

Patterns and comparisons of human-induced changes in river flood impacts in cities

Stephanie Clark^{1*}, Ashish Sharma², Scott A. Sisson¹

1: School of Mathematics and Statistics, University of New South Wales, Sydney, Australia

2: School of Civil and Environmental Engineering, University of New South Wales, Sydney, Australia

* *corresponding author*

ABSTRACT

1
2 In this study, information extracted from the first global urban fluvial flood risk data set (Aqueduct) is
3 investigated and visualised to explore current and projected city-level flood impacts driven by
4 urbanisation and climate change. We use a novel adaption of the self-organizing map (SOM) method,
5 an artificial neural network proficient at clustering, pattern extraction and visualisation of large, multi-
6 dimensional data sets. Prevalent patterns of current relationships and anticipated changes over time
7 in the nonlinearly-related environmental and social variables are presented, relating urban river flood
8 impacts to socioeconomic development and changing hydrologic conditions. Comparisons are
9 provided between 98 individual cities. Output visualisations compare baseline and changing trends of
10 city-specific exposures of population and property to river flooding, revealing relationships between
11 the cities based on their relative map placements. Cities experiencing high (or low) baseline flood
12 impacts on population and/or property that are expected to improve (or worsen), as a result of
13 anticipated climate change and development, are identified and compared. This paper condenses and
14 conveys large amounts of information through visual communication to accelerate the understanding
15 of relationships between local urban conditions and global processes.

Keywords: urban hydrology; self-organizing maps; SPATIOTEMPORAL patterns; clustering; city-scale; neural networks; Anthropocene

1 INTRODUCTION

The hydrologic regimes producing urban floods within many cities are varying due to anthropologic influences such as climate change and urban development (Revi et al., 2014; Mills, 2007; Desai et al., 2015; UNEP, 2016; Willems et al., 2012; Desai et al., 2015), as the high densities of population, property, infrastructure and industry within cities are both substantial drivers and receivers of environmental impacts. River flooding currently impacts more people than any other environmental event (Doocy et al., 2013; Desai et al., 2015; Sofia et al., 2016) posing a threat to almost 380 million urban residents globally (UN-Habitat, 2014). However, most existing river flood assessments are at a local or regional scale (as in Muis et al., 2015), limiting the possibility to compare between multiple cities, and studies at a global scale have traditionally been limited by a lack of datasets and methods (Jongman et al., 2012). The first unified global set of urban fluvial flood risk data has recently been published for a selection of cities as part of the World Resources Institute's Aqueduct Global Flood Analyzer Tool (subsequently referred to as Aqueduct) (Winsemius et al., 2013; Ward et al., 2013; website 3), consisting of current and projected future flood impacts on population and property resulting from climate change and urbanisation. Whilst this data set has previously been analysed and visualised by its creators at the watershed scale (Winsemius et al., 2016), the large amount of city-level information is currently presented on an individual city basis. Here we conduct an analysis, including visualisation and clustering using the self-organizing map (SOM) technique, of the total collection of data that is available at the city scale, to investigate the inherent relationships and patterns amongst the city data. A type of artificial neural network, the SOM is useful for exploring relationships between nonlinearly related variables, and is popular for investigating potentially difficult-to-define environmental responses to human influences (e.g. Shanmuganathan et al., 2006; Vaclavik et al., 2013; Clark et al., 2016b) as well as providing comparisons between geographic areas (Kaski & Kohonen, 1996; Clark et al., 2015; Clark et al., 2016). We expand the traditional SOM method to allow for a comparison over time of expected changes in the city-level conditions. The aim of this study is to increase the understanding of prevalent global patterns of human-environmental relationships influencing city-level river flooding, and discover how a global set of individual cities fits into these patterns of shifting quantities of water and city features.

The combined effects of climate change and urbanisation (alterations in urban population growth, development, land use and density) are leading to variations in the magnitude, frequency and timing of precipitation, snow melt and river floods within cities, generally producing higher peak river flows with shorter response times (Frich, et al. 2002; Desai et al., 2015; UNEP, 2016; Wasko & Sharma, 2015; Shiermeier, 2011; Cunderlik, 2009; Barnett et al., 2005; Immerzeel et al., 2010). The changing patterns of precipitation and runoff are complex and not uniformly spatially distributed (Meehl et al., 2005; Desai et al., 2015; Wentz et al., 2007; Frich et al., 2002). Increases in rainfall intensity at urban hydrology scales of up to 60% are anticipated by 2100 (Willems et al., 2012), and the micro-climates of cities are expected to interact with climate change in a number of ways that will potentially exacerbate flood effects (Revi et al., 2014). Highly populated urban areas are experiencing an increase in flood vulnerability through migration into urban flood plains (Kreimer et al., 2003; Jongman et al., 2012; Revi et al., 2014), causing the global population exposed to river flooding to increase faster than total global population growth (Jongman et al., 2012). By 2050, it is estimated that 70% of the world's population will live in cities (UN-Habitat, 2010), up from 54% in 2015 (UN-DESA, 2015), and as cities grow the proximity of population and property to water courses will continue to increase (Kummu et al., 2011). Urban land cover is increasing globally, with more impervious areas and higher building densities, at a rate over double that of urban population growth (Angel et al., 2010a), and is projected to increase three-fold by 2030 (Pachauri et al., 2014). In the future, cities in particular are predicted to become even more vulnerable to extreme hydrologic events (Pachauri et al., 2014; Willems et al., 2012; Revi et al., 2014, Sofia et al., 2016), and an understanding of each city's unique response to these

1 hydrologic and developmental changes will be necessary as cities strive to adapt (Revi et al. 2014; Doocy et al.,
2 2013).

3 In this paper, a visual comparison is produced amongst a selection of cities based on their current and projected
4 future urban river flood impacts on population and property, resulting from an anticipated combination of
5 climate change and development. It should be noted that fluvial flooding is the only type of flooding that is
6 considered here, and this study does not include an analysis of cities subject to coastal or pluvial flooding.
7 Analysing data with city-specific projections of changes in hydrology, population and development levels (based
8 on future climate scenarios, projected development pathways, and a best assumption of flood protection
9 standards) we produce an analysis and visualisation of the patterns of baseline conditions and anticipated
10 changes in city-level river flooding impacts to the year 2030. We establish the prevalent global spatial and
11 temporal patterns of urban flood impacts, explore these impacts as resulting from both developmental and
12 hydrological drivers, and match the cities to their most similar pattern. The patterns are established through
13 dimension reduction, clustering and visualisation of multivariate data with an adaptation of the self-organizing
14 map technique. We begin by presenting analyses of patterns of urban flood conditions (as measured by the
15 amount of population affected and urban damages costs) for a baseline global snapshot (2010), then investigate
16 projected temporal changes (up to 2030), and finally combine this information into a global temporal analysis of
17 the cities. As individual cities are matched to their closest patterns at each stage, we discover clusters of cities
18 with similar urban flooding characteristics and projected trends.

19 The main analyses to date on this important data set (Winsemius et al., 2013; Ward et al, 2013) have been
20 conducted by its creators, in which the data has been analysed at the watershed scale. Though this data set has
21 been published at city scale as well as watershed scale, certain limitations do exist to an analysis at city scale. The
22 spatial scale of the applied hydrologic and hydraulic models used to create the data, the potentially small
23 upstream catchment areas of the cities, the unidentified relationships of cities along the same river in which
24 mitigation efforts upstream may effect downstream cities, and the assumption of city-specific defence measures
25 (which are discussed in the 'Data' section) all increase the uncertainty inherent in these hydrologic estimates
26 more so than if the data were analysed at the basin scale. However, an analysis of the city data is important in
27 allowing an understanding of conditions that can be expected on a city-level and the identification of cities
28 potentially facing similar circumstances, since climate change, development, and urban administrations are not
29 restricted to river basin boundaries. Therefore, we accept these inherent limitations in order to discover what
30 insights the most cohesive city-level data set to date may reveal.

31 A growing body of research is investigating the impact of anthropogenic changes on urban flooding at regional
32 and global scales, however we have found no literature comparing specific cities in terms of changing city-level
33 flood impacts on populations and property. The Intergovernmental Panel on Climate Change's 5th Assessment
34 Report Chapter 8 'Urban Areas' (Revi et al., 2014) discusses the vulnerabilities and resilience of cities to climate
35 change in general, noting that the analysis is based on economic losses and would differ if a human component
36 is included. Jongman et al. (2012) investigated global trends of coastal and river flooding based on changing
37 regional population densities and land use. Increased vulnerability to flooding is attributed to population growth
38 or increases in wealth, though the modelling does not include changing hydrology due to climate change.
39 Jongman et al. (2015) estimated regional trends in human and economic river flooding vulnerabilities by income
40 level, through hazard and exposure calculations. Kunkel et al., (1999) investigated the increasing trend of
41 economic losses and fatalities in the USA due to increasing vulnerability to floods, however the climate change
42 contribution to this increase was not possible to quantify due to a lack of data. Winsemius et al. (2016) produced
43 the first projections of global future flood risk that consider separate impacts of climate change and
44 socioeconomic development, with results discussed by geographic region (river basin) and economic level. The

1 investigation of the connection between coastal flooding and climate change (increasing storms combined with
2 sea level rise) is more common in the literature than the connection between river flooding and climate change
3 (Nicholls et al., 2008; Nature, 2016) due to better data availability. Sofia et al (2016) emphasize that analyses of
4 climate change and socio-economic development as both drivers and receptors of flood risk is needed. Muis et
5 al. (2015) call for an investigation between the combination of land use change and hydrologic change on future
6 flood risk. Jongman et al. (2012) highlight that due to population growth and climate change, global methods
7 incorporating both spatial and temporal dynamics to investigate inland flooding at the city scale are necessary
8 for global development studies and estimating costs associated with climate change. To date, a global
9 examination of changing flood conditions at the city level resulting from urban development and climate change,
10 including a direct comparison between specific cities, has not been made. The analysis we present here
11 corresponds directly to this gap in the literature.

12 General patterns as well as specific relationships can be extracted from the output maps in this paper. In the
13 interest of channelling the ‘potential of visual communication to accelerate social learning and motivate
14 implementation of changes’ (Sheppard, 2005) the aim of the method used here is to discover and demonstrate
15 potentially interesting global patterns and relationships that would not otherwise be evident in the data, for
16 example: clusters of cities which are currently experiencing high flood impacts that are projected to greatly
17 increase in the future, and to what extent this may be due to climate change (or socioeconomic development)
18 within each city; which cities not currently experiencing notable effects of flooding may expect to in the future;
19 which cities are projected to mitigate potentially adverse flood effects from climate change with reductions in
20 flooding due to socioeconomic factors; which cities are projected to experience an increased flood vulnerability
21 driven by socioeconomic factors alone; and the relationship between the changes in vulnerability of the
22 population and urban damages costs for each city.

23 The comparison of individual cities in this study (rather than river catchments) allows a blending of
24 environmental and social information which reinforces the co-dependence of humans and their natural
25 environment, a relationship which is often easily overlooked by urban dwellers. Explicitly visualising the role that
26 urbanisation may have on the environmental conditions experienced by urban citizens is an essential reminder
27 of this connection. Cities potentially facing similar circumstances and challenges are identified in this study,
28 suggesting possibilities for a sharing of strategies. As climate change, development, and urban administrations
29 transcend river basin boundaries, an investigation of impacts and determination of potential mitigation
30 strategies at the city level as well as the basin level expands the potential for decision makers to be presented
31 with all the available, relevant data for consideration.

32 2 DATA AND METHOD

33 DATA

34 The data set used in this study combines city-level estimates of annual expected urban river flood impacts on
35 population and urban damages costs (2010), projections of future changes in flood impacts attributed to climate
36 change and/or development (up to 2030), and socioeconomic data for a globally distributed set of cities.

37 The selection of cities used here is based on a list provided by the Lincoln Institute of Land Policy’s Atlas of Urban
38 Expansion (Angel et al., 2010, website 1), spanning all continents except Antarctica, encompassing four economic
39 levels and four population levels. City population data (2010) and future population estimates (2030) are from
40 the UN Department of Economic and Social Affairs (UN-DESA, 2015), and GDP per country are from the World
41 Bank’s World Development Indicators database (website 2).

1 Annual river flood impact estimates are obtained from Aqueduct, the global dataset of fluvial flood risk. As this
 2 data is solely related to the influence of fluvial flooding on metropolitan areas, it does not include coastal or
 3 pluvial flood risks. In this data set, Aqueduct provides separate estimates of annual impacts on the number of
 4 affected population (people exposed to flood waters) and urban property damages costs (in US dollars), which
 5 will be referred to in this paper as ‘population’ and ‘damages’ impacts.

6 Global hydrologic and hydraulic models, inundation modelling, and spatial data sets of population, land use and
 7 infrastructure are used within Aqueduct to quantify flood risk in each city. Aqueduct identifies future anticipated
 8 changes in urban flood vulnerabilities as driven by climate change (altered hydrology), socioeconomic
 9 development (population, land use and economic changes), or in most cases a combination of both. Either of
 10 these drivers may increase or decrease the frequency and intensity of flooding, and the resulting flood impacts,
 11 for a given city. Three separate scenarios of climate change and socioeconomic development (optimistic,
 12 business-as-usual, and pessimistic) are given in Aqueduct, and in this study we use data from the business-as-
 13 usual case for our future flood impact scenario. Future hydrologic and hydraulic estimates in Aqueduct are based
 14 on global circulation model data from the ISIMIP project (website 4) and changes in population and economic
 15 development are based on Shared Socioeconomic Pathways data with a downscaling procedure that
 16 differentiates between urban and rural growth (website 5; Samir & Lutz, 2014). Recent papers published with
 17 this data include Winsemius et al. (2016), Jongman et al. (2015) and Muis et al. (2015).

18 Expected flood impacts are provided by Aqueduct for nine possible levels of city-wide flood protection, from
 19 protection against the 2-year average return interval (ARI) flood to the 1000-year ARI flood. This protection level
 20 indicates how well protected the area is against flood damage, based on the standard or capacity of flood
 21 protection measures such as dikes, levees or dams. In this study, we assign an assumed flood protection level to
 22 each city based on the country’s World Bank income level (as in the World Resource Institute’s Aqueduct Global
 23 Flood Risk Country Rankings, website 6) due to a lack of information on each city’s actual protection level. This
 24 method follows recommendations based on the rational that higher standards of protection against flooding
 25 may be expected in higher income countries (Jongman et al., 2012; Nicholls et al., 2008), and findings by Doocy
 26 et al. (2013) that flood impacts are significantly associated with classification of income level by the World Bank.
 27 We assume each city’s flood protection level remains the same during the timeline of this study.

28 To allow for a comparison between cities of greatly differing sizes and hydrologic conditions, the wide-ranging
 29 data values were log-transformed. The data set was then standardized by transforming these values linearly into
 30 the range 0-1 (with the lowest value becoming 0 and the highest value becoming 1) for each variable (population
 31 affected, urban damages, etc). The data is log transformed, following recommendation by Agarwal & Skupin
 32 (2008) that highly skewed variable distributions may benefit from log transformation before use in the SOM.
 33 Cities with no flood impacts in both 2010 and 2030 were removed (22 cities), though cities with no flood impacts
 34 in 2010 but with flood impacts in 2030 have been kept in the study. The final list of cities is presented in Table 1.

35 **TABLE 1: CITY LIST** - alphabetically by region.

Eastern Asia & the Pacific		Seoul	Rep. of Korea	Bandung	Indonesia
Anqing	China	Shanghai	China	Bangkok	Thailand
Ansan	Rep. of Korea	Sydney	Australia	Ho Chi Minh City	Vietnam
Beijing	China	Tokyo	Japan	Kuala Lumpur	Malaysia
Changzhi	China	Ulan Bator	Mongolia	Manila	Philippines
Chinju	Rep. of Korea	Yiyang	China	Palembang	Indonesia
Fukuoka	Japan	Yulin	China	Songkhla	Thailand
Guangzhou	China	Zhengzhou	China		
Leshan	China				
Pusan	Rep. of Korea				
		Southeast Asia		South Asia	
				Dhaka	Bangladesh

Hyderabad	India	Aswan	Egypt	Sao Paulo	Brazil
Jalna	India	Cairo	Egypt	Tijuana	Mexico
Kanpur	India	Casablanca	Morocco	Valledupar	Colombia
Kolkata	India	Marrakech	Morocco		
Mumbai	India	Port Sudan	Sudan		
Puna	India	Tebessa	Algeria		
Rajshahi	Bangladesh				
Vijayawada	India				
Western & Central Asia		Sub-Saharan Africa		North America	
Ahvaz	Iran	Accra	Ghana	Chicago	United States
Astrakhan	Russian Fed.	Bamako	Mali	Cincinnati	United States
Baku	Azerbaijan	Harare	Zimbabwe	Houston	United States
Gorgan	Iran	Ibadan	Nigeria	Los Angeles	United States
Istanbul	Turkey	Johannesburg	South Africa	Minneapolis	United States
Kuwait City	Kuwait	Kampala	Uganda	Modesto	United States
Malatya	Turkey	Kigali	Rwanda	Philadelphia	United States
Moscow	Russian Fed.	Ouagadougou	Burkina Faso	Pittsburgh	United States
Oktyabrsky	Russian Fed.			Springfield	United States
Sanaa	Yemen			St. Catharine's	Canada
Shimkent	Kazakhstan			Tacoma	United States
Teheran	Iran				
Tel Aviv	Israel				
Yerevan	Armenia				
Zugdidi	Georgia				
North Africa		Latin America & the Caribbean		Europe	
Alexandria	Egypt	Buenos Aires	Argentina	Budapest	Hungary
Algiers	Algeria	Caracas	Venezuela	Castellon	Spain
		Guadalajara	Mexico	Le Mans	France
		Ilheus	Brazil	Leipzig	Germany
		Jequie	Brazil	London	UK
		Mexico City	Mexico	Madrid	Spain
		Montevideo	Uruguay	Paris	France
		Ribeirao Preto	Brazil	Sheffield	UK
		Santiago	Chile	Thessaloniki	Greece
				Warsaw	Poland
				Wien	Austria

1

2 METHOD

3 We use an extension to the self-organizing map method to determine patterns and similarities in the impacts,
 4 changes and drivers of urban flooding amongst the cities. The self-organizing map (SOM, Kohonen, 2001) is an
 5 unsupervised learning algorithm from the family of artificial neural networks that discovers patterns in
 6 multivariate data sets with nonlinear inter-variable relationships.

7 The SOM reduces the dimensionality of the data set by creating a (in this case) two-dimensional map grid which,
 8 through an iterative process, is essentially bent and stretched over the data set until it best characterizes the
 9 shape of the data cloud. The numerous data items become represented by a (usually) much smaller number of
 10 map nodes, known as prototypes. The map nodes, or prototypes, move iteratively into position amongst the
 11 data whilst maintaining their grid formation, establishing a higher density of prototypes in areas of higher data
 12 density. Once in position, the prototypes represent the most prevalent patterns in the data. Each data item is
 13 then matched to its closest prototype, creating clusters of similar data items.

14 The SOM algorithm consists of a two-step iterative process of comparing the map and the data, and then
 15 updating the map to better represent the data. The method begins with a calculation of distances in data space
 16 (in this case we use Euclidean distance) between each data item, x_i (where $i = 1: N$), and each map node, m_j
 17 (where $j = 1: M$). Data and map nodes vectors are all of the same dimension, d . The goal of the comparison
 18 stage is to find the nearest map node to each data item (commonly referred to as the best matching unit, BMU),
 19 which is then given the index c , using the following calculation:

$$20 \quad \|x_i - m_c\| = \min_j \{\|x_i - m_j\|\}.$$

21 This partitions the data into subsets of items sharing the same nearest node, m_c . Next, the locations of the
 22 map nodes are adjusted to become closer to their nearby data items. Application of a smoothing

1 ‘neighbourhood’ kernel during this stage produces a smoother map by updating neighbouring nodes to a
 2 similar extent based on the nearby data. That is, the location of each map unit, m_j , becomes updated based
 3 on a weighted average of the data items matching itself as well as its neighbouring nodes, where the
 4 weighting is given by the neighbourhood kernel. The size of the kernel decreases with each iteration to include
 5 fewer nodes. We use a Gaussian shaped neighbourhood kernel, where h_{ij} (the neighbourhood kernel
 6 element indicating the influence of each data item, x_i , on the updating of node m_j) is defined at iteration t as:

$$7 \quad h_{ij}(t) = \exp\left(\frac{-(m_c - m_j)^2}{2\sigma^2(t)}\right)$$

8 where σ is the kernel radius. At each iteration (t), the updated node locations are found as in (Kohonen, 2013):

$$9 \quad m_j(t + 1) = \frac{\sum_{i=1}^N h_{ij}(t) x_i}{\sum_{i=1}^N h_{ij}(t)}.$$

10 After map training is complete, the map node vectors each represent a unique combination of variables in the
 11 data, according to the final location of the map nodes in data space. Each of these unique combinations of
 12 variables represent a characteristic pattern in the data. The data items are once again matched to their closest
 13 map node, forming clusters of data that best match each pattern.

14 In this study, the ‘patterns’ are the key characteristics represented by each map node vector (such as specific
 15 baseline and/or projected flood conditions, and the drivers of change). The ‘cluster’ members are the cities that
 16 match the pattern represented by their nearest map node better than they match the patterns of any other
 17 nodes.

18 As the SOM is an unsupervised learning algorithm, there is no subjectivity in the resulting cluster memberships.
 19 The iterative training process discovers the principal curves of the data set (the nonlinear directions of maximum
 20 variance) and aligns the map coordinate system with these, so that the two axes of the map generally follow the
 21 first two principal curves of the data. When the map is presented in its two-dimensional form, with data items
 22 located at their nearest map node, similar data ends up in close proximity on the map and dissimilar data is far
 23 apart. Through the SOM creation process the prevalent data patterns are identified by the nodes, data items
 24 become grouped into clusters around these patterns, and the clusters are ordered by similarity on the map. For
 25 a more detailed summary of the SOM method, refer to e.g. Clark et al. (2015).

26 Error measures, such as quantization error (QE), topographic error (TE) and dimension range representation
 27 measure (DRR) are used to compare the data set and maps.

28 The QE (Kohonen, 2001) measures how well the map nodes represent the data items using the sum of squared
 29 Euclidean distances between each data item, x_i , and the node closest to it, m_c , averaged over all data points:

$$30 \quad QE = \frac{1}{N} \sum_i \|m_c - x_i\| = \frac{1}{N} \sum_i \sqrt{(m_c^2 + x_i^2 - 2m_c x_i)}.$$

31 The TE (Kiviluoto, 1996) indicates how well the topography of the data set is preserved on the map, giving higher
 32 error values for maps that are unnecessarily bent or twisted. The BMU and second BMU for each data point are
 33 checked to determine if they are adjacent ($u_{x_i} = 1$ if the first and second BMUs of x_i are neighbours, 0
 34 otherwise), and TE is calculated as:

$$TE = \frac{1}{N} \sum_{i=1}^N u_{x_i}$$

The DRR (Clark et al., 2015) measures how well the map represents each variable of the data set to ensure even coverage of the dimensions. The maximum intra-cluster spread of data items in each dimension, d , that become represented by a single map node, x_i (as a proportion of the overall data range in that dimension) is determined. The DRR is calculated as follows, where $x_i(d)$ are data values in dimension d , and $x_{ij}(d)$ are the data values in dimension d that are assigned to map unit j :

$$DRR(d) = \max_j \frac{\max_{ij}(x_{ij}(d)) - \min_{ij}(x_{ij}(d))}{\max_i(x_i(d)) - \min_i(x_i(d))}$$

In this study, the data set is split into two subsets ('baseline' data and 'projected future changes') for each city, allowing a progressive investigation of spatial and temporal patterns of urban flooding. A series of three separate SOMs (also referred to as maps) are created with prevalent global patterns and city similarities established separately on each map through colouring and labels, as follows:

- SOM1 explores the spatial properties of the baseline data set, enabling a comparison of the state of urban river flood impacts in each city at a snapshot in time (2010).
- SOM2 explores patterns of projected temporal changes in impacts of urban flooding on population and property (to 2030), incorporating the drivers of climate change and urban development, and
- SOM3 portrays the temporal relationships between the cities in a type of longitudinal exploratory data analysis, clustering cities that are similar in the baseline situation and are also projected to trend similarly in response to each driver in the future.

SOM1, the baseline map, depicts prevalent global spatial patterns and identifies urban flooding conditions in each city based on two variables: 1) the total population affected annually by river flooding, and 2) annual urban property damages costs incurred by river flooding. The map is created based on these two variables, though by projecting new variables onto the trained map it is also used to show: 3) the percentage of each city's population affected, and 4) the percentage of the country's GDP affected. Usually used with higher-dimensional input data, the SOM method is useful here for creating a map with two variables as the nonlinear projection establishes the relationships between cities in alignment with the directions of maximum variance (ie. the directions of most importance) in the data. It also allows for the results to be used as input into SOM3 later.

SOM2, the future projected changes map, describes the anticipated alterations in urban river flooding in each city by 2030. This map is based on four variables of projected changes and their associated drivers: 1) the projected change in population affected annually, 2) the projected change in annual urban damages costs, 3) the proportion of change in population affected that is anticipated to be attributable to climate change, and 4) the proportion of change in urban damages costs that is anticipated to be attributable to climate change. The remainder of the increase or decrease in impacts is attributed to socioeconomic causes (such as population change, urban density change, increased city footprint, and changes in urban land cover).

SOM3, the temporal map, uses the location of each city along the axes of the two-dimensional baseline and future projected changes maps (which essentially delineate the first two principle curves in each higher dimensional data subset) as input data. In creating SOM1 and SOM2, the baseline and future data subsets have already been reduced to their two most prominent dimensions respectively (which have become the axes of these maps), and each of these four dimensions is considered equally when placing the cities on the temporal

1 map. This method is based on the method used in Clark et al. (2015) to investigate individual data items
2 transitioning through a self-organizing-time-map, and has been modified for the comparison of patterns on two-
3 dimensional maps of differing sizes and shapes that have been created separately based on different variables.

4 Distinct patterns that have emerged through the process of training the three maps are represented by the
5 nodes of SOM3. These patterns are the most relevant combinations of dynamic city flood impacts,
6 socioeconomic, and climate change characteristics in the overall data set. SOM3 is clustered, coloured and
7 labelled to indicate the relationships between the cities in terms of similar or differing baseline situations *and*
8 projected changes. Cities with relatively close locations on both the baseline and future projected changes maps
9 are considered to have parallel temporal paths, and will be found close together on the temporal map. Those
10 with converging trends (dissimilar baseline conditions, but similar future projected changes) and diverging
11 trends (close baseline conditions, but dissimilar future projected changes) are also identifiable on this map.

12 In the creation of each map, grid size and shape have been determined using QE, TE, and DRR, with comparisons
13 between the data set and each potential map. For the baseline map, a 10*7 grid is found to be the optimum
14 shape to represent the data based on the error measures. An 8*8 map is fitted to the future projected changes
15 data set. After finding these optimum side ratios, the maps are increased in size preserving their side ratios (to
16 20*14 and 18*18) to allow the data items to spread out until most cities are placed individually, allowing the
17 relationships between all cities to become evident (as in Skupin & Hagelman, 2005). The temporal map is sized
18 at 25*17 nodes. Whilst the input data for the baseline and future projected changes maps were standardized into
19 the range 0-1 before training, the input data for the temporal map is not standardised in order to preserve the
20 ratios between the lengths of the first two principal curves in each of the first two data subsets.

21 Prevalent cluster characteristics are determined using a ‘second level’ clustering of the nodes of the SOM (as in
22 Vesanto & Alhoniemi, 2000; Skupin & Hagelman, 2005), performed using Ward’s clustering method (Ward, 1963)
23 with the number of clusters determined using the Davies-Bouldin index (Davies & Bouldin, 1979). The Davies-
24 Bouldin index reports the ratio of within cluster scatter (S_j for cluster j) to inter-cluster distances, looking at
25 each cluster and its most similar one, (M_{jk}), with a lower ratio (S_j/M) indicating a better estimate of the number
26 of clusters of interest present in the data. Ward’s minimum variance method is a hierarchical clustering algorithm
27 based on minimizing the total within-cluster variance. With this second-level clustering, each data item of the
28 original data set becomes a member of the same final cluster as its closest node (Vesanto & Alhoniemi, 2000).

29 The final clustering is visually verified with a SOM ‘U-matrix’ (Ultsch, 2003). The U-matrix visualises distances in
30 data space between immediately neighbouring nodes, indicating these distances by colour on a grid of the same
31 size as the SOM. By computing how close adjacent map nodes are in data space, the U-matrix is able to provide
32 an indication of cluster boundaries based on large dissimilarities between neighbouring nodes. A greater change
33 in relative distance between the locations of the nodes in data space than in map space is displayed in a lighter
34 colour on the grid, and lesser distances in darker shades. The darker regions of the grid then indicate the cluster
35 centres, separated by lighter coloured boundary areas.

36 By reducing the information from this multivariate data set into the two most prominent dimensions and finding
37 relationships between the data items at each of these three stages, spatial and temporal information about
38 global patterns of urban flooding is abstracted, and similarities and differences between the cities are clearly
39 portrayed. This method extracts two levels of information:

- 40 (1) the most characteristic socio-environmental patterns in the data are found, and
- 41 (2) cities are compared to each other with respect to their relative flooding conditions.

1 The simulations are run in MATLAB with use of the SOM Toolbox (website 7) with variables and map sizes as
2 described above.

3 3 RESULTS

4 Three SOMs are presented sequentially to reveal three unique sets of patterns in the data, where the term
5 'patterns' refers to combinations of variables that characterise a specific set of conditions. The cities are
6 clustered into groups with conditions matching these patterns, based only on the given data. The maps each
7 have different sizes, shapes and colours as they represent different subsets of input data. The interpretation of
8 the maps is discussed in this section.

9 SOM1: BASELINE URBAN FLOOD IMPACTS

10 Patterns of urban flood conditions in 2010 are shown on the baseline map, SOM1, in Figure 1. The placement of
11 city labels indicates the relationship of each city to each other in terms of river flood impacts on population and
12 urban damages costs. The map is created by organizing the cities with respect to each other based on both of
13 these factors. Cities close together are more similar in the amount of population affected and urban damages
14 costs, and cities located far apart are less similar.

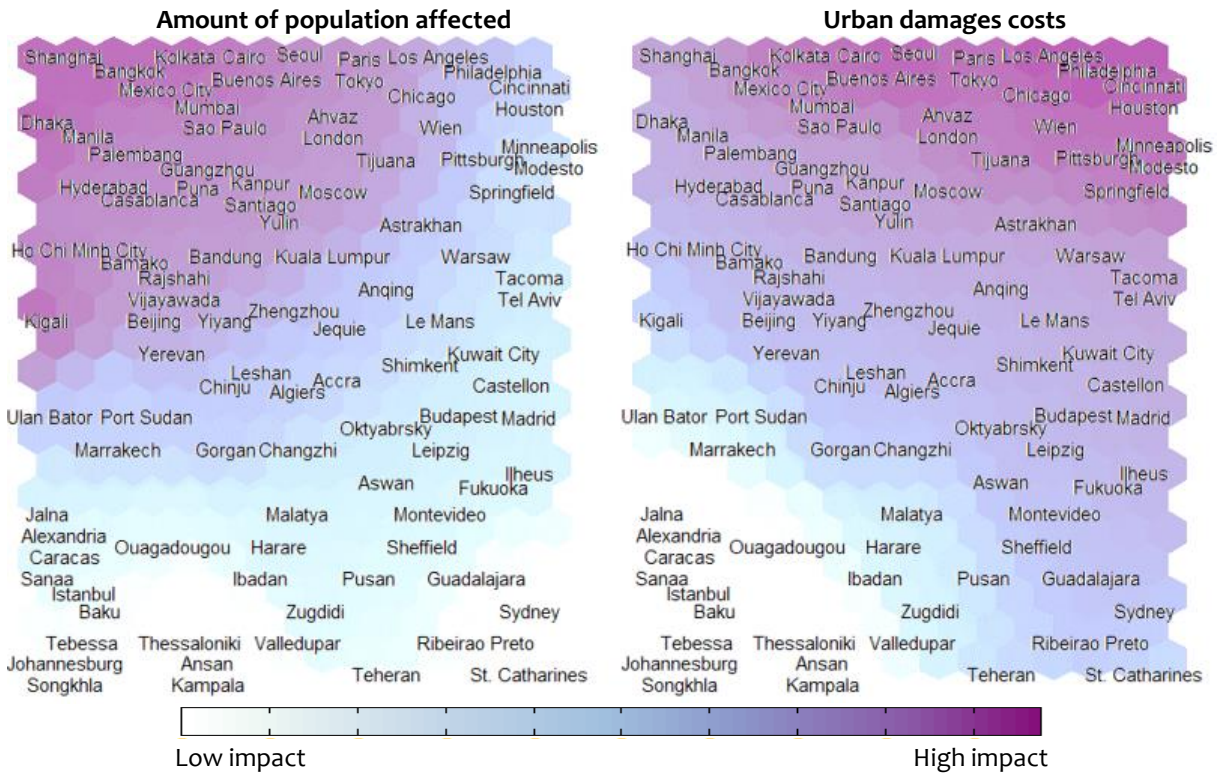
15 The relative placement of the cities on the map is the main map characteristic providing insight into the features
16 of the data, indicating differences in a *combination* of the variables which can be discerned from the colouring
17 of Figure 1(a). Each map node has a four-component vector (representing the value of each of the four variables
18 at the location of the node in data space). The four images in Figure 1(a) show SOM1's city labels over grids
19 coloured separately by the values of each of the four variables (white is low, purple is high). For each city, the
20 relative value of each of the variables can be seen. For example, Cincinnati (top right) incurs high material
21 damages costs, and medium population affected, whereas Ulan Bator (mid left) has similar population affected
22 to Cincinnati, but much lower material damages costs.

23 The nonlinearity of the relationships between the variables is evident from the colouring of the grids, indicating
24 that high (or low) values are located on different regions of the map for each variable. The smooth transition of
25 the values of each variable is also apparent by the smooth transition of colours along the grids. General
26 information about the prevalent baseline global patterns and the relative flood conditions in the specific cities
27 can be gained from inspection of these map labels and coloured grids.

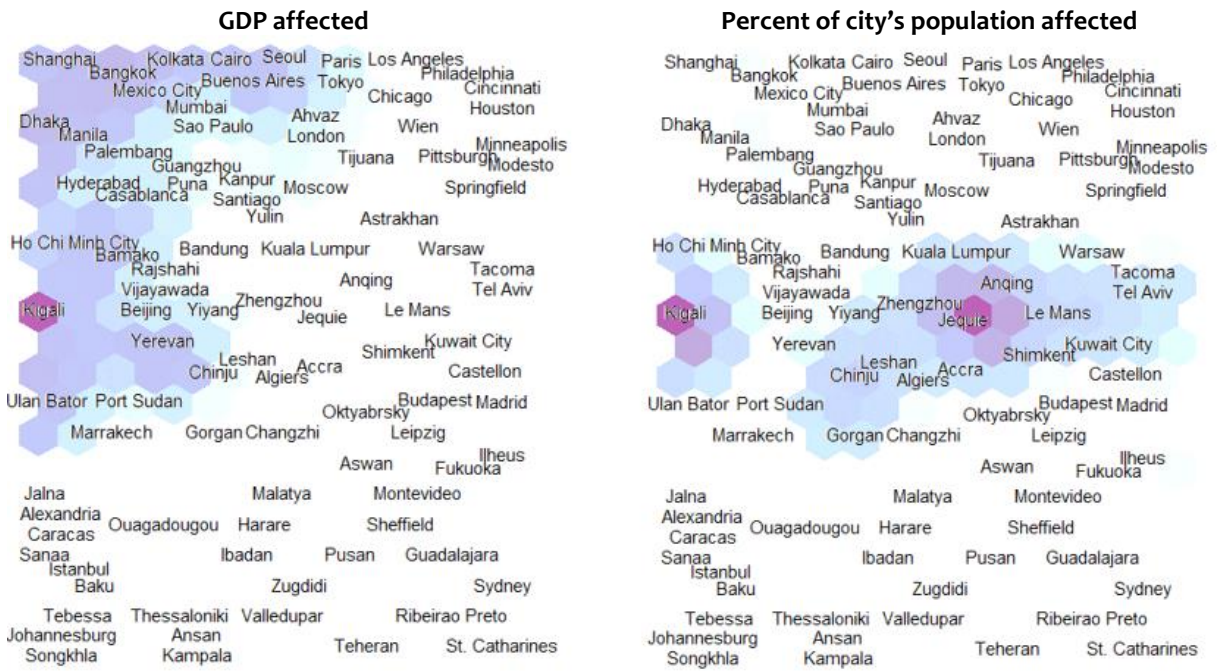
28 Each area of the grid represents a general pattern, or combination of variables in the data, some of which are
29 indicated by annotations on Figure 1(b). In general, higher amounts of population affected and urban damages
30 costs resulting from river flooding are represented by areas towards the top of the map, and these variables
31 decrease in value down the map. Values of affected population are lowest just in from the lower left corner and
32 undulate along the bottom of the map, sweeping upwards to a maximum at the upper left corner. Urban damage
33 values are lowest in the lower left corner and increase in concentric arcs up to the upper right corner. Generally,
34 the left of the map contains patterns involving higher impacts on populations than on property, and the right of
35 the map higher impacts on property than on populations.

36

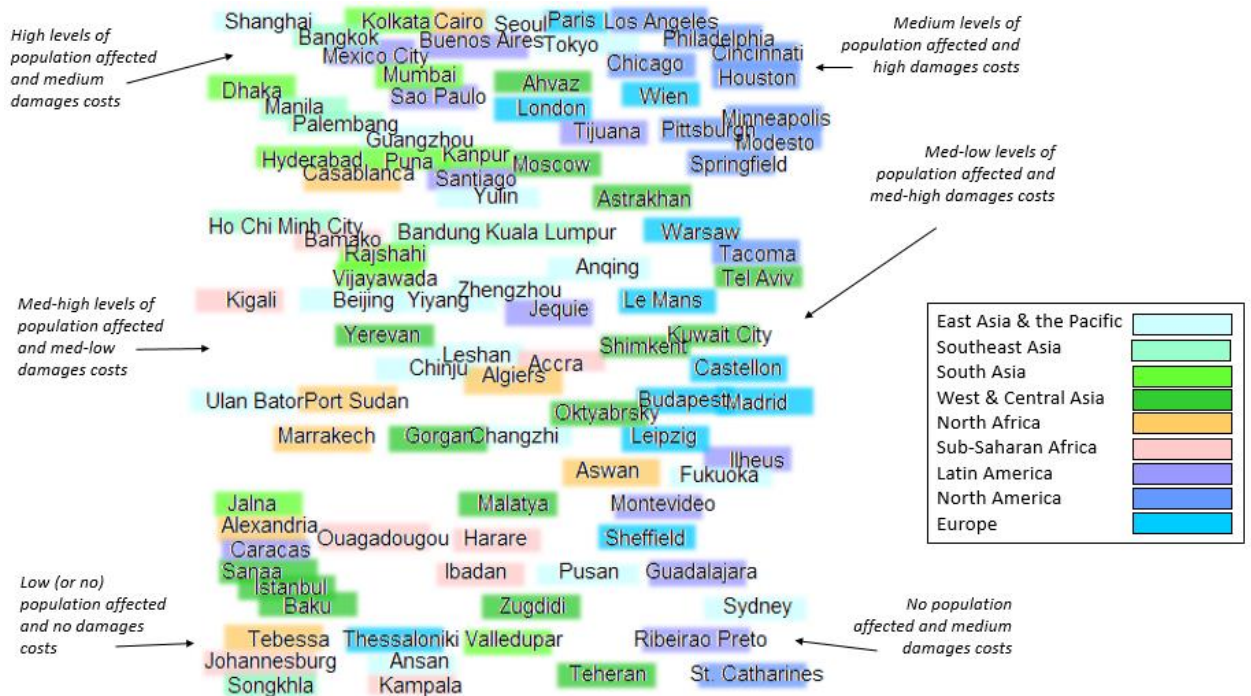
1 a)



2



b)



1

2

3

4

5

6

7

FIGURE 1: SOM1 - BASELINE (2010) URBAN FLOOD CONDITIONS. Cities are placed relative to each other based on annual river flooding impacts on population and urban damages costs. a) The same map is repeated for each of four variables, with colouring indicating low (white) and high (purple) values. b) The city labels are coloured by region (see Table 1), and characteristic patterns of general areas of the map are annotated. The reader may refer to the online version to zoom in on text if required.

8

9

10

11

12

13

14

15

16

From Figure 1(b), relationships can be discerned between regions, as well as between cities in the same region. For instance, cities in North Africa, Sub-Saharan Africa and West & Central Asia are predominantly located in the lower portion of the map, corresponding to a prevalent pattern of low flood impacts on both population and property. Cities in Southeast and South Asia generally correspond to the patterns of high impacts on population and property found in the upper left of the map. Cities in Europe stretch from the top to the bottom of the map, ranging from high overall flood effects (Paris) to no flood effects at all (Thessaloniki). North American cities are matched to patterns that represent more significant impacts on property than on population (down the right side of the map), and are split between those with high property damages (Philadelphia, LA, etc. – in the top right) and those with low damages (St. Catherine’s – in the bottom right).

17

18

19

20

21

22

23

Impacts on GDP and the proportion of the cities’ populations affected are shown in the two lower maps of Figure 1(a), though these variables were not used to position the cities on the map. Cities in which river-related urban flooding is estimated to highly affect the country’s GDP are coloured on the lower left map. Kigali, in particular, which incurs medium-high flood impacts, sees a large impact on Rwanda’s GDP, perhaps because Kigali is the main city in this relatively small country (Kreimer et al., 2003). GDP is most affected by flooding in: Kigali, Bangkok, Yerevan, Dhaka, Bamako and Cairo. Cities in which the flood-affected population forms a significant proportion of the city’s population are coloured on the lower right map, predominantly in a horizontal strip

1 across the centre. The highest proportions are in: Jeju (15%), Kigali (7%), Chinju (6%), Le Mans (5%) and Tacoma
2 (3%).

3 **SOM2: PROJECTED CHANGES IN URBAN FLOOD IMPACTS (TO 2030)**

4 SOM2 identifies the projected patterns of evolving river flood conditions in the cities (between 2010 and 2030),
5 based on city-specific projections of increasing or decreasing flood impacts on population and damages costs,
6 and whether these changes are anticipated to be driven more by climate change or development (Figure 2).

7 In Figure 2(a), regions of the map representing projected increases in flood impacts on either populations or
8 damages costs are coloured blue and reductions in flood impacts are coloured brown (in the top row), with
9 white indicating no projected change. Projected changes primarily driven by socioeconomic development are
10 coloured purple (in the lower row), and green indicates that the primary driver is climate change. White
11 represents a mid-point in which both climate change and development are predicted impact future flood
12 conditions relatively equally. Areas of the map representing patterns of increased flood impacts predominantly
13 due to climate change or development can be located on Figure 2(b).

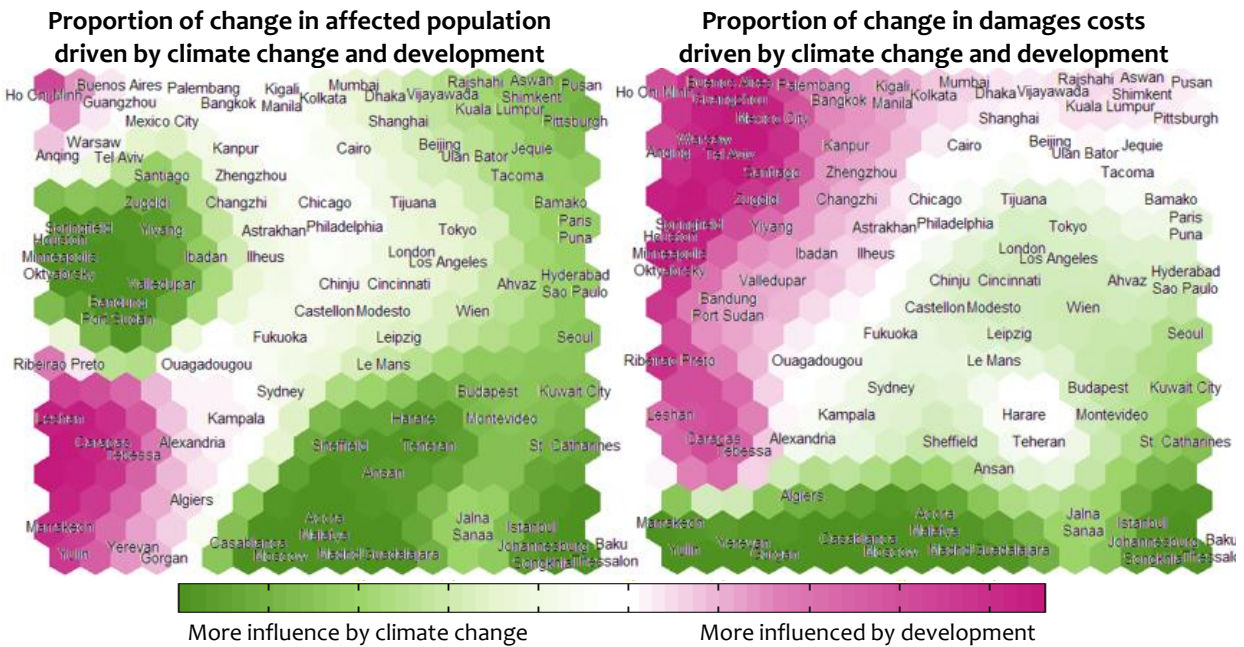
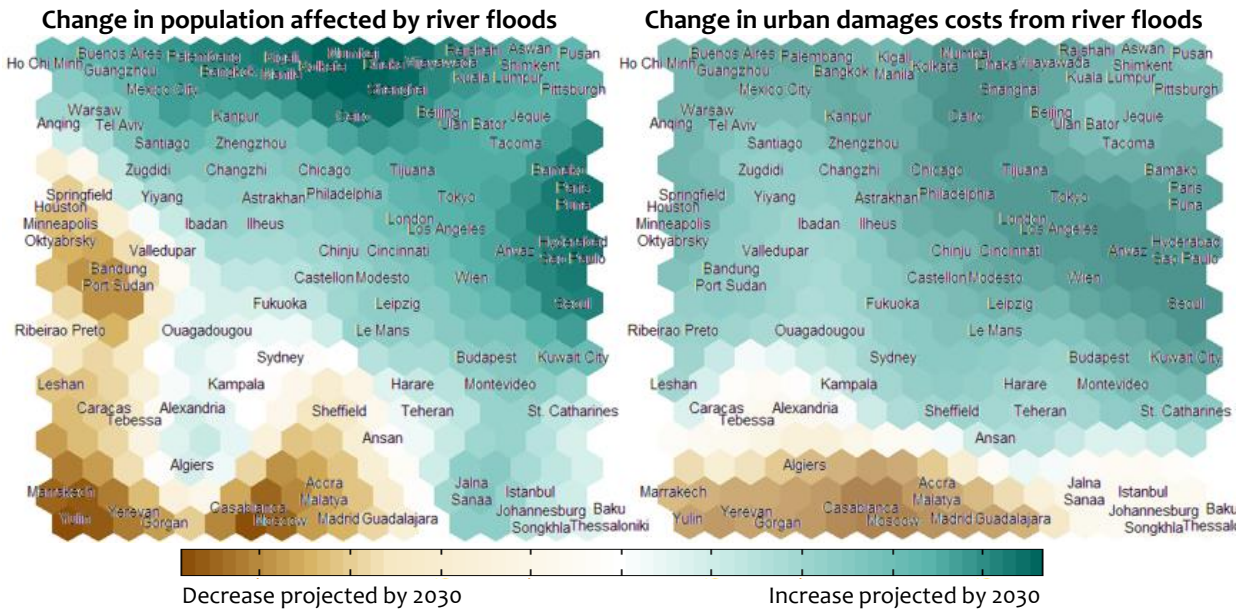
14 Investigating SOM2, we see that climate change is projected to be predominantly responsible for increases in
15 population vulnerability in all cities besides those in the top left corner (around Ho Chi Minh City). Climate change
16 is anticipated to decrease flood damages costs in cities located at the bottom of the map (around Madrid), and
17 decrease impacts on populations in cities in the mid-left (around Minneapolis) and mid-lower (again around
18 Madrid) portions of the map. Socioeconomic development is projected to be the main driver increasing flood
19 damages costs in cities on the upper-left triangle of the map (roughly from Mumbai down to Tebessa). Only in
20 Ho Chi Minh City is development anticipated to be almost completely responsible for all increases in river flood
21 impacts, all other cities in this study are at least partially affected by climate change. Development is not
22 projected to play any part in a decrease in flood damages costs in any cities in this study (Caracas and Tebessa
23 have no change in damages costs on the upper map, though it is attributed to development on the lower map).

24 Geographic regions are shown on Figure 2(b) with coloured text backgrounds. Cities in Southeast Asia are mostly
25 found at the top of the map indicating high projected increases in overall flood impacts. South Asian cities are
26 mostly located in the two areas of the map with patterns of very high increases in flood impacts, split between
27 those projected to be most affected by development (around Mumbai, top middle) and by climate change
28 (around Puna, mid right). Many North African cities are located in the lower left, indicating anticipated reductions
29 in flooding due to socioeconomic development. North American cities are spread across the middle of the map
30 indicating a wide range of projected changes.

31

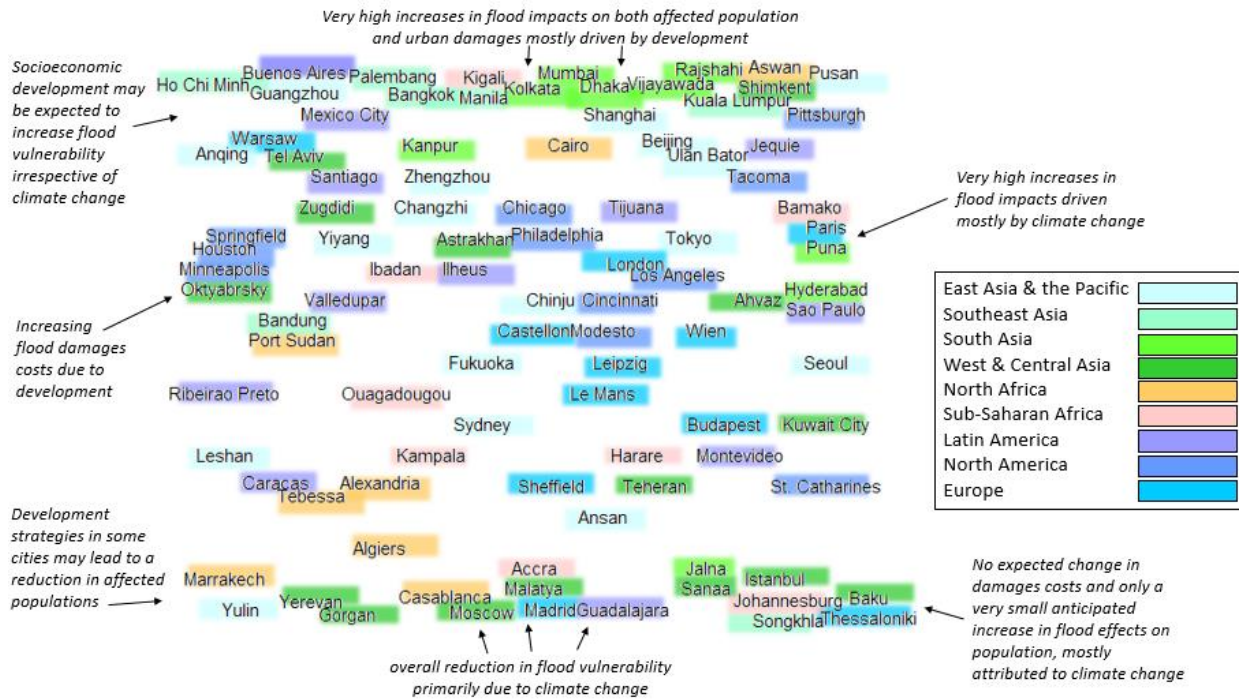
32

1 a)



2

b)



1 **FIGURE 2: SOM₂ - PROJECTED CHANGES IN RIVER FLOOD IMPACTS WITH ASSOCIATED DRIVERS.**

2 River flooding in individual cities will be affected separately by climate change and development
 3 between 2010 and 2030. Cities that are anticipated to experience similar pressures and responses in
 4 terms of river flooding impacts are located nearby on the map. a) City labels are placed over coloured
 5 copies of the map showing the relative values of each variable. b) City labels are coloured by region,
 6 and characteristic patterns of general areas of the map are annotated. The reader may refer to the
 7 online version to zoom in on text if required.

8 Climate change and development may lead to opposing changes in a city's flood impacts on population and
 9 property. A number of cities in this data set are predicted to have affected populations decreasing due to climate
 10 change, whilst damages costs increase due to socioeconomic factors (around Springfield and Port Sudan, in the
 11 mid-left). A decrease in flood effects on urban damages due to climate change, but an increase in affected
 12 population largely due to development is, out of the cities in this study, only projected for Algiers (in the lower
 13 left portion of the map).

14 In some cities, both drivers may generate changes in the same direction. For instance, in Marrakech, Yulin,
 15 Yerevan and Gorgan, climate change is projected to be responsible for a decrease in damages costs whilst
 16 socioeconomic development is anticipated to play a major role in the decrease in affected population, suggesting
 17 that the reduction of population vulnerability due to development is complementing the direction of change
 18 instigated by climate change. In certain cities near the upper left of the map (Santiago, Zugdidi and Yiyang), an
 19 overall increase in flood impacts is expected, with increases in affected population almost completely attributed
 20 to climate change and increases in damages costs almost completely attributed to development.

21

1 SOM3: TEMPORAL PATTERNS

2 Relationships between the baseline characteristics and projected future changes of urban flooding in the
3 individual cities are shown in Figures 1 and 2 respectively, however potentially similar temporal patterns between
4 the cities are not evident from these maps. To link the information abstracted from the first two maps, we create
5 a temporal map, SOM3, shown in Figure 3. SOM3 identifies which cities experience similar baseline flooding, are
6 expected to incur comparable future hydrologic pressures from climate change and/or development, and are
7 projected to respond in similar ways (or which cities may diverge in the future from similar baseline conditions).

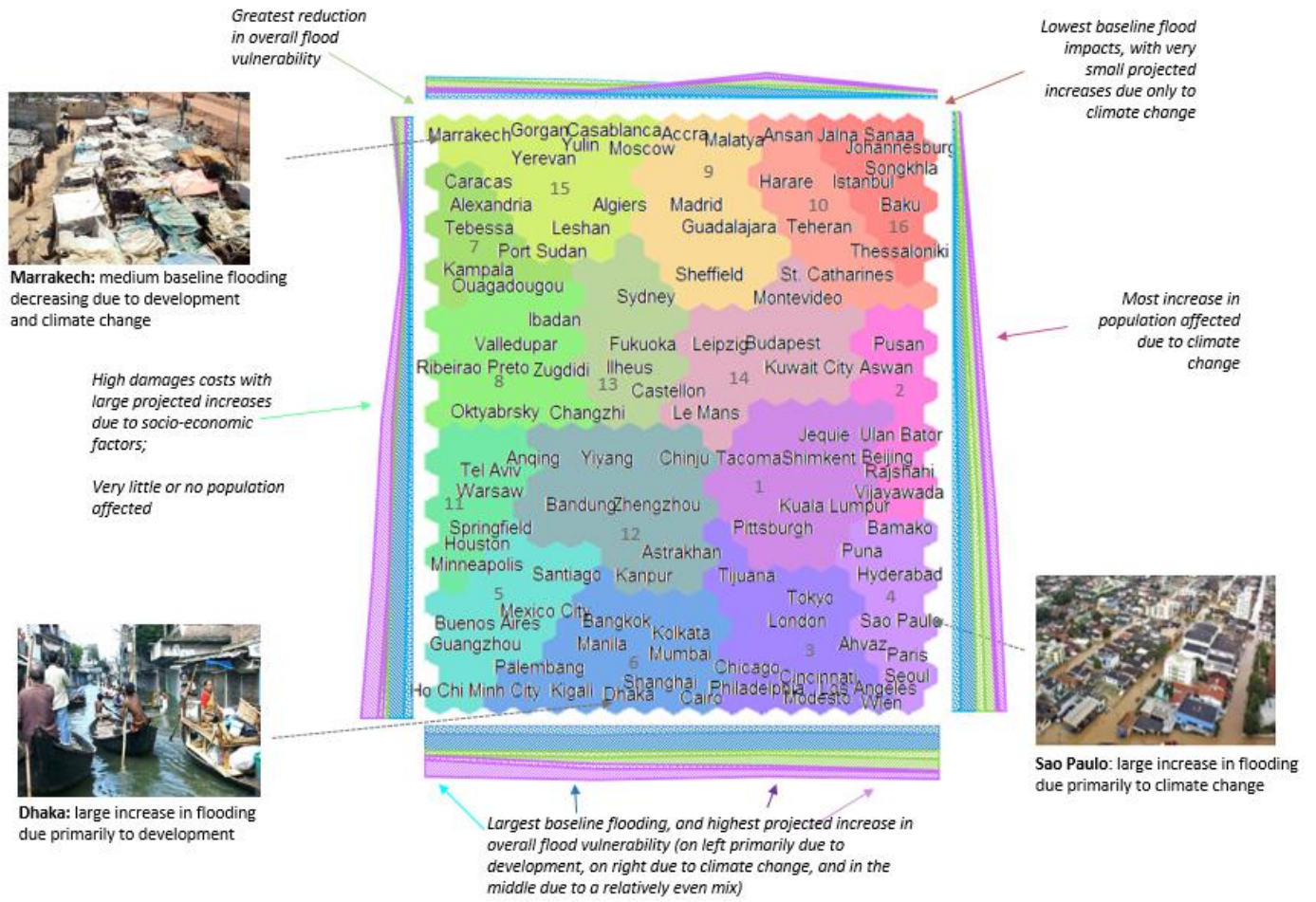
8 The nodes of SOM3 are coloured based on the results of a second-level clustering, giving a visual separation to
9 clusters of more similar data. Clusters are numbered from 1 to 16 for reference. As the cities have been located
10 on SOM3 based on their locations on the 'baseline' and 'future projected changes' SOMs (in which the values of
11 the variables vary smoothly though not monotonically along the axes), again the characteristics of the cities will
12 flow smoothly along the map though multiple peaks and troughs of each variable are possible. The gradients of
13 the cluster characteristics are indicated along the axes in Figure 3(a), which are nonlinear in data space.

14 Broad overviews of the patterns represented by certain regions of the map are identified on Figure 3 with arrows.
15 The largest increases in flood effects are generally represented by nodes in the lower half of the map, whilst the
16 largest decreases in flood effects are represented by nodes in the top left. Climate change is predicted to be the
17 main driver of changes in population vulnerability along the top and down the left and right sides of the map,
18 and in urban damages on the top and right of the map; therefore, climate change is the leading driver of changes
19 in flood impacts on both population and damages costs at the top of the map. Development is the main driver
20 of changes in flood impacts on populations in the lower and upper left side of the map, and on urban damages
21 in the lower left area of the map; therefore, development is the leading driver of changes in flood impacts on
22 both population and damages costs in cities on the lower left side of the map.

23 On Figure 3(b) the city labels are coloured by geographic region allowing for a regional visual comparison. We
24 see the cities of each geographical region are more spread out on SOM3 than on SOM1 where each region was
25 generally contained in one or two broad areas of the map. For example, on SOM3 Cairo and Aswan are noticeably
26 separated from other North African cities which are located close together. Although the cities of this region
27 have differing baseline flood levels (as shown on SOM1), most are projected to incur some reduction in future
28 flood impacts (as shown on SOM2), with the exception of Cairo and Aswan. These cities both have forecasts of
29 increased flood impacts - for Aswan increased impacts on the population due to climate change and impacts on
30 property due to development, and for Cairo future impacts are projected to increase due to a relatively even
31 mixture of both drivers. Another example can be seen in the cities of the USA shown on the map. They have
32 similar starting conditions, yet are in two well-separated clusters on SOM3 - those around Houston and those
33 around Los Angeles. The cities clustered around Houston are characterised by low impacts on population but
34 high damages costs projected to elevate due to development, implying the possibility for local improvements
35 through planning or mitigation strategies. The cities clustered around Los Angeles, however, are characterised
36 by high overall impacts projected to increase predominantly due to climate change. In Sub-Saharan Africa we
37 see Kigali and Bamako (which have similar medium-high baseline flooding conditions) are both expected to see
38 increased impacts, but the cities are separated by SOM3 as these flood increases are attributed to development
39 in Kigali and climate change in Bamako.

40

1 a)



	Baseline annual population affected
	Baseline annual damages costs
	Change in pop due to climate change
	Change in damages due to climate change
	Change in pop due to development
	Change in damages due to development

2

3

4

1 b)
2



3

4
5
6
7
8
9
10
11
12

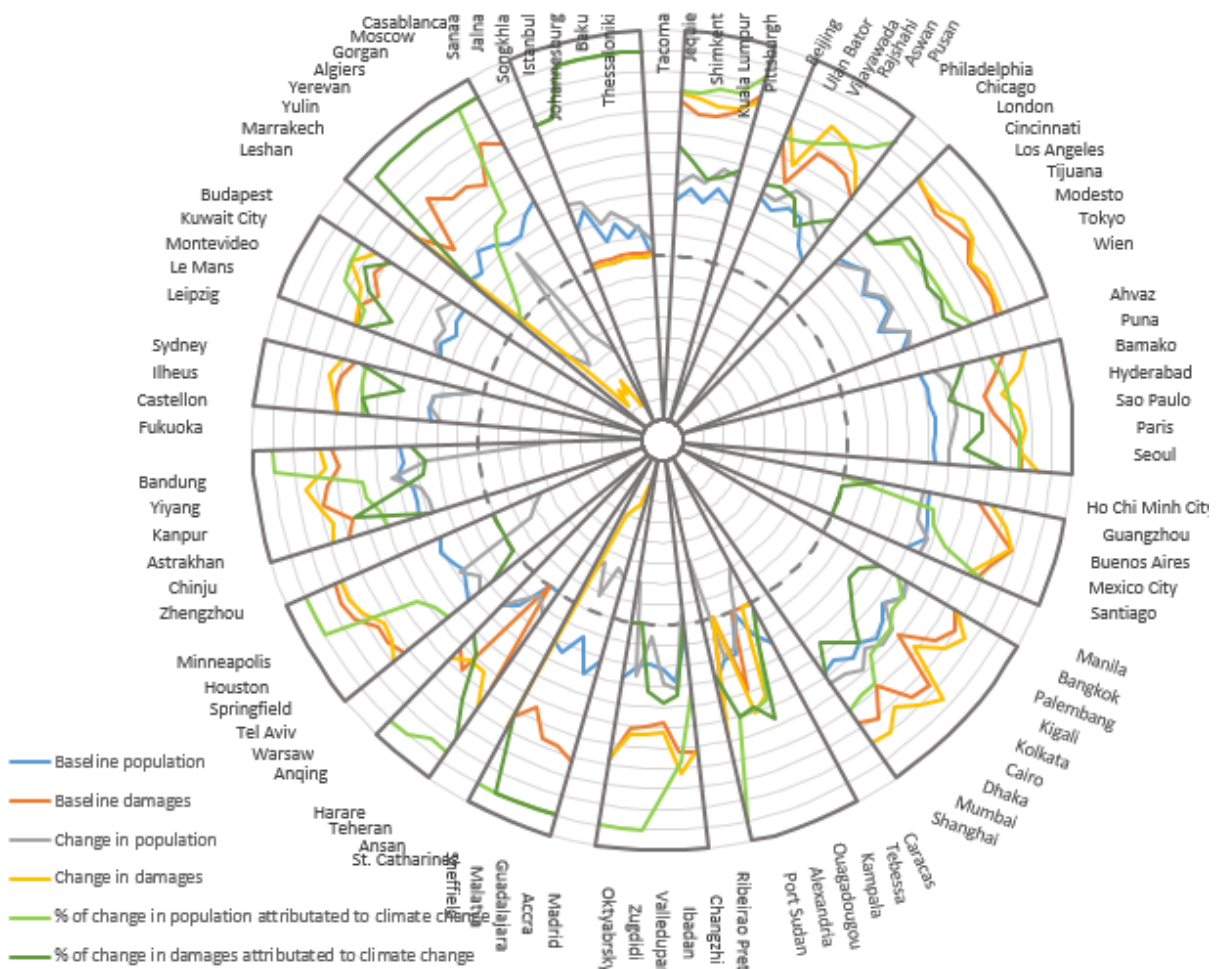
FIGURE 3: SOM₃ - TEMPORAL PATTERNS – Cities are clustered close together that share similar baseline (2010) flood vulnerabilities as well as similar anticipated changes driven by climate change and development on population and urban damages costs by 2030. a) Locations of the cities are based on their individual relationships to the principal curves in the baseline and future projected changes data subsets - therefore, the axes represent the most important nonlinear gradients of flood vulnerabilities in the data set. Coloured bars along the axes indicate the average levels of each variable around the edges of the map. Cities are grouped into coloured clusters based on similarities. b) City labels are coloured by region, and characteristic patterns of general areas of the map are annotated. The reader may refer to the online version to zoom in on text if required.

13
14
15
16
17
18
19
20
21
22
23
24
25
26

To further analyse the characteristics of each cluster and the patterns found on SOM₃, the properties of each city in the 16 clusters are shown in a radial plot in Figure 4. Baseline values of population affected (blue, units = number of people) and damages (orange, units = \$US) are shown on a symmetrical logarithmic scale ranging from -8 (ie. signifying a value of -100,000,000) to 11 (100,000,000,000) with the region between -1 and 1 on the plot set as linear to avoid logarithmic discontinuities in the vicinity of zero. Zero is indicated by a dashed circumference, and each progressive ring is an exponentially higher (or lower) value. Changes in population affected and damages costs are shown on the same scale, in grey and yellow respectively. Values inside the dashed (zero) circle represent decreases in flood impacts, and values outside represent increases, with the size of the increase or decrease indicated by the distance from the dashed circle. The influence of climate change is shown (light green for population and dark green for damages) on a linear scale from the same zero circumference, in units of ‘percentage of projected change attributable to climate change’ (each progressive ring is 10%). Green lines closer to the outer ring than the centre therefore indicate that the flood impacts on the city are anticipated to be more influenced by climate change than by development. If the green lines are both in the middle of the segment, this indicates a relatively equal influence of both drivers on both population and

1 property. Diverging green lines indicate that either population or damages costs are more influenced by climate
2 change, and the other by development.

3 From Figure 4, we can see the differences between neighbouring clusters, such as 10 and 16 located in the top
4 right of the map. Both clusters are characterized by low baseline impacts of flooding on the population, with
5 small increases in population impacts projected primarily due to climate change. However, cities in cluster 16
6 incur no flood damages costs at all in the baseline or future cases, yet in cluster 10 damages costs are projected
7 to increase due to climate change and development. Therefore, development has little or no impact on cities in
8 cluster 16 but does play a role in the increase in damages in cluster 10. In the top left of SOM3, we can now also
9 discern the difference between clusters 9 and 15. In both clusters, development is projected to have no impact
10 on the reduction of flood damages costs in most cities. Development does however play a strong role in the
11 reduction of flood impacts on populations in cluster 15 (except for Moscow and Casablanca) but none on
12 populations in cluster 9.



13

14

15

FIGURE 4: RADIAL PLOT OF CLUSTERS OF FIGURE 3 – The city members of the 16 clusters of Figure 3 are shown with their individual variable values. The scale is logarithmic for baseline

1 and changes in population and damages, and linear for the percent of change attributed to
2 climate change, with the dashed circle representing zero.

3 The relationship between the two drivers, climate change and development, can be discerned from Figures 3
4 and 4. Climate change is projected to impact populations more than urban damages costs in clusters stretched
5 across the centre of the map (clusters 8, 11, 5, 6, 12, 14, 1, 10, 1, 2, and 4 - in cities in these clusters, the proportion
6 of change in the population affected attributed to climate change is higher than the proportion of change in
7 damages costs attributed to climate change). In cluster 15, the population is projected to be more influenced by
8 development than damages costs will be (a higher proportion of the change in damages costs is attributed to
9 climate change than for population). In the remaining clusters, climate change (and development) are projected
10 to affect the population and damages costs relatively similarly (clusters 7, 13, 9, 16 and 3). Some examples of
11 diverging impacts on population and damages costs stand out on the radial plot in Figure 4. For instance, in Port
12 Sudan, Sheffield and Bandung, significant reductions in affected population are projected to be 100% due to
13 climate change, however large projected increases (~300 to 400%) in damages are due mostly to development.
14 In Leshan, development is projected to slightly lower the amount of affected population and also to increase
15 damages costs more than three-fold.

16 4 DISCUSSION

17 In this study, the 'patterns' and 'clusters' in the data have been identified. The patterns, depicting unique, key
18 combinations of variables that are characteristic of the data set, have been extracted at three separate levels on
19 SOM1, SOM2 and SOM3 (for example, each pattern of SOM3 is a separate combination of levels of baseline and
20 projected future flood conditions as well as projected influences of climate change and development). The
21 clusters consist of groups of cities whose conditions are anticipated to be similar to these patterns, based on the
22 given data. In the previous section, the interpretation of each SOM (1-3) has been discussed. In this section, a
23 discussion of a selection of the patterns and clusters is provided. The information that can be gleaned from the
24 SOMs is related to information in current literature through the use of specific examples.

25 The lower left region of SOM3 highlights the fact that a number of cities already experiencing large flood effects
26 are anticipated to incur great flood increases influenced predominantly by socioeconomic factors. In these cities,
27 climate change is playing a large role, and yet it is overshadowed by the magnitude of regional economic growth
28 (UNEP, 2016; website 8) leading to migration, changing land use and unplanned development in flood zones.
29 Many of these cities are in Asia, where the climate is experiencing warming trends, increasing temperature and
30 precipitation extremes, and rapid glacial melting resulting from climate change (Pachauri et al., (2014) chapter
31 24: 'Asia'). However, it can be seen that socioeconomic growth in this area is projected to have even more of an
32 impact on urban floods than climate change.

33 Pachauri et al. (2014, chapter 24: 'Asia') assert that human and material losses due to flooding are already heavily
34 concentrated in India, Bangladesh and China and Jongman (2012) estimates the largest current and future
35 economic exposure to river floods to be in Asia. As an example, we take a closer look at Dhaka which, with a GDP
36 per capita of \$1212 in 2015, already has one of the highest levels of population affected annually by flooding (over
37 130,000) and this number is projected to increase almost five-fold (to over 630,000) by 2030. The greatest
38 change predicted for Dhaka, though, is an almost 22-fold increase in annual damage costs (from \$8 million to
39 \$175 million). Dhaka is subjected to regular flooding from surrounding rivers, with peak flows in the Brahmaputra
40 and Ganges Rivers coinciding to exacerbate flood impacts. In the past, most low-lying areas of western Dhaka
41 were infilled for residential and commercial use, causing a reduction in areas for flood water storage.
42 Uncontrolled urban expansion is spreading rapidly across the floodplains in the east of the city placing more

1 people in flood hazard zones (Kreimer et al., 2003). These hasty developmental changes are having more of an
2 impact on the urban hydrology of Dhaka than climate change is. Examples of cities in similar situations include:
3 Kolkata (with the highest baseline affected population in this study), Mumbai (with a seven-fold increase in both
4 population affected and damages due 40% and 60%, respectively, to development), Bangkok (with large
5 increases, 50-75% of which are attributed to development) and Ho Chi Minh City (with a 50% increase in affected
6 population and an over five-fold increase in damages costs, almost entirely attributed to development).

7 On SOM3 we can identify that developmental changes in some cities appear to be effectively reducing impacts
8 from river flooding, for example in Marrakech (cluster 15). The affected population level is projected to decrease
9 mostly due to socioeconomic factors (website 3; Ward et al., 2013; Winsemius et al., 2013). Through an
10 'Integrated Disaster Risk Management and Resilience Program for Morocco' (World Bank, April 2016-Dec 2021),
11 Morocco is becoming more resilient to climate change and less vulnerable to natural hazards, and is ensuring a
12 rapid transition to a low-carbon economy. Through Morocco's National Strategy for Sustainable Development,
13 a commitment has been made to reduce national greenhouse gas emissions by 32% by 2030. This will be done
14 through an increase in renewable energy sources to 50%, a reduction in energy consumption by 15%, as well as
15 various agricultural, water, waste, forest, industry and housing initiatives (website 9). These housing initiatives
16 in Marrakech include a slum clearance and relocation project, which has become part of urban policy (Ibrahim,
17 2016), reducing the amount of people inhabiting flood hazard zones. Alert systems in the valleys of the Atlas
18 region above Marrakech have been improved, and the proportion of the population living in slums has decreased
19 from over 8% in 2004 to less than 4% in 2010 (UN-Habitat website). The urbanization rate in Morocco is also
20 projected to slow down towards 2030 (UN-Habitat website). This risk-prevention approach combining early
21 warning systems, relocation of inhabitants out of the flood zone, and less urban expansion is expected to
22 combine to reduce the impact of floods on the population of Marrakesh.

23 Current high flood impact conditions projected to get much greater primarily due to climate change are
24 anticipated for cities in the lower right of SOM3, with high magnitude changes expected for impacts on both
25 population and property. One of these cities, Sao Paulo, is expected to experience an almost seven-fold increase
26 in both the number of population affected (to over 140,000 annually) and urban damages costs (to over
27 \$500,000,000 annually) by 2030. 15% of the change in population and 35% of the change in damages is attributed
28 to development, but the majority of the change is projected to come from climate change. Sao Paulo, the largest
29 city in Brazil, has a city footprint projected to increase over 38% by 2030, by which time 22% of the urban area may
30 be located in flood zones (Young, 2013). The IPCC (Pachauri et al., (2014) chapter 14 'Latin America') predicts the
31 increase in temperature in central and south Brazil to be the largest projected increase in Latin America, which
32 will be combined with a 10-15% increase in autumnal precipitation, greatly affecting the hydrologic cycle in the
33 region. The substantial change in development is therefore expected to be eclipsed by the even greater
34 projected change in climate in Sao Paulo, and other cities in this region of SOM3.

35 The anticipated reduction in flood damage costs caused by climate change evident in Cluster 15 may be a result
36 of changing snow melt conditions upstream of these cities. It has been shown that some global regions will
37 experience a decreasing trend in the magnitude and frequency of snow melt floods as the climate warms, as
38 well as a shift in the timing of these floods (Schiermeier, 2011; Barnett et al., 2005; Immerzeel et al., 2010).

39 Many high-income cities with already high current flood vulnerabilities have projections for large elevations in
40 damage costs, but not increased levels of affected population. This can be seen in cities on SOM3 centred around
41 London, Tokyo, LA and Vienna (cluster 3), and Sydney and Castellon (cluster 13). Through high levels of planning,
42 preparedness and infrastructure, prosperous regions generally have systems in place to minimize flood impacts
43 on the population, even though they may incur large economic losses (Desai et al., 2015; Kreimer et al., 2003).

1 Almost half of the projected increases in these clusters are attributed to development, suggesting that these
2 cities may have the capacity for lessening potentially elevated flood damage costs by concentrating on planning
3 and mitigation policies.

4 Although changing climate in some areas is projected to lessen regional flooding, development within urban
5 flood zones may be severe enough to offset any reductions in flood impacts. This can be seen most prominently
6 in a strip on the left of SOM3 stretching from Port Sudan down to Santiago.

7 Though this study does not consider coastal flooding, it may be noted that due to their locations near river
8 mouths, many of the cities in the lower left of the map that are projected to experience high increases in impacts
9 from river flooding are also at risk of increased coastal flooding from intensified storms and sea level rise due to
10 climate change. Mumbai, Guangzhou, Shanghai, Ho Chi Minh City, Kolkata, Bangkok, and Dhaka are 7 of the top
11 14 cities (out of 136) ranked by current population exposure to coastal flooding. These same cities also comprise
12 the top 7 cities (in this order: Kolkata, Dhaka, Mumbai, Guangzhou, Ho Chi Minh City, Shanghai, Bangkok) ranked
13 by future (2070) estimated population exposed to coastal flooding (UNEP, 2016; Nicholls et al., 2008).

14 Almost all projected changes in flooding in this data set are of a relatively similar order of magnitude to the
15 original effects, as can be observed on Figure 4. That is, most cities that are only marginally affected by flooding
16 in 2010 are projected to experience only small increases by 2030, whereas cities with larger flood effects can
17 expect greater changes indicated by the significant correlation between the magnitudes of the cities' baseline
18 flooding effects and the changes projected by 2030 (log-transformed absolute values for both variables) – an
19 88% correlation exists in the number of population affected and a 94% correlation for property damage costs.
20 This supports the findings of Milly et al. (2002) who observed that the frequency of large flood events in large
21 basins had increased substantially in the 20th century, but smaller floods had not.

22 The analysis in this paper is based solely on the data provided in Aqueduct, regardless of the extent to which on-
23 the-ground flood management measures are incorporated into the socioeconomic models which produced this
24 data. A discussion characterizing individual cities is included here as a point of interest to relate the data to
25 current national conditions, providing possible reasons why these cities may fit into the map where they do.

26 5 CONCLUSION

27 This study adds to the understanding of natural hazards in a global context, an important aspect of regional
28 disaster risk management due to the dependency of local situations on global processes (Desai et al., 2015).
29 Complex, nonlinear social-environmental relationships make it difficult to anticipate local responses to global
30 changes (Desai et al., 2015), and this study contributes to risk communication (the process between risk
31 perception and adaptation planning (Cardona et al., 2012)) providing a visual analysis of global patterns of
32 evolving flood impacts, socioeconomic development and climate change, and the local city-level consequences
33 of these changes.

34 Global patterns of urban flood responses to global and local changes in hydrology driven by climate change and
35 development have been identified and visually communicated through a series of related self-organizing maps.
36 Cities have been matched to these global patterns, and relationships between the individual cities have been
37 discerned with respect to baseline flooding conditions and expected future changes. The visual analysis in this
38 study has revealed interesting city-level patterns that are otherwise unobservable in the complex data set, and
39 provides a comparison and distinction between individual cities that is not apparent in regional- or economic-
40 level projections.

1 We have performed dimension reduction and clustering with a series of self-organizing maps to identify
2 changing global patterns of city-level flood risks. The maps provide an indication of the predominant
3 characteristics which determine the differences in urban river flood impacts between cities, and the cities occupy
4 positions on the maps signifying their relative conditions. The method used here incorporates adaptations to the
5 self-organising map technique for map shape selection and temporal pattern extraction, allowing two levels of
6 information to emerge: the characteristic patterns of dynamic global urban flood vulnerabilities, and a
7 comparison between the cities with respect to flood characteristics and trends. This SOM method could be
8 adopted for visualising and clustering any large data set in which the underlying intervariable relationships are
9 difficult to explicitly define, such as is common with human-environmental interactions, and which change over
10 time. The resulting visualisations produce an overall impression of the temporal structure and clusters in the
11 data, allowing for a readily understood overview of the relationships between the variables, and amongst
12 individual data items.

13 A shortcoming of the method used in this study is the assignment of flood protection level based on an
14 assumption of proportionality with national income level. As standardised, current information on the real flood
15 protection levels of all the cities in the data set is not readily available, this assumption has been necessary and
16 has been made in line with current practice. This limitation has been recently acknowledged in the literature,
17 with Winsemius et al. (2016) noting that 'currently installed flood protection is an important missing link in the
18 assessment of global flood risk'. Future studies may aim to include specific flood protection levels for each city.

19 Whilst the timeline of this study is short, it is restricted by the data that is available. Studies at a global scale have
20 been traditionally limited due to lack of cohesive data sets, and therefore the data set provided by Aqueduct is
21 valuable for the fact that it spans a global set of cities and provides a rare opportunity for comparison. As the
22 data is only provided for 2010 and 2030, there was no prospect for a longer analysis. Whilst this analysis may not
23 provide a long-term outlook, at the very least an important insight into current and near-future conditions can
24 be gained.

25 Cities have major implications for climate change mitigation and adaptation (Revi et al., 2014). Unplanned
26 development and urban migration are increasing vulnerabilities to natural hazards (UNEP, 2016) and land cover
27 change and greenhouse gas emissions are intensifying urban hydrology. Understanding the relationship
28 between flood impacts and social vulnerability is a necessary step for prioritizing flood mitigation and prevention
29 strategies (Doocy et al., 2013). Whether the main driver of increased urban flood impacts is development or
30 climate change, cities will benefit from development restrictions and planning standards for urban expansion,
31 sustainable land development, management of population distribution and migration, and early warning
32 systems and preparedness (Revi et al., 2014; UN-DESA, 2014; Doocy et al., 2013).

33 Future work may include the addition of greenhouse gas emissions data, geographic location, city sizes and
34 densities to this study, to discern the relationships of these factors with urban flood changes. Greenhouse gas
35 emissions are the largest contributor to global warming, leading to alterations in the intensity of the hydrologic
36 cycle (Pachauri et al., 2014, Barnett et al., 2005; Wentz et al., 2007; Schiermeier, 2011), and cities are the major
37 contributors of greenhouse gases, with a large proportion of global emissions produced by a small global land
38 area (Mills, 2007; Angel et al., 2010; Revi et al., 2014). The addition of these elements could highlight the essential
39 role cities could play in climate change mitigation and the reduction of urban flood impacts.

6 REFERENCES

- 1
2 Agarwal, P, and Skupin, A. (2008). Self-organising maps: Applications in geographic information science, John
3 Wiley & Sons.
- 4 Angel, S, Parent, J, Civco, D, & Blei, A. (2010a). Atlas of Urban Expansion, Cambridge MA: Lincoln Institute of Land
5 Policy.
- 6 Angel, S, Parent, J, Civco, D, Blei, A, & Potere, D. (2010b). A Planet of Cities: Urban Land Cover Estimates and
7 Projections for All Countries, 2000-2050. Lincoln Institute of Land Policy Working Paper.
- 8 Barnett, T, Adam, J & Lettenmaier, D. (2005). Potential impacts of a warming climate on water availability in
9 snow-dominated regions. *Nature*, 438(7066), 303-309.
- 10 Clark, S, Sarlin, P, Sharma, A, & Sisson, SA. (2015). Increasing dependence on foreign water resources? An
11 assessment of trends in global virtual water flows using a self-organizing time map. *Ecological Informatics*, 26,
12 192-202.
- 13 Clark, S, Sisson, SA, & Sharma, A. (2016). A dimension range representation (DRR) measure for self-organizing
14 maps. *Pattern Recognition*, 53, 276-286.
- 15 Clark, S, Sisson, SA, & Sharma, A. (2016b, in press). Nonlinear manifold representation in natural systems.
16 *Environmental Modelling and Software*.
- 17 Cunderlik, JM, & Ouarda, T. (2009). Trends in the timing and magnitude of floods in Canada. *Journal of Hydrology*,
18 375(3), 471-480.
- 19 Davies, DL, & Bouldin, DW. (1979). A cluster separation measure. *Pattern Analysis and Machine Intelligence, IEEE*
20 *Transactions (2)*, 224-227.
- 21 Desai, B, Maskrey, A, Peduzzi, P, De Bono, A, & Herold, C. (2015). Making Development Sustainable: The Future
22 of Disaster Risk Management, Global Assessment Report on Disaster Risk Reduction. Geneva, Switzerland:
23 United Nations Office for Disaster Risk Reduction.
- 24 Doocy, S, Daniels, A, Murray, S, & Kirsch, TD. The human impact of floods: A historical review of events 1980–
25 2009 and systematic literature review. *PLoS Curr*, 16, 12.
- 26 Frich, P, Alexander, LV, Della-Marta, P, Gleason, B, Haylock, M, Tank, A, & Peterson, T. (2002). Observed coherent
27 changes in climatic extremes during the second half of the twentieth century. *Climate Research*, 19(3), 193-212.
- 28 Ibrahim. (2016). Slum eradication policies in Marrakech, Morocco. World Bank Conference on Land and Poverty,
29 Washington DC.
- 30 Immerzeel, WW, Van Beek, LPH, & Bierkens, MFP. (2010). Climate change will affect the Asian water towers.
31 *Science*, 328(5984), 1382-1385.
- 32 Jiang, L, & O'Neill, BC. (2015). Global urbanization projections for the Shared Socioeconomic Pathways. *Global*
33 *Environmental Change*.
- 34 Jongman, B, Ward, PJ, & Aerts, JC. (2012). Global exposure to river and coastal flooding: Long term trends and
35 changes. *Global Environmental Change*, 22(4), 823-835.
- 36 Jongman B, Winsemius HC, Aerts JC, de Perez, EC, van Aalst, MK, Kron, W, Ward, PJ. (2015) Declining vulnerability
37 to river floods and the global benefits of adaptation. *Proceedings of the National Academy of Sciences*. May
38 5 ;112 (18): E2271-80.
- 39 Kaski, S, & Kohonen, T. (1996). Exploratory data analysis by the self-organizing map: Structures of welfare and
40 poverty in the world. Proceedings of the third international conference on Neural Networks in the Capital
41 Markets.
- 42 Katz, RW, Parlange, MB, & Naveau, P. (2002). Statistics of extremes in hydrology. *Advances in water resources*,
43 25(8), 1287-1304.

1 Kiviluoto, K. (1996). Topology preservation in self-organizing maps. IEEE International Conference on Neural
2 Networks.

3 Kohonen, T. (2001). Self-organizing maps, Volume 30 of Series in Information Sciences.

4 Kreimer, A, Arnold, M, & Carlin, A. (2003). Building safer cities: the future of disaster risk: World Bank Publications.

5 Kumm, M, De Moel, H, Ward, PJ, & Varis, O. (2011). How close do we live to water? A global analysis of population
6 distance to freshwater bodies. PLoS One, 6(6), e20578.

7 Kunkel, KE, Pielke Jr, Roger A, & Changnon, SA. (1999). Temporal fluctuations in weather and climate extremes
8 that cause economic and human health impacts: A review. Bulletin of the American Meteorological Society,
9 80(6), 1077.

10 Meehl, GA, Arblaster, JM, & Tebaldi, C. (2005). Understanding future patterns of increased precipitation intensity
11 in climate model simulations. Geophysical Research Letters, 32(18).

12 Mills, G. (2007). Cities as agents of global change. International Journal of Climatology, 27(14), 1849-1857.

13 Milly, PCD, Dunne, KA, & Vecchia, AV. (2005). Global pattern of trends in streamflow and water availability in a
14 changing climate. Nature, 438(7066), 347-350.

15 Milly, PD, Wetherald, RT, Dunne, KA, & Delworth, TL. (2002). Increasing risk of great floods in a changing climate.
16 Nature, 415(6871), 514-517.

17 Muis, S, Güneralp, B, Jongman, B, Aerts, JC, Ward, PJ. (2015) Flood risk and adaptation strategies under climate
18 change and urban expansion: A probabilistic analysis using global data. Science of the Total Environment. 538:
19 445-57.

20 Nature. (2016). Waters encroaching. Nature Climate Change, 6(7), 635, editorial.

21 Nicholls, RJ, Hanson, S, Herweijer, C, Patmore, N, Hallegatte, S, Corfee-Morlot, J, Muir-Wood, R. (2008). Ranking
22 port cities with high exposure and vulnerability to climate extremes.

23 Pachauri, RK, Allen, MR, Barros, VR, Broome, J, Cramer, W, Christ, R, ... & Dubash, NK. (2014). Climate Change
24 2014: Synthesis Report. Contribution of Working Groups I, II and III to the Fifth Assessment Report of the
25 Intergovernmental Panel on Climate Change (p. 151). IPCC.

26 Revi, A, Satterthwaite, DE, Aragón-Durand, F, Corfee-Morlot, J, Kiunsi, RBR, Pelling, M, Roberts, DC & Solecki, W.
27 (2014). Urban areas. In: Climate Change 2014: Impacts, Adaptation, and Vulnerability. Part A: Global and Sectoral
28 Aspects. Contribution of Working Group II to the Fifth Assessment Report of the Intergovernmental Panel on
29 Climate Change. United Kingdom and New York, NY, USA: Cambridge University Press, Cambridge.

30 Samir, KC, & Lutz, W. (2014). The human core of the shared socioeconomic pathways: Population scenarios by
31 age, sex and level of education for all countries to 2100. Global Environmental Change.

32 Schiermeier, Q. (2011). Increased flood risk linked to global warming. Nature, 470(7334), 316.

33 Shanmuganathan, S, Sallis, P, & Buckeridge, J. (2006). Self-organising map methods in integrated modelling of
34 environmental and economic systems. Environmental Modelling & Software, 21(9), 1247-1256. doi:
35 10.1016/j.envsoft.2005.04.011.

36 Sheppard, SRJ. (2005). Landscape visualisation and climate change: the potential for influencing perceptions and
37 behaviour. Environmental Science & Policy, 8(6), 637-654.

38 Skupin, A, & Hagelman, R. (2005). Visualizing demographic trajectories with self-organizing maps.
39 Geoinformatica, 9(2), 159-179.

40 Sofia, G, Roder, G, Dalla, FG, Tarolli, P. (2017) Flood dynamics in urbanised landscapes: 100 years of climate and
41 humans' interaction. Scientific reports.

42 Ultsch, A. (2003). U-matrix: a tool to visualize clusters in high dimensional data. Marburg: Fachbereich
43 Mathematik und Informatik.

1 UN-DESA. (2015). World Urbanization Prospects: The 2014 Revision. New York: United Nations Department of
2 Economic and Social Affairs.

3 UNEP. (2016). Summary of the sixth global environment outlook regional assessments: Key findings and policy
4 messages. United Nations Environment Programme.

5 UN-Habitat. (2010). State of the world's cities. Earthscan.

6 UN-Habitat. (2014). Urban Equity in Development - Cities for Life. World Urban Forum 7. April 2014, Medellin,
7 Colombia.

8 Václavík, T, Lautenbach, S, Kuemmerle, T, & Seppelt, R. (2013). Mapping global land system archetypes. *Global
9 Environmental Change*, 23(6), 1637-1647.

10 Vesanto, J, & Alhoniemi, E. (2000). Clustering of the self-organizing map. *IEEE Transactions on Neural Networks*,
11 11(3), 586-600. doi: 10.1109/72.846731.

12 Ward, JHJr. (1963). Hierarchical grouping to optimize an objective function. *Journal of the American Statistical
13 Association*, 58, 236-244.

14 Ward, PJ, Jongman, B, Weiland, FS, Bouwman, A, van Beek, R, Bierkens, MF, ... & Winsemius, HC (2013). Assessing
15 flood risk at the global scale: model setup, results, and sensitivity. *Environmental research letters*, 8(4), 044019.

16 Wasko, C, & Sharma, A. (2015). Steeper temporal distribution of rain intensity at higher temperatures within
17 Australian storms. *Nature Geoscience* 8.7: 527-529.

18 Wentz, FJ, Ricciardulli, L, Hilburn, K, & Mears, C. (2007). How much more rain will global warming bring? *Science*,
19 317(5835), 233-235.

20 Willems, P, Olsson, J, Arnbjerg-Nielsen, K, Beecham, S, Pathirana, A, Gregersen, IB, & Madsen, H. (Eds.).
21 (2012). Impacts of climate change on rainfall extremes and urban drainage systems. IWA publishing.

22 Winsemius, HC, Van Beek, LPH, Jongman, B, Ward, PJ, & Bouwman, A. (2013). A framework for global river flood
23 risk assessments. *Hydrology and Earth System Sciences*, 17(5), 1871-1892.

24 Winsemius, HC, Aerts, JC, van Beek, LP, Bierkens, MF, Bouwman, A, Jongman, B, Kwadijk, JC, Ligtoet, W, Lucas,
25 PL, van Vuuren, DP, Ward, PJ. (2016) Global drivers of future river flood risk. *Nature Climate Change*, 6(4): 381-5.

26 Young, AF. (2013). Urban expansion and environmental risk in the São Paulo Metropolitan Area. *Climate Research*,
27 57(1), 73-80.

28
29

Websites:

30 1. **Atlas of Urban Expansion:** [http://www.lincolnst.edu/subcenters/atlas-urban-](http://www.lincolnst.edu/subcenters/atlas-urban-expansion/Default.aspx)
31 [expansion/Default.aspx](http://www.lincolnst.edu/subcenters/atlas-urban-expansion/Default.aspx)

32 2. **World Bank's World Development Indicators database:** [http://data.worldbank.org/data-](http://data.worldbank.org/data-catalog/world-development-indicators)
33 [catalog/world-development-indicators](http://data.worldbank.org/data-catalog/world-development-indicators)

34 3. **World Resources Institute's Aqueduct Global Flood Analyzer Tool:** <http://floods.wri.org/#/>

35 4. **ISIMIP:** [https://www.pik-potsdam.de/research/climate-impacts-and-vulnerabilities/research/rd2-](https://www.pik-potsdam.de/research/climate-impacts-and-vulnerabilities/research/rd2-cross-cutting-activities/isi-mip/about)
36 [cross-cutting-activities/isi-mip/about](https://www.pik-potsdam.de/research/climate-impacts-and-vulnerabilities/research/rd2-cross-cutting-activities/isi-mip/about)

37 5. **Shared Socioeconomic Pathways:**
38 <https://tntcat.iiasa.ac.at/SspDb/dsd?Action=htmlpage&page=about>

39 6. **World Resources Institute's Aqueduct Global Flood Risk Country Rankings:**
40 <http://www.wri.org/resources/data-sets/aqueduct-global-flood-risk-country-rankings>

41 7. **SOM Toolbox:** <http://www.cis.hut.fi/somtoolbox>

42 8. Scientific American: [https://www.scientificamerican.com/article/extreme-rain-may-flood-54-million-](https://www.scientificamerican.com/article/extreme-rain-may-flood-54-million-people-by-2030/)
43 [people-by-2030/](https://www.scientificamerican.com/article/extreme-rain-may-flood-54-million-people-by-2030/)

1 9. **United Nations Framework Convention on Climate Change:** www4.unfccc.in

2 **7 COMPETING INTERESTS**

3 The authors declare that they have no conflicts of interest

