

Editor Decision: Publish subject to minor revisions (review by editor) (18 Dec 2017) by Elena Toth

Thank you very much for your comments. In addressing them, we have focused on highlighting the novel contributions of this study, as well as improving the readability of the manuscript.

Responses to comments (in black) are provided in blue:

1- even more emphasis should be put, and as soon as the city level is introduced as one of the main novelty of the work, on the strong limitations of an application at city scale (and with small catchment areas upstream, in some cases), partly due to the spatial scale of the applied models and partly due to the specific defence measures, that are much more important than at watershed scale, where, due to overall averaging, it may be more acceptable assuming them as proportional to the national income level.

A paragraph has been added to the introduction immediately after the description of the project to discuss limitations of the city-scale aspect. It begins 'The main analyses to date...'.
2- as said above, more stress, in abstract and Introduction, on the novelty of the application of the SOM approach (including the temporal extension to assess the expected changes in time) for analysing the Acqueduct dataset, which is indeed new.

Thank you for reminding us to focus on the importance of this paper as the first application of the SOM to this data. This is indeed the most important feature, and the abstract and introduction have been reworded to stress this. The SOM is now introduced in the first paragraph.

3 - as remarked by Ref#2, the introduction of the Acqueduct data set and the similarity and differences of the work with those by Ward et al and Winsemius et al, should be very clear since beginning, too.

The first paragraph of the introduction has been reworded to make it clear that this study is based upon the work of Winsemius and Ward and that the role of the current study is to analyse the Aqueduct city data through visualisation and clustering. This paragraph now explicitly states the motivation, data and novelty of the method at the very outset of the paper.

Following the above three points, the Introduction section is certainly to be deeply revised (and especially since more weight is to be given to the above points, I do agree with Ref#2 that the first two paragraphs of the current one may be summarised in a few lines).

The introduction has been extensively revised. The first paragraph now clearly explains the novelty of the study and the method used. The following paragraph summarise the climatic and developmental changes that are influencing the transformations in hydrology that are being explored. We feel it is important to retain some of this information to summarise the systems creating the data that is being analysed. Redundant information has been removed. (We have also thoroughly revised the results and discussion section to remove redundant information.)

The conclusions should stress more the potential and also the strong and weak points related to the application of the SOM networks, in order to better help the readers to understand how they be used also in other similar applications.

Sentences have been added to the conclusion to describe how the method used here could be adopted for other human-environmental analysis applications.

Referee # 1: second set of comments:

Thank you kindly for your comments on the paper. We have worked to revise the manuscript thoroughly to clarify the issues you have raised.

My basic question however remains: Is there sufficiently novelty in repeating the work by Ward et al by focussing on cities rather than catchments? If so, this should be clearly communicated. The authors mention that cities can benchmark against each other in the rebuttal letter. That is the closest to a justification of the work; however, the justification should appear in the paper.

A new paragraph has been added to the introduction specifically discussing the analysis of the data at the city scale, including limitations that exist to this analysis compared to one at basin scale. As suggested, the justification for a city scale analysis given in the previous rebuttal letter has been added to this paragraph.

Along the same line of thought also indicate the shortcomings of such an approach, that works in Australia, but not in other parts of the world, where cities are placed along rivers, whether it is the Elbe, the Meuse, or of course the very large rivers of Asia. There mitigation efforts in one city will impact downstream cities, making benchmarking quite difficult. If I were the editor such a short precise description of the justification and the novelty of the paper would be key to accepting the paper.

This has been included in the same paragraph added above.

A thing that I liked about the original manuscript was that it was clearly stated, that there was much similarity with the study by Winsemius et al (2016). Now you have to read the manuscript in detail to understand how closely related they are.

In the original manuscript, the study by Winsemius et al (2016) was referred to on page 3 line 25. In the previous version of the revised manuscript, the study by Winsemius et al (2016) was referred to on page 3 line 26 (in an unchanged sentence with respect to the original manuscript), as well as in four other locations in the manuscript. Discussion concerning the study by Winsemius et al (2016) had only been increased and nothing had been removed. In this revision, we have now also added a reference to Winsemius et al (2016) into the first paragraph of the introduction.

The paper is quite long and could be abbreviated without loss of information quite a few places. An example is the first two paragraphs in the Introduction that are redundant wrt information. Also discussion and conclusion are long and contain redundant information.

The first two paragraphs have been completely revised. The first now clearly indicates the aim of the project in analysing the Aqueduct data, why this is novel, and how it will be done. Following this, a single paragraph provides an overview of the hydrologic changes the data set deals with. It also defines what we are referring to as 'development' and how this influences hydrology. We feel this is necessary to make the paper accessible to a wide audience.

The discussion and conclusion have also been revised to remove redundant information and stress the importance of the information that is retained.

The structure should be further improved. In particular the definition of the measures (P8 L23-36) should be placed next to the description of the method, before the construction of the subsets are introduced, i.e. around P7 L 10.

As suggested, the description of the error measures has been moved immediately after the description of the method.

Discussion is very long, not very precise, and some of the text duplicates findings already found in the results section. The two best sections that should be in the discussion section are currently placed in the Conclusions section (P22 L21-32).

The discussion has been thoroughly revised, and information that was similar to that in the introduction has been removed. As suggested, P22 L21-32 have been moved from the conclusion to the discussion.

P10 L12: How does the non-linearity show up

This has been spelled out in more detail. The original sentence:

‘The nonlinearity of the relationships between the variables is evident, as is the smooth transition of the values of each variable along the map.’

has been expanded to:

‘The nonlinearity of the relationships between the variables is evident from the colouring of the grids, indicating that high (or low) values are located on different regions of the map for each variable. The smooth transition of the values of each variable is also apparent by the smooth transition of colours along the grids.’

Patterns and comparisons of human-induced changes in river flood impacts in cities

Stephanie Clark^{1*}, Ashish Sharma², Scott A. Sisson¹

1: School of Mathematics and Statistics, University of New South Wales, Sydney, Australia

2: School of Civil and Environmental Engineering, University of New South Wales, Sydney, Australia

* corresponding author

ABSTRACT

1
2 ~~In this~~ This study, ~~information extracted from the first global urban fluvial flood risk data set (Aqueduct)~~
3 ~~is investigated and visualised to explore current and projected city-level flood impacts driven by~~
4 ~~urbanisation and climate change. We use a novel adaption of the self-organizing map (SOM)~~
5 ~~method, investigates patterns of current conditions and anticipated future changes in city-level flood~~
6 ~~impacts driven by urbanisation and climate change. an artificial neural network proficient at~~
7 ~~clustering, pattern extraction and visualisation of large, multi-dimensional data sets. Global~~
8 ~~Prevalent patterns of current relationships and anticipated changes over time in the nonlinearly-~~
9 ~~related environmental and social variables are presented,~~ relating urban river flood impacts to
10 socioeconomic development and changing hydrologic conditions. ~~are established, and world cities are~~
11 ~~matched to these patterns.~~ Comparisons are provided between 98 individual cities. ~~We use a novel~~
12 ~~adaption of the self-organizing map method to establish and present patterns in the nonlinearly-~~
13 ~~related environmental and social variables.~~ Output visualisation maps of prevalent patterns compare
14 baseline and changing trends of city-specific exposures of population and property to river flooding,
15 revealing relationships between the cities based on their relative map placements. Cities experiencing
16 high (or low) baseline flood impacts on population and/or property that are expected to improve (or
17 worsen), as a result of anticipated climate change and development, are identified and compared.
18 This paper condenses and conveys large amounts of information through visual communication to
19 accelerate the understanding of relationships between local urban conditions and global processes,
20 ~~and to potentially motivate knowledge transfer between decision makers facing similar circumstances.~~

Keywords: urban hydrology; self-organizing maps; SPATIOTEMPORAL patterns; clustering; city-scale; neural networks; Anthropocene

1 INTRODUCTION

The hydrologic regimes producing urban floods within many cities are varying due to anthropologic influences such as, including climate change and urban development (Revi et al., 2014; Mills, 2007; Desai et al., 2015; UNEP, 2016; Willems et al., 2012; Desai et al., 2015). Through urban development and climate change, humans are progressively generating (and being on the receiving end of) increased hydrologic impacts, with these anthropogenically induced changes becoming particularly evident in cities (Revi et al., 2014, Mills 2007, Kreimer et al., 2003; Willems et al., 2012) as. The the high densities of population, property, infrastructure, property and industry within cities are both substantial drivers and receivers of environmental impacts, and river flooding, the environmental event currently impacting more people than any other natural hazard environmental event (Doocy et al., 2013; Desai et al., 2015; Sofia et al., 2016), posing a threat to almost 380 million urban residents globally (UN-Habitat, 2014). However, most existing river flood assessments are at a local or regional scale (as in Muis et al., 2015), limiting the possibility to compare between multiple cities, and studies at a global scale have traditionally been limited by a lack of datasets and methods (Jongman et al., 2012). The first unified global set of urban fluvial flood risk data has recently been published for a selection of cities as part of the World Resources Institute's Aqueduct Global Flood Analyzer Tool (subsequently referred to as Aqueduct) (Winsemius et al., 2013; Ward et al., 2013; website 3), consisting of current and projected future flood impacts on population and property resulting from climate change and urbanisation. Whilst this data set has previously been analysed and visualised by its creators at the watershed scale (Winsemius et al., 2016), the large amount of city-level information is currently presented on an individual city basis. and in this study Here we conduct an analysis, including visualisation and clustering using the self-organizing map (SOM) technique, of the total collection of data that is available at the city scale, to investigate the inherent relationships and patterns amongst the city data. A type of The SOM is an artificial neural network, the SOM is useful for exploring relationships between nonlinearly related variables, and is popular for investigating potentially difficult-to-define environmental responses to human influences (e.g. Shanmuganathan et al., 2006; Vaclavik et al., 2013; Clark et al., 2016b) as well as providing comparisons between geographic areas (Kaski & Kohonen, 1996; Clark et al., 2015; Clark et al., 2016). We expand the traditional SOM method to allow for a comparison over time of expected changes in the city-level conditions. The aim of this study is to develop an increase the understanding of the prevalent global patterns of human-environmental relationships influencing city-level river flooding, and discover how a global set of individual cities fits into these patterns of shifting quantities of water and city features.

The combined effects of climate change and urbanisation (alterations in urban population growth, development, land use and density) are leading to variations in the magnitude, frequency and timing of precipitation, snow melt and river floods within cities, generally producing higher peak river flows with and shorter response times (Frich, et al. 2002; Desai et al., 2015; UNEP, 2016; Wasko & Sharma, 2015; Shiermeier, 2011; Cunderlik, 2009; Barnett et al., 2005; Immerzeel et al., 2010). I, though these changing patterns of precipitation and runoff are complex and not uniformly spatially distributed (Meehl et al., 2005; Desai et al., 2015; Wentz et al., 2007; Frich et al., 2002). though the influence of each factor varies spatially and temporally (Desai et al., 2015). Historically, cities have formed near rivers and population density is still highest, globally, where the closest water feature is a large river. As cities grow, the proximity of population and property to these water courses increases (Kummu et al., 2011). It is estimated that it is estimated that 70% of the world's population will live in cities by 2050 (UN-Habitat, 2010), up from 54% in 2015 (UN-DESA, 2015). As cities grow, the proximity of population and property to these water courses increases (Kummu et al., 2011). Increases in rainfall intensity at urban hydrology scales of up to 60%

1 are anticipated by 2100 (Willems et al., 2012), and the micro-climates of cities are expected to interact with
2 climate change in a number of ways that will potentially exacerbate flood effects (Revi et al., 2014). It has already
3 been noted that the population exposed to river flooding is increasing faster than total global population growth
4 (Jongman et al., 2012) with ~~With this rapid urbanization, highly populated urban areas are experiencing an~~
5 increase in flood vulnerability through ~~(Kreimer et al., 2003), as unplanned expansion often leads to migration~~
6 into urban flood plains (Kreimer et al., 2003; Jongman et al., 2012; Revi et al., 2014), ~~and~~ causing the ~~global~~
7 population exposed to river flooding to increase faster than total global population growth (Jongman et al.,
8 2012). By 2050, it is estimated that 70% of the world's population will live in cities (UN-Habitat, 2010), up from 54%
9 in 2015 (UN-DESA, 2015), and as cities grow the proximity of population and property to water courses will
10 continue to increase (Kummu et al., 2011). ~~U~~Global urban land cover ~~(more is increasing globally, with more~~
11 ~~impervious areas and higher building densities,~~ at a rate over double that of urban population growth ~~(Angel et~~
12 ~~al., 2010a), and is projected to increase three-fold by 2030 (Pachauri et al., 2014). In the future, cities in particular~~
13 ~~are predicted to become even more vulnerable to extreme hydrologic events (Pachauri et al., 2014; Willems et~~
14 ~~al., 2012; Revi et al., 2014, Sofia et al., 2016), and a~~ More impervious areas and encroachment into the surrounding
15 countryside are forcing faster concentrations of rainfall in urban rivers during storm events, as well as higher
16 flood peaks (Desai et al., 2015; Doocy et al., 2013; Kreimer et al., 2003).

17 ~~Hydrology in cities is also affected by in the future, cities in particular are predicted to become even more~~
18 ~~vulnerable to extreme hydrologic events as a result of climate change (Pachauri et al., 2014; Willems et al., 2012;~~
19 ~~Revi et al., 2014, Sofia et al., 2016). Increases in rainfall intensity at urban hydrology scales of up to 60% are~~
20 ~~anticipated by 2100 (Willems et al., 2012), and the micro-climates of cities are expected to interact with climate~~
21 ~~change in a variety of ways, potentially exacerbating flood effects (Revi et al., 2014). An understanding of each~~
22 ~~city's unique response to these hydrologic and developmental changes will be necessary as cities strive to adapt~~
23 ~~(Revi et al. 2014; Doocy et al., 2013).~~

24
25 In this paper, a visual comparison is ~~produced~~made amongst a selection of cities based on their current and
26 projected future urban river flood impacts on population and property, resulting from an anticipated
27 combination of climate change and development. It should be noted that fluvial flooding is the only type of
28 flooding that is considered here, and this study does not include an analysis of cities subject to coastal or pluvial
29 flooding. Analysing data with city-specific projections of changes in hydrology, population and development
30 levels (based on future climate scenarios, projected development pathways, and a best assumption of flood
31 protection standards) we produce an analysis and visualisation of the patterns of baseline conditions and
32 anticipated changes in city-level river flooding impacts to the year 2030. We establish the prevalent global spatial
33 and temporal patterns of urban flood impacts, explore these impacts as resulting from both developmental and
34 hydrological drivers, and match the cities to their most similar pattern. The patterns are established through
35 dimension reduction, clustering and visualisation of multivariate data with an adaptation of the self-organizing
36 map (SOM) technique. ~~The SOM is an artificial neural network useful for exploring nonlinearly related variables,~~
37 ~~and is popular for investigating potentially difficult to define environmental responses to human influences (e.g.~~
38 ~~Shanmuganathan et al., 2006; Vaclavik et al., 2013; Clark et al., 2016b) as well as providing comparisons between~~
39 ~~geographic areas (Kaski & Kohonen, 1996; Clark et al., 2015; Clark et al., 2016). We begin by presenting analyses~~
40 of patterns of urban flood conditions (as measured by the amount of population affected and urban damages
41 costs) for a baseline global snapshot (2010), then investigate projected temporal changes (up to 2030), and
42 finally combine this information into a global temporal analysis of the cities. As individual cities are matched to
43 their closest patterns at each stage, we discover clusters of cities with similar urban flooding characteristics and
44 projected trends.

1 The main analyses to date on this important data set (Winsemius et al., 2013; Ward et al, 2013) have been
2 conducted by its creators, in which the data has been analysed at the watershed scale. Though this data set has
3 been published at city scale as well as watershed scale, certain limitations do exist to an analysis at city scale. The
4 spatial scale of the applied hydrologic and hydraulic models used to create the data, the potentially small
5 upstream catchment areas of the cities, the unidentified relationships of cities along the same river in which
6 mitigation efforts upstream may effect downstream cities, and the assumption of city-specific defence measures
7 (which are discussed in the ‘Data’ section) all increase the uncertainty inherent in these hydrologic estimates
8 more so than if the data were analysed at the basin scale. However, an analysis of the city data is important in
9 allowing an understanding of conditions that can be expected on a city-level and the identification of cities
10 potentially facing similar circumstances, since climate change, development, and urban administrations are not
11 restricted to river basin boundaries. Therefore, we accept these inherent limitations in order to discover what
12 insights the most cohesive city-level data set to date may reveal.

13
14
15 A growing body of research is investigating the impact of anthropogenic changes on urban flooding at regional
16 and global scales, however we have found no literature comparing specific cities in terms of changing city-level
17 flood impacts on populations and property. The Intergovernmental Panel on Climate Change’s 5th Assessment
18 Report Chapter 8 ‘Urban Areas’ (Revi et al., 2014) discusses the vulnerabilities and resilience of cities to climate
19 change in general, noting that the analysis is based on economic losses and would differ if a human component
20 is included. Jongman et al. (2012) investigated global trends of coastal and river flooding based on changing
21 regional population densities and land use. Increased vulnerability to flooding is attributed to population growth
22 or increases in wealth, though the modelling does not include changing hydrology due to climate change.
23 Jongman et al. (2015) estimated regional trends in human and economic river flooding vulnerabilities by income
24 level, through hazard and exposure calculations. Kunkel et al., (1999) investigated the increasing trend of
25 economic losses and fatalities in the USA due to increasing vulnerability to floods, however the climate change
26 contribution to this increase was not possible to quantify due to a lack of data. Winsemius et al. (2016) produced
27 the first projections of global future flood risk that consider separate impacts of climate change and
28 socioeconomic development, with results discussed by geographic region (river basin) and economic level. The
29 investigation of the connection between coastal flooding and climate change (increasing storms combined with
30 sea level rise) is more common in the literature than the connection between river flooding and climate change
31 (Nicholls et al., 2008; Nature, 2016) due to better data availability. ~~Most existing river flood assessments are at a~~
32 ~~local or regional scale (as in Muis et al., 2015), limiting the possibility to compare between multiple cities, as~~
33 ~~studies at a global scale have traditionally been limited by a lack of datasets and methods.~~ Sofia et al (2016)
34 emphasize that analyses of climate change and socio-economic development as both drivers and receptors of
35 flood risk is needed. Muis et al. (2015) call for an investigation between the combination of land use change and
36 hydrologic change on future flood risk. (Jongman et al., (2012) highlight that due to population growth and
37 climate change, global methods incorporating both spatial and temporal dynamics to investigate inland flooding
38 at the city scale are necessary for global development studies and estimating costs associated with climate
39 change. To date, a global examination of changing flood conditions at the city level resulting from urban
40 development and climate change, including a direct comparison between specific cities, has not been made. The
41 analysis we present here corresponds directly to this gap in the literature.

~~Referee 1: Is there sufficiently novelty in repeating the work by Ward et al by focussing on cities rather than catchments? If so, this should be clearly communicated. The authors mention that cities can benchmark against each other in the rebuttal letter. That is the closest to a justification of the work; however, the justification should appear in the paper.~~

~~1 Along the same line of thought also indicate the shortcomings of such an approach, that works in Australia,
2 but not in other parts of the world, where cities are placed along rivers, whether it is the Elbe, the Meuse, or of
3 course the very large rivers of Asia. There mitigation efforts in one city will impact downstream cities, making
4 benchmarking quite difficult. If I were the editor such a short precise description of the justification and the
5 novelty of the paper would be key to accepting the paper.~~

6 General patterns as well as specific relationships can be extracted from the output maps in this paper. In the
7 interest of channelling the ‘potential of visual communication to accelerate social learning and motivate
8 implementation of changes’ (Sheppard, 2005) the aim of the method used here is to discover and demonstrate
9 potentially interesting global patterns and relationships that would not otherwise be evident in the data, for
10 example: clusters of cities which are currently experiencing high flood impacts that are projected to greatly
11 increase in the future, and to what extent this may be due to climate change (or socioeconomic development)
12 within each city; which cities not currently experiencing notable effects of flooding may expect to in the future;
13 which cities are projected to mitigate potentially adverse flood effects from climate change with reductions in
14 flooding due to socioeconomic factors; which cities are projected to experience an increased flood vulnerability
15 driven by socioeconomic factors alone; and the relationship between the changes in vulnerability of the
16 population and urban damages costs for each city.

17 The comparison of individual cities in this study (rather than river catchments) allows a blending of
18 environmental and social information which reinforces the co-dependence of humans and their natural
19 environment, a relationship which is often easily overlooked by urban dwellers. Explicitly visualising the role that
20 urbanisation may have on the environmental conditions experienced by urban citizens is an essential reminder
21 of this connection. Cities potentially facing similar circumstances and challenges are identified in this study,
22 suggesting possibilities for a sharing of strategies. As climate change, development, and urban administrations
23 transcend river basin boundaries, an investigation of impacts and determination of potential mitigation
24 strategies at the city level as well as the basin level expands the potential for decision makers to be presented
25 with all the available, relevant data for consideration.

26 2 DATA AND METHOD

27 DATA

28 The data set used in this study combines city-level estimates of annual expected urban river flood impacts on
29 population and urban damages costs (2010), projections of future changes in flood impacts attributed to climate
30 change and/or development (up to 2030), and socioeconomic data for a globally distributed set of cities.

31 The selection of cities used here is based on a list provided by the Lincoln Institute of Land Policy’s Atlas of Urban
32 Expansion (Angel et al., 2010, website 1), spanning all continents except Antarctica, encompassing four economic
33 levels and four population levels. City population data (2010) and future population estimates (2030) are from
34 the UN Department of Economic and Social Affairs (UN-DESA, 2015), and GDP per country are from the World
35 Bank’s World Development Indicators database (website 2).

1 Annual river flood impact estimates are obtained from [Aqueduct](#), the global dataset of fluvial flood risk ~~published~~
 2 ~~in the World Resources Institute's Aqueduct Global Flood Analyzer Tool (herein referred to as Aqueduct)~~
 3 ~~(Winsemius et al., 2013; Ward et al., 2013; website 3).~~ Released in 2015, this data set comprises the first unified
 4 ~~global set of fluvial flood risk data at the city level.~~ As this data is solely related to the influence of fluvial flooding
 5 on metropolitan areas, it does not include coastal or pluvial flood risks. In this data set, Aqueduct provides
 6 separate estimates of annual impacts on the number of affected population (people exposed to flood waters)
 7 and urban property damages costs (in US dollars), which will be referred to in this paper as 'population' and
 8 'damages' impacts.

9 Global hydrologic and hydraulic models, inundation modelling, and spatial data sets of population, land use and
 10 infrastructure are used within Aqueduct to quantify flood risk in each city. Aqueduct identifies future anticipated
 11 changes in urban flood vulnerabilities as driven by climate change (altered hydrology), socioeconomic
 12 development (population, land use and economic changes), or in most cases a combination of both. Either of
 13 these drivers may increase or decrease the frequency and intensity of flooding, and the resulting flood impacts,
 14 for a given city. Three separate scenarios of climate change and socioeconomic development (optimistic,
 15 business-as-usual, and pessimistic) are given in Aqueduct, and in this study we use data from the business-as-
 16 usual case for our future flood impact scenario. Future hydrologic and hydraulic estimates in Aqueduct are based
 17 on global circulation model data from the ISIMIP project (website 4) and changes in population and economic
 18 development are based on Shared Socioeconomic Pathways data with a downscaling procedure that
 19 differentiates between urban and rural growth (website 5; Samir & Lutz, 2014). Recent papers published with
 20 this data include Winsemius et al. (2016), Jongman et al. (2015) and Muis et al. (2015).

21 Expected flood impacts are provided by Aqueduct for nine possible levels of city-wide flood protection, from
 22 protection against the 2-year average return interval (ARI) flood to the 1000-year ARI flood. This protection level
 23 indicates how well protected the area is against flood damage, based on the standard or capacity of flood
 24 protection measures such as dikes, levees or dams. In this study, we assign an assumed flood protection level to
 25 each city based on the country's World Bank income level (as in the World Resource Institute's Aqueduct Global
 26 Flood Risk Country Rankings, website 6) due to a lack of information on each city's actual protection level. This
 27 method follows recommendations based on the rational that higher standards of protection against flooding
 28 may be expected in higher income countries (Jongman et al., 2012; Nicholls et al., 2008), and findings by Doocy
 29 et al. (2013) that flood impacts are significantly associated with classification of income level by the World Bank.
 30 We assume each city's flood protection level remains the same during the timeline of this study.

31 To allow for a comparison between cities of greatly differing sizes and hydrologic conditions, the wide-ranging
 32 data values were log-transformed. The data set was then standardized by transforming these values linearly into
 33 the range 0-1 (with the lowest value becoming 0 and the highest value becoming 1) for each variable (population
 34 affected, urban damages, etc). The data is log transformed, following recommendation by Agarwal & Skupin
 35 (2008) that highly skewed variable distributions may benefit from log transformation before use in the SOM.
 36 Cities with no flood impacts in both 2010 and 2030 were removed (22 cities), though cities with no flood impacts
 37 in 2010 but with flood impacts in 2030 have been kept in the study. The final list of cities is presented in Table 1.

38 **TABLE 1: CITY LIST** - alphabetically by region.

Eastern Asia & the Pacific		Fukuoka	Japan	Sydney	Australia
Anqing	China	Guangzhou	China	Tokyo	Japan
Ansan	Rep. of Korea	Leshan	China	Ulan Bator	Mongolia
Beijing	China	Pusan	Rep. of Korea	Yiyang	China
Changzhi	China	Seoul	Rep. of Korea	Yulin	China
Chinju	Rep. of Korea	Shanghai	China	Zhengzhou	China

Southeast Asia		Teheran	Iran	Mexico City	Mexico
Bandung	Indonesia	Tel Aviv	Israel	Montevideo	Uruguay
Bangkok	Thailand	Yerevan	Armenia	Ribeirao Preto	Brazil
Ho Chi Minh City	Vietnam	Zugdidi	Georgia	Santiago	Chile
Kuala Lumpur	Malaysia	North Africa		Sao Paulo	Brazil
Manila	Philippines	Alexandria	Egypt	Tijuana	Mexico
Palembang	Indonesia	Algiers	Algeria	Valledupar	Colombia
Songkhla	Thailand	Aswan	Egypt	North America	
South Asia		Cairo	Egypt	Chicago	United States
Dhaka	Bangladesh	Casablanca	Morocco	Cincinnati	United States
Hyderabad	India	Marrakech	Morocco	Houston	United States
Jalna	India	Port Sudan	Sudan	Los Angeles	United States
Kanpur	India	Tebessa	Algeria	Minneapolis	United States
Kolkata	India	Sub-Saharan Africa		Modesto	United States
Mumbai	India	Accra	Ghana	Philadelphia	United States
Puna	India	Bamako	Mali	Pittsburgh	United States
Rajshahi	Bangladesh	Harare	Zimbabwe	Springfield	United States
Vijayawada	India	Ibadan	Nigeria	St. Catharine's	Canada
Western & Central Asia		Johannesburg	South Africa	Tacoma	United States
Ahvaz	Iran	Kampala	Uganda	Europe	
Astrakhan	Russian Fed.	Kigali	Rwanda	Budapest	Hungary
Baku	Azerbaijan	Ouagadougou	Burkina Faso	Castellon	Spain
Gorgan	Iran	Latin America & the Caribbean		Le Mans	France
Istanbul	Turkey	Buenos Aires	Argentina	Leipzig	Germany
Kuwait City	Kuwait	Caracas	Venezuela	London	UK
Malatya	Turkey	Guadalajara	Mexico	Madrid	Spain
Moscow	Russian Fed.	Ilheus	Brazil	Paris	France
Oktyabrsky	Russian Fed.	Jequie	Brazil	Sheffield	UK
Sanaa	Yemen			Thessaloniki	Greece
Shimkent	Kazakhstan			Warsaw	Poland
				Wien	Austria

1

2 METHOD

3 We use an extension to the self-organizing map method to determine patterns and similarities in the impacts,
 4 changes and drivers of urban flooding amongst the cities. The self-organizing map (SOM, Kohonen, 2001) is an
 5 unsupervised learning algorithm from the family of artificial neural networks that discovers patterns in
 6 multivariate data sets with nonlinear inter-variable relationships.

7 The SOM reduces the dimensionality of the data set by creating a (in this case) two-dimensional map grid which,
 8 through an iterative process, is essentially bent and stretched over the data set until it best characterizes the
 9 shape of the data cloud. The numerous data items become represented by a (usually) much smaller number of
 10 map nodes, known as prototypes. The map nodes, or prototypes, move iteratively into position amongst the
 11 data whilst maintaining their grid formation, establishing a higher density of prototypes in areas of higher data
 12 density. Once in position, the prototypes represent the most prevalent patterns in the data. Each data item is
 13 then matched to its closest prototype, creating clusters of similar data items.

14 The SOM algorithm consists of a two-step iterative process of comparing the map and the data, and then
 15 updating the map to better represent the data. The method begins with a calculation of distances in data space
 16 (in this case we use Euclidean distance) between each data item, x_i (where $i = 1:N$), and each map node, m_j
 17 (where $j = 1:M$). Data and map nodes vectors are all of the same dimension, d . The goal of the comparison
 18 stage is to find the nearest map node to each data item (commonly referred to as the best matching unit, BMU),
 19 which is then given the index c , using the following calculation:

$$20 \quad \|x_i - m_c\| = \min_j \{\|x_i - m_j\|\}.$$

1 This partitions the data into subsets of items sharing the same nearest node, m_c . Next, the locations of the
 2 map nodes are adjusted to become closer to their nearby data items. Application of a smoothing
 3 ‘neighbourhood’ kernel during this stage produces a smoother map by updating neighbouring nodes to a
 4 similar extent based on the nearby data. That is, the location of each map unit, m_j , becomes updated based
 5 on a weighted average of the data items matching itself as well as its neighbouring nodes, where the
 6 weighting is given by the neighbourhood kernel. The size of the kernel decreases with each iteration to include
 7 fewer nodes. We use a Gaussian shaped neighbourhood kernel, where h_{ij} (the neighbourhood kernel
 8 element indicating the influence of each data item, x_i , on the updating of node m_j) is defined at iteration t as:

$$9 \quad h_{ij}(t) = \exp\left(\frac{-(m_c - m_j)^2}{2\sigma^2(t)}\right)$$

10 where σ is the kernel radius. At each iteration (t), the updated node locations are found as in (Kohonen, 2013):

$$11 \quad m_j(t + 1) = \frac{\sum_{i=1}^N h_{ij}(t) x_i}{\sum_{i=1}^N h_{ij}(t)}.$$

12 After map training is complete, the map node vectors each represent a unique combination of variables in the
 13 data, according to the final location of the map nodes in data space. Each of these unique combinations of
 14 variables represent a characteristic pattern in the data. The data items are once again matched to their closest
 15 map node, forming clusters of data that best match each pattern.

16 In this study, the ‘patterns’ are the key characteristics represented by each map node vector (such as specific
 17 baseline and/or projected flood conditions, and the drivers of change). The ‘cluster’ members are the cities that
 18 match the pattern represented by their nearest map node better than they match the patterns of any other
 19 nodes.

20 As the SOM is an unsupervised learning algorithm, there is no subjectivity in the resulting cluster memberships.
 21 The iterative training process discovers the principal curves of the data set (the nonlinear directions of maximum
 22 variance) and aligns the map coordinate system with these, so that the two axes of the map generally follow the
 23 first two principal curves of the data. When the map is presented in its two-dimensional form, with data items
 24 located at their nearest map node, similar data ends up in close proximity on the map and dissimilar data is far
 25 apart. Through the SOM creation process the prevalent data patterns are identified by the nodes, data items
 26 become grouped into clusters around these patterns, and the clusters are ordered by similarity on the map. For
 27 a more detailed summary of the SOM method, refer to e.g. Clark et al. (2015).

28 Error measures, such as quantization error (QE), topographic error (TE) and dimension range representation
 29 measure (DRR) are used to compare the data set and maps.

30 The QE (Kohonen, 2001) measures how well the map nodes represent the data items using the sum of squared
 31 Euclidean distances between each data item, x_i , and the node closest to it, m_c , averaged over all data points:

$$32 \quad QE = \frac{1}{N} \sum_i \|m_c - x_i\| \equiv \frac{1}{N} \sum_i \sqrt{(m_c^2 + x_i^2 - 2m_c x_i)}.$$

33 The TE (Kiviluoto, 1996) indicates how well the topography of the data set is preserved on the map, giving higher
 34 error values for maps that are unnecessarily bent or twisted. The BMU and second BMU for each data point are
 35 checked to determine if they are adjacent ($u_{x_i} = 1$ if the first and second BMUs of x_i are neighbours, 0
 36 otherwise), and TE is calculated as:

$$TE = \frac{1}{N} \sum_{i=1}^N u_{x_i}$$

The DRR (Clark et al., 2015) measures how well the map represents each variable of the data set to ensure even coverage of the dimensions. The maximum intra-cluster spread of data items in each dimension, d , that become represented by a single map node, x_i (as a proportion of the overall data range in that dimension) is determined. The DRR is calculated as follows, where $x_i(d)$ are data values in dimension d , and $x_{ij}(d)$ are the data values in dimension d that are assigned to map unit j :

$$DRR(d) = \max_j \frac{\max_{ij}(x_{ij}(d)) - \min_{ij}(x_{ij}(d))}{\max_i(x_i(d)) - \min_i(x_i(d))}$$

In this study, the data set is split into two subsets ('baseline' data and 'projected future changes') for each city, allowing a progressive investigation of spatial and temporal patterns of urban flooding. A series of three separate SOMs (also referred to as maps) are created with prevalent global patterns and city similarities established separately on each map through colouring and labels, as follows:

- SOM1 explores the spatial properties of the baseline data set, enabling a comparison of the state of urban river flood impacts in each city at a snapshot in time (2010).
- SOM2 explores patterns of projected temporal changes in impacts of urban flooding on population and property (to 2030), incorporating the drivers of climate change and urban development, and
- SOM3 portrays the temporal relationships between the cities in a type of longitudinal exploratory data analysis, clustering cities that are similar in the baseline situation and are also projected to trend similarly in response to each driver in the future.

SOM1, the baseline map, depicts prevalent global spatial patterns and identifies urban flooding conditions in each city based on two variables: 1) the total population affected annually by river flooding, and 2) annual urban property damages costs incurred by river flooding. The map is created based on these two variables, though by projecting new variables onto the trained map it is also used to show: 3) the percentage of each city's population affected, and 4) the percentage of the country's GDP affected. Usually used with higher-dimensional input data, the SOM method is useful here for creating a map with two variables as the nonlinear projection establishes the relationships between cities in alignment with the directions of maximum variance (ie. the directions of most importance) in the data. It also allows for the results to be used as input into SOM3 later.

SOM2, the future projected changes map, describes the anticipated alterations in urban river flooding in each city by 2030. This map is based on four variables of projected changes and their associated drivers: 1) the projected change in population affected annually, 2) the projected change in annual urban damages costs, 3) the proportion of change in population affected that is anticipated to be attributable to climate change, and 4) the proportion of change in urban damages costs that is anticipated to be attributable to climate change. The remainder of the increase or decrease in impacts is attributed to socioeconomic causes (such as population change, urban density change, increased city footprint, and changes in urban land cover).

SOM3, the temporal map, uses the location of each city along the axes of the two-dimensional baseline and future projected changes maps (which essentially delineate the first two principle curves in each higher dimensional data subset) as input data. In creating SOM1 and SOM2, the baseline and future data subsets have already been reduced to their two most prominent dimensions respectively (which have become the axes of these maps), and each of these four dimensions is considered equally when placing the cities on the temporal

1 map. This method is based on the method used in Clark et al. (2015) to investigate individual data items
 2 transitioning through a self-organizing-time-map, and has been modified for the comparison of patterns on two-
 3 dimensional maps of differing sizes and shapes that have been created separately based on different variables.

4 Distinct patterns that have emerged through the process of training the three maps are represented by the
 5 nodes of SOM3. These patterns are the most relevant combinations of dynamic city flood impacts,
 6 socioeconomic, and climate change characteristics in the overall data set. SOM3 is clustered, coloured and
 7 labelled to indicate the relationships between the cities in terms of similar or differing baseline situations *and*
 8 projected changes. Cities with relatively close locations on both the baseline and future projected changes maps
 9 are considered to have parallel temporal paths, and will be found close together on the temporal map. Those
 10 with converging trends (dissimilar baseline conditions, but similar future projected changes) and diverging
 11 trends (close baseline conditions, but dissimilar future projected changes) are also identifiable on this map.

12 In the creation of each map, grid size and shape have been determined using ~~quantization, topographic and~~
 13 ~~dimension range representation error measures~~ (QE, TE, and DRR,) with comparisons between the data set and
 14 ~~each potential the~~ map.

15 The QE (Kohonen, 2001) measures how well the map nodes represent the data items using the sum of squared
 16 Euclidean distances between each data item, x_t , and the node closest to it, m_ϵ , averaged over all data points:

17
$$QE = \frac{1}{N} \sum_t \|m_\epsilon - x_t\|^2 = \frac{1}{N} \sum_t \sqrt{(m_\epsilon^2 + x_t^2 - 2m_\epsilon x_t)}.$$

18 The TE (Kiviluoto, 1996) indicates how well the topography of the data set is preserved on the map, giving higher
 19 error values for maps that are unnecessarily bent or twisted. The BMU and second BMU for each data point are
 20 checked to determine if they are adjacent ($u_{x_t} = 1$ if the first and second BMUs of x_t are neighbours, 0
 21 otherwise), and TE is calculated as:

22
$$TE = \frac{1}{N} \sum_{i=1}^N u_{x_i}$$

23 The DRR (Clark et al., 2015) measures how well the map represents each variable of the data set to ensure even
 24 coverage of the dimensions. The maximum intra-cluster spread of data items in each dimension, d , that become
 25 represented by a single map node, x_t (as a proportion of the overall data range in that dimension) is determined.
 26 The DRR is calculated as follows, where $x_t(d)$ are data values in dimension d , and $x_{t_j}(d)$ are the data values in
 27 dimension d that are assigned to map unit j :

28
$$DRR(d) = \max_j \frac{\max_{t_j} (x_{t_j}(d)) - \min_{t_j} (x_{t_j}(d))}{\max_t (x_t(d)) - \min_t (x_t(d))}$$

29 For the baseline map, a 10*7 grid is found to be the optimum shape to represent the data based on the error
 30 measures. An 8*8 map is fitted to the future projected changes data set. After finding these optimum side ratios,
 31 the maps are increased in size preserving their side ratios (to 20*14 and 18*18) to allow the data items to spread
 32 out until most cities are placed individually, allowing the relationships between all cities to become evident (as
 33 in Skupin & Hagelman, 2005). The temporal map is sized at 25*17 nodes. Whilst the input data for the baseline
 34 and future projected changes maps were standardized into the range 0-1 before training, the input data for the
 35 temporal map is not standardised in order to preserve the ratios between the lengths of the first two principal
 36 curves in each of the first two data subsets.

1 Prevalent cluster characteristics are determined using a ‘second level’ clustering of the nodes of the SOM (as in
2 Vesanto & Alhoniemi, 2000; Skupin & Hagelman, 2005), performed using Ward’s clustering method (Ward, 1963)
3 with the number of clusters determined using the Davies-Bouldin index (Davies & Bouldin, 1979). The Davies-
4 Bouldin index reports the ratio of within cluster scatter (S_j for cluster j) to inter-cluster distances, looking at
5 each cluster and its most similar one, (M_{jk}), with a lower ratio (S_j/M) indicating a better estimate of the number
6 of clusters of interest present in the data. Ward’s minimum variance method is a hierarchical clustering algorithm
7 based on minimizing the total within-cluster variance. With this second-level clustering, each data item of the
8 original data set becomes a member of the same final cluster as its closest node (Vesanto & Alhoniemi, 2000).

9 The final clustering is visually verified with a SOM ‘U-matrix’ (Ultsch, 2003). The U-matrix visualises distances in
10 data space between immediately neighbouring nodes, indicating these distances by colour on a grid of the same
11 size as the SOM. By computing how close adjacent map nodes are in data space, the U-matrix is able to provide
12 an indication of cluster boundaries based on large dissimilarities between neighbouring nodes. A greater change
13 in relative distance between the locations of the nodes in data space than in map space is displayed in a lighter
14 colour on the grid, and lesser distances in darker shades. The darker regions of the grid then indicate the cluster
15 centres, separated by lighter coloured boundary areas.

16 By reducing the information from this multivariate data set into the two most prominent dimensions and finding
17 relationships between the data items at each of these three stages, spatial and temporal information about
18 global patterns of urban flooding is abstracted, and similarities and differences between the cities are clearly
19 portrayed. This method extracts two levels of information:

- 20 (1) the most characteristic socio-environmental patterns in the data are found, and
- 21 (2) cities are compared to each other with respect to their relative flooding conditions.

22 The simulations are run in ~~MATLAB~~ with use of the SOM Toolbox (website 7) with variables and map sizes
23 as described above.

24 3 RESULTS

25 Three SOMs are presented sequentially to reveal three unique sets of patterns in the data, where the term
26 ‘patterns’ refers to combinations of variables that characterise a specific set of conditions. The cities are
27 clustered into groups with conditions matching these patterns, based only on the given data. The maps each
28 have different sizes, shapes and colours as they represent different subsets of input data. [The interpretation of
29 the maps is discussed in this section.](#)

30 SOM1: BASELINE URBAN FLOOD IMPACTS

31 Patterns of urban flood conditions in 2010 are shown on the baseline map, SOM1, in Figure 1. The placement of
32 city labels indicates the relationship of each city to each other in terms of river flood impacts on population and
33 urban damages costs. The map is created by organizing the cities with respect to each other based on both of
34 these factors. Cities close together are more similar in the amount of population affected and urban damages
35 costs, and cities located far apart are less similar.

36 The relative placement of the cities on the map is the main map characteristic providing insight into the features
37 of the data, indicating differences in a *combination* of the variables which can be discerned from the colouring
38 of Figure 1(a). Each map node has a four-component vector (representing the value of each of the four variables
39 at the location of the node in data space). The four images in Figure 1(a) show SOM1’s city labels over grids

1 coloured separately by the values of each of the four variables (white is low, purple is high). For each city, the
2 relative value of each of the variables can be seen. For example, Cincinnati (top right) incurs high material
3 damages costs, and medium population affected, whereas Ulan Bator (mid left) has similar population affected
4 to Cincinnati, but much lower material damages costs.

5 The nonlinearity of the relationships between the variables is evident from the colouring of the grids, indicating
6 that high (or low) values are located on different regions of the map for each variable. ~~as is~~ The smooth
7 transition of the values of each variable is also apparent by the smooth transition of colours along the grids map.
8 General information about the prevalent baseline global patterns and the relative flood conditions in the specific
9 cities can be gained from inspection of these map labels and coloured grids.

10 Each area of the grid represents a general pattern, or combination of variables in the data, some of which are
11 indicated by annotations on Figure 1(b). In general, higher amounts of population affected and urban damages
12 costs resulting from river flooding are represented by areas towards the top of the map, and these variables
13 decrease in value down the map. Values of affected population are lowest just in from the lower left corner and
14 undulate along the bottom of the map, sweeping upwards to a maximum at the upper left corner. Urban damage
15 values are lowest in the lower left corner and increase in concentric arcs up to the upper right corner. Generally,
16 the left of the map contains patterns involving higher impacts on populations than on property, and the right of
17 the map higher impacts on property than on populations.

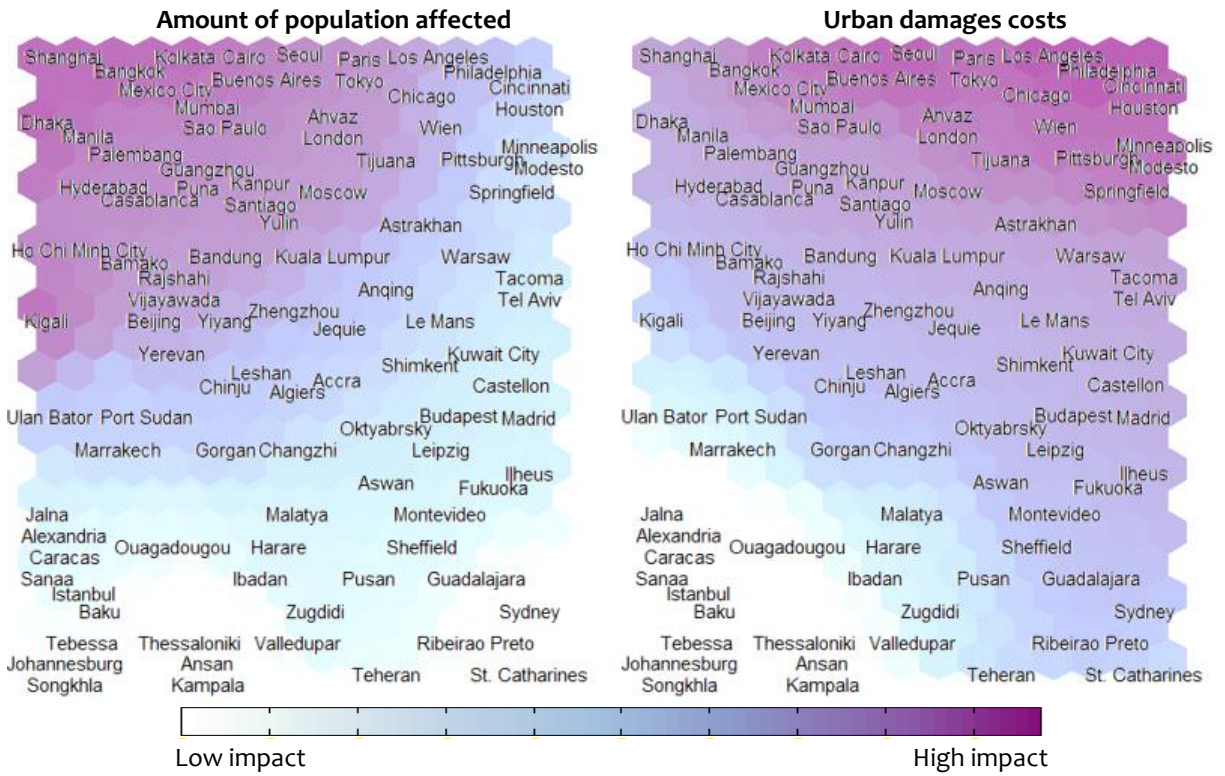
18 ~~Each area of the grid represents a general pattern, or combination of variables in the data, some of which are~~
19 ~~indicated by annotations on Figure 1(b). In general, higher amounts of population affected and urban damages~~
20 ~~costs resulting from river flooding are represented by areas towards the top of the map, and these variables~~
21 ~~decrease in value down the map. Values of affected population are lowest just in from the lower left corner and~~
22 ~~undulate along the bottom of the map, sweeping upwards to a maximum at the upper left corner. Urban damage~~
23 ~~values are lowest in the lower left corner and increase in concentric arcs up to the upper right corner. Generally,~~
24 ~~the left of the map contains patterns involving higher impacts on populations than on property, and the right of~~
25 ~~the map higher impacts on property than on populations.~~

26 ~~From Figure 1(b), relationships can be discerned between regions, as well as between cities in the same region.~~
27 ~~For instance, cities in North Africa, Sub-Saharan Africa and West & Central Asia are predominantly located in the~~
28 ~~lower portion of the map, corresponding to a prevalent pattern of low flood impacts on both population and~~
29 ~~property. Cities in Southeast and South Asia generally correspond to the patterns of high impacts on population~~
30 ~~and property found in the upper left of the map. Cities in Europe stretch from the top to the bottom of the map,~~
31 ~~ranging from high overall flood effects (Paris) to no flood effects at all (Thessaloniki). North American cities are~~
32 ~~matched to patterns that represent more significant impacts on property than on population (down the right~~
33 ~~side of the map), and are split between those with high property damages (Philadelphia, LA, etc.—in the top~~
34 ~~right) and those with low damages (St. Catherine's—in the bottom right).~~

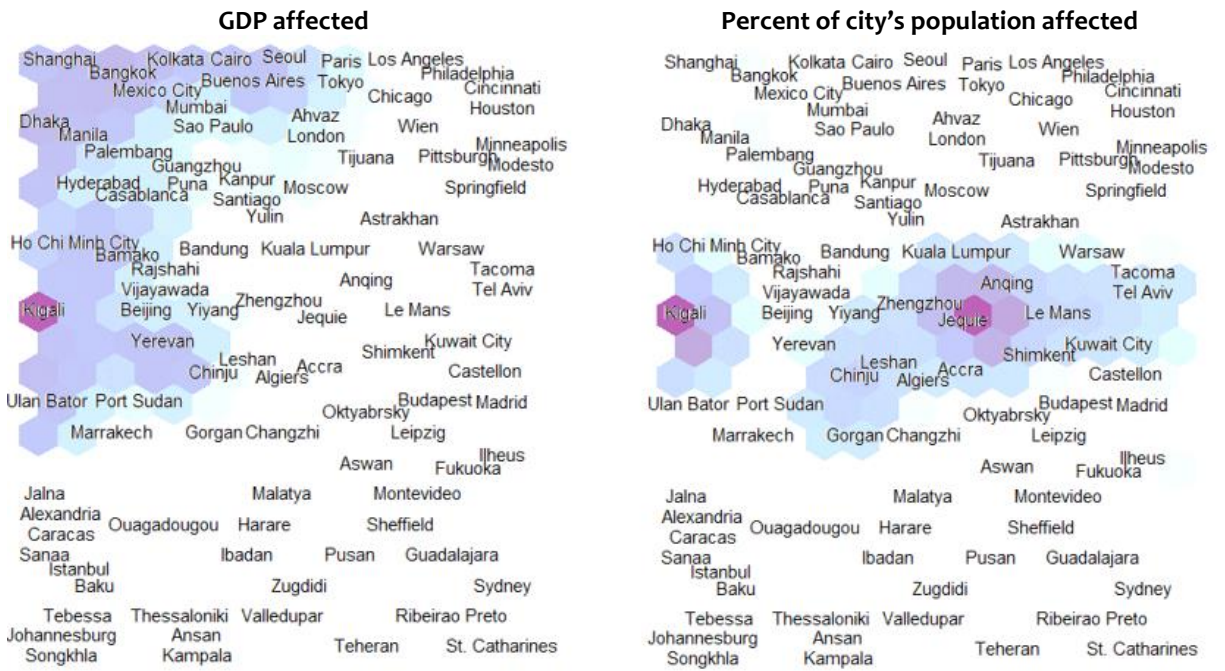
35 ~~Impacts on GDP and the proportion of the cities' populations affected are shown in the two lower maps of Figure~~
36 ~~1(a), though these variables were not used to position the cities on the map. Cities in which river-related urban~~
37 ~~flooding is estimated to highly affect the country's GDP are coloured on the lower-left map. Kigali, in particular,~~
38 ~~which incurs medium-high flood impacts, sees a large impact on Rwanda's GDP, perhaps because Kigali is the~~
39 ~~main city in this relatively small country (Kreimer et al., 2003). GDP is most affected by flooding in: Kigali,~~
40 ~~Bangkok, Yerevan, Dhaka, Bamako and Cairo. Cities in which the flood-affected population forms a significant~~
41 ~~proportion of the city's population are coloured on the lower-right map, predominantly in a horizontal strip~~

- 1 across the centre. The highest proportions are in: Jequie (15%), Kigali (7%), Chinju (6%), Le Mans (5%) and Tacoma
- 2 (3%).
- 3

1 a)



2



b)

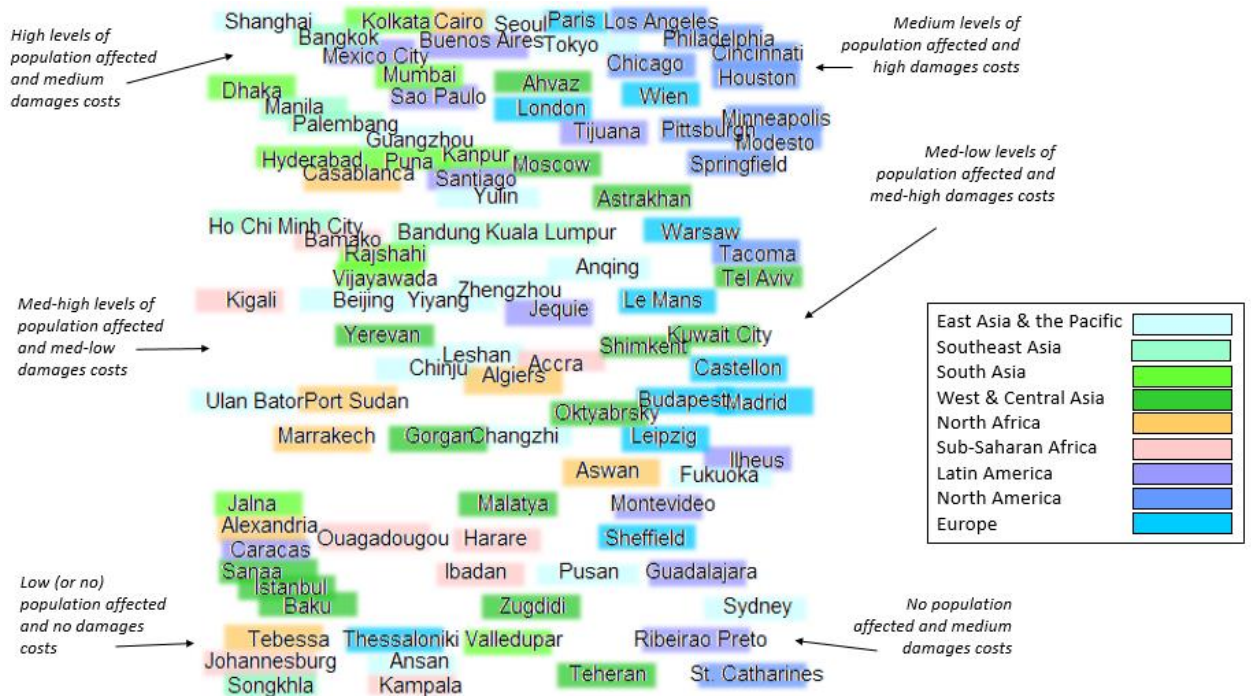


FIGURE 1: SOM1 - BASELINE (2010) URBAN FLOOD CONDITIONS. Cities are placed relative to each other based on annual river flooding impacts on population and urban damages costs. a) The same map is repeated for each of four variables, with colouring indicating low (white) and high (purple) values. b) The city labels are coloured by region (see Table 1), and characteristic patterns of general areas of the map are annotated. The reader may refer to the online version to zoom in on text if required.

8 From Figure 1(b), relationships can be discerned between regions, as well as between cities in the same region.
9 For instance, cities in North Africa, Sub-Saharan Africa and West & Central Asia are predominantly located in the
10 lower portion of the map, corresponding to a prevalent pattern of low flood impacts on both population and
11 property. Cities in Southeast and South Asia generally correspond to the patterns of high impacts on population
12 and property found in the upper left of the map. Cities in Europe stretch from the top to the bottom of the map,
13 ranging from high overall flood effects (Paris) to no flood effects at all (Thessaloniki). North American cities are
14 matched to patterns that represent more significant impacts on property than on population (down the right
15 side of the map), and are split between those with high property damages (Philadelphia, LA, etc. – in the top
16 right) and those with low damages (St. Catherine’s – in the bottom right).

17 Impacts on GDP and the proportion of the cities’ populations affected are shown in the two lower maps of Figure
18 1(a), though these variables were not used to position the cities on the map. Cities in which river-related urban
19 flooding is estimated to highly affect the country’s GDP are coloured on the lower left map. Kigali, in particular,
20 which incurs medium-high flood impacts, sees a large impact on Rwanda’s GDP, perhaps because Kigali is the
21 main city in this relatively small country (Kreimer et al., 2003). GDP is most affected by flooding in: Kigali,
22 Kangon, Bangkok, Yerevan, Dhaka, Bamako and Cairo. Cities in which the flood-affected population forms a significant
23 proportion of the city’s population are coloured on the lower right map, predominantly in a horizontal strip

1 across the centre. The highest proportions are in: Jeju (15%), Kigali (7%), Jinju (6%), Le Mans (5%) and Tacoma
2 (3%).

3 SOM2: PROJECTED CHANGES IN URBAN FLOOD IMPACTS (TO 2030)

4 SOM2 identifies the projected patterns of evolving river flood conditions in the cities (between 2010 and 2030),
5 based on city-specific projections of increasing or decreasing flood impacts on population and damages costs,
6 and whether these changes are anticipated to be driven more by climate change or development (Figure 2).

7 In Figure 2(a), regions of the map representing projected increases in flood impacts on either populations or
8 damages costs are coloured blue and reductions in flood impacts are coloured brown (in the top row), with
9 white indicating no projected change. Projected changes primarily driven by socioeconomic development are
10 coloured purple (in the lower row), and green indicates that the primary driver is climate change. White
11 represents a mid-point in which both climate change and development are predicted impact future flood
12 conditions relatively equally. Areas of the map representing patterns of increased flood impacts predominantly
13 due to climate change or development can be located on Figure 2(b).

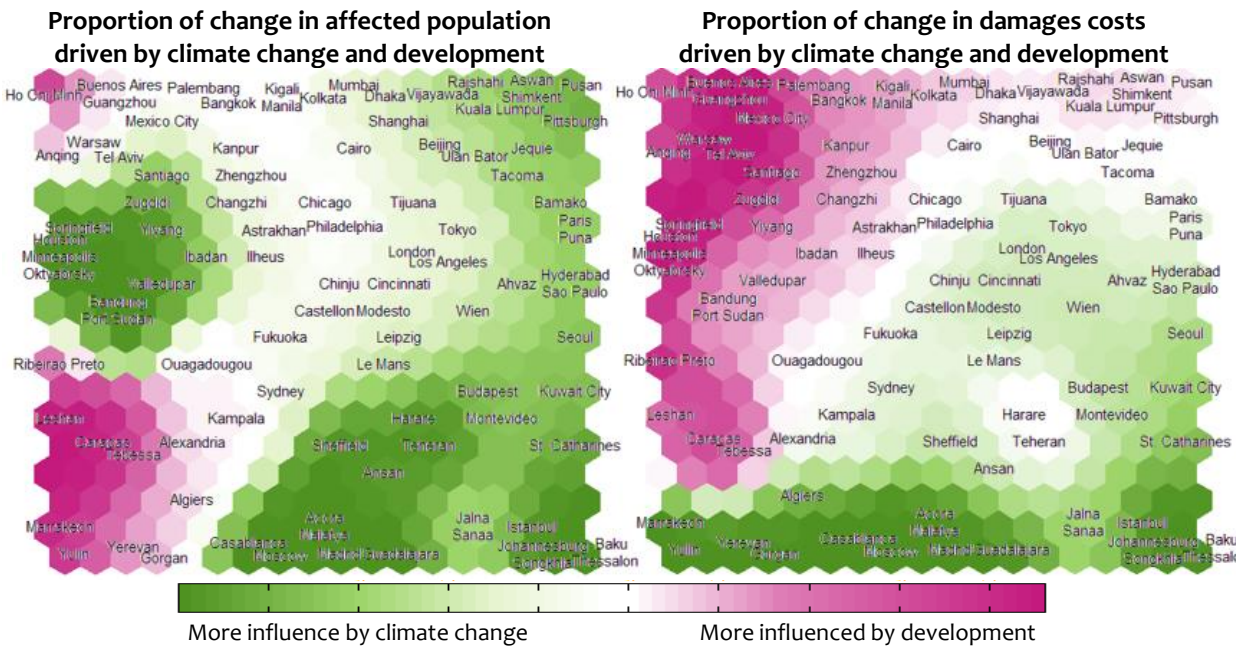
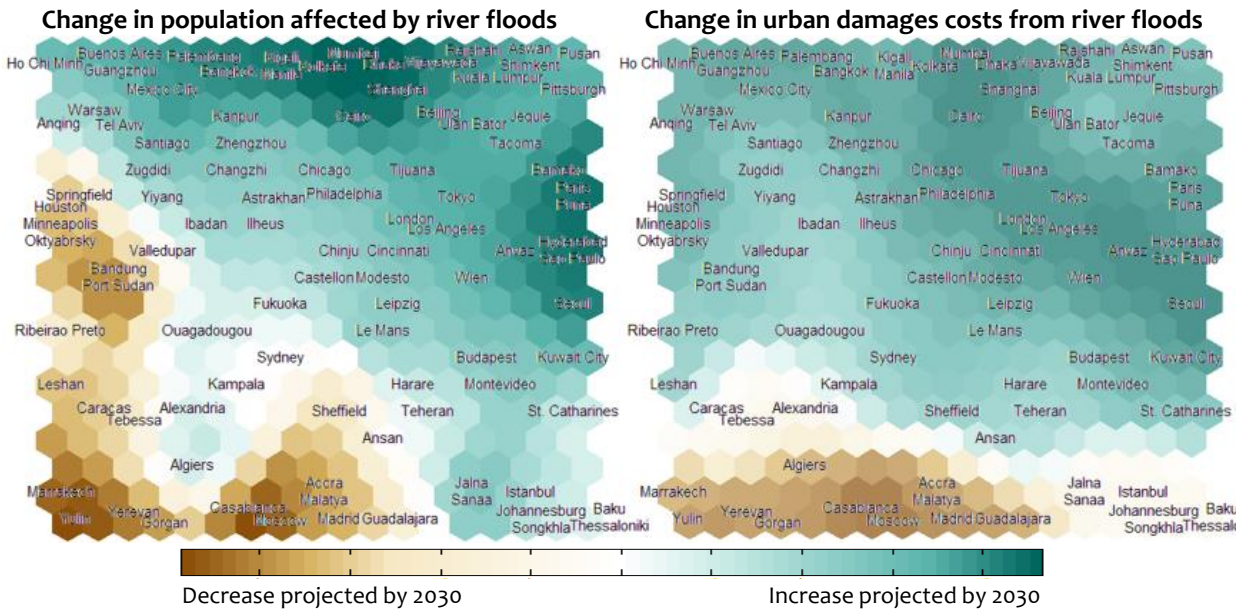
14 Investigating SOM2, we see that climate change is projected to be predominantly responsible for increases in
15 population vulnerability in all cities besides those in the top left corner (around Ho Chi Minh City). Climate change
16 is anticipated to decrease flood damages costs in cities located at the bottom of the map (around Madrid), and
17 decrease impacts on populations in cities in the mid-left (around Minneapolis) and mid-lower (again around
18 Madrid) portions of the map. Socioeconomic development is projected to be the main driver increasing flood
19 damages costs in cities on the upper-left triangle of the map (roughly from Mumbai down to Tebessa). Only in
20 Ho Chi Minh City is development anticipated to be almost completely responsible for all increases in river flood
21 impacts, all other cities in this study are at least partially affected by climate change. Development is not
22 projected to play any part in a decrease in flood damages costs in any cities in this study (Caracas and Tebessa
23 have no change in damages costs on the upper map, though it is attributed to development on the lower map).

24 Geographic regions are shown on Figure 2(b) with coloured text backgrounds. Cities in Southeast Asia are mostly
25 found at the top of the map indicating high projected increases in overall flood impacts. South Asian cities are
26 mostly located in the two areas of the map with patterns of very high increases in flood impacts, split between
27 those projected to be most affected by development (around Mumbai, top middle) and by climate change
28 (around Puna, mid right). Many North African cities are located in the lower left, indicating anticipated reductions
29 in flooding due to socioeconomic development. North American cities are spread across the middle of the map
30 indicating a wide range of projected changes.

31

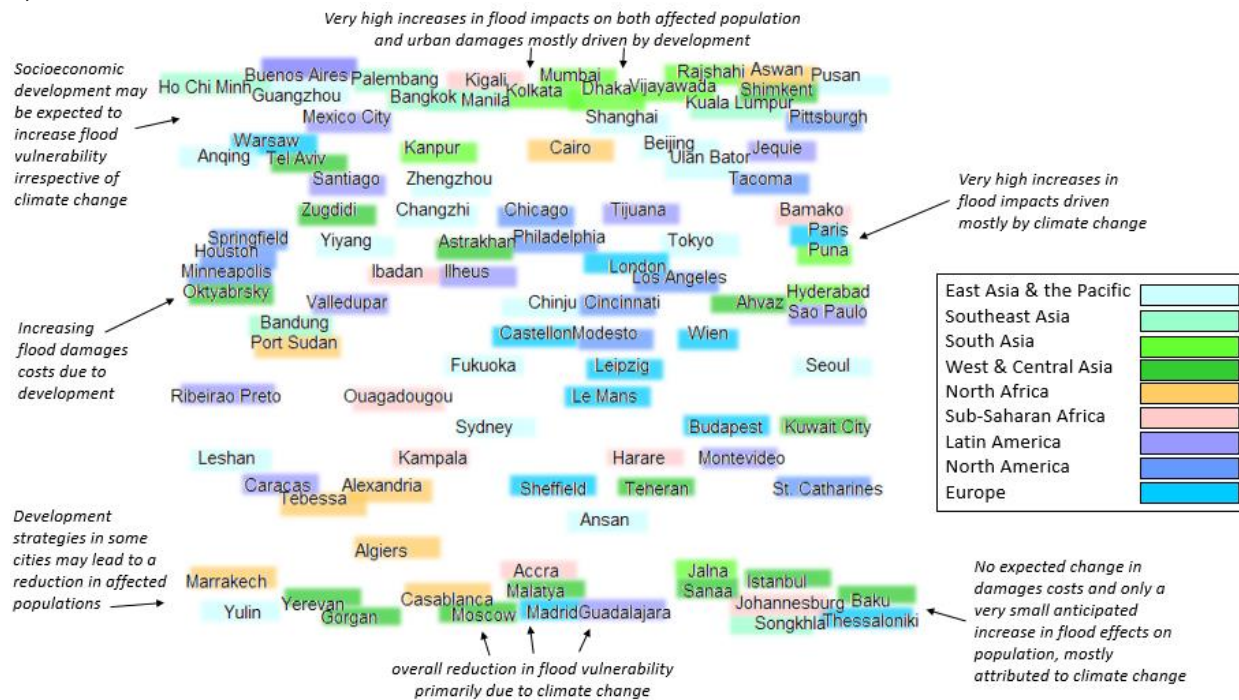
32

1 a)



2

b)



1 **FIGURE 2: SOM2 - PROJECTED CHANGES IN RIVER FLOOD IMPACTS WITH ASSOCIATED DRIVERS.**
2 River flooding in individual cities will be affected separately by climate change and development
3 between 2010 and 2030. Cities that are anticipated to experience similar pressures and responses in
4 terms of river flooding impacts are located nearby on the map. a) City labels are placed over coloured
5 copies of the map showing the relative values of each variable. b) City labels are coloured by region,
6 and characteristic patterns of general areas of the map are annotated. The reader may refer to the
7 online version to zoom in on text if required.

8 Geographic regions are shown on Figure 2(b) with coloured text backgrounds. Cities in Southeast Asia are almost
9 all found at the top of the map indicating high projected increases in overall flood impacts. South Asian cities are
10 mostly located in the two areas of the map with patterns of very high increases in flood impacts, split between
11 those most affected by development (around Mumbai, top middle) and those most affected by climate change
12 (around Puna, mid right). Many North African cities are located in the lower left, indicating anticipated reductions
13 in flooding due to socioeconomic development. North American cities are spread across the middle of the map
14 indicating a wide range of projected changes.

15 Climate change and development may lead to opposing changes in a city's flood impacts on population and
16 property. A number of cities [in this data set](#) are predicted to have affected populations decreasing due to climate
17 change, whilst damages costs increase due to socioeconomic factors (around Springfield and Port Sudan, in the
18 mid-left). A decrease in flood effects on urban damages due to climate change, but an increase in affected
19 population largely due to development is, out of the cities in this study, only projected for Algiers (in the lower
20 left portion of the map).

21 In some cities, both drivers may generate changes in the same direction. For instance, in Marrakech, Yulin,
22 Yerevan and Gorgan, climate change is projected to be responsible for a decrease in damages costs whilst
23 socioeconomic development is anticipated to play a major role in the decrease in ~~population~~-affected ~~population~~,

1 suggesting that the reduction of population vulnerability due to development is complementing the direction of
2 change instigated by climate change. In certain cities near the upper left of the map (Santiago, Zugdidi and
3 Yiyang), an overall increase in flood impacts is expected, with increases in affected population almost completely
4 attributed to climate change and increases in damages costs almost completely attributed to development.

5

SOM3: TEMPORAL PATTERNS

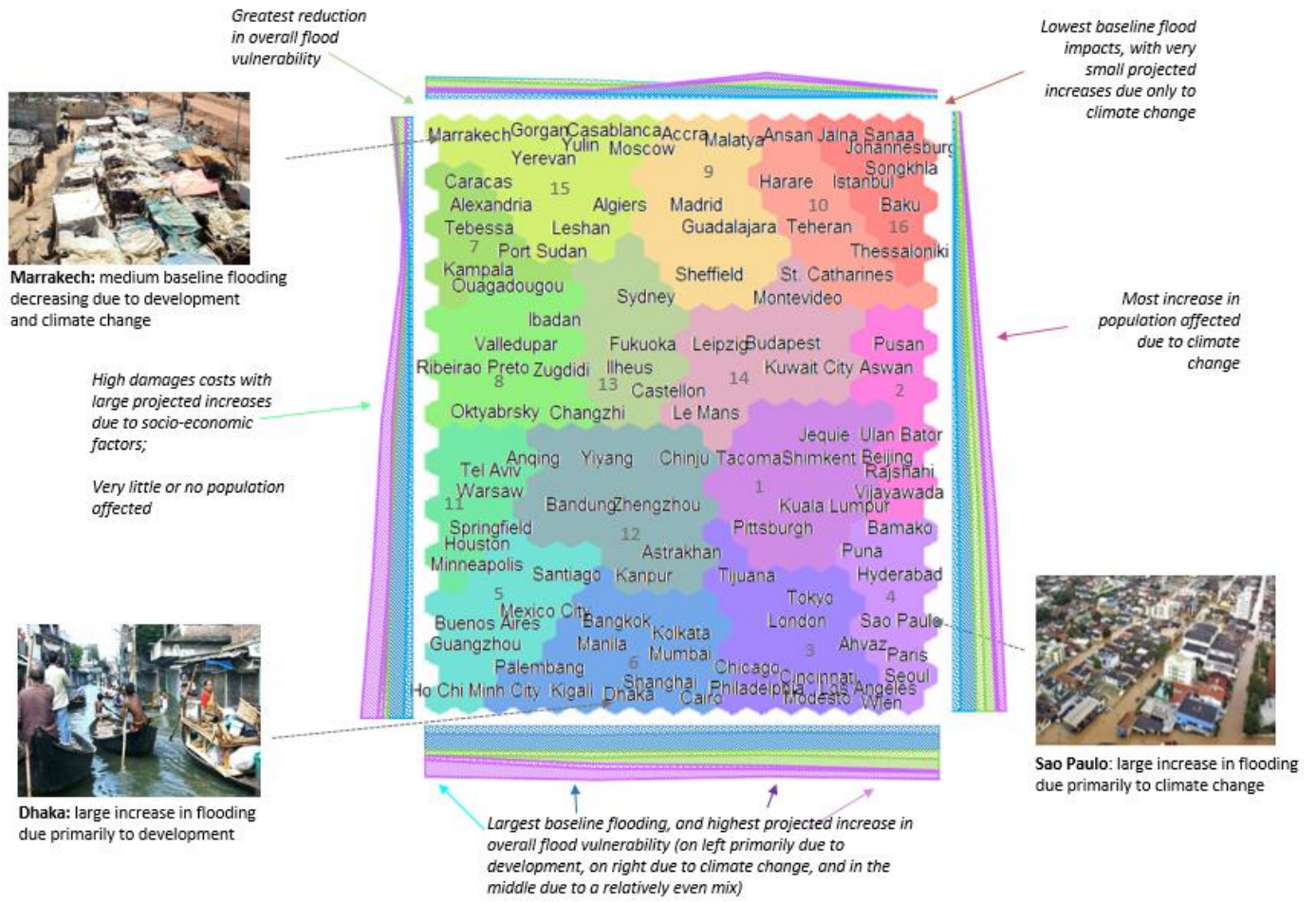
Relationships between the baseline characteristics and projected future changes of urban flooding in the individual cities are shown in Figures 1 and 2 respectively, however potentially similar temporal patterns between the cities are not evident from these maps. To link the information abstracted from the first two maps, we create a temporal map, SOM3, shown in Figure 3. SOM3 identifies which cities experience similar baseline flooding, are expected to incur comparable future hydrologic pressures from climate change and/or development, and are projected to respond in similar ways (or which cities may diverge in the future from similar baseline conditions).

~~Following the creation of SOM3 and the positioning of cities with respect to each other, we perform a second level clustering to colour the nodes.~~ The nodes of SOM3 are coloured based on the results of a second-level clustering, -giving a visual separation to ~~clustergroups~~ of more similar data. Clusters are numbered from 1 to 16 for reference. As the cities ~~are placed~~ have been located on the temporal-SOM3 based on their locations on the 'baseline' and 'future projected changes' SOMs (in which the values of the variables vary smoothly though not monotonically along the axes), again the characteristics of the cities will flow smoothly along the map though multiple peaks and troughs of each variable are possible. The gradients of the cluster characteristics are indicated along the axes in Figure 3(a), which are nonlinear in data space.

Broad overviews of the patterns represented by certain regions of the map are identified on Figure 3 with arrows. The largest increases in flood effects are generally represented by nodes in the lower half of the map, whilst the largest decreases in flood effects are represented by nodes in the top left. Climate change is predicted to be the main driver of changes in population vulnerability along the top and down the left and right sides of the map, and in urban damages on the top and right of the map; therefore, climate change is the leading driver of changes in flood impacts on both population and damages costs at the top of the map. Development is the main driver of changes in flood impacts on populations in the lower and upper left side of the map, and on urban damages in the lower left area of the map; therefore, development is the leading driver of changes in flood impacts on both population and damages costs in cities on the lower left side of the map.

On Figure 3(b) the city labels are coloured by geographic region allowing for a regional visual comparison. We see the cities of each geographical region are more spread out on SOM3 than on SOM1 where each region was generally contained in one or two broad areas of the map. For example, on SOM3 Cairo and Aswan are noticeably separated from other North African cities which are located close together. Although the cities of this region have differing baseline flood levels (as shown on SOM1), most are projected to incur some reduction in future flood impacts (as shown on SOM2), with the exception of Cairo and Aswan. These cities both have forecasts of increased flood impacts - for Aswan increased impacts on the population due to climate change and impacts on property due to development, and for Cairo future impacts are projected to increase due to a relatively even mixture of both drivers. ~~A~~For another example can be seen in the cities ~~of~~in the USA shown on the map. ~~(all of which~~They have similar starting conditions, yet) are in two well-separated clusters on SOM3 - those around Houston and those around Los Angeles. The cities clustered around Houston are characterised by low impacts on population but high damages costs projected to elevate due to development, implying the possibility for local redemption-improvements due to betterthrough planning or mitigation strategies. The cities clustered around Los Angeles, however, are characterised by high overall impacts projected to get higher-increase predominantly due to climate change. ~~!Further,~~in Sub-Saharan Africa we see Kigali and Bamako (which have similar medium-high baseline flooding conditions) are both expected to see increased impacts, but the cities are separated by SOM3 as these flood increases are attributed to development in Kigali and climate change in Bamako.

1 a)



2

3

4

1 b)
2



3
4
5
6
7
8
9
10
11
12

FIGURE 3: SOM3 - TEMPORAL PATTERNS – Cities are clustered close together that share similar baseline (2010) flood vulnerabilities as well as similar anticipated changes driven by climate change and development on population and urban damages costs by 2030. a) Locations of the cities are based on their individual relationships to the principal curves in the baseline and future projected changes data subsets - therefore, the axes represent the most important nonlinear gradients of flood vulnerabilities in the data set. Coloured bars along the axes indicate the average levels of each variable around the edges of the map. Cities are grouped into coloured clusters based on similarities. b) City labels are coloured by region, and characteristic patterns of general areas of the map are annotated. The reader may refer to the online version to zoom in on text if required.

13 To further analyse the characteristics of each cluster and the patterns found on SOM3, the properties of each
14 city in the 16 clusters are shown in a radial plot in Figure 4. Baseline values of population affected (blue, units =
15 number of people) and damages (orange, units = \$US) are shown on a symmetrical logarithmic scale ranging
16 from -8 (ie. signifying a value of -100,000,000) to 11 (100,000,000,000) with the region between -1 and 1 on the
17 plot set as linear to avoid logarithmic discontinuities in the vicinity of zero. Zero is indicated by a dashed
18 circumference, and each progressive ring is an exponentially higher (or lower) value. Changes in population
19 affected and damages costs are shown on the same scale, in grey and yellow respectively. Values inside the
20 dashed (zero) circle represent decreases in flood impacts, and values outside represent increases, with the size
21 of the increase or decrease indicated by the distance from the dashed circle. The influence of climate change is
22 shown (light green for population and dark green for damages) on a linear scale from the same zero
23 circumference, in units of ‘percentage of projected change attributable to climate change’ (each progressive
24 ring is 10%). Green lines closer to the outer ring than the centre therefore indicate that the flood impacts on the
25 city are anticipated to be more influenced by climate change than by development. If the green lines are both in
26 the middle of the segment, this indicates a relatively equal influence of both drivers on both population and

1 property. Diverging green lines indicate that either population or damages costs are more influenced by climate
2 change, and the other by development.

3 From Figure 4, we can see the differences between neighbouring clusters, such as 10 and 16 located in the top
4 right of the map. Both clusters are characterized by low baseline impacts of flooding on the population, with
5 small increases in population impacts projected primarily due to climate change. However, cities in cluster 16
6 incur no flood damages costs at all in the baseline or future cases, yet in cluster 10 damages costs are projected
7 to increase due to climate change and development. Therefore, development has little or no impact on cities in
8 cluster 16 but does play a role in the increase in damages in cluster 10. In the top left of SOM3, we can now also
9 discern the difference between clusters 9 and 15. In both clusters, development is projected to have no impact
10 on the reduction of flood damages costs in most cities. Development does however play a strong role in the
11 reduction of flood impacts on populations in cluster 15 (except for Moscow and Casablanca) but none on
12 populations in cluster 9.

13
14 ~~The relationship between the two drivers, climate change and development, can discerned from Figures 3 and~~
15 ~~4. Climate change is projected to impact populations more than urban damages costs in clusters stretched across~~
16 ~~the centre of the map (clusters 8, 11, 5, 6, 12, 14, 1, 10, 1, 2, and 4 – in cities in these clusters, the proportion of~~
17 ~~change in the population affected attributed to climate change is higher than the proportion of change in~~
18 ~~damages costs attributed to climate change). In cluster 15, the population is projected to be more influenced by~~
19 ~~development than damages costs will be (a higher proportion of the change in damages costs is attributed to~~
20 ~~climate change than for population). In the remaining clusters, climate change (and development) are projected~~
21 ~~to affect the population and damages costs relatively similarly (clusters 7, 13, 9, 16 and 3). Some examples of~~
22 ~~diverging impacts on population and damages costs stand out on the radial plot in Figure 4. For instance, in Port~~
23 ~~Sudan, Sheffield and Bandung, significant reductions in affected population are projected to be 100% due to~~
24 ~~climate change, however large projected increases (–300 to 400%) in damages are due mostly to development.~~
25 ~~In Leshan, development is projected to slightly lower the amount of affected population and also to increase~~
26 ~~damages costs more than three-fold.~~

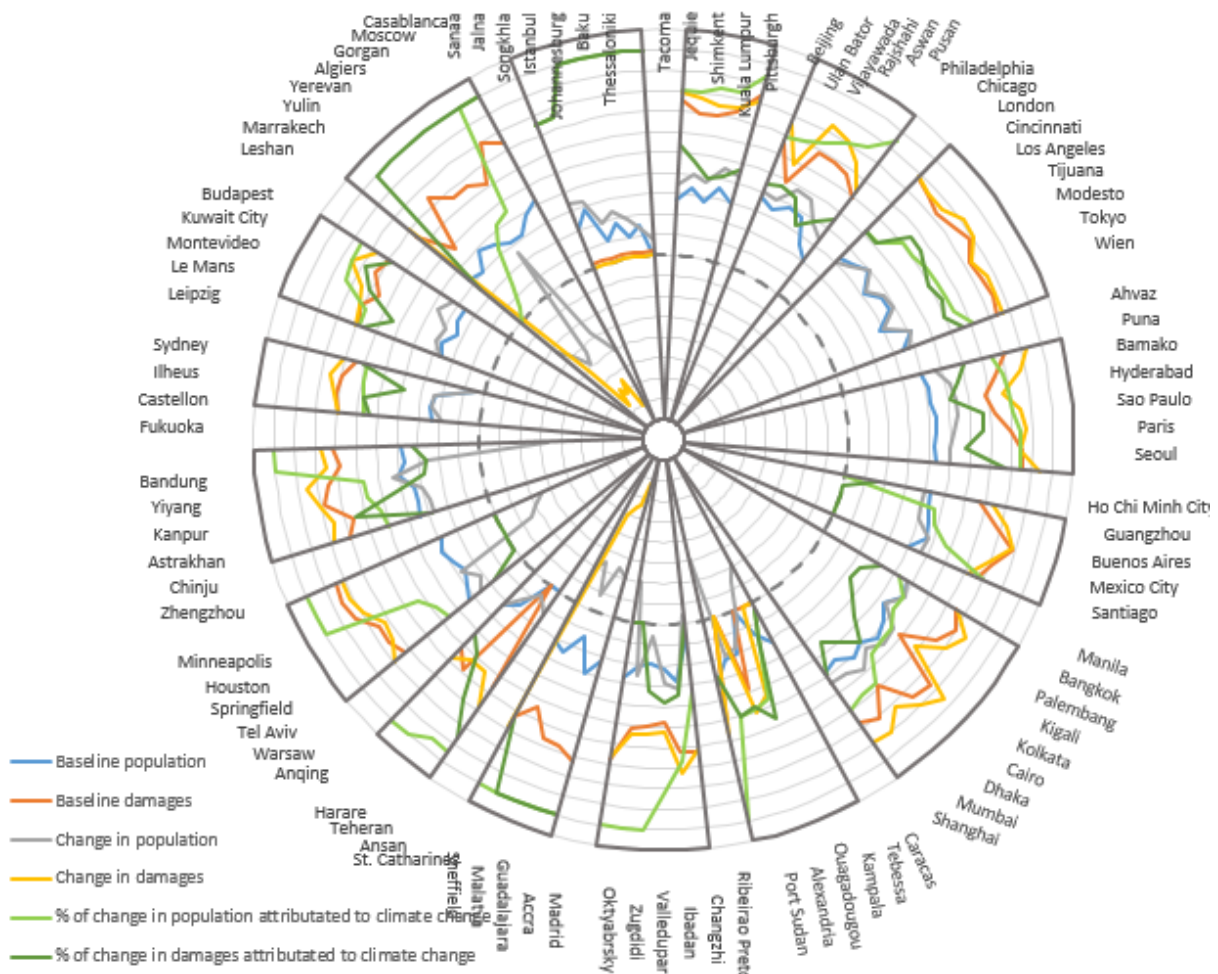


FIGURE 4: RADIAL PLOT OF CLUSTERS OF FIGURE 3 – The city members of the 16 clusters of Figure 3 are shown with their individual variable values. The scale is logarithmic for baseline and changes in population and damages, and linear for the percent of change attributed to climate change, with the dashed circle representing zero.

The relationship between the two drivers, climate change and development, can be discerned from Figures 3 and 4. Climate change is projected to impact populations more than urban damages costs in clusters stretched across the centre of the map (clusters 8, 11, 5, 6, 12, 14, 1, 10, 1, 2, and 4 - in cities in these clusters, the proportion of change in the population affected attributed to climate change is higher than the proportion of change in damages costs attributed to climate change). In cluster 15, the population is projected to be more influenced by development than damages costs will be (a higher proportion of the change in damages costs is attributed to climate change than for population). In the remaining clusters, climate change (and development) are projected to affect the population and damages costs relatively similarly (clusters 7, 13, 9, 16 and 3). Some examples of diverging impacts on population and damages costs stand out on the radial plot in Figure 4. For instance, in Port Sudan, Sheffield and Bandung, significant reductions in affected population are projected to be 100% due to climate change, however large projected increases (~300 to 400%) in damages are due mostly to development. In Leshan, development is projected to slightly lower the amount of affected population and also to increase damages costs more than three-fold.

4 DISCUSSION

In this study, the ‘patterns’ and ‘clusters’ in the data have been identified. The patterns, depicting unique, key combinations of variables that are characteristic of the data set, have been extracted at three separate levels on SOM1, SOM2 and SOM3. ~~(f-~~For example, each pattern of SOM3 is a separate combination of levels of baseline and projected future flood conditions as well as projected influences of climate change and development). The clusters consist of groups of cities whose conditions are anticipated to be similar to these patterns, based on the given data. ~~In the previous section, the interpretation of each SOM (1-3) has been discussed. In this section, Aa~~ discussion of a selection of these patterns and clusters is provided ~~here~~. The information that can be gleaned from the SOMs is related to information in current literature through the use of specific examples.

The lower left region of SOM3 highlights the fact that a number of ~~Some~~ cities already experiencing large flood effects are anticipated to incur great flood increases influenced predominantly by socioeconomic factors ~~(migration, changing land use and unplanned development in flood zones)~~. In these ~~se~~ cities, lower left region of SOM3, we see examples of cities in which climate change is playing a large role, and yet it is overshadowed by the magnitude of regional economic growth ~~(UNEP, 2016; website 8) leading to -migration, changing land use and unplanned development in flood zones(UNEP, 2016; website 8)~~. Many of these cities are in Asia, where the climate is experiencing warming trends, increasing temperature and precipitation extremes, and rapid glacial melting resulting from climate change (Pachauri et al., (2014) chapter 24: ‘Asia’). However, it can be seen that socioeconomic growth in this area is projected to have even more of an impact on urban floods than climate change ~~is~~.

Pachauri et al. (2014, chapter 24: ‘Asia’) assert that Flood risk and ~~h~~ human and material losses due to flooding are already heavily concentrated in India, Bangladesh and China ~~(Pachauri et al., (2014), chapter 24: ‘Asia’)~~, and Jongman (2012) estimates the largest current and future economic exposure to river floods to be in Asia. As an example, we take a closer look at Dhaka which, with a GDP per capita of \$1212 in 2015, already has one of the highest levels of population affected annually by flooding (over 130,000) and this number is projected to increase almost five-fold ~~(to over 630,000)~~ by 2030. The greatest change predicted for Dhaka, though, is an almost 22-fold increase in annual damage costs (from \$8 million to \$175 million). Dhaka is subjected to regular flooding from surrounding rivers, with peak flows in the Brahmaputra and Ganges Rivers coinciding to exacerbate flood impacts. In the past, most low-lying areas of western Dhaka were infilled for residential and commercial use, causing a reduction in areas for flood water storage. ~~U~~Furthermore, uncontrolled and unplanned urban expansion is spreading rapidly across the floodplains in the east of the city placing more people in flood hazard zones (Kreimer et al., 2003). These hasty developmental changes are having more of an impact on the urban hydrology of Dhaka than ~~the~~ climate change is. ~~E~~Other examples of cities in similar situations include: Kolkata (with the highest baseline affected population in this study), Mumbai (with a seven-fold increase in both population affected and damages due 40% and 60%, respectively, to development), Bangkok (with large increases, 50-75% of which are attributed to development) and Ho Chi Minh City (with a 50% increase in affected population and an over five-fold increase in damages costs, almost entirely attributed to development).

On SOM3 we can identify that ~~D~~ developmental changes in some cities, ~~however~~, appear to be effectively reducing impacts from river flooding, ~~for example in~~ Marrakech, ~~in~~ ~~(-cluster 15), is an example of this~~. The affected population level is projected to decrease mostly due to socioeconomic factors (website 3; Ward et al., 2013; Winsemius et al., 2013). ~~Morocco is taking responsibility to make efforts countering global climate change, and~~ ~~through an ‘Integrated Disaster Risk Management and Resilience Program for Morocco’ (World Bank, April 2016-Dec 2021), is making its population~~ Morocco is becoming more resilient to climate change and, less vulnerable to natural hazards, and is ensuring a rapid transition to a low-carbon economy. Through Morocco’s

1 National Strategy for Sustainable Development, a commitment has been made to reduce national greenhouse
2 gas emissions by 32% by 2030. ~~This will be done,~~ through an increase in renewable energy sources to 50% ~~by 2025,~~
3 a reduction in energy consumption by 15% ~~by 2030,~~ as well as various agricultural, water, waste, forest, industry
4 and housing initiatives (website 9). These housing initiatives in Marrakech include a slum clearance and
5 relocation project, which has become part of urban policy (Ibrahim, 2016), reducing the amount of people
6 inhabiting flood hazard zones. Alert systems in the valleys of the Atlas region above Marrakech have been
7 improved, and the proportion of the population living in slums has decreased from over 8% in 2004 to less than
8 4% in 2010 (UN-Habitat website). The urbanization rate in Morocco is also projected to slow down towards 2030
9 (UN-Habitat website). This risk-prevention approach combining early warning systems, relocation of inhabitants
10 out of the flood zone, and less urban expansion is expected to combine to reduce the impact of floods on the
11 population of Marrakesh.

~~The analysis in this paper is based solely on the data provided in Aqueduct, regardless of the extent to which on
12 the ground flood management measures are incorporated into the socioeconomic models which produced this
13 data. A discussion characterizing individual cities is included here as a point of interest to relate the data to
14 current national conditions, providing possible reasons why these cities may fit into the map where they do.~~

16 Current high flood impact conditions projected to get much greater primarily due to climate change are
17 anticipated for cities in the lower right of SOM3, with high magnitude changes expected for impacts on both
18 population and property. One of these cities, Sao Paulo, ~~for instance,~~ is expected to experience an almost seven-
19 fold increase in both the number of population affected (to over 140,000 annually) and urban damages costs (to
20 over \$500,000,000 annually) by 2030. 15% of the change in population and 35% of the change in damages is
21 attributed to development, but the majority of the change is projected to ~~be caused by~~ come from climate
22 change. Sao Paulo, ~~is~~ the largest city in Brazil, ~~has and the~~ city footprint ~~is~~ projected to increase over 38% by
23 2030, by which time 22% of the urban area may be located in flood zones (Young, 2013). The IPCC (Pachauri et al.,
24 (2014) chapter 14 ‘Latin America’) predicts the increase in temperature in central and south Brazil to be the
25 largest projected increase in Latin America, which will be combined with a ~~+10_ to +15%~~ increase in autumnal
26 precipitation, greatly affecting the hydrologic cycle in the region. The substantial change in development is
27 therefore expected to be eclipsed by the even greater projected change in climate in Sao Paulo, and other cities
28 in this region of SOM3.

29 The anticipated reduction in flood damage costs caused by climate change (~~evident in Cluster 15~~) may be a result
30 of changing snow melt conditions upstream of these cities. It has been shown that some global regions will
31 experience a decreasing trend in the magnitude and frequency of snow melt floods as the climate warms, as
32 well as a shift in the timing of these floods (Schiermeier, 2011; Barnett et al., 2005; Immerzeel et al., 2010).

~~Although changing climate in some areas is projected to lessen regional flooding, development within urban
33 flood zones may be severe enough to offset any reductions in flood impacts. This can be seen most prominently
34 in a strip on the left of SOM3 stretching from Port Sudan down to Santiago.~~

36 Many high-income cities with already high current flood vulnerabilities have projections for large elevations in
37 damage costs, but not increased levels of affected population. This can be seen in cities on SOM3 centred around
38 London, Tokyo, LA and Vienna (cluster 3), and Sydney and Castellon (cluster 13). Through high levels of planning,
39 preparedness and infrastructure, prosperous regions generally have systems in place to minimize flood impacts
40 on the population, even though they may incur large economic losses (Desai et al., 2015; Kreimer et al., 2003).
41 Almost half of the projected increases in these clusters are attributed to development, suggesting that these

1 cities may have the capacity for lessening potentially elevated flood damage costs by concentrating on planning
2 and mitigation policies.

3 Although changing climate in some areas is projected to lessen regional flooding, development within urban
4 flood zones may be severe enough to offset any reductions in flood impacts. This can be seen most prominently
5 in a strip on the left of SOM3 stretching from Port Sudan down to Santiago.

6 Though this study does not consider coastal flooding, it may be noted that due to their locations near river
7 mouths, many of the cities in the lower left of the map that are projected to experience high increases in impacts
8 from river flooding are also at risk of increased coastal flooding from intensified storms and sea level rise due to
9 climate change. Mumbai, Guangzhou, Shanghai, Ho Chi Minh City, Kolkata, Bangkok, and Dhaka are 7 of the top
10 14 cities (out of 136) ranked by current population exposure to coastal flooding. These same cities also comprise
11 the top 7 cities (in this order: Kolkata, Dhaka, Mumbai, Guangzhou, Ho Chi Minh City, Shanghai, Bangkok) ranked
12 by future (2070) estimated population exposed to coastal flooding (UNEP, 2016; Nicholls et al., 2008).

13

14 Almost all projected changes in flooding in this data set are of a relatively similar order of magnitude to the
15 original effects, as can be observed on Figure 4. That is, most cities that are only marginally affected by flooding
16 in 2010 are projected to experience only small increases by 2030, whereas cities with larger flood effects can
17 expect greater changes. ~~A~~ indicated by the significant correlation ~~exists~~ between the magnitudes of the cities'
18 baseline flooding effects and the changes projected by 2030 (log-transformed absolute values for both variables)
19 – an 88% correlation exists in the number of population affected and a 94% correlation for property damage costs.
20 This supports the findings of Milly et al. (2002) who observed that the frequency of large flood events in large
21 basins had increased substantially in the 20th century, but smaller floods had not.

22 The analysis in this paper is based solely on the data provided in Aqueduct, regardless of the extent to which on-
23 the-ground flood management measures are incorporated into the socioeconomic models which produced this
24 data. A discussion characterizing individual cities is included here as a point of interest to relate the data to
25 current national conditions, providing possible reasons why these cities may fit into the map where they do.

26 A shortcoming of the method used in this study is the assignment of flood protection level based on an
27 assumption of proportionality with national income level. As standardised, current information on the real flood
28 protection levels of all the cities in the data set is not readily available, this assumption has been necessary and
29 has been made in line with current practice. This limitation has been recently acknowledged in the literature,
30 with Winsemius et al. (2016) noting that 'currently installed flood protection is an important missing link in the
31 assessment of global flood risk'. Future studies may aim to include specific flood protection levels for each city.

32 Whilst the timeline of this study is short, it is restricted by the data that is available. Studies at a global scale have
33 been traditionally limited due to lack of cohesive data sets, and therefore the data set provided by Aqueduct is
34 valuable for the fact that it spans a global set of cities and provides a rare opportunity for comparison. As the
35 data is only provided for 2010 and 2030, there was no prospect for a longer analysis. Whilst this analysis may not
36 provide a long-term outlook, at the very least an important insight into current and near-future conditions can
37 be gained.

38

1

2 5 CONCLUSION

3 ~~This study adds to the understanding of natural hazards in a global context, an important aspect of regional~~
4 ~~disaster risk management due to the dependency of local situations on global processes (Desai et al., 2015).~~
5 ~~Complex, nonlinear social-environmental relationships make it difficult to anticipate local responses to global~~
6 ~~changes (Desai et al., 2015), and this study contributes to risk communication (the process between risk~~
7 ~~perception and adaptation planning (Cardona et al., 2012)) providing a visual analysis of global patterns of~~
8 ~~evolving flood impacts, socioeconomic development and climate change, and the local city-level consequences~~
9 ~~of these changes.~~

10 Global patterns of urban flood responses to global and local changes in hydrology driven by climate change and
11 development have been identified and visually communicated ~~through a series of related self-organizing maps.~~
12 Cities have been matched to these global patterns, and relationships between the individual cities have been
13 discerned with respect to baseline flooding conditions and expected future changes. ~~Information has been~~
14 ~~extracted from a large, recently released, global data set of city-level flood impacts relating hydrology and urban~~
15 ~~development, and combined with city-specific demographic information.~~ The ~~analysis and~~ visual ~~analysis~~
16 ~~interpretation~~ in this study has revealed interesting city-level patterns that are otherwise unobservable in the
17 complex data set, and provides a comparison and distinction between individual cities that is not apparent in
18 regional- or economic-level projections.

19 We have performed dimension reduction and clustering with a series of self-organizing maps to identify
20 changing global patterns of city-level flood risks. The maps provide an indication of the predominant
21 characteristics which determine the differences in urban river flood impacts between cities, and the cities occupy
22 positions on the maps signifying their relative conditions. The method used here incorporates adaptations to the
23 self-organising map technique for map shape selection and temporal pattern extraction, allowing two levels of
24 information to emerge: the characteristic patterns of dynamic global urban flood vulnerabilities, and a
25 comparison between the cities with respect to flood characteristics and trends. ~~This SOM method could be~~
26 ~~adopted for visualising and clustering any large data set in which the underlying intervariable relationships are~~
27 ~~difficult to explicitly define, such as is common with human-environmental interactions, and which change over~~
28 ~~time. The resulting visualisations produce an overall impression of the temporal structure and clusters in the~~
29 ~~data, allowing for a readily understood overview of the relationships between the variables, and amongst~~
30 ~~individual data items.~~

31 ~~A shortcoming of the method used here is the assignment of flood protection level based on an assumption of~~
32 ~~proportionality with national income level. As standardised, current information on the real flood protection~~
33 ~~levels of all the cities in the data set is not readily available, this assumption has been necessary and has been~~
34 ~~made in line with current practice. This limitation has been recently acknowledged in the literature, with~~
35 ~~Winsemius et al. (2016) noting that ‘currently installed flood protection is an important missing link in the~~
36 ~~assessment of global flood risk’. Future studies may aim to include specific flood protection levels for each city.~~

37 ~~Whilst the timeline of this study is short, it is restricted by the data that is available. Studies at a global scale have~~
38 ~~been traditionally limited due to lack of cohesive data sets, and therefore the data set provided by Aqueduct is~~
39 ~~valuable for the fact that it spans a global set of cities and provides a rare opportunity for comparison. As the~~
40 ~~data is only provided for 2010 and 2030, there was no prospect for a longer analysis. Whilst this analysis may not~~

1 ~~provide a long term outlook, at the very least an important insight into the current and near future conditions~~
2 ~~can be gained.~~

3 Cities have major implications for climate change mitigation and adaptation (Revi et al., 2014). Unplanned
4 development and urban migration are increasing vulnerabilities to natural hazards (UNEP, 2016) and land cover
5 change and greenhouse gas emissions are intensifying urban hydrology. Understanding the relationship
6 between flood impacts and social vulnerability is a necessary step for prioritizing flood mitigation and prevention
7 strategies (Doocy et al., 2013). Whether the main driver of increased urban flood impacts is development or
8 climate change, cities will benefit from development restrictions and planning standards for urban expansion,
9 sustainable land development, management of population distribution and migration, and early warning
10 systems and preparedness (Revi et al., 2014; UN-DESA, 2014; Doocy et al., 2013).

11 ~~This study adds to the understanding of natural hazards in a global context, which is an important aspect of~~
12 ~~regional disaster risk management due to the dependency of local situations on global processes (Desai et al.,~~
13 ~~2015). The complex nonlinear socio-environmental relationships make it difficult to foresee local responses to~~
14 ~~global changes (Desai et al., 2015), and therefore this study focuses on risk communication (the process between~~
15 ~~risk perception and adaptation planning (Cardona et al., 2012)) to provide a visual analysis of the global patterns~~
16 ~~of evolving flood impacts, socioeconomic development and climate change, and the local city level~~
17 ~~consequences of these changes.~~

18 Future work may include the addition of greenhouse gas emissions data, geographic location, city sizes and
19 densities to this study, to discern the relationships of these factors with urban flood changes. Greenhouse gas
20 emissions are the largest contributor to global warming, leading to alterations in the intensity of the hydrologic
21 cycle (Pachauri et al., 2014, Barnett et al., 2005; Wentz et al., 2007; Schiermeier, 2011), and cities are the major
22 contributors of greenhouse gases, with a large proportion of global emissions produced by a small global land
23 area (Mills, 2007; Angel et al., 2010; Revi et al., 2014). The addition of these elements could highlight the essential
24 role cities could play in climate change mitigation and the reduction of urban flood impacts.

6 REFERENCES

- 1
2 Agarwal, P, and Skupin, A. (2008). *Self-organising maps: Applications in geographic information science*, John
3 Wiley & Sons.
- 4 Angel, S, Parent, J, Civco, D, & Blei, A. (2010a). *Atlas of Urban Expansion*, Cambridge MA: Lincoln Institute of Land
5 Policy.
- 6 Angel, S, Parent, J, Civco, D, Blei, A, & Potere, D. (2010b). *A Planet of Cities: Urban Land Cover Estimates and
7 Projections for All Countries, 2000-2050*. Lincoln Institute of Land Policy Working Paper.
- 8 Barnett, T, Adam, J & Lettenmaier, D. (2005). Potential impacts of a warming climate on water availability in
9 snow-dominated regions. *Nature*, 438(7066), 303-309.
- 10 Clark, S, Sarlin, P, Sharma, A, & Sisson, SA. (2015). Increasing dependence on foreign water resources? An
11 assessment of trends in global virtual water flows using a self-organizing time map. *Ecological Informatics*, 26,
12 192-202.
- 13 Clark, S, Sisson, SA, & Sharma, A. (2016). A dimension range representation (DRR) measure for self-organizing
14 maps. *Pattern Recognition*, 53, 276-286.
- 15 Clark, S, Sisson, SA, & Sharma, A. (2016b, in press). Nonlinear manifold representation in natural systems.
16 *Environmental Modelling and Software*.
- 17 Cunderlik, JM, & Ouarda, T. (2009). Trends in the timing and magnitude of floods in Canada. *Journal of Hydrology*,
18 375(3), 471-480.
- 19 Davies, DL, & Bouldin, DW. (1979). A cluster separation measure. *Pattern Analysis and Machine Intelligence, IEEE
20 Transactions (2)*, 224-227.
- 21 Desai, B, Maskrey, A, Peduzzi, P, De Bono, A, & Herold, C. (2015). *Making Development Sustainable: The Future
22 of Disaster Risk Management, Global Assessment Report on Disaster Risk Reduction*. Geneva, Switzerland:
23 United Nations Office for Disaster Risk Reduction.
- 24 Doocy, S, Daniels, A, Murray, S, & Kirsch, TD. The human impact of floods: A historical review of events 1980–
25 2009 and systematic literature review. *PLoS Curr*, 16, 12.
- 26 Frich, P, Alexander, LV, Della-Marta, P, Gleason, B, Haylock, M, Tank, A, & Peterson, T. (2002). Observed coherent
27 changes in climatic extremes during the second half of the twentieth century. *Climate Research*, 19(3), 193-212.
- 28 Ibrahim. (2016). Slum eradication policies in Marrakech, Morocco. *World Bank Conference on Land and Poverty*,
29 Washington DC.
- 30 Immerzeel, WW, Van Beek, LPH, & Bierkens, MFP. (2010). Climate change will affect the Asian water towers.
31 *Science*, 328(5984), 1382-1385.
- 32 Jiang, L, & O'Neill, BC. (2015). Global urbanization projections for the Shared Socioeconomic Pathways. *Global
33 Environmental Change*.
- 34 Jongman, B, Ward, PJ, & Aerts, JC. (2012). Global exposure to river and coastal flooding: Long term trends and
35 changes. *Global Environmental Change*, 22(4), 823-835.
- 36 Jongman B, Winsemius HC, Aerts JC, de Perez, EC, van Aalst, MK, Kron, W, Ward, PJ. (2015) Declining vulnerability
37 to river floods and the global benefits of adaptation. *Proceedings of the National Academy of Sciences*. May
38 5 ;112 (18): E2271-80.
- 39 Kaski, S, & Kohonen, T. (1996). Exploratory data analysis by the self-organizing map: Structures of welfare and
40 poverty in the world. *Proceedings of the third international conference on Neural Networks in the Capital
41 Markets*.
- 42 Katz, RW, Parlange, MB, & Naveau, P. (2002). Statistics of extremes in hydrology. *Advances in water resources*,
43 25(8), 1287-1304.

1 Kiviluoto, K. (1996). Topology preservation in self-organizing maps. IEEE International Conference on Neural
2 Networks.

3 Kohonen, T. (2001). Self-organizing maps, Volume 30 of Series in Information Sciences.

4 Kreimer, A, Arnold, M, & Carlin, A. (2003). Building safer cities: the future of disaster risk: World Bank Publications.

5 Kumm, M, De Moel, H, Ward, PJ, & Varis, O. (2011). How close do we live to water? A global analysis of population
6 distance to freshwater bodies. PLoS One, 6(6), e20578.

7 Kunkel, KE, Pielke Jr, Roger A, & Changnon, SA. (1999). Temporal fluctuations in weather and climate extremes
8 that cause economic and human health impacts: A review. Bulletin of the American Meteorological Society,
9 80(6), 1077.

10 Meehl, GA, Arblaster, JM, & Tebaldi, C. (2005). Understanding future patterns of increased precipitation intensity
11 in climate model simulations. Geophysical Research Letters, 32(18).

12 Mills, G. (2007). Cities as agents of global change. International Journal of Climatology, 27(14), 1849-1857.

13 Milly, PCD, Dunne, KA, & Vecchia, AV. (2005). Global pattern of trends in streamflow and water availability in a
14 changing climate. Nature, 438(7066), 347-350.

15 Milly, PD, Wetherald, RT, Dunne, KA, & Delworth, TL. (2002). Increasing risk of great floods in a changing climate.
16 Nature, 415(6871), 514-517.

17 Muis, S, Güneralp, B, Jongman, B, Aerts, JC, Ward, PJ. (2015) Flood risk and adaptation strategies under climate
18 change and urban expansion: A probabilistic analysis using global data. Science of the Total Environment. 538:
19 445-57.

20 Nature. (2016). Waters encroaching. Nature Climate Change, 6(7), 635, editorial.

21 Nicholls, RJ, Hanson, S, Herweijer, C, Patmore, N, Hallegatte, S, Corfee-Morlot, J, Muir-Wood, R. (2008). Ranking
22 port cities with high exposure and vulnerability to climate extremes.

23 Pachauri, RK, Allen, MR, Barros, VR, Broome, J, Cramer, W, Christ, R, ... & Dubash, NK. (2014). Climate Change
24 2014: Synthesis Report. Contribution of Working Groups I, II and III to the Fifth Assessment Report of the
25 Intergovernmental Panel on Climate Change (p. 151). IPCC.

26 Revi, A, Satterthwaite, DE, Aragón-Durand, F, Corfee-Morlot, J, Kiunsi, RBR, Pelling, M, Roberts, DC & Solecki, W.
27 (2014). Urban areas. In: Climate Change 2014: Impacts, Adaptation, and Vulnerability. Part A: Global and Sectoral
28 Aspects. Contribution of Working Group II to the Fifth Assessment Report of the Intergovernmental Panel on
29 Climate Change. United Kingdom and New York, NY, USA: Cambridge University Press, Cambridge.

30 Samir, KC, & Lutz, W. (2014). The human core of the shared socioeconomic pathways: Population scenarios by
31 age, sex and level of education for all countries to 2100. Global Environmental Change.

32 Schiermeier, Q. (2011). Increased flood risk linked to global warming. Nature, 470(7334), 316.

33 Shanmuganathan, S, Sallis, P, & Buckeridge, J. (2006). Self-organising map methods in integrated modelling of
34 environmental and economic systems. Environmental Modelling & Software, 21(9), 1247-1256. doi:
35 10.1016/j.envsoft.2005.04.011.

36 Sheppard, SRJ. (2005). Landscape visualisation and climate change: the potential for influencing perceptions and
37 behaviour. Environmental Science & Policy, 8(6), 637-654.

38 Skupin, A, & Hagelman, R. (2005). Visualizing demographic trajectories with self-organizing maps.
39 Geoinformatica, 9(2), 159-179.

40 Sofia, G, Roder, G, Dalla, FG, Tarolli, P. (2017) Flood dynamics in urbanised landscapes: 100 years of climate and
41 humans' interaction. Scientific reports.

42 Ultsch, A. (2003). U-matrix: a tool to visualize clusters in high dimensional data. Marburg: Fachbereich
43 Mathematik und Informatik.

- 1 UN-DESA. (2015). World Urbanization Prospects: The 2014 Revision. New York: United Nations Department of
2 Economic and Social Affairs.
- 3 UNEP. (2016). Summary of the sixth global environment outlook regional assessments: Key findings and policy
4 messages. United Nations Environment Programme.
- 5 UN-Habitat. (2010). State of the world's cities. Earthscan.
- 6 UN-Habitat. (2014). Urban Equity in Development - Cities for Life. World Urban Forum 7. April 2014, Medellin,
7 Colombia.
- 8 Václavík, T, Lautenbach, S, Kuemmerle, T, & Seppelt, R. (2013). Mapping global land system archetypes. *Global
9 Environmental Change*, 23(6), 1637-1647.
- 10 Vesanto, J, & Alhoniemi, E. (2000). Clustering of the self-organizing map. *IEEE Transactions on Neural Networks*,
11 11(3), 586-600. doi: 10.1109/72.846731.
- 12 Ward, JHJr. (1963). Hierarchical grouping to optimize an objective function. *Journal of the American Statistical
13 Association*, 58, 236-244.
- 14 Ward, PJ, Jongman, B, Weiland, FS, Bouwman, A, van Beek, R, Bierkens, MF, ... & Winsemius, HC (2013). Assessing
15 flood risk at the global scale: model setup, results, and sensitivity. *Environmental research letters*, 8(4), 044019.
- 16 Wasko, C, & Sharma, A. (2015). Steeper temporal distribution of rain intensity at higher temperatures within
17 Australian storms. *Nature Geoscience* 8.7: 527-529.
- 18 Wentz, FJ, Ricciardulli, L, Hilburn, K, & Mears, C. (2007). How much more rain will global warming bring? *Science*,
19 317(5835), 233-235.
- 20 Willems, P, Olsson, J, Arnbjerg-Nielsen, K, Beecham, S, Pathirana, A, Gregersen, IB, & Madsen, H. (Eds.).
21 (2012). Impacts of climate change on rainfall extremes and urban drainage systems. IWA publishing.
- 22 Winsemius, HC, Van Beek, LPH, Jongman, B, Ward, PJ, & Bouwman, A. (2013). A framework for global river flood
23 risk assessments. *Hydrology and Earth System Sciences*, 17(5), 1871-1892.
- 24 Winsemius, HC, Aerts, JC, van Beek, LP, Bierkens, MF, Bouwman, A, Jongman, B, Kwadijk, JC, Ligtoet, W, Lucas,
25 PL, van Vuuren, DP, Ward, PJ. (2016) Global drivers of future river flood risk. *Nature Climate Change*, 6(4): 381-5.
- 26 Young, AF. (2013). Urban expansion and environmental risk in the São Paulo Metropolitan Area. *Climate Research*,
27 57(1), 73-80.

28
29

Websites:

- 30 1. **Atlas of Urban Expansion:** [http://www.lincolnst.edu/subcenters/atlas-urban-](http://www.lincolnst.edu/subcenters/atlas-urban-expansion/Default.aspx)
31 [expansion/Default.aspx](http://www.lincolnst.edu/subcenters/atlas-urban-expansion/Default.aspx)
- 32 2. **World Bank's World Development Indicators database:** [http://data.worldbank.org/data-](http://data.worldbank.org/data-catalog/world-development-indicators)
33 [catalog/world-development-indicators](http://data.worldbank.org/data-catalog/world-development-indicators)
- 34 3. **World Resources Institute's Aqueduct Global Flood Analyzer Tool:** <http://floods.wri.org/#/>
- 35 4. **ISIMIP:** [https://www.pik-potsdam.de/research/climate-impacts-and-vulnerabilities/research/rd2-](https://www.pik-potsdam.de/research/climate-impacts-and-vulnerabilities/research/rd2-cross-cutting-activities/isi-mip/about)
36 [cross-cutting-activities/isi-mip/about](https://www.pik-potsdam.de/research/climate-impacts-and-vulnerabilities/research/rd2-cross-cutting-activities/isi-mip/about)
- 37 5. **Shared Socioeconomic Pathways:**
38 <https://tntcat.iiasa.ac.at/SspDb/dsd?Action=htmlpage&page=about>
- 39 6. **World Resources Institute's Aqueduct Global Flood Risk Country Rankings:**
40 <http://www.wri.org/resources/data-sets/aqueduct-global-flood-risk-country-rankings>
- 41 7. **SOM Toolbox:** <http://www.cis.hut.fi/somtoolbox>
- 42 8. Scientific American: [https://www.scientificamerican.com/article/extreme-rain-may-flood-54-million-](https://www.scientificamerican.com/article/extreme-rain-may-flood-54-million-people-by-2030/)
43 [people-by-2030/](https://www.scientificamerican.com/article/extreme-rain-may-flood-54-million-people-by-2030/)

1 9. **United Nations Framework Convention on Climate Change:** www4.unfccc.in

2 **7 COMPETING INTERESTS**

3 The authors declare that they have no conflicts of interest

