

Author's response to editor and reviewer's comments

First, the authors would like to thank the editor Dr. Uwe Ehret for handling this manuscript as well as the two anonymous reviewers for their critical and constructive comments. The editor's and reviewer's comments and suggestions were highly insightful and enabled us to greatly improve the quality of the manuscript.

Here we present our response (in blue color) to all points raised during the review process and added the revised marked-up version of the manuscript after the replies. The revised manuscript is also uploaded.

Editor's comments:

Comment: The points raised by the referees have been suitably addressed in your replies. Please change your manuscript accordingly.

Response:

The manuscript has been revised according to the comments of the anonymous referees and the editor (please see both the revised manuscript and the marked-up manuscript version).

Comment: In addition, please:

- change the manuscript according to the comment by referee #2 (page 5 line 29): 'This description is not right. TMPA is just a product of TRMM'. This has not been addressed in your reply.

Response:

The referee #2 is right, TMPA is a product of TRMM. The sentence "TRMM product uses a multi-satellite precipitation analysis (TMPA), which includes also ground measurements provided by the Global Precipitation Climatology Center (GPCC)" is replaced by: "*The TRMM satellite rainfall measuring instruments include the Precipitation Radar (PR), TRMM Microwave Image (TMI), a nine-channel passive microwave radiometer, a Visible and Infrared Scanner (VIRS), and five-channel visible/infrared radiometer (Huffman and Bolvin 2013)*". We have also modified our response to the referee #2 regarding this comment.

Comment: comment of referee #2 about table 2: This point is indeed hard to understand and I suggest you add to the manuscript an in-depth explanation (comparable to your reply to the referee), instead of the relatively short text you proposed to add.

Response:

Agreed. We have added the following text to the manuscript in section 4.1 to give further clarification on accuracy assessment.

"The accuracy assessment is based on comparing reference data (class types at specific locations from ground information) to image classification at the same locations. The overall accuracy of classification is the average value from all classes. The user's accuracy corresponds to errors of inclusion (commission errors), which represents the probability of a pixel classified into a given class actually represents that class on the ground (i.e. from the perspective of the user of the classified map). The producer's accuracy corresponds to errors of exclusion (omission errors), which represents how well reference pixels of the land cover type are classified (i.e. from the perspective of the maker of the classified map). The commission errors occur when an area is included in an incorrect category, while the omission errors occur when an area is excluded from the category to which it belongs. Every error on the map is an omission from the correct class and a commission to an incorrect class (Congalton and Green 2008). The cross validation for the year 2011 land use was made using the reference data (120 points) collected with GPS instrument during the field survey (2011–2013). In addition, visual interpretation and historical information obtained from the local people about the land use types in the study area were used also as cross-check validations for old maps. Shrublands show lower user's and producer's accuracies compared to the other LULC classes. This is mainly due to the miss-classification of some shrub land into woodland, grassland and cropland."

Notes:

- Page and line numbers in the reviewer's comments refer to page and line numbers in the manuscript-version1.
- Page and line numbers in the author's replies refer to page and line numbers in the revised marked-up manuscript.

Anonymous Referee #1

Comment: “The rainfall runoff process over the upper Dinder and Rahad basins (D&R) is complex, non-linear, and exhibits temporal and spatial variability”. This needs a citation to support it.

Response:

The citation is made, and text modified as:

“The rainfall runoff process over the upper Dinder and Rahad basins (D&R) is complex, non-linear, and exhibits temporal and spatial variability (Hassaballah et.al. 2016)”.

Comment: “However, the impact is often not well understood with locally obtained data such as observed flow”. !The main issue here is the fact that data from local stations, is often not long enough or have periods of missing gaps. As it reads, it may look like the information from local stations is not understood.

Response:

This sentence is rewritten in the manuscript to make the connection between LULC changes and hydrological response downstream as monitored at the discharge stations.

“Therefore, it is necessary to understand the hydrological processes in the run-off generated catchments, and the possible interlinkages of land use and land cover changes with catchment runoff.”

Comment: Citation in line should follow the author–date.

Response:

Agreed and corrected

#Reviewer’s supplement to his comments:

Page2 line 11: “has” corrected to “have”.

Page2 line 14: (Hassaballah et al., 2016) corrected to “*Hassaballah et al., (2016)*”.

Page3 line 12: here we referred to the Dinder and Rahad rivers. The sentence was corrected to “*Their catchments areas are about 34,964 and 42,540 km² for the Dinder and the Rahad, respectively, giving a total area of about 77,504 km².*”

Comment: In Figure 4.b, the reviewer is asking why the pattern of REF 2.0 during the first period of the validation period is different from the other two products. The response to this question is as follows:

Response:

The different pattern of RFE 2.0 in 2007 is likely due to an error in rainfall estimation by the RFE 2.0 product (please refer to Figure 4(new)).

Anonymous Referee #2

Comment: However, the paper needs improvement before getting published. I will not correct some English grammar / expressions. A final proofreading from a native speaker is still recommended.

Response:

The English language of the manuscript has been improved

Comment: The comments are split into two parts:

1. Remote sensing:

Comment: Page 5 Line 9: The exact dates for these four years are needed. This is very important information for a land cover change detection analysis, also a brief information (e.g. coverage of cloud) about the quality of selected Landsat data is also necessary.

Response:

The Table below (Table 2new) is added to the manuscript in section 3.2 to give further information of the satellite data. Table 2 is a new Table, thus tables in the manuscript are updated accordingly.

Table 2new: Description of used satellite images.

Acquisition date	Satellite	Number of scenes	Spectral bands	Spatial resolution
04 Nov. & 11 Dec. 1972	Landsat MSS	9	1 – 4 bands	60 m
12 Nov. & 26 Nov. 1986	Landsat TM	9	1 – 6 bands	30 m
27 Nov. & 13 Dec. 1998	Landsat TM	8	1 – 6 bands	30 m
07 Nov. & 10 Dec. 2011	Landsat TM	8	1 – 6 bands	30 m

MSS, multispectral scanner; TM, thematic mapper

In addition, the following explanation is added to the manuscript text (page 6, section 3.2, lines 15-16):

“All acquired images had less than 10% cloud cover. However, in order to cover the entire study area, more than 8 scenes of the satellite data were processed (Table 2). Subsequently, all images were mosaicked and resampled to a pixel size of 30m x 30m”

Comment: Page 5 Line 29. This description is not right. TMPA is just a product of TRMM. There are many TRMM products, here please specify which one you used. I think it should be TRMM 3B42V7.

Response:

The reviewer is right, TMPA is a product of TRMM. The sentence “TRMM product uses a multi-satellite precipitation analysis (TMPA), which includes also ground measurements provided by the Global Precipitation Climatology Center (GPCC)” is replaced by: *“The TRMM satellite rainfall measuring instruments include the Precipitation Radar (PR), TRMM Microwave Image (TMI), a nine-channel passive microwave radiometer, a Visible and Infrared Scanner (VIRS), and five-channel visible/infrared radiometer (Huffman and Bolvin 2013)”*. The used product was corrected to TRMM 3B42v7.

Comment: Page 5 Line 34: here it was described as CHIRPS available from 1981, but in the Table 1 it was mistakenly written from 1983. Additionally, CHIRPS provides daily data for the globe, please correct "Pentads" in Table 1 accordingly.

Response:

Table 1, CHIRPS availability corrected to 1981 instead of 1983, and “pentads” corrected to “daily”.

Comment: Page 5 Line 36: The "TRMM" should be corrected to "CHIRPS".

Response:

“TRMM” corrected to "CHIRPS".

Comment: Table 1: These products have different spatial resolutions, the authors should explain how they processed such data (how to deal with the difference in spatial resolution) and used them as input to the model.

Response:

All RS data were projected into WGS-84-UTM-zone 36N (meters), clipped to the catchment extent, and resampled to a horizontal resolution of 500 m. The text below is inserted in section 3.1.2 of the manuscript to clarify spatial resolution issue further.

“All maps were projected into WGS-84-UTM-zone 36N (meters), clipped to catchment extent, and then resampled to a resolution of 500 m”.

Comment: Figure 3: In the caption, "19986" should be "1986". The legend is quite abnormal, in the remote sensing analysis, crop is more commonly assigned to yellow color, while natural vegetation to green. I advise to change legend. The four land cover maps in Figure 3 shows quite remarked differences, and it seems no regular pattern, which needs more discussion and analysis about the quality of classified map. Normally there should be a pattern, because human activities follow rivers to convert natural vegetation to crop lands. I advise to use one or more matchup Google Earth High Resolution Images to further prove/evaluate the reliability of classified map.

Response:

The date “19986” corrected to 1986.

Response:

The legend is changed and the LULC color schematic is made clearer (see Figure 3_modified).

Response:

It seems that the unclear patterns of LULC in the maps is due to the small-scale of the maps (i.e. 1:4,500,000), which may not allow distinction of different LULC change patterns by eye. Therefore, we have added a new figure (Figure 4), which zoom into smaller area as an example to show multi-temporal changes in the LULC patterns.

Response:

We have added the text below to the manuscript in section 4.1, to show a clear example of LULC multi-temporal change.
“The large extent of the catchment (77,504 km²), and the small-scale of the maps (i.e. 1: 4,500,000), may not allow distinction of different LULC change patterns by eye. Figure 4 which zoom into smaller area is an example to show multi-temporal changes in the LULC patterns. The zoomed areas in the red boxes showed in large-scale, provides more details of LULC patterns. This area is located downstream of the Rahad Irrigation Scheme of Sudan established in 1981. The waterlogging and woodland areas occurred in 1998 and 2011 resulted from the drainage water of the project accumulated over the years (i.e. clear example of LULC multi-temporal change over the Rahad basin). The lower maps show the Google Earth imagines of the large-scale area. Although these Google Earth imagines dates do not exactly match the ones of the satellite images, they show the part of the dried period in the study area and hence the complexity of the LULC patterns”

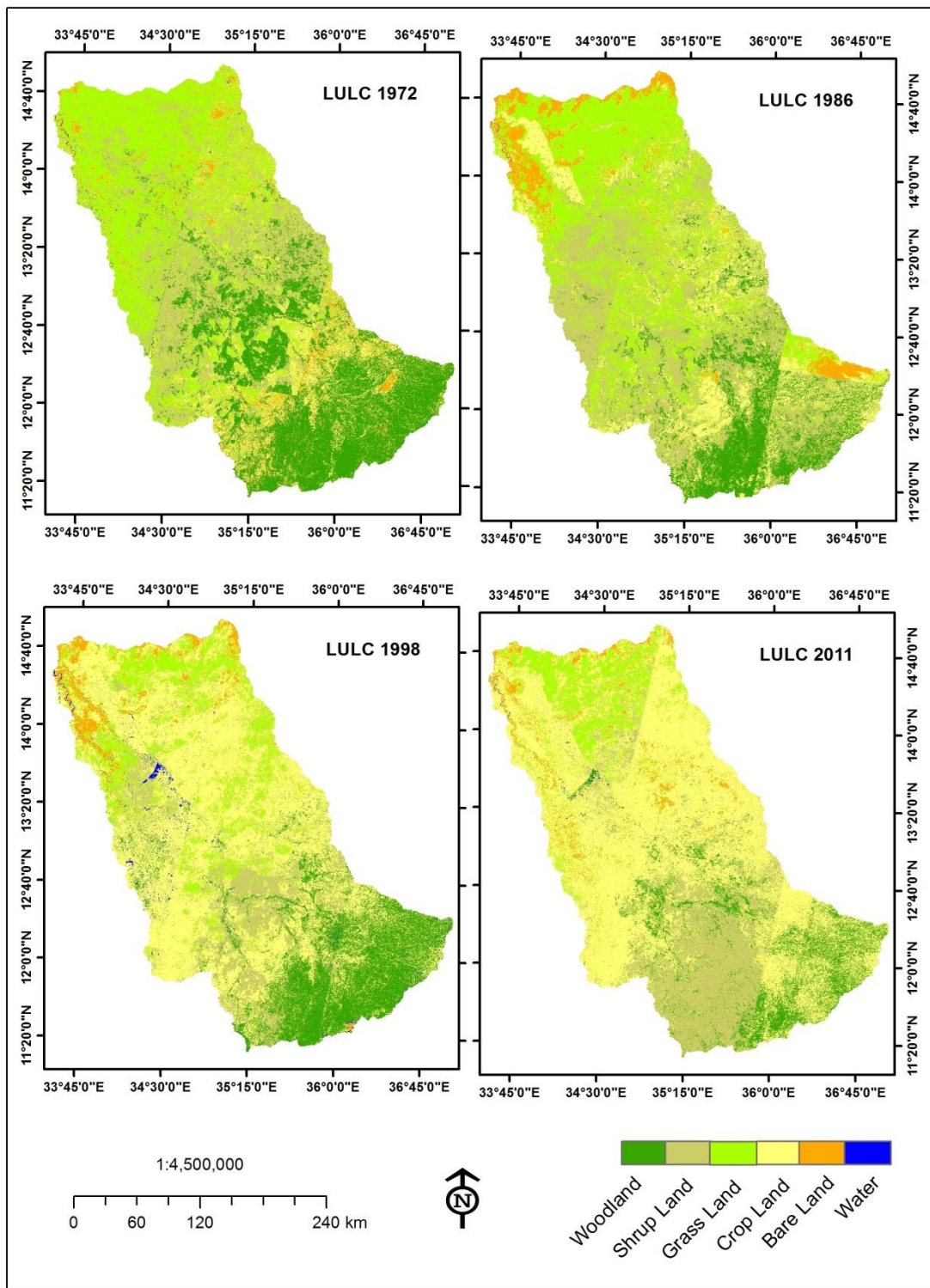


Figure 3_modified: Classified LULC maps of the years 1972, 1986, 1998 and 2011.

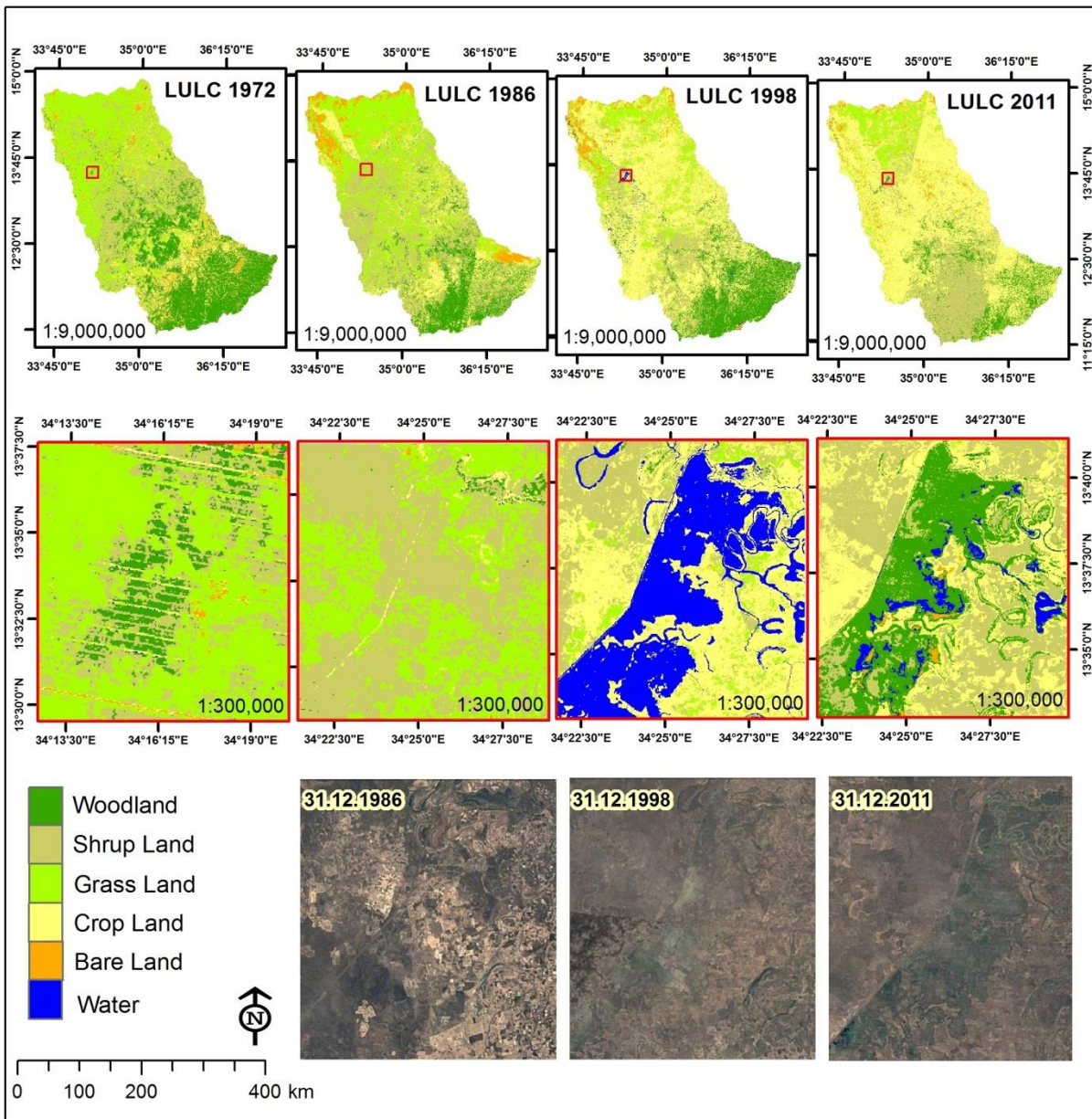


Figure 4new: Classified LULC maps of the years 1972, 1986, 1998 and 2011. The areas in the red boxes showed in large-scale to provide more details of the LULC patterns.

2. Hydrological Modelling:

Comment: Figure 1. I recommend to insert the Blue Nile River in the upper right map.

Response:

Agreed, Blue Nile River was inserted in the upper right map. Also, the rain gauges were added to this Figure (see Figure1_modified).

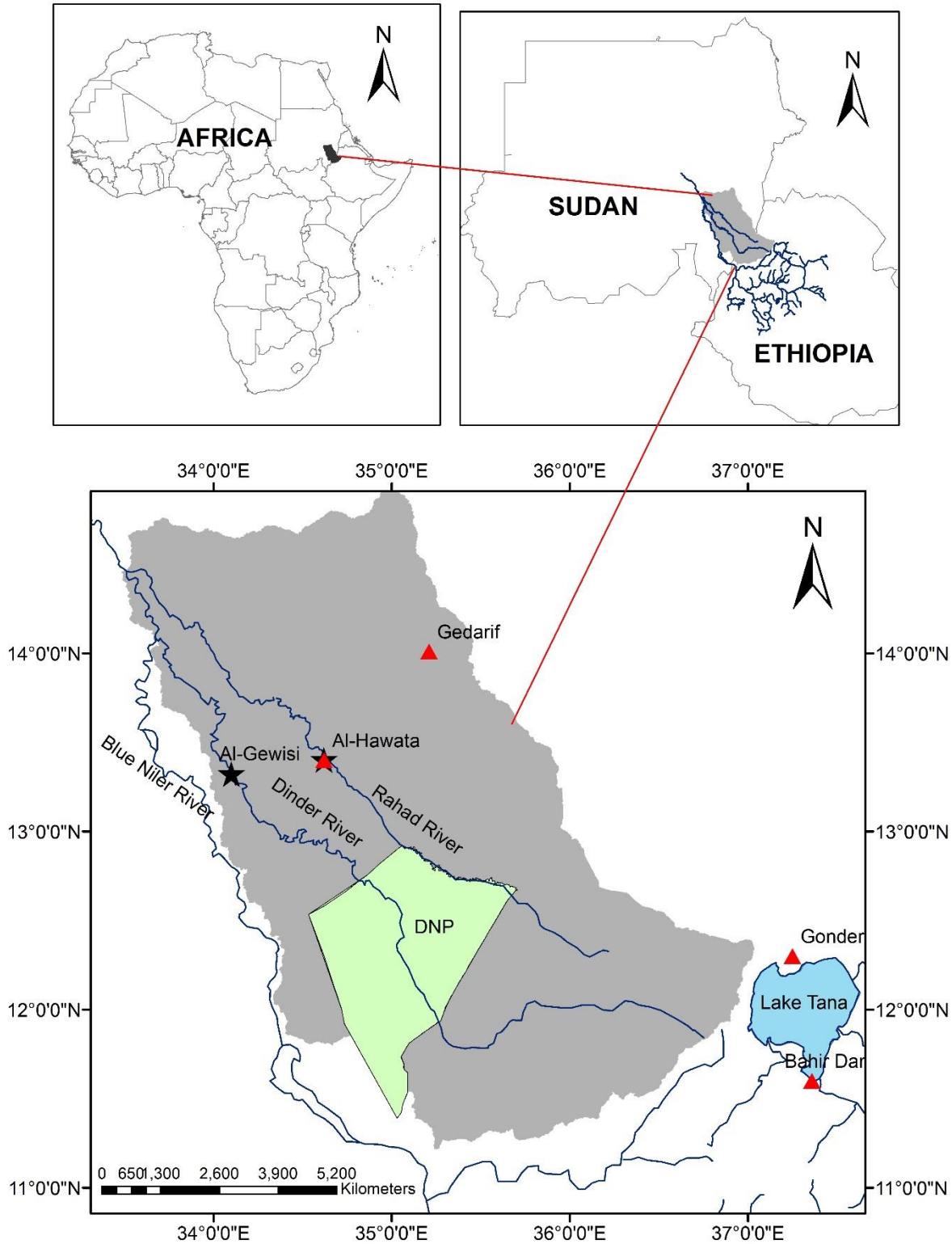


Figure 1_modified: Location map of the Dinder and Rahad basins and the DNP. The two black stars show the locations of the hydrological stations (Al-Gewisi and Al-Hawata), and the red triangles show the locations of the rain gauges.

Comment: Page 5, line 15: Why did you reclassify the 44 soil mapping units into 8 dominant soil groups? Was this necessary for the hydrological modelling?

Response:

Yes, this was necessary to comply with parametrization of the Wflow hydrological model. The reclassification of the 44 soil units into 8 dominant soil groups reduces the number of estimated parameters to 64 instead of 352. We have added this explanation in text on page 5, section 3.1.1.

“This was necessary to reduce the model complexity. The WFlow soil model requires estimates of 8 parameters per soil type, which means 352 parameters if it is for 44 soil types. Therefore, reclassification of soil map into 8 dominant soil groups reduces the number of estimated parameters to 64”.

Comment: Figure 2: The WFlow_sbm model needs more explanation. How is runoff generation modelled? How is ETA calculated? Is there no interflow component?

Response:

We have added below text to further describe the Wflow model.

“Combination of the total rainfall and evaporation under condition of saturated canopy is done for each rainfall storm to determine average values of precipitation and evaporation from the wet canopy. In case the soil surface is partially saturated, the rainfall that falls on the saturated area is directly added to the surface runoff component. The soil is represented by a simple bucket model that assumes an exponential decay of the saturated conductivity with depth. Lateral subsurface flow is simulated using the Darcy equation. Soil depth is identified for different land use types and consequently scaled using the Topographic Wetness Index. The WFlow_sbm interception and soil model’s equations are presented in Appendix A.” Further details of the Wflow model are also given at <https://media.readthedocs.org/pdf/wflow/latest/wflow.pdf>.

Comment: Chapter 3.4: The IHA approach should be explained in more detail (add app. half page)

Response:

We have added below text to further describe the IHA approach.

“The IHA method computes 33 hydrologic parameters for each year. For analyzing the alteration between two periods, the IHA described in Richter et al. (1996) was applied using the IHA software developed by The Nature of Conservancy (2009). The general approach is to define hydrologic parameters that characterized the intra-annual variation in the water system condition and then to use the analysis of variations in these parameters as a base for comparing hydrologic alterations of the system before and after the system has been altered by various human activities. The IHA method has four steps: a) define the time series of the hydrologic variable (e.g. streamflow) for the two periods to be compared; b) calculate values for hydrologic parameters; c) compute intra-annual statistics; and d) calculate values of the IHA by comparing the intra-annual variation before and after the system has been altered and present the results as a percentage of deviation. For assessing hydrologic alteration in the Dinder and Rahad Rivers, the flows variations for both rivers have been characterized based on the variations in the streamflow characteristics between three periods (1972-1986), (1986-1998) and (1998-2011). Temporal variability of streamflow series was analyzed at Al-Gewisi station on the Dinder River and at Al-Hawata station on the Rahad River.”

Comment: Table 2: Please explain the accuracy assessment. What means “producer” and “user”? Did you perform a cross validation analysis? The accuracy seems very high with little uncertainty for all classes. Can you prove this?

Response:

The accuracy assessment is based on comparing reference data (class types at specific locations from ground information) to image classification results at the same locations. The overall accuracy of classification is the average value from all classes. The user’s accuracy corresponds to errors of inclusion (commission errors), which represents the probability of a pixel

classified into a given category actually represents that category on the ground (i.e. from the perspective of the user of the classified map, how accurate is the map?). The producer’s accuracy corresponds to errors of exclusion (omission errors), which represents how well reference pixels of the ground cover type are classified (i.e. from the perspective of the maker of the classified map, how accurate is the map?).

The cross validation for the year 2011 land use was made using the reference data (120 points) collected with GPS instrument during the field survey (2011–2013) assuming no significant change during this period. In addition, visual interpretation and historical information obtained from the local indigenous about the land use types in the study area were used also as cross-check validations for old maps (please refer to the text on page 6, line 17 to page 7, line 2).

Below is an example of the classification error matrix for the image of the year 2011. The error of commission and omission varies from 75 to 94% for the different LULC classes.

Image Date: 2011		Class types determined from reference data						
	LULC	Woodland	Shrub Land	Grass Land	Crop Land	Bare Land	Water	Row Total
Class types determined from classified map	Woodland	130	3	2	2	1	2	140
	Shrub Land	4	36	4	4	0	0	48
	Grass Land	1	2	68	2	3	0	76
	Crop Land	2	3	3	45	2	0	55
	Bare Land	1	1	2	1	28	0	33
	Water	5	0	0	0	0	30	35
	Column Total	143	45	79	54	34	32	387
Accuracies (%)								
Producer’s		91*	80	86	83	82	94	
User’s		93**	75	89	82	85	86	
Overall		87						

* 91% = (130/143) x100

** 93% = (130/140) x 100

We have added the following text to the manuscript in section 4.1 to give further clarification on accuracy assessment.

“The accuracy assessment is based on comparing reference data (class types at specific locations from ground information) to image classification at the same locations. The overall accuracy of classification is the average value from all classes. The user’s accuracy corresponds to errors of inclusion (commission errors), which represents the probability of a pixel classified into a given class actually represents that class on the ground (i.e. from the perspective of the user of the classified map). The producer’s accuracy corresponds to errors of exclusion (omission errors), which represents how well reference pixels of the land cover type are classified (i.e. from the perspective of the maker of the classified map). The commission errors occur when an area is included in an incorrect category, while the omission errors occur when an area is excluded from the category to which it belongs. Every error on the map is an omission from the correct class and a commission to an incorrect class (Congalton and Green 2008). The cross validation for the year 2011 land use was made using the reference data (120 points) collected with GPS instrument during the field survey (2011–2013). In addition, visual interpretation and historical information obtained from the local people about the land use types in the study area were used also as cross-check validations for old maps. Shrublands show lower user’s and producer’s accuracies compared to the other LULC classes. This is mainly due to the miss-classification of some shrub land into woodland, grassland and cropland.”

Comment: Chapter 4.1.1 / Figure 4 and Figure 5: A critical discussion about the calibration and its uncertainties is totally missing. Couldn’t you assess the reliability of the RS data by ground truth measurements (rain gauges)? Please comment on that. Concerning the figures, there are great differences in the peak flows with reverse biases. For instance, at Al-Gewisi station, you get a large underestimation in the first validation period for CHIRPS, whereas you get a large underestimation for the same time period and RS method for the Al-Hawata station. There are many contrary results comparing the two figures. Please

discuss this issue. Moreover, did you vary the plant parameters for different crops (Root depths, crop coefficient, LAI, etc.)? Please name and quantify the parameters.

Response:

Our response to this comment is divided into three parts as follows:

Comment: Chapter 4.1.1 / Figure 4 and Figure 5: A critical discussion about the calibration and its uncertainties is totally missing. Couldn't you assess the reliability of the RS data by ground truth measurements (rain gauges)? Please comment on that.

Response:

We must admit that we haven't conducted an in-depth validation of the Satellite Based Rainfall Estimate (SBRE) products. It is beyond the scope of this manuscript. However, we assessed the reliability of SBRE products by direct comparison against ground measurements at four locations. The results are shown in Figure 5new.

We have inserted below text including Figure 5 new in section 4.1.1 of the manuscript

“To assess the reliability of the SBRE products, validation is done with the use of ground measurements at four gauges in which observed data are available. Two gauges (Gonder and Bahir Dar) are located nearby the upstream part of the catchments in the Ethiopian plateau, while the others two (Gedarif and Al-Hawata) are located at the most downstream part of the catchment in the Sudan low land. The validation is performed at annual time step. The results show that the difference of RFE against ground measurements has no consistent patterns. TRMM and CHIRPS have shown no consistent patterns at the lowland (Gedarif and Al-Hawata), but both products are consistent and overestimate rainfall at the Ethiopian highland (Gonder and Bahir Dar) in all years except 2007 (Figure 5). Since both the Dinder and Rahad derive their main flow from the Ethiopian highlands, products with consistent patterns at highlands will be more suitable for running hydrologic models in this catchment. From these findings, one can conclude that the CHIRPS v2.0 and TRMM 3B42 v7 are more suitable than RFE 2.0 for running hydrologic model. Comparing CHIRPS v2.0 and TRMM 3B42 v7, it is clear that CHIRPS v2.0 has less overestimation of rainfall. Thus, CHIRPS v2.0 is the best product to be used as a forcing data for hydrologic model in the Dinder and Rahad Basins”.



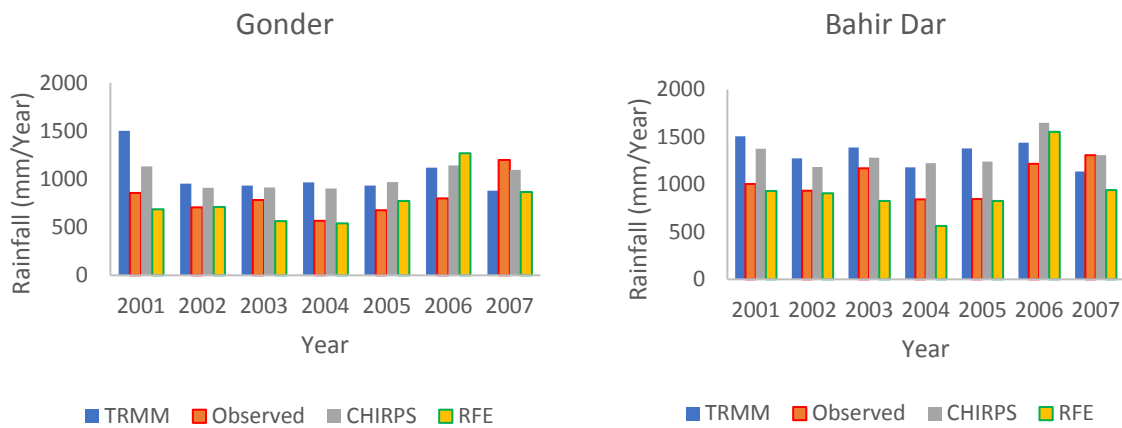


Figure 5new: Comparison of SBRE products with ground measurements at four locations

Comment: Concerning the figures, there are great differences in the peak flows with reverse biases. For instance, at Al-Gewisi station, you get a large underestimation in the first validation period for CHIRPS, whereas you get a large underestimation for the same time period and RS method for the Al-Hawata station. There are many contrary results comparing the two figures. Please discuss this issue.

Response:

The differences in the peak flow with reverse bias can be attributed to the differences in rainfall estimation with different products (see Figure 5new). At Al-Gewisi station, the large underestimation in the first validation period for CHIRPS can be attributed to the underestimation of rainfall by CHIRPS in 2007 at both Gonder and Bahir Dar (Figure 5new). At the same time CHIRPS overestimates rainfall in all years from 2001 to 2006. Therefore, calibration of the hydrologic model based on (2002-2005) will result in a more underestimation of river flow for the year 2007. This is confirmed by Figure 4 in the original manuscript and supported by the validation result in Figure 4new presented in this document. On the other hand, at Al-Hawata station the difference between observed and model flow in the first period of validation (2008) is difficult to explain in terms of problem in model structure as it is a single event out of the 4 years validation period. It can likely be due to error either in the input data or the observed flow or a combination of both. Results of the three SBRE products at Al-Gewisi and Al-Hawata (Figure 6 and 7) are consistent and supported by the validation results in Figure 5new. For instance, in 2004 the model results for RFE 2.0 underestimate the flow at both Al-Gewisi and Al-Hawata stations. This is supported by the rainfall validation results in Figure 5new which shows that RFE 2.0 underestimates rainfall in all stations. Also in 2010, the model results for TRMM 3B42v7 underestimate the flow at both Al-Gewisi and Al-Hawata stations. This is also supported by the validation results in Figure 4new which shows that TRMM 3B42v7 underestimates rainfall in Gedarif station. The text hereafter is added to section 4.1.1.1.

“At Al-Gewisi station, the large underestimation in the first validation period for CHIRPS can be attributed to the underestimation of rainfall by CHIRPS in 2007 at both Gonder and Bahir Dar (see Figure 5). At the same time CHIRPS overestimates rainfall in all years from 2001 to 2006. Therefore, calibration of the hydrologic model based on (2002-2005) resulted in a more underestimation of river flow in 2007. On the other hand, at Al-Hawata station, the difference between observed and model flow in the first period of validation (i.e.2008) is likely due to an error either in the input data or the observed flow or a combination of both.”

Comment: Moreover, did you vary the plant parameters for different crops (Root depths, crop coefficient, LAI, etc.)? Please name and quantify the parameters.

Response:

Yes, indeed each vegetation cover is assigned different parameters when modeling the flow response to different land cover. These parameters include; root depth, leaf area index (LAI), evaporation from wet canopy/average rainfall (E/R) ratio, Albedo, Canopy Gap Fraction and Maximum Canopy Storage. All model parameters are linked to the Wflow model through lookup tables. The text below is added to the manuscript.

“Different parameters are assigned to each land cover type. These parameters include; rooting depth, leaf area index (LAI), ratio of evaporation from wet canopy to average rainfall (E_w/R), Albedo, Canopy Gap Fraction and Maximum Canopy Storage. All model parameters are linked to the Wflow model through lookup tables. The lookup tables are used by the model to create input parameter maps. Each table consists of four columns. The first column is used to identify the land-use class, the second column indicates the sub catchment, the third column represents the soil type and the last column lists the assigned values based on the first three columns. The parameters are linked to land use, soil type or sub-catchment through lookup tables. Description of the Wflow model parameters is presented in Appendix B and the calibrated values for each parameter are presented in Appendix C.”

Comment: Chapter 4.2: You should not only the resulting streamflow pattern (Figure 6) but also the different ETA – for same HRUs (Hydrological response units) and for the entire catchment. How was the water balance changed?

Response:

In Figure 6 (Figure 8 in the revised marked-up manuscript), we have shown the effect of LULCC on the daily streamflow (peak flows). However, to show the changes in AET at HRUs (sub-catchments) and the water balance for the entire catchment, the discussion in the text and the new tables (Table 4 and 5) below are added to section 4.2.

“In addition to the streamflow response to LULCC, Evapotranspiration (ET) is another important component of the water balance that constitutes a major determinant of the amounts of water draining from different land cover type within the catchment. The ET result shows high rates of actual evapotranspiration (AET) when running the model with land cover of 1972 and 1998 at both the sub-catchments and the entire catchment (Table 4 and 5). This can be attributed to the large percentage coverage of woodland in 1972 and 1998 compared to land cover of 1986 and 2011 (please refer to table 3 in the main manuscript). The lowest AET is observed when running the model with land cover of 1986. This is likely due to the severe drought during the mid-1980s that limits the water availability and decreases the green coverage. Table 4 presents the changing in the annual average AET at sub-catchment level as a response to LULCC for the Dinder catchment. Table 5 shows the changes in water balance for the entire Dinder and Rahad catchments when running the hydrologic model with different LULC and fixed rainfall data for the periods (2001-2012).”

Table 4: Annual average AET as a response to LULCC at the sub-catchments level for the Dinder catchment (1972-1986).

Year	AET from land cover of 1972 (mm)				AET from land cover of 1986 (mm)			
	Al-Gewisi	Musa	Gelagu	Upper Dinder	Al-Gewisi	Musa	Gelagu	Upper Dinder
2001	558	583	626	464	426	424	396	288
2002	443	456	535	510	322	317	306	312
2003	564	639	642	486	425	469	405	312
2004	455	502	573	500	326	354	340	311
2005	504	547	575	505	376	396	358	323
2006	527	576	632	545	396	414	406	359
2007	598	602	618	564	468	444	400	382
2008	593	689	703	576	459	513	471	392
2009	421	482	519	516	310	343	302	323
2010	536	566	606	520	412	415	383	331
2011	470	467	554	530	350	327	329	332
2012	636	679	684	542	500	504	450	353

Table 5: Water balance of the Dinder and Rahad catchments as a response to LULCC

Dinder catchment		Land cover of 1972		Land cover of 1986		Land cover of 1998		Land cover of 2011	
Year	Rainfall (mm)	AET (mm)	Streamflow (mm)	AET (mm)	Streamflow (mm)	AET (mm)	Streamflow (mm)	AET (mm)	Streamflow (mm)
2001	816	558	258	383	433	432	384	496	320
2002	663	486	177	314	349	364	299	430	233
2003	847	583	264	403	444	449	397	519	327
2004	703	507	195	333	370	374	329	451	252
2005	768	532	236	363	405	414	354	479	289
2006	835	570	265	394	441	441	395	513	322
2007	876	595	280	424	452	476	400	540	336
2008	929	640	289	459	470	509	420	582	347
2009	659	484	175	319	340	363	297	435	225
2010	817	557	260	385	432	432	386	505	312
2011	710	505	205	334	376	377	333	454	256
2012	972	635	337	452	520	498	474	579	393
Rahad catchment		Land cover of 1972		Land cover of 1986		Land cover of 1998		Land cover of 2011	
Year	Rainfall (mm)	AET (mm)	Streamflow (mm)	AET (mm)	Streamflow (mm)	AET (mm)	Streamflow (mm)	AET (mm)	Streamflow (mm)
2001	724	409	315	290	434	398	326	309	416
2002	641	398	243	271	370	383	258	291	350
2003	755	450	305	323	432	434	322	342	413
2004	609	360	249	231	378	338	270	244	364
2005	656	399	258	267	389	378	278	285	372
2006	782	450	332	324	457	431	351	336	446
2007	774	473	301	344	430	456	319	363	411
2008	754	438	315	313	441	415	338	322	431
2009	581	352	229	220	361	333	248	238	343
2010	744	449	295	319	425	431	313	335	409
2011	610	369	241	235	375	348	262	252	358
2012	873	507	366	381	492	485	388	390	483

Comment: Page 17, line 22: “In the Dinder River the effect of LULCC on streamflow is not big as in Rahad River.” Please find reasons for this different behavior.

Response:

The reason for this was mentioned in the conclusion on page 24, lines 2-4 in the revised marked-up version of the manuscript. However, for more clarity the explanation in the text below is added to section 4.3.2, Page 22, lines 3-4.

“This is likely due to the large expansion in cropland in the Rahad catchment to 68% of the total area compared to 47% in the Dinder catchment”.

Comment: Conclusions: Please analyze also the effect of different precipitation patterns and magnitudes on streamflow in different years (2001 until 2012). When do you see a larger effect of LULCC on streamflow alteration? Find explanations for that.

Response:

Replying to the first part of this comment “Please analyze also the effect of different precipitation patterns and magnitudes on streamflow in different years (2001 until 2012)”, the text below in addition to the new figure is added to section 4.2.

“Since both Dinder and Rahad rivers are seasonal, their flows are mainly depending on rainfall patterns and magnitudes. In addition to the effect of LULCC on the streamflow, Figure 10(new) shows that the annual variability of rainfall is another factor affecting the annual patterns of the streamflow.” Since Figure 10new is a new Figure, figures in the manuscript are updated accordingly.”

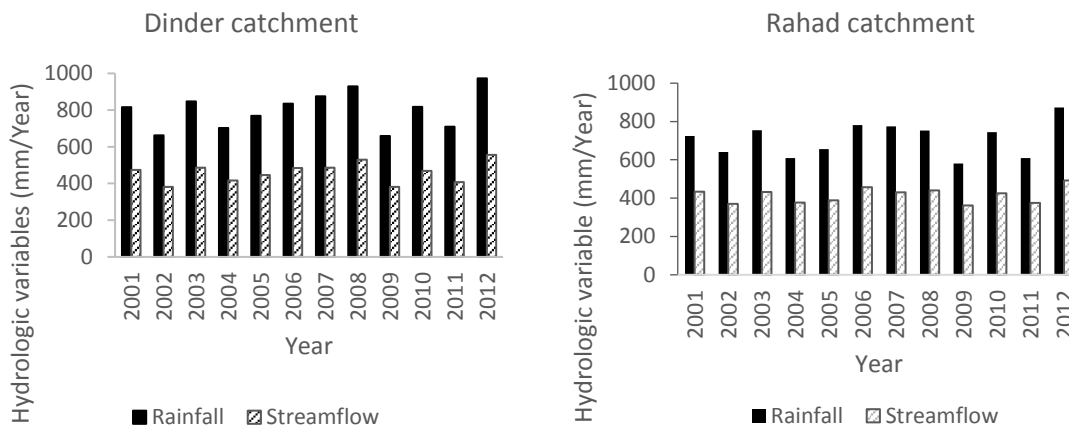


Figure 10: Annual average rainfall and streamflow patterns and magnitudes for the years (2001-2012).

Response:

Our reply to the second part of the above comment “When do you see a larger effect of LULCC on streamflow alteration? Find explanations for that.”, is as follows:

The effect of LULCC on streamflow is found to be large when running the model with land use of 1986 and 2011 particularly in Rahad River. This could be attributed to the severe drought during 1984/1985 that accelerates the runoff processes due to land degradation, beside the large expansion in cropland in the Rahad catchment to 68% of the total area in 2011 compared to 47% in the Dinder catchment. This has been mentioned in the conclusion section on page 24 lines 2-4 (Please refer also to Revision 2.19).

Appendix A:

The wflow_sbm interception model:

The analytical model of rainfall interception is based on Rutter’s numerical model (see Gash, 1979; Gash et al., 1995, for a full description). The simplifications that Gash (1979) introduced allow the model to be applied on a daily basis. The amount of water needed to completely saturate the canopy (P') is defined as:

$$P' = \frac{-RS}{\bar{E}_w} \ln \left[1 - \frac{\bar{E}_w}{\bar{R}} (1 - p - p_t)^{-1} \right] \quad (A1)$$

where:

\bar{R} = average precipitation on a saturated canopy [mm day⁻¹]

\bar{E}_w = average evaporation from the wet canopy [mm day⁻¹]

S = canopy storage capacity [mm]

p = free throughfall coefficient: the proportion of rain which falls to the ground without sticking the canopy [-]

p_t = proportion of rain that is diverted to stemflow [-]

Interception losses from the stems are calculated for days with $P \geq S_t/P_t$. S_t (trunk water capacity [mm]) and P_t are small and neglected in the wflow_sbm model. In applying the analytical model, saturated conditions are assumed to occur when the hourly rainfall exceeds a certain threshold. Often a threshold of 0.5 mm hr⁻¹ is used (Gash, 1979). \bar{R} is calculated for all hours when the rainfall exceeds the threshold to give an estimate of the mean rainfall rate onto a saturated canopy. E_w is then calculated using the Rutter model.

The wflow_sbm soil water accounting scheme:

Within the soil model, the soil is considered as a bucket with a certain depth (Z_t), divided into a saturated store (S) and an unsaturated store (U), the capacity of each is expressed in units of depth. The top of the saturated store forms a pseudo-water table at depth (Z_i) such that the value of (S) at any time is given by:

$$S = (z_t - z_i)(\theta_s - \theta_r) \quad (A2)$$

Where:

θ_s and θ_r are the saturated and residual soil water contents, respectively.

The unsaturated store (U) is subdivided into storage (U_s) and deficit (U_d) which are also expressed in units of depth:

$$U_d = (\theta_s - \theta_r)z_i - U \quad (A3)$$

and

$$U_s = U - U_d \quad (A4)$$

The saturation deficit (S_d) for the whole soil profile is defined as:

$$S_d = (\theta_s - \theta_r)z_t - S \quad (A5)$$

Infiltrating rainfall enters the unsaturated store first. The transfer of water from the unsaturated store to the saturated store (st) is controlled by the saturated hydraulic conductivity K_{sat} at depth (Z_i) and the ratio between U_s and S_d .

$$st = K_{sat} \frac{U_s}{S_d} \quad (A6)$$

As the saturation deficit becomes smaller, the rate of the transfer between the unsaturated and saturated stores increases. Saturated conductivity (K_{sat}) declines with soil depth (z) in the model according to:

$$K_{sat} = K_0 e^{(-fz)} \quad (A7)$$

where:

K_0 is the saturated conductivity at the soil surface and f is a scaling parameter [m⁻¹]

The scaling parameter f is defined by:

$$f = \frac{\theta_s - \theta_r}{M} \quad (A8)$$

M representing a model parameter [m].

The saturated store can be drained laterally via subsurface flow according to:

$$sf = K_0 \tan(\beta) e^{-S_d/M} \quad (A9)$$

where:

β is element slope angle [deg.]

sf is the calculated subsurface flow [m^2d^{-1}]

The original SBM model does not include transpiration or a notion of capillary rise. In wflow_sbm transpiration is first taken from the saturated store if the roots reach the water table (Z_i). If the saturated store cannot satisfy the demand the unsaturated store is used next. First the number of wet roots (WR) is determined (going from 1 to 0) using a sigmoid function as follows:

$$WR = 1.0 / (1.0 + e^{-SN(WT-RT)}) \quad (A10)$$

where:

SN is sharpness parameters

WT is water table [mm]

RT is rooting depth [mm]

The sharpness parameter (by default a large negative value, -80000) is a parameter determines if there is a stepwise output or a more gradual output (default is stepwise). Water Table is the level of the Water table in the grid cell below the surface and rooting depth is the maximum depth of the roots below the surface. For all values of water tables smaller than rooting depth a value of 1 is returned, if they are equal to rooting depth a value of 0.5 is returned, and if the water table is larger than the rooting depth a value of zero is returned. The returned wet roots (WR) fraction is multiplied by the potential evaporation (and limited by the available water in saturated store) to get the transpiration from the saturated part of the soil. Next the remaining potential evaporation is used to extract water from the unsaturated store.

Capillary rise is determined using the following approach: first the K_{sat} is determined at the water table (Z_i); next a potential capillary rise is determined from the minimum of the K_{sat} , the actual transpiration taken from the unsaturated store, the available water in the saturated store and the deficit of the unsaturated store. Finally, the potential rise is scaled using the distance between the roots and the water table using:

$$CS = CSF / (CSF + z_i - RT) \quad (A11)$$

in which CS is the scaling factor to multiply the potential rise with, CSF is a model parameter (default = 100) and RT is the rooting depth. If the roots reach the water table ($RT > Z_i$) CS is set to zero and thus setting the capillary rise to zero. A detailed description of the TOPOG_SBM model has been provided by Vertessy and Elsenbeer (1999)."

Appendix B:

Wflow model parameter's description

Parameter name in Wflow	Description	Unit
CanopyGapFraction	Gash interception model parameter: the free throughfall coefficient. Fraction of precipitation that does not hit the canopy directly	[-]
EoverR (E/R)	Gash interception model parameter. Ratio of average wet canopy evaporation rate over average precipitation rate.	[-]
MaxCanopyStorage	Canopy storage. Used in the Gash interception model	[mm]
FirstZoneCapacity	Maximum capacity of the saturated store.	[mm]
FirstZoneKsatVer	Saturated conductivity of the store at the surface. The M parameter determines how this decreases with depth.	[mm]
FirstZoneMinCapacity	Minimum capacity of the saturated store [mm]	[mm]
InfiltCapPath	Infiltration capacity of the compacted soil fraction of each gridcell.	[mm/day]
InfiltCapSoil	Infiltration capacity of the non-compacted soil fraction of each grid cell	[mm/day]
M	Soil parameter determining the decrease of saturated conductivity with depth.	[m]
N	Manning N parameter for the Kinematic wave function.	
N_river	Manning's parameter for cells marked as river	
LeafAreaIndex	Total one-side green leaf area per ground surface area.	[-]
Albedo	Reflectivity of earth surface: the ratio of radiation reflected to the radiation incident on a surface.	[-]
Beta	element slope angle	[degree]
rootdistpar	Sharpness parameter determine how roots are linked to water table.	[mm]
PathFrac	Fraction of compacted area per grid cell.	[-]
RootingDepth	Rooting depth of the vegetation.	[mm]
CapScale	Scaling factor in the Capillary rise calculations	[mm/day]
RunoffGeneratingGWperc	Fraction of the soil depth that contributes to sub-cell runoff	[-]
thetaR	Residual water content.	[-]
thetaS	Water content at saturation (porosity).	[-]

Appendix C:

Wflow model parameters calibrated values

Albedo

Land cover	Sub-catchment	Soil type	Value
1	[0,>	[0,>	0.40
2	[0,>	[0,>	0.20
3	[0,>	[0,>	0.16
4	[0,>	[0,>	0.26
5	[0,>	[0,>	0.25
6	[0,>	[0,>	0.10

EoverR

Land cover	Sub-catchment	Soil type	Value
1	[0,>	[0,>	0.0
2	[0,>	[0,>	0.3
3	[0,>	[0,>	0.2
4	[0,>	[0,>	0.2
5	[0,>	[0,>	0.1
6	[0,>	[0,>	0.0

FirstZoneKsatVer

Land cover	Sub-catchment	Soil type	Value
[0,>	[0,>	1	511
[0,>	[0,>	2	600
[0,>	[0,>	3	543
[0,>	[0,>	4	525
[0,>	[0,>	5	586
[0,>	[0,>	6	576
[0,>	[0,>	7	540

InfiltCapPath

Land cover	Sub-catchment	Soil type	Value
[0,>	[0,>	1	5
[0,>	[0,>	2	21
[0,>	[0,>	3	5
[0,>	[0,>	4	32
[0,>	[0,>	5	34
[0,>	[0,>	6	5
[0,>	[0,>	7	21

LeafAreaIndex

Land cover	Sub-catchment	Soil type	Value
1	[0,>	[0,>	0.0
2	[0,>	[0,>	8.8
3	[0,>	[0,>	7.0
4	[0,>	[0,>	0.6
5	[0,>	[0,>	0.7
6	[0,>	[0,>	0.0

MaxCanopyStorage

Land cover	Sub-catchment	Soil type	Value
1	[0,>	[0,>	0.00
2	[0,>	[0,>	0.336
3	[0,>	[0,>	0.21
4	[0,>	[0,>	0.25
5	[0,>	[0,>	0.34
6	[0,>	[0,>	0.00

CanopyGapFraction

Land cover	Sub-catchment	Soil type	Value
1	[0,>	[0,>	1.0
2	[0,>	[0,>	0.2
3	[0,>	[0,>	0.6
4	[0,>	[0,>	0.5
5	[0,>	[0,>	0.4
6	[0,>	[0,>	0.5

FirstZoneCapacity

Land cover	Sub-catchment	Soil type	Value
[0,>	[0,>	1	44500
[0,>	[0,>	2	42000
[0,>	[0,>	3	44500
[0,>	[0,>	4	39000
[0,>	[0,>	5	44000
[0,>	[0,>	6	42000
[0,>	[0,>	7	44500

FirstZoneMinCapacity

Land cover	Sub-catchment	Soil type	Value
[0,>	[0,>	1	125
[0,>	[0,>	2	50
[0,>	[0,>	3	137.5
[0,>	[0,>	4	33
[0,>	[0,>	5	87.5
[0,>	[0,>	6	60
[0,>	[0,>	7	70

InfiltCapSoil

Land cover	Sub-catchment	Soil type	Value
[0,>	[0,>	1	24
[0,>	[0,>	2	103
[0,>	[0,>	3	24
[0,>	[0,>	4	158
[0,>	[0,>	5	170
[0,>	[0,>	6	100
[0,>	[0,>	7	103

M

Land cover	Sub-catchment	Soil type	Value
[0,>	[0,>	1	100
[0,>	[0,>	2	87
[0,>	[0,>	3	100
[0,>	[0,>	4	77
[0,>	[0,>	5	100
[0,>	[0,>	6	100
[0,>	[0,>	7	100

N

Land cover	Sub-catchment	Soil type	Value
1	[0,>	[0,>	0.42
2	[0,>	[0,>	0.80
3	[0,>	[0,>	0.70
4	[0,>	[0,>	0.65
5	[0,>	[0,>	0.80
6	[0,>	[0,>	0.12

PathFrac

Land cover	Sub-catchment	Soil type	Value
[0,>	[0,>	1	0.06
[0,>	[0,>	2	0.09
[0,>	[0,>	3	0.05
[0,>	[0,>	4	0.06
[0,>	[0,>	5	0.06
[0,>	[0,>	6	0.07
[0,>	[0,>	7	0.08

thetaR

Land cover	Sub-catchment	Soil type	Value
[0,>	[0,>	1	0.15
[0,>	[0,>	2	0.09
[0,>	[0,>	3	0.19
[0,>	[0,>	4	0.09
[0,>	[0,>	5	0.11
[0,>	[0,>	6	0.09
[0,>	[0,>	7	0.08

RunoffGeneratingGWPer

Land cover	Sub-catchment	Soil type	Value
[0,>	[0,>	[0,>	0.1

N_River

Land cover	Sub-catchment	Soil type	Value
[0,>	[0,>	[0,>	0.035

CapScale

Land cover	Sub-catchment	Soil type	Value
[0,>	[0,>	[0,>	100

RootingDepth

Land cover	Sub-catchment	Soil type	Value
1	[0,>	[0,>	1000
2	[0,>	[0,>	1800
3	[0,>	[0,>	1400
4	[0,>	[0,>	1600
5	[0,>	[0,>	200
6	[0,>	[0,>	0

thetaS

Land cover	Sub-catchment	Soil type	Value
[0,>	[0,>	1	0.5
[0,>	[0,>	2	0.2
[0,>	[0,>	3	0.5
[0,>	[0,>	4	0.3
[0,>	[0,>	5	0.4
[0,>	[0,>	6	0.2
[0,>	[0,>	7	0.2

rootdistpar

Land cover	Sub-catchment	Soil type	Value
[0,>	[0,>	[0,>	-80000

Beta

Land cover	Sub-catchment	Soil type	Value
[0,>	[0,>	[0,>	0.6

Land cover: 1= Bare land, 2= woodland, 3= shrubland, 4= grassland, 5= cropland, 6= water bodies.
 Soil type: 1= Vertisols, 2= Luvisols, 3= Nitisols, 4= Leptosols, 5= cambisols, 6= Alisols, 7= Fluvisols.

Added reference:

Congalton, R. G. & Green, K.: Assessing the accuracy of remotely sensed data: principles and practices. Series title CRC press, 2008.

Analysis of streamflow response to land use land cover changes using satellite data and hydrological modelling: case study of Dinder and Rahad tributaries of the Blue Nile (Ethiopia/Sudan)

Khalid Hassaballah^{1, 2, 3}, Yasir Mohamed^{1, 2, 3}, Stefan Uhlenbrook^{1, 2, 4}, Khalid Biro³

¹UNESCO-IHE Institute for Water Education, P.O. Box 3015, 2601DA Delft, The Netherlands

²Delft University of Technology, P.O. Box 5048, 2600 GA Delft, The Netherlands

³The Hydraulics Research Center, P.O. Box 318, Wad Medani, Sudan

⁴Unesco Italia, UN World Water Assessment Programme

Correspondence to: Khalid Hassaballah (k.hassaballah@yahoo.com)

Abstract. Understanding the land use and land cover changes (LULCC) and its implication on surface hydrology of the Dinder and Rahad basins (D&R) approximately 77,504 km² is vital for the management and utilization of water resources in the basins. Although there are many studies on LULCC in the Blue Nile basin, specific studies on LULCC in the D&R are still missing. Hence, its impact on streamflow is unknown. The objective of this paper is to understand the LULCC in the Dinder and Rahad and its implications on streamflow response using satellite data and hydrological modelling. The hydrological model has been derived by different sets of LULC maps from 1972, 1986, 1998 and 2011. Catchment topography, land cover and soil maps, are derived from satellite images and serve to estimate model parameters. Results of LULCC detection between 1972 and 2011 indicate a significant decrease of woodland and an increase of cropland. Woodland decreased from 42% to 14% and from 35% to 14% for Dinder and Rahad respectively. Cropland increased from 14% to 47% and from 18% to 68% in Dinder and Rahad respectively. The model results indicate that streamflow is affected by LULCC in both the Dinder and the Rahad Rivers. The effect of LULCC on streamflow is significant during 1986 and 2011. This could be attributed to the severe drought during mid 1980s and the recent large expansion in cropland.

Keywords: land use land cover, PCRaster, hydrological modelling, streamflow response, WFlow model, Dinder Rahad

1 Introduction

Streamflow is an important hydrological variable needed for water resources planning and management, and for ecosystem conservations. The rainfall runoff process over the upper Dinder and Rahad basins (D&R) is complex, non-linear, and exhibits temporal and spatial variability (Hassaballah et.al. 2016). To manage water resources effectively at a local level, decision makers need to understand how human activities and climate change may impact local streamflow. **Therefore, it is necessary to understand the hydrological processes in the run-off generated catchments, and the possible interlinkages of land use and land cover changes with catchment runoff.** For this reason, we used satellite data and hydrological modelling to analyze the land use and land cover changes (LULCC) and its impacts on streamflow response in the D&R.

The D&R generate around 7% of the Blue Nile basin's annual flow. The Rahad River supplies water to the Rahad Irrigation Scheme (100,000 ha), while the Dinder River supplies water to the diverse ecosystem of the Dinder National Park (DNP). The DNP (10,291 km²) is a vital ecological area in the arid and semi-arid Sudan-Saharan region.

The Dinder and Rahad Rivers **have** experienced significant changes in floodplain hydrology during recent years, claimed to be caused by land use land cover changes in the upstream catchment. The floodplain hydrology defines the seasonal wetlands (Mayas) which are the only source of water in the DNP during the dry season (8 months). The hydrology of the mayas has large implications on the ecosystem of the DNP. A detailed description of the mayas wetlands can be found in **Hassaballah et al. (2016).**

LULCC was identified as a key research priority with multi-directional impacts on both human and natural systems (Turner II et al. 2007). Many studies highlighted the impacts of LULCC on hydrology (DeFries and Eshleman 2004; Uhlenbrook 2007), on ecosystem services (DeFries and Bounoua 2004; Metzger et al. 2006; Polasky et al. 2011) and on biodiversity (Hansen et al. 2004; Hemmavanh et al. 2010).

LULCC is a widespread observable phenomenon in the Ethiopian highlands as pointed by (Zeleeke and Hurni 2001; Bewket and Sterk 2005; Hurni et al. 2005; Teferi et al. 2013;). These studies have pointed out different types and rates of LULCC in different parts of the Ethiopian highlands over different time periods and reported that the expansion of croplands associated with a decrease in woodlands have been the general forms of transitions.

Recently, Gumindoga et al. (2014) assessed the effect of land cover changes on streamflow in the Upper Gilgel Abbay river basin in northwestern Ethiopia. Their results showed significant land cover changes where cropland has changed from 30% of the catchment in 1973 to 40% in 1986 and 62% in 2001. The study attributed these changes to the increase in population, which increased the demands for agricultural land. The study has also pointed that farmers in the area are commonly clearing forests to create croplands, and the resulting effect was the decrease in forest land from 52% in 1973 to 33% in 1986 and 17% in 2001. Since the Upper Blue Nile basin is neighboring the D&R, one may expect some similarities of catchment characteristics, though differences cannot be excluded. These transitions have contributed to the high rate of soil erosion and land degradation in the Ethiopian plateau (Bewket and Teferi 2009). Understanding the impacts of LULCC on hydrology, and incorporating this understanding into the emerging focus on LULCC science are the most important needs for the future (Turner et al. 2003).

Many models have been developed to simulate impacts of LULCC on streamflow. These can be categorized as an empirical black box, conceptual, and physically based distributed models. Each type of these three models has its own advantages and limitations. Several situations in practice demand the use of simple tools such as the linear system models or black box models. Nevertheless, these simpler models usually fail to mimic the non-linear dynamics, which are essential in the rainfall-runoff transformation process. Therefore, the development of a dynamic modelling language within a GIS framework such as PCRaster is a further important stage that allows complex models, like the WFlow rainfall-runoff model, to be implemented making use of globally available spatial data sets. The PCRaster programming language is an environmental modelling language to build dynamic spatial environmental models (Bates and De Roo 2000; Karssenber 2002; Uhlenbrook et al. 2004). Such spatially distributed models also have the potential to help in answering questions of policymakers about

the impact of spatial changes (e.g. impacts of LULCC on streamflow dynamic). It has been shown that a variety of probable LULCC impacts on hydrologic processes in the D&R are likely to happen. Therefore, the objective of this study is to understand the LULCC in the D&R and its impacts on streamflow response using satellite data, GIS and remote sensing, and hydrological modelling. The WFlow distributed hydrological model (Schellekens, 2011) is used simulate the processes. In addition, understanding the level to which the streamflow has altered is critical for developing an effective management plan for ecosystem restoration and conservation. Thus, the Indicators of Hydrological Alteration (IHA) approach proposed by Richter et al. (1996), was then applied to analyze the streamflow characteristics likely to affect the ecological processes in the D&R including: flow magnitude, timing, and rate of change of flow.

2 Study area

The Dinder and the Rahad are the lower sub-basins of the Blue Nile River basin located between longitude 33°30' E and 37°30' E and latitude 11°00' N and 15°00' N (Fig. 1). The Blue Nile basin collects flows of eight major tributaries in Ethiopia besides the two main tributaries in Sudan: the Dinder and the Rahad Rivers. Both tributaries derive their water from the runoff of the Ethiopian highlands approximately 30 km west of Lake Tana (Hurst et al. 1959). Their catchment areas are about 34,964 and 42,540 km² for the Dinder and the Rahad, respectively, giving a total area of about 77,504 km². The catchment has varied topography with elevation ranges between about 384 m at the catchment outlet and up to 2731 m at the Ethiopian plateau. The D&R have a complex hydrology, with varying climate, topography, soil, vegetation and geology (Hassaballah et al. 2016). The annual average flow is about 2.797×10^9 and 1.102×10^9 m³/year for the Dinder and the Rahad, respectively.

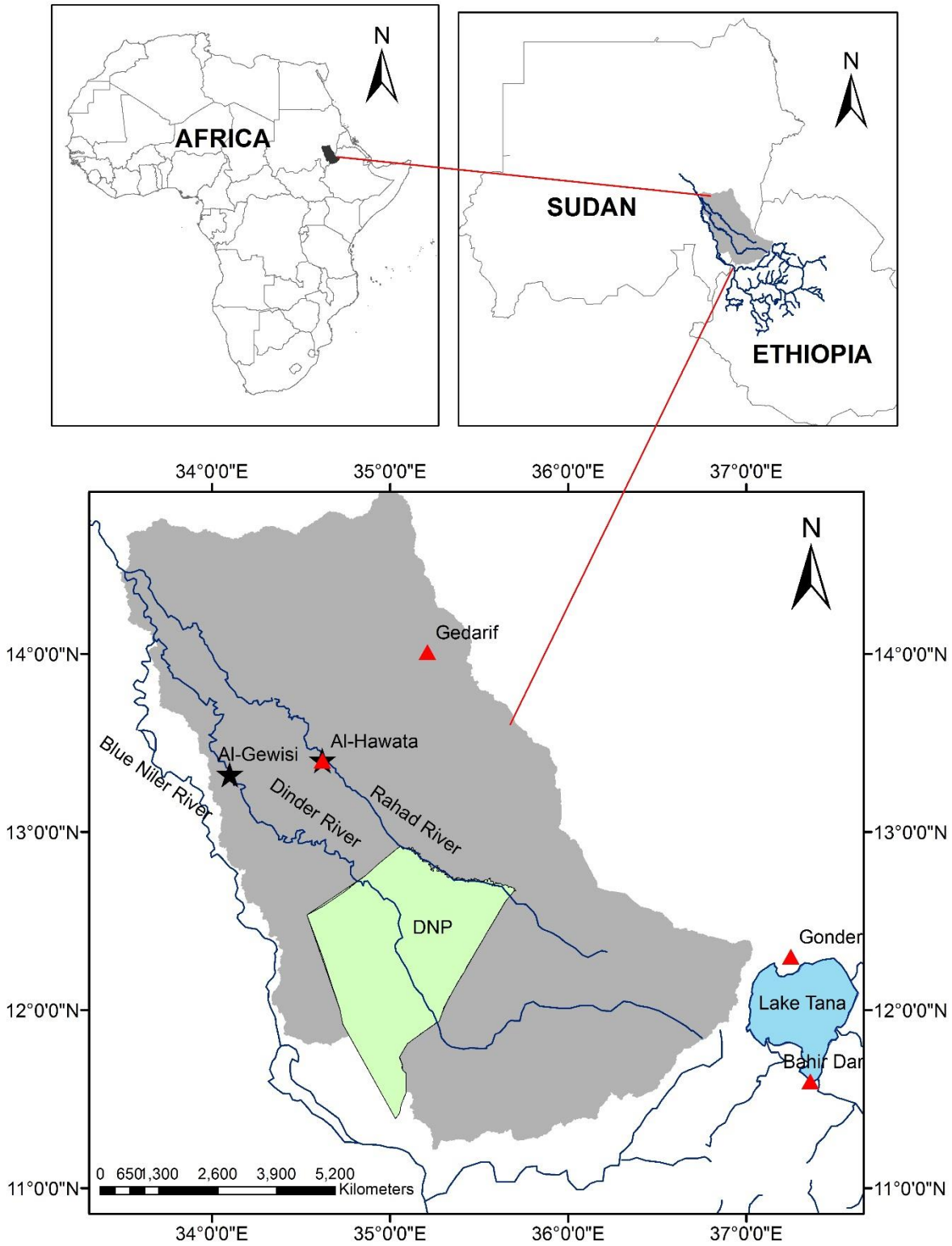


Figure 1: Location map of the Dinder and Rahad basins and the DNP. The two black stars show the locations of the hydrological stations (Al-Gewisi and Al-Hawata), and the red triangles show the locations of the rain gauges.

3 Data and Methods

Limited data is available for simulating the hydrology of the D&R. To fill this data gap, use has been made of globally available free datasets. The datasets which have been used to run the WFlow model are divided into two datasets; static data and dynamic data.

5 3.1 Input data

3.1.1 Static data

The static data contain maps that do not change over time. It includes maps of the catchment delineation, Digital Elevation Map (DEM), gauging points, land use, local drainage direction (*ldd*), outlets and rivers. These maps were created with a pre-prepare processes of the WFlow hydrologic model.

10 The catchment boundary has been delineated based on a 90 m x 90 m digital elevation map (DEM) of the NASA Shuttle Radar Topographic Mission (SRTM) obtained from the Consortium for Spatial Information (CGIAR_CSI) website (<http://srtm.csi.cgiar.org>).

15 Multi-temporal Landsat data for the years 1972, 1986, 1998 and 2011 were obtained free of charge from the internet site of the United States Geological Survey (USGS) (source: <http://glovis.usgs.gov/>). All images were geometrically corrected into the Universal Transverse Mercator (UTM) coordinate system (Zone-36N).

The soil map was obtained free of charge from the Food and Agriculture Organization (FAO) Harmonized World Soil Database (HWSD). The original catchment boundary layer provided 44 Soil Mapping Units (SMU) classes. These classes have been reclassified into 8 dominant soil group (DSG) categories, based on the DSG of each soil mapping unit code. **This was necessary to reduce the model complexity. The WFlow soil model requires estimates of 8 parameters per soil type, which means 352 parameters if it is for 44 soil types. Therefore, reclassification of soil map into 8 dominant soil groups reduces the number of estimated parameters to 64.** The categories are: vertisols 71%, luvisols 9%, nitisols 8%, leptosols 5%, cambisols 4%, alisols 2% and fluvisols 1%. The map was then projected to WGS-84-UTM -zone-36N and resampled to a horizontal resolution of 500 m.

3.1.2 Satellite based rainfall and evapotranspiration data

25 The dynamic data contain maps that change over time. It includes daily maps of the precipitation and evapotranspiration. These maps were created with a pre-prepare step1 and step2 of WFlow model. In this study, three open-access satellites-based rainfall estimates (SBRE) products were compared based on their runoff performance at Al-Gewisi and Al-Hawata stations the outlets of the Dinder and Rahad basins, respectively. The best product was then used to run the WFlow model using different LULC maps. The SBRE and the evapotranspiration products used in this study are: Rainfall Estimates (RFE 2.0), potential evapotranspiration (PET), Tropical Rainfall Measuring Mission (TRMM) and Climate Hazards Group InfraRed Precipitation with Stations (CHIRPS).

The RFE 2.0 and the PET data were obtained from the Famine Early Warning System Network (FEWS NET). The horizontal resolution is 0.1 degree (11.0 km) for the RFE and 1.0 degree (110 km) for PET. This data is available on a daily basis from 2001 to near real-time period of record. More description can be found at <http://earlywarning.usgs.gov/adds/downloads/>.

35 The TRMM is a joint space mission between NASA and the Japan Aerospace Exploration Agency (JAXA) launched in 1997. **The TRMM satellite rainfall measuring instruments include the Precipitation Radar (PR), TRMM Microwave Image (TMI), a nine-channel passive microwave radiometer, a Visible and Infrared Scanner (VIRS), and five-channel visible/infrared radiometer (Huffman and Bolvin 2013). In this study, we have used TRMM 3B42v7 which has a spatial resolution of 0.25° and a temporal resolution of 3 hours. More information can be found at (www.trmm.gsfc.nasa.gov).**

The CHIRPS data were developed by the Climate Hazards Group (CHG) and scientists at the U.S. Geological Survey Earth Resources Observation and Science Center. This product is a new quasi-global precipitation with daily to seasonal time scales, a 0.05° resolution, and 1981 to near real-time period of record. The CHIRPS uses the monthly Climate Hazards Precipitation Climatology (CHPClim), the InfraRed (IR) sensors from the Group on Earth Observations (GEO) satellites, the TRMM 3B42 product, and the ground precipitation observations. More information about CHIRPS data can be found in Funk et al. (2014). A summary of all precipitation and evapotranspiration satellite products was provided in Table 1. All maps were projected into WGS-84-UTM-zone 36N (meters), clipped to catchment extent, and then resampled to a resolution of 500 m.

Table 1: Summary of the different precipitation and evapotranspiration satellite products

Product	Developer	Spatial resolution	Covering area	Temporal resolution	Time span	Ground measurement
TRMM 3B42v7	NASA, JAXA	0.25°	0°E-360°E/50°N-50°S	3 Hourly	Jan 1998 - present	Yes
RFE 2.0	NOAA (CPC)	0.1°	20°E-55°E/40°N-40°S	6 Hourly	Jan 2001 - present	Yes
CHIRPS v2.0	CHG	0.05°	0°E-360°E/50°N-50°S	Daily	Jan 1981 - present	Yes
PET	NOAA (CPC)	1.0°	20°E-55°E/40°N-40°S	6 Hourly	Jan 2001 - present	Yes

3.1.3 Observed hydrological streamflow

Daily streamflow data at Al-Gewisi station on the Dinder River and at Al-Hawata station on the Rahad River for the period (2001-2012) were obtained from the Ministry of Water Resources, Irrigation and Electricity-Sudan. This data is mainly used for calibration and validation of the WFlow hydrological model.

3.2 LULC classification and change detection

LULC images were selected in the same season to minimize the influence of seasonal variations on the classification result. All acquired images had less than 10% cloud cover. However, in order to cover the entire study area, more than 8 scenes of the satellite data were processed (Table 2). Subsequently, all images were mosaicked and resampled to a pixel size of 30m x 30m. The classification results of the historical images 1972, 1986 and 1998 were validated through visual interpretation of the unclassified satellite images and supported by in-depth interview of local elders. The classification of the 2011 image was validated by ground survey during a field visits throughout the study area during the period between 2011 and 2013 assuming no significant change during this period. A Global Positioning System (GPS) device was used to obtain exact location point data for each LULC class included in the classification scheme and for the creation of training sites and for signature generations as well. Moreover, field notes, site descriptions, and terrestrial photographs were taken to relate the site location to scene features. A total of (120) training areas were selected based on image interpretation keys, established during the field survey and from interviews with the local people. This later step was used as a crosscheck validation for the visual interpretation performed to the historical images. A supervised Maximum Likelihood Classification (MLC) technique was independently employed to the individual images. MLC is the most common supervised classification method used with remote sensing image data (Ellis et al. 2010; Pradhan and Suleiman 2009). The derivation of MLC is generally acceptable for remote sensing applications and is used widely (Richards et al. 2006).

The accuracy assessment of the classified images was based on the visual interpretation of the unclassified satellite images (Biro et al. 2013). However, the visual interpretation was conducted by an independent analyst not involved in the

classification. The stratified random sampling design, where the number of points was stratified to the LULC types, was adopted in order to reduce bias (Mundia and Aniya 2006). Accordingly, error matrices as cross-tabulations of the classified data vs. the reference data were used to evaluate the classification accuracy. The overall accuracy, the user's and producer's accuracies, and the Kappa statistic values were then derived from the error matrices.

5 Multi-date Post-Classification Comparison (PCC) change detection method described by Yuan et al. (2005) was used to determine the LULCC in three intervals: 1972–1986, 1986–1998 and 1998–2011. PCC is a quantitative technique that involves an independent classification of separate images from different dates for the same geographic location, followed by a comparison of the corresponding pixels (thematic labels) in order to identify and quantify areas of change (Al Fugara et al. 2009; Jensen 2004). It is the most commonly used method of LULCC detection mapping (Kamusoko and Aniya 2009).

10

Table 2: Description of used satellite images.

Acquisition date	Satellite	Number of scenes	Spectral bands	Spatial resolution
04 Nov. & 11 Dec. 1972	Landsat MSS	9	1 – 4 bands	60 m
12 Nov. & 26 Nov. 1986	Landsat TM	9	1 – 6 bands	30 m
27 Nov. & 13 Dec. 1998	Landsat TM	8	1 – 6 bands	30 m
07 Nov. & 10 Dec. 2011	Landsat TM	8	1 – 6 bands	30 m

MSS, multispectral scanner; TM, thematic mapper

3.3 Description of the WFlow hydrological Model

15 In order to assess the impacts of LULCC on the streamflow dynamic, the WFlow distributed hydrological model (Schellekens, 2011) is forced using SBRE. The WFlow is a state-of-the-art open source distributed catchment model. The model is part of the Deltares OpenStreams project (<http://www.openstreams.nl>). The model is derived from the CQFLOW model (Kohler et al., 2006). It is a hydrological model platform that includes two models: the WFlow_sbm model described by Vertessy and Elsenbeer (1999) derived from the TIOPG_SBM soil concept, and the WFlow_hbv model (distributed version of the HBV model). The model directly appeals to the need within the hydrological and geomorphologic sciences community to effectively use spatial datasets e.g. digital elevation models, land use maps, dynamic satellite data for rapid and adequate modelling of river basins with limited data availability. The model is programmed in PCRaster GIS dynamic language (Deursen 1995).

20

In this study, the WFlow_sbm PCRaster-based distributed hydrological model which makes use of the Gash and the TOPOG_SBM models was used. The model requires less calibration and maximizes the use of available spatial data that makes it a suitable model for this study. Step one of WFlow model was to delineate river network and the gauging points based on the DEM. Next, a land use and soil maps were added to the model and parameters were estimated based on physical characteristics of the soil and land use type. The rainfall interception was calculated using the Gash model (Gash 1979, 1995), while hydrologic processes that cause a runoff or overland flow were calculated using the TOPOG_SBM model. The WFlow uses potential evapotranspiration as an input data and derives the actual evaporation based on soil water content and vegetation cover type. The analytical model of rainfall interception in the WFlow is based on Rutter's numerical model (Gash, 1979; Gash et al., 1995). The surface runoff is modelled using a kinematic wave routine. Combination of the total rainfall and evaporation under condition of saturated canopy is done for each rainfall storm to determine average values of precipitation and evaporation from the wet canopy. In case the soil surface is partially saturated, the rainfall that falls on the saturated area is directly added to the surface runoff component. The soil is represented by a simple bucket model that assumes an exponential decay of the saturated conductivity with depth. Lateral subsurface flow is simulated using the Darcy equation. Soil depth is identified for different land use types and consequently scaled using the Topographic Wetness Index. Different parameters are assigned to each land cover type. These parameters include; rooting depth, leaf area index (LAI), ratio of evaporation from wet canopy to average rainfall (E_w/R), Albedo, Canopy Gap Fraction and Maximum Canopy Storage. All model parameters

25

30

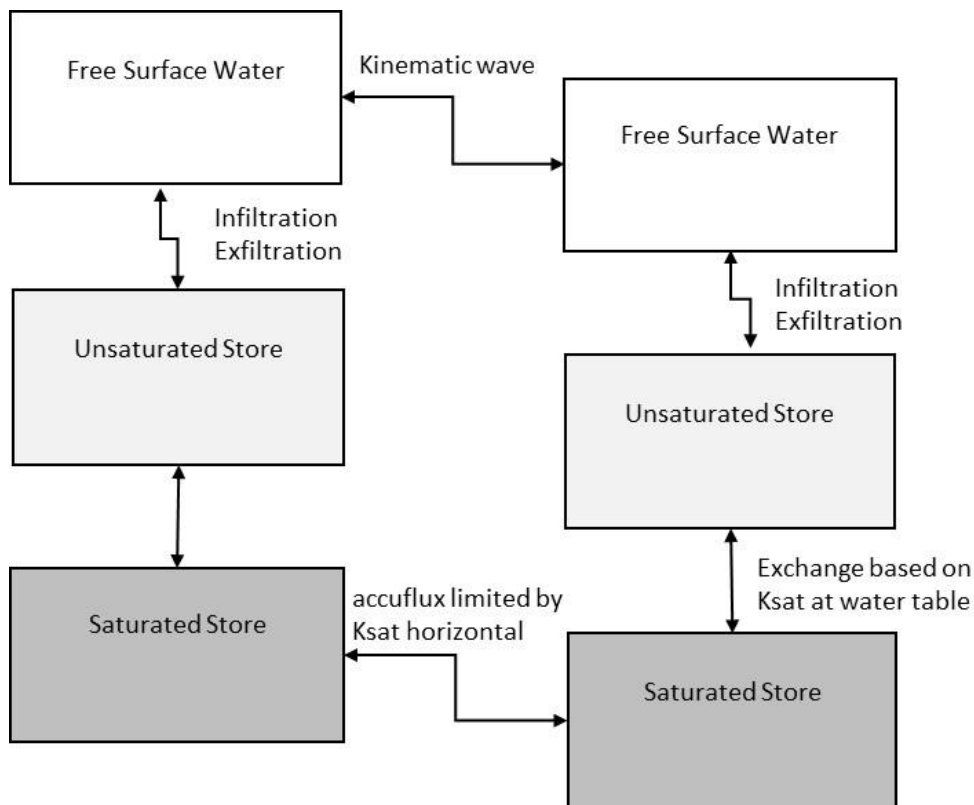
35

are linked to the Wflow model through lookup tables. The lookup tables are used by the model to create input parameter maps. Each table consists of four columns. The first column is used to identify the land-use class, the second column indicates the sub catchment, the third column represents the soil type and the last column lists the assigned values based on the first three columns. The parameters are linked to land use, soil type or sub-catchment through lookup tables. Description of the Wflow model parameters is presented in Appendix B and the calibrated values for each parameter are presented in Appendix C. The WFlow_sbm interception and soil model's equations are presented in Appendix A.” Further details of the Wflow model are also given at <https://media.readthedocs.org/pdf/wflow/latest/wflow.pdf>.

5

10

The model is fully distributed, which means that it makes the calculations for every grid cell of the basin. Each cell (500 m x 500 m) is seen as a bucket with a total depth divided to saturated and unsaturated stores (Fig. 2). The streamflow model results were then analyzed using the IHA approach described by Richter et al. (1996).



15

Figure 2. Schematization of the soil within the WFlow_sbm model

Source: http://WFlow.readthedocs.io/en/latest/WFlow_sbm.html#the-soil-model

3.3.1 Model calibration and validation

20

As with all hydrological models, calibration of the Dinder and Rahad hydrological model is needed for optimal performance. Since the hydrological data available for calibration start from 2001, the nearest land use (land use of 1998) was used in the calibration. The calibration procedure performed in two steps based on; firstly, initial values of all parameters were estimated based on the land use and the soil types. Secondly, by adjusting the model parameters and evaluate the results.

25

The performance of the model was assessed using measures of goodness of fit between the modeled and observed flow using the coefficient of determination (R^2) and the Nash–Sutcliffe efficiency (NSE), defined by Nash and Sutcliffe (1970). The

observed and the simulated flow of the Dinder and Rahad correlated well, except for few under-predictions and over-predictions of peak flows which can be explained in terms of inherent uncertainty in the model and the data. However, measures of performances for both calibration and verification runs fell within the acceptable ranges.

3.4 Indicators of hydrologic alterations (IHA)

5 The IHA approach was introduced by Richter et al. (1996). The approach used to assess river ecosystem management objectives defined based on a statistical representation of the most ecologically relevant hydrologic indicators. These indicators describe the essential characteristics of a river flow that have ecological implications. **The IHA method computes 33 hydrologic parameters for each year. For analyzing the alteration between two periods, the IHA described in Richter et al. (1996) was applied using the IHA software developed by The Nature of Conservancy (2009).**

10 **The general approach is to define hydrologic parameters that characterized the intra-annual variation in the water system condition and then to use the analysis of variations in these parameters as a base for comparing hydrologic alterations of the system before and after the system has been altered by various human activities.**

The IHA method has four steps: a) define the time series of the hydrologic variable (e.g. streamflow) for the two periods to be compared; b) calculate values for hydrologic parameters; c) compute intra-annual statistics; and d) calculate values of the IHA by comparing the intra-annual variation before and after the system has been altered and present the results as a percentage of deviation. For assessing hydrologic alteration in the Dinder and Rahad Rivers, the flows variations for both rivers have been characterized based on the variations in the streamflow characteristics between three periods (1972-1986), (1986-1998) and (1998-2011). Temporal variability of streamflow series was analyzed at Al-Gewisi station on the Dinder River and at Al-Hawata station on the Rahad River. A detailed description of IHA can be found in (Richter et al., 1996 and Poff et al., 1997).

20 4 Results and Discussion

4.1 LULC classification and change detection

The overall LULC classification accuracy levels for the four images ranged from 82% to 87%, with Kappa indices of agreement ranging from 77% to 83% (Table 3). **The accuracy assessment is based on comparing reference data (class types at specific locations from ground information) to image classification results at the same locations. The overall accuracy of classification is the average value from all classes. The user's accuracy corresponds to errors of inclusion (commission errors), which represents the probability of a pixel classified into a given class actually represents that class on the ground (i.e. from the perspective of the user of the classified map). The producer's accuracy corresponds to errors of exclusion (omission errors), which represents how well reference pixels of the ground cover type are classified (i.e. from the perspective of the maker of the classified map). The commission errors occur when an area is included in an incorrect category, while the omission errors occur when an area is excluded from the category to which it belongs. Every error on the map is an omission from the correct class and a commission to an incorrect class (Congalton and Green 2008). The cross validation for the year 2011 land use was made using the reference data (120 points) collected with GPS instrument during the field survey (2011–2013). In addition, visual interpretation and historical information obtained from the local people about the land use types in the study area were used also as cross-check validations for old maps. Shrublands show lower user's and producer's accuracies compared to the other LULC classes. This is mainly due to the miss-classification of some shrub land into woodland, grassland and cropland. This accuracy is satisfactory for the study area considering the multi-temporal analysis of Landsat data and the visual interpretation adapted to image classification.**

Table 3: Accuracy assessment (%) of LULC maps.

LULC Classes	1972		1986		1998		2011	
	Producer's	User's	Producer's	User's	Producer's	User's	Producer's	User's
Woodland	88	89	89	90	89	90	91	93
Cropland	78	70	80	74	80	80	83	82
Shrubland	71	71	73	75	77	75	80	75
Grassland	80	88	83	88	85	88	86	89
Bare Land	82	76	82	78	82	78	82	85
Water	86	86	88	86	91	86	94	86
Overall	82		84		85		87	
Kappa	77		79		81		83	

Landsat image classification results for the years 1972, 1986, 1998 and 2011 are shown in Figure 3. The large extent of the catchment (77,504 km²), and the small-scale of the maps (i.e. 1: 4,500,000), may not allow distinction of different LULC change patterns by eye. Figure 4 which zoom into smaller area is an example to show multi-temporal changes in the LULC patterns. The zoomed areas in the red boxes showed in large-scale, provides more details of LULC patterns. This area is located downstream of the Rahad Irrigation Scheme of Sudan established in 1981. The waterlogging and woodland areas occurred in 1998 and 2011 resulted from the drainage water of the project accumulated over the years (i.e. clear example of LULC multi-temporal change over the Rahad basin). The lower maps show the Google Earth imagines of the large-scale area. Although these Google Earth imagines dates do not exactly match the ones of the satellite images, they show the part of the dried period in the study area and hence the complexity of the LULC patterns.

According to the produced LULC maps, it was found that woodland, shrubland and grassland were the dominant types of LULC classes for the years 1972, while for the year 1986 they were shrubland, grassland and cropland. The LULC map of 1998 illustrates that the predominant types of LULC classes were cropland and woodland, while they were cropland and shrubs in 2011.

LULCC in the D&R are assessed by image comparison. In general, the results showed that the dominant process is the large decrease of woodland and increase of cropland. This result was in agreement with that of Rientjes et al. (1979) and Gumindoga et al. (2014), who studied the changes in land cover, rainfall and streamflow in the neighboring catchment of the upper Gilgel Abbay in Ethiopia.

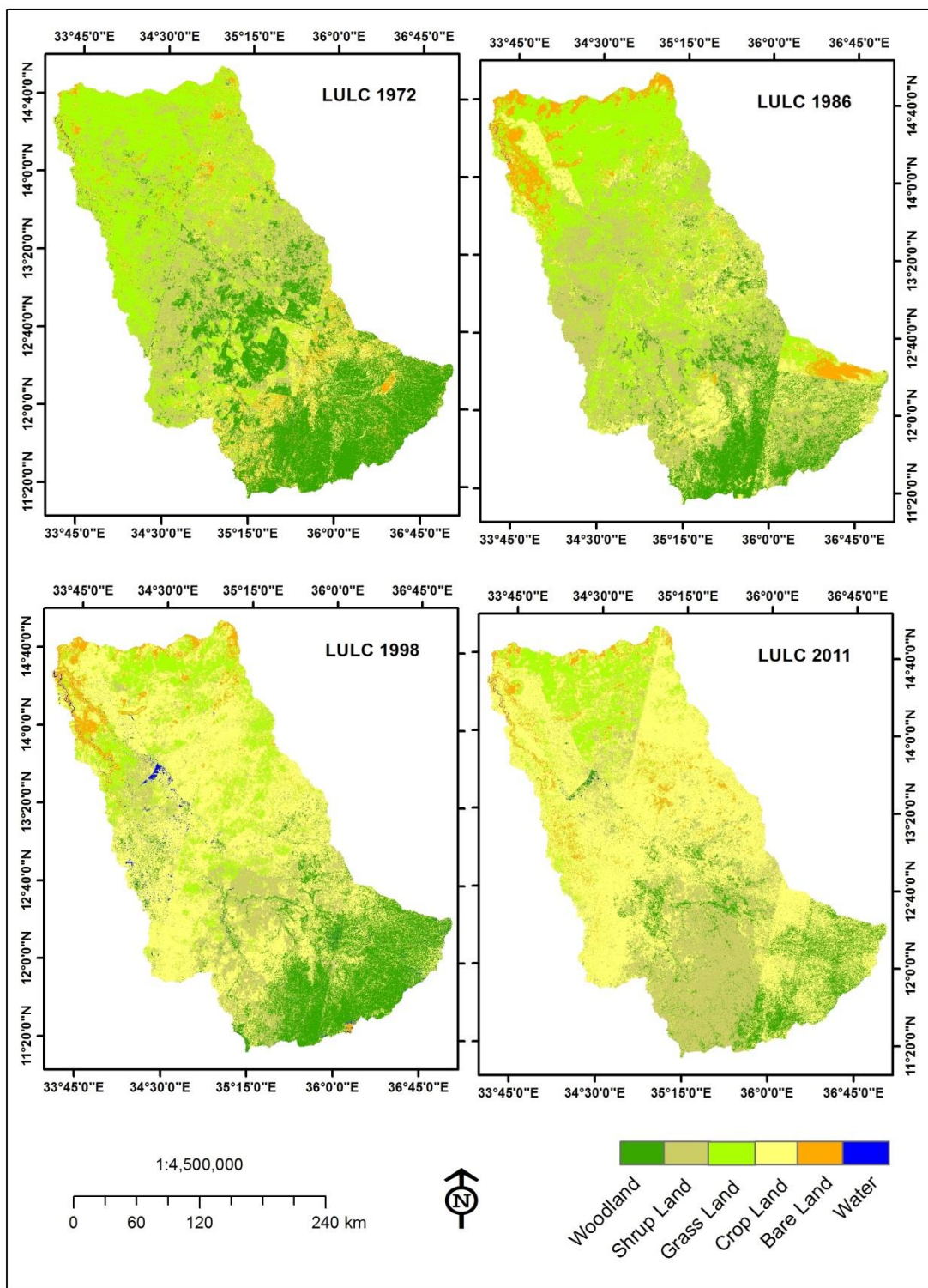


Figure 3. Classified LULC maps of the years 1972, 1986, 1998 and 2011.

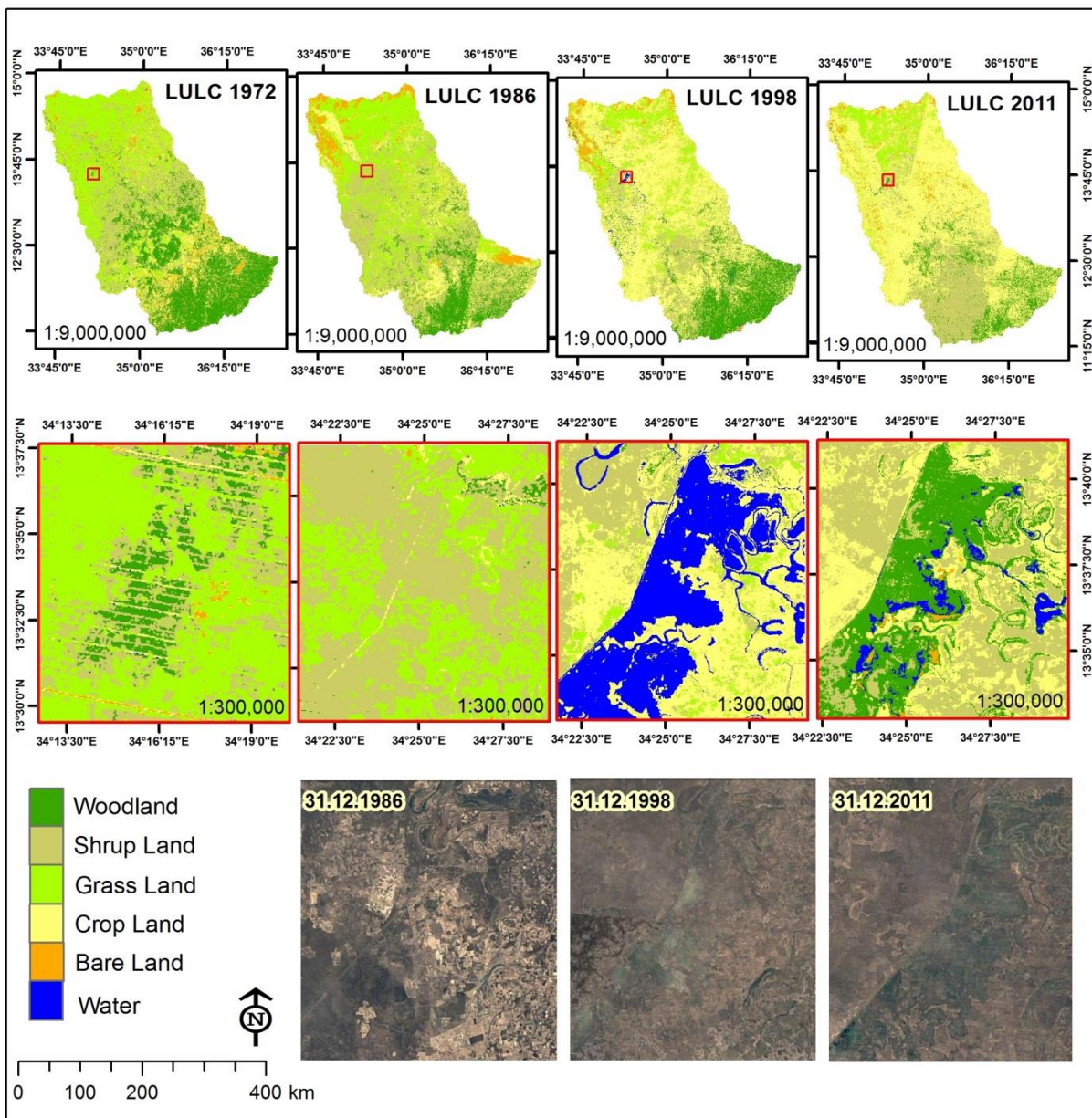


Figure 4: Classified LULC maps of the years 1972, 1986, 1998 and 2011. The areas in the red boxes showed in large-scale provide more details of the LULCC patterns.

5 Table 4 shows the percentages of LULCC classes in Dinder and Rahad basins that occurred in the period 1972 to 1986, 1986 to 1998, and 1998 to 2011. The decrease in the woodland area in 1986 is mainly attributed to the deforestation during the drought time in 1984 and 1985. As a result, the cropland was increased due to the development of new agricultural areas in both irrigated (i.e. Rahad Agricultural Scheme) and rain-fed sectors. The rapid expansion in the mechanized rain-fed agriculture led to a large increase in cropland during 1998 and 2011. These findings are in agreement with what have been

10 reported by Marcotullio and Onishi (2008), and Biro et.al, (2013) from their similar studies conducted in the Ethiopian highlands and Gedarif region in eastern Sudan.

Table 4: Land cover changes (%) in Dinder and Rahad basins that occurred in the period 1972 to 1986, 1986 to 1998, and 1998 to 2011.

Land cover type (%)	Dinder				Rahad			
	1972	1986	1998	2011	1972	1986	1998	2011
Bare area	5	1	0	2	6	5	0	3
Woodland	42	23	27	14	35	14	21	14
Shrubland	23	43	21	36	30	32	13	15
Grassland	16	18	5	1	11	22	9	1
Cropland	14	15	45	47	18	26	55	68

5 4.1.1 Calibration and validation of the hydrological model results

To assess the reliability of the SBRE products, validation is done with the use of ground measurements at four gauges in which observed data are available. Two gauges (Gonder and Bahir Dar) are located nearby the upstream part of the catchments in the Ethiopian plateau, while the other two (Gedarif and Al-Hawata) are located at the most downstream part of the catchment in the Sudan low land. The validation is performed at annual time step. The results show that the difference of RFE against ground measurements has no consistent patterns. TRMM and CHIRPS have shown no consistent patterns at the lowland (Gedarif and Al-Hawata), but both products are consistent and overestimate rainfall at the Ethiopian highland (Gonder and Bahir Dar) in all years except 2007 (Figure 5). Since both the Dinder and the Rahad derive their main flow from the Ethiopian highlands, products with consistent patterns at highlands will be more suitable for running hydrologic models in this catchment. From these findings, one can conclude that the CHIRPS v2.0 and TRMM 3B42 v7 are more suitable than RFE 2.0 for running hydrologic model. Comparing CHIRPS v2.0 and TRMM 3B42 v7, it is clear that CHIRPS v2.0 has less overestimation of rainfall. Thus, CHIRPS v2.0 is the best product to be used as a forcing data for hydrologic model in the Dinder and Rahad basins.

The NSE and R^2 ranged from 0.4 to 0.80 and 0.50 to 0.80, respectively for the daily calibration and validation for the three precipitation products at Al-Gewisi station on the Dinder River and Al-Hawata station on the Rahad River (Fig. 6 and 7). At Al-Gewisi station, the large underestimation in the first validation period for CHIRPS can be attributed to the underestimation of rainfall by CHIRPS in 2007 at both Gonder and Bahir Dar (Figure 4). While at the same time CHIRPS overestimates rainfall in all years from 2001 to 2006. Therefore, calibration of the hydrologic model (during the period 2002-2005) resulted in underestimation of river flow in 2007. On the other hand, at Al-Hawata station, the difference between observed and model flow in the first period of validation (i.e.2008) is likely due to an error either in the input data or the observed flow values or a combination of both.

In general, the calibration results indicate that CHIRPS 2.0 is the best products over rugged terrain with complex rainfall patterns in the D&R basins. This result is in agreement with Hessels (2015), who compared and validated 10 open-access and spatially distributed satellite rainfall products over the Nile Basin and found that CHIRPS is the best product to be used in the Nile Basin. The modelling results show that the approach is reasonably good and therefore can be used in predicting runoff at a sub-basin level. Then the model was used to simulate the impact of LULCC on streamflow by running the model using land cover from different periods of time (1972, 1986, 1998 and 2011) and keeping precipitation (CHIRPS), evapotranspiration and other model parameters without change.

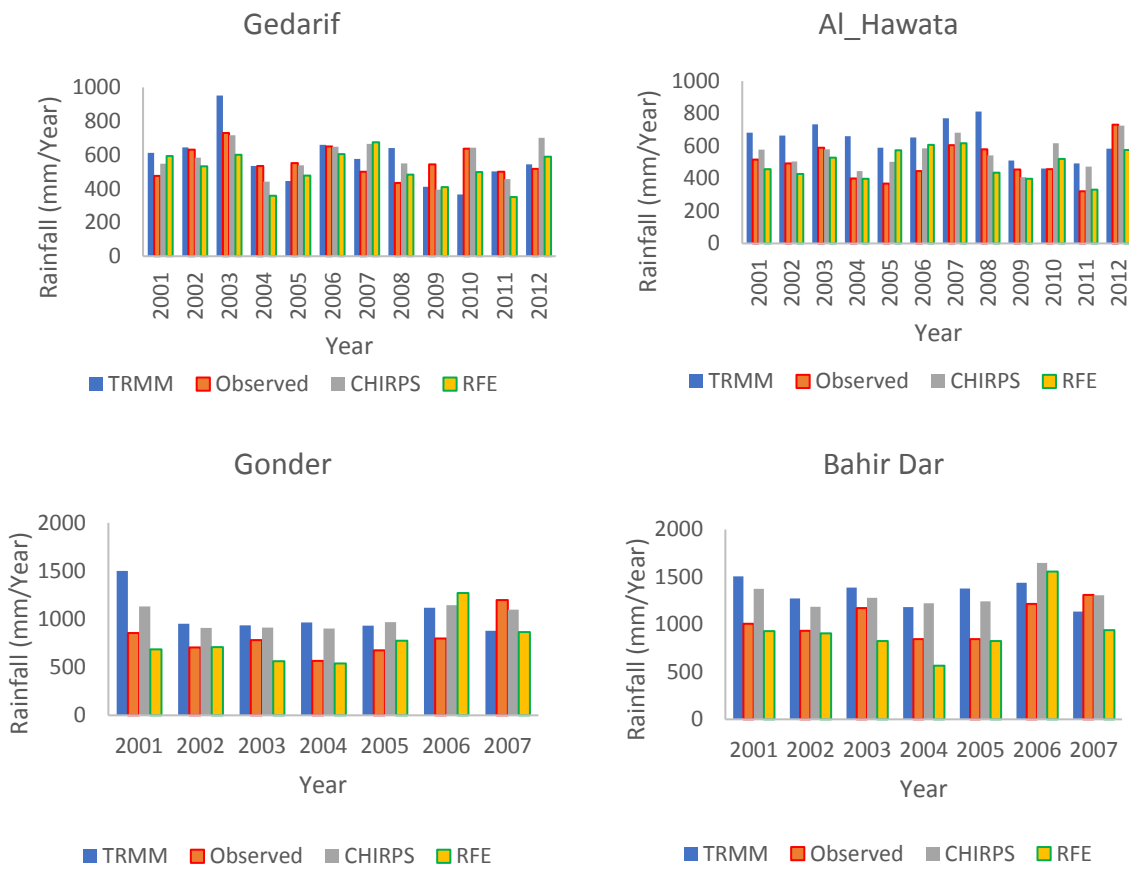


Figure 5: Comparison of SBRE products with ground measurements at four locations

5

10

15

20

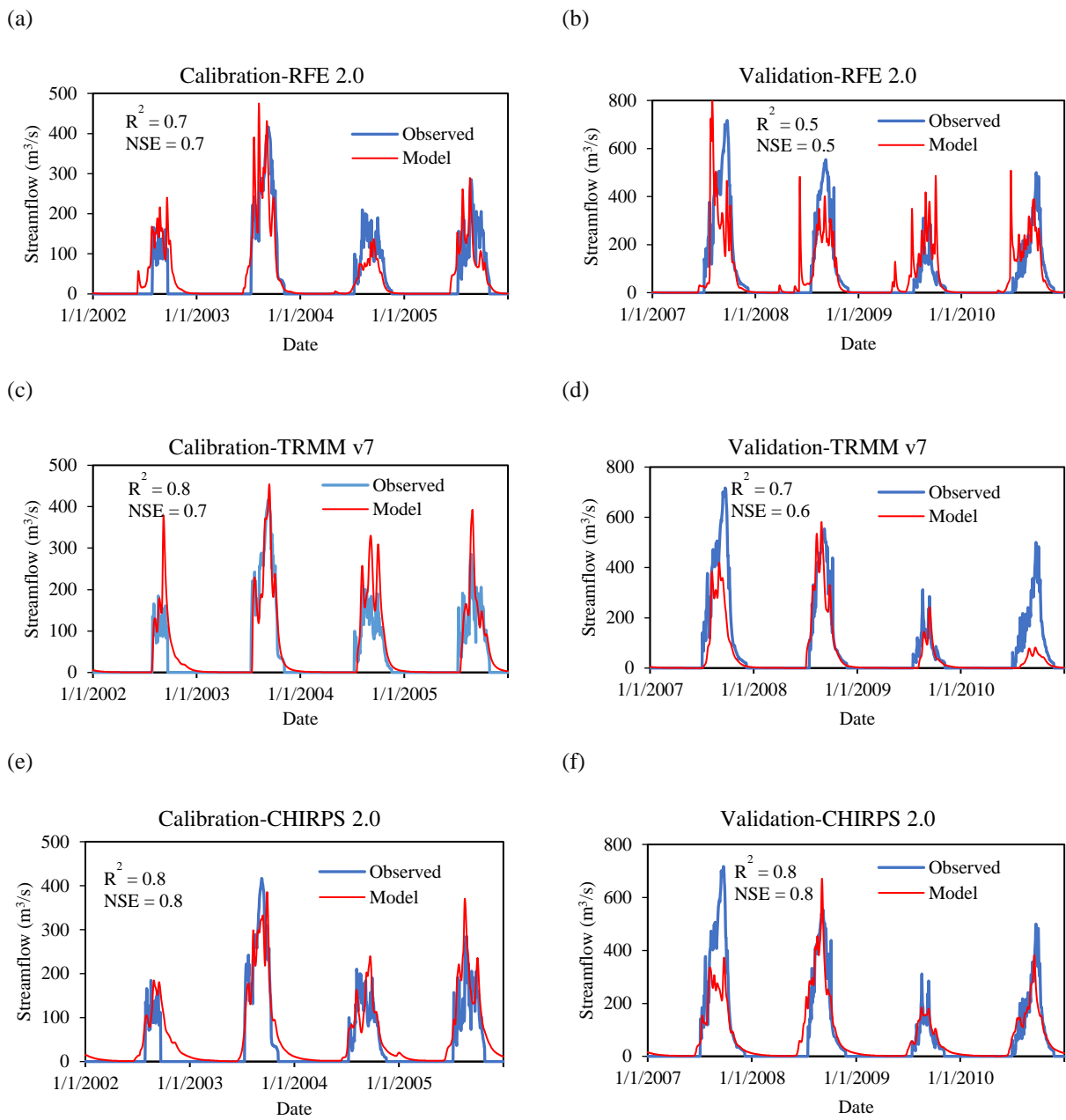


Figure 6. Calibration and validation results at Al-Gewisi station on Dinder River (a) and (b) for RFE, (c) and (d) for TRMM and (e) and (f) for CHIRPS.

5

10

15

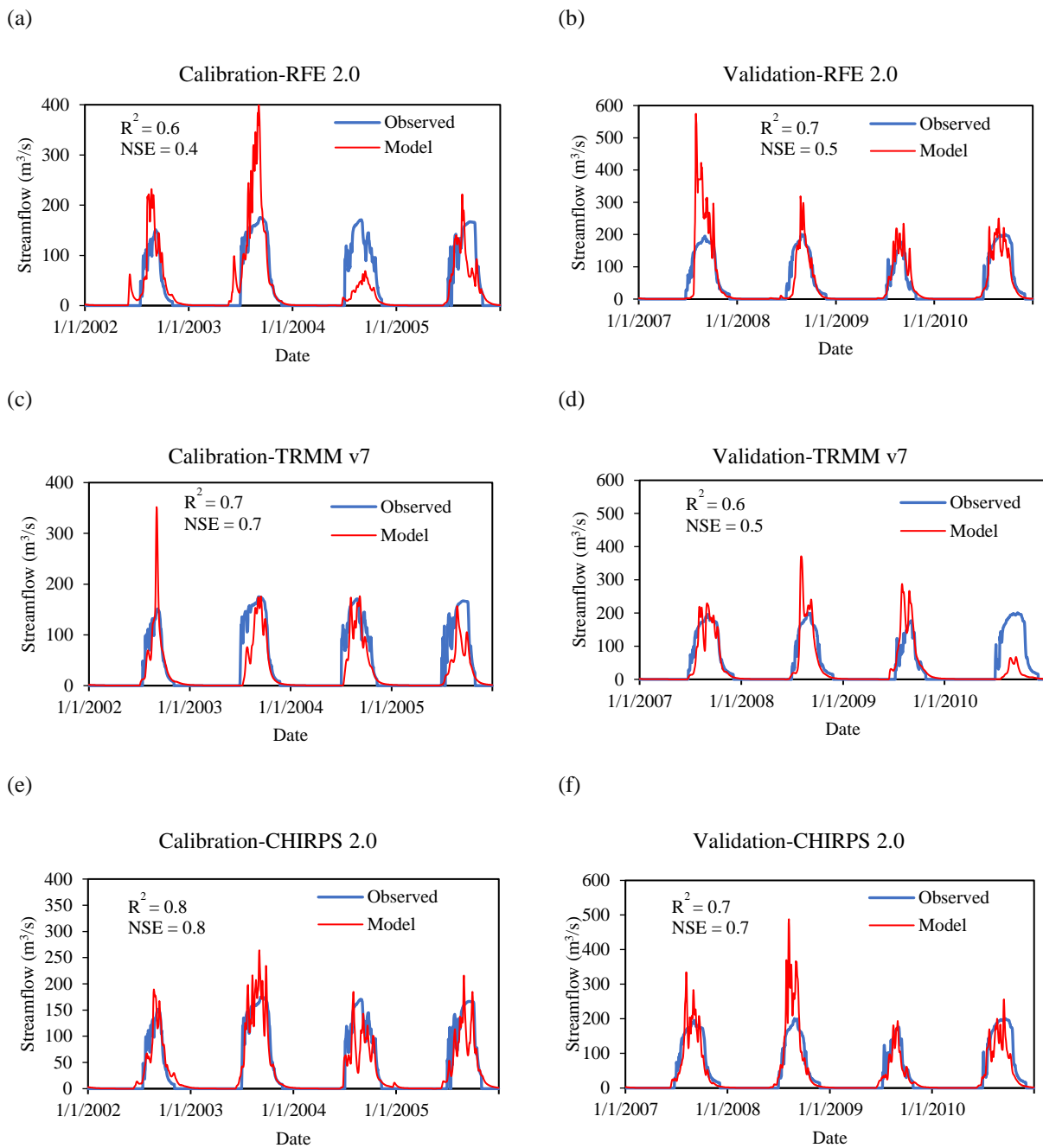


Figure 7. Calibration and validation results at Al-Hawata station on Rahad River (a) and (b) for RFE, (c) and (d) for TRMM and (e) and (f) for CHIRPS.

4.2 Streamflow response under land cover conversions

- 5 After the calibration and validation of the WFlow, the model has been run using different land use with fixed model parameters. First with land use from 1972; second with land use from 1986; third with land use from 1998; and fourth with land use from 2011. Then the output flows from the four land uses were compared. We note that the rainfall (CHIRPS) and PET for the period 2001-2012 were used with the 1972, 1986, 1998 and 2011 land uses to identify hydrological impacts of changes in land cover explicitly.
- 10 The WFlow result indicates that streamflow is affected by LULCC in both the Dinder and the Rahad Rivers. The effect of LULCC is much larger in the Rahad than in the Dinder. In the Rahad basin, the simulated streamflow showed low peak flow with land use of 1972 and high flow with land use of 2011. Woodland and shrubland are dominants in 1972 and occupied 35%

and 30% of the upper catchment area respectively. While cropland is the dominant land cover type in 2011 which occupied 68%. Woodland and shrubland have high porosity and they delayed the release of water to the catchment outlet. Woodland removal implies less infiltration due to a decrease in soil permeability and less interception of rainfall by the tree canopies and thus more runoff and high flow peaks. The daily streamflow of the Dinder and the Rahad as results from different LULC are shown in Fig. 8. Figure 9.a shows the simulated streamflow of the Rahad River as a result from land covers of 1972, 1986, 1998 and 2011. Annual streamflow increased by 75% between 1972 and 1986, but is followed by a decrease of 45% between 1986 and 1998. The increase of streamflow could be a result of a decrease in woodland by 60% from 35% in 1972 to 14% in 1986 associated with an increase in cropland and grassland. Cropland has increased by 44% from 18% in 1972 to 26% in 1986 and grassland has increased by 100% from 11% in 1972 to 22% in 1986. This increase of grassland thus decreases water infiltration due to soil compaction caused by grazing which causes both higher runoff and an increase in annual streamflow magnitude. During the period 1986-1998, cropland and woodland showed a significant increase by 113% and 53%, respectively, while the remaining categories showed declines. During the period 1998-2011, the annual streamflow increased by 65% and corresponds with results on increases in the percentage of bare land, cropland, and shrubland by 754%, 23% and 15%, respectively, while a decrease in woodland and grassland by 37%, and 94%, respectively.

Similar to the Rahad, the simulated streamflow of the Dinder River showed low peak flow with land use of 1972 and relatively high flow with land use of 2011. Woodland is dominant in 1972 and occupied 42% of the total catchment area. While cropland is the dominant land cover type in 2011 which occupied 47%. Figure 9.b shows the simulated annual streamflow of the Dinder River as a result from land covers of 1972, 1986, 1998 and 2011. Annual streamflow increased by 20% between 1972 and 1986 but is followed by a decrease of 9% between 1986 and 1998. This could be a result of a decrease in woodland by 43% from 42% in 1972 to 23% in 1986 associated with an increase in shrubland, grassland and cropland by 83%, 10% and 6%, respectively. During the period 1986-1998, cropland and woodland increased by 192% and 16%, respectively, while the remaining categories showed declines. Over the period 1998-2011, the annual streamflow increased by 52% and corresponds with findings on increases in the percentage of bare land, cropland, and shrubland by 360%, 4% and 71%, respectively, while a decrease in woodland and grassland by 50%, and 76%, respectively. The decrease in percentage change of bare area over the period 1986-1998, beside the increase in woodland in both the Dinder and the Rahad basins indicate that the environment was recovering from the severe drought of 1984/1985.

In addition to the streamflow response to LULCC, evapotranspiration (ET) is another important component of the water balance that constitutes a major determinant of the amounts of water draining from different land cover type within the catchment. The ET result shows high rates of actual evapotranspiration (AET) when running the model with land cover of the years 1972 and 1998 at both the sub-catchments and the entire catchment (Table 4 and 5). This can be attributed to the large percentage coverage of woodland in 1972 and 1998 compared to land cover of 1986 and 2011 (please refer to table 3). The lowest AET is observed when running the model with land cover of 1986. This is likely due to the severe drought during the mid-1980s that limits the water availability and decreases the green coverage. Table 4 presents the changing in the annual average AET at sub-catchment level as a response to LULCC for the Dinder catchment. Table 5 shows the changes in water balance for the entire Dinder and Rahad catchments when running the hydrologic model with different LULC and fixed rainfall data for the periods (2001-2012).

Since both the Dinder and the Rahad rivers are seasonal, their flows are mainly depending on rainfall patterns and magnitudes. In addition to the effect of LULCC on the streamflow, Figure 10 shows that the annual variability of rainfall is another factor affecting the annual patterns of the streamflow.

40

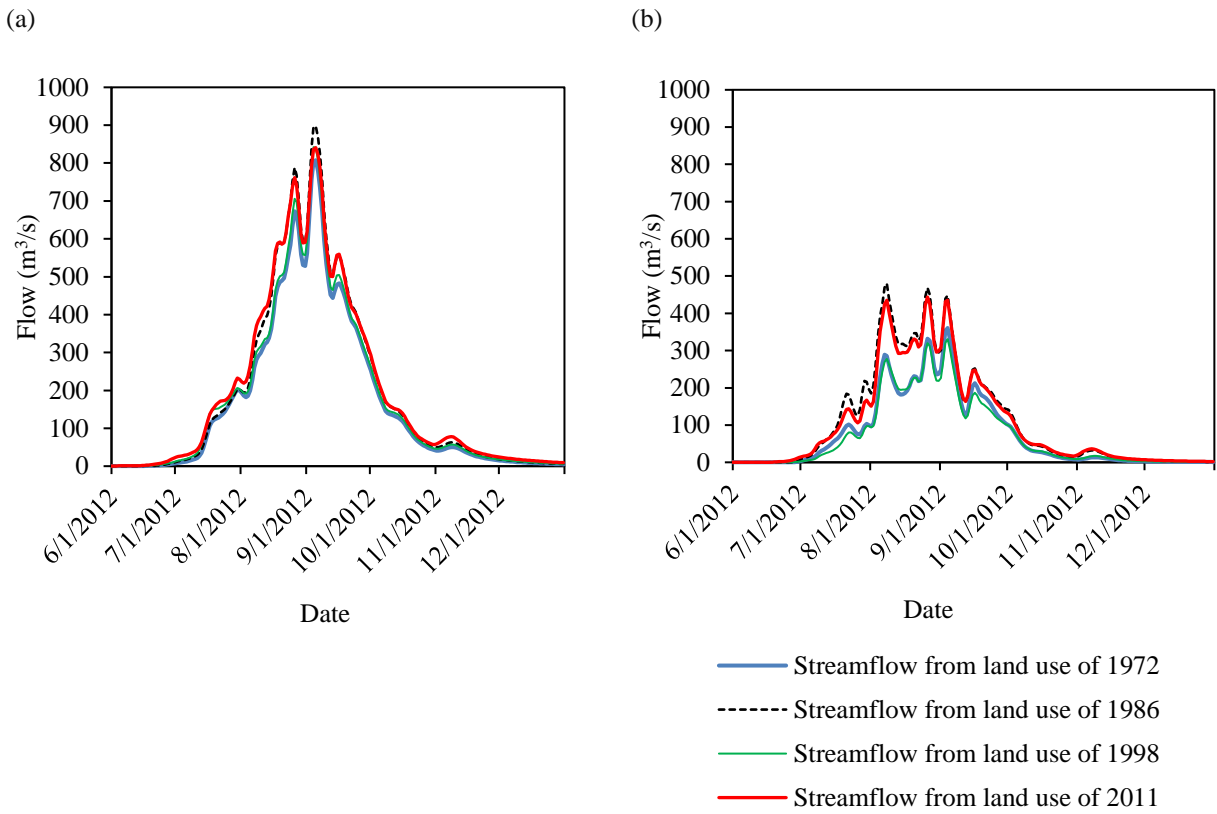


Figure 8. Daily streamflow results from the WFlow model at (a) Al-Gewisi station on the Dinder River and (b) Al-Hawata station on the Rahad River based on land use from 1972, 1986, 1998 and 2011 for the year 2012 as an example.

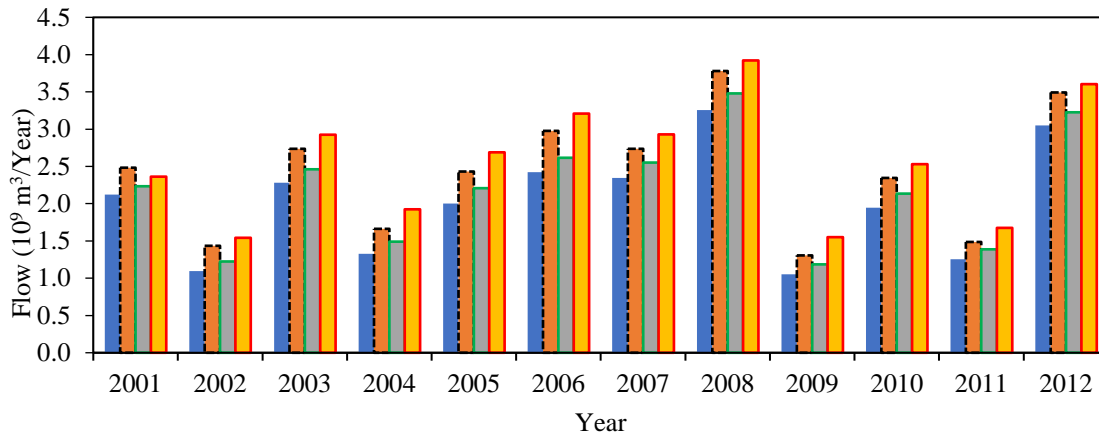
5

10

15

20

(a)



(b)

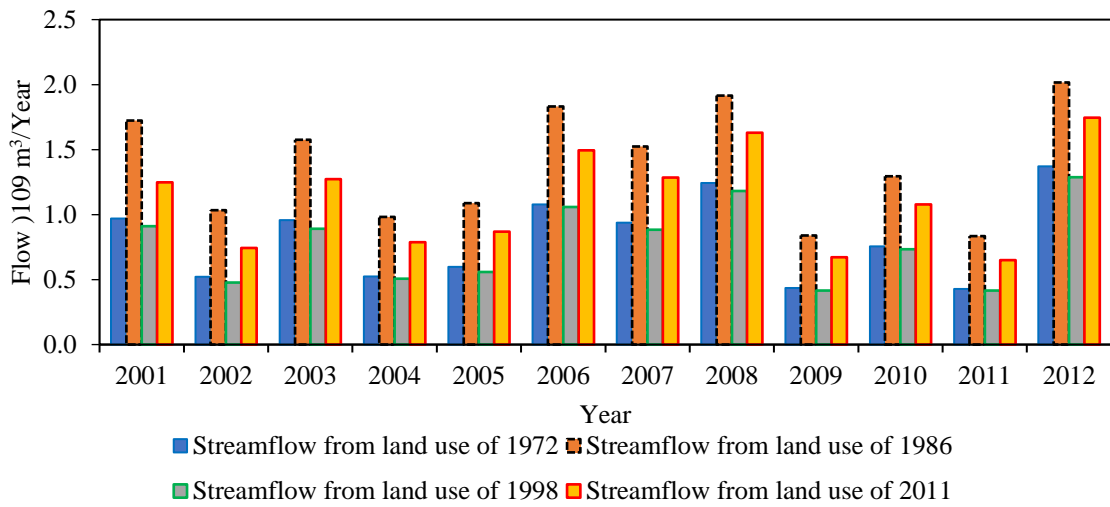


Figure 9. Annual streamflow results from the WFlow model at (a) Al-Gewisi station on the Dinder River and (b) Al-Hawata station on the Rahad River based on land use from 1972, 1986, 1998 and 2011

5

Table 4: Annual average AET as a response to LULCC at the sub-catchments level for the Dinder catchment (1972-1986).

Year	AET from land cover of 1972 (mm)				AET from land cover of 1986 (mm)			
	Al-Gewisi	Musa	Gelagu	Upper Dinder	Al-Gewisi	Musa	Gelagu	Upper Dinder
2001	558	583	626	464	426	424	396	288
2002	443	456	535	510	322	317	306	312
2003	564	639	642	486	425	469	405	312
2004	455	502	573	500	326	354	340	311
2005	504	547	575	505	376	396	358	323
2006	527	576	632	545	396	414	406	359
2007	598	602	618	564	468	444	400	382
2008	593	689	703	576	459	513	471	392
2009	421	482	519	516	310	343	302	323
2010	536	566	606	520	412	415	383	331
2011	470	467	554	530	350	327	329	332
2012	636	679	684	542	500	504	450	353

10

Table 5: Water balance of the Dinder and Rahad catchments applying different LULC

Dinder catchment		Land cover of 1972			Land cover of 1986		Land cover of 1998		Land cover of 2011	
Year	Rainfall (mm)	AET (mm)	Streamflow (mm)	AET (mm)	Streamflow (mm)	AET (mm)	Streamflow (mm)	AET (mm)	Streamflow (mm)	
2001	816	558	258	383	433	432	384	496	320	
2002	663	486	177	314	349	364	299	430	233	
2003	847	583	264	403	444	449	397	519	327	
2004	703	507	195	333	370	374	329	451	252	
2005	768	532	236	363	405	414	354	479	289	
2006	835	570	265	394	441	441	395	513	322	
2007	876	595	280	424	452	476	400	540	336	
2008	929	640	289	459	470	509	420	582	347	
2009	659	484	175	319	340	363	297	435	225	
2010	817	557	260	385	432	432	386	505	312	
2011	710	505	205	334	376	377	333	454	256	
2012	972	635	337	452	520	498	474	579	393	

Rahad catchment		Land cover of 1972			Land cover of 1986		Land cover of 1998		Land cover of 2011	
Year	Rainfall (mm)	AET (mm)	Streamflow (mm)	AET (mm)	Streamflow (mm)	AET (mm)	Streamflow (mm)	AET (mm)	Streamflow (mm)	
2001	724	409	315	290	434	398	326	309	416	
2002	641	398	243	271	370	383	258	291	350	
2003	755	450	305	323	432	434	322	342	413	
2004	609	360	249	231	378	338	270	244	364	
2005	656	399	258	267	389	378	278	285	372	
2006	782	450	332	324	457	431	351	336	446	
2007	774	473	301	344	430	456	319	363	411	
2008	754	438	315	313	441	415	338	322	431	
2009	581	352	229	220	361	333	248	238	343	
2010	744	449	295	319	425	431	313	335	409	
2011	610	369	241	235	375	348	262	252	358	
2012	873	507	366	381	492	485	388	390	483	

5

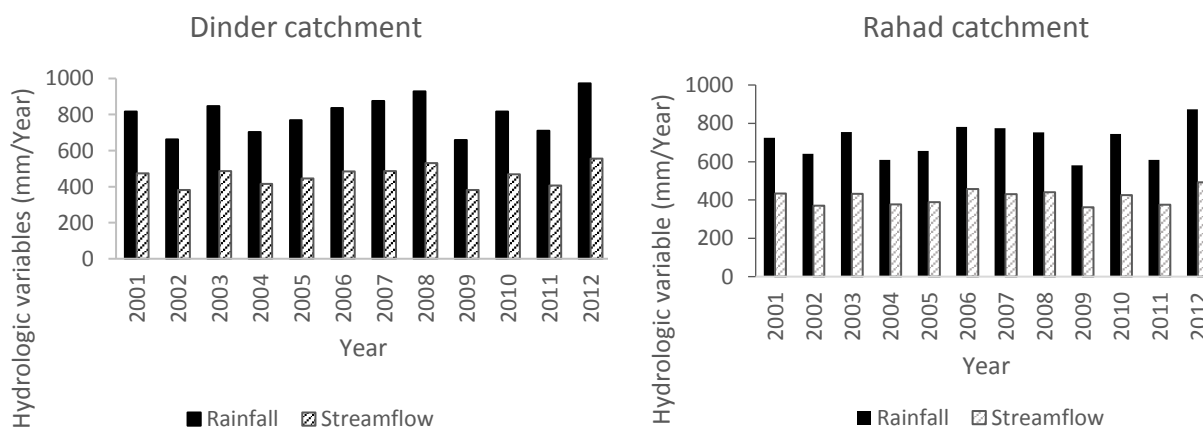


Figure 10: Annual average rainfall and streamflow patterns and magnitudes for the years (2001-2012).

10 4.3 Streamflow analysis with IHA

Since both Dinder and Rahad are seasonal rivers (July-November) and its floodplains including the mayas are mainly depending on floods, the streamflow analysis is focused on the flows during the months of high flows and the indicators describing the hydrological high extremes. The investigated streamflow variables are a subset of the 32 indicators proposed

by Richter et al. (1996) under the Range of Variability approach (RVA) that characterizes the natural flow regime of a river into five categories of magnitude, timing, duration, frequency and rate of change. In this section, we analyzed the modelled streamflow as a result from LULC of 1972, 1986, 1998 and 2011.

4.3.1 Magnitude of monthly flow

5 The general pattern of median monthly flow of the Rahad River (Fig. 11.a) at Al-Hawata station during 1972-1986 is that the median flow increased in all months of flow (July-November) with an average of 83% per month. In contrast, the median monthly flow decreased in all months during the period 1986-1998 with an average of 45% per month. Similar to the period from 1972-1986, the median monthly flow during 1998-2011 increased by an average of 65% per month.

10 In comparison to Rahad, the Dinder median monthly flow (Fig. 11.b) at Al-Gewisi station during 1972-1986 increased in all months of flow by an average of 21% per month. In contrast, the median monthly flow decreased in all months during the period 1986-1998 with an average of 6% per month. Likewise, to the period from 1972-1986, the median monthly flow during 1998-2011 increased by an average of 17% per month. Alterations of the monthly flow magnitude, particularly during the months of high flows (August-October) is likely affecting habitat availability on floodplains, which may lead to decrease and/or disappearance of native flora and increase in non-natives flora that might not be suitable for the herbivores wildlife that

15 dwells in the DNP.

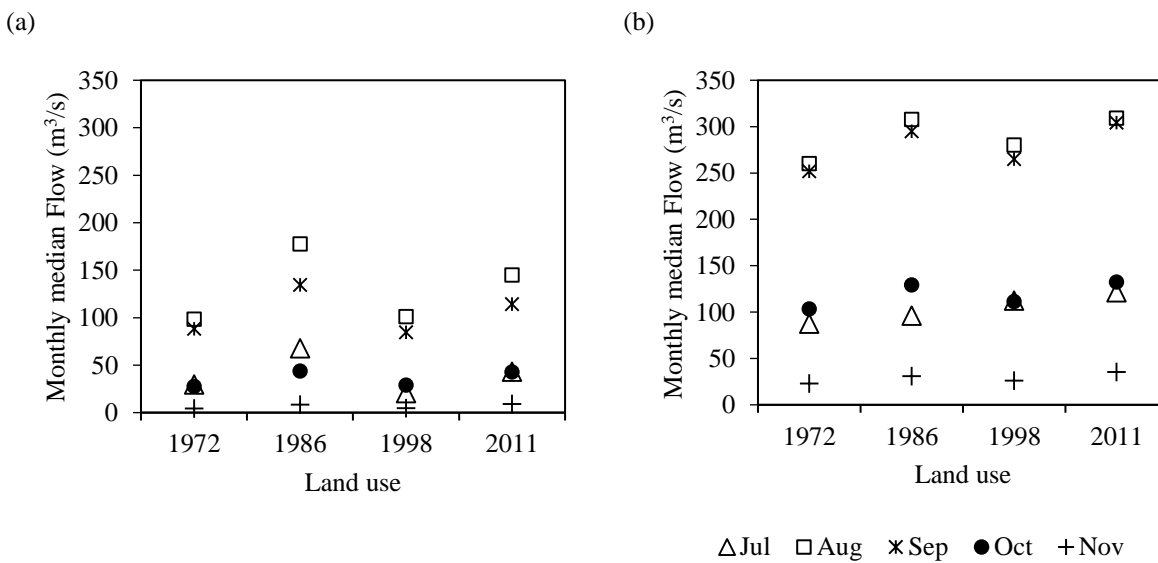


Figure 11. The monthly median flow (a) for Rahad River and (b) for Dinder River

20

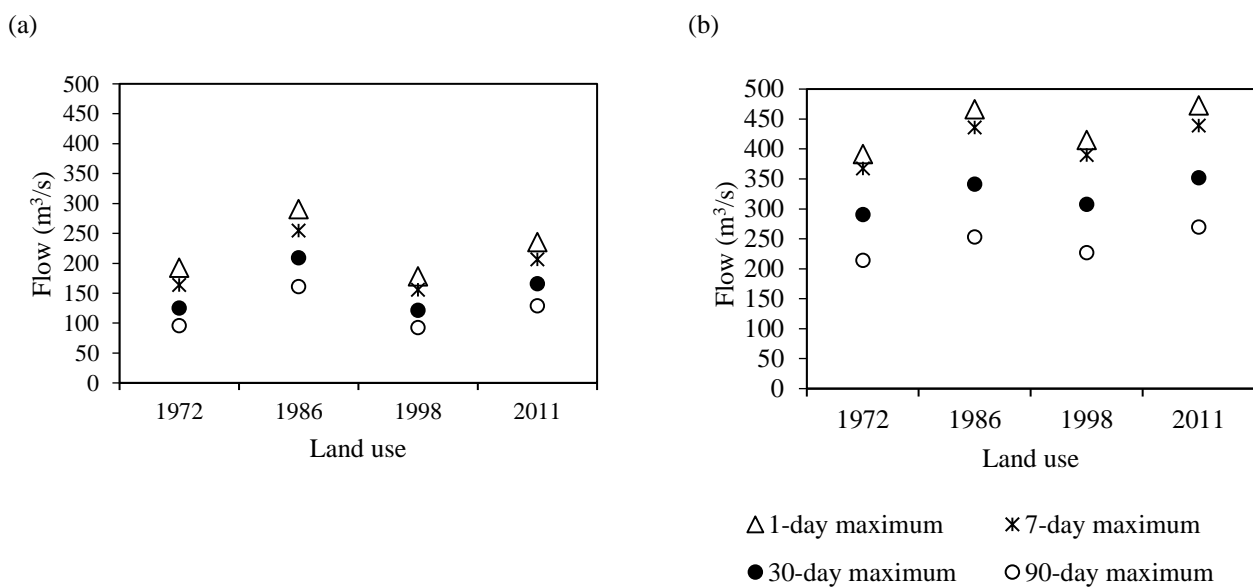
4.3.2 Magnitude of river extreme floods

Extreme floods are important in re-forming both the biological and physical structure of a river and its associated floodplain. Extreme floods are also important in forming key habitats such as oxbow lakes and floodplain wetlands. The pattern of the extreme flow is vital for the filling of wetland mayas of the DNP. Therefore, annual flow maxima of 1, 7, 30 and 90-day have been investigated. The median maxima are presented in Fig. 12. In general, all results have shown that the maxima are significantly affected by LULCC. In Rahad median flow maxima for 1, 7, 30 and 90-day intervals from the land use of 1986 are 51 %, 56%, 67%, and 68%, respectively higher than the maxima from the land use of 1972. Likewise, median flow maxima for 1, 7, 30 and 90-day intervals from the land use of 2011 are 32 %, 33%, 36%, and 39%, respectively higher than the maxima

25

from the land use of 1998. In contrast, median flow maxima for 1, 7, 30 and 90-day intervals from the land use of 1998 are 39 %, 39%, 42%, and 42%, respectively lower than the maxima from the land use of 1986.

5 In the Dinder River the effect of LULCC on streamflow is not big as in Rahad River. This is likely due to the large expansion in cropland in the Rahad catchment to 68% of the total area compared to 47% in the Dinder catchment. The median flow maxima for 1, 7, 30 and 90-day intervals from the land use of 1986 are 19 %, 19%, 18%, and 18%, respectively higher than the maxima from the land use of 1972. Likewise, the median flow maxima for 1, 7, 30 and 90-day intervals from the land use of 2011 are 14 %, 13%, 14%, and 19% respectively higher than the maxima from the land use of 1998. In contrast, the median flow maxima for 1, 7, 30 and 90-day intervals from the land use of 1998 are 11 %, 11%, 10%, and 10%, respectively lower than the maxima from the land use of 1986. Peak flows are the critical aspects of the lateral connectivity between the
 10 Rahad and the Dinder rivers and its floodplains. Reduction of the magnitude of these high flow peaks during dry years (less than average) may reduce the ecological function of the mayas wetlands areas as breeding, nursery and feeding habitat for wildlife.



15 **Figure 12.** Median flow maxima for 1, 7, 30 and 90-day intervals from the land use of 1972, 1986, 1998 and 2011 for (a) Rahad River and (b) Dinder River.

4.3.3 Timing of annual extreme floods

20 Synchronization of annual flood with a variety of riverine and floodplain species life-cycle requirements is of likely high importance given the adaptation of species to their habitat. In the Rahad River, dates of the annual maxima as results from the land use of 1972, 1986, 1998 and 2011 occurred within the same three weeks (15 August – 02 September, Julian date (JD) 227–245). The annual maxima from the land use of 1986 is 18 days earlier than the annual maxima from land use of 1972. This could be attributed to land cover degradation and deforestation due to the devastating drought of 1984/1985 result in accelerating the runoff response.

25 In Dinder River, dates of the annual maxima are not affected by LULCC and occurred within the same two days (11 September – 12 September, Julian date (JD) 254–255).

4.3.4 Rate of change in flow

The rate of change in flow can affect persistence and lifetime for both aquatic and riparian species (Poff et al. 1997), particularly in arid areas where streamflow usually changes rapidly in a very short time. Figure 13 shows the rate of flow-rises and flow-falls for both Rahad and Dinder. The median rate of flow-rises (positive differences between consecutive daily values) in Rahad River has increased by 74% from 2.73 (m³/s) /day in 1972 to 4.73 (m³/s) /day in 1986. In 1998 the median rate of flow-rises decreased by 50%, while increasing by 37% in 2011. Similarly, the median rate of flow-falls (negative differences between consecutive daily values) has increased by 88% from 0.12 (m³/s) /day in 1972 to 0.23 (m³/s) /day in 1986. In 1998 the median rate of flow-falls decreased by 37%, while increasing by 22% in 2011. Likewise, the median rate of flow-rises and flow-falls in the Dinder River follow the same pattern of the Rahad flow, but no significant changes were observed. This result shows that the fluctuation in rate of change in streamflow is strongly linked to LULCC, especially when analyzing the streamflow as a result from land use after a period of drought (e.g. land use of 1986).

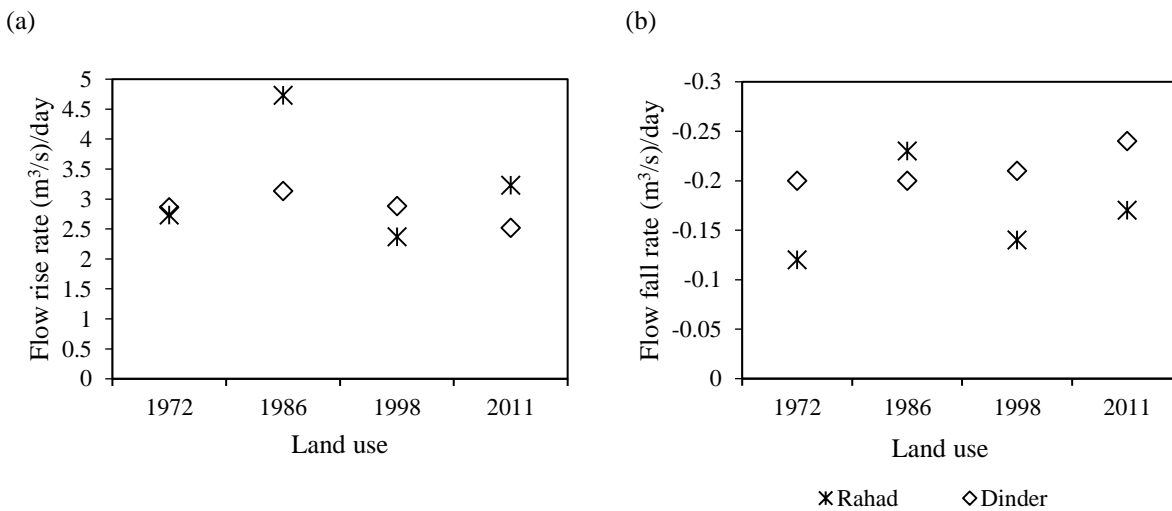


Figure 13. The rate of flow rises (a) and falls (b) as a response to land use of 1972, 1986, 1998 and 2011 for both Rahad and Dinder Rivers (negative sign in the vertical axis indicates downward direction of flow).

5 Conclusion

For assessing the changes in land cover, four remote sensing images were used for the years 1972, 1986, 1998 and 2011. The accuracy assessment with supervised land cover classification shows that the classification results are reliable. The land cover changes in the D&R are assessed by image comparison and the results showed that the dominant process is the relatively large decrease of woodland and the large increase of cropland. Results of LULCC detection between 1972 and 2011 indicate a significant decrease of woodland and an increase of cropland. Woodland decreased from 42% to 14% and from 35% to 14% for Dinder and Rahad respectively. Cropland increased from 14% to 47% and from 18% to 68% in Dinder and Rahad respectively. The rate of deforestation is high during the period 1972-1986 and probably is due to the severe drought during 1984/1985, expansion in agricultural activities and increased demand for wood for fuel, construction and other human needs due to the increase in population. On the other hand, increasing in woodland during the period between 1986 and 1998 is probably due to reforestation activities in the basin. Nevertheless, the magnitude of deforestation is still much larger than the reforestation. The cropland expansion over the period 1986 to 1998 is larger than the expansion over the period 1998 to 2011, suggests that most of the areas that are suitable for cultivation have most likely been occupied, or the land tenure regulations have controlled the expansion of cultivation by local communities.

The results of the hydrological model indicate that streamflow is affected by LULCC in both the Dinder and the Rahad Rivers. The effect of LULCC on streamflow is significant during 1986 and 2011 particularly in the Rahad River. This could be attributed to the severe drought during 1984/1985 and the large expansion in cropland in the Rahad catchment to 68% of the total area.

5 The IHA analysis indicated that the flow of the Dinder and the Rahad Rivers was associated with significant upward and downward alterations in magnitude, timing and rate of change of river flows, as a result of LULCC. These alterations in the streamflow characteristics are likely to have significant effects on a range of species that depend on the seasonal patterns of flow. Therefore, alterations in the magnitude of the annual floods that decrease the water flowing to the mayas may reduce the production of native river-floodplain fauna and flora, and migration of animals that may be connected to mayas inundation.

10

Competing interests: The third author is a member of the editorial board of the journal.

15 **Acknowledgements:** This study was carried out as part of a Ph.D. research program of the first author entitled "The impacts of land degradation on the Dinder and Rahad hydrology and morphology, and linkage to the ecohydrological system of the Dinder National Park, Sudan", which is funded by the Netherland Fellowship Program (NFP). We also thank the Hydraulics Research Center of the Ministry of Water Resources and Electricity-Sudan for providing the hydrological data.

20 **Appendix A:**

The wflow_sbm interception model:

The analytical model of rainfall interception is based on Rutter's numerical model (see Gash, 1979; Gash et al., 1995, for a full description). The simplifications that Gash (1979) introduced allow the model to be applied on a daily basis. The amount of water needed to completely saturate the canopy (P') is defined as:

25
$$P' = \frac{-\bar{R}S}{\bar{E}_w} \ln \left[1 - \frac{\bar{E}_w}{\bar{R}} (1 - p - p_t)^{-1} \right] \quad (A1)$$

where:

30 \bar{R} = average precipitation on a saturated canopy [mm day⁻¹]

\bar{E}_w = average evaporation from the wet canopy [mm day⁻¹]

S = canopy storage capacity [mm]

p = free throughfall coefficient: the proportion of rain which falls to the ground without sticking the canopy [-]

p_t = proportion of rain that is diverted to stemflow [-]

35 Interception losses from the stems are calculated for days with $P \geq S_t/P_t$. S_t (trunk water capacity [mm]) and P_t are small and neglected in the wflow_sbm model. In applying the analytical model, saturated conditions are assumed to occur when the hourly rainfall exceeds a certain threshold. Often a threshold of 0.5 mm hr⁻¹ is used (Gash, 1979). \bar{R} is calculated for all hours when the rainfall exceeds the threshold to give an estimate of the mean rainfall rate onto a saturated canopy. E_w is then calculated using the Rutter model.

The wflow_sbm soil water accounting scheme:

Within the soil model, the soil is considered as a bucket with a certain depth (Z_i), divided into a saturated store (S) and an unsaturated store (U), the capacity of each is expressed in units of depth. The top of the saturated store forms a pseudo-water table at depth (Z_i) such that the value of (S) at any time is given by:

$$5 \quad S = (z_t - z_i)(\theta_s - \theta_r) \quad (A2)$$

Where:

θ_s and θ_r are the saturated and residual soil water contents, respectively.

The unsaturated store (U) is subdivided into storage (U_s) and deficit (U_d) which are also expressed in units of depth:

$$U_d = (\theta_s - \theta_r)z_i - U \quad (A3)$$

10 and

$$U_s = U - U_d \quad (A4)$$

The saturation deficit (S_d) for the whole soil profile is defined as:

$$S_d = (\theta_s - \theta_r)z_t - S \quad (A5)$$

15 Infiltrating rainfall enters the unsturated store first. The transfer of water from the unsaturated store to the saturated store (st) is controlled by the saturated hydraulic conductivity K_{sat} at depth (Z_i) and the ratio between U_s and S_d .

$$st = K_{sat} \frac{U_s}{S_d} \quad (A6)$$

As the saturation deficit becomes smaller, the rate of the transfer between the unsaturated and saturated stores increases. Saturated conductivity (K_{sat}) declines with soil depth (z) in the model according to:

$$K_{sat} = K_0 e^{(-fz)} \quad (A7)$$

20 where:

K_0 is the saturated conductivity at the soil surface [$m \text{ day}^{-1}$] and;

f is a scaling parameter [m^{-1}]

The scaling parameter f is defined by:

$$25 \quad f = \frac{\theta_s - \theta_r}{M} \quad (A8)$$

M is a soil parameter determining the decrease of saturated conductivity with depth [m].

The saturated store can be drained laterally via subsurface flow according to:

30

$$sf = K_0 \tan(\beta) e^{-S_d/M} \quad (A9)$$

where:

β is element slope angle [deg.]

sf is the calculated subsurface flow [$m^2 \text{ day}^{-1}$]

5

The original SBM model does not include transpiration or a notion of capillary rise. In wflow_sbm transpiration is first taken from the saturated store if the roots reach the water table (Z_i). If the saturated store cannot satisfy the demand the unsaturated store is used next. First the number of wet roots (WR) is determined (going from 1 to 0) using a sigmoid function as follows:

10

$$WR = 1.0 / (1.0 + e^{-SN(WT-RT)}) \quad (A10)$$

where:

SN is sharpness parameters

WT is water table [mm]

15

RT is rooting depth [mm]

The sharpness parameter (by default a large negative value, -80000) is a parameter determines if there is a stepwise output or a more gradual output (default is stepwise). Water Table is the level of the Water table in the grid cell below the surface and rooting depth is the maximum depth of the roots below the surface. For all values of water tables smaller that rooting depth a value of 1 is returned, if they are equal to rooting depth a value of 0.5 is returned, and if the water table is larger than the rooting depth a value of zero is returned. The returned wet roots (WR) fraction is multiplied by the potential evaporation (and limited by the available water in saturated store) to get the transpiration from the saturated part of the soil. Next the remaining potential evaporation is used to extract water from the unsaturated store.

20

Capillary rise is determined using the following approach: first the K_{sat} is determined at the water table (Z_i); next a potential capillary rise is determined from the minimum of the K_{sat} , the actual transpiration taken from the unsaturated store, the available water in the saturated store and the deficit of the unsaturated store. Finally, the potential rise is scaled using the distance between the roots and the water table using:

25

$$CS = CSF / (CSF + z_i - RT) \quad (A11)$$

30

in which CS is the scaling factor to multiply the potential rise with, CSF is a model parameter (default = 100) and RT is the rooting depth. If the roots reach the water table ($RT > Z_i$) CS is set to zero and thus setting the capillary rise to zero. A detailed description of the TOPOG_SBM model has been provided by R. A. Vertessy and H. Elsenbeer ¹.

35

40

Appendix B:

5 Wflow model parameter's description

Parameter name in Wflow	Description	Unit
CanopyGapFraction	Gash interception model parameter: the free throughfall coefficient. Fraction of precipitation that does not hit the canopy directly	[-]
EoverR (E/R)	Gash interception model parameter. Ratio of average wet canopy evaporation rate over average precipitation rate.	[-]
MaxCanopyStorage	Canopy storage. Used in the Gash interception model	[mm]
FirstZoneCapacity	Maximum capacity of the saturated store.	[mm]
FirstZoneKsatVer	Saturated conductivity of the store at the surface. The M parameter determines how this decreases with depth.	[mm]
FirstZoneMinCapacity	Minimum capacity of the saturated store [mm]	[mm]
InfiltCapPath	Infiltration capacity of the compacted soil fraction of each gridcell.	[mm/day]
InfiltCapSoil	Infiltration capacity of the non-compacted soil fraction of each grid cell	[mm/day]
M	Soil parameter determining the decrease of saturated conductivity with depth.	[m]
N	Manning N parameter for the Kinematic wave function.	
N_river	Manning's parameter for cells marked as river	
LeafAreaIndex	Total one-side green leaf area per ground surface area.	[-]
Albedo	Reflectivity of earth surface: the ratio of radiation reflected to the radiation incident on a surface.	[-]
Beta	element slope angle	[degree]
rootdistpar	Sharpness parameter determine how roots are linked to water table.	[mm]
PathFrac	Fraction of compacted area per grid cell.	[-]
RootingDepth	Rooting depth of the vegetation.	[mm]
CapScale	Scaling factor in the Capillary rise calculations	[mm/day]
RunoffGeneratingGWperc	Fraction of the soil depth that contributes to sub-cell runoff	[-]
thetaR	Residual water content.	[-]
thetaS	Water content at saturation (porosity).	[-]

10

15

20

25

30

35

Appendix C:

Wflow model parameters calibrated values

Albedo

Land cover	Sub-catchment	Soil type	Value
1	[0,>	[0,>	0.40
2	[0,>	[0,>	0.20
3	[0,>	[0,>	0.16
4	[0,>	[0,>	0.26
5	[0,>	[0,>	0.25
6	[0,>	[0,>	0.10

EoverR

Land cover	Sub-catchment	Soil type	Value
1	[0,>	[0,>	0.0
2	[0,>	[0,>	0.3
3	[0,>	[0,>	0.2
4	[0,>	[0,>	0.2
5	[0,>	[0,>	0.1
6	[0,>	[0,>	0.0

FirstZoneKsatVer

Land cover	Sub-catchment	Soil type	Value
[0,>	[0,>	1	511
[0,>	[0,>	2	600
[0,>	[0,>	3	543
[0,>	[0,>	4	525
[0,>	[0,>	5	586
[0,>	[0,>	6	576
[0,>	[0,>	7	540

InfiltCapPath

Land cover	Sub-catchment	Soil type	Value
[0,>	[0,>	1	5
[0,>	[0,>	2	21
[0,>	[0,>	3	5
[0,>	[0,>	4	32
[0,>	[0,>	5	34
[0,>	[0,>	6	5
[0,>	[0,>	7	21

LeafAreaIndex

Land cover	Sub-catchment	Soil type	Value
1	[0,>	[0,>	0.0
2	[0,>	[0,>	8.8
3	[0,>	[0,>	7.0
4	[0,>	[0,>	0.6
5	[0,>	[0,>	0.7
6	[0,>	[0,>	0.0

MaxCanopyStorage

Land cover	Sub-catchment	Soil type	Value
1	[0,>	[0,>	0.00
2	[0,>	[0,>	0.336
3	[0,>	[0,>	0.21
4	[0,>	[0,>	0.25
5	[0,>	[0,>	0.34
6	[0,>	[0,>	0.00

CanopyGapFraction

Land cover	Sub-catchment	Soil type	Value
1	[0,>	[0,>	1.0
2	[0,>	[0,>	0.2
3	[0,>	[0,>	0.6
4	[0,>	[0,>	0.5
5	[0,>	[0,>	0.4
6	[0,>	[0,>	0.5

FirstZoneCapacity

Land cover	Sub-catchment	Soil type	Value
[0,>	[0,>	1	44500
[0,>	[0,>	2	42000
[0,>	[0,>	3	44500
[0,>	[0,>	4	39000
[0,>	[0,>	5	44000
[0,>	[0,>	6	42000
[0,>	[0,>	7	44500

FirstZoneMinCapacity

Land cover	Sub-catchment	Soil type	Value
[0,>	[0,>	1	125
[0,>	[0,>	2	50
[0,>	[0,>	3	137.5
[0,>	[0,>	4	33
[0,>	[0,>	5	87.5
[0,>	[0,>	6	60
[0,>	[0,>	7	70

InfiltCapSoil

Land cover	Sub-catchment	Soil type	Value
[0,>	[0,>	1	24
[0,>	[0,>	2	103
[0,>	[0,>	3	24
[0,>	[0,>	4	158
[0,>	[0,>	5	170
[0,>	[0,>	6	100
[0,>	[0,>	7	103

M

Land cover	Sub-catchment	Soil type	Value
[0,>	[0,>	1	100
[0,>	[0,>	2	87
[0,>	[0,>	3	100
[0,>	[0,>	4	77
[0,>	[0,>	5	100
[0,>	[0,>	6	100
[0,>	[0,>	7	100

N

Land cover	Sub-catchment	Soil type	Value
1	[0,>	[0,>	0.42
2	[0,>	[0,>	0.80
3	[0,>	[0,>	0.70
4	[0,>	[0,>	0.65
5	[0,>	[0,>	0.80
6	[0,>	[0,>	0.12

PathFrac			
Land cover	Sub-catchment	Soil type	Value
[0,>	[0,>	1	0.06
[0,>	[0,>	2	0.09
[0,>	[0,>	3	0.05
[0,>	[0,>	4	0.06
[0,>	[0,>	5	0.06
[0,>	[0,>	6	0.07
[0,>	[0,>	7	0.08

RootingDepth			
Land cover	Sub-catchment	Soil type	Value
1	[0,>	[0,>	1000
2	[0,>	[0,>	1800
3	[0,>	[0,>	1400
4	[0,>	[0,>	1600
5	[0,>	[0,>	200
6	[0,>	[0,>	0

thetaR			
Land cover	Sub-catchment	Soil type	Value
[0,>	[0,>	1	0.15
[0,>	[0,>	2	0.09
[0,>	[0,>	3	0.19
[0,>	[0,>	4	0.09
[0,>	[0,>	5	0.11
[0,>	[0,>	6	0.09
[0,>	[0,>	7	0.08

thetaS			
Land cover	Sub-catchment	Soil type	Value
[0,>	[0,>	1	0.5
[0,>	[0,>	2	0.2
[0,>	[0,>	3	0.5
[0,>	[0,>	4	0.3
[0,>	[0,>	5	0.4
[0,>	[0,>	6	0.2
[0,>	[0,>	7	0.2

RunoffGeneratingGWPer			
Land cover	Sub-catchment	Soil type	Value
[0,>	[0,>	[0,>	0.1

rootdistpar			
Land cover	Sub-catchment	Soil type	Value
[0,>	[0,>	[0,>	-80000

N_River			
Land cover	Sub-catchment	Soil type	Value
[0,>	[0,>	[0,>	0.035

Beta			
Land cover	Sub-catchment	Soil type	Value
[0,>	[0,>	[0,>	0.6

CapScale			
Land cover	Sub-catchment	Soil type	Value
[0,>	[0,>	[0,>	100

Land cover: 1= Bare land, 2= woodland, 3= shrubland, 4= grassland, 5= cropland, 6= water bodies.
 Soil type: 1= Vertisols, 2= Luvisols, 3= Nitisols, 4= Leptosols, 5= cambisols, 6= Alisols, 7= Fluvisols.

5

References

- Al Fugara, A. M., Pradhan, B. and Mohamed, T. A.: Improvement of land-use classification using object-oriented and fuzzy logic approach, *Appl. Geomat*, 1, 111-120, 2009.
- Bates, P. and De Roo, A.: A simple raster-based model for flood inundation simulation, *J. Hydrol*, 236, 54-77, 2000.
- 10 Bewket, W. and Sterk, G.: Dynamics in land cover and its effect on stream flow in the Chemoga watershed, Blue Nile basin, Ethiopia, *Hydrol. processes*, 19, 445-458, 2005.
- Bewket, W. and Teferi, E.: Assessment of soil erosion hazard and prioritization for treatment at the watershed level: Case study in the Chemoga watershed, Blue Nile basin, Ethiopia, *Land Degrad. Dev*, 20, 609-622, 2009.
- Biro, K., Pradhan, B., Buchroithner, M. and Makeschin, F.: Land use/land cover change analysis and its impact on soil properties in the northern part of Gadarif region, Sudan, *Land Degrad. Dev*, 24, 90-102, 2013.
- 15 Block, P. and Rajagopalan, B.: Interannual variability and ensemble forecast of Upper Blue Nile Basin Kiremt season precipitation, *J. Hydrometeorol*, 8, 327-343, 2006.
- Congalton, R. G. & Green, K.: *Assessing the accuracy of remotely sensed data: principles and practices*. Series title CRC press, 2008.

- DeFries, R. and Bounoua, L.: Consequences of land use change for ecosystem services: A future unlike the past, *GeoJournal*, 61, 345-351, 2004.
- DeFries, R. and Eshleman, K.: Land - use change and hydrologic processes: a major focus for the future, *Hydrol. processes*, 18, 2183-2186, 2004.
- 5 Deursen van, W. P. A.: *Geographical Information Systems and Dynamic Models*. Ph.d., Utrecht University, NGS Publication 190, 198 pp., URL, <http://www.carthago.nl>, 1995.
- Ellis, E. A., Baerenklau, K. A., Marcos-Martínez, R. and Chávez, E.: Land use/land cover change dynamics and drivers in a low-grade marginal coffee growing region of Veracruz, Mexico, *Agrofor. Syst*, 80, 61-84, 2010.
- Funk, C. C., Peterson, P. J., Landsfeld, M. F., Pedreros, D. H., Verdin, J. P., Rowland, J. D., Romero, B. E., Husak, G. J.,
10 Michaelsen, J. C. and Verdin, A. P.: A quasi-global precipitation time series for drought monitoring, *US Geological Survey Data Series*, 832, 2014.
- Gash, J.: An analytical model of rainfall interception by forests, *Q. J. R. Meteorolog. Soc*, 105(443), 43-55, 1979.
- Gash, J. H. C., Lloyd, C. R., and Lachaud, G.: Estimating sparse forest rainfall interception with an analytical model, *J. Hydrol*, 170:79–86, 1995.
- 15 Gumindoga, W., Rientjes, T. H. M., Haile, A. T. and Dube, T.: Predicting streamflow for land cover changes in the Upper Gilgel Abay River Basin, Ethiopia: A TOPMODEL based approach, *Phys. Chem. Earth., Parts A/B/C*, 76–78, 3-15, doi:<http://dx.doi.org/10.1016/j.pce.2014.11.012>, 2014.
- Hansen, A., DeFries, R. and Turner, W.: *Land Use Change and Biodiversity: A Synthesis of Rates and Consequences during the Period of Satellite Imagery in: Land Change Science: Observing, Monitoring, and Understanding Trajectories of Change on the Earth's Surface* Springer Verlag, New York, NY., 277-299, 2004.
- 20 Hassaballah, K., Mohamed, Y. A. and Uhlenbrook, S.: The Mayas wetlands of the Dinder and Rahad: tributaries of the Blue Nile Basin (Sudan), in: *The Wetland Book: II: Distribution, Description and Conservation*, (eds C. Max Finlayson, G. Randy Milton, R. Crawford Prentice, and Nick C. Davidson) Springer Netherlands, 1-13, 2016.
- Hemmavanh, C., Ye, Y. and Yoshida, A.: Forest land use change at Trans-Boundary Laos-China Biodiversity Conservation Area, *J. Geogr. Sci.*, 20, 889-898, doi:10.1007/s11442-010-0818-1, 2010.
- 25 Hessels, T. M.: *Comparison and Validation of Several Open Access Remotely Sensed Rainfall Products for the Nile Basin*, TU Delft, Delft University of Technology, 2015.
- Huffman, G. J. and Bolvin, D. T.: *TRMM and other data precipitation data set documentation*, NASA, Greenbelt, USA, 1-40, 2013.
- 30 Hurni, H., Tato, K. and Zeleke, G.: The implications of changes in population, land use, and land management for surface runoff in the upper Nile basin area of Ethiopia, *Mt. Res. Dev*, 25, 147-154, 2005.
- Hurst, H., Black, R. and Simaika, Y.: *The Nile Basin, vol. IX. The hydrology of the Blue Nile and Atbara and the Main Nile to Aswan, with reference to some Projects*, Ministry of Public Works, Physical Department, Cairo, Egypt, 1959.
- Jensen, J. R.: *Digital change detection. Introductory digital image processing: A remote sensing perspective*, Prentice Hall, Upper Saddle River, NY, 525 pp., 2005.
- 35 Kamusoko, C. and Aniya, M.: Hybrid classification of Landsat data and GIS for land use/cover change analysis of the Bindura district, Zimbabwe, *Int. J. Remote Sens*, 30, 97-115, 2009.
- Karssenber, D.: The value of environmental modelling languages for building distributed hydrological models, *Hydrol. Processes*, 16, 2751-2766, 2002.
- 40 Köhler, L., Mulligan, M., Schellekens, J., Schmid, S. and Tobón, C.: *Final Technical Report DFID-FRP Project no. R7991 Hydrological impacts of converting tropical montane cloud forest to pasture, with initial reference to northern Costa Rica*, 2006.

- Marcotullio, P. J. and Onishi, T.: The impact of urbanization on soils, in: *Land use and soil resources*, Springer, 201-250, 2008.
- Metzger, M., Rounsevell, M., Acosta-Michlik, L., Leemans, R. and Schröter, D.: The vulnerability of ecosystem services to land use change, *Agric. Ecosyst. Environ*, 114, 69-85, 2006.
- 5 Mundia, C. and Aniya, M.: Dynamics of landuse/cover changes and degradation of Nairobi City, Kenya, *Land Degrad. Dev*, 17, 97-108, 2006.
- Nash, J. E. and Sutcliffe, J. V.: River flow forecasting through conceptual models part I—A discussion of principles, *J. Hydrol*, 10, 282-290, 1970.
- Pettitt, A.: A non-parametric approach to the change-point problem, *Applied statistics*, 126-135, 1979.
- 10 Poff, N. L., Allan, J. D., Bain, M. B., Karr, J. R., Prestegard, K. L., Richter, B. D., Sparks, R. E. and Stromberg, J. C.: The natural flow regime, *BioScience*, 769-784, 1997.
- Polasky, S., Nelson, E., Pennington, D. and Johnson, K.: The Impact of Land-Use Change on Ecosystem Services, Biodiversity and Returns to Landowners: A Case Study in the State of Minnesota, *Environ Resource Econ*, 48, 219-242, doi:10.1007/s10640-010-9407-0, 2011.
- 15 Pradhan, B. and Suleiman, Z.: Landcover mapping and spectral analysis using multi-sensor satellite data fusion techniques: case study in Tioman Island, Malaysia, *J. Geomat*, 3, 71-78, 2009.
- Richards, J., Xiuping, J., Gessner, W. and Ricken, D.: *Remote sensing digital image analysis*, 4th edition-Springer-Verlag, Berlin Heidelberg, ISBN: 13 978-973-540-25128-25126. pp.25194 – 25199., 2006.
- Richter, B. D., Baumgartner, J. V., Powell, J. and Braun, D. P.: A method for assessing hydrologic alteration within ecosystems, 20 *Conserv. Biol*, 10, 1163-1174, 1996.
- Schellekens, J.: *WFlow*, a flexible hydrological model, 2011.
- Shahin, M.: *Hydrology of the Nile basin*. Series title Vol. 21 Elsevier Science and Technology, 1985.
- Teferi, E., Bewket, W., Uhlenbrook, S. and Wenninger, J.: Understanding recent land use and land cover dynamics in the source region of the Upper Blue Nile, Ethiopia: Spatially explicit statistical modeling of systematic transitions, *Agric. Ecosyst. Environ*, 165, 98-117, doi:http://dx.doi.org/10.1016/j.agee.2012.11.007, 2013.
- 25 Turner, B. L., Matson, P. A., McCarthy, J. J., Corell, R. W., Christensen, L., Eckley, N., Hovelsrud-Broda, G. K., Kasperson, J. X., Kasperson, R. E. and Luers, A.: Illustrating the coupled human–environment system for vulnerability analysis: three case studies, *Proceedings of the National Academy of Sciences*, 100, 8080-8085, 2003.
- Turner, B. L., Lambin, E. F. and Reenberg, A.: The emergence of land change science for global environmental change and sustainability, *Proceedings of the National Academy of Sciences*, 104, 20666-20671, 2007.
- 30 Uhlenbrook, S.: Biofuel and water cycle dynamics: what are the related challenges for hydrological processes research?, *Hydrological processes*, 21, 3647-3650, 2007.
- Uhlenbrook, S., Roser, S. and Tilch, N.: Hydrological process representation at the meso-scale: the potential of a distributed, conceptual catchment model, *J. Hydrol*, 291, 278-296, 2004.
- 35 Vertessy, R. A. and Elsenbeer, H.: Distributed modeling of storm flow generation in an Amazonian rain forest catchment: Effects of model parameterization, *Water Resour. Res*, 35, 2173-2187, 1999.
- Wesselung, C. G., Karssenberg, D. J., Burrough, P. A., and Deursen, W.: Integrating dynamic environmental models in GIS: the development of a Dynamic Modelling language. *Transactions in GIS*, 1(1), 40-48, 1996
- Yuan, F., Bauer, M. E., Heinert, N. J. and Holden, G. R.: Multi - level land cover mapping of the Twin Cities (Minnesota) 40 metropolitan area with multi - seasonal Landsat TM/ETM+ data, *Geocarto. Int*, 20, 5-13, 2005.
- Zelege, G. and Hurni, H.: Implications of land use and land cover dynamics for mountain resource degradation in the northwestern Ethiopian highlands, *Mt. Res. Dev*, 21, 184-191, 2001.