

## **Reply to Interactive comment by Anonymous Referee #1 “A sprinkling experiment to quantify celerity-velocity differences at the hillslope scale”**

Willem J. van Verseveld, Holly R. Barnard, Chris B. Graham, Jeffrey J. McDonnell, J. Renée Brooks, Markus Weiler

First of all we would like to thank Referee #1 for his/her evaluation of this manuscript and his/her suggestions will for sure improve this manuscript. Our answers (in blue) to the suggestions are written below each suggestion (black).

1. Specify meteorological conditions during the sprinkling experiment. I believe no rainfall events were registered in the 24-days experiment.

Yes, good point. We will described this in more detail on page 5, line numbers 3-6.

2. The description of the different sensors location can be improved. I would also recommend to improve Figure 1 and introduce acronyms for each type of sensors in the map.

We agree with the recommendation of the reviewer to improve Figure 1 and the associated description of the different sensors. We did modify the Figure and the associated text on page 5.

3. In your findings, soil moisture responded earlier than lateral subsurface flow to irrigation. Please comment on this.

Correct, soil moisture responded definitely earlier in the upper 30 cm. Below 60 cm soil moisture responded later than lateral subsurface flow. Apparently, antecedent wetness conditions were such (in combination with the soil depth profile increasing upslope, and applied irrigation intensity) that we observed this response pattern. At the same hillslope, McGuire and McDonnell (2010) found during wet conditions (winter) that peak hillslope runoff always lagged peak soil moisture at about 5 h.

4. Section 4.3 is very relevant and I think it could be rewritten a bit more clearly. Could you also report results in a Figure/Tabley

Yes, we agree and did report the results in Figure 5. We also rewrote this section a bit more clearly.

5. Table 2 could be improved by adding instrument depths.

Since this table is providing information on average vertical velocities (sampling depth/response time), and already contains quite some number of columns we prefer to leave the instrument depths out of Table 2.

6. Discussion on immobile soil water fraction should be expanded and stated more clearly.

We agree with the reviewer that this is an important part of the Discussion. We did expand the Discussion on page 15, line numbers 10-15.

7. Are estimated celerities compatible with WS10 response to storm events?

Quite an interesting question but at the same time difficult to answer. Please note that our reported celerities are vertical celerities through the soil profile, and not lateral celerities, a component one also needs to take into account for lateral subsurface flow or streamflow. Furthermore the response time (or celerity) is also a function of antecedent wetness conditions, for example McGuire and McDonnell (2010) found during the winter period response times of 0.3-0.5 h for water content reflectometers at 100 cm depth, and thus much higher celerities than observed during our sprinkler experiment. Additionally, McGuire and McDonnell (2010) did find that hillslope peak runoff lagged soil moisture responses at 100 cm depth and different positions (up till > 25 m upslope) by about 5 h, indicating very fast lateral celerities (much higher than their observed vertical celerities). Although outside of the scope of our presented work, it would definitely be interesting to investigate this in more detail for the hillslope and WS10, for example by comparing the timing of peak rainfall or mass center of rainfall and the hillslope lateral subsurface flow and WS10 streamflow response.

Finally, the manuscript present numerous typos and reference to figures and Tables is often incorrect. I suggest a thorough revision of the writing.

Yes, we did make sure to correct typos and incorrect references to Figures and Tables.

## **Reply to Interactive comment by Anonymous Referee #2 “A sprinkling experiment to quantify celerity-velocity differences at the hillslope scale”**

Willem J. van Verseveld, Holly R. Barnard, Chris B. Graham, Jeffrey J. McDonnell, J. Renée Brooks, Markus Weiler

First of all we would like to thank Referee #2 for his/her time, useful comments on this manuscript and asking relevant questions. His/her suggestions will for sure help to improve the quality of this manuscript. Our answers (in blue) to the suggestions are written below each suggestion (black).

1. Abstract. It is difficult to understand the significance of the study. The first sentence states that the difference between velocity and celerity is poorly understood. I would argue that it is very well understood. Perhaps the mechanisms explaining such differences are poorly understood. Many numbers are given in the abstract, but it is difficult to understand why such numbers would be interesting. I would stress in the abstract more the connection between experimenting and modelling, which I find the most interesting aspect of this work.

We fully agree with the reviewer that the significance of the study is not very clear from the abstract alone, and that indeed the connection between experimenting and modelling is an interesting aspect of our study. We did change the abstract to make the significance of our study clearer, also leaving out the many numbers. Additionally, we did also change the first sentence.

2. In the introduction, I would cite the paper “Velocity and celerity dynamics at plot scale inferred from artificial tracing experiments and time-lapse ERT”, Journal of Hydrology, 2017, as it seems relevant for the study.

This paper seems indeed relevant for our study, and we did include it in the Introduction, page 3, line numbers 14-16.

3. In section 3.1, before starting to describe what was done, it would be useful to illustrate why it was done it. What were the objectives of the experimental design? Which conditions did you want to recreate? Why? What about natural rainfall in addition to artificial rainfall? Did it happen? If not, what if it happened? Etc.

We think the objectives of this study are clearly mentioned in section 1, also linked to the experimental design. We agree that we did not include information on natural rainfall during the sprinkler experiment (also mentioned by another reviewer), and on what kind of conditions we did want to recreate (in comparison with natural conditions). We did add this information, see page 5, line numbers 3-6.

4. Equation 7 appears to be wrong – the integral of concentration is not equal to mass. What does Mout represent? If it is just the mass of tracer in the outflow, what about Evaporation? I guess the calculation of mean residence time should account also for this. . .

We agree that Equation 7 is not clearly explained, but it is correct, under steady-state water flow conditions (the exit distribution can then be calculated from concentrations alone). Mout

is the mass of tracer at the exit boundaries (for evapotranspiration, recharge, seepage and lateral subsurface flow (captured at trench and total). We did calculate the exit time distribution for these exit boundaries.

Calculation of the mean residence time distribution was based on mass in the storage zone (unsaturated and saturated zone), Equation 8. Outgoing mass fluxes from evaporation and later subsurface flow are thus taken into account.

We did improve the description how we did calculate the exit time distributions (page 10, line number 25) and Equation 7 was changed; only the right part of the equation (mass) is used now, because of unsteady water flow conditions during our sprinkler experiment.

5. What was the recovery rate of water and tracers? Did it differ? Why?

The recovery rates of (simulated) water and tracers are presented in Table 5 and did differ, both at the trench and for total later subsurface flow, with higher recovery rates for water. We explain this difference in the paper by a dual porosity system; about 10% of deuterium remains in the unsaturated zone.

6. Model 1 and Model 2 is a misleading terminology. In fact it appears that the model structure is the same, just the evaluation criteria are different.

Yes, the model structure is the same. We think this depends on the definition, are two models with two different parameter sets, but the same model structure, different models? We think the models are different, and do not think Model 1 and 2 are misleading terms, as we need to make clear in the text to which model (or model with a specific evaluation criteria) we are referring to.

7. The criteria used to calculate the behavioural parameter sets for Model 1 and 2 make the comparison difficult as the criteria with which the models are evaluated are very different. I think it would make more sense to make the behavioural parameters of Model 2 a subset of the behavioural parameters for Model 1, by requiring them to satisfy some additional constraints based on the tracers.

We don't think it makes more sense to constrain the parameter set of Model 2 by the behavioural parameters of Model 1. By doing so, one could a-priori exclude possible behavioural parameter sets for Model 2. Please also note that Model 1 is still part of the behavioral parameter sets of Model 2 (we did not reject Model 1 based on based on the objective criterion for the deuterium breakthrough).

8. Indeed, in Figure 6 the two distributions do not appear to differ significantly, and in my opinion, given how they are constructed, they are not even comparable (besides the fact that the caption is not clear, in Figure 6 there are 2 green colors. Which green color do you mean?)

Correct, the two distributions for most parameters of Model 1 and Model 2 are similar. However, parameters  $n$ ,  $n_0$  and  $k_b$  are more identifiable for Model 2 (from Figure 6 and lower parameter uncertainty (Table 3)). Please note that we use two different colors in Figure 6: green and blue. Green is transparent, so where the color is dark green, the two distributions overlap. We did make this clearer in the legend of Figure 6.

## **Reply to Interactive comment by Anonymous Referee #3 “A sprinkling experiment to quantify celerity-velocity differences at the hillslope scale”**

Willem J. van Verseveld, Holly R. Barnard, Chris B. Graham, Jeffrey J. McDonnell, J. Renée Brooks, Markus Weiler

First of all we would like to thank Referee #3 for his/her time and useful comments on this manuscript. His/her suggestions will for sure help to improve the quality of this manuscript. Our answers (in blue) to the suggestions are written below each suggestion (black).

1) The discussion of the paper is entirely devoted to process understanding. However, I miss a section discussing the effects of the experimental set up (mainly the use of only one tracer in time and space). For example, what would the authors advice to improve on the experimental set up and what would be the effect of applying multiple tracers (or spatially distributed or in time (think of also adding  $^{18}\text{O}$ , or others tracers like salts). It is not critics on the current work, but I think with so much emphasis on the experiment, it could be worthwhile to discuss that as well. This could maybe also be linked to the conclusion you draw that the “precise mechanism of disturbance transmittance remains unclear”.

Yes, we like the idea of adding a paragraph to the paper on possible future work on this topic, including the experimental set up (e.g. use of multiple tracers, applying a disturbance through higher rainfall intensities, lateral celerities etc.). We added paragraph 5.5 (page 19) to the paper, it is about the connection between field experiments and modeling, and possible other experimental setups and future work at this site.

2) I would suggest the authors to rethink if parts of the paper cannot be transferred to appendix or supplement material. The paper is long and that distracts somewhat. Especially the field description (3.1-3.2) but even more the long model description including CRET and mixing model description, python etc info (3.7) and could be summarized in a few lines in the main article and all other details moved to the supplement material. To me that would be helpful.

We agree that the paper is long and transferring parts of the paper you mention to appendix or supplement material could be helpful to readers. We are not sure if transferring parts of the Methods to supplement material is common for HESS. In the end we did decide not to transfer parts of the Methods section (the only section we think makes sense to transfer to appendix or supplement material) of the paper to appendix or supplement material. While for some readers a long Methods section may be distracting, for other readers going back and forth between the paper and appendix or supplement material may be somewhat distracting.

3) There are quite some typo's and sloppiness, wrong references and inconsequent numbering of headings that should be rigorously checked by the authors before resubmitting

Yes, we did make sure to correct typos and incorrect references to Figures and Tables.

# A sprinkling experiment to quantify celerity-velocity differences at the hillslope scale

Willem J. van Verseveld<sup>1</sup>, Holly R. Barnard<sup>2</sup>, Chris B. Graham<sup>3</sup>, Jeffrey J. McDonnell<sup>4, 5</sup>, J. Renée Brooks<sup>6</sup>, Markus Weiler<sup>7</sup>

5 <sup>1</sup>Deltares-Catchment and Urban Hydrology Department, Delft, The Netherlands

<sup>2</sup>Institute of Arctic and Alpine Research, Department of Geography, University of Colorado, Boulder, CO, USA

<sup>3</sup>Hetchy Hetchy Water and Power, Moccasin, CA, USA

<sup>4</sup>Global Institute for Water Security and School of Environment and Sustainability, University of Saskatchewan, Saskatchewan, Canada

10 <sup>5</sup>School of Geoscience, University of Aberdeen, Aberdeen, Scotland

<sup>6</sup>Western Ecology Division, U.S. EPA/NHEERL., Corvallis, Oregon, USA

<sup>7</sup>Chair of Hydrology, Faculty of Environment and Natural Resources, University of Freiburg, Germany

*Correspondence to:* Willem J. van Verseveld (willem.vanverseveld@deltares.nl)

**Abstract.** ~~Few studies have quantified t~~The difference between celerity and velocity of hillslope water flow, ~~and explained~~  
5 ~~the processes that control these differences is poorly understood. -Here w~~We assessed these differences by combining a 24-  
day hillslope sprinkling experiment with a spatially explicit hydrologic model analysis. We focused our work at Watershed  
10 at the H.J. Andrews Experimental Forest in western Oregon.  ~~$\delta^{2}\text{H}$  label was applied at the start of the sprinkler~~  
~~experiment. Maximum event water ( $\delta^{2}\text{H}$  labeled water) contribution was 26% of lateral subsurface flow at 20 h. Celerities~~  
estimated from wetting front arrival times were generally much faster ~~(on the order of 10—377 mm h<sup>-1</sup>)~~ than average  
20 vertical velocities of  $\delta^{2}\text{H}$  ~~(on the order of 6—17 mm h<sup>-1</sup>)~~. In the model analysis, this was consistent with an identifiable  
effective porosity (fraction of total porosity available for mass transfer) parameter, indicating that subsurface mixing was  
controlled by an immobile soil fraction, resulting in ~~an the~~ attenuation of the  $\delta^{2}\text{H}$  input signal in lateral subsurface flow.  
~~Furthermore~~ In addition to the immobile soil fraction, exfiltrating ~~bedrock-deep~~ groundwater that mixed with lateral  
subsurface flow captured at the experimental hillslope trench caused further reduction in the  $\delta^{2}\text{H}$  input signal. ~~Finally, o~~  
25 Our results suggest that soil depth variability played a significant role in the velocity-celerity responses. Deeper upslope soils  
damped the  $\delta^{2}\text{H}$  input signal, while a shallow soil near the trench controlled the  $\delta^{2}\text{H}$  peak in lateral subsurface flow  
response. -and played an important role in the generation of the  $\delta^{2}\text{H}$  breakthrough curve. A shallow soil (~0.30 m depth)  
~~near the trench controlled the  $\delta^{2}\text{H}$  peak in lateral subsurface flow response.~~ Simulated exit time and residence time  
distributions with ~~the our~~ hillslope hydrologic model ~~were consistent with our empirical analysis and provided additional~~  
30 ~~insights into hydraulic behavior of the hillslope. In particular, it~~ showed that water captured at the trench ~~was not~~  
~~representative for the hydrological and mass transport behavior of the~~ did not represent the entire modeled hillslope domain,  
~~that generated total lateral subsurface flow, because of different the~~ exit time distributions for lateral subsurface flow  
captured at the trench ~~and total lateral subsurface flow. showed more early time weighting.~~

## 1 Introduction

Residence time distributions, velocities and celerities at the catchment and hillslope scale are poorly understood (McDonnell and Beven, 2014). Countless studies have shown that the hydrologic response of headwater catchments can be much faster (orders of magnitude) than the mean transit time of water (e.g. Martinec, 1975; Seeger and Weiler, 2014). Or, in other words during a rainfall or snowmelt event stream discharge responds immediately, while the average age of stream water itself ~~is~~ can be years or decades old (Kirchner, 2003). ~~Since~~ Different mechanisms control celerities (technically the celerity of the hydraulic potentials, hereafter simply called ‘celerities’ and described as, or, the hydrograph response to perturbations/precipitation inputs), and flow velocities, or, (i.e. the time it takes a tracer to travel through the system). While, differences between the two are to be expected (McDonnell and Beven, 2014). ~~Nevertheless,~~ few studies have quantified these differences and have explained the processes responsible for it.

~~Although many s~~Studies have found ~~did find~~ different controls on how stored water ~~rapidly~~ travels rapidly to the stream; ~~;~~ transmissivity feedback (Kendall et al., 1999; Bishop, 1991), ~~via~~ macropore flow (McDonnell, 1990), ~~–~~pressure wave propagation (Torres et al., 1998; Williams et al., 2002) and hydrodynamic mixing (Jones et al., 2006); But, open questions remain in quantifying the difference between celerity and velocity. This is because it has been difficult to add tracer to a sufficiently large area of a watershed to force the differentiation of celerity and velocity in measured flow and tracer response. ~~For instance, Bishop et al. (2004) studied old water contribution to streamflow during storm events, – and because of these natural conditions, – But,~~ the natural variability in isotope inputs at their site led to, – added uncertainty into their results. It is difficult to characterize under rainfall conditions the natural isotope input due to spatial and temporal heterogeneity in rainfall and snowmelt inputs at the hillslope and catchment scale. Frequently, the isotope input is only sampled at one location in the study area which can have considerable effect on the uncertainty in modeled residence time and in hydrograph separation (McGuire and McDonnell, 2006). ~~While the study of Anderson et al. (1997) overcame did not have these~~ issues ~~with – of~~ natural variability in inputs ~~because – by using a of~~ controlled sprinkler ~~conditions~~ system. Nevertheless, during their sprinkler experiment only shallow soil lysimeters showed deuterium tracer peaks and soil water breakthrough curves were incomplete. With incomplete breakthrough curves it is a challenge to determine transport process and associated flow velocities, as has been examined in several plot to hillslope scale studies (e.g. Feyen et al., 1999; Weiler et al., 1998; Wienhofer et al., 2009).

To date, the focus of many experimental studies ~~concerning – on the~~ tracer transport at the hillslope scale has been the qualitative and/or conceptual descriptions of velocities, observed transit times and dispersion of solutes (e.g. Anderson et al., 1997; Nyberg et al., 2003; Jackson et al., 2016). ~~Several s~~Studies interpreting the transport of solutes in a more quantitative way have largely relied on a lumped modeling approach (e.g. Rodhe et al., 1996; Jury and Sposito, 1985), assuming time invariant flow conditions. Application of flow weighted rescaling techniques in the case of a variable flow system relies on assumptions that are rarely met in the field (Rodhe et al., 1996; Rinaldo et al., 2011). More recently, and increasingly, coupled hydrological and solute transport models have been used in a spatial explicit manner (e.g. Vache and McDonnell,

2006; Dunn et al., 2007; McGuire et al., 2007; Sayama and McDonnell, 2009; Davies et al., 2013; van der Velde et al., 2010, 2012) or by using a lumped approach (e.g. Fenicia et al., 2010; Botter et al., 2010; Hrachowitz et al., 2013; Klaus et al., 2015) to examine the solute (or tracer) response in the stream or in lateral subsurface flow. Sayama and McDonnell (2009) developed a time-space accounting scheme (T-SAS) ~~modeling results suggested that showed~~ that a catchment with thicker soil depth ~~reveals~~ has a more damped and longer stream mean residence time (MRT) in response to rainfall. Van der Velde et al. (2010) showed with their solute transport model the importance of including time-varying travel time distributions to understand observed nitrate concentration dynamics. Dunn et al. (2007) used a series of virtual experiments to examine primary controls (hydrological processes and geographical) on the stream water mean residence time. Davies et al. (2013) recently developed the multiple interacting pathways (MIPs) model, a particle based model (particle tracking), that includes different velocity pathways and exchanges between these pathways, for exploring flow and transport processes. Yet, realistic and consistent representation of both hydrograph shapes and solute transport remains a grand challenge in hydrology. New datasets that combine tracer data and hydrograph information are needed to improve our understanding of controls on transit times and transit time distributions (McDonnell and Beven, 2014; Klaus et al., 2015). -An example of such a new dataset is the study of Scaini et al. (2017) that demonstrated the need to combine the analysis of tracer velocities and wave or wetting front celerities to understand hillslope flow dynamics.

Here, we mechanistically assess the differences between the celerity and velocity of the hillslope hydrograph using a combination of a hillslope-scale sprinkler experiment and a process-based spatially explicit hydrologic model. We conducted a 24-day sprinkler experiment where we added a conservative tracer deuterium ( $\delta^2\text{H}$ ) at the start of application. This approach avoided many of the variability issues that occur during natural rainfall by carefully monitoring input chemistry and application rates. Steady sprinkler rates and the long sprinkler experiment duration allowed us to examine complete breakthrough curves of  $\delta^2\text{H}$  in ~~and~~ lateral subsurface flow, groundwater and soil water, and enabled us to experimentally construct transit time distributions. Using this approach, we addressed the following questions:

1. What is the shape of the hillslope hydrograph and tracer breakthrough?
2. What are the velocities, celerities and transit time distributions of the hillslope hydrograph?
3. How do our findings compare to recent theoretical work addressing transit time distributions (e.g. Botter et al., 2010; Rinaldo et al., 2011; Harman, 2015)?

## 2 Site description

This study was carried out in Watershed 10 (WS10). WS10, located on the western boundary of the H. J. Andrews Experimental Forest (HJA), in the west-central Cascade Mountains of Oregon, USA (44.2° N, 122.25° W), is a headwater catchment and has an area of 10.2 ha (Figure 1). The climate of HJA is Mediterranean, characterized by dry summers and wet mild winters. Mean annual precipitation is 2220 mm. Eighty percent of precipitation falls between October and April during long duration storm events characterized by low rainfall intensities. While in ~~WD10-WS10~~ snow accumulations are



not uncommon, they rarely exceed 0.3 m, and usually melt within 2 weeks (Sollins et al., 1981). At the watershed outlet the elevation is 470 m and increases at the southeastern ridge line to 680 m. Harvesting took place in WS10 during May-June 1975 and naturally regenerated second-growth Douglas-fir (*Pseudotsuga menziesii*) forest now dominates. Along the stream several seep areas have been identified by Harr (1977) and Triska et al. (1984). The location of these seep areas is controlled  
5 by the presence of vertical, approximately 5 meters wide andesitic dikes, within the southern aspect of the hillslope, and the local topography of bedrock and/ or saprolite (Swanson and James, 1975; Harr, 1977).

Our study hillslope is situated 91 m upstream from the WS10 stream gauging station, on the south aspect of the watershed (Figure 1). The stream-to-ridge slope is 125 m long and is characterized by an average gradient of 37°. The gradient ranges from 27° near the ridge to 48° adjacent to the stream (McGuire, 2004). The elevation range of this site is 480 to 565 m. The  
10 volcanic bedrock includes andesitic and dacitic tuff and coarse breccia (Swanson and James, 1975). At the stream-hillslope interface, the depth to unweathered bedrock ranges from 0.1 to 0.6 m and the depth increases gradually toward the ridge to a depth of approximately 3 to 8 m. The soils formed either in residual parent material or in colluvium originating from these deposits and are about 1 m deep. Soil textures show little variation with depth. The surface soils are mostly identified as  
15 by gravelly loams or clay loams (Harr, 1977). The highly andic soils vary across the landscape as either Andic Dystrudepts or as Typic Hapludands (Yano et al., 2005). Below the soils the relatively low permeability subsoil (saprolite) of 1-8 m formed from the highly weathered coarse breccia (Ranken, 1974; Sollins [et al.](#), 1981). The well aggregated surface soils show, at lower depths (70-110 cm) a more massive blocky structure with a lesser amount of aggregation than surface soils (Harr, 1977).

## 20 **3 Methods**

### **3.1 Sprinkler experiment and instrumentation**

To measure lateral subsurface flow, a 10 m long trench was constructed (McGuire et al., 2007) at a natural seepage face. A calibrated 30° V-notch weir collected routed intercepted subsurface water from the trench. Stage at the 30° V-notch weir was recorded at 10 min time intervals by a 1 mm resolution capacitance water-level recorder (TruTrack, Inc., model WT-HR).  
25 The duration of the sprinkling experiment was 24 days. The sprinkler experiment started on Day of Year (DOY) 208 (July 27), 2005, directly upslope from the trench on an approximately 8 m by 20 m section of the study hillslope (Figure 1). The sprinkler system consisted of 36 micro-sprinklers spaced in a 2 m grid. An automatic timer sustained a consistent input rate of irrigation water throughout the sprinkler experiment. Irrigation water was stored in forest fire tanks at a landing near the ridge, 300 m from the hillslope. This water was transported to the hillslope by fire hose with two pressure regulators that  
30 provided constant head. Irrigation rates were recorded with three tipping bucket rain gauges (TruTrack, Inc., model Rain-SYS-1mm) throughout the experiment. Irrigation rates were also measured during DOY 219 through 226 of the experiment by 72 (0.05 and 0.10 m diameter) randomly placed cups. The cups were sampled every 4-12 h. We applied water with an

average rate of 3.7 mm h<sup>-1</sup> between ~~days-DOY~~ 208 and 232 continuously except for 9 h on ~~day-DOY~~ 210 with no application of water, and on ~~day-DOY~~ 226, 228, 229 and 230 with higher irrigation rates due to timer malfunctions. We did choose an average application rate of about 3-4 mm h<sup>-1</sup> to approximate natural rainfall conditions as much as possible at this site, that are characterized by long-duration, low- to moderate-intensity frontal storms. Natural rainfall events did not occur during the sprinkler experiment. We applied a pulse of deuterium-enriched water for 24.5 h, starting on DOY 208, to the study area via the sprinkling. A 20,000 L reservoir with a natural isotopic signature ( $\delta^2\text{H} = -69 \text{ ‰}$ ) was mixed with approximately one liter of 99.8 % of D<sub>2</sub>O and provided a source of deuterium with a  $\delta^2\text{H}$  signature of 285.

~~Three-Two groups-nests~~ of porous cup suction lysimeters (Soil Moisture Equipment Corp., Model 1900, 2 bar) were installed at 0.3, 0.7 and 1.1 m depths at site BL and DL (Figure 1). ~~The deepest lysimeter at~~ site AL the porous cup suction lysimeters ~~was-were~~ installed at 0.3, 0.7 and 0.8 m depth (soil bedrock interface) (Figure 1). We used three zero tension lysimeters (ZTL) of 0.15 m x 0.15 m. One zero tension lysimeter collected water at 0.2 m depth, and two zero tension lysimeters collected water from the organic horizon. ~~In an upslope transect twenty-five superquartz (Prenart Equipment ApS) 50 kPa tension lysimeters were installed at a 30° angle (Lajtha et al., 1999), at shallow (0.2 m), middle (0.3-0.4 m), and deep (0.7-0.8 m) soil depths.~~ We measured soil matric potential with seven fast responding tensiometers (TM), (type: UMS T4, 1 bar porous cups). The tensiometers were installed vertically in an upslope transect with two clusters of tensiometers at 0.3 and 0.7 m depth (TM (lower) and TM (middle) in Figure 1), and one cluster of tensiometers at 0.3, 0.7 and 1 m depth (TM (upper) in Figure 1).

As part of an earlier study at this site (van Verseveld et al., 2008), 69 maximum rise wells (0.032 m diameter) were installed to measure water table at the soil-saprolite or bedrock interface. Wells were augered with a hand auger until refusal. The wells were screened for the lower 0.25 m, which was the maximum water height observed by Harr (1977). Of these 69 maximum rise wells, 31 wells were located in the sprinkler plot. Two wells A05 and E04 that were installed at depths of 0.45 and 1.25 m respectively, and located in the sprinkler plot showed transient water table (Figure 1) during a previous study at this site (van Verseveld et al., 2008). One well A01 that was installed at a depth of 0.35 m, located in a groundwater seep (Figure 1) showed deep groundwater during a previous study at this site (van Verseveld et al., 2008). Before the installation of wells a cone penetrometer survey was conducted, that showed that well A01 was the only well located at the “soil-bedrock interface”, while the depth to bedrock at well A05 and well E04 was at least 0.8 and 2 m, respectively. ~~All instrument locations are shown in Figure 1.~~

We measured soil volumetric water content within the irrigated area with 24 time domain reflectometry (TDR) sensors (Environmental Sensors, Inc., model PRB-A). Each TDR sensor was 1.2 m in length and measured at the following five depth intervals: 0-0.15 m, 0.15-0.3 m, 0.3-0.6 m, 0.6-0.9 m, and 0.9-1.2 m. The TDR sensors were installed in a 4 (parallel to the stream channel) by 8 grid (perpendicular to the stream channel), with a spacing of 2 m in each direction. Measurements were recorded every hour for the duration of the experiment. Fifty-two TDR sensor segments of the total of 120 segments (locations x depth) gave consistent results. Inconsistent results were caused by sensor segments that were not completely installed in the soil profile, reduced contact between the sensor and soil or poor electrical connection. We only included data

from sensors that gave consistent results in our analysis. Besides TDR sensors, soil water content was measured with water content reflectometers (WCR) (CS615, Campbell Scientific, Inc.). We installed these soil moisture probes at three different depths of 0.3 m, 0.7 m and 1.0 m, parallel to the slope, in three soil pits located 15, 20 and 25 m from the slope base (McGuire and McDonnell, 2010). The WCR probes were calibrated using soil cores that were obtained from a number of locations at the H. J. Andrews, including WS10 (G. W. Moore et al., unpublished data, 2003; Czarnomski et al., 2005).

### 3.2 Sampling and chemical analysis

Lateral subsurface flow at the hillslope trench was sampled every 2 to 4 h with an automated ISCO sampler. From DOY 208 to 218, zero tension and tension lysimeters were sampled daily, while from DOY 219 until DOY 235, lysimeters were sampled every other day. We did evacuate the tension lysimeters to -50 kPa and allowed the tension lysimeters to collect water for 24 h. Transient water table was sampled daily from ~~three-two~~ wells (A05; ~~and E04~~ ~~and A04~~), and deep groundwater was sampled from well A01 (Figure 1).

The analysis of water samples for hydrogen isotope ratios was performed on (1) an isotope ratio mass spectrometer (Delta plus, ThermoQuest Finnigan, Bremen Germany) interfaced with a high temperature conversion/elemental analyzer (TC/EA, ThermoQuest Finnigan) and (2) a liquid water isotope analyzer using off-axis integrated cavity output spectroscopy (Los Gatos Research, Inc). All hydrogen isotope ratios are expressed as  $\delta^2\text{H}$  values relative to Vienna-standard mean ocean water (V-SMOW) in ‰:

$$\delta^2 H = \left( \frac{R_{\text{sample}}}{R_{\text{standard}}} - 1 \right) \quad (1)$$

where  $R_{\text{sample}}$  is the ratio of deuterium to hydrogen atoms of the sample and  $R_{\text{standard}}$  is the standard (V-SMOW). Measurement precision was 1.1‰ for the isotope ratio mass spectrometer and 0.4‰ for the liquid water isotope analyzer.

### 3.3 Two component mixing model

A two-component mixing model was applied to the  $\delta^2\text{H}$  breakthrough in lateral subsurface flow:

$$Q_t C_t = Q_p C_p + Q_e C_e, \quad (2)$$

where  $Q$  is lateral subsurface flow from the trench,  $C$  is the measured  $\delta^2\text{H}$ , and the subscripts  $t$ ,  $p$  and  $e$  stand for total lateral subsurface flow, pre-event water and event water, respectively. Pre-event water was defined as lateral subsurface flow before the start of adding deuterium enriched water to the sprinkler plot. Unlabeled sprinkler water was also defined as pre-event water. Because unlabeled sprinkler water and subsurface flow before the start of adding deuterium enriched water had the same  $\delta^2\text{H}$  signal (-75 ‰), a two-component mixing model was sufficient. Event water was defined as the average  $\delta^2\text{H}$  of deuterium enriched water ( $C_e$ ).

### 3.4 Velocities and celerities

The average vertical velocity of labeled water was calculated by assuming that the observed  $\delta^2\text{H}$  peak in wells and lysimeters coincided with the passage of the  $\delta^2\text{H}$  peak in sprinkled water (consistent with the method of Anderson et al. (1997)).

$$v = \frac{d}{\Delta t} \quad (3)$$

5 where  $d$  is depth of lysimeter or well, and  $\Delta t$  is the travel time between the time of the center of mass of  $\delta^2\text{H}$  in sprinkler water and  $\delta^2\text{H}$  peak in soil- or groundwater.

Wetting front celerities were estimated from TDR, ~~ground~~water level and tensiometer measurements. The arrival time of the wetting front was defined as the first significant response at the depth of measurement to irrigation. The depth of measurement divided by the corresponding arrival time provided the wetting front celerities.

### 10 3.5 Hillvi model

*Hillvi* is a spatially explicit model for water flow and solute transport at the hillslope scale with an explicit coupling between the unsaturated and saturated zone (Weiler and McDonnell, 2004, 2005, 2007; McGuire et al., 2007; Tromp-van Meerveld and Weiler, 2008). The unsaturated and saturated zone coupling has been implemented in the model because several field studies have shown the importance of the conversion of the unsaturated zone ~~water~~ to transient saturation during storm events (Harr, 1977; McDonnell, 1990; Tani, 1997). We provide a brief description of the model and detailed descriptions can be found in Weiler and McDonnell (2004, 2005, 2007) and an application in the same watershed in McGuire et al. (2007). The unsaturated zone is characterized by a time variable water content between the soil surface and the time variable water table. The size of the saturated zone is defined by the elevation difference between the water table and an impermeable or semi-impermeable bedrock surface and the porosity. Lateral subsurface flow within the saturated zone is calculated using the Dupuit-Forchheimer assumption. It is routed downslope using the approach of Wigmosta and Lettenmaier (1999), according to the local water table gradient between adjacent grid cells. *Hillvi* uses an exponential depth function for drainable porosity and saturated hydraulic conductivity, a parameter that controls transient water development (Weiler and McDonnell, 2004). An exponential decline of drainable porosity and saturated hydraulic conductivity with soil depth is typical for Watershed 10, based on the hydrological properties analysis of 452 soil cores by Harr and Ranken (1972), Ranken (1974) and Harr (1977). The unsaturated zone water balance is controlled by the rainfall that enters the unsaturated zone, losses as vertical recharge and bypass flow (optional) and actual evapotranspiration from the unsaturated zone, and change in storage (water content). The amount of bypass flow is a function of precipitation rate and soil moisture (McGuire and McDonnell, 2007). Actual evapotranspiration is estimated by the potential evapotranspiration and the relative water content in the unsaturated zone. The water balance of the saturated zone is controlled by inputs as recharge and bypass flow (optional) from the unsaturated zone and the lateral inflow and losses as outflow, lateral pipeflow (optional), seepage to bedrock (optional) and

the change in storage (water table depth). Seepage to bedrock is a function of the saturated hydraulic conductivity of the bedrock and the total head above the bedrock (Tromp-van Meerveld and Weiler, 2008).

Solute flux in recharge and bypass flow is determined by the recharge and bypass flow of a grid cell and the average concentration in the unsaturated zone. An effective porosity coefficient (fraction of total porosity) is used to describe the available pore volume for mass transfer. This effective porosity coefficient is used to account for the potential influence of immobile water on tracer movement. Lateral subsurface solute fluxes are determined by taking the average concentration in the saturated zone available for solute transport and multiply it with the subsurface flow. The transfer of solutes between the unsaturated zone and saturated zone depends on whether the water table is rising or falling and the total porosity minus the drainable porosity. The amount of solutes that are transported from the saturated to the unsaturated zone, under a falling water table depends on the concentration in the saturated zone, how much the water table falls and the total porosity minus drainable porosity (Weiler and McDonnell, 2004). The amount of solutes that are transported from the unsaturated to the saturated zone, under a rising water table depends on the average concentration in the unsaturated zone (Weiler and McDonnell, 2004). The mass flux of seepage to bedrock is controlled by the average concentrations in the saturated zone and seepage rate to bedrock. Complete mixing in each grid cell and each zone is assumed when calculating the saturated and unsaturated zone concentrations (Weiler and McDonnell, 2004).

The model of study hillslope was setup using a DEM (1x1 m) based on the surface topography and soil depth survey. Inputs to the model were irrigation rates, canopy reference evapotranspiration (CRET) and deuterium concentration of irrigation water. CRET was estimated with the standard Penman–Monteith equation for canopy reference evapotranspiration using meteorological measurements from a weather station placed in the irrigated area. We refer to Barnard et al. (2010) for detailed information about the CRET calculation. A simple mixing model was applied to the simulated deuterium concentrations in lateral subsurface flow from the trench with *Hillvi* to allow for comparison with the measured deuterium concentrations in lateral subsurface flow captured by the trench. We used a constant measured pre-irrigation lateral subsurface flow rate of 30 L h<sup>-1</sup> (as Graham et al. (2010) ) with a δ<sup>2</sup>H signal of -75 ‰ (old water) during the whole sprinkler experiment, and mixed this with the simulated lateral subsurface flow and simulated δ<sup>2</sup>H signal at the trench by *Hillvi*. The source of the pre-irrigation lateral subsurface flow is a groundwater seep (well A01), ~~and we refer to this water as deep groundwater in the remaining part of this paper~~. The simple mixing model also allowed us to compare the simulated δ<sup>2</sup>H signal at the trench by *Hillvi* (mixing without deep groundwater) and the simulated δ<sup>2</sup>H signal at the trench as a result of mixing with deep groundwater. Initial state conditions at the start of the *Hillvi* simulations (DOY 208) were estimated by simulating drainage for five days without rainfall input prior to DOY 208, with the best parameter set of the model that was fitted to runoff and mass flux from earlier modeling work at the same site by McGuire and McDonnell (2007) and an estimated bedrock leakage of 0.001 mm hr<sup>-1</sup> (Graham et al. (2010)). The relative water content in the unsaturated zone five days prior to DOY 208 was changed manually, until the average simulated water content in the unsaturated zone matched the estimated average water content calculated from the WCR measurements in the three soil pits at DOY 208 and simulated lateral subsurface flow from the trench matched the measured lateral subsurface flow during the first hour of response to the

irrigation. We used the WCR measurements for the estimation of the average water content in the unsaturated zone, because these were calibrated using soil cores that were obtained from WS10 and a number of other locations at the H. J. Andrews (G. W. Moore et al., unpublished data, 2003; Czarnomski et al., 2005).

For the parameterization of the model, we used a similar approach as McGuire et al. (2007). After the set-up of the initial state conditions, we performed a Monte Carlo search (5272 runs) over typical parameter ranges based on earlier modeling work and field data. The model performance for lateral subsurface flow was assessed with the Nash Sutcliffe efficiency ( $NSE$ ) (Nash and Sutcliffe, 1970) and the Relative Volume Error ( $RVE$ ), which evaluates the long-term volumetric error. The  $NSE$  was used for the  $\delta^2\text{H}$  breakthrough in lateral subsurface flow. Behavioral parameter sets for lateral subsurface flow were defined as having a  $NSE$  value, equal to at least 90% of the highest value obtained during the Monte-Carlo search, and a  $RVE$  smaller or equal to 0.05. Behavioral parameter sets for the  $\delta^2\text{H}$  breakthrough in lateral subsurface flow were defined as having a  $NSE$  value, equal to at least 80% of the highest value obtained during the Monte-Carlo search. The efficiency of behavioral parameter sets for lateral subsurface flow was defined by weighting  $NSE$  and  $RVE$  equally:

$$E_{lateral\ ssf} = 0.5 * NSE_{lateral\ ssf} + 0.5 * (1 - |RVE|) \quad (34)$$

The efficiency of behavioral parameter sets for the  $\delta^2\text{H}$  breakthrough in lateral subsurface flow was defined by weighting  $NSE_{lateral\ ssf}$ ,  $NSE_{\delta^2\text{H}}$  and  $RVE$  as follows:

$$E_{\delta^2\text{H}} = 0.25 * NSE_{lateral\ ssf} + 0.25 * (1 - |RVE|) + 0.5 * NSE_{\delta^2\text{H}} \quad (45)$$

The best behavioral parameter set based on  $E_{lateral\ ssf}$ , and the best behavioral parameter set based on  $E_{\delta^2\text{H}}$ , were defined as Model 1 and Model 2, respectively. In line with Seibert and McDonnell (2002) and McGuire et al. (2007), we defined uncertainty, expressed as a percentage, as the difference between the 0.9 and 0.1 percentile of the behavioral parameter values divided by the median parameter value.

The original model is written in the IDL development environment (Weiler and McDonnell, 2004) and was converted to Python for our analysis. For the visualization of spatial results of subsurface flow and tracer transport the Mayavi package, a tool for 3D Scientific Data Visualization and Plotting was used.

### 3.6 Analysis of Hillvi model results

After calibrating the *Hillvi* model we used Model 2 to examine the spatial distribution of  $\delta^2\text{H}$  concentrations in the unsaturated and saturated zone, and the spatial distribution of recharge fluxes [ $M^3T^{-1}$ ] to the saturated zone and lateral subsurface flow [ $M^3T^{-1}$ ] during different time slices of the sprinkler experiment.  $\delta^2\text{H}$  concentration in the unsaturated zone was determined by:

$$c_{un}(t) = \frac{M_{un}(t)}{S_{un}(t)} \quad (56)$$

where  $c_{un}(t)$  is the  $\delta^2\text{H}$  concentration in the unsaturated zone of a grid cell at time  $t$ ,  $M_{un}(t)$  is the  $\delta^2\text{H}$  mass in the unsaturated zone of a grid cell, and  $S_{un}(t)$  is the water storage in the unsaturated zone.  $\delta^2\text{H}$  concentration in the saturated zone was determined by:

$$c_{sat}(t) = \frac{M_{sat}(t)}{w(t)n} \quad (67)$$

where  $c_{sat}(t)$  is the  $\delta^2\text{H}$  concentration in the saturated zone of a grid cell at time  $t$ ,  $M_{sat}(t)$  is the  $\delta^2\text{H}$  mass in the saturated zone of a grid cell,  $w$  is the water table and  $n$  is the total porosity. Lateral subsurface flow for each grid cell was calculated by taking the sum of the eight lateral subsurface flow fluxes leaving that grid cell, whereby negative lateral flow fluxes caused by a negative water table gradient were ignored.

Recharge flux for each grid cell was determined by multiplying the recharge rate [ $MT^{-1}$ ] by the area of the grid cell. For the analysis, we considered the relative values (0-1) of lateral subsurface flow, recharge flux,  $c_{un}$  and  $c_{sat}$ , at different time slices during the sprinkler experiment. The relative values of these variables were calculated by determining the maximum grid cell value of each variable for all the time slices considered, and dividing the grid cell values by the maximum grid cell value.

Additionally, we used Model 2 to examine the characteristics of vertical recharge and lateral subsurface flow by determining the ratio of lateral subsurface flow and vertical recharge fluxes [ $M^3T^{-1}$ ]. For this analysis, grid cells that received irrigation water were included and recharge velocities smaller than  $0.5 \text{ mm h}^{-1}$  were excluded from the analysis to prevent very high ratios as a consequence of small recharge velocities. For each grid cell, the ratio was calculated for mean lateral subsurface flow flux (mean of the eight lateral subsurface flow fluxes leaving the grid cell, excluding zero lateral subsurface flow fluxes) and for maximum lateral subsurface flow flux (maximum of the eight lateral subsurface flow fluxes leaving the grid cell). The spatial distribution of the two ratios was examined at different time slices during the sprinkler experiment. Also, we determined the average dynamics of these ratios by calculating the average of the ratio of lateral subsurface flow flux (mean and max) and recharge flux grid for each model time step.

Finally, we examined with Model 2 simulated exit time and residence time distributions. The exit time distribution is defined as the time elapsed between the entrance of a water particle within a control volume  $V$  and its exit through any boundary of the control volume (Botter et al., 2010; Rinaldo et al., 2011). We determined exit time distributions of the labeled sprinkler water for evapotranspiration, recharge, seepage and lateral subsurface flow (captured at trench and total). Because the labeled sprinkler water was applied as a narrow pulse (with respect to the duration of the sprinkler experiment), the exit time distribution for evapotranspiration, recharge, seepage and lateral subsurface flow is given by:

$$ETD(t) = \frac{C_F(t)}{\int_0^\infty C_F(t) dt} = M_F(t)/M_{out} \quad (78)$$

where  $ETD(t)$  is the exit time distribution,  ~~$C_F$  is the outflow flux concentration~~,  $M_F(t)$  is the simulated mass flux that exits  $V$  and  $M_{out}$  the total mass of tracer recovered at the exit boundary, such that the integral of the  $ETD(t)$  is unity. The residence time distribution for the storage zone (unsaturated and saturated zones) is given by:

$$RTD_s(t) = M_s(t)/M_{in} \quad (89)$$

where  $RTD_s(t)$  is the residence time distribution for the storage zone and  $M_s(t)$  is the total mass of tracer in the unsaturated and saturated zone, and  $M_{in}$  is the total mass of tracer at the input boundary.

## 4 Results

### 4.1 Flow response to sprinkling

A detectable increase in lateral subsurface flow was observed within an hour of the start of irrigation on DOY 208 (Figure 2). On DOY 210, lateral subsurface flow almost decreased to ~~irrigation~~-discharge levels before the irrigation started, because on midnight, DOY 210, for 9 h irrigation turned off. Lateral subsurface flow increased within 6 days from an average rate of 30 L h<sup>-1</sup> prior to irrigation, to a steady-state average rate of 211 L h<sup>-1</sup>. Until DOY 226, when a small sprinkler malfunction occurred, steady-state discharge was maintained. After DOY 228, a series of sprinkler malfunctions resulted in a higher discharge than the steady-state rate. On DOY 232 irrigation was terminated. A distinct diel pattern was evident in lateral subsurface flow before, during and after the sprinkler experiment.

Soil moisture responded rapidly to irrigation (Figure 2). Within 5-6 days after irrigation (DOY 213-214) soil moisture reached steady-state. ~~—~~Until DOY 228, steady-state conditions prevailed, since on DOY 228 the first of the sprinkler malfunctions produced a rise in soil moisture. On DOY 232 irrigation was turned off, and as a result the soil profile drained rapidly during the first 8–12 h, which was followed by a slower, more stable drainage during the remainder of the sprinkler experiment. Soil moisture in the upper 0.30 m started to increase after 30 min of irrigation, soil moisture at 0.30-0.60 m started to increase after 45 min, and soil moisture sensors below 0.60 m started to increase after 100 min. Estimated median wetting front celerities from the soil moisture measurements ranged from 43 to 150 mm h<sup>-1</sup> (Table 1), with highest estimated median wetting front celerities for the upper 0.60 m.

Tensiometers at 0.30 m also responded quickly to irrigation (Figure 2). Steady-state conditions were reached within 2 days after irrigation (DOY 210), with matric potential values varying between 0.85 and -0.10 kPa (diel fluctuations).

Tensiometers at 0.70 m reached steady-state conditions 4 days after irrigation (DOY 212), with matric potential varying between 0 and -0.50 kPa (diel fluctuations). The tensiometer at 1.0 m reached steady-state conditions 5 days after irrigation (DOY 213), with matric potential values varying between 1.5 and 0.80 kPa (diel fluctuations). ~~Untile~~ DOY 228 steady-state conditions prevailed, when matric potential increased, caused by the first sprinkler malfunction. Estimated median wetting front celerities from the soil matric potential measurements ranged from 10 to 116 mm h<sup>-1</sup>, with highest estimated median wetting front celerities for the upper 0.30 m (Table 1).

We found a similar rapid response to irrigation in ~~groundwater~~-wells A05 and E04, 1.2 and 4.3 h after irrigation respectively. Estimated wetting front celerities were 377 and 87 mm h<sup>-1</sup> for well A05 and E04 respectively (Table 1). Sampling of ~~the groundwater-these~~ wells during the sprinkler experiment disturbed the ~~groundwater-water table~~ dynamics to such extent that evaluation of steady-state conditions was not possible.

### 4.2 Deuterium breakthrough in soil, ground and lateral subsurface water

Within 4 h of  $\delta^2\text{H}$  application labeled  $\delta^2\text{H}$  water was observed in lateral subsurface flow and  $\delta^2\text{H}$  peaked at approximately 20 h (Figure 3). Deep groundwater exfiltrating from the seep at well A01 did not show any response in  $\delta^2\text{H}$  during the entire



sprinkler experiment (Figure 4). In contrast,  $\delta^2\text{H}$  in the transient water table increased rapidly (Figure 4, wells A05; and E04), with peak values within 2 and 3 days after application of  $\delta^2\text{H}$  labeled water. All soil lysimeters revealed large  $\delta^2\text{H}$  increases. The response to the  $\delta^2\text{H}$  input was first observed at the shallow lysimeters at 0.3 m depth, while ~~and~~ the observed  $\delta^2\text{H}$  peak in lysimeters at 0.7 and 1.1 m depth followed the  $\delta^2\text{H}$  peak at 0.3 m depth (Table 2 and Figure 4).

5 For all locations, the  $\delta^2\text{H}$  peak arrival time ranged from 1 to 8 days and lagged with depth. Based on these  $\delta^2\text{H}$  peak arrival times, the average vertical tracer velocity ranged from 6 to 17 mm h<sup>-1</sup>. The average vertical ~~traces~~ velocity at well E04 was about 2-3 times faster than the average vertical velocity of the deep lysimeters, and for this location the  $\delta^2\text{H}$  peak arrival time did not lag with depth (Table 2).

#### 4.3 Mixing and flowpaths at the hillslope scale

10 For water collected from the trench exiting the hillslope, the maximum event water fraction was 26%, calculated by the  $\delta^2\text{H}$ -based two-component mixing model and occurred at DOY 209, 20 h after the  $\delta^2\text{H}$  application but prior to the addition of non-labeled sprinkler water (Figure 56). After DOY 209, the event water fraction gradually decreased to ~1% on DOY 234. When the deep groundwater contribution with an old water isotopic signature in lateral subsurface flow was excluded, the  $\delta^2\text{H}$ -based two component mixing model showed a maximum event water fraction of 37%.

15 Soil water  $\delta^2\text{H}$ , sampled by suction lysimeters, peaked 1 day after the  $\delta^2\text{H}$  application (DOY 209), at 0.3 m depth (Figure 5). ~~The timing of the soil water  $\delta^2\text{H}$  peak which corresponded was similar to the timing with of nearly saturated steady-state conditions soil matric potentials~~ at the lower and middle slope position tensiometers ~~at the same 0.3 m depth. We defined the arrival time of nearly saturated conditions as the first three successive measurements with  $\psi < 0.1$  kPa and occurred~~ ~~Steady-state soil matric potentials did occur~~ at the lower and middle slope position tensiometers ~~at 0.3 m~~ ~~depth 28-20 h (DOY 209.41) and 13-4 h (DOY 208.76) after the  $\delta^2\text{H}$  application irrigation~~ ~~respectively. Also, soil moisture at 0.15-0.3 m and 0.3-0.6 m depth attained nearly steady-state water contents 18-9 h (DOY 208.96) and 21-13 h (DOY 209.41) after the  $\delta^2\text{H}$  application irrigation~~ ~~respectively (Figure 5). This suggests that shallow soil water was the main source of the observed  $\delta^2\text{H}$  peak (DOY 209.42) in lateral subsurface flow measured at the trench (Figure 5).~~ ~~About 3-4 days after the  $\delta^2\text{H}$  application irrigation, nearly saturated steady-state conditions occurred at 0.7 m depth, at the lower and middle slope~~ ~~position tensiometer nests on DOY 212.18 and 211.86 respectively. Soil moisture at 0.6-0.9 and 0.9-1.2 m depth attained nearly steady-state water contents 2-3 days after the  $\delta^2\text{H}$  application irrigation on DOY 211.09 and 211.43, respectively. The  $\delta^2\text{H}$  peak at well E04 and at most deeper tension lysimeters was observed 3-4 days (DOY 212-213) and 4-53 days (DOY 211.74) after the  $\delta^2\text{H}$  application, respectively. Thus, deeper soil water became important about 3 days after the  $\delta^2\text{H}$  application irrigation (DOY 212).~~

#### 30 4.4 Hillvi modeling results

The best parameter set based only on lateral subsurface flow is presented in Table 3 (Model 1) with NSE of 0.96 and a RVE of 0.0004 for lateral subsurface flow, and a NSE of 0.82 for the  $\delta^2\text{H}$  breakthrough in lateral subsurface flow. Only one

parameter, hydraulic conductivity of bedrock ( $k_b$ ), appears to be identifiable based on relative frequency of the 796 behavioral parameter sets (Figure 67). The best parameter set based on both lateral subsurface flow and the  $\delta^2\text{H}$  breakthrough in lateral subsurface flow (Model 2, Table 3) resulted in a NSE of 0.94 and a RVE of 0.0127 for lateral subsurface flow, and a NSE of 0.93 for the  $\delta^2\text{H}$  breakthrough in lateral subsurface flow. The optimum values of most parameters of Model 2 were different from Model 1, only parameters  $k_b$ ,  $f$  and  $\beta$  had similar optimum values (Table 3).

The relative frequency of the 308 behavioral parameter sets based on lateral subsurface flow and  $\delta^2\text{H}$  (Figure 67) indicate that parameters  $k_b$ ,  $n$ ,  $n_0$  and  $*n_{\text{eff}}$  were identifiable. The parameter  $*n_{\text{eff}}$  was only included in Model 2, since this parameter is used to describe the available pore volume for mass transfer. In addition, the relative uncertainty of these parameters for Model 2 was lower compared to Model 1.

While Models 1 and 2 both produced similar results for lateral subsurface flow, the results for the  $\delta^2\text{H}$  breakthrough in lateral subsurface flow were different (Figure 3). Model 1 underestimates the first  $\delta^2\text{H}$  peak considerably; however based on the objective criterion for the  $\delta^2\text{H}$  breakthrough, we did not reject Model 1 as a behavioral parameter set. Figure 3 also presents the  $\delta^2\text{H}$  breakthrough in lateral subsurface flow without mixing with deep groundwater. Based on the simple mixing model between deep groundwater with an old water signal and the simulated  $\delta^2\text{H}$  in lateral subsurface flow, the simulated maximum event water fraction by Model 2 for mixing with and mixing without deep groundwater was 0.28 and 0.40 (Table 4), respectively, at DOY 209, about 25 h after the  $\delta^2\text{H}$  application. For total lateral subsurface flow (including flow that bypassed the trench but excluding deep groundwater), the simulated maximum event water fraction was 0.38 (Table 4). Based on the 308 behavioral parameter sets, the highest maximum event fraction was 0.60 for lateral subsurface flow from the trench and total lateral subsurface flow, both excluding the contribution of deep groundwater (Table 4).

Mass recovery for total water applied during the sprinkler experiment and  $\delta^2\text{H}$  applied during the labeled pulse was highest for total lateral subsurface flow and lateral subsurface flow collected at the trench, as well as for Model 2 and the 308 behavioral parameter sets (Table 45). Total bedrock seepage  $\delta^2\text{H}$  mass flux was about half of total lateral subsurface flow  $\delta^2\text{H}$  mass flux for Model 2. About 10% of the total  $\delta^2\text{H}$  input of the labeled pulse remained in the unsaturated zone as a result of the inclusion of the effective porosity parameter in Model 2. Of total water applied during the  $\delta^2\text{H}$  pulse, only 2% remained in the unsaturated zone (Table 5). This resulted in higher fractions of total water applied during the sprinkler experiment for total lateral subsurface flow and lateral subsurface flow collected at the trench, compared to fractions of total  $\delta^2\text{H}$  input of the labeled pulse for total lateral subsurface flow and lateral subsurface flow collected at the trench.

The simulated median residence time of  $\delta^2\text{H}$  in the storage zone of the hillslope was 7.4 (99.1) days (Figure 78) during the field experiment, where the value between parentheses refers to the translation of field experiment days to natural conditions.

Although the simulated median residence time of  $\delta^2\text{H}$  was not much longer than the median travel time of total lateral subsurface flow (7.2 (95.6) days), about 10% of the total mass input of the labeled sprinkler water remained in the unsaturated zone (as a consequence of the inclusion of the effective porosity parameter), suggesting that the simulated

median residence time of 7.4 (99.1) days in the storage zone should be interpreted as a minimum. The simulated median travel time of  $\delta^2\text{H}$  in lateral subsurface flow (5.3 (69.5) days) captured at the trench was lower than the simulated median travel time of  $\delta^2\text{H}$  in total lateral subsurface flow (7.2 (95.6) days). This is probably caused by the spatial variation of soil depth at the hillslope, whereby the trench is fed by water from more shallow soils compared to total lateral subsurface flow.

5 The similar exit time distributions (CDF) of total lateral subsurface flow, seepage and recharge, and the different exit time distribution of lateral subsurface flow at the trench, indicate that water captured at the trench was not representative for the hydrological and mass transport behavior of the entire hillslope domain that generated total lateral subsurface flow. The exit time distribution of evaporation was characterized by a heavier tail, compared to the other exit time distributions.

Figure 8-9 presents the relative concentration of  $\delta^2\text{H}$  in the unsaturated and saturated zone and the relative fluxes of recharge and subsurface flow at different time slices simulated by Model 2, to illustrate the spatial dynamics of these variables during the sprinkler experiment. Presenting the relative concentration of  $\delta^2\text{H}$  in the unsaturated and saturated zone and the relative flux of recharge and subsurface flow separately preserves more information than showing relative mass fluxes of  $\delta^2\text{H}$ .  $\delta^2\text{H}$  in lateral subsurface flow around the  $\delta^2\text{H}$  peak, T=10 and T=20 h after the application of labeled sprinkler water (DOY 209), was mainly derived from the lower part of the hillslope, characterized by shallow soil depths. This estimate agreed with the tensiometer and soil moisture observations mentioned earlier.  $\delta^2\text{H}$  in the unsaturated zone varies spatially at T=10 and T=20 h, because of soil depth variation, with deeper soils upslope and thus a larger mixing volume with pre-event soil water, resulting in lower  $\delta^2\text{H}$  concentrations. A similar pattern for relative recharge fluxes emerged because of soil depth variation, with low relative recharge fluxes in deep soil upslope, until at least 64 h after the application of labeled sprinkler water. The spatial pattern of relative  $\delta^2\text{H}$  concentrations in the saturated zone are similar to the spatial pattern of relative  $\delta^2\text{H}$  concentrations in the unsaturated zone, except that the relative  $\delta^2\text{H}$  concentrations in the saturated zone show a more diffuse pattern because of a ‘mechanical (convective) dispersion’ caused by partitioning of outflow from each grid cell. T = 20 and 30 h after the application of labeled sprinkler water (DOY 209) the relative  $\delta^2\text{H}$  concentration in the unsaturated and saturated zone decreased because of dilution with non-labeled sprinkler water while relative fluxes of subsurface flow and recharge increased.

Figure 10-9a and 10-9b demonstrate the characteristics of simulated vertical recharge flow and lateral subsurface flow during the sprinkler experiment by plotting the ratio of lateral subsurface flow and vertical recharge fluxes for the 308 parameter sets of Model 2. During the sprinkler experiment mean and maximum lateral subsurface flow fluxes were mostly larger than the vertical recharge fluxes. While Model 2 showed ratios smaller than one during DOY 208 and 209, a large number of simulations showed higher ratios than one (e.g. 65 and 125 simulations were higher than one on DOY 209.5 for mean and maximum lateral subsurface flow, respectively). Figure 10-11 presents the spatial variation of the ratio of vertical recharge and mean and maximum lateral subsurface flow fluxes simulated by Model 2 at different time slices during the sprinkler experiment. During the initial  $\delta^2\text{H}$  breakthrough in lateral subsurface flow (T=10 and 20 h) the ratio of lateral subsurface flow and vertical recharge fluxes was around one near the trench and values decreased upslope. After T=10 h the ratio of lateral subsurface flow and vertical recharge fluxes increased to a maximum value of about three and six for mean and

maximum lateral subsurface flow, respectively. In addition, after T=20 h higher values for the ratio of lateral subsurface flow and vertical recharge fluxes also occurred upslope.

## 5. Discussion

### 5.1 Process understanding through the Hillvi model

5 We performed a two-step model calibration, first on lateral subsurface flow data alone and then on lateral subsurface flow data and the deuterium breakthrough in lateral subsurface flow. As found in the modeling study of McGuire et al. (2007), the inclusion of tracer information improved parameter identification and thus provided further insight into the processes that control hillslope scale water flux and the rapid mobilization of stored, pre-event (old) water to the stream.

10 Effective porosity ( $n_{eff}$ ) was an important and identifiable parameter (Figure 57) for the simulation of the deuterium breakthrough in lateral subsurface flow. Hillvi assumes complete mixing within the unsaturated and saturated store of each grid cell, and the effective porosity describes the fraction of the total porosity that is available for mass transport (mobile soil water) in recharge, lateral subsurface flow and seepage. -As a result of the effective porosity in Hillvi, mass remains longer in the unsaturated and saturated stores of each grid cell, because a fraction ( $1 - n_{eff}$ ) of these stores (immobile soil water) does not take part in the transport process. While a simplification, because it for example ignores exchange between the mobile and immobile domain.

15 This parameter represents a dual porosity system (e.g. Buttle and Sami, 1990; Corapcioglu and Wang, 1999; Stephens et al., 1998; Rasmussen et al., 2000) with a mobile and immobile water domain and the calibration result for this parameter suggests that the mixing volume of deuterium was controlled by an immobile soil water fraction. A dual porosity system is consistent with the study of Brooks et al. (2010) in the same small watershed: based on water-isotope data, they found soil water that is tightly bound (immobile) within small soil pores remains in the soil or leaves

20 the soil through transpiration by trees but is does not contribute to matrix flow, and is disconnected from mobile or stream water.- Although a dual porosity system is consistent with the study of Brooks et al. (2010), we cannot compare the results of this study directly to Brooks et al. (2010), since the difference in timescale between both studies. The bypass term was somewhat less identifiable compared to previous work by McGuire et al. (2007). However, model calibrations on lateral subsurface flow and  $\delta^2H$  showed that higher bypass values produced better simulations (not shown); this is in contrast with

25 McGuire et al. (2007) who found that smaller bypass values ~~to~~-produced better simulations. Our finding though is consistent with dye staining experiments at a nearby site (McGuire et al., 2007), other studies at this site (McGuire and McDonnell, 2010; van Verseveld et al., 2008) and observations published in other studies (Radulovich et al., 1992; Hornberger et al., 1990; van Stiphout et al., 1987; Jackson et al., 2016) that all showed the importance of bypass flow. Additionally, our finding is in agreement with higher observed average vertical velocity at well E04 compared to the deep lysimeters during

30 the sprinkler experiment.

Furthermore, the hydraulic conductivity of bedrock was an important and identifiable parameter for the simulation of lateral subsurface flow and the deuterium breakthrough. Graham et al. (2010) showed that deep seepage at the WS10 hillslope scale

was  $48 \pm 35\%$  of applied water during the same irrigation period (calculated after 10 days of drainage), based on water balance calculations. Our modeling results (Model 2) showed that bedrock seepage accounted for 24% and 26% based on total applied water and  $\delta^2\text{H}$  mass of the labeled pulse respectively. Graham et al. (2010) hypothesized that water that bypassed the trench system was at most 10% of the measured lateral subsurface flow while Model 2 simulated that 70% of lateral subsurface flow was captured by the trench and 30% bypassed the trench. As a consequence of the lower bypass estimate by Graham et al. (2010), they estimated higher deep seepage fractions. However, our simulated bedrock seepage is consistent with the estimated deep seepage at the catchment scale by Graham et al. (2010) that was on average approximately 21% of precipitation at steady-state. Our modeling approach of bedrock seepage (with no later exfiltration of bedrock water) is largely in agreement with the study of Gabrielli et al. (2012) at the same hillslope. Gabrielli et al. (2012) drilled into the underlying breccia at seven locations and found no indication that bedrock groundwater moved upward and contributed this way to lateral subsurface stormflow. However, they found that water from very shallow substantially fractured bedrock near the soil-bedrock interface contributed to lateral subsurface stormflow. Their interpretation was that the source of this water consisted mainly of infiltrating rainwater ~~than-that~~ mixed with soil water. Furthermore, their perceptual model of water flow through the WS10 hillslope showed a deeper seepage component returning as baseflow, similar to our definition of deep groundwater (well A01 and baseflow prior to the start of the sprinkler experiment).

## 5.2 Celerities and velocities at the hillslope scale

The average vertical flow velocities of  $\delta^2\text{H}$  were generally much slower than celerities estimated from wetting front arrival times from soil moisture, matric potential and ~~groundwater height~~ water table measurements. For example, median celerities at 0.60-0.70 m depth were three and twenty times faster, for TDR and tensiometer measurements respectively, than average vertical flow velocities ( $7 \text{ mm h}^{-1}$ ) at 0.70 m depth. Torres et al. (1998) found on a study hillslope with comparable high permeability and porosity soils that at the onset of a sprinkler experiment, a pressure head signal advanced on average fifteen times faster than estimated water and wetting front celerities. They attributed this to the advancement of a pressure wave instead of advective flow of new water. Following recommencement of irrigation, Jackson et al. (2016) observed during their multitracer hillslope irrigation experiment a fast trench flow and piezometer response indicating a pressure wave celerity much faster than observed dye tracer velocities. Rasmussen et al. (2000) presented parametric expressions for the celerity, which predicted pressure wave travel times two to fifteen times faster than the tracer velocity for their short-duration fluid irrigation experiments with intact saporlite columns. How the perturbation (irrigation) was exactly transmitted through the flow domain at our site remains unclear. For example, the celerity at our site could have been produced by a pressure wave response that gave rise to rapid soil water redistribution (as per Torres, 2002). On the other hand, McGuire and McDonnell (2010) indicated that advective preferential flow transport was the most plausible mechanism for observed rapid soil moisture responses in the unsaturated zone at this study site.

While the precise mechanism of disturbance transmittance remains unclear at our study site, our modeling results are consistent with celerities that were much faster than average vertical flow velocities. The  $\delta^2\text{H}$  breakthrough curve for lateral

subsurface flow was characterized by an early breakthrough and a long tail. This breakthrough shape indicates a subsurface system where mixing is controlled by an immobile soil fraction. This is supported by the importance of the effective porosity model parameter for modeling the  $\delta^2\text{H}$  breakthrough curve. The observed peak  $\delta^2\text{H}$  value of about +20 ‰ in lateral subsurface flow differed substantially from the labeled irrigation water with an average signal of +285 ‰. In *HillVi*, complete mixing of  $\delta^2\text{H}$  with available unsaturated and saturated stores was assumed, but the actual transport of  $\delta^2\text{H}$  was only associated with a portion of the total available porosity (effective porosity). The effect of the effective porosity model parameter was to decouple the hydrologic response (celerity) from the velocity of water transport, consistent with calculated faster celerities than average vertical flow velocities from field observations.

### 5.3 Residence and travel time distributions

The estimated simulated median travel time for total lateral subsurface flow during natural conditions (95.6 days) was in the same range as reported by McGuire et al. (2007) for the same site. McGuire et al. (2007) did for example report a simulated mean travel time of 92 days during steady-state conditions calculated with their model that was calibrated to runoff and mass flux of tracer. They observed that these simulated distributions were considerable younger than estimates that use measured stable isotopes in runoff (McGuire et al., ~~2005~~2007). One of the explanations, besides that observed stable isotope signatures reflect largely baseflow conditions, was that the mixing volume of the model did not include bedrock contributions. While we did not explicitly model bedrock contributions during the sprinkler experiment, we did incorporate the contribution of deep groundwater, resulting in a lower simulated maximum event water contribution and an older simulated travel time distribution, compared to the situation without contribution of deep groundwater.

The simulated median residence time was similar to simulated median travel times, a somewhat expected result since we know from theoretical work of Rinaldo et al. (2011) that the wetter the catchment the closer the median residence and travel time distributions become—our sprinkler experiment was characterized by generally wet conditions. On the other hand, the median residence time in the storage zone should be considered a minimum value, because about 10% of the total mass input of the labeled sprinkler water remained in the unsaturated zone. Botter et al. (2010) showed theoretically that under wet conditions the travel time probability density function (PDF) and evapotranspiration PDF are only slightly different, and this was explained by relatively high soil moisture contents and thus high efficiency of the transpiration processes. Indeed, generally, the simulated evaporation PDF by *HillVi* was similar to the other simulated travel time distributions with an early time peak. While similar, the evaporation PDF showed a more pronounced diel fluctuation, heavier tail and more weighting at earlier times than the other travel time distributions. This difference is probably caused by a combination of evapotranspiration fluxes (pronounced diel fluctuations), effective porosity and low subsurface flow velocities (heavier tale) and simply because the unsaturated zone firstly responds to irrigation (more weighting at earlier times). The exit time CDFs of total lateral subsurface flow, and lateral subsurface flow captured at the trench, illustrated clearly that the exit time CDF of lateral subsurface flow captured at the trench showed more weighting at earlier times.

#### 5.4 What controlled the tracer breakthrough curve at the hillslope scale?

Besides a dual porosity system (effective porosity), the constant contribution of deep groundwater further reduced the  $\delta^2\text{H}$  signal in lateral subsurface flow. Both processes caused an attenuation of the observed  $\delta^2\text{H}$  spike in irrigation water and produced a small contribution of event water. These processes explain how stored, pre-event water quickly mobilizes.

5 However, this explanation is not in line with results of Anderson et al. (1997) who concluded that old water rapidly mobilizes because of old water displacement (plug flow) in the unsaturated zone mixing with lateral subsurface flow originating from the bedrock. Our explanation is more in agreement with the study of Collins et al. (2000) who did not find evidence for new water that completely displaces old water. Similarly, Kienzler and Naef (2007) inter-compared sprinkler experiments at different locations, and found that sites where large pre-event (old) water fractions were observed, were  
10 characterized by subsurface flow, that was supplied indirectly by preferential flow paths from saturated soil parts. Their study did not find support for pre-event and event water that completely and instantaneously mixed. Instead, they found that pre-event water constantly emanated from small pores to large pores during saturation of the soil. Our modeling results of the  $\delta^2\text{H}$  breakthrough curve in lateral subsurface flow point to a similar process at our site whereby event water that moved to the immobile pool (i.e. dead-end pores) during the start of the sprinkler experiment was gradually released during the rest  
15 of the sprinkler experiment.

The two component mixing model based on measured  $\delta^2\text{H}$  showed a small contribution of event water (maximum of 26% with deep groundwater contribution) to lateral subsurface flow. We identified two main hillslope flowpaths: vertical water movement through the unsaturated zone and lateral subsurface flow that ~~traveled~~travelled quickly downslope.  $\delta^2\text{H}$  peaks in lysimeter water and transient groundwater showed that vertical flow moved to depth sequentially. Additionally, the soil  
20 moisture and tensiometer measurements showed a sequential response with depth. Well E04 was the exception because it was characterized by an earlier arrival time of the  $\delta^2\text{H}$  peak than the deep soil. This indicates preferential flow paths that bypassed the deep soil at this location. Vertical bypass flow was an essential process to include in *Hillvi* in order to capture the lateral subsurface flow and the  $\delta^2\text{H}$  breakthrough in lateral subsurface flow dynamics during the sprinkler experiment.

Through the combination of isotopic ( $\delta^2\text{H}$ ) and tensiometer data, this study showed that the source of  $\delta^2\text{H}$  peak in lateral  
25 subsurface flow was primarily from shallow soil water nearby the trench. The soil depth at this site varies between 0.1-0.3 m nearby the hillslope trench to about a soil depth of 3 m at the upper end of the sprinkler plot. This soil depth variation in combination with vertical flow through the unsaturated zone and lateral subsurface flow downslope at this site is in agreement with a shallow soil source of the  $\delta^2\text{H}$  peak in lateral subsurface flow. Also our modeling results are in line with the shallow soil depth source of the  $\delta^2\text{H}$  peak. Since the  $\delta^2\text{H}$  signal in well E04 indicated preferential flow, water may have originated  
30 from deeper soils than 0.3 m higher upslope. The spatial variability of soil depth at our site most likely also played an important role in the generation of the  $\delta^2\text{H}$  breakthrough curve. Several studies, at WS10 (e.g. Sayama and McDonnell, 2009) and elsewhere (e.g. Hopp and McDonnell, 2009) have shown that increases in soil depth lead to a general attenuation of the hydrological response. Deeper soils increase the vertical travel distance to the soil bedrock interface, have more

storage volume and thus increase the mixing reservoir with pre-event water and more slowly reach saturation, resulting generally in a more damped signal of  $\delta^2\text{H}$  in lateral subsurface flow. Figures 8-9 and 10-11 clearly show the disconnection of more upslope areas (deeper soils) from the trench in terms of subsurface flow and  $\delta^2\text{H}$ , around the  $\delta^2\text{H}$  peak in lateral subsurface flow.

### **5.5 On the value of connecting experimental and modeling work at the hillslope scale**

By combining experimental and modeling work we were able to comprehensively assess celerity-velocity differences at the hillslope scale and explain the rapid mobilization of old water. Our experimental work showed that deep groundwater contributions from a seep (well A01) to lateral subsurface flow captured by the trench was important but was not influenced by the sprinkler experiment. We included this information in our modeling work for the simulation of total lateral subsurface flow captured by the trench and the  $\delta^2\text{H}$  breakthrough in lateral subsurface flow. We were able to differentiate between mixing at the hillslope with and without the deep groundwater contribution. Furthermore, the combined experimental and modeling work provided insights into the role of bedrock seepage, the amount of water and  $\delta^2\text{H}$  that bypassed the trench, and showed through the analysis of simulated exit time distributions that the mass transport dynamics for the modeled hillslope domain were different from mass transport dynamics upstream of the trench. These different exit time distributions also illustrate that one should be careful with extrapolating results at the trench scale to other hillslope segments within a catchment or even to adjacent hillslope segments.

While this study demonstrated that the application of one tracer ( $\delta^2\text{H}$ ) in time and space at the hillslope scale in combination with modeling was sufficient to assess hillslope scale celerity-velocity differences, and to explain the rapid mobilization of old water, the precise mechanism of disturbance transmittance at our site remains unclear. This would require spatially and temporally more intensive soil moisture (calibrated), soil matric potential, and tracer concentration measurements. For example, combined soil moisture and electrical conductivity probes with paired soil matric potential probes at different depths, in combination with a salt tracer, could be an interesting experimental setup. Higher irrigation intensities as disturbance in combination with different antecedent wetness conditions during the experiment would provide valuable information. Additionally, the application of other tracers as  $^{18}\text{O}$ , bromide or fluorescent dyes applied for example during steady state conditions, through irrigation or injected into wells, would give insight into tracer dynamics during wet conditions and would also allow for the application of lumped mass transport models that assume steady state conditions.

## **6. Conclusions**

This study combined isotopic and internal physical measurements for a 24 day hillslope sprinkler experiment. The steady irrigation rates and controlled conditions avoided issues associated with natural variability in inputs, and enabled the application of a process-based spatial explicit hydrologic model. This resulted in a mechanistically plausible conceptual



model for celerity-velocity differences and the rapid mobilization of old water. Our analyses show that flow paths of water were vertical ~~flow~~ through the unsaturated zone and then strongly lateral in the thin zone above the bedrock for rapid subsurface flow. Celerities estimated from wetting front arrival times were generally much faster than average vertical velocities of  $\delta^2\text{H}$ . This was consistent with our modeling results that showed that the transport of  $\delta^2\text{H}$  through the hillslope was controlled by effective porosity, indicating a subsurface system where mixing is controlled by an immobile soil fraction. This was one of the mechanisms that caused the large reduction in the  $\delta^2\text{H}$  input signal in lateral subsurface flow. Furthermore, deep groundwater caused a further reduction in the  $\delta^2\text{H}$  input signal, based on calculations with a simple mixing model. Finally, we showed that the soil depth variability at our site played an important role in the generation of the  $\delta^2\text{H}$  breakthrough curve. Deeper upslope soils damped the  $\delta^2\text{H}$  input signal. These processes reduced the observed  $\delta^2\text{H}$  spike in irrigation water and produced a small contribution of event water, explaining therefore the fast appearance of stored, pre-event water in lateral subsurface flow.

The broader implications of our work showed that modeling exit time and residence time distributions provided added value. Through the modeling we observed that the trench did not represent the total modeled hillslope domain, since lateral subsurface flow captured at the trench showed more weighting at earlier times. Additionally, the residence (10%  $\delta^2\text{H}$  remained in the unsaturated zone) and the exit time distributions of evaporation (heavy tail) ~~of  $\delta^2\text{H}$  in the unsaturated zone~~, in combination with the effective porosity as an important model parameter, illustrated the important role of the unsaturated zone in controlling mass transport at the hillslope scale. Finally, besides the unsaturated zone, this study revealed bedrock seepage and deep groundwater as important controls on mass transport at the hillslope scale.

## Acknowledgements

This work was supported through funding from the National Science Foundation (grant DEB 021-8088 to the Long-Term Ecological Research Program at the H. J. Andrews Experimental Forest), Department of Forest Engineering at Oregon State University and the Environmental Protection Agency. This manuscript has been subjected to the Environmental Protection Agency's peer and administrative review, and it has been approved for publication as an EPA document. The views expressed in this paper are those of the author(s) and do not necessarily reflect the views or policies of the U.S. Environmental Protection Agency. Mention of trade names or commercial products does not constitute endorsement or recommendation for use. We thank Marloes Bakker, Matthew Bergen and John Moreau for providing field assistance. We especially thank the McKenzie River Ranger District for providing irrigation water during the experiment, and Kari O'Connell and Cheryl Friesen for coordinating logistics. We also thank R. D. Harr and D. Ranken for initiating the hillslope studies at WS10, and K. J. McGuire for re-initiating this site.

## References

- Anderson, S. P., Dietrich, W. E., Montgomery, D. R., Conrad, M. E., and Loague, K.: Subsurface flow paths in a steep, unchanneled catchment, *Water Resour. Res.*, 33, 2637-2653, 1997.
- Barnard, H. R., Graham, C. B., Van Verseveld, W. J., Brooks, J. R., Bond, B. J., and McDonnell, J. J.: Mechanistic assessment of hillslope transpiration controls of diel subsurface flow: a steady-state irrigation approach, *Ecohydrol.*, 3(2), 133-142, 2010.
- Bishop, K. H.: Episodic increases in stream acidity, catchment flow pathways and hydrograph separation, Univ. of Cambridge Doctoral Dissertation, ISSN 0280-9168, 246 pp, 1991.
- Bishop, K., Seibert, J., Köhler, S., and Laudon, H.: Resolving the double paradox of rapidly old water with variable responses in runoff chemistry, *Hydrol. Process.*, 18, 185-189, 2004.
- Botter, G., Bertuzzo, E., and Rinaldo, A.: Transport in the hydrologic response: travel time distributions, soil moisture dynamics, and the old water paradox, *Water Resour. Res.*, 46, W03514, doi:10.1029/2009WR008371, 2010.
- Buttle, J. M., and Sami, K.: Recharge processes during snowmelt— An isotopic and hydrometric investigation, *Hydrol. Process.*, 4, 343–360, 1990.
- Brooks, R., Barnard, R., Coulombe, R., and McDonnell, J. J.: Ecohydrologic separation of water between trees and streams in a Mediterranean climate, *Nat. Geosci.*, 3, 100–104, doi: 10.1038/NGEO722, 2010.
- Czarnomski, N. M., Moore, G. W., Pypker, T. G., Licata, J., and Bond, B. J.: Precision and accuracy of three alternative instruments for measuring soil water content in two forest soils of the Pacific Northwest, *Can. J. For. Res.*, 35, 1867–1876, doi:10.1139/x05-121, 2005.
- Collins, R., Jenkins, A., and Harrow, M.: The contribution of old and new water to a storm hydrograph determined by tracer addition to a whole catchment, *Hydrol. Process.*, 14, 701-711, 2000.
- Corapcioglu, M. Y., and Choi, H.: Modeling colloid transport in unsaturated porous media and validation with laboratory column data. *Water Resour. Res.*, 32, 3437–3449, 1999.
- Davies, J., Beven, K., Rodhe, A., Nyberg, L., and Bishop, K.: Integrated modeling of flow and residence times at the catchment scale with multiple interacting pathways, *Water Resour. Res.*, 49, 4738–4750, doi:10.1002/wrcr.20377, 2013.
- Dunn, S. M., McDonnell, J. J., and Vaché, K. B.: Factors influencing the residence time of catchment waters: a virtual experiment approach, *Water Resour. Res.*, 43, W06408, doi:10.1029/2006WR005393, 2007.
- Fenicia, F., Wrede, S., Kavetski, D., Pfister, L., Hoffmann, L., Savenije, H. H. G., and McDonnell, J. J.: Assessing the impact of mixing assumptions on the estimation of streamwater mean residence time, *Hydrol. Process.*, 24, 1730–1741, 2010.
- Feyen, H., Wunderli, H., Wydler, H., and Papritz, A.: A tracer experiment to study flow paths of water in a forest soil, *J. Hydrol.*, 225, 155-167, 1999.

- Gabrielli, C. P., McDonnell, J. J., and Jarvis, W. T.: The role of bedrock groundwater in rainfall–runoff response at hillslope and catchment scales, *J. Hydrol.*, 450-451, 117-133, 2012.
- Graham C. B., van Verseveld W. J., Barnard H. R., and McDonnell J. J.: Estimating the deep seepage component of the hillslope and catchment water balance within a measurement uncertainty framework, *Hydrol. Process.*, 24, 3631-3647, 2010.
- 5 Harman, C. J.: Time-variable transit time distributions and transport: Theory and application to storage-dependent transport of chloride in a watershed, *Water Resour. Res.*, 51, 1–30, doi:10.1002/2014WR015707, 2015.
- Harr, R. D.: Water flux in soil and subsoil on a steep forested slope. *J. Hydrol.*, 33, 37-58, 1977.
- Harr, R. D., and Ranken, D. W.: Movement of water through forested soils in steep topography, University of Washington, Coniferous Forest Biome Internal Report, 117, 1972.
- 10 Hornberger, G. M., Beven, K. J., and Germann, P. F.: Inferences about solute transport in macroporous forest soils from time series models, *Geoderma*, 46, 249–262, 1990.
- Hopp, L., and McDonnell, J. J.: Connectivity at the hillslope scale: Identifying interactions between storm size, bedrock permeability, slope angle and soil depth, *J. Hydrol.*, 376, 378-391, DOI: 10.1016/j.jhydrol.2009.07.047, 2009.
- Hrachowitz, M., Savenije, H., Bogaard, T. A., Tetzlaff, D. and Soulsby C.: What can flux tracking teach us about water age distribution patterns and their temporal dynamics?, *Hydrol. Earth Syst. Sci.*, 17(2), 533–564, doi:10.5194/hess-17-533-2013, 2013.
- Jackson, C. R., Du, E., Klaus, J., Griffiths, N. A., Bitew, M., and McDonnell, J. J.: Interactions among hydraulic conductivity distributions, subsurface topography, and transport thresholds revealed by a multitracer hillslope irrigation experiment, *Water Resour. Res.*, 52, 6186–6206, doi:10.1002/2015WR018364, 2016.
- 20 Jones, J. P., Sudicky, E. A., Brookfield, A. E., and Park, Y-J.: An assessment of the tracer-based approach to quantifying groundwater contributions to streamflow, *Water Resour. Res.*, 42, W02407, doi:10.1029/2005WR004130, 2006.
- Jury, W. A., and Sposito, G.: Field calibration and validation of solute transport models for the unsaturated zone, *Soil Sci. Soc. Am. J.*, 49, 1331-1341, 1985.
- Kienzler, P. M., and Naef, F.: Subsurface storm flow formation at different hillslopes and implications for the ‘old water paradox’, *Hydrol. Process.*, 22, 104-116, DOI: 10.1002/hyp.6687, 2008.
- 25 Kendall, K. A., Shanley, J. B., and McDonnell, J. J.: A hydrometric and geochemical approach to test the transmissivity feedback hypothesis during snowmelt, *J. Hydrol.*, 219, 188–205, 1999.
- Kirchner, J. W.: A double paradox in catchment hydrology and geochemistry, *Hydrol. Process.*, 17, 871-874, 2003.
- Klaus, J., Chun, K. P., McGuire, K. J., and McDonnell, J. J.: Temporal dynamics of catchment transit times from stable isotope data, *Water Resour. Res.*, 51, 4208–4223, doi:10.1002/2014WR016247, 2015.
- 30 ~~Lajtha K., Jarrell, W. M., Johnson, D. W., and Sollins P.: Collection of Soil Solution, In Standard Soil Methods for Long-Term Ecological Research, Robertson GP, and others (eds), Oxford, University Press, New York, 166–182, 1999.~~
- Martinez, J.: Subsurface flow from snowmelt traced by tritium, *Water Resour. Res.*, 11, 496-498, 1975.

- McGuire, K. J.: Water residence time and runoff generation in the western Cascades of Oregon, Ph.D., Oregon State University, Corvallis, 2004.
- McGuire, K. J., McDonnell, J. J., and Weiler, M.: Integrating tracer experiments with modeling to infer water transit times, *Adv. Water Resour.*, 30, 824-837, 2007.
- 5 | McGuire, K. J., and McDonnell, J. J.: A review and evaluation of catchment transit time modeling, *J. Hydr.*, 330, 543-563, 2006.
- McGuire, K. J., and McDonnell, J. J.: Hydrological connectivity of hillslopes and streams: Characteristic time scales and nonlinearities. *Water Resour. Res.*, 46, doi:10.1029/2010WR009341, 2010.
- 10 | McDonnell, J. J.: A rationale for old water discharge through macropores in a steep, humid catchment, *Water Resour. Res.*, 26, 2821-2832, 1990.
- McDonnell, J. J., and ~~K.~~Beven, ~~K.~~: Debates—The future of hydrological sciences: A (common) path forward? A call to action aimed at understanding velocities, celerities, and residence time distributions of the headwater hydrograph, *Water Resour. Res.*, 50, 5342–5350, doi:10.1002/2013WR015141, 2014.
- Nash, J. E., and Sutcliffe, J. V.: River flow forecasting through conceptual models, I, A discussion of principles, *J. Hydr.*, 10, 15 | 282-290, 1970.
- Nyberg, L., Rodhe, A., and Bishop, K.: Water transit times and flow paths from two line injections of <sup>3</sup>H and <sup>36</sup>Cl in a microcatchment at Gårdsjön, Sweden, *Hydrol. Process.*, 1, 1557-1575, 1999.
- Ranken, D. W.: Hydrologic properties of soil and subsoil on a steep, forested slope, M.S., Oregon State University, Corvallis, 1974.
- 20 | Radulovich, R., Sollins, P., Baveye, P., and Solorzano, E.: Bypass water flow through unsaturated microaggregated tropical soils. *Soil Sci. Soc. Am. J.*, 56, 721–726, 1992.
- Rasmussen, T. C., Baldwin, R. H., Dowd, J. F., and Williams, A. G.: Tracer vs. pressure wave velocities through unsaturated saprolite, *Soil Sci. Soc. Am. J.*, 64, 75 – 85, 2000.
- Rinaldo, A., Beven, K. J., Bertuzzo, E. L., Nicotina, L., Davies, J., Fiori, A., Russo, D., and ~~G.~~Botter, ~~G.~~: Catchment travel 25 | time distributions and water flow in soils, *Water Resour. Res.*, 47, W07537, doi:10.1029/2011WR010478, 2011.
- Rodhe, A., Nyberg, L., and Bishop, K.: Transit times for water in a small till catchment from a step shift in the oxygen-18 content of the water input, *Water Resour. Res.*, 32(12), 3497–3511, 1996.
- Sayama, T., and McDonnell, J. J.: A new time-space accounting scheme to predict stream water residence time and hydrograph source components at the watershed scale, *Water Resour. Res.*, 45, W07401, doi:10.1029/2008WR007549, 30 | 2009.
- Scaini, A., Audebert, M., Hissler, C., Fenicia, F., Gourdol, L., Pfister, L., and Beven, K. J.: Velocity and celerity dynamics at plot scale inferred from artificial tracing experiments and time-lapse ERT, *J. Hydrol.*, 546, 28–43, 2017.
- Seeger, S. and Weiler, M.: Reevaluation of transit time distributions, mean transit times and their relation to catchment topography, *Hydrol. Earth Syst. Sci.*, 18, 4751-4771, doi:10.5194/hess-18-4751-2014, 2014.

- Seibert, J., and McDonnell J. J.: On the dialog between experimentalist and modeler in catchment hydrology: use of soft data for multicriteria model calibration, *Water Resour. Res.*, 38(11), 1241, doi:10.1029/2001WR000978, 2002.
- Sollins, P., Cromack, K. J., McCorison, F. M., Waring, R. H., and Harr, R. D.: Changes in nitrogen cycling at an old-growth Douglas-fir site after disturbance, *J. Environ. Qual.*, 10, 37-42, 1981.
- 5 Stephens, D. B., Hsu, K., Prieksat, M. A., Ankeny, M. D., Blandford, N., Roth, T. L., Kelsey, J. A., and Whitworth, J. R.: A comparison of estimated and calculated effective porosity, *Hydrogeol. J.*, 6, 156–165, 1998.
- Swanson, F. J., and James, M. E.: *Geology and geomorphology of the H.J. Andrews Experimental Forest, western Cascades, Oregon*. Res. Pap. PNW-188, U.S. Department of Agriculture, Forest Service, Pacific Northwest Forest and Range Experiment Station, Portland, OR, 1975.
- 10 Tani, M.: Runoff generation processes estimated from hydrological observations on a steep forested hillslope with a thin soil layer, *J. Hydrol.*, 200, 84–109, 1997.
- Torres, R.: A threshold condition for soil-water transport, *Hydrol. Process.*, 16(13), 2703–2706, doi:10.1002/hyp.5060, 2002.
- Torres, R., Dietrich, W. E., Montgomery, D. R., Anderson, S. P., [and](#) Loague, K.: Unsaturated zone processes and the hydrologic response of a steep, unchanneled catchment, *Water Resour. Res.*, 34, 1865-1879, 1998.
- 15 Triska, F. J., Sedell, J. R., Cromack, K., Gregory, S. V., [and](#) McCorison, F. M.: Nitrogen budget for a small coniferous forest stream, *Ecol. Monogr.*, 54, 119-140, 1984.
- Tromp-van Meerveld, H. J. and Weiler, M.: Hillslope dynamics modeled with increasing complexity, *J. Hydr.*, 361, 24-40, 2008.
- Vaché, K. B. and McDonnell, J. J.: A process-based rejectionist framework for evaluating catchment runoff model structure, *Water Resour. Res.*, 42, W02409, doi:10.1029/2005WR004247, 2006.
- 20 van Stiphout, T. P. J., van Lanen, H. A. J., Boersma, O. H., and Bouma, J.: The effect of bypass flow and internal catchment of rain on the water regime in a clay loam grassland soil, *J. Hydrol.* 95, 1–11, 1987.
- van Verseveld, W. J., McDonnell, J. J., and Lajtha, K: A mechanistic assessment of nutrient flushing at the catchment scale, *J. Hydr.*, 358, 268-287, 2008.
- 25 van der Velde, Y., de Rooij, G. H., Rozemeijer, J. C., van Geer, F. C., and Broers, H. P.: Nitrate response of a lowland catchment: on the relation between stream concentration and travel time distribution dynamics, *Water Resour. Res.*, 46, W11534, doi:10.1029/2010WR009105, 2010.
- van der Velde, Y., Torfs, P. J. J. F., van der Zee, S. E. A. T. M., and Uijlenhoet, R.: Quantifying catchment-scale mixing and its effects on time-varying travel time distributions, *Water Resour. Res.*, 48, W06536, doi:10.1029/2011WR011310, 2012.
- 30 Weiler, M. and McDonnell, J.: Virtual experiments: a new approach for improving process conceptualization in hillslope hydrology, *J. Hydrol.*, 285, 3–18, 2004.
- Weiler, M. and McDonnell, J.: Testing nutrient flushing hypotheses at the hillslope scale: A virtual experiment approach, *J. Hydrol.*, 319, 339–356, 2005.

Weiler, M., and McDonnell, J. J.: Conceptualizing lateral preferential flow and flow networks and simulating the effects on gauged and ungauged hillslopes, *Water Resour. Res.*, 43, W03403, doi:10.1029/2006WR004867, 2007.

Weiler, M., Naef, F., and Leibundgut, C.: Study of runoff generation on hillslopes using tracer experiments and physically based numerical model, *IAHS Publ.*, 248, 353–360, 1998.

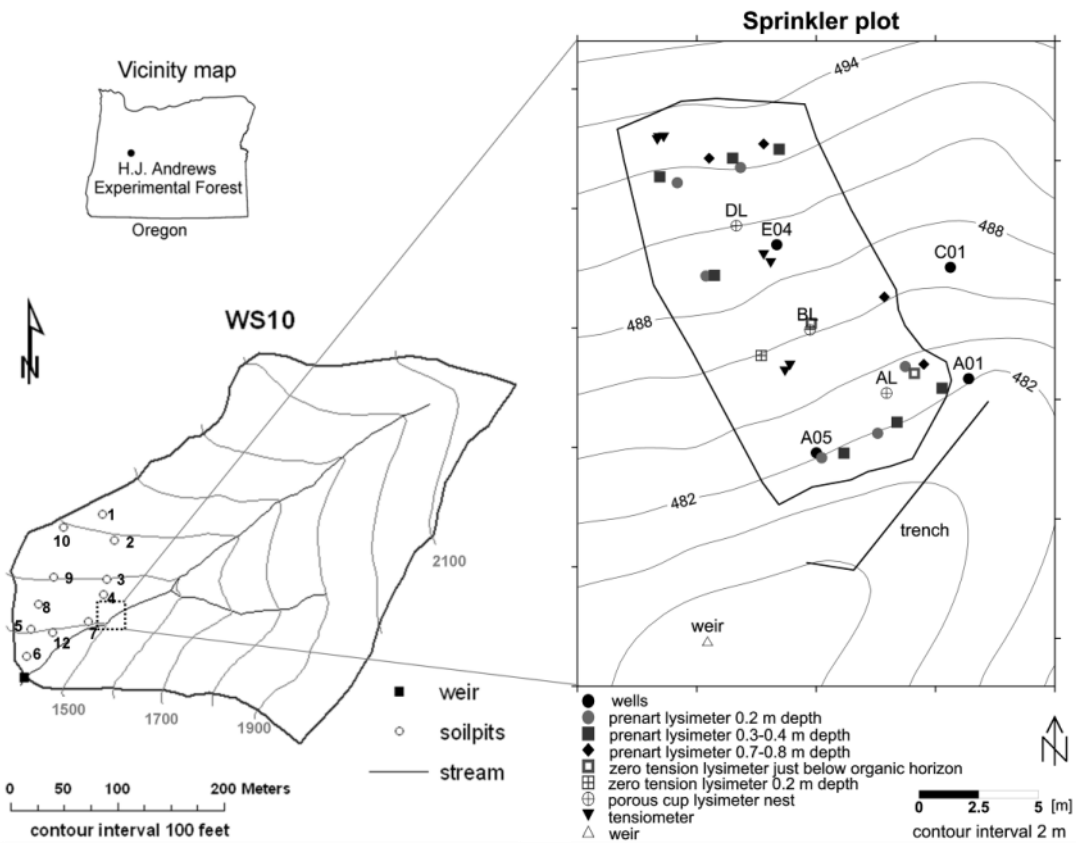
5 | Wienhöfer, J., Germer, K., Lindenmaier, F., Färber, A., and Zehe, E.: Applied tracers for the observation of subsurface stormflow at the hillslope scale, *Hydrol. Earth Syst. Sci.*, 13, 1145–1161, 2009.

Wigmosta, M. S., and Lettenmaier, D. P.: A comparison of simplified methods for routing topographically driven subsurface flow, *Water Resour. Res.*, 35, 255–264, 1999.

Williams, A. G., Dowd, J. F., and Meyles, E. W.: A new interpretation of kinematic stormflow generation, *Hydrol. Process.*,  
10 16, 2791–2803, 2002.

Yano, Y., Lajtha, K., Sollins, P., and Caldwell, B. A.: Chemistry and Dynamics of Dissolved Organic Matter in a Temperate Coniferous Forest on Andic Soils: Effects of Litter Quality, *Ecosystems*, 8, 286-300, 2005







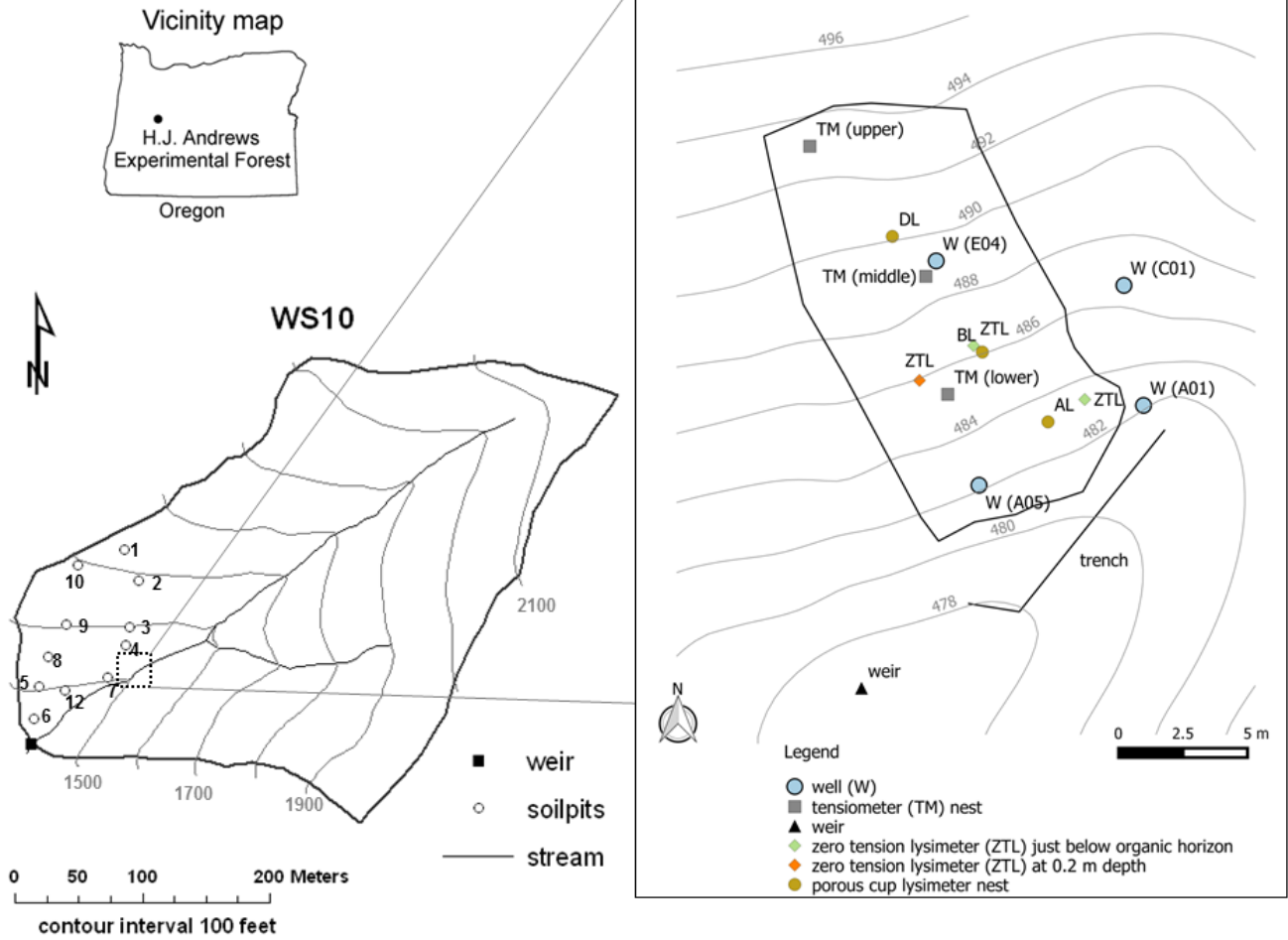
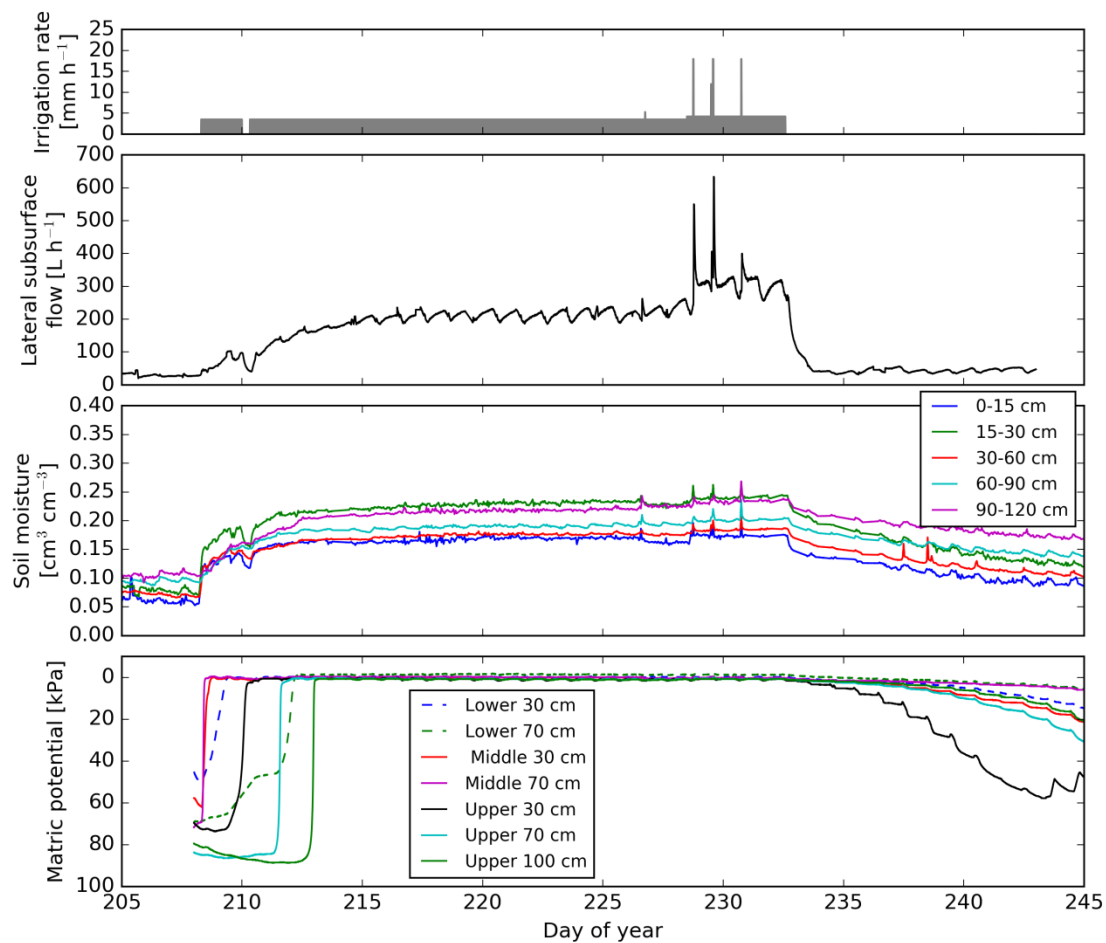
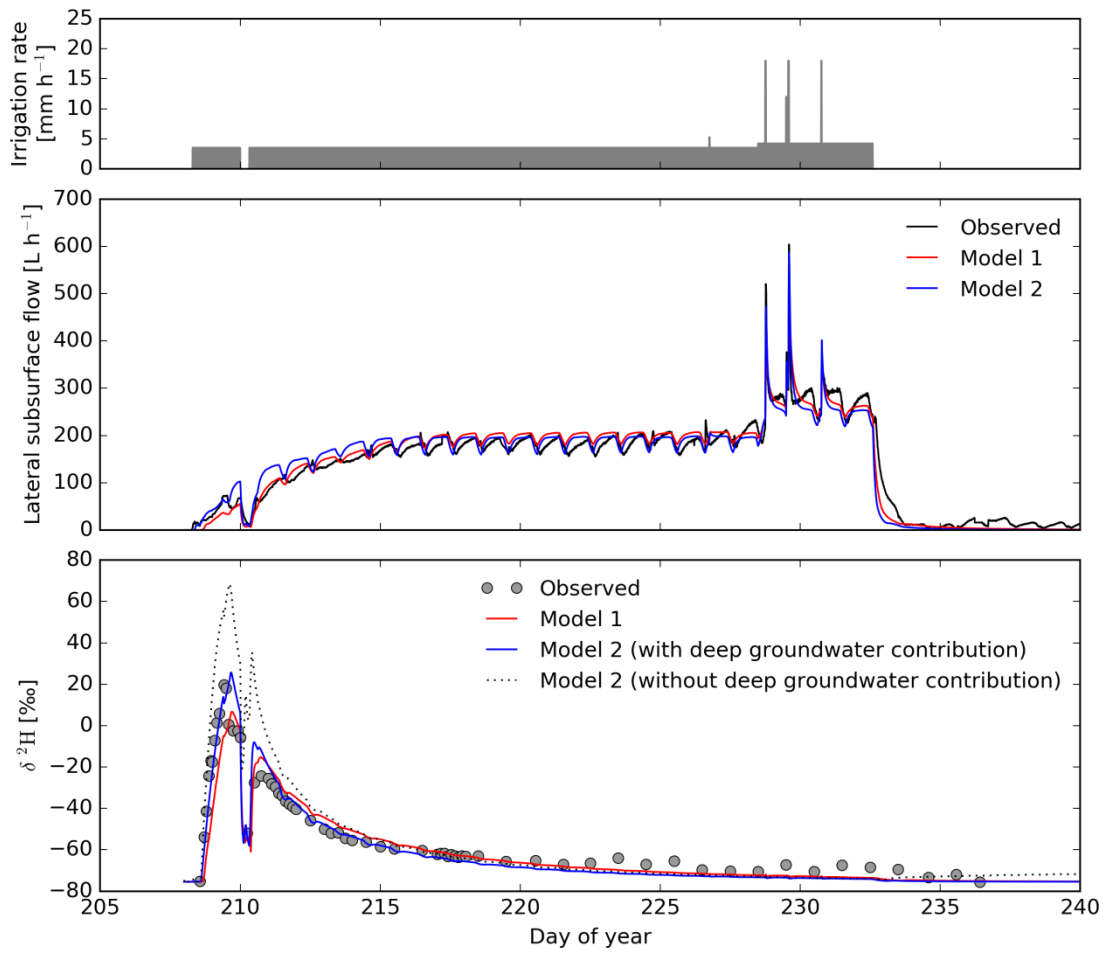


Figure 1: Map of WS10 with soil pits and sprinkler area with instrumentation. See Methods 3.1 for abbreviation explanations.

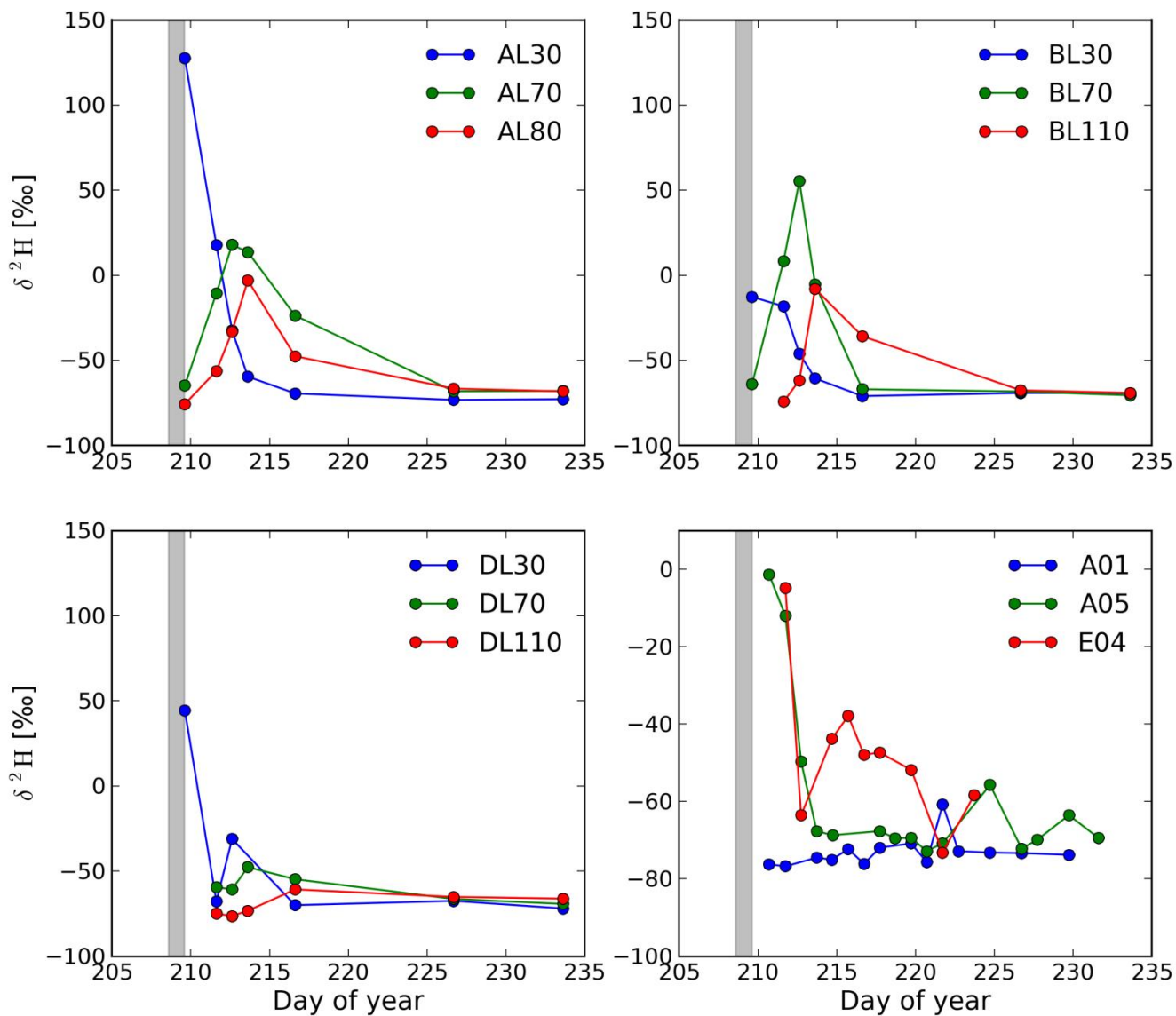


**Figure 2: Temporal dynamics over the experiment of the irrigation rate (top panel), lateral subsurface flow measured at the hillslope trench (second panel), soil moisture measurements averaged for five measurement depths (third panel) and matric potential measurements for the three tensiometer nests (bottom panel).**

5



**Figure 3: Observed (at the trench) and simulated lateral subsurface flow and  $\delta^2\text{H}$  breakthrough in lateral subsurface flow, for Model 1 and 2.**



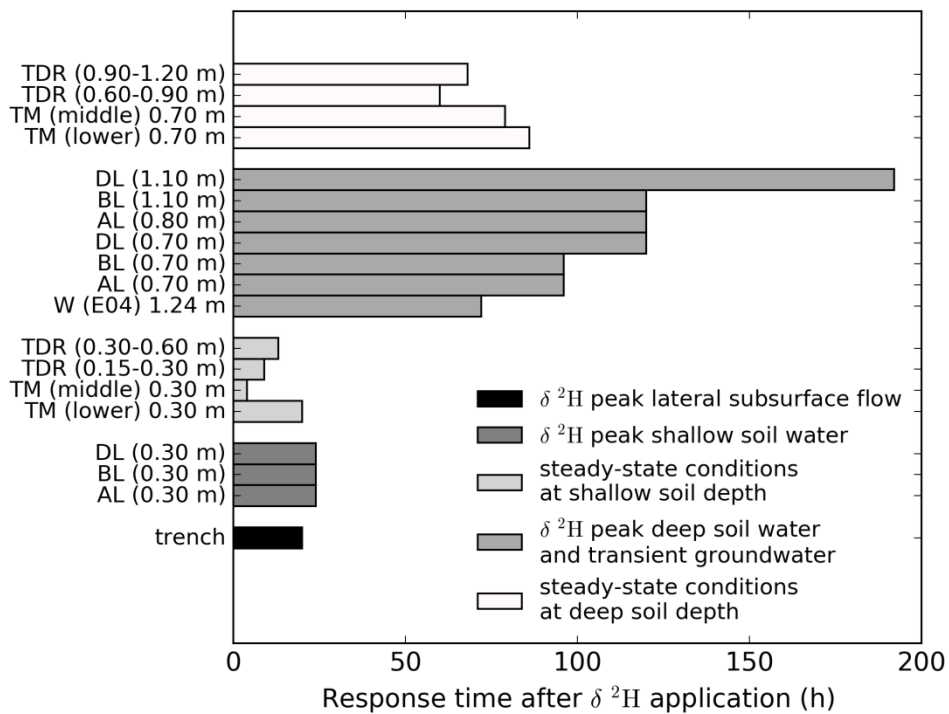
**Figure 4: Soil water  $\delta^2\text{H}$  breakthrough curves at tension lysimeter nests AL, BL and DL, and wells A01, A05 and E04. Gray area represents application of labeled irrigation water.**

**Table 1: Median wetting front celerities estimated from different type of measurements (GW=~~Groundwater~~Well, TDR = Time Domain reflectometry and TM = Tensiometer).**

Depth [m]	Measurement	Number of measurements	Median celerity [mm h <sup>-1</sup> ]
0.15	TDR	9	110
0.30	TDR	11	150
0.30	TM	3	120
0.44	GW (A05)	1	380
0.60	TDR	13	150
0.70	TM	3	25
0.90	TDR	11	45
1.00	TM	1	9.7
1.20	TDR	8	43
1.24	GW (E04)	1	87

**Table 2: Calculated velocities based on timing of  $\delta^2\text{H}$  peak and mean arrival time of  $\delta^2\text{H}$  (first normalized moment of the BTC).**

Location	Peak $\delta^2\text{H}$ [‰]	Response time [d] to $\delta^2\text{H}$ peak input	Depth [m]	Velocity [mm h <sup>-1</sup> ] based on $\delta^2\text{H}$ peak
A05	-1.3	2	0.44	9.2
E04	-5	3	1.24	17
AL30	128	1	0.30	13
BL30	-12.7	1	0.30	13
DL30	44.3	1	0.30	13
AL70	17.9	4	0.70	7.3
BL70	55.3	4	0.70	7.3
DL70	-47.7	5	0.70	5.8
AL80	-3	5	0.80	6.7
BL110	-7.9	5	1.10	9.2
DL110	-60.8	8	1.10	5.7
ZTL20_1	16.2	1	0.20	8.3



**Figure 5: Tracer response time ( $\delta^{2}\text{H}$  peak) observed at porous cup lysimeter nests AL, BL and DL, in lateral subsurface flow at the trench and in well E04, relative from the start of the  $\delta^{2}\text{H}$  application. And response time of steady-state soil water content measured by Time Domain Reflectors (TDR) and steady-state soil matric potential measured by tensiometer nests (TM), relative from the start of the  $\delta^{2}\text{H}$  application.**

5

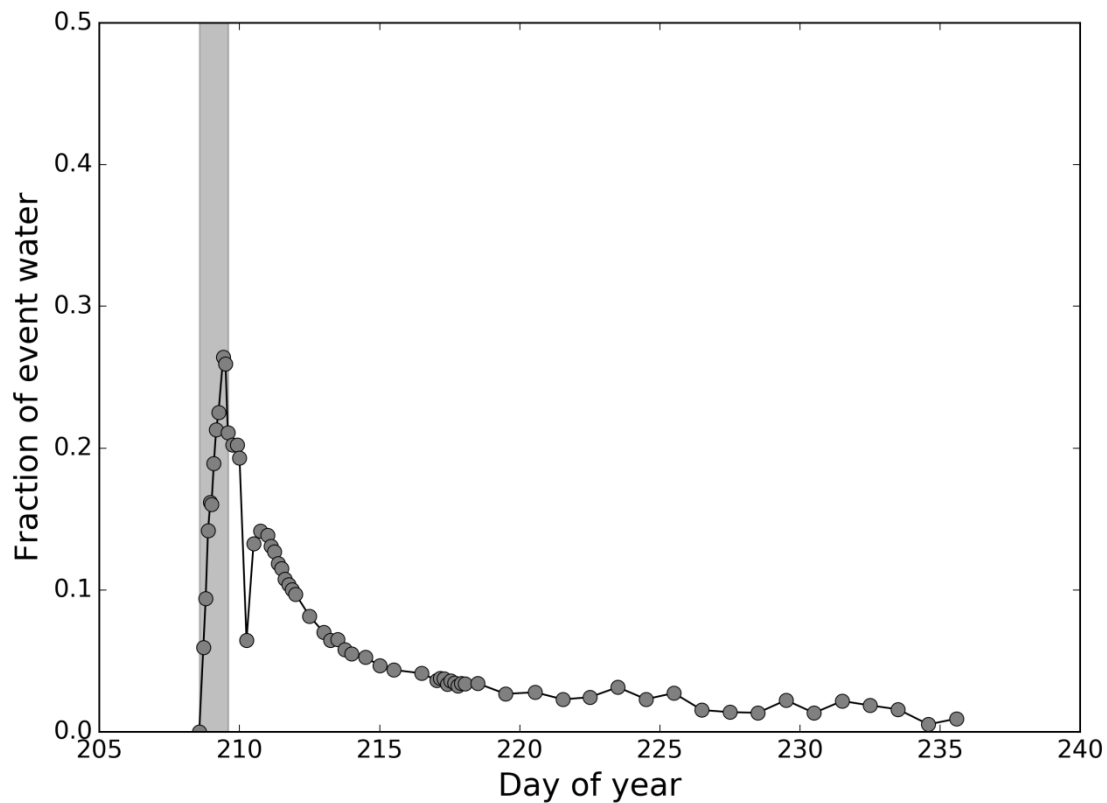


Figure 65: Fraction of event water captured at the trench during the sprinkler experiment based on a 2-component mixing model. Grey area represents application period of labeled irrigation water.



**Table 3: Parameter description, ranges (calibration), best parameter sets with uncertainty in parentheses, based on lateral subsurface flow (Model 1) and based on both lateral subsurface flow and  $\delta^{2}\text{H}$  (Model 2). Parameter uncertainty is defined as the range between behavioral parameter values of the 0.1 and 0.9 percentiles divided by the median parameter value expressed as a percentage.**

Parameter	Description	Parameter range		Model parameters	
		Lower limit	Upper limit	Model 1	Model 2
$n$	Average soil porosity	0.42	0.56	0.48 (22%)	0.44 (18%)
$b$ (m)	Shape factor for drainable porosity function	1	2	1.8 (53%)	1.4 (54%)
$n_0$	Surface drainable porosity	0.17	0.30	0.20 (43%)	0.30 (37%)
$f$ (m)	Shape factor for hydraulic conductivity function	0.5	0.8	0.72 (36%)	0.75 (36%)
$k_0$ (m h <sup>-1</sup> )	Surface hydraulic conductivity	4.4	9	7.7 (57%)	8.4 (56%)
$c$	Recharge power coefficient	23	114	27.0 (102%)	42.4 (113%)
$\beta$	Bypass power coefficient	5	30	26.5 (137%)	23.6 (145%)
* $n_{eff}$	Effective porosity coefficient	0.1	1	-	0.56 (86%)
$k_b$ (m h <sup>-1</sup> )	Hydraulic conductivity of bedrock	0	0.002	0.00085 (75%)	0.00095 (45%)

5

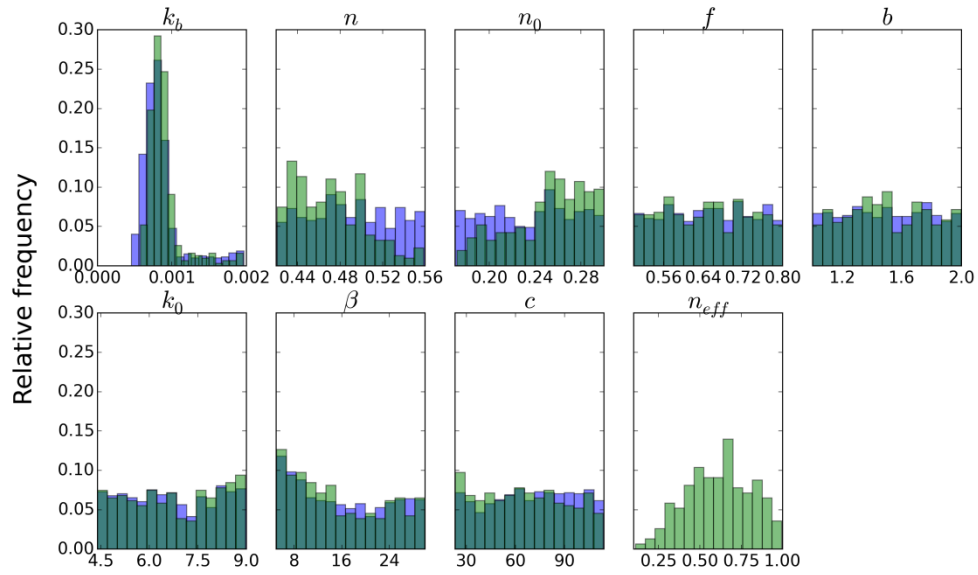
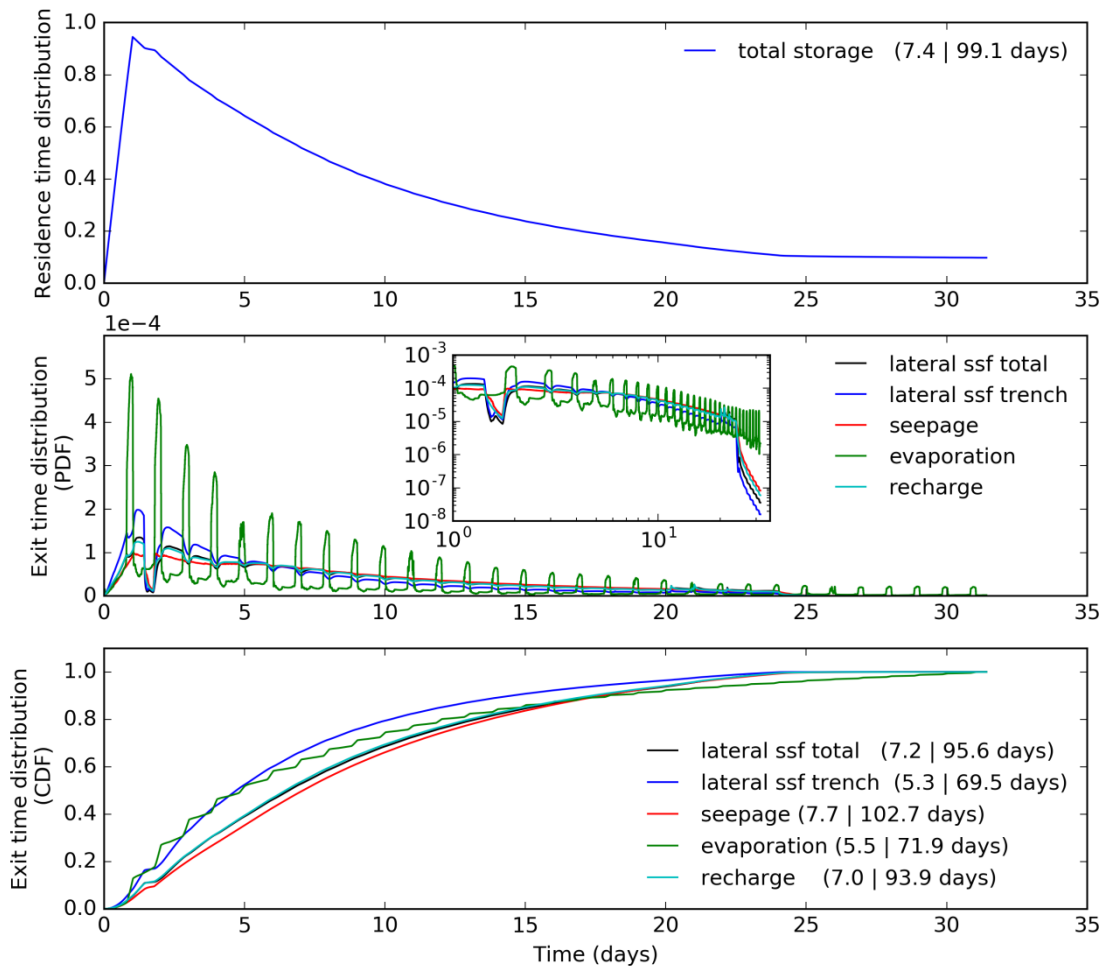


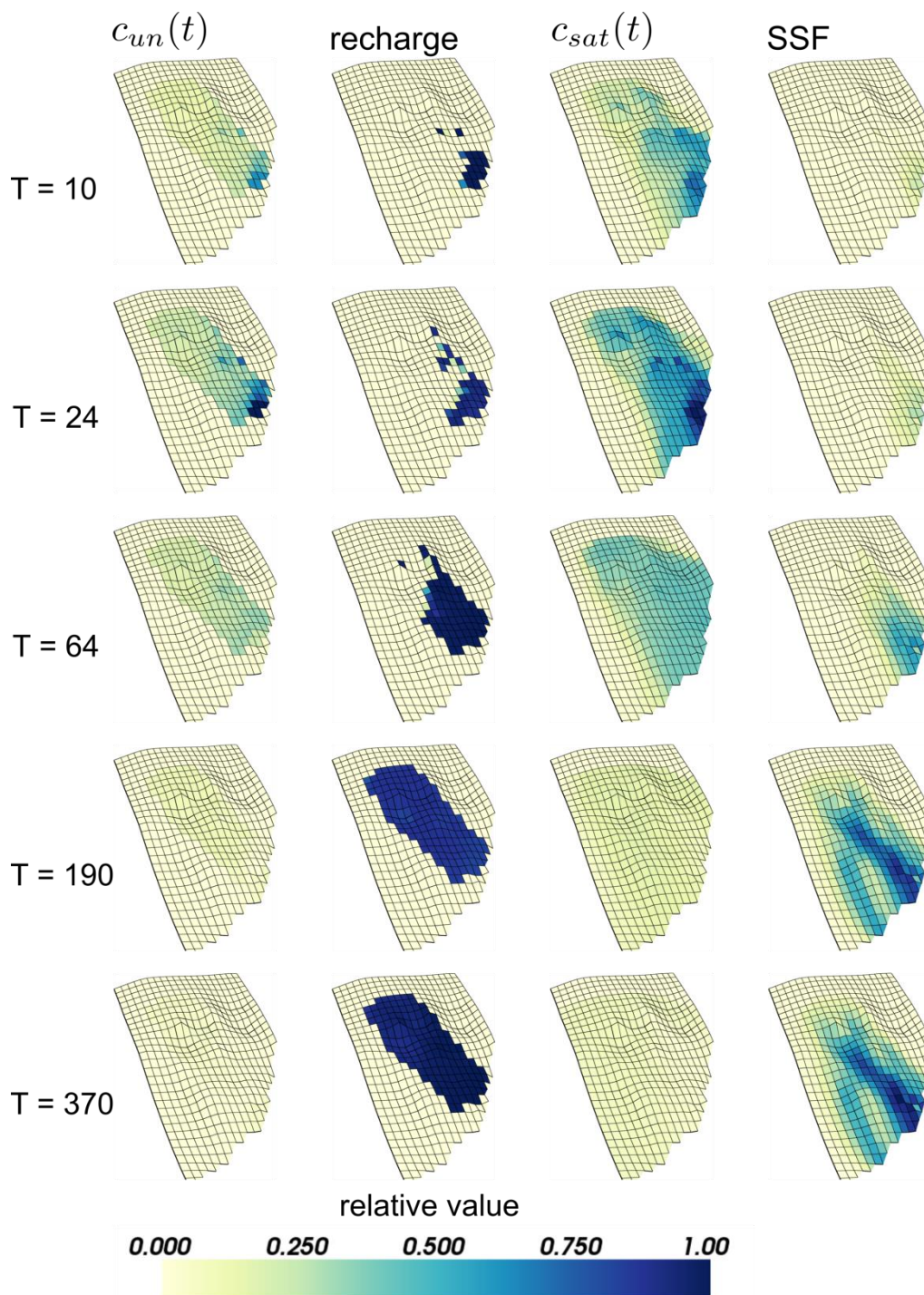
Figure 76: Relative frequency plots of the 796 behavioral parameter sets (blue color) based on lateral subsurface flow (Model 1), and relative frequency plots of the 308 behavioral parameter sets (light green color) based on lateral subsurface flow and  $\delta 2H$  (Model 2). Where the two parameter sets overlap the color is dark green.

5



**Figure 87:** Simulated residence and exit time distributions by Model 2. The values between parentheses refer to median residence or median travel times. The first value between parentheses refers to the actual days (of the field experiment), the second value refers to the amount of days based on the average daily rainfall amount for this site (natural conditions).

5



5 | **Figure 98:** Relative concentration of  $\delta^2\text{H}$  in the unsaturated zone ( $c_{un}(t)$ ) and the saturated zone ( $c_{sat}(t)$ ), and relative subsurface flow (SSF) and recharge fluxes, at different time slices during the sprinkler experiment. Concentrations are relative to maximum concentration values at  $T = 20$ , and fluxes are relative to maximum flux values at  $T=370$ . Time (T) is h since the application of labeled sprinkler water.

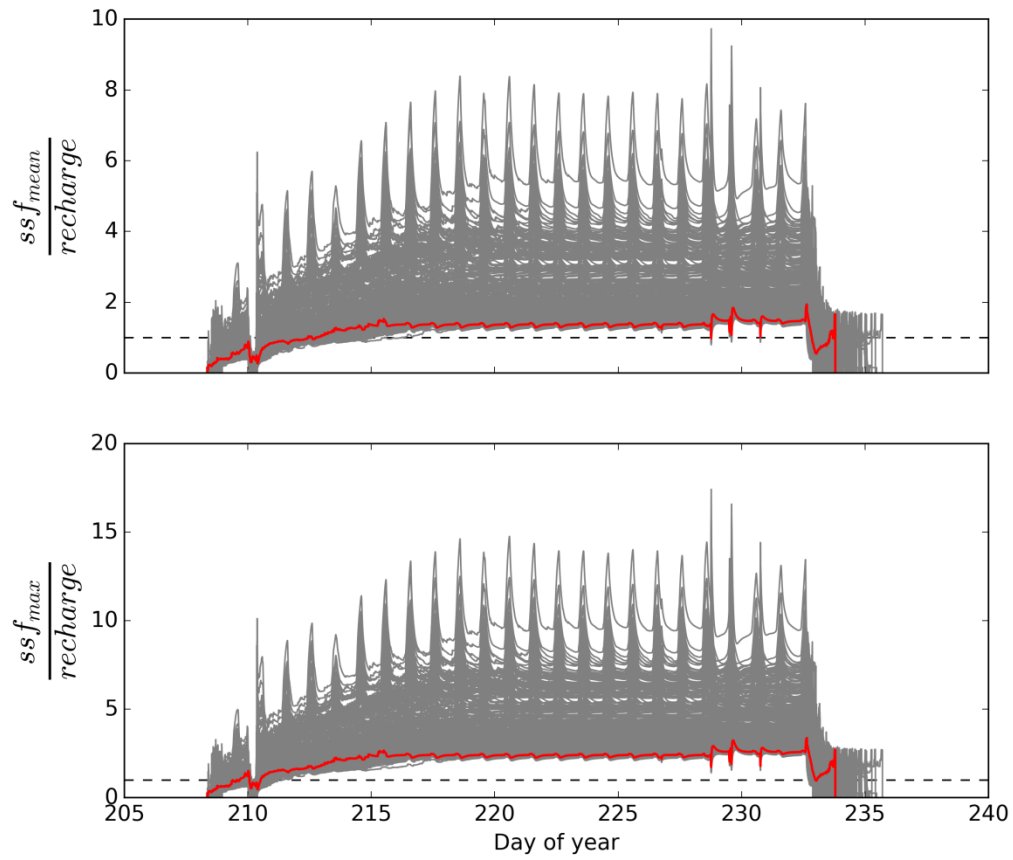


Figure 109: Simulated ratios of (a) average subsurface flow and recharge fluxes, and (b) maximum subsurface flow and recharge fluxes, for the 308 behavioral parameter sets based on lateral subsurface flow and  $\delta^2\text{H}$ . The red line shows the result of Model 2 using the best parameter set in Table 3.

5

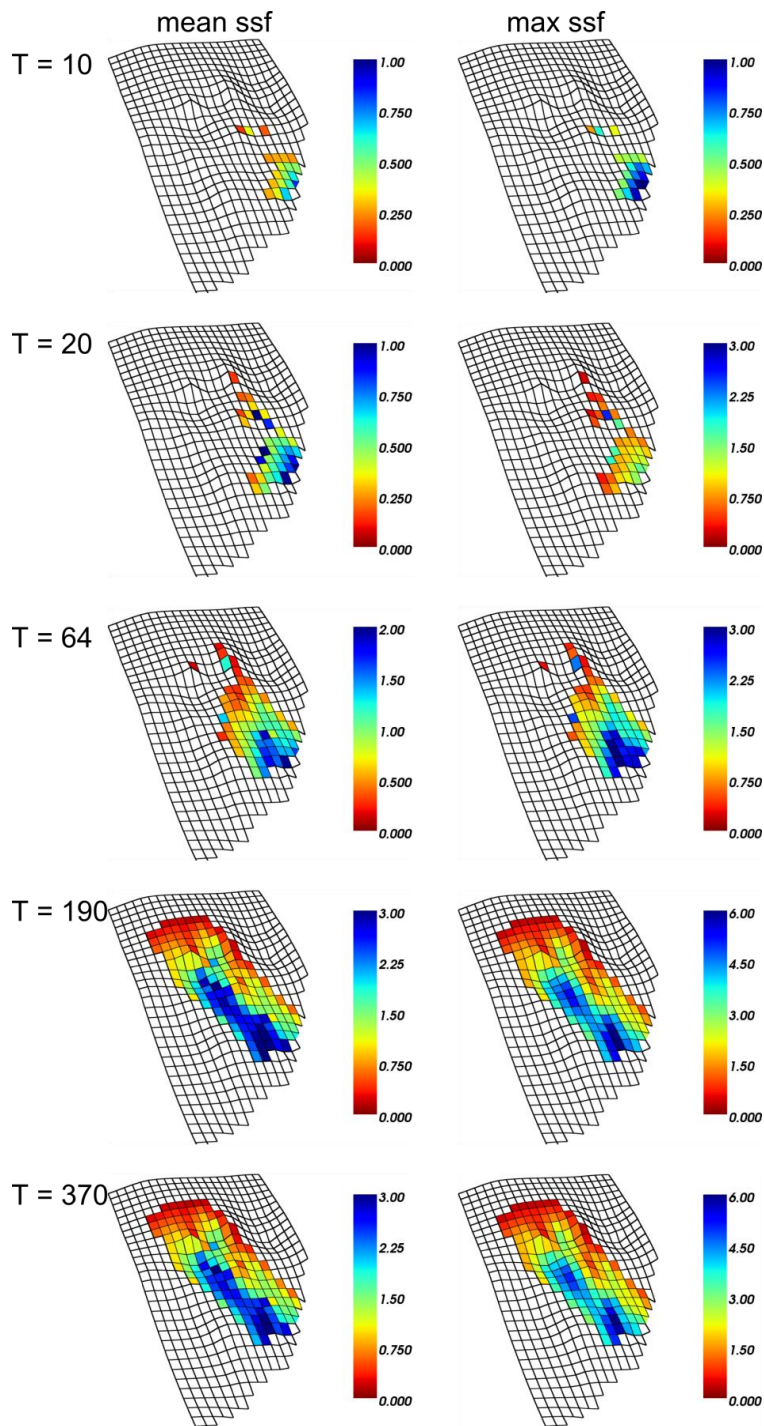


Figure 1140: Simulated ratios of average subsurface flow and recharge fluxes (ssf mean), and simulated ratios of maximum subsurface flow and recharge fluxes (ssf max) by Model 2 with the best parameter set. Time (T) is h since the application of labeled sprinkler water.

**Table 4: Simulated maximum event contribution by Model 2 and the interval of maximum event contribution based on the 308 behavioral parameter sets.**

Source of lateral subsurface flow	Maximum event contribution	Interval of maximum event contribution
Trench with deep groundwater mixing	0.28	0.19 - 0.35
Trench without deep groundwater mixing	0.40	0.29 - 0.60
Total lateral subsurface flow	0.38	0.27 - 0.60

**Table 5: Tracer mass ( $\delta^2\text{H}$ ) and water balance components as percentage of total input simulated by Model 2, and the minimum and maximum values for these balance components simulated by the 308 behavioral parameter sets based on lateral subsurface flow and  $\delta^2\text{H}$ . The time interval for these calculations was DOY 208 – DOY 243.**

	Unsaturated zone	Saturated zone	SSF (total)	SSF (trench)	Seepage	Evaporation
$\bar{\delta}^2\text{H}$ (%)	9.6	0.0	52.0	31.1	26.1	12.4
$\delta^2\text{H}$ min - max (%)	5.6 – 24.0	0.0 – 0.1	42.7 – 63.9	29.2 – 37.5	13.0 – 31.4	8.7 – 15.1
Water (%)	2.0	0.0	60.1	35.0	24.3	13.6
Water min - max (%)	0.0 – 14.4	0.0 – 0.2	54.3 – 65.2	33.8 – 37.3	12.6 - 28.3	10.7 - 14.5

5