

# ***Interactive comment on “The predictability of reported drought events and impacts in the Ebro Basin using six different remote sensing data sets” by Clara Linés et al.***

**Clara Linés et al.**

c.lines@unesco-ihe.org

Received and published: 15 March 2017

Annex to reply to reviewer 1 comments: Figure 1 (Question 3); Figure 2 (Question 6);  
Figure 3 (Suggestion 2)

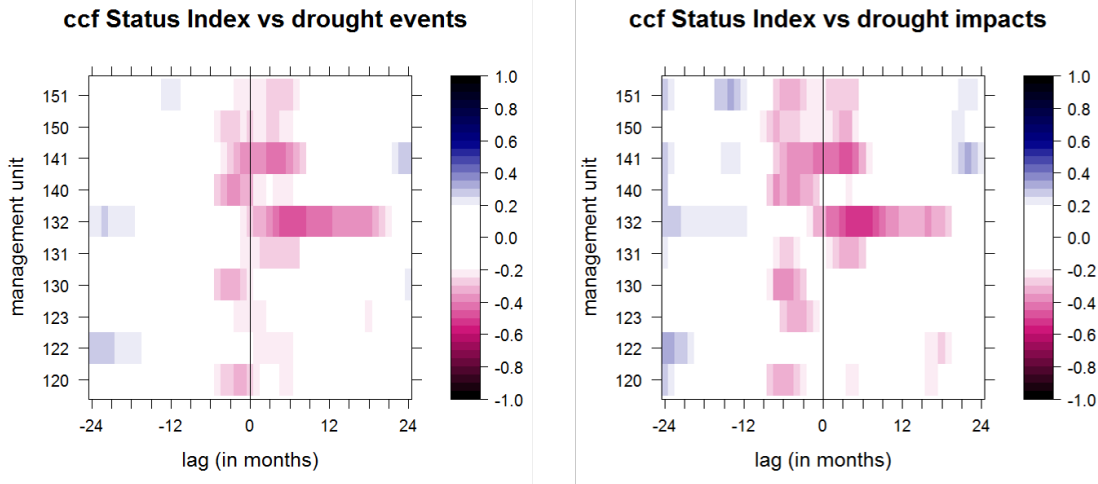
---

Interactive comment on Hydrol. Earth Syst. Sci. Discuss., doi:10.5194/hess-2016-671, 2017.

[Printer-friendly version](#)

[Discussion paper](#)



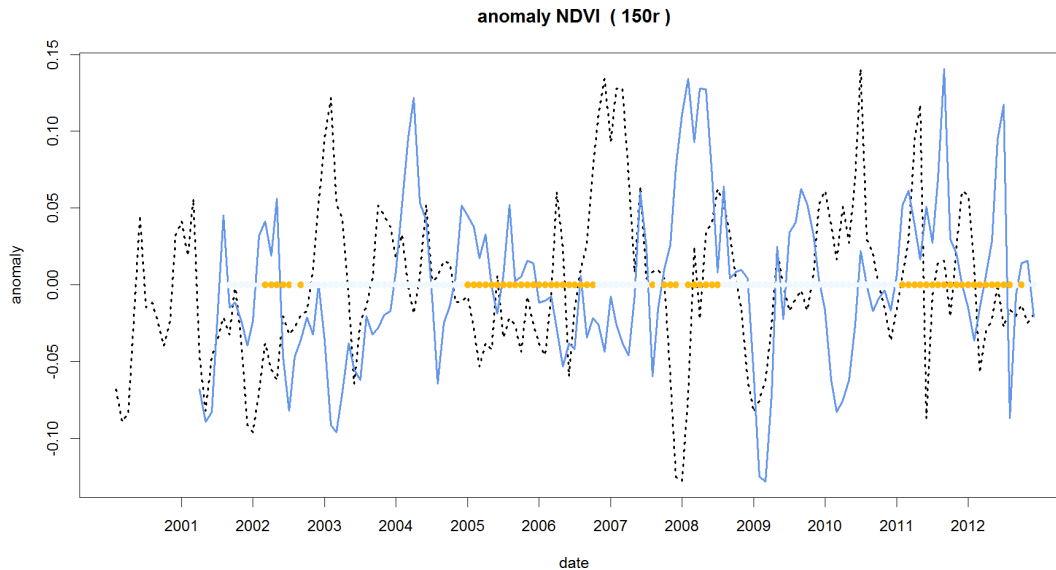


**Fig. 1.** (Q3) Corrected status index cross-correlation plots

Printer-friendly version

Discussion paper



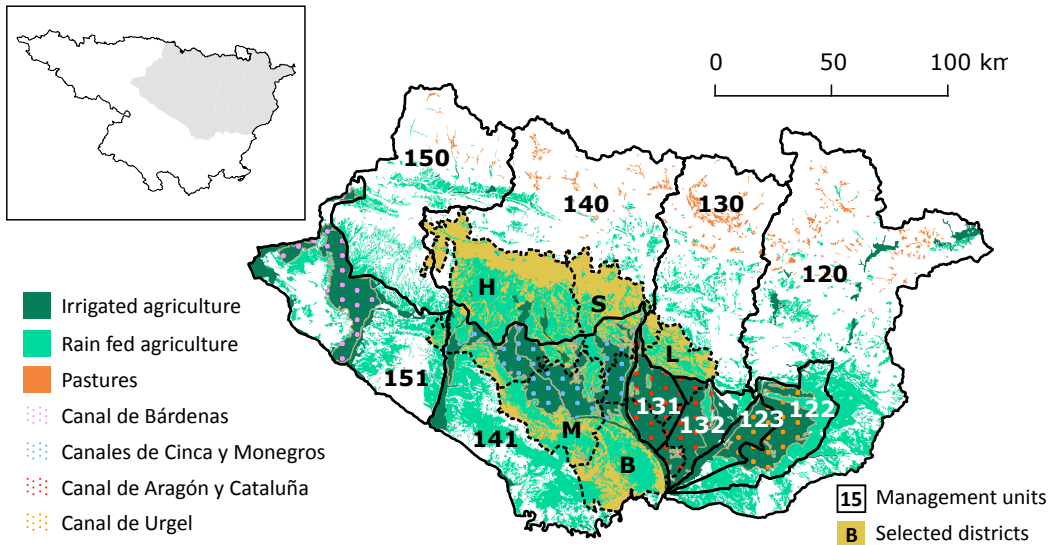


**Fig. 2.** (Q6) The dotted black line represents the anomaly of NDVI at zone 150r and the blue line is the same data with a lag of -15 months. The yellow and white points in the middle represent the months

Printer-friendly version

Discussion paper





**Fig. 3.** (S2) Study area map with numbered management units (corresponds to Figure 1 in the manuscript)

[Printer-friendly version](#)

[Discussion paper](#)

