

Interactive comment on “The predictability of reported drought events and impacts in the Ebro Basin using six different remote sensing data sets” by Clara Linés et al.

Clara Linés et al.

c.lines@unesco-ihe.org

Received and published: 15 March 2017

Annex to reply to reviewer 1 comments: Figure 1 (Question 3); Figure 2 (Question 6); Figure 3 (Suggestion 2)

Interactive comment on Hydrol. Earth Syst. Sci. Discuss., doi:10.5194/hess-2016-671, 2017.

C1

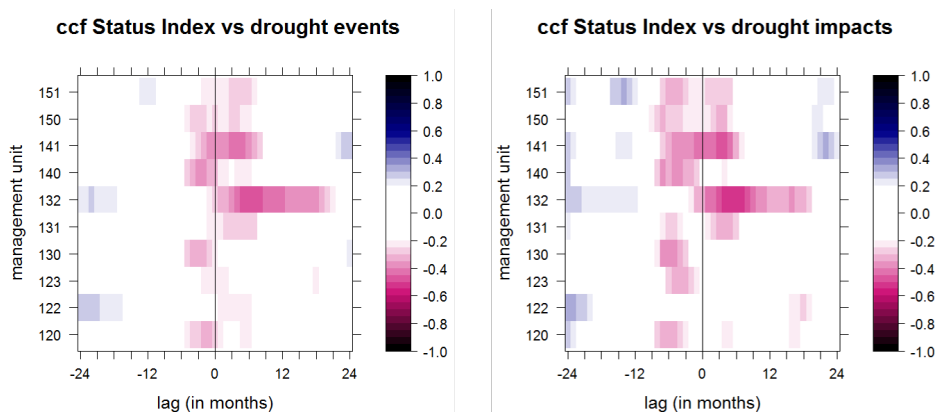


Fig. 1. (Q3) Corrected status index cross-correlation plots

C2

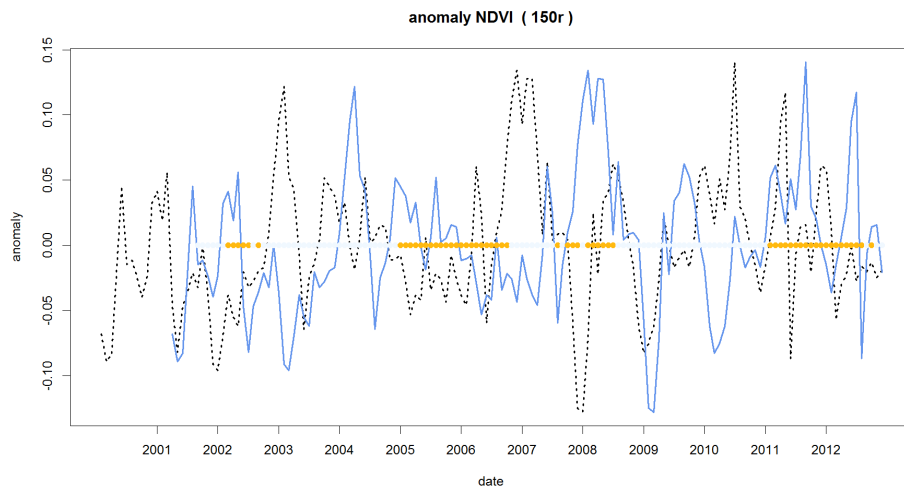


Fig. 2. (Q6) The dotted black line represents the anomaly of NDVI at zone 150r and the blue line is the same data with a lag of -15 months. The yellow and white points in the middle represent the months

C3

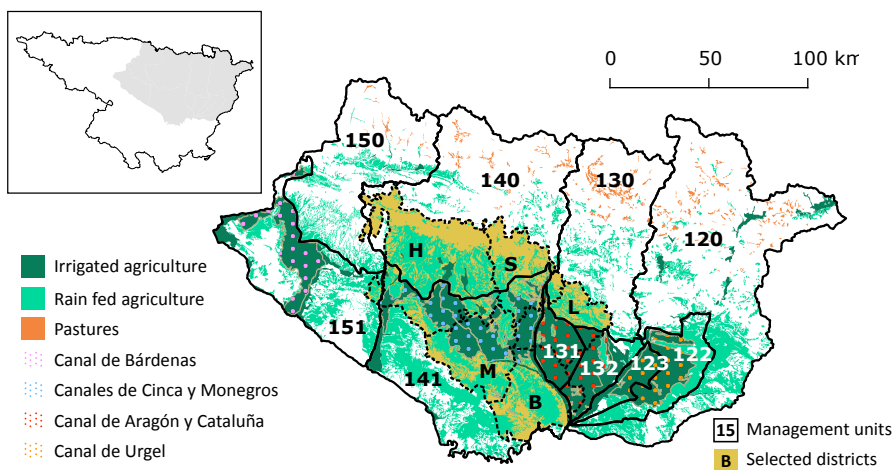


Fig. 3. (S2) Study area map with numbered management units (corresponds to Figure 1 in the manuscript)

C4