

Annex I. Supplementary material for Dragusin et al. - Transfer of environmental signals from surface to the underground at Ascunsă Cave, Romania

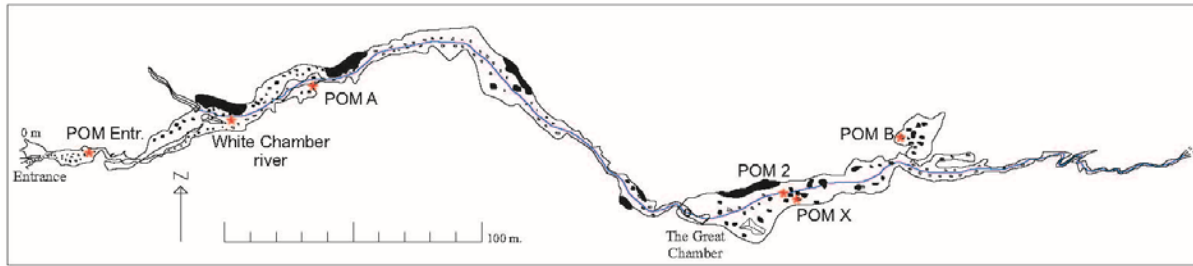


Figure S1. Map of Ascunsă Cave with location of monitoring points.

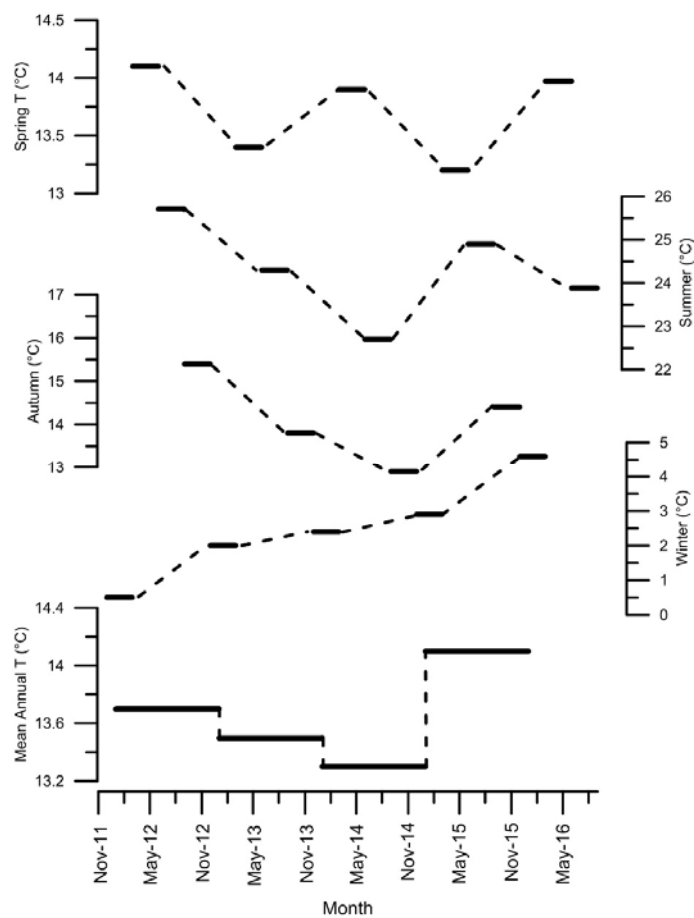


Figure S2. Annual and seasonal temperature averages at Drobeta since 2012.

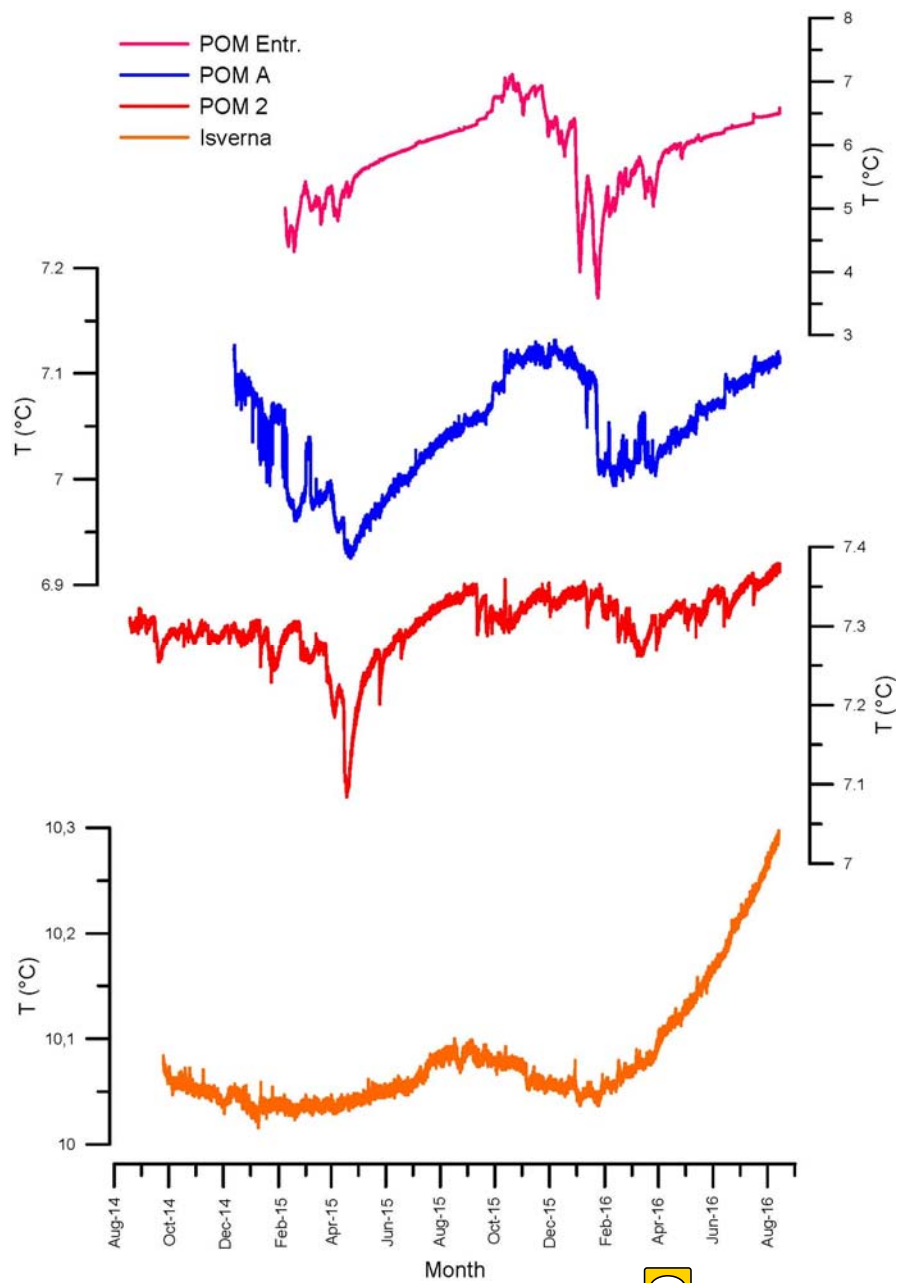


Figure S3. Temperature variability in Ascunsă and Isverna caves.

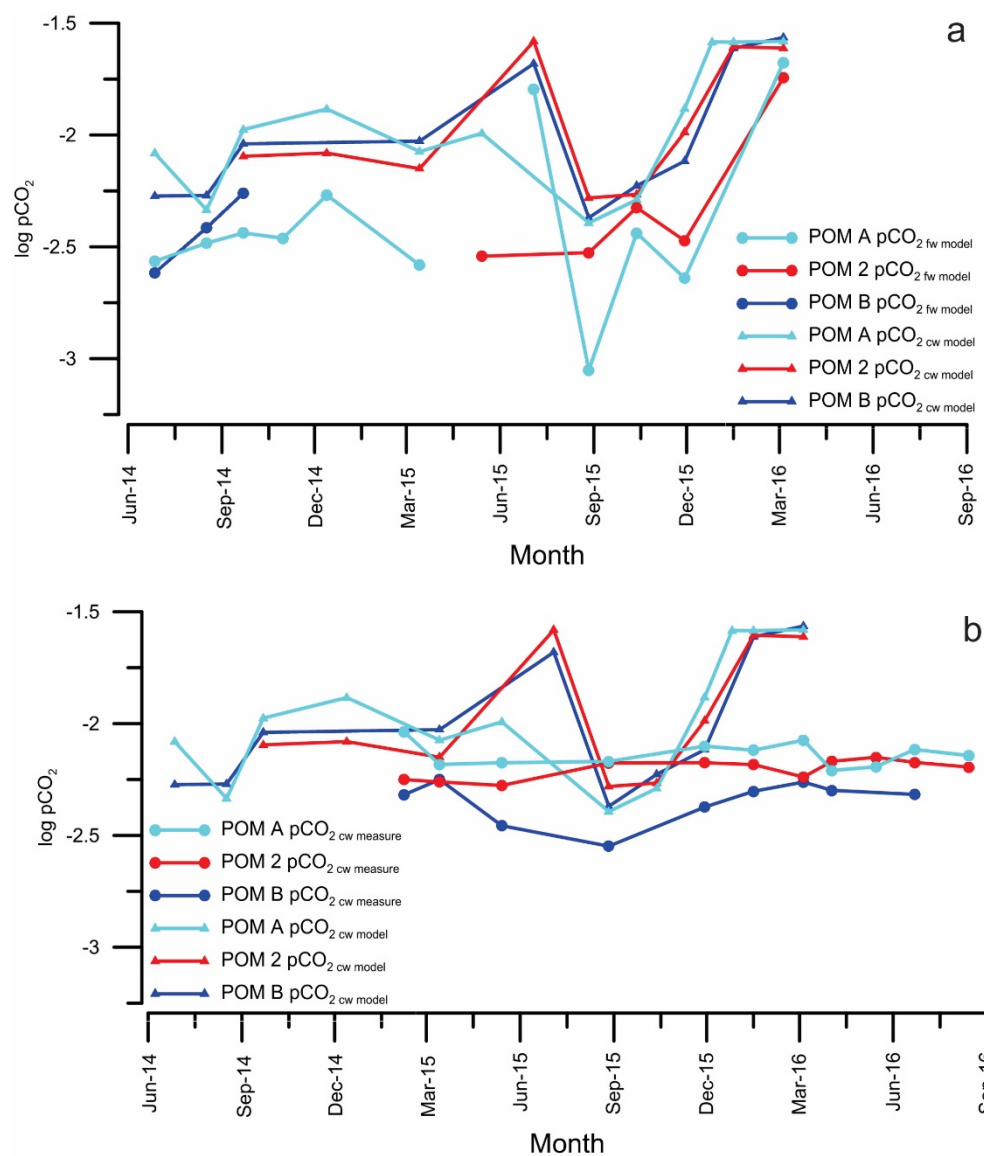


Figure S4. Comparison between (a) $\text{CO}_{2\text{fw}}$ model and $\text{CO}_{2\text{cw}}$ model and (b) $\text{CO}_{2\text{cw}}$ model and $\text{CO}_{2\text{cw}}$ measure.

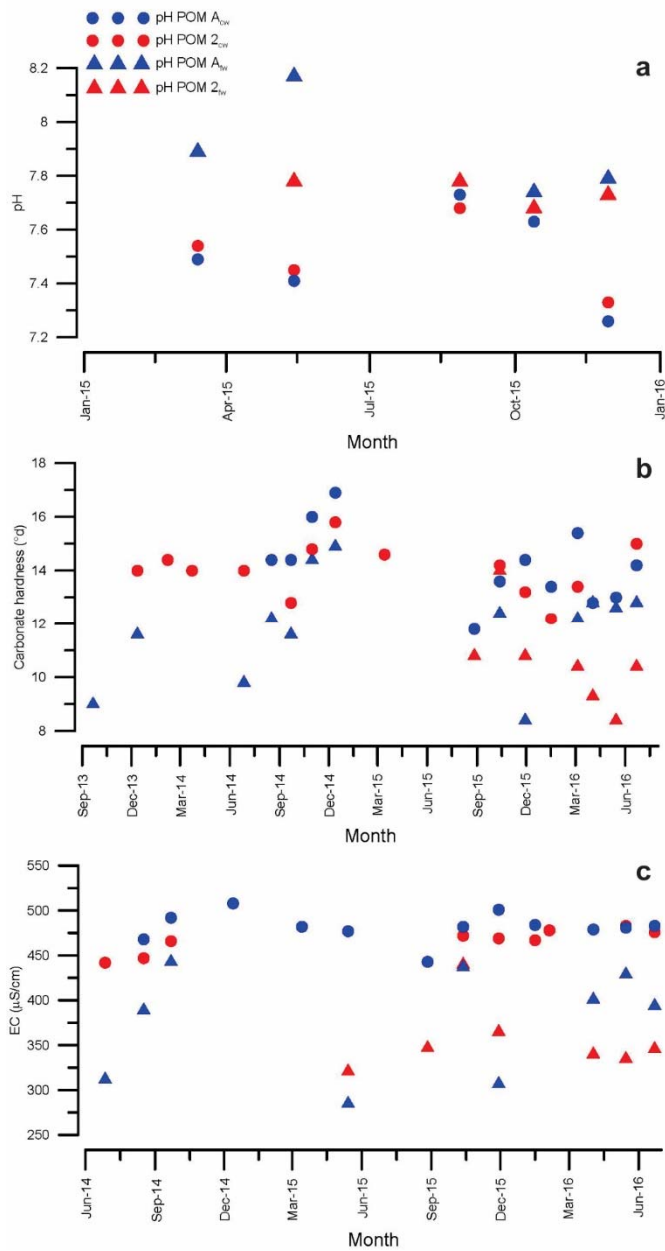


Figure S5. Comparison between pool and confined waters: (a) pH, (b) carbonate hardness and (c) electrical conductivity.

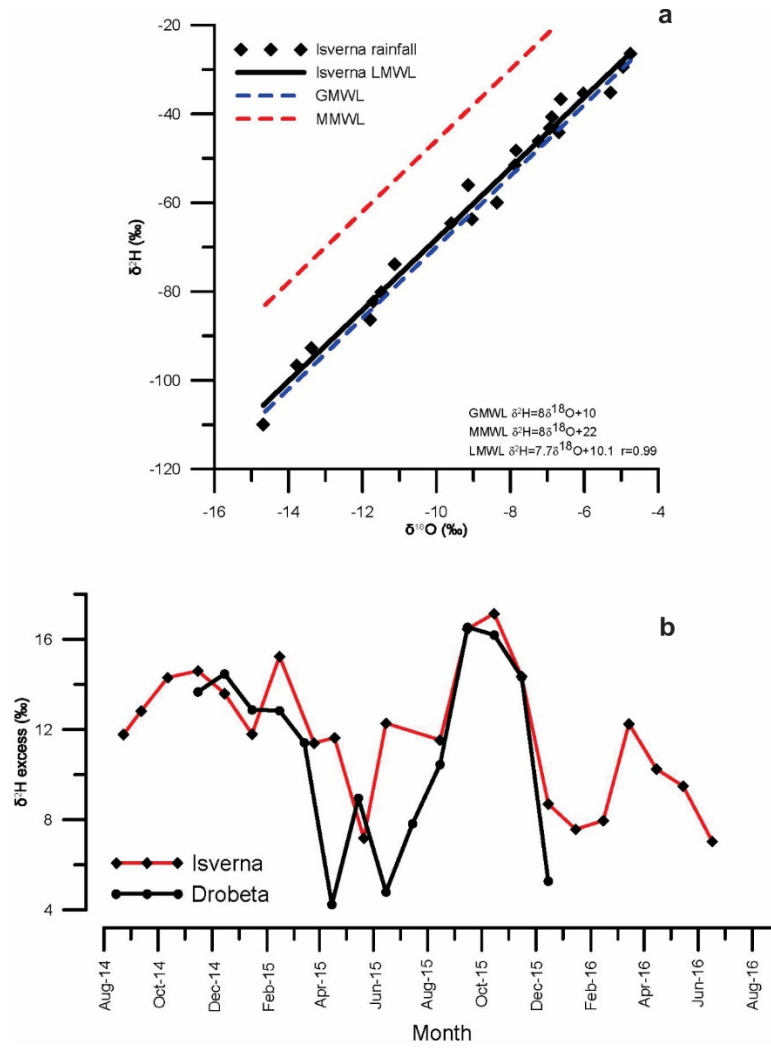


Figure S6. Comparison of (a) the GMWL (Craig, 1961), MMWL (Gat and Carmi, 1970) and LMWL and (b) $\delta^2\text{H}$ excess values at Isverna and Drobeta.

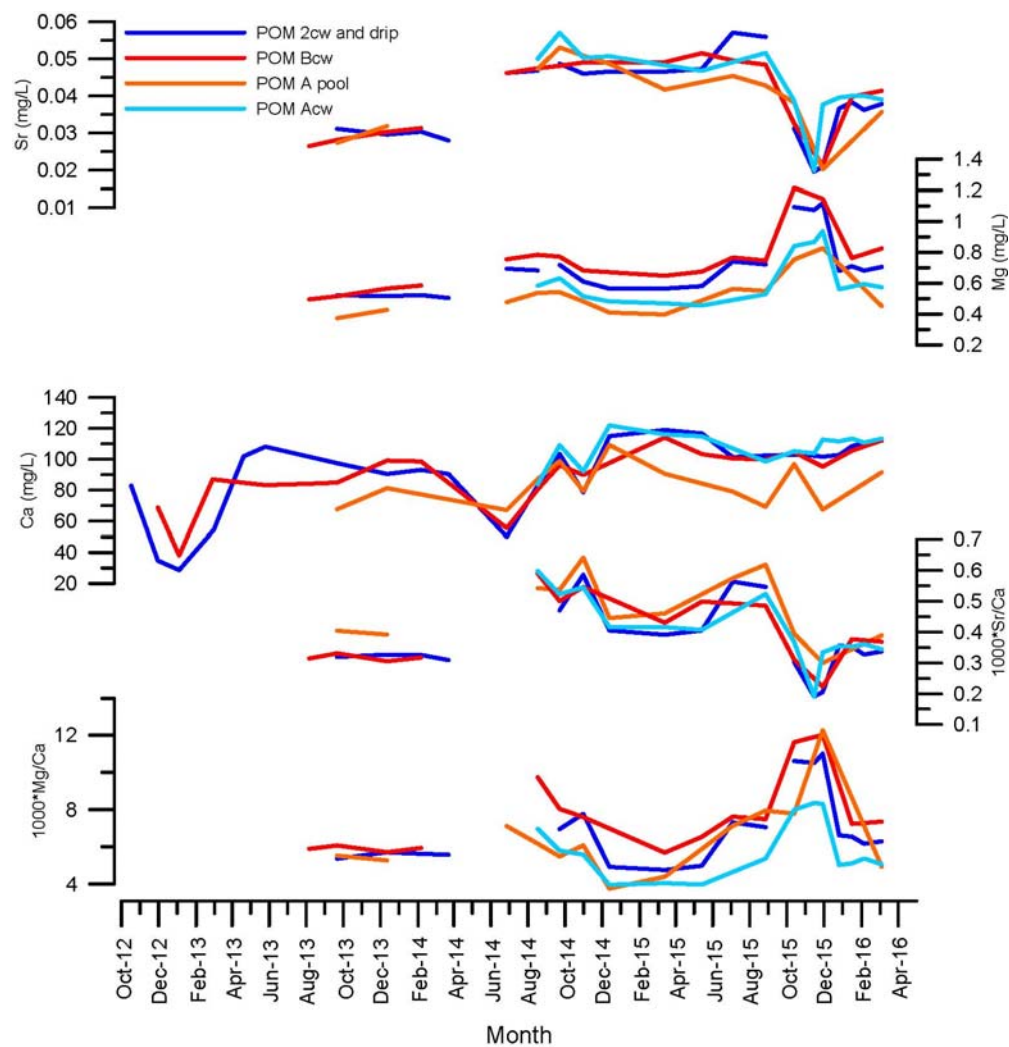


Figure S7. Concentrations of Ca, Mg and Sr in waters from Ascunsă Cave, as well as their ratios, Sr/Ca and Mg/Ca.

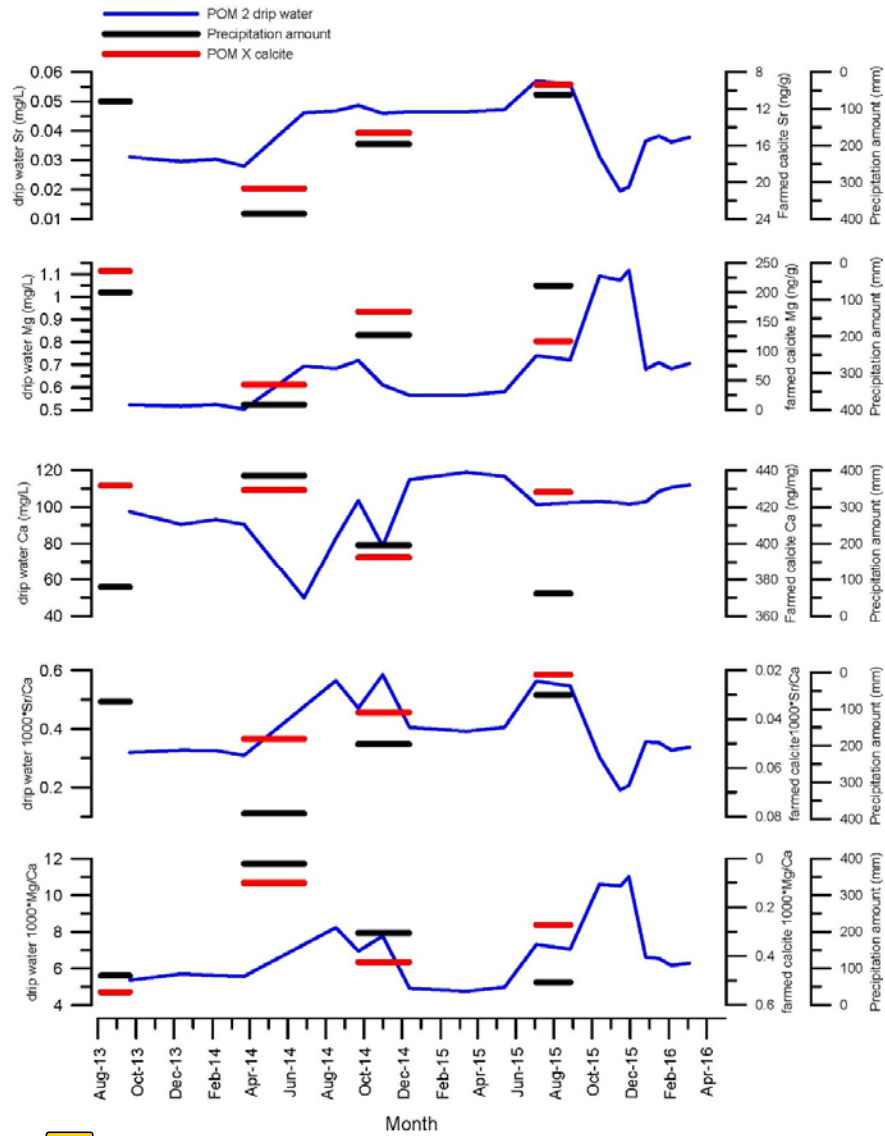


Figure S8. Comparison between Drobeta precipitations, POM X farmed calcite chemistry and POM 2 drip water chemistry.