

Supplement

Supplement of:

Influence of snow surface processes on soil moisture dynamics and streamflow generation in alpine catchments

Authors: N. Wever^{1,2}, F. Comola¹, M. Bavay², M. Lehning^{2,1}

¹ École Polytechnique Fédérale de Lausanne (EPFL), School of Architecture, Civil and Environmental Engineering, Lausanne, Switzerland.

² WSL Institute for Snow and Avalanche Research SLF, Davos Dorf, Switzerland.

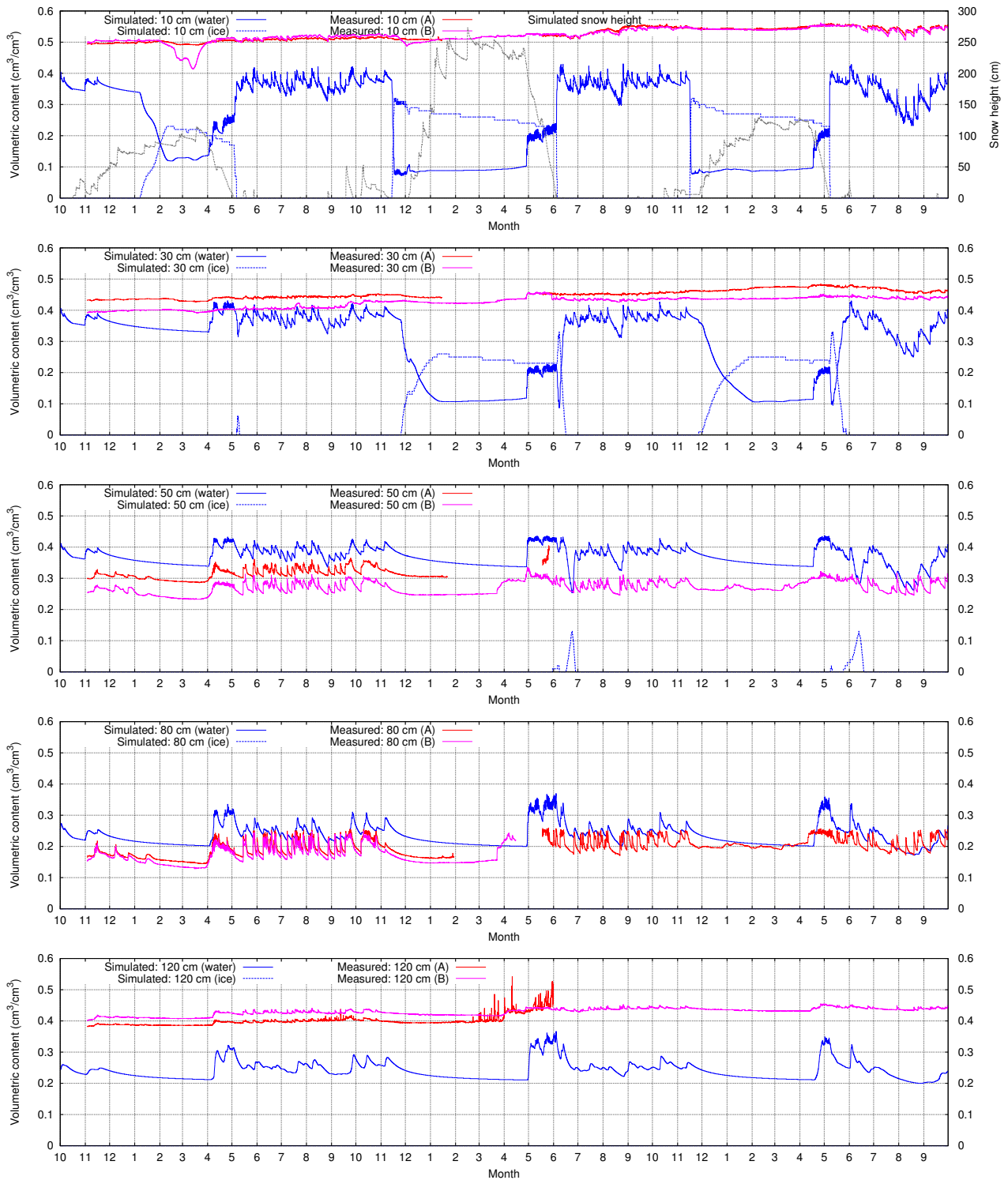


Figure S1: Measured and simulated soil moisture at the IRKIS station Grossalp, for (from top to bottom) 10, 30, 50, 80 and 120 cm depth for the period October 2010 to October 2013. In the upper panel, also simulated snow height is shown.

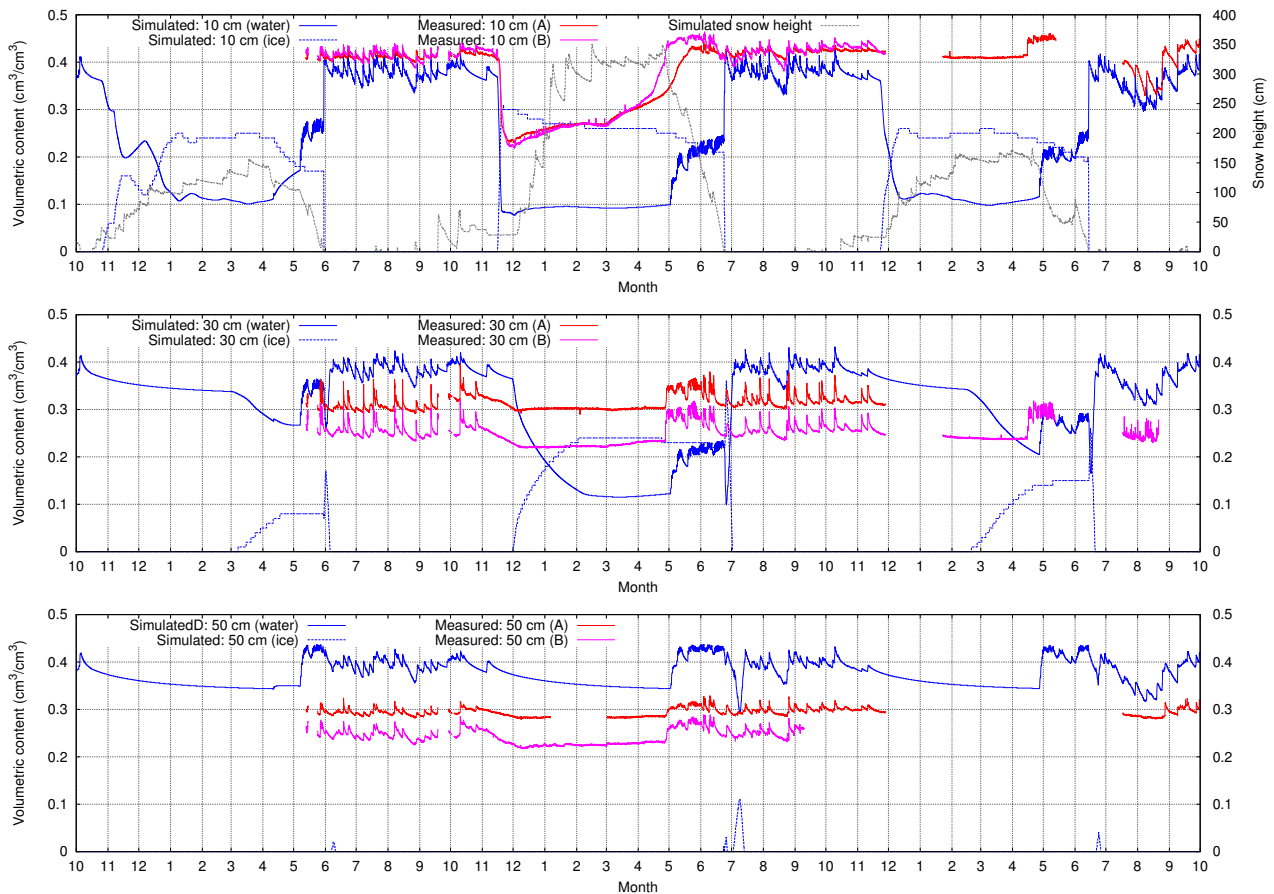


Figure S2: Measured and simulated soil moisture at the SensorScope station Stillberg, for (from top to bottom) 10, 30 and 50 cm depth for the period October 2010 to October 2013. In the upper panel, also simulated snow height is shown.

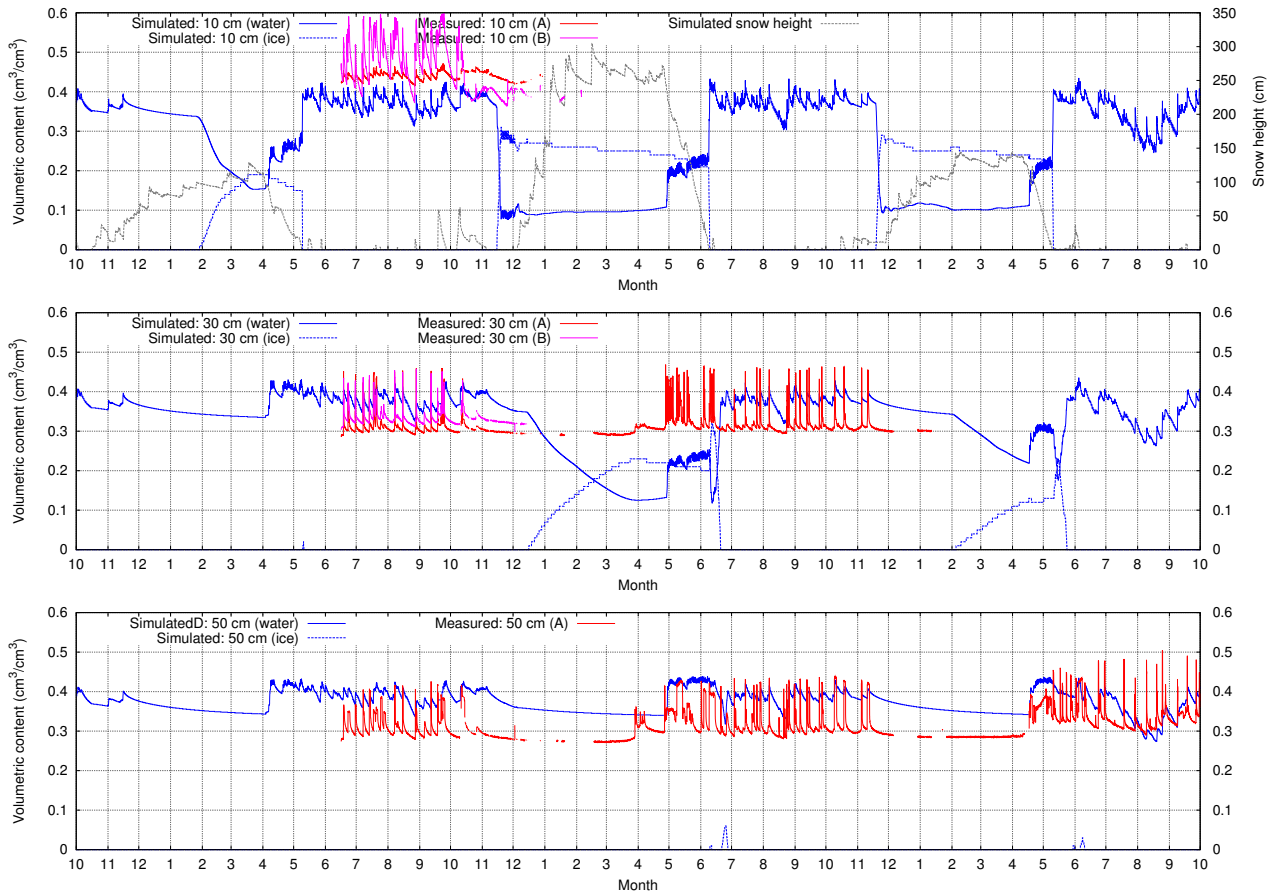


Figure S3: Measured and simulated soil moisture at the SensorScope station Pische, for (from top to bottom) 10, 30 and 50 cm depth for the period October 2010 to October 2013. In the upper panel, also simulated snow height is shown.

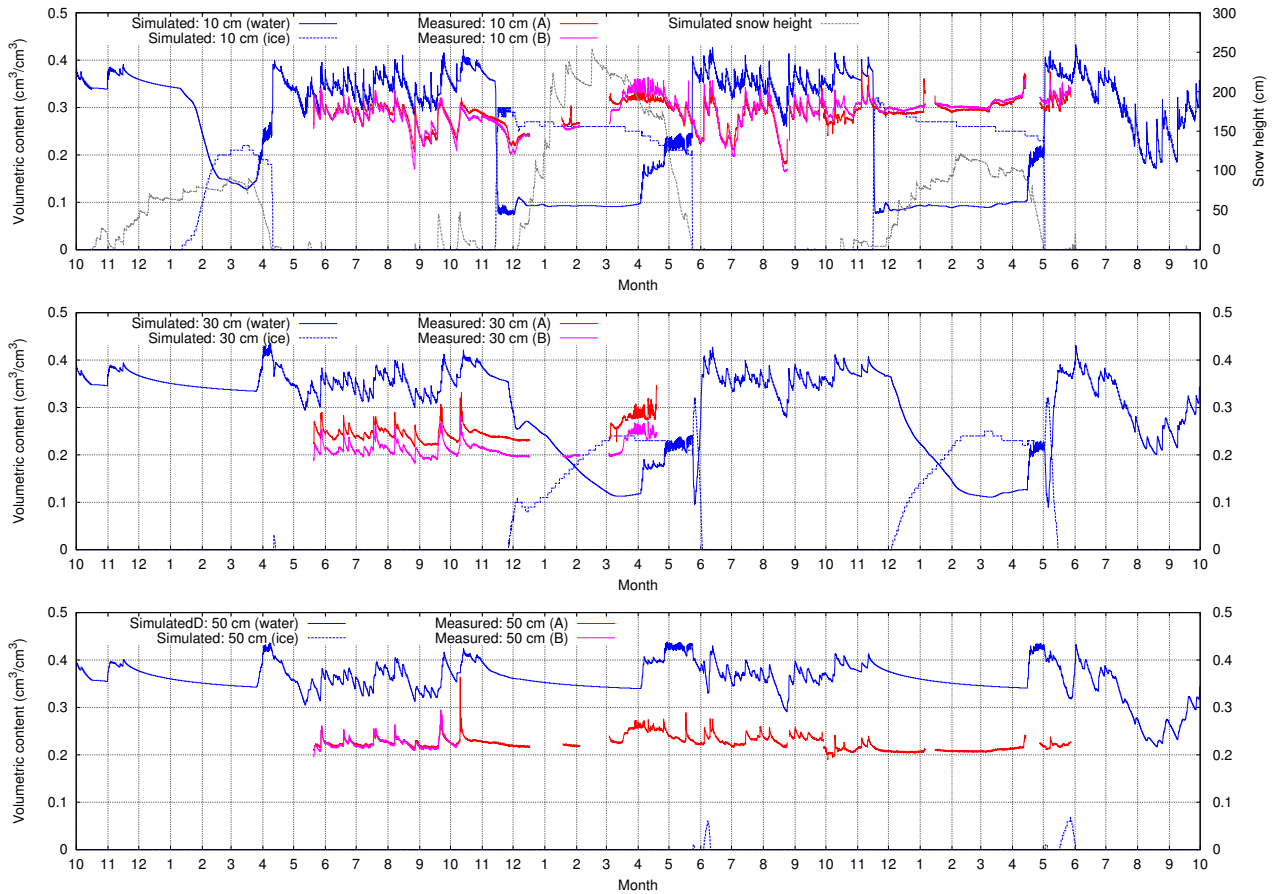


Figure S4: Measured and simulated soil moisture at the SensorScope station Dorjji, for (from top to bottom) 10, 30 and 50 cm depth for the period October 2010 to October 2013. In the upper panel, also simulated snow height is shown.

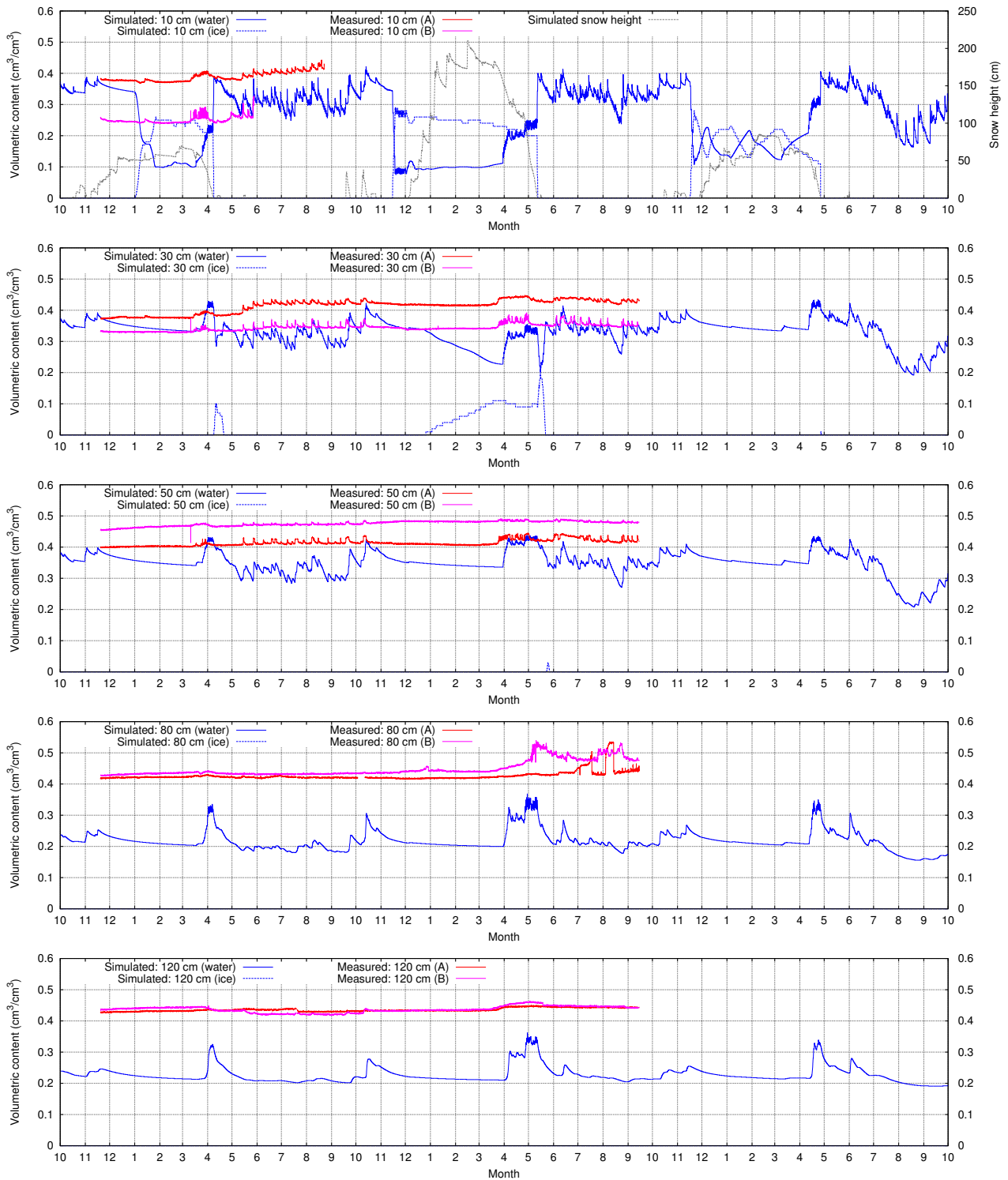


Figure S5: Measured and simulated soil moisture at the SensorScope station Golf Course, for (from top to bottom) 10, 30 and 50 cm depth for the period October 2010 to October 2013. In the upper panel, also simulated snow height is shown.