

# 1 **Topography- and nightlight-based national flood risk assessment in Canada**

2 Amin Elshorbagy<sup>1,2</sup>, Raja Bharath<sup>1</sup>, Anchit Lakhanpal <sup>1</sup>, Serena Ceola<sup>3</sup>, Alberto Montanari<sup>3</sup>,  
3 Karl-Erich Lindenschmidt<sup>2,4</sup>

4 <sup>1</sup>Department of Civil, Geological, and Environmental Engineering, University of Saskatchewan, Saskatoon, Canada.

5 <sup>2</sup>Global Institute for Water Security, University of Saskatchewan, Saskatoon, Canada.

6 <sup>3</sup>Department of Civil, Chemical, Environmental, and Materials Engineering, University of Bologna, Bologna, Italy.

7 <sup>4</sup>*School of Environment and Sustainability, University of Saskatchewan, Saskatoon, Canada.*

8 *Correspondence to: Amin Elshorbagy (amin.elshorbagy@usask.ca)*

9

## 10 **Abstract**

11 In Canada, flood analysis and water resource management, in general, are tasks conducted at the  
12 provincial level; therefore, unified national-scale approaches to water-related problems are  
13 uncommon. In this study, a national-scale flood risk assessment approach is proposed and  
14 developed. The study focuses on using global and national datasets available with various  
15 resolutions to create flood risk maps. First, a flood hazard map of Canada is developed using  
16 topography-based parameters derived from digital elevation models namely Elevation Above  
17 Nearest Drainage (EAND) and Distance From Nearest Drainage (DFND). This flood hazard  
18 mapping method is tested on a smaller area around the city of Calgary, Alberta, against a flood  
19 inundation map produced by the City using hydraulic modeling. Second, a flood exposure map of  
20 Canada is developed using a land-use map and the satellite-based nightlight luminosity data as two  
21 exposure parameters. Third, an economic flood risk map is produced, and subsequently overlaid  
22 with population density information to produce a socioeconomic flood risk map for Canada. All  
23 three maps of hazard, exposure, and risk are classified into five classes, ranging from very low to  
24 severe. A simple way to include flood protection measures in hazard estimation is also  
25 demonstrated using the example of the city of Winnipeg, Manitoba. This could be done for the

1 entire country if information on flood protection across Canada were available. The evaluation of  
2 the flood hazard map shows that the topography-based method adopted in this study is both  
3 practical and reliable for large-scale analysis. Sensitivity analysis regarding the resolution of the  
4 digital elevation model is needed to identify the resolution that is fine enough for reliable hazard  
5 mapping, but coarse enough for computational tractability. The nightlight data are found to be  
6 useful for exposure and risk mapping in Canada; however, uncertainty analysis should be  
7 conducted to investigate the effect of the overflow phenomenon on flood risk mapping.

8 **Keywords:** flood hazard, exposure, risk, nightlights, Canada.

9

## 10 **1 Introduction**

11 Rivers, and water bodies in general, have always been the most attractive landscape feature for  
12 humankind. Historically and to date, rivers have provided people with water for drinking and  
13 agriculture, food, an inexpensive mode of transportation, a natural drain for their effluents, and  
14 fertile land for agriculture in the floodplains. Consequently, most populous cities in the world are  
15 built around rivers. Interestingly, even recent studies show that people are still moving closer to  
16 streams in various regions of the world (Ceola et al. 2015). The increased flood hazard comes as a  
17 natural consequence of encroaching on floodplains.

18 Globally, floods are among the most feared natural hazards as they can inflict large scale economic  
19 and social damage, cause panic, and disrupt essential services. Annually, thousands of lives are  
20 lost due to floods, with 5200 lives, for example, claimed in 2011 alone (Balica et al. 2013). The  
21 most recent 2016 floods in Louisiana, USA, claimed 13 lives and left 40,000 homes under water.  
22 In Canada, flood damages exceeded 7.4 billion US dollars over the recent five years (2010-2015),  
23 with 9 lives lost and more than 100,000 individuals directly affected, according to the

1 CRED/OFDA International Disaster Database (<http://www.emdat.be/database>). This has led the  
2 Canadian government to establish FloodNet – a Canada-wide strategic research network for flood  
3 forecasting and impact assessment.

4 Floodplains and low-lying lands are typically areas with high levels of flood hazard due to their  
5 elevation and proximity to rivers; however, society makes such areas more exposed by inhabiting  
6 them and establishing valuable economic investments, with insufficient measures to contain  
7 vulnerability in most cases, and thus, increasing flood risk as a product of hazard, exposure, and  
8 vulnerability (Balica et al. 2013; UNISDR, 2009; Samuels et al., 2009), which is discussed in detail  
9 in Section 2. It has been suggested that social memory plays a significant role in flood vulnerability  
10 as societal preparedness can be different based on the recent history of floods. Some argue that  
11 areas that have not been flooded for a long time tend to be encroached by the society, causing the  
12 damage from future floods to be higher than expected, whereas areas that were recently damaged  
13 by floods seem to encounter lower than expected damages when another flood occurs (Di  
14 Baldassarre et al. 2015). This emphasizes the importance of developing a systematic flood risk  
15 assessment approach that helps societies, insurance companies, water managers, and policy makers  
16 make informed decisions.

17 National flood risk assessment approaches are useful but challenging as data required to develop  
18 realistic approaches can be extensive, and detailed hydraulic modeling without proper  
19 prioritization of high risk areas can be unjustifiably costly. In recent years, there has been an  
20 increasing use of remotely sensed and global datasets in water resources as they can make such  
21 studies on a national scale possible. For example, GRACE (the Gravity Recovery and Climate  
22 Experiment) has been shown to provide data on water cycle and groundwater reserve that are

1 needed for water management (Famiglietti and Rodell, 2013). Satellite-based data, e.g., snow  
2 cover data, have proven valuable for calibrating hydrological models (Parajka and Blöschl, 2008)  
3 and for flood detection and mapping (Brakenridge and Anderson, 2006). Ceola et al. (2014; 2015)  
4 used 1-km resolution nightlight datasets to show human interaction with streams as well as  
5 exposure to floods, based on the fact that nightlights reflect human activities. As nightlights can  
6 indicate the spatial distribution and temporal trends, in certain regions, of human activities around  
7 rivers, we reiterate that they are of obvious relevance to flood risk assessment studies, especially  
8 on a large scale.

9 Ceola et al. (2014) relied mainly on the proximity of population to rivers to assess exposure to  
10 floods. However, a research question that has been left unaddressed by previous studies that used  
11 nightlights relates to the datasets that are needed, in combination with nightlights, to establish flood  
12 risk assessment approaches that are realistic and feasible. The aim of this study is to integrate  
13 several and relevant sources of information to develop a flood risk assessment approach for  
14 Canada, which will lead to national flood hazard and risk maps that benefit from topographic  
15 information, remotely sensed nightlight data and, as an option, local information to estimate  
16 vulnerability. The end product should be flexible, easily updatable, and help stakeholders assess  
17 areas that require further attention through, for example, detailed hydraulic modeling.

18

## 19 **2 Flood hazard, exposure, vulnerability, and risk**

20 The terms of flood hazard, exposure, vulnerability, and risk are sometimes confusing to readers as  
21 they may have different meanings for different users. The four terms may even be used  
22 interchangeably to refer to the same thing. Following the definition provided by UNISDR, 2009;

1 IPCC, 2012; Colleantuer et al., 2015, flood risk is given by a combination (e.g. the product) of  
2 hazard, exposure, and vulnerability (Equation 1).

$$3 \text{ Flood risk} = \text{flood hazard} \times \text{flood exposure} \times \text{flood vulnerability} \quad (1)$$

4 *Hazard* is used by some researchers to mean the flood disaster itself or its potential occurrence  
5 (Gilard, 2016; UNISDR, 2009, Colleantuer et al., 2015), identified more precisely (Sayers et al.,  
6 2002) by two main components – source (e.g. rain) and pathway (e.g. flood extent and depth). This  
7 definition is appropriate and usually quantified from an engineering perspective as the probability  
8 of occurrence of a flood event (Balica et al., 2013; de Moel et al., 2009). Intuitively, a low-lying  
9 area that is close to a river has a higher level of flood hazard (impacted by more frequent floods)  
10 than an area of higher elevation that is far-removed from the river. In this study, *distance* from,  
11 and *elevation* above, the river are used as two indicators of the flood hazard level of any land pixel.  
12 Exposure (i.e. elements at risk) is given by the economic and intrinsic values that are present at  
13 the location involved (IPCC, 2012). Population density, capital investment, and land or property  
14 value can be indicators of flood exposure. *Vulnerability*, following Adger (2006) and Colleantuer  
15 et al. (2015), is defined as the capacity of the society to deal with the flood event, namely the state  
16 of susceptibility to harm from exposure to an undesired event, floods in this study, associated with  
17 environmental and social change and lack of capacity to adapt. Lack of flood defenses or protection  
18 of economic values and human lives susceptible to floods are indicators of vulnerability.  
19 Obviously, the product of exposure and vulnerability reflects an integrated measure of the  
20 environmental and socioeconomic consequences of floods. The main reason for the increase in  
21 losses due to floods is the increase in the population and people's preference to reside in flood  
22 prone areas, which makes them exposed to floods (Jonkman, 2005; Ceola et al. 2014). An example

1 of the policy and social dimension of exposure is depicted in Figure 1 for the city of Fort  
2 McMurray, Alberta, Canada and its surrounding areas, which shows how the society encroached  
3 into areas of higher level of flood hazard over the years. Increase in exposure is indicated by the  
4 spatial expansion and increase in nightlight luminosity from 1999-2013, which is considered a  
5 proxy for socioeconomic activities (Doll et al. 2000), overlaid with the flood hazard map showing  
6 only high hazard areas. The hazard was calculated based on elevation above and distance from the  
7 nearest rivers, details of which are provided in the forthcoming sections. The figure is obtained  
8 after combining and reclassifying the two maps to show that significant development has occurred  
9 over the years in high hazard areas.

10 In the literature, frameworks or guidelines for flood risk assessment at the national level are  
11 limited. A classic example is the work of Hall et al. (2005), who conducted a national-scale flood  
12 risk assessment in England and Wales for the purpose of prioritization of resources for flood  
13 management. The methodology of Hall et al. (2005) benefited from rich information available on  
14 the standard of protection, condition and location of flood defences, as well as flood extent maps,  
15 occupancy, and asset values in England and Wales. de Moel et al. (2009) noted that flood extent  
16 maps are the most commonly produced flood maps in Europe, and that only very few countries  
17 have developed flood risk maps that comply with the European Directive (2007/60/EC). Later,  
18 Lugeri et al. (2010) developed a flood hazard map of Europe, identifying low-lying areas adjacent  
19 to rivers, and used it with land-use data and a damage-stage relationship to identify flood risk. A  
20 coarse global scale flood risk assessment was also developed by Ward et al. (2013) using global  
21 hydrological and hydraulic modeling. The work presented in this paper is at a finer resolution, and  
22 using different types of data based on topography and remote sensing, which lead to a low-cost  
23 flood mapping product that is relevant at a national scale.

1 The level of detail required for flood risk analysis is an important issue, which is obviously related  
2 to the spatial scale of the study area. Even in urban areas, Apel et al. (2009) found that a medium-  
3 level complexity model for both hazard and exposure is sufficient. One could expect that on  
4 national scale for large countries, aggregate measures and index-based approaches might be the  
5 feasible choice. When compared with a physically based modeling approach, a parametric  
6 approach, which uses flood hazard and exposure indices, can direct decision makers to simplified  
7 usage and simpler understanding of the risk, and thus, better allocation of resources and  
8 investments for flood management and protection (Balica et al. 2013).

9 As the second largest country in the world, the continental extent of Canada from 41.7° to 83.111°N  
10 and from 52.619° to 141.010°W, encompasses different topographies ranging from flat prairies to  
11 mountains and different climates from semi-arid to wet. On an average annual basis, Canadian  
12 rivers discharge 9% of the world's renewable water resources (Whitfield and Cannon, 2000).  
13 Fluvial floods in Canada can happen as a result of excessive rainfall, similar to the 2013 flood in  
14 Alberta, however, high water levels often result from reduced channel capacity due to ice and  
15 debris jams (NRCC, 1989). Therefore, water levels and extent of floods may not reflect the  
16 conventional return period associated with the flood discharge. Floods are usually monitored,  
17 analyzed, and managed at the provincial level, which makes a Canada-wide unified flood  
18 modeling, mapping, and analysis, as well as flood-related data accessibility laborious tasks.

19

### 20 **3 material and methods**

21 To develop a national-scale framework for flood risk assessment in Canada, parameters  
22 representing the concepts of hazard and exposure were identified and subsequently, a flood risk  
23 index was developed based on the integration of both hazard and exposure. All three types of maps

1 – hazard, exposure, and risk – are presented separately as they each contain distinct and useful  
2 information. In a subsequent step that is developed for the city of Winnipeg, Manitoba, we show  
3 how flood protection measures, as might be represented within hazard or vulnerability, can be  
4 incorporated.

5

### 6 **3.1 Hazard parameters and mapping**

7 It is common to define and classify flood hazard based on flood magnitude and/or frequency (Apel  
8 et al. 2009; Balica et al. 2013), but classification based on depth is also used (Masood and  
9 Takeuchi, 2012). The frequency and magnitude of floods, along with their associated inundation  
10 depth, are constantly changing due to economic development and climate change (Milly et al.  
11 2002), which challenges the estimates and definition of flood hazard and risk on a range of scales  
12 (Merz et al. 2010a). Therefore, classifying hazard levels on a national scale based on topography  
13 (Lugeri et al. 2010) is both realistic and sound, as it can be converted locally to other types of  
14 classification as will be discussed here in the results section.

15 In this study, flood hazard was estimated using two parameters: elevation above the nearest  
16 drainage (EAND), which is similar to HAND (height above nearest drainage, Rennó et al. 2008)  
17 and distance from the nearest drainage (DFND). These two parameters define the topography of  
18 an area and thus, help in determining the relative position of a place with respect to the stream.  
19 Both parameters were derived from a Canadian digital elevation model (DEM) obtained from  
20 Natural Resources Canada (<http://geogratis.gc.ca/site/eng/extraction>). The CDEM is derived from  
21 the Canadian Digital Elevation Data, which were extracted from the hypsographic and  
22 hydrographic elements of the National Topographic Data Base (NTDB), the Geospatial Database  
23 (GDB), various scaled positional data acquired by the provinces and territories, or remotely sensed



1 imagery. The CDEM is available for download at various resolutions ranging from 0.75 arc second  
2 (~20m at the equator) to 12 arc seconds (~326m at the equator) as tiles that are consistent with the  
3 National Topographic System (NTS; Official division and identification system for the base  
4 topographic maps of Canada). Both the 20m and 326m DEM resolutions were assessed in this  
5 study. The vertical accuracy of the DEM varies with location, with a measured altimetry accuracy  
6 of under 5 meters per tile for most parts of the country (Natural Resources Canada, 2016).

7 EAND is a terrain descriptor, which produces a new normalized DEM where pixel values represent  
8 altitudes relative to the local drainage instead of the mean sea level. To allocate elevation values  
9 to the pixels with respect to local drainage, we first identified the drainage network by using the  
10 ArcGIS hydrology tool. The DEM, available in raster format, was initially filled by identifying  
11 pits and raising their elevation to the level of the lowest pour point. After obtaining the filled DEM,  
12 the second step was to generate flow direction. There are a total of eight valid output flow  
13 directions, corresponding to the eight adjacent cells into which water may flow. The flow direction  
14 tool follows the eight directions flow model, which was presented by Jenson and Domingue  
15 (1988). After identifying the drainage network for Canada, a new raster was created using the  
16 Euclidean allocation tool available in the spatial analyst toolbox of ArcGIS. All pixels within this  
17 raster were assigned the new values of elevation, which were the elevation values of the nearest  
18 drainage pixel based on Euclidean distance. Finally, this output was subtracted from the original  
19 elevations to obtain the EAND map for the study area. Also, for each pixel, the DFND – the  
20 horizontal distance from the nearest drainage network – was calculated. Negative values of EAND  
21 could be observed because there were depressions lower than the nearest stream. EAND and  
22 DFND were classified into five different EAND and DFND classes as shown in Table 1. The lower  
23 values of EAND and DFND were assigned the higher class values as they indicate the low-lying

1 and close areas to the streams, respectively, and thus, the highest level of flood hazard. The hazard  
 2 value was calculated based on the product of EAND and DFND classes; e.g. a hazard level of 20  
 3 could result from EAND class 4 and DFND class 5 (or vice versa). Finally, hazard values were  
 4 reclassified into five different hazard classes as shown in Table 1. The class intervals were selected  
 5 somewhat arbitrarily in this study. However, depending on the topography of the study area, other  
 6 hazard class intervals can be selected.

7 **Table 1. Classes of elevation above nearest drainage (EAND), distance from nearest drainage**  
 8 **(DFND), and the resultant flood hazard for Canada.**

| EAND (m) | Class | DFND (m)     | Class | Hazard  | Class | Hazard level |
|----------|-------|--------------|-------|---------|-------|--------------|
| ≤ 2.0    | 5     | ≤ 1000       | 5     | 21 – 25 | 5     | Severe       |
| 2.1 – 4  | 4     | 1001 – 2500  | 4     | 16 – 20 | 4     | High         |
| 4.1 – 6  | 3     | 2501 – 5000  | 3     | 11 – 15 | 3     | Medium       |
| 6.1 – 8  | 2     | 5001 – 10000 | 2     | 6 – 10  | 2     | Low          |
| > 8.0    | 1     | > 10000      | 1     | 1 – 5   | 1     | Very low     |

9  
 10 The topography-based hazard mapping approach, developed in this study, was validated  
 11 quantitatively against flood inundation map developed using hydraulic modeling by the city of  
 12 Calgary (Government of Alberta, 2013) for an area of Calgary. Validation is meant to assess that  
 13 the product does provide useful information for locating the areas at higher flood hazard (Biondi  
 14 et al., 2012). Two performance measures were selected for validation: Sensitivity and specificity  
 15 (Altman and Bland, 1994). Sensitivity and specificity are measures that indicate the probability of  
 16 correctly classifying a pixel within the flooding extent as flooded or non-flooded. The measures  
 17 are easy to calculate and have been used in classification studies in the past (e.g. Murtaugh, 1996;  
 18 Cutler et al., 2007). Sensitivity ( $S_v$ ) is defined as,

19 
$$S_v = \frac{F_p}{F_{ap}} \quad (2)$$

$$1 \quad S_v = \frac{F_p}{F_p + F_{op}}$$

2 Where  $F_p$ ,  $F_{ap}$ , and  $F_{op}$  are the number of truly predicted flooded pixels, the total number of  
 3 actually flooded pixels, and the number of pixels actually flooded that were predicted as not  
 4 flooded, respectively. Here, “truly predicted” refers to the pixels in hazard level *severe* in the  
 5 hazard map, and “actually” refers to pixels in the flood inundation map used for validation.  $S_v$   
 6 ranges from 0 to 1, with values closer to 1 indicating high probability of correctness in classifying  
 7 a flooded pixel. Specificity ( $S_c$ ) is defined as,

$$8 \quad S_c = \frac{NF_p}{NF_{ap}} \quad (3)$$

$$9 \quad S_c = \frac{NF_p}{NF_p + NF_{op}}$$

10 Where  $NF_p$ ,  $NF_{ap}$ , and  $NF_{op}$  are the number of truly predicted not-flooded pixels, the total number  
 11 of actually not-flooded pixels, and the number of pixels actually not-flooded that were predicted  
 12 as flooded, respectively.  $S_c$  ranges from 0 to 1 where values closer to 1 indicate high probability  
 13 of correctness in classifying a pixel as a non-flooded pixel. A qualitative assessment of the flood  
 14 hazard mapping was also conducted against an aerial flood photo in Saskatchewan, Canada.  
 15 Another important parameter that affects the flood and its impact on the floodplain is the existence  
 16 of flood protection or defence measures. Including flood protection within hazard or vulnerability  
 17 can be debatable. However, the approach we adopt in this study depends on the type of the flood  
 18 protection. Structural flood protection measures that affect the flood runoff itself (Mays, 2011),  
 19 such as dikes and dams, are included within hazard assessment as they affect the flood stage-  
 20 discharge and discharge-frequency relationships. Non-structural measures, such as zoning,

1 insurance, rearranging spaces, and raising buildings, are included within vulnerability assessment  
2 because they affect the susceptibility of the floodplain (UNISDR, 2009) rather than the flood water  
3 (Mays, 2011). When such information on flood protection is available for the whole country, flood  
4 protection can be included as the third hazard parameter to identify the final hazard level or as a  
5 separate vulnerability parameter. Flood protection can be included as a binary parameter, i.e.  
6 protected/unprotected or in the form of various levels of protection. For the current study, complete  
7 information on flood protection across Canada was not made available to us; however, we  
8 investigated how to consider protection on a smaller regional scale around the city of Winnipeg,  
9 Manitoba, and it will be shown in the results section.

10

### 11 **3.2 Exposure parameters and mapping**

12 As reflected in most flood studies, there is no doubt that land-use is the most relevant flood  
13 exposure parameter as it indicates the land or property value, e.g. urban development or  
14 agricultural land. In this study we also used a *land-use* map for Canada available through the North  
15 American Land Change Monitoring System (NALCMS; Latifovic et al. 2012), which is available  
16 in raster format at a spatial resolution of 250 m and can be obtained through  
17 <http://www.ccc.org/tools-and-resources/map-files/land-cover-2005>. The original land-use data  
18 taken from NALCMS define 19 land-use types for North America, out of which there are 15 types  
19 found in Canada. These types were further reclassified for the purpose of this study into five types  
20 as shown in Table 2. There are no agreed upon global rules for land-use classification, however,  
21 for the purpose of national-scale flood risk assessment, these five types were judged to be  
22 sufficient, and also bear some similarity to the European Corine Land Cover classes  
23 ([http://uls.eionet.europa.eu/CLC2006/CLC\\_Legeng.pdf](http://uls.eionet.europa.eu/CLC2006/CLC_Legeng.pdf)). The reclassified land-use types were

1 then assigned values between 1 and 5 according to their economic value, with the values of 5 and  
2 1 assigned to urban areas and water bodies, respectively.

3 The second flood exposure parameter considered in this study is *nightlights*. Nightlight satellite  
4 imagery has been investigated as a proxy for human activities, and has been used in various studies  
5 for different domains (Raupach et al., 2010; Zhou et al., 2014; Gomez et al., 2015; Townsend and  
6 Bruce, 2010). Ceola et al. (2014) explored nightlights to examine human exposures to floods  
7 worldwide, using HydroSHEDS data, based only on proximity to streams. The study included 175  
8 regions covering 168 countries with the exception of Canada, Russia, and part of northern Europe.  
9 The nightlight values, defined by a digital number (DN) ranging from 0 to 63 to reflect the degree  
10 of luminosity, were classified for Canada into five different nightlight classes (NC) as shown in  
11 Table 3. The nightlight data were obtained from the National Oceanic and Atmospheric  
12 Administration (NOAA) of the United States  
13 (<http://ngdc.noaa.gov/eog/dmsp/downloadV4composites.html>). The spatial resolution of the  
14 dataset is 30 arc-seconds (corresponds to roughly 1 km near the equator, and around 600 m<sup>2</sup> over  
15 the populous southern Canada) and the data are available for the period 1992-2013. When datasets  
16 with multiple spatial resolutions were used, the maps with coarser resolution were resampled to  
17 correspond with the finer resolution, and thus, the final product has the finer resolution. The most  
18 recent available data of 2013 were used for our analysis, and the Canadian nightlight map of the  
19 year 2013 is shown in Figure 2.

20  
21  
22  
23

1 **Table 2. Classes of land-use types in Canada along with their percent of area covered.**

| Land-use type   | Reclassified land-use   | Land-use class (LC) | % of area covered |
|---|-------------------------|---------------------|-------------------|
| - Wetland ( <i>marshes, swamps, mangroves</i> );<br>- Water ( <i>open water</i> );<br>- Snow and Ice ( <i>perennial cover</i> )   | Water bodies            | 1                   | 16                |
| - Barren land;<br>- Sub polar or polar barren moss<br>- Temperate or sub-polar grassland;<br>- Sub polar or polar grassland   | Wasteland/<br>Grassland | 2                   | 28.2              |
| - Temperate or subpolar needle leaf forest;<br>- Temperate or subpolar broad leaf forest;<br>- Mixed forest;<br>- Temperate or subpolar shrub land;<br>- Subpolar or polar shrub land | Forest                  | 3                   | 50                |
| Cropland  | Agriculture             | 4                   | 5.7               |
| Urban and built up  | Urban                   | 5                   | 0.1               |

2

3 **Table 3. Classes of nightlight luminosity in Canada from 1 – 5. The exposure classes were**  
4 **selected based on the product of nightlight and land-use classes.**

| Nightlight value (DN) | Nightlight class (NC) | Nightlight level     | % area covered | Exposure | Class | Exposure level |
|-----------------------|-----------------------|----------------------|----------------|----------|-------|----------------|
| 0 – 5                 | 1                     | Very low luminosity  | 93.6           | 1 – 5    | 1     | Very low       |
| 6 – 10                | 2                     | Low luminosity       | 4.4            | 6 – 10   | 2     | Low            |
| 11 – 30               | 3                     | Medium luminosity    | 1.4            | 11 – 15  | 3     | Medium         |
| 31 – 59               | 4                     | High luminosity      | 0.5            | 16 – 20  | 4     | High           |
| 60 – 63               | 5                     | Very high luminosity | 0.1            | 21 – 25  | 5     | Severe         |

5

6 The ranges of the first two classes (having DN  $\leq$  10) were kept narrow because they are spread  
7 over most part of Canada (about 98% of Canada’s area). They indicate absent or low human  
8 activity and, hence, from a flood exposure perspective they are less important. Accordingly, low  
9 nightlight class values were assigned to them. The range of DN values 11-30 is significant as it is

1 mainly found in parts of the forest and agricultural land that possess more important resources than  
2 the first two classes. The DN range of 31-59 is found in the outskirts of cities and towns, and  
3 represents mostly agricultural lands and small establishments. The pixels having DN values of 60  
4 and above fall within city boundaries and contribute up to 80% of the nightlights of the city.  
5 Therefore, 60 and above were kept as a separate class (NC=5), highlighting urban centers, which  
6 are the most flood exposed areas. Similar to the calculation of the hazard index, exposure was also  
7 calculated as the product of land-use and nightlight classes, leading to values ranging from 1 – 25.  
8 The exposure values were further reclassified into five classes as shown in the last three columns  
9 of Table 3, and a flood exposure map of Canada was produced.

10 Finally, and based on equation (1), flood risk was calculated as the product of hazard and exposure,  
11 as local vulnerability information was not available, and was reclassified into five risk classes as  
12 shown in Table 4. In the absence of population data, nightlights might be taken as a surrogate for  
13 population. However, our investigation reveals that both datasets may differ in some places. This  
14 is expected as nightlights are more representative of economic investment and activities, which  
15 can be different from population. For example, airports and industrial and commercial areas are  
16 highly luminous but the census data show low or no population. Human harm can still happen in  
17 areas indicated by census data as “zero-population”. The nightlight data capture such areas.  
18 However, population data, especially when associated with qualifiers regarding different groups  
19 and income can be distinctively used to assess social vulnerability or exposure to floods (Adger,  
20 1999). As floods may have different impacts on the relative well-being of individuals and groups,  
21 which is not reflected by classic economic exposure, it is important to identify the impact of floods  
22 on population separately, without integrating or averaging with other exposure parameters.  
23 Therefore, in this study the physical flood risk map of Canada was produced first, then it was

1 overlaid with the population information to allow reclassification of the risk map based on the  
2 distribution of population.

3 **Table 4. Classes of flood risk in Canada, which results from the product of hazard and**  
4 **exposure.**

| <b>Flood risk value</b> | <b>Risk class (RC)</b> | <b>Risk level (RL)</b> |
|-------------------------|------------------------|------------------------|
| 1 – 5                   | 1                      | Very low               |
| 6 – 10                  | 2                      | Low                    |
| 11 – 15                 | 3                      | Medium                 |
| 16 – 20                 | 4                      | High                   |
| 21 – 25                 | 5                      | Severe                 |

5

## 6 **4 Results**

### 7 **4.1 flood hazard mapping**

8 The topography-based (EAND and DFND) flood hazard map of Canada, developed and classified  
9 based on the method explained in the previous section, is shown in Figure 3. Large areas of the  
10 country are classified under high and severe levels of flood hazard due to their low elevation and  
11 proximity to rivers. However, most of these areas have negligible human presence and economic  
12 investments. The flood hazard map can be useful for large-scale planning and development, where  
13 avoiding encroachment into flood hazardous area is recommended. In support of identifying the  
14 flood information needed for flood insurers to assess their exposure to floods and to price the flood  
15 elements at risk, Sanders et al. (2005) identified the availability of fine-resolution DEMs as the  
16 key obstacle for such analysis. For the national-scale analysis in this study, we tested the DEM-  
17 326, as it is computationally tractable for a country like Canada. However, a comparison between  
18 hazard mapping using the DEM-326 and DEM-20 was conducted on a smaller area around the city  
19 of Calgary, Alberta. Even though an overall reasonable visual match between both flood hazard  
20 maps produced using the different resolutions was found, there were important differences. The



1 stream network itself, generated using the DEMs, have significant differences, and a more realistic  
2 representation of the rivers, compared to ground truth, was achieved using DEM-20. All maps in  
3 this study were, thus, produced using the DEM-20.

4 A flood inundation map of an area in the city of Calgary was produced by the City (Government  
5 of Alberta, 2013), based on a 100-year flood determined by flood frequency analysis and using the  
6 hydraulic model HEC-RAS. This map was prepared for the reaches of Bow and Elbow River  
7 flowing through the city limits. A comparison between the topography-based flood hazard  
8 mapping method adopted in this study and the hydraulic modeling-based 100-year inundation map  
9 is shown in Figure 4. Visually, there is good agreement between the model-based 100-year flood  
10 inundation (shown as hatched grey area) and the hazard level classified in this study as *severe*  
11 (Table 1). Two sections of the reaches are enlarged, as examples, for better visual comparison  
12 between both methods. As shown in the main map (on top) in Figure 4, there is good agreement  
13 in other sections as well, and there are small areas that do not match well. Some smaller areas of  
14 the 100-year flood are extended over the second highest hazard area defined in this study as *high*.  
15 This was expected, as our classes shown in Table 1 were selected somewhat arbitrarily across  
16 Canada. This agreement between the two maps were further analyzed based on performance  
17 indices (equations 2 and 3) to quantify the agreement between the inundation map and the hazard  
18 level *severe*. The sensitivity ( $S_v$ ) was found to be 0.75 indicating that the hazard class severe is  
19 able to capture 75% of the area being designated as inundated by the 100-year flood inundation  
20 map. The specificity ( $S_c$ ) was found to be higher at 0.85 indicating that the hazard map could be  
21 reliably used to identify an area that would not be inundated by a 1 in 100 year flood as determined  
22 by the inundation map. The locations where the discrepancy between the two maps exist can be  
23 identified visually. The most noticeable disagreement between the hazard map and the inundation

1 map is just above the confluence of the Bow and Elbow rivers, where the *severe* hazard level is  
2 much wider than the modelled extent. The scrutiny of areal imagery of that area did not indicate  
3 the presence of any flood protection measures at that location. A specific reason could not be  
4 ascertained to explain the discrepancy, which could vary from the incorrectness of the DEM at that  
5 location to the modeling extent of the hydraulic model used to prepare the inundation map.  
6 Interestingly, a similar observation for the same location was made by Sampson et al. (2015) in  
7 their study wherein, their global hydraulic model also overestimated the inundation extent at the  
8 same location.

9 The hazard levels can be reclassified locally based on different values of EAND and DFND to  
10 match particular floods, e.g. 100-year, 200-year, in areas where flood inundation using hydraulic  
11 modeling is available. This way, the flood hazard map can be converted into approximate flood  
12 inundation maps for floods with particular return periods. To check if the hazard map can be  
13 compared against an observed flood, a qualitative analysis was also done by visually comparing  
14 the hazard map with an aerial imagery of the 2013 flood in the Qu'Appelle River located in the  
15 Saskatchewan province of Canada (Figure 5). The image was taken on 06/05/2013, a day after the  
16 annual maximum discharge was recorded in the river and the flooded extent is visible in the image.  
17 To compare across both maps, the hazard map is overlaid as a mesh on the aerial image. It can be  
18 observed from the figure that the flooding extent is well captured by the hazard level *severe* at  
19 most locations along the reach. This result further strengthens the relevance of the hazard map and  
20 its accuracy in identifying flooding extents.

21 Another important flood hazard parameter, which was not fully implemented here due to lack of  
22 information, is flood protection measures. However, an example using an area near the city of

1 Winnipeg, Manitoba, is shown in Figure 6. The city of Winnipeg is protected from Red River  
2 floods using a floodway (appears in the figure in pink color) that carries part of the flood runoff  
3 around the city, and a dike (appears in the figure in yellow color) that prevents flood surface runoff  
4 from entering the city from the west side. The effect of flood protection of these structural  
5 measures is handled in our flood hazard mapping method by identifying the flood depth up to  
6 which the city is protected (flood design level), then assigning the design level to the DEM cells  
7 in the protected area. A hazard map with and without flood protection for the city of Winnipeg is  
8 provided in Figure 6, which shows the reduced level of flood hazard within the city limits. Usually,  
9 there are backwater and other hydraulic effects on areas upstream of flood protection, and such  
10 effects cannot be easily captured by the topography-based hazard mapping adopted here. Hydraulic  
11 modeling is recommended to investigate the effects of flood protection measures on upstream  
12 unprotected areas.

13

#### 14 **4.2 Flood Exposure and Risk Mapping**

15 The flood exposure map of Canada, which integrates land-use and nightlight information, is shown  
16 as Figure 7. The areas of higher exposure is mainly concentrated around major urban centers in  
17 Canada. As expected, the exposure map is quite similar to the nightlight map (Figure 2b), because  
18 the distribution of nightlight matches to a great extent the land-use map; for example, urban areas  
19 are much more luminous than forests. However, it is useful to include both types of information  
20 as some major capital investments, reflected by high luminosity, can be situated within larger areas  
21 classified as agricultural, or forested areas. To demonstrate this, a small area within the exposure  
22 map is enlarged and overlaid with the road network map obtained from the National road network  
23 (<http://geogratis.gc.ca/>) and shown in Figure 7. Although the exposure indicates “very low” to

1 “low”, the hazard map for the same location indicates a significant area within the “severe” and  
2 “high” classes. Roads were flooded in major Canadian flood events and hampered rescue efforts.  
3 Also, some large parks with lower luminosity can be found within the limits of urban areas.  
4 Furthermore, nightlights are quantified using the DN, which helps in using them as a proxy for  
5 economic investment/damage calculations in the absence of monetary values. It is important to  
6 note that one of the shortcomings of using nightlights is the phenomenon of “overglow” (Doll,  
7 2008) – areas of low luminosity shown with false high luminosity due to reflections from  
8 surrounding areas with much higher luminosity. Small et al. (2005) listed three major causes for  
9 this phenomenon: coarse spatial resolution, large overlap between pixels, and errors in the  
10 geolocation.

11 By assuming that flood vulnerability is homogeneous over Canada, a flood risk map of Canada,  
12 which results from the product of flood hazard and exposure only, is shown in Figure 8. Even  
13 though severe and high flood hazard areas are spread spatially over the entire country, severe and  
14 high flood risk areas are concentrated in urban centers in the southern part of Canada. Severe and  
15 high flood hazard in northern areas assume lower levels of risk when integrated with lower levels  
16 of exposure in the north due to lack of human activities and urban centers. These maps are in 20  
17 m resolution, which allows for assessing the flood hazard, exposure, and risk in details, which are  
18 not visible on a national map.

19 A key flood exposure and risk parameter, which was deliberately left out of the risk map, is  
20 population. Using the example of the Greater Toronto Area in Ontario, Figure 9 shows the  
21 differences that are represented by nightlights, population distribution, and land-use maps. The  
22 airport area, indicated by a grey triangle, and an industrial area indicated by a grey circle, are

1 typical examples of urban/built-up areas (Figure 9c) with high economic investments that are  
2 highly luminous areas (Figure 9a), but very low – close to zero – population (Figure 9b). This  
3 confirms that nightlights and population distribution can differ at times, and it is important to  
4 include both parameters, but without integrating them in order to avoid the “average” effect.

5 To identify flood impact on people (social impact) and separate it from economic impact, we  
6 propose overlaying the flood risk map (Figure 8) with a population density layer. Figure 10 shows  
7 an example of such reclassification of the flood risk map with and without population on a smaller  
8 area (the city of Calgary, Alberta) for better visualization of the concept. The central part of the  
9 city with high-rise buildings and high population density remains within the highest levels of flood  
10 risk where both economic and social risks are at their highest levels. The northern and southern  
11 parts, which are mainly commercial areas with lower population density and, thus, lower social  
12 risk, assume reduced levels of overall flood risk (Figure 10b) in spite of having severe economic  
13 flood risk (Figure 10a).

14

## 15 **5 Discussion**

16 Even though flood hazard, exposure, and vulnerability maps are all important, the flood hazard  
17 map is of special interest to both the public and planners or decision makers. The flood hazard map  
18 allows the public to assess the situation of their properties with respect to floods, whether the  
19 property is residence, agricultural land, or commercial business. For planners and decision makers,  
20 flood hazard maps allow for assessing areas of future development, or locations of strategic  
21 establishments. As mentioned earlier, the flood hazard map developed in this study can be  
22 reclassified or converted to inundation maps of floods with specific return periods, e.g. 100-year  
23 flood, using hydraulic modeling, or even linked to particular recorded flood events, such as the

1 known 1979, 1997, and 2011 floods in Manitoba. In some areas, like the city of Calgary (Figure  
2 4), 100-year flood extent almost matches our severe flood hazard class ( $< 2$  m). In other regions,  
3 and depending on the topography, the 100-year flood might cover two or three of the flood hazard  
4 classes. Furthermore, local authorities may relate flows at different flood frequencies (e.g., 100  
5 year) to water stage (can be done using rating curves available locally). The stages of different  
6 floods indicate clearly which of the hazard classes, determined using the topography-based hazard  
7 mapping, will be inundated. This way local authorities can convert the flood hazard map to flood  
8 frequencies.

9 For prioritizing resource allocation and intervention for flood damage mitigation, flood risk is the  
10 important indicator as it integrates hazard, exposure, and vulnerability, and reflects the spatial  
11 distribution of expected damage. The general flood risk map, similar to Figures 8 and 10a, can be  
12 used for prioritizing intervention and estimating compensations based on economic flood risk, but  
13 flood risk maps with population, similar to Figure 10b, add an important sociopolitical dimension  
14 because they indicate where certain levels of risk affect more or less people. This type of  
15 socioeconomic flood risk map can be made public to collect feedback from all stakeholders.  
16 Certain groups falling under reduced levels of risk may raise issues of particular social exposure  
17 or vulnerability, and help water managers revise the classification or use differential spatial  
18 weights to produce more realistic socioeconomic flood risk maps. This approach of engaging both  
19 the public and water professionals in co-production of flood-related knowledge can be initiated  
20 using the risk maps (Lane et al. 2011).

21 The simple way presented in this paper for considering the effect of flood protection on the hazard  
22 (or vulnerability), and thus the risk, classification can be useful for quantifying the change in the

1 spatial distribution of flood risk. This might prove useful for comparing flood risk with different  
2 types of societal risk, e.g. forest fires. This method allows for quick assessment of the value of  
3 flood protection measures, and the locations of critical need for such measures.

4 It is important to note that there are various uncertainties associated with the nightlight and  
5 topography-based approach suggested in this paper for flood risk assessment in Canada. The  
6 DEM's resolution is an important criterion, and sensitivity analysis might be needed to identify a  
7 resolution that is coarse enough for tractable computations, but fine enough for reliable  
8 identification of the stream network and the various hazard classes. The available nightlight data  
9 are of much coarser resolution (1 km) than the required DEM's resolution. This difference, along  
10 with the uncertainty stemming from the overflow phenomenon, can cast some doubts on the  
11 nightlight classification. Therefore, exposure and risk maps should be treated with caution when  
12 analyzing small areas. Finally, it is relevant to note the importance of local information for the  
13 estimation of flood hazard and vulnerability. While the flood risk map based on hazard and  
14 exposure may provide important indications to identify critical areas, information on existing flood  
15 protection is necessary in order to provide useful guidelines to decision makers. Therefore,  
16 obtaining local information is a fundamental step that can be carried out only by effectively  
17 cooperating with actors who have a refined knowledge at the local level, like for instance local  
18 water managers.

19

## 20 **6 Conclusions**

21 The topography- and nightlight-based approach adopted in this study for flood risk assessment on  
22 a national scale is both useful and practical. Without detailed hydraulic modeling, the flood hazard  
23 map of Canada can provide a reliable preliminary assessment of the flood hazard level anywhere

1 in the country. This low-cost product can be used for early stages of development planning.  
2 Identifying the flood hazard level of even areas such as wastelands might prove useful for planning  
3 and management of activities like mining in remote and undeveloped areas. The flood risk map,  
4 which integrates both hazard and exposure, including nightlights, is the most useful product as it  
5 allows for evaluating the spatial distribution of the expected flood damage, and thus, can help in  
6 prioritizing government intervention and strategic resource allocation. The risk map, which  
7 typically reflects economic risk can be combined with population distribution maps to explicitly  
8 identify the social risk dimension as well as overall socioeconomic flood risk. It was shown in this  
9 study that nightlight luminosity and population distribution can differ at certain locations, and it is  
10 beneficial to use both types of information for flood risk assessment.

11 The severe and high flood hazard areas in Canada are spread over all regions of the country;  
12 however, the severe and high flood exposure and risk are concentrated in the southern part of the  
13 country around urban centers. Complete information on flood protection across Canada should be  
14 collected and integrated with the developed hazard and risk maps produced in this study in order  
15 for these products to be considered complete and ready to use. Some sensitivity analysis regarding  
16 the required DEM's resolution is needed to identify the resolution that is fine enough for reliable  
17 hazard mapping, but coarse enough for computational tractability. Both DEM's resolution and the  
18 nightlight's overglow phenomenon are possible sources of uncertainty in the maps produced in  
19 this study. Attempts should be made in the future to quantify such levels of uncertainty.

20

## 21 **ACKNOWLEDGEMENT**

22 The financial support of NSERC through the strategic research network – FloodNet – and the  
23 Discovery Grant program is acknowledged. SC and AM gratefully acknowledge the financial  
24 support from the FP7 EU funded project SWITCH-ON (grant agreement n. 603587).



## 1 **References**

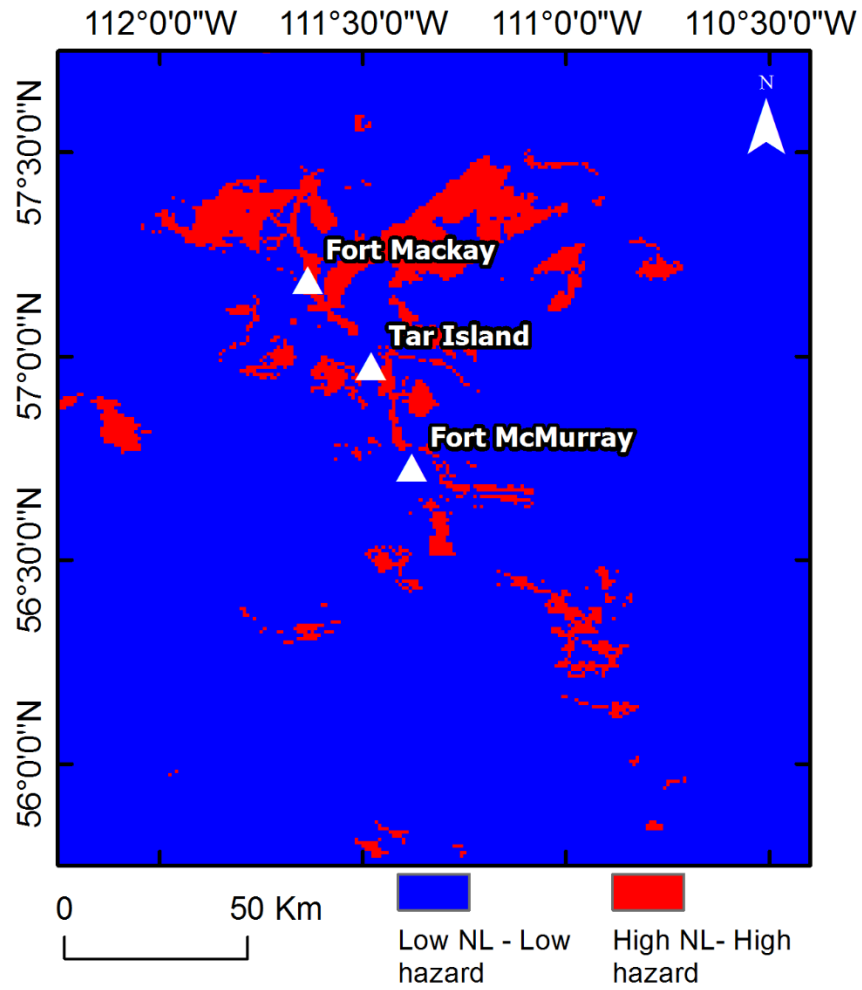
- 2 Adger, W. (2006), Vulnerability, *Global Environmental Change*, **16**, 268–281.
- 3 Adger, W. (1999), Social vulnerability to climate change and extremes in coastal Vietnam, *World*  
4 *Development*, **27**, 2, 249 – 269.
- 5 Altman, D. G., and J.M. Bland (1994), Diagnostic tests. 1: Sensitivity and specificity. *Brit. Med.*  
6 *J.*, 308(6943), 1552.
- 7 Apel, H., G. Aronica, H. Kreibich, and A. Thielen (2009), Flood risk analyses – how detailed do  
8 we need to be? *Nat. Hazards*, **49**, 79–98.
- 9 Balica, S., I. Popescu, L. Beevers, and N. Wright (2013), Parametric and physically based  
10 modelling techniques for flood risk and vulnerability assessment: A comparison, *Environ. Model.*  
11 *Soft.*, **41**, 84 – 92.
- 12 Biondi, D., G. Freni, V. Iacobellis, G. Mascaro, and A. Montanari (2012), Validation of  
13 hydrological models: Conceptual basis, methodological approaches and a proposal for a code of  
14 practice, *Phy. and Chem. of the Earth*, **42-44**, 70-76.
- 15 Brakenridge, R., E. Anderson (2006), MODIS-based flood detection, mapping and measurement:  
16 the potential for operational hydrological applications, J. Marsalek et al. (Eds.), *Transboundary*  
17 *Floods: Reducing Risks Through Flood Management*, Springer, the Netherlands, pp. 1 – 12.
- 18 Ceola, S., F. Laio, and A. Montanari (2015), Human-impacted waters: New perspectives from  
19 global highresolution monitoring, *Water Resour. Res.*, **51**, 7064–7079,  
20 doi:10.1002/2015WR017482.
- 21 Ceola, S., F. Laio, and A. Montanari (2014), Satellite nighttime lights revealing increased human  
22 exposure to floods worldwide, *Geophys. Res. Lett.*, **41**, 7184–7190, doi:10.1002/2014GL061859.
- 23 Collenteur, R.A., H. de Moel, B. Jongman, and G. Di Baldassarre (2015), The failed-levee effect:  
24 Do societies learn from flood disasters? *Nat Hazards*, 76, 373-388, doi:10.1007/s11069-014-1496-  
25 6.
- 26 Cutler, D. R., Edwards, T. C., Beard, K. H., Cutler, A., Hess, K. T., Gibson, J. and Lawler, J. J.  
27 (2007), RANDOM FORESTS FOR CLASSIFICATION IN ECOLOGY. *Ecology*, 88: 2783–  
28 2792. doi:10.1890/07-0539.1
- 29 De Moel, H. J. van Alphen, and C. Aerts (2009), Flood maps in Europe – methods, availability  
30 and use, *Nat. Hazards Earth Syst. Sci.*, **9**, 289–301.
- 31 Di Baldassarre, G., A. Viglione, G. Carr, L. Kuil, K. Yan, L. Brandimarte, and G. Blöschl (2015),  
32 *Debates — Perspectives on socio-hydrology: Capturing feedbacks between physical and social*  
33 *processes*, *Water Resour. Res.*, **51**, 4770–4781, doi:10.1002/2014WR016416.

- 1 Doll, C., J. Muller, C. Elvidge (2000), Night-Time Imagery as a Tool for Global Mapping of  
2 Socio-Economic Parameters and Greenhouse Gas Emissions, *Ambio*, **29**, 157 – 162.
- 3 Famiglietti, J., M. Rodell, (2013), Water in balance, *Science*, **340**, 1300 – 1302.
- 4 Gilard, O., (2016), Hazard, vulnerability, and risk, E. Torquebiau (Ed.), *Climate Change and*  
5 *Agriculture Worldwide*, Éditions Quæ, France, pp. 19 – 29.
- 6 Gómez, A. J. S., G. Di Baldassarre, A. Rodhe, A., and V.A. Pohjola (2015), Remotely Sensed  
7 Nightlights to Map Societal Exposure to Hydrometeorological Hazards. *Remote Sensing*, 7(9),  
8 12380-12399.
- 9 Government of Alberta (2013), Flood hazard studies, [http://aep.alberta.ca/water/programs-and-](http://aep.alberta.ca/water/programs-and-services/flood-hazard-identification-program/flood-hazard-studies/default.aspx)  
10 [services/flood-hazard-identification-program/flood-hazard-studies/default.aspx](http://aep.alberta.ca/water/programs-and-services/flood-hazard-identification-program/flood-hazard-studies/default.aspx).
- 11 Hall, J., P. Sayers, and R. Dawson (2005), National-scale assessment of current and future flood  
12 risk in England and Wales, *Nat. Hazards*, **36**, 147–164.
- 13 IPCC (Intergovernmental Panel on Climate Change) (2012), Glossary of terms. In: *Managing the*  
14 *Risks of Extreme Events and Disasters to Advance Climate Change Adaptation* [Field, C.B., V.  
15 Barros, T.F. Stocker, D. Qin, D.J. Dokken, K.L. Ebi, M.D. Mastrandrea, K.J. Mach, G.-K. Plattner,  
16 S.K. Allen, M. Tignor, and P.M. Midgley (eds.)]. A Special Report of Working Groups I and II of  
17 the Intergovernmental Panel on Climate Change (IPCC). Cambridge University Press, Cambridge,  
18 UK, and New York, NY, USA, pp. 555-564.
- 19 Jenson, S. K., and O.J. Domingue (1988). Extracting topographic structure from digital elevation  
20 data for geographic information system analysis. *Photogramm. Engg. Rem. S.*, 54(11), 1593-1600.
- 21 Jonkman, S. (2005), Global perspectives on loss of human life caused by floods, *Nat. Hazards*, **34**,  
22 151–175.
- 23 Lane, S., N. Odoni, C. Landström, S. Whatmore, N. ward, and S. Bradley (2011), Doing flood risk  
24 science differently: an experiment in radical scientific method, *Trans. Inst. Br. Geogr.*, **NS 36**, 15  
25 – 36.
- 26 Latifovic, R., C. Homer, R. Ressler, D. Pouliot, S.N. Hossain, R.R. Colditz, et al. (2012), North  
27 American land-change monitoring system, C.P. Giri (Ed.), *Remote sensing of land Use and land*  
28 *cover: Principles and applications*, CRC/Taylor & Francis, Boca Raton, Fl, pp. 303–324.
- 29 Luger, N., Z. Kundzewicz, E. Genovese, S. Hochrainer, and M. Radziejewski (2010), River flood  
30 risk and adaptation in Europe – assessment of the present status, *Mitig. Adapt. Strateg. Glob.*  
31 *Change*, **15**, 621–639.
- 32 Masood, M., K. Takeuchi (2012), Assessment of flood hazard, vulnerability and risk of mid-  
33 eastern Dhaka using DEM and 1D hydrodynamic model, *Nat Hazards*, **61**, 757–770.
- 34 Mays, L. W. (2011), *Water Resources Engineering*, Chapter 14: Flood Control, John Wiley and  
35 Sons.

- 1 Merz, B., J. Hall, M. Disse, and A. Schumann (2010a), Fluvial flood risk management in a  
2 changing world, *Nat. Hazards Earth Syst. Sci.*, **10**, 509–527.
- 3 Milly, P., R. Wetherald, K. Dunne, and T. Delworth (2002), Increasing risk of great floods in a  
4 changing climate, *Nature*, **415**, 514 – 517.
- 5 National Research Council Canada (NRCC). 1989. Hydrology of floods in Canada: A guide to  
6 planning and design. NRCC no. 29734. Ottawa, Canada, 245 pp.
- 7 Natural Resources Canada (2016) Canadian Digital Elevation Model Product Specifications-  
8 Edition 1.1, Quebec, Canada, 18pp
- 9 Parajka, J., G. Blöschl, (2008), The value of MODIS snow cover data in validating and calibrating  
10 conceptual hydrologic models, *J. Hydrol.*, **358**, 240– 258.
- 11 Raupach, M. R., P.J. Rayner, and M. Paget (2010), Regional variations in spatial structure of  
12 nightlights, population density and fossil-fuel CO 2 emissions. *Energy Policy*, 38(9), 4756-4764.
- 13 Rennó, C., A. Nobre, L. Cuartas, J. Soares, M. Hodnett, J. Tomasella, and M. Waterloo (2008),  
14 HAND, a new terrain descriptor using SRTM-DEM: Mapping terra-firme rainforest environments  
15 in Amazonia, *Remote.Sens. Environ.*, **112**, 3469–3481.
- 16 Sampson, C. C., Smith, A. M., Bates, P. D., Neal, J. C., Alfieri, L., & Freer, J. E. (2015). A high-  
17 resolution global flood hazard model. *Water Resour. Res.*, 51(9), 7358-7381.
- 18 Samuels, P., B. Gouldby, F. Klijn, F. Messner, A. van Os, P. Sayers, J. Schanze, and H. Udale-  
19 Clarke (2009), Language of risk—project definitions, Floodsite project report T32-04-01.
- 20 Sanders, R., F. Shaw, H. MacKay, H. Galy, and M. Foote (2005), National flood modelling for  
21 insurance purposes: using IFSAR for flood risk estimation in Europe, *Hydrol. Earth Syst. Sci.*,  
22 **9**(4), 449 – 456.
- 23 Sayers, P., J. Hall, and I. Meadowcroft (2002), Towards risk-based flood hazard management in  
24 the UK, *Proc. Institution of Civil Engineers Civil Engineering*, **144**, 42–48.
- 25 Schanze, J. (2006), Flood risk management – a basic framework, flood risk management: hazards,  
26 vulnerability and mitigation measures, NATO science Series: IV. Earth and Environmental  
27 Sciences, **67** (Part 1), 1 – 20.
- 28 Small, C., F. Pozzi, and C.D. Elvidge (2005), Spatial analysis of global urban extent from DMSP-  
29 OLS night lights, *Remote. Sens. Environ.*, 96(3), 277-291.
- 30 Townsend, A. C., and D.A. Bruce (2010), The use of night-time lights satellite imagery as a  
31 measure of Australia's regional electricity consumption and population distribution, *Int. J. Remote  
32 Sens.*, **31**(16), 4459-4480.
- 33 UNISDR (United Nations International Strategy for Disaster Reduction) (2009), Terminology on  
34 Disaster Risk Reduction, Geneva, Switzerland.

- 1 Ward, P., B. Jongman, F. Weiland, A. Bouwman, R. van Beek, M. Bierkens, W. Ligtoet, H.
- 2 Winsemius (2013), Assessing flood risk at the global scale: model setup, results, and sensitivity,
- 3 *Environ. Res. Lett.*, **8**, doi: 10.1088/1748-9326/8/4/044019.
  
- 4 Whitfield, P., A. Cannon (2000), Recent variations in climate and hydrology in Canada, *Can. Wat.*
- 5 *Res. J.*, **25**, 1, 19 – 65.
  
- 6 Zhou, Y., S.J. Smith, C.D. Elvidge, K. Zhao, A. Thomson, and M Imhoff (2014), A cluster-based
- 7 method to map urban area from DMSP/OLS nightlights. *Remote. Sens. Environ.*, 147, 173-185.
  
- 8

1



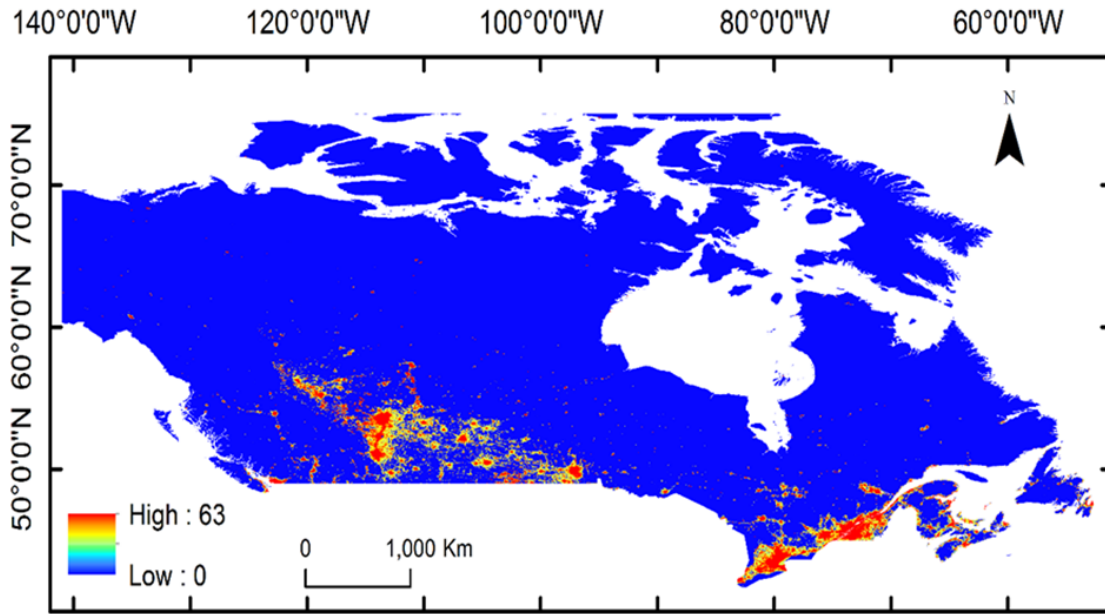
2

3

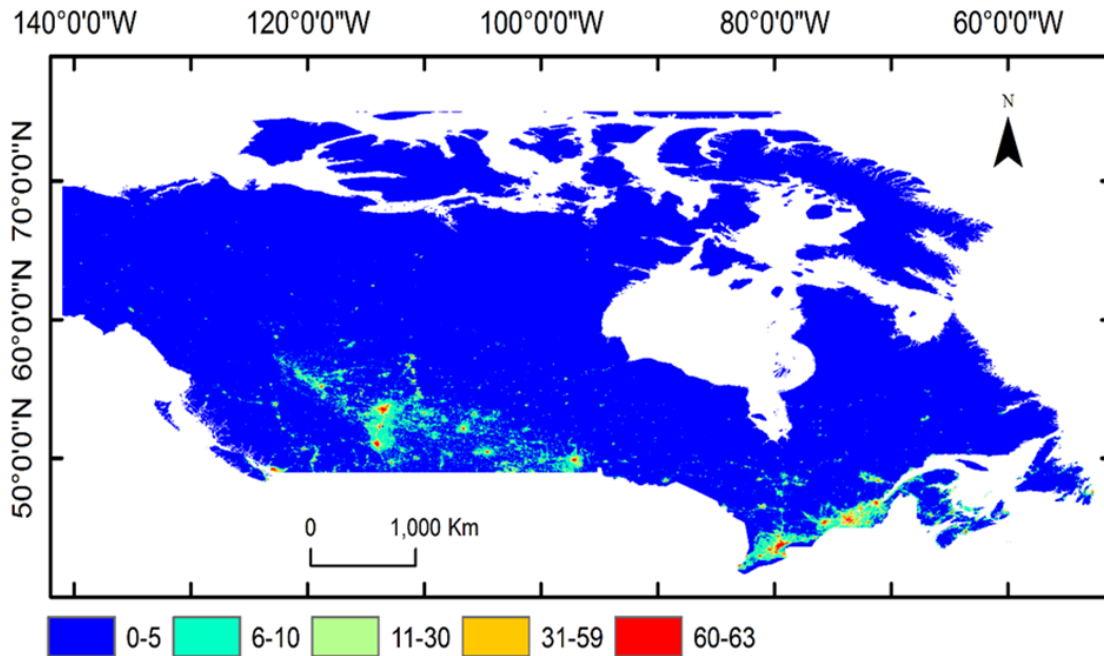
4 Figure 1: Locations indicating increase in nightlight (NL) activity over high hazard areas  
5 between the years 1992 – 2013 ( $DN_{2013} - DN_{1992}$ )

6

1



(a)

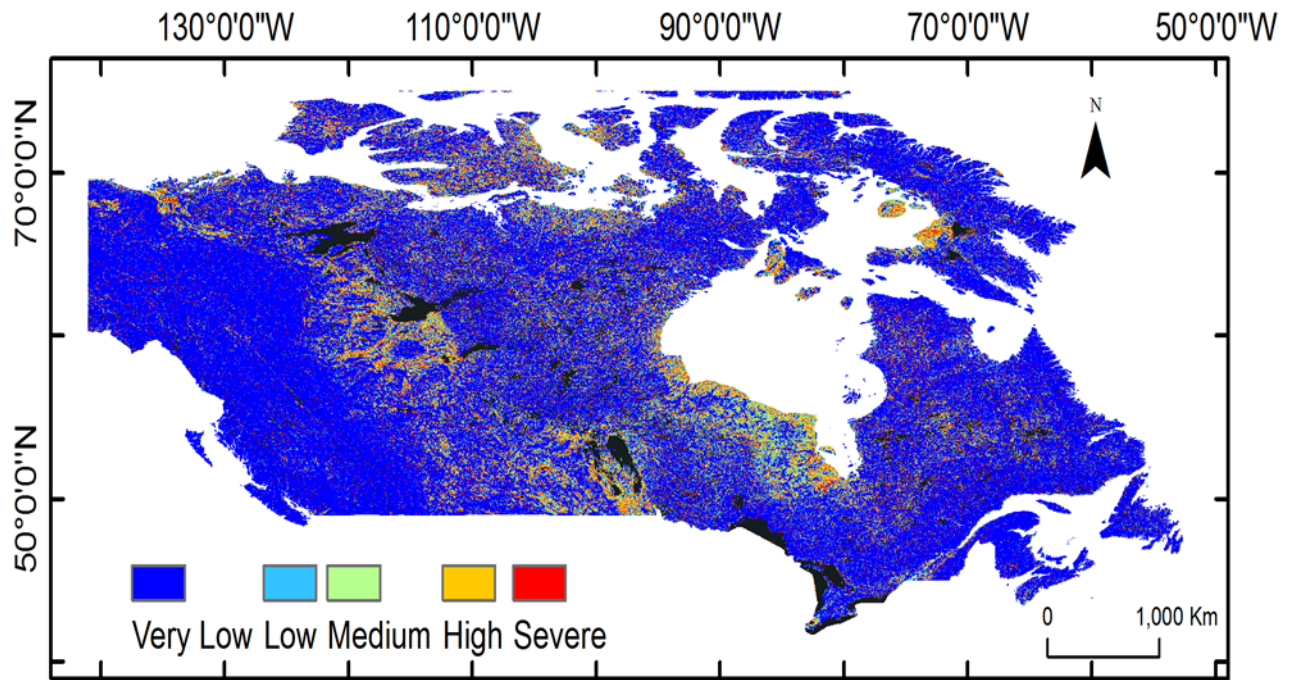


2

(b)

3 Figure 2: Nightlights over Canada shown as (a) Continuous spectrum and (b) classified as shown  
4 in Table 3 into very low luminosity (0-5), low luminosity (6-10), medium luminosity (11-30), high  
5 luminosity (31-59), and very high luminosity (60-63).

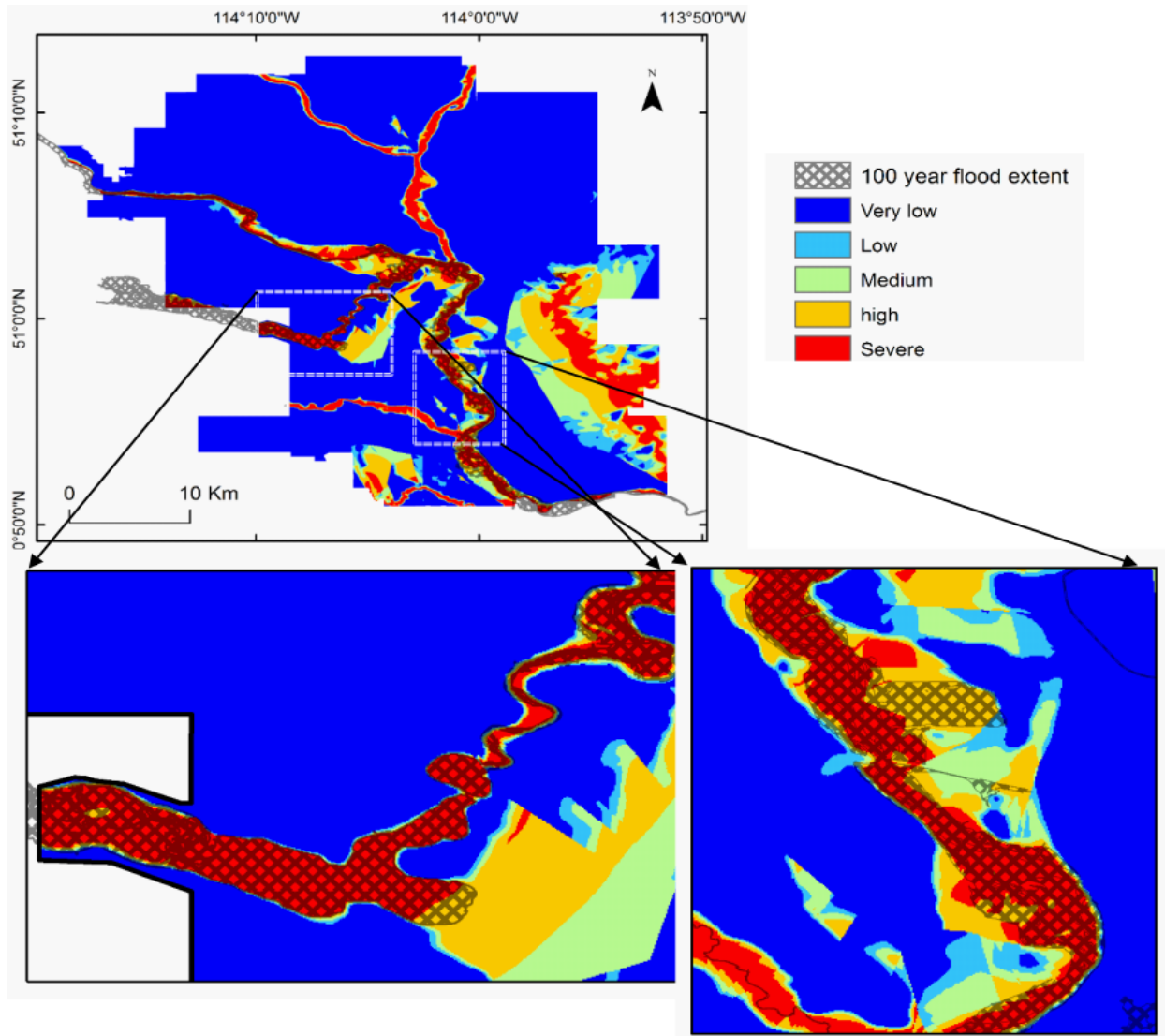
1  
2



3  
4  
5  
6  
7

Figure 3: Flood hazard map for Canada obtained using the 20 m DEM. Large areas are classified under high- and sever-level flood hazard, but most areas have negligible human presence and investments.

1  
2  
3  
4  
5

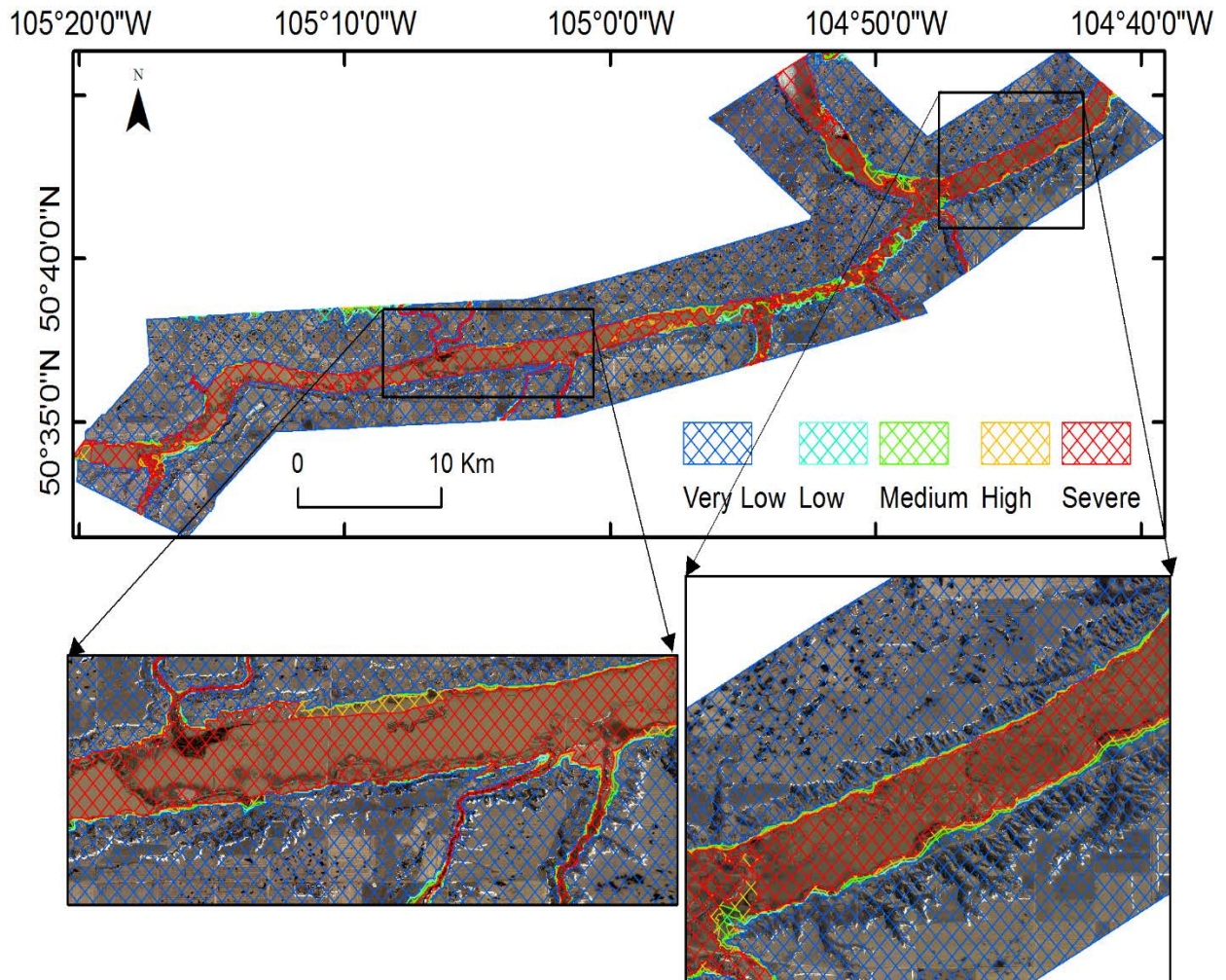


6  
7  
8  
9  
10

Figure 4: Comparison of Hazard map obtained from the present study and a 100-yr flooding extent map prepared by the city of Calgary (Hatched portions). Portions of the reach along the Bow and Elbow rivers are enlarged to show the level of agreement between both maps.



1



2

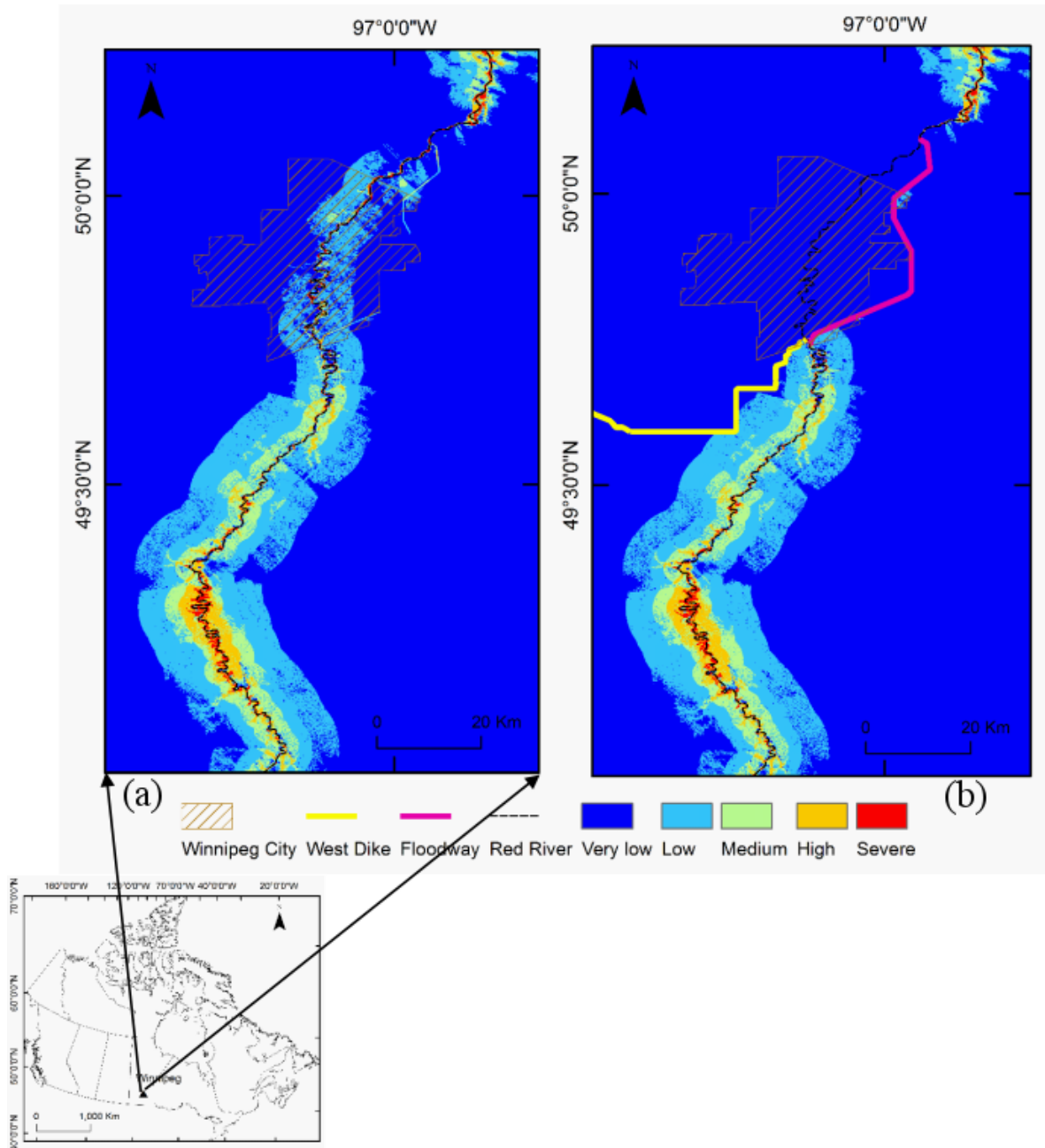
3 Figure 5: Comparison of hazard map with aerial image of a single flood event on the Qu'Appelle  
4 River, Saskatchewan (background). Date of image: 06/05/2013

5

6

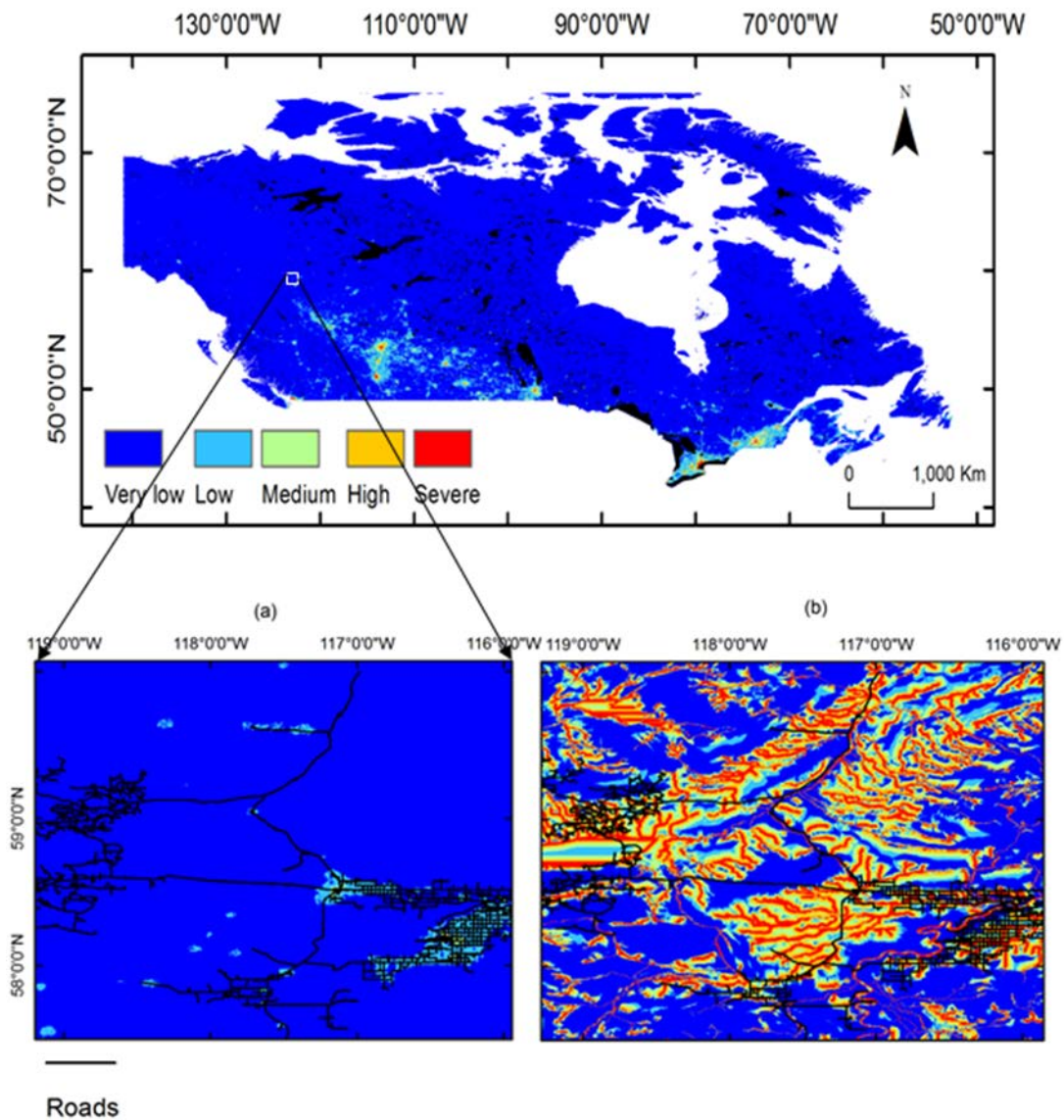
7

1  
2



3 Figure 6. Hazard map for the Red River in Manitoba: (a) without considering flood protection  
4 structures in delineating hazard zones and (b) considering flood protection.

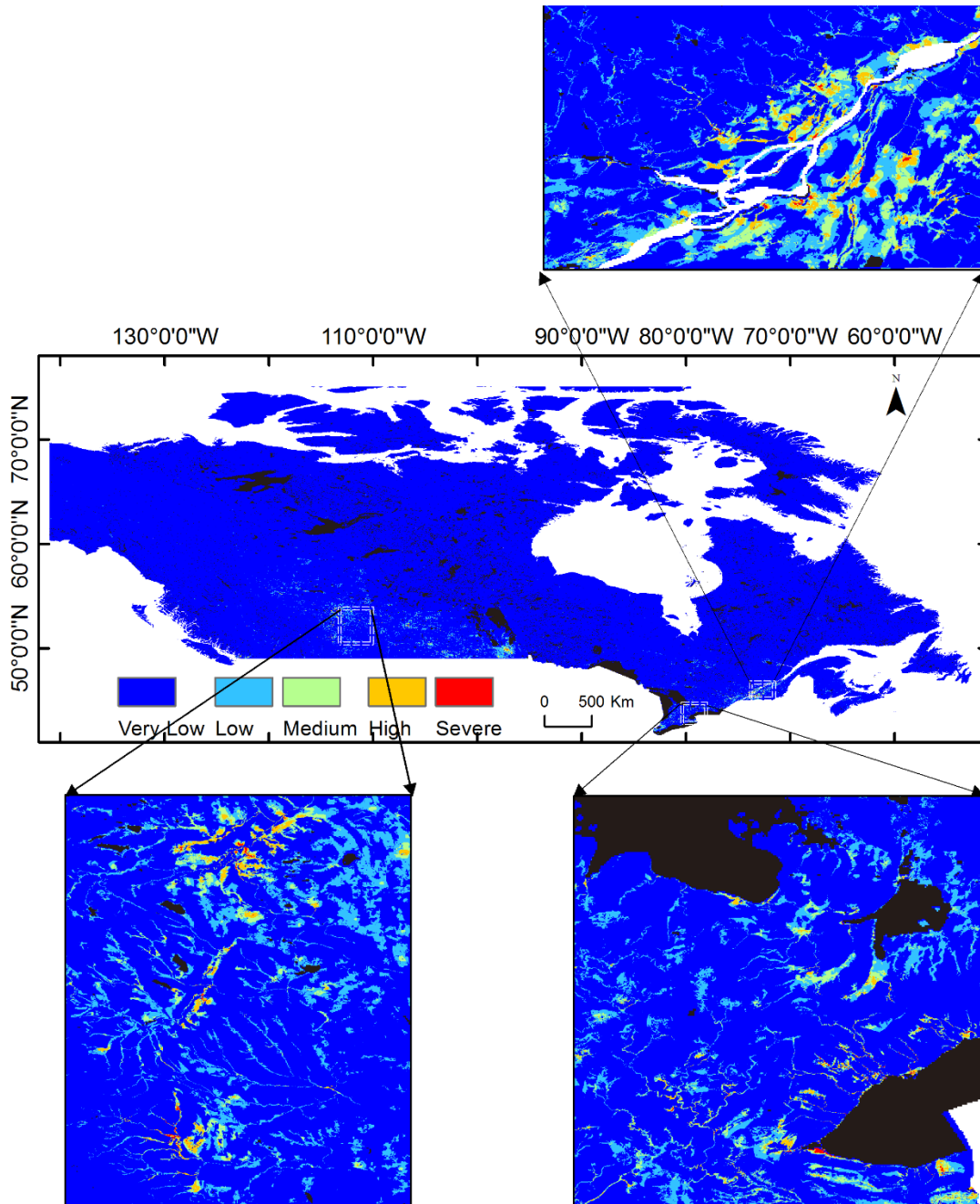
5



1 Roads  
 2 Figure 7: Classified Flood Exposure Map for Canada. Severe and high exposure are concentrated  
 3 around urban centers in the southern part of the country. Enlarged portion shows road network  
 4 overlaid over (a) exposure map and (b) hazard map.

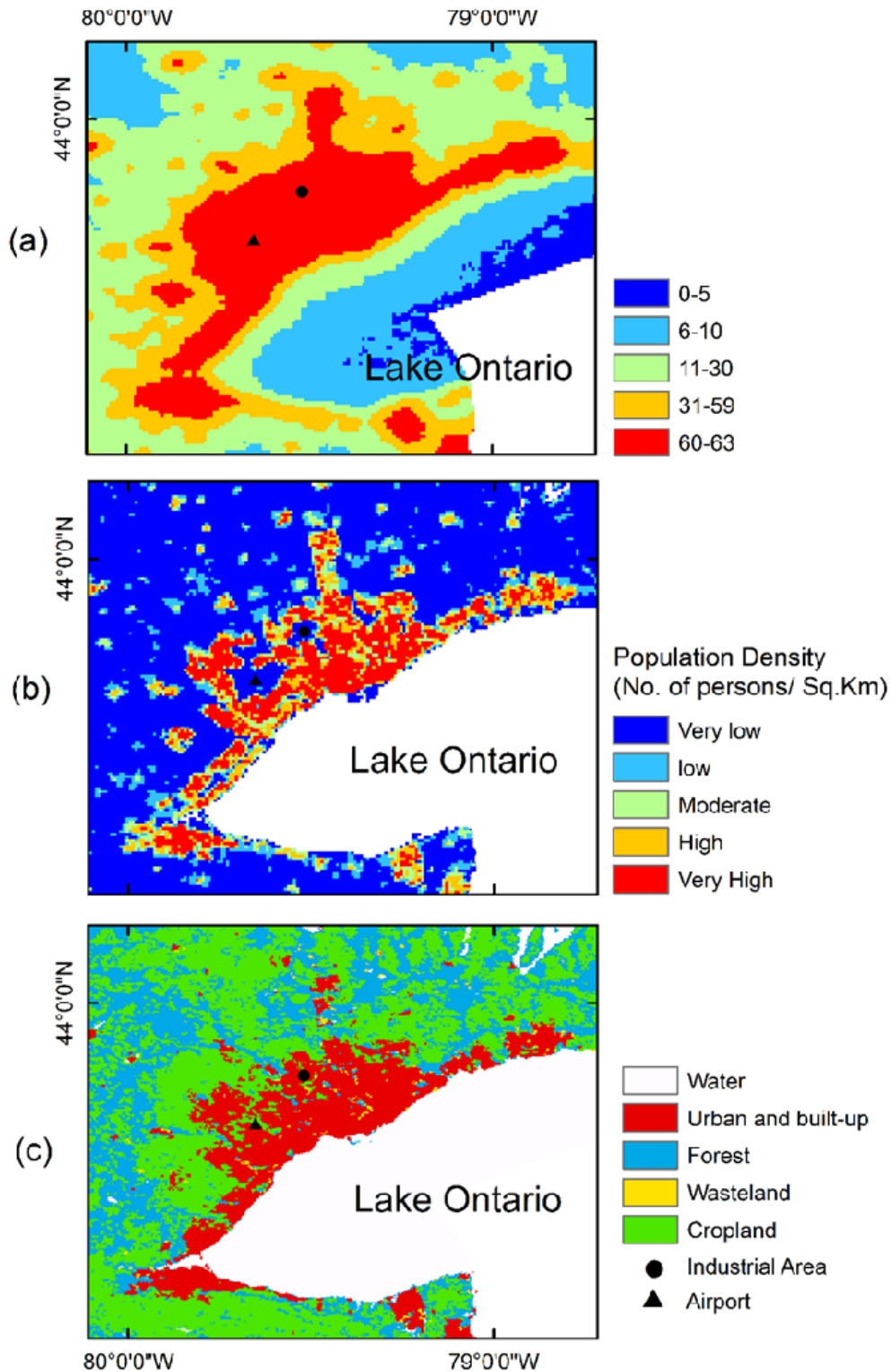
5

1

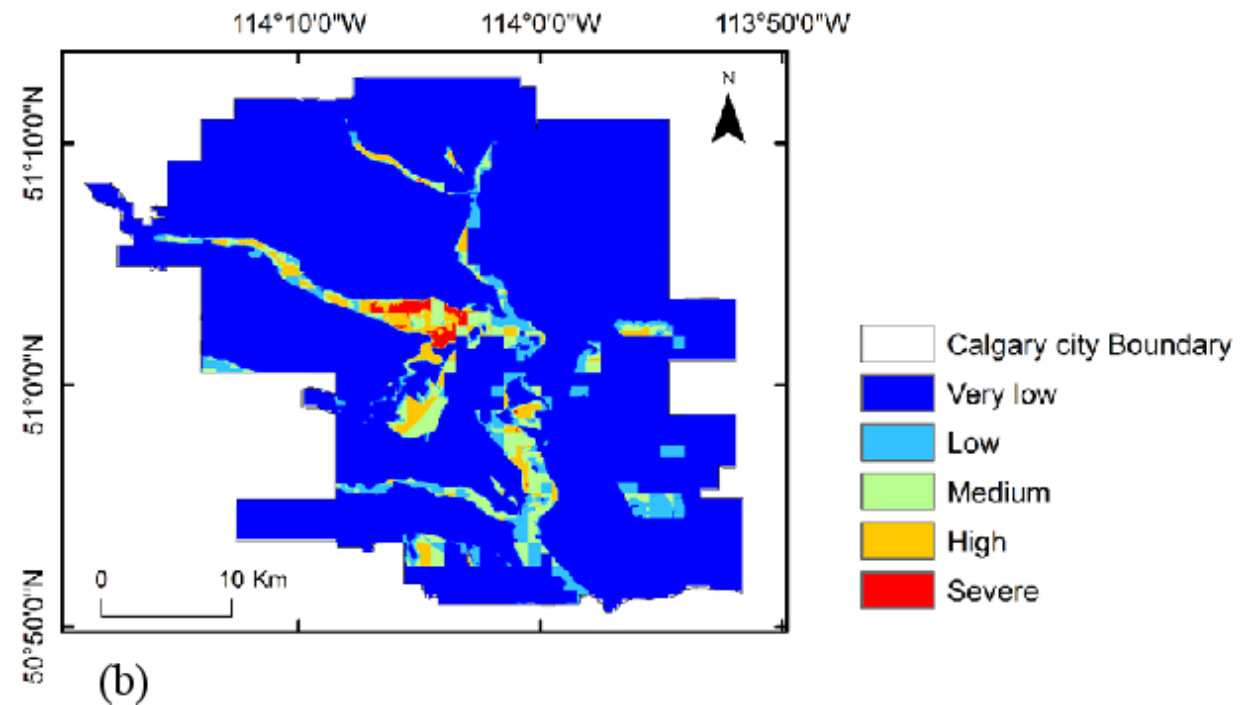
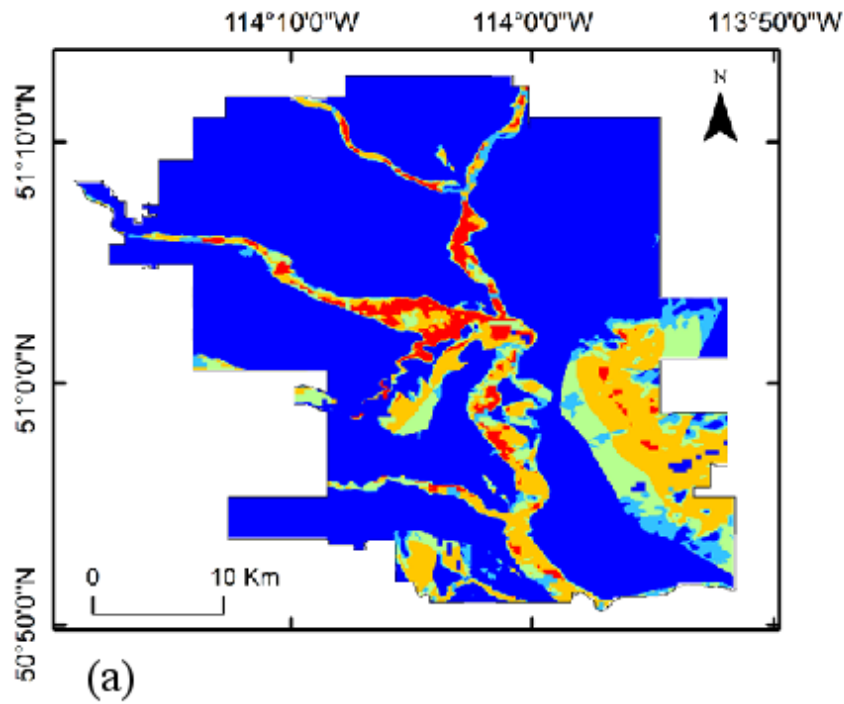


2

3 Figure 8. Flood risk map for Canada. Certain portions of the map are enlarged for better visual  
4 interpretation of the various levels of flood risk. The risk map is a product of hazard and  
5 exposure (flood protection measures are not included). Severe risk only occurs in areas of severe  
6 hazard and exposure, causing sever flood risk areas to be concentrated in urban centers.



1  
 2 Figure 9: Comparison of population distribution and nightlights over Greater Toronto Area: (a)  
 3 classified nightlights for the area with locations of the airport and a major industrial area; (b)  
 4 population density over the area; and (c) land-use map of the area indicating urban extent.



1  
 2 Figure 10: Flood risk map of Calgary; (a) without population information, and (b) with  
 3 population. Areas around the center of the city with high rises and dense population remain in  
 4 the severe risk category, whereas northern and southern parts, which are mainly commercial,  
 5 change to reduced levels of social risk.