

To Editor

Dear Prof. Gelfan,

Thank you very much for accepting the paper with minor revision. The manuscript has been amended to address the issues raised in the reviews. The point-by-point replies to the referees' comments are listed below.

If there are any further questions, please let us know.

Lu Zhuo

The Corresponding author (lu.zhuo@bristol.ac.uk)

University of Bristol

Replies to Referee #1

.....
General comments. The paper is devoted to investigation of ability to estimate land surface soil moisture with the help of the Local Linear Regression model using data retrieved from hydrological model SAC-SMA (soil moisture), radiometer MODIS (land surface temperature), and SMOS (brightness temperatures in H-V polarizations). The research topic is very relevant. The described approach is original and the results is quite convincing.

Specific comments. These comments concern with literature redaction of the paper. May be the Introduction is too long and its text is partly repeated in different sections of the paper. The text is quite loose and without prejudice to the content may be compressed in different parts of the paper especially in the beginnings of the sections.

Reply: Agreed. Some contents have been moved to Section 2 Material and Methods, so the revised Introduction is now more condensed.

Technical corrections 1. It is necessary to correct “polarisation” for “polarization” (for instance, line 13 and further). This mistake can be corrected using contextual replacement.

Reply: They have been corrected.

There are some faults in the References.

Line 602. Is winGammaTM the beginning of PhD Thesis title?

Reply: Yes. It is the beginning of the PhD Thesis title.

Line 642. smos mission has be replaced by SMOS mission

Reply: It has been corrected.

Lines 656-657. JOURNAL OF GEOPHYSICAL RESEARCH-ALL SERIES-, 99: 14,415-14,415. The letters must be in lower case. And what about pages?

Reply: The reference has been updated.

Line 701. Number of pages is not specified

Reply: The page number has been added.

Lines 780-783 One paper is mentioned instead of two different ones. 780 Zhao, R.-J., 1992a. The Xinanjiang model applied in China. Journal of Hydrology, 135(1): 781 371-381. 782 Zhao, RenJun, 1992b. The Xinanjiang model applied in China. Journal of Hydrology, 135(1): 783 371-381

Reply: They have now been combined as one reference.

Resume The submitted paper is interesting; it corresponds to the subject of the journal. The paper may be published in the HESS after mentioned corrections.

.....

Replies to Referee #2

The authors have suggested a method for creating a soil moisture product for hydrological applications using multiple data sources retrieved from three sources (SAC-SMA land surface modelling product, MODIS satellite-retrieved land-surface temperature, and Soil Moisture and Ocean Salinity (SMOS) project data) using the Gamma-test and the Local Linear Regression techniques. The accuracy of the produced soil moisture data was evaluated against the Xinanjiang (XAJ) hydrological model's soil moisture simulations. The authors have concluded that "together with the chosen data inputs can be used with high confidence to estimate an unintermitted hydrological soil moisture product, and the proposed method could be easily applied to other catchments and fields". The topic is of current scientific interest and the manuscript is overall well prepared. However, there are some general points that need to be clarified and at some points more detailed information or analysis is necessary. The following general and specific comments should be addressed before accepting this manuscript for publication.

General Comments

1. Duration of the study period is two years: from January 2010 to December 2011. In my opinion, the presented calibration/validation results don't allow a reader to evaluate the model applicability and the aforementioned conclusion looks too optimistic. The point is that the study period is too short, and the presented results of the model validation are deficient. It means that

the overall model performance based on these results is very sensitive to the meteorological conditions of the study period and the performance assessments are rather casual. This fact limits opportunities for application of the proposed method “to other catchments and fields”. The conclusion on the model applicability would be more convincing if the authors evaluated the model against hydrological data for a longer period. According to the USGS Water Resources webpage, streamflow data series exceed 10 years for the Vermilion River at Pontiac, IL.

Reply: We agree with the referee’s suggestion on using a longer period for model evaluation. However this study has been constrained due to the following two reasons: first although the selected catchment has flow data over 10 years, most of them are discontinuous (e.g., frequent data gaps), and the selected period provides the most complete flow observations. This is essential for the XAJ model’s calibration and validation (it is a continuous simulation model instead of an event-based model); second the SMOS satellite was launched in late 2009, so its data products are only available since then. In addition, since this study is a proof of concept for a new method in optimal fusing of multi-source data for soil moisture estimation, it is more effective to inform the hydrological community about such an approach and trial it in a variety of locations than testing it at one location for a few more years.

2. The Pontiac catchment is characterized by frequent soil freezing events in winter seasons. During freezing events, soil moisture transfer fundamentally differs from the unfrozen conditions (e.g. Gelfan, 2006). To my knowledge, the lumped XAJ model does not consider soil freezing, thus SMD simulations can be inaccurate for winter seasons. Please clarify.

Gelfan A. N. (2006) Physically based model of heat and water transfer in frozen soil and its parametrization by basic soil data. IAHS Publ., 303, pp. 293-304.

Reply: The lumped XAJ model has been frequently used in frozen soil conditions (e.g., see Application of Xin'anjiang model in severe cold region of Niqui River, 2008 (Zhou et al., 2008)). The XAJ model’s evapotranspiration component plays a vital role in the model’s flow generation. The component constitutes three soil storages as seen in Fig.2 (i.e., the SMD simulations). The accuracy of SMD can therefore largely affect the accuracy of the model’s flow calculation. As seen in Fig.3 (in original manuscript), XAJ model is very good at simulating the flow variations in the Pontiac catchment with high NSE values, even during the winter season, which agrees well with the literature. This indicates the model’s SMD simulations are quite realistic.

Zhou, S., Li, Y., Zhu, J., 2008. Application of Xin'anjiang model in severe cold region of Niqui River. Water Resources & Hydropower of Northeast China, 26(9). DOI:10.3969/j.issn.1002-0624.2008.09.016

3. The authors argued that “only the surface SMD referring to the vegetation and the very thin topsoil, is utilised as a hydrological soil moisture target”. Does the XAJ model allow one to

simulate SMD in the “very thin topsoil”? If no, this should be clearly pointed out in the manuscript, and the simulation results’ interpretation should be corrected.

Reply: XAJ model has three soil layers in its modelling structure, and yes the top layer represents the very thin topsoil. We have made this clearer in the updated manuscript.

4. I fully agree with the authors that the results are “model parameter dependent” (line 486). But I disagree that the proposed NHSMS indicators allow one to obtain independent results. I think that Figure 13 cannot be considered as an evidence of such independence because of at least two reasons: (1) only one parameter has been changed; (2) the obtained closeness of the two curves is shown for only 4 months (of 2 years) with mostly high SMD values. Thus I believe that the results presented in the manuscript are dependent on the XAJ model structure, parameters and inputs. Please give a comment.

Reply: It is true the proposed NHSMS only considers the model parameter factor, and other factors such as model structure is required in our future studies. As a result, the proposed indicator is only the very first step into creating a universal soil moisture product, and a lot of case studies adopting different hydrological models will need to be carried out. This has been pointed out in the original manuscript Lines 493-500 (“In the future it is planned to use the same process on other hydrological models to test if the normalised soil moisture indicators are not only model parameter independent but also model structure independent. Since all hydrological models are driven by the same hydrological inputs (precipitation, evapotranspiration and flow), their normalised soil moisture indicators should respond in a similar way (soil becomes wetter when it rains and drier when there is no rain). If this is true a new soil moisture product based on NHSMS could be generated as a routine product by the operational organisations such as NASA and ESA.”).

The reason of showing the 4 months results is for a better visualisation. The selection of a dry period (i.e., high SMD values) is because it is the most critical period of time for the need of accurate soil moisture values for hydrological modelling. A good analogy is a hydrological model’s water storage can be seen as a tea cup, during wet season with a lot of rain, it is easy to calculate how much water comes out of the cup as we know the maximum storage amount (for a hydrological model, it is via parameter calibration), so it is the total rainfall minus the maximum storage. However during dry season, it is impossible to know the outflow amount.

Therefore during the real time flood forecasting, after a long period of dryness, the accumulation of error in the hydrological models can become larger and larger with time. With accurate soil moisture information, the error could be corrected. This clarification has been added in the updated manuscript.

5. Conclusion, lines 539-541. I do not share the optimistic view of the authors on the perspective of the proposed fusion technique. Yes, the data sources contain part of useful (and probably independent) information. However, these data contain their own large measurement

errors and error's synergy can result in dramatically increase of the presented results' uncertainty. I would like to read the authors' comment on this topic.

Reply: It is true that all data sources have their own errors and the errors' synergy could increase the uncertainty of the merged data. This is why a good data fusion scheme should be explored and adopted. In this study, when combining them together using the data fusion method, the total error is controlled by the desired target (the XAJ model's SMD, which has been regarded as quite realistic due to the model's good flow simulations results).

Specific Comments

1. Lines 133-136: The phrase beginning from the words "It is worth noting that. . ." looks unnecessary in scientific (non-popular) hydrological text

Reply: Agreed. It has been removed.

2. I suggest removing Fig. 3. This figure has been already demonstrated in three (at least) recently published papers of the authors (Zhuo and Han, 2016, 2017; Zhuo et al., 2015)

Reply: Agreed. It has been removed.

3. Line 165: There are 17 parameters in Table 1

Reply: Agreed. It has been corrected.

4. Eq. 1: M is not defined

Reply: The definition has been added.

5. Lines 495-496: The statement "all hydrological models are driven by the same hydrological inputs (precipitation, evapotranspiration and flow)" is misconception. Please be more precise.

Reply: This statement has been modified as "all hydrological models are driven by the same physics laws on the conservation of mass..."

Multi-source hydrological soil moisture state estimation using data fusion optimisation

Lu Zhuo^{1*}, Dawei Han¹

¹WEMRC, Department of Civil Engineering, University of Bristol, Bristol, UK

*Correspondence: lu.zhuo@bristol.ac.uk

Abstract

Reliable estimation of hydrological soil moisture state is of critical importance in operational hydrology to improve the flood prediction and hydrological cycle description. Although there have been a number of soil moisture products, they cannot be directly used in hydrological modelling. This paper attempts for the first time to build a soil moisture product directly applicable to hydrology using multiple data sources retrieved from SAC-SMA (soil moisture), MODIS (land surface temperature), and SMOS (multi-angle brightness temperatures in H-V polarisationpolarizations). The simple yet effective Local Linear Regression model is applied for the data fusion purpose in the Pontiac catchment. Four schemes according to temporal availabilities of the data sources are developed, which are pre-assessed and best selected by using the well-proven feature selection algorithm Gamma Test. The hydrological accuracy of the produced soil moisture data is evaluated against the Xinanjiang hydrological model's soil moisture deficit simulation. The result shows that a superior performance is obtained from the scheme with the data inputs from all sources ($NSE = 0.912$, $r = 0.960$, $RMSE = 0.007$ m). Additionally the final daily-available hydrological soil moisture product significantly increases the Nash-Sutcliffe efficiency by almost 50 % in comparison with the two most popular soil

moisture products. The proposed method could be easily applied to other catchments and fields with high confidence. The misconception between the hydrological soil moisture state variable and the real-world soil moisture content, and the potential to build a global routine hydrological soil moisture product are discussed.

Keywords: Hydrological soil moisture state (SMD); Local Linear Regression (LLR); Gamma Test (GT); Soil Moisture and Ocean Salinity (SMOS) multi-angle brightness temperatures; North American Land Data Assimilation System 2 (NLDAS-2); Moderate Resolution Imaging Spectroradiometre (MODIS) land surface temperature

1. Introduction

Soil moisture is a key element in the hydrological cycle, regulating evapotranspiration, precipitation infiltration and overland flow (Wanders et al., 2014). For hydrological applications, the antecedent wetness condition of a catchment is among the most significant factors for accurate flow generation processes (Berthet et al., 2009; Matgen et al., 2012a). (Norbiato et al., 2008) reported that initial wetness conditions are essential for efficient flash flood alerts. Additionally an operational system requires reliable hydrological soil moisture state updates to reduce the time drift problem (Aubert et al., 2003; Berg and Mulroy, 2006; Dumedah and Coulibaly, 2013). However, currently there is no available soil moisture product that can be used directly in hydrology modelling, primarily because soil moisture is difficult to define and there is no single shared meaning in various disciplines (Romano, 2014).

Although there have been many soil moisture measuring projects (e.g., satellite missions such as Advanced Scatterometer (ASCAT), Soil Moisture and Ocean Salinity (SMOS), and Soil

Moisture Active Passive (SMAP); ground-based networks such as Soil Climate Analysis Network (SCAN), U.S. Surface Climate Observing Reference Networks (USCRN), and COsmic-ray Soil Moisture Observing System (COSMOS)), they are not sufficiently used in hydrology due to the following reasons: 1) misconception between the hydrological soil moisture state variable and the real-field soil moisture content (Zhuo and Han, 2016a); 2) unawareness of data availability and strength/weakness of different data sources; 3) the existing soil moisture products are mainly evaluated against point-based ground soil moisture observations or airborne retrievals which have significant spatial mismatch (both horizontally and vertically) to catchment-scales, and are therefore less applicable to hydrological modelling (Pierdicca et al., 2013); 4) underutilisation of multiple data sources (e.g., multi-angle raw observations by satellite sensors).

Some studies have attempted to directly utilise the existing soil moisture products (i.e., data from satellites, land surface models, and in-situ methods directly) for flood prediction improvement, for example (Brocca et al., 2010) explored that utilising the soil water index from ASCAT sensor could improve runoff prediction mainly if the initial catchment wetness conditions were unknown; (Aubert et al., 2003) assimilated in-situ soil moisture observations into a simple rainfall-runoff model and acquired better flow prediction performance ; (Javelle et al., 2010) suggested that estimations of antecedent soil moisture conditions were useful in improving flash flood forecasts at ungauged catchments; contrarily (Chen et al., 2011)'s study showed assimilating ground-based soil moisture observations was generally unsuccessful in enhancing flow prediction; and (Matgen et al., 2012b) revealed that satellite soil moisture products added little or no extra value for hydrological modelling. Clearly those results are

rather mixed. Challenges remain in integrating soil moisture estimated outside the hydrological field into hydrological models. We believe if a hydrologically directly applicable soil moisture product could be produced, the aforementioned studies' results would be significantly improved.

Therefore the aims of this paper are to clarify the aforementioned misconception between the hydrological model's soil moisture state and the real-world soil moisture, assess the data availabilities for direct hydrological soil moisture state estimation, and fuse those available data sources using a hydrologically relevant approach. It is hoped that the final product has a superior hydrological compatibility over the existing soil moisture products. To achieve these aims, the Xinanjiang (XAJ) (Zhao, 1992^b) operational rainfall-runoff model is used as a target to simulate flow and soil moisture state information (i.e., soil moisture deficit (SMD)) for the Pontiac catchment in the central United States (U.S.). ~~XAJ is the first hydrological model adopting the multi-bucket variable size method in its modelling concept which has been followed by many famous operational hydrological models (Beven, 2012), so it is representative for those similar models.~~ The reason for adopting XAJ is explained in the following section. For the purpose of hydrological soil moisture state estimation, it is effective

to adopt the data driven method, which can map multiple data sources into the desired dataset without computational burden. ~~Various data fusion techniques have been developed (Prakash et al., 2012; Srivastava et al., 2013; Wagner et al., 2012), however their methods require high computational time to run and this, in a real-time flood forecasting framework, could not match the operational needs.~~ In this study the Comparatively-Local Linear Regression (LLR) model is used. is a simpler method and requires relatively low computational time. Therefore it is

~~chosen in order to test if a simple method is able to provide effective performance.~~ The multiple data sources applied in this study include the SMOS (Kerr et al., 2010b) multi-angle brightness temperatures (T_{bs}) with both horizontal (H) and vertical (V) ~~polarisation~~polarizations, the Moderate Resolution Imaging Spectroradiometre (MODIS) (Wan, 2008) land surface temperature, and the soil moisture product by SAC-SMA (Xia et al., 2014). ~~The main reason for choosing those three data sources is due to their Near Real Time (NRT) availabilities (MODAPS Services, 2015; Rodell, 2016) (SMOS becomes available in NRT recently (ESA Earth Online, 2016)), which allows fast implementation in flood forecasting.~~ The detail explanations of those datasets are covered in the methodology section. A well-proven feature selection algorithm Gamma Test (GT) (Stefánsson et al., 1997; Zhuo et al., 2016b) is employed to pre-assess the selected data inputs and find the optimal combination of them for soil moisture state calculation. In addition, an *M*-test (Remesan et al., 2008) is adopted to explore the best size of the training data. The desired soil moisture product is trained and tested by the XAJ SMD simulation. In total four data-input schemes are developed according to the temporal availability of the selected data inputs, which are then combined to give a daily hydrological soil moisture product.

Compared with previous work, our study contains the following new elements: i) a hydrologically directly usable soil moisture product is proposed; ii) the GT and LLR techniques are used for the first time in a data fusion of multiple data sources for hydrological soil moisture state estimation; iii) the use of multiple data sources is useful, which allows data users to analyse the availability of the different products and compare the relative benefits of them.

2. Material and Methods

2.1 Study Area

In this study, the Pontiac catchment (1,500 km², Figure 1) is used for the calibration and the validation of the XAJ model. Pontiac (40.878°N, 88.636°W) lies on the north-flowing Vermilion River, which is a tributary of the Illinois River of the state of Illinois, U.S. The worst flood in this area occurred on December 4, 1982, cresting at 5.84 m above mean sea level (MSL); and the most recent flood occurred on January 9, 2008, cresting at 5.75 m MSL, so this catchment is likely located within a winter-flooding region. Pontiac is covered with moderate canopy (the annual mean Normalized Difference Vegetation Index retrieved from the MODIS satellite is around 0.4), when compared with a densely vegetated catchment, it has more accurate soil moisture estimations from satellites (Al-Bitar et al., 2012). Based on the Köppen-Geiger climate classification, this medium sized catchment is dominated mainly by hot summer continental climate (Peel et al., 2007). With reference to the University of Maryland Department Global Land Cover Classification, it is used primarily for agriculture purpose (Bartholomé and Belward, 2005; Hansen, 1998). The soil mostly consists of Mollisols, which has deep and high organic matter, and the nutrient-enriched surface soil is typically between 60-80 cm in depth (Webb et al., 2000). The study period is from January 2010 to December 2011. The reason for using this two-year period of data is due to the discontinuity of the flow records in this catchment, and the selected period provides the most complete flow observations.

The North American Land Data Assimilation System 2 (NLDAS-2) (Mitchell et al., 2004) provides precipitation and potential evapotranspiration information to run the XAJ model. Both

data forces are at 0.125° spatial resolution and have been converted to daily temporal resolution. In order to use those distributed forcing into the lumped XAJ model, both forcing have been interpolated with the area-weighted average method instead of the more complicated Kriging approach, because the latter could produce errors if not well controlled (Wanders et al., 2014). The average annual rainfall depth is about 954 mm, and the average annual potential evapotranspiration is approximately 1670 mm. ~~It is worth noting that the actual evapotranspiration is much less than the potential amount, because dryer soil reduces the actual evapotranspiration, and if the soil is totally dry the actual evapotranspiration will be zero regardless how large the potential evapotranspiration is.~~ The daily observed flow data are acquired from the U.S. Geological Survey.

2.2 Hydrological Model

The XAJ hydrological model is used for the simulation of SMD and river flow at a daily time step. It is a simple lumped rainfall-runoff model with many applications performed in world-wide catchments (Chen et al., 2013; Gan et al., 1997; Shi et al., 2011; Zhao, 1992b; Zhao and Liu, 1995; Zhuo et al., 2016a; Zhuo et al., 2015b). Since XAJ can obtain rather effective flow modelling performances and require only two meteorological forcing (precipitation and potential evapotranspiration) inputs (Peng et al., 2002), it is used more widely than the more complicated semi-distributed/ fully-distributed hydrological models for operational applications.

As shown in Figure 2, the XAJ model has three main components: evapotranspiration, runoff generation, and runoff routing. XAJ consists of soil layers (upper, lower and deep) in its

evapotranspiration calculations. Because XAJ adopts the multi-bucket variable-size method in its modelling concept, it has unfixed soil depths which is more effective than the fixed depths models (Beven, 2012). Other widely used models such as PDM (Moore, 2007), VIC (Liang et al., 1994), and ARNO (Todini, 1996) also follow this concept.

In XAJ, the three-layer soil moisture state variables are all calculated as SMD, which is an important soil wetness variable in hydrology. SMD is defined as the amount of water to be added to a soil profile to bring it to the field capacity (Calder et al., 1983; Rushton et al., 2006).

In this study, only the surface SMD (i.e., top layer) referring to the vegetation and the very thin topsoil, is utilised as a hydrological soil moisture target. This is because the water held in the top few centimetres of the soil has been widely recognised as a key variable associated with water fluxes (Eltahir, 1998; Entekhabi and Rodriguez-Iturbe, 1994). Moreover the current satellite technology is only capable of acquiring the Earth information from the outermost layer of the soil. Therefore as a case study based on the XAJ model, we only focus on the surface soil moisture state investigation here. Future research will focus on the root-zone soil moisture product development by using a similar method proposed in this study.

In this study, a modified version of the XAJ model is adopted, and interested readers are referred to (Zhuo and Han, 2016b) for more details. All the XAJ's ~~16~~17 parameters are used during the model calibration, which are shown in Table 1. In this study, the genetic algorithm (Wang, 1991) is used for parameter optimisation. Based on the genetic algorithm result, minor trial and error adjustments to the parameters *EX*, *B*, *WUM*, *WLM* and *WDM* are also carried out to obtain the best model performance (Chen and Adams, 2006). The calibration and the

validation results (during January 2010-April 2011 and May 2011 to December 2011, respectively) of the XAJ model ~~are shown in Figure 3~~ can be found in (Zhuo et al., 2015a). Discussion regarding the river flow and SMD simulation results in this catchment have been published in (Zhuo and Han, 2016b), with Nash-Sutcliffe Efficiency (*NSE*) obtained larger than 0.80 during both the calibration and validation periods. The results are not repeated here.

2.3 Multiple Data Sources for Hydrological Soil Moisture State Estimation

Data sources from SMOS, MODIS and SAC-SMA are used (Table 2). All data sources have been converted into catchment-scale datasets by the area-weighted average method. The detail description of each data source is given as follows. The main reason for choosing those three data sources is due to their Near-Real-Time (NRT) availabilities (MODAPS Services, 2015; Rodell, 2016) (SMOS becomes available in NRT recently (ESA Earth Online, 2016)), which allows fast implementation in flood forecasting.

2.3.1 SMOS Multi-angle Brightness Temperatures (SMOS- T_{bs})

The SMOS (1.4 GHz, L-band) Level-3 T_{bs} data covering the studying period are available from the Centre Aval de Traitement des Données SMOS (CATDS) (Jacquette et al., 2010). The reason for choosing the SMOS satellite is because compare with other satellite techniques (i.e., optical, and thermal infrared), microwave bands (especially with longer wavelength such as L-band (21 cm)) can penetrate deeper into the soil (~ 5 cm) and have less interruptions from weather conditions (Njoku and Kong, 1977). Additionally SMOS has a relatively longer period of data record compares with other satellite missions such as SMAP. SMOS retrieves the thermal emission from the Earth in both H and V ~~polarisation~~ polarization with a wide ranges

of incidence angles from 0° to 60° . The observation depth of SMOS is approximately 5 cm with a spatial resolution of 35-50 km depending on the incident angle and the deviation from the satellite ground track (Kerr et al., 2012; Kerr et al., 2010a; 2001).

SMOS provides T_{bs} retrievals at all incidence angles averaged in 5° -width angle bins, which have been transformed into the ground ~~polarisation~~polarization reference frame (i.e., H, and V ~~polarisation~~polarizations). Therefore the number of the SMOS- T_{bs} inputs for the hydrological soil moisture estimation can be as high as 24 (12 angle bins per ~~polarisation~~polarization), with the centre of the first angle bin at 2.5° in both ~~polarisation~~polarizations (Rodriguez-Fernandez et al., 2014). As satellite progresses, any given location on the Earth's surface is scanned a number of times at various incidence angles, depending on the location with respect to the satellite subtrack: the further away, the fewer the angular acquisitions (Kerr et al., 2010b). The data availabilities of the SMOS- T_{bs} are illustrated in Figure 4-3 (the availabilities for H and V ~~polarisation~~polarizations are the same). It can be seen that the data availabilities among various incidence angles are rather different. In this study the only angle range that gives the most available record of data is from 27.5° to 57.5° (i.e., 7 for H and 7 for V ~~polarisation~~polarization), which is therefore chosen for the hydrological soil moisture development. This angle range is in line with the angle selection in (Rodriguez-Fernandez et al., 2014). In addition the SMOS Level-3 soil moisture product from the CATDS (SMOS-SM) is also acquired for a comparison with the estimated soil moisture product. Retrievals that are potentially contaminated with Radio Frequency Interference have been removed. Readers are referred to (Kerr et al., 2012) for a full description of the SMOS retrieving algorithms, and (Njoku and Entekhabi, 1996) for a good knowledge of how passive microwave relates to soil moisture variations.

2.3.2 MODIS Land Surface Temperature (MODIS-LST)

The MODIS/Terra (Earth Observing System AM-1 platform) (Wan, 2008) daily MOD11C1-V5 land surface temperature covering the studying period is downloaded from the Land Processes Distributed Active Archive Centre website. MODIS is chosen among other operational optical satellites for its suitable features, mostly, due to its frequent revisiting time and free NRT data availability. It measures 36 spectral bands between 0.405 and 14.385 μm , and acquires data at three spatial resolutions 250 m, 500 m, and 1,000 m respectively while the adopted MOD11C1 V5 product incorporates 0.05° (5.6 km) spatial resolution. The benefit of adding land surface temperature information is that previous studies have shown the variations in soil moisture have a strong linkage with land surface temperature (Carlson, 2007; Goward et al., 2002; Mallick et al., 2009). One reason is the changes of land surface temperature are mainly affected by albedo and diurnal heat capacity, and the diurnal heat capacity is mainly controlled by soil moisture (Price, 1980). (Wan, 2008) compared MOD11C1-V5 land surface temperatures in 47 clear-sky cases with in situ measurement and revealed that the accuracy was better than 1 K in the range from -10° to 58°C in about 39 cases. Cloud-contaminated data have been removed by a double-screening method, and its detail can be found in (Wan et al., 2002).

2.3.3 SAC-SMA Soil Moisture Estimation (SAC-SMA-SM)

The reason for choosing the SAC-SMA land surface modelled soil moisture product is because satellite can often have missing data due to various weather and canopy conditions (e.g., rainfall, frozen weather, and vegetation coverage), so this daily dataset is essential in producing a

temporally completed hydrological soil moisture product. In this study, the surface soil moisture (0-10 cm) simulated from the SAC-SMA model is selected. This is because its estimated soil moisture gives a high accuracy against the observational soil moisture and a good correlation with the XAJ SMD (Zhuo et al., 2015b). The daily SAC-SMA-SM is given in a spatial resolution of 0.125°. The dataset can be download from (<http://www.emc.ncep.noaa.gov/mmb/nldas/>). Readers are referred to (Xia et al., 2012) for a full description of the SAC-SMA data products.

2.3.4 Data Availabilities

As shown in Table 2, the availability of the three data sources is rather different. Unlike SMOS and MODIS, SAC-SMA-2 SM is a model based product which runs in a NRT mode, so it produces valid data every day during the whole studying period. Whereas the two satellites' data are more exiguous depends on weather and surface conditions. Compared with MODIS, the SMOS's retrieval is even sparse and the biggest data shortage normally occurs in the winter season where its returned microwave signal is mostly affected by frozen soils (Zhuo et al., 2015a). Based on the data availability analysis, the proposed hydrological soil moisture product is built from four data-input schemes as presented in Table 3. Those four schemes enable us to test and compare the estimated soil moisture state more comprehensively. Since the continuity of a soil moisture product is essential for any operational applications, SAC-SMA-SM is included in all of the schemes.

2.4 Data Fusion

2.4.1 Gamma Test (GT) for Feature Selection

Before model building, it is important to carry out a feature selection process, because it can simplify the model inputs, shorter training times, and reduce overfitting problems. In this study a proper combination of the incidence angles from the SMOS T_{bs} is vital for the best soil moisture state calculation. For this purpose, a feature selection method called GT is adopted. It has been effectively used in numerous studies for model inputs selection (Durrant, 2001; Jaafar and Han, 2011; Noori et al., 2011; Remesan et al., 2008; Tsui et al., 2002; Zhuo et al., 2016b). In addition to the feature selection, GT can also give useful indication about the underlying model complexity. It is a near-neighbour data analysis routine which determines the minimum mean-squared error (MSE) that can be achieved based on the input-output dataset utilising any continuous nonlinear models (Zhuo et al., 2016b). The calculated minimum MSE is referred as the Gamma statistics and denoted as Γ . For detailed calculations about the GT algorithm, interested readers are referred to (Koncar, 1997; Pi and Peterson, 1994; Stefánsson et al., 1997). Here only the basic knowledge about the GT is shown:

$$\{ (x_i, y_i), 1 \leq i \leq M \} \quad (1)$$

here the inputs $x_i \in R^m$ are vectors restricted by a closed bounded set $C \in R^m$, and their corresponding outputs $y_i \in R$ are scalars, M stands for the sample points. The outputs y are determined by the input vectors x that carry predictively useful messages. The only assumption made is that their latent relationship is from the following function:

$$y = f(x_1 \dots x_m) + r \quad (2)$$

here f is built up as a smooth model with r representing random noise. Without loss of generality, the assumption of r noise distribution is that its mean is always zero, because all the constant

277 bias has been considered within the f model. Additionally r 's variance ($Var(r)$) is restricted
 278 within a set boundary. The observations' potential model is now defined within the class of
 279 smooth functions.

280 The Γ is related to $N[i, k]$, which represents as the k th ($1 \leq k \leq p$) nearest neighbours of each
 281 vector x_i ($1 \leq i \leq M$), written as $x_{N[i, k]}$ ($1 \leq k \leq p$), where p is a fixed integer. In order to
 282 determine the Gamma function from the input vectors, the *Delta* function is used:

$$283 \quad \delta_M(k) = \frac{1}{M} \sum_{i=1}^M |x_{N[i, k]} - x_i|^2 \quad (1 \leq k \leq p) \quad (3)$$

284 here the function $|x_{N[i, k]} - x_i|$ calculates the Euclidean distance. The Gamma function for its
 285 output values is expressed as in Eq. 4, and the Γ can be determined from Eq. 3 and 4:

$$286 \quad \gamma_M(k) = \frac{1}{2M} \sum_{i=1}^M |y_{N[i, k]} - y_i|^2 \quad (1 \leq k \leq p) \quad (4)$$

287 here $y_{N[i, k]}$ is the corresponding output values for the k th nearest neighbours x_i ($x_{N[i, k]}$). To
 288 find Γ a least-squared regression line for the p points $(\delta_M(k), \gamma_M(k))$ is built using the
 289 following equation:

$$290 \quad \gamma = A\delta + \Gamma \quad (5)$$

291 where Γ can be determined when δ is set as zero. The detailed explanation is:

$$292 \quad \gamma_M(k) \rightarrow Var(r), \text{ when } \delta_M(k) \rightarrow 0 \quad (6)$$

293 Eq. 5 gives us valuable information about the underlying system: not only that the Γ is a useful
 294 indicator of the optimal *MSE* result that any smooth functions can achieve, but its gradient A
 295 also provides guidance about the underlying model complexity (i.e., the steeper the gradient

the more sophisticated the model should be adopted). In this study, the winGammaTM software is used for GT calculation (Durrant, 2001). The mathematical feasibility of GT has been published in (Evans and Jones, 2002).

2.4.2 *M*-test for Training Data Size Selection

A common practice in nonlinear modelling is to split the dataset into training and testing parts. However there is no universal solution on how to divide the datasets (i.e., the proportion of each part) so that the best modelling results could be obtained. Here, an *M*-test is carried out, where *M* stands for the training data size. *M*-test is accomplished by calculating the *I* for increasing the *M* value (i.e., expanding the training data) and exploring the resultant graph to judge whether the *I* approaches a stable asymptote. Such an approach is straightforward and effective in finding the optimal sizes of training and testing datasets, while avoiding overfitting problems and reducing unsystematic attempts.

2.4.3 Local Linear Regression (LLR)

Various data fusion techniques have been developed (Prakash et al., 2012; Srivastava et al., 2013; Wagner et al., 2012), however their methods require high computational time to run and this, in a real-time flood forecasting framework, could not match the operational needs. Comparatively, LLR model is a simpler method and requires relatively low computational time. Therefore it is chosen in order to test if a simple method is able to provide effective performance. LLR is a nonparametric regression model that has been applied in (Liu et al., 2011; Pinson et al., 2008; Sun et al., 2003; Zhuo et al., 2016b) for forecasting and smoothing purposes. LLR builds local linear regression based on the nearest points (p_{max}) of a targeted

point, and repeats such a process over the whole training dataset to produce a piecewise linear model. There are many methodologies in selecting the p_{max} , in this study a method called influence statistics is used (Durrant, 2001; Remesan et al., 2008), which is outlined as below.

Assume there are p_{max} nearest points, then the Eq. 7 can be built:

$$Xm = y \quad (7)$$

here X is a $p_{max} \times d$ matrix which shows the d dimensional information of p_{max} , x_i are the nearest points confined between 1 and p_{max} , y is the output vector with p_{max} dimension, and m is a set of parameters formed in a vector, which plays an important role in mapping the solution from X to y . Therefore Eq. 7 can be expanded as

$$\begin{pmatrix} x_{11} & x_{12} & x_{13} & \cdots & x_{1d} \\ x_{21} & x_{22} & x_{23} & \cdots & x_{2d} \\ \vdots & \vdots & \vdots & \ddots & \vdots \\ x_{p_{max}1} & x_{p_{max}2} & x_{p_{max}3} & \cdots & x_{p_{max}d} \end{pmatrix} \begin{pmatrix} m_1 \\ m_2 \\ \vdots \\ m_d \end{pmatrix} = \begin{pmatrix} y_1 \\ y_2 \\ \vdots \\ y_{p_{max}} \end{pmatrix} \quad (8)$$

In order to solve the equation, the following two conditions are set: a) if X is square and non-singular then Eq. (7) can be simply calculated as $m = X^{-1}y$; b) if X is not square or singular, Eq. (7) needs to be rearranged and m can be get by finding the minimum of:

$$|Xm - y|^2 \quad (9)$$

with the distinct solution of:

$$m = X^\# y \quad (10)$$

where $X^\#$ is the pseudo-inverse matrix of X (Penrose, 1955; Penrose, 1956).

3. Results

In this section, different combinations of input data (Table 3) are adopted to examine their impacts on hydrological soil moisture estimation. XAJ SMD is used as a hydrological soil moisture state benchmark for the training and testing. More discussion about the misconception between the hydrological model's soil moisture state variable and the real-world soil moisture content is covered in Section 4. During GT and M -test processes, all data inputs need to be normalised so that their mean is zero and standard deviation is 0.5. This step is necessary in reducing the impacts of numerical difference from various inputs, hence improves the GT efficiency (Remesan et al., 2008). Five statistical indicators are used for the soil moisture estimation analysis: Pearson product moment correlation coefficient (r), MSE which is the same value as the Gamma statistic Γ , Standard error (SE), NSE (Nash and Sutcliffe, 1970), and Root Mean Square Error ($RMSE$).

3.1 Scheme 1: SMD Estimation Using SAC-SMA-SM as input

Although in this scheme, there is no need for data feature selection because only one data input is involved, the GT is still carried out to explore the useful information about the underlying relationship between the XAJ SMD and the SAC-SMA-SM. The calculated Gamma statistics are shown in Table 4. The Γ of 0.072 indicates that the optimal MSE achievable using any modelling technique is 0.072; and the small value of SE means the precision and accuracy of the GT result. Γ is a significant target value in the M -test to find the most suitable training data size. As presented in Figure 5a4a, when more training data (i.e., M increases in steps of one) is used the Γ changes dramatically. Eventually at $M = 292$, Γ starts to stabilise around 0.072. The M -test allows us to confidently apply the first 292 datasets to build a model of a given quality,

in the sense of predicting with a MSE around the asymptotic level. The corresponding Gamma gradient (A) suggests the complexity of the underlying system: the larger the A value is the more complex the system is. For example if A is significantly large, a more complicated model like a Support Vector Machine might be required, but $A = 1.353$ in Scheme 1 is small (Remesan et al., 2008), therefore a LLR model should be able to simulate the system. For LLR modelling, its complexity level is controlled by the p_{max} parameter. As illustrated in Figure 65, p_{max} is identified from a trial and error method. The procedure is by increasing the LLR p_{max} value from 2 to 100 to analyse the variations of their corresponding Γ results. It can be seen from Figure 65 that the smallest Γ is achieved at $p_{max} = 4$, which is therefore adopted for the LLR modelling. The training and testing scatter plots for the LLR modelling are shown in Figure 7a6a. It is observed that there are some points lying far above the bisector line during the training period signifies higher estimations whereas some points sit far below the bisector line during the testing period indicates under-estimation of the SMD. For the testing results, when XAJ simulated soil moistures state have already reach the total dryness (i.e., XAJ SMD peaks at around 0.080 m) the predicted soil moisture state is still in the drying progress. Figure 8a-7a plots the time series of the estimated and the targeted SMD. The plot shows that the estimated SMD follows the seasonal trend of the soil moisture fluctuations well, so it is wetter during the winter season and exsiccated during the hot summer season. However it is clear to see that the model is not able to capture the extreme situations very well, especially during the wet season when the XAJ SMD becomes smaller (e.g., between Day 300 and Day 350).

3.2 Scheme 2: SMD Estimation Using SAC-SMA-SM and MODIS-LST as inputs

Land surface temperature is the product of the soil temperature multiplied by the emissivity, and the emissivity depends on the dielectric constant of the soil and soil moisture (Rodriguez-Fernandez et al., 2015). Therefore the additional MODIS-LST information could potentially improve the soil moisture estimation. The modelling process is the same as in Scheme 1. In Table 4, it is clear to observe that by adding the MODIS-LST input, the Γ is improved to 0.060 and its corresponding gradient A is reduced significantly to less than half of the Scheme 1's. Meanwhile the SE value is decreased remarkably as well showing the accuracy of the GT. The M -test in Figure [5b-4b](#) shows the graph settles to an asymptote around 0.060 which is consistent with the calculated Γ result. Training data size of 199 is chosen here because it gives the lowest Γ value. For the LLR modelling, the best p_{max} value is found to be 2 from the trial and error result in Figure [65](#). The LLR training and testing performances are presented in Figure [7b6b](#). Although the problem of underestimation of extremely dry soil still exists (i.e., the points concentrate at the right end of the training and testing plots), overall the model's prediction ability during both phases are better than Scheme 1's (i.e., data points are closer to the 45° line). The improvement can also be seen clearly in the time series plot in Figure [8b7b](#). For example, the big disparities between the estimated and the targeted SMDs around DAY 300 and DAY 350 are reduced evidently.

3.3 Scheme 3: SMD Estimation Using SAC-SMA-SM and SMOS-T_{bs} as inputs

The multi-angle T_{bs} retrievals are the main data inputs for SMOS soil moisture calculation, therefore their inclusion should also add a positive effect to the hydrological soil moisture estimation. As aforementioned, an efficient feature selection of the SMOS incidence angles is

important for the best SMD calculation. In this study all the possible combinations from all inputs variables are examined with the Γ result as the statistical indicator. This method is capable of examining every combination (16383 embeddings in this case) of data inputs to target the optimal combination that gives the smallest absolute Γ value. As discussed in Section 2.3.4, SAC-SMA-SM is a compulsory data input, so it is not included in the selecting process. The best set of SMOS-T_{bs} to retrieve soil moisture state is composed of H ~~polarisation~~polarization at the incidence angles of 27.5°-47.5°, 57.5°, and V ~~polarisation~~polarization at the incidence angles of 27.5°-42.5°, 52.5°, 57.5°. This result demonstrates that using a combination of H and V T_{bs} gives a better soil moisture estimation, which is logically sensible because different ~~polarisation~~polarizations carry distinct information of the Earth surface. However some incidence angles could held common features which when putting together could result in a negative effect to the LLR modelling, and are therefore not included. The detailed investigation of the possible common features is out of the scope of this paper which is mainly due to the SMOS working mechanism.

As seen from Table 4, the inclusion of SMOS-T_{bs} significantly improves the Γ result by 54%, while the gradient A is reduced greatly by 89% as compared with Scheme 1. The small A value illustrates that the underlying system is more straightforward and easier to model than the Scheme 1's. The M -test analysis in Figure ~~5e~~4c produces an asymptotic convergence from 120 training data size of Γ value around 0.033. It is interesting to see that the proportion of the required training data is relatively larger than those in Scheme 1 and 2. The potential reason could be explained by the larger amount of data inputs in this scheme. For LLR modelling, the p_{max} that gives the smallest Γ is 7 (Figure ~~65~~5). The SMD estimations during the training and the

testing are presented in Figure 9a8a. It can be seen that the SMD prediction ability of this scheme is remarkably better than the previous ones, as most of the points lie on the bisector line albeit there are still some under- and over- estimations. The reason SMOS outperforms MODIS in SMD estimation could be due to the long wavelength microwave has, so it presents the top few centimetres of the soil while MODIS LST (thermal infrared) only provides information at the soil surface. The used LLR algorithm has been double checked to filter out the potential of overfitting problem. The checking processes are performed by muddling the SMD target in the testing datasets as well as altering the input file, and its efficiency stays the same. Hence it is believed that the LLR model is very useful in calculating SMD from this scheme. Generally the *NSE*, *r* and *RMSE* statistical indicators show a high agreement during both training and testing phases. For the time series plot in Figure 8e7c, it is clear to see that most of the estimated points lie closely to the benchmark line. The observed outliers could be partly due to the data shortage in this scheme, so that not all the scenarios are covered in the datasets.

3.4 Scheme 4: SMD Estimation Using SAC-SMA-SM, MODIS-LST, and SMOS-T_{bs} as inputs

In this scheme, all the three data sources are used to test if the modelling performance can be further improved. Here the full embedding calculation is again carried out to explore the most suitable incidence angles from the SMOS-T_{bs}. This is because the added MODIS-LST data could carry identical (i.e., redundant) features with some of the SMOS-T_{bs} datasets. As a result of the full embedding calculation, the best set of SMOS-T_{bs} is composed of H

~~polarisation~~polarization at the incidence angles of 37.5°-57.5°, and V ~~polarisation~~polarization at the incidence angles of 37.5°-42.5°, 57.5°. As seen in Figure ~~5d4d~~, the total amount of data is significantly reduced due to the shortage of simultaneously available days between the MODIS and the SMOS observations. Interestingly the M -test graph vibrates more significantly than the other three schemes, which could be due to the smaller data size and the larger amount of data inputs in this scheme. Here the training data size is chosen as 62 with I obtained at around 0.030. The optimal p_{max} is identified to be 5 (Figure ~~65~~). The LLR modelling results are shown in Figure ~~8d-7d~~ and Figure ~~9b8b~~. It is obvious that this scheme further improves the accuracy of the SMD estimation, especially with the high statistical performances achieved during both training and testing phases. Comparatively this scheme is more stable for SMD estimation, albeit it requires more data inputs and is only realisable when both the MODIS and the SMOS observations are available.

3.5 Produce an Unintermitted Soil Moisture Product

The data availability of the four schemes varies. As shown in Figure ~~109~~, Scheme 1 which has the poorest soil moisture state estimation gives the most data availability, while Scheme 4 which has the most accurate soil moisture state estimation owns the least data availability. In order to produce an unintermitted hydrological soil moisture product, the four schemes need to be combined together to complement each other. The combining method is by selecting the best available soil moisture estimation. For example if all the schemes have available data at the same time, the best scheme's soil moisture data is chosen (i.e., scheme 4 in this situation); whereas if just one scheme has data on that day, only that scheme's soil moisture data is used.

The performances of the four schemes as well as the combined product are summarised in Table 5. Although the combined soil moisture state is obtained with lower statistical performances than Scheme 3's and 4's, it is still hydrologically very accurate especially when comparing with the SMOS's official soil moisture product (Table 5). The time series of the combined soil moisture state is plotted in Figure 4+10. It can be seen that the general trend of the produced soil moisture state follows the targeted data very well. However it tends to overestimate some of the wet events during the rainy season and significantly underestimate the dryer soil condition in September 2011. Those poor estimations are mostly from the Scheme 1 and 2 where Schemes 3 and 4 are not available. Since more and more microwave satellite observations are becoming obtainable, those new data sources could add extra benefits into the proposed model, and the accuracy of the soil moisture product is expected to be further enhanced.

4. Discussion

- *What is a soil moisture state variable?*

This study uses the XAJ's SMD simulation as a target because it is hydrological model directly produced. However it is argued that models with different parameters values can generate equally good flow results named as the equifinality effect, because they are all calibrated based on the observed flow. For this reason, their soil moisture state variables can be distinct among each other.

In order to investigate this effect in more details, the XAJ model is manipulated by increasing one of its parameters *WUM* by 30 %. By doing so, the XAJ's flow simulation remains as

effective as its original form (the same *NSE* values), but its soil moisture state changes significantly from its original values. For a better visualisation, an enlarged plot of the SMD simulations between Day 222 and Day 344 is presented. As seen from Figure ~~12a~~11a although the soil moisture state variables from two equally good calibrations have a wide range of value differences ($NSE = 0.34$), they both follow the same pattern: when it rains they become wet by the similar amount; when there is a dry period they all move into a dryer state in a similar rate to the actual evapotranspiration. Therefore they appear as in parallel movements and the latter plot (Figure ~~12b~~11b) shows a very strong linear correlation ($r = 1.0$) between them. It is important to note that the selection of the dry period (i.e., high SMD values) is because it is the most critical period of time for the need of accurate soil moisture values for hydrological modelling. This is because during the real-time flood forecasting, after a long period of dryness, the accumulation of error in the hydrological models can become larger and larger with time. With accurate soil moisture information, the error could be corrected.

Although the absolute values of the models' soil moisture state variables are not quite meaningful and comparable, their variations are the true reflection of the soil moisture fluctuations in the real-world. This clarification is a very important concept, because there has been a wide spread of misunderstanding about the hydrological model's soil moisture state and its connection with the real-world soil moisture.

- *Soil moisture state normalisation*

One deficiency of this study is that the generated soil moisture state is based on a hydrological model's SMD simulation, so it is model parameter dependent. It is desirable to produce a soil

moisture indicator which is independent from model parameters and dimensionless with variables between 0 and 1. Normalised Hydrological Soil Moisture State (NHSMS) indicators are produced as presented in Figure 13-12 (corresponding to the SMD simulations shown in Figure 12-11). The normalisation method is by adopting the following equation:

$$NHSMS = \frac{SMD - \min(SMD)}{\max(SMD) - \min(SMD)} \quad (11)$$

Such an approach is very effective as demonstrated by the almost identical SMD curves between the two XAJ simulations. In the future it is planned to use the same process on other hydrological models to test if the normalised soil moisture indicators are not only model parameter independent but also model structure independent. Since all hydrological models are driven by the same physics laws on the conservation of mass~~all hydrological models are driven by the same hydrological inputs (precipitation, evapotranspiration and flow)~~, their normalised soil moisture indicators should respond in a similar way (soil becomes wetter when it rains and drier when there is no rain). If this is true a new soil moisture product based on NHSMS could be generated as a routine product by the operational organisations such as NASA and ESA. Such a soil moisture product will also be very useful to the meteorological and hydro-meteorological fields in their land surface modelling because the current land surface models suffer from poor performance in their runoff estimations. As aforementioned, all current soil moisture products such as those from ESA and NASA are not optimised for different application fields. Our study gives an example of simulating the soil moisture data targeted to serve the hydrological community. It is possible other products serving farmers in agriculture,

ecologists in the environment, and geotechnical engineers in construction could be produced using the proposed method.

- *Application of the produced soil moisture data*

Another area needs further work is the hydrological application of the produced data. Generally effective hydrological application of soil moisture data needs three pre-conditions: 1) a good soil moisture data relevant to hydrology; 2) a hydrological model compatible with such data; 3) an effective data assimilation scheme. This paper tackles the first point, and the other two points would need further research because there are significant knowledge gaps in them. If all the three points are solved, such a data has a huge potential in operational hydrological modelling. For example, initialisation of the model could be shortened which reduces the need for model warm up. This is important during real-time flood forecasting when there is not enough data to warm up the model for an imminent flood event. Such a warm-up period could be very long, as demonstrated by the study in (Ceola et al., 2015). In addition the XAJ SMD data used here is based on the calibration of the observed rainfall and flow, so that the targeted SMD is interpolated between observations and there is a minimum time-drift. In the real-time flood forecasting the errors in precipitation and evapotranspiration could accumulate which cause time-drift problems. Therefore a soil moisture product such as the one produced in this study (i.e., based on minimal time-drift SMD) could help avoiding such a problem. The proposed soil moisture data is also valuable for the validation of land surface models, especially useful for their runoff simulations. Due to the limit of time and resources this study has not tackled all the issues, but has laid a good foundation for their future researches.

5. Conclusions

A hydrological soil moisture product is produced for the Pontiac catchment using the GT and the LLR modelling techniques based on four data-input schemes. Three data sources are considered including the soil moisture product from the SAC-SMA model, the land surface temperature retrieved by the MODIS satellite, and the multi-angle brightness temperatures acquired from the SMOS satellite. The four data-input schemes are built from the four combinations of the data sources. The generated soil moisture product (unintermitted with no missing data) for a period of two years (2010-2011) is compared with the XAJ hydrological model's SMD simulation to test its hydrological accuracy. It is concluded that the GT and the LLR modelling techniques together with the chosen data inputs can be used with high confidence to estimate an unintermitted hydrological soil moisture product, and the proposed method could be easily applied to other catchments and fields.

In this study it has been found that different data sources have their own unique information contents, so that they can complement each other using data fusion technique. Their synergy can be best achieved to produce an enhanced soil moisture product. In data fusion an important principle is MRmr (Maximum Relevance minimum redundancy). The soil moisture state in this study is generated from a large number of data inputs, and their selection is carried out by the GT which is one of the methods in MRmr. This is the first time that the GT is used in a data fusion of satellite multiple T_{bs} scans, land surface temperature and external soil moisture information for producing a hydrological soil moisture product. Future studies should explore other MRmr methods in addition to GT, to compare if they are more effective input selection

methods. As to the data fusion regression model, LLR is chosen in this study because it is easily applied and very effective. However it is possible there may exist other better models. We encourage the community to apply the proposed methodology using other regression models.

Acknowledgments

This study is supported by Resilient Economy and Society by Integrated SysTems modelling (RESIST), Newton Fund via Natural Environment Research Council (NERC) and Economic and Social Research Council (ESRC) (NE/N012143/1). We acknowledge the U.S. Geological Survey for making available daily streamflow records (<http://waterdata.usgs.gov/nwis/rt>). The NLDAS-2 data sets used in this article can be obtained through the <http://ldas.gsfc.nasa.gov/nldas/NLDAS2forcing.php> website, the SMOS Level-3 brightness temperatures and soil moisture are from the CATDS at <http://www.catds.fr/>, and the MODIS Level-3 land surface temperature can be obtained from the LP DAAC website at https://lpdaac.usgs.gov/dataset_discovery/modis/modis_products_table/mod11c1.

References

- Al-Bitar, Ahmad, Leroux, Delphine, Kerr, Yann H, Merlin, Olivier, Richaume, Philippe, Sahoo, Alok, Wood, Eric F, 2012. Evaluation of SMOS soil moisture products over continental US using the SCAN/SNOTEL network. *Geoscience and Remote Sensing, IEEE Transactions on*, 50(5): 1572-1586.
- Aubert, David, Loumagne, Cecile, Oudin, Ludovic, 2003. Sequential assimilation of soil moisture and streamflow data in a conceptual rainfall-runoff model. *Journal of Hydrology*, 280(1): 145-161.

587 Bartholomé, E, Belward, AS, 2005. GLC2000: a new approach to global land cover mapping
588 from Earth observation data. *International Journal of Remote Sensing*, 26(9): 1959-
589 1977.

590 Berg, Aaron A, Mulroy, Kathleen A, 2006. Streamflow predictability in the
591 Saskatchewan/Nelson River basin given macroscale estimates of the initial soil
592 moisture status. *Hydrological sciences journal*, 51(4): 642-654.

593 Berthet, L, Andréassian, V, Perrin, C, Javelle, P, 2009. How crucial is it to account for the
594 antecedent moisture conditions in flood forecasting? Comparison of event-based and
595 continuous approaches on 178 catchments. *Hydrology and Earth System Sciences*
596 *Discussions*(13): p. 819-p. 831.

597 Beven, Keith J, 2012. *Rainfall-runoff modelling: the primer*. John Wiley & Sons.

598 Brocca, L, Melone, F, Moramarco, T, Wagner, W, Naeimi, V, Bartalis, Z, Hasenauer, S, 2010.
599 Improving runoff prediction through the assimilation of the ASCAT soil moisture
600 product. *Hydrology and Earth System Sciences Discussions*, 7(4): 4113-4144.

601 Calder, IR, Harding, RJ, Rosier, PTW, 1983. An objective assessment of soil-moisture deficit
602 models. *Journal of Hydrology*, 60(1): 329-355.

603 Carlson, Toby, 2007. An overview of the" triangle method" for estimating surface
604 evapotranspiration and soil moisture from satellite imagery. *Sensors*, 7(8): 1612-1629.

605 Ceola, Serena, Arheimer, Berit, Baratti, E, Blöschl, G, Capell, Rene, Castellarin, Attilio, Freer,
606 Jim, Han, Dawei, Hrachowitz, Markus, Hundecha, Yeshewatesfa, 2015. Virtual
607 laboratories: new opportunities for collaborative water science. *Hydrology and Earth*
608 *System Sciences*, 19(4): 2101-2117.

609 Chen, Fan, Crow, Wade T, Starks, Patrick J, Moriasi, Daniel N, 2011. Improving hydrologic
610 predictions of a catchment model via assimilation of surface soil moisture. *Advances*
611 *in Water Resources*, 34(4): 526-536.

612 Chen, Jieyun, Adams, Barry J, 2006. Integration of artificial neural networks with conceptual
613 models in rainfall-runoff modeling. *Journal of Hydrology*, 318(1): 232-249.

614 Chen, Xi, Yang, Tao, Wang, Xiaoyan, Xu, Chong-Yu, Yu, Zhongbo, 2013. Uncertainty
615 Intercomparison of Different Hydrological Models in Simulating Extreme Flows.
616 *Water resources management*, 27(5): 1393-1409.

617 Dumedah, G, Coulibaly, P, 2013. Evolutionary assimilation of streamflow in distributed
618 hydrologic modeling using in-situ soil moisture data. *Advances in Water Resources*, 53:
619 231-241.

620 Durrant, PJ, 2001. winGammaTM: A non-linear data analysis and modelling tool for the
621 investigation of non-linear and chaotic systems with applied techniques for a flood
622 prediction system. PhD Thesis, Cardiff University.

623 Eltahir, Elfatih AB, 1998. A soil moisture-rainfall feedback mechanism 1. Theory and
624 observations. *Water Resources Research*, 34(4): 765-776.

625 Entekhabi, Dara, Rodriguez-Iturbe, Ignacio, 1994. Analytical framework for the
626 characterization of the space-time variability of soil moisture. *Advances in water*
627 *resources*, 17(1): 35-45.

628 ESA Earth Online, 2016. SMOS soil moisture product in NRT based on neural network is now
629 available, [https://earth.esa.int/web/guest/missions/esa-operational-eo-](https://earth.esa.int/web/guest/missions/esa-operational-eo-missions/smos/news/-/article/smos-soil-moisture-product-in-nrt-based-on-neural-network-is-now-available)
630 [missions/smos/news/-/article/smos-soil-moisture-product-in-nrt-based-on-neural-](https://earth.esa.int/web/guest/missions/esa-operational-eo-missions/smos/news/-/article/smos-soil-moisture-product-in-nrt-based-on-neural-network-is-now-available)
631 [network-is-now-available](https://earth.esa.int/web/guest/missions/esa-operational-eo-missions/smos/news/-/article/smos-soil-moisture-product-in-nrt-based-on-neural-network-is-now-available). Accessed on 13/10/2016.

632 Evans, Dafydd, Jones, Antonia J, 2002. A proof of the Gamma test, *Proceedings of the Royal*
633 *Society of London A: Mathematical, Physical and Engineering Sciences*. The Royal
634 Society, pp. 2759-2799.

635 Gan, Thian Yew, Dlamini, Enoch M, Biftu, Getu Fana, 1997. Effects of model complexity and
636 structure, data quality, and objective functions on hydrologic modeling. *Journal of*
637 *Hydrology*, 192(1): 81-103.

638 Goward, Samuel N, Xue, Yongkang, Czajkowski, Kevin P, 2002. Evaluating land surface
639 moisture conditions from the remotely sensed temperature/vegetation index
640 measurements: An exploration with the simplified simple biosphere model. Remote
641 sensing of environment, 79(2): 225-242.

642 Hansen, M., R. DeFries, J.R.G. Townshend, and R. Sohlberg, 1998. UMD Global Land Cover
643 Classification. In: 1 Kilometer, Department of Geography, University of Maryland,
644 College Park, Maryland, 1981-1994 (Ed.).

645 Jaafar, WZ Wan, Han, D, 2011. Variable selection using the gamma test forward and backward
646 selections. Journal of Hydrologic Engineering, 17(1): 182-190.

647 Jacquette, Elsa, Al Bitar, Ahmad, Mialon, Arnaud, Kerr, Yann, Quesney, Arnaud, Cabot,
648 François, Richaume, Philippe, 2010. SMOS CATDS level 3 global products over land,
649 Remote Sensing for Agriculture, Ecosystems, and Hydrology XII. International Society
650 for Optics and Photonics, Toulouse, France DOI:10.1117/12.865093

651 Javelle, Pierre, Fouchier, Catherine, Arnaud, Patrick, Lavabre, Jacques, 2010. Flash flood
652 warning at ungauged locations using radar rainfall and antecedent soil moisture
653 estimations. Journal of hydrology, 394(1): 267-274.

654 Kerr, Yann H, Waldteufel, Philippe, Richaume, Philippe, Wigneron, J-P, Ferrazzoli, Paolo,
655 Mahmoodi, Ali, Al Bitar, Ahmad, Cabot, François, Gruhier, Claire, Juglea, Silvia
656 Enache, 2012. The SMOS soil moisture retrieval algorithm. Geoscience and Remote
657 Sensing, IEEE Transactions on, 50(5): 1384-1403.

658 Kerr, Yann H, Waldteufel, Philippe, Wigneron, J-P, Delwart, Steven, Cabot, François, Boutin,
659 Jacqueline, Escorihuela, M-J, Font, Jordi, Reul, Nicolas, Gruhier, Claire, 2010a. The
660 ~~smos~~-SMOS mission: New tool for monitoring key elements of the global water cycle.
661 Proceedings of the IEEE, 98(5): 666-687.

662 Kerr, Yann H, Waldteufel, Philippe, Wigneron, J-P, Martinuzzi, J, Font, Jordi, Berger, Michael,
663 2001. Soil moisture retrieval from space: The Soil Moisture and Ocean Salinity (SMOS)
664 mission. Geoscience and Remote Sensing, IEEE Transactions on, 39(8): 1729-1735.

- Kerr, Yann H, Waldteufel, Philippe, Wigneron, Jean-Pierre, Delwart, Steven, Cabot, François Ois, Boutin, Jacqueline, Escorihuela, Maria-José, Font, Jordi, Reul, Nicolas, Gruhier, Claire, 2010b. The SMOS mission: New tool for monitoring key elements of the global water cycle. *Proceedings of the IEEE*, 98(5): 666-687.
- Koncar, N, 1997. Optimisation methodologies for direct inverse neurocontrol. PhD thesis Thesis, University of London, Imperial College of Science, Technology and Medicine, London, SW7 2BZ.
- Liang, Xetal, Lettenmaier, Dennis P, Wood, Eric F, Burges, Stephen J, 1994. A simple hydrologically based model of land surface water and energy fluxes for general circulation models. ~~*Journal of Geophysical Research: Atmospheres*, 99(D7): 14,415-14,428.~~ *JOURNAL OF GEOPHYSICAL RESEARCH ALL SERIES*, 99: 14,415-14,428.
- Liu, Xianming, Zhao, Debin, Xiong, Ruiqin, Ma, Siwei, Gao, Wen, Sun, Huifang, 2011. Image interpolation via regularized local linear regression. *Image Processing, IEEE Transactions on*, 20(12): 3455-3469.
- Mallick, Kaniska, Bhattacharya, Bimal K, Patel, NK, 2009. Estimating volumetric surface moisture content for cropped soils using a soil wetness index based on surface temperature and NDVI. *Agricultural and Forest Meteorology*, 149(8): 1327-1342.
- Matgen, P, Heitz, S, Hasenauer, S, Hissler, C, Brocca, L, Hoffmann, L, Wagner, W, Savenije, HHG, 2012a. On the potential of MetOp ASCAT-derived soil wetness indices as a new aperture for hydrological monitoring and prediction: a field evaluation over Luxembourg. *Hydrological Processes*, 26(15): 2346-2359.
- Matgen, Patrick, Fenicia, Fabrizio, Heitz, Sonia, Plaza, Douglas, de Keyser, Robain, Pauwels, Valentijn RN, Wagner, Wolfgang, Savenije, Hubert, 2012b. Can ASCAT-derived soil wetness indices reduce predictive uncertainty in well-gauged areas? A comparison with in situ observed soil moisture in an assimilation application. *Advances in Water Resources*, 44: 49-65.

- Mitchell, Kenneth E, Lohmann, Dag, Houser, Paul R, Wood, Eric F, Schaake, John C, Robock, Alan, Cosgrove, Brian A, Sheffield, Justin, Duan, Qingyun, Luo, Lifeng, 2004. The multi-institution North American Land Data Assimilation System (NLDAS): Utilizing multiple GCIP products and partners in a continental distributed hydrological modeling system. *Journal of Geophysical Research: Atmospheres* (1984–2012), 109(D7). DOI:10.1029/2003JD003823
- MODAPS Services, 2015. Terra Product Descriptions: MOD11_L2, http://modaps.nascom.nasa.gov/services/about/products/c6-nrt/MOD11_L2.html. Accessed on 13/10/2016.
- Moore, RJ, 2007. The PDM rainfall-runoff model. *Hydrology and Earth System Sciences Discussions*, 11(1): 483-499.
- Nash, JEa, Sutcliffe, JV, 1970. River flow forecasting through conceptual models part I—A discussion of principles. *Journal of Hydrology*, 10(3): 282-290.
- Njoku, Eni G, Entekhabi, Dara, 1996. Passive microwave remote sensing of soil moisture. *Journal of hydrology*, 184(1): 101-129.
- Njoku, Eni G, Kong, Jin-Au, 1977. Theory for passive microwave remote sensing of near-surface soil moisture. *Journal of Geophysical Research*, 82(20): 3108-3118.
- Noori, R, Karbassi, AR, Moghaddamnia, A, Han, D, Zokaei-Ashtiani, MH, Farokhnia, A, Gousheh, M Ghafari, 2011. Assessment of input variables determination on the SVM model performance using PCA, Gamma test, and forward selection techniques for monthly stream flow prediction. *Journal of Hydrology*, 401(3): 177-189.
- Norbiato, Daniele, Borga, Marco, Degli Esposti, Silvia, Gaume, Eric, Anquetin, Sandrine, 2008. Flash flood warning based on rainfall thresholds and soil moisture conditions: An assessment for gauged and ungauged basins. *Journal of Hydrology*, 362(3): 274-290.

- 716 Peel, Murray C, Finlayson, Brian L, McMahon, Thomas A, 2007. Updated world map of the
717 Köppen-Geiger climate classification. Hydrology and Earth System Sciences
718 Discussions, 4(2): 439-473.
- 719 Peng, G., Leslie, L.M., Shao, Y., 2002. Environmental Modelling and Prediction. Springer.
720 480 pp.
- 721 Penrose, Roger, 1955. A generalized inverse for matrices, Mathematical proceedings of the
722 Cambridge philosophical society. Cambridge Univ Press, pp. 406-413.
- 723 Penrose, Roger, 1956. On best approximate solutions of linear matrix equations, Mathematical
724 Proceedings of the Cambridge Philosophical Society. Cambridge Univ Press, pp. 17-
725 19.
- 726 Pi, Hong, Peterson, Carsten, 1994. Finding the embedding dimension and variable
727 dependencies in time series. Neural Computation, 6(3): 509-520.
- 728 Pierdicca, Nazzareno, Pulvirenti, Luca, Bignami, Christian, Ticconi, Francesca, 2013.
729 Monitoring soil moisture in an agricultural test site using SAR data: design and test of
730 a pre-operational procedure. Selected Topics in Applied Earth Observations and
731 Remote Sensing, IEEE Journal of, 6(3): 1199-1210.
- 732 Pinson, Pierre, Nielsen, Henrik Aa, Madsen, Henrik, Nielsen, Torben S, 2008. Local linear
733 regression with adaptive orthogonal fitting for the wind power application. Statistics
734 and Computing, 18(1): 59-71.
- 735 Prakash, Rishi, Singh, Dharmendra, Pathak, Nagendra P, 2012. A fusion approach to retrieve
736 soil moisture with SAR and optical data. Selected Topics in Applied Earth Observations
737 and Remote Sensing, IEEE Journal of, 5(1): 196-206.
- 738 Price, John C, 1980. The potential of remotely sensed thermal infrared data to infer surface soil
739 moisture and evaporation. Water Resources Research, 16(4): 787-795.
- 740 Remesan, R, Shamim, MA, Han, D, 2008. Model data selection using gamma test for daily
741 solar radiation estimation. Hydrological processes, 22(21): 4301-4309.

742 Rodell, Matthew, 2016. NLDAS Concept/Goals, NLDAS Concept/Goals,
743 <http://ldas.gsfc.nasa.gov/nldas/NLDASgoals.php>. Accessed on 13/10/2016.

744 Rodriguez-Fernandez, N, Richaume, P, Aires, F, Prigent, C, Kerr, Y, Kolassa, J, Jimenez, C,
745 Cabot, F, Mahmoodi, A, 2014. Soil moisture retrieval from SMOS observations using
746 neural networks, Geoscience and Remote Sensing Symposium (IGARSS), 2014 IEEE
747 International. IEEE, pp. 2431-2434.

748 Rodriguez-Fernandez, Nemesio J, Aires, Filipe, Richaume, Philippe, Kerr, Yann H, Prigent,
749 Catherine, Kolassa, Jana, Cabot, Francois, Jimenez, Carlos, Mahmoodi, Ali, Drusch,
750 Matthias, 2015. Soil moisture retrieval using neural networks: application to SMOS.
751 IEEE Transactions on Geoscience and Remote Sensing, 53(11): 5991 - 6007.

752 Romano, Nunzio, 2014. Soil moisture at local scale: Measurements and simulations. Journal
753 of Hydrology, 516: 6-20.

754 Rushton, KR, Eilers, VHM, Carter, RC, 2006. Improved soil moisture balance methodology
755 for recharge estimation. Journal of Hydrology, 318(1): 379-399.

756 Shi, Peng, Chen, Chao, Srinivasan, Ragahavan, Zhang, Xuesong, Cai, Tao, Fang, Xiuqin, Qu,
757 Simin, Chen, Xi, Li, Qiongfang, 2011. Evaluating the SWAT model for hydrological
758 modeling in the Xixian watershed and a comparison with the XAJ model. Water
759 resources management, 25(10): 2595-2612.

760 Srivastava, PK, Han, D, Ramirez, MR, Islam, T, 2013. Machine Learning Techniques for
761 Downscaling SMOS Satellite Soil Moisture Using MODIS Land Surface Temperature
762 for Hydrological Application. Water Resources Management, 27(8): 3127–3144.

763 Stefánsson, Adóalbjörn, Končar, N, Jones, Antonia J, 1997. A note on the gamma test. Neural
764 Computing & Applications, 5(3): 131-133.

765 Sun, Hongyu, Liu, Henry, Xiao, Heng, He, Rachel, Ran, Bin, 2003. Use of local linear
766 regression model for short-term traffic forecasting. Transportation Research Record:
767 Journal of the Transportation Research Board(1836): 143-150.

768 Todini, E, 1996. The ARNO rainfall—runoff model. *Journal of Hydrology*, 175(1): 339-382.

769 Tsui, Alban PM, Jones, Antonia J, De Oliveira, A Guedes, 2002. The construction of smooth
770 models using irregular embeddings determined by a gamma test analysis. *Neural*
771 *Computing & Applications*, 10(4): 318-329.

772 Wagner, W, Dorigo, Wouter, de Jeu, Richard, Fernandez, Diego, Benveniste, Jerome, Haas,
773 Eva, Ertl, Martin, 2012. Fusion of active and passive microwave observations to create
774 an essential climate variable data record on soil moisture, *Proceedings of the XXII*
775 *International Society for Photogrammetry and Remote Sensing (ISPRS) Congress*,
776 *Melbourne, Australia*.

777 Wan, Zhengming, 2008. New refinements and validation of the MODIS land-surface
778 temperature/emissivity products. *Remote Sensing of Environment*, 112(1): 59-74.

779 Wan, Zhengming, Zhang, Yulin, Zhang, Qincheng, Li, Zhao-liang, 2002. Validation of the
780 land-surface temperature products retrieved from Terra Moderate Resolution Imaging
781 Spectroradiometer data. *Remote sensing of Environment*, 83(1): 163-180.

782 Wanders, Niko, Bierkens, Marc FP, de Jong, Steven M, de Roo, Ad, Karssenber, Derek, 2014.
783 The benefits of using remotely sensed soil moisture in parameter identification of large-
784 scale hydrological models. *Water Resources Research*, 50(8): 6874-6891.

785 Wang, QJ, 1991. The genetic algorithm and its application to calibrating conceptual rainfall-
786 runoff models. *Water resources research*, 27(9): 2467-2471.

787 Webb, Robert W, Rosenzweig, Cynthia E, Levine, Elissa R, 2000. Global Soil Texture and
788 Derived Water-Holding Capacities (Webb et al.). Data set. Available on-line
789 [[http://www. daac. ornl. gov](http://www.daac.ornl.gov)] from Oak Ridge National Laboratory Distributed Active
790 Archive Center, Oak Ridge, Tennessee, USA.

791 Xia, Youlong, Mitchell, Kenneth, Ek, Michael, Sheffield, Justin, Cosgrove, Brian, Wood, Eric,
792 Luo, Lifeng, Alonge, Charles, Wei, Helin, Meng, Jesse, 2012. Continental-scale water
793 and energy flux analysis and validation for the North American Land Data Assimilation

794 System project phase 2 (NLDAS-2): 1. Intercomparison and application of model
795 products. Journal of Geophysical Research: Atmospheres (1984–2012), 117(D3).

796 Xia, Youlong, Sheffield, Justin, Ek, Michael B, Dong, Jiarui, Chaney, Nathaniel, Wei, Helin,
797 Meng, Jesse, Wood, Eric F, 2014. Evaluation of multi-model simulated soil moisture
798 in NLDAS-2. Journal of Hydrology, 512: 107-125.

799 ~~Zhao, R. J., 1992a. The Xinanjiang model applied in China. Journal of Hydrology, 135(1):~~
800 ~~371-381.~~

801 Zhao, RenJun, 1992~~b~~. The Xinanjiang model applied in China. Journal of Hydrology, 135(1):
802 371-381.

803 Zhao, RenJun, Liu, XR, 1995. The Xinanjiang model. In: Singh, V.P. (Ed.), Computer models
804 of watershed hydrology., pp. 215-232.

805 Zhuo, Lu, Dai, Qiang, Han, Dawei, 2015a. Evaluation of SMOS soil moisture retrievals over
806 the central United States for hydro-meteorological application. Physics and Chemistry
807 of the Earth, Parts A/B/C. DOI:10.1016/j.pce.2015.06.002

808 Zhuo, Lu, Dai, Qiang, Islam, Tanvir, Han, Dawei, 2016a. Error distribution modelling of
809 satellite soil moisture measurements for hydrological applications. Hydrological
810 Processes, 30(13): 2223-2236.

811 Zhuo, Lu, Han, Dawei, 2016a. Could operational hydrological models be made compatible
812 with satellite soil moisture observations? Hydrological Processes, 30(10): 1637-1648.

813 Zhuo, Lu, Han, Dawei, 2016b. Misrepresentation and amendment of soil moisture in
814 conceptual hydrological modelling. Journal of Hydrology, 535: 637-651.

815 Zhuo, Lu, Han, Dawei, Dai, Qiang, 2016b. Soil moisture deficit estimation using satellite
816 multi-angle brightness temperature. Journal of Hydrology, 539: 392-405.

817 Zhuo, Lu, Han, Dawei, Dai, Qiang, Islam, Tanvir, Srivastava, Prashant K, 2015b. Appraisal of
818 NLDAS-2 Multi-Model Simulated Soil Moistures for Hydrological Modelling. Water
819 Resources Management, 29(10): 3503-3517.

Table 1. The XAJ model parameters used in the Pontiac catchment.

Symbol	Model parameters	Unit	Range
<i>K</i>	Ratio of evapotranspiration	[-]	0.10-1.20
<i>WUM</i>	The areal mean field capacity of the upper layer	mm	30-50
<i>WLM</i>	The areal mean field capacity of the lower layer	mm	20-150
<i>WDM</i>	The areal mean field capacity of the deep layer	mm	30-400
<i>IMP</i>	Percentage of impervious and saturated areas in the catchment	%	0.00-0.10
<i>B</i>	Exponential parameter with a single parabolic curve, which represents the non-uniformity of the spatial distribution of the soil moisture storage capacity over the catchment	[-]	0.10-0.90
<i>C</i>	Coefficient of the deep layer that depends on the proportion of the catchment area covered by vegetation with deep roots	[-]	0.10-0.70
<i>SM</i>	Areal mean free water capacity, which represents the maximum possible deficit of free water storage	mm	10-50
<i>KG</i>	Outflow coefficient of the free water storage to groundwater relationships	[-]	0.10-0.70
<i>KSS</i>	Outflow coefficient of the free water storage to interflow relationships	[-]	0.10-0.70
<i>EX</i>	Exponent of the free water capacity curve	[-]	1.10-2.00
<i>KKG</i>	Recession constant of the groundwater storage	[-]	0.01-0.99
<i>KKSS</i>	Recession constant of the lower interflow storage	[-]	0.01-0.99
<i>CS</i>	Recession constant in the lag and route method for routing through the channel system with each sub-catchment	[-]	0.10-0.70
<i>L</i>	Lag in time	[-]	0.00-6.00
<i>V</i>	Parameter of the Muskingum method	m/s	0.40-1.20
<i>dX</i>	Parameter of the Muskingum method	[-]	0.00-0.40

Table 2. General data-input properties relevant for this study.

	SMOS- T_{bs}	MODIS-LST	SAC-SMA-SM
Product	brightness temperature	land surface temperature	soil moisture
Unit	Kelvin (K)	Kelvin (K)	m^3/m^3
Near-Real-Time (NRT)	Yes	Yes	Yes
Spatial resolution (km)	35-50	5.6	14
Data time-step	~ every three days	~ daily	Daily
Data availability for the studying period (days)	217	458	730

Table 3. Four data-input schemes: scheme 1: SAC-SMA-SM; scheme 2: SAC-SMA-SM and MODIS-LST; scheme 3: SAC-SMA-SM and SMOS-T_{bs}; scheme 4: SAC-SMA-SM, MODIS-LST, and SMOS-T_{bs}.

	SAC-SMA-SM	MODIS-LST	SMOS-T _{bs}
Scheme 1	x		
Scheme 2	x	x	
Scheme 3	x		x
Scheme 4	x	x	x

Table 4. Model statistical performances and modelling information, where Γ is the calculated gamma statistic which is the minimum MSE that can be achieved from a modelling method; A is the Gamma gradient; SE is the Standard error; p_{max} is the nearest points for LLR modelling; M is the training data size; and SMOS IA is the chosen incidence angles of SMOS-T_{bs}.

	Γ	A	SE	p_{max}	M	SMOS IA
Scheme 1	0.072	1.353	0.004	4	292	-
Scheme 2	0.060	0.568	0.002	2	199	-
Scheme 3	0.033	0.152	0.004	7	120	H: 27.5°-47.5°, 57.5° V: 27.5°-42.5°, 52.5°, 57.5°
Scheme 4	0.029	0.119	0.006	5	62	H: 37.5°-57.5° V: 37.5°-42.5°, 57.5°

Table 5. Summary of SMD estimation performances. It is noted that *RMSE* is in the unit of metre.

	Training			Testing		
	<i>NSE</i>	<i>r</i>	<i>RMSE</i>	<i>NSE</i>	<i>r</i>	<i>RMSE</i>
Scheme 1	0.752	0.870	0.011	0.688	0.830	0.014
Scheme 2	0.767	0.877	0.011	0.747	0.865	0.012
Scheme 3	0.928	0.965	0.006	0.876	0.940	0.008
Scheme 4	0.912	0.957	0.007	0.912	0.960	0.007
Combined	-	-	-	0.790	0.889	0.011
SMOS-SM	-	-	-	0.420	0.650	0.017

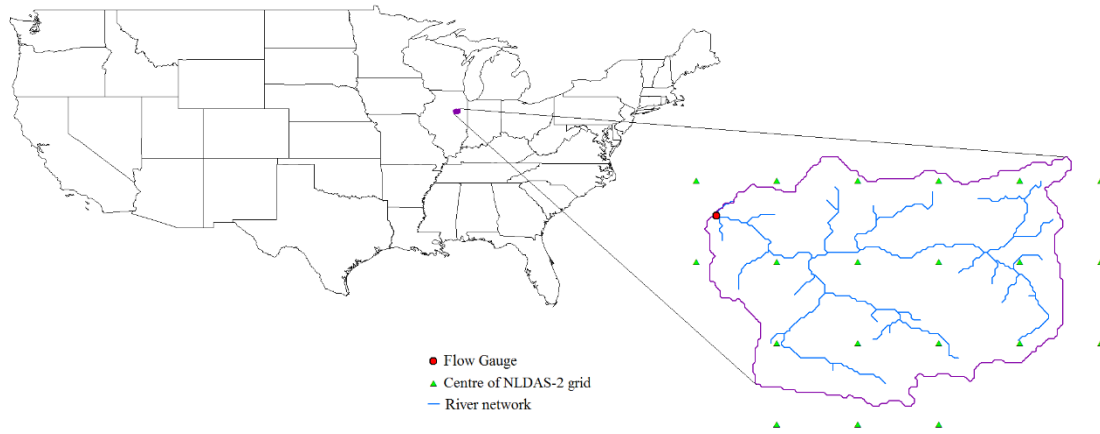


Figure. 1. The location and river network of the Pontiac catchment in the U.S., with the flow gauge and NLDAS-2 central grid points (Zhuo et al., 2015a).

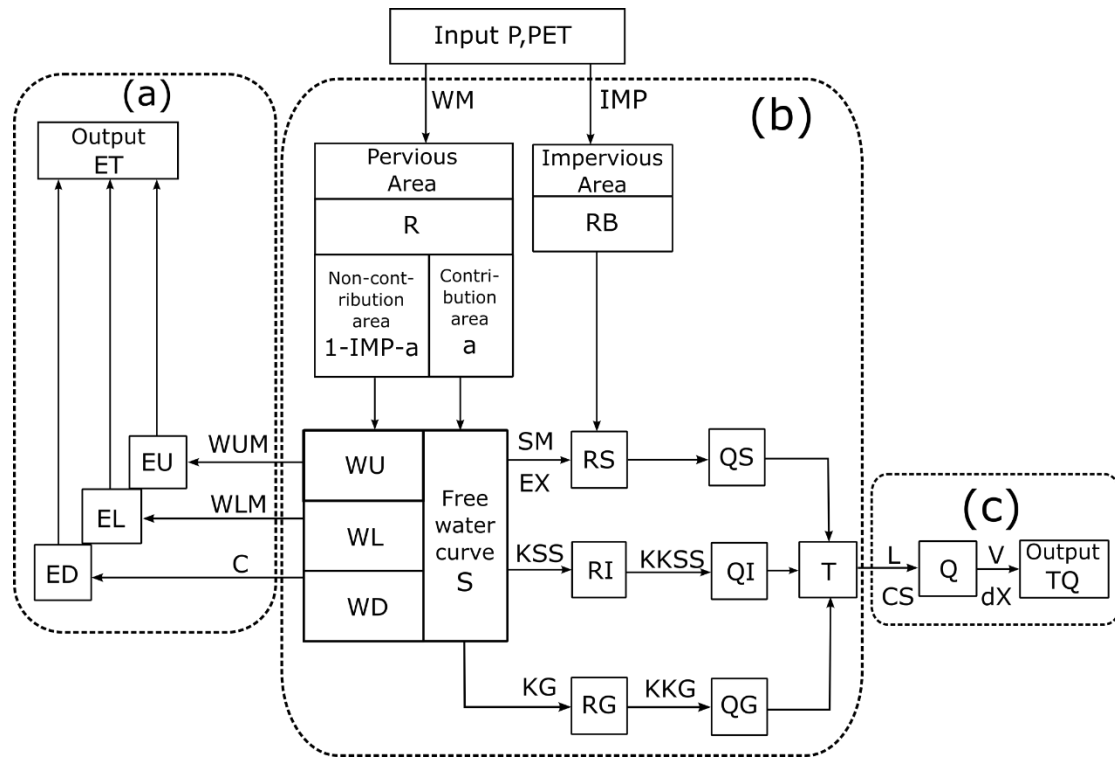


Figure. 2. Adopted flowchart of the XAJ model (Zhao, 1992[#]). The model consists of an evapotranspiration component (a), a runoff generating component (b), and a runoff routing component (c). P , PET , and ET are the precipitation, potential evapotranspiration, and the simulated actual evapotranspiration respectively; WU , WL and WD represent the upper, lower, and deep soil layers' areal mean tension water storage respectively; WM is the areal mean field capacity; EU , EL , and ED stand for the upper, lower, and deep soil layers' evapotranspiration output respectively; S is the areal mean free water storage; a is the portion of the sub-catchment producing runoff; IMP is the factor of impervious area in a catchment; RB is the direct runoff produced from the small portion of impervious area; R is the total runoff generated from the model with surface runoff (RS), interflow (RI), and groundwater runoff (RG) components respectively. These three runoff components are then transferred into QS , QI , and QG and combined as the total sub-catchment inflow (T) to the channel network. The flow outputs Q from each sub-catchment are then routed to the catchment outlet to produce the final flow result (TQ). The rest of the symbols are explained in Table 1.

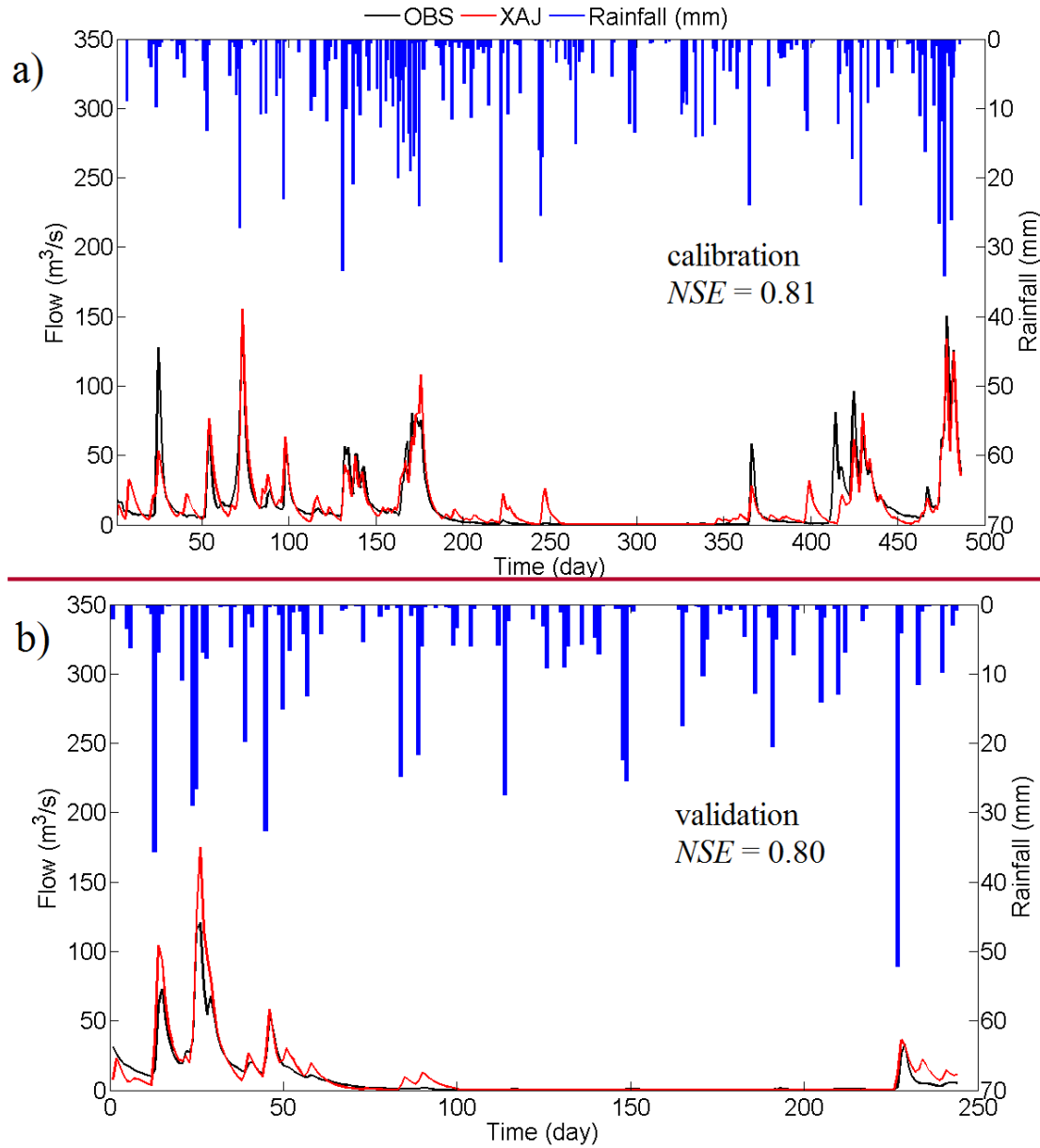


Figure. 3. Time series of daily rainfall and daily flow (observation and XAJ simulated) for the Pontiac catchment, during a) calibration and b) validation (Zhuo et al., 2015a).

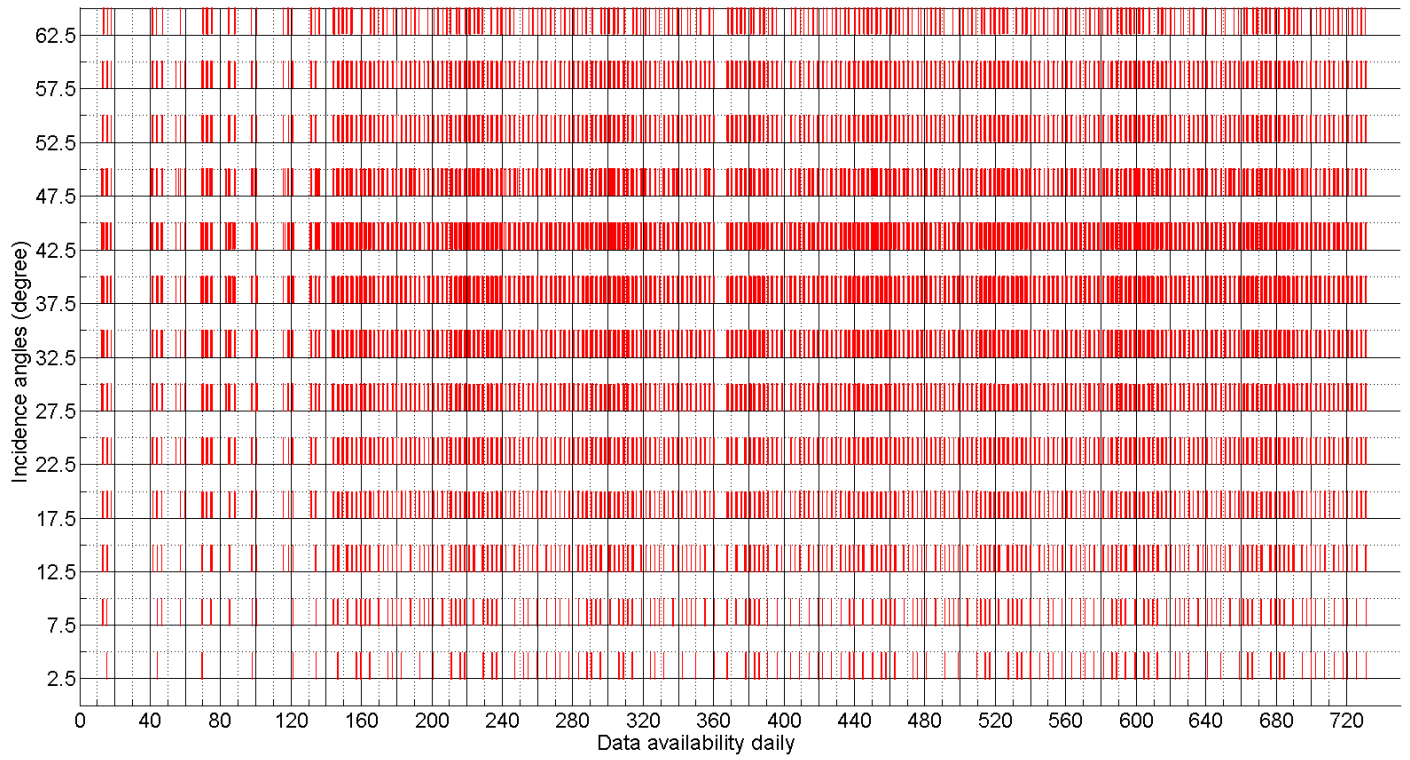


Figure 3. SMOS- T_{bs} data availabilities. It is noted that the available dates for the horizontal and the vertical ~~polarisation~~polarizations are the same, so only one is shown here.

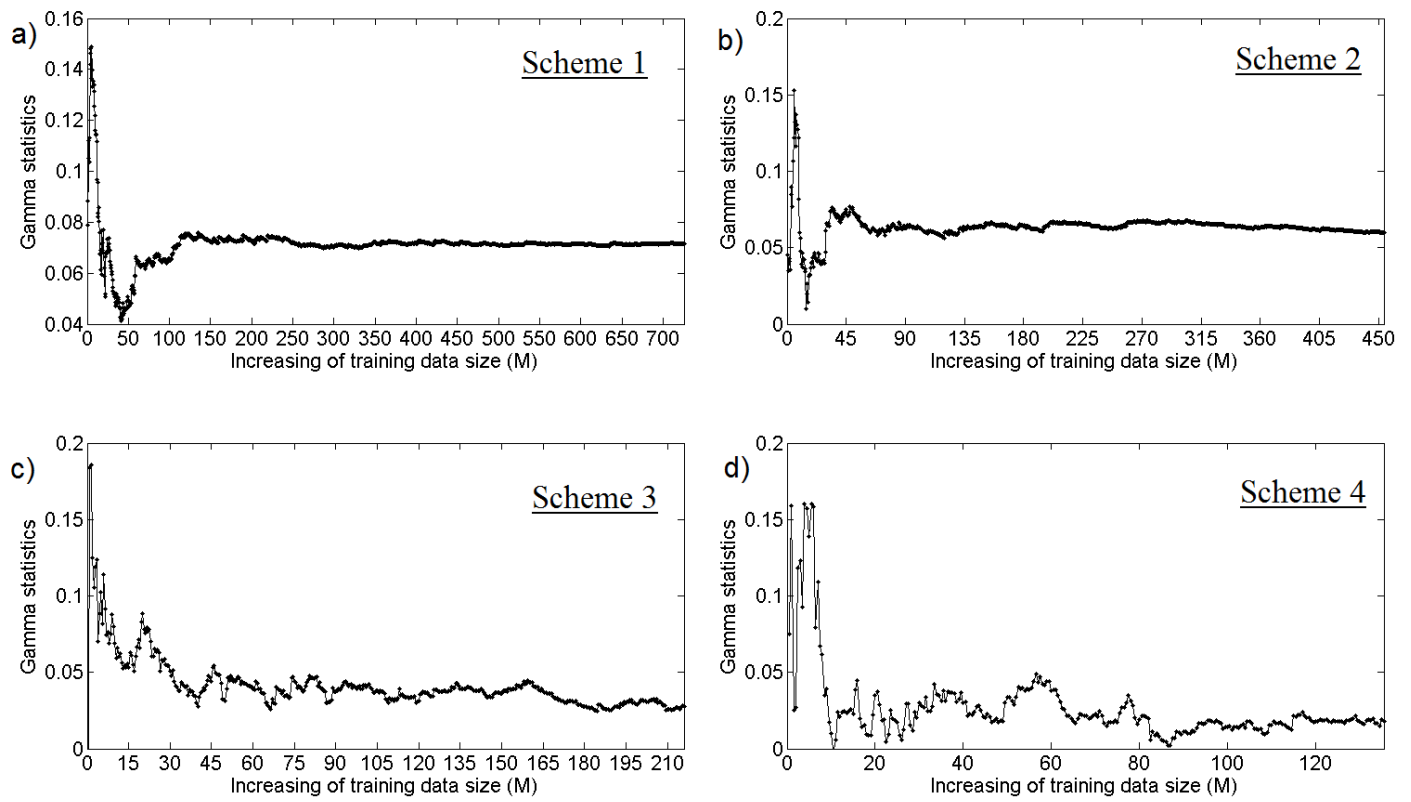


Figure 4. *M*-test, to find the best training data size: a) Scheme 1; b) Scheme 2; c) Scheme 3; and d) Scheme 4.

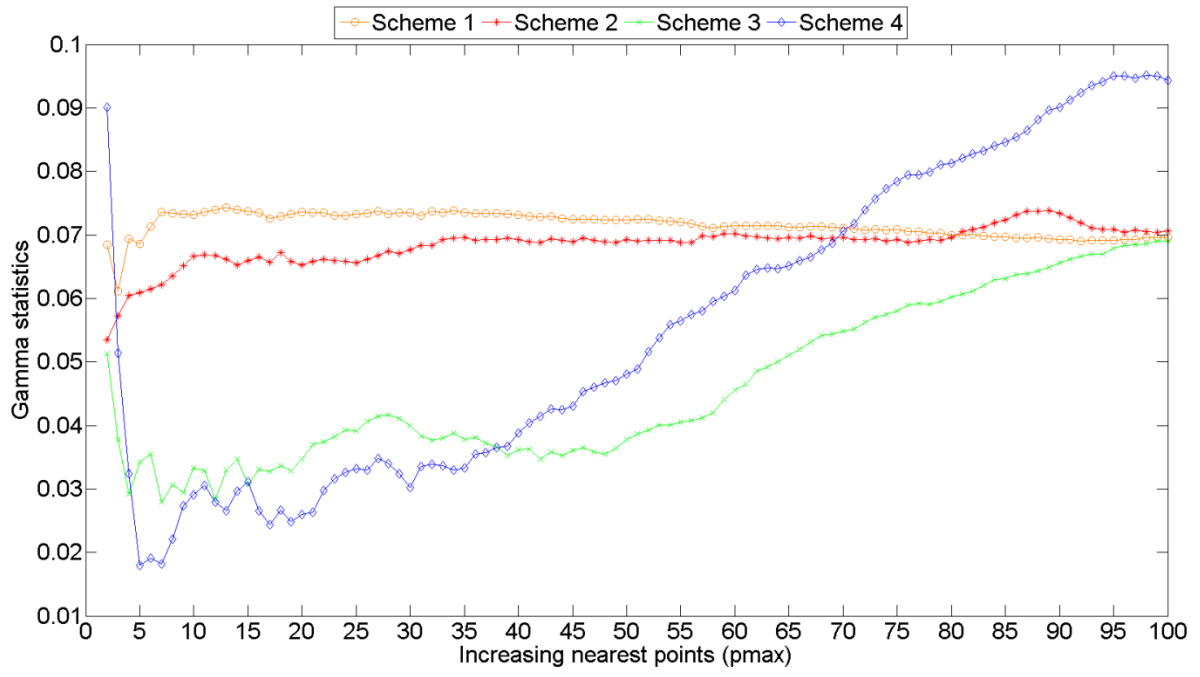


Figure 5. Gamma statistic (I) variations for increasing the LLR p_{max} value.

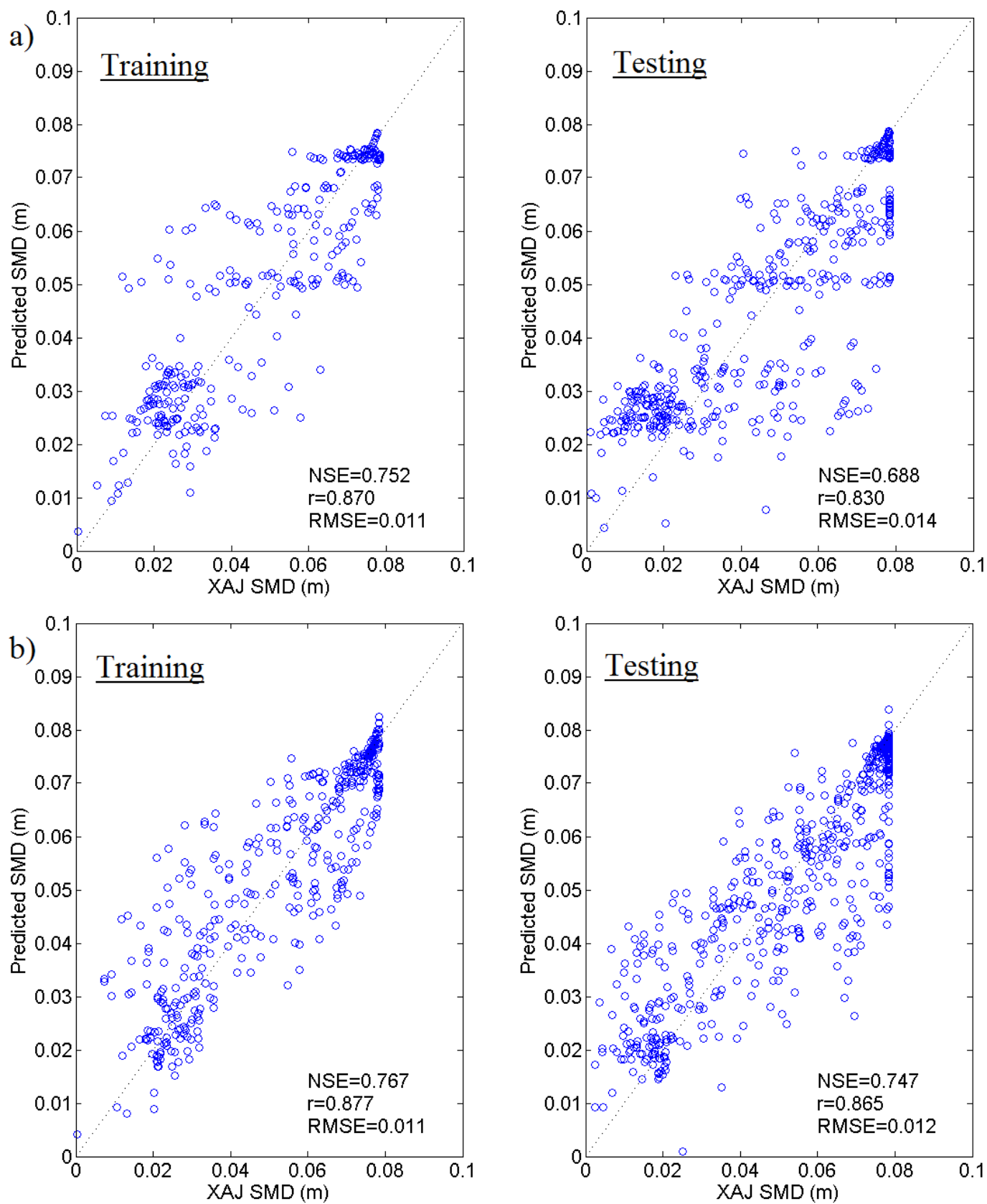


Figure 6. LLR modelling during the training and testing phases for a) Schemes 1 and b) Scheme 2.

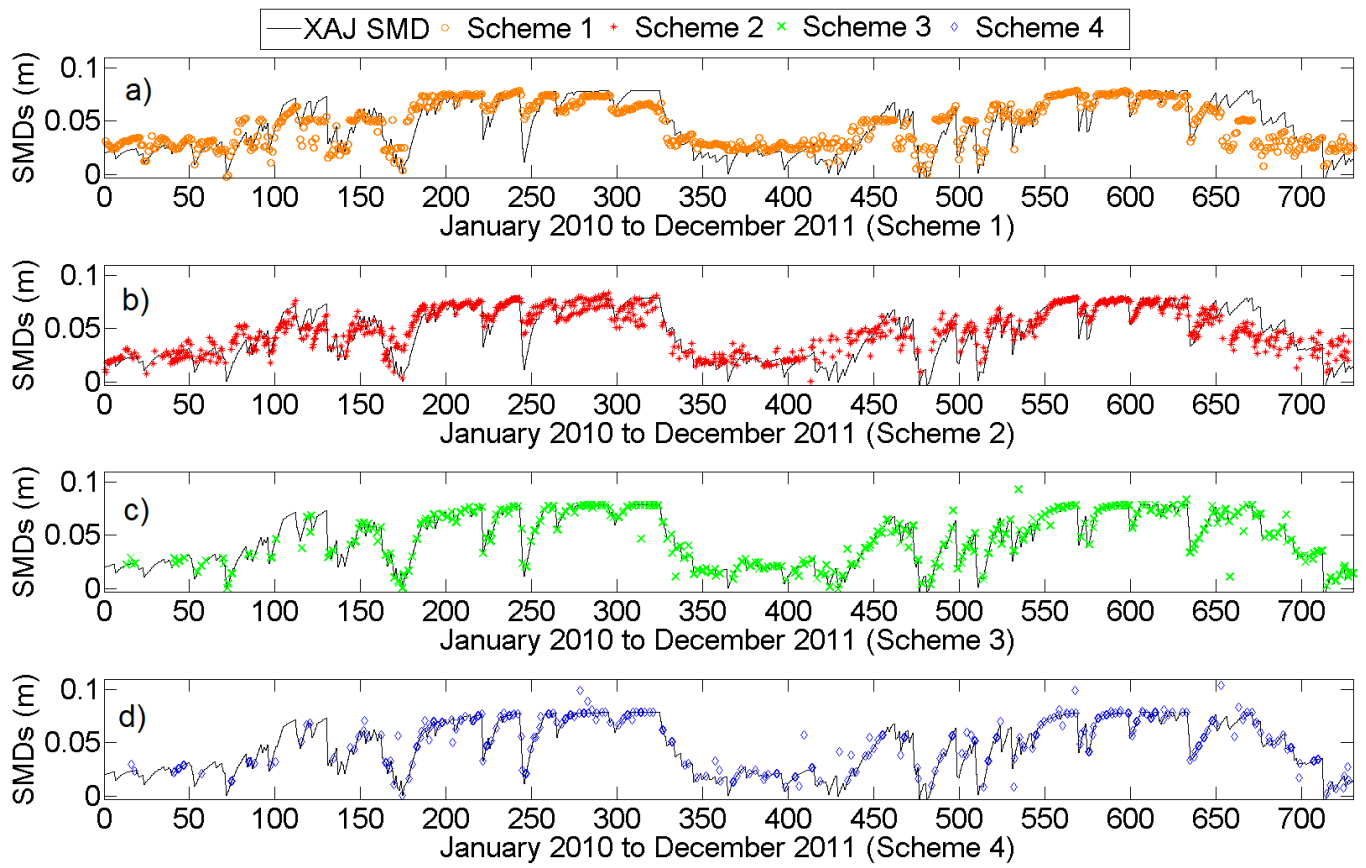


Figure 7. The time series plots of the XAJ SMD and the estimated SMD from the four schemes: a) Scheme 1; b) Scheme 2; c) Scheme 3; and d) Scheme 4.

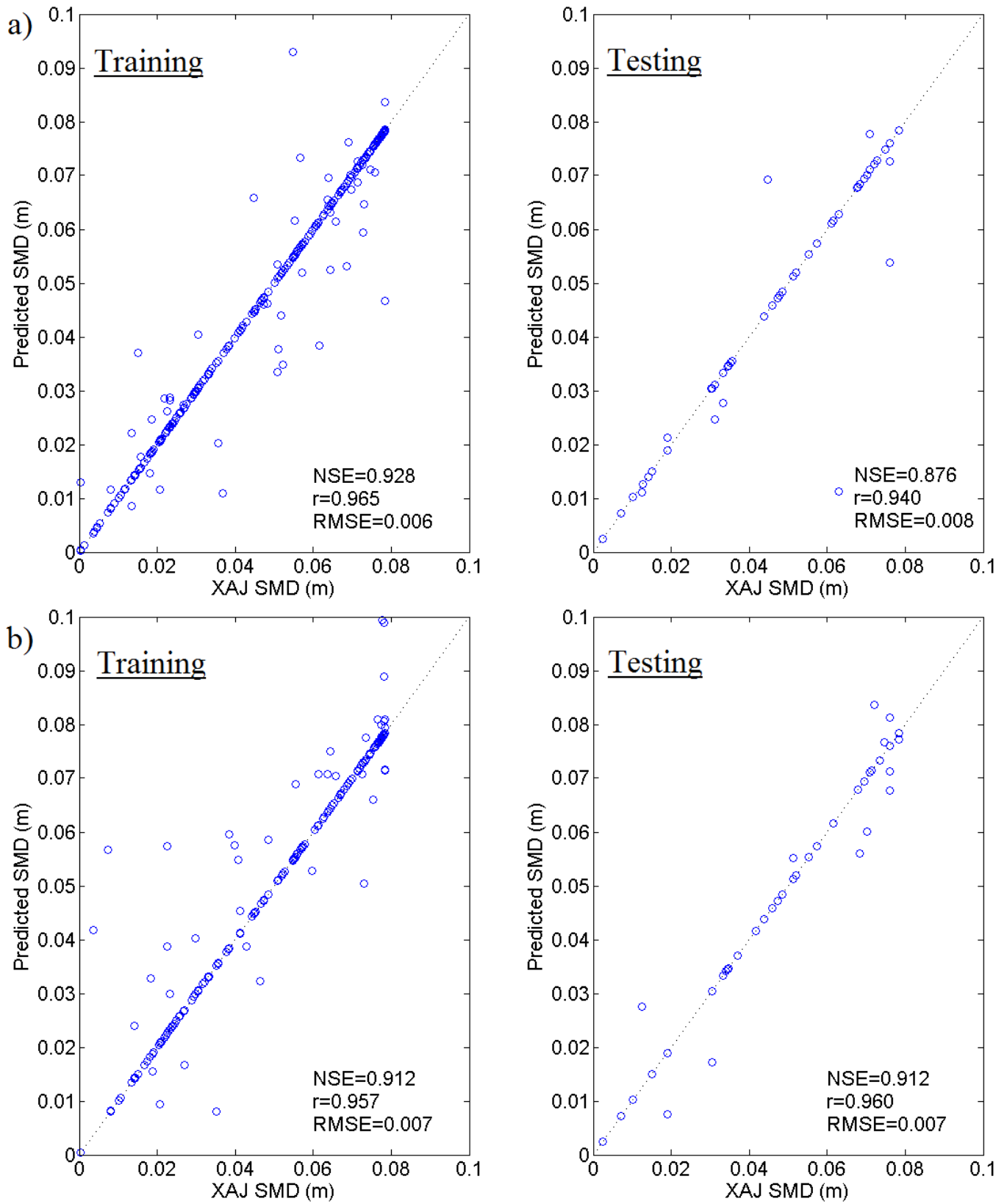


Figure 8. LLR modelling during the training and testing phases for a) Schemes 3 and b) Scheme 4.

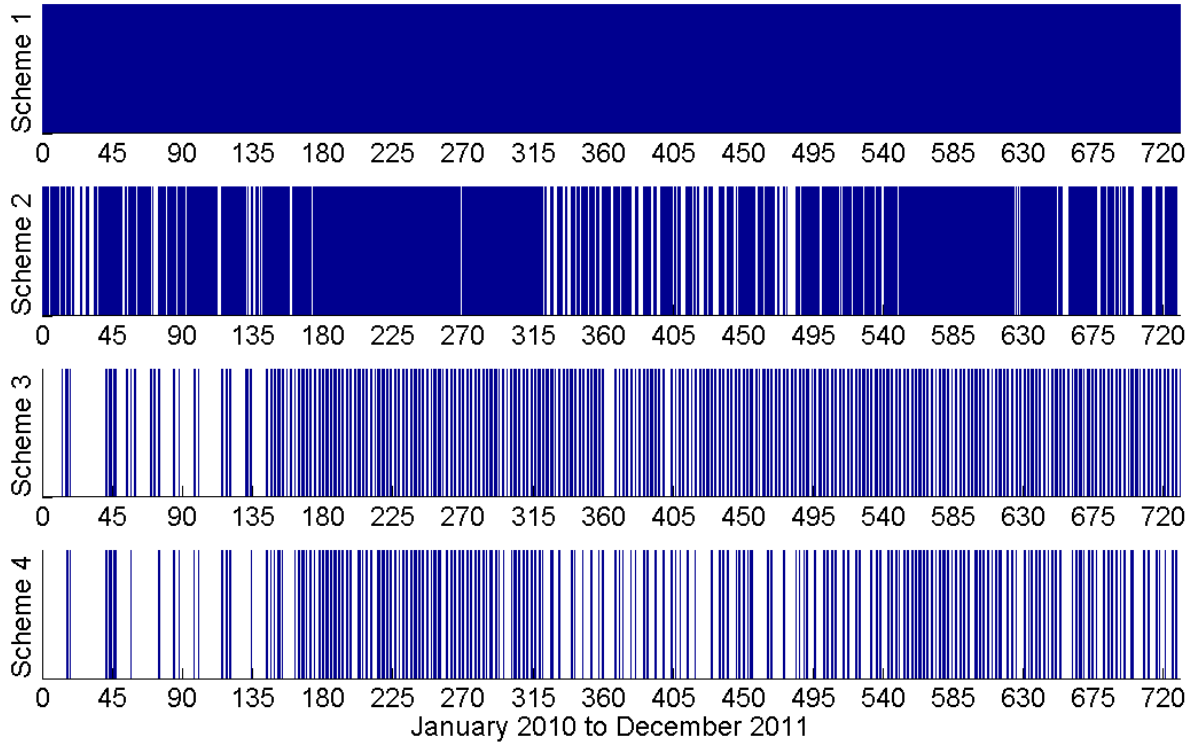


Figure 9. Data availability plots of the four schemes: Scheme 1: SAC-SMA-SM input; Scheme 2: SAC-SMA-SM and MODIS-LST inputs; Scheme 3: SAC-SMA-SM and SMOS- T_{bs} inputs; Scheme 4: SAC-SMA-SM, MODIS-LST, and SMOS- T_{bs} inputs. The total available days for the four schemes are 730, 458, 217, and 140 respectively.

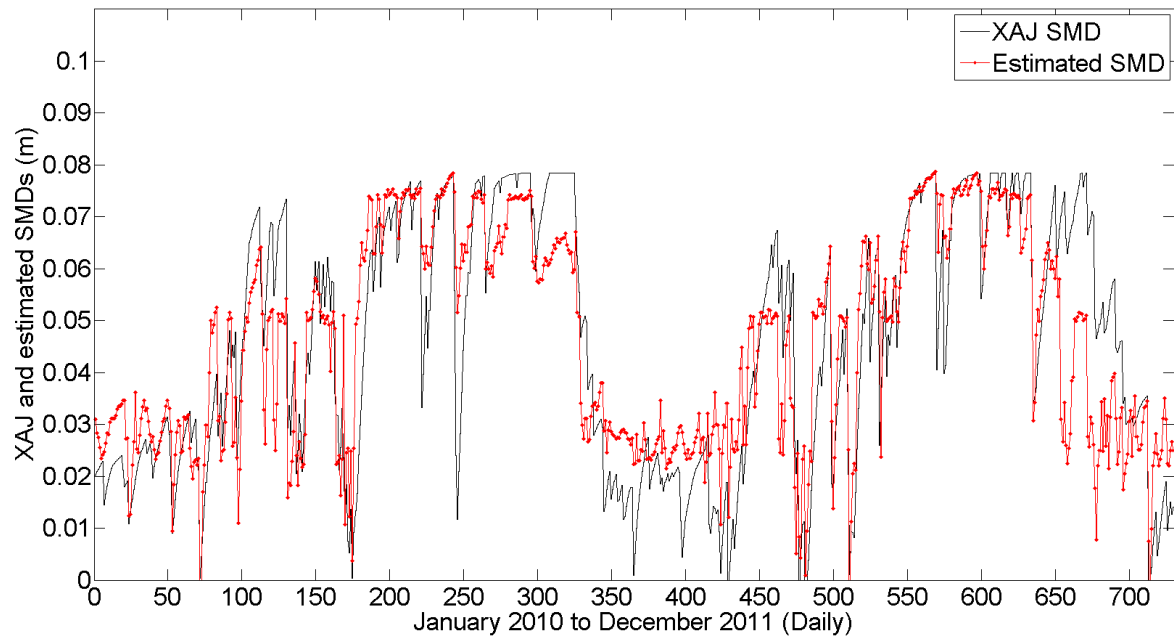


Figure 10. Time series plot of the combined daily hydrological soil moisture state estimations.

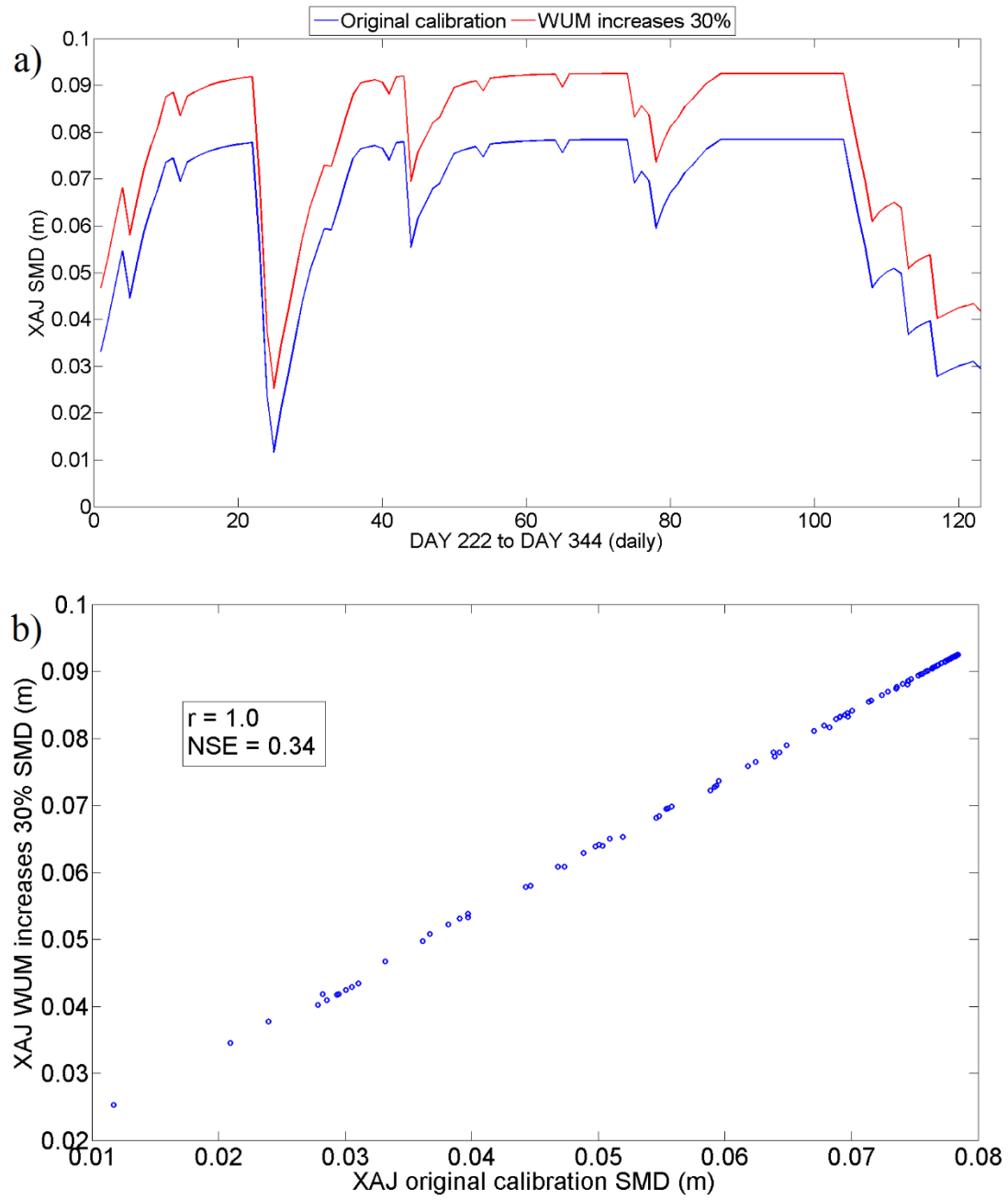


Figure 11. SMD variations from the manipulated XAJ calibration (i.e., the WUM parameter is increased by 30 %) and its original calibration.

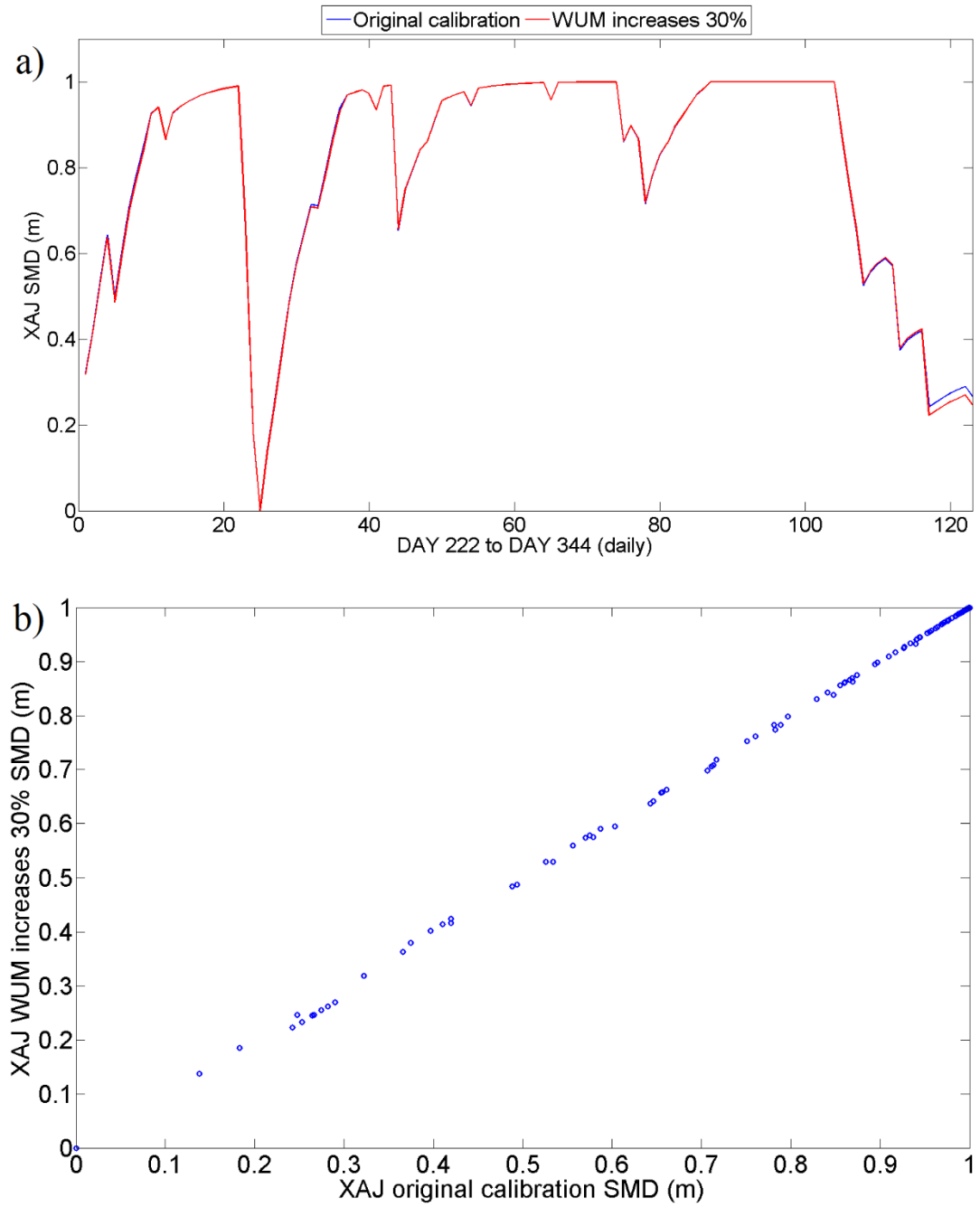


Figure 12. Normalised SMD variations from the manipulated XAJ calibration (i.e., the WUM parameter is increased by 30 %) and its original calibration.