

Please find the responses to the Editor's and reviewers' comments given in blue font, and the track-changed revised manuscript.

**Review by the Editor (Editor decision: publish subject to revisions)**

**Comments to the Author:**

I would like to very much thank the reviewers for their comments on this revised manuscript and the authors for their persistence in accounting for the review comments.

The manuscript has now gone through a second round of revisions. Referee #3 notes that there is still a gap needed to improve the paper for publication; Referee #4 notes that the manuscript should be accepted subject to minor revisions. Both reviewers note - as did the previous reviewers - that the subject of the manuscript and its findings have the potential to make a useful and interesting contribution. It is for this reason that I believe the manuscript should continue in the review process.

I would ask that the authors now respond to the referee comments focusing particularly on the two gaps that are noted - one each by Referee #3 and #4. I will send the manuscript out to for final review to ensure that all comments have been addressed.

I look forward to reviewing the revision.

Kindly,  
Stacey

>> As suggested by the Editor and reviewers, we have revised the manuscript and focused on the uncertainty of the climate datasets used in the study (Referee #3), as well as the implications of our findings (Referee #4). Please refer to the responses to the reviewers' comments below.

### Anonymous Reviewer # 3 (Report #1)

#### Specific comments:

1. According to Dai and Zhao (2016, Climatic Change, doi:10.1007/s10584-016-1705-2.), the CRU precipitation data has a series quality issue over many land areas with higher elevation and/or mountains, in particular, over arid regions, where the gaps are always filled with data from far away stations or with 1961-1990 climatology, especially for the recent decades. That is why there is no trend in CRU for many land areas as shown in Fig. 3a. Although the UDEL is also used to compare with the CRU for climatological mean and long-term trends, the comparison of the long-term temporal variation is not conducted, which is important to address the temporal difference between two datasets since about 1950's.

Dai A, Zhao T (2016) Uncertainties in historical changes and future projections of drought. Part I: estimates of historical drought changes. Climatic Change. DOI: 10.1007/s10584-016-1705-2

>> As Dai and Zhao (2016) noted, the limits of CRU TS3.10.01, which include poor gauge coverage, are discussed. Additionally, the issues with CRU TS3.10.01 that were improved in CRU TS3.22 were noted. Moreover, we examined the CRU and UDEL precipitation datasets used in this study, as shown in Fig. R1. Indeed, we did not detect any significant problems in the CRU precipitation data in Fig. R1 because this study used CRU TS3.23, which is the updated version of CRU TS3.22 that is used in Dai and Zhao (2016). Note that we have corrected a mistake in the original manuscript and changed CRU TS3.10 to CRU TS3.23. In summary, we did not find any significant or erroneous temporal differences between the CRU and UDEL datasets. In the revised manuscript, we have added the findings of Dai and Zhao (2016) and justified our usage of the CRU and UDEL datasets as follows.

Page 2: *“Dai and Zhao (2016) examined uncertainties in the sc-PDSI due to different choices of forcing data and the calibration period. They recommend using the Global Precipitation Climatology Center (GPCC) or the Global Precipitation Climatology (GPCP) datasets over other existing land precipitation products, such as CRU, and not including years after 1980 in the calibration period due to the influence of anthropogenic climate change.”*

Page 3: *“As briefly noted in Section 1, Dai and Zhao (2016) suggested that the GPCC or GPCP dataset should be used instead of the CRU datasets in drought assessment with the sc-PDSI. They noted the limitations of the CRU dataset (specifically CRU TS3.10.01) due to its poor data coverage since the 1990s. In this study, the CRU TS3.23 and the UDEL datasets are used because these datasets provide both precipitation and temperature data, whereas the GPCC and GPCP datasets include only precipitation data.”*

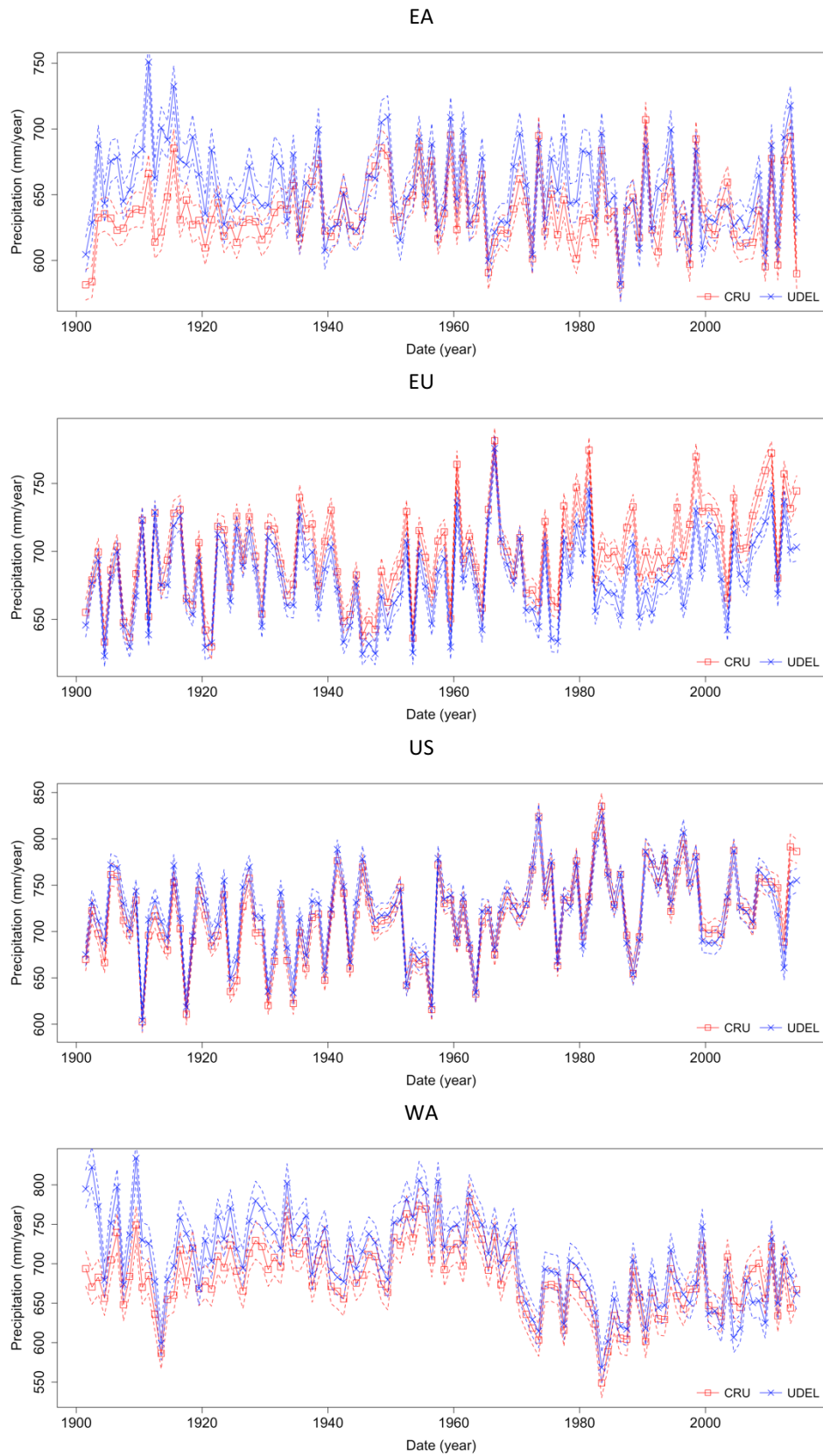


Figure R1. Temporal changes in regionally averaged precipitation based on the CRU and UDEL datasets. The dashed lines indicate the 95% confidence interval.

2. Dai and Zhao (2016), Zhao et al (2014) and other studies, the GPCC V6 or V7 product is better than CRU precipitation data to describe spatio-temporal variations and variability over global land areas, especially over the arid –semiarid regions. So, I suggest the authors use the GPCC, CRU, and the UDEL precipitation products but with same temperature data to perform same analysis, and then compare the impacts of the different precipitation products on the different calibration periods of SPEI.

Zhao T, Chen L, Zhuguo M (2014) Simulation of historical and projected climate change in arid and semiarid areas by CMIP5 models. Chinese Science Bulletin 59(4): 412-429.

>> We agree that the suggested approach by the reviewer could be used to investigate the effects of the different precipitation products on the different calibration periods of SPEI. However, it is beyond the focus of this study; thus, we have added this investigation as a possible point of future study (see Section 4).

Page 10: *“However, we note that the abovementioned results are drawn from only three sets of reference periods, two different datasets (i.e., CRU and UDEL) and four regional examples. Future work should evaluate different combinations of reference periods with increased sample sizes and different datasets. The combined datasets could also be used to focus on the effects of different precipitation or temperature products on the SPEI. For example, the precipitation data from the CRU, UDEL and GPCC, which is suggested to be better than CRU data by Dai and Zhao (2016), and the temperature data from CRU could be utilized to focus on the effects of different precipitation products.”*

3. Some other recent studies discussed the drought change and variations are still needed to cited, such as Zhao and Dai (2015, J. Climate, doi:10.1175/JCLI-D-14-00363.1.; 2016, Climatic Change, doi:10.1007/s10584-016-1742-x.).

Zhao T, Dai A (2015) The magnitude and causes of global drought changes in the twenty-first century under a low–low-moderate emissions scenario. Journal of Climate 28: 4490–4512.

Zhao T, Dai A (2016) Uncertainties in historical changes and future projections of drought. Part II: model-simulated historical and future drought changes. Climatic Change. DOI: 10.1007/s10584-016-1742-x.

>> As suggested by the reviewer, we have added the reviews on the projected drought changes as follows.

Page 2: *“Zhao and Dai (2015; 2016) assessed the self-calibrated PDSI (sc-PDSI) with multiple CMIP3 and CMIP5 model projections at the globe scale and showed that the drought frequency and area increased with increasing sc-PDSI, even under low to moderate emission scenarios.”*

4. The title should be clarified the drought index of the SPEI because this manuscript only focuses on the SPEI but not on other drought index.

>> As suggested by the reviewer, we have revised the title from *“Effects of different reference periods on drought index estimations for 1901-2014”* to *“Effects of different reference periods on drought index (SPEI) estimations from 1901-2014”*.

5. Line 21, P1, ‘limited to’ should be ‘limited by’.

>> As suggested, we have made this correction.

6. Line 20-21, P1, "Although" has been used in this sentence, why is "nevertheless" still used?

>> As suggested, we have deleted this text.

7. Line 31, P1, ‘stated’, is not ‘state’.

>> As suggested, we have corrected this term.

8. Line 31, P2, ‘This study’ would be revised as ‘our study’ to clarify the following description is the main findings obtained from this manuscript.

>> As suggested, we have revised this text.

9. ‘Data and method’ is better for the title of the section 2.

>> As suggested, we have revised the title of section 2.

10. There are large gaps for the English writing for this manuscript.

>> Professional English editors have reviewed the manuscript thoroughly, and the editing certificate is attached below.



AMERICAN JOURNAL EXPERTS

## EDITORIAL CERTIFICATE

This document certifies that the manuscript listed below was edited for proper English language, grammar, punctuation, spelling, and overall style by one or more of the highly qualified native English speaking editors at American Journal Experts.

### Manuscript title:

Effects of different reference periods on drought index (SPEI) estimations from 1901-2014

### Authors:

Myoung-Jin Um, Yeonjoo Kim, Daeryong Park, Jeongbin Kim

### Date Issued:

August 10, 2017

### Certificate Verification Key:

C4A4-9799-5038-D726-A0D5



This certificate may be verified at [www.aje.com/certificate](http://www.aje.com/certificate). This document certifies that the manuscript listed above was edited for proper English language, grammar, punctuation, spelling, and overall style by one or more of the highly qualified native English speaking editors at American Journal Experts. Neither the research content nor the authors' intentions were altered in any way during the editing process. Documents receiving this certification should be English-ready for publication; however, the author has the ability to accept or reject our suggestions and changes. To verify the final AJE edited version, please visit our verification page. If you have any questions or concerns about this edited document, please contact American Journal Experts at [support@aje.com](mailto:support@aje.com).

American Journal Experts provides a range of editing, translation and manuscript services for researchers and publishers around the world. Our top-quality PhD editors are all native English speakers from America's top universities. Our editors come from nearly every research field and possess the highest qualifications to edit research manuscripts written by non-native English speakers. For more information about our company, services and partner discounts, please visit [www.aje.com](http://www.aje.com).

## Anonymous Reviewer # 4 (Report #2)

I am providing comments on the manuscript entitled “Effects of different reference periods on drought index estimations for 1901-2014” submitted to HESS. In my opinion, the manuscript touches an interesting and important subject which is the effect of the reference period on drought analysis. Generally, the manuscript is well organized, concise and to the point. However, I noticed some editorial issues such as verb tense that need to be take care of before final submission.

>> Professional English editors have reviewed the manuscript thoroughly, and the editing certificate is attached below.



The manuscript argues that drought analysis is sensitive to the choice of reference period and support this claim through some interesting analysis. This is the strong aspect of the manuscript; however, it does not inform those who want to perform drought analysis on what they should do. I feel the manuscript establishes the challenge or question well but it is relatively weak when it comes to providing some solutions or answers. Adding such additional discussion will increase the influence of the manuscript.

>> As suggested, we have added discussion of our findings and their implications, as well as potential topics of future studies.

Page 10: *“These findings suggest that recent periods should potentially be excluded from the calibration to better understand recent drought events, particularly in regions such as EA and WA, where dominant drying trends are observed. This highlights the need for clarifying the reference period in drought assessments to better understand regional drought characteristics and their temporal changes. Such a clarification is particularly critical for assessing droughts under climate change scenarios and developing adaptation strategies for water resource management in the context of climate change.*

*However, we note that the abovementioned results are drawn from only three sets of reference periods, two different datasets (i.e., CRU and UDEL) and four regional examples. Future work should evaluate different combinations of reference periods with increased sample sizes and different datasets. The combined datasets could also be used to focus on the effects of different precipitation or temperature products on the SPEI. For example, the precipitation data from the CRU, UDEL and GPCC, which is suggested to be better than CRU data by Dai and Zhao (2016), and the temperature data from CRU could be utilized to focus on the effects of different precipitation products.”*



# Effects of different reference periods on drought index (SPEI) estimations from 1901-2014

Myoung-Jin Um<sup>1</sup>, Yeonjoo Kim<sup>1,\*</sup>, Daeryong Park<sup>2</sup>, Jeongbin Kim<sup>1</sup>

<sup>1</sup>Department of Civil and Environmental Engineering, Yonsei University, Seoul, 03722, Republic of Korea

<sup>2</sup>Department of Civil, Environmental and Plant Engineering, Konkuk University, Seoul 05029, Republic of Korea

Correspondence to: Yeonjoo Kim ([yeonjoo.kim@yonsei.ac.kr](mailto:yeonjoo.kim@yonsei.ac.kr))

Abstract. This study aims to understand how different reference periods (i.e., calibration periods) of climate data used to estimate drought indices influence regional drought assessments. Specifically, we investigate the influences of different reference periods on historical drought characteristics, such as the trend, frequency, intensity and spatial extent, using the standardized precipitation evapotranspiration index (SPEI) with a 12-month lag (SPEI-12), which was estimated from the datasets of the Climate Research Unit (CRU) and the University of Delaware (UDEL). For the 1901–1957 (P1) and 1958–2014 (P2) estimation periods, three different types of reference periods are used: P1 and P2 together, P1 and P2 separately and P1 only. Focusing on East Asia, Europe, the United States and West Africa, we find that the influence of the reference period is significant in East Asia and West Africa, with dominant drying trends from P1 to P2. The reference period influenced the assessment of drought characteristics, particularly the severity and spatial extent, whereas the influence on the frequency was relatively small. Finally, self-calibration, which is the most common practice for indices such as the SPEI, tends to underestimate the drought severity and spatial extent relative to the other approaches used in this study. Although the conclusions drawn in this study are limited by the use of two global datasets, they highlight the need for clarification of the reference period in drought assessments to better understand regional drought characteristics and the associated temporal changes, particularly under climate change scenarios.

## 1 Introduction

Drought is a complex, slow onset and natural phenomenon that affects more people than any other hazard and seriously influences water resources, agriculture, society and ecosystems (Hagman, 1984; Wilhite, 2002; Ionita et al., 2015). Because drought impacts are largely nonstructural and spread over relatively large regions, the onset and end of a drought, as well as its severity, are often difficult to determine (Wilhite, 2002). Furthermore, based on recent changes in the 21st century and projected climate warming, such drought phenomena will likely worsen (Sheffield and Wood, 2008; Dai, 2011a). Sheffield et al. (2012) stated that severe and prolonged drought events have been observed since the 1970s, and these changes are related to higher temperatures and lower precipitation. Drought can be defined and explained using absolute or relative terminology, which allows terms and measures to be compared (Dai, 2011b; Trenberth et al., 2014). Absolute terms include the amount of precipitation, the amount of soil moisture and other metrics. The relative measures include the Palmer drought severity index (PDSI), the standardized precipitation index (SPI), the standardized precipitation and evapotranspiration index (SPEI) and others. Relative drought indices, however, are limited in their utility because they are based on standardized or

Style Definition: Balloon Text: English (US), Left

Deleted: for

Deleted: indexes

Deleted: trends

Deleted: standard

Deleted: indexes

Deleted: to

Deleted: nevertheless

Deleted: their

Deleted: As

Deleted: 2010

Deleted: allowing these

Deleted: or

Deleted: to each other

Deleted: 2011

Deleted: such as

Deleted: can be used

normalized shortages relative to average conditions at a given station or in a specific period (Vicente-Serrano and Begueria-Portugués, 2003; Vicente-Serrano et al., 2010). Nevertheless, various drought indices have been widely used in many drought studies.

Dracup et al. (1980) suggested three components of drought: duration, magnitude (average water deficiency) and severity (cumulative water deficiency). Such concepts have been applied to various drought indices to analyze historical characteristics. Wang et al. (2011) defined the intensity-duration-frequency of droughts with the SPI, standardized runoff index (SRI), standardized soil water index (SSWI) derived from observations and future regional climate change projections in central Illinois. To evaluate how well global climate models simulated observed drying or wetting trends, Nasrollahi et al. (2015) applied the Mann-Kendall trend test to SPIs derived from global observational climate data, in this case, the dataset from the Climate Research Unit (CRU), and 41 predictions of global climate models (GCMs) from the Coupled Model Intercomparison Project Phase 5 (CMIP5). Similarly, Tan et al. (2015) utilized climate data from 22 meteorological stations in Ningxia, a well-known food production area in Northwest China, and performed Mann-Kendall trend tests with the SPI and SPEI. The degrees of increasing drought frequency and intensity varied with the stations in the study region. Furthermore, Touma et al. (2015) used data from 15 GCMs in CMIP5 and assessed the likelihood of changes in the spatial extent, duration and number of occurrences of four drought indices, including the SPI, SPEI, and others. Zhao and Dai (2015; 2016) assessed the self-calibrated PDSI (sc-PDSI) with multiple CMIP3 and CMIP5 model projections at the globe scale and showed that the drought frequency and area increased with increasing sc-PDSI, even under low to moderate emission scenarios.

Estimating a drought index requires a calibration step. Specifically, historical data such as precipitation data should be fitted to a specific probability distribution function (PDF) and used to estimate drought indices. Some previous studies have addressed the issue of the data period in the calibration step (e.g., Karl et al., 1996; Dubrovsky et al., 2009; Dai and Zhao, 2016). While it is common to use self-calibrated indices (i.e., using the same dataset for calibration and index estimation), some studies have proposed calibration using reference climate data to allow for an intercomparison of the index among stations or different periods (Dubrovsky et al., 2009). Such reference periods (i.e., calibration periods) of climate data are particularly important in climate change studies. It was previously noted for the sc-PDSI that trends toward more extreme conditions are amplified when the calibration period does not include recent data, including the recent effects of climate change (van der Schrier et al., 2013; Trenberth et al., 2014). Dai and Zhao (2016) examined uncertainties in the sc-PDSI due to different choices of forcing data and the calibration period. They recommend using the Global Precipitation Climatology Center (GPCC) or the Global Precipitation Climatology (GPCP) datasets over other existing land precipitation products, such as CRU, and not including years after 1980 in the calibration period due to the influence of anthropogenic climate change. Still, few studies have clarified their approaches to calibration.

Therefore, in this study, we aim to understand how a different reference period (i.e., calibration period) of climate data influences regional drought assessment. Specifically, we investigate the influences of different reference periods on historical drought characteristics, such as the trend, frequency, intensity and spatial extent, with the SPEI estimated using two historical global climate datasets from the CRU and the University of Delaware (UDEL). Our study shows that the reference period influences the assessment of drought characteristics, particularly the severity and spatial extent, while its influence on the frequency is relatively small. These influences are especially

Deleted: simulate

Deleted: the

Deleted: A few

Deleted: ).

Deleted: suggest

Deleted: self-calibrated

Deleted: Still, few studies have clarified their approaches to calibration.

Formatted: Font: +Theme Headings (Times New Roman)

Deleted: trends

Deleted: extents

Deleted: This

Deleted: periods influence

significant in regions with dominant drying trends, such as East Asia and West Africa. These findings suggest that the reference period should be clarified in drought assessments for a better understanding of regional drought characteristics and their temporal changes.

## 2 Data and method

### 2.1 Study area and climate data

We investigate the drought characteristics in the Northern Hemisphere with a focus on four different regions: East Asia (EA), Europe (EU), the United States (US) and West Africa (WA) (Fig. 1). We performed analyses based on the spatially distributed patterns in those regions, as well as the average trends, but without distinguishing subregions based on climate characteristics. Two widely used global observational datasets from the CRU and UDEL are utilized in this study. Specifically, monthly precipitation and temperature data from 1901 to 2014 with a spatial resolution of 0.5° are used.

This study uses the latest CRU dataset (CRU TS3.23), as described in Harris et al. (2014). The principal sources of the CRU data are the World Meteorological Organization (WMO) in collaboration with the US National Oceanographic and Atmospheric Administration (NOAA). Covering all land areas between 60°S and 80°N at a spatial resolution of 0.5°, the dataset includes global monthly climate data for ten variables: precipitation, mean temperature, diurnal temperature range, minimum and maximum temperature, vapor pressure, cloud cover, rain days, frost days and potential evapotranspiration. The dataset is derived from archives of climate station records with extensive manual and semi-automated quality control measures.

The UDEL dataset (V 4.01, Willmott and Matsuura, 2001) is also used in this study. The dataset includes gridded monthly precipitation and temperature data at a spatial resolution of 0.5° and a global scale. The dataset was compiled from sources including the Global Historical Climatology Network (GHCN) and the Global Surface Summary of the Day (GSOD). To interpolate the station values to the grid, climatologically aided interpolation (CAI) and traditional interpolation were used for precipitation, and digital elevation model (DEM)-assisted interpolation, traditional interpolation and CAI were used for temperature. In this work, traditional interpolation is based on a spherical version of Shepard's algorithm, which employs an enhanced distance-weighting method (Shepard, 1968; Willmott et al., 1985).

As briefly noted in Section 1, Dai and Zhao (2016) suggested that the GPCC or GPCP dataset should be used instead of the CRU datasets in drought assessment with the sc-PDSI. They noted the limitations of the CRU dataset (specifically CRU TS3.10.01) due to its poor data coverage since the 1990s. In this study, the CRU TS3.23 and the UDEL datasets are used because these datasets provide both precipitation and temperature data, whereas the GPCC and GPCP datasets include only precipitation data.

### 2.2 Meteorological drought index

Various drought indices have been used to understand different types of droughts, including meteorological drought, agricultural drought and hydrological drought (Heim, 2002). For meteorological droughts, the indices include the PDSI (Palmer, 1965), the SPI (McKee et al., 1993) and the SPEI (Vicente-Serrano et al., 2010). As

Deleted: Materials

Deleted: methods

Deleted: over

Deleted: the

Deleted: over

Deleted: their averages

Deleted: the sub-regions

Deleted: the

Deleted: From these two datasets

Deleted: from 1901 to 2014

Deleted: 10

Deleted: across the land over the globe.

Deleted:

Deleted: \*

different studies have used different meteorological drought indices (Seneviratne, 2012; Sheffield et al., 2012; Trenberth et al., 2014; Nasrollahi et al., 2015; Touma et al., 2015), this study focuses on the SPEI. Devised by Vicente-Serrano et al. (2010), the SPEI has the advantage of considering the effects of temperature variability on drought relative to the SPI (Naumann et al., 2014). The SPEI uses the amount of precipitation minus PET and fits the data to the log-logistic PDF. Here, we summarize the steps in estimating the SPEI based on monthly precipitation and temperature data. The detailed procedure for estimating the SPEI was presented by Vicente-Serrano et al. (2010).

Step 1: Estimate the water surplus or deficit in month  $j$  ( $D_j$ ) using the difference between precipitation ( $P_j$ ) and potential evapotranspiration ( $PET_j$ ).

$$D_j = P_j - PET_j \quad (1)$$

Here, the potential evapotranspiration is estimated based on the Thornthwaite method (1948), which requires the monthly temperature, latitude, day and month.

Step 2: Estimate the cumulative difference ( $X_{i,j}^k$ ) over timescale  $k$  in a given month  $j$  and year  $i$ . For example, the cumulative difference for a month in a particular year based on a 12-month timescale can be calculated as follows.

$$X_{i,j}^k = \sum_{l=13-k+j}^{12} D_{i-1,l} + \sum_{l=1}^j D_{i,l}, \quad \text{if } j < k \quad (2)$$

$$X_{i,j}^k = \sum_{l=j-k+1}^j D_{i,l}, \quad \text{if } j \geq k \quad (3)$$

Step 3: Fit the cumulative difference to a log-logistic distribution as follows:

$$F(X) = \left[ 1 + \left( \frac{\alpha}{x-\gamma} \right)^\beta \right]^{-1} \quad (4)$$

where  $F(X)$  is the cumulative probability function of a three-parameter log-logistic distribution and  $\alpha$ ,  $\beta$  and  $\gamma$  represent the scale, shape and origin parameters, respectively. For model fitting, the L-moment procedure (Hosking, 1990) is employed, as it is one of the most robust and easy-to-use approaches.

Step 4: Estimate the SPEI based on the estimated  $F(X)$ . The SPEI can be derived from the standardized values of  $F(X)$  and the classical approximation of Abramowitz and Stegun (1965) following Vicente-Serrano et al. (2010). The estimated drought index is classified as shown in Table 1 for moderate, extreme and very extreme cases. In this study, we focused on the SEPI with a 12-month lag (SPEI-12). SPEI can be estimated for different lag times, such as 1, 3, 6, 9, 12 and 24 months.

### 2.3 Temporal trends and statistical characteristics

This study investigates various measures of historical droughts, including the trend, frequency, severity and spatial extent (Lloyd-Hughes and Saunders, 2002; Wang et al., 2011; Hoerling et al., 2012; Seneviratne, 2012; Trenberth et al., 2014; Touma et al., 2015).

The temporal trend is investigated with a nonparametric and monotonic trend test based on the S-statistic of the Mann-Kendall trend test (Mann, 1945; and Kendall, 1976). In this test, an increasing (positive) trend or decreasing (negative) trend is tested for at a significance level of 5%. Different measures have been defined and used in past studies to assess the frequency, severity and spatial extent of drought (e.g., Wang et al., 2011; Touma et al., 2015) because it is not straightforward to define these quantities in practice. For example, Touma et al. (2015) defined

Deleted: accumulated

Deleted: accumulated

Deleted: with

Deleted: is

Deleted:

Deleted:

Deleted: accumulated

Deleted: ,

Deleted: For

Deleted: , different measures have been defined and used in past studies

the duration, occurrence and spatial extent of drought to investigate the drought changes with 15 CMIP5 models throughout the world in the 21st century. The duration of drought was defined as the consecutive period below a certain drought threshold. The occurrence of drought was defined as the total number of droughts in the period of interest. Additionally, the spatial extent of drought was defined as the percentage of grid points below the given drought level, in which the corresponding drought index was less than the given drought category in each month, relative to the total number of terrestrial grid points in the domain.

In this study, we defined three measures of drought based on the SPEI-12: (1) drought frequency was calculated as the ratio of the total number of drought events (i.e.,  $\text{SPEI-12} \leq -1$ ) to the total number of terrestrial grid points; here, we counted the number of drought events without considering whether a given drought event (i.e.,  $\text{SPEI-12} \leq -1$ ) was identified consecutively. (2) Severity was defined as the lowest estimate of the regional monthly average SPEI-12 using moving windows with periods of 1 to 12 months; here, regional averages were estimated in the four study regions depicted in Fig. 1. (3) The spatial extent was calculated as the number of grid points with an annual  $\text{SPEI-12} \leq -1.0$  relative to the total number of terrestrial grid points.

## 2.4 Design of data analysis

To understand the influence of the reference period (i.e., calibration period) on the drought index, three different types of reference periods are used to estimate the SPEI-12 with the CRU and UDEL data. To separately analyze the drought characteristics in the periods of 1901–1957 (P1) and 1958–2014 (P2), different reference periods are used (Table 2). Here, we assume that the mean climates of P1 and P2 are different to some extent because of global climate and environmental changes, which will be discussed further in Section 3. For the first type of reference period (Ref1), we calibrated the distribution of a specific PDF (Step 3 in Section 2.2) using data from 1901 to 2014, which is used to estimate the SPEI2 for the P1 and P2 estimation periods. For the second type of reference period (Ref2), calibrations are performed separately for P1 and P2; thus, so-called self-calibrated indices are derived. For the third type (Ref3), we calibrated the distribution using the data from P1 (i.e., 1910–1957) and then use this distribution for both estimation periods.

## 3 Results and discussion

### 3.1 Spatial and temporal patterns of climate variables

In this section, we examine the spatial and temporal variations in precipitation, air temperature and PET (Figs. 2, 3 and 4 and Table 3), which are used to estimate  $D (= P - PET)$  (in Eq. 1) and the SPEI values. We particularly focused on the differences in meteorological conditions between P1 and P2 to enhance our understanding of similar or different drought index values according to the different reference periods in the following sections.

To investigate the temporal changes in precipitation, air temperature and PET, we compared the means and standard deviations between the two periods (i.e., P1 and P2) (Figs. 2 and 3 and Table 3). Most cases showed largely consistent results between CRU and UDEL; therefore, we did not focus extensively on the differences

Deleted: droughts

Deleted: ,

Deleted: Drought

Deleted: with

Deleted: Spatial

Deleted: estimation

Deleted: sets of

Deleted: of

Formatted: Font:Times New Roman

Deleted: -

Deleted: thus

between the two datasets. In general, the temporal pattern of precipitation varied among regions, and air temperature ~~increases were~~ observed in all regions. On average (Fig. 3 and Table 3), annual precipitation ~~decreased~~ in P2 relative to P1, as in EA and WA, whereas ~~decreases in precipitation were only~~ evident in limited areas within the regions (Fig. 2); for example, the west Sahel within WA. In contrast, annual precipitation increased in EU and the US. Increases in air temperature were clearly shown in all regions; consequently, increases in PET, which is controlled mainly by air temperature, were generally evident. Decreases in D were observed only in EA and WA (Fig. 4c). In these regions, an annual water deficit (i.e., negative D) was evident, whereas in other regions, i.e., EU and the US, an annual water surplus (i.e., positive D) was ~~observed~~.

The Mann-Kendall trend tests ~~were also performed~~ for annual precipitation, annual average temperature and annual PET, as shown in Fig. 4. The data reflect whether these variables showed statistically increasing, ~~statistically~~ decreasing or no trends. For annual precipitation in EA, the areal extent with an increasing trend was almost twice that with a decreasing trend based on CRU, but the areal extent with a decreasing trend based on UDEL was broader than that with an increasing area. In EU and the US, the areal extent ~~of~~ an increasing trend was clearly larger than that ~~of~~ a decreasing area based on both CRU and UDEL. However, in WA, the areal extent ~~of~~ a decreasing trend was larger than that ~~of~~ an increasing trend based on both CRU and UDEL. These patterns were generally more severe for CRU than for UDEL. For annual average air temperature and PET, CRU produced increasing trends ~~in~~ most regions. Similar patterns were observed for UDEL, but the areal extent of the decreasing trend was slightly larger than that of CRU.

### 3.2 Temporal patterns of ~~the~~ drought index

The drought index (i.e., SPEI-12) was estimated by fitting the three-parameter log-logistic model ~~based on~~ three different reference periods (Table 2), as described in Section 2.4. As shown in the L-moment ratio diagram with the CRU ~~data and~~ Ref1 as an example (Fig. 5), the model is well ~~fit by~~ the L-moment approach, following Vicente-Serrano et al. (2010). Fig. 6 shows the temporal variations in SPEI-12 based on the reference periods (Ref1, Ref2 and Ref3) and datasets (CRU and UDEL) used in the two periods. In the US and EU, the SPEI-12 averages are very similar in the two periods, with values of 0.005 (P1) and 0.118 (P2) in the US and -0.011 (P1) and -0.001 (P2) in EU. In EA, the SPEI-12 averages ~~in~~ the three different reference periods slightly decrease from P1 to P2, whereas the deviations in SPEI-12 increase markedly. In WA, the averages and deviations in SPEI-12 significantly decrease and increase, respectively, from P1 to P2. Furthermore, the variances in SPEI (box lengths in Fig. 5) are relatively small in P1 compared with those in P2 in EA and WA, whereas no noticeable differences in the variances are observed in EU and the US. This result may be attributed to the lack of ground-based observations before 1950 (i.e., most of P1). As suggested in previous studies (i.e., Becker et al., 2013; Vittal et al., 2013; Nasrollahi et al., 2015), the limited availability of data ~~in~~ the early 20<sup>th</sup> century can result in underestimates of the spatial variabilities of climate variables in global datasets; in the present study, such limited data availability might have contributed to the reduced SPEI variance in P1 in EA and WA. Based on regional averages, the role of the reference period is not clear; thus, we ~~investigate~~ the spatial patterns of SPEI-12 hereafter.

Based on the Mann-Kendall trend test of annual SPEI-12 from 1901 to 2014, we ~~identified the areas with~~ increasing (i.e., wetting), decreasing (i.e., drying) and no ~~trends in each region~~ (Fig. 7). First, the spatial distribution of SPEI-

~~Deleted:~~ increased

~~Deleted:~~ was

~~Deleted:~~ was

~~Deleted:~~ decreased

~~Deleted:~~ was clearly

~~Deleted:~~ only

~~Deleted:~~ present

~~Deleted:~~ were also performed

~~Deleted:~~ with

~~Deleted:~~ with

~~Deleted:~~ with

~~Deleted:~~ with

~~Deleted:~~ over

~~Deleted:~~ for

~~Deleted:~~ for

~~Deleted:~~ fitted with

~~Deleted:~~ for

~~Deleted:~~ for

~~Deleted:~~ investigated

~~Deleted:~~ determined

~~Deleted:~~ trend areas of the regions

12 trends is identical between Ref1 and Ref3, and that in Ref2 is different. Ref1 and Ref2 use different calibration datasets but are similar in using one dataset for the two estimation periods; however, Ref2 uses different calibration datasets for different estimation periods (Table 4). Therefore, the SPEI-12 of Ref2 exhibits relatively small areas of wetting and drying trends in the first and second periods relative to those of Ref1 and Ref3.

Deleted: smaller

Regarding the temporal characteristics in different regions, our findings for Ref1 and Ref3 are as follows. In WA, drying trends are clearly dominant. In EU, drying trends are scattered over the domain. In the US, wetting trends are scattered in the eastern region, and drying trends can be observed in the southwestern region. In EA, the drying trends are clearly in the western region.

Deleted: the following are

Based on the grid-level trend analyses of precipitation, air temperature, PET and SPEI-12, we categorized each grid cell based on increasing, decreasing or neutral trends for each variable (Fig. 8). For SPEI-12, increasing and decreasing trends represent wetting and drying trends. We present the ratio of each case relative to the total number of cases (i.e., total number of terrestrial grid cells in all four regions). First, the SPEI-12 trends are the same between Ref1 and Ref3, as the estimation periods share one reference period in both Ref1 and Ref3, while each estimation period uses its own reference period in Ref2. Thus, the values of SPEI-12 are different in both cases, but the trends (i.e., relative values) are the same. Second, precipitation and air temperature exhibit neutral (or no) trends (i.e., the center panel among the 3 x 3 panels in Fig. 8, indicating a presumably stationary climate), and the grid percentages of different trends in SPEI-12 vary between Ref1/Ref3 and Ref2. However, the ratio is relatively small, as most grid cells display increasing temperature and PET trends. Finally, in the case of neutral precipitation and increasing air temperature (or PET) trends (i.e., the top middle panel among the 3 x 3 panels in Fig. 8), the numbers of cells with neutral and drying SPEI-12 trends are notably different between Ref1/Ref3 and Ref2. We observed increasing temperature and thus increasing PET trends in most regions (refer to Fig. 4). This discrepancy between the reference periods might play a critical role in assessing the drought status.

Deleted: i.e., precipitation, air temperature, PET and SPEI-12) (Fig.

### 3.3 Frequency, severity and spatial extent of drought

In this section, we examine how the reference periods play a role in assessing the frequency, severity and spatial extent of drought using SPEI-12. The definitions of frequency, severity and spatial extent of drought used in this study are clarified in Section 2.3, and they may differ in different studies.

As explained above, a drought event occurs when the monthly SPEI-12 is estimated to be at or below -1.0 based on the drought duration-frequency relationship. For each drought event in a grid cell, the duration is how long the SPEI-12 stays at or below -1. The frequency is the ratio between the total number of drought events and the number of terrestrial grid points in each region (Fig. 9). We found that the drought events with long durations (prolonged right tails in the plot) occur more frequently in P2 than in P1 in all regions. However, we did not find any particular differences between the three different reference periods except in WA. The drought frequencies differ among the three reference periods. The frequencies of Ref2 and Ref3 are higher than those of Ref1 in P1, and slight differences in the frequency among the three reference periods are observed throughout the 12-month duration of P2.

Deleted: longer

We examine how the severity of drought varies with the moving window size for the average monthly SPEI-12. Fig. 10 shows the most severe SPEI-12 estimates, which are defined as the lowest values among the regional monthly averages of SPEI-12 in the moving windows from 1 month to 12 months. In EU and the US, we found no

large differences between the SPEI-12s of Ref1, Ref2 and Ref3 in the same period. In these regions, the most severe SPEI-12s in P1 are higher than those in P2. Such findings are seemingly inconsistent with the recently observed severe drought events in the US and EU, but they are reasonable because we examined the regionally averaged indices and not the local extremes of SPEIs. Additionally, the results are consistent with Fig. 3c. In the US (the third row of Fig. 3c), the increase in precipitation is higher than that in PET, which increases D (Eq. 1). In EU (the second row of Fig. 3c), the increase in PET is higher than that in precipitation; thus, D decreases on average. However, at the lower extreme of D in this case (i.e., the lower extent of the vertical line in the box plot of D in Fig. 3c), a slight increase is apparent, indicating that the most severe drought events are less severe in P2 than in P1. By examining the spatial maps of the most severe cases (not shown), we found that severe drought events in P1 were more widespread than in P2. Such widespread drought might be due to the sparse network of meteorological stations during the early 20<sup>th</sup> century, a possibility that requires further study.

In EA and WA, different patterns can be observed for the most severe SPEI-12 values. The annual precipitation and air temperature (and thus PET) exhibit regionally scattered decreases and widespread increases, respectively (Fig. 4). Consequently, the droughts from 1958–2014 are more severe than those in P1. Furthermore, the severity varies significantly with the calibration period in EA and WA, and the changes in precipitation and air temperature between the two periods are considerable.

The spatial extents of droughts for annual SPEI-12  $\leq -1.0$  are examined by sorting the results in ascending order (Fig. 11). We count the numbers of grid points with SPEI-12 values less than -1.0 in each period (i.e., P1 and P2) and divide them by the number of terrestrial grid cells in the region to derive the spatial extent, i.e., the grid-based percentage of droughts. Then, the annual time series of the spatial extent are sorted in ascending order. No specific patterns are evident in EU and the US. In EA and WA, the spatial extents are generally broader in P2 than in P1. Notably, the spatial extents from 1958–2014 clearly diverge based on the different calibration periods, reflecting the importance of the calibration method (i.e., the reference period used to assess the droughts in a region).

To understand how the drought characteristics change if the reference period is dry or wet, we compared the spatial extent of drought (%) for dry and wet cases in EA, EU, the US and WA. We defined dry and wet cases based on the water surplus or deficit D (Eq. 1). Then, we compared D values between the reference period and estimation period. A value of D in the estimation period less than that in the reference period represents a dry case, i.e., the estimation period is drier than the reference period. We performed such analyses only in Ref1 for the estimation periods of 1901–1957 (P1) and 1958–2014 (P2), as well as a reference/calibration period from 1901–2014 (P1+P2). For dry and wet cases, we quantified the spatial extent (%) according to the three different drought levels (D1, D2 and D3, which denote the cases of SPEI  $\leq -1.0$ , SPEI  $\leq -2.0$  and SPEI  $\leq -3.0$ , respectively) in the four regions.

As presented in Table 5, the average D in P1 and P2 (estimation period) is smaller than that in P1+P2 (reference period), and these are considered dry cases. For example, in EA, the D values in P2 and P1+P2 are -4.89 mm/month and -5.07 mm/month, respectively; thus, these are dry cases. Then, for each case, the spatial extent of drought, i.e., the number of drought grid cells relative to the total number of terrestrial grid cells, is analyzed, as shown in Fig. 12. The spatial extent of drought tends to be larger in dry cases than in wet cases in most regions, particularly in WA. However, we also noted that there are a few exceptions to this trend that may be attributed to the fact that we used regionally averaged values of D. Thus, we cannot consider the grid-level variability in D values.

Deleted: for

Deleted: In

Deleted: severest

Deleted: the severest

Deleted: event

Deleted: is

Deleted: that

Deleted: in this case

Deleted: awaits

Deleted: in

Deleted: severities vary

Deleted: where

Deleted: counted

Deleted: In particular

Deleted: in

Deleted: suggesting

Deleted: periods in assessing

Deleted: would

Deleted: ) and

Deleted: < -

Deleted: < -

Deleted: < -

Deleted: or

Deleted: it is

Deleted: to the

Deleted: case

Deleted: it is a

Deleted: case

Deleted: , which

Deleted:



### 3.4 Case studies using historical drought events

SPEI-12s with different reference periods are evaluated for historical drought events selected in each region to investigate how different reference periods influence the drought assessments of historical events. One drought event is chosen in each region as follows: 1) in EA, droughts that occurred in northern China in 2001 are chosen, and these events caused economic losses of USD 1.52 billion (Zhang and Zhou, 2015); 2) in EU, we chose a 2003 drought that was caused by the European heat wave and spread over the majority of Europe (Stagge et al., 2013; Spinoni et al., 2015); 3) in the US, we chose 2012 as the period of study because a historically extensive drought occurred over half of the US and caused economic losses of USD 31.2 billion (Smith and Katz, 2013; National Climate Data Center, 2015); and 4) in WA, the drought in 1984 was chosen because it was one of the most severe droughts that has occurred in Sahel countries (Gommes and Petrassi, 1994; Rojas et al., 2011; Masih et al., 2014). By estimating SPEI-12 for a chosen year in each region, we can compare the magnitudes of SPEI values (Figs. 13, 14, 15 and 16). Here, the annual SPEI-12 values based on monthly climate data from January to December in each year are first calculated. Then, the SPEI-12 values of a chosen year are examined in detail. All SPEI-12 values in different reference periods reflect the drought status because we chose specific years with drought events. In general, all cases reveal that the SPEI-12 estimates in Ref2 are relatively high (i.e., wet), and those in Ref3 are relatively low (i.e., dry) in EA and WA, where drying temporal trends are clear. In particular, several extreme values (i.e., out of the scale range in Figs. 13-16) of SPEI-12 in Ref3 cases highlight the importance of the reference period. If a reference period is based on a certain time (P1 in this study, i.e., Ref3), the drought events in the estimation period may be beyond the range in which the distribution is calibrated for the index. Essentially, for Ref3, it is assumed that not only the stationarity of the climate but also that the entire probability distribution of droughts is sampled in this period.

Furthermore, the percentage of the spatial extent of drought, i.e., the number of drought grid points relative to the total number of grid points, is assessed for different drought thresholds (Table 6). In most cases, the spatial extents of drought with SPEI values less than a certain threshold, such as -1, -2 or -3 (i.e., D1, D2 and D3, as in Table 1), are the greatest in Ref3 among the three cases with different reference periods. These results and the spatial extents are consistent with the SPEI-12 results estimated above. In addition, higher percentages of severe droughts events, which are defined based on low thresholds, such as SPEI-12 values less than -2 or -3, were observed in Ref3 than in Ref1 and Ref2 in all regions of EA, EU, the US and WA.

### 4 Conclusions

This study seeks to understand how a different reference period (i.e., calibration period) of climate data can influence drought index estimation and regional drought assessment. Specifically, we investigated the influences of different reference periods on historical drought characteristics, such as the trend, frequency, intensity and spatial extent, using SPEI-12 and the CRU and UDEL datasets. For the 1901–1957 (P1) and 1958–2014 (P2) estimation periods, three different types of reference periods are used. In the first case, data from 1901 to 2014 (P1+P2) are used for both estimation periods. In the second case, data from P1 and P2 are used separately for the

Deleted: for

Deleted: as drought in that year was the most

Deleted: since the 1930s,

Deleted: it

Deleted: for

Deleted: the

Deleted: )

Deleted: for estimating the

Deleted: can influence

Deleted: trends

Deleted: extents

estimation periods of P1 and P2, respectively (self-calibrated). In the final case, data from P1 (1910–1957) are used for both estimation periods.

Focusing on the EA, EU, US and WA regions, we found that the influence of the reference period is significant in regions with dominant drying trends from P1 to P2, such as EA and WA. Additionally, the results suggest that it

is necessary to quantify the trends of climate variables such as precipitation and air temperature as the first step in selecting a reference period. Our results also show that the reference period influences the assessment of drought characteristics, particularly the severity and spatial extent, based on the two datasets; however, their influence on the frequency is relatively small. Finally, we found that the use of a distribution calibrated with recent observations

(i.e., Ref1 and Ref2) tends to underestimate the drought severity and spatial extent relative to another approach

used in this study (i.e., Ref3).

These findings suggest that recent periods should potentially be excluded from the calibration to better understand recent drought events, particularly in regions such as EA and WA, where dominant drying trends are observed. This highlights the need for clarifying the reference period in drought assessments to better understand regional drought characteristics and their temporal changes. Such a clarification is particularly critical for assessing droughts under climate change scenarios and developing adaptation strategies for water resource management in the context of climate change.

However, we note that the abovementioned results are drawn from only three sets of reference periods, two different datasets (i.e., CRU and UDEL) and four regional examples. Future work should evaluate different combinations of reference periods with increased sample sizes and different datasets. The combined datasets could

also be used to focus on the effects of different precipitation or temperature products on the SPEI. For example, the precipitation data from the CRU, UDEL and GPCC, which is suggested to be better than CRU data by Dai and Zhao (2016), and the temperature data from CRU could be utilized to focus on the effects of different precipitation products.

This study, which was based on historical data, may yield different results at the local scale, and similar studies based on historical data and climate change scenarios in different regions would undoubtedly strengthen our findings. In the present study, we focused on the temporal aspects of calibration data (i.e., the calibration period).

As briefly mentioned in the Section 1, using data from a particular station or grid to obtain averaged data for calibration could permit a meaningful comparison of drought indices at different locations. In conjunction with temporal considerations, spatial issues should be addressed in future studies.

Furthermore, we noted that the Thornthwaite approach, in which air temperature is the main controlling factor of PET, is used to estimate the SPEI in this study; however, other approaches, such as the Penman method, could be used to consider changes in other meteorological variables, such as wind, atmospheric humidity and radiation.

McVicar et al. (2012) suggested that temperature increases may have limited effects on drought through increased PET because other meteorological conditions that affect PET may compensate for the temperature increase.

Deleted: the calibrated

Deleted: the past

Deleted: Ref3

Deleted: overestimate

Deleted: the other approaches

Deleted: .

Deleted: noted

Deleted: these

Deleted: Therefore, future

Deleted: This study highlights the need for clarifying the reference period in drought assessments to better understand regional drought characteristics and their temporal changes, particularly under climate change scenarios.

Deleted: or

Deleted: indexes

Deleted: a

Deleted: have

Deleted: there

Deleted: be

Deleted: of temperature increase

Deleted: affecting

## Acknowledgements

This study was supported by the Korea Meteorological Administration R&D Program under Grant KMIPA 2015-6180 and by the Basic Science Research Program through the National Research Foundation of Korea funded by the Ministry of Science, ICT & Future Planning (2015R1C1A2A01054800).

## References

- Abramowitz, M. and Stegun, I. A.: Handbook of Mathematical Functions. National Bureau of Standards, 1966.
- Becker, A., Finger, P., Meyer-Christoffer, A., Rudolf, B., Schamm, K., Schneider, U., and Ziese, M.: A description of the global land-surface precipitation data products of the Global Precipitation Climatology Centre with sample applications including centennial (trend) analysis from 1901–present, *Earth Syst. Sci. Data*, 5, 71–99, 2013.
- Dai, A.: Drought under global warming: a review. *Wiley Interdisciplinary Reviews: Climate Change*, 2, 45–65, 2011a.
- Dai, A.: Characteristics and trends in various forms of the Palmer Drought Severity Index during 1900–2008, *J. Geophys. Res.*, 116, D12115, 2011b.
- Dai, A. and Zhao T.: Uncertainties in historical changes and future projections of drought. Part I: estimates of historical drought changes, *Clim. Change*, 1-15, doi: 10.1007/s10584-016-1705-2, 2016.
- Dracup, J. A., Lee, K. S., and Paulson Jr, E. G.: On the definition of droughts, *Water Resour. Res.*, 16, 297–302, 1980.
- Dubrovsky, M., Svoboda, M. D., Trnka, M., Hayes, M. J., Wilhite, D. A., Zalud, Z., and Hlavinka, P.: Application of relative drought indices in assessing climate-change impacts on drought conditions in Czechia, *Theor. Appl. Climatol.*, 96, 155–171, 2009.
- Gommes, R. and Petrassi, F., 1994: Rainfall Variability and Drought in Sub-Saharan Africa since 1960. FAO Agrometeorology: Series Working Papers 9: 100pp.
- Hagman, G.: Prevention better than cure: report on human and natural disasters in the third world, Swedish Red Cross, Stockholm, 1984.
- Harris, I., Jones, P. D., Osborn, T. J., and Lister, D. H.: Updated high-resolution grids of monthly climatic observations – the CRU TS3.10 dataset, *Int. J. Climatol.*, 34, 623–642, 2014.
- Heim, R. R.: A review of twentieth-century drought indices used in the United States, *Bull. Amer. Meteor. Soc.*, 83, 1149–1165, 2002.
- Hoerling, M., Eischeid, J., Perlwitz, J., Quan, X., Zhang, T., and Pegion, P.: On the increased frequency of Mediterranean drought, *J. Climate*, 25, 2146–2161, 2012.
- Hosking, J. R. M.: L-Moments: analysis and estimation of Distributions using linear combinations of order statistics, *J. R. Stat. Soc. B*, 52, 105–124, 1990.
- Ionita, M., Scholz, P., and Chelcea, S.: Spatio-temporal variability of dryness/wetness in the Danube river basin, *Hydrological Processes*, 29, 4483–4497, 2015.

**Moved down [1]:** Dai, A.: Drought under global warming: a review, *Wiley Interdisciplinary Reviews: Climate Change*, 2, 45–65,

**Deleted:** 2011. \*

**Moved (insertion) [1]**

**Deleted:** 2011

- Karl, T. R., Knight, R. W., Easterling, D. R., and Quayle, R. G.: Indices of climate change for the United States. *Bull. Amer. Meteor. Soc.* 77, 279-292, 1996.
- Kendall, M. G.: Rank Correlation Methods. Griffin, London, 1957.
- Lloyd-Hughes, B. and Saunders, M. A.: A drought climatology for Europe, *Int. J. Climatol.*, 22, 1571-1592, 2002.
- 5 Mann, H. B.: Nonparametric tests against trend, *Econometrica*, 13, 245-259, 1945.
- Masih, I., Maskey, S., Mussá, F. E. F., and Trambauer, P.: A review of droughts on the African continent: A geospatial and long-term perspective, *Hydrol. Earth Syst. Sci.*, 18, 3635-3649, 2014.
- McKee, T. B., Doesken, N. J., and Kleist, J.: The relationship of drought frequency and duration to Time scales: Eighth Conference on Applied Climatology, in: January 17-22. Anaheim, CA: 179-184, 1993.
- 10 McVicar, T. R., Roderick, M. L., Donohue, R. J., Li, L. T., Van Niel, T. G., Thomas, A., Grieser, J., Jhajharia, D., Himri, Y., Mahowald, N. M., Mescherskaya, A. V., Kruger, A. C., Rehman, S., and Dinpashoh, Y.: Global review and synthesis of trends in observed terrestrial near-surface wind speeds: implications for evaporation, *J. Hydrol.*, 416-417, 182-205, 2012.
- Nasrollahi, N., AghaKouchak, A., Cheng, L., Damberg, L., Phillips, T. J., Miao, C., Hsu, K., and Sorooshian, S.:  
15 How well do CMIP5 climate simulations replicate historical trends and patterns of meteorological droughts?. *Water Resour. Res.*, 51, 2847-2864, 2015.
- Naumann, G., Dutra, E., Barbosa, P., Pappenberger, F., Wetterhall, F., and Vogt, J. V.: Comparison of drought indicators derived from multiple data sets over Africa, *Hydrol. Earth Syst. Sci.*, 18, 1625-1640, 2014.
- National Climate Data Center, 2014: Billion-dollar weather and climate disasters.  
20 <http://www.ncdc.noaa.gov/billions>.
- Palmer, W.: Meteorological drought, Res. Pap., 45, 1965, U.S. Department of Commerce Weather Bureau: 58 p. Available online by the NOAA National Climatic Data Center at <http://www.ncdc.noaa.gov/temp-and-precip/drought/docs/palmer.pdf>.
- Rojas, O., Vrieling, A., and Rembold, F.: Assessing drought probability for agricultural areas in Africa with coarse  
25 resolution remote sensing imagery, *Remote Sens. Environ.*, 115, 343-352, 2011.
- Seneviratne, S. I.: Historical drought trends revisited, *Nature*, 491, 339, 2012.
- Sheffield, J. and Wood, E. F.: Projected changes in drought occurrence under future global warming from multi-model, multi-scenario, IPCC AR4 simulations, *Clim. Dyn.*, 31, 79-105, 2008.
- Sheffield, J., Wood, E. F., and Roderick, M. L.: Little change in global drought over the past 60 years, *Nature*,  
30 491, 435-440, 2012.
- Shepard, D.: A two-dimensional interpolation function for irregularly-spaced data: Proceedings, 1968 ACM National Conference, in: 517-523, 1968.
- Smith, A. B. and Katz, R. W.: US billion-dollar weather and climate disasters: data sources, trends, accuracy and biases, *Nat. Hazards*, 67, 387-410, 2013.
- 35 Spinoni, J., Naumann, G., Vogt, J. V., and Barbosa, P.: The biggest drought events in Europe from 1950-2012, *J. Hydrol.: Reg. Stud.* 3, 509-524, 2015.
- Stagge, J. H., Tallaksen, L. M., Kohn, I., Stahl, K., and van Loon, A. F.: A European drought reference (EDR) database: design and online implementation. Drought-R&SPI deliverable, D1.1. Technical report no. 12, 2013.

- Tan, C., Yang, J., and Li, M.: Temporal-spatial variation of drought indicated by SPI and SPEI in Ningxia Hui Autonomous Region, China, *Atmosphere*, 6, 1399-1421, 2015.
- Thornthwaite, C. W.: An approach toward a rational classification of climate, *Geogr. Rev.*, 38, 55-94, 1948.
- Touma, D., Ashfaq, M., Nayak, M. A., Kao, S., and Diffenbaugh, N. S.: A multi-model and multi-index evaluation of drought characteristics in the 21st century, *J. Hydrol.*, 526, 196-207, 2015.
- 5 Trenberth, K. E., Dai, A., van der Schrier, G., Jones, P. D., Barichivich, J., Briffa, K. R., and Sheffield, J.: Global warming and changes in drought, *Nat. Clim. Change*, 4, 17-22, 2014.
- van der Schrier, G., Barichivich, J., Briffa, K. R., and Jones, P. D.: A scPDSI-based global data set of dry and wet spells for 1901-2009, *J. Geophys. Res.*, 118, 4025-4048, 2013.
- 10 Vicente-Serrano, S. M., Begueria, S., and López-Moreno, J. I.: A multiscalar drought index sensitive to global warming: the standardized precipitation evapotranspiration index, *J. Climate*, 23, 1696-1718, 2010.
- Vicente-Serrano, S. M. and Begueria-Portugués, S.: Estimating extreme dry-spell risk in the middle Ebro valley (northeastern Spain): a comparative analysis of partial duration series with a general Pareto distribution and annual maxima series with a Gumbel distribution, *Int. J. Climatol.*, 23, 1103-1118, 2003.
- 15 Vittal, H., Karmakar, S., and Ghosh, S.: Diametric changes in trends and patterns of extreme rainfall over India from pre-1950 to post-1950, *Geophys. Res. Lett.*, 40, 3253-3258, doi:10.1002/grl.50631, 2013.
- Wang, D., Hejazi, M., Cai, X., and Valocchi, A. J.: Climate change impact on meteorological, agricultural, and hydrological drought in central Illinois, *Water Resour. Res.*, 47, doi: 10.1029/2010WR009845, 2011.
- Wilhite, D. A.: Reducing drought vulnerability through mitigation and preparedness, report to the inter-Agency Task Force For Disaster Reduction Sixth Meeting, Geneva. National Drought Mitigation Center, Lincoln, 2002.
- 20 Willmott, C. J. and Matsuura, K., 2001: Terrestrial Air temperature and precipitation: monthly and annual Time series (1950-1999). [http://climate.geog.udel.edu/~climate/html\\_pages/README.ghcn\\_ts2.html](http://climate.geog.udel.edu/~climate/html_pages/README.ghcn_ts2.html).
- Willmott, C. J., Rowe, C. M., and Philpot, W. D.: Small-scale climate maps: A sensitivity analysis of some common assumptions associated with grid-point interpolation and contouring, *Am. Cartographer*, 12, 5-16, 1985.
- 25 Zhang, L. and Zhou, T.: Drought over East Asia: a review, *J. Climate*, 28, 3375-3399, 2015.
- [Zhao, T. and Dai, A.: The magnitude and causes of global drought changes in the twenty-first century under a low-moderate emission scenario, \*J. Clim.\*, 28, 4490-4512, 2015.](#)
- 30 [Zhao, T. and Dai, A.: Uncertainties in historical changes and future projects of drought. Part II: model-simulated historical and future drought changes, \*Clim. Change\*, 1-14, doi: 10.1007/s10584-016-1742-x, 2016.](#)

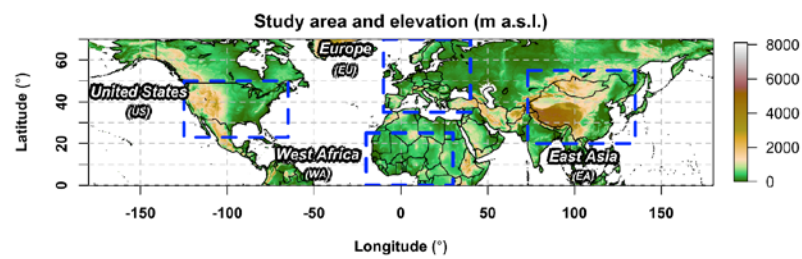
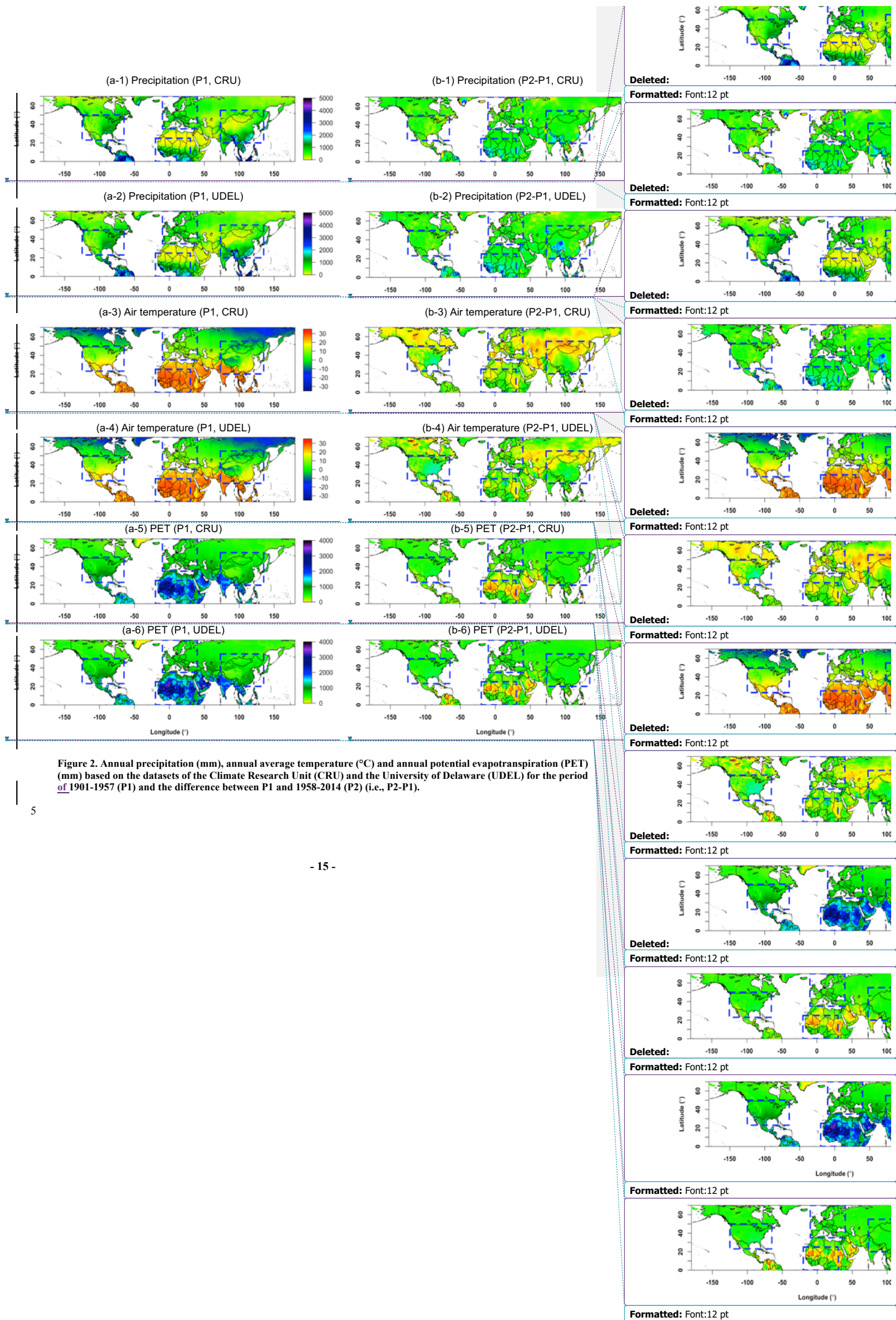


Figure 1. Study area, including East Asia (EA), Europe (EU), the United States (US) and West Africa (WA), and elevation (m above sea level (a.s.l.)). The dashed blue boxes represent the boundaries of each study region.

Deleted: box represents

Deleted: boundary for



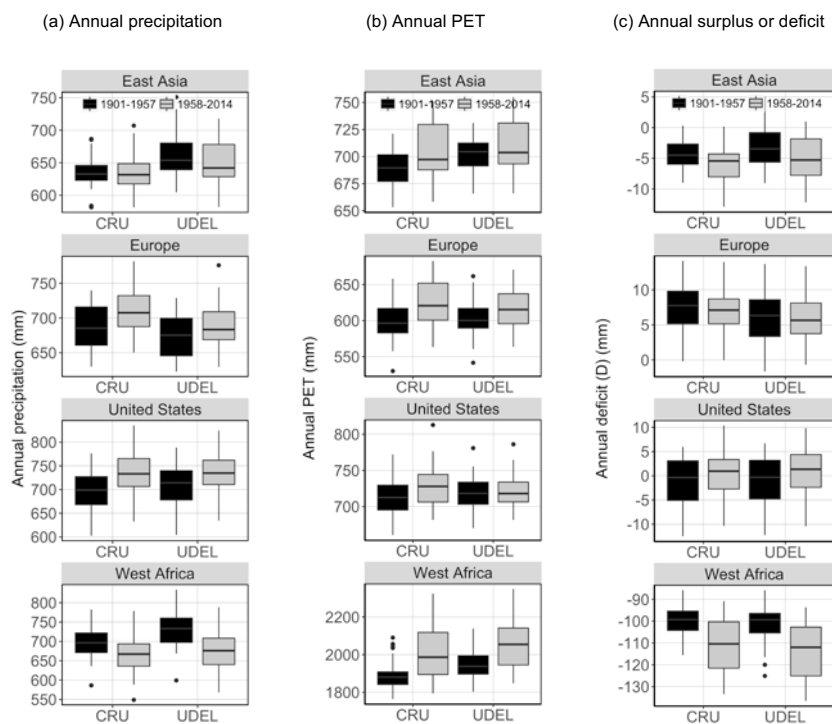


Figure 3. Temporal variations in annual precipitation (mm), PET (mm) and surplus or deficit (D) (mm) based on two datasets (CRU and UDEL) and periods (1901-1957 and 1958-2014). In the box plots, the center line represents the median value; the top and bottom of each box represent the 25<sup>th</sup> and 75<sup>th</sup> percentiles of the data, respectively; and the dots represent outliers.

Deleted: percentile



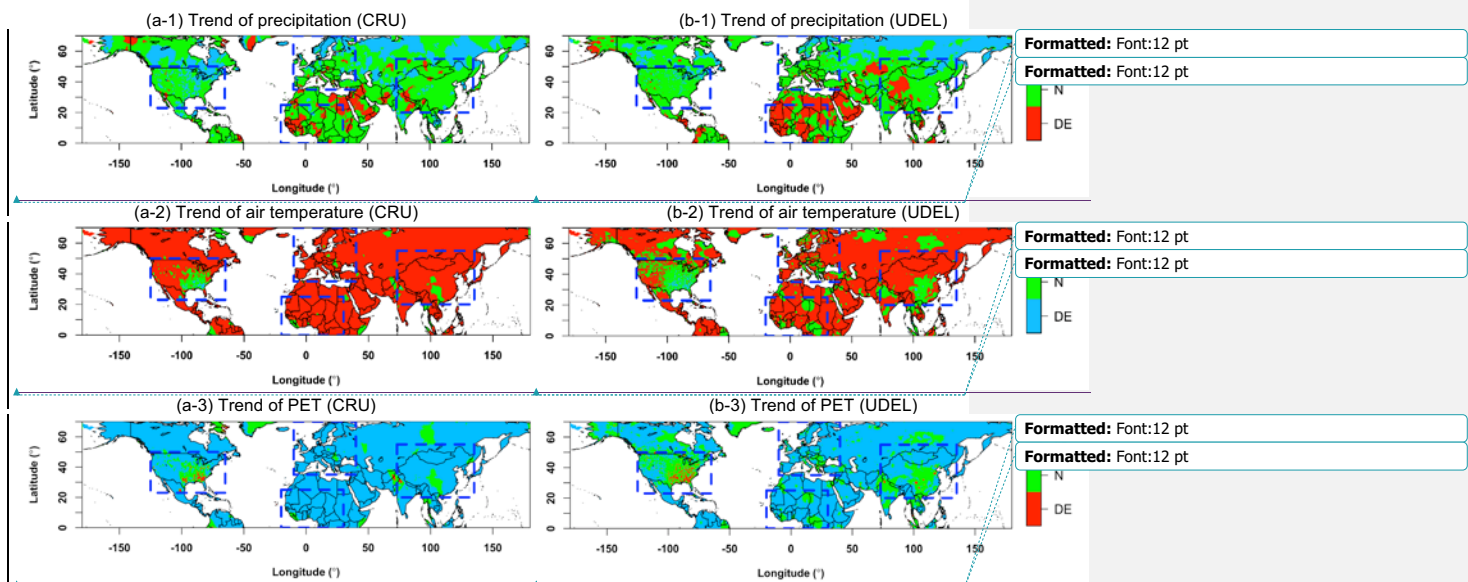


Figure 4. Trends in annual precipitation, annual average temperature and annual PET based on the CRU and UDEL datasets. The colored regions correspond to regions of IN, N and DE, which indicate a statistically positive (increasing) trend, no trend and a negative (decreasing) trend, respectively, at a significance level of 5%.

Deleted: averaged

Deleted: with

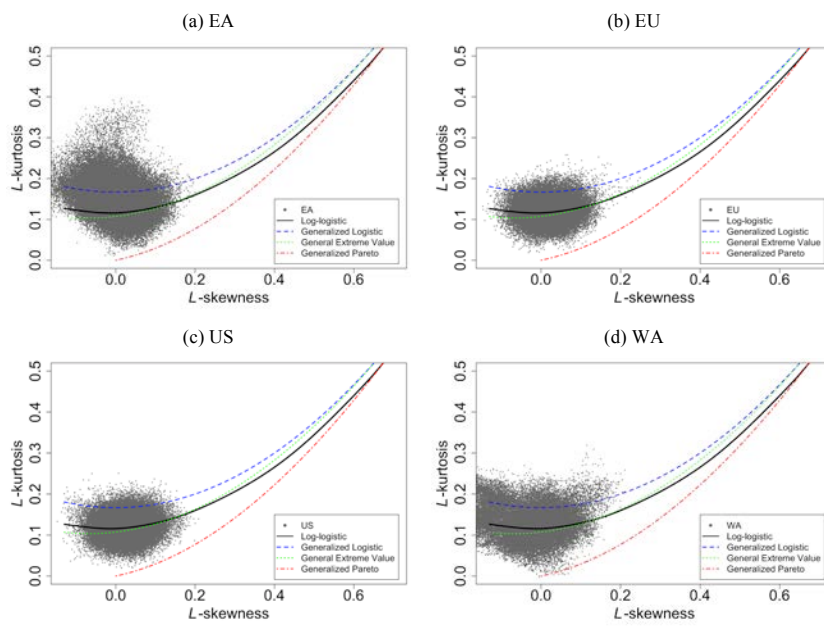


Figure 5. L-moment ratio diagrams for D in Eq. (1) with a 12-month timescale based on CRU for each region from 1901-2014 and 1901-1957.

Deleted: for

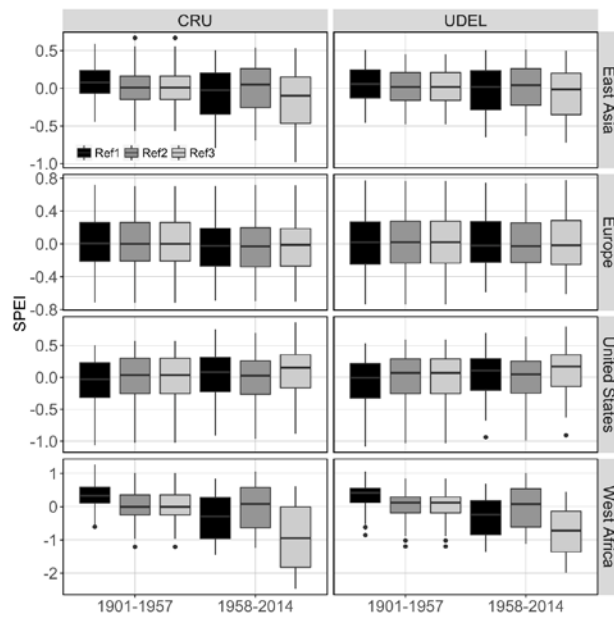


Figure 6. Temporal variations in SPEI-12 for three different reference periods (Ref1, Ref2 and Ref3 in Table 2) based on the CRU and UDEL datasets from 1901–1957 and 1958–2014. In the box plots, the center line represents the median value; the top and bottom of each box represent the 25<sup>th</sup> and 75<sup>th</sup> percentiles of the data, respectively; and the dots represent outliers.

Deleted: percentile

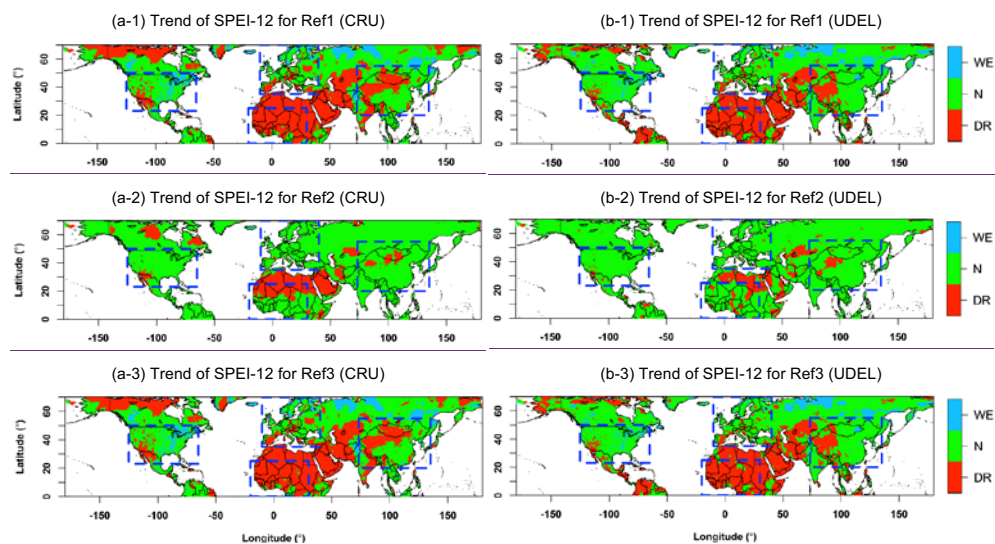
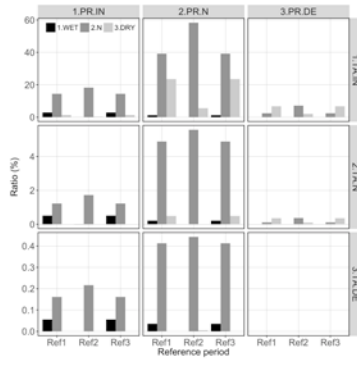
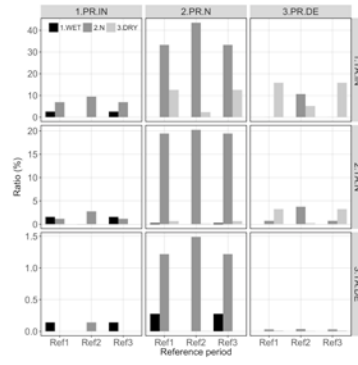


Figure 7. SPEI-12 trends in three different reference periods (Ref1, Ref2 and Ref3 in Table 2) based on the (a) CRU and (b) UDEL datasets. The colored regions correspond to regions of WE, N and DR, which denote a statistically positive (wetting) trend, no trend and a negative (drying) trend, respectively, at a significance level of 5%.

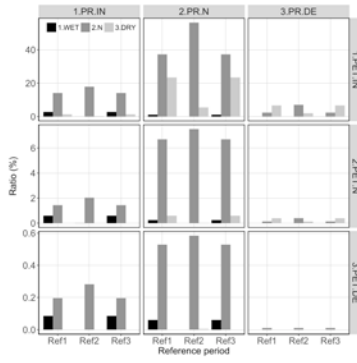
(a-1) Precipitation vs. Air temperature (CRU)



(b-1) Precipitation vs. Air temperature (UDEL)



(a-2) Precipitation vs. PET (CRU)



(b-2) Precipitation vs. PET (UDEL)

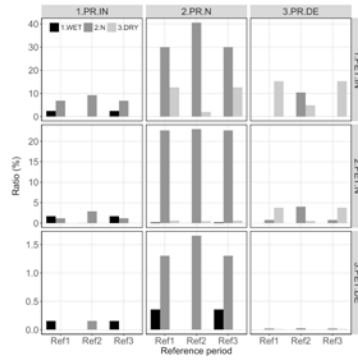


Figure 8. The ratios of SPEI-12 trends in three different reference periods (Ref1 to Ref3 in Table 2) based on the CRU and UDEL datasets for trends of monthly precipitation and temperature (or PET) in each region. For the SPEI, WET, N and DRY indicate a statistically positive (wetting) trend, no trend and a negative (drying) trend, respectively, at a significance level of 5%. For precipitation, air temperature and PET, IN, N and DE denote a statistically increasing (positive) trend, no trend and a decreasing (negative) trend, respectively, at a significance level of 5%.

Deleted: for

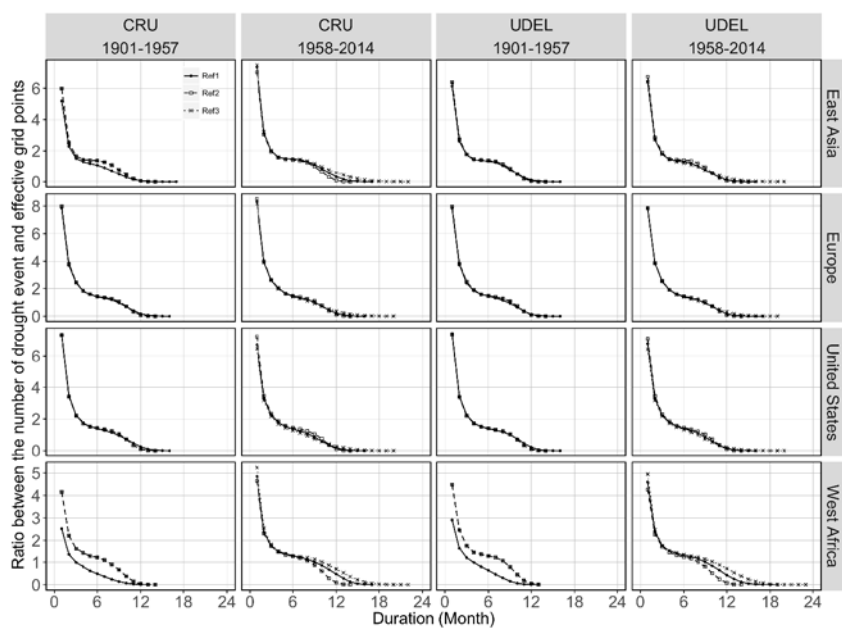


Figure 9. Ratio between the number of drought events and the number of terrestrial data grid points in three different reference periods (Ref1, Ref2 and Ref3 in Table 2) based on the CRU and UDEL datasets from 1901–1957 and 1958–2014 in each region.

Deleted: for

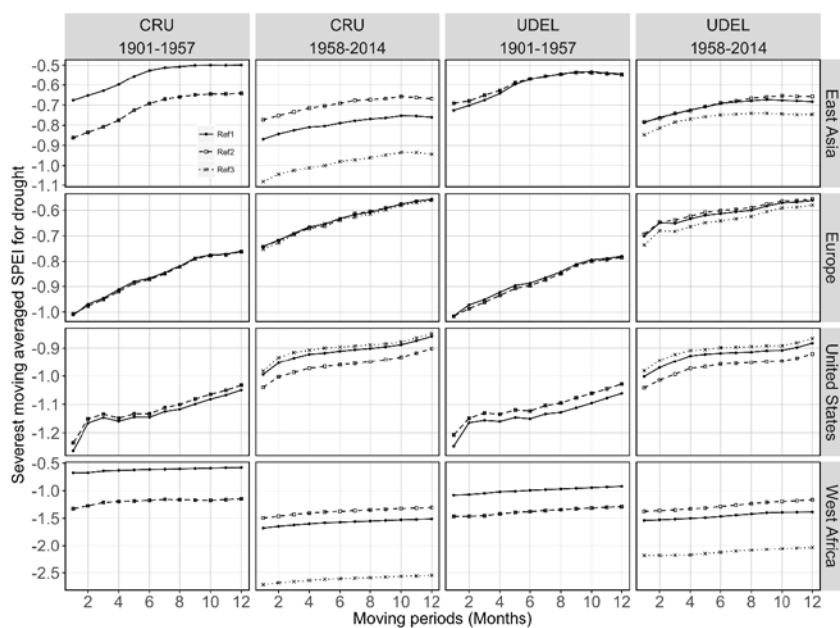


Figure 10. Most severe moving average of regional SPEI-12 over 1–12 months for three different reference periods (Ref1, Ref2 and Ref3 in Table 2) based on the CRU and UDEL datasets from 1901–1957 and 1958–2014 in each region.

Deleted: for

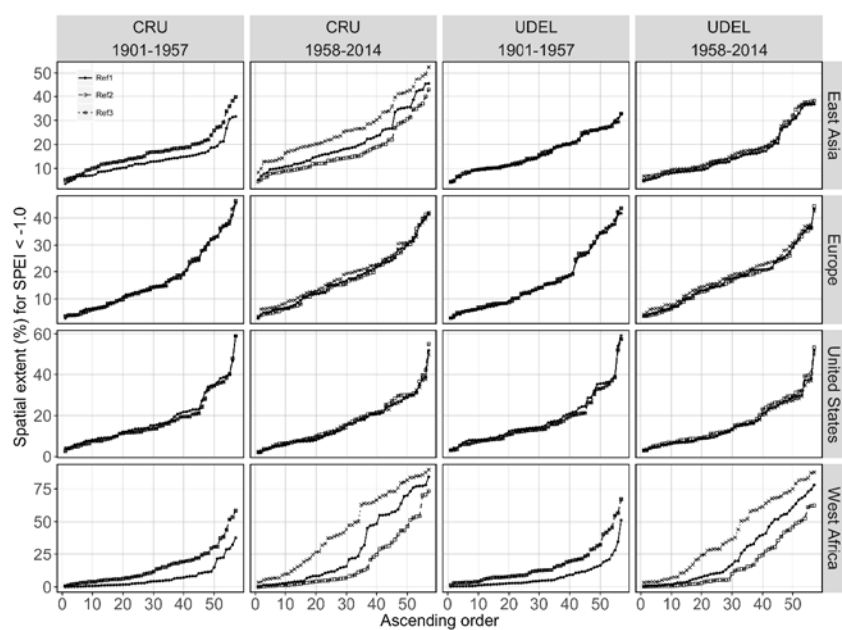


Figure 11. Spatial extent (%) of SPEI-12 < -1.0 for three different reference periods (Ref1, Ref2 and Ref3 in Table 2) based on the CRU and UDEL datasets from 1901–1957 and 1958–2014 in each region.



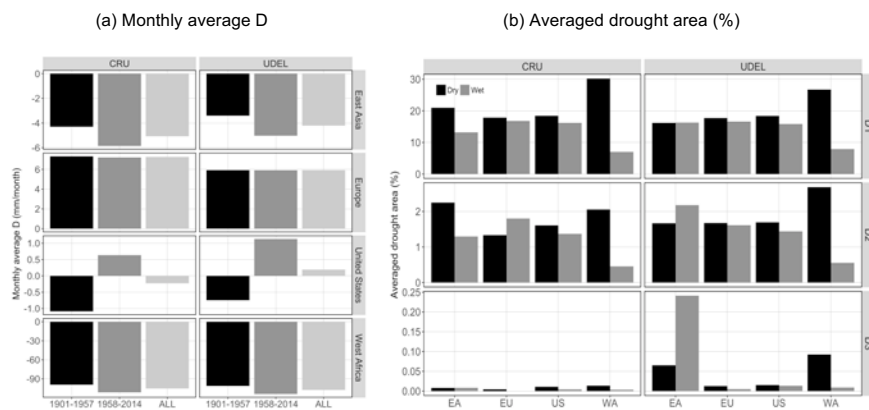


Figure 12. Monthly average D (mm) in Eq. (1) and average drought area (%) based on the CRU and UDEL datasets in the EA, EU, US and WA regions for the Ref1 condition. In (a), ALL denotes the period of 1901-2014. In (b), Dry denotes that the monthly average D in the assessment period is less than that in the reference period, and Wet denotes that the monthly average D in the assessment period is greater than that in the reference period based on the Ref1 condition.

Deleted: for each region of

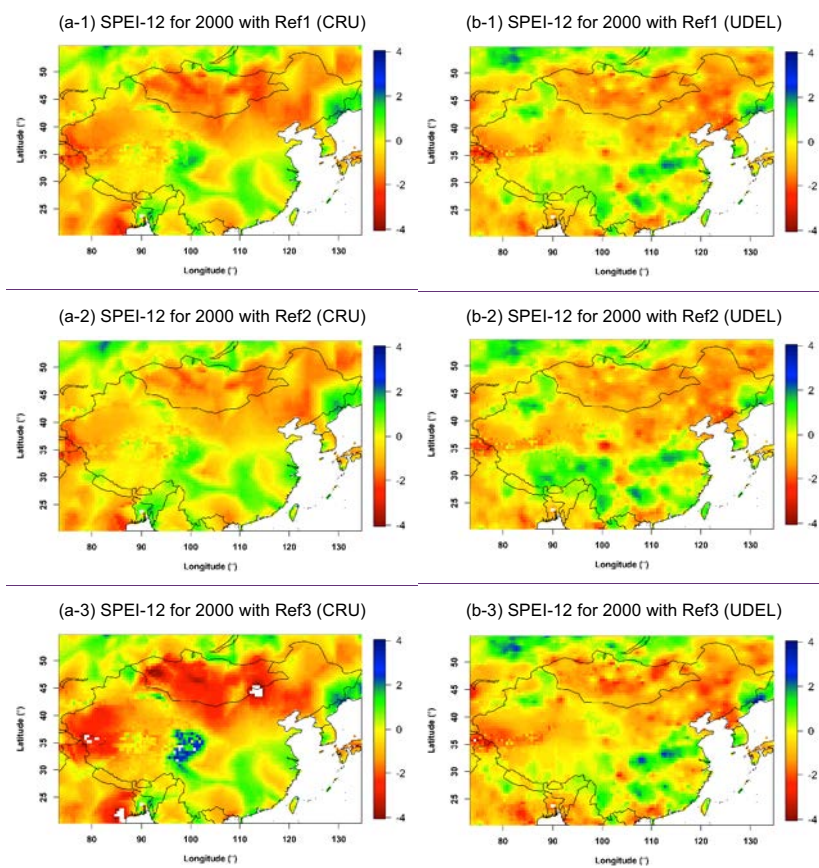


Figure 13. Spatial distribution of SPEI-12 for three different reference periods (Ref1, Ref2 and Ref3 in Table 2) based on the (a) CRU and (b) UDEL datasets in East Asia in 2000 as an example.

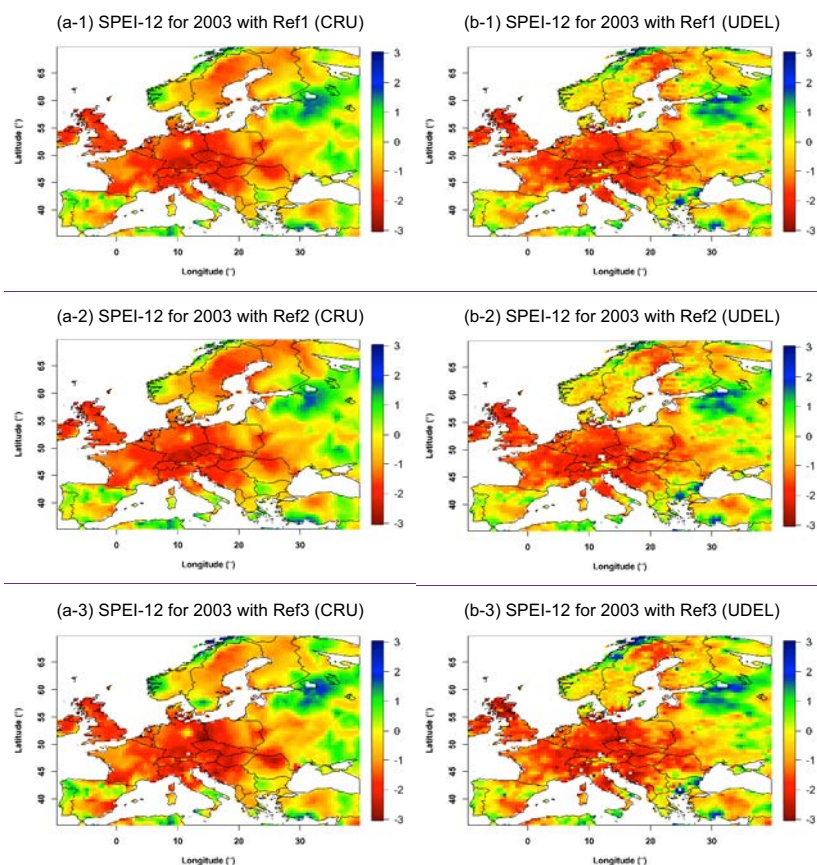


Figure 14. Spatial distribution of SPEI-12 for three different reference periods (Ref1, Ref2 and Ref3 in Table 2) based on the (a) CRU and (b) UDEL datasets in Europe in 2003 as an example.

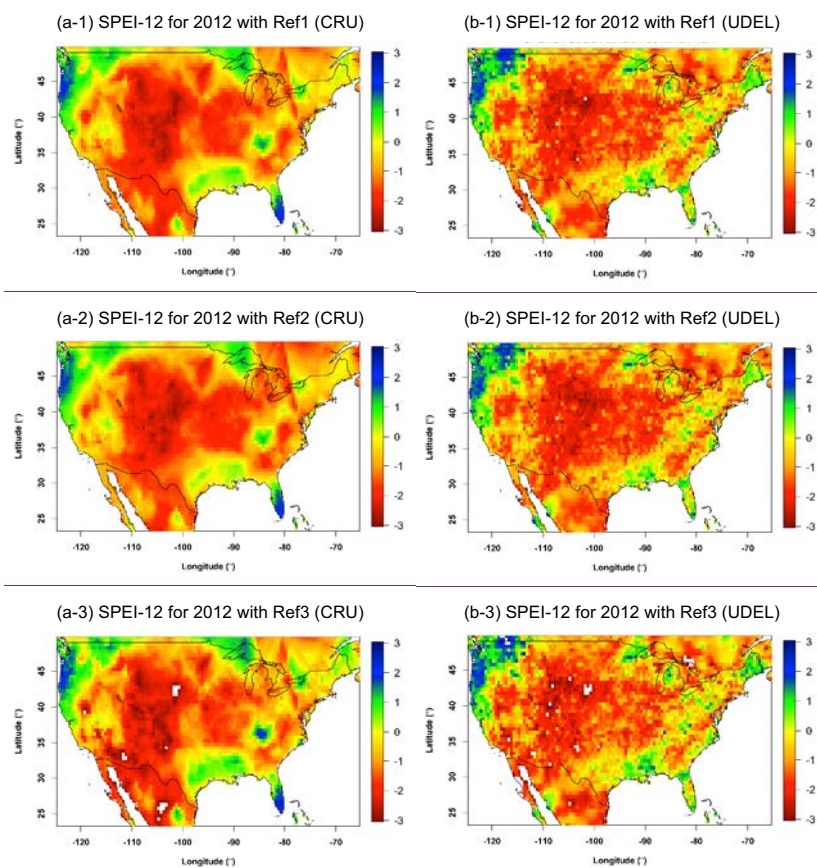


Figure 15. Spatial distribution of SPEI-12 for three different reference periods (Ref1, Ref2 and Ref3 in Table 2) based on the (a) CRU and (b) UDEL datasets in the United States in 2012 as an example.

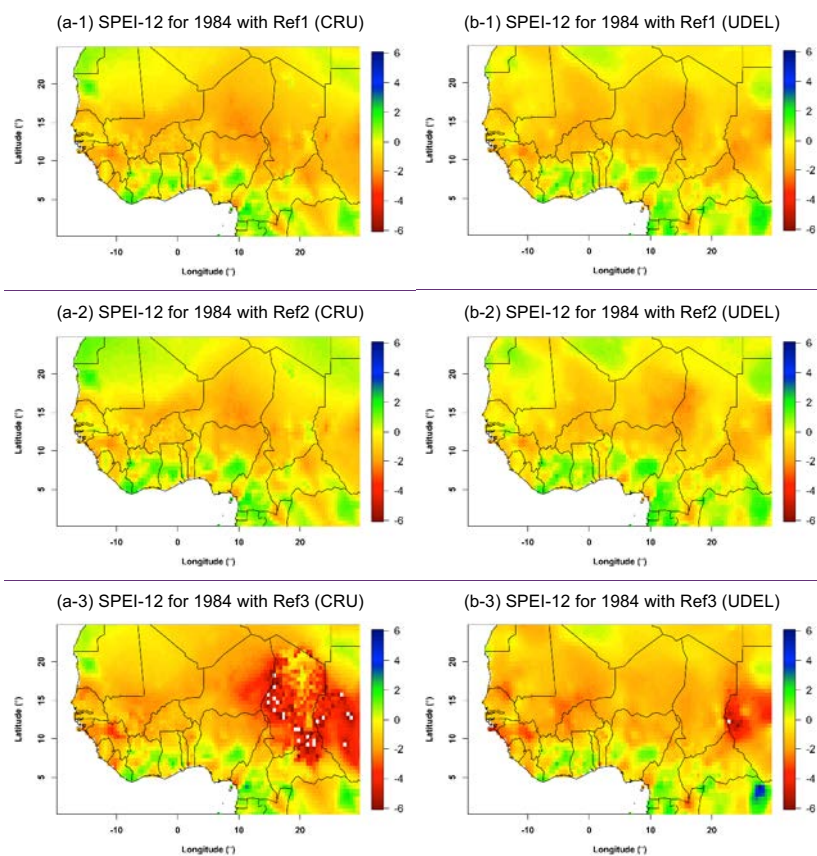


Figure 16. Spatial distribution of SPEI-12 for three different reference periods (Ref1, Ref2 and Ref3 in Table 2) based on the (a) CRU and (b) UDEL datasets in West Africa in 1984 as an example.

Table 1. Classification of dry status in this study (modified from Mckee et al. (1993)).

Category	Description	SPEI
D1	Moderately Dry or More Severe	$\leq -1.0$
D2	Very Dry or More Severe	$\leq -2.0$
D3	Extremely Dry or More Severe	$\leq -3.0$

Deleted: ).

**Table 2. Definition of the cases of Ref1, Ref2 and Ref3 based on the estimation and calibration periods for SPEI-12.**

Type	Estimation Period	Calibration Period
<b>Ref1</b>	1901–1957	1901–2014
	1958–2014	
<b>Ref2</b>	1901–1957	1901–1957
	1958–2014	1958–2014
<b>Ref3</b>	1901–1957	1901–1957
	1958–2014	

**Table 3. Mean and standard deviation (STD) of precipitation and air temperature in each period and each region.**

Deleted: for

			CRU		UDEL	
			1901–1957	1958–2014	1901–1957	1958–2014
Annual precipitation (mm)	EA	Mean	637.19	635.52	659.67	649.21
		STD	22.36	30.05	30.67	31.76
	EU	Mean	685.86	711.03	674.17	688.31
		STD	31.08	32.43	30.97	31.16
	US	Mean	698.44	736.22	709.50	734.42
		STD	43.31	41.48	44.06	41.55
	WA	Mean	698.49	666.59	734.84	676.11
		STD	36.87	43.84	44.89	48.00
Annual average air temperature (°C)	EA	Mean	6.08	6.67	6.25	6.62
		STD	0.28	0.52	0.31	0.48
	EU	Mean	6.96	7.46	7.02	7.29
		STD	0.56	0.68	0.55	0.64
	US	Mean	10.46	10.78	10.59	10.64
		STD	0.45	0.50	0.43	0.43
	WA	Mean	26.27	26.62	26.40	26.66
		STD	0.25	0.48	0.26	0.41
Annual potential evapotranspiration (mm)	EA	Mean	688.69	705.78	700.44	709.52
		STD	16.06	23.92	15.65	22.73
	EU	Mean	598.06	624.48	603.15	617.35
		STD	24.86	31.66	23.46	28.54
	US	Mean	711.49	728.60	718.48	720.90
		STD	23.84	26.28	22.59	21.28
	WA	Mean	1889.57	2001.37	1948.91	2044.28
		STD	72.61	136.96	78.17	129.94



**Table 4. Spatial extent (%) (number of grid points relative to the total number of terrestrial grid points) in each region of different trends of SPEI-12 values based on different reference periods.**

Zone	CRU						UDEL					
	Ref1		Ref2		Ref3		Ref1		Ref2		Ref3	
	Wet	Dry	Wet	Dry	Wet	Dry	Wet	Dry	Wet	Dry	Wet	Dry
EA	2.5	36.3	0.0	8.0	2.5	36.5	3.4	23.2	0.0	7.7	3.4	23.2
EU	10.4	24.9	0.0	1.7	10.4	24.9	5.3	15.8	0.0	2.2	5.3	15.8
US	18.6	16.2	0.0	67	18.6	16.2	11.3	9.7	0.1	3.1	11.3	9.7
WA	0.0	90.2	0.0	40.4	0.1	89.8	0.0	90.9	0.0	19.5	0.0	90.9

Deleted: for

**Table 5. Monthly average D (mm/month) in each region for the periods of 1901-1957 (P1), 1958-2014 (P2) and 1901-2014 (P1+P2) based on the CRU and UDEL datasets.**

	CRU			UDEL		
	P1	P2	P1+P2	P1	P2	P1+P2
EA	-4.29	-5.85	-5.07	-3.40	-5.03	-4.21
EU	7.32	7.21	7.26	5.92	5.91	5.92
US	-1.09	0.64	-0.23	-0.75	1.13	0.19
WA	-99.26	-111.23	-105.24	-101.17	-114.01	-107.59

**Table 6. Spatial extent (%) (number of grid points in each drought category relative to the total number of grid points) of major drought events in different reference periods based on the CRU and UDEL datasets.**

Zone	Period	Type	CRU			UDEL		
			Ref1	Ref2	Ref3	Ref1	Ref2	Ref3
EA	2000	D1	32.63	27.48	38.80	26.81	27.39	29.62
		D2	2.45	0.75	14.64	0.92	0.73	2.64
		D3	0.05	0.00	1.83	0.04	0.01	0.07
EU	2003	D1	37.58	39.10	36.68	35.30	34.67	36.61
		D2	5.33	3.97	7.68	5.93	4.82	8.50
		D3	0.00	0.00	0.02	0.02	0.10	0.22
US	2012	D1	52.16	55.01	50.02	54.69	56.32	52.92
		D2	11.97	11.90	15.74	10.36	11.76	11.63
		D3	0.02	0.00	0.53	0.09	0.05	0.87
WA	1984	D1	44.06	31.04	62.18	37.13	27.15	57.78
		D2	3.42	1.87	28.62	2.07	1.72	13.80
		D3	0.00	0.00	14.30	0.00	0.00	2.99

Deleted: for

Deleted: for