

Davos, 16 June 2016

Dear Dr. Ross Woods,

We would like to thank you and each of the reviewers for their helpful comments that have helped to improve this work.

Please find our discussion of the revisions we have made in response to the comments from the three reviewers in the following pages. You will find specific replies to comments along with references to changes made in the manuscript. The manuscript with all changes marked in red is below this reply letter. The line numbers given in the specific replies refer to the manuscript included below.

For clarification, the manuscript separately uploaded has slightly different line numbers due to the LaTeX journal style template.

Thank you and with best regards,  
Nena Griessinger (on behalf of the authors)

## Review #1

---

**Comment by reviewer:** The study evaluates the value of external snow distributed input into a conceptual hydrologic model in alpine basins. Three different settings are compared for 20 basins in Switzerland. The results show that assimilation of snow improves the runoff model efficiency in basins with mean basin elevation above 2000 m a.s.l.

This is a nice compact study, I enjoyed reading it. The manuscript is clearly written, has a good structure and it is within the scope of the journal.

I have only a few minor comments which might be considered for revision. These include:

1) Introduction: I believe, there are some more relevant studies looking on the benefits of additional snow data in hydrologic model calibration or modelling. Please consider to extend the introduction section accordingly. (please see e.g. Udnaes et al., 2007, Parajka et al. 2007, 2008, or review in Parajka and Blöschl, 2012)

**Answer by authors:** Thank you for the suggested literature; we have included one of the references in the introduction.

**Changes:** Additional literature included in the introduction (see lines 62 to 64).

---

**Comment by reviewer:** 2) Objectives: Is it the sensitivity (or runoff model efficiency) of conceptual hydrologic model to snow inputs, which is the main objective?

**Answer by authors:** We have clarified our objectives and added text in both, the abstract and the introduction.

**Changes:** Clarified at the end of the introduction (line 67) and in the abstract (line 12).

---

**Comment by reviewer:** 3) P.3, 1.9-10: “daily average values for the entire study”? Please clarify.

**Answer by authors:** For each catchment, we used hourly data aggregated to daily sums to match the temporal resolution of the involved models.

**Changes:** Clarified in Section 2 (see lines 81 to 82).

---

**Comment by reviewer:** 4) Results: It seems that the way DDF is estimated does affect the performance. Please consider to provide/discuss more detailed information about the sinusoidal function and snow density model used. Does it change with the elevation of the basins?

**Answer by authors:** We added more information on the DDF in the model description (see lines 152 to 154) and extended the discussion by analyzing the performance of the models with particular regards to differences in the formulation of the DDF (see lines 263 to 269).

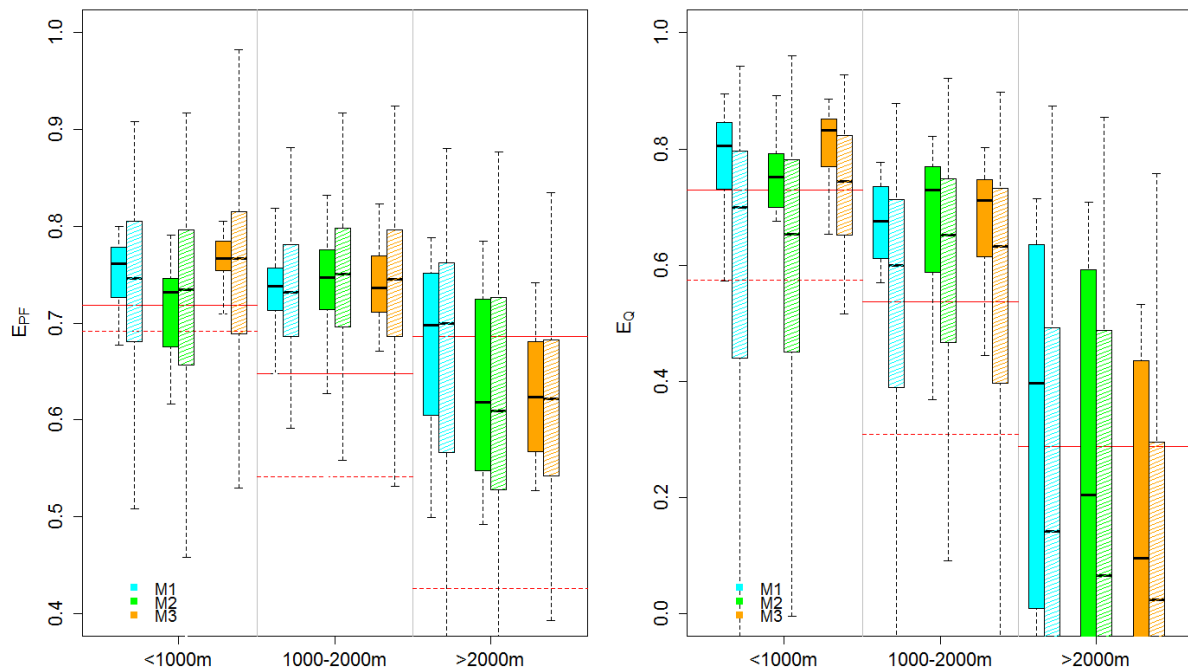
**Changes:** Additional information as mentioned in the answer above.

---

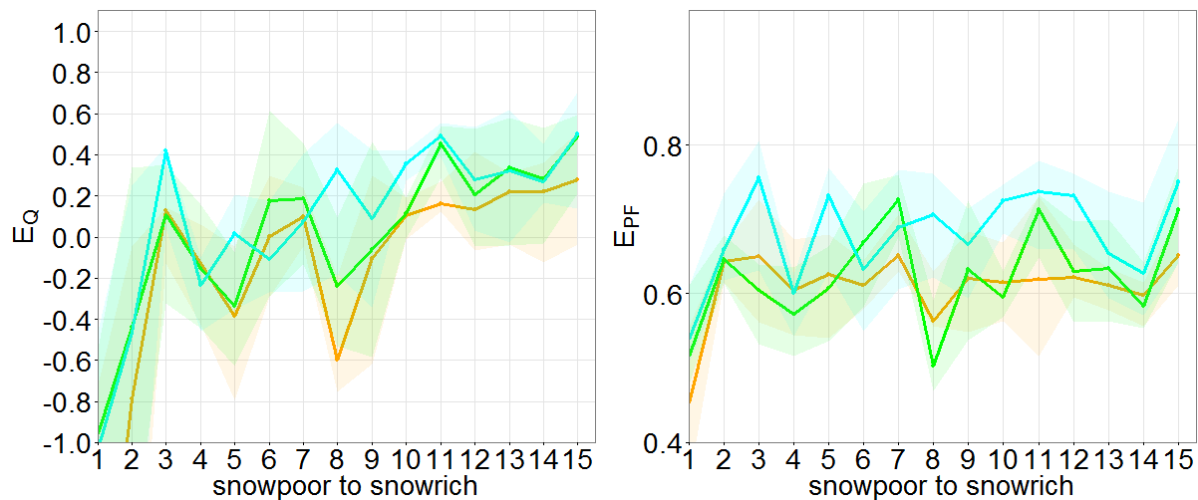
**Comment by reviewer:** 5) Model efficiency: I would suggest to consider extending results and showing also runoff model efficiency (NSE) for the entire calibration/validation periods (not only the selected snowmelt seasons). This might serve as a baseline for comparison with other studies, as well as to allow to evaluate the value of improved snowmelt for the following seasons (e.g. are the soil moisture states/and hence runoff generation different for the three variants?).

**Answer by authors:** The main objective of this study is to assess how different methods for simulating the snow cover influences runoff predictions. Therefore, we focus on a period spanning 60 days that is strongly affected by snowmelt. We agree that improved modeling of snowmelt might also affect runoff model performances later in the year. In response to your comment we performed an additional analysis of the leave-one-out experiment for a snowmelt period of 120 instead of 60 days (see below Figure 1 and Figure 2). This analysis gave similar results with the same relative differences between M1, M2, M3, but with a lower overall performance due to the decreasing relevance of snowmelt as the snow-covered area declines. We thank you for your suggestion, but given these results, we decided not to add the additional figures, but rather include these findings in text-form only.

**Changes:** Extended discussion in Section 4.4 (lines 316-318).



**Figure 1: Results of the leave-one-out approach calculated for 120 days of melt.  $E_{PF}$  (left panel) and  $E_Q$  (right panel) for each elevation class and snowmelt model. For the individual elevation classes and melt models, the left box plots (darker colors) show the results for the calibration period, and the right box plots (lighter colors) show the results for the validation period. The whisker boxes represent the median (center line), the interquartile range (25-75th percentile; box outline) and highest/lowest performance within the interquartile range  $\pm 1.5$  times of the interquartile range (whiskers). The benchmark performance is denoted by a solid red line (upper benchmark) and a dashed red line (lower benchmark), and the latter only displayed if within the range of the axis limits.**



**Figure 2: Results of the leave-one-out approach calculated for 120 days of melt for catchments with mean elevation above 2000 m.a.s.l. Median (solid lines) and interquartile (25-75th percentile, shading) range of EPF (left panel) and EQ (right panel) for validation years ordered from snow-poor (index=1) to snow-rich (index=15) years.**

---

**Comment by reviewer:** 6) Figure 2: Please consider to decrease the legend and increase the size of the maps.

**Answer by authors:** We revised the mentioned figure.

**Changes:** Adapted Figure 2.

---

**Comment by reviewer:** 7) Table 1. Please give names to basins.

**Answer by authors:** We revised the mentioned table.

**Changes:** Added catchment names in Table 1.

---

**Comment by reviewer:** First, the uncertainty associated with snow depth observation data is never mentioned. As I understand from the manuscript the collected snow depth data were rather punctual and to me, the mentioned ‘flatness’ of the terrain where they were collected does not guaranty their ‘local’ representativity. Elaboration on that, and precisions as to the snow depth measurement protocol, would be welcome. An ancillary aspect also regards the hydrological data, which are subject to quite high uncertainties in mountain catchments as a result of frequent shifts in the topography of the river beds. This aspect should at least be discussed.

**Answer by authors:** Thank you for raising the question about the representativeness of the snow observations, which is very relevant. Indeed, flat field observations do not necessarily represent areal mean values over complex terrain as snow accumulation rates are generally smaller in steep terrain as compared to rates over flat terrain. In fact, our snow models do account for the influence of topography on snow distribution and redistribution in mountainous terrain, which is now mentioned in the model description (lines 137 to 147). Furthermore, please note that we have carefully selected our snow data to avoid assimilating data from sites that were influenced by wind or frequent sensor failures, or known to systematically deviate from representative measurements (lines 87 to 92). Regarding the hydrological data, we rely on the plausibility check done by FOEN (Federal Office of Environment), to which we refer (see lines 79 to 82).

**Changes:** Additional information as mentioned in the answer above.

---

**Comment by reviewer:** Second, in most calibration and validation sets of simulations, M3 outperforms the upper-benchmark, which relies on a calibrated degree-day factor whereas M3 relies on a constant degree-day factor for all catchments. To me this result is quite counter-intuitive and deserves an explanation.

**Answer by authors:** Thank you for your remark, we agree that this finding may appear counterintuitive and should be discussed. However, please note that all snow models (incl. M3) have been particularly trained for an optimal performance in the Swiss Alps, i.e. regarding the representation of processes like liquid water content, refreezing, cold content dynamics, the partitioning of rain and snow, and redistribution of snow in steep terrain. Furthermore, calibrating HBV for the melt season only could result in a DDF that is too high during the snow accumulation period, which would inhibit an accurate timing of the meltwater release (c.f. updated Figure 4).

We have adapted the manuscript accordingly and provided this discussion to the reader.

**Changes:** Adapted in Section 4.2 (see lines 263 to 269).

---

**Comment by reviewer:** Finally, a distinct ‘discussion’ part could be inserted in the manuscript : Section 4.4 after line 11 could be part of it, as well as elements coming in response to point 2 mentioned above. Optionally, more elements as to the different, converging metrics used could be provided to the reader. The general decrease of (each) model performances with elevation could be commented and interpreted, in link with the quality of the interpolations (/extrapolation) of meteorological data and sometimes snow observations at these altitudes.

**Answer by authors:** Thank you for your suggestion, however the setup of the manuscript was discussed with all authors in detail and we found the combination of results and discussion within one chapter appropriate for this paper. We would like to point out that Reviewer #1 particularly appreciated the current structure of the paper. The discussion has been extended in response to all other comments.

**Changes:** No changes.

---

**Comment by reviewer:** The last sentence of the abstract overlooks the fact that with altitude, not only the accurate estimation of snowmelt rate gains importance, but also the accurate estimation of SWE, which is one of the hypotheses tested by the paper’s set-up.

**Answer by authors:** We have adapted the last sentence of the abstract accordingly.

**Changes:** Adapted abstract.

---

**Comment by reviewer:** a) The first concern addresses the interpretation of the results. What is exactly the added value of the assimilated data set. Is it a more sophisticated and correct snow melt model or is it rather the added indirect information of precipitation amounts fallen in high altitudes where the meteorological station network is not present. My interpretation would be the latter, as the differences between model M1 and M2 (e.g. assimilation) are considerable for the highest altitudes. I would appreciate a discussion on this question.

**Answer by authors:** As M1 and M2 differ in the use of the data assimilation algorithm only, and not in the snow melt model, the added value is based on the information coming from the point snow observations. Consequently, in both the discussion and the conclusions we highlight the value of data assimilation in M1. We have adapted the model description to clarify the exact difference between M1 and M2.

**Changes:** Additional information about M1 and M2 are given in Section 3.2 (see lines 165 to 168).

---

**Comment by reviewer:** b) A follow up on this issue. The SLF station data are known to overestimate the SWE amounts. How was this issue addressed in the study and if not what are the consequences for your model as you may have calibrated your model against “differently wrong” data.

**Answer by authors:** Indeed, flat field observations do not necessarily represent areal mean values over complex terrain, as snow accumulation rates are generally smaller in steep terrain as compared to rates over flat terrain. In fact, our snow models do account for the influence topography on snow distribution and redistribution in mountainous terrain, which is now mentioned in the model description (lines 137 to 147). Furthermore, note that we have carefully selected our snow data to avoid assimilating data from sites that were influenced by wind or frequent sensor failures, or known to systematically deviate from representative measurements (lines 87 to 92).

**Changes:** Additional information as mentioned in the answer above.

---

**Comment by reviewer:** c) The LOO validation produces by nature highly variable performance values. I find it difficult to estimate differences between the models based on medians of boxplot. I would rather use a significance test. I recommend to show validation boxplots side by side and add notches to them.



**Answer by authors:** Thank you for this suggestion. We have adapted this visualization of our results and added notches to the box plots as suggested.

**Changes:** Updated Figures 5 and 6.

---

**Comment by reviewer:** d) I found examples on the model performance given in Figure 3 and 4 show some room for improvements. Especially in Figure 3 it seems as the threshold for snowmelt was calibrated incorrectly. Is this threshold predefined by the external snowmodel? And if so, doesn't this mean that the snow model itself needs to be updated and calibrated against discharge? And I wonder what the upper benchmark model would look like.

**Answer by authors:** Thank you for catching this mistake. Indeed, in this conceptual figure, the horizontal lines erroneously showed the mean runoff instead of 1.5 times the mean runoff. While calculations of EPF were correct, we replaced Figure 3 with a correct version.

**Changes:** Updated Figure 3.

---

**Comment by reviewer:** Page 1 Line 1: Abstract: The first sentence is somehow isolated from the rest of the text. I recommend to delete this sentence

**Answer by authors:** We deleted this sentence.

**Changes:** Adapted abstract.

---

**Comment by reviewer:** P2 L1: and the erroneous precipitation input data at higher altitudes?

**Answer by authors:** Thank you; we have added this additional information.

**Changes:** Added information plus references in the introduction (see line 36).

---

**Comment by reviewer:** P3 L 32 “rain input” : which precipitation data set drives the snow model? Also the RHiresD?

**Answer by authors:** Yes, RhiresD data were used as input to our snow model. Snowmelt and rain input to HBV are subsequently provided by the external snow model versions.

**Changes:** Clarification in Section 3.1 (line 111).

---

**Comment by reviewer:** P4 L1 ff: Is it correct that all model combinations HBV+M1-M3 as well as upper and lower benchmark models are calibrated? This is somehow suggested by Figure 5. In the calibration section I understood that a calibration was done for M3, upper and lower benchmark.

**Answer by authors:** Yes, all combinations were calibrated separately. We now explicitly mention this in the text.

**Changes:** Sentence added in Section 3.1 (see lines 127 to 128).

---

**Comment by reviewer:** P5 L 2-3 what do you mean by “optimal interpolation approach”. What magnitude of summed corrections can be found?

**Answer by authors:** Thank you for your question. Optimal interpolation, sometimes also referred to as statistical interpolation, is a technical term for a data assimilation technique. See Magnusson et al. (2014) for further details, including the magnitude of summed corrections.

**Changes:** No changes.

References:

Magnusson, J., Gustafsson, D., Hüsler, F., and Jonas, T.: Assimilation of point SWE data into a distributed snow cover model comparing two contrasting methods. *Water Resour. Res.*, 50(10), 7816-7835, doi: 10.1002/2014WR015302, 2014.

---

**Comment by reviewer:** P5 L12: . . . , but the RHiresD precipitation data set. Correct?

**Answer by authors:** Yes, also here RhiresD was used as input to the snow model.

**Changes:** No changes.

---

**Comment by reviewer:** P7 L12ff and Figure4: However, the differences between M1-M3 are rather small for the snowmelt season as also indicated by the differences in NSE

**Answer by authors:** Yes, we agree that the differences are small in some instances.

**Changes:** A respective comment was added in Section 4.1 (see line 237).

---

**Comment by reviewer:** P7 L27: I wonder if the differences of the LOO validation are significant given the relatively large spread. (see general comments)

**Answer by authors:** We changed the style of the boxplots for clarification (see answer to your general comment above)

**Changes:** Updated Figures 5 and 6.

---

**Comment by reviewer:** P7 L31 and Figure 5: - The benchmark lines are only the median of their respective boxplots? What is the spread of benchmark models? - The only difference between the benchmark model and M3 is a predefined DDF in M3 (cp.P5, L17-18)? Or are there further differences? If not, it is unexpected to see M3 to reach higher performance values than the upper benchmark. - Why is the performance of the benchmark model so weak in comparison to the other models especially in the lowest catchment class where snow does not really play a role?

**Answer by authors:** Thank you for your comment. We agree that finding instances where even M3 outperforms the upper benchmark model may appear counter-intuitive. Note however that all snow models (incl. M3) have been particularly trained for an optimal performance in the Swiss Alps, i.e. regarding the representation of processes like liquid water content, refreezing, cold content dynamics, the partitioning of rain and snow, and redistribution of snow in steep terrain. Further,

calibrating HBV for the melt season only could result in a DDF that is too high during the snow accumulation period, which would inhibit an accurate timing of the meltwater release (c.f. updated Figure 4).

We have adapted the manuscript and included this discussion in the revised version.

**Changes:** Added information in 4.2 (see lines 263 to 269).

---

**Comment by reviewer:** P8 L17: Please specify snow-rich: extreme snow years do not necessary result in an increased flood risks. To my understanding, largest snow melt contribution to runoff is expected if snow-covered area is largest and snow depth is widely insignificant (if SWE is above a certain minimum).

**Answer by authors:** Thank you, we have clarified this issue in the revised manuscript.

**Changes:** Sentence added in Section 4.2 (see lines 285 to 286).

---

**Comment by reviewer:** P8 L30: in snow rich years the extent of snow in the lowlands is presumable larger then in snow-poor years. Accordingly, I also expected an effect of snow-rich years in the lowlands? Can you comment on this?

**Answer by authors:** We did not analyze the performances for single years in the lowlands. At low elevations however, a large fraction of the snow-covered area can melt out in less than a week, even for snow-rich years. Only as you move to higher catchments, you increase the correspondence between the mid-winter snow mass and the duration of the main melt season. Since our data analyses were performed over an evaluation period of 2 months duration, it is expected to not find a pronounced difference in model performances between snow-rich and snow-poor years for low-elevation catchments, as the time scales at which these differences matter at low elevation is much smaller than the evaluation period.

**Changes:** No changes.

---

**Comment by reviewer:** Figure 1: The blue lines on black are nearly invisible. Please change colors.

**Answer by authors:** We changed the colors from blue to white, which we hope improves the presentation.

**Changes:** Changed colors in Figure 1.

---

**Comment by reviewer:** Figure 2: Instead of showing one specific year, I would rather see a mean snow melt sum. In addition, maps showing differences between the models would increase readability.

**Answer by authors:** Thank you for your recommendation. We discussed showing either cumulative sums or differences between the models with all authors in detail and we found this visualization appropriate for this paper.

**Changes:** No changes.

---

**Comment by reviewer:** Figure 3: Please indicate which model version is represented by the red dashed line.

**Answer by authors:** Figure 3 serves only as graphical explanation of how to calculate EPF, therefore the model version used here is not of importance.

**Changes:** No changes.

---

**Comment by reviewer:** Figure 4: Please add upper benchmark model

**Answer by authors:** Thank you for this suggestion, we adapted Figure 4 accordingly.

**Changes:** Added upper benchmark model in Figure 4.

---

**Comment by reviewer:** Table 1: Instead of numbers I would prefer to see the names of the catchments

**Answer by authors:** We adapted the mentioned table as requested.

**Changes:** Added catchment names in Table 1.

# Assessing the benefit of snow data assimilation for runoff modeling in alpine catchments

5 N. Griessinger<sup>1,2</sup>, J. Seibert<sup>2</sup>, J. Magnusson<sup>3</sup>, T. Jonas<sup>1</sup>

<sup>1</sup>WSL Institute for Snow and Avalanche Research SLF, Davos, Switzerland

<sup>2</sup>Department of Geography, University of Zurich, Zurich, Switzerland

<sup>3</sup>Norwegian Water Resources and Energy Directorate (NVE), Oslo, Norway

*Correspondence to:* Nena Griessinger (nena.griessinger@slf.ch)

10 **Abstract.** In alpine catchments, snowmelt often is a major contribution to runoff. Therefore, modeling snow processes is important when concerned with flood or drought forecasting, reservoir operation and inland waterway management. In this study, we address the question of **how sensitive hydrological models are to the representation of snow cover dynamics** and whether the performance of a hydrological model can be enhanced by integrating data from a dedicated external snow monitoring system. As a framework for our tests we used the hydrological model HBV (in the version HBV light), which has  
15 been applied in many hydrological studies and is also in use for operational purposes. While HBV originally follows a temperature index approach with time-invariant calibrated degree-day factors to represent snowmelt, in this study the HBV model was modified to use snowmelt time series from an external and spatially distributed snow model as model input. The external snow model integrates three-dimensional sequential assimilation of snow monitoring data with a snowmelt model, which is also based on the temperature-index approach but uses a time-variant degree-day factor. The following three  
20 variations of this external snow model were applied: a) the full model with assimilation of observational snow data from a dense monitoring network, b) the same snow model but with data assimilation switched off, c) a downgraded version of the same snow model representing snowmelt with a time-invariant degree-day factor. Model runs were conducted for 20 catchments at different elevations within Switzerland for 15 years. Our results show that at low and mid elevations the performance of the runoff simulations did not vary considerably with the snow model version chosen. At higher elevations,  
25 however, best performance in terms of simulated runoff was obtained when using the snowmelt time series from the snow model, which utilized data assimilation. This was especially true for snow-rich years. These findings suggest that with increasing elevation and correspondingly increased contribution of snowmelt to runoff, the accurate estimation of **SWE and** snowmelt rates gains importance.

## 1 Introduction

30 Snowmelt provides a dominant contribution to runoff and groundwater storages in mountainous regions. In such areas, modeling snow processes is crucial for resource management as well as for flood and drought forecasting. Snow accumulates and acts as temporary storage of water that is released as soon as snowmelt occurs. Since erroneous simulations of snow

35 accumulation can bias the amount and timing of simulated snowmelt, accurately modeling both processes is important for runoff predictions. Problems for modelers may occur due to the great heterogeneity and variability of these processes, but also due to the limited availability of necessary observational data (Adam et al., 2009, Viviroli et al., 2004, Viviroli et al., 2011), **including erroneous precipitation input data at higher altitudes (Wiesinger, 1993)**. Additionally, computational resources often constrain operational applications as timely model outputs are required. To cope with these challenges, many hydrological models make use of the temperature-index (TI) melt method instead of the energy balance approach, which has higher input data requirements and also is computationally more demanding (Vehviläinen, 1992, Kumar et al., 2013).

40 TI-models can result in sufficient model performance if evaluated at a daily resolution and at the catchment scale (Lang and Braun, 1990, Hock, 2003), provided they use a reasonable parameterization (such as degree-day factor (DDF) and threshold temperature). The basic concept of TI-models is to use air temperature as a proxy for the three energy sources that contribute to snowmelt: incoming longwave radiation, absorbed global radiation, and sensible heat flux (Ohmura, 2001). The methods differ in their number of parameters such as threshold values to parameterize snowfall and melt, ranging from 45 implementations using 2 to 5, as in HBV (Bergström, 1976), to 11 (Irannezhad et al., 2015) parameters. Inappropriate calibration of parameters will fail to accurately describe accumulation and melt rates and lead to a biased duration of the snow season and incorrect melt-out dates (Seibert, 2003). Identifying catchment characteristics that impact hydrological responses (i.e. geology, soil types, or land use types) is also critical (Fontaine et al., 2002).

Snow models of high complexity have been developed for a great variety of applications and their development is still 50 ongoing. For avalanche research or snow studies on a small scale, simulating detailed processes within the snowpack is of great interest and importance. Otherwise, for operational purposes, which require short computation time and therefore cannot represent snowpack processes at great detail, different approaches are used to simulate snow accumulation and melt. Recently, various methods to assimilate observational snow data for snow cover models have been developed. At the point scale, model improvements due to assimilation of snow water equivalent data from observations were already shown 55 (Magnusson et al., 2014).

At the catchment scale and for operational purposes, **several** studies evaluated the effect of **additional information from snow observations** with different approaches. Franz et al. (2014) evaluated data assimilation based on a small number of ground-based observation sites within a hindcasting framework. In contrast to predictions of runoff under low flow conditions, the overall skill of the forecasts could not be significantly improved. Joerg-Hess et al. (2015) improved snow water and runoff 60 volume predictions by replacing simulated snow water equivalent at model initialization with data from measurements. Integrating snow data sets within the calibration procedures is an additional method to improve hydrological models as shown by Finger et al. (2015). **A multiple objective calibration based on daily runoff data and snow depth data converted to spatially snow cover data, as introduced by Parajka et al. (2007), could improve snow cover simulations, but not runoff simulations compared to a single objective calibration based on daily runoff data only.** Andreadis et al. (2006) showed that 65 the assimilation of remotely sensed snow cover area data did not significantly improve the model performance during accumulation, while for the snowmelt season small improvements were found. The authors concluded that assimilating snow

water equivalent data from observations might be a more successful approach. Therefore, as the main objective of this study, we evaluated the sensitivity of a conceptual runoff model (conceptual in terms of the linear reservoir concept) to the external input of snowmelt data from three different snow models of different complexities. Particularly, we examined the benefit of snow water equivalent data assimilation for hydrological applications in mountainous regions.

## 2 Data

To cover a wide range of elevations and different climatic regions, for this study we chose 20 catchments spread over Switzerland. All of them were at most minimally affected by human activities, such as water regulation or abstraction. A further crucial selection criterion was the availability of the required data. Since, especially at high elevations, the runoff regime of many catchments in Switzerland is affected by man-made installations, the number of possible catchments was highly limited.

Catchments analyzed in this study varied in size from 17 to 473 km<sup>2</sup> and the mean elevations of these catchments ranged between 560 and 2656 m.a.s.l. (Table 1 and Figure 1). We grouped the catchments for our analysis based on their mean elevation into three elevation classes: below 1000 m.a.s.l., 1000 to 2000 m.a.s.l., and above 2000 m.a.s.l. Runoff data measured at the catchment outlets of these 20 catchments was provided and checked for plausibility by FOEN (Federal Office of the Environment). According to the temporal resolution of the model output, we aggregated the hourly runoff records into daily sums.

For the data assimilation for the full snow model used in this study we considered daily snow depth measurements from both manual and automatic monitoring stations (see red stars in Figure 1 for locations). All stations used were part of either the MeteoSwiss (Federal Office of Meteorology and Climatology) or the SLF (WSL Institute for Snow and Avalanche Research) snow station networks in Switzerland, covering elevations between 210 and 2950 m.a.s.l. and located on open, flat terrain. Out of approximately 600 available stations, only 320 were used after a careful selection process to avoid sites that were influenced by wind or frequent sensor failures, or known to systematically deviate from representative measurements. Daily data from the morning measurements between 01 September 1998 and 31 August 2013 was carefully checked for missing values or erroneous readings and corrected where necessary. Those values were replaced using a stochastic gap filling model that accounts for data from the same station before and after the gap, as well as for data from neighbouring stations at similar elevations.

Temperature data was obtained from 220 stations and interpolated using an inverse distance weighting approach as described in Magnusson et al. (2014), which considers both, horizontal and vertical distances between measurement stations and interpolated grid cells. A variable weighting factor was used to determine the influence of horizontally near but vertically distant stations. The resolution of the resulting temperature grid dataset was 1 km by 1 km.

Precipitation data was also required as a gridded input dataset. We used a daily product (RhiresD) with a spatial resolution of 2 km by 2 km available from MeteoSwiss. The product is based on a dense precipitation gauge network with approximately



500 stations within Switzerland. Methodological details are described in Frei and Schär (1998), Frei et al. (2006) and Isotta et al. (2013).

### 3 Methods

#### 3.1 Hydrological Model

The hydrological model HBV (Bergström 1976, 1992, 1995; Lindström et al., 1997) in the version HBV light (Seibert and Vis, 2012) was used to simulate runoff at the 20 selected catchments. HBV requires a time series of precipitation, air temperature, and potential evaporation to simulate runoff for a specific catchment. Potential evaporation was calculated following the methods of Priestly and Taylor (1972). In the HBV snow routine, precipitation is expected to be solid below a certain temperature threshold and multiplied by a correction factor to account for possible undercatch and to compensate for the missing snow interception. Snowmelt is usually calculated using the same threshold temperature and a DDF. Up to a certain fraction, liquid water can be stored in the snowpack and refreezes if temperatures are below the threshold temperature. In our study, however, we disabled this snow routine of the HBV model and replaced snowmelt as well as rain input with data coming **both** from the external snow model. Groundwater recharge and actual evaporation were simulated in a soil routine depending on the actual water storage. A response routine consisting of three linear reservoirs and a routing routine using a triangular weighting function follow. Runoff data observed at the outlet of all catchments considered in this study was used for calibration and validation of the model. More details are available in Seibert and Vis (2012).

To evaluate the performance of the hydrological model in response to the input from different variants of the external snowmelt model, we focused our analysis on the main melt period, denoted below as snowmelt season. Although onset and duration of the snowmelt season vary from year to year, we have determined a fixed snowmelt season for each individual catchment (Table 1), based on the average timing of first snowmelt runoff in the spring and the average duration until 75% of melt-out.

Two approaches were chosen to split the available runoff data into separate datasets for calibration and validation. The first approach was to use all years for calibration except one, which was used for validation. This so called leave-one-out procedure was repeated so that each year was used for validation once. The second approach was differential split-sampling (Klemeš, 1986), where the snow-poor and normal years were used for calibration and the snow-rich years were used for validation. This separation into different snow year groups was done individually for each catchment.

To optimize the parameter set of the hydrological model for each catchment and each of the input datasets within the calibration period, we ran a genetic calibration algorithm as described in Seibert (2000) with 5000 model runs and 1000 runs for local optimization. **This was done individually for each of the above model configurations, as well as for the benchmark model.** As the objective function, we used the Nash-Sutcliffe model efficiency (Nash Sutcliffe, 1970) computed for the catchment-specific snowmelt season.

### 130 3.2 Snow Model

The external snow model framework, which we used in this study instead of the snow routine built in the HBV model, also simulates snowmelt by a TI approach but in addition allows for integration of observational snow data using a data assimilation scheme. While some details on the external snow model framework are given below, a full description of model and data assimilation methods is available in Magnusson et al. (2014). We applied three versions of this model, denoted M1 to M3. Version M1 includes the full model and data assimilation scheme (an approach unavailable in the internal snow routine of HBV), whereas M2 and M3 are downgraded versions of M1 as described below.

Several characteristics are common to all model versions described below. First, a threshold temperature differentiates whether precipitation falls as snowfall or rain. However, the models allow for mixed precipitation in a range close to the threshold temperature (see Equation 10 and the corresponding description in Magnusson et al. (2014)). Second, fractional snow-covered area (SCF) is parameterized using modeled snow depth and terrain parameters that were derived from a 25m digital elevation model according to Helbig et al. (2015). Third, all three model versions allow the snow cover to hold a fraction of liquid water. Fourth, all model versions consider the influence of topography on snow distribution and redistribution in mountainous terrain. Slope- and aspect-dependent correction functions were trained using a set of high resolution snow depth maps from airborne LiDAR acquisitions in the European Alps as presented in Grünwald et al. (2015), and applied at a subgrid 25m spatial resolution. This procedure ensured accurate inference of areal mean snow depths from snow and precipitation measurements on flat field sites. In the following section, we describe the three versions of the snow model used in this study:

- TI snowmelt model with data assimilation and time-varying DDF (M1):

This model is the same as described in detail in Magnusson et al. (2014). Using an elaborated TI approach, daily snowmelt at each grid cell was calculated if a certain threshold temperature is exceeded. The DDF defines the possible melt rate per day and per degree temperature above the threshold. For M1, the DDF varied as a function of season between a minimal [ $1.0 \text{ mm } ^\circ\text{C}^{-1} \text{ day}^{-1}$ ] and maximal [ $4.5 \text{ mm } ^\circ\text{C}^{-1} \text{ day}^{-1}$ ] value using a sinusoidal function (see Equation 12 in Magnusson (2014)). The DDF is independent of elevation. For the data assimilation, the daily measured snow depth data at all stations were first converted to snow water equivalents (SWE) using a snow density model, which is based on the methods of Jonas et al. (2009) and Martinec and Rango (1991). Second, by applying an optimal interpolation approach, the SWE data was used to correct the computed snowfall amounts. Finally, the simulated melt rates and model state variables (SWE and liquid water content) were updated using the ensemble Kalman filter with the same SWE data. Both the optimal interpolation scheme and the ensemble Kalman filter were setup using spatially correlated error statistics. With such an approach, often called three-dimensional data assimilation, the point snow observations influences the gridded simulation results even at locations lacking observations. For more details about the model, and the data assimilation method in particular, see Magnusson et al. (2014).

- TI snowmelt model with time-varying DDF without data assimilation (M2):

165 In this version, the same elaborated TI approach as in M1 was applied to simulate snow accumulation and melt at each grid cell based on the same input data grids as in M1. Also, the DDF seasonal variations are equal to those in M1. The only difference concerns the data assimilation procedures which were switched off in M2, such that observed SWE data were not used to update the initial estimates on snow accumulation and melt rates.

170 - TI snowmelt model using a constant DDF without data assimilation (M3):

This version differs from M2 with respect to the DDF. Here the DDF does not show seasonal variations but is assumed to be constant over season. The average DDF of  $2.5 \text{ mm } ^\circ\text{C}^{-1} \text{ day}^{-1}$  was chosen, which is a good compromise if used for the full winter season. For comparison only, complementary analyses were performed with the constant DDF of  $4.0 \text{ mm } ^\circ\text{C}^{-1} \text{ day}^{-1}$ , which is more appropriate if used for a late snowmelt season only. Note that M3 represent the type of snow routine used in  
175 HBV light, except for that DDF is a model parameter determined by calibration in HBV, whereas it is a pre-defined value in M3.

Replacing a TI model with another TI model, and not with an energy-balance or snowpack-physics model, may appear unusual at first glance. However, if concerned with conceptual hydrological modeling at a daily time scale, the TI model  
180 framework used here constituted an ideal testing environment. To provide daily snowmelt rates, the dynamic data assimilation framework within M1 represents current state-of-the art methodology in operational snow hydrological monitoring. Since it accounts for measured snow depletion rates at hundreds of monitoring sites, it provides the best possible input to the hydrological model. Even with data assimilation switched off (M2), if validated against snow lysimeter data at daily time steps, the performance is almost on par with the output of top-notch energy balance models (Magnusson et al.,  
185 2015). Only the concept of using a constant DDF (M3) could result in a severely downgraded performance, as already seen by Lang and Braun (1990). Hence, the triplet [M1, M2, M3] provides a ranked set of input options, which allows an evaluation of the sensitivity of conceptual hydrological modeling on the input from different types of snow models. This ultimately was the purpose of the study, rather than testing the performance of a specific runoff model (i.e., HBV).

As mentioned above, HBV originally uses a TI snowmelt routine, which is similar to our external model version M3.  
190 However, as part of HBV light, the constant DDF is a free parameter to be optimized during calibration of the snowmelt season. Hence, to provide a benchmark for our performance tests, we also ran the HBV model with the original snow routine switched on. We used these runs as an upper benchmark, since the HBV snow routine was tuned by calibration to allow the maximum possible performance of the runoff model for each individual catchment. In contrast, we created a lower benchmark by assuming all precipitation to be rain, i.e., a no-snow-model scenario. These two benchmarks allowed scaling  
195 of the performances, which were achieved when using M1 to M3 to provide input to HBV.

All model variants were run for the whole study period on a daily time step at 1 km spatial resolution. During the snowmelt season, the three snow model methods created individual spatial pattern of simulated snowmelt. As an illustrative example, the cumulative sums of snowmelt between 01 February 2007 and 30 April 2007 are shown in Figure 2. As expected for the snowmelt season, M2 yielded higher amounts of snowmelt compared to M3 due to differences in the DDF. In this particular year, the observations used for the assimilation did not support the high melt rates as predicted by M2, resulting in M1 to calculate lesser amounts of snowmelt.

### 3.3 Validation methods

Timing of snowmelt onset and of runoff events due to snowmelt affects the availability of water resources and influences flooding and droughts (Semmens et al., 2013). Therefore, it is crucial to simulate and to evaluate the timing of streamflow accurately when comparing snowmelt models. Several efficiency criteria are used in the literature for evaluating hydrological models and should be selected carefully depending on the aim of the validation (Krause et al., 2005). To assess the performance of the hydrological model in combination with the input options from our set of snow models, we chose the following two criteria.

First, since we were interested in how precise single peak flow events due to snowmelt could be simulated when integrating data from the different snow model approaches, we used the “Peak flow Efficiency for snowmelt season” ( $E_{PF}$ ). Figure 3 illustrates the procedure to calculate this measure. Observed peak flow events during the snowmelt season (yellow period in Figure 3) that exceed a certain threshold (defined as 1.5 times of the mean runoff during snowmelt season; horizontal line in Figure 3) were picked and denoted as  $Q_{peak\_obs\_i}$  (blue circles in Figure 3). The maximum simulated runoff in a time window of one day before and after each of the  $n$  observed peak flow events were taken as simulated reference values  $Q_{peak\_sim\_i}$  (red stars in Figure 3). These values did not necessarily have to be local peaks or greater than a certain threshold (Eq. (1); Seibert, 2003).

$$E_{PF} = 1 - \frac{\sum_{i=1}^n |Q_{peak\_obs\_i} - Q_{peak\_sim\_i}|}{\sum_{i=1}^n Q_{peak\_obs\_i}}, \quad (1)$$

Additionally, the frequently used Nash-Sutcliffe efficiency of runoff  $E_Q$  (Eq. 2) according to Nash and Sutcliffe (1970), which is also supposed to be sensitive to peak flow events (Krause et al., 2005) was chosen and applied to the defined snowmelt season.

$$E_Q = 1 - \frac{\sum_{i=1}^m (Q_{obs\_i} - Q_{sim\_i})^2}{\sum_{i=1}^m (Q_{obs\_i} - mean(Q_{obs}))^2}, \quad (2)$$

where  $i$  represents all (1 to  $m$ ) days within the snowmelt season and  $Q_{obs\_i}$  and  $Q_{sim\_i}$  are observed and simulated runoff at day  $i$ , respectively. This was also used as the objective function for the genetic calibration algorithm (GAP-optimization) within the hydrological model framework.

Both efficiency metrics were calculated for a) each catchment and b) each of the two calibration experiments. The performance statistics are discussed separately for each of the three groups of catchments depending on mean elevation.

#### 4.1 Example of runoff simulation for a representative catchment

To look for differences between the three snow model methods, individual catchments and years were selected. Representing a catchment at high elevations, results for the Dischma catchment (EZG 2327, gauge Davos Kriegsmatte) with a mean elevation of 2349 m.a.s.l. are shown in Figure 4. The yellow background displays the catchment-specific snowmelt season during which the bulk of the snowmelt typically occurs. The blue and grey lines at top of the graph indicate the snowmelt input to the hydrological model from M1 excluding and including rain, respectively, in this example for the record-high snow year 1999. The observed runoff is shown by the black curve, while the different colored curves indicate the simulations with M1, M2 and M3. The curves as well as the performance metrics achieved by the differential split-sample experiment demonstrate that for this catchment, the M1 model as input to the hydrological framework provided the best runoff simulations, **even though the differences are small**. Note however, that in this example M1 particularly outperforms the other models in the month of July, which is outside the standard evaluation period.

#### 4.2 Model performance across elevation classes: leave-one-out sample

First, we used the leave-one-out approach to calibrate the hydrological model. The leave-one-out approach represents a typical scenario in operational conceptual runoff modeling, i.e. to use as much data as possible for calibration and to apply the resulting parameter values to the current season.

Results grouped according to mean catchment height are presented below (Figure 5). Using this calibration procedure, for catchments with mean elevation below 1000 m.a.s.l. the hydrological model showed good results independent of which snow model was used as input to the hydrological model framework. Even without using a snow model at all (i.e., the lower benchmark), the runoff model resulted in lower but still positive performance values, indicating that the choice of snow model within a conceptual runoff modeling framework is of less importance when dealing with catchments at lower elevations.

Similarly for catchments with mean elevation between 1000 and 2000 m.a.s.l. the differences between the three model runs were small. While  $E_{PF}$  levels were maintained relative to our assessment for catchments below 1000 m.a.s.l., they were separated more clearly from the benchmark model runs, which dropped in performance.  $E_Q$  values, on the other hand, decreased for all the M1, M2, M3 and the benchmark model runs.

Only for the highest elevation class did the results based on M1 **significantly** outperform the other model runs, and even reached better  $E_{PF}$  values than most simulations at lower elevation classes. Even the model runs based on M2 performed better than those based on M3. This shows that the benefit of better snowmelt input data for conceptual runoff modeling only

seems to pay off if considering catchments above a certain elevation. At lower elevation, differences between the model input options could be mitigated by way of the calibration procedure.

Further, while results based on M1 showed a relatively constant performance across all elevation classes in both  $E_{PF}$  and  $E_Q$ , this was not the case for results based on M2 and M3, which deteriorated with increasing elevation.

260 Looking at all elevation classes, the median performance of the M1 runs was always higher than the upper benchmark. This was also mostly the case for M2 and M3. This result shows that all versions of the external snow model performed unexpectedly well in combination with the hydrological framework even though they were not included in the calibration procedure. Finding instances where even M3 (which uses a prescribed DDF) outperforms the upper benchmark model (which relies on a calibrated DDF) may appear counter-intuitive. However, note that [M1, M2, M3] have been particularly  
265 trained for an optimal performance in the Swiss Alps, e.g., regarding the representation of processes like liquid water content, refreezing, cold content dynamics, the partitioning of rain and snow, and redistribution of snow in steep terrain. Further, calibrating HBV for the melt season only could result in a DDF that is too high during the snow accumulation period, which would inhibit an accurate timing of the meltwater release (c.f. Figure 4). On the contrary, M3 features a more moderate DDF of  $2.5 \text{ mm } ^\circ\text{C}^{-1} \text{ day}^{-1}$ , allowing for a more balanced performance over the entire snow season.

270 The above results demonstrate a benefit of using an advanced snowmelt modeling system in the context of conceptual hydrological modeling, even if the benefit seems comparably small and restricted to catchments above a certain elevation. Other studies that evaluated the influence of integrating snow water equivalent data into hydrological models showed similar results (Finger et al., 2015, Joerg-Hess et al., 2015). Only a few studies have used direct assimilation of ground based snow data. Due to limited availability of ground observations, assimilating remotely sensed snow data is a more common practice  
275 but requires further inversion methods, which is quite challenging to implement and induces additional uncertainties (Andreadis et al., 2006). Several studies used satellite observations of snow cover extent in different assimilation schemes to update snow models. Clark et al. (2006) as well as Thirel et al. (2013) could slightly improve runoff predictions by assimilation of snow covered area using the Ensemble Kalman filter and the particle assimilation filter, respectively.

As in the above studies, we focused on a catchment specific snowmelt season and used two performance measures that  
280 evaluated the ability of the models to capture peakflow events, among other characteristics of the hydrograph. Simulating such events is of great importance, especially for operational flood forecasting purposes. While the performance of well-calibrated models may be adequate independent of model complexity (Hock, 2003, Magnusson et al., 2015), we are particularly interested in the model performance in extreme years, when the snowmelt contribution greatly increases flood risks. This is why in the second set of modeling experiments we singled out snow-rich years as validation dataset to generate  
285 both, a more challenging and more relevant test scenario. For the snow-rich years, we selected the 6 years with the highest cumulative snowmelt individually for each catchment.

### 4.3 Model performance across elevation classes: differential split-sample

For the differential split-sample approach, snow-rich years were used to validate the runoff models. As expected, the analysis using the differential split-sample approach revealed similar performance patterns compared to the leave-one-out approach, but with increased differences between model runs (Figure 6). As seen before, at low and mid elevation classes the differences between the three model versions as well as between calibration and validation were comparably small. The median values of efficiencies for each model version ranged between 0.7 and 0.8 ( $E_{PF}$ ) respectively 0.75 and 0.85 ( $E_Q$ ). As seen before, at high elevations, model results based on M1 were superior (significantly for  $E_Q$ ) to those based on M2, which in turn outperformed the model runs based on M3. However, the differences between the three runs were considerably larger than those seen with the leave-one-out approach. Another notable difference between both calibration methods was that the differential split-sample approach led to significantly higher  $E_Q$  for validation years compared to calibration years, while the opposite was the case when using the leave-one-out approach. Both findings strongly suggest that the benefit of advanced snowmelt input data for conceptual runoff modeling is particularly valuable in situations that feature a strong snowmelt component (high elevation, snow-rich years). Both  $E_{PF}$  and  $E_Q$  for M1-based model runs show an exceptional performance at high elevation for validation years, which highlights the value of snow data assimilation when concerned with forecasting snowmelt related floods.

An additional analysis was performed with M3 using a DDF of  $4.0 \text{ mm } ^\circ\text{C}^{-1} \text{ day}^{-1}$  (results not included in figures). This is a typical value found in the literature for high elevations with melting conditions later in the season (Martinec et al., 1983). As expected, compared to the standard DDF of  $2.5 \text{ mm } ^\circ\text{C}^{-1} \text{ day}^{-1}$  in M3, the additional model runs resulted in slightly better performance metrics at high elevations with later onset of snowmelt (catchments above 2000 m.a.s.l.), but considerably worse performance in all other model runs.

### 4.4 Model performance for high elevation catchments: leave-one-out sample

The validation of the differential split-sample experiment showed that the three external snow models provided the best runoff simulations for snow-rich years, specifically for catchments with a mean elevation of above 2000 m.a.s.l.. In a further analysis, we ordered the single validation years individually by catchment for the leave-one-out approach from snow-poor to snow-rich based on peak SWE. This procedure allowed testing of whether there was a trend in the runoff performance metrics associated with the snow amount of single years. Such a trend was indeed evident, as seen in Figure 7. Independent of the snow model used, the best results were achieved when validating the model performance during snow-rich years regarding both  $E_{PF}$  and  $E_Q$ .

The performance measures discussed above were computed for a catchment-specific pre-defined fix snowmelt season, which was based on the typical timing of observed snowmelt runoff. Extending the snowmelt season to 120 days gave similar results (data not shown) with the same relative differences between M1, M2, M3 but with a lower overall performance due to the decreasing relevance of snowmelt as the snow-covered area declines. While our approach allowed us to focus on the

sensitivity of runoff modeling to different approaches for estimating snowmelt, it has four main implications to the interpretation of the results. First,  $E_Q$  values tend to be lower if calculated over a short period, and values may not be comparable to  $E_Q$  data from assessment of multi-year or multi-season datasets, in particular if analyzing daily runoff data that do not encompass diurnal variations. Second, within a pre-defined season, the variation of a time-varying DDF as used in M2 is small. Especially at low elevations and early in the year, the DDF of M2 and M3 do not differ much and therefore produces similar runoff simulations with comparable performance. According to Lang and Braun (1990) and Magnusson et al. (2015), a clearer benefit of using a flexible instead of a fixed DDF would have been expected if used within a longer time window. Third, at low elevations snowmelt may occur sporadically and not necessarily within a pre-defined season. At high elevations, it is also possible that the main melt does not occur within the catchment-specific snowmelt season due to longer melt-out duration of extremely snow-rich years. Consequently, if snowmelt occurred outside of the validation period, it would not affect the performance statistics. This may have partly suppressed differences between the three different snow models. Finally, note that seasonal  $E_{PF}$  and  $E_Q$  statistics are two metrics out of several possible evaluation criteria. While we also tested other metrics, those were not further integrated to the discussion, given that the results were similar compared to the performance data presented above.

## 5 Conclusions

Based on daily runoff data measured over a period of 15 years at 20 catchments in Switzerland, we evaluated the sensitivity of a conceptual hydrological modeling framework to snowmelt input from snow models of different complexity. The most complex snow model integrated three-dimensional sequential assimilation of snow monitoring data with a snowmelt model based on the temperature index approach. In contrast, the simplest snow model represented snowmelt with a constant degree-day factor, and did not include any data assimilation. The snow models were combined with the HBV light hydrological model (Seibert and Vis, 2012) to produce a runoff record. The performance of the HBV runs based on snowmelt data from the snow models was assessed by way of performance metrics evaluated during the snowmelt season only.

Our results showed that advanced methods to calculate snowmelt as input to conceptual runoff models only improved model performance if considering snow-dominated catchments. At low elevations, differences between the model input options were found to be minor. For higher elevation catchments, however, snowmelt input from the data assimilation framework consistently provided the best results. Further analysis demonstrated considerably higher performance metrics for snow-rich years as compared to years with little snow. In contrast to earlier studies, which have shown that assimilation of snow covered area only has limited impact on runoff simulations, our results indicate that the assimilation of snow water equivalent data can have a larger benefit for accurate stream flow predictions. This finding highlights the value of choosing appropriate snow data assimilation methods, and perhaps even more important, selecting the correct variable for assimilation when concerned with operational forecasting of snowmelt related floods.

350



*Acknowledgements.* This study was partly funded by the Federal Office of the Environment (FOEN). We thank MeteoSwiss for access to the meteorological data and FOEN for providing river runoff observations used in this study. Thanks to Manfred Stähli and Massimiliano Zappa for helpful discussions and to Nathalie Chardon for reviewing the English of this article.

## 355 **References**

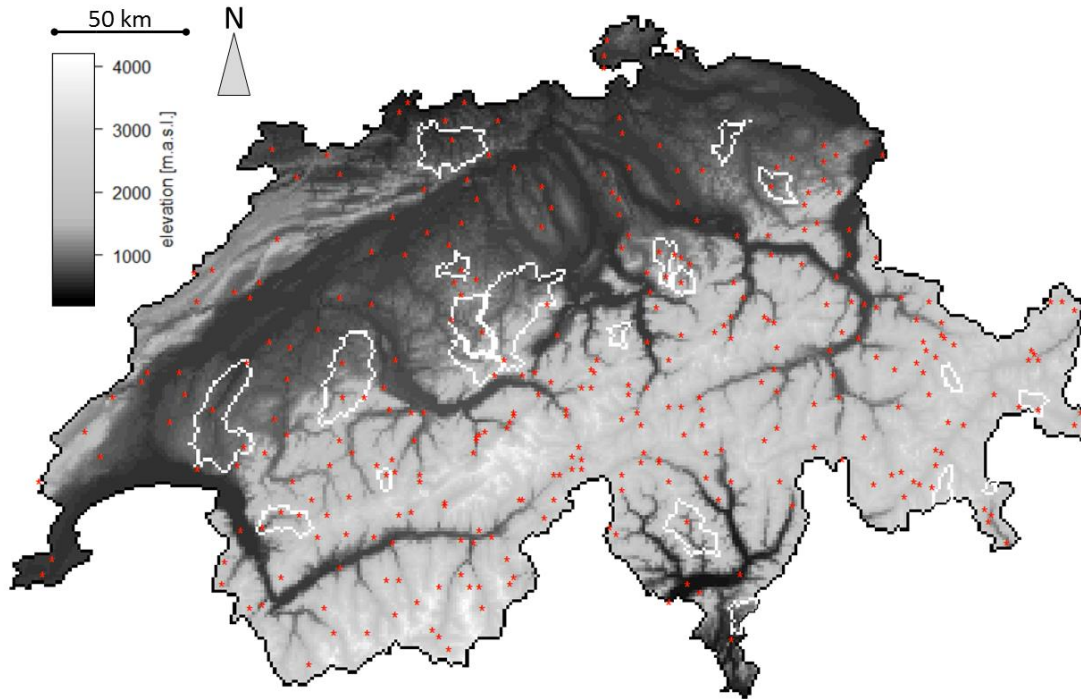
- Adam, J.C., Hamlet, A.F., and Lettenmaier, D.P.: Impact of global climate change for snowmelt hydrology in the twenty-first century, *Hydrol. Processes*, 23, 962-972, 2009.
- Andreadis, K.M. and Lettenmaier, D.P.: Assimilating remotely sensed snow observations into a macroscale hydrology model. *Adv. Water Resour.*, 29, 872-886, 2006.
- 360 Bergström, S.: Development and application of a conceptual runoff model for Scandinavian catchments, *Bulletin Series A*, No. 52, Department of Water Resources Engineering, Lund Institute of Technology, University of Lund, 134 pp, 1976.
- Bergström, S.: *The HBV Model: Its Structure and Applications*, Swedish Meteorological and Hydrological Institute (SMHI), Hydrology, Norrköping, 35 pp, 1992.
- Bergström, S.: The HBV model, in Chapter 13, *Computer Models of Watershed Hydrology*, edited by: Singh, V. P., Water Resources Publications, Highlands Ranch, Colorado, USA, 443–476, 1995.
- 365 Clark, M.P., Slater, A.G., Barrett, A.P., Hay, L.E., McCabe, G.J., Rajagopalan, B., and Leavesly, G.H.: Assimilation of snow covered area information into hydrologic and land-surface models. *Adv. Water Resour.*, 29(8), 1209-1221, 2006.
- Essery, R., Pomeroy, J., Ellis, C., and Link, T.: Modeling longwave radiation to snow beneath forest canopies using hemispherical photography or linear regression. *Hydrol. Processes*, 22, 2788–2800, 2008.
- 370 Evensen, G.: Sequential data assimilation with a nonlinear quasi-geostrophic model using Monte Carlo methods to forecast error statistics. *J. Geophys. Res.*, 99 (C5), 10 143-10 162, 1994.
- Finger, D., Vis, M., Huss, M., and Seibert, J.: The value of multiple data set calibration versus model complexity for improving the performance of hydrological models in mountain catchments. *Water Resour. Res.*, 51(4), 1939-1958, 2015.
- Fontaine, T., Cruickshank, T., Arnold, J., and Hotchkiss, R.: Development of a snowfall--snowmelt routine for mountainous terrain for the soil water assessment tool (SWAT). *J. Hydrol.*, 262, 209-223, 2002.
- 375 Franz, J.K., Hogue, T.S., Barik, M., and He, M.: Assessment of SWE data assimilation for ensemble streamflow predictions. *J. Hydrol.*, 519, 2737-2746, 2014.
- Frei, C. and Schär, C.: A precipitation climatology of the Alps from high-resolution rain-gauge observations. *Int. J. Climatol.*, 18, 837-900, 1998.
- 380 Frei, C., Schöll, R., Fukutome, S., Schmidli, J., and Vidale, P.L.: Future change in precipitation extremes in Europe: Intercomparison of scenarios from regional climate models. *Geophys. Res.*, 111, D06105, doi:10.1029/2005JD005965, 2006.

- Grünewald, T. and Lehning, M.: Are flat-field snow depth measurements representative? A comparison of selected index sites with areal snow depth measurements at the small catchment scale. *Hydrol. Process.* 29: 1717-1728. <http://dx.doi.org/10.1002/hyp.10295>, 2015.
- 385 Helbig, N., van Herwijnen, A., Magnusson, J., and Jonas, T.: Fractional snow-covered area parameterization over complex topography. *Hydrol. Earth Syst. Sci.*, 19, 1339-1351, doi:10.5194/hess-19-1339-2015., 2015.
- Hock, R.: Temperature index melt modeling in mountain areas. *J. Hydrol.*, 282(1), 104-115, 2003.
- Irannezhad, M., Ronkanen, A.-K., and Kløve, B.: Effects of Climate Variability and Change on Snowpack Hydrological Processes in Finland. *Cold Reg. Sci. Technol.*, 118, 14-29, 2015.
- 390 Isotta, F. A., Frei, C., Weigluni, V., Perčec Tadić, M., Lassègues, P., Rudolf, B., Pavan, V., Cacciamani, C., Antolini, G., Ratto, S. M., Munari, M., Micheletti, S., Bonati, V., Lussana, C., Ronchi, C., Panettieri, E., Marigo, G. and Vertačnik, G.: The climate of daily precipitation in the Alps: development and analysis of a high-resolution grid dataset from pan-Alpine rain-gauge data. *Int. J. Climatol.*, 34: 1657–1675. doi:10.1002/joc.3794, 2013.
- Joerg-Hess, S., Griessinger, N., and Zappa, M.: Probabilistic Forecasts of Snow Water Equivalent and Runoff in  
395 Mountainous Areas. *J. Hydrometeorol.*, 16, 2169-2186, 2015.
- Jonas, T., Marty, C., and Magnusson, J.: Estimating the snow water equivalent from snow depth measurements in the Swiss Alps. *J. Hydrol.*, 378(1), 161–167, 2009.
- Klemeš, V.: Operational testing of hydrological simulation models, *Hydrolog. Sci. J.*, 31 (1), 13–24, doi: 10.1080/02626668609491024, 1986.
- 400 Krause, P., Boyle, D.P., and Bäse, F.: Comparison of different efficiency criteria for hydrological model assessment. *Adv. Geosci.*, 5, 89-97, 2005.
- Kumar, M., Marks, D., Dozier, J., Reba, M., and Winstral, A.: Evaluation of distributed hydrologic impacts of temperature-index and energy-based snow models. *Adv. Water Resour.*, 56, 77-89, 2013.
- Lang, H. and Braun, L.: On the information content of air temperature in context of snow melt estimation. *IAHS Publ.*, 190,  
405 347-354, 1990.
- Lindström, G., Johansson, B., Persson, M., Gardelin, M., and Bergström, S.: Development and test of the distributed HBV-96 hydrological model. *J. Hydrol.*, 201, 272–288, 1997.
- Magnusson, J., Gustafsson, D., Hüsler, F., and Jonas, T.: Assimilation of point SWE data into a distributed snow cover model comparing two contrasting methods. *Water Resour. Res.*, 50(10), 7816-7835, doi: 10.1002/2014WR015302, 2014.
- 410 Magnusson, J., Wever, N., Essery, R., Helbig, N., Winstral, A., and Jonas, T.: Evaluating snow models with varying process representations for hydrological applications. *Water Resour. Res.*, 51(4), 2707-2723, 2015.
- Martinec, J. and Rango, A.: Indirect evaluation of snow reserves in mountain basins. *IAHS Publ.*, 602, 111-119, 1991.
- Martinec, J., Rango, A., and Major, E.: The Snowmelt-Runoff Model (SRM) User's Manual. NASA Reference Publication 1100, Washington D.C., 118, 1983.

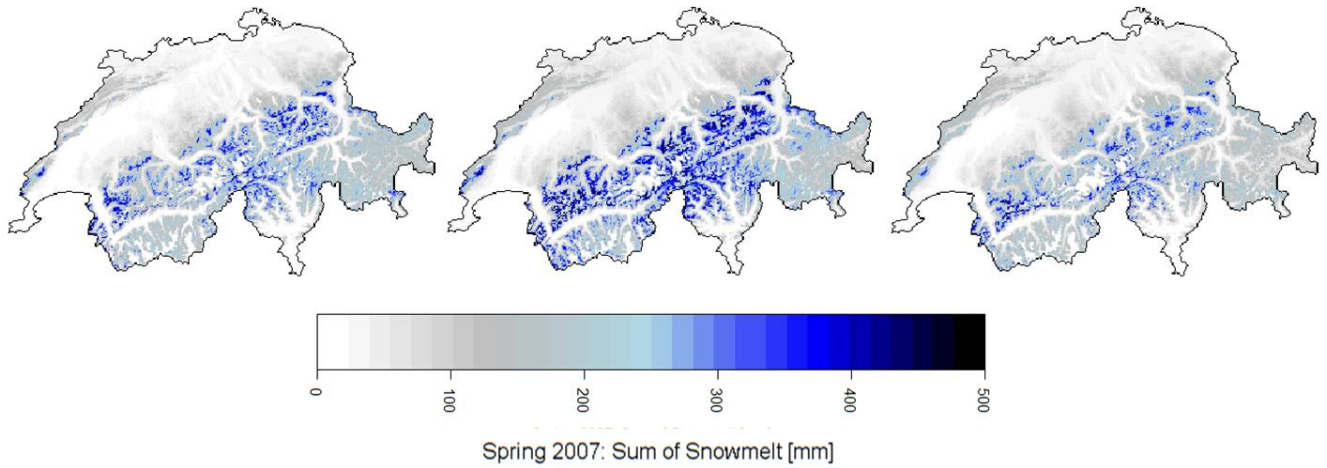
- 415 Nash, J.E. and Sutcliffe, J.V.: River flow forecasting through conceptual models, part 1 - a discussion of principles, *J. Hydrol.*, 10(3), 282-290, 1970.
- Ohmura, A.: Physical Basis for the Temperature-Based Melt-Index Method. *J. Appl. Meteorol.*, 40(4), 753-761, 2001.
- Parajka, J., Merz, R., and Blöschl, G.: Uncertainty and multiple objective calibration in regional water balance modelling: case study in 320 Austrian catchments. *Hydrol. Process.*, 21(4), 435-446, 2007.
- 420 Perrin, C., Michel, C., and Andréassian, V.: Improvement of a parsimonious model for streamflow simulation. *J. Hydrol.*, 279(1), 275-289, 2003.
- Priestley, C. H. B. and Taylor, R. J.: On the assessment of surface heat flux and evaporation using large-scale parameters. *Mon. Weath. Rev.*, 100(2), 81-92, 1972.
- Semmens, K. A. and Ramage, J. M.: Recent changes in spring snowmelt timing in the Yukon River basin detected by  
425 passive microwave satellite data. *Cryosphere*, 7(3), 905-916. doi: 10.5194/tc-7-905-2013, 2013.
- Seibert, J.: Multi-criteria calibration of a conceptual runoff model using a generic algorithm. *Hydrol. Earth Syst. Sci.*, 4(2), 215-224, 2000.
- Seibert, J.: Reliability of model predictions outside calibration conditions. *Nord. Hydrol.*, 34(5), 477-492, 2003.
- Seibert, J. and Vis, M. J. P.: Teaching hydrological modeling with a user-friendly catchment-runoff-model software package.  
430 *Hydrol. Earth Syst. Sci.*, 16(9), 3315-3325, 2012.
- Thirel, G., Salamon, P., Burek, P., and Kalas, M.: Assimilation of MODIS Snow Cover Area Data in a Distributed Hydrological Model Using the Particle Filter. *Remote Sens.*, 5(11), 5825-5850, 2013.
- Vehviläinen, B.: Snow cover models in operational watershed forecasting. Publications of Water and Environment Research Institute 11. National Board of Waters and the Environment, Helsinki, Finland, 1992.
- 435 Viviroli, D. and Weingartner, R.: The hydrological significance of mountains: from regional to global scale. *Hydrol. Earth Syst. Sci.*, 8(6), 1017-1030, doi: 10.5194/hess-8-1017-2004, 2004.
- Viviroli, D., Archer, D.R., Buytaert, W., Fowler, H.J., Greenwood, G.B., Hamlet, A.F., Huang, Y., Koboltschnig, G., Litaor, M.I., López-Moreno, J.I., Lorentz, S., Schädler, B., Schreier, H., Schwaiger, K., Vuille, M., and Woods, R.: Climate change and mountain water resources: overview and recommendations for research, management and policy. *Hydrol. Earth Syst. Sci.*, 15(2), 471-504. doi: 10.5194/hess-15-471-2011, 2011.
- 440 Walter, M.T., Brooks, E.S., McCool, D.K., King, L.G., Molnau, M., and Boll, J.: Process-based snowmelt modeling: does it require more input data than temperature-index modeling?. *J. Hydrol.*, 300(1), 65-75, 2005.
- Whitfield, P.H.: Is 'Centre of Volume' a robust indicator of changes in snowmelt timing?. *Hydrol. Process.*, 27(18), 2691-2698, 2013.
- 445 Wiesinger, T., 1993. Accurate measurement of snowfall - development of two innovative precipitation gages based on the analysis of existing errors. Dissertation, Universität Wien, Inst. f. Meteorologie und Geophysik, 1993: 229 pp.

**Table 1. Characteristics of 20 Swiss catchments in this study.**

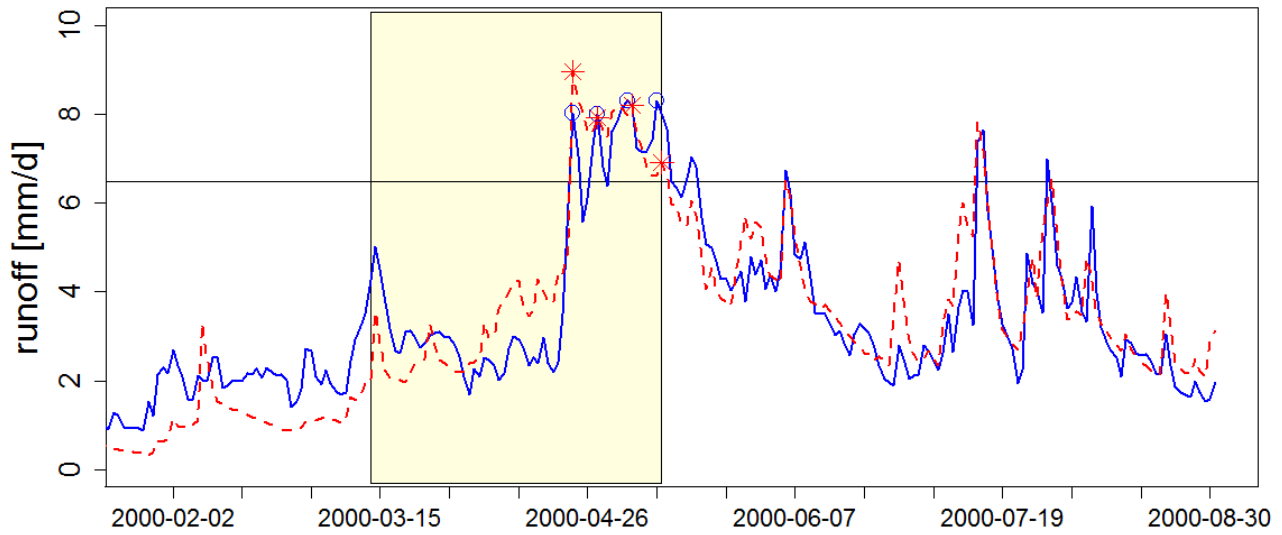
Number	Station name	Area [km <sup>2</sup> ]	Min elevation [m.a.s.l.]	Max elevation [m.a.s.l.]	Mean elevation [m.a.s.l.]	Elevation class	Begin snowmelt [month-day]	End snowmelt [month-day]
EZG 2202	Ergolz - Liestal	276	305	1087	577	1	01-01	03-01
EZG 2126	Murg - Wängi	77	501	911	640	1	01-14	03-14
EZG 2034	Broye - Payerne, Caserne d'aviation	416	450	1402	721	1	01-14	03-14
EZG 2343	Langeten - Huttwil, Häberenbad	61	592	1032	757	1	01-14	03-14
EZG 2374	Necker - Mogelsberg, Aachsäge	89	649	1359	948	1	02-14	04-14
EZG 2321	Cassarate - Pregassona	74	286	1809	954	1	02-14	04-14
EZG 2603	Illfis - Langnau	188	699	1695	1040	2	02-21	04-21
EZG 2634	Kleine Emme - Emmen	473	440	2261	1044	2	02-21	04-21
EZG 2179	Sense - Thörishaus, Sensematt	355	609	2028	1072	2	03-01	05-01
EZG 2609	Alp - Einsiedeln	82	845	1577	1096	2	02-21	04-21
EZG 2409	Emme - Eggiwil, Heidbüel	127	770	2007	1296	2	02-21	04-21
EZG 2300	Minster - Euthal, Rüti	59	918	1994	1345	2	03-07	05-07
EZG 2203	Grande Eau - Aigle	130	579	2830	1546	2	03-14	05-14
EZG 2605	Verzasca - Lavertezzo, Campiòi	188	546	2590	1656	2	03-14	05-14
EZG 2276	Grosstalbach - Isenthal	43	931	2682	1794	2	03-14	05-14
EZG 2232	Allenbach - Adelboden	31	1360	2587	1907	2	03-14	05-14
EZG 2366	Poschiavino - La Rösa	17	1920	3005	2316	3	04-14	06-14
EZG 2304	Ova dal Fuorn - Zernez, Punt la Drossa	56	1797	2903	2337	3	04-14	06-14
EZG 2327	Dischmabach - Davos, Kriegsmatte	42	1772	2869	2349	3	04-14	06-14
EZG 2256	Rosegbach - Pontresina	67	1833	3721	2686	3	05-01	07-01



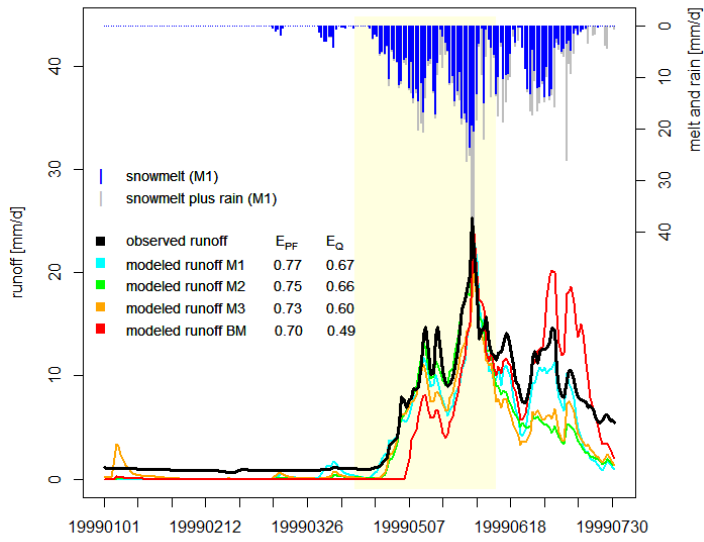
450 **Figure 1: Locations of snow observation stations (red stars) and 20 studied catchments (white border lines) in Switzerland.**



455 **Figure 2: Cumulative snowmelt during the snowmelt season 2007 as calculated by the snow model method M1 (full model with data assimilation, left), M2 (full model without data assimilation, middle), and M3 (simplified model, right). The sums between the three model methods differ depending on the use of observational snow data assimilation and the use of different DDFs.**

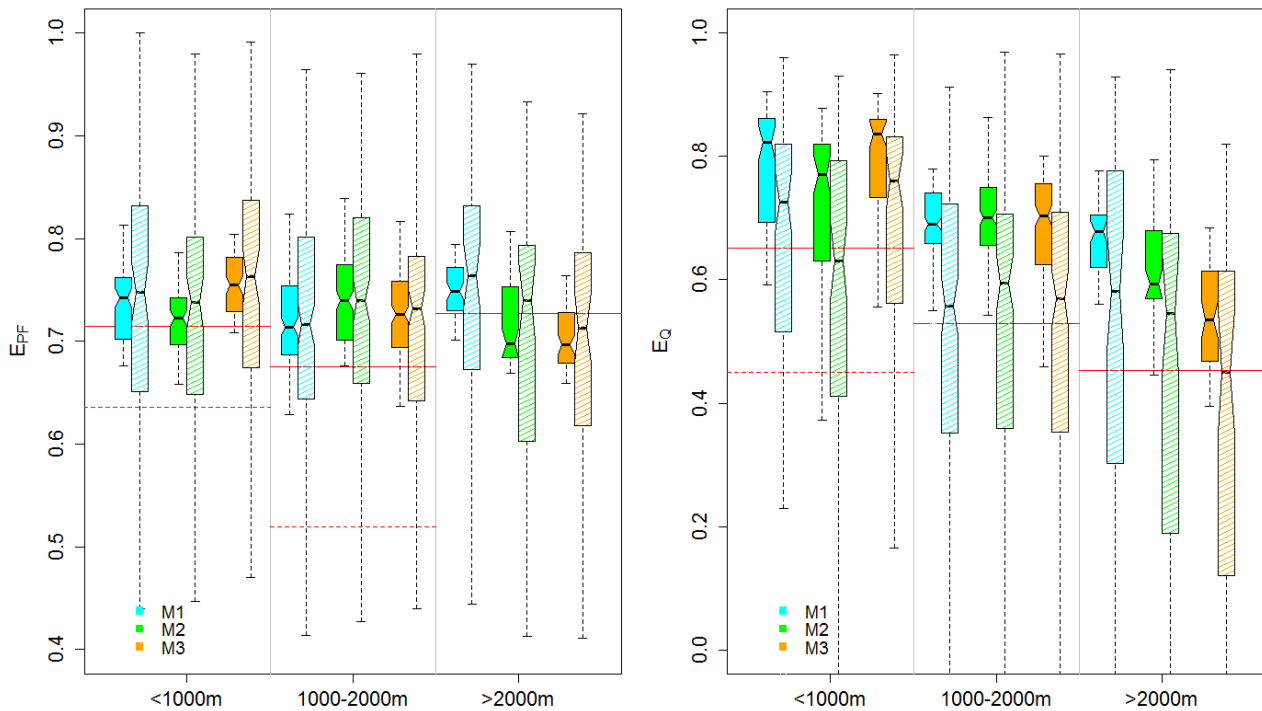


460 **Figure 3: Graphical explanation of how to calculate  $E_{PF}$ . The yellow background shows a catchment-specific snowmelt season window within which the efficiency criteria were computed. The horizontal line indicates the threshold of 1.5 times the mean observed runoff (blue line) above which measured peak flow events (blue circles) are detected. Red stars present corresponding events of the simulated runoff (dashed red line). See Sect. 3.3 for details.**



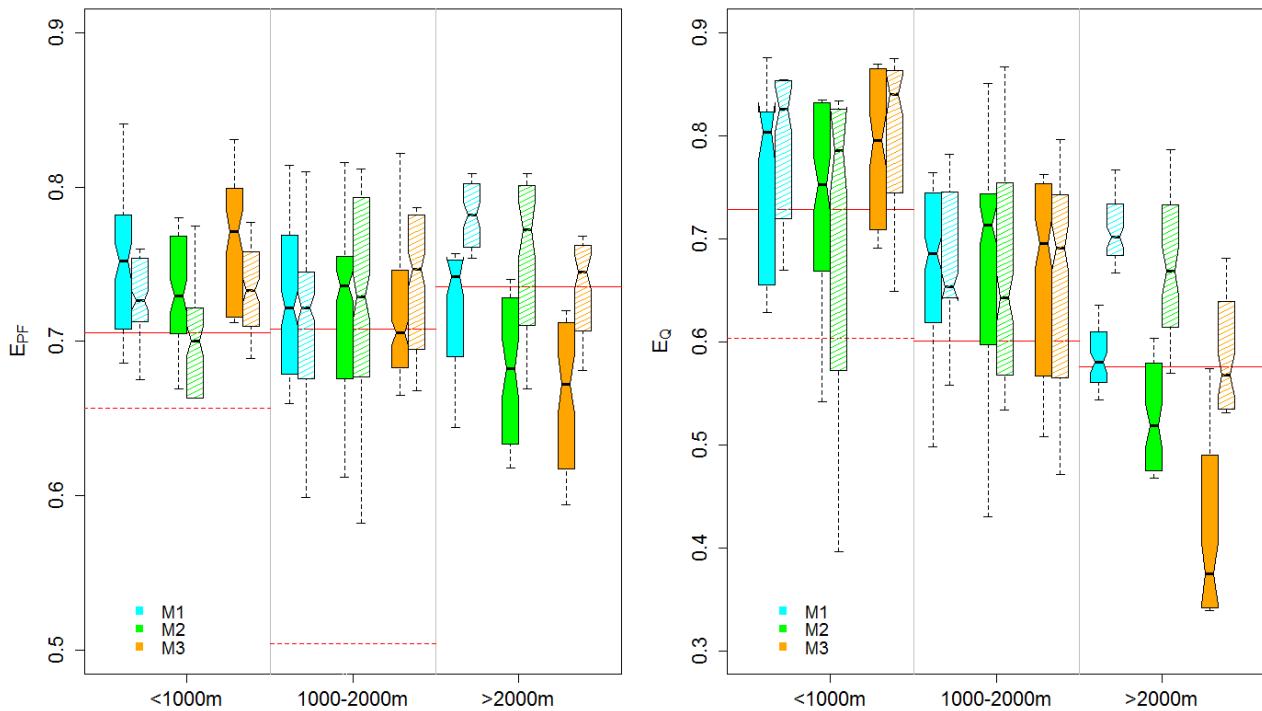
465 **Figure 4: Observed and modeled runoff for the Dischma catchment for year 1999, as well as water input from snowmelt and rain modeled with method M1. The upper benchmark model BM in red.**



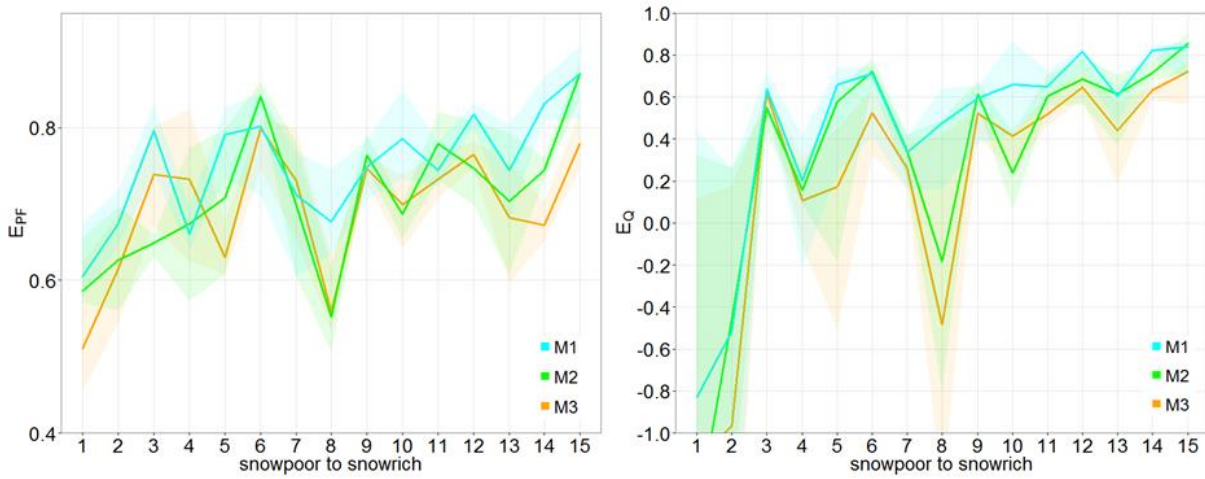


**Figure 5: Results of the leave-one-out approach.  $E_{PF}$  (left panel) and  $E_Q$  (right panel) for each elevation class and snowmelt model. For the individual elevation classes and melt models, the left box plots (darker colors) show the results for the calibration period, and the right box plots (lighter colors) show the results for the validation period. The whisker boxes represent the median (center line), the interquartile range (25-75th percentile; box outline) and highest/lowest performance within the interquartile range  $\pm 1.5$  times of the interquartile range (whiskers). The benchmark performance is denoted by a solid red line (upper benchmark) and a dashed red line (lower benchmark), and the latter only displayed if within the range of the axis limits.**

470



475 **Figure 6: Results of the differential split-sample approach. EPF (left panel) and EQ (right panel) for each elevation**  
**class and snowmelt model. For the individual elevation classes and melt models, the left box plots (darker colors)**  
**show the results for the calibration period, and the right box plots (lighter colors) show the results for the validation**  
**period. The whisker boxes represent the median (center line), the interquartile range (25-75th percentile; box outline)**  
**and highest/lowest performance within the interquartile range +/- 1.5 times of the interquartile range (whiskers). The**  
480 **benchmark performance is denoted by a solid red line (upper benchmark) and a dashed red line (lower benchmark),**  
**and the latter only displayed if within the range of the axis limits.**



485 **Figure 7: Results of the leave-one-out approach for catchments with mean elevation above 2000 m.a.s.l. Median (solid lines) and interquartile (25-75th percentile, shading) range of  $E_{PF}$  (left panel) and  $E_Q$  (right panel) for validation years ordered from snow-poor (index=1) to snow-rich (index=15) years.**