



Louisville-Jefferson County
Metropolitan Sewer District

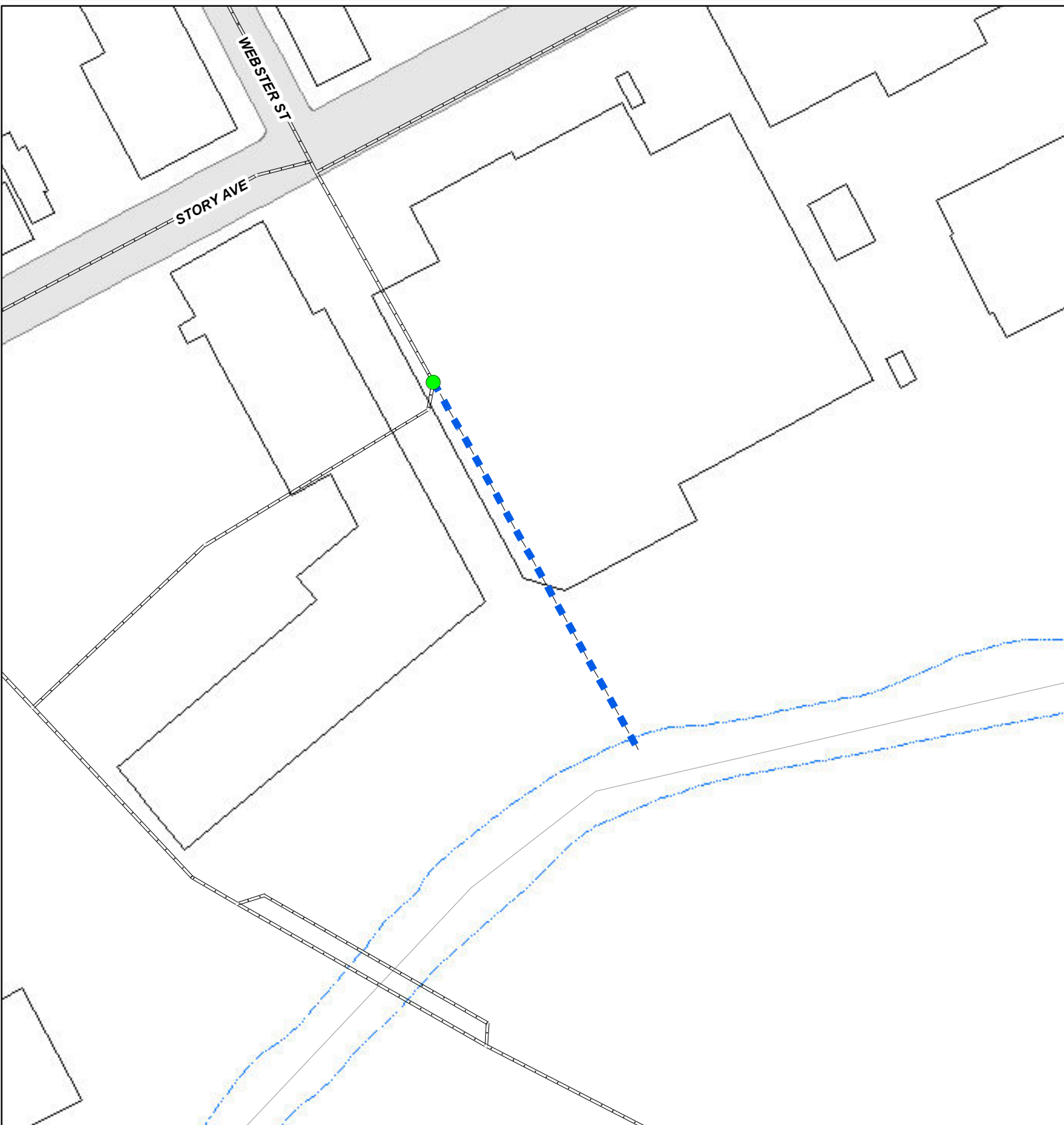
CSO130



Map Data Source: LOJIC

*Maps not to scale.

Report as of: 1/14/2014



● CSO Location

□ Buildings

▲ Pump Station

▬ Combined Sewer Lines

▬ Overflow Lines

▬ Edge of Pavement

○ Manholes

▬ SewerLines

▬ Drainage Lines


MSD

Metropolitan Sewer District

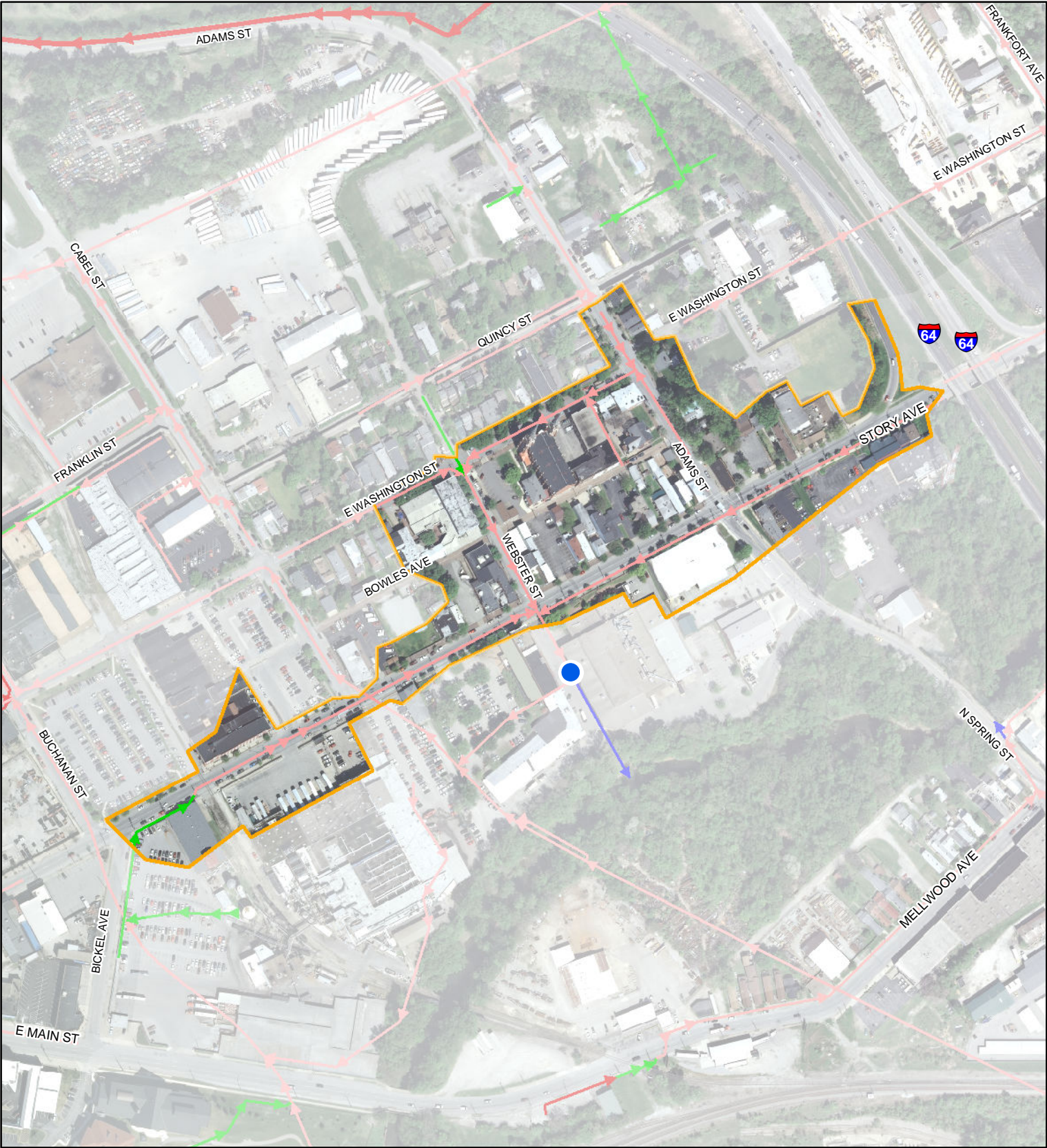
Louisville-Jefferson County
Metropolitan Sewer District


CSO130


Map Data Source: LOJIC *Maps not to scale.




Report as of: 1/14/2014





-  CSO In Service

 CSO Boundary


 Combined

 Siphons

 Sanitary

 TP Effluent Lines
-  Force Mains

 Overflows

 Trunk/Interceptors


 Air Release Lines



Fig 1: The vehicles are parked in the parking lot between J. Gumbo's and the Medical Center Laundry



Fig 2: There are a lot of commercial vehicles around the job site.



Fig 3: The rungs have been corroded away although some still are present and could be harmful to entrants



Fig 4: The over flow line is in good condition



Fig 5: The downstream low flow line is in good condition

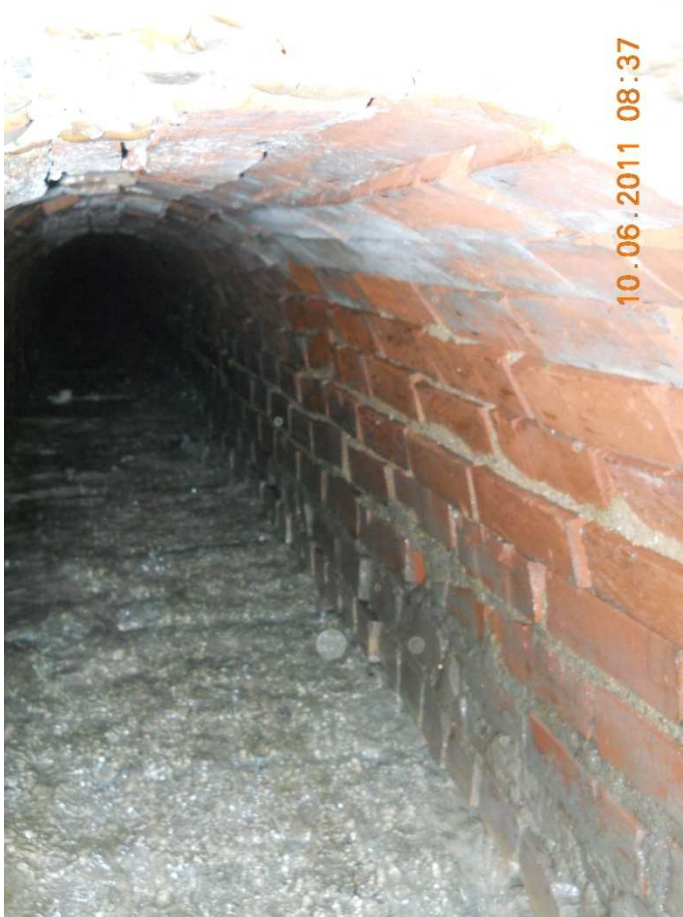


Fig 6: The upstream low flow line is in good condition. Most of the influent waste water is clear



Fig 7: The bar screen is showing signs of rust but no major affects to its structural integrity.



Fig 8: There is a space in the bar screen where debris could go through.



Fig 9: The bar screen is mounted securely over the dam.



Fig 10: The tide flex valve is shut. There is no S & F near the site



CSO Characteristics Report



CSO Number:

CSO 130

CSO Name:	Webster Street
Overflow Type:	Diversion Dam
Solids and Floatables Device:	Screens
Drainage Area:	16
LOJIC Percent Impervious:	79%
Modeled Percent Impervious:	71%
Receiving Stream:	Beargrass Creek
General Location:	South Fork Beargrass Creek

Baseline AAOV (in MG/YR):	1.08
Number of Overflow Incidents (in Number/YR):	12
Average Duration of Overflow (in Hours):	2.33
Average Volume per Incident (in MGal/Incident):	0.09

LTCP 2014 AAOV (in MG/YR):	0.06
Number of Overflow Incidents (in Number/YR):	2
Average Duration of Overflow (in Hours):	1.333
Average Volume per Incident (in 1000 G/Incident):	0.03

Residential Landuse:	24%
Commercial Landuse:	25%
Industrial Landuse:	32%
Parks:	0%
Vacant Landuse:	6%
Population Estimate:	118

Results are based on models populated in December 2013 utilizing InfoWorks ICM Version 3.0. Models were populated with LOJIC data and supplemented with field survey data. CSO's listed having 0.0 Drainage Areas typically serve as system relief points. While a CSO may display 0.0 AAOV, note that this is based on typical year rainfall data.

DATE: JUNE 4, 1991

CSO SERIAL NO. 130

REGULATOR NO. 31 - WEBSTER STREET SEWER

LOCATION: In parking lot south of Story Avenue opposite Webster Street

OVERFLOW TYPE: DAM

STRUCTURE OVERFLOW ELEVATION:

426.70 - Crest of dam

OVERFLOW TYPE AND SEWER GEOMETRY:

The overflow structure is an abandoned regulator located on a 24" circular brick sewer flowing southeast on Webster Street. A dam with a crest elevation of 426.70 diverts low flows through a 12" sewer at invert elevation 425.30 to the abandoned regulator chamber and exits through an 18" sewer to the 60" Middle Fork Trunk Relief Sewer. Overflows top the dam and continue through the 24" brick sewer to a 27" concrete sewer to Beargrass Creek. The invert elevation of the 12" sewer at the abandoned regulator chamber is 424.60. The invert elevation of the 18" outlet sewer is 423.16. The 18" sewer enters the Middle Fork Trunk Relief Sewer at invert elevation 419.35. The invert elevation of the Middle Fork Trunk Relief at this point is 417.60.

BACKWATER LENGTHS AND STORAGE VOLUMES:

The backwater length is about 70 feet. The storage volume is about 80 cubic feet.

DOWNSTREAM BACKWATER EFFECTS:

The overflow discharges to Beargrass Creek. The elevation of Beargrass Creek at the discharge point is about 420.00. High levels in the creek can backflow into the overflow pipe.

*NOTE: Regulator removed in 2007

Updated

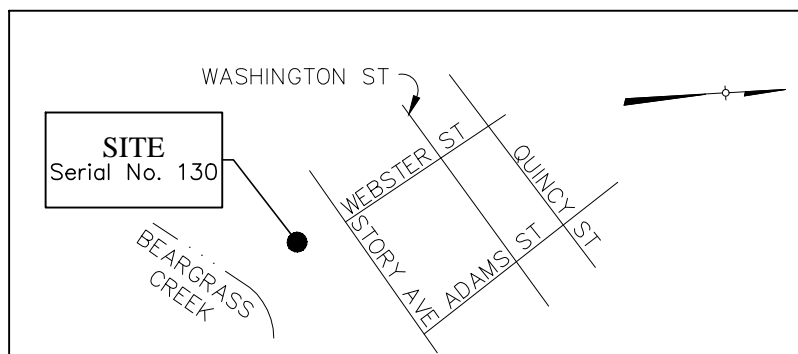
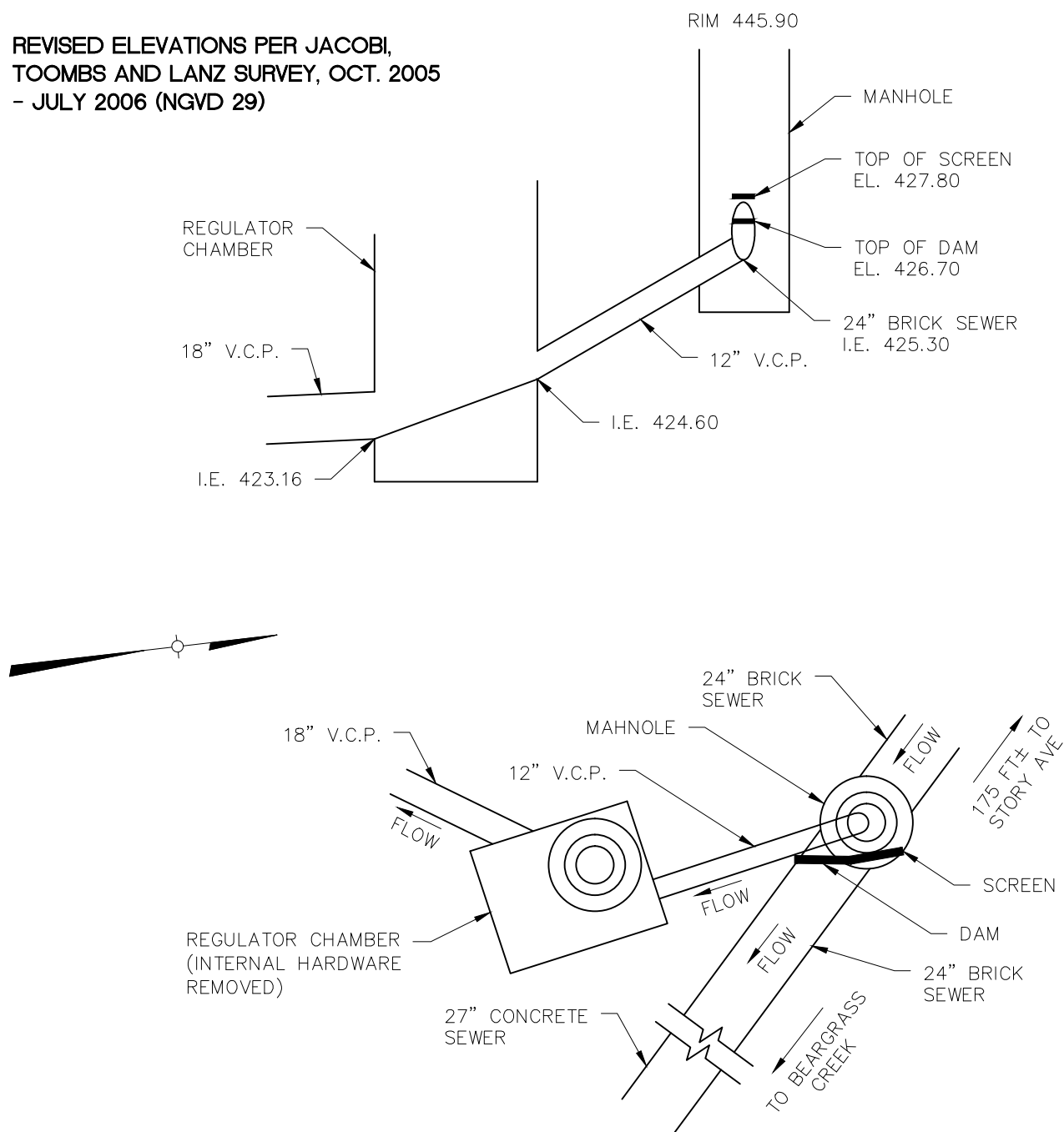
12/00

Updated

12/08 (Revised Elevation per Survey)

Solids and Floatables Technology: Screen

REVISED ELEVATIONS PER JACOBI,
TOOMBS AND LANZ SURVEY, OCT. 2005
- JULY 2006 (NGVD 29)



LOCATION MAP



Louisville and Jefferson County
Metropolitan Sewer District
700 W. Liberty Street
Louisville, Kentucky 40203-1913
502-587-0603 - WWW.MSDLOUKY.ORG

REGULATOR No. 31

WEBSTER STREET SEWER

OVERFLOW TYPE: DAM

SERIAL No. 130

Date			Scale	
Made By	C.B.F.	10-11-84	Horiz.	NONE
Checked By	T.M.	1-16-90	Vert.	NONE