

Response to comments

Anonymous Referee #1

General Comments

5 The main objective of this study is to evaluate the suitability of MODIS 8-day snow cover product (MOD1 OA2) to estimate snow cover area and duration in five watersheds in Chilean Andes. The MODIS dataset was validated against observed snow depth at a few ground base site observations and snow courses data from the period 2000- 2013. The changes in snow cover area and duration were analyzed by trend analysis. Results show that the overall Accuracy of MODIS1 OA2 ranges from 81 to 98%. Authors conclude that the evaluation of trends does not indicate significant changes in snow cover area and duration.

10 Overall I agree with the authors that the effects of snow accumulation and melt changes in Chilean Andes can have significant impacts on allocation and using water resources.

So the evaluation of spatial and temporal patterns of snow cover is important and interesting. On the other hand, however, I wonder to what extent the present manuscript contributes to some novel significant scientific contribution.

15 **R:** *Regarding the scientific contribution of the paper, in Chile there are no studies which evaluated Snowcover dynamic (SCD) in watersheds through a latitudinal gradient (32° - 39.5°), which implies different climatic conditions. There is also no objective evidence of the influence of recent climatic variability in the extension of snow cover area in a wide special scale (Central- South Chile).*

The main research question here is not clearly formulated.

20 **R:** *We have formulated the research question again.*

The evaluation of suitability is rather vague and it is not clear in which respect it is novel. Why do the authors expect that the accuracy of MODIS snow cover products will be different in their region (Southern hemisphere)?

25 **R:** *The Andes mountain range (on the Chilean side) has a great oceanic effect due to the short distance between the coastal line and the mountains, unlike the northern hemisphere that has a great continental influence. This makes the isotherm 0 is higher than in the northern hemisphere; in addition the topographic features produce a great orographic effect, strongly affecting the regime of precipitation and temperatures. This causes small-scale spatial variations in weather, which is sometimes difficult to identify in satellite imagery. All the previously mention make it important to do a validation of MOD10A2, before using it for other analysis. For the research the daily product of MODIS was also tested with no good results, precisely because of all explained above.*

30 There are plenty of studies performed in the past evaluating the accuracy of MODIS products, which show good agreement of satellite images with ground stations or other remote sensing data. The new validation presented in the manuscript is not very robust and not adding much value to these existing results. The number and elevation of ground observations is not representative (in terms of both- spatial and temporal resolution), so the conclusions drawn from these findings are rather over-
35 interpreted and/or not justified well by presented results.

R: *Regarding the number and elevation of ground observations, in a revised version of the manuscript we will incorporate more existing measurements, which will allow improving the conclusions*

The assessment of snow changes is an interesting topic, however the time period used here is rather short, so the interpretation is very challenging and not very robust. Some more deep analysis of the factors that control the variability of snow cover area and duration would be very interesting here.

5 **R:** *Concerning the time period that was used, they were the data we had available at that time. In case of submitting a revised manuscript we can easily incorporate the last 3 years (2014 - 2016).*

The referee suggest some more deep analysis of the factors that control the variability of snow cover area and duration , in this sense we have incorporate the spatial and not only the temporal analysis of the snow cover, and also an analysis of the relation between precipitation and snow cover.

10 Overall the result section is very short (only 3 figures), so the significance of the results is not clearly demonstrated.

R: *We have added some figures and explain more each of them.*

The discussion is not linking the findings with existing literature, so the added value of results is not clear.

R: *We have added at the discussion the linkage with existing literature.*

15

Specific comments

1) Introduction, p.2, 1.22-30: Please consider to revise this part. It is not clear how this is related to the main objective of the study. Maybe reduction of clouds in MODIS images is an important factor, which is worth to mention.

R: *Was revised and change*

20 2) P.4: What is the meaning of snowline?

R: *Mean altitude above which there is snow in winter, definition was added in the manuscript.*

3) P.5, 1.1: snowline around 850 is already presented before. Please consider to reduce duplication of information.

R: *Corrected*

25 4) Is Fig.3 needed? I would suggest to use terminology used in previous literature (e.g. overall accuracy index, over-, underestimation errors, etc.)

R: *Was change according the suggestion of the referee*

5) P.7: How is SCD estimated?

R: *Explained better in the text.*

6) Section 3.2: Please be more detailed what do we see in Fig.4, 5?

30 **R:** *We have explain in more detail both figures*

?) Why is the analyzed period 2000-2013 and not 2015/6? Are the trends the same if the period would be longer? Is the 8-day product accurate enough to estimate the snow cover duration and its changes? Is the duration similar as would be estimated from daily product?

35 **R:** *We have incorporated the last 3 years (2014 - 2016). For the research the daily product of MODIS was also tested with no good results.*

Anonymous Referee #2

The authors present an extensive analysis on the use of snow cover information derived from MODIS imagery for five different watersheds in Chile. The paper evaluates the remote sensing product against detailed field measurements, and analyzes (inter)annual variability and change. Although the paper gives an interesting view on snow cover behavior over several basins in the country, I have the following general observations:

1) Elaborate field measurements were used to evaluate the performance of the MOD10A2 product over two watersheds, which is the most significant contribution of this paper. Nevertheless, the DGA has multiple data points with historical snow depth and snow water equivalent. Why were these not used in the validation exercise? Given that this data complements the current analysis, and can be freely obtained from the DGA, the authors are suggested to take these data into account.

R: Regarding the number and elevation of ground observations, we have incorporated more existing measurements from DGA for validation of MOD10A2.

2) The analysis of the Snow Cover Dynamic is rather limited, and should be further expanded to take into account previous trend analysis already published for Chile. Although most literature has focused on temperature and precipitation trends, this should provide relevant complementary information when comparing with snow dynamics.

R: We have added in discussion the comparison with previous studies.

3) The discussion on the influence of Niña or Niño years is also underdeveloped and more than observing apparent trends, the discussion should go more into depth why these ENSO years are markedly different with respect to snow cover. La Niña years are generally considered years with lower rainfall amounts in central Chile, which makes the observation that La Niña years provide more snow cover rather surprising. It therefore needs a more in depth analysis, why this apparent contradiction occurs. The timing of ENSO should also be taken into account, as ENSO is often strongest over the dry summer season in Chile, generating a delayed impact in the next winter season. The same is the case for the el Niño years, where you would expect significantly more snow volumes and higher snow cover as well, due to higher rainfall volumes. Specifically regarding snow cover, the influence of the Pacific Decadal Oscillation (PDO) has been shown to be a relevant factor, but this has not been addressed in the paper.

R: We have discussed in more detail the influence of Niña and Niño years. Regarding PDO this has been no taken into account.

4) The selection of drought years was also done without providing sufficient detail in annual variability, especially considering that Chile has suffered a multi-annual drought in recent years (2010-2015). It is suggested to provide climatic information regarding the different years of study, by incorporating average rainfall amounts (as well as some additional meteorological indicators, such as minimum temperature) in the graphs or in a separate table. This should allow discussing more in detail what the different driver are for snow cover in those selected watersheds.

R: We have incorporated data about annual precipitation for the upper part of the different watersheds. We have not incorporate temperature as temperature records where very incomplete.

5) The paper has several English grammar errors and many typos, which should be corrected. It is strongly recommended that the paper is revised by an English native speaker for improved readability.

R: A person with high English knowledge has revised the paper.

My additional comments are:

P1-L 14: typo

R: Corrected

P1-L 15: not a sentence

5 *R: Corrected*

P1-L 17: where is used instead of were in multiple occasions in the paper. Please correct them in all cases.

R: Corrected

P1-L21: this should read 'to' protect.

R: Corrected

10 P1-L26: where instead of were P3-L 15: comma too much

R: Corrected

P4-L26: truism instead of tourism. P5-L30: these instead of this

R: Corrected

P5-L30: use instead of used

15 *R: Corrected*

P6-L 13: 'done' is not very specific here. What was done?

R: Corrected

P6-L 15: 'SCA and clouds in was quantified .. .' - please reformulate sentence.

R: Corrected

20 P7-L4: whit instead of with P7-L5: I think this should be 'MODIS images' instead of 'MODIS' P7-L24: This sentence is redundant, as you already mention that the Bio Bio watershed is the only showing a trend.

R: Corrected

P7-L25: In spring should be used instead of 'At spring'

R: Corrected

25 P7-L27: In summer should be used instead of 'At summer'

R: Corrected

P7-L28: this should be show instead of shows

R: Corrected

P8-L 1: where instead of were P8-L2: This should tread 'these two periods' instead of 'this two periods'

30 *R: Corrected*

P8-L 19: 'in all watersheds' instead of 'an all watersheds'

R: Corrected

P9 - L4: analyzed instead of analyze

R: Corrected

P9 - L 12: 'where compared' should be 'were compared' Fig 2: 'Rivers' instead of 'Rvers' Fig 4: ENSO years should be clearly marked on the figures Fig 5: ENSO years should be clearly marked on the figures

R: Corrected

Snow cover dynamics in Andean watersheds of Chile (32.0-39.5°S) during the years 2000 - 2013

Alejandra Stehr^{1,2} and Mauricio Aguayo^{1,2}

¹Centre for Environmental Sciences EULA-CHILE, University of Concepción, Concepción, Chile

5 ²Faculty of Environmental Sciences, University of Concepción, Concepción, Chile

Correspondence to: A. Stehr (astehr@udec.cl)

Abstract. Andean watersheds present important snowfall accumulation mainly during the winter, which ~~is later melted~~ during the spring and part of the summer. The effect of snowmelt on the water balance can be critical to sustain agriculture activities, hydropower generation, urban water supply and wildlife. In Chile 25% of the territory between the ~~region of~~ Valparaiso and Araucanía ~~Regions~~ comprise areas where snow precipitation occurs. As in many other difficult-to-access regions of the world, in the Chilean Andes there is a lack of hydrological data like discharge, snow courses, snow depths, which complicates the analysis of important hydrological processes (e.g. water availability). Remote sensing provides a promising opportunity to enhance the assessment and monitoring of the spatial and temporal variability of snow characteristics, like Snow Cover Area (SCA) and Snow Cover Dynamic (SCD). ~~In the above mentioned context~~ ~~With regard to the foregoing~~, the objectives of this study are to evaluate the suitability of MOD10A2 to estimate SCA and to assess SCD at five watersheds (Aconcagua, Rapel, Maule, Biobío and Toltén) located in the Chilean Andes, between latitude 32.0°S and 39.5°S. Those watershed were chosen because of their importance in terms of number of inhabitants, and dependence of economic activities on water resources. SCA area was obtained from MOD10A2 for the period 2000 – 2013 and SCD was analysed through a number of statistical tests to explore observed trends. ~~In order to verify~~ ~~Prior of obtaining~~ SCA for trend analysis, a validation of MOD10A2 product was done; ~~which consisted in the comparison~~ ~~comparing~~ ~~presence~~ of snow ~~presence~~ predicted by MODIS with ground observations. Results indicate that there is an overall agreement from 81 to 98% between SCA ~~-determined~~ from ground observations, and MOD10A2, showing that MODIS snow product can be taken as a feasible remote sensing tool for SCA estimation in South-Central Chile. Regarding SCD no significant reduction in SCA ~~area~~ for 2000 -2013 was detected, with the exception of the Aconcagua and Rapel watersheds; ~~although~~ ~~In addition to that~~ an important decline in SCA ~~in the five watersheds~~ for the period of 2012 and 2013 was also evident, which is coincident with the rainfall deficit for the same years. Findings were compared against ENSO episodes ~~occurring~~ during 2010 – 2013, detecting that Niña years are coincident with maximum SCA during winter in all watersheds.

1 Introduction

Snowmelt-driven watersheds are systems highly sensitive to climate change, because the hydrologic cycle depends on both precipitation and temperature, and because water is already a scarce resource subject to an ever increasing pressure for its use (Barnett et al. 2005, Vicuña et al. 2010, Meza et al. 2012, Valdés-Pineda et al. 2014). Snowmelt controls the shape of the annual hydrograph and affects the water balance at monthly and shorter time scales (Verbunt et al., 2003, Cortés et al. 2011). The effect of snowmelt on the water balance can be critical to sustain agriculture activities, hydropower generation, urban water supply and wildlife habitat quality (e.g. Vicuña et al. 2011 and 2012).

Andean watersheds present important snowfall accumulation mainly during the austral winter, and snow melts during spring and usually also during part of the summer, depending on relative altitude and ambient temperature. At higher elevations a snowpack stores significant volumes of water, which are released to the surface runoff and groundwater when solar radiation increases.

In particular, 25% of the Chilean territory between Valparaiso and Araucanía Regions is contained in areas where snow precipitation occur (DGA, 1995). As in many other difficult-to-access regions of the world, unlike western North America or the European Alps, in the Chilean Andes there is limited availability in temporal and spatial extent of hydrological data like discharge data, snow courses, snow depths (Ragettli et al., 2013), which complicates the analysis of important hydrological processes and the validation of water quantity prediction models.

Remote sensing provides a promising opportunity to enhance the assessment and monitoring of the spatial and temporal variability of different variables involved in the precipitation-runoff processes in areas where data availability for hydrological modeling is scarce (Simic et al., 2004; Boegh et al., 2004; Melesse et al., 2007; Montzka et al., 2008; Milzowa et al., 2009, Er-Raki et al., 2010; Stehr et al., 2009 and 2010).

Satellite derived snow cover area (SCA) from products like e.g.: NOAA-AVHRR or MODIS, can be used to enhance the assessment and monitoring of the spatial and temporal variability of snow characteristics (Lee et al., 2006; Li & Wang, 2010; Marchane et al., 2015; Wang et al., 2015), especially when it is combined with field data and snowpack models (Kuchment et al., 2010).

Specific spectral reflectance of snow (higher reflectance in the visible compared to the mid infrared electromagnetic spectrum) allows SCA to be accurately discriminated from snow free areas using optical remote sensing methods (in the absence of clouds or vegetation canopies). Compared with other remote sensing techniques such as microwave which can be used to map snow water equivalent (SWE), optical remote sensing which is used to map snow areal extent (SAE) has a much higher spatial resolution (Zhou et al., 2005; Zeinivand & De Smedt, 2009).

Previous studies have compared MODIS snow maps with ground observations and snow maps produced by The National Operational Hydrologic Remote Sensing Center, USA (NOHRSC) (Hall et al., 2002; Klein & Barnett, 2003; Tekeli et al., 2005; Aulta et al., 2006). A validation done by Klein & Barnett (2003), in a study on the Upper Rio Grande River Watershed, USA, showed an 86% agreement between the MODIS and NOHRSC snow maps. Klein & Barnett (2003) compared MODIS and NOHRSC products with ground observations (SNOTEL measurements), obtaining an overall accuracy of 94% and 76%,

Formatted: English (U.S.)

respectively. ~~MOD10A1 and MOD10A2 snow products are-is~~ capable of predicting with good precision (over 90%) the presence of snow when the sky is clear (Zhou et al., 2005; Liang et al., 2008a; Wang et al., 2008; Huang et al., 2011). ~~When clouds are present, however, the accuracy of MOD10A1 (daily) decreases to 34–50% (Zhou et al., 2005; Liang et al., 2008a,b).~~

Regarding snow cover dynamics, Zhang et al. (2012) using MOD10A1 and MYD10A have studied SCD of four lake watersheds located at the Tibetan Plateau in Central Asia. Results indicate that spatial distribution and pattern of snow covered days are ~~very stable~~ from year to year ~~very stable~~, and that there is no trend of snow cover change for each watershed. ~~These findings which~~ are in agreement with the results from Gao et al. (2011) for the northwest pacific region, USA. However, Tang et al. (2013) found a high inter-annual variability of SCA during 2001 to 2011 for the Tibetan plateau, with parts of the studied area showing a declining trend in SCA, and other parts showing increasing trends in SCA. Dietz et al. (2012) in their study of snow cover characteristics in Europe found some abnormal events when comparing the mean conditions with single snow cover seasons. In particular, for the season 2005/2006 an increased snow cover with a later snow cover melt was detected. Maskey et al. (2011) studied the trends and variability of snow cover changes in the Himalayan region above the 3000 m, showing a decreasing trend of snow cover during January and increasing trends during March. Marchane et al. (2015) studied the SCD over the Moroccan Atlas mountain range from 2000 until 2013 concluding that SCA has a strong inter-annual variability and that there is no statistical evidence of trend in that period. Wang et al. (2015) evaluated trends in SCA at the Tibetan Plateau, showing a decrease of snow covered areas from 2003 until 2010. Masiokas et al. (2006) studied snowpack variation in the Central Andes of Chile and Argentina obtaining that the averaged regional maximum value of SWE series displays a positive (though nonsignificant) trend with marked interannual variability ranging from 6% to 257% of the 1966–2004 mean.

From the literature review it is evident that SCD is site-specific and exhibit high variability among the different sites around the world. The Andes mountain range (on the Chilean side) has a great oceanic effect due to the short distance between the coastal line and the mountains, unlike the northern hemisphere that which has a greatbig continental influence. This makes the isotherm 0 is higher than in the northern hemisphere; in addition the topographic features characterized by mean heights above 3000 m, with very steep slopes that produce a greathuge orographic effect that forces the rise of the western winds and condensation of moisture, strongly affecting the regime of precipitation and temperatures. This causes small-scale spatial variations in weather, which isare sometimes difficult to identify in satellite imagery. Since, the Andes are characterized by mean heights above 3000 m, with very steep slopes that produce an orographic effect that forces the rise of the western winds and condensation of moisture which is precipitated as rain or snow, All the previously mentioned aspects make it importantnecessary to do a validation of MOD10A2, before using it for other analysis. SCD is difficult to assess even through remote sensing techniques whereby the validation process is strictly necessary. Indeed, one of the main sources of error in the classification of satellite images is the interpretation of topographic features especially in areas with rugged slopes. The irregular topography produces shading and lighting effects that change the radiometric response of the surface which depends on the local slope and its orientation (Riaño et al., 2003). As the climate controlling hydrologic processes in the Andes is influenced by El Niño events (Escobar y Aceituno 1993, Ayala et al. 2014), as well as warm winter storms (Garreaud 2013), assessment of SCD is of especial interest in this region. Pioneer studies have been presented in recent years for the Mataquito river watershed (De María et al. 2013, Vicuña et al. 2013). The aims of this study are to evaluate the suitability of MOD10A2 as a tool that allows us to analyse SCD in Chile, and get objective evidence of SCA changes during the last 17 years. for estimation of SCA and to assess SCD To prove this we

Formatted: Left, Space Before: 0 pt, Line spacing: single, Don't adjust space between Latin and Asian text, Don't adjust space between Asian text and numbers

Formatted: Font: 10 pt, English (U.K.)

Formatted: Font: 10 pt, English (U.K.)

Formatted: Font: 10 pt, English (U.K.)

Formatted: Font: 10 pt, English (U.K.)

Formatted: Font: 10 pt, English (U.K.)

Formatted: English (U.K.)

Formatted: Font: 10 pt, English (U.K.)

~~selected at~~ five watersheds located in the Chilean Andes, between latitude 32.0°S and 39.5°S. ~~W~~We investigate trends and variability of snow cover changes at different temporal scales (seasonal and annual) and: w~~We used Moderate Resolution Imaging Spectroradiometer (MODIS) snow cover products (Hall et al. 2007) from 2000 to 2017. In-situ precipitation and temperature measurements form the National General Water Directorate (DGA) are used to~~ ~~substantiate~~corroborate the results.

2 Materials and methods

2.1 Study Sites

The study site includes five watersheds located in central and south Chile: Aconcagua, Rapel, Maule, Biobío and Toltén (figure 1). The watersheds were chosen considering their population, and dependence of economic activities on water resources.

The Aconcagua watershed is located in the region of Valparaiso ~~region~~ between the parallels 32°14'–33°09'S and 69°59'–71°33'W, ~~with~~ an area of 7340 km² and a maximum elevation of 5843 m a.m.s.l. Approximately 40% of the watershed lies above the snowline (average altitude above where we can find snow in winter) which is located at 2100 m (Garreaud, 1992). The climate in the watershed is temperate Mediterranean with a long dry season of 7 to 8 months, and a wet season of approximately 4 months (May–August) during which more than 80% of the precipitation occurs. The average annual precipitation is 529 mm. Principal economic activities at the watershed are agriculture, minning and industries. ~~having~~ It has a population of around 600000 inhabitants (4% of Chilean population).

The Rapel watershed is located in the General Libertador Bernardo O'Higgins region between the parallels 33°52'–35°00'S and 70°00'–71°53'W, having an area of 13695 km² and a maximum elevation of 5138 m a.m.s.l.. Approximately 30% of the watershed lies above the snowline which is located at 1500 m (Peña y Vidal, 1993). The climate in the watershed is temperate Mediterranean, with a dry season of 4 to 5 months (November–March), and a wet season of approximately 4 months (May–August) during which more than 75% of the precipitation occurs. The average annual precipitation is 960 mm. Main economic activities at the watershed are agriculture and minning. ~~having~~ It has a population of around 570000 inhabitants (3.8 % of Chilean population).

The Maule watershed is located in the Maule region between the parallels 35°05'–36°35'S and 70°18'–72°42'W, having an area of 20295 km² and a maximum elevation of 3931 m a.m.s.l.. Approximately 32% of the watershed lies above the snowline which is located at 1150 m (Peña y Vidal, 1993). The climate in the watershed is temperate Mediterranean, with a dry season of 6 months (November–April), and a wet season of approximately 4 months (May–August) during which more than 75% of the precipitation occurs. The average annual precipitation is 1471 mm. Main economic activity at the watershed is agriculture. It has ~~having~~ a population of around 410000 inhabitants (2.7 % of Chilean population).

The Biobío watershed is located in the Biobio region between the parallels 36°45'–38°49'S and 71°00'–73°20'W, having an area of 24264 km² and a maximum elevation of 3487 m a.m.s.l.. Approximately 41% of the watershed lies above the snowline which is located at 850 m (Peña y Vidal, 1993). The climate in the watershed is Mediterranean, with a dry season of 5 months

Formatted: English (U.S.)

Formatted: Left, Space Before: 0 pt, Line spacing: single, Don't adjust space between Latin and Asian text, Don't adjust space between Asian text and numbers

Formatted: Font: (Default) Times New Roman, 10 pt, Font color: Black, English (U.K.)

Formatted: Not Highlight

Formatted: Not Highlight

(November–March), and a wet season of approximately 4 months (May–August) during which more than 55% of the precipitation occurs. The average annual precipitation is 1891 mm. Principal economic activities related to water resources at the watershed are agriculture, forestry and industries. ~~It has, having~~ a population of around 630000 inhabitants (4.2 % of Chilean population).

5 The Toltén watershed is located in the Araucanía region between the parallels 38°32′–39°38′S and 71°21′–73°16′W, having an area of 8398 km² and a maximum elevation of 3710 m a.s.l.. Approximately 37% of the watershed lies above the snowline which is located at 750 m (Peña y Vidal, 1993). The climate in the watershed is temperate rainforest with Mediterranean influence, characterize by precipitation throughout the year but the having less rain during the summer months than the winter ones. The average annual precipitation is 2870 mm. Main economic activities related to water resources at the watershed are ~~tourism~~ agriculture and forestry. ~~It has, having~~ a population of around 170000 inhabitants (1.1 % of Chilean population).

2.2 Ground observations of SCA

For validation of MOD10A2 ground observations ~~at two specific sites~~ were performed, including continuous monitoring of snow depth with meteorological stations, snow courses, and one-day observations of snow presence and depth at some mountain trails. Figure 2a shows the location of measuring sites.

15 2.2.1 Continuous monitoring of snow depth

In order to perform a continuous measurement of snow depth three meteorological stations were installed in the upper part of the Biobío watershed. The stations ~~were are~~ Parque Tolhuaca, located at 900 m.a.s.l., Termas Malleco at 1190 m.a.s.l., and Laguna Verde at 1410 m.a.s.l. ~~Mean snow line elevation is around 850 m.a.s.l. (Peña & Vidal, 1993). Also snow depth data from three DGA meteorological station (Portillo 3005 m.a.s.l., Laguna Negra 2709 m.a.s.l. and Volcan Chillan 1964 m.a.s.l.) were use.~~

20 Figure 2b shows the location of the meteorological stations.

Snow depth was measured using acoustic snow depth sensors (Campbell Scientific, SR50A) with a frequency of 15 min. Corrections for variation of the speed of sound in air were made considering the air temperature measured at the same time intervals as snow depth, using the temperature and relative humidity probe (Vaisala, HMP60). The data were collected from April 2010 ~~until to~~ December 2011 at Termas Malleco station and from July 2011 ~~until to~~ December 2011 at Parque Tolhuaca and Laguna Verde ~~stations~~ stations. ~~In the case of DGA station, we used available data from April 2013 until to December 2015.~~ Snow data ~~where were~~ grouped considering the average snow depth over 8 days (same 8 day period of MOD10A2) and then reclassify as snow (1) if the average snow depth was > 0 cm and no-snow (0) for snow depth = 0 cm.

2.2.2 One-day observation points

30 To cover a large spatial domain and ~~thus to~~ achieve a better spatial and temporal representation of SCA, a total of ~~114~~ 124 different single measurements of snow depth were conducted during field campaigns at different mountain trails. Field measurements were taken from the end of June ~~until to~~ the beginning of October 2011. The location of each observation point was recorded with a GPS and snow depth was measured with a Black Diamond QuickDraw Tour Probe 190. Figure 2c shows the location of the observation points and the date and number of observations for each day.

2.2.3 Snow courses

During six days of the winter season in 2011, eleven snow courses were conducted in the upper Malleco watershed. Figure 2d shows the location of snow courses. Each route was recorded with a GPS. Snow depth and density were measured with a Black Diamond QuickDraw Tour Probe 190 and Snow Sampling Tubes (3600 Federal Snow Tubes, Standard-Metric), respectively.

5 | Table 1 shows the dates and repetitions ~~times~~ for each snow route ~~conducted~~ performed.

2.3 MODIS snow cover products

The Moderate Resolution Imaging Spectroradiometer (MODIS) is on the Earth Observing System, which employs a cross-track scan mirror and a set of individual detector elements to provide imagery of the Earth surface and clouds in 36 discrete and narrow spectral bands ranging in wavelength from 0.405 to 14.385 μm . It provides medium-to-coarse resolution imagery with a high temporal repeat cycle (1-2 days). The main purpose of MODIS is to facilitate the study of global vegetation and land cover, vegetation properties, global land surface changes, surface albedo, surface temperature as well as snow and ice cover, on a daily or nearly daily basis. The MODIS snow cover products are one of the many geophysical standard products derived from MODIS data. The MODIS snow cover products are provided ~~both~~ on a daily basis (MOD10A1) and as 8-day composites (MOD10A2) both at 500 m resolution over the Earth's land surfaces. MOD10A1 consists of 1200 km by 1200 km tiles of 500 m resolution data gridded in a sinusoidal map projection and MOD10A2 is a composite of MOD10A1 especially produced to show maximum snow extent. For ~~these~~ this study MOD10A2 ~~were~~ was used. Classification of SCA using MODIS collected data ~~is~~ was done based on the Normalized Difference Snow Index (NDSI) (Hall et al., 1995, Klein et al., 1998, Riggs et al., 2006). Images were reprojected to WGS84 UTM 19S using the MODIS Reprojection Tool (MRT).

10 |
20 | MODIS estimates of SCA were validated for the period between April 2010 and December 2011 by comparing them with ground observations. Eighty snow maps from MOD10A2 were analysed. Only cloud free observations for each cell of the map grid were used.

To validate the correspondence between the image classification and ground observations a confusion matrix was use (Congalton & Mead, 1983; Congalton, 1986, Congalton, 1991; Foody, 2002). The confusion matrix is a simple cross tabulation of classified data versus observed ones, providing a base for accuracy assessment (Campbell, 1996; Canters, 1997). This matrix will give the percentage of cases correctly allocated, and the user's and producer's accuracy, depending on whether the calculations are based upon the matrix's row or column marginals (Campbell, 1996; Story & Congalton, 1986). The indexes are calculated as illustrated in figure 3.

2.4 Assessment of SCD

30 | SCA variation in the five selected watersheds was ~~done~~ evaluated using MOD10A2 for the period covering the years 2000 – 2013 using a total of 167 images. All images were processed in ArcGis reprojecting them to WGS84 19S and ~~were~~ cutting the image according to the desired area, in this case for the Aconcagua, Rapel, Maule, Biobío and Toltén watersheds. SCA and clouds ~~in~~ was were quantified ~~in~~ for each available image, and annual and seasonal averages of snow cover were calculated for each watershed.

SCD was analysed through a number of statistical tests to explore observed trends in SCA during the study period. ~~The use of "Nonparametric" statistical test was/were chosen, asbecause~~ they are ~~more-robuster than the-compared-to~~ "parametric" test. Mann-Kendall test was applied ~~for-to determining-determine the~~ existence of monotonic trends. Sen's method (Gilbert 1987) was applied to determine the rate of observed changes.

An analysis of correlation between SCA and mean precipitation (including only precipitation stations over the 800 m.a.s.l. and with more than 80% of data for each year) was done for each watershed.

3 Results

The product MOD10A2 was validated for determination of SCA in the watersheds under study and the SCD was analysed.

3.1 Validation of MOD10A2 through ground observations

The composite images MOD10A2 ~~where-were~~ compared with ground observations. For the study period 23, 75, ~~and-26, 119, 123 and 32~~ images ~~where-were~~ available for comparison with observations at Parque Tolhuaca, Termas Malleco, ~~and-Laguna Verde, Portillo, Laguna Negra and Volcan Chillan~~ stations, respectively. Clouds were present in 2 (9%), 1 (1%), ~~and-1 (4%), 3 (3%), 3 (2%) and 2 (6%)~~ images for each aforementioned station, respectively. ~~Table 2 shows the confusion matrix and indexes of agreement of the images with ground observations at Parque Tolhuaca, Termas Malleco, and Laguna Verde stations. For no-snow observations User's accuracy was higher (mean value at the three stations of 88%) than for snow observations (mean value at the three stations of 77%), while mean Producer's accuracy was 83% for no-snow observations, and 90% for snow observations.~~ An overall accuracy of 86%, 81%, ~~and-88%, 90 %, 80% and 91%~~ was observed at Parque Tolhuaca, Termas Malleco, ~~and-Laguna Verde, Portillo, Laguna Negra and Volcan Chillan~~ stations, respectively, which ~~meet-reach~~ the target of 85% (Thomlinson et al. 1999).

~~For comparison with one-day observations-A~~ a total of ~~108-117~~ images corresponding to the study period were available ~~for comparison with one-day observations, with-whitwith~~ none of them classified as covered by 'clouds'. All ground observations were done over areas ~~whit-with~~ snow presence. When comparing it to MOD10A2 ~~images~~ the agreement was of ~~9697%~~. MODIS that did not coincide with ground observations occurred during the beginning of the snowfall season or ~~at~~ the end of the melting period. In both cases, ~~-~~snow patches were observed in the field covering areas at the subpixel scale of the MOD10A2 image.

For comparison with snow-courses a total of 282 images were available during the study period, all of them without clouds. Ground observations were done on areas covered by snow only. The overall accuracy of MOD10A2 for predicting SCA was 98%.

Results indicate that MOD10A2 has a ~~good-satisfactory~~ agreement with ground observations, and ~~thus-therefore~~ the 8-days composite images are suitable for analysis of SCD in the Andean watersheds.

3.2 Assessment of SCD

Figure 4-3 shows the SCD at in Aconcagua, Rapel, Maule, Biobío and Toltén watersheds for the period 2000-2013. All watersheds show the same SCD with more SCA in winter than the other seasons. It can be appreciated that in Maule Biobío and Tolten watersheds the maximum SCA in 2016 is considerably lower than the five previous years, and one lowest of the whole study period.

Formatted: English (U.S.)

Formatted: English (U.S.)

Formatted: English (U.S.)

Formatted: Spanish (Chile)

Figure 5-4 shows mean SCA for each season and annual precipitation for each season at in Aconcagua, Rapel, Maule, Biobío and Toltén watersheds for the period 2000-2013. Northern watersheds i.e. Aconcagua and Rapel, present a higher percentage SCA. It can be appreciated that not necessarily years with more precipitation have more SCA, instead, years with lower precipitation have higher SCA. Figure 5 display the relation between SCA and annual precipitation for the different watersheds, it is clear that only at Aconcagua there is a good adjustment to the regression line ($R^2 = 0.7$) with a positive slope. In Rapel and Maule we can see a positive relation but with R^2 smaller than 0.5 which indicate a deficient adjustment. At Biobío we can graphically see a negative slope, i.e. when there is more precipitation there is less SCA, but statistically we have no adequate adjustment.

Formatted: Not Highlight

Formatted: Not Highlight

Formatted: Not Highlight

Formatted: Not Highlight

Formatted: Not Highlight

Formatted: Font: (Default) Times New Roman, Font color: Black, English (U.K.), Pattern: Clear

Formatted: Superscript

Formatted: Not Highlight

Formatted: Not Highlight

Formatted: Superscript

Formatted: Not Highlight

Formatted: Not Highlight

Formatted: English (U.K.)

Formatted: English (U.K.)

Formatted: Spanish (Chile)

Formatted: Spanish (International Sort)

Figure 6 shows the variability of spatial distribution of maximum yearly SCA for the five watersheds. Years with maximum and minimum SCA of yearly maximum SCA are not coincident between watersheds. A considerable spatial variability of maximum SCA can be appreciated. There are no trends in the data.

Figure 6-7 shows annual and seasonal trends of SCA at Aconcagua, Rapel, Maule, Biobío and Toltén watersheds. Trend analysis to the SCA series was performed with the nonparametric Mann-Kendall test. Decreasing trends in annual mean SCA are observed (p -value < 0.01) for the Aconcagua and Rapel watersheds, with a decreasing slope of $42-30$ and 35 km^2/year , respectively (Figure 6a). No significant annual trend was observed for the other three watersheds. In autumn (Figure 6b) only the Aconcagua watershed shows a decreasing trend of mean SCA variation at a level of significance ≤ 0.05 , with a decreasing slope of $65-54$ km^2/year . There is no significant variation in SCA in the winter time (Figure 6c) only the Biobío watershed shows a trend of mean SCA variation at a level of significance ≤ 0.05 , in this case the trend is positive with a slope of 157 km^2/year . At winter time no other watershed shows trend on SCA. At In spring (Figure 6d) the Aconcagua and Rapel and Maule watersheds have a decreasing trend at a level of significance ≤ 0.05 , with a decreasing slope of $49-38$ km^2/year and $53-79$ km^2/year , respectively; data at the Maule watershed indicate a decreasing trend at a level of significance ≤ 0.1 , with a decreasing slope of 86 km^2/year . At In summer (Figure 6e) the Rapel watershed has a decreasing trend at a level of significance ≤ 0.05 , with a slope of 24 km^2/year ; only the Aconcagua and Rapel-Maule watersheds shows some decreasing trends with level of significance ≤ 0.1 and 0.05 , respectively and slopes of $17-10$ km^2/year and $28-11$ km^2/year . Is important to remark is that both the Rapel watershed, s have has important-large glacier areas. All above mentioned results are coincident with the outcomes given by the Pettitt homogeneity test which shows that both time series are not homogenous between two given times (p -value < 0.01), the change in the average in most of the cases is observed between 2008 y 2011.

Considering snow accumulation and melt seasons, data where were grouped into two periods, i.e. autumn - winter (accumulation) and spring - summer (melt), for this-these two periods a trend analysis was also done. Results indicated that there

is a negative trend in mean-average SCA during both seasons, in only for the Aconcagua watershed has a decreasing slope (p-value < 0.01) of 29 km²/year during the snow accumulation season (p-value < 0.01) with a decreasing slope of 28 km²/year, and in the Maule watershed a decreasing slope (p-value < 0.05) of 26 km²/year at the melt season. In the case of yearly maximum SCA we found a significant positive trend for the Biobío watershed (p-value < 0.01), the other watersheds shown a nonsignificant linear trend.

4 Discussion

In general terms we can say that MOD10A2 has a good agreement with ground observations, we found only some small disagreements between MOD10A2 and ground observations at Parque Tolhuaca station. This station is located close to the snowline where most of the time the soil is not covered by snow or is cover by snow for small time-periods of time, in this case the presence of small snow patches is expected to be highly variable in time, it can even varying-variate at the subdaily scale and thus-therefore it could reducing the capability-capacity of images to capture snow coverage when-we-are in the proximity of the snowline.

Regarding SCA, we can see on the results presented on Figures 4-3 and 54, that SCA has a similar behaviour in the different watersheds during the study period, i.e. all watersheds follow the same snow accumulation and melt dynamic and the maximum and minimum % of SCA are also coincident in time.

The SCA magnitude for each watershed was contrasted with historical data from El Niño/ La Niña Southern Oscillation (ENSO) episodes from 2000 – 2013¹. Normal or neutral years correspond to historical conditions, as years Niño and Niña correspond to wet and dry years, respectively in the case of central and south of Chile. During 2000 and 2013 they-wereoccurred four-five episodes of El Niño (2002, 2004-2005, 2006 – 2007, and-2009 and 2015-2016) and three episodes of la Niña (1999 – 2000, 2007 – 2008 and 2010 – 2011), Niño and Niña episodes were defined using the Oceanic Niño Index (ONI).

Niña years are coincident with maximum SCA at winter time in all watersheds, with similar amounts of SCA between different Niña episodes. The 2007 Niña event is coincident with the highest % of SCA during winter for the study period (2000 – 2013) an in all watersheds. Winter SCA for Niña and Niño episodes are all above or just at the mean SCA for the 14 years under study.

Years under the mean of SCA area are all not coincident with Niña and Niño episodes, i.e. normal years are all under the mean SCA value. There is also no linear relation between the amount of precipitation and SCA, in exception of the Aconcagua watershed (Figure 5). This study only analyzed snow coverage and not snow depth, i.e volume of snow, which implies that a bigger SCA is not necessarily related with more water stored as snow. Considering the existing data availability, in time and space, of the DGA regarding snow depth it was not possible to carry out an analysis of changes in snow depth in this study.

During 2012 and 2013 the last five years an important decline in SCA can-bewas perceived in most-all of the watershed, with exception of the Biobío watershed, where no difference can be seen until the last year (2016). This decline is bigger at the Tolten watershed, where the average for the last five years is 50% of the mean for the entire period. In the analysis of the Analyzing

- Formatted: Not Highlight
- Formatted: Not Highlight
- Formatted: Not Highlight
- Formatted: Not Highlight
- Formatted: Not Highlight
- Formatted: Not Highlight
- Formatted: Not Highlight
- Formatted: English (U.S.)
- Formatted: English (U.S.)

- Formatted: Not Highlight
- Formatted: Not Highlight
- Formatted: Not Highlight
- Formatted: Font: 10 pt
- Formatted: Not Highlight
- Formatted: Font: 10 pt
- Formatted: Not Highlight
- Formatted: Font: 10 pt
- Formatted: Font: 10 pt
- Formatted: Font: 10 pt
- Formatted: Font: 10 pt
- Formatted: Not Highlight
- Formatted: Font: 10 pt
- Formatted: Not Highlight
- Formatted: Font: 10 pt
- Formatted: Not Highlight
- Formatted: Not Highlight
- Formatted: Font: 10 pt
- Formatted: Not Highlight
- Formatted: Font: 10 pt
- Formatted: Not Highlight
- Formatted: Not Highlight

¹ http://www.cpc.noaa.gov/products/analysis_monitoring/ensostuff/ensoyears.shtml

precipitation data we can ~~see-observe~~ that in all watershed ~~they-there~~ was a rainfall deficit during 2012 and ~~2013~~2016-; where deficit for 2012 and 2013 are in average the followings: Aconcagua 7% and ~~51~~26%, Rapel 12% and ~~50~~29%, Maule 28% and ~~36~~24%, Biobío 22% and ~~38~~19%, and finally at Toltén 35 % and ~~47~~27 % (DGA, 2012, DGA, 2013, DGA, 2014, DGA, 2015, DGA 2016, DMC, 2013, DMC, 2014).

Masiokas et al. (2006) studied snowpack variation between 1951- 2005 in Chile between latitude 30°S and 37°S, they found that snow accumulation is positively related to El Niño but they could not found a clear relationship with La Niña. The correlations that they found between snowfall and annual amount of rainfall in central Chile fit well with the known positive correlation of precipitation with El Niño during the Southern Hemisphere winter (June–August) (Waylen and Caviedes 1990; Montecinos and Aceituno 2003). It came to their attention that in contrast to the decreasing trend in snowpack observed across western Northamerica, in the region they studied, the average regional maximum value of snow water equivalent shows a positive to nonsignificant trend. In our case we have only analyzed SCA obtaining decreasing trend in the watersheds located in the northern part (32.0°S - 36°S) and to the south nonsignificant trend (35°S - 39.5°S). These results are in agreement with the ones obtained by Falvey and Garreaud (2009) who noticed that in central and northern Chile (17° – 37°S) in situ temperature observations confirm warming in the central valley and western Andes (+0.25°C/decade). In southern Chile (38°S–48°S) temperature trends over land are weak (insignificant at 90% confidence).

In the watersheds located southern than 35°S we observed no relation between SCA and annual precipitation, which is in agreement with the results of Cortes et al. 2011, who found that all watersheds they studied that were located north of 35°S had a high and significant correlation to ONI, and that precipitation during el Niño and la Niña episodes seems to be the most important factor controlling CT timing, but with not influence in the southern ones.

5 Conclusions

The first validation of MODIS snow product MOD10A2 for estimation of snow covered areas (SCA) via remote sensing in watersheds located in the Southern Hemisphere ~~is-was~~ presented. Ground observations of SCA were conducted during the years 2010 and 2011 at six study sites including 3-6 meteorological stations, ~~116-124~~ one-day single-observation points, and 11 snow courses. The SCA was determined for 636 days from MODIS snow products and compared with the SCA measured in situ. The SCA estimated from MOD10A2 presented an overall agreement from 81 to 98% with SCA determined from ground observations, showing that MODIS snow product can be taken as a feasible remote sensing tool for SCA estimation in South-Central Chile.

By the other side we have analyzed SCA trend for the period 2000 - ~~2013-2016~~ in five of the most important watersheds of South-Central Chile in the context of water use and inhabitants, covering a longitudinal gradient from 32°14'S to 39°38'S, which implies different climates regarding precipitation, ~~more~~-drier in the northern part than at the south. Results indicate that all watersheds have the same SCD with more snow during winter time ~~that-wich~~ decreases during spring and summer. Furthermore significant negative trend in annual mean SCA are observed for the Aconcagua and Rapel watersheds, which can have implication on water ability for summer time. In general we can see that there is no significant reduction in SCA for 2000 -

Formatted: Font: 10 pt, English (U.S.)

Formatted: Font: 10 pt, English (U.S.)

Formatted: Font: Not Bold, English (U.S.)

Formatted: Font: 10 pt, English (U.S.),
Pattern: Clear

Formatted: Not Highlight

Formatted: ...

Formatted: Not Highlight

Formatted: ...

Formatted: Font: 10 pt, English (U.S.)

Formatted: ...

Formatted: Font: 10 pt, English (U.S.)

Formatted: ...

Formatted: Not Highlight

Formatted: ...

Formatted: Not Highlight

Formatted: ...

Formatted: Not Highlight

Formatted: ...

Formatted: Not Highlight

Formatted: ...

Formatted: Not Highlight

Formatted: ...

Formatted: Not Highlight

Formatted: ...

Formatted: Not Highlight

Formatted: ...

Formatted: Font: Not Bold, English (U.S.)

Formatted: Not Highlight

Formatted: Font: Not Bold, English (U.S.)

Formatted: Not Highlight

Formatted: Font: Not Bold, English (U.S.)

Formatted: ...

Formatted: Font: Not Bold, English (U.S.)

Formatted: Not Highlight

Formatted: Not Highlight

Formatted: Not Highlight

Formatted: Not Highlight

Formatted: Not Highlight

Formatted: Not Highlight

Formatted: Not Highlight

Formatted: English (U.S.)

2016³, with the exception of the Aconcagua watershed. From the data we can appreciate an important decline in SCA for the period of 2012 and 2013-2016, which is coextensive with the rainfall deficit ~~we had for~~ that occurred during the same years.

The results ~~where were~~ compared with ENSO episode during 2000 – 2013-2016. ~~Of the former comparision~~ we can conclude that ~~in the previously for that period mentioned period~~, Niña years are coincident with maximum SCA at winter time in all watersheds, with similar amounts of SCA between different Niña episodes.

~~In summary~~ the results presented in this work are ~~of highly importance relevant~~ and can be used as one feasible approximation to obtain SCA, particularly in Chilean Andes ~~where there is because of the~~ lack of hydrological data like discharge data, snow courses, snow depths, etc. These can be ~~an outstanding~~ tool to improve the analysis of important hydrological processes and the validation of water quantity prediction models.

Acknowledgements

The present research was conducted in the framework of the FONDECYT 11100119 project ~~and the FONDAP 15130015 project~~.

References

Ault, T. W., Czajkowski, K. P., Benko, T., Coss, J., Struble, J., Spongberg, A., Templin, M., and Gross, C.: Validation of the MODIS snow product and cloud mask using student and NWS cooperative station observations in the Lower Great Lakes Region, *Remote Sens. Environ.*, 105, 341-353, 2006.

Ayala, A., McPhee, J., and Vargas, X.: Altitudinal gradients, midwinter melt, and wind effects on snow accumulation in semiarid midlatitude Andes under La Niña conditions, *Water Resour. Res.*, 50, 3589–3594, 2014.

Boegh, E., Thorsen, M., Butts, M. B., Hansen, S., Christiansen, J. S., Abrahamsen, P., Hasager, C. B., Jensen, N. O., van der Keur, P., Refsgaard, J. C., Schelde, K., Soegaard, H., and Thomsen, A.: Incorporating remote sensing data in physically based distributed agro-hydrological modeling, *J. Hydrol.*, 287, 279–299, 2004.

Campbell, J. B.: *Introduction to remote sensing* (2nd ed.). London: Taylor and Francis, 1996.

Canter, F.: Evaluating the uncertainty of area estimates derived from fuzzy land-cover classification, *Photogramm. Eng. Rem. S.*, 63, 403–414, 1997.

Cohen, J.: A coefficient of agreement for nominal scales, *Educ. Psychol. Measurement*, 20, 1, 37-45, 1960.

Congalton, R., and Mead, R.: A quantitative method to test for consistency and correctness in photointerpretation, *Photogramm. Eng. Rem. S.*, 49, 69–74, 1983.

Congalton, R.: A review of assessing the accuracy of classifications of remotely sensed data, *Remote Sens. Environ.*, 37, 35-46, 1991.

Cortés, G., Vargas, X., and McPhee, J.: Climatic sensitivity of streamflow timing in the extratropical western Andes Cordillera, *J. Hydro.*, 405, 93-109, 2011.

Demaria, E. M. C., Maurer, E. P., Thrasher, B., Vicuña, S., and Meza, F. J.: Climate change impacts on an alpine watershed in Chile: Do new model projections change the story?, *J. Hydrol.*, 502, 128-138, 2013

5 DGA. Manual de Cálculo de Crecidas y Caudales Mínimos en Cuencas Sin Información Fluviométrica, 1995.

DGA. Información pluviométrica, fluviométrica, estado de embalses y aguas subterráneas, *ssd n°: 6423872, Boletín n° 416* diciembre, 2012

DGA. Información pluviométrica, fluviométrica, estado de embalses y aguas subterráneas, *ssd n°: 7429039, Boletín n° 428* diciembre, 2013

10 [DGA. Información pluviométrica, fluviométrica, estado de embalses y aguas subterráneas, *ssd n°: 8441530, Boletín n° 440* diciembre, 2014](#)

[DGA. Información pluviométrica, fluviométrica, estado de embalses y aguas subterráneas, *ssd n°: 9490165, Boletín n° 452* diciembre, 2015](#)

15 [DGA. Información pluviométrica, fluviométrica, estado de embalses y aguas subterráneas, *ssd n°: 10557841, Boletín n° 464* diciembre, 2016](#)

Dietz, J., A. J., Wohner, C., and Kuenzer, C.: European Snow Cover Characteristics between 2000 and 2011 Derived from Improved MODIS Daily Snow Cover Products, *Remote Sens.*, 4, 2432-2454; doi:10.3390/rs4082432, 2012.

DMC, Dirección General de Aeronáutica Civil Dirección Meteorológica e Chile. Subdepartamento Climatología y Met. Aplicada. Anuario Climatológico 2012 Santiago – Chile 2013. Issn 0716.3274

20 DMC, Dirección General de Aeronáutica Civil Dirección Meteorológica e Chile. Subdepartamento Climatología y Met. Aplicada. Anuario Climatológico 2013 Santiago – Chile 2014

Er-Raki, S., Chehboun, A., and Duchemin, B.: Combining Satellite Remote Sensing Data with the FAO-56 Dual Approach for Water Use Mapping In Irrigated Wheat Fields of a Semi-Arid Region, *Remote Sens.*, 2, 375-387, 2010.

25 [Falvey, M. and Garreaud, R.: Regional cooling in a warming world: Recent temperature trends in the southeast Pacific and along the west coast of subtropical South America \(1979–2006\), *J. Geophys Res.*, 114, D04102, 2009.](#)

Garreaud, R.: Warm winter storms in Central Chile, *J. Hydrometeorol.*, 14, 1515-1534, 2013.

Garreaud, R.: Estimación de la línea de nieve en cuencas de Chile Central. *Rev. Soc. Chilena Ing. Hidráulica*, 7, 21 – 32, 1992.

30 Ghanbarpour, M. R., Saghafian, B., Saravi, M. M., and Abbaspour, K. C.: Evaluation of spatial and temporal variability of snow cover in a large mountainous basin in Iran, *Nord. Hydrol.*, 38, 45–58, 2007.

Gilbert, R.O.: Statistical methods for environmental pollution monitoring, Van Nostrand Reinhold, New York, 1987.

Formatted: Font: 10 pt, English (U.S.)

Formatted: Font: 10 pt

Formatted: Font: 10 pt, English (U.S.)

Formatted: Font: 10 pt

Formatted: Font: 10 pt, English (U.S.)

Formatted: English (U.S.)

- Hall, D. K., Riggs, G. A., Salomonson, V. V., Di Girolamo, N. E., and Bayr, K. J.: MODIS snow-cover products, *Remote Sens. Environ.*, 83, 181–194, 2002.
- Hall, D. K., and Riggs, G. A.: Accuracy assessment of the MODIS snowcover products, *Hydrol. Process.*, 21, 1534–1547, 2007.
- Huang, X. D., Liang, T. G., Zhang, X. T., and Guo, Z. G.: Validation of MODIS snow cover products using Landsat and ground measurements during the 2001-2005 snow seasons over northern Xinjiang, China, *Int. J. Remote Sens.*, 32, 133–155, 2011.
- 5 Klein, A. G., and Barnett, A. C.: Validation of daily MODIS snow cover maps of the Upper Rio Grande River Basin for the 2000 - 2001 snow year, *Remote Sens. Environ.*, 86, 162-176, 2003.
- Kuchment, L. S., Romanov, P., Gelfan, A. N., and Demidov, V. N.: Use of satellite-derived data for characterization of snow cover and simulation of snowmelt runoff through a distributed physically based model of runoff generation, *HESS*, 14, 339–350, 10 2010.
- König, M., Winther, J. G., and Isacsson, E.: Measuring snow and glacier ice properties from satellite, *Rev. Geophys.*, 39, 1–27, 2001.
- Lee, S., Klein, A. G., and Over, T. M.: A Comparison of MODIS and NOHRSC Snow-Cover Products for Simulating Streamflow using the Snowmelt Runoff Model, *Hydrol. Process.*, 19, 2951-2972, 2006.
- 15 Liang, T., Huang, X., Wu, C., Liu, X., Li, W., Guo, Z., and Ren, J.: Application of MODIS data on snow cover monitoring in pastoral area: a case study in the Northern Xinjiang, China, *Remote Sens. Environ.*, 112,1514–1526, 2008 a.
- Liang, T., Zhang, X., Xie, H., Wu, C., Feng, Q., Huang, X., and Chen, Q.: Toward improved daily snow cover mapping with advanced combination of MODIS and AMSR-E measurements, *Remote Sens. Environ.*, 112, 3750–3761, 2008b.
- Li, H.Y., and Wang, J.: Simulation of snow distribution and melt under cloudy conditions in an Alpine watershed, *HESS Disc.*, 20 7, 3189–3211, 2010.
- Marchane, A., Jarlan, L., Hanich, L., Boudhar, A., Gascoïn S., Tavernier, A., Filali, N., Le Page M., Hagolle, O., and Berjamy B.: Assessment of daily MODIS snow cover products to monitor snow cover dynamics over the Moroccan Atlas mountain range, *Remote Sens. Environ.*, 160, 72–86, 2015.
- Maskey, S., Uhlenbrook, S., and Ojha, S.: An analysis of snow cover changes in the Himalayan region using MODIS snow products and in-situ temperature data, *Climatic Change*, 108, 391–40, 2011.
- 25 [Masiokas, M., Villalba, R., Luckman, B. Le Quesne, C., and Aravena, J.C.: Snowpack Variations in the Central Andes of Argentina and Chile, 1951–2005: Large-Scale Atmospheric Influences and Implications for Water Resources in the Region. *J. Cliamte*, 19, 6334-6352, 2006.](#)
- Melesse A. M., Weng, Q. H., Thenkabail, P. S., and Senay, G. B.: Remote sensing sensors and applications in environmental resources mapping and modeling, *Sensors*, 7, 3209-3241, 2007.
- 30 Meza F. J., Wilks, D. S., Gurovich, L., and Bambach. N.: Impacts of climate change on irrigated agriculture in the Maipo Basin, Chile: reliability of water rights and changes in the demand for irrigation. *J. Water Res. Pl.-ASCE*, 138, 421–430, 2012.

Formatted: English (U.S.)

Formatted: Font: (Default) Times New Roman, 10 pt, Not Bold, Font color: Black, English (U.K.)

Formatted: Font: (Default) Times New Roman, 10 pt, Not Bold, Font color: Black, English (U.K.)

- Milzowa, C., Kgotlhan, L., Kinzelbach, W., Meier, P., and Bauer-Gottwein, P.: The role of remote sensing in hydrological modelling of the Okavango Delta, Botswana, *J. Environ. Manage.*, 90, 2252-2260, 2009.
- [Montecinos, A., and Aceituno, P.: Seasonality of the ENSO-related rainfall variability in central Chile and associated circulation anomalies. *J. Climate*, 16, 281–296, 2003.](#)
- 5
- Montzka C., Canty, M., Kunkel, R., Menz, G., Vereecken, H., and Wendland, F.: Modelling the water balance of a mesoscale catchment basin using remotely sensed land cover data, *J. Hydrol.*, 353, 322-334, 2008.
- Peña, H., and Vidal, F.: Estimación Estadística de la Línea de Nieves durante los Eventos de Precipitación entre las latitudes 28 y 38 grados Sur, XI Congreso Chileno de Ingeniería Hidráulica, Concepción, Chile, 1993.
- 10 Ragetti, S., Cortés, G., McPhee, J., and Pellicciotti, F.: An evaluation of approaches for modelling hydrological processes in high-elevation, glacierized Andean watersheds, *Hydrol. Process.*, 28, 5674-5695, 20143.
- Riggs, G. A., Hall, D. K., and Salomonson, V. V.: MODIS Snow Products User Guide to Collection 5, Online article, retrieved on 2 January 2007 at: <http://modis-snow-ice.gsfc.nasa.gov/userguides.html>, 2006
- Riaño, D., Chuvieco, E., Salas, J., and Aguado, I.: Assessment of Different Topographic Corrections in Landsat-TM Data for
- 15 Mapping Vegetation Types, *IEEE T. Geosci. Remote*, 41, 1056-1061, 2003.
- Simic, A., Fernandes, R., Brown, R., Romanov, P., and Park, W.: Validation of Vegetation, MODIS, and GOES Plus SSM/I Snow-Cover Products Over Canada Based on Surface Snow Depth Observations, *Hydrol. Process.*, 18, 1089-1104, 2004.
- Stehr, A., Debels, P., Arumi, J. L., Romero, F., and Alcayaga, H.: Combining the Soil and Water Assessment Tool (SWAT) and MODIS imagery to estimate monthly flows in a data-scarce Chilean Andean basin, *Hydrolog. Sci. J.*, 54, 1053-1067, 2009.
- 20 Stehr, A., Aguayo, M., Link, O., Parra, O., Romero, F., and Alcayaga, H.: Modelling the hydrologic response of a mesoscale Andean watershed to changes in land use patterns for environmental planning, *HESS*, 14, 1963–1977, 2010.
- Story, M., and Congalton, R. G.: Accuracy assessment: a user's perspective, *Photogramm. Eng. Rem. S.*, 52, 397– 399, 1986.
- Tang, Z., Wang, J., Li, H., and Yan, L.: Spatiotemporal changes of snow cover over the Tibetan plateau based on cloud-removed moderate resolution imaging spectroradiometer fractional snow cover product from 2001 to 2011, *J. App. Remote Sens.*, 7, 1-
- 25 14,2013.
- Tekeli, A. E., Akyürek, Z., Sorman, A. A., Sensoy, A., and Sorman, A. Ü.: Using MODIS snow cover maps in modeling snowmelt runoff process in the eastern part of Turkey, *Remote Sens. Environ.*, 97, 216-230, 2005.
- Thomlinson, J. R., Bolstad, P. V., and Cohen, W.B.: Coordinating methodologies for scaling landcover classification from site-specific to global: steps toward validating global maps products, *Remote Sens. Environ.*, 70, 16-28, 1999.
- 30 Valdés-Pineda, R., Pizarro, R., García-Chevesich, P., Valdés, J. B., Olivares, C., Vera, M., and Abarza, A.: Water governance in Chile: Availability, management and climate change, *J. Hydrol.*, 519, 2538-2567, 2014.

Verbunt, M., Gurtz, J., Jasper, K., Lang, H., Warmerdam, P., and Zappa, M.: The hydrological role of snow and glaciers in alpine river basins and their distributed modeling, *J. Hydrol.*, 282, 36–55, 2003.

Vicuña, S., Gironás, J., Meza, F. J., Cruzat, M. L., Jelinek, M., Bustos, E., Poblete, D., and Bambach, N.: Exploring possible connections between hydrological extreme events and climate change in central south Chile, *Hydrolog. Sci. J.*, 58, 1598–1619, 2013.

Vicuna, S., McPhee, J., and Garreaud, R.: Agriculture Vulnerability to Climate Change in a Snowmelt Driven Basin in Semiarid Chile. *J. Water Res. Pl.-ASCE*, 138, 431-441, 2012.

Vicuña, S., Garreaud, R., and McPhee, J.: Climate change impacts on the hydrology of a snowmelt driven basin in semiarid Chile, *Climatic Change*, 105,469-488, 2011.

10 Wang, W.; Huang, X.; Deng, J.; Xie, H.; Liang, T.: Spatio-Temporal Change of Snow Cover and Its Response to Climate over the Tibetan Plateau Based on an Improved Daily Cloud-Free Snow Cover Product, *Remote Sens.*, 7, 169-194, 2015.

Wang, X., Xie, H., and Liang, T.: Evaluation of MODIS Snow Cover and Cloud Mask and its Application in Northern Xinjiang, China, *Remote Sens. Environ.*, 112, 1497–1513, 2008.

15 [Waylen, P. R., and Caviedes, C. N.: Annual and seasonal fluctuations of precipitation and streamflow in the Aconcgagua River basin. *J. Hydrol.*, 120, 79–102, 1990.](#)

Zhang, G., Xie, H., Yao, T., Liang, T., and Kang S.: Snow cover dynamics of four lake basins over Tibetan Plateau using time series MODIS data (2001–2010), *Water Resour. Res.*, 48: W10529, doi:10.1029/2012WR011971, 2012.

20 Zeinivand, H., and De Smedt, F.: Simulation of snow covers area by a physical based model, *World Acad. Sci. Eng. Technol.*, 55: 469-474, 2009.

Zhou, X., Xie, H., and Hendrickx, M. H. J.: Statistical evaluation of remotely sensed snow-cover products with constraints from streamflow and SNOTEL measurements, *Remote Sens. Environ.*, 94: 214–231, 2005.

Formatted: Font: (Default) Times New Roman, 10 pt, Font color: Black, English (U.K.)

Formatted: Font: (Default) Times New Roman, 10 pt, Font color: Black, English (U.K.)

Formatted: Font: (Default) Times New Roman, 10 pt, Font color: Black, English (U.K.)

Formatted: English (U.K.), Not Highlight

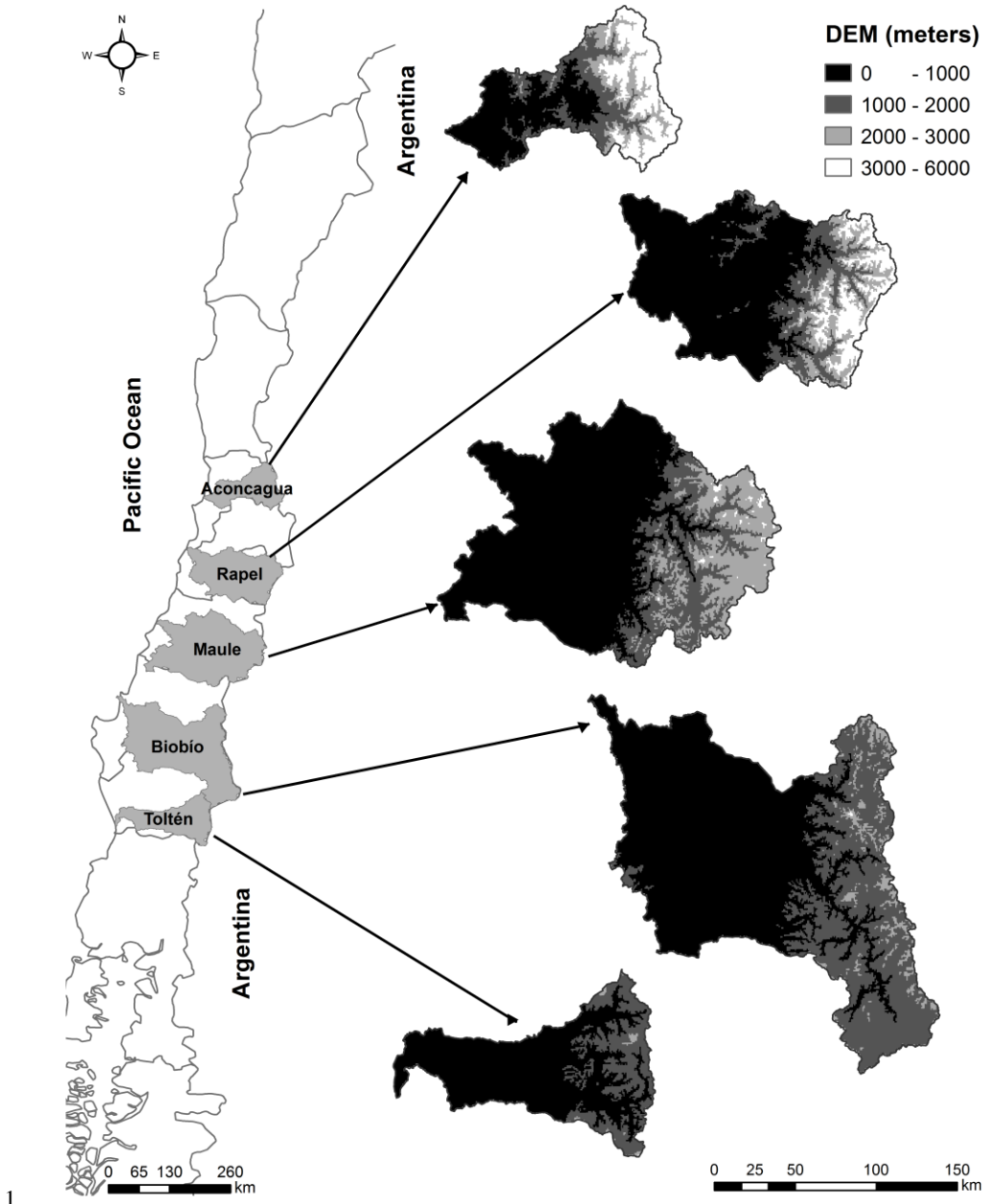
Table 1: Dates and repetition times for each snow route

Snow route	Dates	N° of times route was repeated
1	30-June	1
2	30-June	1
3	30-June, 19-July, 31-August, 14-September	4
4	1-July, 19-July, 31-August, 15-September	4
5	1-July	1
6	1-July	1
7	1-July	1
8	31-August, 15-September	2
9	1-September, 15-September	2
10	31-August, 14-September	2
11	31-August, 14-September	2

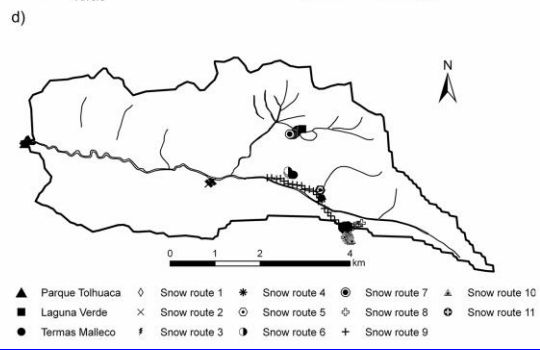
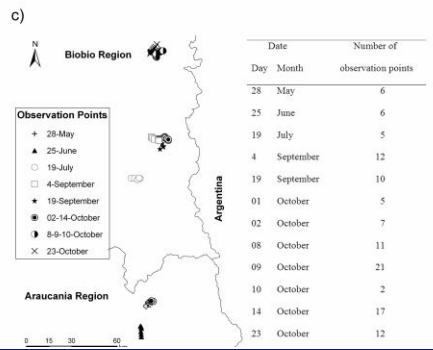
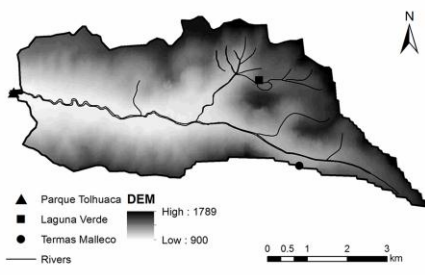
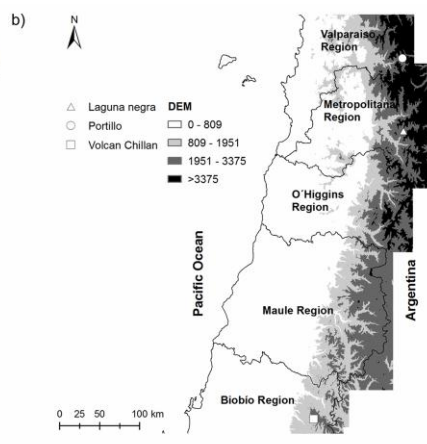
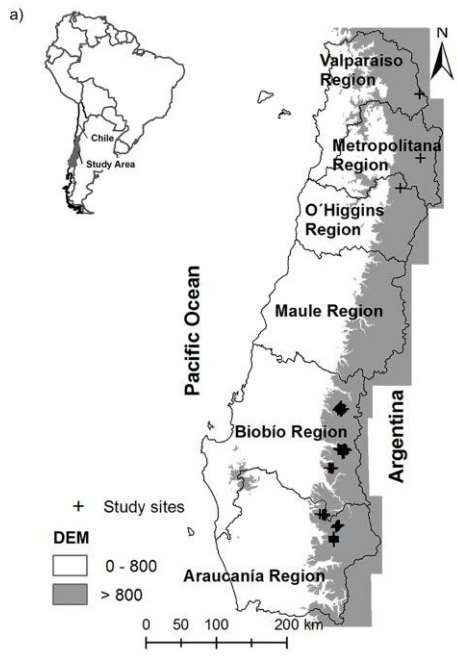
1 **Table 2. Confusion matrix and indexes of agreement for Parque Tolhuaca, Termas Malleco and Laguna Verde Stations**

		Ground observation								
		Parque Tolhuaca Station			Termas Malleco Station			Laguna Verde Station		
		snow	no-snow	User´s accuracy	snow	no-snow	User´s accuracy	snow	no-snow	User´s accuracy
MOD10A2	Snow	6	2	0.75	22	13	0.63	16	1	0.94
	no-snow	1	12	0.92	1	38	0.97	2	6	0.75
Producer´s accuracy		0.86	0.86		0.96	0.75		0.89	0.86	
Overall accuracy		0.86			0.81			0.88		

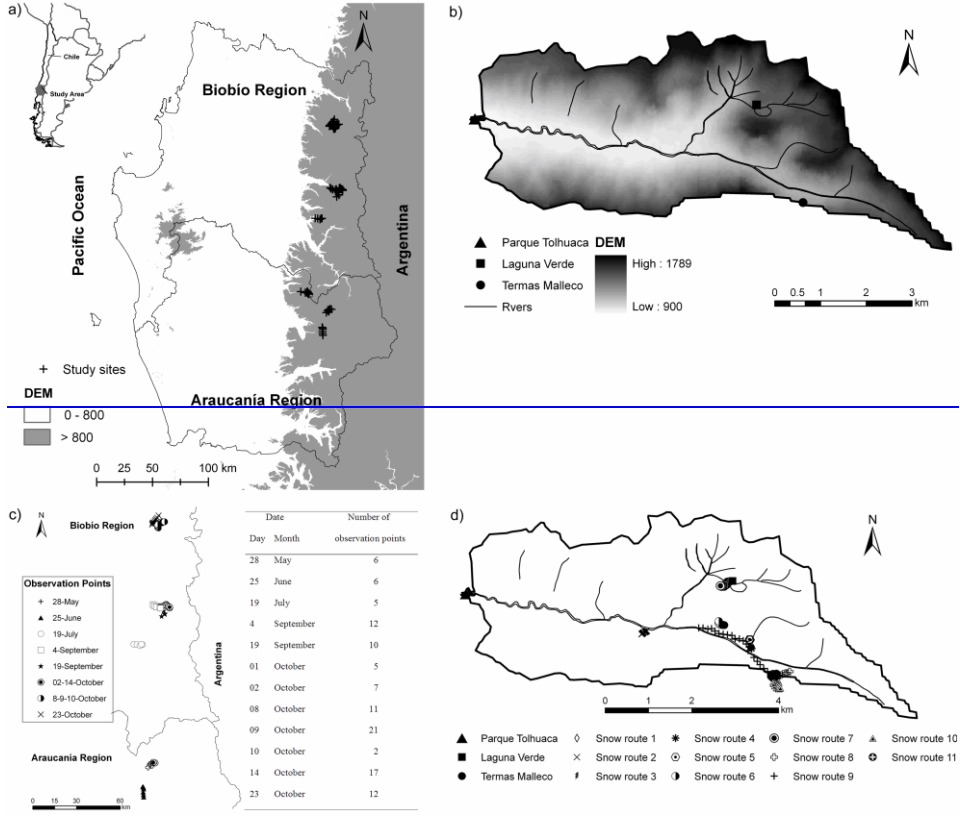
2



1
2 **Figure 1: Study sites**



1

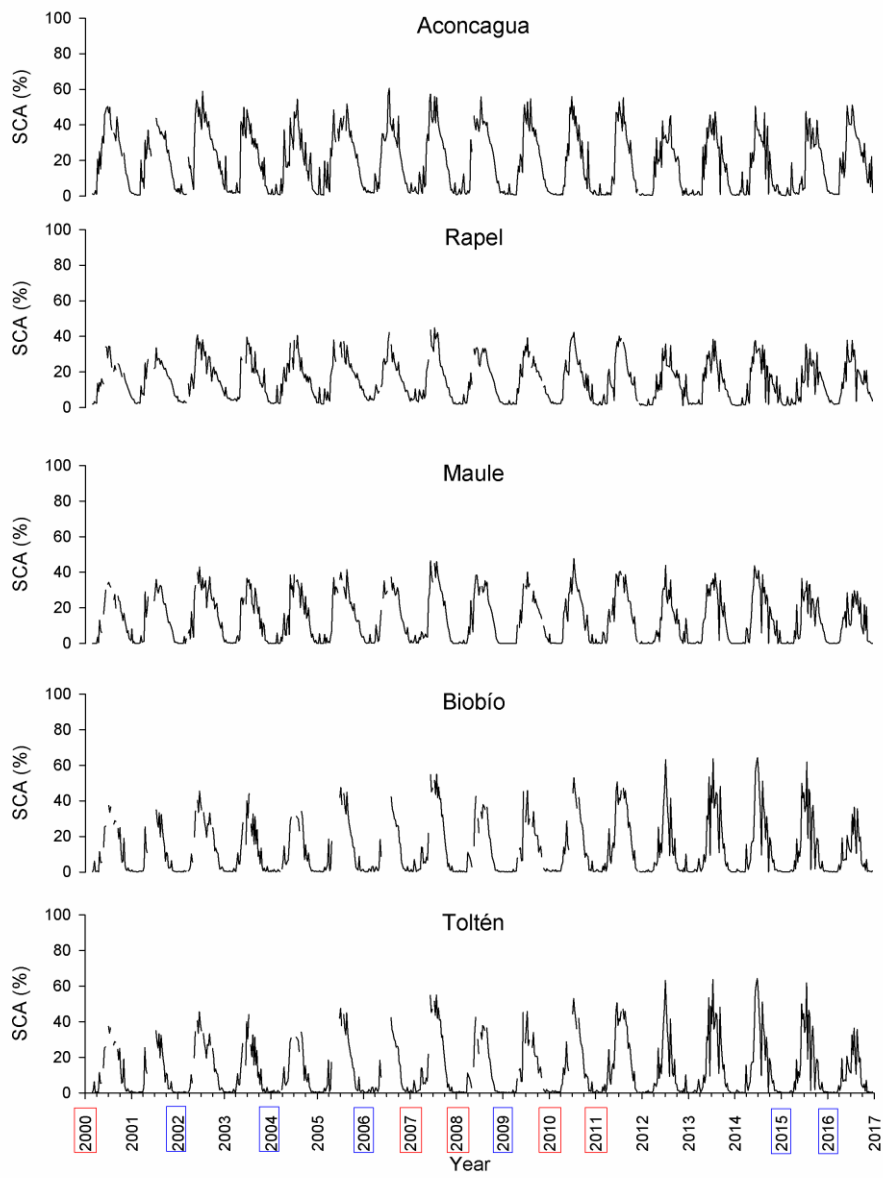


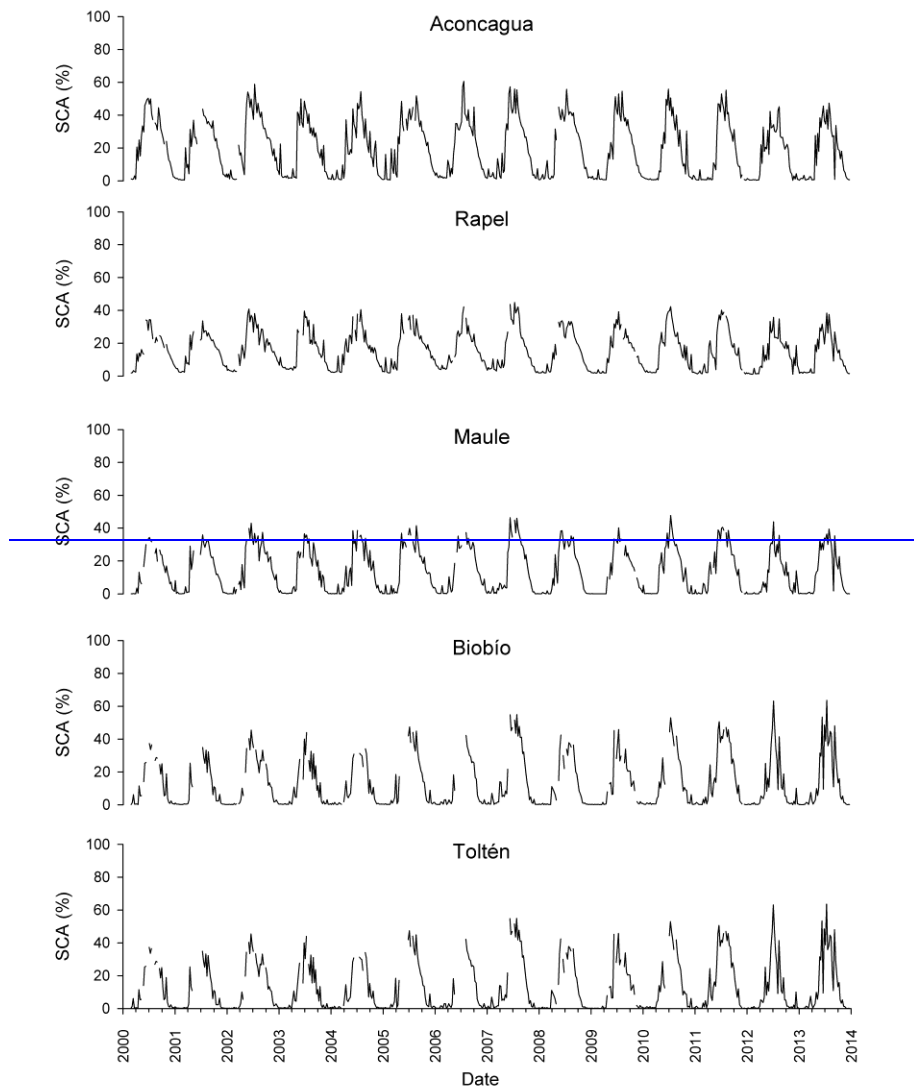
1
 2 **Figure 2: a) Study sites for MOD10A2 validation. b) Location of the meteorological stations for continuous monitoring of**
 3 **snow depth at Malleco watershed. c) Location and date of one-day observation points. d) Location of the snow courses.**
 4

k,k	A	B	C	...	q	Σ	
A	n_{AA}	n_{AB}	n_{AC}	...	n_{Aq}	n_{A+}	Percentage correct = $\frac{\sum_{k=1}^q n_{kk}}{n} \times 100$
B	n_{BA}	n_{BB}	n_{BC}	...	n_{Bq}	n_{B+}	
C	n_{CA}	n_{CB}	n_{CC}	...	n_{Cq}	n_{C+}	User's accuracy = $\frac{n_{kk}}{n_{k+}} \times 100$
\vdots	\vdots	\vdots	\vdots	...	\vdots	\vdots	
q	n_{qA}	n_{qB}	n_{qC}	...	n_{qq}	n_{q+}	Producer's accuracy = $\frac{n_{kk}}{n_{+k}} \times 100$
Σ	n_{+A}	n_{+B}	n_{+C}	...	n_{+q}	n	

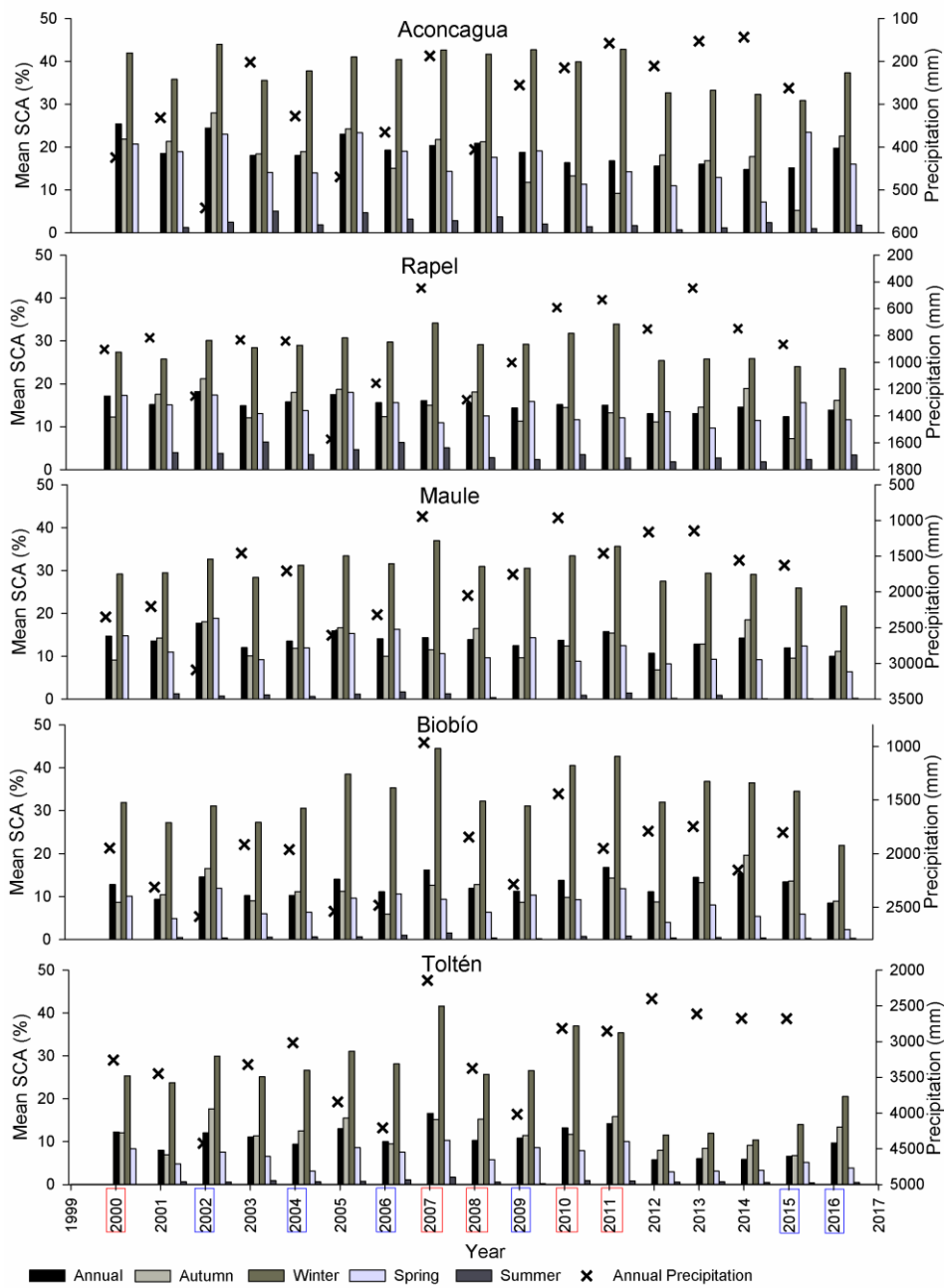
Figure 3: Confusion matrix and some indexes to measure classification accuracy.

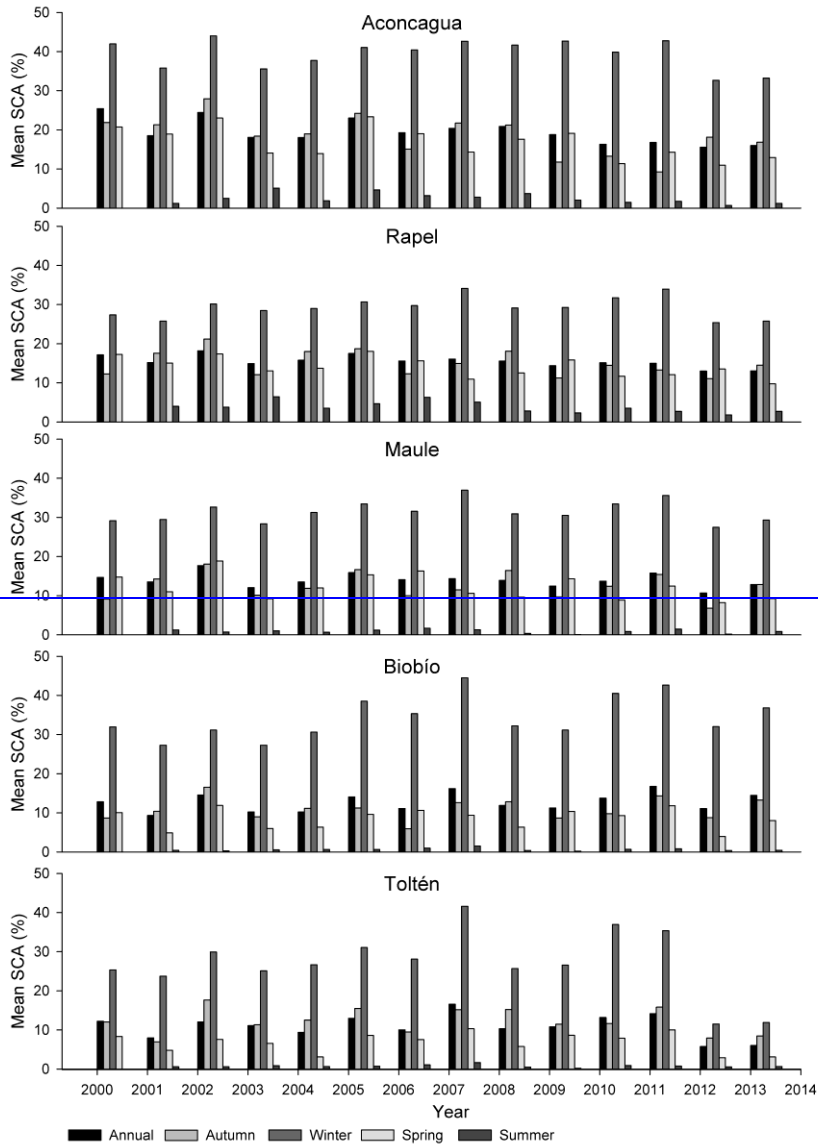
1
2
3





1
 2 **Figure 43:** SCD for the period 2000 – 2013 at Aconcagua, Rapel, Maule, Biobío and Toltén 6watersheds. Red boxes
 3 indicate Niña years, blue ones Niño years.



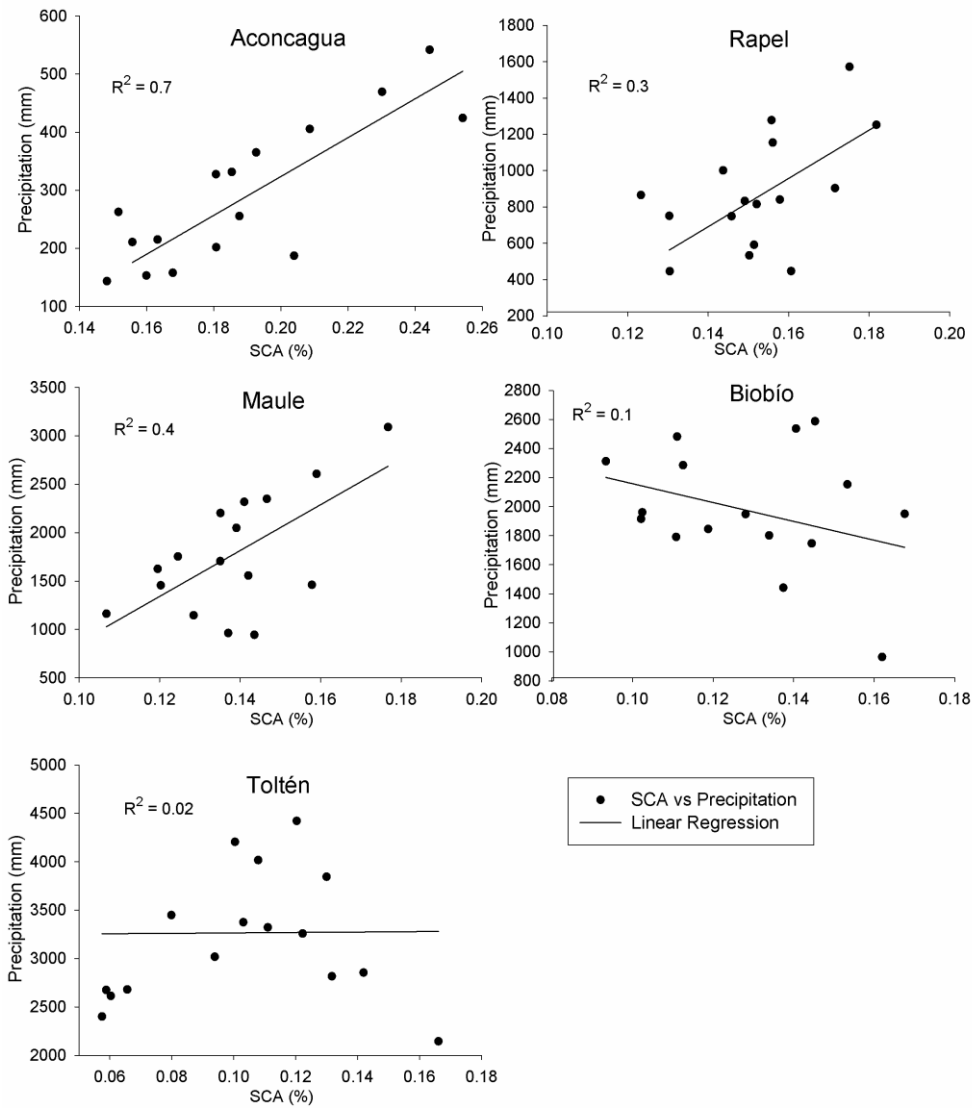


1
2
3

Figure 54: Mean seasonal and annual SCA (%) in Aconcagua, Rapel, Maule, Biobío and Toltén watersheds during 2000–2013. Red boxes indicate Niña years, blue ones Niño years.

Formatted: Not Highlight

1



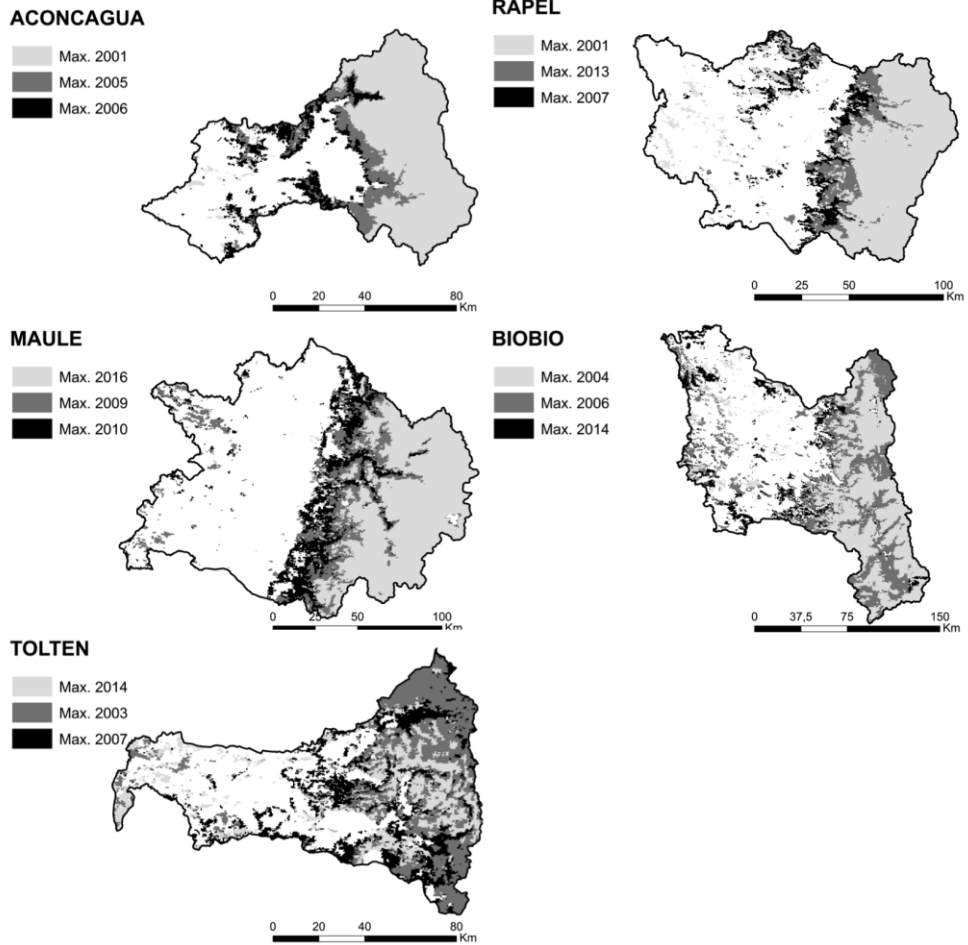
2

3

4

Figure 5: Relation between % of mean annual SCA and annual precipitation at Aconcagua, Rapel, Maule, Biobío and Toltén watersheds.

1
2



3
4
5
6
7

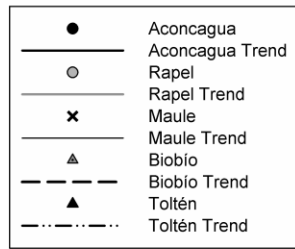
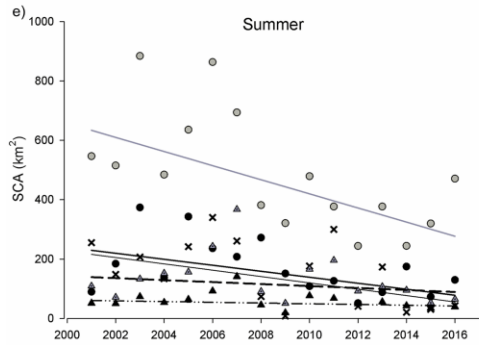
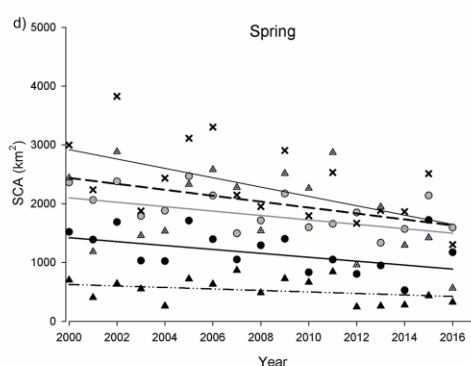
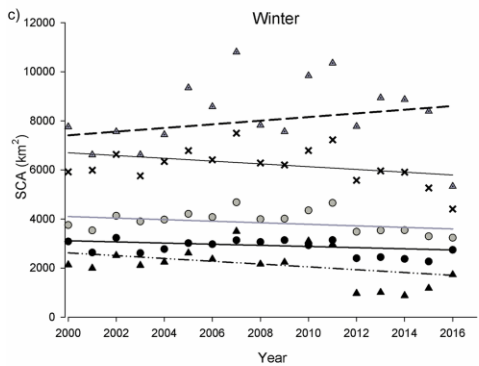
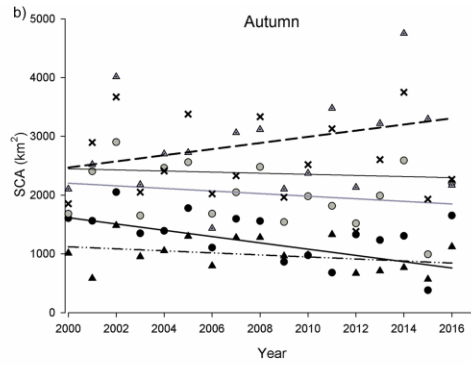
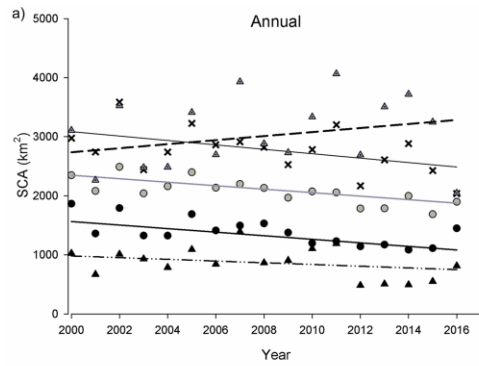
Figure 6: Spatial representation of SCA for the period 2000 - 2016 in Aconcagua, Rapel, Maule, Biobío and Tolten watersheds. Black indicates the year with maximum SCA, dark grey the year with average SCA and gray the year with minimum SCA.

Formatted: Not Highlight

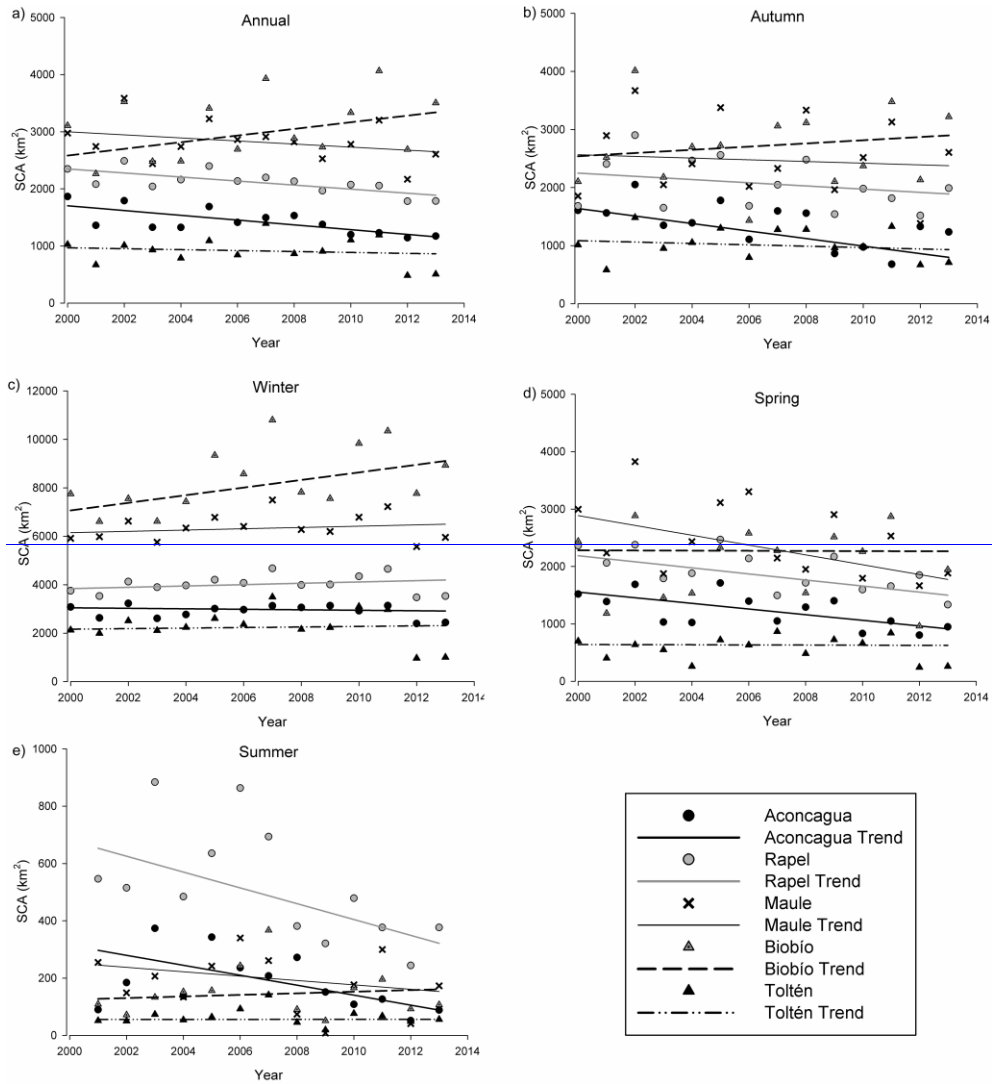
Formatted: Not Highlight

Formatted: Not Highlight

Formatted: Spanish (International Sort)



1



1

2 Figure 67: Annual and seasonal trend of SCA at Aconcagua, Rapel, Maule, Biobío and Toltén watersheds.