

To: *Hydrology and Earth System Sciences (HESS)*

Subject: Revise the manuscript (#hess-2016-332)

The Authors: Wang & Sun

The Title: Impact of LUCC on Streamflow Based on the SWAT Model over the Wei River Basin
on the Loess Plateau of China

Dear Prof. Chen and Referees,

Thank you for your useful suggestions and constructive comments on our manuscript. We have modified the manuscript accordingly, and the detailed corrections are listed below point by point. Part 1 is a point-by-point response to the reviews and part 2 is a marked-up manuscript version.

Part 1. A point-by-point response to the reviews

Comments to the Author:

I think the authors addressed most questions from the two reviewers except the following one from reviewer #1:

Another issue is the implicitly presumed stability of the catchment behavior over each of the 2 periods 1960-79 and 1980-2009. A graphic showing annual flow, rainfall (both in mm) and runoff coefficients in each of the 3 nested catchments and intermediary catchments (e.g. the colored areas in figure 2) would provide a first assessment of the possible effects of the land-use changes (as done in). A statistical assessment quantifying change and/or trend significance is also missing (cf. Lacombe et al. (2016) for an example).

Thank you for your comments. We have revised the figure (Fig. 5) and statistical assessment according to references (*Lacombe et al., 2008 and 2010*) in part “2.4 Meteorological and hydrological data” (line 182-187 and 193-199) and part “4.1 Impact of the observed LUCC on streamflow” (line 304-307 and 318-320).

The supplemented details are as follow:

Figure 6 (b), (c) and (d) show the time-series of average precipitation calculated through elevation bands method of ArcSWAT from 1960 to 2009. The average of precipitation of region 1, 2 and 3 were 489.71 493.25 and 566.60 mm/yr and the trend analysis showed that the precipitation of them decreased with an average decreasing rate of 0.57, 0.55 and 0.21 mm/yr, whereas the decreasing tendencies were not significant at the 0.05 level.

The trend analysis showed that streamflow of region 1 and 2 decreased extremely

significantly ($P < 0.01$), with an average decreasing rate of 1.74 and 5.38 mm/yr. The streamflow of region 3 did not decreased significantly. And the average runoff coefficients were 0.13, 0.34 and 0.17 in region 1, 2 and 3 over the past 50 years (1960-2009). The trend analysis of runoff coefficients showed that the tendencies of region 1 and 2 decreased extremely significantly ($P < 0.01$), with an average decreasing rate of 0.34%, and 1.09 % per year. The runoff coefficient of region 3 decreased significantly ($P < 0.01$) too, with an average decreasing rate of 0.2% per year.

Analysis above (Fig.6) showed that the observed precipitation of study area did not decreased significantly from 1960 to 2009, while the annual streamflow (except region 3) and runoff coefficients decreased significantly ($P < 0.05$) under this meteorological conation. This discrepancy could attribute to LUCC changes mostly.

This result was consistent with the decreasing tendencies of the observed streamflow of Xianyang station, which decreased significantly ($P < 0.05$), with an average decreasing rate of 2.45 mm/yr from 1980 to 2009.

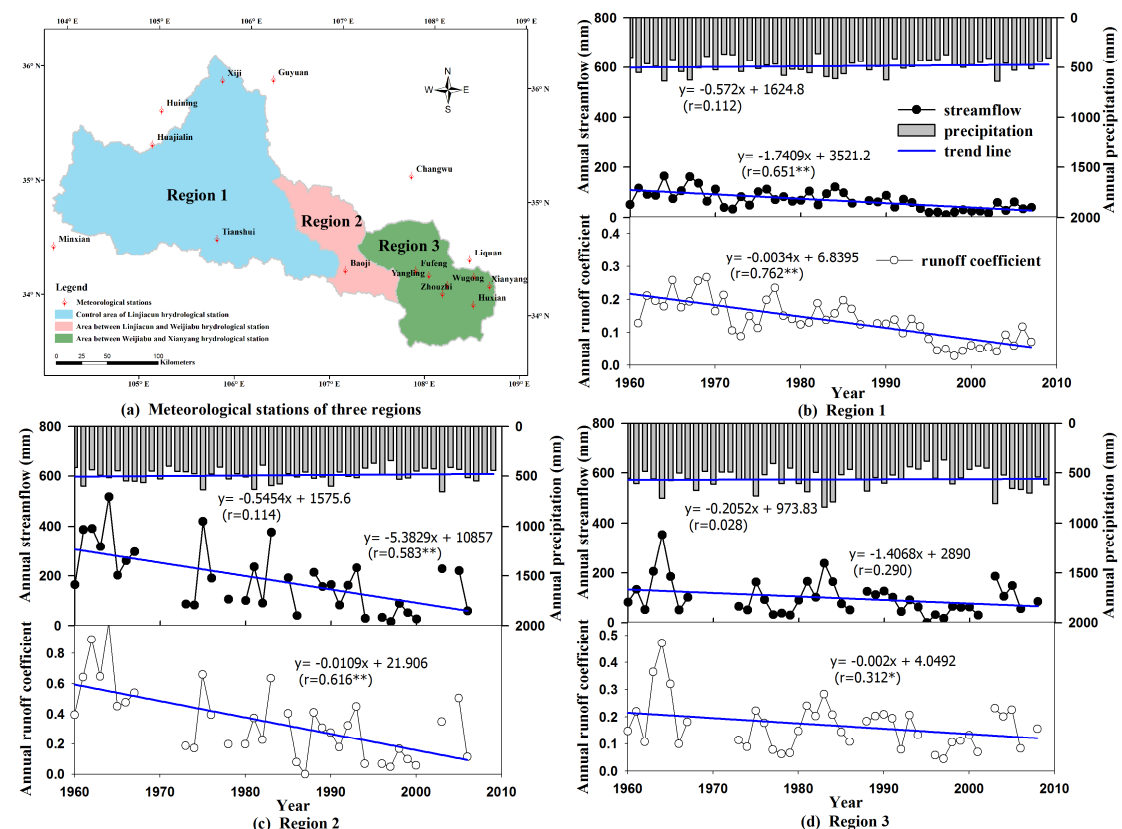


Figure 5 The time-series of precipitation, annual streamflow and runoff coefficients for the regions of study area

In addition, the combined effects of forestation, terraces, grass and dam land on hydrological

processes should be discussed.

Thank you for your suggestion. We have added the combined effects of forestation, terraces, grass and dam land on hydrological processes in part “4.2 Hydrological experiments on the impact of conversion of agricultural land to forests on streamflow” (Line 411-433).

The supplemented details are as follow:

Seemingly, this result was not consistent with the significant decreasing tendencies of streamflow in study area. The combined effects of LUCC, including forestation, terraces, grass, and dam, could explain the discrepancy. Under the same meteorological conditions, the streamflow is mainly a result of combined effects of these measures. Results showed the terrace in the main Weihe River basin could delay the flood and add the drought season streamflow, which reduced the annual streamflow in general. The terrace in 2000 could decrease about 37 million m³ annual water and increased the most dry month streamflow by 3.5% in Xianyang station (Shao, 2013b). Zhang et al (2014a, 2014b) studied the terrace measures of Yanhe River basin, typical basin of the Loess Plateau, and results showed that the terrace measures could reduce the runoff in the flood season and increased the baseflow. Results showed that 1 m³ water could be supplied to the river when 5~6 m³ water stored by the terrace. This meant the water reducing effect of terrace was larger than 80% in Yanhe River basin and. Xu et al. (2012) applied the SWAT model to simulate the streamflow in the Yanhe basin and results showed that the check dams had a regulation effect on streamflow. From 1984 to 1987, the streamflow in rainy season (from May to October) decreased by 1.54 m³s⁻¹ (14.7 %) to 3.13 m³s⁻¹ (25.9 %) due to the check dams; while in dry season (from November to the following April), streamflow increased by 1.46 m³s⁻¹ (60.5%) to 1.95 m³s⁻¹ (101.2 %); From 2006 to 2008, the streamflow in rainy season decreased by 0.79 m³s⁻¹ (15.5 %) to 1.75 m³s⁻¹ (28.9 %), and the streamflow in dry season increased by 0.51 m³s⁻¹ (20.1 %) to 0.97 m³s⁻¹ (46.4 %). Lots of results showed that the terrace and check dam both had a negative effect on annual streamflow which was a result of the balance between the streamflow reducing in the flood season and baseflow increasing in non-flood season on the Loess Plateau (Shao, et al., 2012, 2013a, 2013b; Zhang, et al., 2014a, 2014b; Xu, et al., 2012). The observed streamflow was a result of the balance among forestation, terraces, grass, and dam.

Specific comments:

1. Figure 1: the subbasin numbers are not necessary.

We have revised the Figure 1 as suggestion. Thank you.

2. Provide the statistical assessments of the model performance besides Figure 6.

Thank you for your suggestion. The statistical assessments have been supplemented in the test (Line 183-187 and 193-199).

Author's Response- reviewer #1

The article entitled: Impact of LUCC on Streamflow Based on the SWAT Model over the Wei River Basin on the Loess Plateau of China by Hong Wang and Fubao Sun. This article is narrated very well and easy to understand. Since it is already reviewed earlier the quality of the paper improved a lot compare to initial submission. Paper is worth of publishing in HESS with minor revision as follows:

1. Sufficient details related to parameterization of SWAT model for different years should be included in the Model Setup. Like how catchment characteristics were obtained for different years for parameterization of the SWAT.

We are sorry for insufficient information to bother you. For the SWAT model, the parameters did not change for different years, while they were changed with different slopes, soli type and LUCC in different HRU. Linjiacun, Weijiabu and Xianyang hydrological stations were loaded manually as subbasin outlets in our test. The comprehensive parameters which were different in different slopes, soli type and LUCC for different HRU were calibrated based on the data of calibration period (1960-1969) for every subbasin. Once the calibrated model was validated well in validation period (1970-1979), the parameters will not change. The comprehensive parameters can be calibrated according to observed streamflow of subbasin, while the different parameters in different slopes, soli type and LUCC could not calibrate individually. We added some details in uncertainty in simulated stream flow results (Line 462-464).

2. How catchment characteristics like land use land cover, slope soil, drainage etc., have been adopted for analysis period i.e from 1980-2009, as these are very important for any hydrological phenomenon in addition to the meteorological parameters.

Thank you for your suggestion. We have supplement information about it (line 203, 309 and 353-354). DEM was used to define the topography (such as elevation, slope and aspect) and delineate the watershed boundary. DEM and soil data remain constant. For period of 1980-2009, we used their measured and long-term daily meteorological data of the study area to drive the validated model. And to reduce influence of meteorological conditions; the 30-year (1980-2009)

values of streamflow were averaged respectively. For studies of impact of the observed LUCC on streamflow, the land use data of the 1980 and 2005 were used in the validated SWAT model and the DEM and soil data remained constant.

For studies of the impact of conversion of agricultural land to forests on streamflow, we designed the hydrological experiments using LUCC data of 1980 as (S1) the present land use, we design other four scenarios (Table 3) that (S2) 10%, (S3) 20%, (S4) 40% and (S5) 100% of the agricultural land was converted into Forest-Mixed (FRST) respectively. And all experiments carried out based on the same the DEM, soil data and meteorological conditions.

3. Simulated stream flow results show a high coefficient of variation. Therefore, extent of uncertainty in simulated stream flow results may also be given before commenting on usefulness of study.

This is a good suggestion. We supplemented the analysis for uncertainty in simulation (462-470).

First, the SWAT model could offer the comprehensive parameters for subbasin and detailed parameters for different HRU according to their slopes, soli type and LUCC. The comprehensive parameters were calibrated according to observed streamflow of subbasin, while the different parameters of HRU could not be calibrated individually. Second, the model could not tell the impact of short-duration rainfall on streamflow which has great effect on streamflow. In addition, watershed size, generalization and data accuracy all can lead to uncertainty in the simulations (Yin et al., 2017). To reduce the uncertainty of simulation influence, the 30-year (1980-2009) values of streamflow were averaged to analyze the impacts.

4. China's Grain for Green project, represents the anthropogenic changes in hydrology, its impacts should be discussed and results of these impacts leading to conflict results.

Thank you for your suggestion. We supplemented the related analysis in line 448-461. Although some researchers have urged a cessation on Grain for Green expansion on the Loess Plateau of China for it lead to annual streamflow of the Yellow River declining (Chen et al., 2015; Li, 2001), our modeling results suggest that forest recovery constructions have a little positive impact on both soil flow and base flow compensating reduced surface runoff, which leads to a slight increase in streamflow in the Wei River with mixed landscapes of Loess Plateau and

earth-rock mountain. And rainfall pattern also has great effect on streamflow, particularly the extremes rainfall, i.e., Lacombe et al. (2008) found no streamflow change was found for when the precipitation was larger than 40 mm. Results showed that the daily precipitation extremes seem to be consistent with the 7% increase per degree of warming (Allen and Ingram, 2002; Pall et al., 2007) and one-hour precipitation extremes increase twice as fast with rising temperatures as expected when daily mean temperatures exceed 12 °C (Lenderink and Meijgaard, 2008; Westra, 2014). The streamflow is the combined effects of LUCC (forestation, terraces, grass, and dam and so on) and climate changes. The impact of Grain for Green project on streamflow should be thoughtfully studied according to the characteristics of the basin.

5. Latest article by J. Yin et al. 2017 in HESS: Effects of land use/land cover and climate changes also shows the similar study results, this paper may also be referred here and results may also be compared in discussion, which strengthens the quality of this article.

Thank you for your recommendation. We have studied the reference thoughtfully and it offers a thought for revising and strengthening the quality of this manuscript. We have cited it as compared results (Line 322 and 468).

In line 31: Model was calibrated for 10 years from 1960-69, validated for 1970-79 and even analysis is also a part of validation. Hence it is suggested to validate up to 2009. Large data used from 1960-09 (50 yrs).

Thank you for your comments. Figure s1 shows the time-series graph of calculated streamflow vs. observed streamflow during 1980-2009 for hydrological stations. We can see the calculated streamflow matched well with the observed values during 1980s. The observed values were measured daily based on the actual LUCC, whereas the calculated streamflow was got based on LUCC of 1980. So Fig. s1 shows the calibrated SWAT model played well in our study area and the changing LUCC can affect streamflow gradually. To reduce influence of meteorological condition and isolate the impact of the LUCC on streamflow, 30-year average of the streamflow for forest and agricultural land were taken, respectively. Editor and Referees suggested one figure showing the observed and simulated streamflow was enough in previous version. We showed this result in Author's Response-RC2 in previous version and one figure (Fig.7) showing the observed and simulated streamflow was kept in

the manuscript.

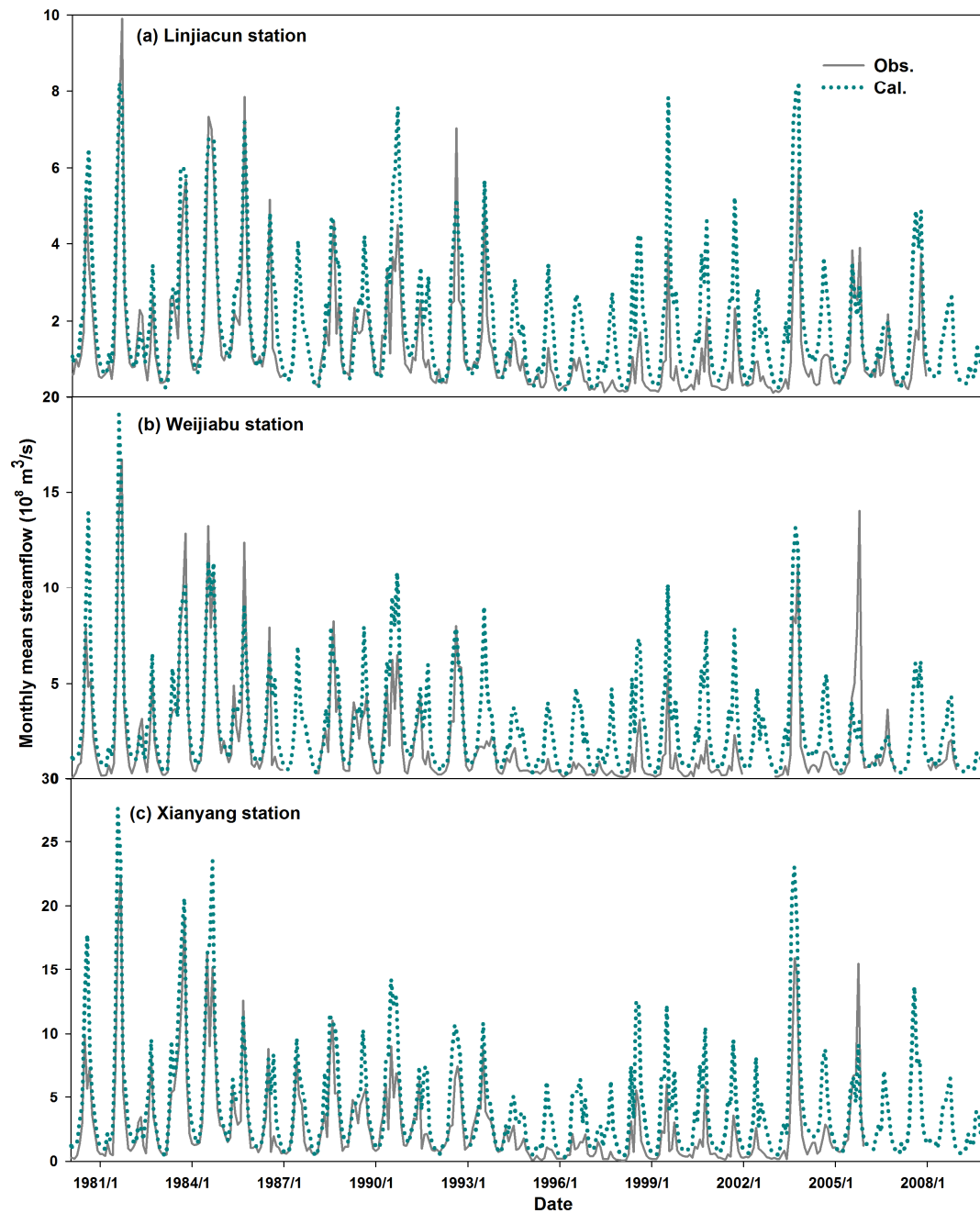


Figure s1 The time-series graphs of calculated vs. observed streamflow during 1980-2009 for hydrological stations.

In line 37: What is soil flow, how it differs from base flow? Explain. In my view baseflow and soil flow were one and the same.

Thank you for your comment. Yes, it is not necessary to part them in many studies. SWAT partitions the streamflow which originates below the surface into Soil flow and base flow (Arnold et al. 1993).

Soil flow is the lateral subsurface flow, or interflow. It is streamflow contribution which originates below the surface but above the zone where rocks are saturated with water. Lateral subsurface flow in the soil profile (0-2m) is calculated simultaneously with redistribution. A kinematic storage model is used to predict lateral flow in each soil layer. The model accounts for variation in conductivity, slope and soil water content.

Base flow, or return flow, is the volume of streamflow originates from groundwater. SWAT partitions groundwater into two aquifer systems: a shallow, unconfined aquifer which contributes return flow to streams within the watershed and a deep, confined aquifer which contributes return flow to streams outside the watershed.

We supplement the information in part “3.1 The SWAT model” (Line 218-221).

Discussion: Reforestation reduced the surface runoff because of vegetation cover and increased streamflow may be because of increase in baseflow that depends on land topography, forestation might be on hillocks. The impact of Grain for Green project shows the conflict results i.e initially from 1969-1980 streamflow reduced and for present periods increasing. And also the Mountain rock regions, higher altitude variation including changing rainfall patter with intensive storms too leading to higher stream flow.

Thank you for your suggestion. We supplemented the related analysis in line 448-461.

Suggestions: One hydrological cycle represents for 30 years. In this study 50 years data used which too large. Study may be restricted to latest 30 years i.e 1980-2009. Calibration and validation may be carried out for the latest data as it represents' the real conditions specially rainfall distribution pattern.

Thank you for your suggestion. For period of 1980-2009, we used their measured and long-term daily meteorological data of the study area to drive the validated model. And To reduce the uncertainty of simulation influence, the 30-year (1980-2009) values of streamflow were averaged to analyze the impacts.

Finally this article, Impact of LUCC on Streamflow Based on the SWAT Model over the Wei River Basin on the Loess Plateau of China by Hong Wang and Fubao Sun is worth of publishing in HESS with minor revisions as suggested.

Thank you for your useful suggestions and constructive comments on our manuscript.

Part 2. A marked-up manuscript version

带格式的: 1 级, 行距: 单倍行距

带格式的: 字体: 小三

Impact of LUCC on Streamflow Based on the SWAT Model over the Wei River Basin on the Loess Plateau of China

Hong Wang¹, Fubao Sun^{*1,2,3,5}, Jun Xia^{4,5}, Wenbin Liu¹

¹ Key Laboratory of Water Cycle and Related Land Surface Processes, Institute of Geographic Sciences and Natural Resources Research, Chinese Academy of Sciences, Beijing 100101, China

² Research School of Qilian Mountain Ecology, Hexi University, Zhangye City, Gansu Province, 734000, China

³ College of Resources and Environment, University of Chinese Academy of Sciences, Beijing, 100049, China

⁴ State Key Laboratory of Water Resources and Hydropower Engineering Sciences, Wuhan University, Wuhan, 430072, China

⁵ Center for Water Resources Research, Chinese Academy of Sciences, Beijing 100101, China

*Corresponding author: Fubao Sun (sunfb@igsnrr.ac.cn)

Abstract: Under the Grain for Green project in China, vegetation recovery constructions have been widely implemented on the Loess Plateau for the purpose of soil and water conservation. Now it becomes controversial whether the recovery constructions of vegetation, particularly forest, is reducing streamflow in rivers of the Yellow River Basin. In this study, we choose the Wei River, the largest branch of the Yellow River and implemented with revegetation constructions, as the study area. To do that, we apply the widely used Soil and Water Assessment Tool (SWAT) model for the upper and middle reaches of the - Wei River basin. The SWAT model was forced with daily observed meteorological forcings (1960-2009), calibrated against daily streamflow for 1960-1969, validated for the period of 1970-1979 and used for analysis for 1980-2009. To investigate the impact of the LUCC (Land Use and land Cover Change) on the streamflow, we firstly use two observed land use maps of 1980 and 2005 that are based on national land survey statistics emerged with satellite observations. We found that the mean streamflow generated by using the 2005 land use map decreased in comparison with that using the 1980 one, with the same meteorological forcings. Of particular interest here, we found the streamflow decreased in agricultural land but increased in forest area. More specifically, the surface runoff, soil flow and baseflow all decreased in agricultural land, while the soil flow and baseflow of forest were increased. To investigate that, we then designed five scenarios including (S1) the present land use (1980), (S2) 10%, (S3) 20%, (S4) 40% and (S5) 100% of agricultural land was converted into mixed forest. We found that the streamflow consistently increased with agricultural land converted into forest by about 7.4 mm per 10%. Our modeling results suggest that forest recovery constructions have positive impact on both soil flow and base flow compensating reduced surface runoff, which leads to a slight increase in streamflow in the Wei River with mixed landscapes of Loess Plateau and earth-rock mountain.

1. Introduction

Since 1999, China's Grain for Green project has greatly increased the vegetation cover (Chen et al., 2015) and the total conversion area reaches 29.9 million ha until 2014 (Li, 2015). And the proposals are to further return another 2.83 million ha farmland to forest and grassland by 2020 (NDRC, 2014). The establishment of either forest or grassland on degraded cropland has been proposed as an effective approach to mitigating climate change because these types of land use can increase soil carbon stocks (Yan et al., 2012; Deng et al., 2013). Implementation of large scale Grain for Green project is undoubtedly one type of geoengineering which not only mitigates climate change but also is expected to alter hydrological cycle (Lacombe et al., 2016; Lacombe et al., 2008).

Some researchers have urged a cessation on Grain for Green expansion on the Loess Plateau of China and argued that continued expansion of revegetation would cause more harm than good to communities and the environment (Chen et al., 2015). One important reason was that the Grain for Green project lead to annual streamflow of the Yellow River declining (Chen et al., 2015; Li, 2001). Land use change can disrupt the surface water balance and the partitioning of precipitation into evapotranspiration, runoff, and groundwater flow (Sriwongsitanon and Taesombat, 2011; Foley et al., 2005; Wagner et al., 2013). Large scale revegetation constructions change hydrologic cycle process and distribution of water resources. There are three controversial points of view about the impact of vegetation on streamflow as a whole. Quite a few catchment studies indicated that annual streamflow decreased with revegetation increasing (Zhang and Hiscock, 2010; Bosch and Hewlett, 1982; VanShaar et al., 2002; Mango et al., 2011; Farley et al., 2005; Liu and Zhong, 1978) or increased with vegetation destruction (Bosch and Hewlett, 1982; Woodward et al., 2014;

Hibbert, 2001), where some catchment studies indicated baseflow of forests was lower due to their high evapotranspiration rates (Lørup et al., 1998; Lorup and Hansen, 1997; Smith and Scott, 1992), while other studies indicated the baseflow increased in the dry season due to higher infiltration and recharge of subsurface storage (the “sponge-effect hypothesis”) (Price, 2011; Lørup et al., 1998; Ogden et al., 2013). In contrast, other studies showed that vegetation has a positive impact on streamflow (Tobella et al., 2014; Li et al., 2001) or no impact on streamflow (Wang, 2000; Beck et al., 2013).

To interpret the controversial results, it was argued that the impact of vegetation on annual streamflow depends on watershed area and the relationship between them was negative in smaller watershed and positive in larger watershed (Huang et al., 2009; Zhang, 1984). Some of them thought it was probably the large amount of transpiration water played the main function in hydrological process when the watershed was smaller. And some thought that the different impacts of area probably because the forest of larger watershed could increase precipitation and vegetation was also conducive for the infiltration of precipitation, which increased the proportion of the underground flow of streamflow in forest region. Some researchers indicated tree planting has both negative and positive effects on water resources and the overall effect was the result of a balance between them, which were strongly dependant on tree density (Tobella et al., 2014). Lacombe et al. (2016) found soil infiltrability was an important factor for explaining two modes of afforestation (natural regeneration vs. planting) led to opposite changes in streamflow regime. Huang (1982) analyzed Soviet research results found that 48% runoff coefficients increased, 32% has no change, and 20% decreased with watershed forest increasing. The increased regions were located at high latitude and humid areas. Under this condition, the total evaporation in wooded

89 areas and woodless area are equal. The speculation was that snow may be blown away or to
90 wooded areas from woodless area, which could enhance the coefficient of streamflow but these
91 factors would be weaker over low to middle latitude than that in high latitude (Huang, 1982).
92 Further, vegetation may change hydrological cycle as follows (Le Maitre et al., 1999): redirection
93 of precipitation by the canopy; branches, stem and litter tends to intercept more water into the soil;
94 roots may provide channels for the flow infiltrating to groundwater and extract soil water as
95 evaporation. Hence different results have led to contentious relationship between vegetation and
96 streamflow (Bradshaw et al., 2007; Dijk et al., 2009).

97 The Wei River is one main branch of the Yellow River and has been widely implemented
98 measures of soil and water conservation, including forestation, terraces, grass and check dam,
99 since the 1980s (~~Fig. 1~~). Meanwhile the annual streamflow of the Wei River has decreased
100 significantly since the 1980s (Liu and Hu, 2006; Lin and Li, 2010; Wang et al., 2011). Since the
101 1990s, the streamflow has sharply dropped and the observed streamflow of Linjiacun station in the
102 1990s was less than one third of that before 1990s. The terrace and check dam both had a negative
103 effect on annual streamflow which was a result of the balance between the streamflow reducing in
104 the flood season and baseflow increasing in non-flood season on the Loess Plateau (Shao et al.,
105 2013a; Xu et al., ~~2013~~2012). But the impacts of vegetation on streamflow are controversial and
106 complicated. Meanwhile on the Loess Plateau, it was found that there is a drying layer of soil
107 underneath forest with a depth of over 1 m to 3 m from the soil surface owing to serious soil
108 desiccation in water-limited ecosystems (Li, 2001; Wang, 2010a). The land use, rainfall, soil type
109 and slope gradient had a significant impact on dried soil layer thickness (Wang, 2010b). And the
110 great water deficit prevents gravitational infiltration of rainfall and replenishment of groundwater.

So forests on the Loess Plateau reduced streamflow as the results of increased retention of rainfall and reduced recharge into ground water (Li, 2001; Tian, 2010). But for earth-rock mountain landscape, vegetation grows on thinner soil layer of rock mountain, which is apt to be saturated and produce soil flow on relatively impermeable rock. So the streamflow in wooded areas might be larger than that in adjacent woodless areas. Under this situation, forests may have positive impact for producing streamflow (Liu and Zhong, 1978).

To investigate that, we develop hydrological experiments based on the widely used SWAT model and observed hydrological/ meteorological data and land use data in the Wei River. We aim at understanding possible impact of revegetation constructions, especially the forest restoration on streamflow and its components in the Wei River, which is not only the largest branch of the Yellow river but also with very mixed landscape with the loess plateau and earth-rock mountain. In Sect. 2, we describe the study area and data. In Sect. 3, we set up, calibrate, and validate the SWAT model in the Wei River. Section 4 reports the numerical experiment results, which is then followed by the conclusion in Sect. 5.

2. Study area and data

2.1 Study area

Wei River is the largest tributary of the Yellow River, which originates from the north of the Wushu ~~mountain~~-Mountain at an altitude of 3495 m (involving Gansu, Ningxia and Shaanxi Provinces), and runs across 818 km through into the Yellow River at Tongguan County, Shaanxi Province. In this study, we choose the basin of the upper and middle reaches ($4.68 \times 10^4 \text{ km}^2$) of the Wei River basin ($103.97^\circ \sim 108.75^\circ \text{ E}$, $33.69^\circ \sim 36.20^\circ \text{ N}$, $13.48 \times 10^4 \text{ km}^2$). And the Linjiacun, Weijiabu and Xianyang hydrological stations are used from upstream to midstream in this study

(Fig. 21), which divided the study area into 3 regions. Linjiacun station locates at the control section of the upstream and Xianyang station is the control station of middle reaches.

Geologically, the basin consists of the Loess Plateau and Qinling Mountain in the respective north and south of the Wei River (Fig. 21). In the north, there are fewer tributaries, whose lengths are further and the gradient is smaller. While in the south, abundant tributaries originate from Qinling Mountain which is steep and close to the river. So the tributaries are shorter and the flows are swifter. And there distribute lots of earth-rock mountain landscape and gravel riverbed in the piedmont.

2.2 Land Use and land Cover Change (LUCC) data

We obtained observed LUCC data from National Science & Technology Infrastructure of China, National Earth System Science Data Sharing Infrastructure (Fig. 32) (<http://www.geodata.cn>). Land use maps for the years of 1980 and 2005 were interpreted based on the corresponding national land use survey data (1:100,000), satellite image, the MODIS data, 250-meter space resolution data and combined with pasture resources map (1:500,000), soil type map (1:1,000,000), vegetation type map (1:1,000,000) and other auxiliary data. The LUCC data were divided into six types and further 25 subtypes. And the six types included forest, shrubland, pasture, cropland, water bodies and residential areas: ① The forest type includes Range-Brush (RNGB), Forest-Mixed (FRST), Forest-Deciduous (FRSD), Pine (PINE) and Forest-Evergreen (FRSE); ② The pasture type includes Pasture (PAST), Winter Pasture (WPAS) and Range-Grasses (RNGE); ③ The cropland means Agricultural Land (AGRL); ④ Water includes water (WATR) and Wetlands-Mixed (WETL); ⑤ The residential areas include area of Residential-High Density (URHD) and Residential-Medium Density (URMD); ⑥ The code of

bare type is BARE. The area of agricultural land decreased about 7.26% and forest area increased 0.81% in 2005 compared with 1980 for the study area.

2.3 Soil data

Soil data were obtained from National Science & Technology Infrastructure of China, National Earth System Science Data Sharing Infrastructure (Fig. 43(a)) (<http://www.geodata.cn>). This soil data map reflects the distribution and characteristics of different soil type and digitized based on 1:500,000 remote sensing digital figures of environment on Loess Plateau.

Based on the soil data, the distribution of earth-rock mountain in study area is drawn as Fig. 43(b). There were 83 soil types in the study area and 15 of them are composed of earth and rock involving 70 hydrological response units (HRUs) (Table 1). At the same time, these 15 soil types distribute mainly in the Qinling Mountain and Liupan Mountain (Fig. 21). And the earth-rock mountain area accounts for 24% of study area.

2.4 Meteorological and hydrological data

The meteorological data were obtained from the China Meteorological Data Sharing Service System (<http://www.escience.gov.cn/metdata/page/index.html>) and some local rainfall stations. The data include atmospheric pressure, mean (minimum and maximum) temperature, vapor pressure, relative humidity, rainfall, wind speed, wind direction, sunshine time. Figure 5-4 (a) shows the distribution of meteorological stations and the annual average precipitation over Wei River basin, which was calculated using kriging interpolation method of ArcGIS 9.3 based on annual average precipitation of 34 meteorological stations. Then the time series of annual average precipitation for the three regions of the study area were calculated respectively using elevation bands method of ArcSWAT (Soil and Water Assessment Tool) 2009.93.7b, which can account for

orographic effects on precipitation (Neitsch et al., 2011). SWAT allows the subbasin to be split into a maximum of ten elevation bands. Precipitation is calculated for each elevation band as a function of the respective lapse rate and the difference between the gage elevation and the average elevation specified for the band. Once the precipitation values have been calculated for each elevation band in the subbasin, new average subbasin precipitation value is calculated based on the fraction of subbasin area within the elevation band (Neitsch et al., 2011). Figure 5 (b), (c) and (d) show the time-series of average precipitation calculated through elevation bands method of ArcSWAT from 1960 to 2009. The average of precipitation of region 1, 2 and 3 were 489.71 493.25 and 566.60 mm/yr and the trend analysis showed that the precipitation of them decreased with an average decreasing rate of 0.57, 0.55 and 0.21 mm/yr, whereas the decreasing tendencies were not significant at the 0.05 level.

And the daily streamflow data of three hydrological stations were obtained from Ecological Environment Database of Loess Plateau (<http://www.loess.csdb.cn/pdmp/index.action>) and the Hydrological Year books of China. Figure 6-5 (b), (c) and (d) shows the time-series of average precipitation, annual streamflow and runoff coefficients for the in the three-3 regions of study area. The trend analysis showed that streamflow of region 1 and 2 decreased extremely significantly ($P < 0.01$), with an average decreasing rate of 1.74 and 5.38 mm/yr. The streamflow of region 3 did not decreased significantly. And the average runoff coefficients were 0.13, 0.34 and 0.17 in region 1, 2 and 3 over the past 50 years (1960-2009). The trend analysis of runoff coefficients showed that the tendencies of region 1 and 2 decreased extremely significantly ($P < 0.01$), with an average decreasing rate of 0.34%, and 1.09 % per year. The runoff coefficient of region 3 decreased

significantly ($P < 0.01$) too, with an average decreasing rate of 0.2% per year.

~~And the runoff coefficients were 0.13, 0.35 and 0.17 on average for region 1, 2 and 3 over the past 50 years (1960-2009).—~~

90-meter resolution digital elevation model (DEM) (Fig. ~~5-4~~(b)) was used to define the topography characteristics (such as elevation, slope and aspect)—and delineate the watershed boundary. It was obtained from the Computer Network Information Center, Chinese Academy of Sciences (<http://srtm.datamirror.csdb.cn/>), based on the Shuttle Radar Topography Mission (SRTM) version 4.1.

3. Methods

3.1 The SWAT model

The SWAT model is developed by the USDA Agricultural Research Service (ARS). It is a physically based and distributed hydrological model. The SWAT model has been widely applied to understand the impact of land management practices on water, sediment and agricultural yields over large complex watersheds with varying soils, land use and management conditions over long periods (Arnold et al., 2009). It is forced with meteorological data, and input with soil properties, topography, land use, and land management practices in the catchment. The physical processes associated with hydrological cycle and sediment movement etc. are directly modeled by SWAT using these input data (Arnold et al., 2009). In addition, the ArcSWAT extension (ArcSWAT 2009.93.7b version) is used as the graphical user interface for the SWAT model (Gassman et al., 2007; Arnold et al., 1998). For the streamflow, surface runoff, soil and baseflow are considered. Soil flow is streamflow contribution which originates below the surface but above the zone where rocks are saturated with water. Base flow is the volume of streamflow originates from

groundwater (Arnold et al. 1993).

3.2 The SWAT Model setup

The SWAT model setup includes four steps: watershed delineation, hydrological response unit (HRU) analyst, input database building and modification and model operation. Based on research of the Wei River (Shao, 2013b; Wang, 2013), the extraction threshold, which is the minimum drainage area required to form the origin of a stream, of subbasin area was 80 km². The Linjiacun, Weijiabu and Xianyang hydrological stations were loaded manually as subbasin outlets and one whole watershed outlet was defined. The study area was divided into 308 subbasins (Fig. 21). The land area in a subbasin can be further divided into the HRUs, which is the basic computing element of the SWAT model. In this study, a subbasin was subdivided into only one HRU that was characterized by dominant land use and soil type. Then the daily meteorological data, including temperature, relative humidity, sunshine duration, wind speed, rainfall, were input and all data were written into database building and modification to force the SWAT model.

For evaluating the performance in the model calibration and validation, we use the R² and NS coefficient to evaluate the performance rating of the model (Nash and Sutcliffe, 1970) (Equation (1) & (2)).

$$R^2 = \frac{\left[\sum_{i=1}^n \left(o_i^{obs} - \overline{o_i^{obs}} \right) \left(o_i^{sim} - \overline{o_i^{sim}} \right) \right]^2}{\sum_{i=1}^n \left(o_i^{obs} - \overline{o_i^{obs}} \right)^2 \sum_{i=1}^n \left(o_i^{sim} - \overline{o_i^{sim}} \right)^2} \quad \text{Eq. (1)}$$

$$NS = 1 - \frac{\sum_{i=1}^n \left(o_i^{obs} - o_i^{sim} \right)^2}{\sum_{i=1}^n \left(o_i^{obs} - \overline{o_i^{obs}} \right)^2} \quad \text{Eq. (2)}$$

where n is the number of observations, $\overline{o_i^{obs}}$ is the observed value, $\overline{o_i^{sim}}$ is the simulated value, and the overbar means the average of the variable. The R² describes the proportion of the

带格式的：字体：倾斜

带格式的：字体：倾斜，上标

variance in measured data explained by the model and typically 0.5 is considered an acceptable threshold (Santhi et al., 2001; Van Liew and Garbrecht, 2003). The SWAT model simulation can be judged as “satisfactory” if the $NS > 0.50$ for a monthly time step simulation and the performance rating of the SWAT model was very good when the $NS > 0.75$, and the model performed good when the $NS > 0.65$ (Moriassi et al., 2007).

3.3 Calibration and validation of the SWAT model

We setup the SWAT-CUP procedure for the sensitivity analysis, calibration and validation in our study (Abbaspour, 2007). The sensitivity analysis is carried out by keeping all parameters constant to realistic values, while varying each parameter within the range assigned in step one. The sensitive parameters were calibrated using LH-OAT (Latin-Hypercube-One Factor-At-a-Time) method of the Sequential Uncertainty Fitting (SUFI2) program (Abbaspour, 2007; Xu et al., 2012). And the t-stat and p-value were used to evaluate the sensitivity of parameters. The t-stat is the coefficient of a parameter divided by its standard error and the larger values are more sensitive. And the p-value determines the significance of the sensitivity and a value close to zero means more significant. The most sensitive (seven) parameters were selected by the SWAT-CUP module. Combined with previous research in Wei River, two additional parameters (SOL_K and GW_DELAY) with the seven parameters were selected in this study (Table 2).

The initial value and the range of relevant parameters were derived from ~~simulated rainfall experiments, regional monitoring data and~~ previous research in study area (Wang, 2014; Shao, 2013b; Zuo et al., 2015). Vegetation construction changes undelaying surface and affects quantity of surface runoff and recharge of both soil and ground water. It has a significant impact on infiltration by providing canopy and litter cover to protect the soil surface from raindrop impacts

and producing organic matter which can bind soil particles and increase soil porosity (Le Maitre et al., 1999). These impacts of vegetation on hydrological process are epitomized and reflect by CN and management operation in the SWAT model. the Soil Conservation Service (SCS) curve number equation is the model for computing the amounts of streamflow in SWAT model and its comprehensive parameter is CN which relates to the soil's permeability, land use and antecedent soil water conditions. We have done some research on the impacts of LUCC changes on runoff, infiltration and groundwater under different soil, slope and rainfall intensity in Wei River basin based on simulated rainfall experiments before (Wang, 2014). Based on the experiments, the SCS model and the three-dimensional finite-difference groundwater flow model (MODFLOW) were calibrated and applied also. So values of parameters related to runoff, infiltration and groundwater, such as the initial CN values and recharge rates for different LUCC, specific yield of soil layer etc. were gotten based on experiments and mathematical simulation (Wang, 2014). Meanwhile in the SWAT model, agricultural land and forest have different heat units required for plant maturity and different management operations. The agricultural land includes plant, harvest/ kill and auto-fertilizer operation and the forest only has plant operation. And the management operation of forest involves leaf area index (LAT_INIT), plant biomass (BIO_INIT), age of trees (CURYR_MAT).

~~According to Fig. 1, we could see that~~ The revegetation was mainly implemented in the study area after the 1980s. Hence we choose 1960-1969 and 1970-1979 for the model calibration and validation respectively and used the daily streamflow data of the Linjiacun, the Weijiabu and the Xianyang hydrological stations from the upper to middle reaches (the data of 1965 and 1968-1971 are missing in the Weijiabu station). The parameters were calibrated for hydrological stations by

the order of upstream to midstream using the daily streamflow of 1960-1969. Firstly, the parameters against the streamflow at the Linjiacun control station were calibrated. Secondly, based on the premise of the calibrated parameter values of the Linjiacun station, the parameters were calibrated for the subbasin controlled by the Weijiabu station. In that way, the parameters for the subbasin controlled by the Xianyang station were then calibrated. Then the SWAT model was validated for the three hydrological stations respectively against the streamflow from 1970 to 1979 (Fig. 76).

4. Results and discussions

The corresponding statistic results of three hydrological stations showed that the ranges of NS and R^2 were 0.59~0.66 and 0.63~0.68 respectively in the calibration period for a daily time step. And they were 0.57~0.62 and 0.61~0.65 respectively in the validation period. At a monthly time step, the results of the NS and R^2 were 0.82~0.84 and 0.79~0.86 respectively in the calibration period. And they were 0.70~0.76 and 0.74~0.79 respectively in the validation period demonstrating good performance of the model. In addition, the time-series and the patterns of the simulated and observed streamflow during the calibration ~~period~~ and validation periods showed similar trends (Fig. 6). Our conclusion is that the SWAT model can be used in upper and middle reaches of the Wei River basin.

4.1 Impact of the observed LUCC on streamflow

Analysis above (Fig. 5) showed that the observed precipitation of study area did not decreased significantly from 1960 to 2009, while the annual streamflow (except region 3) and runoff coefficients decreased significantly ($P < 0.05$) under this meteorological conation. This

带格式的：孤行控制

discrepancy could attribute to LUCC changes mostly (Lacombe et al., 2016; Lacombe et al., 2008).

In order to analyze the impact of the LUCC on streamflow, the land use data of the 1980 and 2005 were used in the validated SWAT model and the DEM and soil data remained constant. Firstly, the daily streamflow from 1980 to 2009 were simulated using observed daily meteorological forcing data and topography, soil data in study area. Secondly, the LUCC data of 1980 was replaced by that of 2005 and their relevant parameters of corresponding land use type were also replaced. We used the LUCC data of 2005 but the same meteorological data to simulate the daily streamflow from 1980 to 2009.

The change of annual streamflow based on LUCC data of 2005 compared with LUCC data of 1980 showed that annual streamflow of Xianyang hydrological station decreased during 20-year in 30-year ((1980-2009)) and the annual average reduction was 2.0 mm/yr for these 20-year in study area. This result was consistent with the decreasing tendencies of the observed streamflow of Xianyang station, which decreased significantly ($P < 0.05$), with an average decreasing rate of 2.45 mm/yr from 1980 to 2009. The modelled streamflow represent the impacts of constant LUCC data of 1980 and 2005, whereas observations are based on dynamic LUCC data, which could explain the discrepancy. Yin et al. (2017) studied the impact of LUCC changes on streamflow in Jinghe River basin, which is the largest tributary of the Wei River basin, found that the streamflow increasingly influenced by LUCC changes, which contributed to 44% of the streamflow changes between the 1980s and 1990s and 71% of the streamflow changes between the 1990s and 2000s. At the same time, ~~This is mainly because over~~ different land use types hydrological responds differently even to the same meteorological forcings, ~~i.e., For example,~~ rainfall intensity was of great importance influencing to hydrological process ~~of the Wei River, which locates~~ in semi-dry

and semi-humid region (Lacombe et al., 2008; Wang, 2014). Results of rainfall numerical experiments showed when the rainfall intensity was smaller or larger, the rainfall would infiltrate into soil or flow away as surface runoff mainly on both grass land and bare slope, while when the rainfall intensity was medium, the rainfall would infiltrate into grass land and flowed away as surface runoff on bare slope (Tobella et al., 2014; Wang, 2014). To reduce influence of meteorological conditions and isolate the impact of the LUCC on streamflow, the 30-year (1980-2009) values of the streamflow for forest and agricultural land were averaged respectively. For period of 1980-2009, we just used their measured and long-term daily meteorological data in the study area to drive the validated model for the designed hydrological experiments. Figure 8-7 shows the changes of streamflow, surface runoff, soil flow and baseflow between agricultural land and forest. The surface runoff, soil flow and baseflow all decreased for agricultural land, while the soil flow and baseflow of forest increased. Overall, the streamflow decreased in agricultural land and increased in forest area. When the LUCC data are classified and re classified in SWAT model, the tree types are summarized as Range-Brush (RNGB), Forest-Mixed (FRST) and Forest-Deciduous (FRSD). Different types have different hydrological responses for their leaf, roots and so on. We also analyzed the streamflow generation of the main types of forest (RNGB, FRST and FRSD) in study area further. Results showed that the streamflow yield of FRST and FRSD were about 1.20 and 1.60 times of that of RNGB respectively.

4.2 Hydrological experiments on the impact of conversion of agricultural land to forests on streamflow

Because the LUCC data involves various land use interconversions, of particular interest here the impact of conversion of cropland to forest on streamflow cannot be distinguished. Starting

带格式的：缩进：首行缩进： 0 厘米

from the LUCC data of 1980 as (S1) the present land use, we design other four scenarios (Table 3) that (S2) 10%, (S3) 20%, (S4) 40% and (S5) 100% of the agricultural land was converted into Forest-Mixed (FRST) respectively. And all experiments carried out based on the same the DEM, soil data and meteorological conditions.

Based on the five scenarios, the SWAT simulations were conducted to analyze the effect of forest constructions on the streamflow in upper and middle reaches of the Wei River basin. Firstly, the converted agricultural land area was controlled proportionately as same as the variational area ratios of set scenarios in 3 regions divided by Linjiacun, Weijiabu and Xianyang hydrological stations (Fig. 65(a)). Secondly, lands with the same soil type and similar slope were the priorities choosing as the converted land. Thirdly, the converted lands were distributed evenly as much as possible in 3 regions. The simulation period was from 1980 to 2009.

We present the distribution of average streamflow change under S2 ~ S5 scenarios compared with S1 scenario in Fig. 98. It shows that the streamflow generally increased when the land use converted from agricultural land into forest in the upstream. And Fig. 10-9 shows the change rate of streamflow at the Linjiacun, Weijiabu and Xianyang stations correspondingly for its annual average and annual average over non-flood season (Jan - Jun and Nov - Dec). Compared with the S1 scenario, the annual average streamflow increases in the non-flood season were 12.70 %, 11.21 % and 9.11% for the Linjiacun, Weijiabu and Xianyang stations with per 10% area of agricultural land converted into forest. Interestingly the average annual streamflow increases were 11.61%, 21.63%, 42.51% and 109.25% for S2, S3, S4 and S5 scenario respectively (Fig. 10-9(b)), which almost consistently suggested about 1.1% per 1% change of the agricultural land. The results are important in that one can expect that for a 0.8% increase in the forest in the observed

LUCC would lead to less than 1% change in the streamflow, which is negligible.

To be more comparable, Fig. ~~4-10~~ shows the distribution of the annual runoff coefficients with the scenario changed from S1 to S5. The spatial variability in mean runoff coefficient was large, which ranges from 0.03 to 0.68 and increased with more forest converted from agricultural land. The annual average runoff coefficient of study area increased from 0.21 to 0.37 with forest area increasing from S1 to S5 (Fig. ~~4-11~~ 11). On average, the runoff coefficient increased about 0.014 (i.e., 1.4% of rainfall transformed into streamflow) with per 10% area of agricultural land converted into forest.

The landscape of the Wei River is mixed with the Loess Plateau and earth-rock mountain landscapes, which induce different mechanisms of transforming rainfall into streamflow. The earth-rock mountain area accounts for 24.03% of study area (Fig. ~~4-3~~ 3(b)). In earth-rock mountain area, vegetation grows on much thinner soil layer over the earth-rock mountain. And the soil has high infiltration ability for high stone fragment content. The thin soil is apt to be saturated and produce more soil flow on relatively impermeable rock, hence the streamflow in wooded areas is larger than that in adjacent woodless areas favoring streamflow production (Liu and Zhong, 1978). On the contrary, in Loess Plateau there is exiting a drying layer of soil underneath forestland in great water deficit. When the agricultural land converted into forest, the precipitation, intercepted by vegetation, infiltrated into soil and supplied the drying layer of soil, vegetation growth, etc. Together with much thicker soil layer on the Loess Plateau, it usually prevents gravitational infiltration into groundwater and reduces streamflow recharge (Li, 2001; Tian, 2010). The observed results of precipitation and streamflow in study area also showed the runoff coefficients had obviously positive correlation with rates of earth-rock mountain area. The regional annual

averages of runoff coefficient were 0.13, 0.17 and 0.354 for Fig. 6-5(b), (d) and (c), while the rates of earth-rock mountain area were opposite correspondingly (Fig. 4-3(b)). The complication is that the overall effect of forest on the streamflow is in fact a balance between earth-rock mountain positive and Loess Plateau negative effects on the streamflow.

Combined with the spatial distribution of precipitation (Fig. 5-4(a)), we can see earth-rock mountain landscapes are mainly distributed in regions with more rainfall. To be precise, the whole earth-rock mountain area located where rainfall was greater than 500 mm/yr and over 62% of the study area where the annual rainfall is greater than 600 mm was in earth-rock mountain. Meanwhile, the river network over the earth-rock mountain is denser and most of tributaries in the earth-rock mountain are close to the main stream of the Wei River. Moreover, there distribute a lot of developed gravel riverbed in piedmont, sandy soil along the river and its groundwater level is shallow, which facilitate rainfall infiltration and recharging streamflow. Therefore although the area of earth-rock mountain accounts for 24% of the study area, its distribution areas are concentrated in the main regions of streamflow yield of the study area. Therefore the overall result of balance among all factors was that the forest constructions have a little positive effect on streamflow in study area.

Seemingly, this result was not consistent with the significant decreasing tendencies of streamflow in study area. The combined effects of LUCC, including forestation, terraces, grass, and dam, could explain the discrepancy. Under the same meteorological conditions, the streamflow is mainly a result of combined effects of these measures. Results showed the terrace in the main Weihe River basin could delay the flood and add the drought season streamflow, which reduced the annual streamflow in general. The terrace in 2000 could decrease about 37 million m³

带格式的：缩进：首行缩进： 2 字符

annual water and increased the most dry month streamflow by 3.5% in Xianyang station (Shao, 2013b). Zhang et al (2014a, 2014b) studied the terrace measures of Yanhe River basin, typical basin of the Loess Plateau, and results showed that the terrace measures could reduce the runoff in the flood season and increased the baseflow. Results showed that 1 m³ water could be supplied to the river when 5~6 m³ water stored by the terrace. This meant the water reducing effect of terrace was larger than 80% in Yanhe River basin and. Xu et al. (2012) applied the SWAT model to simulate the streamflow in the Yanhe basin and results showed that the check dams had a regulation effect on streamflow. From 1984 to 1987, the streamflow in rainy season (from May to October) decreased by 1.54 m³s⁻¹ (14.7 %) to 3.13 m³s⁻¹ (25.9 %) due to the check dams; while in dry season (from November to the following April), streamflow increased by 1.46 m³s⁻¹ (60.5%) to 1.95 m³s⁻¹ (101.2 %); From 2006 to 2008, the streamflow in rainy season decreased by 0.79 m³s⁻¹ (15.5 %) to 1.75 m³s⁻¹ (28.9 %), and the streamflow in dry season increased by 0.51 m³s⁻¹ (20.1 %) to 0.97 m³s⁻¹ (46.4 %). Lots of results showed that the terrace and check dam both had a negative effect on annual streamflow which was a result of the balance between the streamflow reducing in the flood season and baseflow increasing in non-flood season on the Loess Plateau (Shao, et al., 2012, 2013a, 2013b; Zhang, et al., 2014a, 2014b; Xu, et al., 2012). The observed streamflow was a result of the balance among forestation, terraces, grass, and dam.

带格式的：非突出显示

带格式的：字体：五号

带格式的：字体：五号

带格式的：字体：五号

带格式的：字体：五号

带格式的：字体：五号

带格式的：字体：五号

带格式的：字体：五号

带格式的：字体：非倾斜

带格式的：字体：五号

4.3 Impact of conversion of agricultural land to forests on baseflow

In Fig. 10-9(a), one important point is that the average increase in the non-flood season was about 1.41 times larger than the annual increase of the streamflow. To understand that, Fig. 13-12 shows distribution of the baseflow index, i.e., the ratio between baseflow and streamflow, under

S1~S5 scenarios. We can see that the baseflow index also increased with land use converted from agricultural land into forest, which means that groundwater contribution to the streamflow increased with the overall increase of forest area. Putting the pictures together, Fig. 14-13 shows the changes of the streamflow and the baseflow under the S2~S5 scenarios minus those results under the S1 scenario in the non-flood season. The average increases of streamflow and baseflow were 1.14 and 0.98 mm/yr with per 1% increase of forest area respectively. For the non-flood season, they were 0.60 and 0.53 mm/yr. The increase of the streamflow contributed by the increased baseflow was about 88.33% in the non-flood season. So the increasing streamflow was mainly contributed by groundwater with increasing of forest area overall.

Although some researchers have urged a cessation on Grain for Green expansion on the Loess Plateau of China for it lead to annual streamflow of the Yellow River declining (Chen et al., 2015; Li, 2001), our modeling results suggest that forest recovery constructions have a little positive impact on both soil flow and base flow compensating reduced surface runoff, which leads to a slight increase in streamflow in the Wei River with mixed landscapes of Loess Plateau and earth-rock mountain. And rainfall patter also has great effect on streamflow, particularly the extremes rainfall, i.e., Lacombe et al. (2008) found no streamflow change was found for when the precipitation was larger than 40 mm. Results showed that the daily precipitation extremes seem to be consistent with the 7% increase per degree of warming (Allen and Ingram, 2002; Pall et al., 2007) and one-hour precipitation extremes increase twice as fast with rising temperatures as expected when daily mean temperatures exceed 12 °C (Lenderink and Meijgaard, 2008; Westra, 2014). The streamflow is the combined effects of LUCC (forestation, terraces, grass, and dam and so on) and climate changes. The impact of Grain for Green project on streamflow should be

带格式的: 无, 缩进: 首行缩进: 2 字符, 段落间距段前: 0 磅

带格式的: 非突出显示

带格式的: 上标

461 thoughtfully studied according to the characteristics of the basin.

462 At the same time, there are some uncertainties in SWAT model simulations. First, the SWAT
463 model could offer the comprehensive parameters for subbasin and detailed parameters for
464 different HRU according to their slopes, soli type and LUCC. The comprehensive parameters were
465 calibrated according to observed streamflow of subbasin, while the different parameters of HRU
466 could not be calibrated individually. Second, the model could not tell the impact of short-duration
467 rainfall on streamflow which has great effect on streamflow. In addition, watershed size,
468 generalization and data accuracy all can lead to uncertainty in the simulations (Yin et al., 2017).
469 To reduce the uncertainty of simulation influence, the 30-year (1980-2009) values of streamflow
470 were averaged to analyze the impacts.

带格式的：缩进：首行缩进： 0 字符

472 5. Conclusion

473 The large scalar implementation of Grain for Green project in China is expected to alter
474 hydrological cycle, in particular on the Loess Plateau, within the Yellow River Basin. The
475 scientific question is how large the impact of the LUCC on the streamflow and its components in
476 that area. We choose the Wei River as the study area, in that it has been widely implemented
477 revegetation constructions since the 1980s. Of particular interest here, the landscape of the upper
478 and middle reaches of the Wei River basin is mixed with the Loess Plateau and rocky mountain,
479 which would induce different mechanisms of generating surface runoff, soil flow, base flow and
480 therefore streamflow.

481 To investigate it, we setup the SWAT model for the upper and middle reaches of the Wei
482 River basin with the inputs of long term observed meteorological forcing data, hydrological data,

and observed land use data. We use daily and monthly streamflow of the Linjiacun, Weijiabu and Xianyang hydrological stations from upper to middle reaches during 1960-1969 and 1970-1979 respectively for the model calibration and model validation. The results showed that the Nash-Sutcliffe (NS) coefficients and the coefficients of determination (R^2) were > 0.57 and 0.61 for daily streamflow and 0.70 and 0.74 for monthly streamflow respectively demonstrating that the SWAT model can be used in this study.

We analyze the impact of the LUCC on streamflow based on the observed LUCC data of 1980 and 2005. The daily streamflow from 1980 to 2009 were simulated using observed daily meteorological data with the two different land use data. The results showed that two-thirds of annual streamflow decreased and the change of streamflow was different among different land use. On the overall average, the 30-year averages of the streamflow decreased in agricultural land but increased in forest. To interpret the overall result, we design five scenarios in this study including (S1) the present land use of 1980 and the scenarios where agricultural land was converted into forest by 10% (S2), 20% (S3), 40% (S4) and 100% (S5) respectively. Based on the five scenarios, we use the calibrated and validated SWAT model to analyze the effect of forest constructions on the streamflow in detail. The results confirm that annual streamflow consistently increased with more forest converted from the agricultural land. Interestingly, the rate is almost consistently 7.41 mm/yr per 10% increase of forest converted from the agricultural land. Based on detailed analysis of each component of streamflow, we found it was most attributed by the baseflow. The overall effect of LUCC on the streamflow in the Wei River basin, the largest branch of the Yellow River is the result of the balance between Loess Plateau negative and earth-rock mountain positive effects. Our results here are not only of great importance in understanding the impact of LUCC on

streamflow for a catchment with much complicated and mixed landscape, but also of significance for water resources managing practice.

Data availability

The data used in this manuscript were obtained from reliable public data repositories. The LUCC and soil data were obtained from the National Science & Technology Infrastructure of China, the National Earth System Science Data Sharing Infrastructure (<http://www.geodata.cn>). The DEM data were obtained from the Computer Network Information Center, the Chinese Academy of Sciences (<http://srtm.datamirror.csdb.cn/>). The meteorological data were obtained from the China Meteorological Data Sharing Service System (<http://www.eservice.gov.cn/metdata/page/index.html>). The daily streamflow data were from the Ecological Environment Database of Loess Plateau (<http://www.loess.csdb.cn/pdmp/index.action>) and the Hydrological Year books of China.

Acknowledgment

This research was supported by the National Key Research and Development Program of China (2016YFA0602402), an Open Research Fund of State Key Laboratory of Desert and Oasis Ecology, Xinjiang, Institute of Ecology and Geography, Chinese Academy of Sciences, CPSF-CAS Joint Foundation for Excellent Postdoctoral Fellows, National Key Research and Development Program of China (2016YFC0401401), the Chinese Academy of Sciences (CAS) Pioneer Hundred Talents Program, the International Science and Technology Cooperation Program of China (2014DFA71910), [Natural Science Foundation of China \(41571028 and 41601035\)](#). We thank the Editor and reviewers for valuable comments that improved the manuscript.

References

- Abbaspour, K. C.: User manual for SWAT-CUP, SWAT calibration and uncertainty analysis programs, Swiss Federal Institute of Aquatic Science and Technology, Eawag, Duebendorf, Switzerland, 2007.
- [Allen, M. R., and Ingram, W. J.: Constraints on future changes in climate and the hydrologic cycle, *Nature*, 2002, 419\(6903\):224-232.](#)
- Arnold, J., Srinivasan, R., Neitsch, S., George, C., Abbaspour, K., Gassman, P., Hao, F. H., Van Griensven, A., Gosain, A., and Debels, P.: Soil and Water Assessment Tool (SWAT): Global Applications, WASWC, 2009.
- Arnold, J. G., Srinivasan, R., Muttiah, R. S., and Williams, J. R.: Large area hydrologic modeling and assessment part I: Model development1, *JAWRA Journal of the American Water Resources Association*, 34, 73-89, 1998.
- [Arnold, J. G., Allen, P. M., and Bernhardt, G.: A comprehensive surface-groundwater flow model, *Journal of Hydrology*, 1993, 142\(1-4\):47-69.](#)
- Beck, H. E., Bruijnzeel, L. A., Dijk, A. I. J. M. V., and Mcvicar, T. R.: The impact of forest regeneration on streamflow in 12 meso-scale humid tropical catchments, *Hydrology & Earth System Sciences Discussions*, 10, 3045-3102, 2013.
- Bosch, J. M., and Hewlett, J.: A review of catchment experiments to determine the effect of vegetation changes on water yield and evapotranspiration, *Journal of hydrology*, 55, 3-23, 1982.
- Bradshaw, C., Sodhi, N., Peh, K., and Brook, B.: Global evidence that deforestation amplifies flood risk and severity in the developing world, *Global Change Biology*, 13, 2379–2395, 2007.
- Chen, Y., Wang, K., Lin, Y., Shi, W., Song, Y., and He, X.: Balancing green and grain trade, *Nature Geoscience*, 8, 739-741, 2015.
- Deng, L., Liu, G. B., and Shangguan, Z. P.: Land-use conversion and changing soil carbon stocks in China's 'Grain-for-Green' Program: a synthesis, *Global Change Biology*, 20, 3544–3556, 2013.
- Dijk, A. I. J. M. V., Noordwijk, M. V., Calder, I. R., Bruijnzeel, S. L. A., Schellekens, J., and Chappell, N. A.: Forest–flood relation still tenuous – comment on 'Global evidence that deforestation amplifies flood risk and severity in the developing world' by C. J. A. Bradshaw, N.S. Sodi, K. S.-H. Peh and B.W. Brook, *Global Change Biology*, 15, 110-115, 2009.
- Farley, K. A., Jobbágy, E. G., and Jackson, R. B.: Effects of afforestation on water yield: a global synthesis with implications for policy, *Global Change Biology*, 11, 1565-1576, 2005.
- Foley, J. A., Ruth, D., Asner, G. P., Carol, B., Gordon, B., Carpenter, S. R., F Stuart, C., Coe, M. T., Daily, G. C., and Gibbs, H. K.: Global consequences of land use, *Science*, 309, 570-574, 2005.
- Hibbert, A. R.: Forest Treatment Effects on Water Yield, Pennsylvania Univ University, 527-543, 2001.
- Huang, B. W.: Several issues of the impact of forest on environment, *China Water Resouces*, 4, 29-32, 1982.
- Huang, Z. G., Ouyang, Z. Y., Li, F. R., Zheng, H., and Wang, X.: Progress in the Effects of Forest Ecosystem on Runoff Based on Forest Catchments, *World Forestry Research*, 22, 36-41, 2009.
- [D., —Janeau, J. L., Souleuth, B., Robain, H., Taccoen, A., Sengphaathith, P., Mouche, E., Sengtaheuanghoung, O., Tran Duc, T., Valentin, C.: Contradictory hydrological impacts of afforestation in the humid tropics evidenced by long-term field monitoring and simulation modelling, *Hydrology & Earth System Sciences*, 20, 2691-2704, 2016.](#)
- Lacombe, G., Cappelaere, B., Leduc C.: Hydrological impact of water and soil conservation works in

the Merguellil catchment of central Tunisia, *Journal of Hydrology*, 359, 210-224, 2008.

Lacombe, G., Ribolzi, O., de Rouw, A., Pierret, A., Latsachak, K., Silvera, N., Pham Dinh, R., Orange, Lørup, J. K., Refsgaard, J. C., and Mazvimavi, D.: Assessing the effect of land use change on catchment runoff by combined use of statistical tests and hydrological modelling: case studies from Zimbabwe, *Journal of Hydrology*, 205, 147-163, 1998.

Le Maitre, D. C., Scott, D. F., and Colvin, C.: Review of information on interactions between vegetation and groundwater, *Water Research Commission*, 25, 137-152, 1999.

Li, W. H., He, Y. T., and Yang, L. Y.: A summary and perspective of forest vegetation impacts on water yield, *Journal of Natural Resources*, 16, 398-406, 2001.

Lenderink, G., and Meijgaard, E. V.: Increase in hourly precipitation extremes beyond expectations from temperature changes, *Nature Geoscience*, 2008, 1(8):511-514.

Li, Y. S.: Effects of forest on water circle on the Loess Plateau, *Journal of Natural Resources*, 16, 427-432, 2001.

Lin, Q. C., and Li, H. E.: Influence and guarantee on ecological basic flow of Weihe River from Baojixia water diversion, *Journal of Arid Land Resources and Environment*, 24, 114-119, 2010.

Liu, C. M., and Zhong, J. X.: The influence of forest cover upon annual runoff in the Loess Plateau of China, *Acta Geographica Sinica*, 33, 112-126, 1978.

Liu, Y., and Hu, A. Y.: Changes of Precipitation Characters Along Weihe Basin in 50 Years and Its Influence on Water Resources, *Journal of Arid Land Resources & Environment*, 20, 85-87, 2006.

Lorup, J. K., and Hansen, E.: Effect of land use on the streamflow in the southwestern highlands of Tanzania, *International Symposium on Sustainability of Water Resources Under Increasing Uncertainty, at the 5th Scientific Assembly of IAHS, RABAT, MOROCCO*, 1997.

Mango, L., Melesse, A., McClain, M., Gann, D., and Setegn, S.: Land use and climate change impacts on the hydrology of the upper Mara River Basin, Kenya: results of a modeling study to support better resource management, *Hydrology and Earth System Sciences*, 15, 2245-2258, 2011.

Moriasi, D. N., Arnold, J. G., Van Liew, M. W., Bingner, R. L., Harmel, R. D., and Veith, T. L.: Model evaluation guidelines for systematic quantification of accuracy in watershed simulations, *Trans. Asabe*, 50, 885-900, 2007.

Nash, J., and Sutcliffe, J. V.: River flow forecasting through conceptual models part I—A discussion of principles, *Journal of hydrology*, 10, 282-290, 1970.

Neitsch, S. L., Arnold, J. G., Kiniry, J. R., Williams, J. R.: *Soil and Water Assessment Tool (SWAT) Theoretical Documentation: Version 2000*, Texas Water Resources Institute Technical Report No. 406, 2011.

Ogden, F. L., Crouch, T. D., Stallard, R. F., and Hall, J. S.: Effect of land cover and use on dry season river runoff, runoff efficiency, and peak storm runoff in the seasonal tropics of Central Panama, *Water Resources Research*, 49, 8443-8462, 2013.

Pall, P., Allen, M. R., and Stone, D. A.: Testing the ClausiusClapeyron constraint on changes in extreme precipitation under CO2 warming, *Climate Dynamics*, 2007, 28(28):351-363.

Price, K.: Effects of watershed topography, soils, land use, and climate on baseflow hydrology in humid regions: A review, *Progress in physical geography*, 35, 465-492, 2011.

Shao, H., Baffaut, C., and Gao, J. E.: A Process-Based Method for Evaluating Terrace Runoff and Sediment Yield, 12-1341006, 2012.

带格式的: 正文

带格式的: 字体: 10 磅, (无), 不检查拼写或语法

Shao, H., Baffaut, C., Gao, J. E., Nelson, N. O., Janssen, K. A., Pierzynski, G. M., [and Barnes, P. L.](#): Development and application of algorithms for simulating terraces within SWAT, Transactions of the Asabe, 56, 1715-1730, 2013a.

Shao, H.: Simulation of Soil and Water Loss Variation toward Terrace Practice in the Weihe River Basin, Doctor, Northwest A & F University, Yangling Shaanx, 2013b.

Smith, R., and Scott, D.: The effects of afforestation on low flows in various regions of South Africa, Water S. A., 18, 185-194, 1992.

Sriwongsitanon, N., and Taesombat, W.: Effects of land cover on runoff coefficient, Journal of Hydrology, 410, 226-238, 2011.

Tian, J. L.: Environmental effects of Loess Plateau Ecological Construction, China Meteorological Press, Beijing, 2010.

Tobella, A. B., Reese, H., Almaw, A., Bayala, J., Malmer, A., Laudon, H., and Ilstedt, U.: The effect of trees on preferential flow and soil infiltrability in an agroforestry parkland in semiarid Burkina Faso, Water Resources Research, 50, 3342-3354, 2014.

Van Liew, M. W., and Garbrecht, J.: Hydrologic simulation of the Little Washita River experimental watershed using SWAT, Journal of the American Water Resources Association, 39, 413-426, 2003.

VanShaar, J. R., Haddeland, I., and Lettenmaier, D. P.: Effects of land - cover changes on the hydrological response of interior Columbia River basin forested catchments, Hydrological Processes, 16, 2499-2520, 2002.

Wagner, P. D., Kumar, S., and Schneider, K.: An assessment of land use change impacts on the water resources of the Mula and Mutha Rivers catchment upstream of Pune, India, Hydrology & Earth System Sciences, 10, 1943-1985, 2013.

Wang, F.: Study of runoff and value of ecosystem based on landuse change in Weihe River basin, Master, Northwest A & F University, Yangling Shaanxi, 2013.

Wang, H.: The Effects of Typical Measures of Soil and Water Conservation on Ecological Basic Flow Recharged from Groundwater, Doctor, University of Chinese Academy of Sciences, Beijing, China, 2014.

Wang, L. X.: Effect of construction and protective of vegetation on protection and utilization of water resources, Xiangshan Conference, Beijing, 2000.

Wang, Y. H., Yu, P. T., Feger, K. H., Wei, X. H., Sun, G., Bonell, M., Xiong, W., Zhang, S. L., and Xu, L. H.: Annual runoff and evapotranspiration of forestlands and non - forestlands in selected basins of the Loess Plateau of China, Ecohydrology, 4, 277-287, 2011.

[Westra, S., Fowler, H. J., Evans, J. P., Alexander, L. V., Berg, P., Johnson, F., Kendon, E. J., Lenderink, G., and Roberts, N. M.; Future changes to the intensity and frequency of short - duration extreme rainfall, Reviews of Geophysics, 2014, 52\(3\):522-555.](#)

Woodward, C., Shulmeister, J., Larsen, J., Jacobsen, G. E., and Zawadzki, A.: Landscape hydrology. The hydrological legacy of deforestation on global wetlands, Science, 346, 844-847, 2014.

Wang, Y., Shao, M., Shao, H.: A preliminary investigation of the dynamic characteristics of dried soil layers on the Loess Plateau of China, Journal of Hydrology, 381, 9-17, 2010 a.

Wang, Y., Shao, M., Liu, Z.: Large-scale spatial variability of dried soil layers and related factors across the entire Loess Plateau of China, Geoderma, 159, 99-108, 2010 b. Xu, Y. D., Fu, B. J., and He, C. S.:

Assessing the hydrological effect of the check dams in the Loess Plateau, China by model simulations, Hydrology & Earth System Sciences Discussions, 9, 13491-13517, 2012.

Xu, Y. D., Fu, B. J., and He, C. S.: Assessing the hydrological effect of the check dams in the Loess Plateau, China by model simulations, Hydrology & Earth System Sciences, 2012, 9(12):13491-13517.

Yan, Y., Tian, J., Fan, M. S., Zhang, F. S., Li, X. L., Christie, P., Chen, H. Q., Lee, J., Kuzyakov, Y., and Six, J.: Soil organic carbon and total nitrogen in intensively managed arable soils, Agriculture, ecosystems & environment, 150, 102-110, 2012.

Yin, J., He, F., Xiong, Y. J., and Qiu, G. Y.: Effect of land use/land cover and climate changes on surface runoff in a semi-humid and semi-arid transition zone in Northwest China, Hydrology & Earth System Sciences Discussions, 2016:1-23.

Zuo, D., Xu, Z., Zhao, J., Abbaspour, K. C., and Yang, H.: Response of runoff to climate change in the wei river basin, china. Hydrological Sciences Journal/journal Des Sciences Hydrologiques, 60, 1-15, 2015.

Zhang, H., and Hiscock, K.: Modelling the impact of forest cover on groundwater resources: A case study of the Sherwood Sandstone aquifer in the East Midlands, UK, Journal of hydrology, 392, 136-149, 2010.

Zhang, T. Z.: Based on hydrological characteristics of Donggou and Xigou catchment in Yongding River to analyze the hydrological function of forest vegetation, Resources Science, 90-98, 1984.

Zhang, Y. X., Gao, J. E., and Shao, H.: The Terraced Fields Environmental Impact Assessment in Data-Scarce Areas Based on the Embedded Terraced Module SWAT Model, Nature Environment & Pollution Technology, 2014a.

Zhang, Y. X.: The research of watershed runoff and sediments variation toward to the soil and water conservation terrace measure, Doctor, Northwest A & F University, Yangling Shaanxi, 2014b.

带格式的: 英语(美国)

Figure Captions:

~~Fig. 1 The development of soil and water conservation measures in the main stream basin of Wei River over last 50 years.~~

~~Fig. 21~~ The study area: the Wei river basin on the Loess Plateau.

~~Fig. 3-2~~ The observed land use data of the year 1980 and the year 2005 in study area.

~~Fig. 4-3~~ The Soil data and the distribution of earth-rock mountain in study area.

~~Fig. 5-4~~ The spatial distribution of annual average precipitation in Wei River basin over the past 55 years (1956-2010) and the DEM of study area.

~~Fig. 6-5~~ The time-series of precipitation, annual streamflow and runoff coefficients for the regions of study area.

~~Fig. 7-6~~ The time-series graphs of calculated vs. observed values during calibration period and

691 verification period for hydrological stations.

692 **Fig. ~~8-7~~** The changes of 30-year (1980-2009) averages of streamflow, surface runoff, soil flow and
693 baseflow between agricultural land and forest.

694 **Fig. ~~9-8~~** The watershed distribution of average streamflow change under S2~S5 scenarios compared
695 with S1 scenario.

696 **Fig. ~~10-9~~** The corresponding proportional change rate of streamflow at Linjiacun, Weijiabu and
697 Xianyang station for annual average and annual average in non-flood season.

698 **Fig. ~~11-10~~** The distribution of annual runoff coefficient with the scenario changed from S1 to S5.

699 **Fig. ~~12-11~~** The annual average runoff coefficient of study area with forest area increasing from S1 to
700 S5.

701 **Fig. ~~13-12~~** The distribution of baseflow index under S1~S5 scenarios.

702 **Fig. ~~14-13~~** The corresponding change of streamflow and baseflow under S2~S5 scenarios compared
703 with S1 for annual average of year and non-flood season.

704

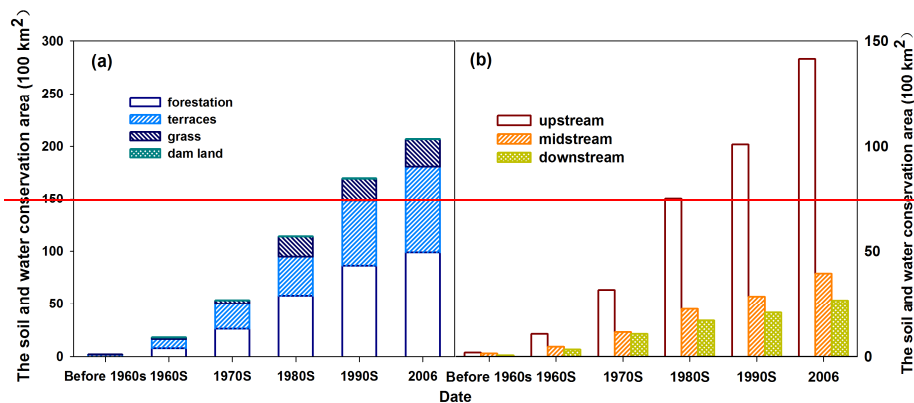


Fig. 1 The development of soil and water conservation measures in the main stream basin of Wei River over last 50 years

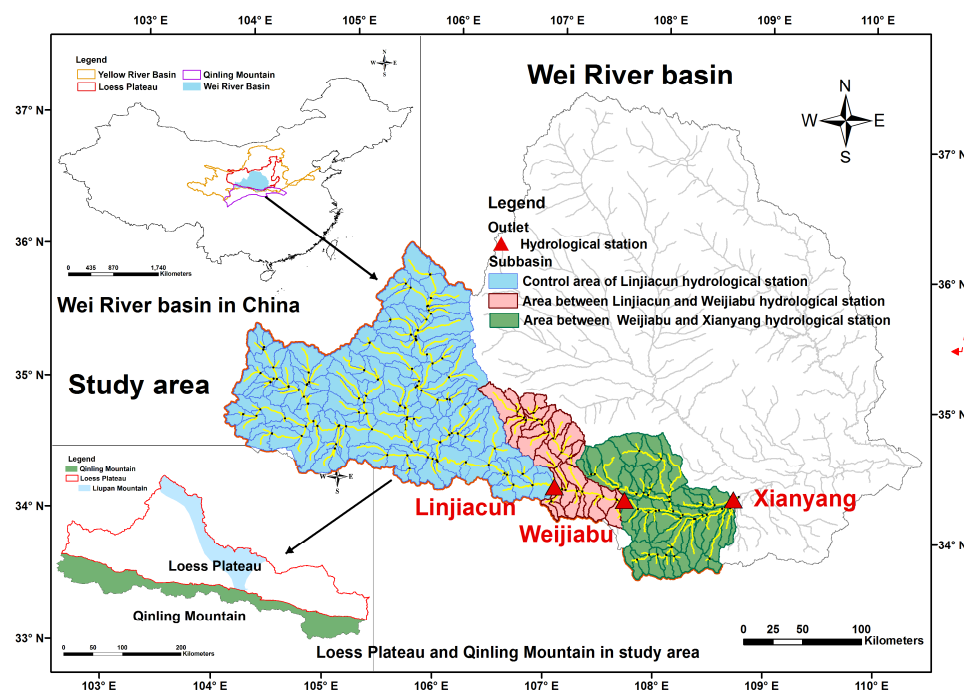


Figure 1 (a) is the area developing of forestation, terraces, grass and dam land separately. Figure 1 (b) is the sum area of the forestation, terraces, grass and dam land in upstream, midstream and downstream.

带格式的：行距：单倍行距

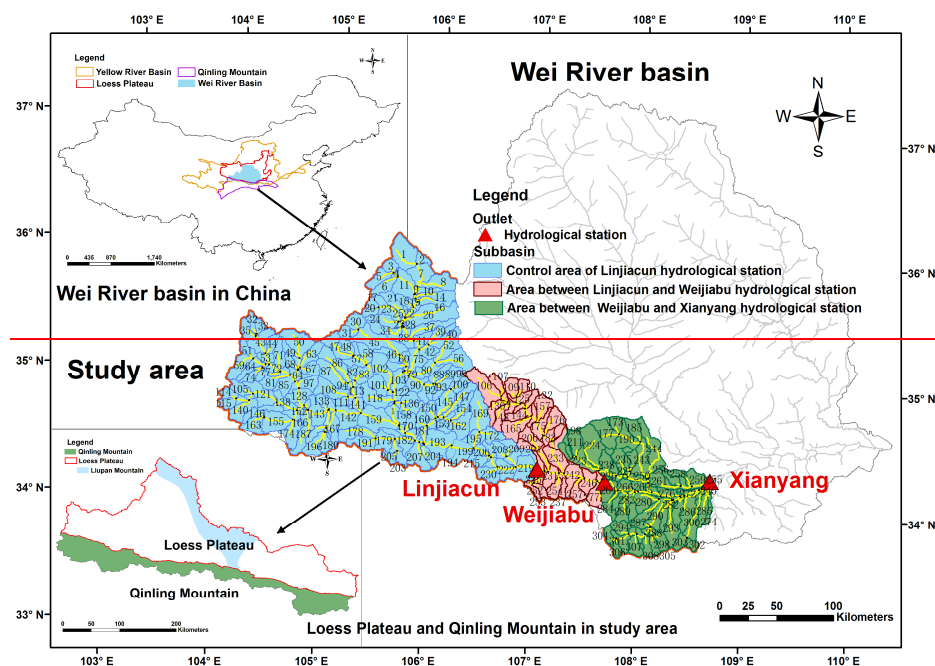


Fig. 2-1 The study area: the Wei river basin on the Loess Plateau.

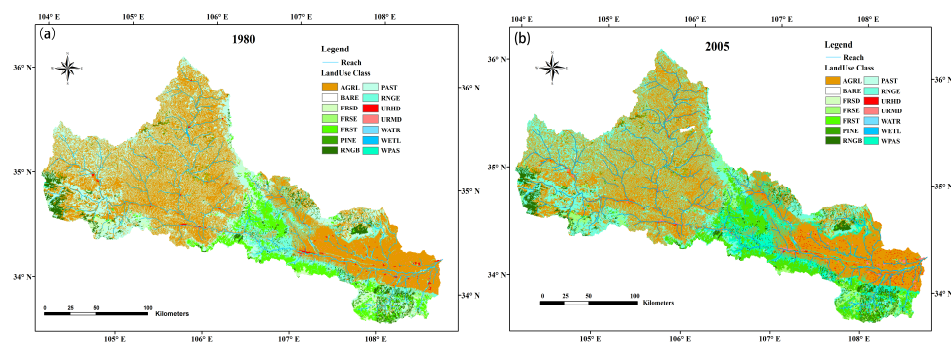


Fig. 3-2 The observed land use data of the year 1980 and the year 2005 in study area

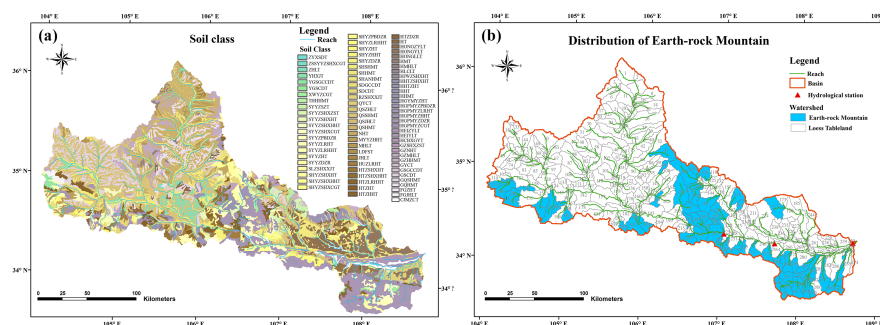


Fig. 4-3 The Soil data and the distribution of earth-rock mountain in study area

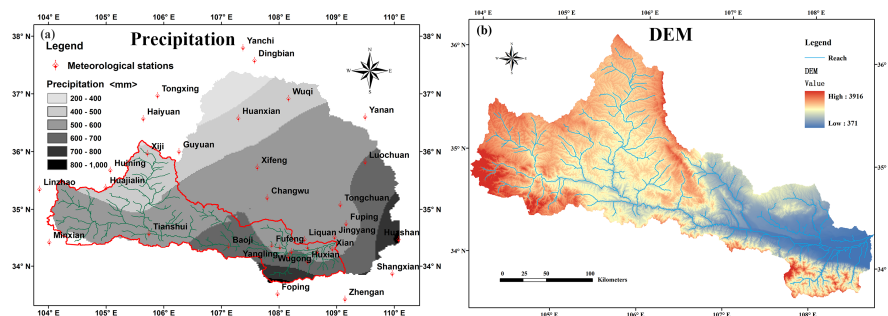
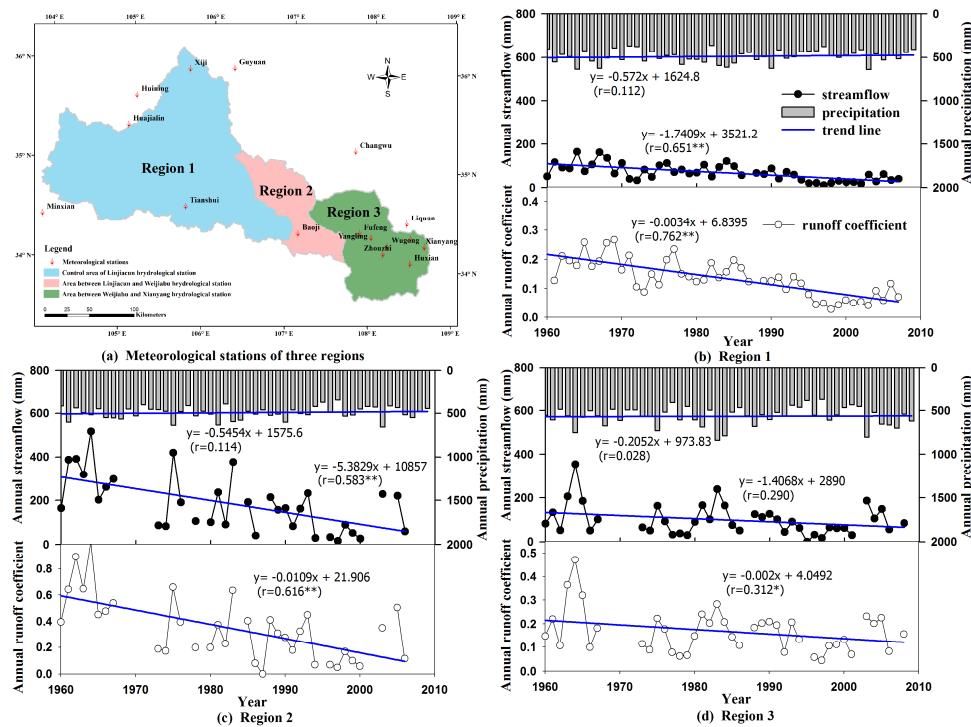


Fig. 5.4 The spatial distribution of annual average precipitation in Wei River basin over the past 55 years (1956–2010) and the DEM study area



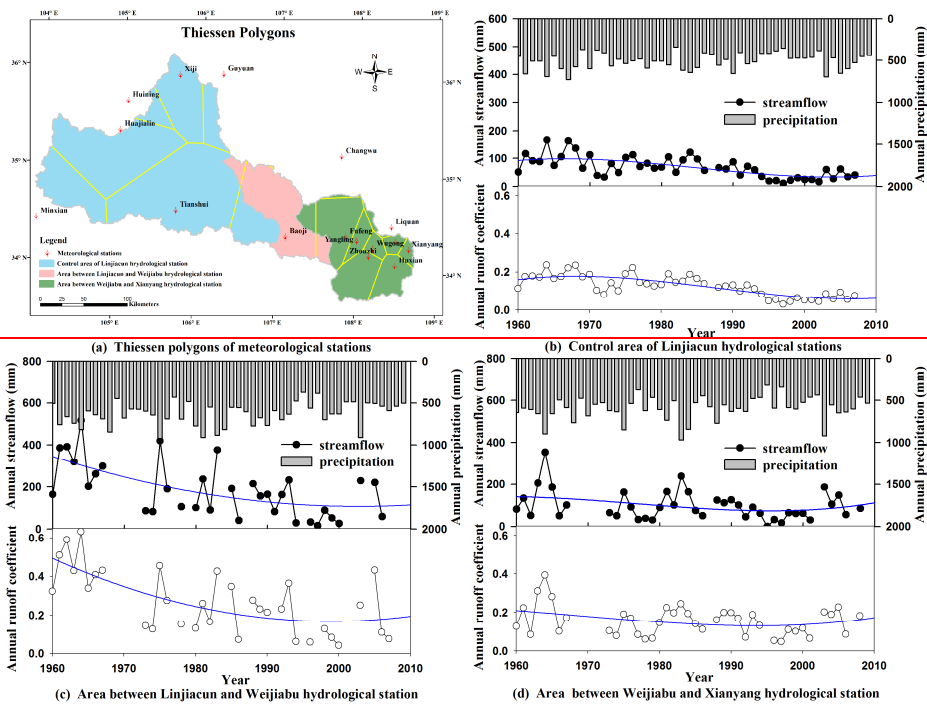


Fig. 6-5 The time-series of precipitation, annual streamflow and runoff coefficients for the regions of study area

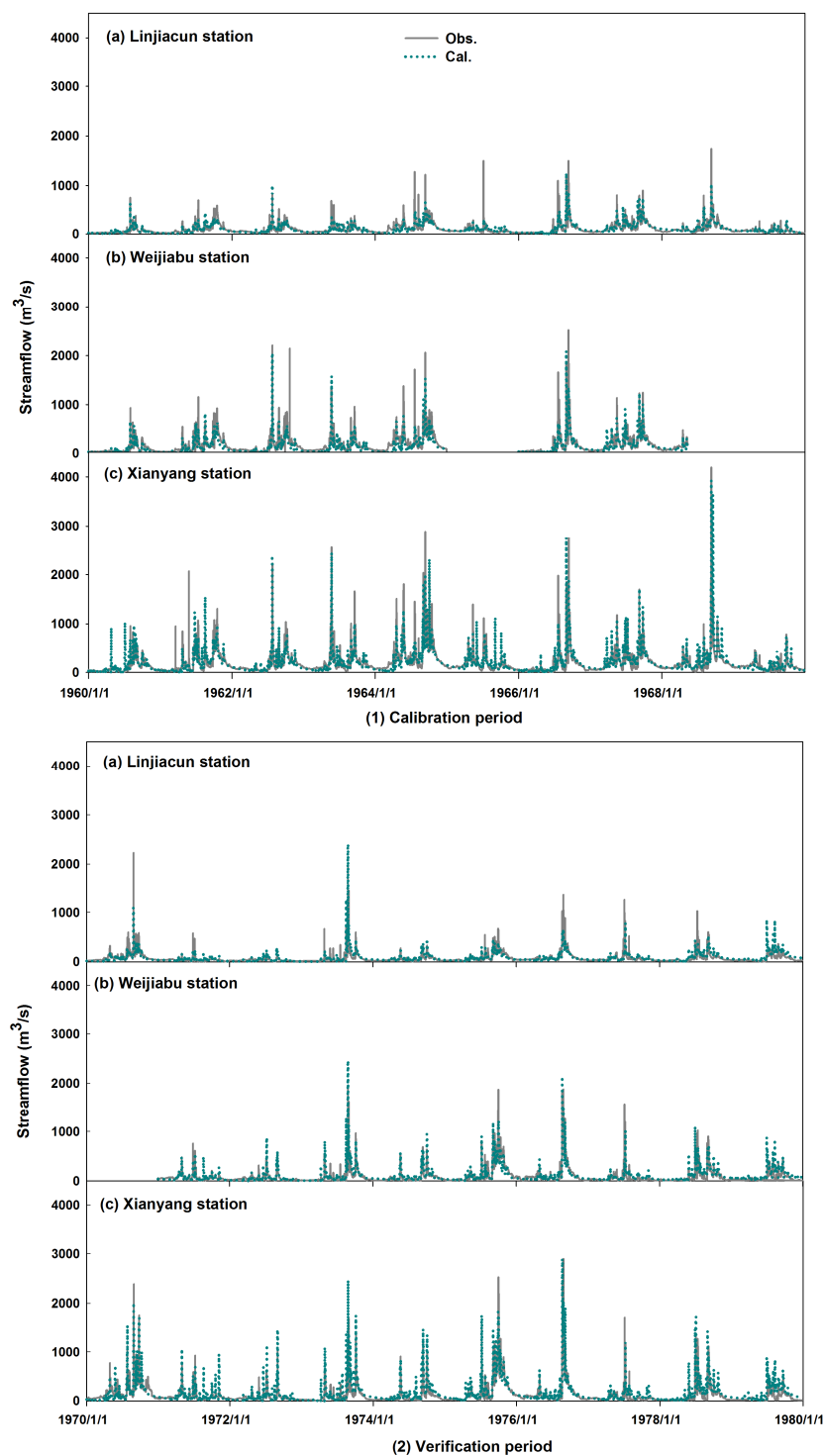
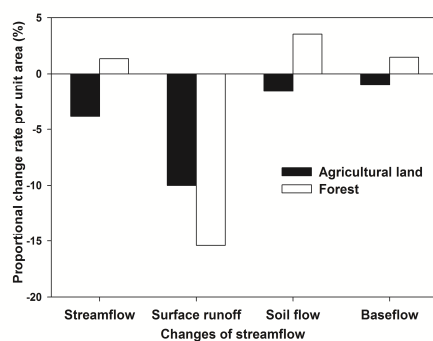


Fig. 7-6 The time-series graphs of calculated vs. observed values during calibration period and verification

727

period for hydrological stations



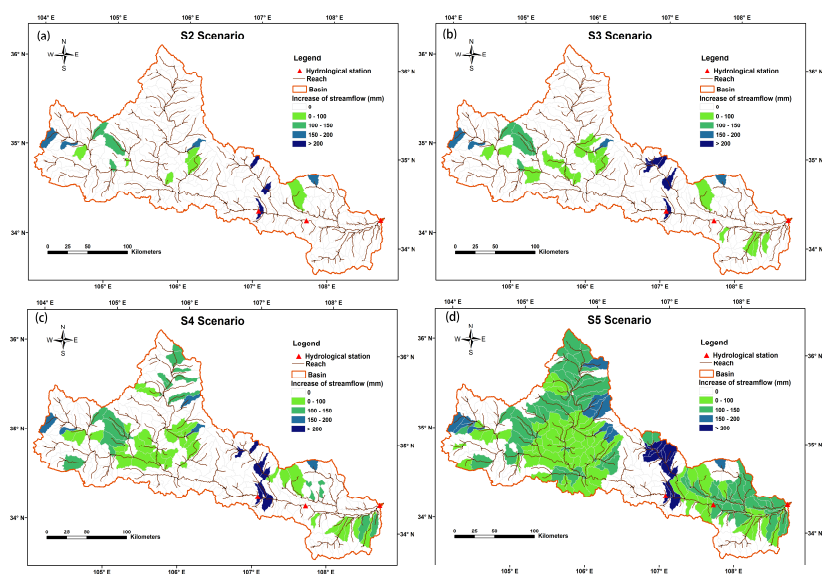
728

729

Fig. 8-7 The changes of 30-year (1980-2009) averages of streamflow, surface runoff, soil flow and

730

baseflow between agricultural land and forest



731

732

Fig. 9-8 The watershed distribution of average streamflow change under S2~S5 scenarios compared

733

with S1 scenario

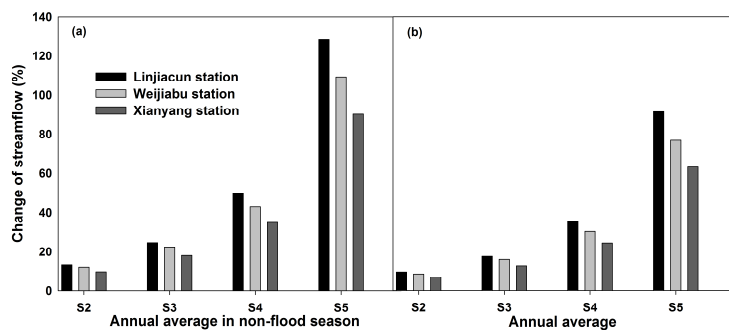


Fig. 4-9 The corresponding proportional change rate of streamflow at Linjiacun, Weijiabu and Xianyang station for annual average and annual average in non-flood season

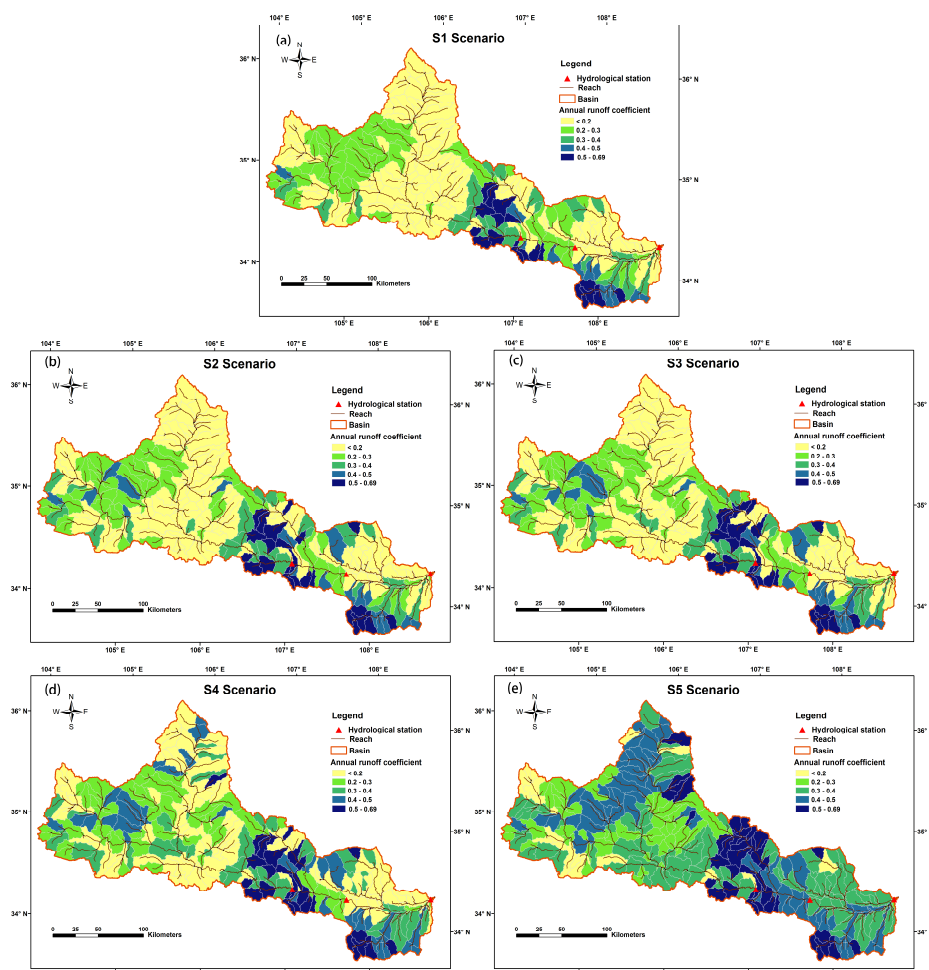


Fig. 4-10 The distribution of annual runoff coefficient with the scenario changed from S1 to S5

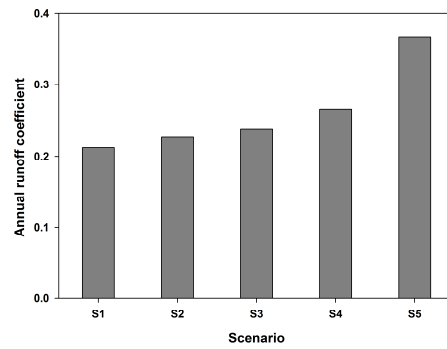


Fig. 12-11 The annual average runoff coefficient of study area with forest area increasing from S1 to S5

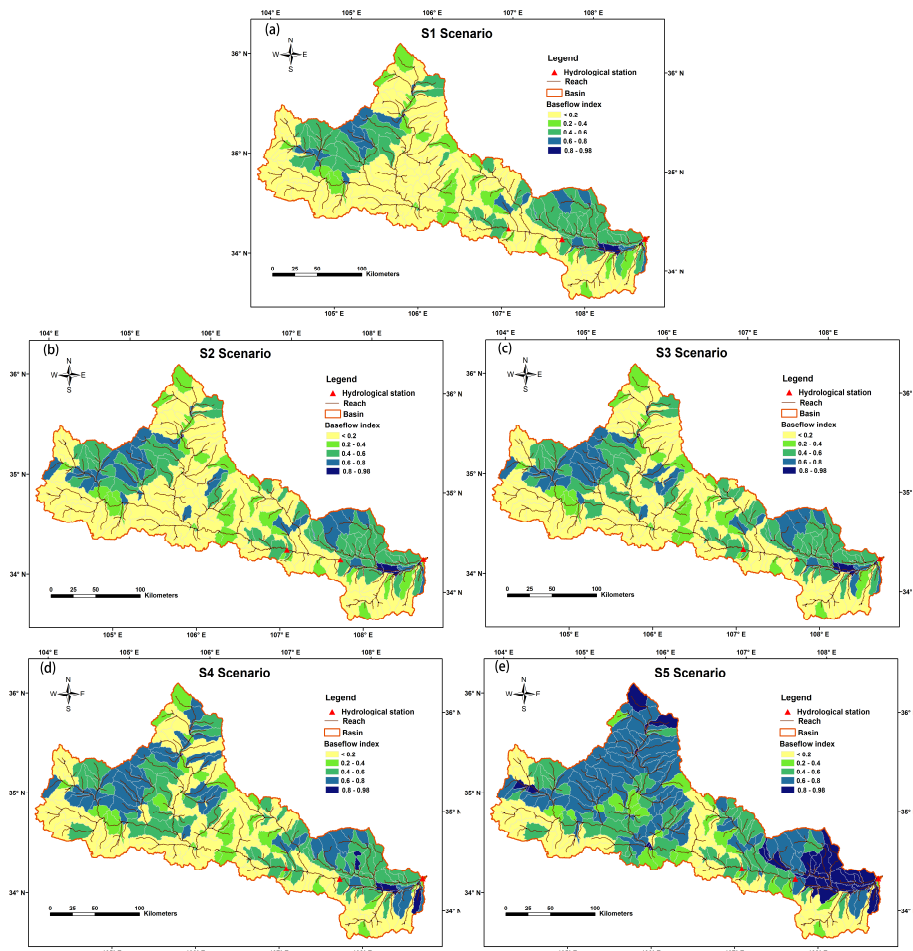


Fig. 13-12 The distribution of baseflow index under S1~S5 scenarios

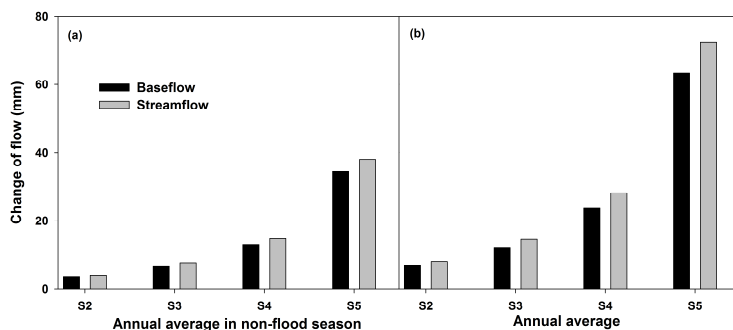


Fig.14-13 The corresponding change of streamflow and baseflow under S2~S5 scenarios compared with S1 for annual average of year and non-flood season

Tables

Table 1 The soil type and its distribution of earth-rock mountain in study area

No.	Code of Soil type	Physical meaning of the code	HRU	Area (km ²)
1	SHYZHT	Limestone Cinnamon soil	220, 257	26316.90
2	SHYZSHXHT	Limestone Calcic cinnamon soil	153	11471.22
3	SYYZLRHT	Sandstone—shale Luvie cinnamon soil	166, 203, 207	50065.29
4	HGPMYLRHT	Granite—gneiss Luvie cinnamon soil	174, 180, 187, 201, 204, 221, 277, 283, 287	158397.93
5	SYYZDZR	Sandstone—shale Light brown earth	106, 169, 299	103955.40
6	HGPMYZDZR	Granite—gneiss Light brown earth	130, 148, 172, 209, 252, 284, 289, 290, 291, 293, 294, 300, 301, 302, 303, 305, 306, 307, 308	299737.26
7	HGPMYZPBDZR	Granite—gneiss Light brown earth	253	8739.90
8	MYYZHHT	Sandstone—shale Grey cinnamon soil	115, 117, 146, 163	51204.96
9	SYYZSHXHHT	Sandstone—shale Calcic grey cinnamon soil	99, 129	19392.21
10	SHYZSHXHHT	Limestone Calcic Grey cinnamon soil	56	33885.54
11	SYYZSHXZST	Sandstone—shale Purple soil	109, 176, 177, 184, 200	106159.41
12	HGPMYZCGT	Granit—gneiss Rhogosol	165, 230, 237, 254, 271, 292, 295, 296, 297, 304	112136.40
13	SYYZSHXCGT	Sandstone—shale Rhogosol	107, 208, 213, 216, 218, 219, 248	87612.84
14	SHYZSHXCGT	Limestone Rhogosol	222	23375.79
15	SYYZLRHHT	Sandstone—shale Luvic grey	116, 140	30320.73

		cinnamon soil		
--	--	---------------	--	--

749

750

Table 2 Calibrated values of model parameters

Parameters	Physical meaning	Calibration range	Calibration result		
			Linjiac	Weijia	Xianya
			un	bu	ng
r__CN2	Initial SCS runoff curve number for moisture condition II	-0.3~0.3	-0.27	0.05	-0.17
r__SOL_AWC	Available water capacity of soil layer	-0.6~0.6	0.01	-0.01	-0.01
r__SOL_K	Saturated hydraulic conductivity of soil layer (mm/hr)	-0.5~0.5	0.5	0.3	0.5
r__HRU_SLP	Average slope stepness (m/m)	-0.5~1.5	1.5	0.41	0.52
r__SLSUBBSN	Average slope length (m)	-0.5~1.5	1.17	0.70	1.20
v__ALPHA_BF	Baseflow alpha factor	0~1.0	0.48	0.61	0.61
v__GW_DELAY	Groundwater delay (days)	0~500	220	38	62
v__ESCO	Soil evaporation compensation factor	0~1.0	0.65	0.90	0.80
v__CH_K2	Effective hydraulic conductivity in main channel alluvium	0~130	5	30	30

751

752

753

754

Notes: v__ means the existing parameter value is to be replaced by the given value; r__ means the existing parameter value is multiplied by (1+ a given value).

Table 3 Scenarios for simulation

Scenario	Description	Area (km ²)	The average simulated streamflow
			(1980-2009) (10 ⁸ m ³ /yr)
S 1	present situation	0	50.44

S 2	10% agricultural land → forest	2937.63	53.92
S 3	20% agricultural land → forest	5875.26	56.83
S 4	40% agricultural land → forest	11750.53	62.73
S 5	100% agricultural land → forest	29376.32	82.28

755 Notes: ① Agricultural land refers to the land for crops planting, including cultivated land, newly cultivated soil, fallow field,
756 rotation plot, pasture-crop rotation and land used for agro-fruit, agro-mulberry, agroforestry (The code in model is AGRL). ②
757 Forest refers to the natural forest and plantation, which canopy density is larger than 30%, including timberland, economic forest,
758 protection forest (The code in model is FRST).
759