

EnKF with closed-eye period - towards a consistent aggregation of information in soil hydrology

Hannes H. Bauser^{1,2}, Stefan Jaumann^{1,2}, Daniel Berg^{1,2}, and Kurt Roth^{1,3}

¹Institute of Environmental Physics (IUP), Heidelberg University, Heidelberg

²HGS MathComp, Heidelberg University, Heidelberg

³Interdisciplinary Center for Scientific Computing (IWR), Heidelberg University, Heidelberg

Correspondence to: Hannes H. Bauser (hannes.bauser@iup.uni-heidelberg.de)

Abstract. The representation of soil water movement exposes uncertainties in all model components. We assess the key uncertainties for the specific hydraulic situation of a 1D soil profile with TDR-measured water contents. Addressed uncertainties are initial condition, soil hydraulic parameters, small-scale heterogeneity, upper boundary condition, and the local equilibrium assumption by the Richards equation. We employ an ensemble Kalman filter (EnKF) with an augmented state to represent and estimate all key uncertainties, except for the intermittent violation of the local equilibrium assumption. For the latter, we introduce a Closed-Eye EnKF to bridge the gap. Due to an iterative approach, the EnKF was capable to estimate soil parameters, Miller scaling factors, and upper boundary condition based on TDR measurements during a single rain event. The introduced closed-eye period ensured constant parameters suggesting that they resemble the believed true material properties. This closed-eye period improves predictions during periods when the local equilibrium assumption is met, but requires a description of the dynamics during local non-equilibrium phases to be able to predict them. Such a description remains an open challenge. Finally, for the given representation our results show the necessity to include small-scale heterogeneity. A simplified representation with Miller scaling already yielded a satisfactory description.

1 Introduction

The description of soil water flow in the vadose zone with a mathematical model requires knowledge about material properties (typically characterized by soil hydraulic parameters), initial conditions, and boundary conditions. Especially the material properties are difficult to determine, since they can neither be measured directly nor transferred directly from the laboratory to the field.

Soil hydraulic parameters have been estimated inversely based on measurements of the temporal development of the hydraulic state with reviews e.g. by Hopmans et al. (2002) and Vrugt et al. (2008). Inversions are based on the assumption of a perfect model and incorporate all errors and uncertainties into the estimated parameters, leading to a suboptimal estimation.

In contrast, data assimilation methods are capable to combine information from measurements and models into an optimal estimate of the geophysical field of interest, but depend on the correct description of corresponding uncertainties (Reichle, 2008). Data assimilation methods include variational methods, particle filters, and ensemble Kalman filters (EnKF).

The EnKF, introduced by Evensen (1994), became popular in hydrology and was used to estimate e.g. water content states

from satellite data (e.g. Reichle et al., 2002) or local water content measurements (e.g. De Lannoy et al., 2009).

Liu and Gupta (2007) pointed out that in hydrologic data assimilation the focus on state estimation is not sufficient and called for the incorporation of the errors in model structures and parameters.

Moradkhani et al. (2005) used a dual EnKF approach, whereas Vrugt et al. (2005) combined an EnKF and the shuffled complex evolution metropolis algorithm in an iterative way, to estimate parameters and states in a rainfall-runoff model. Chen and Zhang (2006) used an EnKF with augmented state to simultaneously estimate pressure and conductivity field for saturated flow.

Based on the Richards equation, Li and Ren (2011) first employed the simultaneous estimation of states and soil hydraulic parameters with the EnKF, which has been studied in more detail for purely synthetic cases (e.g. Wu and Margulis, 2011; Song et al., 2014; Erdal et al., 2015; Shi et al., 2015; Man et al., 2016) or with focus on synthetic cases (e.g. Wu and Margulis, 2013; Erdal et al., 2014).

Synthetic cases offer the advantage of a direct control and knowledge about all uncertainties, which is a challenge in real world cases. The characterization of uncertainties is critical for the success of a data assimilation scheme (Liu et al., 2012). Assuming the wrong uncertainty sources can lead to poorer performance (e.g. Crow and Van Loon, 2006; Zhang et al., 2015). If the correct uncertainty is unknown it can be better to overestimate uncertainties than to disregard or underestimate them (e.g. Jafarpour and Tarrahi, 2011; Zhang et al., 2015).

In this study, we focus on a real world case to address the challenge of consistent aggregation of the information. We exercise this aggregation with the EnKF on a small example: a 1D soil profile equipped with time domain reflectometry (TDR) probes measuring water content, during a time period of less than 2 months. We assess all uncertainties in the representation of this particular situation qualitatively and design a three stage approach to reduce the largest uncertainties or to consider them appropriately: First, we improve the prior knowledge (initial condition and small-scale heterogeneity) to facilitate the subsequent estimation. Second, we perform an assimilation with a standard EnKF approach with an augmented state to directly reduce uncertainties in states, soil hydraulic parameters, small-scale heterogeneity and upper boundary condition. We introduce iterations over the complete EnKF scheme to cope with the short data set, and to determine times when the underlying local equilibrium assumption by the Richards equation is violated. We define this specific time as the closed-eye period, because in the third stage, we only estimates states, but keep parameters constant during this time and thus prevent the incorporation of the uncertainties in the dynamics into the parameters. The estimation of soil hydraulic parameters is only performed before and after this closed-eye period.

The remainder of the manuscript is organized as follows: Section 2 describes our understanding of (i) a representation of a physical system in general, (ii) the hydrological system we want to represent, (iii) the specific representation and its uncertainties in detail, (iv) the concept of knowledge fusion and (v) the EnKF. Section 3 presents the three stages: (i) Improving the prior, (ii) Standard EnKF and (iii) Closed-Eye EnKF and compares the prediction capabilities of Standard and Closed-Eye EnKF. In section 4 we present our conclusion and their implications.

2 Background

2.1 Representation

In this work, we call the mathematical description of a physical system a representation, which comprises in the most general sense the four components: dynamics, forcing, subscale physics and states.

5 **Dynamics:** The dynamics specifies how the state of the system is propagated in space and time at the scale of interest.

Forcing: The forcing or coupling of the system to the superscale physics in space (initial state) and time (boundary condition).

Subscale physics: The subscale physics not explicitly described by the dynamics, but with a parameterization comprising one or more parameters and their spatial and temporal distribution.

State: Distribution of the variable propagated by the dynamics, at a specific time. Notice that this excludes parameters.

10 According to this definition a representation is specific for each system. Hence, we first introduce the system, and the details of the representation afterwards.

2.2 Testsite

We aim to represent the water movement in a soil profile at the Grenzhof test site close to Heidelberg, Germany. Since 2003, 15 experiments are conducted at the test site. In 2004, a weather station was built, which measures precipitation and further atmospheric data (wind, temperature, incoming and outgoing long- and shortwave radiation, relative humidity and air temperature) in 10 minute intervals. A detailed description of the test site can be found in Wollschläger et al. (2009).

In 2009, a soil profile was equipped with 11 TDR probes measuring water content hourly. The soil profile itself, described explicitly by Schenk (2011), is depicted in Fig. 1. It consists of four different soil layers up to the depth of 1.4 m. The top 20 three layers are equipped with three TDR probes each, and the bottom layer with two TDR probes. The profile is kept free of vegetation at the surface.

The complete time period considered comprises 60 days from October 1, 2011 (day 1) until November 29, 2011 (day 60). The boundary condition along with the water content measured by the topmost TDR are shown in Fig. 2.

2.3 Representation of soil water flow

25 For this specific soil profile we can now formulate the representation consisting of the four components described in section 2.1. For each we give the a priori description, as well as the corresponding assumptions and sources of uncertainty.

Dynamics: For a continuous porous medium, the Richards equation (Richards, 1931) describes the change of volumetric water content θ [–]

30
$$\frac{\partial \theta}{\partial t} - \nabla \cdot [K(\theta) [\nabla h_m(\theta) - 1]] = 0, \tag{1}$$

with the isotropic conductivity $K [LT^{-1}]$ and matric head $h_m [L]$. The Richards equation itself is process-based and is expected to describe the actual physics adequately as long as its underlying assumptions are fulfilled: It assumes the soil water movement to be a single-phase process. Hence, the Richards equation is expected to fail in very dry or wet conditions. Both are not observed at the Grenzhof test site during the time period considered. The corresponding uncertainties are small. The Richards equation further assumes local equilibrium. This is assumed to be violated during strong infiltration events, e.g. during heavy rainfall leading to preferential flow. We expect local non-equilibrium at the Grenzhof test site, but it is a priori not clear, how strong the forcing has to be or how to describe these cases. This creates uncertainty in the dynamics during rain events.

We additionally assume, that horizontal flow is negligible and that we can describe the system one dimensional without additional sources or sinks. The flat terrain and horizontal layering at the Grenzhof test site supports this assumption. Still, heterogeneity, that is not represented, might introduce two-dimensional flow.

Material properties: The subscale physics not explicitly represented in Eq. 1, are the dependencies of K and h_m on θ . Several parameterizations are available. We follow Wollschläger et al. (2009) and choose the Mualem-van Genuchten parameterization (Mualem, 1976; Van Genuchten, 1980):

$$K(\Theta) = K_0 \Theta^\tau \left[1 - \left[1 - \Theta^{n/[n-1]} \right]^{1-1/n} \right]^2, \quad (2)$$

$$h_m(\Theta) = \frac{1}{\alpha} \left[\Theta^{-n/[n-1]} - 1 \right]^{1/n}, \quad (3)$$

with the saturation $\Theta [-]$

$$\Theta := \frac{\theta - \theta_r}{\theta_s - \theta_r}. \quad (4)$$

The parameterization reduces the description of the subscale physics to a set of six parameters: $\theta_s [-]$, $\theta_r [-]$, $\alpha [L^{-1}]$, $n [-]$, $K_0 [LT^{-1}]$ and $\tau [-]$. We do not expect significant uncertainties due to assuming this particular parameterization, because we only observe a rather small water content range.

The parameters θ_s and θ_r are the saturated and residual water content. The parameters α and n can be associated with an inverse air entry value and the width of the pore size distribution respectively, although there is no direct physical relation. K_0 is the saturated conductivity and τ is a fudge factor.

The spatial distribution of these material properties has to be defined on the scale of the dynamics. The large-scale structure for this soil profile are 4 soil layers, where we assign an individual parameter set to each layer.

Although these parameters cannot be measured directly and are often assigned with the largest uncertainties in soil hydrology, we can in this case use the soil parameters determined by Wollschläger et al. (2009) through an inversion for a soil profile close by. They are expected to differ from the soil hydraulic parameters at the represented soil profile due to spatial heterogeneity.

We do not include a description of hysteresis, leading to additional uncertainties connected with the parameterization.

We assume the parameters to be constant in time, which appears justified, since we only investigate a short time period of less

than 2 months.

The assumption of homogeneous soil layers is presumably wrong. A possibility to describe the texture inside soil layers in a simplified way is Miller scaling (Miller and Miller, 1956). They assume geometrical similarity and scale the material properties at each location (grid cell) according to:

$$5 \quad K(\theta) = K^*(\theta) \cdot \xi^2, \quad (5)$$

$$h_m(\theta) = h_m^*(\theta) \cdot \frac{1}{\xi}, \quad (6)$$

where * denotes the reference material properties of the corresponding layer and $\xi [-]$ is the Miller scaling parameter at this location. This means, that we have to define a Miller scaling factor for each grid cell. The assumption of geometric similarity does not necessarily hold and leads to some uncertainties. The scaling factor themselves are a priori unknown. We assume no
10 heterogeneity (scaling factors of 1), which is most likely wrong and introduces large uncertainties.

Forcing: The forcing in time is the upper and lower boundary condition. For the upper boundary condition, we can measure rain and use the meteorological data from the on-site weather station to calculate the evaporative water flux using the reference
15 FAO Penman-Monteith equation following Allen et al. (2006). Here, especially the estimation of the evaporation is highly uncertain. The daily mean value can differ 10-20% (Foken, 2006). In dry conditions the evaporation is limited by the soil, which leads to additional uncertainties.

At the Grenzhof test site the rain gauge had not been calibrated during the period of consideration. Because of that we have to assume an uncertainty of about 20% for the precipitation as well.

For the lower boundary condition there are no measurements at the site. However, constant water content measurements in
20 the lowest soil layer during the observed time period indicate, that the dynamics is decoupled from the groundwater table. Therefore, we follow Wollschläger et al. (2009) and add a 5th layer with soil parameters for sand from Carsel and Parrish (1988) up to a depth of 4 m in our representation. The sand layer decouples the dynamics from the groundwater table, that we keep constant at the depth of 4 m. This leads to uncertainties, but they are expected to be negligible.

The forcing in space is the initial condition. The initial condition is difficult to estimate. A simple approach is to use the
25 measured water contents and interpolate them linearly with constant extrapolation to layer boundaries. This leads to large uncertainties in between.

States: With the three components dynamics, material properties and forcing we can predict the temporal development of the states, in this case the water content. These states will have large uncertainties due to the uncertainties in the other compo-
30 nents.

An additional source of uncertainty is the simulation of the dynamics with a numerical solver, here with MuPhi (Ippisch et al., 2006). The assumption of local equilibrium in the Richards equation has to be granted on the grid size of the numerical model as well. We choose a resolution of 1 cm. For the represented soil and boundary conditions this resolution is sufficient to

resolve the occurring fronts smoothly, so that we can neglect effects caused by the numerical solver.

Water content determined with TDR probes will be used to improve the representation. The water content values are calculated from the temperature corrected electric permittivity with the complex refraction index model (CRIM) following Roth et al. (1990). The porosities required there, were obtained from volumetric soil samples. We assume an unbiased uncertainty of 0.01 for the water contents. This is the largest noise observed with the TDR probes. The assumptions made for the representation of the soil water movement at the Grenzhof test site are summarized in Table 1. Along we give our qualitative assessment of the uncertainties: small, no need to represent the uncertainty explicitly; intermediate, it might be necessary to represent these uncertainties, we decide not to but keep them in mind; large, uncertainties must be represented with the goal to reduce them. Our findings depend on this uncertainty assessment and might be affected if it does not hold.

2.4 Knowledge Fusion

We define knowledge fusion as the consistent aggregation of all information pertinent to some observed reality. In the presented situation at the Grenzhof test site this would require the quantitatively correct description of all uncertainties in the representation and a subsequent optimal reduction of all these uncertainties based on all additionally available information. For the measurement part these are primarily the water content data from the 11 TDR probes, but any other information, even expert knowledge, should be incorporated as well. So far, this goal is only partly feasible, though. With an inversion all information and uncertainties would be included into the parameters, which is not a consistent aggregation of the information, since the structural errors in the other components are not represented. Data assimilation methods are capable to represent all uncertainties and have been expanded to not only estimate states, but also parameters. For an aggregation of all information we have to reduce uncertainties in all representation components. In this study we aim to describe and reduce the uncertainties classified as large in Table 1 and decided to neglect the ones classified as intermediate or small with the EnKF.

2.5 Ensemble Kalman Filter

The EnKF is a data assimilation method that uses a Monte Carlo approach for an optimal state estimation, based on the assumption of unbiased Gaussian error distributions. The EnKF incorporates the measurements sequentially by alternating between a forecast step (superscript f), which propagates the state in time, and an analysis step (superscript a), which incorporates the information from the measurements at this time to improve the state. These two steps are now explained in more detail - specifically for the given representation. A general description can be found e.g in Burgers et al. (1998).

Forecast: First an ensemble of water content states θ^i is propagated forward in time from $k-1$ to k :

$$\theta_k^{f,i} = M(\theta_{k-1}^{a,i}, \phi_k^i, \xi_k^i, \mu_k^i) + \beta_k^i \quad (7)$$

where M denotes the propagation with the Richards equation and ϕ^i , ξ^i and μ^i are soil hydraulic parameters, Miller scaling parameters, and the upper boundary condition of ensemble member i , respectively. In this way, all the uncertainties from θ , ϕ , ξ and μ are explicitly represented and propagated forward in time with the non-linear dynamics leading to the forecast ensemble θ^f , which represents these uncertainties. Uncertainties not explicitly represented are incorporated into the process noise β , which is difficult to describe, however. We set the process noise to 0. In this way, we represent all the uncertainties classified as ‘large’ in Table 1 directly, except for uncertainties caused by the local equilibrium assumption, which is expected to only hold outside of strong rain events. We decide to not represent ‘intermediate’ and ‘small’ uncertainties.

The uncertainty of the forecast ensemble is characterized based on the Gaussian assumption with the state error covariance matrix \mathbf{P} :

$$\mathbf{P}_k^f = \frac{1}{N-1} \sum_{i=1}^N \left(\theta_k^{f,i} - \bar{\theta}_k^f \right) \left(\theta_k^{f,i} - \bar{\theta}_k^f \right)^T, \quad (8)$$

with the number of ensemble members N and the ensemble mean $\bar{\theta}$.

Analysis: To incorporate measurements, we have to quantify their uncertainties by defining the measurement error covariance matrix \mathbf{R} :

$$\mathbf{R}_k = \frac{1}{N-1} \sum_{i=1}^N \left(\epsilon_k^i \right) \left(\epsilon_k^i \right)^T, \quad (9)$$

with the measurement errors ϵ . We assume the measurement errors to be uncorrelated and drawn from a normal distribution with the assumed TDR standard deviation of 0.01.

The Kalman gain \mathbf{K} weights the forecast state error covariance and the measurement error covariance

$$\mathbf{K}_k = \mathbf{P}_k^f \mathbf{H}_k^T \left[\mathbf{H}_k \mathbf{P}_k^f \mathbf{H}_k^T + \mathbf{R}_k \right]^{-1}, \quad (10)$$

with the measurement operator \mathbf{H} mapping from the state space to the measurement space, and the Kalman gain \mathbf{K} mapping from the measurement space back to the state space - weighted with the uncertainties of measurements and states. Based on the Kalman gain the weighted difference of forecast and measurements is added to the forecast states to obtain the analysis states

$$\theta_k^{a,i} = \theta_k^{f,i} + \mathbf{K}_k \left[z_k - \mathbf{H}_k \theta_k^{f,i} + \epsilon_k^i \right], \quad (11)$$

where z are the measurements. The measurement errors ϵ have to be added to the difference so that the ensemble describes the analysis error covariance correctly (Burgers et al., 1998). The descriptive explanation is that the measurements z already include measurement errors, while the measurements of the forecast state $\mathbf{H}\theta^f$ do not. Hence, the error has to be added to compare equivalents.

By alternating between forecast and analysis, the information of all measurements is incorporated to achieve an improved estimation of the states at each time step.

By replacing the water content state θ with an augmented state ψ , not only the water content states, but all components of the augmented state can be estimated with the EnKF. We choose to include all the directly represented uncertain components

in the augmented state $\psi = [\theta, \phi, \xi, \mu]$ consisting of water content, soil hydraulic parameters, Miller scaling parameters and the upper boundary condition.

Adding components to the augmented state increases its dimension, which in turn requires a larger number of ensemble members, leading to a higher computational effort. To minimize this effect, we keep the added components as small as possible.

5 As parameters to be incorporated, we choose α , n and K_0 for each of the four layers as well as the saturated water content θ_s for layers 3 and 4. For the upper two layers, the measured water contents were far away from θ_s and θ_r , estimated by Wollschläger et al. (2009). Thus, they are irrelevant for the estimation, as changes in θ_s and θ_r can be compensated by the other parameters. For the bottom two layers measurements exceeded θ_s . Thus, it has to be added in the augmented state. We do not include the fudge factor τ , since the observed water content ranges are rather small. For other situations, incorporation of τ might improve
10 the results, however.

Since the EnKF assumes Gaussian distributions and linear correlations, we do not directly use K_0 but the logarithm (to which the water content response behaves more linearly).

The dimensions of the Miller scaling factors are reduced as well. Only the scaling factors at measurement locations are added. The whole Miller scaling field is determined by linear interpolation between measurement locations inside a layer and a
15 constant extrapolation towards layer boundaries. As the measurements yield only little information about the small-scale architecture away from their location, we expect that this assumption has only little influence on the results. Again, the logarithm of the parameter is used in the augmented state.

The upper boundary condition is already a scalar and is added as the flux at the surface to the augmented state.

In this way, soil parameters, Miller scaling factors and the upper boundary condition are updated besides the states in the
20 analysis.

The expansion to an augmented state changes the propagation in time. Each component needs an individual forward propagation. We assume the soil hydraulic parameters and Miller scaling factors to be constant in time. This is not possible for the upper boundary condition where the forward equation is unknown from a soils perspective. However, measurements are available to estimate the evaporation and precipitation. Hence, we assume the forward model constant until a new estimation
25 is available. Then, we switch to the estimated boundary condition. To base the improvement of the upper boundary condition on several measurements, we reduce the temporal resolution of precipitation measurements to change daily and at transitions between precipitation and evaporation. This means, that the upper boundary condition is treated like the parameters, except that the value can change in the forward propagation. The original temporal resolution of the precipitation data (10 minutes) is not required due to the dissipative nature of the Richards equation, which smooths the infiltration front before it reaches the
30 first TDR sensor in a depth of 8.5 cm. The estimation of the averaged boundary condition will ensure that there is no global bias on the parameter estimation during the rain event, but could lead to small short-time parameter drifts within a rain event.

The expanded forward propagation of the augmented state is:

$$\boldsymbol{\theta}_k^f = M_\theta(\boldsymbol{\theta}_{k-1}^a, \boldsymbol{\phi}_{k-1}^a, \boldsymbol{\xi}_{k-1}^a, \mu_{k-1}^a), \quad (12)$$

$$\boldsymbol{\phi}_k^f = \boldsymbol{\phi}_{k-1}^a, \quad (13)$$

$$\boldsymbol{\xi}_k^f = \boldsymbol{\xi}_{k-1}^a, \quad (14)$$

$$5 \quad \mu_k^f = \begin{cases} \mu_{\text{meas}} & \text{if a measurement is available,} \\ \mu_{k-1}^a & \text{else.} \end{cases} \quad (15)$$

The analysis information for the additional augmented state components lies in the covariance between states at measurement locations and the components. The covariance linearizes this relation that can be highly non-linear.

To reduce the impact of the linearization of non-linear dependencies, we employ damping factors (Hendricks Franssen and Kinzelbach, 2008), different for each augmented state component (Wu and Margulis, 2011) $\mathbf{d} = [\mathbf{d}_\theta, \mathbf{d}_\phi, \mathbf{d}_\xi, \mathbf{d}_\mu]$. The correction vector in Eq. 11 is multiplied by the corresponding factors. Hendricks Franssen and Kinzelbach (2008) investigated damping factors between 0.1 and 1.0, while Erdal et al. (2014) employed a damping factor of 0.3 for the parameters. The smaller the value, the better can a non-linearity be handled, but the slower will the estimated value approach the optimal value. We choose the values $\mathbf{d} = [1.0, 0.1, 0.1, 0.1]$. This means, that based on the water content measurements, there is no damping for the update of the water content state, but a strong damping for soil hydraulic parameters, Miller scaling factors and upper boundary condition.

Due to a limited ensemble size, the EnKF will show spurious covariances between uncorrelated state components. These can be reduced by increasing the ensemble size, or - more computationally efficient - by introducing a localization (Houtekamer and Mitchell, 2001), where external information about uncorrelated states is introduced. This can be achieved by multiplying the error covariance matrix by the correlation matrix ρ (with entries from 0 to 1) with an entrywise product. This alters the calculation of the Kalman gain to

$$\mathbf{K}_t = \left(\rho \circ \mathbf{P}_t^f \right) \mathbf{H}_t^T \left[\mathbf{H}_t \left(\rho \circ \mathbf{P}_t^f \right) \mathbf{H}_t^T + \mathbf{R}_t \right]^{-1}, \quad (16)$$

where the entrywise product is indicated by \circ .

For the water content state, the covariances are reduced with increasing physical distance. We use the 5th order piecewise rational function defined by Gaspari and Cohn (1999), which is similar to a Gaussian but with local support, which introduces a cut off length. We chose a very large empirical value of 153 cm (which corresponds to $2c$ in the 5th order piecewise function). For the soil parameters, we can localize even stronger by only allowing covariances (entries of 1) between parameters and measurement locations in the respective soil layer and the first measurement locations in the neighboring layers. For the Miller scaling factors, only covariances to the corresponding measurement locations are used. All other entries are set to 0.

Spurious correlations and non-Gaussian distributions can lead to filter inbreeding and ultimately filter divergence (e.g. Houtekamer and Mitchell, 1998; Hamill et al., 2001). To prevent this, the ensemble can be inflated by a multiplicative factor λ (Anderson

and Anderson, 1999):

$$\psi^i = \sqrt{\lambda} \left(\psi^i - \overline{\psi^i} \right) + \overline{\psi^i}. \quad (17)$$

We choose the inflation as proposed by Anderson (2009), where the inflation factor λ is adapted temporally and spatially for the states. We expand this for the other augmented state components by simply summing over the inflation factors at the
5 measurement locations weighted with the correlations.

We iterate the whole EnKF scheme and start the next iteration with the final estimation of soil parameters, Miller scaling factors and upper boundary condition of the previous iteration. These iterations differ from the typically applied iterative EnKFs like the Restart EnKF or Confirming EnKF (e.g. Song et al., 2014) and rather resemble the iterations in the Kalman ensemble generator by Nowak (2009), who used a modified EnKF to estimate parameters only. The full iterations applied are required to
10 estimate constant augmented state components even with a small damping factor and a rather short time period of data. This is especially important for the upper boundary condition, where the time periods of constant values are short.

The operational assumptions of the method lead to a sub-optimal estimation of the state in each time step. Furthermore, due to the non-linear dynamics, the assumption of Gaussian distributions does not hold. It is not clear how this affects the EnKF
15 performance in detail. The Gaussian assumption leads to a linearized state update in the analysis step. This induces erroneous updates of those state components with dominant non-linear relation between states and measurements. These errors are alleviated by employing the damping factor, which reduces the update but as a consequence also reduces the incorporation of measurement information. Furthermore, we use the largest observed measurement noise to characterize the TDR uncertainties. This leads to possibly too large measurement uncertainties, which have a similar effect as an additional damping factor.

We do not expect a strong influence from this sub-optimal state estimation on the mean value of the results for the soil hydraulic parameters, Miller scaling factors, and upper boundary condition. However, the final value will be approached slower than in
20 an ideal estimation. This effect is handled by the iterative approach.

On the downside, incorporating the same measurement information several times will lead, together with the other limitations, to incorrect quantitative uncertainties. However, the spatially and temporally adaptive covariance inflation by Anderson (2009)
25 ensures that measurements and states agree with each other within their uncertainties. This is only a partial solution, however, as the information is only propagated through the correlations to the measurement locations. Therefore, we will not interpret the uncertainties of the ensemble in a quantitative way. Nevertheless, we do expect them to hold qualitative information that can be interpreted.

30 **3 Results**

The complete time period considered comprises 60 days and ranges from October 1 (day 1) until November 29 (day 60). The boundary condition along with the water content measured by the topmost TDR are shown in Fig. 2. The whole time period is

separated into 4 sections: A (day 1-2), B (day 3- 17), C (18-22) and D (23-60).

Since soil parameters can only be estimated within the observed water content range and will not be valid outside of this range, a rather large rain event is desirable. On the other hand we do not represent uncertainties associated with the assumption of local equilibrium by the Richards equation, which is violated during strong rain events. Time period C (October 18-22, 2011)

5 combines both: a rather large total rain amount (18.2 mm) and a small maximal intensity (0.7 mm in 10 minutes).

We designed a three stage approach (Fig. 3) to improve the representation by incorporating the information from the water content measurements of the 11 TDR probes: (1) improving the prior information during time periods A and B, (2) a standard EnKF approach, and (3) a closed-eye EnKF approach, both during time period C with the considered rain event. The three stages are discussed in the following, with results analyzed through forecasts in time periods B, C and D.

10 3.1 Stage 1: Improving the prior

Highly uncertain properties can exacerbate the performance of the EnKF. For example Huber et al. (2011) showed that the state estimation with an EnKF is superior in case of properly precalibrated model parameters. In our case, there is no prior knowledge about small-scale heterogeneity, which can lead to difficulties in the estimation process: In a uniform layer, the water content is typically higher in deeper locations. Heterogeneity can reverse this and can lead to higher water contents above

15 lower water contents inside a layer. Until the infiltration front of the rain event reaches these positions, the EnKF cannot distinguish between heterogeneity and an infiltration front propagating at very low speed. This can easily lead to too small saturated conductivities especially in lower soil layers that are not reached by the infiltration front. Even upper layers can require a tuned relation of the prior uncertainties of Miller scaling factors and saturated conductivity.

To avoid too small saturated conductivities, we improve the prior of the heterogeneity using the measurements from time

20 interval A. Prior to A, there had been one month without rainfall leading to little dynamics during A. We start with the soil parameters estimated by Wollschläger et al. (2009) and linearly interpolated initial condition (with constant extrapolation to layer boundaries). Parameters and boundary condition are kept constant, but states and Miller scaling factors are updated with an EnKF of 40 ensemble members, where the initial uncertainty of the natural logarithm of the scaling factors was chosen to be 0.4.

25 As time interval A is only a 2 days period, the filter won't be able to reach constant Miller scaling values during this short time. Therefore, we iterate 50 times over this period, which then does lead to constant scaling factors. The resulting scaling field of the improved prior (Fig. 4) shows that there is heterogeneity within each layer that requires a representation. Especially layer 4 exhibits a strong heterogeneity, which is already observable in Fig. 1.

30 Additionally, a good initial state can improve the estimation. Therefore, we guide the state with an EnKF (only state estimation) with 100 ensemble members through time period B and achieve a better representation for the initial state for time period C, than interpolating between the measurements there.

3.2 Stage 2: Standard EnKF

During time period C, we improve the representation with the following uncertain components: improved initial condition, soil hydraulic parameters estimated by Wollschläger et al. (2009), improved Miller scaling factors, and upper boundary condition from precipitation measurements and estimated with the reference FAO Penman-Monteith equation. We improve soil parameters, Miller scaling factors and the upper boundary condition along with the states. The estimated mean values and standard deviations of soil parameters, Miller scaling factors and upper boundary condition are used to generate the ensemble for the next iterations. The initial condition is kept the same. We iterate 10 times over the time period C. This estimation is performed with an ensemble size of 100 members and will be referred to as the Standard EnKF. This approach is comparable to the SODA approach by Vrugt et al. (2005) but is computationally more efficient.

The initial ensembles of initial condition and Miller scaling are determined as described in stage 1. For the Miller scaling factors the uncertainty is increased again compared to the estimations in the prior, since they were estimated under the assumption of fixed soil parameters. Now, they have to be able to adapt to changing parameters. The uncertainty of the natural logarithm of the scaling factors is chosen to be 0.1. For the boundary condition shown in Fig. 2, an uncertainty of 20% is assumed. The initial soil hydraulic parameters and their uncertainties are summarized in Table 2.

In order to check the improved results, we do not show the states from the last iteration but actually run another iteration, however, this time, without incorporating the measurement information. This corresponds to an ensemble of forward runs during time period C. It is a much more strict test for the quality and objectivity of the assimilation, because the states now cannot be adjusted. Actually, allowing incorporation of measurements leads to a much better agreement. The results for all four layers are shown in Fig. 5. The graphs show that the measurements can be represented well by the ensemble, but deviations occur, mainly during the infiltration.

There is heterogeneity inside the layers. For example, in the first layer, the middle TDR shows the highest water content. This effect is strongest in layer 4. Here, the water content of the TDR about 25 cm above the next has a water content almost 0.1 larger. The results calculated with soil parameters by Wollschläger et al. (2009) with the assumption of homogeneous soil layers are not able to describe the measured water content.

The results for the estimated Miller scaling factors are shown in Fig. 4. The Miller scaling factors were adjusted along with the hydraulic parameters during this Standard EnKF approach. This is necessary, because changing parameters require adjusted Miller scaling factors as well. The largest changes occur in layer 1, where information is introduced by the water content changes during the infiltration.

The estimated soil parameters including their uncertainties are summarized in Table 3. Although the uncertainties are quantitatively incorrect, they still indicate how much information about each parameter is in the measurements. This can be seen especially well for K_0 . The estimation of this parameters requires dynamics. Therefore, the smallest uncertainty is observed in layer 1 and increases with the layers. In layer 4 the uncertainty of $\log_{10}(K_0)$ was reduced least, but still from 1.0 to 0.4. This shows the difficulties of the EnKF. As we did not observe a change in water content, it is unlikely that any flux was introduced during the rain event. Nevertheless, the uncertainty was reduced, which can lead to difficulties when there actually is

information. The development of the parameters K_0 , α and n of the first layer are shown in the Fig. 6. Towards later iterations, all three show the same feature: The value increases during the rain event and decreases before and after, but does not change significantly between initial and final values. As we added the boundary condition into our estimation, we can exclude effects due to a bias in the precipitation to cause this parameter shift. The reduced temporal resolution in the boundary condition could only cause short-term parameter changes within the rain event.

We interpret the parameter shift during the rain event as follows: The assumption of local equilibrium during the rain event is wrong, which leads to preferential flow. The infiltration is thus too fast for the actual parameters (Fig. 5). The preferential flow leads to an apparent increase in the saturated hydraulic conductivity during the rain event, which is reduced again afterwards. This also shows that our initial assumption of zero process noise is wrong. The uncertainty introduced by the dynamics is not represented.

3.3 Stage 3: Closed-Eye EnKF

We enhance the EnKF with a closed-eye period during times when the local equilibrium assumption of the Richards equation does not hold. During this time, soil hydraulic parameters and Miller scaling factors are not adjusted but kept constant. In contrast, the water content state is continuously updated. In this way, the state is guided on the basis of measurements through times with uncertain dynamics without incorporating the dynamics uncertainties into the parameter estimation. The estimation of soil hydraulic parameters is only performed before and after this closed-eye period.

We use an identified non-constant parameter to define the closed-eye period. We choose K_0 , because it shows the changes most prominently and we can directly relate it to observed physics. The closed-eye period is defined as the time period between the minimum and the maximum value of K_0 during the last iteration with the Standard EnKF (Fig. 7).

To perform the Closed-Eye EnKF estimation, we add another 10 iterations to the previous Standard EnKF iterations, but with the closed-eye period for the first layer. We continue with the previously estimated mean values, but increase the uncertainty for the first layer again (to half the initial uncertainty) to allow that the new values can possibly deviate from the Standard EnKF results.

The additional iterations result in new soil parameters and Miller scaling factors. The scaling factors changed only marginally compared to their regular estimates (Fig. 4). Changes in the parameters of the first layer are larger (Fig. 6). We recognize two things: First, the values differ from each other. For n and α the changes are rather small, but for K_0 the difference is significant. The closed-eye estimation yields approximately half the hydraulic conductivity as before. Second, the parameters now are constant over time and do not show fluctuations any more.

This indicates that we could extract times when the Richards equation is actually valid and we are able to determine soil hydraulic parameters that resemble the believed true material properties. This means, if the parameters are constant in time, we believe, that the parameters can represent reality in the observed water content range during times when the underlying assumptions hold. There is also an apparent downside, though. We cannot use the measurements during the closed-eye period to estimate the parameters. This leads to a smaller observed water content range, limiting the parameter estimation possibilities. We call this 'apparent', because the corresponding interval does not contain valid information about the modeled system in the

first place.

As a related aspect, the estimation of the boundary condition is not meaningful during the closed-eye period any more. Consequently only an estimation of the evaporation before and after the rain event is possible. Due to the short time interval and small evaporation flux in our case the effect is negligible.

- 5 The forecast during time period C (analogous to the Standard EnKF) is shown in Fig. 8. The performance is acceptable, but worse than the Standard EnKF (Fig. 5). This is exactly what is expected. In the Standard EnKF we incorporated errors in the dynamics into the parameters e.g. by estimating a too large hydraulic conductivity, which can represent preferential flow up to a point. By introducing the closed-eye period, we do not incorporate these errors into the parameters any more. The parameters are thus believed to be closer to the believed true material properties. Obviously, however, these parameters fail to describe rain events that lead to hydraulic non-equilibrium.

10 Guiding the states through the closed-eye period is a challenge. A representation of the dynamics' uncertainty would be required to estimate optimal states. We did not do this. The adaptive covariance inflation reduces the issue by increasing the ensemble spread when measurements cannot be explained by combined measurement and ensemble uncertainty (Fig. 9). Still, it cannot solve the problem completely, since it was not designed to follow rapid changes of the inflation factor and it is merely based on the correlations in the ensemble. These correlations are not necessarily valid any more, when a major, spatially structured uncertainty is not represented. In our case this did not lead to complications, because the deviations are still small and could be adjusted towards the end of the closed-eye period. In cases with stronger rain (and stronger non-equilibrium) and larger deviations of representation and measurements, we expect that a description of the dynamics uncertainties becomes mandatory.

20 3.4 Prediction capabilities

We investigate the predictive capabilities of the Standard EnKF and Closed-Eye EnKF during the combined time period of B and C as well as time period D. As the Closed-Eye EnKF added another 10 iterations for the estimation, we compare it to Standard EnKF results with a total of 20 iterations as well.

25 During time period B the total amount of rain was 23.2 mm with a maximal flux of 2.5 mm in 10 minutes (compared to a total of 18.2 mm with a maximal flux of 0.7 mm in 10 minutes for time period C). As we already assume local non-equilibrium during the rain event in time period C, we expect an even stronger effect during time period B.

The forecast results for time period B and C for soil parameters and Miller scaling parameters from the Standard EnKF and Closed-Eye EnKF are depicted in Fig. 10a and 10b (there is no improved estimation of the upper boundary condition during time period B and we did not use the improved boundary condition from time period C). We performed a spin-up with an EnKF with state estimation during time period A to achieve a good initial condition. Neither of them is able to predict the water contents during the rain event in time period B in detail. However, the Standard EnKF describes the rain event in time period C better. The Closed-Eye EnKF is not able to predict the water contents during rain events, as for both local non-equilibrium is expected, which is not incorporated into the parameter estimation. For the Standard EnKF only the rain event from time period C is incorporated into the parameters and it predicts this rain event better. However, it fails to predict the stronger rain event

in time period B showing that the local non-equilibrium in different rain events affects the dynamics differently. Hence, their effects should not be included into parameters, but rather considered separately. The uncertainties are large for both EnKFs. The reason is the large uncertainty in the boundary conditions.

We emphasize that the Standard EnKF excels if the goal is to guide some partly flawed representation with a stream of data.

- 5 However, if in addition it is the goal to estimate objective parameters for the representation within its range of applicability, then the Closed-Eye EnKF must be used, at the cost of a lower heuristic performance.

The forecast during the dry time period D is depicted in Fig. 10c and 10d. Here, we used the final state of the last iteration in the Standard EnKF and Closed-Eye EnKF estimation as the initial condition. In the observed water content range the Closed-Eye EnKF performs better than the Standard EnKF. This is the result that we expected. We were able to estimate the believed true material properties in the observed water content range and can make predictions in this range as long as the basic assumptions of the Richards equation are met.

Both EnKF can describe the topmost TDR better than the lower TDRs. This is expected as well, since the first TDR measures the strongest dynamics and hence dominates the parameter estimation. The small deviations in the other TDR sensors show, 15 that the assumption of Miller similarity, including the linear interpolation in between is capable to improve the representation. It cannot represent heterogeneity completely, however.

Below the observed soil water content we do not expect predictive capabilities, since the material properties are heuristic and hence cannot be applied outside of the calibrated range. Nevertheless we can see, that the Closed-Eye EnKF does describe the topmost TDR acceptably. Again, we see deviations in the two lower TDR sensors. This time even stronger. Again, we attribute 20 this to the limited description of the heterogeneity with Miller scaling.

As a last comment, we did investigate the possibility of improving the results by estimating a multiplicative factor to the uncertain evaporation in analogy to Wollschläger et al. (2009). This factor can improve the estimation of the topmost TDR towards later times, but does not change the qualitative results above.

25 4 Conclusions

In this study we improved the representation of soil water movement in a 1D soil profile at the Grenzhof test site close to Heidelberg, Germany with an EnKF based on water content measurements by TDR probes.

We assess key uncertainties of this specific representation. These are initial conditions, soil hydraulic parameters, Miller scaling factors (describing small-scale heterogeneity), upper boundary condition, and the local equilibrium assumption by the 30 Richards equation. These were accounted for in the process. Other components are deemed to be of lesser importance and were neglected. The most noteworthy neglected uncertainties are hysteresis, violations of the 1D assumption and measurement biases, which might affect our results.

We designed a three stage approach to directly represent and estimate all key uncertainties, except for errors caused by the local

hydraulic equilibrium assumption. These intermittent errors are handled by introducing a closed-eye period. Using an iterative approach we can perform the estimation on a single rain event.

In the first stage, the prior is improved. In our case this is the initial water content distribution and Miller scaling factors. A good prior for the Miller scaling proved particularly beneficial, because during phases without dynamics, water content distributions generated by heterogeneity cannot be distinguished from low hydraulic conductivities.

The second stage is the iterative application of a Standard EnKF with an augmented state to improve the representation. This state consists of soil water contents, soil hydraulic parameters, Miller scaling factors, and the upper boundary condition. This approach incorporates possible errors in the dynamics into the augmented state components. Since parameters are assumed to be constant in time, we can detect intermittent errors in the dynamics from fluctuating parameters.

The third stage is the application of a Closed-Eye EnKF, that only estimates the full augmented states when and where we assume the dynamics to be correctly represented. Outside of this range we ‘close an eye’ and do not estimate the previously varying parameters. In this way, the state is guided through this ill-represented phase and the full estimation is picked up afterwards again.

Our study showed that assuming diagnostic soil layers to be homogeneous is not sufficient to represent heterogeneity. We were forced to also assume small-scale heterogeneity by observations of consistently higher water contents at probes that are located higher up within a soil layer. This emphasizes the role of heterogeneity, which must be considered more extensively in studies that rely on local measurements like the used TDR measurements.

We employed a simplified representation of heterogeneity by estimating Miller scaling factors at measurement locations and interpolation between them. This captures the main features. Miller scaling is not capable to represent the heterogeneity completely, however. Predictions for the first layer showed, that measurements from the topmost TDR can be predicted better than the measurements of the second and third TDR probes. We attribute this to limitations of the Miller scaling. The parameter estimation is primarily influenced by the topmost TDR. Describing the other measurements with the same parameter set scaled by the Miller factor cannot fully describe the material properties there.

An iterative Standard EnKF was used to successfully estimate soil parameters, Miller scaling parameters and upper boundary condition. It was capable to predict the rain event that was used for its calibration very well. However, it fails at the prediction of a different rain event. The reason is the violation of the local equilibrium assumption by the Richards equation (Eq. 1) during strong rain events. Non-represented errors are incorporated into the parameters. Since these errors are different for different rain events (with different strengths and different local non-equilibrium), they cannot be predicted. Due to the iterative approach, we could detect the times when the local-equilibrium assumption is violated: the variations of the parameters are larger than the change from initial to final value during later iterations. The changes in the direction of the parameter update then determine the closed-eye period.

Generally, the closed-eye period can be detected, if the operational limits of the model are known. In our case, we base this on

the changing parameters. However, a direct detection in the state or forcing could be possible as well.

- The Closed-Eye EnKF omits the incorporation of the model structural errors in the parameters and is a generally applicable concept. In our current study, it yields better predictions during periods when the underlying assumptions are fulfilled: the drying period after a rain event when there is local equilibrium, showing the strength of the Richards equation there. As a consequence, however, its predictions are worse during rain events, when the local equilibrium assumption is violated. During the closed-eye phase, a description of these uncertainties caused by the non-equilibrium is desirable to be able to optimally guide the states through this phase. In our case, the method still performed well without such a description, as the errors were small enough to be compensated by the adaptive covariance inflation.
- 10 Our approach is capable to find parameters closer to the believed true material properties of the soil than a standard EnKF. Predictions during rain events would require an additional representation of the fast dynamics during the event, though. Still, our approach shows a way to limit the incorporation of errors into parameters and is one step towards the concept of Knowledge Fusion - the consistent aggregation of all information pertinent to some observed reality.
- 15 *Author contributions.* HHB designed, implemented, performed, and analyzed the presented study. SJ provided computational software. DB provided discussions on the statistical foundations from a particle filter point of view. KR came up with the idea of knowledge fusion and the closed-eye period. All authors participated in continuous discussions. HHB prepared the manuscript with contributions from all authors.

Acknowledgements. We thank the two anonymous reviewers for their constructive comments, which helped to improve this paper. This research is funded by Deutsche Forschungsgemeinschaft (DFG) through project RO 1080/12-1.

References

- Allen, R. G., Pereira, L. S., Raes, D., and Smith, M.: FAO Irrigation and Drainage Paper No. 56: Crop Evapotranspiration, FAO Water Resources Development and Management Service, 2006.
- Anderson, J. L.: Spatially and temporally varying adaptive covariance inflation for ensemble filters, *Tellus A*, 61, 72–83, 2009.
- 5 Anderson, J. L. and Anderson, S. L.: A Monte Carlo implementation of the nonlinear filtering problem to produce ensemble assimilations and forecasts, *Monthly Weather Review*, 127, 2741–2758, 1999.
- Burgers, G., van Leeuwen, P. J., and Evensen, G.: Analysis scheme in the ensemble Kalman filter, *Monthly Weather Review*, 126, 1719–1724, 1998.
- Carsel, R. F. and Parrish, R. S.: Developing joint probability distributions of soil water retention characteristics, *Water Resources Research*, 10 24, 755–769, 1988.
- Chen, Y. and Zhang, D.: Data assimilation for transient flow in geologic formations via ensemble Kalman filter, *Advances in Water Resources*, 29, 1107–1122, 2006.
- Crow, W. T. and Van Loon, E.: Impact of incorrect model error assumptions on the sequential assimilation of remotely sensed surface soil moisture, *Journal of Hydrometeorology*, 7, 421–432, 2006.
- 15 De Lannoy, G. J., Houser, P. R., Verhoest, N. E., and Pauwels, V. R.: Adaptive soil moisture profile filtering for horizontal information propagation in the independent column-based CLM2.0, *Journal of Hydrometeorology*, 10, 766–779, 2009.
- Erdal, D., Neuweiler, I., and Wollschläger, U.: Using a bias aware EnKF to account for unresolved structure in an unsaturated zone model, *Water Resources Research*, 50, 132–147, 2014.
- Erdal, D., Rahman, M., and Neuweiler, I.: The importance of state transformations when using the ensemble Kalman filter for unsaturated 20 flow modeling: Dealing with strong nonlinearities, *Advances in Water Resources*, 86, 354–365, 2015.
- Evensen, G.: Sequential data assimilation with a nonlinear quasi-geostrophic model using Monte Carlo methods to forecast error statistics, *Journal of Geophysical Research: Oceans (1978–2012)*, 99, 10 143–10 162, 1994.
- Foken, T.: *Angewandte Meteorologie*, Springer Berlin Heidelberg, 2006.
- Gaspari, G. and Cohn, S. E.: Construction of correlation functions in two and three dimensions, *Quarterly Journal of the Royal Meteorological 25 Society*, 125, 723–757, 1999.
- Hamill, T. M., Whitaker, J. S., and Snyder, C.: Distance-dependent filtering of background error covariance estimates in an ensemble Kalman filter, *Monthly Weather Review*, 129, 2776–2790, 2001.
- Hendricks Franssen, H.-J. and Kinzelbach, W.: Real-time groundwater flow modeling with the ensemble Kalman filter: Joint estimation of states and parameters and the filter inbreeding problem, *Water Resources Research*, 44, 2008.
- 30 Hopmans, J., Šimůnek, J., Romano, N., and Durner, W.: Inverse Methods, *Methods of Soil Analysis: Part 4 Physical Methods*, pp. 963–1008, 2002.
- Houtekamer, P. L. and Mitchell, H. L.: Data assimilation using an ensemble Kalman filter technique, *Monthly Weather Review*, 126, 796–811, 1998.
- Houtekamer, P. L. and Mitchell, H. L.: A sequential ensemble Kalman filter for atmospheric data assimilation, *Monthly Weather Review*, 35 129, 123–137, 2001.
- Huber, E., Hendricks-Franssen, H., Kaiser, H., and Stauffer, F.: The role of prior model calibration on predictions with ensemble Kalman filter, *Ground water*, 49, 845–858, 2011.

- Ippisch, O., Vogel, H.-J., and Bastian, P.: Validity limits for the van Genuchten–Mualem model and implications for parameter estimation and numerical simulation, *Advances in Water Resources*, 29, 1780–1789, 2006.
- Jafarpour, B. and Tarrahi, M.: Assessing the performance of the ensemble Kalman filter for subsurface flow data integration under variogram uncertainty, *Water Resources Research*, 47, 2011.
- 5 Li, C. and Ren, L.: Estimation of unsaturated soil hydraulic parameters using the ensemble Kalman filter, *Vadose Zone Journal*, 10, 1205–1227, 2011.
- Liu, Y. and Gupta, H. V.: Uncertainty in hydrologic modeling: Toward an integrated data assimilation framework, *Water Resources Research*, 43, 2007.
- Liu, Y., Weerts, A. H., Clark, M., Hendricks Franssen, H.-J., Kumar, S., Moradkhani, H., Seo, D.-J., Schwanenberg, D., Smith, P., van Dijk, A. I. J. M., van Velzen, N., He, M., Lee, H., Noh, S. J., Rakovec, O., and Restrepo, P.: Advancing data assimilation in operational hydrologic forecasting: progresses, challenges, and emerging opportunities, *Hydrology and Earth System Sciences*, 16, 3863–3887, 2012.
- 10 Man, J., Li, W., Zeng, L., and Wu, L.: Data assimilation for unsaturated flow models with restart adaptive probabilistic collocation based Kalman filter, *Advances in Water Resources*, 92, 258–270, 2016.
- Miller, E. and Miller, R.: Physical theory for capillary flow phenomena, *Journal of Applied Physics*, 27, 324–332, 1956.
- 15 Moradkhani, H., Sorooshian, S., Gupta, H. V., and Houser, P. R.: Dual state–parameter estimation of hydrological models using ensemble Kalman filter, *Advances in Water Resources*, 28, 135–147, 2005.
- Mualem, Y.: A new model for predicting the hydraulic conductivity of unsaturated porous media, *Water Resources Research*, 12, 513–522, 1976.
- Nowak, W.: Best unbiased ensemble linearization and the quasi-linear Kalman ensemble generator, *Water Resources Research*, 45, 2009.
- 20 Reichle, R. H.: Data assimilation methods in the Earth sciences, *Advances in Water Resources*, 31, 1411–1418, 2008.
- Reichle, R. H., McLaughlin, D. B., and Entekhabi, D.: Hydrologic data assimilation with the ensemble Kalman filter, *Monthly Weather Review*, 130, 103–114, 2002.
- Richards, L. A.: Capillary conduction of liquids in porous mediums, *Physics*, 1, 318–333, 1931.
- Roth, K., Schulin, R., Flüßler, H., and Attinger, W.: Calibration of time domain reflectometry for water content measurement using a composite dielectric approach, *Water Resources Research*, 26, 2267–2273, 1990.
- 25 Schenk, G. U.: Soil-Atmosphere coupling: Looking from within the soil towards the surface, Ph.D. thesis, Ruperto-Carola University Heidelberg, Germany, <http://www.ub.uni-heidelberg.de/archiv/12840>, 2011.
- Shi, L., Song, X., Tong, J., Zhu, Y., and Zhang, Q.: Impacts of different types of measurements on estimating unsaturated flow parameters, *Journal of Hydrology*, 524, 549–561, 2015.
- 30 Song, X., Shi, L., Ye, M., Yang, J., and Navon, I. M.: Numerical comparison of iterative ensemble Kalman filters for unsaturated flow inverse modeling, *Vadose Zone Journal*, 13, 2014.
- Van Genuchten, M. T.: A closed-form equation for predicting the hydraulic conductivity of unsaturated soils, *Soil Science Society of America Journal*, 44, 892–898, 1980.
- Vrugt, J. A., Diks, C. G., Gupta, H. V., Bouten, W., and Verstraten, J. M.: Improved treatment of uncertainty in hydrologic modeling: Combining the strengths of global optimization and data assimilation, *Water Resources Research*, 41, 2005.
- 35 Vrugt, J. A., Stauffer, P. H., Wöhling, T., Robinson, B. A., and Vesselinov, V. V.: Inverse modeling of subsurface flow and transport properties: A review with new developments, *Vadose Zone Journal*, 7, 843–864, 2008.

- Wollschläger, U., Pfaff, T., and Roth, K.: Field-scale apparent hydraulic parameterisation obtained from TDR time series and inverse modelling, *Hydrology and Earth System Sciences*, 13, 1953–1966, 2009.
- Wu, C.-C. and Margulis, S. A.: Feasibility of real-time soil state and flux characterization for wastewater reuse using an embedded sensor network data assimilation approach, *Journal of Hydrology*, 399, 313–325, 2011.
- 5 Wu, C.-C. and Margulis, S. A.: Real-time soil moisture and salinity profile estimation using assimilation of embedded sensor datastreams, *Vadose Zone Journal*, 12, 2013.
- Zhang, D., Madsen, H., Ridler, M. E., Refsgaard, J. C., and Jensen, K. H.: Impact of uncertainty description on assimilating hydraulic head in the MIKE SHE distributed hydrological model, *Advances in Water Resources*, 86, 400–413, 2015.

Table 1. Prior uncertainties of the representation of soil water movement at the Grenzhof test site during October and November 2011. We assess the uncertainty caused by assumptions in a qualitative way: small, no need to represent the uncertainty explicitly; intermediate, it might be necessary to represent these uncertainties, we decide not to but keep them in mind; large, uncertainties must be represented with the goal to reduce them.

Assumption	Uncertainty
Dynamics:	
Single phase description (Richards equation)	small
Local equilibrium (Richards equation)	small- large
1D, no sources and sinks	intermediate
Material Properties:	
Mualem-van Genuchten parameterization for material properties	small
Mualem-van Genuchten parameter values from Wollschläger et al. (2009)	large
Mualem-van Genuchten parameters constant in time	small
No hysteresis	intermediate
Large-scale architecture described with layers	small
Small-scale architecture described with Miller scaling	small-intermediate
Miller scaling factors are 1	large
Forcing:	
Upper boundary condition from rain gauge and FAO Penman-Monteith eq.	large
Lower boundary condition constant groundwater table decoupled with soil layer	small
Linear interpolation for initial condition	large
Numerical representation	
Numerical representation	small
Water content measurements without biases and uncertainty of 0.01	intermediate

Table 2. Soil hydraulic parameters as estimated by Wollschläger et al. (2009) and our initial uncertainties for the Standard EnKF

Layer	α [m^{-1}]	$\log_{10}(K_0)$ [ms^{-1}]	n	θ_s	θ_r	τ
1	-4.8 ± 2.0	-4.6 ± 1.0	1.61 ± 0.20	0.39	0.020	0.5
2	-11.0 ± 2.0	-5.3 ± 1.0	1.80 ± 0.20	0.40	0.070	0.5
3	-7.4 ± 2.0	-6.0 ± 1.0	1.43 ± 0.20	0.43 ± 0.02	0.090	0.5
4	-2.9 ± 2.0	-5.4 ± 1.0	1.36 ± 0.20	0.43 ± 0.02	0.100	0.5
5	-14.5	-4.1	2.68	0.43	0.045	0.5

Parameters without uncertainty are not included in the augmented state and are not estimated. The saturated water content θ_s of the layers 3 and 4 were already estimated during the prior estimation in time period A, because measurement values exceeded the value of 0.36 determined by Wollschläger et al. (2009).

Table 3. Results for the soil hydraulic parameters estimated with the Standard EnKF.

Layer	α [m^{-1}]	$\log_{10}(K_0)$ [ms^{-1}]	n	θ_s	θ_r	τ
1	-4.7 ± 0.3	-5.23 ± 0.04	1.43 ± 0.01	0.39	0.02	0.5
2	-10.1 ± 0.7	-4.08 ± 0.25	1.66 ± 0.02	0.40	0.07	0.5
3	-8.2 ± 1.0	-6.04 ± 0.31	1.33 ± 0.03	0.42 ± 0.01	0.09	0.5
4	-2.3 ± 0.3	-5.71 ± 0.40	1.31 ± 0.01	0.43 ± 0.01	0.10	0.5

Parameters without uncertainty are not included in the augmented state and are consequently not estimated.

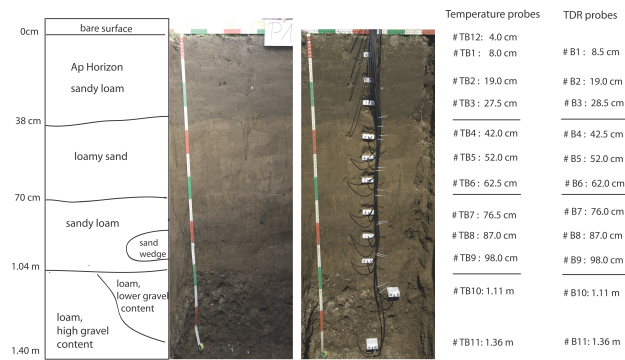


Figure 1. Soil profile at the Grenzhof test site close to Heidelberg, Germany (Schenk, 2011). It consists of four different soil layers and is equipped with twelve temperature probes and eleven TDR probes. The surface is kept free of vegetation.

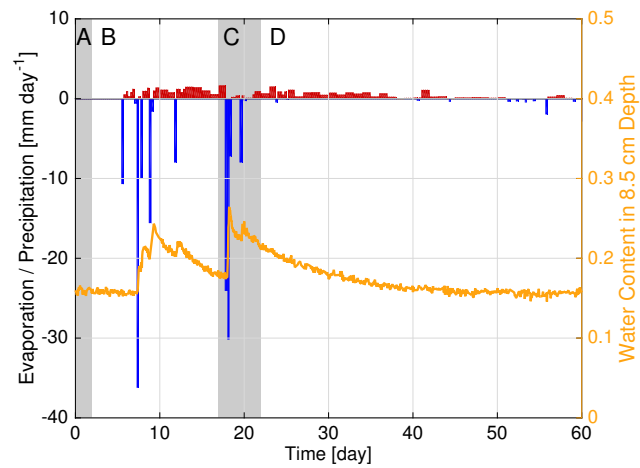


Figure 2. Boundary condition and topmost TDR from October 1 (day 1) until November 29 (day 60) at the Grenzhof test site. We distinguish 4 sections: A (day 1-2), B (day 3-17), C (day 18-22) and D (day 23-60). The evaporation is calculated using the reference FAO Penman-Monteith equation. Before the first rain the evaporation is set to 0, due to a previous dry period of over a month. The precipitation is displayed with a 6 hour resolution.

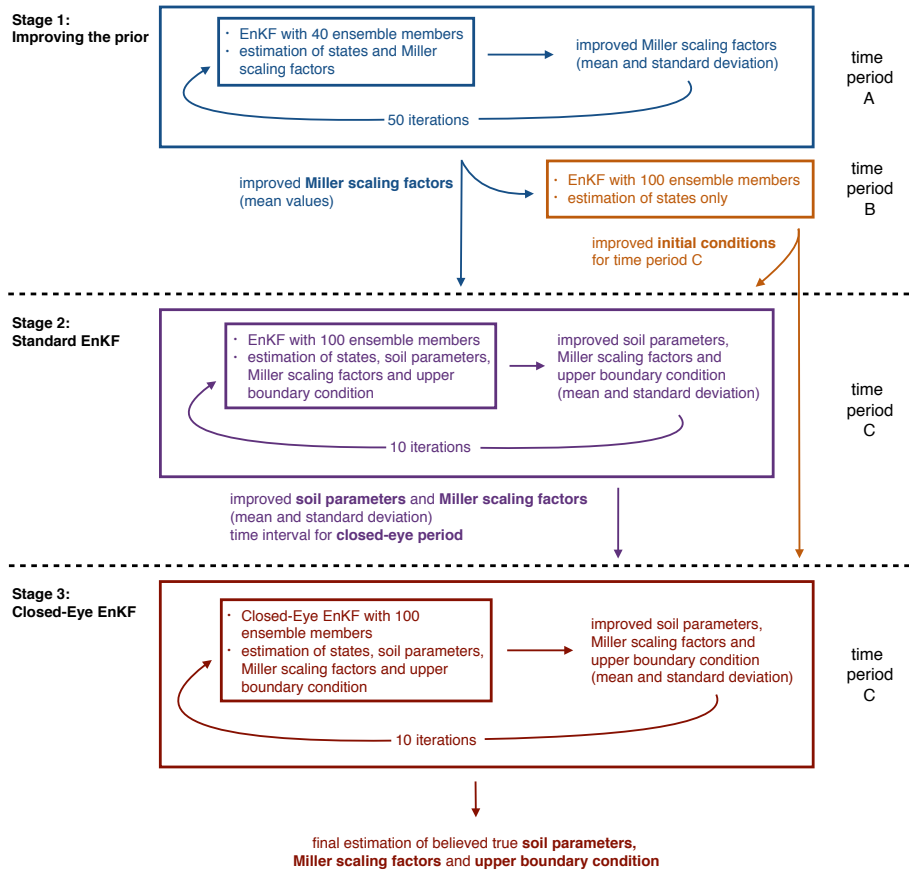


Figure 3. Block diagram illustrating the three-stage approach. The different time periods are shown in Fig. 2.

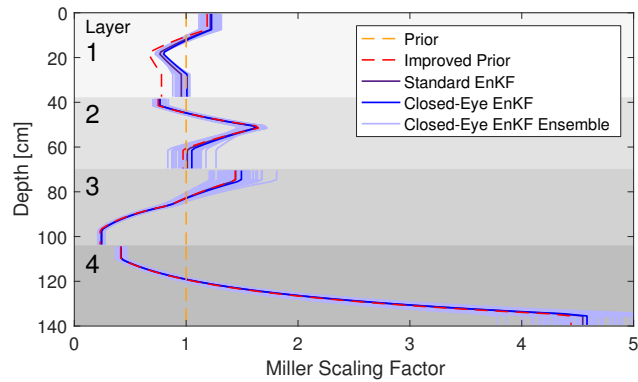


Figure 4. Mean values of the Miller scaling field. Soil layers are indicated by different gray scales. The heterogeneity is a priori unknown and the according prior is set to 1. The natural logarithm of the scaling factors is estimated at the measurement locations and interpolated linearly between (with constant extrapolation to layer boundaries). Already the improved prior can describe the main features. The further estimations with the Standard and Closed-Eye EnKF lead to further small changes mainly in the first layer. For the Closed-Eye EnKF the actual ensemble indicating the uncertainties is additionally shown.

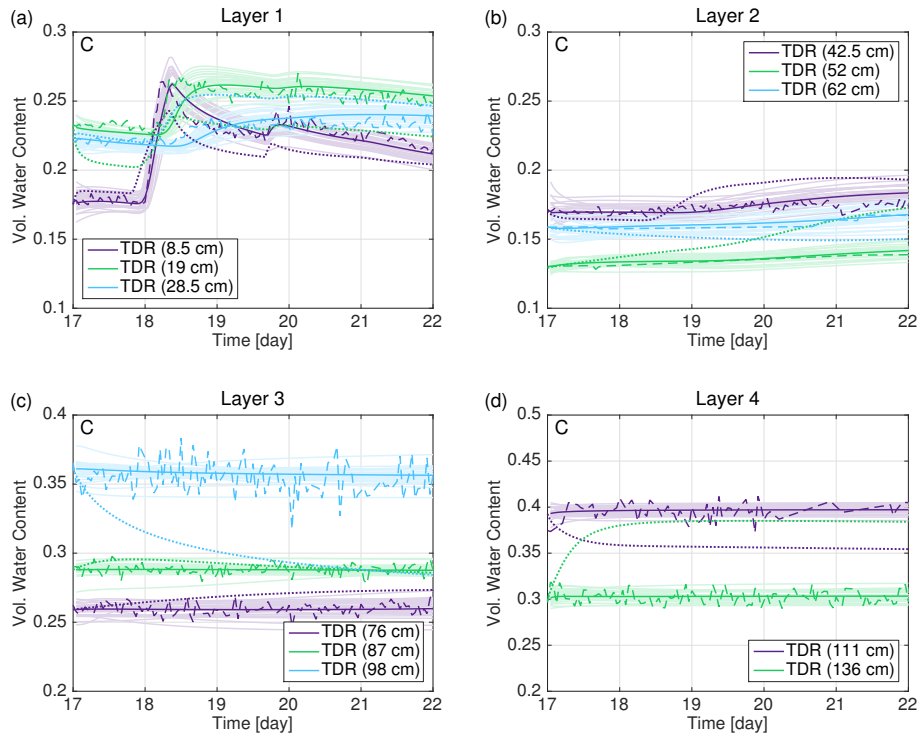


Figure 5. Forecast at the measurement positions of the four different layers during time period C. The solid lines show the mean value of a total of 100 different forecasts. The pale colors show the results from 25 of these, with soil parameters, Miller scaling parameters and boundary condition sampled from the distributions estimated with the Standard EnKF and the initial condition, that was actually used for the estimation itself. The dashed lines show the measurements, the dotted lines results from the original soil parameters by Wollschläger et al. (2009). The measurements were recorded hourly, occurring data gaps were interpolated linearly.

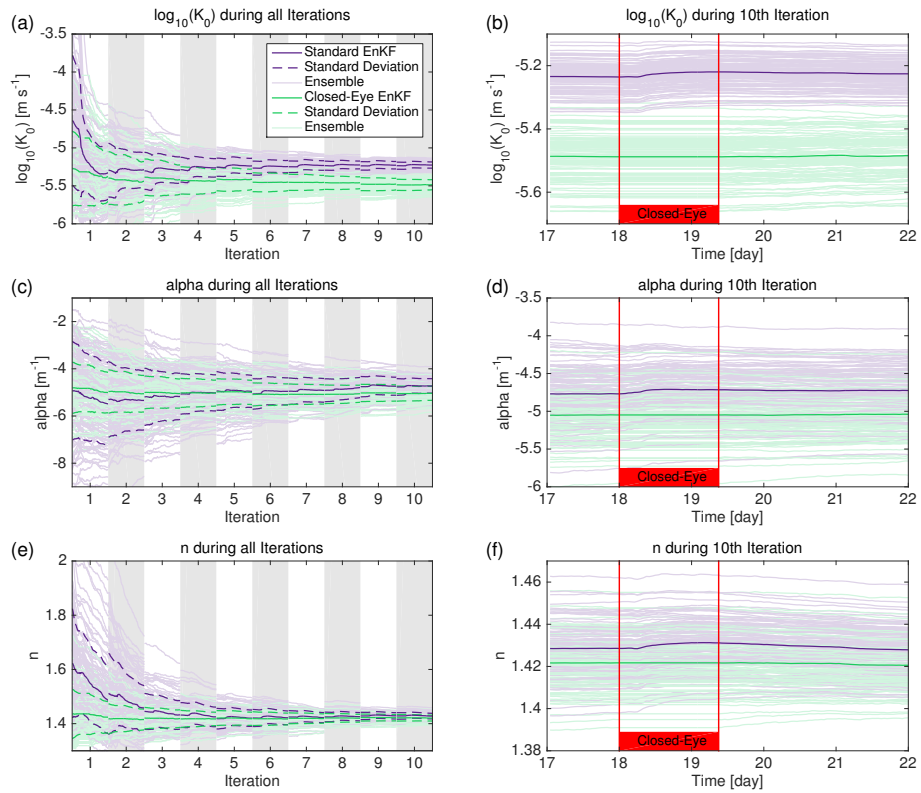


Figure 6. Evolution of the parameters K_0 , α and n of the first layer during the estimation with Standard EnKF (purple) and the Closed-Eye EnKF (green) for all iterations (a), (c), (e) and the last iteration (b), (d), (f).

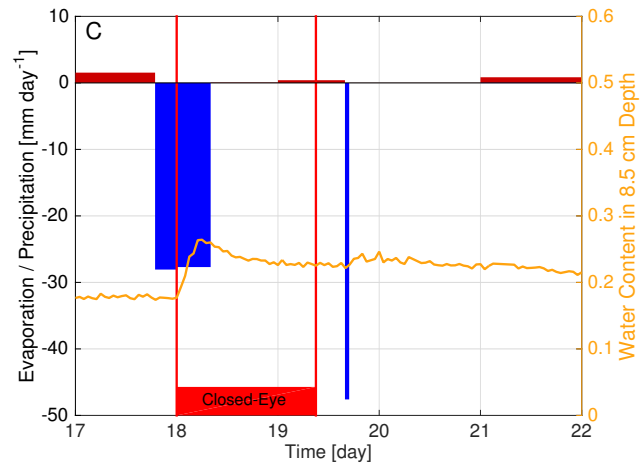


Figure 7. Boundary condition along with the topmost TDR water content measurements during time period C. The closed-eye time period was determined based on the changes in parameter K_0 (Fig. 6). During this time the dynamics cannot describe the water content measurements any more, most likely because of the violation of the local equilibrium assumption. The boundary condition is displayed in the reduced resolution assumed during the estimation.

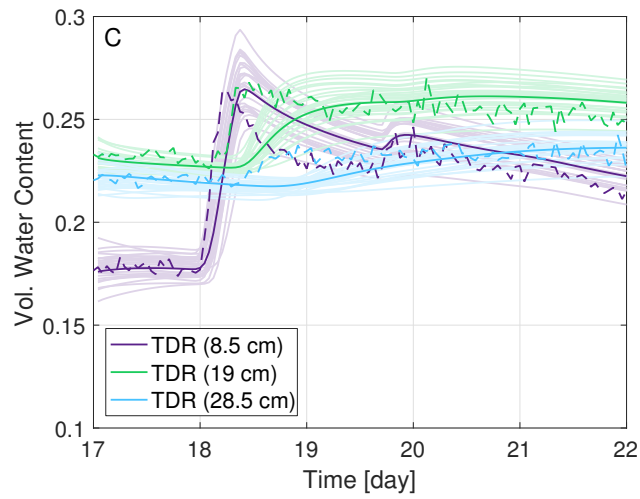


Figure 8. Forecast at the measurement positions of the first layer during time period C with the results from the Closed-Eye EnKF. The solid lines show the mean value of a total of 100 different forecasts. The pale colors show the results from 25 of these, with soil parameters, Miller scaling parameters and boundary condition sampled from the distributions estimated with the Closed-Eye EnKF and the initial condition, that was actually used for the estimation itself. The dashed line shows the measurements.

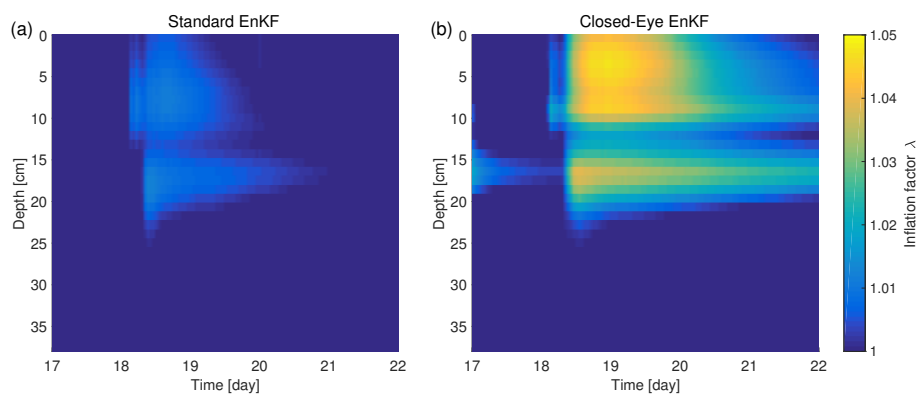


Figure 9. Inflation factor λ in the first layer during the last iteration of the Standard EnKF and Closed-Eye EnKF. The adaptive covariance inflation increases the inflation factor around a measurement location when the deviations due to the infiltration reach the corresponding TDR. The deviations and consequently the inflation are stronger for the Closed-Eye EnKF, as the preferential flow is not incorporated into the parameters any more. The values at the end of an iteration are used as the initial inflation factors for the next iteration.

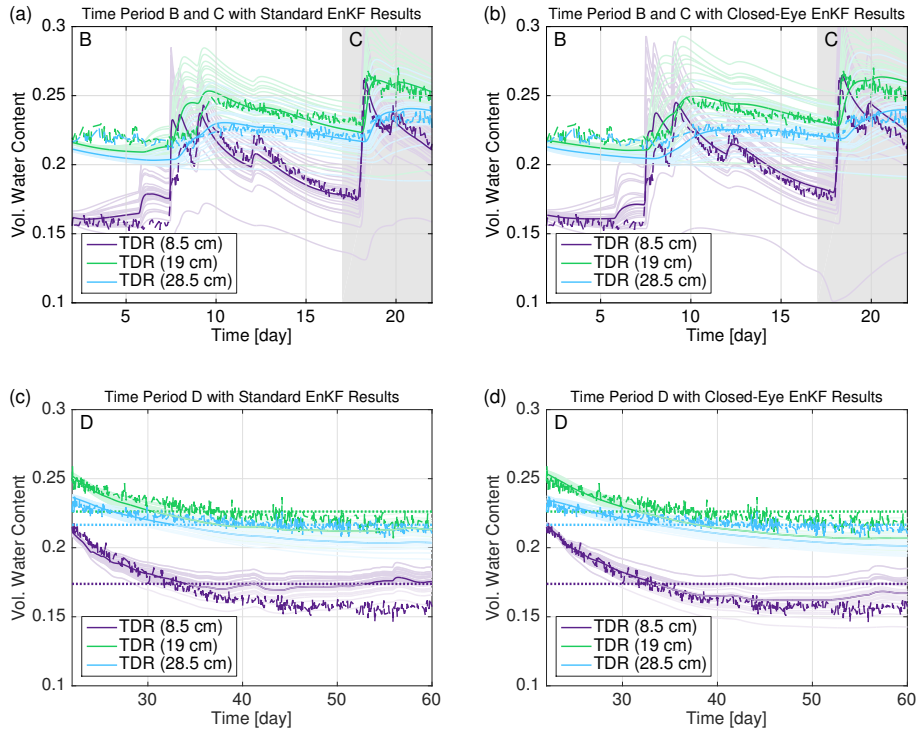


Figure 10. Forecast at the measurement positions of the first layer during time period B and C (a,b) as well as D (c,d). The solid lines show the mean value of a total of 100 different forecasts. The pale colors show the results from 25 of these, with soil parameters and Miller scaling parameters sampled from the distributions estimated with the Standard EnKF (a,c) and Closed-Eye EnKF (b,d). The dashed line shows the measurements, the dotted line the lowest water content measured during time period C, indicating the lower limit of the water content range, for which the parameters are deemed valid.