

Authors' response

We thank the reviewers for their constructive comments on our manuscript and provide point-by-point response hereafter.

Reviewer 1:

There was an initial reaction upon studying the manuscript: 40 patterns?? Are you serious??

Answer:

Yes, we are. Number 40 for the number of classes is not unusual (Philipp et al., 2009). We give various reasons in the discussion and in chapter 3.2 for choosing this number of classes. Among others, we need high stratification of variables for a multi-variate weather generator, which will be subsequently used for global model downscaling. This is best approached by a high number of classes. The availability of a long daily time series of daily climate observations (111 years) in the Rhine catchment further justifies our selection.

R1:

Then another question arose: Are pressure fields as classification a good basis for the stratification of data? There is good experience with using relative topography instead (Spekat et al., 2010 – reference is given at the end).

Answer:

No doubt, there are other suitable variables to be used for a classification besides pressure fields. By the way, our 'optimal' classification is based on a combination of sea level pressure, temperature and humidity. As we stated in chapter 3.2: "However our selection was restricted to variables that are also available from the GCM outputs." Since the classification is to be used for an attribution study later on, we need to select variables for classification that are available for "historical" and "historicalNat" runs of the CMIP5 project. To date geopotential height is only available for 3 Models (10 runs in total) of the historicalNat experiment and 9 Models of the historical experiment. Thus, we would reduce our data base considerably if we decided to use geopotential height or any parameter derived from that. Geopotential height is related to temperature and pressure. We show in Fig. 6 that a classification that uses geopotential height (among other variables) does not perform better than our "optimal" classification, which includes mean sea level pressure and temperature.

R1:

The authors do not go into seasonality when analyzing their data. There is contrary experience from the COST733 Action on classification methods (in the meantime, the results of that COST Action have been made publicly available, see reference at the end). Plus there is experience towards great usefulness of seasonality in classification, indicated, e.g., in Spekat et al. (2010).

Answer:

We do mention (and evaluate) the seasonality of our patterns (chapter 4.1.1 p 10). We show a distinct pattern seasonality due to the use of temperature as classification variable. By using absolute temperature (not anomalies) and a relatively large number of patterns, we achieve seasonal pattern stratification. We do not establish one classification per season, i.e. we "allow" our patterns to assign to their respective season by themselves (and to move within the year under the effect of climate change, if necessary). To make it short: we account for seasonality implicitly (in contrast to other studies that use one separate classification per pre-defined season). Thanks for pointing out to the COST733 Action final report. Many (most) results of the report have been already published some years ago and we are well aware of them (many being cited in the manuscript).

R1:

Usage of E-OBS data – Fig. 1 only shows 8 E-OBS grid points. Text mentions 10. Moreover in Fig. 1: Poor choice of colours for dots.

Answer:

We decided to exclude these data points from our analyses, following reviewer 2, and updated all figures and results accordingly.

R1:

From page 5 on the line numbering is irritatingly confusing. Just look at the repetition of line number 5 on page 5...

Answer:

True... the manuscript has been compiled using HESS' Latex template. Apparently something went wrong. It is fixed now.

R1:

Section 3.2 page 7 line 12: Maybe relative topography is not directly available, but contributing geopotentials can be easily extracted and the retop could be easily computed.

Answer:

See answer to the second comment.

R1:

Page 7 line 14 – and I mean the second appearance of this line (sigh...) beginnngin with “(extents” it must be made more clear that these numbers refer to geographic degrees of latitude and longitude.

Answer:

This has been adapted now in the text (last paragraph of 3.2) and in the caption of figure 2.

R1:

Page 10 figure 3: Not clear what the numbers “12” , “14” and “33” on the right-hand side of the array of figures mean. I would furthermore recommend to deliberately use different colour schemes for different parameters, so they can be better distinguished. Even if the authors would not follow this suggestion at least they should reverse the assignment of the colours (left side red, right side blue) for PREC and HUMID since blue would then point to wet condition which suits the intuition better. More a thought than a substantial comment: All selected patterns are rather cold/have rather low radiation, so perhaps one would like to see examples for classes which denote different conditions.

Answer:

The numbers 12, 14, and 33 indicate the number of the pattern that have been selected. This has been pointed out now in the text (second last paragraph of 3.3) and in the caption of figure 3. The colour scales have been adapted. Regarding the comment concerning pattern selection: the point of this selection is to show patterns that are very similar in some variables (in this case temperature and radiation), but differ in other variables (here: precipitation and humidity). This aims at pointing out the need of multi-variate classification as we describe in the second last paragraph of 3.3.

R1:

Page 10 line 8 I have doubts if retaining the absolute values is a good approach when you have season-specific classes. Particularly temperature is way different from season to season. So au contraire to what the authors write, anomalies are a good way forward because they cover a similar value range in all seasons. Moreover, there is the experience that a further reduction in the number of classes is possible by using anomalies (this would be favourable in the light of the big set of 40 classes used by the authors).

Answer:

We would like to refer the reviewer to our answer to his/her third comment. We do not define the patterns explicitly for each season. This is basically achieved through using the absolute values for temperature as classification variable. The advantage is that we have a continuous sequence of patterns. The fact that each pattern occurs only in a rather limited number of months is solely due to the usage of absolute temperature values for classification. We do know that anomalies are used in many other papers and we are well aware that the annual signal of temperature dominates our classification. See e.g. second paragraph of 4.1.1. Nevertheless, regarding the future use of that classification (downscaling tool in climate change attribution), we appreciate the seasonal restriction of patterns a lot.

R1:

Page 11 figure 4: I suggest to add y-axis labels on the right-hand side, too. Further suggestion: Use open triangle and open circles which are better visible in case of overlaps, and those do appear frequently.

Answer:

The figures have been updated using open symbols now. However, we would like to refrain from adding a second y axis. The grid lines in the plots should be sufficient to guide the reader's eye.

R1:

Page 12 figure 5: It would be could to have the results for four different class number shown at least for one more extent (or domain size, as one might better call it).

Answer:

We would prefer to refrain from that as well. The parameter selection follows a clear strategy, as we point out in the last paragraph of 3.2: 1. Select variable, 2. Select spatial domain, 3. Select number of classes. Adding further information into the figures would jeopardize its clarity.

R1:

Page 12 line 14: "increasing EV" – this is very minute if you look at it. Therefore I suggest to write "almost no change".

Answer:

The mentioned paragraph states: "(...) confirming the general tendency (increasing EV, decreasing PF values for increasing number of classes), although the improvement of EV seems to level off for high number of classes, meaning that the gain in stratification skill is only minimal." – Increasing tendency refers to the fact that a higher number of classes results in higher EV values (which is evident from figure 5). Of course, as the reviewer has mentioned, the difference in EV between the 40 and the 100 pattern classification is minute, that's why we added "although the improvement of EV seems to level off for high number of classes". But, we think in the presented context the statement is valid and we prefer to keep it as is.

R1:

Page 14 figure 7: I am amazed how relatively even the frequency distribution is. Expectation would be that some classes would be quite rare. Furthermore: is the property displayed really the quotient of frequency and cumulative EV? Furtherfurthermore, what does the (-) at the end of the y axis label mean?

Answer:

Well, yes – frequency distribution ranges from 1.4 to 3.8. Which makes the most common pattern occurring almost three times as often as the rarest one, but that is still a rather narrow range. That behaviour originates from the optimisation algorithm used (SANDRA method). A classification using a leader algorithm would certainly result in a broader range of pattern frequencies. Regarding the furtherfurthermore: I see that the y axis label caused some confusion. Of course the property displayed is not a quotient. The figure has been adapted.

R1:

Page 14 lines 30 and following as well as Fig. 8: It is remarkable and should be pointed out that for numerous classes the reanalyses (black dashes) mark either the lowest or the highest frequency so in those cases ALL GCMs are unanimously indicating either higher or lower frequencies, respectively. Isn't that an odd behavior?

Answer:

Thanks for pointing this out. The described behaviour of GCMs (ALL being above or ALL being below the reanalysis) was observed for 7 patterns each. By having a closer look into this behaviour, it becomes apparent that particularly cold weather patterns (1, 12, 14, 21, 33, 34, 37) are underestimated, although the warm pattern 27 is also underestimated. Apparently, all GCMs have difficulties in reproducing these weather patterns. However, it goes beyond the scope of this manuscript to analyse the genesis of these weather patterns and why GCMs are not capable to capture them well. With regards to the overestimated patterns (3, 6, 7, 11, 20, 23, 35), they show a tendency towards average to above-average precipitation. But other, high precipitation patterns seem to be well-captured. The remaining 26 patterns enclose the reanalysis values in their range..

R1:

Page 14/15 Section 4.2.2 I assume that Fig. 9 on Page 16 is meant to visualize this, right? Then make a reference to that figure!

Answer:

Thanks for that remark – the reference has been added.

R1:

Section 4.2.2 again: A definition needed is needed as to what is considered a good reproduction. Imagine that there could be ties in the months of most frequent occurrences – or months with very similar frequency. Would that still be good/superior/inferior reproductions, then?

Answer:

We added the statement “A deviation of one month is considered an acceptably good performance.” to give a definition for a good performance. A deviation of one month should be accepted as good performance, but since pattern occurrence stretches only across a couple of month, the peak should be matched ± 1 month, everything else is not acceptable Regarding ties (i.e. two months with an equal count of pattern occurrence) – this is observed only in pattern 9, model CNRM-CM5 where peak months are Jan and Dec. The resulting peak is marked in the middle between these two months, i.e. at 0.5. Usually there is a clear peak of occurrence – with substantially lower counts to the left and right of the peak month.

R1:

Page 15 Section 4.2.3 The text points to Figure 8, whereas the reference should point to Figure 10.

Answer:

Thanks for pointing out the wrong reference – it has been corrected.

R1:

Page 18 around line 35, the aspect of stratification skill was presented in Spekat et al. (2010), too. Perhaps this needs to be mentioned in the text.

Answer:

We mentioned papers that use a similar evaluation metric as we do (usually EV) to compare values. Spekat et al. (2010) show the reduction of variance by using the geopotential height, which we do not use in our classification. However, the inclusion of temperature in the CEC-TC classification in Spekat et al. (2010) indeed delivers a clear seasonal stratification. This is exactly what is also achieved in our analysis, however, without an additional explicit seasonal separation of weather patterns a priori.

R1:

Page 18 line 12 (bottom): More like a comment – this discussion opens up a whole philosophical can of worms, i.e., universality versus optimization. Should the goal be to find a classification able to cover “everything but with a variable degree of fidelity” or should the goal be to find a classification that is region- and variable-specific, yet has a high skill? Maybe the authors could be drawn into discussing this for a bit, too?

Answer:

Yes, the reviewer is right the classification should be rather site and purpose specific. This is also one of the conclusions in the COST733 report. To this end, we focus particularly on the Rhine basin, for which we attempt an end-to-end attribution of flood changes to changes in the greenhouse gas concentrations due to anthropogenic emissions. For this purpose, we intend to use a hydrological model driven by a set of climate parameters (P,T, radiation, humidity) produced by the weather generator. Hence, we require profound multi-variate stratification of weather patterns for all above-mentioned quantities.

R1:

General comment on the “Discussion” section: It is rather long (no criticism concerning the length, mind you) and could benefit from the insertion of subsections.

Answer:

We follow the suggestion of the reviewer and separate the discussion into two blocks “on the ‘optimal’ classification” and “on the GCM skill”

R1:

Page 34 Table 1: Is it “Runs” or “Run”, i.e., did the authors use all 10 CNRM runs or all 10 CSIRO runs (for example) or did they use just a specific one of those? Then this particular run should be specified. This refers back to page 3 line 12 where it is ambiguous if ALL or SOME runs were analyzed in this paper.

Answer:

We used ALL available runs for the analyses. To make that point more clear, we added “Results from different runs of each GCM are averaged.” in chapter 4.2 and changed the last sentence in chapter 2 to “All available runs were analysed?”.

R1:

General comment concerning Figs. 11 thru 16: It is amazing to me that those 40 classes, some of which are visually quite similar to each other, apparently constitute sets of necessary distinctiveness. Just from looking at them the, admittedly subjective, estimate would be that much fewer classes should be sufficient.

Answer:

The visual similarity of some classes is certainly correct. We partly cover that issue in chapter 3.3 and figure 3, concerning multi-variate evaluation. Nevertheless, some patterns seem to be quite similar across all variables (e.g. patterns 28 and 39). But it should be noted, that figures 11-16 show only the associated local variables, not the variables used for classification. They exhibit some differences in the underlying pattern, i.e. some patterns, although being different, generate similar local mean weather. We tested a classification with 36 classes as well (though not shown in the manuscript). The results align closely to the other classifications (i.e. EV are slightly lower than for 40 classes).

R1:

General comment on the line numbering: It should be uninterrupted, starting with 1 and end in the high several hundreds. The numbering in the draft here is misguided and misleading.

Answer:

See answer to fifth comment. HESS' latex template apparently starts from 1 on each page again.

R1:

General comment on the figure placement: Particularly for Figs. 7 thru 10, a better proximity to their mentioning in the text and respective paragraphs to which they belong should be found.

Answer:

Again, this is latex-specific and would anyway be adapted for the final production of a publication paper. Nevertheless, the figure placement has been adapted slightly.

R1:

General comment on Literature – one could of course think of a “me too” effect? – but there is a paper from 2010 which covers or complements several aspects of the manuscripts's reasoning: Spekat, A., F. Kreienkamp and W. Enke, 2010: An impact-oriented classification method for atmospheric patterns. – Physics and Chemistry of the Earth 35, 352-359. Also, perhaps unknown to the authors of the manuscript, the final report for the COST733 Action is now available. The link to the final report is: <https://opus.bibliothek.uni-augsburg.de/opus4/frontdoor/index/index/docId/3768> That link is permanent. The URN is urn:nbn:de:bvb:384-opus4-37682 (it can be found using a web search engine).

Answer:

Thanks for giving these references. Both have been covered in the other comments already.

R1:

So, bottom line: Something in between minor and major revision. Some reasoning needs to be better shaped, some needs to mention a bit more what alternative paths have been pursued. There is some potential to improve technical aspects (figures, mostly) and general understandability.

Answer:

We thank to the anonymous reviewer for the comments and careful examination of the manuscript, especially of the figures. This helped to improve some details using a new perspective.

Reviewer 2:

Main impression: The paper presents an evaluation of downscaling climate information over the Rhine region by making use of weather patterns. A number of different options are explored, and the conclusion is that best results are obtained with mixed predictors: sea-level pressure in addition to temperature and humidity fields. The main new aspects of this study include the specific emphasis on the Rhine region, large number of stations representing the local climate, and the long time series for searching for weather patterns.

One question I have with this analysis is whether the evaluation of the method is best done when making use of cross-validation of split-sample for calibration/evaluation. Perhaps the main message has a tendency to get lost in all the details? This could be fixed with some revision and an emphasis/reminder of how the details support the main message. I think the abstract may be rewritten – a bit bolder – to make the paper look more interesting.

Answer:

With regards to the reviewers comment, we point out that the classification of weather patterns is done based on the ERA-20C reanalysis data, whereas the evaluation of the classifications' capability to stratify local climatological variables is evaluated using an independent data set based on climate station observations.

We re-wrote the abstract to meet the reviewer's suggestion.

R2:

L15p2: "statistical approaches are comparatively cheap, computationally efficient and relatively easy to apply?". No, it is not always easy to apply statistical downscaling in a good fashion that correctly captures the dependency to large-scale conditions. However, it's easy to apply both dynamical and statistical downscaling to get some output – be it reliable results or non-representative numbers.

Answer:

We adapted the respective paragraph, deleting the criticised sentence.

R2:

L28p2: "The underlying assumption of the downscaling based on weather patterns is that the regional or local behaviour of climate variables is a response to the larger-scale, synoptic forcing." More precisely, downscaling also works if only a fraction $f(X)$ of the variability (which one would expect) is dependent on the large-scale conditions X (local processes n are also usually involved): $y = f(X) + n$. However, both large-scale dependent and local variability must be accounted for. One case in point is precipitation, as discussed in the paper.

Answer:

We acknowledge the reviewers comment and changed the mentioned sentence to “The underlying assumption of the downscaling based on weather patterns is that the regional or local behaviour of climate variables is *partly* a response to the larger-scale, synoptic forcing.”

R2:

L31p2: “Statistical downscaling tends to underestimate the variance of regional or local climate and may poorly represent extremes”. Some past studies have not accounted for the contribution local processes n, hence the variance in the results will be less than observed. Variance inflation is flawed and a priori gives incorrect results (von Stoch, 1999).

Answer:

We adapted the statement accordingly: “Statistical downscaling tends to underestimate the variance of regional or local climate if the contribution of local processes is not considered and may poorly represent extremes. Different methods have been proposed to rectify this problem: variable inflation (Karl et al., 1990), expanded downscaling (Bürger, 1996) and randomisation (Kilsby et al., 1998).”

R2:

L12p3: The assumption of stationarity is more severe for GCMs and RCMs, which rely on parameterisation schemes, involving statistically trained equation to represent the bulk description of unresolved quantities (e.g. cloud schemes). In GCMs/RCMs the results of such schemes feed back to the calculation of the large-scales, whereas for statistical downscaling/weather generators, they can produce a trend in biases. Also relevant for L15p19. When mentioning this only in relation with statistical downscaling (SD), the reader gets a distorted picture and thinks it only affects SD – this has resulted in a myth within the downscaling community.

Answer:

Yes, we agree with the reviewer that dynamical downscaling techniques also rely on the assumptions of stationarity in the empirical relationships incorporated in the climate models. In our study we, however, solely focus on the statistical downscaling and even more narrowly on the weather generator type downscaling conditioned on weather patterns. We thus discuss only the assumptions required for this downscaling approach.

R2:

“Data:“ Gridded observation (EOBS) and station data were mixed? This can introduce artifacts (spatial and temporal inhomogeneities). Furthermore, gridded daily precipitation is no good for analysing extreme precipitation, as the grid points are weighted sums of surrounding observations and hence are expected to exhibit different statistical characteristics (tail of distribution – see attached fig). Also see http://www.icrc-cordex2016.org/images/pdf/Programme/presentations/parallel_D/D3_Chandler_CORDEX2016.pdf.

Furthermore, isn't EOBS limited to after 1950? Perhaps it's better to skip France altogether even if the picture is less complete?

Answer:

The reviewer raised valid concerns regarding the use of E-OBS data. We decided to exclude these data points from our analyses and updated all figures and results accordingly. However, the influence of these data points is only minimal, thus the overall messages of the paper remain unchanged.

R2:

“3.1 Weather pattern classification” – the paper discloses that the cost733 class software was applied to both reanalysis and GCM data (?) – but does that mean that the weather patterns are the same for the models and reanalyses?

Answer:

Apparently, our description of the workflow was misleading. We first establish a classification on reanalysis data. The GCM data are then assigned to the existing patterns (by means of minimum Euclidean distance). Thus, the weather patterns are the same for the reanalysis and the GCMs. We adapted the first sentence in section 4.2 accordingly.

R2:

“3.2 Finding optimal classification parameters” Keep in mind that with many tests, the likelihood of finding an accidental match increases. The “problem of multiplicity” – See Wilks (2006).

Answer:

Multiplicity applies to statistical tests. We do not apply multiple tests, but rather evaluate a set of different valid parameters by using two different metrics. Hence, we do not share the concerns of the reviewer.

R2:

Eq. 3 – 5: Daily rainfall amount is far from normally distributed, whereas the root-mean-square metric is more appropriate for temperature, which tends to behave more like the normal distribution. TSS, WSS and BSS will be strongly affected by a few heavy precipitation events (acknowledged in 4.1.2), and explains low scores for the metric EV. For precipitation, it may be wise to look at aggregated statistics, eg seasonal wet-day mean (precipitation intensity), wet-day frequency, and probabilities (e.g. Benestad & Mezghani, 2015): The precipitation frequency exhibits a close connection with the circulation pattern (e.g. SLP), whereas the intensity is more complicated and is expected to be strongly affected by local small-scale processes (eg convection, which may be consistent with Fig 7 and mentioned in the discussion), but be somewhat moderated by large-scale conditions.

Answer:

Following the reviewer’s suggestion we analysed wet day frequency and wet day mean precipitation (i.e. intensity) for all seasons and the whole year. While precipitation frequency differs between patterns (between <10% for e.g. pattern 36 and >90% for pattern 39), the variation among patterns is much smaller for precipitation intensity. Patterns with high frequencies are associated with high mean daily precipitation (as in Figure 12). Frequencies and intensities differ only slightly between seasons.

We conclude that the differences between pattern precipitation (as in Figure 12) are due to differences in precipitation frequency rather than intensity. We added a respective paragraph to the end of section 4.1.3, but did not add any extra figures since they do not contain additional information.

R2:

Furthermore, the observations represent a poor sample – a rain gauge represents a few cm² capture of a spatially heterogeneous phenomenon with a scale of km². Aggregation in time or space may give a clearer picture that is less affected by sampling fluctuations. The alternative to downscaling single station data and then estimate the area average is to estimate the area average from observations and then downscale this index. I suggest adding some text about this possibility and these issues in the discussion, at least.

Answer:

We share the concern of the reviewer that station records represent only a point estimate of the spatially heterogeneous phenomenon like precipitation. We, however, intend to apply an existing advanced weather generator from Hundedcha et al. (2009) which works on a station basis. Hence, we would abstain from interpolation of precipitation and downscaling regionalized indices instead of estimations at station locations.

R2:

L3p10: The humidity estimate from reanalyses is difficult to validate – it may have substantial errors?

Answer:

We generally agree. In the relatively short overlapping period, however, ERA-20C moisture variables such as precipitation and total column water vapour agree fairly well with observations (cf. Poli et al. (2016), DOI: 10.1175/JCLI-D-15-0556.1). Besides, our study can also be viewed as a validation study itself.

R2:

“4.2.2 Seasonality” – it’s not clear what “the earliest and last months of occurrence in the course of the year” are and how they are specified.

Answer:

We added another paragraph in the end of section 4.2 to explain more thoroughly, what we mean by seasonality of patterns: “Seasonality is evaluated by the first, last, and peak month of pattern occurrence. All patterns show a distinct seasonality. Each season is characterised by a limited number of consecutive months in which a pattern occurs. We evaluate the beginning (i.e. first month) and end (i.e. last month) of pattern occurrence. The peak month is defined as the month with highest number of days with pattern occurrence. Some patterns show two distinct seasons. In this case both seasons are evaluated separately.”

R2:

“4.2.3 Persistence” - the duration of phenomenon/event/pattern may follow the geometric distribution, and differences in the models and reanalysis can be gauged based on its statistics. It can provide an estimate of what differences one would expect from randomness and what is likely a systematic bias.

Answer:

Our point here was solely a comparison of duration times and not the question whether there is any persistence at all. For that one could use the geometric distribution, but it would constitute a rather weak null hypothesis since in that case consecutive days are treated independently, which they are obviously not.

R2:

Minor:

I would move the first sentence in the abstract to the beginning of the introduction. You don’t need to explain why or provide justification in the abstract.

Second sentence in the abstract is a bit difficult, and can be rephrased or moved out of the abstract. It distracts the story away from the main findings. I’d start the abstract with “An objective classification scheme is presented ?”

Answer:

To move the first sentence from the abstract to Introduction would make this sentence stand-alone followed by the description of the basin and the flood problem. In the abstract, it provides an overall idea of the scope of the study. We would prefer to keep the current structure, but re-wrote parts of the abstract nonetheless as also required by the other reviewer.

R2:

L28p4: “For the workflow proposed here three different sets of climate data are needed:“ Comma between “here” and “three”?

L1p11: “The selected classification was compared to the Hess-Brezowsky- Grosswetterlagen” - Use “compared with” rather than “compared to” when there was an actual comparison?

Answer:

Thanks, the corrections were done.

Can local climate variability be explained by weather patterns? A multi-station evaluation for the Rhine basin

Aline Murawski, Gerd Bürger, Sergiy Vorogushyn, Bruno Merz¹, Aline Murawski¹, Gerd Bürger^{2, 3}, Sergiy Vorogushyn¹, and Bruno Merz¹

¹GFZ German Research Centre for Geosciences, Potsdam, Germany

²Institute of Meteorology, FU Berlin, Germany

³Institute of Earth and Environmental Science, University of Potsdam, Germany

Correspondence to: Aline Murawski (murawski@gfz-potsdam.de)

Abstract. For understanding past flood changes in the Rhine catchment and in particular ~~for quantifying~~ the role of anthropogenic climate change for extreme flows, an attribution study relying on a proper GCM (General Circulation Model) downscaling is needed. A downscaling based on conditioning a stochastic weather generator on weather patterns is a promising approach ~~given, among others,~~ This approach assumes a strong link between weather patterns and local climate, and sufficient GCM skill in reproducing weather pattern climatology. ~~To test the first requirement, an objective classification scheme is applied and different classification variables, spatial domains and number of classes are evaluated. To this end, These presuppositions are unprecedentedly evaluated here using~~ 111 years of daily climate data from ~~500-490~~ stations in the Rhine basin ~~are used and comprehensively testing the number of classification parameters and GCM weather pattern characteristics.~~

A classification based on a combination of mean sea level pressure, temperature, and humidity from the ERA20C reanalysis ~~for a relatively small spatial domain of atmospheric fields~~ over Central Europe with ~~overall~~ 40 weather ~~type classes is found most appropriate for stratifying types~~ was found the most appropriate to stratify six local climate variables. The ~~skill in explaining local climate variability is very different, from high corresponding skill is quite diverse though, ranging from good~~ for radiation to ~~low poor~~ for precipitation. Especially ~~local precipitation and humidity are governed by processes that are not completely represented by the large-scale distribution of pressure, temperature and humidity. Before applying the weather pattern-based downscaling approach, it should therefore be investigated whether the link between the large-scale synoptic situation and the local climate variable of interest is strong enough for the given purpose. Our analysis suggests that it is advantageous to incorporate additional classification variables besides pressure fields. The use of temperature results in a very good stratification of weather patterns throughout the year. Hence, there is no need to provide different classifications for each season. for the latter it was apparent that pressure fields alone cannot sufficiently stratify local variability.~~ To test the skill of the latest generation of GCMs from the CMIP5 ensemble in reproducing the frequency, seasonality, and persistence of the derived weather patterns, output from 15 GCMs ~~from the CMIP5 ensemble~~ is evaluated. Most GCMs are able to capture these characteristics well, but some models showed consistent deviations in all three evaluation criteria and should be excluded from further attribution analysis.

1 Introduction

The Rhine River is a trans-boundary river with a catchment area of 185 000 km² and significant flood risk. Along the main river reach from Karlsruhe in south-west Germany to Rees at the Dutch-German border, an area of 14 600 km² is at risk of being flooded for an extreme scenario with a return period of 200 to 500 years (Thieken et al., 2015). This enormous economic exposure to floods is accompanied by expectations that flood magnitudes will increase due to climate change (e.g. Dankers and Feyen, 2009; te Linde et al., 2010; Bosshard et al., 2014). Further, the Rhine catchment has experienced increasing flood trends during the second half of the 20th century (Petrow and Merz, 2009). It has been argued that climatic drivers, land use changes and river training may have contributed to the observed trends (Pinter et al., 2006; Petrow et al., 2009; Villarini et al., 2011; Vorogushyn and Merz, 2013). Whereas the role of river training in the main Rhine channel has been quantified (Lammersen et al., 2002; Vorogushyn and Merz, 2013), the effect of climatic and land use changes remains unclear. In particular, the contribution of anthropogenic climate change on flood trends is an open question. To understand the role of climatic drivers for past changes in river flooding, rigorous attribution studies are needed (Merz et al., 2012).

Several studies tried to quantify the role of changes in meteorological variables on river flows using hydrological models with alternative sets of climate drivers (Hamlet and Lettenmaier, 2007; Hamlet et al., 2007; Hundecha and Merz, 2012; Duethmann et al., 2015). If an attribution of hydrological changes to changes in the atmospheric composition such as greenhouse gas concentration is attempted, output from GCMs (General Circulation Models), representing two different “worlds” with and without anthropogenically induced climate change, are to be compared (Min et al., 2011). This requires that output of GCMs is properly downscaled to a resolution compatible with hydrological models.

Different approaches are applied in the hydrological community for statistical downscaling (for a review see Fowler et al., 2007; Maraun et al., 2010). ~~Compared to dynamical downscaling using Regional Climate Models (RCMs), statistical approaches are comparatively cheap, computationally efficient and relatively easy to apply (Fowler et al., 2005). They are considered to have similar skills compared to RCMs (Hewitson and Crane, 2006).~~ Statistical downscaling approaches using weather generators offer the possibility to generate multiple realisations of long synthetic time series, e.g. 100 years of daily values, and are considered to have similar skills compared to RCMs (Hewitson and Crane, 2006). This provides a basis for a more robust estimation of changes of hydrological variables and moments of their distributions. They are particularly suited for quantifying rare floods and their impacts (e.g. Falter et al., 2015), in case they are capable to represent the statistical behaviour of extreme events. Examples of using weather generators to bridge the spatial gap between GCMs and hydrological impacts are widespread (e.g. Wilks, 1992; Katz, 1996; Semenov and Barrow, 1997; Fowler et al., 2000, 2005; Elshamy et al., 2006; Hewitson and Crane, 2006; Kilsby et al., 2007; te Linde et al., 2010; Fatichi et al., 2011; Lu et al., 2015; Kim et al., 2015)

In order to represent different climate states, parameters of a weather generator can be conditioned on the climate model output by applying a change factor (Kilsby et al., 2007) or on covariates such as weather patterns. The latter approach is expected to better capture change in variability of the changing climate state. Weather patterns are classifications of atmospheric circulation fields or other synoptic fields (Huth et al., 2008). The underlying assumption of the downscaling based on weather patterns is that the regional or local behaviour of climate variables is partly a response to the larger-scale, synoptic forcing.

The weather generator is then parameterised separately for each class of weather patterns (e.g. Bárdossy and Plate, 1991, 1992; Corte-Real et al., 1999; Fowler et al., 2005; Haberlandt et al., 2015)). Statistical downscaling tends to underestimate the variance of regional or local climate if the contribution of local processes is not considered and may poorly represent extremes; ~~and different~~. Different methods have been proposed to rectify this problem: variable inflation (Karl et al., 1990), expanded
5 downscaling (Bürger, 1996) and randomisation (Kilsby et al., 1998). This problem typically occurs in downscaling approaches that are based on regression models and weather patterns. It is circumvented when a weather generator is conditioned on weather patterns, provided that the weather generator is able to adequately capture the tail behaviour of the surface climate variables.

A downscaling approach based on weather pattern classification builds on four assumptions. Firstly, local climate needs
10 to be sufficiently explained by the classification of the large-scale synoptic situation. Bárdossy et al. (2002) summarise that many studies have shown that there is a strong link between atmospheric circulation types derived from CTCs (circulation type classifications) and surface variables such as near-surface temperature and precipitation. Even when the small-scale climate is governed by mesoscale events such as convective systems, these are, in turn, conditional on the synoptic state (Goodess and Jones, 2002). On the other hand, weather patterns can only be a proxy for local weather, due to the categorisation of continuous
15 data by the discrete classification, and more importantly, due to the fact that the large-scale situations do not fully represent smaller-scale features. This so-called within-type variability (e.g. Huth et al., 2008) is caused, for instance, by small-scale processes, such as orography-enhanced rainfall, or by variations in dynamic properties (pressure gradient, vorticity, intensity) of weather patterns (Beck et al., 2007).

Secondly, the linkage between weather patterns and regional and local climate is assumed to be stationary. This means that
20 climate change will mainly manifest itself as a change in the frequency, persistence and seasonality of these weather patterns. The transfer function between synoptic state and regional and local climate thus remains constant. Land use and land cover change, for example, could introduce a variable forcing on local climates (Hewitson and Crane, 2006). Using long observational time series, it has been argued that the linkage between large-scale weather patterns and regional climates are characterised by distinct variabilities (Beck et al., 2007).

The third assumption is that GCMs are able to properly reproduce weather patterns. GCMs are often strongly biased in
25 variables such as precipitation (e.g. Sunyer et al., 2015), but are expected to reflect large-scale circulations well. This skill in representing the synoptic situations compared to the poor skill in representing surface variables is utilised for statistical downscaling. For example, Hewitson and Crane (2006) conclude that much of the discrepancy between GCM projections of precipitation over South Africa may result from differences in their precipitation parametrisation schemes, whereas the synoptic
30 dynamics are well simulated. It has been shown, however, that the skill of GCMs to reproduce weather pattern characteristics such as geopotential height, sea level pressure etc. varies strongly (Brands et al., 2013; Wójcik, 2015).

Finally, to obtain meaningful input for the hydrological model, a weather generator has to adequately represent the space-time dynamics of the catchment meteorology. This is a particular challenge for large river basins, where the correlation structure of e.g. precipitation becomes difficult to capture over large distances.

In the presented paper we evaluate the assumptions for weather pattern based downscaling for the Rhine catchment. This is a prerequisite for conditioning a weather generator on circulation patterns for understanding the role of climatic drivers for past and future flood changes in the Rhine basin. We focus on the first and third assumption here. The assumption of stationarity of the linkage between weather patterns and local climate and the skill of the weather generator itself will be investigated separately. In the future we intend to use a multi-site, multi-variate weather generator (Hundecha et al., 2009; Hundecha and Merz, 2012) for downscaling GCM output to drive a regional hydrological model. Extreme value statistic on the simulated streamflow will then allow to quantify the role of climatic change on flood flows.

To underpin the first and third assumptions, we derive an “optimal” weather pattern classification and investigate (1) to which extent weather patterns are able to stratify local climate variables, and (2) the skill of the GCMs to reproduce these weather patterns. It has been argued that there is no “best” statistical downscaling approach but that the optimal classification depends on the application and region (Hewitson and Crane, 2006; Huth et al., 2008). We look specifically from the perspective of a hydrological impact study for the Rhine catchment.

There is a significant body of literature on weather pattern classification. Our work extends these studies in several aspects. Firstly, we test the skill of several classification variables. Often classifications are based on msl (mean sea level pressure) only. We use, in addition, the synoptic temperature and humidity fields to classify weather patterns. Considering temperature as classification variable has the advantage that one classification can be used throughout the year. Secondly, we test the ability of weather pattern classifications to stratify a comparatively large number of climate variables with daily resolution: precipitation, minimum, mean, and maximum temperature, radiation, and relative humidity. Other studies often consider only one or two variables (e.g. Beck et al., 2007; Kysely, 2007; Anagnostopoulou et al., 2008; Beck and Philipp, 2010; Łupikasza, 2010; Haberlandt et al., 2015) and only few studies are available with an extended list of up to eight variables (e.g. Kidson, 1994; Enke et al., 2005a; Cahynová and Huth, 2010). We use a comparatively long time period of 111 years. The periods of other studies are typically much shorter, e.g. 11 to 50 years (Kidson, 1994; Brinkmann, 1999, 2000; Goodess and Jones, 2002; Hewitson and Crane, 2006; Anagnostopoulou et al., 2008; Beck and Philipp, 2010; Brisson et al., 2010; Łupikasza, 2010; Cahynová and Huth, 2010; Bettolli and Penalba, 2012), or 100 years (Kysely, 2007). Beck et al. (2007) covers a longer period, going back to 1780, however using only monthly resolution. Fourthly, our analysis covers a large, transboundary area of around 160 000 km² and a very large number of climate stations (~~500~~[490](#)). Weather pattern classifications typically work with a comparatively low number of stations, ranging from e.g. one station for Prague (Kysely, 2007) to 84 stations for New Zealand (Kidson, 1994).

Further, we analyse the newest generation of climate models from the Coupled Model Intercomparison Project Phase 5 (CMIP5). We investigate their ability to reproduce frequency, persistence, and seasonality of weather patterns. Wójcik (2015) emphasises the need to assess the reliability of GCMs prior to any statistical downscaling approach. Whereas Perez et al. (2014) analysed the frequency of patterns over the north-east Atlantic and Belleflamme et al. (2013) examined frequency and persistence of patterns over Greenland, so far no other study analysed seasonality as done here. Particularly for understanding the role of climate change on flood flows, matching the seasonality is essential.

2 Data

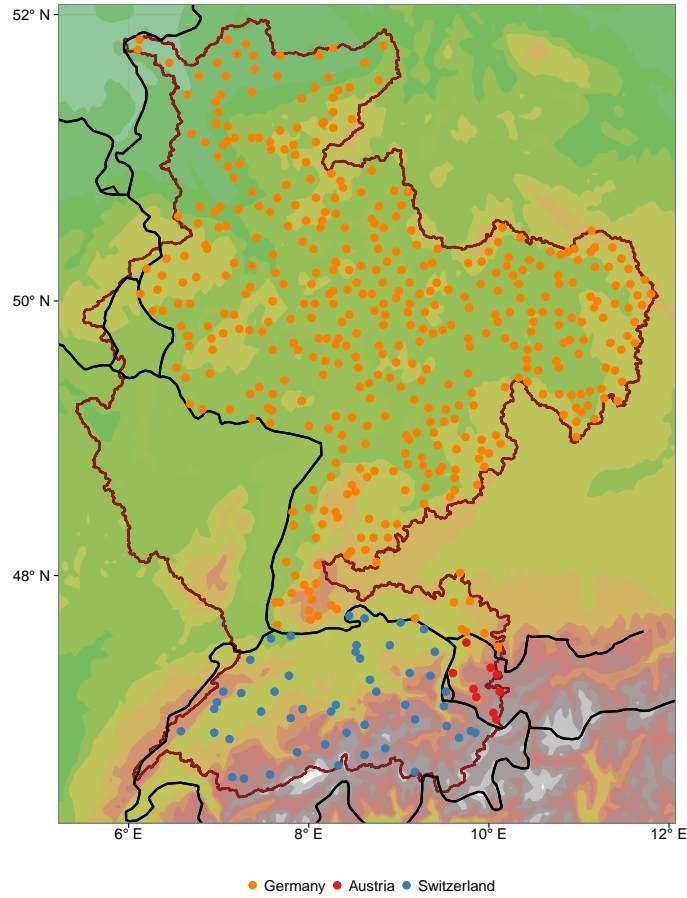


Figure 1. Locations of climate data stations used. See text for more details on single data sets. Dark red line shows Rhine catchment, black lines denote state borders.

For the workflow proposed here, three different sets of climate data are needed: (1) data to establish the weather pattern classification on, (2) compatible output of climate models with different greenhouse gas (GHG) forcings, i.e. same variables and spatial coverage as (1), (3) observations from local climate stations in the investigated area (Rhine catchment) for all meteorological variables of interest, preferably covering the same time period as (1).

To investigate the suitability of different climate variables to establish the weather pattern classification, long-term reanalysis fields can be used. We utilised the newly available ERA-20C – a gridded reanalysis data set from the ERA-CLIM project (Poli et al., 2013). This data set is a pilot reanalysis of the 20th-century assimilating surface observations only and being forced by a HadISST2.1.0.0 ensemble of sea-surface temperature and sea-ice conditions, available for the period 1900–2010. The 3- or

6-hourly data, depending on the variable, were aggregated to daily averages for this study. The spatial resolution of $1^\circ \times 1^\circ$ was chosen. There are finer resolutions available for ERA-20C, but the resolution of GCMs is not finer than $1.25^\circ \times 0.94^\circ$.

The skill of different weather pattern classifications was assessed according to their ability to stratify climate station data located in the Rhine catchment (Figure 1). Sets of daily precipitation, temperature (mean, min, max), relative humidity, and global radiation data for the period 1901–2010 were available from the national meteorological services and kindly processed and quality controlled by the Potsdam-Institute for Climate Impact Research (PIK) (Österle et al., 2006). For the German part of the catchment 432 stations were available, nine stations for the Austrian part, and 49 stations for Switzerland and Liechtenstein. To date no data of meteorological stations in France were available, ~~thus E-OBS data (Haylock et al., 2008) were used to cover the French part of the catchment. Ten grid points with a spacing of $0.5^\circ \times 0.5^\circ$ for precipitation and temperature only were included.~~ This set of 490 climate stations allows for the classification results to be compared to a large and dense station network.

For the assessment of the effect of anthropogenic GHG emissions on changes in floods, data from modelling experiments with two different GHG forcings representing (a) the historical (natural+anthropogenic) GHG concentrations (All-Hist) and (b) only natural GHG concentrations (Nat-Hist) are required. These experiments are available from a number of GCMs of the CMIP5 project (Taylor et al., 2012). An overview on the models and the number of runs available for the All-Hist experiment used here is given in Table 1. The model output is available in daily time steps, mostly starting as early as the mid-19th century. ~~These data~~ All available runs were analysed in relation to the ability of different GCMs to replicate the frequency, persistence, and seasonality of weather patterns.

3 Methods

3.1 Weather pattern classification

Within the COST Action 733 “Harmonisation and Applications of Weather Type Classifications of European Regions” a collection of circulation type classification approaches was compiled and made available (cost733class software: <http://cost733.geo.uni-augsburg.de/cost733class-1.2/>, Philipp et al., 2016). Included, among others, is the SANDRA classification method (simulated annealing and diversified randomisation) which is “a non-hierarchical technique for minimising the sum of Euclidean Distances within the classes” (Philipp, 2009). The method is similar to k-means clustering, but is able to get closer to the global optimum instead of getting trapped in a local one. A detailed description of the method can be found in Philipp et al. (2007). Several studies found a good or even superior performance of SANDRA compared to other classification methods (e.g. Beck and Philipp, 2010; Huth, 2010; Huth et al., 2008; Philipp, 2009; Philipp et al., 2016, 2007).

Available in the cost733class software are also methods for assigning new data to an already existing classification. This was used to apply the selected classification to GCM data. The method takes data of the same spatial domain and resolution and compares every case, i.e. day, to the centroids of the existing classification. The class with the smallest Euclidean Distance to the respective case is assigned. In this way a catalogue (i.e. time series) of weather patterns can be obtained for every GCM data set, which can then be analysed and compared to the catalogue derived from reanalysis data (see subsection 4.2). Since

the GCMs do not necessarily have the same spatial resolution as the classification input, they were first linearly re-interpolated to the same grid as the ERA-20C data.

By employing a weather pattern classification we are aiming towards providing a stratification of observed weather variables such as precipitation, temperature, relative humidity and solar radiation (as required for the hydrological model). For use with the weather generator, it is desired to obtain a classification that provides patterns that are preferably as distinct as possible from each other in terms of local weather characteristics. To derive an optimal classification, different characteristic variables, e.g. msl, geopotential height, temperature, humidity, different spatial ~~extents-domains~~ and different numbers of weather type classes can be tested. Historically, first classification were based on sea level pressure. An improvement of classifications and variable stratification can be achieved by additionally considering geopotential height (Spekat et al., 2010; Nied et al., 2014).
10 Given the further aim of this classification to be used for downscaling of historical runs of CMIP5 models, geopotential height is available only in a few runs and is thus excluded from our consideration.

Note that the term “weather (pattern) classification” is used to contrast the difference to air mass classifications, since surface weather variables are used here instead of variables defined at different tropospheric levels (Huth et al., 2008).

3.2 Finding optimal classification parameters

15 Here we tested different combinations of variables for weather type classification. Classifications on mean sea level pressure (msl) are commonly applied (e.g. Philipp, 2009; Wilby and Quinn, 2013; Masson and Frei, 2014). Other frequently used variables include geopotential height of different levels, thickness between different levels, vorticity and temperature at certain levels, or total column water vapour (e.g. Bárdossy et al., 2002; Anagnostopoulou et al., 2008; Nied et al., 2014; Philipp et al., 2016). However our selection was restricted to variables that are also available from the GCM outputs. Goodess and Jones
20 (2002) state that temperature and humidity are the two most important variables to be included when using a circulation-type approach for downscaling of rainfall. Thus we included temperature in 2 m (temp) (used, among other variables, in e.g. Kalkstein et al., 1987) and specific humidity (hus, as e.g. in Hewitson and Crane, 2006). This led to four combinations of variables: msl, temp, msl+temp, msl+temp+hus.

Different options for the selection of a spatial domain were tested here: one covering the whole of Europe, others being
25 considerably smaller, partly focussing on the Rhine catchment, see Figure 2. One domain is identical to domain D07 in Philipp et al. (2010), another one is a westward shifted version of it. The domain from Nied et al. (2014) was included as well.

A wide range of number of classes was tested to assess the power of classification: 9, 18, 27 (all frequently used, e.g. in Philipp et al., 2010; Huth et al., 2016), 40 (as in Nied et al., 2014; Philipp, 2009; Bissolli and Dittmann, 2001). Many authors (e.g. Huth, 2010) consider 40 already a very large number, but e.g. Jones and Lister (2009) use 6–11 patterns per season, in
30 total 34. Thus, when establishing a classification for the whole year a greater number of classes can be useful.

These different parameter sets allow for 120 possible combinations which poses an intractable computational problem. To break this number down in a reasonable way that still yields reliable results, firstly, some parameter values were prioritised (~~extents-domains~~ (lon/lat in degrees) -27 : 45 / 33 : 74 and -8 : 15 / 43 : 58, 18 and 40 classes). Secondly, four classification variables were combined with four prioritised parameters and the best-performing variable (combination) was selected. This

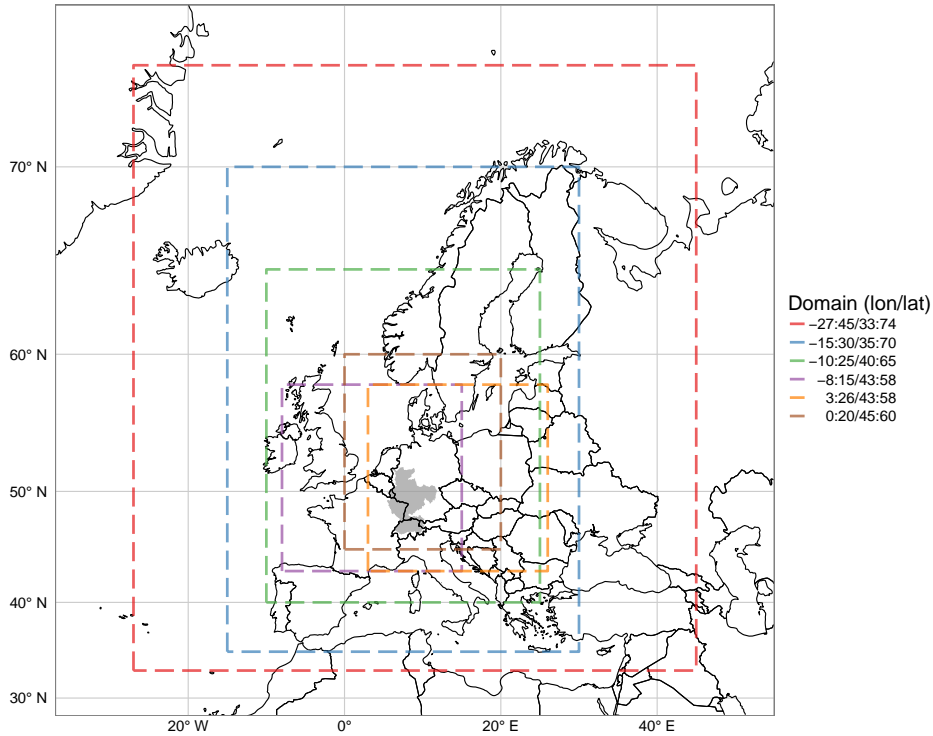


Figure 2. Spatial domains of weather pattern classifications [in degree of geographic longitude/latitude](#). Dark grey polygon shows location of Rhine catchment. [Extent-Domain](#) 3 : 26 / 43 : 58 as in Philipp et al. (2010), region D07; -15 : 30 / 35 : 70 as in Nied et al. (2014).

variable was then combined with all spatial [extents-domains](#) finding the optimal one. Finally, all number of classes were evaluated with the best variable and [extentdomain](#). This reduces the number of combinations to 26, which is still a rather large computational effort.

3.3 Evaluation of classifications

- 5 First of all it has to be clear, if the classification itself should be evaluated (i.e. stratification of the input variables, such as msl) or if the stratification of other variables, such as precipitation, that were observed on days with certain weather patterns should be evaluated based on the developed classification. The latter is needed here. Hence, given a certain classification catalogue, data from weather stations can be assigned to the patterns that occurred at the same day, resulting in a distribution of values associated with each pattern. The distribution of values linked to a pattern can then be compared to the original (complete)
- 10 population of values.

The quality of a given classification can be evaluated using different statistical metrics. For example, Huth et al. (2008) and Beck and Philipp (2010) give various quality measures, among them the Explained Variation (EV), and the so-called Pseudo-F

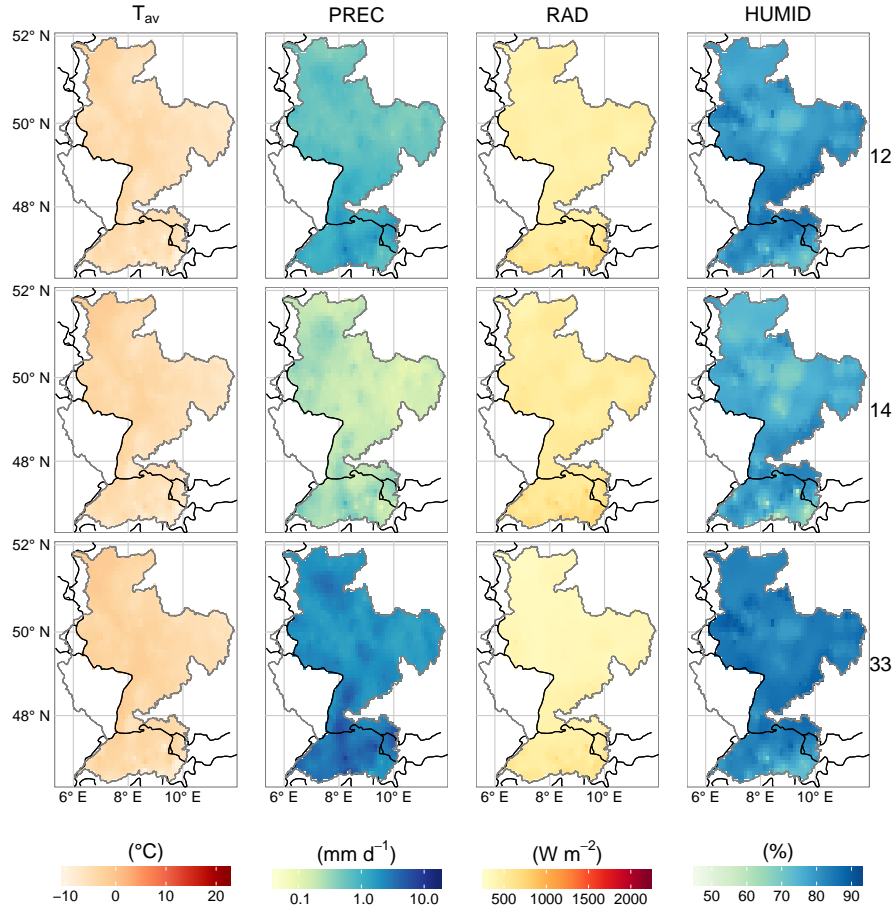


Figure 3. Average daily values of meteorological variables for selected-example patterns 12, 14, and 33 to emphasise the need of multi-variate evaluation of weather pattern classifications (T_{av} – average temperature, PREC – precipitation, RAD – global radiation, HUMID – relative humidity). Black line show state borders, grey outline denotes Rhine catchment.

statistic (PF). These are chosen, because EV is frequently used in similar applications and is easily understood, while PF has the advantage of considering the number of classes and cases per class.

The Explained Variation (Equation 1) is defined as the ratio of the sum of squared deviations from the mean within classes (WSS) and the total sum of squared deviations from the overall mean (TSS). In Equation 3 and Equation 4 k denotes the number of classes (i.e. patterns), m is the number of dimensions (i.e. variables), n is the number of cases (i.e. days), and C_j denotes class/pattern j . Thus EV ranges between zero (poor) and one (perfect stratification).

The Pseudo-F statistic (PF, Equation 2) of Caliński and Harabasz (1974) is the ratio between the sum of squared deviations between means of classes (BSS, Equation 5) and the sum of squared deviations within classes (WSS, Equation 4), weighted

by the number of classes and cases. A minimum of within-type variation (and maximum of distinction between types/classes) is achieved by large values of PF, poor clustering is denoted by values close to zero.

Both indices are usually applied to one meteorological variable at a time, thus evaluating the skill of the classification in stratifying e.g. temperature or precipitation (Huth et al., 2016). When mapping each variable per weather pattern, it becomes
 5 evident that some patterns might be very similar with regards to one (or more) variable(s), while being substantially different in other variables. For example in Figure 3, the selected patterns [no. 12, 14, and 33](#) have a very similar mean temperature for the whole area but very different precipitation. A classification focussing only on one variable would neglect the variability of the others. We therefore evaluate the stratification with respect to both single- and multi-variate performance.

Each evaluation metric is applied to normalised climate data, derived separately for each station and aggregated as an area-
 10 weighted average over the complete Rhine catchment.

$$EV = 1 - \frac{WSS}{TSS} = \frac{BSS}{TSS} \quad (1)$$

$$PF = \frac{BSS/(k-1)}{WSS/(n-1)} \quad (2)$$

$$TSS = \sum_{i=1}^n \sum_{l=1}^m (x_{il} - \bar{x}_l)^2 \quad (3)$$

$$WSS = \sum_{j=1}^k \sum_{i \in C_j} \sum_{l=1}^m (x_{il} - \bar{x}_{jl})^2 \quad (4)$$

$$15 \quad BSS = \sum_{j=1}^k n_j \sum_{l=1}^m (\bar{x}_{jl} - \bar{x}_l)^2 \quad (5)$$

4 Results

4.1 Stratification of local climate variables

4.1.1 Selection of classification variables

For selecting the classification variables, both evaluation metrics (EV and PF) point to the same choice (see Figure 4). The
 20 multi-variate evaluation clearly suggests a classification including temperature (EV around 0.5). This preference is even stronger for single-variate evaluations of temperature (T_{av} , T_{min} , T_{max}) with explained variation (EV) around 0.75. For precipitation (PREC) the temp-only classification performs worst, though EV values are low for all classifications ($EV < 0.2$). From the literature there is no evidence that other studies acquire considerably better results in similar analyses, but surprisingly the exact values of their evaluation criteria are typically not given. Nevertheless this low skill needs to be discussed further

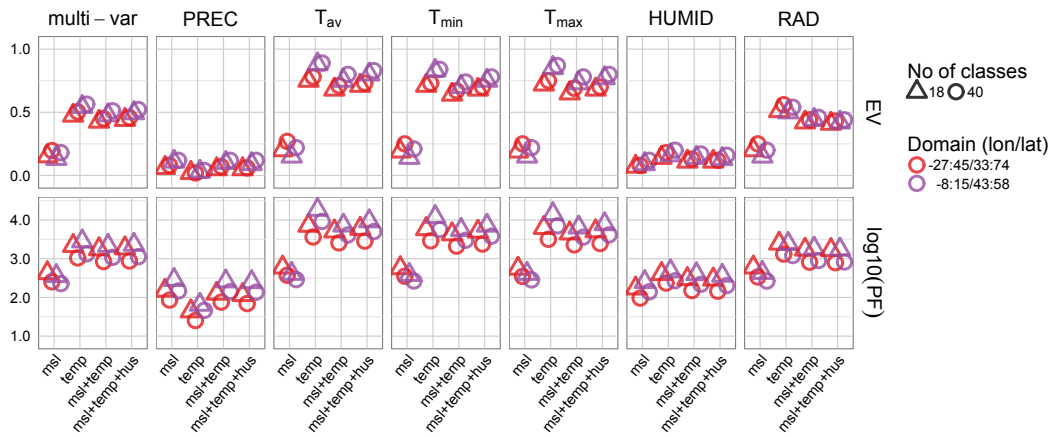


Figure 4. Evaluation metrics for the selection of classification variables (x-axis). Weather variables from station data in columns. Note log scaling of PF.

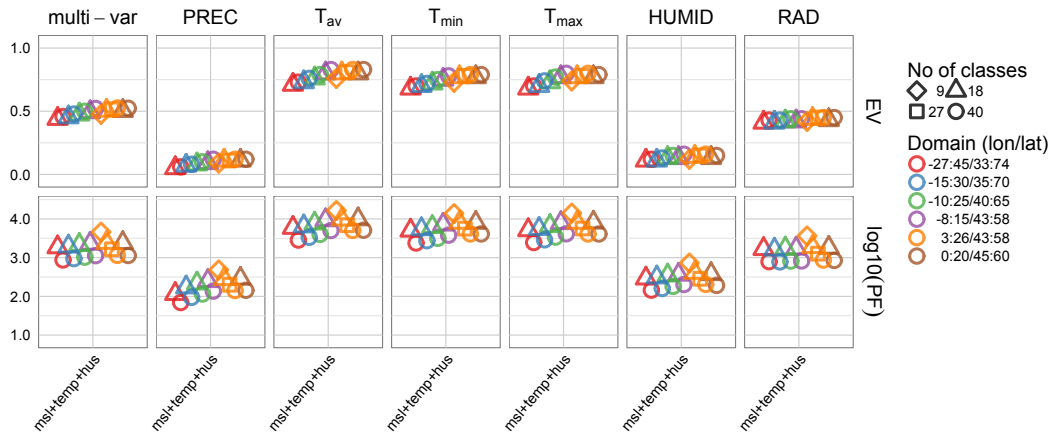


Figure 5. Evaluation metrics for the chosen classification variables, combining results of selection steps 2 and 3. Aims at selecting (a) best spatial domain (colour scale), then (b) selecting best number of classes (point shapes).

(see also subsubsection 4.1.3 and 5). Any classification including msl improves the stratification of precipitation compared to the classification based on temperature only. Thus a classification including both, temperature and mean sea level pressure should be chosen to obtain a reasonably good stratification of all variables.

For relative humidity (HUMID) and global radiation (RAD) the same relation between classifications as for temperature was found (classification including temp better than msl only), although the differences between classifications for HUMID are small. Including specific humidity as classification variable slightly improves the stratification of all variables. Thus the classification on msl+temp+hus was finally selected. This selection holds the additional advantage of a strong seasonal restriction of pattern occurrence. While patterns from a msl-only classification show only weak seasonality (i.e. each patterns might occur in any month throughout the year), the use of raw values (i.e. no anomalies) of temperature and specific humidity confines each pattern to a specific season with a clear peak of occurrence in a certain month. This allows to use one classification for the whole year instead of using separate classifications for each season, as frequently done in other studies.

For both metrics and all meteorological variables the smaller spatial domains deliver better results (Figure 5). The three smallest domains (coloured in purple, orange, yellow) differ only in their exact location, but are of roughly the same size. The orange domain, gives slightly better results for all variables and was chosen for further analysis.

The choice of an optimal number of classes is less obvious (Figure 5). The analysis of the EV shows a slight tendency for a greater number of classes, whereas PF prefers a lower number. However, for the use with a weather generator, a high number of classes with consequently narrow distributions for each class are preferred. At the same time a sufficient amount of observations per class are needed for fitting the distributions. Considering this tradeoff a classification with 40 classes was selected here.

Average values of meteorological variables per pattern of the final classification are shown in Appendix A – Figure 11–16.

4.1.2 Comparison to other classifications

The selected classification was compared ~~to~~ with the Hess-Brezowsky-Grosswetterlagen (GWL) catalogue of circulation patterns, to the classification after Nied et al. (2014), and to two experiments where only one parameter of the selected classification was modified (Figure 6): A classification based on a coarse grid ($2.5^\circ \times 2.5^\circ$ instead of $1^\circ \times 1^\circ$), and one using 100 classes (as in Perez et al., 2014). A comparison to the well-established Hess-Brezowsky-Grosswetterlagen (GWL) (applied in e.g. Kysely, 2007; Fleig et al., 2015) shows that GWL performs inferior to our classification with EV values not exceeding 0.1. The stratification skill obtained by GWL is best comparable to a classification based on msl only, but is inferior when including other variables into the classification scheme. The classification based on 500 hPa geopotential height, 500 hPa temperature and total column water vapour as used by Nied et al. (2014) performs equally well as the selected classification with only slightly lower skill values.

ERA-20C data were originally used with $1^\circ \times 1^\circ$ resolution. A coarser resolution of $2.5^\circ \times 2.5^\circ$ results in an identically good stratification. Hence small-scale features that might be present in a high-resolution reanalysis data set do not distort the results, which is also true for a classification extent covering all of Europe (not shown here).

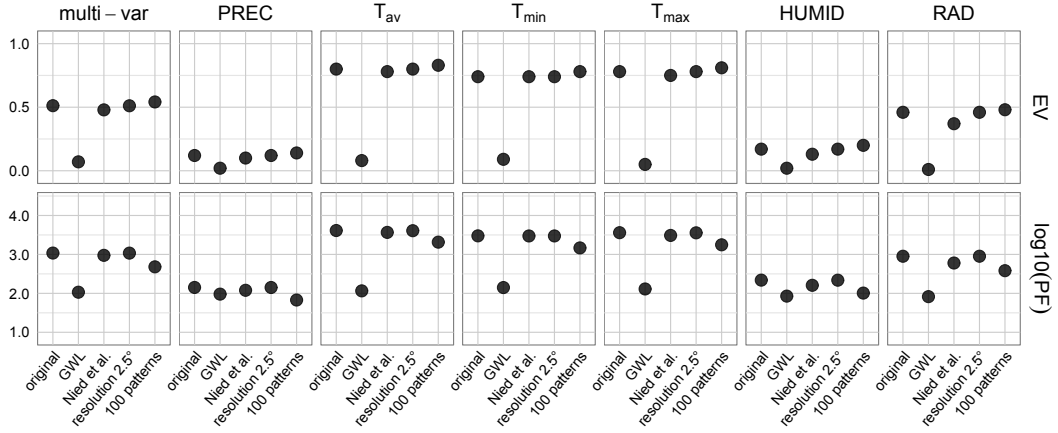


Figure 6. Comparison of selected classification from subsection 4.1.1 (original) and other classifications: Hess-Brezowsky-Grosswetterlagen (GWL), classification variables as in Nied et al. (2014), a classification on a coarse grid, and one with 100 classes.

A last test was dedicated to the number of patterns: 100 patterns as in Perez et al. (2014) were tested, confirming the general tendency (increasing EV, decreasing PF values for increasing number of classes), although the improvement of EV seems to level off for high number of classes, meaning that the gain in stratification skill is only minimal.

4.1.3 Stratification skill for precipitation

- 5 The stratification skill (i.e. EV and PF values) is rather low for precipitation, but maps of mean pattern precipitation (Figure 12) indicate distinct precipitation patterns. Therefore a more detailed investigation of explained variance for individual patterns was done. EV can be expressed as the sum of EV values for individual patterns weighted by the respective relative frequency of the pattern (n_j/n):

$$EV = \sum_{j=1}^k \frac{n_j}{n} \cdot EV_j ; \quad \text{with} \quad (6)$$

$$10 \quad EV_j = \frac{(\bar{x}_j - \bar{x})^2}{TSS/n} \quad (7)$$

- This allows to analyse the contribution of each pattern to the overall EV value. Figure 7 shows the cumulated EV_j values of each pattern. In an idealised case where mean precipitation and frequency of occurrence are uniformly distributed among all types Equation 6 describes (as an integral over a square) a cubic function with a saddle point at the overall mean precipitation. Patterns associated with the tails of the distribution would contribute most to the overall EV, while average types have contributions close to zero (because their mean is close to the overall mean, thus the deviation between both is small, resulting in near-zero EV_j).

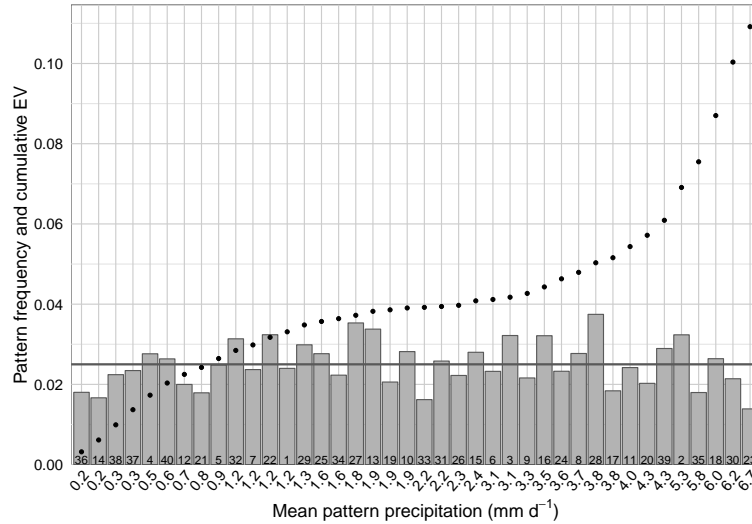


Figure 7. Precipitation intensity of patterns in relation to pattern frequency (bars), and cumulated explained variation per pattern (dots). The pattern number is given at the bottom of the bars. Grey horizontal line denotes average frequency to aid distinction of rare and frequent patterns.

However, in the case of precipitation, patterns with below-average mean precipitation contribute only little to the overall EV, because the overall mean is rather small (2.4 mm) and hence the deviation between the mean of low-precipitation patterns and the overall mean is small. This applies to more than half of all patterns (24 out of 40). Most EV contribution is gained by patterns with very high precipitation – 50% of total EV is contributed by the seven patterns with highest precipitation. This behaviour is clearly originating from the strongly right skewed distribution of precipitation. Thus, the small skill values can be considered inherent to precipitation.

Additionally analysing precipitation frequency and intensity per pattern (not shown) reveals that the variations in Figure 12 are mainly caused by pattern-specific precipitation frequency.

4.2 Performance of GCMs

- 10 After selecting the most appropriate classification, ~~circulation patterns in~~ all GCMs (15 models with up to 10 runs for experiment All-Hist) were ~~identified resulting in daily pattern series~~assigned to the centroids of the final classification, resulting in a catalogue (i.e. time series) of patterns for each GCM run. These time series were compared to the catalogue derived from the reanalysis data to assess the ability of GCMs to reproduce the weather pattern climatology in terms of frequency, seasonality, and persistence as suggested e.g. by Bárdossy et al. (2002).
- 15 Seasonality is evaluated by the first, last, and peak month of pattern occurrence. All patterns show a distinct seasonality. Each season is characterised by a limited number of consecutive months in which a pattern occurs. We evaluate the beginning (i.e. first month) and end (i.e. last month) of pattern occurrence. The peak month is defined as the month with highest number

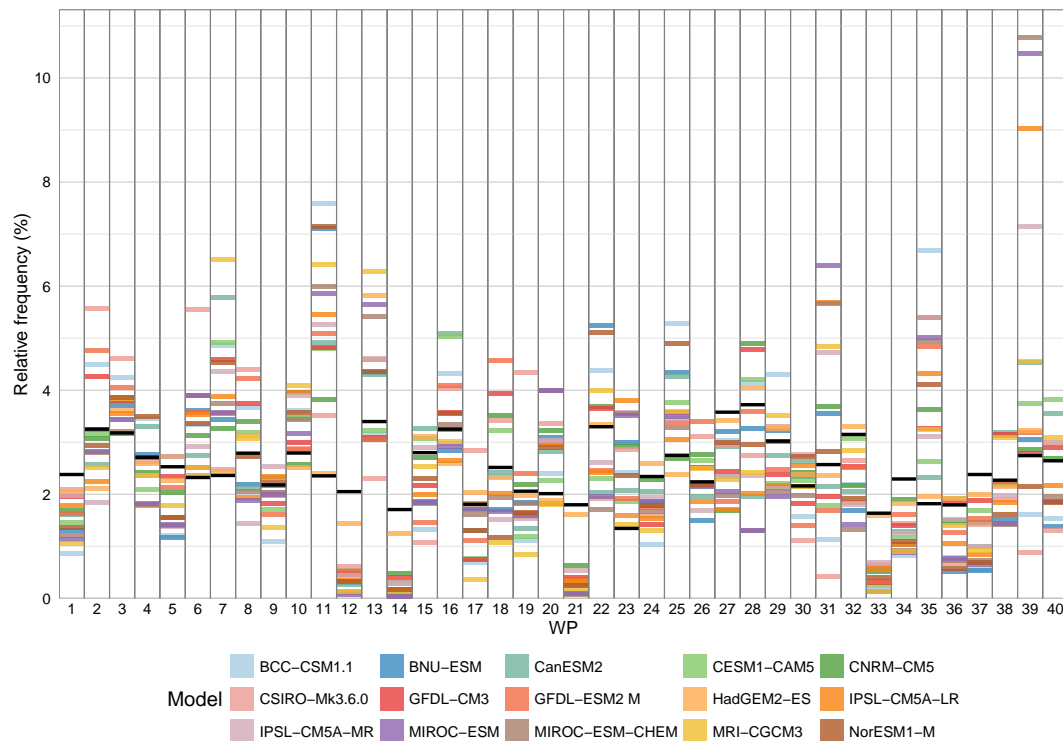


Figure 8. Relative frequency of patterns in GCMs (coloured dashes) compared to frequency in reanalysis data (black dashes).

of days with pattern occurrence. Some patterns show two distinct seasons. In this case both seasons are evaluated separately. Results from different runs of each GCM are averaged.

4.2.1 Frequency of patterns

The frequency of patterns as obtained from each GCM run was compared to pattern frequencies in the reanalyses data (Figure 8). The time series are compared for the whole period, i.e. no separation by seasons or individual years was done. Especially for patterns with high mean daily precipitation a good agreement between reanalysis and GCM (All-Hist) would be desirable (maps of average daily values in the Appendix A, Figure 11-16). Frequencies for different runs of one GCM were averaged, but differences between runs are much smaller (usually less than 0.5 %) than between GCMs. The deviations between reanalyses and GCM frequencies are highly diverse for different patterns, e.g. pattern 30 – a high-precipitation pattern with almost 7 more than 6 mm per day on average (see Appendix A, Figure 12) is well-reproduced, while some GCMs have difficulties to match e.g. patterns 11 or 39. No clear season-specific deviations were found – some models have higher deviations in winter, others in summer (not shown). For eight patterns all GCMs underestimate the frequency found in the reanalysis and for other seven patterns all GCMs overestimate the frequency. By having a closer look into this behaviour, it becomes apparent that particularly cold weather patterns (1, 12, 14, 21, 33, 34, 37) are underestimated, although the warm pattern 27 is also underestimated.

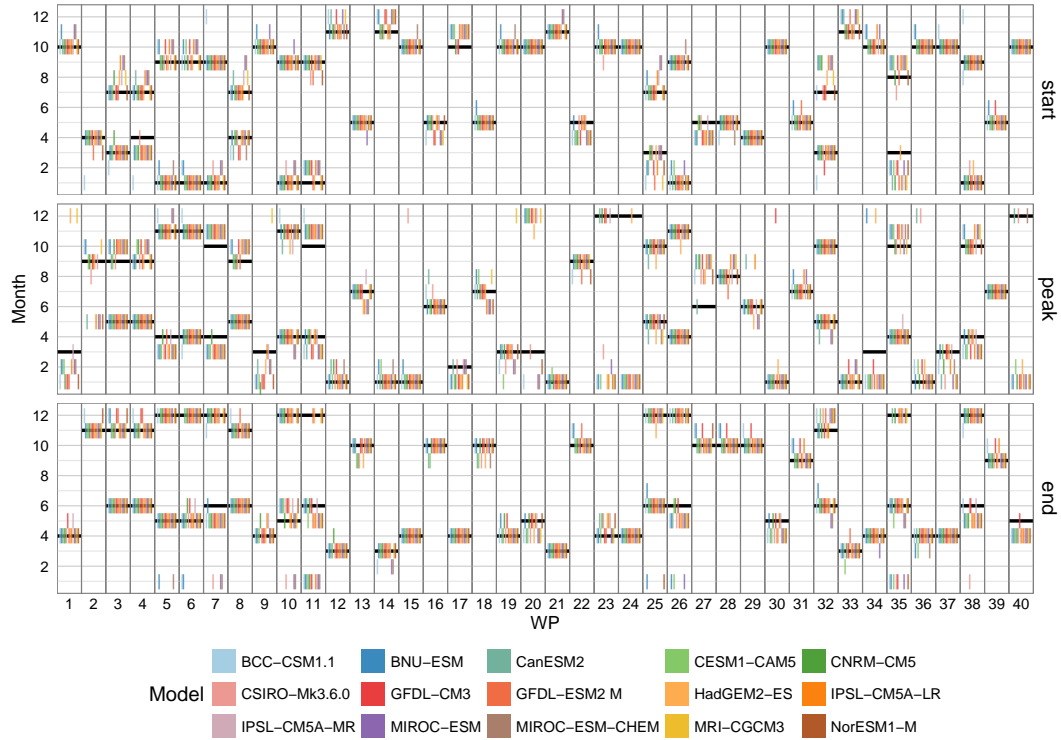


Figure 9. Comparison of seasonality of patterns in GCMs (coloured vertical dashes) and reanalysis data (black horizontal dashes). Seasonality is presented as start month(s) (upper panel), peak month(s) (middle panel) and end month(s) (lower panel) of occurrence of patterns. Dashes for GCMs are only vertical to avoid overlapping – each symbol denotes one distinct month. If pattern occurs in two distinct seasons, both are shown.

Apparently, all GCMs have difficulties in reproducing these weather patterns. However, it goes beyond the scope of this manuscript to analyse the genesis of these weather patterns and why GCMs are not capable to capture them well. With regards to the overestimated patterns (3, 6, 7, 11, 20, 23, 35), they show a tendency towards average to above-average precipitation. But other, high precipitation patterns seem to be well-captured. The remaining 25 patterns enclose the reanalysis values in their range.

- 5 Among the models with an overall good performance in terms of frequency are CNRM-CM5, GFDL-CM3, and HadGEM2-ES, while the models BCC-CSM1.1, CCSM4, IPSL-CM5A-LR, MIROC-ESM, and MIROC-ESM-CHEM show highest deviations from the reanalyses. In the work of Belleflamme et al. (2014) which uses a similar set of GCMs, three of these bad performing models were found to have best rankings in reproducing pattern frequency (in summer), which shows that statements about GCM performance are somewhat depending on the actual application and its geographic focus.

4.2.2 Seasonality

The seasonality of patterns in terms of the earliest and last months of occurrence in the course of the year, and the most frequent month of occurrence is generally well reproduced, even for patterns with two peaks (Figure 9). While start and end are often matched perfectly, the peak months deviate more often, but usually by not more than one or two months. A deviation of one month is considered an acceptably good performance. This good reproduction of pattern seasonality is certainly due to the use of variables with a strong seasonal cycle (temperature and specific humidity) for classification – near-surface temperature and its gradient between continent and sea gives very season-specific patterns that are beneficial for the seasonal stratification of weather patterns.

Most GCMs are able to reproduce the correct start months in 16 to 34 patterns, the highest amount of mismatched patterns (20 or more) are found in BCC-CSM1.1, BNU-ESM, MIROC-ESM, and MIROC-ESM-CHEM. The correct end months are reproduced in 18 to 32 patterns. Only one GCM with more than 20 mismatched patterns was found (BCC-CSM1.1) and 15 or more mismatches occurred in BNU-ESM and CESM1-CAM5. Models BCC-CSM1.1, BNU-ESM, IPSL-CM5A-LR, MIROC-ESM, MIROC-ESM-CHEM, and MRI-CGCM3 fail in more than half of all patterns to match the peak months. All GCMs are generally slightly better in capturing the correct start and end month of summer or winter patterns compared to spring/autumn patterns.

4.2.3 Persistence

Finally the persistence of patterns is assessed as the number of consecutive days with the same weather pattern. In Figure 10 the average duration in reanalysis data is compared to the duration in GCMs. The mean duration of patterns is mainly around 2 days, which is usually well represented by the GCMs. Deviations from the persistence of reanalysis data that are greater than 1 day were only found in very few patterns (14, 39), usually mean persistence deviates by less than 1 day.

Best agreement between reanalyses and GCMs was found for CESM1-CAM5, CNRM-CM5, GFDL-CM3, and HadGEM2-ES, while greatest deviations occurred for BCC-CSM1.1, CSIRO-Mk3.6.0, IPSL-CM5A-LR, MIROC-ESM, and MIROC-ESM-CHEM. There is no general difference in deviation from reanalysis for different seasons, though most GCMs are matching persistence of spring/autumn patterns slightly better than persistence of summer or winter patterns. Other studies found patterns to last longer than in our case (e.g. Kysely, 2007, who found mean persistence for Hess-Brezowsky-Grosswetterlagen of 4.3–5.2 (and up to 6.2) days), which might be due to our comparatively large number of patterns.

5 Discussion

5.1 On the optimal classification

This study derives an “optimal” weather pattern classification for the Rhine catchment and investigates to which extent weather patterns are able to stratify local climate variables. Furthermore, the ability of the latest GCM generation to reproduce these weather patterns is evaluated in terms of frequency, seasonality and persistence. The particularities of this study, compared to

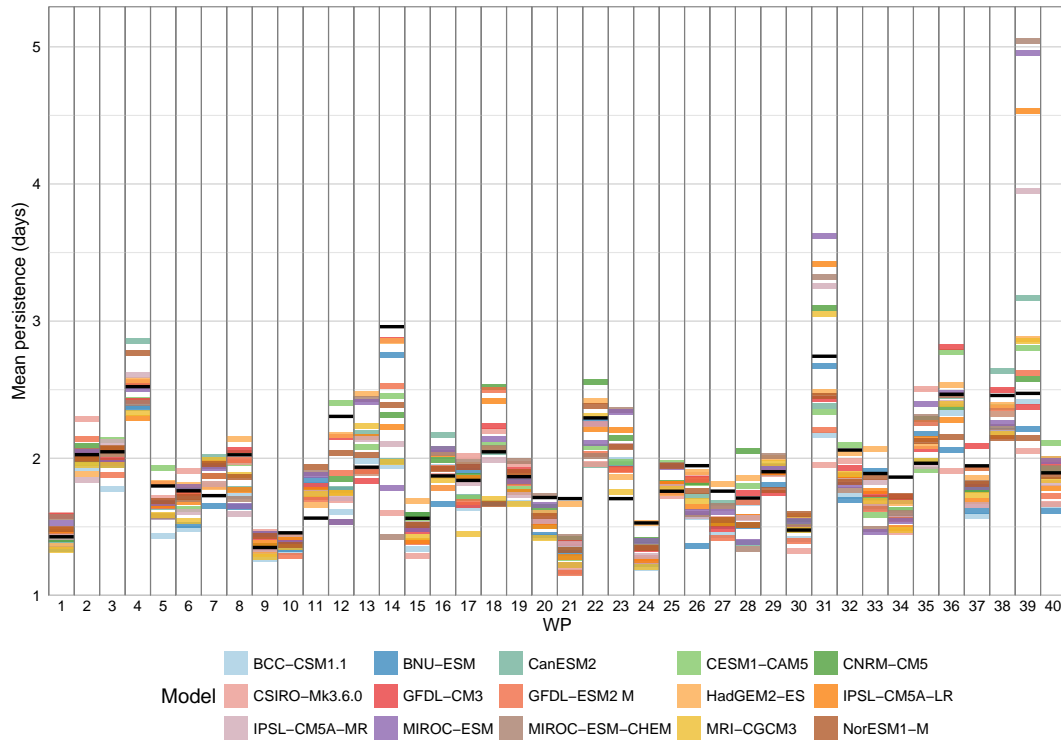


Figure 10. Persistence of patterns (mean number of consecutive days with same pattern) in GCMs (coloured dashes) compared to persistence on reanalysis data (black dashes).

past studies on weather pattern classifications, include (1) the investigation of the skill of several classification variables, (2) the large number of local weather variables used for classification evaluation, (3) the large study area (160 000 km²) and the very high number of climate stations (500490), and (4) the use of long time series (111 years).

It has been argued that there is no “best” classification and that the optimal solution depends on the specific application and region. The best classification for the Rhine catchment was achieved with a combination of mean sea level pressure, temperature and specific humidity as classification variables. Often, weather patterns are classified on pressure fields only. Our results suggest that adding humidity and temperature, which exhibits a distinct seasonal cycle, as classification variable improves the stratification of local climate variables considerably and support the findings of Goodess and Jones (2002). Including temperature as classification variable, yields a very good stratification of weather patterns throughout the year, i.e. weather patterns also show a distinct seasonality. In this way a single classification can be used for the whole year, and there is no need to provide different classifications for each season separately contrary to classifications based solely on mean sea level pressure.

Concerning the number of classes, our results do not give a clear indication about the optimal number. We have selected a comparatively large number, i.e. 40 patterns. This selection is in line with other studies that compared classifications. Philipp

(2009) found for SANDRA classifications that best skills are reached for class numbers greater than 30. Tveito (2010) compared 73 classifications from the COST733 collection of classifications catalogues and found best performances for high numbers of classes; generally for the same classification method a solution with more types performed better. The ten best classifications had at least 26 classes and the best three classifications had 30, 40, and 29 types, respectively. Of course, the decision about the number of classes is guided by the purpose of the classification and the data availability. The stratification of local climate variables into a large number of classes requires sufficient amount of data. Our sensitivity analysis with 100 weather patterns clearly indicated worse performance compared to the classification based on 40 patterns. But in general, a larger number of classes is advisable if not limited by the amount of available data.

In terms of spatial domain, the best results are obtained for rather small classification areas covering the target area. Increasing the classification domain covering the whole of Europe slightly aggravates the stratification of local variables, particularly of temperature. It is however, difficult to draw generalisations with regards to the selection of the spatial domain given our results.

The “optimal” classification is only partially able to stratify local climate variable, i.e. the classification explains a modest share of the local climate variability. EV values, averaged across all ~~500~~⁴⁹⁰ stations in the Rhine catchment, are in the range of 10–20% for precipitation, 70–80% for temperature, 10–20% for humidity and 40% for radiation. Hence, especially local precipitation and humidity are governed by processes that are not completely represented by the large-scale distribution of pressure, temperature and humidity. This result questions the widespread downscaling approaches that are based on weather pattern classification. The within-type variability dominates versus the between-type variability, at least for local precipitation and humidity. Before applying the weather pattern based downscaling approach, it should therefore be investigated whether the link between the large-scale synoptic situation and the local climate variable of interest is strong enough for the given purpose.

Although downscaling approaches based on weather patterns are widespread, there are not many studies that have assessed the skill of weather patterns for stratifying local climate variables. The available studies report skill values that are comparable to our results. For example, Osborn and Jones (2000) found large residuals between precipitation predicted from circulation indices and observed precipitation. Enke and Spekat (1997) obtained 20.5% of explained variation for precipitation and 80.9% for mean temperature. Huth et al. (2016) compared a large number of classifications from COST ACTION 733 using different classification methods, numbers of patterns, spatial domains, classification variables, sequence lengths of 1 or 4 days. For all domains and classification settings they obtained EV values of max. 0.33 for precipitation and max. 0.46 for mean temperature. The much higher values for temperature in our study can be explained by the use of 2 m temperature as additional classification variable. Our classification using only sea level pressure obtains similarly low values. For those classifications that are best comparable to our study, i.e. method SANDRA, whole year, 1-day sequence, classification on sea level pressure, 9, 18, or 27 types, comparable spatial domain, they obtain EV values of 0.07–0.28 for temperature and 0.08–0.27 for precipitation. These results are averages across all seasons, whereas the results for the winter are generally better. The study of Enke et al. (2005b) suggested that classifications that are highly optimised towards a certain local climate variable, such as precipitation, may have significantly better skill than classifications for several variables. However, highly optimised classifications have the disadvantage that their skill deteriorates when applied for other target variables.

Downscaling using the weather pattern approach is based on the assumption of a time-constant relationship between patterns and local climate variables. Instationarities in the relationship between weather types and local variables is a long-debated issue in downscaling (IPCC, 2007), and several studies indicated their presence (e.g. Widmann and Schär, 1997; Beck et al., 2007; Haberlandt et al., 2015). Those classifications were, however, based on sea level pressure only (Beck et al., 2007; Haberlandt et al., 2015) or additionally included geopotential height (Widmann and Schär, 1997). The addition of temperature and specific humidity might provide a better classification also in terms of capturing transient changes in local climate by changes in weather pattern sequencing. This suggestion is supported by the regional climate simulations of Schär et al. (1996). For the European Alps, they found that increased warming can lead to larger moisture fluxes and larger precipitation rates even when the synoptic situation remains unchanged. Thus, it should be further investigated whether classifications that are based on additional variables besides pressure fields show less instationarity in the link between synoptic situation and local climate.

5.2 On the skill of GCMs

Concerning the skill of the latest generation of GCMs to reproduce these weather patterns, we find that the main characteristics of weather patterns derived from ERA20C reanalysis data are well represented in GCMs that are forced with observed GHG concentrations. Interestingly, the performance of GCMs is usually similar for a certain GCM for the analysed characteristics, i.e. frequency, seasonality, or persistence of patterns. This result suggests that some GCMs are much better suited for downscaling based on weather pattern classifications. Others should be excluded or their results should at least be interpreted with greatest care. From the results obtained, it would be advisable not to consider the models BCC-CSM1.1, MIROC-ESM, and MIROC-ESM-CHEM. This would leave 12 GCMs with acceptable performance. However, it should be noted that the skill of GCMs may depend on the specific classification, i.e. the classification variables and the region. Another classifications might result in a different ranking of GCMs.

6 Conclusions

In the scope of an attribution study aimed at quantifying the role of climate change, in particular the contribution of anthropogenic climate change, to changes in flood flows in the Rhine catchment, we developed a weather pattern classification. This classification is intended to be used for downscaling of general circulation model outputs with a multi-site, multi-variate weather generator. An optimal classification was selected by evaluating four different combinations of classification variables based on the ERA20C reanalysis data, by testing six spatial domains and four numbers of classes. The best stratification of local variables (daily precipitation, humidity, radiation, and mean, minimum, and maximum temperature) was obtained when using 40 classes from the SANDRA classification, with sea level pressure, temperature and specific humidity combined over a relatively small Central European domain. The performance of different classifications was assessed with Explained Variation (EV) and Pseudo-F statistic. The optimal classification showed rather high EV (similar to Pseudo-F statistic) for single variables except precipitation and humidity. A multi-variate evaluation demonstrates that the classification is reasonable, although single variables are not very well stratified. Different weather patterns can be similar in one variable (e.g. temperature), but

exhibit very distinct behaviour in others (e.g. precipitation). Often, weather patterns are classified on pressure fields only. Our results suggest that adding humidity and temperature as classification variables improves the stratification considerably. This results in a very good stratification of weather patterns throughout the year. In this way a single classification can be used for the whole year, and there is no need to provide different classifications for each season. Adding further classification variables to pressure fields may also alleviate the often encountered problem that the link between the synoptic situation and the local climate is not constant in time.

GCMs should properly reproduce the climatology of weather patterns in order to be applicable for the attribution of flood changes. Hence, the performance of 15 GCMs from the CMIP5 project in matching the climatology of ERA20C reanalysis in terms of frequency, seasonality (month of occurrence) and persistence (number of consecutive days) of weather patterns was evaluated. The frequency of weather patterns is matched well by the majority of GCMs with a few GCMs showing systematic deviations. No season-specific deviations were found. Due to the use of temperature for pattern classification, the seasonality of weather patterns matched well in most of the GCMs. All GCMs were found able to better capture the seasonality of summer and winter patterns compared to spring and autumn ones. The mean duration of patterns was about 2 days with most GCMs being able to reproduce this persistence. Overall, three GCMs BCC-CSM1.1, MIROC-ESM, and MIROC-ESM-CHEM were found to systematically deviate from the reanalysis weather pattern climatology. The variation between different realisations of one GCM was found small compared to the difference between various GCMs.

Appendix A: Maps of meteorological mean values for each pattern

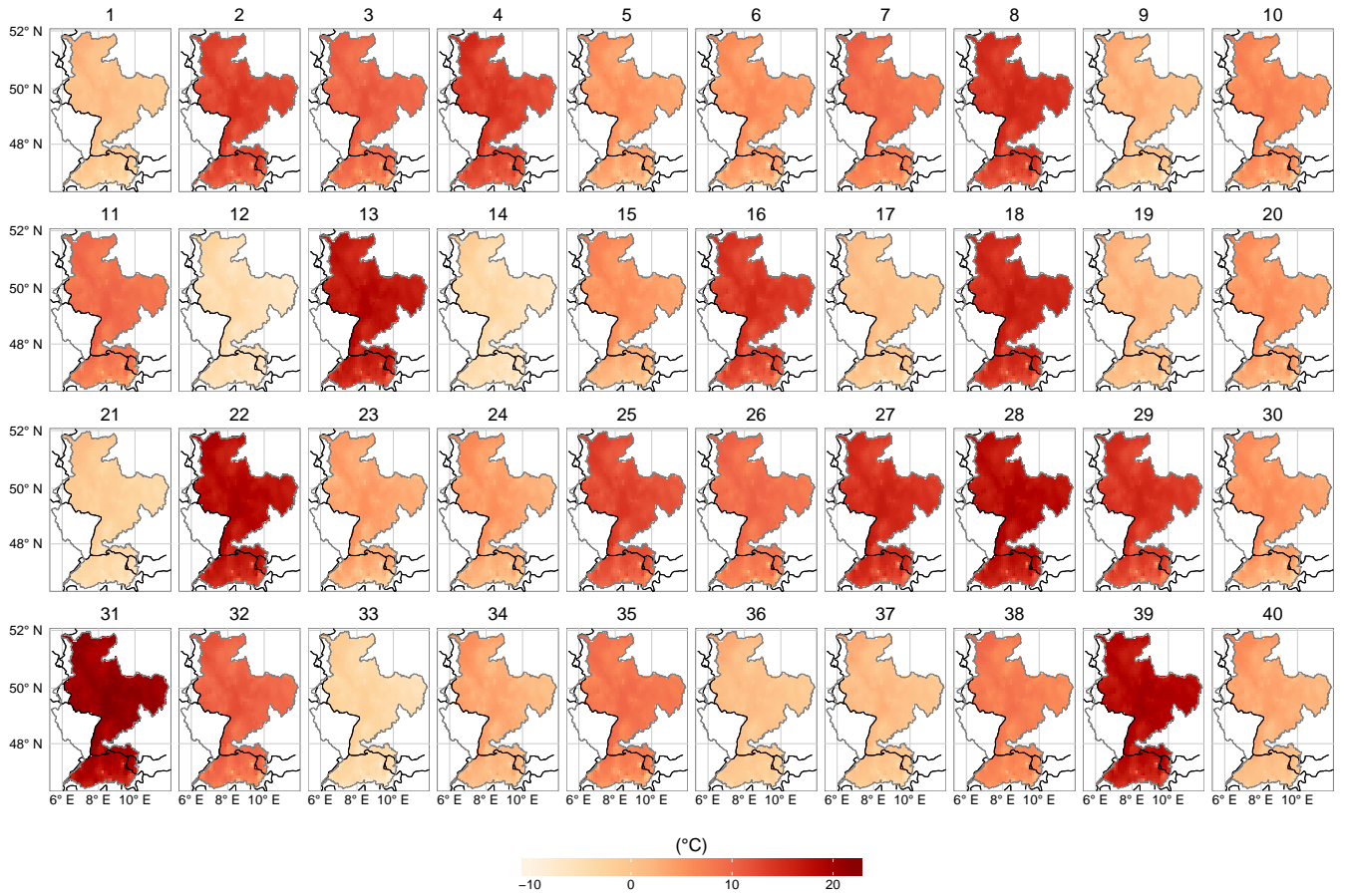


Figure 11. Average (over all days with the respective pattern) mean temperature for all weather patterns. Black lines denote state borders, grey line Rhine catchment.

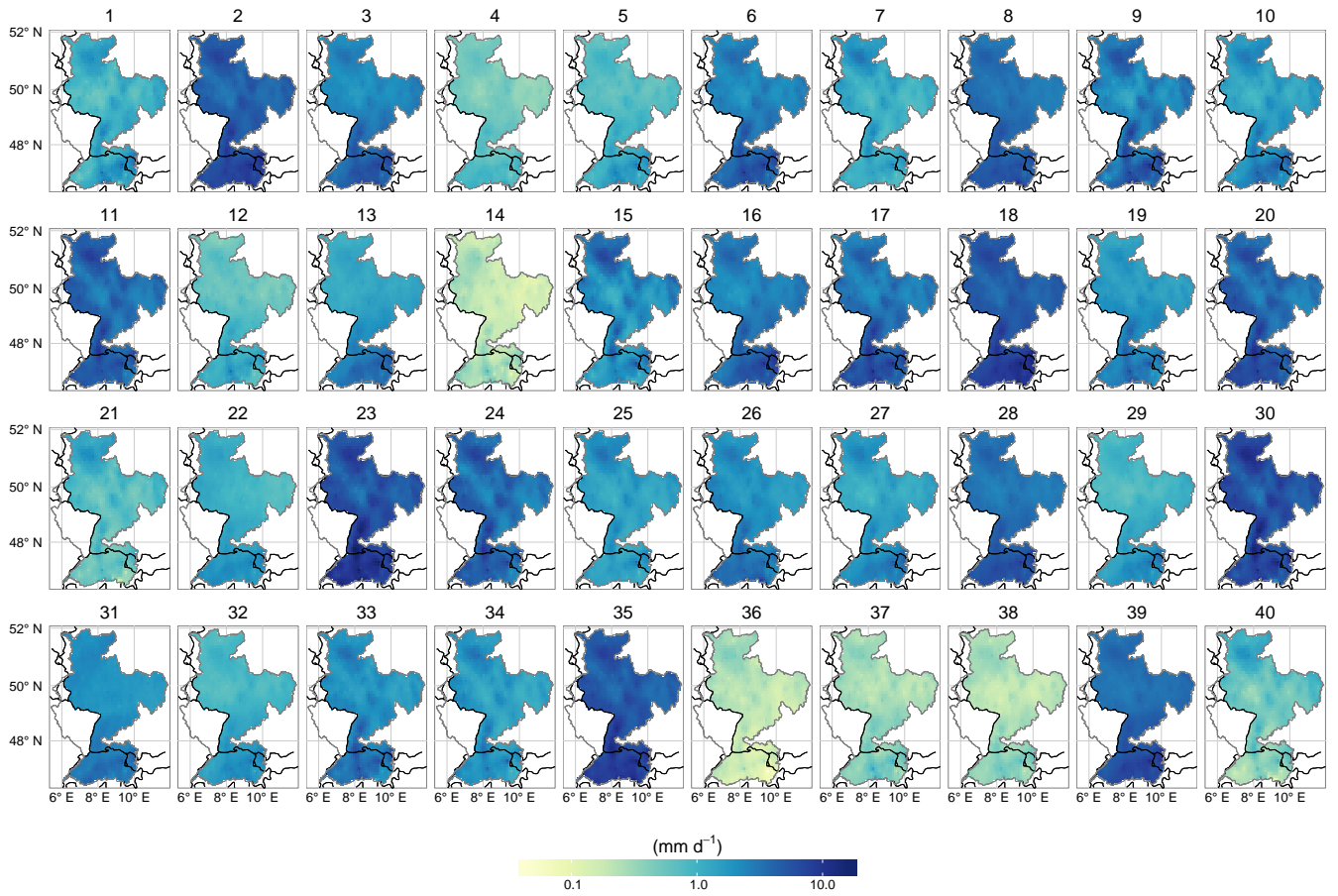


Figure 12. As in Figure 11, but for daily precipitation.

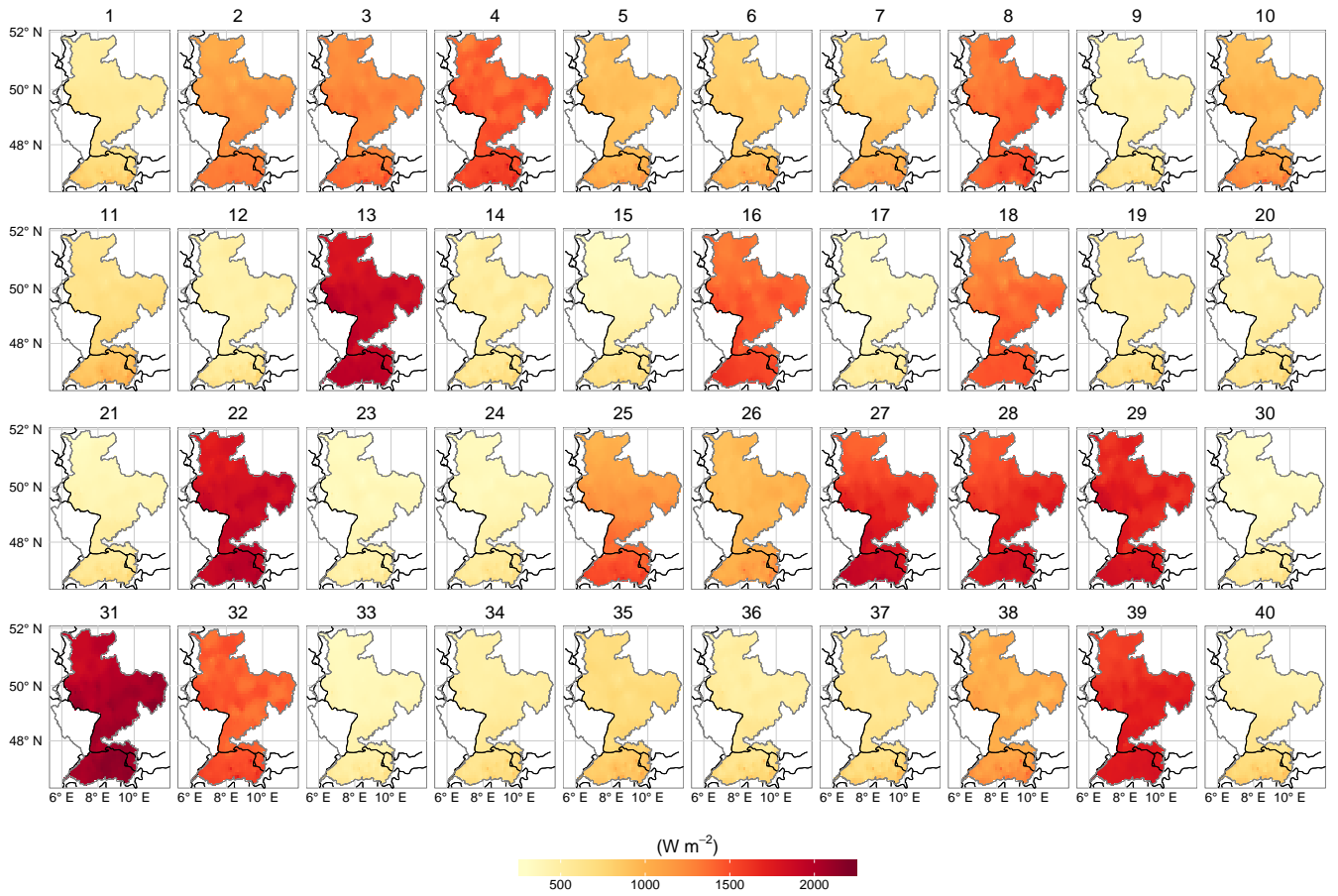


Figure 13. As in Figure 11, but for global radiation.

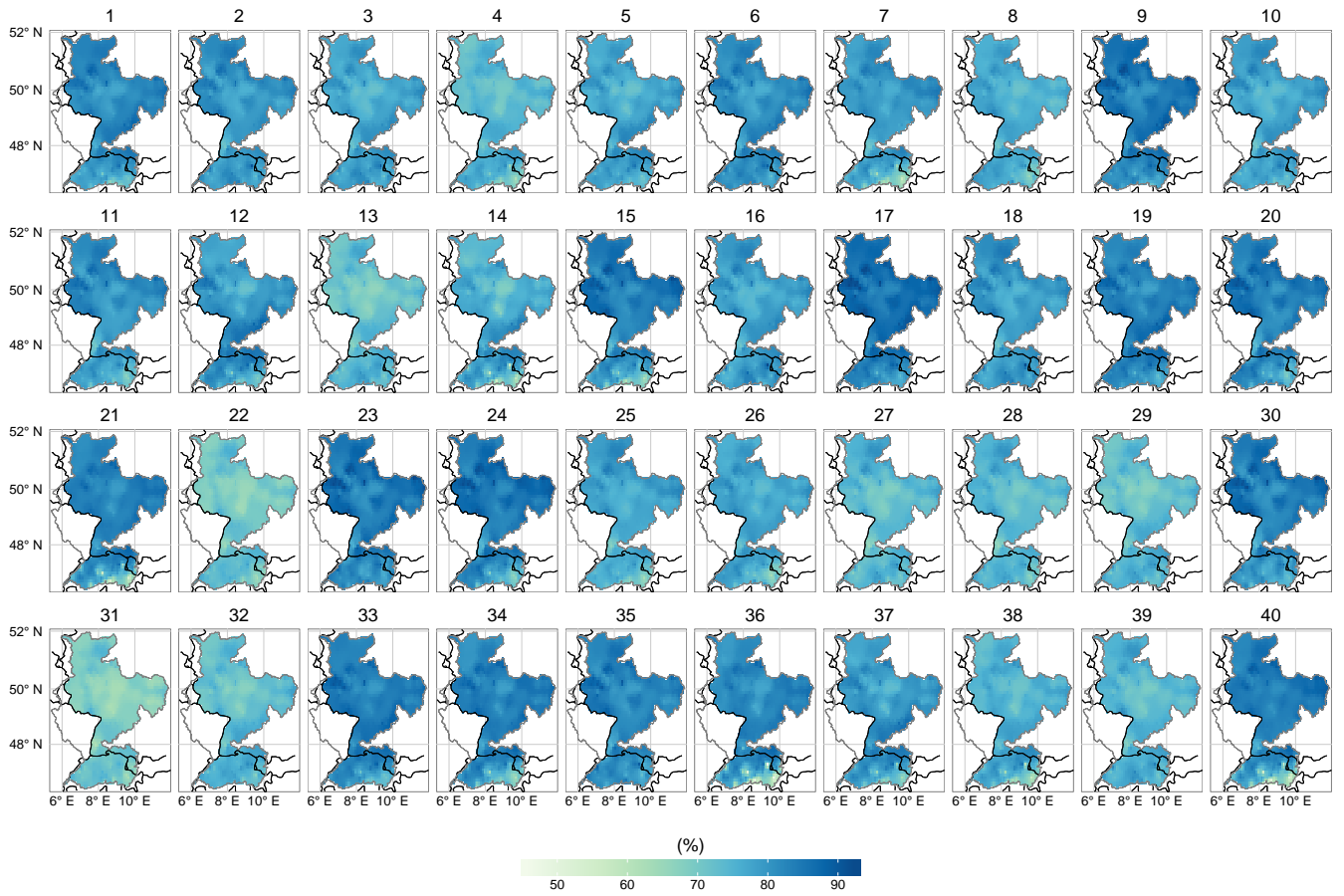


Figure 14. As in Figure 11, but for relative humidity.

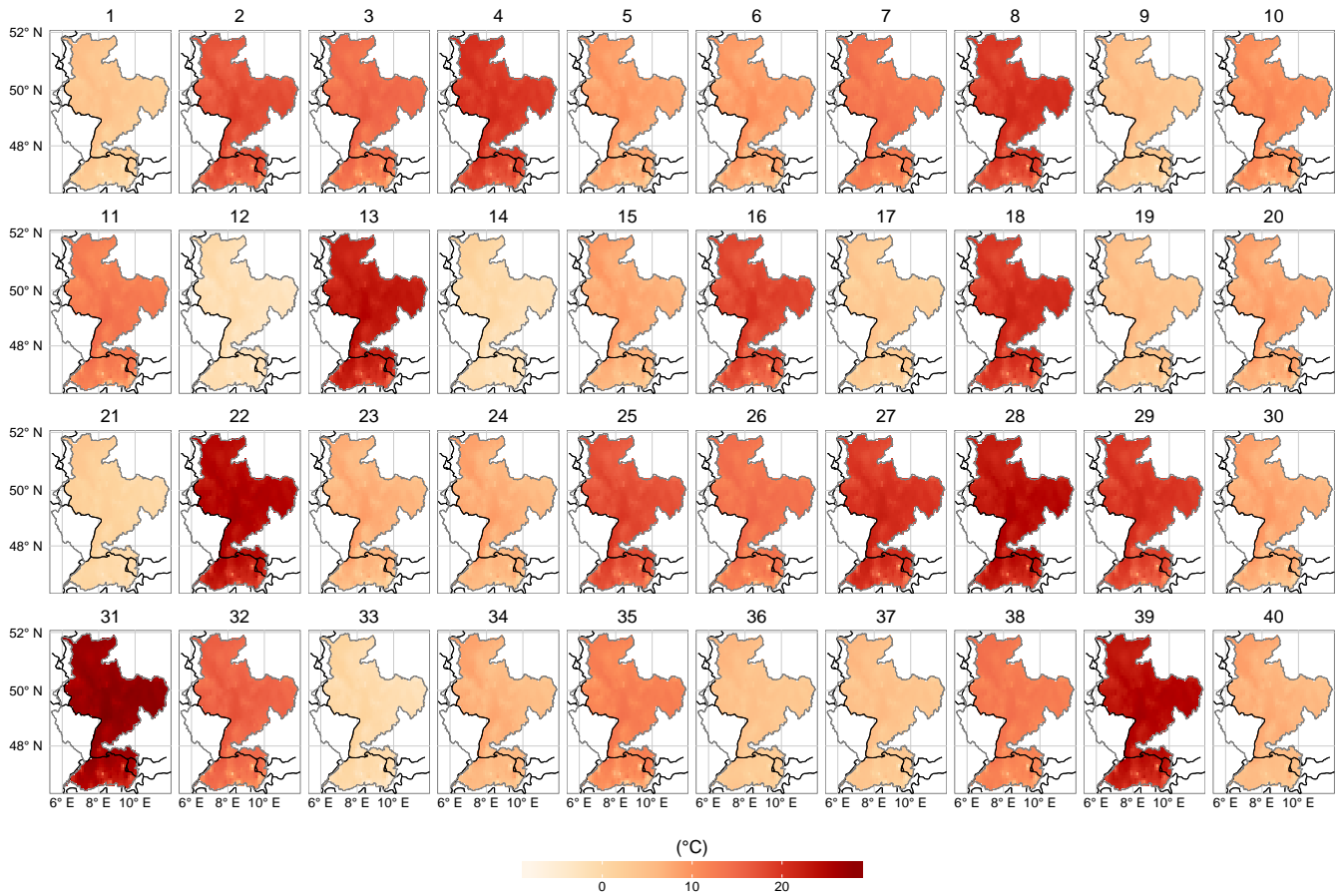


Figure 15. As in Figure 11, but for daily maximum temperature.

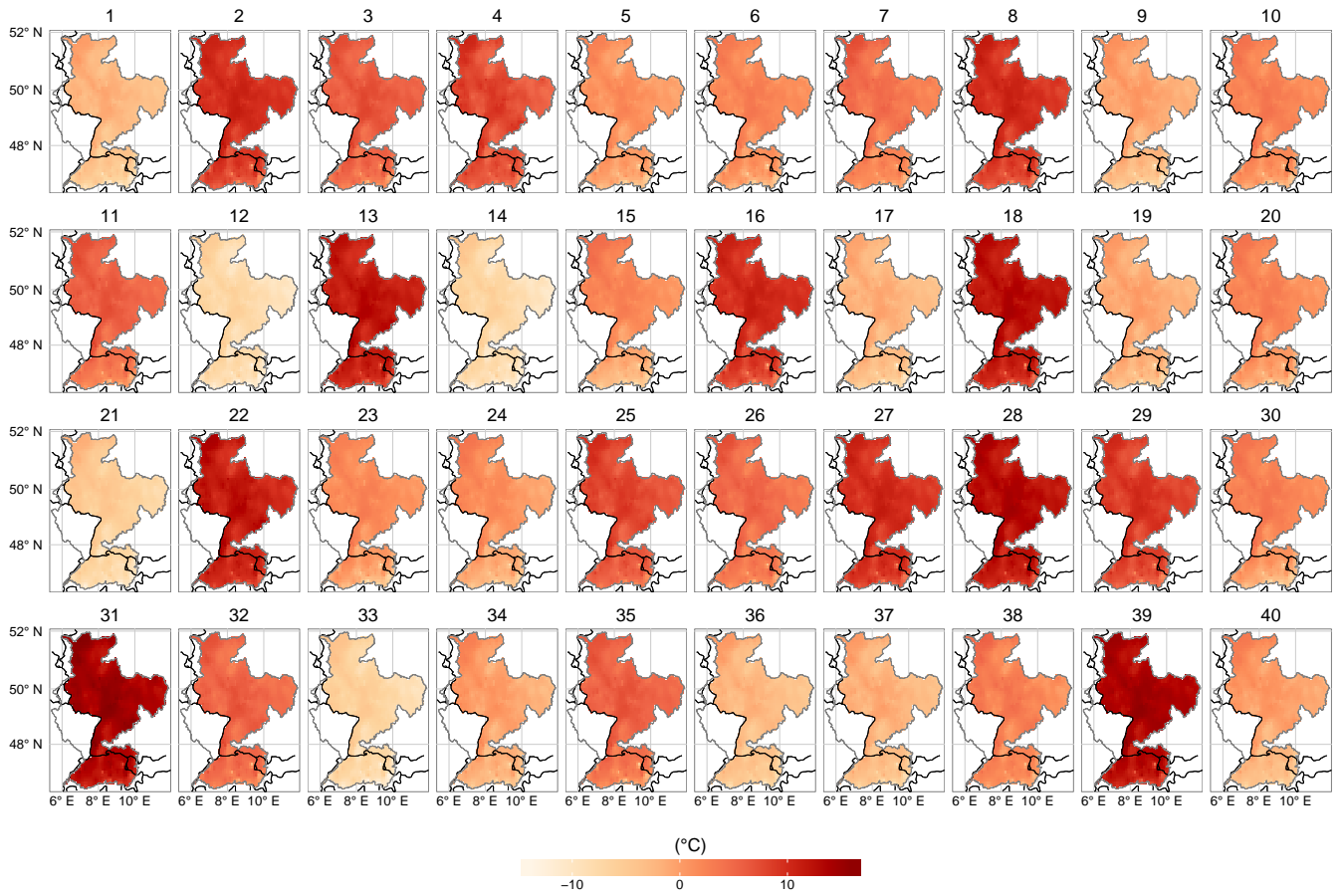


Figure 16. As in Figure 11, but for daily minimum temperature.

Author contributions. All authors contributed to the experiment design and the manuscript. A. Murawski performed the computations and created the figures.

Acknowledgements. We acknowledge the World Climate Research Programme’s Working Group on Coupled Modelling, which is responsible for CMIP, and we thank the climate modeling groups (listed in Table 1 of this paper) for producing and making available their model
5 output. For CMIP the U.S. Department of Energy’s Program for Climate Model Diagnosis and Intercomparison provides coordinating support and led development of software infrastructure in partnership with the Global Organization for Earth System Science Portals. (from <http://cmip-pcmdi.llnl.gov/cmip5/citation.html>)

The ECMWF ERA-20C Reanalysis data used in this study were obtained from the ECMWF Data Server (<http://www.ecmwf.int>).

We gratefully appreciate the provision of data by the national meteorological services of Germany, Austria, and Switzerland, kindly
10 provided and processed by the Potsdam-Institute for Climate Impact Research (PIK).

~~We acknowledge the E-OBS dataset from the EU-FP6 project ENSEMBLES (-) and the data providers in the ECA&D project (-)~~

Help and discussion on the classification software *cost733class* by Dr. Tobias Pardowitz (FU Berlin) is greatly appreciated.

A. Murawski acknowledges funding by Climate KIC.

References

- Anagnostopoulou, C., Tolika, K., Maheras, P., Kutiel, H., and Flocas, H. A.: Performance of the general circulation HadAM3P model in simulating circulation types over the Mediterranean region, *International Journal of Climatology*, 28, 185–203, doi:10.1002/joc.1521, <http://dx.doi.org/10.1002/joc.1521>, 2008.
- 5 Bárdossy, A. and Plate, E. J.: Modeling daily rainfall using a semi-Markov representation of circulation pattern occurrence, *Journal of Hydrology*, 122, 33–47, doi:10.1016/0022-1694(91)90170-M, <http://www.sciencedirect.com/science/article/pii/002216949190170M>, 1991.
- Bárdossy, A. and Plate, E. J.: Space-time model for daily rainfall using atmospheric circulation patterns, *Water Resources Research*, 28, 1247–1259, doi:10.1029/91WR02589, <http://dx.doi.org/10.1029/91WR02589>, 1992.
- Bárdossy, A., Stehlík, J., and Caspary, H.-J.: Automated objective classification of daily circulation patterns for precipitation and temperature
10 downscaling based on optimized fuzzy rules, *Climate Research*, 23, 11–22, 2002.
- Beck, C. and Philipp, A.: Evaluation and comparison of circulation type classifications for the European domain, *Physics and Chemistry of the Earth*, 35, 374–387, doi:10.1016/j.pce.2010.01.001, <http://dx.doi.org/10.1016/j.pce.2010.01.001>, 2010.
- Beck, C., Jacobeit, J., and Jones, P. D.: Frequency and within-type variations of large-scale circulation types and their effects on low-frequency climate variability in central europe since 1780, *International Journal of Climatology*, 27, 473–491, doi:10.1002/joc.1410,
15 <http://dx.doi.org/10.1002/joc.1410>, 2007.
- Belleflamme, A., Fettweis, X., Lang, C., and Erpicum, M.: Current and future atmospheric circulation at 500 hPa over Greenland simulated by the CMIP3 and CMIP5 global models, *Climate Dynamics*, 41, 2061–2080, doi:10.1007/s00382-012-1538-2, <http://dx.doi.org/10.1007/s00382-012-1538-2>, 2013.
- Belleflamme, A., Fettweis, X., and Erpicum, M.: Do global warming-induced circulation pattern changes affect temperature and precipitation
20 over Europe during summer?, *International Journal of Climatology*, 35, 1484–1499, doi:10.1002/joc.4070, <http://dx.doi.org/10.1002/joc.4070>, 2014.
- Bettolli, M. L. and Penalba, O. C.: Synoptic sea level pressure patterns-daily rainfall relationship over the Argentine Pampas in a multi-model simulation, *Meteorological Applications*, 21, 376–383, doi:10.1002/met.1349, <http://dx.doi.org/10.1002/met.1349>, 2012.
- Bissolli, P. and Dittmann, E.: The objective weather type classification of the German Weather Service and its possibilities of application
25 to environmental and meteorological investigations, *Meteorologische Zeitschrift*, 10, 253–260, doi:10.1127/0941-2948/2001/0010-0253, <http://dx.doi.org/10.1127/0941-2948/2001/0010-0253>, 2001.
- Bosshard, T., Kotlarski, S., Zappa, M., and Schär, C.: Hydrological Climate-Impact Projections for the Rhine River: GCM–RCM Uncertainty and Separate Temperature and Precipitation Effects, *Journal of Hydrometeorology*, 15, 697–713, doi:10.1175/jhm-d-12-098.1, <http://dx.doi.org/10.1175/JHM-D-12-098.1>, 2014.
- 30 Brands, S., Herrera, S., Fernández, J., and Gutiérrez, J. M.: How well do CMIP5 Earth System Models simulate present climate conditions in Europe and Africa?, *Climate Dynamics*, 41, 803–817, doi:10.1007/s00382-013-1742-8, <http://dx.doi.org/10.1007/s00382-013-1742-8>, 2013.
- Brinkmann, W. A. R.: Within-type variability of 700 hPa winter circulation patterns over the Lake Superior basin, *International Journal of Climatology*, 19, 41–58, [http://onlinelibrary.wiley.com/doi/10.1002/%28SICI%291097-0088%28199901%2919:1%3C41::AID-JOC349%](http://onlinelibrary.wiley.com/doi/10.1002/%28SICI%291097-0088%28199901%2919:1%3C41::AID-JOC349%3E3.0.CO;2-U/abstract)
35 [3E3.0.CO;2-U/abstract](http://onlinelibrary.wiley.com/doi/10.1002/%28SICI%291097-0088%28199901%2919:1%3C41::AID-JOC349%3E3.0.CO;2-U/abstract), 1999.
- Brinkmann, W. A. R.: Modification of a correlation-based circulation pattern classification to reduce within-type variability of temperature and precipitation, *International Journal of Climatology*, 20, 839–852, 2000.

- Brisson, E., Demuzere, M., Kwakernaak, B., and Van Lipzig, N. P. M.: Relations between atmospheric circulation and precipitation in Belgium, *Meteorology and Atmospheric Physics*, 111, 27–39, doi:10.1007/s00703-010-0103-y, <http://dx.doi.org/10.1007/s00703-010-0103-y>, 2010.
- Bürger, G.: Expanded downscaling for generating local weather scenarios, *Climate Research*, 7, 111–128, https://www.researchgate.net/profile/Gerd_Buerger/publication/250221495_Expanded_downscaling_for_generating_local_weather_scenarios/links/02e7e52c52c9d80ad5000000.pdf, 1996.
- Cahynová, M. and Huth, R.: Circulation vs. climatic changes over the Czech Republic: A comprehensive study based on the COST733 database of atmospheric circulation classifications, *Physics and Chemistry of the Earth*, 35, 422–428, doi:10.1016/j.pce.2009.11.002, <http://dx.doi.org/10.1016/j.pce.2009.11.002>, 2010.
- 10 Caliński, T. and Harabasz, J.: A dendrite method for cluster analysis, *Communications in Statistics – Theory and Methods*, 3, 1–27, doi:10.1080/03610927408827101, <http://dx.doi.org/10.1080/03610927408827101>, 1974.
- Corte-Real, J., Hu, H., and Qian, B.: A weather generator for obtaining daily precipitation scenarios based on circulation patterns, *Climate Research*, 13, 61–75, 1999.
- Dankers, R. and Feyen, L.: Flood hazard in Europe in an ensemble of regional climate scenarios, *Journal of Geophysical Research: Atmospheres*, 114, D16 108, doi:10.1029/2008JD011523, <http://dx.doi.org/10.1029/2008JD011523>, 2009.
- 15 Duethmann, D., Bolch, T., Farinotti, D., Kriegel, D., Vorogushyn, S., Merz, B., Pieczonka, T., Jiang, T., Su, B., and Güntner, A.: Attribution of streamflow trends in snow and glacier melt-dominated catchments of the Tarim River, Central Asia, *Water Resources Research*, 51, 4727–4750, doi:10.1002/2014WR016716, <http://onlinelibrary.wiley.com/doi/10.1002/2014WR016716/abstract>, 2015.
- Elshamy, M. E., Wheeler, H. S., Gedney, N., and Huntingford, C.: Evaluation of the rainfall component of a weather generator for climate impact studies, *Journal of Hydrology*, 326, 1–24, doi:10.1016/j.jhydrol.2005.09.017, <http://dx.doi.org/10.1016/j.jhydrol.2005.09.017>, 2006.
- 20 Enke, W. and Spekat, A.: Downscaling climate model outputs into local and regional weather elements by classification and regression, *Climate Research*, 8, 195–207, http://cost733.geo.uni-augsburg.de/cost733cat-2.0/CKMo27_SE_S01_Z1-Z5/CEC_Meta.pdf, 1997.
- Enke, W., Deutschländer, T., Schneider, F., and Küchler, W.: Results of five regional climate studies applying a weather pattern based downscaling method to ECHAM4 climate simulation, *Meteorologische Zeitschrift*, 14, 247–257, doi:10.1127/0941-2948/2005/0028, <http://dx.doi.org/10.1127/0941-2948/2005/0028>, 2005a.
- 25 Enke, W., Schneider, F., and Deutschländer, T.: A novel scheme to derive optimized circulation pattern classifications for downscaling and forecast purposes, *Theoretical and Applied Climatology*, 82, 51–63, doi:10.1007/s00704-004-0116-x, <http://dx.doi.org/10.1007/s00704-004-0116-x>, 2005b.
- Falter, D., Schröter, K., Dung, N. V., Vorogushyn, S., Kreibich, H., Hundeche, Y., Apel, H., and Merz, B.: Spatially coherent flood risk assessment based on long-term continuous simulation with a coupled model chain, *Journal of Hydrology*, 524, 182–193, doi:10.1016/j.jhydrol.2015.02.021, <http://dx.doi.org/10.1016/j.jhydrol.2015.02.021>, 2015.
- 30 Fatichi, S., Ivanov, V. Y., and Caporali, E.: Simulation of future climate scenarios with a weather generator, *Advances in Water Resources*, 34, 448–467, doi:10.1016/j.advwatres.2010.12.013, <http://dx.doi.org/10.1016/j.advwatres.2010.12.013>, 2011.
- Fleig, A. K., Tallaksen, L. M., James, P., Hisdal, H., and Stahl, K.: Attribution of European precipitation and temperature trends to changes in synoptic circulation, *Hydrology and Earth System Sciences*, 19, 3093–3107, doi:10.5194/hess-19-3093-2015, <http://www.hydrol-earth-syst-sci.net/19/3093/2015/>, 2015.
- 35

- Fowler, H., Kilsby, C., O'Connell, P., and Burton, A.: A weather-type conditioned multi-site stochastic rainfall model for the generation of scenarios of climatic variability and change, *Journal of Hydrology*, 308, 50–66, doi:10.1016/j.jhydrol.2004.10.021, <http://dx.doi.org/10.1016/j.jhydrol.2004.10.021>, 2005.
- Fowler, H. J., Kilsby, C. G., and O'Connell, P. E.: A stochastic rainfall model for the assessment of regional water resource systems under changed climatic condition, *Hydrology and Earth System Sciences*, 4, 263–281, doi:10.5194/hess-4-263-2000, <http://www.hydrol-earth-syst-sci.net/4/263/2000/>, 2000.
- Fowler, H. J., Blenkinsop, S., and Tebaldi, C.: Linking climate change modelling to impacts studies: recent advances in downscaling techniques for hydrological modelling, *International Journal of Climatology*, 27, 1547–1578, doi:10.1002/joc.1556, <http://dx.doi.org/10.1002/joc.1556>, 2007.
- 10 Goodess, C. M. and Jones, P. D.: Links between circulation and changes in the characteristics of Iberian rainfall, *International Journal of Climatology*, 22, 1593–1615, doi:10.1002/joc.810, <http://dx.doi.org/10.1002/joc.810>, 2002.
- Haberlandt, U., Belli, A., and Bárdossy, A.: Statistical downscaling of precipitation using a stochastic rainfall model conditioned on circulation patterns – an evaluation of assumptions, *International Journal of Climatology*, 35, 417–432, doi:10.1002/joc.3989, <http://dx.doi.org/10.1002/joc.3989>, 2015.
- 15 Hamlet, A. F. and Lettenmaier, D. P.: Effects of 20th century warming and climate variability on flood risk in the western U.S., *Water Resources Research*, 43, W06 427, doi:10.1029/2006WR005099, <http://onlinelibrary.wiley.com/doi/10.1029/2006WR005099/abstract>, 2007.
- Hamlet, A. F., Mote, P. W., Clark, M. P., and Lettenmaier, D. P.: Twentieth-century trends in runoff, evapotranspiration, and soil moisture in the western United States, *Journal of Climate*, 20, 1468–1486, doi:doi:10.1175/JCLI4051.1, <http://journals.ametsoc.org/doi/abs/10.1175/JCLI4051.1>, 2007.
- 20 Haylock, M. R., Hofstra, N., Klein Tank, A. M. G., Klok, E. J., Jones, P. D., and New, M.: A European daily high-resolution gridded data set of surface temperature and precipitation for 1950–2006, *Journal of Geophysical Research*, 113, D20 119, doi:10.1029/2008jd010201, <http://dx.doi.org/10.1029/2008JD010201>, 2008.
- Hewitson, B. C. and Crane, R. G.: Consensus between GCM climate change projections with empirical downscaling: precipitation downscaling over South Africa, *International Journal of Climatology*, 26, 1315–1337, doi:10.1002/joc.1314, <http://dx.doi.org/10.1002/joc.1314>, 25 2006.
- Hundecha, Y. and Merz, B.: Exploring the relationship between changes in climate and floods using a model-based analysis, *Water Resources Research*, 48, W04 512, doi:10.1029/2011wr010527, <http://dx.doi.org/10.1029/2011WR010527>, 2012.
- Hundecha, Y., Pahlow, M., and Schumann, A.: Modeling of daily precipitation at multiple locations using a mixture of distributions to characterize the extremes, *Water Resources Research*, 45, W12 412, doi:10.1029/2008wr007453, <http://dx.doi.org/10.1029/2008WR007453>, 30 2009.
- Huth, R.: Synoptic-climatological applicability of circulation classifications from the COST733 collection: First results, *Physics and Chemistry of the Earth*, 35, 388–394, doi:10.1016/j.pce.2009.11.013, <http://dx.doi.org/10.1016/j.pce.2009.11.013>, 2010.
- Huth, R., Beck, C., Philipp, A., Demuzere, M., Ustrnul, Z., Cahynová, M., Kyselý, J., and Tveito, O. E.: Classifications of Atmospheric Circulation Patterns, *Annals of the New York Academy of Sciences*, 1146, 105–152, doi:10.1196/annals.1446.019, <http://dx.doi.org/10.1196/annals.1446.019>, 35 2008.
- Huth, R., Beck, C., and Kučerová, M.: Synoptic-climatological evaluation of the classifications of atmospheric circulation patterns over Europe, *International Journal of Climatology*, 36, 2710–2726, doi:10.1002/joc.4546, <http://dx.doi.org/10.1002/joc.4546>, 2016.

- IPCC: Climate change 2007: The physical science basis, Contribution of Working Group I to the Fourth Assessment Report of the Intergovernmental Panel on Climate Change, Cambridge University Press, Cambridge, United Kingdom and New York, NY, USA, https://www.ipcc.ch/publications_and_data/ar4/wg1/en/contents.html, 2007.
- Jones, P. and Lister, D.: The influence of the circulation on surface temperature and precipitation patterns over Europe, *Climate of the Past*, 5, 259–267, doi:10.5194/cp-5-259-2009, <http://www.clim-past.net/5/259/2009/>, 2009.
- Kalkstein, L. S., Tan, G., and Skindlov, J. A.: An evaluation of three clustering procedures for use in synoptic climatological classification, *Journal of Climate and Applied Meteorology*, 26, 717–730, doi:10.1175/1520-0450(1987)026<0717:AEOTCP>2.0.CO;2, <http://journals.ametsoc.org/doi/abs/10.1175/1520-0450%281987%29026%3C0717%3AAEOTCP%3E2.0.CO%3B2>, 1987.
- Karl, T. R., Wang, W.-C., Schlesinger, M. E., Knight, R. W., and Portman, D.: A method of relating general circulation model simulated climate to the observed local climate. Part I: Seasonal statistics, *Journal of Climate*, 3, 1053–1079, 1990.
- Katz, R. W.: Use of conditional stochastic models to generate climate change scenarios, *Climatic Change*, 32, 237–255, doi:10.1007/BF00142464, <http://dx.doi.org/10.1007/BF00142464>, 1996.
- Kidson, J. W.: Relationship of New Zealand daily and monthly weather patterns to synoptic weather types, *International Journal of Climatology*, 14, 723–737, doi:10.1002/joc.3370140703, <http://dx.doi.org/10.1002/joc.3370140703>, 1994.
- Kilsby, C., Cowpertwait, P., O’connell, P., and Jones, P.: Predicting rainfall statistics in England and Wales using atmospheric circulation variables, *International Journal of Climatology*, 18, 523–539, 1998.
- Kilsby, C., Jones, P., Burton, A., Ford, A., Fowler, H., Harpham, C., James, P., Smith, A., and Wilby, R.: A daily weather generator for use in climate change studies, *Environmental Modelling & Software*, 22, 1705–1719, doi:10.1016/j.envsoft.2007.02.005, <http://dx.doi.org/10.1016/j.envsoft.2007.02.005>, 2007.
- Kim, J., Ivanov, V. Y., and Fatichi, S.: Climate change and uncertainty assessment over a hydroclimatic transect of Michigan, *Stochastic Environmental Research and Risk Assessment*, 30, 923–944, doi:10.1007/s00477-015-1097-2, <http://dx.doi.org/10.1007/s00477-015-1097-2>, 2015.
- Kysely, J.: Implications of enhanced persistence of atmospheric circulation for the occurrence and severity of temperature extremes, *International Journal of Climatology*, 27, 689–695, doi:10.1002/joc.1478, <http://dx.doi.org/10.1002/joc.1478>, 2007.
- Lammersen, R., Engel, H., van de Langemheen, W., and Buiteveld, H.: Impact of river training and retention measures on flood peaks along the Rhine, *Journal of Hydrology*, 267, 115 – 124, doi:10.1016/S0022-1694(02)00144-0, <http://www.sciencedirect.com/science/article/pii/S0022169402001440>, 2002.
- Lu, Y., Qin, X. S., and Mandapaka, P. V.: A combined weather generator and K-nearest-neighbour approach for assessing climate change impact on regional rainfall extremes, *International Journal of Climatology*, 35, 4493–4508, doi:10.1002/joc.4301, <http://dx.doi.org/10.1002/joc.4301>, 2015.
- Łupikasza, E.: Relationships between occurrence of high precipitation and atmospheric circulation in Poland using different classifications of circulation types, *Physics and Chemistry of the Earth*, 35, 448–455, doi:10.1016/j.pce.2009.11.012, <http://dx.doi.org/10.1016/j.pce.2009.11.012>, 2010.
- Maraun, D., Wetterhall, F., Ireson, A. M., Chandler, R. E., Kendon, E. J., Widmann, M., Brien, S., Rust, H. W., Sauter, T., Themeßl, M., Venema, V. K. C., Chun, K. P., Goodess, C. M., Jones, R. G., Onof, C., Vrac, M., and Thiele-Eich, I.: Precipitation downscaling under climate change: Recent developments to bridge the gap between dynamical models and the end user, *Reviews of Geophysics*, 48, RG3003, doi:10.1029/2009rg000314, <http://dx.doi.org/10.1029/2009RG000314>, 2010.

- Masson, D. and Frei, C.: Spatial analysis of precipitation in a high-mountain region: exploring methods with multi-scale topographic predictors and circulation types, *Hydrology and Earth System Sciences*, 18, 4543–4563, doi:10.5194/hess-18-4543-2014, <http://www.hydrol-earth-syst-sci.net/18/4543/2014/>, 2014.
- Merz, B., Vorogushyn, S., Uhlemann, S., Delgado, J., and Hündecha, Y.: HESS Opinions “More efforts and scientific rigour are needed to attribute trends in flood time series”, *Hydrology and Earth System Sciences*, 16, 1379–1387, doi:10.5194/hess-16-1379-2012, <http://dx.doi.org/10.5194/hess-16-1379-2012>, 2012.
- Min, S.-K., Zhang, X., Zwiers, F. W., and Hegerl, G. C.: Human contribution to more-intense precipitation extremes, *Nature*, 470, 378–381, doi:10.1038/nature09763, <http://dx.doi.org/10.1038/nature09763>, 2011.
- Nied, M., Pardowitz, T., Nissen, K., Ulbrich, U., Hündecha, Y., and Merz, B.: On the relationship between hydro-meteorological patterns and flood types, *Journal of Hydrology*, 519, 3249–3262, doi:10.1016/j.jhydrol.2014.09.089, <http://dx.doi.org/10.1016/j.jhydrol.2014.09.089>, 2014.
- Osborn, T. J. and Jones, P. D.: Air flow influences on local climate: observed United Kingdom climate variations, *Atmospheric Science Letters*, 1, 62–74, 2000.
- Österle, H., F.-W., G., and P.C., W.: Qualitätsprüfung, Ergänzung und Homogenisierung der täglichen Datenreihen in Deutschland, 1951–2003: ein neuer Datensatz., in: Deutsche Klimatagung, 9.-11. Oktober 2006, München, 2006.
- Perez, J., Menendez, M., Mendez, F. J., and Losada, I. J.: Evaluating the performance of CMIP3 and CMIP5 global climate models over the north-east Atlantic region, *Climate Dynamics*, 43, 2663–2680, doi:10.1007/s00382-014-2078-8, <http://dx.doi.org/10.1007/s00382-014-2078-8>, 2014.
- Petrow, T. and Merz, B.: Trends in flood magnitude, frequency and seasonality in Germany in the period 1951–2002, *Journal of Hydrology*, 371, 129–141, doi:10.1016/j.jhydrol.2009.03.024, <http://dx.doi.org/10.1016/j.jhydrol.2009.03.024>, 2009.
- Petrow, T., Zimmer, J., and Merz, B.: Changes in the flood hazard in Germany through changing frequency and persistence of circulation patterns, *Natural Hazards and Earth System Sciences*, 9, 1409–1423, doi:10.5194/nhess-9-1409-2009, <http://dx.doi.org/10.5194/nhess-9-1409-2009>, 2009.
- Philipp, A.: Comparison of principal component and cluster analysis for classifying circulation pattern sequences for the European domain, *Theoretical and Applied Climatology*, 96, 31–41, doi:10.1007/s00704-008-0037-1, <http://dx.doi.org/10.1007/s00704-008-0037-1>, 2009.
- Philipp, A., Della-Marta, P. M., Jacobeit, J., Fereday, D. R., Jones, P. D., Moberg, A., and Wanner, H.: Long-Term Variability of Daily North Atlantic-European Pressure Patterns since 1850 Classified by Simulated Annealing Clustering, *Journal of Climate*, 20, 4065–4095, doi:10.1175/jcli4175.1, <http://dx.doi.org/10.1175/JCLI4175.1>, 2007.
- Philipp, A., Bartholy, J., Beck, C., Erpicum, M., Esteban, P., Fettweis, X., Huth, R., James, P., Jourdain, S., Kreienkamp, F., Krenert, T., Lykoudis, S., Michalides, S. C., Pianko-Kluczynska, K., Postm, P., Álvarez, D. R., Schiemann, R., Spekat, A., and Tymvios, F. S.: Cost733cat – A database of weather and circulation type classifications, *Physics and Chemistry of the Earth*, 35, 360–373, doi:10.1016/j.pce.2009.12.010, <http://dx.doi.org/10.1016/j.pce.2009.12.010>, 2010.
- Philipp, A., Beck, C., Huth, R., and Jacobeit, J.: Development and comparison of circulation type classifications using the COST 733 dataset and software, *International Journal of Climatology*, 36, 2673–2691, doi:10.1002/joc.3920, <http://dx.doi.org/10.1002/joc.3920>, 2016.
- Pinter, N., van der Ploeg, R. R., Schweigert, P., and Hoefer, G.: Flood magnification on the River Rhine, *Hydrological Processes*, 20, 147–164, doi:10.1002/hyp.5908, <http://dx.doi.org/10.1002/hyp.5908>, 2006.
- Poli, P., Hersbach, H., Tan, D., Dee, D., Thépaut, J.-N., Simmons, A., Peubey, C., Laloyaux, P., Komori, T., Berrisford, P., Dragani, R., Trémolet, Y., Hólm, E., Bonavita, M., Isaksen, L., and Fisher, M.: The data assimilation system and initial performance evaluation of the

- ECMWF pilot reanalysis of the 20th-century assimilating surface observations only (ERA-20C), ERA Report Series 14, European Centre for Medium-Range Weather Forecasts (ECMWF), <http://old.ecmwf.int/publications/library/do/references/list/782009>, 2013.
- Schär, C., Frei, C., Lüthi, D., and Davies, H. C.: Surrogate climate-change scenarios for regional climate models, *Geophysical Research Letters*, 23, 669–672, doi:10.1029/96GL00265, <http://dx.doi.org/10.1029/96GL00265>, 1996.
- 5 Semenov, M. A. and Barrow, E. M.: Use of a stochastic weather generator in the development of climate change scenarios, *Climatic Change*, 35, 397–414, doi:10.1023/a:1005342632279, <http://dx.doi.org/10.1023/A:1005342632279>, 1997.
- Spekat, A., Kreienkamp, F., and Enke, W.: An impact-oriented classification method for atmospheric patterns, *Physics and Chemistry of the Earth*, 35, 352–359, doi:10.1016/j.pce.2010.03.042, <http://dx.doi.org/10.1016/j.pce.2010.03.042>, 2010.
- Sunyer, M. A., Hundechea, Y., Lawrence, D., Madsen, H., Willems, P., Martinkova, M., Vormoor, K., Bürger, G., Hanel, M., Kriaučiūnienė,
 10 J., Loukas, A., Osuch, M., and Yücel, I.: Inter-comparison of statistical downscaling methods for projection of extreme precipitation in Europe, *Hydrology and Earth System Sciences*, 19, 1827–1847, doi:10.5194/hess-19-1827-2015, <http://www.hydrol-earth-syst-sci.net/19/1827/2015/>, 2015.
- Taylor, K. E., Stouffer, R. J., and Meehl, G. A.: An Overview of CMIP5 and the Experiment Design, *Bulletin of the American Meteorological Society*, 93, 485–498, doi:10.1175/bams-d-11-00094.1, <http://dx.doi.org/10.1175/BAMS-D-11-00094.1>, 2012.
- 15 te Linde, A. H., Aerts, J. C. J. H., Bakker, A. M. R., and Kwadijk, J. C. J.: Simulating low-probability peak discharges for the Rhine basin using resampled climate modeling data, *Water Resources Research*, 46, W03 512, doi:10.1029/2009wr007707, <http://dx.doi.org/10.1029/2009WR007707>, 2010.
- Thieken, A., Apel, H., and Merz, B.: Assessing the probability of large-scale flood loss events: a case study for the river Rhine, Germany, *Journal of Flood Risk Management*, 8, 247–262, doi:10.1111/jfr3.12091, <http://dx.doi.org/10.1111/jfr3.12091>, 2015.
- 20 Tveito, O. E.: An assessment of circulation type classifications for precipitation distribution in Norway, *Physics and Chemistry of the Earth*, 35, 395–402, doi:10.1016/j.pce.2010.03.044, <http://dx.doi.org/10.1016/j.pce.2010.03.044>, 2010.
- Villarini, G., Smith, J. A., Serinaldi, F., and Ntelekos, A. A.: Analyses of seasonal and annual maximum daily discharge records for central Europe, *Journal of Hydrology*, 399, 299–312, doi:10.1016/j.jhydrol.2011.01.007, <http://dx.doi.org/10.1016/j.jhydrol.2011.01.007>, 2011.
- Vorogushyn, S. and Merz, B.: Flood trends along the Rhine: the role of river training, *Hydrology and Earth System Sciences*, 17, 3871–3884,
 25 doi:10.5194/hess-17-3871-2013, <http://dx.doi.org/10.5194/hess-17-3871-2013>, 2013.
- Widmann, M. and Schär, C.: A principal component and long-term trend analysis of daily precipitation in Switzerland, *International Journal of Climatology*, 17, 1333–1356, doi:10.1002/(SICI)1097-0088(199710)17:12<1333::AID-JOC108>3.0.CO;2-Q, [http://dx.doi.org/10.1002/\(SICI\)1097-0088\(199710\)17:12<1333::AID-JOC108>3.0.CO;2-Q](http://dx.doi.org/10.1002/(SICI)1097-0088(199710)17:12<1333::AID-JOC108>3.0.CO;2-Q), 1997.
- Wilby, R. L. and Quinn, N. W.: Reconstructing multi-decadal variations in fluvial flood risk using atmospheric circulation patterns, *Journal
 30 of Hydrology*, 487, 109–121, doi:10.1016/j.jhydrol.2013.02.038, <http://dx.doi.org/10.1016/j.jhydrol.2013.02.038>, 2013.
- Wilks, D. S.: Adapting stochastic weather generation algorithms for climate change studies, *Climatic Change*, 22, 67–84, doi:10.1007/bf00143344, <http://dx.doi.org/10.1007/BF00143344>, 1992.
- Wójcik, R.: Reliability of CMIP5 GCM simulations in reproducing atmospheric circulation over Europe and the North Atlantic: a statistical
 35 downscaling perspective, *International Journal of Climatology*, 35, 714–732, doi:10.1002/joc.4015, <http://dx.doi.org/10.1002/joc.4015>, 2015.

Table 1. Overview on GCMs used (<http://esgf-data.dkrz.de/>).

Model	Institute ID	Country	Period	Resolution	
				Lon \times Lat	Runs
BCC-CSM1.1	BCC	China	1850 – 2012	2.8×2.8	3
BNU-ESM	GCESS	China	1950 – 2005	2.8×2.8	1
CanESM2	CCCMA	Canada	1850 – 2005	2.8×2.8	5
CESM1-CAM5	NSF-DOE-NCAR	USA	1850 – 2005	1.2×0.9	1
CNRM-CM5	CNRM-CERFACS	France	1850 – 2005	1.4×1.4	10
CSIRO-Mk3.6.0	CSIRO-QCCCE	Australia	1850 – 2005	1.9×1.9	10
GFDL-CM3	NOAA-GFDL	USA	1860 – 2005	2.5×2.0	3
GFDL-ESM2 M	NOAA-GFDL	USA	1861 – 2005	2.5×2.0	1
HadGEM2-ES	MOHC	UK	1859 – 2005	1.9×1.2	4
IPSL-CM5A-LR	IPSL	France	1850 – 2005	3.8×1.9	6
IPSL-CM5A-MR	IPSL	France	1850 – 2005	2.5×1.3	3
MIROC-ESM	MIROC	Japan	1850 – 2005	2.8×2.8	3
MIROC-ESM-CHEM	MIROC	Japan	1850 – 2005	2.8×2.8	1
MRI-CGCM3	MRI	Japan	1850 – 2005	1.1×1.1	5
NorESM1-M	NCC	Norway	1850 – 2005	2.5×1.9	3