

Supplementary figures for: Evaluating uncertainty in estimates of soil moisture memory with a reverse ensemble approach

Dave MacLeod¹, Hannah Cloke^{2,3}, Florian Pappenberger^{4,5}, and Antje Weisheimer^{4,6}

¹Atmospheric, Oceanic and Planetary Physics, Department of Physics, University of Oxford, Oxford, UK

²Department of Geography and Environmental Science, University of Reading, UK

³Department of Meteorology, University of Reading, UK

⁴European Centre for Medium-Range Weather Forecasts, Reading, UK

⁵School of Geographical Sciences, Bristol University, Bristol, UK

⁶Department of Physics, National Centre for Atmospheric Science (NCAS), University of Oxford, Oxford, UK

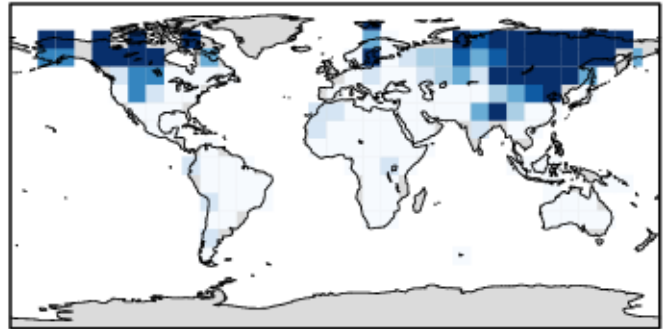
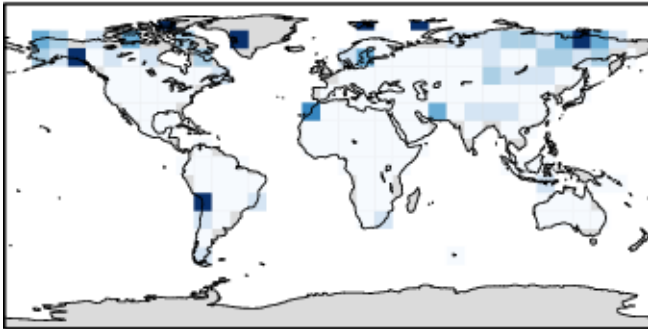
Correspondence to: Dave MacLeod (macleod@atm.ox.ac.uk)

May start

November start

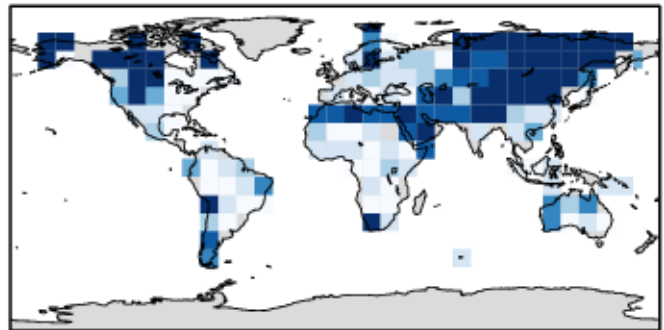
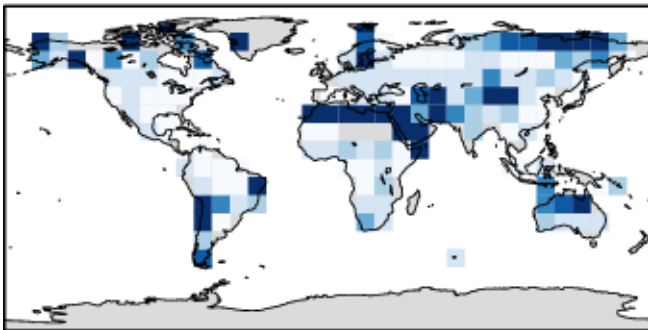
Level 1

Level 1



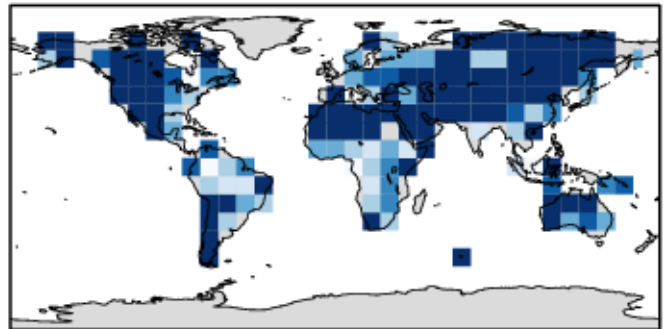
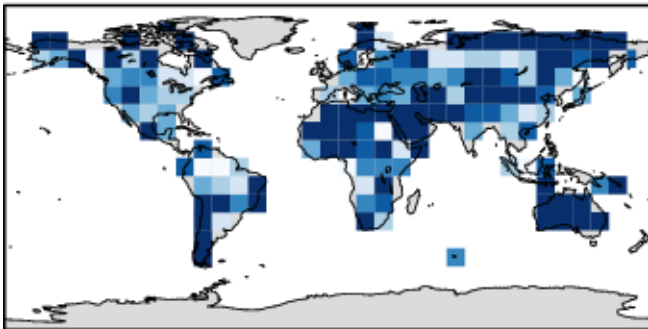
Level 2

Level 2



Level 3

Level 3



Lead time when $\sigma < \sigma_0/e$ [days]



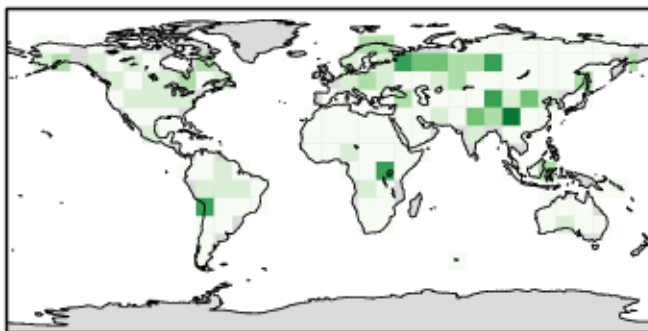
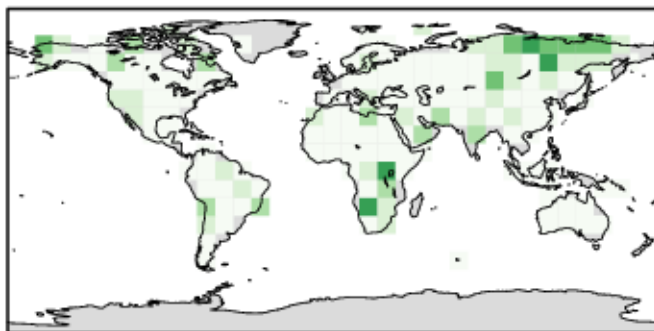
Figure 1. Average date of memory loss in the top model soil level, estimated from HTESSEL (default parameter set), for May (left) and November (right) start dates. Grey areas are masked regions of climatologically low soil moisture.

May start

November start

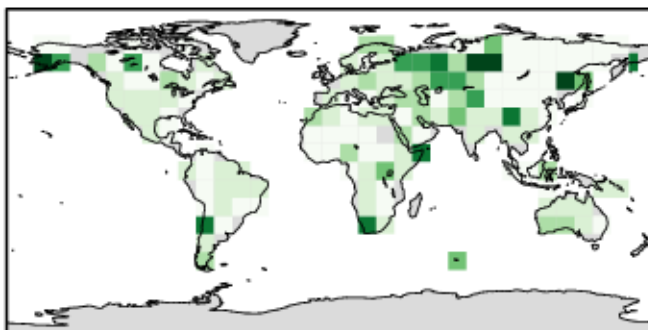
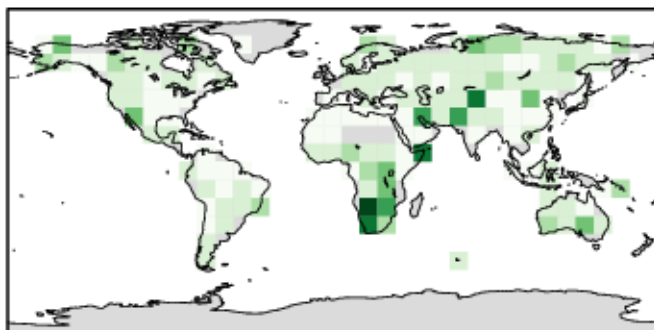
Level 1

Level 1



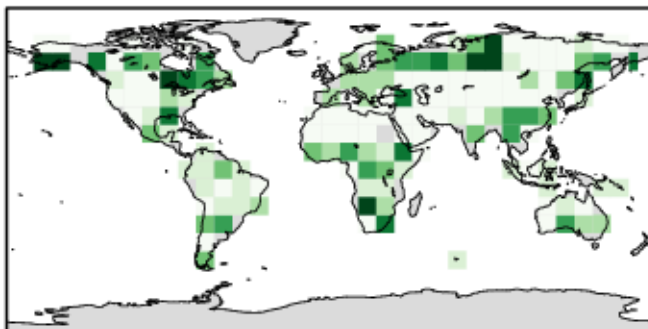
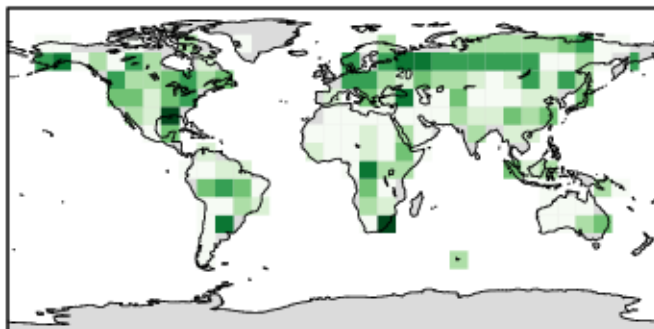
Level 2

Level 2



Level 3

Level 3



Standard deviation of average memory loss date over parameters [days]



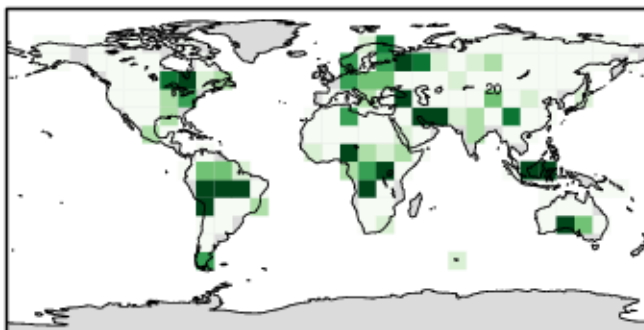
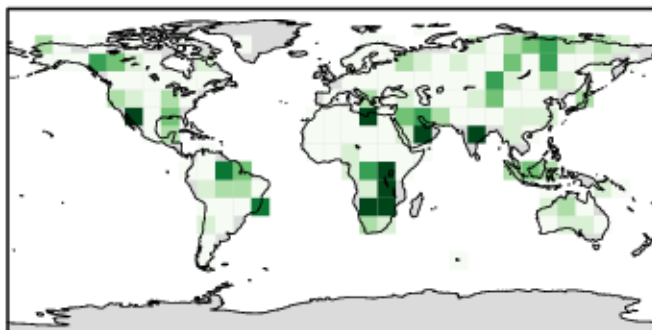
Figure 2. Standard deviation in the date of memory loss across hydraulic parameters, estimated from HTESSSEL, for May (left) and November (right) start dates.

May start

November start

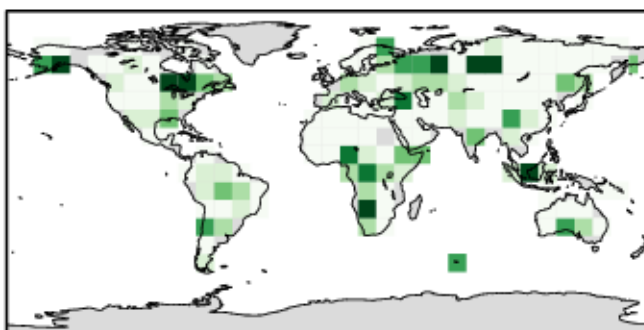
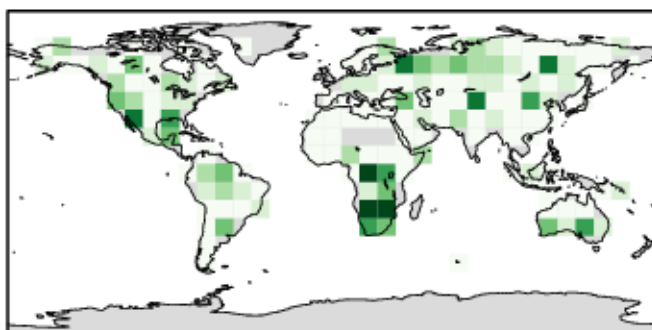
Level 1

Level 1



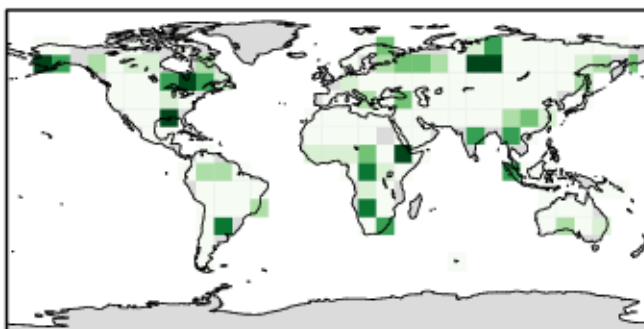
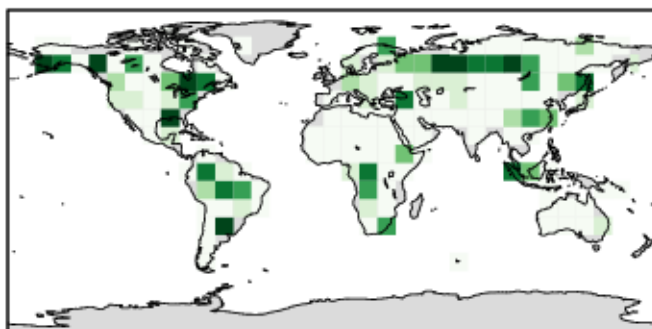
Level 2

Level 2



Level 3

Level 3



Sensitivity (standard deviation as a percentage of memory loss date) [%]



Figure 3. Sensitivity of memory to hydraulic parameters (standard deviation of memory loss across hydraulic parameters as a percentage of the memory loss), estimated from HTESSSEL, for May (left) and November (right) start dates.