

We want to thank the editor, two reviewers and Marc Bierkens for their positive evaluation of our paper. In this response we copy the reviewer comments, repeat our previous replies and give a point-by-point overview of the changes we made in the revised version of our paper. Our comments and changes are in *italics* and preceded by ">>". The page and line numbers we mention refer to the attached track changes version of the manuscript, unless stated otherwise. The track-changes version of the manuscript is included at the end of this rebuttal.

Marc Bierkens

I thoroughly enjoyed reading this paper and subscribe to most of its views. Indeed, it is time that we start including the human dimension into drought analyses and prediction. The paper sets up a comprehensive framework for defining the various types of drought in the Anthropocene and identifies a number of research gaps. There is one major point I would like to make about the framing of the paper. It is claimed on page 3, line 14 that there are "gaps in our understanding of the complex interdisciplinary issue that is drought". This seems to suggest that we as a community of hydrologist are unaware of the fact that drought is a many-headed dragon. I beg to differ here. I am not sure it is lack of understanding per se. It depends on who the "we" are in "our understanding". Surely, hydrologists that are used to simulating or studying the hydrological system holistically, understand how the interactions between the hydrological states and fluxes and human intervention on these work conjunctively. It seems to me that it is more the general public and the policy makers that don't know or understand, partly because we as scientists lack a proper description of the interacting parts (ontology) or use the incorrect terms (semantics). So the question is not so much as "do we (as hydrologists) lack understanding?" but rather "do we as scientists lack the correct ontology and terminology for drought in the Anthropocene and therefore fail to convey understanding with the general public and the policy makers?".

This being said, this does not mean that all issues are resolved. Indeed, if we acknowledge that the study of drought also encompasses the human dimension and we also extend drought impacts from mere indices or water volumes to socio-economic and ecological impacts and if we want to understand how human water demand reacts to extreme events or a changing normal in the future, we need additional knowledge, i.e. understanding of additional system parts. In conclusion: I would set the stage a bit differently: there are two problems with current treatment of drought:

- 1) Lacking the correct ontology and associated semantics to describe what makes a drought, which results in lack of understanding of (the causes of) drought of public and policy makers.
- 2) Necessary extension of the drought research into including human impacts on drought, human response to droughts and the socio-economic and ecological effects on drought that leads to a number (you name 5) areas with lack of understanding of the (inner workings of) parts of the system.

>> Thanks for sharing these thoughts. With the statement "gaps in our understanding of the complex interdisciplinary issue that is drought" we meant to refer to the second issue you mention, namely that there are parts of the complex interdisciplinary system that we do not understand. We did not mean to say that most hydrologists do not know that drought is complex. We see that this statement

is open for multiple interpretations, especially after the examples we provided. We agree with your explanation that there also is a lack of ontology and semantics (and additionally a lack of two-way communication between stakeholders and researchers), which results in a lack of understanding with the general public, policy makers and part of the impact communities. We have not touched upon this issue in our paper, but we certainly agree that it is good to mention. In the revised version of the paper we rephrased the statement about the understanding of the drought issue as follows (p.3 l.19-24): “These examples point out a number of issues (see Box 1). Firstly, recent (drought) research is not always picked up by water managers and policy makers. There exists a lack of two-way communication between stakeholders and researchers, with proper ontology and semantics. Secondly, drought research itself has some important gaps related to the interplay between drought and humans, which prevent us from completely understanding the complex interdisciplinary issue that is drought. Thirdly, these examples also highlight the unsuitability of current methods and data to address these gaps.”

>> We also added a sentence to the conclusion of the paper, which reads: “For improved drought management in the Anthropocene, a better two-way communication between scientists, stakeholders, policy makers and general public is needed. There are often social, psychological and organisational barriers that prevent optimal use of scientific understanding in decision making. They not our primary focus here, but clearly they can play an important role.” (p.16 l.27-30). Additionally, also in response to the comments of reviewer 1, we changed Table 1 so that it now encompasses a list of definitions of drought and related terms, i.e. addressing your point of the semantics.

>> We certainly support the second point you made about challenges for the current treatment of drought, i.e. the necessary extension of the drought research into including human impacts on drought, human response to droughts, incl. the socio-economic and environmental impacts. This is in line with the main message of the paper. We stressed this even more in the revised document (p.3 l.21-22 and p.4 l.1).

Some minor points to make:

>> We addressed all your minor points in our review.

- Page 3, line 12: “Hydrological drought?” *>> Yes. We changed this.*
- Page 4, lines 26-28: Great definition. But what if human activities lead to reduced drought? Think about the impacts of dams on low flows (your Figure 5) or return flows from deep (industrial) groundwater abstractions that also increase discharge in low flow periods (see de Graaf et al., Advances in Water Resources 2013).
>> Human activities reducing drought (hazard or impacts) are indeed important. This can be encompassed in the definition of “human-modified drought”, because that means ‘a drought changed by human activities’. We mention on p.4 l.28 that “human-modified drought” is “a drought that is enhanced or alleviated as the result of anthropogenic processes”. This is however not indicated in Fig. 3, which we adapted to include this alleviating influence of human activities on drought by adding a fourth drought event. Based on the comments of reviewer 1 we also changed Table 1, so that it now restates the definition of human-modified

drought. We also added the reference of de Graaf et al. 2014 (p.9 l.27 & p.10 l.25) and added some sentences to Section 2.2 stressing also the positive effect of humans on drought (p.5 l.26-27 & p.6 l.2-4).

- Page 5, line 30: Here there is a problem with your definitions. Before you defined “normal” as long term average under human and natural conditions. You should then add to the conditions that define a normal that there is long-term balance of fluxes.
>> The normal conditions mentioned in this paragraph do not imply a long-term balance of fluxes. It is not realistic to assume long-term balance of fluxes for any catchment, especially not those with high human influence. With the sentence “the desired situation is out of balance with the normal situation” we mean to say that water demand is higher than water availability. We now realise that this sentence needs some rephrasing to avoid confusion. We added an explanation to the sentence so that it now reads: “desired situation is out of balance with the normal situation, i.e. average water demand is higher than average water availability, ...” (p.6 l.19-20).

- Page 12, line 24: remove the reference or find another. It is of no use to refer to an in prep paper.
>> The paper is now in review. We added the complete reference to the reference list.

- Page 12, lines 28-31 “Many water management. . .scenario (Watts et al., 2012)”. Actually that is also the case for many of the global hydrology and water resources models such as PCR-GLOBWB where water abstractions are a function of water availability”.
>> We agree that some (global) hydrological models are also able to simulate some form of water allocation, although often not as detailed as water resources models. We changed the sentence to include a reference to other hydrological models: “Like some global and lumped hydrological models mentioned before, many water management models, however, are capable of simulating...” (p.14 l.4-5).

- Page 13: the section title “Changing norm in the Anthropocene”. Given the terminology you use, it is not better to use "changing normal" (see also your Figure 4 and the use of the term “normal” in meteorology)? A norm has also a normative connotation.
>> We changed “norm” to “normal”, “normal situation” or “reference situation” throughout the whole paper.

Reviewer #1:

Dear Editor and Authors, In this draft opinion paper, the authors defined the term “drought in Anthropocene” and discussed the direction of future research on the topic. This is an opinion paper, but it is also a review paper on this research field. It includes both the views of eminent researchers and massive volume of information on the latest achievements and limitations of drought research which is potentially useful for the readers of HESS. This is my first time to review an opinion paper. Because it basically conveys the authors’ opinion, I have no strong recommendation on it. Below, I

would like to express my honest impression of this paper which may be potentially useful for the authors for further revision.

I read through this draft paper for three times, but I still cannot fully grasp some of the authors' key meaning. Perhaps this is due to unclearness in the definition of "drought in Anthropocene" (Section 2) and the authors' attitude to include everything of drought (Sections 3 and 4). The latter point is a virtue of the authors, but some clear focuses would enhance readability. After all, I couldn't fully understand the definition of the term "drought in Anthropocene" by the authors. First, although the authors used three pages to explain this term (Section 2), I couldn't find its conclusive definition. I understood that they newly proposed the concept of "human-modified drought" (page 4 lines 22-30), but is this the "drought in Anthropocene"? My confusion is originated from my belief that drought is a perception of humanity and society hence drought cannot be defined without humans. What does "drought in Anthropocene" exclusively mean? Next I couldn't clearly understand what "human modification of drought" means. The term "drought" indicates dry events that rarely occur (drier than normal, as the authors describe in Section 2.2). I found it meaningful to attribute the rareness to "human (i.e. the events that would not be happened if no humanity were there)" and "climate (i.e. the events that would be happened regardless the existence of humanity)". On the other hand, "human modification" basically occurs chronically. Why did the authors link this chronic state with probabilistically rare events? I guess this must be explained in text already, but finally I couldn't figure it out what are the authors' logic.

>> We think your confusion might have arisen from a misunderstanding of the title of this section. We say on p.2 l.1-2 (referring to previous version of paper) that in this section "we revisit drought definitions and make suggestions for robust use in the Anthropocene". So we are not defining a new term called "drought in the Anthropocene", but we are evaluating how we should use existing drought definitions in the Anthropocene. We now rephrased the title of Section 2 as "Drought definitions in the Anthropocene" (p.4 l.3).

>> With the term "human-modified drought" we indicate drought events that are caused by a combination of climate and human processes or drought events of which the severity has been altered substantially by human activities. These human processes / activities can be short-lived ("rare events" such as emergency relief groundwater abstraction) or more chronic (land use change, dam building). The latter are regarded in this paper as human activities changing the propagation of drought (see Figure 2), so they are not causing the specific event, but change its characteristics. We think it is important to make this explicit by using the term "human-modified drought", so that in the drought analysis the characteristics of the drought are attributed to the correct processes, which is crucial in drought management (see our examples in Box 1). This is now better clarified in Table 1.

>> In Section 2.2 we rephrased the option to evaluate the normal or reference situation in the Anthropocene to clarify "human modified drought" in relation to chronic human influence (p.5 l.28 – p.6 l.4). We changed Table 1, so that it now explains the definitions of drought and some related terms. In response to the comments of Marc Bierkens we also adapted Fig. 3 to include the alleviating influence of human activities on drought by adding a fourth drought event to the figure.

In Sections 3-4, the authors made great efforts to cover the diversity of drought issues from the scales of catchment to global, from the events of several days to several years, from moderate to extreme, from place to place. I agree with the authors that human interventions are seen every time and everywhere in the present world, but I believe their magnitude significantly differ by scale, period, events, and places. I guess humans play critical and exclusive roles in drought formation and consequence in a limited number of cases. It could be more informative and readable if the authors focus on the drought that humans' influences are obvious.

>> We agree that the magnitude of human influence on drought is probably very variable, but since it has rarely been quantified an objective selection cannot easily be made. With this opinion / review article we hope to encourage colleagues to do that quantification of the relation between people and drought, so that in the future we will be able to make the selection you propose of which areas / processes are more important.

Finally, I largely agree with the comments by Prof. Marc Bierkens. Although the latest hydrological analyses or models do not incorporate many of human aspects, it does not necessarily mean we do not understand the mechanism, consequences, and countermeasures of drought. Indeed, local water managers and citizens are often aware of them well. This paper would become further important if it is narrowed down what are the unknowns and what should be investigated by researchers.

>> Thanks for your view on the comments of Prof Marc Bierkens. We agree that local water managers and citizens often have a lot of knowledge on local drought processes and their relation with human activities. In our paper we therefore suggest to make more use of this knowledge, e.g. p.9 l.5-10 (referring to previous version of paper) where we advise that "More qualitative and local scale information on the human influences in a catchment can be gathered by a range of methods, including ..." and p.12 l.18-24 (referring to previous version of paper) where we state that "Qualitative data (such as drought narratives) are essential in our quest for increased understanding" of feedbacks between drought and society. We added the reference of Daniels and Endfield (2009) to our statement about narratives (p.13 l.28-29).

We addressed your specific comments in our review:

- Page 4 line 4 "Drought as a lack of water": The subtitle doesn't well reflect the key contents of subsection. I got similar impression for other subsections. Please revisit all the subtitles in text.
>> We revisited the section and subsection titles now we are aware that they can create confusion. We removed the "in the Anthropocene" from the subsection titles, so that the structure of this section becomes: "Drought drivers", "Modifications of drought", "Drought impacts", "Feedbacks between humans and drought" and "Changing normal".
- Page 4 line 32 "Furthermore, the terms we propose are not new": Then what were newly added?

>> As explained above, no new terms were added.

- Page 5 line 16 “average water levels”: This is unclear and confusing. Do you mean mean-annual water availability here?
>> *Not exactly. We want to stress that we are analysing measured (or modelled) water levels and fluxes (which we added now). Also, the average does not need to be annual, but is calculated on the time scale used for the analysis (e.g. daily / monthly). What we did forget to mention is that we refer to long-term averages. So, to avoid confusion, we rephrased this sentence to “long-term average water levels or fluxes” (p.6 l.5).*
- Page 5 line 25 “Drought is often confused with water scarcity and water shortage”: It would be highly helpful to add a table of conclusive definitions for drought in Anthropocene, water stress, and water scarcity, and relevant terms.
>> *We adapted Table 1. It now includes definitions for drought, water scarcity and other relevant terms. We also included more references to Table 1 in Section 2.2 and 2.3.*
- Page 5 line 31 “complemented”: “Coincided”?
>> *Yes, thank you. We changed this sentence to “it coincides with” (p.6 l.21).*
- Page 5 line 31 “with short-term drought”: Do you mean climate-induced drought here?
>> *No, not necessarily. We mean to illustrate the difference between long-term and short-term influences. In this case it can refer to the short-term effects of climate-induced or human-induced drought.*
- Page 6 line 9 “We have to point out that the definitions of drought and its impacts used here deviate from the definitions used in other scientific disciplines.” I’ve read this paragraph again and again, but I couldn’t figure out the similarity and difference clearly. Again, it would be useful for readers if you add a table of definitions on drought and its impacts by disciplines.
>> *It is all a matter of reference. For the climate community, DROUGHT is an IMPACT of extreme climate, whereas for the hydrological community DROUGHT is a state of the physical system that CAUSES IMPACTS on society and ecosystems. We rewrote the paragraph on definitions in other disciplines to clarify the difference (p.6 l.32 – p.7 l.4). We don’t think this paragraph needs a table to show the difference in definitions and terms used by different communities. That would be outside the scope of this paper. We only wanted to highlight that there are differences in phrasing between communities and gave the example of the climate community because that community dominates the drought discourse.*
- Page 9 line 21 “resulting outflows depend on operational rules”: A relevant study is reported also in Mateo et al. (2014).
>> *Thanks, we added the reference (p.10 l.17)*
- Page 10 line 4 “Impacts of drought in the Anthropocene”: In my impression the section describes general impacts of drought, not specific to Anthropocene. Since drought is a

perception of humanity, drought cannot be defined without humans. What is the key difference from the traditional definition of drought?

>> We agree that our section on "Impacts of drought in the Anthropocene" is not specific for the Anthropocene. Quantifying the relation between drought characteristics and drought impacts is however a very relevant open research question in the Anthropocene. As mentioned above we removed the words "in the Anthropocene" from all the subsection titles.

- Page 12 line 18 "One novel type of qualitative data is the use of drought narratives": Is the data qualitative or quantitative?

>> The drought narratives data is qualitative. We added a description of what we mean with drought narratives and a reference to a paper in which they are used (p.13 l.28-29).

- Page 12 line 25 "classic water management models" What are the classic models? What differentiates from classic and another?

>> We mean water management models that only model the allocation of available water to water users, without simulating in detail hydrological processes. We removed "classic" because the next sentence explains what we mean (p.14 l.1).

- Page 13 line 9 "3.3" reads "3.5".

>> Thanks. We changed 3.3 to 3.5.

- Page 14 line 2 "continuous increases in abstraction, and step-changes in storage by dam building": For instance, the works by Wisser et al. (2010) and Pokhrel et al. (2012) reported quantitatively simulations.

>> Thanks for the suggested references. We added them to the manuscript (p.15 l.12).

Reviewer #2:

This review paper discusses drought in the Anthropocene and identifies a number of important research gaps along with tools and techniques to start tackling these research questions. I really enjoyed reading the paper and agree with many of the points that were raised. I think the other two reviewers have highlighted several important points to be addressed so I just have a few comments to add.

Specific Comments

- Section 3.2. P9 L 30. I agree that one of the key limiting factors is availability of data and metadata on human modifiers. However, even if this data is available there are still many questions on how to incorporate these processes into hydrological models. For example, how do we incorporate groundwater abstractions into current lumped or semi-distributed hydrological models (often used for prediction of drought)? While the acquisition of data on human modifiers is important, this needs to be in conjunction with developing models (both catchment, regional and global scale models) that can make use of this data.

>> We agree that it is still unclear how to incorporate dynamic and responsive human processes correctly into current lumped or semi-distributed hydrological models. In Section 3.2, we have only given examples of recent developments in large-scale models, but we agree that it is needed to also briefly mention other types of hydrological models, especially those that are used as prediction tools in local catchments. We do mention water management models in Section 3.4 (p.12, l.25-31), but in the revised version of the paper we added some sentences on incorporating human processes into lumped or semi-distributed hydrological models to Section 3.2 as well: “Most predictions on local scale, however, are done with lumped or semi-distributed hydrological models. It is often not straightforward to incorporate dynamic human processes into these models and more work is needed to adapt these lumped hydrological models for use in the Anthropocene. An example of a new lumped hydrological model that incorporates man-made extraction and supply of water to both surface and subsurface water is WALRUS by Brauer et al. (2014). Current physically-based models are better fitted to simulate human responses to drought, e.g. SIMGRO (Querner et al., 2008; Van Lanen et al., 2004).” (p.10 l.29-34) Thanks for the suggestion.

- Section 3.3. This section was not as clear as the others in how we can move research forward in this area (e.g. how could we use impact information better? P 11, L 17). I would add a sentence or two to better clarify exactly what is needed to address the research gaps you highlighted at the beginning of section 3.3.

>> We revisited Section 3.3. The text was slightly reorganised to better highlight the two aspects of ‘data’ on impacts and the ‘link function’ between drought indices and impacts as well as the consideration of vulnerability, and amended by more suggestions for future work (p.11 l.21 – p.12 l.7).

- Section 3.5. I agree with Marc that you should use a different word to ‘norm’.

>> We agree too and changed “norm” to “normal”, “normal situation” or “reference situation” throughout the whole paper.

- Figure 4. I found Figure 4 and Table 1 quite confusing and not overly useful in helping me to understand the text – can you merge the two together to make a figure that is more easily understandable?

>> Also based on the comments of reviewer 1, we adapted Table 1 and Figure 4. Table 1 now includes the definition of terms related to drought, aridity, water scarcity and overexploitation. Figure 4 visualises these concepts in different climate regions and under natural and human-influenced conditions. We hope that this new Table and Figure are more useful in helping to understand the text.

- Figure 6a. Should there be a y-axis on this plot?

>> We redid figure 6 for clarity. Figure 6a does not have a y-axis because it is a conceptual figure showing threshold behaviour and non-linearity of the climate-yield relationship.

Drought in a human-modified world: reframing drought definitions, understanding and analysis approaches

Anne F. Van Loon¹, Kerstin Stahl², Giuliano Di Baldassarre³, Julian Clark⁴, Sally Ramagecroft¹, Tom Gleeson^{5,2}, ~~Julian Clark³~~, Albert I.J.M. Van Dijk^{6,4}, ~~Lena M. Tallaksen⁷~~, ~~Kerstin Stahl⁵~~, Jamie Hannaford^{8,6}, ~~Giuliano Di Baldassarre⁷~~, Adriaan J. Teuling^{9,8}, ~~Lena M. Tallaksen⁹~~, Remko Uijlenhoet^{9,8}, David M. Hannah¹, Niko Wanders¹⁰, Justin Sheffield¹⁰, Mark Svoboda¹¹, Boud Verbeiren¹², Thorsten Wagener^{13,14}, ~~Sally Ramagecroft¹~~, ~~Niko Wanders¹⁰~~, Henny A.J. Van Lanen^{9,8}

¹ Water Science Research Group, School of Geography, Earth, and Environmental Sciences, University of Birmingham, Edgbaston, Birmingham, B15 2TT, UK.

^{2,5} ~~Hydrology, Faculty of Environment and Natural Resources, University of Freiburg, Germany.~~

^{3,7} ~~Department of Earth Sciences, Uppsala University, Sweden.~~

^{4,3} ~~Human Geography Research Group, School of Geography, Earth, and Environmental Sciences, University of Birmingham, UK.~~

^{5,2} Department of Civil Engineering, University of Victoria, Canada.

³ ~~Human Geography Research Group, School of Geography, Earth, and Environmental Sciences, University of Birmingham, UK.~~

^{6,4} Fenner School of Environment & Society, the Australian National University, Canberra, Australia.

⁵ ~~Hydrology, Faculty of Environment and Natural Resources, University of Freiburg, Germany.~~

^{7,9} ~~Department of Geosciences, University of Oslo, Norway.~~

^{8,6} Centre for Ecology and Hydrology, Wallingford, UK.

⁷ ~~Department of Earth Sciences, Uppsala University, Sweden.~~

^{9,8} Hydrology and Quantitative Water Management group, Wageningen University, the Netherlands.

⁹ ~~Department of Geosciences, University of Oslo, Norway.~~

¹⁰ Civil and Environmental Engineering, Princeton University, USA.

¹¹ National Drought Mitigation Center, University of Nebraska, Lincoln, USA.

¹² Department of Hydrology and Hydraulic Engineering, Vrije Universiteit Brussel, Belgium.

¹³ Department of Civil Engineering, University of Bristol, UK.

¹⁴ Cabot Institute, University of Bristol, UK.

Correspondence to: Anne F. Van Loon (a.f.vanloon@bham.ac.uk)

Abstract. In the current human-modified world, or ‘Anthropocene’, the state of water stores and fluxes has become dependent on human as well as natural processes. Water deficits (or droughts) are the result of a complex interaction between meteorological anomalies, land surface processes, and human inflows, outflows and storage changes. Our current inability to adequately analyse and manage drought in many places points to gaps in our understanding and to inadequate data and tools. The Anthropocene requires a new framework for drought definitions and research. Drought definitions need to be revisited to explicitly include human processes driving and modifying soil moisture drought and hydrological drought development. We give recommendations for robust drought definitions to clarify timescales of drought and prevent confusion with related terms such as water scarcity and overexploitation. Additionally, our understanding and analysis of drought need to move from single driver to multiple drivers and from uni-directional to multi-directional. We identify

research gaps and propose analysis approaches on 1) drivers, 2) modifiers, 3) impacts, 4) feedbacks, and 5) changing baseline of drought in the Anthropocene. The most pressing research questions are related to the attribution of drought to its causes, to linking drought impacts to drought characteristics, and to societal adaptation and responses to drought. Example questions include: i) what are the dominant drivers of drought in different parts of the world?, ii) how do human modifications of drought enhance or alleviate drought severity?, iii) how do impacts of drought depend on the physical characteristics of drought versus the vulnerability of people or the environment?, iv) to what extent are physical and human drought processes coupled, and can feedback loops be identified and altered to lessen or mitigate drought?, v) how should we adapt our drought analysis to accommodate ‘changes in the normal al situation’ (i.e. what are considered normal or reference conditions) over time? Answering these questions requires exploration of qualitative and quantitative data as well as mixed modelling approaches. The challenges related to drought research and management in the Anthropocene are not unique to drought, but do require urgent attention. We give recommendations drawn from the fields of flood research, ecology, water management, and water resources studies. The framework presented here provides a holistic view on drought in the Anthropocene, which will help improve management strategies for mitigating the severity and reducing the impacts of droughts in future.

15 **Keywords: Drought, Anthropocene, Drought definitions, Research framework**

1 Introduction

The hydrological system is intrinsically intertwined with the climate system, the environmental/ecological system and the social system (Fig. 1). These links are dynamic and interdependent. Natural water inflows and outflows vary and change in time and space, as do human water exploitation and associated activities, leading to what some have called a mutually co-evolving “hydrosocial cycle” (Linton and Budds, 2014, p.170). All these complex interlinked processes define the state of the hydrological system and the amount of water stored in the soil, groundwater, lakes, rivers and reservoirs. When there is (much) less water in the hydrological system than normal, as manifested in below-normal soil moisture levels, river discharge, groundwater and/or lake/reservoir levels, the system is perceived to be in drought, whether by natural causes (meteorological anomalies) or anthropogenic causes such as groundwater abstraction (Van Loon et al., 2016). Droughts can have severe consequences for water use in various sectors, for instance agriculture, drinking water supply and hydropower production, as well as having adverse impacts on ecosystems (Ciais et al., 2005; Lake, 2011; Sheffield et al., 2012; Grayson, 2013; Mosely, 2015; Stahl et al., 2015; 2016).

In recent decades, droughts have received increasing attention from policy makers and society, while drought research has made significant progress. Examples of this progress are: the continuous development of drought indices (Shukla and Wood, 2008; Bloomfield and Marchant, 2013; Stagge et al., 2015b); the improved understanding of the link between drought and atmospheric and ocean drivers (Fleig et al., 2010; Kingston et al., 2015); the influence of evapotranspiration (Teuling et al.,

2013), snow (Staudinger et al., 2014) and geology (Stoelzle et al., 2014, Kumar et al., 2016) on drought severity; drought monitoring and forecasting (Sheffield et al., 2014, Trambauer et al., 2015); and the effects of climate change on drought (Prudhomme et al., 2014; Trenberth et al., 2014; Wanders et al., 2015).

5 Still, many challenges remain. For example, the attribution of a groundwater or surface water deficit to its natural and human causes and the prediction of such a drought remain very difficult (Van Dijk et al., 2013; Diffenbaugh et al., 2015). For the recent multi-year drought in California this has led to discussion about the role of groundwater abstraction (AghaKouchak et al., 2015a). Additionally, observed trends in measured low flows and drought are influenced by human activities (Sadri et al., 2016), probably even when only ‘unregulated’ catchments are selected (as noted by Hisdal et al., 2001; Stahl et al., 2010). This undermines our understanding of the effects of climate change on low flows and droughts and increases the uncertainty
10 in projections for the future (Forzieri et al., 2014). Similar difficulties arise when attempting to link physical (i.e. climate or hydrological) indicators with societal or environmental impacts (Stanke et al., 2013; Bachmair et al., 2015a; Gudmundsson et al., 2014; Blauhut et al., 2015, Stagge et al., 2015a); this link being a crucial step in enabling societies to prepare for drought risks. In many big cities, for example, coping with drought is very complex, because vulnerability is high and factors such as the urban heat island effect, poor water supply, and water quality issues play an additional role (Güneralp et al.,
15 2015). In drought management, the connections within the hydrological cycle are often overlooked, for example when unsustainable groundwater abstraction is used as adaptation to drought (e.g. Castle et al., 2014; Foster et al., 2015), or when restrictions are imposed for using surface water, but not for groundwater, leading to enhancement of the hydrological drought (as during the recent California drought and previous droughts in the Netherlands).

20 These examples ~~of open questions~~ point out a number of issues (see Box 1). Firstly, recent (drought) research is not always picked up by water managers and policy makers. There exists a lack of two-way communication between stakeholders and researchers, with proper ontology and semantics. Secondly, drought research itself has some important ~~to~~ gaps related to the interplay between drought and humans, which prevent us from completely ~~in our~~ understanding ~~of~~ the complex interdisciplinary issue that is drought, ~~and~~ Thirdly, these examples also highlight the unsuitability of current methods and data to answer/address these gaps questions (see Box 1). For successful drought risk management our understanding must
25 include the processes leading to drought (causes), and the impacts of drought (consequences). In this way drought predictions can be made and effective measure taken to mitigate drought severity and to reduce drought impacts.

The growing human impact on the earth system has led to numerous calls to recognise a new, distinct geological epoch, the ‘Anthropocene’. While debate continues about the definition of the Anthropocene (Crutzen, 2002; Lewis and Maslin, 2015;
30 Hamilton, 2016), it provides a useful framework for considering the present era, when human activity plays a fundamental role in water, energy and biogeochemical cycles. In the Anthropocene, society actively shapes water availability, and the feedbacks between physical and social aspects are particularly important during periods of water deficit. This means we cannot see drought as an external natural hazard and treat the consequences separately from the causes. Van Loon et al. (2016) argued that, for successful drought management in the Anthropocene, natural and human processes need to be fully integrated into drought definitions, process understanding, and analysis approaches. This paper builds on that argument and

elaborates on research questions, data and methodology that are needed to reframe and extent drought research in the Anthropocene.

2 Drought definitions in the Anthropocene ~~Defining drought in the Anthropocene~~

It is known that human activities can create a drought situation or make an existing one worse (e.g. Wilhite and Glanz, 1985; Tallaksen and Van Lanen, 2004), but these processes are rarely ever explicitly included in drought definitions. Much has been said about the need for objective drought definitions and the difficulties related to that aim (e.g. Yevjevich, 1967; Wilhite and Glantz, 1985; Lloyd-Hughes, 2014), which we will not repeat here. We do, however, need to have a closer look at identifying the role of human processes in the definition of drought. In this section, we therefore revisit drought definitions and make suggestions for robust use in the Anthropocene.

2.1 Drought as a lack of water

Drought is defined as a lack of water compared to normal conditions which can occur in different components of the hydrological cycle (Palmer, 1965; Tallaksen and Van Lanen, 2004; Sheffield and Wood, 2011). It is commonly subdivided into meteorological drought (rainfall deficit), soil moisture drought (below-normal soil moisture levels) and hydrological drought (below-normal (sub)surface water availability). The normal is often taken as a (percentile of the) climatology of the variable of interest, and severity (e.g. deficit volume) and duration of drought events can be calculated (Van Loon, 2015).

In the natural sciences, there is a fair understanding of the propagation of drought from meteorological drought to soil moisture drought and hydrological drought (Fig. 2 – left side), influenced by catchment properties such as geology and vegetation cover. For example, many hydrological drought types have been recognised, e.g. the classical rainfall-deficit drought, but also hydrological droughts caused by temperature anomalies in snow-dominated areas (Van Loon and Van Lanen, 2012; Van Loon et al. 2015). This is typically regarded as a uni-directional propagation with human receptors at the downstream end. However, in reality, human processes are interlinked with natural processes in various ways (Fig. 2 – right side). Soil moisture and hydrological drought (hereafter called drought) are the result of low inputs to the hydrological system (e.g. lack of rain, snow/glacier melt, irrigation, sewage return flows), high outputs (e.g. evapotranspiration, human water use) and limited storage (in soil, groundwater, lakes and reservoirs). Human activities influence water input, output and storage and, therefore, modify the propagation of drought and can even be the cause of drought in the absence of natural drivers of drought. The drought typology based on natural processes should therefore be complemented with drought types based on human processes.

The natural drought types can be grouped together as “climate-induced” droughts and drought types based on human processes can be termed “human-induced” or “man-made” drought (Fig. 3; Van Loon et al., 2016). This parallels an existing

widely-referenced typology of floods, which includes “man-made flood” alongside natural floods such as flash flood, snowmelt flood, and ice jam flood (e.g. Yevjevich, 1994; De Kraker, 2015). The distinction between climate-induced and human-induced drought is useful in studies of the attribution of drought to its causes. To further acknowledge the possibly large influence of human activities modifying drought (Fig. 2), we additionally propose the term “human-modified drought”

5 for a drought that is enhanced or alleviated as the result of anthropogenic processes (Fig. 3). For this terminology, we focus on direct human influences on the hydrological cycle such as water abstraction and land use change, although we recognise that anthropogenic climate change indirectly affects the meteorological drivers of drought (e.g. Williams et al., 2015). With these terms, we actively include humans as drivers and modifiers of drought in the definition. There is no need for rephrasing the general drought definition, in which human processes are implicitly included. Furthermore, the terms we

10 propose are not new (climate-induced drought: Sheffield and Wood, 2011, p. 30; human-induced drought: Wilhite and Buchanan-Smith 2005, p. 10 and Falkenmark and Rockström, 2008, p. 93) and they match well with the flood terminology (Yevjevich, 1994).

2.2 “Drier than normal”: timescales of drought in the Anthropocene

Drought is a lack of water compared to a certain ‘normal situation’, but what constitutes this normal situation in the

15 Anthropocene? A drought occurs when actual water availability (indicated by water levels or fluxes) are-is below normal (Fig. 4). In a natural catchment, undisturbed by human activity, both actual and normal water ~~levels-availability~~ are governed by natural processes in response to climate. Normal water ~~availability levels-are-is~~ determined by the climate (long timescales), for example a (semi-)arid climate results in low average water ~~availability levels(= aridity; -(Table 1) and low~~ threshold levels (Fig. 4c). Actual ~~availability levels-are-is~~ determined by climate variability (here used as term for a

20 combination of weather events; short timescales), for example a rainfall deficit leading to a climate-induced drought (Table 1; Fig. 4a & c). Even though drought is defined on shorter timescales than aridity, very short periods of below-normal water availability are often not regarded as drought, e.g. drought is defined as “sustained” by Tallaksen and Van Lanen (2004, p.4), which means it lasts for longer than few days. This makes droughts generally occur on longer timescales than for example floods.

25 In a human-influenced catchment, actual and normal water ~~levels-availability~~ are, besides by climate, also influenced by human activities (Fig. 4b & d). The actual situation is influenced by water use and water management (short timescales), leading to lower or higher water levels, whereas the normal situation is influenced by long-term actions such as groundwater depletion and anthropogenic land use change (long timescales; Table 1). There are different ways to account for this different normal. If we have a long enough time series to determine the normal situation as influenced by human activities, we can use

30 that as our reference or threshold and only determine our droughts as extreme events relative to this human-influenced normal (Fig. 4b & d: disturbed drought threshold). For example, in the Jucar basin in Spain drought measures are based on thresholds in measured reservoir levels, groundwater levels, and river flow, which are all heavily influenced by abstraction for irrigation (Andreu et al., 2009). Alternatively, we can use a threshold determined from an undisturbed period or a

naturalised model scenario, so using the situation that would have occurred without human activities as reference, as a natural normal (Fig. 4 b & d: natural drought threshold; e.g. Van Loon and Van Lanen, 2013). The latter allows for a better identification of human-modified drought, both droughts enhanced and alleviated by human activities (Van Loon and Van Lanen, 2015).

5 Because drought is an extreme event, the normal situation is not characterised by long-term average water levels or fluxes. Instead, a drought threshold (Fig. 3) is used that is calculated as a percentile(s) of a long time series (commonly, the value that is exceeded 80-95% of the time) or return periods representing rare occurrence (for example, a 50 year drought). Some studies use a variable threshold calculated on daily, monthly, or seasonal time scales to represent seasonality and identify differences between droughts in different seasons (Van Loon, 2015). This is very relevant in the Anthropocene, because
10 humans interact differently with droughts in different seasons. Water abstraction for irrigation, for example, also follows a seasonal pattern and has different effects on summer drought vs. winter drought. On the other hand, in monsoon climates, drought characterised by a prolonged dry season causes different socio-economic impacts than a below-normal wet season.

2.3 Confusion between terms in the Anthropocene

Drought is often confused with water scarcity and water shortage, which are defined as ‘less water than needed’, i.e. where
15 demand is greater than supply (Table 1). The demand, or desired level, is included in Fig. 4 to illustrate the difference. In an unpopulated natural region, the desired situation is related to ecosystem requirements. Often these are not different from the normal situation because of the co-evolution of ecosystem and landscape. However, in a human-dominated region, the desired situation is related to or water demand, ~~which~~ is dependent on population, standard of living, water efficiency, but also on climate. In many areas the desired situation is out of balance with the normal situation, i.e. average water demand is
20 higher than average water availability, because of rapid population growth, changes in diet, etc. This long-term imbalance leads to water scarcity (see Rijsberman, 2006, for a good overview of water scarcity definitions) and when it ~~is coincides complemented~~ with short-term drought it leads to acute water shortage (Fig. 4; Table 1 and Fig. 4). If society satisfies its demand by abstracting more water, human-induced drought can occur in the short term (changing the actual situation) and overexploitation in the long term (changing the normal situation; Table 1 and Fig. 4).

25 Human-induced drought should also not be confused with the term “socio-economic drought” (Wilhite and Glantz, 1985, p. 115), which is used to denote socio-economic impacts of drought. Although socio-economic drought is often mentioned as a type of drought in scientific papers and on websites explaining drought to the general public, a clear distinction should be made between the physical lack of water (drought) and its socio-economic consequences (impacts of drought). These impacts are sometimes used to define the drought threshold (Fig. 3), which then reflects the water level at which ecological
30 or socio-economic impacts are expected to occur, such as ecological minimum flow or minimum reservoir levels.

We have to point out that the definitions of drought and its impacts used here deviate from the definitions used in other scientific disciplines, in particular in the climate community. For example, in the IPCC SREX report drought, as we define it here, is considered an “impact of extreme (weather or climate) on the natural physical environment” (IPCC, 2012, p. 40 &

167), whereas we see drought as a state of the natural physical environment that can cause ecological and socio-economic impacts. the term “extreme (weather or climate) event” is used, having ‘impacts’ defined as the “spectrum of outcomes for humans, society, and physical systems, including ecosystems” (IPCC, 2012, p. 40). Drought, as we define it here, is then considered an “impact on the natural physical environment” (IPCC, 2012, p. 167). Similar confusion can arise for the terms ‘attribution’, ‘mitigation’ and ‘adaptation’, which are often assumed to be synonymous with attribution, mitigation and adaptation of (anthropogenic) climate change, but can also be used for the attribution, mitigation and adaptation of drought.

3 A framework for understanding and analysing drought in the Anthropocene

The traditional view of drought propagation is uni-directional: climate variability causes drought, which propagates through the hydrological system and subsequently leads to impacts (Fig. 2 – left side). Because of the complex relationships in the water cycle (Fig. 1) there are other drivers and modifications of drought and influences working in the opposite direction (Fig. 2). Therefore, the understanding of drought propagation needs to move from single driver to multiple drivers, and from uni-directional to bi-directional or even multi-directional.

For characterisation of this complete multi-directional system, unfortunately, our understanding and observation of drought processes have important gaps and the modelling and prediction tools at our disposal are therefore inadequate. The gaps are in the areas of 1) drivers of drought, 2) modifications of drought, 3) impacts of drought, 4) feedbacks of drought, and 5) changing normals. The framework presented in this section allows us to acknowledge what has been done in these areas, highlight where our understanding of drought processes in the Anthropocene is lacking and discuss the data, approaches and tools that are needed to address these gaps.

3.1 Drivers of drought in the Anthropocene

Drought is often seen from a meteorological perspective (Van Lanen et al., 2016), driven only by meteorological anomalies that disturb the normal water balance in a catchment (Fig. 2 – left side). Given the significant human modifications of the terrestrial hydrological cycle, this is too simplistic a perspective (Box 1). If we take a hydrological perspective on drought, a lack of water compared to normal conditions can have a range of drivers (Fig. 2). There are many reasons for adopting a hydrological rather than meteorological perspective on drought. Firstly, people mainly use (sub)surface water, not rainfall directly (except for rainwater harvesting), so socio-economic impacts of drought are more related to a lack of (sub)surface water. Secondly, water on and beneath the land surface can be managed and manipulated, in contrast to rainfall, so that hydrological drought can be mitigated. And finally, the direct anthropogenic influences on hydrological drought are probably much larger than climate change influences in many areas of the world. If we adopt a hydrological perspective on drought, it is important to distinguish between the different drivers of drought. This distinction leads to more accurate drought prediction and helps to direct attention and allocate investments between adaptation to climate-induced drought and

reduction of human-induced drought. However, separating between climate-induced and human-induced drought is a major scientific challenge.

Human-induced droughts are recognised (Wilhite and Buchanan-Smith, 2005), but there is a large gap in our understanding of the development of human-induced / -modified drought. We do know that human drivers principally influence soil moisture drought and hydrological drought and generally do not cause meteorological drought (Fig. 2; excluding relatively small scale land surface feedbacks, e.g. due to irrigation (Tuinenburg et al., 2014); or the global, indirect effects of anthropogenic climate change). We can also hypothesise that the main process underlying human-induced and human-modified drought is abstraction from groundwater and surface water. There are many scientific studies on the long-term effects of abstraction (decades to centuries), but few on the temporal variability of abstraction on drought timescales (months to years). It is therefore still unclear how important human-induced and human-modified droughts are compared to climate-induced droughts for different areas around the world.

Research questions about drought drivers include: to what extent can observed historic drought events be attributed to different drivers? What are the dominant drivers of drought in different parts of the world? Do human-induced and human-modified droughts follow the same development as climate-induced drought and what are the implications for management?

Answering these questions requires quantification of the direct human drivers of soil moisture drought and hydrological drought, in absence of meteorological anomalies, for historical drought events. The approach would be to identify droughts in time series of observed hydrological variables and compare those to time series of climate-induced drought (represented by meteorological drought, observed droughts in an undisturbed nearby catchment, or simulated ‘naturalised’ droughts). This last approach was used successfully in Australia (Van Dijk et al., 2013) and Spain (Van Loon and Van Lanen, 2013) and could be applied in other areas around the world to understand the variability in how human drivers impact drought. Naturalisation of disturbed time series is challenging, being very much dependent on accurate modelling or regionalisation approaches and data of human disturbances at a sufficiently high spatial and temporal resolution. Many international hydrological databases and data-sharing initiatives, however, have deliberately focused on near-natural systems (e.g. Hannah et al., 2011; Whitfield et al. 2012) in order to discern climate-driven processes from the noise of various human disturbances.

We argue for more analysis of the disturbed catchments already included in hydrological databases and promote the extension of these databases with more human-influenced catchments, as suggested previously by Gustard et al. (2004). Perhaps the greatest obstacle to achieving this is the lack of metadata indexing the type and degree of human impact in any one catchment, which is often not known or poorly quantified. There is a pressing need for a ‘bottom-up’ approach to transfer such knowledge, where it exists, from catchment, regional or national scale archives to the international research community. We also call for more experimental catchments in human-influenced areas in which particular human influences on the hydrological cycle can be isolated and controlled, for example within the Euromediterranean Network of Experimental and Representative Basins (ERB), the network of Critical Zone Observatories in the USA, and the TERrestrial ENvironmental Observatories (TERENO) in Germany. Alternatively, we can make more use of satellite data of hydrological variables, which have become more widely available on global scale, although still with high uncertainties (AghaKouchak et

al., 2015b). Useful satellite products are soil moisture missions (SMAP, SMOS, AMSR-E II, ASCAT) for soil moisture information on high spatial and temporal resolution and NASA's Gravity Recovery and Climate Experiment (GRACE) for total water storage. If these are compared with global precipitation estimates (from satellites, TRMM and GPM, or from re-analysis), human-induced droughts might be identified in the absence of natural drought drivers.

5 | 3.2 Modifications of drought ~~in the Anthropocene~~

The severity of droughts is strongly modified by catchment storage and release processes. In the natural situation these modifiers are determined by factors such as soil type, geology, land cover (Fig. 2 – left side). In the Anthropocene, human activities change storage and land properties influencing propagation processes, and modify drought severity directly through anthropogenic inflows or outflows of water (Fig. 2 – right side). Just like natural modifiers, human modifiers can
10 have both positive (enhancing) and negative (attenuating) effects on drought severity. The processes underlying direct modification of drought severity by human influenced inflows or outflows of water are most recognised and understood, whereas the effects of human modification of storage and land properties, although recognized as potentially important, are more elusive.

There are ample examples of how human changes in land properties influence the hydrological cycle. Urbanisation for
15 example results in less infiltration and more runoff in some cases and in more recharge in others (due to leakage of water supply and sewage systems; Lerner, 1990). Deforestation, afforestation, agricultural practices and desertification influence evapotranspiration and consequently soil moisture. Some studies focused on the effects of land use change on low flows (Tallaksen, 1993; Hurkmans et al., 2009), but there is very little quantitative research on how these processes influence drought severity and contrasting results are reported between modelling studies (Tallaksen, 1993; Hurkmans et al., 2009) and
20 observation-based studies (Price et al., 2011; Eng et al., 2013).

Research questions about human modifications of drought include: how do human modifications of drought enhance or alleviate drought severity? How do we predict drought development, severity and recovery in human-influenced areas, taking into account relevant human drought modifiers?

Direct inflows or outflows of water are relatively easy to quantify with a water balance approach that explicitly takes into
25 account human water flows (Lloyd-Hughes, 2014). However, this approach requires data of human influences on the water system, such as surface water and groundwater abstraction, interbasin water transfers (Van Loon and Van Lanen, 2015), and irrigation return flows (De Graaf, et al., 2014). These data are usually not measured or collected, and if they are, there are often privacy issues in sharing the data, even for research. Additionally, there are many illegal or undocumented human influences on the water system that remain unknown (e.g. Pérez Blanco and Gómez, 2012). National statistical databases can
30 be a good source of information, but their spatial resolution is often coarse so downscaling might be needed. Examples of methods for downscaling information on water demand and water use can be found in Wada et al. (2011) and Nazemi and Wheeler (2015a,b). More qualitative and local scale information on the human influences in a catchment can be gathered by a range of methods including interviews with local water users, participant diaries, oral recollections, community histories,

participant observation, photographs and other visual materials, satellite-derived land use maps, and novel methods such as unmanned aerial vehicles (also known as drones).

Besides new data, new methods are needed to disentangle human modifiers from natural modifiers of drought and quantify how large their effect on drought severity has been for historical drought events and might be for future events. When sufficient data are available, statistical methods, such as multiple regression analysis, can be useful in finding the statistical relationships between drought severity and multiple influencing factors. This approach was used by Van Loon and Laaha (2015) for natural drought modifiers, but can easily be extended to include human modifiers. Paired catchment statistical approaches (as applied to urbanisation impacts on floods by Prosdocimi et al., 2015) or upstream ('natural') – downstream ('disturbed') comparisons (Fig. 5a; López-Moreno et al., 2009; Rangelcroft et al., 2016) are other data-driven approaches, although these have yet to be applied extensively for drought and low flows. Another large-scale data analysis method that has great potential for use in drought research is comparative analysis (Wagener et al., 2007) that aims to find patterns by analysing a large set of catchments with a wide range of characteristics, both in terms of natural and human processes (e.g. Price et al., 2011; Eng et al., 2013; Sadri et al., 2016). This method is especially valuable if it is combined with qualitative data to explain the patterns found.

For scenario testing, conceptual models of human-water systems (Di Baldassarre et al., 2013; 2015) are a useful tool. Natural flows are altered by the presence of reservoirs and the resulting outflows depend on (changing) operational rules, i.e. optimised for flood or drought (Fig. 5b; e.g. Mateo et al., 2014). The conceptual model (Martinez et al., 2016) simulates how the occurrence of a flood event might lead to changes in operational rules (e.g. shifting from the "optimised for drought" to "optimised for flood" scenario in Fig. 5b), which will eventually enhance the next drought event (Di Baldassarre et al., 2016).

Modelling tools are also indispensable for prediction of drought under human modification. There are many types of models and many options to use these models for drought in the Anthropocene. Classic-large-scale hydrological models are being adapted to include more anthropogenic processes (e.g. WaterGAP and PCR-GLOBWB; Wada et al., 2011; Döll et al., 2012; Nazemi and Wheeler, 2015a; Veldkamp et al., 2015). Analysing these models specifically during drought periods has given some encouraging results (Fig. 5c; e.g. Van Lanen et al., 2004; Verbeiren et al., 2013; Wada et al., 2013; De Graaf, et al., 2014; Forzieri et al., 2014; Wanders and Wada, 2015), although model uncertainties during low flow and drought remain high. Since many human influences on the hydrological cycle are on local scale, hyper-resolution modelling might be needed to explicitly represent all relevant human activities (Wood, et al., 2011). For parameterisation of these models, however, a thorough understanding of the processes is essential (Beven and Cloke, 2012). Most predictions on local scale, however, are done with lumped or semi-distributed hydrological models. It is often not straightforward to incorporate dynamic human processes into these models and more work is needed to adapt these lumped hydrological models for use in the Anthropocene. An example of a new lumped hydrological model that incorporates man-made extraction and supply of water to both surface and subsurface water is WALRUS by Brauer et al. (2014). Current physically-based models are better fitted to simulate human responses to drought, e.g. SIMGRO (Querner et al., 2008; Van Lanen et al., 2004). Once again, the key an

important limiting factor is availability of data and metadata on the human modifiers. If information on human pressures is available, modelling can be a key tool in separating human and natural drivers (thus paving the way to attribution) through a ‘multiple working hypothesis’ approach (see for example the work of Harrigan et al., 2014).

3.3 Impacts of drought in the Anthropocene

5 On the other side of the propagation diagram are the environmental and socio-economic impacts of drought (Fig. 2). Drought impacts, compared to the impacts of other hazards, are mostly non-structural and difficult to quantify. Drought impacts also have a high diversity, ranging across agriculture, water supply, industry, energy production, human health, aquatic ecology, forestry and other sectors (Stahl et al., 2016). Impacts are sometimes characterised into direct and indirect or tangible and intangible impacts (Wilhite and Vanyarko, 2000). Thus, the quantification of drought impacts depends on the affected sector
10 and on the level of impact (direct or indirect, and perhaps cumulative). Direct impacts on the agricultural sector are often documented as losses or reductions in crop yields. However, associating indirect economic losses directly to drought is not always straightforward (Ding et al., 2011). Indirect negative consequences are often quantified by the number of people affected or by number of people who died as a result of related food security or health issues, but other factors than a direct association to drought may play an important role as well. Especially drought impacts on (mental) health are complex and
15 dependent on a multitude of factors (Stanke et al., 2013; O'Brien et al., 2014).

Whether a drought event has negative consequences on one of these sectors also depends strongly on people’s perception and thus on the vulnerability of affected sectors (Knutson et al., 1998; Iglesias et al., 2009). Understanding a particular sector’s vulnerability can benefit from specific information and quantification of drought impacts in addition to knowledge on the general vulnerability factors that describe the sensitivity and adaptive capacity of the considered community or region.

20 For drought characteristics, ample data sources exist. However, as noted before, they rarely specify the level of human modification to the drought signal. ~~For vulnerability analysis, many useful data on the sensitivity or adaptive capacity from community to country to international levels are lacking (De Stefano et al., 2015). For drought impacts, the US Drought Impact Reporter (DIR) (<http://droughtreporter.unl.edu/>) and the European Drought Impact report Inventory (EDII) in Europe (<http://www.geo.uio.no/edc/droughtdb/>) collect and categorise textual drought impact reports, whereas Lackstrom et al. (2013) and others suggest the development of a more targeted impact monitoring.~~

Research questions that need to be addressed thus include: how should drought impacts be monitored and quantified? How do they depend on the physical characteristics of drought versus the vulnerability of people or the environment?

~~For drought impacts, the US Drought Impact Reporter (DIR) (<http://droughtreporter.unl.edu/>) and the European Drought Impact report Inventory (EDII) in Europe (<http://www.geo.uio.no/edc/droughtdb/>) collect and categorise textual drought impact reports, whereas Lackstrom et al. (2013) and others suggest the development of a more targeted impact monitoring. A survey of operational monitoring and early warning systems by Bachmair et al. (2016a) found that many regional systems do monitor impacts, however, not in a systematic way and thus they do not consider them for the drought warning and other management in a quantitative manner. Hence impact monitoring is an important starting point for improvement. For~~

30

vulnerability analysis, likewise many useful data on the sensitivity or adaptive capacity from community to country to international levels are lacking (De Stefano et al., 2015); Where data are available, however, research can target to find a useful and applicable functional link between these aspects of drought.

Retrospective analysis of the physical characteristics of past droughts (through some drought indicator) and the impacts that they have triggered ~~is one way~~ have moved this search for a link function forward, especially if compared across different societal contexts, in particular different degrees of vulnerability. However, methods to link physical indicators and societal impacts have only recently been explored more in-depth and still require more systematic appraisal. Figure 6 gives an overview of the different methods. The most widely adopted approach to relate drought indicators-to-impacts is to link commonly used hydrometeorological drought indicators to agricultural yield (Lobell et al., 2008; Vicente-Serrano et al., 2012; 2013; Bachmair et al., 2016a). Most of these studies are based on correlation and as summarized by Stagge et al. (2015a), thus are useful for screening relationships, but they measure the response of a variable, such as crop yield, across its entire range of values including typical or even productive years. A further complicating factor is the non-linearity of the climate-yield relation, which can show ambiguous relations with positive effects during drought or threshold behaviour for reductions in yield (Fig. 6a). Report-based impact data cover a wider range of impact types, but are tedious to gather and have many biases. So far they have mostly been converted to binary or counts of “impact occurrences” for indicator-to-impact studies (Fig. 6b). Data-driven statistical models have used time series or spatial variability of these “impact occurrences” as a response variable in regression and classification tree models (Fig. 6c; Stagge et al., 2015a; Bachmair et al., 2015a2016b; Blauhut et al., 2015). These studies have also shown that impact generation is more complex than previously assumed and may be caused by the co-occurrence of several extremes, lagged effects, and seasonality (Stagge et al. 2015a). A useful outcome of these modelling exercises was the objective determination of ‘best-indicators’ for impacts in particular sectors that are strongly influenced by human factors. For example, when using the Standardized Precipitation Index (SPI) or Standardized Precipitation Evapotranspiration Index (SPEI) the best accumulation period suited to predict agricultural impacts clearly differs for irrigated and rain-fed agriculture (Stagge et al., 2015a); similarly, the best accumulation period to predict drought impact on public water supply differs depending on the relative contributions of groundwater versus surface water resources and the type of reservoirs available (Bachmair et al., 2016b). These examples show that human perception of drought impacts can differ from the occurrence of drought in the natural hydrological system, depending on the prevailing water management framework and thus the vulnerability. Future analysis could use impact information to better characterise impacts of human-modified or human-induced drought.

3.4 Human feedbacks of drought ~~in the Anthropocene~~

The interaction between natural hydroclimatological processes and human influences is not a simple addition of both effects, but instead comprises complex and dynamic feedbacks resulting in a strongly non-linear response of the hydrological system (Fig. 2). There are negative feedbacks, when human management responses to drought (impacts) lessen drought; and positive feedbacks, where management responses exacerbate drought. There is growing knowledge of climate feedbacks

(also called land-atmosphere feedbacks), in which drought influences evapotranspiration rates positively or negatively (Teuling et al., 2013), dependent on geographic situation and time frame. There is, however, only very limited understanding of human feedbacks during drought.

Short-term human feedbacks are responses to drought situations (whether observed, or at least perceived, or predicted) that influence water storages and fluxes within a particular water system in a catchment over timescales of days to years. These influences can include reductions in water use, implementation of water saving technologies, planting of less water-demanding crops, using other water sources (e.g. from surface water to groundwater; from clean to grey water), short-term increases in groundwater abstraction because of surface water shortage, and water transfer from wetter areas, or areas where water demand is lower (e.g. Andreu et al., 2005).

There is strong non-linearity in the reaction of the water system to these short-term influences (Sivapalan et al., 2012). Timescales often do not match; for example, the societal response might be in the order of weeks, but the reaction of groundwater can be in the order of years (Gleeson et al., 2010; Castle et al., 2014). Consequently, there is a difference between short- and long-term droughts, where longer droughts show a more complex interaction of natural and human processes (Van Dijk et al., 2013). Societies can also learn from historic droughts and adapt drought policy in the long-term to be more pro-active, rather than reactive, when the next drought comes (McLeman et al., 2014). Crucially however, human activities are not only influenced by climate and the drought state of the system, but are also strongly dependent on domestic water behaviours (Pullinger et al., 2013), national policy styles (Gober, 2013), existing public policies (particularly for agriculture; Campos, 2015), water law and governance (Maggioni, 2015), and even indirectly by international food markets and geopolitics.

Research questions about human feedbacks include: are there commonalities in the response of different societies to different drought events? To what extent are physical and human drought processes coupled, and can feedback loops be identified and altered to lessen or mitigate drought? What are the links between discourses and practices of drought mitigation and alleviation? Additionally, more information is needed on past histories of water use and the role of technology in current routines of water practice (Pullinger et al., 2013), tipping points in human water use (Mera et al., 2014), and the reasons for a lack of public awareness of environmental water demands (Dessai and Sims, 2010). Understanding the relationship between these factors is crucial to enhancing our understanding of drought.

Qualitative data are essential in our quest for increased understanding of this topic. One novel type of qualitative data is the use of drought narratives [\(i.e. stories of historic drought events\)](#), which can give new insights into societal responses and feedbacks [\(e.g. Daniels and Endfield, 2009\)](#). This is an example of how citizen science can help harvest data. It is especially interesting to study ‘paired drought events’, i.e. drought events of similar magnitude that occurred in the same region, to investigate whether societies learn from drought events and what the effect of this learning is on the next drought. Despite the obvious uncertainties of such an approach, it can provide information on drought responses and feedbacks from one drought event to the next, as was shown for ‘paired flood events’ by Kreibich et al. [\(in-prep2016\)](#).

For quantitative prediction of the effect of feedbacks on drought, ~~classie~~ water management models could be adapted to include more hydrology and feedbacks. The modelling tools that are used in water management generally take water availability as external forcing and do not include the feedbacks of the water use on the hydrological system (e.g. Higgins et al., 2008; Borgomeo et al., 2014). Like some global and lumped hydrological models mentioned before, mMany water management models ~~, however,~~ are capable of simulating the effect of the allocation of water on hydrological processes also during drought, as was shown by Querner et al. (2008) and Van Oel et al. (2012), or simulating the influence of water management decisions on the evolution of a given drought scenario (e.g. Watts et al. 2012).

Socio-hydrology models aim to account explicitly for the two-way feedbacks between social and hydrological processes (e.g. Sivapalan et al., 2012). Di Baldassarre et al. (2013; 2015) have applied this approach to flooding, and the development of a similar modelling framework for drought is underway (Kuil et al., 2015). As the interplay between water and people is still poorly understood, socio-hydrological theory is still to be developed via an iterative process of empirical study, comparative analysis and process-based modelling. Thus, while the current studies do contribute to improve the current understudying of water-society interactions, their predictive power is still very limited (Viglione et al., 2014). Modelling approaches are most successful when people themselves are actively involved in the modelling process; stakeholders can, for example, guide scenario-analysis (Loucks, 2015). In contrast to modelling studies, environmental social science epistemologies, such as grounded theory building, offer alternative means of understanding water resource use and human behaviour (Pearce et al., 2013), potentially enabling more holistic insights into the role of drought feedbacks in the “hydrosocial cycle” (Linton and Budds, 2014, p.170).

3.53 Changing normal in the Anthropocene

We now live in a fast-changing environment; both climate change and long-term human influences on the water cycle are changing the ~~norm~~reference normal situation, even within 30 year time blocks that are traditionally being used to determine a climatology or a drought threshold. This is important from a drought perspective because the normal situation is our reference to determine the occurrence and severity of drought events (Fig. 4). There are many uncertainties in dealing with extreme events like drought under conditions of change. Some model studies of future hydrological drought commented on the assumption of using the same threshold for the historic and the future period (e.g. Giuntoli et al., 2015; Wanders et al., 2015). Two aspects should be mentioned. Firstly, regime changes trigger methodological considerations, because they can result in detection of drought events that should otherwise not be classified as drought, such as earlier snowmelt resulting in a ‘drought’ in the normal snowmelt period (Lehner et al., 2006; Van Huijgevoort et al., 2014). Secondly, ecological and societal systems might adapt to a changing normal, but it is unclear how fast these adaptations will take place and whether tipping points will be passed (Mera et al., 2014).

Research questions related to a changing normals include: is the normal situation actually changing or do we not have the data or understanding of natural variability to say anything about what is normal? How do long-term human influences on the water cycle change the normal situation? Do societies adapt to changes in the normal situation so that more severe

droughts might lead to less impact in the future? How should we adapt our drought analysis to accommodate changes in the normal situation?

The most straightforward solution to regime shifts is analysing different seasons separately, as was done by Hisdal et al. (2001) and Feyen and Dankers (2009) with respect to a snow season and non-snow season. In historical drought analyses, long-term climate change effects are often excluded by taking a short enough period to neglect climate change or by detrending the time series. For a changing normal due to future climate change, Vidal et al. (2012) and Wanders et al. (2015) have suggested to include adaptation by changing the drought threshold for the future. Mondal and Mujumdar (2015) followed a similar approach by estimating changes in return levels of drought under similar probability of occurrence in observed and projected streamflow. These methodologies should be evaluated more thoroughly and should also be applied to account for long-term human influences, alongside climate change effects. Important long-term human influences to consider are anthropogenic land use change (urbanisation and deforestation; Verbeiren et al., 2016), continuous increases in abstraction, and step-changes in storage by dam building (e.g. Wisser et al., 2010; Pokhrel et al., 2012).

These methodological explorations on how to deal with changes of the normal situation in drought analysis are urgently needed, but we should also get a better understanding of long-term changes in the perception of drought impacts and vulnerability. This perception drives adaptation to extreme events like drought and influences feedbacks between the physical and social system. Societies might be able to adapt to a changing mean, but they are more likely to be triggered by extreme impacts of a severe drought, resulting in long-term adaptations aiming to reduce impacts of drought in the future (Fig. 7; Smit et al., 2000; Dillehay and Kolata, 2004). More research is needed to understand trajectories of social development that lead to adaptation to drought.

We can benefit from the work done on long timescales, both regarding long-term climate change, long-term human influence on the water cycle (overexploitation) and long-term water demand and scarcity (Table 1). Research on groundwater depletion (Aeschbach-Hertig and Gleeson, 2012) and water scarcity (Rijsberman, 2006) has been carried out on large temporal and spatial scales (annual and country level), because that is the level of relevance and the level of available data. Accounting for temporal variability and increasing spatial resolution can close the gap with drought research (Savenije, 2000; Hoekstra et al., 2012; Hering et al., 2015; Vörösmarty et al., 2015). Veldkamp et al. (2015) and Mekonnen and Hoekstra (2016) were the first to explore sub-annual time scales of water scarcity.

4 A broader scope on drought in the Anthropocene

The framework proposed here is in line with suggestions for hydrological research in general, for example with the call by Wagener et al. (2010) for a paradigm shift to study hydrology under change, with the research agenda set by Thompson et al. (2013) for hydrological prediction in the Anthropocene, with the new decade of the International Association of Hydrological Sciences (IAHS) ‘Panta Rhei’ (Montanari et al., 2013; McMillan et al., 2016), and with the propositions for

hydrological research and water management by Vogel et al. (2015). Complementary to these visions on the future of hydrology in general, we think that a focus on drought is needed to cope with complex future water challenges.

The challenges mentioned here are, however, not unique to drought. We can learn from other fields that have struggled or are still struggling with similar issues. The parallels with flood research have already been mentioned above in relation to definitions and socio-hydrology. Flood research is further advanced than drought research in including human influences on catchments and rivers in flood analysis (e.g. Vorogushyn and Merz, 2013) and many studies exist that focus on attribution of flood to different drivers and modifications, the complex interaction between natural and human processes, and flood response and adaptation.

There is also an interesting parallel between society and ecology, because, just like people, plants are simultaneously dependent on and shape water availability (e.g. Rodriguez-Iturbe, 2001). The field of ecohydrology has evolved in the last 15 years to a quantitative understanding of the interrelated dynamics of plants and water (e.g. Hannah et al., 2007; Asbjornsen et al., 2011; Jenerette et al., 2012). The importance of including vegetation feedbacks in future drought modelling was, for example, highlighted by Prudhomme et al. (2014). Similar approaches can be applied to the interrelated dynamics of people and water, especially during drought. In addition, the field of hydroecology has been grappling for several decades with the same issue of how to capture 'reference' natural conditions in order to compare impacted conditions against. Again, this is hampered because there are so few extant examples of natural conditions in observed hydrological datasets; the same challenges of how to naturalise flows have been at the core of the environmental flow paradigm (e.g. Acreman and Dunbar, 2004).

Societies have always had to cope with drought, so water management and governance have a long history. Especially interesting are the stories of civilisations that collapsed due to a combination of water overexploitation, drought and other factors (e.g. Lucero, 2002). But there are many examples of successful water management in the past that have reduced drought severity or led to successful adaptation (e.g. Dillehay and Kolata, 2004; Garnier, 2015), which can help to understand feedbacks between society and the water system. In this light it is also very informative to understand how people deal with uncertainties in drought prediction (Kasprzyk et al., 2009; Wagener et al., 2010), which are partly caused by the gaps in our understanding and unsuitability of data and tools to quantify the interaction between people and drought in the Anthropocene (Vogel et al., 2015). The use of drought predictions by society plays an important role in the impacts and feedbacks of drought. For improved drought management in the Anthropocene, a better two-way communication between scientists, stakeholders, policy makers and general public is needed. There are often social, psychological and organisational barriers that prevent optimal use of scientific understanding in decision making. They not our primary focus here, but clearly they can play an important role.

Although water scarcity is very different from drought, and water demand is not the focus of this article, regions with high water demand often influence the water cycle more drastically, possibly resulting in more human-induced drought and human-modified drought compared to regions with low water demand. Additionally, high-demand regions will be more

severely impacted by drought than low-demand regions. Since increases in global water demand are projected for the future, enhancing water scarcity, collaboration between drought research and water scarcity research is urgently needed.

In focussing on human aspects of drought we should not forget the other parts of the complex interlinked system (Fig. 1). Ecological and environmental requirements are recognised but are often neglected during drought (Vörösmarty et al., 2010).

5 For example, in the Murray-Darling Basin (Australia) water management mitigated the water supply and economic impacts of drought, but at the same time strongly amplified the negative environmental impacts of drought (Van Dijk et al., 2008). Deterioration of water quality during drought can mean that water is available but cannot be used, for example due to algal blooms or salt water intrusion in deltas (Van Vliet and Zwolsman, 2008). Although water quality was not discussed in this article, we stress that there are many challenges related to water quality and drought in the Anthropocene that require further
10 research (e.g. Mosely, 2015).

In this opinion article we have argued that drought in the Anthropocene is not an external natural hazard. Instead, the natural hazard is intertwined with human influences on the water cycle and feedbacks of society on drought. We, therefore, explicitly include human processes in drought definitions and clarify previous confusion with related terms such as water scarcity. We present a multi-driver and multi-directional drought framework, in which human drivers, modifications,
15 | impacts, feedbacks and changing norm~~als~~s of drought are included in drought research. This framework highlights gaps in our understanding and indicates the tools and data needed. The elements of the framework have increasing complexity, from relatively straightforward aspects like human drivers and modifications of drought, to the more complex impacts of drought, | to compound feedbacks and changing norm~~als~~s that integrate across all other elements.

The framework can be used to focus on a specific point or research question with the aim to solve part of the puzzle, or to
20 study the entire interrelated system with the aim to put the pieces of the puzzle together. In the end both approaches will hopefully result in a more holistic view of drought in the Anthropocene and consequently better drought management, in which the appropriate understanding and data and tools are used to take effective measures to mitigate drought severity, and to reduce drought impacts in the Anthropocene (Van Loon et al., 2016). This is of crucial importance now that the world is facing increasing human influence on the hydrological system, increasing dependence of society on water availability,
25 combined with significant population growth, and climate change possibly leading to an increasing frequency of extreme hydroclimatological events (Vörösmarty et al., 2000; Oki and Kanae, 2006).

Author contribution

A. Van Loon initialised the ideas presented in this paper with H. Van Lanen, T. Gleeson, R. Uijlenhoet and A. Teuling. All authors contributed to the discussions that shaped the paper. A. Van Loon prepared the manuscript with parts written by J.
30 Clark and K. Stahl, and contributions from all co-authors. Figures were prepared by A. Van Loon, S. Rangelcroft, G. Di Baldassarre, N. Wanders, K. Stahl, B. Verbeiren, and T. Gleeson.

Acknowledgements

The present work was (partially) developed within the framework of the Panta Rhei Research Initiative of the International Association of Hydrological Sciences (IAHS). It draws from discussion in (amongst others) the EU FP7 Project DROUGHT-R&SPI (282769), supports the work of the UNESCO-IHP VIII FRIEND-Water programme and is partly funded by the Dutch NWO Rubicon project ‘Adding the human dimension to drought’ (reference number: 2004/08338/ALW). We want to thank the editor Hilary McMillan, two anonymous reviewers and Marc Bierkens for their constructive comments on our paper.

References

- Acreman, M. C., and Dunbar, M. J.: Defining environmental river flow requirements—a review, *Hydrology and Earth System Sciences*, 8(5), 861-876, 2004.
- Aeschbach-Hertig, W. and Gleeson, T.: Regional strategies for the accelerating global problem of groundwater depletion. *Nature Geoscience*, 5: 853-861. doi:10.1038/ngeo1617, 2012.
- AghaKouchak, A., Farahmand, A., Melton, F.S., Teixeira, J., Anderson, M.C., Wardlow, B.D. and Hain, C.R.: Remote sensing of drought: Progress, challenges and opportunities. *Reviews of Geophysics*, 53(2), pp.452-480, 2015b.
- AghaKouchak, A., Feldman, D., Hoerling, M., Huxman, T. and Lund, J.: Water and climate: Recognize anthropogenic drought *Nature* 524, 409–411, doi:10.1038/524409a, 2015a.
- Andreu, J., Ferrer-Polo, J., Pérez, M. A., and Solera, A.: Decision support system for drought planning and management in the Jucar river basin, Spain. In 18th World IMACS/MODSIM Congress, Cairns, Australia (pp. 13-17), 2009.
- Andreu, J., Rossi, G., Vagliasindi, F. and Vela, A.: *Drought Management and Planning for Water Resource*. CRC Taylor & Francis, 2005.
- Asbjornsen, H., Goldsmith, G. R., Alvarado-Barrientos, M. S., Rebel, K., Van Osch, F. P., Rietkerk, M., ... and Dawson, T. E.: Ecohydrological advances and applications in plant–water relations research: a review. *Journal of Plant Ecology*, 4(1-2), 3-22, 2011.
- Bachmair, S., Kohn, I., and Stahl, K.: Exploring the link between drought indicators and impacts, *Nat. Hazards Earth Syst. Sci.*, 15, 1381-1397, doi:10.5194/nhess-15-1381-2015, 2015a.
- Bachmair S., Stahl K., Collins K., Hannaford J., Acreman M., Svoboda M., Knutson C., Smith K. H., Wall N., Fuchs B., Crossman N. D., Overton I. C.. Drought indicators revisited: the need for a wider consideration of environment and society. *WIREs Water*, doi: 10.1002/wat2.1154, 2016a.
- ~~Bachmair, S., Kohn, I., and Stahl, K.: Exploring the link between drought indicators and impacts, *Nat. Hazards Earth Syst. Sci.*, 15, 1381-1397, doi:10.5194/nhess-15-1381-2015, 2015a.~~

- Bachmair, S., Svensson, C., Hannaford, J., Barker, L. J., and Stahl, K.: A quantitative analysis to objectively appraise drought indicators and model drought impacts, *Hydrol. Earth Syst. Sci. Discuss.*, [20\(7\), 2589–2609, doi:10.5194/hess-20-2589-2016](#), ~~doi:10.5194/hessd-12-9437-2015, 2015b2016b~~.
- 5 Beven, K. J., and Cloke, H. L.: Comment on “Hyperresolution global land surface modeling: Meeting a grand challenge for monitoring Earth's terrestrial water” by Eric F. Wood et al. *Water Resources Research*, 48(1), 2012.
- Blauhut V., Gudmundsson, L., Stahl, K.: Towards pan-European drought risk maps: quantifying the link between drought indices and reported drought impacts, *Environ. Res. Lett.* 10, 014008, doi:10.1088/1748-9326/10/1/014008, 2015.
- Bloomfield JP, Marchant BP. Analysis of groundwater drought building on the standardised precipitation index approach. *Hydrol Earth Syst Sci*, 17:4769–4787. doi:10.5194/hess-17-4769-2013, 2013.
- 10 Borgomeo, E., Hall, J.W., Fung, F., Watts, G., Colquhoun, K. and Lambert, C.: Risk-based water resources planning: Incorporating probabilistic nonstationary climate uncertainties. *Water Resources Research*, 50(8), pp.6850-6873, 2014.
- [Brauer, C.C., Teuling, A.J., Torfs, P.J.J.F. and Uijlenhoet, R. The Wageningen Lowland Runoff Simulator \(WALRUS\): a lumped rainfall–runoff model for catchments with shallow groundwater. *Geoscientific Model Development*, 7\(5\), pp.2313-2332, 2014.](#)
- 15 Campos, J.: Paradigms and public policies on drought in northeast Brazil: A historical perspective. *Environmental Management*, 55, 5, 1052-1063, 2015.
- Castle, S. L., B. F. Thomas, J. T. Reager, M. Rodell, S. C. Swenson, and J. S. Famiglietti, Groundwater depletion during drought threatens future water security of the Colorado River Basin, *Geophys. Res. Lett.*, 41, 5904–5911, doi:10.1002/2014GL061055, 2014.
- 20 Ciais, P., Reichstein, M., Viovy, N., Granier, A., Ogee, J., Allard, V., ... and Valentini, R.. Europe-wide reduction in primary productivity caused by the heat and drought in 2003. *Nature*, 437(7058), 529-533, 2005.
- Crutzen, P.J.: *Geology of mankind*. *Nature* 415: 23, 2002.
- [Daniels, S., and Endfield, G. H. Narratives of climate change: introduction. *Journal of Historical Geography*, 35\(2\), 215-222, 2009.](#)
- 25 [De Graaf, I. E. M., van Beek, L. P. H., Wada, Y., and Bierkens, M. F. P. Dynamic attribution of global water demand to surface water and groundwater resources: effects of abstractions and return flows on river discharges. *Advances in Water Resources*, 64, 21-33, 2014.](#)
- De Kraker, A. M. J.: Flooding in river mouths: human caused or natural events? Five centuries of flooding events in the SW Netherlands, 1500–2000, *Hydrol. Earth Syst. Sci.*, 19, 2673-2684, doi:10.5194/hess-19-2673-2015, 2015.
- 30 De Stefano, S. D., Gudmundsson, L., Gunst, L., Kohn, I., Van Lanen, H. A., Reguera, J. U., and Tallaksen, L. M.: Recommendations for indicators for monitoring and early-warning considering different sensitivities: pan-European scale. DROUGHT-R&SPI Technical Report No. 26, 121 pp., available at: <http://www.eu-drought.org/technicalreports/10859964/DROUGHT-R-SPI-Technical-Report-No-26-Methodological-approach-considering-different-factors-influencing-vulnerability-pan-European-scale> (last access: 18 May 2016), 2012.

- Dessai, S., and Sims, C.: Public perception of drought and climate change in southeast England. *Environmental hazards*, 9(4), 340-357, 2010.
- Di Baldassarre, G., A. Viglione, G. Carr, L. Kuil, K. Yan, L. Brandimarte, and G. Blöschl: Debates—Perspectives on socio-hydrology: Capturing feedbacks between physical and social processes, *Water Resources Research*, 51, 4770–4781, doi:10.1002/2014WR016416, 2015.
- Di Baldassarre, G., Martinez, F., Zalantari, Z. et al. Modelling Floods and Droughts in the Anthropocene. In preparation, 2016.
- Di Baldassarre, G., Viglione, A., Carr, G., Kuil, L., Salinas, J. L., and G. Blöschl: Socio-hydrology: conceptualising human-flood interactions, *Hydrology and Earth System Sciences*, 17, 3295-3303, doi:10.5194/hess-17-3295-2013, 2013.
- 10 Diffenbaugh, N. S., Swain, D. L., and Touma, D.: Anthropogenic warming has increased drought risk in California. *Proceedings of the National Academy of Sciences*, 112(13), 3931-3936, 2015.
- Dillehay, T. D., and Kolata, A. L.: Long-term human response to uncertain environmental conditions in the Andes. *Proceedings of the National Academy of Sciences*, 101(12), 4325-4330, 2004.
- Ding, Y., Hayes, M. J. and Wildham, M.: Measuring economic impacts of drought: a review and discussion, *Disaster Prev. Manage.*, 20, 434–446, doi: 10.1108/09653561111161752, 2011.
- 15 Döll, P., Hoffmann-Dobrev, H., Portmann, F. T., Siebert, S., Eicker, A., Rodell, M., ... and Scanlon, B. R.: Impact of water withdrawals from groundwater and surface water on continental water storage variations. *Journal of Geodynamics*, 59, 143-156, 2012.
- [Eng, K., Wolock, D. M., & Carlisle, D. M. River flow changes related to land and water management practices across the conterminous United States. *Science of the Total Environment*, 463, pp.414-422, 2013.](#)
- 20 Falkenmark, M., and Rockström, J.: Building resilience to drought in desertification-prone savannas in Sub-Saharan Africa: The water perspective. In *Natural Resources Forum* (Vol. 32, No. 2, pp. 93-102). Blackwell Publishing Ltd., 2008.
- Feyen, L., and R. Dankers: Impact of global warming on streamflow drought in Europe, *J. Geophys. Res.*, 114, D17116, doi:10.1029/2008JD011438, 2009.
- 25 Fleig, K., Tallaksen, L.M., Hisdal, H., Stahl, K., and Hannah, D.M.: Inter-comparison of weather and circulation type classifications for hydrological drought development. *Phys Chem Earth*, 35:507–515. doi:10.1016/j.pce.2009.11.005, 2010.
- Forzieri, G., Feyen, L., Rojas, R., Flörke, M., Wimmer, F., and Bianchi, A.: Ensemble projections of future streamflow droughts in Europe. *Hydrology and Earth System Sciences*, 18(1), 85-108, 2014.
- Foster, T., Brozović, N., and Butler, A. P.: Why well yield matters for managing agricultural drought risk. *Weather and Climate Extremes*, 10, pp.11-19, 2015.
- 30 Garnier, E.: A historic experience for a strengthened resilience. European societies in front of hydro-meteors 16th-20th centuries'. In Quevauviller P. (eds.), *Prevention of hydrometeorological extreme events-Interfacing sciences and policies*, Wiley Publisher, New York, Vol 1, pg.3-26, 2015.

- Giuntoli, I., Vidal, J.-P., Prudhomme, C., and Hannah, D. M.: Future hydrological extremes: the uncertainty from multiple global climate and global hydrological models, *Earth Syst. Dynam.*, 6, 267-285, doi:10.5194/esd-6-267-2015, 2015.
- Gleeson, T., VanderSteen, J., Sophocleous, M.A., Taniguchi, M., Alley, W.M., Allen, D.M. and Zhou, Y.: Groundwater sustainability strategies. *Nature Geoscience*, 3(6), pp.378-379, 2010.
- 5 Gober, P.: Getting Outside the Water Box: The Need for New Approaches to Water Planning and Policy. *Water Resour Manage.* 27 955–957, 2013.
- Grayson, M.: Agriculture and drought, *Nature* 501, S1, doi:10.1038/501S1a, 2013.
- Gudmundsson, L., Rego, F.C., Rocha, M. and Seneviratne, S.I.: Predicting above normal wildfire activity in southern Europe as a function of meteorological drought. *Environmental Research Letters*, 9(8), p.084008, 2014.
- 10 Güneralp, B., Güneralp, İ., and Liu, Y.: Changing global patterns of urban exposure to flood and drought hazards. *Global Environmental Change*, 31, 217-225, 2015.
- Gustard, A., van Lanen, H.A.J. and Tallaksen, L.M.: Outlook, Chapter 12. In: Tallaksen, L.M. and van Lanen, H.A.J. (Eds.) (2004) *Hydrological Drought. Processes and Estimation Methods for Streamflow and Groundwater. Developments in Water Science*, 48, Elsevier Science B.V., pg. 485-498, 2004.
- 15 | [Hamilton, C. Define the Anthropocene in terms of the whole Earth. *Nature* 536, 251. doi:10.1038/536251a, 2016.](#)
- Hannah, D. M., Demuth, S., van Lanen, H. A., Looser, U., Prudhomme, C., Rees, G., ... and Tallaksen, L. M.: Large-scale river flow archives: importance, current status and future needs. *Hydrological Processes*, 25(7), 1191-1200, 2011.
- Hannah, D. M., Sadler, J. P., and Wood, P. J.: Hydroecology and ecohydrology: a potential route forward?. *Hydrological Processes*, 21(24), 3385-3390, 2007.
- 20 Harrigan, S., Murphy, C., Hall, J., Wilby, R. L., and Sweeney, J.: Attribution of detected changes in streamflow using multiple working hypotheses, *Hydrol. Earth Syst. Sci.*, 18, 1935-1952, doi:10.5194/hess-18-1935-2014, 2014.
- Hering, J.G., Sedlak, D.L., Tortajada, C., Biswas, A.K., Niwagaba, C. and Breu, T.: Local perspectives on water. *Science*, 349(6247), pp.479-480, 2015.
- Higgins, A., Archer, A., and Hajkovicz, S.: A stochastic non-linear programming model for a multi-period water resource allocation with multiple objectives. *Water resources management*, 22(10), 1445-1460, 2008.
- 25 Hisdal, H., Stahl, K., Tallaksen, L. M., and Demuth, S.: Have streamflow droughts in Europe become more severe or frequent?. *International Journal of Climatology*, 21(3), 317-333, 2001.
- Hoekstra, A.Y., Mekonnen, M.M., Chapagain, A.K., Mathews, R.E., and Richter, B.D.: Global Monthly Water Scarcity: Blue Water Footprints versus Blue Water Availability. *PLoS ONE* 7(2): e32688. doi:10.1371/journal.pone.0032688, 2012.
- 30 Hurkmans, R. T. W. L., Terink, W., Uijlenhoet, R., Moors, E. J., Troch, P. A., and Verburg, P. H.: Effects of land use changes on streamflow generation in the Rhine basin. *Water resources research*, 45(6), 2009.
- Iglesias, A., Moneo, M. and Quiroga, S.: Methods for Evaluating Social Vulnerability to Drought, (Iglesias et al. Eds.), *Coping with Drought Risk in Agriculture and Water Supply Systems*, Chapter 10, *Advances in Natural and Technological Hazards Research*, Vol. 26, pp 153-159, 2009.

- IPCC: Managing the Risks of Extreme Events and Disasters to Advance Climate Change Adaptation. A Special Report of Working Groups I and II of the Intergovernmental Panel on Climate Change [Field, C.B., V. Barros, T.F. Stocker, D. Qin, D.J. Dokken, K.L. Ebi, M.D. Mastrandrea, K.J. Mach, G.-K. Plattner, S.K. Allen, M. Tignor, and P.M. Midgley (eds.)]. Cambridge University Press, Cambridge, UK, and New York, NY, USA, 582 pp, 2012.
- 5 Jenerette, G. D., Barron-Gafford, G. A., Guswa, A. J., McDonnell, J. J., and Villegas, J. C.: Organization of complexity in water limited ecohydrology. *Ecohydrology*, 5(2), 184-199, 2012.
- Kasprzyk, J. R., Reed, P. M., Kirsch, B. R., and Characklis, G. W.: Managing population and drought risks using many-objective water portfolio planning under uncertainty. *Water Resources Research*, 45(12), 2009.
- Kingston, D.G., Stagge, J.H., Tallaksen, L.M. and Hannah, D.M.: European-Scale Drought: Understanding Connections
10 between Atmospheric Circulation and Meteorological Drought Indices. *J. Climate*, 28, 505-516, 2015.
- Knutson, C. L., Hayes, M. J. and Philipps, T.: How to Reduce Drought Risk, Western Drought Coordination Council, Preparedness and Mitigation Working Group, Lincoln, 10 pp., available at: <http://drought.unl.edu/portals/0/docs/risk.pdf> (last access: 18 May 2016), 1998.
- 15 [Kreibich, H., S. Vorogushyn, J.C.J.H. Aerts, H. Apel, G.T. Aronica, K. Arnbjerg-Nielsen, G. Di Baldassarre, L.M. Bouwer, Ph. Bubeck, T. Caloiero, D.T. Chinh, M. Cortés, A.K. Gain, V. Giampá, Ch. Kuhlicke, Z.W. Kundzewicz, M.C. Llasat, J. Mård, P. Matczak, M. Mazzoleni, D. Molinari, V.N. Dung, O. Petrucci, K. Schröter, K. Slager, A.H. Thielen, P.J. Ward, B. Merz. Reducing flood risk by learning from past events. Under review. 2016.](#) ~~Kreibich, H., et al.: Paired flood analysis. In preparation, 2016.~~
- Kuil, L., Carr, G., Viglione, A., Bloesch, G.: Conceptualizing the dynamics of a drought affected agricultural community,
20 *Geophysical Research Abstracts Vol. 17, EGU2015-12435, EGU General Assembly 2015*, 2015.
- Kumar, R., Musuuza, J. L., Van Loon, A. F., Teuling, A. J., Barthel, R., Ten Broek, J., Mai, J., Samaniego, L., and Attinger, S.: Multiscale evaluation of the Standardized Precipitation Index as a groundwater drought indicator, *Hydrol. Earth Syst. Sci.*, 20, 1117-1131, doi:10.5194/hess-20-1117-2016, 2016.
- Lackstrom, K., Brennan, A., Ferguson, D., Crimmins, M., Darby, L., Dow, K., Ingram, K., Meadow, A., Reges, H., Shafer,
25 M., and Smith, K.: The Missing Piece: Drought Impacts Monitoring. Workshop report produced by the Carolinas Integrated Sciences and Assessments program and the Climate Assessment for the Southwest, 5–6 March 2013, Tucson, AZ, 1–23, 22 pp., 2013.
- Lake, S.: *Drought and Aquatic Ecosystems: effects and responses*. Wiley, Chichester, 400pp, 2011.
- Lehner, B., Döll, P., Alcamo, J., Henrichs, T., and Kaspar, F.: Estimating the impact of global change on flood and drought
30 risks in Europe: a continental, integrated analysis. *Climatic Change*, 75(3), 273-299, 2006.
- Lerner, D.N.: Groundwater recharge in urban areas. *Atmospheric Environment. Part B. Urban Atmosphere*, 24(1), pp.29-33, 1990.
- Lewis, S. L., and Maslin, M. A.: Defining the Anthropocene. *Nature*, 519(7542), 171-180, 2015.

- Linton, J., and Budds, J.: The hydrosocial cycle: Defining and mobilizing a relational-dialectical approach to water. *Geoforum*, 57, 170-180, 2014.
- Lloyd-Hughes, B.: The impracticality of a universal drought definition. *Theoretical and Applied Climatology*, 117(3-4), 607-611, 2014.
- 5 Lobell, D.B., Burke, M.B., Tebaldi, C., Mastrandrea, M.D., Falcon, W.P. and Naylor, R.L.: Prioritizing climate change adaptation needs for food security in 2030. *Science*, 319(5863), pp.607-610, 2008.
- López-Moreno, J.I., Vicente-Serrano, Beguería, S.M., Garcíá-Ruiz, J.M., Portela, M.M. and Almeida, A.B.: Dam effects on droughts magnitude and duration in a transboundary basin: The Lower River Tagus, Spain and Portugal, *Water Resour. Res.*, 45, W02405, doi:10.1029/2008WR007198, 2009.
- 10 Loucks, D. P.: Debates—Perspectives on sociohydrology: Simulating hydrologic-human interactions. *Water Resources Research*, 51(6), pp.4789-4794, 2015.
- Lucero, L. J.: The collapse of the Classic Maya: A case for the role of water control. *American Anthropologist*, 104(3), 814-826, 2002.
- Maggioni, E.: Water demand management in times of drought: What matters for water conservation. *Water Resources Research*, 51 1, 125–139, 2015.
- 15 [Maliva, R., and Missimer, T. Aridity and drought. In *Arid lands water evaluation and management* \(pp. 21-39\). Springer Berlin Heidelberg, 2012.](#)
- Martinez, F., Di Baldassarre, G., Zalantari, Z.: Modeling the Interactions between Hydrological Extremes, Water Management and Society. *Geophysical Research Abstracts*, Vol. 18, EGU2016-825, 2016.
- 20 [Mateo, C. M., Hanasaki, N., Komori, D., Tanaka, K., Kiguchi, M., Champathong, A., Sukhapunphan, T., Yamazaki, D., and Oki, T.: Assessing the impacts of reservoir operation to floodplain inundation by combining hydrological, reservoir management, and hydrodynamic models, *Water Resour. Res.*, 50, 7245-7266, 10.1002/2013wr014845, 2014.](#)
- McLeman, R., Dupre, J., Ford, L., Ford, J., Gajewski, K., and Marchildon, G.: What we learned from the Dust Bowl: lessons in science, policy, and adaptation. *Popul Environ* 35:417–440. DOI 10.1007/s11111-013-0190-z, 2014.
- 25 McMillan, H., Montanari, A., Cudennec, C., Savenije, H., Kreibich, H., Krueger, T., Liu, J., Mejia, A., Van Loon, A.F., Aksoy, H., Di Baldassarre, G., Huang, Y., Mazvimavi, D., Rogger, M., Sivakumar, B., Bibikova, T., Castellarin, A., Chen, Y., Finger, D., Gelfan, A., Hannah, D., Hoekstra, A., Li, H., Maskey, S., Mathevet, T., Mijic, A., Pedrozo Acuña, A., Polo, M., Rosales, V., Smith, P., Viglione, A., Srinivasan, V., Toth, E., van Nooyen, R. and Xia, J.: Panta Rhei 2013–2015: global perspectives on hydrology, society and change. *Hydrological Sciences Journal*, pp.1-18. DOI:
- 30 10.1080/02626667.2016.1159308, 2016.
- Mekonnen, M.M. and Hoekstra, A.Y.: Four billion people facing severe water scarcity. *Science Advances*, 2(2), p.e1500323, 2016.

- Mera, R., Massey, N., Rupp, D., Mote, P., Allen, M., and Frumhoff, P.: Climate change, climate justice and the application of probabilistic event attribution to summer heat extremes in the California Central Valley. *Climatic Change* DOI 10.1007/s10584-015-1474-3, 2014.
- Mondal, A., and Mujumdar, P. P.: Return levels of hydrologic droughts under climate change. *Advances in Water Resources*, 75, 67-79, 2015.
- Montanari, A., Young, G., Savenije, H.H.G., Hughes, D., Wagener, T., Ren, L.L., Koutsoyiannis, D., Cudennec, C., Toth, E., Grimaldi, S., Blöschl, G., Sivapalan, M., Beven, K., Gupta, H., Hipsey, M., Schaeffli, B., Arheimer, B., Boegh, E., Schymanski, S.J., Di Baldassarre, G., Yu, B., Hubert, P., Huang, Y., Schumann, A., Post, D., Srinivasan, V., Harman, C., Thompson, S., Rogger, M., Viglione, A., McMillan, H., Characklis, G., Pang, Z., and Belyaev, V.: “Panta Rhei—Everything Flows”: Change in hydrology and society—The IAHS Scientific Decade 2013–2022. *Hydrological Sciences Journal*. 58 (6) 1256–1275, 2013.
- Mosely, L.M.: Drought impacts on the water quality of freshwater systems: a review, *Earth Science Reviews*, 140, 203 – 214, 2015.
- Nazemi, A. and Wheater, H. S.: On inclusion of water resource management in Earth system models – Part 1: Problem definition and representation of water demand, *Hydrol. Earth Syst. Sci.*, 19, 33-61, doi:10.5194/hess-19-33-2015, 2015a.
- Nazemi, A. and Wheater, H. S.: On inclusion of water resource management in Earth system models – Part 2: Representation of water supply and allocation and opportunities for improved modeling, *Hydrol. Earth Syst. Sci.*, 19, 63-90, doi:10.5194/hess-19-63-2015, 2015b.
- [Oertel, M., Meza, F. J., and Gironás, J. Improving operational drought definitions—taking them to basin scale. *Drought: Research and Science-Policy Interfacing*, 151, 2015.](#)
- O'Brien, L. V., Berry, H. L., Coleman, C., and Hanigan, I. C.: Drought as a mental health exposure. *Environmental research*, 131, 181-187, 2014.
- Oki, T., and Kanae, S.: Global hydrological cycles and world water resources. *Science*, 313(5790), 1068-1072, 2006.
- Palmer, W. C. *Meteorological drought* (Vol. 30). Washington, DC, USA: US Department of Commerce, Weather Bureau, 1965.
- Pearce, R., Dessai, S., and Barr, S.: Re-Framing Environmental Social Science Research for Sustainable Water Management in a Changing Climate. *Water Resources Management*, 27(4), 959-979, 2013.
- Pérez Blanco, C. D., and Gómez, C. M.: Insuring water: A practical risk management option in water scarce and drought-prone regions. *Water Policy*, 16(2), 244-263, 2014.
- [Pokhrel, Y. N., Hanasaki, N., Yeh, P. J. F., Yamada, T. J., Kanae, S., and Oki, T.: Model estimates of sea-level change due to anthropogenic impacts on terrestrial water storage, *Nature Geosci.*, 5, 389-392, 10.1038/ngeo1476, 2012.](#)
- [Price, K., Jackson, C. R., Parker, A. J., Reitan, T., Dowd, J., and Cyterski, M. Effects of watershed land use and geomorphology on stream low flows during severe drought conditions in the southern Blue Ridge Mountains, Georgia and North Carolina, United States. *Water Resources Research*, 47\(2\), 2011.](#)

- Prodocimi, I., Kjeldsen, T. R., and Miller, J. D.: Detection and attribution of urbanization effect on flood extremes using nonstationary flood frequency models. *Water Resources Research*, 51(6), pp.4244-4262, 2015.
- Prudhomme C., Giuntoli, I., Robinson, E.L., Clark, D.B., Arnell, N.W., Dankers, R., Fekete, B.M., Franssen, W., Gerten, D., Gosling, S.N., Hagemann, S., Hannah, D.M., Kim, H., Masaki, Y., Satoh, Y., Stacke, T., Wada, Y., and Wisser, D.:
5 Hydrological droughts in the 21st century, hotspots and uncertainties from a global multimodel ensemble experiment, *P. Natl. Acad. Sci. USA (PNAS)*, doi: 10.1073/pnas.1222473110, 2014.
- Pullinger M, Anderson B, Browne A, Medd W: New directions in understanding household water demand: a practices perspective. *Journal of Water Supply: Research and Technology – AQUA* 62 No 8 pp 496–506, 2013.
- Querner, E., Morábito, J., and Tozzi, D.: SIMGRO, a GIS-Supported Regional Hydrologic Model in Irrigated Areas: Case
10 Study in Mendoza, Argentina. *J. Irrig. Drain Eng.*, 134(1), 43–48, 2008.
- Rangecroft, S., Van Loon, A.F., ~~Maureira, H., Verbist, K., Hannah, D.M. et al.: Multi-method assessment of dam effects on hydrological droughts in arid Chile Towards an understanding of the impact of anthropogenic activities on hydrological droughts: a case study from northern Chile. In preparation Submitted~~, 2016.
- Rijkswaterstaat: Droogtemonitor, available at [http://www.rijkswaterstaat.nl/water/waterdata-en-
15 waterberichtgeving/waterberichten/droogteseizoen/droogtemonitor.aspx](http://www.rijkswaterstaat.nl/water/waterdata-en-waterberichtgeving/waterberichten/droogteseizoen/droogtemonitor.aspx) [last visited: 18 May 2016], 2015.
- Rijsberman, F. R.: Water scarcity: Fact or fiction? *Agricultural water management*, 80(1), 5-22, 2006.
- Rodriguez-Iturbe, I., Porporato, A., Laio, F., and Ridolfi, L.: Plants in water-controlled ecosystems: active role in hydrologic processes and response to water stress: I. Scope and general outline. *Advances in Water Resources*, 24(7), 695-705, 2001.
- Sadri, S., Kam, J., and Sheffield, J.: Nonstationarity of low flows and their timing in the eastern United States, *Hydrol. Earth
20 Syst. Sci.*, 20, 633-649, doi:10.5194/hess-20-633-2016, 2016.
- Savenije, H. H. G.: Water scarcity indicators; the deception of the numbers. *Physics and Chemistry of the Earth, Part B: Hydrology, Oceans and Atmosphere*, 25(3), 199-204, 2000.
- Sheffield, J., and Wood, E.: *Drought; Past Problems and Future Scenarios*, Earthscan, London, UK, Washington DC, USA, 2011.
- 25 Sheffield, J., Wood, E. F., and Roderick, M. L.: Little change in global drought over the past 60 years, *Nature*, 491, 435–438, doi: 10.1038/nature11575, 2012.
- Sheffield, J., Wood, E. F., Chaney, N., Guan, K., Sadri, S., Yuan, X., Olang, L., Amani, A., Ali, A., Demuth, S. and Ogallo, L.: A drought monitoring and forecasting system for sub-Saharan African water resources and food security. *Bulletin of the American Meteorological Society*, 95(6), 861-882. doi: 10.1175/BAMS-D-12-00124.1, 2014.
- 30 Shukla, S. and Wood, A.W.: Use of a standardized runoff index for characterizing hydrologic drought. *Geophys Res Lett*, 35. doi:10.1029/2007GL032487, 2008.
- Sivapalan, M., Savenije, H. H., and Blöschl, G.: Socio-hydrology: A new science of people and water. *Hydrological Processes*, 26(8), 1270-1276, 2012.

- Smit, B., Burton, I., Klein, R. J., and Wandel, J. An anatomy of adaptation to climate change and variability. *Climatic change*, 45(1), 223-251, 2000.
- Stagge, J.H., Kohn, I., Tallaksen, L.M. and Stahl, K.: Modeling drought impact occurrence based on meteorological drought indices in Europe. *Journal of Hydrology*, 530, pp.37-50, 2015a.
- 5 Stagge J.H., Tallaksen L.M., Gudmundsson L., Van Loon A.F., Stahl K.: Candidate distributions for climatological drought indices (SPI and SPEI). *International Journal of Climatology*, doi:10.1002/joc.4267, 2015b.
- Stahl, K., Hisdal, H., Hannaford, J., Tallaksen, L. M., van Lanen, H. A. J., Sauquet, E., Demuth, S., Fendekova, M., and Jódar, J.: Streamflow trends in Europe: evidence from a dataset of near-natural catchments, *Hydrology and Earth System Science*, 14, 2367-2382, doi:10.5194/hess-14-2367-2010, 2010.
- 10 Stahl, K., Kohn, I., Blauhut, V., Urquijo, J., De Stefano, L., Acácio, V., Dias, S., Stagge, J.H., Tallaksen, L.M., Kampragou, E. and Van Loon, A.F.: Impacts of European drought events: insights from an international database of text-based reports. *Natural Hazards and Earth System Sciences*, 16(3), pp.801-819, 2016.
- Stahl, K., Kohn, I., De Stefano, L., Tallaksen, L. M., Rego, F.C., Seneviratne, S. I., Andreu, J. and Van Lanen, H. A. J.: An impact perspective on pan-European drought sensitivity, in: *Drought: Research and Science-Policy Interfacing*, edited by:
- 15 Andreu, J., Solera, A., Paredes-Arquiola, J., Haro-Monteagudo, D. and van Lanen, H. A. J., CRC Press, London, 329–334, doi:10.1201/b18077-56, 2015.
- Stanke, C., Kerac, M., Prudhomme, C., Medlock, J., and Murray, V.: Health Effects of Drought: a Systematic Review of the Evidence. *PLoS Currents*, 5, doi: 10.1371/currents.dis.7a2cee9e980f91ad7697b570bcc4b004, 2013.
- Staudinger M, Stahl K, Seibert J.: A drought index accounting for snow, *Water Resour Res*, 5:7861–7872.
- 20 doi:10.1002/2013WR015143, 2014.
- Stoelzle M, Stahl K, Morhard A, Weiler M.: Streamflow sensitivity to drought scenarios in catchments with different geology. *Geophys Res Lett*, 41:6174–6183. doi:10.1002/2014GL061344, 2014.
- Tallaksen, L. M., and Van Lanen, H. A. J., eds.: *Hydrological drought: processes and estimation methods for streamflow and groundwater*, *Developments in water science*; 48, Elsevier Science B.V., Amsterdam, the Netherlands, 2004.
- 25 Tallaksen, L. M.: Modelling land use change effects on low flows. In *FRIEND* (Vol. 1, pp. 56-68), 1993.
- Teuling, A.J., Van Loon, A.F., Seneviratne, S.I., Lehner, I., Aubinet, M., Heinesch, B., Bernhofer, C., Grünwald, T., Prasse, H., and Spank, U.: Evapotranspiration amplifies European summer drought. *Geophys Res Lett*, 40:2071–2075. doi:10.1002/grl.50495, 2013.
- Thompson, S. E., Sivapalan, M., Harman, C. J., Srinivasan, V., Hipsey, M. R., Reed, P., Montanari, A., and Blöschl, G.:
- 30 Developing predictive insight into changing water systems: use-inspired hydrologic science for the Anthropocene, *Hydrol. Earth Syst. Sci.*, 17, 5013-5039, doi:10.5194/hess-17-5013-2013, 2013.
- Trambauer, P., Werner, M., Winsemius, H. C., Maskey, S., Dutra, E., and Uhlenbrook, S.: Hydrological drought forecasting and skill assessment for the Limpopo River basin, southern Africa, *Hydrol. Earth Syst. Sci.*, 19, 1695-1711, doi:10.5194/hess-19-1695-2015, 2015.

- Trenberth, K. E., Dai, A., van der Schrier, G., Jones, P. D., Barichivich, J., Briffa, K. R., and Sheffield, J. Global warming and changes in drought. *Nature Climate Change*, 4(1), 17-22, 2014.
- Tuinenburg, O.A., Hutjes, R.W.A., Stacke, T., Wiltshire, A. and Lucas-Picher, P.: Effects of Irrigation in India on the Atmospheric Water Budget. *J. Hydrometeorol*, 15, 1028–1050. doi: 10.1175/JHM-D-13-078.1, 2014.
- 5 Van Dijk, A.I.J.M., Beck, H. E., Crosbie, R. S., Jeu, R. A., Liu, Y. Y., Podger, G. M., ... and Viney, N. R.: The Millennium Drought in southeast Australia (2001–2009): Natural and human causes and implications for water resources, ecosystems, economy, and society. *Water Resources Research*, 49(2), 1040-1057, 2013.
- Van Dijk, A.I.J.M., Kirby, M., Paydar, Z., Podger, G., Mainuddin Md, M.S. and Peña Arancibia, J.: Uncertainty in river modelling across the Murray-Darling Basin. A report to the Australian Government from the CSIRO Murray-Darling Basin
- 10 Sustainable Yields Project. Details Published by CSIRO, 2008.
- Van Huijgevoort, M. H. J., Van Lanen, H. A. J., Teuling, A. J., and Uijlenhoet, R.: Identification of changes in hydrological drought characteristics from a multi-GCM driven ensemble constrained by observed discharge. *Journal of Hydrology*, 512, 421-434. doi:10.1016/j.jhydrol.2014.02.060, 2014.
- Van Lanen, H. A. J., Kasperek, L., Novicky, O., Querner, E.P., Fendekova, M. Kupczyk, E.: Human influences, Ch. 9 in
- 15 “Hydrological drought: processes and estimation methods for streamflow and groundwater”, Tallaksen, L. M., and Van Lanen, H. A. J., eds., *Developments in water science*; 48, Elsevier Science B.V., Amsterdam, the Netherlands, 2004.
- Van Lanen, H. A. J., Laaha, G., Kingston, D. G., Gauster, T., Ionita, M., Vidal, J.-P., Vlnas, R., Tallaksen, L. M., Stahl, K., Hannaford, J., Delus, C., Fendekova, M., Mediero, L., Prudhomme, C., Rets, E., Romanowicz, R. J., Gailliez, S., Wong, W. K., Adler, M.-J., Blauhut, V., Caillouet, L., Chelcea, S., Frolova, N., Gudmundsson, L., Hanel, M., Haslinger, K., Kireeva,
- 20 M., Osuch, M., Sauquet, E., Stagge, J. H., and Van Loon, A. F.: Hydrology needed to manage droughts: the 2015 European case. *Hydrol. Process.*, doi: 10.1002/hyp.10838, 2016.
- Van Loon, A.F.: Hydrological drought explained. *Wiley Interdisciplinary Reviews: Water*, 2(4), pp.359-392, 2015.
- Van Loon, A. F., and Laaha, G.: Hydrological drought severity explained by climate and catchment characteristics. *Journal of Hydrology*, 526, 3-14, 2015.
- 25 [Van Loon, A.F., and Van Lanen, H.A.J.: A process-based typology of hydrological drought. *Hydrology and Earth System Science*, 16, p. 1915–1946, doi: 10.5194/hess-16-1915-2012, 2012.](#)
- [Van Loon, A.F., and Van Lanen, H.A.J.: Making the distinction between water scarcity and drought using an observation-modeling framework. *Water Resources Research*, 49\(3\), 1483-1502, 2013.](#)
- [Van Loon, A.F. and Van Lanen, H.A.J.: Testing the observation-modelling framework to distinguish between hydrological drought and water scarcity in case studies around Europe. *European Water* 49: 65-75, \[www.ewra.net/ew/issue_49.htm\]\(http://www.ewra.net/ew/issue_49.htm\), 2015.](#)
- 30 [Van Loon, A. F., Ploum, S. W., Parajka, J., Fleig, A. K., Garnier, E., Laaha, G., and Van Lanen, H. A. J.: Hydrological drought types in cold climates: quantitative analysis of causing factors and qualitative survey of impacts, *Hydrol. Earth Syst. Sci.*, 19, 1993-2016, doi:10.5194/hess-19-1993-2015, 2015.](#)

- Van Loon, A. F., Gleeson, T., Clark, J., Van Dijk, A. I. J. M., Stahl, K., Hannaford, J., Di Baldassarre, G., Teuling, A. J., Tallaksen, L. M., Uijlenhoet, R., Hannah, D. M., Sheffield, J., Svoboda, M., Verbeiren, B., Wagener, T., Rangecroft, S., Wanders, N. and Van Lanen, H. A. J.: Drought in the Anthropocene. *Nature Geoscience*, 9(2), pp.89-91. doi:10.1038/ngeo2646, 2016.
- 5 ~~Van Loon, A. F., Ploum, S. W., Parajka, J., Fleig, A. K., Garnier, E., Laaha, G., and Van Lanen, H. A. J.: Hydrological drought types in cold climates: quantitative analysis of causing factors and qualitative survey of impacts, *Hydrol. Earth Syst. Sci.*, 19, 1993–2016, doi:10.5194/hess-19-1993-2015, 2015.~~
- ~~Van Loon, A.F., and Van Lanen, H.A.J.: A process-based typology of hydrological drought, *Hydrology and Earth System Science*, 16, p. 1915–1946, doi: 10.5194/hess-16-1915-2012, 2012.~~
- 10 ~~Van Loon, A.F., and Van Lanen, H.A.J.: Making the distinction between water scarcity and drought using an observation-modeling framework. *Water Resources Research*, 49(3), 1483–1502, 2013.~~
- Van Oel, P. R., Krol, M. S., and Hoekstra, A. Y.: Application of multi-agent simulation to evaluate the influence of reservoir operation strategies on the distribution of water availability in the semi-arid Jaguaribe basin, Brazil. *Physics and Chemistry of the Earth, Parts A/B/C*, 47, 173-181, 2012.
- 15 Van Vliet, M. T. H., and Zwolsman, J. J. G.: Impact of summer droughts on the water quality of the Meuse river. *Journal of Hydrology*, 353(1), 1-17, 2008.
- Veldkamp, T.I., Wada, Y., de Moel, H., Kummu, M., Eisner, S., Aerts, J.C. and Ward, P.J.: Changing mechanism of global water scarcity events: Impacts of socioeconomic changes and inter-annual hydro-climatic variability. *Global Environmental Change*, 32, pp.18-29, 2015.
- 20 Verbeiren B., Huysmans M., Tychon B., Jacquemin I., Canters F., Vanderhaegen S., Engelen G., Poelmans L., De Becker P., Tsakiris G., Vangelis H. and Batelaan O.: Drought-related vulnerability and risk assessment of groundwater resources under temperate conditions, Conference Proceedings, 13th International Conference on Environmental Science and Technology Athens, Greece, 5-7 September 2013, 2013.
- Verbeiren B., Weerasinghe I., Vanderhaegen S., Canters F., Engelen G., Jacquemin I., Tychon B., Vangelis H., Tsakiris G.,
- 25 Batelaan O. and Huysmans M.: Differentiating between influencing factors land use and climate to assess drought effects on groundwater recharge in a temperate context. HESS Special Issue HYPER Droughts, in preparation, 2016.
- Vicente-Serrano, S.M., Beguería, S., Lorenzo-Lacruz, J., Camarero, J.J., López-Moreno, J.I., Azorín-Molina, C., Revuelto, J., Morán-Tejeda, E. and Sanchez-Lorenzo, A.: Performance of drought indices for ecological, agricultural, and hydrological applications. *Earth Interactions*, 16(10), pp.1-27, 2012.
- 30 Vicente-Serrano, S.M., Gouveia, C., Camarero, J.J., Beguería, S., Trigo, R., López-Moreno, J.I., Azorín-Molina, C., Pasho, E., Lorenzo-Lacruz, J., Revuelto, J. and Morán-Tejeda, E.: Response of vegetation to drought time-scales across global land biomes. *Proceedings of the National Academy of Sciences*, 110(1), pp.52-57, 2013.

- Vidal, J.-P., Martin, E., Kitova, N., Najac, J., and Soubeyroux, J.-M.: Evolution of spatio-temporal drought characteristics: validation, projections and effect of adaptation scenarios, *Hydrol. Earth Syst. Sci.*, 16, 2935-2955, doi:10.5194/hess-16-2935-2012, 2012.
- Viglione, A., Di Baldassarre, G., Brandimarte, L., Kuil, L., Carr, G., Salinas, J. L., ... and Blöschl, G.: Insights from socio-
5 hydrology modelling on dealing with flood risk—roles of collective memory, risk-taking attitude and trust. *Journal of Hydrology*, 518, 71-82, 2014.
- Vogel, R. M., Lall, U., Cai, X., Rajagopalan, B., Weiskel, P., Hooper, R. P., and Matalas, N. C.: Hydrology: The interdisciplinary science of water. *Water Resources Research*, 51(6), pp.4409-4430, 2015.
- Vorogushyn, S. and Merz, B.: Flood trends along the Rhine: the role of river training, *Hydrol. Earth Syst. Sci.*, 17, 3871-
10 3884, doi:10.5194/hess-17-3871-2013, 2013.
- Vörösmarty, C. J., Green, P., Salisbury, J., and Lammers, R. B.: Global water resources: vulnerability from climate change and population growth. *Science*, 289(5477), 284-288, 2000.
- Vörösmarty, C.J., Lettenmaier, D., Leveque, C., Meybeck, M., Pahl-Wostl, C., Alcamo, J., ... and Naiman, R.: Humans transforming the global water system. *Eos, Transactions American Geophysical Union*, 85(48), 509-514, 2004.
- 15 Vörösmarty, C.J., Hoekstra, A.Y., Bunn, S.E., Conway, D. and Gupta, J.: Fresh water goes global. *Science*, 349(6247), pp.478-479, 2015.
- Vörösmarty, C.J., McIntyre, P. B., Gessner, M. O., Dudgeon, D., Prusevich, A., Green, P., Glidden, S., Bunn, S. E., Sullivan, C. A., Reidy Liermann, C. and Davies, P. M., Global threats to human water security and river biodiversity, *Nature* 467, 555–561, doi:10.1038/nature09440, 2010.
- 20 Wada, Y., L. P. H. Van Beek, D. Viviroli, H. H. Dürr, R. Weingartner, and M. F. P. Bierkens: Global monthly water stress: 2. Water demand and severity of water stress, *Water Resour. Res.*, 47, W07518, doi:10.1029/2010WR009792, 2011.
- Wada, Y., L. P. H. van Beek, N. Wanders and M. F. P. Bierkens: Human water consumption intensifies hydrological drought worldwide, *Environmental Research Letters* 8 034036 doi:10.1088/1748-9326/8/3/034036, 2013.
- Wagner, T., Sivapalan, M., Troch, P. A., McGlynn, B. L., Harman, C. J., Gupta, H. V., ... and Wilson, J. S.: The future of
25 hydrology: An evolving science for a changing world. *Water Resources Research*, 46(5), 2010.
- Wagner, T., Sivapalan, M., Troch, P. and Woods, R.: Catchment Classification and Hydrologic Similarity. *Geography Compass*, 1: 901–931. doi: 10.1111/j.1749-8198.2007.00039.x, 2007.
- Wanders, N., and Wada, Y.: Human and climate impacts on the 21st century hydrological drought. *Journal of Hydrology*, doi:10.1016/j.jhydrol.2014.10.047, 2015.
- 30 Wanders, N., Wada, Y., and Van Lanen, H. A. J.: Global hydrological droughts in the 21st century under a changing hydrological regime. *Earth System Dynamics*, 6, 1-15, 2015.
- Watts, G., von Christerson, B., Hannaford, J., and Lonsdale, K.: Testing the resilience of water supply systems to long droughts. *Journal of hydrology*, 414, 255-267, 2012.

- Whitfield, P. H., Burn, D. H., Hannaford, J., Higgins, H., Hodgkins, G. A., Marsh, T., and Looser, U.: Reference hydrologic networks I. The status and potential future directions of national reference hydrologic networks for detecting trends. *Hydrological Sciences Journal*, 57(8), 1562-1579, 2012.
- 5 Wilhite, D. A. and Vanyarkho, O.: Pervasive impacts of a creeping phenomenon, in: *Drought: A Global Assessment I*, edited by Wilhite, D. A., Routledge, New York/London, 245–255, 2000.
- Wilhite, D. A., and Glantz, M. H.: Understanding: the drought phenomenon: the role of definitions. *Water international*, 10(3), 111-120, 1985.
- Wilhite, D.A., and Buchanan-Smith, M.: *Drought as hazard: understanding the natural and social context*. Drought and Water Crises–Science, Technology and Management issues, Taylor & Francis, ISBN 0, 847(2771), 1, 2005.
- 10 Williams, A. P., R. Seager, J. T. Abatzoglou, B. I. Cook, J. E. Smerdon, and E. R. Cook: Contribution of anthropogenic warming to California drought during 2012–2014, *Geophys. Res. Lett.*, 42, doi:10.1002/2015GL064924, 2015.
- Winter, T.C., J.W. Harvey, O.L. Franke, and W.M. Alley: *Ground water and surface water: A single resource*. USGS Circular 1139. Available at <http://pubs.usgs.gov/circ/circ1139/index.html> [last access: 18-5-2016], 1998.
- 15 [Wisser, D., Fekete, B. M., Vörösmarty, C. J., and Schumann, A. H.: Reconstructing 20th century global hydrography: a contribution to the Global Terrestrial Network- Hydrology \(GTN-H\), *Hydrol. Earth Syst. Sci.*, 14, 1-24, 10.5194/hess-14-1-2010, 2010.](#)
- Wood, E. F., Roundy, J. K., Troy, T. J., Van Beek, L. P. H., Bierkens, M. F., Blyth, E., ... and Whitehead, P: Hyperresolution global land surface modeling: Meeting a grand challenge for monitoring Earth's terrestrial water. *Water Resources Research*, 47(5), 2011.
- 20 Yevjevich, V.M.: *An objective approach to definitions and investigations of continental hydrologic droughts*. Hydrology papers (Colorado State University); no. 23, 1967.
- Yevjevich, V.M.: *Floods and society*. In *Coping with Floods* (pp. 3-9). Springer, the Netherlands, 1994.

Box 1: Examples of why humans are integral to drought and we should not focus on natural drought causes only.

Drought management: Rhine (the Netherlands)

In the Netherlands, drought management measures and [National Drought Committee](#) ~~drought committee~~ meetings start when the discharge of the river Rhine falls below a pre-defined level, independent of possible causes of the low river flows (e.g. lack of rainfall, lack of snow melt, Germany abstracting more water, etc.; Rijkswaterstaat, 2015).



Figure B 1: 2011 drought on the River Rhine near Nijmegen (photo Ronald Puma; ronaldpuma.nl)



Figure B 2: Name of River Guadiana crossed out after being dry for 20 years.

Drought attribution: Upper-Guadiana (Spain)

An important wetland dried up in Spain in the 1990's. Nature organisations blamed the abstraction for irrigation by farmers, but farmers pointed to the severe multi-year lack of rainfall. There was a need to attribute the low water levels to their causes. Modelling showed that both parties were right, but that abstraction had four times as much influence than the lack of rainfall (Van Loon and Van Lanen, 2013).

Drought termination: California (USA)

“How much rainfall is needed to end the drought?” This question was and still is often mentioned in the media in California. We can calculate how much rain is needed to fill up the system, but at the same time we are constantly taking water out (for example by groundwater abstraction) and putting water in (for example by water transfers). Those human inputs and outputs cannot be disregarded in the calculation of how much rain is needed to end the drought.



Figure B 3: Media trying to answer the question how much rain is needed to end California drought (from edition.cnn.com/2014/12/18/us/california-rains-and-drought, last access 13 May 2016)



Figure B 4: Difficulty of water access in Africa (from www.ghanaweb.com/GhanaHomePage/world/South-Africa-won-t-declare-national-disaster-over-drought-413602, last access 13 May 2016)

Drought impacts: Africa

The impacts of drought are not only related to the severity of drought, but also to access to water sources, and possibility of using alternative sources. Most communities in Africa are very dependent on rain water and do not have access to alternative sources such as groundwater. A lack of rain then leads to severe impacts, even though groundwater reserves and nearby river basins might not suffer from drought (yet).

5 **Table 1: Drought terminology in relation to drivers and timescales** (based on Wilhite and Glantz, 1985; Tallaksen and Van Lanen, 2004; Rijsberman, 2006; Sheffield and Wood, 2011; Maliva and Missimer, 2012; Van Loon and Van Lanen, 2013; Lloyd-Hughes, 2014; Oertel et al., 2015; Stahl et al., 2016; and Van Loon et al. 2016)

lack of water	short-term	long-term
compared to normal level	natural causes	<i>climate-induced drought</i>
	human causes	<i>human-induced drought</i>
compared to desired level		<i>acute water shortage</i>
		<i>water scarcity</i>

<u><i>term</i></u>	<u><i>definition</i></u>
<u>drought</u>	<u>temporary lack of water compared to normal conditions</u>
<u>climate-induced drought</u>	<u>drought caused by climate variability</u>
<u>human-induced drought</u>	<u>drought caused by human influence on water cycle</u>
<u>human-modified drought</u>	<u>drought caused by combination of climate variability and human influence on water cycle OR</u> <u>climate-induced drought enhanced or alleviated by human activities</u>
<u>drought impact</u>	<u>impact of drought on socio-economic systems (sometimes called “socio-economic drought”) and/or ecosystems</u>
<u>aridity</u>	<u>long-term dryness as feature of climate, with long-term average precipitation being much lower than potential evaporation</u>
<u>water scarcity</u>	<u>long-term imbalance between water demand and water supply, caused by high average demand, low average water availability and/or problems with water supply</u>
<u>water shortage / stress</u>	<u>acute lack of water for (social, economic, or environmental) needs, caused by lower water supply than demand</u>
<u>overexploitation</u>	<u>long-term over-use of water resources resulting in a gradual decrease in water availability (for overexploitation of groundwater, the term “depletion” is often used)</u>

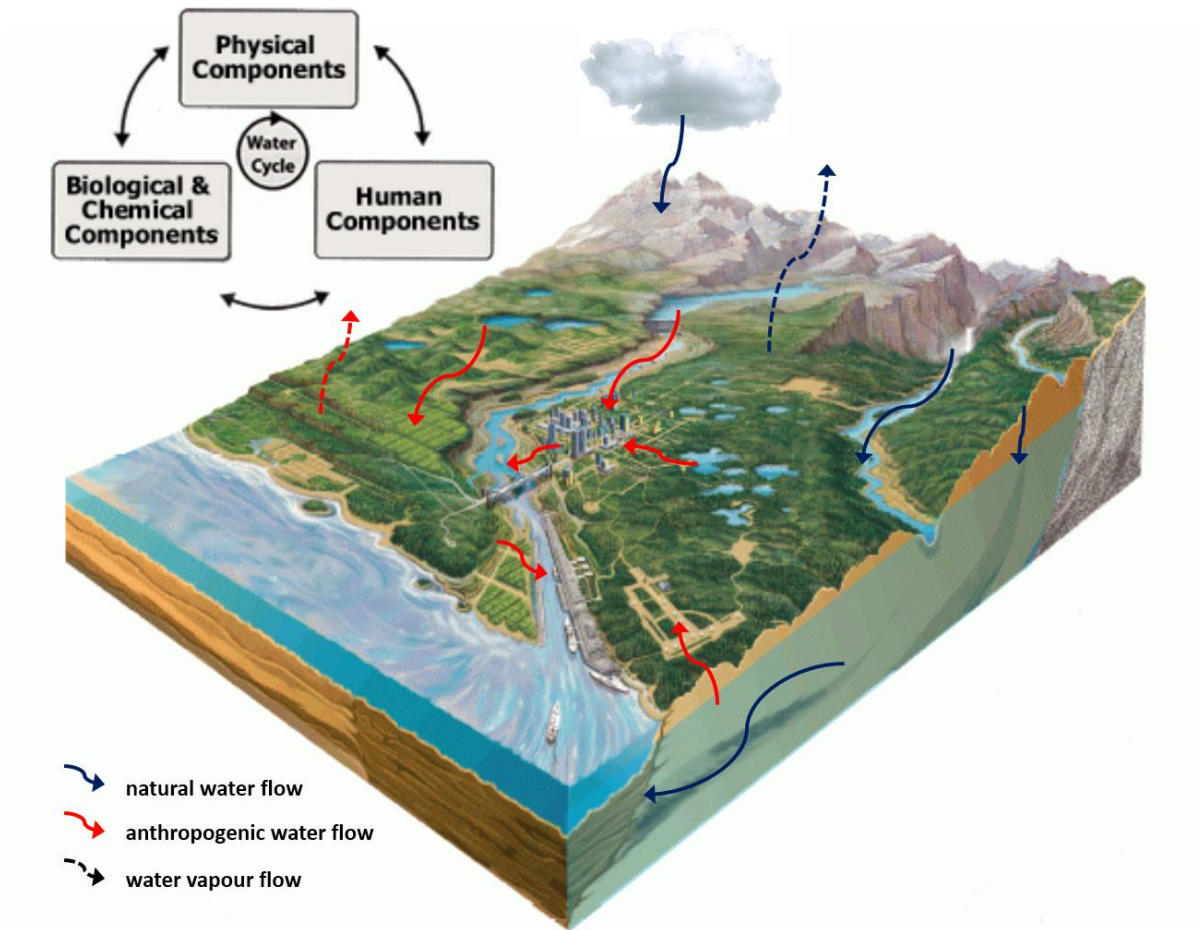


Figure 1: The water system linking physical, biological and human components through natural and anthropogenic water flows (adapted from: Winter et al., 1998; Vörösmarty et al., 2004, copyright AGU).

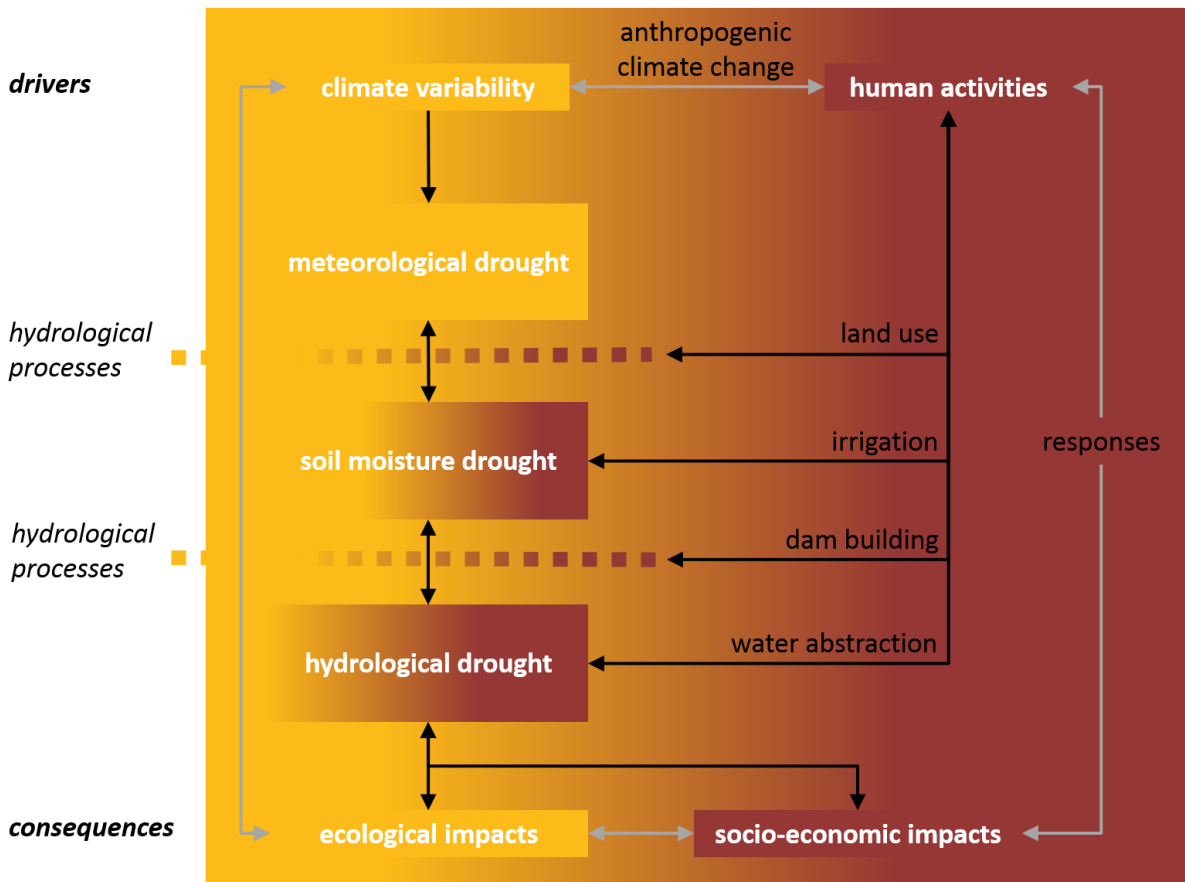
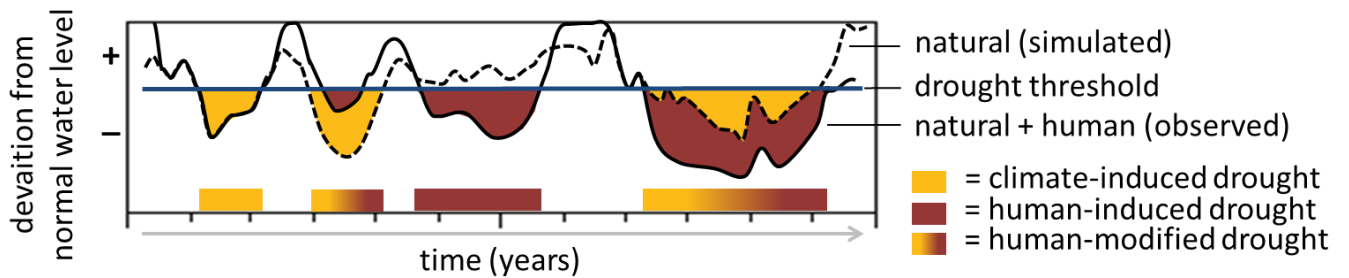


Figure 2: Drought propagation including natural and human drivers and feedbacks, black arrows indicate direct influences, grey arrows feedbacks (modified from Van Loon et al. 2016).



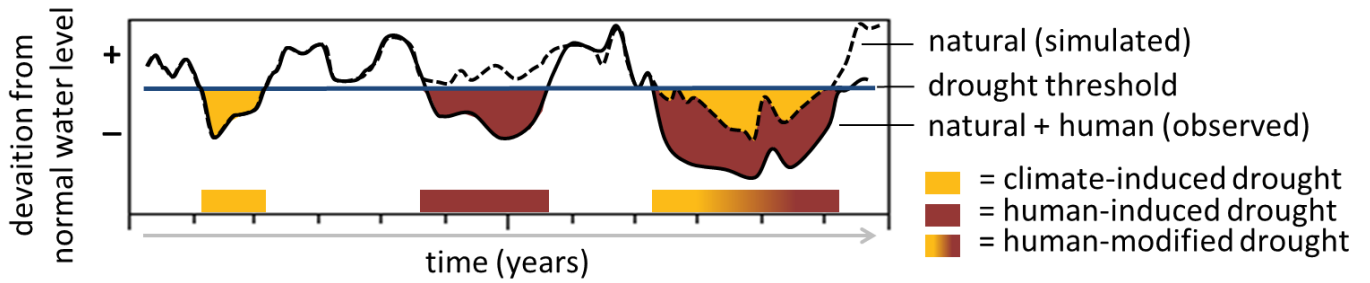
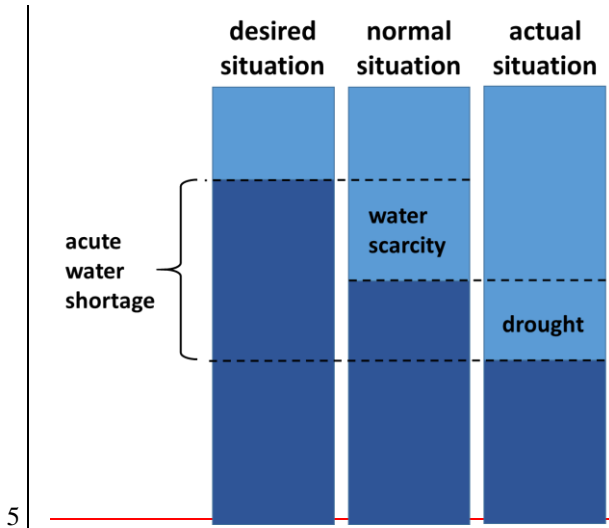


Figure 3: Drought types: climate-induced drought, human-induced drought, human-modified drought (modified from Van Loon et al. 2016).



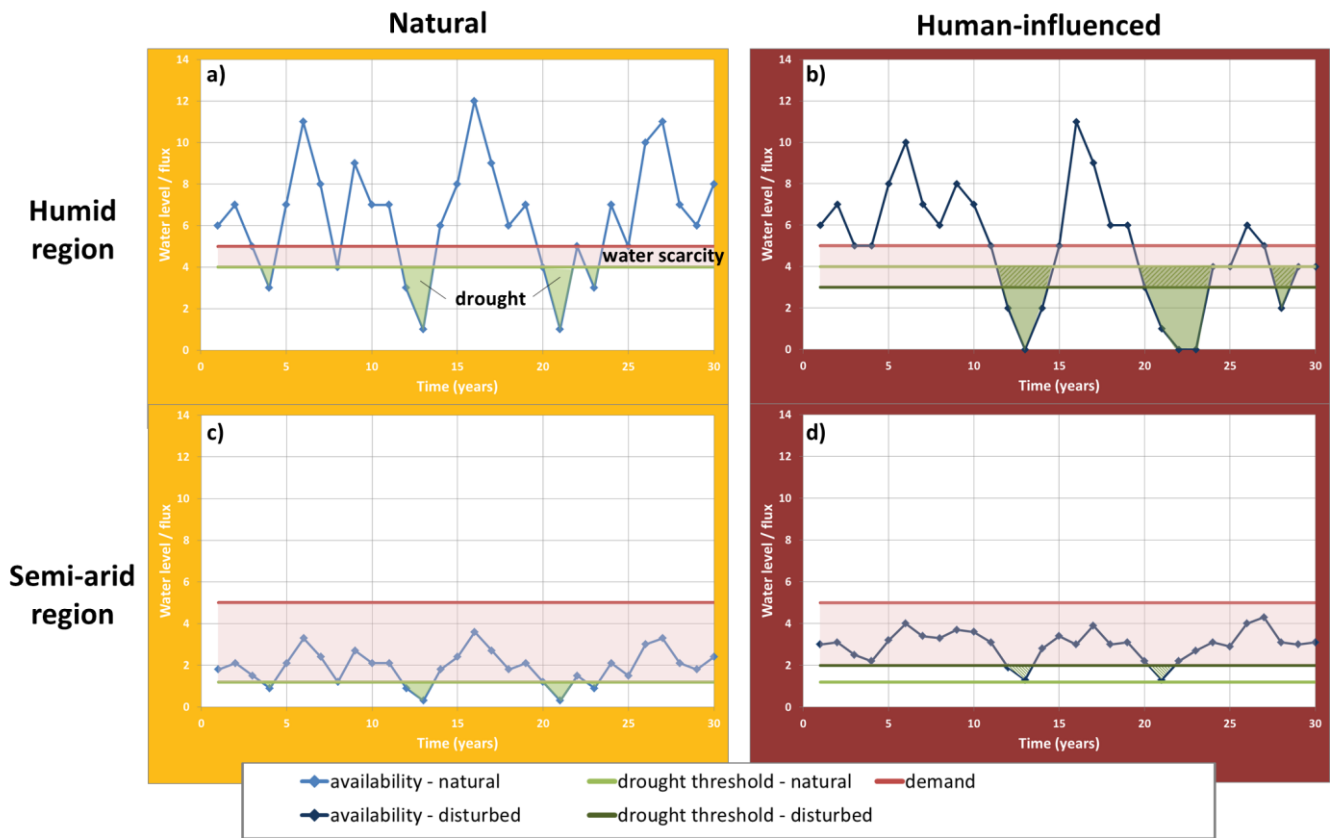
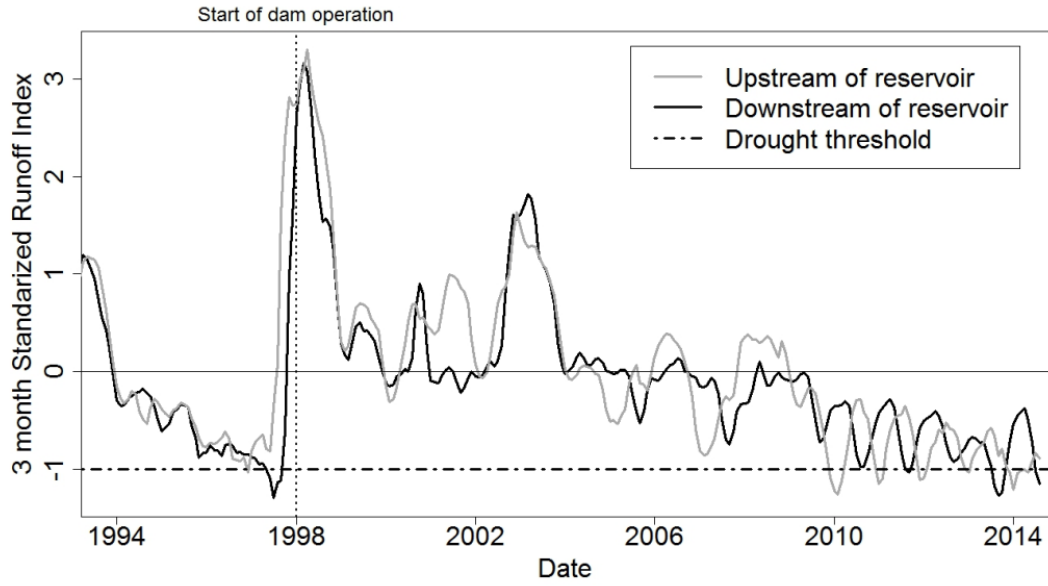
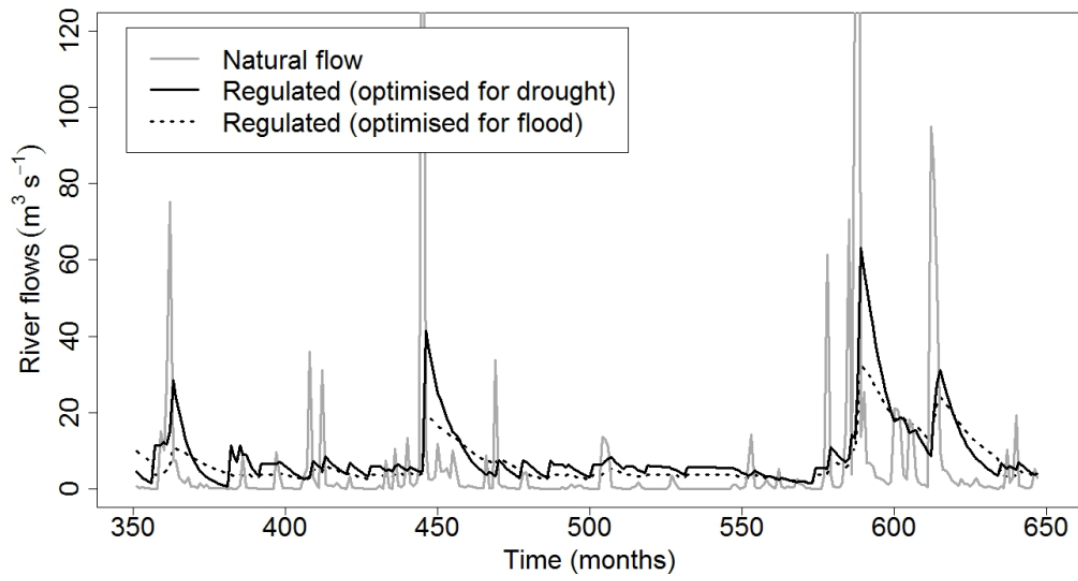


Figure 4: Conceptual figure of drought, aridity and water scarcity. Average water availability storage (water levels or fluxes in rivers, lakes, reservoirs, or groundwater aquifers) are lower in arid climates (b) than in humid climates (a), resulting in a lower threshold under natural conditions on different timescales. In both regions, climate-induced droughts are defined relative to this threshold (a & b; green areas). The region experiences water scarcity when the long-term water demand is higher than the long-term water availability (a & b; red areas). If actual levels are below normal (low) levels, the hydrological system is in drought. If normal levels are below desired levels (determined by water demand), there is long-term water scarcity. If actual levels are below desired levels, there is acute water shortage. In human-influenced catchments (c & d), human-induced and human-modified droughts can be determined relative to a natural threshold (light-green) or a human-influenced threshold (dark-green), resulting in different drought events (green areas vs. dashed areas). For simplicity of this figure, we assumed a similar water demand in humid and arid climates and under natural and human-influenced conditions. Often, however, water demand is higher arid climates and under human-influenced conditions leading to even more severe water scarcity and drought. N.B.: both the drought threshold and water scarcity demand can also be seasonally variable (e.g. Van Loon, 2015; Mekonnen and Hoekstra, 2016). occurs on longer timescales than drought.

(a)



(b)



(c)

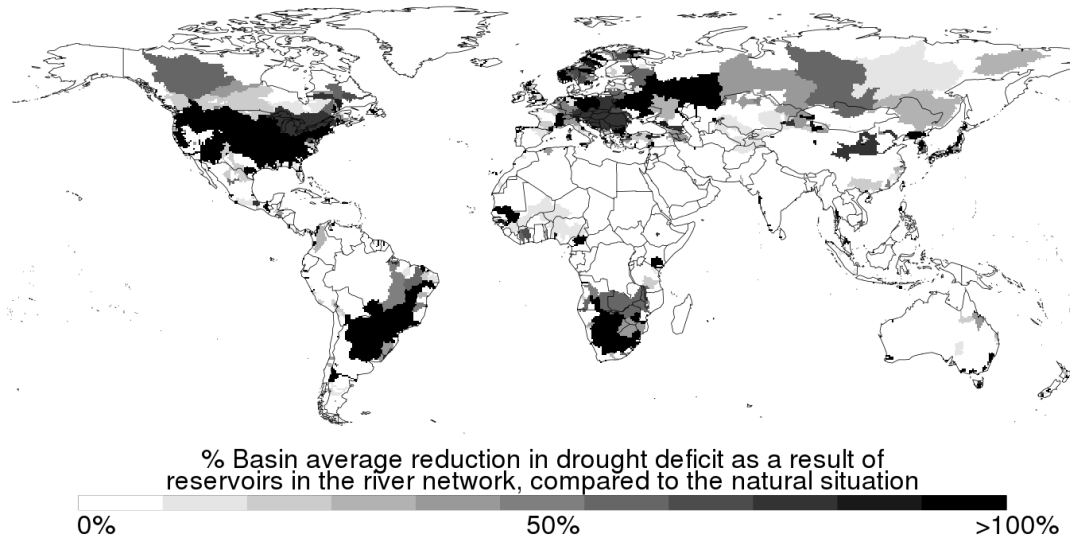


Figure 5: Example of the approaches to investigate drought modification by reservoirs, a) based on observations of discharge upstream and downstream of a reservoir in Chile (Rangecroft et al., 2016), b) theoretical effect of reservoirs on drought (Martinez et al., 2016), c) simulated effect of reservoirs on drought deficit on global scale (adapted from Wanders and Wada, 2015).

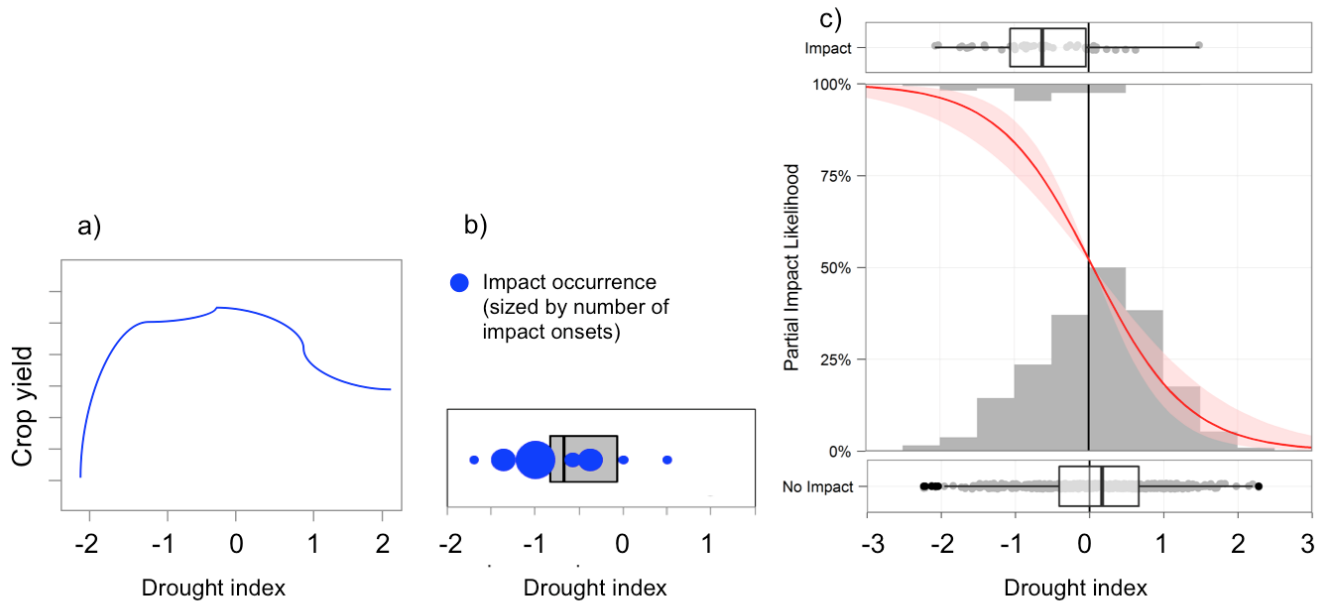


Figure 6: Scheme of the three approaches to investigate impact-related drought index values: a) correlation of drought index to crop yield (from unpublished work), b) drought index values at the time of impact occurrence (based on Bachmair et al., 2015a2015) and c) logistic regression model predicting the likelihood of impact occurrence by the drought index (from as in Blauhut-Stagge et al., 2015, but for drought index SPI instead of SPEI).

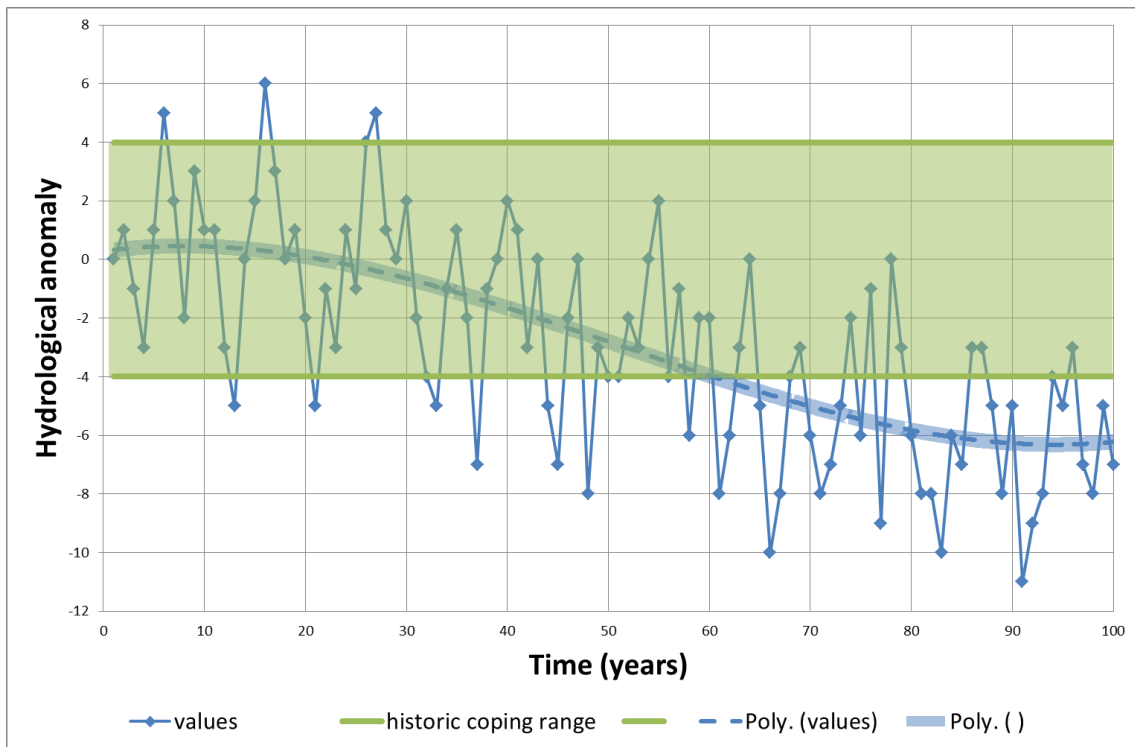


Figure 7: Changing normal situation due to climate change changes drought occurrence and severity (after Smit et al., 2000). Will society adapt to changing normal or in response to one/two extreme events?