

Dear Editor,

We have modified our manuscript based on the reviewers' comments as follows (note that our replies are represented as ACX.X, following to RCX.X). In addition, we have uploaded the programming scripts which we used in this study as supplement information to enhance reproducibility.

Best regards,

Masahiro Ryo

Referee #1

Replies to RC1

RC1.1. *Page 2, line 5–6: “Progress in understanding response patterns have been delayed partially because the quantification of thermal attributes is difficult for running waters.”*

The introduction stresses that understanding of thermal attributes in lotic ecosystems is hindered by scarce temporal observations, which certainly is a limitation in current research. However, this method hinges on a reference hydrologic station (i.e. a site that is not data-scarce) to elucidate thermal attributes at a data scarce site. The manuscript’s current focus seems to lie in extrapolating within a basin where there is abundant data from at least one location, and it may be helpful to state this explicitly because the description of the limitations in currently available methods/research that are mentioned in the introduction may signal to readers that the proposed method will be rooted solely in spot measurements

AC1.1. As the reviewer has clarified, our approach for temperature estimation based on extrapolation cannot be applied where no monitoring station exists along the streamline. To avoid misleading readers, we have modified the last two sentences in this paragraph and a sentence in the next paragraph according to the reviewer’s comment as follows:

Before (p.2, line 10-): Often in these cases, researchers rely on spot-measures of temperature at study sites and thus lack time-series temperature, thereby limiting understanding of the ecological consequences of thermal attributes in freshwaters. Clearly, an estimate of the thermal attributes at spot-measured sites would benefit this understanding.

After (p.2, line 15-): Often in these cases, researchers rely on spot-measures of temperature at study sites lacking time-series temperature data **or refer to temperature time-series data monitored at a nearby hydrological station along the streamline, although likely being biased in thermal attributes. Both datasets have caveats (a lack of time-series or bias in data) when estimating the thermal attributes at a data-poor site, thereby limiting understanding of the ecological consequences in freshwaters. Regardless, estimating thermal stream attributes from both spot-measurements at study sites and time-series measures at the nearest hydrological station would allow more robust estimates.**

Before (p.2, line 15): For instance, regression models employ correlative relationships with air temperature (e.g., Pilgrim et al., 1998) and streamflow (Webb et al., 2003).

After (p.2, line 22-): For instance, regression models employ correlative relationships with air temperature (e.g., Pilgrim et al., 1998) and streamflow (Webb et al., 2003), **while a correlative approach considering water temperature at a nearby hydrological station along the streamline have not been implemented to date.**

RC1.2. *Page 3, line 5: The authors consider external factors such as weather conditions as part of the irregularity component. However, in other climates, these meteorological conditions would likely factor into the diel (sun) and seasonal (rain) periodicity patterns as well.*

AC1.2. For better clarification we have modified the description as follows:

Before (p.3, line 4): We assume that hourly stream temperature $T(t)$ at a given time t is generally composed of the average value \bar{T} , seasonal periodicity pattern $S(t)$, and diel periodicity pattern $D(t)$. The remaining component, which is unexplained by these three components, results from multiple external factors such as weather conditions (sunshine, rain, wind, etc.): we call this component an irregularity $\varepsilon(t)$.

After (p.3, line 11-): We assume that hourly stream temperature $T(t)$ at a given time t is generally composed of the average value \bar{T} , seasonal periodicity pattern $S(t)$, and diel periodicity pattern $D(t)$. **The seasonal and diel periodicity patterns can be driven by meteorological (e.g., solar radiation and precipitation) and hydrological (e.g., discharge and snow-/ice-melt) conditions.** The remaining component, which is unexplained by these three components, results from multiple external factors such as **stochastic sub-daily changes in** weather conditions: we call this component an irregularity $\varepsilon(t)$.

RC1.3. *Page 6, line 5: Are the r^2 values (0.66 vs. 0.6) significantly different to state that the proposed method works better than linear regression? It might make more sense to first stress that the method can successfully recreate extremes (cf. linear regression), and then state that it is better at estimating temperatures at site A.*

AC1.3. We fully agree with the reviewer's suggestion. We have added the following text to better stress out the success in our primary aim recreating extremes:

(p.6, line 14-): **"This result indicates that our approach can accurately estimate periodic components and extremes, including the variability in irregularity that cannot be represented by linear regression focusing on an average estimate."**

RC1.4. *Page 7, line 16: Is the threshold value specific to the system in question? How was this value chosen, and what implications might this have?*

AC1.4. Yes, it would be system-dependent. The paragraph has been modified by inserting the following sentences. See also newly added supplement figure S1:

(p.8, line 2-): **We first estimated an appropriate range of threshold value visually so as to capture a handful of trigonometric curves (i.e., the three major peaks were shown in Figure 3). Then, we compared the patterns modeled based on some threshold values. Too low threshold value results in high sensitivity to noise, while too high threshold value results in high insensitivity to periodic patterns. We compared the performance of the models based on a set of threshold values (0.05, 0.1, and 0.2 °C etc.) and determined graphically as the value 0.1 °C clearly separated periodicity patterns and irregularities (Figure S1; supplement).**

RC1.5. *Below is a list of technical corrections:*

- 1) *Thermal attributes should be explicitly described earlier in the introduction. The full description is currently on page 2, line 21, but thermal attributes are first mentioned well before this line.*
- 2) *Page 2, line 26–27: "...multiple scales in time-series data, **and** water temperature in particular."*
- 3) *Page 2, line 33: "...sites **along** the same stream..."*

AC1.5. We have modified technical corrections 1–3 suggested by the reviewer accordingly.

(p.2, line 1): We have described the term at the 1st sentence in the 2nd paragraph, corresponding to 1).
We have modified (2; p.3, line 1) and (3; p.3, line 7) accordingly.

Reply to RC3

RC3.1. *Page 2, line 10: To which "problem" are you specifically referring? You could edit this section to read: "...near a hydrological station along the streamline, which is likely biased in thermal attributes. Both limit the understanding of ecological consequences in freshwater."*

AC3.1. This point has been also reflected in **AC1.1**.

Referee #2

Reply to RC2

RC2.1. Page 1, line 16-17: *“The results confirm that the developed method can infer stochastic behaviors in stream thermal attributes at spot-measured sites.” It would be beneficial to the reader to reword this sentence so that it reflects the requirement of having highly resolved temperature data at a reference site and the assumption of spatial autocorrelation between the reference site and data poor site that this method relies on.*

AC2.1. As the reviewer has suggested, we have modified the sentence as follows:

Before (p.1, line 16): The results confirm that the developed method can infer stochastic behaviors in stream thermal attributes at spot-measured sites.

After (p.1, line 20-): The results confirm that the developed method, spatially extrapolating thermal attributes **based on Fourier analysis**, can infer stochastic behaviors in stream thermal attributes at a data poor site.

In addition, to increase readability, we described the method more precisely in abstract:

Before (p.1, line 11): This study developed an analytical method to estimate seasonal and diel periodicities as well as irregularities in stream temperature at data-poor sites based on Fourier analysis.

After (p.1, line 11-): This study developed an analytical method **based on Fourier analysis** to estimate seasonal and diel periodicities as well as irregularities in stream temperature at data-poor sites, **by extrapolating thermal attributes from highly resolved temperature data at a reference site on the assumption of spatial autocorrelation.**

RC2.2. Page 2, line 3-13: *The introduction correctly stresses the importance of knowing “thermal attributes” at a given site with regards to an ecosystem. The authors go on to describe that determining “thermal attributes” can be difficult and unrealistic because of the need for highly resolved temperature data. They present a strong argument for the need for improved modeling that can rely on sparsely collected temperature data. The introduction makes it sound as if the temperature modelling method presented in this manuscript does just that. However, the authors’ model is dependent on having two years’ worth of hourly temperature data at a reference site. In addition, it relies on the assumption that there is spatial autocorrelation between the reference site and the data poor site. It would be beneficial to reword the introduction so that this information is more explicit.*

AC2.2. As the other reviewer has also pointed out the lack of the explanation which can mislead readers (**RC1.1** and **RC3.1**), we have modified the last two sentences in this paragraph and a sentence in the next paragraph (see **AC1.1**).

RC2.3. Page 4, line 9-10: *The authors do not include discharge and air temperature data in their methods for simplicity. Would adding this information to the Fourier analysis method improve its performance when compared to the linear regression method?*

AC2.3. Yes, adding information on discharge and air temperature has a potential to increase accuracy, especially if these factors contain unique information which is unexplained by the spatial correlation of

water temperatures between sites. For example, if discharge can represent a volume of snow-melting water that may influence the correlative relationship of water temperature between sites, the inclusion of discharge into the model's structure would increase the accuracy.

We have included this point in discussion as follows:

(After p.7, lines 12): As the statistical expression of our approach is linear (Eqs. 1 and 6), it can be easily coupled with approaches in the review; i.e., using other regression models employing air temperature (e.g., Pilgrim et al., 1998) and streamflow (Webb et al., 2003). Adding such information has the potential to increase accuracy, especially if these factors contain unique information that is unexplained by the spatial correlation of water temperature between sites. For example, if discharge represents a volume of snowmelt water that can influence the correlative relationship of water temperature between sites, inclusion of discharge into the model's structure would increase accuracy.

RC2.4. *Page 6, line 3-5: It appears that the method performs comparably to a linear regression with the exception that the presented method captures extreme thermal pulses and their probability. The linear regression method does not do this. It would be beneficial to emphasize this result and include it in the Abstract.*

AC2.4. We fully agree with the reviewer's suggestion. We have modified the text to better stress out the success in our primary aim recreating extremes:

Results part: see **AC1.3**.

Abstract part: We have inserted the following sentence in p.1, line 18: "The result of the performance evaluation indicated that our approach can reasonably estimate periodic components and extremes, including the variability in irregularity that cannot be represented by linear regression focusing on an average estimate."

RC2.5. *Technical, spelling, and grammatical edits:*

- 1) *Page 1, line 10: It would be beneficial to define explicitly what "thermal attributes" are earlier in the manuscript. The authors do so on Page 2, line 21-22. However, the term is used several instances before this definition.*
- 2) *Page 1, line 11: "Based on Fourier analysis, this study developed. . ." Misplaced modifier*
- 3) *Page 1, line 12-13: "We first quantified. . .Stream temperature was accurately decomposed. . ." The first sentence is active voice while the second sentence is passive voice. The introduction should remain in active voice.*
- 4) *Page 2, line 5: Progress in understanding response patterns has been delayed. . ." Subject verb agreement*

AC2.5. We have modified these points accordingly.

- 1) We have described the term at the 1st sentence in the 2nd paragraph (p.2, line 1).
- 2) We have modified differently (see **AC2.1 (2)**)
- 3) We have modified the sentence from passive voice to active voice (p.1, line 14).
- 4) We have modified it accordingly (p.2, line 10).

Technical note: Fourier approach for estimating the thermal attributes of streams

Masahiro Ryo^{1,2}, Marie Leys^{1,3}, Christopher T. Robinson^{1,3}

¹Department of Aquatic Ecology, EAWAG, 8600 Dübendorf, Switzerland, and Institute of Integrative Biology, ETH-Zürich, 8092 Zürich, Switzerland.

²Department of Civil Engineering, Tokyo Institute of Technology, 2-12-1 Ookayama, Meguro-ku, 152-0033 Tokyo, Japan

³Institute of Integrative Biology, ETH-Zürich, 8092 Zürich, Switzerland

Correspondence to: Masahiro Ryo (masahiroryo@gmail.com)

Abstract. Temperature models that directly predict ecologically important thermal attributes across spatio-temporal scales are still poorly developed. This study developed an analytical method based on Fourier analysis to estimate seasonal and diel periodicities as well as irregularities in stream temperature at data-poor sites by extrapolating thermal attributes from highly resolved temperature data at a reference site on the assumption of spatial autocorrelation. We first quantified the thermal attributes of a glacier-fed stream in the Swiss Alps using 2-years of hourly-recorded temperature. Our approach decomposed stream temperature to an average 3.8 °C, diel periodicity spanning 4.9 °C, seasonal periodicity spanning 7.5 °C, and an irregularity having an average of 0.0 °C but spanning 9.7 °C. These thermal attributes then were used to estimate thermal attributes at spot-measured sites along the river, resulting in a different relative contribution (weighting) of attributes among sites. The result of the performance evaluation indicated that our approach can reasonably estimate periodic components and extremes, including the variability in irregularity that cannot be represented by linear regression focusing on an average estimate. The results confirm that the developed method, spatially extrapolating thermal attributes based on Fourier analysis, can infer stochastic behaviors in stream thermal attributes at a data poor site. Additional ways to further improve the methodological approach are discussed. The R scripts used in this study are available in the Supplement.

Commented [MR1]: AC2.1 (2/2) and AC2.5 (2/4)

Commented [MR2]: AC2.5 (3/4)

Commented [MR3]: AC2.4 (2/2)

Commented [MR4]: AC2.1 (1/2)

Commented [MR5]: We have attached the programming scripts that were used in this study to enhance reproducibility.

1 Introduction

Temperature is a fundamental determinant of physical and biogeochemical patterns and processes in ecosystems. Organisms respond to temperature via different adaptations and distinct life history strategies across various spatial and temporal dimensions (Cossins and Bowler, 1987). More broadly, global biodiversity has tracked external temperature transitions over millennia (Mayhew et al., 2012). In the Anthropocene, unprecedented rapid transitions in thermal regimes owing to climate change are a global concern (IPCC, 2014). Consequently, adequate characterization of thermal regimes is an important prerequisite for understanding the role of temperature in ecosystems and for ecological conservation.

Thermal attributes (seasonal and diel periodicity patterns and irregular extremes), as representations of variability, have attracted a growing interest in recent climate-relevant ecological studies (e.g., Thompson et al., 2013). The combination of seasonal and diel periodicity cycles in temperature promotes diverse behaviors and spatial distributions of exothermic organisms according to respective life history strategies and life cycle stages (e.g., Vannote et al., 1980). In contrast, irregular extremes such as heatwaves can induce physiological exposure and vulnerability (Paaijmans et al., 2013) as well as cause abrupt shifts in biogeochemical processes (Frank et al., 2015) and ecological assemblages (Thompson et al., 2013). Hence, the variability in thermal periodicities and irregular extremes need to be distinguished from average temperatures.

Commented [MR6]: AC1.5 (1) and AC2.5 (1/4)

In freshwaters, ecological responses to thermal regime shifts may be less understood than in marine and terrestrial ecosystems (Thompson et al., 2013), even though freshwater biodiversity has experienced major decreases in recent decades (WWF, 2014). Progress in understanding response patterns has been delayed partially because the quantification of thermal attributes is difficult for running waters. Physical disturbance in streams can be considerable due to periodic flow pulses (Poff et al., 1997). Particularly where flashy flows mobilize gravel riverbeds, e.g. braided rivers, the installation of data-loggers for long-term time-series monitoring can be logistically difficult. For natural floodplains acting as biodiversity hotspots (Tockner and Stanford, 2002), frequent time-series temperature data (daily or sub-daily) recorded throughout a year or longer are difficult to acquire because the floodplain mosaic changes frequently and dramatically (Van der Nat et al., 2003). Often in these cases, researchers rely on spot-measures of temperature at study sites lacking time-series temperature data or refer to temperature time-series data monitored at a nearby hydrological station along the streamline, although likely being biased in thermal attributes. Both datasets have caveats (a lack of time-series or bias in data) when estimating the thermal attributes at a data-poor site, thereby limiting understanding of the ecological consequences in freshwaters. Regardless, estimating thermal stream attributes from both spot-measurements at study sites and time-series measures at the nearest hydrological station would allow more robust estimates.

Commented [MR7]: AC2.5 (4/4)

Commented [MR8]: AC1.1 (1/2) and AC3.1

Given this background, there is still much room towards improving statistical models to predict stream temperature (see review in Benyahya et al., 2007). For instance, regression models employ correlative relationships with air temperature (e.g., Pilgrim et al., 1998) and streamflow (Webb et al., 2003), while a correlative approach considering water temperature at a nearby hydrological station along the streamline have not been implemented to date. Autoregressive models take into account the autocorrelation structure within water temperature time-series data and also the correlation with external variables (Kothandaraman, 1971; Cluis, 1972; Long, 1972). To deal with seasonally changing parameters in regression and autoregressive models, periodic autoregressive models were introduced (Benyahya et al., 2007). However, temperature patterns at multiple temporal scales, particularly the combination of seasonal and diel periodicity patterns, are still rarely considered (Steel and Lange 2007). Moreover, temperature models that directly predict ecologically important thermal attributes do not exist presently, as many models focus solely on temperature numeric values at a given time.

Commented [MR9]: AC1.1 (2/2) and AC2.2

The “well-worn” Fourier analysis (Fourier, 1878) is well-suited for analyzing combined multi-temporal patterns and predicting thermal attributes. Unfortunately, the application of Fourier analysis for assessing stream temperature patterns has slowed since its early emergence in 1970 (Kothandaraman, 1971; Cluis, 1972; Long, 1972; but see Maheu et al., 2015). This

trend is surprising when considering its high potential for detecting periodicity patterns at multiple scales in time-series data, and water temperature data in particular. Therefore, we felt it timely to further investigate the methodological application of Fourier analysis for assessing thermal patterns in running waters with the intent to reintroduce its use in ecological field studies.

Commented [MR10]: AC1.5 (2/3)

5 Our primary aim was to develop an analytical method for estimating average, seasonal and diel periodicities as well as irregular extremes of stream temperature at data-poor sites (i.e., spot measures) based on Fourier analysis. As a case study, we first quantified these thermal attributes using 2-years of hourly-recorded time-series temperature data in an alpine glacial-fed stream in Val Roseg, Switzerland (see Ward and Uehlinger (2003) for a synthesis of research conducted in this catchment). Using those results, we then estimated thermal patterns at sites along the same stream where monthly spot-
10 measures of temperature were taken during the same 2-years.

Commented [MR11]: AC1.5 (3/3)

2 Methods

2.1 Compositional variables in stream temperature

15 We assume that hourly stream temperature $T(t)$ at a given time t is generally composed of the average value \bar{T} , seasonal periodicity pattern $S(t)$, and diel periodicity pattern $D(t)$. The seasonal and diel periodicity patterns can be driven by meteorological (e.g., solar radiation and precipitation) and hydrological (e.g., discharge and snow-/ice-melt) conditions. The remaining component, which is unexplained by these three components, results from multiple external factors such as stochastic sub-daily changes in weather conditions: we call this component an irregularity $\varepsilon(t)$. A distinctive high/low value in the irregularity indicates thermal extremes that strongly disturb the periodicity patterns in temperature. Thereby, hourly stream temperature is expressed as:

Commented [MR12]: AC1.2

$$T(t) = \bar{T} + S(t) + D(t) + \varepsilon(t) \quad (1)$$

20 2.2 Fourier analysis for temperature decomposition

Fourier transformation converts a function of time $T(t)$ into a function of frequency $G(f)$ by transforming time-series data into a combination of trigonometric curves. Both functions are identically reversible:

$$G(f) = \int_{-\infty}^{\infty} T(t) e^{-i2\pi f t} dt \quad (2)$$

$$T(t) = \int_{-\infty}^{\infty} G(f) e^{i2\pi f t} df \quad (3)$$

As measured stream temperature is a discrete variable, we applied the fast Fourier transformation algorithm. The algorithm searches for a single solution to identically explain a time-series variable $T(t)$ by summing the trigonometric curves ($e^{i2\pi f t}$) of
25 different frequency f amplified by a corresponding spectral intensity $G(f)$:

$$G(f) = \sum_{t=0}^{N-1} T(t) e^{-i2\pi f t} \quad (4)$$

$$T(t) = \frac{1}{N} \sum_{f=0}^{N-1} G(f) e^{i2\pi f t} \quad (5)$$

where N is the data length equivalent to the number of summed curves. As seen in Eq. (5), the time-series variable, hourly stream temperature $T(t)$, is formulated with summed trigonometric curves (frequency $f = 0, 1, 2, \dots, N-1$) whose vibration magnitudes are amplified by a corresponding spectral intensity $G(f)$. A strong spectral intensity indicates that the corresponding curve dominates the composed time-series variable. As a consequence, stable patterns of seasonal/diel

5 periodicities in time-series temperature data are detected by trigonometric curves with remarkably strong spectral intensities. The mismatch between Eq. (1) and Eq. (5) needs to be solved to express time-series stream temperature as in Eq. (1). Although our intention is to explain time-series temperature by the four components above, Fourier analysis decomposes it into N components based on a series of trigonometric curves. This mismatch in the number of components requires summing some of the trigonometric curves to best represent seasonal and diel periodicity patterns. However, it is unknown which
10 curves at what frequencies and spectral intensities are required to sufficiently express these periodicity patterns. For selecting curves to be summed, we considered the condition that the seasonal and diel periodicities consist of their period lengths (inverse of frequency, $1/f$) within the ranges of 1–365 days and 1–24 hours, respectively. Moreover, we introduced a threshold value in spectral intensity for selecting only the dominant components as well as to avoid mixing noises with the periodicity patterns. In so doing, the shape of functions $S(t)$ and $D(t)$ are dependent on the spectral threshold value. We set
15 the threshold value at 0.1 °C, a minimal unit of temperature measurement in the case study system (see sect. 2.4). The analysis was performed using the fast Fourier transform (*fft*) function of the “stats” library in R 3.1.2 (R Core Team, 2014).

2.3 Extrapolation to spot-measured temperature data

Assuming that thermal attributes auto-correlate along the river continuum, we can extrapolate the thermal attributes based on time-series data to spot-measured data at sites along the same stream. For simplicity, we do not include external information
20 (e.g., discharge and air temperature). After decomposing the time-series temperature T_0 as Eq. (1) at a reference site, the decomposed factors are used to estimate temperature T_a at spot-measured site A along the same stream network. We assume that the four temperature components in Eq. (1) are linearly correlated between sites when other factors (e.g., major tributary or groundwater inputs) affecting stream temperature along the network are low enough to maintain the spatial-autocorrelation temperature patterns between sites. The temperature at site A is formulated as:

$$T_a(t) = \bar{T}_a + S_a(t) + D_a(t) + \varepsilon_a(t) \quad (6)$$

$$= \beta_1 \bar{T}_0 + \beta_2 S_0(t) + \beta_3 D_0(t) + \beta_4 \varepsilon_0(t) + \beta_5 \quad (7)$$

25 where coefficients β_{1-4} are the weighting parameters for each component (> 0), and β_5 is a parameter to adjust systematic bias. The following procedures are performed to estimate each parameter. First, linear regression between T_a and T_0

corresponding to temperatures at the measurement time of T_a is conducted to estimate β_1 (slope) and β_5 (intercept). Second, β_2 and β_3 are numerically estimated by minimizing the mean square error value based on the linear regression between an estimated $\beta_4 \varepsilon_0 = T_a - \{\beta_1 \bar{T}_0 + \beta_2 S_0(t) + \beta_3 D_0(t) + \beta_5\}$ and ε_a at the corresponding measurement times. Third, β_4 is numerically estimated similarly as for the second step based on T_a and the estimated T_a .

5 To highlight the benefits of the extrapolation method, we compared the component extrapolation approach to a linear regression model that simply extrapolates time-series temperature based on the linear regression between T_a and T_0 . Importantly, if the coefficients β_{1-4} have the same value as the slope of the linear regression and β_5 is the intercept, the Fourier approach is equivalent to the linear regression model. The R scripts used in this study are available in the Supplement.

Commented [MR13]: We have attached the programming scripts that were used in this study to enhance reproducibility.

10 2.4 The case study: an alpine glacier-fed stream (Val Roseg, Switzerland)

The method was applied in the Roseg catchment, an alpine valley located in the Bernina massif of the Swiss Alps (Fig. 1). The catchment area is 66.5 km² and ca. 30% glaciated (Swiss National Hydrological and Geological Survey (OFEV); year of record 2010). Elevations range from 1766 to 4049 m a.s.l. The Roseg River is fed by meltwaters of the Tschierwa and Roseg glaciers. The Roseg glacial runoff first drains into the pro-glacial lake Roseg before merging with the flow from the Tschierwa glacier (Fig. 1). Mean annual discharge at the end of the catchment was 2.8 m³ s⁻¹ (discharge record averaged for 15 1955–2013) and daily discharge ranged from 3.3 to 19.6 m³ s⁻¹ in July and August and from 0.2 to 2.0 m³ s⁻¹ between November and March 2013 (OFEV). The study system comprises (i) a long proglacial reach below the Tschierwa glacier, exhibiting extremely low temperatures due to glacial runoff (kryal), (ii) a single-thread channel downstream of the confluence of the proglacial reach and the Roseg lake outlet, (iii) a complex braided floodplain, and (iv) a constrained reach 20 extending to the end of the catchment where the Pontresina hydrological station is located (see Tockner et al., 1997; Uehlinger et al., 2003 for a detailed description).

Hourly time-series temperature was recorded at a reference site, the Pontresina hydrological station (site R in Fig. 1: 46°29'23.6"N, 09°53'53.3"E; 1766 m a.s.l.) in 2012 and 2013 (Fig. 2a: provided by OFEV). Spot-measured water temperature was taken monthly at two sites, one located within the proglacial reach (site A: 46°24'38.3"N, 09°51'31.2"E; 25 2106 m a.s.l.) and one below the lake outlet confluence reach (site B: 46°25'05.9"N, 09°51'27.1"E; 2054 m a.s.l.) (Fig. 1). For both sites, stream temperature was measured using a conductivity meter (WTW LF323, Weilheim, Germany) at different daily times on each visit from April to October 2012 and 2013 (in total 14 times).

3 Results

3.1 Thermal attributes at the reference site

30 By converting the time-series temperature data at the reference site R (Fig. 2a) to its frequency domain, some frequency ranges had strong spectral pulses (Fig. 3). Nine trigonometric curves exceeded the threshold of 0.1°C (Table 1). Regarding

period length (Table 1), the curves were allocated to seasonal and diel components: three curves for seasonal periodicity patterns (Fig. 2b); six curves for diel periodicity patterns (Fig. 2c). Thereby, the time-series temperature at the reference site R (Fig. 2a) was decomposed into an average of 3.8 °C, a seasonal cycle spanning 7.5 °C (Fig. 2b), a diel cycle spanning 4.9 °C (Fig. 2c), and an irregularity spanning 9.7 °C with an average of 0.0 °C and standard deviation of 0.92 °C (Fig. 2d).

Hourly stream temperatures excluding the irregularity (i.e., $\bar{T} + S(t) + D(t)$; Fig. 2e) explained 92% of the data variability (r^2), indicating a successful decomposition of the time-series data and a high reliability of the approach to characterize stream temperature components. The irregularity had a normal distribution (no inferred bias), indicating that the seasonal and diel periodicity patterns were extracted accurately from the original time-series data.

3.2 Estimating time-series temperature for spot-measured stream sites

- Temperature at site A was approximately twofold lower than at site B during the study period. Temperature at site A had an average of 2.3 °C and spanned 0.4–4.8 °C; temperature at site B had an average of 5.4 °C and spanned 0.8–9.2°C. Temperatures at site A and B were linearly correlated to temperature at the reference site R ($r^2 = 0.60$ and 0.92, respectively; Fig. 4). This result indicates that spatial autocorrelation of the thermal attributes exists between them, even though a thermal influence from the pro-glacial lake differentiates the thermal patterns between sites A and B (Fig. 1).
- For Eq. (7), the proposed method estimated that the weighting parameters at site A ($\beta_{1-4} = \{0.32, 0.32, 0.50, 0.70\}$) showed higher heterogeneity in the relative contributions of the components than those at site B ($\beta_{1-4} = \{0.97, 0.97, 0.99, 0.93\}$). For site A, the relative contribution of diel variability and irregularity to the estimated temperature ($\beta_3 = 0.50, \beta_4 = 0.70$) was higher than the average and seasonal variability ($\beta_1 = \beta_2 = 0.32$). This result indicates that our approach can accurately estimate periodic components and extremes, including the variability in irregularity that cannot be represented by linear regression focusing on an average estimate. At site B, the parameter composition was less variable (0.93–0.99), and therefore the performance of the decomposition approach was similar to the performance of the linear model. Using the developed method, the temperature at site A was estimated better than the estimated temperature using linear regression ($r^2 = 0.66$ and 0.60, respectively). For site B, both approaches performed equivalently ($r^2 = 0.92$). These differences between sites A and B indicate that the thermal attribute at site A was more different from the reference site R than that at site B.
- Based on the obtained parameters, time-series temperatures at sites A and B were inferred (Fig. 5). At site A, due to relatively high contributions of diel cycles and irregularities ($\beta_3 = 0.50, \beta_4 = 0.70$), higher hourly variability was estimated by the proposed approach than the linear regression (Fig. 5a). The maximum values estimated by the proposed approach and linear regression were clearly distinct at 5.9 °C and 4.0 °C, respectively, while an average of 1.1 °C was equivalent for both estimates. The linear model clearly underestimated ($< 4.0^\circ\text{C}$) the high temperatures recorded at 4.4 °C on 30 May 2012 and 4.8 °C on 5 June 2013. In contrast, the proposed approach inferred a possibility of temperature reaching 5.9 °C, having a 97.5% percentile value of 4.0 °C. This difference between approaches indicates the ability of the proposed approach to estimate extreme thermal pulses and their occurrence probability.

Commented [MR14]: AC1.3 and AC2.4 (1/2)

4 Discussion

Currently, no stream temperature models explicitly predict ecologically important thermal attributes (seasonal and diel periodicity patterns and irregular extremes) because of the difficulty in capturing the combined patterns at multiple temporal scales in stream environments (Benyahya et al., 2007). This study developed a Fourier transformation approach that predicts these thermal attributes at data-poor sites based on the pre-analysis of time-series temperature data at a data-rich reference site along the stream. The approach could estimate the relative composition of thermal attributes from a limited number of spot-measured data (see Eq. 7), while linear regression weighted the composition equally. The results emphasized the significance to develop further ecological-based thermal prediction models, aiming at deeper understandings in ecological responses to thermal attributes (Paaijmans et al., 2013; Thompson et al., 2013; Frank et al., 2015).

The developed prediction method confirmed its potential to evaluate the relative contribution of thermal attributes at a data-poor site. The method is somewhat comparable with multiple linear regressions ($Y = \beta_0 + \beta_1 X_1 + \dots$) in terms of the assumption that the thermal attributes are independent of each other and auto-correlated between sites, and their relative contributions change according to location. The unique difference is that the developed method can directly use the periodicity patterns and irregularities for prediction as Eq. (7). This type of model was not addressed in a recent review on temperature models (Benyahya et al., 2007). As the statistical expression of our approach is linear (Eqs. 1 and 6), it can be easily coupled with approaches in the review; i.e., using other regression models employing air temperature (e.g., Pilgrim et al., 1998) and streamflow (Webb et al., 2003). Adding such information has the potential to increase accuracy, especially if these factors contain unique information that is unexplained by the spatial correlation of water temperature between sites. For example, if discharge represents a volume of snowmelt water that can influence the correlative relationship of water temperature between sites, inclusion of discharge into the model's structure would increase accuracy.

The advantage of Fourier decomposition analysis at multiple temporal scales is the ability to evaluate the possible range maxima for each thermal attribute of time-series data (Fig. 2). Fourier analysis clearly detected strong periodicity patterns in time-series temperature data (Fig. 3) and represented them with a small number of trigonometric curves (Table 1). By doing so, we found that the irregularity had broader range (9.7 °C) than the spanning ranges of seasonal and diel periodicity patterns (7.5 °C and 4.9 °C, respectively) at the study stream. This high irregularity may be an important thermal attribute in glacier-fed streams. Further, our results clearly showed that seasonal trends existed in the amplitudes of diel periodicities and irregularities, both having lower variability in winter and greater variability in spring (Figs. 2c-d) (Hopkins, 1971). Importantly, these characteristics are difficult to detect without coupling the periodicity patterns at multiple temporal scales. By decomposing the time-series temperature data at the reference site as a pre-analysis for prediction, this decomposition method (see sect. 2.1 and 2.2) can be useful for quantifying thermal attributes in ecological studies.

The proposed method is highly promising towards evaluating potential changes in thermal variability due to climate change or anthropogenic thermal effluents in rivers and streams (Caissie, 2006; Webb et al., 2008). For instance, environmental change could modify each component of stream temperature with a different degree of severity such as increasing the

Commented [MR15]: AC2.3

average, shifting the peak timing in seasonality, reducing diel variability, or amplifying the irregularity. In addition, as thermal regimes play a key role in aquatic ecosystem structure and functioning (e.g., environmental niches determining community composition, biogeochemical cycles, Vannote et al., 1980), each component of stream temperature can be used to better understand ecosystem dynamics and responses (Thompson et al., 2013).

While demonstrating the broad applicability of this approach, we caution over some of its limitations. First, the analysis connecting Eqs. (1) and (7) is threshold dependent. We first estimated an appropriate range of threshold value visually so as to capture a handful of trigonometric curves (i.e., the three major peaks were shown in Figure 3). Then, we compared the patterns modeled based on some threshold values. Too low threshold value results in high sensitivity to noise, while too high threshold value results in high insensitivity to periodic patterns. We compared the performance of the models based on a set of threshold values (0.05, 0.1, and 0.2 °C etc.) and determined graphically as the value 0.1 °C clearly separated periodicity patterns and irregularities (Figure S1; supplement). Therefore, a threshold value must be carefully chosen and needs to be evaluated whether the irregularity attribute is unbiased. Second, although the concept is feasible, complete validation was limited due to the low number of sample sites. To obtain more robust estimation, the model needs additional validation as well as calibration. Third, if a systematic shift in thermal pattern is observed during a target period, the method would need adjustment. Our target 2-year period was short enough to neglect long-term trends in temperature. For example, some studies using long-term records (>20 years) detected an inter-annual increasing trend in mean temperature due to anthropogenic thermal discharge and land-use change (Beschta and Taylor, 1988; Hostetler, 1991). In such cases, the proposed equation in Eq. (1) must be modified because it assumes constant average temperature over a target period for analysis; i.e., \bar{T} should be a function of time as $\bar{T}(t)$. Last, the assumption of linearly-related components between the reference site and other sites is not always met in all cases. For instance, glacier-fed and groundwater-fed streams can be composed of different seasonal and diel periodicity patterns (Brown and Hannah, 2008). In our target system, flow from the Roseg pro-glacial lake differentiated thermal patterns of sites A and B (Fig. 1). Even though our analysis confirmed that the linear assumption was apparent in this system ($r^2 = 0.60$; Fig. 4), incorporation of the thermal pattern at the lake outlet into the analysis would certainly increase estimation accuracy.

Acknowledgements. The study was done as a fellow in the “Young Researchers Exchange Program between Japan and Switzerland” under the “Japanese-Swiss Science and Technology Programme” (EG 11-2015) and supported by the Japan Society for the Promotion of Science (26-11771). The data used in this study were collected for a Swiss National Science Foundation project (31003A_152815). We thank the Swiss National Hydrological and Geological Survey from the Federal Office for the Environment (OFEV) for kindly providing water temperature data and S. Blaser for field assistance. We are indebted to the anonymous reviewers for their constructive reviews and comments.

Commented [MR16]: AC1.4

References

- Benyahya, L., Caissie, D., St-Hilaire, A., Ouarda, T. B. M., and Bobée, B.: A review of statistical water temperature models, *Can. Water Resour. J.*, 32, 179–192, 2007.
- Beschta, R. L. and Taylor, R. L.: Stream temperature increases and land use in a forested Oregon watershed, *Water Resour. Bull.*, 24, 19–25, 1988.
- Brown, L. E. and Hannah, D. M.: Spatial heterogeneity of water temperature across an alpine river basin, *Hydrol. Process.*, 22, 954–967, 2008.
- Caissie, D.: The thermal regime of rivers: a review, *Freshwater Biol.*, 51, 1389–1406, 2006.
- Cluis, D. A.: Relationship between stream water temperature and ambient air temperature - a simple autoregressive model for mean daily stream water temperature fluctuations, *Nord. Hydrol.*, 3, 65–71, 1972.
- Cossins, A. R. and Bowler, K.: *Temperature biology of animals*, Springer Netherlands, 1987.
- Fourier, J.: *The analytical theory of heat*, Cambridge University Press, 1878.
- Frank, D., Reichstein, M., Bahn, M., Thonicke, K., Frank, D., Mahecha, M. D., Smith, P., van der Velde, M., Vicca, S., Babst, F., Beer, C., Buchmann, N., Canadell, J. G., Ciais, P., Cramer, W., Ibrom, A., Miglietta, F., Poulter, B., Rammig, A., Seneviratne, S. I., Walz, A., Wattenbach, M., Zavala, M. A., and Zscheischler, J.: Effects of climate extremes on the terrestrial carbon cycle: Concepts, processes and potential future impacts, *Glob. Change Biol.*, 21, 2861–2880, 2015.
- Hopkins, C. L.: The annual temperature regime of a small stream in New Zealand, *Hydrobiologia*, 37, 397–408, 1971.
- Hostetler, S. W.: Analysis and modeling of long-term stream temperatures on the Steamboat Creek basin, Oregon: implication for land use and fish habitat, *Water Resour. Bull.*, 27, 637–647, 1991.
- Intergovernmental Panel on Climate Change (IPCC): Summary for policymakers, in *climate change 2014: Impacts, adaptation, and vulnerability, Part A: Global and sectoral aspects. Contribution of working group II to the fifth assessment report of the Intergovernmental Panel on Climate Change*, 1–32, 2014.
- Kothandaraman, V.: Analysis of water temperature variations in large river, *J. Sanit. Eng. Div.*, 97, 19–31, 1971.
- Long, L. L.: *Mathematical modeling of river water temperatures*, Univ. Missouri- Roll., Missouri University of Science and Technology, 1972.
- Maheu, A., Poff, N. L., and St-Hilaire, A.: A classification of stream water temperature regimes in the conterminous USA, *River Res. Appl.*, 2015.
- Mayhew, P. J., Bell, M. A., Benton, T. G., and McGowan, A. J.: Biodiversity tracks temperature over time, *P. Natl. Acad. Sci. USA.*, 109, 15141–15145, 2012.
- Paaïjmans, K. P., Heinig, R. L., Seliga, R. A., Blanford, J. I., Blanford, S., Murdock, C. C., and Thomas, M. B.: Temperature variation makes ectotherms more sensitive to climate change, *Glob. Change Biol.*, 19, 2373–2380, 2013.
- Pilgrim, J. M., Fang, X., and Stefan, H. G.: Stream temperature correlations with air temperatures in Minnesota: Implications for climate warming, *J. Am. Water Resour. As.*, 34, 1109–1121, 1998.

- Poff, N. L., Allan, J. D., Bain, M. B., Karr, J. R., Prestegard, K. L., Richter, B. D., Sparks, R. E., and Stromberg, J. C.: The natural flow regime: A paradigm for river conservation and restoration, *Bioscience*, 47, 769–784, 1997.
- R Core Team, R: A language and environment for statistical computing, 2014.
- Steel, E.A., and Lange, I. A.: Using wavelet analysis to detect changes in water temperature regimes at multiple scales: Effects of multi-purpose dams in the Willamette River Basin, *River Res. Appl.*, 23, 351–359, 2007.
- Thompson, R. M., Beardall, J., Beringer, J., Grace, M., and Sardina, P.: Means and extremes: Building variability into community-level climate change experiments, *Ecol. Lett.*, 16, 799–806, 2013.
- Tockner, K., Malard, F., Burgherr, P., Robinson, C. T., Uehlinger, U., Zah, R., and Ward, J. V.: Physico-chemical characterization of channel types in a glacial floodplain ecosystem (Val Roseg, Switzerland), *Arch. Hydrobiol.*, 140, 433–463, 1997.
- Tockner, K. and Stanford, J. A.: Riverine flood plains: present state and future trends, *Environ. Conserv.*, 29, 308–330, 2002.
- Uehlinger, U., Malardi, F., and Ward, J. V.: Thermal patterns in the surface waters of a glacial river corridor (Val Roseg, Switzerland), *Freshw. Biol.* 48, 284–300, 2003.
- Van der Nat, D., Tockner, K., Edwards, P. J., Ward, J. V., and Gurnell, A. M.: Habitat change in braided flood plains (Tagliamento, NE-Italy), *Freshwater Biol.*, 48, 1799–1812, 2003.
- Vannote, R. L., Minshall, G. W., Cummins, K. W., Sedell, J. R., and Cushing, C. E.: The river continuum concept, *Can. J. Fish. Aquat. Sci.*, 37, 130–137, 1980.
- Ward, J. V. and Uehlinger, U.: *Ecology of a glacial flood plain*, Springer Netherlands, 2003.
- Webb, B.W., Clack, P. D., and Walling, D. E.: Water-air temperature relationships in a Devon river system and the role of flow, *Hydrol. Process.*, 17, 3069–3084, 2003.
- Webb, B. W., Hannah, D. M., Moore, R. D., Brown, L. E., and Nobilis, F.: Recent advances in stream and river temperature research, *Hydrol. Process.*, 22, 902–918, 2008.
- World Wildlife Fund (WWF): *Living Planet Report 2014*, 2014.

Table 1: Frequency f , period $1/f$, and spectral intensity $G(f)$ of trigonometric curves (threshold of $G(f) > 0.1$) composing the thermal attributes: average \bar{T} , seasonal periodicity pattern $S(t)$, and diel periodicity pattern $D(t)$.

Attribute	f	$1/f$		$G(f)$
	[Hz]	[hrs]	[days]	[°C]
\bar{T}	0	–		3.78
$S(t)$	2	8760	365	2.01
	4	4380	183	0.11
	6	2920	122	0.19
$D(t)$	728	24.1	1	0.27
	730	24	1	0.59
	732	23.9	1	0.28
	734	23.9	1	0.10
	1458	12.0	0.5	0.12
	1460	12	0.5	0.21

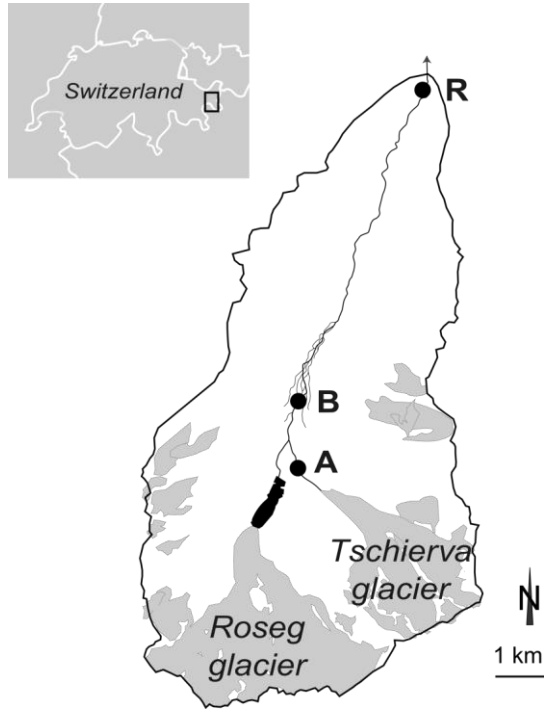


Figure 1: Location of the Val Roseg catchment in Switzerland. Study and reference (i.e., Pontresina hydrological station) sites are indicated by black dots and labeled A, B and R, respectively. Glaciers are shown as shaded areas with the proglacial lake shown below the Roseg glacier (modified from Uehlinger et al. 2003).

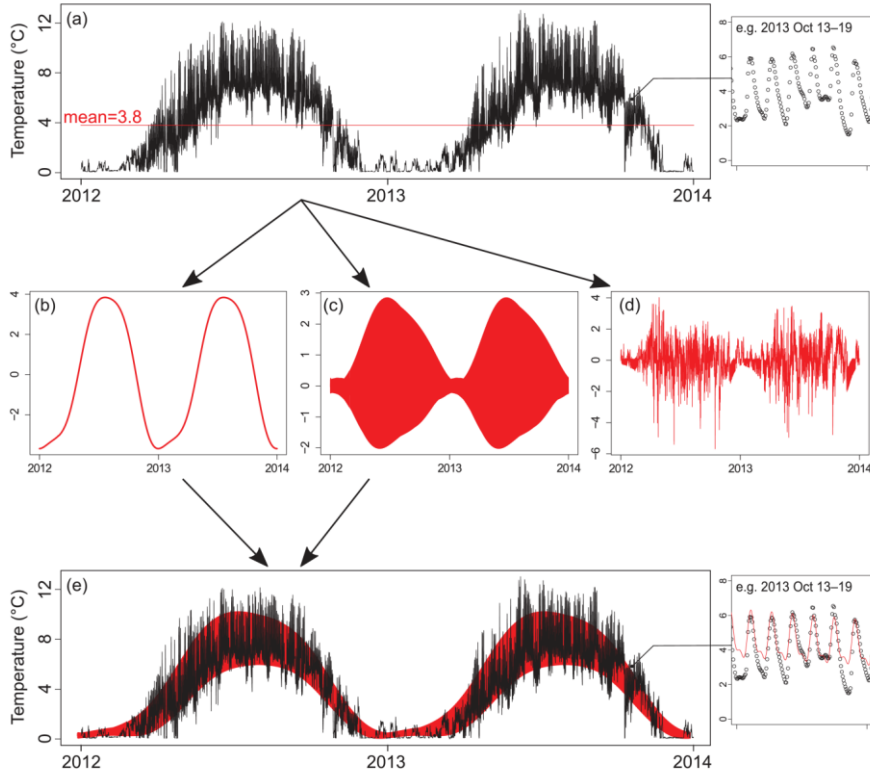


Figure 2: Hourly time-series temperature at the reference site decomposed using Fourier decomposition analysis. (a) The observed record T_a in 2012–2013 is decomposed into an average value (a), seasonal periodicity pattern S_a (b), diel periodicity pattern D_a (c), and the irregularity ϵ_a (d). The comparison between the observed and measured temperature excluding ϵ_a at the reference site (e).

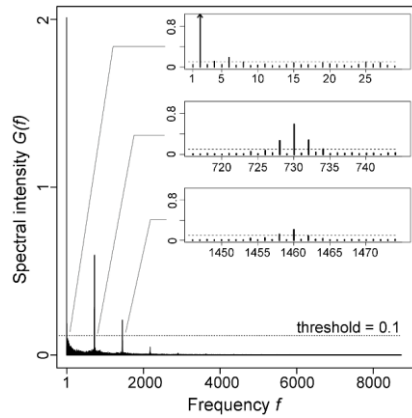


Figure 3: Frequency and spectral intensity of trigonometric curves converted from the 2-year temperature data at the reference site. Trigonometric curves whose spectral intensity was higher than the threshold value are found in Table 1.

5

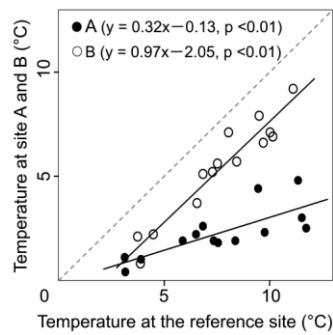


Figure 4: Linear regression of stream temperature at site A and B with the reference site temperature R.

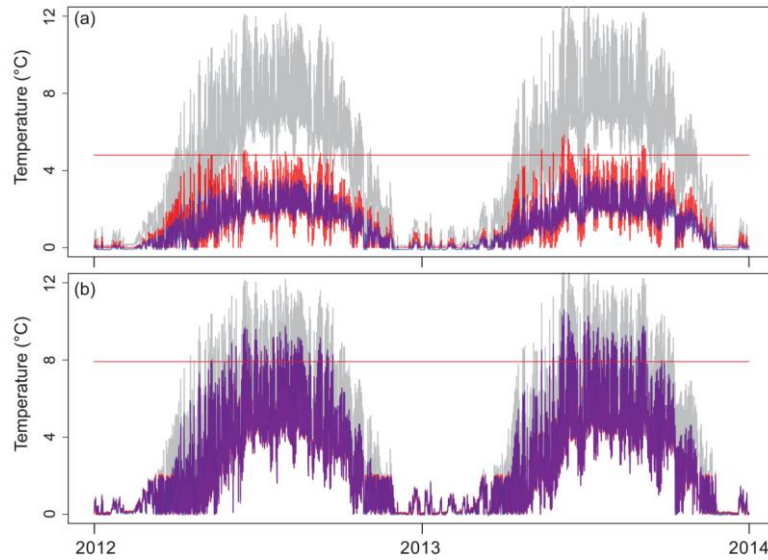


Figure 5: Hourly stream temperatures estimated using Fourier decomposition (red) and linear regression (purple) at site A and B (plots a and b, respectively) and temperature at the reference site (grey). Horizontal red line represents the maximum temperature recorded from the monthly spot measures (4.8 °C on 5 June 2013 at site A, and 7.9 °C on 9 July 2013 at site B).