

This document is the response of the authors to the reviewers comments. It includes a point-by-point response to the reviews and a marked-up manuscript version

Referee 1

We would like to thank the referee for their insightful comments which we address below and which have resulted in an improved paper.

Main comment: *“My main concern is on the short study period for the river discharge (only ten years).For climate studies, a ten year period cannot show clear patterns of climate change and environmental change (land use/land cover). Yangtze River is a major river in China and it is a surprise that the authors couldn’t find more flow records beyond the ten year study period”*

Authors Response: We agree that it not ideal for the simulated study period to consist of only ten years of measured discharge data. The three Chinese co-authors have tried to obtain longer datasets but have been unsuccessful. The problem is discussed in detail in Section 4.3. Within this section we considered some of the problems of using only 10 years of data by comparing the 10 years of precipitation used in this work against the 30 years of data from the GPCC dataset. Both show similar inter-annual variability. In the 30 year GPCC record there are no extremes of precipitation which are large outliers to the 10 year record.

The analysis of global land cover maps show that there have only been small changes in the land-use in recent decades. The following has been added to the text together with the corresponding references “There has been little change in land-use within the Yangtze basin in recent decades (Hansen et al. 2013). The most significant change has been the urbanization within the Sichuan basin but this increase covers less than 1% of the Sichuan basin (Liu et al. 2010).”

Comment 1: *“More justifications/exploration on the Shetran model would be useful. As the authors have said Other hydrological models have previously been applied to the Yangtze basin (Hayashi et al. 2008, Woo et al. 2009, Xu et al. 2008), but in terms of grid resolution, this is the most detailed hydrological model that has been produced for a major part of this basin.’ It would be useful if the authors could try different model resolutions to show the resolution effect on the modelling result at this basin so that a high resolution model is justified. A comparison with other models from the aforementioned literature would also be useful”*

Authors Response: The Shetran simulations in the paper use a 10km x 10km grid. We have carried simulation using Shetran with a 20km x 20km grid and a 40km by 40km grid. These models are significantly less good. A comparison with other models was also carried out. The following has been added to the text “As well as using a 10km by 10km grid, Shetran simulations were carried out using both a 20kmx 20km grid and a 40km x 40km grid. The results for coarser grid resolutions were less good, with an overall (1996-2005) NSEs of 0.79 and 0.66, respectively. This was mainly due to a poorer connectivity between the land surface grid squares and the river channels resulting in a much smoother hydrograph, with the simulated peak also occurring later than the measured peak. The results are also better than other models of the Yangtze basin with a coarser grid resolution. Woo et al. (2009)’s SLURP model gives a NSE of 0.83 and Xu et al. (2008)’s GBHM model a NSE of 0.85”

Comment 2. *“52 potential evapotranspiration stations’ Do you mean evaporation pans? Please Clarify”.*

Authors Response: The text has been changed to clarify that evaporation pans were used.

Comment 3. *“Irrigation abstraction from the basin could be large. How is it considered in the model?”*

Authors Response: Irrigation abstraction is not considered in the model. This is because the main crop growing area is in the Sichuan basin and this is currently not an important issue. No changes to the text have been made

Comment 4. “ ‘A hydraulic conductivity value of 15m/day for a 4m deep aquifer produced the best fit.’ This value seems quite large. Please comment on it. “

Authors Response: The problem of the lack of information about aquifers within the catchment is mentioned in the text. The calibrated value of 15m/day for a 4m aquifer gives a transmissivity of 60 m2/day which is a fairly typical value for an unconfined sandstone aquifer –which seems to be the main aquifer type. No changes to the text have been made

Steve Birkinshaw (on behalf of the co-authors)

Referee 2

We would like to thank the referee for their comprehensive review and comments which we address below. The referee makes some excellent suggestions for improvements to the paper and we have incorporated these suggestions.

Major comment 1. “Evapotranspiration.I suggest that: 1) the author examine whether there is any trend in the observations from the 52 PET stations (ideally over a period longer than 10 years) and 2) the authors extract the ET simulated by the climate models, and assess whether there is a increase in ET, as those simulations can be considered as more reliable than Thornthwaite approximations (Milly and Dunne, 2016). Maybe add a plot to Figure 6 showing ET as simulated by the GCMs and as simulated by Shetran, and add boxplot to Figure 8 showing future ET if PET is held constant. This would illustrate the sensitivity of the projections to the formulation of PET”

Authors Response: There is insufficient data (only 10 years) to look at trends in the 52 PET stations. As the referee suggests we have extracted the ET values from the 78 climate model projections (35 different GCMs) for the current (1981-2010) and future climates (2041-2070). Averaged over the entire Yangtze basin these show an 8.4% increase compared to a 17% increase using the Thornthwaite equation. The following has been added to the text “Further analysis was carried out by considering the change in actual evaporation from the 78 climate model projections. Averaged over the Yangtze basin this shows an increase of 8.4% under the future climate compared to a 17% increase in actual evaporation using the PET calculated from the Thornthwaite equation and a 1% increase in actual evaporation with no change in PET. This suggests the future actual evaporation might be between the two extremes shown in Fig 10a and Fig10b.” As suggested by the referee we have added another Box plot to Figure 10 (previously Figure 8) showing future ET if the PET is held constant.

Major comment 2. “Snow. ... More generally, it suggest that the authors plot the annual cycle of SWE (monthly means) under current and future climate, and discuss to which extent the snow pack influences current and future discharge.”

Authors Response: As suggested by the referee we have added an additional Figure of the annual cycle of SWE under the current climate and for two GCMs (CanESM2 and CSIRO Mk3-6-0) under a future climate. The effect of snow under the current climate has been considered in more detail with the following added to the text in Section 3.1

“Accumulation of snow in the winter is a significant process in approximately 25% of the catchment (above around 3000m in the north of the basin and 4500m in the south of the basin) – there are occasional snow falls in other parts of the basin. This can be seen in Fig. 5a which shows the monthly accumulations at the end of the month from December to May over the 10-year simulation. On average the maximum snow water equivalent depth is 50mm at the end of March. The totals are slightly lower in the Tibetan plateau as the winter precipitation totals are lower than for the area further east. Over the entire basin the spatially averaged snow water equivalent depth is 6.6mm at the end of March compared to a spatially averaged precipitation of 29mm and an annual precipitation total of 904mm. As significant snow accumulation takes place during the dry part of the year in the drier part of the Yangtze basin, the effect of snow accumulation and melt on discharge at Yichang is less than might be expected from considering just the temperature within the basin. Within the model the simulated snow accumulation and melting depend only on the precipitation and temperatures calculated for each grid square using a Thiessen polygon approach. Within each polygon there is no simple relationship between elevation and precipitation to improve this approach. The 90 temperature stations give a good representation of the spatial distribution of temperature in the basin. Where there is a sparse data in the Tibetan plateau there is a small range of elevations”

The following text has been added in Section 3.3

“Figure 5 shows that by the end of May under the present climate there is still a significant amount of snow in the upper part of the basin whereas for CanESM2 and CSIRO-Mk3-6-0 (+12.7 and -3.7% change in precipitation, respectively) all the remaining snow melts in May (note that there is a travel time of approximately 30 days for the water to flow from the upper part of the basin to Yichang).”

Major comment 3 *“GCM selection. The authors find that the simulations of several variables by the GCMs are “implausible” (Tables 3 and 4), yet they still decide to include those models in the ensemble. I suggest conducting a second evaluation, in which they exclude the climate models that they do not deem realistic. Does it lead to a significantly lower spread of the ensemble of discharge projections? In Figure 10, implausible models fall close to the regression line, but I do not consider this as a proof of realism, since they could well fall there for the wrong reasons.”*

Authors Response: We have considered another evaluation of the effect of the GCMs on discharge in which we exclude the climate models that are not considered to be realistic. The response is very similar to the existing Figure and does not lead to a significantly lower spread of the ensemble of discharge projections. The sentence has been modified: “The ‘satisfactory’ green points cover almost the entire range and so it is very hard to discount any future projections of change in precipitation or discharge (plotting only these points gives a very similar response and does not lead to a significantly lower spread of the ensemble of discharge projections).”

We agree that in Figure 10 if implausible GCMs fall close to the regression line it is not considered as a proof of realism.

Major comment 4 *“Sources of uncertainty. ... I encourage them to better explain why they decided to only sample the uncertainty stemming from the GCMs, and in particular why they decided to run a distributed process-based model, when several semi-distributed more conceptual models could probably have been run”*

Authors Response: We agree that there are many sources of uncertainty when considering the effect of future climate on discharge. The approach we took is that it is best to focus on the uncertainty stemming only from the GCMs but to do a complete and thorough analysis of this uncertainty. This is because, for this area, the uncertainty coming from the climate models projections is very high, without agreement even in the direction of change in precipitation. Also, we selected a distributed hydrological model that enables the hydrological processes within the Yangtze to be captured in the most physically realistic way and showed an excellent match between the measured and simulated discharge under the current climate. This model results were considerably better than that achieved by other authors for the same basin. So we have added the following “Woo et al. (2009)’s SLURP model gives a NSE of 0.83 and Xu et al. (2008)’s GBHM model a NSE of 0.85” whereas here a NSE of 0.92 was achieved for the validation period.

The following text considering model uncertainty also been added/modified: “One of the major sources of uncertainty when predicting future discharge as a result of climate change is model uncertainty. In this work the main uncertainties in using Shetran is predicting discharges for precipitation outside the limits of the model calibration and validation period”

Major comment 5: *“Distributed modeling. I find it surprising that the authors chose to run a distributed model, but then barely discuss regional differences within the catchment. Given the size of the catchment and its elevation range, there are probably some interesting spatial patterns. For instance, which regions show the largest changes in terms of ET? And how much is the snow line rising as a result of higher temperature?”*

Authors Response: The regional differences are considered in Figure 7 and the corresponding text, where the numbers on the x axis refer to locations within the catchment. As discussed in Major comment 2 an additional Figure showing spatial variations in snow has been added and the text changed to highlight the regional differences.

Minor comments 1. *“There is a relatively strong emphasis on floods in the text (e.g. in first sentence of the abstract and of the conclusions) but floods are not simulated nor discussed in a quantitative way, and adequate for modeling extremes (page 9, line 21). I suggest that the authors rethink the way they discuss floods”*

Authors Comment: We have removed flooding from the text in the abstract.

Minor comments 2. *“Page 3, section 2.1: Thiessen polygons were used to account for spatial variations of precipitation and temperature within the catchment. Is it correct the forcing was considered uniform within each polygon (i.e. that no correction was applied to account for elevation changes within each polygon)? For instance, for the polygon located in the north-western corner of catchment, which has an area of about 250km x 250km, was the model, which is run on 10km grid, fed with a uniform forcing based on the measurements of a single station? If this is correct, please discuss the implications for snow modeling.”*

Authors Response: Thiessen polygons were used to account for spatial variations of precipitation and temperature within the catchment. In terms of precipitation in the Yangtze basin there is no increase with an increased elevation. The location within the catchment rather than the elevation is important so a simple Thiessen polygon approach is the best approach. In terms of temperature 90 stations are used which overall gives a good representation of temperature in the basin. Where there is sparse data in the Tibetan plateau there is a small range of elevations, so any temperature correction would be small (and so only small changes in the timing of the snow melt would be expected). The changes to the text are already highlighted in Major comment 2.

Minor comments 3. *“Page 4 line 15: If HRUs were used, please explained how they were constructed. If not, please explain why.”*

Authors Response: We are not sure if we fully understand this comment. Shetran is a spatial distributed model and each 10km by 10km grid square has its own individual land use and soil/aquifer type.

Minor comments 4. *“Page 5, lines 4-6: “The calibration was for 1996-2000 and the validation period for 2001-2005. The comparison between measured and simulated discharge is made using the Nash Sutcliffe Efficiency (NSE)”. Was any algorithm used for the calibration or was it a manual calibration?”*

Authors Response: The text has been modified with “manual calibration” added

Minor comments 5. *“Page 5, lines 21-24: “We analysed changes in precipitation and air temperature between 1981-2010 and 2041-2070 from 21 GCM grid cells over the Yangtze for each of the CMIP5 runs, extracted monthly change factors (ratio for precipitation, absolute for temperature) and modified the observed time series data using the monthly CF from the nearest CMIP5 grid cell.” Maybe clarify whether the “observed time series” are measurements from the 64 precipitation stations and 90 air temperature stations”*

Authors Response: The following text has been added: “64 precipitation stations and 90 temperature stations”

Minor comments 6. *“Page 6, line 20: “The colouring indicates the quality of the model against observations using the same system as McSweeney et al. (2015)”. Please briefly explain how the different categories were defined. In particular, explain how the colors for the second column of Table 3 (summer monsoon) were obtained”*

Authors Response: We have removed most of the columns in Table 3 and 4, we agree that they were not well defined. The following text has been added/modified to explain how the different categories were defined and in particular how the colours for the second column of Table 3 were obtained . “In the second column of Table 3 we reproduce results from McSweeney et al. (2015) to indicate the performance of the GCMs at reproducing large scale circulation flow at 850 hPa for the Asian summer monsoon. This flow is largely westerly across peninsular India before diverting to a south-westerly flow across the Bay of Bengal, and then to westerly across continental south-east Asia. The colours are ‘Satisfactory’ (green),

‘Biases’ (yellow), ‘Significant biases’ (orange) and ‘Implausible’ (red) and the grey colour means the model was not available to McSweeney et al. (2015). The ‘Implausible’ models have an unrealistic representation of the large-scale flows of the monsoon and those with ‘biases’ are not able to reproduce the strength of flows.”

5 **Minor comments 7.** *“Page 6, line 24. “It can be seen that many of the models are poor in their simulation of the monsoon”. What is “poor”? Is it with “Significant biases” or “Implausible”? Please be more specific. Page 6, line 26: “all CMIP5 model runs overestimate annual observed precipitation”, indeed the overestimation is quite clear and generalized across the GCMs (Figure 5a). Is it this overestimation reported by other studies focusing on the same region? Can the authors discuss its possible origins?”*

10 **Authors Response:** This sentence has been removed: “It can be seen that many of the models are poor in their simulation of the monsoon” and replaced by the sentences in Minor comment 6

Regarding the overestimation of annual observed precipitation by GCMs the issue is complex and not clearly understood and we feel it is out of the scope of this paper.

15 **Minor comments 8.** *“Page 10, line 25: “There are still uncertainties in using Shetran to predict discharges for precipitation outside the limits of the model calibration and validation period. However, as Shetran is a physically-based model, theoretically this means that the predicted discharges will be representative of future climates.” I disagree with this second sentence. For instance, if PET estimates are biased, the modeled ET will most likely be biased too, and so will the simulated discharge. Also, accounting for land cover is indeed a step towards process-based modeling, but if the land cover*
20 *is assumed constant under a changing climate although it might well change, this partially defeats the purpose of accounting for land cover. I think the second sentence should be removed”*

Authors Response: As suggested by the referee we have removed the second sentence.

Minor comments 9. *“Section 4.4: “The key to predicting future changes to discharge in the Yangtze basin is correctly*
25 *predicting how the strength and location of the summer monsoon will change under a future climate.” The authors should consider adding that another key challenge is to better estimate future ET”*

Authors Response: Sections 4.2 and 4.4 have been modified to make it clear that another key challenge is to better estimate future PET.

30 **Minor comments 10.** *“Table 2: Please indicate the parameter ranges used for the calibration”*

Authors Response: As suggested by the referee we have made this change.

Minor comments 11. *“Tables 3 and 4: Overall, I find that tables of numbers, like Tables 3 and 4 are difficult to interpret. I suggest replacing them by a graphical representation of the same content. Or at least producing a Figure similar to Figure 5 but for temperature”*

Authors Response: As suggested we have added a figure similar to Figure 5 but for temperature. (Figure 5 is now called Figure 6 and there is a new Figure 7)

Minor comments 12. *“Figure 1: Please add a color bar showing elevation”*

Authors Response: As suggested we have added a colour bar showing elevation.

Minor comments 13. *“Figure 5: Why are some models represented by a colored line and others by a gray line? I am guessing from the caption of Figure 10 that grey models do not have lateral boundary conditions available. Please amend the caption. Figure 5c: Why did the authors decide to depict the monthly fraction and not the monthly amounts? Without the monthly amounts it is hard to tell how well the GCMs are doing in absolute term”*

Authors Response: If all the GCMs in Figure 5 (now Figure 6) were coloured it is impossible to distinguish which line is associated with which model. So only the best and the worst models are coloured (this is now done in a consistent way). We have amended the caption to make this clear.

We could not decide if monthly totals or monthly fractions was the better way of showing this data. As suggested by the referee we have changed this to monthly totals.

Minor comments 14. *“Figure 6: mm/month instead of mm?”*

Authors Response: As suggested by the referee we have changed the title.

Minor comments 15. *“Figure 7: Would it be possible to replace this Figure by a map, with for instance the color of the grid cells indicating the mean change, and the hatching density indicating the agreement between the different models? Or at least add some kind of information on the location of these grid points, for instance “south-west”, etc”*

Authors Response: We have added an inset map to the figure showing where in the Yangtze basin the numbers on the x-axis refer to. We feel this makes it much easier to interpret. The reason we did not substitute the boxplots for a map was because we wanted the full range of projected changes to be visible.

Minor comments 16. *“Figure 8: The second sentence of the caption should probably be “The blue squares show the values for the present climate”, like in the text. But then, which of these values are measured and which are modeled?”*

Authors Response: As suggested by the referee we have changed the text in the Figure so it says “The blue squares show the simulated values for the present climate.”

Minor comments 17. *“Figure 11: I find this comparison really interesting, but the discussion would be easier to follow if Figure 11c was replaced by a map showing the differences between the models. As already stated, I am not convinced by the choice of showing the monthly precipitation fraction instead of the monthly means (Figure 11b).”*

Authors Response: We agree with the referee and have changed Figure 11 (now Figure 13) to include parts e) and f) so that
5 it is much easier to see the changes in Figure 11c. As suggested by the referee monthly precipitation totals are now shown in Figure 11b (rather than monthly fractions).

Climate Change Impacts on Yangtze River Discharge at the Three Gorges Dam

Steve J. Birkinshaw¹, Selma B. Guerreiro¹, Alex Nicholson², Qiuhua Liang¹, Paul Quinn¹, Lili Zhang³, Bin He⁴, Junxian Yin³, Hayley J. Fowler¹

¹School of Civil Engineering and Geosciences, Newcastle University, Newcastle NE1 7RU, UK

²Ove Arup and Partners, Admiral House, 78 East St., Leeds, UK

³State Key Laboratory of Simulation and Regulation of Water Cycle in River Basin, China Institute of Water Resources and

Hydropower Research, Beijing, 100038, China

⁴School of Hydraulic Engineering, Dalian University of Technology, Dalian, P.R. China

Correspondence to: Steve J. Birkinshaw (s.j.birkinshaw@ncl.ac.uk)

Abstract. The Yangtze River Basin is home to more than 400 million people ~~and~~ contributes to nearly half of China's food production, ~~and is susceptible to major floods~~. Therefore planning for climate change impacts on water resources ~~river~~ discharges is essential. We used a physically-based distributed hydrological model, Shetran, to simulate discharge in the Yangtze River just below the Three Gorges Dam at Yichang (1,007,200 km²), ~~obtaining~~ ~~obtaining~~ an excellent match between simulated and measured daily discharge, with Nash-Sutcliffe efficiencies of 0.95 for the calibration period (1996-2000) and 0.92 for the validation period (2001-2005). We then used a simple monthly delta change approach for 78 climate model projections (35 different GCMs) from the Coupled Model Intercomparison Project-5 (CMIP5) to examine the effect of climate change on river discharge for 2041-2070 for Representative Concentration Pathway 8.5. Projected changes to the basin's annual precipitation varied between -3.6% and +14.8% but increases in temperature and consequently evapotranspiration (calculated using the Thornthwaite equation) were projected by all CMIP5 models, resulting in projected changes in the basin's annual discharge from -29.8% to +16.0%. These large differences were mainly due to the predicted expansion of the summer monsoon north and west into the Yangtze basin in some CMIP5 models, e.g. CanESM2, but not in others, e.g. CSIRO-Mk3-6-0. This was despite both models being able to simulate current climate well. Until projections of the strength and location of the monsoon under a future climate improve there will remain large uncertainties in the direction and magnitude of future change in discharge for the Yangtze

1 Introduction

The Yangtze (or Chang Jiang) River (Fig. 1) is the third longest river in the world (6418 km) and the longest river in Eurasia. Its source is located on the Qinghai-Tibet Plateau, at 5100m elevation, and extends to the East China Sea through the city of Shanghai. The River basin covers an area of 1,808,500 km², and is home to a population greater than 400 million (Dai et al., 2012). Industry and agriculture within the Yangtze River basin generates 30-40% of China's GDP and the Yangtze River basin contributes nearly half of China's crop production, including more than two-thirds of the total volume of rice (Yang et al. 2005). The Yangtze River has been responsible for some of China's worst natural disasters. Catastrophic floods occurring over the last century include events in 1911, 1931, 1935 and 1954, which claimed the lives of over 300,000 people. As recently as 1998, flooding of the Yangtze River caused over 4000 deaths, inundated 250,000 km² of agricultural land, and cost in excess of \$36 billion in damage to property and infrastructure (Yin and Li, 2001).

The Three Gorges Dam (TGD), which is located near Yichang, is the largest of more than 50,000 dams which have been built in the Yangtze basin (Li et al. 2013). The TGD reservoir is 600km long with a surface area of 1,084 km² and storage of 39.3 km³ of water (Dai et al. 2006). It was built to help alleviate flooding on the Yangtze plain, for hydroelectric power generation and to improve upstream navigation. Construction finished in 2012, when it was the largest hydropower dam in the world in terms of installed capacity, with a maximum output of 23,200MW from 34 turbines (Dai et al., 2006).

Over recent decades the Yangtze has been at a boundary between decreasing precipitation in the north-east of China and increasing precipitation in the south-east (Zhang et al. 2011a,b) due to the weakening of the East Asian summer monsoon (Wang et al. 2012). This has caused a small, but statistically insignificant, increase in discharge for the Yangtze basin since 1960 but a persistent decrease further north in the Yellow river basin (Piao et al. 2010). Therefore, it is instructive to examine how climate change may impact river discharges in the Yangtze basin, as any modifications to the seasonal distribution of precipitation and temperature may also have a major effect on flooding, water resources and hydro-power generation in the TGD.

Using the most recent CMIP5 climate change projections (Taylor et al. 2012) there have been a number of studies considering future precipitation in the Yangtze. Tian et al. (2015) showed that for 22 CMIP5 models under RCP8.5 there was an overall increase in precipitation in China, but these increases were larger further north and only small increases were projected for the Yangtze. Similar results are also shown in Piao et al. (2010), Tao et al. (2012) and Jiang and Tian (2013). However, there have been no previous studies using the most recent CMIP5 climate change projections together with a hydrological model. Ma et al. (2010) considered terrestrial water storage changes within the Yangtze basin using the Variable Infiltration Capacity (VIC) macroscale hydrological model under the SRES A2 and B2 (Nakićenović et al., 2000) climate scenarios. These scenarios showed that the south-east and central parts of the basin had the highest annual variations in storage. Koirala et al. (2014) considered runoff from 11 CMIP5 models together with a routing model. They found little change in discharge from the Yangtze basin but higher discharges further north in China, due to the increased projected precipitation.

In this paper, the Shetran physically-based distributed hydrological model is used to simulate river discharge for the Yangtze basin (Fig. 1) to the TGD near Yichang (1,007,200 km²) for ten years from 1/1/1996 to 31/12/2005. Other hydrological models have previously been applied to the Yangtze basin (Hayashi et al. 2008, Woo et al. 2009, Xu et al. 2008), but in terms of grid resolution, this is the most detailed hydrological model that has been produced for a major part of this basin.

Shetran is then run under a changed climate using a simple monthly delta change approach on the outputs of 35 atmosphere-ocean general circulation models (GCMs) (78 individual projections) from CMIP5 under Representative Concentration Pathway (RCP) 8.5. The results from the CanESM2 and CSIRO-Mk3-6-0 models are then considered in detail.

2 Data and Methods

2.1 Time Series Data

Most of the Yangtze (apart from the Tibetan plateau) has a sub-tropical monsoon climate. This has a distinct wet season (May – September) with high precipitation totals and high temperatures. We use observed daily data for 1/1/1996 – 31/12/2005 for 64 precipitation stations, 90 air temperature stations and 52 potential evapotranspiration (PET) stations (see Fig. 1 for station locations) ~~–evaporation pans~~, with Thiessen polygons used to assign the spatial distribution in each case. Figure 2 shows the annual cycle of precipitation, ~~potential evapotranspiration~~PET, measured and simulated discharge totals in the Yangtze basin to Yichang from 1996–2005. The highest precipitation and ~~potential evapotranspiration~~PET totals are in July; discharge totals are highest from July to September.

Figure 3a shows the Thiessen polygon annual precipitation totals over the Yangtze basin. Annual totals vary from 370mm on the Tibetan plateau, up to 1400mm near the TGD. The highest annual precipitation, 1700mm, is observed at gauge 56385 at the western edge of the Sichuan Basin; at only 100km from the highest point in the basin at Mount Gongga (7556m), there may be some orographic effects at this location. Figure 3b shows Thiessen polygon mean annual air temperature over the Yangtze basin. Temperature shows considerable spatial variation across the basin with mean average annual air temperature ranging from -4.5°C on the Tibetan plateau to 21.3°C towards the southern edge of the basin. Average monthly temperature over the basin ranges from -5°C in January to 16°C in July. Daily potential ~~evapotranspiration~~PET also shows considerable spatial variation, ranging from an annual total of 600mm on the Tibetan plateau to 1300mm near the TGD.

We also used daily discharge data from Yichang for 1/1/1996 to 31/12/2005 (see Fig. 1 for location). Yichang is downstream of the TGD and in May 2003 the dam began to retain water. More details of the effect of the dam on discharges at Yichang are discussed in Sect. 3.1.

2.2 Shetran

SHETRAN (<http://research.ncl.ac.uk/shetran/>) is a physically-based distributed modelling system for water flow, sediment and solute transport in river basins (Ewen et al., 2000; Birkinshaw et al., 2010). The most convenient way of visualizing SHETRAN is as a set of vertical columns with each column divided into finite-difference cells. There are 10,072 vertical

columns, each of which is 10km by 10km, with each column divided into up to 25 finite-difference cells (making a total of around 250,000 finite difference cells). The lower cells contain aquifer materials and groundwater, higher cells contain soil and soil water and the uppermost cells contain surface waters and the vegetation canopy. River channels are specified around the edge of the finite-difference columns and the location and elevations of these channels were calculated automatically using the method demonstrated in Birkinshaw (2010). Overall, 4143 river channel sections were specified.

Digital elevation model data was extracted from the STRM 90m grid resolution dataset (<http://srtm.csi.cgiar.org/>). Land-use for each grid square was obtained from the 1km resolution Global Land Cover map for the year 2000 (Bartholome et al., 2002), with the data acquired from an instrument on board the SPOT 4 satellite. The Asian dataset has 31 classes, although some of these were not present over the Yangtze basin and some were present in very small numbers. Overall there were seven main categories used in the Shetran simulations (Table 1). In the high elevation Tibetan plateau the main vegetation is shrub/herbaceous and deciduous forest. The rest of the basin is mostly cropland and rice paddies with evergreen forest around the steep edge of the Sichuan basin. There has been little change in land-use within the Yangtze basin in recent decades (Hansen et al. 2013). The most significant change has been the urbanization within the Sichuan basin but this increase covers less than 1% of the Sichuan basin (Liu et al. 2010)

Most of the parameters were based on values from the literature (Breuer et al., 2003). However, transpiration depends on the actual/potential evapotranspiration (or crop coefficient) and this value was calibrated by taking into account differences between land-use types from previous simulations (e.g. Bathurst et al. 2011, Birkinshaw et al. 2014).

The soil profile for each Shetran grid square comes from the 1km grid resolution HWSO database (www.fao.org/nr/water/news/soil-db.html) (FAO/IIASA/ISRIC/ISSCAS/JRC, 2012). The Chinese data in this database comes from the Institute of Soil Science, Chinese Academy of Sciences which provided the recent 1:1,000,000 scale Soil Map of China. For each grid square the dataset gives the texture type of the topsoil (0-30cm) and, where it exists, the subsoil (30-100cm). This data was aggregated up to the 10km Shetran grid squares with the soil profile chosen being the most dominant in that square. Overall, this gave 930 soil profiles. Generally the higher elevation region has shallower soils and a sandy loam texture as opposed to a loam or clay loam texture in the lower elevation regions. Using the Hypres v2.0 database (Wösten et al. 1999), eussoils.jrc.ec.europa.eu/esdb_archive/esdbv2/fr_advan.htm, the top soil and subsoil textures were used to assign the Shetran soil parameters (porosity, residual moisture content, van Genuchten parameters and saturated hydraulic conductivity). There is little information available on the subsurface geology. Ge et al. (2008) provides some information for the soil and aquifer properties for the Tibetan plateau and there is some information available for the Sichuan basin (Li et al. 2007; Zhou and Li 1992). Li et al. (2007) note that the surface sediments in the Sichuan basin can produce an unconfined aquifer. Due to these uncertainties, where there is a subsoil, an aquifer is assumed within the model. The depth and hydraulic conductivity of the aquifer was calibrated, with the calibration carried out to produce a baseflow that corresponds with the measured discharges. A hydraulic conductivity value of 15m/day for a 4m deep aquifer produced the best fit.

Snow accumulation depends on both precipitation and air temperature with snowmelt calculated using a degree day method (as there was insufficient data to use the more complex energy budget methods) with the melt dependent on the sum of the

positive air temperatures. Hock (2003) reviewed values for a variety of sites around the world and a typical value for snow of 3.5 mm d⁻¹ °C⁻¹ was used here. Glaciers were not considered in this work as they make up less than 0.1% of the catchment (Immerzeel et al. 2010).

The remaining parameters that were calibrated were the Strickler overland flow coefficient (1.0) and the Strickler flow coefficient for the river channels (50.0). These affect the speed of surface water flow and so the shape of the hydrograph. A complete list of the calibrated parameters can be seen in Table 2.

A large number of dams exist within the Yangtze River basin upstream of the TGD (Yang et al. 2006). Due to the number of dams and the lack of knowledge of their operating procedures the dams are not simulated. However, with the large wet season precipitation totals, the dams seem to have little effect on the discharge at Yichang (see Sect. 3.1).

A standard split sample calibration/validation was carried out for the Shetran simulation. The [manual](#) calibration was for 1996-2000 and the validation period for 2001-2005. The comparison between measured and simulated discharge is made using the Nash Sutcliffe Efficiency (NSE).

2.3 CMIP5

We use outputs from Atmosphere-Ocean General Circulation Models (GCMs) from the fifth phase of the Climate Model Intercomparison Project (CMIP5) under RCP8.5. RCP8.5 has a rising pathway of radiative forcing of more than 8.5W/m² in 2100 (more than 1370ppm CO₂-equiv) (Moss et al. 2010). Sanderson et al. (2011) showed that RCP8.5 is similar to SRES A1FI (Nakićenović et al., 2000) and, although it is the highest emission scenario available in CMIP5, it still assumes emissions well below what the current energy mix would produce in the future.

Since no “general all-purpose metric” to identify best models exists (Knutti et al., 2010), we used all 78 CMIP5 runs for long term simulations under RCP8.5 available at <http://climexp.knmi.nl> at the time of download that contained both precipitation and air temperature. Table 3 details these experiments from 35 different GCMs, with several runs available for some of them. The downloaded CMIP5 outputs had been previously re-gridded and data was available for 21 grids (2.5° by 2.5°) within the Yangtze basin (shown in Fig. 1).

Due to their coarse resolution, and inability to resolve significant subgrid scale features, downscaling of GCM outputs is needed to assess local/regional impacts of climate change (Fowler et al., 2007). We use the simplest method: the change-factor (CF), perturbation or delta-change approach where the mean change between control and future GCM outputs is applied to daily observations (by adding or multiplying, depending on the variable in question). We analysed changes in precipitation and air temperature between 1981-2010 and 2041-2070 from 21 GCM grid cells over the Yangtze for each of the 78 CMIP5 runs, extracted monthly change factors (ratio for precipitation, absolute for temperature) and modified the observed time series data ([64 precipitation stations and 90 temperature stations](#)) using the monthly CF from the nearest CMIP5 grid cell. There were 10 years of original data so the procedure gives 10 years of future precipitation and temperature data.

A CF method was also used to obtain future ~~potential evapotranspiration (PET)~~. PET for both historical and future periods was calculated from climate model temperature outputs using the Thornthwaite equation. With this, PET change factors for each CMIP5 model run and each grid were calculated (similar to the precipitation procedure). These CFs were then applied to the observed PET.

PET is a theoretical concept with inherent direct monitoring difficulties; several equations have been developed to calculate ~~potential evapotranspiration~~PET from measurable variables. The reasons for using the Thornthwaite equation are considered in Sect. 4.2.

3 Results

3.1 Historical ~~Discharge~~Data

Figure 4a shows the excellent match between the Shetran simulated and measured daily discharge at Yichang for monthly values from 1996-2005. The annual cycle of low discharges during the dry season (December to March) and then increasing discharges up to July and then a gradual decrease back to December is well captured by the model, with only small differences between the measured and simulated values. The other plots in Fig. 4 compare measured and simulated mean daily discharges for two years of data. The daily discharge has a NSE of 0.95 for the calibration period (1996-2000) and 0.92 for the validation period (2001-2005). These NSE values are considerable higher than the value of 0.75 suggested by Moriasi et al. (2007) to class the simulation as ‘very good’. As well as using a 10km by 10km grid, Shetran simulations were carried out using both a 20kmx 20km grid and a 40km x 40km grid. The results for coarser grid resolutions were less good, with an overall (1996-2005) NSEs of 0.79 and 0.66, respectively. This was mainly due to a poorer connectivity between the land surface grid squares and the river channels resulting in a much smoother hydrograph, with the simulated peak also occurring later than the measured peak. The results are also better than other models of the Yangtze basin with a coarser grid resolution. Woo et al. (2009)’s SLURP model gives a NSE of 0.83 and Xu et al. (2008)’s GBHM model a NSE of 0.85.

Figure 4e shows an obvious reduction in discharge at Yichang from 26/5/2003 – 12/6/2003. This reduction was due to the first impoundment of water in the dam, with water level at the TGD increasing from 65m to 135m a.s.l. (Wang et al. 2013). After this the water level remains fairly constant until the next impoundment in September 2006 (Wang et al. 2013).

Therefore, as expected, the analysis of the discharge data at Yichang shows no obvious reduction for the rest of 2003-2005. Accumulations of snow in the winter is a significant process in approximately 25% of the catchment (above around 3000m in the north of the basin and 4500m in the south of the basin) – there are occasional snow falls in other parts of the basin. This can be seen in Fig. 5a which shows the monthly accumulations at the end of the months from December to May over the 10-year simulation. On average the maximum snow water equivalent depth is 50mm at the end of March. The totals are slightly lower in the Tibetan plateau as the winter precipitation totals are lower than for the area further east. Over the entire basin the spatially averaged snow water equivalent depth is 6.6mm at the end of March compared to a spatially averaged precipitation of 29mm and an annual precipitation total of 904mm. As significant snow accumulation takes place during the

dry part of the year in the drier part of the Yangtze basin, the effect of snow accumulation and melt on discharge at Yichang is less than might be expected from considering just the temperatures within the basin. Within the model the simulated snow accumulations and melting depend only on the precipitation and temperatures calculated for each grid square using a Thiessen polygon approach. Within each polygon there is no simple relationship between elevation and precipitation (such as elevation) to improve this approach. The 90 temperature stations give a good representation of the spatial distribution of temperature in the basin. Where there is a sparse data in the Tibetan plateau there is a small range of elevations.

3.2 Comparison Ability of the CMIP5 Model Runs with Measured Data to capture the current climate

Before considering future climate projections from the CMIP5 model runs it is first important to consider how well they predict the current climate. The ability of GCMs used in this work (Table 3) to capture the overall dynamics of the Asian summer monsoon is beyond the scope of this paper but work has previously been carried out by other researchers (Sperber et al, 2013; Song and Zhou, 2014; McSweeney et al. 2015; Dong et al. 2016). In Tables 3 and 4, we compare precipitation and temperature indices over the Yangtze basin for one run for each CMIP5 GCM (the other runs are shown in brackets) with those from observations. The colouring indicates the quality of the model against observations using the same system as McSweeney et al. (2015) – ‘Satisfactory’ (green), ‘Biases’ (yellow), ‘Significant biases’ (orange) and ‘Implausible’ (red). In the second column of Table 3 we also reproduce results from McSweeney et al. (2015) to indicate the performance of the GCMs at reproducing large scale circulation flow at 850 hPa for the Asian summer monsoon. This flow is largely westerly across peninsular India before diverting to a south-westerly flow across the Bay of Bengal, and then to westerly across continental south-east Asia. –The colours are ‘Satisfactory’ (green), ‘Biases’ (yellow), ‘Significant biases’ (orange) and ‘Implausible’ (red) and the grey colour means the model was not available to McSweeney et al. (2015). The ‘Implausible’ models have an unrealistic representation of the large-scale flows of the monsoon and those with ‘biases’ are not able to reproduce the strength of flows. It can be seen that many of the models are poor in their simulation of the monsoon.

In Fig. 65 we consider model simulated precipitation in more detail. Figure 65a shows the large spread in annual precipitation amongst the models and that all CMIP5 model runs overestimate annual observed precipitation. The IPSL-CM5A-MR model is closest to the observed with a 30-year mean annual precipitation of 960.6mm and the worst the BNU-ESM model with 1919.5mm. In general the models capture the spatial variation in precipitation reasonably well (Fig. 5b) with the lowest totals in the Tibetan plateau and higher precipitation near the TGD, but given the annual totals are too high the totals in each percentile are also too high. The spatial variability of precipitation in MIROC-ESM and MIROC-ESM-CHEM are poor, estimating nearly as much precipitation in the drier regions as in the wetter regions of the basin. Considering the annual variation in precipitation (Fig. 6c) All models also underestimate the fraction of precipitation occurring in summer (Fig. 5c). Together, the CMIP5 models give a multi-model ensemble average similar to larger than the measured average throughout the year during the wet season (although with a large range). However, the fractional increase is much smaller in the wet season, which is similar to that found by Chen and Frauenfeld (2014; Fig 5).

but considerably higher than observed precipitation during the dry season (Chen and Frauenfeld, 2014; Fig 5). However, the observed spatial distribution of precipitation across the Yangtze basin, from low precipitation in the Tibetan Plateau to higher precipitation near the TGD, is captured better by most models. MIROC-ESM and MIROC-ESM-CHEM are poor, estimating nearly as much precipitation in the drier regions as in the wetter regions of the basin.

The results in Table 4 indicate that all CMIP5 GCMs underestimate observed mean annual temperature in the Yangtze basin (10.2°C). The MIROC5 model produces the best estimate, with a mean temperature of 7.3°C, and the worst is the CNRM-CM5 model with a mean value of 2.6°C. However, all models satisfactorily reproduce the observed spatial distribution and seasonality of temperature.

3.3 Future Changes

A majority of CMIP5 model runs (59 of the 78 models) predict increases in annual precipitation, with a smaller number (19) predicting decreases (Table 3). Applying the non-parametric Kolmogorov-Smirnov (KS) test at the 0.05 significance level, indicates 44 models with a statistically significant increase in precipitation and 34 with no significant change. All the model runs predict statistically significant increases in temperature and potential evapotranspiration PET.

Considering the months separately, Figure 8 shows box plots of the spatially averaged changes in precipitation, temperature and potential evapotranspiration PET. Most models project increases in precipitation for all months, which can reach up to 40%, but some models project decreases in precipitation in some months. All models project increases in temperature in every month but this varies between just over 1°C to more than 4°C. Using the Thornthwaite equation changes in potential evapotranspiration PET are relatively small in winter because of the very low temperatures (mean Dec-Feb temperature is -5°C). However, in summer the projected increases in potential evapotranspiration PET are larger, with some models projecting increases up to 25mm.

Figure 9 shows box-plots of annual changes in precipitation, temperature and potential evapotranspiration and PET for the different CMIP5 grid cells (i.e. the spatial variation). Most models project an annual increase in precipitation for all CMIP5 grid cells. Considering the median values and the percentage change in precipitation (Fig. 9b), the high and dry areas of the Tibetan plateau (grid cells 1, 2 and 3) show the biggest increases (10.8%, 8.6% and 9.4%) and the areas furthest south (grid cells 7, 11 and 15) show the smallest increases (2.8%, 0.91% and 1.4%). However, the projections show a wide range, with individual models indicating both increases and decreases in annual precipitation in all areas of the basin. Considering the change in precipitation (Fig 9a), the range of possible changes from CMIP5 is largest in the south-western part of the basin (grids 4, 7, 8, 11 and 12) and this uncertainty will have an important effect on the future volume of discharges in the Yangtze river at the TGD. The high altitude areas (grids 1, 2, 3, 5, 6, 9 and 10) show the largest temperature increases (Fig. 9c) but, due to their current low temperatures, small increases in potential evapotranspiration PET (Fig. 9d). Accordingly, the warmer eastern areas show a higher increase in potential evapotranspiration PET as a 2°C rise in air temperature has a larger effect at higher temperatures.

Figure 108a shows box plots of future projections (2041-2070) for the basin's annual average precipitation, ~~potential evapotranspiration~~PET, simulated discharge and simulated actual evapotranspiration from the 78 CMIP5 runs. The blue squares show the simulated values for the present climate. Most models runs project increases in precipitation and all models show an increase of potential and consequently actual evapotranspiration (since water availability during the warm season is not an issue). These two factors combined mean that the spread of future discharge projections for the annual totals encompass the present conditions, with 11 model runs showing an increase and 67 a decrease in annual discharge.

Future discharge projections for individual months for all 78 future climate runs are shown as box plots in Fig. 119, with the current climate shown as a blue square. Current discharges are encompassed in the inter-model spread for the future for all months. However, most models show a decrease in discharge in every month compared to the current climate, with the largest decreases in the wet season. A reduction in discharge early in the wet season would affect agricultural production within the Yangtze basin and a reduction in discharge late in the wet season (September and October) would affect hydro-power production in the dry season at TGD since these are particularly important months for filling its reservoir. The largest reduction in projected discharge is in June (with 72 models showing a decrease in discharge and 6 an increase), partly due to changes in snow accumulation and melt. Figure 5 shows that by the end of May under the present climate there is still a significant amount of snow in the upper part of the basin whereas for the CanesmESM2 model and the CSIRO-Mk3-6-0 (+12.7 and -3.7% change in precipitation, respectively) all the remaining snow melts in May (note that there is a travel time of approximately 30 days for the water to flow from the upper part of the basin to Yichang). The modelling suggests that under the present climate 4.2mm of June discharge at Yichang is from snowmelt; this reduces to 2.2mm for the median of the CMIP5 simulations. June discharge is also affected by higher evapotranspiration in the CMIP5 simulations compared to the present day climate as the earlier snowmelt allows the evapotranspiration to start earlier (the snow covering the vegetation prevents any evapotranspiration).

We plot the change in both precipitation and simulated discharge between current and future projections for each of the 78 CMIP5 runs in Fig. 129a. The multi-model mean increase in precipitation is 4.1% which corresponds to an 11.1% decrease in discharge (shown by the red square). The 78 CMIP5 runs show a large range of potential future outcomes: from a 3.6% drop to a 14.8% increase in precipitation and a 29.8% drop to a 16.0% increase in discharge. The slope of the fitted line through all 78 CMIP5 runs in Fig. 129a shows that a 10% change in precipitation produces, on average, an 18.7% change in annual discharge. The problem with this analysis is that some of the GCMs have multiple runs (e.g. CSIRO-Mk3-6-0 has 10) and these are not independent. Therefore, in Fig. 129b, the simulated discharge between current and future projections for each of the 35 GCMs are plotted (the individual models are also labelled). This shows very similar results, with a multi-model mean increase in precipitation of 3.9% which corresponds to an 11.9% decrease in discharge. The range of precipitation (-3.5 to + 13.6%) and discharge (-29.8 to +7.0%) is slightly reduced. The colours in Fig. 129b correspond to those used by McSweeney et al. (2015) to assess the performance of models at reproducing the climate of the Asian summer monsoon (see Table 3). The 'satisfactory' green points cover almost the entire range and so it is very hard to discount any

future projections of change in precipitation or discharge (plotting only these points gives a very similar response and does not lead to a significantly lower spread of the ensemble of discharge projections).

3.4 Comparison of the CanESM2 and CSIRO-Mk3-6-0 Models

To understand why there is such a large range in the future projections of discharge in the Yangtze basin, two models were selected and analysed in more detail: CanESM2 and CSIRO-Mk3-6-0. Both models are able to represent the large-scale circulation of the Asian summer monsoon satisfactorily (McSweeney et al. 2015) and are two of the best models at simulating precipitation and temperature indices in the Yangtze Basin (see Tables 3 and 4). However, although both models project similar increases in temperature, 3.05°C and 2.85°C, respectively, CanESM2 projects a 12.7% increase in precipitation and a 2.6% increase in discharge, whereas CSIRO-Mk3-6-0 projects a 3.1% decrease in precipitation and a 26.3% decrease in discharge. Figure 13a-c shows the annual, monthly and spatial precipitation variability over the Yangtze basin in both models. Both show a slightly earlier onset of the summer monsoon (Fig. 13b) in a future climate but the key difference between the two can be seen in Fig. 13c,e and f which considers the distribution of precipitation across the CMIP5 grid cells. CanESM2 shows a very large increase in annual precipitation in grid 4 (604mm) and also large increases of more than 250mm in grid cells 5, 7, 8 and 9, whereas, CSIRO-Mk3-6-0 projects no significant change or a slight reduction in precipitation in these grids. These spatial differences in precipitation produce the large difference in the projected discharge, seen for each month in Fig. 13d. Grid cells 4, 5, 7, 8 and 9 (Fig. 1 and Fig. 13 e and f) are in the south-west part of the Yangtze basin and, as shown in Fig. 9, show the greatest range in future projections across all the models. So most of the variation in discharge across the different models is due to the change in precipitation seen across these grids in the south-west of the basin. This is considered further in Sect. 4.4.

4. Discussion

4.1 Change Factor Approach

In this paper the change-factor (CF), perturbation or delta-change approach was used to produce the future climate scenarios. The simplicity of this method makes it possible to downscale several GCMs/scenarios quickly but on the other hand it assumes that the GCM bias is constant and that variability, spatial patterns of climate and percentage of wet/dry days will remain constant (Fowler et al., 2007). However this method does preserve the observed spatial correlations between stations or grid points, which some complex methods are not able to do and it also captures the full climate signal of the GCM, while more complex downscaling methods capture only climate forcing shown by the chosen predictor(s) and grid box(es) (Diaz-Nieto and Wilby 2005). The CF method is not suitable for the study of extreme events (since it does not take into consideration any changes to the variance and skewness of the precipitation). For small river basins this might have significant consequences in the projected discharge; however, in a large river basin such as the Yangtze there is considerable attenuation of the hydrograph. Therefore, the consequences of changes in the precipitation variance and skewness on the

basin's monthly mean discharges will be much smaller. Also, this is a widely used method that has been considered appropriate for studies where changes in average values are relevant such as impacts on water resources (Sunyer et al. 2010).

4.2 Potential Evapotranspiration (PET)

There is still considerable debate about the best method for calculating PET under a changing climate using climate model outputs, see for e.g. Ekström et al. (2007), Kingston et al. (2009), Weiland et al. (2012), Prudhomme and Williamson (2013), ~~and~~ McMahon et al. (2015) and Milly and Dunne (2016). In this study the Thornthwaite equation was chosen to calculate change factors because, although simplistic, it only requires temperature time-series which is a fairly reliable GCM output. The Penman-Monteith method was not used as it is based on variables that are not well simulated by GCMs, like cloud cover and vapour pressure (Kingston et al. 2009) and the results can be physically unrealistic (Ekström et al. 2007). However, this does mean that changes in PET as a result of changes in wind speed, cloud cover and vapour pressure deficit are not accounted for and Chen et al. (2006) and Yan et al. (2011) have shown the importance of these meteorological variables for PET from the Tibetan Plateau. McMahon et al. (2015) suggest that the effect of using just temperature to calculate PET is likely to be most important in an energy limited regions such as the Tibetan plateau but is less important in other regions such as the rest of the Yangtze basin.

Nevertheless, as a sensitivity test, the model experiments were run for a second time with no change to PET (i.e. the time series of ten years of historic PET data was used together with the projected changes in precipitation and temperature). Fig 10b shows ~~This~~ this produced an inter-model basin mean increase in discharge of 7.5% with a range between -7.6% and +28.7%. As expected, the discharges are significantly higher than those using future PET where the inter-model basin mean reduction in discharge was 11.1% with a range between -29.8% and +16.0%.

Further analysis was carried out by considering the change in actual evaporation from the 78 climate model projections. Averaged over the Yangtze basin this shows an -increase of 8.4% under the future climate compared to a 17% increase in actual evaporation using the PET calculated from the Thornthwaite equation and a 1% increase in actual evaporation with no change in PET. This suggests the future actual evaporation might be between the two extremes shown in Fig 10a and Fig 10b. ~~This shows~~ This analysis shows the ~~relevance~~ importance of the changes in PET for future discharges and the need for future research on how to calculate realistic PET from climate model outputs.

4.3 Limited measured data

Only ten years of meteorological data was used to calibrate and validate the hydrological model of the Yangtze, with the comparison of the measured and simulated discharge data showing that the Moriasi et al. (2007) 'very good' criteria value was easily exceeded in every year. Ideally a longer time series of measured meteorological and discharge data would be available so any annual extremes or inter-decadal variation in precipitation can be captured by the model. To test the effects of using only 10 years of measured precipitation data, the areal averaged annual totals (from 64 stations) were compared against the Global Precipitation Climate Centre (GPCC) dataset. Gridded GPCC data is available for monthly precipitation at

0.5° x 0.5° from 1901 -2010 (Schneider et al. 2013), and is based on in-situ observations across global land areas. Figure 5a shows that precipitation totals from GPCC are consistently slightly lower than the data observations used in this study.

However, both show similar inter-annual variability. In the 30-year GPCC record there are no extremes of precipitation which are large outliers to the 10-years of precipitation observations used in this study.

One of the major sources of uncertainty when predicting future discharge as a result of climate change is model uncertainty. In this work the main uncertainties in using Shetran to predict discharges for precipitation outside the limits of the model calibration and validation period. However, as Shetran is a physically based model, theoretically this means that the predicted discharges will be representative of future climates. In fact, Sect. 3.1 and 3.2 show that under the current climate the ability of Shetran to simulate the discharge is considerably better than the ability of the CMIP5 model runs to produce a good correspondence with precipitation indices. So it could be argued that under a future climate the uncertainties in discharge from using Shetran are smaller than the uncertainties in the projected future climate.

4.4 Climate Change

Using 78 climate projections under RCP8.5 from the most recent generation of climate models (CMIP5), the analysis shows that between 1981-2010 and 2041-2070 projections of change to basin annual precipitation vary from -3.6% to +14.8%, with a multi-model mean of 4.1%. This small increase in precipitation agrees with other analyses of projected changes to precipitation from both the previous generation of climate models (CMIP3) and the most recent ones (CMIP5) (Piao et al., 2010; Tao et al., 2012; Jiang and Tian, 2013; Tian et al., 2015).

However, in this study we focus on the changes to discharge, using projections from 78 CMIP5 model runs together with a hydrological model. Overall, a multi-model basin mean reduction in discharge of 11.1% was projected for 2041-2070, with a range between -29.8% and +16.0%. The results suggest no agreement in the sign of change and a potentially large range of values.

Key to predicting future changes to discharge in the Yangtze basin is correctly predicting how the strength and location of the summer monsoon will change under a future climate (the importance of predicting future changes in the PET was discussed in Sect 4.2). The key to predicting future changes to discharge in the Yangtze basin is correctly predicting how the strength and location of the summer monsoon will change under a future climate. Lee and Wang (2014) evaluated 20 CMIP5 models while considering future changes in the monsoon and selected the four best ones, which included the CanESM2 model. The four 'best' models projected that the land monsoon domain over Asia will expand westward with a 10.6 % increase in monsoon extent under the RCP4.5 scenario. However, we have shown that there is major uncertainty in this supposed expansion into the Yangtze basin, as in some GCMs (e.g. CanESM2) there is an expansion of the monsoon domain north and west and this increased precipitation produces an increase in the discharge, whereas, in most other GCMs (e.g. CSIRO-Mk3-6-0) there is not an expansion in the domain and so it results in a decrease in the discharge (due to greater evapotranspiration). Until the strength and location of the monsoon under a future climate can be reliably predicted there will remain large uncertainty in changes to projected discharge for the Yangtze basin.

5. Conclusions

Water resources, flooding and hydro-power generation on the Yangtze River are all important due to the size of the population and the industry and agriculture it supports. Variability in the Yangtze discharge under a future climate is therefore of great concern. This study has, for the first time, taken 78 state-of-the-art climate model projections from CMIP5 (from 35 different GCMs) and used these together with a detailed hydrological model of the Yangtze basin to estimate potential changes to future discharge.

We considered 78 CMIP5 projections for the Yangtze RCP8.5 and examined the change in precipitation between 1981-2010 and 2041-2070. The results showed a big spread, without agreement even in the sign of the change for both monthly and annual precipitation (from -3.6% to +14.8%). However, most GCMs projected an increase in precipitation for most months with a multi-model basin mean change of +4.1%. GCM projections for change in temperature for the same time period showed significant increases, which varied from just over 1°C to more than 4°C. The changes in ~~potential evapotranspiration~~PET, calculated using the Thornthwaite equation, also showed significant increases.

The Shetran hydrological model gave an excellent match between measured and simulated discharge for the Yangtze River basin to Yichang (1,007,200 km²) with a Nash-Sutcliffe efficiency of 0.95 for the calibration period in 1996-2000, and of 0.92 for the validation period from 2001-2005. Using monthly change factors within the basin to modify the historic meteorological data, future climate scenarios were obtained for each of the 78 CMIP5 projections and applied to Shetran. These produced a multi-model basin mean change in discharge of -11.1%, with a range between -29.8% and +16.0%.

Overall, this work has highlighted the uncertainty in GCM projected changes of precipitation and temperature and their effect on the discharge in the Yangtze basin. In particular, it has highlighted the importance of predicting the strength and location of the summer monsoon. To fully understand the effect that climate change will have on the Yangtze basin, there needs to be an improvement in climate model projections and, in particular, of precipitation over the basin. Piao et al. (2010) came to a similar conclusion looking at the effect of climate change on agriculture in China.

An improvement in climate model performance would also allow ~~potential evapotranspiration~~PET to be calculated using the Penman-Monteith equation which would deliver more reliable projections of change in ~~potential evapotranspiration~~PET. Further work is also needed looking at how changes in extreme precipitation can cause floods and we intend to carry out future Shetran simulations using different downscaling techniques.

Acknowledgements

This work was a result of the following funding projects: (1) 973 Program (Grant no. 2013CB036401); (2) UK EPSRC Global Secure project (EP/K004689/1). H.J.F. was supported by the Wolfson Foundation and the Royal Society as a Royal Society Wolfson Research Merit Award holder (WM140025). We acknowledge the World Climate Research Programme's Working Group on Coupled Modelling, which is responsible for CMIP, and thank the climate modelling groups for

producing and making available their model output. We would also like to thank Dr Geert Jan van Oldenborgh from the KNMI Climate Explorer website for making outputs from CMIP5 available in an easy to use and downloadable format.

References

- Bartholome, et al.: GLC 2000, Global Land Cover mapping for the year 2000, European Commission, DG Joint Research Centre, EUR 20524, 2002.
- Bathurst, J. C., Birkinshaw, S. J., Cisneros, F., Fallas, J., Iroumé, A., Iturraspe, R., et al.: Forest impact on floods due to extreme rainfall and snowmelt in four Latin American environments 2: Model analysis, *J. Hydrol.*, 400, 292-304, 2011.
- Birkinshaw, S. J.: Technical Note: Automatic river network generation for a physically-based river catchment model, *Hydrol. Earth Syst. Sci.*, 14, 1767-1771, doi:10.5194/hess-14-1767-2010, 2010.
- Birkinshaw, S. J., Bathurst, J. C., and Robinson, M.: 45 years of non-stationary hydrology over a forest plantation growth cycle, Coalburn catchment, Northern England, *J. Hydrol.*, 519, 559-573, doi:10.1016/j.jhydrol.2014.07.050, 2014.
- Birkinshaw, S. J., James, P., and Ewen, J.: Graphical user interface for rapid set-up of SHETRAN physically-based river catchment model, *Environ. Model. Softw.*, 25, 609-610, doi:10.1016/j.envsoft.2009.11.011, 2010.
- Breuer, L., Eckhardt, K., and Frede, H-G.: Plant parameter values for models in temperate climates, *Ecol. Model.*, 169, 237-293, doi:10.1016/S0304-3800(03)00274-6, 2003.
- Chen, L. and Frauenfeld, O. W.: A comprehensive evaluation of precipitation simulations over China based on CMIP5 multimodel ensemble projections, *J. Geophys. Res.: Atmos.*, 119(10), 5767-5786, doi: 10.1002/2013JD021190, 2014.
- Chen, S., Liu, Y., and Thomas, A.: Climatic change on the Tibetan Plateau: potential evapotranspiration trends from 1961-2000, *Clim. Change.*, 76, 291-319, doi: 10.1007/s10584-006-9080-z, 2006.
- Dai, H., Cao, G., and Su, H.: Management and Construction of the Three Gorges Project, *J. Constr. Eng. Manag.*, 132, 615-619, 2006.
- Dai, Z., Chu, A., Stive, M. J. F., and Yao, H.: Impact of the Three Gorges Dam Overruled by an Extreme Climate Hazard, *Nat. Hazards Rev.*, 13, 310-316, doi: 10.1061(ASCE)NH.1527-6996.0000081, 2012.
- Diaz-Nieto, J., and Wilby, R. L.: A comparison of statistical downscaling and climate change factor methods: impacts on low flows in the River Thames, United Kingdom, *Clim. Chang.*, 69, 245-268, doi:10.1007/s10584-005-1157-6, 2005.
- Dong, G., Zhang, H., Moise, A., Hanson, L., Liang, P., and Ye, H.: CMIP5 model-simulated onset, duration and intensity of the Asian summer monsoon in current and future climate, *Clim. Dynam.*, 46, 355-382, doi: 10.1007/s00382-015-2588-z, 2016.
- Ekström, M., Jones, P. D., Fowler, H. J., Lenderink, G., Buishand, T.A., and Conway, D.: Regional climate model data used within the SWURVE project – 1: projected changes in seasonal patterns and estimation of PET, *Hydrol. Earth. Syst. Sci.*, 11, 1069-1083, doi:10.5194/hess-11-1069-2007, 2007.
- Ewen, J., Parkin, G., and O'Connell, P. E.: SHETRAN: distributed river basin flow and transport modeling system, *J. Hydrol. Eng.*, 5, 250-258, doi:10.1061/(ASCE)1084-0699(2000)5:3(250), 2000.
- FAO/IIASA/ISRIC/ISSCAS/JRC: Harmonized World Soil Database (version 1.2), FAO, Rome, Italy and IIASA, Laxenburg, Austria, 2012.

- Fowler, H. J., Blenkinsop, S., and Tebaldi, C.: Linking climate change modelling to impacts studies: recent advances in downscaling techniques for hydrological modelling, *Int. J. Clim.*, 27, 1547-1578, doi: 10.1002/joc.1556, 2007.
- Ge, S., Wu, Q. B., Lu, N., Jiang, G. L., and Ball, L.: Groundwater in the Tibet Plateau, western China, *Geophys. Res. Lett.*, 35, L18403, doi: 10.1029/2008GL034809, 2008.
- 5 [Hansen, M. C., Potapov, P. V., Moore, R., Hancher, M., Turubanova, S. A., Tyukavina, A., Thau, D., Stehman, S. V., Goetz, S. J., Loveland, T. R., and Kommareddy, A.: High-resolution global maps of 21st-century forest cover change, *Sci.*, 342, 850-853, DOI: 10.1126/science.1244693, 2013.](#)
- Hayashi, S., Murakami, S., Xu, K. Q., Watanabe, M., and Xu, B. H.: Daily runoff simulation by an integrated catchment model in the middle and lower regions of the Changjiang basin, China. *J. Hydrol. Eng.*, 13, 846-862, doi:10.1061/(ASCE)1084-0699(2008)13:9(846), 2008.
- 10 Hock, R.: Temperature index melt modelling in mountain areas, *J. Hydrol.*, 282, 104-115, 2003.
- Immerzeel, W. W., Van Beek, L. P., and Bierkens, M. F.: Climate change will affect the Asian water towers. *Science*, 328, 1382-1385, doi: 10.1126/science.118318, 2010.
- Jiang, D., and Tian, Z.: East Asian monsoon change for the 21st century: Results of CMIP3 and CMIP5 models, *Chinese Sci. Bull.*, 58, 1427-1435, doi: 10.1007/s11434-012-5533-0, 2013.
- 15 Kingston, D. G., Todd, M. C., Taylor, R. G., Thompson, J. R., and Arnell, N. W.: Uncertainty in the estimation of potential evapotranspiration under climate change, *Geophys. Res. Lett.*, 36, L20403, doi:10.1029/2009GL040267, 2009.
- Knutti, R., Furrer, R., Tebaldi, C., Cermak, J., and Meehl, G. A.: Challenges in combining projections from multiple climate models, *J. Clim.*, 23, 2739-2758, doi: 10.1175/2009JCLI3361.1, 2010.
- 20 Koirala, S., Hirabayashi, Y., Mahendran, R., and Kanae, S.: Global assessment of agreement among streamflow projections using CMIP5 model outputs, *Environ. Res. Lett.*, 9, 064017, doi:10.1088/1748-9326/9/6/064017, 2014.
- Lee, J. Y., and Wang, B.: Future change of global monsoon in the CMIP5, *Clim. Dyn.*, 42, 101-119, doi: 10.1007/s00382-012-1564-0, 2014.
- Li, X., Masuda, H., Koba, K., and Zeng, H.: Nitrogen isotope study on nitrate-contaminated groundwater in the Sichuan Basin, China, *Water Air Soil Pollut.*, 178, 145-156, doi:10.1007/s11270-006-9186-y, 2007.
- 25 Li, K., Zhu, C., Wu, L., and Huang, L.: Problems caused by the Three Gorges Dam construction in the Yangtze River basin: a review, *Environ. Rev.*, 21, 127-135, doi:10.1139/er-2012-0051, 2013.
- 30 [Liu, J., Zhang, Z., Xu, X., Kuang, W., Zhou, W., Zhang, S., Li, R., Yan, C., Yu, D., Wu, S., Jiang, N.: Spatial patterns and driving forces of land use change in China during the early 21st century. *J. Geog. Sci.*, 20, 483-494, doi: 10.1007/s11442-010-0483-4, 2010](#)
- Ma, Q., Xie, Z. H., and Zhao, L. N.: Variations of terrestrial water storage in the Yangtze River Basin under climate change scenarios, *Atmos. Oceanic Sci. Lett.*, 3, 293-298, 2010.
- McSweeney, C. F., Jones, R. G., Lee, R. W., and Rowell, D. P.: Selecting CMIP5 GCMs for downscaling over multiple regions, *Clim Dyn.*, 44, 3237-3260, doi:10.1007/s00382-014-2418-8, 2014.

- McMahon, T. A., Peel, M. C., and Karoly, D. J.: Assessment of precipitation and temperature data from CMIP3 global climate models for hydrologic simulation, *Hydrol. Earth Syst. Sci.*, 19, 361-377, 2015.
- [Milly, P. C. D., & Dunne, K. A.: Potential evapotranspiration and continental drying. *Nature Clim. Change*, 6, 946-949, doi:10.1038/nclimate3046, 2016.](#)
- 5 Moriasi, D. N., Arnold, J. G., Van Liew, M. W., Bingner, R. L., Harmel, R. D., and Veith, T. L.: Model evaluation guidelines for systematic quantification of accuracy in watershed simulations. *Trans. Asabe*, 50, 885-900, 2007.
- Moss, R. H., Edmonds, J. A., Hibbard, K. A., Manning, M. R., Rose, S. K., Van Vuuren, D. P., Carter, T. R., Emori, S., Kainuma, M., and Kram, T.: The next generation of scenarios for climate change research and assessment, *Nature*, 463, 747-756, doi:10.1038/nature08823, 2010.
- 10 Nakićenović, N. J. Alcamo, G., Davis, B., De Vries, J., Fenhann, S., Gaffin, K., Gregory, A., Grubler, T., Jung, T., Kram, et al.: IPCC Special Report on Emissions Scenarios (SRES), Cambridge: Cambridge University Press, 2000.
- Piao, S., Ciais, P., Huang, Y., Shen, Z., Peng, S., Li, J., et al.: The impacts of climate change on water resources and agriculture in China, *Nature*, 467, 43-51, doi:10.1038/nature09364, 2010.
- Prudhomme, C. and Williamson, J.: Derivation of RCM-driven potential evapotranspiration for hydrological climate change impact analysis in Great Britain: a comparison of methods and associated uncertainty in future projections, *Hydrol. Earth Syst. Sci.*, 17, 1365-1377, 2013.
- 15 Sanderson, B. M., O'Neill, B. C., Kieh, J. T., Meehl, G. A., Knutti, R., Washington, W. M.: The response of the climate system to very high greenhouse gas emission scenarios, *Environ. Res. Lett.*, 6, 034005. doi:10.1088/1748-9326/6/3/034005, 2011.
- 20 Schneider, U., Becker, A., Finger, P., Meyer-Christoffer, A., Ziese, M., and Rudolf, B.: GPCC's new land surface precipitation climatology based on quality-controlled in situ data and its role in quantifying the global water cycle, *Theor. Appl. Climatol.*, 115, 15-40, doi:10.1007/s00704-013-0860-x, 2014.
- Song, F. and Zhou, T.: Interannual variability of East Asian summer monsoon simulated by CMIP3 and CMIP5 AGCMs: Skill dependence on Indian Ocean-western Pacific anticyclone teleconnection, *J. Clim.*, 27, 1679-1697, doi: 10.1002/2013GL058705, 2014.
- 25 Sperber, K. R., Annamalai, H., Kang, I. S., Kitoh, A., Moise, A., Turner, A., Wang, B., and Zhou, T.: The Asian summer monsoon: an intercomparison of CMIP5 vs. CMIP3 simulations of the late 20th century, *Clim. Dyn.*, 41, 2711-2744, doi: 10.1007/s00382-012-1607-6, 2013.
- Sunyer, M.A., Madsen, H., and Ang, P.H.: A comparison of different regional climate models and statistical downscaling methods for extreme rainfall estimation under climate change. *Atmospheric Res.*, 103, 119-128. doi:10.1016/j.atmosres.2011.06.011, 2010.
- 30 Tao, H., Gemmer, M., Jiang, J., Lai, X., and Zhang, Z.: Assessment of CMIP3 climate models and projected changes of precipitation and temperature in the Yangtze River Basin, China, *Clim. Chang.*, 111, 737-751, doi: 10.1007/s10584-011-0144-3, 2012.

- Tian, D., Guo, Y., and Dong, W.: Future changes and uncertainties in temperature and precipitation over China based on CMIP5 models, *Adv. Atmos. Sci.*, 32, 487-496, doi: 10.1007/s00376-014-4102-7, 2015.
- Taylor, K. E., Stouffer, R. J., and Meehl, G. A.: An overview of CMIP5 and the experiment design. *Bull. Am. Meteorol. Soc.* 93, 485-498, doi: 10.1175/BAMS-D-11-00094.1, 2012.
- 5 Wang, H. J., Sun, J. Q., Chen, H. P., Zhu, Y. L., Zhang, Y., Jiang, D. B., et al.: Extreme climate in China: Facts, simulation and projection, *Meteorologische Zeitschrift*, 21, 279-304, doi: 10.1127/0941-2948/2012/033, 2012.
- Wang, Y., Ding, Y., Ye, B., Liu, F., and Wang, J.: Contributions of climate and human activities to changes in runoff of the Yellow and Yangtze rivers from 1950 to 2008, *Sci. China Earth Sci.*, 56, 1398-1412, doi:10.1007/s11430-012-4505-1, 2012.
- Wang, J., Sheng, Y., Gleason, C. J., and Wada, Y.: Downstream Yangtze River levels impacted by Three Gorges Dam, *Environ. Res. Lett.*, 8, 044012, doi:10.1088/1748-9326/8/4/044012, 2013.
- 10 Weiland, F. C. S., Tisseuil, C., Durr, H. H., Vrac, M., and Beek, L. P. H.: Selecting the optimal method to calculate daily global reference potential evapotranspiration from CFSR reanalysis data for application in a hydrological model study, *Hydrol. Earth Syst. Sci.*, 16, 983–1000, 2012.
- Woo, M. K., Long, T. Y., and Thorne, R.: Simulating monthly streamflow for the Upper Changjiang, China, under climatic change scenarios, *Hydrol., Sci. J.*, 54, 596-605. doi: 10.1623/hysj.54.3.596, 2009.
- 15 Wösten, J. H. M., Lilly, A., Nemes, A., and Le Bas, C.: Development and use of a database of hydraulic properties of European soils, *Geoderma*, 90, 169-185, doi:10.1016/S0016-7061(98)00132-3, 1999.
- Xu, J., Yang, D., Yi, Y., Lei, Z., Chen, J., and Yang, W.: Spatial and temporal variation of runoff in the Yangtze River basin during the past 40 years, *Quat. Int.*, 186, 32-42, doi:10.1016/j.quaint.2007.10.014, 2008.
- 20 Yan, K., Ye, B., Zhou, D., Wu, B., Foken, T., Qin, J., and Zhou, Z.: Response of hydrological cycle to recent climate changes in the Tibetan Plateau, *Clim. Change*, 109, 517-534, doi: 10.1007/s10584-011-0099-4, 2011.
- Yang, S. L., Zhang, J., Zhu, J., Smith, J. P., Dai, S. B., Gao, A., and Li, P.: Impact of dams on Yangtze River sediment supply to the sea and delta intertidal wetland response. *J. Geophys. Res.*, 110, F03006. doi:10.1029/2004JF000271, 2005.
- Yang, Z.S., Wang, H.J., Saito, Y., Milliman, J.D., Xu, K., Qiao, S., Shi, G.: Dam impacts on the Changjiang (Yangtze) River sediment discharge to the sea: The past 55 years and after the Three Gorges Dam. *Water Resour. Res.*, 42, W04407. doi: 10.1029/2005WR003970, 2006.
- 25 Yin, H., Li, C.: Human impact on floods and flood disasters in the Yangtze River. *Geomorphol.*, 41, 105-109, 2001
- Zhang, Q., Singh, V.P., Sun, P., Chen, X., Zhang, Z., Li, J.: Precipitation and streamflow changes in China: changing patterns, causes and implications, *J. Hydrol.*, 410, 204-216, doi:10.1016/j.jhydrol.2011.09.017, 2011a.
- 30 Zhang, Z., Chen, X., Xu, C. Y., Yuan, L., Yong, B., Yan, S.: Evaluating the non-stationary relationship between precipitation and streamflow in nine major basins of China during the past 50 years, *J. Hydrol.*, 409, 81-93, doi:10.1016/j.jhydrol.2011.07.041, 2011b.
- Zhou, X., Li, C.: Hydrogeochemistry of deep formation brines in the central Sichuan Basin, China. *J. Hydrol.*, 138, 1-15, 1992.

Table 1. Vegetation parameters used in the Shetran simulations of Yangtze. ¹The leaf area index values vary seasonally. ²The Actual /Potential evapotranspiration is the value at field capacity it reduces as the soil dries (this parameter was calibrated).

Vegetation type	Leaf area index ¹	Canopy storage capacity (mm)	Actual /Potential evapotranspiration ²
Cropland	0.01-1.0	1.5	0.8
Shrub/herbaceous	0.01-0.8	1.0	0.6
Evergreen forest	0.5-1.0	3.0	1.0
Deciduous forest	0.1-1.0	3.0	1.0
Bare rock/soil	0.0	0.2	0.5
Rice paddies	0.01-1.0	1.5	0.8
Lake/wetlands	0.0	0.0	1.0

Table 2. List of parameters calibrated in the Shetran model during the calibration period (1996-2000) ~~—see the text for details.~~ The Strickler coefficient is the inverse of the Manning coefficient

Parameter	Value	Calibration Range
Actual/potential evapotranspiration for each vegetation type typeeach vegetation type	<u>See Table 1</u>	<u>0.4 -1.0</u>
Aquifer depth <u>(m)</u>	<u>4</u>	<u>0 - 20</u>
Aquifer conductivity <u>(m/day)</u>	<u>15</u>	<u>1-100</u>
Strickler overland flow coefficient <u>(m^{1/3} s⁻¹)</u>	<u>1</u>	<u>0.2 - 5</u>
Strickler flow coefficient for river channels <u>(m^{1/3} s⁻¹)</u>	<u>50</u>	<u>20 - 100</u>

Formatted Table

Formatted: Centered

Formatted: Centered

Formatted: Centered

Formatted: Centered

Formatted: Centered

5 | **Table 3.** CMIP5 model runs, ~~performance summary for precipitation~~. The results from 78 runs simulated using 35 GCMs are shown; if a model has several different runs the numbers of runs and the ranges are shown in brackets. The summer monsoon results are from McSweeney et al. (2015). The performance is based on the ability of the GCMs at reproducing large scale circulation flow at 850 hPa for the Asian summer monsoon and is identified as ‘Satisfactory’ (green), ‘Biases’ (yellow), ‘Significant biases’ (orange) and ‘Implausible’ (red). ~~If the analysis was not carried out by McSweeney et al. (2015) it is shown in grey. The other future change in precipitation and temperature results are calculated in this study for the Yangtze basin. The colours show the comparison with the measured data with green being the best through yellow, orange and red the worst. The measured data is for 10 years (1996–2005) whereas the CMIP5 data is for 30 years (1980–2009), see Fig. 5.~~

Model	Summer Monsoon	Future Change in Precipitation (%)°C	Future Change in Temperature (°C)
Measured			
ACCESS1-0		9.8	<u>3.13</u>
ACCESS1-3		8.2	<u>2.71</u>
bcc-csm1-1		1.4	<u>2.39</u>
BNU-ESM		-0.4	<u>2.78</u>
CanESM2 (5)		12.7 (9.8 - 14.9)	<u>3.05</u> <u>(3.05-3.45)</u>
CCSM4 (6)		6.5 (-0.5 – 6.5)	<u>2.49</u> <u>(2.32-2.54)</u>
CESM1-BGC		6.4	<u>2.34</u>
CESM1-CAM5 (3)		10.9 (10.9 - 14.3)	<u>2.93</u> <u>(1.56-2.96)</u>
CMCC-CM		1.0	<u>2.71</u>
CMCC-CMS		3.4	<u>2.91</u>
CNRM-CM5 (5)		2.8 (2.3 - 6.7)	<u>2.13</u> <u>(1.82-2.13)</u>
CSIRO-Mk3-6-0 (10)		-3.1 (-3.5 - 2.8)	<u>2.85</u> <u>(2.65-2.87)</u>
EC-EARTH (4)		0.1 (0.1 - 4.5)	<u>2.24</u> <u>(2.12-2.24)</u>
FGOALS_g2		-0.1	<u>2.24</u>
FIO-ESM (3)		-3.5 (-3.5 - 3.0)	<u>2.57</u> <u>(1.68-2.57)</u>
GFDL-CM3		8.0	<u>1.67</u>
GFDL-ESM2G		3.6	<u>3.69</u>
GFDL-ESM2M		-0.5	<u>1.89</u>
GISS-E2-H (p1-p3)		0.6 (0.6 - 2.3)	<u>2.08</u> <u>(2.08-2.78)</u>
GISS-E2-R (r1-r3)		-1.3 (-1.6 - 4.6)	<u>2.75</u> <u>(2.27-2.75)</u>
HadGEM2-AO		13.6	<u>2.68</u>

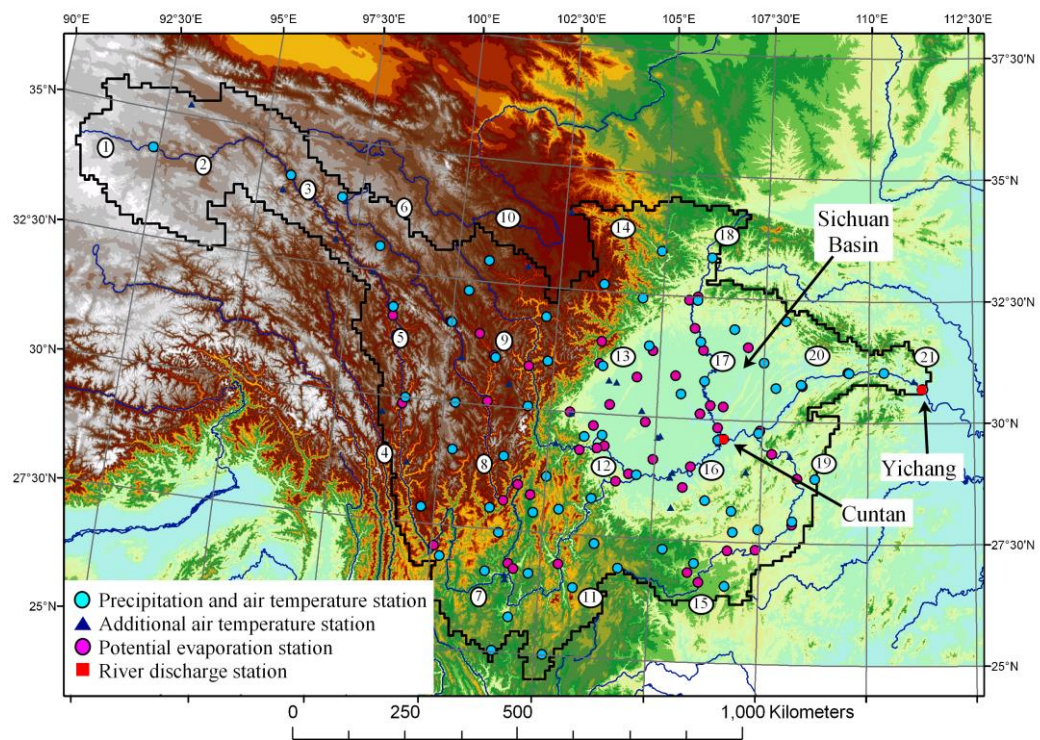
Formatted Table

HadGEM2-CC		7.5	<u>2.64</u>
HadGEM2-ES (4)		6.2	<u>3.51</u>
		(5.6 – 8.1)	<u>(3.15-3.51)</u>
Inmcm4		-1.2	<u>3.25</u>
IPSL-CM5A-LR		2.8	<u>1.65</u>
(4)		(2.2 – 4.1)	<u>(1.65-3.54)</u>
IPSL-CM5A-MR		-2.7	<u>3.58</u>
IPSL-CM5B-LR		1.9	<u>3.44</u>
MIROC5 (3)		12.4	<u>2.19</u>
		(12.0 – 12.4)	<u>(2.19-2.94)</u>
MIROC-ESM		9.0	<u>2.85</u>
MIROC-ESM- CHEM		6.9	<u>3.29</u>
MPI-ESM-LR (3)		-0.8	<u>3.68</u>
		(-0.8 – 0.6)	<u>(2.60-3.68)</u>
MPI-ESM-MR		3.4	<u>2.73</u>
MRI-CGCM3		0.3	<u>2.60</u>
NorESM1-M		4.7	<u>2.24</u>
NorESM1-ME		6.0	<u>2.55</u>

Table 4. CMIP5 model run performance summary for temperature. As in Table 3 the results from 78 runs simulated using 35 GCMs are shown; if a model has several different runs the numbers of runs and the ranges are shown in brackets. The colours show the comparison with the measured data with green being the best through yellow, orange and red the worst. For all CMIP5 models the spatial distribution and intra annual distribution are considered to be satisfactory. The measured data is for 10 years (1996–2005) whereas the CMIP5 data is for 30 years (1980–2009), see Fig. 5.

Model	Mean (°C)	Spatial distribution T90–T10 (°C)	Intra-annual distribution: Dry-months mean—DJF (°C)	Intra-annual distribution: Wet-months mean—JJA (°C)	Inter-annual variation: Minimum mean (°C)	Inter-annual variation: Maximum mean (°C)	Future Change (°C)
Measured	10.24	21.5	1.34	18.21	9.64	10.69	
ACCESS1-0	5.39	17.87	-5.27	14.94	4.67	6.39	3.13
ACCESS1-3	6.01	16.37	-3.69	15.52	5.27	6.67	2.71
bee-csm1-4	5.15	17.69	-5.56	14.76	4.29	6.47	2.39
BNU-ESM	6.28	17.67	-4.39	16.41	5.79	7.03	2.78
CanESM2 (5)	6.84 (6.83–6.91)	18.36	-4.45	17.01	5.58	8.40	3.05 (3.05–3.45)
CCSM4 (6)	5.20 (5.12–5.27)	20.23	-6.06	15.39	4.23	6.23	2.49 (2.32–2.54)
CESM1-BGC	5.10	20.32	-5.98	15.39	4.55	6.28	2.34
CESM1-CAM5 (3)	4.72 (4.61–4.72)	21.17	-6.30	14.31	4.16	5.52	2.93 (1.56–2.96)
CMCC-CM	5.51	18.93	-4.17	13.60	4.73	6.32	2.71
CMCC-CMS	6.45	17.57	-2.98	14.44	5.58	7.68	2.91
CNRM-CM5 (5)		22.57	-8.09	12.65	1.88	3.76	2.13 (1.82–2.13)
CSIRO-Mk3-6-0 (10)	6.19 (6.17–6.36)	20.12	-4.79	16.29	5.57	7.32	2.85 (2.65–2.87)
EC-EARTH (4)	4.64 (4.58–4.68)	20.23	-4.55	12.95	3.76	5.46	2.24 (2.12–2.24)
FGOALS-g2	4.20	22.32	-6.77	14.27	3.79	5.24	2.24
FIO-ESM (3)	2.13 (2.12–2.36)	17.25	-2.64	16.23	6.44	8.91	2.57 (1.68–2.57)
GFDL-CM3	4.47	19.77	-5.91	13.42	3.01	6.06	1.67
GFDL-ESM2G	5.57	18.71	-3.17	13.89	5.00	6.55	3.69
GFDL-ESM2M	5.47	18.54	-3.25	13.93	4.87	6.73	1.89
GISS-E2-H (p1–p3)	4.16 (4.00–5.42)	25.71	-4.58	12.28	3.27	5.12	2.08 (2.08–2.78)

GISS-E2-R	5.25	23.14	-2.81	13.03	4.66	6.12	2.75
(+1-r3)	(5.18-5.91)						(2.27-2.75)
HadGEM2-AO	5.64	18.23	-5.42	15.52	4.60	6.51	2.68
HadGEM2-CC	4.61	16.99	-6.64	14.69	4.09	5.46	2.64
HadGEM2-ES (4)	5.32	16.67	-5.42	15.15	4.10	6.24	3.51
	(5.29-5.38)						(3.15-3.51)
inmem4		22.06	-9.59	13.94	2.14	4.18	3.25
IPSL-CM5A-LR	4.20	24.06	-5.85	14.34	2.96	5.61	1.65
(4)	(4.20-4.36)						(1.65-3.54)
IPSL-CM5A-MR	5.80	23.81	-3.78	15.58	4.82	7.45	3.58
IPSL-CM5B-LR	3.43	22.72	-7.41	13.42	2.26	4.52	3.44
MIROC5 (3)	2.29	21.28	-2.73	16.41	6.58	8.30	2.19
	(2.29-2.43)						(2.19-2.94)
MIROC-ESM	5.20	26.08	-5.86	15.31	4.44	6.54	2.85
MIROC-ESM-CHEM	4.98	26.24	-6.12	15.06	4.64	5.87	3.29
MPI-ESM-LR (3)	6.39	18.52	-2.87	14.45	5.96	7.47	3.68
	(6.30-6.39)						(2.60-3.68)
MPI-ESM-MR	6.50	19.07	-3.01	14.68	5.70	7.58	2.73
MRI-CGCM3	3.88	20.54	-7.48	14.52	3.43	4.93	2.60
NorESM1-M	4.55	18.87	-6.70	14.54	3.86	5.23	2.24
NorESM1-ME	4.49	18.88	-6.64	14.50	3.80	5.27	2.55



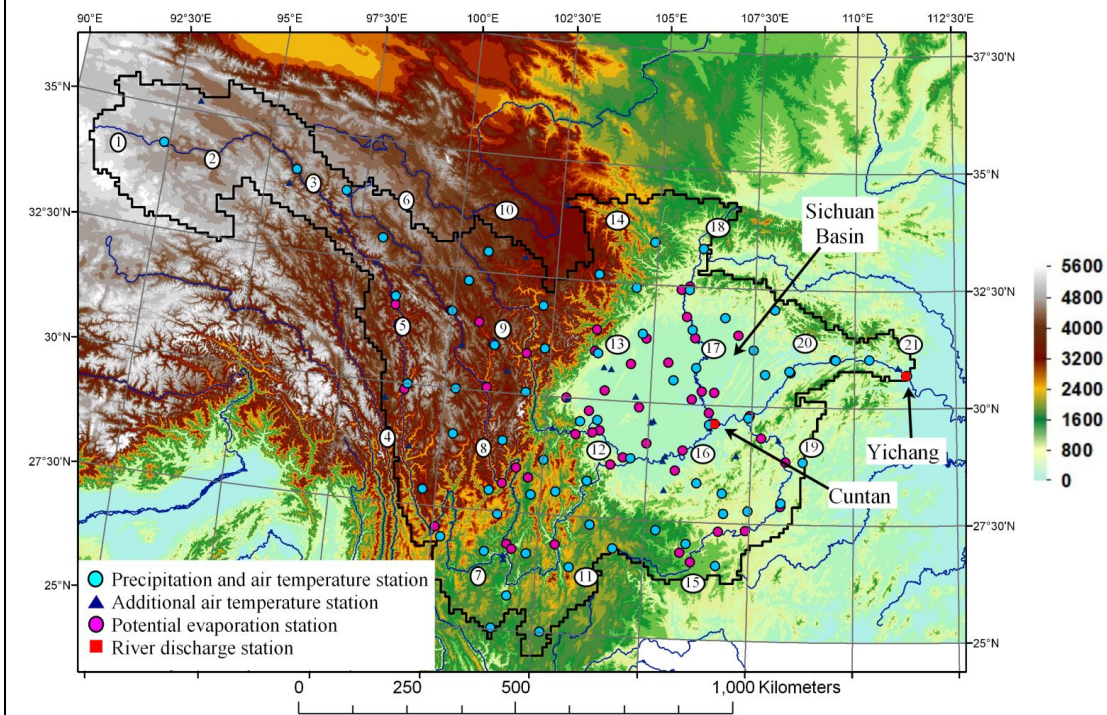


Figure 1. Yangtze River basin to Yichang (1,007,200 km²). Elevations range from over 5000m at the source of the Yangtze in the Tibetan plateau in the west to 65m at Yichang. CMIP5 outputs are available for each of the 2.5° by 2.5° grids numbered in the figure. In total 21 CMIP5 grids within or close to the Yangtze basin were used in this study. 64 precipitation and air temperature stations are shown and also shown are the locations of an additional 26 air temperature stations where there is not precipitation data (90 in total). The locations of the 52 potential evaporation stations are shown.

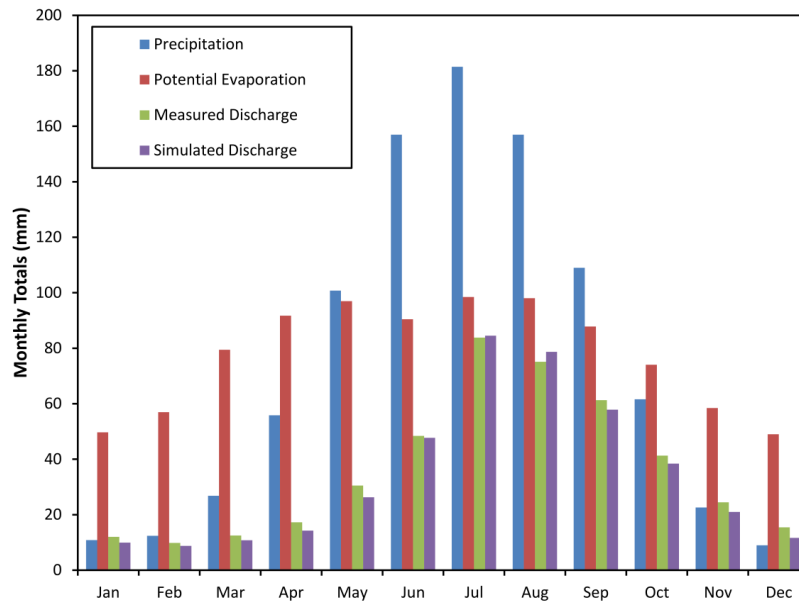


Figure 2. Monthly precipitation, potential evaporation, measured and simulated discharge totals in the Yangtze basin to Yichang, 1996-2005.

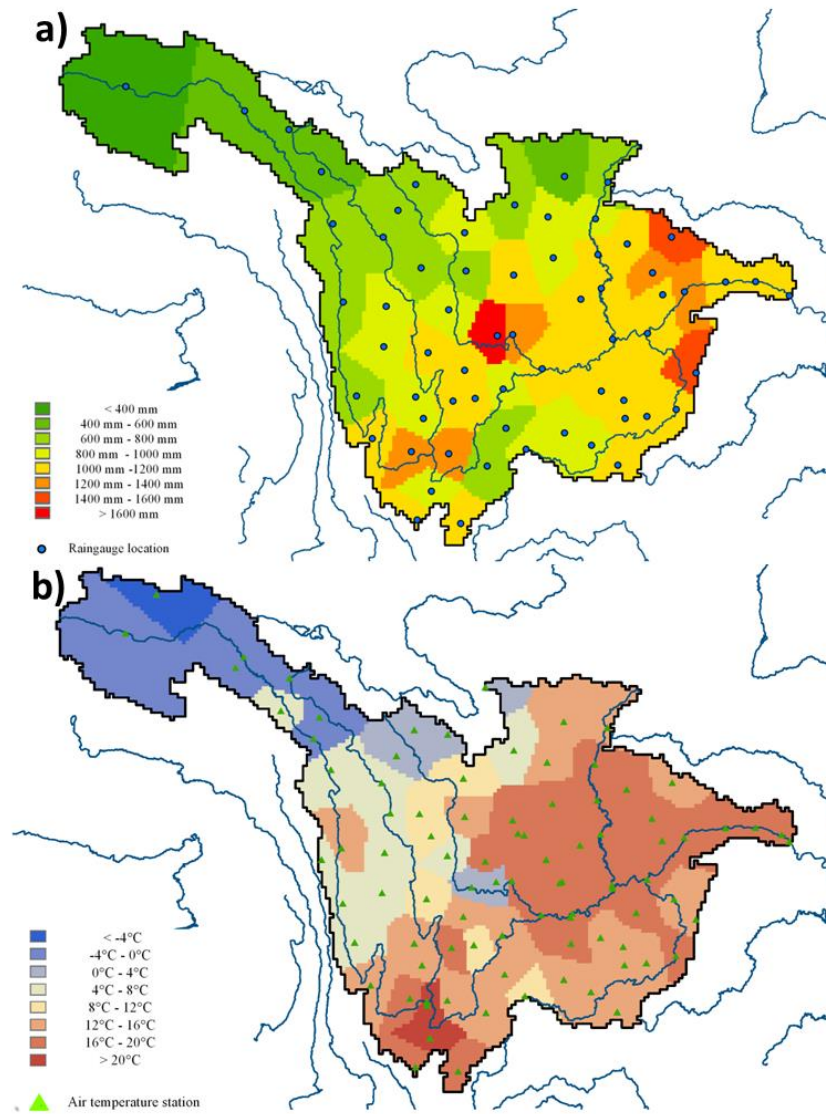


Figure 3. (a) Theissen polygon annual precipitation totals over the Yangtze basin. The high value (gauge 56385) at the western edge of the Sichuan Basin is discussed in the text. **(b)** Theissen polygon mean annual air temperature over the Yangtze basin.

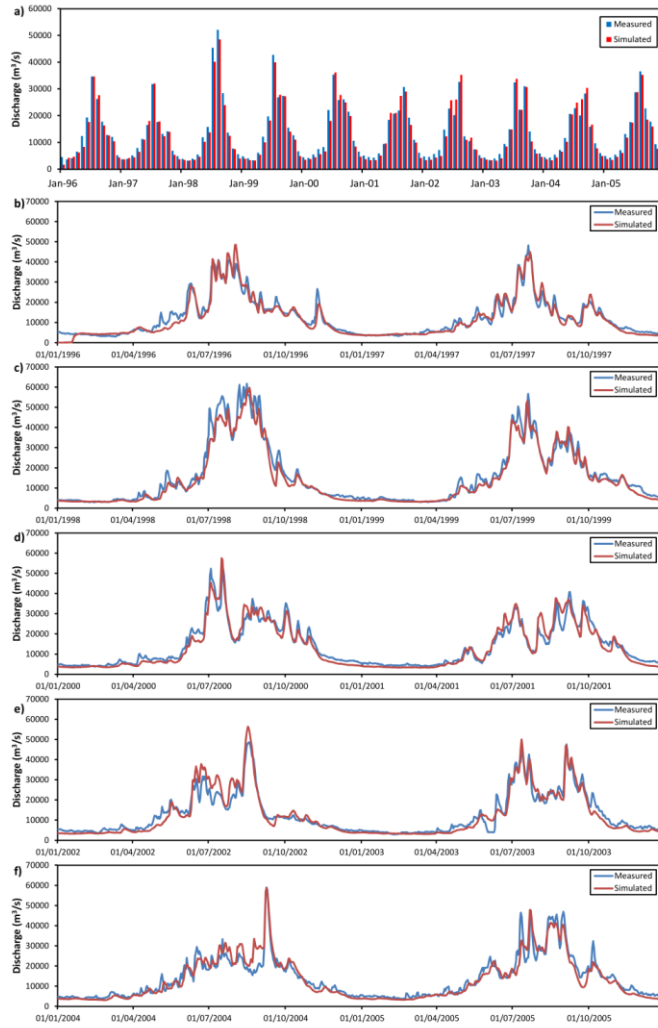


Figure 4. Measured and simulated daily discharges for the Yangtze at Yichang from 1996-2005. **(a)** monthly averages **(b)-(e)** daily averages for two year periods.

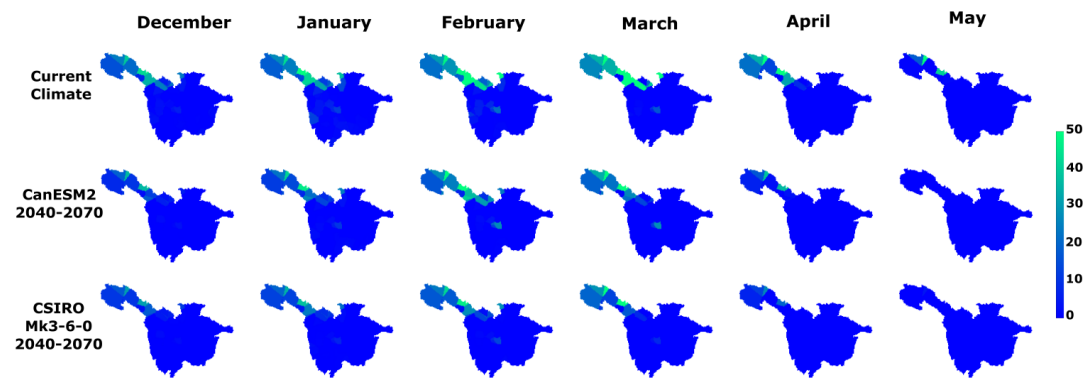
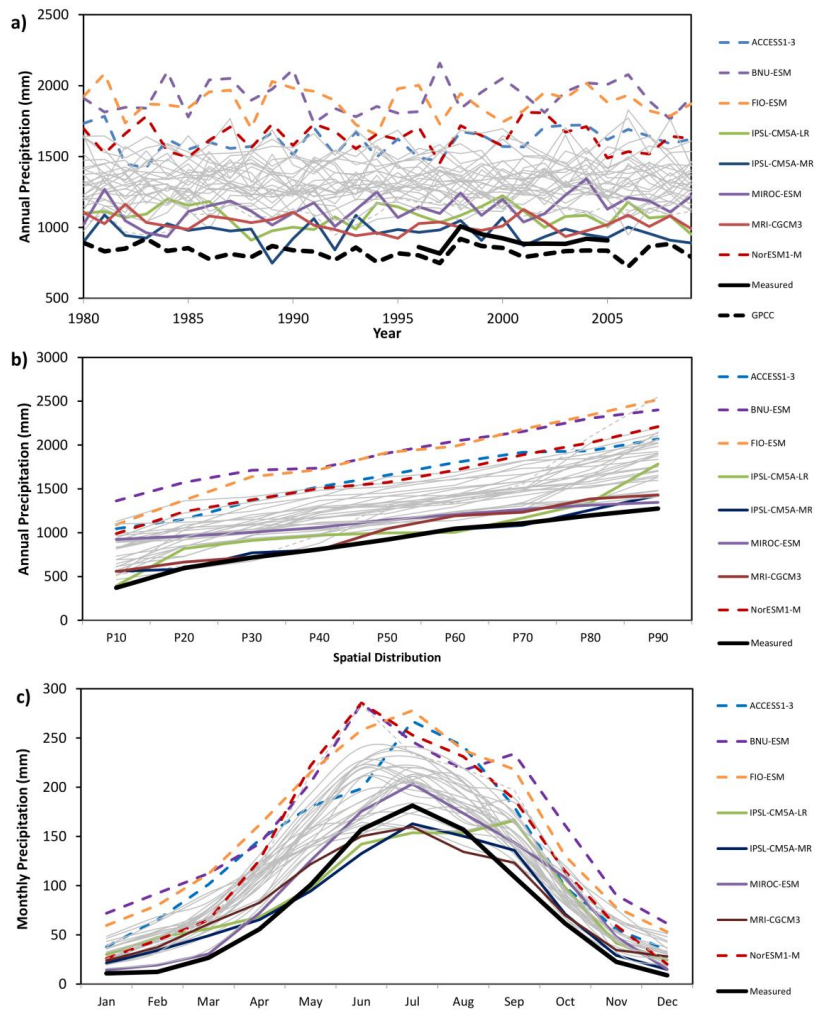


Figure 5. Simulated Snow water equivalent depths (mm) at the end of the months from December to May for the current climate and two future climate models.



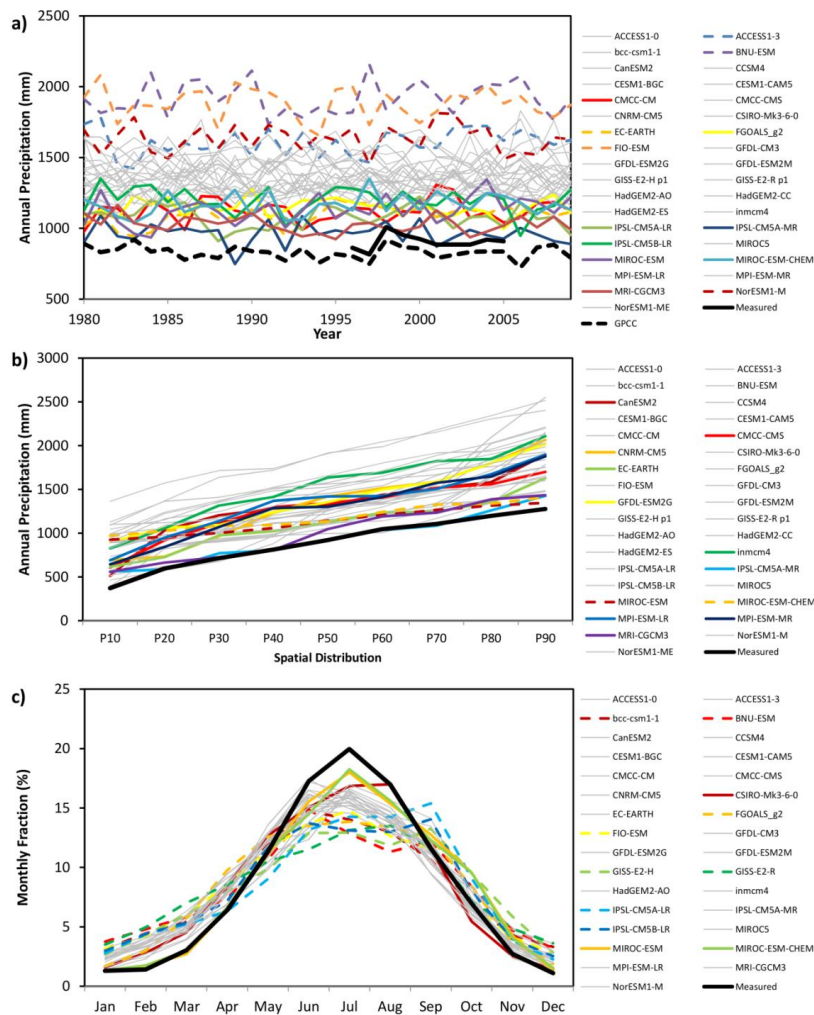


Figure 65. Comparison of the measured and CMIP5 climate models for the precipitation in the Yangtze basin. The data from each GCM is shown but only the four with the largest and smallest totals are in colour the rest are shown in grey. Only one run from each GCM is shown. (a) Annual precipitation (measured GPCC data is also shown); (b) Spatial distribution across the Yangtze basin showing the 10th - 90th percentiles (c) intra-annual distribution.

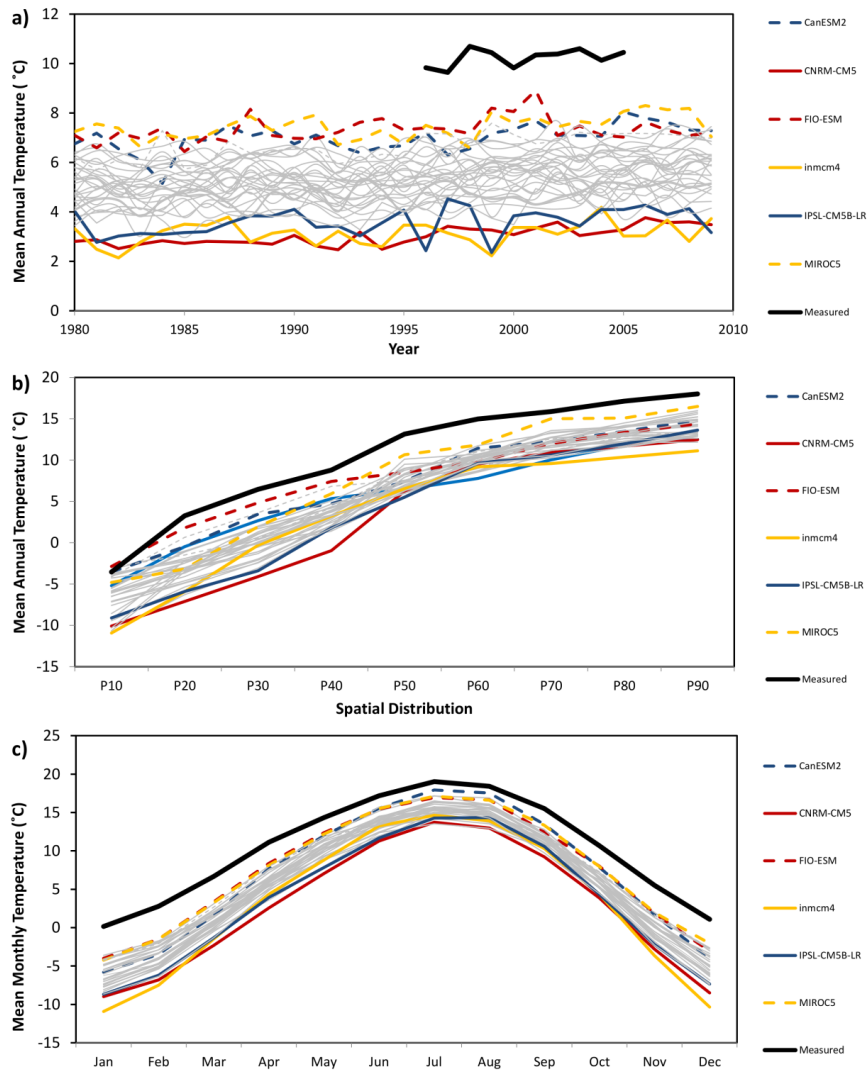
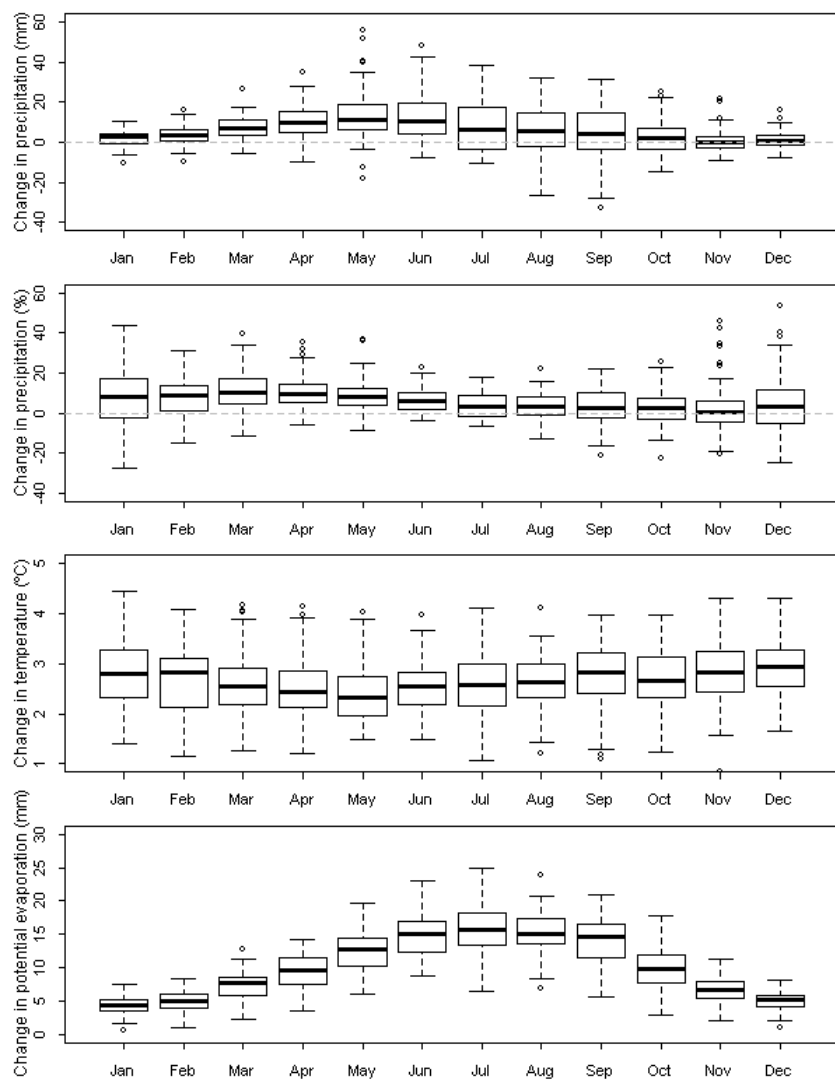


Figure 7. Comparison of the measured and CMIP5 climate models for the temperature in the Yangtze basin. The data from each GCM is shown but only the three with the largest and smallest totals are in colour the rest are shown in grey. (a) Annual precipitation (b) Spatial

distribution across the Yangtze basin showing the 10th - 90th percentiles (c) intra-annual distribution. The continuous lines are those that have the best correspondence with the measured data and the dashed the worst (see Table 3 for details).



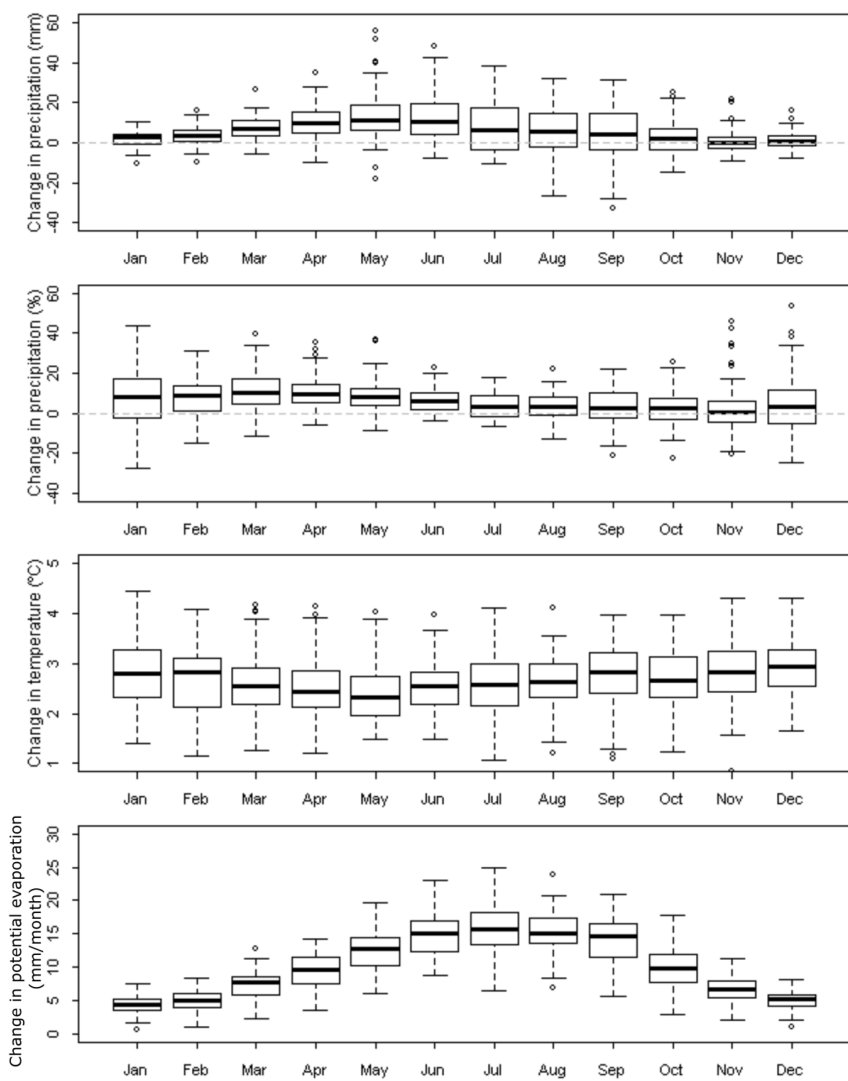
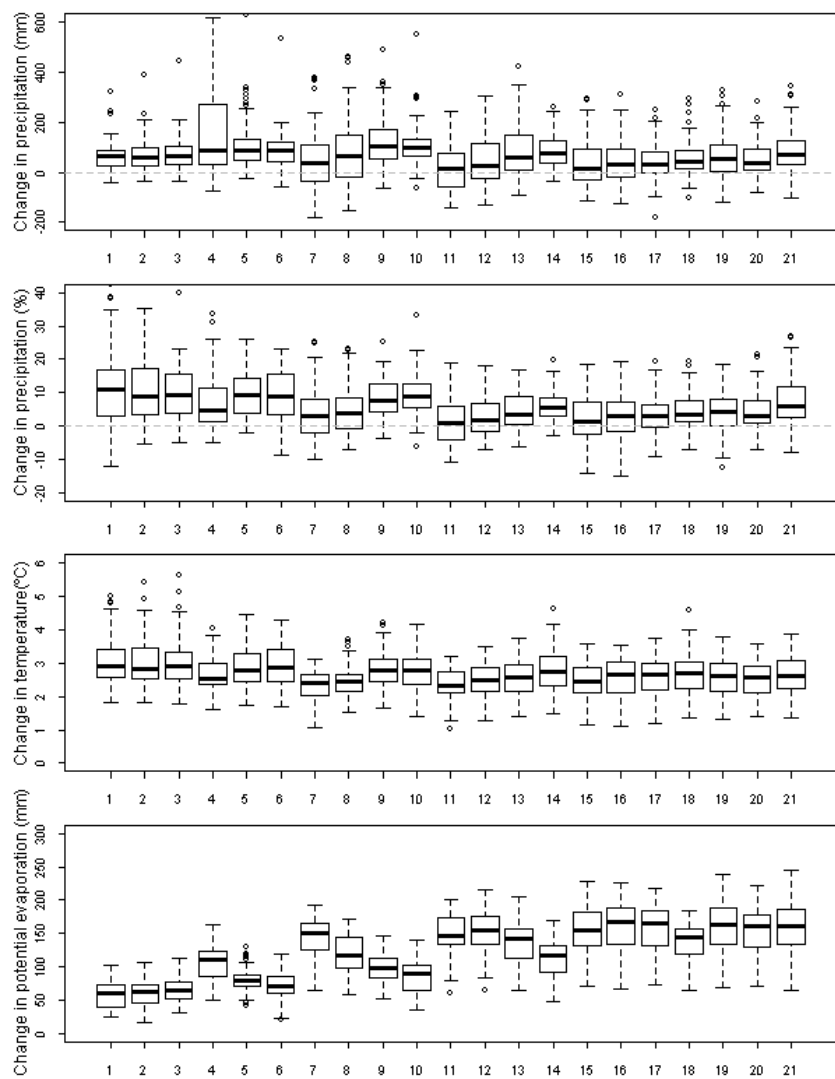


Figure 86. Box plots showing monthly changes between 1981-2010 and 2041-2070 in precipitation, temperature and potential evaporation for the 78 CMIP5 runs averaged over the Yangtze basin.



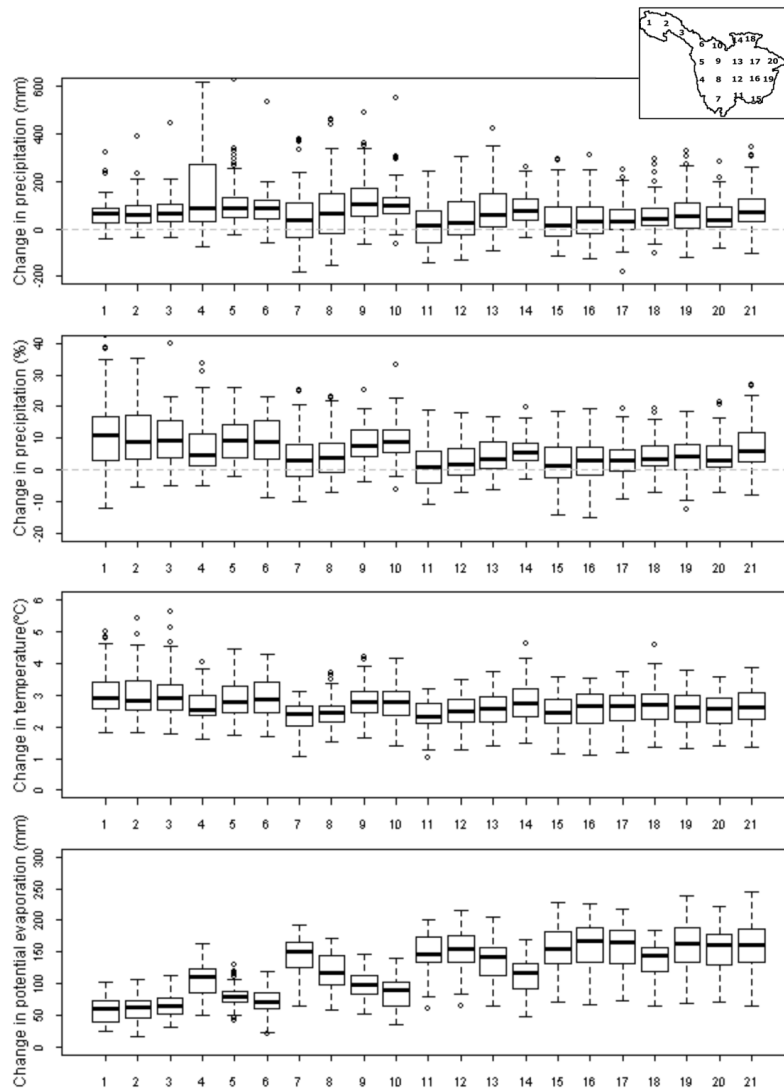


Figure 97. Box plots showing spatial changes between 1981-2010 and 2041-2070 in precipitation, temperature and potential evaporation for the 78 CMIP5 runs. The numbers on the x-axis correspond to the 2.5° by 2.5° CMIP5 grids numbered in the Fig 1. [and shown in the inset.](#)

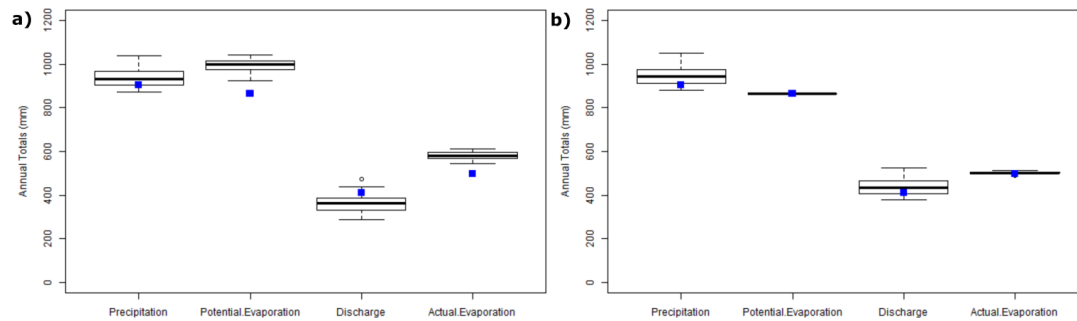
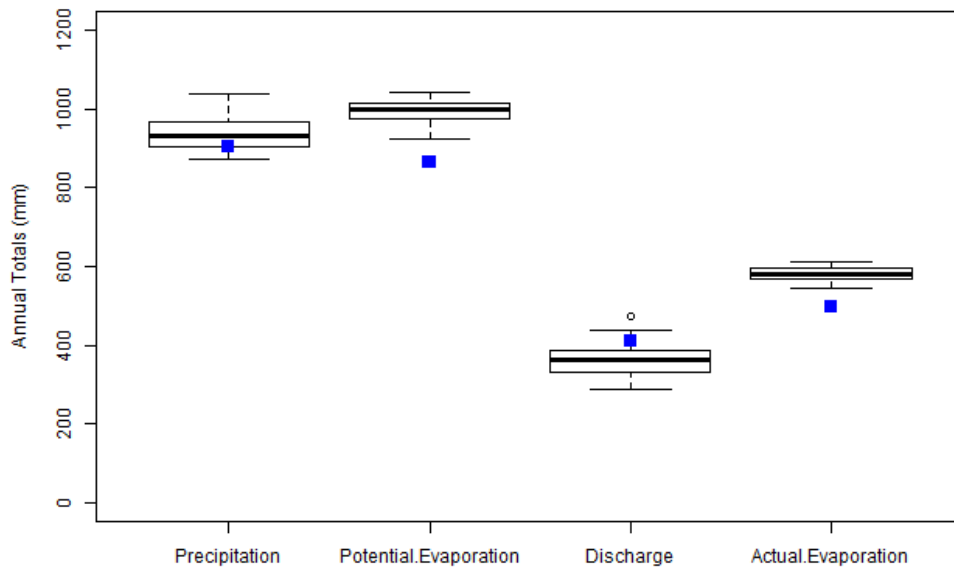


Figure 108. Box plot showing the range of precipitation, potential evaporation, simulated discharge and simulated actual evaporation over the 78 CMIP5 future climates. a) PET calculated using the Thornthwaite equation b) no change in PET. The blue squares show the simulated values for the present climate. The simulated discharge for the current climate is shown by the blue square.

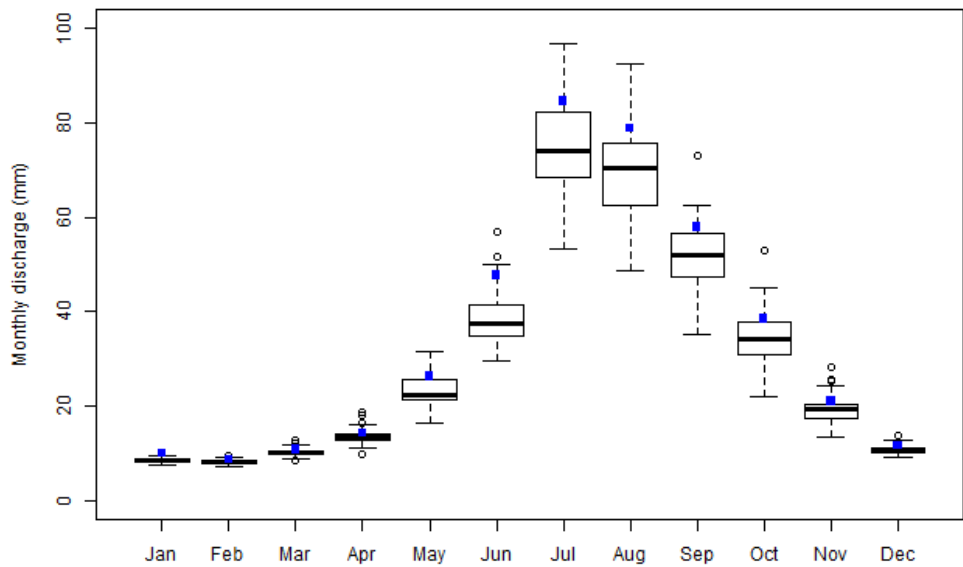


Figure 119. Box plots for individual months showing the range of simulated discharges over the 78 CMIP5 future climates. The simulated discharge for the current climate for each month is shown by the blue square.

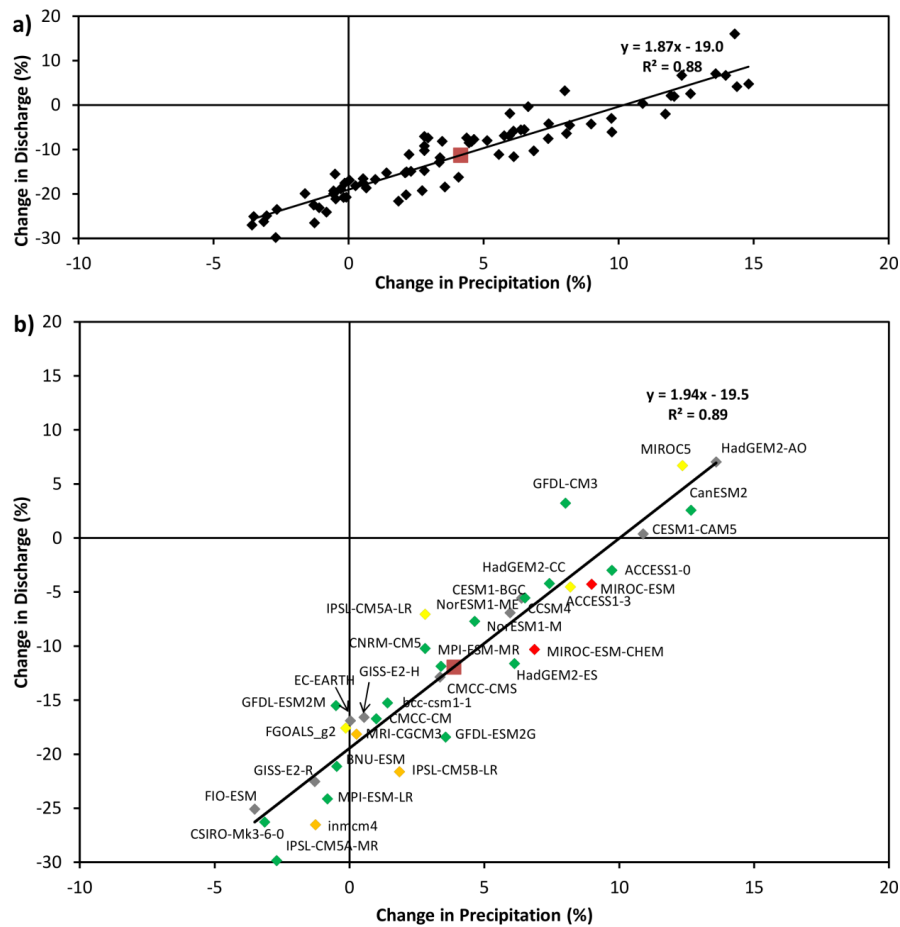


Figure 120. Change in simulated discharge and precipitation between the current and future climates. **(a)** for each of the 78 CMIP5 future climate projections. **(b)** for each of the 35 GCM models (labelled). The colours correspond to those [produced by McSweeney et al. \(2015\)](#) in Table 3 for the summer monsoon whereby green is 'satisfactory', yellow 'biases', orange 'significant biases', red 'implausible' and grey models ~~do not have lateral boundary conditions~~ [are where the data was not available](#).

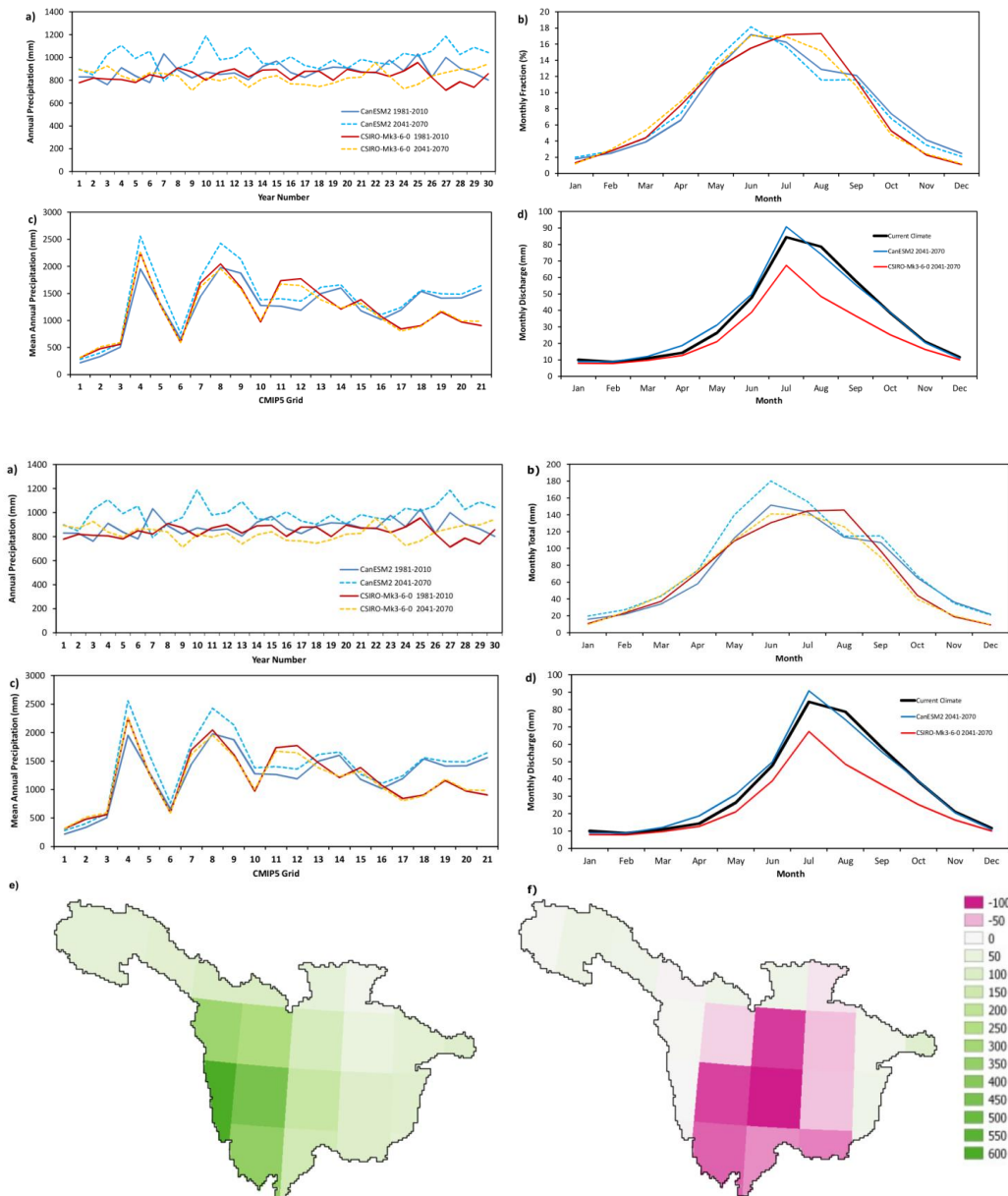


Figure 134. Comparison of the current climate and future climate projections for the CanESM2 model and the CSIRO Mk3-6-0 model. (a) Annual precipitation, (b) Monthly precipitation fraction (c) Mean annual precipitation for each 2.5° by 2.5° CMIP5 grid numbered in the Fig 1; (d) Monthly discharge from using the Shetran hydrological model (e) Change in mean annual precipitation for the CanESM2 model for each 2.5° by 2.5° CMIP5 grid (f) Change in mean annual precipitation for the CSIRO Mk3-6-0 model for each 2.5° by 2.5° CMIP5 grid

Formatted: Font: Not Bold