

RESPONSE TO ANONYMOUS REVIEWERS

Martin Hanel, Petr Máca et al., 2016-11-7

We thank all anonymous reviewers for their time and constructive comments on the manuscript, which pointed us towards some further explorations and discussion. The comments lead to substantial changes in the organization of the manuscript, several additions, modifications of 2 figures and supplementary material. The point-by-point response is included below with your comments in bold and our response in regular font. We also attach the pdf with highlighted changes. Please note, that the changes resulting from comments of individual reviewers are highlighted in the manuscript versions included in the interactive discussion.

REVIEWER #1

10 **Find below the main points to be corrected:**

1. Measurement Unit: R-factor is further expressed in MJ ha¹ cm h¹ (equivalent to kJ mm m² h¹), which is the unit most often used in the Czech Republic. However, here you address your result to the International public and you should adapt it to the most used measurement unit (please replace cm with mm and multiply by 10).

15 We agree, that using Czech conventional unit might be confusing for international audience. The units were changed as requested in the new version of the manuscript (including main text, tables and figures).

20 **2. Comparison with other datasets: You estimated the mean R-factor in Czech Republic around 640 MJ mm ha⁻¹ h⁻¹ yr⁻¹ using 10-minutes data. The Mean R-factor in Czech Republic at 30 minutes is 524 MJ mm ha⁻¹ h⁻¹ yr⁻¹ according to the rainfall erosivity map of Europe. If you take into account the calibration factor used by Panagos et al (2016) for transferring data between 10-minutes and 30-minutes is 0.8205 then both datasets (Czech republic, European) have the same Mean (640 * 0.8205 = 525). Taking into account that for the European application another dataset has been used, both results are similar. Congratulations for the results.**

Thank you for this point. This information is now included in the main text.

25 **3. Length of time-series and short period of stations (Paragraph P2L3-13): You need to restructure this paragraph somehow. Panagos et al (2015) have used the best available high temporal resolution data at European scale and according to Table 1 in their publications the mean length period is more than 17.5 years (half of the countries had records more than 20 years). Only countries with low erosivity (Finland, Estonia, Latvia, Romania) had records covering short periods. Angulo-Martinez (2009) estimated the R-factor in Ebro based on 10 years data. So, you cannot compare the data availability in Europe (or in one country or at regional level) with the 1 station made available by Verstraeten(2006). Moreover, your estimates are based on 14 years data.**

30 Our intention was not to assert that Panagos et al. (2015) or Angulo-Martínez et al. (2009) used insufficient data for R-factor assessment, rather we tried to point out, that although the best available high temporal resolution records in some regions might be considerably shorter than the length recommended by guidelines, the R-factor often needs to be estimated at these locations using the available data. The second point was, that in the case when only short records are available, it is possible to reduce the uncertainty by regional analysis or/and by employing appropriate covariates into the analysis. To make these points clear, 35 the paragraph has been modified.

4. Whole section 3.2: You need to restructure this section by giving a short description of each model used (IDW, GLS, OK, RK. Etc) and avoid the whole part on Fixed and stochastic component. Those 2 parts seems like technical note from the geostatistical books. References will be enough while you have simply to describe the models used in your

case. 5. Figures should be self-explained. So In Figure 3, the reader cannot understand what GLS, SK, etc is. Please put the explanations in the caption.

We agree, that it is not necessary to include details that can be found in statistical books, therefore the whole section 3.2 was rewritten a substantially shortened.

5 **Some additional adjustments requested:**

P1, L17: Soil erosion by water is a widespread problem throughout Europe (Van der Knijff et al., 2000). Citation to the paper of 2000. There is a more recent and accurate development of soil erosion map in Europe (2015) and you should update this citation with the new one.

The sentence was updated.

10 **L2P28: Replace datastes with datasets.**

This was corrected.

In the introduction, I would also expect one sentence (plus necessary citations) regarding other recently developed rainfall erosivity datasets at national scale. There are new R-factor datasets for Italy, Greece, Brazil, Chile, China, Australia, New Zealand etc.

15 This was added.

P3 L8-9: The trends in rainfall erosivity were studied by Hanel et al. (2015), who found significant a positive trend (= 4% per decade) in 51-year records for 11 stations (more than a half of the considered stations). Trend on what? And compared to what? Increase or decrease?

The information was clarified.

20 **Please replace sub-title: 2.3 Spatial Data with Precipitation maps or Precipitation Spatial datasets. Spatial data can be everything.**

The section was renamed to "Gridded precipitation data".

P7L24: REML stands for??? Please explain

The abbreviation REML - restricted maximum likelihood - is explained in a new section 3.2.

25 **Figure 1: please delete the word The map and rephrase the caption**

The caption was modified.

P15 : Last paragraph: The ranges you presented are quite wide. I doubt that with 80-year data records the range can be +-15%.

30 The surprisingly large width of the confidence interval for the Rfactor estimate based on 80 years of data relates to large variation of annual rainfall erosivity, which is due to its non-linear relation to rain intensity and depth. Note for instance, that for the same station and 10 year record the width of the confidence interval for 10 min annual maxima and rainfall total is 70% and 40% that for rainfall erosivity, respectively. This difference only slightly decreases for longer averaging periods. Assuming

that decrease in width of the confidence interval with number of years is proportional to corresponding standard deviation and assuming independence between years, the width of the confidence interval should be inversely proportional to the square root of the number of years. For the confidence interval around the estimated Rfactor this leads to drop from $\pm 40\%$ to $\pm 14\%$ ($40/\sqrt{8}$), which matches our estimate well. Note, that in the case of dependence between years, the standard deviation (and thus the confidence interval) is expected to be larger.

We added a short note on this.

Conclusions: what is the areal-average. Please correct it.

The sentence was modified.

Specific comments:

In general, I agree with the authors that the rainfall erosivity index is a good indicator of areas subjected to soil erosion. However, I do not believe that using only 14-15 years of measurements it is possible to obtain a good estimate of long-term rainfall erosivity, everywhere. The period covered by the datasets is short and may (or may not) contain outliers which generally affect the mean values. Even if some authors are inclined to remove the outliers from the series (see Janecek et al., 2013), I do not think it is a correct approach because these outliers often are the major contributors (up to 80%) of the total amount of soil eroded from an area (see for example Martinez-Casasnovas et al., 2002; Fang et al., 2013). In this respect, the authors based their long-term analysis on a single dataset (C2TREB01, with 80 years available). As I understand, this station shows a value of $R = 669$ (MJ ha⁻¹ mm h⁻¹) which falls perfectly around the mean value calculated for the entire region (ca. 640). The same consideration can be extended to the CV value (CV = 21.6 for C2TREB01, considering 15 years, and CV=23.3 for the entire region – see natural variability for 96 stations in Table 2). In other words, this station is indicative of the average conditions of the region and it is not surprising that the bootstrap analysis indicated in section 3.3.1 and appendix b gives no strong differences if periods of different length are considered. It would be interesting to look at another station, with similar length, but showing a higher variability of the rainfall erosivity factor. If the authors have this information, this can be added to improve the paper. If not, please, add some comments that emphasize this uncertainty.

Thank you for pointing this out. Indeed the coverage probability and the width of the confidence interval is influenced by variability of the erosivity index at a location. Since the only station with similar record length that is available to us is located close to C2TREB01 and has similar characteristics, we demonstrate this effect using simulated data. At most sites (including C2TREB01), the annual erosivity index (EI_{30}) can be described by gamma distribution (assessed by the Anderson-Darling test), i.e. $EI_{30} \sim \Gamma(\alpha, \beta)$, with α and β the shape and rate parameter, respectively. It can be shown, that in order to change the coefficient of variation by factor k , the parameters have to be modified as follows:

$$\alpha^* = R \frac{\beta}{k^2}, \beta^* = \frac{\beta}{k^2}$$

(with α^* and β^* the modified shape and rate), provided the R-factor ($R = \text{mean } EI_{30}$) remains constant. We estimated α and β using the whole record from the C2TREB01 station and modified these parameters considering $k = 0.5, 1$ and 2 . The scheme from appendix B was used to assess the coverage probability and confidence intervals, except point 2, where the sample of length l was generated from the modified distribution. The results are shown in the right panel of Fig. 1. It is clear, that the confidence intervals as well as the coverage probability for $k = 1$ correspond reasonably with those from the left panel of the same figure. It is also clear (and expected) that the confidence interval width increases with coefficient of variation. For instance for 15 year record and doubling of coefficient of variation it ranges from 0.5 to 1.57. For increasing record lengths the coverage probability increases and the width of the confidence interval decreases. Note that the confidence interval for erosivity index with large coefficient of variation remains large (>50%) even for 80 years of data. The coverage probability, on the other hand, decreases only slightly with CV.

In reaction to your comment we extended Fig. 6 of the manuscript and added a paragraph at the end of section 4.3.

During the last 2-3 decades, an increase in the rainfall erosivity factor is documented in different areas of the world due to climate change (see among the others Fiener et al., 2013; Nearing et al., 2004; Porto et al., 2013; Capra et al., 2015; Zhang et al., 2005). This is documented also by the first author in a previous contribution (see Hanel et al., 2016) for some stations in Czech Republic. I suggest to show a figure with the 80 values of R (calculated for C2TREB01) vs time (years) in order to see if no increasing trend can be detected during the period 1989-2003. If there is an increasing trend in this period, it means that the 96 values of R are not stationary and this needs some more comments.

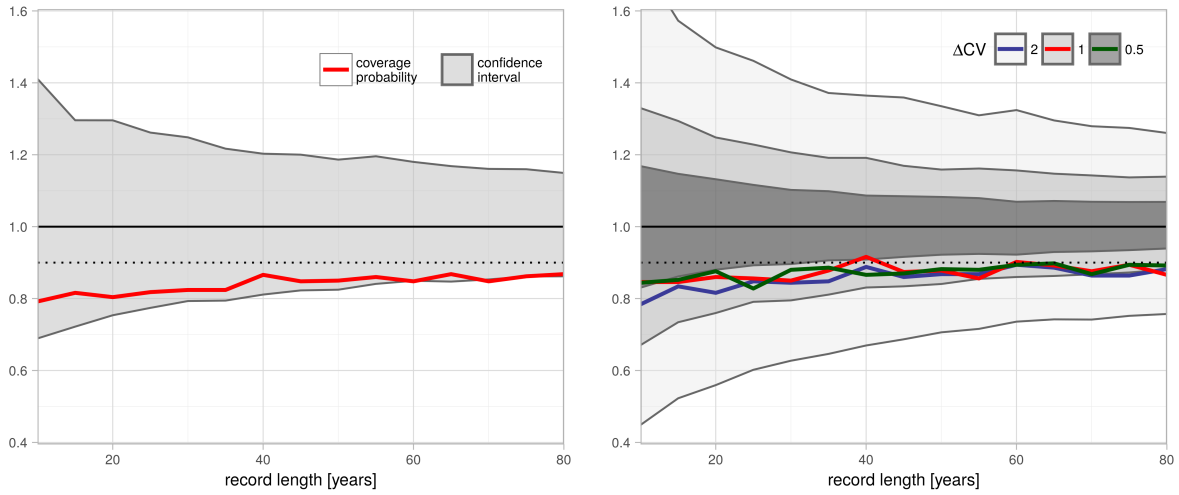


Figure 1. The average confidence intervals (relative to the long-term mean R-factor, $669 \text{ MJ ha}^{-1} \text{ mm h}^{-1}$; gray area) and the coverage probability (thick lines) for different record lengths based on the station C2TREB01 - Třeboň (left) and simulated data (right). The dotted line corresponds to the coverage probability of 90%.

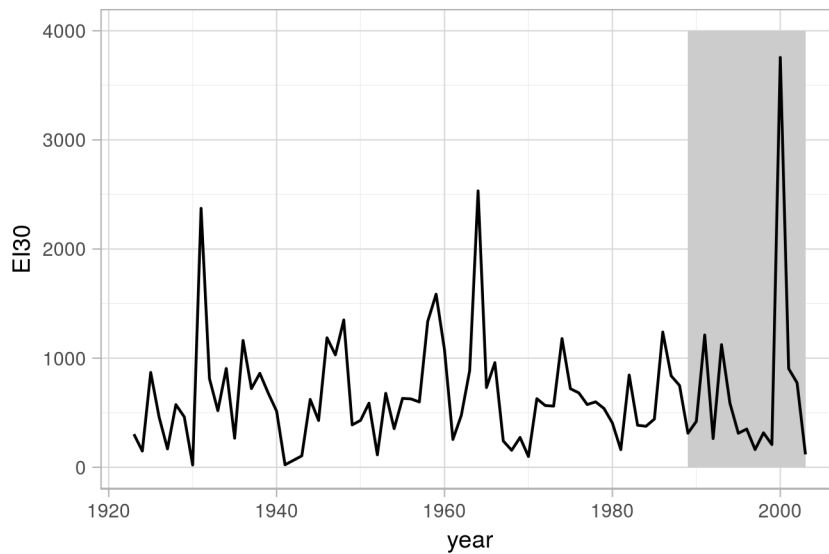


Figure 2. Annual erosivity index (EI30) for station C2TREB01

It is true, that positive trend was detected for some stations in the Czech Republic for the period 1961-2011 in our previous study. Looking at the period 1989-2003 no clear trend is obvious (Fig. 2). We added a sentence on that in the section 2.2.

The authors said (citing also Goovaerts, 1999; Angulo-Martínez et al., 2009) that using covariates like longitude, latitude and elevation or long-term precipitation it is possible to cover the existing gaps of direct evaluation of R. I want to emphasize here that such correlations are acceptable only where the R values are obtained using indirect methods that involve, for example, rainfall values at daily or monthly scale (see Capra et al., 2015). When short time steps are considered (and R requires time intervals shorter than 30 minutes) these correlations fail (see for example Porto, 2016), unless climatic conditions are uniform over large areas. But, as the authors recognize, R values are very much affected by local conditions and this complicates things. I am sure the authors want to add some more comments here.

10 The correlation between the Rfactor and various covariates is discussed in the beginning of section 4.2 (i.e. correlation between Rfactor and r_{mea} is 0.75, for r_{cv} it is 0.44, for r_{p95} 0.54, elevation 0.32, longitude 0.49 and latitude -0.25). Fig. 3 bellow show scatter plots of Rfactor and selected covariates. The relevance of these covariates for the Rfactor is also obvious from the cross-validation of different GLS models (see tab. 1) bellow. Finally, a GLS model considering r_{mea} can explain around 59% variability of Rfactor, r_{p95} around 31% and r_{cv} or longitude around 21% of variability. The elevation is, on the
15 other hand, rather poor covariate, when not considered in combination with some characteristics of precipitation.

However, in line with your comment, we agree that the correlation between Rfactor and long term characteristics of precipitation, its variability and topographic indices, which is considerable in our dataset, might be very different in more complex regions as documented by Capra et al. (2015) or Porto (2016). A note on this was added.

Table 1. Cross-validation of GLS models with different combinations of covariates compared to IDW interpolation. (See table 1 of the manuscript for the explanation of acronyms.)

GLS model	WI	RMSE	MAE	rMAE	AVst	SDst
IDW	0.78	164.33	123.68	0.20	625.69	162.15
$R \sim r_{mea}$	0.83	139.47	108.74	0.18	619.06	146.62
$R \sim r_{mea} + X$	0.84	138.80	106.75	0.17	600.22	148.66
$R \sim r_{mea} + r_{p95} + Y$	0.90	116.98	92.62	0.15	635.57	175.48
GLS _E	0.91	114.37	89.95	0.14	635.64	177.47
GLS _M	0.90	115.38	90.57	0.15	635.34	175.12

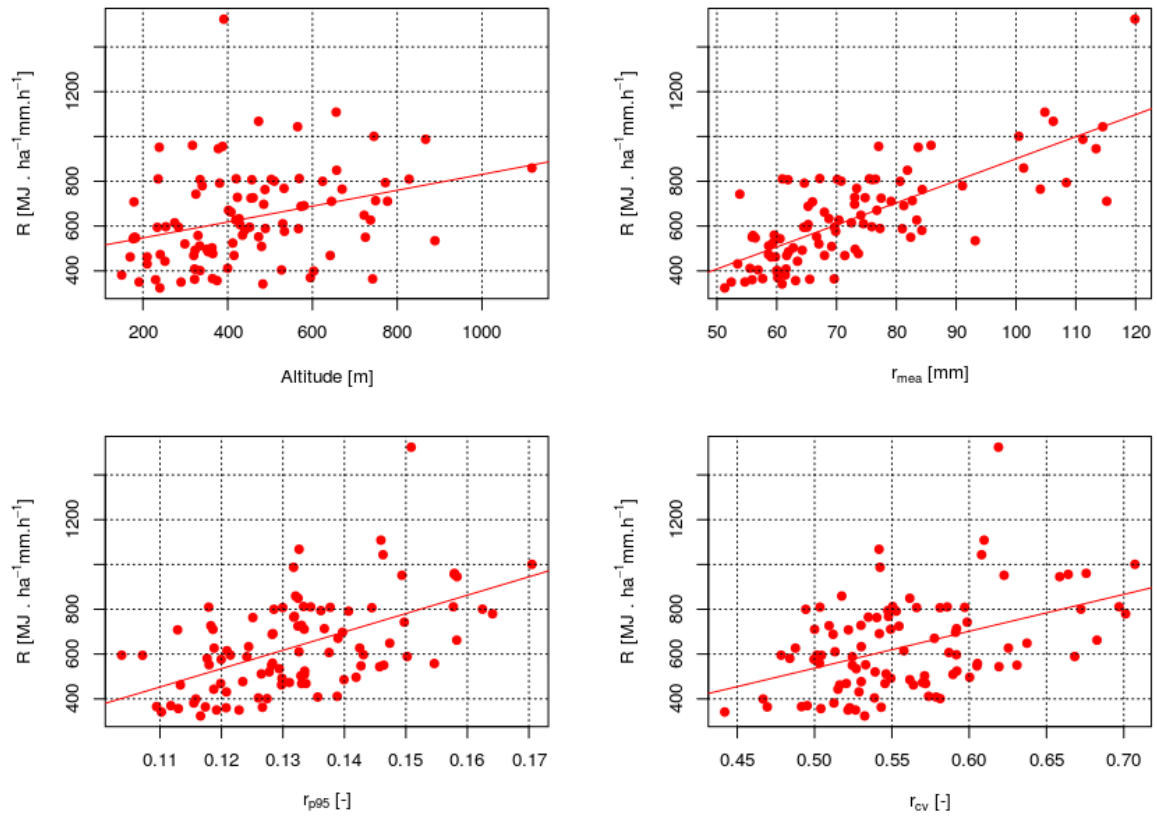


Figure 3. Scatter plots for Rfactor and selected covariates.

More specific remarks:

1) I find it impossible to recalculate any of the results obtained due to the complete lack of parameter values for the different equations tested; I suggest to add a table with parameter values whenever possible

5 We agree, that for practical purposes, it is useful to provide parameters allowing estimation of the R-factor. However, in our opinion, it is sufficient to include estimated parameters for the best interpolation model (GLS_E) only, since it is in general preferred over the other models. Note also, that the parameter matrices for some other models are huge and their practical implementation would be rather difficult. The estimated parameters for the best interpolation model (GLS_E) are now included in the revised manuscript (Sect. 4.2).

10 **2) Detailed information on input data is missing (station name, exact period of recording, details about covariate values.. . .) in addition a table with information on R-factor characteristics (mean R-factor) of the stations is missing, this may already be included into the table of input information - please provide; I am aware that these details will need about two pages of the manuscript, however without this information, the manuscript lacks much of detail.**

15 We believe, that such table is too large to fit in the manuscript. However, we agree that such detailed information might be interesting/useful for some readers. Therefore we extended the manuscript with a supplement providing this information (station identifier, name, coordinates, altitude, covariate values, the at-site R factor and the number of missing/unreliable years within the considered period 1989-2003).

20 **3) Please reconsider the number of digits you are using to describe results. Given the fact that you are dealing with confidence intervals in the range of ± 10 (minimum) it does not make sense to provide R-factors with 2 digits after the decimal. See for instance page 12, line 7 or Table 1. Please reconsider throughout the whole manuscript.**

In response to anonymous referee #1 we already modified units in which the R-factor is presented in the manuscript. We agree that it is sufficient to provide rounded R-factor values. This was checked throughout the manuscript.

25 **4) For practical purposes (a useful application of the USLE) it will be necessary to provide at least monthly R factors, because they are needed as input into the USLE management factor. I understand that it might be beyond the scope of this paper, however I would strongly suggest to provide these data in the future.**

We understand this point, but it is indeed out of the scope of this paper to consider monthly R-factor values. Please note, that for instance it might be good to purchase the covariate values (gridded data) for individual months. To increase a potential practical impact of our study, however, we at least provide a typical seasonal distribution of the erosivity index in the modified manuscript (see Sect. 4.1).

30 **5) I am missing some information about stationarity of the data used for the study. Can you provide some information here?**

The erosivity index shows no clear trend in the considered period (1989-2003). This is now noted in Sect. 2.2 (also as a reaction to anonymous referee #2).

35 **6) Page 2, line 29: It is interesting to note that, while the mean R-factor values of maps based on a European dataset (Panagos et al., 2015) are quite similar to those derived in this manuscript, their range is much smaller. For the extreme case of an R factor of 152 (recorded at one site in Czech Republic) this would practically increase a soil loss according to some USLE approach for >100%.**

Thank you for this point. It is true, indeed, that the range of R-factor values for the Czech Republic is narrower in the map provided by Panagos (2015) - further denoted PNGS2015 - compared to our results. This is likely due to different (and smaller) number and location of stations used for derivation of the maps. The range of the R-factor values for the Czech Republic from PNGS2015 is ca <340 - 900 [MJ ha-1 mm h-1]. After correction for temporal resolution (conversion from 30 min to 10 min, also provided in PNGS2015) it becomes ca <414 - 1097 [MJ ha-1 mm h-1]. While the maximum at-site R-factor is 1520 [MJ ha-1 mm h-1] (O1RASK01), the second largest at-site R-factor only slightly exceeds 1100 [MJ ha-1 mm h-1], corresponding well with the maximum from PNGS2015.

Note that the R-factor map, when derived without the O1RASK01 station, is very similar to the map presented in the manuscript - the maximum, mean and spatial distribution of R-factor changes only very slightly, suggesting our model is rather robust. We added a note on this. In addition, in response to comment #8 we modified Fig.3, showing now also R-factor maps based on different sets of stations.

7) Page 4, line 25: Is the gridded information data set using the same time period as the station specific data set? Please provide this information.

Yes, the period considered for the derivation of the gridded data is the same as for the station data. It is now stated explicitly in the manuscript (see Sect. 2.3).

8) Figure 3: This Figure does not provide useful information at present – either rework for a better graphical representation or skip

The figure was modified - we decreased the number of panels. The four displayed maps now show the estimated R-factor according to the “best” model (GLS_E) fitted on full set of 96 stations. Other 3 panels demonstrate the effect of excluding stations with large R-factor values, responding to comment #6.

9) Figure 7: . . . only those below 600 m (dashed).

Thank you for spotting this error. It is now corrected.

Rainfall erosivity factor in the Czech Republic and its **Uncertainty**

Martin Hanel^{1, 2}, Petr Máca¹, Petr Bašta¹, Radek Vlnas¹, and Pavel Pech¹

¹Faculty of Environmental Sciences, Czech University of Life Sciences, Kamýcká 1176, Prague 6, Czech Republic

²T. G. Masaryk Water Research Institute, Podbabská 30, Prague 6, Czech Republic

Correspondence to: Martin Hanel (hanel@fzp.czu.cz)

Abstract. In the present paper, the rainfall erosivity factor (R-factor) for the area of the Czech Republic is assessed. Based on 10-minute data for 96 stations and corresponding R-factor estimates, a number of spatial interpolation methods are applied and cross-validated. These methods include inverse distance weighting, standard, ordinary and regression kriging with parameters estimated by the method of moments and restricted maximum likelihood and a generalized least-squares (GLS) model. For the regression-based methods, various statistics of monthly precipitation as well as geographical indices are considered as covariates. In addition to the uncertainty originating from spatial interpolation, also the uncertainty due to estimation of the rainfall kinetic energy (needed for calculation of the R-factor) as well as the effect of record length and spatial coverage are addressed. Finally, the contribution of each source of uncertainty is quantified. The average R-factor for the area of the Czech Republic is $64\text{--}640 \text{ MJ ha}^{-1} \text{ mm h}^{-1}$, with values for the individual stations ranging between $32\text{--}152\text{--}320\text{--}1520$ $\text{MJ ha}^{-1} \text{ mm h}^{-1}$. Among various spatial interpolation methods, the GLS model relating R-factor to the mean altitude, longitude, mean precipitation and mean **excess fraction of precipitation** above the 95th percentile of monthly precipitation performed best. Application of the GLS model also reduced the uncertainty due to the record length, which is substantial when the R-factor is estimated for individual sites. Our results revealed that reasonable estimates of the R-factor can be obtained even from **relatively** short records (15–20 years), provided sufficient spatial coverage and covariates are available.

1 Introduction

Erosion is a natural geological phenomenon resulting from the removal of soil particles by water or wind. Soil erosion by water is a widespread problem throughout Europe (Van der Knijff et al., 2000)(Van der Knijff et al., 2000; Panagos et al., 2015). Erosion is usually triggered by a combination of factors like climate (e.g. long dry periods followed by heavy rainfall), topography (steep slopes), inappropriate land use, land cover patterns (e.g. sparse vegetation), ecological disasters (e.g. forest fires) and soil characteristics (e.g. a thin layer of topsoil, silty texture or low organic matter content).

Although measurements of soil erosion exist, they are often used as a basis for development, modification or verification of soil erosion models (applicable at larger scales), which are relating soil loss to indicators of relevant factors. A classic example is the Universal soil loss equation (USLE, Wischmeier and Smith, 1978) or the Revised USLE (Renard et al., 1997). Both methods express the long-term average annual soil loss as a product of rainfall erosivity factor (R-factor), soil erodibility factor,

slope length factor, slope steepness factor, cover-management factor and support practice factor. The experimental data indicate that when factors other than rainfall are held constant, soil losses from cultivated fields are directly proportional to an erosivity index ($EI30$) calculated as the total rainfall kinetic energy times the maximum 30-min intensity (Renard et al., 1997). The R-factor is then obtained as a long-term average annual rainfall erosivity index. In addition to point estimate of the R-factor a spatial information (map) is often required for practical purposes. Number of such maps have been released recently at national (Lu and Yu, 2002; Yin et al., 2007; Bonilla and Vidal, 2011; Oliveira et al., 2013; Borrelli et al., 2016; Panagos et al., 2016a; Meddi et al., 2015) scales.

Because of large spatiotemporal variability of rainfall, long records from a dense network of stations are in general required in order to provide reliable estimates of the R-factor and/or to develop rainfall erosivity maps. For instance, Wischmeier and Smith (1978) or Verstraeten et al. (2006) recommend at least 22 years of data to be used for estimation of the R-factor. On the other hand, lack of high-resolution rainfall data in combination with a need for soil erosion risk assessment often leads to situations where the R-factor ~~is estimated based on relatively short~~ has to be estimated from shorter records. For instance, ~~many of the a number of~~ stations used recently for the derivation of rainfall erosivity maps for Europe (Panagos et al., 2015) were shorter than 20 years and ~~even a number of several~~ records shorter than 10 years were considered. Similarly, the comparison of the spatial interpolation methods in the Ebro Basin (Angulo-Martínez et al., 2009) was based on 10 years of data (for a large number of stations) and Catari et al. (2011) assessed the uncertainty in the estimated R-factor considering a 13-year record for eight stations. ~~These record lengths are significantly shorter than the 22–30 years recommended in the USLE (Wischmeier and Smith, 1978) or e.g. by Verstraeten et al. (2006), which might lead to estimates with large confidence intervals.~~

~~The uncertainty can be, however,~~ In general, the uncertainty in the estimated R-factor increases as the length of the available record decreases but can be reduced by combination of data from different sites (Catari et al., 2011) or by considering covariates that are better sampled or/and their variation over space and time is smaller (Goovaerts, 1999). For the spatial interpolation of the R-factor, often variables like longitude, latitude and elevation (Goovaerts, 1999; Angulo-Martínez et al., 2009) or long-term precipitation (Lee and Lin, 2014) are considered.

In addition to spatial and temporal variability, the expression for the rainfall kinetic energy (needed for estimation of the erosivity index) and spatial interpolation are also relevant sources of uncertainty for the development of an R-factor map. The rainfall kinetic energy can be estimated by a number of expressions (see e.g. van Dijk et al., 2002). Therefore, several authors assessed the effect on the estimated R-factor. For instance, Catari et al. (2011) mentioned variation due to kinetic energy calculation of about 10%. Similarly, many spatial models can be used to predict the R-factor values over the area. The differences between several spatial interpolation methods have been reported e.g. by Angulo-Martínez et al. (2009). Catari et al. (2011) compared the contribution of different sources of variability to the overall uncertainty in the estimated basin average R-factor in NE Spain, concluding that while the uncertainty in annual erosivity index is dominated by the temporal variability (explaining more than 40% of variation) for long-term R-factor the kinetic energy calculation becomes more important.

Several maps of the R-factor for the whole Europe have been released in recent decades. For instance, Van der Knijff et al. (2000) applied simple relationships between seasonal and annual rainfall and R-factor and Panagos et al. (2015) used many high-resolution station ~~datastes~~ datasets (with various record length and observation periods) to derive an R-factor map based

on a Gaussian process model. The values derived for the Czech Republic from these maps range between ~~35 and 70~~ 350 and 700 MJ ha⁻¹ ~~em-mm~~ h⁻¹.

A number of estimates of the R-factor have been also published specifically for the Czech Republic. See e.g. the overview by Krása et al. (2014), who mention also results from a number of national projects. Official guidelines for soil erosion risk assessment recommend the value ~~20-200~~ MJ ha⁻¹ ~~em-mm~~ h⁻¹ to be used for all agricultural land in the Czech Republic. Only recently this value was increased to ~~40-400~~ MJ ha⁻¹ ~~em-mm~~ h⁻¹ (Janeček et al., 2007, 2012a). These values are relatively small with respect to the neighboring countries and some of the research published for the area. For instance, Janeček et al. (2006) published values of R-factor in the range of ~~43-106~~ 430-1060 MJ ha⁻¹ ~~em-mm~~ h⁻¹ and concluded that considerably larger values of R-factor (~~45-60~~ 450-600 MJ ha⁻¹ ~~em-mm~~ h⁻¹) should be used for practical application of USLE in the Czech Republic (instead of ~~20-200~~ MJ ha⁻¹ ~~em-mm~~ h⁻¹). Even larger values of R-factor are reported by Krása et al. (2015). On the other hand, Janeček et al. (2012b), using a regression between daily erosion index (*EI*30) and daily precipitation in order to predict annual *EI*30, report values of R-factor between ~~15 and 120~~ 150 and 1200 MJ ha⁻¹ ~~em-mm~~ h⁻¹, with an average for arable land of ~~30-40~~ 300-400 MJ ha⁻¹ ~~em-mm~~ h⁻¹. Similarly, Janeček et al. (2013) derived an R-factor for the Czech Republic from daily data considering the fraction of erosive events in each year for each station and the areal-average annual sum of the erosivity index. In addition, they excluded years with the largest and years with the smallest erosivity index from the analysis. This resulted in a recommendation to use ~~40-400~~ MJ ha⁻¹ ~~em-mm~~ h⁻¹ for all agricultural land in the Czech Republic. The trends in ~~rainfall erosivity~~ annual rainfall erosivity index were studied by Hanel et al. (2015), who found significant ~~a positive~~ increasing trend ($\approx 4\%$ per decade) in 51-year records for 11 stations (more than a half of the considered stations). However, recent values of erosivity index were not exceptional when compared to a longer (91-year) record available at a single station.

The present paper compares several methods of spatial interpolation of the R-factor over the Czech Republic and evaluates the bias and uncertainty due to expression for the kinetic energy, spatial model, record length and spatial coverage. The paper is structured as follows. The study area and data considered for calculation and spatial interpolation of the R-factor are given in Section 2. Section 3 describes the methods used for estimation of the R-factor, spatial interpolation and uncertainty assessment. The results are presented and discussed in Section 4. The paper is closed with concluding remarks (Section 5).

2 Study area and data

2.1 Study area

Because of relatively complex orography and combination of Atlantic, Mediterranean and continental effects, the precipitation patterns over the area of the Czech Republic are rather variable (see Fig. 4). The precipitation is mostly due to enhanced westerly flows in winter (Atlantic influence), except for the eastern part of the Czech Republic, which is typically influenced by the Mediterranean Sea. The Mediterranean influences are also dominant over the whole area in summer (e.g. Brádka, 1972; Brázdil, 1980).

The mean annual total precipitation varies from about 400 mm in the western part of the Czech Republic up to more than 1400 mm in the mountains to the north (Tolasz et al., 2007). Almost two-thirds of the annual total falls in the warm half of

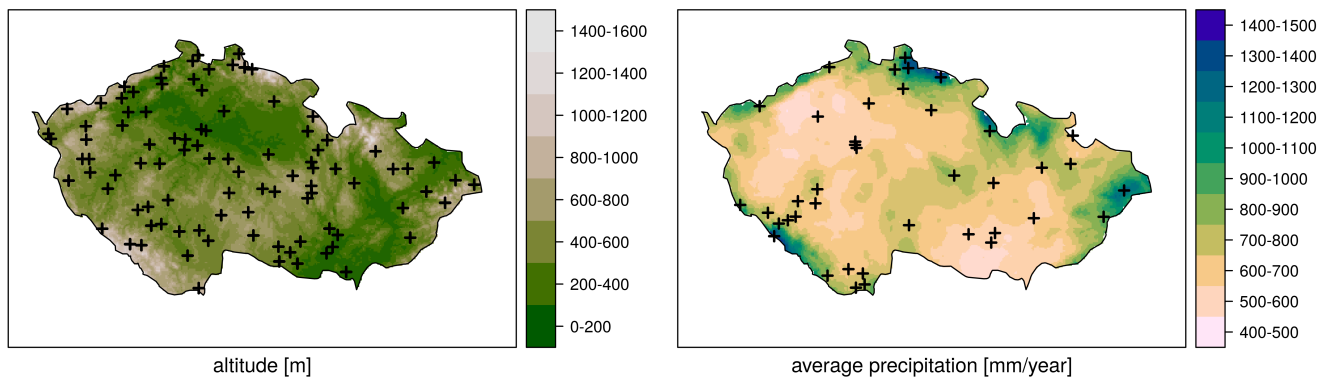


Figure 4. The ~~map of the~~ study area with ~~(left)~~ altitude and location of 96 stations used for ~~spatial interpolation and derivation of the R-factor~~ map (rightleft) and mean annual precipitation ~~and together with~~ location of additional stations used for ~~assessment of uncertainty~~ assessment (right).

the year (April–September). The maximum precipitation amounts can be quite large at short timescales, thus contributing considerably to the annual total precipitation. Štekl et al. (2001) point to historical records of 237 mm in 1 hour (25 May 1872), 345 mm in 1 day (29 July 1897), 537 mm in 3 days (6–8 July 1997) and 617 mm in 5 days (4–8 July 1997).

2.2 Pluviograph records

- 5 A database of 10-min digitized pluviograph records was used in our study. Since a considerable amount of precipitation falls as snow during winter, the data are in general available only for mid-May to mid-September (further referred to as year). This is, however, the period when heavy precipitation usually occurs. The data were digitized by the Czech Hydrometeorological Institute (CHMI). Detailed identification and reconstruction of unreadable, damaged or missing records comprised part of the digitization process (see Květoň et al., 2004, for details). Consistency of the aggregated 10-min data with daily records from
- 10 control ombrometers was further checked by Hanel and Máca (2014). Identified inconsistent days were marked unreliable and the years with more than 10% of unreliable data were excluded from the analysis. A set of 96 stations covering the study area for the period 1989–2003 was selected (based mainly on data availability) in order to provide reasonable spatial coverage and record length for the spatial interpolation of rainfall erosivity. The distance between neighbouring stations is 5–42 km (17 km on average) and the stations are located at altitudes from 150 to 1118 m (450 m on average). Note that although significant
- 15 positive trend in annual erosivity index has been reported by Hanel et al. (2015) for several stations in the Czech Republic, no clear trend is observed (not shown) in the considered period (1989-2003). Detailed information on the considered stations is included in the supplement to this paper.

To analyze the temporal variability and the effect of the number of stations used for the spatial interpolation, also the longest available record (C2TREB01 - Třeboň), with 80 years of data and ~~an additional 24~~ additional 40 stations (usually with slightly different time period than 1989–2003), ~~was~~ were considered (see Sect. 3.3). The location of the stations is indicated in Fig. 4.

The database of 10-min digitized pluviograph records was also used for the estimation of average at-site rainfall event characteristics (event depth, event duration, maximum 10-min intensity, mean event rate, time to peak, depth to peak and number of events), which were later linked with selected spatial interpolation models (see Hanel and Máca, 2014, for details on the considered rainfall event characteristics).

2.3 ~~Spatial~~ Gridded precipitation data

Gridded (1 km resolution) statistics of monthly precipitation for the period 1989-2003 (the same as for the station data) provided by the CHMI were considered as covariates for the spatial interpolation models. Specifically, we used the average (May–September) precipitation (r_{mea}), coefficient of variation of monthly (May–September) precipitation (r_{cv}) and the mean ~~excess~~ fraction of precipitation above the 95% quantile of monthly (May–September) precipitation (r_{p95}). Please note that these gridded statistics are based on much larger numbers of stations (usually more than 750 stations were available for each month and year) than were used in our study for spatial interpolation of the R-factor.

15 3 Methods

3.1 Rainfall erosivity factor

A standard methodology for the assessment of at-site rainfall erosivity factor (Wischmeier and Smith, 1978) was applied. A continuous 6-hour interval without precipitation is used to separate individual rainfall events. To be considered erosive, the cumulative rainfall of an event should be greater than 12.7 mm or the event should have at least one peak greater than 6.35 mm in 15 minutes. The latter criterion was modified to 8.5 mm in 20 minutes in order to match the temporal resolution of our dataset. Similar modification was reported by Meusburger et al. (2012). The proportion of erosive events that are included on the basis of the intensity criterion is, however, small.

The rainfall erosivity factor is defined as a long-term average annual sum of the event erosivity index (EI_{30} [$\text{MJ mm ha}^{-1} \text{h}^{-1} \text{yr}^{-1}$], Wischmeier and Smith, 1978),

$$25 \quad EI_{30} = I_{30} \sum_i e_i v_i, \quad (1)$$

where

$$e_i = 28.3[1 - 0.52 \exp(-0.042r_i)] \quad (2)$$

is the unit rainfall energy [$\text{MJ ha}^{-1} \text{mm}^{-1}$] (van Dijk et al., 2002), v_i and r_i are the rainfall volume [mm] and intensity [mm h^{-1}] during a time interval i , respectively, and I_{30} is the maximum rainfall intensity during a period of 30 min in the event [mm h^{-1}].

The unit rainfall energy in eq. 2 is from van Dijk et al. (2002), who assessed many expressions for its calculation. To assess the related uncertainty, the R-factor was also estimated using an additional 14 expressions for e_i (see Appendix A for their definition).

Note, that the R-factor is further expressed in $\text{MJ ha}^{-1} \text{cm h}^{-1}$ (equivalent to $\text{kJ mm m}^{-2} \text{h}^{-1}$), which is the unit most often used in the Czech Republic.

3.2 Spatial interpolation models

At-site dataset of rainfall erosivity factors was further explored using spatial interpolation models. Following the classification of spatial interpolation models for rainfall erosivity provided by Angulo-Martínez et al. (2009), selected local, global, geostatistical and mixed-geostatistical, mixed and global models were tested. For detailed discussion on spatial interpolation models of rainfall erosivity factor, see also Goovaerts (1997); Meusburger et al. (2012).

The local models, which described the spatial distribution of rainfall erosivity using local at-site information of R-factor, were represented by the model based on inverse distance weighting (IDW) (Angulo-Martínez et al., 2009 and; see e.g. Angulo-Martínez et al., 2012; Meusburger et al., 2012).

The IDW model predicts the R-factor $R(x_0)$ at a location x_0 considering rainfall erosivity factor from nn nearest stations by weighting the contribution of each station by the inverse distance d_{0i} between station i at location x_i to the location x_0 . This can be summarized by

$$R(x_0) = \frac{\sum_{i=1}^{nn} d_{0i}^{-r} R(x_i)}{\sum_{j=1}^{nn} d_{0j}^{-r}},$$

with exponent r as a weighted average of R-factor estimates from a selected number of stations. Weights are inversely proportional to the distance (between interpolated location and corresponding station) raised to the power r controlling the decay of weight with distance. Parameters nn and r . The number of considered stations and the value of parameter r were estimated during the model cross-validation (see sections 3.2.1 and 4).

Global models are based on regression between the R-factor and other covariates available for the whole spatial domain. These The geostatistical models were represented by generalized linear models (GLS). Selected geostatistical models mainly used semivariogram information about rainfall erosivity factor and other spatial covariates. This group consisted of simple kriging (SK), ordinary kriging (OK), simple cokriging (SC) and ordinary cokriging models (OC) (Goovaerts, 1997, 1999). The arithmetic mean of at-site R-factor values was used as the estimator of mean value for simple kriging and cokriging models. The cokriging models were tested using a set of seven rainfall event characteristics (see section 2.2) as a cokriging variate. The mixed models combine the global information about R-factor descriptors with variogram information and were represented by regression kriging models (RK; Hengl et al., 2004, 2007) Their spatial covariance structures were described by the Matérn models (Minasny and McBratney, 2005; Haskard, 2007; Pardo-Iguzquiza and Chica-O

The global, geostatistical and mixed spatial interpolation models decompose the rainfall erosivity factor $R(x)$ at location x into two parts, using an additive model of general form

$$R(x) = m(x) + e(x),$$

where $m(x)$ represented the fixed or deterministic component of rainfall erosivity factor, and $e(x)$ described the stochastic component of rainfall erosivity related to the residuals of the fixed component of the spatial interpolation model (Kitanidis, 1993; Goovaerts, 1997). Note, that the IDW model (eq. 2.1) can be interpreted as a special form of the model from eq. 2.2 with $e(x)$ set to 0.

3.2.1 Fixed component

For the prediction of the fixed terms of the considered spatial interpolation model the linear model

$$m(x) = \mathbf{f}(x)^\top \boldsymbol{\beta}$$

was used, with \mathbf{f} the column vector of fixed term inputs at location x and $\boldsymbol{\beta}$ the column vector of parameters, which can be uniquely identified for each interpolation model (Kitanidis, 1993; Goovaerts, 1997; Minasny et al., 2011).

The fixed term consists of a single constant and $\boldsymbol{\beta}$ equals to 1 for SK, OK, SC and OC models. The arithmetical mean was used as an estimator of expected value of rainfall erosivity in SK and SC models. The assumption of unknown constant mean of R-factor was applied for all OK and OC models (Goovaerts, 1997).

The fixed term for the rest of the models (GLS and RK) was mixed models were represented using a set of different regression kriging models, further denoted as RK (Hengl et al., 2004, 2007). Their spatial covariance structures of residuals were described using the Matérn models. The spatially varied means of R-factors were estimated using three types of inputs:

1. location information represented by longitude (x), latitude (y) and altitude z ,
2. spatial rainfall information expressed by the combinations of r_{mea} , r_{cv} and r_{p95} and
3. information consisting of combinations of both previous types of spatial covariates.

All GLS and RK models take into account the covariance structure of residuals for the estimation of parameters $\boldsymbol{\beta}$. The applied estimator of $\boldsymbol{\beta}$ vector was defined as

$$\hat{\boldsymbol{\beta}} = \left(\mathbf{F}^\top \mathbf{K}^{-1} \mathbf{F} \right)^{-1} \mathbf{F} \mathbf{K}^{-1} \mathbf{R},$$

with $\mathbf{F} = [\mathbf{f}(x_1), \dots, \mathbf{f}(x_n)]^\top$ the design matrix of fixed terms inputs, $\mathbf{R} = [R(x_1), \dots, R(x_n)]$ the rainfall erosivity calculated at n locations, $\mathbf{K} = \text{cov}(\mathbf{R}, \mathbf{R}^\top)$ its covariance matrix and $\hat{\boldsymbol{\beta}}$ the estimate of $\boldsymbol{\beta}$ (Kitanidis, 1993; Goovaerts, 1999; Minasny and McBratney, 2007).

The inverse of covariance matrix \mathbf{K}^{-1} was calculated using the Cholesky factorization. For the computationally unstable cases, the constant diagonal terms were added to \mathbf{K} for improving its positive-definiteness (Minasny and McBratney, 2007).

3.2.1 Stochastic component

The random residual component $e(x)$ was expressed as a zero-mean stochastic process with the underlying isotropic spatial covariance structure $\mathbf{K} = cov(\mathbf{R}, \mathbf{R}^T)$ for SK, OK, SC, OC and all RK models (Kitanidis, 1993; Goovaerts, 1999; Minasny and McBratney,

5 The rainfall erosivity $R(x_0)$ at unsampled location x_0 was calculated as-

$$R(x_0) = m(x_0) + k\mathbf{K}^{-1} \left(\mathbf{R} - \mathbf{F}\hat{\beta} \right),$$

with $k = cov(\mathbf{R}, R(x_0))$. The second term of eq. ?? expresses the empirical best linear unbiased prediction of the stochastic component of linear mixed models (Stein, 1999; Hengl et al., 2004; Minasny and McBratney, 2007).

The covariance structure of random component was modeled. The global spatial interpolation models were represented by the set of generalized linear models GLS. The deterministic components were estimated using the same types of inputs as in the case of mixed models. Their random error terms were represented using the Matérn and exponential models (Minasny and McBratney, 2005).

The spatial covariance was found using two approaches: 1) the classical semivariogram estimator based on the method of moments (further denoted MofM, see Goovaerts, 1997; Angulo-Martínez et al., 2009) and 2) the REML approach (Kitanidis, 1983; Pinheiro

15

The MofM was based on calculating the semivariogram cloud of residuals and fitting of the heteroscedasticity of the Matérn/exponential semivariogram to the pairs of averaged semivariances calculated within each pair of two successive separation distances (Goovaerts, 1997). The semivariogram fitting often requires expert knowledge (Angulo-Martínez et al., 2009), and therefore different settings of separation distances for averaging the semivariances and reducing the effects of outliers were tried. This approach to estimating of the rainfall erosivity covariances was applied for the SK, OK, SC, OC and all regression kriging methods.

20

The REML approach was applied in parameter estimation for GLS model residuals was studied by the means of exponential variance function (see. 206 in Pinheiro and Bates, 2000). The parameters of all tested GLS models. The GLS models with the exponential and Matérn (further distinguished as GLS_M) form of spatial covariance structure were considered. We also studied heteroscedasticity of the GLS model residuals using approach based on exponential variance function (see. 206 in Pinheiro and Bates, 2000) estimated with the restricted maximum likelihood (REML) method (Kitanidis, 1993; Pinheiro and Bates, 2000; Minasny and McBratney, 2005).

25

3.2.1 Model selection

Standard leave-one-out procedure (Minasny and McBratney, 2007; Angulo-Martínez et al., 2009) was used for the validation of spatial interpolation models. The following indices were considered:

Willmott's agreement index (*WI*)

$$WI = 1 - \frac{\sum_{i=1}^n [R_S(\mathbf{x}_i) - R_I(\mathbf{x}_i)]^2}{\sum_{i=1}^n (|R_S(\mathbf{x}_i) - \bar{R}_S(\mathbf{x}_i)| + |R_I(\mathbf{x}_i) - \bar{R}_I(\mathbf{x}_i)|)^2}, \quad (3)$$

Mean absolute error (*MAE*)

$$MAE = \frac{1}{n} \sum_{i=1}^n |R_S(\mathbf{x}_i) - R_I(\mathbf{x}_i)|, \quad (4)$$

Relative mean absolute error (*rMAE*)

$$rMAE = \frac{1}{n} \sum_{i=1}^n \frac{|R_S(\mathbf{x}_i) - R_I(\mathbf{x}_i)|}{R_S(\mathbf{x}_i)}, \quad (5)$$

Root mean square error (*RMSE*)

$$RMSE = \sqrt{\frac{1}{n} \sum_{i=1}^n [R_S(\mathbf{x}_i) - R_I(\mathbf{x}_i)]^2}, \quad (6)$$

5 where $R_S(\mathbf{x}_i)$ is the rainfall erosivity calculated for station i , $R_I(\mathbf{x}_i)$ is the spatially interpolated value of the rainfall erosivity for the same station, and $\bar{R}_S(\mathbf{x}_i)$ and $\bar{R}_I(\mathbf{x}_i)$ are the mean rainfall erosivities calculated for the station data and obtained from spatial interpolation, respectively.

The choice of the validation criteria follows the discussion about *RMSE* and *MAE* presented by Willmott and Matsuura (2005), who recommended the use of *MAE* for the estimation of average model error over the *RMSE*, since *RMSE* can be
10 influenced by outlying observations. The *WI* was also considered for consistency with other relevant studies (for example, see Angulo-Martínez et al., 2009).

The model selection aimed at identification of robust spatial interpolation methods from the considered groups and also at identification of optimal structure and parameters of the particular models including various combinations of covariates, covariance models, number of nearest stations considered for ~~the IDW and SK, OK and RK~~ local, geostatistical and mixed
15 models, etc.

3.3 Uncertainty assessment

The uncertainty in the derived R-factor map originates from the formulation of the kinetic energy term, spatial interpolation model and spatial and temporal variability. While the effect of the former two can be assessed by direct comparison of results for different expressions of rainfall kinetic energy and different spatial interpolation models, the effect of spatial and temporal
20 variability is evaluated here by simple bootstrap resampling procedures, which are briefly summarized in the rest of this section.

3.3.1 Temporal variability

Record length influences the width of the confidence interval around the R-factor estimate. Due to the temporal variability, sufficient record length is required in order to provide an estimate of the R-factor such that the long-term average R-factor (further denoted the “true R-factor”) would be covered by the estimated confidence interval. Therefore, we derived the confidence intervals for various record lengths together with the probability that the “true R-factor” lies within the corresponding confidence interval (further denoted the “coverage probability”) using our longest available record, i.e. the station C2TREB01 (Třeboň) with 80 years of data. This can be done using a nested bootstrap procedure in which a sample of required length (e.g. 10, 20, or 80 years) is drawn (with replacement) from the original record and further resampled. This allows for determination of the confidence interval and examination whether the “true R-factor” is included. To obtain the coverage probability, the whole procedure has to be repeated many times. Here we evaluated the coverage probabilities for the record lengths 10–80 years. For details, see Appendix B.

3.3.2 Record length and spatial coverage

Long records from a dense network of stations should be ideally available to derive an R-factor map. In reality, however, long records are often available only for a relatively small number of stations and a balance between record length and spatial coverage has to be found. It is then not clear whether longer records or better spatial coverage should be preferred.

Specifically, we asked (a) what is the relationship of error in the estimated R-factor to the spatial and temporal coverage and how spatial and temporal coverage influences (b) the width of the confidence interval around the estimated R-factor and (c) the coverage probability (i.e. the probability that the estimated confidence interval includes the “true R-factor”).

To be able to assess these questions, a simulation study was conducted. The procedure is fully described in Appendix C, and here we provide only general overview. As a reference, a synthetic dataset of monthly (May–September) erosivity index (*EI30*) was created by permutation of 10 years of data available for 120 stations as follows: First, a 100-year-long sequence of months May–September was created and a random year (from the available period) was assigned to each month in each year. Data for each of the 120 stations were then rearranged according to this year–month sequence and the data were aggregated by years. This resulted in a dataset of 100 years for 120 stations. This procedure preserves the annual cycle of erosivity index and its spatial variability, while it assumes independence of erosivity index between individual months. This dataset is further denoted as the “full dataset”. Please note that although many different replications of this “full dataset” can be obtained, only one replication is used in this study. We do not expect the results (presented further) to vary significantly when different replication is considered.

The R-factor in this “full dataset” was estimated and a simple GLS model of the form $R \sim NAVY + r_{mea} + Y$ was fitted. This model was used to predict the R-factor for an additional 62 locations (coincident with real stations, but independent of the “full dataset”). This is further denoted the “validation dataset”. The assessment of the effects of spatial and temporal coverage was based on a repetitive resampling of the subsets of the “full dataset”, fitting a GLS model and predicting the R-factor for the “validation dataset” (for details, refer to Appendix C).

Within the simulation study, we evaluated the RMSE, the width of the 90% confidence interval and the coverage probability for record lengths of 5, 10, 15, 20, 30, \dots , 100 years for 10, 20, \dots , 120 stations. Since it has been frequently noted that areal averaging is in general preferred to spatial interpolation in the Czech Republic (Janeček et al., 2006, 2012b, 2013), at least for agricultural areas (in general low-altitudes), we also assessed this “areal-average model” (i.e. constant R-factor for all 5 locations). The “areal-average model” was applied for the whole “validation dataset” and considering only the stations with altitude below 600 m.

3.3.3 Comparison of uncertainties

To compare the contribution of different sources of uncertainty, the R-factor was predicted for the “validation data” using:

- the best GLS model of the R-factor considering 15 different expressions for kinetic energy (see Appendix A)
- 10 – selected classes of spatial interpolation models
- GLS models based on different number of stations and years (see Sect. 3.3.2)

The coefficient of variation CV for each set of the estimated R-factors was calculated to summarize the variability due to different sources, similarly as done by Catari et al. (2011) or Panagos et al. (2015). For comparison, we also evaluated CV for the R-factor estimates considering various record lengths for the C2TREB01 (Třeboň) station (see Sect. 3.3.1). Finally, CV 15 for the R-factor estimate for each of the 96 stations (representing natural variability) was evaluated using a simple bootstrap resampling of the annual erosivity values.

4 Results and discussion

4.1 R-factor

The estimated R-factor (considering the kinetic energy relationship proposed by ~~van Dijk et al., 2002~~ [van Dijk et al., 2002](#), eq. 2) for the 96 stations used for spatial interpolation ranges between ~~32~~ [320](#) (U1KOPI01 - Kopisty, NW Czech Republic) and ~~152~~ [1520](#) (O1RASK01 - Raškovice, NE Czech Republic) $\text{MJ ha}^{-1} \text{ mm h}^{-1}$, and averages ~~64~~ [640](#) $\text{MJ ha}^{-1} \text{ mm h}^{-1}$. Note that the second largest R-factor (station H2DEST01 - Deštné v Orlických horách) equals 1108 $\text{MJ ha}^{-1} \text{ mm h}^{-1}$. R-factor values for individual stations can be found in supplement to this paper. Figure 5 shows average R-factor values for subsets of stations based on maximum station elevation included in the subset. For instance, the average R-factor for the elevations up to 25 300 m is slightly less than ~~55~~ [550](#) $\text{MJ ha}^{-1} \text{ mm h}^{-1}$ and for elevations up to 600 m slightly more than ~~60~~ [600](#) $\text{MJ ha}^{-1} \text{ mm h}^{-1}$. The average contribution of individual months to the annual total R-factor is 17% for May, 19% for June, 28% for July, 26% for August and 10% for September.

~~These values~~ The at-site R-factor estimates correspond well with those published by Janeček et al. (2006) and Krása et al. (2015), but are considerably larger than values recommended by the official guidelines for the Czech Republic (Janeček

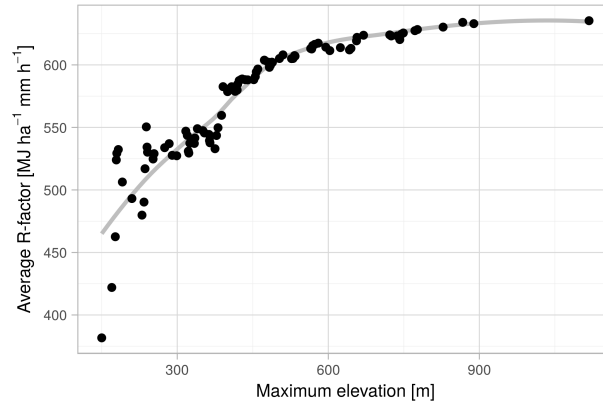


Figure 5. Average R-factor for subsets of stations with smaller elevation than that plotted on horizontal axis. The leftmost point corresponds to a station with the lowest altitude, the rightmost point to the overall average R-factor.

et al., 2007, 2012a) and those published by Janeček et al. (2012b, 2013). In part, differences might be due to the modifications to the standard USLE methodology considered by Janeček et al. (2012b, 2013), e.g. calculation of the R-factor as a trimmed mean (excluding years with the two smallest and two largest annual erosivity values) of the annual erosivity index. Perhaps in small part measure, the differences can be also attributed to the different time period used for R-factor assessment (here 1989–2003, in other studies often the series from 1960 and earlier were considered). The estimated average R-factor, after reduction for temporal resolution (from 10 to 30 minutes; Panagos et al., 2016b), becomes 525 MJ ha⁻¹ mm h⁻¹, which almost equals the average R-factor from the rainfall erosivity map of Europe - 524 MJ ha⁻¹ mm h⁻¹ for the Czech Republic (Panagos et al., 2015). In addition to different temporal resolution, Panagos et al. (2015) considered also different stations and kinetic energy formulation (i.e. that of Brown and Foster, 1987, see Fig. 8 for comparison with van Dijk et al., 2002 used here). Although the spatial distribution of the R-factor over the Czech Republic appears rather homogeneous in Panagos et al. (2015) the range of the at-site R-factors (after correction for temporal resolution) corresponds well with that from Panagos et al. (2015) when the station with the maximum rainfall erosivity (O1RASK01) is left out. The effect of this station on the resulting R-factor map is further discussed in following section.

4.2 Model selection

The estimated at-site R-factor is positively correlated with average precipitation (r_{mea}), coefficient of variation of monthly precipitation (r_{cv}) and the mean excess fraction of precipitation above the 95% quantile of monthly precipitation (r_{p95}) derived from the gridded data (see Sect. 2.3), with correlation coefficients 0.75, 0.44 and 0.54, respectively. Further, positive correlation was also found with altitude (0.32) and longitude (0.47) and weak negative correlation (-0.25) with latitude. These variables have been primarily used also as covariates in the relevant spatial interpolation methods. Note, that correlation may

be substantially weaker or different variables may be relevant in other regions, especially regions with complex topography (see e.g. Capra et al., 2015 or Porto, 2016).

To explore these relationships further, we analyzed a set of GLS models with various combinations of fixed component covariates and spatial stochastic covariance structure. The number of fixed term covariates ranged from one to five. Two theoretical models of spatial covariance and a heteroscedastic error model were considered (see section 3.2). The best GLS model according to the cross-validation results of WI , $RMSE$ and $rMAE$ had four fixed term covariates: r_{mea} , r_{p95} , altitude, and longitude, exponential spatial correlation structure and exponential heteroscedastic error. The coefficient of determination for regression between at-site R-factor values and R-factor values predicted by this GLS model equals to 0.7, which is comparable to results of Meusburger et al. (2012). This was followed by a GLS model with fixed term covariates longitude, latitude, altitude, r_{mea} and r_{cv} and Mathérn spatial covariance structure, which had the lowest value of MAE . These two GLS models are further referred to as GLS_E and GLS_M , respectively. The GLS_E model with estimated coefficients reads as:

$$R = 10.246r_{mea} + 2902.462r_{p95} - y - 0.130z + 3649.792 \quad (7)$$

with y the latitude [km] (in the Czech S-42 - Pulkovo 1942/Gauss-Krüger zone 3 projection) and z the altitude [m]. The parameters are transformed such that the equation can be directly applied to observed covariates. Please note, that r_{mea} and r_{p95} are based on (1 km) gridded data (see Sect. 2.3). Calculating these indices using station data would likely lead to positive bias in the resulting R-factor. This is due to area reduction effects influencing areal-average rainfall event characteristics (see e.g. Svoboda et al., 2016, for discussion).

Figure 6 further demonstrates the effect of excluding station(s) with large R-factor on the interpolated R-factor in the case of GLS_E model. Although the mean and maximum R-factor decrease and local R-factor patterns change slightly when stations with large R-factor are excluded, the differences are small (especially with respect to other sources of uncertainty, see further) suggesting our model is rather robust.

In addition to GLS models, other spatial interpolation methods were considered. Table 2 presents cross-validation indices, spatial average and standard deviation of interpolated R-factor. ~~Figure 6 shows the estimated R-factor for each spatial interpolation model.~~ The estimated average R-factor ranges from ~~62.62 to 65.66~~ 626 to 657 $MJ\ ha^{-1}\ em\ mm\ h^{-1}$.

Comparing the R-factor estimated by different spatial interpolation models, the largest similarities were found between the GLS_E , GLS_M and $RK_{xyz, r_{mea}, r_{cv}}$. GLS_M and $RK_{xyz, r_{mea}, r_{cv}}$ models had fixed terms inputs formed from longitude, latitude, altitude, r_{mea} and r_{cv} . The correlation coefficient ~~0.99~~ between estimates of GLS_E and GLS_M ~~and 0.97 equals 0.99 and~~ between the GLS_E model and $RK_{xyz, r_{mea}, r_{cv}}$ models 0.97. These similarities were confirmed on the rasters of differences between values of the GLS_E model and remaining spatial interpolation models (see Fig. 7). The median absolute difference between the GLS_E and GLS_M models was ~~2.00-20.0~~ 20.0 $MJ\ ha^{-1}\ em\ mm\ h^{-1}$, with standard deviation of differences ~~1.92-19.2~~ 19.2 $MJ\ ha^{-1}\ em\ mm\ h^{-1}$. For the differences between the GLS_E and the best RK model, the median absolute difference and standard deviation was roughly double.

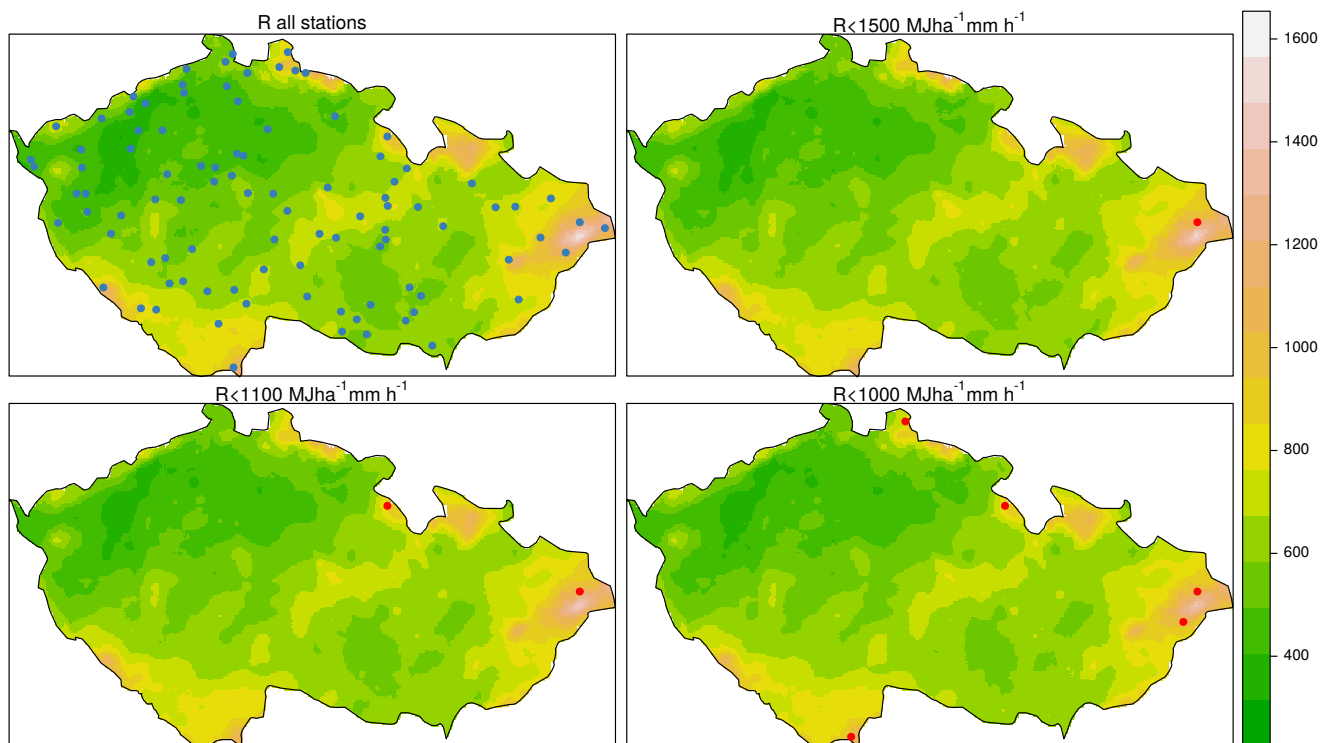


Figure 6. R-factor estimated by different spatial interpolation models: with the GLS_E model using all available stations (top left) and GLS_E model fitted considering only stations with $R \sim r_{mea} + r_{p95} + Y + NAVY$, where XYZ stands for longitude (top right), latitude (bottom left) and altitude (bottom right). Blue points in the top left panel indicate the full set of 96 stations, red dots in other panels correspond to stations excluded from fitting procedure.

The largest differences were found between the GLS_E model and the spatial interpolation models, which did not take into account the long-term rainfall characteristics. The largest difference of R-factor estimates ($74.12-741 MJ ha^{-1} mm h^{-1}$) was found between the GLS_E and OK models. Large values of MAE , $rMAE$ and $RMSE$ and small values of WI for IDW, SK, OK, SC and OC models show that spatial distribution of R-factor could not be sufficiently described by the models, which emphasized the stochastic component of R-factor, or explain R-factor using local information. The spatial interpolation models with fixed term covariates based on r_{mea} or r_{cv} or r_{p95} were superior to the models without fixed component linked to the long-term rainfall characteristics (cf. the cross-validation results of RK_{XYZ}).

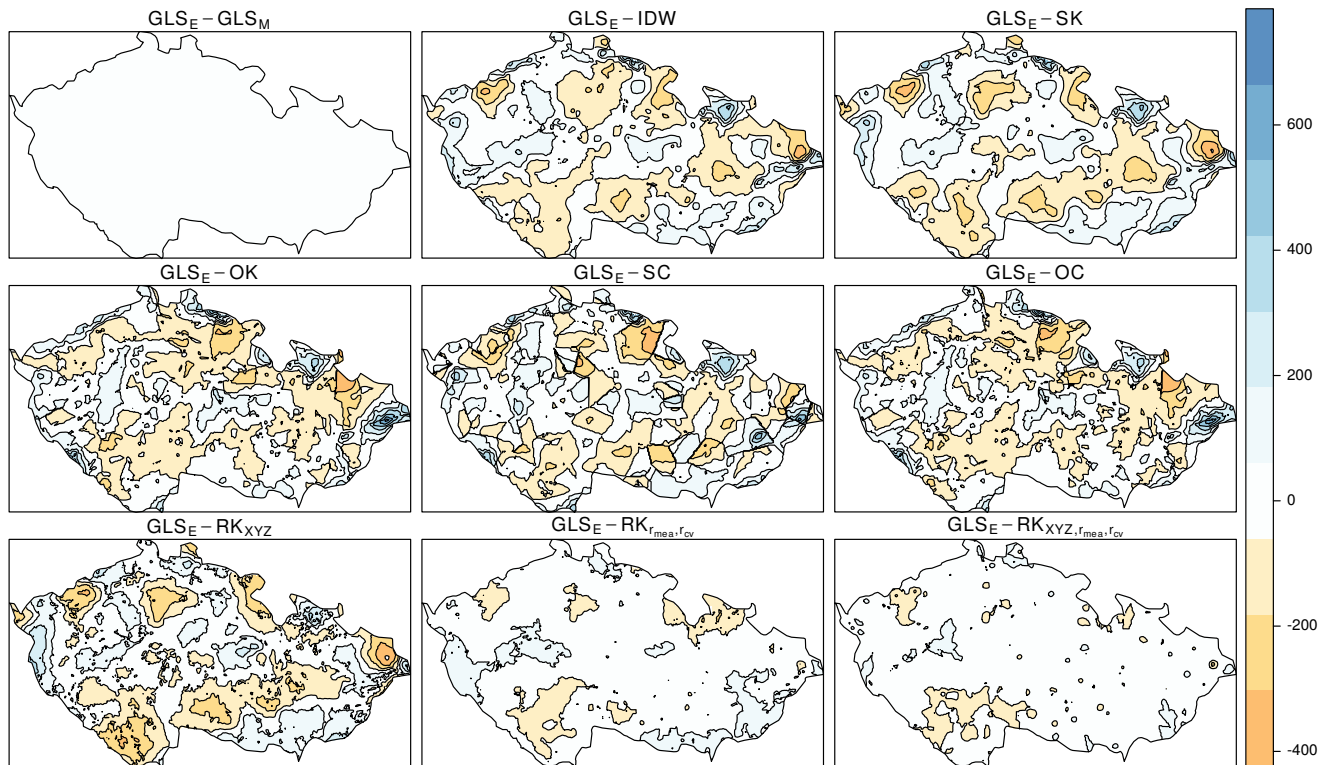


Figure 7. Differences [$MJ\ ha^{-1}\ cm\ mm\ h^{-1}$] between the GLS_E and other spatial interpolation models, GLS_E - generalized linear model with exponential covariance structure, GLS_M - generalized linear model with Matérn covariance structure, IDW - inverse distance weighting, SK - simple kriging, OK - ordinary kriging, SC - simple cokriging, OC - ordinary cokriging, RK - stands for regression kriging.

Including the stochastic information obtained from rainfall event characteristics in simple cokriging and ordinary cokriging models also did not improve the spatial interpolation of R-factor. The presented SC and OC models were selected from seven different types of cokriging models. They differed according to the rainfall event characteristic, which was used for the second cokriging variate. The best SC and OC models were those, which linked their stochastic component with the maximum 10-min intensity and on site R-factor. Including these rainfall event characteristics did not, however, improve the spatial interpolation of R-factor over the spatial models based on the long-term rainfall event characteristics (see Table 2).

The success of models including long-term precipitation characteristics might be surprising in part because daily or subdaily rainfall data are in general preferred for calculation of the R-factor over monthly or annual data (Angulo-Martínez et al., 2009). The potential of long-term rainfall characteristics for R-factor estimation is also stressed by Lee and Lin (2014), who explored

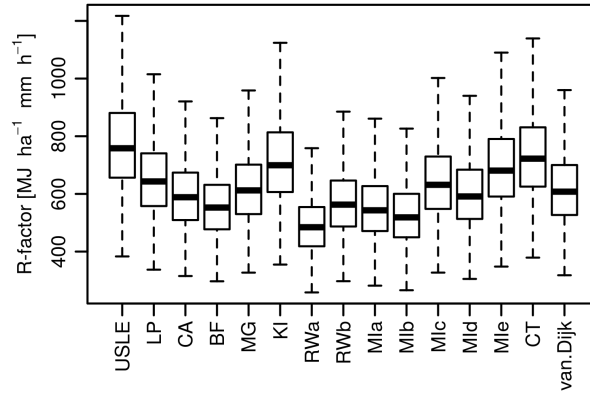


Figure 8. Estimated R-factor [$\text{MJ ha}^{-1} \text{ em-mm h}^{-1}$] considering different kinetic energy formulations (see Appendix A).

Table 2. Cross-validation indices for the best variants of each spatial interpolation model. AVst - at-site average; SDst - at-site standard deviation; AVsp - spatial average; SDsp - standard deviation of spatial R-factor. The best cross-validation indices are marked in bold font.

	WI	RMSE	MAE	rMAE	AVst	SDst	AVsp	SDsp
IDW	0.78	16.43 <u>164.33</u>	12.37 <u>123.68</u>	0.20	62.57 <u>625.69</u>	16.21 <u>162.15</u>	64.95 <u>649.46</u>	16.54 <u>165.37</u>
SK	0.79	16.30 <u>163.01</u>	12.48 <u>124.78</u>	0.21	62.70 <u>626.98</u>	16.37 <u>163.73</u>	64.73 <u>647.33</u>	17.45 <u>174.49</u>
OK	0.79	16.60 <u>165.96</u>	12.65 <u>126.48</u>	0.21	63.07 <u>630.72</u>	17.46 <u>174.62</u>	65.66 <u>656.59</u>	13.57 <u>135.70</u>
SC	0.73	16.97 <u>169.72</u>	13.12 <u>131.15</u>	0.22	63.13 <u>631.26</u>	13.98 <u>139.77</u>	64.45 <u>644.53</u>	15.16 <u>151.57</u>
OC	0.79	15.88 <u>158.78</u>	12.19 <u>121.86</u>	0.21	63.29 <u>632.86</u>	15.89 <u>158.90</u>	65.63 <u>656.32</u>	13.81 <u>138.13</u>
RK _{XYZ}	0.79	17.14 <u>171.44</u>	13.13 <u>131.34</u>	0.22	63.69 <u>636.86</u>	19.15 <u>191.49</u>	65.37 <u>653.69</u>	18.78 <u>187.78</u>
RK _{r_{mea},r_{cv}}	0.89	12.69 <u>126.89</u>	9.36 <u>93.59</u>	0.15	63.69 <u>636.87</u>	18.57 <u>185.67</u>	62.62 <u>626.22</u>	16.81 <u>168.13</u>
RK _{xyz,r_{mea},r_{cv}}	0.90	12.19 <u>121.91</u>	9.31 <u>93.13</u>	0.15	63.62 <u>636.18</u>	18.37 <u>183.74</u>	63.28 <u>632.77</u>	15.88 <u>158.78</u>
GLS _M	0.90	11.63 <u>115.38</u>	8.98 <u>90.57</u>	0.14 <u>0.15</u>	63.39 <u>635.34</u>	17.58 <u>175.12</u>	63.28 <u>628.27</u>	15.88 <u>149.29</u>
GLS _E	0.91 <u>0.91</u>	11.44 <u>114.37</u>	9.00 <u>89.95</u>	0.14 <u>0.14</u>	63.56 <u>635.64</u>	17.75 <u>177.47</u>	62.78 <u>627.80</u>	15.33 <u>153.35</u>

relationships between rainfall and erosivity index at daily, monthly and annual time-scales and concluded that the relationship between annual erosivity index and annual rainfall is closer than that for the other time-scales.

The average R-factor varies considerably when different formulas for kinetic energy are considered (see Fig. 8). The smallest average R-factor is obtained by the RWa relationship (~~50~~ 500 $\text{MJ ha}^{-1} \text{ em-mm h}^{-1}$) and the largest value by the standard USLE (~~79~~ 790 $\text{MJ ha}^{-1} \text{ em-mm h}^{-1}$). The average (~~64~~ 640 $\text{MJ ha}^{-1} \text{ em-mm h}^{-1}$) corresponds well with the value estimated using the van Dijk formula (difference is ~~0.6~~ 6 $\text{MJ ha}^{-1} \text{ em-mm h}^{-1}$). The range between estimates for individual stations is proportional to the estimated R-factor (corresponding roughly to 40%). This also has an effect on the estimated spatial distribution of the R-factor values.

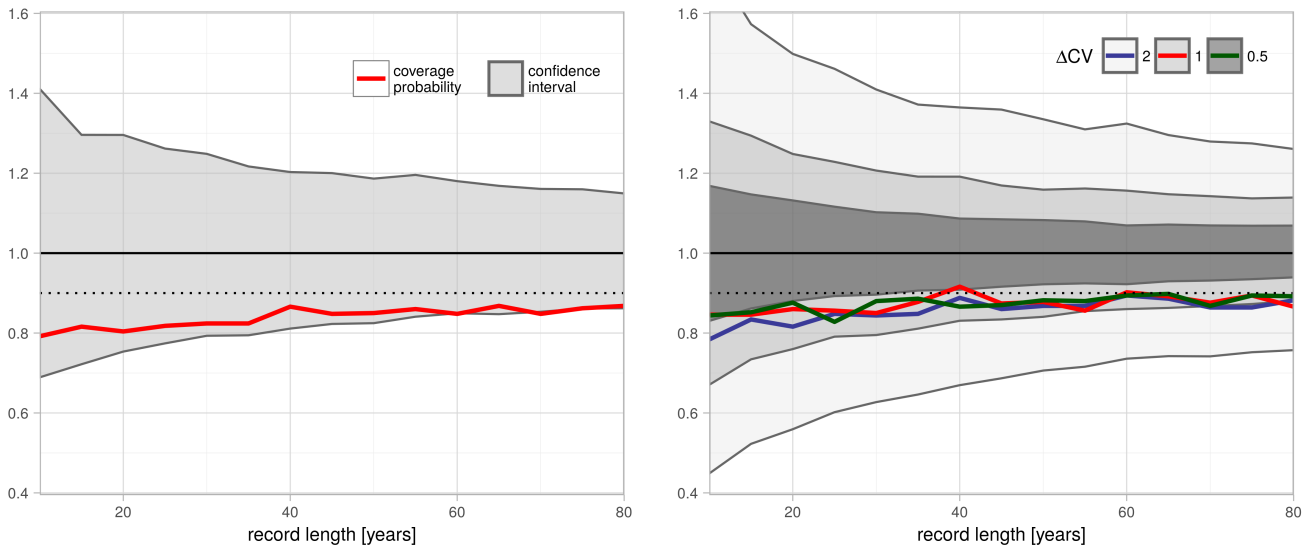


Figure 9. The average confidence intervals (relative to the long-term mean R-factor, $66.9\text{--}669\text{ MJ ha}^{-1}\text{ em-mm h}^{-1}$; gray area) and the coverage probability (red line) for different record lengths based on the station C2TREB01 (Třeboň (left) and simulated data (right)). The dotted line corresponds to the coverage probability of 90%.

4.3 Temporal variability

Wischmeier and Smith (1978) used a 22-year record to derive the rainfall erosivity factor because of "apparent cyclical patterns in rainfall data". The same is repeated by Renard et al. (1997) with a remark that longer records are advisable especially in the case that coefficient of variation of annual precipitation is large. This recommendation is often mentioned in rainfall erosivity studies. However, due to data availability, shorter records are often considered at least in addition to longer records (e.g. Angulo-Martínez et al., 2009; Meusburger et al., 2012; Oliveira et al., 2013; Lee and Lin, 2014; Panagos et al., 2015). For a 105-year record from Belgium, Verstraeten et al. (2006) tested whether rainfall erosivity derived from running 10- and 22-year averages is significantly different than that from using the overall (105-year) mean. They concluded that while a 22-year period is sufficient, reliable estimates of R-factor cannot be based on 10 years of data. Apart from their study, the actual effect of the sample size on the estimate of the R-factor was seldom investigated.

Fig. 9(left) gives the estimated confidence intervals (gray area) together with the coverage probability, i.e. the probability that the long-term mean R-factor ($66.9\text{--}669\text{ MJ ha}^{-1}\text{ em-mm h}^{-1}$) lies within the confidence intervals for record lengths between 10 and 80 years for the Třeboň station (C2TREB01). The 90% confidence interval for record length 10 years ranges from $40\text{--}95\text{--}400\text{ to }950\text{ MJ ha}^{-1}\text{ em-mm h}^{-1}$ (i.e. $\pm 40\%$), narrows to $50\text{--}87\text{--}500\text{--}870\text{ MJ ha}^{-1}\text{ em-mm h}^{-1}$ ($\pm 25\text{--}30\%$) for 20 years; $53\text{--}83\text{ and }530\text{--}830\text{ MJ ha}^{-1}\text{ em-mm h}^{-1}$ ($\pm 20\text{--}25\%$) for 30 years and remains relatively wide, i.e. $58\text{--}77\text{--}580\text{--}770\text{ MJ ha}^{-1}\text{ em-mm h}^{-1}$ ($\pm 15\%$) even for an 80-year record. Note, that the temporal variability of erosivity index is considerably larger than in the case of annual total or maxima. For instance, the standard deviation of annual erosivity index is more than double

that of annual precipitation total and more than 40% larger than for annual 1-hour precipitation maxima (estimated for the same station). The coverage probability (red line in Fig. 9(left)) of the 90% confidence interval is around 75% for 10-year record and from 82% for 15-year record it increases only slowly with increasing record length up to 87% for the 80-year record.

The width of the confidence interval as well as the coverage probability are influenced by the variability of the at-site erosivity index. This is demonstrated in Fig. 9(right) for synthetic data generated from Gamma distribution with parameters estimated from the C2TREB01 record (denoted $\Delta CV = 1$) and with parameters modified such that the coefficient of variation of the modified distribution is half and double that of the C2TREB01 record ($\Delta CV = 0.5$ and $\Delta CV = 2$, respectively) and the mean R-factor remains constant. Note that Gamma distribution was not rejected by the Anderson-Darling test at 0.05 significance level at most of the stations including C2TREB01. It is clear, that the confidence intervals as well as the coverage probability for the erosivity index simulated with parameters estimated from C2TREB01 (i.e. $\Delta CV = 1$) correspond reasonably with those based on observed data. It is also clear (and expected) that the width of the confidence interval increases with coefficient of variation. For instance for 15 year record and doubling of coefficient of variation it ranges from 0.5 to 1.57. For increasing record lengths the coverage probability increases and the width of the confidence interval decreases. Note that the confidence interval for erosivity index with large coefficient of variation remains relatively large (>50%) even for 80 years of data. The coverage probability, on the other hand, decreases only slightly with coefficient of variation.

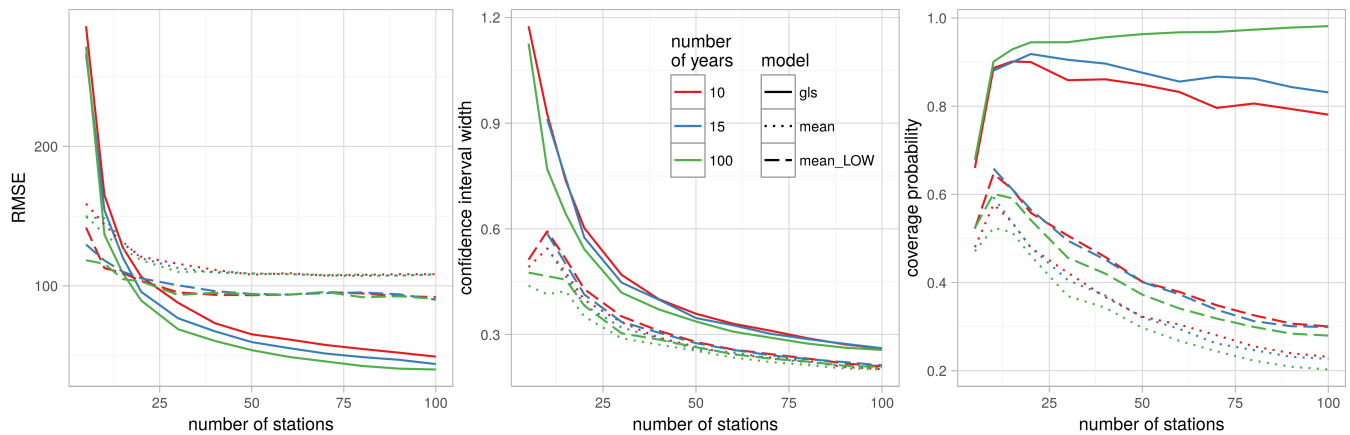


Figure 10. The RMSE, width of the confidence interval and the coverage probability for a GLS model (solid lines) and the "areal-average" model considering all stations (dotted lines) and only those below 600 m (dotted dashed lines) based on simulated data with various record lengths and number of stations.

4.4 Spatial and temporal coverage

Fig. 10 shows the average RMSE, coverage probability and relative width of the 90% confidence interval for the validation data in cases of the GLS model (solid line), "areal-average" model (dotted line) and "areal-average" model considering only stations with altitude less than 600 m (dashed line). In the case of the GLS model, the RMSE for small numbers of stations and years is

relatively large ($\approx 30\text{--}300$ MJ ha⁻¹ em-mm h⁻¹). However, it quickly drops to $\approx 10\text{--}100$ MJ ha⁻¹ em-mm h⁻¹ for 25 stations and then decreases almost linearly to $\approx 5\text{--}50$ MJ ha⁻¹ em-mm h⁻¹ for 100 stations. The RMSE for both “areal-average” models depends on the number of stations only up to 25 stations and remain almost constant for larger number of stations ($\approx 11\text{--}110$ MJ ha⁻¹ em-mm h⁻¹ when validated against all stations and $\approx 10\text{--}100$ MJ ha⁻¹ em-mm h⁻¹ when only stations below 600 m are used). The RMSE depends only slightly on the number of years used for estimation of the R-factor in the case of all models (GLS and both “areal-average” models). With respect to RMSE, the “areal-average” model is beneficial only when less than 20 stations are available. The RMSE for individual stations might be considerably larger. The 90% quantile RMSE (not shown) is around $60\text{--}600$ MJ ha⁻¹ em-mm h⁻¹ for both “areal-average” models (mostly independently of the number of stations) and from $200\text{--}2000$ MJ ha⁻¹ em-mm h⁻¹ (10 stations) to $45\text{--}450$ MJ ha⁻¹ em-mm h⁻¹ (30 stations) and $25\text{--}250$ MJ ha⁻¹ em-mm h⁻¹ (100 stations) for the GLS model with 15 years of data.

The width of the 90% confidence interval (Fig. 10, middle panel) for the GLS model drops from 120% (5 stations) to 50% (25 stations) and 30% (100 stations). This value corresponds well with the width of the confidence interval for the full record of the C2TREB01 (Třeboň) station (see Fig. 9). The confidence interval for both “areal-average” models is approximately half that for the GLS model. The impact of the record length is small.

The coverage probability (Fig. 10, right panel) for the GLS model increases from 70 to 90% for 5 and 10 stations, respectively. The coverage probability further increases only when more than 20 years of data are used. For shorter records, the coverage probability decreases to $\approx 80\%$ for 100 stations. This is a consequence of faster reduction of the confidence interval width when compared to the decrease of the RMSE. Similarly, the coverage probability decreases for both “areal-average” models, since the RMSE is almost constant for more than 25 stations while the width of the confidence interval decreases. As with the RMSE, the coverage probability might be considerably lower for individual stations, especially in the case of both “areal-average” models (for a number of stations close to 0), while the coverage probability is larger than 70% for most of the stations in the case of the GLS model.

The results for all evaluated characteristics indicate that appropriate spatial coverage is more important than the length of the record, at least in situations when other relevant information to build a spatial model is available. However, at least 15–20 years of data should be considered (if possible) to provide reasonable coverage probabilities.

4.5 Comparison of different sources of uncertainty

Using the “validation data” and the GLS model, we calculated the coefficient of variation (*CV*) associated with formulation of the kinetic energy, spatial interpolation and spatial and temporal coverage (Table 3). In addition, *CV* was also calculated for estimates of the R-factor based on different record lengths for the C2TREB01 (Třeboň) station and for the set of 96 stations considered for spatial interpolation. For the latter, the estimated *CV* was 23% on average (9–43% for all stations). This value can be interpreted as an indicator of natural variability of the R-factor based on a 15 year record. Almost the same value (21%) is estimated for the C2TREB01 (Třeboň) station and 15-years of data. The contribution of the kinetic energy formulation ($\approx 13\%$) and spatial interpolation ($\approx 9\%$) is about half of this value. As expected, *CV* of the estimates for the C2TREB01 (Třeboň) station decreases with increasing record length (38, 16 and 12% for 5, 50 and 80 years, respectively).

Table 3. The coefficient of variation (*CV*) for the R-factor estimated considering different formulas for kinetic energy, spatial interpolation methods, record length and spatial coverage. In the second column, the average *CV* for all considered stations is given, the last two columns indicate the range of the *CV* from all stations in the “validation dataset”.

Source	Coefficient of variation [%]		
Kinetic energy	12.7	(11.8	- 14.4)
Spatial interpolation	9.4	(1.5	- 29.7)
Number of stations (GLS model, 15 years)			
10 stations	31.0	(19.6	- 69.1)
30 stations	10.3	(7.6	- 21.4)
50 stations	7.6	(6.0	- 13.9)
Number of years (GLS model, 100 stations)			
5 years	13.0	(10.9	- 22.3)
15 years	6.4	(4.9	- 11.8)
50 years	4.9	(3.4	- 9.5)
Number of years (C2TREB01 - Třeboň)			
5 years	37.6		-
15 years	21.6		-
50 years	16.1		-
80 years	11.8		-
Natural variability (96 stations, 15 years)			
	23.3	(9.1	- 43.0)

The same applies for the GLS model, for which, in addition, *CV* also decreases with increasing number of stations. When comparing corresponding record lengths, the *CV* is considerably smaller for the GLS model than for individual stations, providing a sufficient number of stations is considered in the model. For instance, for the R-factor based on 15 years of data, the average *CV* is 31, 10, 7 and 6.4% for 10, 30, 50 and 100 stations, respectively, while for the station data and same record length the average *CV* was 23%. In addition, considering 100 stations *CV* is only 13(5)% for 5(50) years. From Table 3 it is evident that not only the average *CV* decreases but the same holds also for the stations with maximum variation. For instance, using 100 stations and 15 years, the maximum *CV* in the “validation set” is 12% for a GLS model and 43% for the station data. As the *CV* decreases with more stations and longer records, the relative importance of the expression for the kinetic energy and spatial interpolation increases. The assessment of the sources of uncertainty could be done more formally using an analysis of variance (ANOVA) model (e.g. Yip et al., 2011) or slightly more flexible linear mixed-effects model (see e.g. Hanel and Buishand, 2015).

5 Summary and conclusions

In the present paper we estimated the rainfall erosivity factor (R-factor) for the area of the Czech Republic. The at-site values of the R-factor based on a 15-year record for 96 stations were considered in several spatial models in order to provide estimates of the R-factor for the whole area of the Czech Republic.

- 5 The spatial interpolation models included inverse distance weighting, simple and ordinary kriging, simple and ordinary cokriging, regression kriging with parameters estimated by the method of moments and the GLS models ~~estimated using the REME~~. Several covariates have been considered to explain the spatial variation of the R-factor over the area.

In addition, uncertainty due to kinetic energy formulation, spatial model and spatial and temporal coverage was assessed by direct comparison of different methods and simulation studies.

- 10 The most important findings can be summarized as follows:

- The average R-factor in the period 1989–2003 for the considered stations is ~~64~~ 640 MJ ha⁻¹ ~~em-mm~~ h⁻¹, with values for the individual stations between ~~32 and 152~~ 320 and 1520 MJ ha⁻¹ ~~em-mm~~ h⁻¹.
- The at-site R-factor is considerably correlated with average precipitation, coefficient of variation of monthly precipitation, the mean ~~excess~~ fraction of precipitation above the 95% quantile of monthly precipitation and longitude, while the correlation with altitude and latitude is weak.
- From the considered spatial models, a GLS model with altitude, latitude, mean precipitation and the mean ~~excess~~ fraction of precipitation above the 95% quantile of monthly precipitation provided the best performance according to three of four cross-validation indices.
- With respect to the cross-validation statistics, the spatial interpolation models that included long-term rainfall characteristics performed considerably better than those based on local interpolation and/or geographical information only.
- The resulting map based on the GLS model does not change considerably, when stations with largest R-factor are excluded.
- When the number of stations and years available for interpolation is small, the relative contribution of the uncertainty due to kinetic energy estimate and spatial interpolation method is small compared to that due to the choice of the stations and time period.
- Although the RMSE and confidence interval width decrease and coverage probability in general increases with record length and number of stations, reasonable estimates of R-factor may be obtained from relatively short records (e.g. 15–20 years) providing ~~there is good spatial coverage~~ sufficient number of stations are available and appropriate covariates can be found.

- The confidence intervals around the R-factor estimates remain relatively wide even for long records, especially at locations with large natural variability of the annual erosivity index and are considerably wider than those for annual rainfall total or precipitation maxima.
- The spatial model should be in general preferred over the ~~“areal-average”, except for situations when areal-averaging of R-factor estimates from individual stations unless~~ only very short records for a small number of stations are available ; ~~or situations when or~~ appropriate covariates cannot be used.

Appendix A: Considered formulations of rainfall kinetic energy

For the application of the universal soil loss equation, Wischmeier and Smith (1978) derived a logarithmic relationship between rainfall intensity and kinetic energy of the form (converted to metric units):

$$e_i = 210 + 89 \log(r_i/10), \quad (\text{A1})$$

where (as in eq. 2), r_i is the rainfall intensity [mm h^{-1}] during time interval i . Note that slightly different coefficients are provided by Renard et al. (1997). The logarithmic relationship implies that there is no upper limit to kinetic energy, whereas research has suggested that a maximum value does exist (see van Dijk et al., 2002, for references). Therefore, Wischmeier and Smith (1978) considered constant rainfall kinetic energy for intensities greater than 76 mm h^{-1} . Other authors used a relationship of the form

$$e_i = e_{\max} [1 - a \exp(-br_i)], \quad (\text{A2})$$

where e_{\max} denotes the maximum kinetic energy contents and a and b are empirical constants. Many different combinations of the parameters e_{\max} , a and b have been published. Van Dijk et al. (2002) therefore proposed a relationship given in eq. 2 as one providing estimates that are close to the average of many formulas for calculation of e_u . In the present paper, in addition to formulas given in eq. 2 and eq. A1, which are further referred to as “van Dijk” and “USLE”, respectively, we calculated the e_i considering a set of coefficients for eq. A2 given in table 4.

Appendix B: A resampling scheme for the assessment of temporal variability

Here we describe a nested bootstrap procedure in which samples of required length l (e.g. 10, 20, 80 years) are repeatedly drawn from the original (observed) record and resampled to obtain the R-factor estimate with corresponding confidence interval. Finally, the probability that the “true R-factor” (here the estimate based on the full record) lies within the confidence interval is estimated.

The resampling is performed in the following steps:

Table 4. Coefficients for calculation of rainfall kinetic energy in eq. A2. The acronyms used throughout the paper are given in the first column.

	e_{\max}	a	b	
LP	28.9	0.54	0.059	Laws and Parsons (1943)
CA	28.0	0.76	0.090	Carter et al. (1974)
BF	29.0	0.72	0.050	Brown and Foster (1987)
MG	29.0	0.72	0.082	McGregor et al. (1995)
KI	29.3	0.28	0.018	Kinnell (1981)
RWa	26.4	0.67	0.035	Rosewell (1986)
RWb	28.1	0.60	0.040	Rosewell (1986)
MIa	24.6	0.46	0.037	McIsaac (1990)
MIb	29.2	0.51	0.011	McIsaac (1990)
MIc	28.8	0.45	0.033	McIsaac (1990)
MId	25.1	0.40	0.045	McIsaac (1990)
MIe	26.8	0.29	0.049	McIsaac (1990)
CT	35.9	0.56	0.034	Coutinho and Tomás (1995)

1. choose the number of bootstrap samples for derivation of the confidence intervals (n_{CI}) and the number of bootstrap samples for the assessment of the coverage probability (n_{CP}); in our study we set $n_{CI} = n_{CP} = 500$
2. draw a sample of length l with replacement from the original series of annual erosivity and denote this sample s
3. draw a sample of length l with replacement from s and use it to calculate the average erosivity (i.e. the R-factor)
- 5 4. repeat the previous step n_{CI} times
5. calculate the 90% confidence interval from the n_{CI} estimates of the R-factor from step 3 and check whether this interval includes the true R-factor
6. repeat steps 2–5 n_{CP} times
7. calculate the coverage probability associated with the record length l as the proportion of cases when the confidence interval from step 5 included the true R-factor
- 10 8. repeat the whole process for different record lengths l

Please note that the described procedure provides n_{CP} estimates of the confidence intervals for specific l and only their average is presented in the paper. Setting $n_{CP} = 1$ might be sufficient in the situation that only the confidence intervals would be of interest.

Appendix C: A resampling scheme for the assessment of spatial and temporal coverage

The following scheme describes a nested bootstrap procedure for assessment of the RMSE, coverage probability and the width of the 90% confidence interval for a GLS model considering different length of the precipitation data and different number of stations. The assessment is based on resampling of a synthetic dataset of 100 years for 120 stations (denoted “full dataset”) and 5 validated against the independent “validation dataset” (see Sect. 3.3.2). The procedure is summarized as follows:

1. draw a sample of nyr years for $nsta$ stations from the “full dataset” and calculate the R-factor for each station
2. fit a GLS model of the form $R \sim NAVY + r_{mea} + Y$ $R \sim NAVY + r_{mea} + Y$ using the sample from the previous step
3. simulate data for the given $nsta$ stations from the fitted model (see e.g. Pinheiro and Bates, 2000)
- 10 4. refit the model and use this refitted model to predict the R-factor for the “validation dataset”
5. repeat the previous two steps 500 times
6. calculate the 90% confidence interval around the estimated R-factor and the RMSE for each station of the “validation dataset” from the 500 samples obtained in steps 2–5
7. repeat the previous steps (1–6) 500 times
- 15 8. repeat the whole procedure for different nyr and $nsta$

The RMSE, confidence interval and coverage probability for the “areal-average” model used for comparison was derived by replacing the estimates from the refitted model in step 4 by the areal-average of the simulated data from step 3.

Acknowledgements. The research has been conducted within the framework of the project “Erosion runoff - increased risk of the residents and the water quality exposure in the context of the expected climate change” (VG20122015092) sponsored by the Ministry of the Interior 20 of the Czech Republic. Data have been kindly provided by the Czech Hydrometeorological Institute. All calculations and plotting were done in R.

References

- Angulo-Martínez, M., López-Vicente, M., Vicente-Serrano, S. M., and Beguería, S.: Mapping rainfall erosivity at a regional scale: a comparison of interpolation methods in the Ebro Basin (NE Spain), *Hydrology and Earth System Sciences*, 13, 1907–1920, <http://www.hydrol-earth-syst-sci.net/13/1907/2009/>, 2009.
- 5 Bonilla, C. A. and Vidal, K. L.: Rainfall erosivity in central Chile, *Journal of Hydrology*, 410, 126–133, 2011.
- Borrelli, P., Diodato, N., and Panagos, P.: Rainfall erosivity in Italy: a national scale spatio-temporal assessment, *International Journal of Digital Earth*, pp. 1–16, 2016.
- Brádka, J.: Srážky na území ČSSR při jednotlivých typech povětrnostní situace, Hydrometeorological Institute, Prague, 1972.
- Brázdil, R.: Vliv atlantského oceánu a středoemního moře na srážkové poměry léta na území ČSSR, J. E. Purkyne University, Brno, 1980.
- 10 Brown, L. and Foster, G.: Storm erosivity using idealized intensity distributions, *Transactions of the ASAE-American Society of Agricultural Engineers (USA)*, 1987.
- Capra, A., Porto, P., and La Spada, C.: Long-term variation of rainfall erosivity in Calabria (Southern Italy), *Theoretical and Applied Climatology*, pp. 1–18, 2015.
- Carter, C., Greer, J., Braud, H., and Floyd, J.: Raindrop characteristics in South Central United States, *Transactions of the ASAE*, 17, 1033–1037, 1974.
- 15 Catari, G., Latron, J., and Gallart, F.: Assessing the sources of uncertainty associated with the calculation of rainfall kinetic energy and erosivity—application to the Upper Llobregat Basin, NE Spain, *Hydrology and Earth System Sciences*, 15, 679–688, 2011.
- Coutinho, M. A. and Tomás, P. P.: Characterization of raindrop size distributions at the Vale Formoso Experimental Erosion Center, *Catena*, 25, 187–197, 1995.
- 20 Goovaerts, P.: *Geostatistics for natural resources evaluation*, Applied geostatistics series, Oxford University Press, Incorporated, 1997.
- Goovaerts, P.: Using elevation to aid the geostatistical mapping of rainfall erosivity, *Catena*, 34, 227–242, 1999.
- Hanel, M. and Buishand, T. A.: Assessment of the sources of variation in changes of precipitation characteristics over the Rhine basin using a linear mixed-effects model, *Journal of Climate*, 28, 6903–6919, 2015.
- Hanel, M. and Máca, P.: Spatial variability and interdependence of rain event characteristics in the Czech Republic, *Hydrological Processes*, 28, 2929–2944, 2014.
- 25 Hanel, M., Pavlásková, A., and Kyselý, J.: Trends in characteristics of sub-daily heavy precipitation and rainfall erosivity in the Czech Republic, *International Journal of Climatology*, 2015.
- Haskard, A.: *Anisotropic Matérn spatial covariance model: REML estimation and properties*, University of Adelaide, 2007.
- Hengl, T., Heuvelink, G., and Rossiter, D.: About regression-kriging: From equations to case studies, *Comput. Geosci.*, 33, 1301–1315, 2007.
- 30 Hengl, T., Heuvelink, G., and Stein, A.: A generic framework for spatial prediction of soil variables based on regression-kriging, *Geoderma*, 120, 75–93, 2004.
- Janeček, M., Kubátová, E., Tipl, M., et al.: Revised determination of the rainfall-runoff erosivity factor R for application of USLE in the Czech Republic, *Soil and Water Research*, 1, 65–71, 2006.
- Janeček, M., Bečvář, M., Bohušlávka, J., Dufková, J., Dumbrovský, M., Dostál, T., Hula, J., Kadlec, V., Krása, J., and et al.: Guidelines on protection of agricultural land against soil erosion, Research Institute of Agricultural Engineering, Prague, in Czech, 2007.
- 35 Janeček, M., Dostál, T., Kozlovsky Dufková, J., Dumbrovský, M., Hula, J., Kadlec, V., Kovář, P., Krása, J., and et al.: Guidelines on protection of agricultural land against soil erosion, Czech University of Life Sciences, Prague, in Czech, 2012a.

- Janeček, M., Květoň, V., Kubátová, E., and Kobzová, D.: Differentiation and regionalization of rainfall erosivity factor values in the Czech Republic, *Soil and Water Research*, 7, 1–9, 2012b.
- Janeček, M., Květoň, V., Kubátová, E., Kobzová, D., Vošmerová, M., and Chlupsová, J.: Values of rainfall erosivity factor for the Czech Republic, *Journal of Hydrology and Hydromechanics*, 61, 97–102, 2013.
- 5 Kinnell, P.: Rainfall intensity-kinetic energy relationships for soil loss prediction, *Soil Science Society of America Journal*, 45, 153–155, 1981.
- Kitanidis, P.: Statistical estimation of polynomial generalized covariance functions and hydrologic applications, *Water Resources Research*, 19, 909–921, 1983.
- Kitanidis, P.: Generalized covariance functions in estimation, *Mathematical Geology*, 25, 525–540, 1993.
- 10 Krása, J., Středová, H., Dostál, T., and Novotný, I.: Rainfall erosivity research on the territory of the Czech Republic, in: *Mendel a bioklimatologie*, <http://www.cbks.cz/SbornikBrno14/Krasa.pdf>, 2014.
- Krása, J., Středová, H., Štěpánek, P., Hanel, M., Dostál, T., and Novotný, I.: Recent and future rainfall erosivity on the territory of the Czech Republic, in: *EGU General Assembly Conference Abstracts*, vol. 17, p. 7714, 2015.
- Květoň, V., Zahradníček, J., and Žák, M.: Quality control and digitising of pluviographic measurements in the Czech Hydrometeorological Institute, *Meteorologické zprávy*, 57, 47–52, 2004.
- 15 Laws, J. O. and Parsons, D. A.: The relation of raindrop-size to intensity, *Eos, Transactions American Geophysical Union*, 24, 452–460, 1943.
- Lee, M.-H. and Lin, H.-H.: Evaluation of Annual Rainfall Erosivity Index Based on Daily, Monthly, and Annual Precipitation Data of Rainfall Station Network in Southern Taiwan, *International Journal of Distributed Sensor Networks*, 2014.
- 20 Lu, H. and Yu, B.: Spatial and seasonal distribution of rainfall erosivity in Australia, *Soil Research*, 40, 887–901, 2002.
- McGregor, K., Bingner, R., Bowie, A., and Foster, G.: Erosivity index values for northern Mississippi, *Transactions of the ASAE*, 38, 1039–1047, 1995.
- McIsaac, G.: Apparent geographic and atmospheric influences on raindrop sizes and rainfall kinetic energy, *Journal of Soil and Water Conservation*, 45, 663–666, 1990.
- 25 Meddi, M., Toumi, S., and Assani, A. A.: Spatial and temporal variability of the rainfall erosivity factor in Northern Algeria, *Arabian Journal of Geosciences*, 9, 1–13, 2016.
- Meusburger, K., Steel, A., Panagos, P., Montanarella, L., and Alewell, C.: Spatial and temporal variability of rainfall erosivity factor for Switzerland, *Hydrology and Earth System Sciences*, 16, 167–177, 2012.
- Minasny, B. and McBratney, A. B.: The Matérn function as a general model for soil variograms, *Geoderma*, 128, 192 – 207, 2005.
- 30 Minasny, B. and McBratney, A. B.: Spatial prediction of soil properties using EBLUP with the Matern covariance function, *Geoderma*, 140, 324–336, *Pedometrics Meeting 2005, Naples, FL, SEP 12–14, 2005*, 2007.
- Minasny, B., Vrugt, J. A., and McBratney, A. B.: Confronting uncertainty in model-based geostatistics using Markov Chain Monte Carlo simulation, *Geoderma*, 163, 150–162, 2011.
- Oliveira, P. T. S., Wendland, E., and Nearing, M. A.: Rainfall erosivity in Brazil: A review, *Catena*, 100, 139–147, 2013.
- 35 Panagos, P., Ballabio, C., Borrelli, P., Meusburger, K., Klik, A., Rousseva, S., Tadić, M. P., Michaelides, S., Hrabalíková, M., Olsen, P., et al.: Rainfall erosivity in Europe, *Science of the Total Environment*, 511, 801–814, 2015.
- Panagos, P., Ballabio, C., Borrelli, P., and Meusburger, K.: Spatio-temporal analysis of rainfall erosivity and erosivity density in Greece, *Catena*, 137, 161–172, 2016a.

- Panagos, P., Borrelli, P., Spinoni, J., Ballabio, C., Meusburger, K., Beguería, S., Klik, A., Michaelides, S., Petan, S., Hrabalíková, M., et al.: Monthly Rainfall Erosivity: Conversion Factors for Different Time Resolutions and Regional Assessments, *Water*, 8, 119, 2016b.
- Pardo-Iguzquiza, E. and Chica-Olmo, M.: Geostatistics with the Matern semivariogram model: A library of computer programs for inference, kriging and simulation, *Comput. Geosci.*, 34, 1073–1079, 2008.
- 5 Pinheiro, J. C. and Bates, D. M.: *Linear Mixed-Effects Models: Basic Concepts and Examples*, Springer, New York, NY, USA, 2000.
- Porto, P.: Exploring the effect of different time resolutions to calculate the rainfall erosivity factor R in Calabria, southern Italy, *Hydrological Processes*, 30, 1551–1562, 2016.
- Renard, K. G., Foster, G. R., Weesies, G. A., McCool, D., Yoder, D., et al.: *Predicting soil erosion by water: a guide to conservation planning with the revised universal soil loss equation (RUSLE)*, Agriculture Handbook 703. US Government Printing Office, 1997.
- 10 Rosewell, C. J.: Rainfall kinetic energy in eastern Australia, *Journal of Climate and Applied Meteorology*, 25, 1695–1701, 1986.
- Stein, M.: *Interpolation of Spatial Data: Some Theory for Kriging*, Springer series in statistics, U.S. Government Printing Office, 1999.
- Štekl, J., Brázdil, R., Kakos, V., Jež, J., Tolasz, R., and Sokol, Z.: Extreme daily precipitation on the territory of the Czech Republic in the period 1879–2000 and their synoptic causes, *National Climatic Programme of the Czech Republic*, 31, 140, 2001.
- Svoboda, V., Hanel, M., Máca, P., and Kyselý, J.: Characteristics of rainfall events in RCM simulations for the Czech Republic, *Hydrology and Earth System Sciences Discussions*, doi:10.5194/hess-2016-283, 2016.
- 15 Todini, E.: Influence of parameter estimation uncertainty in Kriging: Part 1 - Theoretical Development, *Hydrology and Earth System Sciences*, 5, 215–223, 2001.
- Tolasz, R., Brázdil, R., Bulfř, O., Dobrovolný, P., Dubrovský, M., Hájková, L., Halásová, O., Hostýnek, J., Janouch, M., Kohut, M., et al.: *Atlas podnebí Česka (Climate atlas of the Czech Republic)*, Český hydrometeorologický ústav, Universita Palackého, 2007.
- 20 Van der Knijff, J., Jones, R., and Montanarella, L.: *Soil erosion risk assessment in Europe*, 2000.
- van Dijk, A., Bruijnzeel, L., and Rosewell, C.: Rainfall intensity-kinetic energy relationships: a critical literature appraisal, *Journal of Hydrology*, 261, 1–23, 2002.
- Verstraeten, G., Poesen, J., Demarée, G., and Salles, C.: Long-term (105 years) variability in rain erosivity as derived from 10-min rainfall depth data for Ukkel (Brussels, Belgium): Implications for assessing soil erosion rates, *Journal of Geophysical Research: Atmospheres*
- 25 (1984-2012), 111, 2006.
- Willmott, C. and Matsuura, K.: Advantages of the mean absolute error (MAE) over the root mean square error (RMSE) in assessing average model performance, *Climate Research*, 30, 79–82, 2005.
- Wischmeier, W. H. and Smith, D. D.: *Predicting rainfall erosion losses-A guide to conservation planning*, Agriculture Handbook 537, U.S. Department of Agriculture, 1978.
- 30 Yin, S., Xie, Y., Nearing, M., and Wang, C.: Estimation of rainfall erosivity using 5-to 60-minute fixed-interval rainfall data from China, *Catena*, 70, 306–312, 2007.
- Yip, S., Ferro, C. A., Stephenson, D. B., and Hawkins, E.: A simple, coherent framework for partitioning uncertainty in climate predictions, *Journal of Climate*, 24, 4634–4643, 2011.