

Relative impacts of land use and climate change on summer precipitation in the Netherlands

Emma Daniels¹, Geert Lenderink², Ronald Hutjes¹, and Albert Holtslag¹

¹Wageningen University, Droevendaalsesteeg 3, 6708 PB Wageningen, The Netherlands

²KNMI, Utrechtseweg 297, 3731 GA De Bilt, The Netherlands

Correspondence to: Emma E. Daniels (emmadamme@gmail.com)

1 comments from referees/public

Anonymous Referee 1

Received and published: 7 June 2016

The submitted manuscript entitled "Relative impacts of land use and climate change on summer precipitation in the Netherlands" by Daniels et al. is a well written paper with clear clear description of methods and structure. They have analyzed the impact of land use changes on historical precipitation patterns and the impact of future land use changes on precipitation patterns. This is a very timely and relevant study. Thus it should be published. I have a few comments for improving the paper: - The results of the study show the intensifying impact of land use change on resulting precipitation patterns in the past. However, in future changes in land use have a less intensifying role of precipitation patters. The authors briefly mention the differential impacts of future land use change on extreme precipitation patterns. The paper can benefit from a deeper discussion about the impacts of future land use change on extreme precipitation patterns. – Closely related to the previous point is the role of impervious surfaces on precipitation trends. The authors have used quite fine resolution land use maps in their study. It will be worthwhile to take into consideration the proportion and spatial patterns of increase in impervious surfaces, which will lead to greater runoff and flooding in urban areas. This measure can be accessed from fine resolution satellite images such as Landsat. – Finally, given the main aim of the study is to examine the impact of land use changes on precipitation patterns. The authors need to take into consideration the impact of land surface temperatures in their simulations along with atmospheric conditions.

Anonymous Referee 2

20 Received and published: 5 July 2016

This paper is a nice study which looks at the effects of historic and future land use on precipitation in the Netherlands. The authors do this by looking at a number of summer days with similar meteorological conditions and using WRF to examine the effect of changing land use from historic, present day and future conditions and compare this to a temperature perturbation to see which has most effect. They find that the effects of land use are not negligible although the temperature rise has a larger

effect on precipitation intensity. I suggest that the paper is accepted with recourse to moderate revisions. Suggested revisions 1. Add some detail into the abstract on what decreases in precipitation are simulated following conversion of historic to present and present to future land use. 2. It is unclear how many summer days you are examining – is it 19 or 18? Check your paper as this is not clear (both are used) 3. P5, lines 3-9: please make it more clear how long the simulations are. This does not jump
5 out at me from the text and I had to do some searching to find this information in the paper. Are the models just run for the 19 selected cases? 19 days for each land use scenario? If this is the case, is one model run of each day enough with which to draw strong conclusions? What role might initial conditions uncertainty play? 4. Why should you be able to add linearly the response of precipitation to land use change and climate change? This does not make intuitive sense. 5. The model inadequacy in representing current climate precipitation needs be discussed much earlier than in the discussion section – what implication
10 does this have for the results of the study? It would be nice to see more detail in the discussion on the Trusilova et al. studies to see if the results are directly comparable. 6. It would be nice to see some discussion of natural variability and the effect of varying initial conditions on the results. 7. P10, line 10-20: Why does land use change have such a disproportionate effect in summer? 8. P10, line 28-29: The mean change simulated in this experiment is not comparable to mean change simulated by GCMs as you only simulate a few days – make this clear. In general are GCM results really comparable given that convective-
15 permitting model experiments suggest that they do not adequately simulate summer precipitation intensities. 9. P11, line 10 onwards: could this also not be a sampling effect? Is the statement “no increase in extreme precipitation is found in the combined future land use-climate simulation” correct as this seems to contradict what you have said earlier in the paper. 10. Figure 8: Looking at the diurnal cycle of precipitation the huge difference between observed and model simulated worries me – do models give us realistic enough results to use to show sensitivity to land use change. The changes predicted by the model
20 are much smaller than the bias between the model and observations. Minor typos 1. P4, line 8: processes; line 23: most like 2. P5, line 14: declining rate 3. P6, line 14: in the evening is found in only two simulated days: : :: line 26: decrease 4. P8, line 16: opposite; 5. P9, line 23: useful

2 author's response

Author comment to reviewer 1

25 Received and published: 15 July 2016

Thanks for your timely and positive comments. Regarding the first comment about extreme precipitation patterns, we foresee expanding the last paragraph of section 3.1 and/or adding a figure with e.g. the 95th percentile distribution of precipitation for the REF, REF+1 and FUT+1 case. For the second comment, regarding the role of impervious surfaces, accessing this on a high(er) resolution for the current study is somewhat out of scope. Impervious surfaces are however taken into account im-
30 plicitly by WRF in the Urban Canopy Model and its parametrizations. From the results of this study and a previous study, the role of impervious surfaces seems to be substantial because they alter the surface water balance and related sensible heat flux, so this is certainly something to keep in mind in future work. Finally, land surface temperatures are simulated very accurately by the model (much better than precipitation) so this has already been taken into account. In an earlier paper - Daniels

et al 2015a, referred to in the reference list – this has been shown and discussed in detail, also in relation to the urban heat island.

Author comment to reviewer 2

Received and published: 20 July 2016

5 Thanks for your positive words and suggestions for improvement. Regarding your suggested revisions: 1. We will add the
3-5% increase resulting from conversion of historic to present and 2-5% reduction following present to future land use to the
abstract. 2. 19 cases were initially selected, but only 18 were used in the analysis. We will check the paper for clarity on this.
3. The model is run for 48 hours, including 12 hours of spin-up from 12 to 00 UTC, 24 hours of simulation and 12 additional
10 hours to be able to compare to both radar data (00-00UTC) and station data (8-8UTC). We will make this more clear. The
model is indeed run for 19 cases for each land-use/temperature perturbation. Although 19 cases might still not be enough, it
is substantially more than a single case study. In addition, we thought the selection procedure for the cases would assist in
drawing relatively strong conclusions, but the results were more heterogeneous than hoped for. The initial conditions might
have affect the results, though a sensitivity analysis was performed for some of the cases by starting the runs up to 3 hours
15 earlier or later and this had relatively effect and WRF seems pretty robust in its predictions. 4. The linearity in adding the
responses is indeed not intuitive, though something we have encountered with WRF before. In Daniels et al. 2015a -referred to
in the reference lista similar linearity is found for changes in the latent heat flux and related parameters. We are unclear on the
implications, but thought it is worth drawing the attention of the reader to. 5. The model inadequacy in representing the current
climate precipitation can be discussed in the beginning of the results section. What the implications are for the study is unclear.
WRF is a commonly used model that does not do worse on predictions than similar mesoscale or alike climate models. The
20 usefulness of alike studies can be sought in understanding the processes governing the changes -in precipitation in our case-
not in the numeric outcomes of the models per se. We hope to further such understanding through section 3.2 explaining the
atmospheric processes involved. More in-depth discussion on the Trusilova et al. studies will be added. 6. We can add some
discussion on natural variability and initial conditions. From previous work, the soil moisture initialisation seems to be one of
the most important in general. In the Netherlands those conditions are generally at field capacity however due to the frequent
25 rain and high ground water table and can therefore be expected to have limited influence. 7. Land use change is considered to
have a larger effect on convective precipitation, which mostly occurs in summer. 8. We will make this distinction more clear.
Neither GCMs nor WRF are unfortunately able to adequately simulate precipitation intensities. 9. This could very well be a
sampling effect. The sentence on extreme precipitation is certainly correct. In this case the FUT+1 case is meant, where land
use changes seem to counter the increase in extreme precipitation that is observed in REF+1. 10. This comment touches upon
30 our main concern while preparing the paper. The analysis was repeated twice for a different set of data, but led to similar results.
This gives us confidence in the response of the model, but whether this response is realistic cannot be inferred. Nevertheless,
we hope to add to the knowledge on land atmosphere processes by describing the surface and atmospheric conditions and
processes in detail. Sharing successful and less successful methodologies – in this case the selection procedure (clustering
approach)- is in our opinion at least as important as the numeric conclusions that can be drawn from the simulations, which
35 should be treated with caution due to sampling and model issues.

3 author's changes in manuscript

Abstract. The effects of historic and future land use on precipitation in the Netherlands are investigated on ~~19~~¹⁸ summer days with similar meteorological conditions. The days are selected with a circulation type classification and a clustering procedure to obtain a homogenous set of days that is expected to favour land impacts. Changes in precipitation are investigated in relation to the present day climate and land use, and in the perspective of future climate and land use. To that end, the weather research and forecasting (WRF) model is used with land use maps for 1900, 2000, and 2040. In addition a temperature perturbation of +1°C, assuming constant relative humidity is imposed as a surrogate climate change scenario. Decreases in precipitation of respectively 3-5% and 2-5% are simulated following conversion of historic to present, and present to future, land use. The temperature perturbation under present land use conditions increases precipitation amounts by on average 7-8% and amplifies precipitation intensity. However, when also considering future land use, the increase is reduced to 2-6% on average, and no intensification of extreme precipitation is simulated. In all, the simulated effects of land use changes on precipitation in summer are smaller than the effects of climate change but not negligible.

4 Introduction

Humans can exert influence on precipitation through modifications in land use (Mahmood et al., 2014; Kalnay and Cai, 2003) next to other anthropogenic forcings such as climate change (Zhang et al., 2007). Currently, land conversion takes place at a rapid pace and this will likely continue in the future (Mahmood et al., 2010; Angel et al., 2011). Therefore, this type of human influence on the climate system will continue, and will probably become more significant in the coming decades (Pielke et al., 2007; Mahmood et al., 2010).

In the Netherlands, the most important land cover changes in the last century were the conversion of large heather areas into agricultural or grassland and expansion of urban areas (Feranec et al., 2010; Verburg et al., 2004). In addition, almost 1650 km² of land was reclaimed from the sea in the former Zuiderzee, now called Lake Yssel (Hoeksema, 2007). Urban areas have increased from about 2% in 1900, to 13% in 2000, and are projected to further increase to 24% in 2040 (Dekkers et al., 2012). Precipitation in the Netherlands has increased by about 25% over the last century, especially along the West coast (Buishand et al., 2013). The increase of sea surface temperatures and changes in circulation seem to be the major causes for this increase (Attema et al., 2014; van Haren et al., 2013). In addition, there is some evidence that urbanization plays a role (Daniels et al., 2015b).

In contrast to the above, an earlier study using a model to investigate land surface changes in the Netherlands in spring found that precipitation is in fact reduced after expansion of urban areas (Daniels et al., 2014). That study also tested the sensitivity of precipitation to soil moisture and found a positive feedback, that is, wet (dry) soils increase (decrease) the amount of precipitation. The reduction of precipitation after urban expansion was dominated by the model's response to reduced moisture, overruling the enhanced triggering of precipitation by boundary layer processes. However, only a 4-day case study was investigated and questions can therefore be raised with respect to the climatological representability of the results. In

addition, the simulated land use changes were conceptual, rather than realistic and only focused on changes in urban extent, ignoring the expansion of agricultural areas for example.

The present study aims to improve on both aspects, by (1) sampling a larger set of meteorological cases, and (2) evaluating the effects of more realistic land cover changes. Our main interest is the precipitation response to the altered land surface and the physical processes underlying this response. We investigate this response in the summer season. The summer months typically have a larger shower activity, connected to unstable conditions. This relatively intense type of precipitation, arising from (deep) cumulus convection, is expected to be most influenced by land surface changes (Pielke et al., 2007; Cotton and Pielke, 2007) and is typically expected to increase under climate change (Fischer et al., 2014). Also, the largest impact of urban areas on precipitation along the Dutch West coast was found in summer (Daniels et al., 2015b).

The current study also aims to put the effects of historic and future land use changes on precipitation in the perspective of climate change. This will be done by imposing an increase in overall temperatures as a surrogate climate change scenario (Schar et al., 1996). On a global scale, climate change is expected to increase both mean and extreme precipitation in response to an intensification of the hydrological cycle (Huntington, 2006; Wu et al., 2013). Here, the precipitation response to land use changes in the Netherlands, and climate change, is investigated for multiple summer days. The selection procedure for the investigated events and the model setup will be described in the next section. Followed by the results, discussion and conclusions thereafter.

5 Data and methods

5.1 Case selection

Selection of days to use as case studies is conducted with the help of a circulation type classification, similar to Daniels et al. (2015a). We make use of the nine type Jenkinson-Collison Types (JCT) classification scheme. This method was developed by Jenkinson and Collison (1977) and is intended to provide an objective scheme that acceptably reproduces the subjective Lamb weather types (Jones et al., 1993; Lamb, 1950). The classification has eight weather types (WTs) representative of the prevailing wind direction (W, NW, N, NE, E, SE, S, and SW, where W = 1 etc.) and one that is treated as unclassified (WT9). Computation of the WTs is done using 12 UTC MSLP data from ERA-Interim (Dee et al., 2011) at 16 points in the area 47.25 to 57.75°N and 3 to 12.75°E (Figure 1) with the ‘cost733class’ software (Philipp et al., 2010, 2014).

Previous work has shown that the downwind effects of urban areas on precipitation in the Netherlands are largest under WT9 (Daniels et al., 2015b). Under the light, unclassifiable, flow that occurs in this weather type, the atmosphere seems to be most susceptible to the land surface. All summer (JJA) days in the period 2000-2010 are classified with the JCT scheme, but only days with WT9 and more than 1 mm of precipitation at one station or more are used for further selection. The remaining 215 days are grouped using a statistically objective k-means clustering procedure (Hartigan and Wong, 1979) in R (core team, 2013). The k-means clustering partitions n observations into k clusters, in which each observation belongs to the cluster with the nearest mean in a principle component space. Clustering is done to obtain a homogenous set of days with

similar meteorological conditions. The similarity of the cases should result in comparable results and enable generalization of conclusions.

Seven parameters are used in the clustering procedure: (1) mean precipitation; (2) total column water; (3) vertical velocity at 700 hPa; (4) horizontal wind speed at 700 hPa; (5) K-index; (6) land-sea temperature difference; and (7) a measure of the distribution and “patchiness” of precipitation, computed as the difference between maximum precipitation and the 85th percentile. Parameters 2, 3, 4 and 5 are derived from 12 UTC ERA-Interim data averaged over the center of the Netherlands (4.75 to 5.75°E and 51.75 to 52.25°N, Figure 1). Parameter 6 is derived from ERA-Interim data as the difference between the 2 meter temperature over this land area and sea surface temperature (SST) averaged over a nearby ocean area of similar size (3-4°E and 52.25-52.75°N, Figure 1). Parameter 1 and 7 are computed over the whole of the Netherlands using daily precipitation data collected at 8 UTC from about 320 stations. The K-index (George, 1960) is a linear combination of temperature (T) and dewpoint (Td) at various levels ($T_{850} - T_{500} + T_{d850} - (T_{700} - T_{d700})$) and is a measure of convection used to forecast air mass thunderstorms. The parameter values are normalized and scaled, by subtracting the mean and dividing by the standard deviation, before being used in the clustering algorithm.

The k-means clustering algorithm was set to use 12 clusters, repeated 1000 times and the best, stable, solution is used. A cluster with higher than mean precipitation was selected (see Figure 2), since sufficient precipitation is needed to investigate the response to alternative land use maps. Total column water is about average in the selected cluster, while it has the most negative vertical velocity (omega), of about 0.3 Pa/s. Since omega is positive with increasing pressure, this means the largest upward speeds are selected. A large upward vertical velocity is associated with strong hourly precipitation and convective showers (Loriaux et al., 2013). Low wind speed was found to be favorable for detection of urban effects in the Netherland (Daniels et al., 2015b) and is therefore desirable. The average K-index in the selected cluster is over 20, which is the average threshold for likelihood of thunderstorms. The land-sea temperature difference is amongst the lowest. High SST is known to cause enhanced precipitation (in the coastal area) mainly in summer (Lenderink et al., 2009). This could interfere with our land use experiments and is therefore not sought. Finally, the selected cluster has quite patchy precipitation, indicative of convective conditions as desired. The selected cluster consists of 19 days (see Figure 6 for the dates), ~~that of which 18~~ will be averaged on an hourly basis for many of the analyses presented in the results section.

5.2 Model setup

We use the non-hydrostatic Advanced Research WRF model (ARW, version 3.4.1) (Skamarock et al., 2008) on a single domain of 1000 x 1000 km (see Figure 1). The model has a horizontal grid spacing of 2.5 km and the vertical grid contains 40 sigma levels. Atmospheric and surface boundary conditions are obtained from ERA-Interim every six hours. Model output is stored and analyzed on an hourly basis. ~~All simulations start at 00-00 UTC the previous day and, unless otherwise specified, results from 0-0 are used in the analyses, 24 hours of simulation on the chosen day and 12 additional hours to be able to compare to both radar data (00-00 UTC) and station data (8-8 UTC).~~

Following earlier studies with WRF in the Netherlands (e.g. Steeneveld et al., 2011; Daniels et al., 2015a; Theeuwes et al., 2013), we selected the following schemes to represent subgrid ~~poeesses~~ processes. Namely the YSU PBL scheme (Hong et al.,

2006), the WRF Single-Moment 6-Class Microphysics Scheme (WSM6) (Hong and Lim, 2006), the RRTMG schemes for both long- and shortwave radiation (Iacono et al., 2008), the Grell 3D cumulus parameterization scheme (Grell, 1993; Grell and Devenyi, 2002) and the Unified Noah Land Surface Model (Tewari et al., 2004) with the Urban Canopy Model (UCM). The UCM is a single layer model which has a simplified urban geometry. Included in the UCM are: shadowing from buildings, reflection of short and longwave radiation, wind profile in the canopy layer and multi-layer heat transfer equations for roof, wall and road surfaces (Kusaka et al., 2001; Kusaka and Kimura, 2004).

5 Where possible within the model domain, the European land-use map Corine (EEA, 2002) was used, supplemented with a high resolution map for the Netherlands. Corine is not available over the UK, so there the standard USGS map at 30' resolution available within WRF is used. Reclassification of the Corine land-use map is done following Pineda et al. (2004), but intertidal flats are classified as water instead of herbaceous wetlands. Three high resolution maps were used for the Netherlands: HGN1900 (Kramer et al., 2010), LGN4 (Hazeu et al., 2011; Wit, 2003; Hazeu et al., 2010), and GE2040 (Dekkers et al.,
10 2012), representing land use in 1900, 2000 and 2040 respectively (see Figure 3). The future map is based on the Dutch Global Economy scenario (CPB et al., 2006), a national scenario consistent with the SRES A2 scenario. The SRES scenarios have been replaced by Representative Concentration Pathways (RCP) and Shared Socioeconomic Pathways (SSP). The SRES A2 scenario is most ~~like~~-like SSP3 and between RCP 6.0 and 8.5 in carbon emissions. Reclassification of the Dutch land use maps is done as specified in Table 1. GE2040 unfortunately did not distinguish between different dry nature classes, so the
15 differentiation was copied from the LGN map. Therefore, all dry nature in GE2040 was first classified as herbaceous tundra. Next the newly classified herbaceous tundra was reclassified to Barren or sparsely vegetated areas, Evergreen needle leaf, and Deciduous broadleaf forest when it overlapped with the areas classified as such in the LGN map.

5.3 Model simulations

Three model simulations: HIS, REF, and FUT, are done with the land use maps of respectively 1900, 2000 and 2040 in the
20 Netherlands. These simulations have exactly the same boundary conditions. In 1900 the creation of land in Lake Yssel had not yet taken place. To test the effect of this conversion separately from the changes in land use an additional simulation with the historic land use map was done, this time with the current land extent (similar to that in REF). All previously non-existent land is assumed to be covered with grassland (the most common land cover class) in this simulation. This simulation is referred to as HIS+Ys.

25 Furthermore, to be able to put the land cover changes in the perspective of climate change, simulations with the present and future land use maps and a temperature perturbation of +1°C are conducted. These will be referred to as REF+1 and FUT+1. The global surface temperature is predicted to increase with at least 1°C under all concentration pathways by 2050 (IPCC, 2013). The surrogate climate change scenario is applied to the initial land and atmospheric conditions of the simulations, as well as to the driving sea surface temperature following the methodology by Attema et al. (2014), who suggest a vertically
30 uniform temperature perturbation is appropriate at mid-latitudes. The relative humidity is unchanged in these simulations, which implies an absolute surface humidity increase of 6–7%.

Urban areas outside of the Netherlands are removed in the historic, and expanded in the future land cover scenarios, in the same way as in Daniels et al. (2014). Angel et al. (2011, 's) projections of urban land cover are used to determine the level of expansion. Across the globe, urban land cover has increased due to people migrating to urban areas and because the population density within cities decreased (Marshall, 2007). Within Europe a population density decline rate of 2% per annum has been reached between 1990 and 2000 (Angel et al., 2011). We assume a conservative increase with a decline rate of 1% for the future. Urban areas are therefore less than doubled in our simulations, consistent with Angel's projection for Europe and Japan in 2050 with an annual density decline of 1%.

5.4 Precipitation data

In the Netherlands, measurements of precipitation are available from the national meteorological institute (KNMI). Gauge measurements are available on a daily basis (8-8 UTC) at about 320 stations. Gridded observations of precipitation are available at a 2.4 km resolution on an hourly basis from (bias)corrected radar data (Overeem et al., 2009). Modelled precipitation amounts are best compared with radar data, because of the similarity in resolution and spatial extent. Unfortunately for four of the 19 selected cases there is no radar data available, so some averages shown in the results sections consist of fewer cases.

6 Results

The focus of this paper is on the sensitivity of precipitation to changes in land surface conditions in historical and future perspectives. The precipitation response to the perturbations in the experiments will be described in the next section. To clarify these responses, the section after that focusses on the (differences in) atmospheric conditions and processes leading to the formation of precipitation.

In general, the WRF model overestimates precipitation amounts compared to both station and radar data (Figure 4). The days marked with red markers only have station data, and no radar data available. There is one day where precipitation amounts are grossly overestimated, namely for June 30 2003. This day is marked with an open dot in the scatterplot. This is the only day in the selection that has easterly winds and the poor model performance could therefore be related to the chosen position of the domain. This day was excluded from further analysis, so only 18 days are used further on in this paper. The average wind direction on the other days is southwest, alike the year round dominant wind direction in the Netherlands.

The performance of the model to represent spatial precipitation patterns is reasonable overall, but shows quite patchy results (Figure 5). The precipitation pattern of 2000-07-29 for example is well represented by the model. This day is denoted by a triangle in Figure 4. As an example in which the model does not represent the spatial precipitation pattern well the precipitation pattern of 2007-07-22 is given. This day is denoted by a square in Figure 4. Compared to the previous example, this day is more accurately modelled in terms of amounts, but the modelled spatial distribution is quite distant from that observed. The average spatial distribution of all 18 cases overestimates the amount of precipitation compared to observed station data by almost 50%. Nevertheless, the model seems to capture the relatively high precipitation amounts in the center of the country and lower rainfall amounts in the northern parts.

The daily evolution of precipitation in observations and in the model is given in Figure 8, that will be discussed more thoroughly in the next section. Compared to radar data, the phasing of all model runs is 3 hours too early in simulating the intensification of precipitation, and the modelled precipitation peak is 2 hours too early. In addition, the average precipitation intensity is often higher than in observations. The separation of the model and observations in the evening is ~~caused-by-found~~ in only two days and is therefore not a generic feature. The comparison between the radar data and the modelled amounts in Figure 8 is not entirely consistent, however, since the averages are made over a different number of cases (14 vs 18 respectively). Repeating the analysis with the fewer number of cases leads to the same results.

5 6.1 Precipitation response

Despite the fact that we select days with similar atmospheric conditions, the response of precipitation to the land use and climate perturbations is not uniform and varies strongly between the different cases. In Figure 6 the relative difference of precipitation between the land cover/temperature scenarios and REF is given for each of the 19 cases. The average precipitation difference given here, is calculated over the 18 cases (excluding the 2003-06-30 case) by averaging the relative change per case. The mean precipitation difference is, on the other hand, directly calculated from the averaged precipitation amount of the 18 cases as given in Figure 7. Although the strength and sometimes the sign of the response differs between the days in every simulation, a generic picture of a decrease of precipitation appears as a response to changes in land use. From historic to present, and from present to future, land use the ~~decreaese~~ decrease is about 3-5% and 2-5% respectively.

One of the averaging methods shows a difference between HIS and HIS+Ys, suggesting that the creation of land in Lake Yssel caused a moderate reduction of precipitation in the last century. The other method gives the same response for both HIS scenarios, suggesting the creation of land in Lake Yssel did not influence the total precipitation response. Either way, the model simulates a reduction of precipitation between HIS(+Ys) and REF. Similarly, the difference between FUT and REF is negative, so a reduction of precipitation is simulated by the model after incorporation of future land use.

On average, the spatial differences between the simulations are quite patchy (Figure 7). All simulations show small areas of enhancement as well as areas of reduction in precipitation. The reduction in FUT is seen over large parts of the Netherlands. Urbanization mainly takes place along the west coast, where the reduction of precipitation seems to be moderate. The relatively small reduction might be caused by the downwind enhancement of precipitation by urban areas, though the patchiness in the rest of the country doesn't seem supportive of this hypothesis. In the HIS simulation, the largest enhancement is located on the eastern side of Lake Yssel. This increase is not visible in the HIS+Ys simulation, so it might be caused by the relatively high SST and evaporation over Lake Yssel itself and subsequent higher moisture content of the air when it reaches the coast. The enhancement of precipitation in REF+1 and FUT+1 is most pronounced along the south-eastern border of the country. The relatively large spatial changes shown here average out to the relative changes given before in the order of 2 to 8%, which is only 0.1 to 0.6 mm. So the average changes between the runs are much smaller than the patchy spatial differences seen here.

It is interesting to see if the precipitation response to the perturbations is happening equally throughout the day, or whether it occurs during a specific moment. In the mean daily evolution of precipitation, the differences between HIS(+Ys) and REF are hardly distinguishable (Figure 8). The differences between FUT and REF manifest themselves in the middle of the day when

the intensity of precipitation is lower in FUT. This reduction of precipitation is also seen in FUT+1 and must be caused by land use changes, like the expansion of urban areas. The most pronounced temporal differences are visible in the temperature perturbation experiments: REF+1 and FUT+1. The differences are most evident in the early morning between 2 and 8 UTC. This difference is not significant as the divergence is mainly caused by the precipitation enhancement on 2000-07-05, the day with the largest response to the temperature perturbations. So the only systematic differences between REF and other simulations are seen in FUT and FUT+1 in the middle of the day.

The surrogate climate change experiments: REF+1 and FUT+1 are conducted to allow a comparison between changes in precipitation due to land use changes and due to climate change. In our simulations, precipitation in the Netherlands increases in the temperature scenarios. The 7-8% rainfall increase in REF+1 (Figure 6) is close to the increase of about 7% K^{-1} in near surface humidity that follows from the Clausius-Clapeyron equation (O’Gorman and Muller, 2010). FUT+1 shows a more moderate increase in precipitation of 2-6%. The increase seems to be offset by the reduction in precipitation from the expected land use change that is obtained in FUT. Interestingly, it appears that the precipitation response to land use change and to the climate perturbation can be added linearly. So the mean and average values in Figure in REF+1, of respectively 8 and 7%, are reduced with the mean and average values in FUT, of -2 and -5% respectively, to attain the mean and average values in FUT+1, of 6 and 2% respectively.

The distribution of precipitation is not well represented by the model, but is consistent among the scenarios (Figure 9). The extremes of precipitation are very similar in all of the experiments, except for REF+1. The REF+1 simulation reveals a considerable increase in precipitation extremes. In the tail of the distribution the difference with REF is more than 20%. For more moderate extremes (> 15mm) the difference between REF+1 and REF is about 10%. Although mean precipitation increases in FUT+1, the distribution remains similar to REF. Apparently extreme precipitation is in this case influenced more by land use changes than mean precipitation. The spatial distribution of the enhanced precipitation is similar to the pattern of mean precipitation, in other words there is more rain in the same locations. Overall, what can be inferred is that climate change and future land use change have an equal, though opposed, effect on extreme precipitation. The atmospheric conditions and relatively little (deep) convection in FUT+1 seem to play a role in this difference.

6.2 Surface and atmospheric conditions

To understand the differences between the various simulations, this section focusses on surface and atmospheric conditions. We first consider changes in the latent and sensible heat flux and changes in 2 meter relative humidity. In HIS both a higher latent and sensible heat flux are seen in comparison to REF and to HIS+Ys (Figure 10 and Table 2). This is largely caused by the inclusion of part of Lake Yssel in the averaging, as the high lake temperature, and low albedo, causes both fluxes to be enhanced. In HIS+Ys the latent heat flux and relative humidity are somewhat higher than in REF, but the sensible heat flux is lower. Consequently the available moisture in both historical simulations will be higher and this boosts precipitation amounts. In the FUT simulations the reverse effects happens as moisture is reduced after expansion of urban areas and other land use conversions.

30 In REF+1 the heat fluxes are not that different from REF. Nevertheless, there is a large precipitation response. The imposed temperature perturbation with constant relative humidity increases the amount of moisture at the time of initialization and the amount that enters the model domain at the boundaries, causing precipitation to change, but fluxes to remain the same. In FUT and FUT+1 a reduction of the latent heat flux is simulated in comparison to REF. Also, in both experiments relative humidity at the surface is lower than in REF. The expansion of urban areas leads to an increase of the sensible heat flux and a decrease of the latent heat flux, since potential evaporation is reduced within urban areas. This decreases overall moisture availability. The surface responses in FUT and FUT+1 look relatively similar, though the precipitation response relative to REF is of **opposed** opposite sign in the experiments (Figure 6).

We now focus on the possibility of triggering convection by considering the atmospheric conditions. Figure 11 shows the median of the diurnal cycle of the planetary boundary layer (PBL), lifting condensation level (LCL), level of free convection (LFC), and convective available potential energy (CAPE) calculated at the lowest model level, of the 18 cases in the REF experiment. We show the median because the mean is influenced more by outliers from individual cases. For REF+1, FUT and FUT+1 the average difference with regards to REF is given for each of these variables. The differences are normalized with respect to the mean values in REF, so a relative increase is given at every time. On average, the PBL increases to about 800 m during daytime and reaches the LCL at around 9 UTC. In the figure, the LFC remains well above the PBL and LCL. In many individual cases, however, the LFC drops to about 800 m as well, permitting (deep) convection. The LFC reaches its lowest level at 11 UTC. This coincides with the time of the highest precipitation intensities in the model (Figure 8). CAPE increases up to 9 UTC while the LFC decreases, then stabilizes because of the rain and associated temperature and humidity changes. The early onset and intensification of precipitation in the model (Figure 8) contributes to the small buildup of CAPE and could explain the underestimation of extreme precipitation compared to observations (Figure 9). Also, there are large spatial variations in these variables. Therefore, we computed the fraction of space and time that the PBL is higher than the LCL and LFC respectively (Table 2). We consider this a measure of the amount of triggering that occurs.

In REF+1 the temperature is higher, while the PBL is quite similar to REF. During daytime there is little difference between REF and REF+1 regarding the LCL and LFC and approximately the same amount of triggering (PBL higher than LCL/LFC) occurs (Table 2). At night the LCL and LFC are lower in REF+1 than in REF. CAPE is higher throughout the day in REF+1 than in REF, likely due to the enhanced moisture content above the PBL as a result of the imposed climate change scenario. This leads to the simulation of higher precipitation amounts and intensities in REF+1 (Figure 9). In FUT the large sensible heat flux causes the PBL to grow more during the day and stay higher during the evening than in REF. The relatively large sensible heat flux also affects and raises the LCL and LFC. In comparison to REF, CAPE decreases in FUT from 8 UTC onwards when temperatures go up and relatively little moisture is available. Consequently, less precipitation is simulated.

In FUT+1 a combination of atmospheric processes from FUT and REF+1 can be seen. The LFC remains lower (like in REF+1), while the PBL and LCL are slightly higher (like in FUT). Accordingly, CAPE is higher than in REF in the beginning and end of the day (like in REF+1) and drops early in the day (like in FUT). In FUT+1 in total, precipitation is enhanced by the moisture availability from the boundary conditions imposed through the climate change scenario, but high intensity precipitation is not simulated because there is little triggering and (deep) convection. Strong precipitation events are caused by

convective instability, which is measured by CAPE, and generally occur during daytime. In FUT+1, CAPE is mainly enhanced during nighttime, not during daytime. The relatively low values of CAPE during daytime likely explain the absence of a response in the tail of the precipitation distribution in FUT (Figure 9).

7 Discussion

Although WRF is a widely used atmospheric model, questions regarding the choice of parameterization schemes and the models validity for the specific conditions always remain. The sensitivity to different parameterization schemes was not specifically investigated in this study, while this is known to be important (Gallus and Bresch, 2006; Jankov et al., 2005; Rajeevan et al., 2010; Ruiz et al., 2010; Zeng et al., 2012; ter Maat et al., 2013). The chosen YSU PBL scheme is a first-order nonlocal scheme that is widely used under convective conditions (Hu et al., 2010). Sensitivity to initial conditions was checked for some of the cases by starting the runs up to 3 hours earlier or later. This had relatively little effect and WRF seems pretty robust in its predictions, so the sensitivity is small. Previous work (Daniels et al., 2015a) found the largest sensitivity to the initial soil moisture conditions. In the Netherlands those conditions are generally at field capacity however due to the frequent rain and high ground water table and can therefore be expected to have limited influence. The HIS, REF, and FUT experiments were duplicated without the convection scheme, but this was found to have little effect on precipitation amounts and is therefore not shown. The utilized and presented model design is consequently only one version of reality, of which many more could be simulated. In this paper our main interest is the response of the model to changes in land use relative to climate change. The model is well capable to simulate temperature (changes) as was shown in Daniels et al. (2015a). Although the model's representation of precipitation is not perfect for the current climate, we believe that the current setup can still be ~~usefull~~ useful to explore the sensitivities. In addition, the model was used in a slightly different setup for a four day case in spring and comparable results regarding the response of precipitation to increased urban areas were found (Daniels et al., 2015a). A similar reduction in precipitation was also found with the MM5 model for Europe as a whole (Trusilova et al., 2009, 2008), which gives confidence in the results. Trusilova et al. (2009) simulated a 0.2 mm/day reduction in precipitation in summer after expansion of urban land by 40%. They also found the area in which precipitation was altered increased nearly linearly with the urban land increment.

The utilized procedure to select cases for simulation was intended to obtain a homogeneous set of days with similar meteorological conditions which were thought to favour the land surface impact on precipitation. A large spread among responses to land use and temperature scenarios was found between the cases however, so the intended comparability was not fully accomplished. This could be a model artefact, or a realistic response showing how differently the atmosphere reacts to similar conditions, thus showing natural variability. Nevertheless, the majority of cases has a similar sign in its response. By averaging the results we find a more representable response than the response of any single case could be. Our estimates could be biased by the selection procedure that selected cases with rather strong convective activity. Consequently, convection will always be triggered in the selected cases and a potential feedback increasing precipitation through enhanced triggering was excluded. Examples of this feedback can be found in Findell and Eltahir (2003), Santanello et al. (2011), Taylor et al. (2012), and others. The Netherlands is however not located in a region where strong feedbacks of this type are expected (Seneviratne et al., 2006;

The GLACE Team et al., 2004) and the influence of changes in climate, SST or circulation are likely more important (Attema et al., 2014; van Haren et al., 2013). Would the selection procedure have been more successful in identifying similar events, we could have made a composite event by averaging the initial and boundary conditions, similar to Mahoney et al. (2012). Their procedure sounds promising, because it could reduce simulation time and provide a more representative response, but
35 the selection of cases to average is apparently not straightforward.

In this study reductions in precipitation from historic to present, as well as from present to future land use are obtained for selected summer cases in the Netherlands. Observations show, however, that precipitation has on average increased by about 25% in the last century (Buishand et al., 2013). So apparently factors other than land use changes have been dominant. The observed change in precipitation was larger in the winter half year than the summer half year nonetheless, and the trend in
5 the summer months (June – August) in the period 1951-2009 was only about 5% (Daniels et al., 2014). Hence, land surface changes in the last century might have mitigated some of the precipitation increase in summer and hereby have contributed to the relatively low increase observed in summer. The same seems to happen in the future in the simulations: combining future land use with the expected temperature rise, reduces the precipitation increase in the model. This might only hold for summer however, because historical and theoretical evidence suggests that the precipitation response to land use changes is
10 lower in cases with non-convective precipitation (Pielke et al., 2007; Cotton and Pielke, 2007). Studies for different types of precipitation, taking place in other seasons, are therefore desirable as well.

The climate change scenario used here maintains constant relative humidity in the model. The resulting response in precipitation under current land cover conditions (REF+1) is close to the expected increase in near surface humidity of about 7% estimated with the Clausius-Clapeyron equation. It is interesting to note that in all simulations, except for REF+1, no
15 differences in extreme precipitation were simulated. We note that it are not the changes in mean, but the changes in extreme precipitation that may cause problems for society, with for example landslides or urban flooding (e.g. Feddema et al., 2005; Hibbard et al., 2010; Mahmood et al., 2014). In REF+1 precipitation over 15 mm/hr increases with 10% or more. This increase is higher than the average increase in extreme precipitation simulated by global climate models (GCMs), which is about 6% per degree global warming (Kharin et al., 2007, 2013). Mean precipitation also increases more in our simulations (7-8%) than
20 in GCMs (3%) (Allen and Ingram, 2002). This can partly be explained because we investigate hourly data, while GCMs data is generally daily and we only simulate 18 cases, while GCMs generate mean climate simulations. In addition, GCMs generally show a decrease in the occurrence frequency, and increase in intensity of precipitation. Because we only selected cases in which precipitation occurs, there can be no difference in the occurrence frequency in our simulations. Our estimates are therefore higher than those made by GCMs, but similar to comparable studies (Attema et al., 2014).

25 8 Conclusions

This paper aims to quantify the precipitation response to historic (1900) and future (2040) land use change in the Netherlands, and put this response in the perspective of climate change. To achieve this, historic, present and future land use maps are incorporated into the WRF model. In addition, simulations with a temperature perturbation of +1°C are done as a surrogate

climate change scenario. The investigation is done for 18 summer days with similar characteristics that were selected with a circulation type classification and k-means clustering procedure. On average, precipitation decreases from historic to present land cover with 3-5%, and decreases with 2-5% from present to future land cover. Creation of land in Lake Yssel might have caused a decrease of precipitation, but the evidence is not exhaustive. Under the present climate, the simulated land use changes hardly have any influence on extreme precipitation.

Observations of precipitation in the last century show a year-round increase of 25%, but only 5% in summer. The results in this paper suggest that the relatively low increase of precipitation in summer due to climate change might have been offset by the effects of land use conversion. The same land use-climate compensation occurs in our simulations for the future. Precipitation increases by 7-8% on average in response to the temperature perturbation in the climate simulations and has a disproportional impact on extremes. Expected land use changes, including the expansion of urban areas, diminish this increase however. As such an average precipitation increase of 2-6% is achieved in the simulation that combines future land use with climate change. No increase in extreme precipitation is found in the combined future land use-climate change simulation. Overall, although the precipitation response to land use changes is smaller than the response to climate change, it is not negligible in the summer period in the Netherlands. Our simulations suggest this might be especially true for precipitation extremes.

Author contributions. The authors collectively designed the experiments and interpreted the results. ED conducted the experiments, analysed the data and wrote the paper, that all authors commented on.

Acknowledgements. ED and GL acknowledge contributions of the Knowledge for Climate programme, and RH and AH acknowledge support by the EU programme EMBRACE.

References

- Allen, M. R. and Ingram, W. J.: Constraints on future changes in climate and the hydrologic cycle, *Nature*, 419, 224–232, doi:10.1038/Nature01092, 2002.
- Angel, S., Parent, J., Civco, D. L., Blei, A., and Potere, D.: The dimensions of global urban expansion: Estimates and projections for all countries, 2000–2050, *Progress in Planning*, 75, 53–107, doi:10.1016/j.progress.2011.04.001, 2011.
- Attema, J. J., Loriaux, J. M., and Lenderink, G.: Extreme precipitation response to climate perturbations in an atmospheric mesoscale model, *Environmental Research Letters*, 9, 12 pp, doi:10.1088/1748-9326/9/1/014003, 2014.
- Buishand, T. A., De Martino, G., Spreeuw, J. N., and Brandsma, T.: Homogeneity of precipitation series in the Netherlands and their trends in the past century, *International Journal of Climatology*, 33, 815–833, doi:10.1002/joc.3471, 2013.
- 25 core team, R.: R: A language and environment for statistical computing, R Foundation for Statistical Computing, Vienna, Austria, 2013.
- Cotton, W. R. and Pielke, R. A.: *Human impacts on weather and climate*, Cambridge University Press, 2nd edition edn., 2007.
- CPB, MNP, and RPB: *Welvaart en Leefomgeving. Een scenariostudie voor Nederland in 2040*, Tech. rep., Den Haag, the Netherlands, 2006.
- Daniels, E. E., Lenderink, G., Hutjes, R. W. A., and Holtslag, A. A. M.: Spatial precipitation patterns and trends in The Netherlands during 1951–2009, *International Journal of Climatology*, 34, 1773–1784, doi:10.1002/joc.3800, 2014.
- 30 Daniels, E. E., Hutjes, R. W. A., Lenderink, G., Ronda, R. J., and Holtslag, A. A. M.: Land surface feedbacks on spring precipitation in the Netherlands, *Journal of Hydrometeorology*, 16, 232–243, doi:10.1175/jhm-d-14-0072.1, 2015a.
- Daniels, E. E., Lenderink, G., Hutjes, R. W. A., and Holtslag, A. A. M.: Observed urban effects on precipitation along the Dutch West coast, *International Journal of Climatology*, n/a, 9 pp, doi:10.1002/joc.4458, 2015b.
- Dee, D. P., Uppala, S. M., Simmons, A. J., Berrisford, P., Poli, P., Kobayashi, S., Andrae, U., Balmaseda, M. A., Balsamo, G., Bauer, P., Bechtold, P., Beljaars, A. C. M., van de Berg, L., Bidlot, J., Bormann, N., Delsol, C., Dragani, R., Fuentes, M., Geer, A. J., Haimberger, L., Healy, S. B., Hersbach, H., Hólm, E. V., Isaksen, I., Kållberg, P., Köhler, M., Matricardi, M., McNally, A. P., Monge Sanz, B. M., Morcrette, J. J., Park, B. K., Peubey, C., de Rosnay, P., Tavolato, C., Thépaut, J. N., and Vitart, F.: The ERA-Interim reanalysis: configuration and performance of the data assimilation system, *Quarterly Journal of the Royal Meteorological Society*, 137, 553–597, doi:10.1002/qj.828, 2011.
- Dekkers, J., Koomen, E., Jacobs Crisioni, C., and Rijken, B.: Scenario-based projections of future land use in the Netherlands: A spatially-explicit knowledge base for the Knowledge for Climate programme, Tech. Rep. SL-11, Department of Spatial Economics/ Spatial Information Laboratory (SPINlab), Amsterdam, the Netherlands, 2012.
- 5 EEA: *Corine land cover 2000*, European Environment Agency, 2002.
- Feddema, J. J., Oleson, K. W., Bonan, G. B., Mearns, L. O., Buja, L. E., Meehl, G. A., and Washington, W. M.: The importance of land-cover change in simulating future climates, *Science*, 310, 1674–1678, doi:10.1126/science.1118160, 2005.
- 10 Feranec, J., Jaffrain, G., Soukup, T., and Hazeu, G.: Determining changes and flows in European landscapes 1990–2000 using CORINE land cover data, *Applied Geography*, 30, 19–35, doi:10.1016/j.apgeog.2009.07.003, 2010.
- Findell, K. L. and Eltahir, E. A. B.: Atmospheric controls on soil moisture-boundary layer interactions: Three-dimensional wind effects, *Journal of Geophysical Research-Atmospheres*, 108, doi:10.1029/2001jd001515, 2003.
- Fischer, E. M., Sedlacek, J., Hawkins, E., and Knutti, R.: Models agree on forced response pattern of precipitation and temperature extremes, *Geophysical Research Letters*, 41, 8554–8562, doi:10.1002/2014gl062018, 2014.
- 15

- Gallus, W. A. and Bresch, J. F.: Comparison of impacts of WRF dynamic core, physics package, and initial conditions on warm season rainfall forecasts, *Monthly Weather Review*, 134, 2632–2641, doi:10.1175/mwr3198.1, 2006.
- George, J. J.: *Weather forecasting for aeronautics*, New York and London Academic Press, 1960.
- Grell, G.: Prognostic Evaluation of Assumptions Used by Cumulus Parameterizations, *Monthly Weather Review*, 121, 764–787, doi:10.1175/1520-0493(1993)121<0764:PEOAUB>2.0.CO;2, 1993.
- 20 Grell, G. and Devenyi, D.: A generalized approach to parameterizing convection combining ensemble and data assimilation techniques, *Geophysical Research Letters*, 29, 38–1–38–4, doi:10.1029/2002GL015311, 2002.
- Hartigan, J. A. and Wong, M. A.: Algorithm AS 136: A K-Means Clustering Algorithm, *Journal of the Royal Statistical Society. Series C (Applied Statistics)*, 28, 100–108, doi:10.2307/2346830, 1979.
- 25 Hazeu, G., Schuiling, C., Dorland, G., Oldengarm, J., and Gijsbertse, H.: *Landelijk grondgebruiksbestand Nederland versie 6 (LGN6); vervaardiging, nauwkeurigheid en gebruik*, Tech. rep., Alterra, Wageningen, the Netherlands, 2010.
- Hazeu, G. W., Bregt, A. K., de Wit, A. J. W., and Clevers, J. G. P. W.: A Dutch multi-date land use database: Identification of real and methodological changes, *International Journal of Applied Earth Observation and Geoinformation*, 13, 682–689, doi:10.1016/j.jag.2011.04.004, 2011.
- 30 Hibbard, K., Janetos, A., van Vuuren, D. P., Pongratz, J., Rose, S. K., Betts, R., Herold, M., and Feddema, J. J.: Research priorities in land use and land-cover change for the Earth system and integrated assessment modelling, *International Journal of Climatology*, 30, 2118–2128, doi:10.1002/joc.2150, 2010.
- Hoeksema, R. J.: Three stages in the history of land reclamation in the Netherlands, *Irrigation and Drainage*, 56, S113–S126, doi:10.1002/ird.340, 2007.
- 35 Hong, S. and Lim, J. J.: The WRF single-moment 6-class microphysics scheme (WSM6), *Journal of Korean Meteorological Society*, 42, 129–151, 2006.
- Hong, S.-Y., Noh, Y., and Dudhia, J.: A New Vertical Diffusion Package with an Explicit Treatment of Entrainment Processes, *Monthly Weather Review*, 134, 2318–2341, doi:10.1175/mwr3199.1, 2006.
- Hu, X.-M., Nielsen Gammon, J. W., and Zhang, F.: Evaluation of Three Planetary Boundary Layer Schemes in the WRF Model, *Journal of Applied Meteorology and Climatology*, 49, 1831–1844, doi:10.1175/2010jamc2432.1, 2010.
- Huntington, T. G.: Evidence for intensification of the global water cycle: Review and synthesis, *Journal of Hydrology*, 319, 83–95, doi:10.1016/j.jhydrol.2005.07.003, 2006.
- 5 Iacono, M. J., Delamere, J., Mlawer, E., Shephard, M., Clough, S., and Collins, W.: Radiative forcing by long-lived greenhouse gases: Calculations with the AER radiative transfer models, *Journal of Geophysical Research*, 113, 8 pp, doi:10.1029/2008JD009944, 2008.
- IPCC: *Climate Change 2013: The Physical Science Basis. Contribution of Working Group I to the Fifth Assessment Report of the Intergovernmental Panel on Climate Change*, Tech. rep., Cambridge, United Kingdom and New York, NY, USA, doi:10.1017/CBO9781107415324, 2013.
- 10 Jankov, I., Gallus, W. A., Segal, M., Shaw, B., and Koch, S. E.: The impact of different WRF model physical parameterizations and their interactions on warm season MCS rainfall, *Weather and Forecasting*, 20, 1048–1060, doi:10.1175/waf888.1, 2005.
- Jenkinson, A. and Collison, B.: *An Initial Climatology of Gales Over the North Sea*, Tech. Rep. Memorandum No. 62, Meteorological Institution, London, UK, 1977.
- Jones, P. D., Hulme, M., and Briffa, K. R.: A comparison of lamb circulation types with an objective classification scheme, *International*
- 15 *Journal of Climatology*, 13, 655–663, doi:10.1002/joc.3370130606, 1993.

- Kalnay, E. and Cai, M.: Impact of urbanization and land-use change on climate, *Nature*, 423, 528–531, doi:10.1038/nature01675, 2003.
- Kharin, V. V., Zwiers, F. W., Zhang, X., and Hegerl, G. C.: Changes in Temperature and Precipitation Extremes in the IPCC Ensemble of Global Coupled Model Simulations, *Journal of Climate*, 20, 1419–1444, doi:10.1175/jcli4066.1, 2007.
- 20 Kharin, V. V., Zwiers, F. W., Zhang, X., and Wehner, M.: Changes in temperature and precipitation extremes in the CMIP5 ensemble, *Climatic Change*, 119, 345–357, doi:10.1007/s10584-013-0705-8, 2013.
- Kramer, H., Dorland, G. v., and Gijsbertse, H.: Historisch grondgebruik Nederland, in: *Tijd en Ruimte. Nieuwe toepassingen van GIS in de alfawetenschappen*, edited by Boonstra, O. and Schuurman, A., pp. 142–153, Uitgeverij Matrijs, Utrecht, the Netherlands, 2010.
- Kusaka, H. and Kimura, F.: Thermal effects of urban canyon structure on the nocturnal heat island: Numerical experiment using a mesoscale model coupled with an urban canopy model, *Journal of Applied Meteorology*, 43, 1899–1910, doi:10.1175/jam2169.1, 2004.
- 25 Kusaka, H., Kondo, H., Kikegawa, Y., and Kimura, F.: A Simple Single-Layer Urban Canopy Model For Atmospheric Models: Comparison With Multi-Layer And Slab Models, *Boundary-Layer Meteorology*, 101, 329–358, doi:10.1023/a:1019207923078, 2001.
- Lamb, H.: Types and spells of weather around the year in the British Isles: annual trends, seasonal structure of years, singularities, *Quarterly Journal of the Royal Meteorological Society*, 76, 393–438, 1950.
- Lenderink, G., van Meijgaard, E., and Selten, F.: Intense coastal rainfall in the Netherlands in response to high sea surface temperatures: analysis of the event of August 2006 from the perspective of a changing climate, *Climate Dynamics*, 32, 19–33, doi:10.1007/s00382-008-0366-x, 2009.
- 30 Loriaux, J. M., Lenderink, G., De Roode, S. R., and Siebesma, A. P.: Understanding Convective Extreme Precipitation Scaling Using Observations and an Entraining Plume Model, *Journal of the Atmospheric Sciences*, 70, 3641–3655, doi:10.1175/jas-d-12-0317.1, 2013.
- Mahmood, R., Pielke, R. A., Hubbard, K. G., Niyogi, D., Bonan, G., Lawrence, P., McNider, R., McAlpine, C., Etter, A., Gameda, S., Qian, B. D., Carleton, A., Beltran Przekurat, A., Chase, T., Quintanar, A. I., Adegoke, J. O., Vezhapparambu, S., Conner, G., Asefi, S., Sertel, E., Legates, D. R., Wu, Y. L., Hale, R., Frauenfeld, O. W., Watts, A., Shepherd, M., Mitra, C., Anantharaj, V. G., Fall, S., Lund, R., Trevino, A., Blanken, P., Du, J. Y., Chang, H. I., Leeper, R. E., Nair, U. S., Dobler, S., Deo, R., and Syktus, J.: Impacts of land use/land cover change on climate and future research priorities, *Bulletin of the American Meteorological Society*, 91, 37–46, doi:10.1175/2009bams2769.1, 2010.
- 35 Mahmood, R., Pielke, R. A., Hubbard, K. G., Niyogi, D., Dirmeyer, P. A., McAlpine, C., Carleton, A. M., Hale, R., Gameda, S., Beltran Przekurat, A., Baker, B., McNider, R., Legates, D. R., Shepherd, M., Du, J. Y., Blanken, P. D., Frauenfeld, O. W., Nair, U. S., and Fall, S.: Land cover changes and their biogeophysical effects on climate, *International Journal of Climatology*, 34, 929–953, doi:10.1002/joc.3736, 2014.
- 5 Mahoney, K., Alexander, M. A., Thompson, G., Barsugli, J. J., and Scott, J. D.: Changes in hail and flood risk in high-resolution simulations over Colorado’s mountains, *Nature Climate Change*, 2, 125–131, 2012.
- Marshall, J. D.: Urban Land Area and Population Growth: A New Scaling Relationship for Metropolitan Expansion, *Urban Studies*, 44, 1889–1904, doi:10.1080/00420980701471943, 2007.
- 10 O’Gorman, P. and Muller, C. J.: How closely do changes in surface and column water vapor follow Clausius–Clapeyron scaling in climate change simulations?, *Environmental Research Letters*, 5, 025 207, 2010.
- Overeem, A., Holleman, I., and Buishand, T.: Derivation of a 10-year radar-based climatology of rainfall, *Journal of Applied Meteorology and Climatology*, 48, 1448–1463, doi:10.1175/2009JAMC1954.1, 2009.
- Philipp, A., Bartholy, J., Beck, C., Erpicum, M., Esteban, P., Fettweis, X., Huth, R., James, P., Jourdain, S., Kreienkamp, F., Krennert, T., Lykoudis, S., Michalides, S. C., Pianko Kluczynska, K., Post, P., Rasilla Alvarez, D., Schiemann, R., Spekat, A., and Tymvios,
- 15

- F. S.: Cost733cat-A database of weather and circulation type classifications, *Physics and Chemistry of the Earth*, 35, 360–373, doi:10.1016/j.pce.2009.12.010, 2010.
- Philipp, A., Beck, C., Huth, R., and Jacobeit, J.: Development and comparison of circulation type classifications using the COST 733 dataset and software, *International Journal of Climatology*, pp. n/a–n/a, doi:10.1002/joc.3920, 2014.
- 20 Pielke, R. A., Adegoke, J. O., Chase, T. N., Marshall, C. H., Matsui, T., and Niyogi, D.: A new paradigm for assessing the role of agriculture in the climate system and in climate change, *Agricultural and Forest Meteorology*, 142, 234–254, doi:10.1016/j.agrformet.2006.06.012, 2007.
- Pineda, N., Jorba, O., Jorge, J., and Baldasano, J. M.: Using NOAA AVHRR and SPOT VGT data to estimate surface parameters: application to a mesoscale meteorological model, *International Journal of Remote Sensing*, 25, 129–143, doi:10.1080/0143116031000115201, 2004.
- 25 Rajeevan, M., Kesarkar, A., Thampi, S. B., Rao, T. N., Radhakrishna, B., and Rajasekhar, M.: Sensitivity of WRF cloud microphysics to simulations of a severe thunderstorm event over Southeast India, *Annales Geophysicae*, 28, 603–619, 2010.
- Ruiz, J. J., Saulo, C., and Nogues Paegle, J.: WRF Model Sensitivity to Choice of Parameterization over South America: Validation against Surface Variables, *Monthly Weather Review*, 138, 3342–3355, doi:10.1175/2010mwr3358.1, 2010.
- Santanello, J. A., Peters Lidard, C. D., and Kumar, S. V.: Diagnosing the Sensitivity of Local Land–Atmosphere Coupling via the Soil Moisture–Boundary Layer Interaction, *Journal of Hydrometeorology*, 12, 766–786, doi:10.1175/jhm-d-10-05014.1, 2011.
- 30 Schar, C., Frei, C., Luthi, D., and Davies, H. C.: Surrogate climate-change scenarios for regional climate models, *Geophysical Research Letters*, 23, 669–672, doi:10.1029/96gl00265, 1996.
- Seneviratne, S. I., Luthi, D., Litschi, M., and Schar, C.: Land-atmosphere coupling and climate change in Europe, *Nature*, 443, 205–209, doi:10.1038/nature05095, 2006.
- 35 Skamarock, W., Klemp, J., Dudhia, J., Gill, D., D.M., B., Duda, M., Huang, X., Wang, W., and Powers, J.: A Description of the Advanced Research WRF Version 3, Tech. rep., National Center for Atmospheric Research, Boulder, Colorado, USA, 2008.
- Steenefeld, G. J., Tolk, L. F., Moene, A. F., Hartogensis, O. K., Peters, W., and Holtslag, A. A. M.: Confronting the WRF and RAMS mesoscale models with innovative observations in the Netherlands: Evaluating the boundary layer heat budget, *Journal of Geophysical Research-Atmospheres*, 116, 16 pp, doi:10.1029/2011jd016303, 2011.
- Taylor, C. M., de Jeu, R. A. M., Guichard, F., Harris, P. P., and Dorigo, W. A.: Afternoon rain more likely over drier soils, *Nature*, 489, 423–426, doi:10.1038/nature11377, 2012.
- 5 ter Maat, H. W., Moors, E. J., Hutjes, R. W. A., Holtslag, A. A. M., and Dolman, A. J.: Exploring the Impact of Land Cover and Topography on Rainfall Maxima in the Netherlands, *Journal of Hydrometeorology*, 14, 524–542, doi:10.1175/jhm-d-12-036.1, 2013.
- Tewari, M., Chen, F., Wang, W., Dudhia, J., LeMone, M., Mitchell, K., Ek, M., Gayno, G., Wegiel, J., and Cuenca, R.: Implementation and verification of the unified NOAA land surface model in the WRF model, in: 20th conference on weather analysis and forecasting/16th conference on numerical weather prediction, p. 11–15, 2004.
- 10 The GLACE Team, Koster, R. D., Dirmeyer, P. A., Guo, Z., Bonan, G., Chan, E., Cox, P., Gordon, C. T., Kanae, S., Kowalczyk, E., Lawrence, D., Liu, P., Lu, C.-H., Malyshev, S., McAvaney, B., Mitchell, K., Mocko, D., Oki, T., Oleson, K., Pitman, A., Sud, Y. C., Taylor, C. M., Verseghy, D., Vasic, R., Xue, Y., and Yamada, T.: Regions of Strong Coupling Between Soil Moisture and Precipitation, *Science*, 305, 1138–1140, doi:10.1126/science.1100217, 2004.
- Theeuwes, N. E., Solcerová, A., and Steenefeld, G. J.: Modeling the influence of open water surfaces on the summertime temperature and thermal comfort in the city, *Journal of Geophysical Research: Atmospheres*, 118, 8881–8896, doi:10.1002/jgrd.50704, 2013.
- 15

- Trusilova, K., Jung, M., Churkina, G., Karstens, U., Heimann, M., and Claussen, M.: Urbanization Impacts on the Climate in Europe: Numerical Experiments by the PSU–NCAR Mesoscale Model (MM5), *Journal of Applied Meteorology and Climatology*, 47, 1442–1455, doi:10.1175/2007jamc1624.1, 2008.
- Trusilova, K., Jung, M., and Churkina, G.: On Climate Impacts of a Potential Expansion of Urban Land in Europe, *Journal of Applied Meteorology and Climatology*, 48, 1971–1980, doi:10.1175/2009jamc2108.1, 2009.
- 595 van Haren, R., Oldenborgh, G., Lenderink, G., Collins, M., and Hazeleger, W.: SST and circulation trend biases cause an underestimation of European precipitation trends, *Climate Dynamics*, 40, 1–20, doi:10.1007/s00382-012-1401-5, 2013.
- Verburg, P. H., van Eck, J. R. R., de Nijs, T. C. M., Dijst, M. J., and Schot, P.: Determinants of land-use change patterns in the Netherlands, *Environment and Planning B-Planning & Design*, 31, 125–150, doi:10.1068/b307, 2004.
- Wit, A. J. W. d.: Land use mapping and monitoring in the Netherlands using remote sensing data, in: *IEEE international geoscience and remote sensing symposium, Learning from Earth's shapes & colors*, Toulouse, 2003.
- 600 Wu, P., Christidis, N., and Stott, P.: Anthropogenic impact on Earth's hydrological cycle, *Nature Climate Change*, 3, 807–810, doi:10.1038/nclimate1932, 2013.
- Zeng, X. M., Wu, Z. H., Song, S., Xiong, S. Y., Zheng, Y. Q., Zhou, Z. G., and Liu, H. Q.: Effects of land surface schemes on the simulation of a heavy rainfall event by WRF, *Chinese Journal of Geophysics-Chinese Edition*, 55, 16–28, doi:10.6038/j.issn.0001-5733.2012.01.002, 605 2012.
- Zhang, X., Zwiers, F. W., Hegerl, G. C., Lambert, F. H., Gillett, N. P., Solomon, S., Stott, P. A., and Nozawa, T.: Detection of human influence on twentieth-century precipitation trends, *Nature*, 448, 461–465, 2007.

Table 1. USGS land use category descriptions and parameter settings used in WRF, with the national land use map (HGN, LGN and GE2040) classes that are reclassified as such.

USGS land use category	Land use description	z0 (m)	Albedo (-)	green vegetation fraction (%)	Leaf Area Index	Emissivity (%)	HGN/LGN class description	GE2040 class description
1	Urban and built-up land	0.5	0.15	0.1	1	0.88	Buildings and roads	Urban area, commercial /industrial, seaport, building lot, infrastructure
2	Dryland cropland and pasture	0.15	0.17	0.8	5.68	0.985	Crops and bare soil	Arable land
6	Cropland/ woodland mosaic	0.2	0.16	0.8	4	0.985	Other	Recreation - single day, recreation - stay, perennial crops
7	Grassland	0.12	0.19	0.8	2.9	0.96	Grassland	Grassland
11	Deciduous broadleaf forest	0.5	0.16	0.8	3.31	0.93	Deciduous forest	Nature - dry
14	Evergreen needle leaf	0.5	0.12	0.7	6.4	0.95	Coniferous forest	Nature - dry
16	Water bodies	0.0001	0.08	0	0.01	0.98	Water	Water
17	Herbaceous wetland	0.2	0.14	0.6	5.65	0.95	Reed swamps	Nature - wet
19	Barren or sparsely vegetated	0.01	0.38	0.01	0.75	0.9	Drifting sands and sandbanks	Greenhouse horticulture, nature -dry
20	Herbaceous tundra	0.1	0.15	0.6	3.35	0.92	Heath land and raised bogs	Nature - dry

Table 2. Mean daily (0-0 UTC) values of latent heat flux (LH), sensible heat (HFX), convective available potential energy (CAPE), precipitation (RAIN), and daytime (6-18 UTC) values of the percentage of time and area that the planetary boundary layer top is over the level of free convection (PBL > LFC), likewise for lifting condensation level (PBL > LCL), over the Netherlands for the conducted experiments

Variable	Unit	HIS	HIS+Ys	REF	REF+1	FUT	FUT+1
LH	W/m ²	88.6	82.5	81.1	83.7	73.0	75.4
HFX	W/m ²	40.2	38.4	39.4	38.0	43.8	42.6
CAPE	J/kg	330.1	311.4	301.2	360.6	290.1	346.7
PBL>LCL	%	54.2	54.0	52.7	52.9	51.0	51.2
PBL>LFC	%	45.3	45.0	43.7	44.0	41.7	42.1
RAIN	mm	7.5	7.3	7.2	7.7	6.9	7.5

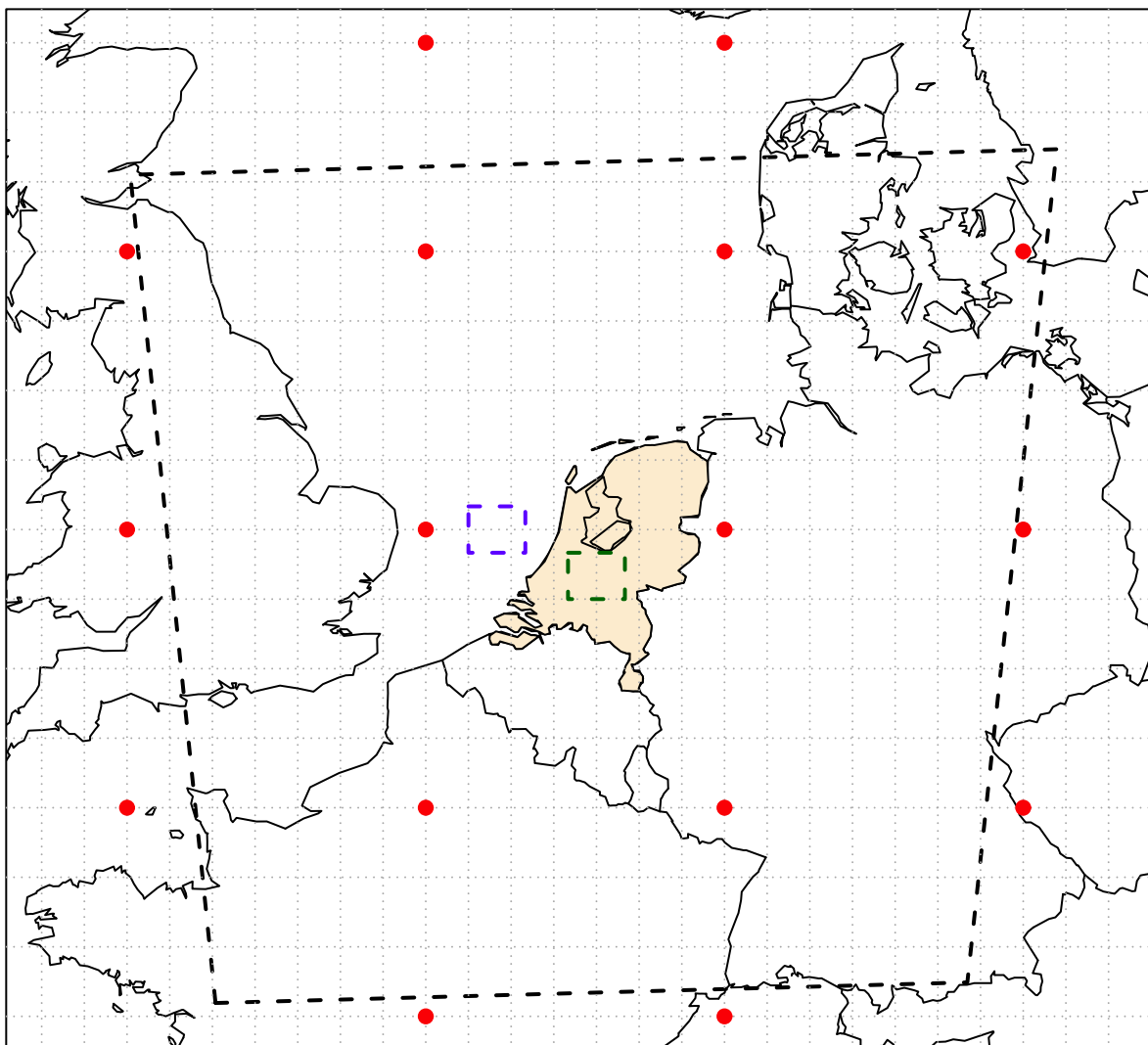


Figure 1. Map of part of Europe showing the 16 (red) points used in the circulation type classification, the WRF model domain (black) and the land (green) and sea (blue) area used for averaging in the selection procedure.

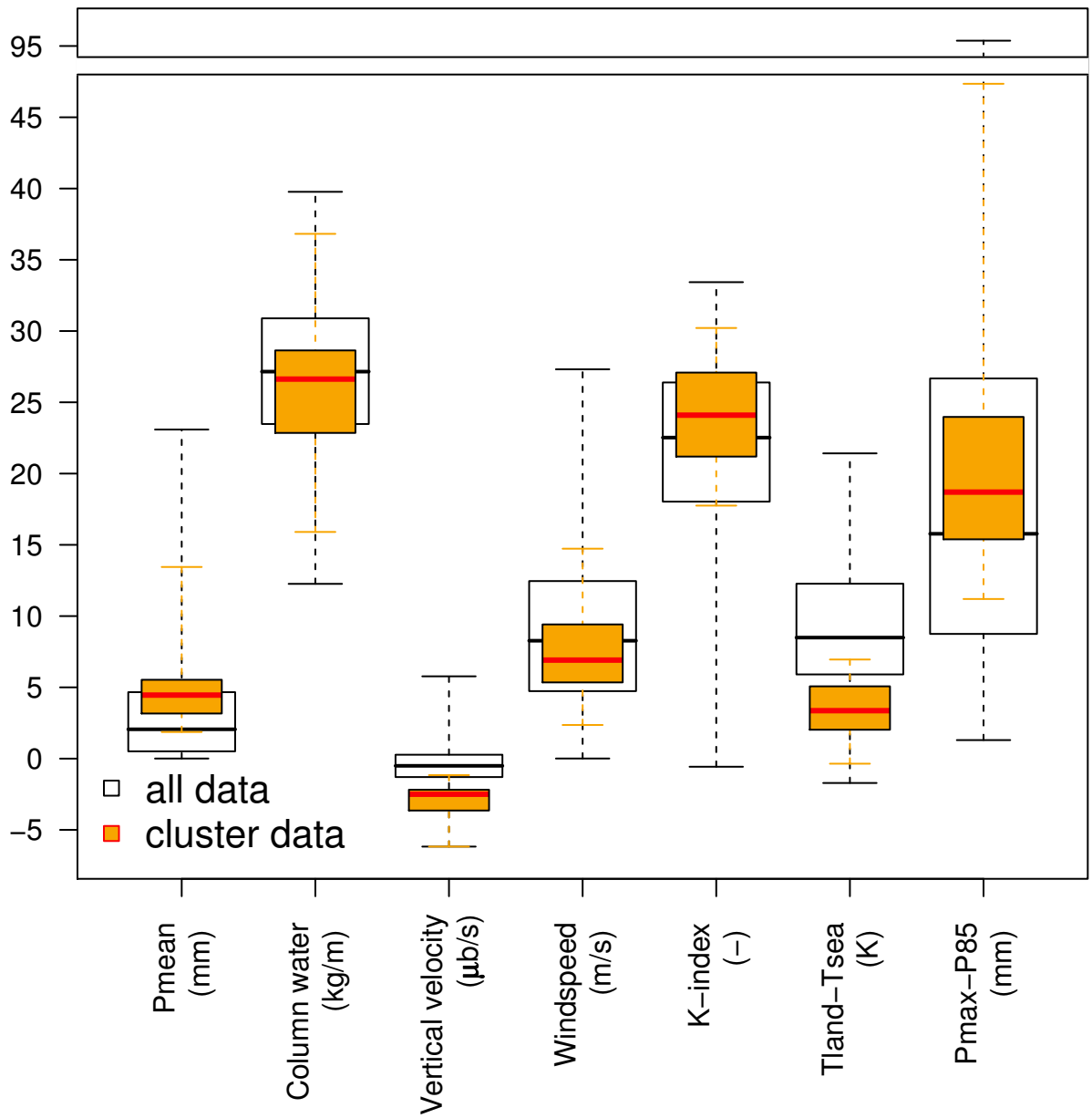


Figure 2. Boxplots of the seven parameters used in the procedure to select days to simulate with the WRF model. Boxes of the days included in the selected cluster are given in orange and boxes of all summer days classified as WT 9 in the period 2000-2010 are given in white.

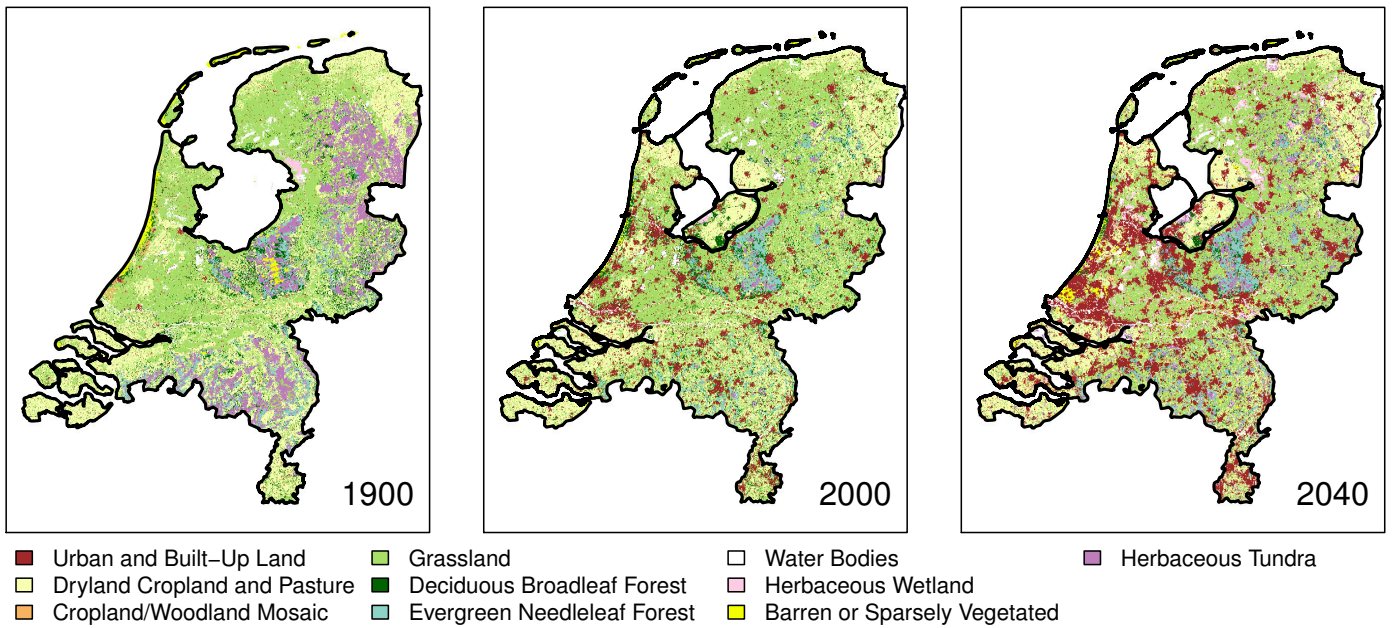


Figure 3. Dutch land use maps for 1900, 2000 and 2040 based on HGN1900, LGN4 and GE2040 respectively.

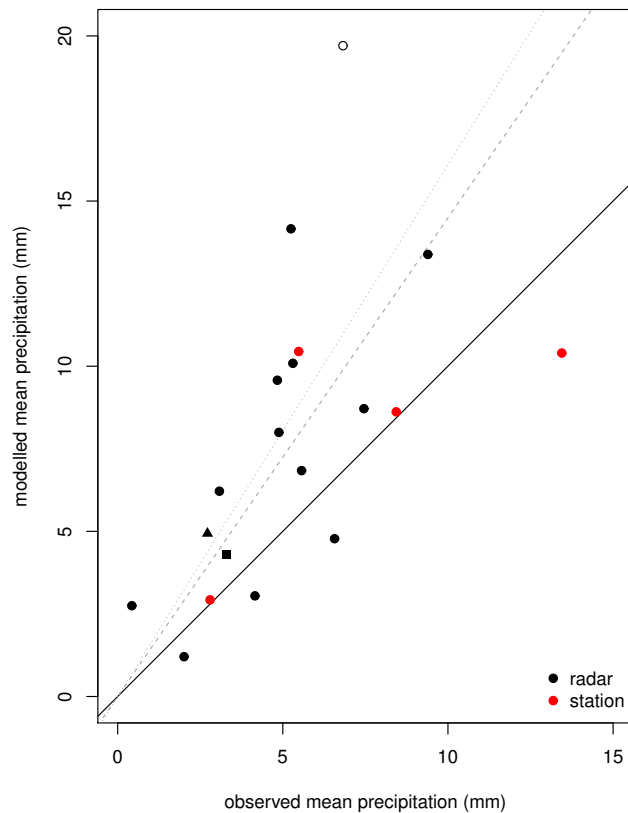


Figure 4. Scatterplot of observed and modelled daily mean precipitation (mm) by radar (black, 0-0 UTC) and at stations (red, 8-8 UTC) over the Netherlands. The dotted and dashed lines give a linear regression between precipitation modelled and observed by radar, respectively in- and excluding the day indicated with an open dot (2003-06-30). The days with a square (2007-07-22) and triangle (2000-07-29) are illustrated spatially in Figure 5. The solid 1:1 line represents a perfect correlation.

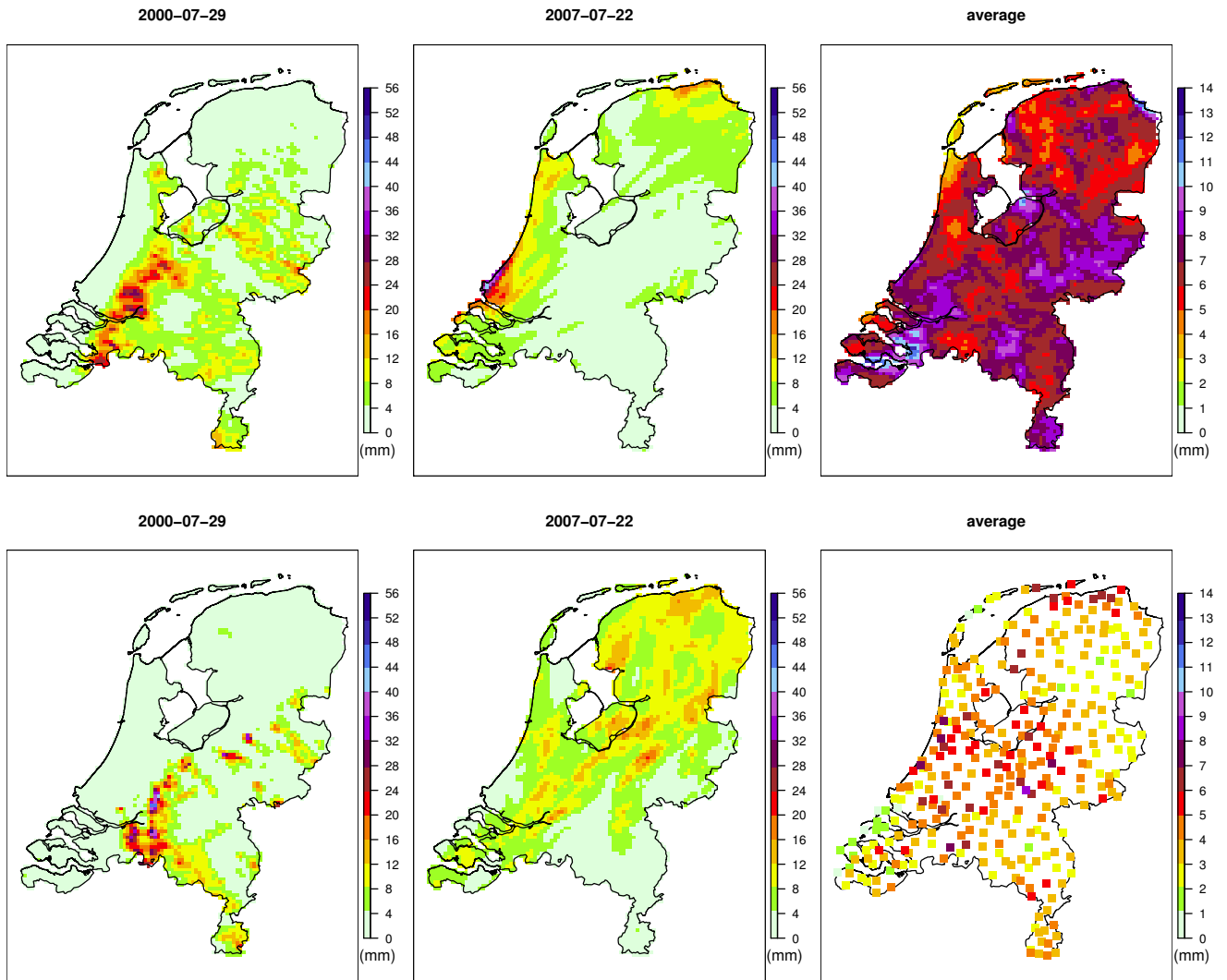


Figure 5. Daily mean precipitation (mm) simulated by the model (top) and observed (bottom) on (from left to right) 2000-07-29, 2007-07-22 (0-0 UTC) and averaged (8-8 UTC) over the 18 selected cases.

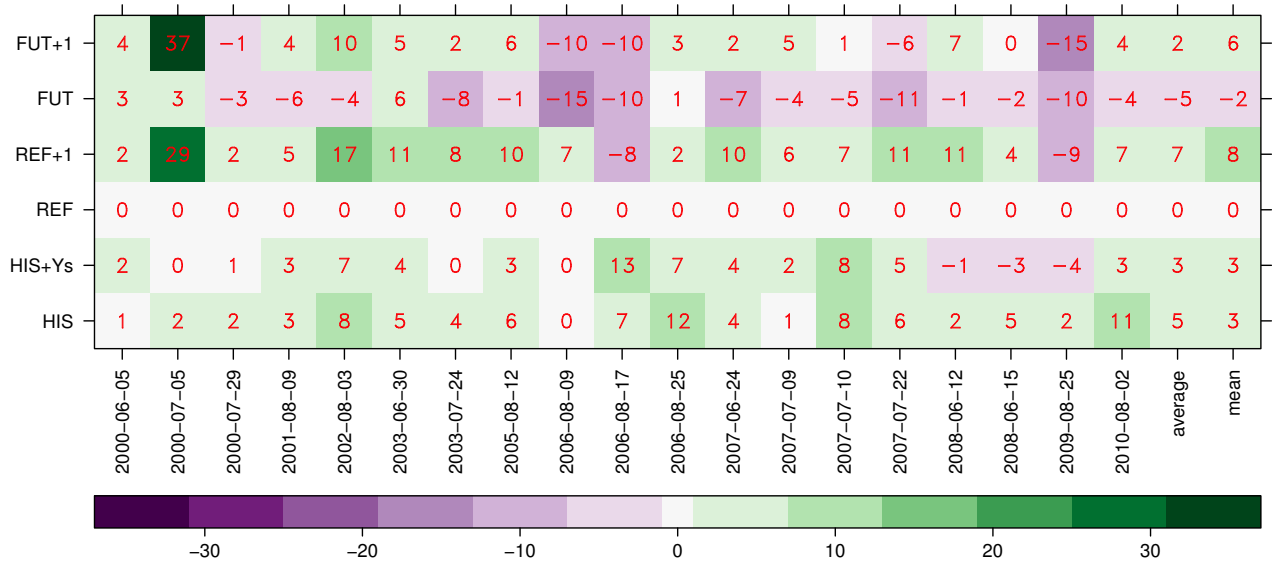


Figure 6. Relative precipitation difference (%) in each of the cases for all experiments compared to REF. Here the average is directly calculated over the 18 selected cases and the mean is calculated using the mean spatial differences as given in Figure 7

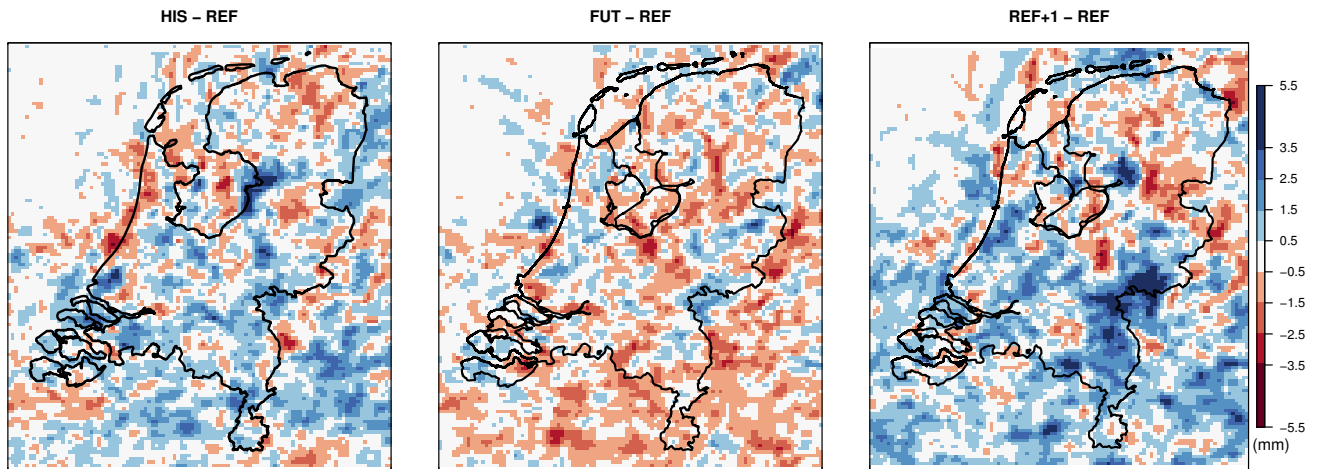


Figure 7. Spatial precipitation differences (mm) between the HIS, REF+1, and FUT experiments and the reference experiment.

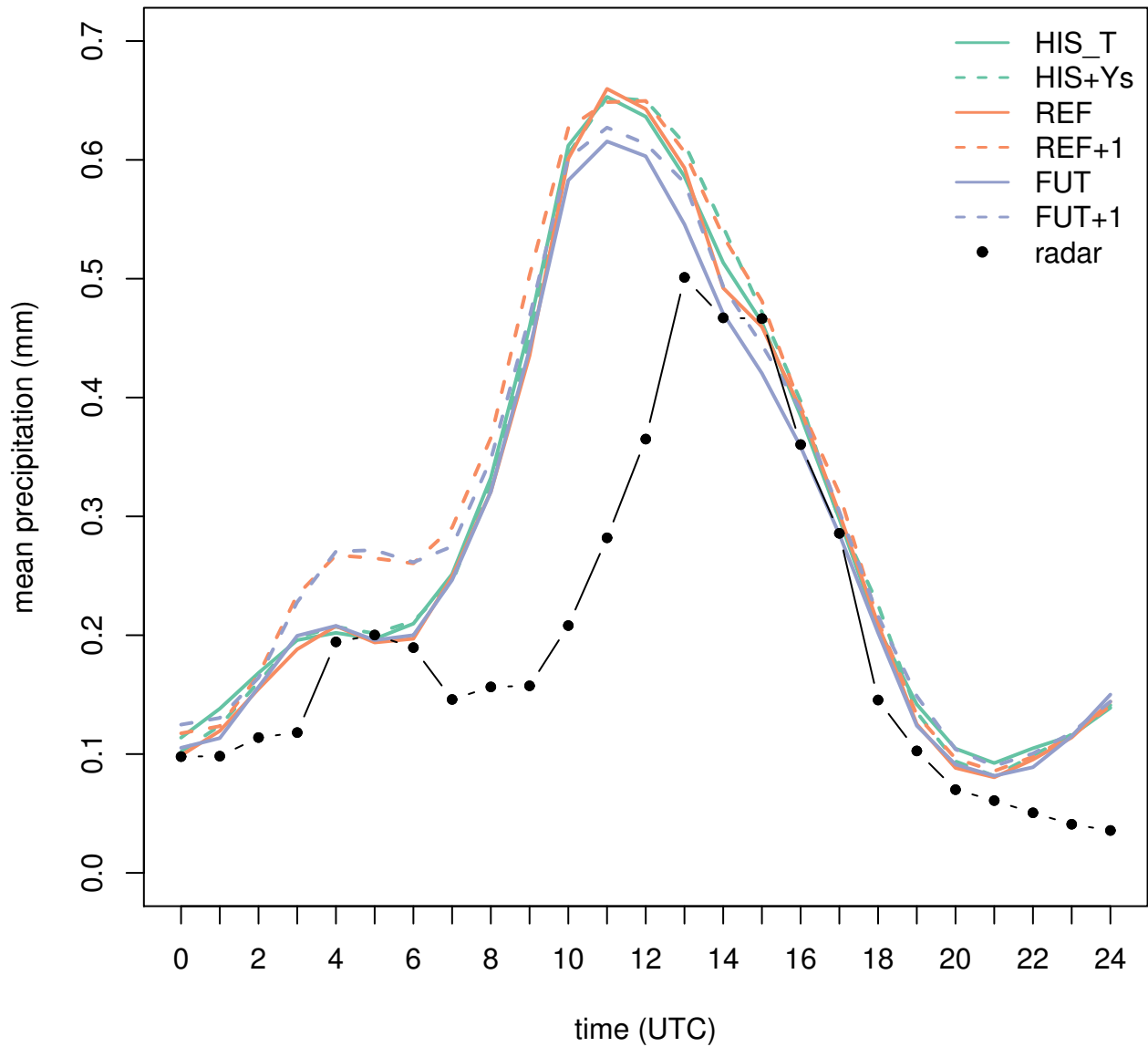


Figure 8. Diurnal cycle of mean precipitation (mm) over the Netherlands in the different experiments (averaged over 18 cases) and given by radar data (averaged over 14 cases).

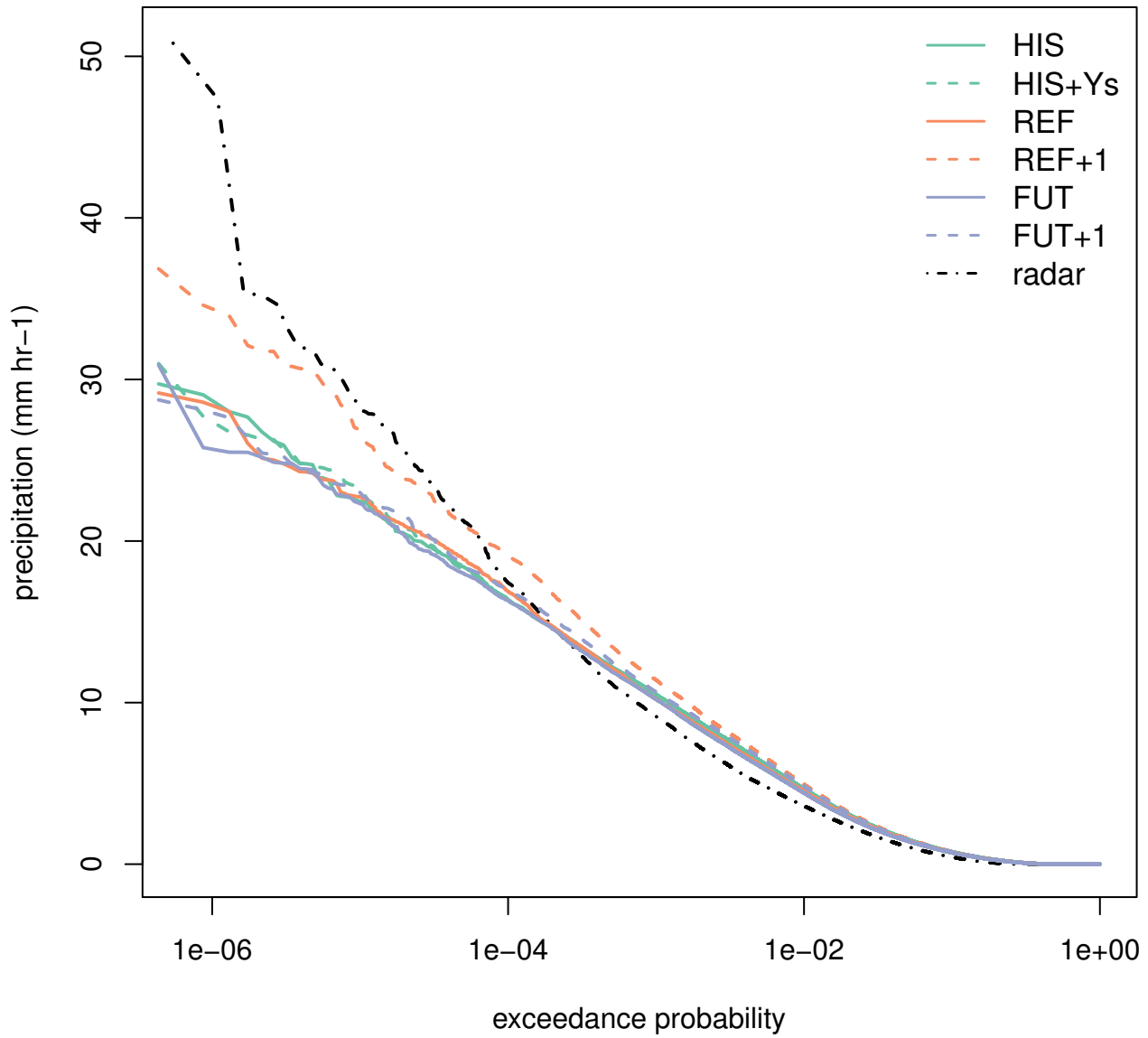


Figure 9. Distribution of hourly precipitation (mm) for each of the experiments and radar data, averaged over the 14 days that have radar data available.

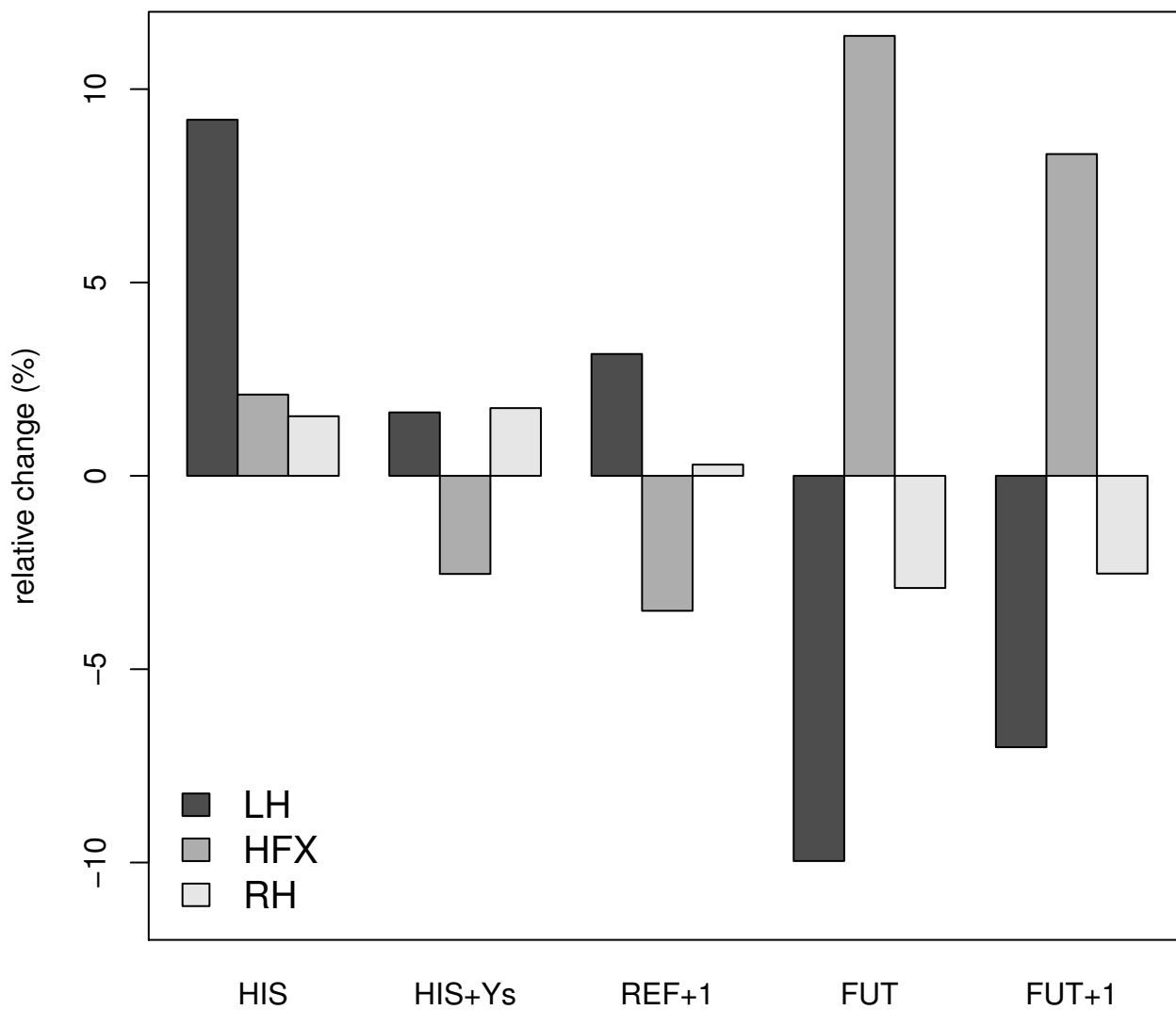


Figure 10. Mean relative change (%) over the Netherlands in latent heat flux (LH), sensible heat flux (HFX) and relative humidity (RH) in each of the experiments in comparison to REF.

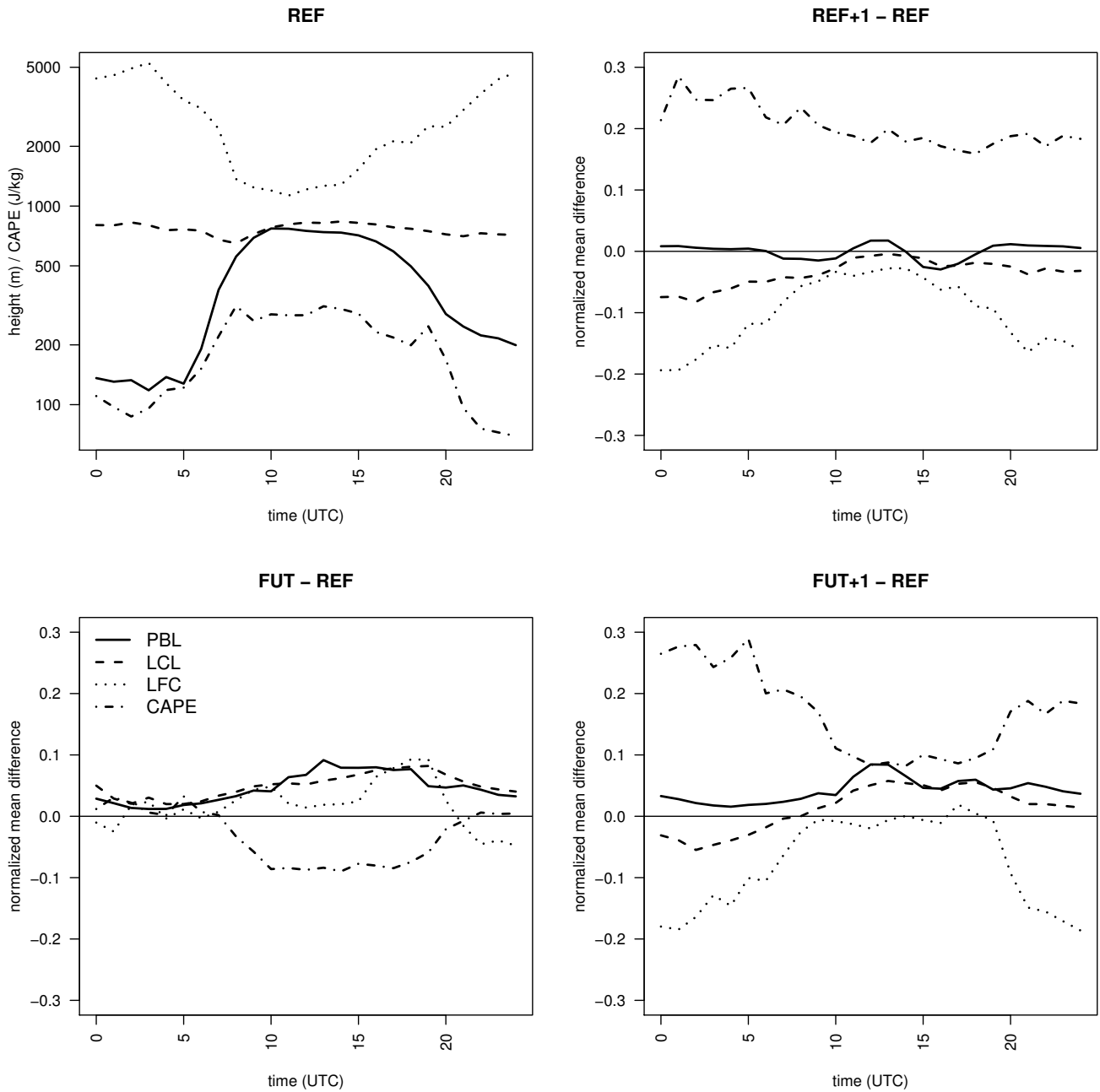


Figure 11. Diurnal cycle of the planetary boundary layer (PBL,solid), lifting condensation level (LCL,dashed), level of free convection (LFC,dotted) [m] and convective available potential energy (CAPE,dash-dotted) [J/kg] in the reference experiment and normalized mean difference of these variables in the experiments with a temperature perturbation and reference land cover (REF+1), future land cover (FUT), and a temperature perturbation and future land cover (FUT+1).