

## **Cover letter**

Date: 17-06-2016

To: The Handling Editor of Hydrology and Earth System Sciences

Sub: Submission of revised manuscript hess-2016-104

Dear Prof. Pappenberger,

I would like to first thank you and the reviewers for the insightful comments and suggestions that helped improve the manuscript.

On behalf of my co-authors, I would like to submit the revised version of the manuscript entitled “A Retrospective Streamflow Ensemble Forecast for an Extreme Hydrologic Event: a Case Study of Hurricane Irene and on the Hudson River basin”. The manuscript is accepted for publication with minor revisions. We have carefully addressed all the reviewers’ constructive comments and suggestions. Along with the revised version, we are also submitting a marked-up manuscript version and a point-by-point reply to the reviewers comments.

Respectfully,

Dr. Firas Saleh

Senior Research Engineer  
Stevens Institute of Technology  
The Department of Civil, Environmental and Ocean Engineering (CEOE)  
Davidson Laboratory  
711 Hudson Street, Hoboken, NJ 07030  
Tel. 201 216 5654  
Email: fsaleh@stevens.edu

## Point-by-point response to the reviews

# **A Retrospective Streamflow Ensemble Forecast for an Extreme Hydrologic Event: a Case Study of Hurricane Irene and on the Hudson River basin**

### **Referee #1 comments and reply**

Comment 1: In the abstract the authors state that this modeling framework could be applied anywhere in the world. However, they use NARR dataset and a database from US based gage sites for calibration. How would these methods be applied for watersheds without gaging stations (or with only a few) outside of the US where the NARR dataset does not apply? Also, this statement was not discussed in the paper.

*It is possible to use other sources of atmospheric data in the framework instead of NARR in order to apply the framework to watersheds in other countries. For instance, one may use atmospheric reanalysis products from the European Center for Medium range Weather Forecasting (ECMWF), National Centers for Environmental Prediction (NCEP) and National Center for Atmospheric Research (NCAR). The framework directly handles GRIB1, GRIB2 and NetCDF. As for watersheds without gaging stations (or with only a few), it is possible to use remote sensing river discharge data to calibrate and validate the modeling outputs. Despite that fact that such data have uncertainties, there have been many advancements in this field and there is potential for future applications (e.g., the Surface Water and Ocean Topography (SWOT) satellite mission). This was added in the revised version of the manuscript (section 4).*

Comment 2: The HEC-HMS model uses the SCS Curve Number method that includes “antecedent moisture content” (P5 Line 22) as a parameter for estimating runoff. From my experience, model runoff estimation can be very sensitive to soil moisture. This indicates that calibrating the model will only produce accurate answers for the conditions of the storm it was calibrated to. How do you account for changing soil moisture in the forecast framework?

*This is a very important point that the referee is addressing. We are aware of the limitations in using static parameters for the SCS curve number method. To this end, the framework has a look up table for the initial abstraction parameters based on the hindcast and the continuous run of the model with the NARR data. We are actively working on integrating a machine learning technique which automatically selects the optimal initial abstraction parameters on the fly. This was added in the revised version of the manuscript (section 2.2.2).*

Comment 3: How long does it take for the streamflow forecasts to be produced? How much lead-time is left over? Is it enough to issue a warning?

*For the entire Hudson River Basin, the required time for GEFS (21 members) is around 30 minutes. This includes processing the GRIB files and post-processing of the ensemble outputs. We are currently running 125 ensemble members in the framework and this includes (in addition to GEFS) the ECMWF, ECMWF-HRES, the Short-Range Ensemble Forecast (SREF), the Canadian Meteorological Centre (CMC) and the North American Mesoscale Forecast System (NAM). The total time for all these ensemble members is around five and a half hours from pre-processing to updating the database and the website. We are currently updating the forecasts every 6 hours. The current lead time (87 hours) is sufficient for issuing a flood warning. This was discussed in the revised version of the manuscript (section 4).*

#### Technical Corrections

*All the technical corrections were carefully addressed in the revised manuscript (see marked-up version).*

#### Referee #2 comments and reply

- Streamflow forecasts are indeed highly dependent on the meteorological input and have historically been associated with much uncertainty.
- Summary/discussion states that a higher confidence in the river discharge forecast may be attained within 48 hours of a major rainfall event. This concept isn't new and points back to the uncertainty with hydrologic modeling.

*We agree with your comments regarding the concept of obtaining a higher confidence in the river discharge forecast as one approaches the event in question but we would like to reiterate the fact that using ensemble members instead of one deterministic forecast has advantages in terms of better representing the envelope uncertainty, particularly in an extreme hydrologic event such as the one presented in this work. Furthermore, while the general idea is that hydrologic uncertainty is reduced with lead time, we have not found studies that quantitatively characterize this aspect using the GEFS retrospective data and in the event of an extreme flood event such as Hurricane Irene. This was added to the revised version of the manuscript (section 4).*

- In terms of what's new that is presented in this work is perhaps using GIS and a regional scale HEC-HMS model but the paper seems to suggest that you are reducing uncertainty. The work seems to suggest that this will enable better flood forecasts but that can't be ascertained unless you are doing hydraulic modeling (HEC-RAS). It is the hydraulic modeling that will translate the hydrology to a given water surface elevation (i.e., flood stage). It is the flood stage that determines the level of riverine inundation. While HEC-HMS can be used for routing, if this work is suggesting better with streamflow forecasts unless this work is coupled with simulations in HEC-RAS. Hydrology is more of science and hydraulics more of an engineering discipline. This work is suitable for hydrologic modeling discussions but not "the uncertainties in weather inputs may result in false warnings and missed river flooding events, reducing the potential to effectively mitigate flood damage" (lines 17-19). Flood forecasting is possible than traditional riverine hydraulic modeling is warranted. I'm a little unfordable with what is being stated for better control of modeling uncertainty

*We agree with the reviewer that using a hydrodynamic model will have advantages in terms of simulating the water levels but from our perspective the simulation of hydrological streamflow remains the main driver because HEC-RAS or any other hydrodynamic model would require flow boundary conditions produced by a hydrological (rainfall-runoff) model to solve the Saint-Venant equations. If the flow inputs produced by the hydrological model are not accurate then the simulated inundations or water surface elevations will be impacted regardless of the level of complexity within the modeling framework. Furthermore, hydrodynamic modeling would require detailed representation of river cross sections geometry that is not available at regional scale. In this context, a number of techniques such as pre-defined rating curves (water levels vs. discharge) are operationally used to convert the streamflow to water levels at specific locations. This is also the technique we are currently using in our operational framework and we have discussed it in the revised version of the manuscript (section 4).*

## Marked-up manuscript version

# 5 **A Retrospective Streamflow Ensemble Forecast for an Extreme Hydrologic Event: a Case Study of Hurricane Irene and on the Hudson River basin**

F. Saleh\*, V. Ramaswamy, N. Georgas, A. F. Blumberg and J. Pullen

Stevens Institute of Technology, Davidson Laboratory, Department of Civil, Environmental and Ocean Engineering, Hoboken NJ, 07030, USA

10 \*Correspondence to: F. Saleh (fsaleh@stevens.edu)

**Abstract.** This paper investigates the uncertainties in hourly streamflow ensemble forecasts for an extreme hydrological event using a hydrological model forced with short-range ensemble weather prediction models.

A state-of-the art, automated, short-term hydrologic prediction framework was implemented using GIS and a regional scale hydrological model (HEC-HMS). The hydrologic framework was applied to the Hudson River Basin, ~~USA~~ (~36,000 km<sup>2</sup>) [in the United States](#) using gridded precipitation data from the National Centers for Environmental Prediction (NCEP) North American Regional Reanalysis (NARR) and was validated against streamflow observations from the United States Geologic Survey (USGS). Finally, 21 precipitation ~~datasets reforecast by the 21~~ ensemble members of the latest Global Ensemble Forecast System (GEFS/R) were ~~used~~[forced into HEC-HMS](#) to generate a retrospective streamflow ensemble forecast for an extreme hydrological event, Hurricane Irene. The work shows that ensemble stream discharge forecasts provide improved

15 [predictions and useful information about associated uncertainties, thus improving the assessment of risks when compared with deterministic forecasts. The uncertainties in weather inputs may result in false warnings and missed river flooding events, reducing the potential to effectively mitigate flood damage. The findings demonstrate how errors in the ensemble median streamflow forecast and time of peak, as well as the ensemble spread \(uncertainty\) are reduced 48 hours pre-event utilizing the ensemble framework. The methodology and implications of this work benefit efforts of short-term streamflow forecasts at regional scales, notably regarding the peak timing of an extreme hydrologic event when combined with a flood threshold exceedance diagram. \[Although the modelling framework was implemented on the Hudson River basin, it is flexible and applicable in other parts of the world where atmospheric reanalysis products and streamflow data are available.\]\(#\)](#)

20 ~~Although the modelling framework was implemented on the Hudson River basin, it is flexible and re locatable in other parts of the world.~~

25

30

## Keywords

Streamflow ensemble forecasts; Hudson River Basin, NARR, GEFS, Extreme hydrological event, Hurricane Irene, Weather models, hydrological ensemble skill assessment, uncertainty

## 5 1 Introduction

Riverine floods are known to adversely impact affected communities by causing casualties, inflicting damage to physical property, temporarily disrupting social and economic activities, and forcing a community to take emergency measures (IFRC, 2013). In the United States, for example, floods are recognized as the main natural disaster with \$7.96 Billion in flood-related damages/year and 82 fatalities/year, averaged over the past 30 years (NWS, 2014). It is reported that 78% of emergencies are weather related (Weaver et al., 2014; Hoss and Fischbeck, 2016).

The increase in global averaged temperatures enhanced the potential for severe to extreme weather events (Becker and Grunewald, 2003; WMO, 2003). As the world warms, northern regions and mountainous areas are experiencing more precipitation falling as rain rather than snow, with a pronounced increase in precipitation being observed in the area of eastern North America (Karl, 2009). The special report on “Managing the Risks of Extreme Events and Disasters to Advance Climate Change Adaptation” of the Intergovernmental Panel on Climate Change (IPCC), critically assessed recent scientific literature on climate change and the impacts from extreme events. They reported that increased frequency and intensity of rainfall, based on climate models, substantially contributed in local flooding (Kundzewicz et al., 2014). Studies addressing flood damage in the United States show that the impact of floods to a community has increased over time as a result of both climate factors such as precipitation and societal factors: such as increased damage is associated with increased precipitation and with increasing population and urban development (Pielke Jr, 2000; Changnon et al., 2001). Furthermore, studies report that associated monetary damages from flooding are also likely to go up in the 21<sup>st</sup> century and beyond (Milly et al., 2002; Allamano et al., 2009; Pall et al., 2011). The rise in the number of extreme weather events in recent years has spurred the need to better predict floods and mitigate flood damage. Such advanced warnings are not only important for economic losses but can mean the difference between life and death (NWS, 2012). Studies suggest that as little as one hour of lead-time can result in a ten-percent reduction in flood damages if forecast information is communicated in a timely manner (McEnery et al., 2005). Flood modelling and prediction has greatly advanced in recent years with the advent of geographic information systems (GIS), high-resolution digital elevation models (DEMs), distributed hydrologic and weather models and better delivery systems on the internet (McEnery et al., 2005). However, despite the advancement in hydrological prediction systems, such systems remain plagued by uncertainty from numerical weather prediction models (Clark and Hay, 2004) and, hydrologic model and structure parameters (Krzysztofowicz, 2001a; Gupta, 2005).

In terms of atmospheric forcing, the main source of uncertainty in streamflow forecasts arises from precipitation forecast errors which include errors arising from parameterizations of physical processes in atmospheric models, resolution and initial

conditions (Krzysztofowicz, 2001a; Bartholmes and Todini, 2005; Cuo et al., 2011). In this context, ensemble hydrological forecasts using every [member in the](#) ensemble are appealing to account for the uncertainty in numerical weather prediction (NWP) model forecasts (Buizza et al., 1999; Krzysztofowicz, 2001b; Bowler et al., 2008; Hamill et al., 2008; Cloke and Pappenberger, 2009).

- 5 Recent studies show the promise of adopting streamflow ensemble forecast techniques due to advantages over deterministic forecasts (Habets et al., 2004; Younis et al., 2008; Boucher et al., 2011; Schellekens et al., 2011; Verkade and Werner, 2011; Alfieri et al., 2013) as well as a way of accounting for uncertainties in hydrological forecasting (Chen and Yu, 2007; Demeritt et al., 2007; Davolio et al., 2008; Pappenberger et al., 2008; Reggiani and Weerts, 2008; Cloke and Pappenberger, 2009; Bao et al., 2011; Bogner and Pappenberger, 2011; Cuo et al., 2011; Schellekens et al., 2011; Alfieri et al., 2012;
- 10 Amengual et al., 2015). Other advantages include the ability to distinguish between an extreme event forecast that is more or less likely to occur within the model's forecast horizon (Buizza, 2008; Golding, 2009) and better decision making with respect to operational hydrological concerns (Ramos et al., 2007; McCollor and Stull, 2008; Boucher et al., 2012). Furthermore, ensemble-based streamflow forecasts tend to be more consistent between successive forecasts (Pappenberger et al., 2011). Fan et al. (2014) showed benefits in the use of ensembles, particularly for reservoir inflows on flooding events,
- 15 and in comparison to the deterministic values given by the control member of the ensemble and by the ensemble mean. Komma et al. (2007) ~~found~~[reported](#) that for longer lead forecast times, the variability of the precipitation ensemble is amplified as it propagates through the catchment system as a result of non-linear catchment response. ~~Also,~~[They also showed that](#) the ensemble spread ~~was found to be a~~[is](#) useful indicator to assess potential forecast errors for lead time greater than 12 hours. ~~Several~~
- 20 [A numbers of existing](#) techniques ~~have been devised~~[are currently used by the hydrologic community](#) to account for uncertainty in hydrological forecast systems. [For instance,](#) Krzysztofowicz (2001a) implemented a method ~~of combining~~[to combine uncertainties from both](#) hydrological ~~uncertainties with uncertainties of the models and~~ precipitation forecasts using a Bayesian Forecasting System (BFS) ~~which decomposes~~. [This approach was based on decomposing](#) the total uncertainty ~~about~~[in](#) the river stage into precipitation uncertainty and hydrologic uncertainty, which are quantified
- 25 independently and then integrated into a predictive distribution of the river stage. Montanari and Grossi (2008) indirectly related the forecast error to the sources of uncertainty in the forecasting procedure through a probabilistic link with the current forecast issued by the hydrologic model, the past forecast error, and the past rainfall. Olsson and Lindström (2008) performed analysis on separating the contributions of the precipitation forecast errors and the hydrological simulation errors. Weerts et al. (2011) used quantile regressions to assess the relationship between the hydrological forecast and the associated
- 30 forecast error. Renard et al. (2010) addressed the total predictive uncertainty and separated it into input and structural components under different inference scenarios. They highlighted the inherent limitations of inferring inaccurate hydrologic models using rainfall-runoff data with large uncertainties. Brown (2015) quantified the total uncertainty in future streamflow as a combination of the meteorological forcing uncertainties and the hydrologic modeling uncertainties. He implemented a

Meteorological Ensemble Forecast Processor (MEFP) to quantify the meteorological uncertainties and correct biases in the forcing inputs to the streamflow forecasts modeling.

In spite of the advancements and advantages in streamflow ensemble forecasts reported in the literature there are a number of key scientific questions that need better understanding. These include: how the meteorological forecast uncertainty reflects in the ensemble streamflow forecast; how does the degree of spread and hydrological response correlate with the lead time of the forecast and the scale of application; and how effective is streamflow ensemble forecasting during an extreme hydrological event. The present work investigates these questions by retrospectively forecasting streamflow of an extreme event (Hurricane Irene) in the Hudson River Basin, USA. Hurricane Irene had strong hydrological effects from high moisture content that brought very heavy rainfall rates to the US East Coast including the Hudson River basin (Coch, 2012) (Figure 1). The total estimated damage from Hurricane Irene was ~~around~~ \$15.8 billion. This includes about \$7.2 billion from inland flooding and storm surges (Avila and Cangialosi, 2011).

In this paper we first describe the case study area and context. We then summarise the main datasets that were used to implement the hydrologic framework. Subsequently, we provide a detailed quantitative analysis and discussion of the uncertainties in the streamflow forecasts associated with the forcing from weather models and demonstrate how uncertainties in streamflow forecast median, time of peak and spread are reduced approaching a given event.

## 2 Materials and Methods

### 2.1 Study area and context

The study encompasses the Hudson River Basin (USA) which originates from the Adirondack Mountains of Upstate New York and drains into the Atlantic Ocean (Figure 2). The drainage area of the basin is approximately 36,000 km<sup>2</sup>, covering 25% of New York State and other portions of the States of New Jersey, Connecticut, Massachusetts and Vermont. The basin is considered one of the largest drainage areas in the eastern seaboard of the United States. According to a national water quality assessment study conducted by the United States Geological Survey (USGS), nearly 60% of the water supplied in the basin is for commercial or industrial use. Several reservoirs within the Hudson River basin contribute to the New York City water-supply system, which supplies water to about 8 million people.

In 2011, Hurricane Irene caused severe damage and widespread destruction that affected the east coast of the United States. The storm made landfall as a strong tropical storm at Little Egg Inlet in New Jersey on August 28, 2011 (Figure 1). The total precipitation accumulation from Hurricane Irene during August 27–30, 2011 was more than 300 mm in certain areas of the Hudson River basin (Figure 4). It inundated streams throughout New Jersey resulting in peak stream flows exceeding the 100-year recurrence interval at many stream gages and causing heavy property and road damage. For instance, the Passaic and Hackensack River Basins in Northern New Jersey ~~just~~(south of the Hudson River Basin) witnessed new record peaks at a number of streamflow-gauging stations.



President Obama issued a Major Disaster Declaration for counties in New York and New Jersey impacted by Hurricane Irene. In total, 38 counties across New York State were impacted with an estimated \$1.5 billion dollars in FEMA public assistance costs and 10 deaths (FEMA, 2011). In New Jersey, the property damage was estimated to be \$1 billion. In addition to high monetary damages, millions of people across the State were evacuated and seven deaths were reported (Watson et al., 2013; NJOEM, 2014).

## 2.2 Modeling framework description

The operational framework diagram is shown in Figure 3 and the datasets used in constructing the Hudson River basin regional scale hydrological model are depicted in Figure 2. The framework was validated using the National Centers for Environmental Prediction (NCEP) North American Regional Reanalysis (NARR) precipitation data (Mesinger et al., 2006). A retrospective forecast of Hurricane Irene utilizing the 21 ensemble members from NOAA's Global Ensemble Forecast System Reforecast (GEFS/R) was then used (Hamill et al., 2015; Zhou and Zhu, 2016).

Apart from this work, the framework is currently operational and fully automated on the *Pharos (lighthouse)* Linux supercomputer at Stevens Institute of Technology, producing 4 forecast cycles of ensemble river discharge per day, simulated at hourly time steps, which feed into the New York Harbor Observing and Prediction System (NYHOPS) (Bruno et al., 2006; Georgas et al., 2007; Georgas et al., 2014). NYHOPS was developed at Stevens Institute of Technology's Davidson Laboratory to generate forecasts of the Atlantic Coast, New York Harbor, and Hudson River region through in-situ monitoring equipment and hydrodynamic modeling (Blumberg et al., 2015).

### 2.2.1 HEC-HMS model description

The Hudson River Basin was modelled using the latest Hydrologic Engineering Center's Hydrologic Modeling System (HEC-HMS), version 4.1 (USACE, 2015). HEC-HMS, developed by the US Army Corps of Engineers, is a conceptual semi-distributed hydrological model that has been used extensively in rainfall-runoff modeling and other related hydrological studies (Anderson et al., 2002; Neary et al., 2004; Knebl et al., 2005; Amengual et al., 2009; Chu and Steinman, 2009; Halwatura and Najim, 2013; Meenu et al., 2013; Seyoum et al., 2013; Zhang et al., 2013; Yang and Yang, 2014). The model uses a number of adjustable empirically derived parameters that describe the overall structure of the basin including parameters for runoff, baseflow, and river routing (Feldman, 2000). In this work, the Modified Clark (ModClark) distributed method (Kull and Feldman, 1998) was used to account for the spatial variability and characteristics of the basin. The gridded precipitation inputs were used to enable spatially distributed infiltration calculations at all regions of the basin. Infiltration capacity in the model was quantified using the gridded curve number (CN) methodology derived by the Soil Conservation Service (SCS) (USDA, 1986; Mishra and Singh, 2013). The SCS CN method estimates precipitation excess as a function of cumulative precipitation, soil cover, land use and type, antecedent soil moisture content, land use, total length of the river, and the elevation of the catchment area (Scharffenberg, 2015). The baseflow component of the model includes the initial flow and the recession constant to account for ground-water contributions to stream flow (Chow, 1959; Maidment, 1992; Feldman, 2000).

### 2.2.2 Hudson River Basin hydrological model datasets

The ArcGIS HEC-GeoHMS 10.2 extension (Fleming and Doan, 2013) was used to prepare and import the geographical information system (GIS) data into ~~the~~ HEC-HMS (Johnson et al., 2001). The regional model datasets shown in Figure 2 include topography obtained from the USGS National Elevation Dataset (NED) (Gesch et al., 2002), land surface cover obtained from the US Department of Agriculture National Resource Conservation Service (NRCS) and soil data for New York State and New Jersey gathered from the State Soil Geographic Database (STATSGO) (Miller and White, 1998). Land use datasets were obtained from the USGS National Land Cover Dataset (NLCD) (Homer et al., 2012).

The Hudson River basin was first delineated into sub-basins based on flow direction and accumulation derived from a digital elevation model (DEM) using HEC-GeoHMS (Fleming and Doan, 2013), and then each sub-basin was subdivided into hydrologic response units, each of which has a gridded curve number representing its runoff response rate based on its unique combination of land use, soil type, and slope (Gassman et al., 2007). The gridded SCS curve number was obtained by intersecting land use and land cover with the soil data using the -CN-grid tool in HEC-GeoHMS. An example of the curve number grid GIS layer over a sub-basin of the Hudson River is shown in Figure 2. ~~The other hydrologic parameters namely, imperviousness storage coefficient and imperviousness, were derived from the GIS datasets listed earlier this section (. It is important to point out that model runoff estimation can be very sensitive to soil moisture and using static SCS curve number parameters may introduce limitations when the model is run operationally. To overcome such limitations, the framework utilizes a look up table for the initial abstraction parameters based on the hindcast and the continuous run of the model with the NARR data. Other future techniques that involve integrating machine learning techniques to automatically select the optimal initial abstraction parameters on the fly, can be advantageous as well. The sub-basins' storage coefficients and imperviousness percent were derived from the GIS datasets described earlier this section using HEC-GeoHMS 10.2 (Figure 2). For observed river discharge we used fifteen USGS gauging stations that were made available through the National Water Information System (NWIS). The dataRetrieval R package (Hirsch and De Cicco, 2015) was used to download and process the USGS data into the R environment (R Core Team, 2012). We used river discharge data recorded at 15 minutes time intervals to form a complete HEC-DSSVue (HEC, 2009) database of streamflow observations over the study region (Figure 2). In total, we used 25-years of available historical flow data (not shown) to derive the model baseflow recession constants that are important to better simulate the falling limb of the discharge hydrograph for each sub-basin. More precisely, an automated base flow separation technique based on the R low flow statistics package "lfstat" was used (Gustard and Demuth, 2009; Koffler and Laaha, 2012).). The observed streamflow data for fifteen USGS gauging stations, located in the Hudson River basin (Figure 2), were automatically retrieved using the R dataRetrieval package (Hirsch and De Cicco, 2015). The observed discharge data were recorded at 15 minutes time intervals and imported to the USACE Data Storage System Visual Utility Engine (HEC-DSSVue) (HEC, 2009). ~~The optimal recession constant values for the sub-basins ranged from 0.67 to 0.90 depending on the sub-basin that was considered.~~ These calculated values were consistent and in agreement with the ones reported in the literature (Pilgrim and Cordery, 1993; Feldman, 2000).~~

[The model's baseflow recession constants were derived using an automated base flow separation technique based on the R low flow statistics package "lfstat" \(Gustard and Demuth, 2009; Koffler and Laaha, 2012\). In total, 25-years of observed historical flow data were used to derive the baseflow recession constants for each sub-basin in order to better simulate the falling limb of the simulated discharge hydrograph. The optimal recession constant values for the sub-basins ranged from 0.67 to 0.90 depending on the sub-basin that was considered. The calculated recession constant values were consistent and in agreement with the ones reported in the literature \(Pilgrim and Cordery, 1993; Feldman, 2000\).](#)

For the initial baseflow, we used observed conditions in the gauging stations to reduce uncertainties in the model as the model was intended to forecast short term extreme events, within a 96-hour forecast horizon, and not long term simulations. The model was forced with gridded precipitation, discussed in detail in the next sections of this paper, to work with the ModClark transform method (Kull and Feldman, 1998).

## 2.3 Model meteorological datasets

### 2.3.1 North American Regional Reanalysis (NARR)

NARR is a long term, dynamically consistent, high resolution, high frequency, atmospheric and land surface hydrology [data set](#) for the North American domain (Mesinger et al., 2006). NARR was developed as a major improvement upon the earlier National Centers for Environmental Prediction - National Centre for Atmospheric Research Global Reanalysis 1 (NCEP-NCAR GR1). NARR data has successfully assimilated high-quality and detailed precipitation observations into the atmospheric analysis to create a long-term, consistent, high-resolution climate dataset for the North American domain. The temporal resolution of the NARR data is 3 hours and the spatial resolution is 32 km (Mesinger et al., 2006). The NARR precipitation data has been used in a number of hydrological studies. For instance, Choi et al. (2009) used the NARR data sets to successfully calibrate the Semi-Distributed Land Use-based Runoff Process (SLURP) model. Solaiman and Simonovic (2010) used the NARR data in a regional hydrological basin and reported satisfactory performance of such data in scarce regions.

In this work, NARR precipitation data, from the 26<sup>th</sup> to 31<sup>st</sup> of August 2011, corresponding to Hurricane Irene was used in the hydrological model applied to the Hudson River Basin in a 2-km common hydrologic gridded format using bicubic interpolation. Table 1 displays the rainfall accumulation totals extracted from the NARR data for selected sub-basins of the Hudson River. The hydrological simulation using this dataset of precipitation was considered as the simulation of reference and was compared with the ensemble forecast that is reported in the next section.

### 2.3.2 Global Ensemble Forecast System Reforecast (GEFS/R)

The Global Ensemble Forecast System (GEFS) is a weather forecast model made up of 21 ensemble members ([Hamill et al., 2013; Hamill et al., 2015; Zhou and Zhu, 2016](#)), ([Hamill et al., 2013; Hamill et al., 2015](#)). The GEFS accounts for the amount of uncertainty in a forecast by generating an ensemble of multiple forecasts, each minutely different, or perturbed, from the

control forecast. The GEFS, 1 degree horizontal resolution, data reforecasts used initial conditions obtained from high quality reanalyses data and same assimilation system that is used operationally. These reforecasts have been shown to be particularly useful for the calibration of relatively uncommon phenomena such as heavy precipitation (Hagedorn, 2008; Hamill et al., 2008). In relation to hydrology, reforecasts help produce quantitative probabilistic estimates of river streamflow that are as sharp and reliable as possible (Schaake et al., 2007).

#### 2.4 Statistical criteria used to assess models performance

The performance of the models was statistically evaluated using the criteria of Nash-Sutcliffe Efficiency [referred hereafter as NSE (Eq. (1))] and Bias (in %) between simulations and observations [referred hereafter as BIAS Eq. (2)]. The NSE measures the fraction of the variance of the observed flows explained by the model in terms of the relative magnitude of the residual variance ('noise') to the variance of the flows ('information'); the optimal value is 1.0 and values should be larger than 0.0 to indicate 'minimally acceptable' performance (Nash and Sutcliffe, 1970; O'Connell et al., 1970).

$$NSE = 1 - \frac{\sum_{i=1}^N (P_i - O_i)^2}{\sum_{i=1}^N (O_i - \bar{O}_i)^2} \quad \text{Eq(1)}$$

where  $N$  is the number of compared values,  $P_i$  is the simulated (forecast) value,  $O_i$  is the observed value and  $\bar{O}_i$  is the average of  $O_i$  time series.

The BIAS measures the average tendency of the simulated values to be larger or smaller than the observed ones. The optimal value of BIAS is 0.0, with low-magnitude values indicating accurate model simulation. Positive values indicate overestimation, whereas negative values indicate underestimation (Yapo et al., 1996).

$$BIAS(\%) = 100 \frac{\sum_{i=1}^N (P_i - O_i)}{\sum_{i=1}^N O_i} \quad \text{Eq(2)}$$

Model BIAS is reported relative to the mean observation magnitude (Eq 2), in percentage (%).

### 3 Results

#### 3.1 HEC-HMS model calibration using NARR precipitation data

Upon implementing the model set-up, we calibrated the hydrological model to assess its ability to reproduce the Hurricane Irene event using the North American Regional Reanalysis (NARR) gridded precipitation data (Mesinger et al., 2006). The HEC-HMS model was run on a 2x2 km [Standard Hydrologic](#) grid resolution (SHG) (Maidment and Djokic, 2000) at hourly time steps. The simulated flow hydrographs were calibrated against hourly river flow observations to obtain optimal performance in terms of both runoff volume and peak flow. The hydrological parameters were modified to produce a best-fit model using a root-mean-square error (RMSE) objective function within the HEC-HMS model's Nelder Mead

optimization method (Barati, 2011; Seyoum et al., 2013), aiming at maximizing the fit between simulated streamflow and observations at fifteen U.S. Geological Survey (USGS) gauging stations (Figure 2). The calibration was also carried out by comparing visually and statistically to produce an accurate simulation of discharge at the Hudson River gauging stations (Figure 2). We also used the HEC-HMS uncertainty function which, through a variant of Latin Hypercube Sampling, varies sensitive model parameters within a defined range, thereby producing an estimate of best-fit parameters after multiple iterations (Mousavi et al., 2012). For example, the hydrologic Muskingum routing parameters were modified to include a greater ratio of attenuation to translation of runoff in the sub-basins which significantly improved the model results (Figure 5). To assess and evaluate the parameter uncertainties we performed a Monte-Carlo-based uncertainty analysis available in HEC-HMS 4.1 (Scharffenberg et al., 2015).

Table 1 lists the NARR accumulated precipitation for each sub-basin of the Hudson River while the summary of the model fit represented by the NSE and BIAS criteria is shown in Figure 4. The NARR hydrological model results (also referred to as the simulation of reference) showed a reasonable fit between model and observations in all the selected sub-basins. The lowest NSE was 0.75 and certain sub-basins had NSE values higher than 0.90 (Figure 4). Amongst the 15 flow stations examined in the study, 13 stations had a BIAS below 10% while 2 stations had a BIAS higher than 10%. It was observed that the stations with a higher BIAS were located in the upstream parts of the basin, notably the Hoosic River sub-basin (USGS ID 01334500) (Figure 4). Importantly, the hourly hydrograph shape and timing of peaks accurately replicated the observations as illustrated in Figure 5. Overall, the reference simulation exhibited a representative fit to observations. Thus, the developed calibrated framework showed promising results for generating ~~96-hour lead~~ streamflow forecasts with a 96-hour lead time using ensemble member weather forecast forcing.

### 3.2 Ensemble river discharge retrospective forecast

We forced the HEC-HMS model ~~in ensemble mode~~, with precipitation fields from the GEFS-retrospective forecast ensemble members to examine the variations in simulated discharge among the ensemble members. More specifically, we fed the Hudson River basin hydrological model with every single GEFS member of the 21 available members. The resulting sets of streamflow forecasts were then analysed to better understand the uncertainty of the streamflow forecasts that arises from the hydrologic framework's response to uncertainties in the meteorological forcing. The spread of ensemble members is considered as a useful measure of forecast uncertainty (Pappenberger et al., 2005).

To assess the skill of the forecasts, we compared, at lead times of 72, 48 and 24 hours, observations with results of the individual ensemble members, the median of all members, the ensemble control member (GEFSC00) and the NARR simulation of reference (Figure 5). We chose to include the control member in these comparisons as a proxy for the single deterministic models used when ensemble forecasts are not considered. The hydrological parameters and baseflow conditions calibrated in the NARR simulation of reference were retained in all simulations. The 98<sup>th</sup> and 2<sup>nd</sup> percentiles of accumulated precipitation from the 21 ensemble members at each forecast are reported in Table 1. ~~One notes~~

In the reforecast issued 72 hours prior to the event, the high uncertainty in the ~~precipitation data from the weather~~NWP ensemble ~~72 hours prior to the event which was~~inputs translated ~~by the hydrological model~~ to a high uncertainty in the simulated streamflow- ~~when simulated by the hydrological model~~. For instance, in station ~~01390500~~ID 01391500 (Saddle River at Lodi, NJ), there was a 20-fold spread in the accumulated precipitation amongst the 21 ensemble members. For the same station the peak flow ranged from base flow (3 m<sup>3</sup>/s) to 242 m<sup>3</sup>/s (exceeding the major flood threshold) (Figure 5). At the Hackensack River at New Milford the peak flow was ranging anywhere between 20 m<sup>3</sup>/s and 525 m<sup>3</sup>/s. The magnitude of spread in other stations was similar (Figure 5). At that point of the retrospective forecast, the streamflow simulated using the control member (GEFSC00) underestimated the observed flow in all stations except for station ID 01375000 (Croton River on Hudson, NY) where the flow was simulated correctly (Figure 5). However, the spread between the individual ensemble members remained very high as reported above. In terms of estimated time of peak, one notes that the GEFSC00 control member correctly projected the peak time of the event in all stations with an error of  $\pm 3$  hours when compared with observations. However, other individual members had an offset of up to 24 hours between simulated and observed peaks in certain stations ([Figures 5-a1, 5-b1, 5-c1, 5-d1 and 5-e1](#)). For instance, at station [ID 01375000](#) (Croton River on Hudson, NY), one individual member was projecting an estimated peak on the evening of August 28 while another individual member was projecting it at noon of the following day. In ~~that~~[this particular](#) station, the observed peak was around [the](#) midnight of August 28.- This finding offers an interesting perspective in terms of precisely extracting hydrograph features as one may, ~~therefore~~ use the control member at this stage of the forecasts to precisely project the time of the peak with a temporal error of  $\pm 3$  hours. In terms of statistical evaluation, Figure 6 and Figure 7 report the NSE and BIAS (%) for selected stations. For station [ID 01375000](#), the control member (GEFSC00) ~~predicts~~[predicted](#) the flow accurately with a NSE of approximately 0.95, however the flow is underestimated by about 20% [in the forecast issued](#) 72 hours prior to the event. Overall, only seven ensemble members at this station had a NSE above 0.70 while more than 60% of the members underestimated or overestimated the flow hydrograph by more than 30% (Figure 7). Although uncertainties in baseflow initial conditions and model hydrological parameters are not addressed in this work, ~~one may argue it was noted~~ that uncertainties from precipitation inputs have a substantial impact on the prediction compared to remaining uncertainties in the initial conditions and parameters of the calibrated hydrological model.

In the next reforecast, [issued](#) 48 hours before the event, the spread (or the uncertainty envelope) was ~~reduced~~substantially [reduced](#), notably in the projected time of the peak ([FigureFigures 5-a2, 5-b2, 5-c2, 5-d2 and 5-e2](#)). This is primarily due to the decrease in accumulated precipitation ensemble spread (Table 1). The magnitude of the peak ensemble spread was between 104 to 229 m<sup>3</sup>/s for the Saddle River. The same river had a spread on the order of 20-fold in the prior forecast. This improvement was observed at other stations as well. At ~~48hrs~~[48 hours](#) lead time, the control member systematically ~~overestimating~~[overestimated](#) the flow at all stations ([e.g. FigureFigures 5-a2, 5-b2, 5-c2, 5-d2 and 5-e2](#)), but it consistently predicted the time of peak, as was the case in the -forecast issued 72 hours before the event. The uncertainty in the time of the peak also decreased, with most of the ensemble members predicting the peaks [around](#)[within](#)  $\pm 3$  hours from the observed ones. This suggests that the peak ensemble spread [may](#)[should](#) not be the only metric ~~that should be analyzed~~[considered](#) to quantify

potential uncertainty, it suggests that other features such as the peak timing and magnitude should also be examined. The control member (GEFSC00), which predicted the flow correctly for Croton River on Hudson (ID 01375000) 72 hours before the event, however, at ~~48hrs~~48 hours lead time showed a marked overestimation of the flow 65%. This suggests that the accuracy of the predictions also varies temporally and no single member can be relied upon consistently as a perfect forecast.

5 Overall ~~one notes that for 48 hours before the event,~~ there ~~iswas~~ a significant improvement in NSE for most of the ensemble members in the examined stationsforecasts issued 48 hours before the event.

In the final reforecast considered, issued 24 hours before the event, the spread was further reduced with all the members predicting the rising and the falling limbs of the hydrograph more accurately. The control member presented an almost perfect forecast for Hackensack River at New Milford (Figure 6). The peak ensemble spread was reduced by 57%, 60% and 48%

10 compared to the ~~72hrs~~72 hours lead-time predicted peak ensemble spread at the Hackensack River, Saddle River and Wallkill River stations, respectively. Also, the peaks were predicted to occur within  $\pm 3$  hours of the observed event peak in all cases.

The control member seemed to be consistent with the observations in terms of the peak time at this stage of the forecast and the uncertainties are less than that projected 48 hours before the event. At this stage of the forecast 75% of the ensemble members had a NSE higher than 0.75 (Figure 6). This is consistent with findings in recent ensemble streamflow studies that

15 used different modelling frameworks (Thielen et al., 2009; Fan et al., 2014; Yang and Yang, 2014). The results also suggest that the magnitude of spread between the ensemble members depends significantly on the sub-basin drainage area. For

example, at station ID 01391500, Saddle River at Lodi (140 km<sup>2</sup>) a peak discharge of 242 m<sup>3</sup>/s corresponds to a maximum accumulated precipitation of 206 mm. Thus, there is peak flow of about 1 m<sup>3</sup>/s for 1 mm of accumulated precipitation. This

20 km<sup>2</sup>) there was a peak flow of approximately 10 m<sup>3</sup>/s for 1 mm of accumulated precipitation as it propagates (non-linearly) through the drainage area, thus there is a correlation between the spread in the precipitation data and the area of the sub-basin.

To have an overall assessment of the forecast skill, we calculated the range and average NSE and Bias (%) across all stations (Figure 8) in the Hudson River basin for the different reforecast ensemble members 24 hours before the event. The ~~figures~~figure depicts how a member that has a good NSE and BIAS at one station can have a very poor performance in other parts of the

25 basin that may partly be due to the statistical downscaling of precipitation from 1 degree resolution to ~~2km~~2 km, and the associated uncertainty in the spatial distribution of precipitation. The median of all the members and the control member showed ~~a~~ good performance with an average NSE of 0.75 compared to each of the members. The results show that there is no

“one size fits all” solution for selecting an ensemble member, noting that each sub-basin has its own distinct set of characteristics manifested in local conditions such as the size of the basin and land use. This finding calls for further work  
30 involving higher resolution precipitation models to assess the effect of basin size and meteorological forcing resolutions.

### 3.2.1 Threshold exceedance persistence diagram

In addition to the statistical metrics and visual comparison of stream-flow, an assessment of the forecasts skill was carried out for Hurricane Irene using a threshold exceedance persistence diagram at 6-~~hr~~hour time intervals of the forecasts streamflow



time series (Figure 9). The exceedance diagram used in this study is an adaptation of the operational European Flood Alert System (Bartholmes et al., 2009; Thielen et al., 2009). Such quantitative diagrams give an idea ~~of~~about the forecast persistence and support operational flood management decisions and human judgment. The “major flood” threshold for each station was ~~based on the “major flooding” flow defined by~~obtained from the NOAA National Weather Service. ~~It is defined as~~ the category of flood where extensive inundation of structures and roads is expected, ~~leading to which calls for~~ significant ~~evacuation~~evacuation of people and ~~or~~ transfer of property to higher elevations ~~is called~~ (NWS, 2012) ~~—~~.

The major thresholds for observed and simulated discharge were transformed into dichotomous time series of 1 (=Yes, the major threshold is exceeded) and 0 (=No, the major threshold is not exceeded). The information of each cell in the matrix diagram is the probability of exceeding the major flooding value, calculated using all the ensemble members at a given forecast.

For instance, a probability of 100% suggests that all 21 ensemble members used in the work are projecting a major flood. Figure 9 exhibits the exceedance diagram results at selected stations of the Hudson River basin in which observations exceeded the major flood threshold during this event. The results suggest that one may establish a highly reliable streamflow forecast 48 hours prior to the event. For instance, the ~~72-hrs-~~hours lead-time reforecasts (issued on 26-Aug-2011 00:00 GMT) for station ID 01381900 were projecting a 52% probability (11 members out of 21) of having a major flood event 78 hours out. However, the probability increased to 100% in the 27-Aug-2011 00:00 GMT (48 hours before the event) reforecast for the same station. The average across all stations for the day-3 (72 hours before the event) reforecast was showing a 60% probability of having a major flood on 29-Aug-2011 (between 00:00 and 06:00 am GMT), while the day-2 (48 hours before the event) reforecasts had a 99% average chance of exceeding the major flood threshold. This highlights the increase in reliability the event approaches. The diagram also suggests that the persistence of the event occurrence among subsequent forecasts is a good indicator to trigger a major flood warning, especially when the proportion of members above the threshold exceeds 71% (15 or more out of the 21 ensemble members). By contrast, in station ID 0137500, both observations and flow ensemble members did not exceed the major flood threshold (Figure 9). This is particularly important for the reliability and validation of the operational forecast system. However, caution should be practiced when interpreting the persistence exceeding diagrams as time series will have to be examined in parallel to confirm any potential discrepancy between the models.

#### 25 4. Summary and Discussion

The first part of this work consisted of implementing a regional scale hydrological modeling framework on ~~of~~the Hudson River basin using the HEC-HMS model (USACE, 2015) forced with NARR gridded precipitation inputs (Mesinger et al., 2006). The second part investigated the use of GEFS (Hamill et al., 2013; Hamill et al., 2015) ensemble inputs to retrospectively forecast an extreme hydrological event, Hurricane Irene, with a 96-~~hr~~hour time horizon at hourly time ~~steps~~steps.

In total, 21 GEFS ensemble members were tested on the Hudson River basin atwith reforecasts issued 72, 48, and 24 hours prior to the event.



~~This work did not address uncertainty in hydrological initial conditions and model parameters, which were optimized in the NARR-based calibration, but rather was focused on how dominant the precipitation inputs are on the results of the hydrological streamflow forecasts.~~

In terms of assessment, we visually and statistically quantified the results of the GEFS individual members, the deterministic forecasts represented by the control member (GEFSC00), and the median of all members. We also used the persistence exceedance diagram of established thresholds to project the possibility of major floods based on all the individual members.

The ~~visual~~ comparison ~~and the statistical metrics show~~showed that ensemble forecasts are advantageous in quantifying uncertainty of forecasts lead time and raising reliability from an operational perspective. This work did not address uncertainty in hydrological initial conditions and model parameters, which were optimized in the NARR-based calibration, but rather was focused on how dominant the precipitation inputs are on the results of the hydrological streamflow forecasts. The findings of this work confirm that using ensemble streamflow predictions have advantages over deterministic forecasts in terms of better representing the uncertainty, particularly in an extreme hydrologic event such as the one presented in this work. Furthermore, while the general perception is that hydrological uncertainty is reduced with lead time, there are no studies that quantitatively characterize this aspect using the GEFS retrospective data and in the event of an extreme flood event such as Hurricane Irene.

The work shows that streamflow forecasts are highly dependent on the meteorological inputs and reflect uncertainties associated with these inputs. Clearly, the relatively small area of the sub-basin and resolution of the weather model was of importance for the spread overestimation due to the precipitation inputs. In this context, higher resolution weather models such as the European Centre for Medium-Range Weather Forecast (ECMWF) (Molteni et al., 1996; Thiemig et al., 2015) or the Coupled Ocean-Atmosphere Mesoscale Prediction System (COAMPS)<sup>®</sup> (Pullen et al., 2015) may be of particular interest in smaller scale sub-catchments in order to provide higher accuracy. The operational GEFS ensemble forecast datasets were upgraded to 0.5 degrees resolution on December 2, 2015 (<http://www.neo.ncep.noaa.gov/pmb/changes/>). More detailed weather model forcing ~~should~~may lead to a reduction in the streamflow spread, and reduce the uncertainty of the forecast.

The ~~presented hydrologic~~ modeling of the Hudson River basin ~~demonstrates~~demonstrated that a given streamflow ensemble member may produce streamflow that is highly in agreement with observations, accounting for uncertainty in precipitation and in ~~hydrologic~~the hydrological model parameters. However, there is no “one size fits all” solution for selecting an ensemble member, noting that each sub-basin has its own distinct set of characteristics manifested in local conditions such as the area of the drainage basin and land use. Furthermore, caution should be exercised in forecast models that only use the control member from the weather models or the average ensemble member as it may lead to considerable deviation in river discharge forecasts from observations resulting in false warnings and missed flooding events, ~~thereby, decreasing the potential reduction of flood risk~~ (Figure 5).

The findings also suggest that higher confidence in the river discharge forecasts may be attained as we approach a major event by approximately 48 hours. The outcomes of this work provide interesting perspectives for future ensemble post-processing techniques and features extraction, notably regarding the peak timing of an extreme hydrologic event when combined with the major flood persistence diagram.

This operational framework offers an improvement over the available NOAA's Advanced Hydrological Prediction System (AHPS) in this particular region (McEnery et al., 2005). The AHPS streamflow forecasts are at 6-hour time interval using one weather control member for input and with a lead time that is less than 60 hours in this region (Adams, 2015).

The Hudson River basin regional scale model may be potentially used for numerous applications such as continuously

5 forecasting. The operational framework presented in this work offers an improvement over the available NOAA's Advanced Hydrological Prediction System (AHPS) in this particular region (McEnery et al., 2005) and is operationally running 125 ensemble members including (in addition to GEFS) the ECMWF, ECMWF-HRES, the Short-Range Ensemble Forecast (SREF), the Canadian Meteorological Centre (CMC) and the North American Mesoscale Forecast System (NAM). The AHPS streamflow forecasts are at 6-hour time intervals using one weather deterministic forecast as input and with a lead time that is  
10 less than 60 hours in this region (Adams, 2015).

The framework is highly flexible and directly handles GRIB1, GRIB2 and NetCDF meteorological inputs format. This operational flexibility in the framework allows it to use other sources of meteorological data instead of NARR, which is not available in areas outside North America. Examples of atmospheric reanalysis products that may be used include the European Center for Medium range Weather Forecasting (ECMWF), National Centers for Environmental Prediction (NCEP) and  
15 National Center for Atmospheric Research (NCAR). As for framework validation, if applied to watersheds without gauging stations (or with only a few), it is possible to use remote sensing river discharge data to calibrate and validate the modeling outputs. Despite that fact that such data have uncertainties, there have been many advancements in this field and there is potential for future applications [e.g., the Surface Water and Ocean Topography (SWOT) satellite mission (Saleh et al., 2012; Biancamaria et al., 2015)]. Thus, this framework shows promise for operational streamflow forecasting in other parts of the  
20 world.

The computational time required to run the Hudson River basin for the 21 GEFS ensemble members was approximately 30 minutes. This includes processing the GRIB input files and post-processing of the ensemble outputs. The total time required to run the entire 125 ensemble members is approximately five and a half hours, this includes pre-processing inputs and updating the database and the Stevens Flood Advisory System (SFAS) website. The forecasts are updated every 6 hours which is  
25 sufficient for issuing a flood warning.

The current work maybe potentially expanded to integrate a hydrodynamic model such as HEC-RAS (Brunner, 2002) that has advantages in terms of simulating the water levels and flood extents in addition to streamflow. However, this would require detailed representation of river cross sections geometry that is currently not available at regional scale (Saleh et al., 2011).

In terms of applications, the Hudson River basin regional scale model may be used to continuously forecast the overall  
30 variability of the water resources (Saleh et al., 2011; Pryet et al., 2015; Saraiva Okello et al., 2015), predicting fate and transport of water quality such as nitrate (Schoonover and Lockaby, 2006; Wang et al., 2012; Bastola and Misra, 2015; Schuetz et al., 2015) and climate change scenarios (Ducharme et al., 2007; Graham et al., 2007; Ducharme et al., 2010; Quintana Seguí et al., 2010; Habets et al., 2013). Moreover, socio-economic analysis may be used to weigh how such improved forecasts

[potentially can](#) prevent loss of life and minimize the damage to property, with the aid of effective communication and social media.

### **Acknowledgments**

5 This work was funded by a research task agreement entered between the Trustees of the Stevens Institute of Technology and the Port Authority of New York and New Jersey, effective August 19, 2014. [We would like to first thank the reviewers for their valuable comments and suggestions to improve the quality of the paper.](#) We are grateful to Dr. William Scharffenberg and his team at the USACE Hydrologic Engineering Center for their help in operationally running HEC-HMS and HEC-DSSvue on Linux. We are grateful to Ms. Sarah R. Hatala from New Jersey Department of Environmental Protection Office of Engineering and Construction Bureau of Dam Safety and Flood Control for providing reservoir data. We are thankful to  
10 Mr. Alon Dominitz from New York State Department of Environmental Conservation for providing us with sources of dams elevation-storage data. We are also thankful to Mr. Jacob Isleib from the USDA-Natural Resources Conservation Service for his help in extracting the soil data for New York and New Jersey from the State Soil Geographic Database (STATSGO). We are thankful to Mr. Wesley Ebisuzaki from the NOAA Climate Prediction Center for his help with the NARR data. The GEFS Retrospective Forecasts were graciously provided by Drs. Yuejian Zhu, Justin Cooke, Xiaqiong Zhou, and Rebecca Cosgrove  
15 of NOAA EMC.

## References

- Adams, T.: Verification of the NOAA/NWS MMEFS Operational Hydrologic Ensemble Forecasting System in the Ohio River Valley, World Environmental and Water Resources Congress 2015 at Floods, Droughts, and Ecosystems, 2688-2700, 2015.
- Alfieri, L., Salamon, P., Pappenberger, F., Wetterhall, F., and Thielen, J.: Operational early warning systems for water-related hazards in Europe, *Environmental Science & Policy*, 21, 35-49, 2012.
- Alfieri, L., Burek, P., Dutra, E., Krzeminski, B., Muraro, D., Thielen, J., and Pappenberger, F.: GloFAS &ndash; global ensemble streamflow forecasting and flood early warning, *Hydrology and Earth System Sciences*, 17, 1161-1175, 2013.
- Allamano, P., Claps, P., and Laio, F.: Global warming increases flood risk in mountainous areas, *Geophysical Research Letters*, 36, 2009.
- Amengual, A., Romero, R., Vich, M., and Alonso, S.: Inclusion of potential vorticity uncertainties into a hydrometeorological forecasting chain: Application to a medium size basin of Mediterranean Spain, *Hydrology and Earth System Sciences*, 13, 793-811, 2009.
- Amengual, A., Homar, V., and Jaume, O.: Potential of a probabilistic hydrometeorological forecasting approach for the 28 September 2012 extreme flash flood in Murcia, Spain, *Atmospheric Research*, 166, 10-23, 2015.
- Anderson, M. L., Chen, Z. Q., Kavvas, M. L., and Feldman, A.: Coupling HEC-HMS with atmospheric models for prediction of watershed runoff, *Journal of Hydrologic Engineering*, 7, 312-318, 2002.
- Avila, A. L., and Cangialosi, J.: Tropical Cyclone Report-Hurricane Irene (Technical Report AL092011), 21-28 August 2011, National Hurricane Center, [http://www.nhc.noaa.gov/data/tcr/AL092011\\_Irene.pdf](http://www.nhc.noaa.gov/data/tcr/AL092011_Irene.pdf) (accessed 4-Feb-2016), 2011.
- Bao, H., Zhao, L., He, Y., Li, Z., Wetterhall, F., Cloke, H., Pappenberger, F., and Manful, D.: Coupling ensemble weather predictions based on TIGGE database with Grid-Xinanjiang model for flood forecast, *Advances in Geosciences (ADGEO)*, 29, 61-67, 2011.
- Barati, R.: Parameter estimation of nonlinear Muskingum models using Nelder-Mead simplex algorithm, *Journal of Hydrologic Engineering*, 16, 946-954, 2011.
- Bartholmes, J., and Todini, E.: Coupling meteorological and hydrological models for flood forecasting, *Hydrology and Earth System Sciences*, 9, 333-346, 2005.
- Bartholmes, J. C., Thielen, J., Ramos, M. H., and Gentilini, S.: The european flood alert system EFAS – Part 2: Statistical skill assessment of probabilistic and deterministic operational forecasts, *Hydrology and Earth System Sciences*, 13, 141-153, 2009.
- Bastola, S., and Misra, V.: Seasonal hydrological and nutrient loading forecasts for watersheds over the Southeastern United States, *Environmental Modelling and Software*, 73, 90-102, 2015.
- Becker, A., and Grunewald, U.: Flood risk in central Europe, *Science*, 300, 1099, 2003.
- Blumberg, A. F., Georgas, N., Yin, L., Herrington, T. O., and Orton, P. M.: Street-scale modeling of storm surge inundation along the New Jersey Hudson river waterfront, *Journal of Atmospheric and Oceanic Technology*, 32, 1486-1497, 2015.
- Bogner, K., and Pappenberger, F.: Multiscale error analysis, correction, and predictive uncertainty estimation in a flood forecasting system, *Water Resources Research*, 47, 2011.
- Boucher, M.-A., Anctil, F., Perreault, L., and Tremblay, D.: A comparison between ensemble and deterministic hydrological forecasts in an operational context, *Advances in Geosciences*, 29, 85-94, 2011.
- Boucher, M.-A., Tremblay, D., Delorme, L., Perreault, L., and Anctil, F.: Hydro-economic assessment of hydrological forecasting systems, *Journal of Hydrology*, 416, 133-144, 2012.
- Bowler, N. E., Arribas, A., Mylne, K. R., Robertson, K. B., and Beare, S. E.: The MOGREPS short-range ensemble prediction system, *Quarterly Journal of the Royal Meteorological Society*, 134, 703-722, 2008.
- Brown, J.: An evaluation of the minimum requirements for meteorological reforecasts from the Global Ensemble Forecast System (GEFS) of the U.S. National Weather Service (NWS) in support of the calibration and validation of the NWS Hydrologic Ensemble Forecast Service (HEFS), National Weather Service (NWS) Technical Report, 2015.
- Bruno, M. S., Blumberg, A. F., and Herrington, T. O.: The urban ocean observatory-coastal ocean observations and forecasting in the New York Bight, *Proceedings-Institute of Marine Engineering Science and Technology Part C, Journal of Marine Science and Environment*, 4, 31. Institute of Marine Engineering Science and Technology, 2006.
- Buizza, R., Hollingsworth, A., Lalauette, F., and Ghelli, A.: Probabilistic predictions of precipitation using the ECMWF Ensemble Prediction System, *Weather and Forecasting*, 14, 168-189, 1999.
- Buizza, R.: The value of probabilistic prediction, *Atmospheric Science Letters*, 9, 36-42, 2008.

- Changnon, S. A., Kunkel, K. E., and Andsager, K.: Causes for record high flood losses in the central United States, *Water International*, 26, 223-230, 2001.
- Chen, S.-T., and Yu, P.-S.: Real-time probabilistic forecasting of flood stages, *Journal of Hydrology*, 340, 63-77, 2007.
- Choi, W., Kim, S. J., Rasmussen, P. F., and Moore, A. R.: Use of the North American Regional Reanalysis for hydrological modelling in Manitoba, *Canadian Water Resources Journal*, 34, 17-36, 2009.
- 5 Chow, V. T.: *Open channel hydraulics*, McGraw-Hill Book Company, Inc; New York, 1959.
- Chu, X., and Steinman, A.: Event and continuous hydrologic modeling with HEC-HMS, *Journal of Irrigation and Drainage Engineering*, 135, 119-124, 2009.
- Clark, M. P., and Hay, L. E.: Use of Medium-Range Numerical Weather Prediction Model Output to Produce Forecasts of Streamflow, *Journal of Hydrometeorology*, 5, 15-32, 2004.
- 10 Cloke, H., and Pappenberger, F.: Ensemble flood forecasting: a review, *Journal of Hydrology*, 375, 613-626, 2009.
- Coch, N. K.: *Hurricane Irene (2011) - A Hydrological Catastrophe In The Northeast U.S.*, American Institute of Professional Geologist, 2012.
- Cuo, L., Pagano, T. C., and Wang, Q. J.: A Review of Quantitative Precipitation Forecasts and Their Use in Short- to Medium-Range Streamflow Forecasting, *Journal of Hydrometeorology*, 12, 713-728, 2011.
- 15 Davolio, S., Miglietta, M., Diomede, T., Marsigli, C., Morgillo, A., and Moscatello, A.: A meteo-hydrological prediction system based on a multi-model approach for precipitation forecasting, *Natural Hazards and Earth System Science*, 8, 143-159, 2008.
- Demeritt, D., Cloke, H., Pappenberger, F., Thielen, J., Bartholmes, J., and Ramos, M.-H.: Ensemble predictions and perceptions of risk, uncertainty, and error in flood forecasting, *Environmental Hazards*, 7, 115-127, 2007.
- 20 Ducharne, A., Baubion, C., Beaudoin, N., Benoît, M., Billen, G., Brisson, N., Garnier, J., Kieken, H., Lebonvallet, S., and Ledoux, E.: Long term prospective of the Seine River system: Confronting climatic and direct anthropogenic changes, *Science of the Total Environment*, 375, 292-311, 2007.
- Ducharne, A., Habets, F., Pagé, C., Sauquet, E., Viennot, P., Déqué, M., Gascoïn, S., Hachour, A., Martin, E., and Oudin, L.: Climate change impacts on water resources and hydrological extremes in northern France, XVIII Conference on Computational Methods in Water Resources, 2010.
- 25 Fan, F. M., Collischonn, W., Meller, A., and Botelho, L. C. M.: Ensemble streamflow forecasting experiments in a tropical basin: The São Francisco river case study, *Journal of Hydrology*, 519, 2906-2919, 2014.
- Feldman, A. D.: *Hydrologic modeling system HEC-HMS: technical reference manual*, US Army Corps of Engineers, Hydrologic Engineering Center, 2000.
- 30 FEMA: *Federal Emergency Management Agency Technical Report on New York-Hurricane Irene (DR-4020)*, 2011 <http://www.fema.gov/ar/disaster/4020> (accessed February 4, 2016),
- Fleming, M., and Doan, J.: *HEC-GeoHMS geospatial hydrologic modelling extension: user's manual version 10.2*, US Army Corps of Engineers, Institute for Water Resources, Hydrologic Engineering Centre, Davis, CA, 2013.
- 35 Gassman, P. W., Reyes, M. R., Green, C. H., and Arnold, J. G.: The soil and water assessment tool: historical development, applications, and future research directions, *Transactions of the ASABE*, 50, 1211-1250, 2007.
- Georgas, N., Blumberg, A. F., and Herrington, T. O.: An operational coastal wave forecasting model for New Jersey and Long Island waters, *Shore and beach*, 75, 30, 2007.
- 40 Georgas, N., Orton, P., Blumberg, A., Cohen, L., Zarrilli, D., and Yin, L.: The impact of tidal phase on Hurricane Sandy's flooding around New York City and Long Island Sound, *Journal of Extreme Events*, 1, 1450006, 2014.
- Gesch, D., Oimoen, M., Greenlee, S., Nelson, C., Steuck, M., and Tyler, D.: The national elevation dataset, *Photogrammetric engineering and remote sensing*, 68, 5-32, 2002.
- Golding, B.: Long lead time flood warnings: reality or fantasy?, *Meteorological Applications*, 16, 3-12, 2009.
- 45 Graham, L. P., Andréasson, J., and Carlsson, B.: Assessing climate change impacts on hydrology from an ensemble of regional climate models, model scales and linking methods – a case study on the Lule River basin, *Climatic Change*, 81, 293-307, 2007.
- Gupta, H. V., K. J. Beven, and T. Wagener: *Model Calibration and uncertainty estimation*, in: *Encyclopedia of Hydrological Sciences*, John Wiley and Sons, 2015-2032, 2005.
- Habets, F., LeMoigne, P., and Noilhan, J.: On the utility of operational precipitation forecasts to served as input for streamflow forecasting, *Journal of Hydrology*, 293, 270-288, 2004.

- Habets, F., Boé, J., Déqué, M., Ducharne, A., Gascoïn, S., Hachour, A., Martin, E., Pagé, C., Sauquet, E., Terray, L., Thiéry, D., Oudin, L., and Viennot, P.: Impact of climate change on the hydrogeology of two basins in northern France, *Climatic Change*, 121, 771-785, 2013.
- Halwatura, D., and Najim, M. M. M.: Application of the HEC-HMS model for runoff simulation in a tropical catchment, *Environmental Modelling and Software*, 46, 155-162, 2013.
- 5 Hamill, T. M., Hagedorn, R., and Whitaker, J. S.: Probabilistic forecast calibration using ECMWF and GFS ensemble reforecasts. Part II: Precipitation, *Monthly weather review*, 136, 2620-2632, 2008.
- Hamill, T. M., Bates, G. T., Whitaker, J. S., Murray, D. R., Fiorino, M., Galarneau Jr, T. J., Zhu, Y., and Lapenta, W.: NOAA's second-generation global medium-range ensemble reforecast dataset, *Bulletin of the American Meteorological Society*, 94, 10 1553-1565, 2013.
- Hamill, T. M., Scheuerer, M., and Bates, G. T.: Analog Probabilistic Precipitation Forecasts Using GEFS Reforecasts and Climatology-Calibrated Precipitation Analyses, *Monthly Weather Review*, 143, 3300-3309, 2015.
- HEC: Data storage system visual utility engine user's manual version 2.0. Davis, CA: US Army Corps of Engineers, Institute for Water resource, Hydrologic Engineering Center, 2009.
- 15 Hirsch, R. M., and De Cicco, L. A.: User guide to Exploration and Graphics for RivEr Trends (EGRET) and dataRetrieval: R packages for hydrologic data, US Geological Survey 2328-7055, 2015.
- Homer, C. H., Fry, J. A., and Barnes, C. A.: The national land cover database, US Geological Survey Fact Sheet, 3020, 1-4, 2012.
- Hoss, F., and Fischbeck, P.: Increasing the Value of Uncertain Weather and River Forecasts for Emergency Managers, *Bulletin of the American Meteorological Society*, 97, 85-97, 2016.
- 20 IFRC: World disaster report, Geneva: International Federation Of Red Cross And Red Crescent Societies (www. ifrc. Org), 2013.
- Karl, T. R.: *Global Climate Change Impacts in the United States*, Cambridge University Press, 2009.
- Knebl, M. R., Yang, Z. L., Hutchison, K., and Maidment, D. R.: Regional scale flood modeling using NEXRAD rainfall, GIS, and HEC-HMS/ RAS: A case study for the San Antonio River Basin Summer 2002 storm event, *Journal of Environmental Management*, 75, 325-336, 2005.
- 25 Koffler, D., and Laaha, G.: LFSTAT-an R-package for low-flow analysis, EGU General Assembly Conference Abstracts, 14, 8940, 2012.
- Komma, J., Reszler, C., Blöschl, G., and Haiden, T.: Ensemble prediction of floods? catchment non-linearity and forecast probabilities, *Natural Hazards and Earth System Science*, 7, 431-444, 2007.
- 30 Krzysztofowicz, R.: Integrator of uncertainties for probabilistic river stage forecasting: precipitation-dependent model, *Journal of Hydrology*, 69-85, 2001a.
- Krzysztofowicz, R.: The case for probabilistic forecasting in hydrology, *Journal of hydrology*, 249, 2-9, 2001b.
- Kull, D. W., and Feldman, A. D.: Evolution of Clark's unit graph method to spatially distributed runoff, *Journal of Hydrologic engineering*, 3, 9-19, 1998.
- 35 Kundzewicz, Z. W., Kanae, S., Seneviratne, S. I., Handmer, J., Nicholls, N., Peduzzi, P., Mechler, R., Bouwer, L. M., Arnell, N., and Mach, K.: Flood risk and climate change: global and regional perspectives, *Hydrological Sciences Journal*, 59, 1-28, 2014.
- Maidment, D. R.: *Handbook of hydrology*, McGraw-Hill Inc., 1992.
- 40 Maidment, D. R., and Djokic, D.: *Hydrologic and hydraulic modeling support: With geographic information systems*, ESRI, Inc., 2000.
- McCollor, D., and Stull, R.: Hydrometeorological short-range ensemble forecasts in complex terrain. Part II: Economic evaluation, *Weather and Forecasting*, 23, 557-574, 2008.
- McEnery, J., Ingram, J., Duan, Q., Adams, T., and Anderson, L.: NOAA'S Advanced Hydrologic Prediction Service: Building Pathways for Better Science in Water Forecasting, *Bulletin of the American Meteorological Society*, 86, 375-385, 2005.
- 45 Meenu, R., Rehana, S., and Mujumdar, P. P.: Assessment of hydrologic impacts of climate change in Tunga-Bhadra river basin, India with HEC-HMS and SDSM, *Hydrological Processes*, 27, 1572-1589, 2013.
- Mesinger, F., DiMego, G., Kalnay, E., Mitchell, K., Shafran, P. C., Ebisuzaki, W., Jović, D., Woollen, J., Rogers, E., Berbery, E. H., Ek, M. B., Fan, Y., Grumbine, R., Higgins, W., Li, H., Lin, Y., Manikin, G., Parrish, D., and Shi, W.: North American 50 Regional Reanalysis, *Bulletin of the American Meteorological Society*, 87, 343-360, 2006.

- Miller, D. A., and White, R. A.: A conterminous United States multilayer soil characteristics dataset for regional climate and hydrology modeling, *Earth interactions*, 2, 1-26, 1998.
- Milly, P. C. D., Wetherald, R. T., Dunne, K., and Delworth, T. L.: Increasing risk of great floods in a changing climate, *Nature*, 415, 514-517, 2002.
- 5 Mishra, S. K., and Singh, V.: *Soil conservation service curve number (SCS-CN) methodology*, Springer Science & Business Media, 2013.
- Molteni, F., Buizza, R., Palmer, T. N., and Petroliagis, T.: The ECMWF ensemble prediction system: Methodology and validation, *Quarterly journal of the royal meteorological society*, 122, 73-119, 1996.
- Montanari, A., and Grossi, G.: Estimating the uncertainty of hydrological forecasts: A statistical approach, *Water Resources*
- 10 *Research*, 44, 2008.
- Mousavi, S. J., Abbaspour, K., Kamali, B., Amini, M., and Yang, H.: Uncertainty-based automatic calibration of HEC-HMS model using sequential uncertainty fitting approach, *Journal of Hydroinformatics*, 14, 286-309, 2012.
- Nash, J. E., and Sutcliffe, J. V.: River flow forecasting through conceptual models part I — A discussion of principles, *Journal of Hydrology*, 10, 282-290, 1970.
- 15 Neary, V. S., Habib, E., and Fleming, M.: Hydrologic modeling with NEXRAD precipitation in Middle Tennessee, *Journal of Hydrologic Engineering*, 9, 339-349, 2004.
- NJOEM: New Jersey Office of Emergency Management, New Jersey State Hazard Mitigation Plan Technical Report 2014. : 5.8-2. [http://www.ready.nj.gov/programs/mitigation\\_plan2014.html](http://www.ready.nj.gov/programs/mitigation_plan2014.html) (accessed February 1, 2016), 2014.
- NOAA: National Oceanic and Atmospheric Administration, 2011m, National Weather Service, Advanced Hydrologic
- 20 Prediction Center, daily precipitation totals for New York, April 26–29, August 28–29, and September 6–9, 2011, accessed January 29, 2016, at <http://water.weather.gov/precip/>.
- NWS: National Weather Service Manual 10-950 DECEMBER 4, 2012, Operations and Services Hydrologic Services Program, NWSPD 10-9, <http://www.nws.noaa.gov/directives/>,
- NWS: United States Flood Loss Report – Water Year 2014 <http://www.nws.noaa.gov/hic/summaries/WY2014.pdf> accessed
- 25 on 01-Feb-2016, 2014.
- O'Connell, P. E., Nash, J. E., and Farrell, J. P.: River flow forecasting through conceptual models part II - The Brosna catchment at Ferbane, *Journal of Hydrology*, 10, 317-329, 1970.
- Olsson, J., and Lindström, G.: Evaluation and calibration of operational hydrological ensemble forecasts in Sweden, *Journal of Hydrology*, 350, 14-24, 2008.
- 30 Pall, P., Aina, T., Stone, D. A., Stott, P. A., Nozawa, T., Hilberts, A. G., Lohmann, D., and Allen, M. R.: Anthropogenic greenhouse gas contribution to flood risk in England and Wales in autumn 2000, *Nature*, 470, 382-385, 2011.
- Pappenberger, F., Beven, K., Hunter, N., Bates, P., Gouweleeuw, B., Thielen, J., and De Roo, A.: Cascading model uncertainty from medium range weather forecasts (10 days) through a rainfall-runoff model to flood inundation predictions within the European Flood Forecasting System (EFFS), *Hydrology and Earth System Sciences*, 9, 381-393, 2005.
- 35 Pappenberger, F., Bartholmes, J., Thielen, J., Cloke, H. L., Buizza, R., and de Roo, A.: New dimensions in early flood warning across the globe using grand-ensemble weather predictions, *Geophysical Research Letters*, 35, 2008.
- Pappenberger, F., Cloke, H., Persson, A., and Demeritt, D.: "HESS Opinions" On forecast (in) consistency in a hydro-meteorological chain: curse or blessing?", *Hydrology and Earth System Sciences*, 15, 2391-2400, 2011.
- Pielke Jr, R. A. a. D., M. W.: Precipitation and Damaging Floods: Trends in the United States, *Journal of Climate*, 13, 3625-3637,
- 40 2000.
- Pryet, A., Labarthe, B., Saleh, F., Akopian, M., and Flipo, N.: Reporting of stream-aquifer flow distribution at the regional scale with a distributed process-based model, *Water Resources Management*, 29, 139-159, 2015.
- Pullen, J., Gordon, A. L., Flatau, M., Doyle, J. D., Villanoy, C., and Cabrera, O.: Multiscale influences on extreme winter rainfall in the Philippines, *Journal of Geophysical Research: Atmospheres*, 120, 2014JD022645, 2015.
- 45 QGIS, D.: Quantum GIS geographic information system, Open Source Geospatial Foundation Project, 2011.
- Quintana Seguí, P., Ribes, A., Martín, E., Habets, F., and Boé, J.: Comparison of three downscaling methods in simulating the impact of climate change on the hydrology of Mediterranean basins, *Journal of Hydrology*, 383, 111-124, 2010.
- R: Core Team: *A language and environment for statistical computing*. R Foundation for Statistical Computing, Vienna, Austria. ISBN 3-900051-07-0, URL <http://www.R-project.org/>, 2012.



- Ramos, M. H., Bartholmes, J., and Thielen-del Pozo, J.: Development of decision support products based on ensemble forecasts in the European flood alert system, *Atmospheric Science Letters*, 8, 113-119, 2007.
- Reggiani, P., and Weerts, A.: Probabilistic quantitative precipitation forecast for flood prediction: An application, *Journal of Hydrometeorology*, 9, 76-95, 2008.
- 5 Renard, B., Kavetski, D., Kuczera, G., Thyer, M., and Franks, S. W.: Understanding predictive uncertainty in hydrologic modeling: The challenge of identifying input and structural errors, *Water Resources Research*, 46, 2010.
- Saleh, F., Flipo, N., Habets, F., Ducharme, A., Oudin, L., Viennot, P., and Ledoux, E.: Modeling the impact of in-stream water level fluctuations on stream-aquifer interactions at the regional scale, *Journal of Hydrology*, 400, 490-500, 2011.
- Saraiva Okello, A., Masih, I., Uhlenbrook, S., Jewitt, G., Van der Zaag, P., and Riddell, E.: Drivers of spatial and temporal variability of streamflow in the Incomati River basin, *Hydrology and Earth System Sciences*, 19, 657-673, 2015.
- 10 Schaake, J. C., Hamill, T. M., Buizza, R., and Clark, M.: HEPEX: the hydrological ensemble prediction experiment, *Bulletin of the American Meteorological Society*, 88, 1541, 2007.
- Scharffenberg, W.: *Hydrologic Modeling System HEC-HMS User's Manual*, 2015.
- Scharffenberg, W., Duren, A., and Fleming, M.: *Uncertainty Analysis Using Monte Carlo Techniques in the Hydrologic Modeling System*, Joint Federal Interagency Conference, Reno, Nevada USA, 2015.
- 15 Schellekens, J., Weerts, A., Moore, R., Pierce, C., and Hildon, S.: The use of MOGREPS ensemble rainfall forecasts in operational flood forecasting systems across England and Wales, *Advances in Geosciences*, 29, 77-84, 2011.
- Schoonover, J. E., and Lockaby, B. G.: Land cover impacts on stream nutrients and fecal coliform in the lower Piedmont of West Georgia, *Journal of Hydrology*, 331, 371-382, 2006.
- 20 Schuetz, T., Gascuel-Oudou, C., Durand, P., and Weiler, M.: Nitrate sinks and sources as controls of spatio-temporal water quality dynamics in an agricultural headwater catchment, *Hydrology and Earth System Sciences*, 12, 8577-8614, 2015.
- Seyoum, M., van Andel, S. J., Xuan, Y., and Amare, K.: Precipitation forecasts for rainfall runoff predictions. A case study in poorly gauged Ribb and Gumara catchments, upper Blue Nile, Ethiopia, *Physics and Chemistry of the Earth*, 61-62, 43-51, 2013.
- 25 Solaiman, T. A., and Simonovic, S. P.: National Centers for Environmental Prediction-National Center for Atmospheric Research (NCEP-NCAR) reanalyses data for hydrologic modelling on a basin scale, *Canadian Journal of Civil Engineering*, 37, 611-623, 2010.
- Thielen, J., Bartholmes, J., Ramos, M. H., and de Roo, A.: The European Flood Alert System – Part 1: Concept and development, *Hydrology and Earth System Sciences*, 13, 125-140, 2009.
- 30 Thiemi, V., Bisselink, B., Pappenberger, F., and Thielen, J.: A pan-African medium-range ensemble flood forecast system, *Hydrology and Earth System Sciences*, 19, 3365-3385, 2015.
- USACE: *Hydrologic Modeling System: User's Manual Version 4.1*”, US Army Corps of Engineers, Hydrologic Engineering Center, Davis, CA, USA, 2015.
- USDA: *Urban hydrology for small watersheds*, Technical release, 55, 2-6, 1986.
- 35 Verkade, J. S., and Werner, M. G. F.: Estimating the benefits of single value and probability forecasting for flood warning, *Hydrol. Earth Syst. Sci.*, 15, 3751-3765, 2011.
- Wang, L., Stuart, M. E., Bloomfield, J. P., Butcher, A. S., Goody, D. C., McKenzie, A. A., Lewis, M. A., and Williams, A. T.: Prediction of the arrival of peak nitrate concentrations at the water table at the regional scale in Great Britain, *Hydrological Processes*, 26, 226-239, 2012.
- 40 Watson, K. M., Collenburg, J. V., and Reiser, R. G.: Hurricane Irene and associated floods of August 27-30, 2011, in New Jersey, US Geological Survey 2328-0328, 2013.
- Weaver, J., Harkabus, L. C., Braun, J., Miller, S., Cox, R., Griffith, J., and Mazur, R. J.: An Overview of a Demographic Study of United States Emergency Managers, *Bulletin of the American Meteorological Society*, 95, 199-203, 2014.
- Weerts, A., Winsemius, H., and Verkade, J.: Estimation of predictive hydrological uncertainty using quantile regression: examples from the National Flood Forecasting System (England and Wales), *Hydrology and Earth System Sciences*, 15,(1), 2011.
- 45 WMO: World Meteorological Organization, *Our Future Climate*, Technical Report 92-63-10952-4 ISBN 92-63-10952-4, 2003.
- Yang, S.-C., and Yang, T.-H.: Uncertainty assessment: reservoir inflow forecasting with ensemble precipitation forecasts and HEC-HMS, *Advances in Meteorology*, 2014, 2014.
- 50



- Yapo, P. O., Gupta, H. V., and Sorooshian, S.: Automatic calibration of conceptual rainfall-runoff models: sensitivity to calibration data, *Journal of Hydrology*, 181, 23-48, 1996.
- Younis, J., Ramos, M. H., and Thielen, J.: EFAS forecasts for the March–April 2006 flood in the Czech part of the Elbe River Basin—A case study, *Atmospheric Science Letters*, 9, 88-94, 2008.
- 5 Zhang, H., Wang, Y., Wang, Y., Li, D., and Wang, X.: The effect of watershed scale on HEC-HMS calibrated parameters: a case study in the Clear Creek watershed in Iowa, US, *Hydrology and Earth System Sciences*, 17, 2735-2745, 2013.
- Zhou, X., and Zhu, Y.: The NCEP Global Ensemble Forecast System with the EnKF Initialization, *Monthly Weather Review* (in preparation), 2016.
- Adams, T.: Verification of the NOAA/NWS MMEFS Operational Hydrologic Ensemble Forecasting System in the Ohio River Valley, *World Environmental and Water Resources Congress 2015 at Floods, Droughts, and Ecosystems*, 2688-2700, 2015.
- 10 Alfieri, L., Salamon, P., Pappenberger, F., Wetterhall, F., and Thielen, J.: Operational early warning systems for water-related hazards in Europe, *Environmental Science & Policy*, 21, 35-49, 2012.
- Alfieri, L., Burek, P., Dutra, E., Krzeminski, B., Muraro, D., Thielen, J., and Pappenberger, F.: GloFAS &ndash; global ensemble streamflow forecasting and flood early warning, *Hydrology and Earth System Sciences*, 17, 1161-1175, 2013.
- 15 Allamano, P., Claps, P., and Laio, F.: Global warming increases flood risk in mountainous areas, *Geophysical Research Letters*, 36, 2009.
- Amengual, A., Romero, R., Vich, M., and Alonso, S.: Inclusion of potential vorticity uncertainties into a hydrometeorological forecasting chain: Application to a medium size basin of Mediterranean Spain, *Hydrology and Earth System Sciences*, 13, 793-811, 2009.
- 20 Amengual, A., Homar, V., and Jaume, O.: Potential of a probabilistic hydrometeorological forecasting approach for the 28 September 2012 extreme flash flood in Murcia, Spain, *Atmospheric Research*, 166, 10-23, 2015.
- Anderson, M. L., Chen, Z. Q., Kavvas, M. L., and Feldman, A.: Coupling HEC-HMS with atmospheric models for prediction of watershed runoff, *Journal of Hydrologic Engineering*, 7, 312-318, 2002.
- Avila, A. L., and Cangialosi, J.: Tropical Cyclone Report-Hurricane Irene (Technical Report AL092011), 21-28 August 2011,
- 25 National Hurricane Center, [http://www.nhc.noaa.gov/data/tcr/AL092011\\_Irene.pdf](http://www.nhc.noaa.gov/data/tcr/AL092011_Irene.pdf) (accessed 4-Feb-2016), 2011.
- Bao, H., Zhao, L., He, Y., Li, Z., Wetterhall, F., Cloke, H., Pappenberger, F., and Manful, D.: Coupling ensemble weather predictions based on TIGGE database with Grid-Xinanjiang model for flood forecast, *Advances in Geosciences (ADGEO)*, 29, 61-67, 2011.
- Barati, R.: Parameter estimation of nonlinear Muskingum models using Nelder-Mead simplex algorithm, *Journal of Hydrologic Engineering*, 16, 946-954, 2011.
- 30 Bartholmes, J., and Todini, E.: Coupling meteorological and hydrological models for flood forecasting, *Hydrology and Earth System Sciences*, 9, 333-346, 2005.
- Bartholmes, J. C., Thielen, J., Ramos, M. H., and Gentilini, S.: The european flood alert system EFAS – Part 2: Statistical skill assessment of probabilistic and deterministic operational forecasts, *Hydrology and Earth System Sciences*, 13, 141-153, 2009.
- 35 Bastola, S., and Misra, V.: Seasonal hydrological and nutrient loading forecasts for watersheds over the Southeastern United States, *Environmental Modelling and Software*, 73, 90-102, 2015.
- Becker, A., and Grunewald, U.: Flood risk in central Europe, *Science*, 300, 1099, 2003.
- Biancamaria, S., Lettenmaier, D. P., and Pavelsky, T. M.: The SWOT Mission and Its Capabilities for Land Hydrology, *Surveys in Geophysics*, 1-31, 2015.
- 40 Blumberg, A. F., Georgas, N., Yin, L., Herrington, T. O., and Orton, P. M.: Street-scale modeling of storm surge inundation along the New Jersey Hudson river waterfront, *Journal of Atmospheric and Oceanic Technology*, 32, 1486-1497, 2015.
- Bogner, K., and Pappenberger, F.: Multiscale error analysis, correction, and predictive uncertainty estimation in a flood forecasting system, *Water Resources Research*, 47, 2011.
- Boucher, M.-A., Anctil, F., Perreault, L., and Tremblay, D.: A comparison between ensemble and deterministic hydrological forecasts in an operational context, *Advances in Geosciences*, 29, 85-94, 2011.
- 45 Boucher, M.-A., Tremblay, D., Delorme, L., Perreault, L., and Anctil, F.: Hydro-economic assessment of hydrological forecasting systems, *Journal of Hydrology*, 416, 133-144, 2012.
- Bowler, N. E., Arribas, A., Mylne, K. R., Robertson, K. B., and Beare, S. E.: The MOGREPS short-range ensemble prediction system, *Quarterly Journal of the Royal Meteorological Society*, 134, 703-722, 2008.

- Brown, J.: An evaluation of the minimum requirements for meteorological reforecasts from the Global Ensemble Forecast System (GEFS) of the U.S. National Weather Service (NWS) in support of the calibration and validation of the NWS Hydrologic Ensemble Forecast Service (HEFS), National Weather Service (NWS) Technical Report, 2015.
- Brunner, G. W.: HEC-RAS River Analysis System: User's Manual, US Army Corps of Engineers, Institute for Water Resources, Hydrologic Engineering Center, 2002.
- 5 Bruno, M. S., Blumberg, A. F., and Herrington, T. O.: The urban ocean observatory-coastal ocean observations and forecasting in the New York Bight, Proceedings-Institute of Marine Engineering Science and Technology Part C, Journal of Marine Science and Environment, 4, 31. Institute of Marine Engineering Science and Technology, 2006.
- Buizza, R., Hollingsworth, A., Lalauette, F., and Ghelli, A.: Probabilistic predictions of precipitation using the ECMWF Ensemble Prediction System, Weather and Forecasting, 14, 168-189, 1999.
- 10 Buizza, R.: The value of probabilistic prediction, Atmospheric Science Letters, 9, 36-42, 2008.
- Changnon, S. A., Kunkel, K. E., and Andsager, K.: Causes for record high flood losses in the central United States, Water International, 26, 223-230, 2001.
- Chen, S.-T., and Yu, P.-S.: Real-time probabilistic forecasting of flood stages, Journal of Hydrology, 340, 63-77, 2007.
- 15 Choi, W., Kim, S. J., Rasmussen, P. F., and Moore, A. R.: Use of the North American Regional Reanalysis for hydrological modelling in Manitoba, Canadian Water Resources Journal, 34, 17-36, 2009.
- Chow, V. T.: Open channel hydraulics, McGraw-Hill Book Company, Inc; New York, 1959.
- Chu, X., and Steinman, A.: Event and continuous hydrologic modeling with HEC-HMS, Journal of Irrigation and Drainage Engineering, 135, 119-124, 2009.
- 20 Clark, M. P., and Hay, L. E.: Use of Medium-Range Numerical Weather Prediction Model Output to Produce Forecasts of Streamflow, Journal of Hydrometeorology, 5, 15-32, 2004.
- Cloke, H., and Pappenberger, F.: Ensemble flood forecasting: a review, Journal of Hydrology, 375, 613-626, 2009.
- Coch, N. K.: Hurricane Irene (2011) - A Hydrological Catastrophe In The Northeast U.S, American Institute of Professional Geologist, 2012.
- 25 Cuo, L., Pagano, T. C., and Wang, Q. J.: A Review of Quantitative Precipitation Forecasts and Their Use in Short- to Medium-Range Streamflow Forecasting, Journal of Hydrometeorology, 12, 713-728, 2011.
- Davolio, S., Miglietta, M., Diomede, T., Marsigli, C., Morgillo, A., and Moscatello, A.: A meteo-hydrological prediction system based on a multi-model approach for precipitation forecasting, Natural Hazards and Earth System Science, 8, 143-159, 2008.
- 30 Demeritt, D., Cloke, H., Pappenberger, F., Thielen, J., Bartholmes, J., and Ramos, M.-H.: Ensemble predictions and perceptions of risk, uncertainty, and error in flood forecasting, Environmental Hazards, 7, 115-127, 2007.
- Ducharne, A., Baubion, C., Beaudoin, N., Benoît, M., Billen, G., Brisson, N., Garnier, J., Kieken, H., Lebonvallet, S., and Ledoux, E.: Long term prospective of the Seine River system: Confronting climatic and direct anthropogenic changes, Science of the Total Environment, 375, 292-311, 2007.
- 35 Ducharne, A., Habets, F., Pagé, C., Sauquet, E., Viennot, P., Déqué, M., Gascoïn, S., Hachour, A., Martin, E., and Oudin, L.: Climate change impacts on water resources and hydrological extremes in northern France, XVIII Conference on Computational Methods in Water Resources, 2010.
- Fan, F. M., Collischonn, W., Meller, A., and Botelho, L. C. M.: Ensemble streamflow forecasting experiments in a tropical basin: The São Francisco river case study, Journal of Hydrology, 519, 2906-2919, 2014.
- 40 Feldman, A. D.: Hydrologic modeling system HEC-HMS: technical reference manual, US Army Corps of Engineers, Hydrologic Engineering Center, 2000.
- FEMA: Federal Emergency Management Agency Technical Report on New York-Hurricane Irene (DR-4020), 2011 <http://www.fema.gov/ar/disaster/4020> (accessed February 4, 2016),
- Fleming, M., and Doan, J.: HEC-GeoHMS geospatial hydrologic modelling extension: user's manual version 10.2, US Army Corps of Engineers, Institute for Water Resources, Hydrologic Engineering Centre, Davis, CA, 2013.
- 45 Gassman, P. W., Reyes, M. R., Green, C. H., and Arnold, J. G.: The soil and water assessment tool: historical development, applications, and future research directions, Transactions of the ASABE, 50, 1211-1250, 2007.
- Georgas, N., Blumberg, A. F., and Herrington, T. O.: An operational coastal wave forecasting model for New Jersey and Long Island waters, Shore and beach, 75, 30, 2007.

- Georgas, N., Orton, P., Blumberg, A., Cohen, L., Zarrilli, D., and Yin, L.: The impact of tidal phase on Hurricane Sandy's flooding around New York City and Long Island Sound, *Journal of Extreme Events*, 1, 1450006, 2014.
- Gesch, D., Oimoen, M., Greenlee, S., Nelson, C., Steuck, M., and Tyler, D.: The national elevation dataset, *Photogrammetric engineering and remote sensing*, 68, 5-32, 2002.
- 5 Golding, B.: Long lead time flood warnings: reality or fantasy?, *Meteorological Applications*, 16, 3-12, 2009.
- Graham, L. P., Andréasson, J., and Carlsson, B.: Assessing climate change impacts on hydrology from an ensemble of regional climate models, model scales and linking methods – a case study on the Lule River basin, *Climatic Change*, 81, 293-307, 2007.
- Gupta, H. V., K. J. Beven, and T. Wagener: Model Calibration and uncertainty estimation, in: *Encyclopedia of Hydrological Sciences*, John Wiley and Sons, 2015-2032, 2005.
- 10 Habets, F., LeMoigne, P., and Noilhan, J.: On the utility of operational precipitation forecasts to served as input for streamflow forecasting, *Journal of Hydrology*, 293, 270-288, 2004.
- Habets, F., Boé, J., Déqué, M., Ducharne, A., Gascoïn, S., Hachour, A., Martin, E., Pagé, C., Sauquet, E., Terray, L., Thiéry, D., Oudin, L., and Viennot, P.: Impact of climate change on the hydrogeology of two basins in northern France, *Climatic Change*, 121, 771-785, 2013.
- 15 Halwatura, D., and Najim, M. M. M.: Application of the HEC-HMS model for runoff simulation in a tropical catchment, *Environmental Modelling and Software*, 46, 155-162, 2013.
- Hamill, T. M., Hagedorn, R., and Whitaker, J. S.: Probabilistic forecast calibration using ECMWF and GFS ensemble reforecasts. Part II: Precipitation, *Monthly weather review*, 136, 2620-2632, 2008.
- Hamill, T. M., Bates, G. T., Whitaker, J. S., Murray, D. R., Fiorino, M., Galarneau Jr, T. J., Zhu, Y., and Lapenta, W.: NOAA's second-generation global medium-range ensemble reforecast dataset, *Bulletin of the American Meteorological Society*, 94, 1553-1565, 2013.
- 20 Hamill, T. M., Scheuerer, M., and Bates, G. T.: Analog Probabilistic Precipitation Forecasts Using GEFS Reforecasts and Climatology-Calibrated Precipitation Analyses, *Monthly Weather Review*, 143, 3300-3309, 2015.
- HEC: Data storage system visual utility engine user's manual version 2.0. Davis, CA: US Army Corps of Engineers, Institute for Water resource, Hydrologic Engineering Center, 2009.
- 25 Hirsch, R. M., and De Cicco, L. A.: User guide to Exploration and Graphics for RivEr Trends (EGRET) and dataRetrieval: R packages for hydrologic data, US Geological Survey 2328-7055, 2015.
- Homer, C. H., Fry, J. A., and Barnes, C. A.: The national land cover database, US Geological Survey Fact Sheet, 3020, 1-4, 2012.
- 30 Hoss, F., and Fischbeck, P.: Increasing the Value of Uncertain Weather and River Forecasts for Emergency Managers, *Bulletin of the American Meteorological Society*, 97, 85-97, 2016.
- IFRC: World disaster report, Geneva: International Federation Of Red Cross And Red Crescent Societies ([www. ifrc. Org](http://www.ifrc.org)), 2013.
- Karl, T. R.: *Global Climate Change Impacts in the United States*, Cambridge University Press, 2009.
- 35 Knebl, M. R., Yang, Z. L., Hutchison, K., and Maidment, D. R.: Regional scale flood modeling using NEXRAD rainfall, GIS, and HEC-HMS/ RAS: A case study for the San Antonio River Basin Summer 2002 storm event, *Journal of Environmental Management*, 75, 325-336, 2005.
- Koffler, D., and Laaha, G.: LFSTAT-an R-package for low-flow analysis, *EGU General Assembly Conference Abstracts*, 14, 8940, 2012.
- 40 Komma, J., Reszler, C., Blöschl, G., and Haiden, T.: Ensemble prediction of floods? catchment non-linearity and forecast probabilities, *Natural Hazards and Earth System Science*, 7, 431-444, 2007.
- Krzysztofowicz, R.: Integrator of uncertainties for probabilistic river stage forecasting: precipitation-dependent model, *Journal of Hydrology*, 69-85, 2001a.
- Krzysztofowicz, R.: The case for probabilistic forecasting in hydrology, *Journal of hydrology*, 249, 2-9, 2001b.
- 45 Kull, D. W., and Feldman, A. D.: Evolution of Clark's unit graph method to spatially distributed runoff, *Journal of Hydrologic engineering*, 3, 9-19, 1998.
- Kundzewicz, Z. W., Kanae, S., Seneviratne, S. I., Handmer, J., Nicholls, N., Peduzzi, P., Mechler, R., Bouwer, L. M., Arnell, N., and Mach, K.: Flood risk and climate change: global and regional perspectives, *Hydrological Sciences Journal*, 59, 1-28, 2014.
- 50 Maidment, D. R.: *Handbook of hydrology*, McGraw-Hill Inc., 1992.

- Maidment, D. R., and Djokic, D.: Hydrologic and hydraulic modeling support: With geographic information systems, ESRI, Inc., 2000.
- McCollor, D., and Stull, R.: Hydrometeorological short-range ensemble forecasts in complex terrain. Part II: Economic evaluation, *Weather and Forecasting*, 23, 557-574, 2008.
- 5 McEnery, J., Ingram, J., Duan, Q., Adams, T., and Anderson, L.: NOAA'S Advanced Hydrologic Prediction Service: Building Pathways for Better Science in Water Forecasting, *Bulletin of the American Meteorological Society*, 86, 375-385, 2005.
- Meenu, R., Rehana, S., and Mujumdar, P. P.: Assessment of hydrologic impacts of climate change in Tunga-Bhadra river basin, India with HEC-HMS and SDSM, *Hydrological Processes*, 27, 1572-1589, 2013.
- Mesinger, F., DiMego, G., Kalnay, E., Mitchell, K., Shafran, P. C., Ebisuzaki, W., Jović, D., Woollen, J., Rogers, E., Berbery, E. H., Ek, M. B., Fan, Y., Grumbine, R., Higgins, W., Li, H., Lin, Y., Manikin, G., Parrish, D., and Shi, W.: North American Regional Reanalysis, *Bulletin of the American Meteorological Society*, 87, 343-360, 2006.
- 10 Miller, D. A., and White, R. A.: A conterminous United States multilayer soil characteristics dataset for regional climate and hydrology modeling, *Earth interactions*, 2, 1-26, 1998.
- Milly, P. C. D., Wetherald, R. T., Dunne, K., and Delworth, T. L.: Increasing risk of great floods in a changing climate, *Nature*, 15 415, 514-517, 2002.
- Mishra, S. K., and Singh, V.: Soil conservation service curve number (SCS-CN) methodology, Springer Science & Business Media, 2013.
- Molteni, F., Buizza, R., Palmer, T. N., and Petroliagis, T.: The ECMWF ensemble prediction system: Methodology and validation, *Quarterly journal of the royal meteorological society*, 122, 73-119, 1996.
- 20 Montanari, A., and Grossi, G.: Estimating the uncertainty of hydrological forecasts: A statistical approach, *Water Resources Research*, 44, 2008.
- Mousavi, S. J., Abbaspour, K., Kamali, B., Amini, M., and Yang, H.: Uncertainty-based automatic calibration of HEC-HMS model using sequential uncertainty fitting approach, *Journal of Hydroinformatics*, 14, 286-309, 2012.
- Nash, J. E., and Sutcliffe, J. V.: River flow forecasting through conceptual models part I — A discussion of principles, *Journal of Hydrology*, 10, 282-290, 1970.
- 25 Neary, V. S., Habib, E., and Fleming, M.: Hydrologic modeling with NEXRAD precipitation in Middle Tennessee, *Journal of Hydrologic Engineering*, 9, 339-349, 2004.
- NJOEM: New Jersey Office of Emergency Management, New Jersey State Hazard Mitigation Plan Technical Report 2014. : 5.8-2. [http://www.ready.nj.gov/programs/mitigation\\_plan2014.html](http://www.ready.nj.gov/programs/mitigation_plan2014.html) (accessed February 1, 2016), 2014.
- 30 NOAA: National Oceanic and Atmospheric Administration, 2011m, National Weather Service, Advanced Hydrologic Prediction Center, daily precipitation totals for New York, April 26–29, August 28–29, and September 6–9, 2011, accessed January 29, 2016, at <http://water.weather.gov/precip/>.
- NWS: National Weather Service Manual 10-950 DECEMBER 4, 2012, Operations and Services Hydrologic Services Program, NWSPD 10-9, <http://www.nws.noaa.gov/directives/>,
- 35 NWS: United States Flood Loss Report – Water Year 2014 <http://www.nws.noaa.gov/hic/summaries/WY2014.pdf> accessed on 01-Feb-2016, 2014.
- O'Connell, P. E., Nash, J. E., and Farrell, J. P.: River flow forecasting through conceptual models part II - The Brosna catchment at Ferbane, *Journal of Hydrology*, 10, 317-329, 1970.
- 40 Olsson, J., and Lindström, G.: Evaluation and calibration of operational hydrological ensemble forecasts in Sweden, *Journal of Hydrology*, 350, 14-24, 2008.
- Pall, P., Aina, T., Stone, D. A., Stott, P. A., Nozawa, T., Hilberts, A. G., Lohmann, D., and Allen, M. R.: Anthropogenic greenhouse gas contribution to flood risk in England and Wales in autumn 2000, *Nature*, 470, 382-385, 2011.
- Pappenberger, F., Beven, K., Hunter, N., Bates, P., Gouweleeuw, B., Thielen, J., and De Roo, A.: Cascading model uncertainty from medium range weather forecasts (10 days) through a rainfall-runoff model to flood inundation predictions within the European Flood Forecasting System (EFFS), *Hydrology and Earth System Sciences*, 9, 381-393, 2005.
- 45 Pappenberger, F., Bartholmes, J., Thielen, J., Cloke, H. L., Buizza, R., and de Roo, A.: New dimensions in early flood warning across the globe using grand-ensemble weather predictions, *Geophysical Research Letters*, 35, 2008.
- Pappenberger, F., Cloke, H., Persson, A., and Demeritt, D.: HESS Opinions" On forecast (in) consistency in a hydro-meteorological chain: curse or blessing?", *Hydrology and Earth System Sciences*, 15, 2391-2400, 2011.

- Pielke Jr, R. A. a. D., M. W.: Precipitation and Damaging Floods: Trends in the United States, *Journal of Climate*, 3625-3637, 2000.
- Pryet, A., Labarthe, B., Saleh, F., Akopian, M., and Flipo, N.: Reporting of stream-aquifer flow distribution at the regional scale with a distributed process-based model, *Water Resources Management*, 29, 139-159, 2015.
- 5 Pullen, J., Gordon, A. L., Flatau, M., Doyle, J. D., Villanoy, C., and Cabrera, O.: Multiscale influences on extreme winter rainfall in the Philippines, *Journal of Geophysical Research: Atmospheres*, 120, 2014JD022645, 2015.
- Qgis, D.: Quantum GIS geographic information system, Open Source Geospatial Foundation Project, 2011.
- Quintana Seguí, P., Ribes, A., Martin, E., Habets, F., and Boé, J.: Comparison of three downscaling methods in simulating the impact of climate change on the hydrology of Mediterranean basins, *Journal of Hydrology*, 383, 111-124, 2010.
- 10 R: Core Team: A language and environment for statistical computing. R Foundation for Statistical Computing, Vienna, Austria. ISBN 3-900051-07-0, URL <http://www.R-project.org/>, 2012.
- Ramos, M. H., Bartholmes, J., and Thielen-del Pozo, J.: Development of decision support products based on ensemble forecasts in the European flood alert system, *Atmospheric Science Letters*, 8, 113-119, 2007.
- Reggiani, P., and Weerts, A.: Probabilistic quantitative precipitation forecast for flood prediction: An application, *Journal of Hydrometeorology*, 9, 76-95, 2008.
- 15 Renard, B., Kavetski, D., Kuczera, G., Thyer, M., and Franks, S. W.: Understanding predictive uncertainty in hydrologic modeling: The challenge of identifying input and structural errors, *Water Resources Research*, 46, 2010.
- Saleh, F., Flipo, N., Habets, F., Ducharme, A., Oudin, L., Viennot, P., and Ledoux, E.: Modeling the impact of in-stream water level fluctuations on stream-aquifer interactions at the regional scale, *Journal of Hydrology*, 400, 490-500, 2011.
- 20 Saleh, F., Flipo, N., Biancamaria, S., Habets, F., Rodríguez, E., and Mognard, N.: The Contribution of the Future Mission SWOT to improve Simulations of River Stages and Stream-aquifer Interactions at Regional scale, 20 years of Progress in Radar Altimetry, Venice, Italy, 2012, <http://www.altimetry2012.org/>,
- Saraiva Okello, A., Masih, I., Uhlenbrook, S., Jewitt, G., Van der Zaag, P., and Riddell, E.: Drivers of spatial and temporal variability of streamflow in the Incomati River basin, *Hydrology and Earth System Sciences*, 19, 657-673, 2015.
- 25 Schaake, J. C., Hamill, T. M., Buizza, R., and Clark, M.: HEPEX: the hydrological ensemble prediction experiment, *Bulletin of the American Meteorological Society*, 88, 1541, 2007.
- Scharffenberg, W.: Hydrologic Modeling System HEC-HMS User's Manual, 2015.
- Scharffenberg, W., Duren, A., and Fleming, M.: Uncertainty Analysis Using Monte Carlo Techniques in the Hydrologic Modeling System, Joint Federal Interagency Conference, Reno, Nevada USA, 2015.
- 30 Schellekens, J., Weerts, A., Moore, R., Pierce, C., and Hildon, S.: The use of MOGREPS ensemble rainfall forecasts in operational flood forecasting systems across England and Wales, *Advances in Geosciences*, 29, 77-84, 2011.
- Schoonover, J. E., and Lockaby, B. G.: Land cover impacts on stream nutrients and fecal coliform in the lower Piedmont of West Georgia, *Journal of Hydrology*, 331, 371-382, 2006.
- Schuetz, T., Gascuel-Oudou, C., Durand, P., and Weiler, M.: Nitrate sinks and sources as controls of spatio-temporal water quality dynamics in an agricultural headwater catchment, *Hydrology and Earth System Sciences*, 12, 8577-8614, 2015.
- 35 Seyoum, M., van Andel, S. J., Xuan, Y., and Amare, K.: Precipitation forecasts for rainfall runoff predictions. A case study in poorly gauged Ribb and Gumara catchments, upper Blue Nile, Ethiopia, *Physics and Chemistry of the Earth*, 61-62, 43-51, 2013.
- Solaiman, T. A., and Simonovic, S. P.: National Centers for Environmental Prediction-National Center for Atmospheric Research (NCEP-NCAR) reanalyses data for hydrologic modelling on a basin scale, *Canadian Journal of Civil Engineering*, 37, 611-623, 2010.
- 40 Thielen, J., Bartholmes, J., Ramos, M. H., and de Roo, A.: The European Flood Alert System – Part 1: Concept and development, *Hydrology and Earth System Sciences*, 13, 125-140, 2009.
- Thiemig, V., Bisselink, B., Pappenberger, F., and Thielen, J.: A pan-African medium-range ensemble flood forecast system, *Hydrology and Earth System Sciences*, 19, 3365-3385, 2015.
- 45 USACE: Hydrologic Modeling System: User's Manual Version 4.1", US Army Corps of Engineers, Hydrologic Engineering Center, Davis, CA, USA, 2015.
- USDA: Urban hydrology for small watersheds, Technical release, 55, 2-6, 1986.
- Verkade, J. S., and Werner, M. G. F.: Estimating the benefits of single value and probability forecasting for flood warning, *Hydrol. Earth Syst. Sci.*, 15, 3751-3765, 2011.
- 50

- Wang, L., Stuart, M. E., Bloomfield, J. P., Butcher, A. S., Goody, D. C., McKenzie, A. A., Lewis, M. A., and Williams, A. T.: Prediction of the arrival of peak nitrate concentrations at the water table at the regional scale in Great Britain, *Hydrological Processes*, 26, 226-239, 2012.
- 5 Watson, K. M., Collenburg, J. V., and Reiser, R. G.: Hurricane Irene and associated floods of August 27-30, 2011, in New Jersey, US Geological Survey 2328-0328, 2013.
- Weaver, J., Harkabus, L. C., Braun, J., Miller, S., Cox, R., Griffith, J., and Mazur, R. J.: An Overview of a Demographic Study of United States Emergency Managers, *Bulletin of the American Meteorological Society*, 95, 199-203, 2014.
- 10 Weerts, A., Winsemius, H., and Verkade, J.: Estimation of predictive hydrological uncertainty using quantile regression: examples from the National Flood Forecasting System (England and Wales), *Hydrology and Earth System Sciences*, 15,(1), 2011.
- WMO: World Meteorological Organization, *Our Future Climate*, Technical Report 92-63-10952-4 ISBN 92-63-10952-4, 2003.
- Yang, S.-C., and Yang, T.-H.: Uncertainty assessment: reservoir inflow forecasting with ensemble precipitation forecasts and HEC-HMS, *Advances in Meteorology*, 2014, 2014.
- 15 Yapo, P. O., Gupta, H. V., and Sorooshian, S.: Automatic calibration of conceptual rainfall-runoff models: sensitivity to calibration data, *Journal of Hydrology*, 181, 23-48, 1996.
- Younis, J., Ramos, M. H., and Thielen, J.: EFAS forecasts for the March–April 2006 flood in the Czech part of the Elbe River Basin—A case study, *Atmospheric Science Letters*, 9, 88-94, 2008.
- 20 Zhang, H., Wang, Y., Wang, Y., Li, D., and Wang, X.: The effect of watershed scale on HEC-HMS calibrated parameters: a case study in the Clear Creek watershed in Iowa, US, *Hydrology and Earth System Sciences*, 17, 2735-2745, 2013.
- Zhou, X., and Zhu, Y.: The NCEP Global Ensemble Forecast System with the EnKF Initialization, *Monthly Weather Review* (submitted), 2016.

# A Retrospective Streamflow Ensemble Forecast for an Extreme Hydrologic Event: a Case Study of Hurricane Irene and on the Hudson River basin

5

## -Tables-

Table 1 Percentiles of total accumulated precipitation from the 21 GEFS ensemble members along with the peak discharge for forecasts issued at lead times of 72 to 24 hours. The drainage area of each basin is also reported

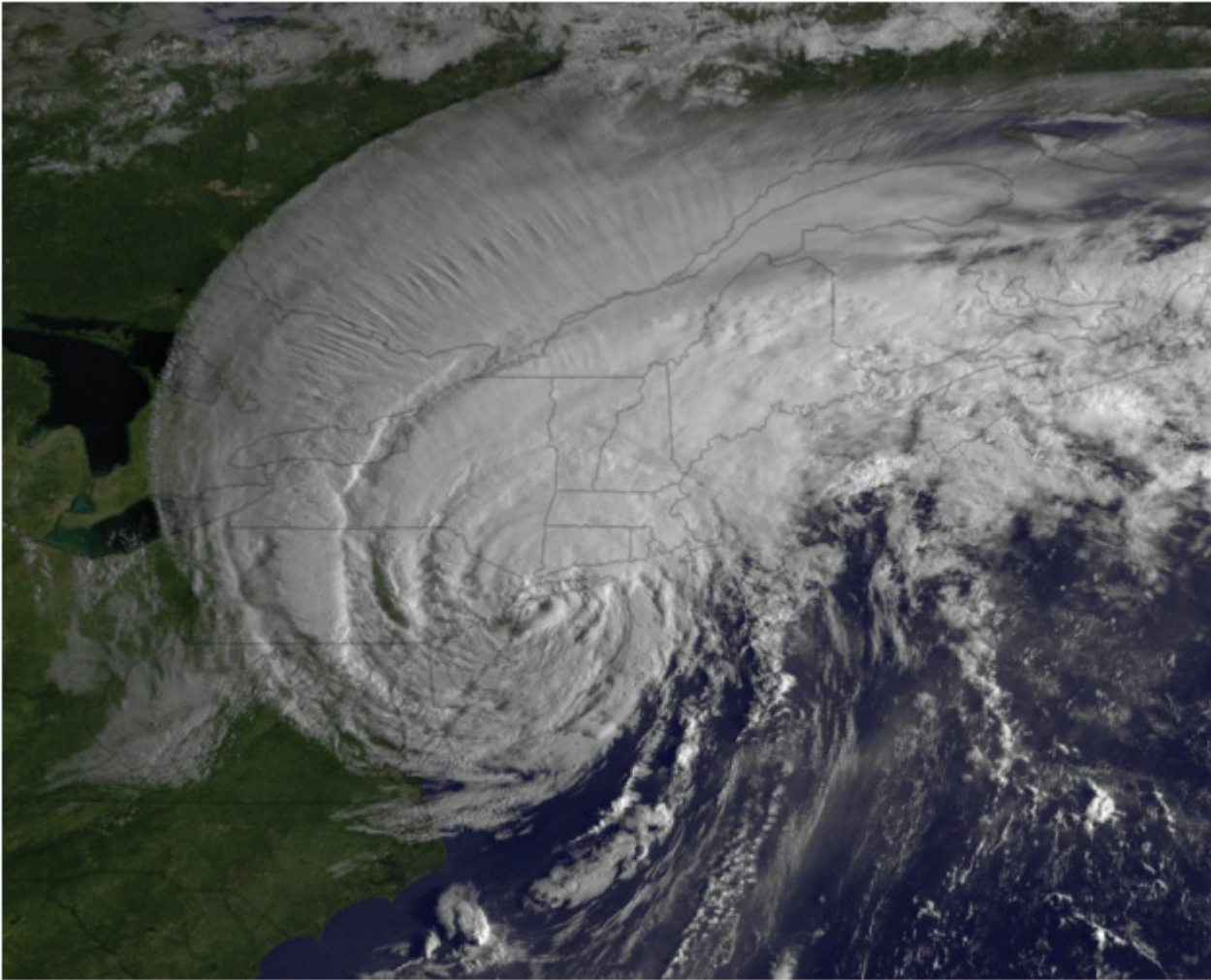
Station USGS ID / -name	Basin area (km <sup>2</sup> )	Forecast date	NARR precipitation (mm) over the whole event	GEFS precipitation (mm) over the whole event		Simulated peak flow (m <sup>3</sup> /s)	
				2 <sup>nd</sup>	98 <sup>th</sup>	2 <sup>nd</sup>	98 <sup>th</sup>
<b>01391500</b> Saddle River at Lodi, NJ	141	26-Aug-11	143	11	206	3	242
		27-Aug-11		110	201	104	229
		28-Aug-11		108	178	105	200
<b>01378500</b> Hackensack River at New Milford, NJ	293	26-Aug-11	143	11	206	20	525
		27-Aug-11		108	200	196	514
		28-Aug-11		111	183	225	442
<b>01371500</b> Wallkill River at Gardiner, NY	1800	26-Aug-11	106	3	190	22	1990
		27-Aug-11		80	187	475	1857
		28-Aug-11		82	154	558	1585
<b>01388500</b> Pompton River at Pompton Plains, NJ	329	26-Aug-11	130	7	202	156	1208
		27-Aug-11		101	200	474	1150
		28-Aug-11		98	168	490	1024
<b>01375000</b> Croton River on Hudson, NY	979	26-Aug-11	126	13	192	2	1255
		27-Aug-11		123	190	604	1205
		28-Aug-11		112	182	503	1205



# A Retrospective Streamflow Ensemble Forecast for an Extreme Hydrologic Event: a Case Study of Hurricane Irene and on the Hudson River basin

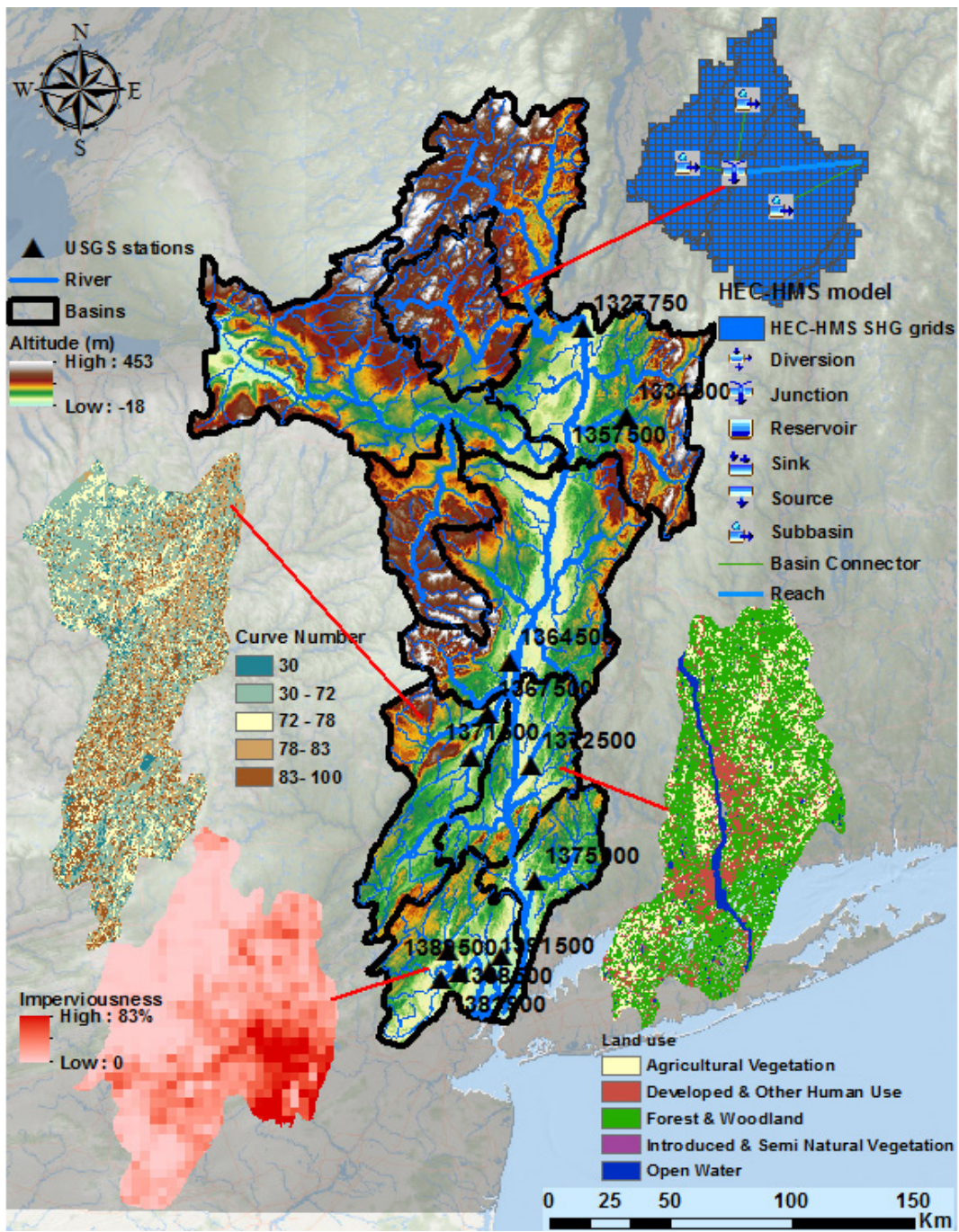
5

-Figures-



10 Figure 1. Geostationary Operational Environmental Satellite (GOES) East image of Hurricane Irene making landfall on August 28, 2011 (image source: National Oceanic and Atmospheric Administration, 2011).







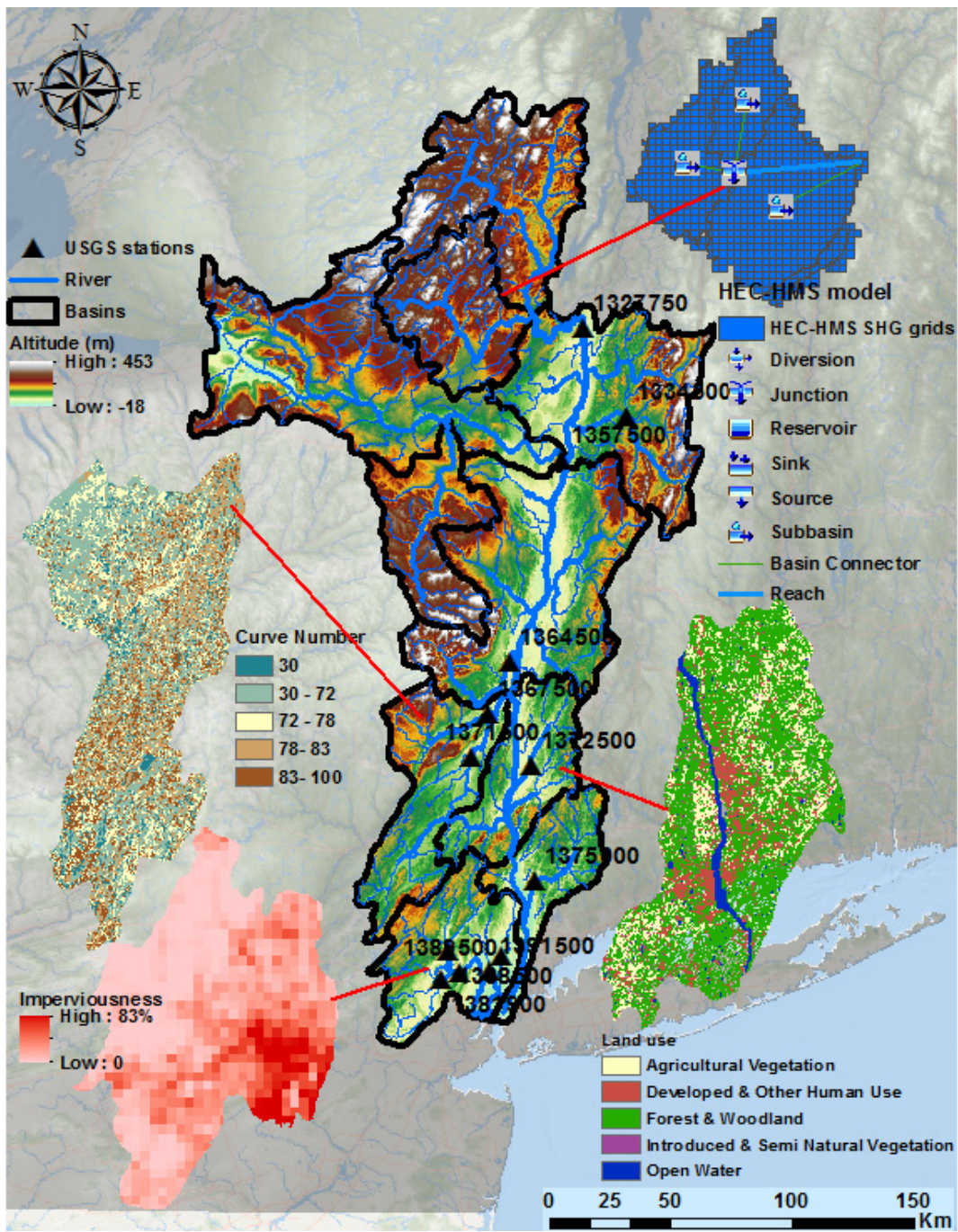


Figure 2 Map showing the Hudson River Basin topography including basin divisions (thin black lines) and hydrographic network. Examples of land use, curve number, and imperviousness datasets (zoomed) that were used in HEC-GeoHMS to construct the hydrological model are also shown. The upper right side of the figure exhibits an example of the HEC-HMS model structure and its sub-basins using [Standard Hydrologic Grids](#) [SHG (2\*2 km)].

5

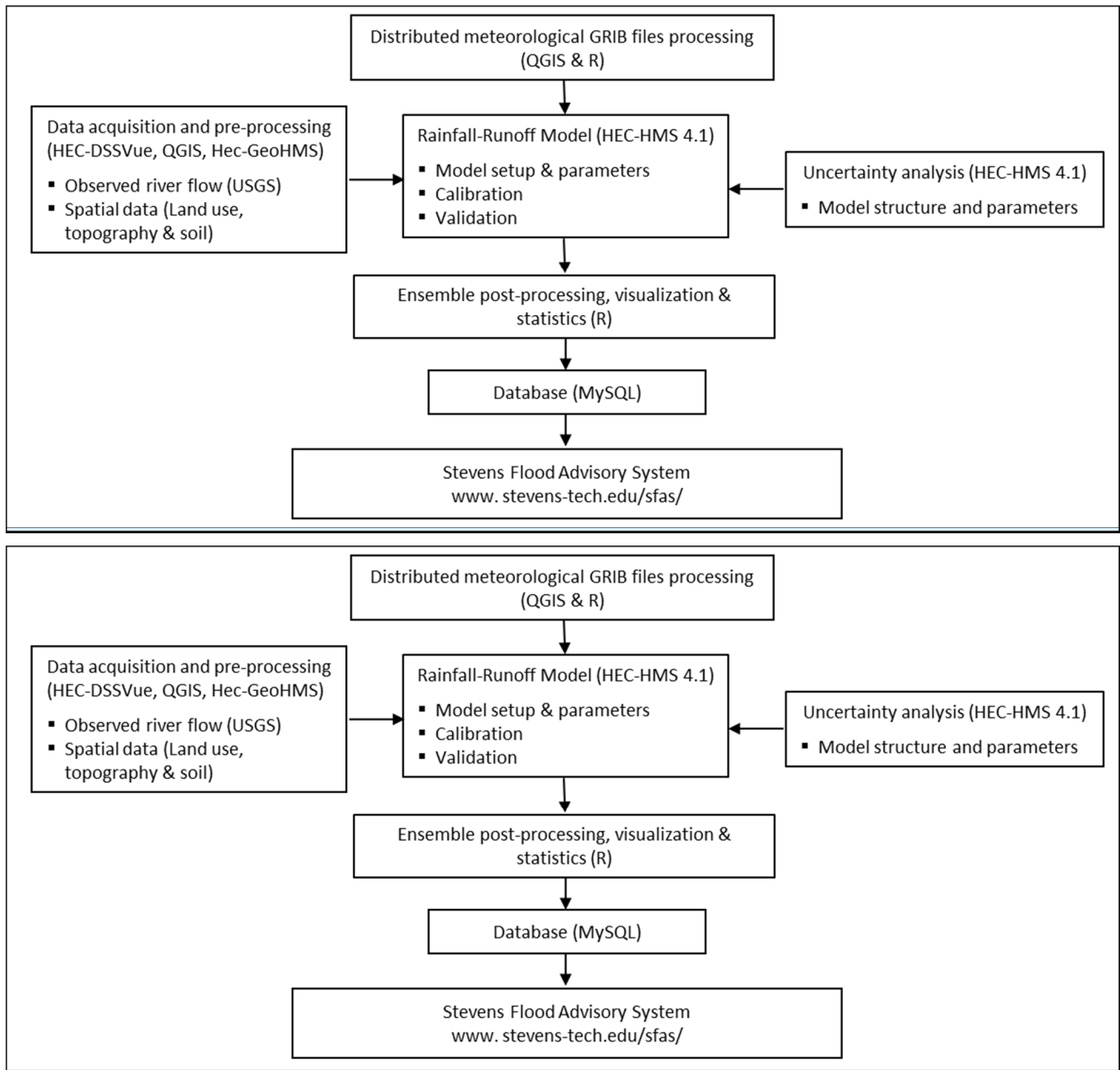
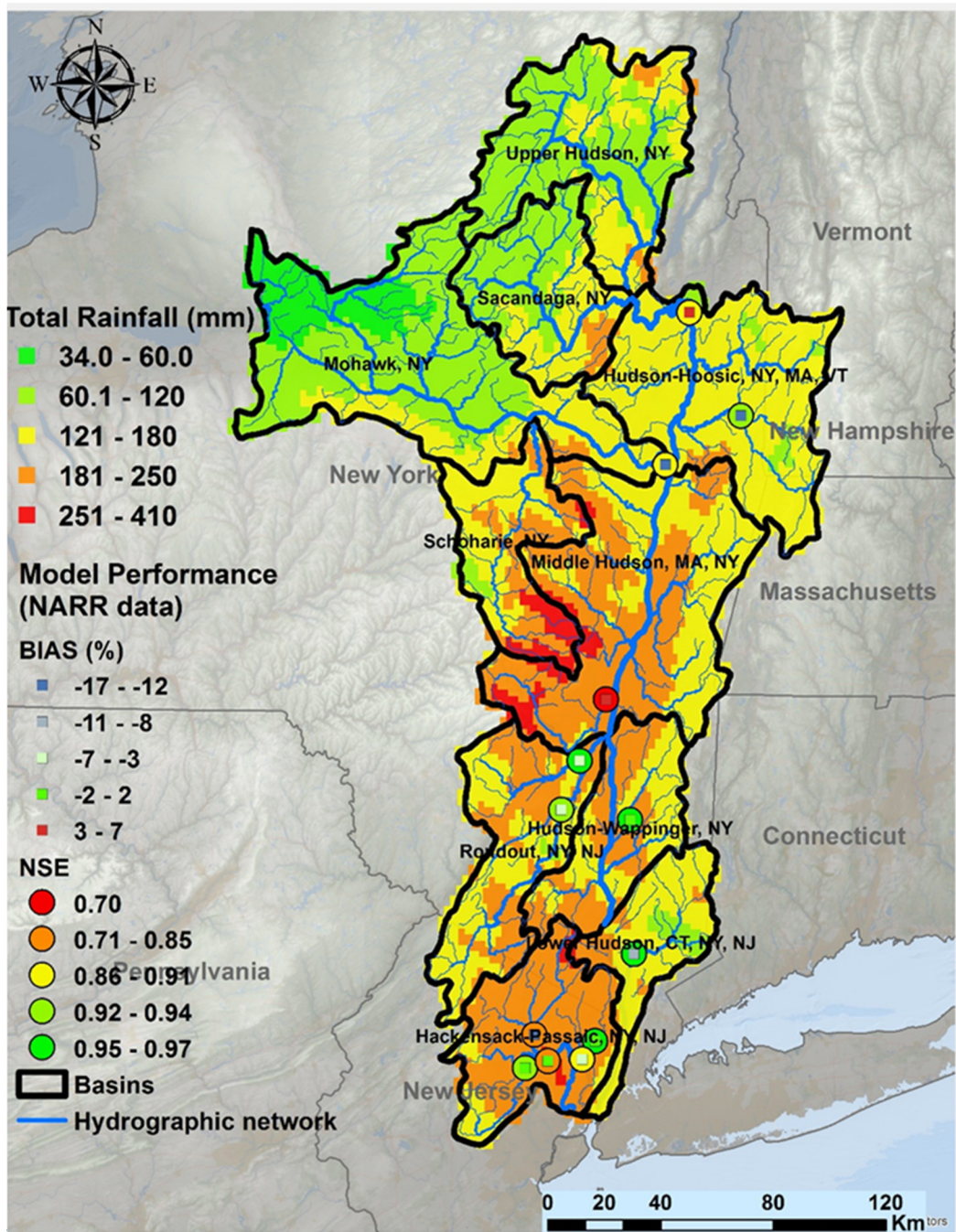


Figure 3 Framework design steps including spatial data and USGS discharge time series. Processing of General Regularly-distributed Information in Binary GRIB precipitation files data was carried out in Qgis (Qgis, 2011), R and Python and exported to the HEC-DSSVue storage system. Basin parameters were derived for the study area and the hydrological model was run using these inputs.

5







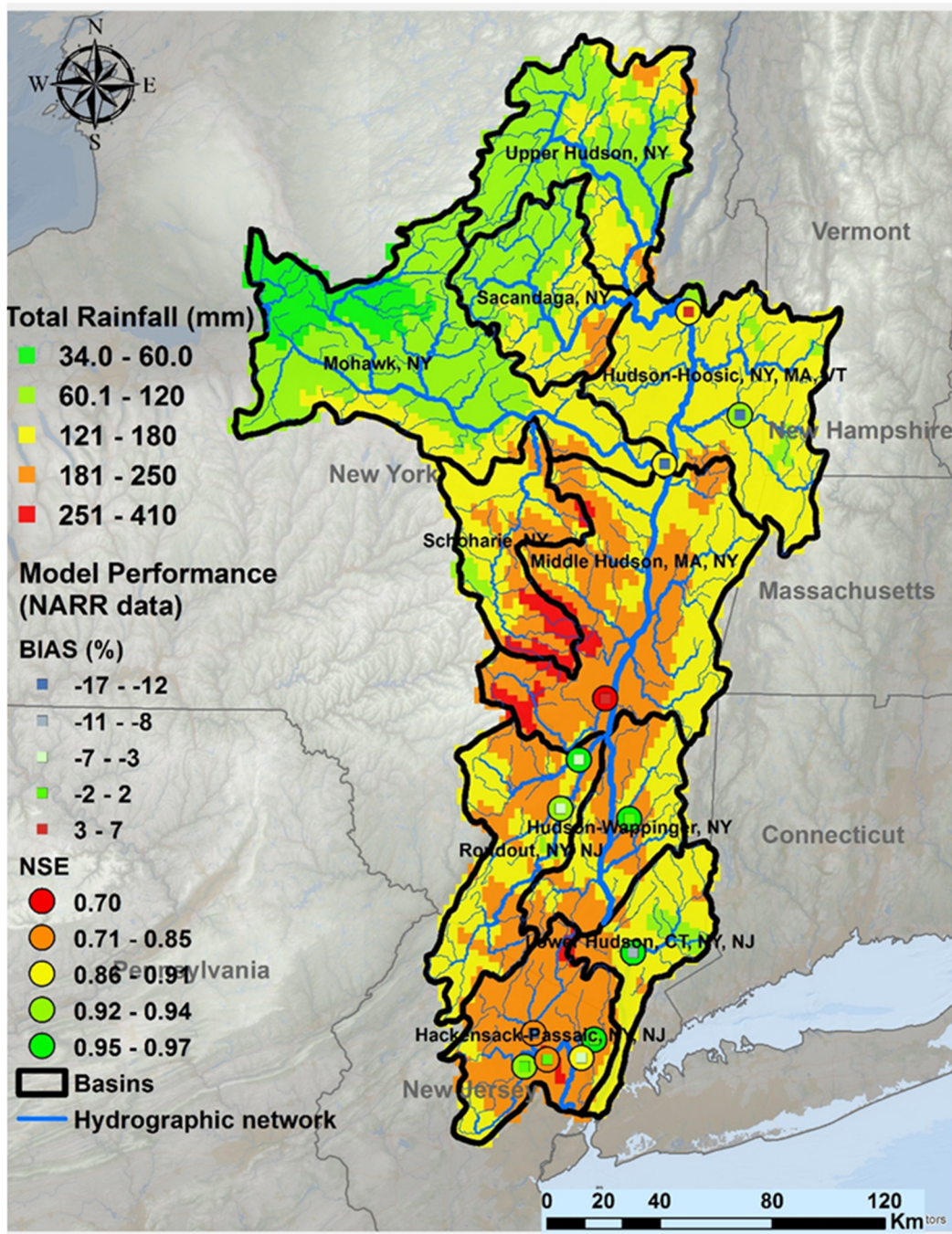
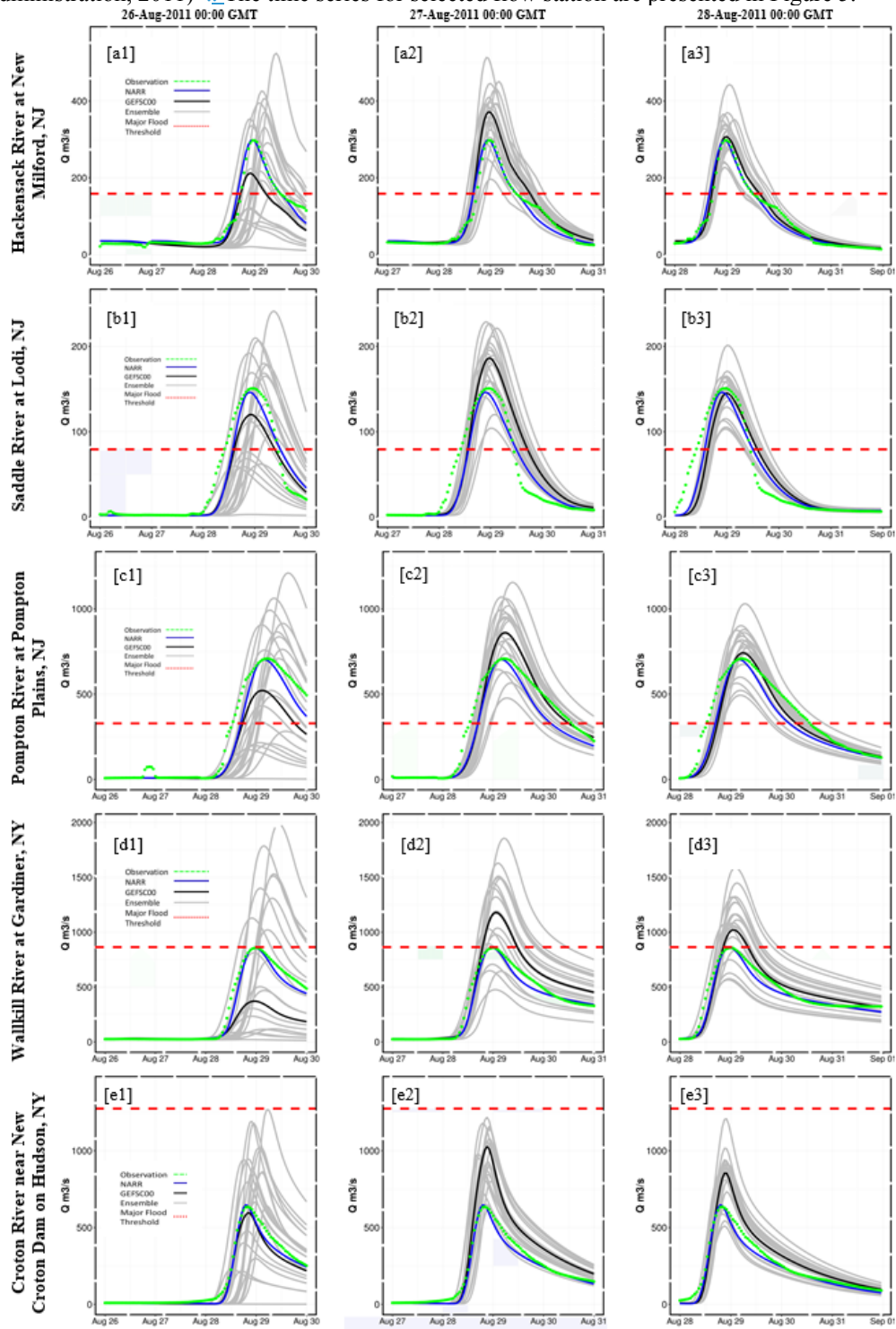


Figure 4 Summary of HEC-HMS performances at the USGS streamflow stations. The circles represent the criteria of Nash and Sutcliffe (NSE) while the squares represent the Bias (%). The statistical criteria are computed at an hourly time [stepsteps](#). The model performances are illustrated for the NARR precipitation forcing. The map also shows the total

5

observed accumulated precipitation received in 48 hours during August 28–29, 2011 (data from National Oceanic and Atmospheric Administration, 2011) — The time series for selected flow station are presented in Figure 5.



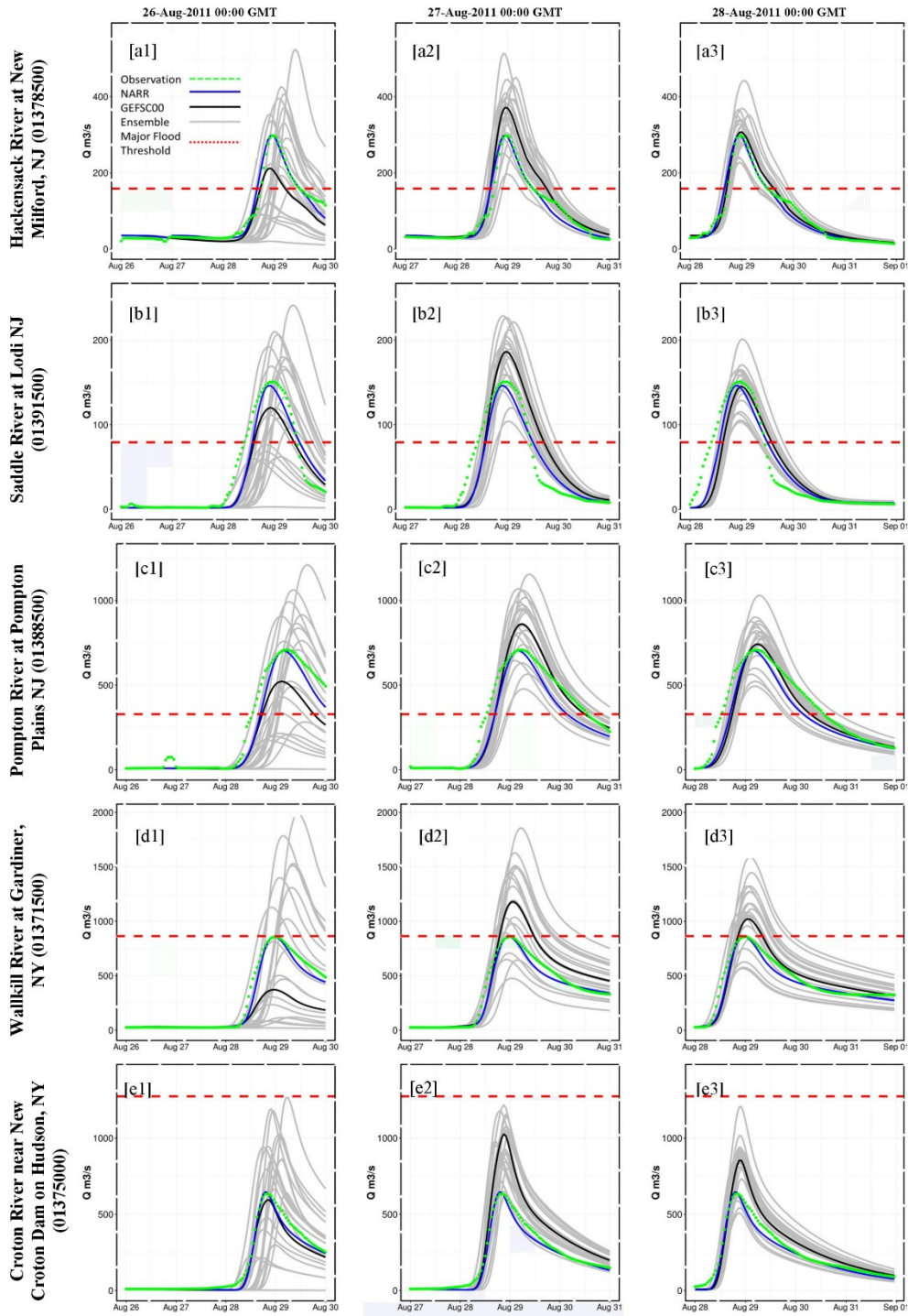
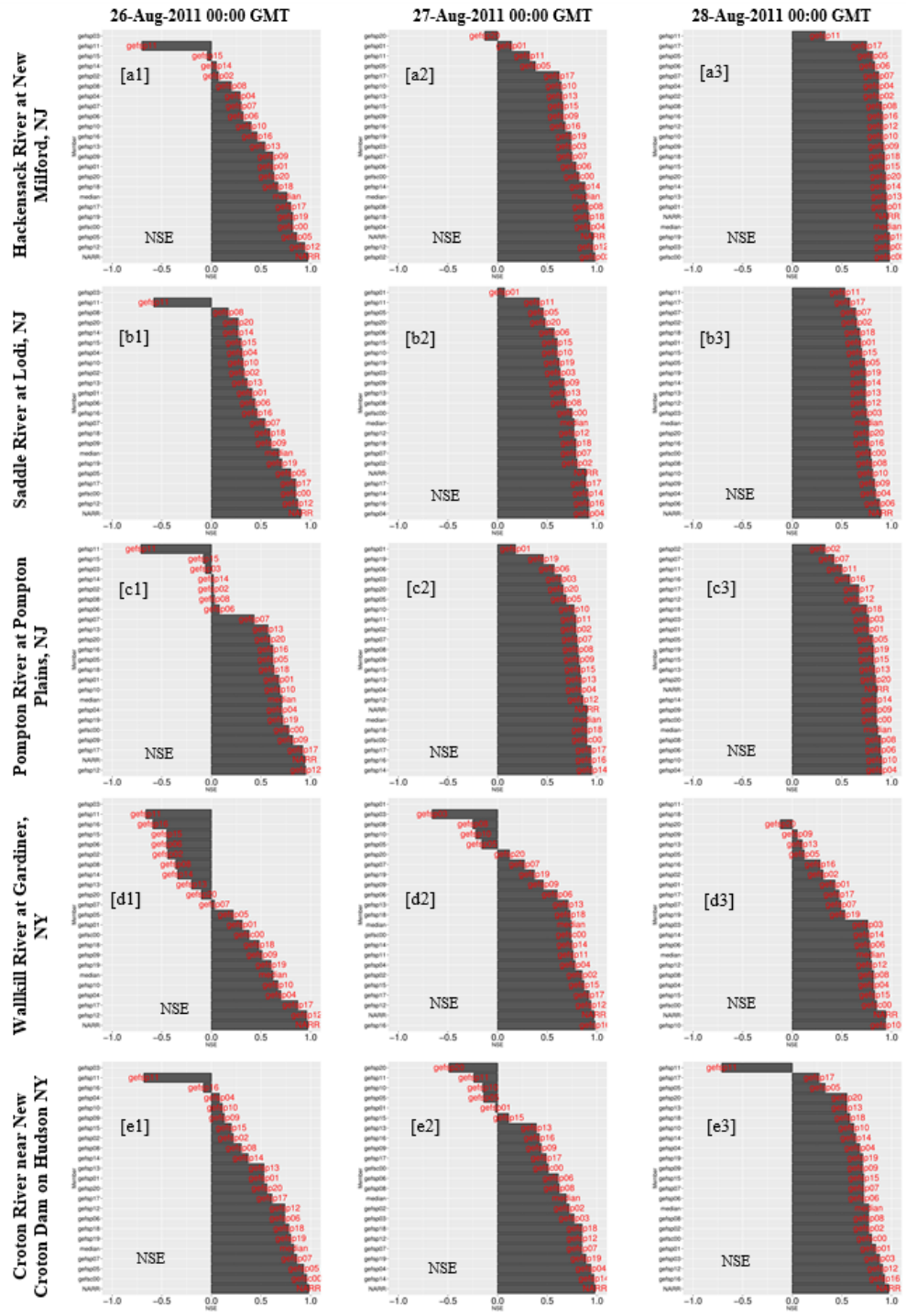


Figure 5 Models performance Ensemble streamflow forecasts compared to observed streamflow in selected stationstations at lead times of 72-h, 48-h and 24 hours from the observed peak flow, reported time is in UTCGMT.







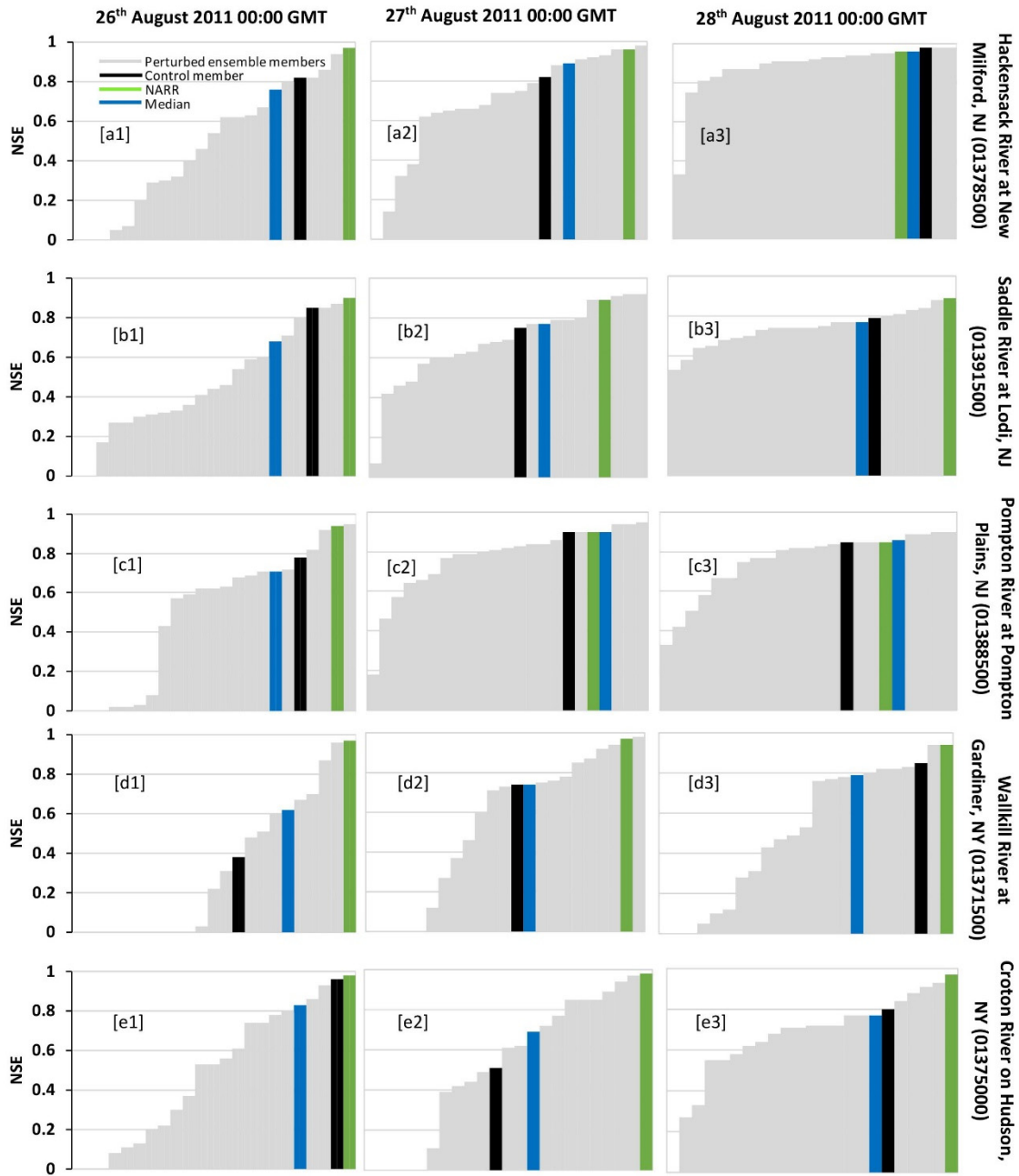
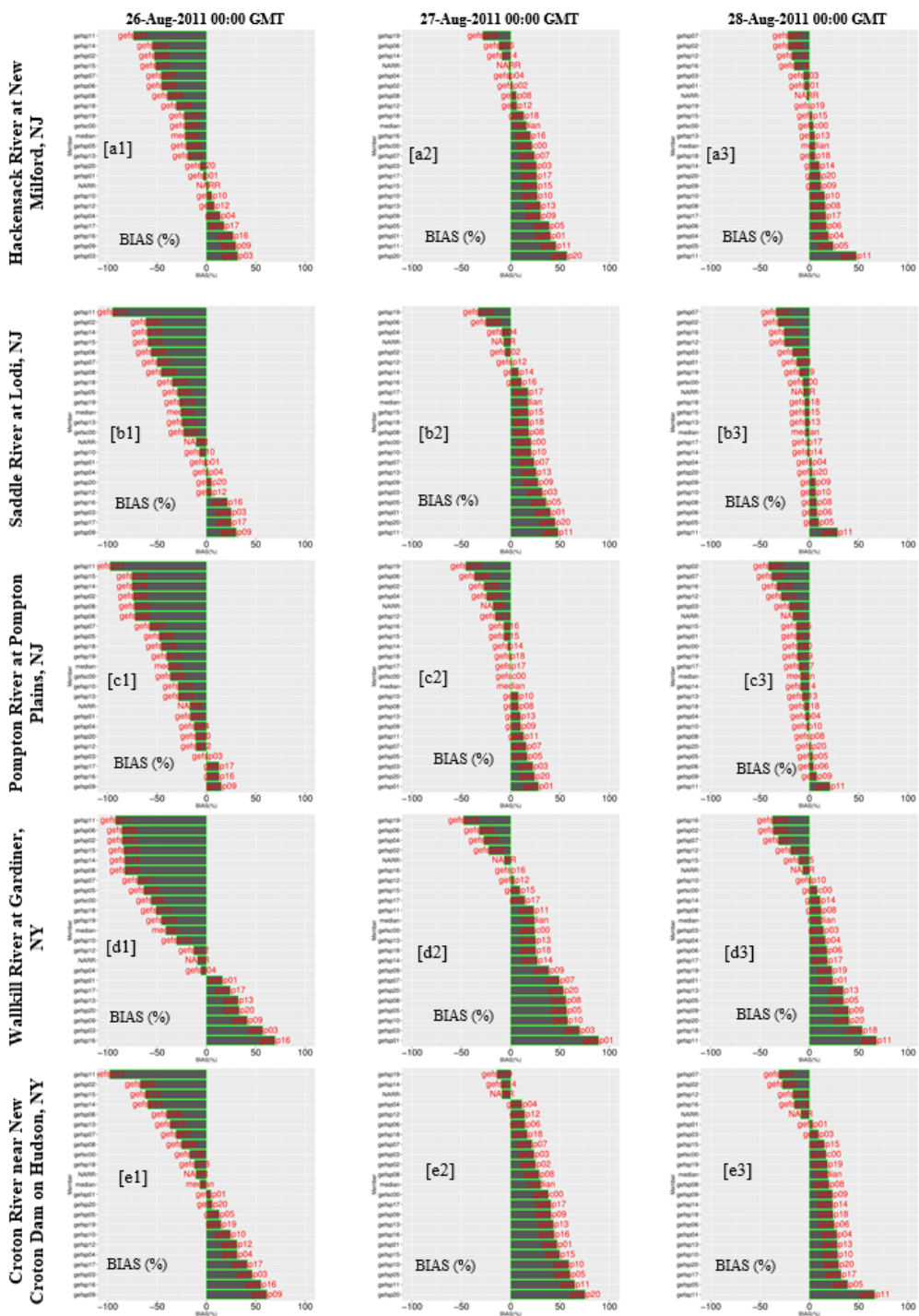


Figure 6 Models' performance represented by Nash-Sutcliffe efficiency (NSE) statistical metric at lead times of 72 h, 48 h and 24 hours from the observed peak flow. The metrics are also showing the NARR model outputs and the median of ensemble members of this station and the GEFS control member. The GEFS perturbed members are shown in grey.



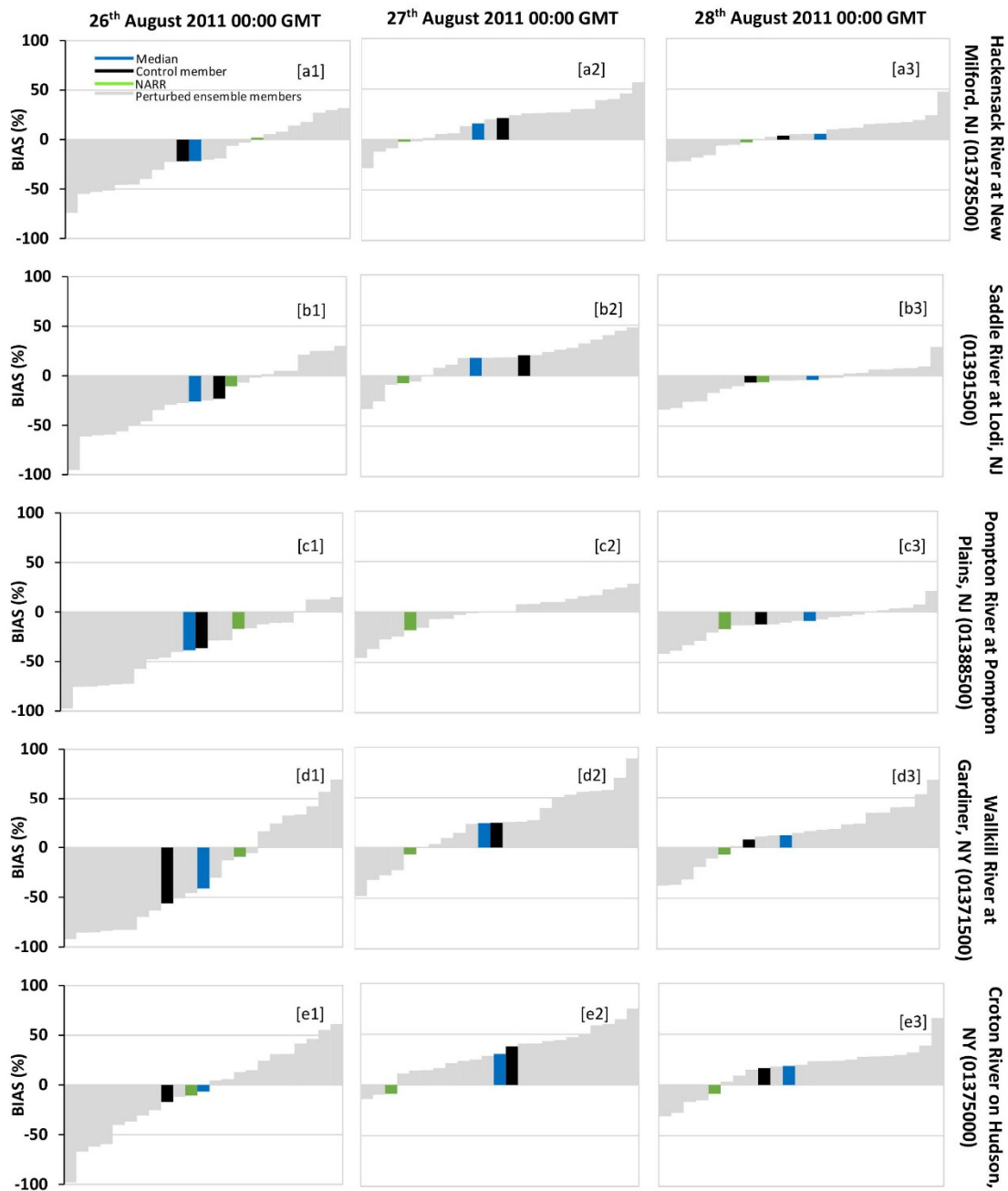
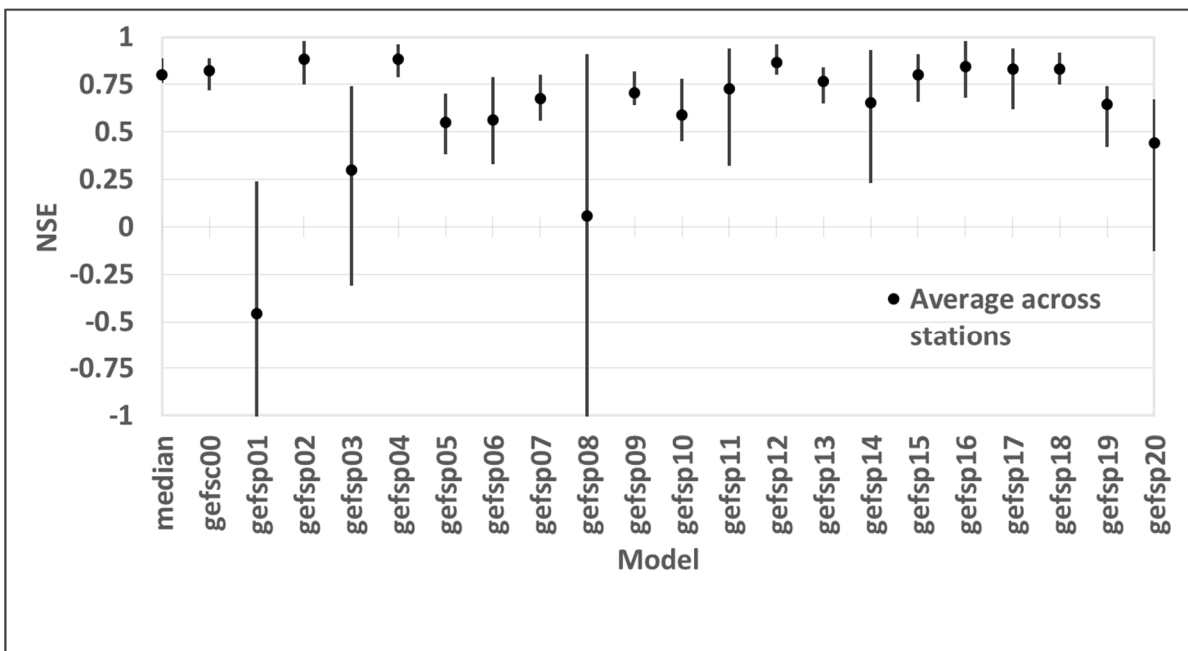
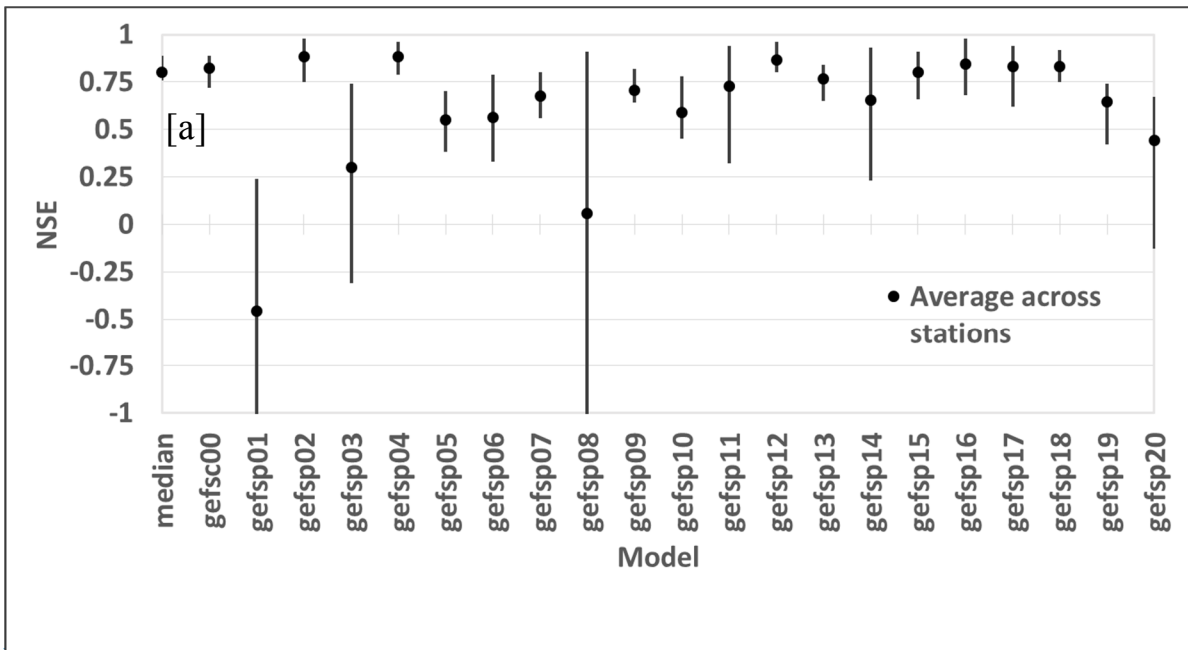


Figure 7 ModelsModels' performance represented by Bias (%) statistical-metric at lead times of 72-h, 48-h and 24 hours from the observed peak flow. The metrics are also-showing the NARR model outputs and, the median of ensemble members of this station and the GEFS control member. The GEFS perturbed members are shown in grey.



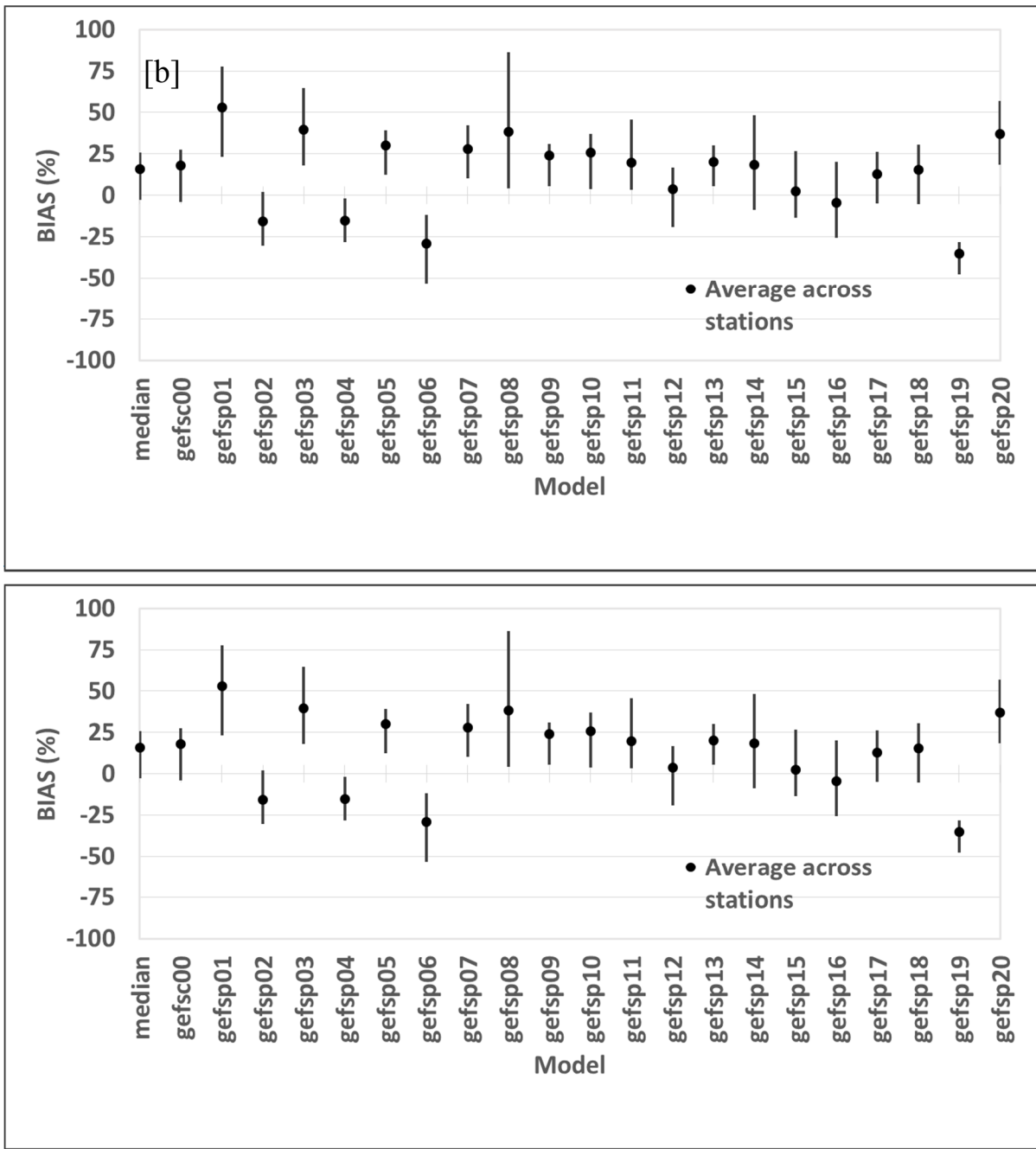


Figure 8 Overall NSE and BIAS (%) across the stations for forecast issued 24 hours before Hurricane Irene.

Station & major flood threshold	Time Forecast hr	8/26/2011				8/27/2011				8/28/2011				8/29/2011				8/30/2011				8/31/2011				
		0:00	6:00	12:00	18:00	0:00	6:00	12:00	18:00	0:00	6:00	12:00	18:00	0:00	6:00	12:00	18:00	0:00	6:00	12:00	18:00	0:00	6:00	12:00	18:00	
Hoosic River at Eagle Bridge, NY (01334500) 886 m <sup>3</sup> /s	08/26/2011 t00	0	0	0	0	0	0	0	0	0	0	0	0	14	52	71	62	29								
	08/27/2011 t00					0	0	0	0	0	0	0	0	62	100	100	86	29	0	0	0	0				
	08/28/2011 t00									0	0	0	71	100	100	90	0	0	0	0	0	0	0	0	0	0
	Observed																									
Wappinger Creek at Wappingers Falls, NY (01372500) 286 m <sup>3</sup> /s	08/26/2011 t00	0	0	0	0	0	0	0	0	0	0	0	0	5	29	52	52	38								
	08/27/2011 t00					0	0	0	0	0	0	0	10	86	90	86	48	5	0	0	0	0				
	08/28/2011 t00									0	0	0	5	86	90	86	62	0	0	0	0	0	0	0	0	0
	Observed																									
Hackensack River at New Milford, NJ (01378500) 158 m <sup>3</sup> /s	08/26/2011 t00	0	0	0	0	0	0	0	0	0	0	0	14	52	67	62	48	33								
	08/27/2011 t00					0	0	0	0	0	0	0	62	100	100	95	86	48	5	0	0	0	0			
	08/28/2011 t00									0	0	43	100	100	100	81	14	0	0	0	0	0	0	0	0	0
	Observed																									
Passaic River at Little Falls, NJ (01389500) 283 m <sup>3</sup> /s	08/26/2011 t00	0	0	0	0	0	0	0	0	0	0	0	5	24	67	67	67	67								
	08/27/2011 t00					0	0	0	0	0	0	19	90	100	100	100	100	100	100	100	100					
	08/28/2011 t00									0	0	5	86	100	100	100	100	100	100	100	100	100	100	100	100	100
	Observed																									
Rondout Creek at Rosendale, NJ (01367500) 708 m <sup>3</sup> /s	08/26/2011 t00	0	0	0	0	0	0	0	0	0	0	0	19	48	57	48	38	19								
	08/27/2011 t00					0	0	0	0	0	0	0	76	95	100	81	29	5	0	0	0	0				
	08/28/2011 t00									0	0	71	100	95	86	29	0	0	0	0	0	0	0	0	0	0
	Observed																									
Saddle River at Lodi, NJ (01391500) 80 m <sup>3</sup> /s	08/26/2011 t00	0	0	0	0	0	0	0	0	0	0	0	5	29	67	71	71	52	38							
	08/27/2011 t00					0	0	0	0	0	0	10	90	100	100	100	90	48	0	0	0	0				
	08/28/2011 t00									0	0	81	100	100	100	81	5	0	0	0	0	0	0	0	0	0
	Observed																									
Passaic River at Pine Brook, NJ (01381900) 141 m <sup>3</sup> /s	08/26/2011 t00	0	0	0	0	0	0	0	0	0	0	0	19	52	52	57	57									
	08/27/2011 t00					0	0	0	0	0	0	19	81	100	100	100	100	100	100	100	100					
	08/28/2011 t00									0	0	5	48	95	100	100	100	100	100	100	100	100	100	100	100	100
	Observed																									
Pompton River at Pompton Plains, NJ (01388500) 329 m <sup>3</sup> /s	08/26/2011 t00	0	0	0	0	0	0	0	0	0	0	0	14	43	71	67	67	62								
	08/27/2011 t00					0	0	0	0	0	0	0	57	95	100	100	100	100	90	76	57	19				
	08/28/2011 t00									0	0	29	100	100	100	100	100	100	81	76	19	5	0	0	0	0
	Observed																									
Raritan River at Bound Brook, NJ (01403060) 923 m <sup>3</sup> /s	08/26/2011 t00	0	0	0	0	0	0	0	0	0	0	33	67	90	90	81	71	52								
	08/27/2011 t00					0	0	0	0	0	0	62	100	100	100	100	100	100	62	5	0	0				
	08/28/2011 t00									0	0	100	100	100	100	100	81	5	0	0	0	0	0	0	0	0
	Observed																									
Esopus Creek at Mount Marion, NY (01364500) 547 m <sup>3</sup> /s	08/26/2011 t00	0	0	0	0	0	0	0	0	0	0	0	14	29	52	52	48	48	48							
	08/27/2011 t00					0	0	0	0	0	0	38	95	95	95	95	95	90	81	67	57	48				
	08/28/2011 t00									0	33	100	100	100	90	86	86	71	62	57	48	29	14	5	0	0
	Observed																									
Mohawk River at Cohoes, NY (01375000) 1274 m <sup>3</sup> /s	08/26/2011 t00	0	0	0	0	0	0	0	0	0	0	0	0	0	0	0	0	0								
	08/27/2011 t00					0	0	0	0	0	0	0	0	0	0	0	0	0	0	0	0	0				
	08/28/2011 t00									0	0	0	0	0	0	0	0	0	0	0	0	0	0	0	0	0
	Observed																									

Figure 9 Color-coded threshold exceedance diagram for Hurricane Irene forecasts at 6-hour intervals using the major flood threshold for each USGS station. The flow values below the station ID are the major flood threshold for a given station. The x-axis represents the 96-hour forecast horizon from the simulation date shown on the left column. The time period, in which the major event hydrological record exceeds the equivalent alert threshold, is indicated using a dark red cell while the cell values refer to the percentage of ensemble members that were projecting a major flood. For instance, if the value is 100 then all 21 flow ensemble members are projecting a major event within a given time interval, while 0 means none of the ensemble members are exceeding the major event threshold. The observed occurrence of the threshold is exhibited at the last row for each station, the red colour-code indicates an observed flow higher than the major flood threshold, while the green cell is flow below the major threshold. Reported time is in UTC-GMT.