

1 **Variations of global and continental water balance**
2 **components as impacted by climate forcing uncertainty**
3 **and human water use**

4

5 **H. Müller Schmied^{1,2}, L. Adam¹, S. Eisner³, G. Fink³, M. Flörke³, H. Kim⁴, T. Oki⁴,**
6 **F. T. Portmann¹, R. Reinecke¹, C. Riedel¹, Q. Song¹, J. Zhang¹ and P. Döll¹**

7 [1]{Institute of Physical Geography, Goethe-University Frankfurt, Germany}

8 [2]{Senckenberg Biodiversity and Climate Research Centre (BiK-F), Frankfurt, Germany}

9 [3]{Center for Environmental Systems Research (CESR), University of Kassel, Germany}

10 [4]{Institute of Industrial Science, The University of Tokyo, Tokyo, Japan}

11 Correspondence to: H. Müller Schmied (hannes.mueller.schmied@em.uni-frankfurt.de)

12

1 **Abstract**

2 When assessing global water resources with hydrological models, it is essential to know about
3 methodological uncertainties. The values of simulated water balance components may vary
4 due to different spatial and temporal aggregations, reference periods and applied climate
5 forcings and due to the consideration of human water use, or the lack thereof. We analyzed
6 these variations over the period 1901-2010 by forcing the global hydrological model
7 WaterGAP 2.2 (ISI-MIP 2.1) with five state-of-the-art climate data sets, including a
8 homogenized version of the concatenated WFD/WFDEI data set. Absolute values and
9 temporal variations of global water balance components are strongly affected by the
10 uncertainty in the climate forcing, and no temporal trends of the global water balance
11 components are detected for the four homogeneous climate forcings considered (except for
12 human water abstractions). The calibration of WaterGAP against observed long-term average
13 river discharge Q significantly reduces the impact of climate forcing uncertainty on estimated
14 Q and renewable water resources. For the homogeneous forcings, Q of the calibrated and non-
15 calibrated regions of the globe varies by 1.6% and 18.5%, respectively, for 1971-2000. On
16 continental scale, most differences for P and Q estimates occur in Africa and, due to snow
17 undercatch of rain gauges, also in the data-rich continents Europe and North America.
18 Variations of Q at the grid-cell scale are large except in a few grid cells upstream and
19 downstream of calibration stations, with an average variation of 37% and 74% among the four
20 homogeneous forcings in calibrated and non-calibrated regions, respectively. Considering
21 only the forcings GSWP3 and WFDEI_hom, i.e. excluding the forcing without undercatch
22 correction (PGFv2.1) and the one with a much lower SWD than the others (WFD), Q
23 variations are reduced to 16% and 31% in calibrated and non-calibrated regions, respectively.
24 These simulation results support the need for extended Q measurements and data sharing for
25 better constraining global water balance assessments. Over the 20th century, the human
26 footprint on natural water resources has become larger. On 11–18% of the global land area,
27 change of Q between 1941-1970 and 1971-2000 was driven more strongly by change of
28 human water use including dam construction than by change in precipitation, while this was
29 true on only 9-13% of the land area from 1911-1940 to 1941-1970.

30

1 **1 Introduction**

2 Assessment of global-scale water resources and water balance components is of importance
3 for water resources management at global, continental and river basin scales (Vörösmarty et
4 al. 2015). Many data-based, model-based, and hybrid approaches exist in order to quantify
5 macro-scale water balance components (Baumgartner and Reichel, 1975; Fekete et al., 2002;
6 Haddeland et al., 2011; Müller Schmied et al., 2014; Oki and Kanae, 2006). For water
7 resources management, especially the estimation of renewable freshwater resources (long-
8 term average runoff or river discharge) is of importance, as it is the source for both human
9 and ecosystem needs. As adequate discharge observations are available only at selected
10 locations (see the catalogue of the Global Runoff Data Centre (GRDC), <http://grdc.bafg.de/>),
11 model-based or hybrid (i.e. incorporating historical discharge observations) approaches to
12 estimate discharge and other water balance components are of increasing importance. Since
13 the 1980s, global hydrological models (GHMs) have been developed to calculate the water
14 balance on global and/or continental scales. Recent reviews of such models are presented by
15 Bierkens (2015), Sood and Smakhtin (2015) and Trambauer et al. (2013).

16 All GHMs are driven by climate forcing input data sets (hereafter called climate forcings),
17 based on station observations (e.g. for precipitation and air temperature), reanalysis (global
18 circulation models for numerical weather prediction which assimilate all available up-to-date
19 data for current time step) and/or remote sensing data (e.g. for radiation). Within the last two
20 decades, numerous climate forcings were developed with a current standard of at least daily
21 temporal resolution and 0.5° by 0.5° spatial resolution (the common GHM spatial resolution),
22 providing data from as early as 1901 until recent years. These climate forcings differ among
23 each other and thus may lead to different water resources estimates by GHMs.

24 Humans have altered the global water cycle with an increasing intensity, e.g. due to irrigation
25 or industrial water use (Döll and Siebert, 2002; Döll et al., 2012; Flörke et al., 2013; Siebert et
26 al., 2015; Wada et al., 2010). A number of GHMs (but not all) are able to incorporate human
27 water use in their calculations (see Table 2 in Bierkens, 2015). Neglecting anthropogenic
28 water consumption prevents meaningful water resources assessments, at least in regions with
29 high water consumption relative to renewable resources (e.g. High Plains Aquifer, Indus,
30 Ganges-Brahmaputra). For example, groundwater depletion as observed by falling
31 groundwater heads in wells and by GRACE satellite observations of gravity variations can
32 only be modelled when human water use is considered (Döll et al., 2014).

1 Simulated water balance components vary considerably due to various uncertainties of GHMs
2 (Haddeland et al., 2011; Schewe et al., 2014) including GHM ability to include human water
3 use, model improvements over time (e.g. see the different results of the Water Global
4 Assessment and Prognosis (WaterGAP) model in Müller Schmied et al. (2014), their Table 5),
5 climate forcing (Biemans et al., 2009; Voisin et al., 2008) as well as uncertainties in discharge
6 observations (Coxon et al., 2015; McMillan et al., 2012). In addition to these uncertainties,
7 water resources estimates differ due to different reference periods (Wisser et al., 2010).

8 This study contributes to the assessment of water balance components on a global and
9 continental scale by answering the following research questions.

- 10 1. What is the impact of climate forcing uncertainty on water balance components at
11 global, continental and grid-cell scale?
- 12 2. What is the variation of estimated global water balance components for different
13 temporal aggregations: year, decade, 30 years, and century?
- 14 3. What determines variations of long-term average river discharge between consecutive
15 30-year periods more strongly – either change of precipitation or change of human
16 water use and dam construction creating reservoirs and regulated lakes
17 (“anthropogenic impact”)?

18 To answer these questions, we conducted a modeling experiment. The model, data and
19 methods are described in Sect. 2. Results are presented and discussed in Sect. 3. Finally,
20 conclusions are drawn and an outlook is given.

21

22 **2 Data and methods**

23 In this study, the global water availability and water use model WaterGAP (Alcamo et al.,
24 2003; Döll et al., 2003) was applied in a modified version of WaterGAP 2.2 (Müller Schmied
25 et al., 2014) in two water use and management variants (including and excluding
26 anthropogenic effects). The model was driven by four state-of-the-art climate forcings
27 provided by the Inter-Sectoral Impact Model Intercomparison Project (ISI-MIP) in its current
28 phase 2.1 ([https://www.pik-potsdam.de/research/climate-impacts-and-
29 vulnerabilities/research/rd2-cross-cutting-activities/isi-mip/about/isi-mip2](https://www.pik-potsdam.de/research/climate-impacts-and-vulnerabilities/research/rd2-cross-cutting-activities/isi-mip/about/isi-mip2)) and a fifth
30 homogenized forcing.

1 **2.1 GHM WaterGAP 2.2 (ISI-MIP 2.1)**

2 The spatial resolution of WaterGAP is 0.5° by 0.5° (approx. 55 km by 55 km at the equator),
3 and the model uses daily time steps for calculation. The WaterGAP water use models
4 compute water use estimates for five sectors (irrigation, domestic, manufacturing, cooling
5 water for electricity generation, and livestock) that are processed by the Ground Water
6 Surface Water Use (GWSWUSE) submodule to quantify both net water abstractions from
7 surface water and from groundwater (Fig. 1 in Müller Schmied et al., 2014). Taking into
8 account the net abstractions, the WaterGAP Global Hydrology Model (WGHM) calculates
9 changes in water storage compartments as well as water flows between these compartments
10 based on water balance equations, including groundwater recharge, evapotranspiration and
11 river discharge. A description of model version WaterGAP 2.2 can be found in Müller
12 Schmied et al. (2014). The version used for this study is named “WaterGAP 2.2 (ISI-MIP
13 2.1)”, and differences to WaterGAP 2.2 mainly consider requirements of the ISI-MIP project
14 phase 2.1 as described in Appendix A.

15 **2.2 Calibration of WaterGAP 2.2 (ISI-MIP 2.1) against observed streamflow**

16 The purpose of WaterGAP has been to provide a best estimate of renewable water resources
17 worldwide. To obtain meaningful estimates of water resources despite different sources of
18 uncertainty related to GHMs, a calibration routine was applied (see Döll et al., 2003; Hunger
19 and Döll, 2008; Müller Schmied et al., 2014). The calibration routine in WaterGAP 2.2 (ISI-
20 MIP 2.1) forces the long-term annual simulated river discharge (Q) to be equal (within $\pm 1\%$)
21 to observed long-term annual discharge at grid cells representing calibration stations, for the
22 period of observations (with a maximum of 30 years of observation being considered). With
23 alternative climate forcings, basin-scale differences in Q and (subsequent) actual
24 evapotranspiration (AET) therefore occur especially in catchments without calibration
25 stations or during years without observed discharge. Figure 1 shows the land grid cells that
26 are affected by calibration in this study, incorporating around 54% of the global land surface
27 (excluding Antarctica and Greenland). We calibrated the model for each of the four climate
28 forcings GSWP3, PGFv2, WFD and WFDEI_hom (descriptions of acronyms in Sect. 2.3)
29 against mean annual discharge at 1319 discharge observation stations from the Global Runoff
30 Data Centre (GRDC) catalogue, except for WFD, where due to the earlier end of the forcing
31 time series, only 1312 stations could be used. The calibration parameters of WFDEI_hom
32 were then used for the WFD_WFDEI forcing. Observation stations were selected such that

1 the upstream area had a minimum of 9000 km². To avoid including stations that are located
2 very close to each other along a river, the minimum interstation catchment area was set to 30
3 000 km². Furthermore, a station was selected only if a minimum of four complete years of
4 data was available.

5 **2.3 Climate forcing data sets**

6 Within the ISI-MIP project phase 2.1, four state-of-the-art climate forcings were made
7 available through the coordinating Potsdam Institute for Climate Impact Research (PIK):
8 GSWP3, PGFv2, WFD, and WFD_WFDEI. For each forcing, daily values of the variables
9 surface-level (raingage-level) precipitation (P), 2 m air temperature (T), shortwave downward
10 radiation at the surface level (SWD) and longwave downward radiation at the surface level
11 (LWD) were used to run WaterGAP. Due to inhomogeneity problems during overlapping
12 periods of WATCH Forcing Data based on ERA-40 (WFD data set, 1901-2001) and WFD
13 methodology applied to ERA-Interim (WFDEI data set, 1979-2010), a data homogenization
14 method was applied. This resulted in a fifth homogenized climate forcing (WFDEI_hom). The
15 name of the climate forcing is used to name the model variant. In all data sets, daily
16 precipitation estimates were obtained by bias-correcting output of weather models by monthly
17 precipitation data sets that had been derived from monthly precipitation observed at
18 raingages. These monthly data sets were optimized for spatial coverage, i.e. using, for each
19 month, the available number of gauging stations. The temporally variable number of
20 precipitation observations makes the applied precipitation data sets less suitable for the
21 analysis of temporal variations. While a temporally homogeneous data set of observation-
22 based monthly precipitation exists at least for the time period 1950-2000, it is based on less
23 than 10 000 gauging stations and therefore provides a spatially less accurate representation of
24 global-scale precipitation (Beck et al., 2005) than the data sets used in this study, which
25 include up to 50 000 gauging stations (Schneider et al., 2015).

26 **2.3.1 Global Soil Wetness Project 3 (GSWP3)**

27 For the third phase of Global Soil Wetness Project (GSWP), a century-long (1901-2010) high-
28 resolution global climate data was developed (<http://hydro.iis.u-tokyo.ac.jp/GSWP3>). The 20th
29 Century Reanalysis (20CR) done with the NCEP atmosphere land model (Compo et al. 2011)
30 which has a relatively low spatial resolution (~2.0°) and long-term availability (140 years)
31 was dynamically downscaled into the global T248 (~0.5°) resolution using Experimental

1 Climate Prediction Center (ECPC) Global Spectral Model (GSM) by spectral nudging data
2 assimilation technique (Yoshimura and Kanamitsu, 2008). Also, Global Precipitation
3 Climatology Centre (GPCC) version 6 (for P), Climate Research Unit (CRU) TS3.21 (for T)
4 and Surface Radiation Budget (SRB, for SWD/LWD) were used for bias correction to reduce
5 model-dependent uncertainty. Wind-induced P undercatch correction is applied depending on
6 gauge type and their global distribution according to Hirabayashi et al. (2008).

7 2.3.2 Princeton Global Meteorological Forcing Dataset (PGFv2.1)

8 The Princeton Global Meteorological Forcing Dataset, version 2 (PGFv2) is an update of the
9 forcing described by Sheffield et al. (2006). It blends reanalysis data (NCEP-NCAR) with
10 station and satellite observations and covers in its current form the period 1901-2012
11 (<http://hydrology.princeton.edu/data.pgf.php>). P is bias corrected to monthly CRU TS3.21 but
12 is not undercatch corrected (different to its previous version 1). Daily T is adjusted to match
13 CRU TS3.21 monthly values by shifting. SWD is adjusted for systematic biases at monthly
14 scale (using a product from the University of Maryland (by Rachel Pinker) developed within
15 the NASA Measures project) and then for trends using CRU TS3.21 cloud cover. LWD is
16 scaled to match the mean and variability of the University of Maryland data (see SWD) but
17 retains the year-to-year variation of the NCEP data. All information on PGFv2 is based on
18 personal communication with J. Sheffield in 2015. During the first review process of this
19 manuscript, we were informed about an error in the T data for the period 1901-1947 for
20 certain regions. We therefore present below results of a WaterGAP run driven by the
21 corrected version PGFv2.1 but with calibration parameters determined by using PGFv2 as no
22 significant effect of the erroneous T data on calibration is expected, because calibration
23 periods start after 1947 except for 21 basins that are all located in regions where the error
24 effect is small.

25 2.3.3 WATCH Forcing Data (WFD)

26 The WATCH Forcing Data (WFD) was developed by Weedon et al. (2010, 2011) in the scope
27 of the European FP6-funded Water and Global Change (WATCH) project ([www.eu-](http://www.eu-watch.org)
28 [watch.org](http://www.eu-watch.org)). The data-set is based on the European Centre for Medium-Range Weather
29 Forecasts (ECMWF) 40-year reanalysis product (ERA-40) for the period 1958-2001 and on
30 the reordered ERA-40 data for the period 1901-1957. The variables from ERA-40 are
31 interpolated (taking into account elevation) and some are corrected to monthly observation

1 data, e.g. P is corrected using GPCC version 4 observations (details in Weedon et al., 2010,
2 2011). Monthly P is corrected for wind-induced undercatch according to Adam and
3 Lettenmaier (2003). Monthly T is corrected to CRU TS2.1 and SWD is corrected to cloud
4 cover of CRU TS2.1 whereas LWD is not bias corrected (Weedon et al. 2010).

5 2.3.4 Combined WFD and WFDEI (WFD_WFDEI)

6 The WFDEI dataset was created by applying the WFD methodology to the newer ERA-
7 Interim reanalysis data of ECMWF which is improved compared to ERA-40, especially for
8 SWD (Weedon et al., 2014). WFDEI is available for the period 1979-2010, with P bias
9 corrected to GPCC version 5 (and version 6 for 2010) and using ratios from Adam and
10 Lettenmaier (2003) for correction of P undercatch. SWD in WFDEI is almost everywhere on
11 the globe larger than SWD of WFD, with differences between 15 and 100 W/m² in most of
12 Africa and Europe, due to changes in aerosol distribution in ERA-Interim as compared to
13 ERA-40 (Dee et al., 2011; Weedon et al., 2014). Monthly values for T are bias corrected to
14 CRU TS3.1/3.21 and SWD to cloud cover of CRU TS3.1/3.21. WFD_WFDEI as provided by
15 ISI-MIP 2.1 is a simple time-consecutive combination of WFD (1901-1978) and WFDEI
16 (1979-2010), which can be problematic when not checking for offsets (Weedon et al., 2014).
17 Müller Schmied et al. (2014) used the same concatenating approach and found considerable
18 offsets in WaterGAP simulated water balance components. Due to the strong global increase
19 in SWD in WFDEI relative to WFD for overlapping periods (1979-2001), global AET
20 increased by ~5 000 km³ yr⁻¹, which affects resulting water storages and global sums of Q
21 (Müller Schmied et al., 2014).

22 2.3.5 Homogenized combined WFD and WFDEI (WFDEI_hom)

23 To overcome the offset in selected climatic variables between WFD and WFDEI, a
24 homogenization approach analog to the bias correction approach in Haddeland et al. (2012)
25 was applied to the daily data for three climatic variables SWD, LWD, and T. For SWD and
26 LWD, a multiplicative approach was applied (Eq. 1), whereas T was homogenized with an
27 additive approach due to possible zero values (Eq. 2) and P was not homogenized as only
28 marginal differences in continental and global sums occur (Table 4).

$$29 \quad V_{hom} = V_{WFD} * \frac{\overline{V_{WFDEI}(m)}}{\overline{V_{WFD}(m)}} \quad (1)$$

$$V_{hom} = V_{WFD} + \overline{V_{WFDEI}(m)} - \overline{V_{WFD}(m)} \quad (2)$$

with V_{hom} being the homogenized daily variable (1901-2001), V_{WFD} the original daily variable from WFD (1901-2001), $\overline{V_{WFDEI}(m)}$ and $\overline{V_{WFD}(m)}$ the long-term mean monthly variable from WFDEI and WFD for the overlapping time period 1979-2001, applied to the current month. The final homogenized daily WFDEI_hom time series consists of homogenized WFD data until 1979 and of WFDEI data afterwards. As the averages of SWD and T during the overlapping period are larger for WFDEI than for WFD, WFDEI_hom values until 1978 are larger than respective original WFD values, also included in WFD_WFDEI time series. The opposite is true for LWD which is furthermore only slightly adjusted compared to SWD.

2.4 Calculation of spatial averages and indicators

2.4.1 Calculation of spatial averages

The calculation of global averages for climate forcing variables as well as water balance components are based on all land grid cells excluding Antarctica (not represented), Greenland, and those grid cells that represent inland sinks. For T, SWD and LWD, area-weighted averages were calculated. Q was calculated for global totals by summing up Q of all grid cells that are outflow cells into the ocean according to the drainage direction map DDM30 (Döll and Lehner, 2002) and Q into all grid cells that represent inland sinks. The same procedure was used for the continental assessment (with all of the Russian Federation considered to belong to Europe in this study). For the calibrated and non-calibrated regions, the sum of net cell runoff (Q flowing out of the grid cell minus Q flowing into the grid cell) was used.

2.4.2 Indicator for relative dominance of precipitation or anthropogenic impact on discharge variability

To answer research question 3, i.e. to determine whether the change of long-term average discharge between two consecutive 30-year periods is caused mainly by the change of P in the upstream river basin or by the change of anthropogenic impact on Q by human water use and dam construction, two indicators were developed and combined. In the equations below, Q represents simulated discharge under anthropogenic conditions, whereas Q_{nat} is the discharge

1 that would occur with neither human water use nor reservoirs or regulated lake regulation by
2 dams.

3 First, we assume that P change cannot be more dominant a driver than change of
4 anthropogenic impacts if P increases while Q decreases (and vice versa), expressed by the
5 ratio of differences in Eq. 3. Furthermore, the runoff coefficient scales the ratio. Thus,
6 indicator A_n is computed as

$$7 \quad A_n = C_{QP,n} \frac{P_{bas(n),t2} - P_{bas(n),t1}}{Q_{n,t2} - Q_{n,t1}} \quad (3)$$

8 where A_n [-] is the indicator for dominance of P of grid cell n with $P_{bas(n)}$ [$\text{km}^3 \text{ yr}^{-1}$] as sum
9 of P for the upstream area (contributing basin area) and Q_n [$\text{km}^3 \text{ yr}^{-1}$] the simulated river
10 discharge of the grid cell between the time periods $t1$ (e.g. 1941-1970) and $t2$ (e.g. 1971-
11 2000). The runoff coefficient $C_{QP,n}$ [-] is calculated as the averaged mean runoff coefficient
12 of the two time periods under consideration

$$13 \quad C_{QP,n} = \text{avg} \left(\frac{Qnat_{n,t1}}{P_{bas(n),t1}}, \frac{Qnat_{n,t2}}{P_{bas(n),t2}} \right), \quad (4)$$

14 where $Qnat_n$ [$\text{km}^3 \text{ yr}^{-1}$] is the simulated river discharge of the grid cell of the model runs
15 without human water abstractions and reservoir operation. The runoff coefficient is
16 independently calculated for the two time periods.

17 If changes of P and Q have the same sign, A_n is positive, and the change in P may be a
18 significant driver of the Q change. If A_n is negative, it can be excluded that the change of P is
19 a dominant driver of the change in Q.

20 Indicator B_n quantifies the anthropogenic impact on river discharge, expressed as the change
21 in the difference between Q and Qnat compared to the change in Q. An increasing difference
22 between Q and Qnat between the periods should lead to a decrease of Q.

$$23 \quad B_n = \frac{(Q_{n,t2} - Qnat_{n,t2}) - (Q_{n,t1} - Qnat_{n,t1})}{Q_{n,t2} - Q_{n,t1}} \quad (5)$$

24 where B_n [-] is the indicator for dominance of anthropogenic impact on river discharge
25 ranging from negative values, zero (for $Q = Qnat$) to positive values. If e.g. Q increases

1 between the two time periods but the difference between Q and Qnat decreases e.g. due to
2 decreased human water use among the time periods, B_n becomes negative, indicating that
3 anthropogenic effects cannot be the dominant driver of change in Q.

4 The larger A_n (B_n), the more likely P (anthropogenic effects) is the dominant driver of Q
5 change, since the change in P (anthropogenic effects) is large. Consequently, P is more
6 dominant a driver than change in anthropogenic impact if $A_n > B_n$ and $A_n > 0$. The change in
7 anthropogenic impact is the more dominant a driver than change in P if $B_n > A_n$ and $B_n > 0$. If
8 both $A_n \leq 0$ and $B_n \leq 0$, changes in Q are neither consistent with changes in P nor with
9 changes in anthropogenic impact, and Q change is caused by other drivers, e.g. T. No
10 assessment is possible, if there is no change in Q. To illustrate the indicator of relative
11 dominance approach, Table 1 lists indicator values and underlying data for the example of
12 four grid cells representing discharge of large rivers near the outlet to the ocean.

13

14 **3 Results and discussion**

15 **3.1 Water balance components as impacted by climate forcing uncertainty**

16 In this section, uncertainties of climate forcing are described first, followed by uncertainties
17 of model output variables stemming from climate forcing uncertainty (Fig. 2). Spatial scales
18 range from global (Table 2) to continental (Table 3) and to grid cells (Fig. 3). In addition, we
19 differentiate between calibrated and non-calibrated regions (Table 5). Finally, values of water
20 balance components are compared to values from other studies (Table 6).

21 **3.1.1 Uncertainty of global climate forcings**

22 The 1971-2000 global P differs among the model forcing variants, with the largest difference
23 found between CRU based product (PGFv2.1) and the GPCC based products (all other
24 forcings) amounting up to $7500 \text{ km}^3 \text{ yr}^{-1}$ (Table 2). Even the GPCC-based forcings vary by up
25 to $1400 \text{ km}^3 \text{ yr}^{-1}$ (exceeding the amount of actual water consumption WCa). Oceania (with the
26 lowest absolute value) has the lowest deviation among the forcings (Table 3). The largest
27 deviations are found in North America, Europe, and Africa. In North America and Europe,
28 where the station density is comparably high and GPCC versions agree very well (Table 4)
29 but in winter precipitation falls often as snow (with strong undercatch in gauging devices), the

1 different approaches to undercatch correction of P lead to large P deviations among the
2 climate forcings. In case of WFD and WFDEI, monthly precipitation data are undercatch
3 corrected according to Adam and Lettenmaier (2003); in case of GSWP3 a correction
4 described in Hirabayashi et al. (2008) is applied, while there is no undercatch correction in
5 PGFv2.1. While the calibrated grid cells cover 53.9% (53.7% for WFD) of global land area
6 (excluding Antarctica and Greenland), they receive 61.0-61.5% of P (for all forcings, Table
7 5). The variation among the forcing variants, calculated as (maximum P – minimum P) / mean
8 P, is with 7.5% in calibrated basins slightly higher than in non-calibrated basins (6.1%) (Table
9 5).

10 Global averages of T for 1971-2000 are very similar for all forcings, which is not surprising
11 as all of them are bias corrected to (different) versions of the CRU time series. Global annual
12 averages over the 30 years differ between the warmest (PGFv2.1) and coldest (WFD) forcing
13 by only 0.08°C.

14 SWD is the forcing variable which has large differences throughout the forcings (Fig. 2).
15 Remarkably lower values are found for WFD (compared to GSWP3 and PGFv2.1) which is a
16 result of the underlying reanalysis and affects dominantly Africa and Europe (Sect. 2.3.4,
17 Table 3, Weedon et al., 2014). The concatenation approach (which is also used in the ISI-MIP
18 project phase 2.1) of WFD_WFDEI leads to a very strong increase (by on average ~15 W m⁻²)
19 starting in 1979. Homogenizing WFD eliminates this effect (WFDEI_hom, Fig. 2). Variations
20 of global LWD are rather low (Table 3).

21 3.1.2 Uncertainty of simulated water balance components due to climate 22 forcing uncertainty

23 Climate forcing uncertainty propagates to all water balance components simulated by
24 WaterGAP. For the period 1971-2000, global Q varies among the five forcings by about 3400
25 km³ yr⁻¹ (Table 2). On the continental scale, the strongest climate forcing-induced variation of
26 Q occurs in Africa (Table 3). Here, some areas with high amounts of P (and Q) are in non-
27 calibrated regions (e.g. Madagascar, see Fig. 3). Besides, the runoff coefficient (Q/P) of
28 Africa is with 0.21 the lowest compared to all other continents, varying between 0.34
29 (Oceania) and 0.47 (Europe). A low runoff coefficient leads to the translation of a small
30 precipitation deviation (in percent of mean) to a relatively large discharge deviation, as can
31 also be seen for Oceania (Table 3).

1 While calibrated basins cover 54% of the global land area excluding Greenland and
2 Antarctica (Fig. 1), 53-58% of global Q flows out of calibrated basins (Table 5). Most of the
3 Q from non-calibrated basins is simulated to occur in tropical regions, particularly in
4 Indonesia and other parts of South-East Asia. As expected, the sum of Q from all non-
5 calibrated basins varies more strongly among the forcing variants (18.4%) than the sum of Q
6 from all calibrated basins (2.8%, Table 5). Variation of Q from non-calibrated regions is
7 reduced to 10.5% if the PGFv2.1 variant (the only forcing without precipitation undercatch
8 correction) is excluded, while Q variation in the calibrated regions remains the same. If only
9 the four homogeneous forcings (without WFD_WFDEI) are considered, Q varies by 18.5%
10 for the non-calibrated region and by 1.6% for the calibrated one (Table 5, row 3). Q variation
11 in calibrated basins is due to various reasons. Calibration forces the simulated mean annual
12 discharges in the cells with discharge stations to be equal (within 1%) to the observed ones for
13 the calibrated period. Outside the calibrated period, the different forcings cause the computed
14 Q to vary. In case of the homogeneous forcings that are undercatch corrected and bias
15 corrected against GPCC data (GSWP3, WFD, WFDEI_hom), Q differs by only 0.1% in
16 calibrated regions and 10.5% in non-calibrated regions. The low value for the calibrated
17 regions indicates neglectable influence of the different calibration periods and the smaller
18 number of calibration stations in the case of WFD. The Q variation for the discharge produced
19 in non-calibrated regions appears to be large in particular because all forcings are bias-
20 corrected against monthly observations of temperature from CRU, and of P from GPCC
21 (Table 4). This indicates a dissimilar spatio-temporal distribution of SWD and LWD radiation
22 components. The larger deviation of WFD_WFDEI in calibrated regions (Table 5, row 3) can
23 be explained by the fact that in order to deal with the offset problem in the WFD_WFDEI
24 forcing, the WFDEI_hom calibration parameters were also used for the model variant that
25 was driven by WFD_WFDEI (see Appendix A). Due to the much lower values of SWD in
26 WFD as compared to WFDEI, GWSP or PGFv2.1, Q as computed with WFD has the highest
27 value of all variants in non-calibrated regions, and is 11% larger than Q computed with
28 WFDEI_hom for 1971-2000 (Table 5). One may conclude that GHMs without a calibration
29 routine overestimate Q if driven by WFD; this may be one reason for the comparably high
30 multi-model Q estimate of 42 000 – 66 000 km³ yr⁻¹ reported in Haddeland et al. (2011)
31 which is much higher than previous estimates (e.g. Baumgartner and Reichel, 1975; Fekete,
32 2002) or this study.

1 Figure 3 shows the uncertainty range of Q at grid-cell level for calibrated and non-calibrated
2 regions caused by the four homogeneous forcings. In both calibrated and non-calibrated
3 regions, the highest absolute differences occur in cells with large discharge, either in the
4 downstream part of large rivers (e.g. Nile in Fig. 3a) or in areas with high precipitation (e.g.
5 coast of Alaska or in Papua New Guinea in Fig. 3b). The lowest relative differences in the
6 calibrated regions occur up- and downstream of the 1319 discharge gauging stations that were
7 used for model calibration (Fig. 3c). The effect of calibration is also visible in non-calibrated
8 regions downstream of a gauging station, e.g. in the Amazon downstream of Obidos (Fig. 3d).
9 Even in most areas of the globe which are calibrated, i.e. in grid cells upstream of calibration
10 stations, relative Q variations due to variations in climate forcings exceed 10% (Fig. 3c). In
11 many cells not only in dry regions, variations exceed 50%. In non-calibrated regions, grid
12 cells with relative Q variations below 10% are very rare unless they are located downstream
13 of calibration station (Fig. 3d). In general, relative variations of Q are often higher in non-
14 calibrated (Fig. 3d) than in calibrated regions (Fig. 3c) mainly because dry areas are less
15 likely to have calibration stations. However, humid Iceland, for example, also exhibits
16 simulated Q variations of more than 50%. When averaged over all grid cells globally (with Q
17 > 0), variation of Q due to variation of the four homogeneous forcings is 55% ($1.3 \text{ km}^3/\text{yr}$).
18 For calibrated regions, the variation reduces to 37% ($1.6 \text{ km}^3 \text{ yr}^{-1}$), while it increases to 74%
19 ($1.0 \text{ km}^3 \text{ yr}^{-1}$) in non-calibrated regions. When considering net cell runoff R in all cells with
20 positive values, i.e. the runoff added to upstream discharge within a cell, variations due to the
21 climate forcings grow to an average of 64% in calibrated regions and an average of 92% in
22 non-calibrated regions. When considering only GSWP3 and WFDEI_hom, i.e. additionally
23 excluding the forcings without undercatch correction (PGFv2.1) and with a much lower SWD
24 than the others (WFD), the Q (runoff) variations are reduced to 16% (27%) and 31% (38%) in
25 calibrated and non-calibrated regions, respectively. Reduction due to excluding PGFv2.1 is
26 larger than reduction due to excluding WFD.

27 Global AET is the variable with the highest relative uncertainty due to climate forcing (Table
28 2). As Q within the calibrated region is forced to be nearly equal for all climate data sets,
29 different values of P (as well as T and radiation) lead to large differences in aggregated AET
30 (with higher absolute differences than P differences, or 12.2%). In contrast, AET differs by
31 only 8.8% (and lower absolute differences than the P differences) in non-calibrated regions
32 (both numbers for all forcings, Table 5). 63-67% of AET occur in calibrated regions (Table 5,
33 row 2). In WFD forcing, the low global values for SWD lead to relatively low AET and

1 higher Q ($2000 \text{ km}^3 \text{ yr}^{-1}$) compared to the homogenized forcing WFDEI_hom. PGFv2.1 has
2 the lowest global AET but the highest WCa of all five forcings (Table 2), even though WCa
3 includes mainly evaporation of irrigation water that is driven by the same climatic variables as
4 AET. This reflects the variations in the spatial pattern of the climatic variables among the five
5 forcing data sets.

6 For the period 1971-2000, global WCa varies among the five forcings by $45 \text{ km}^3 \text{ yr}^{-1}$ (Table
7 2), i.e. the range is less than 5%. 56.0 to 56.9% of global WCa occurs in calibrated regions
8 (Table 5, row 4). Among all forcing variants, deviation of WCa is higher in calibrated regions
9 (5.9%) than in non-calibrated regions (4.4%) (Table 5). WCa uncertainty due to climate
10 forcings differs strongly among the continents (Table 3). For Asia, the continent with the
11 highest water use, variation among the model variants is very low, indicating good agreement
12 of climate forcing for the irrigation sub-model and/or averaging out differences in climate
13 forcings over the large number of grid cells in Asia with irrigation water use. Again, Europe
14 and North America have high uncertainties in continental assessments due to climate forcing
15 uncertainty/variability.

16 3.1.3 Comparison with other studies

17 Global sums of AET and Q for the five climate forcings used in this study are within the
18 range of estimates reported in the literature (see values from various sources in Müller
19 Schmied et al. (2014), their Table 5). Values for AET of this study ($64\,400 - 70\,800 \text{ km}^3 \text{ yr}^{-1}$
20 including WCa) are well within this range. Global values for Q ($39\,200 - 42\,200 \text{ km}^3 \text{ yr}^{-1}$) are
21 at the upper end of values from literature (except Haddeland et al., 2011).

22 Table 6 shows a comparison to global and continental estimates of AET and Q of this study to
23 four recent reference studies. Time span and spatial coverage of WaterGAP results is the same
24 as in the respective references, and the climate forcing variant of WaterGAP was selected
25 such that studies using P without undercatch were compared to results of WaterGAP using
26 PGFv2.1. Wisser et al. (2010) used the WBMplus model with CRU forcing plus three
27 different precipitation data sets for an uncertainty analysis. Even though their P was not
28 undercatch corrected and also scaled to CRU observations (like PGFv2.1), global P of
29 PGFv2.1 is 2.7% lower for the time period 1901-2002 (and lower between 2.2 and 3.1% in
30 the different time periods analyzed). For this period, WaterGAP simulates around 7.2% less

1 AET and 4.2% more Q compared to Wisser et al. (2010), but differences are varying for the
2 other time periods analyzed (AET: 6.0-8.7%, Q: 2.6-6.6%).

3 Hanasaki et al. (2010) used a climate forcing that is scaled to CRU TS 2.1 and not undercatch
4 corrected for the time span 1985-1999. Therefore, results of WaterGAP driven by PGFv2.1
5 were used for the comparison in Table 6. Their values included probably also Antarctica as
6 they mention a land area of 144 000 km², so a direct comparison is not straightforward. Based
7 on the assessment of Rodell et al. (2015) (see next paragraph), Antarctica's share in global P,
8 AET and Q is about 2.1%, 0.2% and 4.9%, respectively,, and these percentages were added to
9 the WaterGAP results. Surprisingly, global P of PGFv2.1 is 7.4% lower than P of Hanasaki et
10 al. (2010). As a consequence, AET (by 12.1%) and Q (by 2.3%) are also lower for WaterGAP
11 forced with PGFv2.1 compared to Hanasaki et al. (2010) (Table 6).

12 Rodell et al. (2015) provide an optimized consistent set of global and continental water fluxes
13 during 2000-2010 by combining satellite products and outputs from a number of models in an
14 optimization routine that enforced multiple water and energy budget constraints
15 simultaneously. Compared to WFDEI_hom (this study), global P is nearly equal (0.8%
16 lower). WaterGAP simulated AET slightly higher (1.5%) but Q is 6.0% lower compared to
17 Rodell et al. (2015) (Table 6). As the definition of continents differs partly between Rodell et
18 al. (2015) and this study, only North and South America as well Africa can be compared.
19 PGFv2.1 continental estimates for P are 1.5% and 3.3% higher for North America and Africa,
20 and 1.5% lower for South America, with WaterGAP AET being higher (1.6 to 4.1%). Large
21 differences occur for Q, where WaterGAP estimated 19.5% and 6.2% lower values for North
22 and South America, and 5.2% higher values for Africa. North America and Africa are the
23 continents, which show high variations in Q also in this study among the forcings (Table 3).

24 Considering the water balance component values of Wisser et al. (2010), Hanasaki et al.
25 (2010) and Rodell et al. (2015), there is no water balance component for which WaterGAP
26 values are consistently too high or too low. Even when the climate forcings used in these
27 studies are similar to one of the climate forcings used here (e.g. regarding undercatch and bias
28 correction), global P values differ, which in itself leads to different model output. Therefore
29 the approach of the many model intercomparison studies to use the same climate forcing for
30 all models helps to assess the differences of the models themselves (Haddeland et al., 2012).

31 The WaterGAP 2.2 (ISIMIP 2.1) water balance components using WFD_WFDEI climate
32 input (Table 2) differ from those of the STANDARD WaterGAP 2.2 model runs that was also

1 driven by WFD_WFDEI as presented in Müller Schmied et al. (2014) (their Table 2) due to
2 the seven model modifications listed in Appendix A. Global P is insignificantly affected by
3 the different landmasks. Global AET and Q are comparable and differ only by 1 to 2%
4 between both studies (Table 6). Due to the assumed deficit irrigation in groundwater depletion
5 areas (Sect. 2.1), global WCa during 1971-2000 is estimated as $936 \text{ km}^3 \text{ yr}^{-1}$ as compared to
6 $1031 \text{ km}^3 \text{ yr}^{-1}$ in STANDARD. Deficit irrigation also explains the smaller decrease of
7 groundwater storage in this study, with an average of $75 \text{ km}^3 \text{ yr}^{-1}$ during the period 1971-2000
8 compared to $125 \text{ km}^3 \text{ yr}^{-1}$ in STANDARD (Müller Schmied et al., 2014, their Table 3). In the
9 applied WaterGAP 2.2 (ISIMIP 2.1) version, reservoirs are filled up with water in their
10 construction year. This leads to a net increase of reservoir storage ($53 \text{ km}^3 \text{ yr}^{-1}$) compared to a
11 decrease of $43 \text{ km}^3 \text{ yr}^{-1}$ in STANDARD, where reservoirs are assumed to have been in
12 operation over the entire simulation period. Thus, total water storage decreased less than in
13 STANDARD, with $74 \text{ km}^3 \text{ yr}^{-1}$ instead of $215 \text{ km}^3 \text{ yr}^{-1}$.

14 **3.2 Variation of estimated global water balance components across temporal** 15 **aggregation and reference periods**

16 Figure 2 shows the importance of temporal aggregation and reference periods for the
17 assessment of global-scale climatic variables and water balance components during the time
18 period 1901-2010 (2001 for WFD, 2012 for PGFv2.1). Even for globally aggregated
19 components, there are strong year-to-year fluctuation. To assess (next to the visual
20 interpretation) the importance of the choice of temporal aggregation for the different climatic
21 variables or water balance components on their variability during the simulation period, the
22 ranges of their global values at temporal aggregations of 1, 10 and 30 years were first
23 computed as the difference between the maximum and the minimum value during the whole
24 time period. Then the effect of temporal aggregation was quantified by calculating the ratio of
25 the ranges at the different temporal aggregations. For all climate variables and water balance
26 components except those with a significant trend, the ranges (Fig. 2) and ratios vary strongly
27 among the forcing variants. To achieve an approximate but robust representation of the effect
28 of temporal aggregation on variability, we present only the median of the ratios among the
29 four homogeneous forcings. Regarding the radiation variables SWD and LWD, their range is
30 approximately halved when going from 30 to 10 years or from 10 to 1 year, and consequently
31 reduced by a factor of 3-4 when going from 30 to 1 year. Global P and AET range is reduced
32 by a factor of about 2 when going from 30 to 10 years or by a factor of 3 when going from 10

1 to 1 year. Regarding global discharge, the corresponding ratios are approximately 2 and 4.
2 Here, the variation among the four forcings is 1.6-2.7 for the reduction of variability when
3 going from 30 to 10 years and 3.0-5.4 when going from 10 to 1 years. Quantifying temporal
4 variability of global WCa, which has a significant trend (Fig. 2), the range of 1-year and 10-
5 year aggregates is very similar, while the range is reduced by a factor of 1.6 when going from
6 30 to 10 years. Considering the variability of T, the ranges during the simulation period are
7 around 1.5 °C (1 year), 1.1 °C (10 years) and 0.4 °C (30 years).

8 Regarding the choice of reference period, its importance is obvious in case of the variables
9 with a strong temporal trend like T and WCa. Increase of global averages of T during the last
10 three decades is comparable among the five climate forcings as they are all bias corrected to
11 almost the same observation-based product (CRU TS, but different versions). Large
12 differences occur for 100 year average SWD, for which WFD forcing shows an offset of
13 around -15 Wm⁻². This also affects the combined WFD_WFDEI, resulting in an implausible
14 discontinuity from 1978 to 1979. The monthly homogenized series (WFDEI_hom) reduces
15 this offset, but the (smaller) offset within WFD since 1973 (integration of first NOAA VTPR
16 satellite data, Uppala et al., 2005) cannot be reduced by this method. LWD shows different
17 variations among the climate forcings at annual, decadal and 30-year aggregations (e.g.
18 between GSWP3 and PGFv2.1), while the 100-year averages are relatively close to each
19 other. Again, in WFD (and consequently WFD_WFDEI and WFDEI_hom) the usage of
20 satellite data in the ERA-40 reanalyses from 1973 onwards leads to an offset in LWD which
21 is clearly visible in the 30-year averages (1971-2000) in all three forcings. Except PGFv2.1,
22 all climate forcings indicate an increase of LWD in the last decades which fits to increasing T.
23 Using land surface parameters and T, WaterGAP calculates the outgoing components of
24 radiation and subsequently net radiation which is then used to calculate potential
25 evapotranspiration. In WFD, net radiation is much lower than in the other data sets (century
26 mean 72 Wm⁻² compared to 83 Wm⁻² for WFDEI_hom and 86 Wm⁻² for GSWP3 and
27 PGFv2.1) (Fig. 2). Considering the four homogeneous forcings only, temporal variations of
28 net radiation are low but rather different among the forcings, and there is no significant trend
29 except for PGFv2.1 with a decreasing trend in the last 30 years. Global PET has an even
30 smaller variation, and no trend during the century either. Global P seems to be slightly smaller
31 before 1940 than afterwards but this may be due to the lower number of rain gauges available
32 during this time period. After 1940, 30-year averages of global P are almost constant in time.
33 This is supported by Beck et al. (2005) who found no significant trend in global P for 1950-

1 2000 when utilizing observations from the same set of rain gauges over the whole analysis
2 period.

3 Neither can trends of global AET or Q be detected. The decadal or 30-year variations vary
4 strongly among the forcings. For Q (AET), the inhomogeneity in WFD_WFDEI leads to an
5 implausible decrease (increase) of around $5000 \text{ km}^3 \text{ yr}^{-1}$. Among the homogeneous forcings,
6 WFDEI_hom shows low Q (high AET) during the last three decades as compared to the
7 previous decades and as compared to the other forcings, even though PET of all those
8 forcings does not show a trend. This might be related to differences in spatial patterns among
9 the forcings. The results of this study confirm the finding of the IPCC Fifth Assessment
10 Report that “the most recent and most comprehensive analyses of river runoff do not support
11 the IPCC Fourth Assessment Report (AR4) conclusion that global runoff has increased during
12 the 20th century” (Stocker et al, 2013, p. 44). Century means of global Q from GSWP3 and
13 WFDEI are very similar (like their P and PET values), while Q is smaller in case of PGFv2.1
14 due to lower P (compare section 3.1) and higher in WFD due to lower SWD (and thus PET).

15 WCa is the only water balance component with a strong temporal trend (strong increase since
16 the 1950s) and only a small variation of annual values around the trend that is mainly caused
17 by expansion of irrigated land. Interannual variability is due to climate variability affecting
18 irrigation water use. Temporal aggregation over a decade appears to be appropriate to clearly
19 show the trend. The separation of total water use into the different sectors as well as into
20 water withdrawals and consumptive use is presented by Müller Schmied et al. (submitted to
21 Proceedings of the International Association of Hydrological Sciences (PIAHS), their Fig. 3).

22 When comparing the output of different GHMs, the climate forcing used as model input is a
23 very strong determinant of model output (see section 3.1). When GHMs driven by (more or
24 less) the same climate forcing are compared (see comparison of WaterGAP to Wisser et al.,
25 2010, in Table 6), the choice of reference period matters. Differences for global P, AET and Q
26 among the four roughly 25-year time periods are 3.2, 2.5 and 4.9%, respectively, for
27 WaterGAP in this study and 2.6, 3.0 and 5.5% for Wisser et al. (2010).

28 **3.3 Dominant drivers of temporal variations of 30-year mean annual river** 29 **discharge: precipitation or human water use and dam construction**

30 Figure 4 shows where the change of long-term average Q between the time period 1941-1970
31 and the time period 1971-2000 is either caused mainly by the change of P in the upstream

1 river basin (blue colours) or by the change of the anthropogenic impact on Q by human water
2 use and dam construction (red colours, see Sect. 2.4.2). Results for WaterGAP as driven by
3 each of the four homogeneous climate forcings GSWP3, PGFv2.1, WFDEI_hom and WFD
4 are shown. In most regions, change in P is the more important driver of change in Q than
5 change in the anthropogenic impact. It is areas with high water consumption or/and the
6 construction of dams where change in anthropogenic impact is more important than change in
7 P for explaining temporal Q changes. Note that the developed indicators only compare the
8 relevance of two drivers of change. Even in the blue and red grid cells, other variables such as
9 T or radiation may be even stronger drivers of the simulated change in Q. In grid cells where
10 indicators A_n and B_n are both negative or zero (green colours), however, other drivers (and
11 not P or anthropogenic effects) are certainly the main reason for changes in Q.

12 Changes in long-term average Q between the time periods 1911-1940 (t1) and 1941-1970 (t2)
13 are, in most world regions, less dominated by changes in the anthropogenic impact on river
14 discharge (Fig. 5). Anthropogenic impact increases in the time period 1941-1970 and 1971-
15 2000 (t3), which is consistent with the acceleration of human water use (Fig. 2) and dam
16 construction throughout the 20th century. In the earlier analysis period, anthropogenic activity
17 dominates Q change only in small parts of North America and Asia (around the North China
18 Plain and inflows to the Caspian Sea). It is only in the later analysis period that anthropogenic
19 impact dominates over P impact in India, Southeast China, Spain and Turkey (compare Figs.
20 4 and 5). Taking India and GSWP3 forcing as an example, P increases for both time steps (t1-
21 t2: +49 km³ yr⁻¹, t2-t3: +30 km³ yr⁻¹). However, Q (+9 km³ yr⁻¹) and WCa (+26 km³ yr⁻¹)
22 increases between t1 and t2, while between t2 and t3 Q (-39 km³ yr⁻¹) decreases and WCa
23 (+81 km³ yr⁻¹) increases more strongly than between t1 and t2. In India, the intensified water
24 use and changed signs between P and Q lead to the indication that anthropogenic effects
25 dominate the change in Q (compare Figs 4 and 5).

26 Human water use and dam construction is the dominant driver for changes in long-term Q
27 averages on 9-13% of land area for the time period 1911-1940 and 1941-1970, and increases
28 to 11-18% of land area for the time period 1941-1970 and 1971-2000. The fraction with P
29 domination decreases, from 82-84% to 77-82%. At the same time, the area for which the
30 indicators A_n and B_n cannot be calculated (due to similar long-term Q averages and thus zero
31 in the denominators of Eqs.3 and 4) is rather constant (1.1% to 0.9%). The land fractions

1 where neither driver dominates decreases slightly from 6% to 5%. Figs. B1 and B2 in
2 Appendix B shows A_n and Figs. B3 and B4 shows B_n .

3 The four climate forcings affect the spatial pattern of dominance. They lead to different
4 changes of P and different changes of human water use as the globally dominant irrigation
5 water use is computed as a function of climate. For example, with the forcings based on
6 ECMWF reanalyses (WFDEI_hom, WFD, Fig 4c-d), large parts in southeast Australia are
7 driven by anthropogenic effects whereas for the forcings based on NCEP reanalyses this is not
8 (PGFv2.1, Fig. 4b) or to a lesser extent (GSWP3, Fig. 4a) the case. For WFDEI_hom, the
9 anthropogenic dominance is considerably higher in Mexico (Fig. 4). If using PGFv2.1
10 forcing, the area around the North China Plain is dominated by P changes whereas in the
11 other forcings it is dominated by anthropogenic effects (Fig. 5). Even if mean global values,
12 e.g. for P and Q, compare well (Fig. 2, Table 2), regional differences in the climate forcings
13 (and underlain reanalysis) result in these different spatial patterns of GHM output.

14 The effects of human water use and dam construction on Q variations cannot be separated by
15 the applied indicator approach. While dam construction leading to new reservoirs decreases
16 long-term average Q (e.g. due to additional evaporation), human water consumption is
17 expected to be more important in most grid cells (see also Döll et al., 2009).

18 **4 Conclusions**

19 This study presents a model-based assessment of water balance components considering
20 different temporal (year to century) and spatial (0.5° grid cell to global) aggregations. The
21 GHM WaterGAP 2.2 (ISI-MIP 2.1) was forced with an ensemble of four (plus one
22 homogenized) state-of-the-art climate forcings with daily data. These forcings differ by the
23 underlying reanalyses, the observational data sets used for bias correction and whether
24 precipitation observations were corrected for undercatch. At global scale and for 1971-2000,
25 P differs among the forcing by $7500 \text{ km}^3 \text{ yr}^{-1}$ and Q about $3000 \text{ km}^3 \text{ yr}^{-1}$. Estimated Q differs
26 most among climate forcings where WaterGAP cannot be calibrated due to a lack of river
27 discharge observations in the GRDC database, in particular in South-East Asia (Indonesia and
28 Papua New Guinea). Variations among the four homogeneous forcings (GSWP3, PGFv2.1,
29 WFD, WFDEI_hom) result, for 1971-2000, in a variation of long-term average Q aggregated
30 over all non-calibrated areas of 18.5% but only in a variation of 1.6% for the calibrated areas.
31 This supports the many calls for extending (or maintaining) in situ Q observations (e.g. Fekete
32 et al., 2015) and for sharing the already available Q data (e.g. Hannah et al., 2011). Certainly,

1 satellite observations have the potential to support river discharge estimation (Tang et al.,
2 2009). The Surface Water and Ocean Topography (SWOT) mission, for example, proposes
3 discharge observations for river widths > 50 m but all remote sensing methods for deriving Q
4 strongly rely on in situ measurements (Pavelsky et al., 2014).

5 On continental scale, most differences for P and Q among the homogeneous forcings
6 (GSWP3, PGFv2.1, WFD, WFDEI_hom) occur in Africa and, due to snow undercatch of rain
7 gauges, also in the data-rich continents Europe and North America. Variations of Q at the
8 grid-cell scale due to uncertainty in meteorological data are large except in a few grid cells
9 upstream and downstream of calibration stations, with on average 37% and 74% variation
10 among the four homogeneous forcings. These large forcing induced uncertainties are
11 disturbing because actual forcing data set uncertainty may not fully be represented by the
12 ensemble and uncertainty due to the choice of hydrological model and its parameters is
13 neglected.

14 The study underlined that the level of temporal aggregation of water balance components is of
15 importance, such that for comparison purposes, the same temporal aggregation and identical
16 reference periods should be used. However, for all variables except T and WCa, due to the
17 uncertainty of climate data, the choice of the climate forcing affects climate variables and
18 water balance components computed by GHMs more strongly than the choice of reference
19 period. For global variables that (until now) show no significant trend (like P and Q), the
20 widely used 30-year aggregation period is suitable for comparison purposes, while for
21 variables showing a strong trend, i.e. T and WCa, decadal aggregation is recommended.
22 Ranges of climate forcing variables and water balance components are reduced roughly by a
23 factor of 2 when going from 30 to 10 years (and 10 to 1 years) and consequently by a factor of
24 3-4 when going from 30-year to 1-year assessment.

25 Homogenization of climate forcing is required when concatenating time series of
26 meteorological variables from different sources, as in the case of WFD and WFDEI (which
27 are based on two different reanalyses) are combined to cover the time period since 1901 until
28 recent times. Even within the homogenized WFDEI_hom climate forcing there remains an
29 offset in SWD and LWD data in 1973 that stems from the ERA-40 reanalysis; therefore it is
30 recommended to start analysis if possible only after 1978 when ERA-Interim data are
31 available. Anyway none of the four homogeneous climate forcings appears to be suitable for
32 trend analyses as they are all bias-corrected against gridded monthly data derived from

1 observations of precipitation and temperature where the number of observation stations varies
2 over time.

3 Humans affect the global water cycle increasingly. Comparing global sums of human water
4 consumption to river discharge into oceans and internal sinks (or to renewable water
5 resources), human impact seems to be small (Table 2). However, on 9-18% of global land
6 area, human water consumption and dam construction was a more important driver of change
7 in river discharge in the 20th century than precipitation (Figs. 4 and 5). In this study, however,
8 only the impact on long-term averaged discharge was analyzed, while possible seasonal
9 impacts e.g. due to reservoir operation were not considered (Adam et al., 2007; Döll et al.,
10 2009).

11 For future water resources modeling studies (see also Döll et al., 2016), the impact of the
12 uncertainty of meteorological variables should be considered by applying various (equally)
13 plausible climate forcings. Using more than one GHM may add additional robustness. Such
14 model intercomparison projects are currently on the way (e.g. ISI-MIP 2.1, earth2Observe
15 (www.earth2observe.eu/), The Agricultural Model Intercomparison and Improvement Project
16 AgMIP (<http://www.agmip.org/>), Land Surface, Snow and Soil Moisture Model
17 Intercomparison Project LS3MIP ([http://www.climate-
18 cryosphere.org/activities/targeted/ls3mip](http://www.climate-cryosphere.org/activities/targeted/ls3mip)) or already finished (e.g. WATCH model
19 intercomparison (Haddeland et al., 2011), ISI-MIP Fast Track (Schewe et al., 2014)). They
20 may improve the quantification of the world's water resources and guide investigation of
21 various sources of uncertainty. Development of an improved method for correcting the global
22 state-of-the-art precipitation products, by building on the work of Fuchs et al. (2001), would
23 enable a better quantification of global precipitation.

24

25 **Data availability**

26 The WaterGAP output will become freely available for the public within the framework of the
27 ISI-MIP project phase 2.1 but it is not yet known where the data will be hosted (please check
28 [https://www.pik-potsdam.de/research/climate-impacts-and-vulnerabilities/research/rd2-cross-
29 cutting-activities/isi-mip/for-modellers/isi-mip-phase-2](https://www.pik-potsdam.de/research/climate-impacts-and-vulnerabilities/research/rd2-cross-cutting-activities/isi-mip/for-modellers/isi-mip-phase-2) for updates). The homogenized
30 climate forcing WFDEI_hom is not included within the ISI-MIP 2.1a project. All model
31 outputs used in this study are available on request from the corresponding author.

1

2 **Acknowledgments**

3 The authors thank the Global Runoff Data Centre (GRDC, <http://grdc.bafg.de>), 56068
4 Koblenz, Germany, for providing the discharge data used in this study. We are also grateful to
5 the ISI-MIP coordination team as well as the leaders of the ISI-MIP water sector (Simon
6 Gosling and Rutger Dankers) for providing the climate forcings and for their support.
7 Furthermore, we thank Wolfgang Grabs for organizing the international conference “Water
8 Resources Assessment & Seasonal Prediction” (13-16 October 2015 in Koblenz, Germany)
9 where some content of this paper was presented. Finally, we thank three anonymous
10 reviewers for their valuable suggestions that improved the manuscript significantly.

11

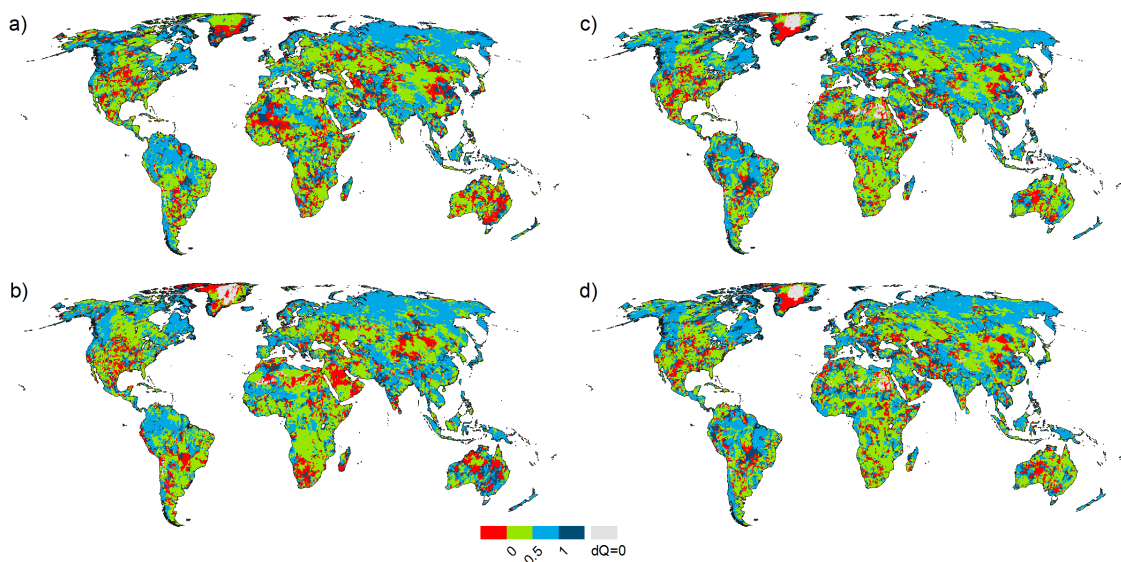
12 **Appendix A: Modification of WaterGAP 2.2 (ISI-MIP 2.1) compared to WaterGAP** 13 **2.2**

- 14 • A new land cover input based on MODIS data from the year 2004 (using the dominant
15 land cover class per 0.5° cell instead of the land cover class at the grid centre).
- 16 • Updated lake and wetland inputs based on the Global Lakes and Wetlands Database
17 (GLWD) (Lehner and Döll, 2004) and the Global Reservoir and Dam database
18 (GRanD) version 1.01 (Lehner et al., 2011) as well as information on operation years
19 from available electronic resources.
- 20 • Different ocean-land mask: while WaterGAP 2.2 uses the ocean-land mask from the
21 IMAGE model (Alcamo et al., 1998), being the standard for WaterGAP development
22 and covering 66 896 grid cells, here the WATCH-CRU ocean-land mask with 67 420
23 grid cells is used. Main differences occur in coastal areas (for which static attributes,
24 such as soil moisture capacity, of the standard land mask are transferred to the new
25 neighbouring cell, while some other coastal cells disappeared), and the inclusion of
26 many more islands in the Pacific Ocean (that obtained attributes values from nearest
27 grid cells).
- 28 • Deficit irrigation based on Döll et al. (2014), with only 70% of irrigation water
29 demand in grid cells which have a groundwater depletion of at least 5 mm yr⁻¹ during

1 1980-2009 and where the fraction of water withdrawals for irrigation is larger than 5%
2 of total water withdrawals for the same time period.

- 3 • Man-made reservoirs are no longer assumed to exist over the whole simulation period
4 but only from the year of their construction onward. This includes also regulation of
5 the outflow of natural lakes by dams.
- 6 • For lakes, reduction of evaporation due to decreasing lake area is calculated according
7 to Eq. 1 in Hunger and Döll (2008), resulting in a lower but more realistic lake area
8 and thus evaporation reduction with decreasing lake storage.
- 9 • For WaterGAP calibration, we used observed streamflow data from 30 years. For
10 GSWP3, PGFv2.1 and WFD, we used data from 1971-2000 if available for the time
11 period. Due to the offset in radiation of WFD_WFDEI forcing (and consequences for
12 model results, see Müller Schmied et al., 2014), we calibrated WFDEI_hom using
13 preferably the period 1980-2009 and used these calibration parameters for the
14 WFD_WFDEI simulation.

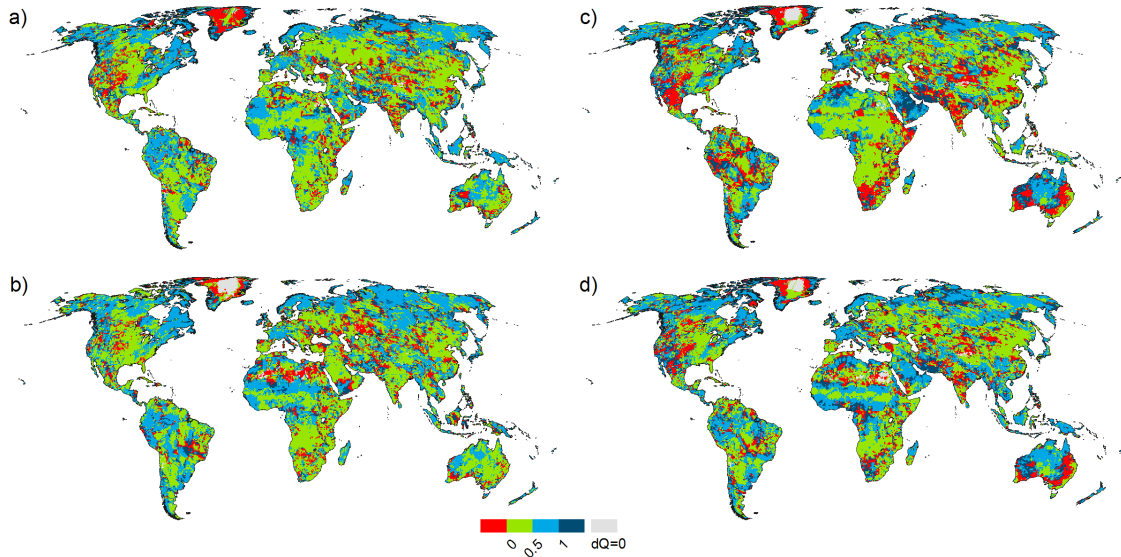
16 Appendix B: Indicators A_n and B_n



17
18 Figure B1: Indicator A_n representing dominance of the change of P for the change in Q (Eq.
19 3) from 1911-1940 to 1941-1970. Grey colour indicates that the change in Q is zero such that
20 A_n cannot be computed. Red colour indicate areas where A_n is negative, i.e. change in P had

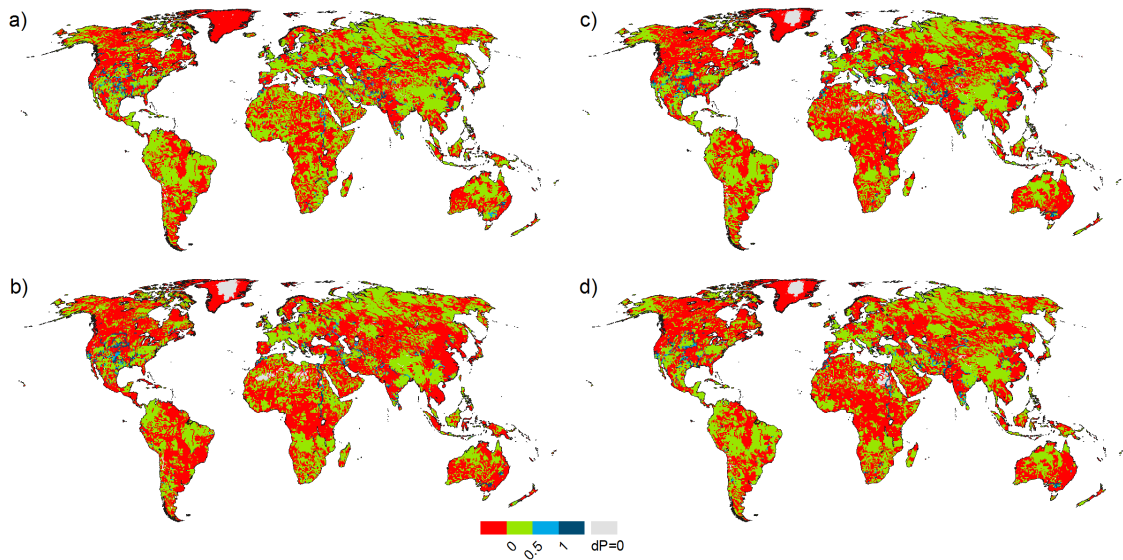
1 the opposite sign of the change in Q; therefore, P was not the dominant driver for change in
2 Q. Results are shown for WaterGAP as driven by the climate forcings GSWP3 (a), PGFv2.1
3 (b), WFDEI_hom (c) and WFD (d).

4



5

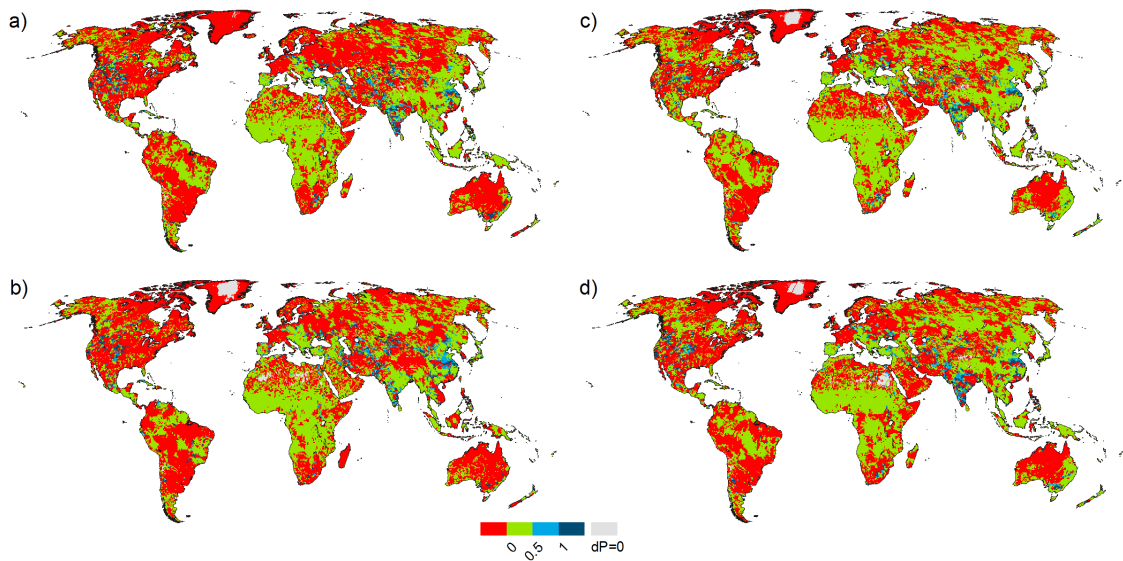
6 Figure B2: Indicator A_n representing dominance of the change of P for the change in Q (Eq.
7 3) from 1941-1970 to 1971-2000. Grey colour indicates that the change in Q is zero such that
8 A_n cannot be computed. Red colour indicate areas where A_n is negative, i.e. change in P had
9 the opposite sign of the change in Q; therefore, P was not the dominant driver for change in
10 Q. Results are shown for WaterGAP as driven by the climate forcings GSWP3 (a), PGFv2.1
11 (b), WFDEI_hom (c) and WFD (d).



1

2 Figure B3: Indicator B_n quantifying the relative dominance of anthropogenic impact on Q
 3 change (i.e. Q-Qnat) as compared to the change in Q (Eq. 5) from 1911-1940 to 1941-1970.
 4 Grey colour indicates that the change in Q is zero such that B_n cannot be computed. Red
 5 colour indicates areas where B_n is less than 0, and the change in anthropogenic impact is not
 6 consistent with the change in Q; therefore, the anthropogenic impact is not the dominant
 7 driver for change in Q. Results are shown for WaterGAP as driven by the climate forcings
 8 GSWP3 (a), PGFv2.1 (b), WFDEI_hom. (c) and WFD (d).

9



10

1 Figure B4: Indicator B_n quantifying the relative dominance of anthropogenic impact on Q
2 change (i.e. Q-Qnat) as compared to the change in Q (Eq. 5) from 1941-1970 to 1971-2000.
3 Grey colour indicates that the change in Q is zero such that B_n cannot be computed. Red
4 colour indicates areas where B_n is less than 0, and the change in anthropogenic impact is not
5 consistent with the change in Q; therefore, the anthropogenic impact is not the dominant
6 driver for change in Q. Results are shown for WaterGAP as driven by the climate forcings
7 GSWP3 (a), PGFv2.1 (b), WFDEI_hom. (c) and WFD (d).

8

9

1 References

- 2 Adam, J. C. and Lettenmaier, D. P.: Adjustment of global gridded precipitation for systematic
3 bias, *J. Geophys. Res.*, 108(D9), 4257, doi:10.1029/2002JD002499, 2003.
- 4 Adam, J. C., Haddeland, I., Su, F. and Lettenmaier, D. P.: Simulation of reservoir influences
5 on annual and seasonal streamflow changes for the Lena, Yenisei, and Ob' rivers, *J. Geophys.*
6 *Res.*, 112(D24), 1–22, doi:10.1029/2007JD008525, 2007.
- 7 Alcamo, J., Döll, P., Henrichs, T., Kaspar, F., Lehner, B., Rösch, T. and Siebert, S.:
8 Development and testing of the WaterGAP 2 global model of water use and availability,
9 *Hydrol. Sci. J.*, 48(3), 317–337, doi:10.1623/hysj.48.3.317.45290, 2003.
- 10 Alcamo, J., Leemans, R. and Kreileman, E., Eds.: *Global change scenarios of the 21st century*
11 – Results from the IMAGE 2.1 model, Pergamon, Oxford., 1998.
- 12 Baumgartner, A. and Reichel, E.: *The world water balance: Mean annual global, continental*
13 *and maritime precipitation, evaporation and runoff.*, Elsevier, Amsterdam., 1975.
- 14 Beck, C., Grieser, J. and Rudolf, B.: A new monthly precipitation climatology for the global
15 land areas for the period 1951 to 2000, German Weather Service, Climate Status Report KSB
16 2004, Offenbach, Germany. Pp. 181–190, 2005.
- 17 Biemans, H., Hutjes, R. W. A., Kabat, P., Strengers, B. J., Gerten, D. and Rost, S.: Effects of
18 precipitation uncertainty on discharge calculations for main river basins, *J. Hydrometeorol.*,
19 10(4), 1011–1025, doi:10.1175/2008JHM1067.1, 2009.
- 20 Bierkens, M. F. P.: Global hydrology 2015: state, trends and directions, *Water Resour. Res.*,
21 51(7), 4923–4947, doi:10.1002/2015WR017173, 2015.
- 22 Compo, G. P., Whitaker, J. S., Sardeshmukh, P. D., Matsui, N., Allan, R. J., Yin, X., Gleason,
23 B. E., Vose, R. S., Rutledge, G., Bessemoulin, P., Brönnimann, S., Brunet, M., Crouthamel,
24 R. I., Grant, a. N., Groisman, P. Y., Jones, P. D., Kruk, M. C., Kruger, a. C., Marshall, G. J.,
25 Maugeri, M., Mok, H. Y., Nordli, Ø., Ross, T. F., Trigo, R. M., Wang, X. L., Woodruff, S. D.
26 and Worley, S. J.: The Twentieth Century Reanalysis Project, *Q. J. R. Meteorol. Soc.*,
27 137(654), 1–28, doi:10.1002/qj.776, 2011.
- 28 Coxon, G., Freer, J., Westerberg, I. K., Wagener, T., Woods, R. and Smith, P. J.: A novel
29 framework for discharge uncertainty quantification applied to 500 UK gauging stations,
30 *Water Resour. Res.*, 51(7), 5531–5546, doi:10.1002/2014WR016532, 2015.
- 31 Dee, D. P., Uppala, S. M., Simmons, A. J., Berrisford, P., Poli, P., Kobayashi, S., Andrae, U.,
32 Balmaseda, M. A., Balsamo, G., Bauer, P., Bechtold, P., Beljaars, A. C. M., van de Berg, L.,
33 Bidlot, J., Bormann, N., Delsol, C., Dragani, R., Fuentes, M., Geer, A. J., Haimberger, L.,
34 Healy, S. B., Hersbach, H., Hólm, E. V., Isaksen, L., Kållberg, P., Köhler, M., Matricardi, M.,
35 McNally, A. P., Monge-Sanz, B. M., Morcrette, J.-J., Park, B.-K., Peubey, C., de Rosnay, P.,
36 Tavolato, C., Thépaut, J.-N. and Vitart, F.: The ERA-Interim reanalysis: configuration and

- 1 performance of the data assimilation system, *Q. J. R. Meteorol. Soc.*, 137(656), 553–597,
2 doi:10.1002/qj.828, 2011.
- 3 Döll, P. and Lehner, B.: Validation of a new global 30-min drainage direction map, *J.*
4 *Hydrol.*, 258(1-4), 214–231, doi:10.1016/S0022-1694(01)00565-0, 2002.
- 5 Döll, P. and Siebert, S.: Global modeling of irrigation water requirements, *Water Resour.*
6 *Res.*, 38(4), 8–1–8–10, doi:10.1029/2001WR000355, 2002.
- 7 Döll, P., Fiedler, K. and Zhang, J.: Global-scale analysis of river flow alterations due to water
8 withdrawals and reservoirs, *Hydrol. Earth Syst. Sci.*, 13(12), 2413–2432, doi:10.5194/hess-
9 13-2413-2009, 2009.
- 10 Döll, P., Kaspar, F. and Lehner, B.: A global hydrological model for deriving water
11 availability indicators: model tuning and validation, *J. Hydrol.*, 270(1-2), 105–134,
12 doi:10.1016/S0022-1694(02)00283-4, 2003.
- 13 Döll, P., Douville, H., Güntner, A., Müller Schmied, H., and Wada, Y.: Modelling freshwater
14 resources at the global scale: Challenges and prospects. *Surv. Geophys.*, 37(2), 195-221,
15 doi:10.1007/s10712-015-9347-x, 2016.
- 16 Döll, P., Hoffmann-Dobrev, H., Portmann, F. T., Siebert, S., Eicker, A., Rodell, M.,
17 Strassberg, G. and Scanlon, B. R.: Impact of water withdrawals from groundwater and surface
18 water on continental water storage variations, *J. Geodyn.*, 59-60, 143–156,
19 doi:10.1016/j.jog.2011.05.001, 2012.
- 20 Döll, P., Müller Schmied, H., Schuh, C., Portmann, F. T. and Eicker, A.: Global-scale
21 assessment of groundwater depletion and related groundwater abstractions: Combining
22 hydrological modeling with information from well observations and GRACE satellites, *Water*
23 *Resour. Res.*, 50(7), 5698–5720, 2014.
- 24 Fekete, B. M., Vörösmarty, C. J. and Grabs, W.: High-resolution fields of global runoff
25 combining observed river discharge and simulated water balances, *Global Biogeochem.*
26 *Cycles*, 16(3), 15–1–15–10, doi:10.1029/1999GB001254, 2002.
- 27 Fekete, B. M., Robarts, R. D., Kumagai, M., Nachtnebel, H.-P., Odada, E. and Zhulidov, A.
28 V.: Time for in situ renaissance, *Science* 349(6249), 685–686, doi:10.1126/science.aac7358,
29 2015.
- 30 Flörke, M., Kynast, E., Bärlund, I., Eisner, S., Wimmer, F. and Alcamo, J.: Domestic and
31 industrial water uses of the past 60 years as a mirror of socio-economic development: A
32 global simulation study, *Glob. Environ. Chang.*, 23(1), 144–156,
33 doi:10.1016/j.gloenvcha.2012.10.018, 2013.
- 34 Fuchs, T., Rapp, J., Rubel, F. and Rudolf, B.: Correction of synoptic precipitation
35 observations due to systematic measuring errors with special regard to precipitation phases,
36 *Phys. Chem. Earth, Part B Hydrol. Ocean. Atmos.*, 26(9), 689–693, doi:10.1016/S1464-
37 1909(01)00070-3, 2001.

- 1 Haddeland, I., Clark, D. B., Franssen, W., Ludwig, F., Voß, F., Arnell, N. W., Bertrand, N.,
2 Best, M., Folwell, S., Gerten, D., Gomes, S., Gosling, S. N., Hagemann, S., Hanasaki, N.,
3 Harding, R., Heinke, J., Kabat, P., Koirala, S., Oki, T., Polcher, J., Stacke, T., Viterbo, P.,
4 Weedon, G. P. and Yeh., P.: Multi-model estimate of the global terrestrial water balance:
5 Setup and first results, *J. Hydrometeorol.*, 12, 869-884, doi:10.1175/2011JHM1324.1, 2011.
- 6 Haddeland, I., Heinke, J., Voß, F., Eisner, S., Chen, C., Hagemann, S. and Ludwig, F.: Effects
7 of climate model radiation, humidity and wind estimates on hydrological simulations, *Hydrol.*
8 *Earth Syst. Sci.*, 16(2), 305–318, doi:10.5194/hess-16-305-2012, 2012.
- 9 Hanasaki, N., Inuzuka, T., Kanae, S. and Oki, T.: An estimation of global virtual water flow
10 and sources of water withdrawal for major crops and livestock products using a global
11 hydrological model, *J. Hydrol.*, 384(3-4), 232–244, doi:10.1016/j.jhydrol.2009.09.028, 2010.
- 12 Hannah, D. M., Demuth, S., van Lanen, H. A. J., Looser, U., Prudhomme, C., Rees, G., Stahl,
13 K. and Tallaksen, L. M.: Large-scale river flow archives: Importance, current status and
14 future needs, *Hydrol. Process.*, 25(7), 1191–1200, doi:10.1002/hyp.7794, 2011.
- 15 Hirabayashi, Y., Kanae, S., Motoya, K., Masuda, K. and Döll, P.: A 59-year (1948-2006)
16 global meteorological forcing data set for land surface models. Part II: Global snowfall
17 estimation, *Hydrol. Res. Lett.*, 2(December), 65–69, doi:10.3178/hrl.2.65, 2008.
- 18 Hunger, M. and Döll, P.: Value of river discharge data for global-scale hydrological
19 modeling, *Hydrol. Earth Syst. Sci.*, 12(3), 841–861, doi:10.5194/hess-12-841-2008, 2008.
- 20 Lehner, B. and Döll, P.: Development and validation of a global database of lakes, reservoirs
21 and wetlands, *J. Hydrol.*, 296(1-4), 1–22 [online] Available from:
22 <http://linkinghub.elsevier.com/retrieve/pii/S0022169404001404>, 2004.
- 23 Lehner, B., Liermann, C. R., Revenga, C., Vörösmarty, C., Fekete, B., Crouzet, P., Döll, P.,
24 Endejan, M., Frenken, K., Magome, J., Nilsson, C., Robertson, J. C., Rödel, R., Sindorf, N.
25 and Wisser, D.: High-resolution mapping of the world's reservoirs and dams for sustainable
26 river-flow management, *Front. Ecol. Environ.*, 9(9), 494–502, doi:10.1890/100125, 2011.
- 27 McMillan, H., Krueger, T. and Freer, J.: Benchmarking observational uncertainties for
28 hydrology: rainfall, river discharge and water quality, *Hydrol. Process.*, 26(26), 4078–4111,
29 doi:10.1002/hyp.9384, 2012.
- 30 Müller Schmied, H., Adam, L., Eisner, S., Fink, G., Flörke, M., Kim, H., Oki, T., Portmann,
31 F. T., Reinecke, R., Riedel, C., Song, Q., Zhang, J., and Döll, P.: Impact of climate forcing
32 uncertainty and human water use on global and continental water balance components.
33 Submitted to *Proceedings of the Association of Hydrological Sciences*.
- 34 Müller Schmied, H., Eisner, S., Franz, D., Wattenbach, M., Portmann, F. T., Flörke, M. and
35 Döll, P.: Sensitivity of simulated global-scale freshwater fluxes and storages to input data,
36 hydrological model structure, human water use and calibration, *Hydrol. Earth Syst. Sci.*,
37 18(9), 3511–3538, doi:10.5194/hess-18-3511-2014, 2014.

- 1 Oki, T. and Kanae, S.: Global hydrological cycles and world water resources, *Science*,
2 313(5790), 1068–72, doi:10.1126/science.1128845, 2006.
- 3 Pavelsky, T. M., Durand, M. T., Andreadis, K. M., Beighley, R. E., Paiva, R. C. D., Allen, G.
4 H. and Miller, Z. F.: Assessing the potential global extent of SWOT river discharge
5 observations, *J. Hydrol.*, 519, 1516–1525, doi:10.1016/j.jhydrol.2014.08.044, 2014.
- 6 Rodell, M., Beaudoin, H. K., L'Ecuyer, T. S., Olson, W. S., Famiglietti, J. S., Houser, P. R.,
7 Adler, R., Bosilovich, M. G., Clayson, C. A., Chambers, D., Clark, E., Fetzer, E. J., Gao, X.,
8 Gu, G., Hilburn, K., Huffman, G. J., Lettenmaier, D. P., Liu, W. T., Robertson, F. R.,
9 Schlosser, C. A., Sheffield, J. and Wood, E. F.: The observed state of the water cycle in the
10 early 21st century, *J. Clim.*, 28(21), 8289-8928, doi:10.1175/JCLI-D-14-00555.1, 2015.
- 11 Schewe, J., Heinke, J., Gerten, D., Haddeland, I., Arnell, N. W., Clark, D. B., Dankers, R.,
12 Eisner, S., Fekete, B. M., Colón-González, F. J., Gosling, S. N., Kim, H., Liu, X., Masaki, Y.,
13 Portmann, F. T., Satoh, Y., Stacke, T., Tang, Q., Wada, Y., Wisser, D., Albrecht, T., Frieler,
14 K., Piontek, F., Warszawski, L. and Kabat, P.: Multimodel assessment of water scarcity under
15 climate change., *Proc. Natl. Acad. Sci. U. S. A.*, 111(9), 3245–50,
16 doi:10.1073/pnas.1222460110, 2014.
- 17 Schneider, U., Becker, A., Finger, P., Meyer-Christoffer, A., Rudolf, B. and Ziese, M.: GPCP
18 Full Data Reanalysis Version 7.0 at 0.5°: Monthly land-surface precipitation from rain-gauges
19 built on GTS-based and historic data, doi:10.5676/DWD_GPCP/FC_M_V7_050, 2015.
- 20 Sheffield, J., Goteti, G. and Wood, E. F.: Development of a 50-year high-resolution global
21 dataset of meteorological forcings for land surface modeling, *J. Clim.*, 19(13), 3088–3111,
22 doi:10.1175/JCLI3790.1, 2006.
- 23 Siebert, S., Kummu, M., Porkka, M., Döll, P., Ramankutty, N. and Scanlon, B. R.: A global
24 data set of the extent of irrigated land from 1900 to 2005, *Hydrol. Earth Syst. Sci.*, (19),
25 1521–1545, doi:10.13019/M20599, 2015.
- 26 Sood, A. and Smakhtin, V.: Global hydrological models: a review, *Hydrol. Sci. J.*, 60(4),
27 549–565, doi:10.1080/02626667.2014.950580, 2015.
- 28 Stocker, T. F., Qin, D., Plattner, G.-K., Alexander, L. V., Allen, S. K., Bindoff, N. L., Bréon,
29 F.-M., Church, J. A., Cubasch, U., Emori, S., Forster, P., Friedlingstein, P., Gillett, N.,
30 Gregory, J. M., Hartmann, D. L., Jansen, E., Kirtman, B., Knutti, R., Krishna Kumar, K.,
31 Lemke, P., Marotzke, J., Masson-Delmotte, V., Meehl, G. A., Mokhov, I. I., Piao, S.,
32 Ramaswamy, V., Randall, D., Rhein, M., Rojas, M., Sabine, C., Shindell, D., Talley, L. D.,
33 Vaughan, D. G. and Xie, S.-P.: Technical Summary, in: *Climate Change 2013: The Physical
34 Science Basis. Contribution of Working Group I to the Fifth Assessment Report of the
35 Intergovernmental Panel on Climate Change*, Stocker, T. F., Qin, D., Plattner, G.-K., Tignor,
36 M., Allen, S. K., Boschung, J., Nauels, A., Xia, Y., Bex, V. and Midgley P.M. (eds.).
37 Cambridge University Press, Cambridge, United Kingdom and New York, NY, USA., 84 pp.,
38 2013.
- 39 Tang, Q., Gao, H., Lu, H. and Lettenmaier, D. P.: Remote sensing: hydrology, *Prog. Phys.
40 Geogr.*, 33(4), 490–509, doi:10.1177/0309133309346650, 2009.

- 1 Trambauer, P., Maskey, S., Winsemius, H., Werner, M. and Uhlenbrook, S.: A review of
2 continental scale hydrological models and their suitability for drought forecasting in (sub-
3 Saharan) Africa, *Phys. Chem. Earth, Parts A/B/C*, 66, 16–26, doi:10.1016/j.pce.2013.07.003,
4 2013.
- 5 Uppala, S. M., Kållberg, P. W., Simmons, A. J., Andrae, U., Bechtold, V. D. C., Fiorino, M.,
6 Gibson, J. K., Haseler, J., Hernandez, A., Kelly, G. A., Li, X., Onogi, K., Saarinen, S., Sokka,
7 N., Allan, R. P., Andersson, E., Arpe, K., Balmaseda, M. A., Beljaars, A. C. M., Berg, L. Van
8 De, Bidlot, J., Bormann, N., Caires, S., Chevallier, F., Dethof, A., Dragosavac, M., Fisher,
9 M., Fuentes, M., Hagemann, S., Hólm, E., Hoskins, B. J., Isaksen, L., Janssen, P. A. E. M.,
10 Jenne, R., McNally, A. P., Mahfouf, J.-F., Morcrette, J.-J., Rayner, N. A., Saunders, R. W.,
11 Simon, P., Sterl, A., Trenberth, K. E., Untch, A., Vasiljevic, D., Viterbo, P. and Woollen, J.:
12 The ERA-40 re-analysis, *Q. J. R. Meteorol. Soc.*, 131(612), 2961–3012,
13 doi:10.1256/qj.04.176, 2005.
- 14 Voisin, N., Wood, A. W. and Lettenmaier, D. P.: Evaluation of Precipitation Products for
15 Global Hydrological Prediction, *J. Hydrometeorol.*, 9(3), 388–407,
16 doi:10.1175/2007JHM938.1, 2008.
- 17 Vörösmarty, C. J., Hoekstra, A. Y., Bunn, S. E., Conway, D. and Gupta, J.: Fresh water goes
18 global, *Science* (80), 349(6247), 478–479, doi:10.1126/science.aac6009, 2015.
- 19 Wada, Y., van Beek, L. P. H., van Kempen, C. M., Reckman, J. W. T. M., Vasak, S. and
20 Bierkens, M. F. P.: Global depletion of groundwater resources, *Geophys. Res. Lett.*, 37(20),
21 L20402, doi:10.1029/2010GL044571, 2010.
- 22 Weedon, G. P., Balsamo, G., Bellouin, N., Gomes, S., Best, M. J. and Viterbo, P.: The
23 WFDEI meteorological forcing data set: WATCH Forcing Data methodology applied to
24 ERA-Interim reanalysis data, *Water Resour. Res.*, 7505–7514, doi:10.1002/2014WR015638,
25 2014.
- 26 Weedon, G. P., Gomes, S., Viterbo, P., Österle, H., Adam, J. C., Bellouin, N., Boucher, O.
27 and Best, M.: The WATCH Forcing Data: a meteorological forcing dataset for land surface-
28 and hydrological models, *Watch Techn. Rep.*, 22, p. 41, available at: [http://www.eu-
29 watch.org/media/default.aspx/emma/org/10376311/WATCH+Technical+Report+Number+22
30 +The+WATCH+forcing+data+1958-
31 2001+A+meteorological+forcing+dataset+for+land+surface+and+hydrological-models.pdf](http://www.eu-watch.org/media/default.aspx/emma/org/10376311/WATCH+Technical+Report+Number+22+The+WATCH+forcing+data+1958-2001+A+meteorological+forcing+dataset+for+land+surface+and+hydrological-models.pdf)
32 (last access: 22 December 2015), 2010.
- 33 Weedon, G. P., Gomes, S., Viterbo, P., Shuttleworth, W. J., Blyth, E., Österle, H., Adam, J.
34 C., Bellouin, N., Boucher, O. and Best, M.: Creation of the WATCH Forcing Data and its use
35 to assess global and regional reference crop evaporation over land during the twentieth
36 century, *J. Hydrometeorol.*, 12(5), 823–848, doi:10.1175/2011JHM1369.1, 2011.
- 37 Wissler, D., Fekete, B. M., Vörösmarty, C. J. and Schumann, A. H.: Reconstructing 20th
38 century global hydrography: a contribution to the Global Terrestrial Network- Hydrology
39 (GTN-H), *Hydrol. Earth Syst. Sci.*, 14(1), 1–24, doi:10.5194/hess-14-1-2010, 2010.

- 1 Yoshimura, K. and Kanamitsu, M.: Dynamical global downscaling of global reanalysis, Mon.
- 2 Wea. Rev., 136, 2983-2998, doi:10.1175/2008MWR2281.1, 2008.

1 Table 1: Examples of indicator calculation (Sect. 2.4.2) for four large river basins at grid cells
 2 located near the outflow to the ocean for the forcing GSWP3 and changes from 1941-1970
 3 (t1) to 1971-2000 (t2). Values for latitude and longitude in decimal degrees, values for A_n
 4 and B_n are dimensionless, other numbers in $\text{km}^3 \text{ yr}^{-1}$. Explanations of variables other than Lat
 5 and Lon see Sect. 2.4.2.

	Rhine River	Congo River	Colorado River	Yellow River
Lat	4.25	12.25	-114.75	133.25
Lon	52.25	-6.25	31.75	48.25
$P_{\text{bas}(n),t1}$	169.36	5735.52	191.24	771.92
$P_{\text{bas}(n),t2}$	176.43	5469.11	206.56	771.91
$Q_{\text{natn},t1}$	69.27	1370.46	1.53	215.28
$Q_{\text{natn},t2}$	75.19	1251.09	1.92	209.94
$Q_{n,t1}$	67.83	1370.46	0.62	213.41
$Q_{n,t2}$	72.63	1250.67	0.10	203.68
A_n	0.61	0.52	-0.26	0.00
B_n	-0.23	0.00	1.76	0.45
Dominant driver	$A_n > B_n$ & $A_n > 0$: Precipitation		$B_n > A_n$ & $B_n > 0$: Human impact	

1 Table 2. Global sums of water balance components for land area (except Antarctica and Greenland) [$\text{km}^3 \text{ yr}^{-1}$] from WaterGAP (same sorting
 2 as Table 2 in Müller Schmied et al. 2014) for the five model variants and the years 1971-2000. Cells representing inland sinks were excluded
 3 but discharge into inland sinks was included.

No.	Component	GSWP3	PGFv2.1	WFD	WFDEI_hom	WFD_WFDEI
1	Precipitation P	109 631	103 525	110 690	111 050	111 050
2	Actual evapotranspiration AET ^a	68 026	63 416	67 588	69 907	68 887
3	Discharge into oceans and inland sinks Q ^b	40 678	39 173	42 200	40 213	41 298
4	Water consumption (actual) (rows 5 + 6) WCa	933	960	915	949	932
5	Net abstraction from surface water (actual) ^c	1050	1071	1023	1070	1044
6	Net abstraction from groundwater ^d	-117	-111	-108	-121	-112
7	Change of total water storage dS/dt^e	-14	-30	-20	-25	-74
	Long-term-averaged yearly volume balance					
8	error (P-AET-Q-WCa-dS/dt)	6	6	7	6	6

4 ^aAET does not include evapotranspiration caused by human water use, i.e. actual water consumption WCa; ^bTaking into account
 5 anthropogenic water use; ^cSatisfied demand from surface waters; ^dNegative values indicate that return flows from irrigation with surface water
 6 exceed groundwater abstractions; ^eTotal water storage (TWS) of 31 December 2000 minus TWS of 31 December 1970, divided by the number
 7 of 30 years.

1 Table 3. Continental climate forcing variables (T, SWD, LWD, P) and water balance
2 components (AET, Q, WCa). Ensemble mean and min/max deviation from mean (in %, also
3 for T) over all four homogenous forcing variants (GSWP3, PGFv2.1, WFD, WFDEI_hom),
4 for six continental regions and the global total and for the time period 1971-2000.

		Africa	Asia	Europe ¹	NAmerica	Oceania	SAmerica	Global
T [°C]	Mean	24.1	14.6	-1.6	4.2	21.7	22.1	13.6
	Δ min	-0.2	0.0	-5.3	-3.0	-0.2	-0.1	-0.4
	Δ max	0.1	0.1	14.0	1.3	0.4	0.2	0.2
SWD [W m ⁻²]	Mean	229	196	117	156	229	197	185
	Δ min	-11.1	-5.6	-9.9	-1.9	-2.4	-6.8	-6.7
	Δ max	3.9	2.9	4.5	2.3	1.2	4.4	2.5
LWD [W m ⁻²]	Mean	365	322	266	285	351	381	326
	Δ min	-0.2	-0.7	-1.0	-1.2	-0.9	1.4	-0.3
	Δ max	0.4	1.0	0.9	1.2	0.6	1.5	0.3
P [km ³ yr ⁻¹]	Mean	20 457	24 501	13 026	16 177	5939	28 623	108 724
	Δ min	-5.6	-3.0	-7.0	-6.9	-2.4	-4.0	-4.8
	Δ max	3.9	2.6	3.7	3.7	1.9	2.1	2.1
AET [km ³ yr ⁻¹]	Mean	16 194	13 506	6942	9573	3887	17 132	67 234
	Δ min	-5.5	-4.0	-8.7	-8.0	-3.0	-5.2	-5.7
	Δ max	4.7	3.7	3.7	5.4	3.2	3.4	4.0
Q [km ³ yr ⁻¹]	Mean	4183	10 276	6138	6507	2033	11 428	40 566
	Δ min	-5.9	-3.6	-5.0	-5.4	-3.4	-2.2	-3.4
	Δ max	10.9	4.4	4.0	3.8	5.0	2.5	4.0
WCa [km ³ yr ⁻¹]	Mean	71	612	87	121	16	32	939
	Δ min	-5.9	-1.0	-8.5	-5.3	-2.8	-2.8	-2.6
	Δ max	2.5	1.7	3.6	5.7	2.5	2.8	2.2

1 ¹ includes all of Russian Federation

1 Table 4. Average density of precipitation gauging stations and P sums [km³ yr⁻¹] for 1971-2000 of the original P data that were used for bias
 2 correction (WFD: GPCCv4, WFDEI: GPCCv5, GSWP3: GPCCv6, PGFv2.1: CRU TS3.21) and P outputs of WaterGAP using the undercatch
 3 adjusted forcings (except PGFv2.1 which is not adjusted).

variable	continent	Africa	Asia	Europe	NAmerica	Oceania	SAmerica	global
Stations per 0.5° grid cell	CRU TS3.21	0.12	0.09	0.06	0.12	0.17	0.06	0.09
	GPCCv4	0.30	0.23	0.61	0.32	1.05	0.61	0.44
	GPCCv5	0.31	0.30	0.66	0.54	1.82	0.63	0.57
	GPCCv6	0.31	0.32	0.68	0.60	1.85	0.71	0.60
P totals (without undercatch correction)	CRU TS3.21	19 595	24 040	12 128	15 160	5958	27 611	104 492
	GPCCv4	19 745	24 062	11 858	15 073	5732	28 135	104 605
	GPCCv5	19 729	24 044	11 852	15 095	5688	28 201	104 610
	GPCCv6	19 724	24 066	11 861	15 116	5694	28 085	104 546
P totals (WaterGAP)	PGFv2.1	19 318	23 756	12 112	15 065	5799	27 475	103 525
	WFD	21 102	24 519	13 232	16 732	5960	29 146	110 690
	WFDEI_hom	21 250	24 597	13 256	16 779	5945	29 223	111 050
	GSWP3	20 160	25 133	13 505	16 131	6053	28 649	109 631

1 Table 5. Global sums of water balance components for land area [km³ yr⁻¹] (except Antarctica, Greenland, and inland sinks) (component
 2 numbers as in Table 2) for the model variants and the years 1971-2000, divided in calibrated and non-calibrated grid cells.

No.	calibrated regions					non-calibrated regions				
	GSWP3	PGFv2.1	WFD	WFDEI_hom	WFD_WFDEI	GSWP3	PGFv2.1	WFD	WFDEI_hom	WFD_WFDEI
1	66 825	63 290	68 039	68 288	68 288	42 806	40 235	42 651	42 762	42 762
2	43 996	40 112	45 232	45 482	44 903	24 031	23 303	22 356	24 425	23 984
3	22 291	22 619	22 286	22 269	22 893	18 388	16 554	19 915	17 944	18 405
4	523	546	515	531	523	411	414	400	418	410
5	582	598	572	594	581	468	473	451	476	463
6	-59	-52	-58	-62	-59	-57	-59	-50	-58	-53
7	18	15	9	9	-28	-32	-44	-29	-33	-46
8	-3	-3	-2	-3	-2	9	8	9	8	8

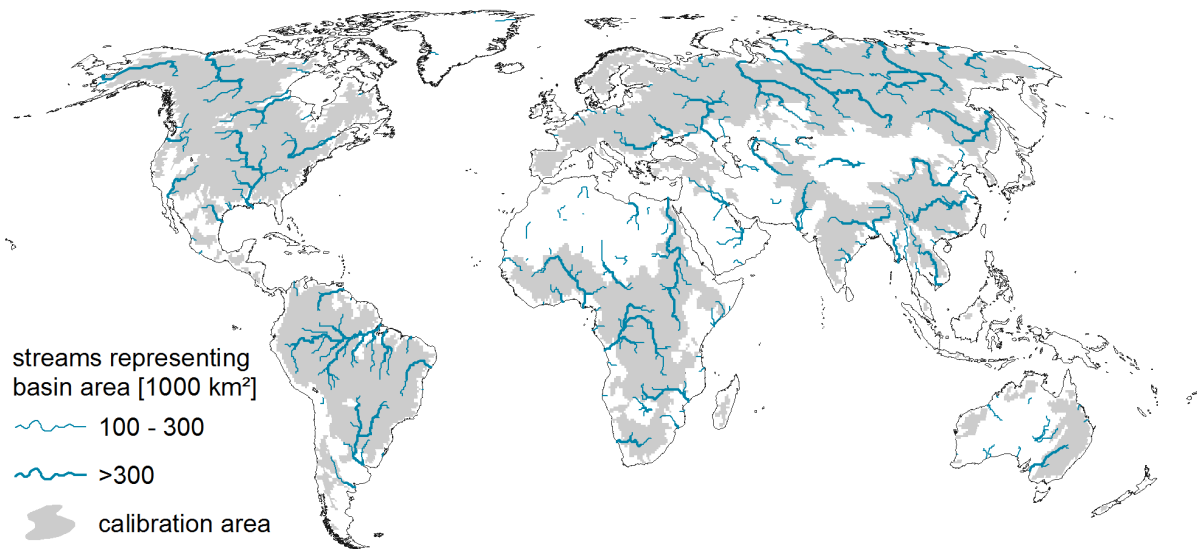
3

4

1 Table 6. Global and continental estimates of WaterGAP water balance components compared to literature values [$\text{km}^3 \text{ yr}^{-1}$]. WaterGAP results
 2 are analyzed for the same time span and spatial coverage as the reference and are comparable in terms of precipitation undercatch (see
 3 footnotes).

Source	Coverage	time span	P		AET		Q	
			WaterGAP	reference	WaterGAP	reference	WaterGAP	reference
Wisser et al. (2010)	global, w G	1901-1925	102 110 ^a	105 298	63 319 ^{a,b}	68 274	37 974 ^a	36 888
		1926-1950	102 653 ^a	105 675	63 081 ^{a,b}	67 826	38 837 ^a	37 092
		1951-1975	105 444 ^a	108 081	64 693 ^{a,b}	68 550	39 914 ^a	38 864
		1976-2002	104 436 ^a	106 764	64 337 ^{a,b}	69 917	39 421 ^a	36 813
		1901-2002	103 676 ^a	106 461	63 867 ^{a,b}	68 480	39 044 ^a	37 401
Hanasaki et al. (2010)	global, w G, w A	1984-1999	106 012 ^{a,c}	113 900	64 281 ^{a,b,d}	72 080	40 876 ^{a,c}	41 820
Rodell et al. (2015)	global, w/o A	2000-2010	113 341 ^f	114 300	71 554 ^{b,f}	70 500	41 309 ^f	43 800
	NAmerica, w G		17 983 ^f	17 717	10 339 ^{b,f}	9911	6604 ^f	7894
	SAmerica		29 153 ^f	29 587	17 573 ^{b,f}	17 286	11 579 ^f	12 301
	Africa		21 323 ^f	20 629	17 307 ^{b,f}	16 809	4029 ^f	3820
Müller Schmied et al. (2014)	global, w/o G, w/o A	1971-2000	111 050 ^g	111 070 ^h	69 819 ^{b,g}	70 576 ^{b,h}	41 298 ^g	40 458 ^h

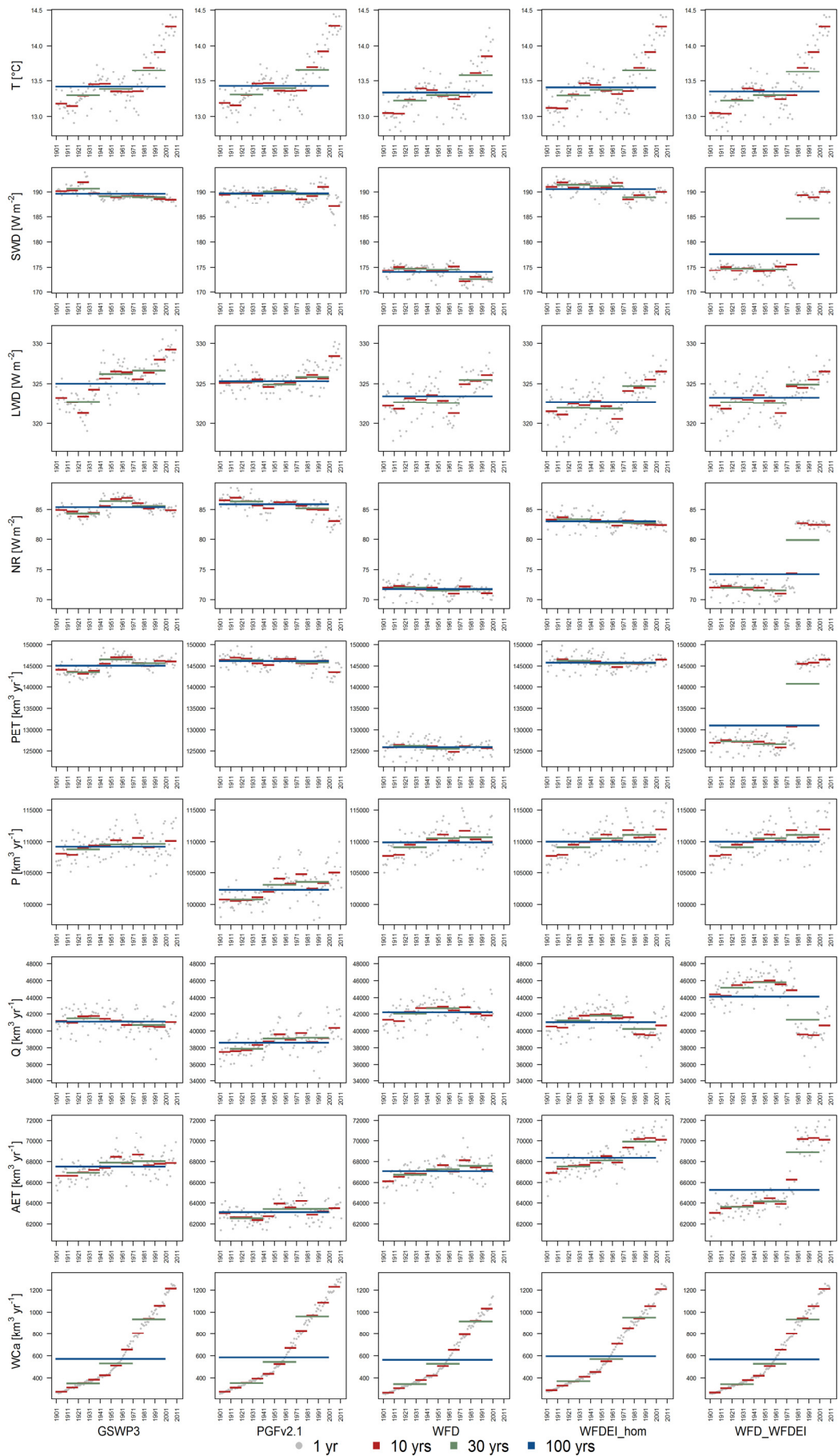
1 ^aPGFv2.1, ^bincluding WCa, ^cincluding Antarctica (as 2.1% of global value), ^dincluding Antarctica (as 4.9% of global value), ^eincluding
2 Antarctica (as 0.2% of global value, all percentages based on Rodell et al., 2015), ^fWFDEI_hom, ^gWFD_WFDEI, ^hSTANDARD model
3 variant; G in column coverage: Greenland, A in column coverage: Antarctica.



1

2 Figure 1. Global land area affected by WaterGAP 2.2 (ISI-MIP 2.1) calibration (grey shading)
3 against observed long-term average river discharge. Streamflow directions and flow
4 accumulation are based on the drainage direction map DDM30 with 0.5° resolution (Döll and
5 Lehner, 2002).

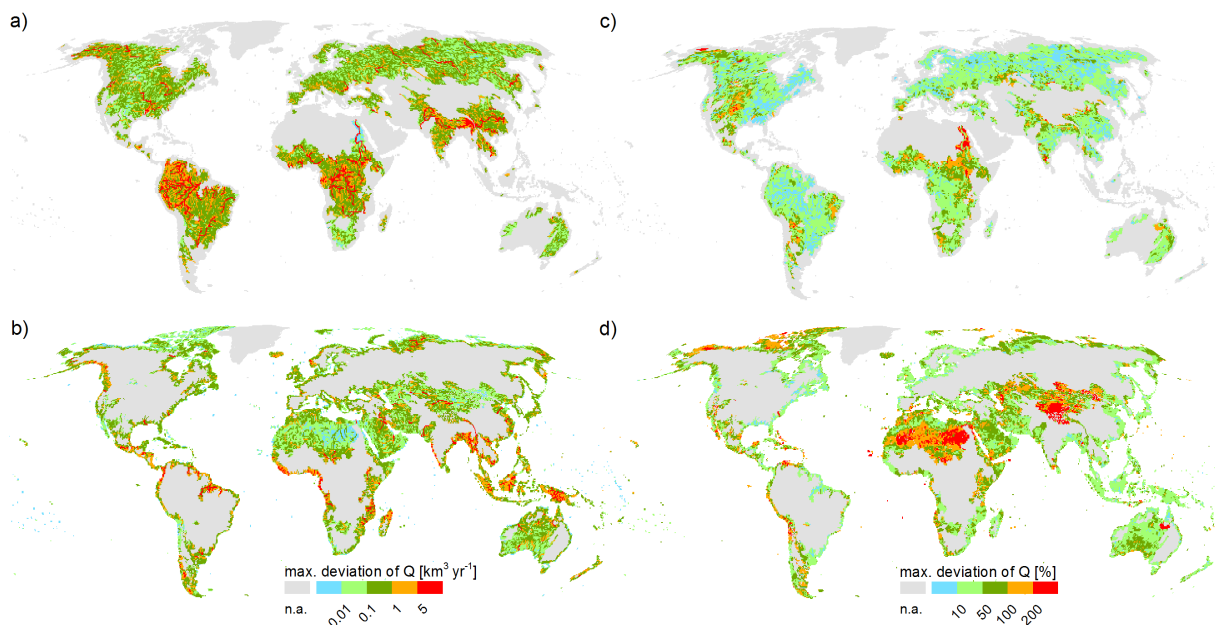
6



1

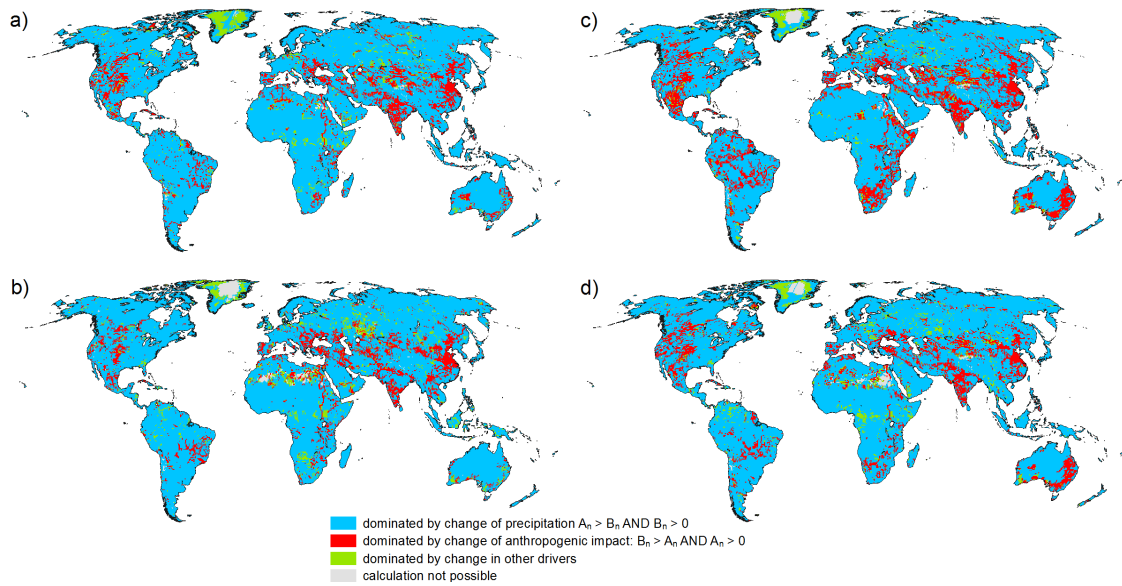
1 Figure 2. Global sums (means) of climatic variables and water balance components for five
 2 climate forcings (GSWP3: 1901-2010, PGFv2.1: 1901-2012, WFD: 1901-2001,
 3 WFDEI_hom: 1901-2010, WFD_WFDEI: 1901-2010) for different temporal aggregation
 4 periods of 1, 10, 30, and 100 years. Displayed are: temperature (T), shortwave downward
 5 radiation (SWD), longwave downward radiation (LWD), precipitation (P), discharge into the
 6 ocean or inland sinks (Q), actual evapotranspiration (AET) and (actual) water consumption
 7 from surface water resources (which could be smaller than the demand, depending on water
 8 availability) and groundwater resources (WCa).

9



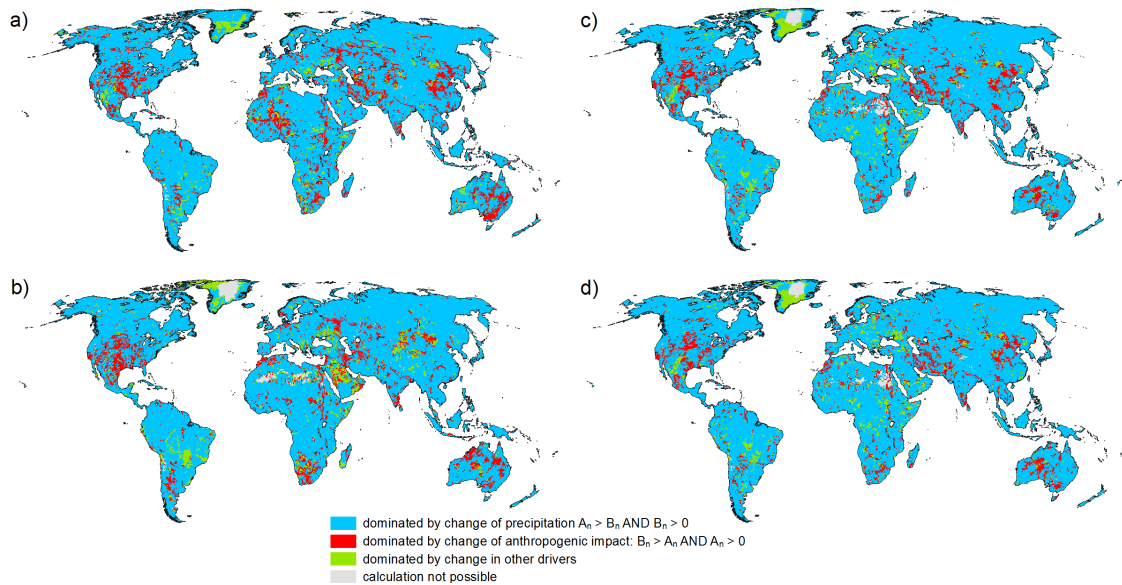
10

11 Figure 3. Spatial distribution of the maximum difference of long-term average (1971-2000) Q
 12 among the four homogeneous climate forcings (GSWP3, PGFv2.1, WFD, WFDEI_hom),
 13 expressed as absolute deviation [$\text{km}^3 \text{yr}^{-1}$] (a, b) and relative deviation (c, d) separately for
 14 calibrated (a, c) and non-calibrated (b, d) regions. Grey areas contain either no discharge or
 15 are outside the region of interest, i.e. non-calibrated regions are grey in a) and c) and vice
 16 versa.



1
 2 Figure 4. Relative dominance of drivers of change of long-term average Q between 1941-
 3 1970 and 1971-2000 (Sect. 2.4.2). Blue indicates that change in P is more dominant than
 4 change in anthropogenic impact due to water abstraction and dam construction, red indicates
 5 the opposite. In green areas, other drivers are dominant. In grey areas a calculation is not
 6 possible as the denominator of indicators A_n and B_n is zero (no change in long-term average
 7 Q). Results are shown for WaterGAP as driven by the meteorological forcings GSWP3 (a),
 8 PGFv2.1 (b), WFDEI_hom (c) and WFD (d).

9



10
 11 Figure 5. Relative dominance of drivers of change of long-term average Q between 1911-

1 1940 and 1941-1970 (Sect. 2.4.2). Blue indicates that change in P is more dominant than
2 change in anthropogenic impact due to water abstraction and dam construction, red indicates
3 the opposite. In green areas, other drivers are dominant. In grey areas a calculation is not
4 possible as the denominator of indicators A_n and B_n is zero (no change in long-term average
5 Q). Results are shown for WaterGAP as driven by the meteorological forcings GSWP3 (a),
6 PGFv2.1 (b), WFDEI_hom (c) and WFD (d).

7

8