

Interactive comment on “Assimilation of space-based passive microwave soil moisture retrievals and the correction for a dynamic open water fraction” by B. T. Gouweleeuw et al.

B. T. Gouweleeuw et al.

ben.gouweleeuw@csiro.au

Received and published: 11 April 2012

Added Figure 2 caption

Interactive comment on Hydrol. Earth Syst. Sci. Discuss., 9, 1013, 2012.

Full Screen / Esc

Printer-friendly Version

Interactive Discussion

Discussion Paper

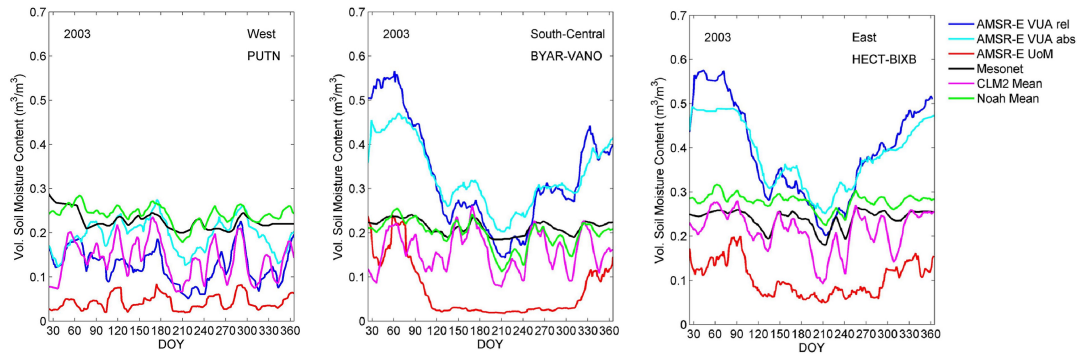


Fig. 1. Fig. 2. AMSR-E derived, ground-observed and simulated soil moisture for 0.25 grid cells in the Western (PUTN), South-Central (BYAR-VANO) and Eastern Oklahoma area (HECT-BIXB) (low pass filter 14 days)

Full Screen / Esc

Printer-friendly Version

Interactive Discussion

Discussion Paper