

This discussion paper is/has been under review for the journal Hydrology and Earth System Sciences (HESS). Please refer to the corresponding final paper in HESS if available.

An ecohydrological sketch of climate change impacts on water and natural ecosystems for The Netherlands: bridging the gap between science and society

J. P. M. Witte^{1,2}, J. Runhaar¹, R. van Ek³, D. C. J. van der Hoek⁴,
R. P. Bartholomeus¹, O. Batelaan^{5,6}, P. M. van Bodegom², M. J. Wassen⁷, and
S. E. A. T. M. van der Zee⁸

¹KWR Watercycle Research Institute, P.O. Box 1072, 3430 BB Nieuwegein, The Netherlands

²VU University Amsterdam, Department of Ecological Science, De Boelelaan 1085,
1081 HV Amsterdam, The Netherlands

³Deltares, P.O. Box 85467, 3508 AL Utrecht, The Netherlands

⁴PBL Netherlands Environmental Assessment Agency, P.O. Box 303,
3720 AH Bilthoven, The Netherlands

⁵Department of Hydrology and Hydraulic Engineering, Vrije Universiteit Brussel, Pleinlaan 2,
1050 Brussels, Belgium

⁶Department of Earth and Environmental Sciences, K. U. Leuven,
Celestijnenlaan 200e – bus 2410, 3001 Heverlee, Belgium

6311

HESSD

9, 6311–6344, 2012

**Climate change
impacts on water and
natural ecosystems
for The Netherlands**

J. P. M. Witte et al.

Title Page

Abstract

Introduction

Conclusions

References

Tables

Figures

⏪

⏩

◀

▶

Back

Close

Full Screen / Esc

Printer-friendly Version

Interactive Discussion



⁷Environmental Sciences, Faculty of Geosciences, Copernicus Institute of Sustainable Development, Utrecht University, Heidelberglaan 2, 3584 CS Utrecht, The Netherlands

⁸Wageningen UR, Environmental sciences, Soil Physics, Ecohydrology and Groundwater Management Group, P.O. Box 47, 6700 AA Wageningen, The Netherlands

Received: 25 April 2012 – Accepted: 4 May 2012 – Published: 23 May 2012

Correspondence to: J. P. M. Witte (flip.witte@kwrwater.nl)

Published by Copernicus Publications on behalf of the European Geosciences Union.

HESSD

9, 6311–6344, 2012

Climate change impacts on water and natural ecosystems for The Netherlands

J. P. M. Witte et al.

Title Page

Abstract

Introduction

Conclusions

References

Tables

Figures



Back

Close

Full Screen / Esc

Printer-friendly Version

Interactive Discussion



Abstract

For policy making and spatial planning, information is needed about the impacts of climate change on natural ecosystems. To provide this information, commonly hydrological and ecological models are used. We give arguments for our assessment that modelling only is insufficient for determining the impacts of climate changes on natural ecosystems at regional scales. Instead, we proposed a combination of hydrological simulations, a literature review and process-knowledge on climate-hydrology-vegetation interactions, to compile a sketch-map that indicates climate change effects on a number of ecosystems in The Netherlands. Soon after its introduction, copies of our sketch-map appeared in policy documents and in a commercial and popular atlas of The Netherlands. Moreover, the map led to a question in the Dutch parliament about the survivability of bog reserves in the future climate. Apparently, there was an urgent need for the information provided by the map.

The map shows that climate change will presumably have the largest influence on ecosystems in The Netherlands that depend on precipitation as the major water source, like heathlands, dry grasslands, rain-fed moorland pools and raised bogs. Also highly susceptible are fens in reserves surrounded by deeply drained polders, because such fens depend on the inlet of surface water, of which quality is likely to deteriorate upon climate change. While the map is indicative for directions of change, in view of the uncertainties of our study no conclusions should be drawn that may have far-reaching consequences, such as giving up certain nature targets that might no longer be feasible in the future climate. Instead, we advise to anticipate on the potential threats from climate change by taking a number of adaptation measures that enhance the robustness of nature reserves.

To improve climate change projections on hydrology and ecosystems, future research should especially focus on feedbacks of vegetation on the water balance, on processes that directly influence plant performance and on the ecological effects of weather extremes.

Climate change impacts on water and natural ecosystems for The Netherlands

J. P. M. Witte et al.

Title Page

Abstract

Introduction

Conclusions

References

Tables

Figures



Back

Close

Full Screen / Esc

Printer-friendly Version

Interactive Discussion



1 Introduction

1.1 ~~Problem definition~~

Both observations and model simulations indicate that the climate of our earth is changing at an unprecedented pace (Dai, 2011; Karl et al., 1995; Solomon et al., 2007). It is foreseen that not only temperature will rise, but also that more prolonged dry periods will alternate with more intensive rainfall events, both within and between years. This will change, among others, soil moisture dynamics (Easterling et al., 2000; Fay et al., 2008; Knapp et al., 2008; Porporato et al., 2004; Weltzin et al., 2003). Soil moisture is the most important environmental filter of local terrestrial plant species composition, as it determines the availability of both oxygen and water to plant roots and, with that, indirectly other habitat factors that are essential for plant growth, such as soil acidity and nutrient availability (Bartholomeus et al., 2011a; Easterling et al., 2000; Knapp et al., 2008; Levine et al., 2008; Porporato et al., 2004; Weltzin et al., 2003; Witte et al., 2007).

In view of the projected change in climate and hydrology, it is questionable whether target ecosystems for nature preservation may still be attained under a future climate. This is important, since most of such targets are legally enforced, e.g. by the European Habitat Directive, by the Water Framework Directive and by national legislations of several countries. For a timely response to climate change, as well as to avoid measures that may be ineffective, policy makers and spatial planners require information about the feasibility of nature targets under a future climate. It is inevitable that models are used for this purpose, because the empirical bases for climate change effects in the recent past, across transects that cover different climate zones, is too small. However, it is debatable whether current models are properly equipped for assessing climate change effects on nature targets. Here, we suggest that a combination of model results with other sources of information should be preferred above relying on model results alone.

The aims of this paper are: (1) to provide insight into the usability of current models for climate change projections, and (2) to demonstrate how model results can be

Climate change impacts on water and natural ecosystems for The Netherlands

J. P. M. Witte et al.

Title Page

Abstract

Introduction

Conclusions

References

Tables

Figures



Back

Close

Full Screen / Esc

Printer-friendly Version

Interactive Discussion



combined with a literature survey, process knowledge and the consultation of experts, to compile a sketch map of climate change effects on natural ecosystems that fulfils the current needs of policy makers and spatial planners. For illustration, and because of the wealth of information for the Dutch delta region, we focus on The Netherlands. The Dutch delta and its transition to the upstream higher regions is one of the important geo-hydrological reference cases, comparable to other such EU regions (e.g. Rhone, Po, Danube's and Ebro's deltas and estuaries), which are of similar ecological importance. Moreover, we consider possible eco-hydrological effects of two climate scenarios, a relatively dry one and a relatively wet one.

Hydrological characterization of The Netherlands

The Netherlands is a small and flat country with a temperate sea climate that has small spatial differences in meteorological conditions. The mean summer and winter temperature is 16°C and 3°C, respectively, the mean yearly precipitation is 770 mm and the mean yearly Makkink (1957) reference evapotranspiration is 563 mm. From a hydrological viewpoint the country can be divided in: (1) a “high part” where drainage is mostly by gravity, found in the coastal dunes in the west (elevation up to 80 m a.m.s.l.) and the Pleistocene cover sand landscape and ice-pushed ridges in the middle, east and south (elevation up to 150 m a.m.s.l.), and (2) the clayey and peaty “low part” formed during the Holocene transgressions in the west and north of The Netherlands (elevation -5 to +5 m a.m.s.l.), consisting of polders where the surface water regime is artificially controlled by the inlet of surface water in times of water shortage and by pumping out water in case of water excess. Figure 1 shows cross-sections of two characteristic landscapes: a stream valley in the high part and a fen area in the low part.

The usability of models for climate change projections

Impacts of the water regime on natural vegetation in The Netherlands have been assessed by vegetation models on the basis of results obtained with transient hydrological

Climate change impacts on water and natural ecosystems for The Netherlands

J. P. M. Witte et al.

Title Page

Abstract

Introduction

Conclusions

References

Tables

Figures



Back

Close

Full Screen / Esc

Printer-friendly Version

Interactive Discussion



modelling (Olde Venterink and Wassen, 1997; Witte et al., 2008b). Developments in both types of models and in their combination have been tremendous during the past two decades.

Transient hydrological models are especially needed in low lying areas such as The Netherlands, where groundwater levels in large parts of the country are shallow so that capillary flow from the groundwater table to the rooting zone is an important source of water supply to crops and natural vegetation. A major limitation to the combined modelling of surface water, groundwater and the water-unsaturated zone is that few integrated models are available that rigorously link these zones. A well-known example is GeoHydroSphere (Sudic et al., 2008). When they are used, e.g. for shallow groundwater wetlands, they be very computationally demanding (Frei et al., 2010). Alternatively, so-called minimalist modelling according to the new ecohydrological framework that follows a systems analysis approach (Rodriguez-Iturbe and Porporato, 2004), has predominantly focussed on semi-arid situations. Approaches that account for capillary replenishment of root zone water are limited (Vervoort and van der Zee, 2008). At this moment, such modelling is conceptual rather than directly of use for the present purpose.

Hence, in practice the groundwater is typically modelled using codes such as Modflow (Harbaugh et al., 2000), for local and small catchment scales, or even for the whole of The Netherlands (comprising 35 000 km²). Since Modflow is a saturated zone flow model, the top system has either to be simulated with a separate model that explicitly addresses the vadose zone (e.g. SWAP; Van Dam et al., 2008), or it has to be adequately mimicked in the Modflow boundary conditions. This is feasible if vegetation is conceptualized as a layer with fixed characteristics that partitions precipitation into intercepted rain water (E_i), evaporation from the soil (E_s) and water uptake from the soil by roots (transpiration, T). Errors in the simulated actual evapotranspiration (ET) can be considerable (e.g. Liu and Yang, 2010; Moore and Heilman, 2011; Zhang et al., 2010) but are usually obscured because modelling is not validated on ET. Instead, it is common practice to calibrate hydrological models on measured groundwater

Climate change impacts on water and natural ecosystems for The Netherlands

J. P. M. Witte et al.

Title Page

Abstract

Introduction

Conclusions

References

Tables

Figures



Back

Close

Full Screen / Esc

Printer-friendly Version

Interactive Discussion

5 levels and, when available, on measured surface water discharges, i.e. by adjusting the soil physical properties of the subsoil, such as the transmissivity of the underlying aquifers. Whereas in this way a good description of observed groundwater levels may be achieved, there is no reason why this should lead to accuracy with regard to the different water fluxes. Moreover, it is doubtful whether such a model is suitable for climate projections since it is not calibrated on the entity ET that, together with precipitation (P) and surface runoff, actually determines groundwater recharge and thus drives the groundwater system.

10 Even more constraints relate to the application of hydrological model in climate projections. In most regional hydrological models, vegetation is not explicitly represented, and conceptual parameterizations are used to find actual ET. Actual ET is estimated by scaling potential ET using empirical functions of soil moisture and/or vegetation (Arora, 2002). For instance, potential ET is usually derived from a reference ET, provided by a meteorological institute, via an empirical crop or vegetation type dependent factor.

15 This approach (*sensu* Allen et al., 2005; Feddes, 1987) may be preferred for model simplicity, but such factors can only be applied under the climate conditions for which they were determined, especially since they implicitly include interception, a term that is highly dependent on the precipitation regime (which is likely to change). In addition, hydrological models often do not account for the fact that plants may reduce their future transpiration rate because their necessary consumption of carbon through their stomata is fulfilled more easily at enhanced atmospheric CO₂-levels (De Boer et al., 2011; Kruijt et al., 2008). Finally, in practice current transient models do not account for the fact that vegetation may respond to increased drought by changes in vegetation cover and in rooting depth (Knapp et al., 2008; Moore and Heilman, 2011; Porporato et al., 2001; Wegehenkel, 2009).

25 In The Netherlands, this adaptation of vegetation to climate change can especially be expected on elevated sandy soils with deep groundwater tables, such as Pleistocene hills and coastal dunes. For those areas it is predicted that the fraction of bare soil and non-rooting species (lichens and mosses) in the vegetation will increase when summers become drier (Kamps et al., 2008; Wegehenkel, 2009;

Climate change impacts on water and natural ecosystems for The Netherlands

J. P. M. Witte et al.

[Title Page](#)[Abstract](#)[Introduction](#)[Conclusions](#)[References](#)[Tables](#)[Figures](#)[⏪](#)[⏩](#)[◀](#)[▶](#)[Back](#)[Close](#)[Full Screen / Esc](#)[Printer-friendly Version](#)[Interactive Discussion](#)

Witte et al., 2008a). This could increase future groundwater recharge, as actual ET decreases with decreasing vascular plant cover.

The importance of explicitly considering vegetation in hydrological models and the explicit distinction of soil evaporation, transpiration and interception is increasingly recognized (Brooks et al., 2011; Jackson et al., 2009; Liu, 2009). Nevertheless, only few studies exist that consider the vegetation as a dynamic component and that attempt to account for the dynamic interactions between hydrology and vegetation (e.g. Brolsma et al., 2010; Gerten et al., 2004; Wigmosta et al., 2002). However, because such models are very data and computationally demanding, they are not yet applicable for climate projections on a regional scale, certainly not in an area with shallow groundwater levels, such as The Netherlands.

In addition to hydrological models, also the application of vegetation models to evaluate the impact of climate projections on nature targets is not without complications. To predict changes in vegetation distribution due to global change, various models have been developed, each with its own approach, scale and timeline, and thus also each with its own strengths and limitations (Douma, 2011). Of these models, habitat distribution models (HDMs) play an important role (Guisan and Zimmermann, 2000). Current HDMs, however, are likely inapplicable under changing climatic conditions for at least three reasons. First, they use relationships based on measurements for the current climate, assuming steady state or pseudo steady-state conditions (Guisan and Thuiller, 2005). Climate change is irreconcilable with steady state and various studies have indicated that upon changing conditions other processes may become important, including vegetation adaptation, shifts in feedback mechanisms and switches in the type of resource limitation (light, water, nitrogen, phosphorus) (Van Bodegom et al., 2012). Second, the applied relationships between environmental factors and vegetation characteristics are often highly correlative and do not include climate variables like temperature, which impedes application to other climatic conditions (Bartholomeus et al., 2011b; Botkin et al., 2007; Guisan and Thuiller, 2005; Pearson and Dawson, 2003).

Climate change impacts on water and natural ecosystems for The Netherlands

J. P. M. Witte et al.

Title Page

Abstract Introduction

Conclusions References

Tables Figures

⏪ ⏩

◀ ▶

Back Close

Full Screen / Esc

Printer-friendly Version

Interactive Discussion



Third, they do not account for no-analogue combinations of environmental conditions (Bartholomeus et al., 2011a).

Based on empirical work on competition for resources between species, also a few mechanistic competition-succession models have been built that can be used for climate projections (for The Netherlands: Van Oene et al., 1999; Van Oene and Berendse, 2001). A drawback of these models is that the inclusion of more processes requires a higher number of input parameters, which usually goes at the cost of the model accuracy and applicability (Baird, 1999; Douma, 2011; Guisan and Zimmermann, 2000). For this reason, mechanistic models have only been applied to a limited number of well-studied species and ecosystems (Morin and Lechowicz, 2008).



4 Ecohydrological sketch map

We conclude that neither hydrological nor vegetation models are currently suited to reliably assess the effects of climate change on natural vegetation on landscape scales varying from small catchments to the whole of The Netherlands. Therefore, we adopted an alternative approach: based on a combination of literature review, model results and expert judgement, we compiled an approximate sketch map for The Netherlands, presenting the estimated perspectives for a number of broad-scaled ecosystems. This map indicates how a number of characteristic ecosystems for The Netherlands will likely be affected by changes in the water regime that are induced by climate change. The purpose of this map was not only to stimulate and guide policy makers, spatial planners, natural resource managers and water managers in their thinking about climate change effects, but to elicit comments from the scientific community as well. For the latter aim, we here present the approach developed for constructing the hypothetical sketch map and the sketch map itself. Next, we discuss how the map was disseminated and the impact it had on policy practices.

Climate change impacts on water and natural ecosystems for The Netherlands

J. P. M. Witte et al.

Title Page

Abstract

Introduction

Conclusions

References

Tables

Figures



Back

Close

Full Screen / Esc

Printer-friendly Version

Interactive Discussion



2 Material and methods



2.1 General approach

To detect possible hydrological trends of climate change and their impacts on vegetation types we overlaid the results of a national hydrological model for two scenarios of climate change with a national vegetation map. Next, we defined decision rules for the sketch map, among others to avoid over-interpretation beyond the uncertainty limits of the hydrological model. These rules were based on a literature survey and expert knowledge of the authors. In two workshops, the resulting sketch map was confronted with the opinion of hydrologists and ecologists from provinces, water boards, and conservation organizations (Van Rooij et al., 2010), which led to minor adjustments only.

2.2 Climate scenarios

In 2006, based on general circulation model simulations published in the Fourth Assessment Report of the IPCC (Solomon et al., 2007), the Royal Netherlands Meteorological Institute (KNMI) issued four climate scenarios which include changes in temperature, P and reference ET (Van den Hurk et al., 2006). Here, we focused on the two warmest scenarios for our sketch map, the W and the W+ scenarios. Both scenarios are related to the IPCC A2 and A1B scenarios and comprise a +2°C global temperature increase. On an annual basis, the W scenario has the highest and the W+ scenario has the lowest potential precipitation excess (P minus reference ET) (Table 1). The distinction between the two is the anticipated circulation regime change: a strong change of circulation, which induces warmer, and moister winter seasons and increasing the likelihood of dry and warm summertime situations (W+), and a weak change of circulation (W).

Climate change impacts on water and natural ecosystems for The Netherlands

J. P. M. Witte et al.

Title Page

Abstract

Introduction

Conclusions

References

Tables

Figures



Back

Close

Full Screen / Esc

Printer-friendly Version

Interactive Discussion



2.3 Hydrological simulations combined with a vegetation map

To identify general trends in possible hydrological effects of climate change, we used the outcomes of simulations applying a national hydrological model (Vermulst and De Lange, 1999). The model had a spatial and temporal resolution of 500 m and 10 d (Vermulst and De Lange, 1999), respectively, and was fed with meteorological input data of both the current and the 2050 climate. To obtain feasible computation times, only two meteorological years were considered: an average (1967) and a dry year (1949), with return periods of 2.5 and 11.7 yr, respectively (Beersma et al., 2005). Each calculation for these two characteristic years was preceded with a year to initiate the simulations (1966, 1948). For the 2050 climate, we transformed time series of these four years of P , reference ET and temperature to the 2050-climate of W and $W+$, using transformation software supplied by the KNMI (Bakker and Bessembinder, 2007). This software takes account of shifts in precipitation from summer to winter and of intensified rainfall and drought events. With the aid of a digital elevation model, simulated groundwater levels and seepage intensities were downscaled to a spatial resolution of 25×25 m. Hydrological quantities, relevant for terrestrial ecosystems, considered were: moisture deficit (difference between potential and actual transpiration, T_{red}), seepage intensity and saline load (all on an annual basis); lowest, highest and spring groundwater depth (relative to soil surface); the average percentage “alien water” in July (Fig. 2). The latter is the surface water from the rivers Rhine and Meuse that is conveyed through smaller streams, canals and ditches through those areas where it is needed to mitigate negative effects of low groundwater levels in agriculture and nature reserves, and to ensure the stability of dikes and buildings. This water is called “alien” because it has a different chemical composition, which may affect plant species composition.

We overlaid the hydrological output maps for the two scenarios with a national map showing the distribution of 32 vegetation types (defined by Bal et al., 2001) in nature reserves (Fig. 3). In this way we were able to assign current and future frequency distributions of each simulated hydrological quantity to each vegetation type. [This analysis](#)

HESSD

9, 6311–6344, 2012

Climate change impacts on water and natural ecosystems for The Netherlands

J. P. M. Witte et al.

Title Page

Abstract

Introduction

Conclusions

References

Tables

Figures

⏪

⏩

◀

▶

Back

Close

Full Screen / Esc

Printer-friendly Version

Interactive Discussion



confirmed that it is not very sensible to rely blindly on hydrological models: simulated groundwater depths in nature areas for the current climate were on average 45 cm lower than optimum groundwater levels based on empirical data as given by Runhaar et al. (2002). For instance, the hydrological model computed an average groundwater depth in spring of “wet mesotrophic grassland” of 46 cm minus soil surface, where Runhaar et al. (2002) on the basis of field observations mention an average of 14 cm minus soil surface. Nonetheless, we could use the results to identify some general trends about the hydrological consequences of the two climate scenarios, in particular by focussing on the simulated changes in hydrology, in stead of on absolute hydrological output variables. For instance, according to the simulations the yearly moisture deficit will increase under both scenarios, from the current 16 mm yr⁻¹ to 21 and 43 mm yr⁻¹ under the W and W+ scenario in an average year, while in a dry year, these values are 75, 89 and 144 mm yr⁻¹, respectively.

2.4 Basic assumptions to compile the sketch map

We combined the trends from the hydrological simulations per vegetation type with a literature survey (references in Witte et al., 2009a) and expert knowledge on the involved processes to sketch the consequences of climate change for a limited number of ecosystem types, such as bogs, fens, wet heathlands, dry heathlands, woodlands and streams. The following considerations were used to compile the map:

1. Based on e.g. Bartholomeus et al. (2011a,b); Bazzaz et al. (1996); Kamps et al. (2008); Knapp et al. (2008); Van Oene and Berendse (2001); Van Walsum et al. (2001); Witte et al. (2008a) we assumed that changes in plant communities as a result of climate change are mainly driven by changes in temperature and water balance components. Aggressive invasive species may also play an important role in shaping species communities, but are more strongly related to other human-induced changes than climate change (Tamis et al., 2005).

Climate change impacts on water and natural ecosystems for The Netherlands

J. P. M. Witte et al.

Title Page

Abstract

Introduction

Conclusions

References

Tables

Figures



Back

Close

Full Screen / Esc

Printer-friendly Version

Interactive Discussion



2. In areas with a deep groundwater level in summer (deeper than one to two meter below rooting zone, depending on the soil texture) water supply to the rooting zone by capillary flow from the groundwater table is negligible (Vervoort and Van der Zee, 2008). In such areas the moisture deficit in summer will increase under both scenarios, due to an increased atmospheric demand (potential ET). The hydrological simulations revealed that the increase is most significant under scenario W+, due to decreased precipitation in summer combined with higher potential ET.
3. The average groundwater recharge will certainly increase under scenario W. Because of feedbacks of the vegetation to increased summer droughts (closing of stomata, increasing share of bare soil, mosses and lichens), we assume the average recharge on elevated sandy and gravel soils will approximately remain the same or increase somewhat under scenario W+ compared to current conditions. This rule is supported by detailed simulations (Fig. 4) with a coupled soil-water-atmosphere-plant model (Van Dam et al., 2008). This figure shows the yearly course of the actual precipitation excess ($P - \text{actual ET}$) on a medium textured sandy soil with a deep groundwater level, characteristic of elevated sandy soils in The Netherlands, under the current and under the W+ climate. In spite of the fact that the potential precipitation excess ($P - \text{reference ET}$) decreases considerably under scenario W+ (on average from 291 to 208 mm yr^{-1} , Fig. 4a), the net result of a higher precipitation amount in winter in combination with a stronger reduction of ET in a drier summer is that the annual actual precipitation excess, i.e. the groundwater recharge, remains more or less the same for a soil fully covered by vegetation (Fig. 4b: decrease in groundwater recharge of 6 mm yr^{-1}). However, if we take account of lower vegetation cover at drier soils (empirical relationship in Fig. 4c), groundwater recharge increases a bit under scenario W+ (Fig. 4d: increase of 33 mm yr^{-1}).
4. Since groundwater recharge in recharge areas remains the same or increases lightly under scenario W+ and will certainly increase under scenario W, the

Climate change impacts on water and natural ecosystems for The Netherlands

J. P. M. Witte et al.

Title Page

Abstract

Introduction

Conclusions

References

Tables

Figures

◀

▶

◀

▶

Back

Close

Full Screen / Esc

Printer-friendly Version

Interactive Discussion

upward seepage to lower lying discharge areas, such as brook valleys and polders, will on average remain the same or increase as well.

5. In both scenarios, the groundwater level of groundwater dependent ecosystems in winter and spring is likely to rise slightly: according to the national hydrological simulations the rise averaged a few cm over The Netherlands.
6. In groundwater dependent ecosystems the groundwater level in summer remains more or less constant under scenario W and will drop under scenario W+ (according to the transient hydrological model on average 15 cm, but feedbacks not accounted for, see point 1 and Sect. 3, may reduce this number).
7. Especially under scenario W+, more river water will be supplied to the low-lying areas of The Netherlands. In areas fed by upward seepage, the amount of inlet water remains unchanged or may even reduce (W).
8. The quality of inlet water in the low part of The Netherlands will deteriorate substantially because of lower river discharges, higher surface water temperatures, and increased upward seepage of (fossil) brackish water in deep polders (Van Vliet and Zwolsman, 2008; Vellinga et al., 2009).
9. The dynamics of the hydrology of The Netherlands will increase: through an intensification of the rainfall showers, wetter winters and drier summers, but also by larger meteorological differences between years.

3 Results: the sketch map with accompanying text

3.1 Free-draining high part of The Netherlands

For a proper understanding of the map, we distinguish between the “high part” and the “low part” of The Netherlands. In the sketch map (Fig. 5) the areas dominated by the colours yellow and blue approximately delineate these two regions.

Climate change impacts on water and natural ecosystems for The Netherlands

J. P. M. Witte et al.

Title Page

Abstract

Introduction

Conclusions

References

Tables

Figures



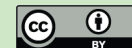
Back

Close

Full Screen / Esc

Printer-friendly Version

Interactive Discussion



The sketch map reveals that particularly ecosystems in the high part of The Netherlands (Fig. 1b) are vulnerable to climate change. This is because they depend on atmospheric precipitation as the only or dominant source of water.

Groundwater independent vegetation – which is found on glacial ridges, coastal dunes and on hills in the Pleistocene cover-sand landscape – will experience a larger moisture deficit within the growing season. Examples are dry heaths dominated by *Calluna vulgaris* (heather), and dry dunes dominated by mosses, lichens and xerophilic grasses such as *Corynephorus canescens* (grey hair-grass). This shortage is particularly expected to increase for scenario W+. As a result, the fraction barren soil in dry heaths and grasslands will increase. It is also expected that the number of plants that flower early and pass dry and hot periods in a dormant condition to reduce metabolic activity (summer sleep) will increase. The increase in barren soil and the accompanying wind erosion will probably be judged positively by nature managers. This is because there is currently a lack of dynamics in these dry ecosystems within The Netherlands, leading to the dominance of common grasses at the cost of rare species. In dry heathlands, the species diversity potentially increases because of the large number of *Ericaceous* and *Cytisus* (broom) species occurring in Middle- and Southern-European regions that might invade. The increase in regional species diversity may be hindered, though, by lack of dispersal possibilities.

In dry forests, some species related to a warmer climate are expected to profit from climate change, like *Taxus baccata* (yew), *Ilex aquifolium* (ilex hairstreak) and *Robinia pseudoacacia* (locust tree). Mortality of trees that are more sensitive to drought, like *Fagus sylvatica* (beech) and *Betula pendula* (silver birch) may increase when extended drought periods will occur more frequently. In addition, dry spells may lead to an increased risk of forest fires.

Also the wet, groundwater independent rainwater-fed ecosystems in the elevated parts of The Netherlands are expected to be prone to large hydrological changes. Characteristic vegetation types of raised bogs, nutrient-poor moorland pools and moist and wet heathlands are likely to suffer from drier and warmer summers and the increased

Climate change impacts on water and natural ecosystems for The Netherlands

J. P. M. Witte et al.

Title Page

Abstract

Introduction

Conclusions

References

Tables

Figures



Back

Close

Full Screen / Esc

Printer-friendly Version

Interactive Discussion

hydrological dynamics. Bogs that already suffer from too low groundwater tables will be prone to an increased risk of peat fires, such as occurred in The Netherlands after a very dry spring in 2011. The development of actively peat accumulating raised bogs may be seriously hampered under the warmer and drier conditions created upon scenario W+. In nutrient-poor moorland pools, higher temperatures will stimulate the break down of organic matter, leading to eutrophication.

Seepage to the lower parts of stream valleys, dune slacks and the edges of large infiltration areas will increase for the scenario W, and presumably for scenario W+ too, although that is highly uncertain because we do not know enough about how vegetation (affecting recharge) in the elevated dry infiltration area will adapt to climate change. The increased upward seepage is beneficial for the biodiversity of natural and dug-spring streams, for species-rich wet dune slacks, and for seepage dependent ecosystems such as species-rich mesotrophic grasslands (Fig. 1b). However, positive effects under W+ are only expected when the increase in upward seepage is sufficient to compensate for the higher evapotranspiration demand in summer. Whether this is the case depends on the size of the infiltration area, as well as on the future actual ET of the infiltration area (which is, as discussed in the introduction, highly uncertain). Lower reaches of streams will be flooded more frequently, which under the current poor water quality probably is harmful to the vegetation.

3.2 Artificially drained, lower parts of The Netherlands

High conservation values in the low part of The Netherlands are especially found in former day mines where peat was excavated as a source of fuel, especially in the 16th and 17th century. After abandoning these cut-over peatlands, peat accumulation started again, particularly as floating vegetation mats (quacking fens). The inset of Fig. 1a illustrates the succession of such a floating fen from minerotrophic (colour blue) to ombrotrophic (colour red). In an initial succession stage these mats are often dominated by a vegetation of tall helophytes such as *Typha latifolia* (bulrush) and several *Carex* species (sedge sp.); in a next stage a very species-rich vegetation may

Climate change impacts on water and natural ecosystems for The Netherlands

J. P. M. Witte et al.

Title Page

Abstract

Introduction

Conclusions

References

Tables

Figures



Back

Close

Full Screen / Esc

Printer-friendly Version

Interactive Discussion



develop of e.g. *Hypnaceae* (brown moss sp.) and *Sphagnum* (peat moss sp.), *Phragmites australis* (common reed), and a high diversity of forbs among others orchids; the end of succession may harbour an ombrotrophic vegetation of for instance peat moss, *Drosera* (sundew sp.), *Eriophorum angustifolium* (common cottongrass) and *Erica tetralix* (cross-leaved heath). The water vegetation is characteristic for nutrient-rich and alkaline conditions, with several *Potamogeton* and *Characeae* species (pondweed and stonewort sp.).

Nowadays, these fens are all designated as nature reserve. Most of them are nowadays the higher parts of the landscape, being 1 to 4 m higher than the surrounding agricultural area, where drainage over the past centuries has caused considerable soil subsidence (Fig. 1a). We expect that these fens, that are characteristic for The Netherlands and that harbour many rare and endangered plant and animal species, will suffer from climate change. The higher ET loss in the drier summers will require supply of large amounts of surface water to maintain the high water tables in the fens. With an appropriate water quality, this would not be such a problem, but, as discussed in Sect. 2.4, it is very likely that the quality of inlet water will deteriorate substantially. Possible positive effects of climate change are only foreseen for fens that are fed by upward seepage from adjacent higher sandy areas.

The lower lying fen meadows, that are mostly managed by farmers, will face a loss of biodiversity, not only because of the greater influence of poor quality surface water, but also because a lower groundwater level and a higher temperature in summer will lead to an accelerated decomposition of peat and thus to an increased availability of soil nutrients. Species from mesotrophic conditions are expected to be replaced by fast growing and more common species from nutrient-rich environments. The deterioration of surface water quality will also be a threat to the flora and fauna of ditches and lakes, and the frequency of algal blooms is likely to increase because of the warming.

Climate change impacts on water and natural ecosystems for The Netherlands

J. P. M. Witte et al.

[Title Page](#)[Abstract](#)[Introduction](#)[Conclusions](#)[References](#)[Tables](#)[Figures](#)[⏪](#)[⏩](#)[◀](#)[▶](#)[Back](#)[Close](#)[Full Screen / Esc](#)[Printer-friendly Version](#)[Interactive Discussion](#)

4 Discussion

4.1 Model uncertainties

Our study identified gaps in our current knowledge, needed to better predict the effects of climate change on nature in The Netherlands. To improve climate change projections, future research should especially focus on feedbacks of vegetation on the water balance, on processes that directly influence plant performance and on the ecological effects of weather extremes. Furthermore, for ecological applications we need hydrological models with a higher spatial resolution, i.e. with a resolution that fits both the size and the climate change susceptibility of the ecosystems considered.

Because climate projections with current hydrological and vegetation models should be interpreted with great caution, we combined the results of hydrological simulations, a literature review, process-knowledge and the consultation of experts to draw up a sketch-map that indicatively shows the effects of climate change on a number of ecosystems in The Netherlands.

4.2 Dissemination of the sketch map in the Dutch society

We disseminated the sketch-map through two technical reports (Van Rooij et al., 2010; Witte et al., 2009a), two publications for a wider public in Dutch professional journals (Witte et al., 2009b, c), and two workshops for provinces, water boards and nature conservation organisations (Van Rooij et al., 2010). The map was soon embraced by others. First, the map appeared in an information brochure of the Dutch provinces (Anonymous, 2009). Then The Netherlands Environmental Assessment Agency (PBL) presented the map in a policy document about adaptation strategies for climate-proofing biodiversity (Vonk et al., 2010). In the same year, the “platform communication on climate change” (PCCC), a group of research institutes that aims to communicate with the Dutch society about climate change, issued an information brochure in which the sketch map was discussed (De Coninck et al., 2009). Moreover, the map appeared in

Climate change impacts on water and natural ecosystems for The Netherlands

J. P. M. Witte et al.

Title Page

Abstract

Introduction

Conclusions

References

Tables

Figures



Back

Close

Full Screen / Esc

Printer-friendly Version

Interactive Discussion



Climate change impacts on water and natural ecosystems for The Netherlands

J. P. M. Witte et al.

[Title Page](#)[Abstract](#)[Introduction](#)[Conclusions](#)[References](#)[Tables](#)[Figures](#)[Back](#)[Close](#)[Full Screen / Esc](#)[Printer-friendly Version](#)[Interactive Discussion](#)

a study of climate change effects, published by the largest nature management NGO of The Netherlands, “Vereniging Natuurmonumenten” (Piek et al., 2010). Finally, a version of the map was published in a popular atlas of water in The Netherlands, available in all public book shops (Anonymous, 2010). Apparently, the information provided by our map was timely and needed, which clearly supports the thesis of highly needed methods for establishing a science-policy interface for climate change induced effects on water and ecosystems (Quevauviller, 2011).

The map also led to a question in the Dutch parliament whether intended measures to combat atmospheric emission of nitrogen around bog reserves could be given up, since the prospects for bog development under the two scenarios are rather pessimistic, certainly under the W+ scenario. This was a tendentious question, fitting to the current trend in some Dutch political parties to immediately use each opportunity to question the relevance of nature for society and cut budgets for nature preservation. Although we explicitly warned the users of the sketch map that it is based on climate scenarios, which are still uncertain, this case shows that utmost care should be taken in entering scientific results into societal arenas. Acceptability, credibility and the correct use of modelling results in policy depends on a delicate balance in which user participation and communication between scientists and policy makers are key aspects (Wassen et al., 2011).

Along with our map, we presented information about the increase in precipitation in The Netherlands over the last century: 20 % (Anonymous, 2011). Especially winters became wetter, while the amount of precipitation in summer did not change significantly. In combination with a substantial reduction in the last decades of atmospheric deposition of nitrogen and sulphate, the wetter climate favoured the development of bog vegetation (De Hoop, 2011). Nevertheless, if one of the two scenarios becomes reality, especially the dry W+ scenario, we believe bog ecosystems in The Netherlands will be under serious stress.

4.3 Adaptive measures

Given the uncertainties of the future climate and the response of ecosystems, no conclusions can be drawn that may have far-reaching consequences, such as giving up certain nature targets because they would no longer be feasible in the future climate.

5 However, one could at least anticipate on possible negative effects of climate change by taking a number of adaptation measures that enhance the robustness of nature reserves. Desiccation of wet heaths and rain-fed moorland pools can be combated by converting highly evaporating dark coniferous woods into less water consuming deciduous forests, grasslands or heathlands. Also damming of gullies, insofar as they are
10 still present from e.g. the former buckwheat fire cultivation, is a way to prevent water loss and stimulate groundwater recharge. External measures are the creation of hydrological buffer zones, increasing surface water levels in agricultural areas, a ban on sprinkling during prolonged drought periods and re-allocation or closing of groundwater abstraction wells. Linking nature areas and enlarging their size makes it easier to
15 maintain high groundwater and surface water levels in relation to the surroundings and increases the supply of upwelling alkaline groundwater into the root zone of plants. In addition, this measure helps species to disperse to locations that offer favourable habitats in the future of ecological networks. The European Natura 2000 network and climate adaptation zones for wetland ecosystems are examples of an adapted spatial
20 planning aimed at linking and enlarging nature areas (Vos et al., 2010).

In nature areas with a controlled water level, such as fens, a more flexible water regime can help to significantly reduce the inlet of surface water of poor quality. The need for inlet-water for fens may also be reduced by minimizing downward seepage through a number of external measures: submerging adjacent deep polders, closing
25 nearby groundwater abstraction wells and promoting the groundwater recharge in infiltration areas. Submerging adjacent polders may also be a means to create a buffer from which water can be extracted in periods of drought.

Climate change impacts on water and natural ecosystems for The Netherlands

J. P. M. Witte et al.

[Title Page](#)

[Abstract](#)

[Introduction](#)

[Conclusions](#)

[References](#)

[Tables](#)

[Figures](#)

[⏪](#)

[⏩](#)

[◀](#)

[▶](#)

[Back](#)

[Close](#)

[Full Screen / Esc](#)

[Printer-friendly Version](#)

[Interactive Discussion](#)



In conclusion, climate change should be a stimulus to combat with greater diligence the desiccation of nature and to stimulate the enlargement and implementation of the European Natura 2000 network.

5 Conclusions

5 Current models have serious limitations when used for predicting effects of climate change on natural ecosystems on a regional scale. However, based on the combined result of model simulations, a literature review, process-knowledge and expert judgement, we can qualitatively estimate what ecosystems will probably go through. Given the uncertainty of how climate change will develop, this is sufficient for discussing how
10 to adapt in nature management and spatial planning to expected climatic change.

Climatic change will presumably have the largest influence on natural ecosystems in the high part of The Netherlands that depend on precipitation as the only or major source of water, such as heathlands, dry grasslands, nutrient-poor moorland pools and bogs. Also very susceptible to climate change are fen reserves in the low part of The
15 Netherlands surrounded by deeply drained polders, because such fens depend on the inlet of surface water, of which quality is likely to deteriorate under climate change.

To a certain extent, we can prevent changes in ecosystem functioning and composition, for instance by enlarging and linking nature reserves to combat drought and to facilitate adaptation of species to changed conditions.

20 We show that the here applied methodology of use of deterministic prediction models, although hampered by limited accuracy, combined with a set of reasonable assumptions is able to bridge the knowledge gap between science and society. However, as scientists we have to be careful how to present results in a political atmosphere where outcomes are easily taken out of their context for short-term political interests.

Climate change impacts on water and natural ecosystems for The Netherlands

J. P. M. Witte et al.

Title Page

Abstract

Introduction

Conclusions

References

Tables

Figures



Back

Close

Full Screen / Esc

Printer-friendly Version

Interactive Discussion



Acknowledgements. This study was carried out in the framework of both of the Dutch national research program Knowledge for Climate (<http://knowledgeforclimate.climateresearchnetherlands.nl/>) and the joint research program of the Dutch Water Utility sector (<http://www.kwrwater.nl/BTO/>). We thank Bob Douma for his valuable comments on the manuscript.

References

- Allen, R. G., Pereira, L. S., Smith, M., Raes, D., and Wright, J. L.: FAO-56 dual crop coefficient method for estimating evaporation from soil and application extensions, *J. Irrig. Drain. E.-ASCE*, 1, 2–13, 2005.
- Anonymous: IPO brochure Klimateffectatlas: Inspelen op klimaatverandering, Interprovinciaal Overleg, NL, 2009.
- Anonymous: De Bosatlas van Nederland Waterland, Noordhoff Uitgevers bv, Groningen, NL, 104 pp., 2010.
- Anonymous: De Bosatlas van het Klimaat, Noordhoff Uitgevers bv & KNMI, Groningen, NL, 112 pp., 2011.
- Arora, V. K.: Modeling vegetation as a dynamic component in soil-vegetation-atmosphere transfer schemes and hydrological models, *Rev. Geophys.*, 40, 3–1, 2002.
- Baird, A. J.: Modelling, in: *Eco-Hydrology. Plants and Water in Terrestrial and Aquatic Environments*, edited by: Baird, A. J. and Wilby, R. L., Routledge, London, New York, 300–345, 1999.
- Bakker, A. and Bessembinder, J.: Neerslagreeksen voor de KNMI'06 scenario's, *H₂O*, 22, 45–47, 2007.
- Bal, D., Beije, H. M., Fellingner, M., Haveman, R., van Opstal, A. J. F. M., and Zadelhoff, F. J.: *Handboek Natuurdoeltypen*, EC-LNV, Wageningen, NL, 2001.
- Bartholomeus, R. P., Witte, J. P. M., van Bodegom, P. M., van Dam, J. C., and Aerts, R.: Climate change threatens endangered plant species by stronger and interacting water-related stresses, *J. Geophys. Res.*, 116, G04023, doi:10.1029/2011jg001693, 2011a.
- Bartholomeus, R. P., Witte, J.-P. M., van Bodegom, P. M., van Dam, J. C., de Becker, P., and Aerts, R.: Process-based proxy of oxygen stress surpasses indirect ones in predicting vegetation characteristics, *Ecohydrology*, in press, doi:10.1002/eco.261, 2011b.

Climate change impacts on water and natural ecosystems for The Netherlands

J. P. M. Witte et al.

Title Page

Abstract

Introduction

Conclusions

References

Tables

Figures



Back

Close

Full Screen / Esc

Printer-friendly Version

Interactive Discussion



Climate change impacts on water and natural ecosystems for The Netherlands

J. P. M. Witte et al.

Title Page

Abstract

Introduction

Conclusions

References

Tables

Figures

◀

▶

◀

▶

Back

Close

Full Screen / Esc

Printer-friendly Version

Interactive Discussion



- Bartholomeus, R. P., Witte, J. P. M., and Runhaar, J.: Drought stress and vegetation characteristics on sites with different slopes and orientations, *Ecohydrology*, in press, doi:10.1002/eco.271, 2011c.
- 5 Bazzaz, F. A., Bassow, S. L., Berntson, G. M., and Thomas, S. C.: Elevated CO₂ and terrestrial vegetation: implications for and beyond the global carbon budget, in: *Global Change and Terrestrial Ecosystems*, edited by: Walker, B. and Steffen, W., Cambridge University Press, New York, 43–76, 1996.
- Beersma, J. J., Buishand, T. A., and Buiteveld, H.: Droog, droger, droogst, KNMI/RIZA-bijdrage aan de tweede fase van de Droogtestudie Nederland., KNMI, Bilthoven, NL, 2005.
- 10 Botkin, D. B., Saxe, H., Araújo, M. B., Betts, R., Bradshaw, R. H. W., Cedhagen, T., Chesson, P., Dawson, T. P., Etterson, J. R., Faith, D. P., Ferrier, S., Guisan, A., Hansen, A., Hilbert, D. W., Loehle, C., Margules, C., New, M., Sobel, M. J., and Stockwell, D. R. B.: Forecasting the effects of global warming on biodiversity, *BioScience*, 57, 227–236, 2007.
- Brolsma, R. J., Van Beek, L. P. H., and Bierkens, M. F. P.: Vegetation competition model for water and light limitation. II: Spatial dynamics of groundwater and vegetation, *Ecol. Model.*, 15 221, 1348–1363, 2010.
- Brooks, P. D., Troch, P. A., Durcik, M., Gallo, E., and Schlegel, M.: Quantifying regional scale ecosystem response to changes in precipitation: not all rain is created equal, *Water Resour. Res.*, 47, W00J08, doi:10.1029/2010wr009762, 2011.
- 20 Dai, A.: Drought under global warming: a review, *Wiley Interdisciplinary Reviews: Climate Change*, 2, 45–65, 2011.
- De Boer, H. J., Lammertsma, E. I., Wagner-Cremer, F., Dilcher, D. L., Wassen, M. J., and Dekker, D. C.: Climate forcing due to optimization of maximal leaf conductance in subtropical vegetation under rising CO₂, *Proc. Natl. Acad. Sci.*, 108, 4041–4046, 2011.
- 25 De Coninck, H. C., Van Dorland, R., Dubelaar-Versluis, W., Van de Guchte, C., Jansen, B., Jong, F., Meyer, L., Van de Sandt, K., Seebregts, A. J., and Strengers, B.: *De Staat van het Klimaat 2009 – actueel onderzoek en beleid nader verklaard PCCC*, ECN Policy Studies, De Bilt, Wageningen, NL, 2009.
- De Hoop, E.: *Evaluatie hoogveengebieden in Nederland: evaluatie van het beheer van de hoogvenen van Natuurmonumenten, Staatsbosbeheer, Landschap Overijssel en het Ministerie van Defensie, Natuurmonumenten, 's-Gravenland, NL*, 2011.
- 30 Douma, J. C.: *Putting assembly rules to work: predicting vegetation distribution through plant traits*, PhD thesis, VU Amsterdam University, Amsterdam, 2011.

Climate change impacts on water and natural ecosystems for The Netherlands

J. P. M. Witte et al.

Title Page

Abstract

Introduction

Conclusions

References

Tables

Figures

⏪

⏩

◀

▶

Back

Close

Full Screen / Esc

Printer-friendly Version

Interactive Discussion



- Easterling, D. R., Meehl, G. A., Parmesan, C., Changnon, S. A., Karl, T. R., and Mearns, L. O.: Climate extremes: observations, modeling, and impacts, *Science*, 289, 2068–2074, 2000.
- Fay, P. A., Kaufman, D. M., Nippert, J. B., Carlisle, J. D., and Harper, C. W.: Changes in grassland ecosystem function due to extreme rainfall events: implications for responses to climate change, *Glob. Change Biol.*, 14, 1600–1608, 2008.
- Feddes, R. A.: Crop factors in relation to Makkink reference-crop evapotranspiration, in: *Evaporation and Weather*, edited by: Hooghart, C., Proceedings and Information, Comm. Hydrological Research TNO, The Hague, 33–47, 1987.
- Frei, S., Lischeid, G., and Fleckenstein, J. H.: Effects of micro-topography on surface-subsurface exchange and runoff generation in a virtual riparian wetland – a modeling study, *Adv. Water Resour.*, 33, 1388–1401, 2010.
- Gerten, D., Schaphoff, S., Haberlandt, U., Lucht, W., and Sitch, S.: Terrestrial vegetation and water balance: hydrological evaluation of a dynamic global vegetation model, *J. Hydrol.*, 286, 249–270, 2004.
- Guisan, A. and Thuiller, W.: Predicting species distribution: offering more than simple habitat models, *Ecol. Lett.*, 8, 993–1009, 2005.
- Guisan, A. and Zimmermann, N. E.: Predictive habitat distribution models in ecology, *Ecol. Model.*, 135, 147–186, 2000.
- Harbaugh, A. W., Banta, E. R., Hill, M. C., and McDonald, M. G.: MODFLOW 2000, The US geological survey modular ground water model user guide to modularization concepts and the ground water flow process, US Geological Survey, Reston, Virginia, 2000.
- Jackson, R. B., Jobbágy, E. G., and Noretto, M. D.: Ecohydrology in a human-dominated landscape, *Ecohydrology*, 2, 383–389, 2009.
- Kamps, P., Nienhuis, P., and Witte, J. P. M.: Effects of climate change on the water table in the coastal dunes of the Amsterdam water supply, Proceedings of MODFLOW and MORE 2008, edited by: Poeter, E. P., Hill, M. C., and Zheng, C., Ground Water and Public Policy Conference, 18–21 May 2008, Golden, CO, 535 p., 2008.
- Karl, T. R., Knight, R. W., and Plummer, N.: Trends in high-frequency climate variability in the twentieth century, *Nature*, 377, 217–220, 1995.
- Knapp, A. K., Beier, C., Briske, D. D., Classen, A. T., Luo, Y., Reichstein, M., Smith, M. D., Smith, S. D., Bell, J. E., Fay, P. A., Heisler, J. L., Leavitt, L. W., Sherry, R., Smith, B., and Weng, E.: Consequences of more extreme precipitation regimes for terrestrial ecosystems, *BioScience*, 58, 811–821, 2008.

Climate change impacts on water and natural ecosystems for The Netherlands

J. P. M. Witte et al.

Title Page

Abstract

Introduction

Conclusions

References

Tables

Figures

◀

▶

◀

▶

Back

Close

Full Screen / Esc

Printer-friendly Version

Interactive Discussion



- Kruijt, B., Witte, J. P. M., Jacobs, C. M. J., and Kroon, T.: Effects of rising atmospheric CO₂ on evapotranspiration and soil moisture: a practical approach for The Netherlands, *J. Hydrol.*, 349, 257–267, 2008.
- Levine, J. M., McEachern, A. K., and Cowan, C.: Rainfall effects on rare annual plants, *J. Ecol.*, 96, 795–806, 2008.
- Liu, J.: Consumptive water use in cropland and its partitioning: a high-resolution assessment, *Sci. China Ser. E*, 52, 3309–3314, 2009.
- Liu, J. and Yang, H.: Spatially explicit assessment of global consumptive water uses in cropland: green and blue water, *J. Hydrol.*, 384, 187–197, 2010.
- Makkink, G. F.: Testing the Penman formula by means of lysimeters, *J. Inst. Water Eng.*, 11, 277–288, 1957.
- Moore, G. W. and Heilman, J. L.: Proposed principles governing how vegetation changes affect transpiration, *Ecohydrology*, 4, 351–358, 2011.
- Morin, X. and Lechowicz, M. J.: Contemporary perspectives on the niche that can improve models of species range shifts under climate change, *Biol. Lett.*, 4, 573–576, 2008.
- Olde Venterink, H. and Wassen, M. J.: A comparison of six models predicting vegetation response to hydrological habitat change, *Ecol. Model.*, 101, 347–361, 1997.
- Pearson, R. G. and Dawson, T. P.: Predicting the impacts of climate change on the distribution of species: are bioclimate envelope models useful?, *Global Ecol. Biogeogr.*, 12, 361–371, 2003.
- Piek, H., Biemans, M., and De Hoop, E.: Klimaatverandering en natuurbeheer: verkenning van de effecten van klimaatverandering op het functioneren van de natuur en de mogelijkheden tot het creëren van klimaatrobuuste natuur (adaptatie), Vereniging Natuurmonumenten, 's-Graveland, NL, 2010.
- Porporato, A., Laio, F., Ridolfi, L., and Rodriguez-Iturbe, I.: Plants in water-controlled ecosystems: active role in hydrologic processes and response to water stress: III. vegetation water stress, *Adv. Water Resour.*, 24, 725–744, 2001.
- Porporato, A., Daly, E., and Rodriguez-Iturbe, I.: Soil water balance and ecosystem response to climate change, *Am. Nat.*, 164, 625–632, 2004.
- Quevauviller, P.: Adapting to climate change: reducing water-related risks in Europe – EU policy and research considerations, *Environ. Sci. Policy*, 14, 722–729, 2011.
- Rodriguez-Iturbe, I. and Porporato, A.: *Ecohydrology of Water-Controlled Ecosystems: Soil Moisture and Plant Dynamics*, Cambridge University Press, Cambridge, 2004.

Climate change impacts on water and natural ecosystems for The Netherlands

J. P. M. Witte et al.

Title Page

Abstract

Introduction

Conclusions

References

Tables

Figures

◀

▶

◀

▶

Back

Close

Full Screen / Esc

Printer-friendly Version

Interactive Discussion



Runhaar, J., Gehrels, J. C., van der Lee, G., Hennekes, S. M., Wamelink, G. W. W., van der Linden, W., and de Louw, P. G. B.: Waterlood deelrapport Doelrealisatie Natuur, STOWA, Utrecht, NL, 2002.

Schaminée, J. H. J., Stortelder, A. H. F., and Westhoff, V.: De Vegetatie van Nederland, Inleiding tot de plantensociologie: grondslagen, methoden en toepassingen, Opulus press, Uppsala, Leiden, 1995.

Solomon, S., Qin, D., Manning, M., Alley, R. B., Berntsen, T., Bindoff, N. L., Chen, Z., Chidthaisong, A., Gregory, J. M., Hegerl, G. C., Heimann, M., Hewitson, B., Hoskins, B. J., Joos, F., Jouzel, J., Kattsov, V., Lohmann, U., Matsuno, T., Molina, M., Nicholls, N., Overpeck, J., Raga, G., Ramaswamy, V., Ren, J., Rusticucci, M., Somerville, R., Stocker, T. F., Whetton, P., Wood, R. A., and Wratt, D.: Technical summary, in: Climate Change 2007: The Physical Science Basis, Contribution of working group I to the fourth assessment report of the intergovernmental panel on climate change, edited by: Solomon, S., Qin, D., Manning, M., Chen, Z., Marquis, M., Averyt, K. B., Tignor, M., and Miller, H. L., Cambridge University Press, Cambridge, UK and New York, NY, USA, 2007.

Sudicky, E. A., Jones, J. P., Park, Y.-J., Brookfield, A. E., and Colautti, D.: Simulating complex flow and transport dynamics in an integrated surface-subsurface modelling framework, *Geosci. J.*, 12, 107–122, 2008.

Tamis, W., Van't Zelfde, M., Van der Meijden, R., and Udo de Haes, H.: Changes in vascular plant biodiversity in The Netherlands in the 20th century explained by their climatic and other environmental characteristics, *Climatic Change*, 72, 37–56, 2005.

Van Beek, E., Haasnoot, M., Meijer, K. M., Delsman, J. R., Snepvangers, J. J. J. C., Barse, G., Van Ek, R., Prinsen, G. F., Kwadijk, J. C. J., and Van Zetten, J. W.: Verkenning kosteneffectiviteit van grootschalige maatregelen tegen droogteschade als gevolg van de G+ en W+ klimaatscenario's, *Deltares*, Utrecht, NL, 2008.

Van Bodegom, P. M., Douma, J. C., Witte, J. P. M., Ordoñez, J. C., Bartholomeus, R. P., and Aerts, R.: Going beyond limitations of plant functional types when predicting global ecosystem–atmosphere fluxes: exploring the merits of traits-based approaches, *Global Ecol. Biogeogr.*, 21, 625–636, doi:10.1111/j.1466-8238.2011.00717.x, 2012.

Van Dam, J. C., Groenendijk, P., Hendriks, R. F. A., and Kroes, J. G.: Advances of modeling water flow in variably saturated soils with SWAP, *Vadose Zone J.*, 7, 640–653, 2008.

Van den Hurk, B., Klein Tankink, A., Lenderink, G., Van Ulden, A., Van Oldenborgh, G. J., Katsman, C., Van den Brink, H., Keller, F., Bessembinder, J., Burgers, G., Komen, G.,

Climate change impacts on water and natural ecosystems for The Netherlands

J. P. M. Witte et al.

Title Page

Abstract

Introduction

Conclusions

References

Tables

Figures

⏪

⏩

◀

▶

Back

Close

Full Screen / Esc

Printer-friendly Version

Interactive Discussion



Hazeleger, W., and Drijfhout, S.: KNMI Climate change scenarios 2006 for The Netherlands, KNMI, De Bilt, NL, 82 pp., 2006.

Van Oene, H. and Berendse, F.: Predicting responses of ecosystem processes to climate change and nitrogen deposition, in: Long-Term Effects of Climate Change on Biodiversity and Ecosystem Processes, edited by: Van Oene, H., Ellis, W. N., Heijmans, M. M. P. D., Mauquoy, D., Tamis, W. L. M., Van Vliet, A. J. H., Berendse, F., Van Geel, B., Van der Meijden, R., and Ulenberg, S. A., Dutch National Research Programme on Global Air Pollution and Climate Change, Bilthoven, NL, 2001.

Van Oene, H., Berendse, F., and De Kovel, C. G. F.: Model analysis of the effects of historic CO₂ levels and nitrogen inputs on vegetation succession, *Ecol. Appl.*, 9, 920–935, 1999.

Van Rooij, S., Steingröver, E., Witte, J. P. M., and Goosen, H.: Klimaat-effect Atlas 1.0. Klimaat-scan Natura 2000 gebieden, Alterra, Wageningen, NL, 2010.

Van Vliet, M. T. H. and Zwolsman, J. J. G.: Impact of summer droughts on the water quality of the Meuse river, *J. Hydrol.*, 353, 1–17, 2008.

Van Walsum, P. E. V., Verdonschot, P. F. M., and Runhaar, J.: Effects of climate and land-use change on lowland stream ecosystems, Dutch National Research Programme on Global Air Pollution and Climate Change, Bilthoven, NL, 2001.

Vellinga, P., Katsman, C. A., Sterl, A., and Beersma, J. J.: Exploring high-end climate change scenarios for flood protection of The Netherlands, International Scientific Assessment carried out at the request of the Delta Committee, KNMI, De Bilt, NL, 2009.

Vermulst, J. A. P. H. and De Lange, W. J.: An analytic-based approach for coupling models for unsaturated and saturated groundwater flow at different scales, *J. Hydrol.*, 226, 262–273, 1999.

Vervoort, R. W. and Van der Zee, S. E. A. T. M.: Simulating the effect of capillary flux on the soil water balance in a stochastic ecohydrological framework, *Water Resour. Res.*, 44, W08425, doi:10.1029/2008wr006889, 2008.

Vonk, M., Vos, C. C., and Van der Hoek, D. J.: Adaptation strategy for climate-proofing biodiversity, 500078005, Netherlands Environmental Assessment Agency (PBL), Den Haag, Bilthoven, NL, 2010.

Vos, C., Van der Hoek, D. C. J., and Vonk, M.: Spatial planning of a climate adaptation zone for wetland ecosystems, *Landscape Ecol.*, 25, 1465–1477, 2010.

Wassen, M. J., Runhaar, H., Barendregt, A., and Okruszko, T.: Evaluating the role of participation in modeling studies for environmental planning, *Environ. Plann. B*, 38, 338–358, 2011.

Climate change impacts on water and natural ecosystems for The Netherlands

J. P. M. Witte et al.

[Title Page](#)

[Abstract](#)

[Introduction](#)

[Conclusions](#)

[References](#)

[Tables](#)

[Figures](#)



[Back](#)

[Close](#)

[Full Screen / Esc](#)

[Printer-friendly Version](#)

[Interactive Discussion](#)



- Wegehenkel, M.: Modeling of vegetation dynamics in hydrological models for the assessment of the effects of climate change on evapotranspiration and groundwater recharge, *Adv. Geosci.*, 21, 109–115, doi:10.5194/adgeo-21-109-2009, 2009.
- 5 Weltzin, J. F., Loik, M. E., Schwinning, S., Williams, D. G., Fay, P. A., Haddad, B. M., Harte, J., Huxman, T. E., Knapp, A. K., Lin, G., Pockman, W. T., Shaw, M. R., Small, E. E., Smith, M. D., Smith, S. D., Tissue, D. T., and Zak, J. C.: Assessing the response of terrestrial ecosystems to potential changes in precipitation, *BioScience*, 53, 941–952, 2003.
- Wigmosta, M. S., Nijssen, B., Storck, P., Singh, V., and Frevert, D.: The Distributed Hydrology Soil Vegetation Model, *PBD*, 7–42, 2002.
- 10 Witte, J. P. M., Wójcik, R. B., Torfs, P. J. J. F., De Haan, M. W. H., and Hennekens, S.: Bayesian classification of vegetation types with Gaussian mixture density fitting to indicator values, *J. Veg. Sci.*, 18, 605–612, 2007.
- Witte, J. P. M., Bartholomeus, R. P., Cirkel, D. G., and Kamps, P. W. T. J.: Ecohydrologische gevolgen van klimaatverandering voor de kustduinen van Nederland, *Kiwa Water Research*, KWR 08.006, Nieuwegein, NL, 2008a.
- 15 Witte, J. P. M., Runhaar, J., and Van Ek, R.: Ecohydrological modelling for managing scarce water resources in a groundwater-dominated temperate system., in: *Ecohydrology: Processes, Models and Case Studies*, edited by: Harper, D., Zalewski, M. E. J., and Pacini, N., CABI Publishing, Oxfordshire, UK, 88–111, 2008b.
- 20 Witte, J. P. M., Runhaar, J., and Van Ek, R.: Ecohydrologische effecten van klimaatverandering op de vegetatie van Nederland, *KWR Watercycle Research Institute*, Nieuwegein, NL, 2009a.
- Witte, J. P. M., Runhaar, J., Van Ek, R., and Van der Hoek, D. J.: Eerste landelijke schets van de ecohydrologische effecten van een warmer en grilliger klimaat, *H₂O*, 16/17, 37–40, 2009b.
- 25 Witte, J. P. M., Runhaar, J., Van Ek, R., and Van der Hoek, D. J.: Ecohydrologische effecten van klimaatverandering in kaart gebracht, *De Levende Natuur*, 110, p. 242, 2009c.
- Zhang, K., Kimball, J. S., Nemani, R. R., and Running, S. W.: A continuous satellite-derived global record of land surface evapotranspiration from 1983 to 2006, *Water Resour. Res.*, 46, W09522, doi:10.1029/2009wr008800, 2010.

Climate change impacts on water and natural ecosystems for The Netherlands

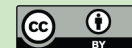
J. P. M. Witte et al.

- Title Page
- Abstract Introduction
- Conclusions References
- Tables Figures
- ⏪ ⏩
- ◀ ▶
- Back Close
- Full Screen / Esc
- Printer-friendly Version
- Interactive Discussion

Discussion Paper | Discussion Paper | Discussion Paper | Discussion Paper | Discussion Paper

Table 1. Effects of climate change on temperature, precipitation and evapotranspiration in The Netherlands for two climate scenarios (Van den Hurk et al., 2006).

| Variable | Summer (JJA) | | Winter (DJF) | |
|-------------------------|--------------|-------|--------------|-------|
| | W | W+ | W | W+ |
| mean temperature (K) | +1.7 | +2.8 | +1.8 | +2.3 |
| mean <i>P</i> (%) | +5.5 | −19.0 | +7.3 | +14.2 |
| wet day frequency (%) | −3.3 | −19.3 | +0.2 | +1.9 |
| <i>P</i> on wet day (%) | +9.1 | +0.3 | +7.1 | +12.1 |
| reference ET (%) | +6.8 | +15.2 | | |



Climate change impacts on water and natural ecosystems for The Netherlands

J. P. M. Witte et al.

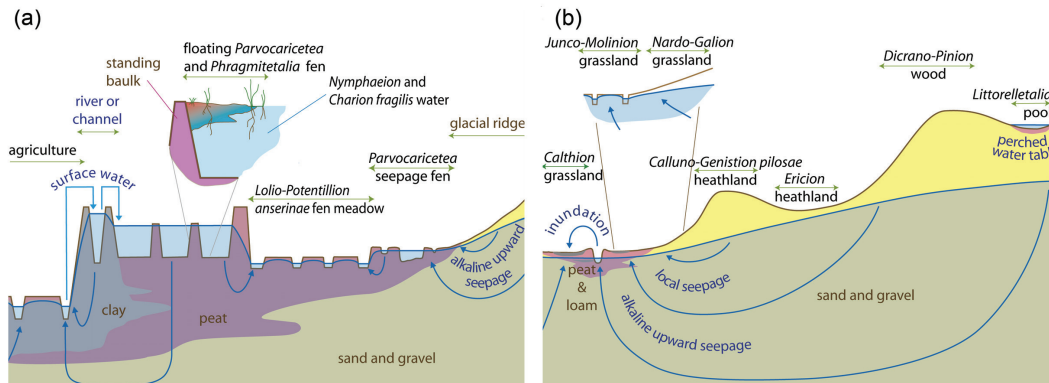


Fig. 1. Schematized ecohydrological cross-sections, measuring ca. 10 km in width and 10 m in height, of: **(a)** a fen landscape and **(b)** a cover-sand landscape. These landscapes occur in the “low” and “high” part of The Netherlands, respectively. Some characteristic vegetation types at the level of alliances and orders are indicated in italics (nomenclature according to Schaminée et al., 1995).

Title Page

Abstract

Introduction

Conclusions

References

Tables

Figures

◀

▶

◀

▶

Back

Close

Full Screen / Esc

Printer-friendly Version

Interactive Discussion

Climate change impacts on water and natural ecosystems for The Netherlands

J. P. M. Witte et al.

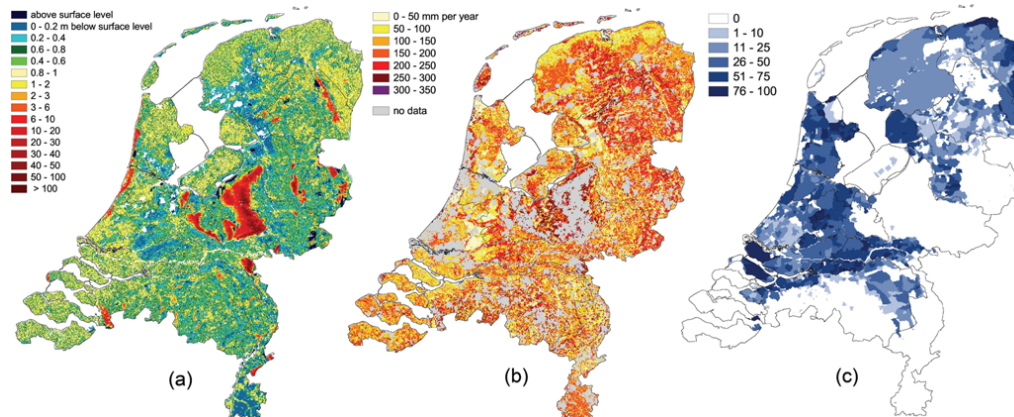


Fig. 2. Examples of hydrological output parameters (Van Beek et al., 2008): **(a)** average groundwater depth in spring (m – soil surface); **(b)** soil moisture deficit T_{red} (mm yr⁻¹); **(c)** percentage of system alien water (%), i.e. surface water from the rivers Rhine and Meuse.

Title Page

Abstract

Introduction

Conclusions

References

Tables

Figures

◀

▶

◀

▶

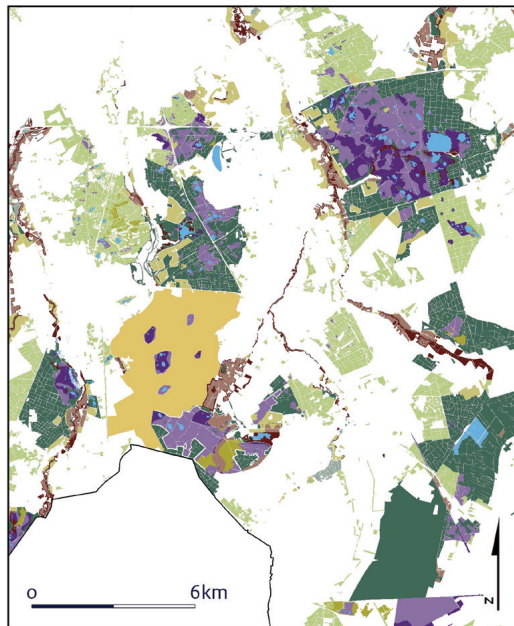
Back

Close

Full Screen / Esc

Printer-friendly Version

Interactive Discussion



- Small oligotrophic water
- Wet heath and raised bogs
- Dry heath
- Landscape of sandy soils
- Dry oligotrophic grassland
- Dry species-rich grassland
- Wet oligotrophic grassland
- Wet mesotrophic grassland
- Marshland
- Brook forest
- Forest of nutrient-poor sandy soils
- Multifunctional woodland



Fig. 3. Part of the of map of national vegetation types according to Bal et al. (2001).

Climate change impacts on water and natural ecosystems for The Netherlands

J. P. M. Witte et al.

| | |
|--------------------------|--------------|
| Title Page | |
| Abstract | Introduction |
| Conclusions | References |
| Tables | Figures |
| ◀ | ▶ |
| ◀ | ▶ |
| Back | Close |
| Full Screen / Esc | |
| Printer-friendly Version | |
| Interactive Discussion | |



Climate change impacts on water and natural ecosystems for The Netherlands

J. P. M. Witte et al.

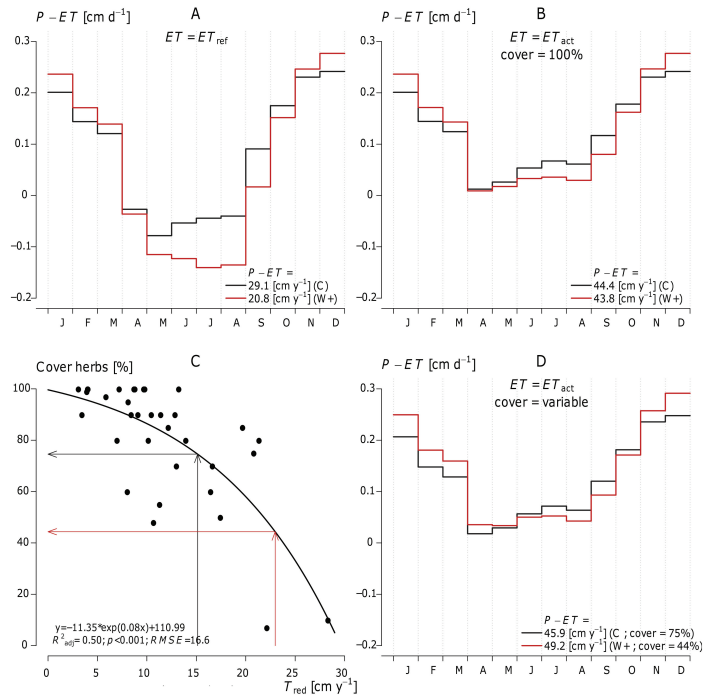


Fig. 4. Monthly averages $P - ET$ for the current (**C**: black lines) and the future (W+ in 2050: red lines), based on 30 yr weather data from meteorological station De Bilt (centre of The Netherlands) and simulations of actual ET with the integrated soil-water-atmosphere-plant model SWAP (Van Dam et al., 2008) for a groundwater independent medium textured sandy soil: **(A)** P minus Makkink reference ET; **(B)** P minus actual ET of a grassland fully covering the ground; **(C)** empirical relationship between simulated yearly transpiration reduction T_{red} (defined by Bartholomeus et al., 2011c) versus observed cover fraction of rooting plants, based on 35 plots throughout The Netherlands; **(D)** $P - ET$ of a grassland which cover of rooting species is adapted to drought according to the relationship in **(C)**.

Climate change impacts on water and natural ecosystems for The Netherlands

J. P. M. Witte et al.

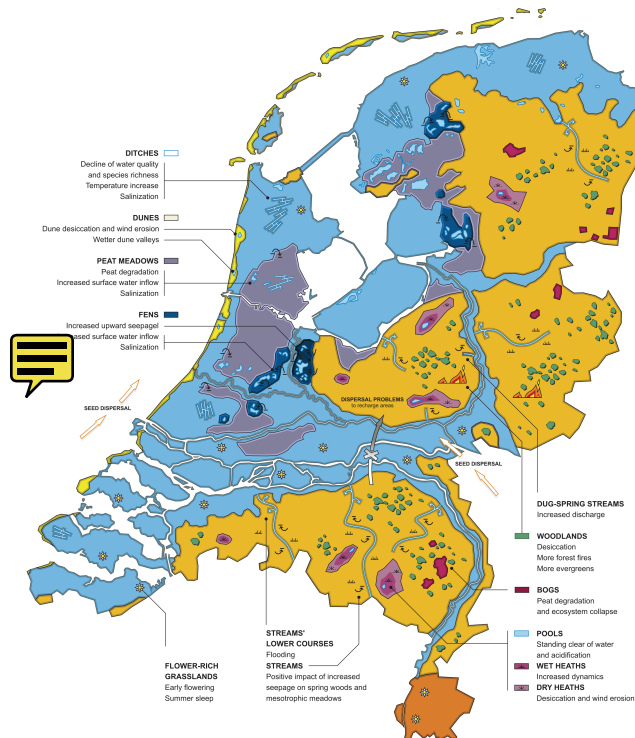


Fig. 5. Primarily sketch map showing the ecohydrological impact of climate change in The Netherlands. Climate change, through its impact on the water cycle, will alter the diversity of plant species and plant communities. These alterations will in turn have an effect on habitat factors that are essential for plant growth such as salt levels, acidity, and the availability of moisture, oxygen and nutrients. This map indicates ecohydrological effects in 2050 under two climate change scenarios: W and W+. Both scenarios include a global temperature rise of 2 °C, increased winter rainfall, drier summers (especially W+) and more intensive rainfall events.

Title Page

Abstract

Introduction

Conclusions

References

Tables

Figures



Back

Close

Full Screen / Esc

Printer-friendly Version

Interactive Discussion