

Interactive comment on “Relating climate change signals and physiographic catchment properties to clustered hydrological response types” by N. Köplin et al.

N. Köplin et al.

nina.koeplin@giub.unibe.ch

Received and published: 16 May 2012

For the response please see the supplement. Please find here the revised version of Fig. 5.

Please also note the supplement to this comment:

<http://www.hydrol-earth-syst-sci-discuss.net/9/C1536/2012/hessd-9-C1536-2012-supplement.pdf>

Interactive comment on Hydrol. Earth Syst. Sci. Discuss., 9, 3165, 2012.
C1536

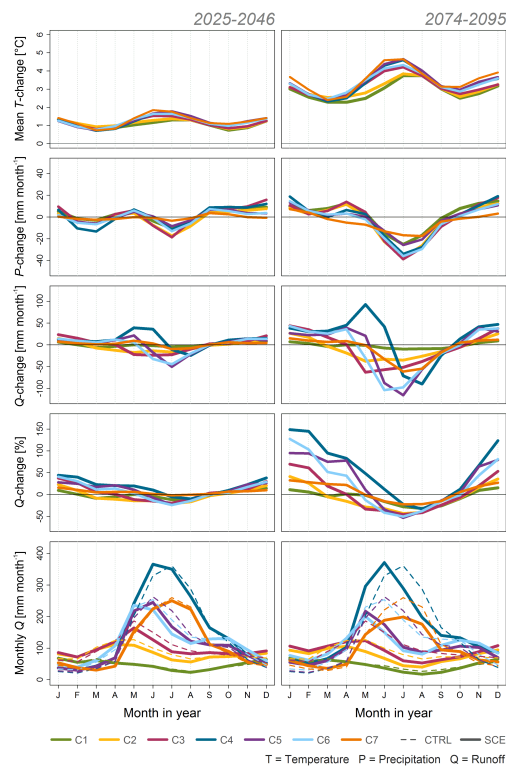


Fig. 1.