

This discussion paper is/has been under review for the journal Hydrology and Earth System Sciences (HESS). Please refer to the corresponding final paper in HESS if available.

# Precipitation observation using microwave backhaul links in the alpine and pre-alpine region of Southern Germany

C. Chwala<sup>1</sup>, A. Gmeiner<sup>1,3</sup>, W. Qiu<sup>1</sup>, S. Hipp<sup>2</sup>, D. Nienaber<sup>2</sup>, U. Siart<sup>2</sup>, T. Eibert<sup>2</sup>, M. Pohl<sup>3</sup>, J. Seltmann<sup>4</sup>, J. Fritz<sup>5</sup>, and H. Kunstmann<sup>1,6</sup>

<sup>1</sup>Karlsruhe Institute of Technology (KIT), Institute for Meteorology and Climate Research (IMK-IFU), Garmisch-Partenkirchen, Germany

<sup>2</sup>Technische Universität München, Institute for High-Frequency Engineering, München, Germany

<sup>3</sup>University of Applied Sciences Regensburg, Regensburg, Germany

<sup>4</sup>Deutscher Wetterdienst, Hohenpeißenberg, Germany

<sup>5</sup>Ericsson GmbH, Düsseldorf, Germany

<sup>6</sup>University of Augsburg, Institute for Geography, Augsburg, Germany

Received: 23 December 2011 – Accepted: 31 December 2011 – Published: 13 January 2012

Correspondence to: H. Kunstmann (harald.kunstmann@kit.edu)

Published by Copernicus Publications on behalf of the European Geosciences Union.

**HESSD**

9, 741–776, 2012

**Precipitation  
observation using  
microwave links in  
the Alps**

C. Chwala et al.

Title Page

Abstract

Introduction

Conclusions

References

Tables

Figures

◀

▶

◀

▶

Back

Close

Full Screen / Esc

Printer-friendly Version

Interactive Discussion

## Abstract

Measuring rain rates over complex terrain is afflicted with large uncertainties because rain gauges are influenced by orography and weather radars are mostly not able to look into mountain valleys. We apply a new method to estimate near surface rain rates exploiting attenuation data from commercial microwave links in the alpine region of Southern Germany. Received signal level (RSL) data is recorded minutely with small data loggers at the towers and then sent to a database server via GSM. Due to the large RSL fluctuations in periods without rain, the determination of attenuation caused by precipitation is not straightforward. To be able to continuously process the RSL data from July 2010 to October 2010, we introduce a new method to detect wet and dry periods using spectral time series analysis. We show the performance and limitations of the method and analyse the derived rain rates compared to rain gauge and weather radar measurements. The resulting correlations differ for different links and reach values of  $R^2 = 0.80$  for the link-gauge comparison and  $R^2 = 0.84$  for the link-radar comparison.

## 1 Introduction

For the improved understanding of all aspects of the regional water cycle, knowledge of the spatio-temporal distribution of precipitation is of crucial importance. Improved and scientifically sound water availability information, however, still suffers from limited quality of available spatial rainfall products. This is particularly true in regions with complex orography and complex precipitation variability where the established precipitation measurement methods (rain gauges and radar) often can not provide the desired accuracy. The wind and exposure induced errors that rain gauges are affected by (Nešpor and Sevruk, 1999; Sevruk and Zahlavova, 1994), increase especially in complex terrain like the Alps. Weather radar measurements are in general subject to great uncertainties because of the error-prone relation between measured reflectivity and rain rate

**HESSD**

9, 741–776, 2012

### Precipitation observation using microwave links in the Alps

C. Chwala et al.

Title Page

Abstract

Introduction

Conclusions

References

Tables

Figures

◀

▶

◀

▶

Back

Close

Full Screen / Esc

Printer-friendly Version

Interactive Discussion



(Ulbrich and Lee, 1999). In mountainous regions beam blockage and enhanced bright band interception introduce further errors (Andrieu et al., 1997).

A new possibility to gain additional information on precipitation is to use attenuation data from microwave links. This methods makes use of the fact that rain drops considerably absorb and scatter electromagnetic radiation in the microwave region (wavelengths between 30 cm and 0.3 cm, corresponding to frequencies between 1 GHz and 100 GHz). The first theoretical description of this effect was given by Stratton (1930) and later proven by experiments of Mueller (1946). Both were focusing on the prediction of unwanted interference along a microwave communication link and thus treated precipitation as a source of disturbance. In the 1960s, weather radar researchers were the first who used the effect the other way round. They measured line integrated precipitation by using corner reflectors as fixed radar targets (Atlas, 1964). Among them were Atlas and Ulbrich (1977) who introduced the idea to use microwave point to point links instead of expensive radars. Since then several experiments with purpose-built microwave links, mostly using two frequencies, were conducted to measure line integrated precipitation (Holt et al., 2003; Rahimi et al., 2004; Minda and Nakamura, 2005; Upton et al., 2005; Leijnse et al., 2007a) and its drop size distribution (DSD) (Rincon and Lang, 2002).

Messer et al. (2006) showed that it is possible to use attenuation data from existing commercial microwave link networks operated by cell phone providers. Those networks exist wherever a cell phone network exists. Thus this technique can in general be employed even in areas with coarse gauge densities like mountainous regions or developing countries. The density of links of course varies, with more links in urban regions and a coarser network in rural areas. As a rough figure, a density of at least 0.3 links km<sup>2</sup> can be assumed for European countries. Reported approximate numbers are: Germany 100 000 links per 350 000 km<sup>2</sup>, Netherlands 12 000 links per 35 000 km<sup>2</sup> (Leijnse et al., 2007b).

The potential of exploiting attenuation data from commercial microwave links networks has been studied both in theory and praxis to derive line integrated rain rates

## Precipitation observation using microwave links in the Alps

C. Chwala et al.

Title Page

Abstract

Introduction

Conclusions

References

Tables

Figures

◀

▶

◀

▶

Back

Close

Full Screen / Esc

Printer-friendly Version

Interactive Discussion



(Leijnse et al., 2007b; Schleiss and Berne, 2010; Townsend and Watson, 2011; Overeem et al., 2011), spatial rainfall fields (Zinevich et al., 2008) and humidity measurements (David et al., 2009). Leijnse et al. (2008) and Zinevich et al. (2010) also studied the impact of different error sources, like wet antenna attenuation and the variability of the drop size distribution.

In this study, we show results from data acquired at five links in the pre-alpine and alpine region around Garmisch-Partenkirchen in Southern Germany for the period July 2010 to October 2010. We use small data loggers directly at the towers to record the received signal level (RSL) every minute with a power resolution  $< 0.05$  dB. To be able to continuously process the data, a new wet/dry classification algorithm which uses spectral time series analysis is introduced. Both its potential and limitations are shown. The rain rates produced by the algorithm are then compared with gauge and radar derived quantities.

## 2 Physics of microwave attenuation by precipitation

Attenuation of the transmitted power of an electromagnetic wave occurs when energy is scattered or absorbed by diffusers in the path of propagation. In the case of microwave radiation and liquid precipitation, those processes have to be described using the Mie solution to Maxwell's equations, because the diameter of the diffusers (i.e. the raindrop diameter  $D \leq 5$  mm) and the wavelength used in microwave link systems ( $\lambda \leq 3$  cm) are roughly in the same order of magnitude. Following the Mie solution, Olsen et al. (1978) showed that the relation between rain rate  $R$  in  $\text{mm h}^{-1}$  and attenuation  $A$  in  $\text{dB km}^{-1}$  can be approximated by the power law

$$A = aR^b. \quad (1)$$

The constants  $a$  and  $b$  primarily depend on the frequency of the propagating wave, but also on the drop size distribution (DSD) and the temperature. Problematic is the dependence on the DSD, because it is not only changing from rain event to rain event

## Precipitation observation using microwave links in the Alps

C. Chwala et al.

Title Page

Abstract

Introduction

Conclusions

References

Tables

Figures

◀

▶

◀

▶

Back

Close

Full Screen / Esc

Printer-friendly Version

Interactive Discussion



but even within the same rain shower on short scales in time and space. Its accurate determination by remote sensing techniques is still an unsolved problem.

For different rainfall climatologies and DSDs there are several sets of the values  $a$  and  $b$  available, both empirically and theoretically derived ones. They all have in common that  $b$  is close or equal to one in the frequency range from 25 GHz to 40 GHz. Hence, the power law in Eq. (1) is almost linear. This is an important fact, since any non linearity leads to errors of the line integrated precipitation because of the inhomogeneous distribution of rain fall along the microwave link path (Leijnse et al., 2008).

We use the  $a$  and  $b$  values from the recommendation of the ITU (2003). For the values in between the listed ones we perform a shape preserving spline interpolation as shown in Fig. 1.

### 3 Study region

Our study region is the area between the cities Weilheim and Garmisch-Partenkirchen located in the southern part of Germany 40 to 90 km south of Munich. An overview of the region with the locations of all used microwave links, rain gauges and the weather radar is given in Fig. 2. It stretches from the upper Bavarian lowlands in the north at about 600 m a.s.l. to the high alpine area in the south with summits up to 3000 m a.s.l. (Mount Zugspitze 2962 m). Accordingly, the southern part of the study region is characterized by steep orography. Hence, strong gradients in temperature and mean rain rate exist on very short horizontal scales. In contrast to the lower parts of our study region with an annual precipitation of 1100 mm and a mean temperature of 8°C the weather station on Mount Zugspitze yields 2000 mm and -4.7°C. Furthermore climatic conditions in the study region are characterized by strong seasonal and diurnal variations. The typical wind direction is southwest to northwest.

**Precipitation  
observation using  
microwave links in  
the Alps**

C. Chwala et al.

Title Page

Abstract

Introduction

Conclusions

References

Tables

Figures



Back

Close

Full Screen / Esc

Printer-friendly Version

Interactive Discussion



## 4 Instrumentation

### 4.1 Microwave links

We use data from five links from Ericsson GmbH which are part of a German cell phone network. In contrast to other studies with commercial microwave links (Zinevich et al., 2008; Schleiss and Berne, 2010; Overeem et al., 2011) we do not receive any processed data from the network providers, but rather record the RSL directly at the towers from a monitoring output of the link systems. We use a data logger, described in more detail in Sect. 5, which sends the data to a database server via GSM. This restricts data acquisition to a smaller number of links, but gives the advantage of a high resolution of the RSL ( $< 0.05$  dB) and a selectable sampling rate.

Of the equipped links two are located in the pre-alpine area around Mount Hoher Peißenberg where the German Meteorological Service (DWD) operates a meteorological observatory with the C-Band weather radar described in Sect. 4.3. The other three links are located in the valley around Garmisch-Partenkirchen. Details of link length, location, frequency, polarization and altitude difference are summarized in Table 1.

### 4.2 Rain gauges

For comparison with the link derived rainfall rate we use data from six rain gauges in the test area. Three gauges are operated by the DWD which provide hourly rain rate data with 0.1 mm resolution.

In addition to these, we operate three rain gauges at the slope beneath the steepest link connecting the center of Garmisch-Partenkirchen (700 m a.s.l.) and the summit of Mount Wank (1780 m a.s.l.) to better capture the inhomogeneity of precipitation caused by the orography. The gauges are tipping buckets with 0.2 mm resolution and are placed at 930 m, 1340 m and 1750 m a.s.l. Because all locations are on the steep forest covered windward side of the mountain, the accuracy of the absolute values of rainfall amount is affected by large uncertainties. Qualitative information on the

**HESSD**

9, 741–776, 2012

## Precipitation observation using microwave links in the Alps

C. Chwala et al.

Title Page

Abstract

Introduction

Conclusions

References

Tables

Figures

◀

▶

◀

▶

Back

Close

Full Screen / Esc

Printer-friendly Version

Interactive Discussion



occurrence of rain events in general can nonetheless be deduced. A summary of all gauges can be found in Table 2.

### 4.3 Weather radar

Radar data are obtained by the DWD C-band weather radar at Mount Hoher Peißenberg. It is not part of the operational radar network which comprises 16 radar systems covering the whole area of Germany, but rather serves as a research testbed for innovations that could be introduced to the next generation of the operational network. Because of this, data is not always continuously available as soft- and hardware are being upgraded from time to time. Nevertheless it is our preferred source of radar data because of its vicinity to the microwave links and to the Alps in general.

The radar covers a circular area with a radius of 256 km and generates a precipitation scan every five minutes. We use the raw reflectivity data of those five minute precipitation scans (the so called DX product), which we project from the polar radar coordinates to a  $100 \times 100$  km Cartesian grid with grid size of  $1 \times 1$  km. For the transformation of the radar reflectivity  $Z$  to the rainfall rate  $R$ , we employ the RADOLAN  $Z$ - $R$ -relation (Bartels et al., 2004) used by the DWD for its radar precipitation products.

## 5 Data acquisition and data management

### 5.1 Data logger

To acquire RSL data from the microwave links, data loggers are connected to the RSL monitoring voltage output at the links. We use a Cinterion TC65i which combines a GSM module, two ADC channels and a Java virtual machine to run our custom logging program. The module's ADC input is connected to the RSL monitoring voltage output of the link. If a second link is available at the same location its RSL output can be connected to the second ADC, which will help save costs when installing loggers at

## Precipitation observation using microwave links in the Alps

C. Chwala et al.

Title Page

Abstract

Introduction

Conclusions

References

Tables

Figures

◀

▶

◀

▶

Back

Close

Full Screen / Esc

Printer-friendly Version

Interactive Discussion



nodes where usually several links are located. The voltage is sampled every three seconds and stored as a minute average. Via the GSM module, the recorded data is then transferred to the FTP port of the project server. Since the minimal java virtual machine installed ex factory does not implement FTP, the free FTP library Ftp2Me (László, 2011) is used. With a conversion factor distinct for each link system, the recorded voltage can then be converted to RSL in the next processing step. The conversion factors are provided by Ericsson GmbH. To assure good data consistency, the logger requests the current time via time protocol from the *Physikalisch-Technische Bundesanstalt* (PTB) in Germany to update its systems time used to timestamp the data. Each logger also has a unique *International Mobile Station Equipment Identity* (IMEI) number which is used to organize the raw data storage at the server so that distinguishing data from different loggers is straightforward. The cryptic IMEI is then resolved to the real microwave link name in the database.

## 5.2 Data base and data access

To ease analysis, processing and storage organization of the daily increasing amount of RSL records, a database system is used. The framework consists of a MySQL backbone, holding the tables for all data, and python scripts for parsing and exporting data to and from the database. Besides RSL, data it also holds all important information on the specific microwave links (locations, frequency, polarization, etc.), rain gauge data and additional meteorological data from our institute's met station on the summit of Mount Wank. It is easily expandable for new data sources. Export for automatic processing and research work can be done via a command line tool to csv files or binary matlab structures. Raw data is not yet freely available but a web interface for visualization is already online (Gmeiner, 2011).

### Precipitation observation using microwave links in the Alps

C. Chwala et al.

Title Page

Abstract

Introduction

Conclusions

References

Tables

Figures

◀

▶

◀

▶

Back

Close

Full Screen / Esc

Printer-friendly Version

Interactive Discussion





# 6 Data preprocessing: wet/dry classification

## 6.1 Background

As shown in Sect. 2, the attenuation of microwave radiation strongly depends on the amount of precipitation along its path of propagation. Hydrometeors are however not the only source of disturbance. All other atmospheric parameters like gas concentrations, pressure, humidity, temperature and even aerosols (Liebe, 1989) or dust particles (Ho et al., 2004) can cause signal impairment. However, compared with the impact of precipitation, the effect is minor. But even during clear sky conditions the RSL level is always fluctuating, because the atmospheric conditions are constantly changing. For special layering of the atmosphere, so called ducting, where gradients of the refractive index cause the direction of wave propagation to bend, losses of several dB are possible (Valtr et al., 2011). Thus, to derive meaningful precipitation information from microwave link data, the fluctuations of the RSL have to be distinguished into those caused by precipitation and those caused by other effects. As there is usually no reliable information on the atmospheric conditions along the links available, discounting their impairment on the signal is not feasible. In order to still derive meaningful rain rates from microwave link data, two directions can be taken.

First, the differential polarization signal from a dual polarization-link cancels out the unwanted fluctuations (Ruf et al., 1996). This is because the differential signal is only affected by the unequal raindrop diameters in the horizontal and vertical direction depending on the drop sizes, which in turn depends on the rain rate.

The second way is to determine in which periods rain events occurred (wet period) and which were dry (dry periods). The attenuation during a rain event could then be calculated from a baseline which is derived from the dry period before it, assuming that the baseline does not significantly change during the rain event. This was first shown by Rahimi et al. (2003) who analysed the correlation between RSL time series for different frequencies recorded with purpose built dual-frequency links. Wet events could be distinguished from dry ones by significantly higher correlation values. The

### Precipitation observation using microwave links in the Alps

C. Chwala et al.

Title Page

Abstract

Introduction

Conclusions

References

Tables

Figures



Back

Close

Full Screen / Esc

Printer-friendly Version

Interactive Discussion



same approach was taken by Goldshtein et al. (2009) using the correlation between bidirectional signals of commercial links. Overeem et al. (2011) also analysed correlation between different links to detect wet periods. They compared RSL levels of several links (not farther than 10 km from each other) from a dense network of microwave links in an urban area.

In commercial microwave link networks usually only one polarization and one frequency is available along a certain link path. Density of the network also varies considerably between rural and urban areas. Hence the above mentioned methods are not always applicable. Nevertheless, a determination of wet and dry periods is possible using time series analysis tools. Schleiss and Berne (2010) showed that a windowed standard deviation sliding along a RSL record from commercial links accomplished this task quite robustly. For our specific environment (i.e. specific data resolution and orography) we developed further a new analysis tool, using short-time Fourier transform (STFT), which is a sliding windowed fast Fourier transform (FFT).

## 6.2 Algorithm

The problem to distinguish wet and dry periods in the RSL data records can be viewed as a problem of pattern recognition in time series. A human observer, who has experience in comparing RSL data with rain gauge records, can very often easily detect even weak rain events by looking at the course of the RSL time series. For larger data sets this is of course not feasible and scientifically not satisfying. Thus the main task is to find features defining “the look” of a rain event that are easily extractable from the time series by means of a computer algorithm.

We approach this task by analysing spectra of short snippets of the RSL time series  $R_i$  with  $i \in \{1, \dots, N\}$ ,  $N$  being the length of the time series. For each time step  $t$  we take short section of the RSL data

$$\mathbf{R}(t) = \{R_k | k \in \{t - L, \dots, t + L\}\} \quad (2)$$

with length  $2L$ , windowed by a Hamming window  $\omega$  from which we calculate the Fourier

## Precipitation observation using microwave links in the Alps

C. Chwala et al.

Title Page

Abstract

Introduction

Conclusions

References

Tables

Figures

◀

▶

◀

▶

Back

Close

Full Screen / Esc

Printer-friendly Version

Interactive Discussion



transform

$$\mathcal{F}(f, t) = \text{FFT}(\omega \mathbf{R}(t)) \quad (3)$$

via FFT. As we are only interested in the spectrum of the amplitudes we use the power spectral density

$$P(f, t) = \frac{2 |\mathcal{F}(f, t)|^2}{F_s \sum_0^L \omega^2} \quad (4)$$

for further analysis. The normalisation factors used are the sampling rate  $F_s$  and the sum over all Hamming window weights. The received spectrum is just a different representation of the short time series section around  $t$ , only in the frequency domain. Effects that occur at a certain frequency or in a certain frequency range are thus more easily observable. Figure 3 shows example spectra for three points in time of a RSL record with different atmospheric conditions: a rain event, a dry period and a dry period which causes strong signal fluctuations.

The raw spectra all exhibit a  $1/f$  like shape hampering the classification of the deviations from the mean spectrum of the dry period. Thus for each point in time  $t$  the normalised spectrum

$$P_{\text{norm}}(f, t) = \frac{P(f, t)}{P_{\text{meandry}}(f)} \quad (5)$$

is calculated by division through a mean dry spectrum  $P_{\text{meandry}}$ . The inset in Fig. 3 shows the three spectra for the three different atmospheric conditions in normalised form. Besides the obvious strong deviation at low frequencies for the wet period the dry period with strong fluctuations also shows considerable differences from the dry mean. Contrary to the wet period, its deviation spreads over the whole frequency range with the highest amplitudes towards high frequencies. That is, not only can the wet periods be identified by the strong deviation at low frequencies but they can also

## Precipitation observation using microwave links in the Alps

C. Chwala et al.

Title Page

Abstract

Introduction

Conclusions

References

Tables

Figures

◀

▶

◀

▶

Back

Close

Full Screen / Esc

Printer-friendly Version

Interactive Discussion

be distinguished from dry periods by the uneven distribution of the deviations. Hence, we look at the difference

$$P_{\text{sumdiff}}(t) = P_{\text{sumlow}}(t) - P_{\text{sumhigh}}(t) \quad (6)$$

of the sums of the normalised low and high frequency amplitudes

$$P_{\text{sumlow}}(t) = \sum_{f=f_{\text{low1}}}^{f_{\text{low2}}} \frac{P_{\text{norm}}(f, t)}{N_{\text{low}}} \quad (7)$$

$$P_{\text{sumhigh}}(t) = \sum_{f=f_{\text{high1}}}^{f_{\text{high2}}} \frac{P_{\text{norm}}(f, t)}{N_{\text{high}}} \quad (8)$$

with  $f_{\text{low1}} < f_{\text{low2}} < f_{\text{high1}} < f_{\text{high2}}$  and  $N_{\text{low}}, N_{\text{high}}$  being the number of frequencies used in each sum. For all following applications of the algorithm  $f_{\text{low1}} = 0 \text{ Hz}$ ,  $f_{\text{low2}} = 4.1 \times 10^{-3} \text{ Hz}$ ,  $f_{\text{high1}} = 4.3 \times 10^{-3} \text{ Hz}$  and  $f_{\text{high2}} = 8.3 \times 10^{-3} \text{ Hz}$  will be used.  $P_{\text{sumlow}}$  and  $P_{\text{sumhigh}}$  then cover the whole frequency range, comprising the same number of values. If their difference  $P_{\text{sumdiff}}$  exceeds a certain threshold  $\sigma$  we mark the period as wet. Hence for each point in time  $t$  we define the decision rule

$$t = \begin{cases} \text{wet if } P_{\text{sumdiff}}(t) > \sigma \\ \text{dry if } P_{\text{sumdiff}}(t) \leq \sigma. \end{cases} \quad (9)$$

During wet periods, the baseline  $R_{\text{base}}$  of the RSL is kept constant at the level of the last value  $t_{\text{lastdry}}$  of the last dry period. For the dry period the baseline always follows the RSL level. That is

$$R_{\text{base}}(t) = \begin{cases} R(t_{\text{lastdry}}) & \text{if wet} \\ R(t) & \text{if dry.} \end{cases} \quad (10)$$

The attenuation is then

$$A(t) = R_{\text{base}}(t) - R(t) \quad (11)$$

## Precipitation observation using microwave links in the Alps

C. Chwala et al.

Title Page

Abstract

Introduction

Conclusions

References

Tables

Figures

◀

▶

◀

▶

Back

Close

Full Screen / Esc

Printer-friendly Version

Interactive Discussion

which is always zero for the dry periods. If the attenuation and thus the rain rate becomes negative, the rain rate is set to zero. This sometimes happens at the end of a rain event when the baseline was set too low at the beginning.

### 6.3 Example

5 An example of the application of the wet/dry classification algorithm is shown in Fig. 4. It is applied to a 18 day time series of RSL data recorded in summer 2010 at the link *gap0-oagau1* from Garmisch-Partenkirchen to Mount Laber near the city of Oberammergau. The topmost plot (Fig. 4a) shows the minute resolution RSL time series recorded by our data logger. Within the 18 days several rain showers passed the link.  
 10 The slight attenuation events around the 19 and 20 June indicate a long lasting stratiform rain event. On the 22 and 30, three weak and short events occurred. The last days of the time series around the 4 and 5 July are dominated by sharp attenuation events which can be assumed to stem from more convective showers.

In Fig. 4b, a spectrogram of this time series is shown which comprises the normalised spectra  $P_{\text{norm}}(t)$  for each minute, with the frequency along the  $y$ -axis and the amplitude colour coded. A window length of 256 points was used. The uneven distribution of the normalised amplitudes during rain events (which was already show in Fig. 3), is also visible in this representation of the time series. During the dry period from the 23 to the 29 June, a daily periodicity is revealed with stronger fluctuations (higher amplitudes) in  
 20 the morning hours.

To visualize the decision whether a period is wet or dry,  $P_{\text{sumdiff}}$  and the threshold  $\sigma$  are plotted in Fig. 4c. Following the decision rule in Eq. (9), a shaded area is added to indicate a wet period where  $P_{\text{sumdiff}} > \sigma = 2.5$ . The baseline, shown in the Fig. 4d, is then set according to Eq. (10). With the magnified  $y$ -axis compared to the topmost plot, the fluctuations during dry periods are now clearly visible.  
 25

With the baseline set, it is now straightforward to calculate the rain rate with the power law from Eq. (1) and the  $a$  and  $b$  values taken from the interpolation of the ITU recommendations. Figure 4e,f comprise the calculated hourly rain rates and accumulated

## Precipitation observation using microwave links in the Alps

C. Chwala et al.

Title Page

Abstract

Introduction

Conclusions

References

Tables

Figures

◀

▶

◀

▶

Back

Close

Full Screen / Esc

Printer-friendly Version

Interactive Discussion



sum of rain, respectively. For comparison, data from the two nearest DWD rain gauges are shown. Reasonable agreement can be observed between all three precipitation observations. Deviations are of course likely because the gauges are several kilometres away from the link and thus they do not necessarily collect the same amount of rain.

#### 6.4 Adjustment and performance for different links

For the example shown in Fig. 4, the threshold was chosen by hand to best fit the event detection by the rain gauge. However, this is not feasible for a larger number of links and a longer time series. To determine the best threshold value for each of the five links, we analysed our algorithm's performance for different values over the period July 2010 to October 2010. Measures of the performance are the error rates of wet and dry detection. Using the numbers of hours  $N_{\text{link\&gauge=wet}}$  and  $N_{\text{link\&gauge=dry}}$ , where both link and gauge are classified as wet or dry respectively and the number of hours  $N_{\text{gauge=wet}}$  and  $N_{\text{gauge=dry}}$ , where the gauge indicates a wet or dry period, respectively, we define the error rates as

$$\mathcal{E}_{\text{wet}} = 1 - \frac{N_{\text{link\&gauge=wet}}}{N_{\text{gauge=wet}}} \quad (12)$$

$$\mathcal{E}_{\text{dry}} = 1 - \frac{N_{\text{link\&gauge=dry}}}{N_{\text{gauge=dry}}} \quad (13)$$

which form the weighted mean error rate

$$\mathcal{E}_{\text{wmean}} = w \mathcal{E}_{\text{wet}} + (1 - w) \mathcal{E}_{\text{dry}} \quad (14)$$

with the weighting factor  $w$ . We chose  $w = 0.6$  to emphasise the error of wet detection. This is motivated by the fact that a misclassification of a dry period as wet is less severe, since it is in fact not raining than (if the gauge is regarded as truth) (Rahimi et al., 2003). The attenuation, and hence the derived rain rate, is expected to be low. The dry error of course still has to be taken into account due to the possibility of large

## Precipitation observation using microwave links in the Alps

C. Chwala et al.

Title Page

Abstract

Introduction

Conclusions

References

Tables

Figures

◀

▶

◀

▶

Back

Close

Full Screen / Esc

Printer-friendly Version

Interactive Discussion



fluctuations in absence of rain, which is exactly the reason why a wet/dry classification is necessary.

Besides the threshold, the window length is the second crucial parameter for the algorithm's performance. We found that 256 points (with our minute averaged data, i.e. 256 min) performed best. Shorter windows yielded more problems with detecting long lasting, almost constant rain events, for the short window does not see the long term fluctuation. Longer windows in contrast had drawbacks in detecting small and short events because their contribution to the Fourier spectra is blurred out.

The results of the performance analysis for a window length of 256 for different threshold values are given in Fig. 5. All five links exhibit more or less the same behaviour. The higher the threshold  $\sigma$  the lower the dry detection error rate (because more and more points are classified as dry since  $P_{\text{sumdiff}}$  is smaller than  $\sigma$  more often) and the higher the wet detection error rate (because fewer and fewer points are classified as wet). Above a certain threshold value, the dry detection error rate of all links rapidly decreases, converging to zero for increasing  $\sigma$ . Except for *hop2-murn1*, the course of the wet detection error rate is more linear and only rises slowly with high thresholds  $\sigma$ . The weighted mean error is thus dominated by the high values of dry detection error rate for low  $\sigma$  and does not form a significant minimum. In contrast, the wet detection error rate for the link *hop2-murn1* rapidly increases for increasing  $\sigma$  yielding a noticeable minimum of the weighted mean error rate at  $\sigma = 0.1$ . For the other four links, the exact value for the optimal  $\sigma$  is not that crucial for the wet/dry algorithm performance since the weighted mean error rate does not change much in the vicinity of its minimum. The cause for the peculiar behaviour of the link *hop2-murn1* is not yet clear. We analysed the relation between different link parameters (length, frequency, altitude difference, RSL quantization, sensitivity) and the threshold values for all links, but could not find a significant correlation.

Table 3 in the results section shows the determined optimal values of  $\sigma$  for each link together with the detection error rates and the correlation with rain rates from the corresponding rain gauges.

## Precipitation observation using microwave links in the Alps

C. Chwala et al.

Title Page

Abstract

Introduction

Conclusions

References

Tables

Figures

◀

▶

◀

▶

Back

Close

Full Screen / Esc

Printer-friendly Version

Interactive Discussion

## 6.5 Limitations

As can be seen from the error rates in Fig. 5 and Table 3, there still remains an amount of missclassifications of wet and dry periods. Some are due to the inability of the algorithm itself, others to the more general problem of precipitation ground truthing.

In our case the rain gauge locations and the farthest point of some links are separated by more than 10 km and up to 1000 m of altitude difference. That is, the rain gauge indicating a dry period does not necessarily mean that there was no rain along the link at all.

Figure 6 gives an example of a situation like this. The RSL data shows three distinct attenuation events, at 06:00, 11:30 and 13:00 UTC. Judging by the course of the RSL, all three stem from precipitation. The rain gauge, however, seems to miss the second event and parts of the third one. Hence, a dry detection error is counted where the algorithm in fact was correct. Unfortunately a comparison with radar data, which would offer an improved more localised event detection, is not possible for the three links around Garmisch-Partenkirchen because no radar data is available for the test period in summer 2010. The cause for this was a new scan strategy which set the elevation angle of the radar lower for the precipitation scan. Hence the beam is blocked by the mountain range north of Garmisch-Partenkirchen.

Besides the problem with the spatial representativeness of rain gauges, Fig. 6 also shows a detection limitation of the algorithm itself. For both the events at 06:00 and 11:30 UTC a wet period is detected already one hour before and after the actual attenuation event. The cause for this broadening of the wet detection period is that the 256 min sliding window used for the spectra calculation sees large attenuation peaks 128 points (i.e. 128 min) before and after the period it classifies. The effect is mitigated by the use of the Hamming window weakening the influence from the points at the window edges, but not enough. Remedy could be found by shortening the window length, but as discussed in Sect. 6.4 this would implicate other drawbacks. Although the derived rainrates for the wrongly classified period are negligible because there is

### Precipitation observation using microwave links in the Alps

C. Chwala et al.

Title Page

Abstract

Introduction

Conclusions

References

Tables

Figures



Back

Close

Full Screen / Esc

Printer-friendly Version

Interactive Discussion





almost no attenuation, this still increases the error rate. The obvious solution, weighting the detection errors with the derived rain rates to emphasise errors leading to high rain rates, is problematic. It would emphasise those dry detection errors mentioned in the previous paragraph, when a rain gauge misses a rain event clearly observed by the link.

The same limitation is visible in the example in Fig. 7. The strong attenuation event at 14:00 to 15:00 UTC also is preceded by more than one hour of wet detection without attenuation. Again the uncertainty of the gauge as the rain event indicator for our purpose is present. Between 14:00 and 15:00 UTC the link yields  $\approx 5 \text{ mm h}^{-1}$  whereas the gauge did not record any precipitation. Only the following smaller (presumably more widespread) event is detected.

Another limitation revealed by this example is the correct wet event detection for very light rain events. Starting from 01:00 UTC on the 13 August, the rain gauge at Mount Hoher Peißenberg measures five hours of very light precipitation ( $0.1\text{--}0.2 \text{ mm h}^{-1}$ ). Looking at the RSL data of the link, a slight decrease ( $\approx 1 \text{ dB}$ ) is observable. However the decrease takes place very slowly ( $1 \text{ dB h}^{-1}$ ). That is, in the spectrum only the amplitudes of the lowest four frequencies (from  $0.07 \times 10^{-3} \text{ Hz} \hat{=} 1/256 \text{ min}$  to  $2.60 \times 10^{-3} \text{ Hz} \hat{=} 1/64 \text{ min}$ ) will be increased considerably by this very slow change of RSL. For the sum over all 64 low frequencies  $P_{\text{sumlow}}$  their contribution is not enough to fulfil the wet period condition  $P_{\text{sumlow}} - P_{\text{sumdry}} > \sigma$ .

Again this is a problem of window length. A longer window would have captured the slowly changing RSL level better, however at the expense of detecting shorter events. Thus a further improvement of the algorithm may be achieved using spectral analysis tools which are more suitable for revealing simultaneous changes on long and short time scales. Examples could be the discrete wavelet transform or the Hilbert-Huang transform (Huang et al., 1998).

## Precipitation observation using microwave links in the Alps

C. Chwala et al.

Title Page

Abstract

Introduction

Conclusions

References

Tables

Figures

◀

▶

◀

▶

Back

Close

Full Screen / Esc

Printer-friendly Version

Interactive Discussion

7 Intercomparison of link, gauge and radar derived rain rates

Section 6 focused on the rain event detection, which is necessary to determine a RSL baseline. For the application of microwave links as a precipitation remote sensing tool, the crucial parameter is the rain rate it delivers. We derived rain rates by applying the algorithm introduced above with the values listed in Table 3 and the power law relation in Eq. (1). Continuous minute resolution data of RSL records is used throughout the period from July 2010 to October 2010 for all links except for *gap0-gap4*, where two failures of the data acquisition system made several hours of data unusable. The rain rates are then averaged hourly to be comparable with the available rain gauge and radar measurements.

7.1 Microwave link – rain gauge comparison

Figure 8 gives an overview of the comparison between the hourly rain rate from each of the five links and their closest rain gauge. The sixth plot on the lower right shows data from the link *gap0-gap4* and the three gauges along the slope of Mount Wank beneath the link.

Correlation between link and gauge measurements differ from link to link between  $R^2 = 0.57$  and  $R^2 = 0.80$ . Again the link *hop2-murn1* shows the lowest agreement. The link *gap0-gap4*, which has far better detection error rates, also yields a low correlation though. Comparisons using our own gauges directly beneath the link on the slope of Mount Wank instead of the DWD gauge does not provide any further improvement. A look at the time series (not shown here) revealed that some events not recorded by the DWD gauge were detected by the gauges at the higher elevations (which can be attributed to precipitation generation due to orographic lifting), but the overall correlation even declined. The advantage of the better spatial representativeness might have been outweighed by the errors attributed to the steep orography and the forest cover at the gauge locations.

For the other three links (*hop2-wh0*, *gap3-oau4*, *gap0-oagau1*) the correlation is better with values between  $R^2 = 0.74$  and  $R^2 = 0.80$ .

In general for all links, problems in the range of small rain rates can be observed, especially along the axes. The values directly on the axes (i.e. the rain gauge or the link measures zero rainfall but the respective other measurement yields a rain rate great than zero) stem from the classification errors mentioned in Sect. 6.5. The dry detection errors lead to values on the  $x$ -axis, wet detection errors to values on the  $y$ -axis. Links with lower error rates like *gap0-oagau1* are thus not affected that much as those with higher error rates, e.g. *hop2-murn1* (compare Table 3).

For all links, except *gap0-oagau1*, a slight overestimation of rain rates is observable. This is likely due to the additional attenuation introduced by the water film present on the antenna during a rain event. We are aware of the fact that correction methods for the wet antenna effect exist (Kharadly and Ross, 2001; Minda and Nakamura, 2005; Leijnse et al., 2008; Overeem et al., 2011), but all implicate further uncertainties. Hence, as long as no reliable ground truth for the absolute rain rates along the links is available, we prefer not to apply a wet antenna correction.

## 7.2 Microwave link – weather radar comparison

For the two links connecting Mount Hoher Peißenberg with the cities of Weilheim and Murnau radar data is available throughout the test period. The radar data is averaged along the corresponding link path. Each pixel is attributed a weight based on the fraction of link length passing through it. Figure 9 shows the resulting rain rates for link and radar as well as a comparison of the gauge at Mount Hoher Peißenberg with the radar path average data along the link towards Weilheim.

In comparison with the gauge-link correlation from Fig. 8, a significant improvement can be observed for the link *hop2-murn1*, as  $R^2$  increases from 0.57 to 0.74. There are still points along the  $y$ -axis indicating that the link may have missed a precipitation event, resulting from the high error rate for wet detection. However most of the dry detection errors from Fig. 8 vanished. The low spatial representativeness of the gauge

## Precipitation observation using microwave links in the Alps

C. Chwala et al.

Title Page

Abstract

Introduction

Conclusions

References

Tables

Figures

◀

▶

◀

▶

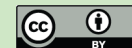
Back

Close

Full Screen / Esc

Printer-friendly Version

Interactive Discussion



seemed to be a major cause for the poor performance of the long link *hop2-murn1* (17.4 km).

Correlation for the link *hop2-wh0* also increased, from an already high  $R^2 = 0.80$  to  $R^2 = 0.84$ . Just as for the link *hop2-murn1*, the main improvement can be observed when the gauge seemed to have underestimated or completely missed rain events.

The comparison of the gauge rain rates against the averaged radar rain rates along the link *hop2-wh0* (shown on the right in Fig. 9) emphasises the problem of rain gauge measurements. For low rain rates the error is small, but with higher rain rates which mostly occur on smaller horizontal scales, the error increases. Radar rain rate availability is thus desired for our whole test region.

## 8 Conclusions

We have analysed four month of continuous RSL data from five commercial backhaul links in the pre alpine and alpine region of Southern Germany. To derive rain rates from this data, a classification into wet and dry periods had to be performed to account for fluctuations during dry conditions. To do so, we introduced a new classification algorithm using short-time Fourier transform. It is based on the fact that spectra of wet periods, in contrast to dry periods with strong fluctuations, exhibit a significant deviation from mean dry spectra in the low frequency regime. To decide whether a period is wet or dry, sums of spectral amplitudes are compared against a threshold. Using rain gauge data as ground truth, optimal values for the threshold could be identified for the five links. Apart from one link (*hop2-murn1*), the wet/dry classification performance is stable over a wider range of threshold values. Misclassifications are due to the low spatial representativeness of rain gauge measurements and limitations of the classification algorithm in detecting the different types of rain events (short and strong, long lasting and weak).

Using the determined optimal threshold values, rain rates were derived throughout the entire four month test period. Good correlation (up to  $R^2 = 0.80$ ) was found between

## Precipitation observation using microwave links in the Alps

C. Chwala et al.

Title Page

Abstract

Introduction

Conclusions

References

Tables

Figures

◀

▶

◀

▶

Back

Close

Full Screen / Esc

Printer-friendly Version

Interactive Discussion



link and rain gauge data. Using radar data averaged along the links, correlation could be improved showing that rain gauge data might not always be the best ground truth for microwave link studies. In summary, our study confirmed that commercial microwave links can be used to continuously measure rain rates over complex terrain in summer and autumn conditions.

For a further improvement of the wet/dry classification algorithm (especially for the simultaneous detection of short and long events), spectral analysis tools different from Fourier transform may be considered. To overcome the limitation of adjusting the wet/dry classification algorithm for each link, the relation between link parameters (frequency, length, altitude, altitude difference, slope) and the algorithm's threshold value must be investigated further. With knowledge of this relation, the need for error-prone ground truthing could be avoided. This is especially important for potential future applications, e.g. in developing countries where ground truth sources are scarce. Furthermore, the algorithm's performance for longer time series spanning over all seasons should be investigated. For example winter conditions with sleet, snow and antenna icing will pose further challenges.

Where radar-, gauge- and link measurements are available, a merging of all three data sources may provide the opportunity to obtain improved spatio temporal distributions of rainfall for all kind of hydrological analyses.

*Acknowledgements.* This work was funded by the Helmholtz Association of German Research Centres under grant VH-VI-314 entitled "Regional Precipitation Observation by Cellular Network Microwave Attenuation and Application to Water Resources Management" (PROCEMA). The authors want to thank Josef Aigner from Ericsson GmbH for his efforts to expedite the installation of the data logger modules. TERENO (<http://www.tereno.net>) infrastructure is gratefully acknowledged.

**Precipitation  
observation using  
microwave links in  
the Alps**

C. Chwala et al.

Title Page

Abstract

Introduction

Conclusions

References

Tables

Figures



Back

Close

Full Screen / Esc

Printer-friendly Version

Interactive Discussion



## References

- Andrieu, H., Creutin, J. D., Delrieu, G., and Faure, D.: Use of a weather radar for the hydrology of a mountainous area. Part I: Radar measurement interpretation, *J. Hydrol.*, 193, 1–25, 1997. 743
- 5 Atlas, D.: Advances in radar meteorology, *Adv. Geophys.*, 10, 385, 1964. 743
- Atlas, D. and Ulbrich, C. W.: Path- and area-integrated rainfall measurement by microwave attenuation in the 1–3 cm band, *J. Appl. Meteorol.*, 16, 1322–1331, 1977. 743
- Bartels, H., Weigl, E., Reich, T., Lang, P., Wagner, A., Kohler, O., and Gerlach, N.: Abschlussbericht projekt RADOLAN, Tech. rep., Deutscher Wetterdienst, Offenbach, 2004. 747
- 10 David, N., Alpert, P., and Messer, H.: Technical Note: Novel method for water vapour monitoring using wireless communication networks measurements, *Atmos. Chem. Phys.*, 9, 2413–2418, doi:10.5194/acp-9-2413-2009, 2009. 744
- Gmeiner, A.: Interface for Procema Site Overview, available online: <http://195.37.187.138/interface/map>, last access: 10 January 2012, 2011. 748
- 15 Goldshtein, O., Messer, H., and Zinevich, A.: Rain rate estimation using measurements from commercial telecommunications links, *IEEE T. Signal Proces.*, 57, 1616–1625, doi:10.1109/TSP.2009.2012554, 2009. 750
- Ho, C. M., Wang, C., Angkasa, K., and Gritton, K.: Estimation of microwave power margin losses due to Earth's atmosphere and weather in the frequency range of 3–30 GHz, Tech. rep., Jet Propulsion Laboratory, Pasadena, 2004. 749
- 20 Holt, A., Kuznetsov, G., and Rahimi, A.: Comparison of the use of dual-frequency and single-frequency attenuation for the measurement of path-averaged rainfall along a microwave link, *IET Microw. Antenna P.*, 150, 315–20, doi:10.1049/ip-map:20030616, 2003. 743
- Huang, N. E., Shen, Z., Long, S. R., Wu, M. C., Shih, H. H., Zheng, Q., Yen, N., Tung, C. C., and Liu, H. H.: The empirical mode decomposition and the Hilbert spectrum for nonlinear and non-stationary time series analysis, *P. Roy. Soc. A-Math. Phys.*, 454, 903–995, 1998. 757
- 25 ITU: ITU-R P.838-2: Specific Attenuation Model for Rain for Use in Prediction Methods, International Telecommunication Union, Geneva, 2003. 745
- 30 Kharadly, M. and Ross, R.: Effect of wet antenna attenuation on propagation data statistics, *IEEE T. Antenn. Propag.*, 49, 1183–1191, doi:10.1109/8.943313, 2001. 759
- László, F. T.: Ftp2Me – The FTP client library for handheld devices, available online: <http://>

# HESSD

9, 741–776, 2012

## Precipitation observation using microwave links in the Alps

C. Chwala et al.

Title Page

Abstract

Introduction

Conclusions

References

Tables

Figures

◀

▶

◀

▶

Back

Close

Full Screen / Esc

Printer-friendly Version

Interactive Discussion



//ftp2me.sourceforge.net/, last access: 10 January 2012, 2011. 748

- Leijnse, H., Uijlenhoet, R., and Stricker, J. N. M.: Hydrometeorological application of a microwave link: 2. precipitation, *Water Resour. Res.*, 43, W04417, doi:200710.1029/2006WR004989, 2007a. 743
- 5 Leijnse, H., Uijlenhoet, R., and Stricker, J. N. M.: Rainfall measurement using radio links from cellular communication networks, *Water Resour. Res.*, 43, W03201, doi:200710.1029/2006WR005631, 2007b. 743, 744
- Leijnse, H., Uijlenhoet, R., and Stricker, J.: Microwave link rainfall estimation: effects of link length and frequency, temporal sampling, power resolution, and wet antenna attenuation, *Adv. Water Resour.*, 31, 1481–1493, doi:10.1016/j.advwatres.2008.03.004, 2008. 744, 745, 759
- 10 Liebe, H. J.: MPM – an atmospheric millimeter-wave propagation model, *Int. J. Infrared Milli.*, 10, 631–650, 1989. 749
- Messer, H., Zinevich, A., and Alpert, P.: Environmental monitoring by wireless communication networks, *Science*, 312, 713, doi:10.1126/science.1120034, 2006. 743
- 15 Minda, H. and Nakamura, K.: High temporal resolution path-average rain gauge with 50-GHz band microwave, *J. Atmos. Ocean. Tech.*, 22, 165–179, 2005. 743, 759
- Mueller, G.: Propagation of 6-millimeter waves, *P. IRE*, 34, 181–183, doi:10.1109/JRPROC.1946.234240, 1946. 743
- 20 Nešpor, V. and Sevruk, B.: Estimation of wind-induced error of rainfall gauge measurements using a numerical simulation, *J. Atmos. Ocean. Tech.*, 16, 450–464, doi:10.1175/1520-0426(1999)016<0450:EOWIEO>2.0.CO;2, 1999. 742
- Olsen, R., Rogers, D., and Hodge, D.: The  $aR^b$  Relation in the calculation of rain attenuation, *IEEE T. Antenn. Propag.*, 26, 318–329, 1978. 744
- 25 Overeem, A., Leijnse, H., and Uijlenhoet, R.: Measuring urban rainfall using microwave links from commercial cellular communication networks, *Water Resour. Res.*, 47, W12505, doi:10.1029/2010WR010350, 2011. 744, 746, 750, 759
- Rahimi, A. R., Holt, A. R., Upton, G. J. G., and Cummings, R. J.: Use of dual-frequency microwave links for measuring path-averaged rainfall, *J. Geophys. Res.-Atmos.*, 108, 4467, doi:10.1029/2002JD003202, 2003. 749, 754
- 30 Rahimi, A. R., Upton, G. J. G., and Holt, A. R.: Dual-frequency links – a complement to gauges and radar for the measurement of rain, *J. Hydrol.*, 288, 3–12, doi:10.1016/j.jhydrol.2003.11.008, 2004. 743

**Precipitation  
observation using  
microwave links in  
the Alps**

C. Chwala et al.

Title Page

Abstract

Introduction

Conclusions

References

Tables

Figures

◀

▶

◀

▶

Back

Close

Full Screen / Esc

Printer-friendly Version

Interactive Discussion





- Rincon, R. F. and Lang, R. H.: Microwave link dual-wavelength measurements of path-average attenuation for the estimation of drop size distributions and rainfall, *IEEE T. Geosci. Remote*, 40, 760–770, 2002. 743
- Ruf, C. S., Aydin, K., Mathur, S., and Bobak, J. P.: 35-GHz dual-polarization propagation link for rain-rate estimation, *J. Atmos. Ocean. Tech.*, 13, 419–425, 1996. 749
- Schleiss, M. and Berne, A.: Identification of dry and rainy periods using telecommunication microwave links, *IEEE Geosci. Remote S.*, 7, 611–615, doi:10.1109/LGRS.2010.2043052, 2010. 744, 746, 750
- Sevruk, B. and Zahlavova, L.: Classification system of precipitation gauge site exposure: evaluation and application, *Int. J. Climatol.*, 14, 681–689, doi:10.1002/joc.3370140607, 1994. 742
- Stratton, J.: The effect of rain and fog on the propagation of very short radio waves, *P. IRE*, 18, 1064–1074, doi:10.1109/JRPROC.1930.222101, 1930. 743
- Townsend, A. J. and Watson, R. J.: The linear relationship between attenuation and average rainfall rate for terrestrial links, *IEEE T. Antenn. Propag.*, 59, 994–1002, doi:10.1109/TAP.2010.2103021, 2011. 744
- Ulbrich, C. W. and Lee, L. G.: Rainfall measurement error by WSR-88D radars due to variations in Z–R law parameters and the radar constant, *J. Atmos. Ocean. Tech.*, 16, 1017–1024, doi:10.1175/1520-0426(1999)016<1017:RMEBWR>2.0.CO;2, 1999. 743
- Upton, G., Holt, A., Cummings, R., Rahimi, A., and Goddard, J.: Microwave links: the future for urban rainfall measurement?, *Atmos. Res.*, 77, 300–312, doi:10.1016/j.atmosres.2004.10.009, 2005. 743
- Valtr, P., Pechac, P., Kvicera, V., and Grabner, M.: Estimation of the refractivity structure of the lower troposphere from measurements on a terrestrial multiple-receiver radio link, *IEEE T. Antenn. Propag.*, 59, 1707–1715, doi:10.1109/TAP.2011.2122234, 2011. 749
- Zinevich, A., Alpert, P., and Messer, H.: Estimation of rainfall fields using commercial microwave communication networks of variable density, *Adv. Water Resour.*, 31, 1470–1480, doi:10.1016/j.advwatres.2008.03.003, 2008. 744, 746
- Zinevich, A., Messer, H., and Alpert, P.: Prediction of rainfall intensity measurement errors using commercial microwave communication links, *Atmos. Meas. Tech.*, 3, 1385–1402, doi:10.5194/amt-3-1385-2010, 2010. 744

## Precipitation observation using microwave links in the Alps

C. Chwala et al.

Title Page

Abstract

Introduction

Conclusions

References

Tables

Figures

◀

▶

◀

▶

Back

Close

Full Screen / Esc

Printer-friendly Version

Interactive Discussion





# Precipitation observation using microwave links in the Alps

C. Chwala et al.

**Table 1.** Table of all links used in this study.

name	from	to	length	altitude difference	frequency	polarization
hop2-murn1	Mount Hoher Peißenberg	Murnau	17.4 km	300 m	15.0 GHz	vertical
hop2-wh0	Mount Hoher Peißenberg	Weilheim	10.2 km	420 m	18.7 GHz	vertical
gap0-gap4	Garmisch-Partenkirchen	Mount Wank	4.0 km	1050 m	18.7 GHz	horizontal
gap3-oau4	Mount Kreuzeck	Oberau	17.1 km	950 m	15.0 GHz	vertical
gap0-oagau1	Garmisch-Partenkirchen	Mount Laber	10.4 km	940 m	23.0 GHz	vertical

Title Page

Abstract

Introduction

Conclusions

References

Tables

Figures

◀

▶

◀

▶

Back

Close

Full Screen / Esc

Printer-friendly Version

Interactive Discussion



# Precipitation observation using microwave links in the Alps

C. Chwala et al.

**Table 2.** Table of rain gauges used in this study.

name	location	altitude	accuracy
gap	Garmisch-Partenkirchen	720 m	0.1 mm h <sup>-1</sup>
oagau	Oberammergau	840 m	0.1 mm h <sup>-1</sup>
hop	Hoher Peißenberg	960 m	0.1 mm h <sup>-1</sup>
wank900	Mount Wank	930 m	0.2 mm h <sup>-1</sup>
wank1300	Mount Wank	1340 m	0.2 mm h <sup>-1</sup>
wank1750	Mount Wank	1750 m	0.2 mm h <sup>-1</sup>

Title Page

Abstract

Introduction

Conclusions

References

Tables

Figures

◀

▶

◀

▶

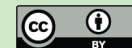
Back

Close

Full Screen / Esc

Printer-friendly Version

Interactive Discussion



# Precipitation observation using microwave links in the Alps

C. Chwala et al.

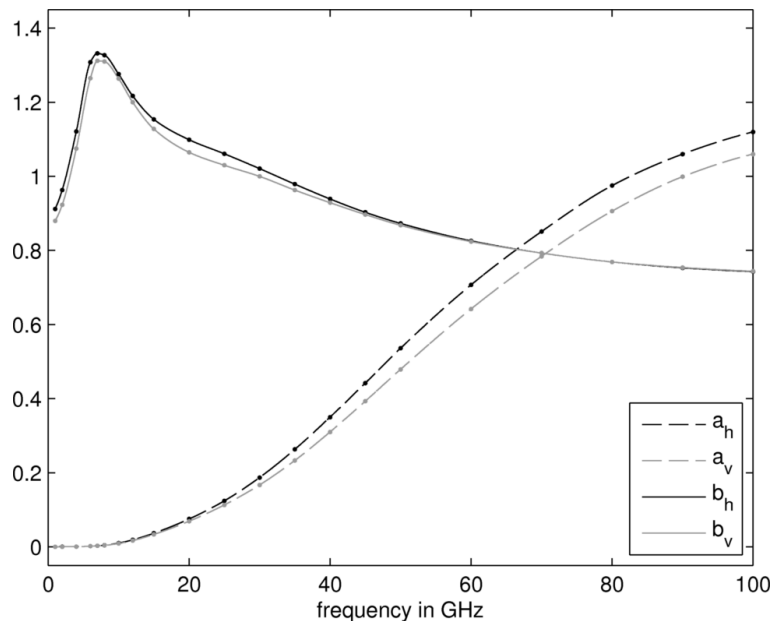
**Table 3.** Rounded values of the performance of the wet/dry classification algorithm with a window length of 256 min for the optimal threshold  $\sigma$ .

Link name	$\sigma$	$\mathcal{E}_{\text{wet}}$	$\mathcal{E}_{\text{dry}}$	$\mathcal{E}_{\text{wmean}}$	$R^2$
hop2-murn1	0.1	0.30	0.19	0.26	0.57
hop2-wh0	0.4	0.13	0.17	0.15	0.80
gap0-gap4	1.0	0.13	0.15	0.14	0.61
gap3-oau4	0.7	0.11	0.15	0.13	0.74
gap0-oagau1	1.6	0.10	0.13	0.11	0.76

[Title Page](#)
[Abstract](#)
[Introduction](#)
[Conclusions](#)
[References](#)
[Tables](#)
[Figures](#)
[I◀](#)
[▶I](#)
[◀](#)
[▶](#)
[Back](#)
[Close](#)
[Full Screen / Esc](#)
[Printer-friendly Version](#)
[Interactive Discussion](#)

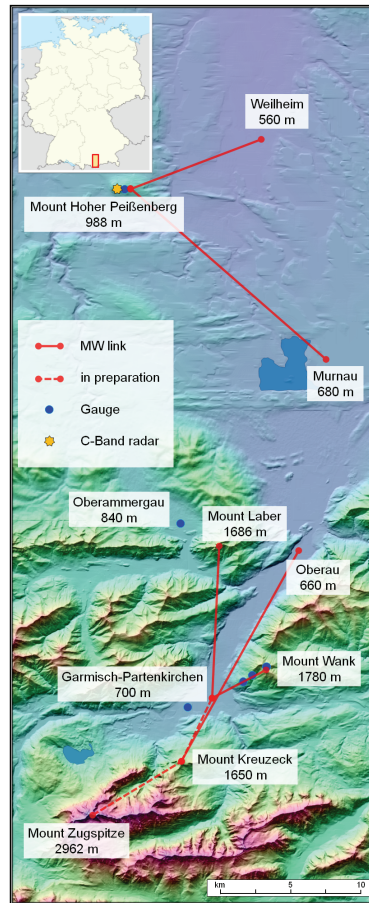

# Precipitation observation using microwave links in the Alps

C. Chwala et al.



**Fig. 1.** Values of  $a$  and  $b$  for horizontal and vertical polarization used for the power law relation in Eq. (1). Dots are the values listed in the ITU recommendation. Lines are shape preserving spline interpolations of the ITU data.

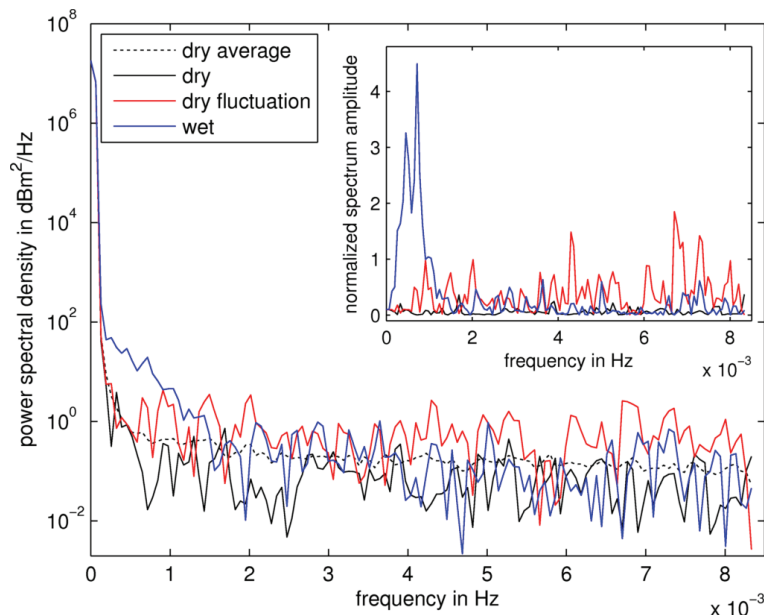
[Title Page](#)
[Abstract](#)
[Introduction](#)
[Conclusions](#)
[References](#)
[Tables](#)
[Figures](#)
[◀](#)
[▶](#)
[◀](#)
[▶](#)
[Back](#)
[Close](#)
[Full Screen / Esc](#)
[Printer-friendly Version](#)
[Interactive Discussion](#)



**Fig. 2.** Overview of the study region in Southern Germany showing the location of the DWD C-band radar, all microwave links and all rain gauges used in this study.

**Precipitation  
observation using  
microwave links in  
the Alps**

C. Chwala et al.



**Fig. 3.** Typical spectra for 256 min snippet (with a Hamming window) from a RSL time series for different atmospheric conditions. The inset shows the spectra normalised with the average dry spectrum by division. Deviation from the mean dry spectrum is largest for the low frequency part of the *wet*-spectrum. Note that for the *dry fluctuation*-spectrum the observable deviation is highest in the high frequency part.

Title Page

Abstract

Introduction

Conclusions

References

Tables

Figures

◀

▶

◀

▶

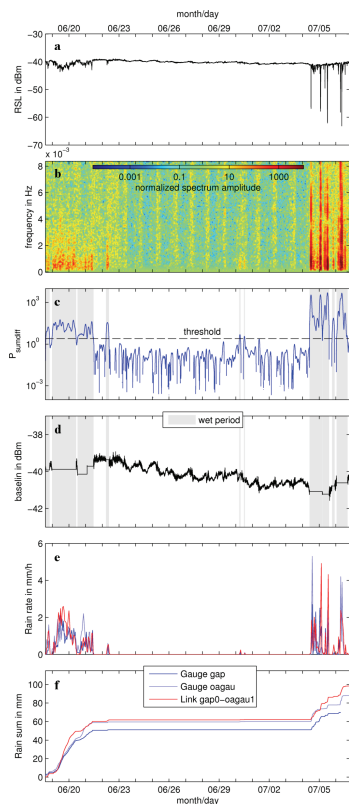
Back

Close

Full Screen / Esc

Printer-friendly Version

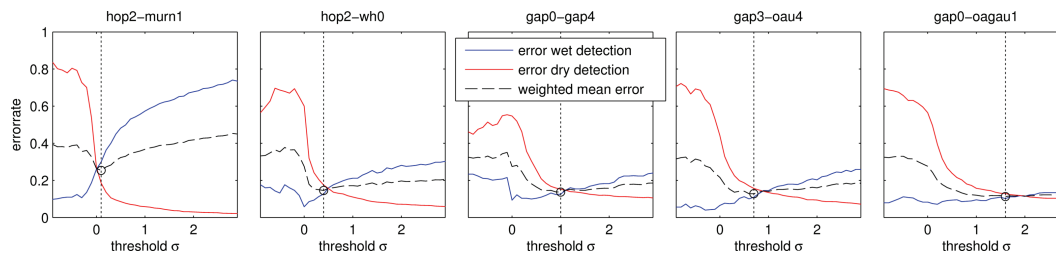
Interactive Discussion



**Fig. 4.** Application of the proposed wet/dry classification algorithm to a 18 day RSL time series in summer 2010 from the link *gap0-oagau1*. The plots from top to bottom show: **(a)** the RSL time series, **(b)** its spectrogram, **(c)** the difference of the spectrum amplitude sums  $P_{\text{sumdiff}}$  (see text for explanation), **(d)** the derived baseline for the RSL time series and **(e)** the calculated rain rates plus **(f)** the accumulated sum, both compared to two nearby rain gauges.

# Precipitation observation using microwave links in the Alps

C. Chwala et al.



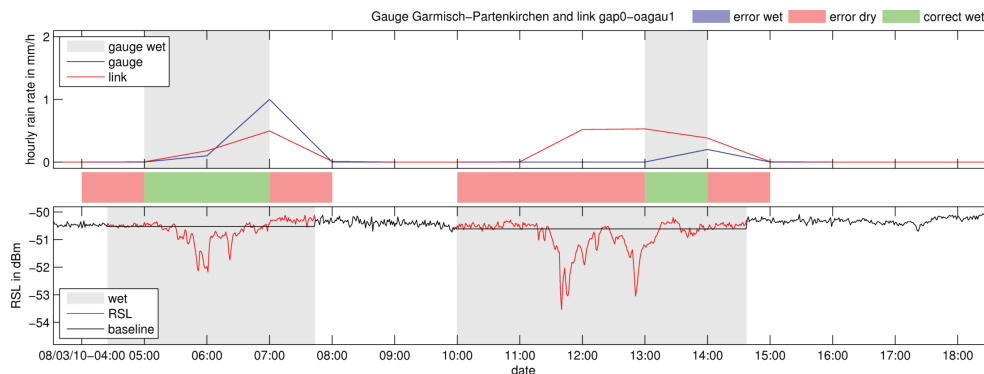
**Fig. 5.** Wet and dry detection error rates for the five links for different threshold values  $\sigma$  and a window length of 256.

[Title Page](#)
[Abstract](#)
[Introduction](#)
[Conclusions](#)
[References](#)
[Tables](#)
[Figures](#)
[◀](#)
[▶](#)
[◀](#)
[▶](#)
[Back](#)
[Close](#)
[Full Screen / Esc](#)
[Printer-friendly Version](#)
[Interactive Discussion](#)



# Precipitation observation using microwave links in the Alps

C. Chwala et al.



**Fig. 6.** Example of the limitations of the proposed wet/dry classification algorithm. Shown are time series of the minute resolution RSL data from the link *gap0-gap4* (bottom plot in red), the hourly link derived rain rate (top plot in red) and the hourly rain rate from the gauge Garmisch-Partenkirchen. Note: the hourly data is derived according to the DWD standard (e.g. 12:00 UTC mean value is averaged from 10:50 to 11:50 UTC) and the classification of a period as wet or dry applies for the whole hour before the value's timestamp (e.g. from 11:00 to 12:00 UTC for the 12:00 UTC value). The colours indicating the errors correspond to the hourly data.

Title Page

Abstract

Introduction

Conclusions

References

Tables

Figures

◀

▶

◀

▶

Back

Close

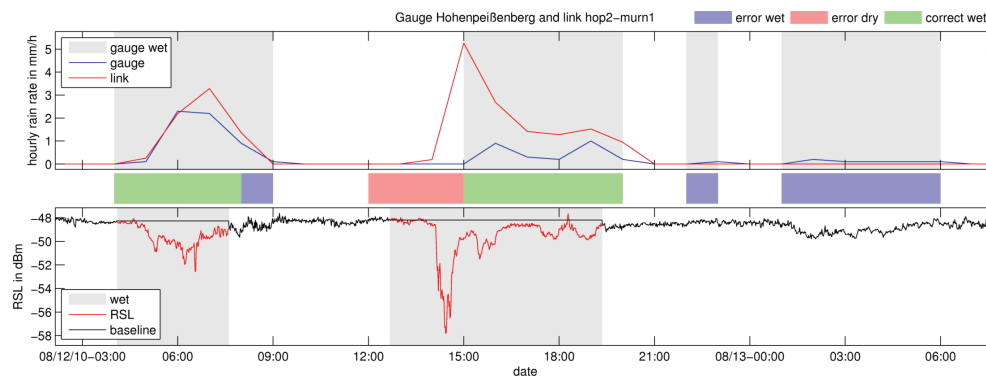
Full Screen / Esc

Printer-friendly Version

Interactive Discussion

# Precipitation observation using microwave links in the Alps

C. Chwala et al.

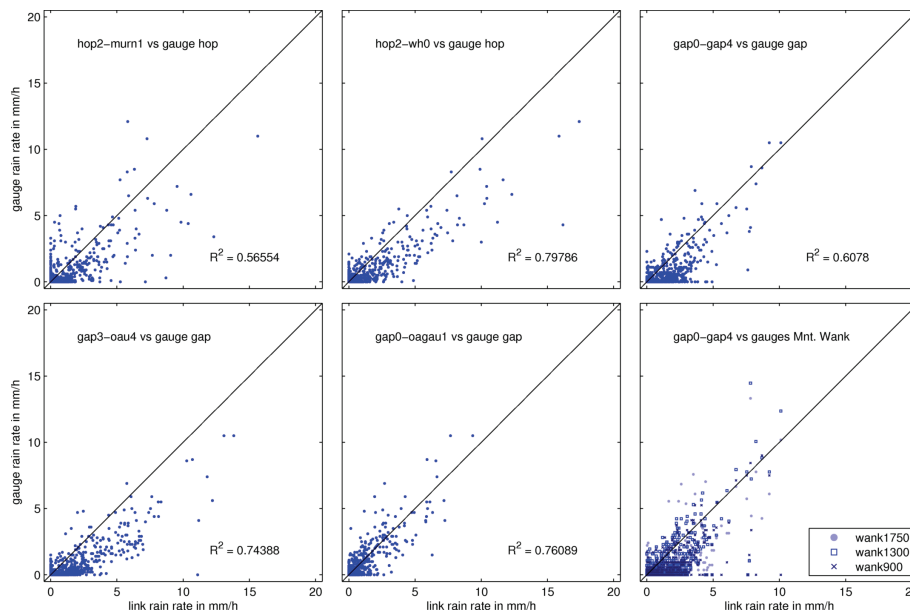


**Fig. 7.** Same plots as in Fig. 6 but for the link *hop2-murn1* and gauge Hoher Peißenberg.

[Title Page](#)
[Abstract](#)
[Introduction](#)
[Conclusions](#)
[References](#)
[Tables](#)
[Figures](#)
[⏮](#)
[⏭](#)
[◀](#)
[▶](#)
[Back](#)
[Close](#)
[Full Screen / Esc](#)
[Printer-friendly Version](#)
[Interactive Discussion](#)

# Precipitation observation using microwave links in the Alps

C. Chwala et al.



**Fig. 8.** Scatter plots for continuous hourly microwave link rain rate observation and DWD rain gauge data for the period from July 2010 to October 2010. The plot on the bottom right shows gauge data from the rain gauges at different altitudes on Mount Wank directly beneath the link path.

Title Page

Abstract

Introduction

Conclusions

References

Tables

Figures

◀

▶

◀

▶

Back

Close

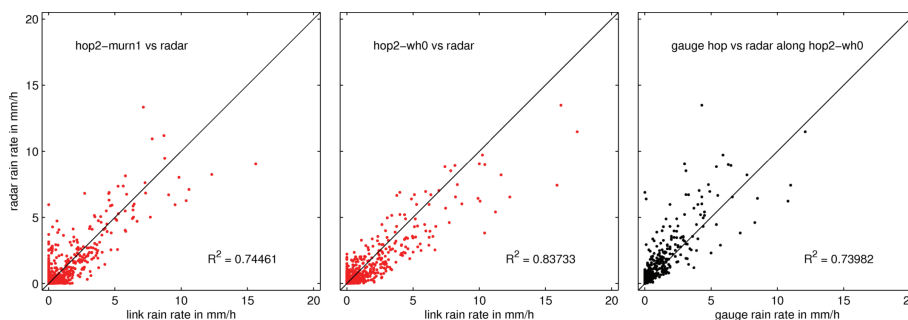
Full Screen / Esc

Printer-friendly Version

Interactive Discussion

**Precipitation  
observation using  
microwave links in  
the Alps**

C. Chwala et al.



**Fig. 9.** Scatter plots for continuous hourly microwave link rain rate observation and DWD weather radar data along the links for the period from July 2010 to October 2010. The plot on the right gives a comparison of data from the rain gauge at Mount Hoher Peißenberg and the radar along the link *hop2-wh0*.

Title Page

Abstract

Introduction

Conclusions

References

Tables

Figures

◀

▶

◀

▶

Back

Close

Full Screen / Esc

Printer-friendly Version

Interactive Discussion