

**Regional effects of
vegetation
restoration on water
yield**

X. M. Feng et al.

Regional effects of vegetation restoration on water yield across the Loess Plateau, China

X. M. Feng¹, G. Sun², B. J. Fu¹, C. H. Su¹, Y. Liu³, and H. Lamparski¹

¹State Key Laboratory of Urban and Regional Ecology, Research Center for Eco-Environmental Sciences, Chinese Academy of Sciences, Beijing 100085, China

²Eastern Forest Environmental Threat Assessment Center, US Department of Agriculture Forest Service, Southern Research Station, Raleigh, NC27606, USA

³College of Global Change and Earth System, Beijing Normal University, Beijing 100875, China

Received: 14 March 2012 – Accepted: 21 March 2012 – Published: 29 March 2012

Correspondence to: X. M. Feng (fengxm@rcees.ac.cn)

Published by Copernicus Publications on behalf of the European Geosciences Union.

Title Page

Abstract

Introduction

Conclusions

References

Tables

Figures

⏪

⏩

◀

▶

Back

Close

Full Screen / Esc

Printer-friendly Version

Interactive Discussion

Abstract

The general relationships between vegetation and water yield under different climatic regimes are well established at a small watershed scale in the past century. However, applying the basic theories to evaluate the regional effects of land cover change on water resources has been rarely done due to the complex interactions of vegetation and climatic variability and hydrologic processes at the large scale. The objective of this study was to explore ways to examine the spatial and temporal effects of a large ecological restoration project on water yield across the Loess Plateau region in Northern China. We estimated annual water yield as the difference between precipitation input and modeled actual evapotranspiration (ET) output. We constructed a monthly ET model using published eddy flux ET measurements, ET estimates derived from local watershed streamflow data. We validated the ET models at a watershed and regional levels. The model was then applied to examine regional water yield under land cover change and climatic variability during the implementation of the Grain-for-Green (GFG) project during 1999–2007. We found that water yield in 38 % of the Loess Plateau area as a whole might have decreased ($1\text{--}48\text{ mm yr}^{-1}$) as a result of land cover change alone. However, combined with climatic variability, 37 % of the study area might have seen a decrease in water yield with a range of $1\text{--}54\text{ mm yr}^{-1}$, and 35 % of the study area might have seen an increase with a range of $1\text{--}10\text{ mm yr}^{-1}$. Across the study region, climate variability masked or strengthened the water yield response to vegetation restoration. The absolute annual water yield change due to vegetation restoration varied with precipitation regimes with the highest in wet years, but the relative water yield changes were most pronounced in dry years. When compared to findings at the plot or catchment-scale, this study suggested that regional hydrologic effects of vegetation restoration practices had a rather complex pattern due to both spatial differences in climatic regimes and vegetation response. We concluded that the effects of land cover change associated with ecological restoration varied greatly over time and space and were strongly influenced by climatic variability in the arid region. The current regional

Regional effects of vegetation restoration on water yield

X. M. Feng et al.

Title Page

Abstract

Introduction

Conclusions

References

Tables

Figures



Back

Close

Full Screen / Esc

Printer-friendly Version

Interactive Discussion



vegetation restoration projects have variable effects on local water resources across the region. Land management planning must consider the influences of spatial climate variability and long-term climate change on water yield to be more effective and achieve environmental sustainability.

1 Introduction

China's Loess Plateau region stretches a total area of 0.64 million km², and drains the upper and middle reaches of the mighty Yellow River (Fig. 1). Situated in a semiarid to sub-humid climate, the rugged Loess Plateau region has the world largest loess-paleosol deposit with a soil depth of up to 100 m on an elevation ranging from 1200 to 1600 m a.s.l. Due to the long history of human settlement, natural vegetation cover is generally low, and land uses are predominantly cultivated croplands. The Loess Plateau is one of the most severely eroded areas in the world due to the loose loess soils, steep slopes, high rainfall intensity, and poor vegetation conditions (Li et al., 2009). The soil erosion and sedimentation issues have long been recognized as a security threat to the livelihoods of local communities in the Yellow River Basin (Xu, 2002). In order to control soil erosion and restore the ecological functions of watersheds, efforts have been made to plant trees and grasses on slope lands since the 1950s. A recent large reforestation campaign, the Grain-for-Green (GFG) project was implemented at the end of 1990s, aiming at converting croplands and abandoned farmlands to forest and pasture lands (Xu and Cao, 2002).

The positive effects of the decade-long GFG project on regional vegetation cover recovery have been documented. For example, in Northern Shaanxi Province, the combined planted forest and herbaceous vegetation (i.e. grasses, forbs, and herbs) increased from 29.7 % in 1998 to 42.2 % in 2005 as a result of the GFG project (Cao et al., 2009). Also, recovery of natural vegetation and soil conservation practices have shown to be effective in controlling soil erosion (He et al., 2003; Feng et al., 2010) as evidenced by the reduced sediment loading in many large rivers in the region. However,

Regional effects of vegetation restoration on water yield

X. M. Feng et al.

Title Page

Abstract

Introduction

Conclusions

References

Tables

Figures



Back

Close

Full Screen / Esc

Printer-friendly Version

Interactive Discussion



some concerns have been raised with argument that large-scale afforestation in the water-limited arid and semi-arid regions may increase the severity of water shortages on the ground that plantation forests consume more water than grassland or degraded lands (Eastham and Rose, 1988; Sun et al., 2006; Zhang et al., 2008a; Wang et al., 2011). McVicar et al. (2007) conduct a comprehensive literature review on relations between land use and hydrology for the Loess Plateau region. The results overwhelmingly confirm that annual streamflow is reduced by forestation in this arid region. Water yield reduction for the cases examined varied from 10 % to 70 %. Bi et al. (2009) reports that forestation reduced annual streamflow by 49.6 % (or 6.5 mm yr^{-1}). Zhang et al. (2008a,b)'s time series analysis for multiple large basins across the regions suggests that soil conservation practices that include both tree planting and engineering methods (check dams, terracing) partially explained the observed streamflow declines. A recent North-China wide comparison studies on forest cover's role in regulating streamflow by Wang et al. (2011) concludes that forest cover percentage has a clear negative relationship with streamflow rate, reconfirming previous watershed studies in the region. Those findings are consistent with world-wide forest hydrology literature that suggests reforestation practices on grasslands generally reduces water yield at the small watershed scale (Bush and Hewlett, 1982; Andreassian, 2004).

For specific watersheds, however, to detect the effects of vegetation restoration or land use change on flow can be challenging in this dry region that is dominated by a few large stormflow events annually. Wang et al. (2009) found that the average annual runoff coefficient over 1989–2003, a period of improved land cover, did not change significantly as compared to that in the period 1982–1988 (pre-vegetation restoration) in a small watershed located in a western part of the Loess Plateau. However, they concluded that water yield reduction caused by vegetation restoration was detectable in high precipitation years. It appears that the extent of the hydrologic response to land cover change varied greatly for study areas located in different climatic regimes over time. Few studies have been conducted to examine the relationship between vegetation change and hydrological response at a regional scale for the Loess Plateau. Indeed,

**Regional effects of
vegetation
restoration on water
yield**

X. M. Feng et al.

[Title Page](#)[Abstract](#)[Introduction](#)[Conclusions](#)[References](#)[Tables](#)[Figures](#)[⏪](#)[⏩](#)[◀](#)[▶](#)[Back](#)[Close](#)[Full Screen / Esc](#)[Printer-friendly Version](#)[Interactive Discussion](#)

small watershed experiment studies worldwide (Zhang et al., 2001; Andreassian, 2004) and continental scale modeling studies suggest the hydrologic influences of vegetation restoration vary across a climatic gradient (Ma et al., 2008) and over the course of plant community establishment (Sun et al., 2006). However, few case studies (Sun et al., 2002, 2011) are available to extend small-watershed study results to a large basin or a region although land management planning and policy decisions are made at those scales (Wei et al., 2011).

Regional annual water yield of the Loess Plateau area, like any terrestrial ecosystems, is controlled mostly by precipitation and evapotranspiration (ET) (Budyko, 1974; Potter et al., 2005). Changes in land use/land cover and climate can directly impact the regional hydrological cycle by altering ET processes (Zhang et al., 1999, 2001, 2004; Sun et al., 2010). Previous studies on the vegetation-water yield relationships for the Loess Plateau region focus on annual ET modeling using Zhang's ET model (McVicar et al., 2007; Ma et al., 2008; Zhang et al., 2008a,b). The existing "curve-type" ET models (Zhang et al., 2001) that are generally believed to be easy to use for continental scale studies or sensitivity analysis, but they remain difficult to apply for regional scale water balance calculations because they do not explicitly account for vegetation characteristics and the seasonal dynamics of key controls on actual ET. For example, Zhang (1999, 2001)'s ET model considers two major land cover, forest and grass, represented by an empirical parameter " w ". However, when the model is applied at the regional scale, it is difficult to determine its numerical values for heterogeneous watersheds that are affected by land cover, soil, geology, and topography (Zhang et al., 2008a,b). In addition, large basins generally have complex landcover compositions beyond forest and grass lands.

Consequently, practical models are not readily available to quantify the regional hydrological effects of vegetation restoration on the Loess Plateau, and it remains challenging to extrapolate small watershed study results to the regional scale. To our knowledge, no attempts have been made to quantify the land cover change and climate variability on regional water yield for the Loess Plateau as a whole, largely due to lacking

Regional effects of vegetation restoration on water yield

X. M. Feng et al.

Title Page

Abstract

Introduction

Conclusions

References

Tables

Figures



Back

Close

Full Screen / Esc

Printer-friendly Version

Interactive Discussion

of reliable and practical hydrological models. We hypothesized that hydrological responses to vegetation restoration vary across the Loess Plateau, a region that has a strong north-south gradient in precipitation. The objectives of this study included: (1) developing and validating a monthly ET model for estimating regional annual water yield; and (2) applying the ET model to examine the effects of GFG vegetation restoration program on water yield for the whole Loess Plateau region during 1999–2007.

2 Method and materials

2.1 The study region

This study covers the entire Loess Plateau region that includes seven administrative Provinces in Northwestern China. The region is controlled by a monsoon climate with an annual precipitation varying from 200 mm in the northwest to about 750 mm in the southeast (Fig. 2). Most precipitation occurs in the rainy season from June to September in the form of high intensity rainstorms. The northwest-southeast precipitation gradient strongly influences the vegetation distribution patterns (Fig. 1) that are dominated by forests in the south and grasslands in the north. The mean air temperature is about 0–13 °C, and a warming trend in recent decades has been reported (Li et al., 2008; Wang, 2008).

2.2 Monthly ET and annual water yield (Q) estimates

We estimate annual water yield at the 1-km spatial scale as the difference between annual precipitation (PPT) and annual total water loss, i.e., the sum of monthly ET:

$$Q = \text{PPT} - \text{ET} \pm \Delta S \quad (1)$$

When estimating annual water yield or annual ET by this equation, we assume that the change in soil water storage (ΔS) is negligible for normal years, but may cause large

Regional effects of vegetation restoration on water yield

X. M. Feng et al.

Title Page

Abstract

Introduction

Conclusions

References

Tables

Figures

⏪

⏩

◀

▶

Back

Close

Full Screen / Esc

Printer-friendly Version

Interactive Discussion



errors in extreme climatic conditions (Donohue et al., 2007). Fortunately, the streamflow of Loess Plateau region is dominated by surface runoff, and annual changes of soil water and groundwater are not likely to be large to cause a concern for annual estimate of ET by the water balance method. The watershed water balance approach is a common practice and reliable method to estimate ET at watershed scale when streamflow and precipitation are available (Palmroth et al., 2011).

Monthly ET is estimated by a monthly scale ET model as described below. Monthly actual ET can be sufficiently predicted by potential ET (PET), precipitation, and leaf area index (Sun et al., 2011). This study adopted the same logic to develop an ET model by employing a subset of the eddy flux ET database for dry regions. Predicted ET was validated at two scales, watershed annual ET derived from gauged watersheds and regional monthly and annual ET estimates derived from MODIS remote sensing products.

As described in Sun et al. (2011), monthly ET can be estimated from key environmental controls that include available energy (i.e. potential evapotranspiration, PET), water (i.e. precipitation, PPT) and seasonal vegetation biomass dynamics (i.e., leaf area index). Thus, the ET model has the following form:

$$ET = f(\text{PET}, \text{PPT}, \text{LAI}) \quad (2)$$

We used a subset of the ET flux databases in Sun et al. (2011) for model development that only include ecosystems of dry forests and grasslands in China, Australia, and the US, a total of 10 sites. The 10 sites cover non-humid regimes as indicated by average air temperature (0.6–17°C) and annual precipitation (148–840 mm yr⁻¹), resulting in a large difference in vegetation conditions (i.e. leaf area index, LAI) and water balance patterns. For example, low annual precipitation and PET supported low LAI plant communities in the Kubuqi shrub and poplar plantation sites in a desert environment of Inner Mongolia in Western China. On the Paringa site on the Liverpool Plain in Eastern Australia, a combination of high PET and uneven distribution of rainfall helped explain the periodic water stress experienced by this water-limited ecosystem. The

Regional effects of vegetation restoration on water yield

X. M. Feng et al.

[Title Page](#)[Abstract](#)[Introduction](#)[Conclusions](#)[References](#)[Tables](#)[Figures](#)[⏪](#)[⏩](#)[◀](#)[▶](#)[Back](#)[Close](#)[Full Screen / Esc](#)[Printer-friendly Version](#)[Interactive Discussion](#)

observation period varied from one full growing season to three years. This database contains 134 records (i.e., 134 site-months). Detailed descriptions of the study sites can be found in Sun et al. (2001).

In this study we used a simpler Hamon PET method (Hamon, 1963) as described below to replace the PET method used in Sun et al. (2011) to reduce climatic input data needed for regional analysis. Spatial distribution of monthly PET was mapped at the 1 km scale as a function of air temperature and day length.

$$\text{PET} = 0.1651 \cdot \text{Ld} \cdot \text{RHOSAT} \cdot \text{Nd} \quad (3)$$

$$\text{Ld} = \arccos(-\tan \psi \tan \delta) \quad (4)$$

$$\delta = 0.4093 \cdot \sin((2\pi/365) \cdot J - 1.405) \quad (5)$$

$$\text{RHOSAT} = 216.7 \cdot \text{ESAT} / (T + 273.3) \quad (6)$$

$$\text{ESAT} = 6.108 \cdot \exp(17.26939 \cdot T / (T + 237.3)) \quad (7)$$

Where, Ld is the average daytime length of each month, RHOSAT is the saturated vapor density (g m^{-3}) at the mean air temperature (T); and where T is the monthly mean air temperature ($^{\circ}\text{C}$); ESAT is the saturated vapor pressure (mbar) at the given T ; and Nd is the day number of each month. ψ is the latitude, δ is the solar declination (in radians) and J is the Julian day. When calculating monthly PET from monthly climate data, the middle date of each month was used to represent the mean Julian date.

Regression models that relate ET, PET, PPT, and LAI for the entire dataset were developed using the SAS regression procedure (SAS 9.2, 2010). Different combinations of the independent variables (PPT, LAI, and PET) were tested to derive the best fit of observed data. Influences of PET, PPT, and LAI on ET for each site were determined by Pearson correlation coefficients with a significance level of 0.01. Model performance was evaluated at multiple scales with different context. The performance of the model was evaluated qualitatively using scatter plots and difference maps, coefficients of determination (R^2) and the slopes of the linear regression models.

**Regional effects of
vegetation
restoration on water
yield**

X. M. Feng et al.

Title Page

Abstract

Introduction

Conclusions

References

Tables

Figures

⏪

⏩

◀

▶

Back

Close

Full Screen / Esc

Printer-friendly Version

Interactive Discussion



2.3 Regional database for ET model calibration, validation and application to estimate water yield

The ET model developed in this study was calibrated and validated with watershed-scale annual ET estimates that were derived based on the watershed-balance method (i.e., PPT-Q method). We acquired monthly streamflow data (Table 1) for 48 randomly distributed catchments monitored by the Yellow River Conservancy Commission. The catchments cover a wide range of climatic and hydrologic conditions with a size ranging from 215 to 8704 km². This method (referred to as watershed-ET hereafter) represents the most feasible approach for obtaining meso-scale ET across the Loess Plateau and offers an independent dataset for validating other regional ET products (i.e., MODIS-ET) or modeled ET at a large scale.

Simulated annual ET was calculated as the sum of monthly ET scaled to the watershed scale using the ESRI ARCGIS spatial analysis tools. The calibration was conducted through parameter research to acquire the best fit between measured and estimated ET values with the SAS 92 software.

To examine ET model performance at the regional scale, simulated ET for high precipitation year (2003), average precipitation year (2006) and relatively low precipitation year (2005) by the monthly ET model was compared to a remote sensing product by Mu et al. (2011). MODIS-ET was developed using the Penman-Monteith logic and MODIS imagery, and global meteorological data. The MODIS-ET algorithm employs reanalyzed surface meteorological data (0.05° resolution) from the NASA Global Modeling and Assimilation Office with MODIS land cover, albedo, LAI and the Fraction of Absorbed Photosynthetically Active Radiation (FPAR) inputs for regional and global ET mapping and monitoring with 1 km resolution. The global ET model has been successfully evaluated using various flux datasets (Mu et al., 2007; Sun et al., 2011b). Monthly LAI dynamic data are needed to drive the monthly ET model. LAI was estimated by an empirical relationship between LAI and remotely sensed NDVI (normalized difference vegetation index) derived locally for the study region (Hu, 2006). NDVI data were

Regional effects of vegetation restoration on water yield

X. M. Feng et al.

Title Page

Abstract

Introduction

Conclusions

References

Tables

Figures



Back

Close

Full Screen / Esc

Printer-friendly Version

Interactive Discussion

compiled from different sources because of the limitation of data availability for different time periods. GIMMS AVHRR-NDVI data were used to describe vegetation conditions in the period 1980–1999, while SPOT VEGETATION data was used in the period 1999–2007. The two NDIV datasets provided reliable long term vegetation data for land cover change detection and ecological studies (Song et al., 2010).

Monthly climate data (precipitation and temperature) for the time period of 1980–2007 were acquired from 172 stations within and near the Loess Plateau region (State Bureau of Meteorology, 2011, <http://new-cdc.cma.gov.cn:8081/home.do>) (Fig. 2). The 1-km resolution DEM from the US Geological Survey global HYDRO1K product (<http://edcdaac.usgs.gov/gtopo30/hydro/index.asp>) (Fig. 2) was used to derive gridded climate data. Combining climatologic and topographic data the point climate data were interpolated at a 1 km resolution with the thin-plate smoothing spline method provided by the ANUSPLIN 3.1 program, (Wahba and Wendelberger, 1980; Hutchinson, 1991). The climate data interpolation method provides accurate estimates of spatial climatic variables by including the linear covariates rather than a constant lapse rate to represent the elevation effect on atmospheric pressure and temperature (Hutchinson, 1991) and also the method is able to provide a direct estimation of interpolation error and efficient diagnosis of data errors (Hutchinson and Gessler, 1994).

2.4 Model applications to examine water yield response to land cover change and associated climate variability

At the annual scale, water yield from unregulated watersheds is mainly controlled by the balance between precipitation input and evapotranspiration (ET) output fluxes. ET is affected by both land cover and climate change, so does water yield. Taking water yield as the difference between PPT and ET, this study focused on the time period of 1999–2007 to evaluate the effect of land use change and climate variability on water resource, the water part potentially providing ecosystem services (surface runoff and soil water). Year 1999 and 2000–2007 represent pre and post-vegetation restoration periods. The individual influences of vegetation restoration and climate variability were

Regional effects of vegetation restoration on water yield

X. M. Feng et al.

Title Page

Abstract

Introduction

Conclusions

References

Tables

Figures



Back

Close

Full Screen / Esc

Printer-friendly Version

Interactive Discussion



separated by comparing the model outputs of two schemes: (1) to determine the hydrologic effects of land cover change, the water yield model was run with a fixed climate of 1999 when the GFG project was first initiated and land cover has changed gradually during 1999–2007; (2) to determine the combined effects of both the climate and land cover, the water yield was calculated with the observed annual precipitation and land cover changes for the period from 2000 to 2007. We assume that the climatic effect on water yield during the post restoration period is the difference between Scheme 2 and Scheme 1 with recognition that climate-land cover feedbacks during the entire study period.

3 Results

3.1 ET model performance

When pooling all data of 134 point-scale measurements from the ten research sites we found that 61 %, 3.5 % and 17 % of monthly ET variability was explained by the terms $PET \cdot PPT$, $PPT \cdot LAI$ and $PET \cdot LAI$, respectively. All variables in the above equation were highly significant ($p < 0.0001$). The monthly ET for semi-arid and arid region thus has the following form:

$$ET = k_1 + k_2 \cdot PET \cdot PPT + k_3 \cdot PPT \cdot LAI + k_4 \cdot PET \cdot LAI \quad (8)$$

This model clearly shows that precipitation and PET are two major drivers for ET in the study regions. To further constrain the values of the parameters k_1 , k_2 , k_3 and k_4 for the Loess Plateau region, we used the annual watershed-scale ET data (Watershed-ET) to calibrate the model. A subset of the Watershed-ET dataset for 36 catchments with a total of 218 site-years (Table 2) was used to calibrate the equation.

With the calibrated parameters, predicted ET compared well with Watershed-ET. The overall error of model prediction was 40 mm yr^{-1} (about 3 mm per month). The predicted error was 9.7 % of the ET value for the entire Loess Plateau region. The term

Regional effects of vegetation restoration on water yield

X. M. Feng et al.

Title Page

Abstract

Introduction

Conclusions

References

Tables

Figures

⏪

⏩

◀

▶

Back

Close

Full Screen / Esc

Printer-friendly Version

Interactive Discussion



PET · LAI contributed very little in the Loess Plateau region, and the term was dropped. We used the simplified model in the following application at the regional scale.

$$ET = 9.78 + 0.0072 \cdot PET \cdot PPT + 0.05142 \cdot PPT \cdot LAI \quad (9)$$

For model validation at the watershed scale, we used the remaining 10 catchments, a total of 67 yr data to independently to evaluate ET predictions. The modeled annual ET datasets were derived from monthly simulation using Eq. (8). A fairly high regression coefficient (R^2) of 0.87 and a slope of 0.97 were achieved when the intercept was set to zero. The model overestimated somewhat for the drier watersheds where ET was less than 400 mm yr^{-1} , suggesting some uncertainty of the ET model for the extreme dry areas where ET is likely controlled by precipitation only. Overall, a single monthly ET model performed well across the region for predicting annual ET (Fig. 3).

The pixel-based correlation coefficients of the two ET datasets (Modeled ET vs. MODIS-ET) were 0.66, 0.74, and 0.72 in 2003, 2005 and 2006, respectively, suggesting that the modeled ET is in agreement with the MODIS ET product in spatial variability. However, we believe that the MODIS-ET appeared to have over-estimated ET. Modeled ET by this study was much higher than MODIS-ET. Our regression models showed that ET exceeded 90 % of precipitation (Fig. 4), while MODIS ET was much lower, less than 75 % of precipitation in the wet and average precipitation years, and 85 % in the dry years (Fig. 4a). Hydrologic literature generally suggest that watersheds in the Loess Plateau region produce streamflow less than 5–10 % of precipitation (thus 90–95 % of as ET) (Zhang et al., 2008a; Wang, S. et al., 2009; Wang, Y. et al., 2011), and the runoff coefficients are even lower for fully forested watersheds or the desert area in the northern part of the study region (Chen et al., 2010). So, our ET estimates were more in agreement with field observations at the annual scale (Fig. 4b). The MODIS product severely underestimated ET not only at the annual scale, but also at the monthly scale (Fig. 4b). Most of the annual underestimation by MODIS occurred in the growing season. Monthly MODIS-ET appeared to be too low when compared to monthly precipitation ($ET < 50 \% \text{ of } P$) during the period of May to September. In

**Regional effects of
vegetation
restoration on water
yield**

X. M. Feng et al.

Title Page

Abstract

Introduction

Conclusions

References

Tables

Figures



Back

Close

Full Screen / Esc

Printer-friendly Version

Interactive Discussion



general, monthly ET should equal or be slightly less than precipitation during the growing season for water-limited vegetated ecosystems (Sun et al., 2011). Therefore, our model appeared to be superior to the MODIS-ET algorithms in performance for the study region when evaluated at the regional scale at two temporal scales.

5 3.2 Spatial variability of annual water yield

3.2.1 Effects of land cover change only

We used the MATLAB Program to detect the trend of modeled annual water yield for each pixel by developing linear models relating water resource with time (year) and conduct regression statistical tests. The results suggested that vegetation restoration only during the study period caused annual water yield to decrease as much as 1.6 mm yr^{-1} on average across the Loess Plateau (Fig. 5). Frequency distributions of water yield change by category showed that most of the study region experienced a decrease in water yield within a range of $1\text{--}10 \text{ mm yr}^{-1}$. About 40% of the study region located in the southeast portion (i.e., Shaanxi and Shanxi Provinces) had a decrease trend in water yield with a range of $1\text{--}48 \text{ mm yr}^{-1}$. A small portion (2%) of the study region (middle of Shaanxi Province) experienced a large decrease in water yield of more than 1 mm yr^{-1} (Figs. 5a and 6a).

3.2.2 Effects of land cover change + climate variability

The combined water yield responses to land cover change and climate variability during 1999–2007 were much higher than land cover change alone. Water yield decreased by 1.0 mm yr^{-1} on the Loess Plateau as a whole. About 37% of the study area saw a decrease in water yield within a range of $1\text{--}54 \text{ mm yr}^{-1}$. About 5% of the study region (Northern and Middle Shaanxi Province and Shanxi Province) has undergone a large decrease in water yield of more than 10 mm yr^{-1} . About 35% of the study areas have

Regional effects of vegetation restoration on water yield

X. M. Feng et al.

Title Page

Abstract

Introduction

Conclusions

References

Tables

Figures



Back

Close

Full Screen / Esc

Printer-friendly Version

Interactive Discussion



experienced an increase in water yield with a range of 1–10 mm yr⁻¹ in Qinghai, Gansu, Western Ningxia and Northern Shanxi Province (Figs. 5b and 6a).

Change in water yield can be expressed in a relative term. The relative change is defined as the change in annual water yield divided by water yield under baseline conditions in 1999. The highest reduction in water yield occurred in Southern Shaanxi Province. Great relative water yield variance also occurred in the western and northern areas (Figs. 5c, d and 6b). As expected, small changes in water yield amount resulted in a large relative change in the dry Northeastern Shaanxi, Western Shaanxi and Inner Mongolia Province due to their low background water yield values (Fig. 5c, d).

3.3 Temporal variability of water yield

Temporal water yield change for the entire Loess Plateau region was defined as the water yield amount in post-vegetation restoration period minus that under the baseline condition (i.e., in 1999). The water yield under the combined changes in land cover and climate followed closely with precipitation patterns during the period 1999–2007. Mean annual water yield across the region decreased during 2000–2007 except in 2000 and 2001 when a slight increase in water yield was noted (Fig. 7). We argue that the young forests or shrubs established by the project in the initial stage of early 2000s might not have caused increase in ET and thus water yield. Both vegetation characteristics (i.e., LAI) and the size of the area of vegetation restored might not have significantly changed during 2000–2001. The restored ecosystems appeared to be stabilized three years after the implementation of the GFG project. The relative contribution of vegetation restoration to the total water yield reduction varied with precipitation. For example, we found a 10 % of change in annual water yield in the wet years (i.e., 2003) and 56 % of the annual change in dry years (i.e., year 2005).

Regional effects of vegetation restoration on water yield

X. M. Feng et al.

Title Page

Abstract

Introduction

Conclusions

References

Tables

Figures

⏪

⏩

◀

▶

Back

Close

Full Screen / Esc

Printer-friendly Version

Interactive Discussion



4 Discussions

4.1 Data and model uncertainty

Several factors affect the accuracy of estimating annual water yield at the regional scale. First, the complex terrain of the Loess Plateau presents a challenge to derive the spatial distribution of annual precipitation that was interpolated from climate records at 172 weather stations. In addition, the seasonal and inter-annual variability of precipitation was considered to be high in the Loess Plateau region where summer storms were the major forms of precipitation. Thus, the large spatial and temporal variability of precipitation made it difficult to map accurately the distribution of precipitation at the 1-km scale, especially for remote areas that do not have sufficient converges of weather stations. In addition to precipitation, large uncertainty remains in ET estimates. Although our ET modeling results were believed to be much closer to reality than the remote sensing based product (MODIS-ET), uncertainty remained for the seasonal distributions of ET by land cover type. The watershed-scale ET estimates derived from watershed water balances were used to calibrate and validate the monthly ET model had uncertainty as well because of two reasons: (1) change in water storage may not be negligible for certain wet years; (2) human water withdrawal for irrigation use, especially soil conservation engineering (e.g., check dams) is in use, is not considered. In the study region, especially in the semi-arid areas in the northern part, small changes in ET would result in large error of water yield estimates. Although watershed-ET is the most readily available hydrological data in the Loess Plateau, this method has a certain degree of uncertainty due to lacking of gauged watershed coverage.

4.2 Spatial and temporal variability across a precipitation gradient

This study clearly showed that spatial and temporal precipitation patterns influenced the hydrological effects of vegetation restoration, and climate variability explained most of the variability of water yield in the study region. Previous empirical and theoretical

Regional effects of vegetation restoration on water yield

X. M. Feng et al.

Title Page

Abstract

Introduction

Conclusions

References

Tables

Figures



Back

Close

Full Screen / Esc

Printer-friendly Version

Interactive Discussion



studies also conclude that the differences in water yield sensitivity to precipitation change increase dramatically when PET/*P* ratio exceed 1.0 (i.e. dry regions) (Ma et al., 2008). Using a process based hydrological model (SWAT), Li et al. (2009) quantified the combined and individual influences of land use change and climate variability in the Heihe catchment located in our study region. Their studies concluded that land use change and climate variability were responsible for the decrease in streamflow during 1981–2000. Land use change and climate variability decreased runoff by 9.6% and 95.8%, respectively. In an empirical study on the Loess Plateau (Shiyang River), Ma et al. (2008) reported that climate variability and ecosystem restoration accounted for over 64% and 12–36% of the observed streamflow reduction, respectively. Our study showed the complexity of combined hydrologic responses at the regional scale: the magnitude of ET or water yield could be enhanced or cancelled by landcover and climate dynamics. We defined two types of combined response on ET: (1) ET increased (or water yield decreased) due to vegetation restoration in Southern Shaanxi Province and the change was strengthened by climate variability both in areal extent and magnitude; and (2) the increase in ET or decrease in water yield due to vegetation restoration was masked by climate variability due to an increase in precipitation in Northern Shanxi Province. Thus, vegetation recovery or restoration from degraded land did not automatically result in a decrease in water yield. The actual change was influenced by the spatial location of the land cover change and climatic conditions. Regional vegetation restoration, especially in water-limited northwest Loess Plateau areas, should consider long term climate trends so the influence of land cover and land use change on water availability by humans and ecosystems (i.e. water use by plant and aquatic biota in streams).

In the study region, effects of land cover change on water yield were most pronounced in the growing season. Plants almost exhausted the soil water supply through ET during the growing season in the Loess Plateau. Streamflow only occurred as flush stormflow during heavy storms (Wang et al., 2009). About 85% of the increase in ET or decrease in water yield was believed to occur during the growing season (May–

Regional effects of vegetation restoration on water yield

X. M. Feng et al.

Title Page

Abstract

Introduction

Conclusions

References

Tables

Figures



Back

Close

Full Screen / Esc

Printer-friendly Version

Interactive Discussion



September). At the annual scale, the land cover change caused a relatively higher impact on water yield in dry years. In general, our study results are consistent with findings in Yellow River Basin in Northern China (Wang et al., 2011) and the forest hydrologic community on the hydrologic impacts of reforestation (Brown et al., 2005).

In contrast to deforestation studies, data on the hydrologic effects of vegetation recovery or forestation (i.e., reforestation and afforestation) on streamflow are scarce internationally (Andreassian, 2004). Thus, there are still uncertainties about the true effects of reforestation on the water yield and more studies are needed. Based on climate and physiographic conditions, a modeling study by Sun et al. (2006) proposed differential hydrologic recovery rates for five sub-regions that have different climate across China, and stressed the importance of timing and extent of reforestation activities on the potential hydrologic impacts. A recent study by Zhou et al. (2010) suggested that forest recovery in the humid Southeast China in the past 50 yr did not necessarily reduce streamflow, but rather helped redistributing water from the wet season to the dry season, and, consequently, elevating water yield in the dry season. A recent regional study by Price et al. (2011) found that undisturbed forested watersheds in the humid Southeastern US had higher baseflow rates than other land uses with less forest cover in spite of the higher ET rates in forests. Those limited regional-scale studies challenge traditional “paired watershed” research results.

Due to the large spatial and temporal variability of climate and land uses across regional Loess Plateau, one single ET model may not fit all land cover types. Although the adopted models and MODIS ET estimates can be used to assess the general trend, but accurately quantifying ET remain challenging. Future studies in the Loess Plateau region should examine the effects of changes of vegetation restoration on infiltration, soil water dynamics, ET controls at a finer temporal scale.

Regional effects of vegetation restoration on water yield

X. M. Feng et al.

[Title Page](#)

[Abstract](#)

[Introduction](#)

[Conclusions](#)

[References](#)

[Tables](#)

[Figures](#)



[Back](#)

[Close](#)

[Full Screen / Esc](#)

[Printer-friendly Version](#)

[Interactive Discussion](#)



5 Conclusions

The effects of vegetation restoration on water yield are rarely evaluated at the regional scale. Due to the large spatial variability in climate and vegetation characteristics, findings on the vegetation-water yield relationship at a small watershed scale have not been readily applied to large areas on the Loess Plateau.

We built a monthly scale ET model by integrating eddy flux data, gauged watershed runoff measurements, and remotely sensed vegetation parameters. Model validation suggested that our ET model developed specifically for the study region performs well and can be used for regional hydrologic analysis in the Loess Plateau region.

Our modeling study suggested that vegetation restoration caused a decrease of water yield on the Loess Plateau. The magnitude of water yield decrease varied spatially and temporally. Climate variability can mask or strengthen the water yield change caused by vegetation restoration alone, depending on the location of the vegetation restoration. Vegetation restoration has the highest relative impact in dry years, mostly occurring in the growing season because of the tight relationship between plant growth and water use.

We concluded that the effects ecological restoration was strongly influenced by climatic variability in the arid region. The current regional vegetation restoration projects have variable effects on local water resources across the region that has a large precipitation gradient. Future climate change in the study region is likely to alter the water balances due to both air warming and precipitation patterns. Land management planning must consider the influences of spatial climate variability and long-term climate change on water yield and other potential environmental impacts. Quantifying the hydrologic response at the regional scale is an essential step toward developing a sustainable ecological restoration program in the Loess Plateau region.

Acknowledgements. The research was supported by National Basic Research Priorities Program of China (No. 2009CB421104), National Natural Science Foundation of China (No. 40801070), the External Cooperation Program of the Chinese Academy of Sciences (Grant No.

Regional effects of vegetation restoration on water yield

X. M. Feng et al.

Title Page

Abstract

Introduction

Conclusions

References

Tables

Figures



Back

Close

Full Screen / Esc

Printer-friendly Version

Interactive Discussion



GJHZ1205). GIMMS AVHRR-NDVI data and SPOT VEGETATION data was provided from Environmental and Ecological Science Data Center for West China, (<http://westdc.westgis.ac.cn>). Partial support also comes from the USDA Forest Service Eastern Forest Environmental Threat Assessment Center.

5 References

- Andreassian, V.: Waters and forests: from historical controversy to scientific debate, *J. Hydrol.*, 291, 1–27, 2004.
- Bi, H. X., Liu, B., Wu, J., Yun, L., Chen, Z. H., and Cui, Z. W.: Effects of precipitation and landuse on runoff during the past 50 years in a typical watershed in the Loess Plateau, China, *Int. J. Sediment Res.*, 24, 352–364, 2009.
- Brown, A. E., Zhang, L., McMahon, T. A., Western, A. W., and Vertessy, R. A.: A review of paired catchment studies for determining changes in water yield resulting from alterations in vegetation, *J. Hydrol.*, 310, 28–61, 2005.
- Budyko, M. I.: *Climate and Life*, translated from Russian by Miller, D. H., Academic, San Diego, California, 1974.
- Cao, S. X., Chen, L., and Yu, X. X.: Impact of China's Grain-for-Green project on the landscape of vulnerable arid and semi-arid agricultural regions: a case study in Northern Shaanxi Province, *J. Appl. Ecol.*, 46, 536–543, 2009.
- Chen, L. D., Wang, J. P., Wei, W., Fu, B. J., and Wu, D. P.: Effects of landscape restoration on soil water storage and water use in the Loess Plateau Region, China, *Forest Ecol. Manag.*, 259, 1291–1298, 2010.
- Cleugh, H. A., Leuning, R., Mu, Q., and Running, S. W.: Regional evaporation estimates from flux tower and MODIS satellite data, *Remote Sens. Environ.*, 106, 285–304, 2007.
- Donohue, R. J., Roderick, M. L., and McVicar, T. R.: On the importance of including vegetation dynamics in Budyko's hydrological model, *Hydrol. Earth Syst. Sci.*, 11, 983–995, doi:10.5194/hess-11-983-2007, 2007.
- Eastham, J. and Rose, C. W.: Pasture evapotranspiration under varying tree planting density in an agroforestry experiment, *Agr. Water Manage.*, 15, 87–105, 1988.

Regional effects of vegetation restoration on water yield

X. M. Feng et al.

Title Page

Abstract

Introduction

Conclusions

References

Tables

Figures



Back

Close

Full Screen / Esc

Printer-friendly Version

Interactive Discussion



Regional effects of vegetation restoration on water yield

X. M. Feng et al.

[Title Page](#)
[Abstract](#)
[Introduction](#)
[Conclusions](#)
[References](#)
[Tables](#)
[Figures](#)
[Back](#)
[Close](#)
[Full Screen / Esc](#)
[Printer-friendly Version](#)
[Interactive Discussion](#)

- Federer, C. A. and Lash, D.: BROOK: a hydrologic simulation model for eastern forested, Research Report 19, Water Resources Research Center, University of New Hampshire, Durham, New Hampshire, 84 pp., 1978.
- Feng, X. M., Wang, Y. F., Chen, L. D., Fu, B. J., and Bai, G.: Modeling soil erosion and its response to land-use change in hilly catchments of the Chinese Loess Plateau, *Geomorphology*, 118, 239–248, 2010.
- Hamon, W. R.: Computation of direct runoff amounts from storm rainfall, *Int. Assoc. Sci. Hydrol. Publ.*, 63, 52–62, 1963.
- He, X. B., Li, Z. B., Hao, M. D., Tang, K. L., and Zheng, F. L.: Downscale analysis for water scarcity in response to soil-water conservation on Loess Plateau of China, *Agr. Ecosyst. Environ.*, 94, 355–361, 2003.
- Hutchinson, M. F.: The application of thin plate smoothing splines to continent-wide data assimilation, in: *BMRC Research Report No. 27, Data Assimilation Systems*, edited by: Jasper, J. D., Bureau of Meteorology, Melbourne, 104–113, 1991.
- Hutchinson, M. F. and Gessler, P. E.: Splines – more than just a smooth interpolator, *Geoderma*, 62, 45–67, 1994.
- Li, Z., Liu, W. Z., Zhang, X. C., and Zheng, F. L.: Impacts of land use change and climate variability on hydrology in an agricultural catchment on the Loess Plateau of China, *J. Hydrol.*, 377, 35–42, 2009.
- Li, Z. C., Wei, Z. G., Wen, J., and Fu, R.: Analyses on climate variation characteristics over the Loess Plateau in recent 50 years, *J. Arid Land Res. Environ.*, 22, 57–62, 2008.
- Ma, Z. M., Kang, S. Z., Zhang, L., Tong, L., and Su, X. L.: Analysis of impacts of climate variability and human activity on streamflow for a river basin in arid region of Northwest China, *J. Hydrol.*, 352, 239–249, 2008.
- McVicar, T. R., Li, L. T., van Niel, T. G., Zhang, L., Li, R., Yang, Q. K., Zhang, X. P., Mu, X. M., Wen, Z. M., Liu, W. Z., Zhao, Y. A., Liu, Z. H., and Gao, P.: Developing a decision support tool for China's re-vegetation program: Simulating regional impacts of afforestation on average annual streamflow in the Loess Plateau, *Forest Ecol. Manag.*, 251, 65–81, 2007.
- Mu, Q., Heinsch, F. A., Zhao, M., and Running, S. W.: Development of a global evapotranspiration algorithm based on MODIS and global meteorology data, *Remote Sens. Environ.*, 111, 519–536, 2007.

Regional effects of vegetation restoration on water yield

X. M. Feng et al.

[Title Page](#)
[Abstract](#)
[Introduction](#)
[Conclusions](#)
[References](#)
[Tables](#)
[Figures](#)
[⏪](#)
[⏩](#)
[◀](#)
[▶](#)
[Back](#)
[Close](#)
[Full Screen / Esc](#)
[Printer-friendly Version](#)
[Interactive Discussion](#)

- Palmroth, S., Katul, G. G., Hui, D., McCarthy, H. R., Jackson, R. B., and Oren, R.: Estimation of long-term basin scale evapotranspiration from streamflow time series, *Water Resour. Res.*, 46, W10512, doi:10.1029/2009WR008838, 2010.
- Potter, N. J., Zhang, L., Milly, P. C. D., McMahon, T. A., and Jakeman, A. J.: Effects of rainfall seasonality and soil moisture capacity on mean annual water balance for Australian catchments, *Water Resour. Res.*, 41, W06007, doi:10.1029/2004WR003697, 2005.
- Price, K. C., Jackson, R., Parker, A. J., Reitan, T., Dowd, J., and Cyterski, M.: Effects of watershed land use and geomorphology on stream low flows during severe drought conditions in the Southern Blue Ridge Mountains, Georgia and North Carolina, United States, *Water Resour. Res.*, 47, W02516, doi:10.1029/2010WR009340, 2011.
- Song, Y., Ma, M. G., and Veroustraete, F.: Comparison and conversion of AVHRR GIMMS and SPOT VEGETATION NDVI data in China, *Int. J. Remote Sens.*, 31, 2377–2392, 2010.
- Sun, G., Zhou, G. Y., Zhang, Z. Q., Wei, X. H., McNulty, S. G., and Vose, J. M.: Potential water yield reduction due to forestation across China, *J. Hydrol.*, 328, 548–558, 2006.
- Sun, G., Alstad, K., Chen, J. Q., Chen, S. P., Ford, C. R., Lin, G. H., Liu, C. F., Lu, N., McNulty, S. G., Miao, H. X., Noormets, A., Vose, J. M., Wilske, B., Zeppel, M., Zhang, Y., and Zhang, Z. Q.: A general predictive model for estimating monthly ecosystem evapotranspiration, *Ecohydrology*, 4, 245–255, 2011a.
- Sun, G., Caldwell, P., Noormets, A., Cohen, E., McNulty, S. G., Treasure, E., Domec, J.-C., Mu, Q., Xiao, J., John, R., and Chen, J.: Upscaling key ecosystem functions across the conterminous United States by a water-centric ecosystem model, *J. Geophys. Res.*, 116, G00J05, doi:10.1029/2010JG001573, 2011b.
- Wahba, G. and Wendelberger, J.: Some new mathematical methods for variational objective analysis using splines and cross-validation, *Mon. Weather Rev.*, 108, 1122–1145, 1980.
- Wang, S. P., Zhang, Z. Q., Sun, G., McNulty, S. G., and Zhang, M. L.: Detecting water yield variability due to the small proportional land use and land cover changes in a watershed on the Loess Plateau, China, *Hydrol. Process.*, 23, 3083–3092, 2009.
- Wang, Y. H., Yu, P., Feger, K. H., Wei, X., Sun, G., Bonell, M., Xiong, W., Zhang, S., and Xu, L.: Annual runoff and evapotranspiration of forestlands and non-forestlands in selected basins of the Loess Plateau of China, *Ecohydrol.*, 4, 277–287, 2011.
- Wang, Y. R.: Warming and drought response of Autumn climate over Loess Plateau to global warm, *Plateau Meteorol.*, 27, 104–112, 2008 (in Chinese).

Regional effects of vegetation restoration on water yield

X. M. Feng et al.

[Title Page](#)
[Abstract](#)
[Introduction](#)
[Conclusions](#)
[References](#)
[Tables](#)
[Figures](#)
[⏪](#)
[⏩](#)
[◀](#)
[▶](#)
[Back](#)
[Close](#)
[Full Screen / Esc](#)
[Printer-friendly Version](#)
[Interactive Discussion](#)


- Wei, X., Sun, G., Liu, S., Hong, J., Zhou, G., and Dai, L.: The forest–streamflow relationship in China: a 40-year retrospect, *J. Am. Water Resour. As.*, 44, 1076–1085, 2008.
- Wei, X, Sun, G., Vose, J., Otsuki, K., Zhang, Z., and Smetterm, K.: Preface. Forest ecohydrological processes in a changing environment, *Ecohydrology*, 4, 143–145, 2011.
- 5 Xu, J. and Cao, Y.: Efficiency and sustainability of converting cropland to forest and grassland in the western region, in: *Implementing the Natural Forest Protection Program and the Sloping Land Conversion Program: Lessons and Policy Implications*, edited by: Xu, J., Katsigris, E., and White, T. A., CCICED-WCFGT F, China Forestry Publishing House, Beijing, 2002.
- Zhang, L., Dawes, W. R., and Walker, G. R.: Response of mean annual evapotranspiration to
10 vegetation changes at catchment scale, *Water Resour. Res.*, 37, 701–708, 2001.
- Zhang, L., Hickel, K., Dawes, W. R., Chiew, F. H. S., Western, A. W., and Briggs, P. R.: A rational function approach for estimating mean annual evapotranspiration, *Water Resour. Res.*, 40, W02502, doi:10.1029/2003WR002710, 2004.
- Zhang, X. P., Zhang, L., McVicar, T. R., van Niel, T. G., Li, L. T., Li, R., Yang, Q. K., and Wei, L.:
15 Modelling the impact of afforestation on average annual streamflow in the Loess Plateau, China. *Hydrol. Process.*, 22, 1996–2004, 2008a.
- Zhang, X. P., Zhang, L., Zhao, J., Rustomji, P., and Hairsine, P.: Responses of streamflow to changes in climate and land use/cover in the Loess Plateau, China, *Water Resour. Res.*, 44, W00A07, doi:10.1029/2007WR006711, 2008b.
- 20 Zhang, W. C., Zhong, S., and Hu, S. Y.: Spatial scale transferring study on Leaf Area Index derived from remotely sensed data in the Heihe River Basin, China, *Acta Ecol. Sin.*, 28, 2495–2503, 2008 (in Chinese).
- Zhou, G. Y., Wei, X. H., Luo, Y., Zhang, M. F., Li, Y. L., Qiao, Y., Liu, H. G., and Wang, C. L.: Forest recovery and river discharge at the regional scale of Guangdong Province, China,
25 *Water Resour. Res.*, 46, W09503, doi:10.1029/2009WR008829, 2010.

Table 1. Hydrometeorological characteristics of catchments for model calibration and validation.

Hydrological Station	Station Location	Catchment Area (km ²)	Mean Annual Runoff (m ³ s ⁻¹)	Annual Precipitation (mm)	Data Period	For Calibration (C) or Validation (V)
BeiXia	35° 34' N; 105° 45' E	2726	545.0	434	1981–1986	C
BiCun	38° 31' N; 110° 53' E	1423	323.5	496	1981–1985	C
ChanKou	35° 41' N; 104° 33' E	1709	255.1	456	1981–1987	C
DaNaoBao	40° 37' N; 110° 43' E	931	333.0	350	1981–1986, 1988	C
DaNing	36° 28' N; 110° 43' E	3796	1120.99	536	1981–1989	V
DangYangQiao	39° 59' N; 111° 37' E	5025	1151.40	404	1981–1989	V
DongZhuang	36° 13' N; 111° 52' E	952	514.29	557	1981, 1982, 1984	C
DuDui	37° 43' N; 113° 11' E	1161	425.53	559	1981–1987	C
FenHe Reservoir	38° 03' N; 111° 56' E	5224	2603.51	495	1981–1987	C
GeDong	37° 53' N; 111° 14' E	838	435.03	501	1981–1989	V
GuYuan	36° 01' N; 106° 18' E	215	87.05	461	1981–1985, 1988	C
GuoChengYi	36° 13' N; 104° 53' E	5404	614	390	1981–1987	C
HanFuWan	36° 36' N; 106° 09' E	5045	538.0	391	1981–1986, 1988	C
HanJiaMao	38° 04' N; 109° 09' E	2518	1004.38	329	1981–1989	C
HaoSiHe	34° 36' N; 108° 03' E	961	049.35	642	1981–1983, 1985, 1986	C
HengShan	7° 58' N; 109° 17' E	2689	678.06	394	1981–1989	C
HongDe	36° 46' N; 107° 12' E	4580	616.92	369	1981–1987	C
HuangFu	39° 17' N; 111° 05' E	3249	1320.91	384	1981–1989	C
HuiHe Reservoir	35° 39' N; 111° 34' E	1328	575.97	585	1983–1987	C
JiXian	36° 05' N; 110° 40' E	455	115.37	549	1981–1989	C
JingChuan	35° 20' N; 107° 21' E	3150	2194.84	533	1981–1987	V
KeLan	38° 42' N; 111° 34' E	402	137.75	513	1981–1989	V
LaoYuKou	34° 01' N; 108° 32' E	398	1789.58	869	1981–1984, 1986	C
LinJiaCun	4° 23' N; 107° 03' E	633	3503.95	811	1981–1986	C
LinJiaPing	37° 42' N; 110° 52' E	1969	553.63	462	1981–1989	C
LiuLin	35° 03' N; 108° 49' E	672	1032.80	620	1981–1986	C
LvZhuang Reservoir	35° 23' N; 111° 15' E	823	519.9	577	1983–1985	C
MaDuWang	34° 14' N; 109° 09' E	1645	7884.38	732	1981–1986	C
MaoJiaHe	35° 31' N; 107° 35' E	7381	1985.58	466	1981–1987	C
PeiJiaChuan	38° 37' N; 110° 54' E	2080	376.14	488	1981–1985	C
PianGuan	39° 28' N; 111° 30' E	1879	215.93	444	1981–1989	C
QiaoTou	36° 56' N; 101° 41' E	2745	430.23	493	1981, 1982, 1984, 1986	C
QingYangCha	37° 22' N; 109° 13' E	636	282.02	420	1981–1989	C
QingShui	39° 15' N; 111° 03' E	747	340.39	397	1981–1989	C
ShenJiaWan	38° 02' N; 110° 29' E	1110	459.68	400	1981–1989	C
SuiDe	37° 30' N; 110° 14' E	3850	1478.39	415	1981–1989	C
TianShui	34° 35' N; 105° 41' E	979	1029.23	577	1981–1984, 1986	C
WenJiaChuan	38° 26' N; 110° 45' E	8704	6141.61	378	1981–1989	C
WenYuHe Reservoir	37° 30' N; 112° 01' E	2120	1224.06	509	1981–1987	C
WuShan	34° 44' N; 104° 53' E	8251	8417.76	575	1981–1986	V
WuShengYi	36° 52' N; 103° 11' E	1976	356.45	421	1981–1982, 1984, 1986, 1988	V
Yan'an	36° 38' N; 109° 27' E	3125	1451.36	465	1981–1989	V
YanChuan	36° 53' N; 110° 11' E	3359	1354.72	463	1981–1983, 1985–1989	C
YangLv	35° 26' N; 107° 30' E	1342	509.78	500	1981–1987	C
YueLe	36° 18' N; 107° 54' E	585	158.89	464	1981–1987	V
ZaoYuan	36° 38' N; 109° 20' E	774	325.71	501	1981–1989	C
ZhangHe	35° 11' N; 107° 43' E	1387	813.29	559	1981–1987	C
ZhangLiuZhuang	34° 50' N; 110° 19' E	5738	402.30	573	1981–1987	V

Regional effects of vegetation restoration on water yield

X. M. Feng et al.

Title Page

Abstract Introduction

Conclusions References

Tables Figures

⏪ ⏩

◀ ▶

Back Close

Full Screen / Esc

Printer-friendly Version

Interactive Discussion



Regional effects of vegetation restoration on water yield

X. M. Feng et al.

Title Page

Abstract

Introduction

Conclusions

References

Tables

Figures

⏪

⏩

◀

▶

Back

Close

Full Screen / Esc

Printer-friendly Version

Interactive Discussion



Table 2. Relationship between NDVI and LAI (after Zhang et al., 2008).

	Land cover	Equation
1	Agriculture	$LAI = 0.7271 \cdot \exp(3.0236 \cdot NDVI)$
21	Broadleaf forest	$LAI = 0.5628 \cdot (1 + NDVI)/(1 - NDVI) + 0.3817$
22	Needleleaf forest	$LAI = 3.482 \cdot NDVI + 0.4378$
23	Shrub	$LAI = 1.1273 \cdot (1 + NDVI)/(1 - NDVI) - 0.3468$
3	Pasture	$LAI = 0.8253 \cdot \exp(0.3309 \cdot (1 + NDVI)/(1 - NDVI))$
4	Others	0

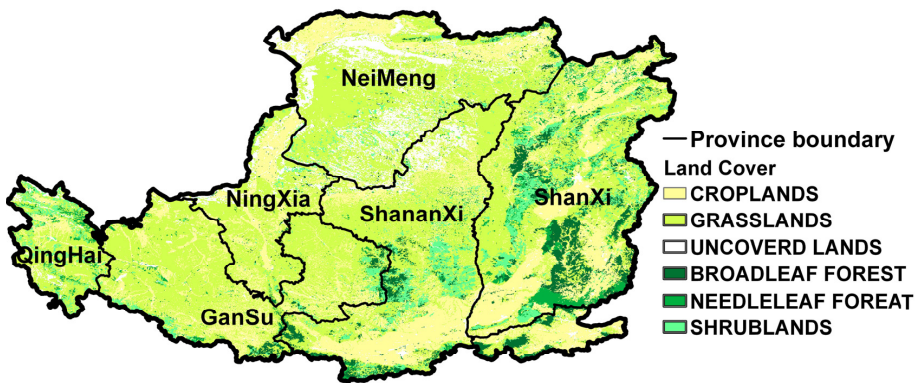
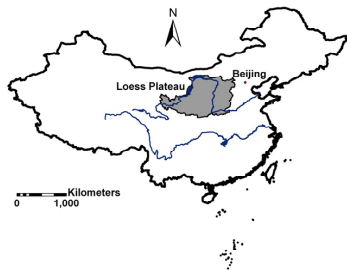


Fig. 1. Location and land cover of the Loess Plateau.

Regional effects of vegetation restoration on water yield

X. M. Feng et al.

[Title Page](#)

[Abstract](#) | [Introduction](#)

[Conclusions](#) | [References](#)

[Tables](#) | [Figures](#)

[⏪](#) | [⏩](#)

[◀](#) | [▶](#)

[Back](#) | [Close](#)

[Full Screen / Esc](#)

[Printer-friendly Version](#)

[Interactive Discussion](#)



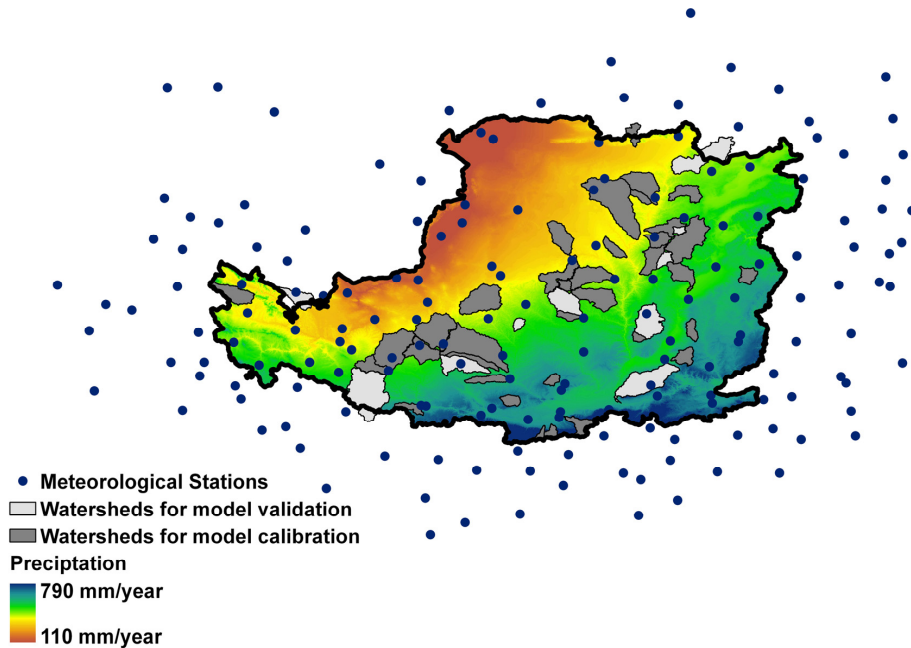


Fig. 2. Spatial distributions of gauged watersheds and meteorological stations used for model development and application.

**Regional effects of
vegetation
restoration on water
yield**

X. M. Feng et al.

Title Page

Abstract Introduction

Conclusions References

Tables Figures

⏪ ⏩

◀ ▶

Back Close

Full Screen / Esc

Printer-friendly Version

Interactive Discussion



Regional effects of vegetation restoration on water yield

X. M. Feng et al.

[Title Page](#)

[Abstract](#)

[Introduction](#)

[Conclusions](#)

[References](#)

[Tables](#)

[Figures](#)



[Back](#)

[Close](#)

[Full Screen / Esc](#)

[Printer-friendly Version](#)

[Interactive Discussion](#)

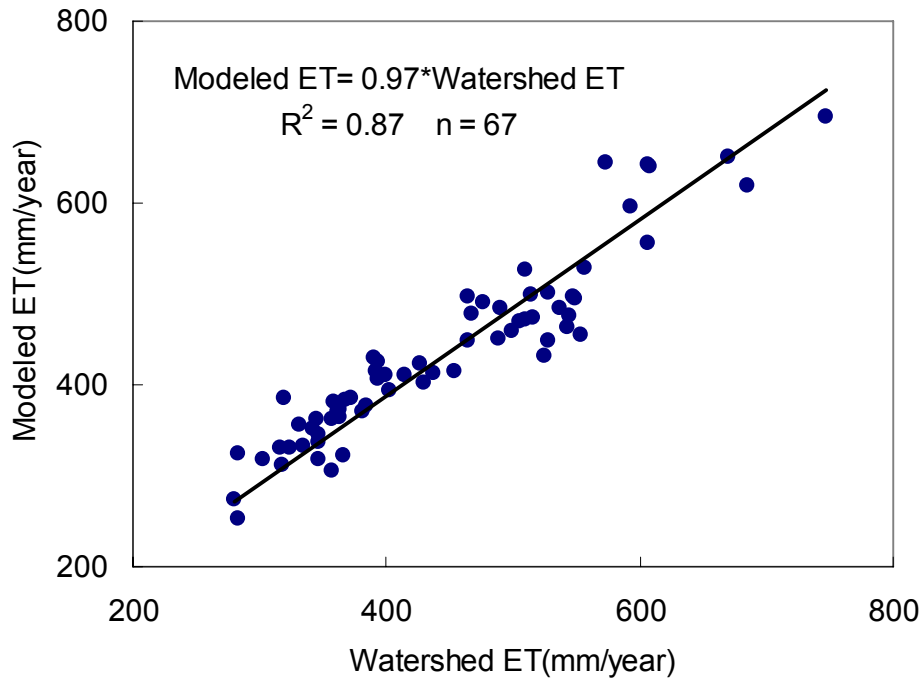


Fig. 3. ET Model validation using watershed ET data derived from hydrometeorological data across the Loess Plateau region.

Regional effects of vegetation restoration on water yield

X. M. Feng et al.

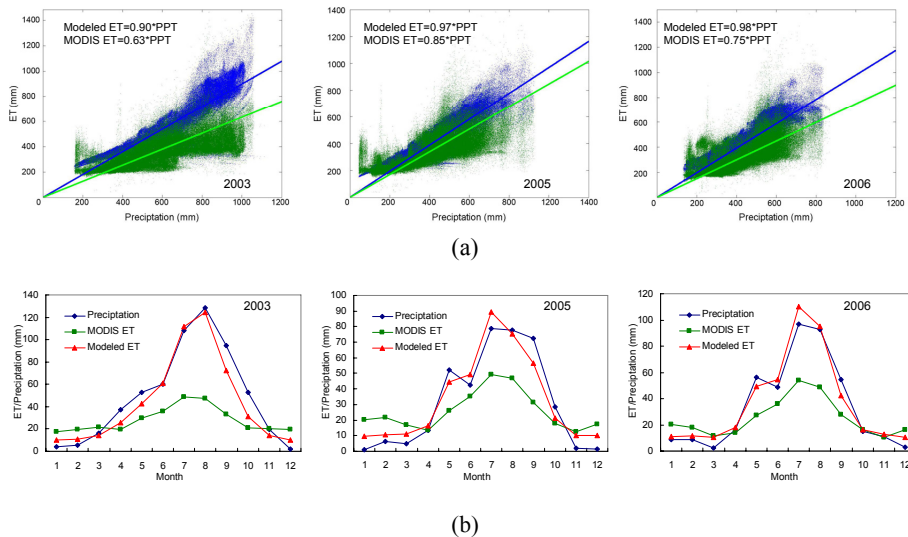


Fig. 4. Pixel to pixel comparison between modeled ET and MODIS ET products in a dry year (2005), wet year (2003) and for average conditions (2006) **(a)**; the monthly data comparison between modeled ET and MODIS ET products in a dry year (2005), wet year (2003) and for average conditions (2006) **(b)**.

[Title Page](#)
[Abstract](#)
[Introduction](#)
[Conclusions](#)
[References](#)
[Tables](#)
[Figures](#)
[⏪](#)
[⏩](#)
[◀](#)
[▶](#)
[Back](#)
[Close](#)
[Full Screen / Esc](#)
[Printer-friendly Version](#)
[Interactive Discussion](#)

Regional effects of vegetation restoration on water yield

X. M. Feng et al.

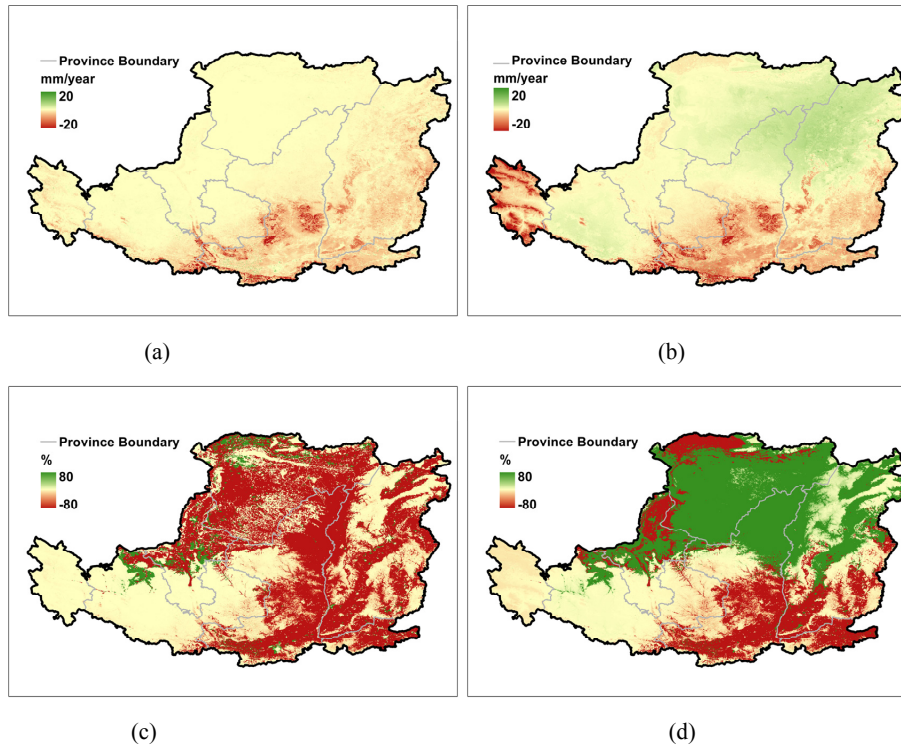


Fig. 5. Spatial pattern of water yield change per year due to vegetation restoration **(a)** and its relative value **(c)**; combined water yield change **(b)** and its relative value **(d)** in the period 2000–2007.

[Title Page](#)[Abstract](#)[Introduction](#)[Conclusions](#)[References](#)[Tables](#)[Figures](#)[⏪](#)[⏩](#)[◀](#)[▶](#)[Back](#)[Close](#)[Full Screen / Esc](#)[Printer-friendly Version](#)[Interactive Discussion](#)

Regional effects of vegetation restoration on water yield

X. M. Feng et al.

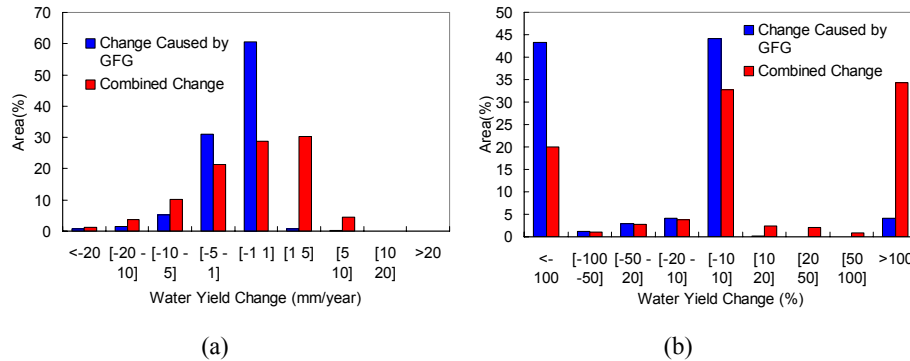


Fig. 6. Frequency distribution of water yield change per year **(a)** and its relative value **(b)**.

[Title Page](#)
[Abstract](#) [Introduction](#)
[Conclusions](#) [References](#)
[Tables](#) [Figures](#)
[⏪](#) [⏩](#)
[◀](#) [▶](#)
[Back](#) [Close](#)
[Full Screen / Esc](#)
[Printer-friendly Version](#)
[Interactive Discussion](#)



Regional effects of vegetation restoration on water yield

X. M. Feng et al.

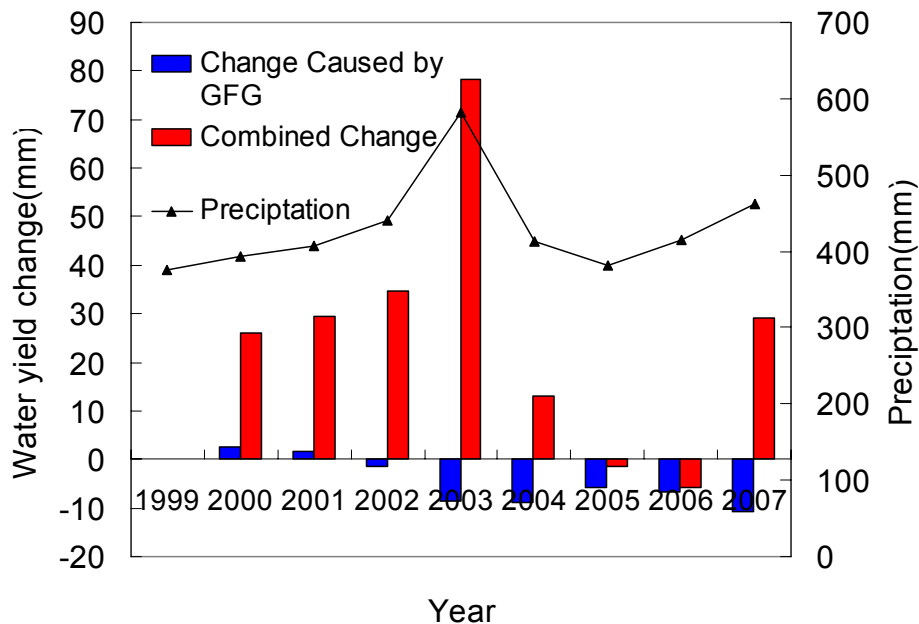


Fig. 7. Temporal variability of change in water yield due to land cover change only and combined climate and land cover change during 2000–2007.

Title Page

Abstract	Introduction
Conclusions	References
Tables	Figures

⏪
⏩

◀
▶

Back
Close

Full Screen / Esc

Printer-friendly Version

Interactive Discussion