

This discussion paper is/has been under review for the journal Hydrology and Earth System Sciences (HESS). Please refer to the corresponding final paper in HESS if available.

Relating climate change signals and physiographic catchment properties to clustered hydrological response types

N. Köplin^{1,2}, B. Schädler^{1,2}, D. Viviroli^{1,2}, and R. Weingartner^{1,2}

¹Institute of Geography, University of Bern, Switzerland

²Oeschger Centre for Climate Change Research, University of Bern, Switzerland

Received: 27 February 2012 – Accepted: 1 March 2012 – Published: 12 March 2012

Correspondence to: N. Köplin (nina.koeplin@web.de)

Published by Copernicus Publications on behalf of the European Geosciences Union.

HESSD

9, 3165–3202, 2012

**Hydrological
response to climate
change due to
catchment properties**

N. Köplin et al.

Title Page

Abstract

Introduction

Conclusions

References

Tables

Figures

⏪

⏩

◀

▶

Back

Close

Full Screen / Esc

Printer-friendly Version

Interactive Discussion

Abstract

We propose an approach to reduce a comprehensive set of 186 mesoscale catchments in Switzerland to fewer response types to climate change and name sensitive regions as well as catchment characteristics that govern hydrological change. We classified the hydrological responses of our study catchments through an agglomerative-hierarchical cluster analysis, and we related the dominant explanatory variables, i.e. the determining catchment properties and climate change signals, to the catchments' hydrological responses by means of redundancy analysis. All clusters except for one exhibit clearly decreasing summer runoff and increasing winter runoff. This seasonal shift was observed for the near future period (2025–2046) but is particularly obvious in the far future period (2074–2095). Within a certain elevation range (between 1000 and 2500 m a.s.l.), the hydrological change is basically a function of elevation because the latter governs the dominant hydro-climatological processes associated with temperature, e.g. the ratio of liquid to solid precipitation and snow melt processes. For catchments below the stated range, hydrological change is mainly a function of precipitation change, which is not as pronounced as the temperature signal is. Future impact studies in Switzerland can be conducted on a reduced sample of catchments representing the sensitive regions or covering a range of altitudes.

1 Introduction

The latest climate scenarios for Switzerland project a summer mean temperature increase of 3.7–4.1 °C and a summer mean precipitation decrease of 18–24 % for the A1B emission scenario and the late 21st century (CH2011, 2011). These changes in climate will inevitably induce changes in Switzerland's hydrology because the hydrological cycle is closely connected to the climate system. This was demonstrated in numerous studies covering a range of different foci and scales, from rather detailed and local-scale case studies (e.g., Finger et al., 2012; Graham et al., 2007; Hänggi, 2011;

Hydrological response to climate change due to catchment properties

N. Köplin et al.

Title Page

Abstract

Introduction

Conclusions

References

Tables

Figures



Back

Close

Full Screen / Esc

Printer-friendly Version

Interactive Discussion

Huss et al., 2008; Jasper et al., 2004; Kunstmann et al., 2004; Schaeffli et al., 2007) to broader analyses at the regional or continental scale (e.g., Bergström et al., 2001; Christensen and Lettenmaier, 2007; Dankers and Middelkoop, 2008; Hamlet, 2011).

With the “Bali Action Plan”, the United Nations Framework Convention on Climate Change (UNFCCC) identified the need to integrate adaptation actions into sectoral and national planning (UNFCCC, 2008). Switzerland, as a Party to the Convention, adjusted its climate policy according to the UNFCCC obligations and formulated a Swiss adaptation strategy, where water resources management was identified as one of nine sectors specifically affected by climate change (FOEN, 2010). Among others, the adaptation strategy includes frequent updates of climate-impact studies according to the most recent climate scenarios. The latest of those impact studies is the joint research project “Climate Change and Hydrology in Switzerland” (CCHydro; Volken, 2010), which the study presented here is part of.

A comprehensive hydrological climate-impact study, however, that accounts for all sources of uncertainties is an utmost demanding task in terms of computational power and time. Ideally, it would involve a series of different greenhouse gas emission scenarios forcing different general circulation models (GCMs), into which different regional climate models (RCMs) are nested. The regional climate models, in turn, would be downscaled with different downscaling procedures to drive a number of hydrological models each having a series of different parameter sets and being run for different catchment types. This extensive modelling set up would allow a complete integration and quantification of all possible sources of uncertainty along the impact-modelling chain. The associated heavy workload, however, is far beyond the means and would even increase with forthcoming generations of climate scenarios that are likely to be available in a higher spatial and temporal resolution.

Obviously, it is impossible to execute this idealized impact-modelling chain whenever a new generation of climate scenarios is available, and ways to simplify the procedure are indispensable. Therefore, the aim of this study is to ease the multi-dimensional task of impact modelling by reducing the catchments to few distinct response types

Hydrological response to climate change due to catchment properties

N. Köplin et al.

Title Page

Abstract

Introduction

Conclusions

References

Tables

Figures



Back

Close

Full Screen / Esc

Printer-friendly Version

Interactive Discussion



and assessing their specific climate-sensitivity, for example. This facilitates to conduct future impact studies only in the most affected regions, which eases the workload to a great extent.

To achieve a dimension reduction, we first classify a comprehensive set of catchments based on their hydrological responses to climate change to answer our first research question: (1) Are there certain types of hydrological responses, i.e. can the catchments be grouped into fewer response types? We assume a differentiation and, therefore, a possible grouping of the catchments due to their hydrological responses because Wagener et al. (2007) identified the response behaviour as the “[. . .] main differentiating metric between catchments”. In a second step, the resulting response types are analysed to find out (2) which response types are specifically sensitive to changes in climate. Finally, we assess the relative impact of climate change signals and catchment properties on the hydrological response to test (3) if there are general causal relationships between the hydrological response to climate change and characteristic catchment properties. We want to assess this relative impact of climate and catchment properties because the climate change signal might not be the only factor determining the hydrological response to climate change. Sawicz et al. (2011) found, for example, “[. . .] that soil properties will modify the impacts of climate change on hydrologic regimes, which means that changes in precipitation and temperature will not impact the streamflow response equally”. If there are modifying catchment characteristics like soil properties or other physiographic signatures in our study region, then the entity of catchments to be analysed can be reduced to a sample that is representative for the determining properties. One approach to relate catchment characteristics to hydrological response is to classify the catchments according to their physiographic properties and compare it to the classification of the hydro-climatological response (see e.g., Ley et al., 2011). Here, we relate the hydrological response to both the catchment properties and the climate change signals by means of redundancy analysis, a constrained ordination method widely used in vegetation ecology that has been demonstrated to be effectively applicable to hydrologic data, too (Ali et al., 2011).

Hydrological response to climate change due to catchment properties

N. Köplin et al.

Title Page

Abstract Introduction

Conclusions References

Tables Figures

⏪ ⏩

◀ ▶

Back Close

Full Screen / Esc

Printer-friendly Version

Interactive Discussion



Based on the latest climate scenario data for Switzerland, we apply the proposed procedure to an extensive set of 186 mesoscale catchments that represent the variety of Switzerland's hydrological systems. With a view to practical application, the reduction of the variety of hydrological responses to the most important types will facilitate to designate prioritized regions which adaptation measures should be applied to, first.

2 Study area and data

We studied 186 catchments in Switzerland (*study catchments*, Fig. 1) that cover an area of 63% (25 865 km²) of the country. Switzerland provides a variety of different landscape types, from the Jura limestone range in the Northwest over the flat and hilly Swiss Plateau and the high Alpine areas, which constitute a continental drainage divide, to the inner Alpine valleys and the Southern Alpine region with their distinct climates. Because of this heterogeneous landscape structure, a range of different catchment types evolved, which is reflected in the catchments' mean elevations, for example, ranging from 438 to 3024 m a.s.l. The study catchments have an average area of approximately 250 km² and are water balance basins as introduced and defined by Schädler and Weingartner (1992).

We used hourly discharge measurements for the period from 1983 to 2005 (FOEN, 2008) to calibrate and validate our hydrological model for 163 catchments (*calibrated catchments* in Fig. 1). Discharge data is available for more catchments than those calibrated here, but in the Alpine areas, for example, hydropower production biases the discharge measurements, which is why we could not use these data for model calibration.

Meteorological data are available in hourly to daily resolution, depending on the type of meteorological station. For the 76 stations of the automatic meteorological network, the data are available in 1 h resolution, while 84 climate stations provide data two or three times a day, and 668 precipitation gauges measure with a daily resolution (cf.

Hydrological response to climate change due to catchment properties

N. Köplin et al.

Title Page

Abstract

Introduction

Conclusions

References

Tables

Figures



Back

Close

Full Screen / Esc

Printer-friendly Version

Interactive Discussion

Fig. 1; MeteoSwiss, 2008). Model forcing is mainly based on the 76 highly resolved meteorological stations and is complemented with the less highly resolved data.

2.1 Model data

We used the hydrological modelling system PREVAH (Precipitation-Runoff-EVApotranspiration-Hydrotope-based model; Viviroli et al., 2009a) that is semi-distributed because it relies on the concept of Hydrological Response Units (HRUs) and that is process-oriented as it incorporates, for example, combined temperature-radiation modules for snow and ice melt. In this study, PREVAH is run on the basis of hourly meteorological input (temperature, precipitation, relative humidity, wind speed, global radiation and sunshine duration) and at a spatial resolution of $500 \times 500 \text{ m}^2$. We extended an existing set of 140 calibrated Northern Alpine catchments (Viviroli et al., 2009b) to Southern Alpine catchments (Köplin et al., 2010) following the calibration procedure designed by Viviroli et al. (2009b). Thus, we arrived at a comprehensive set of 163 calibrated catchments representing the variety of catchment types in Switzerland. The evaluation of the calibration results for the Northern and the Southern Alpine catchments is described in detail in Viviroli et al. (2009b) and in Köplin et al. (2010), respectively.

The 163 calibrated model parameter sets were used to regionalize runoff simulations for ungauged catchments, subsequently. For this, we used a regionalization scheme by Viviroli et al. (2009c) developed for flood estimation in small- to mesoscale catchments in Switzerland (Viviroli and Weingartner, 2011). The scheme combines three different regionalization methods (Nearest Neighbours, Kriging and Regression) by averaging the model output of the respective simulations for every time step, i.e. for every hour. To be precise, the simulated runoff time series of five model runs based on calibrated parameter sets of the five Nearest Neighbours (near in the attribute space) as well as the simulated runoff of two model runs (based on parameter sets derived by Kriging and Regression) were combined by computing the mean of the seven time series. As a result of this procedure, the regionalized simulated runoff of a catchment is not

Hydrological response to climate change due to catchment properties

N. Köplin et al.

Title Page

Abstract

Introduction

Conclusions

References

Tables

Figures

⏪

⏩

◀

▶

Back

Close

Full Screen / Esc

Printer-friendly Version

Interactive Discussion



based on one distinct but on seven different parameter sets. It should be noted that we regionalized the runoff simulations not only for the ungauged catchments, but for all our study catchments, even for those where discharge measurements were available, to guarantee a homogeneous data base for our further analysis. This means that the pool of calibrated and regionalized catchments partly overlap in space (cf. Fig. 1). The regionalization of the catchments with available discharge measurements allows for a validation of the regionalization procedure using the jack-knife technique, a cross-validation approach that proved good model efficiencies for the regionalized runoff, e.g. a median Nash-Sutcliffe efficiency (NSE) of 0.69 for the tested catchments (see Viviroli et al., 2009c for details).

Although the absolute numbers of calibrated (163) and regionalized (186) catchments do not differ substantially, their spatial distribution does (cf. Fig. 1): the calibrated catchments encompass an overall smaller area because of their smaller average size (110 km² opposed to 250 km² for the regionalized catchments) and, besides, the calibrated catchments are unevenly distributed which is why regionalisation could significantly extend our catchment database to high and Southern Alpine areas. Since the high Alpine areas are expected to be areas that are most vulnerable to changes in climate (Birsan et al., 2005; Viviroli et al., 2011), regionalization was a prerequisite in this study.

2.1.1 Physiographic catchment properties

The physiographic properties that will be used to characterize the catchments (Table 1) were derived from the HRU-based spatial information gathered during the pre-processing of the data for the hydrological model. The data are gained from a Digital Elevation Model (DEM, 100 × 100 m²), a soil map (1 : 200 000) and a land use map (100 × 100 m²), all provided by the Swiss Federal Statistical Office (SFSO, 2003). The digital maps are joined and provided at a spatial resolution of 500 × 500 m². For use as characterising properties, the HRU-based data are summed up to the catchment-scale.

Hydrological response to climate change due to catchment properties

N. Köplin et al.

Title Page

Abstract

Introduction

Conclusions

References

Tables

Figures

◀

▶

◀

▶

Back

Close

Full Screen / Esc

Printer-friendly Version

Interactive Discussion

2.2 Scenario data

2.2.1 Climate scenarios

We applied climate scenarios of expected changes (deltas) in the annual cycle of temperature and precipitation that are part of the latest release of downscaled climate scenarios for the area of Switzerland (CH2011, 2011). The change signals between the control (1980–2009) and the scenario periods (2021–2050 and 2070–2099) were provided for each day of the year and each observation station in Switzerland (Bosshard et al., 2011). For every station site, a total of ten model chains from the ENSEMBLES-project (van der Linden and Mitchell, 2009) were analysed, each consisting of one of five GCMs driving one of eight RCMs, whereas all model chains assume the SRES A1B emission scenario.

Bosshard et al. (2011) applied a spectral smoothing method to filter the annual cycle of change signals, which resulted in considerably better representations of the climate change signals' annual cycle compared to the commonly applied moving averaging window. A bias correction of the climate model output is implicitly incorporated in this downscaling method.

2.2.2 Scenarios of glacier retreat

In addition to the climate scenario data itself, we accounted for the accompanying glacier retreat, too. The scenarios include a glacier downwasting that is parameterized as a function of elevation and assume a mean response time of 50 yr. The increase in equilibrium line was calculated according to three different temperature increases, a low, a middle and a high increase, that were classified from the range of all temperature increases of the climate scenarios in use. Further details on the methodology can be found in Paul et al. (2007) and in Linsbauer et al. (2012).

HESSD

9, 3165–3202, 2012

Hydrological response to climate change due to catchment properties

N. Köplin et al.

Title Page

Abstract

Introduction

Conclusions

References

Tables

Figures



Back

Close

Full Screen / Esc

Printer-friendly Version

Interactive Discussion



2.2.3 Hydrological projections

The annual cycles of the climate change signals were superimposed on the observed time series of precipitation and temperature to generate a set of climate scenarios with which the catchment models were run. We simulated the runoff for the control period from 1984 to 2005 and for the two scenario periods from 2025 to 2046 (near future) and 2074 to 2095 (far future) for every catchment and climate scenario. These periods slightly differ from the scenario periods mentioned in Sect. 2.2.1 because they are based on the calibration and validation period of the hydrological model. We calculated the mean annual cycle of monthly runoff and derived the monthly change signals, afterwards, being the ratios of scenario runoff over control period runoff. Finally, we computed the ensemble mean of the ten hydrological projections per catchment and scenario period.

3 Methods

The analysis in this study consists of three steps that are explained in this section: (1) the classification of catchments through cluster analysis based on the catchments' hydro-climatological change signals, (2) the evaluation of the clusters' climate-sensitivity and (3) the mapping of hydrological change to both the climate change signals and the catchment properties by means of redundancy analysis.

For the remainder of this paper, we will refer to three distinct change signals mentioned in the previous paragraph that are specified at this point: (A) the climate change signal comprising annual cycles of monthly temperature and precipitation deltas, (B) the hydrological change signal consisting of the annual cycle of monthly runoff deltas, and (C) the hydro-climatological change signal combining signals A and B. For all change signals, the ensemble mean of the ten different projections are computed, thus providing single annual cycles per catchment that result from the spread of the ten scenarios.

Hydrological response to climate change due to catchment properties

N. Köplin et al.

Title Page

Abstract

Introduction

Conclusions

References

Tables

Figures



Back

Close

Full Screen / Esc

Printer-friendly Version

Interactive Discussion



0.7 indicates high correlations (Leyer and Wesche, 2007) and one of the correlated variables is dismissed from further analysis.

Mean slope, mean available field capacity and mean soil depth are highly correlated among each other. Because available field capacity and soil depth are variables derived from the soil map that is spatially less highly resolved (see Sect. 2.1.1), they are assumed to be less precise and are dispensed from the set of catchment properties. Mean slope is also highly correlated with mean altitude, but they are both used in further analysis because they are expected to impact on different hydrological processes, i.e. the slope is supposed to rule runoff generating processes whereas the mean altitude (as an indicator of temperature) governs, for example, snow and glacier melt processes. From the two correlated variables mean altitude and elevation range, we apply mean altitude in our further analysis because of its superior significance for hydrological processes (Weingartner, 1999). The variables dominant aspect and dominant land use are used in further analysis, but they are not tested for correlations because they are of nominal scale.

3.3 Redundancy analysis

Redundancy analysis (RDA) is the canonical or constrained version of a principal components analysis (PCA) and combines multiple linear regression with classical ordination; for a detailed explanation see Borcard et al. (2011) and Legendre and Legendre (1998). Briefly, while classical ordination is a method of dimension reduction designed to extract the dominant structures in a single data set, constrained ordination extracts that part of the variation of a data set that is a function of the variation in another data set (Borcard et al., 2011). In other words, constrained ordination only describes the variation of the data that can be explained by the constraints (Oksanen et al., 2011), and the canonical axes that are derived are linear combinations of the explanatory, i.e. the constraining variables that best explain the variation in the matrix of the response variables (Borcard et al., 2011; Legendre et al., 2011).

Hydrological response to climate change due to catchment properties

N. Köplin et al.

Title Page

Abstract

Introduction

Conclusions

References

Tables

Figures



Back

Close

Full Screen / Esc

Printer-friendly Version

Interactive Discussion



high Alpine area in all three clustering modes, which was the case for a $k = 7$. We refer to the seven clusters as C1 to C7.

The clusters of all three versions are spatially coherent, and the distribution of the clusters mirrors the landscape types depicted in Fig. 1 to a certain extent. Comparing the clusters of the near and the far future, altogether 55 catchments are assigned to different clusters between those periods (referred to as *changing catchments*). Particularly remarkable are the catchments that switch to C6 in the far future because this cluster was that Southern Alpine cluster mentioned above we wanted to separate from the others. Analysis of the switching catchments' hydrological regime, however, revealed that their regime switched to the two-peaked southern regimes, too (Schädler and Blanc, 2012), which explains their grouping in the far future period. Another interesting feature observed is that the combined clustering preserves either the clusters of the near or the far future and does not generate completely new clusters. In most cases, the clustering of the far future is preserved in the combined clustering, though, which might be ascribed to the clearer hydro-climatological signal in that period. For our further analyses, we will use the clustering based on both periods in combination (Fig. 3, lower panel).

The physiographic properties of the clustered catchments are summarized in a parallel coordinates plot (Fig. 4). Each parallel axis displays the range of values of a physiographic variable, and each curve represents a single catchment with its characteristic properties. The curves are colour-coded according to the cluster a catchment belongs to. The graph can be read from left to right examining, for example, the mean values of a single cluster or it can be studied axis-wise comparing the clusters with respect to a specific variable. The variable catchment area is not discriminating between the clusters; the clusters' mean values vary around the overall mean. Unlike the catchment area, mean altitude and mean slope are two variables that clearly distinguish the clusters. The high correlation of those two variables (Fig. 2) is visible in the parallel coordinates plot, too. The clusters with glaciated catchments can be subdivided into two clusters (C4 and C7) that are still considerably glaciated in the far future, one in-

Hydrological response to climate change due to catchment properties

N. Köplin et al.

Title Page

Abstract

Introduction

Conclusions

References

Tables

Figures



Back

Close

Full Screen / Esc

Printer-friendly Version

Interactive Discussion



intermediate cluster (C5) and two clusters (C3 and C6) that are projected to be nearly ice-free by the end of the century. For the nominally scaled variables dominant aspect and dominant land use, no clear pattern can be observed, which has to be partly attributed to the parallel plot itself because most curves are exactly superimposed, here, and only the topmost curve is visible.

The hydro-climatological change signals of the clusters (Fig. 5, rows 1 to 3) show clear annual cycles with maxima in summer for temperature and minima in summer for precipitation and runoff. The rather slight changes that can be observed for the near future period are visibly amplified in the far future for all change signals. The amount of decreasing summer precipitation is considerably smaller than that of the summer runoff, which means that the temperature change signal determines the change in runoff to a large extent. Unlike the climate change signals that hardly differentiate among the clusters, the hydrological change exhibits an obvious spread. This confirms our assumption that the same climate change signal, indeed, can induce very different hydrological responses.

Concerning climate sensitivity in the near future period, the clusters can be regarded as non-sensitive. Although slight changes in near future runoff can be observed for all clusters except C1 (Jura mountains, Swiss Plateau), these changes are negligible with respect to the absolute monthly runoff (see lower left panel in Fig. 5). In the far future period, C1 stays insensitive to the clear changes in climate. On the contrary, C2 which experiences about the same climate change as C1 exhibits discernible changes in runoff. The physiographic properties that differ between those clusters are mean altitude and mean slope, which indicates an influence of those variables on the projected hydrological change. The yearly peak runoff of C5 and C6 is shifted one month earlier and is projected to significantly decrease in the far future (lower right panel in Fig. 5). The shift in peak runoff applies to C4, too, with the exception that the peak is projected to increase, here. The most obvious difference between C4 and C5/C6 is their glaciation, which is on average still 10% for C4 in the far future, whereas the mean values of C5 and C6 are 3% and nearly zero, respectively. Moreover, C4 has

Hydrological response to climate change due to catchment properties

N. Köplin et al.

Title Page

Abstract

Introduction

Conclusions

References

Tables

Figures



Back

Close

Full Screen / Esc

Printer-friendly Version

Interactive Discussion



a higher mean altitude than C5 and C6, meaning that increasing winter precipitation is to a certain extent solid precipitation causing increasing snowmelt in spring. This, together with a still existing glacier melt, explains the increasing yearly peak runoff. This is not true, however, for C7, the cluster with the highest mean altitude and glaciation, where the projected peak runoff decreases in the far future. This decrease is the result of the smaller glaciated area compared to the control period (that applies to the other glaciated cluster, too, of course) as well as the decreasing summer precipitation. C7 does not show the increase in spring runoff that C4 exhibits because of the high mean altitude of this cluster and therewith the low mean temperature: the temperature is low enough to preserve the control period's ice-fed regime in the far future period. Moreover, temperature is the reason why winter runoff does not increase significantly in C7, too, because the ratio of liquid to solid precipitation does not change markedly. That is, the mean altitude of a catchment and therewith the temperature are features that strongly determine hydrological change.

4.2 Redundancy analysis

The redundancy analysis confirms the results of the cluster analysis because the catchments of a cluster are grouped together in the RDA-biplot, too (Fig. 6, upper panel). It should be noted that the catchments are only colour-coded according to the corresponding cluster, but the cluster itself was not a constraint in the RDA. Besides this obvious result, biplots are interpreted according to certain rules (cf. e.g., Borcard et al., 2011; Leyer and Wesche, 2007; Oksanen et al., 2011 and see the RDA schematic in Fig. 6):

1. Only the first two (and most important) canonical axes are displayed; their proportion of explained variance of the dependent variables is given as R_{adj}^2 .
2. The arrow of a constraining variable points to the direction of the variable's gradient, and the arrow's length, projected on each of the two canonical axes at right

Hydrological response to climate change due to catchment properties

N. Köplin et al.

Title Page

Abstract

Introduction

Conclusions

References

Tables

Figures



Back

Close

Full Screen / Esc

Printer-friendly Version

Interactive Discussion

Hydrological response to climate change due to catchment properties

N. Köplin et al.

Title Page	
Abstract	Introduction
Conclusions	References
Tables	Figures
⏪	⏩
◀	▶
Back	Close
Full Screen / Esc	
Printer-friendly Version	
Interactive Discussion	

angle, indicates the strength of this variable. The absolute length of a vector has no meaning, but it can be assessed relative to the length of the other vectors.

3. The response variables (i.e. the catchments, Fig. 6, upper panel, or the monthly runoff change signals, Fig. 6, lower panel) are projected at right angle on a constraining variable's vector. They are ordered along the vector according to the relative importance the constraint has for the response variable.
4. Distances between the response variables and the centroids of nominally scaled constraining variables (here: dominant aspect and dominant land use) approximate their Euclidean distances in the multidimensional space; the nearer a response variable to the constraint's centroid, the more of the variance is explained by the constraint.

The analysis of the entire set of catchments (Fig. 6) provides insight into the general structure of explanatory and dependent variables. The overall R_{adj}^2 is 0.79, meaning that the variance of explanatory variables explains roughly 80 % of the variance of the dependent variables. This is a fairly high value that indicates we have assessed the important constraints in our analysis. The first RDA axis accounts for the major part, i.e. 63 % of the variance, and this axis is strongly determined by mean altitude, mean slope and summer and autumn temperature change of both periods. The second RDA axis, in contrast, explains only 8 % of the variance of the response variables.

The set of catchments is divided into northward (C1, C2, C3 and C7, Fig. 6, upper panel) and south- and eastward exposed catchments (C4, C5, C6). Furthermore, the colour-coded clusters are distributed along the first RDA axis from right to left, roughly sorted depending on their mean altitude. At the same time, they are spread in relation to land use type that itself is a function of elevation. For highly elevated catchments (C4, C5, C6), the importance of the temperature change is proportionately higher, too. The highest catchments, however, exhibit strikingly different behaviours (C7 in Fig. 6, upper panel); these catchments' hydrological change signals depend on the precipitation delta and on glaciation, which matches our findings from the cluster analysis. The



Hydrological response to climate change due to catchment properties

N. Köplin et al.

[Title Page](#)[Abstract](#)[Introduction](#)[Conclusions](#)[References](#)[Tables](#)[Figures](#)[⏪](#)[⏩](#)[◀](#)[▶](#)[Back](#)[Close](#)[Full Screen / Esc](#)[Printer-friendly Version](#)[Interactive Discussion](#)

dispersion of catchments along the second RDA axis is mainly a function of glaciation for the high elevated catchments (C4 and partly C5 and C7) as well as a function of spring temperature change for the catchments at lower elevations (C2, C3, C6 and partly C5), indicating an influence of snowmelt processes on the hydrological response for the latter ones.

Regarding the hydrological change signals (Fig. 6, lower panel), the variance of the near future's change signals is generally smaller compared to the hydrological change signals of the far future because they are distributed around the origin of the RDA axes. This reflects the lower climate sensitivity during the near future period that we found in cluster analysis. The land use type does not constrain the monthly hydrological change; it seems to be only characterising for the entire annual cycle of change signals (represented by the centroid of a catchment). There is a strong dependence of spring and summer runoff change on the glaciation of a catchment. The change in winter and spring runoff is also a function of the catchments' mean altitude and is thereby a function of winter and spring temperature change, determining the ratio of liquid to solid precipitation as well as snowmelt processes. Whereas the summer precipitation delta has an influence on changes in summer runoff, the other seasonal precipitation deltas do not determine hydrological change.

For the analysis of single clusters, the set of constraining variables had to be further reduced because the n of single clusters is smaller (cf. Sect. 3.3). First of all, we assessed only the sensitive far future period and excluded dominant land use and catchment area from the set of constraints, because they showed to be less important for the monthly runoff change (cf. Fig. 6, lower panel). C3 and C7 were not analysed at all because their number of cluster members was too small as opposed to the number of constraining variables. In fact, there would have been more constraints than objects to explain. The results of the redundancy analysis for single clusters (Fig. 7) are summarized in Table 2.

C1 and C2 are the only clusters where a clear impact of mean slope on the monthly runoff change was observed. At the same time, precipitation change influences the

change in runoff during the whole year in those two clusters. This suggests that hydrological processes that are related to the slope of a catchment are dependent on the precipitation delta. In C2, the winter temperature delta is important for runoff change, too, indicating an additional impact of an altered ratio of liquid to solid precipitation, here. The small ($> \pm 10\%$, C1) to medium ($> \pm 30\%$, C2) seasonal changes in runoff in the far future period are averaged out over the whole year. This is different for C4 to C6, where a small ($> +10\%$) to large ($> +50\%$) increase in the far future's yearly runoff was projected despite of decreasing summer runoff. This yearly increase is highest for the highly glaciated C4. Mean altitude is important in all clusters tested separately, but its impact is less pronounced in C4, where the glaciation is most important. In summary, the RDA for single clusters underlines our previous findings where mean altitude and thereby the temperature of a catchment are the dominant factors determining hydrological change.

5 Discussion and conclusions

We introduced an approach to reduce a comprehensive set of 186 catchments in Switzerland to fewer response types to climate change. We then inferred general relationships between catchment characteristics, climate change signals and the hydrological responses of the catchments in order to extract the dominant processes that govern hydrological change. The motivation for this study is the adaptation policy that demands hydrological projections which should support the decision-making on necessary adaptation measures. Hydrological climate-impact studies that provide these projections are highly demanding with respect to computational power and time, however. To simplify future impact studies in Switzerland, we deduced characteristic catchment properties that constitute the hydrological change to a large extent and identified climate-sensitive regions, so that future impact studies can be conducted on a reduced sample of catchments that represent the determining properties and sensitive regions.

Hydrological response to climate change due to catchment properties

N. Köplin et al.

Title Page

Abstract

Introduction

Conclusions

References

Tables

Figures



Back

Close

Full Screen / Esc

Printer-friendly Version

Interactive Discussion

In the following we want to discuss our results with respect to the research questions outlined in the introduction, then evaluate the results' significance for adaption measures and review some sources of uncertainty we did not cover in our analysis. Finally, we propose possible directions where future research could focus on.

5.1 Research questions

In our first research question we sought a grouping of hydrological response. By means of cluster analysis, we grouped the catchments into seven distinct response types. This means that future impact studies for the entire area of Switzerland can be conducted on a subset of catchments representing the different response types.

Regarding the second question that aimed at the response types' climate-sensitivity, we found that all clusters except for one exhibit a clear shift of the annual runoff distribution in the far future period: Summer runoff decreases significantly whereas winter runoff increases. This shift acts on specific regimes, though, which alters the effect with respect to the absolute monthly runoff. Significant yearly increases in runoff were observed for the high Alpine region in addition to the clear seasonal shift. Cluster 1 (C1), which encompasses catchments in the Jura ranges and in parts of the Swiss Plateau, is not sensitive to climate change, neither during the near (2025–2046) nor the far future period (2074–2095). To summarize, all clusters except for C1 have to be regarded climate-sensitive in the far future period and their response to climate change is cluster-specific. To reduce the workload of future impact studies, one could focus on catchments in the sensitive regions and assess only the far future period, provided that the near future is not of particular interest.

The third research question aimed at deriving general causal relationships between the hydrological response to climate change and characteristic catchment properties. We conclude that the main determining feature is the catchments' mean elevation, which e.g., Birsan et al. (2005) and Renner and Bernhofer (2011) found, too. Within a certain range of the catchments' mean altitudes, between 1000 and 2500 m a.s.l., the hydrological change can be regarded as a function of elevation and, therefore, as

Hydrological response to climate change due to catchment properties

N. Köplin et al.

Title Page

Abstract

Introduction

Conclusions

References

Tables

Figures



Back

Close

Full Screen / Esc

Printer-friendly Version

Interactive Discussion



response, however, can actually be advantageous if the focus is on hydropower production, which is the main economic factor in these regions. Hänggi et al. (2012) concluded, for instance, that a more balanced runoff regime is favourable for hydropower production, although they recommend that each hydropower plant should be analysed, separately. Conversely, we assessed C1 to be insensitive to climate change based on the analysis of changes in the mean annual cycle. Meyer et al. (2012), however, who focused on low flow events, detected a significant low flow vulnerability of catchments in this particular region. This underlines the importance of a clear focus and a tailored study set up when suggestions for adaptation measures are requested. As a last example, C2 encompasses areas in the Swiss Plateau where conflicts between the water use for agriculture, drinking water supply and ecological requirements might emerge in the future. With regard to seasonal and annual changes, this cluster is not as climate-sensitive as the Alpine clusters are, but the projected runoff still considerably decreases in late spring and summer when water demand by the concurrent users is usually highest.

5.3 Sources of uncertainty

We assume that the primary source of uncertainty associated with hydrological climate-impact modelling is the climate model itself, which had been demonstrated by e.g., Arnell (2011), Kay et al. (2009), Teutschbein and Seibert (2010) and Wilby et al. (2006). By applying ten different combinations of GCM-RCMs, we accounted for a spread in the hydrological projections caused by the climate models and omitted the other uncertainty sources mentioned in the introductory part to direct our efforts towards assessing as much different catchment types as possible, instead.

The climate scenarios in our study do not include changes in the frequency and intensity of the climate variables, though, because they were derived with the Delta Change approach which only accounts for changes in the mean annual cycle of temperature and precipitation. This is a drawback, of course, with respect to the assessment of extremes (that we did not aim at). On the other hand, these rather moderate scenarios

Hydrological response to climate change due to catchment properties

N. Köplin et al.

Title Page

Abstract

Introduction

Conclusions

References

Tables

Figures



Back

Close

Full Screen / Esc

Printer-friendly Version

Interactive Discussion



cluster spread of some variables depicted in Fig. 4. The comparatively high values for R_{adj}^2 indicate, however, we captured a significant amount of variance explained through the constraints.

5.4 Further research

We showed just one possibility to reduce the workload in hydrological climate-impact studies, and there are several options to widen or modify our analysis. The cluster analysis could be tested for its robustness, for example, by separately clustering the hydro-climatological change signals of each climate scenario and comparing the results to the clustering based on the ensemble mean that we applied, here. Moreover, different clustering methods could be tested, e.g. a fuzzy clustering that would account for smooth transitions between the clusters. An option to widen our study is to select a sample of catchments according to the suggestions mentioned above and consider additional uncertainty sources like, for instance, different hydrological models or calibrated parameter sets. Moreover, it would be interesting to apply the proposed procedure to all catchments but driven by climate scenarios that account for frequency and intensity changes, too, and compare the results to our findings. Presumably, we extracted essential components of hydrological change in Switzerland because we applied the basic changes in the annual cycles of temperature and precipitation. There might be other processes, though, that emerge with frequency and intensity changes of the climate variables which would be important for the assessment of extremes, for example.

It has to be stated that our findings are only valid for the study domain considered, but they are likely to be valid for other Alpine regions in Europe, as well. Moreover, the proposed procedure is applicable to any desired study region and helps to understand and structure the hydrological change in the particular area of interest.

Acknowledgements. This study is funded by the Swiss Federal Office for the Environment (FOEN) in the framework of the joint research project “Climate Change in Switzerland – Hydrology” (CCHydro). The authors would like to thank the FOEN, the Swiss Federal Statisti-

Hydrological response to climate change due to catchment properties

N. Köplin et al.

Title Page

Abstract

Introduction

Conclusions

References

Tables

Figures



Back

Close

Full Screen / Esc

Printer-friendly Version

Interactive Discussion



cal Office (SFSSO) and the Federal Office for Meteorology and Climatology (MeteoSwiss) for providing the necessary input data. The delta change scenario data were distributed by the Center for Climate Systems Modeling (C2SM). The data were derived from regional climate simulations of the EU FP6 Integrated Project ENSEMBLES (Contract number 505539) whose support is gratefully acknowledged. The dataset has been prepared by Thomas Bosshard at ETH Zurich, partly funded by swisselectric/Swiss Federal Office of Energy (SFOE) and CCHydro/Swiss Federal Office for the Environment (FOEN). The authors would like to thank Frank Paul and Andreas Linsbauer, Institute of Geography, University of Zurich (GIUZ), for providing the scenarios of glacier retreat.

References

- Ali, G., Tetzlaff, D., Soulsby, C., and McDonnell, J. J.: Topographic, pedologic and climatic interactions influencing streamflow generation at multiple catchment scales, *Hydrol. Process.*, doi:10.1002/hyp.8416, 2012.
- Arnell, N. W.: Uncertainty in the relationship between climate forcing and hydrological response in UK catchments, *Hydrol. Earth Syst. Sci.*, 15, 897–912, doi:10.5194/hess-15-897-2011, 2011.
- Bergström, S., Carlsson, B., Gardelin, M., Lindström, G., Petterson, A., and Rummukainen, M.: Climate change impacts on runoff in Sweden – assessments by global climate models, dynamical downscaling and hydrological modelling, *Clim. Res.*, 16, 101–112, 2001.
- Birsan, M.-V., Molnar, P., Burlando, P., and Pfandner, M.: Streamflow trends in Switzerland, *J. Hydrol.*, 314, 312–329, doi:10.1016/j.jhydrol.2005.06.008, 2005.
- Borcard, D., Gillet, F., and Legendre, P.: *Numerical Ecology with R*, Springer, New York, New York, NY, 2011.
- Bosshard, T., Kotlarski, S., Ewen, T., and Schär, C.: Spectral representation of the annual cycle in the climate change signal, *Hydrol. Earth Syst. Sci.*, 15, 2777–2788, doi:10.5194/hess-15-2777-2011, 2011.
- CH2011: *Swiss Climate Change Scenarios CH2011*, C2SM, MeteoSwiss, ETH, NCCR Climate, and OcCC, Zürich, Switzerland, 88 pp., 2011.
- Christensen, N. S. and Lettenmaier, D. P.: A multimodel ensemble approach to assessment of climate change impacts on the hydrology and water resources of the Colorado River Basin,

Hydrological response to climate change due to catchment properties

N. Köplin et al.

Title Page

Abstract

Introduction

Conclusions

References

Tables

Figures



Back

Close

Full Screen / Esc

Printer-friendly Version

Interactive Discussion



Hydrological response to climate change due to catchment properties

N. Köplin et al.

Title Page

Abstract

Introduction

Conclusions

References

Tables

Figures

⏪

⏩

◀

▶

Back

Close

Full Screen / Esc

Printer-friendly Version

Interactive Discussion



Köplin, N., Viviroli, D., Schädler, B., and Weingartner, R.: How does climate change affect mesoscale catchments in Switzerland? – a framework for a comprehensive assessment, *Adv. Geosci.*, 27, 111–119, doi:10.5194/adgeo-27-111-2010, 2010.

Köplin, N., Schädler, B., Viviroli, D., and Weingartner, R.: Significance of climate-induced land use changes on Switzerland's hydrology, in preparation, 2012.

Kunstmann, H., Schneider, K., Forkel, R., and Knoche, R.: Impact analysis of climate change for an Alpine catchment using high resolution dynamic downscaling of ECHAM4 time slices, *Hydrol. Earth Syst. Sci.*, 8, 1031–1045, doi:10.5194/hess-8-1031-2004, 2004.

Legendre, P. and Legendre, L.: *Numerical Ecology*, 2nd English edition, Elsevier, Amsterdam, 853 pp., 1998.

Legendre, P., Oksanen, J., and ter Braak, C. J. F.: Testing the significance of canonical axes in redundancy analysis, *Methods in Ecology and Evolution*, 2, 269–277, doi:10.1111/j.2041-210X.2010.00078.x, 2011.

Ley, R., Casper, M. C., Hellebrand, H., and Merz, R.: Catchment classification by runoff behaviour with self-organizing maps (SOM), *Hydrol. Earth Syst. Sci.*, 15, 2947–2962, doi:10.5194/hess-15-2947-2011, 2011.

Leyer, I. and Wesche, K.: *Multivariate Statistik in der Ökologie, Eine Einführung*, Springer, Berlin, Heidelberg, New York, 221 pp., 2007.

van der Linden, P. and Mitchell, J.: *ENSEMBLES: Climate Change and its Impacts: Summary of Research and Results from the ENSEMBLES Project*, FitzRoy Road, Exeter EX1 3PB, UK, 160 pp., 2009.

Linsbauer, A., Paul, F., Machguth, H., and Haeberli, W.: Comparing different methods to model scenarios of future glacier change for the entire Swiss Alps, in preparation, 2012.

Merz, R., Parajka, J., and Blöschl, G.: Time stability of catchment model parameters: Implications for climate impact analyses, *Water Resour. Res.*, 47, W02531, doi:10.1029/2010WR009505, 2011.

MeteoSwiss: *Time Series of Meteorological Variables*, Federal Office for Meteorology and Climatology, Zürich, Switzerland, 2008.

Meyer, R., Schädler, B., Viviroli, D., and Weingartner, R.: The implications of projected climate change on summer low flow in the Swiss Plateau, *Hydrolog. Sci. J.*, submitted, 2012.

Nijssen, B., O'Donnell, G. M., Hamlet, A. F., and Lettenmaier, D. P.: Hydrologic sensitivity of global rivers to climate change, *Climatic Change*, 50, 143–175, doi:10.1023/A:1010616428763, 2001.

Hydrological response to climate change due to catchment properties

N. Köplin et al.

Title Page

Abstract

Introduction

Conclusions

References

Tables

Figures

⏪

⏩

◀

▶

Back

Close

Full Screen / Esc

Printer-friendly Version

Interactive Discussion



- Oksanen, J., Blanchet, G. F., Kindt, R., Legendre, P., Minchin, P. R., O'Hara, R. B., Simpson, G. L., Solymos, P., Stevens, M. H. H., and Wagner, H.: Vegan: Community Ecology Package, version 2.0-2, <http://cran.r-project.org/web/packages/vegan/index.html>, last access: 10 February 2012, 2011.
- 5 Paul, F., Maisch, M., Rothenbühler, C., Hoelzle, M., and Haerberli, W.: Calculation and visualisation of future glacier extent in the Swiss Alps by means of hypsographic modelling, *Global Planet. Change*, 55, 343–357, doi:10.1016/j.gloplacha.2006.08.003, 2007.
- R Development Core Team: R: A language and environment for statistical computing, R version 2.14.1, R Foundation for Statistical Computing, Vienna, Austria, ISBN: 3-900051-07-0, <http://www.R-project.org/>, last access: 10 February 2012, 2011.
- 10 Renner, M. and Bernhofer, C.: Long term variability of the annual hydrological regime and sensitivity to temperature phase shifts in Saxony/Germany, *Hydrol. Earth Syst. Sci.*, 15, 1819–1833, doi:10.5194/hess-15-1819-2011, 2011.
- Sawicz, K., Wagener, T., Sivapalan, M., Troch, P. A., and Carrillo, G.: Catchment classification: empirical analysis of hydrologic similarity based on catchment function in the eastern USA, *Hydrol. Earth Syst. Sci.*, 15, 2895–2911, doi:10.5194/hess-15-2895-2011, 2011.
- Schädler, B. and Blanc, P. (Eds.): Klimaänderung und Hydrologie in der Schweiz (CCHydro) – Synthese, In: Umweltwissen, Bundesamt für Umwelt BAFU, Synthesis Report, in preparation, 2012.
- 20 Schädler, B. and Weingartner, R.: Natural runoff 1961–1980, In: Hydrological Atlas of Switzerland, Plate 5.4, Federal Office for the Environment FOEN, Berne, Switzerland, 1992.
- Schaeffli, B., Hingray, B., and Musy, A.: Climate change and hydropower production in the Swiss Alps: quantification of potential impacts and related modelling uncertainties, *Hydrol. Earth Syst. Sci.*, 11, 1191–1205, doi:10.5194/hess-11-1191-2007, 2007.
- 25 SFSO: GEOSTAT Database Products, Licence No. G158000315, ©SFSO, Swiss Federal Statistical Office, Neuchâtel, Switzerland, 2003.
- Teutschbein, C. and Seibert, J.: Regional climate models for hydrological impact studies at the catchment scale: a review of recent modeling strategies, *Geography Compass*, 4, 834–860, doi:10.1111/j.1749-8198.2010.00357.x, 2010.
- 30 UNFCCC: Report of the Conference of the Parties on its thirteenth session, held in Bali from 3 to 15 December 2007, Part Two: Action taken by the Conference of the Parties at its thirteenth session, United Nations Framework Convention on Climate Change, Report, 60 pp., <http://unfccc.int/resource/docs/2007/cop13/eng/06a01.pdf>, last access: 10 February 2012, 2008.

Hydrological response to climate change due to catchment properties

N. Köplin et al.

Title Page

Abstract

Introduction

Conclusions

References

Tables

Figures

◀

▶

◀

▶

Back

Close

Full Screen / Esc

Printer-friendly Version

Interactive Discussion

- Vaze, J., Post, D., Chiew, F., Perraud, J.-M., Viney, N., and Teng, J.: Climate non-stationarity – validity of calibrated rainfall–runoff models for use in climate change studies, *J. Hydrol.*, 394, 447–457, doi:10.1016/j.jhydrol.2010.09.018, 2010.
- Viviroli, D. and Weingartner, R.: Umfassende hochwasserhydrologische Beurteilung ungemessener mesoskaliger Einzugsgebiete im schweizerischen Rheineinzugsgebiet durch prozessorientierte Modellierung. Comprehensive flood-hydrological assessment of ungauged catchments in the Swiss part of the River Rhine basin by means of process-oriented modelling, *Hydrol. Wasserbewirts.*, 55, 258–272, 2011.
- Viviroli, D., Zappa, M., Gurtz, J., and Weingartner, R.: An introduction to the hydrological modelling system PREVAH and its pre- and post-processing-tools, *Environ. Modell. Softw.*, 24, 1209–1222, doi:10.1016/j.envsoft.2009.04.001, 2009a.
- Viviroli, D., Zappa, M., Schwanbeck, J., Gurtz, J., and Weingartner, R.: Continuous simulation for flood estimation in ungauged mesoscale catchments of Switzerland – Part I: Modelling framework and calibration results, *J. Hydrol.*, 377, 191–207, doi:10.1016/j.jhydrol.2009.08.023, 2009b.
- Viviroli, D., Mittelbach, H., Gurtz, J., and Weingartner, R.: Continuous simulation for flood estimation in ungauged mesoscale catchments of Switzerland – Part II: Parameter regionalisation and flood estimation results, *J. Hydrol.*, 377, 208–225, doi:10.1016/j.jhydrol.2009.08.022, 2009c.
- Viviroli, D., Archer, D. R., Buytaert, W., Fowler, H. J., Greenwood, G. B., Hamlet, A. F., Huang, Y., Kobltschnig, G., Litaor, M. I., López-Moreno, J. I., Lorentz, S., Schädler, B., Schreier, H., Schwaiger, K., Vuille, M., and Woods, R.: Climate change and mountain water resources: overview and recommendations for research, management and policy, *Hydrol. Earth Syst. Sci.*, 15, 471–504, doi:10.5194/hess-15-471-2011, 2011.
- Volken, D.: Projektbericht. CCHydro – Auswirkungen der Klimaänderung auf die Wasserressourcen und die Gewässer in der Schweiz. CCHydro – impacts of climate change on water resources, rivers, and lakes in Switzerland, *Hydrol. Wasserbewirts.*, 54, 143–146, 2010.
- Wagener, T., Sivapalan, M., Troch, P., and Woods, R.: Catchment classification and hydrologic similarity, *Geography Compass*, 1, 901–931, doi:10.1111/j.1749-8198.2007.00039.x, 2007.
- Weingartner, R.: Regionalhydrologische Analysen, Grundlagen und Anwendungen, In: Beiträge zur Hydrologie der Schweiz, 37, Schweizerische Gesellschaft für Hydrologie und Limnologie (SGHL), Berne, Switzerland, 178 pp., http://chy.scnatweb.ch/downloads/Nr.37_001.pdf, last access: 10 February 2012, 1999.

Wilby, R. L. and Harris, I.: A framework for assessing uncertainties in climate change impacts: low-flow scenarios for the River Thames, UK, *Water Resour. Res.*, 42, W02419, doi:10.1029/2005WR004065, 2006.

HESSD

9, 3165–3202, 2012

Hydrological response to climate change due to catchment properties

N. Köplin et al.

Title Page

Abstract

Introduction

Conclusions

References

Tables

Figures



Back

Close

Full Screen / Esc

Printer-friendly Version

Interactive Discussion

Hydrological response to climate change due to catchment properties

N. Köplin et al.

Title Page

Abstract

Introduction

Conclusions

References

Tables

Figures



Back

Close

Full Screen / Esc

Printer-friendly Version

Interactive Discussion

Table 1. Characterizing catchment properties.

Abbreviation	Description	Unit	Scale type
catch_area	Catchment area	km ²	Ratio
mean_alt	Mean altitude	m a.s.l.	Ratio
elv_range	Elevation range (altitude _{max} -altitude _{min})	m	Ratio
mean_slo	Mean slope of the catchment	°	Ratio
mean_afc	Mean available field capacity	Vol%	Ratio
mean_sdp	Mean soil depth	m	Ratio
gl_ctrl_rel	Relative glaciated area (control period)	%	Ratio
gl_near_rel	Relative glaciated area (near future, 2025–2046)	%	Ratio
gl_far_rel	Relative glaciated area (far future, 2074–2095)	%	Ratio
domnt_asp	Dominant aspect class (the mode of the aspect classes, 1 = North, 2 = East, 3 = South, 4 = West)	–	Nominal
domnt_lu	Dominant land use (the mode of the land use types, 1 = coniferous forest, 2 = deciduous forest, 3 = mixed forest, 4 = pasture, 5 = bare ice, 6 = rock, 7 = sub-Alpine meadow, 8 = coniferous forest/rock)	–	Nominal

Hydrological response to climate change due to catchment properties

N. Köplin et al.

Title Page

Abstract Introduction

Conclusions References

Tables Figures

⏪ ⏩

◀ ▶

Back Close

Full Screen / Esc

Printer-friendly Version

Interactive Discussion

Discussion Paper | Discussion Paper | Discussion Paper | Discussion Paper | Discussion Paper

Table 2. Summary of summer (JJA), winter (DJF) and yearly (a) runoff changes per cluster and scenario period (near, far) and evaluation of the constraints from redundancy analysis. Explanation of symbols: increase/decrease < 10 % (\approx), 10–29 % (+/-), 30–50 % (++/-), > 50 % (+++/-). Yearly peak increased (\uparrow), decreased (\downarrow) or shifted earlier (\leftarrow). Influence of constraint (x), strong influence of constraint (xx). For influence of the climate change signal (ΔT , ΔP) the respective seasons are indicated. R_{adj}^2 = proportion of variance explained by constraints.

	C1	C2	C3*	C4	C5	C6	C7*
$Q_{JJA, near}$	\approx	-	-	\approx	-	-	\approx
$Q_{DJF, near}$	\approx	+	++	++	+	++	+
$Q_{a, near}$	\approx	\approx	\approx	+	\approx	\approx	\approx
Peak _{a, near}	\approx	$\downarrow\leftarrow$	\downarrow	$\uparrow\leftarrow$	\downarrow	$\downarrow\leftarrow$	\downarrow
$Q_{JJA, far}$	-	--	--	-	--	--	-
$Q_{DJF, far}$	+	++	+++	+++	+++	+++	+
$Q_{a, far}$	\approx	\approx	\approx	+++	++	+	\approx
Peak _{a, far}	\approx	$\downarrow\leftarrow$	\downarrow	$\uparrow\leftarrow$	$\downarrow\leftarrow$	$\downarrow\leftarrow$	\downarrow
ΔT_{far}		djf	*	mam	djf, son		*
ΔP_{far}	all	all	*	djf, mam, jja	djf, jja	mam, jja, son	*
mean_alt	xx	xx	*	x	xx	xx	*
mean_slo	xx	x	*				*
gl_rel			*	xx	x		*
domnt_asp	x	x	*	x	x	x	*
R_{adj}^2	0.72	0.86	*	0.61	0.61	0.72	*

* C3 and C7 were not separately analysed in redundancy analysis because of the too small numbers of cluster members.



STUDY REGION

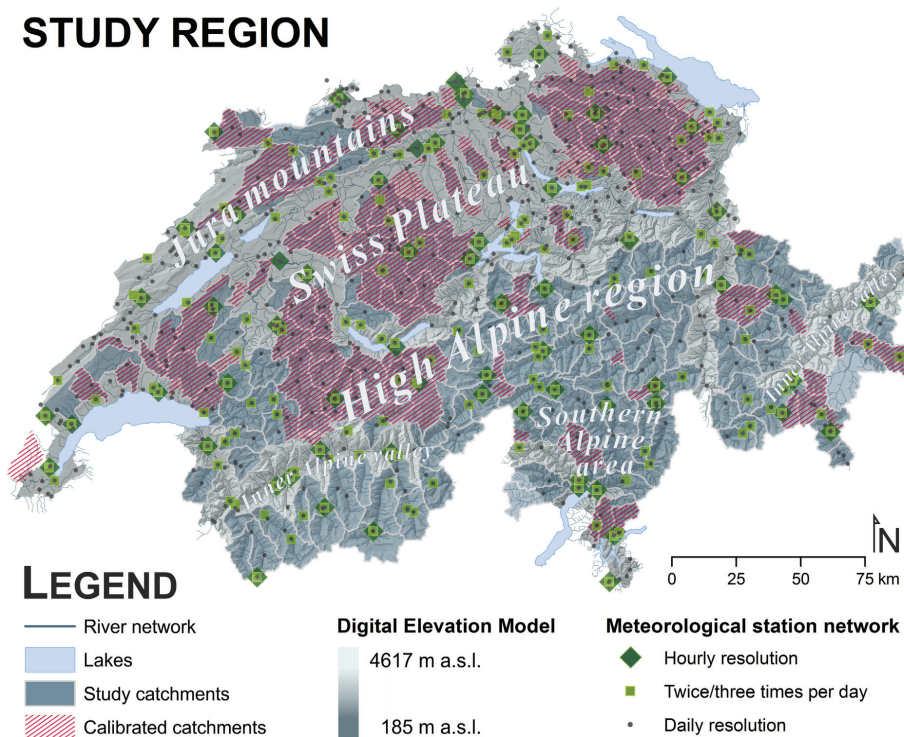


Fig. 1. Overview of the study region. Note that the study catchments (white borders) and the calibrated catchments are partly superimposed on each other. The calibrated catchments are located within the red hatched areas, but their watershed boundaries are not delineated to enhance legibility.

Title Page

Abstract

Introduction

Conclusions

References

Tables

Figures

⏪

⏩

◀

▶

Back

Close

Full Screen / Esc

Printer-friendly Version

Interactive Discussion

Hydrological response to climate change due to catchment properties

N. Köplin et al.

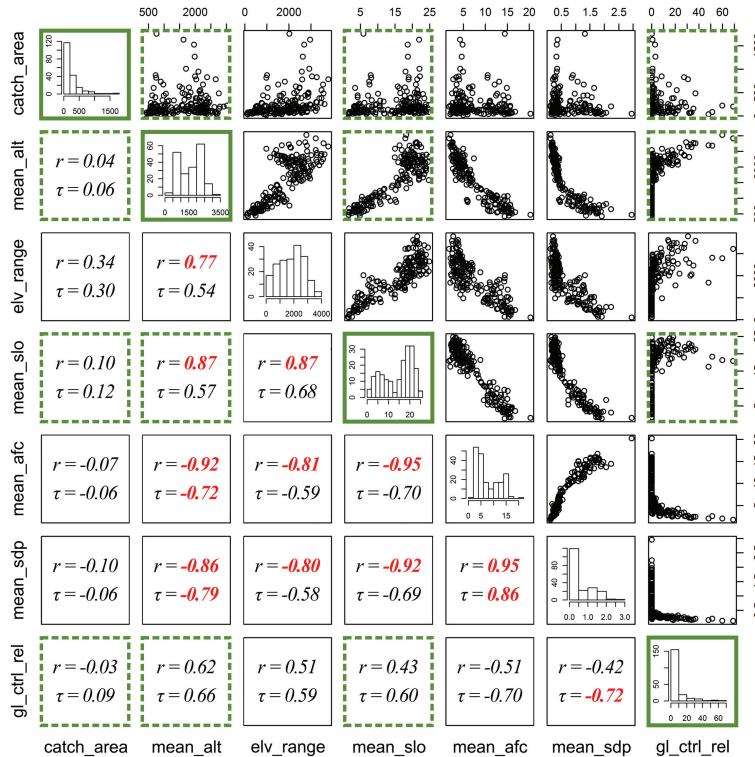


Fig. 2. Correlation analysis of physiographic catchment properties, for abbreviations see Table 1. For each pair of variables, a scatterplot (upper right part of the figure) and Pearson's correlation coefficient (r) as well as Kendall's tau (τ) are given (lower left part of the figure). Red values indicate high correlations (> 0.7). In between, the histogram of each variable is displayed to visualize its distribution. The variables whose histograms are marked with a green box are used in further analyses.

Title Page

Abstract Introduction

Conclusions References

Tables Figures

◀ ▶

◀ ▶

Back Close

Full Screen / Esc

Printer-friendly Version

Interactive Discussion



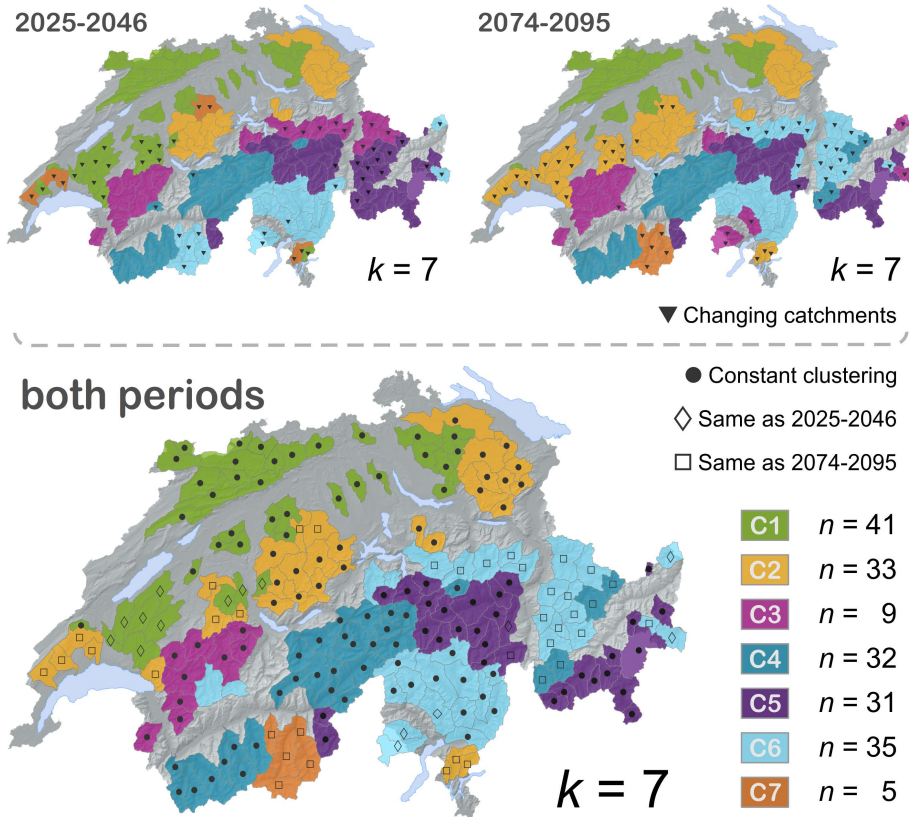


Fig. 3. Cluster analysis for hydro-climatological change signals of the near future (2025–2046, upper left panel), the far future (2074–2095, upper right panel) and both periods in combination (lower panel). The number of cluster members n is given for every cluster. The catchments that are assigned to the same cluster in all three versions are marked with a solid circle in the lower panel.

Hydrological response to climate change due to catchment properties

N. Köplin et al.

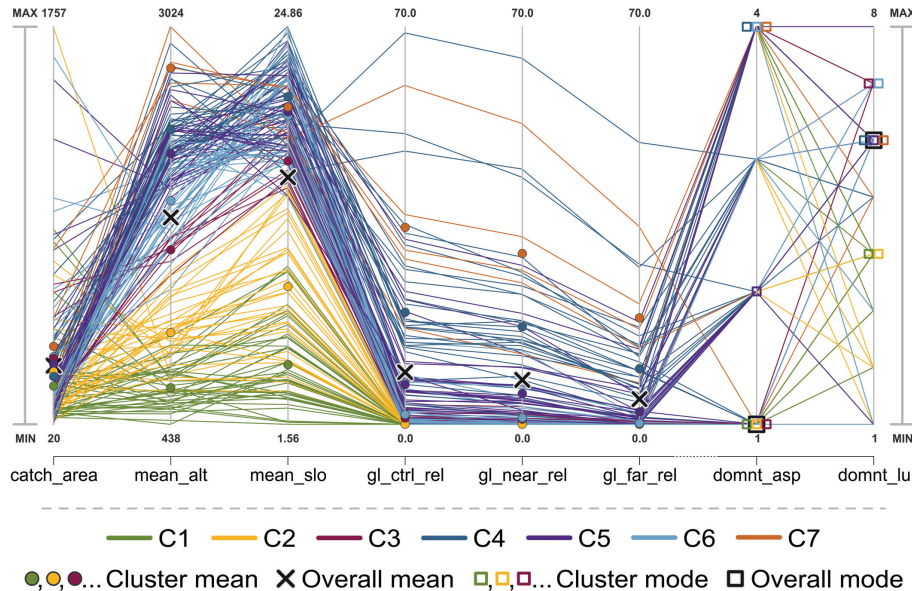


Fig. 4. Parallel coordinates plot of the physiographic catchment properties, for abbreviations and class descriptions of the nominal variables dominant aspect and dominant land use see Table 1. Each parallel axis displays one physiographic variable and each curve represents a catchment. The curves are colour-coded according to the cluster a catchment is assigned to.

Title Page

Abstract Introduction

Conclusions References

Tables Figures

⏪ ⏩

◀ ▶

Back Close

Full Screen / Esc

Printer-friendly Version

Interactive Discussion

Hydrological response to climate change due to catchment properties

N. Köplin et al.

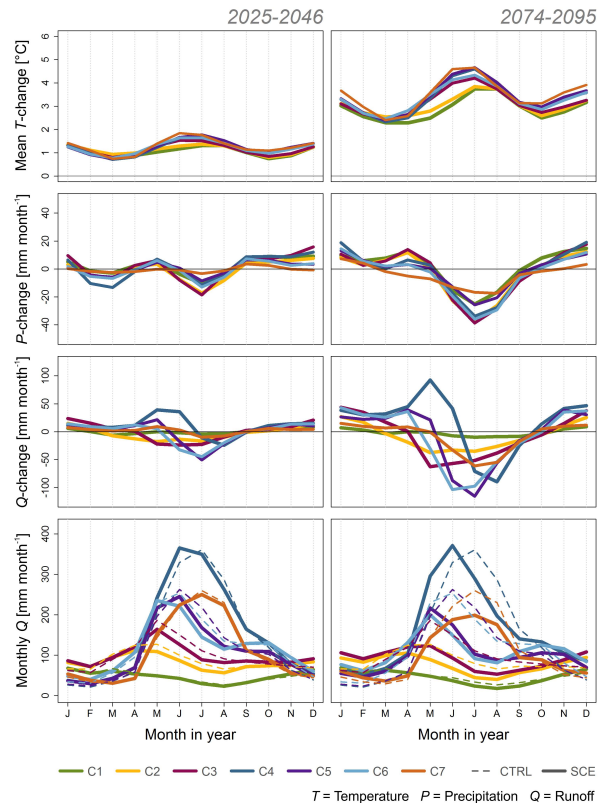


Fig. 5. Hydro-climatological change signals per cluster (temperature, precipitation and runoff change, rows 1 to 3) and absolute monthly runoff (4th row) for the control period (CTRL, dashed lines), the near future period (SCE, solid lines in left column) and the far future period (SCE, solid lines in right column). The change signals are given as absolute values to facilitate direct comparison with the absolute monthly runoff.

[Title Page](#)
[Abstract](#)
[Introduction](#)
[Conclusions](#)
[References](#)
[Tables](#)
[Figures](#)
[Back](#)
[Close](#)
[Full Screen / Esc](#)
[Printer-friendly Version](#)
[Interactive Discussion](#)

Hydrological response to climate change due to catchment properties

N. Köplin et al.

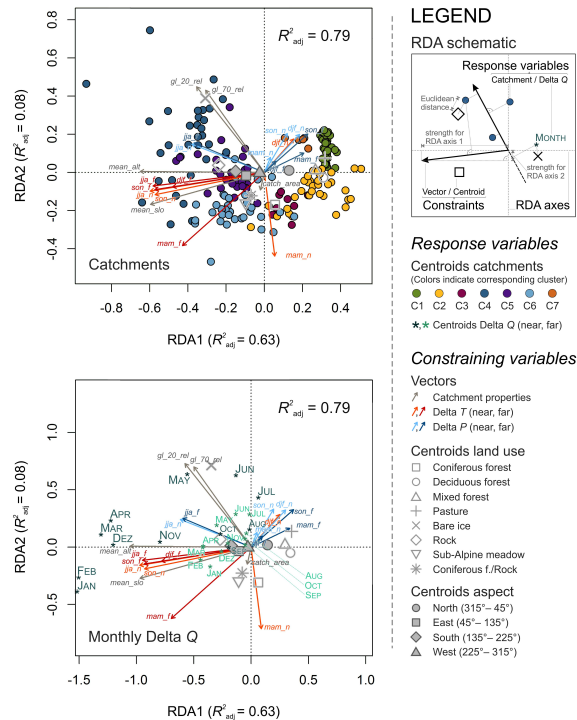


Fig. 6. RDA-biplots for all catchments and both scenario periods. At the top of the legend, a schematic of an RDA with its different components is given (cf. Sect. 4.2 for interpretation rules). The upper panel shows a biplot of the catchments, the lower panel displays the same results but with respect to monthly runoff changes (Delta Q). The vectors of seasonal Delta T and P are indicated with the initials of the respective month (e.g. “mam” for spring). Both change signals are displayed for the near and the far future, indicated with an appended n and f , respectively. The adjusted R^2 (R^2_{adj}) is the proportion of variance of the response variables explained by the constraining variables.

Hydrological response to climate change due to catchment properties

N. Köplin et al.

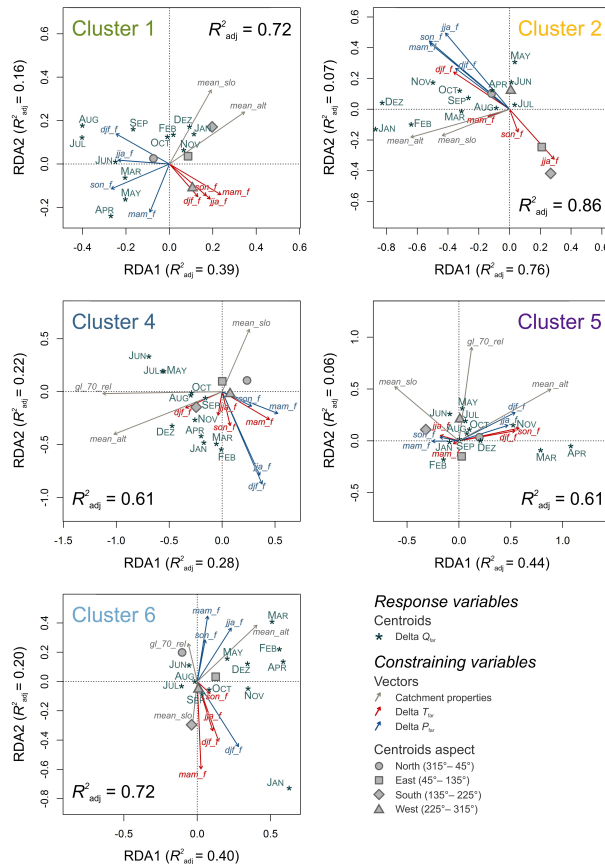


Fig. 7. RDA results for the far future period and single clusters. Clusters three and seven were not analysed because of their too small numbers of cluster members. For explanation of the vector names see Fig. 6. Note that clusters one and two are not glaciated and therefore miss glaciation as a constraining variable.