

SUPPLEMENTARY MATERIAL (A): TABLE OF ITEMS

Table A. List of the 309 items considered in the analysis, with corresponding FAOSTAT identification number, description, category to which it belongs, and presence/absence in the sub-list of items considered for the internal production (only primary crop products and derived animal products are included -if present in the complete list-).

| id | crop | Category | Production | id | crop | Category | Production |
|-----|-------------------------|-------------|------------|-----|-------------------------------|-------------|------------|
| 15 | Wheat | plant-based | yes | 128 | Cassava Dried | plant-based | no |
| 16 | Flour of Wheat | plant-based | no | 129 | Cassava Starch | plant-based | no |
| 18 | Macaroni | plant-based | no | 135 | Yautia (cocoyam) | plant-based | yes |
| 20 | Bread | plant-based | no | 136 | Taro (cocoyam) | plant-based | yes |
| 27 | Rice, paddy | plant-based | yes | 137 | Yams | plant-based | yes |
| 28 | Rice Husked | plant-based | no | 149 | Roots and Tubers, nes | plant-based | yes |
| 31 | Rice Milled | plant-based | no | 150 | Flour of Roots and Tubers | plant-based | no |
| 32 | Rice Broken | plant-based | no | 156 | Sugar cane | luxury | yes |
| 38 | Rice Flour | plant-based | no | 157 | Sugar beet | luxury | yes |
| 44 | Barley | plant-based | yes | 160 | Maple Sugar and Syrups | luxury | yes |
| 46 | Barley Pearled | plant-based | no | 161 | Sugar crops, nes | luxury | yes |
| 48 | Barley Flour and Grits | plant-based | no | 162 | Sugar Raw Centrifugal | luxury | no |
| 49 | Malt | plant-based | no | 164 | Sugar Refined | luxury | no |
| 51 | Beer of Barley | luxury | no | 165 | Molasses | luxury | no |
| 56 | Maize | plant-based | yes | 166 | Other Fructose and Syrup | luxury | yes |
| 58 | Flour of Maize | plant-based | no | 167 | Sugar, nes | luxury | no |
| 60 | Maize oil | plant-based | no | 171 | Sugar flavoured | luxury | no |
| 71 | Rye | plant-based | yes | 172 | Glucose and Dextrose | luxury | yes |
| 72 | Flour of Rye | plant-based | no | 176 | Beans, dry | plant-based | no |
| 75 | Oats | plant-based | yes | 181 | Broad beans, horse beans, dry | plant-based | yes |
| 76 | Oats Rolled | plant-based | no | 187 | Peas, dry | plant-based | no |
| 79 | Millet | plant-based | yes | 191 | Chick peas | plant-based | yes |
| 83 | Sorghum | plant-based | yes | 195 | Cow peas, dry | plant-based | yes |
| 89 | Buckwheat | plant-based | yes | 197 | Pigeon peas | plant-based | yes |
| 92 | Quinoa | plant-based | yes | 201 | Lentils | plant-based | yes |
| 94 | Fonio | plant-based | yes | 203 | Bambara beans | plant-based | yes |
| 97 | Triticale | plant-based | yes | 205 | Vetches | plant-based | yes |
| 101 | Canary seed | plant-based | yes | 210 | Lupins | plant-based | yes |
| 103 | Mixed grain | plant-based | yes | 211 | Pulses, nes | plant-based | yes |
| 108 | Cereals, nes | plant-based | yes | 212 | Flour of Pulses | plant-based | no |
| 116 | Potatoes | plant-based | yes | 216 | Brazil nuts, with shell | plant-based | yes |
| 117 | Potatoes Flour | plant-based | no | 217 | Cashew nuts, with shell | plant-based | yes |
| 118 | Frozen Potatoes | plant-based | no | 220 | Chestnuts | plant-based | yes |
| 120 | Potato Offals | plant-based | no | 221 | Almonds, with shell | plant-based | yes |
| 212 | Flour of Pulses | plant-based | no | 289 | Sesame seed | plant-based | yes |
| 216 | Brazil nuts, with shell | plant-based | yes | 290 | Sesame oil | plant-based | no |
| 217 | Cashew nuts, with shell | plant-based | yes | 292 | Mustard seed | plant-based | yes |
| 220 | Chestnuts | plant-based | yes | 296 | Poppy seed | plant-based | yes |
| 221 | Almonds, with shell | plant-based | yes | 299 | Melonseed | plant-based | yes |
| 222 | Walnuts, with shell | plant-based | yes | 329 | Cottonseed | non edible | yes |
| 223 | Pistachios | plant-based | yes | 331 | Cottonseed oil | plant-based | no |
| 224 | Kolanuts | plant-based | yes | 332 | Cake of Cottonseed | non edible | no |

Table A. (continue...)

| id | crop | Category | Production | id | crop | Category | Production |
|-----|--------------------------------|-------------|------------|-----|-------------------------------|-------------|------------|
| 225 | Hazelnuts, with shell | plant-based | yes | 333 | Linseed | non edible | yes |
| 226 | Arecanuts | luxury | yes | 334 | Linseed oil | non edible | no |
| 231 | Almonds Shelled | plant-based | no | 335 | Cake of Linseed | non edible | no |
| 232 | Walnuts Shelled | plant-based | no | 336 | Hempseed | plant-based | yes |
| 233 | Hazelnuts Shelled | plant-based | no | 339 | Oilseeds, Nes | plant-based | yes |
| 234 | Nuts, nes | plant-based | yes | 340 | Oil of vegetable origin, nes | plant-based | no |
| 235 | Prepared Nuts (Exc.Groundnuts) | plant-based | no | 358 | Cabbages and other brassicas | plant-based | yes |
| 236 | Soybeans | plant-based | yes | 366 | Artichokes | plant-based | yes |
| 237 | Soybean oil | plant-based | no | 367 | Asparagus | plant-based | yes |
| 238 | Cake of Soybeans | plant-based | no | 372 | Lettuce and chicory | plant-based | yes |
| 239 | Soya Sauce | plant-based | no | 373 | Spinach | plant-based | yes |
| 240 | Soya Paste | plant-based | no | 388 | Tomatoes | plant-based | yes |
| 241 | Soya curd | plant-based | no | 389 | Tomatojuice Concentrated | plant-based | no |
| 242 | Groundnuts, with shell | plant-based | yes | 390 | Juice of Tomatoes | plant-based | no |
| 243 | Groundnuts Shelled | plant-based | no | 391 | Paste of Tomatoes | plant-based | no |
| 244 | Groundnut oil | plant-based | no | 392 | Tomato Peeled | plant-based | no |
| 249 | Coconuts | plant-based | yes | 393 | Cauliflowers and broccoli | plant-based | yes |
| 251 | Copra | plant-based | no | 394 | Pumpkins, squash and gourds | plant-based | yes |
| 252 | Coconut (copra) oil | plant-based | no | 397 | Cucumbers and gherkins | plant-based | yes |
| 256 | Palm kernels | plant-based | yes | 399 | Eggplant-baseds (aubergines) | plant-based | yes |
| 257 | Palm oil | plant-based | no | 401 | Chillies and peppers, green | plant-based | yes |
| 258 | Palm kernel oil | plant-based | no | 402 | Onions (inc. shallots), green | plant-based | yes |
| 259 | Cake of Palm Kernel | plant-based | no | 403 | Onions, dry | plant-based | no |
| 260 | Olives | plant-based | yes | 406 | Garlic | plant-based | yes |
| 261 | Olive oil, virgin | plant-based | no | 414 | Beans, green | plant-based | yes |
| 262 | Olives Preserved | plant-based | no | 417 | Peas, green | plant-based | yes |
| 263 | Karite Nuts (Sheanuts) | plant-based | yes | 423 | String beans | plant-based | yes |
| 264 | Butter of Karite Nuts | plant-based | no | 426 | Carrots and turnips | plant-based | yes |
| 265 | Castor oil seed | non edible | yes | 430 | Okra | plant-based | yes |
| 266 | Oil of Castor Beans | non edible | no | 446 | Maize, green | plant-based | yes |
| 267 | Sunflower seed | plant-based | yes | 447 | Sweet Corn Frozen | plant-based | yes |
| 268 | Sunflower oil | plant-based | no | 460 | Veg.Prod.Fresh Or Dried | plant-based | no |
| 269 | Sunflower Cake | non edible | no | 461 | Carobs | plant-based | yes |
| 270 | Rapeseed | plant-based | yes | 463 | Vegetables fresh nes | plant-based | yes |
| 271 | Rapeseed oil | plant-based | no | 466 | Juice of Vegetables Nes | plant-based | no |
| 272 | Cake of Rapeseed | non edible | no | 469 | Vegetables Dehydrated | plant-based | no |
| 273 | Olive Residues | non edible | no | 471 | Vegetables in Vinegar | plant-based | no |
| 278 | Oil of Jojoba | luxury | yes | 472 | Vegetables Preserved Nes | plant-based | no |
| 280 | Safflower seed | plant-based | yes | 473 | Vegetable Frozen | plant-based | no |
| 486 | Bananas | plant-based | yes | 603 | Fruit, tropical fresh nes | plant-based | yes |
| 489 | Plantains | plant-based | yes | 604 | Fruit Tropical Dried Nes | plant-based | no |
| 490 | Oranges | plant-based | yes | 619 | Fruit Fresh Nes | plant-based | yes |
| 491 | Orange juice, single strength | plant-based | no | 622 | Fruit Juice Nes | plant-based | no |
| 495 | Tangerines, mandarins, clem. | plant-based | yes | 656 | Coffee, green | luxury | yes |
| 497 | Lemons and limes | plant-based | yes | 657 | Coffee Roasted | luxury | no |
| 507 | Grapefruit (inc. pomelos) | plant-based | yes | 661 | Cocoa beans | luxury | yes |
| 509 | Juice of Grapefruit | plant-based | no | 662 | Cocoa Paste | luxury | no |

Table A. (continue...)

| id | crop | Category | Production | id | crop | Category | Production |
|-----|--------------------------------|--------------|------------|------|--------------------------------|--------------|------------|
| 512 | Citrus fruit, nes | plant-based | yes | 663 | Cocoahusks;Shell | non edible | no |
| 513 | Citrus juice, single strength | plant-based | no | 664 | Cocoa Butter | luxury | no |
| 515 | Apples | plant-based | yes | 665 | Cocoapowder and Cake | luxury | no |
| 517 | Cider Etc | plant-based | no | 666 | Chocolate Prsnes | luxury | no |
| 518 | Apple juice, single strength | plant-based | no | 667 | Tea | luxury | yes |
| 521 | Pears | plant-based | yes | 677 | Hops | luxury | yes |
| 526 | Apricots | plant-based | yes | 687 | Pepper (Piper spp.) | luxury | yes |
| 527 | Dry Apricots | plant-based | no | 689 | Chillies and peppers, dry | luxury | no |
| 530 | Sour cherries | plant-based | yes | 692 | Vanilla | luxury | yes |
| 531 | Cherries | plant-based | yes | 693 | Cinnamon (canella) | luxury | yes |
| 534 | Peaches and nectarines | plant-based | yes | 698 | Cloves | luxury | yes |
| 536 | Plums and sloes | plant-based | yes | 702 | Nutmeg, mace and cardamoms | luxury | yes |
| 537 | Plums Dried (Prunes) | plant-based | no | 711 | Anise, badian, fennel, corian. | luxury | yes |
| 541 | Stone fruit, nes | non edible | yes | 720 | Ginger | luxury | yes |
| 544 | Strawberries | plant-based | yes | 723 | Spices, nes | luxury | yes |
| 547 | Raspberries | plant-based | yes | 748 | Peppermint | plant-based | yes |
| 549 | Gooseberries | plant-based | yes | 767 | Cotton lint | non edible | yes |
| 550 | Currants | plant-based | yes | 768 | Cotton Carded,Combed | non edible | no |
| 552 | Blueberries | plant-based | yes | 769 | Cotton Waste | non edible | no |
| 554 | Cranberries | plant-based | yes | 770 | Cotton Linter | non edible | yes |
| 558 | Berries Nes | plant-based | yes | 773 | Flax fibre and tow | non edible | yes |
| 560 | Grapes | plant-based | yes | 774 | Flax Tow Waste | non edible | no |
| 561 | Raisins | plant-based | no | 777 | Hemp Tow Waste | non edible | yes |
| 562 | Grape Juice | plant-based | no | 780 | Jute | non edible | yes |
| 563 | Must of Grapes | luxury | no | 782 | Other Bastfibres | non edible | yes |
| 564 | Wine | luxury | no | 788 | Ramie | non edible | yes |
| 565 | Vermouths and Similar | luxury | no | 789 | Sisal | non edible | yes |
| 566 | Marc of Grapes | luxury | no | 800 | Agave Fibres Nes | non edible | yes |
| 567 | Watermelons | plant-based | yes | 809 | Manila Fibre (Abaca) | non edible | yes |
| 568 | Other melons (inc.cantaloupes) | plant-based | yes | 821 | Fibre Crops Nes | non edible | yes |
| 569 | Figs | plant-based | yes | 826 | Tobacco, unmanufactured | luxury | yes |
| 571 | Mangoes, mangosteens, guavas | plant-based | yes | 836 | Natural rubber | non edible | yes |
| 572 | Avocados | plant-based | yes | 866 | Cattle | animal-based | no |
| 574 | Pineapples | plant-based | yes | 867 | Cattle meat | animal-based | yes |
| 576 | Juice of Pineapples | plant-based | no | 868 | Offals of cattle, edible | animal-based | yes |
| 577 | Dates | plant-based | yes | 870 | Meat-Cattle, boneless | animal-based | yes |
| 591 | Cashew apple | plant-based | yes | 872 | Meat of Beef,Drd, SltD,Smkd | animal-based | yes |
| 592 | Kiwi fruit | plant-based | yes | 874 | Sausage Beef and Veal | animal-based | yes |
| 600 | Papayas | plant-based | yes | 882 | Cow milk, whole, fresh | animal-based | yes |
| 886 | Butter Cow Milk | animal-based | no | 1035 | Pig meat | animal-based | yes |
| 888 | Milk Skm of Cows | animal-based | no | 1036 | Offals of Pigs, Edible | animal-based | yes |
| 889 | Milk Whole Cond | animal-based | no | 1037 | Fat of Pigs | animal-based | yes |
| 890 | Whey Condensed | animal-based | no | 1039 | Bacon and Ham | animal-based | no |
| 891 | Yoghurt | animal-based | no | 1041 | Sausages of Pig Meat | animal-based | no |
| 893 | Butterm.,CurdL,Acid.Milk | animal-based | no | 1042 | Prep of Pig Meat | animal-based | no |
| 897 | Milk Whole Dried | animal-based | no | 1057 | Chickens | animal-based | yes |
| 898 | Milk Skimmed Dry | animal-based | no | 1062 | Hen eggs, in shell | animal-based | yes |

Table A. (continue...)

| id | crop | Category | Production | id | crop | Category | Production |
|------|--------------------------|--------------|------------|------|----------------------------|--------------|------------|
| 901 | Cheese of Whole Cow Milk | animal-based | no | 1063 | Eggs Liquid | animal-based | no |
| 905 | Whey Cheese | animal-based | no | 1064 | Eggs Dried | animal-based | no |
| 907 | Processed Cheese | animal-based | no | 1069 | Duck meat | animal-based | yes |
| 909 | Prod.of Nat.Milk Constit | animal-based | no | 1073 | Goose and guinea fowl meat | animal-based | yes |
| 919 | Cattle hides | non edible | yes | 1080 | Turkey meat | animal-based | yes |
| 920 | Hides Wet Salted Cattle | non edible | no | 1091 | Other bird eggs,in shell | animal-based | yes |
| 921 | Hidesdry S.Cattle | non edible | no | 1096 | Horses | animal-based | no |
| 976 | Sheep | animal-based | no | 1097 | Horse meat | animal-based | yes |
| 977 | Sheep meat | animal-based | yes | 1100 | Hair of Horses | non edible | yes |
| 978 | Offals of Sheep,Edible | animal-based | yes | 1103 | Hides Wet Salted Horses | non edible | no |
| 984 | Cheese of Sheep Milk | animal-based | yes | 1104 | Hides Dry Slt Horses | non edible | no |
| 998 | Skins Nes Sheep | non edible | yes | 1105 | Hides Unsp Horse | non edible | yes |
| 999 | Skins With Wool Sheep | non edible | yes | 1107 | Asses | animal-based | yes |
| 1016 | Goats | animal-based | no | 1110 | Mules | animal-based | yes |
| 1017 | Goat meat | animal-based | yes | 1159 | Offals other camelids | animal-based | yes |
| 1018 | Offals of Goats, Edible | animal-based | yes | 1187 | Cocoon Unr. and Waste | non edible | yes |
| 1021 | Cheese of Goat Mlk | animal-based | yes | 1219 | Hair Coarse Nes | non edible | yes |
| 1025 | Goatskins | non edible | yes | 1232 | Food Prep Nes | plant-based | no |
| 1034 | Pigs | animal-based | no | | | | |

AUSTRALIA

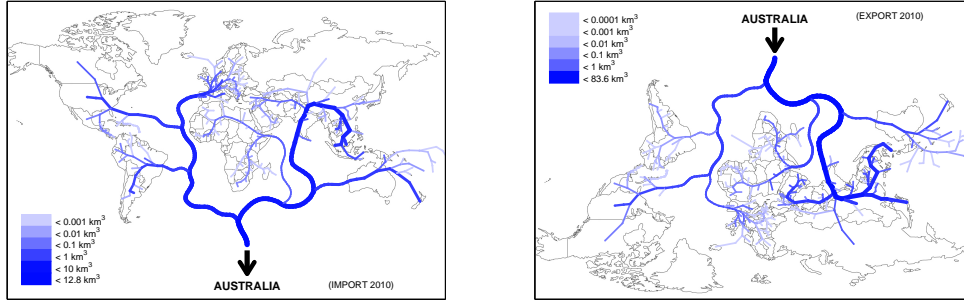


Fig. I.a. The virtual water river/delta flowing to/from the country in 2010.

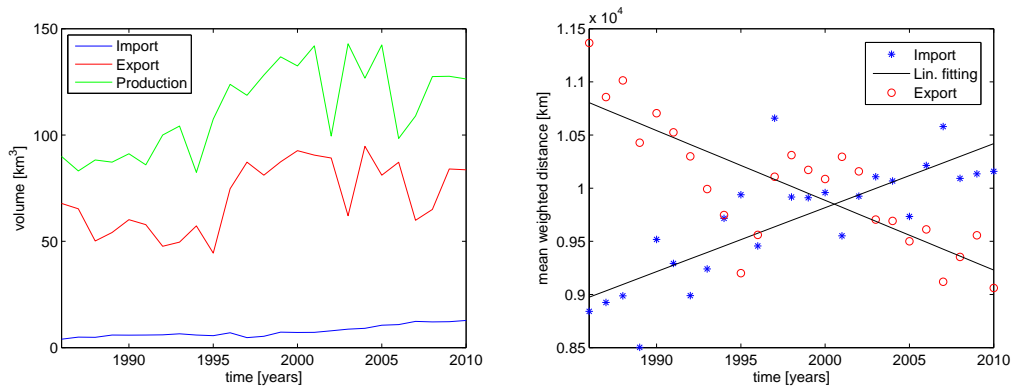


Fig. I.b. Virtual water balance of the country (left) and mean distance travelled by virtual water flowing to/from the country (right).

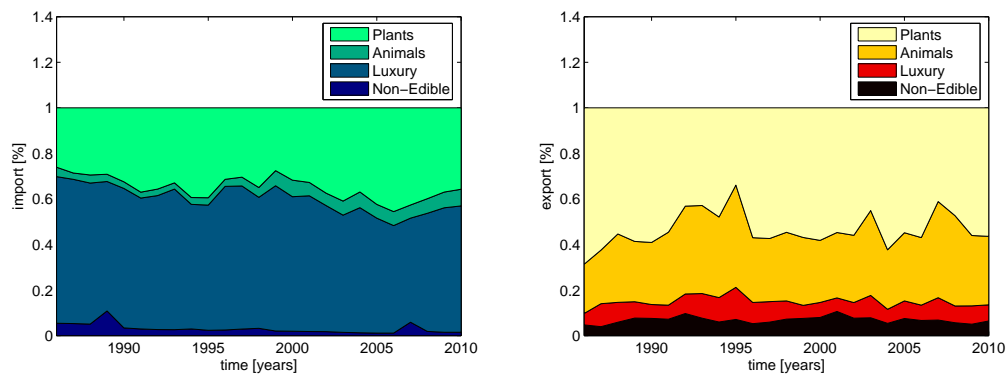


Fig. I.c. Fractions of virtual water imported (left) and exported (right) in each category by the country.

BRAZIL

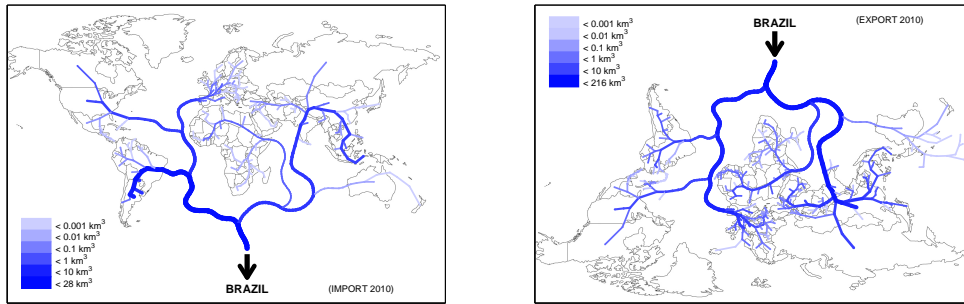


Fig. II.a. The virtual water river/delta flowing to/from the country in 2010.

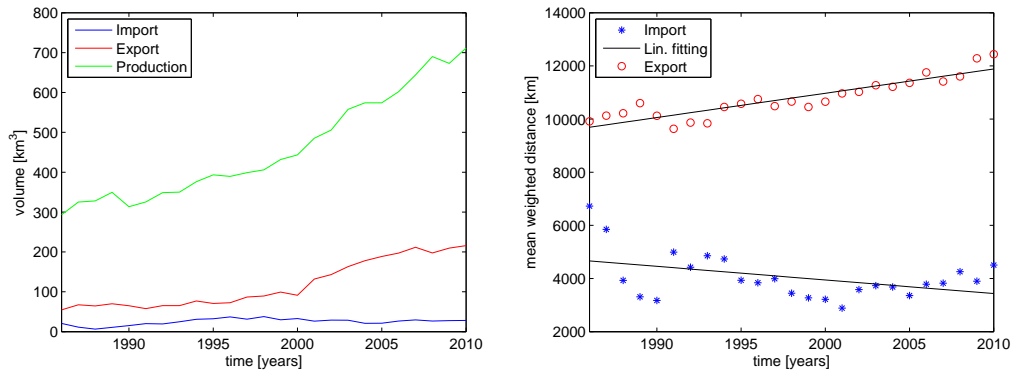


Fig. II.b. Virtual water balance of the country (left) and mean distance travelled by virtual water flowing to/from the country (right).

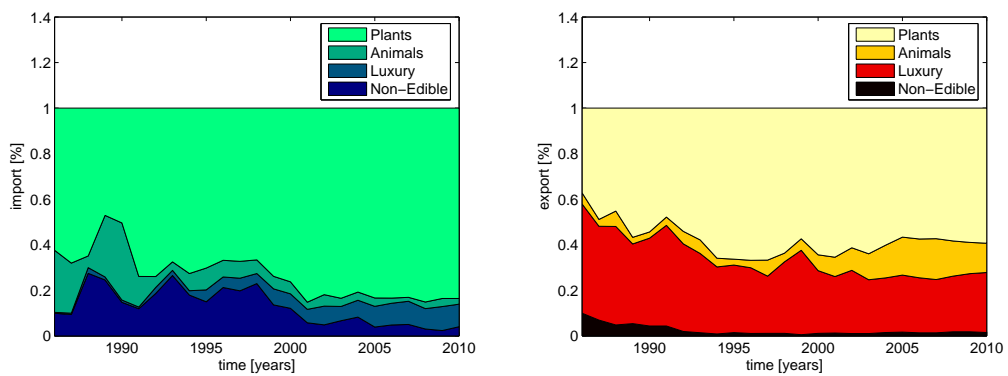


Fig. II.c. Fractions of virtual water imported (left) and exported (right) in each category by the country.

CHINA

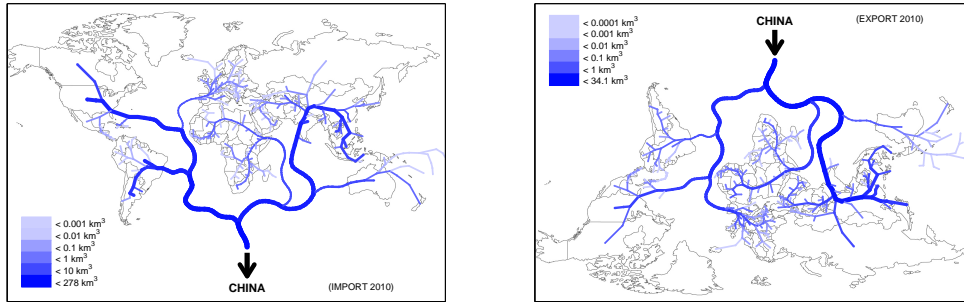


Fig. III.a. The virtual water river/delta flowing to/from the country in 2010.

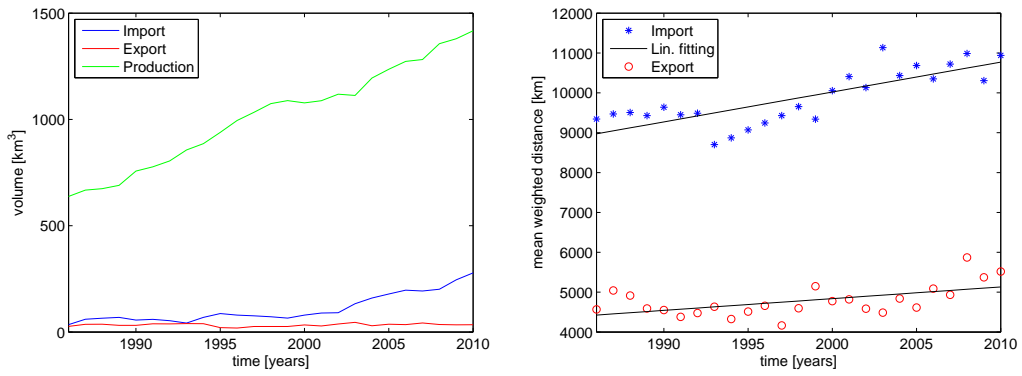


Fig. III.b. Virtual water balance of the country (left) and mean distance travelled by virtual water flowing to/from the country (right).

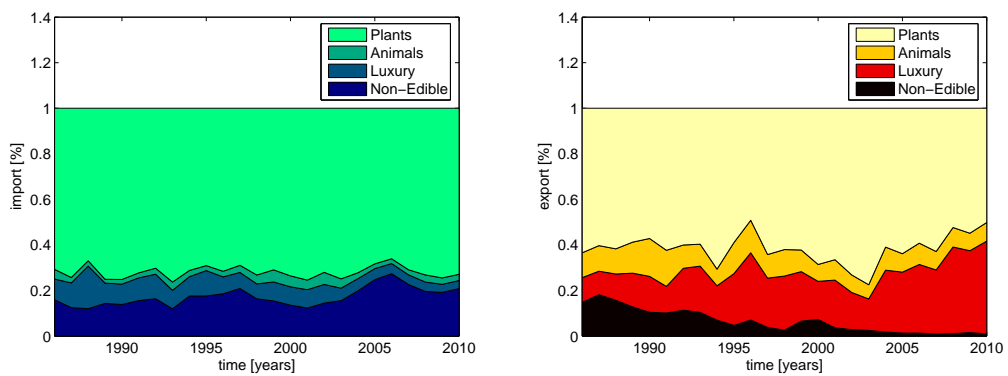


Fig. III.c. Fractions of virtual water imported (left) and exported (right) in each category by the country.

EGYPT

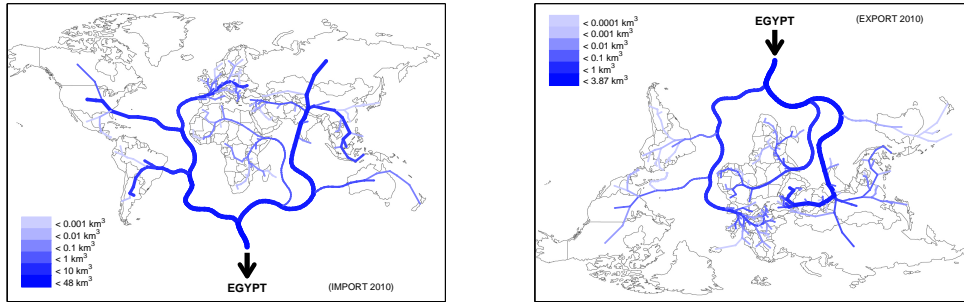


Fig. IV.a. The virtual water river/delta flowing to/from the country in 2010.

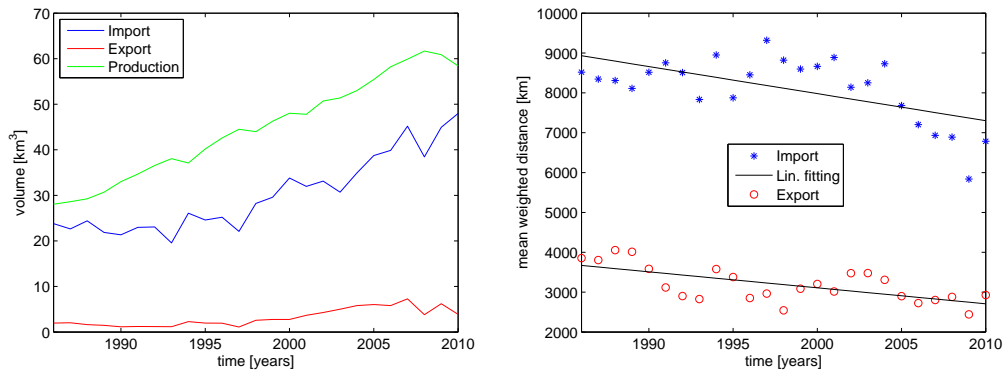


Fig. IV.b. Virtual water balance of the country (left) and mean distance travelled by virtual water flowing to/from the country (right).

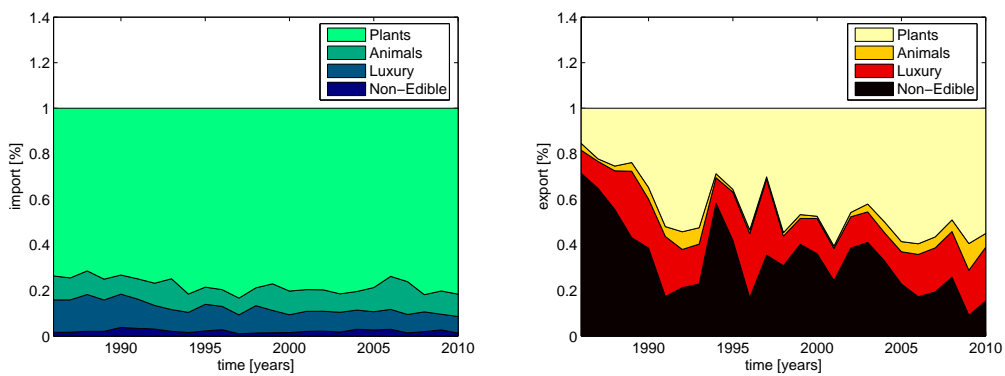


Fig. IV.c. Fractions of virtual water imported (left) and exported (right) in each category by the country.

FRANCE

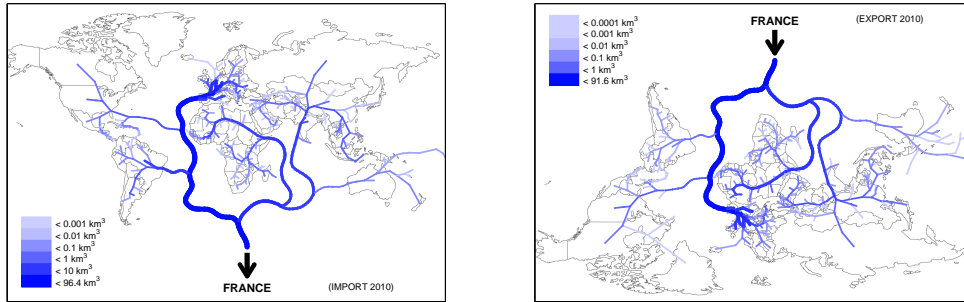


Fig. V.a. The virtual water river/delta flowing to/from the country in 2010.

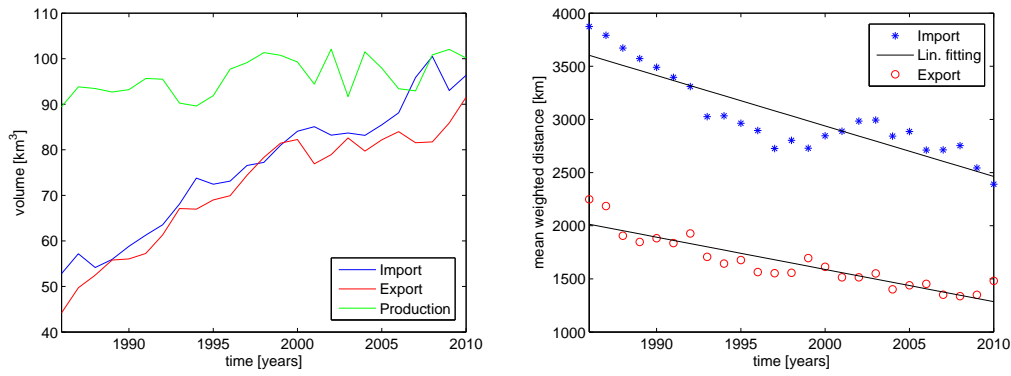


Fig. V.b. Virtual water balance of the country (left) and mean distance travelled by virtual water flowing to/from the country (right).

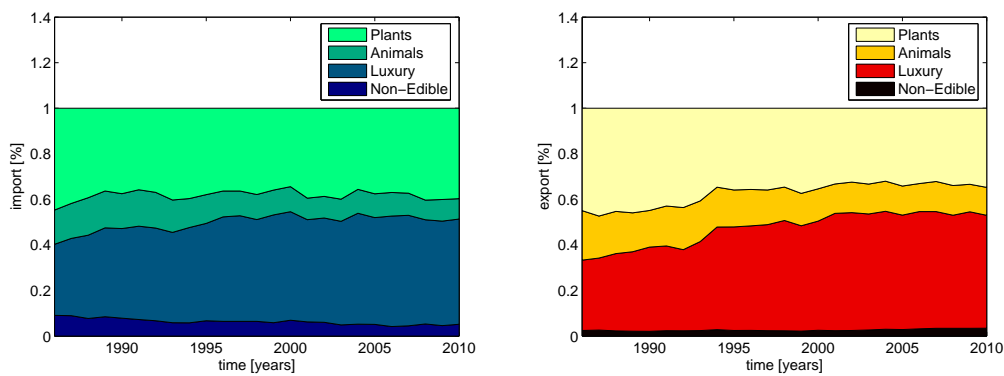


Fig. V.c. Fractions of virtual water imported (left) and exported (right) in each category by the country.

GERMANY

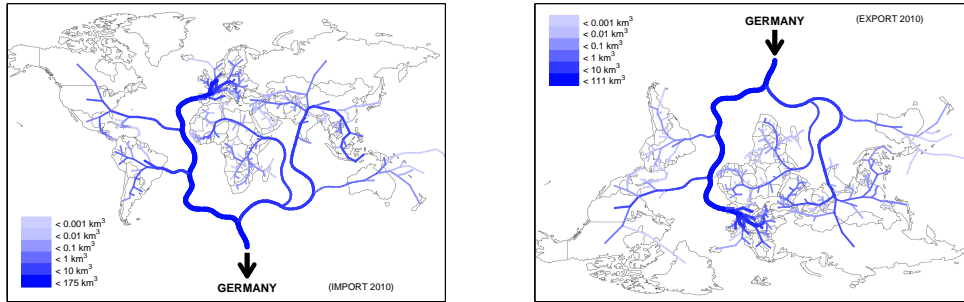


Fig. VI.a. The virtual water river/delta flowing to/from the country in 2010.

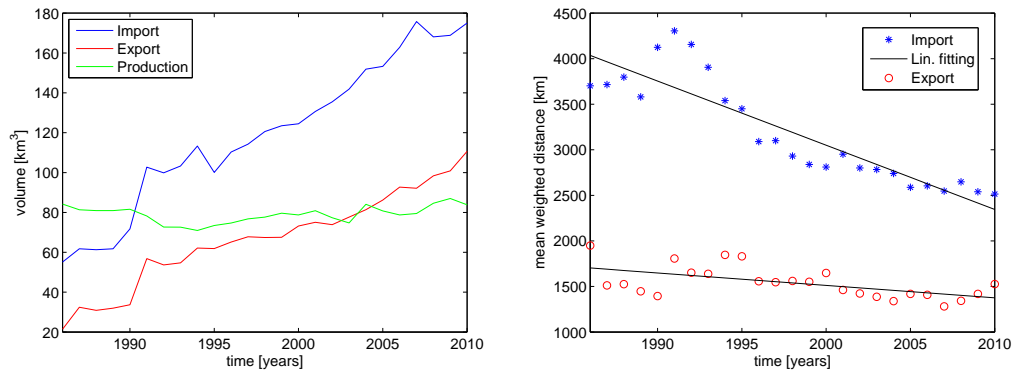


Fig. VI.b. Virtual water balance of the country (left) and mean distance travelled by virtual water flowing to/from the country (right).

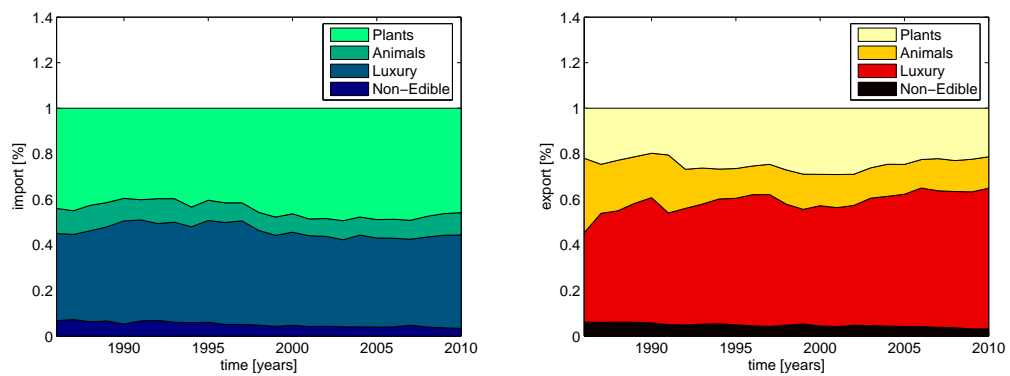


Fig. VI.c. Fractions of virtual water imported (left) and exported (right) in each category by the country.

INDIA

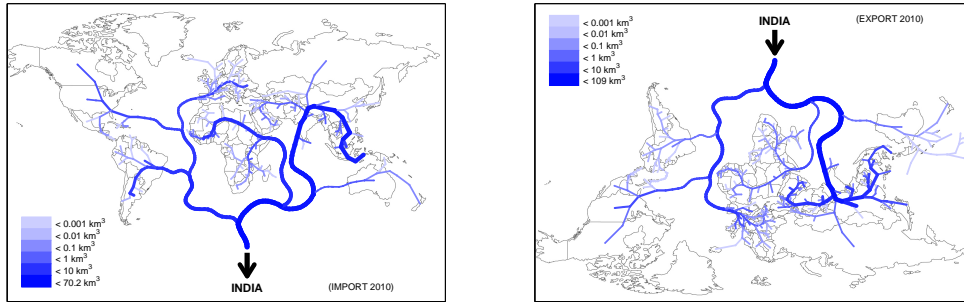


Fig. VII.a. The virtual water river/delta flowing to/from the country in 2010.

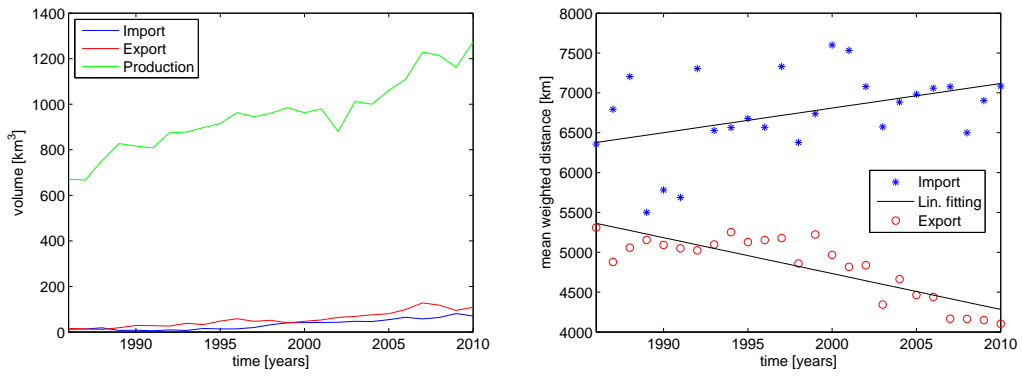


Fig. VII.b. Virtual water balance of the country (left) and mean distance travelled by virtual water flowing to/from the country (right).

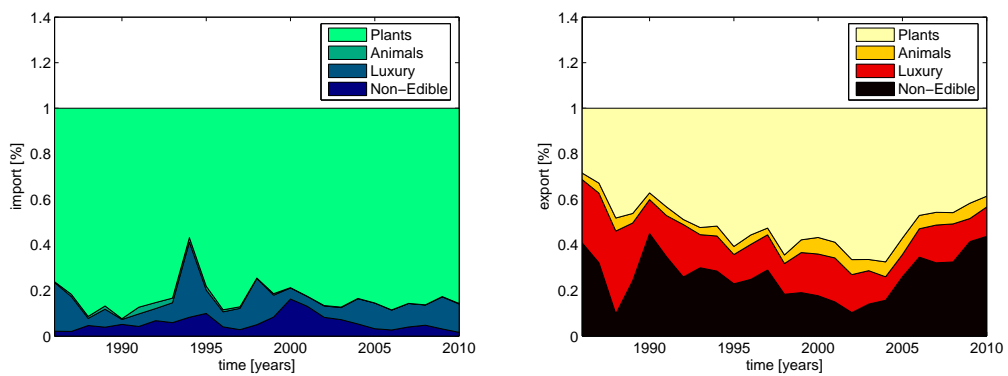


Fig. VII.c. Fractions of virtual water imported (left) and exported (right) in each category by the country.

INDONESIA

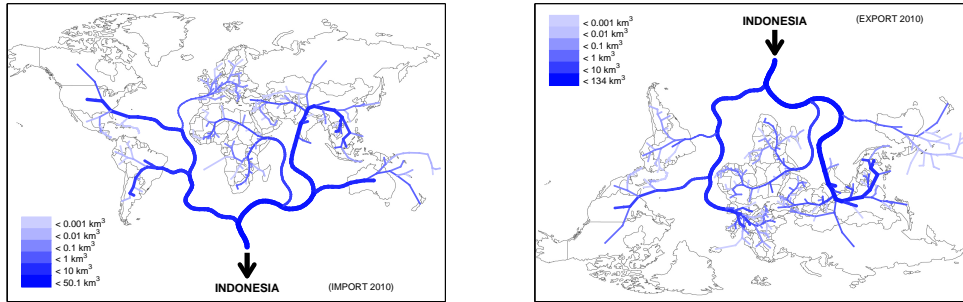


Fig. VIII.a. The virtual water river/delta flowing to/from the country in 2010.

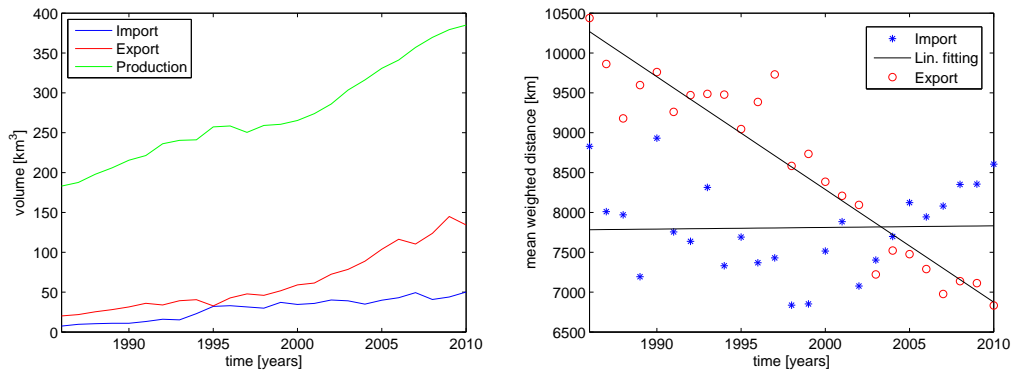


Fig. VIII.b. Virtual water balance of the country (left) and mean distance travelled by virtual water flowing to/from the country (right).

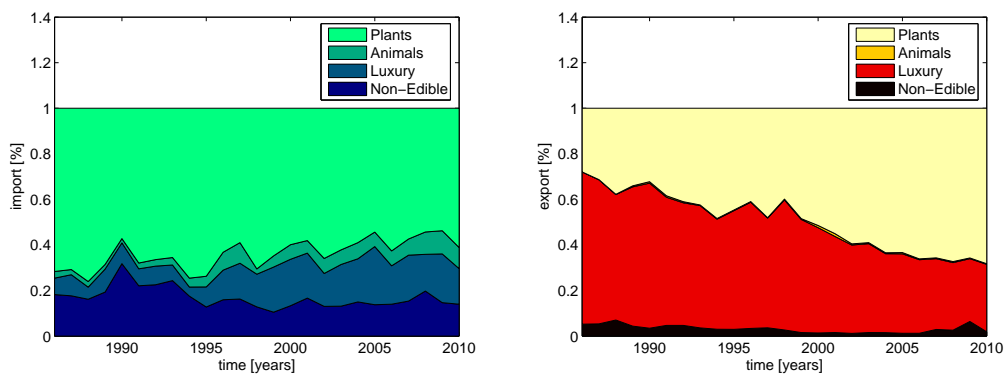


Fig. VIII.c. Fractions of virtual water imported (left) and exported (right) in each category by the country.

JAPAN

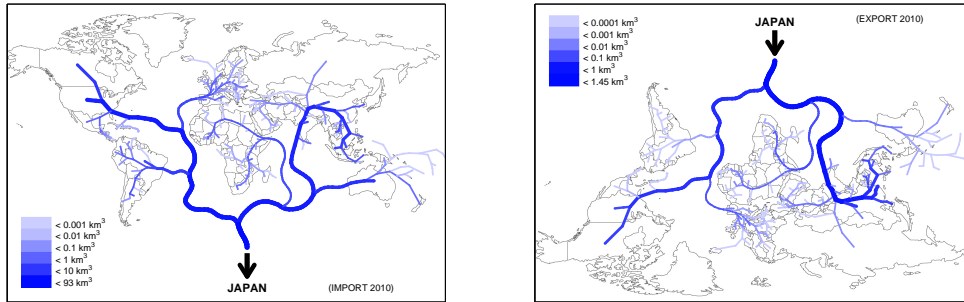


Fig. IX.a. The virtual water river/delta flowing to/from the country in 2010.

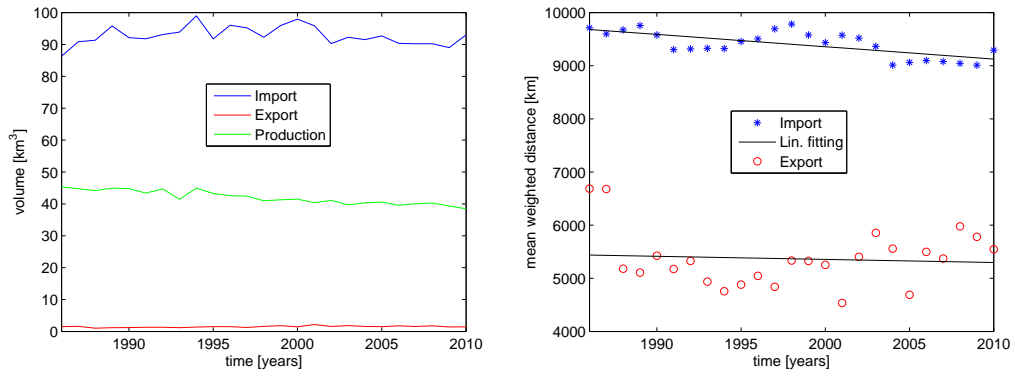


Fig. IX.b. Virtual water balance of the country (left) and mean distance travelled by virtual water flowing to/from the country (right).

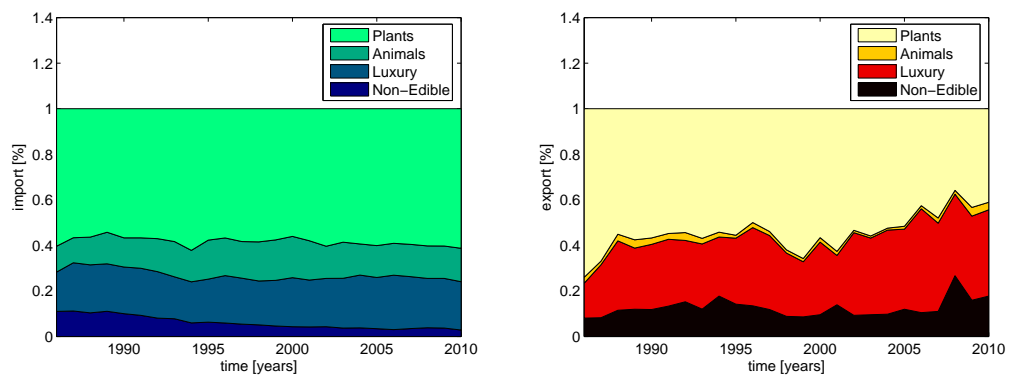


Fig. IX.c. Fractions of virtual water imported (left) and exported (right) in each category by the country.

UNITED STATES OF AMERICA

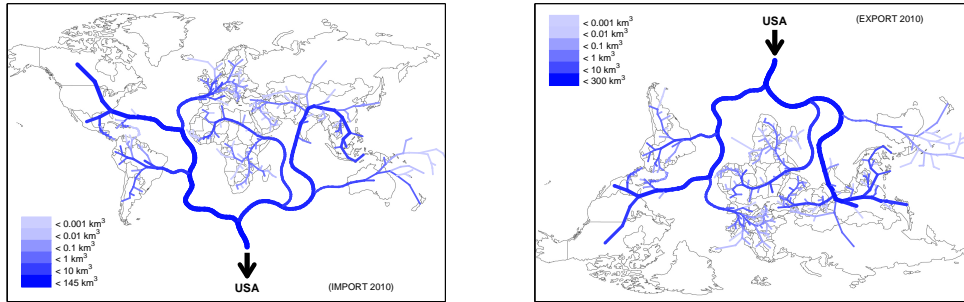


Fig. X.a. The virtual water river/delta flowing to/from the country in 2010.

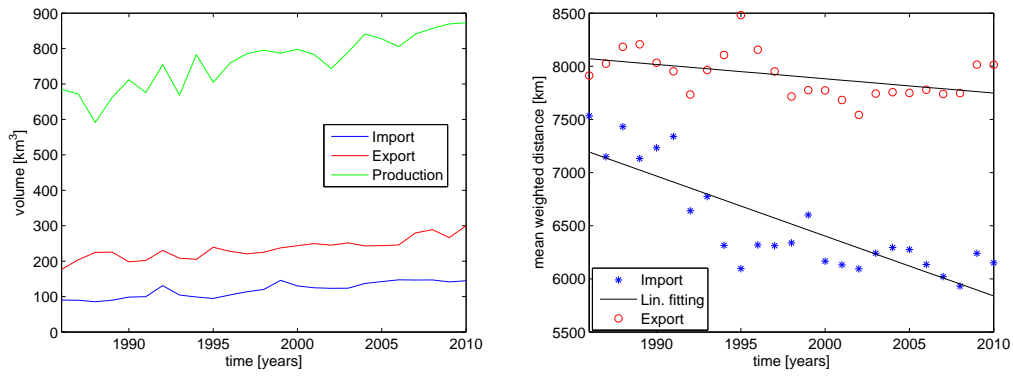


Fig. X.b. Virtual water balance of the country (left) and mean distance travelled by virtual water flowing to/from the country (right).

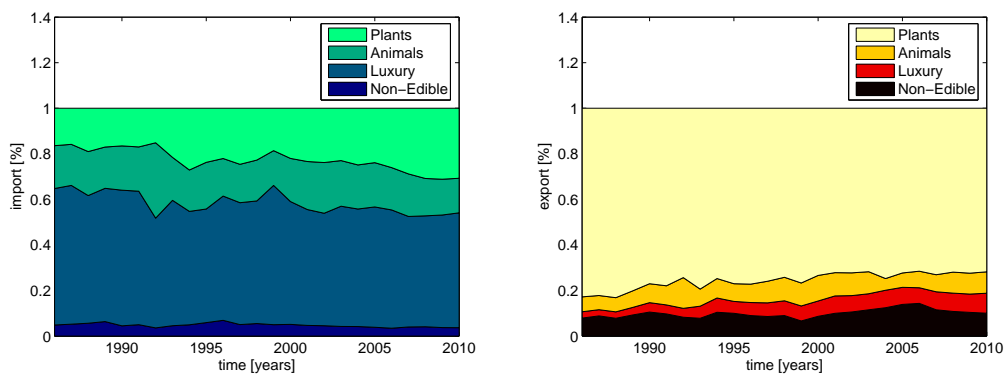


Fig. X.c. Fractions of virtual water imported (left) and exported (right) in each category by the country.