

**Estimation of ET
from TOA radiances
in the Poyang Lake
Basin, China**

J. Peng et al.

**Estimation of evapotranspiration from
TOA radiances in the Poyang Lake Basin,
China**

J. Peng^{1,2,3,4}, **Y. Liu**¹, **X. Zhao**¹, and **A. Loew**³

¹State Key Laboratory of Lake Science and Environment, Nanjing Institute of Geography and Limnology, Chinese Academy of Sciences, Nanjing 210008, China

²Graduate University of Chinese Academy of Sciences, Beijing 100049, China

³Max-Planck-Institute for Meteorology, KlimaCampus, 20146 Hamburg, Germany

⁴International Max Planck Research School on Earth System Modelling, 20146 Hamburg, Germany

Received: 11 June 2012 – Accepted: 18 September 2012 – Published: 27 September 2012

Correspondence to: Y. Liu (ybliu@niglas.ac.cn)

Published by Copernicus Publications on behalf of the European Geosciences Union.

Title Page

Abstract

Introduction

Conclusions

References

Tables

Figures

⏪

⏩

◀

▶

Back

Close

Full Screen / Esc

Printer-friendly Version

Interactive Discussion

Abstract

Routine and rapid estimation of ET (evapotranspiration) at regional scale is of great significance for agricultural, hydrological and climatic studies. A simplified single-source energy balance parameterization scheme, known as the LST/NDVI (Land Surface Temperature/Vegetation Index) triangle method, has been applied successfully to estimate regional clear sky ET in many studies. Based on the triangle method, we proposed a new method in this study to estimate daily ET directly using the TOA (Top of Atmosphere) radiances without performing atmospheric correction and other complicated processes. Firstly, the EF (Evaporative Fraction, defined as the ratio of latent heat flux to surface available energy) was estimated by interpolation in the LST/NDVI triangular-shaped scatter space, which was constructed using the MODIS (Moderate Resolution Imaging Spectro radiometer) TOA radiances over a heterogeneous area of the Poyang Lake Basin in China. Then the net radiation over the same study area was derived based entirely on MODIS TOA radiances as well. Finally, daily ET maps were estimated from these EF maps and net radiation maps by using a sinusoidal temporal interpolation model. The estimated EF, net radiation and ET have been validated against field observations collected for the period October 2007–July 2008. The results indicate comparable accuracy to results of other current widely used satellite-based methods. In addition, intercomparisons between the proposed method-based estimates and MODIS products-based estimates were also carried out over the validation site. The results suggest that the proposed method performed slightly better than the MODIS products-based triangle method. Overall, the proposed algorithm requires fewer assumptions and can avoid uncertainties associated with the satellite derived products, while its accuracy is slightly higher. It should facilitate direct use of satellite data for determining ET and relevant applications as well. Nonetheless, more validation work needs to be carried out with more integration of satellite data and ground-based measurements over various climatic regions and under different surface conditions in the future.

Estimation of ET from TOA radiances in the Poyang Lake Basin, China

J. Peng et al.

Title Page

Abstract

Introduction

Conclusions

References

Tables

Figures



Back

Close

Full Screen / Esc

Printer-friendly Version

Interactive Discussion



1 Introduction

ET (evapotranspiration), including plant transpiration and direct evaporation from soil and water surface, is an important variable in water and energy balances on the Earth's surface. Accurate estimation of the temporal and spatial distribution of ET is of great significance for better understanding the mechanism of climate change and plays a crucial role in the agricultural, hydrological and meteorology studies (Jung et al., 2010). The major factors that control the rate of ET are the availability of water, the amount of available energy, the wind speed and the humidity gradient in the air above the evaporating surface (Monteith, 1981). To account for all such factors, various micrometeorological techniques (e.g. Bowen ratio, eddy covariance and lysimeter systems) have been designed to measure ET on various spatial scales from hundreds to thousands of meters (Farahani et al., 2007). Although ET is quantifiable at the small scale using ground-based techniques, larger-scale estimates require alternative measurements and estimation approaches. They need a variety of land surface and atmospheric variables, such as temperature, albedo, and vegetation indices. Such quantities, however, are difficult to obtain over large-scale heterogeneous areas and have to be extrapolated/interpolated to various temporal and spatial scales with limited accuracy. Therefore, it is important and necessary to develop other methods for estimating regional ET.

Satellite remote sensing is a promising technique for mapping temporally and spatially continuous patterns of regional ET with a reasonable degree of accuracy. It can provide unprecedented spatial distribution of critical land surface and atmospheric variables, such as land surface temperature, albedo, and vegetation indices, which are logistically and economically impossible to obtain from conventional observation networks. Over the last few decades, a number of physical and empirical remote sensing based models that vary in complexity have been proposed to estimate ET. For a review, see e.g. Kalma et al. (2008). These methods usually need ancillary surface and atmospheric data like wind speed, aerodynamic resistance, and surface roughness,

HESSD

9, 10963–11003, 2012

Estimation of ET from TOA radiances in the Poyang Lake Basin, China

J. Peng et al.

Title Page

Abstract

Introduction

Conclusions

References

Tables

Figures



Back

Close

Full Screen / Esc

Printer-friendly Version

Interactive Discussion



which cannot readily be measured through remote sensing techniques. Therefore, it is still challenging to routinely map regional and even global ET distribution using satellite remote sensing without ground measurements or reanalyzed meteorological data.

In order to overcome this problem, some attempts have been made to develop new parameterizations for ET estimation that depend entirely on remote sensing. One widely used approach among them is the LST/NDVI (land surface temperature/vegetation index) triangle method, which was proposed by Jiang and Islam (1999, 2001). This method is based on the P-T (Priestley-Taylor) equation (Priestley and Taylor, 1972), which can be considered as a simplified version of the more general Penman equation (Penman, 1948). The most difficult part in this approach is the determination of the P-T parameter, which accounts for aerodynamic and canopy resistances. The essence of the LST/NDVI triangle method is to estimate the P-T parameter on the basis of the triangular shape of the LST/NDVI feature space, which is formed by the scatter of LST against NDVI over a wide range of soil moisture content and fractional vegetation cover. The emergence of the triangular shape is caused primarily by different sensitivity of LST to soil moisture variations over bare soil and vegetated areas. Recent and detailed reviews of the triangle method have been provided in terms of the theoretical basis, biophysical properties and limitations by Carlson (2007) and Petropoulos et al. (2009).

A number of researchers have also demonstrated the applicability of this method for the estimation of regional ET and soil moisture from various remote sensors, such as NOAA-AVHRR, TERRA/AQUA-MODIS, MSG-SEVIRI and FY-2C (Han et al., 2010; Sandholt et al., 2002; Tang et al., 2011, among others). The notable advantages of this method lie in its simplicity, easiness to parameterize ET, and relatively high accuracy. The assessment of ET derived by the triangle method (Batra et al., 2006; Jiang and Islam, 2003; Jiang et al., 2004; Stisen et al., 2008), shows that the root mean square difference (RMSD) and relative error (RE) are generally within 60 W m^{-2} and 30 % at the hourly and daily timescales.

Estimation of ET from TOA radiances in the Poyang Lake Basin, China

J. Peng et al.

[Title Page](#)[Abstract](#)[Introduction](#)[Conclusions](#)[References](#)[Tables](#)[Figures](#)[⏪](#)[⏩](#)[◀](#)[▶](#)[Back](#)[Close](#)[Full Screen / Esc](#)[Printer-friendly Version](#)[Interactive Discussion](#)

evaporative fraction and remotely sensed spatial variables (e.g. NDVI, LST and soil moisture), the parameterization of ET proposed by Jiang and Islam (1999) is expressed with the following equation:

$$ET = \varphi \left(\frac{\Delta}{\Delta + \gamma} \right) (R_n - G) \quad (1)$$

5 Where ET is evapotranspiration (Wm^{-2}), R_n is the surface net radiation (Wm^{-2}), G is the soil heat flux (Wm^{-2}), Δ is the slope of saturated vapor pressure at the air temperature ($kPaK^{-1}$) and γ is the psychrometric constant ($kPaK^{-1}$). Φ is a substitute for the P-T coefficient, which accounts for aerodynamic and canopy resistances. In the standard application of the P-T method, Φ is approximately 1.26 for wet surface equilibrium conditions (Eichinger et al., 1996). In practice, Φ , which is determined by wind speed, air temperature and surface moisture, should not be assigned to a constant value (Davies and Allen, 1973; Komatsu, 2003). It is important to note that in the absence of significant advection and convection, Φ in Eq. (1) can take a wider range of 10 (no ET) to $(\Delta + \gamma)/\Delta$ (maximum ET). This scheme is more applicable for a wide range of surface evaporative conditions where $R_n - G$ is the driving force for ET.

15 In order to obtain the value of Φ , a three-step linear interpolation scheme based on the LST/NDVI triangle is used in the following manner (see Fig. 1): (1) determine the dry and wet edges in the triangular space; (2) the global minimum and maximum Φ are respectively set to $\Phi_{min} = 0$ for the driest bare soil pixel and $\Phi_{max} = 1.26$ for the densely vegetated pixel with largest NDVI and lowest LST, then Φ_{min}^i is linearly interpolated for each NDVI interval ($NDVI_i$) between Φ_{min} and Φ_{max} , and Φ_{max}^i for each $NDVI_i$ is obtained from the lowest LST pixel with that NDVI interval (Φ_{max}^i is generally set to $\Phi_{max}^i = \Phi_{max} = 1.26$); (3) Φ^i -value within each NDVI interval is interpolated between the lowest LST pixel (T_{min}^i, Φ_{max}^i), and highest LST pixel (T_{max}^i, Φ_{min}^i). Consequently, 20 the Φ -value for each pixel can be calculated using a normalized form of LST, and the mathematical expression is given as follows (Jiang and Islam, 2001):

Estimation of ET from TOA radiances in the Poyang Lake Basin, China

J. Peng et al.

Title Page

Abstract Introduction

Conclusions References

Tables Figures

⏪ ⏩

◀ ▶

Back Close

Full Screen / Esc

Printer-friendly Version

Interactive Discussion



$$\Phi = \frac{T_{\max}^i - T^i}{T_{\max}^i - T_{\min}^i} (\Phi_{\max}^i - \Phi_{\min}^i) + \Phi_{\min}^i \quad (2)$$

The key procedure associated with the implementation of the above scheme is the accurate determination of the dry and wet edges. The wet edge (a horizontal line representing potential ET) is generally identified from the lowest surface temperature over different vegetation indices (Jiang and Islam, 2001). However, the dry edge (oblique line representing minimum ET) determination is a little subjective, which could incur uncertainty in the calculation of Φ . Tang et al. (2010) proposed an automatically iterative process to determine the dry edge more objectively. This procedure is applied here to get the linear-relation:

$$T_{\max}^i = a + b\text{NDVI}_i \quad (3)$$

where a and b , respectively define the intercept and slope of the dry edge.

According to Eq. (1) and the definition of EF, EF can be directly estimated as:

$$\text{EF} = \Phi \left(\frac{\Delta}{\Delta + \gamma} \right) \quad (4)$$

The slope of saturated vapor pressure Δ at the air temperature T_a is given as:

$$\Delta = \frac{26297.76}{(T_a - 29.65)^2} \exp \left(\frac{17.67(T_a - 273.15)}{T_a - 29.65} \right) \quad (5)$$

The sensitivity of $\Delta/(\Delta + \gamma)$ on the variation of T_a is quite small with a reported 1 %–2 % change per 1 K change in T_a (Jiang and Islam, 2001; Garatuza-Payan et al., 2001). Therefore, the T_a used in this equation can be obtained by using mean surface temperature or mean inland water surface temperature as a surrogate without incurring much error (Jiang and Islam, 2001; Tang et al., 2010). In this work, the MODIS MOD07 air

Estimation of ET from TOA radiances in the Poyang Lake Basin, China

J. Peng et al.

Title Page

Abstract

Introduction

Conclusions

References

Tables

Figures

⏪

⏩

◀

▶

Back

Close

Full Screen / Esc

Printer-friendly Version

Interactive Discussion



temperature product will be used to provide spatially distributed T_a , which is derived through a statistical relationship between observed TOA radiances and corresponding atmospheric profiles (Menzel et al., 2002).

The major advantages of the triangle method are that: (1) it holds true for a wide range of surface conditions; (2) it is relatively insensitive to uncertainties associated with atmospheric corrections and land surface heterogeneity; (3) all of the four quantities (Φ , R_n , G , and Δ) involved in Eq. (1) can be derived independently using remotely sensed data alone; (4) EF and R_n are estimated independently from each other, which provides the possibility to evaluate the performance of EF and R_n estimations, respectively. The main limitation of the triangle method is that a large number of pixels over a flat area with a wide range of soil wetness and fractional vegetation cover are required to make sure that the dry and wet limits exist in the triangle space.

2.2 Estimation of ET from MODIS products

Instead of getting T_s and NDVI from in-situ measurements, the parameters estimated from satellite data are used. In the following, MODIS products are used to derive ET (ET_{Products}). In order to apply the triangle method to MODIS products, the EF and R_n will be estimated, respectively. Several steps need to be carried out for EF calculation. As stated in Sect. 2.1, the LST/NDVI triangular space should be constructed firstly. The NDVI is calculated using the MOD09GA surface reflectance products after atmospheric correction, and LST is from the MODIS surface temperature product retrieved from MOD11_L2. Then, the wet and dry edges of the triangular space are determined using the algorithm described in Sect. 2.1. Finally, the EF-value for each pixel in the study area is calculated from the triangular space.

R_n , the sum of R_{sn} (shortwave net radiation) and R_{ln} (longwave net radiation), has to be estimated from satellite data. Here we employed the algorithm proposed by Bisht et al. (2005) for estimating R_n entirely from MODIS products. The method can be expressed as:

Estimation of ET from TOA radiances in the Poyang Lake Basin, China

J. Peng et al.

Title Page

Abstract

Introduction

Conclusions

References

Tables

Figures



Back

Close

Full Screen / Esc

Printer-friendly Version

Interactive Discussion



Estimation of ET from TOA radiances in the Poyang Lake Basin, China

J. Peng et al.

Title Page

Abstract

Introduction

Conclusions

References

Tables

Figures

⏪

⏩

◀

▶

Back

Close

Full Screen / Esc

Printer-friendly Version

Interactive Discussion

$$R_n = R_{sn} + R_{ln} = (1 - \alpha) \frac{S_0 \cos^2 \theta}{d} + \sigma \varepsilon_a T_a^4 - \sigma \varepsilon_s T_s^4 \quad (6)$$

with

$$d = 1.085 \cos \theta + e_0 (2.7 + \cos \theta) \times 10^{-3} + 0.1$$

$$\varepsilon_a = \left[1 - (1 + \xi) \exp \left\{ -(1.2 + 3\xi)^{1/2} \right\} \right], \quad \text{and} \quad (7)$$

$$\xi = 46.5 e_0 / T_a$$

Where α is the land surface albedo calculated from MOD43, S_0 is the solar constant at the atmospheric top (1367 W m^{-2}), θ is the solar zenith angle extracted from MOD03, σ is the Stefan-Boltzmann constant ($5.67 \times 10^{-8} \text{ W m}^{-2} \text{ K}^{-4}$), T_a is the air temperature retrieved from MOD07, ε_s and T_s are the surface temperature and surface emissivity both extracted from MOD11_L2, e_0 is the vapor pressure calculated from MOD07 dew point temperature by using the Clausius–Clapeyron equation:

$$e_0 = 6.11 \exp \left[\frac{L_v}{R_v} \left(\frac{1}{T_0} - \frac{1}{T_d} \right) \right] \quad (8)$$

Where L_v is the latent heat of vaporization ($2.5 \times 10^6 \text{ J kg}^{-1}$), R_v is the gas constant for water vapor ($461 \text{ J kg}^{-1} \text{ K}^{-1}$), T_d is the dew point temperature and $T_0 = 273 \text{ K}$.

2.3 Estimation of ET from MODIS TOA radiances

In order to avoid certain difficulties associated with the processing chain for derivation MODIS products, we directly used MODIS TOA radiances to estimate ET. The algorithm for estimating EF from MODIS TOA radiances is the same to the MODIS TOA products-based EF except for the input data source. About EF, Peng and Liu (2011) demonstrate the feasibility of using TOA radiances to estimate EF with the triangle

method. Firstly, the Top of Atmosphere (TOA) reflectance is used for calculating the TOA Normalized Difference Vegetation Index ($NDVI_{TOA}$). It can be computed from the Level 1 MOD021KM and MOD03 datasets by converting the scaled integers (SI) to reflectance-value with the following equation as given by (Toller et al., 2006):

$$5 \quad TOA_reflectance = reflectance_scale \cdot (SI - reflectance_offset) / \cos(\theta) \quad (9)$$

Where the SI, reflectance_scale and reflectance_offset-values are extracted from the MOD021KM head file, and θ , the solar zenith angle, is extracted from the MOD03 dataset. Then $NDVI_{TOA}$ is calculated using the TOA reflectance-values as follows:

$$NDVI_{TOA} = (\rho_{NIR} - \rho_{RED}) / (\rho_{NIR} + \rho_{RED}) \quad (10)$$

10 Where ρ_{NIR} and ρ_{RED} are the TOA reflectances in the near infrared (NIR) and the red band from the MOD021KM dataset. The TOA radiance of the MODIS thermal infrared band 31 (L_{31}) is used instead of the MODIS LST product. It is extracted using the following scaling equation:

$$TOA_radiance = radiance_scale \cdot (SI - radiance_offset) \quad (11)$$

15 With the SI, radiance_scale and radiance_offset-values coming from the MOD021KM head file. Then, EF-value for each pixel in the study area can be calculated using TOA reflectances and radiances as input.

The parameterization scheme for estimating R_n based on MODIS TOA radiances is different from the one applied to TOA MODIS products in Sect. 2.2. In this study, a parameterization of R_{sn} fully based on MODIS TOA radiances proposed by Tang et al. (2006) is used:

$$20 \quad R_{sn} = \frac{E_0 \cos \theta_S}{D^2} (\alpha' - \beta' r) \quad (12)$$

Estimation of ET from TOA radiances in the Poyang Lake Basin, China

J. Peng et al.

Title Page

Abstract

Introduction

Conclusions

References

Tables

Figures

⏪

⏩

◀

▶

Back

Close

Full Screen / Esc

Printer-friendly Version

Interactive Discussion



$$r = b_0 + \sum_{i=1}^7 b_i \rho_i \quad (13)$$

Here E_0 is the solar irradiance at TOA, D is the earth–sun distance in astronomical unit. θ_s is the solar zenith angle extracted from MOD03, r is the broadband albedo at TOA, α' and β' are parameters dependent on solar zenith angle and atmospheric precipitable water extracted from MOD05 over land surface, ρ_i is the TOA reflectance in the MODIS band i ($i = 1-7$) as provided in MOD021KM. b_0-b_7 are coefficients depending on the view zenith angle and the solar zenith angle, which are both retrieved from MOD03.

Similarly, Wang et al. (2009) and Wang and Liang (2009) developed a method to directly estimate the R_{in} with merely MODIS TOA radiances as inputs:

$$R_{in} = L_{Tair} \left(a_0 + a_1 L_{27} + a_2 L_{29} + a_3 L_{33} + a_4 L_{34} + b_1 \frac{L_{32}}{L_{31}} + b_2 \frac{L_{33}}{L_{32}} + b_3 \frac{L_{28}}{L_{31}} + c_1 H \right) + d_0 + d_1 L_{31} + d_2 L_{32} + d_3 L_{29} \quad (14)$$

Here L_j are the TOA radiances measured by the MODIS thermal infrared channel extracted from MOD021KM and the number in the subscript indicates the thermal channel of the MODIS sensor. L_{Tair} represents surface air temperature (equal to L_{31} during night time and equal to L_{32} during day time). a_i ($i = 0-4$), b_i ($i = 1-3$), c_1 and d_i ($i = 0-3$) are regression coefficients depending on the viewing zenith angle extracted from MOD03. H is the surface elevation retrieved from MOD03. For detailed information about the above parameterizations of R_n , readers are recommended to refer to relative papers.

2.4 Estimation of daily ET

The main objective of this work is to estimate ET on a daily scale, as daily ET is more applicable than instantaneous ET in hydrological and water resources management studies. However, the triangle method introduced above provides only instantaneous

Estimation of ET from TOA radiances in the Poyang Lake Basin, China

J. Peng et al.

Title Page

Abstract

Introduction

Conclusions

References

Tables

Figures

⏪

⏩

◀

▶

Back

Close

Full Screen / Esc

Printer-friendly Version

Interactive Discussion



Estimation of ET from TOA radiances in the Poyang Lake Basin, China

J. Peng et al.

Title Page

Abstract

Introduction

Conclusions

References

Tables

Figures

⏪

⏩

◀

▶

Back

Close

Full Screen / Esc

Printer-friendly Version

Interactive Discussion



ET at the time of satellite overpass. In this work, we use the following scheme for extrapolating instantaneous ET-values to a daily time step: firstly, the near noon instantaneous EF is used to represent the daily average EF-value. This is based on observations (Capparrini et al., 2004; Crago, 1996) that for both homogeneous and heterogeneous land surfaces EF remains fairly constant for daylight hours, particularly between 10:00 and 16:00 LT. This can be explained from a physical perspective. The EF during daytime is mainly determined by land surface properties such as vegetation amount, soil moisture and surface resistance to heat and momentum transfer. Most of them are slowly varying parameters during daytime as compared to other fast changing variables (e.g. surface temperature, radiation), which have much stronger diurnal cycles due to radiation and atmospheric forcing (Jiang et al., 2009). Several studies have concluded, that using local near noon EF represent all-day EF for daily ET estimation incurs very small error (Farah et al., 2004; Hall et al., 1992; Hoedjes et al., 2008; Jia et al., 2009).

Secondly, daily R_n is estimated through a sinusoidal model (Bisht et al., 2005) that has been applied successfully in several studies (Bhattacharya et al., 2010; Bisht and Bras, 2010; Kim and Hogue, 2008). The sinusoidal model is given as:

$$R_n^{\text{daily}} = \frac{\int_{t_{\text{rise}}}^{t_{\text{set}}} R_n(t) dt}{\int_{t_{\text{rise}}}^{t_{\text{set}}} dt} = \frac{2R_n^{\text{overpass}}}{\pi \sin \left[\left(\frac{t_{\text{overpass}} - t_{\text{rise}}}{t_{\text{set}} - t_{\text{rise}}} \right) \pi \right]} \quad (15)$$

where R_n^{overpass} is the instantaneous R_n estimated at satellite overpass time, t_{rise} , t_{set} , t_{overpass} denote local sunrise time, sunset time and satellite overpass time, respectively. Thus daily ET can be approximated as follows:

$$\text{ET}^{\text{daily}} = \left(R_n^{\text{daily}} - G^{\text{daily}} \right) \text{EF}^{\text{daily}} \quad (16)$$

It should be noted here that soil heat flux G^{daily} is ignored in this study, as it is usually assumed negligible over the diurnal cycle (Jiang et al., 2009; Sánchez et al., 2008; Tang

were nearly 17.6 °C and 1615 mm, respectively. The annual rainfall over the study area occurs mainly during the humid summer months, with very little during spring and autumn, and much less during the cold, dry winters (Liu et al., 2010). Figure 3 shows the yearly land cover classification map in 2005 over the study area, provided by the Data sharing Network of Earth System Sciences, Chinese Academy of Sciences. It is a heterogeneous land cover area characterized by cropland (35 %), forest (45 %), grassland (3 %), urban areas (2 %), and inland water surface (5 %). Data used for validating the estimated R_n , EF and ET are collected from Nanchang Ecological Experiment Station (indicated in Fig. 3), which is located in the Nanchang County, Jiangxi Province. It is geographically situated at 28.6° N, 115.92° E at an elevation of 47 m a.s.l. Land cover across the Nanchang station is grassland.

3.2 Satellite data

MODIS sensors were launched on board the National Aerodynamics and Space Administration (NASA) Earth Observing System (EOS) Terra and Aqua satellites on December 1999 and May 2002, respectively. With 36 discrete spectral bands ranging from visible, near-infrared, to thermal infrared and high spatial resolution at 250, 500, and 1000 m, the MODIS sensor can provide data covering the entire surface of the Earth every 1 to 2 days. To date, the MODIS science team has developed 44 products for a variety of disciplines, including land, atmosphere, ocean and calibration. The Terra-MODIS Collection 5 data products used in this study consist of MOD021KM, MOD03, MOD04, MOD05_L2, MOD07_L2, MOD09GA, MOD11_L2, MOD35_L2 and MOD43B3 (Table 1). A brief description of the data products used is given below. In order to validate and compare the estimation of ET, clear sky day images were selected on the basis of visual inspection of the MODIS true color image and the MOD35_L2 cloud mask product. We characterized 85 % of the study area being clear as a clear sky condition, because it is difficult to avoid cloudy pixels over the whole domain. Finally, a total of 16 clear sky daytime MODIS data products ranging from fall to summer between 2007 and 2008 over our study area were used to estimate ET. The period from October 2007

Estimation of ET from TOA radiances in the Poyang Lake Basin, China

J. Peng et al.

Title Page

Abstract

Introduction

Conclusions

References

Tables

Figures



Back

Close

Full Screen / Esc

Printer-friendly Version

Interactive Discussion



to July 2008 was selected also because all the required satellite data and in situ measurements are both available during this period. Seven of the selected days are from 2007 (DOY: 277, 279, 283, 290, 300, 327, 332) in 2007, and nine days are from 2008 (DOY: 003, 005, 061, 062, 084, 134, 138, 206, 209). During this study period, environmental conditions at the Nanchang station change considerably between dry and wet (see Fig. 6). Table 2 gives the description of selected days, satellite overpass time over the study region, and image quality for each day.

3.2.1 MODIS TOA radiances

TOA radiances for 36 bands were obtained from the MODIS Level 1B MOD021KM file, which is calibrated Earth View data at 1 km resolution from the MODIS Characterization and Support Team (MCST). The Level 1A MOD03 file consists of geolocation field data calculated for each 1 km MODIS Instantaneous Field of View (IFOV), including geodetic coordinates, ground elevation, and satellite zenith and azimuth angles for each 1 km pixel.

3.2.2 MODIS products

The MOD04.L2 aerosol product provides aerosol optical depth (AOD) on a 10×10 km pixel array (Remer et al., 2005). The MOD05.L2 product is the near-infrared total precipitable water data consisting of column water vapor amounts over clear land areas and above clouds over both land and ocean (King et al., 2003). The MOD07.L2 atmospheric profile product has a spatial resolution of 5×5 km at 20 vertical atmospheric pressure levels, of which air and dew-point temperature were extracted from the vertical pressure level of 1000 hPa (Bisht et al., 2005). The MOD09GA comprises of surface spectral reflectances from atmospheric correction, which are computed from MODIS Level 1B land bands 1–7 (Vermote and Kotchenova, 2008). The MOD11.L2 data contains LST and band-averaged emissivity in band-31 ($10.780\text{--}11.280 \mu\text{m}$) and band-32 ($11.770\text{--}12.270 \mu\text{m}$) calculated using the generalized split-window algorithm (Wan and

Estimation of ET from TOA radiances in the Poyang Lake Basin, China

J. Peng et al.

Title Page

Abstract

Introduction

Conclusions

References

Tables

Figures

⏪

⏩

◀

▶

Back

Close

Full Screen / Esc

Printer-friendly Version

Interactive Discussion



Estimation of ET from TOA radiances in the Poyang Lake Basin, China

J. Peng et al.

Title Page

Abstract

Introduction

Conclusions

References

Tables

Figures

⏪

⏩

◀

▶

Back

Close

Full Screen / Esc

Printer-friendly Version

Interactive Discussion



Dozier, 1996) at a spatial resolution of 1 km. The MOD35_L2 is a cloud mask product which assigns a clear-sky confidence level (clear, probably clear, uncertain, cloudy) to each IFOV (Frey et al., 2008). The MOD43B3 product provides clear-sky observations at 1 km spatial resolution for both Bidirectional Reflectance Distribution Function (BRDF) and albedo (Schaaf et al., 2002). Using the MODIS Reprojection Tool (MRT) and MODIS Reprojection Tool Swath (MRTSwath), all the MODIS data used in this work were transformed from HDF-EOS swath format to a Universal Transverse Mercator (UTM) projected GeoTIFF image and resampled for 1 km pixel size. It should be mentioned that all the above products are MODIS Level 2 data except land surface albedo, which is a global MODIS Level 3 data.

3.3 Ground measurements

A weighing lysimeter (1 m² in area and 1 m in height) at the Nanchang Ecological Experiment Station has been set up to measure ET at daily scale since August 2007 (Liu et al., 2010). The precision of the ET measurements is estimated to be 0.01 mm day⁻¹ (Liu et al., 2010). The land cover across the Nanchang station is grassland, which relies on natural rainfall to grow and survive. Ground-measured surface net radiation, air temperature and rainfall were provided by the meteorology station, which locates only 30 m away from the lysimeter. The EF for the lysimeter is calculated as the ratio of the daily ET and daily net radiation.

4 Results and discussion

4.1 Triangular scatter plots

In order to calculate ET from MODIS products and MODIS TOA radiances for the case days, the dry and wet edges of the triangular space need to be determined firstly. This procedure is very important, because the uncertainty in the determination of the dry and wet edges will transfer to the estimation of EF and further affect the accuracy of

estimated ET. Figure 4 gives examples of LST/NDVI_{Products} and TOA radiance/NDVI_{TOA} scatter plots for five different representative months over the seasons (October 2007, January 2008, March 2008, May 2008 and July 2008). As expected, January was characterized by low NDVI and low LST. From March to July, the NDVI and LST increased as the vegetation cover is increasing rapidly. In October both NDVI and LST decreased. The variations over different seasons show that both NDVI and LST rise first and then decline, reflecting the state of the soil moisture over the study area. When the soil moisture is low over the study area, the bare land surface is drying rapidly, and ET is small and absorption of the solar energy is mainly consumed for surface temperature. The absorption of the solar energy is mainly used for ET when the soil moisture is high.

It can also be seen in Fig. 4 that the shapes of the TOA radiance/NDVI_{TOA} spatial variations are similar to those of the LST/NDVI_{Products} spatial variations, which makes it possible to estimate comparable EF-values from both data sets. The corresponding dry and wet edges of the triangular space were determined as described in the previous section. As shown in Fig. 4, they define the maximum and minimum envelopes of temperatures in the scatter plots. Table 3 illustrates the intercepts, slopes and the R²-values for the dry edges of the LST/NDVI_{Products} and TOA radiance/NDVI_{TOA} scatter plots observed for the case days. One can see that the dry edge intercept in the LST/NDVI_{Products} triangle varies from 286.54 K to 316.62 K, and from 7.61 W m⁻² μm⁻¹ sr⁻¹ to 10.94 W m⁻² μm⁻¹ sr⁻¹ in the TOA radiance/NDVI_{TOA} triangle. The dry edge slope also exhibited temporal variation ranging from -12.84 K to -2.65 K for LST/NDVI_{Products} scatter plot, and from -2.83-0 W m⁻² μm⁻¹ sr⁻¹ to 54 W m⁻² μm⁻¹ sr⁻¹ for TOA radiance/NDVI_{TOA} scatter plot throughout the study period. These variations of the parameters (slope and intercept) imply that a variety of hydrological conditions were present in the study period, and could capture the variability and direction of gradient in virtual surface dryness and wetness pattern. Furthermore, the high R²-values, ranging from 0.921 to 0.988 for LST/NDVI_{Products} triangular space and 0.88 to 0.998 for TOA radiance/NDVI_{TOA} triangular space, indicate the reliability of

Estimation of ET from TOA radiances in the Poyang Lake Basin, China

J. Peng et al.

[Title Page](#)[Abstract](#)[Introduction](#)[Conclusions](#)[References](#)[Tables](#)[Figures](#)[⏪](#)[⏩](#)[◀](#)[▶](#)[Back](#)[Close](#)[Full Screen / Esc](#)[Printer-friendly Version](#)[Interactive Discussion](#)

the algorithm for determining the dry edge. Thus the uncertainty in the estimation of EF caused by the subjective determination of the dry edge will be significantly decreased.

4.2 Evaporative fraction, daily net radiation and ET estimated from TOA Radiances

5 In order to evaluate the accuracy of the estimated daily ET based on MODIS TOA radiances, ground measurements from Nanchang Ecological Experiment Station are used as an independent data source for validation. Since EF and daily R_n are the key parameters in the estimation of ET and are calculated independently, their estimates from TOA radiances are evaluated before ET validation. In spite of the different spatial
10 scales representative of satellite data and in situ data, R_n are believed to have very low spatial variability and validation of estimated R_n with ground-based measurements have been made in a variety of studies (Jin et al., 2011; Kim and Liang, 2010; Vinukollu et al., 2011). Daily R_n in this study is derived not by a complicated physics-based model but through a simple sinusoidal model following the work of Bisht et al. (2005). Figure 5
15 shows the scatterplot of the derived daily R_n versus the observed R_n at Nanchang station for the sixteen case days in our study. Overall, good agreement between the estimated and measured R_n is obtained with $\text{BIAS} = 13.11 \text{ W m}^{-2}$, $\text{RMSD} = 20.47 \text{ W m}^{-2}$ and $\text{RE} = 21.87 \%$ (Table 4). Furthermore, it can be observed that $R^2 = 0.931$. These statistics suggest the reliability of deriving R_n with MODIS TOA radiances alone and the applicability of the sinusoidal model for estimating daily R_n .
20

The next step is the evaluation of the EF estimate. It is worth nothing that the comparison of estimated EF with ground-measured data is essentially the true validation of the triangle method for ET estimate, as EF is a fairly conservative quantity over the course of a single day and is calculated entirely based on the LST/NDVI triangular feature space. Comparison between the MODIS TOA radiances-derived EF and in situ-measured EF is shown in Fig. 5. Statistics are also presented in Table 4. One
25 can see from Fig. 5 that the derived EF agrees well with measured EF with a BIAS of -0.025 , RMSD of 0.064 , RE of 15.09% , and R^2 of 0.559 . The differences between the

Estimation of ET from TOA radiances in the Poyang Lake Basin, China

J. Peng et al.

Title Page

Abstract

Introduction

Conclusions

References

Tables

Figures



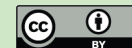
Back

Close

Full Screen / Esc

Printer-friendly Version

Interactive Discussion



derived and measured EF may be attributed to the assumption that the instantaneous EF is representative or equivalent to the daily EF. This assumption may become invalid if the daily overall cloud condition for a pixel is quite different from the snapshot of satellite overpass. Nevertheless, the results presented here are considered reasonable and satisfactory, given the simplicity of the method and the limited input requirements.

Similar evaluations of predictions of EF based on satellite products have been reported by other studies. Wang et al. (2006) estimated EF using MODIS products with a BIAS of -0.002 , RMSD of 0.106 and R^2 of 0.605 based on ground observations collected at the Southern Great Plains of the United States. Stisen et al. (2008) obtained BIAS, RMSD and R^2 of 0.04 , 0.13 and 0.63 , respectively from the use of MSG-SEVIRI data products to derive EF in the Senegal River Basin of West Africa. Another study validated over the North China Plain, using Fengyun-2C data products, reported BIAS, RMSD and R^2 of -0.017 , 0.14 and 0.55 , respectively (Shu et al., 2011). Some other methods may achieve higher accuracies, but they often need additional information from field observations, or the calibration against in situ measurements.

The final step is to examine the performance of the purely MODIS TOA radiances-based daily ET. The daily ET estimate is compared with ground-based daily ET. Results for the comparison are shown in Fig. 5 and statistics are provided in Table 4. The BIAS of 0.132 mm, RMSD of 0.292 mm, RE of 23.28% and R^2 of 0.818 are achieved compared to measured values. This suggests that the proposed MODIS TOA radiances-based method performs well for estimating daily ET during clear sky days and the assumptions associated with the method are reasonable for the derivation of daily ET. As compared to EF validations, the results of daily ET show a slight improvement in terms of R^2 . The reason for this is obviously caused by the inclusion of daily R_n in obtaining daily ET. Similar tendency was reported by Batra et al. (2006) and Jiang et al. (2009). The sources of errors in the estimation of daily ET originate from the uncertainties in both the estimated daily R_n and daily EF. However, it is difficult to further quantify the detailed error contribution from R_n and EF based on these limited analyses. In general, the RE of 23.28% in daily ET estimate is within

Estimation of ET from TOA radiances in the Poyang Lake Basin, China

J. Peng et al.

[Title Page](#)[Abstract](#)[Introduction](#)[Conclusions](#)[References](#)[Tables](#)[Figures](#)[⏪](#)[⏩](#)[◀](#)[▶](#)[Back](#)[Close](#)[Full Screen / Esc](#)[Printer-friendly Version](#)[Interactive Discussion](#)

the range of accuracies reported in the literature, between 15% and 30% (Kalma et al., 2008; Glenn et al., 2010; Verstraeten et al., 2008). The results presented above with BIAS = 0.132 mm and RMSD = 0.292 mm are comparable to other triangle method based ET estimation results elsewhere. Nishida et al. (2003) has validated MODIS-derived ET against AmeriFlux stations and achieved BIAS = 0.197 mm, RMSD = 1.587 mm, and $R^2 = 0.86$. In the Southern Great Plains of USA, different studies on ET estimation using NOAA-AVHRR and MODIS data obtained BIAS between -1.021 and 0.423 mm, RMSE between 1.285 and 3.004 mm, R^2 between 0.47 and 0.89 (Batra et al., 2006; Jiang and Islam, 1999, 2001, 2003). Jiang et al. (2009) reported BIAS = -0.151 mm, RMSD = 1.100 mm, and correlation coefficient of 0.595, respectively from the comparison of NOAA-AVHRR data to multi-year ground observations over the South Florida region.

Figure 6 shows that the seasonal variation in estimated ET generally follows the rainfall and air temperature patterns. The high ET-values appeared in wet periods with high air temperature, while the relatively low ET-values occurred during dry seasons. The validation data set with a temporal variation between dry and wet conditions further gives confidence that the MODIS TOA radiances-based estimates can provide reasonable results at other locations under different surface and meteorological conditions. As an example, the spatial distribution map of ET estimated from TOA radiances over the study area on 3 January 2008, is shown in Fig. 7. Comparing Fig. 7 and land cover map in Fig. 3, one can see that areas covered by forests and water-bodies in general have higher ET than other areas because of sufficient recharging of water resources from surface water or groundwater, while lowest ET appeared in cropland due to no crops grown in the winter season. These distribution characteristics are in agreement with the spatial pattern of NDVI (Fig. 7), which is a measure of vegetation cover and crop growth condition.

Estimation of ET from TOA radiances in the Poyang Lake Basin, China

J. Peng et al.

[Title Page](#)[Abstract](#)[Introduction](#)[Conclusions](#)[References](#)[Tables](#)[Figures](#)[⏪](#)[⏩](#)[◀](#)[▶](#)[Back](#)[Close](#)[Full Screen / Esc](#)[Printer-friendly Version](#)[Interactive Discussion](#)

4.3 Inter comparison of MODIS products and TOA Radiances based evaporative fraction, daily net radiation and ET

The first step of our assessment strategy focused on the validation of the MODIS TOA radiances-based estimates against ground observations. It is also very interesting to analyze how MODIS TOA radiances-based estimations compare to retrievals based on MODIS products. Thus, the intercomparisons between these two estimates are carried out over the validation site in the second step. It should be noted here that 11 case days rather than all 16 case days were selected for the intercomparisons, as the MODIS LST products have no values over the validation site for five days. Actually, these five days are quite clear over the study area as depicted in Sect. 3.2. The void values in the LST products may be caused by mis-classification of MODIS cloud mask product. It further addresses the advantage of using TOA radiances directly to estimate R_n , EF and ET. The validation exercise provided similar results for the TOA radiances-based and products-based estimates of the daily R_n , EF and ET when assessing from a visual inspection, as displayed in Fig. 5. Corresponding statistics were summarized in Table 4. For TOA radiances-based estimates, the RE for daily R_n , EF and ET were less than 30%. The magnitude of this error is within the range for remote sensing based parameterization schemes. As stated previously, the general uncertainty in the estimation of heat fluxes is in the 15–30% range. The accuracy of R_n and EF are also in the same order of magnitude (Bisht et al., 2005; Jiang et al., 2004; Stisen et al., 2008). Validation results for products-based estimates were worse, with RE for daily R_n and ET both slightly higher than 30%. Overall, the TOA radiances-based estimates performed better than the products-based estimates, because the BIAS and RMSD for daily R_n , EF and ET are lower than the former, and the R^2 -values higher than the former. The above results further suggest that the TOA radiances-based method is operationally feasible and can provide reasonable estimation accuracy for daily ET.

The discrepancies between the estimates and the measurements might be related to the differences in spatial scales between the satellite area integrated value and the

Estimation of ET from TOA radiances in the Poyang Lake Basin, China

J. Peng et al.

Title Page

Abstract

Introduction

Conclusions

References

Tables

Figures



Back

Close

Full Screen / Esc

Printer-friendly Version

Interactive Discussion



field point measurement, and the heterogeneity of the land surface within the satellite footprint (Kustas et al., 2004; McCabe and Wood, 2006; Vinukollu et al., 2011). As depicted in Sect. 1, the lysimeter (1 m²) is located in homogeneous land cover, while the satellite has a footprint of 1 km. This incompatibility in spatial scale will evidently introduce uncertainty in the comparative analysis.

An improved option to further investigate the importance of scale issues is using flux tower data for additional comparisons, as the tower fluxes represent a footprint of roughly 1–3 km (Cleugh et al., 2007; Running et al., 1999), which we plan for the future. The validation of the proposed method against flux tower footprint measurements over various climatic regions and analysis of the uncertainties associated with the comparison will be the focus of our subsequent research.

5 Conclusions

Recently, various attempts have been made to estimate regional ET by using remote sensing derived products. However the derivations of these variables are composed of a series of processing steps. Errors associated with each step may be accumulated and finally impact the accuracy of these variables. Further, these uncertainties will be transferred to the estimation of ET. In this study, we proposed a method to estimate daily ET directly using TOA radiances, which attempted to overcome the limitations related to using satellite derived variables. It eliminated the complex processing chain of deriving these variables and the uncertainties associated with them. The proposed method was derived through the following procedures. Firstly, the instantaneous EF and R_n were calculated from MODIS TOA radiances, respectively. Then, daily ET were estimated based on these EF and R_n estimates by using a sinusoidal temporal interpolation model.

The proposed method was tested in the Poyang Lake Basin for sixteen case days varying from October 2007 to July 2008. The field observations collected for the same period were used to validate the estimated EF, R_n and ET. The results are promising

Estimation of ET from TOA radiances in the Poyang Lake Basin, China

J. Peng et al.

Title Page

Abstract

Introduction

Conclusions

References

Tables

Figures



Back

Close

Full Screen / Esc

Printer-friendly Version

Interactive Discussion



and appear to provide comparable or better estimates than currently available satellite-based methods, given the common uncertainties in R_n , EF and ET. In addition, the intercomparisons between the proposed method-based estimates and MODIS products-based estimates were also carried out over the validation site. The results suggested that the proposed method performed slightly better than the MODIS products-based triangle method, which further confirmed the feasibility of the proposed method for ET estimation. Consequently, we believe that the use of TOA radiances appears to be adequate for the estimation of daily ET in conjunction with the triangle method over large areas under the assumption of uniform atmospheric forcings.

The uncertainty in our MODIS TOA radiances-based estimates may be attributed to the incompatibility in spatial scale between satellite footprint and ground-based point measurement. This requires us to further explore more feasible comparison metrics for the validation of the remote sensing estimates using field observations. In addition, to make the proposed method more general and operational for the estimation of daily ET, more validation work needs to be carried out with more integration of satellite data and ground-based measurements over various climatic regions and under different surface conditions in the future.

Acknowledgements. This work was partly supported by the Cluster of Excellence CliSAP (EXC177), University of Hamburg, funded through the German Science Foundation (DFG) and by the CAS-MPG Doctoral Promotion Programme (DPP). The MODIS Level 1 and Level 2 datasets are downloaded from the Level 1 and Atmosphere Archive and Distribution System (LAADS, <http://ladsweb.nascom.nasa.gov/>). The MODIS Level 3 datasets are obtained in The Next Generation Earth Science Discovery Tool (Reverb ECHO, <https://reverb.echo.nasa.gov>). The authors would like to thank Zhang Qi for providing the lysimeter data and the China Meteorological Administration for supporting the climatic data.

The service charges for this open access publication have been covered by the Max Planck Society.

Estimation of ET from TOA radiances in the Poyang Lake Basin, China

J. Peng et al.

Title Page

Abstract Introduction

Conclusions References

Tables Figures

⏪ ⏩

◀ ▶

Back Close

Full Screen / Esc

Printer-friendly Version

Interactive Discussion



References

- Batra, N., Islam, S., Venturini, V., Bisht, G., and Jiang, L.: Estimation and comparison of evapotranspiration from MODIS and AVHRR sensors for clear sky days over the Southern Great Plains, *Remote Sens. Environ.*, 103, 1–15, 2006.
- 5 Bhattacharya, B. K., Mallick, K., Patel, N. K., and Parihar, J. S.: Regional clear sky evapotranspiration over agricultural land using remote sensing data from Indian geostationary meteorological satellite, *J. Hydrol.*, 387, 65–80, 2010.
- Bisht, G. and Bras, R. L.: Estimation of net radiation from the MODIS data under all sky conditions: Southern Great Plains case study, *Remote Sens. Environ.*, 114, 1522–1534, 2010.
- 10 Bisht, G., Venturini, V., Islam, S., and Jiang, L.: Estimation of the net radiation using MODIS (Moderate Resolution Imaging Spectroradiometer) data for clear sky days, *Remote Sens. Environ.*, 97, 52–67, 2005.
- Caparrini, F., Castelli, F., and Entekhabi, D.: Estimation of surface turbulent fluxes through assimilation of radiometric surface temperature sequences, *J. Hydrometeorol.*, 5, 145–159, 2004.
- 15 Carlson, T. N.: An overview of the “triangle method” for estimating surface evapotranspiration and soil moisture from satellite imagery, *Sensors*, 7, 1612–1629, 2007.
- Carlson, T. N., Gillies, R. R., and Schmugge, T. J.: An interpretation of methodologies for indirect measurement of soil water content, *Agr. Forest Meteorol.*, 77, 191–205, 1995.
- 20 Cleugh, H. A., Leuning, R., Mu, Q., and Running, S. W.: Regional evaporation estimates from flux tower and MODIS satellite data, *Remote Sens. Environ.*, 106, 285–304, 2007.
- Crago, R. D.: Conservation and variability of the evaporative fraction during the daytime, *J. Hydrol.*, 180, 173–194, 1996.
- Davies, J. A. and Allen, C. D.: Equilibrium, potential and actual evaporation from cropped surfaces in Southern Ontario, *J. Appl. Meteorol.*, 12, 649–657, 1973.
- 25 Eichinger, W. E., Parlange, M. B., and Stricker, H.: On the concept of equilibrium evaporation and the value of the Priestley–Taylor coefficient, *Water Resour. Res.*, 32, 161–164, 1996.
- Farah, H., Bastiaanssen, W., and Feddes, R.: Evaluation of the temporal variability of the evaporative fraction in a tropical watershed, *Int. J. Appl. Earth Obs.*, 5, 129–140, 2004.
- 30 Farahani, H. J., Howell, T. A., Shuttleworth, W. J., and Bausch, W. C.: Evapotranspiration: progress in measurement and modeling in agriculture, *T. Asabe*, 50, 1627–1638, 2007.

Estimation of ET from TOA radiances in the Poyang Lake Basin, China

J. Peng et al.

Title Page

Abstract

Introduction

Conclusions

References

Tables

Figures



Back

Close

Full Screen / Esc

Printer-friendly Version

Interactive Discussion



Estimation of ET from TOA radiances in the Poyang Lake Basin, China

J. Peng et al.

Title Page

Abstract

Introduction

Conclusions

References

Tables

Figures

⏪

⏩

◀

▶

Back

Close

Full Screen / Esc

Printer-friendly Version

Interactive Discussion



Frey, R. A., Ackerman, S. A., Liu, Y., Strabala, K. I., Zhang, H., Key, J. R., and Wang, X.: Cloud detection with MODIS. Part I: Improvements in the MODIS cloud mask for collection 5, *J. Atmos. Ocean. Tech.*, 25, 1057–1072, 2008.

Galleguillos, M., Jacob, F., Prévot, L., French, A., and Lagacherie, P.: Comparison of two temperature differencing methods to estimate daily evapotranspiration over a Mediterranean vineyard watershed from ASTER data, *Remote Sens. Environ.*, 115, 1326–1340, 2011.

Garatuza-Payan, J., Pinker, R. T., Shuttleworth, W. J., and Watts, C. J.: Solar radiation and evapotranspiration in Northern Mexico estimated from remotely sensed measurements of cloudiness, *Hydrolog. Sci. J.*, 46, 465–478, 2001.

Glenn, E., Nagler, P., and Huete, A.: Vegetation Index methods for estimating evapotranspiration by remote sensing, *Surv. Geophys.*, 31, 531–555, 2010.

Hall, F. G., Huemmrich, K. F., Goetz, S. J., Sellers, P. J., and Nickeson, J. E.: Satellite remote sensing of surface energy balance: success, failures, and unresolved issues in FIFE, *J. Geophys. Res.*, 97, 19061–19089, 1992.

Han, Y., Wang, Y., and Zhao, Y.: Estimating soil moisture conditions of the greater Changbai Mountains by land surface temperature and NDVI, *IEEE T. Geosci. Remote*, 48, 2509–2515, 2010.

Hoedjes, J., Chehbouni, A., Jacob, F., Ezzahar, J., and Boulet, G.: Deriving daily evapotranspiration from remotely sensed instantaneous evaporative fraction over olive orchard in semi-arid Morocco, *J. Hydrol.*, 354, 53–64, 2008.

Jia, L., Xi, G., Liu, S., Huang, C., Yan, Y., and Liu, G.: Regional estimation of daily to annual regional evapotranspiration with MODIS data in the Yellow River Delta wetland, *Hydrol. Earth Syst. Sci.*, 13, 1775–1787, doi:10.5194/hess-13-1775-2009, 2009.

Jiang, L. and Islam, S.: A methodology for estimation of surface evapotranspiration over large areas using remote sensing observations, *Geophys. Res. Lett.*, 26, 2773–2776, 1999.

Jiang, L. and Islam, S.: Estimation of surface evaporation map over Southern Great Plains using remote sensing data, *Water Resour. Res.*, 37, 329–340, 2001.

Jiang, L. and Islam, S.: An intercomparison of regional latent heat flux estimation using remote sensing data, *Int. J. Remote Sens.*, 24, 2221–2236, 2003.

Jiang, L., Islam, S., and Carlson, T. N.: Uncertainties in latent heat flux measurement and estimation: implications for using a simplified approach with remote sensing data, *Can. J. Remote Sens.*, 30, 769–787, 2004.

Estimation of ET from TOA radiances in the Poyang Lake Basin, China

J. Peng et al.

Title Page

Abstract

Introduction

Conclusions

References

Tables

Figures

⏪

⏩

◀

▶

Back

Close

Full Screen / Esc

Printer-friendly Version

Interactive Discussion



- Jiang, L., Islam, S., Guo, W., Singh Jutla, A., Senarath, S. U. S., Ramsay, B. H., and Eltahir, E.: A satellite-based daily actual evapotranspiration estimation algorithm over South Florida, *Global Planet. Change*, 67, 62–77, 2009.
- Jin, Y., Randerson, J. T., and Goulden, M. L.: Continental-scale net radiation and evapotranspiration estimated using MODIS satellite observations, *Remote Sens. Environ.*, 115, 2302–2319, 2011.
- Jung, M., Reichstein, M., Ciais, P., Seneviratne, S. I., Sheffield, J., Goulden, M. L., Bonan, G., Cescatti, A., Chen, J., and de Jeu, R.: Recent decline in the global land evapotranspiration trend due to limited moisture supply, *Nature*, 467, 951–954, 2010.
- Kalma, J., McVicar, T., and McCabe, M.: Estimating land surface evaporation: a review of methods using remotely sensed surface temperature data, *Surv. Geophys.*, 29, 421–469, 2008.
- Kim, H.-Y. and Liang, S.: Development of a hybrid method for estimating land surface shortwave net radiation from MODIS data, *Remote Sens. Environ.*, 114, 2393–2402, 2010.
- Kim, J. and Hogue, T. S.: Evaluation of a MODIS-based potential evapotranspiration product at the point scale, *J. Hydrometeorol.*, 9, 444–460, 2008.
- King, M. D., Menzel, W. P., Kaufman, Y. J., Tanré, D., Gao, B. C., Platnick, S., Ackerman, S. A., Remer, L. A., Pincus, R., and Hubanks, P. A.: Cloud and aerosol properties, precipitable water, and profiles of temperature and water vapor from MODIS, *IEEE T. Geosci. Remote*, 41, 442–458, 2003.
- Komatsu, T. S.: Toward a robust phenomenological expression of evaporation efficiency for unsaturated soil surfaces, *J. Appl. Meteorol.*, 42, 1330–1334, 2003.
- Kustas, W. P., Li, F., Jackson, T. J., Prueger, J. H., MacPherson, J. I., and Wolde, M.: Effects of remote sensing pixel resolution on modeled energy flux variability of croplands in Iowa, *Remote Sens. Environ.*, 92, 535–547, 2004.
- Lambin, E. F. and Ehrlich, D.: The surface temperature-vegetation index space for land cover and land-cover change analysis, *Int. J. Remote Sens.*, 17, 463–487, 1996.
- Liu, B., Jiang, T., Zhai, J., and Zhang, W.: New design and observation of lysimeter on actual evapotranspiration, *Meteorol. Month.*, 36, 112–116, 2010 (in Chinese).
- Margulis, S. A., Kim, J., and Hogue, T.: A comparison of the triangle retrieval and variational data assimilation methods for surface turbulent flux estimation, *J. Hydrometeorol.*, 6, 1063–1072, 2005.

Estimation of ET from TOA radiances in the Poyang Lake Basin, China

J. Peng et al.

Title Page

Abstract

Introduction

Conclusions

References

Tables

Figures

⏪

⏩

◀

▶

Back

Close

Full Screen / Esc

Printer-friendly Version

Interactive Discussion



Shu, Y., Stisen, S., Jensen, K. H., and Sandholt, I.: Estimation of regional evapotranspiration over the North China Plain using geostationary satellite data, *Int. J. Appl. Earth Obs.*, 13, 192–206, 2011.

Stisen, S., Sandholt, I., Nørgaard, A., Fensholt, R., and Jensen, K. H.: Combining the triangle method with thermal inertia to estimate regional evapotranspiration – applied to MSG-SEVIRI data in the Senegal River Basin, *Remote Sens. Environ.*, 112, 1242–1255, 2008.

Sun, D. and Kafatos, M.: Note on the NDVI-LST relationship and the use of temperature-related drought indices over North America, *Geophys. Res. Lett.*, 34, L24406, doi:10.1029/2007GL031485, 2007.

Tang, B., Li, Z.-L., and Zhang, R.: A direct method for estimating net surface shortwave radiation from MODIS data, *Remote Sens. Environ.*, 103, 115–126, 2006.

Tang, R., Li, Z.-L., and Tang, B.: An application of the Ts-VI triangle method with enhanced edges determination for evapotranspiration estimation from MODIS data in arid and semi-arid regions: implementation and validation, *Remote Sens. Environ.*, 114, 540–551, 2010.

Tang, R., Li, Z.-L., and Chen, K.-S.: Validating MODIS-derived land surface evapotranspiration with in situ measurements at two AmeriFlux sites in a semiarid region, *J. Geophys. Res.*, 116, D04106, doi:10.1029/2010JD014543, 2011.

Toller, G. N., Isaacman, A., Kuyper, J., and Salomonson, V.: MODIS Level 1B Product User's Guide, NASA/Goddard Space Flight Center, Greenbelt, MD, 2006.

Vermote, E. F. and Kotchenova, S.: Atmospheric correction for the monitoring of land surfaces, *J. Geophys. Res.*, 113, D23S90, doi:10.1029/2007JD009662, 2008.

Verstraeten, W., Veroustraete, F., and Feyen, J.: Assessment of evapotranspiration and soil moisture content across different scales of observation, *Sensors*, 8, 70–117, 2008.

Vinukollu, R. K., Wood, E. F., Ferguson, C. R., and Fisher, J. B.: Global estimates of evapotranspiration for climate studies using multi-sensor remote sensing data: evaluation of three process-based approaches, *Remote Sens. Environ.*, 115, 801–823, 2011.

Wan, Z. M. and Dozier, J.: A generalized split-window algorithm for retrieving land-surface temperature from space, *IEEE T. Geosci. Remote*, 34, 892–905, 1996.

Wan, Z., Wang, P., and Li, X.: Using MODIS land surface temperature and normalized difference Vegetation Index products for monitoring drought in the Southern Great Plains, USA, *Int. J. Remote Sens.*, 25, 61–72, 2004.

Wang, K., Li, Z., and Cribb, M.: Estimation of evaporative fraction from a combination of day and night land surface temperatures and NDVI: a new method to determine the Priestley-Taylor parameter, *Remote Sens. Environ.*, 102, 293–305, 2006.

5 Wang, W. and Liang, S.: Estimation of high-spatial resolution clear-sky longwave downward and net radiation over land surfaces from MODIS data, *Remote Sens. Environ.*, 113, 745–754, 2009.

Wang, W., Liang, S., and Augustine, J. A.: Estimating high spatial resolution clear-sky land surface upwelling longwave radiation from MODIS data, *IEEE T. Geosci. Remote*, 47, 1559–1570, 2009.

HESSD

9, 10963–11003, 2012

Estimation of ET from TOA radiances in the Poyang Lake Basin, China

J. Peng et al.

Title Page

Abstract

Introduction

Conclusions

References

Tables

Figures

⏪

⏩

◀

▶

Back

Close

Full Screen / Esc

Printer-friendly Version

Interactive Discussion



Estimation of ET from TOA radiances in the Poyang Lake Basin, China

J. Peng et al.

Table 1. MODIS data products used in this study and their characteristics as obtained from LAADS.

MODIS data	Category	Version	Spatial resolution	Parameters used
MOD021KM	Level 1B	5	1 km	TOA radiance and reflectances
MOD03	Level 1A	5	1 km	Geodetic coordinates, ground elevation, Solar zenith and azimuth angles, satellite zenith and azimuth angles
MOD04	Level 2	5	10 km	Aerosol optical depth
MOD05	Level 2	5	1 km	Column water vapor amounts
MOD07	Level 2	5	5 km	Air temperature and dew point temperature
MOD09GA	Level 2	5	1 km	Surface reflectance after atmospheric correction
MOD11	Level 2	5	1 km	Surface emissivity and temperature
MOD35	Level 2	5	1 km	Cloud mask
MOD43	Level 3	5	1 km	Black- and white sky albedos

Title Page

Abstract

Introduction

Conclusions

References

Tables

Figures

⏪

⏩

◀

▶

Back

Close

Full Screen / Esc

Printer-friendly Version

Interactive Discussion

Estimation of ET from TOA radiances in the Poyang Lake Basin, China

J. Peng et al.

Title Page

Abstract

Introduction

Conclusions

References

Tables

Figures

⏪

⏩

◀

▶

Back

Close

Full Screen / Esc

Printer-friendly Version

Interactive Discussion

Table 2. Day of year, date, overpass time and image quality for the study days.

Day of the year (DOY)	Date	Overpass time (Local time)	Image quality (Cloud free pixels %)
2007277	4 Oct 2007	11:05	96.74
2007279	6 Oct 2007	10:55	96.00
2007283	10 Oct 2007	10:30	93.62
2007290	17 Oct 2007	10:35	92.73
2007300	27 Oct 2007	11:10	99.19
2007327	23 Nov 2007	10:55	97.64
2007332	28 Nov 2007	11:10	98.99
2008003	3 Jan 2008	10:45	96.09
2008005	5 Jan 2008	10:35	94.80
2008061	1 Mar 2008	11:25	98.24
2008062	2 Mar 2008	10:30	95.23
2008084	24 Mar 2008	11:30	95.90
2008134	13 May 2008	11:20	92.37
2008138	17 May 2008	10:55	91.91
2008206	24 Jul 2008	10:30	88.50
2008209	27 Jul 2008	11:00	97.11

Table 3. Statistics of the dry edge values used for estimation of EF (*a* and *b* represent the intercept and slope of the dry edge, respectively).

DOY	Scatter Plot	<i>a</i>	<i>b</i>	R^2
2007277	NDVI-LST	313.04	-5.92	0.985
	NDVI-TOA Radiance	10.60	-1.54	0.936
2007279	NDVI-LST	311.26	-7.39	0.931
	NDVI-TOA Radiance	10.73	-2.11	0.88
2007283	NDVI-LST	304.39	-9.01	0.921
	NDVI-TOA Radiance	9.22	-1.42	0.968
2007290	NDVI-LST	304.02	-8.61	0.934
	NDVI-TOA Radiance	9.85	-2.58	0.965
2007300	NDVI-LST	309.06	-11.53	0.958
	NDVI-TOA Radiance	10.48	-2.80	0.986
2007327	NDVI-LST	297.91	-4.92	0.957
	NDVI-TOA Radiance	9.07	-1.16	0.907
2007332	NDVI-LST	295.05	-7.48	0.974
	NDVI-TOA Radiance	8.72	-1.71	0.975
2008003	NDVI-LST	286.54	-2.65	0.933
	NDVI-TOA Radiance	7.61	-0.54	0.936
2008005	NDVI-TOA Radiance	7.98	-0.85	0.978
2008061	NDVI-TOA Radiance	9.27	-0.99	0.914
2008062	NDVI-TOA Radiance	9.15	-1.86	0.998
2008084	NDVI-TOA Radiance	9.15	-0.68	0.974
2008134	NDVI-LST	312.88	-12.84	0.988
	NDVI-TOA Radiance	10.94	-2.83	0.931
2008138	NDVI-LST	314.46	-6.03	0.938
	NDVI-TOA Radiance	10.70	-1.03	0.896
2008206	NDVI-TOA Radiance	9.47	-0.56	0.910
2008209	NDVI-LST	316.62	-7.98	0.956
	NDVI-TOA Radiance	10.66	-1.46	0.945

Estimation of ET from TOA radiances in the Poyang Lake Basin, China

J. Peng et al.

Title Page

Abstract Introduction

Conclusions References

Tables Figures

⏪ ⏩

◀ ▶

Back Close

Full Screen / Esc

Printer-friendly Version

Interactive Discussion



Estimation of ET from TOA radiances in the Poyang Lake Basin, China

J. Peng et al.

Table 4. Statistical results for the estimated R_n , EF and ET using MODIS TOA radiances and MODIS products in comparison with observations at Nanchang station.

Parameter	BIAS	MAD	RMSD	Unit	RE (%)	R^2	No. of days
R_n (TOA)	13.11	17.55	20.47	Wm^{-2}	21.87	0.931	16
R_n (Products)	16.88	19.87	22.69	Wm^{-2}	25.92	0.919	11
EF (TOA)	-0.025	0.049	0.064	–	15.09	0.559	16
EF (Products)	-0.036	0.055	0.069	–	16.48	0.553	11
ET (TOA)	0.132	0.250	0.292	mm	23.28	0.818	16
ET (Products)	0.283	0.335	0.433	mm	36.64	0.716	11

Title Page

Abstract

Introduction

Conclusions

References

Tables

Figures

⏪

⏩

◀

▶

Back

Close

Full Screen / Esc

Printer-friendly Version

Interactive Discussion

Estimation of ET from TOA radiances in the Poyang Lake Basin, China

J. Peng et al.

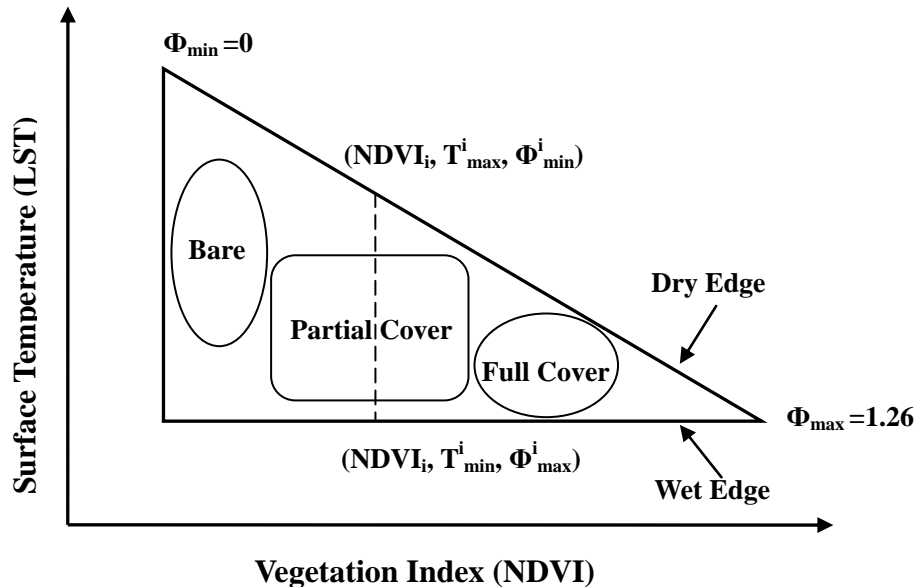


Fig. 1. Conceptual diagram of the LST/NDVI scatter plot to estimate evaporative fraction using wet and dry surfaces assumption. The dry (upper solid line) and wet (lower solid line) edges represent the maximum ET and minimum ET, respectively (after Tang et al., 2010).

Title Page

Abstract

Introduction

Conclusions

References

Tables

Figures

◀

▶

◀

▶

Back

Close

Full Screen / Esc

Printer-friendly Version

Interactive Discussion

Estimation of ET from TOA radiances in the Poyang Lake Basin, China

J. Peng et al.

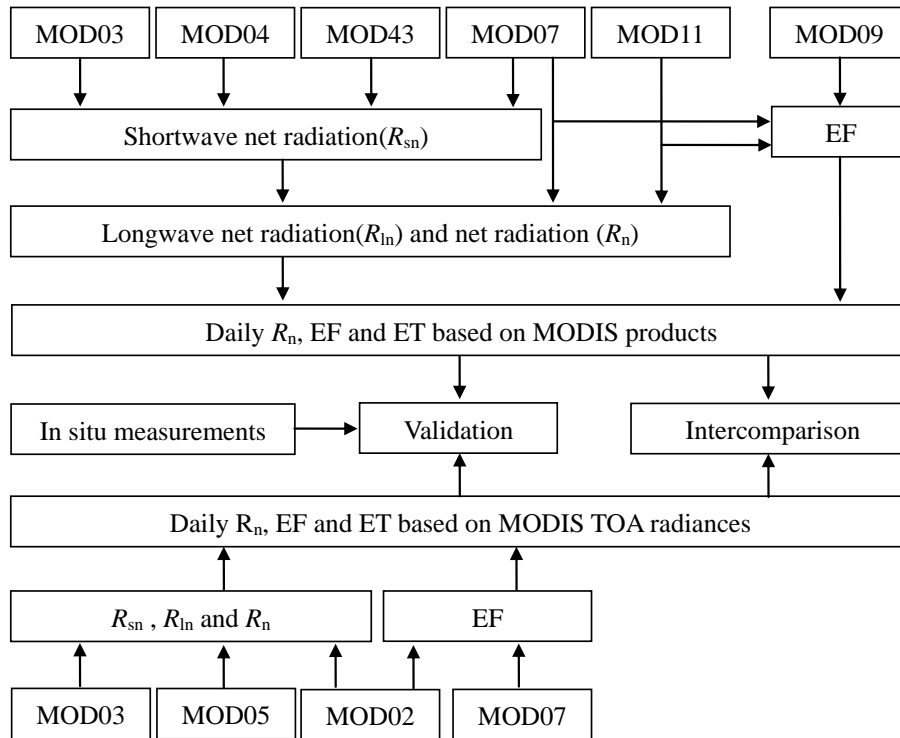


Fig. 2. Flowchart for the estimation of daily ET, respectively from various MODIS products and the MODIS TOA radiances using the triangle method, and the validation of the satellite retrievals with in situ measurements.

Title Page

Abstract Introduction

Conclusions References

Tables Figures

⏪ ⏩

◀ ▶

Back Close

Full Screen / Esc

Printer-friendly Version

Interactive Discussion

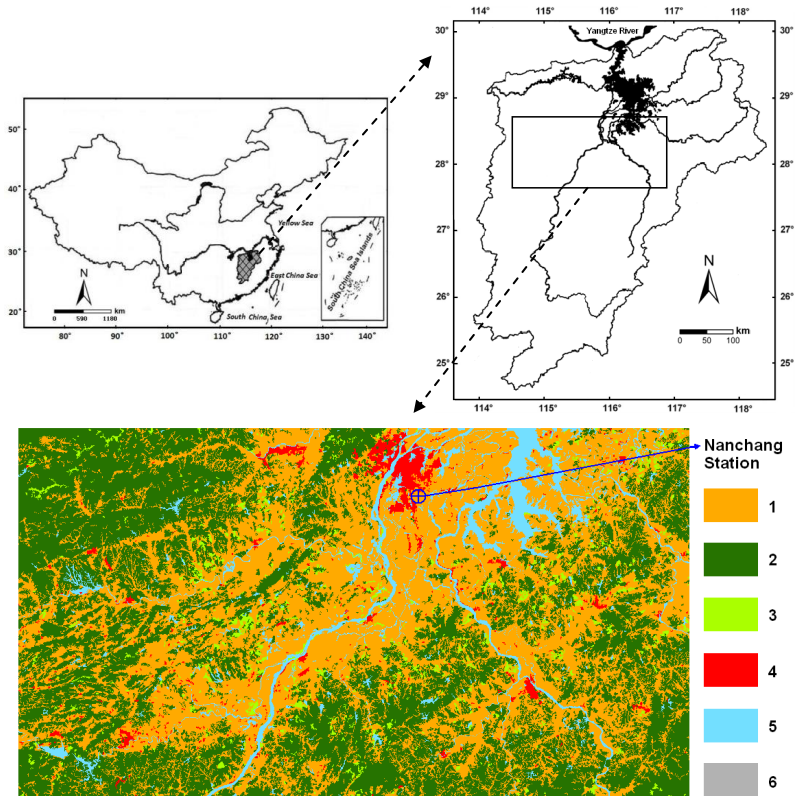


Fig. 3. Geographical location of the study area (up) and land cover map of the study area (down). Poyang Lake Basin is located in southeast of China and a relatively flat region within the basin is selected as our study area. The yearly land cover classification map in 2005 was provided by the “Data sharing Network of Earth System Science, Chinese Academy of Sciences”. 1 = cropland, 2 = forest, 3 = grassland, 4 = urban areas, 5 = water, 6 = bare soil. The location of the Nanchang Ecological Experimental station is also shown in the land cover map.

Estimation of ET from TOA radiances in the Poyang Lake Basin, China

J. Peng et al.

Title Page

Abstract Introduction

Conclusions References

Tables Figures

◀ ▶

◀ ▶

Back Close

Full Screen / Esc

Printer-friendly Version

Interactive Discussion

Estimation of ET from TOA radiances in the Poyang Lake Basin, China

J. Peng et al.

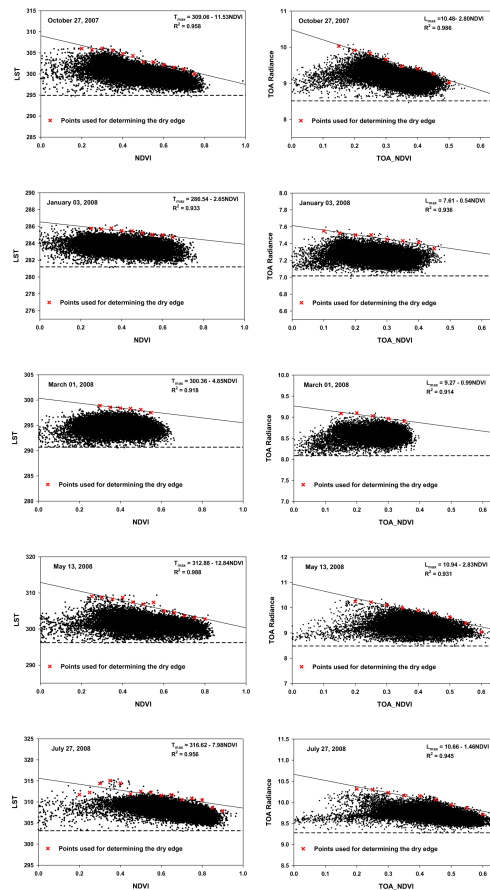


Fig. 4. Illustrative examples of LST/NDVI scatter plots constructed, respectively from MODIS products and TOA radiances for five representative days over the study area during the study period.

[Title Page](#)
[Abstract](#) [Introduction](#)
[Conclusions](#) [References](#)
[Tables](#) [Figures](#)
⏪ ⏩
⏴ ⏵
[Back](#) [Close](#)
[Full Screen / Esc](#)
[Printer-friendly Version](#)
[Interactive Discussion](#)



Estimation of ET from TOA radiances in the Poyang Lake Basin, China

J. Peng et al.

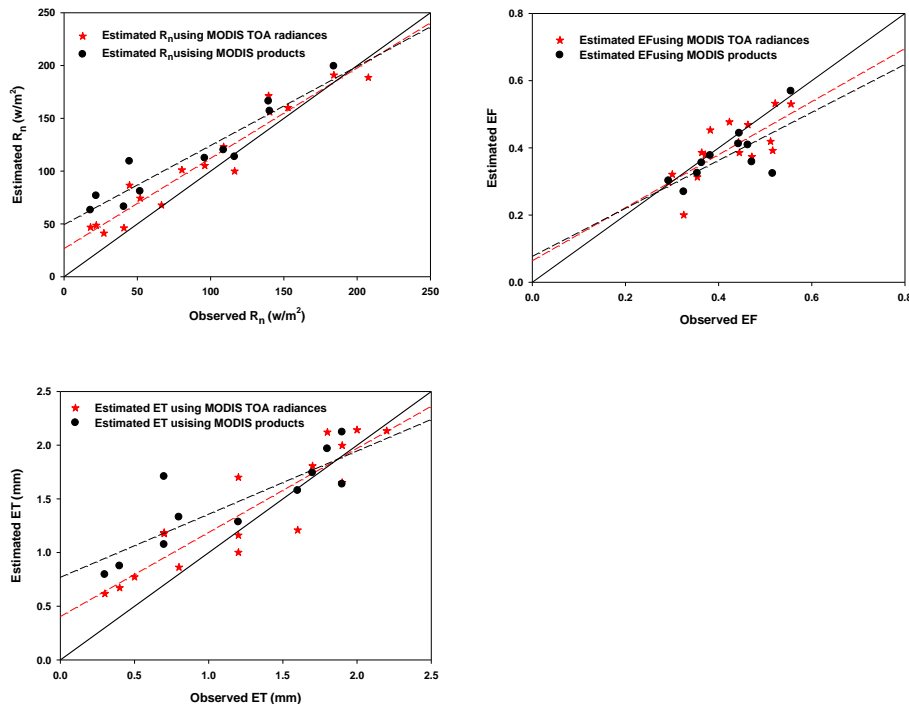


Fig. 5. Comparison of daily net radiation, evaporative fraction and ET estimated, respectively from MODIS products and TOA Radiances with field observations (data from Nanchang experimental station).

Title Page

Abstract

Introduction

Conclusions

References

Tables

Figures

◀

▶

◀

▶

Back

Close

Full Screen / Esc

Printer-friendly Version

Interactive Discussion



Estimation of ET from TOA radiances in the Poyang Lake Basin, China

J. Peng et al.

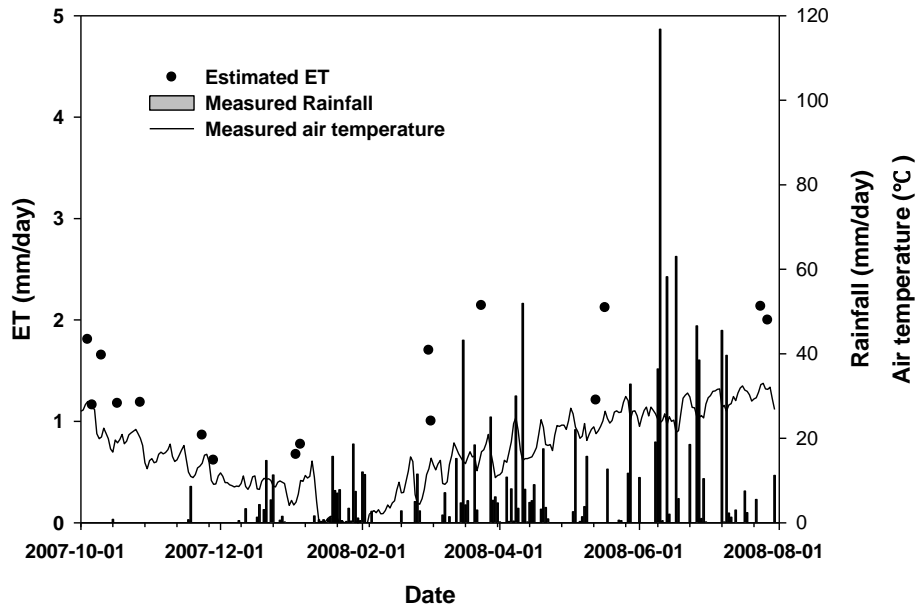


Fig. 6. Seasonal variation of estimated ET for Nanchang experimental station during the study period.

Title Page

Abstract

Introduction

Conclusions

References

Tables

Figures

⏪

⏩

◀

▶

Back

Close

Full Screen / Esc

Printer-friendly Version

Interactive Discussion

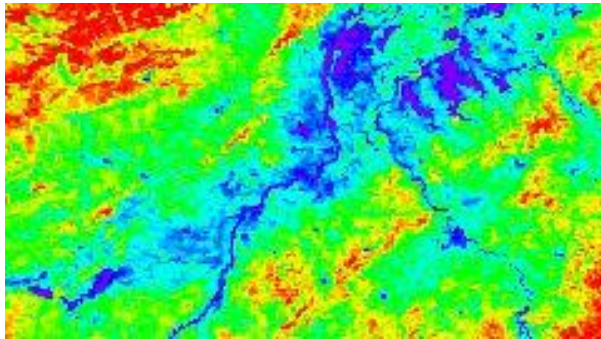
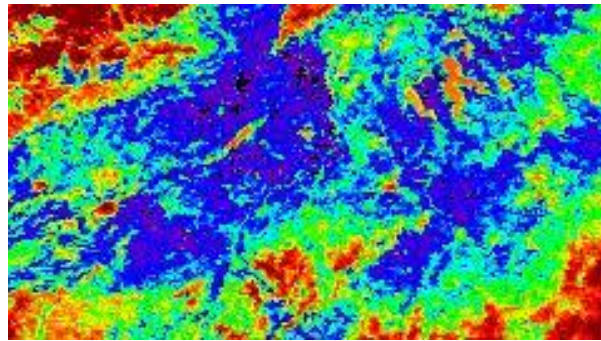


Fig. 7. Spatial distribution of daily ET (up) and NDVI (down) maps at 1 km resolution for 3 January 2008 over the study area.

Estimation of ET from TOA radiances in the Poyang Lake Basin, China

J. Peng et al.

Title Page

Abstract

Introduction

Conclusions

References

Tables

Figures

◀

▶

◀

▶

Back

Close

Full Screen / Esc

Printer-friendly Version

Interactive Discussion

