

Interactive comment on “Diffuse hydrological mass transport through catchments: scenario analysis of physical and biogeochemical uncertainty effects” by K. Persson et al.

K. Persson et al.

klas.persson@natgeo.su.se

Received and published: 20 June 2011

I just noticed an error in Figure 2. The travel time map for scenario 1 did not correspond to that scenario (but to scenario 2). I have now updated the figure with the correct map. This correction does not imply any further changes in the main text of the article.

Klas Persson

Interactive comment on Hydrol. Earth Syst. Sci. Discuss., 8, 4721, 2011.

Full Screen / Esc

Printer-friendly Version

Interactive Discussion

Discussion Paper



Interactive
Comment

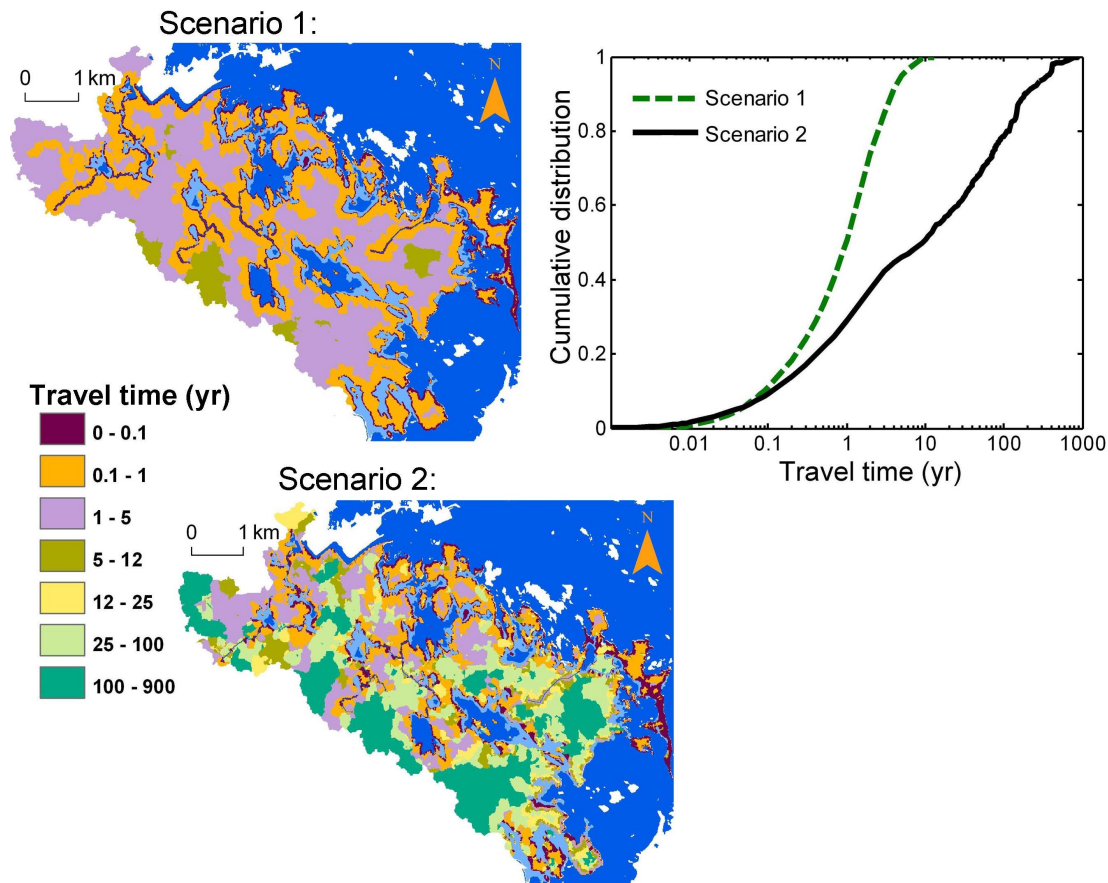


Fig. 1.

Full Screen / Esc

Printer-friendly Version

Interactive Discussion

Discussion Paper

