

# New Figures

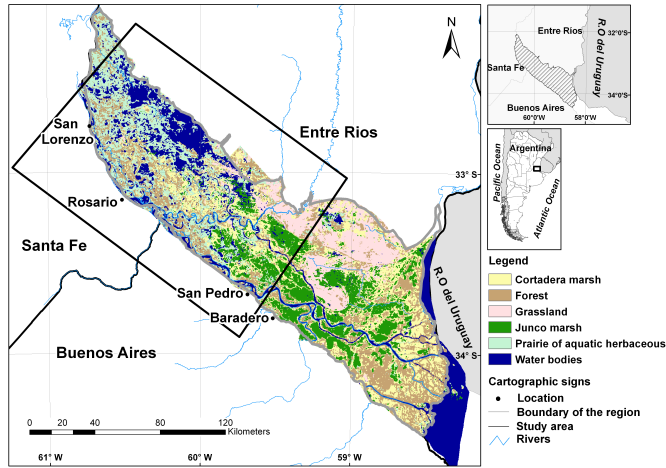


Figure 1. Location of water level stations: San Lorenzo, Rosario, San Pedro, Baradero

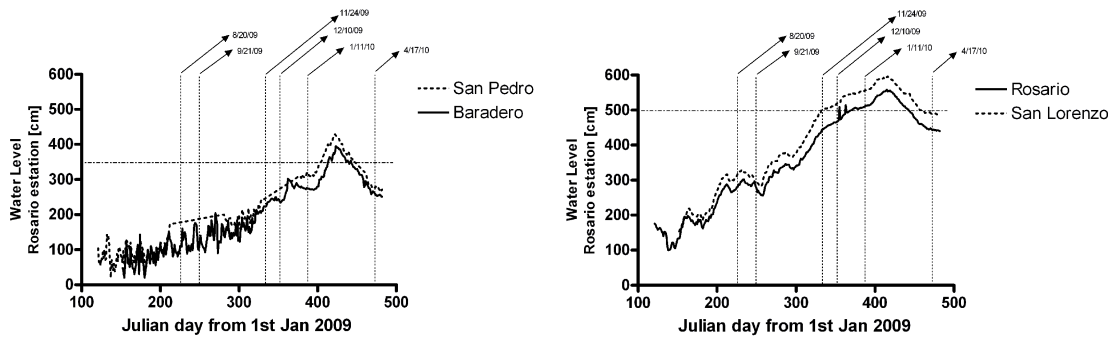


Figure 2. Water level measured at several locations along the watersheds. Horizontal bars indicate alert levels.

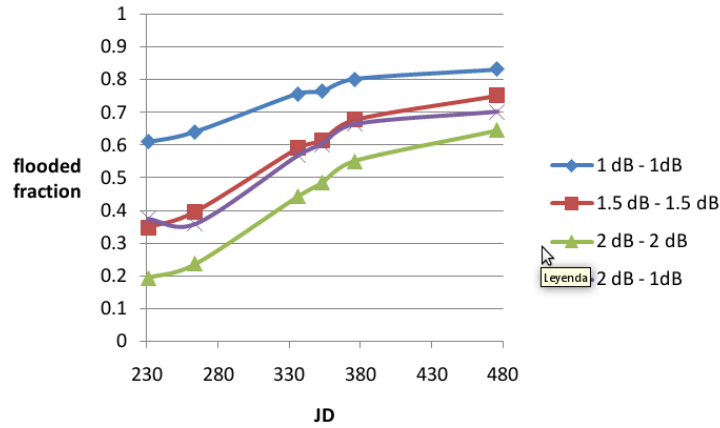


Figure 3. Flooded fraction as a function of time, derived from SAR using different thresholds: a) 1 dB increase, 1dB decrease; b) 1.5 increase, 1.5 decrease; c) 2 dB increase, 2 dB decrease; 2 dB increase, 1 dB decrease.

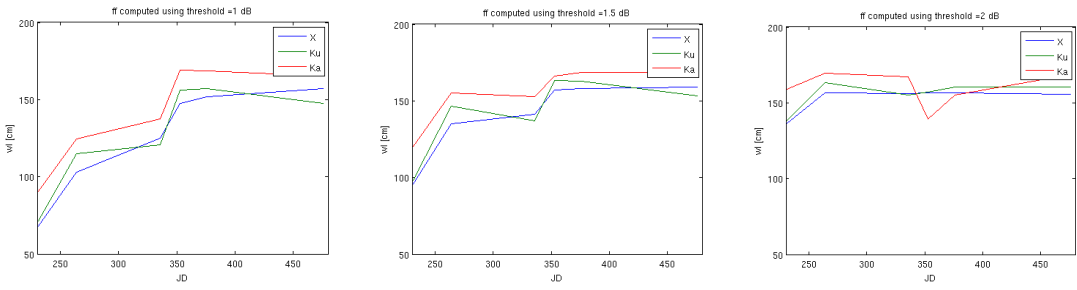


Figure 4. Estimated mean water level as a function of time, for three different thresholds. Left: 1 dB increase, 1 dB decrease. Center: 1.5 dB increase, 1.5 dB decrease. Right: 2 dB increase, 2 dB decrease.