

## ***Interactive comment on “Large-scale groundwater modeling using global datasets: a test case for the Rhine-Meuse basin” by E. H. Sutanudjaja et al.***

**E. H. Sutanudjaja et al.**

[e.sutanudjaja@geo.uu.nl](mailto:e.sutanudjaja@geo.uu.nl)

Received and published: 28 April 2011

The response was uploaded in the form of a supplement. On the next pages, we attached the figures in better quality.

Please also note the supplement to this comment:

<http://www.hydrol-earth-syst-sci-discuss.net/8/C1230/2011/hessd-8-C1230-2011-supplement.pdf>

Interactive comment on Hydrol. Earth Syst. Sci. Discuss., 8, 2555, 2011.

Full Screen / Esc

Printer-friendly Version

Interactive Discussion

Discussion Paper



Interactive  
Comment

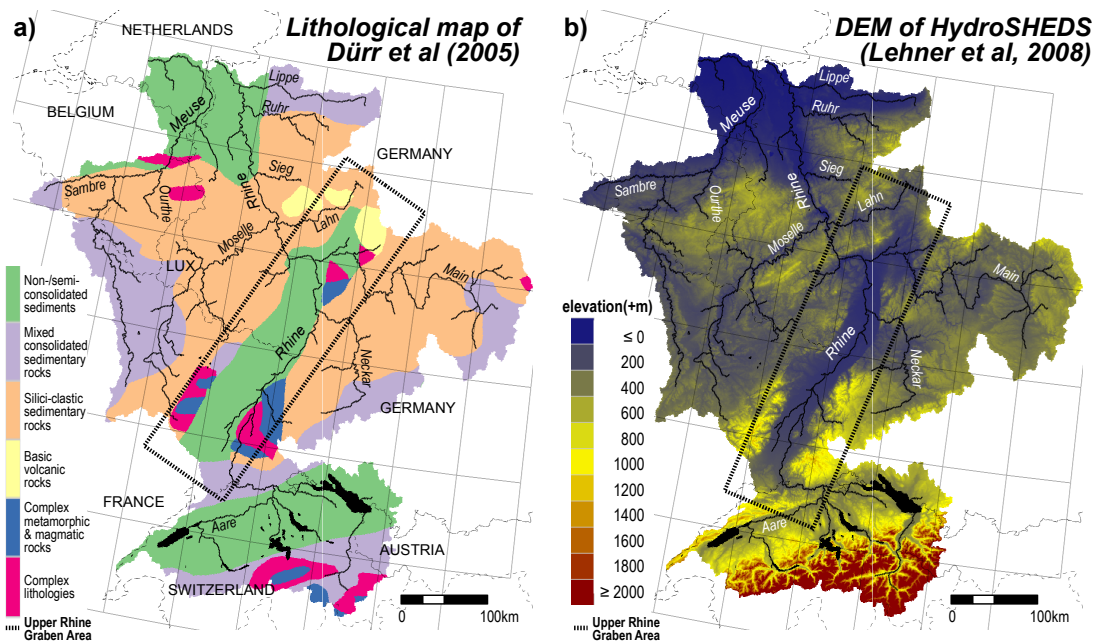


Fig. 1.

Full Screen / Esc

Printer-friendly Version

Interactive Discussion

Discussion Paper



Interactive  
Comment

Full Screen / Esc

Printer-friendly Version

Interactive Discussion

Discussion Paper

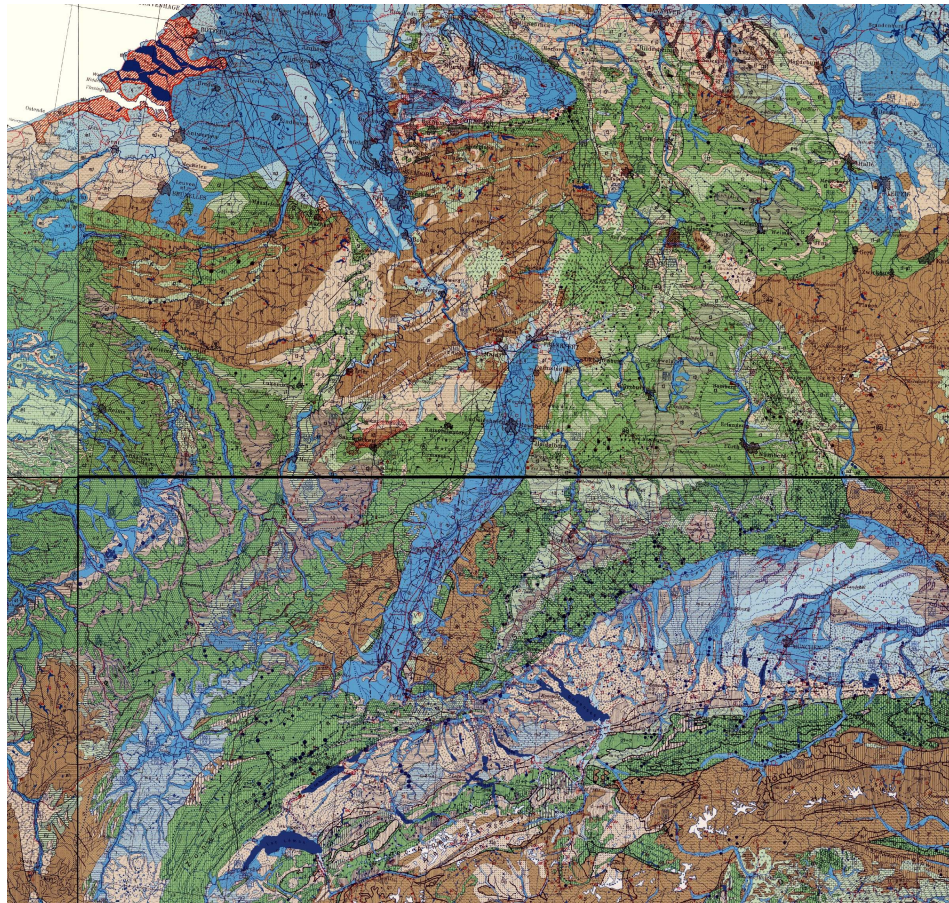


Fig. 2.

Interactive  
Comment

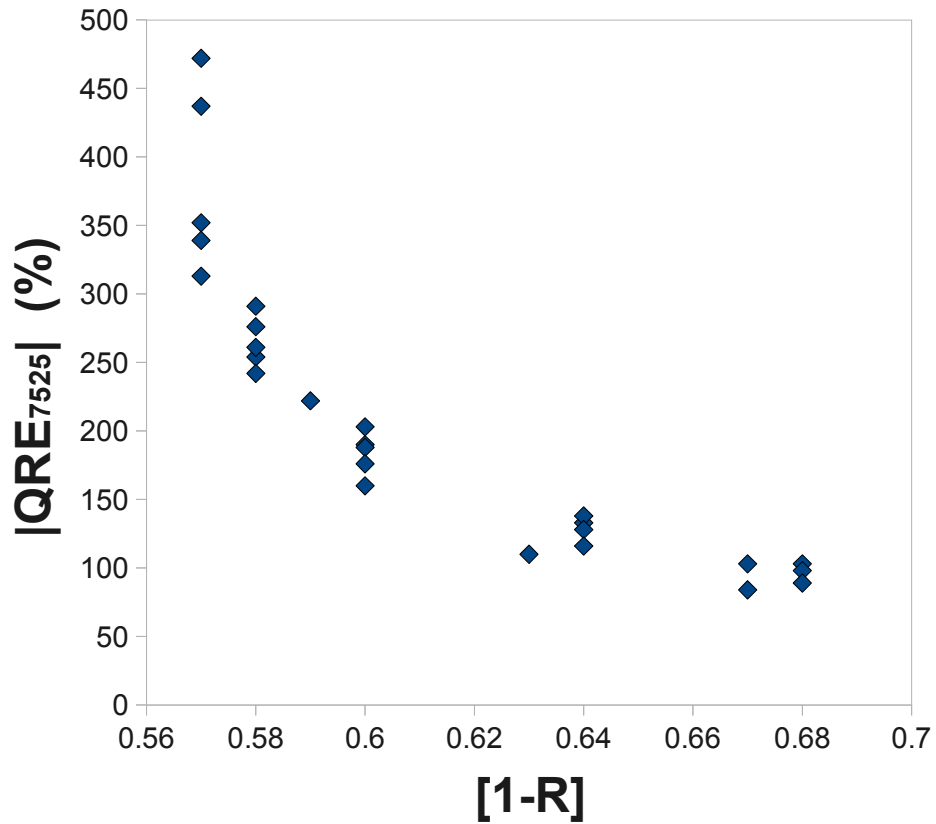


Fig. 3.

Full Screen / Esc

Printer-friendly Version

Interactive Discussion

Discussion Paper

