

This discussion paper is/has been under review for the journal Hydrology and Earth System Sciences (HESS). Please refer to the corresponding final paper in HESS if available.

# Spatial variation of the longitudinal dispersion coefficient in an estuary

D. C. Shaha<sup>1</sup>, Y.-K. Cho<sup>1</sup>, M.-T. Kwak<sup>1</sup>, S. R. Kundu<sup>2</sup>, and K. T. Jung<sup>3</sup>

<sup>1</sup>School of Earth & Environmental Sciences, Research Institute of Oceanography, Seoul National University, Seoul 151-742, Korea

<sup>2</sup>Department of Oceanography, Chonnam National University, Gwangju 500-757, Korea

<sup>3</sup>Korea Ocean Research and Development Institute, Ansan 425-600, Korea

Received: 7 June 2011 – Accepted: 5 August 2011 – Published: 12 August 2011

Correspondence to: Y.-K. Cho (choyk@snu.ac.kr)

Published by Copernicus Publications on behalf of the European Geosciences Union.

**HESSD**

8, 7757–7780, 2011

## Spatial variation of the dispersion coefficient

D. C. Shaha et al.

Title Page

Abstract

Introduction

Conclusions

References

Tables

Figures

◀

▶

◀

▶

Back

Close

Full Screen / Esc

Printer-friendly Version

Interactive Discussion



## Abstract

The effective longitudinal dispersion is a primary tool for determining property distributions in estuaries. Most previous studies have examined the longitudinal dispersion coefficient for the average tidal condition. However, information on spatial and temporal variations of this coefficient at low and high tide is scarce. Three years of hydrographic data taken at low and high tide along the main axis of the Sumjin River Estuary (SRE), Korea are used to estimate the spatial and temporal variation of the effective longitudinal dispersion coefficient. The range of the dispersion coefficient is rather broad at high water slack (HWS) and narrower at low water slack (LWS) because of the different tidal amplitudes. The spatially varying dispersion coefficient has maximal values ( $>300 \text{ m}^2 \text{ s}^{-1}$ ) near the mouth at high water and decreases gradually upstream, with fluctuations. The temporally varying dispersion coefficient appears to be positively correlated with river discharges at both low and high tide. The dispersion varies with the square root of river discharges at HWS and LWS. The dispersive salt fluxes increases with increasing river discharges and decreases with decreasing river discharges at HWS and LWS. Estimation of the numerical values of the effective longitudinal dispersion coefficient in the SRE can be useful for better understanding of the distributions of other tracers in the SRE as well as for developing and testing hypotheses about various mixing mechanisms.

## 1 Introduction

Pollutants enter rivers by many routes, including runoff from agricultural land, industrial and municipal wastewater, and tributary discharge. Physical processes such as advective transport and dispersion play key roles in determining the movement and changes in concentration of these contaminants after they enter a river. Thus, advection and dispersion are fundamental variables for the evaluation of water quality in aquatic systems by conceptual or numerical models (Garcia-Barcina et al., 2006; Ji, 2008). The

HESSD

8, 7757–7780, 2011

### Spatial variation of the dispersion coefficient

D. C. Shaha et al.

Title Page

Abstract

Introduction

Conclusions

References

Tables

Figures

◀

▶

◀

▶

Back

Close

Full Screen / Esc

Printer-friendly Version

Interactive Discussion



dispersion coefficient can be estimated using tracer experiments (Caplow et al., 2003; Ho et al., 2002), but these experiments are logistically complex and time consuming. However, the spatial and temporal distribution of salinity in an estuary sampled non-synoptically is a useful indicator of the system's physical condition because it represents the net effect of numerous complex processes such as the freshwater inflow, tidal range, and degree of turbulence (Lewis and Uncles, 2003; Eaton, 2007).

Dispersive processes in an estuary are usually estimated by a dispersion coefficient  $D_i(x)$  using salinity as a tracer.  $D_i(x)$  is usually defined as the ratio of the non-advective transport rate of salt (or other substances) through a unit cross-sectional area to the salinity gradient along the main axis of the estuary (Dyer, 1997; Savenije, 2005). The tidally averaged approach has been used by many authors to understand the temporal variation of the longitudinal dispersion coefficient (Paulson, 1970; Officer, 1976; Dyer, 1997; Lewis and Uncles, 2003). However, the spatial variation of  $D_i(x)$  in estuaries at low and high tides has received little attention. The tidally averaged salt balance equation has been integrated for high water slack (HWS) and low water slack (LWS) conditions (Savenije, 1989, 2005), which are of greater interest in this study for determining the effective longitudinal dispersion coefficient. Eaton (2007) noted that the spatial distributions of the dispersion coefficient depend strongly on ground-water discharge and are most sensitive at LWS.

The numerical values of this longitudinal dispersion coefficient in estuaries are comparatively difficult to determine and interpret because the motion of solutes in estuaries is influenced by river discharge, tidal variations, bed friction, channel topography and density gradients (Guymer and West, 1992; Geyer and Signell, 1992; Austin, 2004). The effective longitudinal dispersion varies temporally and increases with freshwater inflow (Paulson, 1970; Garvine et al., 1992; Dyer, 1997; Austin, 2004). In contrast, the  $D_i(x)$  values decline with an increase in tidal range (Lewis and Uncles, 2003). This is because the dispersive action becomes less effective under more turbulent conditions as turbulence generated by strong tidal amplitude effectively reduces the dispersing action of velocity shears (Linden and Simpson, 1988). Moreover, Linden

## Spatial variation of the dispersion coefficient

D. C. Shaha et al.

Title Page

Abstract

Introduction

Conclusions

References

Tables

Figures



Back

Close

Full Screen / Esc

Printer-friendly Version

Interactive Discussion



and Simpson (1988) reported that  $D_L(x)$  increases with the horizontal density gradient and also with the period of the turbulence modulation. The dispersive flux of salt is particularly sensitive near the maximum salinity gradient (Lewis and Uncles, 2003).

The Sumjin River discharges into Gwangyang Bay on the south coast of Korea. No information is available about the typical magnitude of  $D_L(x)$  along the Sumjin River Estuary (SRE) or how it changes with variations in freshwater discharge, tidal height, and salinity gradient along the SRE. The purpose of this study is to determine the effective longitudinal dispersion coefficient at low and high tides in the SRE, which are ultimately responsible for transporting salt upstream. In addition, the effects of freshwater discharge, tidal height and salinity gradient on the spatially varying longitudinal dispersion coefficient are examined. A better knowledge of the numerical magnitude of the effective longitudinal dispersion, with some indications of the spatial and temporal variability of this dispersion coefficient, may be useful for developing numerical models with more accurate physical fields, which would be helpful for a more realistic understanding of biological and chemical distributions in the SRE.

The rest of this paper is organized as follows. The study area and data sources are briefly presented in Sect. 2. The methods are described in Sect. 3. The results and discussion are presented in Sect. 4. The conclusions are summarized in Sect. 5.

## 2 Study site and data

The Sumjin River splits into east and west channels near the Pohang Iron and Steel Company (POSCO) before it enters Gwangyang Bay. The bay is connected in the south to the coastal ocean (South Sea) and in the east to Jinjoo Bay through the narrow Noryang Channel (Fig. 1). The cross-sectional area ( $m^2$ ), width (m), and depth (m) of cross-sections of all CTD stations of the SRE were calculated by using Surface Water Modeling System grid generation software (version 8.1) (Shaha and Cho, 2011). The watershed area of the SRE, including farmland, is almost  $4900 km^2$ . Seasonal precipitation and runoff in the Sumjin River basin decrease in spring and winter, and

## Spatial variation of the dispersion coefficient

D. C. Shaha et al.

Title Page

Abstract

Introduction

Conclusions

References

Tables

Figures

◀

▶

◀

▶

Back

Close

Full Screen / Esc

Printer-friendly Version

Interactive Discussion



## Spatial variation of the dispersion coefficient

D. C. Shaha et al.

Title Page

Abstract

Introduction

Conclusions

References

Tables

Figures

◀

▶

◀

▶

Back

Close

Full Screen / Esc

Printer-friendly Version

Interactive Discussion



increase in summer (Bae et al., 2008). The daily mean river discharge has been obtained from Songjung gauge station located about 11 km upstream from CTD station 24. The maximum monthly median river discharge was highest ( $370 \text{ m}^3 \text{ s}^{-1}$ ) in July 2006 and lowest ( $11 \text{ m}^3 \text{ s}^{-1}$ ) in January 2005. Tidal information has been collected over the observation period from the Gwangyang Tidal Station (GT1, Fig. 1), operated by the Korea Hydrographic and Oceanographic Administration. The tidal cycle is semi-diurnal, with mean spring and neap ranges of 3.40 and 1.10 m, respectively.

We recently acquired three years of conductivity-temperature-depth (CTD) profiles using Ocean Seven 304 CTD sensors (IDRONAUT Company) at 25 stations distributed along the SRE to cover most of the range over which salt intrudes from Gwangyang Bay. The nominal distance between CTD stations was 1 km. A total of 24 longitudinal salinity transects were obtained at low and high tide during spring tide in each season from August 2004 to April 2007. A Global Positioning System was used to obtain the location of the CTD stations. On the basis of the stratification parameter, which is the ratio of the salinity difference between the surface and the bottom divided by the depth-averaged salinity, the SRE shows partially or well-mixed condition during spring tide (Shaha and Cho, 2009).

### 3 Methods

By assuming equilibrium between advective and dispersive fluxes under tidal average conditions, Savenije (1986, 1989, 2005) integrated the salt balance equation with respect to  $x$  to give

$$Q(S_{\text{TA}} - S_f) - A_{\text{TA}} D_{\text{TA}} \frac{\partial S_{\text{TA}}}{\partial x} = 0 \quad (1)$$

where  $Q$  is the freshwater discharge,  $S_{\text{TA}}$  represents the mean tidal steady-state salinity,  $S_f$  is the freshwater salinity,  $A_{\text{TA}}$  is the tidal average cross-sectional area and  $D_{\text{TA}}$  is the longitudinal dispersion coefficient. This equation can also be used to determine

the longitudinal dispersion coefficient under HWS and LWS conditions (Savenije, 1989, 2005). Assuming the salinity  $S_f$  of freshwater discharge is zero, this equation can be expressed in general form for the spatially varying dispersion coefficient  $D_i(x)$  as follows:

$$D_i(x) = \frac{QS_i(x)/A_i(x)}{\frac{\partial S_i}{\partial x}} \quad (2)$$

where the subscript  $i$  corresponds to HWS or LWS. The longitudinal dispersion coefficient  $D_i(x)$  is a bulk parameter used to characterize the overall diluting capacity of an estuary (Dyer, 1997; Lewis and Uncles, 2003; Savenije, 1989, 2005). Therefore, it is important to obtain a better quantitative knowledge of the dispersive characteristics of a particular estuary.  $D_i(x)$  can be calculated at LWS and HWS along the SRE; because  $Q$ ,  $A_i(x)$ , and the longitudinal salinity distribution  $S_i(x)$  are known. The numerator represents the advective rate of transport of salt seawards by the river flow,  $Q$  per unit area of cross-section  $A(x)$ . This is countered by the landward flux of salt due to non-advective processes. The denominator represents the longitudinal salinity gradient. Equation (2) is strictly inapplicable to stratified conditions (Dyer, 1997) and describes the coefficient of effective longitudinal dispersion for well-mixed estuaries (Dyer, 1997; Savenije, 1989, 2005).

The effects of salinity gradient and the magnitude of  $D_i(x)$  on the salt flux in the SRE are taken into account to obtain insight. The non-advective transport, expressed as the rate of transport of salt per unit area, represents the salt flux  $F_s$  at the estuary location corresponding to the salinity gradient (Dyer, 1997).

$$F_s(x) = D_i(x) \frac{\partial S_i}{\partial x} \quad (3)$$

$F_s$  is expressed in units of  $\text{ms}^{-1}$ .

**Spatial variation of the dispersion coefficient**

D. C. Shaha et al.

Title Page	
Abstract	Introduction
Conclusions	References
Tables	Figures
◀	▶
◀	▶
Back	Close
Full Screen / Esc	
Printer-friendly Version	
Interactive Discussion	



## 4 Results and discussion

### 4.1 Longitudinal distribution of salinity and its gradient

The depth mean salinity  $\overline{S}_i$  with standard deviation at LWS and HWS is shown in Fig. 2 for all stations. The shape of the salt intrusion curve varies according to the range of river discharges. The river discharges are categorized as 5–15 m<sup>3</sup> s<sup>-1</sup>, 16–30 m<sup>3</sup> s<sup>-1</sup>, and 45–60 m<sup>3</sup> s<sup>-1</sup>. A concave shape salt intrusion curve is found for river discharge of 5–15 m<sup>3</sup> s<sup>-1</sup> with small salinity gradient near the mouth (Fig. 2a). For river discharge of 45–60 m<sup>3</sup> s<sup>-1</sup>, 50% of the total salt intrusion curve is concave toward the mouth and another 50% is convex upstream. The salt intrusion curve for river discharge of 16–30 m<sup>3</sup> s<sup>-1</sup> is a mixture of the two. These salt intrusion curves are consistent with the curves described by Savenije (2005). The salt intrusion curves are mostly concave at LWS (Fig. 2b). The mean horizontal salinity gradients at high (low) tide according to the first-order polynomial fit (not shown) are 1.25 (1.40) km<sup>-1</sup>, 1.44 (1.48) km<sup>-1</sup> and 1.46 (1.42) km<sup>-1</sup> for river discharges of 5–15 m<sup>3</sup> s<sup>-1</sup>, 16–30 m<sup>3</sup> s<sup>-1</sup>, and 45–60 m<sup>3</sup> s<sup>-1</sup>, respectively (Fig. 2a). The first-order polynomial (linear function) fits give  $R^2$  value of >0.92 at HWS and LWS. This simple fit predicts the landward end of the salt intrusion.

Figure 2 also shows the lower-order mean standard deviation of salinity over the length scale of the tidal excursion of 6 km near the mouth (Shaha and Cho, 2011), in which mixing occurs mainly by tidal effects, resulting in less variation in the salinity distribution and consequently yielding a lower standard deviation. The salt intrusion length is longer than the tidal excursion length scale, which characterizes the SRE as a coastal plain estuary (MacCready and Geyer, 2010). In contrast, the standard deviation is of higher order in the central regimes between 6 and 20 km, where mixing occurs because of both tide-driven and density-driven circulation (Shaha et al., 2010), causing different salinity distributions and thus a higher standard deviation.

The mean longitudinal salinity gradients along the SRE at low and high tides under different river discharges are shown in Fig. 3. At river discharge of 45–60 m<sup>3</sup> s<sup>-1</sup>,

## Spatial variation of the dispersion coefficient

D. C. Shaha et al.

Title Page

Abstract

Introduction

Conclusions

References

Tables

Figures



Back

Close

Full Screen / Esc

Printer-friendly Version

Interactive Discussion



the strength of the mean salinity gradient increases from downstream of the SRE to middle regimes and then decreases in the upper most regimes at LWS and HWS. However, a continuous landward increase of the salinity gradient is found at both HWS and LWS for river discharge of  $5\text{--}15\text{ m}^3\text{ s}^{-1}$  and  $16\text{--}30\text{ m}^3\text{ s}^{-1}$ . The cross-sectional area of the SRE increases exponentially toward the mouth from upstream (Shaha and Cho, 2011). Therefore, the displacement of a given salinity is reduced at the seaward end of the SRE compared to upstream locations for mass balance; as a result the seaward advective transport of salt per unit area decreases near the mouth. Consequently, the salinity gradient increase landward from the SRE mouth at both LWS and HWS. An exception is found at high river discharge of  $45\text{--}60\text{ m}^3\text{ s}^{-1}$  at HWS where the salinity gradient falls after 17 km from the SRE mouth. Lewis and Uncles (2003) noted that estuarine locations with less-steep salinity gradients are relatively well-mixed, and those with steeper gradients are partially stratified. According to the longitudinal salinity gradient of the SRE, the well-mixed area can be approximated as extending up to 7 km from the estuary mouth with a salinity gradient of  $<1$ ; and the partially mixed area can be approximated as extending between 7 and 20 km with a salinity gradient ranging from 1 to 2 at high water. These well- and partially mixed areas agree with those identified in the earlier studies of the stratification parameter (Shaha and Cho, 2009), estuarine parameter and potential energy anomaly (Shaha et al., 2010), and Van der Burgh's coefficient (Shaha and Cho, 2011).

## 4.2 Longitudinal dispersion at low and high tides

The relative abundance of salinity data in the SRE is used to estimate the distribution of the effective dispersion  $D(x)$ , which varies with time and location. The longitudinal dispersion increases with increasing river discharge ( $45\text{--}60\text{ m}^3\text{ s}^{-1}$ ) and decreases with diminishing river discharges ( $5\text{--}15\text{ m}^3\text{ s}^{-1}$ ). The range of dispersion coefficient values is rather broad for HWS (Fig. 4a). The values vary between  $100$  and  $494\text{ m}^2\text{ s}^{-1}$ , with a mean value of  $261\text{ m}^2\text{ s}^{-1}$ , at high tide for river discharge of  $45\text{--}60\text{ m}^3\text{ s}^{-1}$ . The mean longitudinal dispersions are  $171\text{ m}^2\text{ s}^{-1}$  with a range of  $44\text{--}470\text{ m}^2\text{ s}^{-1}$  for river

### Spatial variation of the dispersion coefficient

D. C. Shaha et al.

Title Page

Abstract

Introduction

Conclusions

References

Tables

Figures

◀

▶

◀

▶

Back

Close

Full Screen / Esc

Printer-friendly Version

Interactive Discussion





discharges of  $5\text{--}15\text{ m}^3\text{ s}^{-1}$ , and  $181\text{ m}^2\text{ s}^{-1}$  with a range of  $53\text{--}400\text{ m}^2\text{ s}^{-1}$  for river discharges of  $16\text{--}30\text{ m}^3\text{ s}^{-1}$  at HWS. The spatially dependent structure has maximum values ( $>300\text{ m}^2\text{ s}^{-1}$ ) due to the reduced salinity gradient near the mouth. This reduced gradient reflects a larger dispersion coefficient with higher standard deviation, and decreases gradually upstream after the tidal excursion length at HWS. Prandle (1981) found a range of  $D_i(x)$  values between  $50$  and  $500\text{ m}^2\text{ s}^{-1}$  for a group of six estuaries. This range is consistent with that found in this study. Banas et al. (2004) also found a decreasing trend in  $D_i(x)$  from  $710\text{ m}^2\text{ s}^{-1}$  near the mouth to  $20\text{ m}^2\text{ s}^{-1}$  upstream. These values correspond well with the mean value at high tide. In contrast, the range of longitudinal dispersion coefficient values is considerably smaller for LWS. These values range between  $35$  and  $194\text{ m}^2\text{ s}^{-1}$ , with a mean value of  $110\text{ m}^2\text{ s}^{-1}$  for river discharge of  $16\text{--}30\text{ m}^3\text{ s}^{-1}$  at low tide (Fig. 4b). The mean value of  $D_i(x)$  is around  $79\text{ m}^2\text{ s}^{-1}$  with a range of  $18\text{--}138\text{ m}^2\text{ s}^{-1}$  for river discharge of  $5\text{--}15\text{ m}^3\text{ s}^{-1}$  and  $184\text{ m}^2\text{ s}^{-1}$  with a range of  $41\text{--}286\text{ m}^2\text{ s}^{-1}$  for river discharge of  $45\text{--}60\text{ m}^3\text{ s}^{-1}$ .

Monismith (2010) gives a range of values for  $D(x)$ , with typical dispersion values of  $100\text{--}300\text{ m}^2\text{ s}^{-1}$  for many estuaries. Lewis and Uncles (2003) suggested a representative longitudinal dispersion value of  $100\text{ m}^2\text{ s}^{-1}$  as a reasonable first choice for establishing a cross-sectionally averaged estuary model. Fischer et al. (1979) reported a typical dispersion value of  $200\text{ m}^2\text{ s}^{-1}$  for estuaries, particularly for tidal dispersion. These average values of this study are consistent with those suggested by Fischer et al. (1979), Lewis and Uncles (2003), and Monismith (2010). The analysis does not address the specific mechanisms responsible for this dispersion owing to a lack of velocity measurements. However, this quantitative knowledge of the spatially varying dispersive characteristics of the SRE can be useful for developing and testing hypotheses about various mixing mechanisms. This is the only example known to the authors of either temporal or spatial variability in dispersion estimates at high and low tide for the SRE. These data provide an important starting point for additional characterization of mixing processes in the SRE. Future tracer experiments using  $\text{SF}_6$  (Ho et al., 2002) can be performed to verify and refine these values determined from salinity data.

## Spatial variation of the dispersion coefficient

D. C. Shaha et al.

[Title Page](#)[Abstract](#)[Introduction](#)[Conclusions](#)[References](#)[Tables](#)[Figures](#)[◀](#)[▶](#)[◀](#)[▶](#)[Back](#)[Close](#)[Full Screen / Esc](#)[Printer-friendly Version](#)[Interactive Discussion](#)

### 4.3 Effects of river discharge and potential energy anomaly on longitudinal dispersion

The longitudinal dispersion coefficient increases with increasing river discharge (Paulson, 1970; Garvine et al., 1992; Monismith et al., 2002; Austin, 2004). In this study, the temporally varying longitudinal dispersion appears to be positively correlated with river discharge at high and low tide (Figs. 5 and 6), respectively. Theoretically the dispersion is a function of the square root of the river discharge (Eqs. 1.2 and 5.70; Savenije, 2005). The dispersion varies approximately with the root of the freshwater discharge in segments 1, 9, 11, 12, 13, 21 and 22 at HWS (Fig. 5). Some locations do not show this functional relationship between river discharge and longitudinal dispersion coefficient at high tide. This is because mixing in estuaries is determined in part by the bathymetry, and no combination of purely external inputs completely describes the process (Fischer, 1976). Moreover, Chatwin and Allen (1985) reported that the transport of salt at a given point in space may conveniently be considered to result from turbulent mean advection processes and turbulent diffusion processes. At LWS, the dispersion varies with the root of the freshwater discharge mostly in all segments except in 4, 9, 11, 12 and 13 (Fig. 6). As the tidal effect is minimal at LWS compared to that at HWS, and river discharge induces seaward advection at LWS, a more functional relationship between river discharge and longitudinal dispersion coefficient might be found at LWS than at HWS.

In addition, the temporally varying horizontal dispersion coefficient appears to be inversely proportional to the tidal heights, but there was no significant correlation (not shown). The tidal height data were collected from the Gwangyang tidal gauge station near the SRE's mouth. These data were used to examine the effects of tidal heights on the longitudinal dispersion coefficient because of a lack of observed tidal height data along the SRE. This may be one cause of an insignificant correlation between tidal height and longitudinal dispersion coefficient. This is attributed to turbulence generated by strong tidal currents, which effectively reduce the dispersing action of velocity shears

### Spatial variation of the dispersion coefficient

D. C. Shaha et al.

Title Page

Abstract

Introduction

Conclusions

References

Tables

Figures



Back

Close

Full Screen / Esc

Printer-friendly Version

Interactive Discussion



(Linden and Simpson, 1988). Without corresponding velocity data (the observations lack velocity measurements), it is impossible to judge the relative contribution of shear flow dispersion by tidal currents. However, the fact that the dispersion increases with river discharge is consistent with previous studies.

5 The spatial variation in the potential energy anomaly at low and high tides along the SRE is shown in Fig. 7. The potential energy anomaly ( $\phi$ ) is the amount of work necessary to completely mix the water column ( $\text{Jm}^{-3}$ ) and can be calculated using

$$\phi = \frac{1}{H} \int_{-H}^0 gz(\bar{\rho} - \rho)dz, \text{ where } \rho \text{ is the vertical density profile over a water column of}$$

depth  $H$ ,  $z$  is the vertical coordinate and  $g$  is the gravitational acceleration ( $9.8 \text{ ms}^{-2}$ ).

10 The potential energy anomaly increases with increasing river discharges. As a result, the longitudinal dispersion increases with increasing potential energy on the water column. The potential energy anomaly at HWS (Fig. 7a) is  $>10 \text{ Jm}^{-3}$  over the tidal excursion length for river discharge of  $45\text{--}60 \text{ m}^3 \text{ s}^{-1}$  at which the longitudinal disper-

sion coefficient is maximal. The potential energy anomaly is  $<10 \text{ Jm}^{-3}$  over the tidal excursion length (landward 6 km) at LWS and HWS for river discharge of  $5\text{--}15 \text{ m}^3 \text{ s}^{-1}$

15 and  $16\text{--}30 \text{ m}^3 \text{ s}^{-1}$  where the longitudinal dispersion coefficient is lower. Burchard and Hofmeister (2008) examined the dynamics of the potential energy anomaly at a lo-

cation, where the water column is fully destabilized during flood, with a range of  $\phi$  between 0 and  $9 \text{ Jm}^{-3}$ . According to the stratification parameter, well-mixed condi-

20 tions are found near the mouth of the SRE during spring tide (Shaha and Cho, 2009). Therefore, it can be assumed that the effective longitudinal dispersion values should be maximal over the tidal excursion length scale observed in the SRE (Shaha and Cho, 2009). Banas et al. (2004) also found the maximum  $D(x)$  value near the mouth. In contrast,  $\phi$  increased to more than  $11 \text{ Jm}^{-3}$  landward from the tidal excursion length of 6 km, and the value of  $D(x)$  decreased upstream.

25

## Spatial variation of the dispersion coefficient

D. C. Shaha et al.

Title Page

Abstract

Introduction

Conclusions

References

Tables

Figures

◀

▶

◀

▶

Back

Close

Full Screen / Esc

Printer-friendly Version

Interactive Discussion



#### 4.4 Link between salt fluxes and salinity gradient

The spatially varying horizontal dispersion coefficient is inversely related to the salinity gradient; whereas the salt fluxes are proportional to the salinity gradient (Fig. 8). The low salt fluxes are associated with low salinity gradients and a low potential energy anomaly, whereas high salt fluxes are associated with high salinity gradients and a high potential energy anomaly. The net salt fluxes increases with increasing river discharges and decreases with decreasing river discharges at HWS and LWS (Fig. 8a–b).

As the cross-sectional area increases exponentially at the seaward end of the SRE (Shaha and Cho, 2011), the displacement of the salinity distribution for a particular isohaline decreases at the seaward end of the SRE. Therefore, the seaward advective transport of salt per unit area decreases to the mouth of the SRE from the upstream end at LWS because of maintaining mass balance. This result is consistent with that of Lewis and Uncles (2003). They reported that the rate of salt transport per unit area at the seaward end of a coastal plain estuary may be quite small because of the relatively large cross-sectional area, which leads to low residual currents.

On the other hand, the salt fluxes increase in the central regimes owing to the increasing salinity gradient. The seaward shifts of the salinity distribution in the central and inner regimes are much more sensitive at LWS than at HWS during high river discharge period because of mass balance between the regions of greater cross-sectional area (near the mouth) and shorter cross-sectional area (upstream). As a result the standard deviation of net salt fluxes is higher in the central regimes at LWS than at HWS.

#### 5 Conclusions

Three years of hydrographic data taken along the main axis of the SRE are used to analyze the effective longitudinal dispersion coefficient. Using an advection- diffusion equation, the effective longitudinal dispersion is inferred as a function of space. The

## Spatial variation of the dispersion coefficient

D. C. Shaha et al.

Title Page

Abstract

Introduction

Conclusions

References

Tables

Figures

◀

▶

◀

▶

Back

Close

Full Screen / Esc

Printer-friendly Version

Interactive Discussion



**Spatial variation of  
the dispersion  
coefficient**

D. C. Shaha et al.

Title Page

Abstract

Introduction

Conclusions

References

Tables

Figures

◀

▶

◀

▶

Back

Close

Full Screen / Esc

Printer-friendly Version

Interactive Discussion



effective longitudinal dispersion is particularly sensitive near the mouth of the SRE at both HWS and LWS owing to the small salinity gradient. The maximum value of the temporally varying dispersion coefficient is  $494 \text{ m}^2 \text{ s}^{-1}$  near the mouth and decreases gradually upstream to  $44 \text{ m}^2 \text{ s}^{-1}$  at HWS. On the other hand, the mean dispersion value is approximately  $110 \text{ m}^2 \text{ s}^{-1}$  with a range between 18 and  $194 \text{ m}^2 \text{ s}^{-1}$  at LWS. The seaward advective transport of salt per unit area near the mouth of the SRE is decreased because of the relatively large cross-sectional area at the seaward end, which generates a small salinity gradient. This effective longitudinal dispersion appears to be positively correlated with river discharge at both HWS and LWS. The dispersion varies approximately with the square root of the river discharges at both HWS and LWS in many locations along the SRE which are consistent with the theory.

The salinity gradient decreases at the seaward end of the SRE and increases upstream by maintaining mass balance between greater cross-section area near the mouth and upstream locations. The dispersive flux of salt is particularly sensitive near the maximum salinity gradient in the central regimes at LWS because of the increasing displacement of isohalines. The salt flux increases with the salinity gradient and potential energy anomaly at both LWS and HWS.

These basic estimates of effective longitudinal dispersion and information about their spatial and temporal variability will provide an essential test for numerical models of this estuarine circulation. A better understanding of the principal hydraulic parameters controlling mixing such as the dispersion coefficient is therefore the prime requirement for an effective numerical simulation of estuarine circulation.

*Acknowledgements.* This research was supported by the NAP program of the Korea Ocean Research Development Institute. The authors thank the members of the Marine Environment Prediction Laboratory for their enthusiastic supports during data collection.

## References

- Austin, J. A.: Estimation of effective longitudinal dispersion in the Chesapeake Bay, *Estuar. Coast. Shelf S.*, 60, 359–368, 2004.
- Bae, D. H., Jung, I. W., and Chang, H.: Long-term trend of precipitation and runoff in Korean river basins, *Hydrol. Process.*, 22, 2644–2656, 2008.
- Banas, N. S., Hickey, B. M., MacCready, P., and Newton, J. A.: Dynamics of Willapa Bay, Washington, a highly unsteady partially mixed estuary, *J. Phys. Ocean.*, 34, 2413–2427, 2004.
- Burchard, H. and Hofmeister, R.: A dynamic equation for the potential energy anomaly for analysing mixing and stratification in estuaries and coastal seas, *Estuar. Coast. Shelf S.*, 77, 679–687, 2008.
- Caplow, T., Schlosser, P., Ho, D. T., and Santella, N.: Transport dynamics in a sheltered estuary and connecting tidal straits: SF<sub>6</sub> tracer study in New York Harbor, *Environ. Sci. Technol.*, 37, 5116–5126, 2003.
- Chatwin, P. C. and Allen, C. M.: Mathematical models of dispersion in rivers and estuaries, *Ann. Rev. Fluid. Mech.*, 17, 119–149, 1985.
- Dyer, K. R.: *Estuaries, A Physical Introduction*. 2nd edn., John Wiley, London, 195 pp., 1997.
- Eaton, T. T.: Analytical estimates of hydraulic parameters for an urbanized estuary – Flushing Bay, *J. Hydrol.*, 347, 188–196, 2007.
- Fischer, H. B., List, E. J., Koh, R. C. Y., Imberger, J., and Brooks, N. H.: *Mixing in Inland and Coastal Waters*, 1st edn, Academic Press, New York, 483 pp., 1979.
- Fischer, H. B.: Mixing and dispersion in estuaries, *Annu. Rev. Fluid Mech.*, 8, 107–133, 1976
- Garcia-Barcina, J. M., Gonzalez-Oreja, J. A., and De la Sota, A.: Assessing the improvement of the Bilbao estuary water quality in response to pollution abatement measures, *Water Res.*, 40, 951–960, 2006.
- Garvine, R., McCarthy, R., and Wong, K.-C.: The axial salinity distribution in the Delaware estuary and its weak response to river discharge, *Estuar. Coast. Shelf S.*, 35, 157–165, 1992.
- Geyer, W. and Signell, R.: A reassessment of the role of tidal dispersion in estuaries and bays, *Estuaries*, 15, 97–108, 1992.
- Guymer, I. and West, J. R.: The determination of estuarine diffusion coefficients using a fluorimetric dye tracing technique, *J. Hydraul. Eng.*, 118, 718–734, 1992.

## Spatial variation of the dispersion coefficient

D. C. Shaha et al.

Title Page

Abstract

Introduction

Conclusions

References

Tables

Figures

◀

▶

◀

▶

Back

Close

Full Screen / Esc

Printer-friendly Version

Interactive Discussion



## Spatial variation of the dispersion coefficient

D. C. Shaha et al.

Title Page

Abstract

Introduction

Conclusions

References

Tables

Figures

◀

▶

◀

▶

Back

Close

Full Screen / Esc

Printer-friendly Version

Interactive Discussion



- Ho, D. T., Schlosser, P., and Caplow, T.: Determination of longitudinal dispersion coefficient and net advection in the tidal Hudson River with a large-scale, high resolution SF<sub>6</sub> tracer release experiment, *Environ. Sci. Technol.*, 36, 3234–3241, 2002.
- Ji, Z. G.: *Hydrodynamics and Water Quality: Modeling Rivers, Lakes and Estuaries*, 1st edn., John Wiley, New Jersey, USA, 676 pp., 2008.
- Lewis, R. E. and Uncles, R. J.: Factors affecting longitudinal dispersion in estuaries of different scale, *Ocean Dynam.*, 53, 197–207, 2003.
- Linden, P. F. and Simpson, J. E.: Modulated mixing and frontogenesis in shallow seas and estuaries, *Cont. Shelf Res.*, 8, 1107–1127, 1988.
- MacCready, P. and Geyer, W. R.: Advances in estuarine physics, *Annu. Rev. Mar. Sci.*, 2, 35–58, 2010.
- Monismith, S. G., Kimmerer, W., Stacey, M. T., and Burau, J. R.: Structure and flow-induced variability of the subtidal salinity field in Northern San Francisco Bay, *J. Phys. Ocean.*, 32, 3003–3019, 2002.
- Monismith, S. G.: Mixing in estuaries, In: Valle-Levinson, A. (Ed.), *Contemporary Issues in Estuarine Physics*, Cambridge University Press, Cambridge, 145–185, 2010.
- Officer, C. B.: *Physical Oceanography of Estuaries (and Associated Coastal Waters)*, John Wiley, New York, USA, 465 pp., 1976.
- Paulson, R. W.: Variation of the longitudinal dispersion coefficient in the Delaware River Estuary as a function of freshwater inflow, *Water Resour. Res.*, 6, 516–526, 1970.
- Prandle, D.: Salinity intrusion in estuaries, *J. Phys. Oceanogr.*, 11, 1311–1324, 1981.
- Savenije, H. H. G.: A one-dimensional model for salinity intrusion in alluvial estuaries, *J. Hydrol.*, 85, 87–109, 1986.
- Savenije, H. H. G.: Salt intrusion model for high water slack, low water slack and mean tide on spreadsheet, *J. Hydrol.*, 107, 9–18, 1989.
- Savenije, H. H. G.: *Salinity and Tides in Alluvial Estuaries*, 1st edn., Elsevier, Amsterdam, 197 pp., 2005.
- Shaha, D. C. and Cho, Y.-K.: Comparison of empirical models with intensively observed data for prediction of salt intrusion in the Sumjin River estuary, Korea, *Hydrol. Earth Syst. Sci.*, 13, 923–933, doi:10.5194/hess-13-923-2009, 2009.
- Shaha, D. C. and Cho, Y.-K.: Determination of spatially varying Van der Burgh's coefficient from estuarine parameter to describe salt transport in an estuary, *Hydrol. Earth Syst. Sci.*, 15, 1369–1377, doi:10.5194/hess-15-1369-2011, 2011.

Shaha, D. C., Cho, Y.-K., Seo, G.-H., Kim, C.-S., and Jung, K. T.: Using flushing rate to investigate spring-neap and spatial variations of gravitational circulation and tidal exchanges in an estuary, *Hydrol. Earth Syst. Sci.*, 14, 1465–1476, doi:10.5194/hess-14-1465-2010, 2010.

# HESSD

8, 7757–7780, 2011

## Spatial variation of the dispersion coefficient

D. C. Shaha et al.

Title Page

Abstract

Introduction

Conclusions

References

Tables

Figures

◀

▶

◀

▶

Back

Close

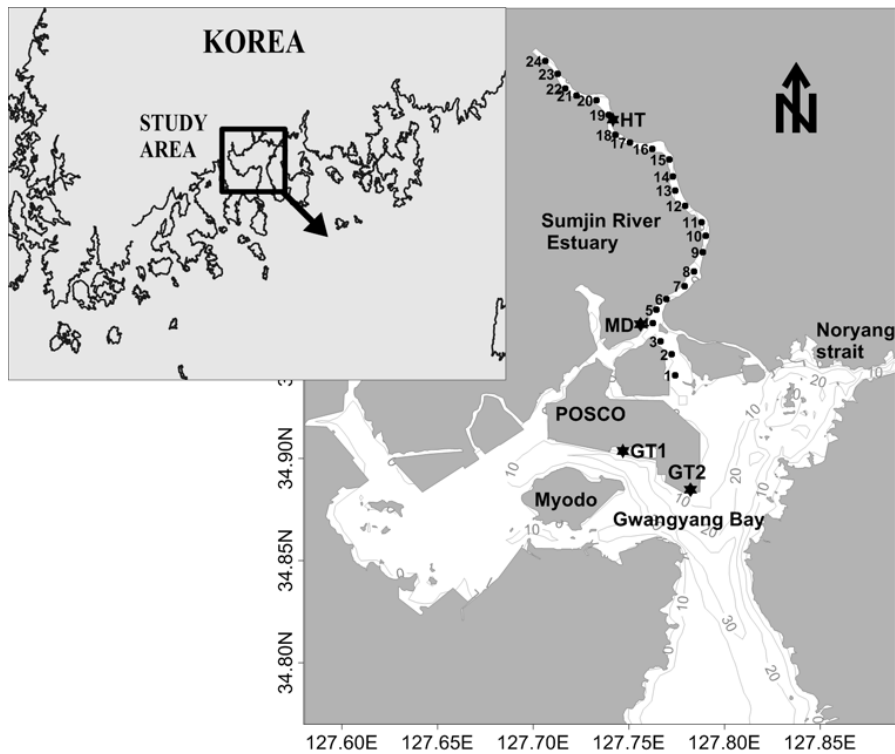
Full Screen / Esc

Printer-friendly Version

Interactive Discussion







**Fig. 1.** Map of the study area. Solid circles indicate CTD stations. Stars denote the Gwangyang (GT1 and GT2), Mangdock (MD) and Hadong (HT) tide observation stations.

## Spatial variation of the dispersion coefficient

D. C. Shaha et al.

Title Page

Abstract

Introduction

Conclusions

References

Tables

Figures

◀

▶

◀

▶

Back

Close

Full Screen / Esc

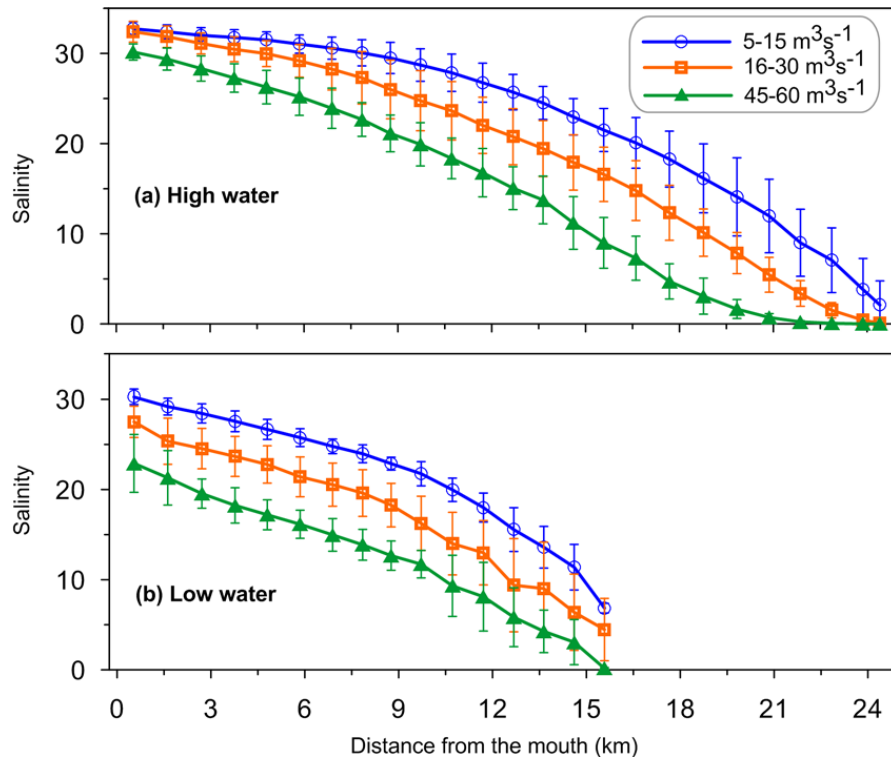
Printer-friendly Version

Interactive Discussion



**Spatial variation of the dispersion coefficient**

D. C. Shaha et al.



**Fig. 2.** Depth mean salinity distribution at high and low water slack in the Sumjin River Estuary under different river discharges.

Title Page

Abstract Introduction

Conclusions References

Tables Figures

◀ ▶

◀ ▶

Back Close

Full Screen / Esc

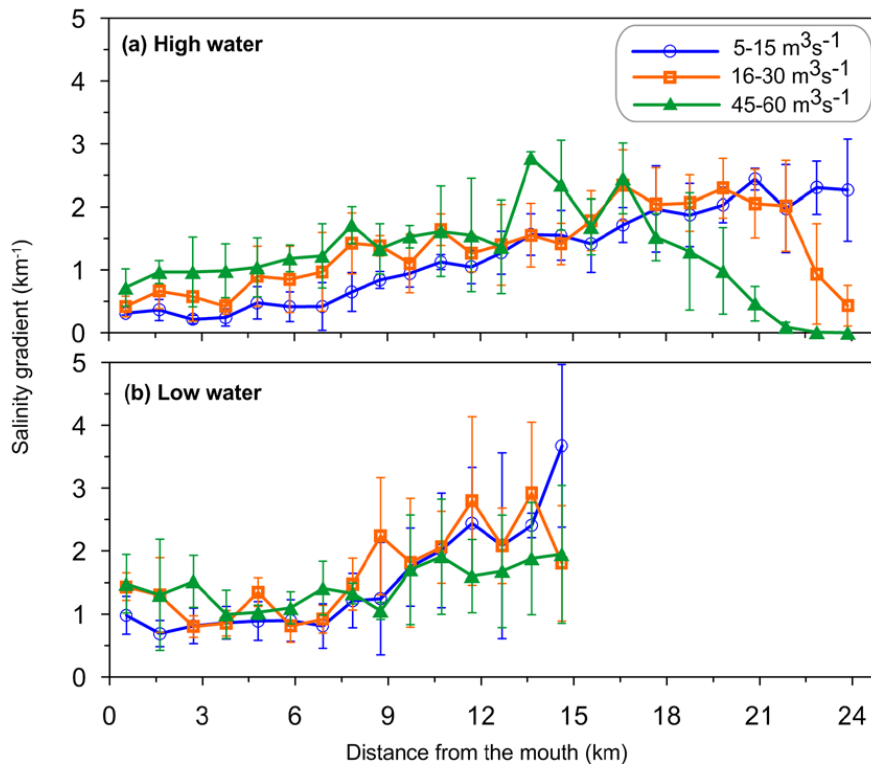
Printer-friendly Version

Interactive Discussion



Spatial variation of the dispersion coefficient

D. C. Shaha et al.



**Fig. 3.** Spatial variation in mean longitudinal salinity gradient along the Sumjin River Estuary at low and high tide under different river discharges.

Title Page

Abstract Introduction

Conclusions References

Tables Figures

◀ ▶

◀ ▶

Back Close

Full Screen / Esc

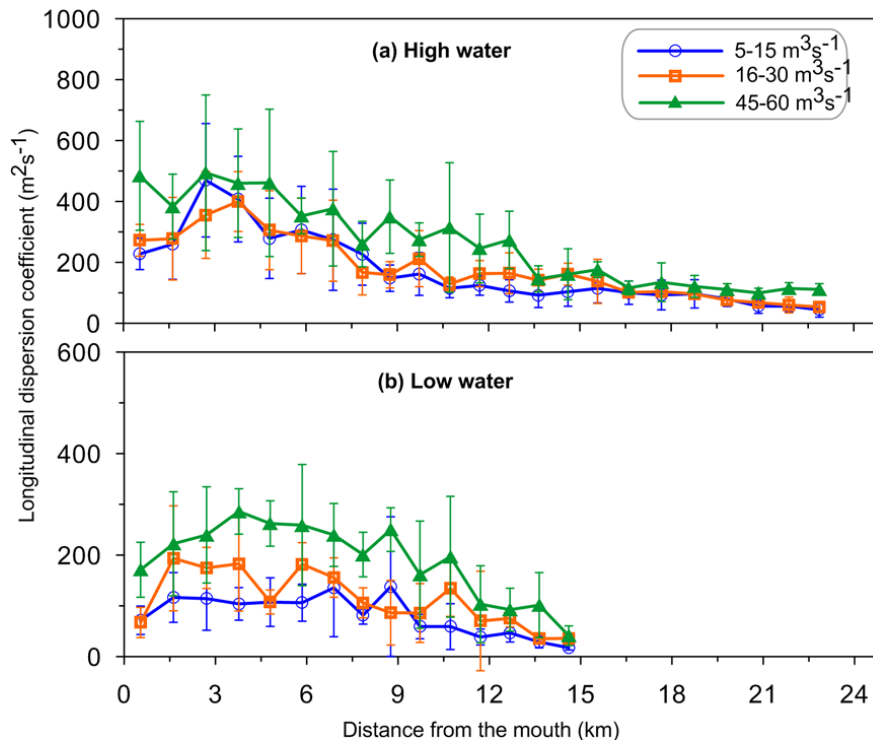
Printer-friendly Version

Interactive Discussion



**Spatial variation of  
the dispersion  
coefficient**

D. C. Shaha et al.



**Fig. 4.** Mean longitudinal dispersion coefficient  $D_l$  ( $\text{m}^2\text{s}^{-1}$ ) as a function of position along the Sumjin River Estuary for high water slack and low water slack conditions.



Spatial variation of the dispersion coefficient

D. C. Shaha et al.

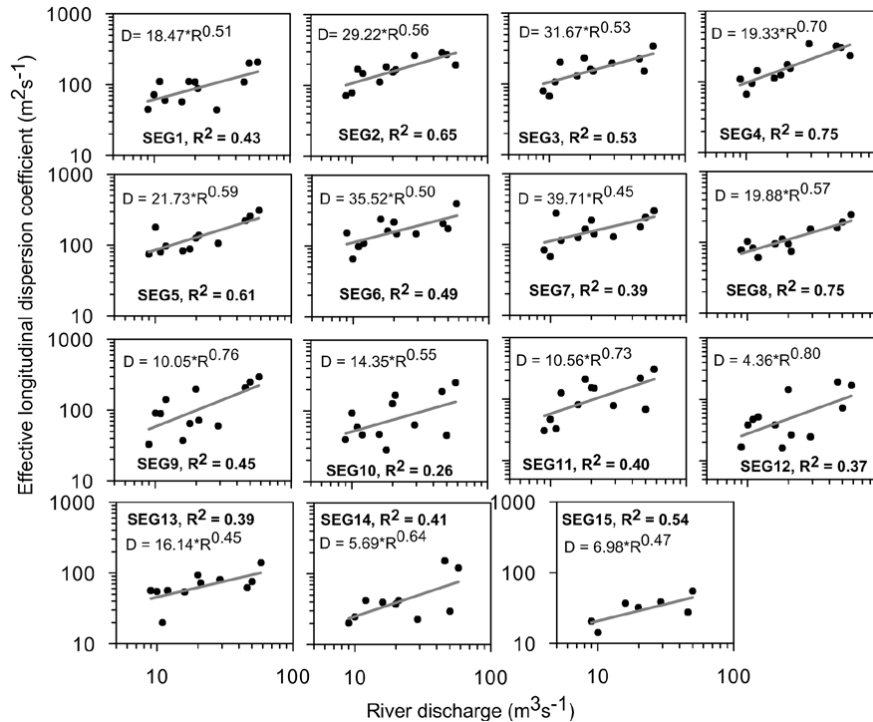


Fig. 6. Effective longitudinal dispersion coefficient ( $D$ ) estimated at low water slack versus river discharge ( $R$ ) at various positions along the Sumjin River Estuary.

Title Page

Abstract

Introduction

Conclusions

References

Tables

Figures

◀

▶

◀

▶

Back

Close

Full Screen / Esc

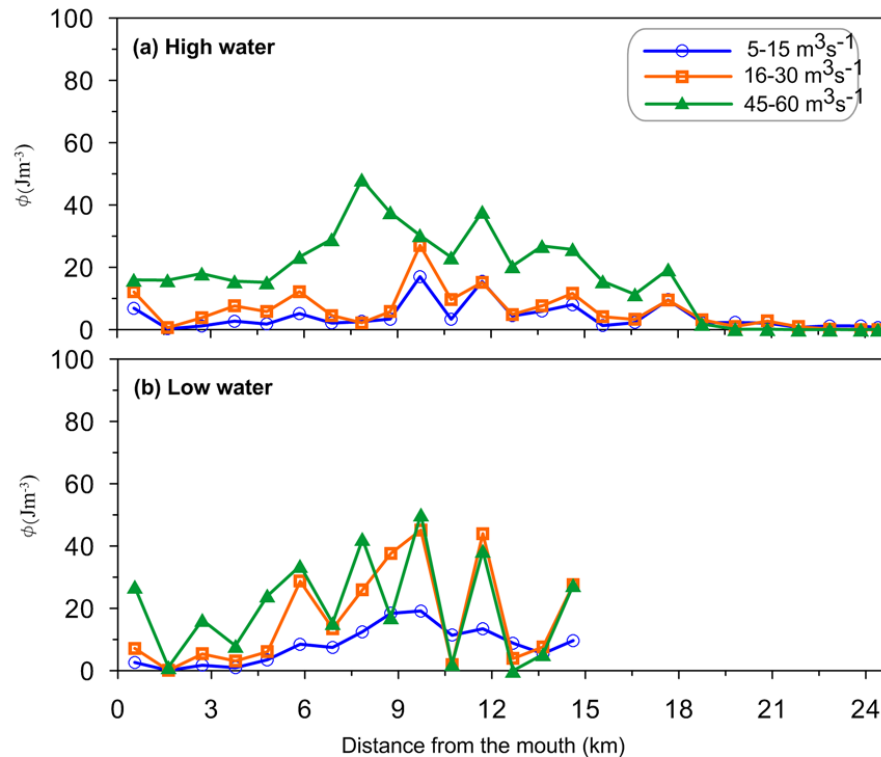
Printer-friendly Version

Interactive Discussion



## Spatial variation of the dispersion coefficient

D. C. Shaha et al.



**Fig. 7.** Spatial variation in the potential energy anomaly at low and high tides along the Sumjin River Estuary under different river discharges.

[Title Page](#)
[Abstract](#)
[Introduction](#)
[Conclusions](#)
[References](#)
[Tables](#)
[Figures](#)
[◀](#)
[▶](#)
[◀](#)
[▶](#)
[Back](#)
[Close](#)
[Full Screen / Esc](#)
[Printer-friendly Version](#)
[Interactive Discussion](#)


Spatial variation of the dispersion coefficient

D. C. Shaha et al.

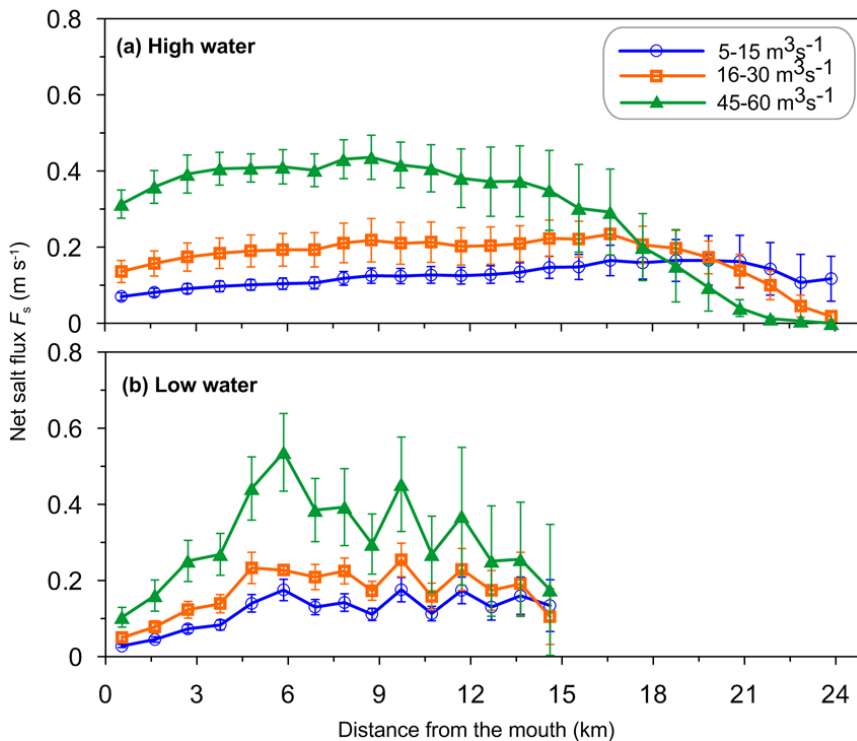


Fig. 8. Response of dispersive salt flux  $F_s$  ( $\text{ms}^{-1}$ ) to salinity gradient ( $\text{km}^{-1}$ ) at low and high waters along the Sumjin River Estuary under different river discharges.

Title Page

Abstract Introduction

Conclusions References

Tables Figures

◀ ▶

◀ ▶

Back Close

Full Screen / Esc

Printer-friendly Version

Interactive Discussion

