

This discussion paper is/has been under review for the journal Hydrology and Earth System Sciences (HESS). Please refer to the corresponding final paper in HESS if available.

Estimation of future glaciation and runoff in the Tanimas basin, Eastern Pamirs

W. Hagg¹, M. Hoelzle², S. Wagner³, and Z. Klose⁴

¹Department of Geography, Ludwig-Maximilians-University, Munich, Germany

²Department of Geosciences, University of Fribourg, Fribourg, Switzerland

³Itos-GmbH, Ebnat-Kappel, Switzerland

⁴Department of Water Resources and Environmental Modeling, Czech University of Life Science, Prague, Czech Republic

Received: 29 December 2010 – Accepted: 25 January 2011 – Published: 28 January 2011

Correspondence to: W. Hagg (hagg@lmu.de)

Published by Copernicus Publications on behalf of the European Geosciences Union.

HESSD

8, 1507–1540, 2011

Estimation of future glaciation and runoff in the Tanimas basin, Eastern Pamirs

W. Hagg et al.

Title Page

Abstract

Introduction

Conclusions

References

Tables

Figures

⏪

⏩

◀

▶

Back

Close

Full Screen / Esc

Printer-friendly Version

Interactive Discussion

Abstract

A conceptual hydrological model was set up in the upper Panj catchment, the main tributary of Amu-Darya river. Driven by daily temperature and precipitation, the model reproduced daily hydrographs of Tanimas river at the Rukhk gauging station in a very satisfactory way. Based on two glacier inventories from the mid-20st century (WGI, World Glacier Inventory) and from 2003 (GLIMS, Global Land Ice Measurements from Space), a simple parameterization scheme based on steady state conditions was applied to infer the ice volumes and glacier areas for the two different time periods in the past. Assuming temperature rises of 2.2 °C and 3.1 °C, which mark the extreme values of regional climate scenarios, the same method was used to extrapolate glaciation to the year 2050. The results show that these temperature rises will reduce the current glacier extent of 431 km² by 36% and 45%, respectively.

To assess future changes in water availability, the hydrological model input was modified according to the regional climate scenarios and the resulting glacier changes. The use of an elevation distributed deglaciation pattern is a clear improvement over methods used previously, where the impact on runoff was tested by excluding either the lower half or the total glacier area. The runoff scenarios reveal no changes in annual runoff, because the glacier area decrease is balanced out by enhanced melt rates. However, there is an important seasonal shift of water resources from summer to spring, unfavorably affecting agriculture and irrigation in the lowlands.

1 Introduction

In many mountain ranges at mid-latitudes, glaciers represent important water reservoirs on several time scales. They are nourished by solid precipitation and release the water again through melting. In climate zones where accumulation and ablation occur at different times of year, this leads to a seasonal delay of runoff (Jansson et al., 2003). When glacier mass balance is disturbed in one direction over a longer period, the

HESSD

8, 1507–1540, 2011

Estimation of future glaciation and runoff in the Tanimas basin, Eastern Pamirs

W. Hagg et al.

Title Page

Abstract

Introduction

Conclusions

References

Tables

Figures



Back

Close

Full Screen / Esc

Printer-friendly Version

Interactive Discussion



area development based on area-volume scaling (Stahl, 2008) or by parameterizations using ice thickness change patterns (Huss et al., 2008, 2010).

One such conceptual model designed for application in glacierized catchments is the HBV-ETH model. It already proved its robust performance in various studies in the Alps (Braun et al., 2000), the Himalayas (Braun et al., 1993), the Tian Shan (Hagg et al., 2006, 2007) and the Caucasus (Hagg et al., 2010). In heavily glacierized regions, runoff is strongly regulated by glacier melt and a prediction of future discharge requires information about future glacier extent. The absence of such information was a weak point in the HBV-ETH applications mentioned above. By assuming three steps of deglaciation (100%, 50%, 0%) without knowing the timing of their occurrence, the runoff scenarios tended to have the character of a sensitivity study. The 50% deglaciation scenario was realized by excluding the lower half of the glacier area in the topographic input file, which is a simplification that introduces further uncertainties. Despite these restrictions, this simple methodology was adopted by other authors (e.g. Akhtar et al., 2008), probably due to the difficulties involved in a more realistic prediction of future glacier extent.

Future changes in ice volume and glacier extent can be determined by coupled models for glacier mass balance and ice-flow dynamics (e.g. Jouvet et al., 2009). Since this approach is limited by its substantial field data and computational time requirements, many authors prefer simpler parameterizations for glacier retreat (Schaeffli et al., 2007; Huss et al., 2008, 2010).

The overall aim of this contribution is to estimate future hydrological conditions for the middle of this century, a time horizon important for water resources planning. Due to the strong hydrological dependence of arid regions on mountain runoff, the highly glacial runoff regime is conserved far downstream and the results also provide important information about the lower reaches of the basin. On the basis of past and recent glacier inventories, high-resolution digital elevation models and the temperature rise projected by regional climate models, a parameterization scheme based on Haeberli and Hoelzle (1995) is used to predict elevation-distributed glaciation. Implemented in

Estimation of future glaciation and runoff in the Tanimas basin, Eastern Pamirs

W. Hagg et al.

Title Page

Abstract

Introduction

Conclusions

References

Tables

Figures



Back

Close

Full Screen / Esc

Printer-friendly Version

Interactive Discussion



the HBV-ETH precipitation-runoff model, these data enable more realistic runoff scenarios than those from earlier applications to be generated.

2 Geographical setting

Amu-Darya is one of the two inflows into the Aral Sea; 68% of total runoff in the Aral Sea basin is formed in its catchment (UNEP, 2006). While almost 90% of the total annual discharge of 78 km^3 is formed in the mountain areas of Tajikistan and Afghanistan (UNEP, 2006), most of the water consumption takes part in the strongly arid zones of the downstream riparians (Turkmenistan, Uzbekistan).

From Kerki to Nukus, Amu-Darya loses almost all of its water, mainly by artificial use. According to the Interstate Commission for Water Coordination in Central Asia, up to 4 mill. km^2 of land in the basin are irrigated (ICWC, 2010), for the most part still using the outdated and inefficient infrastructure from the Soviet period. Another major source of water loss is the Karakum canal which diverts $8\text{--}12 \text{ km}^3$ from the Aral Sea Basin to Turkmenistan (Glantz, 2005). As a response, Aral Sea has lost 90% of its volume from 1960 to 2006 (Micklin, 2007).

Amu-Darya is formed at the confluence of the rivers Vakhsh and Panj, the latter contributing $986 \text{ m}^3 \text{ s}^{-1}$ or 60% to total runoff. According to the World Glacier Inventory (WGMS, 1989) prepared in the mid 20th century, the Panj catchment has a glacier coverage of 3913 km^2 , which correspond to a glaciation of 3.4%.

Rukhk is a village and hydrological post at the Tanimas river, which becomes the river Bartang at the confluence with the Murghab river (Fig. 1). The catchment (4306 km^2) has a glacier cover of 431 km^2 (10%) and drains the most heavily glacierized part of the Panj basin. Five years of daily discharge data (1985/1986–1989/1990) were compiled at the Rukhk gauge. The hydrographs show a distinct glacial regime with maximum values in July and August. Meteorological data were taken from the Irkht station (3290 m a.s.l) close to Lake Sarez (Fig. 1). This station is located outside the Rukhk catchment, but the close proximity (approx. 23 km from Rukhk) suggested that

Estimation of future glaciation and runoff in the Tanimas basin, Eastern Pamirs

W. Hagg et al.

Title Page

Abstract

Introduction

Conclusions

References

Tables

Figures

⏪

⏩

◀

▶

Back

Close

Full Screen / Esc

Printer-friendly Version

Interactive Discussion



**Estimation of future
glaciation and runoff
in the Tanimas basin,
Eastern Pamirs**W. Hagg et al.

[Title Page](#)[Abstract](#)[Introduction](#)[Conclusions](#)[References](#)[Tables](#)[Figures](#)[⏪](#)[⏩](#)[◀](#)[▶](#)[Back](#)[Close](#)[Full Screen / Esc](#)[Printer-friendly Version](#)[Interactive Discussion](#)

the data are still representative for the meteorology inside the test basin. Irkht offers a valuable long-term series (since 1939) from this strongly continental mountain region. Mean monthly temperatures (1939–1994) range from -13.6°C in January to 14.4°C in July, the resulting inter-annual amplitude is 28 K. Mean annual precipitation in the same period is only 139 mm, 72% of which fall from December to May, mostly in solid form. Only 12 mm or 8.6% fall in July to August, when 46% of annual runoff is formed and when the demand for irrigation water is highest. These numbers impressively demonstrate the importance of icemelt in runoff formation and seasonal redistribution.

Agaltseva et al. (2005) conducted regional climate modeling to assess future climate change in the mountainous part of the upper Amu-Darya basin. In order to partly moderate uncertainties of climate models, the averaged results of six Global Circulation Models (HadCM3, ECHAM4, CSIRO-TR, GFDL-TR, CGCM1-TR, CCSR-NIES) were used. The full range of five emission scenarios formed the basis for characterizing climate changes by three time intervals in the future (2030, 2050 and 2080) with respect to the baseline scenario 1961–1990. Statistical downscaling was performed by multivariate linear regression and is based on observational data from 22 stations in the case of air temperature, and 21 stations in the case of precipitation (Agaltseva et al., 2005). For mid-century, the mean warming in the mountain region ranges from 2.2°C (emission scenario A2) to 3.1°C (emission scenario A1F1) and is evenly distributed over the year. To cover the full range of possible reactions, we selected these two extreme scenarios to estimate changes in glaciation and runoff. The corresponding precipitation changes for Fedchenko station (4156 m a.s.l), are given in Table 1.

3 Methods

3.1 Glacier model

In order to calculate future discharge, the change in ice volume and glacier extent must be taken into account using parameterizations for glacier retreat (Schaeffli et al., 2007; Huss et al., 2008, 2010) or coupled models for glacier mass balance and ice-

Estimation of future glaciation and runoff in the Tanimas basin, Eastern Pamirs

W. Hagg et al.

Title Page

Abstract

Introduction

Conclusions

References

Tables

Figures

⏪

⏩

◀

▶

Back

Close

Full Screen / Esc

Printer-friendly Version

Interactive Discussion

flow dynamics (e.g. Jouvét et al., 2009). However, numerical modelling has some restrictions if it is not applied in a proper way (Le Meur et al., 2004) and the input requirement for fully coupled models increases strongly and processing time is order of magnitudes higher than with the other models. In addition, basal processes have to be parameterized in all model types as well, which is a drawback for the whole modeling process.

The parameterization scheme developed by Haeberli and Hoelzle (1995) provides the possibility to analyze glacier inventory data stored in the databases of WGMS and NSIDC. Detailed information about the complete parameterization scheme can be found in Haeberli and Hoelzle (1995), Hoelzle and Haeberli (1995), Hoelzle et al. (2003, 2007) and Baumann and Winkler (2010). Here, a brief summary of the most important parameterisations is provided. Only five measured input variables from the inventories were used, namely maximum glacier altitude (H_{\max}), mean altitude (H_{mean}), minimum altitude (H_{\min}), length (L_0) and total surface area (F). All other variables are calculated or taken from measurements. Where specific equations are not given, the corresponding references are cited.

This approach considers the step changes after full dynamic response and new equilibrium of the glacier have been achieved, when mass balance disturbance Δb leads to a corresponding glacier length change ΔL that depends on the original length L_0 and the average annual mass balance (ablation) at the glacier terminus b_t . The term b_t is calculated as $b_t = db/dh \cdot (H_{\text{mean}} - H_{\min})$, where db/dh is the mass balance gradient:

$$\Delta b = b_t \Delta L / L_0 \quad (1)$$

Glacier thickness (h) is determined according to Eq. (2) (Paterson, 1994) where α is the slope, τ the basal shear stress, ρ the density of ice and g the acceleration due to gravity.

$$h = \tau / \rho g \sin \alpha \quad (2)$$

The dynamic response time t_{resp} is calculated after Jóhannesson et al. (1989), where h_{\max} is a characteristic ice thickness, usually taken at the equilibrium line where ice

depths are near maximum. h_{\max} is calculated as 2.5 h, as estimated from known ice thickness measurements on various alpine glaciers worldwide (Bauder et al., 2003; Farinotti et al., 2009, March 2000).

$$t_{\text{resp}} = h_{\max} / b_t \quad (3)$$

5 Assuming a linear change of the mass balance from b to zero during the dynamic response, the average mass balance $\langle b \rangle$ can be calculated according to Eq. (4). $\langle b \rangle$ values are annual ice thickness change (meters of water equivalent (we) per year) averaged over the entire glacier surface, which can be directly compared with values measured in the field. Although the method is quite simple, the results compare
10 very well with long-term observations (Hoelzle et al., 2003). The factor n_{resp} denotes the count of possible response times for each glacier within the considered time period.

$$\langle b \rangle = \Delta b / 2 n_{\text{resp}} \quad (4)$$

World Glacier Inventory data of the investigation area from two time frames were used. The older data (1940s to 1960s) were derived mainly from aerial photographs, while
15 the second period covers the time between 2000 and 2003 and is based on updated digital outlines (polygons) from the GLIMS database. Nearly all existing glacier polygons had to be corrected for their position and updated using self-digitized polygons. The parameterization scheme was applied to some representative glaciers in both inventories and the results were extrapolated to the whole investigation area to provide
20 an estimation on the total ice volume and the ice volume change for the period 2003 to 2050. Abramov glacier was a reference glacier during the Soviet era and also serves as such in this study. Although it lies 115 km outside the basin under investigation, it is the nearest glacier that can provide the necessary data. A mass balance gradient of 9.0 mm m^{-1} , derived from measured data at Abramov (Pertziger, 1996), was chosen
25 for the entire sample. The parameterization was applied to 82 selected glaciers, where glacier information from both inventories could be compiled. The resulting differences of the modeled volumes were then extrapolated to an overall volume change for the whole test basin.

Estimation of future glaciation and runoff in the Tanimas basin, Eastern Pamirs

W. Hagg et al.

Title Page

Abstract

Introduction

Conclusions

References

Tables

Figures

⏪

⏩

◀

▶

Back

Close

Full Screen / Esc

Printer-friendly Version

Interactive Discussion



Mean specific mass balances were estimated using a relation found by Kuhn (1989, 1993), which states that a temperature change of +1 °C increases ELA by 170 m with an accuracy of ±50 m per degree Celsius. The corresponding change in mass (Δb) was calculated using the mass balance gradient (db/dh) after Eq. (5).

$$\Delta b = db/dh dELA/dT_{\text{air}} \Delta T_{\text{air}} \quad (5)$$

where $dELA/dT_{\text{air}}$ describes the vertical shift of ELA per degree Celsius and integrates the change in all climate parameters, i.e. radiation, humidity, accumulation and air temperature, as well as feedback effects for any temperate glaciers (Kuhn, 1993).

The calculation of the $\langle b \rangle$ value was done by taking into account each individual response time and multiples thereof (Eq. 4). According to Eq. (5) an increase in temperature of 2.2 and 3.1 °C with a corresponding ELA shift of 374 m and 527 m would lead to a Δb of 3.37 m and 4.74 m, respectively.

3.2 Runoff model

The HBV-ETH model (Braun and Renner, 1992) is a further development of the world-wide used HBV model (Bergström, 1976). At the ETH in Zurich, the main model structure was extended by adding a snow and glacier subroutine to simulate both snow accumulation and the melt of snow and ice. The snow- and glacier-subroutine calculates melt rates of the snow- and ice cover distributed for different elevation belts and aspect classes, while the further steps of the model are performed on a lumped basis for the whole catchment area.

Required input consists of topographical data (distribution of area and exposition classes by altitude, separately for glaciated and total area) and hydrometeorological data (daily values of air temperature and precipitation to drive the model, and runoff for calibration purposes). In the following model description, tuning parameters are in brackets.

A threshold air temperature (T_0) distinguishes snow from rainfall and both aggregational states of precipitation are corrected by factors (SCF, RCF) to account for gauge

Estimation of future glaciation and runoff in the Tanimas basin, Eastern Pamirs

W. Hagg et al.

Title Page

Abstract

Introduction

Conclusions

References

Tables

Figures

⏪

⏩

◀

▶

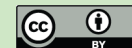
Back

Close

Full Screen / Esc

Printer-friendly Version

Interactive Discussion



Estimation of future glaciation and runoff in the Tanimas basin, Eastern Pamirs

W. Hagg et al.

Title Page

Abstract

Introduction

Conclusions

References

Tables

Figures

⏪

⏩

◀

▶

Back

Close

Full Screen / Esc

Printer-friendly Version

Interactive Discussion

between liquid and solid precipitation in each elevation band and to account for different melt rates on south- and north-exposed slopes. Terrain with slopes smaller than 5° was classified as horizontal and has the same melt rates as east- and west-exposed slopes. The ASTER images used to generate the elevation models were taken in the period 2000–2006. This means a time gap between the topographic and hydrometeorological input of 10–20 yr. Since no maps or elevation models from the 1980s are available and due to the lack of better options, this inaccuracy was accepted. A comparison of data from the GLIMS (Global Land Ice Measurements from Space) project with the World Glacier Inventory (WGI) revealed that from the mid 20th century until 2003, glacier area in the whole Panj basin decreased by 8.2% only (Hoelzle et al., 2010), equaling a mean rate of less than 2% per decade.

4 Results and discussion

4.1 Deglaciation

The temperature rises of 2.2°C and 3.1°C until 2050 reduce the current glacier extent by 36% and 45%, respectively. The deglaciation in the elevation classes of the HBV-ETH model is depicted in Fig. 3.

In the two lowest intervals below 4400 m a.s.l., glaciers practically disappear. In the following three intervals up to 5000 m a.s.l., glacier area is reduced by more than 50%, from 5000–5300 m a.s.l. by 28–36% and above 5300 m a.s.l. there are only very minor changes. Regarding the current distribution, the largest absolute losses ($56\text{--}74\text{ km}^2$) will occur between 4700 and 5000 m a.s.l.

The parameterization scheme used to derive future glaciation does not allow to differentiate between the exposition classes used in the hydrological model. It was assumed that relative deglaciation is similar for all expositions.

4.2 Runoff model calibration

The HBV-ETH model was calibrated manually by tuning the free parameters in a way that minimizes deviations between simulated and measured runoff. The numerical criterion used is the model efficiency after Nash and Sutcliffe (1970), which equals 1.0 when the two curves are identical. Unfortunately, only five years of observations were accessible for this gauge. This allows calibration, but is barely enough to make a separate period for validation, because the characteristics of the individual years can influence calibration if only very few years are used. In any case, it was tested to calibrate the model by the first two years only and to validate it with the following three years. The resulting model efficiencies were $R^2 = 0.88$ and $R^2 = 0.86$ for the calibration and validation period, respectively. When calibrated over the full five years, R^2 is 0.87 (Fig. 4). The values of all free parameters found by this optimization procedure are listed in Table 1.

The model provides the possibility for an additional quality check by comparing simulated glacier mass balances with field observations (Braun and Aellen, 1990). Since both basin precipitation and glacier melt are difficult to simulate correctly, a cross-check with measured mass balance data helps to avoid error compensation (Hagg et al., 2004; Schaefli and Huss, 2010; Konz and Seibert, 2010). Unfortunately, no direct observations are available in the investigation area. In any case, moderate mass losses compared to more maritime mountain ranges were also confirmed by repeat photographs in the Tanimas valley (Braun and Hagg, 2009) and by a new GPS survey on Fedchenko glacier in 2009 (Lambrecht et al., 2010). As a consequence, the only frame we had to constrain parameters in terms of icemelt was to avoid strongly negative mass changes, balanced conditions or a gain in glacier mass.

Since daily variations in runoff (which are assessed by the Nash-Sutcliffe criterion) are not essential for the evaluation of future water availability, the ability of the model to reproduce monthly runoff was tested (Fig. 5).

Estimation of future glaciation and runoff in the Tanimas basin, Eastern Pamirs

W. Hagg et al.

Title Page

Abstract

Introduction

Conclusions

References

Tables

Figures



Back

Close

Full Screen / Esc

Printer-friendly Version

Interactive Discussion



The comparison of modeled and measured monthly runoff shows a high coefficient of determination (0.96) and proves that the model performs well on a monthly time step.

While the use of daily data enables a differentiated evaluation of the model performance, the hydrological regime and the temporal distribution of water resources become more clearly visible if monthly means are calculated (Fig. 6). The only month with a minor deviation among the mean values is August, where the model underestimates runoff by 11% compared to the observational data.

4.3 Runoff scenarios for 2050

Runoff scenarios were generated by modifying the meteorological model input by a constant temperature shift throughout the year and by seasonal precipitation adjustments according to Table 1.

Glacier changes (Fig. 3) were considered in the area-altitude distribution. The monthly hydrographs of the scenarios are displayed in Fig. 7.

Numerical changes are listed in Table 2. For the sake of a better comparability, absolute runoff values have been transformed into relative changes.

It is important to note that annual runoff remains stable, while the seasonal distribution shift towards a water surplus in May–June and a shortage in July–September. The runoff increase in spring and early summer is stronger in the warmer scenario, it can be attributed to an earlier and intensified snowmelt. In July, the glacier area decrease in the two scenarios overcompensates enhanced melt rates due to warming, resulting in lower runoff values when compared with the calibration period. The stronger water shortage occurs in the warmer scenario, indicating that glacier area is the key factor controlling meltwater yield. In August and September, both scenarios show an identical decrease in monthly streamflow compared to the current situation.

The availability of areal changes by altitude is a real improvement over former studies, where deglaciation was simulated by “cutting” the lowest glacier parts. In order

Estimation of future glaciation and runoff in the Tanimas basin, Eastern Pamirs

W. Hagg et al.

Title Page

Abstract

Introduction

Conclusions

References

Tables

Figures



Back

Close

Full Screen / Esc

Printer-friendly Version

Interactive Discussion



to determine the differences between these two approaches, additional model runs have been performed with the old deglaciation procedure (“cutting lowest”). Results are shown in Table 3.

By cutting the lowest areas, the glaciers lose their most melt-relevant parts. An elevation distributed deglaciation also affects higher reaches and as a consequence preserves glacier areas in lower elevation bands, if the same total area loss is assumed. This leads to an underestimation of runoff for the model runs in the “cutting lowest” mode. Total summer (Jun–Sep) runoff is underestimated by 8.8% in the moderate scenario (A2) and by 5.6% in the warmer scenario (A1F1). This error is not large and it diminishes with deglaciation, because the absolute differences between the approaches also decrease with total glacier area. In any case, we believe that the elevation distributed deglaciation approach is a step towards more realistic runoff scenarios.

The HBV-ETH model simulates not only runoff, but also other terms of the water balance. Their average values are listed in Table 4.

According to the presented combination of climate modeling, glacier area parameterization and runoff modeling, neither annual precipitation nor runoff will change significantly until 2050. The areal glacier losses are compensated almost exactly by the enhanced melt rates in the warmer atmosphere.

All values in Table 4 relate to the entire catchment. Therefore, the glacier storage changes have to be regarded as basin values, not as glacier mass balances. Considering the respective glaciation (calibration period: 10%, scenario A2: 6.4%, scenario A1F1: 5.5%), the specific glacier net balances are -1100 mm a^{-1} for the calibration period, -1550 mm a^{-1} for the A2-scenario and -2016 mm a^{-1} for the A1F1-scenario.

Estimation of future glaciation and runoff in the Tanimas basin, Eastern Pamirs

W. Hagg et al.

Title Page

Abstract

Introduction

Conclusions

References

Tables

Figures



Back

Close

Full Screen / Esc

Printer-friendly Version

Interactive Discussion



5 Conclusions

Including the projected climate and glacier changes, the hydrological model generates an annual runoff which is similar to the calibration period in the 1980s. Changes in precipitation and evapotranspiration are negligible and enhanced glacier melt rates are compensated by a distinct reduction of glacier area. In other words, glacier will melt more strongly but over a smaller area. The seasonal peak runoff is shifted towards May and June. Due to the robust performance of the temperature index approach, these melt-related processes can be predicted with rather good accuracy. We estimate the error in monthly runoff to be less than 20%. The greatest uncertainty is related to future precipitation sums and their seasonality. The GCMs fail in part to model precipitation accurately across varying elevations (Agaltseva et al., 2005). Uncertainties arise at all stages of the modeling process (Meehl et al., 2007), and especially in mountain regions, the confidence in the projected precipitation change remains weak. Differing precipitation sums and intra-annual changes would influence future runoff in two main ways: solid precipitation contributes to accumulation in winter and reduces ablation in summer, both affecting the glacier mass balance and consequently the future glacier extent. Liquid precipitation that falls on ice and rock surfaces runs off immediately and in this arid region even small absolute changes would have a large impact on runoff formation. Unless climate models perform better in mountainous terrain this is a source of error which cannot be avoided.

The mean runoff reduction in July and August of approximately 25% will raise major problems for irrigation and drinking water supply. Irrigation capacities are already limited by summer runoff and a further decrease will intensify the situation in the lowlands. Furthermore, evapotranspiration losses in the downstream regions will be significantly higher than in the headwaters treated in this study, which will further limit water availability in summer. The transnational character of the Amu-Darya requires multilateral planning of adaption strategies and impact mitigation to secure the livelihood of the population.

Estimation of future glaciation and runoff in the Tanimas basin, Eastern Pamirs

W. Hagg et al.

Title Page

Abstract

Introduction

Conclusions

References

Tables

Figures



Back

Close

Full Screen / Esc

Printer-friendly Version

Interactive Discussion



We trust that the applied methodology is a practical but also reliable way to estimate future water availability in regions with little data. The incorporation of real estimates of future glacier areas and the consideration of elevation distributed area changes in particular improved the validity of the results and the power of the approach to deliver predictions.

Acknowledgements. The authors thank Susan Braun-Clarke for editing the English in a very professional way.

References

- Agaltseva, N., Spectorman, T., White, C., and Tanton, T.: Modelling the future climate of the Amu Darya Basin, in: Interstate Water Resource Risk Management: Towards a Sustainable Future for the Aral Basin, edited by: Olsson, O. and Bauer, M., IWA Publishing, London, UK, 2005.
- Akhtar, A., Ahmad, N., and Booij, M. J.: The impact of climate change on the water resources of Hindukush – Karakorum – Himalaya region under different glacier coverage scenarios, *J. Hydrol.*, 355, 148–163, 2008.
- Barnett, T., Adam, J., and Lettenmaier, D.: Potential impacts of a warming climate on water availability in snow dominated regions, *Nature*, 438, 303–309, 2005.
- Bauder, A., Funk, M., and Gudmundsson, G. H.: The ice-thickness distribution of Unteraargletscher, Switzerland, *Ann. Glaciol.*, 37, 331–336, 2003.
- Baumann, S. and Winkler, S.: Parametrization of glacier inventory data from Jotunheimen/Norway in comparison to the European Alps and the Southern Alps of New Zealand, *Erdkunde*, 64, 155–177, 2010.
- Bekchanov, M., Lamers, J. P., and Martius, C.: Pros and Cons of Adopting Water-Wise Approaches in the Lower Reaches of the Amu Darya: A Socio-Economic View, *Water*, 2, 200–216, 2010.
- Bergström, S.: Development and Application of a Conceptual Runoff Model for Scandinavian Catchments, Department of Water Resources Engineering, University of Lund, 1976.
- Braun, L. N. and Aellen, M.: Modelling discharge of glacierized basins assisted by direct measurements of glacier mass balance, *IAHS Publ.*, 193, 99–106, 1990.

Estimation of future glaciation and runoff in the Tanimas basin, Eastern Pamirs

W. Hagg et al.

Title Page

Abstract

Introduction

Conclusions

References

Tables

Figures

⏪

⏩

◀

▶

Back

Close

Full Screen / Esc

Printer-friendly Version

Interactive Discussion



Estimation of future glaciation and runoff in the Tanimas basin, Eastern Pamirs

W. Hagg et al.

Title Page

Abstract

Introduction

Conclusions

References

Tables

Figures

⏪

⏩

◀

▶

Back

Close

Full Screen / Esc

Printer-friendly Version

Interactive Discussion



- Braun, L. N. and Hagg, W.: Present and future impact of snow cover and glaciers on runoff from mountain regions – comparison between Alps and Tien Shan, in: Assessment of Snow, Glacier and Water Resources in Asia, edited by: Braun, L., Hagg, W., Severskiy, I., and Young, G., IHP/HWRP-Berichte, 8, 36–43, 2009.
- 5 Braun, L. N. and Renner, C. B.: Applications of a conceptual runoff model in different physiographic regions of Switzerland, *Hydrolog. Sci. J.*, 73, 217–231, 1992.
- Braun, L. N., Grabs, W., and Rana, B.: Application of a Conceptual Precipitation-Runoff Model in the Langtang-Khola Basin, Nepal Himalaya, *IAHS Publ.*, 218, 221–237, 1993.
- Braun, L. N., Weber, M., and Schulz, M.: Consequences of climate change for runoff from
10 Alpine regions, *Ann. Glaciol.*, 31, 19–25, 2000.
- Conrad, C., Dech, S. W., Hafeez, M., Lamers, J. P. A., Martius, C., and Strunz, G.: Mapping and assessing water use in a Central Asian irrigation system by utilizing MODIS remote sensing products, *Irrig. Drainage Syst.*, 21, 197–218, doi:10.1007/s10795-007-9029-z, 2007.
- Farinotti, D., Huss, M., Bauder, A., Funk, M., and Truffer, M.: A method for estimating the ice
15 volume and ice thickness distribution of alpine glaciers, *J. Glaciol.*, 191, 422–430, 2009.
- Froebrich, J. and Kayumov, O.: Water management aspects of Amu Darya, in: Dying and Dead Seas – Climatic Versus Anthropic Causes, Kluwer Academic Publishers, Dordrecht, The Netherlands, 49–76, 2004.
- Glantz, M. H.: Water, climate, and development issues in the Amu Darya Basin, *Mitigation
20 Adaptation Strategies Global Change*, 10, 23–50, doi:10.1007/s11027-005-7829-8, 2005.
- Haerberli, W. and Hoelzle, M.: Application of inventory data for estimating characteristics of and regional climate-change effects on mountain glaciers: a pilot study with the European Alps, *Ann. Glaciol.*, 21, 206–212, 1995.
- Hagg, W., Braun, L. N., Uvarov, V., and Makarevich, K. G.: Comparison of three methods
25 for mass balance determination in the Tuyuksu glacier region, Tien Shan, *J. Glaciol.*, 171, 505–510, 2004.
- Hagg, W., Braun, L. N., Weber, M., and Becht, M.: Runoff modeling in glacierized Central Asian catchments for present-day and future climate, *Nord. Hydrol.*, 37, 93–105, 2006.
- Hagg, W., Braun, L. N., Kuhn, M., and Nesgaard, T. I.: Modeling of hydrological response to
30 climate change in glacierized Central Asian catchments, *J. Hydrol.*, 332, 40–53, 2007.
- Hagg, W., Shahgedanova, M., Mayer, C., Lambrecht, A., and Popvni, V.: A sensitivity study for water availability in the Northern Caucasus based on climate projections, *Global Planet. Change*, 73, 161–171, doi:10.1016/j.gloplacha.2010.05.005, 2010.

Estimation of future glaciation and runoff in the Tanimas basin, Eastern Pamirs

W. Hagg et al.

Title Page

Abstract

Introduction

Conclusions

References

Tables

Figures

◀

▶

◀

▶

Back

Close

Full Screen / Esc

Printer-friendly Version

Interactive Discussion



elling of the glacierized Alpine Upper Salzach basin (Austria): multi-criteria result validation, *Hydrol. Process.*, 22, 3950–3964, doi:10.1002/hyp.7112, 2008.

Konz, M., Uhlenbrook, S., Braun, L., Shrestha, A., and Demuth, S.: Implementation of a process-based catchment model in a poorly gauged, highly glacierized Himalayan headwater, *Hydrol. Earth Syst. Sci.*, 11, 1323–1339, doi:10.5194/hess-11-1323-2007, 2007.

Kuhn, M.: The response of the equilibrium line altitude to climatic fluctuations: Theory and observations, in: *Glacier fluctuations and climatic change*, edited by: Oerlemans, J., Kluwer, Dodrecht, The Netherlands, 407–417, 1989.

Kuhn, M.: Possible future contributions to sea level change from small glaciers, in: *Climate and sea level change observations, projections and implications*, edited by: Warrick, R. A., Barrow, E. M., and Wigley, T. M. L., Cambridge University Press, Cambridge, UK, 134–143, 1993.

Lambrecht, A. and Mayer, C.: Temporal variability of the non-steady contribution from glaciers to water discharge in western Austria, *J. Hydrol.*, 376, 353–36, 2009.

Lambrecht, A., Mayer, C., Surazakov, A., and Aizen, V.: Changes of Fedchenko Glacier, Pamir, during the last 81 years. EGU General Assembly, Vienna, Austria, 2–7 May 2010, EGU2010-1522, 2010.

Le Meur, E., Gagliardini, O., Zwinger, T., and Ruokolainen, J.: Glacier flow modelling: a comparison of the Shallow Ice Approximation and the full-Stokes solution, *Physique*, 5, 709–722, 2004.

March, R. S.: Mass balance, meteorological, ice motion, surface altitude, runoff, and ice thickness data at Gulkana Glacier, Alaska, 1995 balance year, US Geological Survey Water Resources Investigations, 2000.

Martius, C., Froebrich, J., and Nuppenau, E.-A.: Water Resource Management for Improving Environmental Security and Rural Livelihoods in the Irrigated Amu Darya Lowlands. Hexagon Series on Human and Environmental Security and Peace, 4, 749–761, doi:10.1007/978-3-540-68488-6_57, 2009.

Meehl, G. A., Stocker, T. F., Collins, W. D., Friedlingstein, P., Gaye, A. T., Gregory, J. M., Kitoh, A., Knutti, A., Murphy, J. M., Noda, A., Raper, S. C. B., Watterson, I. G., Weaver, A. J., and Zhao, Z.-C.: Global Climate Projections, in: *Climate Change 2007: The Physical Science Basis. Contribution of Working Group I to the Fourth Assessment Report of the Intergovernmental Panel on Climate Change*, edited by: Solomon, S., Qin, D., Manning, M., Chen, Z., Marquis, M., Averyt, K. B., Tignor, M., and Miller, H. L., Cambridge University

Estimation of future glaciation and runoff in the Tanimas basin, Eastern Pamirs

W. Hagg et al.

Title Page

Abstract

Introduction

Conclusions

References

Tables

Figures

⏪

⏩

◀

▶

Back

Close

Full Screen / Esc

Printer-friendly Version

Interactive Discussion

Press, Cambridge, UK and New York, USA, 747–845, 2007.

Micklin, P.: The Aral Sea Disaster, *Annu. Rev. Earth Planet. Sci.*, 35, 47–72, 2007.

Nash, J. E. and Sutcliffe, J. V.: River flow forecasting through conceptual models. Part Ia discussion of principles, *J. Hydrol.*, 10, 282–290, 1970.

5 Paterson, W. S. B.: *The Physics of Glaciers*, 3rd edition, Pergamon Press, Oxford, 380 pp., 1994.

Pertziger, F.: *Abramov Glacier Data Reference Book: Climate, Runoff, Mass Balance*, SANIGMI, Tashkent, Uzbekistan, 279 pp., 1996.

10 Schaefli, B. and Huss, M.: Simulation of high mountainous discharge: how much information do we need?, *Hydrol. Earth Syst. Sci. Discuss.*, 7, 8661–8702, doi:10.5194/hessd-7-8661-2010, 2010.

Schaefli, B., Hingray, B., Niggli, M., and Musy, A.: A conceptual glacio-hydrological model for high mountainous catchments, *Hydrol. Earth Syst. Sci.*, 9, 95–109, doi:10.5194/hess-9-95-2005, 2005.

15 Schaefli, B., Hingray, B., and Musy, A.: Climate change and hydropower production in the Swiss Alps: quantification of potential impacts and related modelling uncertainties, *Hydrol. Earth Syst. Sci.*, 11, 1191–1205, doi:10.5194/hess-11-1191-2007, 2007.

20 Stahl, K., Moore, R., Shea, J., Hutchinson, D., and Cannon, A.: Coupled modelling of glacier and streamflow response to future climate scenarios, *Water Resour. Res.*, 44, W02422, doi:10.1029/2007WR005956, 2008.

UNEP: *Tajikistan: State of the Environment 2005*, United Nations Environment Programme, 115 pp., 2006.

UNESCO: *The United Nations World Water Development Report 3: Water in a Changing World*, UNESCO, Paris and Earthscan, London, 318 pp., 2009.

25 Verbunt, M., Gurtz, J., Jasper, K., Lang, H., Warmerdam, P., and Zappa, M.: The hydrological role of snow and glaciers in alpine river basins and their distributed modeling, *J. Hydrol.*, 282, 36–55, 2003.

Viviroli, D. and Weingartner, R.: The hydrological significance of mountains: from regional to global scale, *Hydrol. Earth Syst. Sci.*, 8, 1017–1030, doi:10.5194/hess-8-1017-2004, 2004.

30 Weber, M., Braun, L., Mauser, W., and Prasch, M.: The relevance of glacier melt for the upper Danube River discharge today and in the future, *Mitteilungsblatt des Hydrographischen Dienstes in Österreich*, Nr. 86, 1–29, 2009.

Weber, M., Braun, L., Mauser, W., and Prasch, M.: Contribution of rain, snow- and icemelt in the upper Danube discharge today and in the future, Geogr. Fis. Dinam. Quat., 33, 221–230, 2010.

WGMS: World glacier inventory – status 1989, edited by: Haeberli, W., Bösch, H., Scherler, K., Østrem, G., and Wallen, C. C., IAHS/(ICSI)/UNEP/UNESCO, Nairobi, 458 pp, 1989.

5

HESSD

8, 1507–1540, 2011

Estimation of future glaciation and runoff in the Tanimas basin, Eastern Pamirs

W. Hagg et al.

Title Page

Abstract

Introduction

Conclusions

References

Tables

Figures



Back

Close

Full Screen / Esc

Printer-friendly Version

Interactive Discussion



Estimation of future glaciation and runoff in the Tanimas basin, Eastern Pamirs

W. Hagg et al.

Title Page

Abstract

Introduction

Conclusions

References

Tables

Figures

⏪

⏩

◀

▶

Back

Close

Full Screen / Esc

Printer-friendly Version

Interactive Discussion

Table 1. Description of the free parameters in the HBV-ETH model, their units and their values found by calibration.

Parameter	Description	Unit	Value
RCF	rainfall correction factor	–	1.10
SCF	snowfall correction factor	–	1.18
PGRAD	precipitation gradient	%/100 m	5.7
TGRAD	temperature gradient	°C/100 m	–0.60
T0	temperature divider (also general temperature correction)	–	–0.1
CMIN	minimum degree day factor on 21 December	mm °C ^{–1} day	2.7
CMAX	maximum degree day factor on 21 June	mm °C ^{–1} day	3.86
CWH	water holding capacity of snow	–	0.4
CRFR	coefficient of refreezing	–	0.01
ETMAX	maximum evapotranspiration on 1 August	mm day ^{–1}	3.5
LP	limit for potential evapotranspiration	mm	120
FC	field capacity	mm	180
BETA	coefficient to calculate outflow of soil moisture storage	–	0.25
LUZ	filling level of upper storage above which surface runoff occurs	–	40
CPERC	percolation from upper to lower storage	mm day ^{–1}	0.5
k_0	storage discharge constant	–	0.03
k_1	storage discharge constant	–	0.016
k_2	storage discharge constant	–	0.002

Estimation of future glaciation and runoff in the Tanimas basin, Eastern Pamirs

W. Hagg et al.

Title Page

Abstract

Introduction

Conclusions

References

Tables

Figures

◀

▶

◀

▶

Back

Close

Full Screen / Esc

Printer-friendly Version

Interactive Discussion

Table 3. Relative monthly runoff changes by 2050 for the two climate scenarios in comparison to the calibration period (1985/1986–1989/1990).

	Oct	Nov	Dec	Jan	Feb	Mar	Apr	May	Jun	Jul	Aug	Sep	Year
+2.2°C (A2)	0.97	1.03	1.02	1.02	1.02	1.02	1.11	1.55	1.28	0.83	0.74	0.88	0.97
+3.1°C (A1F1)	1.02	1.08	1.05	1.05	1.05	1.05	1.26	2.09	1.37	0.75	0.71	0.91	1.00

Estimation of future glaciation and runoff in the Tanimas basin, Eastern Pamirs

W. Hagg et al.

Table 4. Mean monthly runoff derived by model runs using different approaches to implement deglaciation. Elevation distributed deglaciation considers area changes in every elevation belt according to the results of the parameterization scheme (Haeberli and Hoelzle, 1995), whereas “cutting lowest” excludes glacier extent in the lowest elevation classes until the anticipated total deglaciation is reached.

		Jun	Jul	Aug	Sep
+2.2 °C (A2)	elevation distributed ($\text{m}^3 \text{s}^{-1}$)	61.1	72.5	52.7	35.9
	cutting lowest ($\text{m}^3 \text{s}^{-1}$)	57.7	67.0	46.0	31.9
	difference (%)	-5.6	-7.5	-12.7	-11.3
+3.1 °C (A1F1)	elevation distributed ($\text{m}^3 \text{s}^{-1}$)	65.3	65.6	50.6	37.1
	cutting lowest ($\text{m}^3 \text{s}^{-1}$)	62.9	61.3	47.4	34.8
	difference (%)	-3.7	-6.5	-6.4	-6.3

Title Page

Abstract

Introduction

Conclusions

References

Tables

Figures

⏪

⏩

◀

▶

Back

Close

Full Screen / Esc

Printer-friendly Version

Interactive Discussion

HESSD

8, 1507–1540, 2011

Estimation of future glaciation and runoff in the Tanimas basin, Eastern Pamirs

W. Hagg et al.

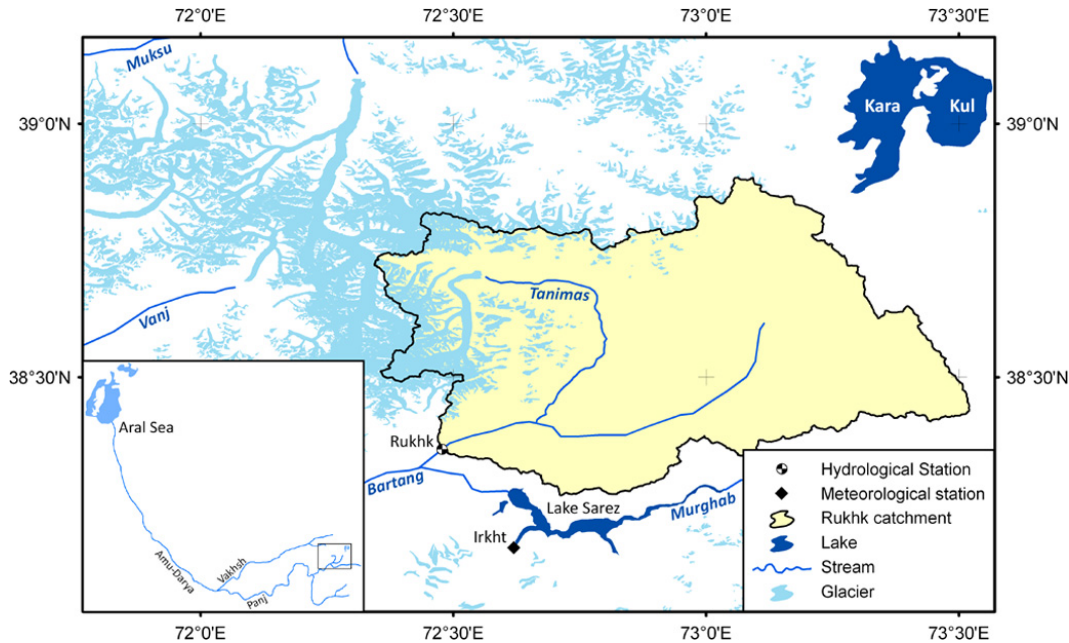


Fig. 1. Sketch map of the Rukhk catchment.

[Title Page](#)[Abstract](#)[Introduction](#)[Conclusions](#)[References](#)[Tables](#)[Figures](#)[⏪](#)[⏩](#)[◀](#)[▶](#)[Back](#)[Close](#)[Full Screen / Esc](#)[Printer-friendly Version](#)[Interactive Discussion](#)

Estimation of future glaciation and runoff in the Tanimas basin, Eastern Pamirs

W. Hagg et al.

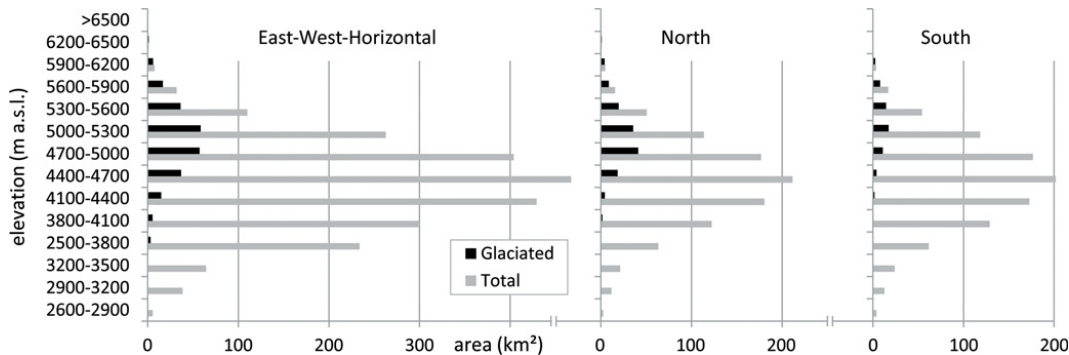


Fig. 2. Distribution of area by altitude and exposition classes for the total area and the glaciated part of the catchment.

Title Page

Abstract Introduction

Conclusions References

Tables Figures

⏪ ⏩

◀ ▶

Back Close

Full Screen / Esc

Printer-friendly Version

Interactive Discussion

Estimation of future glaciation and runoff in the Tanimas basin, Eastern Pamirs

W. Hagg et al.

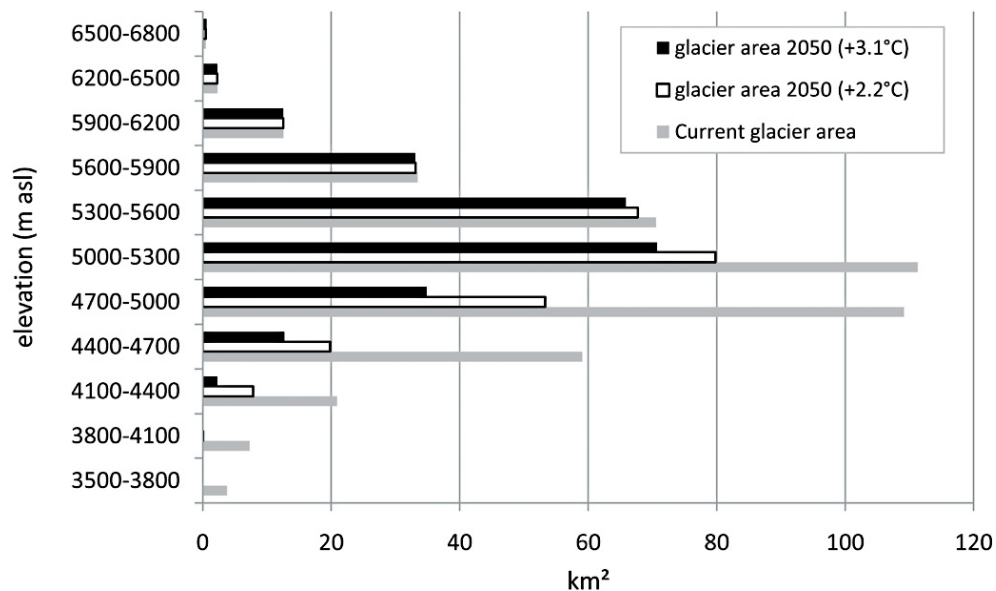


Fig. 3. Current distribution of glacier area by elevation classes and projections for the year 2050.

Title Page

Abstract Introduction

Conclusions References

Tables Figures

⏪ ⏩

◀ ▶

Back Close

Full Screen / Esc

Printer-friendly Version

Interactive Discussion

Estimation of future glaciation and runoff in the Tanimas basin, Eastern Pamirs

W. Hagg et al.

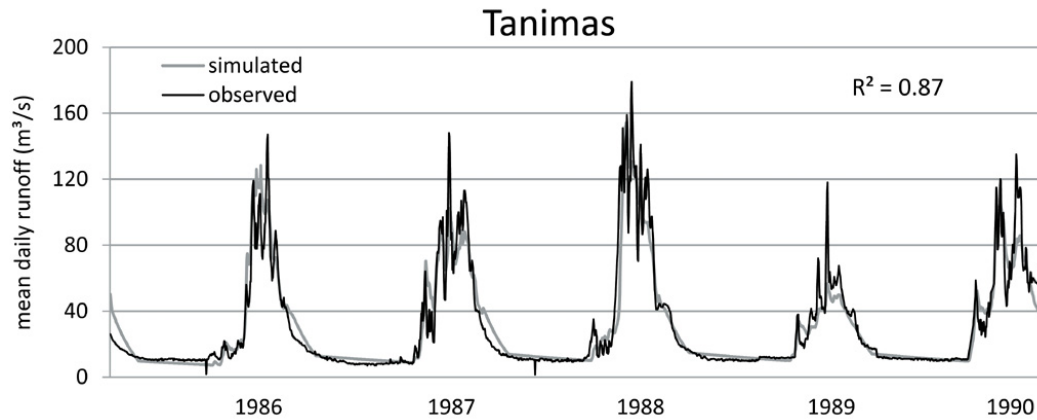


Fig. 4. Observed and simulated daily runoff at Rukhk (R^2 is the model efficiency criterion after Nash and Sutcliffe, 1970).

[Title Page](#)[Abstract](#)[Introduction](#)[Conclusions](#)[References](#)[Tables](#)[Figures](#)[⏪](#)[⏩](#)[◀](#)[▶](#)[Back](#)[Close](#)[Full Screen / Esc](#)[Printer-friendly Version](#)[Interactive Discussion](#)

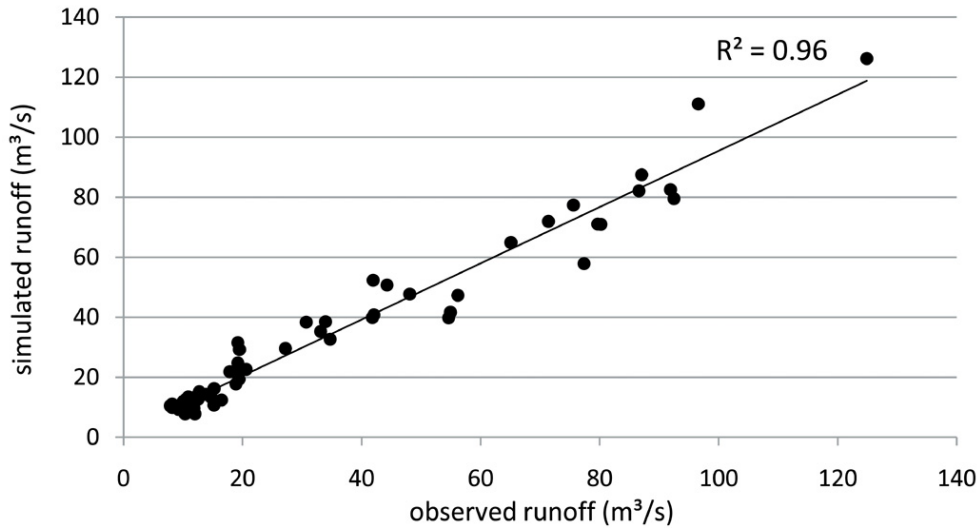


Fig. 5. Correlation between simulated and observed mean monthly runoff at Rukhk from 1986/1986 to 1989/1990.

Estimation of future glaciation and runoff in the Tanimas basin, Eastern Pamirs

W. Hagg et al.

Title Page	
Abstract	Introduction
Conclusions	References
Tables	Figures
⏪	⏩
◀	▶
Back	Close
Full Screen / Esc	
Printer-friendly Version	
Interactive Discussion	



Estimation of future glaciation and runoff in the Tanimas basin, Eastern Pamirs

W. Hagg et al.

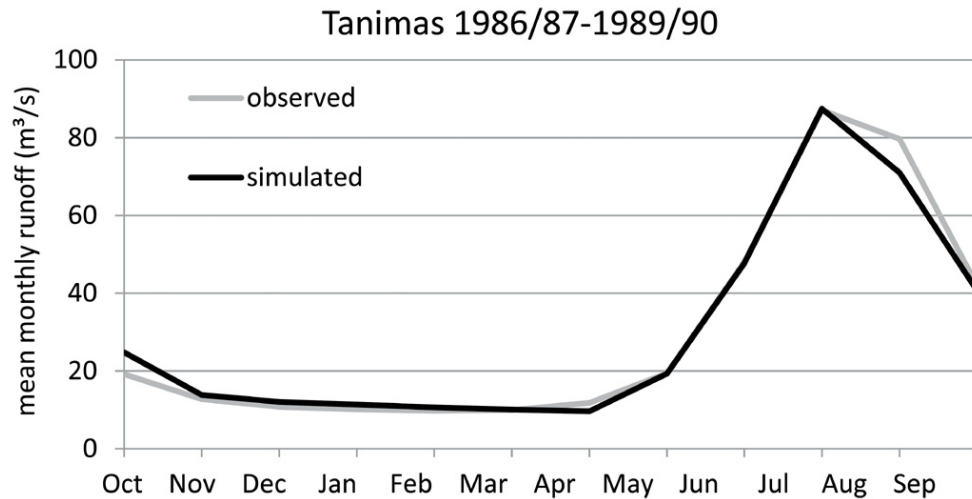


Fig. 6. Observed and simulated monthly runoff in the calibration period.

Title Page

Abstract

Introduction

Conclusions

References

Tables

Figures

⏪

⏩

◀

▶

Back

Close

Full Screen / Esc

Printer-friendly Version

Interactive Discussion

Estimation of future glaciation and runoff in the Tanimas basin, Eastern Pamirs

W. Hagg et al.

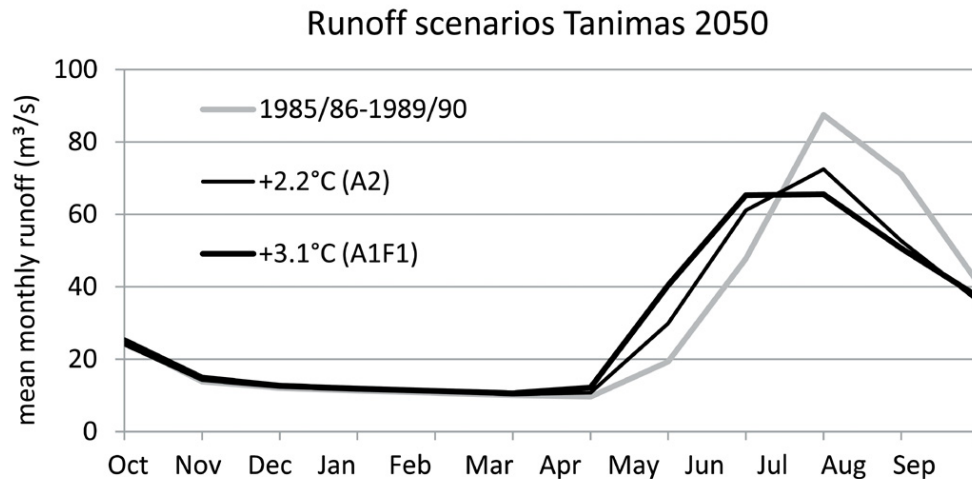


Fig. 7. Baseline and future scenarios for Tanimas river (Rukhk hydrological post).

Discussion Paper | Discussion Paper | Discussion Paper | Discussion Paper | Discussion Paper

[Title Page](#)

[Abstract](#) | [Introduction](#)

[Conclusions](#) | [References](#)

[Tables](#) | [Figures](#)

[⏪](#) | [⏩](#)

[◀](#) | [▶](#)

[Back](#) | [Close](#)

[Full Screen / Esc](#)

[Printer-friendly Version](#)

[Interactive Discussion](#)

