

## Supplementary material: Estimated multipliers

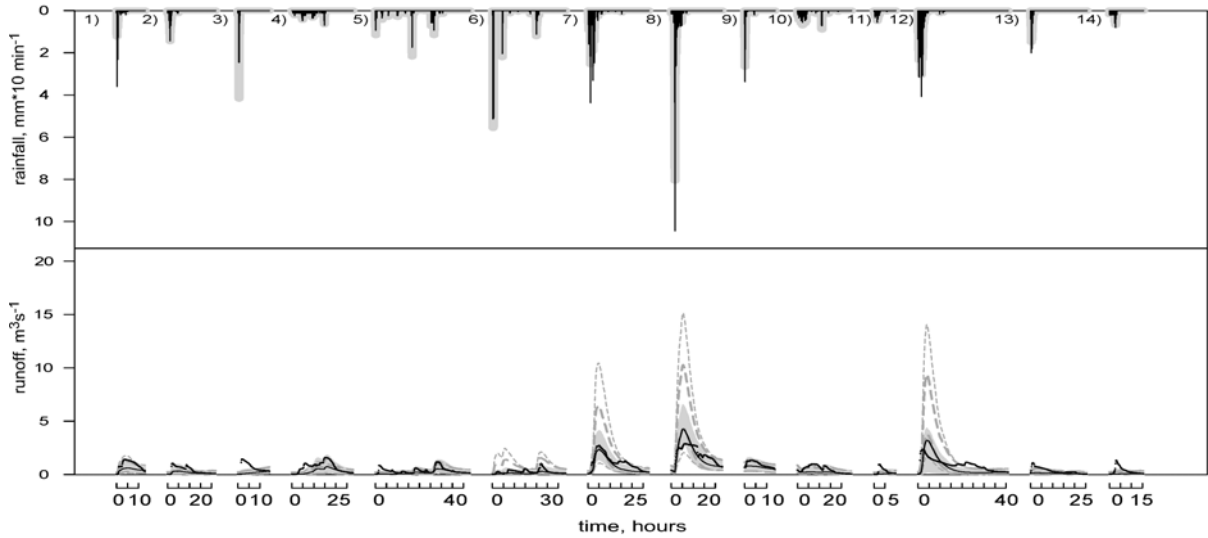


Figure SM1. Fixed runoff for all events with rainfall multipliers. Gray lines contribute to the uncertain rainfall (corrected by multipliers) and uncertainty bands for runoff (80%). Dashed lines depict the uncertainty for scenarios B & C.

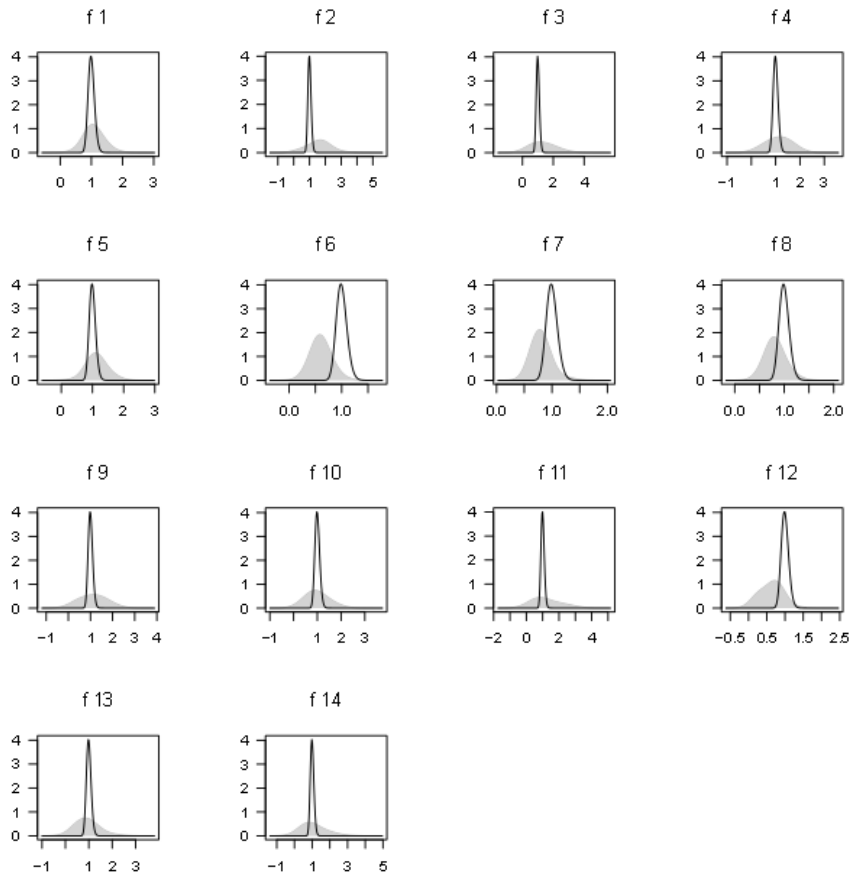


Figure SM2. Prior (solid line) and posterior (gray area) distribution of rainfall multipliers.