

This discussion paper is/has been under review for the journal Hydrology and Earth System Sciences (HESS). Please refer to the corresponding final paper in HESS if available.

Implications of deep drainage through saline clay for groundwater recharge and sustainable cropping in a semi-arid catchment, Australia

W. A. Timms¹, R. R. Young², and N. Huth³

¹National Centre for Groundwater Research and Training, School of Civil and Environmental Engineering, University of New South Wales, Sydney, NSW, Australia

²Tamworth Agricultural Institute, NSW Department of Primary Industry, NSW, Australia

³Ecosystem Sciences, Agricultural Production Systems Research Unit, CSIRO, Toowoomba, Queensland, Australia

Received: 5 October 2011 – Accepted: 25 October 2011 – Published: 15 November 2011

Correspondence to: W. A. Timms (w.timms@wrl.unsw.edu.au)

Published by Copernicus Publications on behalf of the European Geosciences Union.

Implications of deep drainage through saline clay

W. A. Timms et al.

Title Page

Abstract

Introduction

Conclusions

References

Tables

Figures



Back

Close

Full Screen / Esc

Printer-friendly Version

Interactive Discussion



Abstract

The magnitude and timing of deep drainage and salt leaching through clay soils is a critical issue for dryland agriculture in semi-arid regions (<500 mm yr⁻¹ rainfall), such as parts of Australia's Murray-Darling Basin (MDB). In this unique study, hydrogeological measurements and estimations of the historic water balance of crops grown on overlying Grey Vertosols were combined to estimate the contribution of deep drainage below crop roots to recharge and salinization of shallow groundwater. Soil sampling at two sites on the alluvial flood plain of the Lower Namoi catchment revealed significant peaks in chloride concentrations at 0.8–1.2 m depth under perennial vegetation and at 2.0–2.5 m depth under continuous cropping indicating deep drainage and salt leaching since conversion to cropping. Total salt loads of 91–229 t ha⁻¹ NaCl equivalent were measured for perennial vegetation and cropping, with salinity to ≥ 10 m depth that is not detected by shallow soil surveys. Groundwater salinity varied spatially from 910 to 2430 mS m⁻¹ at 21 to 37 m depth ($N = 5$), whereas deeper groundwater was less saline (290 mS m⁻¹) with use restricted to livestock and rural domestic supplies in this area. The Agricultural Production Systems Simulator (APSIM) software package predicted deep drainage of 3.3–9.5 mm yr⁻¹ (0.7–2.1 % rainfall) based on site records of grain yields, rainfall, salt leaching and soil properties. Predicted deep drainage was highly episodic, dependent on rainfall and antecedent, and over a 39 yr period was restricted mainly to the record wet winter of 1998. During the study period, groundwater levels were unresponsive to major rainfall events (70 and 190 mm total), and most piezometers at about 18 m depth remained dry. In this area, at this time, recharge negligible due to low rainfall and large potential evapotranspiration, transient hydrological conditions after changes in land use and a thick clay dominated vadose zone. This is in contrast to regional groundwater modelling that assumes annual recharge of 0.5 % of rainfall. Importantly, it was found that leaching from episodic deep drainage could not cause discharge of saline groundwater in the area, since the water table was several meters below the incised river bed.

Implications of deep drainage through saline clay

W. A. Timms et al.

Title Page

Abstract

Introduction

Conclusions

References

Tables

Figures



Back

Close

Full Screen / Esc

Printer-friendly Version

Interactive Discussion



1 Introduction

Water is a major limitation to plant growth in both native and agricultural systems in the semi-arid areas such as the western Murray-Darling Basin (MDB) of Australia. Native ecosystems, with both perennial and ephemeral plants, have adapted to this and use almost all of the rain infiltrating the soil. Therefore, in soils of high water holding capacity, such as the Vertosols of North Western NSW, deep drainage below the plant root zone is usually close to zero. In contrast, annual crop-fallow sequences generally use less water over the long term, resulting in increased surface run-off and deep drainage.

When native vegetation is replaced by annual crops with intervening periods of fallow to replenish soil water reserves, drainage generally increases, resulting in mobilisation of salt and other contaminants stored in the soil and ultimately increased recharge to groundwater. The latter is beneficial if fresh recharge occurs to depleted aquifers, but in many areas with saline clayey soils, it can be problematic if shallow water tables rise with increased saline discharge into surface systems (Stauffacher et al., 1997). Chloride at toxic levels within the root zone of annual crops effectively reduces the stored soil water available to plants (Dang et al., 2008). Deep drainage through Vertosols can be highly saline with potential implications for water resources. For example, Gunawardena et al. (2011) reported lysimeter leachate salinity of up to 2500 mS m^{-1} at sites in the upper Murray-Darling Basin of Queensland, although higher values were associated with irrigation by bore water.

In the past, it was typically assumed that deep drainage in heavy clay soils was negligible under dryland conditions in the northern plains of the MDB (Hearn, 1998). Low hydraulic conductivity of these alluvial sediments (derived from weathering of Tertiary age volcanics) lead to deep drainage being ignored in the Basin Salt Audit (SKM, 2010). However, estimates from crop water balance modelling based on extensive field data indicate that deep drainage under continuous wheat cropping on Vertosols increased from 30 to $\sim 100 \text{ mm yr}^{-1}$ (4.8–13.3% of rainfall) as rainfall increased from 625 to 750 mm yr^{-1} moving up the Liverpool Plains Catchment (Ringrose-Voase et al.,

HESSD

8, 10053–10093, 2011

Implications of deep drainage through saline clay

W. A. Timms et al.

Title Page

Abstract

Introduction

Conclusions

References

Tables

Figures

◀

▶

◀

▶

Back

Close

Full Screen / Esc

Printer-friendly Version

Interactive Discussion



2003). While deep drainage from dryland agriculture is much lower than for irrigated crops, only 3% of the Namoi catchment is irrigated, so deep drainage in the Namoi and other dryland areas is likely to be important (Vervoort et al., 2003).

Deep drainage, generally a small proportion of the total water balance, is often assumed to be equal to recharge, as for example Abbs and Littleboy's (1998) deep drainage simulations for the Upper Namoi. A soil-vegetation-atmosphere-transfer model WAVES was used by Vervoort et al. (2003) to compare deep drainage and groundwater levels under irrigated cotton near Narrabri in the Lower Namoi. However, non-specific input data were used, and no observations were available for verification. WAVES was also used to assess the sensitivity of recharge to climatic factors, assuming drainage below 4.0 m was equal to recharge (McCallum et al., 2010). Deep drainage below a perennial pasture on a "typical" Namoi soil was found to be 14 mm yr⁻¹ (1.8% of average Namoi rainfall), an order of magnitude higher than Abbs and Littleboy (1998). All of these studies assumed that deep drainage was equal to recharge, and none provided an integrated surface to groundwater assessment for a specific paddock or site.

Integrated approaches using soil water models to calculate recharge as a calibrated input to groundwater models are rare. Soil water models typically generate deep drainage values as the water remaining after accounting for other components of the water balance (Ranatanga et al., 2008), while groundwater models are typically calibrated to observed groundwater levels with estimated hydraulic parameters and recharge as an input (Middlemis, 2000). For example, the MODFLOW groundwater model developed by Merrick (2001) for the Lower Namoi catchment reported that diffuse recharge from rainfall was a minor recharge source. Recharge inputs were set at 0.5% of rainfall in the southern half and 0.1% of rainfall in the northern half of the catchment.

Under some conditions, rapid leakage may occur to several meters depth through heavy clay soils (Acworth and Timms, 2009; Greve et al., 2010, Timms, 1997). An increase in groundwater salinity, possibly due to increased saline drainage through the

Implications of deep drainage through saline clay

W. A. Timms et al.

Title Page

Abstract

Introduction

Conclusions

References

Tables

Figures



Back

Close

Full Screen / Esc

Printer-friendly Version

Interactive Discussion



alluvium, has been reported in irrigation areas of the Lower Namoi (Barret et al., 2006; Smithson, 2009) and several sites in the Upper Namoi where groundwater salinity appears to have increased during the 1990s possibly limiting beneficial use (Timms et al., 2009).

To our knowledge, there are limited data available on deep drainage, recharge and salinity in the semi-arid (<500 mm yr⁻¹ rainfall) areas such as the Lower Namoi catchment. Crop yields in these western areas are highly dependent on using stored soil water efficiently, so deep drainage losses are of concern. Thus, the Lower Namoi is an excellent study area for assessing the importance of deep drainage and concomitant impacts on water quality in semi-arid regions. The main objective of this exploratory study was to determine if significant deep drainage under annual cropping might mobilize the many tonnes of salt stored in these soils, with consequences for agricultural and natural ecosystems.

Here we report for the first time, direct measurements of soil and groundwater in this semi-arid farming environment and use rainfall and paddock records together with chloride profiles to estimate deep drainage below the plant root zone. The gaps (quantitative, spatial and temporal) between deep drainage estimated from agronomic water balances and estimations and assumptions of groundwater recharge are addressed to assess the possible links of deep drainage with groundwater systems. Site investigations and monitoring, farming records, information from long term NOW (NSW Office of Water) monitoring bores and BOM (Bureau of Meteorology) data are used as a basis for numerical modelling of deep drainage.

2 Study area

The study was carried out on the Cryon plain, a remote area east of the township of Walgett, in the far west of the Namoi catchment, in the northern Murray Darling Basin of Australia (Fig. 1). No groundwater irrigated agriculture occurs this far west in the Namoi catchment, partly because groundwater supplies are relatively deep and

Implications of deep drainage through saline clay

W. A. Timms et al.

Title Page

Abstract

Introduction

Conclusions

References

Tables

Figures



Back

Close

Full Screen / Esc

Printer-friendly Version

Interactive Discussion



saline (McLean, 2003). The study sites were located on the mixed farming properties Denham (D piezometers) and Sefton Park (SP piezometers), about 12 km north of the Namoi River. Field work including soil testing and coring was carried out at the two sites during 2006 and 2007. The outcomes presented here are part of a larger project that tested soil cores at seven paired sites across northern NSW, and simulated deep drainage for a range of cropping and land use practices, in semi-arid zones of 450 and 500 mm yr⁻¹ (Young, 2009). Unconsolidated alluvial deposits of clay, silt, sand and gravel occur to a depth of about 110 m in this area. Grey Vertosols (Isbell, 2002) are the dominant soil type and are defined by surface self mulching with deep cracking on drying, clay content greater than 35 %, and slickensides at depth and the dominant colour is grey (0–0.5 m). Soil chemistry (0–3 m depth) (Young et al., 2009) showed strong alkaline reaction (pH ≥ 8), a peak in EC (100–300 mS m⁻¹) at 0.5 to 1.5 m, moderately large CEC (20–40 cmol(+) kg⁻¹) and high levels of exchangeable sodium (20–45 %, >1 m depth).

Rainfall is non-seasonal, but generally summer dominant. Potential evapotranspiration is >2000 mm yr⁻¹ and is greatest in the summer months of December to February. Mean annual rainfall is 480 mm at Walgett (480 mm) 30 km to the west of the Denham site (BOM, <http://www.bom.gov.au/climate/data>). The Namoi River flows into the Darling River at Walgett, approximately 20 km to the west of the study sites. As the altitude decreases from 220 m at Narrabri to 130 m at Walgett, the surface elevation gradient is <1 % (Young et al., 2002). The plains were covered with savannah woodland (Beadle, 1981) until clearing for wheat cropping in 1965 (Denham) and 1985 (Sefton Park).

3 Methods

3.1 Soil properties

A tractor mounted hydraulically operated coring machine was used to obtain soil samples to ≤5 m depth using a 50 mm diameter Cr-Mo steel alloy tube with a 42 mm

Implications of deep drainage through saline clay

W. A. Timms et al.

Title Page

Abstract

Introduction

Conclusions

References

Tables

Figures



Back

Close

Full Screen / Esc

Printer-friendly Version

Interactive Discussion



diameter cutting tip. Two locations (A and B) approximately 500 m apart were selected at each site (Denham and Sefton Park) each with adjacent grassland and cropping. Four cores, approximately 50 m apart, were taken along a transect on each land use at each location. The position of each core was randomly selected, irrespective of surface cracking, but permanent wheel tracks of farming machinery were avoided.

Soil cores were cut into depth increments (0–0.1 m, 0.1–0.3 m, 0.3–0.5 m, etc. to ≤ 5 m), air dried (40 °C), ground < 2 mm, for chemical analysis. Bulk density (ρ_b) at field water content of each depth increment, was calculated from the oven dry (105 °C) weight and dimensions of a 94 mm diameter core taken from each transect. Soil samples were analysed by the NSW Department of Primary Industries' Diagnostic and Analytical Services Environmental Laboratory, with the following methods: water soluble chloride and EC (Rayment and Higginson, 1992, method 5A1); exchangeable cations by ICP (method 15E1) and soil pH (method 4A1). Chloride data for deep drainage estimation were the means for each depth increment within each site, land use and location transect. Soil bulk density (ρ_b) was used to estimate saturated water content ($SAT = [1 - \rho_b / 2.65] 100$) and drained upper limit, assuming air filled porosity (Φ) of 0.02 reducing to 0.005 at 5 m depth ($DUL = ([\Phi - \rho_b] / 2.65) 100$). The volumetric soil water content in the control native vegetation was assumed to be at the lower limit of available water (LL15).

3.2 Stratigraphy and core testing

Stratigraphic information was obtained from cutting returns during rotary mud drilling and geophysical bore logs. A Geovista™ logging system was used with bulk conductivity (EM39) and natural gamma sondes. Data was collected at 1 cm vertical increments in drill holes by running these sondes at a rate of 1–2 m min⁻¹.

Two minimally disturbed cores were drilled using a split tube sampler mounted on the drilling rig, from 6–18 m depth at D1, and 5–17 m depth at D3. Intact 100 mm diameter cores were successfully recovered for ρ_b and hydraulic conductivity (K) measurements. A field tensiometer (UMS) was inserted into a 10 mm diameter hole drilled

Implications of deep drainage through saline clay

W. A. Timms et al.

Title Page

Abstract

Introduction

Conclusions

References

Tables

Figures

◀

▶

◀

▶

Back

Close

Full Screen / Esc

Printer-friendly Version

Interactive Discussion



into an intact sample from each meter of core, for tension and temperature measurements one and two hours after insertion. Two samples were taken per meter for ρ_b . Two samples were also taken from each meter of core or core fragments and all traces of drilling mud and loose material were removed by trimming each sample with a sharp knife. The samples were then forced air dried (40 °C), ground (<2 mm) and analysed for chloride, EC and pH using the surface soil methods described in Sect. 3.1.

Core sections from D1 and D2 (12–17 m depth, 200 mm length) were placed into 250 mm long sections of rigid PVC pipe, 115 mm in diameter, contained within a snugly fitting outer PVC container with screw cap. Two-pack resin (Megapoxy 240 <http://www.megapoxy.com>) was mixed and poured onto the core until the PVC pipe was full, and the core totally encased in resin. The outer container was capped and the sample was placed in a cool place until the resin had set, and then stored at 4 °C.

Saturated hydraulic conductivity (K_{sat}) was measured on these core sections sealed in PVC pipe using a modification of the method described by McKenzie and Cresswell (2002). Prior to testing, each core section was cut into 3 smaller sections (the middle section being 100 mm long and retained for testing) by first cutting the PVC with a powered cutting disc around the pipe circumference; then by cutting through the resin with a sharp knife. The two ends of the core were broken off leaving freshly exposed material either end of the centre section; any smeared surfaces were carefully “picked” with the point of a knife.

The core was placed, top end down, onto a vessel made from similar PVC pipe (115 × 100 mm and capped on the bottom end) containing a bed of coarse sand. The core was separated from the sand by a circle of thick filter fabric. The junction of the pipe sections was sealed with a rubber collar. An influent solution of 0.01 M $CaCl_2$ was piped from an elevated reservoir providing a constant hydraulic head to the PVC vessel. To collect effluent from the core, a 100 × 100 mm diameter ring was sealed onto the original bottom of the core, now at the top of the apparatus. The ring had an outlet pipe fitted into the side which fed into an effluent collector. During operation, the exposed upper surface of the core was kept moist, but not wet.

Implications of deep drainage through saline clay

W. A. Timms et al.

Title Page

Abstract

Introduction

Conclusions

References

Tables

Figures

◀

▶

◀

▶

Back

Close

Full Screen / Esc

Printer-friendly Version

Interactive Discussion



3.3 Piezometer installation and groundwater quality

Four nested piezometers were installed in cropped paddocks on Denham (D1, 2, 3) and one on Sefton Park (SP1) using the rotary drilling rig and mud methods (Table 1). The D1 and D3 piezometers were located adjacent to the deep cores described in Sect. 3.2.

5 Nested 50 mm diameter PVC piezometers were slotted (1.5 m screen with 1 m sump) in the shallow sandy material between 10 and 16 m depth (shallow screen), and in water bearing sandy silty sediments at 18 to 36 m depth. The Denham piezometers were on a north-south transect, 1.26 and 1.84 km apart (D1 to D2 and D2 to D3, respectively).

A GEOVISTA bore logging system obtained logs at 1 cm vertical increments. The natural gamma and EM39 logs were run at speeds of 2 m min^{-1} , and due to relatively high salinity, the EM39 logs were run using lower sensitivity (Gain 2). The combination of natural gamma and EM39 logs provides the ability to discriminate between the effects of clay content and fluid EC anomalies.

10 Groundwater samples were obtained by purging bore water with either an air-powered BENNET pump or 24V MOONSOON pump until stable EC, pH and temperature were indicated by TPS meters and electrodes. These electrodes were calibrated with standard EC solutions each day.

An elevation survey to an accuracy of $\pm 5 \text{ cm}$ using a Trimble RTK GPS was completed for all monitoring points, and in a north-south transect following the road to the Namoi River crossing at Goangra. The elevation of the river bank, the incised channel and the river level (8 January 2008) were recorded.

3.4 Rainfall and groundwater levels

25 Daily rainfall records were obtained from the Bureau of Meteorology (BOM) at Walgett council (BOM station 05026), Koothney north of Cryon (BOM station 52003) and from the Sefton Park property (F. Denya, personal communication, 9 February 2011). Since the BOM site is located approximately 30 km to the west of the Denham site, local property rainfall records were used for correlation where possible. The local residual

Implications of deep drainage through saline clay

W. A. Timms et al.

Title Page

Abstract

Introduction

Conclusions

References

Tables

Figures



Back

Close

Full Screen / Esc

Printer-friendly Version

Interactive Discussion



mass rainfall curve indicates above average rainfall between April 1998 and 2001, and from February 2007 to the present, with very high rainfall in 1998 and 2010. From May 1998, the climate was influenced by a moderate La Nina event with above average rainfall (<http://www.bom.gov.au/climate/enso/feature/ENSO-feature.shtml>).

5 Absolute groundwater pressures and atmospheric pressures were recorded every 15 min using Schlumberger Diver® and Baro Diver® loggers respectively, with manual dip measurements recorded periodically. Twelve loggers were installed in piezometers and NOW monitoring bores between September 2007 and January 2009. Although the project had been completed by June 2008, four loggers remained deployed until
10 July 2009 in deep piezometers D1, D3, SP1 and GW36541-1 in the anticipation of a large rainfall event. Unfortunately, logger failure meant that no data was retrieved from these loggers with the exception of SP1.

3.5 Deep drainage estimation and simulation

Deep drainage was estimated using three methods: transient chloride mass balance (SODICS), chloride front displacement and APSIM deep drainage modelling.
15

3.5.1 Transient chloride mass balance

Firstly, deep drainage was estimated from chloride mass-balance using the SODICS software (Rose et al., 1979; Thorburn et al., 1991). The software was run for several depths and the most “sensible” result from the likely bottom of the crop root zone was selected (accounting for toxic layers of chloride).
20

3.5.2 Chloride front displacement

Secondly, deep drainage was calculated from the difference in depths of the chloride peaks (Cl FD) or “fronts” under cropped and control areas (Allison and Hughes, 1983; Walker, 1998). For each site, total deep drainage since the change in land use was calculated as the difference in the drainable volume (D_r) = SAT-LL15 in the soil volume
25

Implications of deep drainage through saline clay

W. A. Timms et al.

Title Page

Abstract

Introduction

Conclusions

References

Tables

Figures

◀

▶

◀

▶

Back

Close

Full Screen / Esc

Printer-friendly Version

Interactive Discussion



above the peak in the control area compared to that above the Cl peak in the cropped area.

3.5.3 Deep drainage simulation

Thirdly deep drainage, water use and crop growth from farmers' records of crop sequences, yields and historic weather records was predicted with APSIM (Agricultural Production Systems Simulator). APSIM was parameterised to simulate cropping history, supplied by farmers, and changes in chloride profile data using historic weather data with deep drainage as output. The APSIM farming systems software consists of a series of interconnected modules, for plant growth, soil water and rooting depth where the crop types, fertiliser rates and planting rules are defined by the user (Keating et al., 2003). A set of biophysical modules simulates biological and physical processes in farming systems including rotations, residues, crop establishment and death and management issues responsive to weather or soil conditions. The model operates at a paddock scale (1-D) with a daily time step allowing it to capture episodic deep drainage events. The fate of rainfall is determined by potential evaporation, and the characteristics of the soil surface and the crop root zone. For example, if rain falls faster than it can infiltrate, then the module generates surface run-off. If rainfall infiltrates and tops up the soil water store faster than the crop can use water, driven by solar radiation, the water escapes below the crop root zone as deep drainage. Soil evaporation, during fallows in particular, were tuned so that the model closely simulated both the grain yield records and the chloride leaching observed in the field samples.

This study used the SoilWat2 module with APSIM, a "cascading bucket" model that is applicable to both Vertosols and the rigid soils of the Liverpool Plains (Ringrose-Voase et al., 2003). The model was developed from the CERES (Jones and Kiniry, 1986) and PERFECT models (Littleboy et al., 1992). Water redistribution in the profile is calculated by allowing a fraction of the drainable water in each layer to drain to the next layer each day (Jones and Kiniry, 1986). For water contents below DUL, water movement depends upon the water content gradient between adjacent layers and the

Implications of deep drainage through saline clay

W. A. Timms et al.

Title Page

Abstract

Introduction

Conclusions

References

Tables

Figures



Back

Close

Full Screen / Esc

Printer-friendly Version

Interactive Discussion



average water contents of the two layers. Soil chloride is redistributed within the soil profile as the result of both convective, or mass flow with water movement and diffusion processes.

For these APSIM SoilWat2 simulations the soil was divided into 26 layers of 0.1 m for the surface layer and 0.2 m for the remaining layers to 5.0 m depth. The SoilWat2 module requires a number of soil properties and water holding capacity inputs. The drained upper limit (DUL) was calculated from bulk density assuming material density of 2.65 t m^{-3} and air filled porosity at DUL of 0.05. The volumetric soil water content in the perennially vegetated control areas were used as estimates of the moisture lower limit at -1500 kPa (LL15) (the samples were taken during an extended dry period). It is noted that the samples were taken during an extended dry period. Saturated moisture (SAT) and air dried moisture content and permeability near saturation (K at -0.5 kPa) were also estimated from field information. Deep drainage was considered as the amount of water draining from the soil at 5.0 m depth.

4 Results

4.1 Soil properties

Soil properties to $\leq 5 \text{ m}$ depth are presented in detail elsewhere (Young, 2009) and are summarised here. The soil profiles were grey cracking clays (Grey Vertosols) with alkaline reaction (pH 8–9) constant to 5 m depth. Bulk density (BD) at field moisture content was large: 1.2 (Denham)–1.4 (Sefton Park) near the surface, increasing to a constant value of 1.6 at 1.0–1.5 m (Fig. 2). Despite differences in field water content, BD was not different between land uses. Cation exchange capacity (CEC) was high throughout the profile with a small peak, $\sim 40 \text{ cmol}(+) \text{ kg}^{-1}$, at $\sim 1 \text{ m}$. The soils are highly sodic (exchangeable Na/CEC % $\sim 10\%$ at the surface increasing to 30–50 % at 3 m depth).

Implications of deep drainage through saline clay

W. A. Timms et al.

Title Page

Abstract

Introduction

Conclusions

References

Tables

Figures

◀

▶

◀

▶

Back

Close

Full Screen / Esc

Printer-friendly Version

Interactive Discussion



Chloride increased to phytotoxic levels (1000 mg kg^{-1} for durum wheat, Dang et al., 2008) by $\sim 1 \text{ m}$, within the usual rooting depth of most annual crops. There were significant peaks in chloride concentrations at 0.8–1.2 m depth under perennial vegetation and at 2.0–2.5 m depth under continuous cropping indicating deep drainage and salt leaching since conversion to cropping (Fig. 3, note that chloride data are kg ha^{-1} and have been adjusted for equal mass balance for land uses within each comparison). This assumption appears reasonable as there was little evidence for leaching below 5 m.

Despite the difference in the depth of salt peaks, leaching had not been to the extent that significant differences were detected in salt load under ($<5 \text{ m}$) cropping and perennial vegetation. The average salt loads ($\text{t NaCl equivalent ha}^{-1}$ in 0–5 m) calculated for transect 1 and 2, respectively were Denham cropping, 91, 140; Denham perennial vegetation, 91, 139; Sefton Park cropping, 163, 124; Sefton Park perennial vegetation, 229, 99 t ha^{-1} of NaCl. Total salt loads are approximately treble these values with large concentrations of sulphates ($800\text{--}3600 \text{ mg kg}^{-1}$) and carbonates between 1 and 3 m depth.

The water content of soil under cropping was larger than that under perennial vegetation for some depth. The depth at which the water content of cores from perennial vegetation and cropping converged was deemed to be the depth of the wetting front. The wetting front was identified at 2.5 m at Sefton Park and 5.0 m at Denham where cropping began approximately 20 yr earlier (Fig. 3). Bulk density, average LL15 and derived values for SAT and Dr were used in transient Cl mass balance (SODICS) and chloride front displacement (Cl FD) calculations of deep drainage.

4.2 Stratigraphy and core testing

The stratigraphic section (Fig. 4) shows alluvial sediments across approximately 30 km from west to east across the Cryon plain. There is about 1 m of elevation change over

Implications of deep drainage through saline clay

W. A. Timms et al.

Title Page

Abstract

Introduction

Conclusions

References

Tables

Figures

◀

▶

◀

▶

Back

Close

Full Screen / Esc

Printer-friendly Version

Interactive Discussion



this distance, as the elevation survey confirmed an east-west gradient of about 0.04 % in the Cryon area. The section shows lenses of sand and gravel at 12 to 28 m below ground (the Narrabri Formation), and sand gravel aquifer from 40 to 86 m below ground (the Gunnedah Formation). A confining layer of clay with a thickness of almost 30 m separates this middle aquifer from the underlying Cubbaroo Formation, underlain by shale bedrock (NOW bore stratigraphy e.g. GW036541 on Fig. 4).

Bulk density (ρ_b) of the cored sediments, near D1 and D3, underlying the top soil varied from 1.4–2.0 t m⁻³ (average 1.7, $N = 35$), reflecting textural changes with no clear trend with depth (Fig. 5). Gravimetric moisture (θ_g) varied from 0.16 to 0.30 g g⁻¹ (average 0.22 g g⁻¹, $N = 36$). Tension values at 1 h varied substantially (–13 to –1552 hPa, average –559 hPa, $N = 37$) but on average indicated relatively high suctions.

The potential storage space, i.e. air space (V_a), in the sediments for future deep drainage was estimated based on available information. The calculated air space ($V_a = [1 - \rho_b/\rho_s] - [\rho_b \times \theta_g]$) or pore volume available for storage of additional deep drainage appears to be less than zero (Fig. 6a), if particle density, $\rho_s = 2.65$ t m⁻³, the usual assumed value (Cresswell and Hamilton, 2002). Likely errors in the measurement of ρ_b were insufficiently large to produce such anomalies in V_a . If the smallest estimates of V_a are assumed to be ~zero, so allowing the remainder positive volumes, then ρ_s 2.9–3 t m⁻³ (Fig. 6b), values that are likely to be overestimated. Then, unless ρ_s actually varied substantially from sample to sample the largest likely average values of V_a in core D1 was <0.053 m³ m⁻³ and D3 was <0.017 m³ m⁻³. Naturally high bulk conductivity of sediments at the piezometer and core sites was evident from EM39 logs (Fig. 5). Although there was variation between sites, the highest values (46.3 mS m⁻¹) were recorded at 2–4 m depth at site D1, with high values also at 15–26 m depth. Natural gamma activity indicated a relatively homogeneous clay between 2–10 m at D3 and 1–6 m at D1. The sediment appears to be relatively homogeneous on a scale of meters, since the downhole bulk conductivity logs at site D3 (Fig. 6) are almost identical from the surface to 16 m depth for the piezometer and core holes that are were located

HESSD

8, 10053–10093, 2011

Implications of deep drainage through saline clay

W. A. Timms et al.

Title Page

Abstract

Introduction

Conclusions

References

Tables

Figures

◀

▶

◀

▶

Back

Close

Full Screen / Esc

Printer-friendly Version

Interactive Discussion



5 m apart. However, there are significant stratigraphic heterogeneity observed at bores that are located more than a few metres apart (Figs. 4 and 5).

Salt content generally decreased with depth (1800 to 400 mg kg⁻¹), from relatively high values at 2–5 m depth, except at 15 m depth associated with more clayey sediments (Fig. 5). Chloride and electrical conductivity (EC) were positively correlated and to a lesser extent, with soil moisture (Fig. 5). The higher salt storage in shallow soils and sediments was also observed in groundwater. Groundwater salinity (Table 1) varied spatially from 910 to 2430 mS m⁻¹ at 21 to 37 m depth (*N* = 5). Deeper groundwater was less saline (290 mS m⁻¹).

Tests of K_{sat} were successful only on some core sections with a large hydraulic gradient. A relatively large vertical hydraulic gradient of 3 (0.3 m head over 0.1 m core section) applied to 14 core sections was insufficient to saturate cores and produce transmission of solute over periods of 14 to 35 days. A larger vertical hydraulic gradient of 18 (1.86 m head over 0.1 m core section) applied to 10 cores over periods of 2 to 35 days, saturated 3 cores (D1, 12–13 m and 16–17 m depth; D2, 12–13 m) with subsequent transmission rates of 0.0040, 0.0006 and 0.0046 mm h⁻¹, respectively. The equivalent K_{sat} values are 6×10^{-11} m s⁻¹ for D1, 12–13 m, 9×10^{-12} m s⁻¹ for 16–17 m and 6×10^{-11} m s⁻¹ for D2, 12–13 m depth. Hydraulic conductivity for unsaturated conditions would be expected to be significantly less than these K_{sat} measurements.

When dissected, the cores for which K_{sat} measurements were not successful were found to have become wet around 20–30 mm into the core and had swollen such that the core material protruded 2–3 mm from the resin and PVC pipe. The lack of flow through all but 3 cores, even with high hydraulic gradients and lengthy testing times, indicates that the hydraulic conductivity of these sodic clays is very low. Advanced permeability testing methods are required for these materials to apply stress equivalent to the core depth, to match in-situ porosity and controlling swelling while allowing for variable moisture content.

Implications of deep drainage through saline clay

W. A. Timms et al.

Title Page

Abstract

Introduction

Conclusions

References

Tables

Figures

◀

▶

◀

▶

Back

Close

Full Screen / Esc

Printer-friendly Version

Interactive Discussion



4.3 Surface and groundwater levels

The relative elevation of bores, piezometers and the nearby Namoi River showed that groundwater levels are located approximately 10 m below the stream bed (Fig. 7). This indicates that the Namoi River either is losing water or is hydraulically disconnected from groundwater at Goangra crossing, depending on the bed and bank permeability. Under these conditions, discharge of saline groundwater in the local area is not possible.

Shallow piezometer screens (16 to 18 m depth) remained dry throughout the study period with one exception, and negligible groundwater level changes occurred in the piezometer screens between 22 and 42 m depth. Confined groundwater conditions were indicated by levels above the screen intakes and low barometric efficiencies of 30 % for D1d and 18 % for D2d (Timms et al., 2009). Groundwater levels in confined aquifers below the study area have been stable since 1984 (Fig. 8). Manual groundwater dip data, collected approximately four times per year do not show response to rainfall events in shallow screens, or any evidence of significant groundwater extraction from the deep screens (GW036540 and GW036541).

Automated logger data was captured for two large (>70 mm) rainfall events at selected sites. During Event 1, 70 mm fell over 8 days at the Walgett BOM station commencing on 19 December 2007, compared with rainfall at Sefton Park homestead of 81 mm over 3 days and 83 mm over 4 days recorded at the Koothney BOM station.

Event 1 resulted in a maximum groundwater level increase of 0.09 m on the same day of the event at 36 m and 95 m depth (GW36541, screens 1 and 3). Groundwater levels increased in D1d by 0.04 m (Fig. 9) and SP1d by 0.05 m during this event and returned to average values soon afterwards. Equipment failure during 2007 unfortunately meant barometric data during the December 2007 event was not available.

During Event 2, on 14 February 2008, 112 and 116 mm rain was recorded at Sefton Park and Walgett BOM stations respectively. Over the 6 day event, totals of 189 and 191.4 mm were recorded at Sefton Park, and Walgett BOM stations, respectively. The

Implications of deep drainage through saline clay

W. A. Timms et al.

Title Page

Abstract

Introduction

Conclusions

References

Tables

Figures



Back

Close

Full Screen / Esc

Printer-friendly Version

Interactive Discussion



Koothney BOM data is not considered reliable as 11.4 mm was recorded only on the 12 February 2008. Event 2 resulted in an immediate 0.04 m increase at SP1d, with groundwater levels returning to average values within days (Fig. 9). In contrast, a 0.107 m level increase was recorded at SP1s, commencing 15 h after the increase in SP1d. The levels in SP1 gradually declined to pre-event levels over about 10 days.

Collection of water occurred in the sump below the screen intake, since the maximum level in SP1s was about 11.8 m below ground. The logger record of water in the sump was confirmed by a series of dry manual dip measurements before the event, and 0.1 m of water observed on 23 July 2009 (Table 1). It is significant that all three shallow piezometers at Denham were found to be dry on both these occasions, unfortunately multiple failures of Schlumberger Diver® loggers meant that no automated recordings were available from the shallow or deep piezometers.

4.4 Estimated recharge rates

Rainfall events of 80 to 190 mm, almost half the annual rainfall, clearly do not result in significant groundwater level increases. A 107 mm level rise is equivalent to recharge of 1.5 % of a 189 mm rainfall event (or 0.6 % of 2009 rainfall total of 495 mm at Sefton Park), assuming a specific yield of 0.25 for the top of the saturated zone. However the actual recharge could be less due to preferential inflow around the bentonite seal that fills the annulus around the PVC pipe at 9 m depth. This estimate of recharge at just one of four locations during one major rainfall event is therefore subject to considerable uncertainty and requires further verification. If recharge is <0.6 % of annual rainfall during very wet years and is limited to localised areas of the plains, then the 50 yr average recharge rate expressed as a long term average could therefore be <0.01 % of rainfall (<0.6 % per year divided by 50 for a 1 in 50 yr recharge event). Detection and verification of such a small (or negligible) rate of recharge for Grey Vertisols on the plains is a significant challenge.

Implications of deep drainage through saline clay

W. A. Timms et al.

Title Page

Abstract

Introduction

Conclusions

References

Tables

Figures



Back

Close

Full Screen / Esc

Printer-friendly Version

Interactive Discussion



4.5 Deep drainage estimation and simulation

4.5.1 Transient chloride mass balance

The SODICS software did not lend itself well to calculation of deep drainage from this chloride data. This was due to the negligible loss of salt (although downward displacement of the chloride peak under cropping was quite apparent) and root zone chloride concentrations under a cropped area being greater than the control due to natural variation, resulting in negative deep drainage values (Table 2). Deep drainage at the bottom of the root zone (i.e. chloride $\geq 1000 \text{ mg kg}^{-1}$ or 2.0 m, whichever occurred first) ranged from -13 – 68 mm yr^{-1} (Table 2). The lack of success of the SODICS method was despite considerable success when applied to data in higher rainfall areas where more leaching had occurred through Black Vertosols (Young and McLeod, 2001).

4.5.2 Chloride front displacement

The displacement of peaks in chloride concentration were at the same depths as the peaks in chloride rate ha^{-1} shown in Fig. 3. Deep drainage estimations using soil water holding capacity data were around 4 mm yr^{-1} at both the sites (Table 2).

4.5.3 Deep drainage simulations

APSIM provided reasonably good simulations of actual grain yields (Fig. 10), although crop yield data were only available since 2000 for comparison with simulations. The model was initialised using Cl measurements from native vegetation (grass) and provided acceptable predictions of Cl movement over the period from clearing to 2004. Predicted values for cropping were close to average chloride values (Fig. 3) measured for four cores at each of the two locations at Denham and Sefton Park; providing confidence in predicted total deep drainage estimations. Elsewhere (R. R. Young and S. Harden, personal communication, 2009) have shown that the downward shift in Cl peaks is statistically significant.

Implications of deep drainage through saline clay

W. A. Timms et al.

Title Page

Abstract

Introduction

Conclusions

References

Tables

Figures

◀

▶

◀

▶

Back

Close

Full Screen / Esc

Printer-friendly Version

Interactive Discussion



Both observations and simulations show that the peak in soil salt has moved downwards from about 1.0 m to 2.0 and 3.0 m depth at these sites (Fig. 3). Greater salt mobilisation was apparent at the Denham site, presumably because it was cleared 20 yr earlier than Sefton Park. Salts within the root zone are now lower in cropped areas, than in grassland areas. However, total salt storage remains high to 5.0 m in the shallow cores (Fig. 3), and up to 10.0 m depth in the deep cores (Fig. 5).

Simulated deep drainage values are summarised in Table 3, and shown in comparison to annual cropping information in Fig. 10. Significant deep drainage occurred only during the wet periods with high antecedent soil moisture. Between 1966 and 2004, deep drainage of 57 and 133 mm (Sefton Park and Denham sites) occurred only during 1998 for paddocks with relatively moist soil. Significant deep drainage occurred 1 in 39 yr at Denham, with deep drainage >10 mm for 2 of 39 yr. Over a period of 19 yr, simulated deep drainage was equivalent to 0.7–2.1 % of annual rainfall, or 0.03–0.5 % of annual rainfall excluding 1998 data. The highly episodic nature of deep drainage is evident in that this occurred 1 in 39 yr at Denham, with deep drainage >10 mm for 2 of 39 yr. Over a period of 19 yr, simulated deep drainage was 0.7 and 2.1 % of annual rainfall for Sefton Park and Denham sites respectively, or 0.03 and 0.5 % of annual rainfall excluding 1998 data.

5 Discussion and conclusions

5.1 Significance of deep drainage

Displacement of chloride profiles under cropping compared to perennial vegetation control areas and water balance modelling show that water has drained below the plant root zone despite the low rainfall, high rates of evapotranspiration and relatively large water holding capacity of these Grey Vertosols. However, simulation of paddock cropping history using historic weather data indicated that deep drainage was highly episodic and associated with very wet conditions. But most of the time, it was very

Implications of deep drainage through saline clay

W. A. Timms et al.

Title Page

Abstract

Introduction

Conclusions

References

Tables

Figures



Back

Close

Full Screen / Esc

Printer-friendly Version

Interactive Discussion



small. Average annual deep drainage was in the order of 3–5 mm for the Sefton Park and Denham sites estimated either by the chloride front displacement or APSIM.

Groundwater modelling assumed constant annual recharge (Merrick, 2001), in contrast to the highly episodic nature of deep drainage. A significant deep drainage event occurred 1 in 39 yr at Denham, with deep drainage >10 mm for 2 of 39 yr. The episodic nature of deep drainage is well known in the crop sciences. For example, deep drainage simulations by Abbs and Littleboy (1998) using PERFECT over 108 yr and for different dryland farming practices showed 54 of 108 yr with no deep drainage.

5.2 Groundwater response to large rainfall events

This study has established that a water table occurs at 20 m depth at four exploratory drilling sites on the Denham and Sefton Park properties, and that there is generally no significant groundwater level response to large rainfall events. The lack of groundwater level response was to be expected given the large water holding capacity of the surface clays and the very low hydraulic conductivity limiting vertical flow through the vadose zone. This was in contrast to rapid groundwater level response in the Upper Namoi catchment (Timms and Acworth, 2005). The depth of the shallow saline water table had not previously been recorded in this area, as monitoring bores drilled in the 1960s had targeted high yielding deep aquifers and the shallowest monitoring bore screen was positioned at over 30 m depth in a semi-confined sand aquifer (GW036541-1).

High frequency groundwater level data reported in this study indicated that recharge is <0.6 % of annual rainfall and is limited to localised areas of the plains (1 of 4 sites, SP1s). Considering the uncertainties involved, the recharge is considered very small or negligible. The representative average recharge rate for Grey Vertsols on the plains, expressed as a 50 yr average must therefore be <0.01 %. Detection and verification of such a small (or negligible) rate of recharge is a significant challenge.

The lack of evidence for significant recharge is consistent with available natural isotope data for the area, although no studies of isotope variations after major rainfall have yet been attempted. Oxygen-18 and deuterium isotope values plotted in two

Implications of deep drainage through saline clay

W. A. Timms et al.

Title Page

Abstract

Introduction

Conclusions

References

Tables

Figures



Back

Close

Full Screen / Esc

Printer-friendly Version

Interactive Discussion



groups relative to the Local Meteoric Water Line (Timms et al., 2009), with Group A (including D3 and GW36541-2) probably recharged in a wetter, cooler climate, whereas Group B (including sites D1, SP1 and D2) being relatively similar or relatively enriched compared with weighted modern rainfall values. Some additional evidence of very old groundwater is available from a detailed hydrogeochemical and isotope study in the Lower Namoi catchment (McLean, 2003). Carbon-14 activities for GW36542 of 3.9 and 1.1 % modern carbon respectively for 75 and 101 m depth, corresponding to 22 650 and 33 530 yr (apparent age). Although this was the only bore site sampled west of the irrigation area, there was clear evidence for increasing groundwater age downstream in the catchment, without significant modern recharge at depth.

5.3 The gap between deep drainage and recharge

Transient hydrological conditions in the sub-surface are anticipated where recent land use change may have increased deep drainage and where lateral flow pathways and moisture storage occur above the water table (Bond, 1998). Perennial vegetation at the Cryon sites was cleared for dryland wheat cropping in the 1960s. Whether the water draining beyond the root zone after a change to leakier land management ultimately recharges the groundwater system at some time in the future, will depend on the water storage capacity in the soil and regolith below the root zone, impediments to downward water movement which may create pockets of saturation/perched water tables and sub-surface lateral redistribution of water leading to discharge into lower lying surface waters or landscapes.

Deep drainage should be equal to recharge if there are no storage or lateral flows in the unsaturated/vadose zone, and a hydrological steady state has been achieved. For example, an increase in water storage in the vadose zone would indicate that deep drainage is greater than recharge of underlying groundwater. The estimates of storage capacity from the core samples are equivocal. At most, ~4 % of soil volume is air space ($V_a \approx 0.04 \text{ m}^3 \text{ m}^{-3}$ or 800 mm over 20 m of sediment) remains as water storage capacity. At the least, there may be no water storage capacity ($V_a \approx 0$), which, together with very

Implications of deep drainage through saline clay

W. A. Timms et al.

Title Page

Abstract

Introduction

Conclusions

References

Tables

Figures



Back

Close

Full Screen / Esc

Printer-friendly Version

Interactive Discussion



low rates of hydraulic conductivity, may render much of the vadose zone hydrologically inactive and a barrier to groundwater recharge from leakage from overlying surface sediments. The gap between deep drainage and groundwater recharge estimates is due in part to the separation of scientific disciplines and limitations of 1-D models such as APSIM as recognised by Ringrose-Voase et al. (2003). If the total amount of water that could be stored between the surface and the water table at 20 m depth was in the order of 0.8 m, then with a deep drainage rate of $\sim 10 \text{ mm yr}^{-1}$, it would take ~ 80 yr for the wetting front presently at 2.5 to 5 m depth to advance sufficiently to recharge water tables at 20 m depth. This estimate assumes a minimum hydraulic conductivity of 0.0001 mm h^{-1} in any layer and a relatively large deep drainage rate because of the widespread adoption of zero tillage cropping in North Western NSW which captures and conserves far more rainfall than previous systems. By comparison, studies of Vertosols in Queensland found deep drainage over the last 30 to 50 yr was stored in the unsaturated zone indicating a long time lag between land-use change and groundwater response (Silburn et al., 2011; Silburn and Montgomery, 2008).

However, drainage can occur beyond the wetting front towards the water table, even at constant soil moisture, by gravity if the moisture is above the DUL, and by a suction gradient that is downwards. Core data (Fig. 5) indicates that a significant suction gradient exists within the sedimentary layers with orientation both up and down, suggesting an additional impediment to downward flow in some layers. Considering all these factors, the proportion of deep drainage that becomes actual recharge is likely to be negligible in this area of the Lower Namoi catchment.

5.4 Sediment heterogeneity and preferential flow

Preferential flow, if verified, could be via heterogeneity within the sediment matrix, cracking, slickenside surfaces or leakage along the piezometer-soil interface. The sediment appears to be relatively homogeneous on a scale of meters, but varies between bores that are more than a few meters apart. Sediment heterogeneity at a scale

Implications of deep drainage through saline clay

W. A. Timms et al.

Title Page

Abstract

Introduction

Conclusions

References

Tables

Figures



Back

Close

Full Screen / Esc

Printer-friendly Version

Interactive Discussion



hundreds of meters on this flood plain is consistent with the possibility of ancient channels (Young et al., 2002).

The observation of water collecting in the sump of a previously dry piezometer (SP1s) after a 190 mm rainfall event could be significant, but is difficult to interpret.

Independent confirmation, using geochemical and isotopic signatures is required to verify whether this observation was a direct result of recharge at depth.

5.5 Salt storage and potential for mobilisation

High salt storage to 10 m depth was measured at these sites with evidence for mobilisation of salt by deep drainage beneath crops. There were significant peaks in chloride concentrations at 0.8–1.2 m depth under perennial vegetation and at 2.0–2.5 m depth under continuous cropping indicating deep drainage and salt leaching since conversion to cropping. A similar range of total salt loads (91–229 t ha⁻¹ NaCl equivalent) were measured for both perennial vegetation and cropping.

The present annual rate of deposition, via rain and dryfall, of marine NaCl is ~11.3 kg ha⁻¹ at Gunnedah in the Upper Namoi (Blackburn and McLeod, 1983). Accounting for the salt store in the top 10 m of up to 229 t ha⁻¹, would require over 20 000 yr of aerial deposition by this mechanism. However, a significant proportion of salt storage is likely to be related to Aeolian dust deposits from inland Australia (rather than marine sources) that peaked approximately 13 000 yr ago in this area (Young et al., 2002). Leaching of accumulated chloride at toxic concentrations can only benefit crop growth by increasing the availability of soil water to crops (Dang et al., 2008). Figure 3 shows chloride concentrations with depth relative to the 10% and 50% yield reduction thresholds for salinity in durum wheat (Dang et al., 2008). APSIM predictions suggest that the rate of deep drainage and leaching will substantially increase if zero tillage continuous winter cropping continues without improved water use efficiency and productivity. Water loss as deep drainage is doubled under continuous winter cropping using zero tillage practices (Young, 2009).

Implications of deep drainage through saline clay

W. A. Timms et al.

Title Page

Abstract

Introduction

Conclusions

References

Tables

Figures

◀

▶

◀

▶

Back

Close

Full Screen / Esc

Printer-friendly Version

Interactive Discussion



A small fraction of saline deep drainage mixing with relatively fresh groundwater or river water could have significant consequences for beneficial use and the environment. Groundwater salinity varied spatially from 910 to 2430 mS m⁻¹ at 21 to 37 m depth (Table 1, *N* = 5). Deeper groundwater, with use restricted to livestock and rural domestic supplies in this area, was less saline (290 mS m⁻¹) compared to seawater salinity of 5800 mS m⁻¹. The EC of leachate from deep drainage was not measured at these sites, but over time, would add to the mass of salt in shallow groundwater.

5.6 Implications for catchment management

This study found that deep drainage may affect groundwater in the long term, but not the nearby Namoi River. Although it is very likely that deep drainage and mobilisation of subsoil salt will be greater under zero tillage cropping than in the past, there is no apparent risk of discharge into streams or onto low lying flood plains in the foreseeable future. Groundwater moves slowly to the south-west, but cannot discharge to the surface because the Namoi River bed is located at least 10 m above the water table. Surface waters in this area appear to be either disconnected from, or are losing water to, groundwater depending on the permeability of the bed and bank sediments.

It was concluded that in this area, deep drainage could matter most as lost production, since 1 mm is required for every 10 kg ha⁻¹ wheat yield. It is acknowledged however, that most of the time, deep drainage is sufficiently small that production losses would be negligible. A significant benefit of deep drainage is the leaching of salt from the crop root zone, likely to be large where salt stores are large, but it will take time and probably a series of wet seasons. The implications of increased salt leaching to the water table are not a primary concern this far west in the Namoi catchment where groundwater salinity limits beneficial use to stock water. The substantial time lag for changes at the soil surface to affect groundwater, perhaps decades, could constitute an unseen threat to natural resources, but is also an opportunity to quantify small, gradual changes and to implement the necessary land management actions. Silburn and Montgomery (2008) for example report a time lag of 30 to 40 yr for new equilibrium fluxes to establish in clayey soils of the northern MDB.

Implications of deep drainage through saline clay

W. A. Timms et al.

Title Page

Abstract

Introduction

Conclusions

References

Tables

Figures



Back

Close

Full Screen / Esc

Printer-friendly Version

Interactive Discussion



Integrated analyses of flow systems from the ground surface to the saturated zone are lacking, particularly over both dry and wet climatic periods. This paper is a contribution to linking the scientific disciplines of crop water balance and hydrogeology. Current work is extending this exploratory approach to saline risk areas by direct comparison of deep drainage and recharge measurements and models, combined with high resolution isotope and salinity measurements of groundwater and pore water in the vadose zone to detect possible changes over time.

Acknowledgements. This work was funded by the National Action Plan for Salinity (Australia) through the NSW Department of Primary Industries. We thank David and Fiona Denyer and Sandy Stump for site access and support, biometrical support provided by Steven Harden (DPI), and for technical support: Ross McLeod, Steven O'Brien (DPI), Maureen Schwarz (UNSW), Ian Cunningham (UNSW) and Anna Blacka (UNSW).

References

- Abbs, K. and Littleboy, M.: Recharge estimation for the Liverpool Plains, Aust. J. Soil Res., 36, 335–57, 1998.
- Acworth, R. I. and Timms, W. A.: Evidence for connected water processes through smectite-dominated clays at Breeza, New South Wales, Aust. J. Earth Sci., 56, 71–86, 2009.
- Allison, G. B. and Hughes, M. W.: The use of natural tracers as indicators of soil water movement in a temperate semi-arid region, J. Hydrol., 60, 157–173, 1983.
- Barret, C., Williams, R. M., and Sinclair, P.: Groundwater chemistry changes due to mixing – Lower Namoi Valley, New South Wales, Proceedings of the 10th Murray-Darling Basin Groundwater Workshop, Canberra, 18–20th September, 2006.
- Beadle, N. C. W.: The vegetation of Australia, Cambridge University Press, Cambridge, Cambridgeshire, New York, 1981.
- Blackburn, G. and McLeod, S.: Salinity of atmospheric precipitation in the Murray-Darling Basin Drainage Division, Australia, Aust. J. Soil Res., 21, 411–434, 1983.
- Bond, W.: Part 3: Soil physical methods for estimating recharge, in: Zhang, L., The Basics of Recharge and Discharge, CSIRO Publishing, Collingwood, 1998.
- Bond, W.: Soil physical methods for estimating discharge, in: Basics of Recharge and Discharge, Section 3, CSIRO Publishing, Collingwood, Victoria, 2006.

Implications of deep drainage through saline clay

W. A. Timms et al.

Title Page

Abstract

Introduction

Conclusions

References

Tables

Figures

◀

▶

◀

▶

Back

Close

Full Screen / Esc

Printer-friendly Version

Interactive Discussion



Implications of deep drainage through saline clay

W. A. Timms et al.

Title Page

Abstract

Introduction

Conclusions

References

Tables

Figures

◀

▶

◀

▶

Back

Close

Full Screen / Esc

Printer-friendly Version

Interactive Discussion



- Dang, Y. P., Dala, R. C., Mayer, D. G., McDonald, M., Routley, R., Schwenke, G. D., Buck, S. R., Daniells, I. G., Singh, D. K., Manning, W., and Ferguson, N.: High subsoil chloride concentrations reduce soil water extraction and crop yield on Vertosols in north-eastern Australia, *Aust. J. Agr. Res.*, 59, 321–330, 2008.
- 5 Greve, A., Andersen, M. S., and Acworth, R. I.: Investigations of soil cracking and preferential flow in a weighing lysimeter filled with cracking clay soil, *J. Hydrol.*, 393, 105–113, 2010.
- Gunawardena, T. A., McGarry, D., Robinson, J. B., and Silburn, D. M.: Deep drainage through Vertosols in irrigated fields measured with drainage lysimeters, *Soil Res.*, 49, 343–354, 2011.
- 10 Hearn, A. B.: Summer rains on Vertosol Plains – A review of cotton irrigation research in Australia, Irrigation Association of Australia 1998 National Conference, Brisbane, 19–21 May, 1998.
- Isbell, R. F.: *The Australian Soil Classification*, CSIRO, 2002.
- Jones, C. A. and Kiniry, J. R.: *CERES-Maize – a simulation model of growth and development*, Texas A&M University Press, College Station, Texas, 1986.
- 15 Keating, B. A., Carberry, P. S., Hammer, G. L., Probert, M. E., Robertson, M. J., Holzworth, D., Huth, N. I., Hargreaves, J. N. G., Meinke, H., Hochman, Z., McLean, G., Verburg, K., Snow, V., Dimes, J. P., Silburn, M., Wange, E., Brown, S., Bristow, K. L., Asseng, S., Chapman, S., McCown, R. L., Freebairn, D. M., and Smith, C. J.: An overview of APSIM, a model designed for farming systems simulation, *Europ. J. Agronomy*, 18, 267–288, 2003.
- 20 Littleboy, M., Silburn, D. M., Freebairn, D. M., Woodruff, D. R., Hammer, G. L., and Leslie, J. K.: Impact of soil erosion on production in cropping systems. I Development and validation of a simulation model, *Aust. J. Soil Res.*, 30, 757–774, 1992.
- McCallum, J. L., Crosbie, R. S., Walker, G. R., and Dawes, W. R.: Impacts of climate change on groundwater in Australia: a sensitivity analysis of recharge, *Hydrogeol. J.*, 18, 1625–1638, 2010.
- 25 McKenzie, N., Coughlan, K., and Cresswell, H.: *Soil physical measurement for interpretation and land evaluation*, CSIRO Publishing, Collingwood, Australia, 2002.
- McLean, W.: *Hydrogeochemical evolution and variability in a stressed alluvial aquifer system: Lower Namoi River catchment, NSW*, PhD Thesis, University of New South Wales, School of Biological Earth and Environmental Science, 2003.
- 30 Merrick, N. P.: *Report on Lower Namoi Groundwater Flow Model – Calibration 19800–1998*, Insearch Limited Report for the Department of Water and Energy, Sydney, 2001.

Implications of deep drainage through saline clay

W. A. Timms et al.

Title Page

Abstract

Introduction

Conclusions

References

Tables

Figures

◀

▶

◀

▶

Back

Close

Full Screen / Esc

Printer-friendly Version

Interactive Discussion



- Middlemis, H., Merrick, N., and Ross, J.: Murray-Darling Basin groundwater flow modelling guideline, Murray-Darling Basin Commission, Canberra, 2000.
- Paydar, Z., Huth, N., Ringroase-Voase, A., Young, R., Bernadi, T., Keating, B., and Cresswell, H.: Deep drainage and land use systems, Model verification and systems comparison, Aust. J. Agr. Res., 56, 995–1007, 2005.
- Ranatunga, K., Nation, E., and Barratt, D.: Review of soil water models and their application in Australia, Environ. Model. Softw., 23, 1182–1206, 2008.
- Rayment, G. E. and Higginson, F. R.: Australian laboratory handbook of soil and water chemical methods, Incarta Press, Melbourne, 1992.
- Ringrose-Voase, A. J., Young, R. R., Paydar, Z., Huth, N. I., Bernardi, A. L., Cresswell, H. P., Keating, B. A., Scott, J. F., Stauffacher, M., Banks, R. G., Holland, J. F., Johnston, R. M., Green, T. W., Gregory, L. J., Daniells, I., Farquharson, R., Drinkwater, R. J., Heidenreich, S., and Donaldson, S.: Deep Drainage under Different Land Uses in the Liverpool Plains Catchment, Report 3, Agricultural Resource Management Report Series, NSW Agriculture, ISBN 07347 1565 X, 2003.
- Rose, C. W., Dayananda, P. W. A., Neilsen, D. R., and Biggar, J. M.: Long term solute dynamics and hydrology in irrigated slowly permeable soils, Irr. Sci., 1, 77–87, 1979.
- Silburn, M. and Montgomery, J.: Deep drainage under irrigated cotton in Australia: a review, in: WaterPAK – A guide for irrigation management in cotton, 2008.
- Silburn, D. M., Tolmie, P. E., Biggs, A. J. W., Whish, J. P. M., and French, V.: Deep drainage rates of Grey Vertosols depend on land use in semi-arid subtropical regions of Queensland, Australia, Soil Res., 49, 424–438, 2011.
- SKM: Groundwater Modelling Report – Lower Namoi, Draft report by Sinclair Knight Mertz and CSIRO for Murray Darling Basin Authority, 2010.
- Smithson, A.: Lower Namoi Groundwater Source – Groundwater Management Area 001 Groundwater Status Report 2008, NSW Department of Water and Energy, Sydney, 2009.
- Stauffacher, M., Walker, G., and Evans, R.: Salt and water movement in the Liverpool Plains – What's going on?, NDSP Occasional Paper 14/97, 1997.
- Thorburn, P. J., Cowie, B. A., and Lawrence, P. A.: Effect of land development on groundwater recharge determined from non-steady chloride profiles, J. Hydrol., 124, 43–58, 1991.
- Timms, W. A.: The Liverpool Plains Water Quality Project: 1996/97 Report on Groundwater Quality, Department of Land and Water Conservation, Centre for Natural Resources, CNR 97.108, 1997.

Implications of deep drainage through saline clay

W. A. Timms et al.

Title Page

Abstract

Introduction

Conclusions

References

Tables

Figures

◀

▶

◀

▶

Back

Close

Full Screen / Esc

Printer-friendly Version

Interactive Discussion



Timms, W. and Acworth, I.: Propagation of porewater pressure change through thick clay sequences: an example from the Yarramanbah site, Liverpool Plains, New South Wales, *Hydrogeol. J.*, 13, 858–870, 2005.

Timms, W. A., Acworth, R. I., and Young, R.: Natural leakage pathways through cracking smectite clay: a hydrogeological synthesis of data from the Hudson Agricultural Trial site on the Liverpool Plains, UNSW Water Research Laboratory, Research Report No. 209, 2002.

Timms, W. A., Badenhop, A., Rayner, D., and Mehrabi, S.: Namoi groundwater monitoring and evaluation, Report No. 2 Part A- Results of 2009 groundwater monitoring and recommendations for future best practice monitoring framework, Part B: Groundwater user survey, UNSW Water Research Laboratory Technical Report 2009/25, 2010.

Verbyla, A. P., Cullis, B. P., Kenward, M. G., and Welham, S. J.: The analysis of designed experiments and longitudinal data using smoothing splines (with discussion), *Appl. Stat.*, 48, 269–312, 1999.

Vervoort, R. W., Silburn, M., and Kirby, M.: Near surface water balance in the Northern Murray-Darling Basin, *Water Sci. Technol.*, 48, 207–214, 2003.

Walker, G. R.: Using Soil Water Tracers to Estimate Recharge – Part 7 of Basics of Recharge and Discharge, CSIRO Publishing, Collingwood, Victoria, 1998.

Young, R. R.: Mobilization of 100 tonnes of salt/ha under cropping in north western NSW – a threat to agriculture and natural ecosystems?, National Action Plan for Salinity, Final Report, 2009.

Young, R. R., Huth, N., and Timms, W.: Deep drainage and salt mobilisation under rain-fed cropping on cracking clay soils in the Walgett and Coonamble districts – does it matter? NSW Department of Primary Industries, AgFact, in preparation, 2011.

Young, R. R. and McLeod, M. K.: Estimation of historic deep drainage under grassed woodland, lucerne pastures and cropped paddocks in the upper Liverpool Plains catchment using the SODICS mode, in: Conference Proceedings 2001 from the 7th National PUR\$L Conference, 115–119, Launceston, Tasmania, 2001.

Young, R. W., Young, A. R. M., Price, D. M., and Wray, R. A. L.: Geomorphology of the Namoi alluvial plain, northwestern New South Wales, *Aust. J. Earth Sci.*, 49, 509–523, 2002.

Implications of deep drainage through saline clay

W. A. Timms et al.

Title Page

Abstract

Introduction

Conclusions

References

Tables

Figures

◀

▶

◀

▶

Back

Close

Full Screen / Esc

Printer-friendly Version

Interactive Discussion



Table 1. Summary of piezometers installed (1–2 September 2007), monitoring bore 36541 (NSW Office of Water), groundwater salinity (EC) and groundwater levels.

Site	Surface elevation (m AHD)	Screen interval (m b.g.)	Piezo height (m)	(ms m ⁻¹)	Groundwater level (m b.g.)		
					23/10/07	23/10/07	29/1/09
D1s	138.73	15.5–17	0.39	–	Dry	17.3	Dry
D1d	138.74	22.5–24	0.39	2240	18.95	18.92	18.91
D2s	139.15	14.5–16	0.55	–	Dry	–	–
D2d	139.15	35.9–37.4	0.55	1650	19.33	–	–
D3s	139.39	14.5–16	0.55	–	Dry	Dry	Dry
D3d	139.41	38–41	0.49	910	19.33	19.35	19.34
SP1s	136.15	10–11.5	0.56	–	Dry	Dry	12.08
SP1d	136.13	21–22.5	0.52	2430	16.98	17.04	17.05
36541-1	135.78	33–36	1.27	1645	18.1	–	–
36541-2	135.78	57.3–60.3	1.08	1000	20.32	–	–
36541-3	135.78	89.6–95.6	1.16	290	17.67	–	–

* Piezometers were installed 1–2/9/2007. Nested piezometers were installed in the same holes, piezo height is the steel monument height above ground level, m.b.g. is metres below ground, AHD is Australian Height Datum, groundwater levels are manual dip measurements.

Implications of deep drainage through saline clay

W. A. Timms et al.

Table 2. Deep drainage estimated using chloride mass balance, chloride front displacement and APSIM simulations of paddock records using historic weather data.

	Denham		Sefton Park	
	Transect 1	Transect 2	Transect 1	Transect 2
Chloride load: control, <i>cropped</i> (t ha^{-1} to 5 m depth)				
	52, 56	73, 82	138, 95	49, 66
Deep drainage				
Time period	1966–2004		1986–2004	
<i>SODICS</i> (mm yr^{-1})	17	19	68	–13
CI FD (total, mm)	128	171	82	80
<i>CI FD</i> (mm yr^{-1})	3.2	4.3	4.1	4.0
APSIM (mm total)	196		61	
<i>APSIM</i> (mm yr^{-1})	5.0		3.2	

[Title Page](#)
[Abstract](#)
[Introduction](#)
[Conclusions](#)
[References](#)
[Tables](#)
[Figures](#)
[◀](#)
[▶](#)
[◀](#)
[▶](#)
[Back](#)
[Close](#)
[Full Screen / Esc](#)
[Printer-friendly Version](#)
[Interactive Discussion](#)


Implications of deep drainage through saline clay

W. A. Timms et al.

Table 3. Simulated deep drainage over time and as a proportion of rainfall 1966 to 2004.

Deep drainage	Denham	Sefton Park	Time Period
	196	–	1966 to 2004
Total (mm)	179.7	61	1986 to 2004
	46.3	3.0	1986 to 2004 (except 1998)
Average (mm yr ⁻¹)	9.5	3.3	1986 to 2004
% of annual rainfall*	2.1	0.7	1986 to 2004
	0.5	0.03	1986 to 2004 (except 1998)
% of total in 1998	74.2	95.0	
>10 mm (no. of years)	2	–	1966 to 2004 (39 yr)
>2 mm (no. of years)	12	1	1986 to 2004 (19 yr)

* Walgett BOM data.

Title Page

Abstract

Introduction

Conclusions

References

Tables

Figures

◀

▶

◀

▶

Back

Close

Full Screen / Esc

Printer-friendly Version

Interactive Discussion



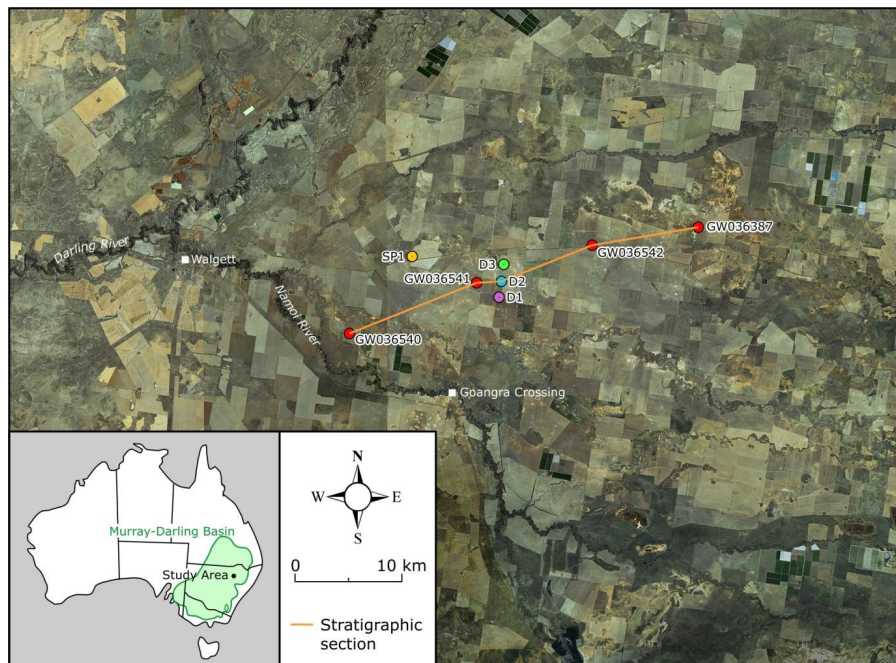


Fig. 1. Location map, showing the Namoi River, groundwater monitoring sites and location of stratigraphic section (Google earth image).

Implications of deep drainage through saline clay

W. A. Timms et al.

Title Page	
Abstract	Introduction
Conclusions	References
Tables	Figures
◀	▶
◀	▶
Back	Close
Full Screen / Esc	
Printer-friendly Version	
Interactive Discussion	



Implications of deep drainage through saline clay

W. A. Timms et al.

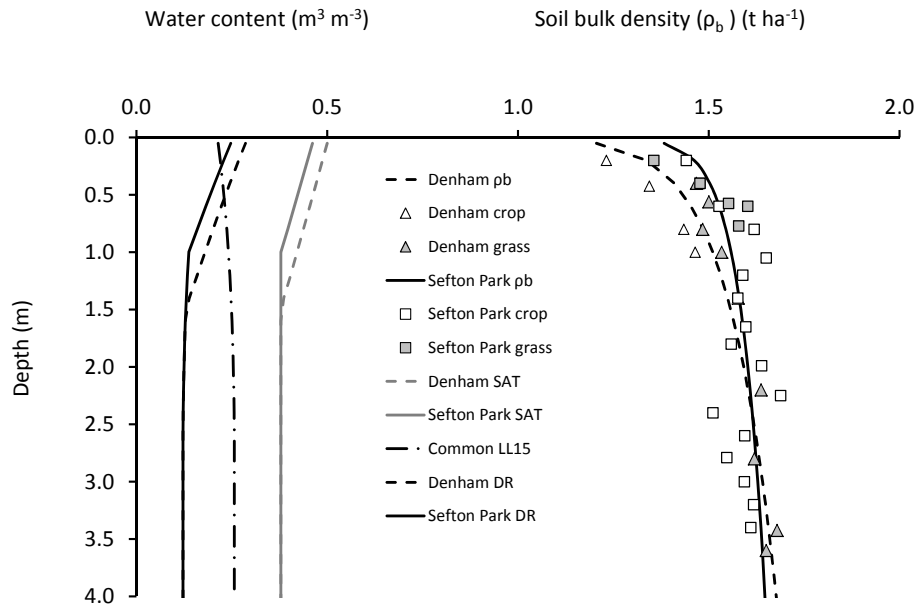


Fig. 2. Measured soil bulk density (ρ_b) and water holding capacity at “perennial vegetation lower limit” assumed = -15 bar (LL15) and derived water holding capacity at saturation (SAT) and drainable water capacity (DR).

[Title Page](#)
[Abstract](#)
[Introduction](#)
[Conclusions](#)
[References](#)
[Tables](#)
[Figures](#)
[◀](#)
[▶](#)
[◀](#)
[▶](#)
[Back](#)
[Close](#)
[Full Screen / Esc](#)
[Printer-friendly Version](#)
[Interactive Discussion](#)

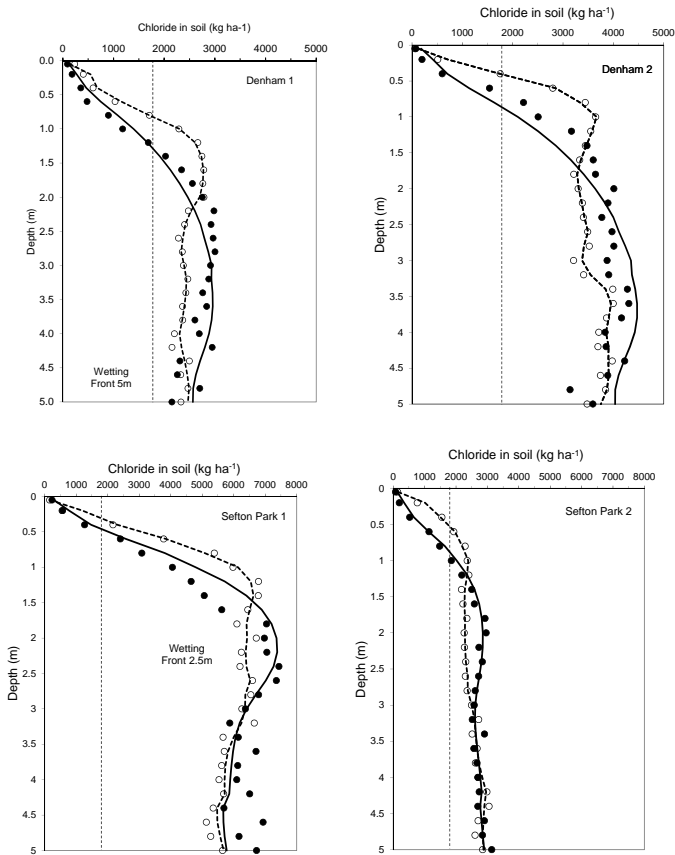


Fig. 3. Measured and APSIM simulations of normalised chloride in soil (kg ha^{-1}) with depth at **(a–b)** Denham and **(c–d)** Sefton Park for cropping and grass control. The 50% reduction in water extraction for durum wheat is shown at 1000 mg kg^{-1} soil chloride at 1.0 m depth (Dang et al., 2008), equivalent to 1800 kg ha^{-1} assuming bulk density of 1.5 t m^{-3} .

Implications of deep drainage through saline clay

W. A. Timms et al.

Title Page

Abstract

Introduction

Conclusions

References

Tables

Figures



Back

Close

Full Screen / Esc

Printer-friendly Version

Interactive Discussion

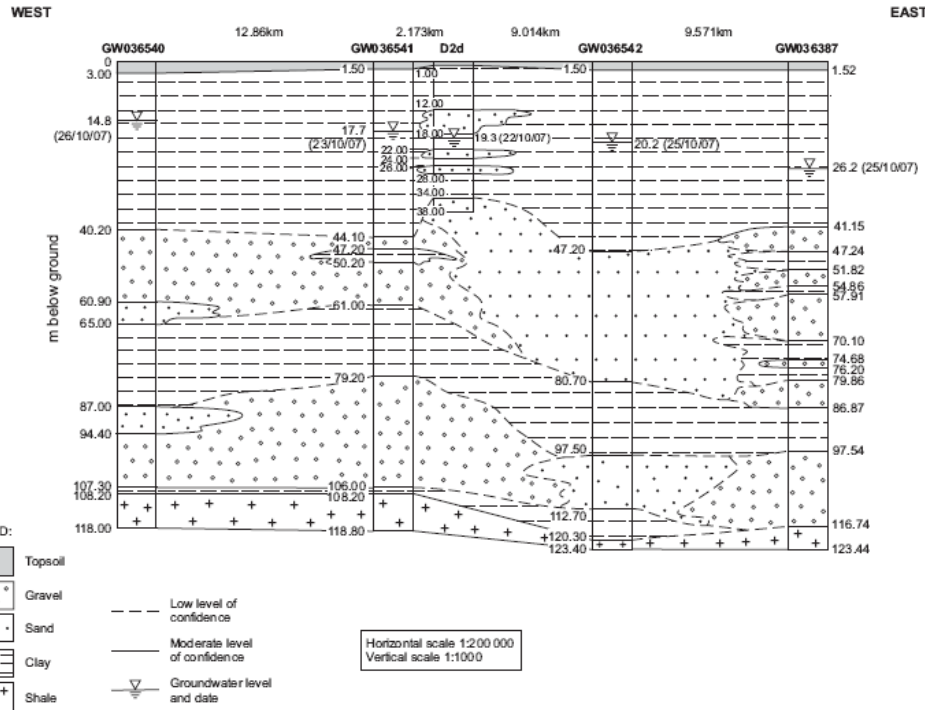


Fig. 4. Stratigraphic transect from west to east (location shown on Fig. 1), through the Denham monitoring piezometer site.

Implications of deep drainage through saline clay

W. A. Timms et al.

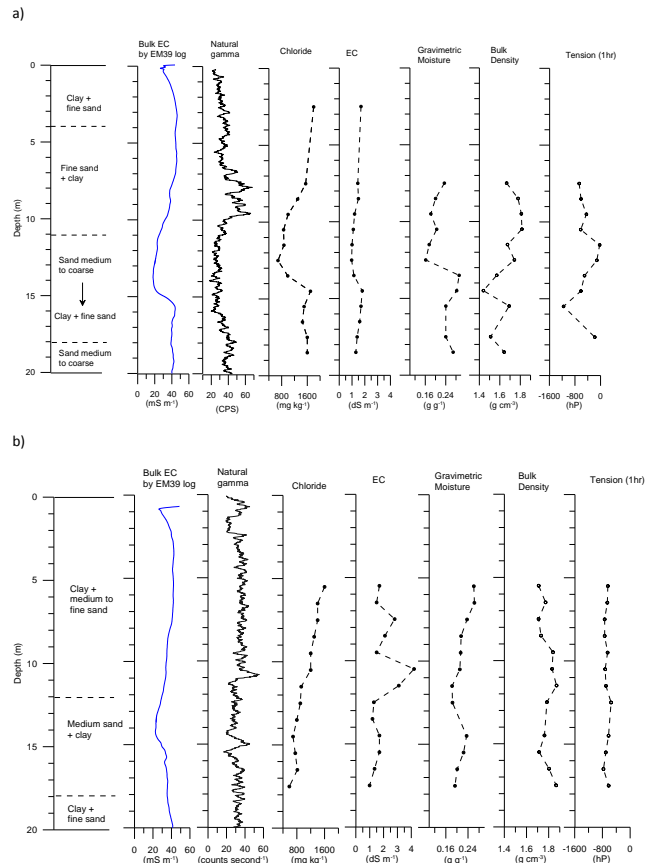


Fig. 5. Downhole sediment measurements showing bulk electrical conductivity and natural gamma logs, and core measurements including soil:water 1:5 electrical conductivity, chloride, water content, bulk density and tension for the **(a)** D1 site and **(b)** D3 site.

Title Page

Abstract

Introduction

Conclusions

References

Tables

Figures

◀

▶

◀

▶

Back

Close

Full Screen / Esc

Printer-friendly Version

Interactive Discussion



Implications of deep drainage through saline clay

W. A. Timms et al.

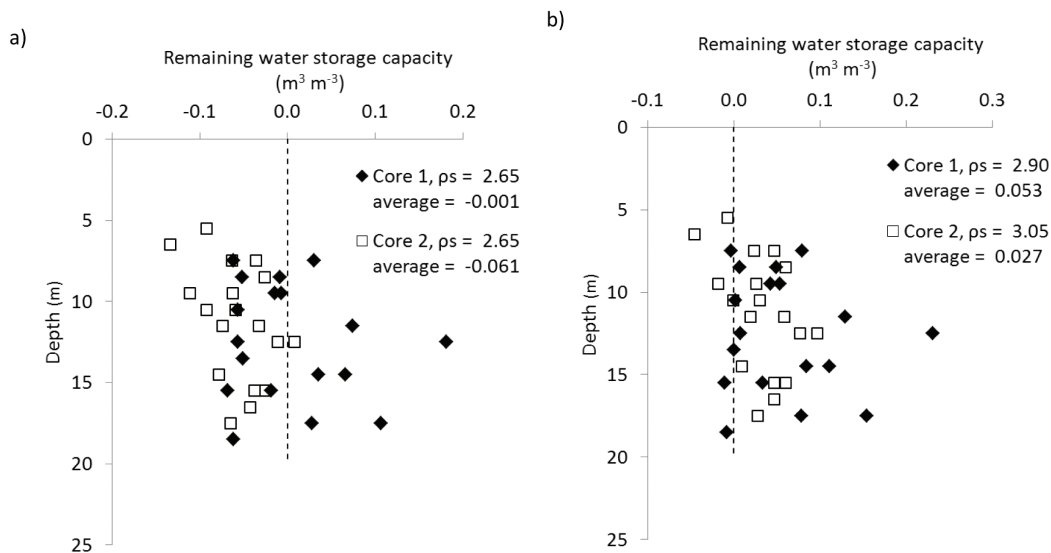


Fig. 6. Remaining water storage capacity for site D1 (Core 1) and site D3 (Core 2), calculated from bulk density, moisture content and **(a)** assumed particle density of 2.65 t m^{-3} and **(b)** assumed particle density of 2.90 and 3.05 t m^{-3} .

Discussion Paper | Discussion Paper | Discussion Paper | Discussion Paper | Discussion Paper

Title Page

Abstract Introduction

Conclusions References

Tables Figures

◀ ▶

◀ ▶

Back Close

Full Screen / Esc

Printer-friendly Version

Interactive Discussion



Implications of deep drainage through saline clay

W. A. Timms et al.

Title Page

Abstract

Introduction

Conclusions

References

Tables

Figures



Back

Close

Full Screen / Esc

Printer-friendly Version

Interactive Discussion

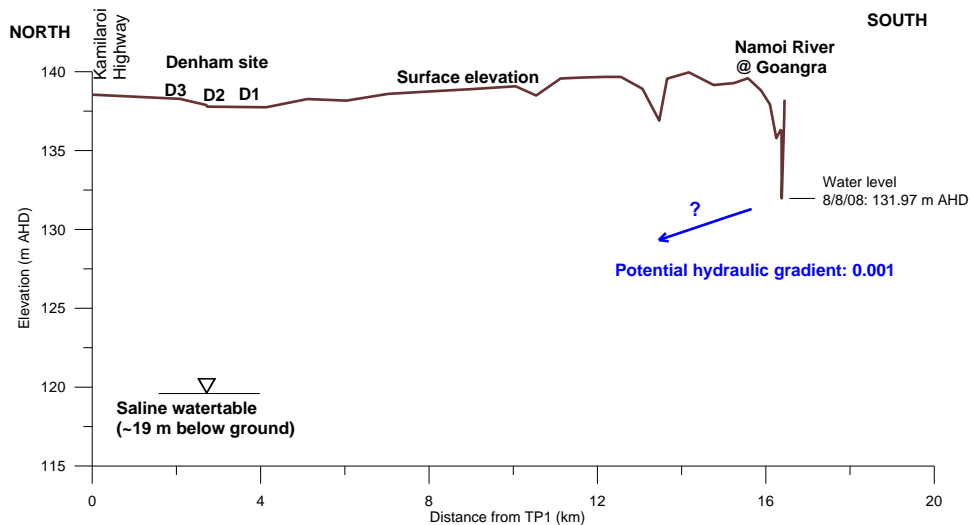


Fig. 7. Elevation transect from north to south through the Denham site to the Namoi River. The relative elevation of the saline water table at Denham, and the river level in January 2008 are shown.

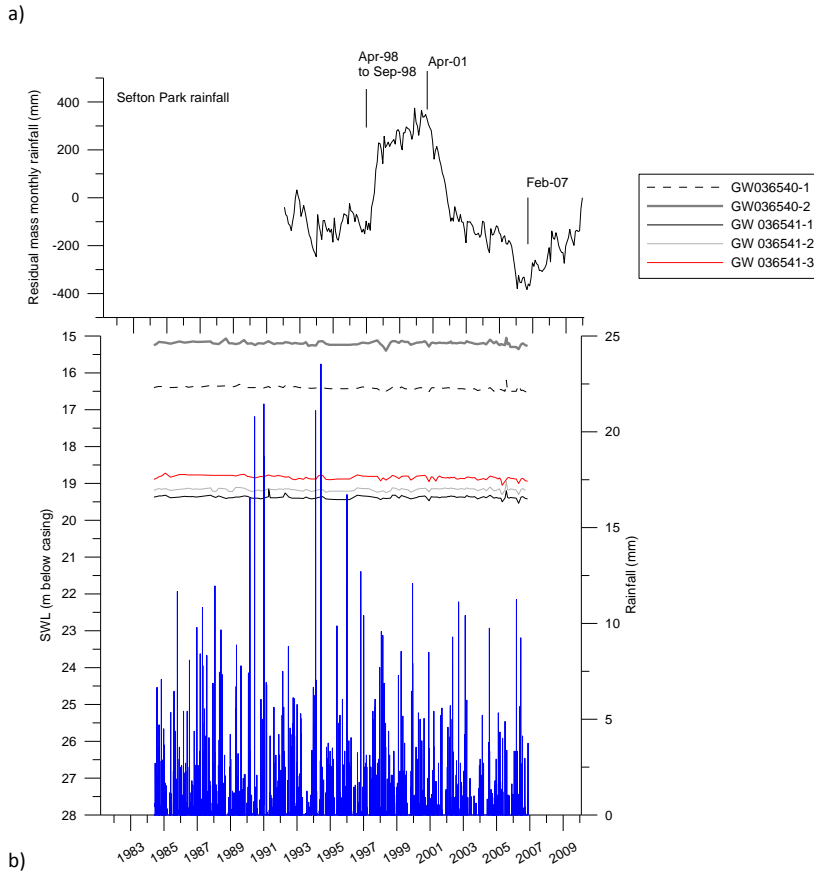


Fig. 8. (a) The residual mass curve for monthly rainfall at the Sefton Park and **(b)** groundwater levels (1985 to 2009) compared with daily rainfall.

Implications of deep drainage through saline clay

W. A. Timms et al.

Title Page

Abstract Introduction

Conclusions References

Tables Figures

◀ ▶

◀ ▶

Back Close

Full Screen / Esc

Printer-friendly Version

Interactive Discussion



Implications of deep drainage through saline clay

W. A. Timms et al.

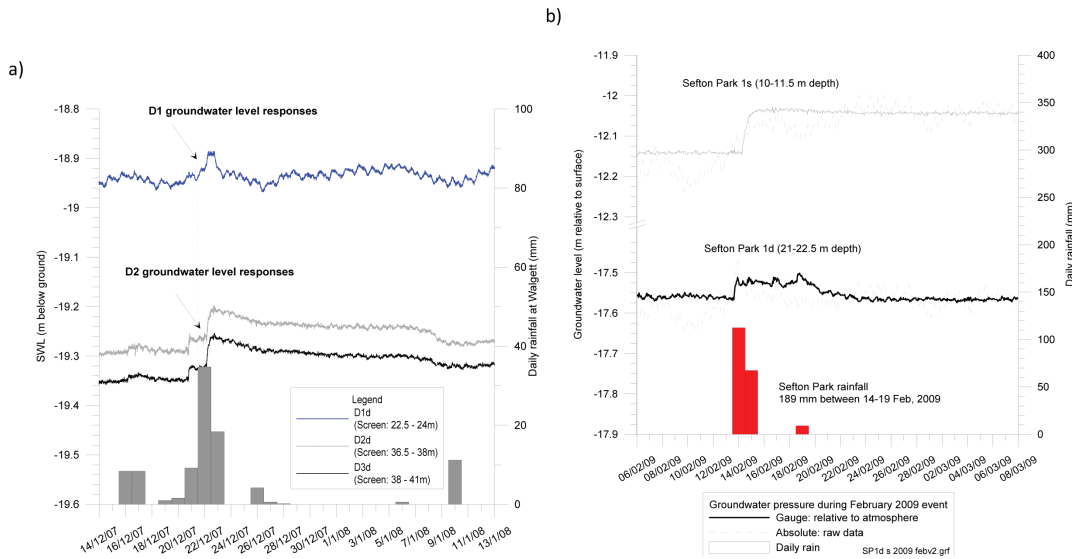


Fig. 9. Groundwater level variation at Denham monitoring piezometers for (a) December 2007 rainfall event, with absolute groundwater pressures recorded at 15 min intervals and (b) February 2009 event at Sefton Park with groundwater absolute and gauge pressures (based on daily rainfall at Sefton Park property).

Title Page

Abstract Introduction

Conclusions References

Tables Figures

⏪ ⏩

⏴ ⏵

Back Close

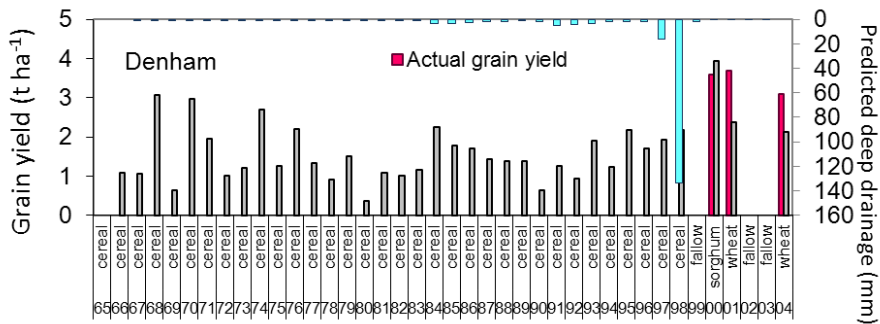
Full Screen / Esc

Printer-friendly Version

Interactive Discussion



a)



b)

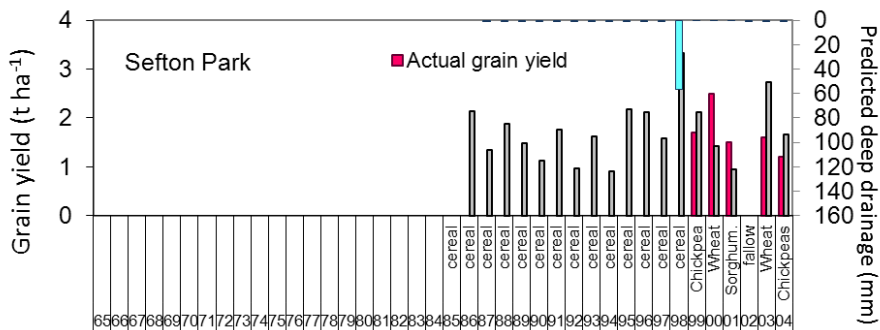


Fig. 10. Actual crop yields (pink), APSIM predicted crop yields (grey) and deep drainage (blue), compared to paddock records and grain yields for **(a)** Denham since 1966 and **(b)** Sefton Park since 1986. One significant deep drainage event is evident in 1998.

Title Page

Abstract Introduction

Conclusions References

Tables Figures

◀ ▶

◀ ▶

Back Close

Full Screen / Esc

Printer-friendly Version

Interactive Discussion

