

Supplement to final response

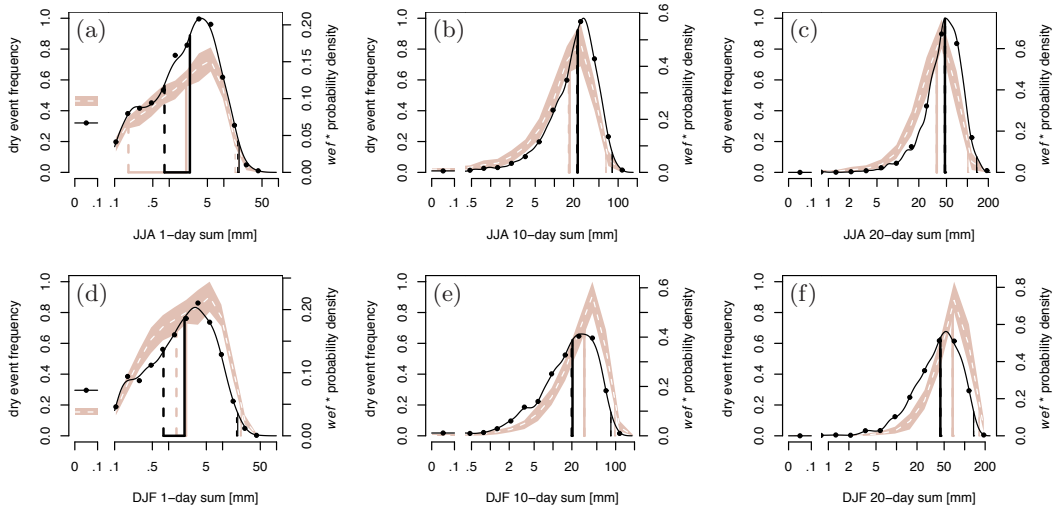


Figure S.1: As for Fig. 2 but taking only a single (most westerly) ESSENCE grid cell to represent the North Rhine region. CHR-OBS input unchanged.

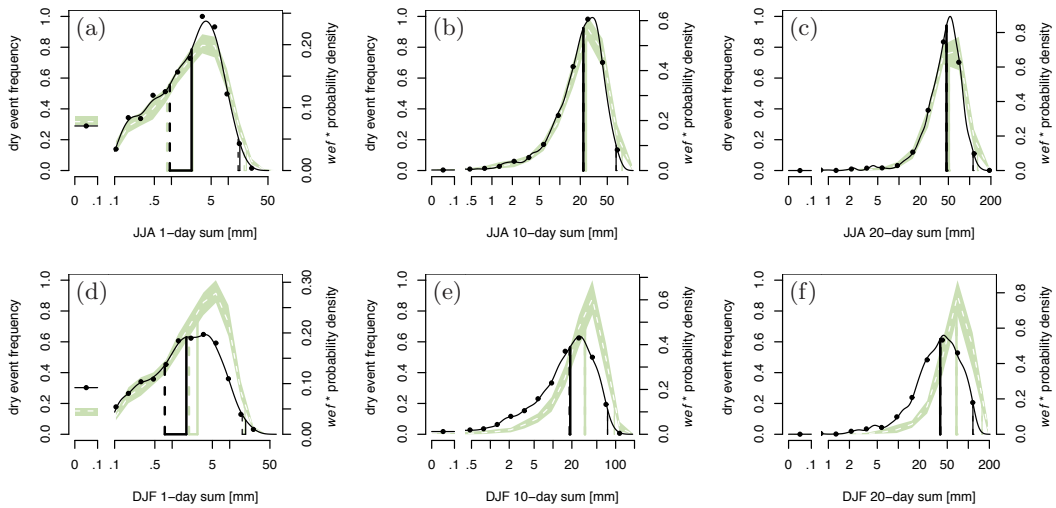


Figure S.2: As for Fig. 2 but for the Central Rhine and taking 3 (most easterly) instead of 4 ESSENCE grid cells to represent the region. CHR-OBS input unchanged.

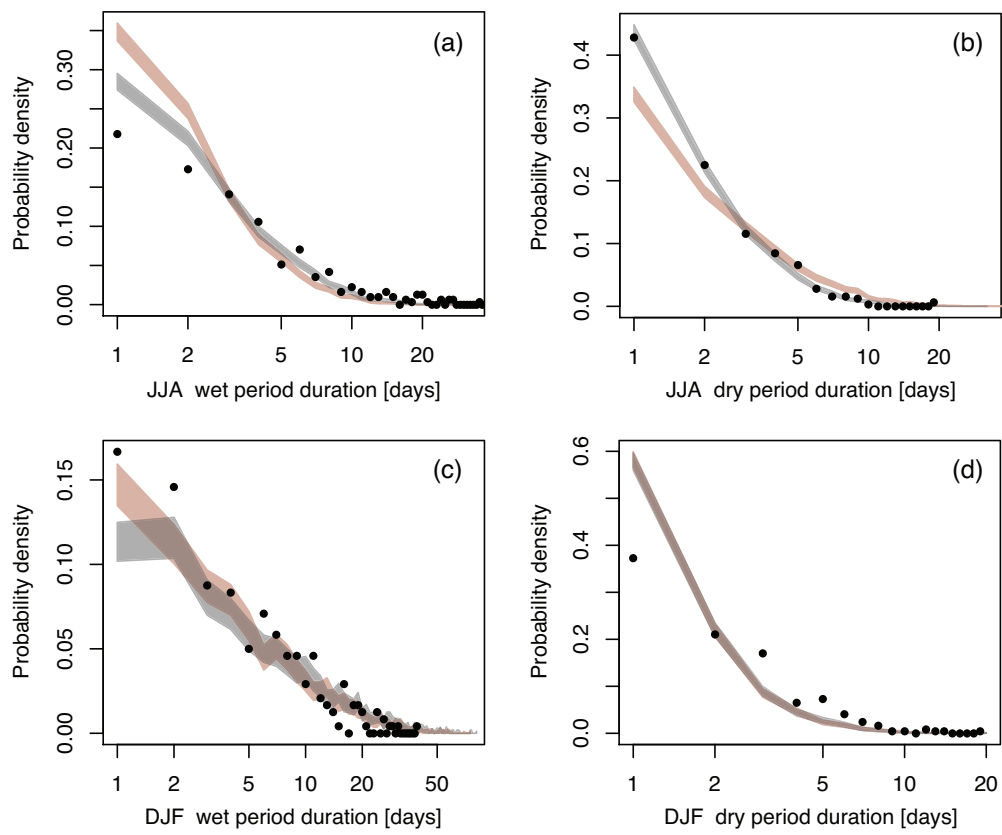


Figure S.3: Probability density functions for wet (left) and dry (right) durations in JJA (top row) and DJF (lower row) for the North Rhine region. Shaded regions show 95% confidence intervals from bootstrapping for the 1961/1962–1990/1991 (control) time slice (gray) and 2070/2071–2099/2100 (future) time slice (color). Black dots show the control period distributions for CHR-OBS data.