

This discussion paper is/has been under review for the journal Hydrology and Earth System Sciences (HESS). Please refer to the corresponding final paper in HESS if available.

Trend analysis of extreme precipitation in the northwestern Highlands of Ethiopia with a case study of Debre Markos

H. Shang¹, J. Yan^{1,2}, M. Gebremichael³, and S. M. Ayalew⁴

¹Department of Statistics, University of Connecticut, Storrs, Connecticut, USA

²Center for Environmental Sciences and Engineering, University of Connecticut, Storrs, Connecticut, USA

³Department of Civil and Environmental Engineering, University of Connecticut, Storrs, Connecticut, USA

⁴Department of Civil Engineering, Faculty of Technology, Addis Ababa University, Ethiopia

Received: 21 September 2010 – Accepted: 19 October 2010 – Published: 28 October 2010

Correspondence to: J. Yan (jun.yan@uconn.edu)

Published by Copernicus Publications on behalf of the European Geosciences Union.

HESSD

7, 8587–8605, 2010

Extreme precipitation in Ethiopia

H. Shang et al.

Title Page

Abstract

Introduction

Conclusions

References

Tables

Figures

◀

▶

◀

▶

Back

Close

Full Screen / Esc

Printer-friendly Version

Interactive Discussion



Abstract

Understanding the extreme precipitation is very important for Ethiopia, which is heavily dependent on low-productivity rainfed agriculture but lacks structural and non-structural water regulating and storage mechanisms. There has been increasing concern about whether there is an increasing trend in extreme precipitation as the climate changes. Existing analysis of this region has been descriptive, without taking advantage of the advances in extreme value modeling. After reviewing the statistical methodology on extremes, this paper presents the first analysis of extremes of this region with daily time series of precipitation records at Debre Markos in the northwestern Highlands of Ethiopia. We found no strong evidence to reject the null hypothesis that there is no increasing trend in extreme precipitation at this location.

1 Introduction

In Ethiopia, rainfall is by far the most important factor climate, as is true for most of Africa. Low-productivity agriculture, which accounts for a majority of the national economy, relies heavily on rainfall. Climate extremes such as drought or flood often lead to famine and disaster for the vulnerable agricultural, social and economic environment in Ethiopia, which lacks structural and non-structural water regulating and storage mechanisms. In particular, flood, as a result of extreme precipitation, poses serious threat on food security and public safety. Estimating the probability of extreme precipitation and characterizing the uncertainty of the estimates are crucial to, for instance, structural design, public safety alerts, evacuation management, and loss mitigation.

Given the increasing public concern on climate change, it is of particular interest to test whether there is a long term increasing trend in extreme precipitation. An important measure of extreme precipitation is the 100-year return level, which is amount of rain in a given area in one day that is exceeded once in 100 years. That is, the upper 1st percentile of the distribution of annual maximum daily rainfall. Long term trend of 100-

HESSD

7, 8587–8605, 2010

Extreme precipitation in Ethiopia

H. Shang et al.

Title Page

Abstract

Introduction

Conclusions

References

Tables

Figures

◀

▶

◀

▶

Back

Close

Full Screen / Esc

Printer-friendly Version

Interactive Discussion



year return level can be analyzed with the extreme value theory provided long term historical data.

Debre Markos is a city in the Blue Nile River basin on the Northwestern Highlands of Ethiopia. It has latitude $10^{\circ}20' N$, longitude $37^{\circ}43' E$, and elevation 2446 m. Although the topography of Ethiopia is highly diverse, more than 45% of the country is dominated by highlands with elevations greater than 1500 m, where almost 90% of the nation's population resides. The rain gauge station at Debre Markos provides the longest record among all stations in Ethiopia. Daily precipitation records are available from 1953, with only a tiny proportion of missing data; see Sect. 2 for more details. We use Debre Markos as a case study to investigate the long term trend in extreme precipitation in the Northwestern Highland of Ethiopia.

Previous studies have reported rainfall patterns in Ethiopia. A decline of annual and summer rainfall in eastern, southern, and southwestern Ethiopia was found, but no trend was detected over central, northern, and northwestern Ethiopia (Seleshi and Zanke, 2004; Cheung et al., 2008). It is worth noting, however, that annual or summer total rainfall and annual maximum daily rainfall are very different aspects of rainfall characterization. Seleshi and Camberlin (2006) studied changes in extreme seasonal rainfall as measured by extreme rainfall indices with daily rainfall data. One of the indices was extreme intensity, defined as the average intensity of events greater than or equal to the 95th percentile. A weak increasing trend in summer extreme intensity over the $10\text{--}11^{\circ}$ North band of the Ethiopia Highlands and no trend was found over the remaining Highlands, based on the nonparametric Mann-Kendall test for trend. These existing analyses have been descriptive, without taking advantage of the advances in extreme value modeling from the statistics literature. To the best of our knowledge, extreme value analysis based on the generalized extreme value distribution (GEV) has not been applied to extreme precipitation data in Ethiopia.

The GEV distribution was first introduced by Fisher and Tippett (1928) as limits of the sample maximum or minimum for independent, identically distributed variables. Extreme value theory has evolved into a proliferating field in statistics, motivated by

Extreme precipitation in Ethiopia

H. Shang et al.

Title Page

Abstract

Introduction

Conclusions

References

Tables

Figures

◀

▶

◀

▶

Back

Close

Full Screen / Esc

Printer-friendly Version

Interactive Discussion



5 numerous environmental applications. Accessible statistical references are, for instances, Coles (2001) and Beirlant et al. (2004). Extreme precipitation has been an important application area of extreme value analysis (e.g., Durman et al., 2001; Kharin and Zwiers, 2005; Huerta and Sansó, 2007). In particular, statistical inferences for univariate extreme value analysis, as is the case with the precipitation data at a single location at Debre Markos, have been rather mature and widely applied by practitioners in many fields. Two standard approaches can be used to fit a univariate GEV distribution. The first one applies to annual maxima of a time series, using only one data point, the maximum, per year. The second one applies to all exceedances over a high threshold, also known as “peaks over threshold” (POT); see Sect. 3 for more details. Given the relatively short period of data record (53 years), the POT approach is adopted in this application as it takes full advantage of daily precipitation record in fitting GEV distributions.

15 Through GEV models, this article aims to provide an extreme value analysis of the annual maximum precipitation in Debre Markos, Ethiopia. Specifically, our objective is to test whether there is an increasing trend in extreme precipitation in this area given the public concerns of suspected trend as a consequence of global climate changes. We incorporated a linear function of time in the location parameter of a GEV distribution and fitted the model with the POT approach to the daily precipitation data at Debre Markos. No evidence was found to support an increasing trend in extreme precipitation since 1953 at this location.

25 The rest of the article is organized as follows. Details of the data are described in Sect. 2. The statistical methods to be used, including the extreme value theory and modeling techniques, are reviewed in Sect. 3. The results of the extreme value analysis are reported in Sect. 4 with a test for trend. A discussion concludes in Sect. 5.

Extreme precipitation in Ethiopia

H. Shang et al.

Title Page

Abstract

Introduction

Conclusions

References

Tables

Figures

◀

▶

◀

▶

Back

Close

Full Screen / Esc

Printer-friendly Version

Interactive Discussion



2 Data

Our raw data of daily precipitation at Debre Markos spans from 1 November 1953 to 10 December 2006. Out of the total of 19 398 days, 229 (about 1.2%) observations are missing. The observed daily time series of precipitation is plotted in Fig. 1. The maximum daily was 86.9 mm, observed on 14 August 1997.

The daily precipitation series are obviously not independent and not identically distributed. Larger precipitations may tend to occur in clusters. For instance, out of 76 days in June with precipitation exceeding the 95th percentile of June precipitation, there were 9 occasions of two or more consecutive exceedances. These counts are 7 out of 79, 3 out of 78, and 7 out of 80 for July, August, and September, respectively, the other three most rainy months.

Strong seasonality naturally exists in the data. As most areas in Ethiopia, there are three seasons in Debre Markos: main rainy season (June to September), dry season (October to January), and small rainy season (February to May), which are locally known as Kiremt, Bega, and Belg, respectively. Figure 2 (left panel) shows the mean precipitation for each day in a year, with the 11-day moving average overlaid. The plot is consistent with the three seasons. High precipitations are observed in summer months and low precipitations are observed in winter months. Our extreme value analysis needs to take the clustering and seasonality into account.

3 Methods

The basis of extreme value modeling is the GEV distribution, with distribution function

$$F(z; \mu, \sigma, \xi) = \begin{cases} \exp\left\{-\left[1 + \xi\left(\frac{z-\mu}{\sigma}\right)\right]^{-1/\xi}\right\}, & \xi \neq 0, \quad 1 + \xi\left(\frac{z-\mu}{\sigma}\right) > 0, \\ \exp\left\{-\exp\left[-\frac{z-\mu}{\sigma}\right]\right\}, & \xi = 0, \end{cases} \quad (1)$$

Title Page

Abstract

Introduction

Conclusions

References

Tables

Figures

◀

▶

◀

▶

Back

Close

Full Screen / Esc

Printer-friendly Version

Interactive Discussion



where $\mu \in \mathbb{R}$ is a location parameter, $\sigma > 0$ is a scale parameter, and $\xi \in \mathbb{R}$ is a shape parameter governing the tail behavior. The Gumbel family is the limiting case of $\xi \rightarrow 0$. The sub-families defined by $\xi > 0$ and $\xi < 0$ correspond to the Fréchet family and the Weibull family, respectively. The m -year return level z_m , with the return period $1/m$, is calculated from $F(z_m) = 1 - 1/m$. When the only available data is a sequence of annual maxima of daily precipitation, the maximum likelihood approach can be applied to make inferences about the unknown parameters. Usual regularity conditions of the maximum likelihood estimator are satisfied when $\xi > -0.5$ (Smith, 1985)

With daily precipitation available, the peaks over threshold (POT) approach is more attractive in that all exceedances over threshold, instead of just the annual maxima, contribute to the inference. Assuming that X_1, \dots, X_n are independent and identically distributed, Pickands (1971) showed that, for sufficiently large threshold u , the sequence of point processes $\{(i/(n+1), X_i) : i = 1, \dots, n\}$ is approximated by a Poisson process on the region $(0, 1) \times [u, \infty)$ with intensity function on $A = (t_1, t_2) \times [z, \infty)$ given by

$$\Lambda(A) = n_x(t_2 - t_1) \left[1 + \xi \left(\frac{z - \mu}{\sigma} \right) \right]^{-1/\xi}, \quad (2)$$

where n_x is the number of years of data to which the available X_i correspond, ensuring that the parameters (μ, σ, ξ) are the same as those in the GEV approximation (1) of annual maxima. Suppose that we observe k exceedances of daily precipitation over threshold u , x_1, \dots, x_k , from n_x year's of data. The likelihood function is

$$L(\mu, \sigma, \xi; x_1, \dots, x_k) = \exp \left\{ -n_x \left[1 + \xi \left(\frac{u - \mu}{\sigma} \right) \right]^{-1/\xi} \right\} \prod_{i=1}^k \sigma^{-1} \left[1 + \xi \left(\frac{x_i - \mu}{\sigma} \right) \right]^{-1/\xi - 1}. \quad (3)$$

The point process likelihood is based on all data greater than u , thus inference are likely to be more accurate than estimates based on the classical GEV model which studies only block maxima. The likelihood also takes into account of missing data in

Extreme precipitation in Ethiopia

H. Shang et al.

Title Page

Abstract

Introduction

Conclusions

References

Tables

Figures

◀

▶

◀

▶

Back

Close

Full Screen / Esc

Printer-friendly Version

Interactive Discussion



that where there are missing data, n_x will be the number of year's worth of observed data.

So far we have assumed that the data are independent and identically distributed, which is clearly violated in the daily series data. Before we can apply the likelihood function, we need to remove the clustering and seasonality from the observed data.

We use runs declustering to filter the dependent observations to obtain a set of threshold excesses that are approximately independent. For a given threshold, define clusters to be wherever there are consecutive exceedances of this threshold. In particular, two exceedances of the threshold that are separated apart by fewer than r observations are deemed part of the same cluster. That is, only after a certain number, r , of observations falls below the threshold, the cluster is terminated (e.g. Coles, 2001, Ch.5). In practice, it is recommended to try different r values for comparison.

To handle the seasonality, we adopt a simple and broadly applicable approach that allows all model parameters of the Poisson process to be seasonally dependent. Specifically, we allow each month to have its own GEV parameters as in Smith (1989).

Finally, how do one select the threshold u ? Although the value of threshold can be arbitrary to some extent for initial analysis, too low a threshold is likely to violate the asymptotic basis of the model and too high a threshold will lead to too few exceedances for data analysis. An exploratory tool for choosing u is the mean residual life plot (e.g., Coles, 2001, Ch. 4). When u is sufficiently large, the expected residual life, $E(X - u | X > u)$, is a linear function of u . In a mean residual life plot, we plot the sample mean residual life against threshold u , and choose the smallest u beyond which the mean residual life plot is approximately linear.

4 Results

The mean residual plots with 95% confidence intervals are drawn for each month with run length $r = 1$ in Fig. 3. For all months, the figures are approximately linear when the threshold exceeds the sample 95% percentile. Therefore, we take the 95% percentile

Extreme precipitation in Ethiopia

H. Shang et al.

Title Page

Abstract

Introduction

Conclusions

References

Tables

Figures

◀

▶

◀

▶

Back

Close

Full Screen / Esc

Printer-friendly Version

Interactive Discussion



as threshold for each month. This is different from the analysis of Smith (1989), where the same threshold was used for all months. The right panel of Fig. 2 shows the thresholds we choose for each month, which has similar pattern as the average precipitation plot in the left panel.

5 Each month is modeled separately, thus no specific form describing the seasonal variation is assumed. Let μ_{ij} , σ_{ij} and ξ_{ij} denote the GEV parameters for month j of year i . To detect the long-term trend for each month, we assume the form

$$\mu_{ij} = \alpha_j + i\beta_j, \quad \sigma_{ij} = \sigma_j > 0, \quad \xi_{ij} = \xi_j, \quad (4)$$

where the location parameter μ_{ij} includes a linear trend in year with coefficient β_j . This form was also adopted to detect trend by Smith (1989) with ground-level ozone and by Cooley (2009) with annual maximum temperatures. The likelihood L_j of month j , $j = 1, \dots, 12$, is maximized separately to estimate $(\alpha_j, \beta_j, \sigma_j, \xi_j)$.

10 It turns out that none of the β_j parameters is significant at 5% level, indicating there is no strong evidence of long-term increasing trend over time. The models are re-fitted with all $\beta_j = 0$. The sum of the minimized log likelihood is -3063.91 for the models all 12 months, which is very close to that with β_j 's in the model (-3060.29). The parameter estimates with no trend are shown in Table 1. There is strong seasonal pattern for the location parameter μ . The other parameters σ and ξ , however, vary haphazardly. All ξ 's are estimated greater than -0.5 , indicating that the estimators are regular and they have the usual asymptotic properties. The 10-year return level for each specific month, calculated from GEV distribution, is also shown in the table.

15 The 95% confidence intervals for parameter estimates are calculated by profile likelihood (Coles, 2001, Ch.2), which is shown in Fig. 4. Although the confidence interval of ξ covers zero in all months, we do not reduce the model to the Gumbel model with constraint $\xi = 0$, because "a reduction to the Gumbel subfamily is always risky" (Coles and Pericchi, 2003, p.416); the uncertainty in parameter ξ would otherwise be inappropriately accounted for.

Extreme precipitation in Ethiopia

H. Shang et al.

Title Page	
Abstract	Introduction
Conclusions	References
Tables	Figures
◀	▶
◀	▶
Back	Close
Full Screen / Esc	
Printer-friendly Version	
Interactive Discussion	



To check the sensitivity of results to the choice of threshold u and run length r , return levels are compared under different choices. Since there is seasonality during the year, the calculation of the return level can be derived through the maxima for each month. Let M_1, \dots, M_{12} denote the maxima for each month. The m -year return level z_m will satisfy

$$1 - \frac{1}{m} = \Pr\{\max(M_1, \dots, M_{12}) \leq z_m\} = \prod_{i=1}^{12} \exp\left\{-\left[1 + \xi_i \left(\frac{z_m - \mu_i}{\sigma_i}\right)\right]^{-1/\xi_i}\right\}. \quad (5)$$

The confidence interval for return level can be obtained by simulation. We simulate the model parameters first from the the multivariate normal approximation of the estimator. For each set of generated parameters, a realization of the return level is obtained by solving Eq. (5). A large number ($N = 5000$) of realizations is used to approximate the confidence intervals.

Table 2 summarizes the parameter estimates and 95% confidence intervals for 10-year, 50-year and 100-year return levels for different combinations of (u, r) . It appears that the inference is quite robust on the choice of r for all return levels. The inference on the 10-year return level is robust to the choice of u , but the 50-year and 100-year return levels are less so, which is most evident from the upper bound of the 95% confidence interval. The change in confidence intervals is not completely surprising because the sample size of exceedances decreases as u increases. With the confidence intervals in consideration, the changes in the point estimate of return levels appear reasonably robust.

Among all those threshold sets, the only significant β_j 's were found when $u = Q_{90\%}$ and $r = 1$, with standardized beta values -2.07 and -2.15 for February and July, respectively. We conclude that there is no increasing long-term trend for any month.

As a model diagnosis, we performed goodness-of-fit test for the GEV distribution with the annual maximum daily precipitation data in each of the 12 months over 53 years. There were 10, 10, and 13 zeros in January, February, and December, respectively. These zeros were removed to run the goodness-of-fit test as, otherwise, a distribution

Extreme precipitation in Ethiopia

H. Shang et al.

Title Page

Abstract

Introduction

Conclusions

References

Tables

Figures

◀

▶

◀

▶

Back

Close

Full Screen / Esc

Printer-friendly Version

Interactive Discussion



with point mass at zero would be needed and any continuous distribution would fail to capture this. For the POT approach, these zeroes would not affect the result as they do not affect the selection of the threshold. The p-values of the Kolmogorov–Smirnov test statistic are, respectively, 0.405, 0.220, 0.197, 0.127, 0.674, 0.621, 0.562, 0.560, 0.313, 0.465, 0.494, and 0.372 from January to December, suggesting no lack of fit from the GEV distribution. The p-values of the Anderson-Darling test give similar results.

Finally, we present the estimated return level plots for the model with no trend in Fig. 5. The 95% confidence intervals were obtained again by a large number ($N = 5000$) of Monte Carlo simulation that accounts for the uncertainty in parameter estimate. The 100-year return level was estimated as 96.4, with a 95% confidence interval (78.7, 161.0).

5 Conclusions

With the extreme value theory, we presented a case study with the daily precipitation series at Debre Markos, Ethiopia. No evidence was found to support long-term increasing trend in extreme precipitation at this location. This means, for instance, that the 100-year return level has not increased significantly during the period of 1953–2006. We have performed the same analysis with daily records separately at two other sites, Bahir Dar and Gondar, in the Blue Nile River basin on the northwestern Highland in Ethiopia. No significant trend was found at either sites.

In practice, for a given data set, many parametric families may fit the data well and pass the goodness-of-fit test. One can always maximize the likelihood under the assumption that the data come from an assumed family, which is likely a misspecification of the real distribution (White, 1982). As the true distribution is unknown, the fitted distribution for any assumed parametric family from the maximum likelihood approach is the one in this assumed family that minimizes the Kullback-Leibler divergence (e.g., Kullback, 1987). Models from different families are in general not nested, and to perform

HESSD

7, 8587–8605, 2010

Extreme precipitation in Ethiopia

H. Shang et al.

Title Page

Abstract

Introduction

Conclusions

References

Tables

Figures

◀

▶

◀

▶

Back

Close

Full Screen / Esc

Printer-friendly Version

Interactive Discussion



model selection, one can use Vuong's test (Vuong, 1989), which chooses the model with the least Kullback-Leibler divergence. Nevertheless, distinguishing two nonnested models with statistical significance requires a large amount of data when competing models offer similar capabilities in capturing the observed data frequencies. With only 53 observations, other distributions such as generalized Pareto, fatigue life, and log-normal may fit the data as well as GEV. These distributions, however, can differ very much in tails, which is what we want to study through extreme value analysis. For this reason, a GEV model may be preferred as it is by definition the limit distribution of sample maximums.

Our current extreme value analysis deals one site at a time. It cannot address important questions that involve events jointly defined across multiple sites; for instance, what is the probability that the 100-year return levels of three sites in the vicinity of a city occur in the same year? Estimating the probability of extremal events at a network of locations with spatial dependence appropriately accounted is a much more challenging problem. Spatial extremes is a new and rapidly developing field (e.g., Cooley et al., 2007; Padoan et al., 2010). Further extreme analysis in a spatial context for Ethiopia, with data from a network of sites, is worth investigating.

References

- Beirlant, J., Goegebeur, Y., Segers, J., and Teugels, J.: Statistics of Extremes: Theory and Applications, John Wiley & Sons Inc., 2004. 8590
- Cheung, W. H., Senay, G. B., and Singh, A.: Trends and Spatial Distribution of Annual and Seasonal Rainfall in Ethiopia, *Int. J. Climatol.*, 28, 1723–1734, 2008. 8589
- Coles, S.: An Introduction to Statistical Modeling of Extreme Values, Springer-Verlag Inc., 2001. 8590, 8593, 8594
- Coles, S. and Pericchi, L.: Anticipating Catastrophes through Extreme Value Modelling, *Journal of the Royal Statistical Society, Series C: Applied Statistics*, 52, 405–416, 2003. 8594
- Cooley, D.: Extreme Value Analysis and the Study of Climate Change: A Commentary on Wigley 1988, *Climatic Change*, 97, 77–83, 2009. 8594

Extreme precipitation in Ethiopia

H. Shang et al.

Title Page

Abstract

Introduction

Conclusions

References

Tables

Figures

◀

▶

◀

▶

Back

Close

Full Screen / Esc

Printer-friendly Version

Interactive Discussion



- Cooley, D., Nychka, D., and Naveau, P.: Bayesian Spatial Modeling of Extreme Precipitation Return Levels, *J. Am. Stat. Assoc.*, 102, 824–840, 2007. 8597
- Durman, C. F., Gregory, J. M., Hassell, D. C., Jones, R. G., and Murphy, J. M.: A Comparison of Extreme European Daily Precipitation Simulated by a Global and a Regional Climate Model for Present and Future Climates, *Q. J. Roy. Meteorol. Soc.*, 127, 1005–1015, 2001. 8590
- 5 Fisher, R. A. and Tippett, L. H. C.: Limiting Forms of the Frequency Distributions of the Largest or Smallest Member of a Sample, *Proceedings of the Cambridge Philosophical Society*, 24, 180–190, 1928. 8589
- Huerta, G. and Sansó, B.: Time-varying Models for Extreme Values, *Environ. Ecol. Stat.*, 14, 285–299, 2007. 8590
- 10 Kharin, V. V. and Zwiers, F. W.: Estimating Extremes in Transient Climate Change Simulations, *J. Climate*, 18, 1156–1173, 2005. 8590
- Kullback, S.: The Kullback-Leibler Distance [Letter], *Am. Stat.*, 41, 340–341, 1987. 8596
- Padoan, S. A., Ribatet, M., and Sisson, S. A.: Likelihood-based Inference for Max-stable Processes, *J. Am. Stat. Assoc.*, 105, 263–277, 2010. 8597
- 15 Pickands, J.: The Two-dimensional Poisson Process and Extremal Processes, *J. Appl. Probability*, 8, 745–756, 1971. 8592
- Seleshi, Y. and Camberlin, P.: Recent Changes in Dry Spell and Extreme Rainfall Events in Ethiopia, *Theor. Appl. Climatol.*, 83, 181–191, 2006. 8589
- 20 Seleshi, Y. and Zanke, U.: Recent Changes in Rainfall and Rainy Days in Ethiopia, *Int. J. Climatol.*, 24, 973–983, 2004. 8589
- Smith, R. L.: Maximum Likelihood Estimation in a Class of Nonregular Cases, *Biometrika*, 72, 67–90, 1985. 8592
- Smith, R. L.: Extreme Value Analysis of Environmental Time Series: An Application to Trend Detection in Ground-level Ozone (C/R: P378-393), *Stat. Sci.*, 4, 367–377, 1989. 8593, 8594
- 25 Vuong, Q. H.: Likelihood Ratio Tests for Model Selection and Non-nested Hypotheses (STMA V31 0456), *Econometrica*, 57, 307–333, 1989. 8597
- White, H.: Maximum Likelihood Estimation of Misspecified Models, *Econometrica*, 50, 1–26, 1982. 8596

**Extreme precipitation
in Ethiopia**H. Shang et al.

[Title Page](#)[Abstract](#)[Introduction](#)[Conclusions](#)[References](#)[Tables](#)[Figures](#)[◀](#)[▶](#)[◀](#)[▶](#)[Back](#)[Close](#)[Full Screen / Esc](#)[Printer-friendly Version](#)[Interactive Discussion](#)

Extreme precipitation in Ethiopia

H. Shang et al.

Table 1. Parameter estimates and standard errors for each month with no trend.

Month	Number of Exceedances	μ	σ	ξ	10-year return level
1	65	3.97 (0.74)	5.74 (0.96)	0.04 (0.14)	17.45
2	56	4.61 (0.77)	5.71 (1.20)	0.11 (0.17)	19.15
3	67	11.54 (1.17)	9.05 (1.35)	-0.04 (0.12)	31.00
4	68	15.60 (1.20)	9.25 (1.38)	-0.04 (0.12)	35.42
5	69	18.18 (1.05)	8.13 (1.21)	-0.14 (0.13)	33.92
6	67	21.72 (0.88)	6.89 (1.01)	-0.11 (0.11)	35.46
7	72	30.68 (1.12)	8.80 (1.23)	-0.02 (0.11)	50.00
8	75	33.04 (1.12)	8.66 (1.34)	0.18 (0.14)	57.14
9	73	28.01 (1.21)	9.50 (1.34)	-0.09 (0.12)	47.34
10	66	18.71 (1.80)	13.96 (2.17)	-0.24 (0.13)	42.94
11	60	6.17 (1.07)	8.20 (1.46)	0.01 (0.14)	24.94
12	57	3.89 (0.99)	7.45 (1.44)	-0.03 (0.15)	20.16

[Title Page](#)
[Abstract](#)
[Introduction](#)
[Conclusions](#)
[References](#)
[Tables](#)
[Figures](#)
[I◀](#)
[▶I](#)
[◀](#)
[▶](#)
[Back](#)
[Close](#)
[Full Screen / Esc](#)
[Printer-friendly Version](#)
[Interactive Discussion](#)


Extreme precipitation in Ethiopia

H. Shang et al.

Table 2. Comparison of return levels and their 95% confidence intervals under different choices for threshold u and run length r .

u	r	10-year return level	50-year return level	100-year return level
$Q_{85\%}$	1	64.8 (60.9, 73.1)	81.3 (75.4, 108.9)	89.4 (82.2, 135.4)
$Q_{85\%}$	2	64.4 (60.6, 72.4)	80.1 (73.8, 108.2)	87.7 (79.9, 150.4)
$Q_{90\%}$	1	64.6 (60.4, 73.3)	81.4 (74.9, 106.5)	89.3 (80.6, 127.9)
$Q_{90\%}$	2	64.2 (60.0, 72.7)	80.3 (73.2, 104.9)	87.9 (79.2, 125.4)
$Q_{95\%}$	1	63.5 (58.7, 73.7)	84.3 (72.6, 124.1)	96.4 (78.7, 161.0)
$Q_{95\%}$	2	63.4 (58.6, 72.8)	83.8 (71.5, 122.6)	95.2 (78.1, 153.3)
$Q_{97\%}$	1	63.5 (58.7, 73.3)	85.1 (71.7, 132.1)	98.7 (77.2, 182.5)
$Q_{97\%}$	2	63.1 (58.0, 72.4)	84.2 (70.0, 126.1)	96.9 (75.8, 168.7)

[Title Page](#)
[Abstract](#)
[Introduction](#)
[Conclusions](#)
[References](#)
[Tables](#)
[Figures](#)
[I◀](#)
[▶I](#)
[◀](#)
[▶](#)
[Back](#)
[Close](#)
[Full Screen / Esc](#)
[Printer-friendly Version](#)
[Interactive Discussion](#)

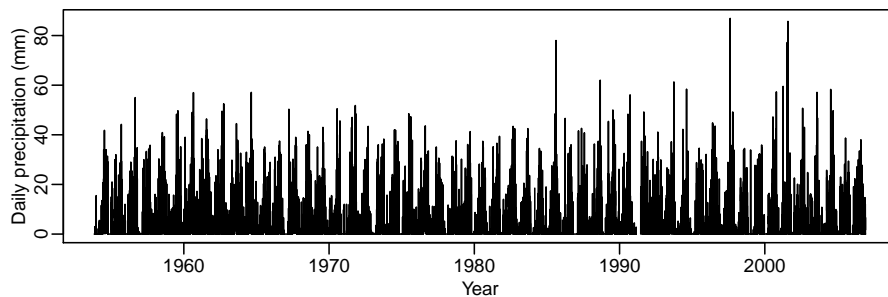



Fig. 1. Times series of daily precipitation at Debre Markos, Ethiopia.

Extreme precipitation in Ethiopia

H. Shang et al.

Title Page	
Abstract	Introduction
Conclusions	References
Tables	Figures
◀	▶
◀	▶
Back	Close
Full Screen / Esc	
Printer-friendly Version	
Interactive Discussion	



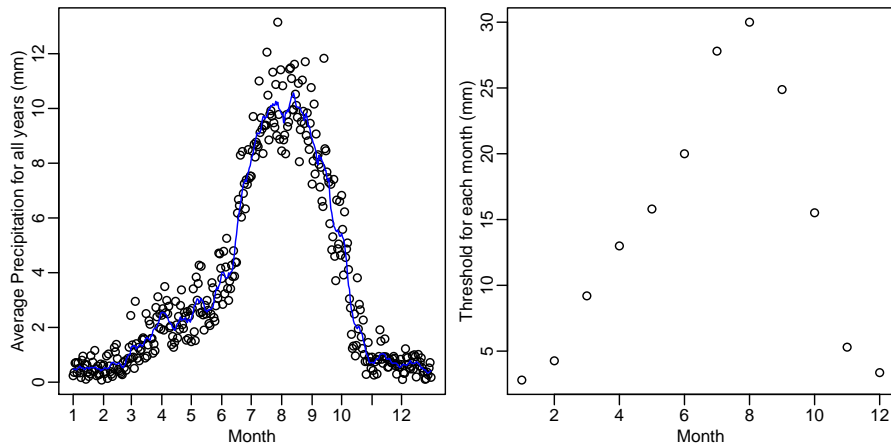


Fig. 2. Left: scatter plot of mean precipitation for each day overlaid with the 11-day moving average. Right: threshold chosen for each month.

Extreme precipitation in Ethiopia

H. Shang et al.

Title Page	
Abstract	Introduction
Conclusions	References
Tables	Figures
◀	▶
◀	▶
Back	Close
Full Screen / Esc	
Printer-friendly Version	
Interactive Discussion	



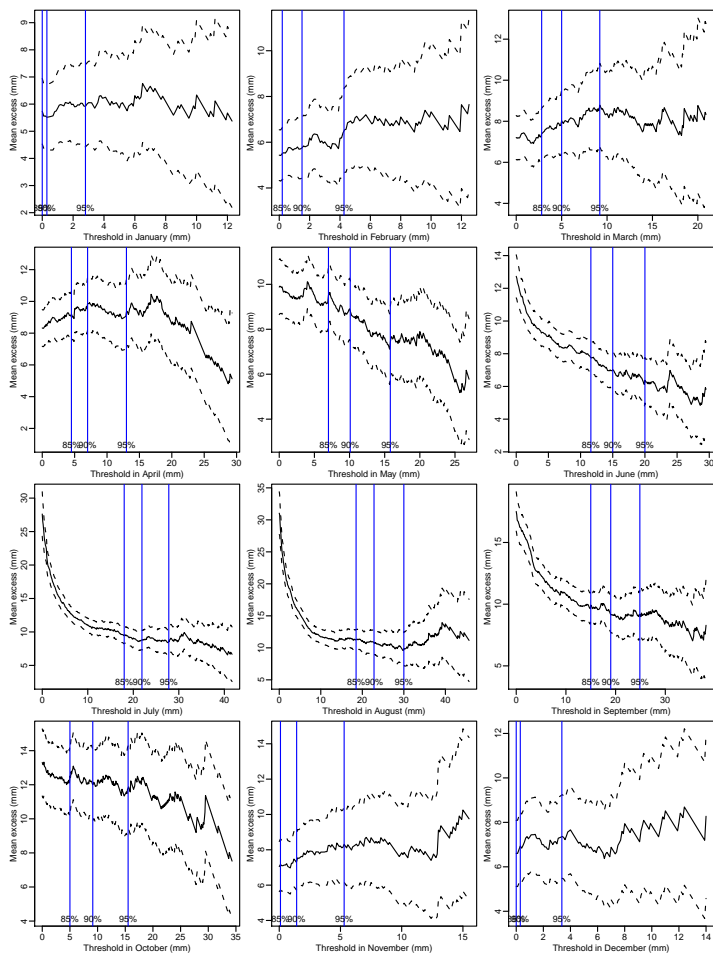


Fig. 3. Mean residual life plots with 95% confidence intervals for all months, $r = 1$.

**Extreme precipitation
in Ethiopia**

H. Shang et al.

Title Page	
Abstract	Introduction
Conclusions	References
Tables	Figures
◀	▶
◀	▶
Back	Close
Full Screen / Esc	
Printer-friendly Version	
Interactive Discussion	



Extreme precipitation in Ethiopia

H. Shang et al.

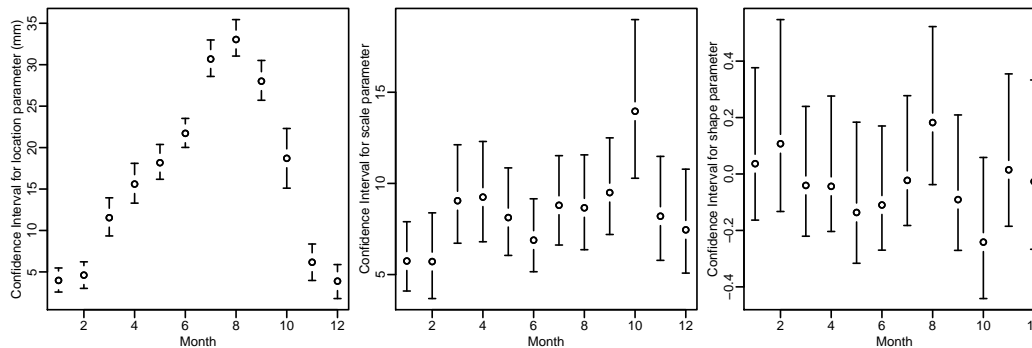


Fig. 4. 95% confidence intervals for GEV parameters. Left: confidence intervals for μ . Middle: confidence intervals for σ . Right: confidence intervals for ξ .

Title Page

Abstract

Introduction

Conclusions

References

Tables

Figures

◀

▶

◀

▶

Back

Close

Full Screen / Esc

Printer-friendly Version

Interactive Discussion



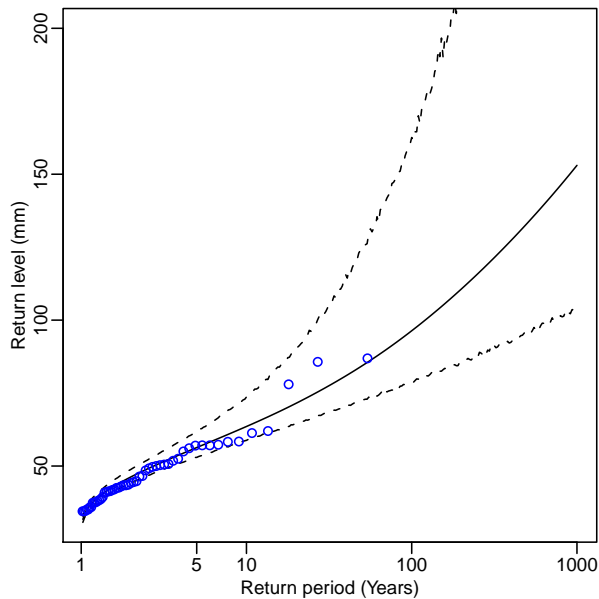


Fig. 5. Return level plot with 95% confidence intervals obtained from 5000 Monte Carlo simulation. The circles are the empirical estimates based on the complete 53-year data.

Extreme precipitation in Ethiopia

H. Shang et al.

Title Page	
Abstract	Introduction
Conclusions	References
Tables	Figures
◀	▶
◀	▶
Back	Close
Full Screen / Esc	
Printer-friendly Version	
Interactive Discussion	

