

This discussion paper is/has been under review for the journal Hydrology and Earth System Sciences (HESS). Please refer to the corresponding final paper in HESS if available.

Climate resources analysis for use of planning in crop production and rainfall water management in the central highlands of Ethiopia, the case of Bishoftu district, Oromia region

F. Yemenu¹ and D. Chemed²

¹Asso Researcher, Ethiopian Institute of Agricultural Research, POB-32, Debre Zeit, Ethiopia

²Asso Professor, Haramaya University, POB-138, Dire Dawa, Ethiopia

Received: 4 May 2010 – Accepted: 10 May 2010 – Published: 23 June 2010

Correspondence to: F. Yemenu (fitsum.yimenu@yahoo.com)

Published by Copernicus Publications on behalf of the European Geosciences Union.

HESSD

7, 3733–3763, 2010

Climate resources analysis for use of planning

F. Yemenu and
D. Chemed

Title Page

Abstract

Introduction

Conclusions

References

Tables

Figures

⏪

⏩

◀

▶

Back

Close

Full Screen / Esc

Printer-friendly Version

Interactive Discussion

Abstract

Agricultural practices and water resources management in the central highlands of Ethiopia is highly dependant and associated with climatic resources and their pattern and hence wise use of those resources is a priority for the region. Accordingly, a study was conducted to asses and critically quantity the climate resources of the central high lands of Ethiop, Bishoftu district. Thirty three years of weather record data has been used for the work. The onset, duration and end of the growing seasons were defined and quantified based on FAO and Reddy models while the dry and wet spell distributions and the drought events were calculated using the Markov chain models and the standardized precipitation index (SPI) respectively. The results revealed that the mean onset of the main (Kiremt) growing season was found to occur during the second meteorological decade and ended during the end of September. Similarly, though unreliable and only few occurred during the entire study period, the mean onset of the shorter (Belg) season was found to occur during the beginning of the first decade of April. The length of the growing season during the main rainy season, (Kiremt,) ranged from 112 to 144 days with a standard deviation of 9.6 days and coefficient of variation of 7.5%. However, the mean growing length during the Belg season was found to be 22.4 days with a standard deviation of 27 days and coefficient of variation of 122%. The results of analysis obtained both from the Markov Chain and Reddy models indicated higher probabilities of dry spell occurrences during the shorter season (Belg) but the occurrences of the same in the main rainy season (Kiremt) was very minimal. Like wise, the SPI model detected some drought events ranging from mild to severe classes in both seasons based on one a month time scale analysis. A considerable attention of maximizing crop harvest during the main rainy season is practically important.

Climate resources analysis for use of planning

F. Yemenu and
D. Chemedad

Title Page

Abstract

Introduction

Conclusions

References

Tables

Figures



Back

Close

Full Screen / Esc

Printer-friendly Version

Interactive Discussion



1 Introduction

Rain fed agriculture, on which the Ethiopian economy rests, has been the dominant sources of food production. Recent studies reported that this sector is still contributing more than 50% to GDP and about 60% to foreign exchange earnings and provides livelihood to more than 85% of the population (Goodswill et al., 2007). However, yields from rainfed agriculture are often very low due to repeated failure of crop yield associated with irregularity in onset, temporal and spatial distribution of rain in most parts of the region during the growing season.

Some studies conducted in sub-Saharan Africa indicated that there is a potential opportunities for increasing crop yields in the region. An assessment made by Baron (2004) showed that the cereal crop yields could reach as high as 3.5 t ha^{-1} against the existing yield 1 t ha^{-1} yield estimated by Rockstrom (2003). This wide gap suggests that there is an enormous opportunity to raise crop yield from rainfed agriculture. This is entirely linked to focusing attention on maximizing yield per unit of water.

According to Meinke (2003), climate resources assessment work determined through possible estimation of rainfall onset date, end date, duration and seasonal totals and dry spell length, which together make up the overall rain feature, can provide deep insight into the rainfall variability and into the field management options through proactive responses. The assessment and prediction of the onset and cessation dates of the rainy season is also a key issue in countries which rely on rain-fed agriculture for better explanation of the growing season of a given area (Camberlin and Diop, 2003).

In line with this, few studies have been conducted in Ethiopia mainly focusing on climate resources assessment based on the analysis of growing periods. Some researchers tried to quantify the agro-climatic resources of Ethiopia for land use planning. However, certain limitations have been observed in the model they used in that it assumes an optimal matching between the length of the climatic growing period and the crop growth cycle to the extent that they are often used interchangeably (Mersha, 2005).

Climate resources analysis for use of planning

F. Yemenu and
D. Chemedad

Title Page

Abstract

Introduction

Conclusions

References

Tables

Figures



Back

Close

Full Screen / Esc

Printer-friendly Version

Interactive Discussion



of onset of rain, length of growing season and recession period developed by FAO (1978) sounds better if appropriate unit of time for the analysis is employed (Engida, 2005).

With regard to dry and wet spell analysis, recently many more researchers are becoming interested in using the Markov Chains model (Pabitra et al., 2008). McKee et al. (1993) also developed the Standardized Precipitation Index (SPI) for the purpose of defining and monitoring drought. The nature of the SPI allows an analysis to determine the rarity of a drought or an anomalously wet event at a particular time scale for any location in the world that has a precipitation record of more than thirty years period of time.

With a view of this, an attempt was made to critically investigate the climate resources of the Bishoftu district in the central highlands of Ethiopia, with the following specific objectives:

- to determine the onset and end of growing periods in Belg (shorter) and Kiremt (main) seasons in the watershed, assess their probability of occurrences of onsets and assess the variability of growing period over years,
- to analyze the distribution of dry and wet spells during the two seasons and quantify the drought magnitude and intensity in the study district

2 Methodolgy and data annalysis

2.1 Rainfall in the central highland

The central highland of Ethiopia is predominantly tropical highland climate, with dry winter season. Mahdi and Petra (2002) reported a minimum rainfall of 335 mm and a maximum of 1594 mm were recorded in the central highlands of Ethiopia based on the analysis of one hundred years rainfall data (1898–1997). Rainfall in this region followed a clearly decreasing observed trend during the period mentioned.

Climate resources analysis for use of planning

F. Yemenu and
D. Chemed

Title Page

Abstract

Introduction

Conclusions

References

Tables

Figures

⏪

⏩

◀

▶

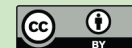
Back

Close

Full Screen / Esc

Printer-friendly Version

Interactive Discussion



2.2 The study district

The study district is located at 45 km south east of Addis Ababa, Ethiopia. The district is the most agricultural important area in the central highlands of Ethiopia. The area receives an annual mean rainfall of around 789 mm (Yemenu) with medium seasonal variability and bimodal pattern. The “Belg” or the shorter season’s rain, which is quite small to support crop production, usually occurs during the periods from the second week of March to second or third week of May. The long rainy season extends from the second week of June to the last week of September. The area is intensively cultivated for crop production. The major crop types grown in the district are wheat, chickpea and indigenous Ethiopian crop, “teff”.

2.3 Data summary

A weather record of thirty three years (1975–2007) was obtained from the Debre Zeit Agricultural Research Center’s weather archive and was organized at decadal time unit for appropriate analysis. Though it is point weather data, it is believed that the analysis would serve a wider area of the district (Mersha, 2003). The standard or meteorological decades (SMDs) are constructed in such a way that each month of a given year was divided in to three decades and subsequently the first two ten days are considered as the first and second decade for each month, respectively. The rest of days in each month again will be summed up to form the last or third decade (Messay, 2006). In other words, the whole year will have 36 decades starting from the month of January which will have the first three decades (decade number 1, 2 and 3) and it follows the same pattern where the last three decades of a given year will be for December (decade number 34, 35 and 36) respectively. Table 1 is given for better illustrations of the organizations of the meteorological or standard decades.

The reference evapotranspiration (ET_o) data for each decade of a given year was obtained from the CropWat model based on the Penman-Month equation.

Climate resources analysis for use of planning

F. Yemenu and
D. Chemedda

Title Page

Abstract

Introduction

Conclusions

References

Tables

Figures

⏪

⏩

◀

▶

Back

Close

Full Screen / Esc

Printer-friendly Version

Interactive Discussion

2.4 Determination of beginning and end of the growing seasons and length of growing period

The beginning or the start of the rainy season both for Kiremt (the main growing season) and Belg (the shorter) was identified based on FAO (1978) simple soil water balance model which suggested that a growing period starts when a decadal (ten-days) rainfall amount is equal or greater than half of the reference evapotranspiration (ET_o) during the beginning of the rainy season. Accordingly the end of the rainy seasons was set when the decadal rainfall of amount during the end of season is again less than half of the corresponding reference evapotranspiration (ET_o). Finally, the length of the growing period (LGP) was defined by counting the number of days between the start and the end of the growing period plus the period required to evapotranspire the 100 mm moisture stored in the soil reserve during the rainy season (FAO, 1978; Mersha, 2005). The 100 mm of soil moisture reserve after the recession of the rainy season is accounted after an extensive work done in Eastern Africa (Mersha, 2003)

2.5 Dry-wet spell and drought analysis

2.5.1 Dry and wet spell analysis

Reddy (1990) has already stated that a 3 mm rainfall depth per day is the minimum threshold value for crops to satisfy their crop water requirement during a growing season. Accordingly, in this study, an average of 30 mm per decade of precipitation depth was taken as a threshold value for evaluating whether a decade is in a dry or wet spell. A decade with a depth of precipitation below this value was considered as dry and vice-versa for a decade with precipitation value of above the threshold level and a Markov chain model of first order as illustrated in “Eqs. 1–6” was used to explain the dry-wet spell probability of occurrences during the two rainy seasons.

$$P_D = \frac{F_D}{n} \quad (1)$$

Climate resources analysis for use of planning

F. Yemenu and
D. Chemedda

Title Page

Abstract

Introduction

Conclusions

References

Tables

Figures

⏪

⏩

◀

▶

Back

Close

Full Screen / Esc

Printer-friendly Version

Interactive Discussion



$$P_W = \frac{F_W}{n} \quad (2)$$

$$P_{WW} = \frac{F_{WW}}{F_W} \quad (3)$$

$$P_{DD} = \frac{F_{DD}}{F_D} \quad (4)$$

$$P_{WD} = 1 - P_{DD} \quad (5)$$

$$5 \quad P_{DW} = 1 - P_{WW} \quad (6)$$

Wet spell duration is defined as sequence of k wet decades preceded and followed by the dry decades and correspondingly the dry spell duration is the sequence of dry decades followed and preceded by the wet ones. The distributions of the spells by length or duration are found to be geometric (Gabriel and Neuman, 1962; Pabitra, 2000) with the probability of wet spell of length k given by the following equations:

$$P(W = k) = (1 - P_1)P_1^k - 1 \quad (7)$$

$$P(W > k) = P_1^k \quad (8)$$

Similarly, probability of a dry spell of length m and greater than m were calculated using the following equations respectively.

$$15 \quad P(D = m) = P_O(1 - P_O)^m - 1 \quad (9)$$

And

$$P(D > m) = (1 - P_O)^m \quad (10)$$

Where, P_D is the probability of a decade being dry
 F_D is the number of dry decade

Climate resources analysis for use of planning

F. Yemenu and
D. Chemedda

Title Page

Abstract

Introduction

Conclusions

References

Tables

Figures

⏪

⏩

◀

▶

Back

Close

Full Screen / Esc

Printer-friendly Version

Interactive Discussion

P_W is the probability of a decade being wet

F_W is the number of wet decades

n is the number of observations

P_{WW} is the probability of wet decade followed by another wet decade

5 F_{WW} is the number of wet decades followed by other wet decades

P_{DD} is the probability of a dry decade followed by another dry one

F_{DD} is the number of dry decade followed by another dry one

P_{WD} is the probability of a wet decade followed by another dry decade

P_{DW} is the probability of a dry decade followed by a wet one.

10 P_1 is the probability that a decade is wet given that the previous decade is wet and denoted by $P(W/W)$

P_0 is the probability that a decade being wet given that the previous is dry and is denoted by $P(W/D)$

15 2.5.2 Standardized precipitation index (SPI)

The same time step (decadal) can not be used to obtain SPI values in this study as there has not been any practice of similar case so far in the world. Therefore the time series of monthly rainfall data of 33 years (1978–2007) was made to fit the gamma distribution function:

$$20 \quad g(x) = \frac{1}{\beta^\alpha \Gamma(\alpha)} x^{\alpha-1} e^{-\frac{x}{\beta}} \quad (11)$$

Where: $\alpha > 0$, is a shape parameter; $\beta > 0$, is a scale parameter; X is the precipitation amount

$$\Gamma(\alpha) = \int_0^{\infty} y^{\alpha-1} e^{-y} dy \quad (12)$$

Climate resources analysis for use of planning

F. Yemenu and
D. Chemedda

Title Page

Abstract

Introduction

Conclusions

References

Tables

Figures

⏪

⏩

◀

▶

Back

Close

Full Screen / Esc

Printer-friendly Version

Interactive Discussion

Where, $\Gamma(\alpha)$ is the gamma function. The values of alpha and beta (α and β) in the function were estimated using the following equations;

$$\alpha = \frac{1}{4}A \left[1 + \sqrt{1 + \frac{4A}{3}} \right] \quad (13)$$

$$\beta = \frac{\bar{X}}{\alpha} \quad (14)$$

$$A = \ln \left(\bar{X} \right) - \frac{\sum \ln x}{n} \quad (15)$$

Where, X is the precipitation amount and, \bar{x} is the mean precipitation of the series.

The resulting parameters, alpha and beta, were then entered into excel program of gamma distribution function to obtain the cumulative probabilities of each rainfall event for monthly rainfall total. Since the gamma function is not defined for zero values and the cumulative probability of each rainfall event was then estimated through the following equation:

$$H_{(X)} = q + (1 - q)G_{(X)} \quad (16)$$

q is the probability of zero which was estimated as the proportion of zeros in the rainfall data series.

The SPI was then computed as (Abramowitz and Stegun, 1965)

$$Z = \text{SPI} = + \left[t - \frac{c_0 + c_1 t + c_2 t^2}{1 + d_1 t + d_2 t^2 + d_3 t^3} \right] \quad (17)$$

For $0 < H(x) \leq 0.5$

$$Z = \text{SPI} = + \left[t - \frac{c_0 + c_1 t + c_2 t^2}{1 + d_1 t + d_2 t^2 + d_3 t^3} \right] \quad (18)$$

Climate resources analysis for use of planning

F. Yemenu and
D. Chemedda

Title Page

Abstract

Introduction

Conclusions

References

Tables

Figures

⏪

⏩

◀

▶

Back

Close

Full Screen / Esc

Printer-friendly Version

Interactive Discussion



For $0.5 < H(x) < 1$ where,

$$t = \sqrt{\ln \frac{1}{(H(x))^2}} \text{ for } 0 < H(x) \leq 0.5 \quad (19)$$

and

$$t = \sqrt{\ln \left(\frac{1}{(1-H(x))^2} \right)} \text{ for } 0.5 < H(x) < 1 \quad (20)$$

5 $C_0 = 2.515517$ $d_1 = 1.432788$ $C_1 = 0.802853$ $d_2 = 0.189269$ $C_2 = 0.010328$ $d_3 = 0.00130$

The cumulative probability was then transformed in to standard random variable, Z being described as the SPI values for each of the precipitation events of desired time scale.

10 The drought magnitude was also derived from SPI values already obtained through the equation:

$$DM = - \left(\sum_{j=1}^K SPI_{ij} \right) \quad (21)$$

Where DM is the drought magnitude for the desired time scale.

15 This study gave a due attention to analyze the drought events and magnitude only for one month time scale analysis which is practically important for agricultural resources characterization.

3 Results and discussions

3.1 Onset, end and length of the growing period

The analysis results revealed that the main rainy season (Kiremt) starts during the second meteorological decade of June (decade 17/ second decade of June) and the

Climate resources analysis for use of planning

F. Yemenu and
D. Chemedo

Title Page

Abstract

Introduction

Conclusions

References

Tables

Figures

⏪

⏩

◀

▶

Back

Close

Full Screen / Esc

Printer-friendly Version

Interactive Discussion



precipitation depth is observed to be much lower than the threshold of the crop water requirements of the study area. Hence a substantial amount of precipitation deficit is experienced during this particular season (Fig. 3). The result substantiates that rainfall water is critically a limiting factor and one can draw a conclusion that the season needs to be out of the major activities of crop production, like planting.

However, the moisture during this period could be used to facilitate land preparation activities for early planting in the main rainy season. Consequently, planting could be carried out earlier during the start of the season and the probable loss of moisture for the land preparation activity during Kiremt could be minimized.

3.2 Dry and Wet Spell analysis and drought assessment

3.2.1 Dry and wet spell analysis

The probability of a decade being wet in the Kiremt was found to be greater than 40% throughout the meteorological decades with the exception of decade number 16 and 17, which gave a corresponding probability, value of 21% each (Table 6). The probability of getting a wet decade after wet in the study watershed during the main rainy season was also found to be in the range of 14–100% with most of the meteorological decades skewed to the maximum. In general, the Kiremt season is having well above the threshold limit for most of the years during the study period. Therefore, crop harvesting during the same season is less likely affected by moisture stress.

But the probability of getting a wet decade during this season was found to be in the range of 15 to 30% (Table 7) throughout the meteorological decade. The same table also showed that high probability of occurrence of dry spells was observed in the season throughout the meteorological decades (greater than 70% in all decades), as expected. Consequently, one can infer from these figures that the particular season is getting below the threshold minimum requirement of rainfall and hence planting during Belg season is less likely.

Climate resources analysis for use of planning

F. Yemenu and
D. Chemedda

Title Page

Abstract

Introduction

Conclusions

References

Tables

Figures



Back

Close

Full Screen / Esc

Printer-friendly Version

Interactive Discussion



the drought in year 1993 occurred on a longer period while the same appeared on a very short time span in 1985 (Fig. 3).

4 Conclusions

It can be noted from this study that planning of agricultural activities is fairly simple and involves less risks in and around the study area during the main rainy season because of the stability of the onset dates of the main rainy season and occurrences of the sufficient amount of the wet spell. However, it was found that the variability of length of growing period in Belg (the shorter rainy season) season is extremely high (CV=121%) implying difficulties associated with its prediction and frequent occurrences of dry spells and drought events. More over the shorter rainy season, Belg is liable to drought and its impacts. Hence crop production during this particular period needs a due attention and monitoring of planted crops. Therefore a considerable attention of maximizing crop harvest during the main rainy season is practically important. In general a kind of analysis work is extremely helpful for decision making in agricultural operation and related activities especially at a watershed scale. Therefore this work needs to be promoted in a similar fashion across the country.

References

- Baron, J.: Dry spell mitigation to upgrade semi-arid rain fed agriculture: Water harvesting and soil nutrient management for smallholder maize cultivation in Macakos, Kenya. Doctoral thesis, Natural Resource Management, Department of Systems Ecology, Stockholm University, Sweden, 2004.
- Drought Network News: A news letter of the Interational Drought Information Center and the National Drought Mitigation Center, February Bulletin, 11(1), 1–24, 1999.
- FAO (Food and Agriculture Organization): Report on the agro-ecological Zones Project Vol. 1, Methodology and Results of Africa, Rome, 1978.

Climate resources analysis for use of planning

F. Yemenu and
D. Chemedda

Title Page

Abstract

Introduction

Conclusions

References

Tables

Figures

⏪

⏩

◀

▶

Back

Close

Full Screen / Esc

Printer-friendly Version

Interactive Discussion

Climate resources analysis for use of planning

F. Yemenu and
D. Chemedá

Title Page

Abstract

Introduction

Conclusions

References

Tables

Figures

◀

▶

◀

▶

Back

Close

Full Screen / Esc

Printer-friendly Version

Interactive Discussion



- Godswill, M., Dawit, K., and Dejene, A.: A comparative analysis of rainfed and irrigated agricultural production in Ethiopia, *J. Irrig. Drain.*, 21(1), Springer Netherlands, 2007.
- Mahdi, O. and Petra, S.: A Preliminary Assessment of Characteristics and Long – term rainfall Variability of Rainfall in Ethiopia-Basis for Sustainable Land Use and Resources Management, Conference on International Agricultural Research for Development, Witzenhausen, October 9–11, 2002.
- Mckee, T. B., Doesken, N. J., and Kliest, J.: The relationship of drought frequency and duration to time scales, in: 8th conference on Applied Climatology, Am. Meter. Soc., Boston, 179–184, 1993.
- Meinke, H.: Options for cropping systems management at a range of time scales, edited by: Stone, R. C. and Partridge, I., *Science for Drought, Proceedings of the National Drought Forum*, 82–87, 2003.
- Mersha, E.: Agroclimatic Classification of Ethiopia, *Ethiopian Journal of Natural Resources*, 2(2), Addis Ababa, Ethiopia, 2005.
- Messay, A.: The Onset, Cessation and Dry Spells of the Small Rainy Season (BELG) of Ethiopia, Unpublished, National Meteorological Services of Ethiopia, Addis Ababa, 2006.
- Pabitra, P., Mandal, A., and Sayedur, M.: Markov Chain Analysis of Weekly Rainfall Data in Determining Drought-proneness, *Discrete Dynamics in Nature and Society*, 7, 231–239, 2000.
- Reddy, S. J.: Methodology: Agro-climatic Analogue Technique and Applications as relevant to dry land agriculture, *Agro climatology Series Eth 86/o21-WMO/UNDP NMSA*, Addis Ababa, Ethiopia, 1990.
- Seleshi Y. and Demarre, G. R.: Rainfall variability in the Ethiopian highlands and Ertitherian highlands and its links with the southern oscillation index, *J. Biogeography*, 22, 945–952, 1995.
- Yemenu, F.L.: Assessment of rainfall water potential for rain-fed crop production in the central highlands of Ethiopia: case of “*yerer*” watershed, oromia region, M. Sc Thesis in soil and water engineering submitted to Haramaya University, Department of Agricultural Engineering, Haramaya, Ethiopia, 2009.

Climate resources analysis for use of planning

F. Yemenu and
D. Chemed

Table 1. Classification of SPI values and corresponding probability of occurrences.

SPI classes	Probability	Period classification
$SPI < -2$	0.0228	Extremely dry
$-2 < SPI < -1.54$	0.0441	Severely dry
$-1.5 < SPI < -1$	0.0918	Moderately dry
$-1 < SPI < 1$	0.6827	Near normal
$1 < SPI < 1.5$	0.0918	Moderately wet

[Title Page](#)
[Abstract](#)
[Introduction](#)
[Conclusions](#)
[References](#)
[Tables](#)
[Figures](#)
[⏪](#)
[⏩](#)
[◀](#)
[▶](#)
[Back](#)
[Close](#)
[Full Screen / Esc](#)
[Printer-friendly Version](#)
[Interactive Discussion](#)

Climate resources analysis for use of planning

F. Yemenu and
D. Chemeda

Title Page

Abstract

Introduction

Conclusions

References

Tables

Figures

◀

▶

◀

▶

Back

Close

Full Screen / Esc

Printer-friendly Version

Interactive Discussion

Table 2. Summary of the onset date of the main growing season.

Mean onset decade no	SD (in decade)	CV (%)	Frequency (%)	Stability of the onset
17	0.62	3.6	58.6	Very high

Climate resources analysis for use of planning

F. Yemenu and
D. Chemed

Title Page

Abstract

Introduction

Conclusions

References

Tables

Figures

⏪

⏩

◀

▶

Back

Close

Full Screen / Esc

Printer-friendly Version

Interactive Discussion

Table 3. Characteristics of the Kiremt growing period in the watershed.

Characteristic	Decade no
Earliest onset	16
Mean onset	17
Delayed onset	18
Earliest recession of the rainy season	26
Mean recession of the rainy season	27
Delayed recession of the rainy season	28

Climate resources analysis for use of planning

F. Yemenu and
D. Chemeda

Title Page

Abstract

Introduction

Conclusions

References

Tables

Figures



Back

Close

Full Screen / Esc

Printer-friendly Version

Interactive Discussion

Table 4. The onset characteristics of the Belg growing season.

Mean onset	SD	CV	Frequency of mean onset (%)
9	1.5	17	18.8

HESSD

7, 3733–3763, 2010

Climate resources analysis for use of planning

F. Yemenu and
D. Chemeda**Table 5.** The occurrence distribution of the onset of Belg season.

Dekade no	7	8	9	10	11	12	With no occurrence of Belg
Number of occurrences	5	3	6	2	2	1	10
Percentage of occurrences	15.15	9.09	18.18	6.06	6.06	3.03	30.30

[Title Page](#)[Abstract](#)[Introduction](#)[Conclusions](#)[References](#)[Tables](#)[Figures](#)[⏪](#)[⏩](#)[◀](#)[▶](#)[Back](#)[Close](#)[Full Screen / Esc](#)[Printer-friendly Version](#)[Interactive Discussion](#)

Climate resources analysis for use of planning

F. Yemenu and
D. Chemedá

Title Page

Abstract

Introduction

Conclusions

References

Tables

Figures

⏪

⏩

◀

▶

Back

Close

Full Screen / Esc

Printer-friendly Version

Interactive Discussion



Table 6. (1975–2007)

Decade No	Pw	PD	Pww	PDD	PWD	PDW
16	21	79	14	92	8	86
17	21	79	57	88	12	43
18	42	58	29	89	11	71
19	64	36	52	75	25	48
20	88	12	69	25	75	31
21	88	12	66	0	100	34
22	91	9	87	0	100	13
23	94	6	90	0	100	10
24	94	6	100	0	100	0
25	88	12	100	0	100	0
26	61	39	90	8	92	10
27	52	48	53	56	44	47

Climate resources analysis for use of planning

F. Yemenu and
D. Chemedá

Table 7. Dry-wet spell probability distribution of Belg based on the Markov Chain model (1975–2007).

Dekade No	Pw	PD	Pww	PDD	PWD	PDW
9	30	70	30	87	13	70
10	30	70	60	78	22	40
11	30	70	50	74	26	50
12	18	82	33	67	33	67
13	18	82	17	74	26	83
14	21	79	14	81	19	86
15	15	85	20	75	25	80

[Title Page](#)
[Abstract](#)
[Introduction](#)
[Conclusions](#)
[References](#)
[Tables](#)
[Figures](#)
[⏪](#)
[⏩](#)
[◀](#)
[▶](#)
[Back](#)
[Close](#)
[Full Screen / Esc](#)
[Printer-friendly Version](#)
[Interactive Discussion](#)

Climate resources analysis for use of planning

F. Yemenu and
D. Chemeda

Title Page

Abstract

Introduction

Conclusions

References

Tables

Figures

⏪

⏩

◀

▶

Back

Close

Full Screen / Esc

Printer-friendly Version

Interactive Discussion

Table 8. Dry-wet spell duration distribution in the two seasons.

k	Probability of wet sequences at least				Probability of dry spell > 3 dek
	2	3	5	7	
Bega	0.13	0.048	0.0062	0.00082	0.58
Kiremt	0.43	0.28	0.12	0.01524	0.19

Climate resources analysis for use of planning

F. Yemenu and
D. Chemeda

Title Page

Abstract

Introduction

Conclusions

References

Tables

Figures

⏪

⏩

◀

▶

Back

Close

Full Screen / Esc

Printer-friendly Version

Interactive Discussion

Table 10. Frequency of drought severity during the Belg growing season.

Drought class	Months		
	March	April	May
Extremely dry	1	0	0
Severely dry	3	2	3
Moderately dry	2	4	3
Mild	7	7	8
Total	13	13	14

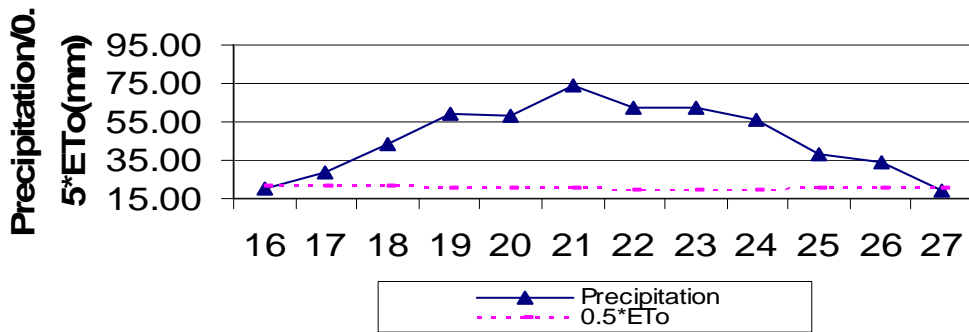


Fig. 2. Average Precipitation and the threshold crop water requirements (0.5*ETo) in Kirem.

Climate resources analysis for use of planning

F. Yemenu and
D. Chemed

Title Page

Abstract Introduction

Conclusions References

Tables Figures

⏪ ⏩

◀ ▶

Back Close

Full Screen / Esc

Printer-friendly Version

Interactive Discussion



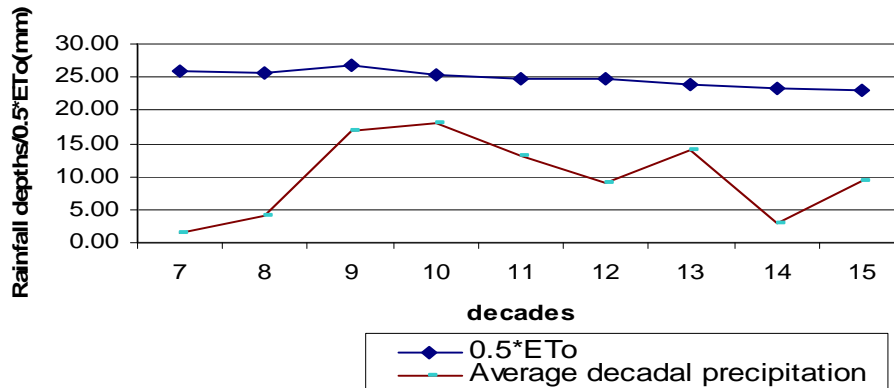


Fig. 3. Average Precipitation and the threshold crop water requirements ($0.5 \cdot E_{To}$) in Belg season.

Climate resources analysis for use of planning

F. Yemenu and
D. Chemed

[Title Page](#)

[Abstract](#) [Introduction](#)

[Conclusions](#) [References](#)

[Tables](#) [Figures](#)

[⏪](#) [⏩](#)

[◀](#) [▶](#)

[Back](#) [Close](#)

[Full Screen / Esc](#)

[Printer-friendly Version](#)

[Interactive Discussion](#)



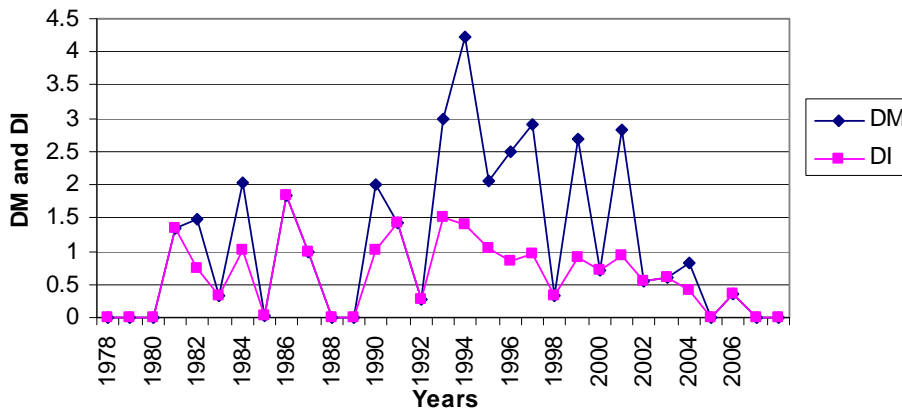


Fig. 5. Drought magnitude (DM) and intensity (DI) in the shorter rainy season.

Climate resources analysis for use of planning

F. Yemenu and
D. Chemedda

[Title Page](#)

[Abstract](#) [Introduction](#)

[Conclusions](#) [References](#)

[Tables](#) [Figures](#)

[◀](#) [▶](#)

[◀](#) [▶](#)

[Back](#) [Close](#)

[Full Screen / Esc](#)

[Printer-friendly Version](#)

[Interactive Discussion](#)

