

This discussion paper is/has been under review for the journal Hydrology and Earth System Sciences (HESS). Please refer to the corresponding final paper in HESS if available.

## Heat fluxes over shrub tundra

D. Bewley et al.

# Measurements and modelling of snowmelt and turbulent heat fluxes over shrub tundra

D. Bewley<sup>1</sup>, R. Essery<sup>2</sup>, J. Pomeroy<sup>3</sup>, and C. Ménard<sup>2</sup>

<sup>1</sup>Department of Forest Resources Management, University of British Columbia, Vancouver, Canada

<sup>2</sup>School of GeoSciences, University of Edinburgh, Edinburgh, UK

<sup>3</sup>Centre for Hydrology, University of Saskatchewan, Saskatoon, Canada

Received: 15 January 2010 – Accepted: 24 January 2010 – Published: 8 February 2010

Correspondence to: R. Essery (richard.essery@ed.ac.uk)

Published by Copernicus Publications on behalf of the European Geosciences Union.

Title Page

Abstract

Introduction

Conclusions

References

Tables

Figures

◀

▶

◀

▶

Back

Close

Full Screen / Esc

Printer-friendly Version

Interactive Discussion



## Abstract

Measurements of snowmelt and turbulent heat fluxes were made during the snowmelt periods of two years at two neighbouring tundra sites in the Yukon, one in a sheltered location with tall shrubs exposed above deep snow and the other in an exposed location with dwarf shrubs covered by shallow snow. The site with buried vegetation showed a transition from air-to-surface heat transfers to surface-to-air heat transfers as bare ground became exposed during snowmelt, but there were daytime transfers of heat from the surface to the air at the site with exposed vegetation even while snow remained on the ground. A model calculating separate energy balances for snow and exposed vegetation, driven with meteorological data from the sites, is found to be able to reproduce these behaviours. Sensitivity of simulated fluxes to model parameters describing vegetation cover and density is investigated.

## 1 Introduction

Shrub tundra occupies the latitudes and altitudes above the coniferous forest treeline. Many species are present in shrub tundra, although willow (*salix*) and birch (*betula*) dominate; 40% of the Alaska-Yukon Arctic region comprises upland low shrub canopies of *betula nana* (dwarf birch) and *salix pulchra* (Jorgenson and Heiner, 2003), and these species are also present in Western Alaska and Northern Scandinavia. Tall shrub canopies occupy less areal extent but are prevalent in both upland and sheltered riverine areas, consisting mainly of willow and alder (*alnus*) species such as *alnus crispa* (Jorgenson and Heiner, 2003). Epstein et al. (2004) suggest that shrubs are sensitive indicators of climate warming and appear to be the most responsive of a wide range of tundra and treeline biomes considered; this pattern is reflected in repeat photography and satellite imagery suggesting recent expansions in Arctic shrub cover (Tape et al., 2006).

## Heat fluxes over shrub tundra

D. Bewley et al.

Title Page

Abstract

Introduction

Conclusions

References

Tables

Figures

◀

▶

◀

▶

Back

Close

Full Screen / Esc

Printer-friendly Version

Interactive Discussion



**Heat fluxes over  
shrub tundra**

D. Bewley et al.

Title Page

Abstract

Introduction

Conclusions

References

Tables

Figures

◀

▶

◀

▶

Back

Close

Full Screen / Esc

Printer-friendly Version

Interactive Discussion



Tundra may be snow-covered for 6 to 8 months per year in sub-arctic regions (Pomeroy et al., 2006) and up to 9 months in the Arctic (McFadden et al., 2001). Snowmelt is the major annual hydrological event in these areas, providing between 40% and 90% of the annual flow of freshwater to streams, lakes and oceans at high latitudes. However, the processes controlling the rates and magnitude of snow ablation under vegetation canopies remain one of the greatest uncertainties in snowmelt calculations (Link and Marks, 1999; Koivusalo and Kokkonen, 2002; Gelfan et al., 2004).

Previous field and modelling studies have identified the effect of shrubs on snow accumulation, snowmelt, hydrology and surface energy balance. Shrubs have a strong control on snow accumulation through suppression of wind transport; for instance, McFadden et al. (2001) showed from measurements in Alaska that shrubby tussock tundra and water track margin areas in which shrub birch was common had 27% deeper snow than tussock tundra, and Pomeroy et al. (1997) found that shrub tundra north of Inuvik, NWT accumulated four to five times more snow than sparsely vegetated tundra. Essery and Pomeroy (2004) and Liston et al. (2002) used blowing snow models to simulate erosion of snow from sparse tundra and trapping by shrubs. The amount of snow accumulation around shrubs was found to be sensitive to both the extent and height of shrubs (Essery and Pomeroy, 2004). Sturm et al. (2001) also found that the deeper snow in shrubs has different structural and thermal characteristics from snow in open areas, such as a greater proportion of weakly-bonded depth hoar of lower thermal conductivity, and proposed a positive feedback loop in which larger and more abundant shrubs trap more snow and reduce sublimation losses, leading to deeper snow cover; this promotes higher winter soil temperatures and microbial activity which ultimately increases the plant-available nitrogen required for further shrub growth.

The effect of shrubs on snowmelt was identified by Price and Dunne (1976). Emergence of low-albedo shrubs from a receding snowpack increases the absorption of solar radiation, increasing the energy available for snowmelt. Pomeroy et al. (2003) found little difference in net radiation on north and south facing shrub tundra slopes until the earlier shrub emergence on the south facing slope, after which higher values

of net radiation led to earlier snowpack removal by over a month. Hydrologically, Mc-  
Cartney et al. (2006) showed that tall shrub canopies exert an inordinately large control  
on the timing and magnitude of streamflow discharge in tundra basins because of their  
enhancement of snow accumulation and rapid meltwater production which overwhelms  
the infiltration capacity of soils. An increase in abundance of shrub tundra during cli-  
mate warming may therefore impact the timing and magnitude of freshwater runoff to  
the major drainage basins.

Accurate surface energy balance calculations are required as boundary conditions  
in atmospheric models. Melt rates also determine the degree of vegetation exposure  
and fractional snow covered area, which in turn strongly influence albedo. Both Strack  
et al. (2003) and Viterbo and Betts (1999) found that numerical weather predictions  
were too cold (by as much as 6°C) when the role of vegetation over snow was not  
represented correctly. Estimates of the increase in heating associated with the transi-  
tion from shrub-free tundra to shrubland range from  $\sim 10 \text{ Wm}^{-2}$  for the growing season  
(e.g., Chapin et al., 2000) up to  $37 \text{ Wm}^{-2}$  for the non-growing season (Sturm et al.,  
2005). Although energy-balance snowmelt models have been used to simulate shrub  
effects on surface energy and moisture fluxes during snowmelt, representations of im-  
portant natural processes in such models are tentative and require evaluation by field  
measurements.

This paper presents measurements of snow accumulation, melt and turbulent fluxes  
of heat and moisture at two nearby sites: one with short vegetation that is completely  
buried by snow prior to melt and another with tall shrubs that remain partially exposed  
throughout the winter. The measurements are then used to evaluate the performance  
of an energy balance model in simulating melt rates and energy fluxes to the atmo-  
sphere for the two sites, and the model is used to investigate how fluxes depend on  
shrubs canopy structure.

## Heat fluxes over shrubs tundra

D. Bewley et al.

Title Page

Abstract

Introduction

Conclusions

References

Tables

Figures

◀

▶

◀

▶

Back

Close

Full Screen / Esc

Printer-friendly Version

Interactive Discussion



## 2 Field sites and data

### 2.1 Site descriptions

The 195 km<sup>2</sup> Wolf Creek Research Basin (60°35' N, 135°11' W) near Whitehorse, Yukon Territory, Canada, lies in the mountainous headwaters of the Yukon River and has a sub-arctic continental climate characterized by a large seasonal variation in temperature, low relative humidity and relatively low precipitation. The mean annual temperature is -3°C, and annual precipitation is 300–400 mm with approximately 40% falling as snow. Wolf Creek is situated within the Boreal Cordillera ecozone (Environment Canada, 1995) and consists of three principle ecosystems: boreal forest, shrub tundra and alpine tundra cover 22%, 58% and 20% respectively of the total basin area (Fig. 1). The shrub tundra zone is snow-covered from early October to May with snowdrifts persisting until June.

Measurements were conducted in the melt periods of 2003 and 2004 at two sites within the Granger Creek sub-basin (Fig. 1), with automatic weather stations (Fig. 2) providing half-hourly meteorological data. One station was located at 1363 m a.s.l. in a valley bottom with a discontinuous willow canopy up to 2.5 m in height overlying a ground cover of grasses and mosses. The shrubs in this area retain a number of marcescent leaves and become exposed during the melt season both gradually as snow ablates and rapidly by spring-up of buried branches when there is insufficient weight of snow to maintain their burial. Many of the shorter shrubs have been observed to be completely buried prior to melt in high snowfall years, but part of the canopy remains exposed. Another station was located 330 m from the valley site at 1424 m a.s.l. on an exposed plateau. Shrub cover here is sparse and dominated by birches of limited height (average 0.32 m) that become completely buried by snowfall and blowing snow.

Title Page

Abstract

Introduction

Conclusions

References

Tables

Figures

◀

▶

◀

▶

Back

Close

Full Screen / Esc

Printer-friendly Version

Interactive Discussion



## 2.2 Meteorological measurements

Shortwave radiation, longwave radiation, air temperature and wind speed measured on the plateau are shown for 30-day periods beginning on day 105 (mid-April to mid-May) in Fig. 3 for 2003 and Fig. 4 for 2004. Both sites are nearly level and, despite differences in sky view, Sicart et al. (2006) found that differences in incoming radiation between the sites were generally not significant. Air temperatures at the sites are also very similar, although the valley site is often a couple of degrees colder at night, perhaps due to cold air drainage. The major difference in the meteorology between the sites is in wind speeds, which are lower in the valley as shown by the dotted lines in Figs. 3 and 4.

## 2.3 Snow measurements

Snow depths were measured automatically at each site with sonic ranging sensors, giving point measurements that may not represent good areal estimates. In addition, manual measurements were made on several dates to obtain areal-mean snow depth, snow water equivalent (SWE) and snow-covered fraction. Near the valley site, snow depths were measured on a 61-point transect with 1 m spacing in 2003 and on a 7×7 grid with 5 m spacing in 2004. There were no distributed snow measurements in the immediate vicinity of the plateau site in 2003, but snow depths were measured there on a 25-point transect with 5 m spacing in 2004. Snow density was measured at a selection of points by weighing cores in an ESC-30 snow tube, and snow-covered fractions were calculated as the fraction of the total number of points that were snow-covered for each survey. The observed relationships between SWE and snowcover fraction snow shown in Fig. 5 can be approximated by a snowcover depletion curve of the form

$$f_{\text{snow}} = \tanh \frac{\text{SWE}}{\chi} \quad (1)$$

Title Page

Abstract

Introduction

Conclusions

References

Tables

Figures

◀

▶

◀

▶

Back

Close

Full Screen / Esc

Printer-friendly Version

Interactive Discussion



Heat fluxes over  
shrub tundra

D. Bewley et al.

Title Page

Abstract

Introduction

Conclusions

References

Tables

Figures

◀

▶

◀

▶

Back

Close

Full Screen / Esc

Printer-friendly Version

Interactive Discussion



which has been used in previous studies (Yang et al., 1997; Essery and Pomeroy, 2004) for snow depletion around short vegetation. Adjusting the parameter  $X$  to minimize mean squared differences between Eq. (1) and the observations, a value of 44 mm gives a reasonable fit to snow distributions both in the valley and on the plateau. SWE and snow depths for both sites and both years are shown in Figs. 6 to 9. The results show consistent differences in pre-melt snow accumulation between the sites, with more snow accumulating in the valley than on the plateau. In 2003, rapid snow ablation began on day 113 and continued uninterrupted until day 120, corresponding with a period of clear skies, high solar irradiance and warm air temperatures that exceeded  $10^{\circ}\text{C}$  during each afternoon and were above freezing when averaged diurnally. The shallow snow around the plateau station all melted by about day 117. Between days 121 and 127, the sky was overcast and air temperatures only rose above freezing in the afternoons. Thereafter, diurnal mean air temperatures again rose above freezing, and this led to the remaining snow at the valley station melting by day 131. Averaged over the snow-covered period, the melt rates were  $4.3\text{ mm d}^{-1}$  on the plateau and  $7.3\text{ mm d}^{-1}$  in the valley; the latter value incorporates the week-long period of near-zero melt at the beginning of May.

There was more snow in 2004 than in 2003. Rapid ablation started in the valley on day 118 during a period of clear skies and rising air temperatures that persisted until the end of April. The melt rate on the plateau was initially slower than in the valley but increased to a similar rate by day 121 when sufficient shrubs were exposed; the snow at this site remained until day 124, giving a mean diurnal melt rate of  $8.6\text{ mm d}^{-1}$ . The remaining snow at the valley site melted steadily through May; patterns of cloud cover were less distinct than in 2003, with no extended periods of clear or overcast sky. Air temperatures were cooler between days 123 and 130 resulting in slightly lower melt rates, but the warmer period thereafter was sufficient to melt all remaining snow at the valley site by about day 134. Because more snow melted in a shorter period than in 2003, the overall valley melt rate was higher in 2004 at  $10.9\text{ mm d}^{-1}$ .

## 2.4 Flux measurements

Eddy covariance systems (Campbell Scientific CSAT3 sonic anemometers and KH2O or LiCor-7500 absorption hygrometers) were installed at both sites to provide measurements of sensible and latent heat fluxes between the surface and the atmosphere, calculated by finding covariances between vertical wind speed fluctuations and temperature or vapour density fluctuations respectively. Results for both sites and both years are shown in Figs. 6 to 9, with the convention that fluxes to the atmosphere are positive. On the plateau, sensible heat fluxes were small and mostly negative while the ground remained completely covered with snow but increased rapidly upon the emergence of shrubs and bare ground. Positive sensible heat fluxes were observed even during the period of continuous snowcover in the valley, where relatively dense shrubs were always exposed. In contrast, latent heat fluxes were small and, assuming that transpiration was minimal from the leafless shrubs, were entirely due to snow sublimation and evaporation of soil moisture. The snow on the plateau was relatively well exposed to turbulent transfer, with daily mean sublimation rates of  $0.42 \text{ mm d}^{-1}$  in 2003 while snow was still present, after which the surface dried and latent heat fluxes decreased. In the valley, sublimation was suppressed beneath the dense canopy, and the daily mean sublimation was  $0.38 \text{ mm d}^{-1}$ .

## 3 Model description and results

### 3.1 Model description

To simultaneously calculate energy fluxes from an exposed shrub canopy to the atmosphere and energy fluxes to underlying snow that determine the melt rate, it is necessary to use a model that represents separate energy balances for the canopy and the snow. Several land surface models, such as CLASS (Verseghy et al., 1993) and CLM (Oleson et al., 2004), already have this type of structure but have not been widely evaluated in comparison with field observations of energy fluxes and snow melt. The

Title Page

Abstract

Introduction

Conclusions

References

Tables

Figures

◀

▶

◀

▶

Back

Close

Full Screen / Esc

Printer-friendly Version

Interactive Discussion





dual-source model of Blyth et al. (1999) was modified for comparison with observations here.

Sensible heat fluxes are parameterised as being proportional to temperature differences and inversely proportional to aerodynamic resistances. The sensible heat flux between the surface and the canopy air space is

$$H_s = \frac{\rho c_p}{r_{as}} (T_s - T_c), \quad (2)$$

the flux between the vegetation and the canopy air space is

$$H_v = f_v \frac{\rho c_p}{r_{av}} (T_v - T_c), \quad (3)$$

and the flux above the canopy is

$$H = \frac{\rho c_p}{r_{aa}} (T_c - T_a), \quad (4)$$

where  $\rho$  and  $c_p$  are the density and heat capacity of air,  $T_s$  is the snow surface temperature,  $T_v$  is the canopy temperature,  $f_v$  is the vegetation fraction,  $T_c$  is the canopy air temperature, and  $T_a$  is the air temperature measured above the canopy at height  $z_t$ . Assuming that there is no transpiration from the shrubs, the latent heat flux is simply

$$LE = \frac{L\rho}{r_{as} + r_{aa}} [Q_{sat}(T_s) - Q_a], \quad (5)$$

where  $L$  is the latent heat of sublimation,  $Q_a$  is the measured specific humidity of the air and  $Q_{sat}(T_s)$  is the saturation humidity at the snow surface temperature. Considering the uncertainty in parametrizations of turbulent transport through vegetation canopies, Blyth et al. (1999) argued for the use of simple forms for the aerodynamic resistances in Eqs. (2) to (5), taking

$$r_{aa} = \frac{1}{k^2 U} \ln\left(\frac{z_u}{z_0}\right) \ln\left(\frac{z_t}{z_0}\right), \quad (6)$$

Title Page

Abstract

Introduction

Conclusions

References

Tables

Figures

◀

▶

◀

▶

Back

Close

Full Screen / Esc

Printer-friendly Version

Interactive Discussion



$$r_{av} = \frac{1}{k^2 U} \ln\left(\frac{z_u}{z_0}\right) \ln\left(\frac{z_0}{z_{0v}}\right) \quad (7)$$

and

$$r_{as} = \frac{1}{k^2 U} \ln\left(\frac{z_u}{z_0}\right) \ln\left(\frac{z_t}{z_{0s}}\right), \quad (8)$$

where  $U$  is the wind speed measured at height  $z_u$ ,  $k$  is the von Kármán constant and  $z_{0s}$  and  $z_{0v}$  are roughness lengths for the surface and the vegetation. Following Mason (1988), the effective momentum roughness length  $z_0$  is calculated here as

$$z_0 = z_u \exp\left\{-\left[\frac{f_v}{\ln^2(z_u/z_{0v})} + \frac{1-f_v}{\ln^2(z_u/z_{0s})}\right]^{-1/2}\right\}. \quad (9)$$

With the original form of Eq. (8), increasing vegetation cover was found to give increasing sublimation rather than suppressing turbulent transport from underlying snow, so a modified form

$$\frac{1}{r'_{as}} = \frac{1-f_v}{r_{as}} + \frac{f_v k U}{\ln(z_u/z_0)} C \quad (10)$$

is used here, where the dense canopy exchange coefficient  $C$  is given the value 0.004 (Zeng et al., 2005). Setting  $f_v$  equal to 0 or 1, Eqs. (6)–(10) reduce to the usual logarithmic forms for resistances over homogeneous surfaces.

Net shortwave and longwave radiation absorbed by the vegetation are calculated as

$$SW_v = f_v(1 - \alpha_v)SW_{\downarrow} \quad (11)$$

and

$$LW_v = f_v(LW_{\downarrow} - 2\sigma T_v^4 + \sigma T_s^4), \quad (12)$$

Title Page

Abstract

Introduction

Conclusions

References

Tables

Figures

◀

▶

◀

▶

Back

Close

Full Screen / Esc

Printer-friendly Version

Interactive Discussion



## Heat fluxes over shrub tundra

D. Bewley et al.

Title Page

Abstract

Introduction

Conclusions

References

Tables

Figures

◀

▶

◀

▶

Back

Close

Full Screen / Esc

Printer-friendly Version

Interactive Discussion



where  $SW_{\downarrow}$  and  $LW_{\downarrow}$  are the measured incoming shortwave and longwave radiation fluxes,  $\alpha_v$  is the canopy albedo and  $\sigma$  is the Stefan Boltzmann constant. Neglecting multiple reflections with the canopy, the net shortwave radiation absorbed at the surface is

$$5 \quad SW_s = \tau(1 - \alpha_s)SW_{\downarrow} \quad (13)$$

where  $\alpha_s$  is the surface albedo and  $\tau$  is the canopy transmissivity (multiple reflections amount to a renormalization of  $\tau$ ), and the net longwave radiation is

$$LW_s = v_f LW_{\downarrow} + (1 - v_f)\sigma T_v^4 - \sigma T_s^4 \quad (14)$$

10 where  $v_f$  is the sky view through canopy gaps. For partial snowcover, the surface albedo is calculated as

$$\alpha_s = f_{\text{snow}}\alpha_{\text{snow}} + (1 - f_{\text{snow}})\alpha_{\text{ground}}, \quad (15)$$

where  $\alpha_{\text{snow}}$  is the snow albedo,  $\alpha_{\text{ground}}$  is the albedo of snow-free ground and  $f_{\text{snow}}$  is given by Eq. (1). Energy conservation requires

$$SW_s + LW_s = H_s + LE + G \quad (16)$$

15 at the surface, where  $G$  is the surface heat flux,

$$SW_v + LW_v = H_v \quad (17)$$

for the canopy, and

$$H = H_s + H_v \quad (18)$$

20 for the canopy air space. Substituting Eqs. (2) to (5) into Eqs. (16) to (18) and linearizing gives a system of three equations that can be solved for the three unknowns  $T_s$ ,  $T_v$  and  $T_c$ ; Blyth et al. (1999) gives the solution. As the model was originally developed for savannah vegetation, it had to be modified to include snowmelt. If the initial solution gives a snow surface temperature in excess of  $0^\circ\text{C}$ , the temperature is fixed at  $0^\circ\text{C}$  and the solution is repeated to find the snowmelt heat flux as the residual in Eq. (16).

## 3.2 Parameter values

Roughness lengths are set to typical values of 1 mm for snow, 1 cm for snow-free ground and a tenth of the canopy height for vegetation. Shortwave radiation measurements gave values of 0.85 for the albedo of snow and 0.15 for the albedo of snow-free ground at the plateau site, and 0.11 for the albedo of shrubs at the valley site. To make some allowance for the influence of radiation absorption by buried branches and leaf litter, the snow albedo at the valley site is set to a slightly lower value of 0.8. The parameters  $f_v$ ,  $v_f$  and  $\tau$  are difficult to measure and are poorly defined for discontinuous canopies. From hemispherical photography, an aerial photograph and an array of 9 radiometers deployed under the canopy near the valley site, Bewley et al. (2007) estimated that  $f_v$  increased from 0.20 to 0.71 as snow melted and shrubs emerged between days 112 and 129 in 2004,  $v_f$  decreased from 0.77 to 0.59 and  $\tau$  decreased from 0.69 to 0.57. Simulations were initially made with these parameters set to median values of  $f_v=0.46$ ,  $v_f=0.68$  and  $\tau=0.63$  for the valley site. Assuming that there is no exposed vegetation at the plateau site while there is snowcover, the canopy parameters are simply set to  $f_v=0$  and  $v_f=\tau=1$  for plateau simulations.

## 3.3 Model evaluation

Model results for both sites and both years are compared with observations in Figs. 6 to 9. The model was initialized with the measured pre-melt SWE and snow density in each case.

For the plateau site (Figs. 6 and 8), the model captures the transition from small downwards sensible heat fluxes before melt to large upwards sensible heat fluxes once the snow has disappeared, with smaller and predominantly upwards daytime latent heat fluxes throughout the simulation periods. The onset of melt is well-represented, although the model removes the snow a day or two early. For three days during melt in each year the model predicts sensible heat fluxes of opposite sign from the observations. These are periods when the snowcover was observed to have become patchy; a

Title Page

Abstract

Introduction

Conclusions

References

Tables

Figures

◀

▶

◀

▶

Back

Close

Full Screen / Esc

Printer-friendly Version

Interactive Discussion



model calculating simultaneous energy balances for snow and snow-free ground may be better able to represent this situation.

For the valley site (Figs. 7 and 9), the model matches the observations in producing downwards sensible heat fluxes at night and upwards fluxes during daytime even while snow remains on the ground. The onset and initial rates of melt are captured well; where the automatic and manual depth measurements differ, the model is generally closer to the manual measurements. In 2004, the date at which the model becomes snow-free matches the manual observations closely, but in 2003 the model continues to melt snow during the cold period following day 120 during which the observations suggest that melting halted. By this time, about one-third of the measurement points were snow-free. Excessive melt rates for patchy snowcover are a known feature of models that calculate a single energy balance for the composite snow and snow-free surface (Liston, 2004; Essery et al., 2005); a model with separate energy balances may, again, produce better results.

### 3.4 Sensitivity to canopy parameters

To explore how fluxes depend on the structure of the canopy, the model was run using the valley meteorology for 2004 but with the vegetation fraction and canopy transmissivity varied independently between the limits 0 and 1. Sky view was set equal to transmissivity, giving longwave radiation transmission equal to shortwave radiation transmission; this is likely to be a better approximation for overcast periods with purely diffuse shortwave radiation rather than clear periods when the shrubs cast shadows (Bewley et al., 2007).

Figure 10 shows contour plots of radiative, turbulent and melt energy fluxes averaged over the period of snowcover for varying canopy parameters (these parameters are not fully independent in reality; the lower left corners of the plots correspond with the unrealistic situation of a canopy that covers a small area but efficiently shades the surface). As formulated in Eq. (13), the shortwave radiation at the snow surface depends solely on  $\tau$ , so the contours are horizontal. Longwave radiation at the surface,

## Heat fluxes over shrub tundra

D. Bewley et al.

Title Page

Abstract

Introduction

Conclusions

References

Tables

Figures

◀

▶

◀

▶

Back

Close

Full Screen / Esc

Printer-friendly Version

Interactive Discussion



Heat fluxes over  
shrub tundra

D. Bewley et al.

Title Page

Abstract

Introduction

Conclusions

References

Tables

Figures

◀

▶

◀

▶

Back

Close

Full Screen / Esc

Printer-friendly Version

Interactive Discussion



given by Eq. (14), largely depends on  $v_f$ , but the contours slope due to the dependence on canopy temperature; as the vegetation fraction increases, the canopy temperature increases due to less cooling of the canopy air space by transfer of sensible heat to the snow, and the longwave radiation to the snow correspondingly increases slightly.

5 For the high albedo of snow, the increase in longwave radiation dominates over the decrease in shortwave radiation (the contours are tighter in the longwave plot than in the shortwave plot), and the net radiation at the snow surface increases as the vegetation fraction increases or the canopy becomes denser (Sicart et al., 2006); snowmelt increases correspondingly. As the canopy is the dominant source of heat transfer to the atmosphere, the sensible heat flux largely depends on vegetation fraction and increases as  $f_v$  increases; however, the sensible heat flux also increases gradually as the canopy becomes denser and less heat is transported to the snow beneath. Finally the latent heat flux, which is derived entirely from the surface, increases as the canopy density decreases and the radiative energy available for driving sublimation increases.

10 As the vegetation fraction increases, the latent heat flux first increases as the transport of moisture from the canopy air space to the atmosphere increases but then decreases as the transport of moisture from the surface into the canopy air space is suppressed.

#### 4 Conclusions

Two field campaigns involved measurements of snowmelt, near-surface meteorology and energy fluxes at two neighbouring sites through the melt period. The sites had different vegetation structures and topographic settings: one was in a valley with tall shrubs and deep snow, and the other was on a plateau with shallow snow but no exposure of the dwarf shrubs there prior to melt. Topography and vegetation together determine the pre-melt snow accumulation by controlling the redistribution of snow by wind (Essery and Pomeroy, 2004).

25 Snow surface temperatures cannot exceed  $0^\circ\text{C}$ , so there is a downward temperature gradient above a snow surface when air temperatures rise above  $0^\circ\text{C}$  during

**Heat fluxes over  
shrub tundra**

D. Bewley et al.

Title Page

Abstract

Introduction

Conclusions

References

Tables

Figures

◀

▶

◀

▶

Back

Close

Full Screen / Esc

Printer-friendly Version

Interactive Discussion



spring melt, giving downward sensible heat fluxes from the atmosphere that contribute to melting. Due to their low albedo, shrubs can be warmed by absorption of solar radiation to temperatures well above those of the air or the snow surface, giving upward sensible heat fluxes to the atmosphere even while there is melting snow on the ground.

5 Exposed shrubs can also greatly increase the roughness of the surface, increasing turbulent fluxes. Increases in incoming longwave radiation beneath shrubs can outweigh decreases in shortwave radiation due to shading, giving greater net radiation at snow surfaces below shrubs than for exposed snow. Heating of exposed shrubs at the valley site led to upward sensible heat fluxes approaching  $200 \text{ Wm}^{-2}$  while snow remained on the ground. Conversely, the plateau snow surface was well exposed to turbulent transfer, and sublimation was the main mechanism by which net radiation was dissipated while the snowcover was continuous, but sensible heat flux rapidly increased upon the emergence of shrubs over melting snow and bare ground between snow patches.

10 The meteorological observations were used to drive a model that calculates separate energy balances for a snow surface and an exposed shrub canopy. The model was initialized with pre-melt snow observations and then evaluated in comparison with the observations of snowmelt and sensible and latent heat fluxes. Differences between fluxes before and after melt and between the sites were represented well, although the model showed some deficiencies in calculating fluxes and melt rates for the few days in each year during which the snowcover was patchy. It is suggested that additionally calculating separate energy balances for snow and snow-free ground and considering horizontal advection of energy would help to address these deficiencies.

15 The model parameters include vegetation fraction, canopy transmissivity and sub-canopy sky view that were estimated from field observations. These parameters vary with the extent to which shrubs are buried by snow and would generally have to be parameterised. One complication is that shrubs are often observed to be bent over and buried by a depth of snow that is less than their height when erect. The mechanisms involved are uncertain, but are likely to be related to the temperature-related properties of branch stiffness, snow cohesion and strength that control the interception

and unloading of snow in forest canopies (Schmidt and Pomeroy, 1990; Hedstrom and Pomeroy, 1998). Further observations are required of how shrubs of different species trap and bend under snow.

*Acknowledgements.* We thank all those who contributed to the field experiments, especially Newell Hedstrom and Raoul Granger (Environment Canada), Michael Solohub and Steve McCartney (University of Saskatchewan), Tim Link (University of Idaho), Jean-Emmanuel Sicart and Aled Rowlands (University of Wales Aberystwyth), and Rick Janowicz, Glen Ford and Glen Carpenter (Yukon Environment). Wolf Creek Research Basin is operated by the Water Resources Branch, Yukon Department of Environment, and the National Water Research Institute, Environment Canada. This work was supported by Natural Environment Research Council (NERC) Standard Grant NER/A/S/2001/01089, NERC Student Grant NER/S/A/2002/10426, NOAA GAPP via the USDA ARS, the International Polar Year, and the CFCAS research network Improved Processes and Parameterisation for Prediction in Cold Regions (IP3).

## References

- Bewley, D., Pomeroy, J. W., and Essery, R. L.H.: Solar radiation transfer through a subarctic shrub canopy, *Arct. Antarctic Alp. Res.*, 39, 365–374, 2007. 1016, 1017
- Blyth, E. M., Harding, R. J., and Essery, R.: A coupled dual source GCM SVAT, *Hydrol. Earth Syst. Sci.*, 3, 71–84, 1999, <http://www.hydrol-earth-syst-sci.net/3/71/1999/>. 1013, 1015
- Chapin, F. S., McGuire, A. D., Randerson, J., Pielke, R. A., Baldocchi, D., Hobbie, S. E., Roulet, N., Eugster, W., Kasischke, E., Rastetter, E. B., Zimov, S. A., and Running, S. W.: Arctic and boreal ecosystems of western North America as components of the climate system, *Glob. Change Biol.*, 6, 211–223, 2000. 1008
- Environment Canada: Terrestrial Ecozones of Canada, Ecological Land Classification Series No. 19, Ottawa, 35 pp., 1995. 1009
- Epstein, H. E., Beringer, J., Gould, W. A., Lloyd, A. H., Thompson, C. D., Chapin, F. S., Michaelson, G. J., Ping, C. L., Rupp, T. S., and Walker, D. A.: The nature of spatial transitions in the Arctic, *J. Biogeogr.*, 31, 1917–1933, 2004. 1006

## Heat fluxes over shrub tundra

D. Bewley et al.

Title Page

Abstract

Introduction

Conclusions

References

Tables

Figures

◀

▶

◀

▶

Back

Close

Full Screen / Esc

Printer-friendly Version

Interactive Discussion





- Essery, R. L. H. and Pomeroy, J. W.: Vegetation and topographic control of windblown snow distributions in distributed and aggregated simulations for an Arctic tundra basin, *J. Hydrometeorol.*, 5, 734–744, 2004. 1007, 1011, 1018
- Essery, R. L. H., Blyth, E. M., Harding, R. J., and Lloyd, C. M.: Modelling albedo and distributed snowmelt across a low hill on Svalbard, *Nord. Hydrol.*, 36, 207–218, 2005. 1017
- Gelfan, A., Pomeroy J. W., and Kuchment, L.: Modelling forest cover influences on snow accumulation, sublimation and melt, *J. Hydrometeorol.*, 5, 785–803, 2004. 1007
- Hedstrom, N. R. and Pomeroy, J. W.: Measurements and modelling of snow interception in the boreal forest, *Hydrol. Process.*, 12, 1611–1625, 1998. 1020
- Jorgenson, M. T. and Heiner, M.: Ecosystems of Northern Alaska. 1:2.5 million-scale map, ABR Inc., Fairbanks, AK and The Nature Conservancy, Anchorage, AK, 2003. 1006
- Koivusalo, H. and Kokkonen, T.: Snow processes in a forest clearing and in a coniferous forest, *J. Hydrol.*, 262, 145–164, 2002. 1007
- Link, T. and Marks, D.: Point simulation of seasonal snow cover dynamics beneath boreal forest canopies, *J. Geophys. Res.*, 104, 27841–27857, 1999. 1007
- Liston, G. E.: Representing subgrid snow cover heterogeneities in regional and global models, *J. Climate*, 17, 1381–1397, 2004. 1017
- Liston, G. E., McFadden, J. P., Sturm, M., and Pielke, R. A.: Modeled changes in arctic tundra snow, energy and moisture fluxes due to increased shrubs, *Glob. Change Biol.*, 8, 17–32, 2002. 1007
- Mason, P.: The formation of areally-averaged roughness lengths, *Q. J. Roy. Meteor. Soc.*, 114, 399–420, 1988. 1014
- McCartney, S. E., Carey, S. K., and Pomeroy, J. W.: Spatial variability of snowmelt hydrology and its controls on the streamflow hydrograph in a subarctic catchment, *Hydrol. Process.*, 20, 1001–1016, 2006. 1008
- McFadden, J. P., Liston, G. E., Sturm, M., Pielke, R. A., and Chapin, F. S.: Interactions of shrubs and snow in arctic tundra: measurements and models., in: *Soil-Vegetation-Atmosphere Transfer Schemes and Large-Scale Hydrological Models*, edited by: Dolman, A. J., Hall, A. J., Kavvas, M. L., Oki, T., and Pomeroy, J. W., IAHS publication 270, Wallingford, 317–325, 2001. 1007
- Oleson, K. W., Dai, Y., Bonan, G., et al.: Technical description of the Community Land Model (CLM), NCAR Technical Note NCAR/TN-461+STR, Boulder, Colorado, 2004. 1012

---

**Heat fluxes over  
shrub tundra**D. Bewley et al.

---

[Title Page](#)[Abstract](#)[Introduction](#)[Conclusions](#)[References](#)[Tables](#)[Figures](#)[◀](#)[▶](#)[◀](#)[▶](#)[Back](#)[Close](#)[Full Screen / Esc](#)[Printer-friendly Version](#)[Interactive Discussion](#)

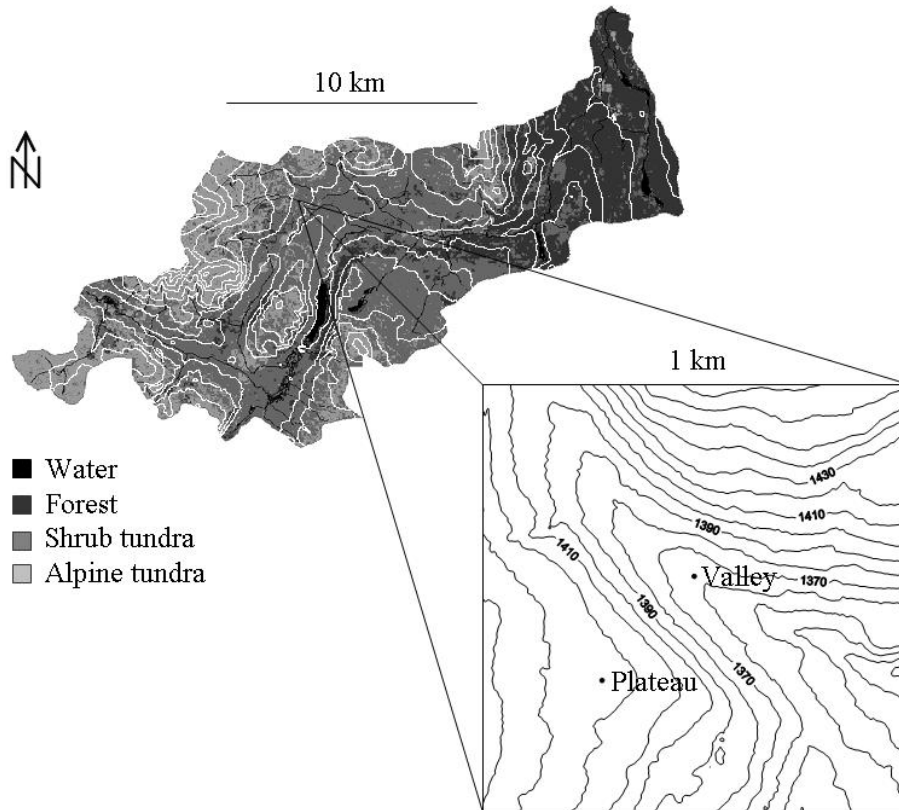
- Pomeroy, J. W., Marsh, P., and Gray, D.,M.: Application of a distributed blowing snow model to the arctic, *Hydrol. Process.*, 11, 1451–1464, 1997. 1007
- Pomeroy, J. W., Toth, B., Granger, R. J., Hedstrom, N. R., and Essery, R. L. H.: Variation in surface energetics during snowmelt in complex terrain, *J. Hydrometeorol.*, 4, 702–716, 2003. 1007
- Pomeroy, J. W., Bewley, D. M., Essery, R. L. H., Hedstrom, N., Granger, R. J., Sicart, R. E., and Janowicz, R.: Shrub tundra snowmelt, *Hydrol. Process.*, 20, 923–941, 2006. 1007
- Price, A. G. and Dunne, T.: Energy balance computations of snowmelt in a subarctic area, *Water Resour. Res.*, 12, 686–694, 1976. 1007
- Schmidt, R. A. and Pomeroy, J. W.: Bending of a conifer branch at subfreezing temperatures: Implications for snow interception, *Can. J. Forest Res.*, 20, 1250–1253, 1990. 1020
- Sicart, J. E., Pomeroy, J. W., Essery, R. L. H., and Bewley, D.: Incoming longwave radiation to melting snow: observations, sensitivity and estimation in northern environments, *Hydrol. Process.*, 20, 3697–308, 2006. 1010, 1018
- Strack, J. E., Pielke, R. A., and Adegoke, J.: Sensitivity of model-generated daytime surface heat fluxes over snow to land-cover changes, *J. Hydrometeorol.*, 4, 24–42, 2003. 1008
- Sturm, M., McFadden, J. P., Liston, G. E., Chapin, F. S., Racine, C. H., and Holmgren, J: Snow-shrub interactions in Arctic tundra: a hypothesis with climatic implications, *J. Climate*, 14, 336–344, 2001. 1007
- Sturm, M., Douglas, T., Racine, C., and Liston, G. E.: Changing snow and shrub conditions affect albedo with global implications, *J. Geophys. Res.*, 110, G01004, doi:10.1029/2005JG000013, 2005. 1008
- Tape, K., Sturm, M., and Racine, C.: The evidence for shrub expansion in Northern Alaska and the Pan-Arctic, *Glob. Change Biol.*, 12, 686–702, 2006. 1006
- Verseghy, D. L., McFarlane, N. A., and Lazare, M.: CLASS – A Canadian land surface scheme for GCMs, II. Vegetation model and coupled runs, *Int. J. Climatol.*, 13, 347–370, 1993. 1012
- Viterbo, P. and Betts, A. K.: Impact on ECMWF forecasts of changes to the albedo of the boreal forests in the presence of snow, *J. Geophys. Res.*, 104(D22), 27803–27810, 1999. 1008
- Yang, Z.-L., Dickinson, R. E., Robock, A., and Vinnikov, K. Y.: On validation of the snow sub-model of the Biosphere-Atmosphere Transfer Scheme with Russian snow cover and meteorological observational data, *J. Climate*, 10, 353–373, 1997. 1011
- Zeng, X. B., Dickinson, R. E., Barlage, M., Dai, Y. J., Wang, G. L., and Oleson, K.: Treatment of undercanopy turbulence in land models, *J. Climate*, 18, 5086–5094, 2005. 1014

---

**Heat fluxes over shrub tundra**D. Bewley et al.

---

[Title Page](#)[Abstract](#)[Introduction](#)[Conclusions](#)[References](#)[Tables](#)[Figures](#)[◀](#)[▶](#)[◀](#)[▶](#)[Back](#)[Close](#)[Full Screen / Esc](#)[Printer-friendly Version](#)[Interactive Discussion](#)



**Fig. 1.** Maps of the Wolf Creek Research Basin (100 m contour interval) showing vegetation zones, and the Granger sub-basin (10 m contour interval) showing the locations of the valley and plateau automatic weather stations.

## Heat fluxes over shrub tundra

D. Bewley et al.

Title Page

Abstract

Introduction

Conclusions

References

Tables

Figures

◀

▶

◀

▶

Back

Close

Full Screen / Esc

Printer-friendly Version

Interactive Discussion



## Heat fluxes over shrub tundra

D. Bewley et al.



**Fig. 2.** Automatic weather stations at the valley site (left) and the plateau site (right). Both photographs were taken on 18 April 2004.

[Title Page](#)

[Abstract](#)

[Introduction](#)

[Conclusions](#)

[References](#)

[Tables](#)

[Figures](#)

[I◀](#)

[▶I](#)

[◀](#)

[▶](#)

[Back](#)

[Close](#)

[Full Screen / Esc](#)

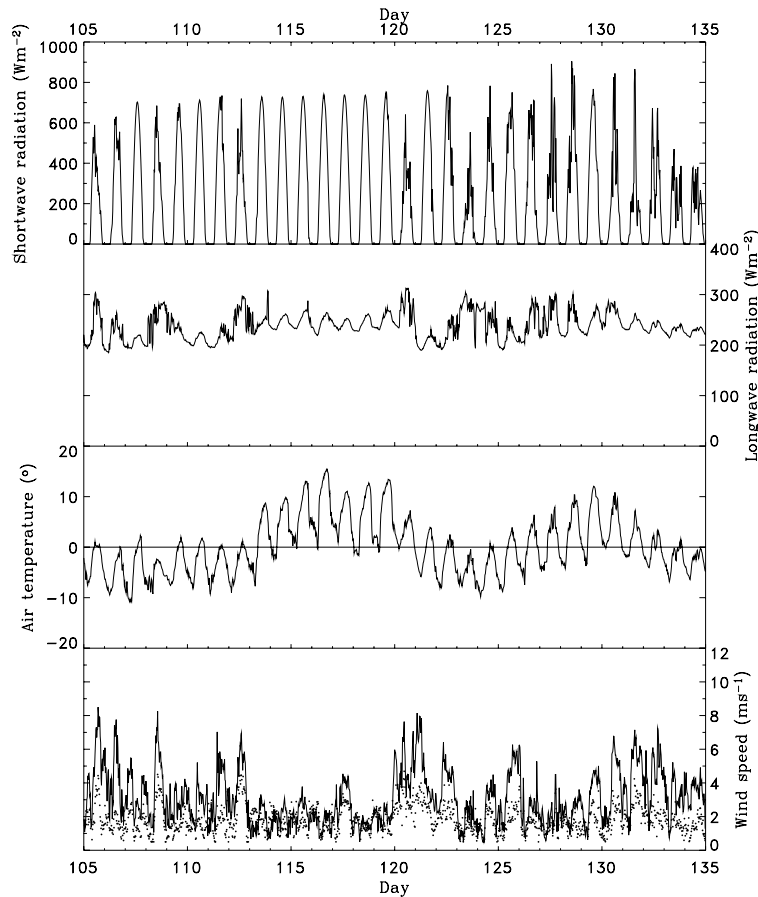
[Printer-friendly Version](#)

[Interactive Discussion](#)



## Heat fluxes over shrub tundra

D. Bewley et al.



**Fig. 3.** Meteorological data for 15 April to 14 May 2003 at the plateau site. Dotted line shows wind speeds at the valley site. Radiation fluxes are incoming to the surface.

Title Page

Abstract

Introduction

Conclusions

References

Tables

Figures

◀

▶

◀

▶

Back

Close

Full Screen / Esc

Printer-friendly Version

Interactive Discussion



## Heat fluxes over shrub tundra

D. Bewley et al.

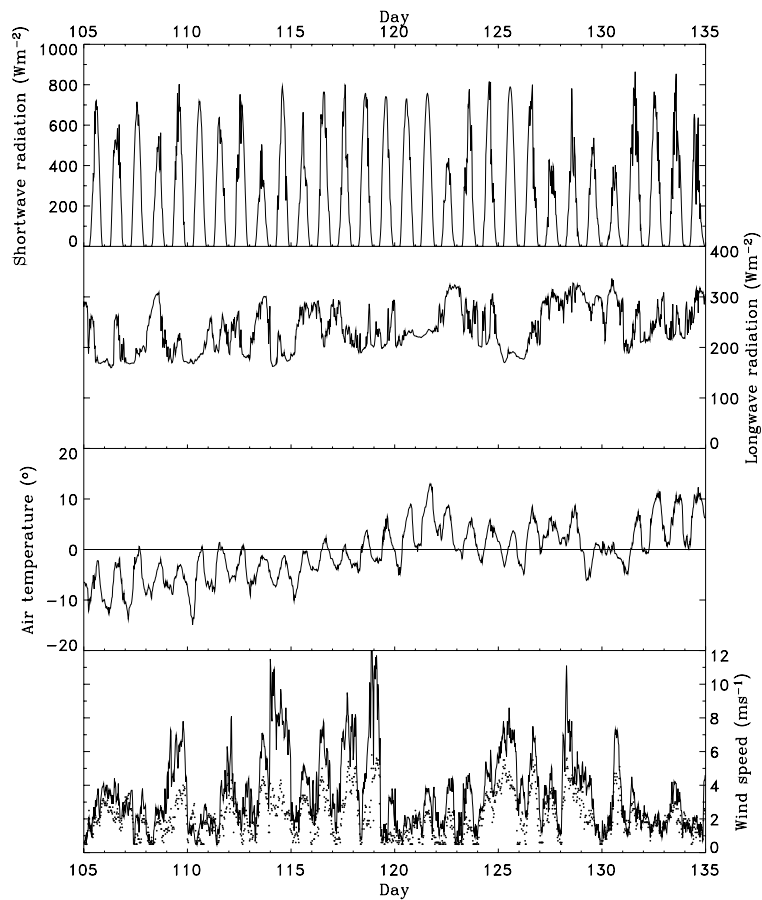


Fig. 4. As Fig. 3, but for 14 April to 13 May 2004.

Title Page

Abstract

Introduction

Conclusions

References

Tables

Figures

◀

▶

◀

▶

Back

Close

Full Screen / Esc

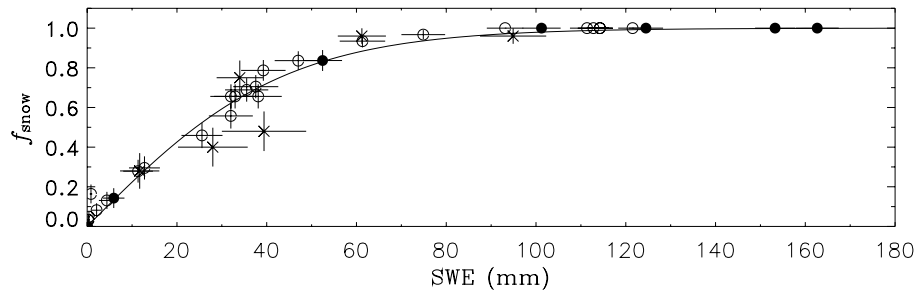
Printer-friendly Version

Interactive Discussion



Heat fluxes over  
shrub tundra

D. Bewley et al.



**Fig. 5.** Measured snow-covered fraction and average SWE, with standard error bars, for the valley site in 2003 (open circles) and 2004 (closed circles) and the plateau site in 2004 only (crosses). The fitted curve is given by Eq. (1).

Title Page

Abstract

Introduction

Conclusions

References

Tables

Figures

◀

▶

◀

▶

Back

Close

Full Screen / Esc

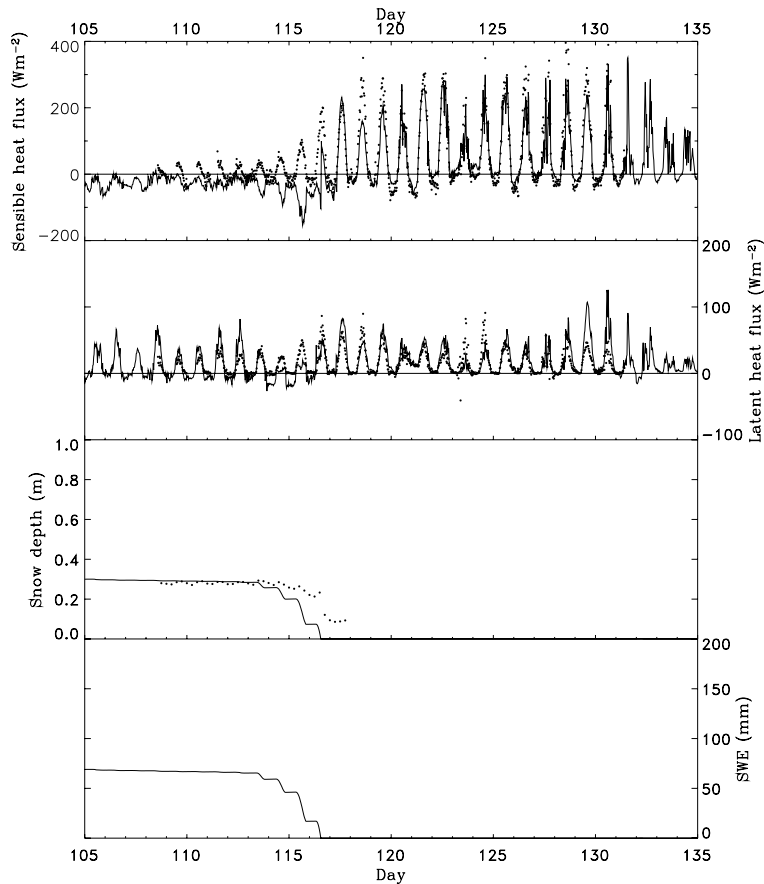
Printer-friendly Version

Interactive Discussion



## Heat fluxes over shrub tundra

D. Bewley et al.



**Fig. 6.** Sensible and latent heat fluxes, snow depth and snow water equivalent for the plateau site in 2003. Dotted lines are automatic measurements, symbols are manual measurements and solid lines are model results discussed in Sect. 3.

Title Page

Abstract

Introduction

Conclusions

References

Tables

Figures

◀

▶

◀

▶

Back

Close

Full Screen / Esc

Printer-friendly Version

Interactive Discussion





Heat fluxes over  
shrub tundra

D. Bewley et al.

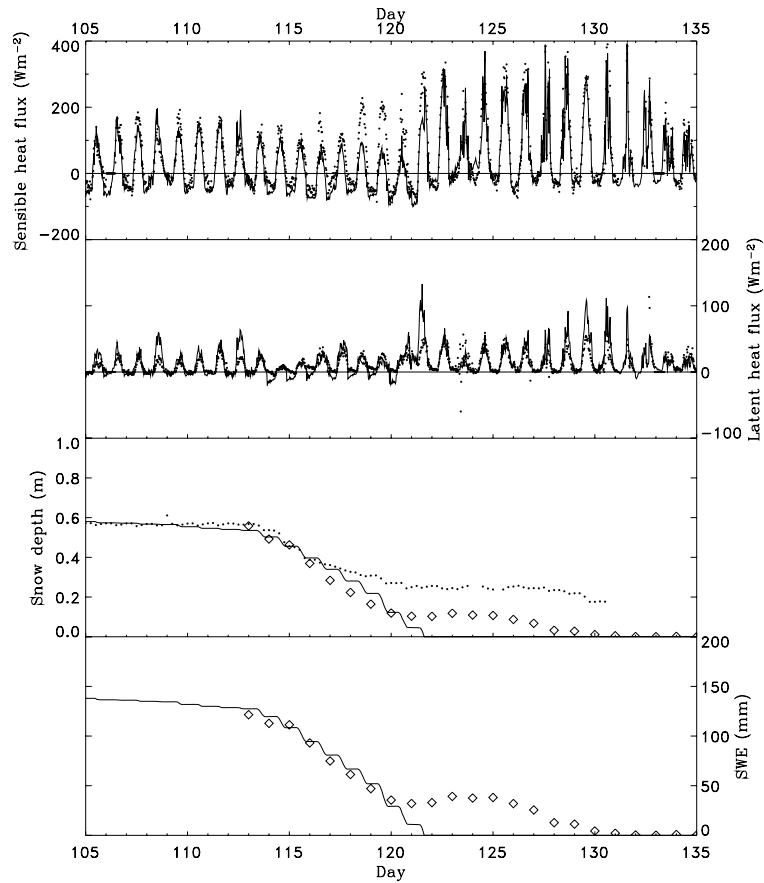


Fig. 7. As Fig. 6, but for the valley site in 2003.

Title Page

Abstract Introduction

Conclusions References

Tables Figures

◀ ▶

◀ ▶

Back Close

Full Screen / Esc

Printer-friendly Version

Interactive Discussion



Heat fluxes over  
shrub tundra

D. Bewley et al.

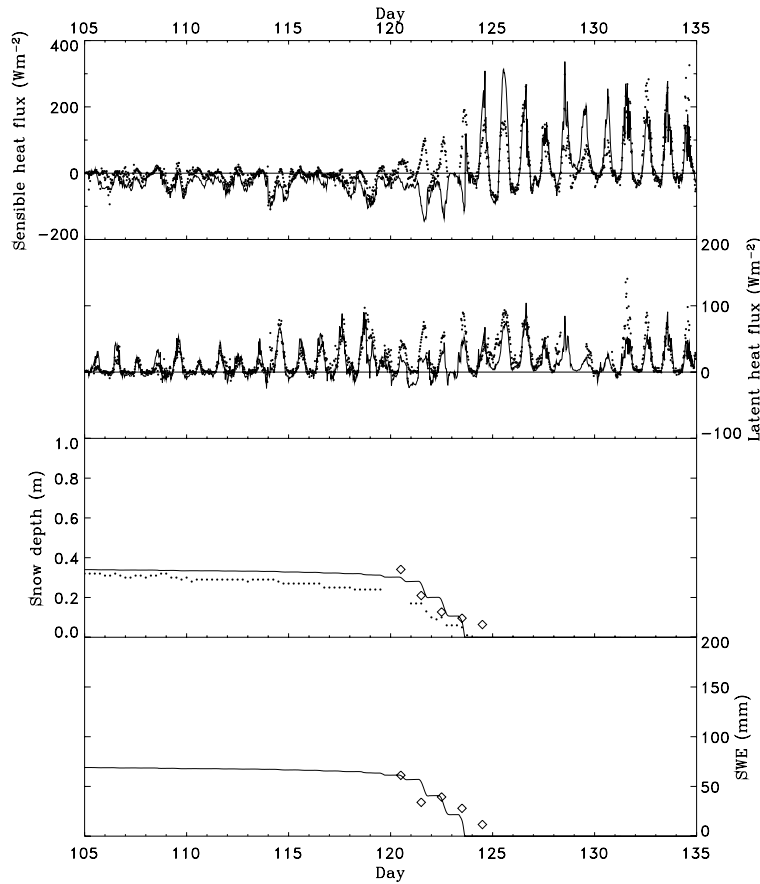


Fig. 8. As Fig. 6, but for the plateau site in 2004.

Title Page

Abstract Introduction

Conclusions References

Tables Figures

◀ ▶

◀ ▶

Back Close

Full Screen / Esc

Printer-friendly Version

Interactive Discussion



Heat fluxes over  
shrub tundra

D. Bewley et al.

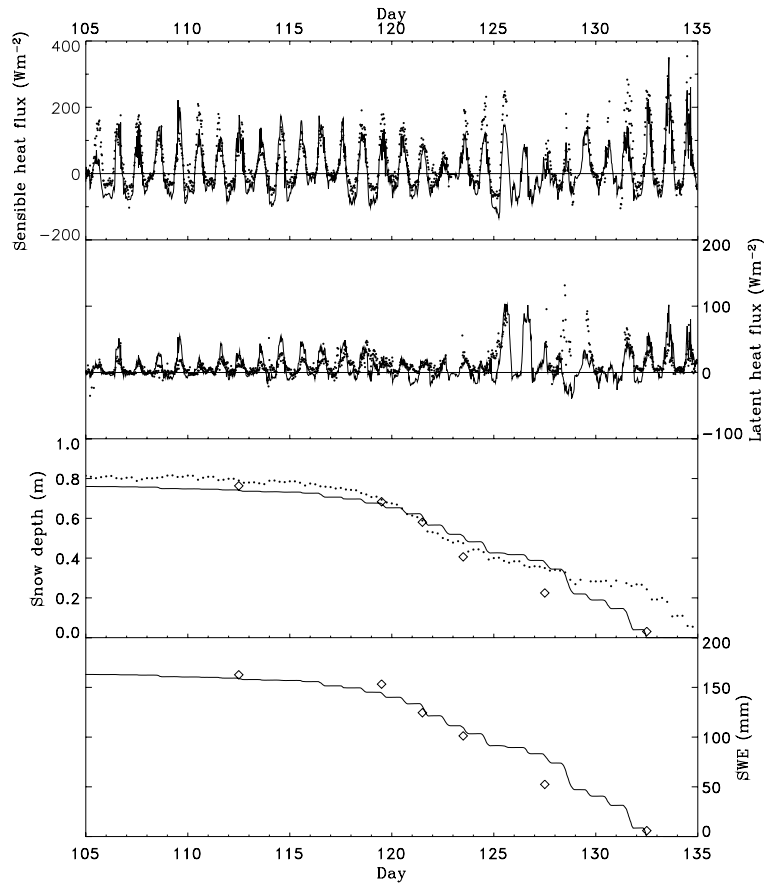


Fig. 9. As Fig. 6, but for the valley site in 2004.

Title Page

Abstract Introduction

Conclusions References

Tables Figures

◀ ▶

◀ ▶

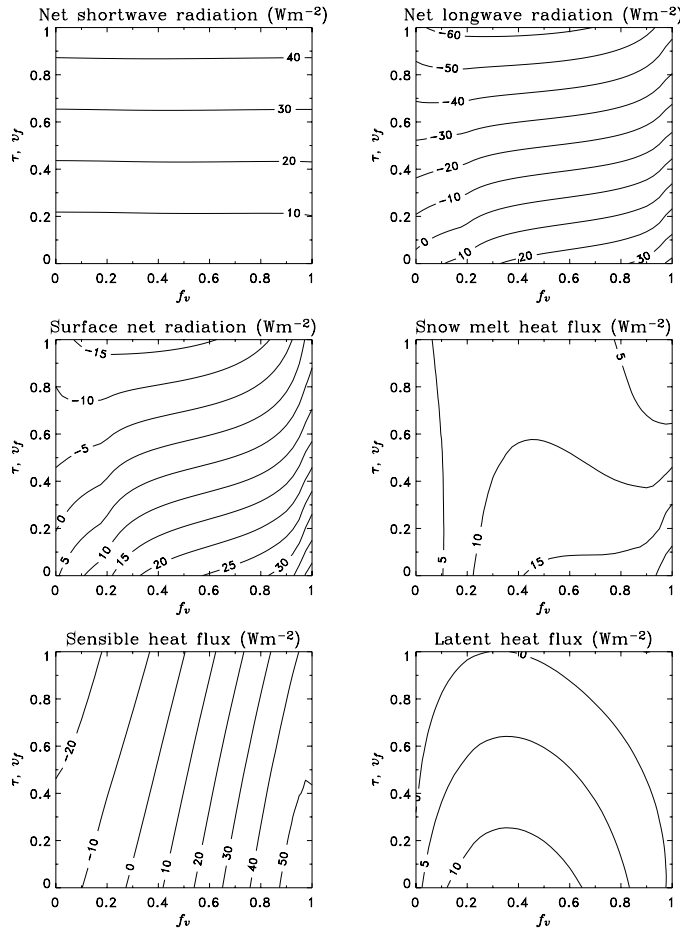
Back Close

Full Screen / Esc

Printer-friendly Version

Interactive Discussion





**Fig. 10.** Contour plots of average net shortwave, longwave and total radiation at the surface, and melt, sensible and latent heat fluxes for varying vegetation fraction  $f_v$ , sky view factor  $v_f$  and transmittance  $\tau$ , assuming  $\tau = v_f$ .

Title Page

Abstract

Introduction

Conclusions

References

Tables

Figures

◀

▶

◀

▶

Back

Close

Full Screen / Esc

Printer-friendly Version

Interactive Discussion

