

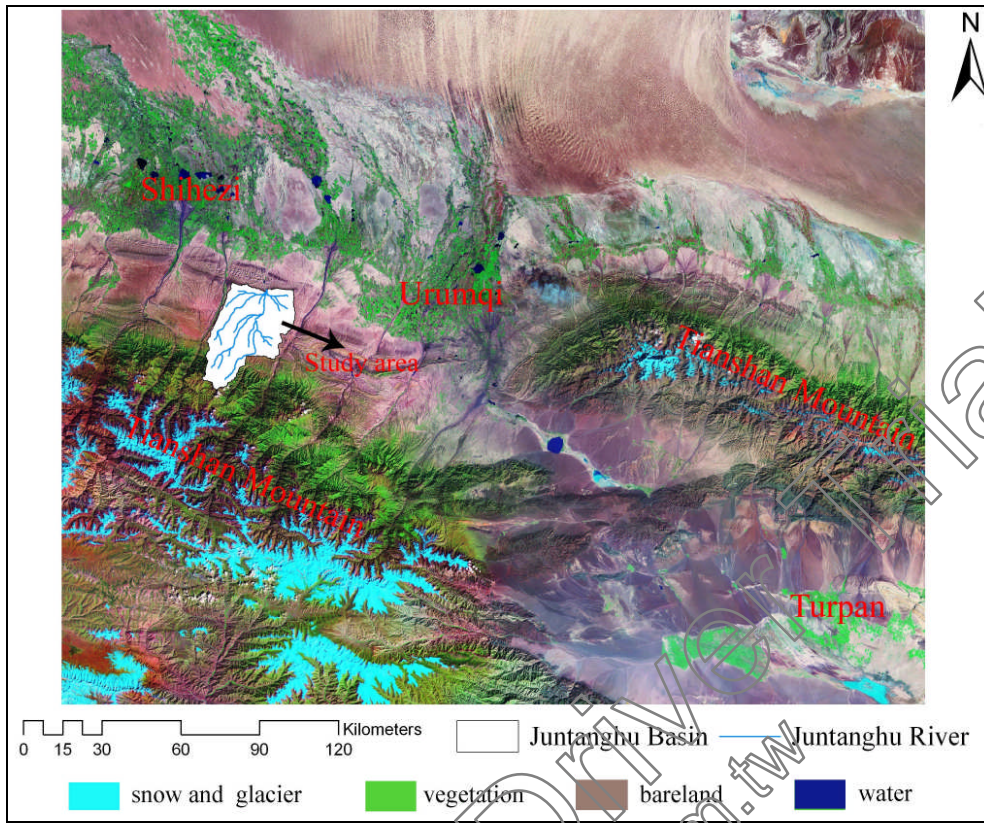
Tab.1 Some soil parameters

<i>Parameter</i> <i>Soil class</i>	<i>Maximum</i> <i>Infiltration</i>	<i>Porosity</i>			<i>Pore Size</i> <i>Distribution</i>			<i>Bubbling</i> <i>Pressure</i>			<i>Field</i> <i>Capacity</i>		<i>Wilting Point</i>			
Chernozem	3.0e-5	.48	.46	.46	.13	.12	.12	.34	.26	.26	.36	.31	.31	.21	.23	.23
Brown calcic soil	2.0e-4	.46	.48	.48	.12	.13	.13	.26	.34	.34	.31	.36	.36	.23	.23	.23
Light chestnut coloured soil	1.0e-5	.39	.39	.39	.12	.12	.12	.29	.29	.29	.27	.27	.27	.17	.17	.17
Dark chestnut soil	1.0e-5	.39	.46	.46	.12	.12	.12	.29	.26	.26	.27	.31	.31	.17	.23	.23
Chestnut soil cultivation	1.0e-5	.46	.46	.46	.12	.12	.12	.26	.26	.26	.31	.31	.31	.23	.23	.23
Grey- cinnamonic soil	3.0e-5	.48	.49	.49	.13	.10	.10	.34	.34	.34	.36	.37	.37	.21	.25	.25
Calcareous Grey-cinnamonic soil	1.0e-5	.46	.48	.48	.12	.13	.13	.26	.34	.34	.31	.36	.36	.23	.21	.21
Alpine meadow soil	1.0e-5	.47	.47	.47	.08	.08	.08	.37	.37	.37	.36	.36	.36	.27	.27	.27
Subalpine meadow soil	1.0e-5	.46	.46	.46	.12	.12	.12	.26	.26	.26	.31	.31	.31	.23	.23	.23

Tab.2 Some vegetation parameters

<i>Vegetation class</i> <i>Parameter</i>	<i>Farmland</i>	<i>Water</i>	<i>Grassland</i>	<i>Bare land</i>	<i>Evergreen Needleleaf</i>
<i>Overstory Present</i>	<i>FALSE</i>	<i>FALSE</i>	<i>FALSE</i>	<i>FALSE</i>	<i>TRUE</i>
<i>Understory Present</i>	<i>TRUE</i>	<i>FALSE</i>	<i>TRUE</i>	<i>FALSE</i>	<i>TRUE</i>
<i>Max Snow Int Capacity</i>					<i>0.04</i>
<i>Root Zone Depths</i>	<i>0.1 0.5 0.5</i>	<i>0.0 0.0 0.0</i>	<i>0.1 0.45 0.4</i>	<i>0.0 0.0 0.0</i>	<i>0.1 0.45 0.5</i>
<i>Overstory Root Fraction</i>					<i>0.2 0.4 0.4</i>
<i>Understory Root Fraction</i>	<i>0.2 0.7 0.1</i>	<i>0.0 0.0 0.0</i>	<i>0.4 0.6 0.0</i>	<i>0.0 0.0 0.0</i>	<i>0.4 0.6 0.0</i>
<i>Maximum Resistance</i>	<i>600</i>		<i>600</i>		<i>5000. 3000.</i>
<i>Minimum Resistance</i>	<i>120</i>		<i>200</i>		<i>650 200.</i>
<i>Overstory LAI(Feb.)(%)</i>					<i>90</i>
<i>Understory LAI(Feb.)(%)</i>	<i>0</i>		<i>0</i>		<i>0</i>
<i>Overstory Alb (Feb.)</i>					<i>0.2</i>
<i>Understory Alb(Feb.)</i>	<i>0.12</i>		<i>0.12</i>		<i>0.12</i>
<i>Height</i>	<i>0.8</i>		<i>0.3</i>		<i>20</i>

Fig.1 The Location of Juntanghu basin



ZEON PDF DRIVER  
www.zeon.com.tw