

This discussion paper is/has been under review for the journal Hydrology and Earth System Sciences (HESS). Please refer to the corresponding final paper in HESS if available.

**TSEBPS for  
estimation of land  
surface heat fluxes**

X. Xin and Q. Liu

# The two-layer surface energy balance parameterization scheme (TSEBPS) for estimation of land surface heat fluxes

**X. Xin and Q. Liu**

State key laboratory of Remote Sensing Science, Institute of Remote Sensing Applications,  
Chinese Academy of Sciences, Beijing 100101, China

Received: 30 September 2009 – Accepted: 26 October 2009 – Published: 4 November 2009

Correspondence to: X. Xin (xin\_xzh@sohu.com)

Published by Copernicus Publications on behalf of the European Geosciences Union.

Title Page

Abstract

Introduction

Conclusions

References

Tables

Figures

◀

▶

◀

▶

Back

Close

Full Screen / Esc

Printer-friendly Version

Interactive Discussion



## Abstract

A Two-layer Surface Energy Balance Parameterization Scheme (TSEBPS) is proposed for the estimation of surface heat fluxes using thermal infrared (TIR) data over sparsely vegetated surfaces. TSEBPS is based on the theory of the classical two-layer energy balance model, as well as a set of new formulations derived from assumption of the energy balance at limiting cases. Two experimental data sets are used to assess the reliabilities of TSEBPS. Based on these case studies, TSEBPS has proven to be capable of estimating heat fluxes at vegetation surfaces with acceptable accuracy. The uncertainties in the estimated heat fluxes are comparable to in-situ measurement uncertainties.

## 1 Introduction

Land surface evapotranspiration (ET) is one of the most important components in the water cycle between the earth and atmosphere, and plays a very important role in the atmosphere, hydrosphere, and biosphere of the planet. It is an urgent task to understand the evapotranspiration process over different surface types and conditions in agriculture, hydrogeology, forest, and ecology for the purpose of using water resources properly. Additionally, land surface evapotranspiration is a key parameter in the synoptic and climatic phenomenon because of the heat and moment transfer processes in association with evapotranspiration. Studies (Dickinson, 1984; Avissar, 1998) on climate models and general circulation models (GCMs) have found that the climate is sensitive to the change of land surface evapotranspiration. At present, remote sensing is the only efficient technical way that can be used to monitor surface evapotranspiration on the regional scale. Spatial and temporal distributions of the key state variables of the land surface energy balance can be provided by remote sensing, and can be used to estimate surface evapotranspiration. The data of mid-low resolution meteorology and the land resource satellite can cover large areas of the land surface and

**HESSD**

6, 6795–6832, 2009

### **TSEBPS for estimation of land surface heat fluxes**

X. Xin and Q. Liu

Title Page

Abstract

Introduction

Conclusions

References

Tables

Figures

◀

▶

◀

▶

Back

Close

Full Screen / Esc

Printer-friendly Version

Interactive Discussion



can observe repeatedly in short periods, which is useful for the research in the drought monitoring, climate changes, water resource management, and so on.

Generally, surface evapotranspiration (i.e. latent heat flux  $LE$ ) is estimated as the residual term of surface energy balance equation. Remotely sensed data have been used successfully over the past years to estimate the surface net radiation and the soil heat flux (hence available energy) from combined visible, near infrared and thermal infrared data (Norman et al., 1995; Liang et al., 2000; Su et al., 2001; Ma, 2003). Therefore, the primary focus has been the determination of the sensible heat flux based on the spatially distributed surface temperature fields. The turbulent heat fluxes models to estimate the sensible heat flux can be categorized into two groups, single-source models and dual-source models, according to whether or not the model separates the foliage and the substrate soil. In the single-source models, a so called “excess” resistance or parameter  $kB^{-1}$  is used to account for the difference between the remotely sensed radiative surface temperature  $T_r$  and the aerodynamic temperature  $T_0$ . The difference between  $T_0$  and  $T_r$  depends on a number of factors within the soil-plant-atmosphere continuum (SPAC) as well as the viewing condition of the thermal infrared (TIR) sensor. Therefore, it is very difficult to find out a robust relationship that takes all these factors into account. Many authors (Blyth et al., 1995; Verhoef et al., 1997; Troufleau et al., 1997; Kustas et al., 1999; Massman, 1999) have examined the features of the  $kB^{-1}$  parameter. This parameter is a complex function of canopy structure, water stress and environment factors, and it is too variable to provide a universal solution for estimating the sensible heat flux using single-angle radiative surface temperature. This problem can be circumvented to some extent by using the dual-source models. In this type of models, the heat fluxes of the components (foliage and soil) are simulated individually, and the aerodynamic temperature is analytically expressed in terms of the component temperatures and a set of resistances, as described in the two-layer model proposed by Shuttleworth and Wallace (1985) and revised by Shuttleworth and Gurney (1990). This is very important for sparsely vegetated surfaces, because in this circumstance the contribution of soil surface cannot be neglected. Otherwise, the bias

## TSEBPS for estimation of land surface heat fluxes

X. Xin and Q. Liu

Title Page

Abstract

Introduction

Conclusions

References

Tables

Figures

◀

▶

◀

▶

Back

Close

Full Screen / Esc

Printer-friendly Version

Interactive Discussion



of the estimated surface heat fluxes can be significant.

Even though the advantage of the dual-source models in physics has been recognized by the scientific community, the most widely used methods in applications are still based on the assumption of the single source of the surface heat fluxes. This results from such a fact that the use of the two-layer model for operational purpose requires component surface temperatures (i.e. soil and vegetation), which is still not available from regular observations and retrieval of the most space-borne remote sensors. Studies of applying the two-layer model with traditional single-angle TIR data have been reported since the model was proposed (Norman et al., 1995; Jupp et al., 1999; Xin et al., 2002). Usually, this is achieved by simplification of the model or adding an empirical relationship in the model, which decreases the modeling accuracy or limits universal application.

In this study, we have developed a physics-based Two-layer Surface Energy Balance Parameterization Scheme (TSEBPS) for estimation of land surface heat fluxes. We combined the two-layer model developed by Shuttleworth and Wallace (1985) with techniques of handling limiting cases as shown in Su (2002) and Norman et al. (1995) to derive the component temperature difference (CTD) under several extreme soil moisture states. Additionally, a directional thermal radiative transfer model is used to simulate the radiative surface temperature at these states. Then an index is developed using the observed surface temperature and the simulated temperature at the extreme states. This index is then used to calculate the actual sensible and latent heat fluxes of the foliage and soil surface.

## TSEBPS for estimation of land surface heat fluxes

X. Xin and Q. Liu

Title Page

Abstract

Introduction

Conclusions

References

Tables

Figures

◀

▶

◀

▶

Back

Close

Full Screen / Esc

Printer-friendly Version

Interactive Discussion



## 2 TSEBPS (Two-layer Surface Energy Balance Parameterization Scheme)

### 2.1 The Two-layer Surface Energy Balance model

The classical two-layer model by Shuttleworth and Wallace (1985) founded the theory basis for this study (Fig. 1). The surface energy balance is commonly written as

$$R_n - G = H + LE \quad (1)$$

where  $R_n$  is the net radiation,  $G$  is the soil heat flux,  $H$  is the sensible heat flux, and  $LE$  is the latent heat flux ( $L$  is the latent heat of vaporization and  $E$  is the actual evapotranspiration). The net radiation of the surface ( $R_n$ ) can be calculated from the equation:

$$R_n = S_d(1 - \alpha) + \varepsilon_s L_d - L_u \quad (2)$$

where  $S_d$  is solar irradiation,  $\alpha$  surface albedo,  $\varepsilon_s$  surface emissivity,  $L_d$  downward atmosphere longwave radiation, and  $L_u$  surface emitted longwave radiation.  $G$  can be calculated with method used by Su (2002):

$$G = R_n \cdot [\Gamma_c + (1 - f_c) \cdot (\Gamma_s - \Gamma_c)] \quad (3)$$

where,  $\Gamma_s = 0.315$  and  $\Gamma_c = 0.05$ ,  $f_c$  fractional canopy coverage.

The budget of the net radiation between soil and the canopy can be calculated using the Beer's law:

$$R_{ns} = b(\theta)R_n \quad (4)$$

$$R_{nv} = R_n - R_{ns} \quad (5)$$

where  $R_{ns}$  and  $R_{nv}$  are the net radiation of soil and the canopy, and  $b(\theta)$  is the gap frequency of the canopy written as

$$b(\theta) = \exp(-G(\theta) \cdot LAI / \cos\theta) \quad (6)$$

Title Page

Abstract

Introduction

Conclusions

References

Tables

Figures

◀

▶

◀

▶

Back

Close

Full Screen / Esc

Printer-friendly Version

Interactive Discussion



where,  $\theta$  is the solar zenith angle, LAI leaf area index of the canopy, and  $G(\theta)$  projection coefficient of the leaves which is related to the leaf angle distribution (LAD). The energy balance of the soil is written as:

$$R_{ns} = H_s + LE_s + G \quad (7)$$

5 The energy balance of the canopy is written as:

$$R_{nv} = H_v + LE_v \quad (8)$$

The basic principle underlying two-layer models is that the two sources of water vapor and heat are superimposed and hence heat and water vapor enter or leave the bottom layer only via the top one. The total flux of sensible heat emanating from the whole surface is the sum of the fluxes emanating from each layer (here soil and vegetation).  
10 So there is

$$H = H_s + H_v = \rho C_p \frac{[T_0 - T_a]}{r_{aa}} \quad (9)$$

where,  $\rho$  is the air density ( $\text{kg m}^{-3}$ ),  $C_p$  the specific heat of air at constant pressure ( $\text{J kg}^{-1} \text{K}^{-1}$ ),  $T_0$  the aerodynamic temperature (K) defined as the extrapolation of the air temperature profile down to the apparent source/sink of heat within the canopy,  $T_a$  air  
15 temperature (K) at the reference height, and  $r_{aa}$  the aerodynamic resistance ( $\text{s m}^{-1}$ ) for heat transfer.  $H_s$  and  $H_v$  are soil and vegetation sensible heat fluxes, respectively, which can be expressed according to the gradient-diffusion hypothesis as

$$H_s = \rho C_p \frac{T_s - T_0}{r_{a_s}} \quad (10a)$$

$$20 \quad H_v = \rho C_p \frac{T_v - T_0}{r_{a_v}} \quad (10b)$$

Title Page

Abstract

Introduction

Conclusions

References

Tables

Figures

◀

▶

◀

▶

Back

Close

Full Screen / Esc

Printer-friendly Version

Interactive Discussion



where,  $T_s$  and  $T_v$  are soil and vegetation temperature, respectively,  $r_{a_s}$  the aerodynamic resistance between soil and the source height in the canopy, and  $r_{a_v}$  the bulk boundary-layer resistance of the vegetation. The transfer of the latent heat flux in the canopy can also be expressed similarly as:

$$5 \quad LE = LE_s + LE_v = \frac{\rho C p}{\gamma} \cdot \frac{e_0 - e_a}{r_{aa}} \quad (11)$$

$$LE_s = \frac{\rho C p}{\gamma} \cdot \frac{e(T_s) - e_0}{r_{ss} + r_{as}} \quad (12a)$$

$$LE_v = \frac{\rho C p}{\gamma} \cdot \frac{e^*(T_v) - e_0}{r_{st} + r_{av}} \quad (12b)$$

where,  $\gamma$  is the psychrometric constant ( $\text{kPa K}^{-1}$ ),  $e_0$  the aerodynamic vapor pressure of the surface,  $e_a$  vapor of the atmosphere,  $LE_s$  and  $LE_v$  soil and vegetation latent heat fluxes respectively,  $e(T_s)$  and  $e^*(T_v)$  vapor pressure of soil surface and the saturate vapor pressure in leaf stomata respectively,  $r_{ss}$ , and  $r_{st}$  soil surface resistance and leaf stomata resistance, respectively.

Aerodynamic resistance  $r_{aa}$  is formulated using the stability correction method by Choudhury (1989):

$$15 \quad r_{aa} = r_{a0} \phi \quad (13)$$

where  $r_{a0}$  is the aerodynamic resistance in the neutral atmosphere condition:

$$r_{a0} = \frac{\left[ \ln \left( \frac{z-d}{z_0} \right) \right]^2}{k^2 U} \quad (14)$$

where  $u$  is the wind speed at the reference height  $z$ , and  $k$  von Karman's constant. The corrective term  $\phi$  is calculated with:

$$\phi = \frac{1}{(1+\eta)^p} \begin{cases} p = 2 \text{ Stable} \\ p = 3/4 \text{ Unstable} \end{cases} \quad (15)$$

$$\eta = \frac{5g(z-d)(T_0 - T_a)}{T_a u^2}$$

where  $g$  is acceleration due to gravity ( $\text{ms}^{-2}$ ). The zero plane displacement height  $d$  and the roughness length for momentum  $z_0$  can be determined following Choudhury and Monteith (1988), who fitted simple functions to the curves obtained by Shaw and Pereira (1982) from the second-order closure theory:

$$d = 1.1h \ln \left[ 1 + (c_d \text{LAI})^{1/4} \right] \quad (16)$$

$$z_0 = \begin{cases} z_{0s} + 0.3h(c_d \text{LAI})^{1/2} & 0 \leq c_d \text{LAI} \leq 0.2 \\ 0.3h(1 - d/h) & 0.2 < c_d \text{LAI} \leq 1.5 \end{cases} \quad (17)$$

where,  $c_d$  is the mean drag coefficient assumed to be uniform within the canopy (0.2), and  $z_{0s}$  the roughness length of the substrate. For bare soil,  $z_{0s}$  is taken as 0.01 m. The formulations for resistances  $r_{a_s}$  and  $r_{a_v}$  proposed by Choudhury and Monteith (1988) and Shuttleworth and Gurney (1990) are used here:

$$r_{a_v} = \alpha_w [w/u(h)]^{1/2} / \{4\alpha_0 \text{LAI} [1 - \exp(-\alpha_w/2)]\} \quad (18)$$

$$r_{a_s} = h \exp(\alpha_w) \{ \exp[-\alpha_w z_{0s}/h] - \exp[-\alpha_w(d+z_0)/h] \} / [\alpha_w K(h)] \quad (19)$$

where  $w$  is the leaf width,  $u(h)$  the wind speed at canopy height  $h$ ,  $\alpha_0$  and  $\alpha_w$  two constant coefficients equal to 0.005 ( $\text{ms}^{-1/2}$ ) and 2.5 (dimensionless), respectively. The value of eddy diffusivity at canopy height  $K(h)$  is determined with  $K(h) = k u_*(h-d)$ .

Title Page

Abstract

Introduction

Conclusions

References

Tables

Figures

◀

▶

◀

▶

Back

Close

Full Screen / Esc

Printer-friendly Version

Interactive Discussion





## 2.2 Parameterization scheme based on limiting cases

Figure 2 gives the flow chart of the parameterization. First of all, the limiting cases of soil moisture in the soil-plant-atmosphere continuum (SPAC) are defined, which are dry-limit, wet-limit, and transition-state. The definitions of the dry- and wet-limit are similar to those in SEBS (2002), but differ in processing soil and foliage components individually. The transition-state occurs when the surface soil layer is dry and the root zone soil is still wet, which is understandable and predictable in natural vegetation because the drying-off process after a rainfall or irrigation event starts from the surface. Then the component temperature difference (CTD, i.e.,  $T_s - T_v$ ) at the limiting cases is derived based on the assumptions.

Under the dry-limit, the latent heat (or the evaporation and transpiration) becomes zero due to the limitation of soil moisture and the sensible heat flux is at its maximum value. From Eqs. (1), (7) and (8), it follows,

$$\begin{aligned} LE_{s,dry} &= 0 \\ H_{s,dry} &= R_{ns} - G \end{aligned} \quad (20)$$

and

$$\begin{aligned} LE_{v,dry} &= 0 \\ H_{v,dry} &= R_{nv} \end{aligned} \quad (21)$$

The CTD under this case can be derived from Eq. (10).

$$\delta T_{dry} = T_{s,dry} - T_{v,dry} = \frac{1}{\rho C_p} [(R_{ns} - G)r_{as} - R_{nv}r_{av}] \quad (22)$$

The aerodynamic surface temperature at dry-limit  $T_{0,dry}$  can also be calculated from Eq. (9). Hence, the soil and foliage temperatures under this case  $T_{s,dry}$  and  $T_{v,dry}$  can be calculated using  $\delta T_{dry}$  and  $T_{0,dry}$ .

Under the wet-limit, where the evaporation and transpiration take place at potential rates (i.e. the evaporation and transpiration is limited only by the energy available under

Title Page

Abstract

Introduction

Conclusions

References

Tables

Figures

◀

▶

◀

▶

Back

Close

Full Screen / Esc

Printer-friendly Version

Interactive Discussion



the given surface and atmospheric conditions), the sensible heat flux takes its minimum value.

$$LE_{\text{wet}} = LE_{\rho} \quad (23)$$

The component temperature difference between soil and foliage can be derived based on the P-M type equation of soil and the canopy and assuming the soil surface resistance and the stomata resistance are zero, we have

$$\begin{aligned} T_{s,\text{wet}} &= \frac{(R_{ns}-G)r_{as}/\rho C_p - D_{0,\text{wet}}/\gamma}{1+\Delta_{\text{wet}}/\gamma} + T_{0,\text{wet}} \\ T_{v,\text{wet}} &= \frac{R_{nc}r_{av}/\rho C_p - D_{0,\text{wet}}/\gamma}{1+\Delta_{\text{wet}}/\gamma} + T_{0,\text{wet}} \\ \delta T_{\text{wet}} &= T_{s,\text{wet}} - T_{v,\text{wet}} = \frac{1}{\rho C_p} \frac{[(R_{ns}-G)r_{as} - R_{nc}r_{av}]}{1+\Delta_{\text{wet}}/\gamma} \end{aligned} \quad (24)$$

where  $\delta T_{\text{wet}}$  is CTD under the wet-limit,  $\Delta_{\text{wet}}$  is the slope of the saturate vapor pressure versus the temperature, and  $\gamma$  is psychrometric constant. Hence, the soil and foliage temperatures under this case  $T_{s,\text{wet}}$  and  $T_{v,\text{wet}}$  can be calculated using  $\delta T_{\text{wet}}$  and  $T_{0,\text{wet}}$ .

Under the transition-state, where the evaporation becomes zero due to the limitation of surface soil moisture, and the transpiration is limited only by the energy available (i.e., root zone soil moisture is still at wet-limiting). So there is:

$$LE_{s,\text{trans}} = 0 \quad (25)$$

and the transpiration is simulated using Priestly-Taylor equation.

$$LE_{v,\text{trans}} = a \cdot f_g \cdot \frac{\Delta}{\Delta + \gamma} R_{nv} \quad (26)$$

where Priestly-Taylor constant  $a = 2.0$  according to Kustas et al. (1999),  $f_g$  is fraction of green leaves in the canopy. So the aerodynamic surface temperature  $T_{0,\text{trans}}$  and foliage temperature  $T_{v,\text{trans}}$  under this case can be calculated using Eqs. (9) and (10), and the soil temperature  $T_{s,\text{trans}}$  under this case is derived using  $T_{0,\text{trans}}$  and  $T_{v,\text{trans}}$ .

## TSEBPS for estimation of land surface heat fluxes

X. Xin and Q. Liu

Title Page

Abstract

Introduction

Conclusions

References

Tables

Figures

◀

▶

◀

▶

Back

Close

Full Screen / Esc

Printer-friendly Version

Interactive Discussion



**TSEBPS for  
estimation of land  
surface heat fluxes**

X. Xin and Q. Liu

Title Page

Abstract

Introduction

Conclusions

References

Tables

Figures



Back

Close

Full Screen / Esc

Printer-friendly Version

Interactive Discussion



Based on the above assumptions and calculations, we have the aerodynamic surface temperature under the limiting cases,  $T_{0,dry}$ ,  $T_{0,wet}$ , and  $T_{0,trans}$ , and the soil and foliage temperatures under the limiting cases,  $T_{s,dry}$ ,  $T_{v,dry}$ ,  $T_{s,trans}$ ,  $T_{v,trans}$ , and  $T_{s,wet}$ ,  $T_{v,wet}$ . So we also have the sensible and latent heat fluxes of the soil and foliage under the limiting cases,  $H_{s,dry}$ ,  $H_{v,dry}$ ,  $LE_{s,dry}$ ,  $LE_{v,dry}$ ,  $H_{s,trans}$ ,  $H_{v,trans}$ ,  $LE_{s,trans}$ ,  $LE_{v,trans}$ , and  $H_{s,wet}$ ,  $H_{v,wet}$ ,  $LE_{s,wet}$ ,  $LE_{v,wet}$  based on Eq. (10).

The next step is to derive the actual sensible and latent heat fluxes of the soil and foliage using an interpolate method from the limiting cases. We assume that the dry- and wet-limit cases set reasonable boundaries of the surface heat balance under limiting conditions, and the transition-state gives a key spot where dramatic changes of the budget of sensible and latent heat of the canopy take place (i.e., transpiration is at its maximum value and evaporation decreases between wet-limit and transition-state, and evaporation is zero and transpiration decreases between transition-state and dry-limit). Increasing or decreasing the soil and foliage heat fluxes can bring about changes in the temperatures of the soil and foliage, which can result in canopy surface temperature changes. We have derived the component temperatures under the limiting-cases, from which we simulated the radiometric surface temperature under the limiting cases,  $T_{r,dry}$ ,  $T_{r,wet}$ , and  $T_{r,trans}$  using a directional thermal infrared radiative transfer model of the canopy. In this study, the model proposed by François (1997) was used to simulate directional radiometric surface temperatures. In the simulation, the observing zenith angle takes the actual angle in the field measurement of  $T_r$ , and the soil and foliage emissivity takes the value of 0.94 and 0.98 following François (1997) and François (2002). So the actual heat fluxes can be derived based on the comparison between the actual surface temperature and the simulated surface temperature under the limiting-cases.

Comparison between the measured radiometric surface temperature and the simulated surface temperature under the limiting cases can give a clue of the status of soil moisture, i.e., higher temperature than that under the transition state hints limitation of soil moisture on evaporation, and lower temperature than that under the transition state

may indicate relatively better soil moisture condition in the canopy. The derivation of the actual heat fluxes is:

1. If  $T_{r,wet} < T_r < T_{r,trans}$ , transpiration is at its maximum value and evaporation decreases, we have:

$$\begin{aligned} LE_V &= LE_{V,wet} = LE_{V,trans} \\ LE_S &= (LE_{S,wet} - LE_{S,trans}) \times (1 - x^n) + LE_{S,trans} \end{aligned} \quad (27)$$

where  $x$  is an index build from radiometric surface temperatures:

$$x = (T_r - T_{r,wet}) / (T_{r,trans} - T_{r,wet}) \quad (28)$$

The sensible heat flux of soil and foliage is then derived as the residual of the energy balance equation of the soil and foliage.

2. If  $T_{r,trans} < T_r < T_{r,dry}$ , evaporation is zero and transpiration decreases, we have:

$$\begin{aligned} H_V &= (H_{V,dry} - H_{V,trans}) \times (1 - y^n) + H_{V,trans} \\ H_S &= H_{S,dry} = H_{S,trans} \end{aligned} \quad (29)$$

where  $y$  is an index build from radiometric surface temperatures:

$$y = (T_{r,dry} - T_r) / (T_{r,dry} - T_{r,trans}) \quad (30)$$

The latent heat flux of soil and foliage is then derived as the residual of the energy balance equation of the soil and foliage.

The indices  $x$  and  $y$  are used to measure the relative distance of the actual radiometric surface temperatures from the virtual radiometric surface temperatures under the limiting cases. The coefficient  $n$  is used to account for the non-linear effect of the heat fluxes changing with the relative change of the surface temperature. Here we take the value of  $n = 0.25$  and it shows that the result is not sensitive to this coefficient.

Title Page

Abstract

Introduction

Conclusions

References

Tables

Figures

◀

▶

◀

▶

Back

Close

Full Screen / Esc

Printer-friendly Version

Interactive Discussion



3. If an unexpected situation happens, such as  $T_r > T_{r,dry}$  or  $T_r < T_{r,wet}$ , which may result from the errors of the measurements, simulations and assumptions, the heat fluxes under the limiting cases are used for the actual heat fluxes.

### 3 Data

5 Two sets of in-situ data were used for evaluation of TSEBPS: 1) the data set from the “Quantitative Remote Sensing theory and application for Land Surface Parameters (QRSLSP)” project at Shunyi, Beijing, China, 2001, and 2) the data set from the “Watershed Allied Telemetry Experiment Research (WATER)” project in the Heihe River Basin, Gansu, China, 2008.

#### 10 3.1 Winter wheat in Beijing

The winter wheat dataset was obtained during the “Quantitative Remote Sensing theory and application for Land Surface Parameters (QRSLSP)” campaign that was carried out in North China in April 2001. The main concern of this experiment was for quantitative remote sensing applications in agriculture. The winter wheat fields located  
15 in Shunyi district, north of Beijing (116°34' E, 40°12' N) were selected as the chief observation target. The winter wheat with row structure and regular irrigation is one of the main agricultural crops in North China, and usually the growing period after the winter starts from the end of March through the beginning of April. The experiment was carried out in April in order to obtain the in-situ data during the rapid growing period of the winter wheat. There are three observation sites, NW3, NW4 and NW5 that are adjacent  
20 from south to north, with different planting and management measures, such as wheat cultivar, sowing date, irrigation/fertilization date and amount due to the fields belonging to different farmers, which resulted in different surface conditions among the three sites especially the soil moisture. During the experiment period, soil moisture condition was  
25 the best in NW4 and the worst in NW5, which resulted in evident difference in heat

## TSEBPS for estimation of land surface heat fluxes

X. Xin and Q. Liu

Title Page

Abstract

Introduction

Conclusions

References

Tables

Figures

◀

▶

◀

▶

Back

Close

Full Screen / Esc

Printer-friendly Version

Interactive Discussion



fluxes and surface temperature between the fields.

Turbulent heat fluxes and meteorological data were measured with Bowen-ratio (BR) systems and auto-weather stations (AWS) at the 3 sites, respectively (see Table 1). The interchange of high- and low- layer measurements takes place for every 10-min for sites NW3 and NW4, and 5-min for site NW5, from which 20-min (NW3 and NW4)/10-min (NW5) average turbulent fluxes ( $H$  and  $LE$ ) were computed in order to eliminate the discrepancy of equipments at the two sides of the system. While 10-min averages of net radiation and soil heat flux were stored. In addition, 10-min averaged ancillary meteorological data, such as air temperature, relative humidity, and wind speed were also recorded. 10-min average surface brightness temperature was measured and recorded by TIR radiometers, from which the radiative surface temperature was obtained by correction of atmospheric effect and emissivity (Oliosio et al., 1996). Hence, every 20-min (NW3 and NW4)/10-min (NW5) averaged heat fluxes, net radiation, soil heat flux, meteorological data, and surface temperature during daytime (when both sensible and latent heat fluxes are positive) were collected as a group of data, and regarded as a sample (see Table 2). The period of available data of the 3 sites are different due to the different beginning/ending time of TIR observation.

As a necessary input for the model, canopy structure data (including leaf area index (LAI), canopy height, leaf shape, and row width and space) were also measured manually by a specific team at the 3 sites regularly during the experiment.

So the winter wheat dataset contains 3 sub-datasets, which represent different soil moisture condition as well as different vegetation density as shown in Table 2. The 3 sub-datasets are used independently to evaluate TSEBPS. More detailed information about the experiment can be found in Liu et al. (2002) for the interested.

### 3.2 Maize in Gansu

The maize dataset was obtained during “Watershed Allied Telemetry Experimental Research (WATER)” project carried out in Heihe River Basin of Gansu province, North-west China from May to July 2008 (Li et al., 2009). The main concern of this experi-

## TSEBPS for estimation of land surface heat fluxes

X. Xin and Q. Liu

Title Page

Abstract

Introduction

Conclusions

References

Tables

Figures

◀

▶

◀

▶

Back

Close

Full Screen / Esc

Printer-friendly Version

Interactive Discussion



ment was to study hydrology and ecology processes using remote sensing techniques, therefore evapotranspiration is one of the main concerns in this project. Heihe River Basin of Gansu province is located in the arid/semi-arid region in the northwest of China, where the agricultural and natural ecosystems suffer from deficit of precipitation frequently. The agriculture is supported mostly by the irrigation system, which takes the melted snow/ice water from the upper-stream Qilian mountain area to the flat middle- and lower-stream oasis.

The site Yingke (YK) is located in the artificial oasis to the south of Zhangye city (100°24' E, 38°51' N), where the main crop is maize with row structure and regular irrigation. The turbulent heat fluxes and meteorological data were measured with eddy-covariance system (EC) and auto-weather station (AWS). Half-hourly averaged turbulent fluxes ( $H$  and  $LE$ ) were computed, while 10-min averages of net radiation and soil heat flux were stored. In addition, 10-min average ancillary meteorological data, such as air temperature, relative humidity, and wind speed were also recorded. About 80% energy closure ratio was found in the EC data. Since the two-layer model requires energy conservation, closure in the flux measurements was enforced through a Bowen-ratio method; that is, Bowen-ratio was calculated using  $H$  and  $LE$  of the EC measurements, and then  $H_{BR}$  and  $LE_{BR}$  were recalculated with Bowen-ratio method using net radiation and soil heat flux. 10-min average surface brightness temperature was measured and recorded by TIR radiometers, from which the radiative surface temperature was obtained by correction of atmospheric effect and emissivity (Oliosio et al., 1996). Hence, every 30-min averaged heat fluxes, net radiation, soil heat flux, meteorological data, and surface temperature during daytime (when both sensible and latent heat fluxes are positive) were collected as a group of data, and regarded as a sample (see Table 2). As a necessary input for the surface models, canopy structure data (including leaf area index (LAI), canopy height, leaf shape, and row width and space) were measured manually from 21 May to 15 July throughout the whole growing period before tasseling stage of maize.

## TSEBPS for estimation of land surface heat fluxes

X. Xin and Q. Liu

Title Page

Abstract

Introduction

Conclusions

References

Tables

Figures

◀

▶

◀

▶

Back

Close

Full Screen / Esc

Printer-friendly Version

Interactive Discussion



Unlike the field campaign of QRSLSP, the experiment of the WATER project had lasted for several months. The data collected during the experiment covers the main growing period of maize, which allows us to evaluate TSEBPS with data of different vegetation coverage states, i.e., from very sparse vegetation at the beginning ( $LAI < 0.5$ ), to very dense vegetation at the end ( $LAI > 5$ ). In order to evaluate the performance of TSEBPS at different canopy coverage, the dataset of maize was separated into 3 subsets according to LAI; that is YK-sparse for the data when  $LAI < 1.0$ , YK-medium for  $1.0 < LAI < 3.0$ , and YK-dense for  $LAI > 3.0$ .

Table 1 gives the brief information about the turbulent fluxes and TIR radiometric measurements. Table 2 lists the datasets or subsets that are used in the evaluation.

## 4 Results

The accuracy of TSEBPS will be assessed using the datasets listed in Table 2. Radiative surface temperature as well as ancillary meteorology and canopy structure data were input to the TSEBPS, and the sensible and latent heat fluxes are estimated as discussed previously. All other input variables are measured including net radiation and soil heat flux. The difference between estimation and measurement of the sensible and latent heat fluxes will be analyzed for each of the datasets.

### 4.1 Results of the winter wheat datasets

The canopy sensible and latent heat fluxes predicted versus the measured values of winter wheat sites are shown in Fig. 3. On the whole, TSEBPS estimated heat fluxes agree very well with the field measurements over winter wheat canopies. The performance of TSEBPS at the 3 sites is very close besides the difference in the magnitude of sensible and latent heat fluxes, which can be explained to some extent by the surface condition of the fields. As we have mentioned before, the canopy density and soil moisture condition are different at the 3 sites (Table 2), which resulted in different mag-

## TSEBPS for estimation of land surface heat fluxes

X. Xin and Q. Liu

Title Page

Abstract

Introduction

Conclusions

References

Tables

Figures



Back

Close

Full Screen / Esc

Printer-friendly Version

Interactive Discussion





nitude of sensible and latent heat fluxes (therefore the Bowen ratio). For the latent heat flux, the best agreement appears at NW4, and followed by NW3 and NW5, and all of the predictions are within acceptable accuracy. The data points are scattered closely to the 1:1 line and the bias is confined mostly to within around  $50 \text{ Wm}^{-2}$ , indicating good agreement with measured values. There is no obvious trend of overestimate or underestimate of the heat fluxes.

Table 3 to Table 5 show the error statistics of the predicted heat fluxes. Root-Mean-Squared-Error (RMSE), Mean-Absolute-Difference (MAD) and Mean-Absolute-Percentage-Difference (MAPD) are shown in the tables. RMSE of the 3 sites are all within  $35 \text{ Wm}^{-2}$  and MAD within  $30 \text{ Wm}^{-2}$ , which means that the predicted heat fluxes agree well with the field heat fluxes observation. Mean and standard deviation of the predicted heat fluxes compare very well with those measured as shown in Table 3 to Table 5. The best agreement is found at NW4 dataset, where both mean and standard deviation of predicted sensible and latent heat fluxes are very close to the measurements. The discrepancy between measurements and simulation is within the uncertainty of turbulent heat fluxes measurements. Coefficients of determination ( $R^2$ ) for sensible and latent heat fluxes are high at the three sites, indicating TSEBPS can predict heat fluxes with high accuracy. The highest and lowest  $R^2$  of the predicted latent heat flux appear at site NW4 and NW5, respectively.

In order to investigate the bias of TSEBPS-estimated  $LE$ , we compared the relationship between the bias and input parameters and found that the surface temperature gradient (surface temperature minus air temperature) is the mostly related factor with the bias as shown in Fig. 4. We can see that the temperature gradient is mostly under  $2 \text{ K}$  at NW4, and the bias of estimated  $LE$  is also small, mostly within  $\pm 20 \text{ Wm}^{-2}$ . At point No. 8 (12:00, 13-April), the temperature gradient is the largest (about  $8 \text{ K}$ , and the bias of estimated  $LE$  is also the largest (about  $-60 \text{ Wm}^{-2}$ ). At NW5, the temperature gradient is much higher than that of NW4 (mostly between  $5 \sim 20 \text{ K}$ , and the bias of estimated  $LE$  is also larger than that of NW4 (mostly within  $\pm 50 \text{ Wm}^{-2}$ ). On the whole, the trend of bias is opposite to that of temperature gradient. Similar to NW4, the

## TSEBPS for estimation of land surface heat fluxes

X. Xin and Q. Liu

Title Page

Abstract

Introduction

Conclusions

References

Tables

Figures

◀

▶

◀

▶

Back

Close

Full Screen / Esc

Printer-friendly Version

Interactive Discussion



points with largest bias ( $LE$  was much underestimated in Fig. 3) also have very large temperature gradient.

## 4.2 Results of the maize dataset

The canopy sensible and latent heat fluxes predicted versus the measured values are shown in Fig. 5. Similar to the winter wheat dataset, the estimated sensible and latent heat fluxes agree very well with the measurement. Table 6 shows the error statistics of the predicted heat fluxes. RMSE and MAPD of the estimated latent heat flux are low and the coefficient of determination ( $R^2$ ) is very high, which means that the TSEBPS-estimated latent heat flux with TIR measurements can reach high accuracy. Mean and standard deviation of the predicted heat fluxes compare very well with those measured as shown in Table 6.

In order to investigate the performance of TSEBPS at different vegetation coverage conditions, the error statistics are recalculated separately for the 3 subsets of the maize according to Table 2. The results are shown in Table 7, from which we can see that there is no evident difference in the  $R^2$  between the subsets, but the RMSE shows much more variability between the subsets, i.e., RMSE increases with increasing LAI. On the other hand, MAPD decreases with increasing LAI. Comparison of mean and standard deviation shows that datasets of medium and dense canopy have larger bias than that of sparse canopy. However, the difference between the subsets is not evident, and the performance of TSEBPS is stable from very sparse to very dense canopies. It means that TSEBPS can estimate heat fluxes accurately above surfaces with different density of vegetation.

## 4.3 Error analysis

According to the flow chart of TSEBPS (Fig. 2), the actual heat fluxes are derived from the heat fluxes of the limiting cases with an interpolating method. So the error of TSEBPS-estimated heat fluxes comes from these two aspects, i.e., the heat fluxes of

## TSEBPS for estimation of land surface heat fluxes

X. Xin and Q. Liu

Title Page

Abstract

Introduction

Conclusions

References

Tables

Figures

◀

▶

◀

▶

Back

Close

Full Screen / Esc

Printer-friendly Version

Interactive Discussion



the limiting cases and the interpolating methods. The sensitivity of the estimated heat flux to the error of the heat flux at the limiting cases is described by the following way.

$$\Delta Y = \frac{Y(Y_i \pm 0.1Y_i) - Y(Y_i)}{Y(Y_i)}$$

where  $Y$  represents the derived actual heat flux, and  $Y_i$  the heat flux at the limiting cases (i.e., wet- and dry-limits, and transition state). From Eqs. (27) and (29), we can see that the non-linear interpolation takes place for soil latent heat flux when  $T_{r,wet} < T_r < T_{r,trans}$ , and for foliage sensible heat flux when  $T_{r,trans} < T_r < T_{r,dry}$ . And at other cases, the interpolation is linear. Sensitivity to the error of  $LE_{s,wet}$  in Eq. (27) and the error of  $H_{v,dry}$  in Eq. (29) can be expressed in a same way:

$$\Delta Y = \pm \frac{1}{10 + \frac{10Ap^n}{1-p^n}}$$

where  $A$  represents  $LE_{s,trans}/LE_{s,wet}$  and  $p$  for  $x$  for Eq. (27), and  $A$  represents  $H_{v,trans}/H_{v,dry}$  and  $p$  for  $y$  for Eq. (29). According to the assumption of TSEBPS (Eqs. 25 and 26),  $A$  equals to 0 or is very close to 0 (no negative value of the heat fluxes is allowed in the calculation), which results in that the sensitivity to the error of  $LE_{s,wet}$  and  $H_{v,dry}$  is nearly  $\pm 10\%$ . It means that the error of component heat fluxes at the dry- and wet-limiting cases is propagated to the estimated heat fluxes in a linear way.

Sensitivity to the error of  $LE_{s,trans}$  in Eq. (27) and the error of  $H_{v,trans}$  in Eq. (29) can also be expressed in a same way:

$$\Delta Y = \pm \frac{1}{10 + \frac{10(1-p^n)}{Ap^n}}$$

Because  $A$  equals to 0 or is very close to 0, the sensitivity to the error of  $LE_{s,trans}$  and  $H_{v,trans}$  is very small and can be regarded as 0. It means that the error of component heat fluxes at the transition state has no obvious influence on the estimated heat fluxes.

## TSEBPS for estimation of land surface heat fluxes

X. Xin and Q. Liu

Title Page

Abstract

Introduction

Conclusions

References

Tables

Figures

◀

▶

◀

▶

Back

Close

Full Screen / Esc

Printer-friendly Version

Interactive Discussion



Sensitivity to the error of  $p$  ( $x$  in Eq. 27 and  $y$  in Eq. 29) can be expressed as:

$$\Delta Y = \frac{1 - (1 \pm 0.1)^n}{\frac{1}{(1-A)p^n} - 1}$$

Because  $A$  equals to 0 or is very close to 0, the sensitivity to the error of  $p$  mainly varies with  $p$ . The magnitude of  $p$  is within the range of  $[0, 1]$ . When  $p$  is close to 0, the sensitivity is small, and when  $p$  is close to 1, the sensitivity becomes relatively larger. And the sign of the error in the estimated heat fluxes is opposite to that of  $p$ . In our datasets, the average value of  $p$  is about  $0.5 \sim 0.6$ , which leads to about  $\pm 10 \sim 20\%$  error in the estimated heat fluxes for  $\pm 10\%$  of error in  $p$ .

From above analysis we can see that  $\pm 10\%$  error in the component heat fluxes at the wet- and dry-limiting cases will result in about  $\pm 10\%$  error in TSEBPS- estimated heat fluxes, and the error in the component heat fluxes at the transition state will result in no obvious error in TSEBPS- estimated heat fluxes. The component heat fluxes at the limiting cases are calculated using Eq. (10) with the aerodynamic temperature and component temperatures, which are calculated based on the assumptions of the limiting cases. In this study, the assumptions and calculations are physics-based and the error in the estimated component heat fluxes is regarded within acceptable range.

On the other hand, the error in the simulated surface temperature at the limiting cases has obvious influence on the results. The error of  $p$  comes from the error of TIR observation, as well as the error of the simulated surface temperature at the limiting cases. In our study, a directional canopy TIR radiation transfer model by François (1997) is used to simulate the surface temperature at the limiting cases. This model is of reasonable physics-basis and has performed well in the experimental study in the reference. In their study, the error of the simulated temperature is relatively small and acceptable. In this study, we believe that the simulated temperature is of good quality and comparable to the field TIR observation. Furthermore, from Eqs. (28) and (30) we can see that the error in  $x$  and  $y$  can be relatively small because the index is constructed by the difference between the temperatures, which means that the error

## TSEBPS for estimation of land surface heat fluxes

X. Xin and Q. Liu

Title Page

Abstract

Introduction

Conclusions

References

Tables

Figures

◀

▶

◀

▶

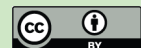
Back

Close

Full Screen / Esc

Printer-friendly Version

Interactive Discussion



of the temperature can wipe one another out.

At last, some may argue that the error may come from the coefficient  $n$ . This coefficient is empirical and we took  $n = 0.25$  because it gives the best accuracy in the results. And this value is identical for both winter wheat and maize datasets, which implies that the coefficient may have a universal value for all of the surfaces, but this still needs to be proved by more investigations.

## 5 Discussions

TSEBPS is proposed to estimate surface heat fluxes using TIR data obtained by space-borne sensors such as AVHRR, MODIS, etc. This kind of data is easily available and economical for the users, which is important for applications at regional or global scale with routinely schedule. For regional or global estimation of land surface evapotranspiration, sparsely vegetated surface is one of the situations of relatively larger uncertainty, where single layer model associated with TIR data can not simulate the canopy heat fluxes accurately. As a parameterization of the classical two-layer model, TSEBPS is reliable on the theory basis. It was shown in the evaluation using datasets over different vegetation canopies that TSEBPS-estimated evapotranspiration compared very well with the field measurement. The parameterization is based on the limiting cases of soil moisture, which is commonly accepted. The difference of TSEBPS is to consider foliage and soil independently at the limiting cases, and bring a key state of soil moisture into the model, i.e., transition state, which is based on the process of drying off after a rain or irrigation event when the soil surface is dry and the root zone is still wet. By the concept of transition state, we can hence define two different states of soil moisture in the canopy, i.e., before and after the transition, which represent the limit of soil moisture is only on evaporation ( $E$ ) or on both evaporation ( $E$ ) and transpiration ( $T$ ). The canopy heat fluxes are then easily predictable using the assumptions of the limiting cases associated with an interpolation method using TIR data. Commonly, all of the states of soil moisture can be described by such assumptions. However,

## TSEBPS for estimation of land surface heat fluxes

X. Xin and Q. Liu

Title Page

Abstract

Introduction

Conclusions

References

Tables

Figures

◀

▶

◀

▶

Back

Close

Full Screen / Esc

Printer-friendly Version

Interactive Discussion



## TSEBPS for estimation of land surface heat fluxes

X. Xin and Q. Liu

Title Page

Abstract

Introduction

Conclusions

References

Tables

Figures

◀

▶

◀

▶

Back

Close

Full Screen / Esc

Printer-friendly Version

Interactive Discussion



there are exceptions when the soil surface is wet and root zone is relatively drier, which could be possible when there is heavy dew or light precipitation while the field has been under drought already. Under this circumstance, the relationship between surface temperature and soil moisture would be different from the assumption of TSEBPS, and TSEBPS-estimated heat fluxes would be of substantial error. Fortunately, this kind of exception is not a frequent event, i.e., once or twice during the whole growing season of crop, which will not affect the applicability of TSEBPS in the long term.

It can be found in the results that the TSEBPS-estimated heat fluxes under dense and wet canopy are similar to that under sparse and dry canopy with high accuracy. The empirical method that tries to relate TIR measurements with actual heat fluxes is able to produce good results and can be used widely for surfaces with different soil moisture and vegetation conditions.

According to the sensitivity analysis, the TSEBPS-estimated heat fluxes are not sensitive to the assumed heat fluxes at the limiting cases as well as the error of the simulated temperature. On the other hand, it was found that higher accuracy can be obtained by using more complex model to allocate net radiation into soil and foliage. However, this could restrict the applicability of TSEBPS in satellite data. Compromise between accuracy and convenience has to be made. Fortunately, a simple method such as shown in Eqs. (4) to (6) can calculate soil and foliage net radiation reasonably and result acceptable heat fluxes in this study. On this meaning, the method proposed and used in this study is applicable for regional estimation of ET using satellite data. Results of evaluation of TSEBPS using satellite data will be reported by the authors in the near future.

## 6 Conclusions

Two-layer energy balance model has been validated and approved at many references. However, its application in remote sensing is still of problem because of short of component temperatures data. In this study, a parameterization scheme (TSEBPS) was

proposed to utilize the two-layer model with traditional TIR observation data. The parameterization is based on the assumption of the changing process of sensible and latent heat fluxes of the foliage and sub-layer soil with the change of soil moisture at surface layer and root zone. The actual canopy heat fluxes are derived from the observed radiative surface temperature by comparing with the simulated temperatures at the limiting cases. Two datasets obtained in two different field experiments were used to evaluate the reliability of TSEBPS. The estimated canopy heat fluxes agreed well with the field measurements of heat fluxes. The uncertainties of the estimation are comparable to in-situ measurement uncertainties. The errors of TSEBPS mainly come from the following aspects, i.e., the assumption of the limiting cases, and the interpolation method of heat fluxes using the TIR observations. Although extensive evaluation should be carried out using more in-situ or remotely sensed data, the results of this study showed that the method proposed in this paper is reliable and can be used to estimate heat fluxes over sparsely vegetated surfaces.

*Acknowledgements.* This work was carried out under the auspices of Chinese Natural Science Fund Project (40601067), the Knowledge Innovation Project of Chinese Academy of Sciences (KZCX2-YW-313), China's Special Funds for Major State Basic Research Project (2007CB714400), Chinese Natural Science Fund Project (40730525), the Special Research Foundation of Public Benefit Industry (GYHY200706046-1), and Youth Research Foundation of IRSA (08S01200CX).

## References

- Avissar, R.: Which type of SVAT is needed for GCMs, *J. Hydrol.*, 50, 3751–3774, 1998.
- Bastiaanssen, W. G. M., Menenti, M., Feddes, R. A., and Holtlag, A. A. M.: A remote sensing surface energy balance algorithm for land (Sebal), *J. Hydrol.*, 212–213, 198–212, 1998.
- Blyth, E. M. and Dolman, A. J.: The roughness length for heat of sparse vegetation, *J. Appl. Meteorol.*, 34, 583–585, 1995.
- Brutsaert, W.: *Evaporation into the Atmosphere*, Reidel, Dordrecht, The Netherlands, 299 pp., 1982.

## TSEBPS for estimation of land surface heat fluxes

X. Xin and Q. Liu

Title Page

Abstract

Introduction

Conclusions

References

Tables

Figures

◀

▶

◀

▶

Back

Close

Full Screen / Esc

Printer-friendly Version

Interactive Discussion



## TSEBPS for estimation of land surface heat fluxes

X. Xin and Q. Liu

Title Page

Abstract

Introduction

Conclusions

References

Tables

Figures



Back

Close

Full Screen / Esc

Printer-friendly Version

Interactive Discussion



- Caselles, V., Sobrino, J. A., and Coll, C.: A physical model for interpreting the land surface temperature obtained by remote sensing sensors over incomplete canopies, *Remote Sens. Environ.*, 39, 203–211, 1992.
- 5 Chehbouni, A., Lo Seen, D., Njoku, E. G., and Monteny, B. M.: Examination of the difference between radiative and aerodynamic surface temperatures over sparsely vegetated surfaces, *Remote Sens. Environ.*, 58, 177–186, 1996.
- Chebouni, A., Nouvellon, Y., Lhomme, J. P., Watts, C., Boulet, G., Kerr, Y. H., Moran, M. S., and Goodrich, D. C.: Estimation of surface sensible heat flux using dual angle observations of radiative surface temperature, *Agr. Forest Meteorol.*, 108, 55–65, 2001.
- 10 Choudhury, B. J.: Estimating evaporation and carbon assimilation using infrared temperature data: vistas in modeling, in: *Theory and Applications of Remote Sensing*, edited by: Asrar, G., John Wiley, New York, 628–690, 1989.
- Choudhury, B. J. and Monteith, J. L.: A four-layer model for the heat budget of homogeneous land surfaces, *Q. J. Roy. Meteorol. Soc.*, 114, 373–398, 1988.
- 15 Choudhury, B. J., Reginato, R. J., and Idso, S. B.: An analysis of infrared temperature observations over wheat and calculation of latent heat fluxes, *Agr. Forest Meteorol.*, 37, 75–88, 1986.
- Dickinson, R. E.: Modeling evapotranspiration for three-dimensional global climate models, in: *Climate Processes and Climate Variability*, edited by: Hanson, J. E. and Takahashi, T., Am. Geophys. Union, 58–72, 1984.
- 20 François, C.: The potential of directional radiometer temperatures for monitoring soil and leaf temperature and soil moisture status, *Remote Sens. Environ.*, 80, 122–133, 2002.
- François, C., Ottlé, C., and Prévot, L.: Analytical parameterization of canopy directional emissivity and directional radiance in the thermal infrared. Application on the retrieval of soil and foliage temperatures using two directional measurements, *Int. J. Remote Sens.*, 18, 2587–2621, 1997.
- 25 Friedl, M. A.: Modeling land surface fluxes using a sparse canopy model and radiometric surface temperature measurements, *J. Geophys. Res.*, 100, 25435–25446, 1995.
- Jackson, R. D., Reginato, R. J., and Idso, S. B.: Wheat canopy temperature: a practical tool for evaluating water requirements, *Water Resour. Res.*, 13, 651–656, 1977.
- 30 Jupp, D. L. B., Tian, G., McVicar, T. R., Qin, Y., and Li, F.: Soil moisture and drought monitoring using remote sensing I: Theoretical background and methods, *EOC Report1*, 16–21, 1998.
- Kimes, D. S.: Remote sensing of row crop structure and component temperatures using di-



rectional radiometric temperatures and inversion techniques, *Remote Sens. Environ.*, 13, 33–55, 1983.

Kustas, W. and Jackson, T.: The impact on area-averaged heat fluxes from using remotely sensed data at different resolutions: a case study with Washita'92 data, *Water Resour. Res.*, 35, 1539–1550, 1999.

Lhomme, J. P., Monteny, B., and Amadou, M.: Estimating sensible heat flux from radiometric temperature over sparse millet, *Agr. Forest Meteorol.*, 68, 77–91, 1994.

Li, F., Kustas, W. P., Prueger, J. H., Neale, C. M. U., and Jackson, T. J.: Utility of remote sensing based two-source energy balance model under low and high vegetation cover conditions, *J. Hydrometeorol.*, 6, 878–891, 2005.

Li, X., Li, X. W., Li, Z. Y., Ma, M. G., Wang, J., Xiao, Q., Liu, Q., Che, T., Chen, E. X., Yan, G. J., Hu, Z. Y., Zhang, L. X., Chu, R. Z., Su, P. X., Liu, Q. H., Liu, S. M., Wang, J. D., Niu, Z., Chen, Y., Jin, R., Wang, W. Z., Ran, Y. H., Xin, X. Z., and Ren, H. Z.: Watershed Allied Telemetry Experimental Research, *J. Geophys. Res.*, in press, 2009.

Liang, S. L.: Narrowband to broadband conversions of land surface albedo: I Algorithms, *Remote Sens. Environ.*, 76, 213–238, 2000.

Liang, S.L., Stroeve, J.C., Grant, I.F., Strahler, A.H. and Duvel, J.P.: Angular Corrections to Satellite Data for Estimating Earth Radiation Budget, *Remote Sensing Reviews*, 18, 103–136, 2000.

Liu, Q., Liu, Q.H., Xiao, Q., and Tian, G. L., Study on geometric correction of airborne multi-angular imagery, *Science in China Series D*, 45(12), 1075–1086, 2002.

Liu, Q. H., Liu, Q., and Xin, X. Z.: Experiment study of directional radiance and hotspot effect in thermal infrared observation of corn canopy, *Proc. IGARSS'01*, Sydney, Australia, 2001.

Liu, Q. H., Li, X. W., Chen, L. F., and 973 Project Members: Field Campaign for Quantitative Remote Sensing in Beijing, *J. Remote Sens.*, 6(Suppl.), 43–49, 2002 (in Chinese).

Ma, Y. M.: Remote sensing parameterization of regional net radiation over heterogeneous land surface of Tibetan Plateau and arid area, *Int. J. Remote Sens.*, 24, 3137–3148, 2003.

Massman, W. J.: A model study of  $kB_{-H}^{-1}$  for the vegetated surfaces using 'localized near-field' Lagrangian theory, *J. Hydrol.*, 223, 27–43, 1999.

Norman, J. M., Kustas, W. P., and Humes, K. S.: Source approach for estimating soil and vegetation energy fluxes in observations of directional radiometric surface temperature, *Agr. Forest Meteorol.*, 77, 263–293, 1995.

Olioso, A., Taconet, O., and Mehrez, M. B.: Estimation of heat and mass fluxes from IR bright-

## TSEBPS for estimation of land surface heat fluxes

X. Xin and Q. Liu

Title Page

Abstract

Introduction

Conclusions

References

Tables

Figures

◀

▶

◀

▶

Back

Close

Full Screen / Esc

Printer-friendly Version

Interactive Discussion



- ness temperature, IEEE T. Geosci. Remote, 34, 1184–1190, 1996.
- Shaw, R. H. and Pereira, A. R.: Aerodynamic roughness of a plant canopy: a numerical experiment, Agr. Forest Meteorol., 26, 51–65, 1982.
- Shuttleworth, W. J. and Wallace, J. S.: Evaporation from sparse crops – an energy combination theory, Q. J. Roy. Meteorol. Soc., 111, 839–855, 1985.
- Shuttleworth, W. J. and Gurney, R. J.: The theoretical relationship between foliage temperature and canopy resistance in sparse crop, Q. J. Roy. Meteorol. Soc., 116, 497–519, 1990.
- Sobrino, J. A. and Caselles, V.: Thermal infrared radiance model for interpreting the directional radiometric temperature of a vegetative surface, Remote Sens. Environ., 33, 193–199, 1990.
- 10 Su, Z.: The Surface Energy Balance System (SEBS) for estimation of turbulent heat fluxes, Hydrol. Earth Syst. Sci., 6, 85–100, 2002, <http://www.hydrol-earth-syst-sci.net/6/85/2002/>.
- Troufleau, D., Lhomme, J. P., Monteny, B., and Vidal, A.: Sensible heat fluxes and radiometric temperature over sparse Sahelian vegetation: I. An experimental analysis of the  $kB^{-1}$  parameter, J. Hydrol., 188–189, 815–838, 1997.
- 15 Verhoef, W., de Bruin, H. A. R., and van den Hurk, B. J. J. M.: Some practical notes on the parameter for sparse vegetation, J. Appl. Meteorol., 36, 560–572, 1997.

**HESSD**

6, 6795–6832, 2009

---

**TSEBPS for  
estimation of land  
surface heat fluxes**

X. Xin and Q. Liu

---

Title Page

Abstract

Introduction

Conclusions

References

Tables

Figures

◀

▶

◀

▶

Back

Close

Full Screen / Esc

Printer-friendly Version

Interactive Discussion



## TSEBPS for estimation of land surface heat fluxes

X. Xin and Q. Liu

**Table 1.** Information about the turbulent and TIR measurements.

Site	location	Surface type	Turbulent heat fluxes measurement		TIR radiometric measurement		
			Instrument	Height	Instrument	Height	View zenith angle
NW3	Beijing	Winter wheat	Bowen-ratio system made by Peking University	2.74 m and 0.74 m	TIR Radiometer made by Chinese Academy of Sciences	2 m	0
NW4	Beijing	Winter wheat	Bowen-ratio system made by Peking University	2.4 m and 0.4 m	MINOTA TIR Radiometer made in Japan	2 m	45
NW5	Beijing	Winter wheat	Bowen-ratio system made by Chinese Academy of Sciences	1.6 m and 0.6 m	BS-32T TIR Radiometer made in Japan	2 m	45
YK	Gansu	Maize	Eddy-covariance system made by Campbell company	2.81 m	IRR-PN TIR Radiometer made by Apogee Company	3.5 m	0

Title Page

Abstract

Introduction

Conclusions

References

Tables

Figures



Back

Close

Full Screen / Esc

Printer-friendly Version

Interactive Discussion



## TSEBPS for estimation of land surface heat fluxes

X. Xin and Q. Liu

**Table 2.** Datasets used for the evaluation of TSEBPS.

Dataset	Sample number ( $n$ )	date	Leaf area index ( $LAI$ )
NW3	230	2001-4-1~22	0.776~2.402
NW4	188	2001-4-13~21	2.087~3.577
NW5	885	2001-4-5~24	1.028~3.094
YK-sparse	436	2008-5-21~6-9	0.24~0.989
YK-medium	284	2008-6-10~6-23	1.02~2.879
YK-dense	368	2008-6-24~7-15	3.057~5.298

Title Page

Abstract

Introduction

Conclusions

References

Tables

Figures

◀

▶

◀

▶

Back

Close

Full Screen / Esc

Printer-friendly Version

Interactive Discussion



## TSEBPS for estimation of land surface heat fluxes

X. Xin and Q. Liu

**Table 3.** Statistics of TSEBPS estimated versus observed heat fluxes at site NW3 (RMSE: Root Mean Squared Error; MAD: Mean Absolute Deviation; MAPD: Mean Absolute Percentage Deviation;  $R^2$ : coefficient of determination).

Heat flux	Statistics	RMSE ( $W m^{-2}$ )	MAD ( $W m^{-2}$ )	MAPD (%)	$R^2$	Mean ( $W m^{-2}$ )		Standard Deviation ( $W m^{-2}$ )	
						estimated	measured	estimated	measured
$H$		31.4	25.4	25.3	0.8241	113.2	100.5	68.4	60.8
$LE$		31.4	25.4	11.3	0.9046	211.4	224.0	92.8	90.2

Title Page

Abstract

Introduction

Conclusions

References

Tables

Figures



Back

Close

Full Screen / Esc

Printer-friendly Version

Interactive Discussion



## TSEBPS for estimation of land surface heat fluxes

X. Xin and Q. Liu

**Table 4.** Statistics of TSEBPS estimated versus observed heat fluxes at site NW4 (RMSE: Root Mean Squared Error; MAD: Mean Absolute Deviation; MAPD: Mean Absolute Percentage Deviation;  $R^2$ : coefficient of determination).

Heat flux	Statistics	RMSE ( $\text{W m}^{-2}$ )	MAD ( $\text{W m}^{-2}$ )	MAPD (%)	$R^2$	Mean ( $\text{W m}^{-2}$ )		Standard Deviation ( $\text{W m}^{-2}$ )	
						estimated	measured	estimated	measured
$H$		26.6	20.6	37.4	0.704	54.2	55.4	48.9	39.8
$LE$		26.6	20.6	7.5	0.9107	277.1	276.0	87.1	88.7

Title Page

Abstract

Introduction

Conclusions

References

Tables

Figures

◀

▶

◀

▶

Back

Close

Full Screen / Esc

Printer-friendly Version

Interactive Discussion



## TSEBPS for estimation of land surface heat fluxes

X. Xin and Q. Liu

**Table 5.** Statistics of TSEBPS estimated versus observed heat fluxes at site NW5 (RMSE: Root Mean Squared Error; MAD: Mean Absolute Deviation; MAPD: Mean Absolute Percentage Deviation;  $R^2$ : coefficient of determination).

Heat flux	Statistics	RMSE ( $\text{W m}^{-2}$ )	MAD ( $\text{W m}^{-2}$ )	MAPD (%)	$R^2$	Mean ( $\text{W m}^{-2}$ )		Standard Deviation ( $\text{W m}^{-2}$ )	
						estimated	measured	estimated	measured
$H$		26.4	21.2	21.6	0.8722	99.2	98.1	64.0	72.9
$LE$		26.4	21.2	19.7	0.7581	106.0	107.2	53.6	47.0

Title Page

Abstract

Introduction

Conclusions

References

Tables

Figures

◀

▶

◀

▶

Back

Close

Full Screen / Esc

Printer-friendly Version

Interactive Discussion



## TSEBPS for estimation of land surface heat fluxes

X. Xin and Q. Liu

**Table 6.** Statistics of TSEBPS estimated versus observed heat fluxes at site YK (RMSE: Root Mean Squared Error; MAD: Mean Absolute Deviation; MAPD: Mean Absolute Percentage Deviation;  $R^2$ : coefficient of determination).

Heat flux	Statistics	RMSE	MAD	MAPD	$R^2$	Mean		Standard Deviation	
		( $W m^{-2}$ )	( $W m^{-2}$ )	(%)		( $W m^{-2}$ )	( $W m^{-2}$ )	estimated	measured
$H$		31.0	23.7	32.3	0.7610	79.9	73.4	56.0	61.8
$LE$		31.0	23.7	9.0	0.9722	255.5	262.0	169.9	178.2

Title Page

Abstract

Introduction

Conclusions

References

Tables

Figures



Back

Close

Full Screen / Esc

Printer-friendly Version

Interactive Discussion





## TSEBPS for estimation of land surface heat fluxes

X. Xin and Q. Liu

**Table 7.** Statistics of TSEBPS estimated versus observed heat fluxes at three different growing stages of maize at site YK (RMSE: Root Mean Squared Error; MAD: Mean Absolute Deviation; MAPD: Mean Absolute Percentage Deviation;  $R^2$ : coefficient of determination).

Data set	Statistics	RMSE	MAD	MAPD	$R^2$	Mean		Standard Deviation	
		( $\text{W m}^{-2}$ )	( $\text{W m}^{-2}$ )	(%)	$LE$	$LE$	estimated	measured	estimated
YK-sparse		25.2	19.6	11.8	0.9576	162.6	165.7	120.0	121.5
YK-medium		29.5	23.3	8.6	0.9627	260.0	270.1	136.9	142.7
YK-dense		37.5	28.8	7.8	0.9687	362.2	369.7	179.3	195.0

Title Page

Abstract

Introduction

Conclusions

References

Tables

Figures

◀

▶

◀

▶

Back

Close

Full Screen / Esc

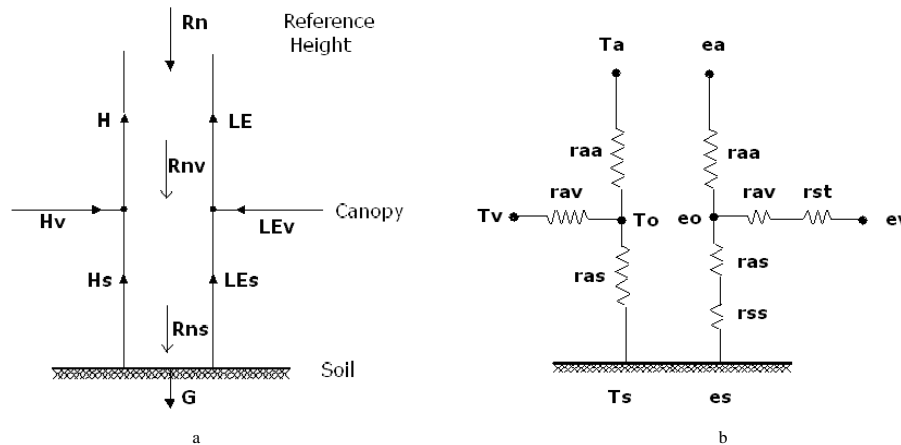
Printer-friendly Version

Interactive Discussion



## TSEBPS for estimation of land surface heat fluxes

X. Xin and Q. Liu



**Fig. 1.** Energy balance **(a)** and resistance network **(b)** of the two-layer model.

Title Page

Abstract

Introduction

Conclusions

References

Tables

Figures

◀

▶

◀

▶

Back

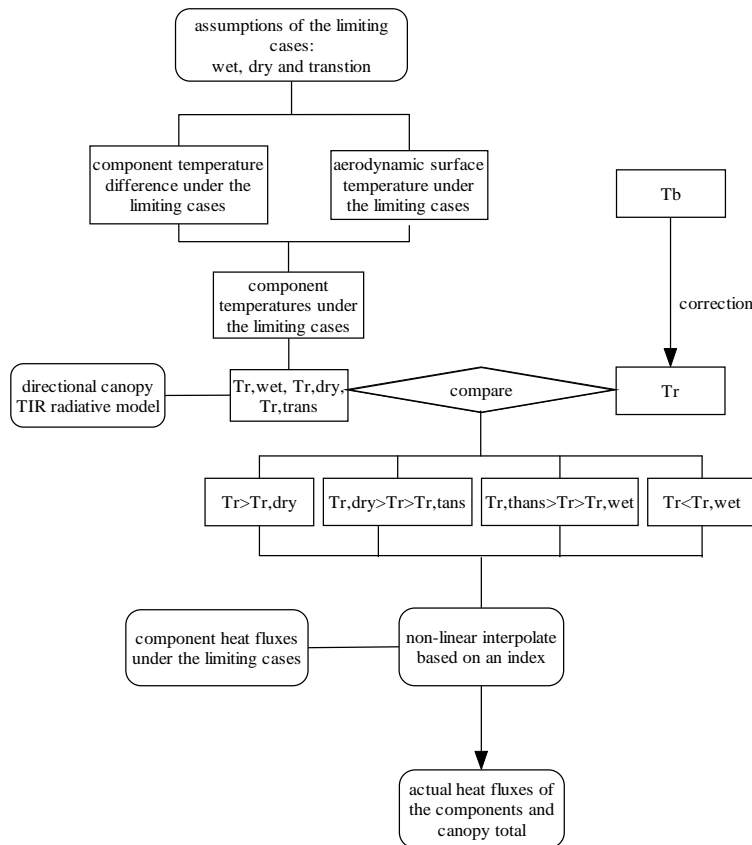
Close

Full Screen / Esc

Printer-friendly Version

Interactive Discussion





**Fig. 2.** Flow chart of the parameterization scheme of the two-layer models.

Title Page

Abstract

Introduction

Conclusions

References

Tables

Figures

◀

▶

◀

▶

Back

Close

Full Screen / Esc

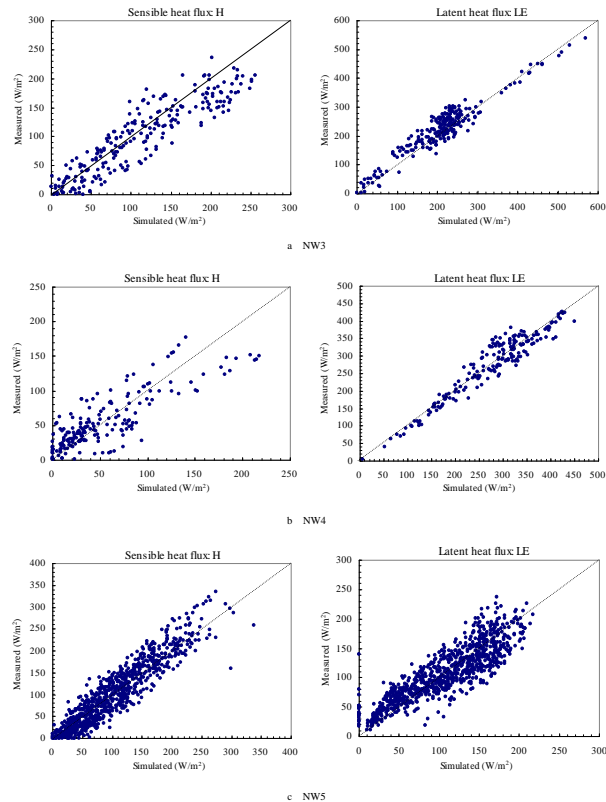
Printer-friendly Version

Interactive Discussion



## TSEBPS for estimation of land surface heat fluxes

X. Xin and Q. Liu



**Fig. 3.** Comparison between observations and TSEBPS modeled sensible and latent heat fluxes over winter wheat canopy: **(a)** NW3, **(b)** NW4, **(c)** NW5. Dashed line represents perfect agreement.

Title Page

Abstract

Introduction

Conclusions

References

Tables

Figures

◀

▶

◀

▶

Back

Close

Full Screen / Esc

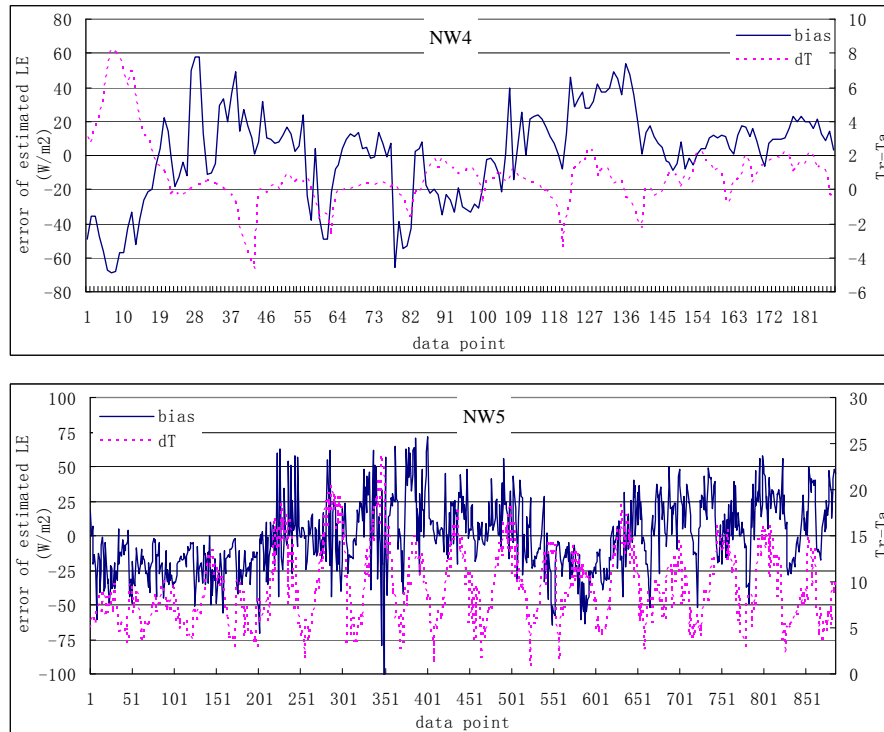
Printer-friendly Version

Interactive Discussion



## TSEBPS for estimation of land surface heat fluxes

X. Xin and Q. Liu



**Fig. 4.** Time series of TSEBPS estimated latent heat flux bias (TSEBPS estimated minus measured latent heat flux) versus surface temperature gradient (radiative surface temperature minus air temperature).

Title Page

Abstract

Introduction

Conclusions

References

Tables

Figures

◀

▶

◀

▶

Back

Close

Full Screen / Esc

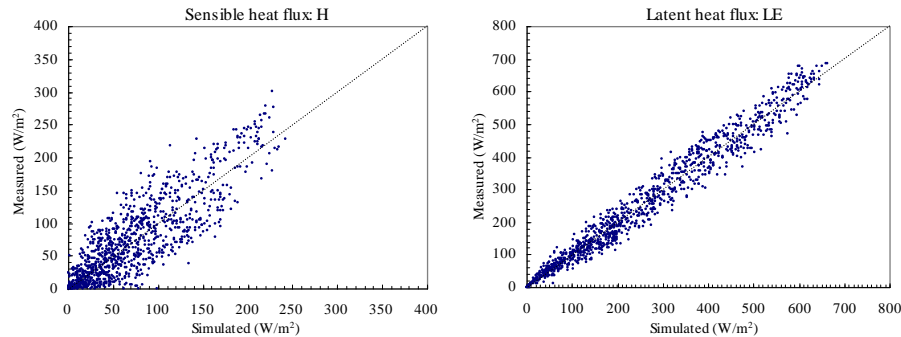
Printer-friendly Version

Interactive Discussion



## TSEBPS for estimation of land surface heat fluxes

X. Xin and Q. Liu



**Fig. 5.** Comparison between observations and TSEBPS modeled sensible and latent heat fluxes over maize canopy. Dashed line represents perfect agreement.

Title Page

Abstract

Introduction

Conclusions

References

Tables

Figures

⏪

⏩

◀

▶

Back

Close

Full Screen / Esc

Printer-friendly Version

Interactive Discussion

