

Papers published in *Hydrology and Earth System Sciences Discussions* are under open-access review for the journal *Hydrology and Earth System Sciences*

# Soil moisture active and passive microwave products: intercomparison and evaluation over a Sahelian site

C. Gruhier<sup>1</sup>, P. de Rosnay<sup>2</sup>, S. Hasenauer<sup>3</sup>, T. Holmes<sup>4</sup>, R. de Jeu<sup>5</sup>, Y. Kerr<sup>1</sup>, E. Mougin<sup>1</sup>, E. Njoku<sup>6</sup>, F. Timouk<sup>1</sup>, W. Wagner<sup>3</sup>, and M. Zribi<sup>1</sup>

<sup>1</sup>Centre d'Études Spatiales de la BIOSphère, UMR 5126 (CNRS, CNES, IRD, UPS), Toulouse, France

<sup>2</sup>European Centre for Medium-Range Weather Forecasts, Reading, UK

<sup>3</sup>Institute of Photogrammetry and Remote Sensing, Vienna University of Technology, Vienna, Austria

<sup>4</sup>USDA-ARS Hydrology and Remote Sensing Laboratory, Beltsville, USA

<sup>5</sup>Faculty of Earth and Life Sciences, Vrije Universiteit, Amsterdam, The Netherlands

<sup>6</sup>Jet Propulsion Laboratory, Pasadena, USA

Received: 3 August 2009 – Accepted: 4 August 2009 – Published: 5 August 2009

Correspondence to: C. Gruhier (claire.gruhier@cesbio.cnes.fr)

Published by Copernicus Publications on behalf of the European Geosciences Union.

## Evaluation of microwave soil moisture products

C. Gruhier et al.

Title Page

Abstract

Introduction

Conclusions

References

Tables

Figures

◀

▶

◀

▶

Back

Close

Full Screen / Esc

Printer-friendly Version

Interactive Discussion



## Abstract

This paper presents a comparison and an evaluation of five soil moisture products based on satellite-based passive and active microwave measurements. Products are evaluated for 2005–2006 against ground measurements obtained from the soil moisture network deployed in Mali (Sahel) in the framework of the African Monsoon Multidisciplinary Analysis project. It is shown that the accuracy of the soil moisture products is sensitive to the retrieval approach as well as to the sensor type (active or passive) and to the signal frequency (from 5.6 GHz to 18.8 GHz). The spatial patterns of surface soil moisture are compared between the different products at meso-scale (14.5° N–17.5° N and 2° W–1° W). A general good consistency between the different satellite soil moisture products is shown in terms of meso-scale spatial distribution, in particular after convective rainfall occurrences. Soil moisture values provided by the different products are compared to ground measurements time series. Although soil moisture products obtained from satellite generally over-estimate soil moisture values during the dry season, most of them capture soil moisture temporal variations in good agreement with ground station measurements.

## 1 Introduction

Surface soil moisture is a key variable which controls the water and energy exchanges at the soil-vegetation-atmosphere interface. Koster et al. (2004) showed that the soil moisture feedback with precipitation is very strong in the three regions of the US Great Plains, Asia and West Africa. In particular, in the Sahelian region of West Africa, Taylor et al. (2007) and Taylor (2008) showed that soil moisture and land surface processes influence meso-scale convective systems dynamics.

Quantitative soil moisture assessment is crucial for land surface modelling and understanding as well as for numerical weather prediction purpose. However, due to its high temporal and spatial variability, it is difficult to provide accurate quantitative infor-

HESSD

6, 5303–5339, 2009

### Evaluation of microwave soil moisture products

C. Gruhier et al.

Title Page

Abstract

Introduction

Conclusions

References

Tables

Figures

◀

▶

◀

▶

Back

Close

Full Screen / Esc

Printer-friendly Version

Interactive Discussion



mation on soil moisture at regional and global scales. Several coordinated land surface modelling activities have provided insight into quantitative soil moisture characterisation at regional and global scale (Dirmeyer et al., 2006; Boone et al., 2009). Satellite remote sensing approaches also open the possibility to provide information on soil moisture over large areas with a good spatial consistency. Microwave remote sensing at low frequencies is the most efficient approach to characterise soil moisture from space, with low atmospheric contribution (Njoku and Entekhabi, 1996; Jones et al., 2004; Wagner et al., 2007; Kerr, 2007).

Various active and passive microwave sensors have been measuring Earth emissions and reflection for several years. The Advanced Microwave Scanning Radiometer on Earth Observing System (AMSR-E) on the AQUA satellite is a passive microwave sensor. It has been providing brightness temperature at five frequencies from 6.9 to 89 GHz since 2002. AMSR-E C-band (6.9 GHz) and X-band (10.7 GHz) channels are suitable for soil moisture remote sensing (Njoku et al., 2003). On the Tropical Rainfall Measuring Mission (TRMM) satellite, the TRMM Microwave Imager (TMI) has been measuring microwave emission at five frequencies from 10.7 GHz to 85.5 GHz since 1997. The wind scatterometer on the European Remote Sensing (ERS) satellites have been performing continuous active microwave measurements at C-band (5.3 GHz) for 1991–1996 (ERS-1) and since 1996 (ERS-2) (European Space Agency, 1997). Their continuity has been ensured since 2006 by the Advanced Scatterometer (ASCAT) on the Meteorological Operational satellite (METOP). METOP/ASCAT has been providing near real-time soil moisture products since 2008. The ERS/SCAT and METOP/ASCAT series provides the longest consistent and continuous global scale soil moisture data set since 1992. The future SMOS (Soil Moisture and Ocean Salinity) satellite of the European Space Agency (ESA), to be launched in 2009, will provide L-band passive microwave measurements (Kerr et al., 2001). SMOS will be the first satellite devoted to soil moisture remote sensing. From 2015 it should be followed by the Soil Moisture Active and Passive (SMAP) satellite of NASA which, by combining active and passive approaches, will provide soil moisture products at high resolution

## Evaluation of microwave soil moisture products

C. Gruhier et al.

Title Page

Abstract

Introduction

Conclusions

References

Tables

Figures

◀

▶

◀

▶

Back

Close

Full Screen / Esc

Printer-friendly Version

Interactive Discussion



(<http://smap.jpl.nasa.gov/>).

An important issue in remote sensing approaches concern products validation. Several papers investigated soil moisture products evaluation (Dirmeyer et al., 2004; Wagner et al., 2007; Draper et al., 2009; Rüdiger et al., 2009). Gruhier et al. (2008) provided an evaluation of the AMSR-E soil moisture products of Njoku (2004) over the Gourma region of Sahel for 2005. The study was based on ground measurements acquired in the framework of the AMMA (African Monsoon Multidisciplinary Analysis) program (Re-delsperger et al., 2006; de Rosnay et al., 2009b), within the AMMA-CATCH observatory (Lebel et al., 2009; Mougouin et al., 2009) (<http://ltheIn21.hmg.inpg.fr/catch/?&lang=en>).

In this paper five soil moisture products, obtained from current active and passive microwave sensors, are inter-compared and evaluated based on the AMMA ground measurements for 2005–2006. Two products derived from the AMSR-E measurements are provided by the National Snow and Ice Data Center (NSIDC) (Njoku, 2004) and by the VU University Amsterdam (VUA) in collaboration with NASA (Owe et al., 2008). The last-ones also provides a product based on TRMM/TMI X-band data set. Two products are derived from the ERS scatterometer by Zribi and Decharme (2009) and by the Vienna University of Technology (Wagner et al., 2003).

The next section presents the data and method. It provides a short description of the test site and ground measurements and presents the satellite data. In Sect. 3, the results of the intercomparison are presented and discussed, while Sect. 4 gives a conclusion.

## 2 Data and methods

### 2.1 Study region and ground data

The AMMA international research program aims at providing a better understanding of West African monsoon and its physical processes. Three representative meso-scale sites have been instrumented along a North-South climatic gradient in West Africa

## Evaluation of microwave soil moisture products

C. Gruhier et al.

Title Page

Abstract

Introduction

Conclusions

References

Tables

Figures

◀

▶

◀

▶

Back

Close

Full Screen / Esc

Printer-friendly Version

Interactive Discussion



(Redelsperger et al., 2006). They are located in Mali (North and Central Sahel), in Niger (South-Sahel) and in Benin (Soudanian site).

This study focuses on the Mali meso-scale site which is located in the Gourma region (Fig. 1a). The site spans 3 degrees in latitude from 14.5° N to 17.5° N and covers 1 degree in longitude from 2° W to 1° W. It is characterised by Sahelian meteorological conditions with a short rainy season from end of June to September, followed by a long dry season from October until June. Mean annual rainfall is 370 mm per year, modulated by a strong inter-annual variability of the West African Monsoon (Frappart et al., 2009). Over the considered area, the landscape is characterised by 65% of homogeneous gently undulating sandy dunes covered by annual herbaceous savanna, 30% of flat rocky-loam plain and 5% of clay-forested areas (Fig. 1b). The site has been instrumented with soil moisture and meteorological station networks, water and CO<sub>2</sub> flux stations, LAI measurements as well as manual measurements of soil and vegetation properties (Mougin et al., 2009). As pointed out by Mougin et al. (2009), the relative homogeneity of the Gourma meso-scale site is particularly suitable for remote sensing evaluation of land surface products. Several studies investigated the validation and evaluation of satellite products, including soil moisture, vegetation parameters, and albedo (Baup et al., 2007; Zribi and Decharme, 2009; Gruhier et al., 2008; Samain et al., 2008; Mougin et al., 2009; de Rosnay et al., 2009a).

The soil moisture network is described in detail in de Rosnay et al. (2009b). It will be a validation area for the future SMOS products. For the considered period 2005–2006 the Gourma site includes ten stations. Each of them is instrumented with capacitive soil moisture sensors. Stations perform a continuous monitoring (15 min time step) of soil moisture profiles, including soil moisture at 5 cm depth.

In this study three representative stations are considered (Table 1). They are located in In Zaket (ZAK), Ekia (EKI) and Agoufou (AGT) (Fig. 1c) and are all installed on coarse textured dune systems which are representative of the main land type of the region. The ZAK and EKI stations are located at intermediate topography levels (middle of hillslope), while the AGT station is located on top of a hillslope. As shown

## Evaluation of microwave soil moisture products

C. Gruhier et al.

Title Page

Abstract

Introduction

Conclusions

References

Tables

Figures

◀

▶

◀

▶

Back

Close

Full Screen / Esc

Printer-friendly Version

Interactive Discussion



by de Rosnay et al. (2009b) the location of the station on the hillslope influences the absolute soil moisture value. Stations located top (bottom) of hillslope tend to underestimate (over-estimate) soil moisture values at larger scale. However, these authors showed that on coarse textured soil types, the soil moisture temporal dynamics are very fast and well captured independently of the location of the station on the slope. AGT has been shown to be the most representative station in terms of soil moisture variability, at both the kilometre scale and the super site scale (50 km×50 km). de Rosnay et al. (2009b) also showed that local scale ground measurements of soil moisture can be up-scaled at a kilometre scale using a simple linear regression, with very good inter-annual and meso-scale stabilities. To correct local biases of the stations and to ensure spatial scale consistency between satellite and ground based soil moisture, local ground measurements used hereafter are up-scaled according to de Rosnay et al. (2009b).

## 2.2 Satellite data

Five soil moisture products are evaluated in this study. Three products are derived from the AMSR-E and the TMI passive microwave sensors. Two products are derived from the ERS scatterometer sensor. Table 2 shows basic information about these sensors and products.

According to the different satellite orbits and to the different inversion methods, data set sizes and amount of soil moisture values vary with products (Fig. 2). ERS/TUW and ERS/CETP (Centre d'Études Terrestres et Planétaires) products have significantly less available data than the three passive microwave data sets. There are three reasons for this: (i) the revisit and swath widths are different, (ii) the availability of ERS data is rather limited for the years 2005 and 2006 being beyond ERS life time, and (iii) inversion approaches used to obtain the two ERS/TUW and ERS/CETP products use several thresholds that filter out extreme values which reduce the size of the data sets for these two products. Among passive microwave data sets, AMSR-E/NSIDC is shown to contain twice more data than VUA products (AMSR-E/VUA and TMI/VUA) for which

## Evaluation of microwave soil moisture products

C. Gruhier et al.

Title Page

Abstract

Introduction

Conclusions

References

Tables

Figures

◀

▶

◀

▶

Back

Close

Full Screen / Esc

Printer-friendly Version

Interactive Discussion



night pass are used and a filtering approach also reduces the data set in case of noise or extreme values.

### 2.2.1 AQUA-AMSR-E

The passive microwave AMSR-E instrument was launched on the AQUA satellite in May 2002. AQUA crosses over the equator at a local solar time of 1:30 p.m./a.m. for ascending/descending orbit on a polar sun-synchronous orbit (14 orbits/day). AMSR-E records brightness temperature at frequencies of 6.9, 10.7, 18.7, 23.8, 36.5 and 89 GHz, at horizontal (H) and vertical (V) polarisations. The mean spatial resolution at 6.9 GHz is about 56 kilometres with a swath width of 1445 km.

AMSR-E/NSIDC products Level3 B02 are used in this study. They are provided at a 25 km regular grid and soil moisture is obtained from an inversion algorithm using 10.7 GHz and 18.7 GHz data (Njoku et al., 2003). Initially, this algorithm was developed for 6.9 GHz and 10.7 GHz frequencies. Due to RFI (Radio Frequency Interferences) affecting C-band data over large regions, the 10.7 GHz and 18.7 GHz data were used instead. Land surface parameters like soil moisture, vegetation water content, and surface temperature are also provided as AMSR-E products. A main issue in using passive microwaves is that the effects of soil moisture and vegetation water content on microwave emission are contrasting: a decrease in vegetation water content and an increase of soil moisture have the same effect on the signal, and conversely. Another issue concerns the strong temperature effects on day-time measurements (ascending orbit). A strong gradient in the top soil layers makes it difficult for soil moisture inversion in these conditions. To alleviate this problem only descending passes (i.e. night-time) are used in this study.

An independent product (AMSR-E/VUA) is evaluated in this paper. It has been developed by the VU University Amsterdam in collaboration with NASA (Owe et al., 2008). It is obtained by applying the Land Parameter Retrieval Model (LPRM, v03) to the dual polarized 6.9 GHz channels to retrieve soil moisture and vegetation water content simultaneously without using any additional information on vegetation cover. In order

## Evaluation of microwave soil moisture products

C. Gruhier et al.

Title Page

Abstract

Introduction

Conclusions

References

Tables

Figures

◀

▶

◀

▶

Back

Close

Full Screen / Esc

Printer-friendly Version

Interactive Discussion



to ensure a good accuracy of the products, only data of descending orbits, for which temperature gradient in the emitting layer are low, are used in this algorithm.

### 2.2.2 ERS-scatterometer

ERS-1 was launched in July 1991 and ERS-2 April 1995, both with a scatterometer on board. The first objective of this sensor is to measure wind over oceans, but its measurements have been shown to be highly suitable for soil moisture remote sensing (Magagi and Kerr, 1997; Wagner et al., 1999). ERS-2 is on a sun-synchronous polar orbit, completing in 100 min (14 orbits/day), with equator crossing times at 10:30/22:30 (descending/ascending). The scatterometer records the backscattering coefficient at 5.3 GHz at VV polarisation at spatial resolution of 47 kilometres for two angles.

The ERS/TUW product consists of soil moisture indexes provided at a 12.5 km spatial sampling. Soil moisture indexes are in the range of 0 to 100%, which correspond to residual water content and saturation respectively. Minimum and maximum values of the backscatter signal observed during 1992–2000 period are used to define the range of variations (Wagner et al., 1999). In this study, local values of saturation are used to convert relative soil moisture index values to soil moisture volumetric values (given in  $\text{m}^3/\text{m}^3$ ). According to observed soil moisture at the Agoufou station, saturated and residual soil moisture are set to 28%  $\text{m}^3/\text{m}^3$  and 0%  $\text{m}^3/\text{m}^3$ , respectively. This absolute values are validated only on sandy soil which is the main soil type.

An other ERS soil moisture product considered in the present paper is provided by Zribi and Decharme (2009) with a 25 km spatial sampling. This product, hereafter referred as ERS/CETP (Centre d'Etudes Terrestres et Planétaires), has been specifically developed for the West African region in the context of the AMMA project. A statistical inversion has been applied on the signal based on local calibrations over the AMMA sites. For this product, soil moisture are provided in volumetric units.

## Evaluation of microwave soil moisture products

C. Gruhier et al.

Title Page

Abstract

Introduction

Conclusions

References

Tables

Figures

◀

▶

◀

▶

Back

Close

Full Screen / Esc

Printer-friendly Version

Interactive Discussion





### 2.2.3 TRMM-TMI

The TMI sensor on board TRMM, launched in November 1998, is a passive microwave instrument. It is designed for tropical rainfall observations with a circular orbit and an inclination of 35 degrees to the Equator. Each orbit is completed in 91 min (16 orbits/day) with a swath around 400 kilometres. The TMI instrument operates at frequencies of 10.7, 19.4, 21.3, 37 and 85.5 GHz in horizontal and vertical polarisations (21.3 GHz band only in H). The mean spatial resolution varies from 50 km at 10.7 GHz and 6 km at 85.5 GHz.

The volumetric soil moisture product provided by the TMI/VUA is retrieved from the 10.7 GHz measurements, with the same retrieval model as the AMSR-E/VUA product (LPRM v03, Owe et al., 2008). Only the night data are used for this study (between 7 p.m. and 8 a.m.), and these are provided on a 0.25 degree regular grid.

### 2.3 Methods

In order to validate the satellite products, ground measurements of soil moisture are spatially up-scaled as indicated in Sect. 2.1. Since the different satellites perform measurements at different times of the day (Table 2), satellite products and ground measurements are considered at the daily time scale. For the purpose of satellite products intercomparison, all products are resampled to a reference grid with the nearest neighbour method. The grid of the ERS/TUW soil moisture product is used here as reference because it has the finest resolution (Table 2). Statistics are computed for each pair of products when a minimum of 33 pixels are available for the two considered products at the same date. This threshold ensures having enough data for the comparison and it enables to compute statistics between the products. Mean Relative Difference (MRD) is traditionally used to determine the most representative station inside a soil moisture network (Vachaud et al., 1985). In this study, MRD is used to compare soil moisture values of each product to the mean value obtained from the five products. For each

Title Page

Abstract

Introduction

Conclusions

References

Tables

Figures

◀

▶

◀

▶

Back

Close

Full Screen / Esc

Printer-friendly Version

Interactive Discussion



SM product  $i$ ,  $MRD_i$  is computed as:

$$MRD_i = \frac{1}{m} \sum_{j=1}^m \frac{S_{i,j} - \bar{S}_j}{\bar{S}_j} \quad (1)$$

where  $S_{i,j}$  is the soil moisture value of the considered product  $i$  at Day of Year (DOY)  $j$ ,  $\bar{S}_j$  is soil moisture value averaged over all products at DOY  $j$ , and  $m$  is the amount of DOY for which soil moisture is available from all the five products. The  $MRD_i$  value indicates the position of the product  $i$  relatively to the products-average. A MRD value of 0 indicates that the considered product is representative of the products average. A positive MRD indicates that this product over-estimates soil moisture compared to the products average, while a negative MRD indicates an under-estimation. The stability of the MRD during the time series is provided by its standard deviation value. Lowest standard deviation value indicates strongest stability and best representativeness in terms of soil moisture temporal variability.

### 3 Results

#### 3.1 General features of surface soil moisture products

Table 3 gives general information on surface soil moisture range (minimum and maximum values) and indicates soil moisture variability (standard deviation). These values are obtained for 2005–2006 for each soil moisture product (AMSR-E/NSIDC, AMSR-E/VUA, ERS/CETP, ERS/TUW, TMI/VUA), as well as for local ground measurements (ZAK, EKI, AGT). Several spatial scales are considered: (i) at the pixel scale, for which ground measurements and satellite products are available (ZAK, EKI, AGT) and (ii) averaged at meso-scale for the satellite products only.

Results of Table 3 show substantial differences between the different soil moisture products in terms of soil moisture range and soil moisture temporal variability. Ground

## Evaluation of microwave soil moisture products

C. Gruhier et al.

Title Page

Abstract

Introduction

Conclusions

References

Tables

Figures

◀

▶

◀

▶

Back

Close

Full Screen / Esc

Printer-friendly Version

Interactive Discussion



measurements indicate very low values of soil moisture during the dry season (minimum close to  $0\% \text{ m}^3/\text{m}^3$ ), which are consistent among the three stations. These low values are representative of lowest soil moisture values encountered for coarse textured soils in this region (de Rosnay et al., 2009b). Apart AMSR-E/NSIDC, all products reach very low minimum values of soil moisture during the dry season at both the pixel and the meso-scales (between 0% and 1.6%). Lowest soil moisture values from the AMSR-E/NSIDC product are in the range of 4% to 5.6% at the pixel scale and 2.4% at the meso-scale.

Maximal soil moisture values recorded by the stations are 10.71%, 21.38%, and 17.81%, for ZAK, EKI, and AGT, respectively. The ZAK station, located north of the climatic gradient, represents the lowest range of soil moisture variations and the driest conditions. Over the ZAK pixel, all soil moisture products overestimate soil moisture values in wet conditions compared the ground station. For the AGT pixel, ERS/TUW and AMSR-E/NSIDC soil moisture maximum values are very close to those of the ground station, while ERS/CETP, TMI/VUA and AMSR-E/VUA maximal values are overestimated. Table 3 shows that standard deviation of ground soil moisture time series lies in the range of 2.1% to 3% for the three stations. For the AMSR-E/NSIDC product, standard deviation varies in the range of 1.5% to 1.9% over the three pixels and its value is 1.8% at meso-scale. Comparison with ground stations at the pixel scale clearly shows that AMSR-E/NSIDC underestimates the soil moisture variability. In opposite AMSR-E/VUA, ERS/CETP, ERS/TUW, TMI/VUA generally overestimate the soil moisture variability, with larger standard deviation values than those of the stations (apart ERS/CETP for the EKI pixel).

The MRD method is applied here for the soil moisture satellite products as shown in Fig. 3. AMSR-E/NSIDC product is shown to have the largest MRD. This clearly shows that AMSR-E/NSIDC overestimates soil moisture compared to the other products. AMSR-E/NSIDC is also characterized by the largest standard deviations which indicates that the AMSR-E/NSIDC soil moisture temporal variability is not representative of that given by the products average. In contrast, AMSR-E/VUA product has

## Evaluation of microwave soil moisture products

C. Gruhier et al.

Title Page

Abstract

Introduction

Conclusions

References

Tables

Figures



Back

Close

Full Screen / Esc

Printer-friendly Version

Interactive Discussion



a negative MRD compared to the product average and a large standard deviation. TMI/VUA, ERS/CETP and ERS/TUW products are representative of the product average (low values of MRD). ERS/CETP presents the lowest bias with respect to the product average.

5 Among the five soil moisture products evaluated here, some are based on the same remote sensing data set and others use the same retrieval approach. Figure 4 shows the three possible comparisons of pairs of products: (1) both products based on AMSR-E sensor (Fig. 4a), (2) both products based on scatterometer sensor (Fig. 4b), (3) both products based on same retrieval approach from LPRM model by VUA (Fig. 4c). Soil moisture values used in these scatterplots are from the three pixels corresponding to the stations.

15 AMSR-E/NSIDC and AMSR-E/VUA products, both based on AMSR-E data set, have a correlation ratio of 0.732. This result indicates a strong correlation according to the sample of 1340 data. However, the two products are not in agreement for dry soil moisture conditions (Fig. 4a). Indeed AMSR-E/NSIDC product is constrained by a minimum threshold value which presents values higher than 5%  $\text{m}^3/\text{m}^3$ . This leads to Root Mean Square Error (RMSE) values to be relatively high (5.79) between the AMSR-E/NSIDC and the AMSR-E/VUA products. In contrast, the Fig. 4b shows that the two products based on scatterometer data provide soil moisture values in great agreement with a correlation ratio of 0.776 and a RMSE of 2.34%  $\text{m}^3/\text{m}^3$ . A comparison between the AMSR-E/VUA and TMI/VUA products is shown in Fig. 4c. These products are obtained from different sensors but they are based on the same inversion algorithm. They are in very good agreement with a correlation ration of 0.82 and a RMSD of 3.21%  $\text{m}^3/\text{m}^3$ . This result clearly shows that retrieval and remote sensing approaches are both of high importance for the final soil moisture product characteristics.

## Evaluation of microwave soil moisture products

C. Gruhier et al.

Title Page

Abstract

Introduction

Conclusions

References

Tables

Figures

◀

▶

◀

▶

Back

Close

Full Screen / Esc

Printer-friendly Version

Interactive Discussion



## 3.2 Meso-scale surface soil moisture characteristics

### 3.2.1 Soil moisture maps

Figure 5 shows soil moisture maps from the five satellite products over the meso-scale site. Fourteen days are selected so as to be representative of all cases encountered during the two year study. For six of these days, at least one product is characterised by missing data for the entire meso-scale window. ERS/CETP and ERS/TUW products, both based on scatterometer data, are particularly concerned by missing data (Fig. 2). Moreover, the retrieval methodologies used for these two products introduce missing data which are based on different criteria for ERS/CETP and ERS/TUW. For ERS/TUW product, high (DOY 229) or low (DOY 372) soil moisture values are masked (missing) because they are beyond the thresholds which are defined according to past measurements.

DOY 213, 216, 229, and 614 show rather good agreement between the five soil moisture products. They all depict contrasted spatial distribution of soil moisture values at meso-scale. DOY 527 also indicates a relative good consistence between soil moisture maps for AMSR-E/NSIDC, AMSR-E/VUA, and ERS/TUW products which clearly show a wet patch centred on  $1.8^{\circ}$  W/ $15^{\circ}$  N. However, TMI/VUA product does not capture this wet patch on DOY 527 and indicates relatively uniform soil moisture conditions at meso-scale. That can be explained by different times of overpass between the satellites.

During DOY 197 and 566, ERS/CETP product underestimates soil moisture values in the south part of the area, compared to the four other products which are in good agreement.

DOY 372 and 477 (dry conditions) show that both ERS derived products, overestimate soil moisture values in the northern part of the area. This two DOY are representative of existing differences between active (ERS/CETP, ERS/TUW) and passive (AMSR-E/NSIDC, AMSR-E/VUA and TMI/VUA) products during dry season (not shown). The assumption is that backscatter may be enhanced by volume scattering

## Evaluation of microwave soil moisture products

C. Gruhier et al.

Title Page

Abstract

Introduction

Conclusions

References

Tables

Figures



Back

Close

Full Screen / Esc

Printer-friendly Version

Interactive Discussion



when the soil is completely dry. Therefore, providers recommend to mask these regions. Comparison without north area was investigated. Statistical calculations have shown similar results. Spatial correlations are calculated between each soil moisture map when data are available for a minimum on 33 pixels for each pair of products in the studied Gourma-Mali window. Temporal evolutions of the obtained spatial correlation values are shown in Fig. 6 and summarised in Table 4 for different periods. In general a high correlation between the pairs of products is obtained during the monsoon season compared to the dry season. However, this is less marked when the ERS/CETP soil moisture product is in the pair.

Correlation between AMSR-E/NSIDC and AMSR-E/VUA presents the highest seasonal sensitivity, with variations between 0.96 during rainy seasons down to  $-0.75$  during the 2005–2006 dry seasons (Fig. 6). This is confirmed by mean seasonal values (Table 4) which show mean correlation ratios of 0.422 during monsoon and  $-0.005$  during dry season, respectively. For the entire 2005–2006 period, spatial mean correlation between AMSR-E/NSIDC and AMSR-E/VUA is relatively low (0.113). The best agreement between products is obtained between ERS/CETP and ERS/TUW products (0.609), both obtained from the same sensor (ERS). Very good agreement between the AMSR-E/VUA and TMI/VUA product (0.503) is also obtained. It is interesting to notice that although these last two products are not obtained from the same sensor and frequency (AMSR-E and TMI), they are obtained from the same retrieval approach (Owe et al., 2008).

### 3.2.2 Time-Latitude representation of soil moisture

Time-latitude diagrams are shown in Fig. 7 for the five soil moisture products for 2005–2006. They represent seasonal and latitudinal soil moisture variability for each product. Monsoon season in July-August-September is clearly distinguished with highest soil moisture values. Seasonal cycles of soil moisture are particularly contrasted for AMSR-E/VUA, ERS/TUW and TMI/VUA products. In contrast, amplitude is relatively small for AMSR-E/NSIDC and ERS/CETP products due to combined effects of over-estimated

## Evaluation of microwave soil moisture products

C. Gruhier et al.

Title Page

Abstract

Introduction

Conclusions

References

Tables

Figures



Back

Close

Full Screen / Esc

Printer-friendly Version

Interactive Discussion



soil moisture during dry seasons and under-estimated soil moisture during the wet season. ERS/CETP and ERS/TUW, both based on ERS data set, indicate very high soil moisture values ( $>8\% \text{ m}^3/\text{m}^3$ ) during the dry season over the north part of the study area, as mentioned in Sect. 3.2.1.

5 Latitudinal soil moisture profiles are shown in Fig. 8 for January-February-March, April-May-June, July-August-September, and October-November-December for the five satellite products and the three ground stations. Ground stations clearly show a contrasted annual cycle, with soil moisture values ranging between 7% during the wet season and less than 1% during the rest of the year. During April-May-June, which  
10 is the end of the dry season and the very beginning of the monsoon season, a few precipitation events lead to a slight increase soil moisture values of AGT station in the south part of the area. The AMSR-E/VUA soil moisture product is in relative good agreement with the ground measurements. It is able to capture the season amplitude and to some extent the latitudinal profile. TMI/VUA also performs well in terms of soil  
15 moisture seasonal amplitude. AMSR-E/NSIDC in contrast underestimates soil moisture seasonal dynamics. ERS/CETP and ERS/TUW overestimate soil moisture values in the north part of the area. This is consistent with results shown in Fig. 5.

### 3.3 Soil moisture comparison with ground measurements

Evaluation of remote sensing products against ground measurements is very difficult  
20 and it needs to be taken with great care. Ground stations provide extremely local estimates of soil moisture while satellite measurements, as well as land surface modelling approaches, give spatially integrated estimates of surface soil moisture. Surface soil moisture scaling properties mainly result from ground heterogeneities (land cover, soil properties, topography) and precipitation heterogeneities. De Rosnay et al. (2009)  
25 have investigated surface soil moisture scaling properties over the Gourma meso-scale site. They have shown that scaling properties of surface soil moisture are stable at the meso-scale site.

Figure 9 shows the temporal profile of soil moisture (five satellite products and

## Evaluation of microwave soil moisture products

C. Gruhier et al.

Title Page

Abstract

Introduction

Conclusions

References

Tables

Figures

◀

▶

◀

▶

Back

Close

Full Screen / Esc

Printer-friendly Version

Interactive Discussion



ground truth), expressed in volumetric unit (a) and normalised (b), for the three different locations (ZAK, EKI, AGT). Quantitative comparisons are provided in Fig. 10 which represents scatterplots between soil moisture products and ground stations. Table 5 gives statistics (correlation, RMSE, bias) of this evaluation at several temporal scales, averaged on the three ground stations. Figure 9 shows that all products and ground stations indicate soil moisture increase during the monsoon seasons in summer 2005 and in summer 2006. However, the scatter between soil moisture products and ground stations is important (Fig. 10). The five satellite soil moisture products overestimate soil moisture during dry seasons as clearly shown in Figs. 9a and in 10 for low soil moisture values. This is particularly the case for the AMSR-E/NSIDC product which therefore considerably underestimates the seasonal amplitude of soil moisture. However normalised values of AMSR-E/NSIDC product indicate that soil moisture dynamics and variability is qualitatively well captured for this product as well as for the other products (Fig. 9). Table 5 shows that the AMSR-E/VUA soil moisture product is in best agreement with ground measurements at any temporal scale, with correlation values of 0.82, 0.60 and 0.58 for the entire 2005–2006 period, for the monsoon seasons and for the dry seasons, respectively. TMI/VUA with correlation values of 0.72, 0.52, and 0.48 is close to AMSR-E/VUA in terms of performances. ERS/CETP product reproduces accurate soil moisture values, with correlation values of 0.63 and 0.52 for 2005–2006 and for monsoon periods. It has poor correlation with ground data for dry season periods ( $-0.02$ ), for which soil moisture variability is very low. Figure 9 shows that most soil moisture products are affected by relatively large noise during dry periods, while ground data indicate steady soil moisture values close to  $0\% \text{ m}^3/\text{m}^3$ . However, soil moisture remote sensing is of highest interest during the monsoon seasons during which atmospheric feedbacks are very strong. Most products perform satisfactorily during the monsoon seasons with correlation ranging from 0.31 for ERS/TUW to 0.6 for AMSR-E/VUA.

**Evaluation of  
microwave soil  
moisture products**

C. Gruhier et al.

Title Page

Abstract

Introduction

Conclusions

References

Tables

Figures

◀

▶

◀

▶

Back

Close

Full Screen / Esc

Printer-friendly Version

Interactive Discussion





## 4 Conclusions

This paper provides an inter-comparison and evaluation of five products derived from three different satellite sensors (active and passive microwaves): four surface soil moisture and one soil moisture index. The study has been performed over a Sahelian area located in the Gourma-Mali region (14.5° N to 17.5° N and 2° W to 1° W) and during two consecutive years (2005–2006). Three satellite products were obtained from passive microwave remote sensors. Two derived from AMSR-E and with two different approaches (AMSR-E/NSIDC, AMSR-E/VUA) and one from TMI (TMI/VUA). The two remaining products were obtained from the same active microwave sensor (ERS SCAT) but with different approaches (ERS/TUW, ERS/CETP). ERS/TUW provides a soil moisture index which, to be comparable to the other “absolute” products had to be converted to absolute values taking into account the local characteristics. So as to evaluate these different products, local ground station measurements from three different ground sites in the Gourma region of Sahel were used.

As the products have different orbital and observing configurations as well as different processing strategies (oversampling), products had to be re-gridded so as to be comparable. The finest spatial sampling (ERS/TUW) was selected. Temporal collocation was performed based on the use of ground station measurements at the daily temporal scale. A comparison of the products by pairs was performed according to similarities in terms of sensor or retrieval approaches. Although they are both derived from AMSR-E data, the AMSR-E/NSIDC and AMSR-E/VUA products were obtained using different retrieval approaches (notably different frequencies). The resulting products are shown to be very different in terms of soil moisture distribution. In particular, the AMSR-E/NSIDC product does not capture low soil moisture values while AMSR-E/VUA product captures the correct range of soil moisture variations.

The ERS/TUW and ERS/CETP products were both obtained from ERS C-band backscattering coefficient, using different retrieval approaches. In this paper ERS/TUW soil wetness index products were rescaled to absolute values based on soil texture

## Evaluation of microwave soil moisture products

C. Gruhier et al.

Title Page

Abstract

Introduction

Conclusions

References

Tables

Figures

◀

▶

◀

▶

Back

Close

Full Screen / Esc

Printer-friendly Version

Interactive Discussion



properties of the Gourma-Mali site. This enables a comparison with the other satellite products which are all provided in volumetric soil moisture. Volumetric soil moisture from ERS/TUW and from ERS/CETP products are similar.

The AMSR-E/VUA and TMI/VUA products were both obtained by VUA, using the LPRM retrieval model applied at C-band for AMSR-E and at X-band for TMI. Their soil moisture products are very similar in terms of absolute value and spatial and temporal distribution of soil moisture.

The five products capture the seasonal monsoon variations. However, the range of soil moisture variations is very different between the products. Verification against ground measurements shows that AMSR-E/NSIDC soil moisture data strongly underestimate the range of soil moisture variations and do not capture low soil moisture values during dry season or between two precipitation events during the monsoon season. The other products are in better agreement with the ground data although they also tend to overestimate low soil moisture values that occur in dry conditions. ERS/CETP and ERS/TUW present acceptable performances but they both overestimate soil moisture in the northern part of the area. AMSR-E/VUA and TMI/VUA products have the best performances in terms of soil moisture retrieval when compared to ground station measurements, with correlation values above 0.81 and RMSE less than  $4.2\% \text{ m}^3/\text{m}^3$  for all three sites considered.

This first large scale inter-comparison of active and passive microwave soil moisture products over Sahel shows that both active and passive low frequency remote sensing approaches are sensitive to surface soil moisture variations. The soil moisture product (ERS/CETP) and the soil moisture index (ERS/TUW) based applied on both ERS-1 and ERS-2 data enables to have a long and continuous time record (since 1992). However, best performances over the study area were clearly obtained using the VU University Amsterdam product, which is based on AMSR-E C-band passive microwave measurements. This study also demonstrates that, all things considered, the retrieval accuracy is as much linked to the sensor (within a category) than to the algorithm used. In passive microwaves the VUA algorithm applied to AMSR-E (C band) and TMI

## Evaluation of microwave soil moisture products

C. Gruhier et al.

Title Page

Abstract

Introduction

Conclusions

References

Tables

Figures

◀

▶

◀

▶

Back

Close

Full Screen / Esc

Printer-friendly Version

Interactive Discussion



(X band) behaves similarly but very differently than that of NSIDC applied to AMSR -E (X band).

This study results will be used in the framework of the validation of the future SMOS L-band instrument which should provide from 2009 on further information on surface soil moisture with an expected improved accuracy.

*Acknowledgements.* The ground validation data set was obtained in the framework of the AMMA (African Monsoon Multidisciplinary Analysis) Program. Based on a French initiative, AMMA was built by an international scientific group and is currently funded by a large number of agencies, especially from France, UK, US and Africa. It has been the beneficiary of a major financial contribution from the European Community Sixth Framework Research Program. Detailed information on scientific coordination and funding is available on the AMMA International web site <http://www.amma-international.org>.



The publication of this article is financed by CNRS-INSU.

## References

- Baup, F., Mougin, E., de Rosnay, P., Timouk, F., and Chênerie, I.: Surface soil moisture estimation over the AMMA Sahelian site in Mali using ENVISAT/ASAR data, *Remote Sens. Environ.*, 109(4), 473–481, 2007. 5307
- Boone, A., de Rosnay, P., Balsamo, G., Beljaars, A., Chopin, F., Decharme, B., Delire, C., Ducharne, A., Gascoïn, S., Guichard, F., Gusev, Y., Harris, P., Jarlan, L., Kergoat, L., Mougin, E., Nasonova, O., Norgaard, A., Orgeval, T., Ottlé, C., Pocard-Leclercq, I., Polcher, J., Sandholt, I., Saux-Picart, S., Taylor, C., and Xue, Y.: The AMMA Land Surface Model

## Evaluation of microwave soil moisture products

C. Gruhier et al.

Title Page

Abstract

Introduction

Conclusions

References

Tables

Figures

◀

▶

◀

▶

Back

Close

Full Screen / Esc

Printer-friendly Version

Interactive Discussion



- Intercomparison Project (ALMIP), B. Am. Meteorol. Soc., doi:10.1175/2009BAMS2786.1, in press, 2009. 5305
- de Rosnay, P., Drusch, M., Boone, A., Balsamo, G., Decharme, B., Harris, P., Kerr, Y., Pellarin, T., Polcher, J., and Wigneron, J.-P.: Microwave Land Surface modelling evaluation against AMSR-E data over West Africa. The AMMA Land Surface Model Intercomparison Experiment coupled to the Community Microwave Emission Model (ALMIP-MEM), J. Geophys. Res., 114, D05108, doi:10.1029/2008JD010724, 2009a. 5307
- de Rosnay, P., Gruhier, C., Timouk, F., Baup, F., Mougin, E., Hiernaux, P., Kergoat, L., and LeDantec, V.: Multi-scale soil moisture measurements at the Gourma meso-scale site in Mali, J. Hydrol., doi:10.1016/j.jhydrol.2009.01.015, in press, 2009b. 5306, 5307, 5308, 5313
- Dirmeyer, P. A., Guo, Z., and Gao, X.: Comparison, Validation, and Transferability of Eight Multiyear Global Soil Wetness Products, J. Hydrometeo., 5(6), 1011–1033, 2004. 5306
- Dirmeyer, P. A., Gao, X., Guo, Z., Oki, T., and Hanasaki, N.: The Second Global Soil Wetness Project (GSWP-2): Multi-model analysis and implications for our perception of the land surface, B. Am. Meteorol. Soc., 87(10), 1381–1397, 2006. 5305
- Draper, C., Walker, J., Steinle, P., de Jeu, R., and Holmes, T.: An evaluation of AMSR-E derived soil moisture over Australia, Remote Sens. Environ., 113, 703–710, 2009. 5306
- European Space Agency, E.: Satellite Data in Hydrology. Experience with ERS, ESA Publications Division, SP-1207, 1997. 5305
- Frappart, F., Hiernaux, P., Guichard, F., Mougin, E., Kergoat, L., Arjounin, M., Lavenu, F., Koité, M., Paturol, J.-E., and Lebel, T.: Rainfall regime over the Sahelian climate gradient in the Gourma region, Mali, J. Hydrol., in press, 2009. 5307
- Gruhier, C., de Rosnay, P., Kerr, Y. H., Mougin, E., Ceschia, E., Calvet, J.-C., and Richaume, P.: Evaluation of AMSR-E soil moisture product based on ground measurements over temperate and semi-arid regions, Geophys. Res. Lett., 35, L10405, doi:10.1029/2008GL033330, 2008. 5306, 5307
- Jones, A., Vukićević, T., and Vonder Haar, T.: A microwave satellite observational operator for variational data assimilation of soil moisture, J. Hydrometeo., 5, 213–229, 2004. 5305
- Kerr, Y. H.: Soil Moisture from space: Where we are ?, Hydrogeology journal, 15, 117–120, 2007. 5305
- Kerr, Y. H., Waldteufel, P., Wigneron, J.-P., Martinuzzi, J.-M., Font, J., and Berger, M.: Soil moisture retrieval from Space: The soil moisture and ocean salinity (SMOS) mission, IEEE Trans. Geosci. Remote Sens., 39(8), 1729–1735, 2001. 5305

## Evaluation of microwave soil moisture products

C. Gruhier et al.

Title Page

Abstract

Introduction

Conclusions

References

Tables

Figures



Back

Close

Full Screen / Esc

Printer-friendly Version

Interactive Discussion



## Evaluation of microwave soil moisture products

C. Gruhier et al.

Title Page

Abstract

Introduction

Conclusions

References

Tables

Figures



Back

Close

Full Screen / Esc

Printer-friendly Version

Interactive Discussion



- Koster, R. D., Dirmeyer, P., Guo, Z., Bonan, G., Cox, P., Gordon, C., Kanae, S., Kowalczyk, E., Lawrence, D., Liu, P., Lu, C., Malyshev, S., McAvaney, B., Mitchell, K., Mocko, D., Oki, T., Oleson, K., Pitman, A., Sud, Y., Taylor, C., Versegny, D., Vasic, R., Xue, Y., and Yamada, T.: Regions of Strong Coupling Between Soil Moisture and Precipitation, *Sciences*, 305, 1138–1140, 2004. 5304
- 5 Lebel, T., Cappelaere, B., Galle, S., Hanan, N., Kergoat, L., Levis, S., Vieux, B., Descroix, L., Gosset, M., Mougin, M., Peugeot, C., and Seguis, L.: AMMA-CATCH studies in the Sahelian region of West-Africa: an overview., *J. Hydrol.*, doi:10.1016/j.jhydrol.2009.03.020, in press, 2009. 5306
- 10 Magagi, R. and Kerr, Y.: Retrieval of soil moisture and vegetation characteristics by use of ERS-1 wind scatterometer over arid and semi-arid areas, *J. Hydrol.*, 188–189, 361–384, 1997. 5310
- Mougin, E., Hiernaux, P., Kergoat, L., Grippa, M., de Rosnay, P., Timouk, F., Le Dantec, V., Demarez, V., Arjounin, M., Lavenu, F., Soumaguel, N., Ceschia, E., Mougénot, B., Baup, F., Frappart, F., Frison, P.-L., Gardelle, J., Gruhier, C., Jarlan, L., Mangiarotti, S., Sanou, B., Tracol, Y., Guichard, F., Trichon, V., Diarra, L., Soumaré, A., Koité, M., Dembélé, F., Lloyd, C., Hanan, N. P., Damesin, C., Delon, C., Sera, D., Galy-Lacaux, C., Seghieri, J., Becerra, S., Dia, H., Gangneron, F., and Mazzega, P.: The AMMA-CATCH Gourma observatory site in Mali: Relating climatic variations to changes in vegetation, surface hydrology, fluxes and natural resources, *J. Hydrol.*, in press, 2009. 5306, 5307
- 15 Njoku, E. G.: AMSR-E/AQUA daily L3 surface soil moisture, interpretive parms, & QC EASE-Grids, Boulder, CO, USA: National Snow and Ice Data Center, Digital Media, 2004. 5306
- Njoku, E. G. and Entekhabi, D.: Passive microwave remote sensing of soil moisture, *J. Hydrol.*, 184, 101–129, 1996. 5305
- 20 Njoku, E. G., Jackson, T., Lakshmi, V., Chan, T., and Nghiem, S.: Soil moisture retrieval from AMSR-E, *IEEE Geosc. Remote Sens. Lett.*, 41(2), 215–229, 2003. 5305, 5309
- Owe, M., de Jeu, R., and Holmes, T.: Multi-sensor historical climatology of satellite derived global land surface soil moisture, *J. Geophys. Res.*, 113, F01002, doi:10.1029/2007JF000769, 2008. 5306, 5309, 5311, 5316
- 25 Redelsperger, J.-L., Thorncroft, C., Diedhiou, A., Lebel, T., Parker, D., and Polcher, J.: African Monsoon, Multidisciplinary Analysis (AMMA): An International Research Project and Field Campaign, *B. Am. Meteorol. Soc.*, 87(12), 1739–1746, 2006. 5306, 5307
- 30 Rüdiger, C., Calvet, J.-C., Gruhier, C., Holmes, T. R. H., de Jeu, R. A. M., and Wagner, W.: An

Intercomparison of ERS-Scat and AMSR-E Soil Moisture Observations with Model Simulations over France, *Am. Meteorol. Soc.*, 10, 431–447, 2009. 5306

Samain, O., Kergoat, L., Hiernaux, P., Guichard, F., Mougou, E., Timouk, F., and Lavenu, F.: Analysis of the in-situ and MODIS albedovariability at multiple time scale in the Sahel, *J. Geophys. Res.*, 113, D14119, doi:10.1029/2007JD009174, 2008. 5307

Taylor, C.: Intraseasonal land-atmosphere coupling in the West African Monsoon, *J. Climate.*, 21, 6636–6648, 2008. 5304

Taylor, C., Kergoat, L., and de Rosnay, P.: The diurnal cycle and African easterly waves: A land surface perspective, *Clivar Exchanges News Letter*, 12(2), 20–21, 2007. 5304

Vachaud, G., Passerat De Silans, A., Balabanis, P., and Vauclin, M.: Temporal Stability of Spatially Measured Soil Water Probability Density Function, *Soil Sci. Soc. Am. J.*, 49, 822–828, 1985. 5311

Wagner, W., Lemoine, G., and Rott, H.: A Method for Estimating Soil Moisture from ERS Scatterometer and Soil Data, *Remote Sens. Environ.*, 70(2), 191–207, 1999. 5310

Wagner, W., Scipal, K., Pathe, C., Gerten, D., Lucht, W., and Rudolf, B.: Evaluation of the agreement between the first global remotely sensed soil moisture data with model and precipitation data, *J. Geophys. Res.*, 108, 4611, doi:10.1029/2003JD003663, 2003. 5306

Wagner, W., Naeimi, V., Scipal, K., de Jeu, R., and Martínez-Fernández, J.: Soil moisture from operational meteorological satellites, *Hydrogeology Journal*, 15, 121–131, 2007. 5305, 5306

Zribi, M. André, C. and Decharme, B.: A method for soil moisture estimation in Western Africa based on ERS Scatter meter, *IEEE Transactions on Geoscience and Remote Sensing*, 46(2), 438–448, 2009. 5306, 5307, 5310

**HESSD**

6, 5303–5339, 2009

---

**Evaluation of  
microwave soil  
moisture products**

C. Gruhier et al.

---

Title Page

Abstract

Introduction

Conclusions

References

Tables

Figures

◀

▶

◀

▶

Back

Close

Full Screen / Esc

Printer-friendly Version

Interactive Discussion



## Evaluation of microwave soil moisture products

C. Gruhier et al.

**Table 1.** Soil moisture ground stations used for satellite products validation.

Name	Short name	Latitude	Longitude
In Zaket	ZAK	16.572° N	1.789° W
Ekia	EKI	15.965° N	1.253° W
Agoufou top	AGT	15.345° N	1.479° W

Title Page

Abstract

Introduction

Conclusions

References

Tables

Figures



Back

Close

Full Screen / Esc

Printer-friendly Version

Interactive Discussion



## Evaluation of microwave soil moisture products

C. Gruhier et al.

**Table 2.** Radiometric characteristics and spatio-temporal resolutions of each soil moisture product.

Name	Type	Frequencies used	Pol. used	Temporal	Spatial
AMSR-E/NSIDC	Passive	10.7	H and V	Daily	25 km
AMSR-E/VUA	Passive	6.9	H and V	Daily	25 km
ERS/CETP	Active	5.3	VV	3 days	25 km
ERS/TUW	Active	5.3	VV	3 days	12.5 km
TMI/VUA	Passive	10.7	H and V	Daily	25 km

Title Page

Abstract

Introduction

Conclusions

References

Tables

Figures

◀

▶

◀

▶

Back

Close

Full Screen / Esc

Printer-friendly Version

Interactive Discussion





## Evaluation of microwave soil moisture products

C. Gruhier et al.

**Table 3.** Volumetric Soil Moisture (in %  $m^3/m^3$ ) from satellite products and ground measurements at the ZAK, EKI and AGT stations and averaged at the meso-scale. Minimum and maximum value, while standard deviation are calculated for the time series 2005–2006. \*Minimal and maximal values for ERS/TUW are from converted original indexes values.

PRODUCT	Minimum				Maximum				Standard Deviation			
	ZAK	EKI	AGT	Meso-scale	ZAK	EKI	AGT	Meso-scale	ZAK	EKI	AGT	Meso-scale
AMSR-E/NSIDC	5.6	5.1	4.0	2.4	20.9	18.7	18.9	22.6	1.5	1.8	1.9	1.8
AMSR-E/VUA	0.0	0.0	0.0	0.0	20.0	24.0	26.0	29.0	3.7	5.0	5.6	4.8
ERS/CETP	1.6	0.4	0.0	0.0	24.0	13.4	20.0	24.6	3.5	2.5	4.4	4.1
ERS/TUW*	0.5	1.4	0.0	0.0	23.0	21.4	17.3	36.6	3.6	3.3	3.9	4.7
TMI/VUA	0.0	0.0	0.0	0.0	17.0	21.0	24.0	26.0	3.2	3.5	4.2	3.9
Ground	0.1	0.0	0.0		10.7	21.4	17.8		2.2	3.0	2.1	

Title Page

Abstract

Introduction

Conclusions

References

Tables

Figures

◀

▶

◀

▶

Back

Close

Full Screen / Esc

Printer-friendly Version

Interactive Discussion



## Evaluation of microwave soil moisture products

C. Gruhier et al.

**Table 4.** Mean values of spatial correlations shown in Fig. 6, for the entire 2005–2006 period (left), for 2005–2006 monsoon seasons (middle) and for 2005–2006 dry seasons (right).

PRODUCT	Two years				Monsoon seasons				Dry seasons			
	AMSR-E NSIDC	AMSR-E VUA	ERS CETP	ERS TUW	AMSR-E NSIDC	AMSR-E VUA	ERS CETP	ERS TUW	AMSR-E NSIDC	AMSR-E VUA	ERS CETP	ERS TUW
TMI/VUA	0.12	0.50	0.24	0.24	0.37	0.66	0.27	0.45	0.02	0.44	0.23	0.17
ERS/TUW	−0.07	0.40	0.61		0.14	0.56	0.51		−0.17	0.32	0.65	
ERS/CETP	−0.16	0.39			0.07	0.21			−0.26	0.48		
AMSR-E/VUA	0.11				0.42				−0.01			

Title Page

Abstract

Introduction

Conclusions

References

Tables

Figures

◀

▶

◀

▶

Back

Close

Full Screen / Esc

Printer-friendly Version

Interactive Discussion



## Evaluation of microwave soil moisture products

C. Gruhier et al.

**Table 5.** Average of statistical results obtained product and stations for two years period, monsoon periods, and dry seasons. RMSE and bias are in %  $m^3/m^3$ , N indicates the number of data.

PRODUCT	Two year				Monsoon seasons				Dry seasons			
	Corr	RMSE	Bias	N	Corr	RMSE	Bias	N	Corr	RMSE	Bias	N
AMSR-E/NSIDC	0.59	5.91	5.31	334	0.42	4.48	3.25	102	0.34	6.47	6.33	23
AMSR-E/VUA	0.82	3.33	1.27	335	0.60	5.46	3.65	102	0.58	1.75	0.31	23
ERS/CETP	0.63	5.23	4.14	83	0.52	5.70	3.91	27	-0.02	4.88	4.37	56
ERS/TUW	0.52	5.41	4.15	151	0.31	6.30	4.10	49	0.04	4.97	4.41	102
TMI/VUA	0.72	3.94	2.82	274	0.52	5.02	3.18	80	0.48	3.38	2.74	194

Title Page

Abstract

Introduction

Conclusions

References

Tables

Figures

◀

▶

◀

▶

Back

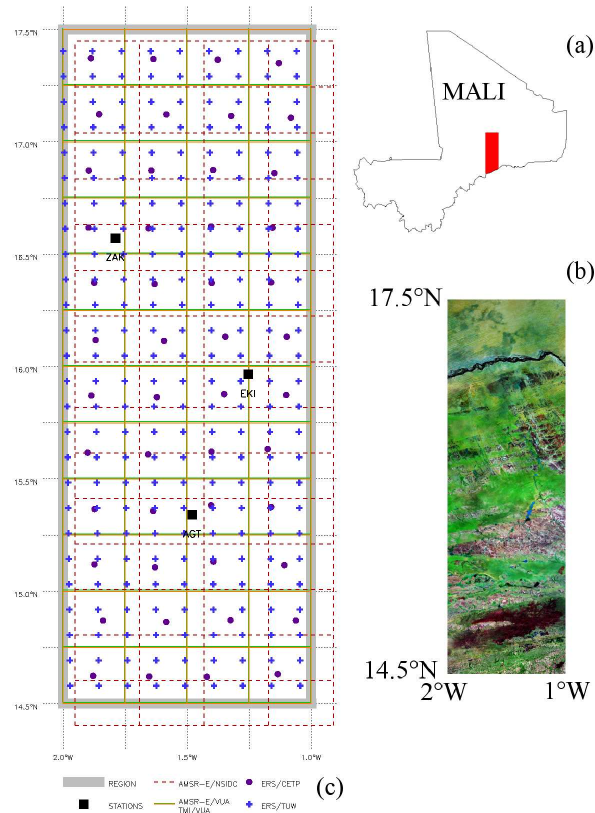
Close

Full Screen / Esc

Printer-friendly Version

Interactive Discussion



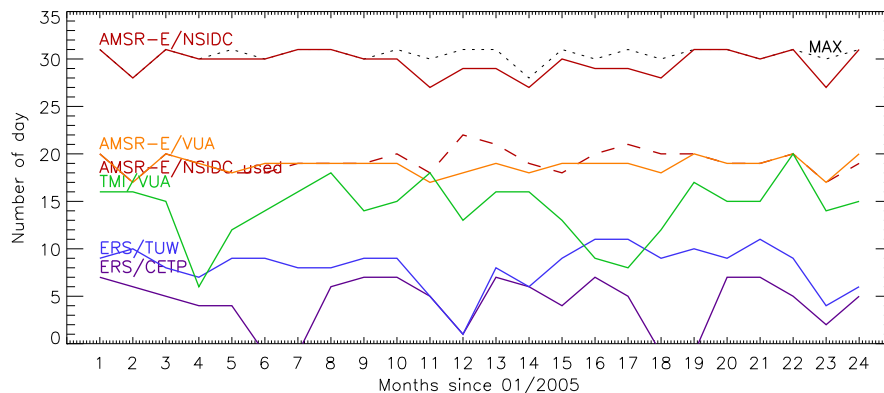


**Fig. 1.** (a) Localisation of study area inside Mali. (b) Land cover map from Landsat mosaic, green area are homogeneous gently undulating sandy dunes covered by annual herbaceous savanna (65%), pink is flat rocky-loam plain (30%), and very dark red is clay-forested areas (5%). (c) Stations location (black squares) over the Gourma-Mali meso-scale site (grey box) and satellite soil moisture products grids. Regular grids are represented by red and green boxes for AMSR-E/NSIDC and AMSR-E/VUA-TMI/VUA respectively. For irregular grids central points of the pixels are indicated by purple and blue crosses for ERS/CETP and ERS/TUW respectively.

Title Page	
Abstract	Introduction
Conclusions	References
Tables	Figures
◀	▶
◀	▶
Back	Close
Full Screen / Esc	
Printer-friendly Version	
Interactive Discussion	

## Evaluation of microwave soil moisture products

C. Gruhier et al.



**Fig. 2.** Temporal coverage for each soil moisture product, in day by month over the Gourma window (counted when at least one pixel is available).

Title Page

Abstract

Introduction

Conclusions

References

Tables

Figures

◀

▶

◀

▶

Back

Close

Full Screen / Esc

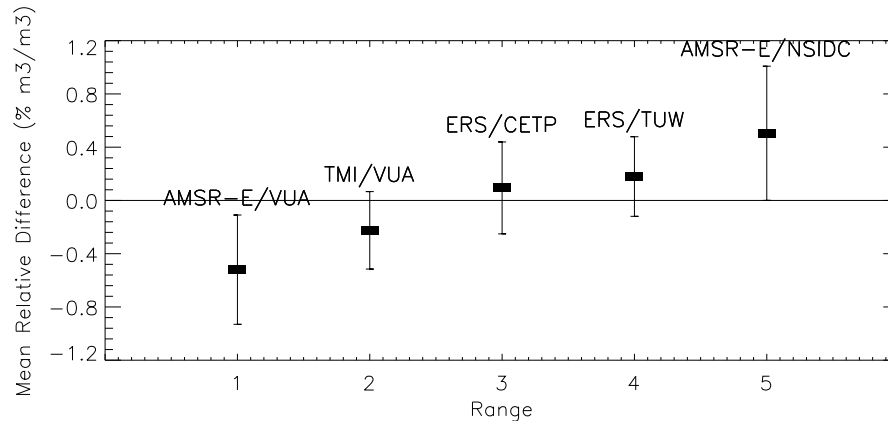
Printer-friendly Version

Interactive Discussion



## Evaluation of microwave soil moisture products

C. Gruhier et al.



**Fig. 3.** Mean relative difference (MRD) value (in % m<sup>3</sup>/m<sup>3</sup>) for each satellite product. Negative values of MRD indicate that the product under-estimates soil moisture compared to the products average, while positive values indicate an over-estimation.

Title Page

Abstract

Introduction

Conclusions

References

Tables

Figures

◀

▶

◀

▶

Back

Close

Full Screen / Esc

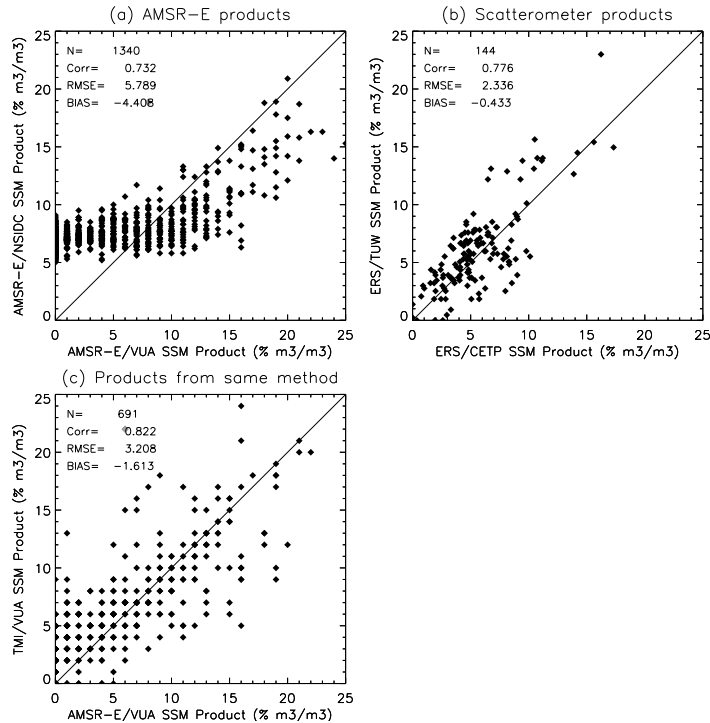
Printer-friendly Version

Interactive Discussion



Evaluation of microwave soil moisture products

C. Gruhier et al.



**Fig. 4.** Relation between different satellite soil moisture products for 2005–2006 on the three validation sites. **(a)** shows the relation between the two AMSR-E products (AMSR-E/NSIDC and AMSR-E/VUA). **(b)** shows the relation between the ERS products (ERS/TUW and ERS/CETP). **(c)** shows the relation between the TMI/VUA and AMSR-E/VUA products obtained with different sensors.

Title Page

Abstract

Introduction

Conclusions

References

Tables

Figures

◀

▶

◀

▶

Back

Close

Full Screen / Esc

Printer-friendly Version

Interactive Discussion



## Evaluation of microwave soil moisture products

C. Gruhier et al.

Title Page

Abstract

Introduction

Conclusions

References

Tables

Figures



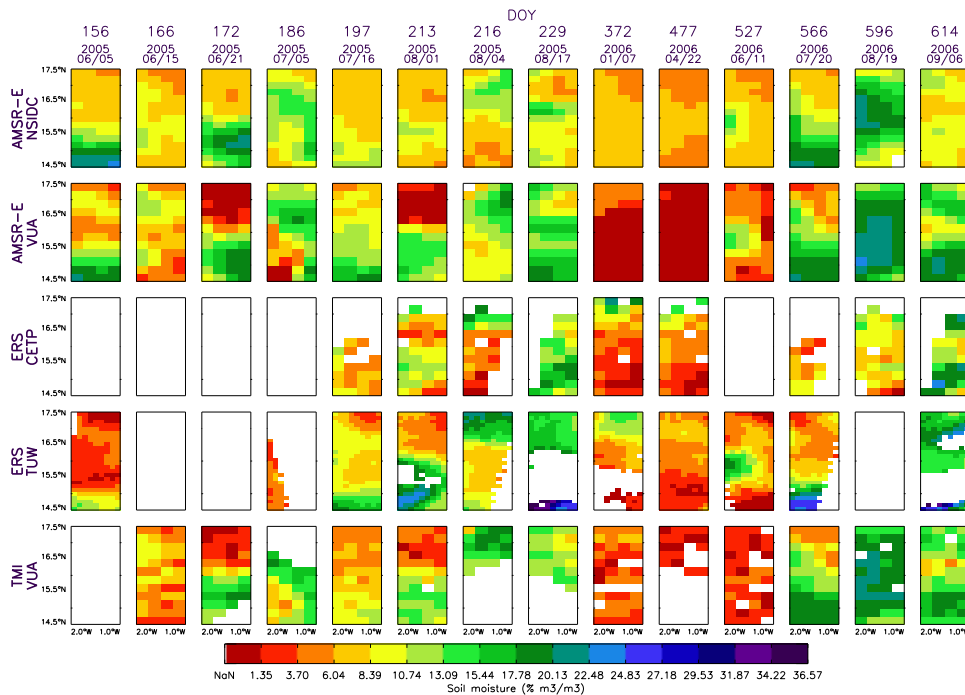
Back

Close

Full Screen / Esc

Printer-friendly Version

Interactive Discussion

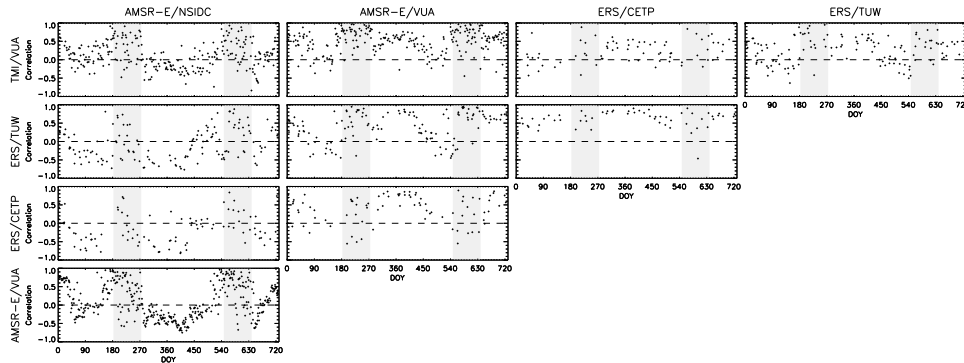


**Fig. 5.** Soil moisture maps over the Gourma-Mali window for the five products (AMSR-E/NSIDC, AMSR-E/VUA, ERS/CETP, ERS/TUW, TMI/VUA), for DOY 156, 166, 172, 186, 197, 213, 216, and 229 for 2005 and DOY 372, 477, 527, 566, 596, and 614 for 2006.



## Evaluation of microwave soil moisture products

C. Gruhier et al.



**Fig. 6.** Temporal evolution of spatial correlations between soil moisture products for the Gourma-Mali window. Background shaded grey areas indicate monsoon seasons.

Title Page

Abstract

Introduction

Conclusions

References

Tables

Figures

◀

▶

◀

▶

Back

Close

Full Screen / Esc

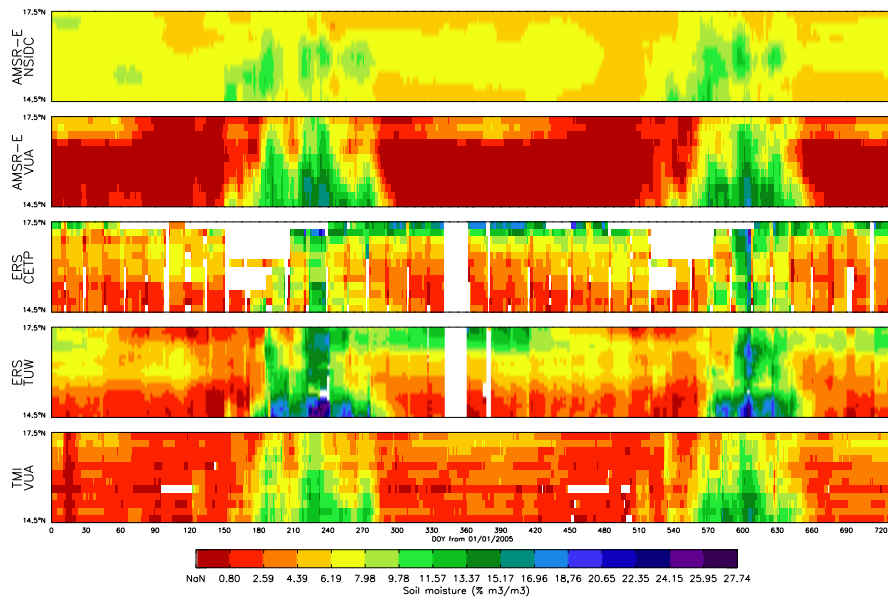
Printer-friendly Version

Interactive Discussion



## Evaluation of microwave soil moisture products

C. Gruhier et al.



**Fig. 7.** Time-Latitude diagrams of the five soil moisture products (AMSR-E/NSIDC, AMSR-E/VUA, ERS/CETP, ERS/TUW, TMI/VUA) for 2005–2006, represented for 10-day averaged values.

Title Page

Abstract

Introduction

Conclusions

References

Tables

Figures

◀

▶

◀

▶

Back

Close

Full Screen / Esc

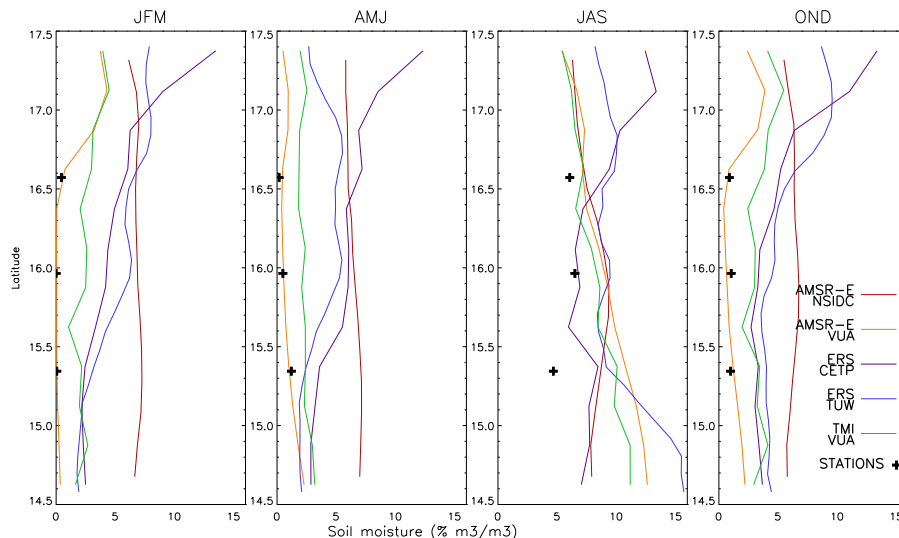
Printer-friendly Version

Interactive Discussion



## Evaluation of microwave soil moisture products

C. Gruhier et al.



**Fig. 8.** Latitudinal distribution of soil moisture for January-February-March (JFM), April-May-June (AMJ), July-August-September (JAS), October-November-December (OND), based on 2005–2006 data. The five soil moisture products are represented by color lines (AMSR-E/NSIDC, AMSR-E/VUA, ERS/CETP, ERS/TUW, TMI/VUA). Ground stations soil moisture values are indicated by black crosses.

Title Page

Abstract

Introduction

Conclusions

References

Tables

Figures



Back

Close

Full Screen / Esc

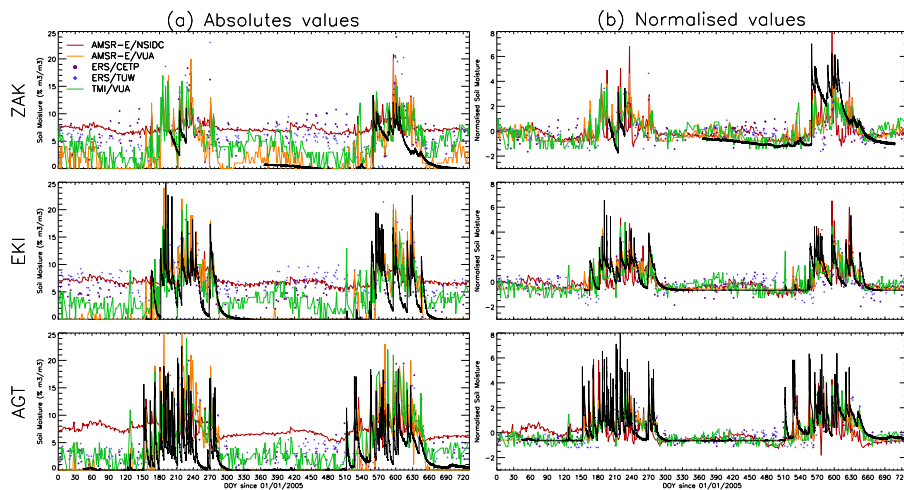
Printer-friendly Version

Interactive Discussion



## Evaluation of microwave soil moisture products

C. Gruhier et al.



**Fig. 9.** Soil moisture values from all soil moisture products over the three ground stations for 2005 and 2006.

Title Page

Abstract

Introduction

Conclusions

References

Tables

Figures

◀

▶

◀

▶

Back

Close

Full Screen / Esc

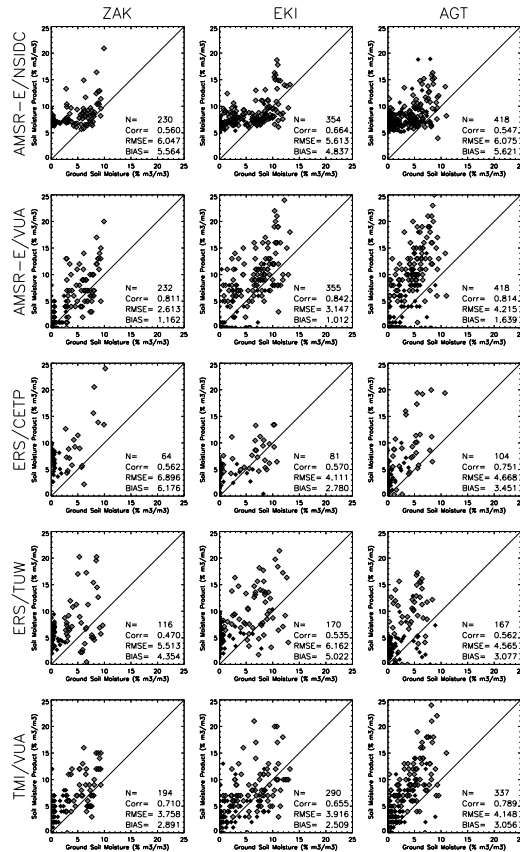
Printer-friendly Version

Interactive Discussion



Evaluation of microwave soil moisture products

C. Gruhier et al.



**Fig. 10.** Soil moisture from products versus from ground measurements. Black points correspond to dry seasons (October to June) and grey points to monsoon seasons (July–August–September). Statistical results shown are calculated during two years period.

Title Page

Abstract

Introduction

Conclusions

References

Tables

Figures

◀

▶

◀

▶

Back

Close

Full Screen / Esc

Printer-friendly Version

Interactive Discussion

