

Papers published in *Hydrology and Earth System Sciences Discussions* are under open-access review for the journal *Hydrology and Earth System Sciences*

Geodynamical processes in the channel connecting the two lobes of the Large Aral Sea

E. Roget¹, P. Zavialov², V. Khan³, and M. A. Muñiz¹

¹Environmental Physics Group, Department of Physics, University of Girona, Catalonia, Spain

²Shirshov Institute of Oceanology, Moscow, Russia

³Hydrometeorological Research Center of the Russian Federation, Moscow, Russia

Received: 22 July 2009 – Accepted: 29 July 2009 – Published: 4 August 2009

Correspondence to: E. Roget (elena.roget@udg.edu)

Published by Copernicus Publications on behalf of the European Geosciences Union.

HESSD

6, 5279–5301, 2009

**Geodynamical
processes
connecting two lobes
of the Large Aral Sea**

E. Roget et al.

Title Page

Abstract

Introduction

Conclusions

References

Tables

Figures

⏪

⏩

◀

▶

Back

Close

Full Screen / Esc

Printer-friendly Version

Interactive Discussion

Abstract

Reasons for the existence of the channel connecting the two lobes of the present Large Aral Sea are discussed. In situ measurements show that differences between the measured depths and those contained in the available digital bathymetry of the lake are considerably different at the channel (7.5 ± 0.9 m, at nine measurement stations along it) and at the northern part of the eastern lobe (1.6 ± 0.3 m, at six stations from the western to the eastern shore). Differences in the misfits observed in the two zones are discussed and thought to be a consequence of the variation of the transversal area of the channel as it enters the eastern lobe, which would affect the flow velocity and thus the strength of the erosion process at the bottom. Field data together with satellite images have been used to modify an original digital bathymetry of the lake and have been implemented into a 3-D hydrodynamical model. A numerical simulation shows that a wind of 12 m/s blowing from the east (112°) generates velocities of up to 45 cm/s in the channel, allowing denser water from the eastern lobe (salinity: 132 g/kg) to flow about 38 km towards the fresher western lobe (salinity: 98 g/kg) in one day. The effect of the inflow on the vertical structure of the western lobe is also illustrated. All in all, the Aral Sea is presented as an example where geomorphologic and geophysical processes, along with hydrological and atmospheric processes, must be taken into account for short-term predictions.

1 Introduction

Now that the scientific community has been able to document the present climate change and convince the society of its importance, the need for planning that takes climate change into account has arisen. New probable short-term forecasts are needed (Allen, 2003), and will require a better understanding of physical, chemical and geophysical processes, including feedback effects between land and atmospheric systems. Within this context, the Aral Sea is one of the most paradigmatic examples of a se-

HESSD

6, 5279–5301, 2009

Geodynamical processes connecting two lobes of the Large Aral Sea

E. Roget et al.

Title Page

Abstract

Introduction

Conclusions

References

Tables

Figures

⏪

⏩

◀

▶

Back

Close

Full Screen / Esc

Printer-friendly Version

Interactive Discussion

Geodynamical processes connecting two lobes of the Large Aral Sea

E. Roget et al.

Title Page

Abstract

Introduction

Conclusions

References

Tables

Figures



Back

Close

Full Screen / Esc

Printer-friendly Version

Interactive Discussion



ries of seas “dying” under the combined effect of climate change, i.e., warming trends across Central Asia (Chase et al., 2000), and anthropogenic influences (Micklin, 1988), which have been demonstrated to affect regional meteorological conditions (Small et al., 2001; Khan et al., 2004; Khan and Holko, 2009). However, the entire Aral region has not yet reached a stationary state and is therefore an exceptional natural laboratory for interdisciplinary studies addressing important issues related to climate change.

As has been widely documented (see, for instance, Micklin, 2004), in 1989, the northernmost part of the Aral Sea, known as the Small Sea, and the main body of the lake (the Large Sea) were separated. At present, the runoff from the Syr Darya River into the Small Aral is enough to keep its level stable. The state of the Large Aral is much more critical, although the residual flow of the Amu Darya River – around $5 \text{ km}^3/\text{year}$ (Gorelkin and Kudyshekin, 2006) – led to a rather stable situation between 2002 and 2006 (Zavialov et al., 2008a). In the fall of 2006, however, the level of the Large Aral started to drop again, following the construction of a dam separating the Small Sea from the Large Sea, and thus preventing Syr Darya runoffs from reaching the Large Sea. The current situation, with the maximum depth of the eastern lobe below 2 m, depends greatly on arbitrary spills from the Small to the Large Aral Sea.

The eastern lobe is very shallow, so evaporation is high, and its salinity reached 211 g/kg in June 2008. The western lobe, being much deeper (about 40 m), presents a lower salinity, although it is also very high – around 116 g/kg at the surface in June 2008 (Zavialov et al., 2008b). The importance of the exchange flux through the channel connecting the two lobes on the vertical structure of the western lobe was first discussed by Zavialov et al. (2003) based on the existence, discovered in 2003, of a bottom layer with a thickness of about 20 m which was warmer and saltier than the bulk water. Measurements made one year later (Zavialov, 2005) showed that water at the bottom of the western lobe was also saltier but colder than the upper bulk water, suggesting a later inflow than in the previous year. Accordingly, it could be concluded that water inflows through the connecting channel (i.e., the high salinity water intrusions into the western lobe, either cold or warm) affect the 3-D thermohaline structure so that the future

scenario greatly depends on the persistence of the channel between the two lobes.

In this paper, unpublished detailed measurements of the water column depth at different stations along the channel connecting the two lobes of the Large Aral and in the northern region of its eastern lobe are presented. Based on the field measurements, satellite images and an existing digital bathymetry of the lake, the evolution of the channel morphometry is discussed. Considering the observed misfits between measurements and the original bathymetry a more realistic bathymetry of the lake has been generated and implemented into a 3-D hydrodynamic model to reproduce the exchange flow between the two lobes through the channel.

2 The context and the methodology of the experimental setup

Virtually, the only digital bathymetry of Lake Aral available to date was developed by S. Stanichniy and R. Stanichnaya (Marine Hydrophysical Institute, Sebastopol, Ukraine), based on digitizing an old bathymetric chart issued by the Naval Hydrographic Office of the USSR in the 1950s. The data from the chart were interpolated and converted onto a regular grid with a spatial resolution of about $0.5 \text{ km} \times 1 \text{ km}$ (see Table 1). The digital map represents absolute elevations of the bottom above sea level (a.s.l.).

Satellite data have been and are used to monitor desiccation and morphological changes of aquatic systems (Medina et al., 2008; Crétaux et al., 2005). In general, the morphological changes of the Aral observed from satellite data are well reproduced by the existing bathymetry when considering the lake level either from satellite altimetry reconstructions (after 1993) or direct geodesic determinations. That is the case for the separation of the Large and Small Aral in 1989, and the new connection of the former Vozrozhdeniya Island to the mainland on the south coast of the lake in 2002 (Ressl and Micklin, 2004). However, when the surface level had decreased from the 53.4 m a.s.l. in 1960 (e.g., Bortnik and Chstyayeva, 1990) to 30.1 m a.s.l. in 2005 (Zavialov et al., 2006), large mismatches between the remote sensing images of the system and the bathymetry appeared in the northern area of the Large Aral. Furthermore, according

Geodynamical processes connecting two lobes of the Large Aral Sea

E. Roget et al.

Title Page

Abstract

Introduction

Conclusions

References

Tables

Figures



Back

Close

Full Screen / Esc

Printer-friendly Version

Interactive Discussion

to the “old” bathymetry, although the strait connecting the eastern and western lobes should have disappeared by 2005, it is still there.

Within this context, in October 2005, a bathymetric survey was carried out in the strait and water depth was measured at 15 different stations along the channel and at the northern part of the eastern lobe. The location of the stations are indicated in Fig. 1 where the bathymetric levels bellow 30.1 m a.s.l. according to the digital bathymetry are presented. As observed, at the nine most westerly stations, the channel is not present in the available bathymetry. Details of the campaign have been given by Zavialov et al. (2008a) although depths along the channel were not reported.

Using standard utilities of Matlab software, the in situ measured depths were merged into the available bathymetry. Furthermore, a navigated high resolution Landsat image of the Aral Sea was used to reconstruct the borders of the channel using GIMP, a free image manipulation program under GNU license. Figure 2 presents the satellite image of the day we used for channel reconstruction – 24 of November 2006. The image has a size of 1100×1000 pixels and encompasses the area between the 59th and 60th meridians and the 45th and 46th parallels. The number of pixels within one degree of longitude is 337, and the number of pixels within one degree of latitude is 500. Table 1 provides the resolutions of Fig. 2 in degrees and meters. In the table, the resolutions of the digital bathymetry along the meridian and the parallel are also indicated.

3 Results

Table 2 presents the observed depths recorded during the campaign at 15 stations, which are identified by their coordinates. As previously mentioned and also shown in Fig. 1, the last six stations are not located in the channel but in the northern part of the eastern lobe. Disregarding these stations, the mean measured depth of the channel was 4.8 ± 1.1 m.

The misfits between the expected depth according to the original bathymetric map and the measured depths for all the stations are shown in Fig. 3. As observed, the

Geodynamical processes connecting two lobes of the Large Aral Sea

E. Roget et al.

Title Page

Abstract

Introduction

Conclusions

References

Tables

Figures



Back

Close

Full Screen / Esc

Printer-friendly Version

Interactive Discussion

differences between the expected and the measured depths are much smaller in the last six stations which are already located in the eastern lobe. More precisely, the mean mismatches at the channel stations were found to be 7.5 ± 0.9 m, and at stations located in the northern part of the eastern lobe they were 1.6 ± 0.3 m.

5 Taking another look at Table 2, the indices (I,J) of the bathymetric matrix corresponding to the stations are also shown. The column's indexes, J, and the line's indexes, I, were obtained as $J = \text{round}[(\text{longitude of the station} - 58.194)/0.0067]$ and $I = \text{round}[(\text{latitude of the station} - 43.396)/0.0087]$, where round stands for the closest natural number. Values (58.194° E, 43.396° N) are the coordinates of the node (1,1) of the bathymetric matrix and 0.0067 and 0.0087 correspond to the resolution along the
10 meridian and the parallel, as specified in Table 1.

A similar procedure was used to locate the border of the channel in the digital bathymetry based on the satellite image. Contour pixels were easy to visually identify in the satellite image because of the contrast and resolution (higher than that of the bathymetry). Finally, as was done with the field stations, the closest coordinates (I,J) in the digital bathymetry were identified.

After locating the measuring stations and the satellite-derived channel contour in the original digital bathymetry, depths measured in situ were merged and the channel was reconstructed. Considering the shape and width of the channel – between ~ 1 and ~ 3 km – and the resolution of the digital bathymetry, only a few points around each station had to be interpolated to reconstruct the channel. Because of this, a linear approximation was used, and the depth at the cells which were identified as the channel limits were fixed at 0.5 m. The interpolation was first done along the horizontal
20 direction and then along the vertical. This simple procedure gave reasonable results with the exception of three critical points at the western end of the channel which were modified manually (as discussed below). The sparse data make it unreasonable to use more sophisticated interpolation methods (Dunn and Ridgway, 2002).

Figure 4a presents the detailed matrix of the bathymetry at the western end of the channel. More precisely, the matrix refers to the cells contained in the rectangular re-

Geodynamical processes connecting two lobes of the Large Aral Sea

E. Roget et al.

Title Page

Abstract

Introduction

Conclusions

References

Tables

Figures

⏪

⏩

◀

▶

Back

Close

Full Screen / Esc

Printer-friendly Version

Interactive Discussion

Geodynamical processes connecting two lobes of the Large Aral Sea

E. Roget et al.

Title Page

Abstract

Introduction

Conclusions

References

Tables

Figures



Back

Close

Full Screen / Esc

Printer-friendly Version

Interactive Discussion



gion whose opposite vertex indices are (267,145) and (274,153). Zeros stand for cells with no water, the shadowed cells with depths of 0.5 m correspond to the channel borders, and the underlined values correspond to the field measurements. The values for the remaining cells were obtained by linear interpolation with the exception of the bold values at cells (149,269), (150,269) and (150,268) which were fixed manually at 5 m depth to avoid a big reduction in the transversal section of the channel in those regions that appear to be artificially generated due to a lack of data. Manual adjustments were not required along the channel.

The bathymetric matrix in the northern region of the eastern lobe was also modified to have a more realistic bathymetry for hydrodynamic studies. This was automatically done considering the cells where depths in the original bathymetry were smaller than 2 m; in these cells, the depths were modified by a factor of 1.5, allowing a maximum value of 2 m. Details of the resulting morphometry in this area are shown in Fig. 4b. The reconstructed bathymetric map is shown in Fig. 5.

This new bathymetry has been implemented in the Princeton Ocean Model (POM), a hydrodynamic model based on the hydrostatic 3-D primitive equations with the level 2.5 Mellor and Yamada closure scheme and terrain-following (sigma) coordinates. The model is widely documented (see, for example, <http://www.aos.princeton.edu/WWWPUBLIC/htdocs.pom/>). At the surface, the wind stress was calculated as $\tau = \rho_a C_D |V_{10}| V_{10}$, where τ is the wind stress vector, V_{10} is the wind speed vector at the height of 10 m, ρ_a is the air density, and C_D is the drag coefficient defined by Hasselmann (1998). Bottom stress is determined considering the logarithmic law of the wall as commented by Blumberg and Mellor (1987).

Although it is not the aim of the paper to delve in detail into the results of hydrodynamic numerical simulations, Fig. 6 presents some results for the western lobe that show a denser intrusion flowing mainly, but not only, along its western shore. The intruded water comes from the eastern lobe after flowing along the channel. For this simulation, the whole system was forced with a constant wind blowing from 112° with an intensity of 12 m/s. The easterly winds are quite typical for the region (e.g., Bort-

nik and Chistyayeva, 1990). In this simulation, the mean velocities along the channel were found to be of about 45 cm/s, so that the denser water from the eastern lobe (salinity: 132 g/kg) can flow about 38 km towards the fresher western lobe (salinity: 98 g/kg) in one day. The northwestward velocities of 40–50 cm/s appear to be consistent with those directly measured in the channel in October 2005, under the conditions of moderate-to-strong easterly winds (Zavialov et al., 2006). Plots in Fig. 6 were obtained after 10 days of simulation with the constant wind.

Figure 7, which is based on the original bathymetric matrix, shows the contour levels down to 5.8 m below the surface level measured during the 2005 campaign for the area where the channel has been completely and numerically reconstructed. Dots on the plot stand for the measuring stations along the channel. As observed, the present channel follows a neck in the previous bathymetry in this area. This indicates that the original bathymetry did resolve the details of the region well, although, as discussed in the previous section, the measured depths were about 7.5 m deeper. This difference is significantly greater than the depth mismatch of about 1.5 m observed at the northern part of the eastern lobe, which could be thought of more easily as a precision error of the original bathymetry. Note that such uncertainty could also explain the differences on the shoreline observed at the southern part of the eastern lobe if Figs. 2 and 3 are compared. In this region, the bottom slope is very small so that a small variation in the water surface level corresponds to a large shift of the shoreline.

Finally, in Fig. 8, a very recent image of the channel (7 October 2008) is presented which allows channel bed changes – which in the case of rivers have been reported to be of importance in short periods (Winterbottom, 2000) – to also be discussed. This fact should be significant for the water exchange between the two lobes as it depends on the relative direction of different sections of the channel and the relevant winds.

Geodynamical processes connecting two lobes of the Large Aral Sea

E. Roget et al.

Title Page

Abstract

Introduction

Conclusions

References

Tables

Figures



Back

Close

Full Screen / Esc

Printer-friendly Version

Interactive Discussion

4 Discussion and conclusions

During the shallowing of the lake, velocities within the channel could be expected to become higher and have eroded the bottom of the channel. In fact, in the recent field campaigns, near-bottom velocities of up to 27 cm/s were recorded (Zavialov et al., 2008a).

Such high velocities could indeed be responsible for massive erosion of the channel bed, especially considering that the latter is formed by soft silts. A similar process has been documented as important in the strait of Istanbul by Gökasan et al. (2005), who described the existence of an inner channel within the strait which could be formed by an abrupt flooding of the Black Sea by Mediterranean waters at the beginning of the latest connection between the Marmara and the Black seas. Holcombe et al. (1997) also described overdeepened channels in the bathymetry of western Lake Erie due to intense wind-driven water circulation through the restricted passages. Gómez-Gesteira et al. (2002) reported an increase of about 30% in the velocities in the main channel of an estuary after the building of a dock, and the in-situ sedimentary measurements confirmed the bottom erosion in the main channel of the estuary produced by the velocity increase.

In our case, as discussed above, the mismatch between the depth of the underwater channel contained in the original bathymetry and the currently measured depth is quite large. It is difficult to believe that this is due to a lack of resolution of the original bathymetry or to extrapolation errors. Furthermore, the differences in the misfits observed for the two zones (the channel and the northern part of the eastern lobe) are significant enough (7.5 and 1.5 m, respectively) to consider different causes for them. Note also that easternmost point, where the channel had to be completely reconstructed (see Figs. 1 and 2), coincides with a region where the width of the channel varies considerably. This variation of the transversal area of the channel as it enters into the eastern lobe would affect the flow velocity and also the strength of the erosion process, which could explain the differences in the mismatch between expected and measured depths, as was the case in the systems referred to in the previous paragraph.

HESSD

6, 5279–5301, 2009

Geodynamical processes connecting two lobes of the Large Aral Sea

E. Roget et al.

Title Page

Abstract

Introduction

Conclusions

References

Tables

Figures

⏪

⏩

◀

▶

Back

Close

Full Screen / Esc

Printer-friendly Version

Interactive Discussion

Geodynamical processes connecting two lobes of the Large Aral Sea

E. Roget et al.

Title Page

Abstract

Introduction

Conclusions

References

Tables

Figures



Back

Close

Full Screen / Esc

Printer-friendly Version

Interactive Discussion



The exchanges between the two lobes, which have already been discussed based on field measurements (Zavialov, 2005), have now been reproduced numerically by incorporating an updated bathymetry of the lake into a three-dimensional hydrodynamical model. The system – with a difference of salinity between the two lobes of 34 g/kg – was forced with a constant easterly wind (112°) of 12 m/s and velocities of about 45 cm/s were generated in the channel. Zavialov (2005) and Crétaux et al. (2009) present different scenarios when the different surface level of both basins can force the release of water from the eastern to the western basin. All in all, the exchange flow between the two lobes depends on baroclinic instabilities and on barotropic forcing, including the possibility of resonant effects if the stationary modes of the internal waves at the different lobes are considered (Roget and Casamitjana, 1990; Roget et al., 2008).

All these considerations lead to the conclusion that the erosion of the bottom in the channel connecting the two lobes has been an important process during the present shrinking period of the Aral Sea. It has been crucial for the survival of the channel by allowing exchange fluxes between the two lobes and influencing the stratification of the lake. Considering regional climate feedback between the land, the atmosphere, and large inland water bodies, this study illustrates that the morphological evolution of the landform should be incorporated into the models to allow for realistic forecasts. In fact, there are models which already account for sedimentary process affecting the bathymetry of large inland water systems (e.g., Filina et al., 2008), but the Aral Sea study shows that underwater erosion should also be considered. Accordingly, the Aral Sea example shows that for reliable short-term predictions, geomorphological and geophysical processes must be taken into account along with hydrological and atmospheric processes.

Acknowledgements. We thank D. Soloviov and S. Stanichniy (Marine Hydrophysical Institute, Ukraine), who kindly provided the satellite images used in this study. This paper has been done within the frame of the NATO Collaborative Linkage Grant ESP-NR-NRCLG-982592. The work was also supported by the Russian Foundation for Basic Research and, partially, by the

References

- Allen, M. R.: Possible or probable?, *Nature*, 425, 6955, p. 242, 2003.
- Blumberg, A. F. and Mellor, G. L.: A description of a three-dimensional coastal ocean circulation model, in: *Three-Dimensional Coastal Ocean Models*, edited by: Heaps, N., American Geophysical Union, 1–16, 1987.
- Bortnik, V. N., Chistyayeva, S. P. (Eds.): *Hydrometeorology and Hydrochemistry of the seas of the USSR. Vol. 7, The Aral Sea*. Leningrad, Gidrometeoizdat, 194 pp., 1990 (in Russian).
- Chase, T. N., Pielke, R. A., Knaff, J. A., Kittel, T. G. F., and Eastman, J. L.: A comparison of regional trends in 1979–1997 depth-averaged tropospheric temperatures, *Int. J. Climatol.*, 20, 503–518, 2000.
- Crétaux, J. F., Kouraev, A. V., Papa, F., Berge-Nguyen, M., Cazenave, A., Aladin, N., and Plotnikov, I. S.: Evolution of sea level of the big Aral Sea from satellite altimetry and its implications for water balance, *J. Great Lakes Res.*, 31(4), 520–534, 2005.
- Crétaux, J. F., Létolle, R., and Calmant, S.: Investigations on Aral Sea Regressions from mirabilite deposits and remote sensing, *Aquat. Geochem.*, 15, 277–291, 2009.
- Dunn, J. R. and Ridgway, K. R.: Mapping ocean properties in regions of complex topography, *Deep-Sea Res. I*, 49, 591–604, 2002.
- Filina, I. Y., Blankenship, D. D., Thoma, M., Lukin, V. V., Masolov, V. N., and Sen, M. K.: New 3-D bathymetry and sediment distribution on Lake Vostok: Implication for pre-glacial origin and numerical modeling of internal processes within the lake, *Earth Planet. Sci. Lett.*, 276, 106–114, 2008.
- Göktaşan, E., Tur, H., Ecevitoglu, B., Görüm, T., Türker, A., Tok, B., Çağlak, F., Birkan, H., Şimşek, M.: Evidence and implications of massive erosion along the Strait of Istanbul, *Geo-Mar. Lett.*, 25, 324–342, 2005.
- Gómez-Gesteira, M., Decastro M., Prego R., and Martins, F.: Influence of the Barrie de la Maza dock on the circulation pattern of the Ría of A Coruña (NW-Spain), *Sci. Mar.*, 66(4), 337–346, 2002.
- Gorelkin, N. E. and Kudyshkin, T. V.: Modern hydrometeorological condition of Aral Sea. *Gen-*

Geodynamical processes connecting two lobes of the Large Aral Sea

E. Roget et al.

Title Page

Abstract

Introduction

Conclusions

References

Tables

Figures



Back

Close

Full Screen / Esc

Printer-friendly Version

Interactive Discussion

eral Assembly of European Geosciences Unions, Vienna, Austria, collected abstracts in CD-ROM, 2006.

Hasselmann, S.: The WAM model – a third generation ocean wave prediction model, *J. Phys. Oceanogr.*, 18, 1775–1810, 1988.

5 Holcombe, T. L., Warren, J. S., Taylor, L. A., Reid, D. F., and Herdendorf, C. E.: Lakefloor geomorphology of Western Lake Erie, *J. Great Lakes Res.*, 23(2), 190–201, 1997.

Khan, V. M., Vilfand, R. M., and Zavialov, P. O.: Long-term variability of air temperature in the Aral sea region, *J. Marine Syst.*, 47(1–4), 25–33, 2004.

10 Khan, V. M. and Holko, L.: Snow cover characteristics in the Aral Sea Basin from different data sources and their relation with river runoff, *J. Marine Syst.*, 76, 254–262, doi:10.1016/j.jmarsys.2008.03.012, 2009.

Medina, C. E., Gomez-Enri, J., Alonso, J. J., and Villares, M. P.: Water level fluctuations derived from ENVISAT Radar Altimeter (RA-2) and in-situ measurements in a subtropical waterbody: Lake Izabal (Guatemala), *Remote Sens. Environ.*, 112, 2604–3617, 2008.

15 Micklin, P. P.: Desiccation of the Aral Sea: A water management disaster in the Soviet Union, *Science*, 241, 1170–1176, 1988.

Micklin, P. P.: The Aral Sea crisis, in: *Dying and Dead Seas*, edited by: Nihoul, J. C. J., Zavialov, P., and Micklin, P. P., Kluwer Academic Publishers, 99–123, 2004.

20 Ressler, R. and Micklin, P.: Morphological changes in the Aral Sea: satellite imagery and water balance model, in: *Dying and Dead Seas*, edited by: Nihoul, J. C. J., Zavialov, P., and Micklin, P. P., Kluwer Academic Publishers, 77–89, 2004.

Roget, E. and Casamitjana, X.: Water exchanges between a coastal lagoon and the sea. *International Association of Theoretical and Applied Limnology, Proceedings*, 24, 92–96, ISBN: 3-510-54034-4, 1990.

25 Roget, E., Muñiz, M. A., and Zavialov, P.: Mixing related to internal waves and gyres in the western lobe of the Large Aral Sea, *Geophys. Res. Abstracts*, ISBN:1027-7006, EGU2008-A-07371, 2008.

Small, E. E., Sloan, L. C., and Nychka, D.: Changes in surface air temperature caused by desiccation of the Aral Sea, *J. Climate*, 14(3), 284–299, 2001.

30 Winterbottom, S. J.: Medium and short-term channel planform changes on the Rivers Tay and Tummel, Scotland, *Geomorphology*, 34, 195–208, 2000.

Zavialov, P. O., Arashkevich, A. G., Grabovskiy, A. B., Dikarev, S. N., Dzhaliylov, G., Evdokimov Yu. V., Kudyshkin, T. V., Kurbaniyazov, A. K., Kurbaniyazov, S. K., Matchanov, A. G., Ni A.

Geodynamical processes connecting two lobes of the Large Aral Sea

E. Roget et al.

Title Page

Abstract

Introduction

Conclusions

References

Tables

Figures

◀

▶

◀

▶

Back

Close

Full Screen / Esc

Printer-friendly Version

Interactive Discussion

- A., Sapozhnikov F. V., and Tomashevskaya, I. G.: Quasi-synoptic field survey in the western and eastern basin of the Aral Sea (October 2005), *Oceanology*, 46(5), 750–754, 2006.
- Zavialov P. O., Kostianoy, A. G., Emelianov, S. V., Ni, A. A., Ishniyazov, D., Khan, V. M., and Kudyshkin, T. V.: Hydrographic survey in the dying Aral Sea, *Geophys. Res. Lett.*, 30(13), 1659, doi:10.1029.2003GL017427, 2003.
- 5 Zavialov, P. O., Ni, A. A., Kudyshkin, T. V., Kurbaniyazov, A. K., and Dikarev, S. N.: Five years of field hydrographic research in the Large Aral Sea (2002–2006), *J. Marine Syst.*, 76(3), 263–275, 2008a.
- Zavialov, P. O., Ni, A. A., Ishniyazov, D. P., Kudyshkin, T. V., Kurbaniyazov, A. K., and 10 Mukhamedzhanova, D.: Ongoing changes in salt composition and dissolved gases in the Aral Sea, *Aquat. Geochem.*, 15(1–2), 263–275, doi:10.1007/s10498-008-9057-9, 2008b.
- Zavialov, P. O.: *Physical Oceanography of the dying Aral Sea*, Springer-Verlag, Berlin, 146 pp., ISBN: 3-540-22891-8, 2005.

Geodynamical processes connecting two lobes of the Large Aral Sea

E. Roget et al.

Title Page

Abstract

Introduction

Conclusions

References

Tables

Figures

◀

▶

◀

▶

Back

Close

Full Screen / Esc

Printer-friendly Version

Interactive Discussion

Geodynamical processes connecting two lobes of the Large Aral Sea

E. Roget et al.

Table 1. Resolution of the digital bathymetry of the lake and of the image presented in Fig. 2.

	Digital Bathymetry		Landsat Image	
Longitude	0.0067°	538.7 m	0.0028°	225.1 m
Latitude	0.0087°	967.0 m	0.0020°	222.3 m

Title Page

Abstract

Introduction

Conclusions

References

Tables

Figures

◀

▶

◀

▶

Back

Close

Full Screen / Esc

Printer-friendly Version

Interactive Discussion

Geodynamical processes connecting two lobes of the Large Aral Sea

E. Roget et al.

Table 2. In-situ measured depths (column 4) at 15 different stations (column 1) placed at the coordinates indicated in columns 2 and 3. Corresponding indexes (I,J) on the digital model of the lakes for these stations are also indicated in columns 5 and 6.

Longitude	Latitude	Depth (m)	I	J
59.1903	45.7833	5.0	149	274
59.1913	45.7612	5.4	149	272
59.1912	45.7572	6.4	149	271
59.1900	45.7430	5.0	149	270
59.2026	45.7196	5.3	151	267
59.2393	45.7021	4.6	156	266
59.2506	45.6864	6.2	158	263
59.2820	45.6653	4.5	162	260
59.3126	45.6479	4.5	167	259
59.3538	45.6470	2.6	173	259
59.4417	45.6302	3.5	186	257
59.5246	45.6165	3.0	199	255
59.5540	45.5780	3.0	203	251
59.6168	45.6086	2.6	212	254
59.7025	45.5997	0.8	225	253

Title Page

Abstract

Introduction

Conclusions

References

Tables

Figures

⏪

⏩

◀

▶

Back

Close

Full Screen / Esc

Printer-friendly Version

Interactive Discussion

Geodynamical processes connecting two lobes of the Large Aral Sea

E. Roget et al.

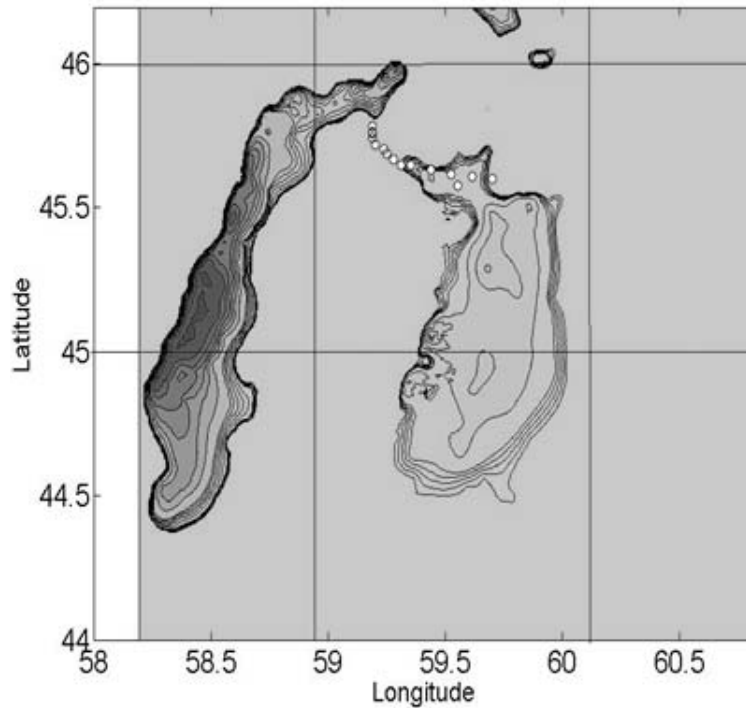


Fig. 1. Bathymetric levels below 30.1 m a.s.l. according to the only available digital model. Dots indicate the location of the stations where the depth of the water column was measured.

Title Page

Abstract

Introduction

Conclusions

References

Tables

Figures

◀

▶

◀

▶

Back

Close

Full Screen / Esc

Printer-friendly Version

Interactive Discussion

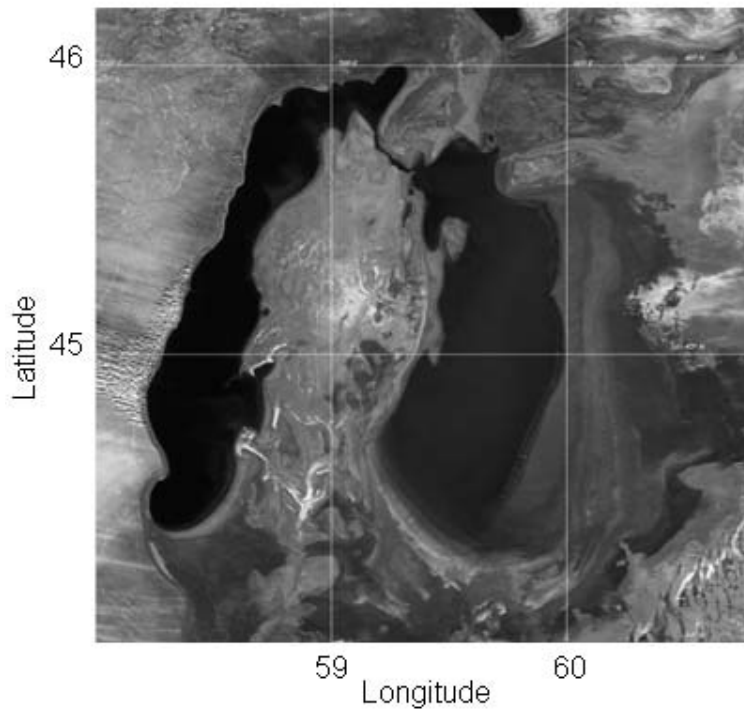


Fig. 2. High resolution Landsat image of Aral Sea on the 24 November 2006.

HESSD

6, 5279–5301, 2009

Geodynamical processes connecting two lobes of the Large Aral Sea

E. Roget et al.

Title Page

Abstract

Introduction

Conclusions

References

Tables

Figures

⏪

⏩

◀

▶

Back

Close

Full Screen / Esc

Printer-friendly Version

Interactive Discussion

Geodynamical processes connecting two lobes of the Large Aral Sea

E. Roget et al.

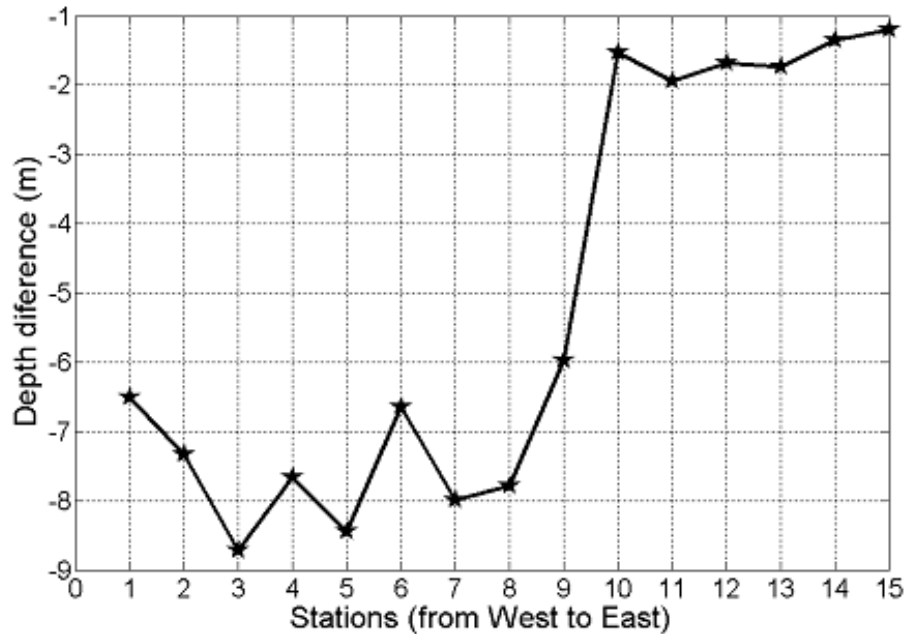


Fig. 3. Differences between expected (according to the available bathymetry) and measured depth at the stations indicated in Fig. 1 (from west to east).

Title Page

Abstract Introduction

Conclusions References

Tables Figures

⏪ ⏩

◀ ▶

Back Close

Full Screen / Esc

Printer-friendly Version

Interactive Discussion

Geodynamical processes connecting two lobes of the Large Aral Sea

E. Roget et al.

Title Page

Abstract

Introduction

Conclusions

References

Tables

Figures

⏪

⏩

◀

▶

Back

Close

Full Screen / Esc

Printer-friendly Version

Interactive Discussion

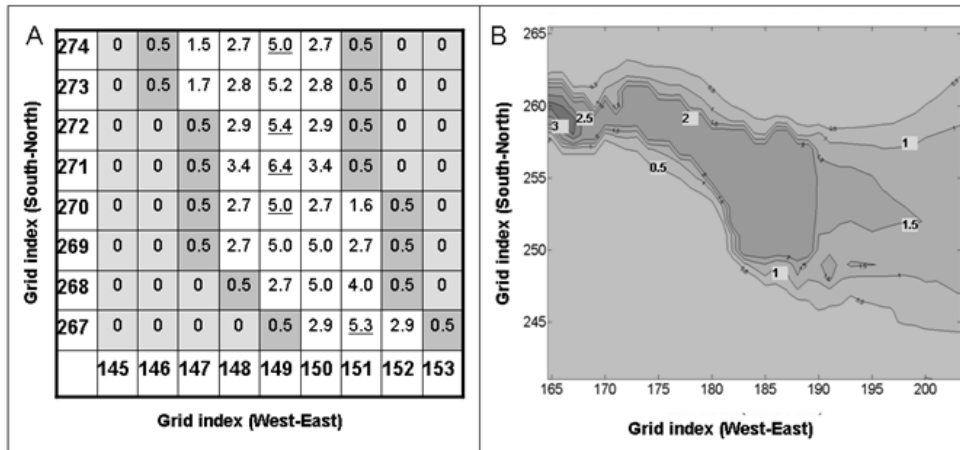


Fig. 4. Details of the reconstructed bathymetry at the extremes of the channel: **(A)** depth matrix at the western side and **(B)** contour levels ($\Delta=0.5$ m) at the eastern side.

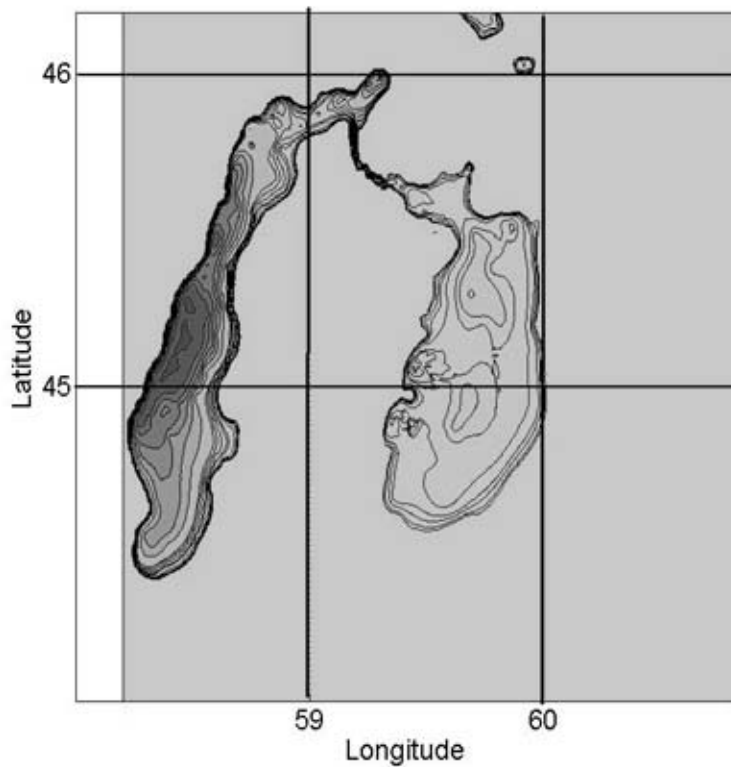


Fig. 5. New bathymetry of the Aral Sea where the channel connecting the two lobes was reconstructed.

Geodynamical processes connecting two lobes of the Large Aral Sea

E. Roget et al.

Title Page

Abstract

Introduction

Conclusions

References

Tables

Figures

◀

▶

◀

▶

Back

Close

Full Screen / Esc

Printer-friendly Version

Interactive Discussion

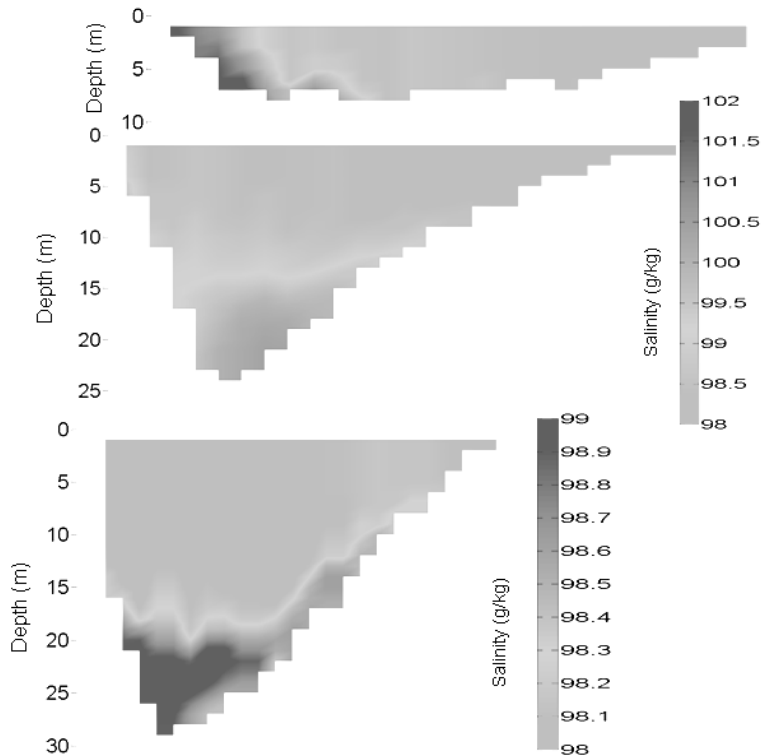


Fig. 6. Salinity at three transversal sections along the western lobe of the Aral obtained after 10 days of simulation using a 3-D hydrodynamical model (POM). Background conditions were similar to those measured during the campaign, with salinity at the western lobe and in the channel of 98 g/kg and at the eastern lobe of 132 g/kg. The system was forced with a constant wind from 112° of 12 m/s.

Geodynamical processes connecting two lobes of the Large Aral Sea

E. Roget et al.

Title Page

Abstract Introduction

Conclusions References

Tables Figures

⏪ ⏩

◀ ▶

Back Close

Full Screen / Esc

Printer-friendly Version

Interactive Discussion



Geodynamical processes connecting two lobes of the Large Aral Sea

E. Roget et al.

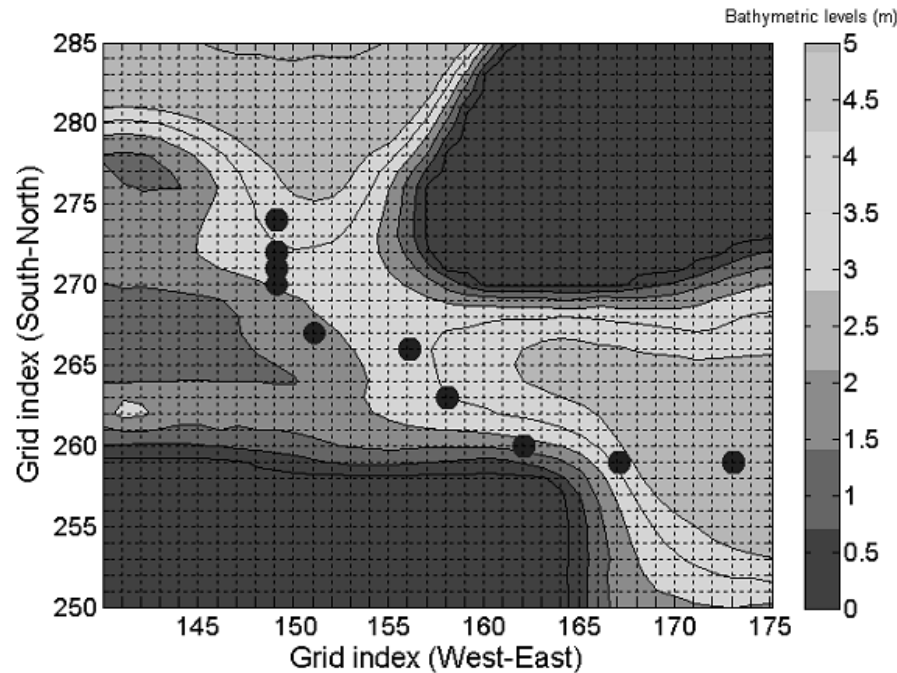


Fig. 7. Bathymetric levels below 24.3 m a.s.l. (5.8 m below the surface level during the campaign) according to the available digital model of the sea at the area where the channel connecting the two lobes is located. Dots show the stations along the channel which were visited during the campaign.

Title Page

Abstract

Introduction

Conclusions

References

Tables

Figures

⏪

⏩

◀

▶

Back

Close

Full Screen / Esc

Printer-friendly Version

Interactive Discussion

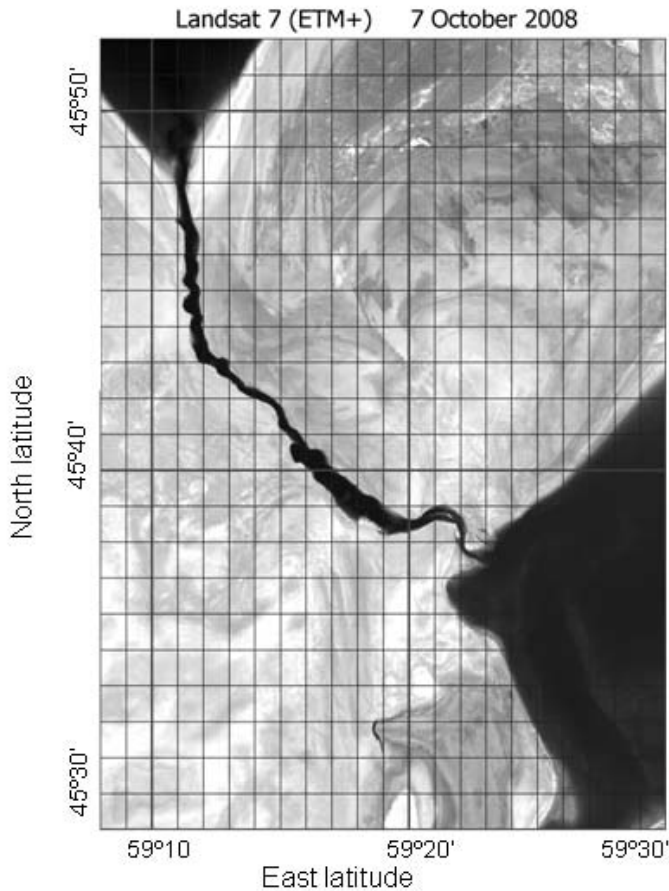


Fig. 8. High resolution Landsat image of Aral Sea of the 7 October 2008.

HESSD

6, 5279–5301, 2009

Geodynamical processes connecting two lobes of the Large Aral Sea

E. Roget et al.

Title Page

Abstract

Introduction

Conclusions

References

Tables

Figures

⏪

⏩

◀

▶

Back

Close

Full Screen / Esc

Printer-friendly Version

Interactive Discussion