

Papers published in *Hydrology and Earth System Sciences Discussions* are under open-access review for the journal *Hydrology and Earth System Sciences*

# Global-scale analysis of river flow alterations due to water withdrawals and reservoirs

**P. Döll, K. Fiedler, and J. Zhang**

Institute of Physical Geography, Goethe University Frankfurt, Frankfurt am Main, Germany

Received: 17 June 2009 – Accepted: 22 June 2009 – Published: 3 July 2009

Correspondence to: P. Döll (p.doell@em.uni-frankfurt.de)

Published by Copernicus Publications on behalf of the European Geosciences Union.

**HESSD**

6, 4773–4812, 2009

## Global-scale analysis of river flow alterations

P. Döll et al.

Title Page

Abstract

Introduction

Conclusions

References

Tables

Figures

◀

▶

◀

▶

Back

Close

Full Screen / Esc

Printer-friendly Version

Interactive Discussion



## Abstract

Global-scale information on natural river flows and anthropogenic river flow alterations is required to identify areas where aqueous ecosystems are expected to be strongly degraded. Such information can support the identification of environmental flow guidelines and a sustainable water management that balances the water demands of humans and ecosystems. This study presents the first global assessment of the anthropogenic alteration of river flow regimes by water withdrawals and dams, focusing in particular on the change of flow variability. Six ecologically relevant flow indicators were quantified using an improved version of the global water model WaterGAP. WaterGAP simulated, with a spatial resolution of 0.5 degree, river discharge as affected by human water withdrawals and dams, as well as naturalized discharge without this type of human interference. Mainly due to irrigation, long-term average river discharge and statistical low flow  $Q_{90}$  (monthly river discharge that is exceeded in 9 out of 10 months) have decreased by more than 10% on one sixth and one quarter of the global land area (excluding Antarctica and Greenland), respectively.  $Q_{90}$  has increased significantly on only 5% of the land area, downstream of reservoirs. Due to both water withdrawals and dams, seasonal flow amplitude has decreased significantly on one sixth of the land area, while interannual variability has increased on one quarter of the land area mainly due to irrigation. It has decreased on only 8% of the land area, in areas with little consumptive water use that are downstream of dams. Areas most affected by anthropogenic river flow alterations are the western and central USA, Mexico, the western coast of South America, the Mediterranean rim, Southern Africa, the semi-arid and arid countries of the Near East and Western Asia, Pakistan and India, Northern China and the Australian Murray-Darling Basin, as well as some Arctic rivers. Due to a large number of uncertainties related e.g. to the estimation of water use and reservoir operation rules, the analysis is expected to provide only first estimates of river flow alterations that should be refined in the future.

**HESSD**

6, 4773–4812, 2009

## Global-scale analysis of river flow alterations

P. Döll et al.

Title Page

Abstract

Introduction

Conclusions

References

Tables

Figures

◀

▶

◀

▶

Back

Close

Full Screen / Esc

Printer-friendly Version

Interactive Discussion



# 1 Introduction

Freshwater ecosystems, which include rivers, wetlands and lakes as well as their floodplains, have been deteriorating faster than other ecosystems. According to the Millennium Ecosystem Assessment (2005), populations of freshwater species (included in the Living Planet Index) declined, between 1970 and 2000, on average by 50%, compared to 30% for marine and also for terrestrial species. Approximately 20% of the world's 10 000 described freshwater fish species have been listed as threatened, endangered, or extinct in the last few decades. Over one third (37%) of the freshwater-dependent mammal species assessed for the IUCN Red List were globally threatened, including manatees, river dolphins and porpoises (Millenium Ecosystem Assessment, 2005). Besides, about one half of the 200 species of freshwater turtles were classified as globally threatened in the IUCN Red List. Threats to global freshwater biodiversity can be grouped under five categories: overexploitation, invasion by exotic species, water pollution, destruction or degradation of habitat (e.g. related to changes in fluvial morphology), and alteration of flow regimes (Dudgeon et al., 2006). While the first two relate to the biotic component of freshwater ecosystems, the latter affect the abiotic component.

Monitoring of freshwater species is required to characterize the degree to which humans have affected aquatic ecosystems. The knowledge of the status and trend of freshwater species, however, is still very poor, in particular in developing countries, and it is not likely to significantly improve in the near future (Revenga et al., 2005). Therefore, assessment and monitoring of the physical conditions of the freshwater habitat is an option, firstly because it provides a more integrated characterization of ecosystem change, and secondly because physical data may be available at more locations than species data (Revenga et al., 2005). Humans have significantly influenced most rivers of the world with respect to the physical habitat conditions water quality, fluvial morphology, and flow regimes. Changes in water quality are predominantly due to human and animal excretions as well as agricultural and industrial emissions, while fluvial morphol-

### Global-scale analysis of river flow alterations

P. Döll et al.

Title Page

Abstract

Introduction

Conclusions

References

Tables

Figures



Back

Close

Full Screen / Esc

Printer-friendly Version

Interactive Discussion



ogy has been modified mainly to improve navigation and flood protection. River flow regimes have been altered by water withdrawals as well as by reservoir construction and management. These alterations do not only affect river ecosystems themselves but also associated ecosystems like riparian wetlands and floodplains.

5 Many studies have shown that flow regimes play a major role in determining the biotic composition, structure, function and diversity within river ecosystems (Richter et al., 1996; Arthington and Pusey, 1993). In recent years, the importance of flow variability for river ecosystems has been well documented (e.g. Poff and Ward, 1989; Poff et al., 1997; Richter et al., 1996, 1997; Puckridge et al., 1998; Clausen and Biggs, 2000; 10 World Commission on Dams, 2000). Researchers now generally agree on the “natural flow paradigm”, stating that the full range of natural intra- and interannual variability of hydrological regimes is critical in sustaining native biodiversity and integrity of aquatic ecosystems (Richter et al., 1997; Poff et al., 1997). Thus, environmental flow guidelines must take into account flow variability as expressed by a number of indicators, not just 15 prescribe minimum flows. The natural flow paradigm also suggests that approaches for defining environmental water requirements only as fraction of long-term average flows, like the Smakhtin et al. (2004) approach, are overly simplistic and inappropriate for protecting ecosystems.

20 A comparison of the natural flow regime of a river with the flow regime that is affected by human intervention provides an indication for the degree of human alteration or degradation of the freshwater ecosystem. Such a comparison requires the identification of appropriate hydrological indicators that are relevant for the well-being of the biotic components of the freshwater ecosystem (Black et al., 2005). The Indicators of Hydrologic Alteration (IHA) approach of Richter et al. (1996) has been widely adopted 25 because of its comprehensive ability to characterize ecologically relevant hydrological changes. In this method, two sets of flow time series representing natural and altered conditions at the same site are compared using 32 indicators of flow magnitude, frequency, duration, timing and rate of change. Large differences between natural and actual, i.e. anthropogenically altered regimes are likely to indicate that the biotic com-

## Global-scale analysis of river flow alterations

P. Döll et al.

Title Page

Abstract

Introduction

Conclusions

References

Tables

Figures

◀

▶

◀

▶

Back

Close

Full Screen / Esc

Printer-friendly Version

Interactive Discussion



ponents of the aquatic ecosystem have been altered too, and that biodiversity has been decreased due to human impacts.

There are many case studies that show how water withdrawals and dams have affected flow regimes but only few on the impacts on the biotic ecosystem component.

5 For the Krishna River in India, for example, Bouwer et al. (2006) showed that reservoir construction and pertaining irrigation after 1960 lead to decreased annual runoff, decreased monsoon season flows and somewhat increased post-monsoon season flows. For the Murrumbidgee River in Australia, Kingsford and Thomas (2004) describe a river flow reduction to about one third of the natural median flow and the resulting degradation of the major wetland due to damming and subsequent water withdrawals. This led to a 21% reduction of the number of waterbird species and a 90% reduction of the total number of waterbirds between 1983 and 2001.

At the global scale, what is known about the drivers of river flow regime alteration, i.e. water use and dams? Total global water withdrawals are estimated to be 15 4000 km<sup>3</sup>/yr, approximately one tenth of the renewable water resources (Döll, 2009), but ratios exceed 0.4 in many river basins which are then called “water-stressed”. These cover about one quarter of the global land area outside the ice caps and are the home of more than 2 billion people (Alcamo et al., 2003a). Consumptive water use (i.e. the fraction of the withdrawn water that evapotranspires during use and therefore does not return to the river) leads to river discharge reduction and is therefore 20 the relevant quantity for determining human river flow alterations. It amounts to 1300–1400 km<sup>3</sup>/yr, of which more than 90% are caused by irrigation (Döll, 2009; Sect. 2.1.2). Therefore, river flow reductions due to human water use are high in semi-arid and arid areas with significant irrigation.

25 According to ICOLD (1998), there are more than 45 000 large dams (with a dam height of more than 15 m, or of more than 5 m if the reservoir volume is above 3 million m<sup>3</sup>), but part of these dams are run-of-river dams with a rather small effect on the flow regime. Avakyan and Iakovleva (1998) estimated that there were around 60 000 reservoirs world-wide, but gave no lower size limit. They estimated that their

## Global-scale analysis of river flow alterations

P. Döll et al.

Title Page

Abstract

Introduction

Conclusions

References

Tables

Figures

◀

▶

◀

▶

Back

Close

Full Screen / Esc

Printer-friendly Version

Interactive Discussion



## Global-scale analysis of river flow alterations

P. Döll et al.

Title Page

Abstract

Introduction

Conclusions

References

Tables

Figures

◀

▶

◀

▶

Back

Close

Full Screen / Esc

Printer-friendly Version

Interactive Discussion



total capacity exceeds 6500 km<sup>3</sup> and that their water surface equals 400 000 km<sup>2</sup>. Nils-  
son et al. (2005) found that 172 out of 292 large river systems (i.e. 60%) are affected  
by dams. While Europe has almost no unfragmented large river systems, there are  
many unfragmented systems in North and Central America (outside the USA). The in-  
vestigated 292 river systems account for 60% of the world's river discharge. Analyzing  
around 600 of the largest reservoirs world-wide, Vörösmarty et al. (1997) found that  
the mean age of river water has likely tripled to well over one month, which shows the  
increase of transport time of river water due to reservoirs. Poff et al. (2007) stated that  
extensive construction of dams has greatly dampened seasonal and interannual river  
discharge variability, with negative impacts on global biodiversity in river and riparian  
ecosystems as biodiversity is generated and maintained by geographic variation. An-  
alyzing the temporal development of 186 intermediate-sized rivers affected by dams in  
the continental USA, they found that flow regimes have become more homogeneous  
due to modification of ecologically critical high and low flows. Such a homogenization,  
which favors the spread of cosmopolitan, nonindigenous species, was not identified for  
317 undammed reference rivers (Poff et al., 2007).

The objective of this study was to analyze the impact of water withdrawals and dams  
(i.e. reservoirs or regulated lakes) on monthly and annual river flow regimes world-  
wide, considering ecologically-relevant hydrologic indicators. We used the most recent  
version 2.1g of the global hydrology and water use model WaterGAP (Alcamo et al.,  
2003b; Hunger and Döll, 2008) which takes into account the impact of reservoirs and  
water withdrawals on river discharge. For this study, the reservoir algorithm of Hanasaki  
et al. (2006) was implemented together with the new GRanD reservoir data set of  
Lehner et al. (2008), such that the impact of about 6600 reservoirs and regulated lakes  
could be analyzed. The model was used to generate time series of anthropogenically  
altered river discharge and of naturalized discharge that would occur if there were no  
dams of water withdrawals. This allowed the quantification of river flow alterations.

In Sect. 2, the methods to compute anthropogenically altered and naturalized river  
flows, the selected indicators of river flow alteration and a simple approach for relating

changes in annual flows to changes of the number of fish species are described. In Sects. 3 and 4, results are presented and discussed. In the last section, we summarize the study results and draw conclusions.

## 2 Methods

### 2.1 Computation of natural and anthropogenically altered river flows with WaterGAP

With a spatial resolution of  $0.5^\circ$  by  $0.5^\circ$  (55 km by 55 km at the equator), the global water resources and use model WaterGAP simulates water flows and storages (hydrology) as well as human water use for all land areas of the globe excluding Antarctica (Alcamo et al., 2003b). Water use, i.e. water withdrawals and consumptive water use, is estimated by separate models for the sectors irrigation, livestock, households and industry. The WaterGAP Global Hydrology Model WGHM computes groundwater recharge, total runoff generation as well as river discharge, taking into account the impact of human water use on river discharge (Döll et al., 2003; Döll and Fiedler, 2008). For each grid cell, a vertical water balance is computed, and the resulting runoff is routed laterally within the cell through a groundwater store and various surface water stores (if existent). The effect of lakes, reservoirs and wetlands on water balance and flow dynamics is modeled by first routing the runoff generated within the grid cell through so-called “local” lakes, reservoirs and wetlands. The resulting discharge volume is added to the discharge from the upstream grid cell and routed through so-called “global” lakes, reservoirs and wetlands, and through the river storage compartment. The difference between precipitation and potential evapotranspiration is added to each surface water type within the grid cell, thus taking into account the effect of the surface water balance on cell runoff. Global lakes and reservoirs are defined based on their size, exceeding a surface area of  $100 \text{ km}^2$  or a maximum storage capacity of  $0.5 \text{ km}^3$ . In former versions of WGHM including WGHM 2.1f (Hunger and Döll, 2008; Döll and Fiedler,

## Global-scale analysis of river flow alterations

P. Döll et al.

Title Page

Abstract

Introduction

Conclusions

References

Tables

Figures

◀

▶

◀

▶

Back

Close

Full Screen / Esc

Printer-friendly Version

Interactive Discussion



2008), reservoirs were modeled like natural lakes, where outflow is computed as a nonlinear function of water storage. Evapotranspiration from lakes (and wetlands) is reduced at low storage values, and outflow is stopped (Hunger and Döll, 2008). In WGHM 2.1g used here, reservoir management is simulated following the approach of Hanasaki et al. (2006) which is explained in Sect. 2.1.3 below. In addition, the database of lakes, reservoirs and wetlands that was used in version 2.1f (Lehner and Döll, 2004) has been enhanced by inclusion of a larger number of man-made reservoirs (comp. Sect. 2.1.3). WGHM is tuned in a basin-specific manner against long-term average discharge at 1235 gauging stations (Hunger and Döll, 2008), taking into account the impact of reservoirs and human water use.

Important WGHM inputs are time series of monthly values of climate variables as well as information on soil and land cover. Monthly climate data are downscaled to daily data, in the case of precipitation using the number of wet days per month. Monthly climate data, except precipitation, are provided by the CRU TS 2.1 data set (Mitchell and Jones, 2005). As precipitation input, 0.5° gridded monthly time series of the GPCP Full Data Product Version 3 (Fuchs et al., 2007) were used, together with the number of wet days from the CRU TS 2.1 data set.

### 2.1.1 Specification of model runs

Five time series of gridded monthly river discharge from 1961–1990 were computed by WGHM, which were then used to quantify the indicators of river flow regime alterations described in Sect. 2.2. In our analysis, ANT conditions refer to the flow regime as impacted by human water withdrawals as well as by reservoirs and regulated lakes. This simulation is the standard WGHM simulation for which tuning against long-term annual observed discharge has been performed. NAT refers to the naturalized regime as computed by a model run in which there are no water withdrawals and in which all reservoirs are removed while regulated lakes are not treated like reservoirs but like natural lakes. Under RES conditions, there are no water withdrawals but reservoirs and regulated lakes exist. Under USE conditions, the impact of water withdrawals on river

## Global-scale analysis of river flow alterations

P. Döll et al.

Title Page

Abstract

Introduction

Conclusions

References

Tables

Figures

◀

▶

◀

▶

Back

Close

Full Screen / Esc

Printer-friendly Version

Interactive Discussion





discharge is simulated but not the impact of reservoirs and lake regulation. To show the effect of the newly implemented reservoir algorithm, the model run ANT LAKE was designed in which all reservoirs were treated like natural lakes, like in previous model versions. In the following two sections, the methods to simulate the impact of human water withdrawals and of dams/reservoirs on river discharge are explained in detail.

### 2.1.2 Reduction of river flow due to human water withdrawals

For the computation of indicators of river flow alteration due to human water withdrawals, domestic, industrial and livestock water use in 2002 as computed by the respective WaterGAP water use modules was taken into account. Irrigation water use was computed according to Döll and Siebert (2002) using, as input, (1) version 4.0.1 of the Global Map of Irrigated Areas GMIA (Siebert et al., 2005), (2) estimates of actually irrigated area per country in 2002 and (3) the climate data time series 1961–1990, to take into account the effect of climate variability on irrigation water use. While domestic, industrial and livestock water use is assumed to be constant within each year, irrigation water use varies from month to month. In WHGM, the effect of human water withdrawals is simulated by subtracting total consumptive water use from water stored in lakes and reservoirs, if there are any in the grid cell, and from river discharge. Consumptive use of a cell is supplied from the cell itself, or from the neighboring cell with the highest long-term average river discharge if not enough water is available in the cell itself.

Consumptive water use is particularly high in India, Pakistan, parts of China and the USA and in the Mediterranean region, mainly due to the large irrigation areas there (Fig. 1a). Global consumptive water use has more than doubled between 1951 and 2002, reaching about 1300–1400 km<sup>3</sup>/yr around 2000 (Fig. 1b). Irrigation accounts for more than 90% of the global consumptive water use. In dry years, irrigation water requirements are particularly high (Fig. 1b), which results in a stronger anthropogenic reduction of the already naturally low river discharge.

Due to various reasons, it is not always possible in WHGM to subtract total con-

## Global-scale analysis of river flow alterations

P. Döll et al.

Title Page

Abstract

Introduction

Conclusions

References

Tables

Figures

◀

▶

◀

▶

Back

Close

Full Screen / Esc

Printer-friendly Version

Interactive Discussion



sumptive use from rivers, lakes or reservoirs, due to a lack of water. One reason is the likely overestimation of irrigation water use by the WaterGAP irrigation water use model, as in dry years, farmers might not have enough water to irrigate all fields with the optimal amount. Another reason may be long-distance water transfers, which are not represented in WGHM. In addition, non-renewable groundwater is withdrawn in reality, e.g. in the USA, Libya, Saudi-Arabia or China. Currently, we cannot model any groundwater withdrawals explicitly because it is not known (globally) which part of the water use comes from groundwater or surface water. Thus, in WGHM, we attempt to withdraw all water from surface water sources. If on any day there is not enough water available in surface waters to satisfy the consumptive use, the model will take out this consumptive water use later in the year or in the next year. This approximates withdrawals from renewable groundwater resources, and leads to a temporal smoothing of discharge reduction that also occurs in reality if groundwater that is connected to surface waters is withdrawn. The “actual use” line in Fig. 1b shows that the fraction of water demand that can be fulfilled from renewable water resources has been decreasing in recent decades, in line with the increasing demand. The difference between “actual use” and total demand, which reaches a maximum of 20% of the demand, is expected to be caused mainly by overestimation of actual water withdrawals due to deficit (sub-optimal) irrigation, and by withdrawal of fossil groundwater. Whether the imperfect consideration of water use leads to an over- or underestimation of the reduction of river flows due to human water use is not known, both at the global and the grid scales.

### 2.1.3 Modification of river flows due to reservoir operation

For this study, we needed to distinguish between man-made reservoirs and regulated lakes, i.e. natural lakes whose outflows of which are regulated by a dam. This was required because under naturalized conditions (NAT), reservoirs do not exist at all, while regulated lakes are treated as natural lakes. Under anthropogenically altered conditions, reservoirs and regulated lakes are modeled by the same algorithm. The

## Global-scale analysis of river flow alterations

P. Döll et al.

Title Page

Abstract

Introduction

Conclusions

References

Tables

Figures

◀

▶

◀

▶

Back

Close

Full Screen / Esc

Printer-friendly Version

Interactive Discussion



new reservoirs and regulated lakes data set was derived by adding additional reservoirs from a preliminary (July 2008) version of the GRanD database (Lehner et al., 2008) to the 886 reservoirs included in WGHM 2.1f. For WGHM 2.1f, the Global Lakes and Wetlands Database of Lehner and Döll (2004) had already been augmented by 64 reservoirs. GRanD does not distinguish between regulated lakes and reservoirs. Therefore, all reservoirs with an area of more than 100 km<sup>2</sup> or a maximum storage volume of at least 0.5 km<sup>3</sup> were checked to decide whether they are actually regulated lakes. Reservoirs of this size are classified in WGHM as “global”, i.e. they are assumed to be fed by river discharge from the upstream cell, while smaller reservoirs are assumed to be “local”, i.e. they are only fed by the runoff generated within the grid cell.

The reservoirs and regulated lakes data set used in this study includes 6568 reservoirs and 52 regulated lakes (Table 1 and Fig. 2). The majority of reservoirs are in North America and Asia. The surface area of the reservoirs and regulated lakes is 291 000 km<sup>2</sup> and 124 000 km<sup>2</sup>, respectively, as compared to a total of 254 000 km<sup>2</sup> in version 2.1f. Maximum storage capacity of reservoirs and regulated lakes is 5929 km<sup>3</sup> and 405 km<sup>3</sup>, respectively, vs. 4642 km<sup>3</sup> before (Table 1). Please note that many of the new reservoirs were included formerly as lakes. The newest dams taken into account in this study were finished in 2006 but the data set certainly does not cover all reservoirs that existed in 2006. The Three Gorges Dam on the Yangtze River in China is included but not the dams at the Narmada River in India.

The reservoir operation algorithm of Hanasaki et al. (2006) was implemented in WGHM for the 1074 global reservoirs and regulated lakes, while flow dynamics of local reservoirs were modeled like those of natural lakes. Hanasaki et al. (2006) developed two different algorithms, one for reservoirs with irrigation as their main purpose, and another for all other reservoir types. In both cases, monthly releases were constrained by long-term average annual inflows. Different from Hanasaki et al. (2006), in WGHM the releases are constrained by the sum of all inflows and the difference between precipitation and evaporation over the reservoir, as the long-term average annual outflow of a reservoir depends not only on the inflows but also on the reservoir water balance,

## Global-scale analysis of river flow alterations

P. Döll et al.

Title Page

Abstract

Introduction

Conclusions

References

Tables

Figures

◀

▶

◀

▶

Back

Close

Full Screen / Esc

Printer-friendly Version

Interactive Discussion



in particular in case of large reservoirs (and regulated lakes). According to Hanasaki et al. (2006), annual release is a function of the relative water storage at the beginning of the operational year. In case of non-irrigation reservoirs, monthly outflows are assumed to be constant throughout the operational year. Monthly outflows of irrigation reservoirs depend on downstream consumptive water use, taking into account water use in the next five downstream cells, or down to the next reservoir or the river mouth. In addition, overflow occurs if reservoir storage capacity would be exceeded, while release is reduced if reservoir storage would fall below 10% of storage capacity.

For 900 of the 1074 global reservoirs (and regulated lakes), information was available on the main purpose of the reservoir, either irrigation (249) or others (651). For the remaining 174 water bodies, the main purpose was estimated based on consumptive irrigation water use in the five grid cells downstream of the reservoir. If this value use was larger than the 75% quantile of the irrigation water use downstream of the known non-irrigation reservoirs, the reservoir was assumed to be an irrigation reservoir. Six of the 1074 reservoirs had a negative sum of inflow and vertical reservoir water balance in WGHM and had to be treated as natural lakes.

The performance of the reservoir algorithm in WGHM was tested by comparing time series of observed monthly outflows from reservoirs to modeled values, distinguishing four cases: reservoirs modeled according to the described reservoir algorithm (ANT), reservoirs modeled as lakes (ANT LAKE), no reservoirs modeled but consumptive water use taken into account (USE), and naturalized conditions without reservoir and use (NAT). The observed reservoir outflow data were obtained from Hanasaki et al. (2006) and included 29 reservoirs with more than 10 years of data that are mostly located in USA and Canada. Ten of the reservoirs are mainly used for irrigation. The best correspondence to observed reservoir outflows is achieved with ANT (i.e. with the reservoir algorithm) for 9 out of 10 irrigation reservoirs (Fig. 3b) and for 15 out of 19 non-irrigation reservoirs (Fig. 3a). If these reservoirs are modeled like lakes, model performance is mostly better than if it is assumed that there is no surface water body at all (USE and NAT). However, for many reservoirs the discrepancies between modeled and simu-

## Global-scale analysis of river flow alterations

P. Döll et al.

Title Page

Abstract

Introduction

Conclusions

References

Tables

Figures

◀

▶

◀

▶

Back

Close

Full Screen / Esc

Printer-friendly Version

Interactive Discussion



lated monthly outflows remain high, due to erroneously modeled reservoir inflows. For simplicity of analysis, water use for 2002 and not the mostly lower values during the observation years were taken into account, which is not expected to have a significant impact on the analysis. The root mean squared errors shown in Fig. 3 are larger than those of Hanasaki et al. (2006), as Hanasaki and colleagues applied observed and not modeled river discharge as input to their reservoir model.

The effect of the reservoir algorithm on the quality of computed monthly river discharge at the 1235 tuning stations was investigated by comparing the modeling efficiencies for a model run using the reservoir algorithm ( $ME_r$ ) and a model run where reservoirs were modeled as lakes ( $ME_l$ ). Monthly time series of observed river discharge were provided by the Global Runoff Data Centre (grdc.bafg.de).  $ME$ , or Nash-Sutcliffe coefficient, is defined as the mean squared error normalized by the variance of the observed data subtracted from unity, and ranges from minus infinity to one (Janssen and Heuberger, 1995). While a  $ME$ -value of one represents a perfect fit of simulated and observed time series, values below zero indicate that the average of observed discharge would be a better estimation than the model.  $ME$  represents model success with respect to the mean as well as to the variance of the observations. Among the 937 stations with  $ME_r > 0$ , the modeling efficiencies differed by less than 0.1 for 836 stations, due mostly to the nonexistence of large reservoirs upstream.  $ME_r$  was 0.1–0.3 units better than  $ME_l$  at 32 stations and 0.3–0.5 units better at 36 stations. However, the reservoir algorithm caused a  $ME$  decrease of 0.1–0.3 (0.3–0.5) at 27 (6) stations.

## 2.2 Indicators of river flow regime alteration

We developed six different indicators of river flow regime alteration that are ecologically relevant and can be computed by WGHM in a rather reliable manner (Table 2). Most of the Indicators of Hydrologic Alteration proposed by Richter et al. (1997) require daily discharges, and thus cannot be computed well by a global hydrological model that is driven by monthly climate input data. Therefore, we only considered indicators that are based on monthly and annual river discharge estimates. Indicator  $I_{SR}$  is taken from

## Global-scale analysis of river flow alterations

P. Döll et al.

Title Page

Abstract

Introduction

Conclusions

References

Tables

Figures

◀

▶

◀

▶

Back

Close

Full Screen / Esc

Printer-friendly Version

Interactive Discussion



Black et al. (2005; their indicator 1a), while  $I_{TS}$  is similar to indicator 3a of Black et al. (2005) but applied for monthly instead of daily discharge values. Black et al. and colleagues also suggested looking not only at the changes of mean values between natural and anthropogenic conditions, but also on the changes of the coefficient of variations. We adapted this idea when we devised indicator  $I_{IV}$ .

### 2.3 Estimation of decrease of freshwater fish richness

Xenopoulos et al. (2005) derived a regression equation between the number of freshwater species in river basins and the long-term average river discharges (1961–1990) at the mouth of the basins. They considered data from 237 river basins located between 42° N and 42° S. The number of fish species mainly relates to endemic fish, with nonindigenous species being assumed to be less than 5%. Long-term average discharge was computed with a previous version of WGHM (Xenopoulos et al., 2005). Fish species numbers in river basins were found to decrease with decreasing long-term average river discharge according to

Log number of fish species in basin =

$$0.4 \cdot \log \text{ mean annual discharge at basin outlet (m}^3/\text{s)} + 0.6242, r^2 = 0.57 \quad (1)$$

Xenopoulos et al. (2005) used Eq. (1) to predict decreases of fish species richness due to future climate change and future water withdrawals. Here, we applied the regression equation to translate indicator  $I_{LTA}$  into a direct indicator of a change in the biotic component of freshwater ecosystems. We computed how fish species richness under naturalized flow conditions has decreased due to human water withdrawals and reservoirs, providing estimates for the upstream basin of each 0.5° grid cell.

Title Page

Abstract

Introduction

Conclusions

References

Tables

Figures

◀

▶

◀

▶

Back

Close

Full Screen / Esc

Printer-friendly Version

Interactive Discussion



### 3 Results

#### 3.1 Anthropogenic impact on long-term annual average discharge ( $I_{LTA}$ )

Total discharge into oceans and internal sinks is computed to be 38 164 km<sup>3</sup>/yr under anthropogenically altered conditions (ANT), compared to 39 549 km<sup>3</sup>/yr for naturalized conditions (NAT) (climate normal 1961–1990, without Antarctica). Thus, dams and water withdrawals (in 2002) have led to a decrease of global river discharge of 3.5% and a corresponding increase in evapotranspiration. Water withdrawals alone (USE) would have caused a discharge decrease of 2.7%, while dams alone (RES) would have led to 0.8% less discharge.

Figure 4 shows naturalized long-term annual river discharge (Fig. 4a) as well the  $I_{LTA}$  indicator (Fig. 4b).  $I_{LTA}$  indicates that long-term average annual discharge (1961–1990) has decreased due to anthropogenic impacts, with decreases reaching up to 100% of natural discharge. The most affected areas are the western and central USA, Mexico, the western coast of South America, the Mediterranean rim, Southern Africa, the semi-arid and countries of the Near East and Western Asia, Pakistan and India, Northern China and the Australian Murray-Darling Basin. Both reservoirs (Fig. 4c) and human water use (Fig. 4d) have led to a decrease of discharge. According to WGHM, the damming of a few lakes (e.g. Lake Baikal in Russia) has caused a small increase of discharge compared to the situation without a dam, i.e. if they are modeled like natural lakes (Fig. 4c). This is related to the different water level variations in case of reservoirs and natural lakes, which leads to different evaporation values.

Water withdrawals are by far the dominant reason for the anthropogenic decrease of long-term average annual river discharge, the areas of strong decrease (high negative values, Fig. 4d) coinciding with the areas of high consumptive water use (Fig. 2a). An exception is humid Southeast Asia, where high consumptive irrigation uses do not lead to high  $I_{LTA}$  values because river discharge values are high. Globally, 16% of the global land area (not considering Greenland and Antarctica) suffer from an anthropogenic decrease of long-term average annual river discharge of at least 10% of the naturalized

Title Page

Abstract

Introduction

Conclusions

References

Tables

Figures

◀

▶

◀

▶

Back

Close

Full Screen / Esc

Printer-friendly Version

Interactive Discussion





value (Table 3). In these areas, the average discharge decrease amounts to 35% (Table 3), and not only river water levels but also groundwater levels in the adjacent floodplains are significantly decreased, negatively affecting riparian vegetation. Based on the work by Xenopolous et al. (2005), we expect that the decrease of long-term average river discharge has led to a decrease in the number of endemic fish species (comp. Sect. 3.7).

### 3.2 Anthropogenic impact on statistical monthly low flow $Q_{90}$ ( $I_{LF}$ )

Naturalized statistical monthly low flow  $Q_{90}$  is zero in many arid grid cells (Fig. 5a). Reservoirs and withdrawals have led to wide-spread decreases of  $Q_{90}$  (negative  $I_{LF}$ ) but also increases along some rivers (Fig. 5b). The increases are caused by reservoirs or the regulation of natural lakes (Fig. 5c), as dams generally have the purpose to make river flow temporally more homogeneous to allow for hydropower production, flood protection or water supply. Examples are the Nile downstream of Lake Victoria, which is regulated by a dam for hydropower production, but also the northern Nile where low flows have been increased by five dams in Ethiopia as well as by the Assuan Dam. The effects of a large number of dams are visible in India, Southeastern Africa, Spain and in the USA. Some reservoirs in semi-arid regions have led to decrease in  $Q_{90}$  (positive  $I_{LF}$ ) because the additional open water surfaces cause higher evaporation (Fig. 5c). This has decreased long-term average discharge so much that temporal homogenization of discharge cannot balance this decrease. The negative impact of water withdrawals on  $Q_{90}$  is larger than the impact on long-term average discharge if expressed in % decrease compared to natural conditions (comp. Figs. 5d and 4d). The main reason for this is that  $Q_{90}$  values are smaller than long-term average discharge values. Decreases have a particular negative impact on habitat availability. Globally,  $Q_{90}$  increases, by at least 10%, on 5% of the land area, due to reservoirs, with an average increase of 161% as compared to natural conditions. It decreases by, on average, 57% on 26% of the land area, mostly due to human water use (Table 3).

Title Page

Abstract

Introduction

Conclusions

References

Tables

Figures

◀

▶

◀

▶

Back

Close

Full Screen / Esc

Printer-friendly Version

Interactive Discussion





### 3.3 Anthropogenic impact on amplitude of seasonal variability of long-term average monthly discharges ( $I_{SA}$ )

Due to reservoirs and human water withdrawals, the difference between the minimum and the maximum long-term average monthly discharge decreases downstream of reservoirs and in areas with high consumptive water use (Fig. 6a). It increases slightly in areas with low water use, or downstream of some regulated lake where regulation leads to a less smooth outflow (e.g. Lake Baikal and Lake Victoria). Seasonal amplitudes decrease mainly because of a decrease in high flows, either due to outflow reductions by dams or high consumptive water use during the high flow months. Such a decrease has negative impacts on, for example, the flora and fauna of seasonally flooded floodplains. The decrease of seasonal amplitude due to reservoirs is consistent with the results of Poff et al. (2007) who analyzed the impact of 186 reservoirs in the continental USA, or with observations for Arctic rivers (e.g. Yang et al., 2004). Globally, the seasonal amplitude decreases on 15% of the land area by at least 10% compared to natural conditions, by on average 39%. It increases by at least 10% on less than 1% of the land area, by on average 26% (Table 3).

### 3.4 Anthropogenic impact on seasonal flow regime ( $I_{SR}$ )

Different from  $I_{SA}$ , the indicator  $I_{SR}$  does not look only at the months with the highest and lowest flows but considers the anthropogenic changes of all 12 long-term average monthly river discharge values.  $I_{SR}$  may range between 0% and infinity because for this indicator, absolute differences of the monthly discharges under naturalized and anthropogenic differences, in percent of the naturalized monthly flows, are averaged for all 12 months. On almost one quarter of the global land area,  $I_{SR}$  is 10% or larger, while the average  $I_{SR}$  – value for this area is 42% (Table 3). There, natural seasonal flow variability has been altered significantly, with negative impacts on habitat availability and the compatibility of the flow regime with the life cycle of aqueous organisms. Figure 6b shows the spatial distribution of the indicator. Both reservoirs and high consumptive

Title Page

Abstract

Introduction

Conclusions

References

Tables

Figures

◀

▶

◀

▶

Back

Close

Full Screen / Esc

Printer-friendly Version

Interactive Discussion



water use can cause large changes in the seasonal flow regime, but the impact of consumptive water use is more diffuse and often stronger than the impact of reservoirs.

### 3.5 Anthropogenic shift of month with maximum discharge ( $I_{TS}$ )

$I_{TS}$  indicates where altered river flows dynamics may not be compatible with the life cycle of organisms any more. A shift in the seasonal occurrence of the maximum mean monthly discharge value of at least one month occurs rather seldom and is almost exclusively due to reservoir operations (Fig. 7a, compare to Fig. 5c). On almost 3% of the land area, maximum seasonal flows occur at least one month later than under naturalized conditions, and on almost 2% of the land area by at least one month earlier, with typical shifts of 1 to 2 months (Table 3). The USA is particularly affected by temporal shifts of the occurrence of high flows (Fig. 7a).

### 3.6 Anthropogenic impact on interannual variability of monthly flows ( $I_{IV}$ )

Interannual variability of monthly mean flows, as expressed by the coefficient of variation, increases significantly wherever there is an even small consumptive water use (Figs. 7b and 1a). Please note that  $I_{IV}$  is computed only for cells in which the coefficient of variation changes by at least 10% in any month. In years with low precipitation and thus low natural discharge, discharge is strongly decreased by higher than normal consumptive water use for irrigation. In years with high precipitation and natural discharge, discharge is less strongly decreased, as a high precipitation amount leads to a lower than normal irrigation water use. Therefore, irrigation increases interannual variability of river discharge such that  $I_{IV}$  is positive in irrigation areas. But even the temporally constant consumptive water use assumed for households and industry leads to an increase of  $I_{IV}$ , as the coefficient of variation increases with decreasing mean. Interannual variability decreases only downstream of dams where there is no high consumptive water use (Fig. 7b). The latter is consistent with the findings of Poff et al. (2007) for the USA.

## Global-scale analysis of river flow alterations

P. Döll et al.

Title Page

Abstract

Introduction

Conclusions

References

Tables

Figures

◀

▶

◀

▶

Back

Close

Full Screen / Esc

Printer-friendly Version

Interactive Discussion



On more than one quarter of the land area, the number of months in which interannual variability increases is larger than the number of months for which interannual variability decreases due to anthropogenic impacts. For these cells, variability increases, on average, for 11 out of 12 months ( $I_V=11+(-1)=10$ , Table 3). On less than 8% of the land area, interannual variability predominantly decreases, during 8 to 9 months on average (Table 3).

### 3.7 Effect of anthropogenically decreased long-term average river flows on number of fish species

Due mainly to water withdrawals, long-term annual river discharge has decreased as compared to natural conditions (Sect. 3.1), and it can be expected that this decrease has led to a decrease of endemic fish species (Xenopoulos et al., 2005). Using Eq. (1), the decrease in the number of fish species upstream of each grid cell due to water withdrawals and dams, in % of fish species that would exist under naturalized long-term average river discharge, was computed (Fig. 8). High decreases of fish species of up to 99% may have occurred according to this rough estimation, with the highest decreases in areas with a high decrease of long-term average discharge due to water withdrawals (Fig. 4d and Sect. 3.1). On 10% of the land area, the number of fish species in the upstream basin has decreased by at least 10%, while on 0.6%, it has decreased by even 50% and more. The average decrease in areas with at least a 10% decrease is 24%. We believe that the computed fish species reduction is much smaller than in reality as only the changes of annual river discharge are taken into account, but not the changes at the monthly scale.

## 4 Discussion

Our study has indicated significant flow alterations in regions with high consumptive water use (i.e. irrigation areas) and downstream of dams. The question is: how well can

Title Page

Abstract

Introduction

Conclusions

References

Tables

Figures



Back

Close

Full Screen / Esc

Printer-friendly Version

Interactive Discussion



**Global-scale analysis  
of river flow  
alterations**

P. Döll et al.

Title Page

Abstract

Introduction

Conclusions

References

Tables

Figures



Back

Close

Full Screen / Esc

Printer-friendly Version

Interactive Discussion



we estimate river flow alterations due to human water use and dams with WGHM? As four of the six indicators presented here are based on mean monthly river discharges, we looked at mean monthly river discharge at four gauging stations for which observations and partly also independent estimates of naturalized flows were available. All four stations (Colorado at Lees Ferry, Missouri at Hermann, Volta at Senchi (Halcrow), and Volga at Volgograd Power Station) are located downstream of large reservoirs, but only the two US basins have considerable consumptive water use (Table 4). For the US basins, local estimates of naturalized river discharge were available for 1980–1999 (Haddeland et al., 2006). Please note that the station “Glen Canyon” in Haddeland et al. (2006) is equivalent to the station “Lees Ferry”.

For the Volta at Senchi, we compared long-term monthly river discharge as computed for naturalized conditions (NAT) for the years 1951–1964, i.e. for the time before dam construction, with values that were observed during that time period. In addition, we considered the time period 1968–1984 after dam construction, comparing observations to simulations under anthropogenic impacts (ANT). Figure 9a shows that for the time period after dam construction, the very low observed seasonality of discharge is represented well by WGHM. If Lake Volta is modeled like a natural lake and not a reservoir (ANT LAKE), the fit to the observed discharge is worse, and, for example, discharge in the dry season (February to June) is underestimated. Simulated naturalized discharge, i.e. discharge before dam construction, has a much higher seasonal variability than the anthropogenically impacted discharge, with a peak in September. Observed variability, however, is even larger, with a higher peak that is shifted by one month, and zero flow between February and May. Thus, for this gauging station, WGHM underestimates  $I_{SA}$  and  $I_{SR}$ , while  $I_{TS}$  is estimated correctly.

Discharge of the Volga observed at the Volgograd Power Station during the period 1961–1990 peaks in May, which is rather well modeled by ANT even though discharge from January to March is somewhat underestimated (Fig. 9b). If the upstream reservoirs are simulated like natural lakes, peak discharge is overestimated, and the impact of reservoirs on peak flow is strongly underestimated (Fig. 9b). Naturalized discharge

is estimated to amount to only half the ANT value from January to March, and it shows a May peak discharge that is 50% larger than the discharge with reservoirs. Between July and November, reservoir impact is very small.

The hydrographs for the Missouri at Hermann show that WGHM can, for this station, model the anthropogenic impact on the month with maximum flow ( $I_{TS}=1$ ) well even though the model simulates the peak flows to occur too early for all model variants (Fig. 9c). Like for the Volta, the naturalized peak flow is somewhat underestimated by the model which leads to an underestimation of  $I_{SA}$ . Without reservoirs and only water use (USE), discharge would decrease significantly throughout the year as compared to naturalized discharge, while reservoirs but no water use (RES) would lead to increased discharge in winter (January to March) and decreased values during the high flow period from April to August. As upstream water use also affects the simulated reservoir operation, the effects of reservoirs and use are not additive.

Like for the Volta and the Missouri, naturalized seasonal peak flow is underestimated by WGHM for the Colorado at Lees Ferry, while the low seasonal variability of anthropogenically impacted discharge is captured well (Fig. 9d). The observed shift of the month with maximum flow is one month, but zero months for the simulated values. Again, the positive effect of modeling the outflow dynamics of reservoirs differently from those of natural lakes can be observed. Nonetheless, there are also stations for which a better fit to observed discharge can be obtained if reservoirs are modeled like natural lakes. Based on the analysis of the four stations, we might conclude that with respect to the indicators  $I_{SA}$  and  $I_{SR}$ , our WGHM-based analysis underestimates the actual anthropogenic impact. However, due to the very low number of analyzed stations, this conclusion is not robust.

Haddeland et al. (2006) showed a better fit between the naturalized flow regime they computed with the hydrological model and the independent naturalized flow data for the Colorado and the Missouri shown in Fig. 9. This might be due to the fact that they (indirectly) tuned their reservoir algorithm to the naturalized flow data available to them: for the Colorado, the Missouri and the Columbia. Besides, tuning of their hydrological

## Global-scale analysis of river flow alterations

P. Döll et al.

Title Page

Abstract

Introduction

Conclusions

References

Tables

Figures

◀

▶

◀

▶

Back

Close

Full Screen / Esc

Printer-friendly Version

Interactive Discussion



model involved more parameters than model tuning of WGHM.

With respect to modeling the impacts of reservoirs on discharge dynamics, a major uncertainty is caused by the fact that reservoir operation is done, in reality, in a very site-specific manner that cannot be simulated very well by a general algorithm in a global-scale model. Besides, the actual number of reservoirs, in particular the number of small reservoirs, is higher than the number of reservoirs represented in WGHM.

With respect to the impacts of water use, uncertainty is related to uncertain water use estimates, in particular for irrigation. Here, even the location of areas equipped for irrigation is rather uncertain in many areas (Siebert et al., 2005). Besides, water withdrawals are assumed to be taken from surface water or shallow groundwater, such that all water withdrawals lead to a river flow reduction. If, however, deep groundwater without any connection to surface water is withdrawn, river flow might even increase due to the return flow to surface water via artificial drainage or shallow groundwater.

How significant are the anthropogenic changes of river flow regimes caused by water withdrawals and reservoirs as compared to the conversion of potential vegetation to agricultural land? Conversion to agricultural land leads to decreased evapotranspiration while water use and reservoirs increase evapotranspiration. Besides, land conversion has affected all agricultural lands and not only the approximately 20% that are irrigated. Rost et al. (2008) modeled both the impact of land conversion and the impact of water use for the time period 1991–2000. They found that land conversion (without irrigation) has increased global long-term average river discharge by 6.6% as compared to the discharge for potential vegetation, while irrigation has led to a decrease of only 1.5% as compared to only rainfed agriculture. The latter value differs from our model analysis where irrigation water withdrawals are estimated to result in a decrease of global discharge of approximately 2.4% because in the model of Rost et al. (2008), a smaller fraction of the water use requirements can be fulfilled than in WGHM (see Fig. 1b). Thus, decrease of river discharge by total water withdrawals and dams, by 3.5% as computed in our study, approximately balances half of the discharge increase caused by land conversion, if we consider global averages. However,

## Global-scale analysis of river flow alterations

P. Döll et al.

Title Page

Abstract

Introduction

Conclusions

References

Tables

Figures



Back

Close

Full Screen / Esc

Printer-friendly Version

Interactive Discussion



an aggregation over river basins is more appropriate for ecological questions. Rost et al. (2008) found that in river basins with extensive irrigation the combined effect of land conversion and irrigation water use was a decrease of river discharge, even though they appear to somewhat underestimate the effect of irrigation. Thus, we expect that conversion and water use in semi-arid areas with significant irrigation have lead to an overall decrease of discharge.

## 5 Conclusions

This study has provided a first global overview of the impacts of human water use and dams on river flow regimes. Six different indicators of river flow alteration were identified that are of specific relevance for the health (e.g. biodiversity) of the biotic components of freshwater ecosystems. These indicators describe anthropogenic flow changes that concern organism in surface waters as well as groundwater-dependent vegetation in floodplains. Applying the state-of-the-art global water model WaterGAP, which integrates the computation of both human water use and terrestrial water flows and takes into account the impact of more than 6600 dams, these indicators were quantified with a spatial resolution of  $0.5^\circ$  by  $0.5^\circ$ .

Total long-term average river discharge into oceans and internal sinks has been decreased by 3.5% due to water withdrawals and dams. One sixth of the global land area (excluding Greenland and Antarctica) has suffered from a significant decrease of long-term average annual river discharge (of more than 10%), mainly due to water withdrawals and in particular irrigation, which accounts for more than 90% of global consumptive water use. The average decrease in these areas has been 35%. This decrease in annual river discharge may have lead to a more than 10% decrease of the number of fish species in the upstream basin on one tenth of the land area. The monthly statistical low flow  $Q_{90}$  has decreased significantly on a quarter of the land area, but downstream of reservoirs, on 5% of the land area, it has increased significantly. Also on one sixth of the land area, the seasonal discharge amplitude has

## Global-scale analysis of river flow alterations

P. Döll et al.

Title Page

Abstract

Introduction

Conclusions

References

Tables

Figures

◀

▶

◀

▶

Back

Close

Full Screen / Esc

Printer-friendly Version

Interactive Discussion



decreased significantly, both due to reservoirs and water use, and our analysis may even underestimate the decrease. While seasonal variability has thus become smaller due to human impacts, interannual variability has increased due to water use except in areas downstream of dams with little consumptive water use. A temporal shift of the month with maximum discharge by at least one month has occurred on only 4% of the land area. The spatial patterns of significant alterations are roughly the same for all indicators except  $I_{TS}$ , as high indicator values are in most cases related to the spatial patterns of water use and dams.

Identification and quantification of anthropogenic river flow alterations is a first step for defining environmental flow guidelines. The next step would be to develop quantitative relationships between indicators of biotic changes (e.g. species richness, traits, assemblage structure, recruitment success) and degrees of flow alterations (Arthington et al., 2006). Arthington et al. (2006) suggested computing flow alterations either as compared to undisturbed reference streams, or, if these do not exist, by hydrological modeling as done in this study. They also suggested classifying all rivers according to their natural flow regime, such that quantitative relationships determined for a few selected rivers can be applied to rivers for which no ecological data are available. This approach has the potential to lead to scientifically-based environmental flow guidelines even for the majority of global rivers that only have very scarce ecological data. Such guidelines are urgently required to support a sustainable water resources management that balances human and ecosystem water demands.

*Acknowledgements.* This study was partly funded by the IPSWaT program of BMBF (German Ministry for Education and Research).

## References

Alcamo, J., Döll, P., Henrichs, T., Kaspar, F., Lehner, B., Rösch, T., and Siebert, S.: Global estimates of water withdrawals and availability under current and future “business-as-usual” conditions, *Hydrol. Sci. J.*, 48, 339–348, 2003a.

## Global-scale analysis of river flow alterations

P. Döll et al.

Title Page

Abstract

Introduction

Conclusions

References

Tables

Figures

◀

▶

◀

▶

Back

Close

Full Screen / Esc

Printer-friendly Version

Interactive Discussion





- Alcamo, J., Döll, P., Henrichs, T., Kaspar, F., Lehner, B., Rösch, T., and Siebert, S.: Development and testing of the WaterGAP 2 global model of water use and availability, *Hydrol. Sci. J.*, 48, 317–337, 2003b.
- Arthington, A. H., Bunn, S. E., Poff, N. L., and Naiman, R. J.: The challenge of providing environmental flow rules to sustain river ecosystems, *Ecol. Appl.*, 16(4), 1311–1318, 2006.
- Arthington, A. H. and Pusey, B. J.: In-stream flow management in Australia: methods, deficiencies and future directions, *Australian Biology*, 6, 52–60, 1993.
- Avakyan, A. B. and Iakovleva, V. B.: Status of global reservoirs: The position in the late twentieth century, *Lakes & Reservoirs: Research and Management*, 3, 45–52, 1998.
- Black, A. R., Rowan, J. S., Duck, R. W., Bragg, O. M., and Clelland, B. E.: DHRAM: a method for classifying river flow regime alterations for the EC Water Framework Directive, *Aquatic Conservation: Marine and freshwater Ecosystems*, 15, 427–446, 2005.
- Bouwer, L. M., Aerts, J. C. J. H., Droogers, P., and Dolman, A. J.: Detecting the long-term impacts from climate variability and increasing water consumption on runoff in the Krishna river basin (India), *Hydrol. Earth Syst. Sci.*, 10, 703–713, 2006, <http://www.hydrol-earth-syst-sci.net/10/703/2006/>.
- Clausen, B. and Biggs, B. J. F.: Flow variables for ecological studies in temperate streams: groupings based on covariance, *J. Hydrol.*, 237, 184–197, 2000.
- Döll, P.: Vulnerability to the impact of climate change on renewable groundwater resources: a global-scale assessment, *Environ. Res. Lett.*, submitted, 2009.
- Döll, P. and Fiedler, K.: Global-scale modeling of groundwater recharge, *Hydrol. Earth Syst. Sci.*, 12, 863–885, 2008, <http://www.hydrol-earth-syst-sci.net/12/863/2008/>.
- Döll, P., Kaspar, F., and Lehner, B.: A global hydrological model for deriving water availability indicators: model tuning and validation, *J. Hydrol.*, 270(1–2), 105–134, 2003.
- Döll, P. and Siebert, S.: Global modeling of irrigation water requirements, *Water Resour. Res.*, 38(4) 81–810, 2002.
- Dudgeon, D., Arthington, A. H., Gessner, M. O., Kawabata, Z.-I., Knowler, D. J., Lévêque, C., Naiman, R. J., Prieur-Richard, A.-H., Soto, D., Stiassny, M. L. J., and Sullivan, C. A.: Freshwater biodiversity: importance, threats, status and conservation challenges. *Biol. Rev.*, 81, 163–182, 2006.
- Fuchs, T., Schneider, U., and Rudolf, B.: Global precipitation analysis products of GPCP, GPCP / Deutscher Wetterdienst, <http://www.dwd.de/en/FundE/Klima/KLIS/int/>

---

**Global-scale analysis  
of river flow  
alterations**P. Döll et al.

---

Title Page

Abstract

Introduction

Conclusions

References

Tables

Figures

◀

▶

◀

▶

Back

Close

Full Screen / Esc

Printer-friendly Version

Interactive Discussion



GPCC/Reports\_Publications/QR/GPCC\_intro\_products\_2007.pdf, 2007.

Gibson, C. A, Meyer, J. L., Poff, N. L., Hay, L. E., and Georgakakos, A.: Flow regime alterations under changing climate in two river basins: Implications for freshwater ecosystems, *River Res. Applic.*, 21, 849–864, 2005.

5 Haddeland, I., Skaugen, T., and Lettenmaier, D. P.: Anthropogenic impacts on continental surface water fluxes, *Geophys. Res. Lett.*, 33, L08406, doi:10.1029/2006GL026047, 2006.

Hanasaki, N., Kanae, S. and Oki, T.: A reservoir operation scheme for global river routing models, *J. Hydrol.*, 327, 22–41, 2006.

10 Hunger, M. and Döll, P.: Value of river discharge data for global-scale hydrological modeling, *Hydrol. Earth Syst. Sci.*, 12, 841–861, 2008, <http://www.hydrol-earth-syst-sci.net/12/841/2008/>.

ICOLD (International Commission on Large Dams): *World Register of Dams (CD-ROM)*, Paris, France, 1998.

15 Kingsford, R. T. and Thomas, R. F.: Destruction of wetlands and waterbird populations by dams and irrigation on the Murrumbidgee River in arid Australia, *Environ. Manage.*, 34(3), 383–396, 2004.

Janssen, P. H. M. and Heuberger P. S. C.: Calibration of process-oriented models, *Ecol. Model.* 83, 55–66, 1995.

20 Lehner, B., Fekete, B., Reidy, C., and Vörösmarty, C.: Global Reservoir and Dam (GRand) Database – Project Summary, [http://www.gwsp.org/current\\_activities.html](http://www.gwsp.org/current_activities.html), 2008.

Lehner, B. and Döll, P.: Development and validation of a global database of lakes, reservoirs and wetlands, *J. Hydrol.*, 296, 1–22, 2004.

Millennium Ecosystem Assessment: *Ecosystems and human well-being: wetlands and water synthesis*, World Resources Institute, Washington, DC, 2005.

25 Mitchell, T. D. and Jones, P. D.: An improved method of constructing a database of monthly climate observations and associated high-resolution grids, *Int. J. Climatol.*, 25, 693–712, 2005.

Nilsson, C., Reidy, C. A., Dynesius, M., and Revenga, C.: Fragmentation and flow regulation of the world's large river systems, *Science*, 308(5720), 405–408, 2005.

30 Poff, N. L., Olden, J. D., Merritt, D. M., and Pepin, D. M.: Homogenization of regional river dynamics by dams and global biodiversity implications, *Proc. National Academy of Sciences of the United States of America*, 104(14), 5732–5737, 2007.

Poff, N. L., Allan, D. J., Brain, M. B., Karr, J. R., Prestegard, K. L., Richter, B. D., Sparks, R.

---

## Global-scale analysis of river flow alterations

P. Döll et al.

---

Title Page

Abstract

Introduction

Conclusions

References

Tables

Figures

◀

▶

◀

▶

Back

Close

Full Screen / Esc

Printer-friendly Version

Interactive Discussion



## Global-scale analysis of river flow alterations

P. Döll et al.

Title Page

Abstract

Introduction

Conclusions

References

Tables

Figures



Back

Close

Full Screen / Esc

Printer-friendly Version

Interactive Discussion



- E., and Stromberg, J. C.: The natural flow regime: a paradigm for river conservation and restoration, *BioScience*, 47(11), 769–784, 1997.
- Poff, N. L. and Ward, J. V.: Implications of stream flow variability and predictability for lotic community structure: a regional analysis of stream flow patterns, *Can. J. Fish. Aquat. Sci.*, 46, 1805–1818, 1989.
- Puckridge, J. T., Sheldon, F., Walker, K. F., and Boulton, A. J.: Flow variability and the ecology of large rivers, *Mar. Freshwater Res.*, 49, 55–72, 1998.
- Revena, C., Campbell, I., Abell, R., de Villiers, P. and Bryer, M.: Prospects for monitoring freshwater ecosystems towards the 2010 targets, *Phil. Trans. R. Soc. B*, 360, 397–413, 2005.
- Richter, B. D., Baumgartner, J. V., Powell, J., and Braun, D. P.: A method for assessing hydrologic alteration within ecosystems, *Conserv. Biol.*, 10(4), 1163–1174, 1996.
- Richter, B. D., Baumgartner, J. V. Wigington, R., and Braun, D. P.: How much water does a river need?. *Freshwater Biology*, 37, 231–249, 1997.
- Rost, S., Gerten, D., Bondeau, A., Lucht, W, Rohwer, J., and Schaphoff, S.: Agricultural green and blue water consumption and its influence on the global water system, *Water Resour. Res.*, 44, W09405, doi:10.1029/2007WR006331, 2008.
- Siebert, S., Döll, P., Hoogeveen, J., Faures, J.-M., Frenken, K., and Feick, S.: Development and validation of the global map of irrigation areas, *Hydrol. Earth Syst. Sci.*, 9, 535–547, 2005, <http://www.hydrol-earth-syst-sci.net/9/535/2005/>.
- Smakhtin, V., Revena, C., and Döll, P.: A pilot global assessment of environmental water requirements and scarcity, *Water Int.*, 29(3), 307–317, 2004.
- Vörösmarty, C. J., Sharma, K. P., Fekete, B. M., Copeland, A. H., Holden, J., Marble, J., and Lough, J. A.: The storage and aging of continental runoff in large reservoir systems of the world, *AMBIO*, 26(4), 210–219, 1997.
- World Commission on Dams: Dams and Development. Earthscan, online available: <http://www.dams.org/report/earthscan.htm>, 2000.
- Xenopoulos, M. A., Lodge, D. M., Alcamo, J., Märker, M., Schulze, K., and van Vuuren, D. P.: Scenarios of freshwater fish extinctions from climate change and water withdrawal, *Glob. Change Biol.*, 11, 1557–1564, 2005.
- Yang, D., Ye, B., and Kane, D.: Streamflow changes over Siberian Yenisey River basin, *J. Hydrol.*, 296, 59–80, 2004.

**Table 1.** Reservoirs and regulated lakes taken into account in this study.

	number			surface area [km <sup>2</sup> ]			storage capacity <sup>a</sup> [km <sup>3</sup> ]		
	old <sup>b</sup>	reservoirs	regul. lakes	old <sup>b</sup>	reservoirs	regul. lakes	old <sup>b</sup>	reservoirs	regul. lakes
Africa	170	678	2	38899	40238	67380	1302.7	1807.3	90.5
Asia	171	1952	9	47914	61607	35939	804.7	877.3	206.5
Europe <sup>c</sup>	150	1112	15	45525	42340	10313	419.0	541.3	53.37
Oceania	30	238	0	5303	7899	0	80.0	110.0	0
N. America	269	2302	25	69051	87663	9735	1250.9	1590.7	54.50
S. America	96	288	1	47610	51169	147	785.7	1002.8	0.6
Global	886	6568	52	254301	290916	123513	4642.0	5929.5	405.4

<sup>a</sup> Only 672 reservoirs in “old” version and 6512 reservoirs in the current version of the reservoirs and regulated lakes data set were used to calculate the storage capacity because of lack of storage capacity data. Storage capacity of regulated lakes includes all 52 regulated lakes.

<sup>b</sup> taken into account in previous WGHM model version 2.1f (Hunger and Döll, 2008).

<sup>c</sup> Eurasia is subdivided into Europe and Asia along the Ural; Turkey is assigned to Asia.

Title Page

Abstract

Introduction

Conclusions

References

Tables

Figures

⏪

⏩

◀

▶

Back

Close

Full Screen / Esc

Printer-friendly Version

Interactive Discussion



**Table 2.** Six ecologically relevant indicators of river flow alterations due to human water withdrawals and reservoirs.

indicator	question	definition	ecological relevance
$I_{LTA}$	How are long-term average river flows affected?	differences between long-term average annual river discharges under anthropogenically impacted and naturalized conditions, in percent of long-term average naturalized river discharge	number of fish species <sup>a</sup> , groundwater-dep. floodplain vegetation
$I_{LF}$	How are statistical low flows affected?	difference between long-term average $Q_{90}$ (monthly river discharge that is exceeded in 9 out of 10 months) under anthropogenically impacted and naturalized conditions, in percent of naturalized river discharge	habitat conditions, connectivity channel/floodplain, wastewater dilution <sup>b</sup>
$I_{SA}$	How is the seasonal amplitude affected?	difference in seasonal amplitude (maximum minus minimum long-term average monthly river discharge) under anthropogenically impacted and naturalized conditions, in % of naturalized amplitude	habitat availability in particular on floodplains
$I_{SR}$	How is the seasonal regime affected?	mean over 12 monthly values of absolute differences between long-term average monthly river discharges under anthropogenically impacted and naturalized conditions, in % of naturalized discharge	habitat conditions, compatibility with life cycle of organisms
$I_{TS}$	What seasonal flow shifts have occurred?	temporal shift of month with maximum river discharge, in months (if negative, this month occurs earlier due to anthropogenic impact)	compatibility with life cycle of organisms
$I_{IV}$	How is the interannual variability of monthly flows affected?	Number of months (January, February, etc.) in which the coefficient of variation of monthly flows increases minus the number of months in which it decreases (-12, -10, -8, ..., +8, +10, 12) under anthropogenically impacted conditions as compared to naturalized conditions <sup>c</sup>	habitat conditions for aquatic organisms

<sup>a</sup> Xenopoulos et al. (2005).

<sup>b</sup> Gibson et al. (2005).

<sup>c</sup> Computed only for cells in which the coefficient of variation changes by at least 10% in any month.

**Global-scale analysis of river flow alterations**

P. Döll et al.

Title Page

Abstract Introduction

Conclusions References

Tables Figures

◀ ▶

◀ ▶

Back Close

Full Screen / Esc

Printer-friendly Version

Interactive Discussion



## Global-scale analysis of river flow alterations

P. Döll et al.

**Table 3.** Global characterization of anthropogenic river flow regime alteration using six indicators (ANT compared to NAT). Greenland and Antarctica are not taken into account.

Indicator	% of land area with indicator value $\geq 10\% $ (or $\geq 1$ month , in case of indicators $I_{TS}$ and $I_{IV}$ )		average indicator values for these land areas, in % (for indicators $I_{TS}$ and $I_{IV}$ in months) <sup>a</sup>	
	increase	decrease	increase	decrease
$I_{LTA}$	0.002	16.2	18.2	-34.8
$I_{LF}$	4.9	26.0	161.4	-57.1
$I_{SA}$	0.6	14.8	25.7	-38.6
$I_{SR}^b$	23.8		41.8	
$I_{TS}$	2.7	1.7	1	-2
$I_{IV}$	26.8	7.5	10	-5

<sup>a</sup> cell area weighted average of grid cell values.

<sup>b</sup> indicator has absolute values.

Title Page

Abstract

Introduction

Conclusions

References

Tables

Figures

◀

▶

◀

▶

Back

Close

Full Screen / Esc

Printer-friendly Version

Interactive Discussion



## Global-scale analysis of river flow alterations

P. Döll et al.

**Table 4.** Characteristics of four selected gauging stations with significant impact of upstream reservoirs or water use: basin and station name, upstream area, observed long-term average river discharge, consumptive use CU in upstream area, reservoir area in % of upstream area and reservoir storage divided by observed discharge ( $S/Q_{\text{obs}}$ ).

basin	station	upstream area <sup>a</sup> [km <sup>2</sup> ]	observed discharge [km <sup>3</sup> /yr]	CU 2002 upstream [km <sup>3</sup> /yr]	reservoir area [% of upstream area]	$S/Q_{\text{obs}}$ [yr]
Colorado	Lees Ferry	288 177	12.1 <sup>b</sup>	3.70	0.38	3.56
Missouri	Hermann	1 347 425	76.1 <sup>c</sup>	22.76	0.45	1.25
Volga	Volgograd Power Plant	1 363 415	239.2 <sup>d</sup>	3.09	1.38	0.82
Volta	Senchi (Halcrow)	399 457	32.9 <sup>e</sup>	0.18	2.00	4.77

<sup>a</sup> basin area upstream of gauging station according to WGHM.

<sup>b</sup> during tuning period 1955–1984.

<sup>c</sup> during tuning period 1958–1987.

<sup>d</sup> during tuning period 1961–1990.

<sup>e</sup> during tuning period 1955–1984.

Title Page

Abstract

Introduction

Conclusions

References

Tables

Figures

◀

▶

◀

▶

Back

Close

Full Screen / Esc

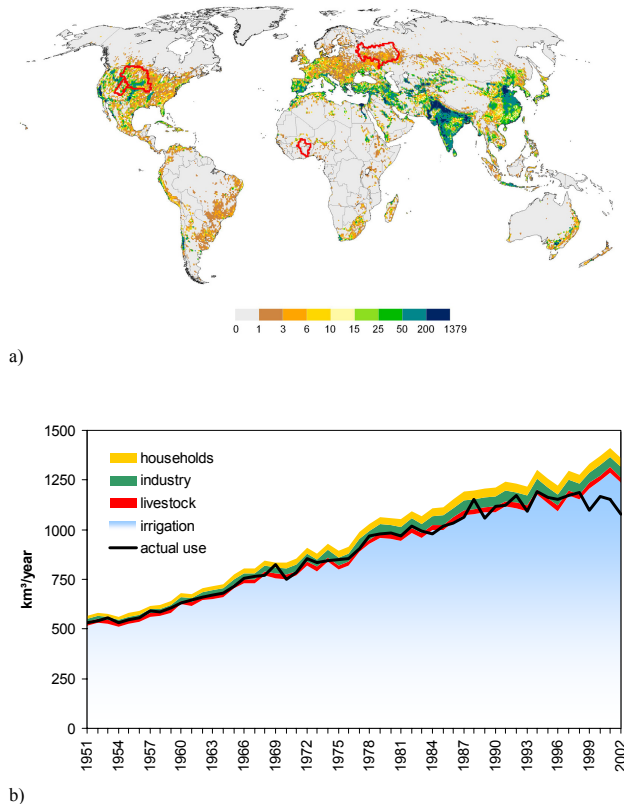
Printer-friendly Version

Interactive Discussion



## Global-scale analysis of river flow alterations

P. Döll et al.



**Fig. 1.** Consumptive water use in 2002, in mm/yr **(a)**, and time series 1951–2002 of global consumptive water use, using climate and irrigated areas of particular year **(b)**, as simulated by the WaterGAP water use models. In **(a)**, the location of the four basins discussed in Sect. 4 is shown. In **(b)**, actual use refers to the part of the computed consumptive use that can actually be taken out of water storage in the WaterGAP Global Hydrology Model WGHM.

Title Page

Abstract

Introduction

Conclusions

References

Tables

Figures

◀

▶

◀

▶

Back

Close

Full Screen / Esc

Printer-friendly Version

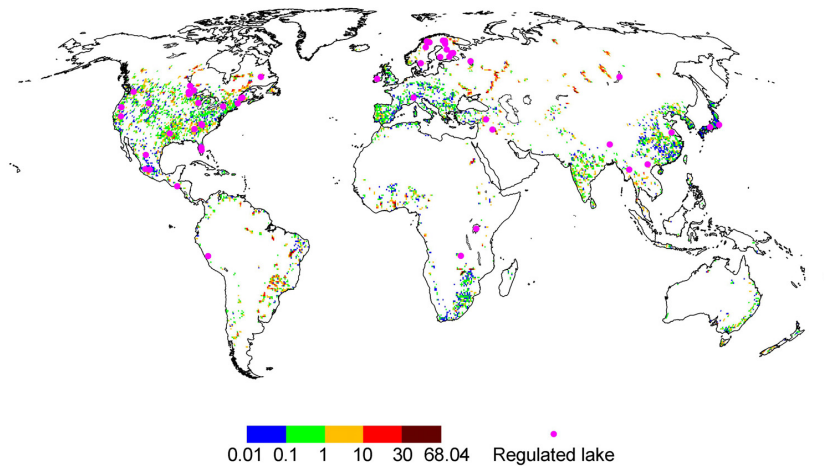
Interactive Discussion





## Global-scale analysis of river flow alterations

P. Döll et al.



**Fig. 2.** Reservoir area in percent of 0.5° grid cell area, and location of regulated lakes.

Title Page

Abstract

Introduction

Conclusions

References

Tables

Figures

◀

▶

◀

▶

Back

Close

Full Screen / Esc

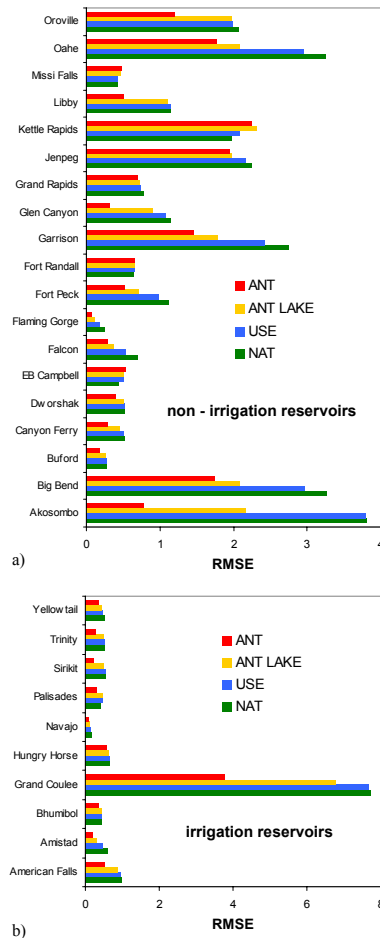
Printer-friendly Version

Interactive Discussion



## Global-scale analysis of river flow alterations

P. Döll et al.



**Fig. 3.** Validation of WGHM reservoir algorithm against observed reservoir outflow for non-irrigation reservoirs (a) and irrigation reservoirs (b). Outflow data from Hanasaki et al. (2006).

Title Page

Abstract

Introduction

Conclusions

References

Tables

Figures

◀

▶

◀

▶

Back

Close

Full Screen / Esc

Printer-friendly Version

Interactive Discussion



## Global-scale analysis of river flow alterations

P. Döll et al.

Title Page

Abstract

Introduction

Conclusions

References

Tables

Figures

◀

▶

◀

▶

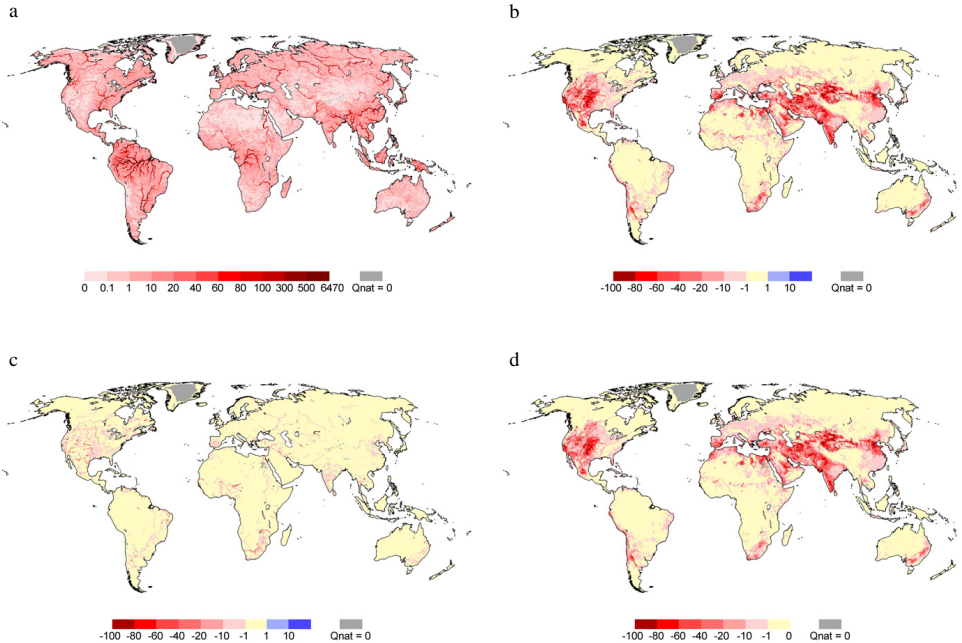
Back

Close

Full Screen / Esc

Printer-friendly Version

Interactive Discussion



**Fig. 4.** Anthropogenic impact on long-term average (1961–1990) annual river discharges,  $I_{\text{LTA}}$ : naturalized river discharge NAT, in  $\text{km}^3/\text{yr}$  **(a)**, impact of water withdrawals and reservoirs (ANT): difference between ANT and NAT, in % of NAT **(b)**, impact of reservoirs only (RES): difference between RES and NAT, in % of NAT **(c)**, and impact of water withdrawals only (USE): difference between USE and NAT, in % of NAT **(d)**.

Global-scale analysis  
of river flow  
alterations

P. Döll et al.

Title Page

Abstract

Introduction

Conclusions

References

Tables

Figures

◀

▶

◀

▶

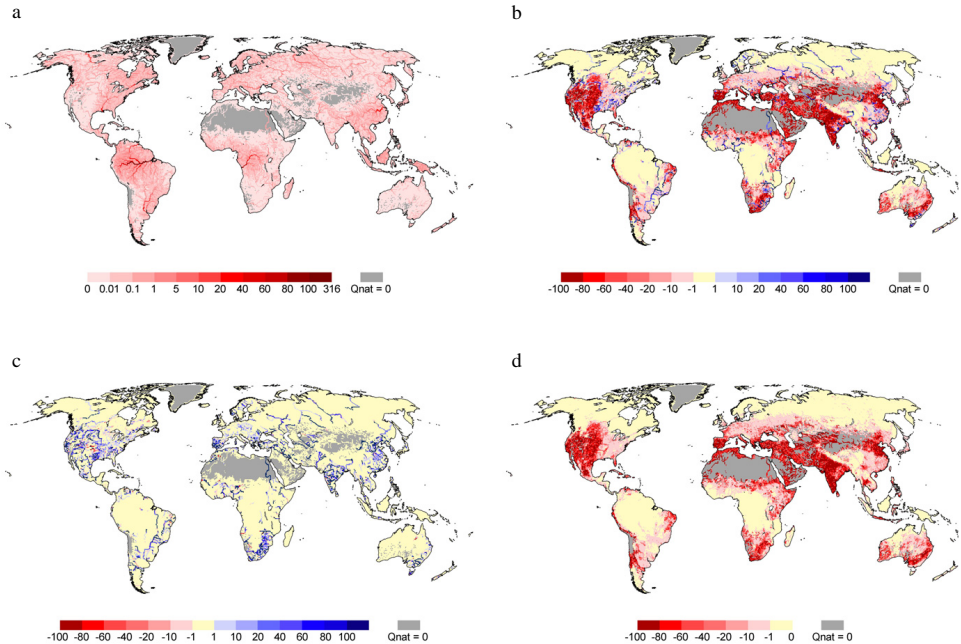
Back

Close

Full Screen / Esc

Printer-friendly Version

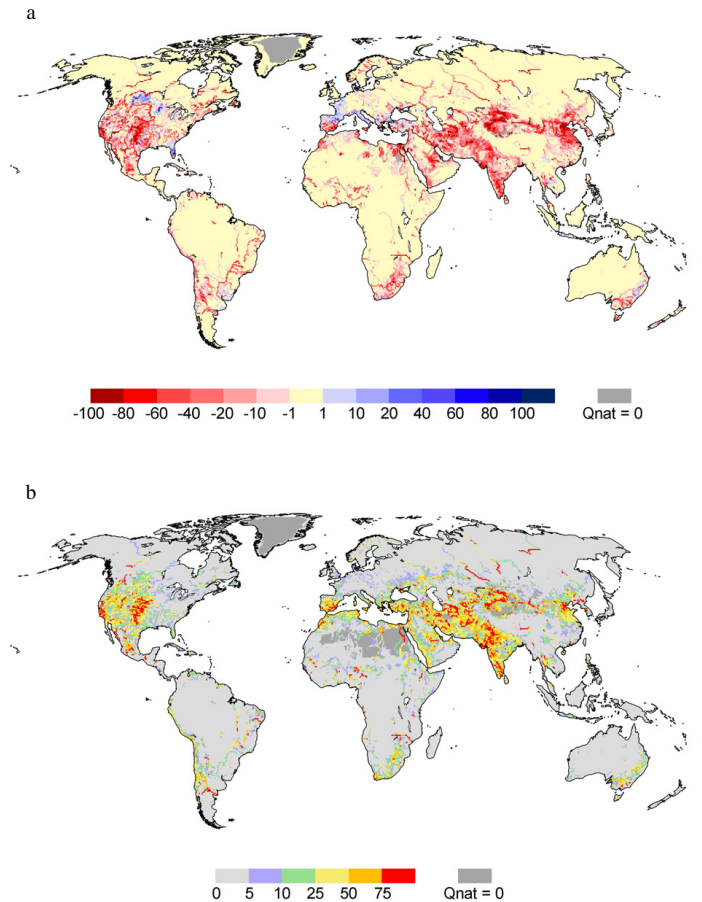
Interactive Discussion



**Fig. 5.** Anthropogenic impact on long-term average (1961–1990) monthly low flows  $Q_{90}$ ,  $I_{LF}$ : naturalized  $Q_{90}$ , in  $\text{km}^3/\text{month}$  **(a)**, impact of water withdrawals and reservoirs (ANT): difference between ANT and NAT, in % of NAT **(b)**, impact of reservoirs only (RES): difference between RES and NAT, in % of NAT **(c)**, and impact of water withdrawals only (USE): difference between USE and NAT, in % of NAT **(d)**.

## Global-scale analysis of river flow alterations

P. Döll et al.



**Fig. 6.** Anthropogenic impact on seasonal flow amplitudes,  $I_{SA}$ , in % of NAT (a), and on seasonal flow regimes,  $I_{SR}$ , in % of NAT (b).

Title Page

Abstract

Introduction

Conclusions

References

Tables

Figures

◀

▶

◀

▶

Back

Close

Full Screen / Esc

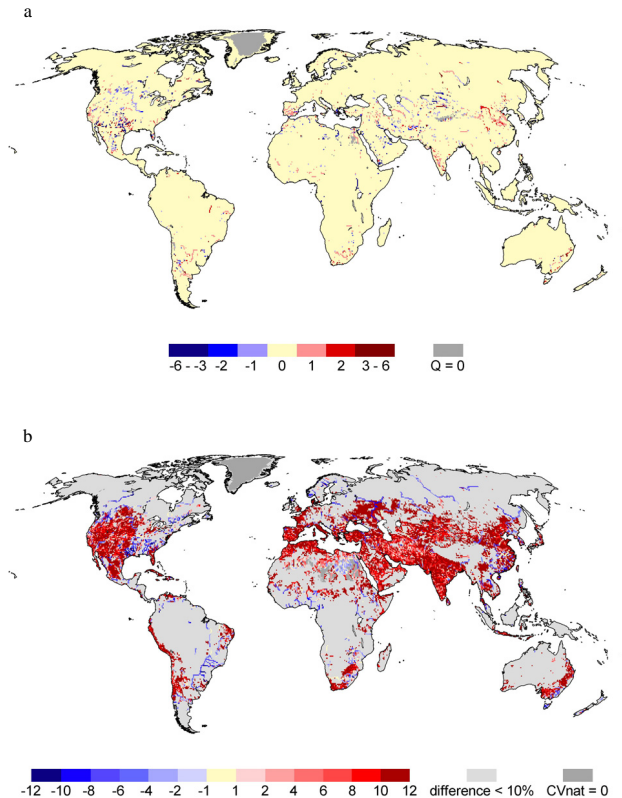
Printer-friendly Version

Interactive Discussion



## Global-scale analysis of river flow alterations

P. Döll et al.



**Fig. 7.** Anthropogenic shift of the month with maximum flow,  $I_{TS}$ , in months **(a)**, and anthropogenic impact on interannual variability of monthly flows,  $I_{IV}$ , in months **(b)**. If  $I_{IV}$  is positive, interannual variability increases in most months due to anthropogenic impacts; if  $I_{IV}$  equals 12, it increases in each month of the year.

Title Page

Abstract

Introduction

Conclusions

References

Tables

Figures

◀

▶

◀

▶

Back

Close

Full Screen / Esc

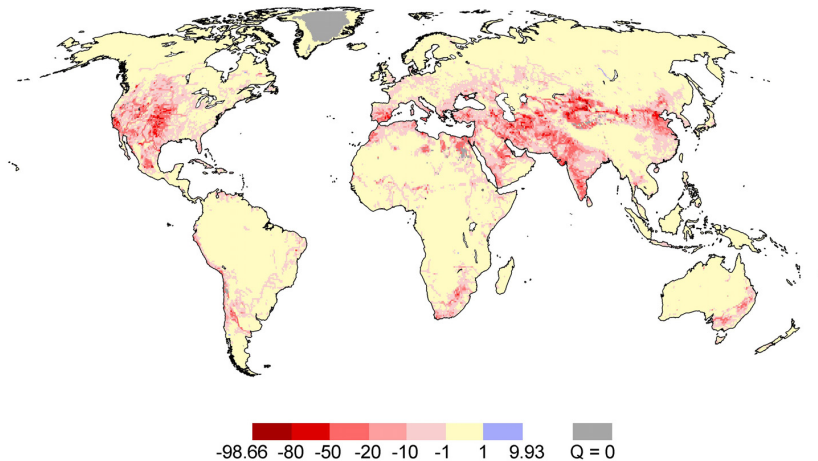
Printer-friendly Version

Interactive Discussion



## Global-scale analysis of river flow alterations

P. Döll et al.



**Fig. 8.** Change of number of fish species upstream of grid cells due to changes in long-term average discharge caused by water withdrawals and reservoirs, in % of fish species that would exist under naturalized conditions.

Title Page

Abstract

Introduction

Conclusions

References

Tables

Figures

◀

▶

◀

▶

Back

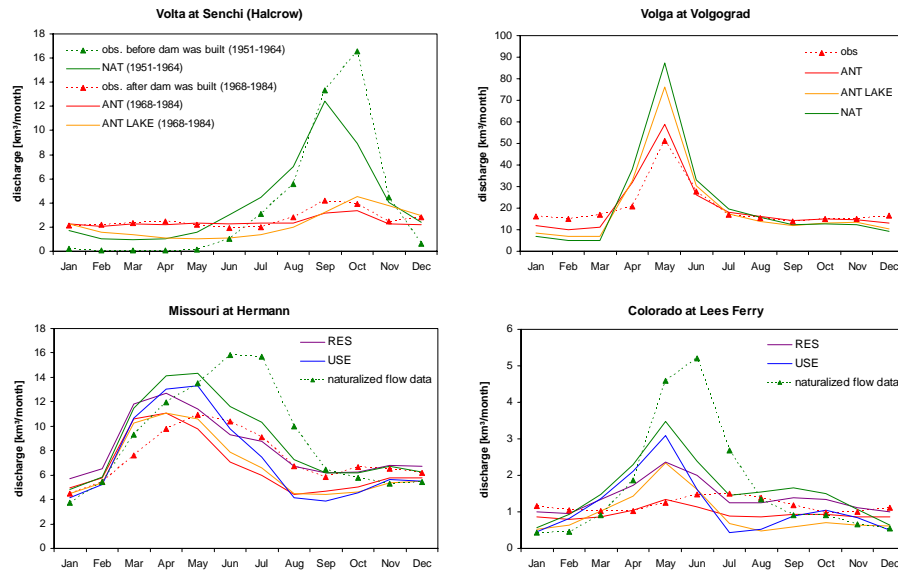
Close

Full Screen / Esc

Printer-friendly Version

Interactive Discussion





**Fig. 9.** Long-term average monthly river discharge at four selected gauging stations: Comparison between observed and independent estimates of naturalized river discharges, and modeled anthropogenically altered (ANT) and naturalized (NAT) conditions. ANT LAKE refers to a simulation in which the global reservoirs are modeled as lakes, while RES and USE refer to simulations with only reservoirs or only use, respectively. Discharge observations were provided by the Global Runoff Data Centre (grdc.bafg.de), while naturalized discharge data are from Haddeland et al. (2006). Time period for the Colorado and Missouri 1980–1999, for the Volga 1961–1990.

[Title Page](#)  
[Abstract](#) [Introduction](#)  
[Conclusions](#) [References](#)  
[Tables](#) [Figures](#)  
[◀](#) [▶](#)  
[◀](#) [▶](#)  
[Back](#) [Close](#)  
[Full Screen / Esc](#)  
[Printer-friendly Version](#)  
[Interactive Discussion](#)

