

Papers published in *Hydrology and Earth System Sciences Discussions* are under open-access review for the journal *Hydrology and Earth System Sciences*

Modelling runoff at the plot scale taking into account rainfall partitioning by vegetation: application to stemflow of banana (*Musa* spp.) plant

J.-B. Charlier^{1,*}, R. Moussa², P. Cattan¹, Y.-M. Cabidoche³, and M. Voltz²

¹CIRAD, UPR Systèmes bananes et ananas, Capesterre-Belle-Eau, 97130 Guadeloupe, France

²INRA, Laboratoire d'étude des Interactions Sol-Agrosystème-Hydrosystème (LISAH), UMR SupAgro-INRA-IRD, Bât. 24, 2 place Viala, 34060 Montpellier cedex 1, France

³INRA, UR 135 Agropédologie de la Zone Caraïbes, Domaine Duclos, 97170 Petit-Bourg, Guadeloupe (FWI), France

* now at: Université de Franche-Comté-CNRS/UMR 6249 Chrono-environnement, UFR des Sciences et Techniques, 16 route de Gray, 25030 Besançon cedex, France

Received: 26 May 2009 – Accepted: 4 June 2009 – Published: 16 June 2009

Correspondence to: J.-B. Charlier (jb.charlier@gmail.com)

Published by Copernicus Publications on behalf of the European Geosciences Union.

Modelling runoff taking into account rainfall partitioning

J.-B. Charlier et al.

Title Page

Abstract

Introduction

Conclusions

References

Tables

Figures

◀

▶

◀

▶

Back

Close

Full Screen / Esc

Printer-friendly Version

Interactive Discussion



Abstract

Rainfall partitioning by vegetation modifies the intensity of rainwater reaching the ground, which affects runoff generation. Incident rainfall is intercepted by the plant canopy and then redistributed into throughfall and stemflow. Rainfall intensities at the soil surface are therefore not spatially uniform, generating local variations of runoff production that are disregarded in runoff models. The aim of this paper was to model runoff at the plot scale, accounting for rainfall partitioning by vegetation in the case of plants concentrating rainwater at the plant foot and promoting stemflow. We developed a lumped modelling approach, including a stemflow function that divided the plot into two compartments: one compartment including stemflow and the relative water pathways and one compartment for the rest of the plot. This stemflow function was coupled with a production function and a transfer function to simulate a flood hydrograph using the MHYDAS model. Calibrated parameters were a “stemflow coefficient”, which compartmented the plot; the saturated hydraulic conductivity (K_s), which controls infiltration and runoff; and the two parameters of the diffusive wave equation. We tested our model on a banana plot of 3000 m² on permeable Andosol (mean $K_s=75 \text{ mm h}^{-1}$) under tropical rainfalls, in Guadeloupe (FWI). Runoff simulations without and with the stemflow function were performed and compared to 18 flood events from 10 to 130 mm rainfall depth. Modelling results showed that the stemflow function improved the calibration of hydrographs according to the error criteria on volume and on peakflow and to the Nash and Sutcliffe coefficient. This was particularly the case for low flows observed during residual rainfall, for which the stemflow function allowed runoff to be simulated for rainfall intensities lower than the K_s measured at the soil surface. This approach also allowed us to take into account the experimental data, without needing to calibrate the runoff volume on K_s parameter. Finally, the results suggest a rainwater redistribution module should be included in distributed runoff models at a larger scale of the catchment.

HESSD

6, 4307–4347, 2009

Modelling runoff taking into account rainfall partitioning

J.-B. Charlier et al.

Title Page

Abstract

Introduction

Conclusions

References

Tables

Figures

◀

▶

◀

▶

Back

Close

Full Screen / Esc

Printer-friendly Version

Interactive Discussion



1 Introduction

Many studies have shown the impact of vegetation structure on rainfall partitioning and redistribution at the soil surface (see reviews of Crockford and Richardson, 2000; Levia and Frost, 2003; Llorens and Domingo, 2007). Rainfall intensities at the soil surface are not spatially uniform under vegetation cover, influencing runoff production locally. In this setting, we hypothesized that the concentration of the incident rainfall at the plant foot by stemflow could locally favour runoff. One consequence is that runoff would occur for a lower incident rainfall rate than the infiltration rate of the soil. In this paper we tested hypothesis by modelling at the scale of banana fields, which exhibit large stemflows (Harris, 1997; Cattán et al., 2007a, 2009).

Most runoff simulation models at the plot scale separate incident rainfall P into rainfall excess or surface runoff S and infiltration I (Fig. 1a). For simulation models of Hortonian overland flow – without groundwater contribution – this rainfall partitioning at the soil surface depends on the rainfall intensity, the hydrodynamic soil properties, and the initial soil water content. When the soil is close to saturation, P can be separated into S and I with a threshold corresponding to the saturated hydraulic conductivity K_s . Under vegetation cover, P can be divided into three components (Fig. 1b) before reaching the ground: interception E_i , which is the water stored in the canopy and evaporated mainly before it reaches the soil; stemflow P_{Sf} , which is the water reaching the ground by running down the stem of trees; and throughfall P_{Tf} , which is a combination of water reaching the ground directly through gaps (direct precipitation) and of water dripping from leaves and branches. This redistribution of rainfall intensities can generate two opposite effects: on the one hand, a buffering effect of incident rainfall intensities under dense vegetation covers (Keim and Skaugset, 2004) such as in forested contexts with a high interception component; on the other hand, a concentration effect on incident rainfall at the base of the plant (Herwitz, 1986; Cattán et al., 2007a), such as for vegetation covers with a funnelling structure promoting stemflow. Because vegetation redistributes the spatially uniform incident rainfall into non-uniform rainfall at the soil

Modelling runoff taking into account rainfall partitioning

J.-B. Charlier et al.

Title Page

Abstract

Introduction

Conclusions

References

Tables

Figures

◀

▶

◀

▶

Back

Close

Full Screen / Esc

Printer-friendly Version

Interactive Discussion



surface, modifying locally the surface water fluxes, it should be accounted for in studies of hydrological processes and models of runoff at the plot scale.

Although runoff models have been developed mainly at the catchment scale, many modelling approaches exist at the plot scale. These modelling approaches are based on two functions. First, a production function simulating the runoff-infiltration partitioning on the basis of various infiltration models (Green and Ampt, 1911; Richards, 1931; Horton, 1933; Philip, 1957; Morel-Seytoux, 1978). The main parameters to simulate runoff are the soil hydrodynamic properties, initial soil moisture conditions, and rainfall intensity. Second, a transfer function routing the generated runoff volume at the outlet of the plot on the basis of the diffuse wave model (Moussa and Bocquillon, 1996) or the kinematic wave model (Singh, 1994). The main parameters to model a hydrograph relate to surface geometry (slope, roughness), leading to flow velocity and diffusivity parameters. Regarding rainfall partitioning, although many infiltration models account for this process in simulations of soil water dynamics (e.g. Bouten et al., 1992; Belk et al., 2007; Sansoulet et al., 2008; Liang et al., 2009), this is not the case for runoff models. In fact, only few runoff models consider rainfall interception by vegetation based on the Gash model (1995) and account for this interception to simulate rainfall intensities at the soil surface and discharge (e.g. Van Dijk and Bruijnzeel, 2001; Ajayi et al., 2008). Moreover, in such models, the rainwater concentrated by stemflow has generally been disregarded in runoff simulations.

The aim of this paper was to model runoff at the plot scale accounting for rainfall partitioning by vegetation in the case of plants promoting stemflow and concentrating rainfall at the plant foot. We have developed a stemflow function in the hydrological MHYDAS model (Moussa et al., 2002; Charlier, 2007). This stemflow function redistributes incident rainfall at the soil surface into two compartments: one compartment including stemflow and the relative water pathways and one compartment for the rest of the plot. At the plot scale, the model was lumped, considering the plot area as a single entity. The stemflow function was coupled with a production function and a transfer function to simulate discharge at the outlet of the plot. The four main calibrated param-

Modelling runoff taking into account rainfall partitioning

J.-B. Charlier et al.

Title Page

Abstract

Introduction

Conclusions

References

Tables

Figures

◀

▶

◀

▶

Back

Close

Full Screen / Esc

Printer-friendly Version

Interactive Discussion



Modelling runoff taking into account rainfall partitioning

J.-B. Charlier et al.

Title Page

Abstract

Introduction

Conclusions

References

Tables

Figures

◀

▶

◀

▶

Back

Close

Full Screen / Esc

Printer-friendly Version

Interactive Discussion



eters are the stemflow coefficient, which separates the plot into two compartments with contrasted rainfall fluxes; the saturation hydraulic conductivity at the soil surface; and the two parameters of the diffuse wave equation. We have tested our modelling approach on a banana plot of 3000 m² located on Andosol in Guadeloupe (FWI, in lesser Antilles), and monitored for rainfall and runoff measurements by Cattan et al. (2006). Banana is a highly redistributive plant with a large stemflow component, increasing rainfall intensities from 18- to 28-fold at the banana foot (Cattan et al., 2007a). Consequently, at the plant scale, stemflow feeds surface water pathways on permeable soils (Cattan et al., 2009) and enhances percolation fluxes at the base of the plant (Cattan et al., 2007b). Calibration and validation of the MHYDAS model were carried out on a set of 18 rainfall events. The usefulness of the stemflow function was tested by comparing situations without and with stemflow. The paper is organised in four sections: i) presentation of the model structure, ii) description of the study site, iii) characterisation of the model behaviour and of the parameter variability, and iv) comparison of modelling approaches “without” and “with” stemflow.

2 Model structure

The modelling approach was based on the MHYDAS model, which is lumped at the plot scale. The model was built on three functions presented in Fig. 2. The first one is the stemflow function, which partitioned incident rainfall into stemflow and throughfall and redistributed these fluxes into two soil compartments. The second one is the production function used to simulate Hortonian runoff at the soil surface without groundwater reaching it – this function was applied separately to each of the two compartments. The third one is the transfer function, which routes the total runoff volume at the outlet of the plot by the diffuse wave equation. The model input is the incident rainfall and the output is a simulated hydrograph, which was compared to the measured hydrograph to test model performances. We present first the stemflow, production, and transfer functions, then a theoretical analysis of the influence of the stemflow function on runoff, and

lastly the model properties and calibration procedure.

2.1 The stemflow function

2.1.1 Rainfall partitioning into two compartments

First, as shown in Fig. 3, rainfall partitioning generates two fluxes at the soil surface: stemflow P_{Sf} , the flow of water down the stem of a plant, and throughfall P_{Tf} , which includes leaf drip plus direct precipitation:

$$P_{Sf} + P_{Tf} = P - E_i \text{ in } [LT^{-1}] \quad (1)$$

where the amount P is the incident rainfall and E_i is the interception of rainfall that never reaches the soil surface. According to Cattani et al. (2007a), studying the case of banana plant under abundant rainfalls, E_i can be neglected at the event time scale, with reference to tropical rainfall volumes; the case study of this paper respects these conditions.

Second, as proposed by Cattani et al. (2009), a two-compartment scheme was considered for modelling runoff (Fig. 3): i) one compartment of the runoff water pathway fed by stemflow called “R” (like Runoff fed by stemflow) of A_R area collecting the rainfall fluxes P_R containing the whole stemflow P_{Sf} fluxes and the part of throughfall P_{Tf} falling on this area, and ii) one compartment for the rest of the plot called “NR” (like No Runoff fed by stemflow) of A_{NR} area for the rest of the plot collecting the rainfall fluxes P_{NR} containing the other part of throughfall. Let P_R and P_{NR} be the two rainfall fluxes reaching A_R and A_{NR} areas, respectively to be linked to stemflow and throughfall on the plot according to Eq. (2):

$$P_R + P_{NR} = P_{Sf} + P_{Tf} \text{ in } [LT^{-1}] \quad (2)$$

Title Page

Abstract

Introduction

Conclusions

References

Tables

Figures

◀

▶

◀

▶

Back

Close

Full Screen / Esc

Printer-friendly Version

Interactive Discussion



2.1.2 Calculation of redistributed rainfall intensities on each compartment

2.1.2.1 Hypothesis about the rainfall redistribution at the plot scale

We hypothesised that stemflow fluxes resulted in a feeding of a surface A_R smaller than the whole plot area A with an intensity higher than that of the incident rainfall. The stemflow function shared a uniform rainfall intensity P into two P_R and P_{NR} fluxes on the A_R and A_{NR} areas, respectively, with $P_R > P_{NR}$. For that, we define α and β parameters according to Eqs. (3) and (4):

$$P_R = \alpha P \quad \text{with } \alpha \geq 1 \text{ in } [L T^{-1}] \quad (3)$$

$$A_R = \beta A \text{ and } A_{NR} = (1 - \beta)A \quad \text{with } 0 \leq \beta \leq 1 \text{ in } [L^2] \quad (4)$$

Parameter α represents the ratio between incident rainfall and effective rainfall on the surface of the runoff pathway fed by stemflow whereas β is the proportion of the plot area that is submitted to the influence of stemflow. Equation (3) means that the higher the α , the higher the rainfall intensity in A_R . According to Eq. (4), β ranges between 0 and 1, knowing that a value close to 1 corresponds to a model without soil compartmentation (i.e. $A_R \approx A$) and thus without rainfall redistribution.

In parallel, P_{NR} , can be expressed as a function of P_R , A_R and A_{NR} :

$$P_{NR} = \frac{(PA - P_R A_R)}{A_{NR}} \quad \text{in } [L T^{-1}] \quad (5)$$

Then, P_{NR} can be expressed as a function of α and β substituting P_R and A_R using Eqs. (3) and (4), respectively:

$$P_{NR} = \frac{(PA - \alpha P \beta A)}{(1 - \beta)A} \quad \text{in } [L T^{-1}] \quad (6)$$

$$P_{NR} = \frac{(1 - \alpha\beta)}{(1 - \beta)} P \quad \text{with } \alpha \geq 1 \text{ and } 0 < \beta \leq 1 \text{ in } [L T^{-1}] \quad (7)$$

For $P_{NR} > 0$, we set the following condition: $\alpha\beta \leq 1$.

Title Page

Abstract

Introduction

Conclusions

References

Tables

Figures

◀

▶

◀

▶

Back

Close

Full Screen / Esc

Printer-friendly Version

Interactive Discussion



Incident rainfall P is the input variable of the stemflow function and P_R and P_{NR} are the two output variables. Parameters α and β are the two stemflow function parameters.

2.1.2.2 Calculation of the parameters of the stemflow function

On an A plot area, rainfall partitioning generates two fluxes: stemflow P_{Sf} and throughfall P_{Tf} . We can express P_{Tf} as a function of P_{Sf} and P :

$$P_{Tf} = \frac{PA - P_{Sf}A_{Sf}}{A_{Tf}} = P \left(\frac{A - \frac{P_{Sf}}{P}A_{Sf}}{A - A_{Sf}} \right) \quad \text{in } [L T^{-1}] \quad (8)$$

where A_{Sf} and A_{Tf} are areas where stemflow and throughfall occur, i.e. at the base of the plant, and in the rest of the plot, respectively (see Fig. 3). The rainfall P_R reaching A_R is expressed according to Eq. (9):

$$P_R = \frac{P_{Sf}A_{Sf} + P_{Tf}(A_R - A_{Sf})}{A_R} \quad \text{in } [L T^{-1}] \quad (9)$$

According to Eqs. (3) and (4), we can express α as a function of β by substituting Eqs. (3) and (4) into Eq. (9):

$$\alpha = \frac{P_R}{P} = \frac{\frac{P_{Sf}}{P}A_{Sf} + \frac{P_{Tf}}{P}(A_R - A_{Sf})}{A_R} = \frac{\frac{P_{Sf}}{P}A_{Sf} + \frac{P_{Tf}}{P}(\beta A - A_{Sf})}{\beta A} \quad (10)$$

Substituting Eq. (8) into Eq. (10), we have

$$\alpha = \frac{1}{\beta A} \left[\frac{P_{Sf}}{P}A_{Sf} + \left(\frac{A - \frac{P_{Sf}}{P}A_{Sf}}{A - A_{Sf}} \right) (\beta A - A_{Sf}) \right] \quad (11)$$

and then

$$\alpha = -\frac{1}{\beta} \left[\frac{A_{Sf} - \frac{P_{Sf}}{P}A_{Sf}}{A - A_{Sf}} \right] + \left[\frac{A - \frac{P_{Sf}}{P}A_{Sf}}{A - A_{Sf}} \right] \quad (12)$$

Title Page

Abstract

Introduction

Conclusions

References

Tables

Figures

◀

▶

◀

▶

Back

Close

Full Screen / Esc

Printer-friendly Version

Interactive Discussion



In a general case, the α parameter is expressed as a function of A , P , P_{Sf} , and A_{Sf} , which are input parameters, and of β , which is a calibration parameter. The calibration parameter of the stemflow function β is called “stemflow coefficient”. The input parameters are characteristic of each cropping plant system, and we detail hereafter the case of a banana plot.

2.1.2.3 Parameters of the stemflow function for a banana plot

According to Eq. (12), input parameters of the stemflow function are detailed for a banana plot. At the banana plant scale, Cattan et al. (2007a) have established an experimental relationship between P_{Sf}/P and leaf area index LAI [dimensionless]:

$$\frac{P_{Sf}}{P} = 11.2 \text{ LAI} \quad (13)$$

On a banana plot planted in a square design (2.35×2.35), the measured values of A , LAI, and A_{Sf} given by these authors for a banana plant were: $A = 2.35 \times 2.35 \text{ m}^2$, which represents the elementary area for one banana plant; LAI = 3.2 for a full-grown banana plant; $A_{Sf} = 0.047 \text{ m}^2$. For a banana plot, α was thus calculated according to Eqs. (12) and (13), which yields:

$$\alpha = \frac{1}{\beta} 0.299 + 0.701 \quad (14)$$

2.1.3 Inputs, parameters, and outputs of the stemflow function

The inputs of the stemflow function are the incident rainfall P , the plot area A , the cross-sectional area of the pseudostem at its base A_{Sf} , and the relationship between P_{Sf}/P and LAI (Eq. 13), which is specific to each plant. The calculated parameter of the stemflow function is α , and the calibration parameter is the stemflow coefficient β . Outputs of the function are the redistributed rainfall intensities P_R and P_{NR} in the two soil compartments of A_R and A_{NR} areas.

2.2 The production function

2.2.1 Calculation of runoff and infiltration

Runoff was calculated using the production function on compartments A_R and A_{NR} separately. The calculation procedure is detailed for A_R only, but it is identical for A_{NR} .
5 Hortonian runoff is generated by a rainfall intensity exceeding the saturated hydraulic conductivity Ks of the soil surface. Here we assume that the soil is close to saturation at the soil surface. Thus, we have considered that the initial water content was equal to water content at natural saturation. In this model, the simple production function separates rainfall P_R into surface runoff (or stormflow) S_R and infiltration I_R using the
10 Ks threshold. Consequently, the production function is valid only for soils always close to the saturation state and without any influence of the rise of the water table; the following case study respects these conditions.

The variation of S_R/P_R with time directly depends on the variation of rainfall intensity; I_R and S_R were determined at each time step according to the following equations:

$$15 \quad \text{If } P_R \leq Ks \Rightarrow P_R/Ks \leq 1 \quad \text{then } I_R = P_R \quad \text{and } S_R = 0 \quad \text{in } [L T^{-1}] \quad (15)$$

$$\text{If } P_R > Ks \Rightarrow P_R/Ks < 1 \quad \text{then } I_R = Ks \quad \text{and } S_R = P_R - Ks \quad \text{in } [L T^{-1}] \quad (16)$$

On the whole A plot, total runoff S and total infiltration I are given according to Eq. (4):

$$S = S_R + S_{NR} \quad \text{and } I = I_R + I_{NR} \quad \text{in } [L T^{-1}] \quad (17)$$

2.2.2 Inputs, parameters, and outputs of the production function

20 As explained in Fig. 2, for A_R and A_{NR} areas, the inputs of the production function are the redistributed rainfall P_R and P_{NR} , respectively. Ks is the calibration parameter. Runoff depth S_R and S_{NR} , and infiltration depth I_R and I_{NR} are calculated for A_R and A_{NR} areas, respectively. The output of the function is the total runoff depth S .

Modelling runoff taking into account rainfall partitioning

J.-B. Charlier et al.

Title Page

Abstract

Introduction

Conclusions

References

Tables

Figures

◀

▶

◀

▶

Back

Close

Full Screen / Esc

Printer-friendly Version

Interactive Discussion



2.3 The transfer function

2.3.1 Calculation of the discharge

A transfer function was used to route the total runoff depth S at the outlet of the plot and to simulate discharge Q_S . This function is a linear model, based on a Hayami (1951) kernel function, which is a resolution of the diffusive wave equation (Moussa and Bocquillon, 1996). Let $A \cdot S(t)$ [$L^3 T^{-1}$] be the input hydrograph and $Q_S(t)$ the routed hydrograph at the outlet.

$$Q_S(t) = \int_0^t A \cdot S(\tau) \cdot H(t - \tau) \cdot d\tau \quad \text{with} \quad H(t) = \left(\frac{\omega \cdot z}{\pi}\right)^{\frac{1}{2}} \cdot \frac{\exp^{z(2 - \frac{t}{\omega} - \frac{\omega}{t})}}{(t)^{3/2}} \quad (18)$$

where $H(t)$ is the Hayami kernel function, ω [T] is a time parameter that represents the centre of gravity of the unit hydrograph called lag time, z [dimensionless] is a form parameter, $\pi \approx 3.1416$, and t [T] is the time. The two parameters of the transfer function are ω and z .

2.3.2 Inputs, parameters, and output of the transfer function

The inputs of the transfer function are the simulated runoff depth S and the plot area A . The two parameters ω and z are the calibration parameters of the function. As shown in Fig. 3, the output is the simulated discharge Q_S .

2.4 Theoretical analysis of the influence of the stemflow function on runoff

Herein we discuss the parameters that relate to runoff production in the modelling approach. These parameters are those of the stemflow and the production functions.

If the model does not include a stemflow function, the runoff production is controlled only by the production function. Based on Eqs. (15) and (16), runoff volume V_S is

Title Page

Abstract

Introduction

Conclusions

References

Tables

Figures

◀

▶

◀

▶

Back

Close

Full Screen / Esc

Printer-friendly Version

Interactive Discussion



produced if P is higher than Ks according to following equations:

$$\text{If } P/Ks > 1 \text{ then } V_S = (P - Ks)A \text{ in } [L^3] \quad (19)$$

$$\text{If } P/Ks \leq 1 \text{ then } V_S = 0 \text{ in } [L^3] \quad (20)$$

If the model includes a stemflow function, and thus a two-compartment scheme, three cases can be distinguished for runoff production:

i) First case: if $P_R/Ks > 1$ and $P_{NR}/Ks > 1$, V_S is expressed as the sum of runoff in areas A_R and A_{NR} , that is, according to previous Eqs. (3), (4), and (7):

$$V_S = (\alpha P - Ks)\beta A + \left(\left(\frac{1 - \alpha\beta}{1 - \beta} \right) P - Ks \right) (1 - \beta) A \text{ in } [L^3] \quad (21)$$

Then we have

$$V_S = \alpha\beta AP + \left(\frac{1 - \alpha\beta}{1 - \beta} \right) (1 - \beta) AP - Ks\beta A - Ks(1 - \beta) A \text{ in } [L^3] \quad (22)$$

and we obtain

$$V_S = (P - Ks)A \text{ in } [L^3] \quad (23)$$

This first case corresponds to runoff occurring in A_R and in A_{NR} . In this case, the model with stemflow including a production function applied on each compartment is thus equivalent to the model without stemflow (β close to 1) including a production function applied on the whole plot. The infiltration rate is thus equal to Ks . In this case, the model calibration can be performed only by optimising Ks .

ii) Second case: if $P_R/Ks > 1$ and $P_{NR}/Ks < 1$, we have, according to Eqs. (3) and (7)

$$\frac{1}{\alpha} < \frac{P}{Ks} < \frac{1 - \beta}{1 - \alpha\beta} \quad (24)$$

Title Page

Abstract

Introduction

Conclusions

References

Tables

Figures

◀

▶

◀

▶

Back

Close

Full Screen / Esc

Printer-friendly Version

Interactive Discussion



and in this case V_S is expressed as follows:

$$V_S = (\alpha P - Ks)\beta A = \alpha\beta PA - \beta KsA \quad \text{in [L}^3\text{]} \quad (25)$$

In the specific case of a banana plot, substituting Eq. (14) into Eq. (24) leads to

$$\frac{\beta}{0.299 + 0.701\beta} < \frac{P}{Ks} < \frac{1 - \beta}{0.701 - 0.701\beta} = \frac{1}{0.701} \quad (26)$$

5 Then, according to Eqs. (14) and (25), we have

$$V_S = \left(0.701 + \frac{0.299}{\beta}\right)\beta PA - \beta KsA \quad \text{in [L}^3\text{]} \quad (27)$$

which simplifies to

$$V_S = \beta(0.701P - Ks)A + 0.299PA \quad \text{in [L}^3\text{]} \quad (28)$$

10 In this second case, we have runoff only in the A_R compartment. Simulated runoff volume depends on Ks and β . Calibration with Ks allows us to fit runoff depth (V_S/A) between 0 and αP , i.e. rainfall reaching A_R compartment ($A_R = \beta A$). Concerning β , note that the linear regression coefficient of the straight line of Eq. (28) is negative according to the conditions imposed by Eq. (26) (i.e. $Ks > 0.701P$) meaning that an increase in β tends to reduce the runoff volume. According to Eq. (28), calibration with
15 β allows us to fit runoff depth (V_S/A) between 0 and $0.299P$.

iii) Third case: if P_R and $P_{NR} \leq Ks$, then $V_S = 0$.

The third case corresponds to a total infiltration of water on the plot.

20 In conclusion, the β coefficient influences the simulated runoff volumes when rainfall intensities are not high enough to generate runoff in the A_{NR} compartment, but β has no influence when rainfall intensities are high and generate runoff in both compartments. Consequently, a model that represents stemflow can generate runoff for maximum rainfall intensities P_x inferior to Ks , leading to higher simulated runoff volumes when $P_x/Ks < 1$.

Title Page

Abstract

Introduction

Conclusions

References

Tables

Figures

◀

▶

◀

▶

Back

Close

Full Screen / Esc

Printer-friendly Version

Interactive Discussion



2.5 Model properties and calibration procedure

2.5.1 Model parameters

The input variable of the model is the incident rainfall P , which was considered uniform on the whole plot area. The output of the model is a simulated hydrograph $Q_S(t)$, which was compared with the original measured hydrographs $Q_O(t)$ to assess model performances. The input rainfall P is usually given as a function of time in the form of a histogram with a fixed time interval. Consequently, the other variables are also presented as functions of time, and the computations are carried out with the same fixed time interval. The model needs a total of nine parameters that may be measured, calculated, or calibrated. Four of these parameters could be measured and then fixed: the plot area A and the representative parameters of the plant structure (A_{Sf} , P_{Sf} , and LAI). In theory, another parameter can be measured in the field, namely β , but its measurement may be difficult because the boundaries of the runoff water pathways generated by stemflow vary in space and time, as shown by Cattán et al. (2009). Thus, β should preferably be considered as a calibration parameter. Finally, there are five parameters that need to be calibrated: i) two parameters for the stemflow function, coefficients α and β , ii) one parameter for the production function, the average value of the saturated hydraulic conductivity K_s , and iii) two parameters for the transfer function, the lag time ω and the shape parameter z . However the number of parameters to be calibrated can be restricted to only four in the case of banana fields, because Cattán et al. (2007a) have shown that there is an empirical relation (see Eq. 14) between α and β . The sensitivity analysis conducted on a representative flood event, as well as the different modelling strategies that will be presented later, will assess the variability of these four calibrated parameters.

Modelling runoff taking into account rainfall partitioning

J.-B. Charlier et al.

Title Page

Abstract

Introduction

Conclusions

References

Tables

Figures

◀

▶

◀

▶

Back

Close

Full Screen / Esc

Printer-friendly Version

Interactive Discussion



2.5.2 Parameterization strategies

The usefulness of the stemflow function was tested by comparing strategies without and with stemflow. For that, we defined three approaches: one approach without a stemflow function – noted NoStem, and two approaches each with a stemflow function – noted Stem(1) and Stem(2). Fixed and calibrated parameters used in these approaches are presented in Table 1 and detailed hereafter:

- i) the NoStem approach is the “reference” approach because the rainfall reaching the ground is homogeneous (without a stemflow function). It is carried out in conditions of unknown K_s , which was calibrated;
- ii) the Stem(1) approach is the first approach with a non-uniform rainfall reaching the ground (with a stemflow function). This approach is also in conditions of unknown K_s , leading to calibrating K_s and fixing β ;
- iii) the Stem(2) approach is the second approach with stemflow carried out in a condition of known K_s , leading to fixing K_s and calibrating β .

In these three approaches, parameters of the transfer function ω and z were calibrated.

Comparing the three approaches aimed to assess the effect of soil permeability (K_s parameter) as well as the effect of stemflow (β parameter) on runoff production. Moreover, analysis of the shape of the simulated hydrographs according to the rainfall intensities helps identify the role of stemflow on runoff production, notably for low rainfall intensities.

2.5.3 Performance criteria

To analyse calibration results and to assess model performances, we used three criteria relative to the simulation of runoff depth, peakflow, and shape of the whole hydrograph.

Title Page

Abstract

Introduction

Conclusions

References

Tables

Figures

◀

▶

◀

▶

Back

Close

Full Screen / Esc

Printer-friendly Version

Interactive Discussion



Criteria for accuracy of runoff depth S and peakflow Q_x were the relative errors ε_{S_i} and $\varepsilon_{Q_{x_i}}$ for event i and ε_S and ε_{Q_x} for N events, respectively. The formula of relative errors ε_{S_i} and ε_S are given below:

$$\text{for a flood event: } \varepsilon_{S_i} = \frac{S_{s_i} - S_{o_i}}{S_{o_i}} \quad (29)$$

$$\text{for } N \text{ flood events: } \varepsilon_S = \frac{1}{N} \sum_{i=1}^N \left| \frac{S_{s_i} - S_{o_i}}{S_{o_i}} \right| \quad (30)$$

where i is an index representing a flood event ($1 \leq i \leq N$); N is the total number of flood events used for calibration and validation; S_{o_i} is the measured runoff depth for event i ; S_{s_i} is the simulated runoff depth for event i . Criterion ε_{S_i} ranges between -1 and $+\infty$ and criterion ε_S between 0 and $+\infty$. The optimum value for these two criteria is 0 , and we considered like Chahinian et al. (2006) that a value lower than $|0.25|$ corresponded to good model performances. Peakflow criteria $\varepsilon_{Q_{x_i}}$ and ε_{Q_x} were calculated according to Eqs. (29) and (30) by substituting the observed peakflow $Q_{x_{o_i}}$ and the simulated peakflow $Q_{x_{s_i}}$ by S_{o_i} and S_{s_i} , respectively.

The shape of the whole hydrograph was assessed according to the Nash and Sutcliffe (1970) coefficient, which was expressed for one event, NS_i , and for N events, NS , as follows:

$$\text{for one event: } NS_i = 1 - \left[\frac{\sum_{j=1}^{n_i} (Q_{o_{ij}} - Q_{s_{ij}})^2}{\sum_{j=1}^{n_i} (Q_{o_{ij}} - \bar{Q}_i)^2} \right] \quad (31)$$

Modelling runoff taking into account rainfall partitioning

J.-B. Charlier et al.

Title Page

Abstract

Introduction

Conclusions

References

Tables

Figures

◀

▶

◀

▶

Back

Close

Full Screen / Esc

Printer-friendly Version

Interactive Discussion



and according to Chahinian et al. (2006)

$$\text{for } N \text{ events: } NS = 1 - \frac{\left[\sum_{i=1}^N \sum_{j=1}^{n_i} (Q_{Oij} - Q_{Sij})^2 \right]}{\left[\sum_{i=1}^N \sum_{j=1}^{n_i} (Q_{Oij} - \bar{Q})^2 \right]} \quad (32)$$

where j is an index representing the time step in a flood event i ($1 \leq j \leq n_i$); n_i , the number of time steps in the flood event i ; Q_{Oij} , the observed discharge at time j in the flood event i ; Q_{Sij} , the simulated discharge at time j on the flood event i ; \bar{Q}_i , the mean value of discharge of the flood event i , and \bar{Q} , the mean value of all measured discharge of all flood events. NS criteria range between $-\infty$ and 1, with 1 signifying a perfect fit between simulated and observed hydrographs, and with negative values signifying that the arithmetic mean of the observed hydrograph is a better estimate than the simulated hydrograph. We considered in this study that a 0.8 value corresponded to good model performances.

3 Study site

3.1 Situation

Measurements were carried out at the Neufchâteau experimental station ($16^{\circ}04'38''$ N, $61^{\circ}36'04''$ W, 250 m), on the windward side of Basse Terre, Guadeloupe (FWI). The Lesser Antilles are under a maritime humid tropical climate, and the interannual average for rainfall between 1952 and 2004 at Neufchâteau station was 3600 mm (Météo-France, 2004).

Field "Espérance Haut" has a 3000 m² surface area with a 12% mean slope. The soil is an Umbric Andosol (WRB, 2006) with a continuous macroscopic structure, with medium and fine tubular pores. Neither of the two horizons exhibited cracks at any

Title Page

Abstract

Introduction

Conclusions

References

Tables

Figures

◀

▶

◀

▶

Back

Close

Full Screen / Esc

Printer-friendly Version

Interactive Discussion



time because the soil never dries out sufficiently due to the regularity of rainfall (Cattan et al., 2006). The field was planted with banana in a square design (2.35 m×2.35 m), in 10 cm diameter holes.

3.2 Measurements

5 The plot was hydraulically isolated from upstream runoff by 50-cm-wide galvanized sheets pushed vertically 20 cm into the ground. The runoff from the plot was channelled to the outlet via a concrete-lined channel at the lower end of the plot, and hence to a venturi channel (type E 1253 AZ, Hydrologic, Grenoble, France). The head of water in the venturi channel was measured using a bubble flowmeter (ALPHEE 3010, Hydro-
10 logic, Grenoble, France) adapted to the narrow width of the venturi, with 8 s time lapse. Rainfall intensities were measured on the plot by tipping-bucket rain gauges (ARG100, Campbell Scientific, Shepshed, Leicestershire, UK), with a sensitivity of 0.2 mm of rain per tip. The study period lasted from 6 December 2001 to 2 April 2002.

15 On these soils always close to saturation under a humid tropical climate, we assumed that the mean hydraulic conductivity measured in 2001 on the field using a controlled-suction disc infiltrometer at potential 0 by Cattan et al. (2006) was a reference value of the mean saturated hydraulic conductivity K_s of the plot. Mean K_s was 75 mm h^{-1} (standard deviation of 7.6 mm h^{-1}) for five measurements at the ground surface.

3.3 Characteristics of flood events

20 To reduce the influence of soil surface characteristics (mulch, accumulation of material transported by runoff, etc.) on the hydrological response of the plot while characterizing the impact of rainfall partitioning, we selected rainfall events higher than 10 mm depth. A flood event was defined as a rainy period in which there was less than 15 min between two successive tips of the tipping bucket; the corresponding runoff period was
25 defined as a period in which water flow was never interrupted for over 5 min. Eighteen selected flood events were selected for model calibration and validation (Table 2). The

Modelling runoff taking into account rainfall partitioning

J.-B. Charlier et al.

Title Page

Abstract

Introduction

Conclusions

References

Tables

Figures

◀

▶

◀

▶

Back

Close

Full Screen / Esc

Printer-friendly Version

Interactive Discussion



18 events were split at random between a set of 9 events for calibration and a set of 9 events for validation. Rainfall depth P ranged between 10.0 and 139.2 mm, runoff depth S between 1.5 and 44.0 mm, maximum rainfall intensity over 5 min Px_5 between 45.6 and 144.0 mm h⁻¹, peakflow Qx between 6.8 and 35.7 L s⁻¹, and runoff coefficient S/P between 9.3% and 36.0%. Figure 4 presents these last four variables as a function of rainfall depth. Globally, the higher the rainfall depth, the higher the maximum rainfall intensity over 5 min, the higher the runoff depth, and the higher the peakflow.

3.4 Model parameterization for application on the study site

3.4.1 Input data

To relate rainfall to runoff at the plot scale, the hydrological time series of rainfall and runoff were synchronised on a 1 min time step. Thus, in the model application, the computing interval was 1 min. Concerning input data relative to banana plot geometry, see Sect. 2.1.2.3. Concerning the three modelling approaches, the parameterization is detailed on Table 3. For NoStem, Ks was calibrated. For Stem(1), β was set to 5% (this value was chosen from preliminary simulations) and Ks was calibrated. For Stem(2), Ks was set to 75 mm h⁻¹ in accordance with the mean of Ks measurements in the field by Cattán et al. (2006).

3.4.2 Analysis of the indicators of the results

To characterize low flows corresponding to recession periods, we defined a Nash and Sutcliffe coefficient NS for measured discharges lower than 5 L s⁻¹, called $NS_{<5i}$ and $NS_{<5}$ for one and N events, respectively (see Eqs. 31 and 32). In fact, NS on the whole hydrograph favours simulation of the highest discharges at the expense of a good fit of low discharges. With $NS_{<5}$ and $NS_{<5i}$ criteria, we wish to better characterize the role of the stemflow function on the simulation of low flows. We applied $NS_{<5}$ and $NS_{<5i}$ on a period when runoff was the least influenced by the initial conditions of the soil,

Title Page

Abstract Introduction

Conclusions References

Tables Figures

◀ ▶

◀ ▶

Back Close

Full Screen / Esc

Printer-friendly Version

Interactive Discussion



i.e. on the recession period (generally occurring after the peak of rainfall) when the soil remained saturated.

To test the hypothesis that the incident rainfall concentration at the plant foot from stemflow generated runoff for rainfall intensities lower than K_s , we compared maximal rainfall intensities P_x with calibrated K_s for the three modelling approaches. In the case study, the computing interval of 1 min was considered as unstable relative to measurement uncertainties. To smooth P_x for 1 min, maximum rainfall intensities for 5 min, P_{x_5} , were used. Consequently, simulation results are presented as a function of the P_{x_5}/K_s ratio, which is an adapted indicator of rainfall intensity during a flood event at the plot scale.

3.4.3 Calibration procedure

A collective calibration procedure was carried out manually on a set of nine events noted 1 to 9. This calibration was identical for the three approaches, NoStem, Stem(1), and Stem(2). It involved two steps: i) a calibration was performed to obtain a minimal value of the relative error ε_S on the simulated runoff depth (calibration parameters K_s or β according to the approaches – see Table 1), and then ii) an optimisation of the shape of the hydrograph was done to obtain a maximal value of NS criteria (calibration parameters ω and z). With this kind of calibration, the second step cannot influence ε_S criteria, whereas the first step may slightly influence NS criteria, which are partly linked to the simulated runoff depth.

Then, model performances were assessed according to the four criteria ε_S , ε_{Q_x} , NS , and $NS_{<5}$ for the calibration and validation sets. Within these sets, individual performances of the flood events – event by event – were assessed according to the four criteria ε_{S_j} , $\varepsilon_{Q_{xj}}$, NS_j , and $NS_{<5j}$. Results are presented in Sect. 5.

Modelling runoff taking into account rainfall partitioning

J.-B. Charlier et al.

Title Page

Abstract

Introduction

Conclusions

References

Tables

Figures

◀

▶

◀

▶

Back

Close

Full Screen / Esc

Printer-friendly Version

Interactive Discussion



4 Model behaviour and parameter variability

To improve the understanding of stemflow production, we present in this section results of rainfall-runoff simulations on two events. First, simulations on an event with low and large rainfall intensities were chosen to illustrate the model behaviour according to the three modelling approaches NoStem, Stem(1), and Stem(2). Second, the sensitivity of runoff production to K_s and β was determined on a mean rainfall event to illustrate the variability of the parameters described theoretically above.

4.1 Illustration of the model behaviour

To illustrate the model behaviour, Fig. 5 shows simulations on event 7 for the three approaches, NoStem, Stem(1), and Stem(2). This event was selected because it presented long periods with rainfall intensities lower than the mean K_s value. In Fig. 5 two long periods of residual rainfall appear before and after the rainfall peak, during which rainfall intensities were about 12 mm h^{-1} and systematically inferior to the K_s calibration value (i.e. a minimum of 13 mm h^{-1} for NoStem approach).

Figure 5 shows that during this period of residual rainfall (time > 100 min), the NoStem modelling approach did not simulate runoff. Conversely, approaches Stem(1) and Stem(2) simulated a continuous discharge of about 2.5 L s^{-1} . In addition, we observed that for Stem(2), runoff volumes were under-estimated for peakflows. In fact, for high rainfall intensities there was no possible calibration of β (first case of the previous theoretical analysis – see Sect. 2.4). In this case, runoff volume was thus strictly determined by the fixed K_s value of 75 mm h^{-1} .

4.2 Sensitivity analysis on a representative event

To illustrate the model behaviour described theoretically above, we present a sensitivity analysis on a representative event. We have assumed that a sensitivity analysis carried out on a mean flood event was an indicator of the sensitivity of the model parameters

Title Page

Abstract

Introduction

Conclusions

References

Tables

Figures

◀

▶

◀

▶

Back

Close

Full Screen / Esc

Printer-friendly Version

Interactive Discussion



Modelling runoff taking into account rainfall partitioning

J.-B. Charlier et al.

Title Page

Abstract

Introduction

Conclusions

References

Tables

Figures

◀

▶

◀

▶

Back

Close

Full Screen / Esc

Printer-friendly Version

Interactive Discussion



on the other events. This analysis was carried out for event 16 on the four parameters K_s , β , ω , and z . This event was selected because its rainfall depth P (27.8 mm) and its maximal rainfall intensity over 5 min Px_5 (76.8 mm h⁻¹) corresponded to the average P and average Px_5 of the 18 events (Table 2). Calibration using the Stem(1) approach led to the following optimal parameter values: $K_s=51.5$ mm h⁻¹, $\beta=0.05$, $\omega=7$ min, and $z=0.47$.

Regarding the sensitivity of runoff production to K_s and β , an interaction between these parameters generated an equifinality on runoff depth calibration because of their impacts on the rainfall-runoff partition at the soil surface. For this reason we wanted to identify the more sensitive calibration parameter, K_s or β ? Figure 6 represents, on a semi-log scale, ε_{S_i} iso-values according to K_s and β . For a perfect fit of runoff depth (i.e. $\varepsilon_{S_i}=0$), the higher the K_s , the lower the β . K_s value for a β close to 1 corresponds to the calibration value for approach NoStem, i.e. 39 mm h⁻¹. Below this K_s threshold, variations of β cannot offset the insufficient infiltration, and consequently the model overestimates the runoff depth. The shape of the curve for $\varepsilon_{S_i}=0$ shows that for K_s values increasing from 39 to 200 mm h⁻¹, which correspond to the range of K_s values measured on the field, β decreases from 1 (equivalent to a model without stemflow, i.e. NoStem approach) to 0.0002. This means that the model is more sensitive to β than to K_s . Finally, if we wish to have only one calibration parameter for runoff simulations, β should be selected rather than K_s .

Regarding the sensitivity of hydrographs to ω and z , parameter variability of the diffuse wave equation has been largely investigated (e.g. Moussa and Bocquillon, 1996; Yu et al., 2000; Chahinian et al., 2006; Tiemeyer et al., 2007). Our results agreed with literature values and confirmed that the higher the ω and the z , the lower the Q_x and the transfer velocity.

5 Comparison of modelling approaches “without” and “with” stemflow

5.1 Global analysis of calibration and validation sets

5.1.1 Calibration results

Simulations of the calibration set carried out to optimise the runoff volume ($\varepsilon_S=0$) showed that the shape of the simulated hydrograph was better simulated with the stemflow function than without (Table 3): for the calibration set, NS was 0.69, 0.88, and 0.92 for NoStem, Stem(1), and Stem(2), respectively. To assess the model performances on all events, a split-sample test (Klemeš, 1986) was conducted. This test considers that each set of events (event numbers 1 to 9 and 10 to 18 in our case study – Table 2) should be used in turn for calibration and validation. Taking events 10 to 18 for calibration and 1 to 9 for validation led to similar NS values for calibration, that is to say 0.61, 0.80, and 0.82 for the same three approaches, respectively.

Regarding performance criteria of peakflows (ε_{Qx}) in Table 3 for the calibration set, peakflows were overestimated for all approaches but were better simulated with the stemflow function (ε_{Qx} 0.36, 0.18, down to 0.02 for NoStem, Stem(1), and Stem(2), respectively). But with poorer results, low flows were unequally simulated ($NS_{<5}$ -0.55, 0.35, up to 0.47 for NoStem, Stem(1), and Stem(2), respectively). Finally, these results showed that the modelling approach with stemflow globally improved model performances.

Moreover, the model with stemflow adequately simulated runoff volumes, with a mean Ks value equal to the mean of field measurements (75 mm h^{-1}): for NoStem, calibrated Ks was 44.4 mm h^{-1} , whereas for Stem(1), Ks was higher (60.5 mm h^{-1}). Additionally, we noticed that the lag time ω decreased by nearly half when using the stemflow function, with values of 16, 11, and 9 min for approaches NoStem, Stem(1), and Stem(2), respectively. This decrease in response time indicates that the transfer velocity on the plot increased when using the stemflow function. In fact, the lower transfer velocity with approach NoStem contributed to stretching the flood hydrograph

Modelling runoff taking into account rainfall partitioning

J.-B. Charlier et al.

Title Page

Abstract

Introduction

Conclusions

References

Tables

Figures

◀

▶

◀

▶

Back

Close

Full Screen / Esc

Printer-friendly Version

Interactive Discussion



and thus to simulating runoff for residual rainfall in the recession period, although the production function did not produce runoff during this period. Conversely, approaches Stem(1) and Stem(2) produced runoff for residual rainfall in the recession period. Consequently, good simulations were obtained with faster transfer. Finally, the shape parameter z varied little from an approach to another, and was about 0.48.

5.1.2 Validation results

Globally, the three approaches simulated runoff volumes well on the validation set with ε_S values inferior to 0.17. As seen for calibration results, modelling approaches with stemflow improved simulation of flood hydrographs for validation sets (Table 3): NS was 0.53, 0.75, and 0.81 for NoStem, Stem(1), and Stem(2), respectively, and was 0.61, 0.89, and 0.90 for the split-sample test detailed above. However, contrary to the calibration results, the other performance criteria of peak and low flows were poorly simulated for the three approaches with ε_{Qx} values superior to 0.45, and with negative $NS_{<5}$ values (Table 3). To better understand the disparity of the simulation results of the calibration and validation sets, the next section will analyse the model performances event by event.

5.2 Event by event analysis

Performance criteria of the model simulations event by event – shown in Fig. 7 – are plotted in Fig. 8 as a function of Px_5/Ks , which represents the ratio between the maximal rainfall intensity over 5 min and the saturated hydraulic conductivity.

Regarding the criteria on runoff volume, NoStem shows an increasing function of ε_{Sj} vs. Px_5/Ks , leading to an under-estimation of the lowest rainfall events and an over-estimation of the highest. This ε_{Sj} vs. Px_5/Ks relationship became less marked for Stem(1) and disappeared for Stem(2), meaning that the stemflow function improved the simulation of runoff volume for all events, notably with low rainfall intensities. The same trend was observed for criteria ε_{Qxj} , indicating that the simulation of the peakflow

Modelling runoff taking into account rainfall partitioning

J.-B. Charlier et al.

Title Page

Abstract

Introduction

Conclusions

References

Tables

Figures

◀

▶

◀

▶

Back

Close

Full Screen / Esc

Printer-friendly Version

Interactive Discussion



is also better with stemflow.

Concerning the simulation of the hydrograph, modelling with a stemflow function improved the shape of the whole hydrograph as well as the shape of low flows, especially for low rainfall intensities. In fact, the number of events out of 12 with $Px_5/Ks < 1$ having NS_i and $NS_{<5i}$ values superior to 0.8 were 0 and 0 for NoStem, 7 and 6 for Stem(1), and 7 and 4 for Stem(2), respectively.

Finally, NoStem, Stem(1), and Stem(2) gave good performances for events having a Px_5/Ks close to 1 (in other words for which the maximum rainfall intensity was close to the calibrated Ks value; events 6, 14, 15, and 16 in Fig. 7). And the Stem(1) and Stem(2) approaches considerably improved runoff modelling for rainfall events with low intensities, notably those lower than the measured Ks . On the other hand, these results showed that β can be an efficient calibration parameter when Ks is measured in situ.

6 Discussion and conclusion

Our results show that taking into account the rainfall partitioning by vegetation in a runoff model improved discharge simulation at the plot scale, in the case of a banana field. This approach was consistent with the high permeability values measured on the field and accounts for the production of runoff for rainfall intensities lower than surface saturated hydraulic conductivity. This modelling approach was lumped at the plot scale, in which we developed a stemflow function that was coupled with a production function and a transfer function. The application on a banana field under tropical rainfalls in Guadeloupe gave good results ($NS_i > 0.6$ for 14 events out of 18) for a wide range of rainfall events from 10 to 130 mm depth. This last point highlights the robustness of the model and allows it to be considered for application on long time series.

Our study showed the influence of plant canopy on hydrological processes at the 3000 m² plot scale. Simulations showed that the rainfall concentration at the plant foot by stemflow could increase the runoff coefficient at this scale. This was done in the context of plants with a high funnelling ratio cropped on permeable Andosol under high

Modelling runoff taking into account rainfall partitioning

J.-B. Charlier et al.

Title Page

Abstract

Introduction

Conclusions

References

Tables

Figures

◀

▶

◀

▶

Back

Close

Full Screen / Esc

Printer-friendly Version

Interactive Discussion



rainfall intensities. Concerning low flows, although results without and with stemflow showed that it was difficult to simulate runoff during low rainfalls, low flows were better modelled with stemflow. This result is coherent with the decrease in K_s observed at the end of the rainfall event by Cattán et al. (2009) at the banana plant scale. In fact, this decrease in permeability generates more runoff and is equivalent to a concentration of rainwater at the soil surface in our modelling approach with stemflow.

One limitation of the modelling approach lies in the concept of the hydraulic compartmentation of the plot, with one compartment receiving a water pathway from stemflow. In fact, the physical measurement of the stemflow coefficient β , which determines the area of both compartments, may be difficult because the boundaries of the water pathways vary in space and time as shown by Cattán et al. (2009). Thus, this conceptual two-compartment scheme implies that the parameter of the stemflow function should remain calibrated.

The major implication of this study concerns the management of water fluxes in a cultivated plot. First, our study shows that, to account for rainfall partitioning between runoff and infiltration, changes in the structure and arrangement of cropping species should be considered as well as the more traditional soil management techniques (plant cover, mulching, soil tillage ...). Second, the structure and arrangement of cropping species should be taking into account to globally manage transfers in and out of the plot. Indeed, the great heterogeneity of water fluxes at the soil surface that are induced by plant cover may influence transport of solute elements (fertilizers and pesticides) or solid elements (erosion). Some authors have shown the role of banana stemflow in drainage water on transport of nitrate and potassium (Sansoulet et al., 2007) and of pesticides (Saison et al., 2008), confirming the need to consider these processes. This is especially true since applications of agrochemicals on banana fields are not spatially distributed over the whole area: in the case of banana, applications are localized around the plant collar, i.e. in zones of high water fluxes from stemflow.

In prospect, the improved simulation of low flows with our modelling approach provided opportunities to model low intermittent rainfalls corresponding to rainfall events

Modelling runoff taking into account rainfall partitioning

J.-B. Charlier et al.

Title Page

Abstract

Introduction

Conclusions

References

Tables

Figures

◀

▶

◀

▶

Back

Close

Full Screen / Esc

Printer-friendly Version

Interactive Discussion



of long duration with relatively low intensities, situations for which authors like Yu et al. (2000) and Chahinian et al. (2006) have noted the modelling difficulties. Finally, considering the influence of vegetation on runoff generation at the plant and the plot scales, its influence on hydrological processes at a larger scale, that of the hillslope and the catchment scales, have to be assessed. The proposed stemflow function integrated into a lumped model at the plot scale can be used in distributed hydrological models at the catchment scale to characterize vegetation impact on hydrological processes.

Acknowledgement. This study was funded by the Guadeloupe Region (FWI), the Ministère de l'Ecologie et du Développement Durable (France), and the European Community under the project "Assessment of water-pollution risks associated with agriculture in the French West Indies: management at the catchment scale".

References

- Ajayi, A. E., Van de Giesen, N., and Vlek, P.: A numerical model for simulating Hortonian overland flow on tropical hillslopes with vegetation elements, *Hydrol. Process.*, 22(8), 1107–1118, 2008.
- Belk, E. L., Markewitz, D., Rasmussen, T. C., Carvalho, E. J. M., Nepstad, D. C., and Davidson, E. A.: Modeling the effects of throughfall reduction on soil water content in a Brazilian Oxisol under a moist tropical forest, *Water Resour. Res.*, 43, W08432, doi:10.1029/2006WR005493, 2007.
- Bouten, W., Schaap, M. G., Bakker, D. J., and Verstraten, J. M.: Modelling soil water dynamics in a forested ecosystem. I: A site specific evaluation, *Hydrol. Process.*, 6(4), 435–444, 1992.
- Cattan, P., Cabidoche, Y.-M., Lacas, J.-G., and Voltz, M.: Effects of tillage and mulching on runoff under banana (*Musa* spp.) on a tropical Andosol, *Soil Till. Res.*, 86(1), 38–51, 2006.
- Cattan, P., Bussièrè, F., and Nouvellon, A.: Evidence of large rainfall partitioning patterns by banana and impact on surface runoff generation, *Hydrol. Process.*, 21(16), 2196–2205, 2007a.
- Cattan, P., Voltz, M., Cabidoche, Y.-M., Lacas, J.-G., and Sansoulet, J.: Spatial and temporal variations in percolation fluxes in a tropical Andosol influenced by banana cropping patterns, *J. Hydrol.*, 335(1–2), 157–169, 2007b.

Modelling runoff taking into account rainfall partitioning

J.-B. Charlier et al.

Title Page

Abstract

Introduction

Conclusions

References

Tables

Figures

◀

▶

◀

▶

Back

Close

Full Screen / Esc

Printer-friendly Version

Interactive Discussion



Modelling runoff taking into account rainfall partitioning

J.-B. Charlier et al.

Title Page

Abstract

Introduction

Conclusions

References

Tables

Figures

◀

▶

◀

▶

Back

Close

Full Screen / Esc

Printer-friendly Version

Interactive Discussion



Cattan, P., Ruy, S., Cabidoche, Y.-M., Findeling, A., Desbois, P., and Charlier, J.-B.: Effect on runoff of rainfall redistribution by the impluvium-shaped canopy of banana cultivated on an Andosol with a high infiltration rate, *J. Hydrol.*, 368(1–4), 251–261, 2009.

Chahinian, N., Moussa, R., Andrieux, P., and Voltz, M.: Accounting for temporal variation in soil hydrological properties when simulating surface runoff on tilled plots, *J. Hydrol.*, 326(1–4), 135–152, 2006.

Charlier, J.-B.: Fonctionnement et modélisation hydrologique d'un petit bassin versant cultivé en milieu volcanique tropical, PhD thesis, Université des Sciences et Techniques du Languedoc, Montpellier II, 246 pp., 2007.

Crockford, R. H. and Richardson, D. P.: Partitioning of rainfall into throughfall, stemflow and interception: effect of forest type, ground cover and climate, *Hydrol. Process.*, 14(16–17), 2903–2920, 2000.

Gash, J. H. C., Lloyd, C. R., and Lachaud, G.: Estimating sparse forest rainfall interception with an analytical model, *J. Hydrol.*, 170(1–4), 79–86, 1995.

Green, W. A. and Ampt, G. A.: Studies on soil physics, 1: The flow of air and water through soils, *J. Agr. Sci.*, 4(1), 1–24, 1911.

Harris, D.: The partitioning of rainfall by a banana canopy in St Lucia, Windward Islands, *Trop. Agr.*, 74, 198–202, 1997.

Hayami, S.: On the propagation of flood waves, *Disaster Prev. Res. Inst. Bull.*, Kyoto University, 1, 1–16, 1951.

Herwitz, S. R.: Infiltration-excess caused by Stemflow in a cyclone-prone tropical rainforest, *Earth Surf. Proc. Land.*, 11(4), 401–412, 1986.

Horton, R. E.: The role of infiltration in the hydrologic cycle, *EOS T. Am. Geophys. Un.*, 14, 446–460, 1933.

Keim, R. F. and Skaugset, A. E.: A linear system model of dynamic throughfall rates beneath forest canopies, *Water Resour. Res.*, 40(05), W05208, 2004.

Klemeš, V.: Operational testing of hydrological simulation models, *Hydrol. Sci. J.*, 31(1), 13–24, 1986.

Levia, D. F. J. and Frost, E. E.: A review and evaluation of stemflow literature in the hydrologic and biogeochemical cycles of forested and agricultural ecosystems, *J. Hydrol.*, 274, 1–29, 2003.

Liang, W.-L., Kosugi, K.I., and Mizuyama, T.: A three-dimensional model of the effect of stemflow on soil water dynamics around a tree on a hillslope, *J. Hydrol.*, 366(1–4), 62–75, 2009.

- Llorens, P. and Domingo, F.: Rainfall partitioning by vegetation under Mediterranean conditions. A review of studies in Europe, *J. Hydrol.*, 335, 37–54, 2007.
Météo-France: <http://www.meteofrance.com/>, 2004.
- Morel-Seytoux, H. J.: Derivation of equations for variable rainfall infiltration, *Water Resour. Res.*, 14(4), 561–568, 1978.
- Moussa, R. and Bocquillon, C.: Algorithms for solving the diffusive wave flood routing equation, *Hydrol. Process.*, 10(1), 105–123, 1996.
- Moussa, R., Voltz, M., and Andrieux, P.: Effects of the spatial organization of agricultural management on the hydrological behaviour of a farmed catchment during flood events, *Hydrol. Process.*, 16(2), 393–412, 2002.
- Philip, J. R.: The theory of infiltration: 4. Sorptivity and algebraic infiltration equations, *Soil Sci.*, 84, 257–267, 1957.
- Richards, L. A.: Capillary conduction of liquids through porous medium, *Physics*, 1(5), 318–333, 1931.
- Saison, C., Cattan, P., Louchart, X., and Voltz, M.: Effect of spatial heterogeneities of water fluxes and application pattern on cadusafos fate on banana-cultivated andosols, *J. Agr. Food Chem.*, 56(24), 11947–11955, 2008.
- Sansoulet, J., Cabidoche, Y. M., and Cattan, P.: Adsorption and transport of nitrate and potassium in an Andosol under banana (Guadeloupe, French West Indies), *Eur. J. Soil Sci.*, 58(2), 478–489, 2007.
- Sansoulet, J., Cabidoche, Y.-M., Cattan, P., Ruy, S., and Šimůnek, J.: Spatially distributed water fluxes in an andisol under banana plants: Experiments and three-dimensional modeling, *Vadose Zone J.*, 7(2), 819–829, 2008.
- Singh, V. P.: Accuracy of kinematic wave and diffusion wave approximations for space independent flows, *Hydrol. Process.*, 8(1), 45–62, 1994.
- Tiemeyer, B., Moussa, R., Lennartz, B., and Voltz, M.: MHYDAS-DRAIN: A spatially distributed model for small, artificially drained lowland catchments, *Ecol. Model.*, 209(1), 2–20, 2007.
- Van Dijk, A. I. J. M. and Bruijnzeel, L. A.: Modelling rainfall interception by vegetation of variable density using an adapted analytical model. Part 1. Model description, *J. Hydrol.*, 247(3–4), 230–238, 2001.
- WRB (Ed.): World reference base for soil resources, *World Soil Resources*, No 103, FAO, Rome, 2006.

**Modelling runoff
taking into account
rainfall partitioning**J.-B. Charlier et al.

Title Page

Abstract

Introduction

Conclusions

References

Tables

Figures

◀

▶

◀

▶

Back

Close

Full Screen / Esc

Printer-friendly Version

Interactive Discussion



Yu, B., Sombatpanit, S., Rose, C. W., Ciesiolka, C. A. A., and Coughlan, K. J.: Characteristics and modeling of runoff hydrographs for different tillage treatments, *Soil Sci. Soc. Am. J.*, 64(5), 1763–1770, 2000.

HESSD

6, 4307–4347, 2009

**Modelling runoff
taking into account
rainfall partitioning**

J.-B. Charlier et al.

Title Page

Abstract

Introduction

Conclusions

References

Tables

Figures



Back

Close

Full Screen / Esc

Printer-friendly Version

Interactive Discussion



Modelling runoff taking into account rainfall partitioning

J.-B. Charlier et al.

Table 1. Fixed and calibrated parameters for the three modelling approaches.

Modelling approaches	Model functions and corresponding parameters			
	Stemflow function	Production function	Transfer function	
	β [-]	Ks [mm h ⁻¹]	ω [min]	z [-]
NoStem	Not used	Calibrated	Calibrated	Calibrated
Stem(1)	Fixed	Calibrated	Calibrated	Calibrated
Stem(2)	Calibrated	Fixed	Calibrated	Calibrated

Title Page

Abstract

Introduction

Conclusions

References

Tables

Figures

◀

▶

◀

▶

Back

Close

Full Screen / Esc

Printer-friendly Version

Interactive Discussion



Modelling runoff taking into account rainfall partitioning

J.-B. Charlier et al.

Table 2. Characteristics of flood events, sorted by increasing rainfall depth for each calibration and validation set.

Event number	Date	Calibration (C) and validation (V) set	Rainfall depth P [mm]	Maximum rainfall intensity over 5 min Px_5 [mm h ⁻¹]	Runoff depth S [mm]	Peakflow Q_x [L s ⁻¹]	S/P [%]
1	27 Jan 2002	C	10.6	64.8	1.8	6.8	17.2
2	10 Dec 2001		11.2	67.2	3.0	13.5	26.9
3	20 Dec 2001		13.0	52.8	2.8	8.2	21.2
4	2 Apr 2002		15.8	67.2	1.5	9.0	9.3
5	16 Dec 2001		23.2	48.0	8.3	18.6	36.0
6	9 Dec 2001		24.4	91.2	6.0	18.7	24.7
7	15 Dec 2001		25.4	45.6	8.7	17.8	34.3
8	21 Dec 2001		47.6	110.4	13.9	25.6	29.2
9	13 Dec 2001		139.2	129.6	44.0	35.7	31.6
10	10 Dec 2001	V	10.0	48.0	1.9	10.8	19.4
11	14 Dec 2001		11.4	50.4	4.1	14.8	35.6
12	11 Dec 2001		12.6	64.8	3.5	15.3	27.7
13	20 Dec 2001		15.0	62.4	5.2	19.5	34.5
14	11 Dec 2001		23.2	69.6	6.4	16.4	27.5
15	14 Dec 2001		25.2	93.6	8.0	19.8	31.9
16	10 Dec 2001		27.8	76.8	7.6	18.3	27.3
17	6 Dec 2001		37.4	144.0	7.8	24.5	20.8
18	2 Apr 2002		57.0	62.4	8.2	12.7	14.4

Title Page

Abstract Introduction

Conclusions References

Tables Figures

◀ ▶

◀ ▶

Back Close

Full Screen / Esc

Printer-friendly Version

Interactive Discussion



Modelling runoff taking into account rainfall partitioning

J.-B. Charlier et al.

Table 3. Parameterization and performance criteria for calibration and validation sets for the three modelling approaches using collective calibration.

Approaches	Event numbers	Calibration (C) and validation (V) sets	Fixed and optimised parameter values				Performance criteria			
			β [-]	Ks [mm h ⁻¹]	ω [min]	z [-]	ε_S [-]	ε_{Qx} [-]	NS [-]	$NS_{<5}$ [-]
NoStem	1–9	C	$\approx 1^{a,b}$	44.4	16.0	0.481	0.000	0.37	0.69	-0.55
	10–18	V	$\approx 1^{a,b}$	44.4	16.0	0.481	0.106	0.45	0.53	-5.50
Stem(1)	1–9	C	0.05 ^a	60.5	10.9	0.485	0.000	0.18	0.88	0.35
	10–18	V	0.05 ^a	60.5	10.9	0.485	0.066	0.59	0.75	-1.32
Stem(2)	1–9	C	0.00935	75.0 ^a	8.7	0.484	0.000	0.02	0.92	0.47
	10–18	V	0.00935	75.0 ^a	8.7	0.484	0.166	0.53	0.81	-0.36

^a fixed parameters

^b parameterisation without accounting for stemflow

Title Page

Abstract

Introduction

Conclusions

References

Tables

Figures

◀

▶

◀

▶

Back

Close

Full Screen / Esc

Printer-friendly Version

Interactive Discussion



Modelling runoff taking into account rainfall partitioning

J.-B. Charlier et al.

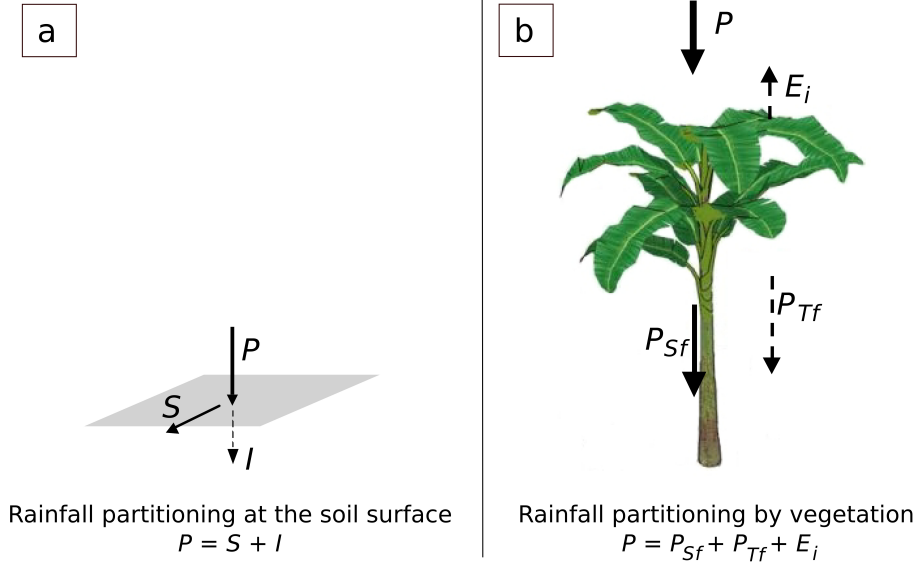


Fig. 1. Rainfall partitioning at the soil surface without vegetation **(a)** and rainfall partitioning under vegetation **(b)**; with rainfall P , runoff S , infiltration I , interception and evaporation E_i , stemflow P_{Sf} , and throughfall P_{Tf} .

Title Page

Abstract

Introduction

Conclusions

References

Tables

Figures

◀

▶

◀

▶

Back

Close

Full Screen / Esc

Printer-friendly Version

Interactive Discussion



Modelling runoff taking into account rainfall partitioning

J.-B. Charlier et al.

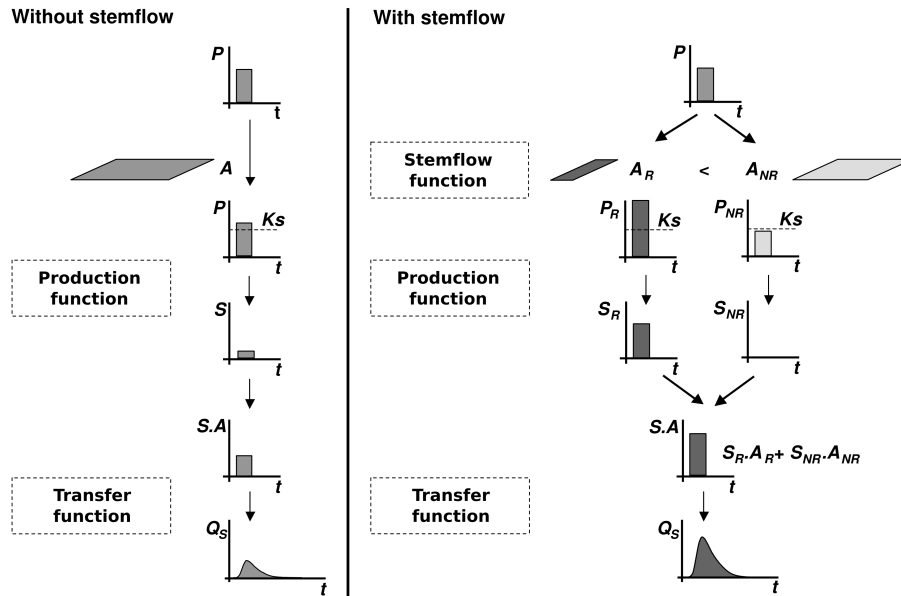


Fig. 2. Model structure without and with a stemflow function, coupled with a production function and a transfer function; with t the time, incident rainfall P reaching the plot of A surface area, the saturated hydraulic conductivity Ks , total runoff S and total infiltration I on the whole A plot, the simulated discharge Q_s at the outlet of the A plot, rainfall intensity P_R and P_{NR} , runoff S_R and S_{NR} on the A_R and A_{NR} area; A_R and A_{NR} correspond to the runoff water pathway fed by stemflow (in dark grey color) and the rest of the plot (in light grey color), respectively.

Title Page

Abstract

Introduction

Conclusions

References

Tables

Figures

◀

▶

◀

▶

Back

Close

Full Screen / Esc

Printer-friendly Version

Interactive Discussion



Modelling runoff taking into account rainfall partitioning

J.-B. Charlier et al.

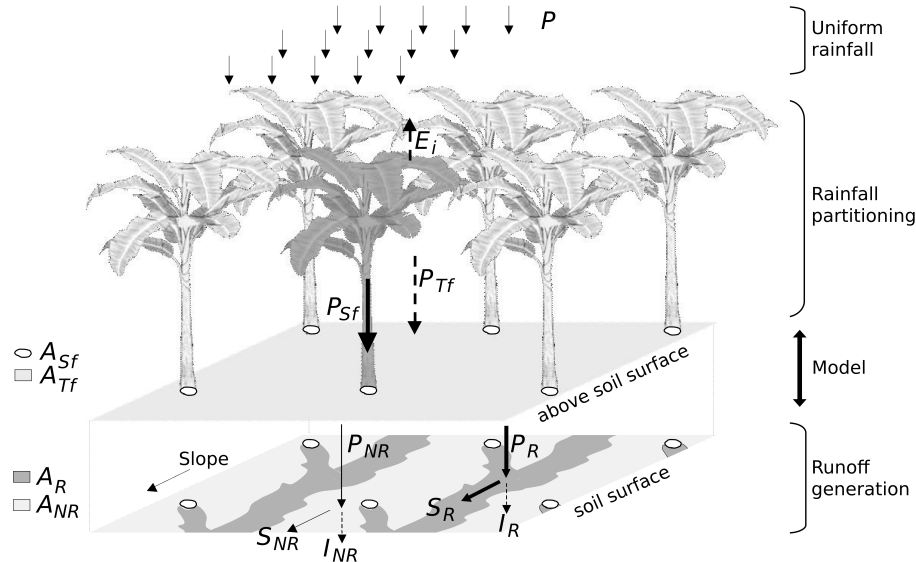


Fig. 3. Water balance at the plot scale; with incident rainfall P , interception and evaporation E_i , stemflow P_{Sf} , throughfall P_{Tf} , rainfall intensity P_R reaching the A_R area corresponding to the runoff water pathway fed by stemflow (in dark grey color), rainfall intensity P_{IR} reaching the A_{NR} area corresponding to the rest of the plot (in light grey color), S_R , I_R , and S_{IR} , and I_{IR} the runoff and infiltration on A_R and A_{NR} compartments, respectively.

Title Page

Abstract

Introduction

Conclusions

References

Tables

Figures

◀

▶

◀

▶

Back

Close

Full Screen / Esc

Printer-friendly Version

Interactive Discussion



Modelling runoff taking into account rainfall partitioning

J.-B. Charlier et al.

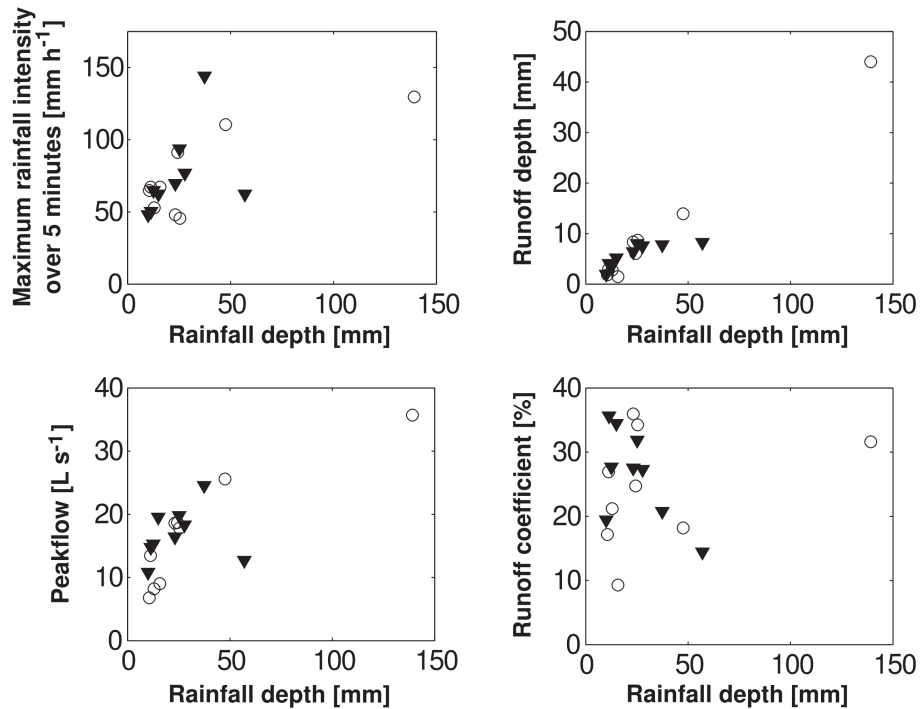


Fig. 4. Characteristics of flood events of the calibration set (○) and validation set (▼).

Title Page

Abstract

Introduction

Conclusions

References

Tables

Figures

◀

▶

◀

▶

Back

Close

Full Screen / Esc

Printer-friendly Version

Interactive Discussion



Modelling runoff taking into account rainfall partitioning

J.-B. Charlier et al.

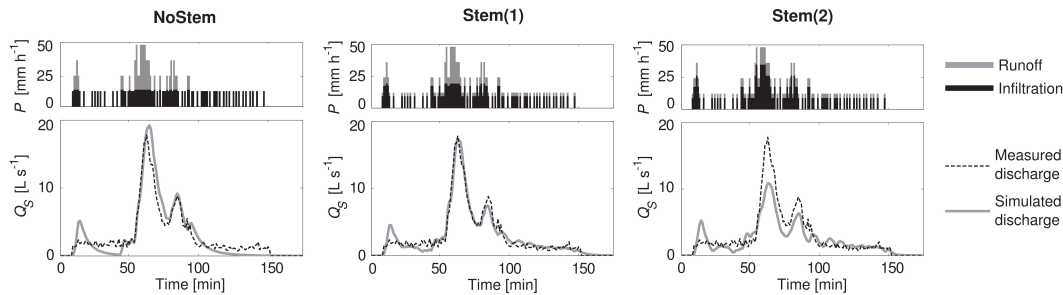


Fig. 5. Simulated hydrographs of event 7 for the three approaches: without stemflow NoStem and with stemflow Stem(1) and Stem(2) using individual calibration.

Title Page

Abstract

Introduction

Conclusions

References

Tables

Figures

◀

▶

◀

▶

Back

Close

Full Screen / Esc

Printer-friendly Version

Interactive Discussion



Modelling runoff taking into account rainfall partitioning

J.-B. Charlier et al.

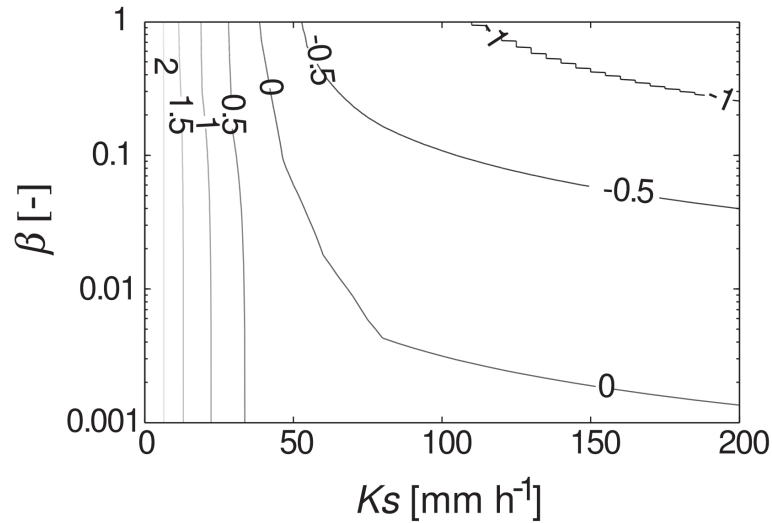


Fig. 6. Sensitivity analysis of the K_s and β parameters on simulated runoff volume for event 16; lines represent iso-values of the relative error on volume ϵ_{Sj} .

Title Page

Abstract

Introduction

Conclusions

References

Tables

Figures

◀

▶

◀

▶

Back

Close

Full Screen / Esc

Printer-friendly Version

Interactive Discussion



Modelling runoff taking into account rainfall partitioning

J.-B. Charlier et al.

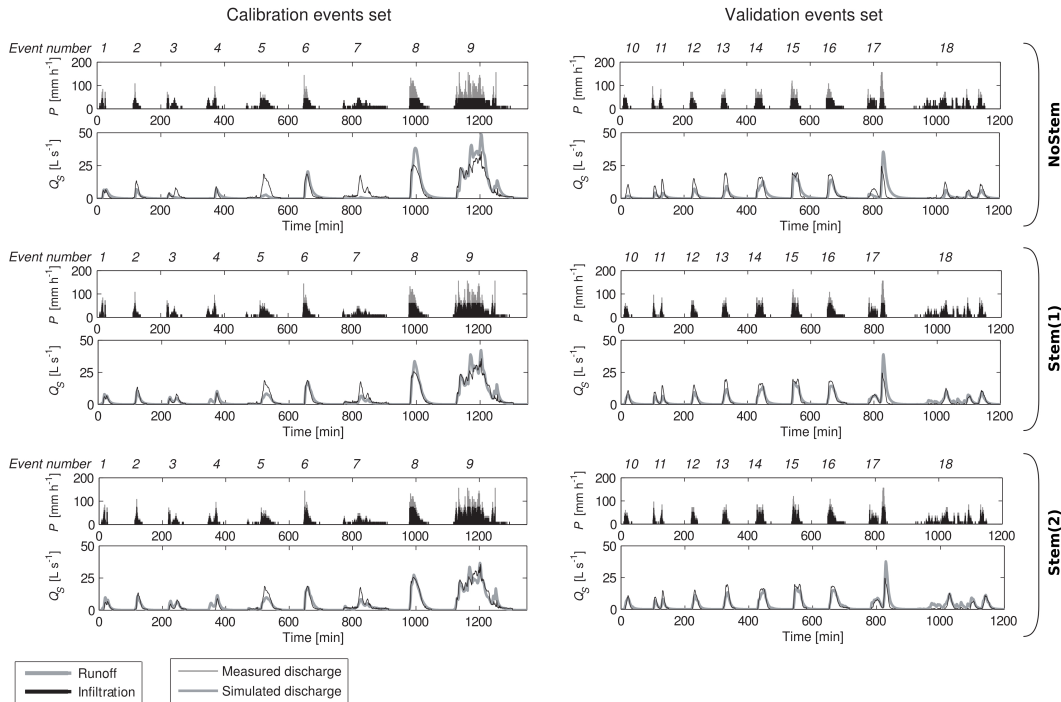


Fig. 7. Simulation results for calibration and validation sets for the three approaches: without stemflow NoStem and with stemflow Stem(1) and Stem(2). P is the rainfall and Q_S the discharge at the plot outlet. Notice that the various events are presented on the same time axis.

Title Page

Abstract Introduction

Conclusions References

Tables Figures

◀ ▶

◀ ▶

Back Close

Full Screen / Esc

Printer-friendly Version

Interactive Discussion



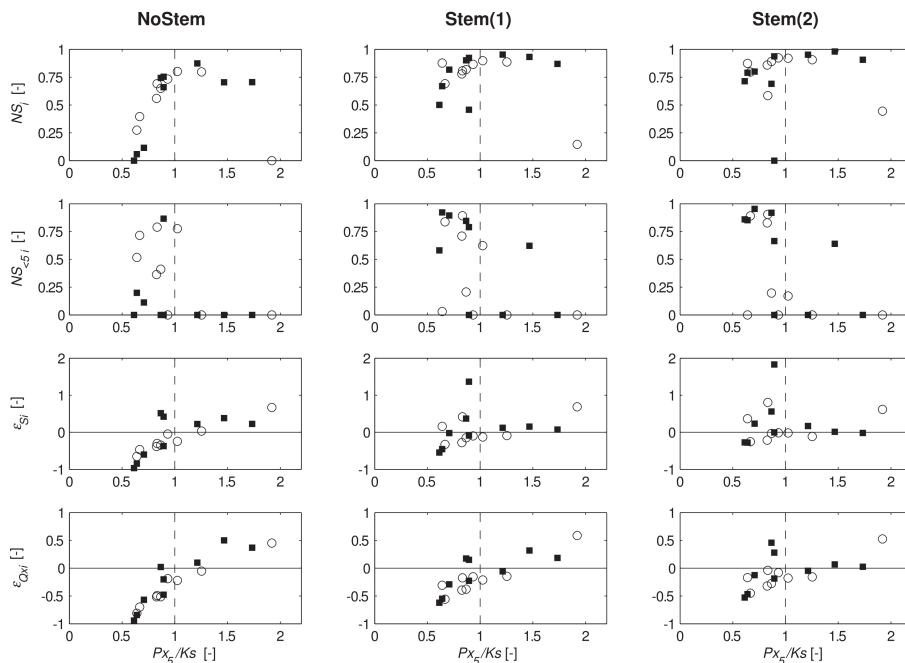


Fig. 8. Results of performance criteria for the calibration (■) and validation (○) sets for the three approaches: without stemflow NoStem and with stemflow Stem(1) and Stem(2). P_{X_5}/K_s is the ratio between the maximal rainfall intensity for 5 min and the saturated hydraulic conductivity, NS_i and $NS_{<5i}$ are the Nash and Sutcliffe coefficients on the whole hydrograph and on discharge lower than 5 L s^{-1} on flood recession, respectively, ε_{S_i} and $\varepsilon_{Q_{xi}}$ the relative errors on volume and on peakflow, respectively; for graphical readability, null values are used as a substitute for negative values of NS_i and $NS_{<5i}$ criteria.

Title Page

Abstract

Introduction

Conclusions

References

Tables

Figures

◀

▶

◀

▶

Back

Close

Full Screen / Esc

Printer-friendly Version

Interactive Discussion

